

The

1

9

4

0

of
Finefone



West Hall from the North Drive



COPYRIGHT 1940

ORA KATE WISENBAKER . . *Editor*

ROSEMARY BAKER . *Business Manager*



Presented by the
Student Body of
the Georgia State
Womans College
at Valdosta, Ga.

PINE CONE
for 1940

FOREWORD

MOVING IMAGES OF ENTHUSIASM—the four daughters of the College—the classes—are herein presented in an illustrated chronicle of student life for the year 1939-'40.

Marching on to a world where women are active, these daughters are pictured on the threshold of new adventures, carved out of the past and created from the experiences of the generations before them.

On the pages that follow the students of G. S. W. C. can see themselves as seen by the eye of the PINE CONE—at work, at play.

The illusive and distinctive atmosphere, the spirit which is the vitality of the college, the camaraderie which motivates friendship and cooperation among students, the versatility that makes possible the varied activities—these qualities the staff has tried to capture in the sincere desire of bringing them concretely to the hearts and minds of the students, hoping that these scenes will portray the college at its best.

The PINE CONE editors, conscious of their great privilege and responsibility, have done their best to find a new voice for heralding the march of the Liberal Arts College for Women of the University System of Georgia as they apply themselves to the goals which make for woman's successful living.



West Hall through the pines



CONTENTS

COLLEGE

CLASSES

ACTIVITIES

FEATURES



The Main Entrance of West Hall

5-27-40

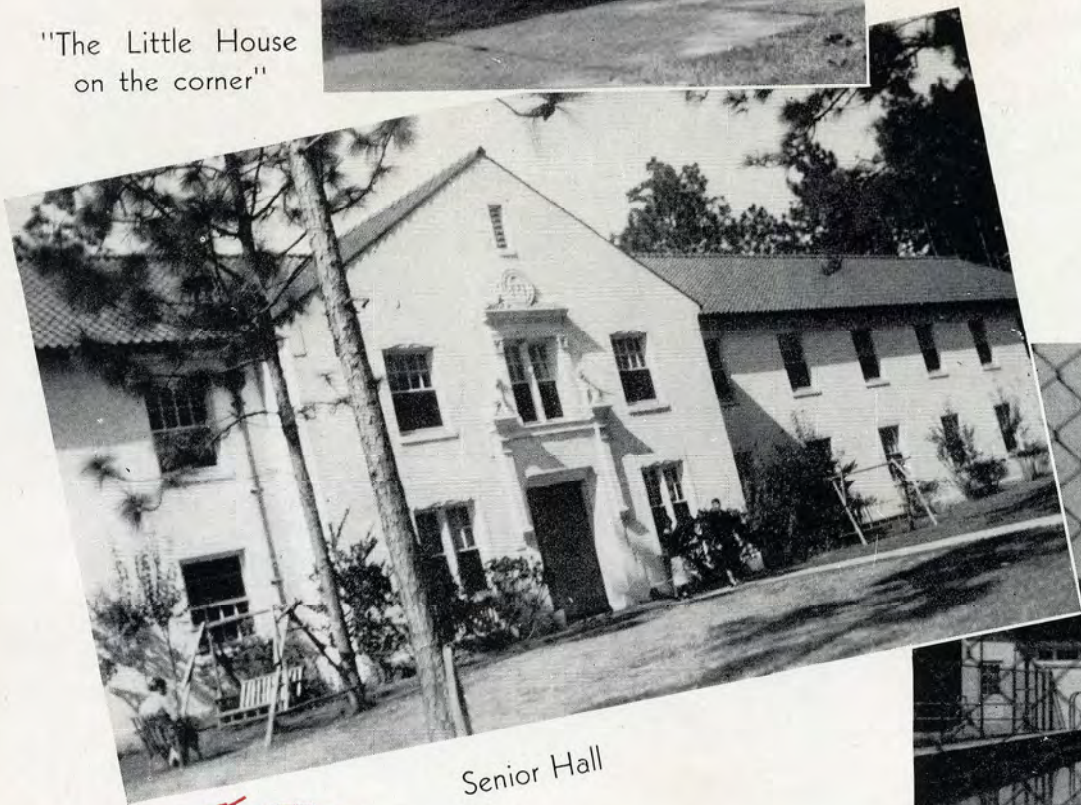
~~1394~~



West Hall



"The Little House on the corner"



Senior Hall

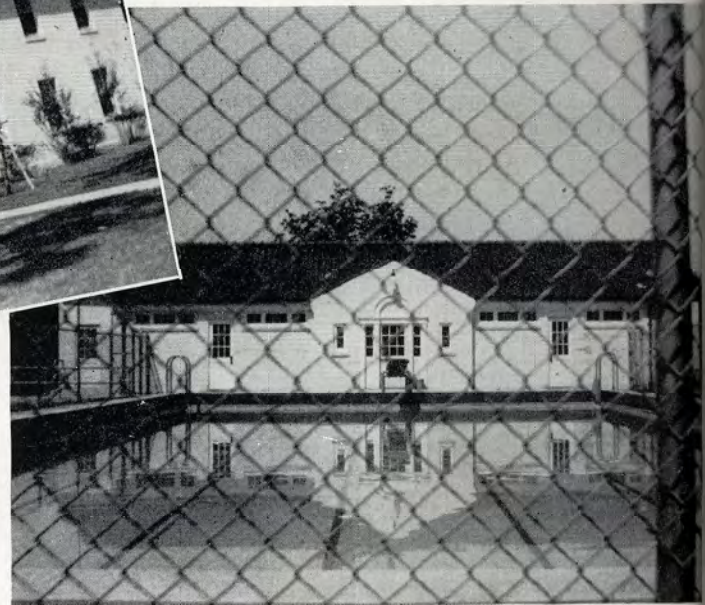


Seeing is Believing

THE STUDENTS, as well as the college, have gained far-reaching publicity because of beauty. So to the skeptic, who must see to believe, these two pages, and those that follow, give undeniable proof.

Scarred stairways, studious students, the historic hitch-hiking corner, the dome, the new swimming pool, the dormitory of juniors and seniors that is yet to be named—all represent thresholds to adventure to girls of G. S. W. C. by the beauty way.

When life at college needs a change in routine the House-in-the-Pines has been found to be the best panacea of all ills. Newly installed in the house is a Carnegie Music Set which is fast becoming a means of enjoyment to both faculty and students. The perfectly arranged little kitchen has inspired many candy-making parties and spaghetti suppers, also it has halted the work of the *Canopy* many nights in its rush to beat the eleven o'clock deadline. Due to periodical physical checkups on students made by the resident physician, a high standard of health is maintained. The zest for activity, which comes from health, is apparent at G. S. W. C., where there is no place for those without the will to do.



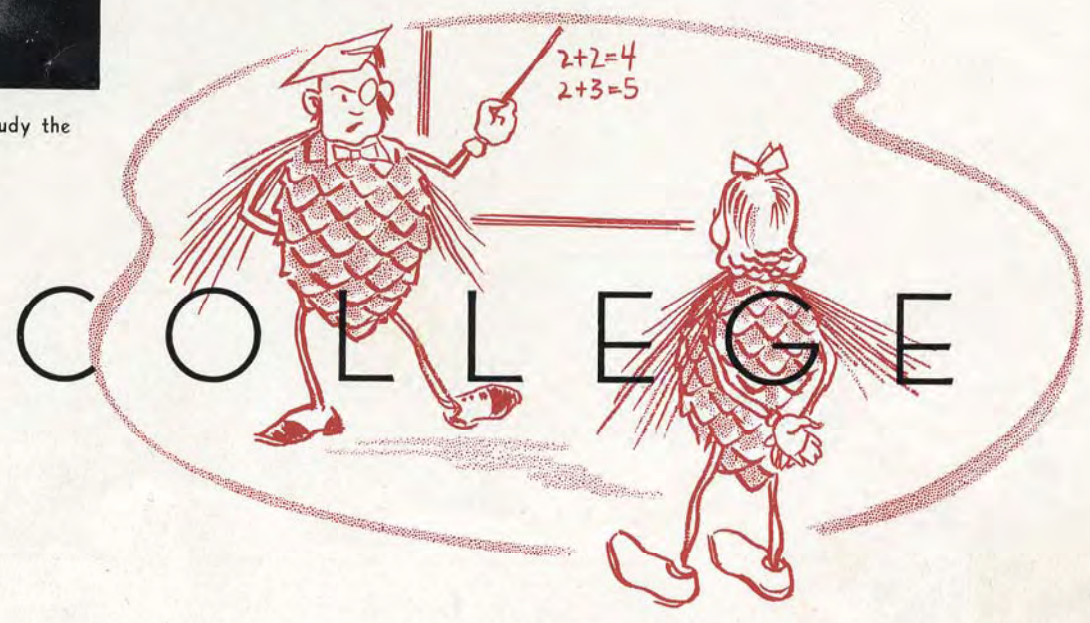
Swimming Pool



Wilkes, Clark, McQueen, Dutton and Abrahams On the Way to Class



Middleton and Abernathy Study the Latest Magazines



8-27-40

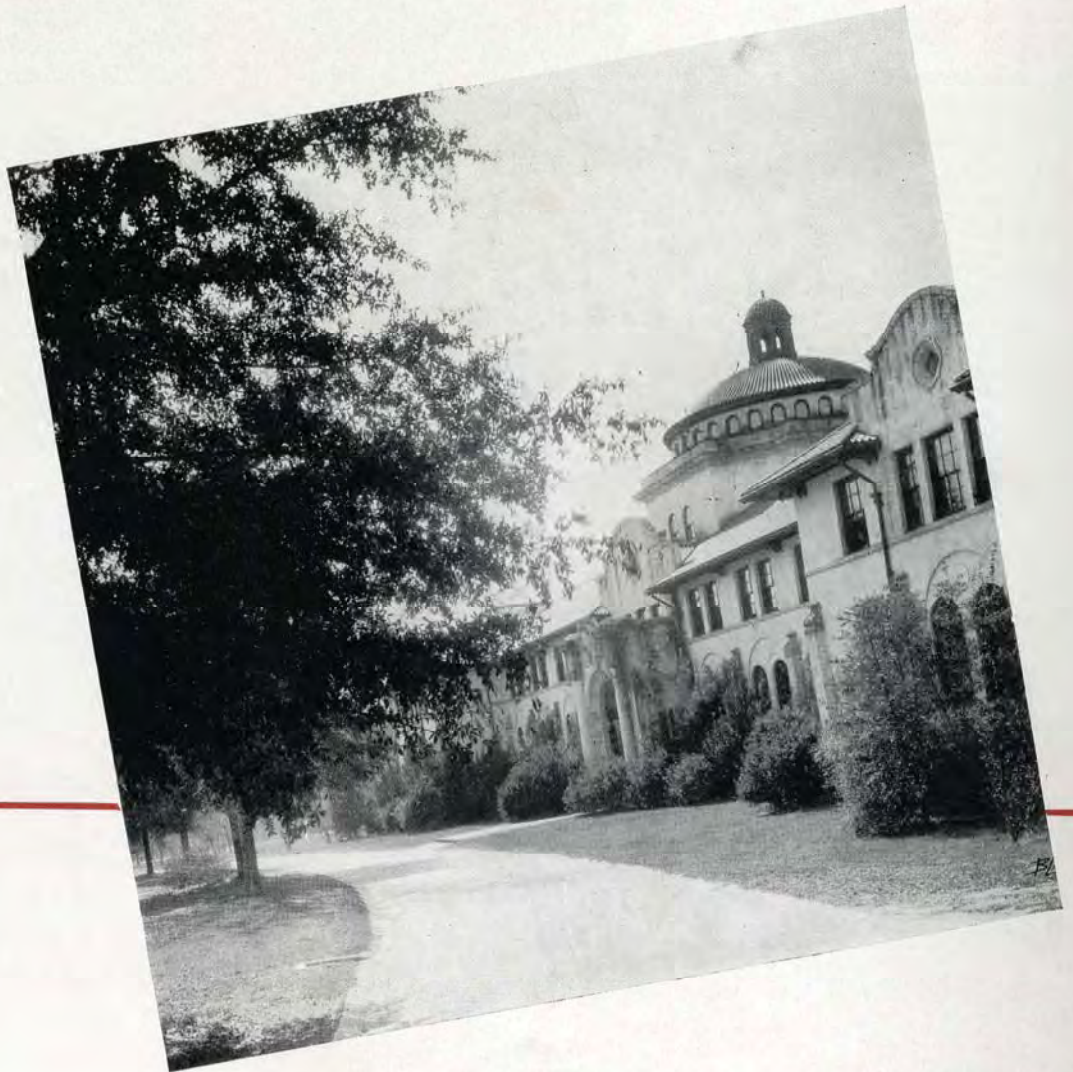
1943

CAMPUS



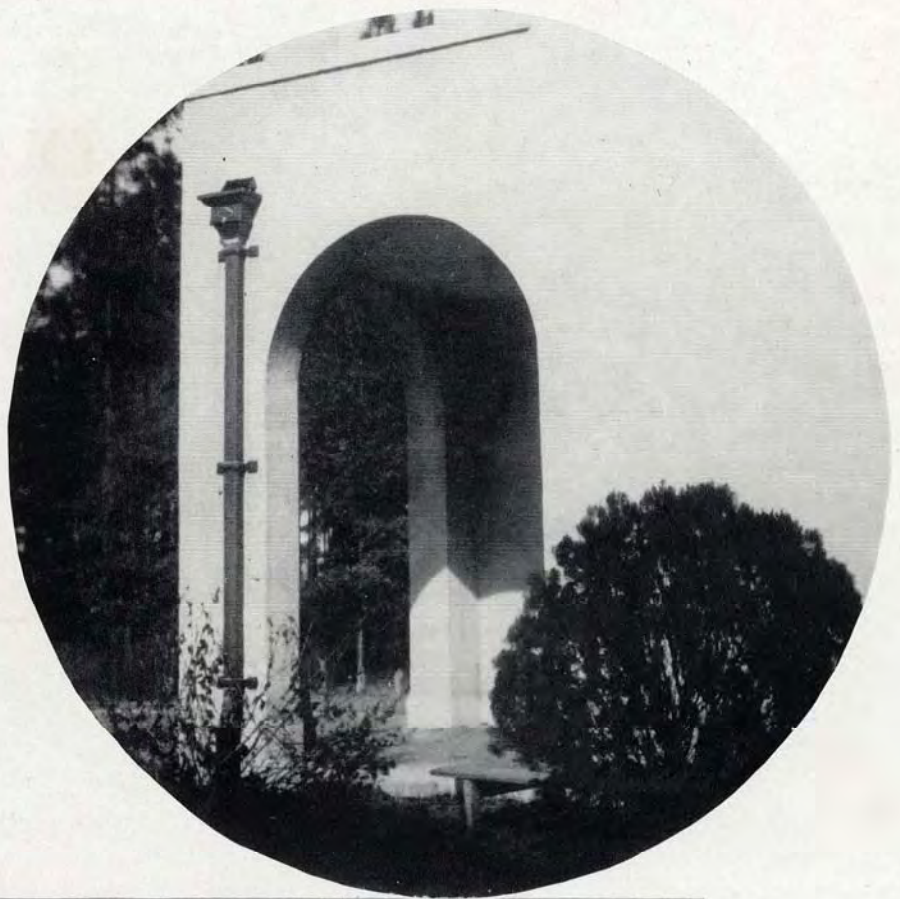
West Hall from South Drive

West Hall looking south



VIEWS

The Arch at Senior Hall

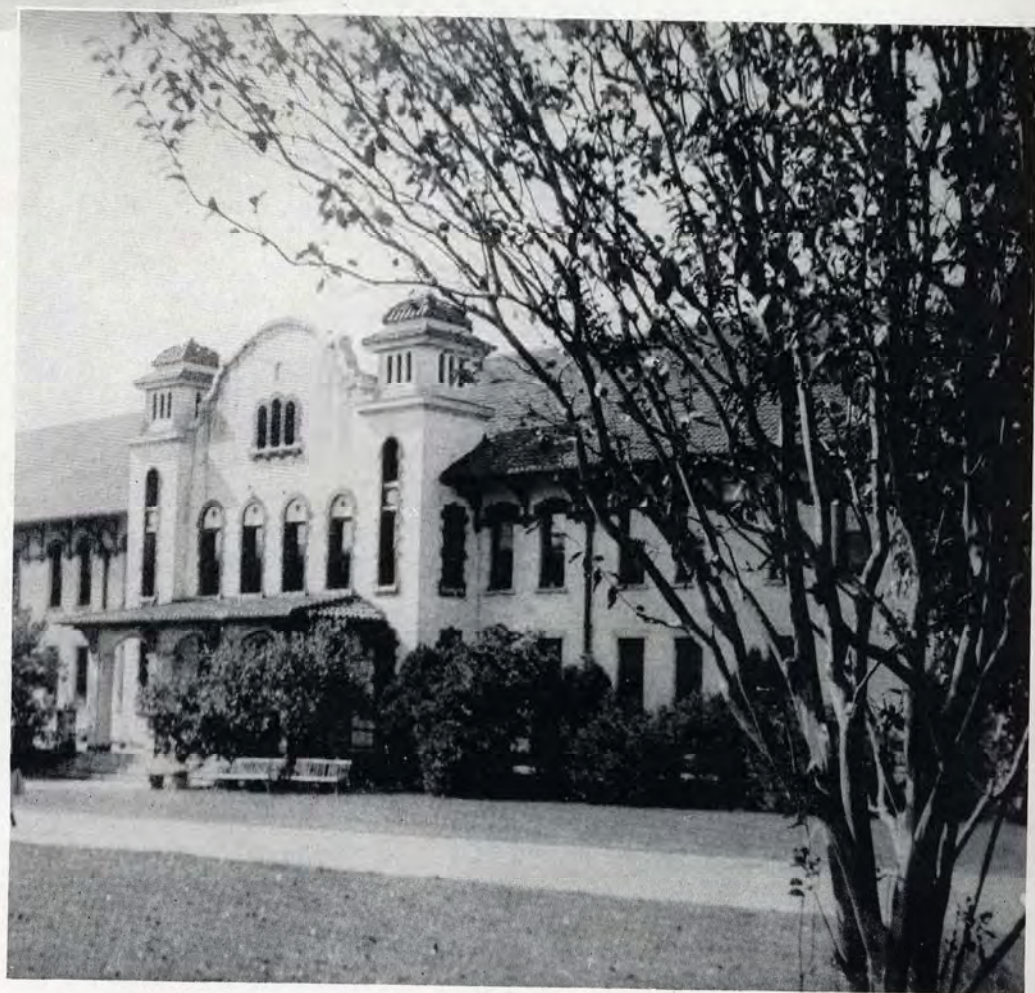


The Dome from Back Campus

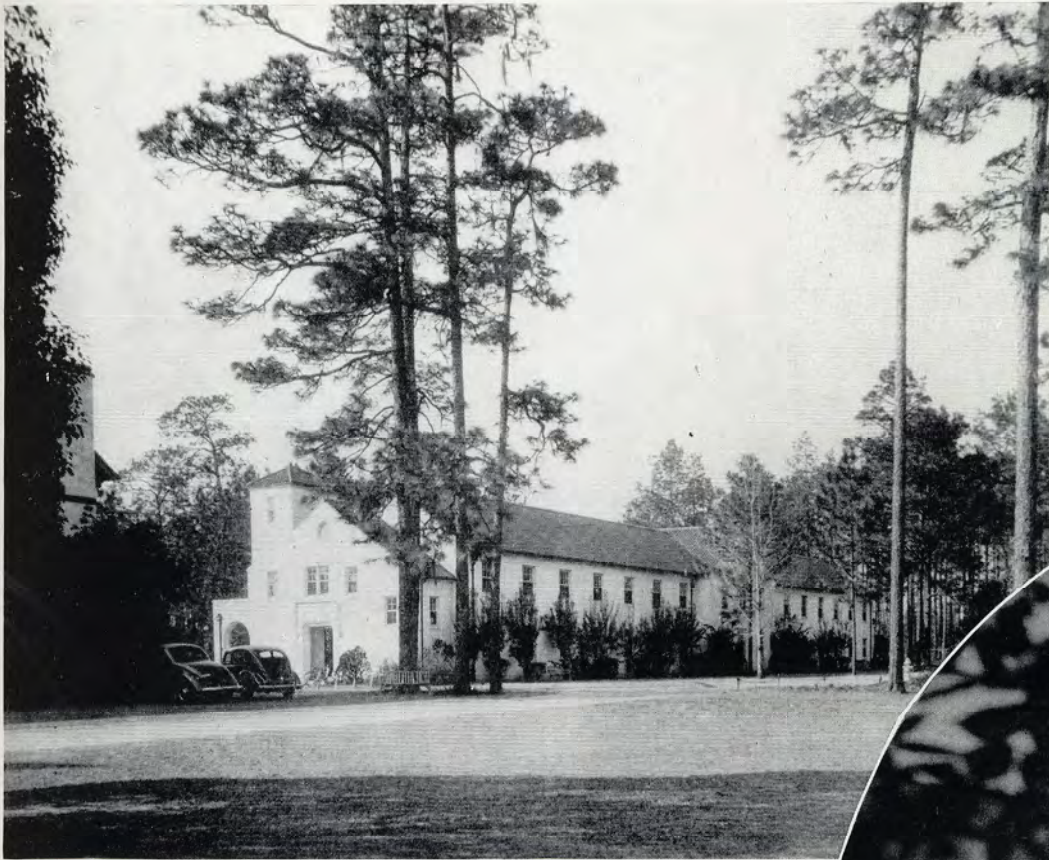


House-in-the-Pines

Converse Hall



VIEWS

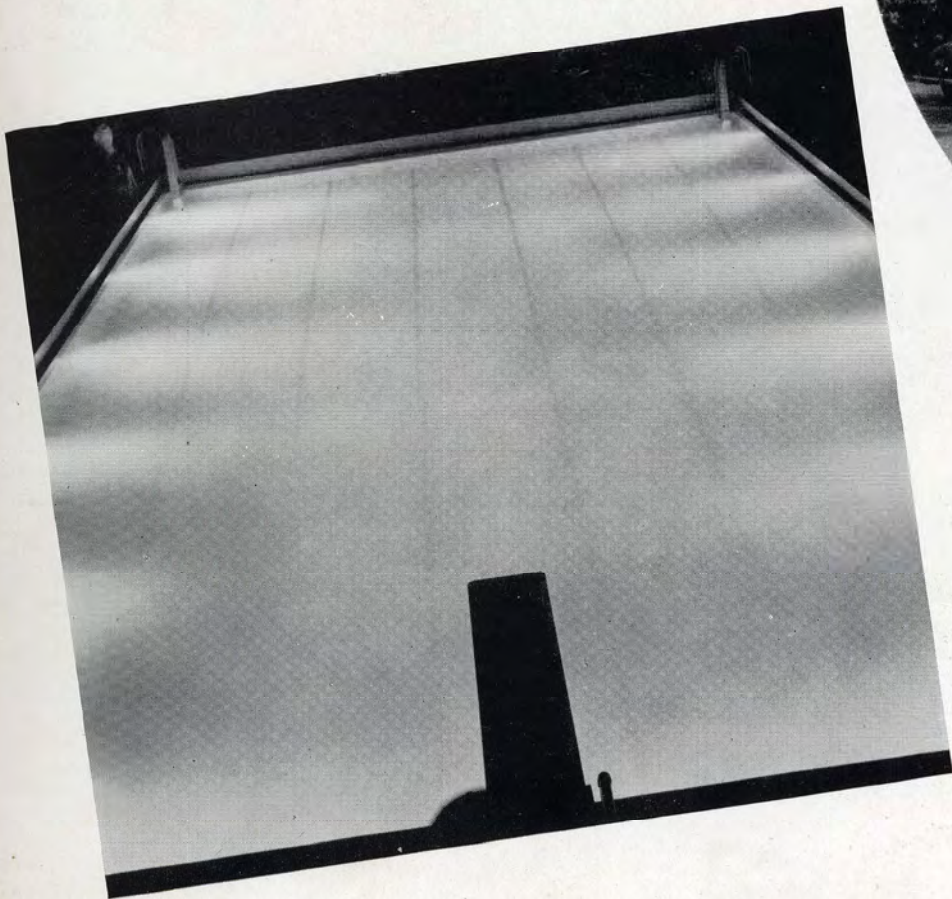


Senior Hall

South entrance of West Hall



Swimming Pool lighted
by underwater lights at
night



A D M I N I S T R A T I O N



FRANK R. READE

President

B.A., M.A., Ph.D., University of Virginia.

ANNIE POWE HOPPER

Dean of Women

B.S., George Peabody College for Teachers; A.M.,
Columbia University; Teachers College Diploma as
Adviser of Women and Girls.



LENA JAMES HAWKS

Dean of Instruction

A.B., Goucher College; A.M., Vanderbilt University;
Ph.D., The Johns Hopkins University.



The '40 PINE CONE

and FACULTY

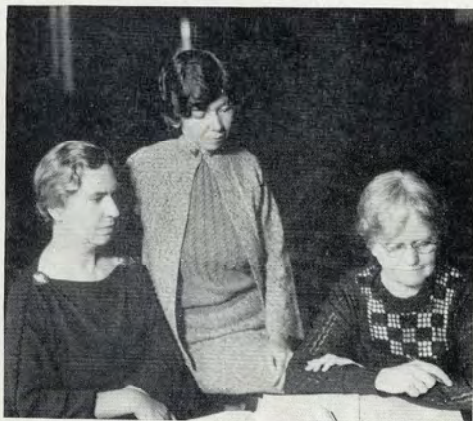
MISS EVELYN DEARISO, *Librarian*. A.B., Georgia State Womans College; B.L.S., Emory University. . . . MISS LILLIAN PATTERSON, *Assistant Librarian*. A.B., Georgia State Womans College; B.L.S., University of North Carolina. . . . MISS ANNA RICHTER, *Secretary to the President and Assistant in Speech Department*. A.B., Georgia State Womans College. . . . MISS MILDRED TEASLEY, *Director of Placement and Publicity*. A.B., A.M., University of Georgia. . . . MR. JAMES ROBERT DUSENBURY, *Treasurer and Purchasing Agent*. . . . MRS. CAROLINE PARRISH THOMAS, *Registrar*. A.B., Georgia State Womans College. . . . MISS MILDRED LARSEN, *Assistant Treasurer*. A.B., Georgia State Womans College. . . . MR. HERBERT F. KRAFT, *Professor of Music*. Special Student, Oberlin Conservatory; Sangster Studio, Cleveland; Pupil of Valjean Anderson, Organ, Washington; Edwin Lathrop Baker, Piano, New York; C. V. Rychlik, Composition, Cleveland. . . . MISS GLADYS WARREN, *Professor of Music*. B.M., Lake Erie College; M.A., Iowa State University; Pupil of Ernest Hutcheson, New York; Lee Pattison, Chicago; Tobias Matthay School of Pianoforte, London, England. . . . MISS MARIE MOTTER, *Professor of Voice*. A.B., Music, The Carnegie Institute of Technology. Further study: Ithaca Conservatory, University of Pittsburgh. Graduate study in voice choral conducting at The Carnegie Institute of Technology. Pupil of Jean Dagg Seaman, Dr. Bert Rogers Lyon. . . . MRS. FRANCES PARDEE, *Instructor in Violin*. Graduate, Cincinnati Conservatory of Music; Pupil of Sevcik in Vienna, and of Julian Polikawski,



Above, top to bottom, first: Deariso and Patterson. . . . Second: Richter, Teasley, Dusenbury, Thomas and Larsen. . . . Third: Kraft, Warren, Pardee and Motter. . . . Below, left to right: Brink, Durrenberger, Punke and Price. . . . Odum, Gulliver and Sawyer.



Faculty



Carpenter, Treanor and Bush



Farbar



Carter, Blitch, Nevins, Phelan and Hawks

Cincinnati Conservatory of Music. . . . DR. ELEANOR NIMS BRINK, *Professor of Social Sciences*. A.B., Vassar College; Ph.D., University of Chicago. . . . DR. JOSEPH A. DURRENBERGER, *Professor of History and Social Science*. A.B., Southwestern University; A.M., Ph.D., Columbia University. . . . DR. HAROLD H. PUNKE, *Professor of Education*. B.S., M.S., University of Illinois; Ph.D., University of Chicago. . . . MISS MILDRED McCLELLAN PRICE, *Professor of History*. A.B., Georgia State Womans College; A.M., Columbia University. . . . MRS. GERTRUDE GILMER ODUM, *Professor of English*. B.S., A.M., George Peabody College for Teachers. . . . DR. HAROLD STRONG GULLIVER, *Professor of English*. B.A., Yale University; A.M., Columbia University; Ph.D., Yale University. . . . MISS LOUISE ANNE SAWYER, *Professor of Speech*. Graduate, Columbia College of Expression; Student, University of North Carolina; B.S., School of Speech, Northwestern University; Student, Columbia College of Expression. . . . MISS FRANCES RUTH CARPENTER, *Professor of Art*. Bachelor's Diploma, B.S., A.M., Teachers College, Columbia University. . . . DR. SAPELO TREANOR, *Professor of French*. A.B., A.M., University of Georgia; Student at the Sorbonne, Paris, France; Ph.D., University of North Carolina. . . . MISS SARA JANIE BUSH, *Professor of Latin*. A.B., University of Georgia; A.M., University of North Carolina; Diploma, College of Classical Studies, Rome, Italy. . . . DR. EARL W. PHELAN, *Professor of Chemistry*. B.Chem., Ph.D., Cornell University. . . . DR. LEE W. BLITCH, B.S., Emory University; Ph.D., Johns Hopkins. . . . DR. BEATRICE I.





Middlebrooks and Garbutt



Ivey, Lowry and McRee



Forsythe

Shrivalle and Whittle



NEVINS, *Professor of Biology*. Ph.B., Ph.M., Ph.D., University of Wisconsin. . . . MISS MARJORIE ESTELLE CARTER, *Assistant Dean of Women and Instructor in Biology and Physical Education*. B.S., William and Mary College. . . . DR. MARIAN E. FARBAR, *Resident Physician and Teacher of Biology*. M.D., University of Illinois Medical College; Practiced Medicine in India and at Earlhan College. . . . MRS. EVA ALFORD SHRIVALLE, *Dietitian*. Palmer College. . . . MRS. C. C. WHITTLE, *Assistant Dietitian*. . . . MISS LEONORA IVEY, *Professor of Physical Education*. Graduate, Sargent School for Physical Education of Boston University; B.S., Georgia State College for Women; M.A., George Peabody College for Teachers. . . . MISS EDITH LOWRY, *Riding Instructor*. Gulf Park College, Gulfport, Miss. . . . MISS ELIZABETH McREE, *Assistant Professor of Physical Education*. A.B., Georgia State Woman's College; M.A., Columbia University. . . . MISS MATILDA CALLAWAY, *Professor of Home Economics*. B.S., University of Georgia; M.A., Columbia University; Exchange Teacher at the University of Tennessee, Winter and Spring, 1940. . . . MISS ELIZABETH GARBUTT, *Assistant and Secretary to Miss Hopper*. A.B., Georgia State Woman's College. . . . MRS. MARY T. MIDDLEBROOKS, *House Mother of Converse Hall*. . . . MRS. DOROTHY MITCHELL FORSYTHE, *Professor of Home Economics*. A.B., Georgia State College for Women. B.S., George Peabody College for Teachers; Graduate Work, University of Tennessee; Exchange Teacher from the University of Tennessee, Winter and Spring Quarters.

THE *Faculty* AS WE SEE THEM . . .

PRIDE AND JOY of Dr. Frank Reade, president, is the House-in-the-Pines. All visiting celebrities and guests are personally escorted there by Dr. Reade. . . . Finding relief from book-lined walls, the librarians, Miss Evelyn Deariso and Miss Lillian Patterson, keep beautifully arranged flowers on the table of the Board Room, and on the desks of the registrar and president. . . . A perfect "natural" for the dramatic club, Dr. Eleanor Brink, professor of sociology, puts students in a roar with characterizations. . . . Known among students as the hardest professor to make an "A" under, Dr. Harold Gulliver, professor of English, tries hard to secure converts to Falstaff. . . . Every single one of her friends would give her last dime to ride the wobbly, and aged bicycle, Jehosephat, of Miss Mildred Teasley, director of publicity and placement. . . . By his flashes of intelligence and brilliance Dr. Harold Punke, professor of psychology and education, earns for himself the coveted title of "best instructor on campus." . . . A speedster . . . Dr. Earl Phelan, professor of chemistry, doesn't spare the tires when he sets out. . . . Photography is his chief hobby . . . quite adept. . . . Noted for her original and clever ideas is Mrs. Gertrude Odum, professor of English. . . . Miss Annie P. Hopper, dean of women, is ever the guardian angel of G. S. W. C. . . . Miss Mildred Price, professor of History, owns two chow dogs, three cats, and innumerable kittens, a fur-coat named Maud, one cow, and hundreds of chickens.



Phelan



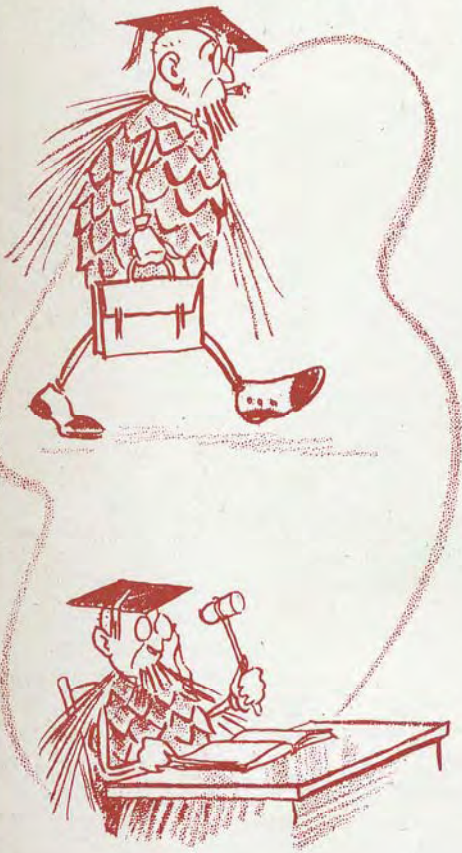
Dr. Reade and Chancellor Sanford



Callaway



McRee, Ivey and Lowry



Class Presidents Abernathy, Burns, Smith and Williams



Gulliver

C L A S S E S





Harper, Abernathy and Williams study travel folders

OPENING THE SOCIAL YEAR with a dance in the Rec Hall, the Senior Class began a record-breaking program of activities. This first dance attracted the largest crowd ever witnessed at a Saturday evening frolic. No other dance of the year touched it in number of persons present.

Sponsoring a benefit bridge at the House-in-the-Woods as a second venture in the money-making scheme, the seniors again met with success, but this time unexpectedly. The class feared losses due to the fact that only a small number of the students in the college played bridge.

In concurrence with an annual custom the seniors sponsored the October Carnival, and pulled as one strong body in putting it over—their biggest enterprise of the year. Financial returns were not thought to be staggering by members of the class, who had aimed at even higher monetary gains, but judging the results comparatively with senior classes of other years, the money earned in the undertaking justified the work expended, and made it possible to name the carnival a success.

After tasting the fruits of success the seniors clamored for more. In a drive to sell engraved stationery to the student body, faculty members, clubs, and organizations, the class met Dame Fortune right in the face. Strengthened by such an encounter this class of '40 plunged into another sale.

In an effort to raise more money the seniors edited a Student-Faculty Address Book. To all who could pay the nominal fee the class equipped with complete addresses and telephone numbers of all those connected with the college.

Thus the senior trip became a reality after much hard work.

- MARY CATHERINE ABERNATHY *President*
- DORIS HARPER *Vice-President*
- HAZEL WILLIAMS *Secretary*



NIORS...

The TRIP

AT THE SUGGESTION of several class members the Senior Class President, Mary Catherine Abernathy, checked up on the possibilities of a trip to New Orleans during the Mardi Gras festivities. Finding the facts favorable with the budget, she presented them to the entire class, which voted for New Orleans during Mardi Gras as the site of their destination.

Chartering a special bus, thirty-one seniors set out February 2 for New Orleans with high hopes, and found the Crescent City more glamorous and foreign than they had imagined. Spending four days in New Orleans the seniors engaged in a round of activities that would have tired the indefatigable Mrs. Roosevelt.

After several tours over the city, the French Quarter became the source of chief attraction to the G.S.W.C.-ers. Finding the food the best ever, and the shops the quaintest, many representatives of the class could be found in the French Quarter any time during the day.

Highlights of the trip: Taking a 12-minute flight over the city at 130 miles per hour, seeing and talking to Wallace Beery and Wayne King, Eleanor Morgan's singing over station WWL, having coffee and doughnuts at the French Market at midnight, witnessing the magnificent Mardi Gras parades, making a round of the night clubs, hearing Larry Clinton play "My Little Rubber Dollie."

New Orleans
at Mardi
Gras!

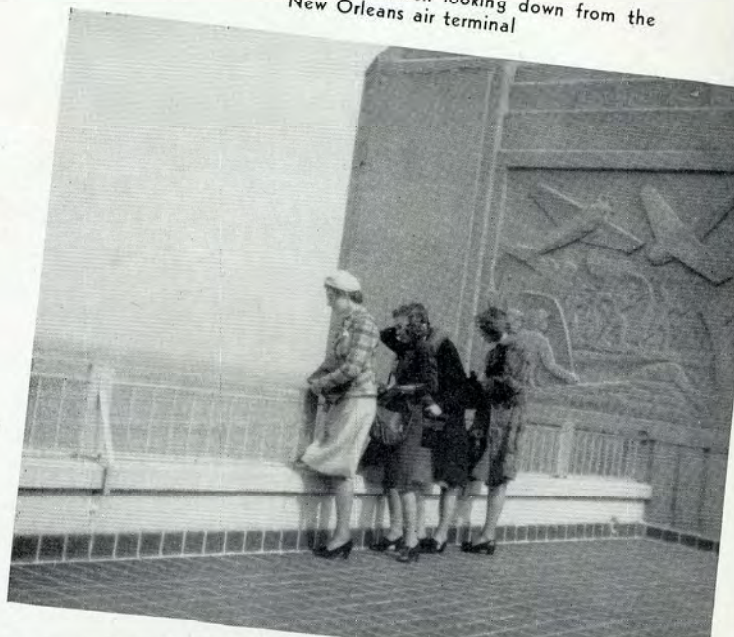


Home—worn out but happy

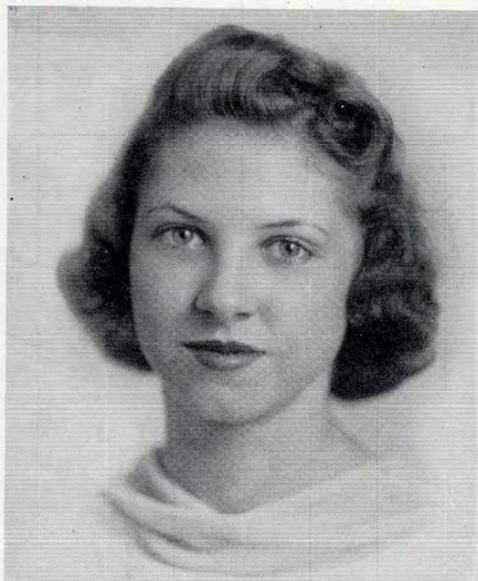


Campbell, Wilson and Cowart talk things over with the bus drivers

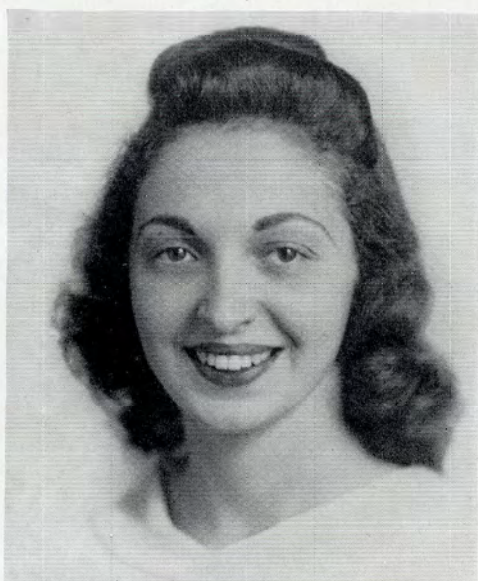
Cowart, Baker, Bell and Bowen looking down from the
New Orleans air terminal



SENIOR



MARY CATHERINE ABERNATHY . . . MOULTRIE, GEORGIA . . . English Major . . . Transfer from G. S. C. W.; Student Government Association (1, 2, 3, 4); Class President of Junior Class (3); Class President of Senior Class (4); Y. W. C. A. (1, 2, 3, 4), Sophomore Council (2), Student Advisor (3, 4); Sock and Buskin Club (3, 4), Annual Play (3); English Club (3, 4); Sociology Club (4); Junior PINE CONE Staff (3); PINE CONE Staff (4), Activities Editor (4); Phi Lambda Sports Club (1, 2); G. S. W. C. Emblem (4); Who's Who in American Colleges and Universities.



JACQUELINE ABRAHAMS . . . VALDOSTA, GEORGIA . . . Voice Major . . . S. G. A. (1, 2, 3, 4); Glee Club (2, 3, 4), Sextet (3, 4), Secretary-Treasurer (3), President (4); Valdosta Club (1, 2, 3, 4); Philharmonic Club (1, 2, 3, 4); French Club (4); PINE CONE Staff (4), Make-up Staff (4); *Campus Canopy* Staff, Advertising Staff.



ROSEMARY BAKER . . . VALDOSTA, GEORGIA . . . Biology Major . . . S. G. A. (1, 2, 3, 4); Phi Kappa Sports Club (1); Freshman Honor Society (2), Vice-President (2); Valdosta Club (1, 2, 3, 4), Secretary-Treasurer (3); Math-Science Club (1, 2, 3, 4), Treasurer of Math-Science (3); Senior Honor Society (4); G. S. W. C. Emblem (3); Alpha Delta Journalistic Fraternity (3, 4); *Campus Canopy* (1, 2, 3, 4), Reporter, (1), Feature Editor (2), Assistant Editor (3, 4); Junior PINE CONE Staff (3); PINE CONE Staff (4), Business Manager (4); Honors (1, 2).

SENIORS LOOK BACK ON THE BUSIEST FOUR

CLASS

LOUISE BELL . . . ARLINGTON, GEORGIA . . . English Major . . . S. G. A. (1, 2, 3, 4); Y. W. C. A. (1, 2, 3, 4); Sock and Buskin Club (1, 2, 3, 4), Annual Play (1, 3); Phi Lambda Sports Club (1, 2, 3, 4), Treasurer (2), Sports Council (1, 2, 3, 4), Sports Captain (3); English Club (3, 4); *Campus Canopy* Staff (1, 2, 3, 4), Sports Editor (1), News Editor (2), Assistant Editor (3), Editor (4); Vice-President of G. C. P. A. (4); Alpha Delta National Journalistic Fraternity (2, 3, 4), Vice-President (4); Who's Who in American Colleges and Universities (4); PINE CONE Staff (4), Literary Editor (4), Junior Staff (3); Sports Awards (1, 2, 3, 4); G. S. W. C. Emblem (3).



GERALDINE BOWEN . . . VALDOSTA, GEORGIA . . . History Major . . . S. G. A. (1, 2, 3, 4); Phi Lambda Sports Club (1); Valdosta Club (1, 2, 3, 4); Freshman Honor Society (2); I. R. C. (2, 3, 4), Secretary (2), Vice-President (3), President (4); *Campus Canopy* (3, 4); PINE CONE Staff (4); Senior Honor Society (4), Editor (4); French Club (4); Honors (1, 2, 3); G. S. W. C. Emblem (4).



CAROLYN BRIDGES . . . SUMNER, GEORGIA . . . Biology Major . . . S. G. A. (1, 2, 3, 4), Monitor (4); Y. W. C. A. (1, 2, 3, 4), Vesper Choir (2); Sports Club (1, 2); Sociology Club (3, 4); Math-Science Club (2, 3, 4); *Campus Canopy* Staff (4), Advertising Staff (4); Sophomore Council (2).



YEARS OF THEIR LIVES; FOUR YEARS FILLED

SENIOR



Kathleen

KATHLEEN CAMPBELL . . . VALDOSTA, GEORGIA . . .
English Major . . . S. G. A. (1, 2, 3, 4); Sports Club (1, 2, 3, 4), Awards (1, 2, 3, 4), Council (4); English Club (3, 4), Vice-President (4); French Club (3, 4), Secretary-Treasurer, (4); Glee Club (2); Valdosta Club (1, 2, 3, 4); PINE CONE Staff (4), Make-up Staff (4).



MONTINE COWART . . . WAYCROSS, GEORGIA . . .
*Chemistry Major . . . S. G. A. (1, 2, 3, 4), Monitor (3), Secretary-Treasurer (4); Y. W. C. A. (1, 2, 3, 4); Phi Lambda Sports Club (1, 2, 3, 4), Awards (1, 2), Council (3); Glee Club (1, 2); Advertising Staff of *Campus Canopy* (2); Math-Science Club (1, 2, 3, 4), Chairman of Chemistry Division (4); Camera Club (4); Freshman Honor Society (2); Senior Honor Society (4), Vice-President (4); Honors (1, 2); G. S. W. C. Emblem (4).*

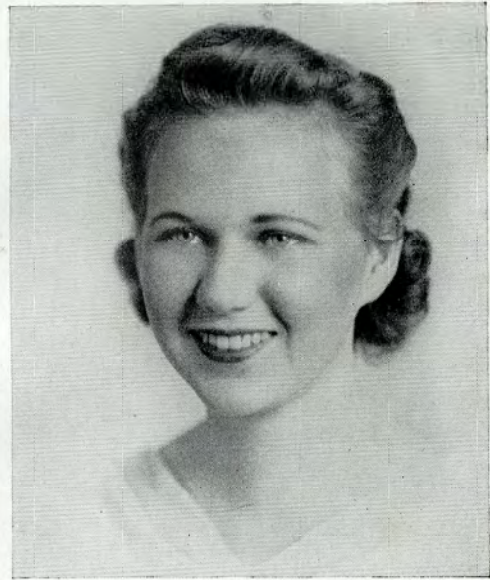


HELEN DUNCAN . . . VALDOSTA, GEORGIA . . .
Music Major . . . S. G. A. (1, 2, 3, 4); Phi Lambda Sports Club (1, 4); Valdosta Club (1, 2, 3, 4); Freshman Honor Society (2), Secretary (2); Philharmonic Club (1, 2, 3, 4), Secretary-Treasurer (3); Senior Honor Society (4), President (4); PINE CONE (4), Advertising Staff (4); English Club (4); Day Student Representative on Student-Faculty Honor Council (4); Honors (2).

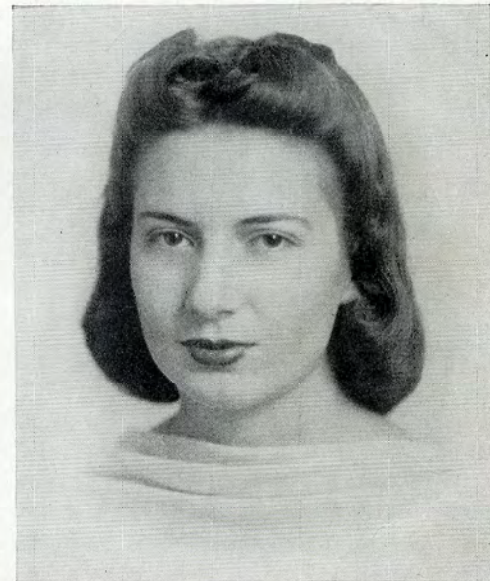
WITH WORKING, PLAYING AND STUDYING, WITH

CLASS

MARY OLIVE FOUNTAIN . . . SYCAMORE, GEORGIA
. . . *English Major* . . . Transfer from the University
of Georgia; S. G. A. (4); Y. W. C. A. (4); English
Club (4).



SARA GARBUTT . . . VALDOSTA, GEORGIA . . .
Biology Major . . . S. G. A. (1, 2, 3, 4); Treasurer
Freshman Class (1); Vice-President Junior Class
(3); Freshman Honor Society (2); Senior Honor
Society (4), Treasurer (4); Math-Science Club (1,
2, 3, 4), Vice-President (4); Sports Club (1, 2, 3,
4), Phi Lambda Award (3), Sports Council (3, 4);
Valdosta Club (1, 2, 3, 4); English Club (4); Junior
Staff *PINE CONE* (3); Photograph Editor *PINE CONE*
(4); G. S. W. C. Emblem (4); Camera Club (2, 4).



JOSEPHINE GRAHAM . . . VALDOSTA, GEORGIA
. . . *History Major* . . . S. G. A. (1, 2, 3); Val-
dosta Club (1, 2, 3); Sports Club (1, 2, 3), Awards
(1, 3); International Relations Club (2, 3), Secretary
(3); Fine Arts Club (2, 3), Publicity Chairman (3);
Campus Canopy Staff (2, 3), Reporter (2), Assistant
Editor (3).



COMPANIONSHIP, AND WITH PREPARATION FOR

SENIOR



DORIS HARPER . . . VALDOSTA, GEORGIA . . .
English Major . . . S. G. A. (1, 2, 3, 4); Fine Arts
Club (1, 2, 3, 4); Valdosta Club (1, 2, 3, 4); Sock
and Buskin Club (1, 2, 3, 4), Annual Play (1, 3),
Vice-President (2, 3), President (4); English Club
(3, 4).



JAUNITA HARRELL . . . VALDOSTA, GEORGIA . . .
English Major . . . S. G. A. (1, 2, 3, 4); Valdosta
Club (1, 2, 3, 4); Sociology Club (4).

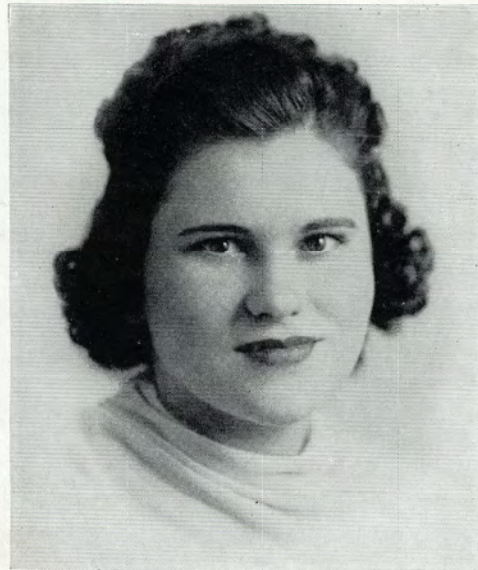


ALICE HATCHER . . . ALBANY, GEORGIA . . . *Biology
Major* . . . S. G. A. (1, 2, 3, 4); Y. W. C. A. (1, 2,
3, 4); Sports Club (1, 4); Sophomore Council (2);
Math-Science Club (2, 3, 4), Biology Group Leader
(3); PINE CONE Staff (4), Make-up Staff (4).

CITIZENSHIP AND WORTHWHILE LIVING IN THE

CLASS

HATTILU McINTYRE . . . OUSLEY, GEORGIA . . .
English Major . . . S. G. A. (1, 2, 3, 4); English Club (3); Sociology Club (3).



MARY LEE MARTINDALE . . . BLAKELY, GEORGIA . . .
English Major . . . S. G. A. (1, 2, 3, 4); Y. W. C. A. (3, 4); Math-Science Club (2); Valdosta Club (2); English Club (4).



CHRISTINE MOORE . . . VALDOSTA, GEORGIA . . .
English Major . . . S. G. A. (1, 2, 3, 4); Y. W. C. A. (1, 2, 3, 4); Phi Kappa Sports Club (1, 4); Sociology Club (3, 4).



WORLD WHICH THEY ARE ABOUT TO ENTER,

SENIOR



ELEANOR MORGAN . . . VALDOSTA, GEORGIA . . .
Voice Major . . . S. G. A. (1, 2, 3, 4); Glee Club (1, 2, 3, 4), Publicity Chairman (3), Triple Quartet (2, 3), Sextet (4); Philharmonic Club (1, 2, 3, 4), Secretary-Treasurer (4); Sock and Buskin Club (3, 4), Annual Play (3); Valdosta Club (1, 2, 3, 4), President (4).



MARGUERITE NORTON . . . NAYLOR, GEORGIA . . .
Math Major . . . S. G. A. (1, 2, 3, 4); Y. W. C. A. (1, 2, 3, 4), Sophomore Council (2); Math-Science Club (2, 3, 4), President (4); Phi Kappa Sports Club (1, 2, 3, 4), Awards (1, 2, 3, 4), Sports Council (2, 3, 4), Treasurer (3), Vice-President (4); G. S. W. C. Emblem (4).



VIRGINIA PARRISH . . . ADEL, GEORGIA . . .
*History Major . . . S. G. A. (1, 2, 3, 4); Y. W. C. A. (1, 2, 3, 4), Vesper Choir (2), Sophomore Council (2); Sports Club (1, 2); International Relations Club (2, 3, 4), Member-at-large (2), Vice-President (4); Sociology Club (3, 4); *Campus Canopy* Staff (4), Advertising Staff (4); Freshman Honor Society (2).*

AND IN WHICH THEY HOPE SOME DAY TO MAKE

CLASS

IRWIN SMITH . . . WAYCROSS, GEORGIA . . . English Major . . . S. G. A. (1, 2, 3, 4); Y. W. C. A. (1, 2, 3, 4), Cabinet (2, 3, 4), Treasurer (3), Deputation Chairman (4), Y. W. C. A. Choir (2), Sophomore Council (2), Adviser (3), Student Adviser (2, 3, 4); Reporter on *Campus Canopy* (1); Phi Lambda Sports Club (1, 2); Freshman Honor Society (2), President (2); Treasurer of Sophomore Class (2); English Club (3, 4), President (4); Fine Arts Club (3, 4); G. S. W. C. Emblem (3); Senior Honor Society (4); Honors (1); PINE CONE Staff (4); Senior Representative from Senior Honor Society in the Freshman Honor Society (4).



NELL ZIPPERER SOUTHWELL . . . VALDOSTA, GEORGIA . . . English Major . . . S. G. A. (1, 2, 3, 4); Sock and Buskin (1, 2, 3, 4), Annual Play (2, 3, 4), Vice-President (4); English Club (3, 4), Secretary and Treasurer (3); Phi Kappa Sports Club (1, 2); Valdosta Club (1, 2, 3, 4), Treasurer (3).

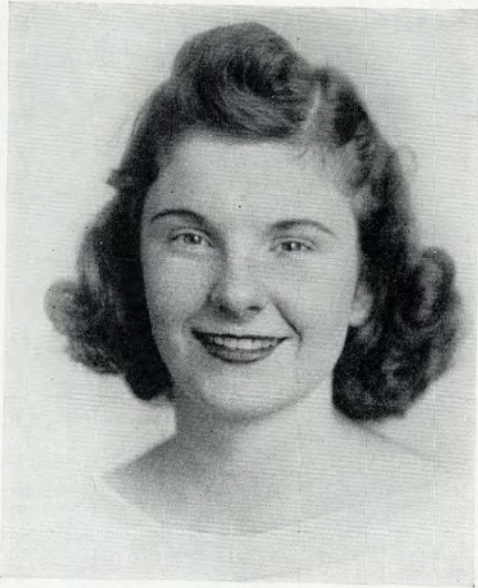


LILA MAE SPOONER . . . IRON CITY, GEORGIA . . . Sociology Major . . . Transfer from Young Harris College; S. G. A. (3, 4); Y. W. C. A. (3, 4); Sociology Club (4); Phi Kappa Sports Club (4).

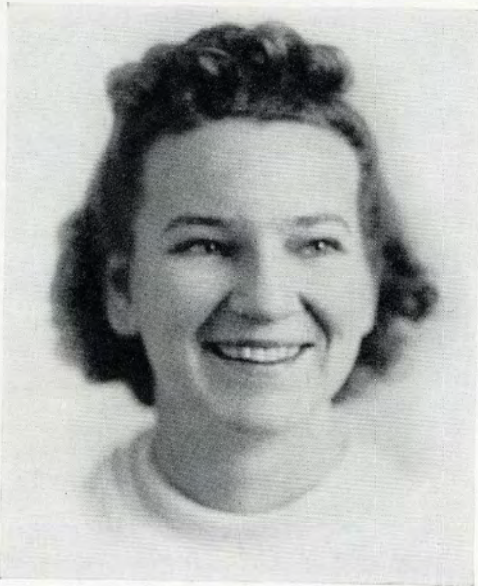


THEIR MARK EITHER IN THE FIELD OF HOME -

SENIOR



ROSALIND TAYLOR . . . VALDOSTA, GEORGIA . . .
Music Major . . . S. G. A. (1, 2, 3, 4); Philharmonic Club (1, 2, 3, 4), Secretary-Treasurer (2); Glee Club (1, 2, 3, 4), Triple Quartet (1, 2), Business Manager (4), Sextet (3, 4); Math-Science Club (2, 3); Phi Lambda Sports Club (1, 2); Reporter on *Campus Canopy* (1); Freshman Honor Society (2); Senior Honor Society (4), Secretary (4); Valdosta Club (1, 2, 3, 4); PINE CONE Staff (4); Honors (1, 2, 3).



FRANCES VAN BRACKLE . . . ADEL, GEORGIA . . .
History Major . . . S. G. A. (1, 2, 3, 4); Y. W. C. A. (1, 2, 3, 4); International Relations Club (2, 3, 4); Freshman Honor Society (2); Sports Club (1, 2, 3); *Campus Canopy* Staff (1, 2, 3), Advertising Staff (1, 2), Circulation Manager (3).



CURTIS WHATLEY . . . MCRAE, GEORGIA . . . *English Major* . . . S. G. A. (1, 2, 3, 4), Monitor (3), Dormitory Representative Student-Faculty Honor Council (4); Y. W. C. A. (1, 2, 3, 4), Sophomore Council (2); Sock and Buskin Club (2, 3, 4), Annual Play (2, 3); English Club (3, 4); *Campus Canopy* Staff (2, 3, 4), Advertising Staff (2), Business Manager (3, 4); G. S. W. C. Emblem (4); Alpha Delta Journalistic Fraternity (3, 4), Secretary-Treasurer (4); PINE CONE Staff (4), Advertising Staff (4); Phi Lambda Sports Club (1, 2).

MAKING, OR IN THE PROFESSIONS OF TEACH

CLASS

RUTH WHISONANT . . . BAXLEY, GEORGIA . . .
*Sociology Major . . . S. G. A. (1, 2, 3, 4), Ashley House President (2), Vice-President (3), President (4); Y. W. C. A. (1, 2, 3, 4), Sophomore Council (2), Vesper Choir (2); Sock and Buskin Club (1, 2, 3, 4), Secretary-Treasurer (2), Emory Junior Annual Play (2); Phi Lambda Sports Club (1, 2, 3); Sociology Club (3, 4); Advertising Staff *Campus Canopy* (2, 3); Freshman Honor Society (2); Senior Honor Society (4); G. S. W. C. Emblem (3); Who's Who in American Colleges and Universities (3); Honors (1, 2, 3).*



HAZEL WILLIAMS . . . TIFTON, GEORGIA . . . Music Major . . .
Transfer Abraham Baldwin; Student Government (2, 3, 4); Y. W. C. A. (2, 3, 4), Sophomore Council (2), "Y" Cabinet (3), Pianist for Vespers (3), Vesper Choir (3); Secretary-Treasurer Junior Class (3); Philharmonic Club (2, 3, 4), President (4); Secretary-Treasurer Senior Class (4).



EDITH GORDON WILSON . . . BLOUNTSTOWN, FLORIDA . . . Math Major . . . S. G. A. (1, 2, 3, 4);
*Y. W. C. A. (4); Phi Lambda Sports Club (1, 2, 3, 4), Awards (1, 2, 3, 4), Council (4); Math-Science Club (1, 2, 3, 4), Secretary-Treasurer (4), Chairman Math Division (3); *Campus Canopy* (4); PINE CONE (4).*



ING, JOURNALISM, ADVERTISING, MUSIC, ART,

SENIORS



MILDRED WILSON . . . WAYCROSS, GEORGIA . . .
*History Major . . . S. G. A. (1, 2, 3, 4); Y. W. C. A. (1, 2, 3, 4), Cabinet (2), Vice-President (3), President (4), Vesper Choir (2), Sophomore Council (2); I. R. C. (2, 3, 4), Treasurer I. R. C. (2, 3); Deputation Team (3); Sock and Buskin Club (1, 2, 3, 4), Emory Junior Annual Play (2); Freshman Honor Society (2); Senior Honor Society (4); G. S. W. C. Emblem (3); Who's Who in American Colleges and Universities (4); Honors (1, 2, 3); Phi Kappa Sports Club (1, 2, 3, 4), Athletic Awards (1, 2, 3); Advertising Staff *Campus Canopy*.*



ORA KATE WISENBAKER . . . VALDOSTA, GEORGIA . . .
*History Major . . . S. G. A. (1, 2, 3, 4); Fine Arts Club (2, 3, 4); I. R. C. (2, 3, 4), President (3); Valdosta Club (1, 2, 3, 4); Secretary Freshman Class (1); Freshman Honor Society (2), Historian (2); *Campus Canopy* (1, 2, 3, 4), Reporter (1), Feature Editor (2), Managing Editor (3), Columnist (4); Junior Staff PINE CONE (3); Editor of PINE CONE (4); Alpha Delta Journalistic Fraternity (3, 4), President (4); Senior Honor Society (4); Who's Who in American Colleges and Universities (4); G. S. W. C. Emblem (3); Honors (1, 2).*



VIRGINIA ZACHERT . . . BAINBRIDGE, GEORGIA . . .
*Math Major . . . Transfer from Norman Junior College; Phi Kappa Sports Club (3, 4), Sports Council (3, 4), Secretary (4), Archery Manager (3), Athletic Medal (3), Awards (3, 4); Math-Science Club (3, 4); Camera Club (4); S. G. A. (3, 4); Y. W. C. A. (3, 4); Sophomore Council (3); *Campus Canopy* (3, 4); Assistant Managing Editor (3).*

WRITING, OR BUSINESS ADMINISTRATION.

The SENIOR CARNIVAL

FILLED WITH THE CARNIVAL SPIRIT, and giving everything they had to make the undertaking a success, the seniors plunged into the most extensive money-making project of the year. Nothing seemed too hard or too easy for the versatile upperclassmen.

Asking donations from the downtown business houses, the seniors were able to open the carnival gates with all the frills and trappings. Hot dogs, the fortune tellers, the fishing ponds, the cakewalks, the Town Crier aided by a microphone, the bowling pen, special sideshows incorporating Emory Junior College talent, a dance, bingo tables—all were featured attractions, and done up in the Hallowe'en manner.

As another way of increasing financial returns, the dormitories were canvassed by seniors selling tickets on chances for valuable prizes.

The original plan of the class of '40 had been to take en masse a cruise to Cuba. After the carnival, those plans had to be changed as the high water mark was not attained.



Stars of the Variety Show



The crowd watches the show



Abrahams sells the cake Morgan displays



Knock them down and win a prize

THE LOWER C

The JUNIORS



Burns, Williams and Orr

"HOPE SPRINGS not only from what we have done, but from the work we have just begun," is the motto characteristic of the Junior Class in its participation in the campus activities of the past three years. With enthusiasm, interest, and sportsmanship each member of this class has endeavored to make herself a unit of the group personality. Genuinely cooperative is the adjective that has adequately described these class members from the time they came together as one body in the fall of '37 up until the present year.

As president of her class for the freshman year as well as the junior year, Margaret Burns has tried to lead her fellow classmates in such a way that the college year might prove successful for every member. As the class before graduation, the Junior Class prepares to assume campus responsibility and leadership in the following year, and it is toward this ideal that the class as a unit has worked.

Rotunda teas and the Junior-Senior formal dances given in honor of the departing seniors marked this year's social center of class hospitality. In an effort to raise funds for necessary expenditures the juniors brought the University of Georgia Glee Club to the campus, sponsored a benefit bridge, and sold college banners to the students.

Boosting the spirit of the Alma Mater throughout the three-year period, this Junior Class, it may be said, has paved the way to higher successes as the Senior Class of '41.

It has attempted as its final goal this year to bring enrichment to not only the Junior Class itself but to the entire campus as well.

- MARGARET BURNS *President*
- FRANCES WILLIAMS *Vice-President*
- MARION ORR *Secretary-Treasurer*



LASS OFFICERS

The SOPHOMORES

THE SOPHOMORE CLASS, through the cooperation of each of its members, has been very active in campus affairs during this year. Hiding the traditional hat in the fall quarter for the Freshmen to find, the Sophs were successful in the hiding and were later entertained by the losing class.

For the purpose of raising funds for class progress the Sophomores sponsored a dance in the Rec Hall and undertook the selling of Christmas card orders on the campus.

In the winter quarter they entertained the Seniors, their sister classmen, at a formal dance at the Country Club just outside Valdosta.

- MAXWELL WILLIAMS *President*
- MINNIE ROBERTS *Vice-President*
- KATHRYN SCOTT *Secretary-Treasurer*



Williams, Scott and Roberts



Hartsfield, J. E. Smith and C. Smith

The FRESHMEN

THE YOUNGEST CLASS in college, the Freshman Class is the center of interest during Orientation Week, held at the beginning of the year. Class members then proceed to learn about college through actual experience and observation throughout the year.

Class President, Jane Ellen Smith, named as the class goal "making the Freshman year the happiest, most beneficial, and most encouraging the members have ever known; including as many class members as possible in the class undertakings; and the preparing for a broader life as each girl learns the art of living and working harmoniously with others."

A formal dance, featuring the horoscope in decorations was given in February at the Country Club by the Freshmen honoring their sister-classmen, the Juniors. Early in the spring quarter the class also sponsored a dance and later a class picnic.

- JANE ELLEN SMITH *President*
- CORINNE SMITH *Vice-President*
- ELIZABETH HARTSFIELD *Secretary*

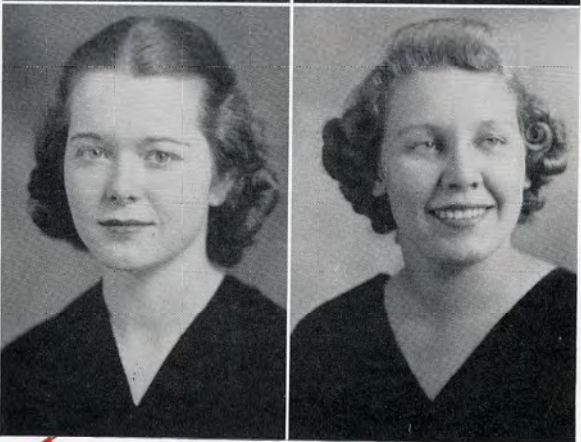
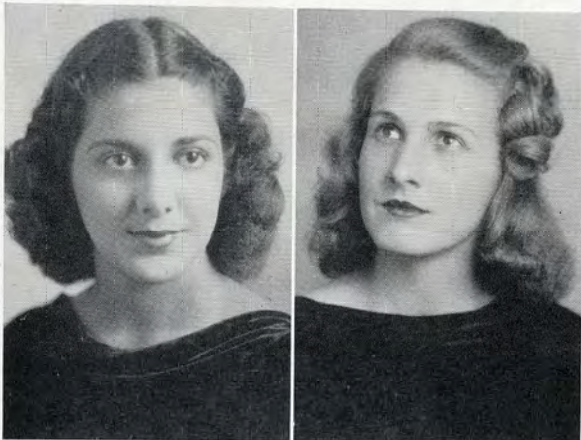
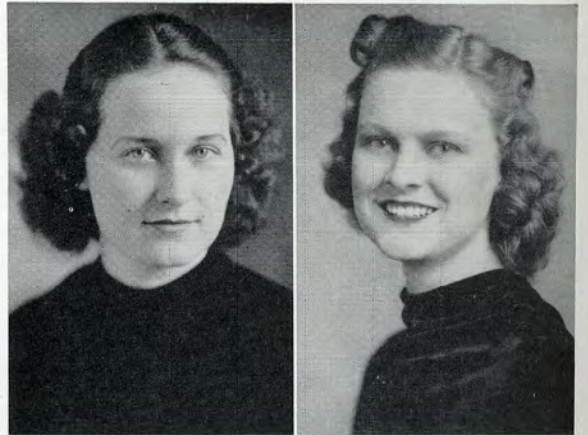
JUNIOR CLASS

FRANCES ASHLEY ROCHELLE, GEORGIA

EVELYN BRIM SASSER, GEORGIA

MARY ALICE BRIM SASSER, GEORGIA

ROWENA BURFORD MCRAE, GEORGIA



MARGARET BURNS MACON, GEORGIA

LOIS CHRISTIAN VALDOSTA, GEORGIA

YOLANDE COPPAGE VALDOSTA, GEORGIA

MAXINE COWART WAYCROSS, GEORGIA



JUNIOR CLASS

BETTY DASHER VALDOSTA, GEORGIA

FRANCES GIDDENS DAVIS VALDOSTA, GEORGIA



MARGARET DUTTON SAVANNAH, GEORGIA

IVELYN FOLSOM HAIHRA, GEORGIA



MARY ALICE FREE DOERUN, GEORGIA

EMILY GARNER ASHBURN, GEORGIA



CHARLEEN GRATER LAKE PARK, GEORGIA

LOIS GREEN JACKSONVILLE, FLORIDA



JUNIOR CLASS

WILMOT GREEN . . . JACKSONVILLE, FLORIDA

MARTHA SUE GRIFFIN . . . NASHVILLE, GEORGIA

LUCILLE JOHNSON PITTS, GEORGIA

JEANETTE JOHNSON . . . THOMASVILLE, GEORGIA



VERONICA KLEEMAN SAVANNAH, GEORGIA

LOUISE MACFIE BAINBRIDGE, GEORGIA

SUSIE McKEY VALDOSTA, GEORGIA

JANE McLAUGHLIN JESUP, GEORGIA

JUNIOR CLASS

FRANCES MIDDLETON COLQUITT, GEORGIA

RUTH MORGAN VALDOSTA, GEORGIA

KATHERINE MUNDY VALDOSTA, GEORGIA

MARION ORR SAVANNAH, GEORGIA

ANN PARHAM WARM SPRINGS, GEORGIA

LOUIE PEEPLES VALDOSTA, GEORGIA

CHRISTINE ROSS BRUNSWICK, GEORGIA

RUNELLE PRANCE TIFTON, GEORGIA



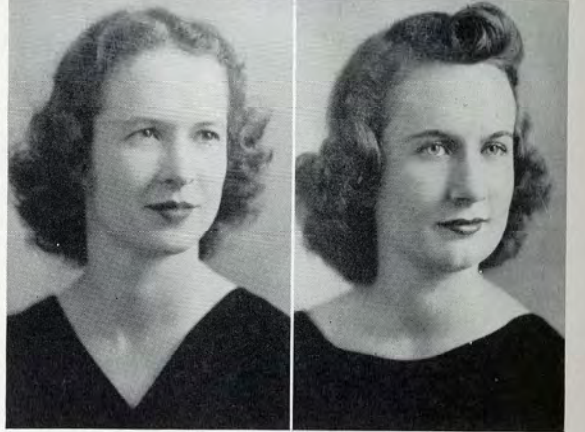
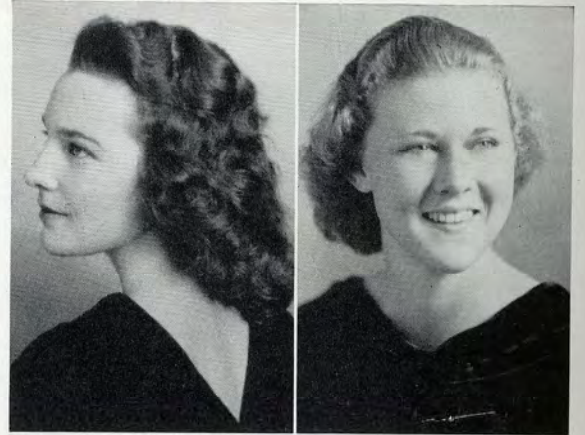
JUNIOR CLASS

HELEN QUARTERMAN VALDOSTA, GEORGIA

RUTH REID VALDOSTA, GEORGIA

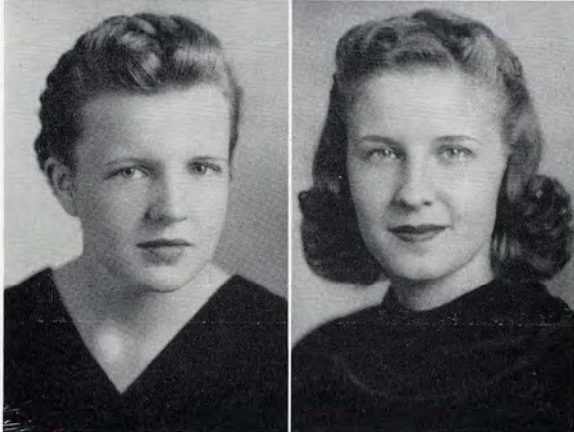
VERA SIMPSON VALDOSTA, GEORGIA

MARIE SMITH PATTERSON, GEORGIA



LINDA SUMMER ATLANTA, GEORGIA

INEZ TAYLOR GREENSBORO, GEORGIA



VIRGINIA TOMLINSON STATESBORO, GEORGIA

MARTHA WILKES ADEL, GEORGIA



JUNIOR CLASS

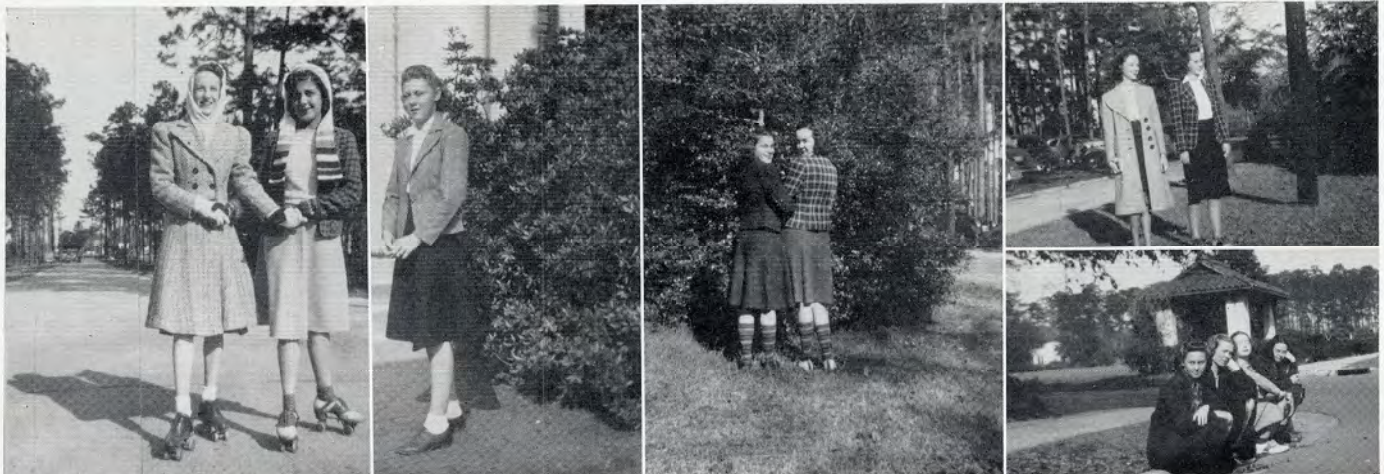
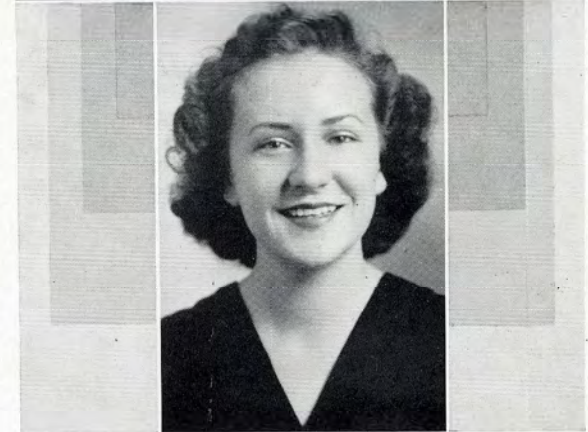
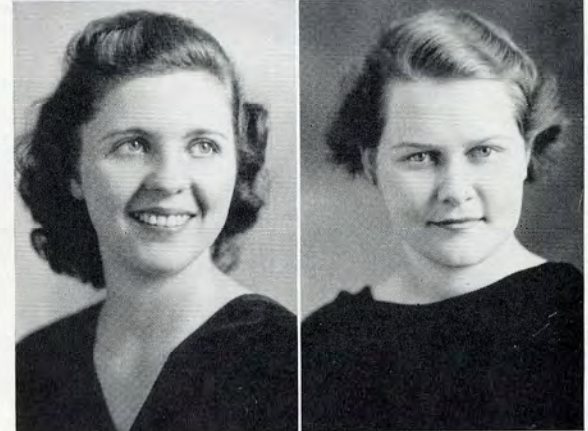
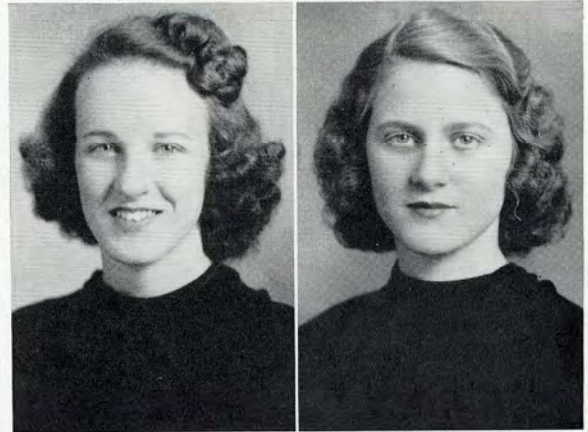
CAROLYN WILLIAMS TY TY, GEORGIA

FRANCES WILLIAMS VALDOSTA, GEORGIA

GWENDOLYN WINTER VALDOSTA, GEORGIA

EVELYN WOODWARD WAYCROSS, GEORGIA

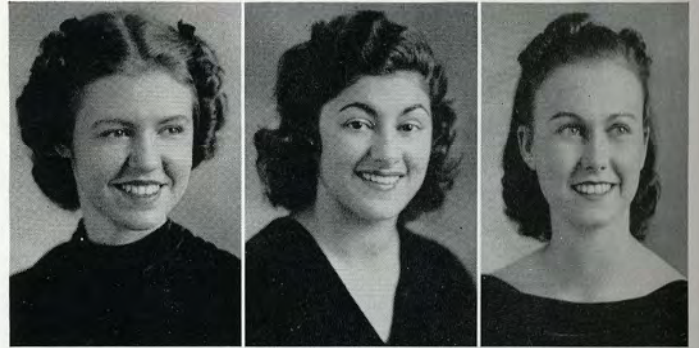
MARY FRANCES JOHNSON WOODWARD . VALDOSTA, GEORGIA



Informal Snaps of the Juniors

SOPHOMORE CLASS

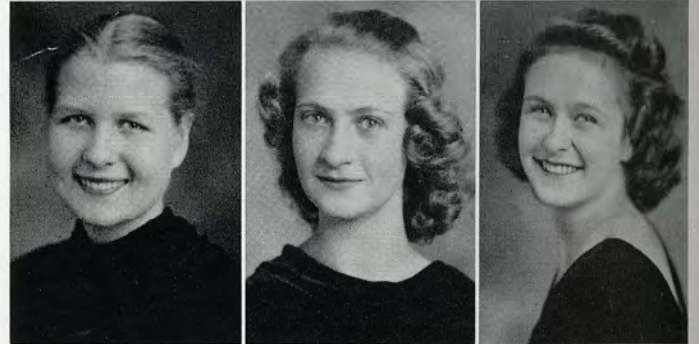
AILEEN BARTLETT VALDOSTA, GEORGIA
 RUTHANN BELLOFF SYRACUSE, NEW YORK
 ROBINETTE BELL LUDOWICI, GEORGIA



ELIZABETH BOWEN TIFTON, GEORGIA
 VIRGINIA BRIDGES JASPER, FLORIDA
 MARY PAYNE BROWN NASHVILLE, GEORGIA



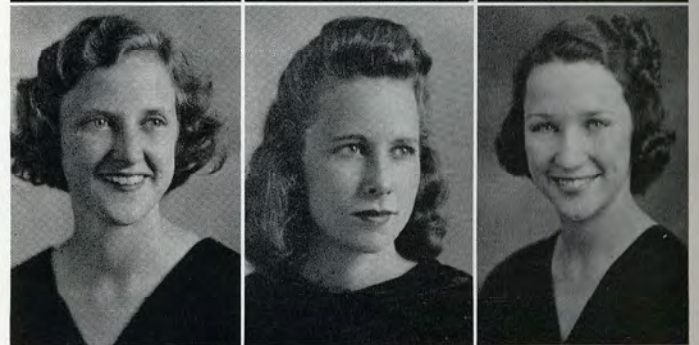
MARY BUNDRICK CORDELE, GEORGIA
 MARY FRANCES BURKE VALDOSTA, GEORGIA
 MARY MARTHA BURNETTE VALDOSTA, GEORGIA



STARR CLARK ALBANY, GEORGIA
 MARGARET CLAY VALDOSTA, GEORGIA
 SIBYL COLEMAN OMEGA, GEORGIA



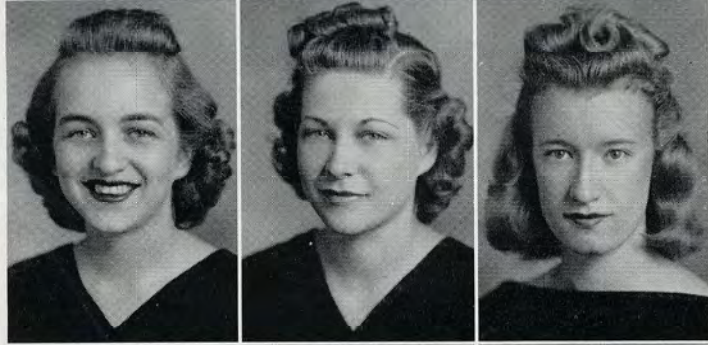
ELEANOR COOK SAVANNAH, GEORGIA
 LAVERNE COOK COLQUITT, GEORGIA
 MARGARET COPELAND LAKE PARK, GEORGIA



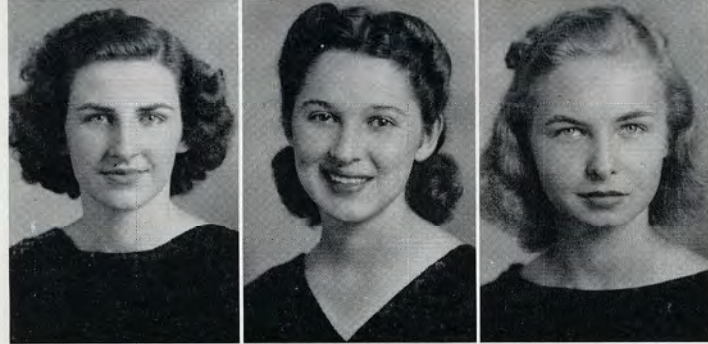
SOPHOMORE CLASS



RACHEL CRITTENDEN SHELLMAN, GEORGIA
 NANCY DANIELS VALDOSTA, GEORGIA
 CHARLOTTE DAVENPORT BAXLEY, GEORGIA



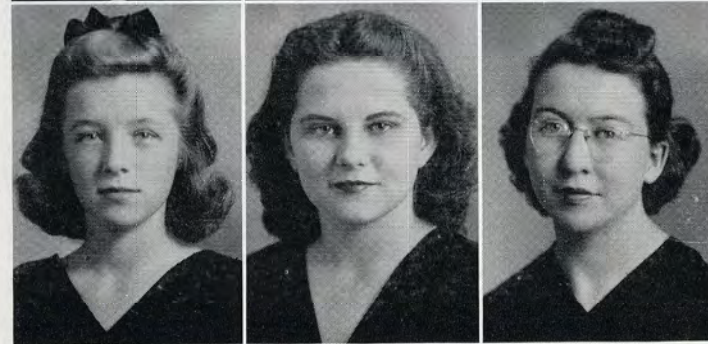
RUTH DIXON BAXLEY, GEORGIA
 DORIS DRAKE DONALSONVILLE, GEORGIA
 MARGIE DRAKE COLQUITT, GEORGIA



LOUISE EDWARDS EASTMAN, GEORGIA
 MARION EDWARDS CLAXTON, GEORGIA
 BETTY FRANKLIN VALDOSTA, GEORGIA



RETA EVANS FITZGERALD, GEORGIA
 ELISE GANNON CORDELE, GEORGIA
 ELIZABETH GARBUTT VALDOSTA, GEORGIA

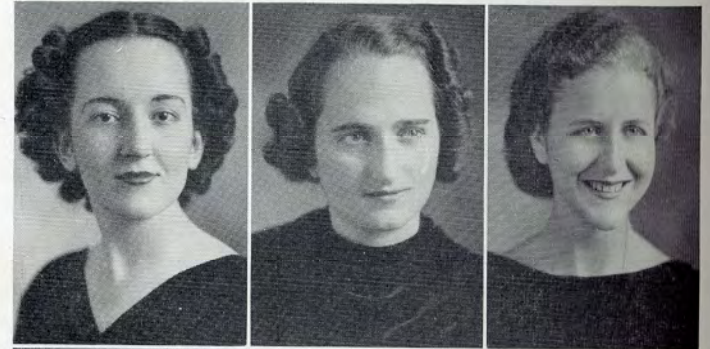


LEECY ANNE GOODLOE VALDOSTA, GEORGIA
 CATHERINE YOUNG GRAHAM VALDOSTA, GEORGIA
 MARY HARDY CORDELE, GEORGIA

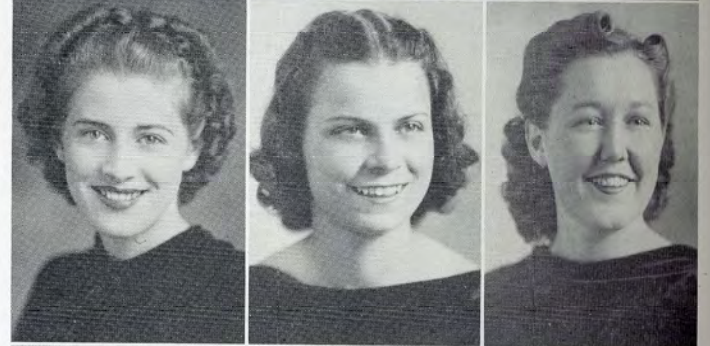


SOPHOMORE CLASS

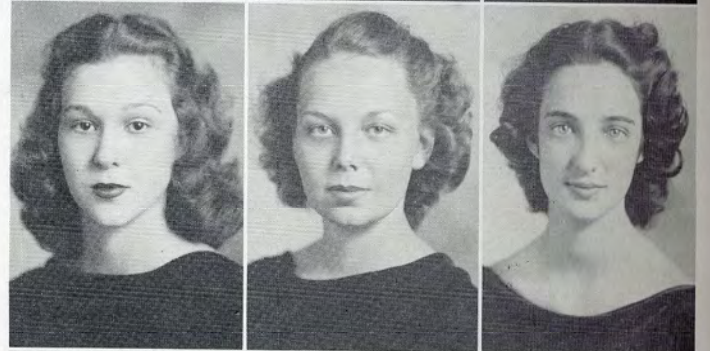
MILDRED HARRIS MOULTRIE, GEORGIA
 ANNIE HEALD THOMASVILLE, GEORGIA
 GWENDOLYN HENDRICK MOULTRIE, GEORGIA



LAVERNE HERRING VALDOSTA, GEORGIA
 MARGARET HIERS MOULTRIE, GEORGIA
 GERALDINE HILL JASPER, FLORIDA



FLORRIE HINES AMERICUS, GEORGIA
 SHIRLEY HOYE VALDOSTA, GEORGIA
 ELIZABETH JOHNSON VALDOSTA, GEORGIA



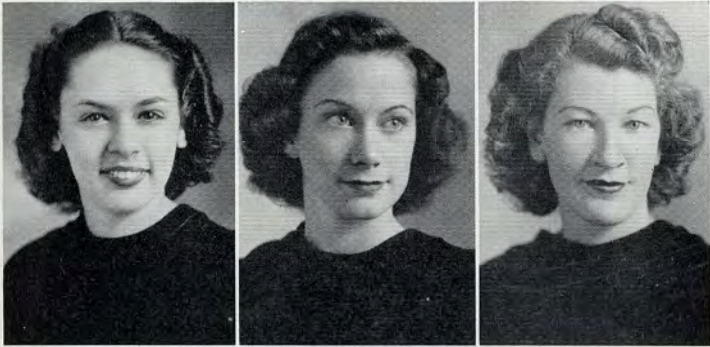
LOIS JOHNSON MILLEN, GEORGIA
 RAY KIEVE ALBANY, GEORGIA
 SARA ELIZABETH KNOWLES BROXTON, GEORGIA



LOUIE KRIEGER VALDOSTA, GEORGIA
 MARY LANIER FORT GAINES, GEORGIA
 BETTY LOGAN VALDOSTA, GEORGIA



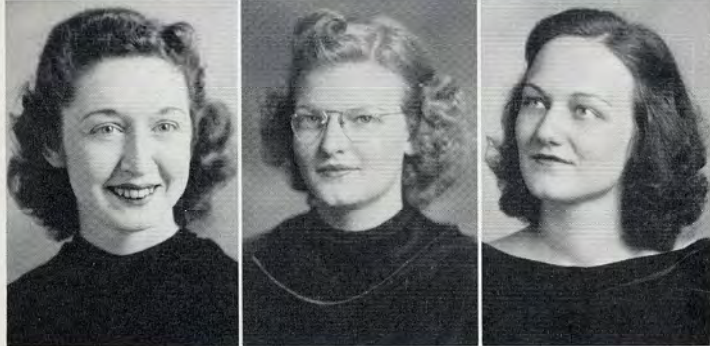
SOPHOMORE CLASS



ELIZABETH LYON VALDOSTA, GEORGIA
 EMILY McCALL VALDOSTA, GEORGIA
 CATHERINE McDONALD HAHIRA, GEORGIA



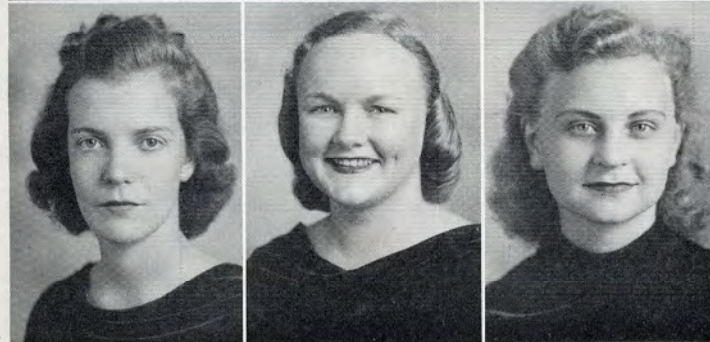
VIVA McGEACHY OUSLEY, GEORGIA
 MILDRED MARTIN HILTON, GEORGIA
 RICHMOND MARTIN BRUNSWICK, GEORGIA



HARRIET MILLER BRONWOOD, GEORGIA
 JEWELL MILLER BRONWOOD, GEORGIA
 MARNELL PARKER HAHIRA, GEORGIA



PATY PATERSON VALDOSTA, GEORGIA
 MARY ELIZABETH PERDUE COLUMBUS, GEORGIA
 VIRGINIA POWER VIENNA, GEORGIA



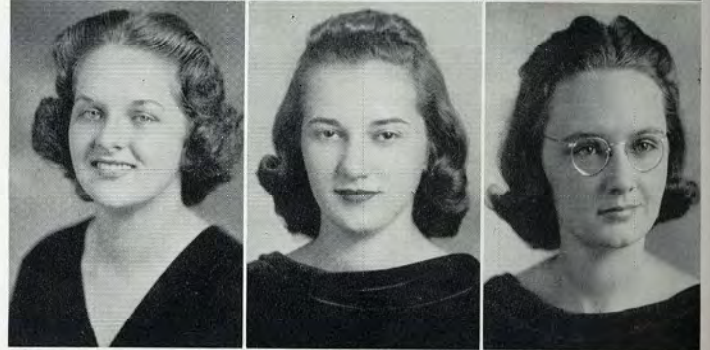
SUE PRITCHETT ALBANY, GEORGIA
 KATHRYN RAYNOR FOLKSTON, GEORGIA
 LUCILLE ROBERSON OCHLOCHNEE, GEORGIA

SOPHOMORE CLASS

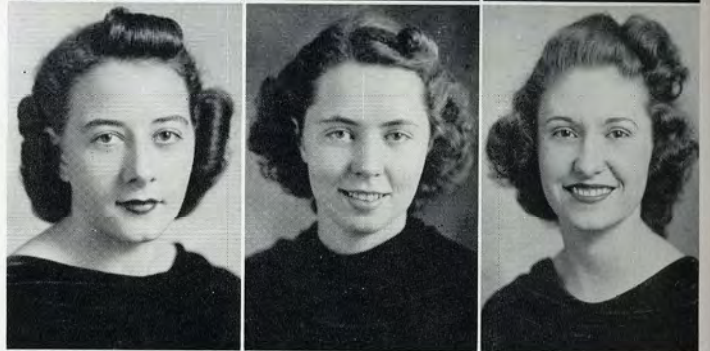
MINNIE ROBERTS VALDOSTA, GEORGIA
 MARY JEAN ROCKWELL VALDOSTA, GEORGIA
 MARY ELEANOR ROGERS CAIRO, GEORGIA



HARRIET GOODSON SAUNDERS . . . VALDOSTA, GEORGIA
 WINIFRED RUFFIN REYNOLDS, GEORGIA
 KATHRYN SCOTT PELHAM, GEORGIA



RUTH SESSOMS COGDELL, GEORGIA
 ANNABEL SHERMAN VALDOSTA, GEORGIA
 JULIA BESS SMITH VALDOSTA, GEORGIA



DOROTHY LUCILLE THOMAS . . . SAVANNAH, GEORGIA
 MARJORIE COPELAND TOMLINSON . CLYATTVILLE, GEORGIA
 ELLA SUE TRAYNHAM BROXTON, GEORGIA

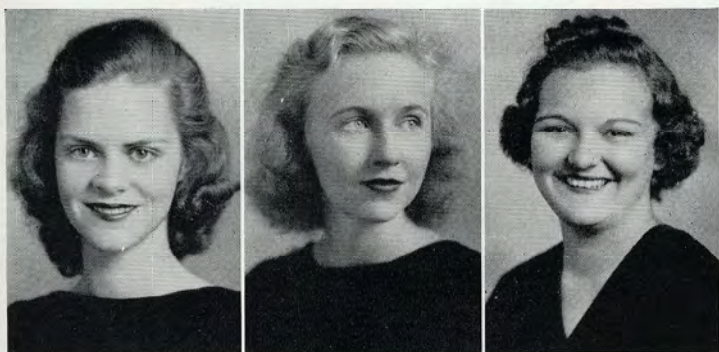


MARY ALICE TUMLIN CAVE SPRINGS, GEORGIA
 ELEANOR TURNBULL MOULTRIE, GEORGIA
 FRANCES WEST COLUMBUS, GEORGIA



The '40 PINE CONE

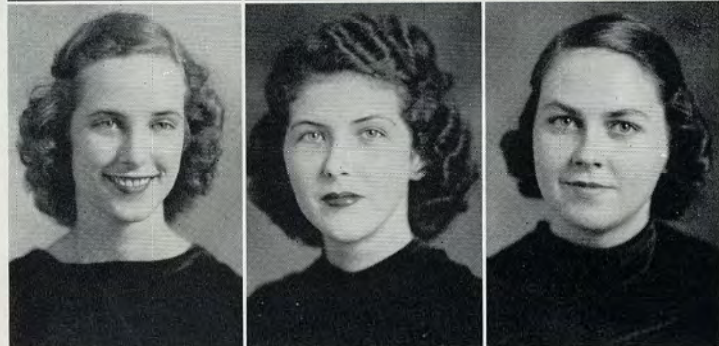
SOPHOMORE CLASS



CHRISTINE WIGGINS LEARY, GEORGIA

DOROTHY WILKES ADEL, GEORGIA

ELOISE WILLIAMS FORT VALLEY, GEORGIA



GRACE WILLIAMS MILLEN, GEORGIA

MARY WILLIAMS FITZGERALD, GEORGIA

MAXWELL WILLIAMS CORDELE, GEORGIA



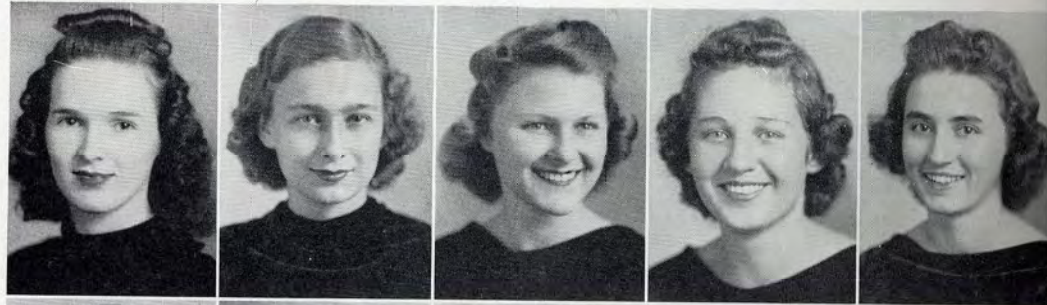
ALICE WISENBAKER VALDOSTA, GEORGIA



Informal Pictures of the Sophomores

FRESHMAN CLASS

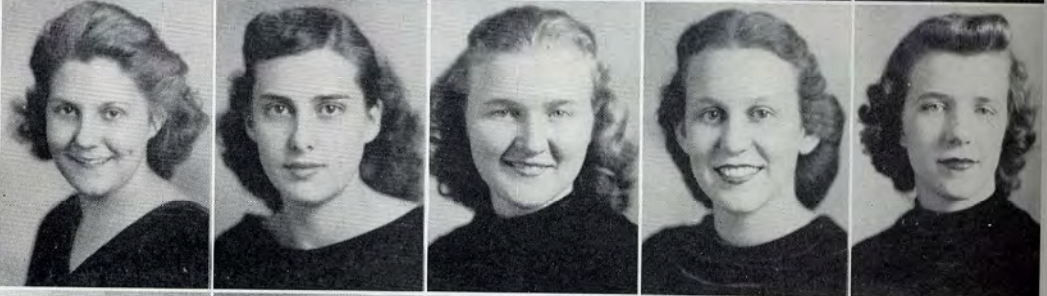
ABELL
 ADKINS
 ALLEN
 E. BARKER
 M. A. BARKER



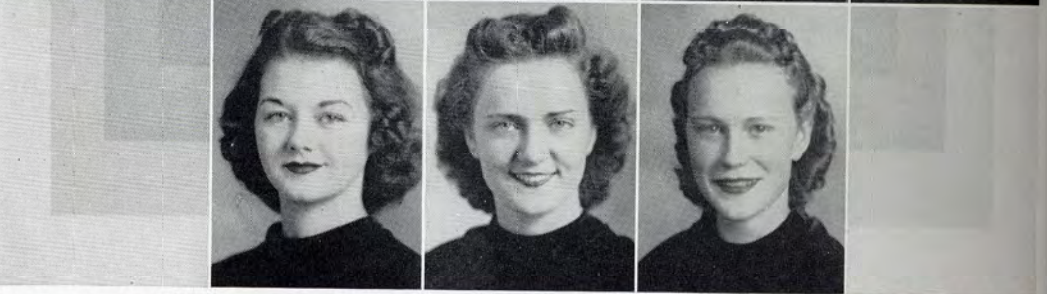
BARNES
 BLACKBURN
 C. BLANTON
 H. BLANTON
 BOOTH



BOWDEN
 BURNS
 CALLAHAN
 CARTER
 CHAUNCEY



CLEMENTS
 CODY
 COLEMAN



MARY KATHRYN ABELL RICHLAND, GEORGIA
 FRANCES ADKINS VALDOSTA, GEORGIA
 SARA ZELDA ALLEN QUITMAN, GEORGIA
 ELOISE BARKER WAYCROSS, GEORGIA
 MARY ANN BARKER QUITMAN, GEORGIA
 BETTY BARNES VALDOSTA, GEORGIA
 ANNETTE BLACKBURN VALDOSTA, GEORGIA
 CAROLYN BLANTON CAIRO, GEORGIA
 HELEN BLANTON NAYLOR, GEORGIA

FRANCES BOOTH QUITMAN, GEORGIA
 ROSE MARY BOWDEN WALLKILL, NEW YORK
 JEAN BURNS MACON, GEORGIA
 DORIS CALLAHAN RUPERT, GEORGIA
 FRANCES CARTER REYNOLDS, GEORGIA
 RITA CHAUNCEY KINGSLAND, GEORGIA
 WILMA NELL CLEMENTS PINEVIEW, GEORGIA
 WILMA CODY WAYCROSS, GEORGIA
 TENZIE COLEMAN VALDOSTA, GEORGIA



FRESHMAN CLASS



COLLINS
 COTTER
 CRAWFORD
 CREWS
 CRUMMY

DALTON
 K. DAVIS
 U. DAVIS
 DRENNON
 DUNBAR

DUSENBURY
 EDWARDS
 ETHREDGE
 FAIRCHILD
 FAIRCLOTH

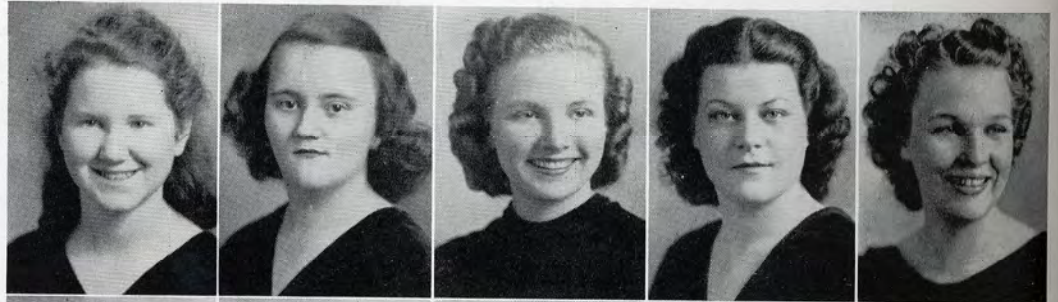
FENDER
 FINKLEA
 FLOURNOY

AVA COLLINS CAIRO, GEORGIA
 MARY COTTER VALDOSTA, GEORGIA
 OLIVE CRAWFORD VALDOSTA, GEORGIA
 MUIR CREWS JASPER, FLORIDA
 CAROLYN CRUMMEY ROCHELLE, GEORGIA
 GLORIA DALTON VALDOSTA, GEORGIA
 KATHRYN ANN DAVIS VALDOSTA, GEORGIA
 URSULA DAVIS VALDOSTA, GEORGIA
 MARY ADELE DRENNON JESUP, GEORGIA

JULIA DUNBAR VALDOSTA, GEORGIA
 DOROTHY DUSENBURY VALDOSTA, GEORGIA
 LOUVAIN EDWARDS VALDOSTA, GEORGIA
 SARA ETHREDGE SUMNER, GEORGIA
 EUNICE LOUISE FAIRCHILD WAYCROSS, GEORGIA
 VIRGINIA PATTERSON FAIRCLOTH VALDOSTA, GEORGIA
 ELIZABETH FENDER VALDOSTA, GEORGIA
 JEAN FINKLEA VALDOSTA, GEORGIA
 HARRIET FLOURNOY FORT VALLEY, GEORGIA

FRESHMAN CLASS

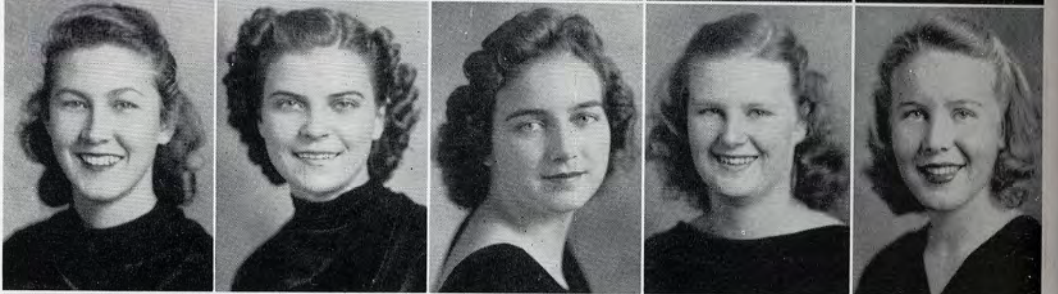
FORD
 GILLIS
 GNANN
 GOLDING
 GREEN



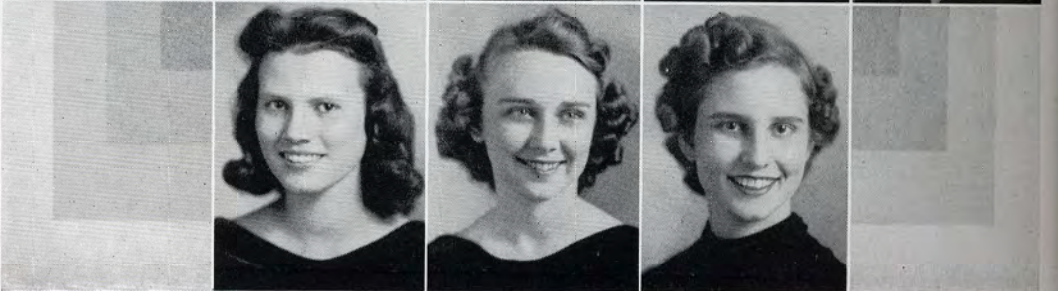
GRIFFIN
 HARP
 HARRIS
 HARTSFIELD
 HATCHER



HATTON
 HIERS
 HIGHTOWER
 HILL
 HENSHAW



A. HODGES
 M. L. HODGES
 HUGHES



MARY JOSEPHINE FORD COLUMBUS, GEORGIA
 ELIZABETH GILLIS QUITMAN, GEORGIA
 WILHELMINA GNANN LAKELAND, GEORGIA
 EVELYN GOLDING VALDOSTA, GEORGIA
 CATHERINE GREEN GREENSBORO, FLORIDA
 SIBYL LOUISE GRIFFIN MONTICELLO, FLORIDA
 SAMMIE HARP OGLETHORPE, GEORGIA
 CAROLYN HARRIS LEESBURG, GEORGIA
 ELIZABETH HARTSFIELD MOULTRIE, GEORGIA

ANITA HATCHER VALDOSTA, GEORGIA
 MARTHA HATTON HAZLEHURST, GEORGIA
 DORIS HIERS MOULTRIE, GEORGIA
 MARTHA HIGHTOWER DAMASCUS, GEORGIA
 LOUISE HILL MOULTRIE, GEORGIA
 HALLIE HINSHAW VALDOSTA, GEORGIA
 ALICE HODGES STATESBORO, GEORGIA
 MARIE LOUISE HODGE CLAXTON, GEORGIA
 MARY HUGHES LAKELAND, GEORGIA



The '40 PINE CONE

FRESHMAN CLASS



HURST
 JACKSON
 JAMES
 B. JOHNSON
 G. JOHNSON

JOYNER
 KENNEDY
 KENNON
 KENT
 KING

KIRK
 LAHOOD
 LAND
 LAWSON
 LAZARUS

LEE
 LEWIS
 LODGE

JEWELL HURST QUITMAN, GEORGIA
 GLORIA JACKSON VALDOSTA, GEORGIA
 LOUISE JAMES FITZGERALD, GEORGIA
 BOBBIE JOHNSON VALDOSTA, GEORGIA
 GWENDOLYN JOHNSON LEESBURG, GEORGIA
 JANET JOYNER SCREVEN, GEORGIA
 FRANCES KENNEDY THOMASTON, GEORGIA
 ANNE KENNON VALDOSTA, GEORGIA
 DORIS KENT TIFTON, GEORGIA

MARGARET KING VALDOSTA, GEORGIA
 HELEN KIRK VALDOSTA, GEORGIA
 MARGUERITE LAHOOD VALDOSTA, GEORGIA
 DORIS LAND GRIFFIN, GEORGIA
 MARGUERITE LAWSON CLIMAX, GEORGIA
 RAYE LAZARUS VALDOSTA, GEORGIA
 VIRGINIA LEE JESUP, GEORGIA
 SUE LEWIS ADEL, GEORGIA
 HELEN GRACE LODGE BOSTON, GEORGIA



FRESHMAN CLASS

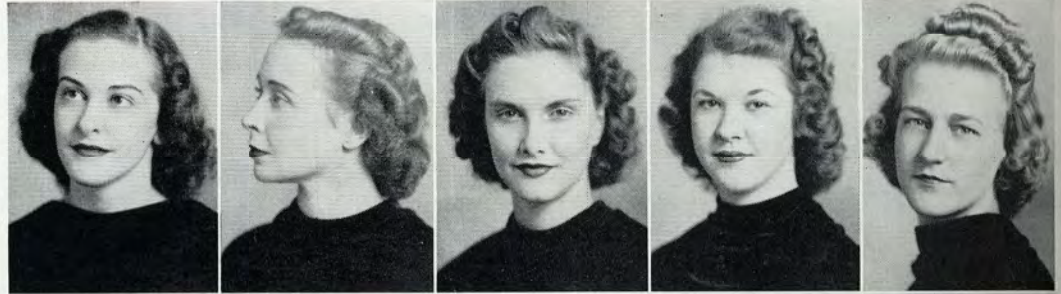
LOTT

LUCKY

McDONALD

J. McLEOD

R. McLEOD



McQUEEN

MARSHALL

C. MARTIN

H. MARTIN

S. C. MARTIN



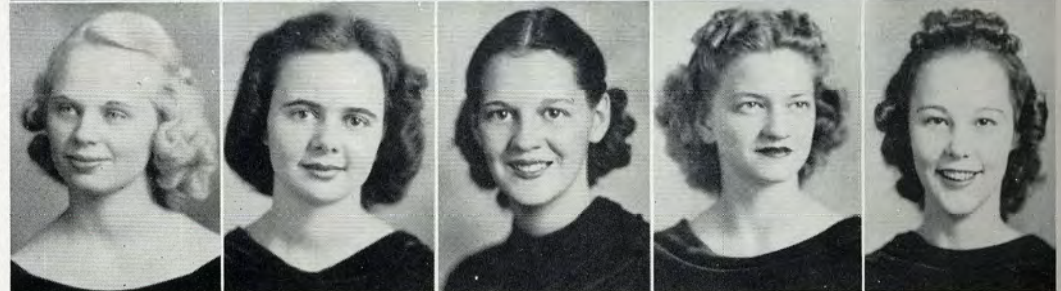
S. H. MARTIN

MEADORS

MEADOWS

MEANS

MILEY



MILLSAP

MINCHEW

E. MOBLEY

J. MOBLEY

MOORE



VALDEESE LOTT NICHOLLS, GEORGIA

LORETTE LUCKY CAMILLA, GEORGIA

ANN McDONALD FITZGERALD, GEORGIA

JAMIE McLEOD PINEVIEW, GEORGIA

ROSE McLEOD PINEVIEW, GEORGIA

CHARLOTTE McQUEEN CAMILLA, GEORGIA

CAROLYN MARSHALL PERRY, GEORGIA

CAROLYN MARTIN COLUMBUS, GEORGIA

HARRIET MARTIN HILTON, GEORGIA

SARA CATHERINE MARTIN WAYCROSS, GEORGIA

SARA HELEN MARTIN GREEN POND, SOUTH CAROLINA

ALICE MEADORS ALBANY, GEORGIA

FRANCES MEADOWS VALDOSTA, GEORGIA

MARY JEAN MEANS VALDOSTA, GEORGIA

JONELL MILEY HAHIRA, GEORGIA

MARY JO MILLSAP DOERUN, GEORGIA

MARY LUCILLE MINCHEW WAYCROSS, GEORGIA

ELLEN MOBLEY MOULTRIE, GEORGIA

JEAN MOBLEY SYLVANIA, GEORGIA

ELLEN JUDY MOORE MORVEN, GEORGIA



The '40 PINE CONE

FRESHMAN CLASS



MOSELY
MULLIS
NEAL
NEWTON
NORTH

O'NEAL
W. PARRISH
M. I. PARRISH
PEEPLES
PHILLIPS

PLOWDEN
POSEY
D. F. POWELL
M. POWELL
A. M. PRYOR

J. PRYOR
REED
RICHARDSON
ROBERTS
ROLES

JUNE MOSELY JAKIN, GEORGIA
 MARIAN MULLIS PELHAM, GEORGIA
 MARY REBECCA NEAL MONTEZUMA, GEORGIA
 MARY INA NEWTON COGDELL, GEORGIA
 MARY ANN NORTH BRUNSWICK, GEORGIA
 EVELYN O'NEAL VALDOSTA, GEORGIA
 WILLARD PARRISH VALDOSTA, GEORGIA
 MYRTICE IRENE PARRISH HOWELL, GEORGIA
 LENORA PEEPLES VALDOSTA, GEORGIA
 MARGARET LAVERNE PHILLIPS VIDALIA, GEORGIA

MARCELLA PLOWDEN VALDOSTA, GEORGIA
 MARION POSEY VALDOSTA, GEORGIA
 DORA FRANCES POWELL OMEGA, GEORGIA
 MARY POWELL VALDOSTA, GEORGIA
 ANNA MAE PRYOR FITZGERALD, GEORGIA
 JEANNE PRYOR FITZGERALD, GEORGIA
 VIVIAN JANET REED STEUBENVILLE, OHIO
 MARION AUDREY RICHARDSON ROCHELLE, GEORGIA
 BERTHA ROBERTS LAKE PARK, GEORGIA
 EDWINA ROLES CAMILLA, GEORGIA



FRESHMAN CLASS

ROLLISON
 ROUNDTREE
 RUTLAND
 E. SAUNDERS
 J. SAUNDERS



SHANNON
 SIMS
 SIRMANS
 M. SLOAN
 A. L. SLOAN



C. SMITH
 G. SMITH
 J. SMITH
 J. E. SMITH
 H. SMITH

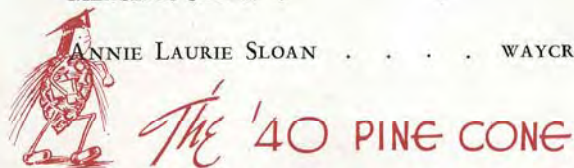


STEIN
 STORY
 STUMP
 R. TAYLOR
 S. TAYLOR



BETH ROLLISON WAYCROSS, GEORGIA
 MARY HELEN ROUNDTREE HAHIRA, GEORGIA
 MARY FRANCES RUTLAND MOULTRIE, GEORGIA
 EVELYN SAUNDERS VALDOSTA, GEORGIA
 JEAN SAUNDERS ST. PETERSBURG, FLORIDA
 VIVIAN SHANNON VALDOSTA, GEORGIA
 JEWELL SIMS OUSLEY, GEORGIA
 THELMA SIRMANS LA BELLE, FLORIDA
 MERCEDES SLOAN FORT VALLEY, GEORGIA
 ANNIE LAURIE SLOAN WAYCROSS, GEORGIA

CORINNE SMITH VALDOSTA, GEORGIA
 GLADYS SMITH DAWSON, GEORGIA
 JACQUELINE SMITH WAYCROSS, GEORGIA
 JANE ELLEN SMITH FITZGERALD, GEORGIA
 HELEN SMITH VALDOSTA, GEORGIA
 ROSEMARY STEIN JACKSONVILLE, FLORIDA
 MARY STORY ARABI, GEORGIA
 CAROLINE STUMP VALDOSTA, GEORGIA
 RUTH TAYLOR VALDOSTA, GEORGIA
 STELLA TAYLOR VALDOSTA, GEORGIA



FRESHMAN CLASS



TAYLOR
 THARPE
 THOMPSON
 TISON
 TOMPKINS

TULLIS
 TUTEN
 TWITTY
 WADE
 WALKER

WATSON
 WENTZ
 WEST
 WILCOX
 B. WILLIAMS

J. WILLIAMS
 M. WILLIAMS
 M. F. WILLIAMS
 WRIGHT
 YOUNG

SUNSHINE TAYLOR DOUGLAS, GEORGIA
 BETH THARPE MORGAN, GEORGIA
 JEAN THOMPSON LUMPKIN, GEORGIA
 DOROTHY ANNA TISON MOULTRIE, GEORGIA
 LUCY TOMPKINS CAMILLA, GEORGIA
 RUTH TULLIS VALDOSTA, GEORGIA
 CAROLYN TUTEN ALMA, GEORGIA
 MARY JAMES TWITTY ATLANTA, GEORGIA
 SARA WADE VALDOSTA, GEORGIA
 MARY FRANCES WALKER VALDOSTA, GEORGIA

MARY MARTHA WATSON VALDOSTA, GEORGIA
 DELLA WENTZ BRUNSWICK, GEORGIA
 ELSIE WEST MOULTRIE, GEORGIA
 JACQUELINE WILCOX HAZLEHURST, GEORGIA
 BETTY WILLIAMS VALDOSTA, GEORGIA
 JANE WILLIAMS MOULTRIE, GEORGIA
 MARJORIE WILLIAMS VALDOSTA, GEORGIA
 MARY FRANCES WILLIAMS CLYATTVILLE, GEORGIA
 DELL WRIGHT FITZGERALD, GEORGIA
 ANNA YOUNG QUITMAN, GEORGIA

Variety is the Spice of Life

"LISTEN to me and I'll learn you where to listen to learn"—so it goes, more talk, instead of work, but feeling that too much work would make Jill a dull girl, students find time for play.

Whether it's swimming, sleeping, or studying, these girls have a system—always manage to look breathless and eager—and never fail to say "Hey" to each other on every meeting.

In a "Battle of the Sexes" held in February G. S. W. C. battlers lost to the Emory Junior foe. A new idea, the "battle" furnished stimulation and enjoyment to all those participating and watching.

At formal time the air is tense with excitement as arriving corsages and boy friends break monotony of school days—the "Y" Angler, sponsored by the Y.W.C.A. brings crisp and curt quotations on each Thursday via mimeographed sheets . . . more of Annie Angler.



Garbutt Dives



Time Out for Food

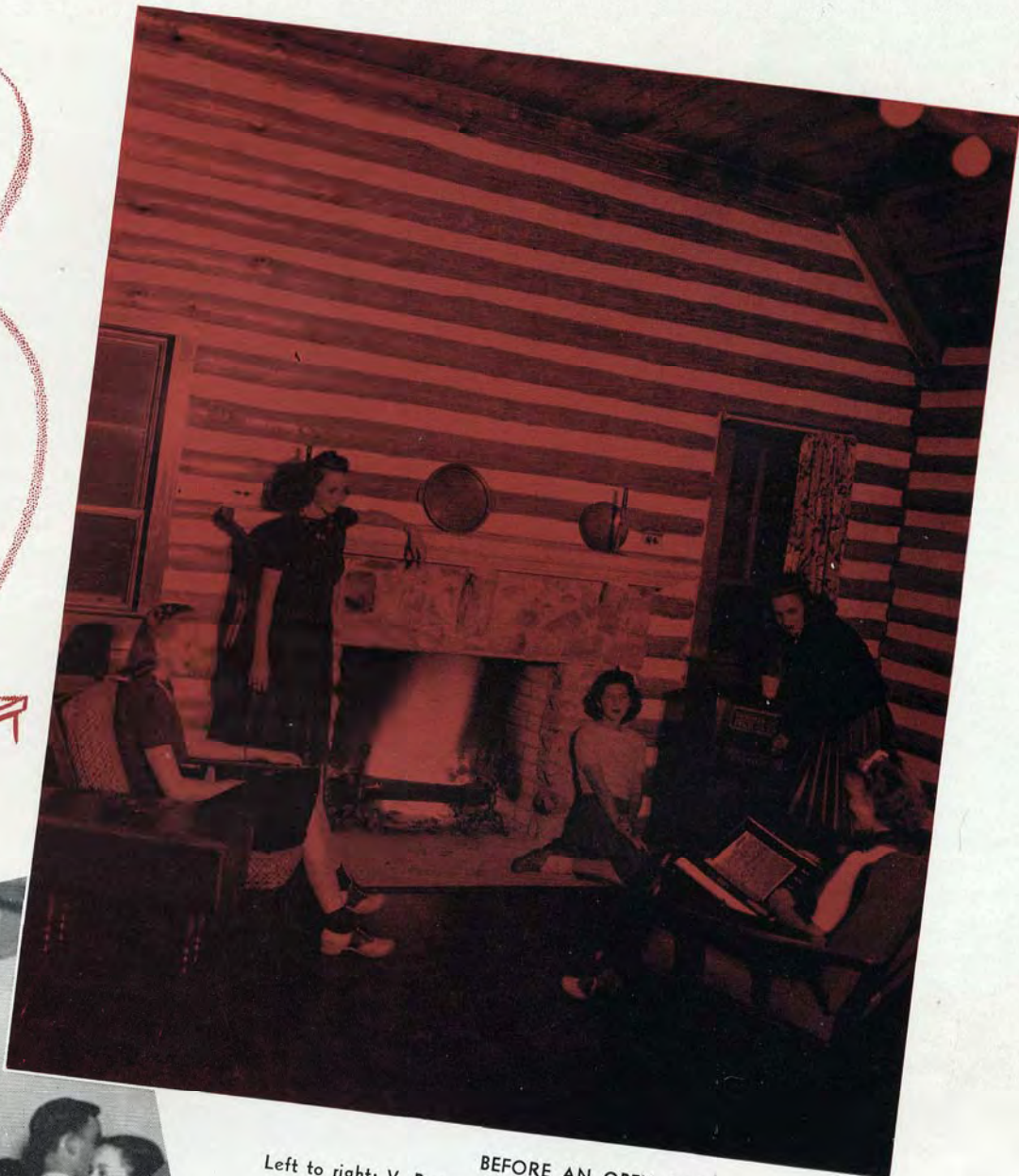


Smith "Absorbs" Knowledge

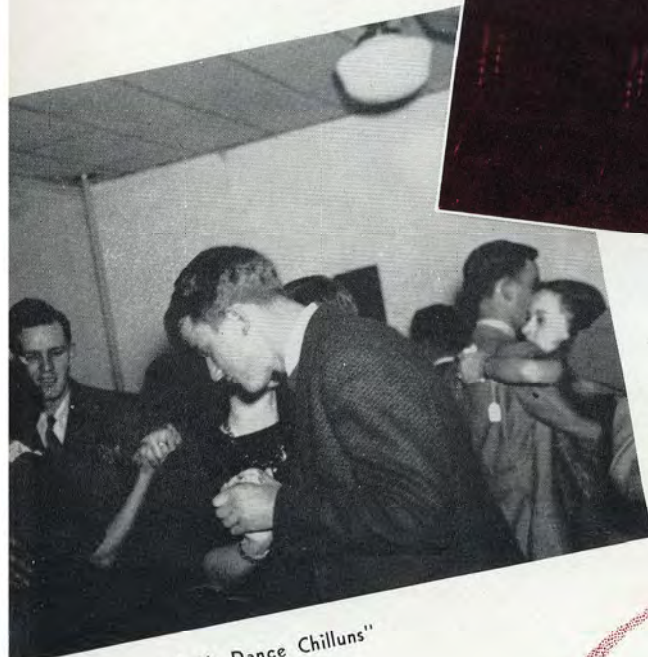


Prepared for Study





BEFORE AN OPEN FIRE
Left to right: V. Power, F. Middleton, M. Williams, L. Christian and B. Tharpe



"Let's Dance Chilluns"



ACTIVITIES

THE STUDENT GOVER



Top, above: Whisonant. . . Above: Parham and Cowart

OFFICERS

RUTH WHISONANT *President*
 ANN PARHAM *Vice-President*
 MONTINE COWART . . . *Secretary-Treasurer*
 MARY ALICE BRIM . . . *Recorder of Points*

COURT MEMBERS

RUTH WHISONANT
 ANN PARHAM
 MARY CATHERINE ABERNATHY
 MARGARET BURNS
 MAXWELL WILLIAMS
 JANE ELLEN SMITH

MONITORS

KATHRYN SCOTT . *Ashley House President*
 VIRGINIA POWER
 RUTH DIXON
 GWENDOLYN HENDRICK
 CAROLYN BRIDGES
 LUCILLE JOHNSON

HONOR COUNCIL REPRESENTATIVES

CURTIS WHATLEY *Dormitory*
 HELEN DUNCAN *Day Student*

INCLUDING EVERY GIRL in the student body in its membership, the Student Government Association is a democratic organization. Consequently, the organization doesn't fear an investigation from the Dies Committee. SGA has as its main purpose the promotion of the highest standards of honor and integrity in all manners of personal conduct. Such a goal defies Mr. Martin Dies, of Texas, to find even a hint of a suspicious un-American way on the campus.

Responsibility and privileges are democratically distributed among the students. Freshmen become members of the organization after a week of intensive training and orientation. Freshman Week is conducted jointly by the Young Woman's Christian Association and the Student Government Association.

Again working cooperatively, the SGA and the Y. W. C. A. brought Mrs. Florence S. Robnett to the campus. Speaking on vocations for women, Mrs. Robnett spoke to sophomores in special meetings, and to the student body as a whole.

Strengthening the cordial relations between faculty and students, thereby promoting general respect for law and order, officers of SGA meet with the president and deans of the college to get all sides of important issues.

The Student-Faculty Honor Council and the Executive Board work together. Delegates are sent each year by the association to the annual Student Government Conference. This year delegates were sent to the conference held at Shorter College.

As delegates go to other colleges for conferences, they return saying, "we have more privileges than most schools!" Privileges are granted to the student body when they seem desirable by the heads of the organization.

This year SGA granted to the students the privilege of wearing socks to the dining room for evening meals, with the exception of Thursday evenings, when dancing is allowed between courses and students dress for the occasion.

Ruth Whisonant, the present president of the organization, had the idea of calling together the class presidents to discuss campus problems, and to solve them in the best way. Consequently, she attended club meetings to present the problems



STUDENT ASSOCIATION DIRECTS STUDENT ACTIVITY

to even more students. As a result, the various clubs, at the suggestion of the SGA president, have made a notable effort to eliminate the snags of college life.

An open forum, held in the spring quarter each year, allows students to meet and voice any thoughts of theirs as to changes in regulations which they think worthy. In such a meeting the pot boils with suppressed ideas and hopes of students. Many new privileges have been granted later to the student body because of these lively gabfests.

Honor Council Representatives are Curtis Whatley, dormitory, and Helen Duncan, town. These girls serve on the Executive Committee when major problems of discipline arise.

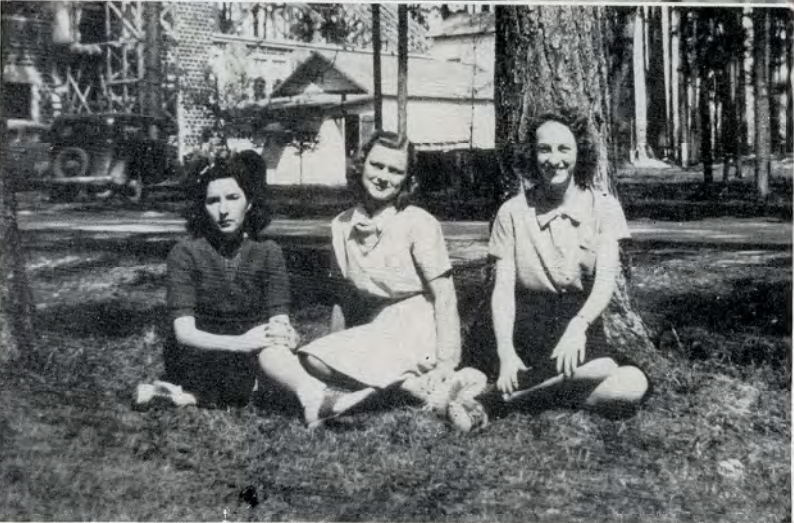
SGA monitors are Kathryn Scott, Ashley Hall House President, Virginia Power, Ruth Dixon, Gwendolyn Hendricks, Carolyn Bridges, and Lucile Johnson. They maintain discipline in Senior Hall and in Ashley Hall. In Converse Hall, N. Y. A. girls act as monitors. This innovation was added last year.



Top, above: Duncan and Whatley, members of Student-Faculty Honor Committee. . . . Above: Bridges and Johnson, Hall Monitors.

Holding Court in the Board Room—Court Members: Maxwell Williams, Jane Ellen Smith, Ann Parham, Ruth Whisonant, M. C. Abernathy and Margaret Burns

THE Y. W. C. A.



Top, above: Wilson. . . Above: Free, E. Brim and Williams

quickly followed, climaxed with a Sing on the steps the same evening. The freshmen were early orientated by a Recognition Service through which leaders on campus in student activities were introduced to them.

Religious Emphasis Week brought Dr. W. A. Smart of Emory Theological School to the campus on November 19th. Each year Dr. Smart comes to G. S. W. C., giving special conferences and lectures to the students, and trying to point a way of religious life which is not contrary to intelligence.

The Hanging of the Greens, the Fire Lighting Ceremony, Heart Sister Week, installation services, the Christmas pageant and play, all annual occurrences for the Y. W. C. A., foster religious development and give to the campus a distinctive atmosphere.

The Vesper Choir, under the direction of Mr. Herbert Kraft, assisted by Mildred Harris and Frances Middleton, appeared with special songs each week.

Professor Vissimore and his choir of Negro Singers bring a charm to the "Y" programs each year that is unrivalled.

Chairman of Deputation Irwin Smith sought and obtained a student speaker for each quarter. They appeared on evening programs at the churches of Valdosta, and also at Vesper programs.

The "Y" Cabinet romps and plays, together with the Student Government officials, at the Retreat. Held in the spring quar-

A NON-DENOMINATIONAL organization, The Young Woman's Christian Association directs the religious activities on the campus. The executive staff, the Cabinet, meets once a week to discuss and to find answers to many problems, great and small, to create a better social order and to plan the "Y" program.

Miss Annie P. Hopper and Miss Elizabeth Garbutt are faculty advisers.

On Sunday and Thursday evenings Vesper services are held. Throughout the year ministers of the various churches in Valdosta are asked to speak at Vesper programs, also professors on campus appear on these programs. Through the "Y" and its program a definite spiritual atmosphere is stimulated within the college. Morning Watch is held each morning except Saturday and Sunday mornings.

The Young Woman's Christian Association is represented each year at the national conference held at Blue Ridge, North Carolina, also at the Georgia Student Christian Conference, and other smaller conferences. A Freshman Commission and a Sophomore Council were organized this year to establish a closer connection between the underclass students and the Y. W. C. A.

In order to understand the scope of the organization, here is a birds-eye view of the activities which have highlighted this year's program.

Beginning the year with a Barn Dance for the freshmen, a play entitled "Pygmalion and Galatea"



Vesper Choir—First row: Flournoy, Tuten, Harris, W. Green, Gannon. . . .
Second row: L. Green, Summer, Dr. Kraft, Millsap, Hendrick and Neal



FOSTERS RELIGIOUS DEVELOPMENT

ter, the Retreat affords a chance for both organizations to evaluate their programs, and to make changes for the coming school year. The Y. W. C. A. and S. G. A. work jointly in many undertakings, strengthening their objectives by so doing.

OFFICERS

MILDRED WILSON
President

CAROLYN WILLIAMS
Vice-President

EVELYN BRIM
Secretary

MARY ALICE FREE
Treasurer



Cabinet Members—First row: Millsap, C. Williams, M. Williams, Hiers, Wilson. . . . Back row: Hartsfield, Turnbull, J. Smith, M. A. Brim, Free, I. Smith, E. Brim and Harris

MEMBERS OF CABINET

MARY ALICE BRIM
Chairman of Entertainment

FRANCES MIDDLETON
Vesper Choir

MARGARET HIERS
Room Chairman

KATHRYN SCOTT
Morning Watch

IRWIN SMITH
Deputation

JACQUELINE SMITH
Vesper Pianist

MARY JEAN ROCKWELL
Publicity

ELEANOR TURNBULL
Morning Watch

MILDRED HARRIS
Vesper Choir

MARY JO MILLSAP
Morning Watch Pianist

MARY WILLIAMS
World Fellowship



Deputation Team Members: Smith, Parham, J. Johnson



Garbutt, Baker, Wisenbaker and Bell



Wisenbaker Plans Layouts

PINE CONE STAFF

- ORA KATE WISENBAKER Editor
- SUSIE McKEY Assistant Editor
- LOUISE BELL Literary Editor
- LOUIE PEEPLES Assistant Literary Editor
- SARA GARBUTT Photograph Editor
- RUTH REID, LEECY ANNE GOODLOE, MARY WILLIAMS
Assistant Photograph Editors
- MARY CATHERINE ABERNATHY Activities Editor
- KATHLEEN CAMPBELL, LOUISE MACFIE Asst. Activities Editors

MAKE-UP STAFF

- JACQUELINE ABRAHAMS
- EDITH WILSON
- ROSALIND TAYLOR
- RUTH MORGAN

ALICE HATCHER

JUNIOR STAFF

- LOIS GREEN
- LINDA SUMMER
- WILMOT GREEN
- MARY ALICE BRIM
- EVELYN BRIM

BEGINNING with a great deal of advice, good, bad, indifferent, a few ideas, quantities of paper and a very new PINE CONE office, the editors of the PINE CONE have put out a yearbook using a great many new methods and ideas. Instead of the old twelve by fifteen size book, printed by the offset process, the 1940 PINE CONE is a nine by twelve book printed by the engraving process.

Following the example set by the 1939 PINE CONE, the book is presented by the entire student body of the Georgia State Womans College. Formerly the book was presented only by the members of the Senior Class.

Using *Life* and *Fortune* magazines as models, the editors have attempted to picture, through words and photographs, the year's activities of students at G. S. W. C. In picturing life on the campus, care



Editorial Conference—Peeples, Abernathy and McKey



Junior Staff—Goodloe, Williams, L. Green, R. Reid, Morgan and W. Green

1940 PINE CONE PICTURES YEAR'S ACTIVITIES

has been taken to get the usual campus activities as well as the unusual ones.

For the fourth year a junior staff has been organized in order to give the oncoming staff experience in publishing a yearbook. This year underclassmen have been given responsible positions as assistant editors so that they may gain an even better understanding of yearbook preparation.

In October Ora Kate Wisenbaker, Editor, and Rosemary Baker, Business Manager, were sent as delegates to Des Moines, Iowa, where the National Collegiate Press Association held its annual convention. Here, under the expert guidance of leaders in the field of yearbook journalism, the delegates mapped out plans for the 1940 PINE CONE.

As is traditional, the color and design of the yearbook cover has been kept a secret by the editors. Mr. Henry Tice of Kingsport Press, in cooperation with the editors, designed a cover for their approval.

Studio portraits for the PINE CONE were taken by Mr. Veran Blackburn of Valdosta. Snapshots were taken under the direction of the photograph editor, Sara Garbutt.

Throughout the preparation of the book, the editors have been able to call on Mr. Johnny Long, of Foote and Davies Company, and Mr. Walter Dargan, of Photo-Process Engraving Company, for advice on all technical problems.

For eight years the PINE CONE has received first class honor rating in the National Scholastic Press Association's All-American Yearbook Contest. In 1929, 1932 and 1933 it received All-American honors. Twice, in 1926 and 1927, the PINE CONE received Honorable Mention in the Art Crafts Guild's national contest for yearbooks as being one of the outstanding yearbooks published in the United States.



Baker Goes Ad-hunting

BUSINESS STAFF

ROSEMARY BAKER . . . *Business Manager*

ADVERTISING STAFF

HELEN DUNCAN

CATHERINE YOUNG GRAHAM

GERALDINE BOWEN

MINNIE ROBERTS

GWENDOLYN WINTER



Garbutt Snaps Her Assistant, Bowen



Baker, Bell and Wisenbaker
Off to Des Moines



PINE CONE Advertising Staff—M. A. Brim,
Bowen, E. Brim, Winter and Graham

THE CAMPUS CANOPY SEES ALL, TELLS ALL, AND



Bell Writes an Editorial

REALIZING THAT the college newspaper, as a major extra-curricular activity, can solidify and stimulate school spirit, the *Campus Canopy* has demonstrated leadership in its viewpoints directed toward student life.

Achieving the position of counsellor through its editorial policies, the editors have not been content to be a reflector of what has been, rather they have chosen to portray what should be.

Each year delegates have been sent to national and state conventions. Last year Louise Bell, present editor of the *Canopy*, was elected secretary and treasurer of the Georgia Collegiate Press Association at the Spring Convention held on the G. S. W. C. campus.

STAFF

LOUISE BELL	<i>Editor</i>
LINDA SUMMER	<i>Managing Editor</i>
ROSEMARY BAKER	<i>Assistant Editor</i>
ALICE WISENBAKER	<i>News Editor</i>
SUSIE MCKEY	<i>Feature Editor</i>
HARRIET FLOURNOY	<i>Sports Editor</i>
GWENDOLYN HENDRICK	<i>Headline Writer</i>
CATHERINE MARTIN	<i>Headline Writer</i>

REPORTERS

JANE ELLEN SMITH	BETTY WILLIAMS
ROSEMARY STEIN	JEANNE PRYOR
KITTY DAVIS	CAROLYN STUMP
RUTH DIXON	FRANCES KENNEDY
CATHERINE MARTIN	JACQUELINE SMITH
ANNABEL SHERMAN	DORIS LAND
LOUISE JAMES	BARBARA LANDSTREET
SARA WADE	DORIS HIERS
EUNICE FAIRCHILD	WILMA CODY
MARY NEWTON	LEONORA PEEPLES
BETTY BARNES	CATHERINE ABELL



Wisembaker, Whatley, Baker, Bell and Summer



Woodward Reads Proof



Hiers Interviews Therpe



Editors Bell and Wisembaker Are Cooks



Oomph Girls—Griffin, Bell and McCoy

IS THE OFFICIAL ORGAN OF THE STUDENT BODY

Fostering an interest in the work of the college by related outside groups, such as alumni, educational foundations, and civic clubs, the *Canopy* has also afforded a medium to report accomplishments and needs of the college and students.

Working in conjunction with the College President and Deans the *Canopy* has been able to secure many sides to important questions.

From the standpoint of the present staff members, work on the paper has brought a feeling of usefulness, and pride in doing a worthwhile job, also a certainty that future editors will continue the efforts made toward a high rate of journalistic progress.



Whatley



Advertising Staff—First row: Hiers, Lanier and Bridges. . . . Second row: Sessoms, Miller, Parrish

PROOFREADERS

EDITH WILSON	EVELYN WOODWARD
RUTH SESSOMS	LOUISE LAMBERT

BUSINESS STAFF

CURTIS WHATLEY	<i>Business Manager</i>
RUNELLE PRANCE	<i>Exchange Manager</i>
INEZ TAYLOR	<i>Circulation Manager</i>

ADVERTISING STAFF

JACQUELINE ABRAHAMS	CAROLYN BRIDGES
EVELYN BRIM	MARY ALICE BRIM
MARY ADELE DRENNON	EUNICE FAIRCHILD
DORIS HIERS	MARGARET HIERS
FRANCES KENNEDY	DORIS KENT
MARY LANIER	ALICE MEADORS
HARRIET MILLER	ELLEN MOBLEY
ELEANOR MORGAN	MARY ANN NORTH
VIRGINIA PARRISH	VIVIAN REED
BETH ROLLISON	RUTH SESSOMS
SUNNY TAYLOR	SUSANNE WANNAMAKER
	DELLA WENTZ



G. C. P. A. Convention Pauses for Photo



G. C. P. A. Officers—Hall, Emory; Bell, G. S. W. C.; Geeslin, Mercer



Sessoms, Lanier and Graham go Ad-hunting



THE SOCK AND BUSKIN CLUB

OFFICERS

DORIS HARPER *President*
 NELL SOUTHWELL *Vice-President*
 ROBINETTE BELL *Secretary-Treasurer*

BRINGING THE WORLD of the theater to the campus the Sock and Buskin Club has a twofold purpose of promoting an interest in play production and developing the appreciation of dramatic arts on the campus.

An initiation service and entertainment for the new members was held early in October after the annual tryouts. In the following month the new members entertained the old members.

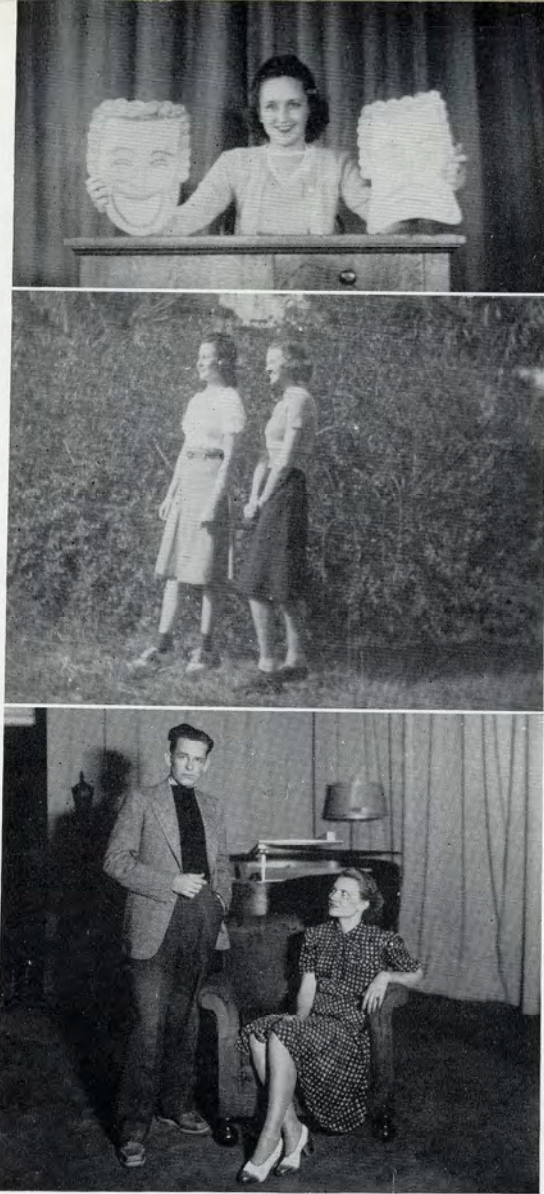
At the December meeting of the club Miss Willene Roberts of Valdosta, alumna of G. S. W. C. and former member of the Sock and Buskin Club, lectured on the art of make-up and gave appropriate demonstrations. Miss Roberts did graduate work at the American Academy of Dramatics in New York City.

During the winter quarter the club members went to Atlanta to see Katherine Cornell playing in "No Time for Comedy," at the Erlanger Theater. It is the custom of the club each year, to take a trip to see some outstanding play or actress.

Each year also the club presents a three-act play and a number of one-act plays at selected intervals. This year the members presented the three-act play, "First Lady," in the spring quarter. Tryouts for the cast were held early in January.

Another noteworthy function in this year's activities was the shower for the costume closet of the club, given at the January meeting. Besides sponsoring a dance in the Rec Hall, the club held its Annual Frolic in February.

Membership in the Sock and Buskin Club is based on dramatic ability and the club limitation is thirty-five.



Top: Harper. . . . Center: Bell, Southwell. . . . Bottom: Tilly and Burroughs in "Stage Door."

MEMBERS

- MARY CATHERINE ABERNATHY
- ELIZABETH ALLEN
- LOUISE BELL
- ROBINETTE BELL
- MARY ALICE BRIM
- RACHAEL CRITTENDEN
- RUTH DIXON
- MARY ADELE DRENNON
- SARA ETHERIDGE
- BETTY FLOWERS
- MARTHA SUE GRIFFIN
- LOUISE GRIFFIN
- DORIS HARPER
- RAY KIEVE
- JANE McLAUGHLIN
- SARA CATHERINE MARTIN
- ELEANOR MORGAN
- MARION ORR
- ANN PARHAM
- JEANNE PRYOR
- JANE ELLEN SMITH
- NELL SOUTHWELL
- LINDA SUMMER
- CAROLYN TUTEN
- CURTIS WHATLEY
- RUTH WHISONANT
- DOROTHY WILKES
- MILDRED WILSON
- MARY WILLIAMS
- DELL WRIGHT

Miss Sawyer, Club Mentor



Scene in "Stage Door"



ENCOURAGES DRAMA

THE FINE ARTS CLUB

THEY ARE THE ARTISTS of the campus, the twenty-five Fine Arts Club members. They give art its place in college life and create an art-consciousness among the students.

Among the year's interesting exhibits displayed through efforts of the club were those of book plates, Japanese prints, children's work and work from the High Museum of Art in Atlanta. In the spring quarter the work of Miss Frances Ruth Carpenter, club counsellor, was displayed, along with an exhibit of select student work.

Programs featuring art in the different phases were given at monthly meetings which were thrown open to other students and the public as well. Guest speakers discussed art in dress, religion, poetry, dance, drama, music, and flower arrangement.

A Saturday Morning Sketching Class and a Craft Shop were opened to students with materials furnished by the club.

Setting a new pace in campus money-raising the club promoted a poster-making business which brought successful results. They also sponsored a picture show, a dance, a sale on trade chances, and candy sales during the winter quarter.



Miss Carpenter Advises President Louie Peeples



Top: Green and Coppage Paint Peeples. . . . Bottom: Woodward Inspects the Bazaar

In addition, the Christmas Bazaar was held early in December, featuring Ohio pottery, Japanese prints, antique china, a china display, and suitable Christmas gifts. The Bazaar was termed one of the most successful in the club's history. As a result of a certain number of Japanese print sales, three Japanese Design books were awarded the club by the Shima Art Company.

Easter week-end the club members went to Sarasota, Florida, to see the Ringling Art Collection. Going by Silver and Tarpon Springs, they were present at Bok Tower in Lake Wales for Easter morning services and they returned by way of St. Augustine to visit the Marine Studios.

Yearbooks, distributed in the fall, and a club scrapbook were other club projects.

OFFICERS

LOUIE PEEPLES *President*
 YOLANDE COPPAGE *Vice-President*
 WILMOT GREEN *Secretary-Treasurer*

MEMBERS

VIRGINIA BRIDGES	VIVA MCGEACHY
MARGARET BURNS	RUTH MORGAN
YOLANDE COPPAGE	LOUIE PEEPLES
JOSEPHINE GRAHAM	MINNIE ROBERTS
LOIS GREEN	VERA SIMPSON
WILMOT GREEN	IRWIN SMITH
DORIS HARPER	JULIA BESS SMITH
MILDRED HARRIS	MARIE SMITH
GERALDINE HILL	MARY MARTHA WATSON
FLORRIE HINES	JANIE RAY WHITE
JEWEL HURST	ORA KATE WISENBAKER
LUCILLE JOHNSON	EVELYN WOODARD
EMILY MCCALL	MARY FRANCES WOODWARD

DRAWS CAMPUS ARTISTS TOGETHER

THE GLEE CLUB MAKES MELODY



BEGINNING the school year with a supper for the new members, the Glee Club has sponsored a dance in the Rec Hall and a picture show at the Ritz Theater.

Prominent throughout the year in the musical affairs of the college, the club members sang at Thanksgiving programs, Vesper Services, the Christmas Festival, and Commencement exercises. The annual spring concert, however, is the largest offering the group makes to the campus.

In the spring quarter the entire club went on a tour. They sang this year over WRUF in Gainesville, Florida, and WPAX in Thomasville.

Chosen on the basis of singing ability, the thirty members ended the year's activities with a banquet.

OFFICERS

- JACQUELINE ABRAHAMS *President*
 FRANCES MIDDLETON *Secretary-Treasurer*
 ELEANOR COOK *Librarian*
 MILDRED HARRIS *Assistant Librarian*

MEMBERS

- | | |
|----------------------|--------------------|
| JACQUELINE ABRAHAMS | ELEANOR MORGAN |
| SHIRLEY ABRAHAMS | RUTH MORGAN |
| PAYNE BROWN | FRANCES MIDDLETON |
| FRANCES CARTER | CAROLYN MARSHALL |
| MARY MARTHA BURNETTE | SUSIE McKEY |
| ELEANOR COOK | CATHERINE McDONALD |
| AVA COLLINS | REBECCA NEAL |
| MAXINE COWART | JEANNE PRYOR |
| RACHAEL CRITTENDEN | MARCELLA PLOWDEN |
| MARGIE DRAKE | ANNA MAE PRYOR |
| DOROTHY DUSENBURY | MINNIE ROBERTS |
| MARY ADELE DRENNON | WINIFRED RUFFIN |
| LEECY ANNE GOODLOE | THELMA SIRMANS |
| LOUISE GRIFFIN | JACQUELINE SMITH |
| MARTHA SUE GRIFFIN | MARY JAMES TWITTY |
| MILDRED HARRIS | RUTH TAYLOR |
| MARTHA HATTON | ROSALIND TAYLOR |
| LOUISE JAMES | ELEANOR TURNBULL |
| MARGARET KING | FRANCES WEST |

LOIS CHRISTIAN *Pianist* JACQUELINE SMITH *Assistant Pianist*

SEXTET

SUSIE McKEY *Soprano* ELEANOR MORGAN *Second Soprano*
 MARY MARTHA BURNETTE *Soprano* MILDRED HARRIS *Alto*
 JACQUELINE ABRAHAMS *Second Soprano* ROSALIND TAYLOR *Alto*



Christian Accompanies Abrahams



Officers Cook, Taylor, Brown and Harris Talk Over Club Business



THE PHILHARMONIC CLUB UNITES MUSIC LOVERS

OFFICERS

HAZEL WILLIAMS *President*
 ELEANOR MORGAN *Secretary-Treasurer*



Williams

MEMBERS

JACQUELINE ABRAHAMS	MARGUERITE LAHOOD
BETTY BARNES	SUSIE McKEY
MARY MARTHA BURNETTE	ELEANOR MORGAN
LOUIS CHRISTIAN	MARCELLA PLOWDEN
AVA COLLINS	CORINNE SMITH
ELEANOR COOK	JACQUELINE SMITH
HELEN DUNCAN	MARIE SMITH
DOROTHY DUSENBURY	ROSALIND TAYLOR
MILDRED HARRIS	RUTH TAYLOR
ANITA HATCHER	MARY JAMES TWITTY
ALICE HODGES	HAZEL WILLIAMS



Williams Accompanies Morgan

SPONSORING A DANCE in December formally began the activities of the Philharmonic Club. Following this activity up, the club brought the University of Florida Symphony Orchestra, composed of more than fifty members, to the campus. Noteworthy was this attraction in that it was the first time a symphony orchestra had been sponsored by a club.

Regular monthly programs presented by the members of the club were part of the plan to give to the student body a chance to hear and appreciate the best in music.

The outstanding club event during the fall quarter was a trip to Tallahassee to hear the Cincinnati Symphony Orchestra directed by Fritz Reiner.

Composed of twenty-two members, the club this year had the largest number of girls trying out for membership. Members are chosen from the Music Department.

Five senior members of the club gave recitals in the spring quarter, either in voice or piano, or both.

The Philharmonic Club attempts to inspire its members and the campus as a whole to a better appreciation of good music.



Senior Recitalists Abrahams, Williams, Duncan, Taylor, Morgan

THE INTERNATIONAL RELATIONS CLUB REVIEWS CURRENT ISSUES

MEMBERS

- GERALDINE BOWEN
- FRANCES G. DAVIS
- BETTY FRANKLIN
- JOSEPHINE GRAHAM
- LOIS GREEN
- MARY HARDY
- VIVA McGEACHY
- ANN PARHAM
- VIRGINIA PARRISH
- KATHRYN RAYNOR
- KATHRYN SCOTT
- ANNABEL SHERMAN
- MILDRED WILSON
- ALICE WISENBAKER
- ORA KATE WISENBAKER



Top: Green, Parrish, Graham and A. Wisenbaker Read the Headlines. . . . Bottom: Bowen and Wisenbaker Confer With Price

WITH MISS MILDRED PRICE as faculty adviser the International Relations Club is responsible for the creation of interest in national and international affairs of the day. Weekly forums, open to the student body and faculty, were conducted during the winter and spring quarters.

The club was organized in 1928 under the sponsorship of the Carnegie Endowment for International Peace. From the Endowment the club receives a number of books and pamphlets relating to current national and international issues, which are placed on the I. R. C. shelf in the library for general use. Also the Endowment sends speakers each year to the campus through the auspices of the club.

At present there are available four fifty-dollar-loan scholarships for the use of history majors in senior college.

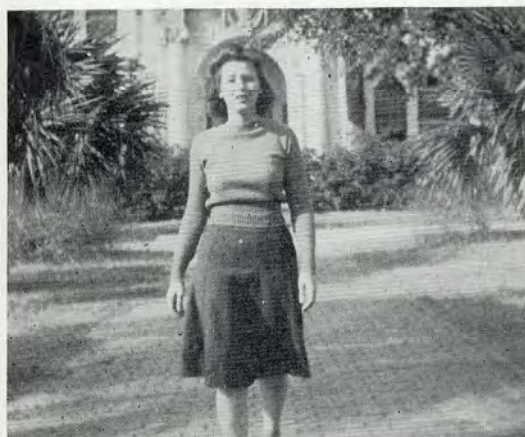


Bowen

OFFICERS

- GERALDINE BOWEN *President*
- VIRGINIA PARRISH *Vice-President*
- JOSEPHINE GRAHAM *Secretary*
- LOIS GREEN *Treasurer*
- ALICE WISENBAKER *Member-at-Large*
- MISS MILDRED PRICE *Faculty Adviser*

THE MATH-SCIENCE CLUB CARRIES ON RESEARCH



Top: Norton. . . Bottom: Wilson and Garbutt
Have a Heart-to-Heart Confab

OFFICERS

MARGUERITE NORTON *President*
SARA GARBUTT *Vice-President*
EDITH WILSON *Secretary-Treasurer*

TO OFFER TO ITS MEMBERS an opportunity to work out phases of those scientific projects in which they are most interested, and to be of service to the college through the fulfillment of these projects—this has been the purpose of the Math-Science Club.

In order to accomplish its goals the club is divided into three parts: math, chemistry, and biology. The activity of the club as a whole is under the supervision of the club president.

The Biology Division this year collected and preserved South Georgia flora, thus beginning a permanent herbarium for the college. The division also continued work on the botanical garden in the south woods of the campus.

The Chemistry Division acted as nucleus and sponsor of the Camera Club. During the year the division made field trips to industrial centers in the vicinity of the college.

An attempt was made by the Math Division to show the lighter side of mathematics. This was done through periodically depicting the dream of a math professor through the medium of posters and miniature figures showing the math progress made by "Little Willie" from kindergarten to college graduation. The exhibit was placed in the hall of the Administration Building for all to see, and changed each quarter.

MEMBERS

- MARIE AMBOS
- ROSEMARY BAKER
- CAROLYN BRIDGES
- MARGARET BURNS
- MONTINE COWART
- ANNELLE DAVIS
- LOUISE EDWARDS
- ELIZABETH GARBUTT
- SARA GARBUTT
- LEECY ANNE GOODLOE
- CHARLEEN GRATER
- BILLIE GREEN
- ALICE HATCHER
- MARGARET HIERS
- LOIS JOHNSON
- MARY JANE JONES
- LOUISE MACFIE
- KATHRYN MUNDY
- MARGUERITE NORTON
- RUNELLE PRANCE
- CHRISTINE POSS
- HELEN QUARTERMAN
- RUTH REID
- CAROLYN ROBERTS
- MARY E. ROGERS
- MARION SMITH
- CAROLYN WILLIAMS
- FRANCES WILLIAMS
- MARY W. WILLIAMS
- EDITH WILSON
- VIRGINIA ZACHERT



Cowart



Jones



Williams

THE ENGLISH CLUB DISCUSSES THE NEWEST BOOKS



Campbell and McKey



Smith

OFFICERS

IRWIN SMITH *President*
 SUSIE McKEY *Vice-President*
 KATHLEEN CAMPBELL . *Secretary-Treasurer*

FACULTY ADVISERS

MRS. GERTRUDE GILMER ODUM DR. HAROLD GULLIVER
 MISS LOUISE SAWYER

MEMBERS

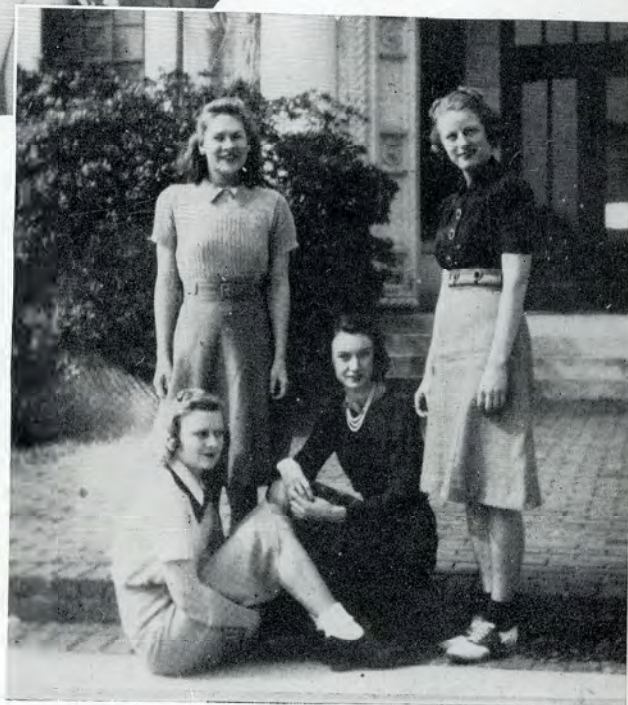
MARY CATHERINE ABERNATHY
 SARA DEAN ADAMS
 ELIZABETH ALLEN
 EVELYN BRIM
 MARY ALICE BRIM
 LOUISE BELL
 KATHLEEN CAMPBELL
 HELEN DUNCAN
 MARGARET DUTTON
 MARY OLIVE FOUNTAIN
 SARA GARBUTT
 EMILY GARNER
 DORIS HARPER
 JEANETTE JOHNSON
 MARY LEE MARTINDALE
 HATTILU McINTYRE
 SUSIE McKEY
 MARY EDNA RATLIFF
 IRWIN SMITH
 NELL ZIPPERER SOUTHWELL
 CURTIS WHATLEY
 GWENDOLYN WINTER

CENTER OF LITERARY INTERESTS, the English Club limits its membership to twenty-five English majors holding a specified scholastic average.

Bringing to the campus in September John G. Neihardt, American poet and literary critic, the club was the first of the year to sponsor an artist on campus. Mr. Neihardt, author of *Epic Cycle of the West* which included *Song of Hugh Glass*, *Song of Three Friends*, *Song of Indian Wars*, and *Song of the Messiah*, appeared at the college on a program in which he read selections from his epic.

Reviewing a current novel and offering criticism upon it was the program at the January meeting. In such programs students are given the chance to formulate their own opinions concerning popular books, and to learn some way of evaluating these books.

A panel discussion, as a means of increasing student interest in literary pursuits, was held with great success. Five members of the club discussed the subject "Romanticism vs. Realism," following it up by allowing the entire club members to offer their opinions.



Panel Discussion Group—E. Brim, Allen, M. A. Brim and Campbell

THE FRENCH CLUB STUDIES FRENCH LITERATURE AND ART

OFFICERS

- MARY BUNDRICK *President*
- MARY JEAN ROCKWELL *Vice-President*
- KATHLEEN CAMPBELL *Secretary-Treasurer*

HAVING A DEEP INTEREST not only in the French language but in the literature of France and the country itself as well, the French Club members endeavor to stimulate this interest elsewhere on the campus.

At club meetings, which are customarily conducted in French, the members give French book reviews and discuss topics of club interest. They presented a French play entitled "*Napoleonette*" in the latter part of the fall quarter, according to the annual custom of the club.

Membership is limited to twenty French majors and minors of the Sophomore, Junior and Senior Classes with the scholastic average of B or above.



Top: Bundrick. . . . Bottom: Rockwell and Campbell

MEMBERS

- | | |
|-------------------|--------------------|
| ROBINETTE BELL | LOUISE MACFIE |
| RUTHANN BELLOFF | VIRGINIA TOMLINSON |
| GERALDINE BOWEN | ELISE GANNON |
| MARY BUNDRICK | MARY JEAN ROCKWELL |
| JACKIE ABRAHAMS | ANNELLE DAVIS |
| KATHLEEN CAMPBELL | ORA JOHNSON |

French Club Members—Tomlinson, Belloff, Bell and Gannon



More Members—Davis, Bowen, Abrahams and Johnson



THE G. S. W. C. HONOR

The Seniors



Garbutt, Cowart and Taylor

MEMBERS

ROSEMARY BAKER
 GERALDINE BOWEN
 MONTINE COWART
 HELEN DUNCAN
 SARA GARBUTT
 ROSALIND TAYLOR
 RUTH WHISONANT
 MILDRED WILSON
 IRWIN SMITH
 ORA KATE WISENBAKER

ORGANIZED with the purpose of recognizing scholarship, leadership, and personality in 1936-'37, the Senior Honor Society is composed of a group selected from students who have completed two and two-thirds years of work in the college, and who are outstanding for academic work and leadership.

On a five-year period of trial, the society is petitioning Mortar Board, national honor and leadership society for membership.

This year, the Senior Honor Society organized a Student Cooperative Book Store, and opened it to the students on January 1, 1940. The society also sponsored a school for training in Parliamentary Law and in cooperation with the Freshman Honor Society an Honor Day program was held.

OFFICERS

HELEN DUNCAN *President*
 MONTINE COWART *Vice-President*
 SARA GARBUTT *Treasurer*
 GERALDINE BOWEN *Editor*
 ROSALIND TAYLOR *Secretary*

Duncan and Bowen Sell the First Book to Dutton



SOCIETIES RECOGNIZE SCHOLARSHIP



Power, Graham and Rockwell



President Williams

OFFICERS

MARY WILLIAMS	<i>President</i>
CATHERINE Y. GRAHAM	<i>Vice-President</i>
MARY JEAN ROCKWELL	<i>Secretary-Treasurer</i>
VIRGINIA POWER	<i>Historian</i>
MISS HOPPER, MISS SAWYER	<i>Faculty Advisers</i>
IRWIN SMITH	<i>Student Adviser</i>

The Freshmen

PROMOTING and maintaining among the members of its organization and the campus at large all activities which tend to stimulate and enrich their intellectual living, the Freshman Honor Society has an important role in college life.

It is composed of only Junior College students of high scholastic standing in academic work. Other bases for membership are personality, leadership, and cooperation.

Not only creating an interest in intellectual achievement, the society tries also to render service to the college whenever possible.

Organized in 1936-'37 the society is on a five-year period of trial petitioning for membership in the Alpha Lambda Delta Honorary Fraternity. The membership for this year totals seventeen.

Among the projects this year was a "Battle of the Sexes," sponsored jointly with the Freshman Honor Society of Emory Junior at Valdosta. Ballot boxes were placed at either college and all the students were invited to contribute questions. The purpose of this project was to bring intellectual good to both campuses and create a more friendly attitude between the two schools.

The society also purchased outstanding books which the members read and contributed to the library at the end of the year.



Turnbull, Goodloe, Garbutt and Bartlett
Inspect Books Given to Library

MEMBERS

MARIE AMBOS	MARGARET HIERS
AILEEN BARTLETT	VIVA McGEACHY
ELEANOR COOK	PATTY PATTERSON
LOUISE EDWARDS	WINIFRED RUFFIN
ELIZABETH GARBUTT	KATHRYN SCOTT
LEECY ANNE GOODLOE	ELEANOR TURNBULL
	FRANCES WEST

THE SOCIOLOGY CLUB DOES SOCIAL SERVICE WORK

OFFICERS

VIRGINIA TOMLINSON *President*
 INEZ TAYLOR *Vice-President*
 LUCILLE JOHNSON *Secretary-Treasurer*

CHOOSING as its chief purpose the furtherance of interest in the Social Sciences as set forth in the club constitution, the Sociology Club has an additional purpose in seeking ways of enriching the lives of those who need the help of others.

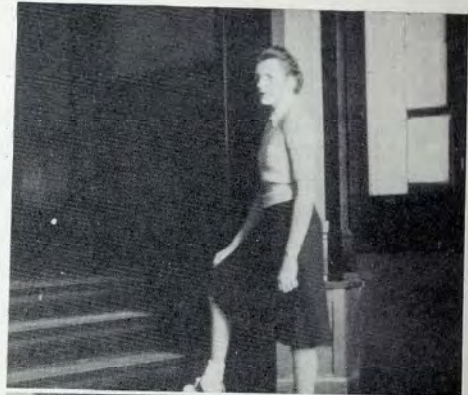
Programs are provided that the group might gain a better understanding of the cultural and vocational aspects in the field of Sociology.

Those majoring or minoring in the field of Sociology and maintaining a certain scholastic standard are entitled to membership.

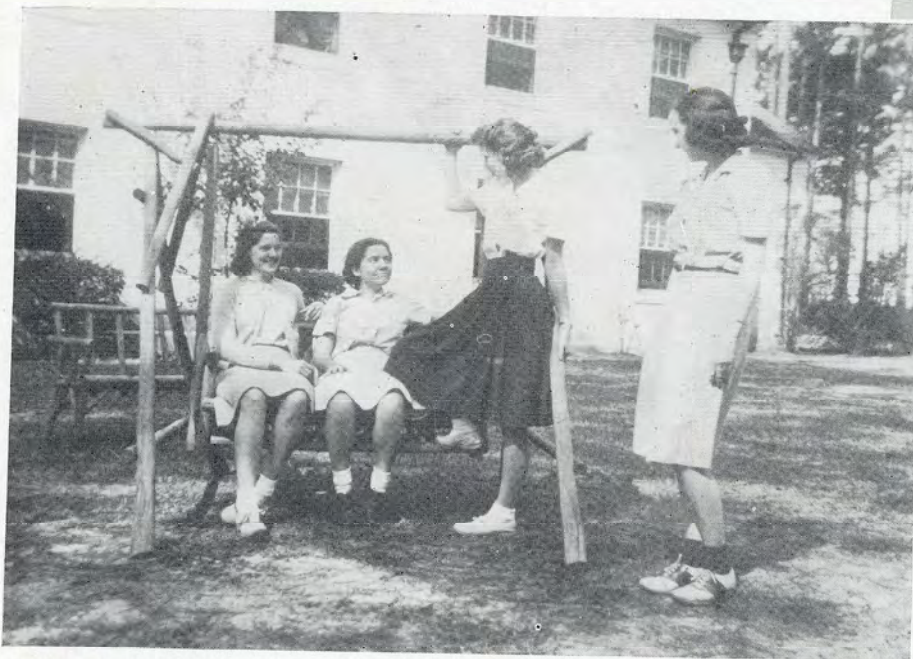
This club, the youngest on the campus, is two years old. It was organized in the fall of last year by a group of interested students majoring in Sociology.

MEMBERS

MAXINE COWART	MARY CATHERINE ABERNATHY
VIRGINIA PARRISH	ANNIE HEALD
BETTY DASHER	RUTH SESSOMS
SUSIE MCKEY	LOUISE MACFIE
MARGARET DUTTON	ROWENA BURFORD
INEZ TAYLOR	CAROLYN BRIDGES
FRANCES MIDDLETON	YOLANDE COPPAGE
VERONICA KLEEMAN	JUANITA HARRELL
CHRISTINE MOORE	LUCILLE JOHNSON
MATTIE RUTH PARRISH	VIRGINIA TOMLINSON
RUTH WHISONANT	MARGARET CLAY
HATTILU MCINTYRE	LILA MAE SPOONER
LINDA SUMMER	REBA MANGHAM



Top: Tomlinson. . . . Center: Taylor and Johnson. . . . Bottom: Faculty Advisers Durrenberger and Brink



Just Social-minded—Kleeman, Mangham, McLaughlin and Dutton

VALDOSTA CLUB

OFFICERS

ELEANOR MORGAN *President*
 HELEN QUARTERMAN . . . *Vice-President*
 CATHERINE YOUNG GRAHAM . *Secretary*
 ANNELLE DAVIS *Treasurer*
 MISS HOPPER *Adviser*



Morgan Confers With Hopper



Graham, Quarterman, and Davis

UNITING THE DAY STUDENTS into an effective group, the Valdosta Club has aimed to establish a better understanding between day and boarding students. Membership of the club is limited to students in the college who are graduates of the Valdosta High School.

Social luncheons given once a quarter in the Recreational House and sometimes outdoors are the chief functions of club activity, along with a banquet given at the close of the year honoring the Senior Class of the local high school.

Club members sponsored a dance and a picture show during the spring quarter.

MEMBERS

- | | | | | | |
|-------------------------|--------------------------|----------------------|-------------------------|---------------------|---------------------|
| JACQUELINE ABRAHAMS | ELIZABETH FENDER | SARA FRANCES MEADOWS | NELL ZIPPERER SOUTHWELL | RUTH TULLIS | BETTY WILLIAMS |
| FRANCES ADKINS | JEAN FINKLEA | MARY JANE MEANS | CAROLINE STUMP | SARA WADE | FRANCES WILLIAMS |
| ROSEMARY BAKER | BETTY FRANKLIN | ELEANOR MORGAN | ROSALIND TAYLOR | HENRIETTA WALKER | MARJORIE WILLIAMS |
| BETTY BARNES | ELIZABETH GARBUTT | RUTH MORGAN | RUTH TAYLOR | MARY FRANCES WALKER | GWENDOLYN WINTER |
| AILEEN BARTLETT | SARA GARBUTT | KATHERINE MUNDY | STELLA TAYLOR | MARY MARTHA WATSON | ALICE WISENBAKER |
| ANNETTE BLACKBURN | EVELYN GOLDING | EVELYN O'NEAL | JANET TILLMAN | MINNIE WELLS | ORA KATE WISENBAKER |
| GERALDINE BOWEN | LEUCY ANNE GOODLOE | WILLARD PARRISH | | | |
| MARY FRANCES BURKE | HARRIET GOODSON SAUNDERS | MATTHE RUTH PARRISH | | | |
| KATHLEEN CAMPBELL | CATHERINE YOUNG GRAHAM | PATTYE PATTERSON | | | |
| LOIS CHRISTIAN | JOSEPHINE GRAHAM | LEONORA PEEPLES | | | |
| TENZIE COLEMAN | DORIS HARPER | LOUIE PEEPLES | | | |
| EVELYN COOK | ANITA HATCHER | MARCELLA PLOWDEN | | | |
| YOLANDE COPPAGE | LAVERNE HERRING | MARION POSEY | | | |
| MARY COTTER | HALLIE HINSHAW | MARY POWELL | | | |
| OLIVE CRAWFORD | SHIRLEY HOYE | HELEN QUARTERMAN | | | |
| GLORIA DALTON | GLORIA JACKSON | MARY EDNA RATLIFF | | | |
| BETTY DASHER | BOBBIE JOHNSON | RUTH REID | | | |
| ANNELLE DAVIS | ORA JOHNSON | MINNIE ROBERTS | | | |
| FRANCES GIDDENS DAVIS | ANNE KENNON | MARY JANE ROCKWELL | | | |
| KATHERINE ANN DAVIS | MARGARET KING | EVELYN SAUNDERS | | | |
| URSULA DAVIS | HELEN KIRK | MARIE SHANNON | | | |
| JULIE DUNBAR | LOUIE MAE KRIEGER | ANNABEL SHERMAN | | | |
| HELEN DUNCAN | MARGUERITE LAHOOD | HILDA SIKES | | | |
| DOROTHY DUSENBURY | RAY LAZARUS | VERA SIMPSON | | | |
| ANNE EAGER | ELIZABETH LYONS | CORINNE SMITH | | | |
| LAWAIN EDWARDS | KATHERINE McDONALD | JULIA BESS SMITH | | | |
| MRS. VIRGINIA FAIRCLOTH | SUSIE MCKEY | MARION SMITH | | | |



Harper Serves at a Quarterly Luncheon

KAPPA AND LAMBDA SPORTS CLUBS VIE



President Reid

THE AIM of the Sports Club is to promote a higher degree of physical efficiency by fostering a program which will provide the maximum number of girls an avenue of relaxation from the strain and stress of the too-rushed status quo.

Serving as a guide toward better leadership, sportsmanship, and ability, the Sports Club is divided into two associations, Phi Lambda and Phi Kappa. The association winning the greater number of points from match games during the year is awarded the Honor Plaque for the year.

The executive body of the club, the Sports Council, plans each week for activities that will bring a well-rounded program of team games and individual sports.

Meeting this year every Tuesday afternoon at the House-in-the-Pines, the Council discusses the outcome of the club's varied activities and plots a course by which the most students can be reached for sports. Once a month the Council has a supper. At these monthly suppers the faculty advisers of the club and the student members share fun and work.

Aiming to have "a sport for every girl and every girl a sport" the club ranks as one of the most democratic organizations on campus. The entire student body is eligible for membership, qualifications for membership being only that a girl keep up the required number of practices per quarter. Pledges are taken into full membership after they have shown an active interest in the club's program, and have a satisfactory scholastic record.

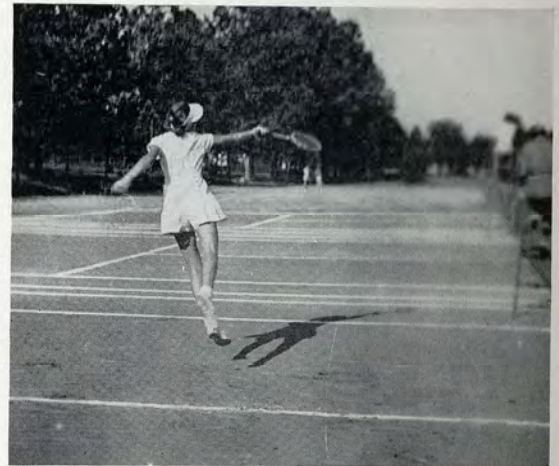


Wilson, Ross, Campbell,

Activities included in the year's program are tennis, archery, swimming, golf, horseback riding, ping-pong, deck tennis, box hockey, croquet, shuffleboard, American ball, basketball, baseball, and badminton.

For the first time the club this year sold felt shields to girls for sweaters. The shields were in the colors, red and purple, of the two teams, each girl wearing the color of her team.

Reid goes after a hard one



Match-game in American Ball

Grace and skill on the Archery Range



FOR PLAQUE DURING SCHOOL YEAR



Reid inspect plaques



Officers Zachert, Norton and Coppage Team Captains Brim and Mundy

FACULTY ADVISERS

MISS LENORA IVEY MISS ELIZABETH MCREE

MISS MARJORIE CARTER MISS EDITH LOWRY

DR. MARIAN E. FARBAR

Advisers Ivey, Carter, McRee



Matchpoint in Fist Ball

Fashion Highlights from the Pledges of the Day



SPORTS COUNCIL

- RUTH REID *President*
- MARGUERITE NORTON *Vice-President*
- VIRGINIA ZACHERT *Secretary*
- YOLANDE COPPAGE *Treasurer*
- EVELYN BRIM *Kappa Team Captain*
- KATHERINE MUNDY *Lambda Team Captain*
- CHRISTINE ROSS *Kappa Fist Ball Mgr.*
- KATHLEEN CAMPBELL *Lambda Fist Ball Mgr.*
- REBA MANGHAM *Kappa Archery Mgr.*
- MARY BUNDRICK *Lambda Archery Mgr.*
- CATHERINE Y. GRAHAM *Kappa Swimming Mgr.*
- ELIZABETH GARBUTT *Lambda Swimming Mgr.*
- EDITH WILSON *Lambda Basketball Mgr.*
- SARA GARBUTT *Tennis Mgr.*
- MAXWELL WILLIAMS *Art Mgr.*
- LOUISE BELL *Club Reporter*
- LOUISE MACFIE *Campus Games Mgr.*
- LEECY ANNE GOODLOE, *Co-Recreation Chairman*

THE ALUMNAE ASSOCIATION LOOKS AFTER COLLEGE INTEREST



Vinson

OFFICERS

- MYRTLE PIERCE VINSON *President*
 VANELLE KENDALL *Vice-President*
 LOUISE ODUM HOWELL *Secretary*
 LENA MAY SMITH *Treasurer*

THE ALUMNAE ASSOCIATION has been striving yearly to bring the students who are graduates of the college in closer contact with the college after they have graduated, and this year's program has been planned with that main objective in view. An installation ceremony will be held at commencement to welcome the new members to the organization.

The annual alumnae luncheon will also be held during commencement time, along with other social affairs for the graduates.

The purpose of the association is to combine former G. S. W. C. students into an active off-campus group. The organization aims to preserve the ideals of the college, and to extend its influence through its membership of more than a thousand graduates. The privileges of active membership are granted to those who have received a degree or a diploma; those who have completed one year of college work are eligible for associate membership.

Each year the association provides a scholarship for some girl who meets certain definite qualifications.

The Alumnae Association sends members each year to G. E. A. meetings. The Association is a member of the American Alumni Council.

To encourage the continued interest of its members in the Association the dormitory staff maintains a feeling of "open house" for any returning student.

The constitution of the Association was adopted in 1933 which focused the ideals and aims of the organization. The future holds for the Alumnae Association the realization of a dream of local chapters organized and scattered throughout the state which will carry its ideals forward.



Kendall
Smith

THE CHRISTMAS FESTIVAL BRINGS YULETIDE CHEER



Top: Members of the Glee Club bring in the traditional Yule Log. . . . Center: Sailors home on leave give a rousing cheer. . . . Bottom: Stately Lords and Ladies of the Manor dance the minuet. . . . Circle: Rag Dolls Orr and Taylor with Court Fool Zachert.

INCARNATION of the true manner of the Old English, the Christmas Festival is a reproduction of a medieval manor with the banquet hall decorated in mistletoe and ivy.

Held on the evening before going home for the holidays, the festival has become a tradition of the college. Only students, faculty members and invited guests may attend the festival.

The festival begins in the Rotunda where the Yule log is lighted and a toast is drunk by faculty members. As the Lord of the Manor goes into the Feast Hall, the festivities begin.

The Lord and Lady of the Manor, President and Mrs. Reade, with their invited guests, sit on a dais overlooking the entire feast hall, and in full sight of the dances.

Singing "Adeste Fidelis," the students, transformed for the evening into the good people of Merrie England, stream into the feast hall, attired in costumes of lords and ladies, peasants, Robin Hoods, milkmaids, and others. Miss Lenora Ivey, physical education director, is Master of Ceremonies as the Lord of Misrule. Her underling, the Court Fool, attends to any misruling that the master might happen to neglect at any time during the program.

The evening proceeds from the comic and ludicrous to the quaint and the humourous and then on to beauty and solemnity.

Fun and entertainment are not lacking: singers, dancers, and jesters add to the joviality of the occasion. Throughout the feast, the guests blend their voices to sing old Christmas carols. As the evening progresses, the music passes from the whimsical folk carol to a religious note, which deepens at last with the beauty and grace of the stately minuet.

After the lights are extinguished, the entire company marches out to the candlelight recessional, "Silent Night," and there comes to the hearts of everyone a new interpretation of the meaning of Christmas.





MAY QUEEN ELIZABETH GARBUTT
 Flower girls: Patsy McDermott, Katherine
 Zeigler. Train bearers: Nancy Griffin,
 Jane Dickerson.

May DAY

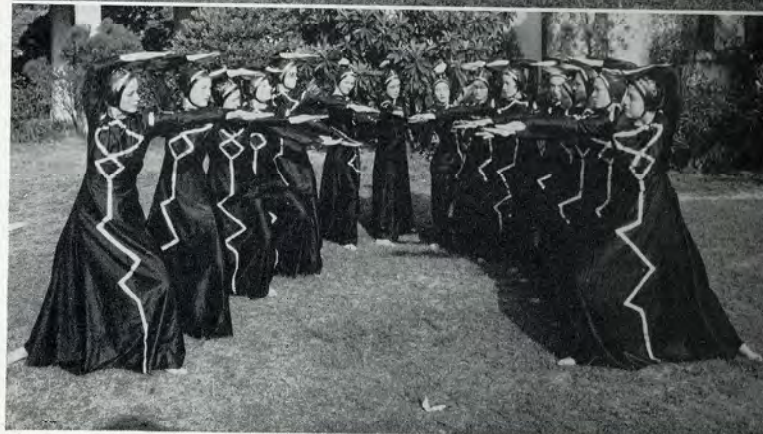
ONE OF THE loveliest traditions at the college is the annual May Day celebration, a gala occasion in which every student takes part, from the Queen of the May, selected from the Senior Class by popular vote, to the lowliest freshman, masquerading as a peasant.

Songs and dances on the green in which the peasant folk express the age-old sentiments regarding May Day—old English traditions featuring milkmaids, lords and ladies—the winding of the vari-colored May poles—the lovely court procession of the Queen and her court—all typify the spirit of the May Day celebrations from the time of the Druids to the present day.

All of the pageantry and simple splendor that marked the celebrations of the Celtics is carried on as a tradition at the College each May Day. The May Day Festival is a particularly happy occasion since it celebrates the coming of Spring with its promise of new life. The May Court, ruled over by the Queen, is held on the green in front of Converse Hall. After the Queen is crowned, there follows a colorful program of dances for the pleasure of Her Highness, the Court and the guests.

Each year the May Festival has a new and different theme, although the spirit of it remains always the same. Last year, the theme was Springtime in the South. Through dances, this idea was traced from ante bellum days up to the modern era.

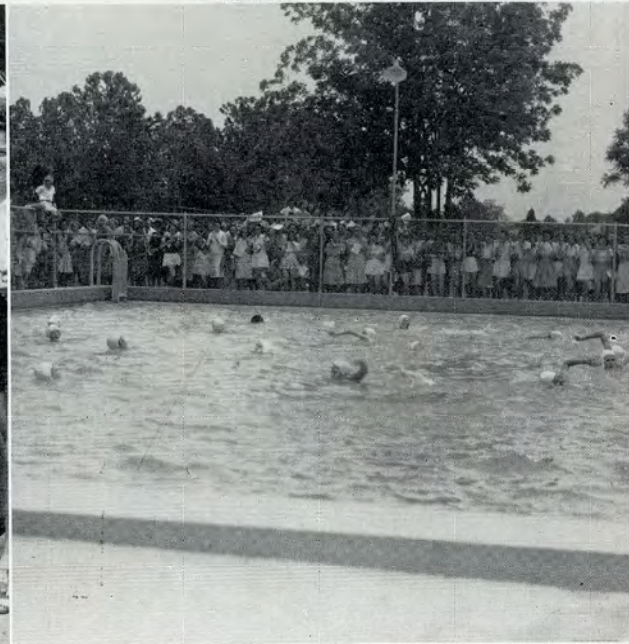
Top: May Queen and her Court. First row: M. Carter, A. Adams, H. Joiner, M. V. Williams, M. Weir. Second row: H. Muggridge, J. Lawson, C. J. Morris, M. Abernathy, A. Richter, Queen, E. Garbutt, Maid-of-Honor, E. Ogletree. Those missing: H. Carroll, R. Rhymes, P. Greer and P. Tullis. . . . Center: Freshmen Dance in the Colonial Manner. Bottom: Upperclassmen Interpret the Modern Mode.



and *Play* DAY

EACH YEAR on the first Saturday in May, the college acts as hostess to hundreds of girls from the Senior Classes of South Georgia high schools.

Invited to spend the day on the campus, the girls enjoy a combined May Day—Play Day. Students and visitors are divided into teams and compete in games throughout the morning. After a horse show and archery exposition, a picnic lunch is spread in the grove back of Senior Dormitory. Early in the afternoon, before the May Festival, an especially prepared musical and dramatic program is given in the G. S. W. C. auditorium for the high school guests.



Above: Sammie Snead signs autographs for admiring students. . . . Left, above: Luncheon for students and visitors. . . . Right, above: Student swimming exhibition.



Dr. Reade makes the home run!

The aim of Play Day is to help the work being done all over the country, to spread the knowledge and use of new and interesting games to other schools, and to encourage friendship between the high schools and the college.

There is no school rivalry, no playing merely to win, no individual honor to be gained, but a day spent in learning new games, playing old ones, and enjoying the comradeship of play.

Personality Plus...

IT WAS NOT the wish of the student body to include in this section either an interpretation of "it" or of "oomph."

Eight seniors, elected by the student body in a ballot poll conducted jointly by the Student Government Association and the PINE CONE, were chosen from a group of sixteen.

Norton

The sixteen seniors selected on the characteristics of leadership, versatility, personality, and ability, were considered outstanding by a selected committee made up of students and faculty members. They, accordingly, submitted their selections to the student body for final election of the eight.

On this page are the eight girls who were runner-ups in the PINE CONE Feature Poll. They were: Rosemary Baker, Geraldine Bowen, Montine Cowart, Helen Duncan, Eleanor Morgan, Marguerite Norton, Rosalind Taylor, and Curtis Whatley.



Morgan

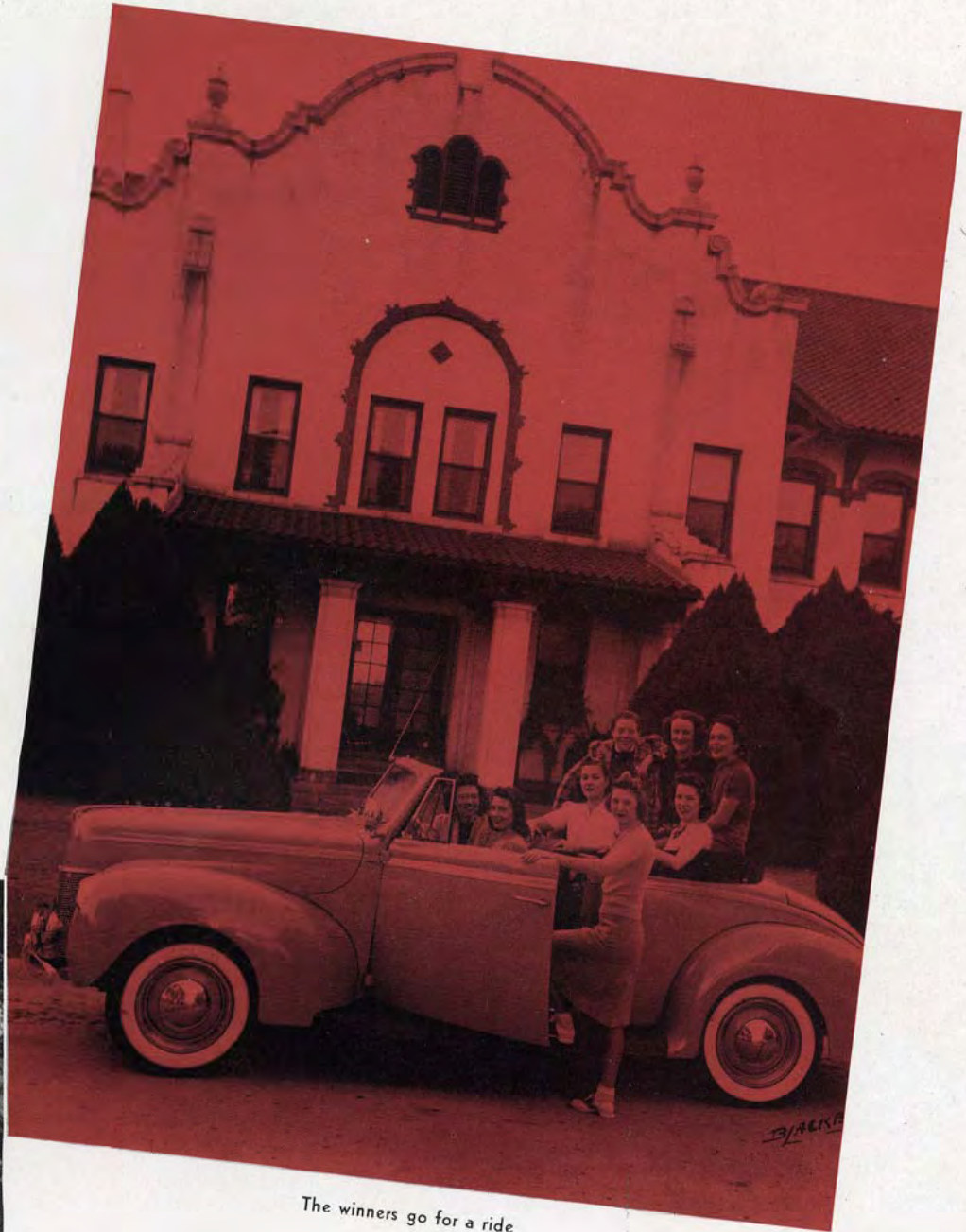


Cowart and Taylor

Baker and Duncan



Bowen

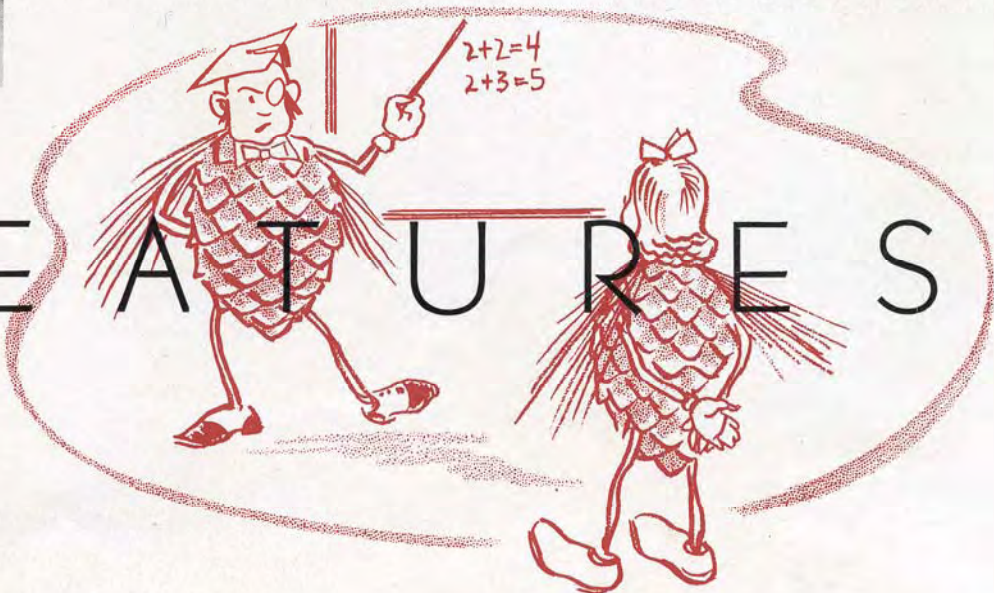


The winners go for a ride



Whatley

F E A T U R E S



LOUISE BELL



MARY CATHERINE ABERNATHY

THE 1940 PINE CONE PROUDLY PRESENTS THESE GIRLS WHICH



SARA GARBUTT



IRWIN SMITH

THE STUDENT BODY THINKS MOST NEARLY SEEM TO COMBINE

RUTH WHISONANT



MILDRED WILSON

THE QUALITIES OF LEADERSHIP, PERSONALITY, ABILITY, AND



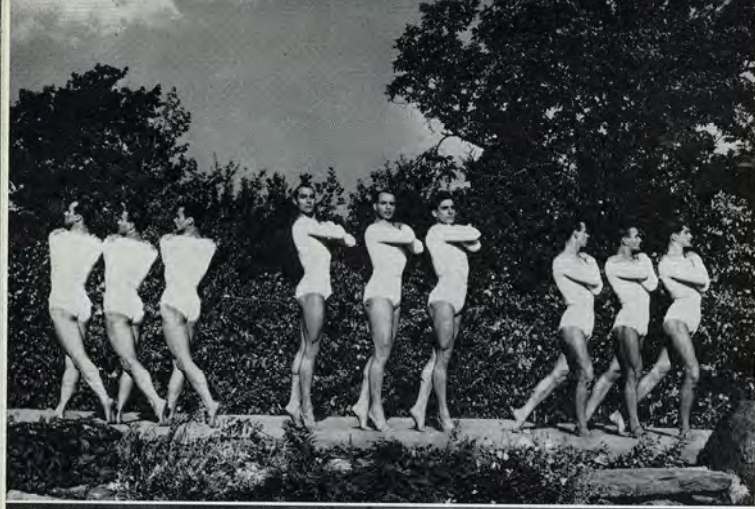
ORA KATE WISENBAKER



VIRGINIA ZACHERT

SCHOLARSHIP THAT MAKE AN IDEAL REPRESENTATIVE SENIOR

ARTIST SERIES



OPENING the Artist Series this year was the American poet, John G. Neihardt, who gave a number of his lyric and dramatic readings. He was assisted by his son, Sigurd Neihardt. Following Mr. Neihardt, the Jitney Players, headed by Miss Ethel Barrymore Colt, presented *End of Summer*. In December General Platoff's Don Cossack Choir gave a concert on the campus. Ruth Bryan Owen (Mrs. Borge Rhode) spoke on "This Democracy of Ours" at the beginning of the winter quarter. In February Ted Shawn and His Men Dancers presented *The Dome*, a program of his newest dances. Otto Leuning and his wife, Ethel, spent three days on the campus discussing music in relationship to the other activities of college life. Appearing late in the spring quarter were Blanche Yurka, dramatic mime, and Walter B. Pitkin, lecturer.

Top, left: Ted Shawn and His Men Dancers—in three-part invention—Bach—presented in "The Dome." . . . Bottom, left: Ethel Barrymore Colt and Jitney Players in scene "End of Summer." . . . Top, right: Roth Quartet. . . . Center, right: Gen. Platoff's Don Cossack Choir. . . . Circle: Otto Leuning. . . . Below, left to right: John G. Neihardt, Ruth Bryan Owen Rhode, Ethel Leuning



1. Hendricks and Lewis amble classward.



2. Bell's Telephone Company.



3. Williams is Burn's first aid.



4. "Queen" of Senior Hall.



5. Taylor and Dutton struttin'.



6. What, Mary, no Ovaltine?



7. Roberts crams.



8. Ch a p e l—the pause that Refreshes.



9. Seniors Brave Delta Winds.



10. Inevitable Foursome — McCoy, Taylor, Kleeman and Orr.



11. Bathing Beauties — Burns and Griffin.



12. Beautician Neal designs West's hair.



OFF THE RECORD



Fresh Daily at

Your Grocer

Colonial Baking Co.

VALDOSTA,

GEORGIA

Phone 751



Duncan and Goodloe get Good Bread.

Compliments

of

WHITTINGTON'S

LINDBERGH RESTAURANT

Valdosta's Leading Restaurant

Famous for Western Steaks

*Delicious Sandwiches Special for
College Girls*

VALDOSTA

GEORGIA



*Pryor, Taylor, Southwell, and Rollison get
"That Pause That Refreshes."*



R. Bell and M. Williams Window Shop.

SHOP WITH THE STUDENTS

at

MCCRORY'S

FIVE and TEN CENT STORES

VALDOSTA

GEORGIA

*"Take Paine's In Buying Your
Hardware"*

PAINE HARDWARE COMPANY

Everything in Hardware and
Sporting Goods

VALDOSTA

GEORGIA

G. S. W. C.

GIRLS

Pause to Refresh

with

Coca-Cola

VALDOSTA COCA-COLA

BOTTLING WORKS, Inc.

VALDOSTA

GEORGIA

JOHN OLIVER SERVICE
STATION

FIRESTONE TIRES
AMOCO PRODUCTS

Phone 231

Again our best wishes to G. S. W. C.
from

the Printers of your "*Campus Canopy*"

THE LOWNDES COUNTY NEWS

PUBLISHERS - PRINTERS

VALDOSTA, GEORGIA

Like Milk? . . .

TRY OURS

*Quality
Dairy
Products*

SUITSUS

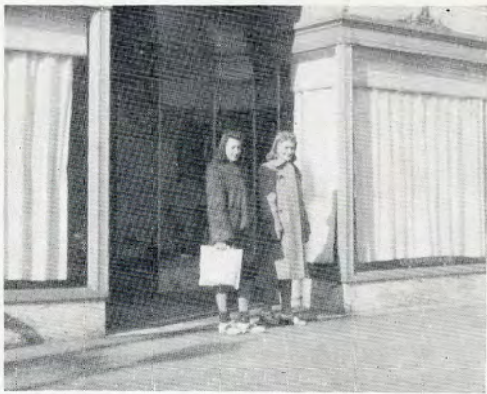
*- Quality
Registered
Jerseys*

DAIRIES
INC.

Insist on . . .

LANCE'S

CRACKERS



E. Bowen and Evans Shoplifting?

VALDOSTA GREENHOUSES

FLORISTS

Member F. T. D. Telephone 662

*The Style Center
For G. S. W. C.*

Exclusive Ladies' Fashions

C. C. VARNEDOE & CO.

Valdosta's Store Dependable

WE THE PEOPLE



1.

2.

3.

4.

5.

6.

8.

9.

10.

11.

1. Whisonant and McCoy whiz coyly by.
2. Fountain: Well all right, Gretel!
3. All's well, Bowen and Evans.
4. Amateur Cornells—Christian and Taylor.
5. Sociability Plus—at Brookwood.
6. Goin' home—Drennon and Tharpe.
7. Flash note: Woodward studies!
8. Monday morning blues for Cotter.
9. Zachert, Reid, Williams practice Communism.
10. Pledge Kennedy sets hair styles.
11. The Best Foot Forward.

Never Buy Before You Try

FRIEDLANDER'S

Your Money's Worth or Your
Money Back

VALDOSTA, GEORGIA

BENNETT'S DRUG STORE

The REXALL Store

TOASTED TASTY SANDWICHES - CANDY
ICE CREAM - HOT and COLD LUNCHES

VALDOSTA, GEORGIA



Budget: 15c for Movies.

CHURCHWELL'S

DEPARTMENT STORE

College Girls' Headquarters

Compliments

of

RITZ THEATRE

VALDOSTA, GEORGIA

A Martin Theatre

CLOTHES ARE
*cleaner * brighter*
when SANITONED

by

STAR LAUNDRY

Phone 54

Only Rug Cleaning Plant
in the City

THOMPSON AND GIRARDIN

JEWELERS

120 N. Patterson Street

VALDOSTA, GEORGIA

ELLINOR MOTOR CO.



Sales — Service

Phone 144

VALDOSTA, GEORGIA

COWART'S DRESS SHOP

RITZ BUILDING

VALDOSTA, GEORGIA

BROOKWOOD PHARMACY

*Where College Girls Meet
Where College Girls Eat*



Crystal Gazing

Pleasant Interlude at "BW."

SOUTHERN STATIONERY
and
PRINTING COMPANY

*Wholesale
Paper Dealers*

COMMERCIAL STATIONERS - PRINTERS

OFFICE OUTFITTERS

VALDOSTA, GEORGIA

Flowers for All Occasions † † †

PINEVIEW GARDENS

MRS. CLAUDE CHRISTIAN, Manager

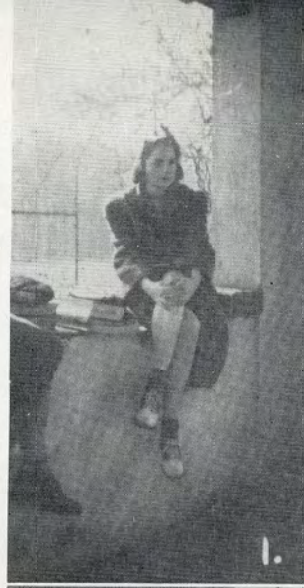
WE WIRE FLOWERS

Compliments of

WILLIAM H. MORGAN CO.

KITCHEN EQUIPMENT
and SUPPLIES

JACKSONVILLE, FLORIDA



1. Duncan waits.
2. Martin chastizes Shorty.
3. After dinner jooking.
4. Teasley and Jehosephat.
5. Intellegensia.
6. Gwine' my way, Bud?
7. Threesome—Bundrick, Traynham, Gannon.
8. Ye Olde Bulle Sessione.
9. Self-Explanatory—we hope.
10. Censored.
11. Campus Cutie—Bowen.



PINE STRAWS



Edmundson Cooks for Jennings.

OFFICIAL JEWELER for G. S. W. C.

HERFF-JONES COMPANY

INDIANAPOLIS, INDIANA

H. S. CANFIELD, *Representative*



All pianos used in G. S. W. C. were
purchased from us

*Sometime you will buy a piano—
Please remember us.*

MATHIS & YOUMANS CO.

112 N. Patterson Street
VALDOSTA, GEORGIA

The MODERN GAS EQUIPMENT in
the log cabin shows better than
words can express how well gas
can do the four big jobs in the
home—cooking, water heating,
refrigeration and room heating.

**GEORGIA PUBLIC UTILITIES
COMPANY**

The Girls Like to Get Lost
in the

JITNEY-JUNGLES
QUALITY GROCERIES
and MEATS

*Compliments
of the*

**GEORGIA POWER AND
LIGHT COMPANY**

VALDOSTA, GEORGIA

FOR EXCELLENT SERVICE
THE STUDENTS SUGGEST

BENSON'S

Valdosta's Leading Dry Cleaners

DIPLOMAS COMMENCEMENT
INVITATIONS

CLASS and FRATERNITY STATIONERY
DANCE, RECEPTION, and VISITING CARDS

Samples and Price Upon Request

J. P. STEVENS ENGRAVING CO.

ATLANTA

GEORGIA

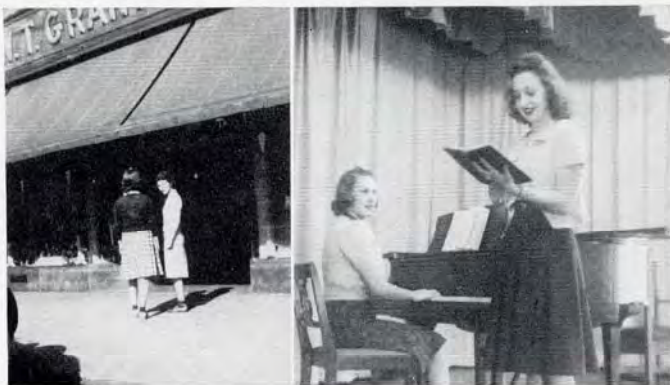
G. S. W. C. STUDENTS

We welcome a visit from any
of you and assure you of
a friendly reception.

*Accounts of any size
appreciated*

THE
FIRST NATIONAL BANK
of VALDOSTA

MEMBER *of the* FEDERAL DEPOSIT
INSURANCE CORPORATION



Still Shopping!

Our Steinway!

W. T. GRANT CO.

"KNOWN for VALUES"

FROM FRESHMAN

TO FACULTY

GREYHOUND
Lines

the favorite travel way

AFTER HOURS



1. "Let's have another drink of beer (?), eh Kennedy," sez Hightower.
2. Looking at the fish, girls?
3. Look closely and see the dome.
4. Where is Sue, Rita?
5. Whatley, Southwell, and Cowart study script.
6. Sports Study—Prance, Klee-man, Wilkes.
7. Rose studies.
8. Mentor Garbutt.
9. May Queen—Garbutt.
10. Bell is Still Telephoning.
11. And Abernathy is Still Reading—Nuff Sed.



Just Shopping.

Let's Get a Drink.

CARL'S GRILL

"Where the Girls Get Together"

200 North Patterson Street

Just Two Words to Remember

"GEORGIA ACE"

GEORGIA FERTILIZER CO.

VALDOSTA, GEORGIA

TO THE COLLEGE GIRLS

IT'S

F O R E M O S T

Healthful Ice Cream

Your Family and Friends

Will Enjoy a New Portrait of you

Have it made now

Veran Blackburn

The Photographer

We are proud of the

GEORGIA STATE WOMAN'S COLLEGE

We are glad to take this
occasion to say that the

CITY OF VALDOSTA

is proud to list among
its greatest assets the

Georgia State Woman's College

and we hope that Valdosta as a city makes a favorable and lasting impression on
the minds of the young ladies who make up the student body of the great institution.

*Valdosta's
Leading
Hotel*

THE
DANIEL ASHLEY

FIREPROOF

HORACE CALDWELL
Manager

VALDOSTA, GEORGIA

A FRIEND

*Compliments
of*

**RHODES COLLINS FURNITURE
COMPANY**

**ROUSE PLUMBING & HEATING
COMPANY**

CONTRACTING *and* REPAIRING

A \$ spent for plumbing is a \$ spent
for health.

L. M. BUTLER, *Owner*

VALDOSTA

GEORGIA

*Compliments
of*

The

**CITIZENS AND SOUTHERN
NATIONAL BANK**

VALDOSTA

GEORGIA

GOOD SERVICE *at . . .*

**BOB BELCHER'S
DRUG STORE**

Patterson and Central

Phones 812-813



★ THE MARK THAT
IDENTIFIES THE SOUTH'S
FINEST YEARBOOKS

PHOTO-PROCESS ENGRAVING CO.

115 - 119 LUCKIE STREET ★ ATLANTA GEORGIA



SUCCESSFUL ANNUALS

Require the services of experienced and expert craftsmen, trained in every detail of the processes of creating • planning layout and design • typesetting • printing lithographing and binding ... Throughout half a century this company has pioneered in the production of the highest type of printing ... Our services include a special college annual sales and service organization ... Abundant equipment • modern and complete ... Prices representing maximum in value



FOOTE & DAVIES

PRINTING • LITHOGRAPHING • ENGRAVING

ATLANTA