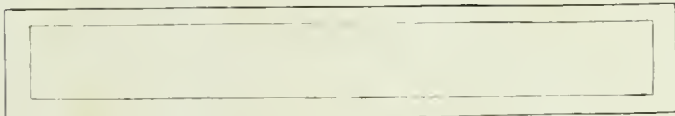
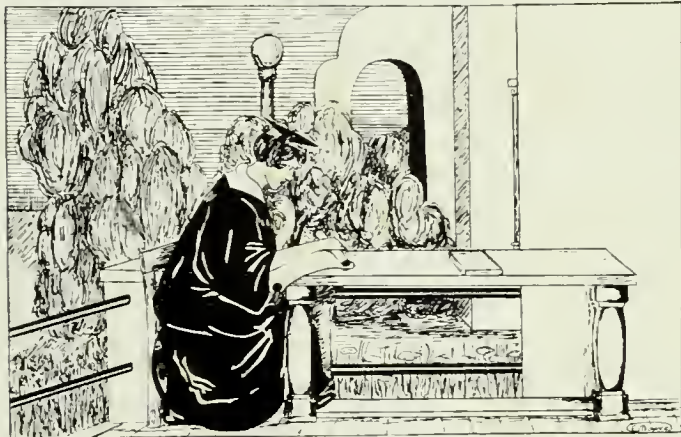


Jewell Carmack

EX LIBRIS





Digitized by the Internet Archive
in 2014

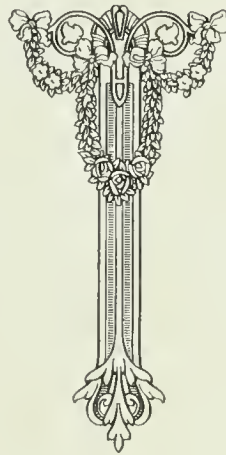
<https://archive.org/details/pinecone192501geor>



The PINE CONE

VOLUME I

1925

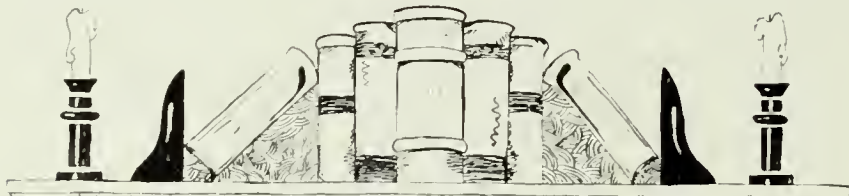


Published by the Senior Class

THE GEORGIA STATE WOMAN'S COLLEGE

VALDOSTA, GEORGIA





CONTENTS

Foreword

DEDICATION

A GREETING

HISTORY OF G. S. W. C.

PINE BRANCH

FACULTY

CLASSES

ORGANIZATIONS

ACTIVITIES

STATISTICS

ATHLETICS

JOKES

ADS

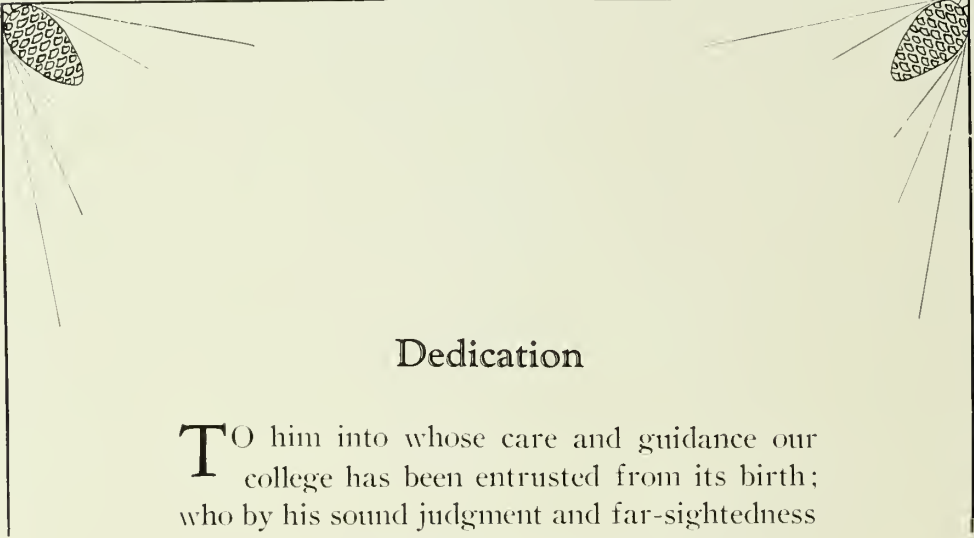


Foreword

AT LAST! For years we have looked forward to this event, and now it is here. Ever since the beginning of the college we have had visions of our first annual, but now it is no longer a vision—it is a reality! We realize, of course, that there are many imperfections, but we felt that it would be rather selfish of us to assume the honor of both starting and perfecting the Pine Cone. Therefore, through our generosity we have satisfied ourselves with laying the foundation, leaving to our successors the privilege of contributing their share by making vast improvements in years to come.

The name of the annual has been chosen after very careful thought and study. What is more characteristic of South Georgia than the tall, stately pines? Not only are they characteristic of South Georgia, but our campus as well, for no one could ever separate in their imagination the pines from our buildings. So vital has been the influence of our pines that both our monthly magazine and our college song has been named "*The Pine Branch*." Therefore, to be consistent, we have deemed it proper to search among the pines for an annual name. The result is "THE PINE CONE"—for what is more essential to the pine than its cone? Is it not the final product which represents the growth and development of the tree? Even as the cone is the fruitage of the pine, may this annual always be the true fruitage of this college.





Dedication

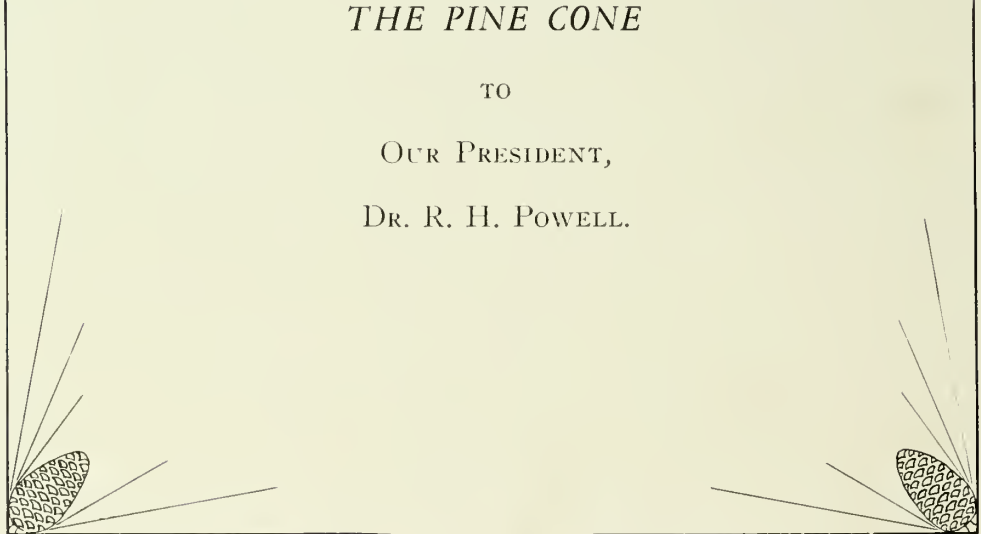
TO him into whose care and guidance our college has been entrusted from its birth; who by his sound judgment and far-sightedness has not only enabled our college to move forward, but has won for himself the loyalty and devotion of those who daily seek his counsel, we, the Seniors of 1925, dedicate this, the first volume of

THE PINE CONE

TO

OUR PRESIDENT,

DR. R. H. POWELL.

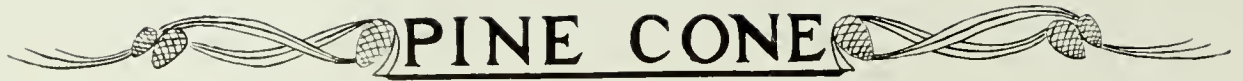


PINE CONE



DR. R. H. POWELL





A Greeting

to the

Georgia State Woman's College

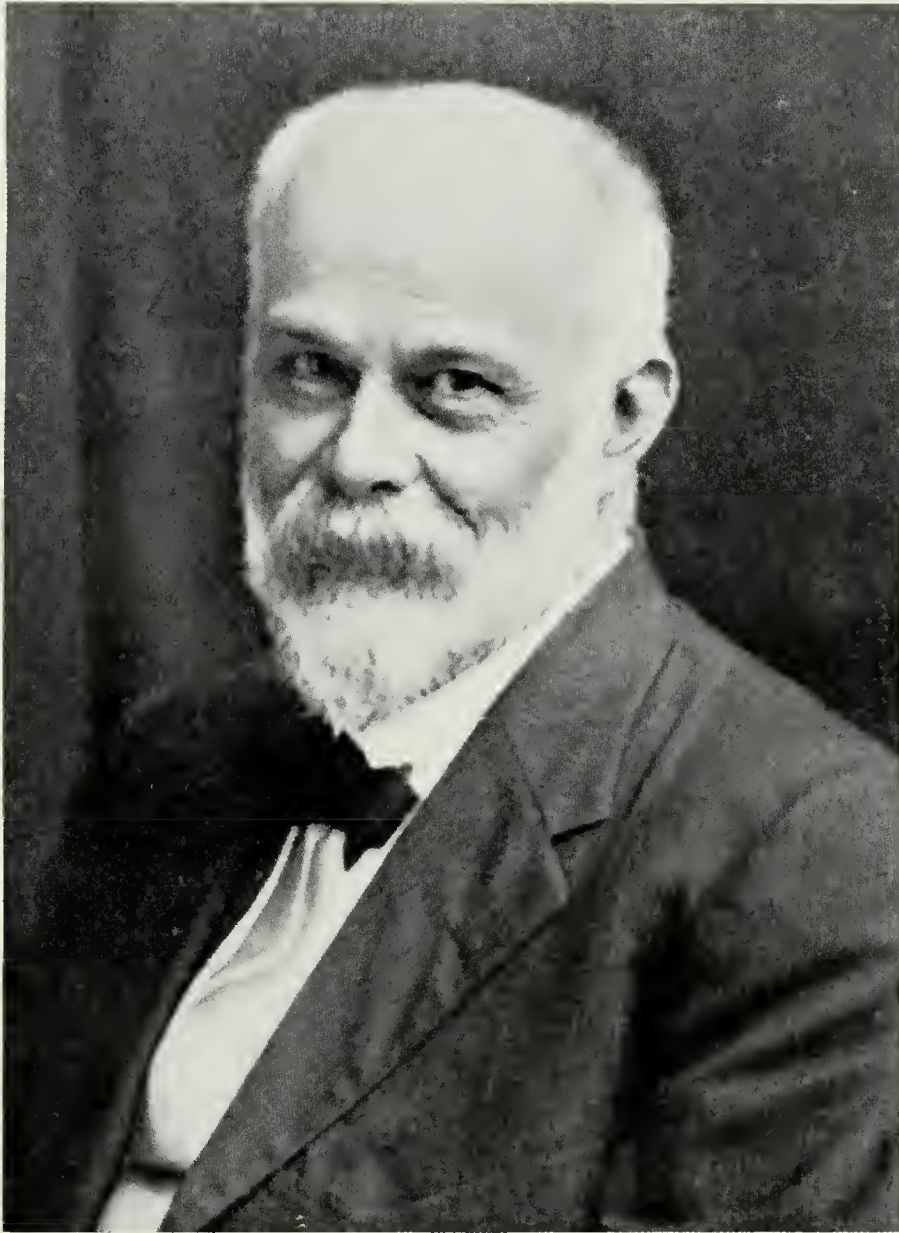
by the

Chancellor of the University



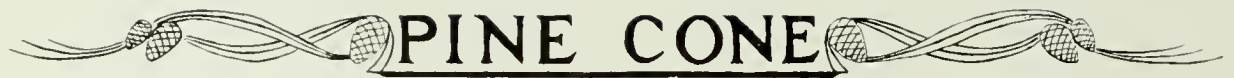
Wind, take this word of mine,
Bear it south to the singing pine,
Pine, sing faith in God above;
Pine, sing love to the school I love.





David C. Barrow





History of the College



IN the delightfully mild climate of South Georgia there has grown up the gem of the State University system—the Georgia State Woman's College—a beautiful and noble institution, an honor to the State, and the pride of her home city, Valdosta.

Created by a bill introduced in the Legislature by Hon. W. S. West, in 1905, opening her doors in 1913, she is as yet hardly out of her infancy, but she has already established herself as one of the best schools in the South, second to none of Georgia's great institutions. It is a cause of great pride to Valdosta that her sons were the leaders of the movement which finally made possible the creation of such an institution. The College received a liberal charter and a Board of Trustees was appointed; on this first board Valdosta was represented by the Hon. W. S. West, Hon. J. E. McRae, Hon. C. R. Ashley and Hon. R. F. Ousley; however, owing to the financial stringency then beginning to be felt by the State, no appropriation was made to finance the institution. No change was made in this situation until 1911.

At this time an appropriation of \$30,000.00 was made to build and equip a College building; this sum was entirely inadequate, as there was no money appropriated for a dormitory. However, the Board was in no wise daunted. It decided as an emergency measure that the College should "for the present admit only women," thus determining the scope of the institution. At the same time the West site on Patterson Street was selected as the location. These two important matters having been settled, the Board adjourned to meet again in December for the purpose of electing a President and receiving the deeds to the campus. Dr. R. H. Powell was selected for the position.

In the meantime the city of Valdosta had agreed to give, besides a campus of sixty acres, \$5,000.00 a year for ten years. After the above business had been transacted, the problem of housing the College again occupied the front of the stage. The solution was found by the city, which at once made available \$25,000.00 of the \$50,000.00 which had been promised. Thus the College received her first dormitory—one of the most beautiful and perfectly adapted buildings in the South. In 1912, thanks to the diligence of the representatives from Lowndes county, an adequate maintenance was appropriated.





PINE CONE

The doors of the building opened for service in January, 1913. During the first half-year session the school was very small, but by the next fall every room in the dormitory had its two students; soon after, another girl was added to each room, and since that time the dormitories have had to carry a 50 per cent. overload. In 1916 the Legislature made an appropriation of \$50,000.00 to build an Administration building; the city of Valdosta then made available the second \$25,000.00 of its gift and the beautiful West Hall was erected, the actual cost being about \$100,000.00, as the State made a supplementary appropriation to finish the work. In the summer of 1919 the College received another appropriation of \$75,000.00 for a new dormitory; as this sum was little more than half the sum required, the citizens of Valdosta executed a joint note for \$50,000.00, which was purchased by Mr. A. J. Strickland. Converse Hall opened its doors the following September.

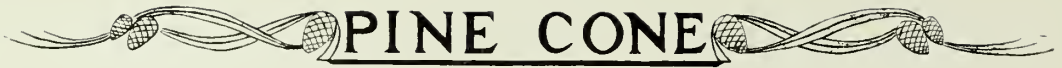
By an act of the Legislature in 1922, the name of the College was changed from the South Georgia State Normal College to that of the Georgia State Woman's College at Valdosta; at this time she ceased being merely a junior college and began to confer the Bachelors' degree. All the subjects properly entering into the higher education of young women are offered: History, Literature, Mathematics, the Languages, the Sciences, the Arts, fine, domestic and liberal; all departments are under highly trained specialists.

The College has never sought mere numbers. She has always striven for sound service, high standards of living and of work, and of impartial enforcement of these standards on all students. Her diploma cannot be bought; neither can it be secured by merely "staying through." Her diploma is an honor because it is an evidence of full quota of serious intellectual work well done, and of a character worthy of trust.

Thus has been the establishment and growth of the Georgia State Woman's College—chartered in foresight and patriotism, founded on the broad-minded faith and liberality of a whole community, organized for permanent and noble service and maintained by the loyalty and indefatigable efforts of her President and her Board.

E. K. BROWN.





Annual Staff



EPIE ROBERSON
Editor-in-Chief

GRACE BUIE
Assistant Editor-in-Chief

KATIE HERRIN
Business Manager

NANA ALEXANDER
Assistant Business Manager

CLARICE WEATHERSBEE
Art Editor

KATHLEEN MOORE
FRANCES DEKLE
Assistant Art Editors

EVELYN BROWN
Literary Editor

RUTH CARRIN
Accountant



WE, the members of the annual staff, wish to thank the whole student body for co-operating with us in publishing this, our first annual. Especially do we wish to express our appreciation for the aid given us by the following girls: Grace Beasley, Louise Bunn, Annie Lloyd Liggin, Cleo Mansfield, Neva Mathis, Ursula Miller, Emma Moore, Annie Smith for their artistic productions; Shirley Gaskins, Georgia Gibson and Sara Mandeville for their typing, and Florence Breen, Frances Faries and Frances Thomas for help in general.



PINE CONE



G. Buie



K. Herrin



N. Alexander



C. Weathersbee



E. Roberson



K. Moore



F. Dekle



E. Brown



R. Carrin





PINE CONE

Board of Trustees

Hon. W. E. Thomas, <i>Chairman</i>	Valdosta, Georgia
Hon. George F. Patterson.....	Valdosta, Georgia
Mrs. A. J. Strickland.....	Valdosta, Georgia
Hon. J. F. McCrackin.....	Valdosta, Georgia
Hon. Samuel A. Nunn.....	Perry, Georgia
Mrs. A. P. Brantley.....	Blackshear, Georgia
Hon. John D. Pope.....	Albany, Georgia
Hon. G. W. Lankford.....	Lyons, Georgia
Hon. B. D. Purcell.....	Jesup, Georgia
Hon. J. Hansell Merrill.....	Thomasville, Georgia
Hon. A. T. Woodward.....	Valdosta, Georgia
Hon. Claude M. Methvin.....	Eastman, Georgia
Hon. Morton Turner.....	Quitman, Georgia
Mrs. J. L. Walker.....	Waycross, Georgia



Representing the University of Georgia

Hon. D. M. Hughes.....	Danville, Georgia
Hon. Henry R. Goetchins.....	Columbus, Georgia
Hon. J. R. Pottle.....	Albany, Georgia



Ex-Officio

Hon. D. C. Barrow.....	Athens, Georgia
<i>Chancellor of the University of Georgia</i>	
Hon. N. H. Ballard.....	Atlanta, Georgia
<i>State Superintendent of Schools</i>	

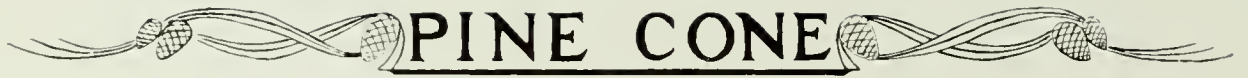




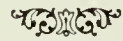
JAMES FRANKLIN WOOD
Dean of College



ANNIE POWE HOPPER
Dean of Women



The Pine Branch



Oh, may the Pine Branch ever wave
O'er Georgia's college fair;
And may we of G. S. W. C.
With glad songs fill the air.

CHORUS

Our hearts are with the Red and Black,
And may we never sever
The ties that bind our hearts to thee,
G. S. W. C., forever!

And may our classes raise a song
To Alma Mater dear;
And may she win new laurels true,
Fresh honors year by year.





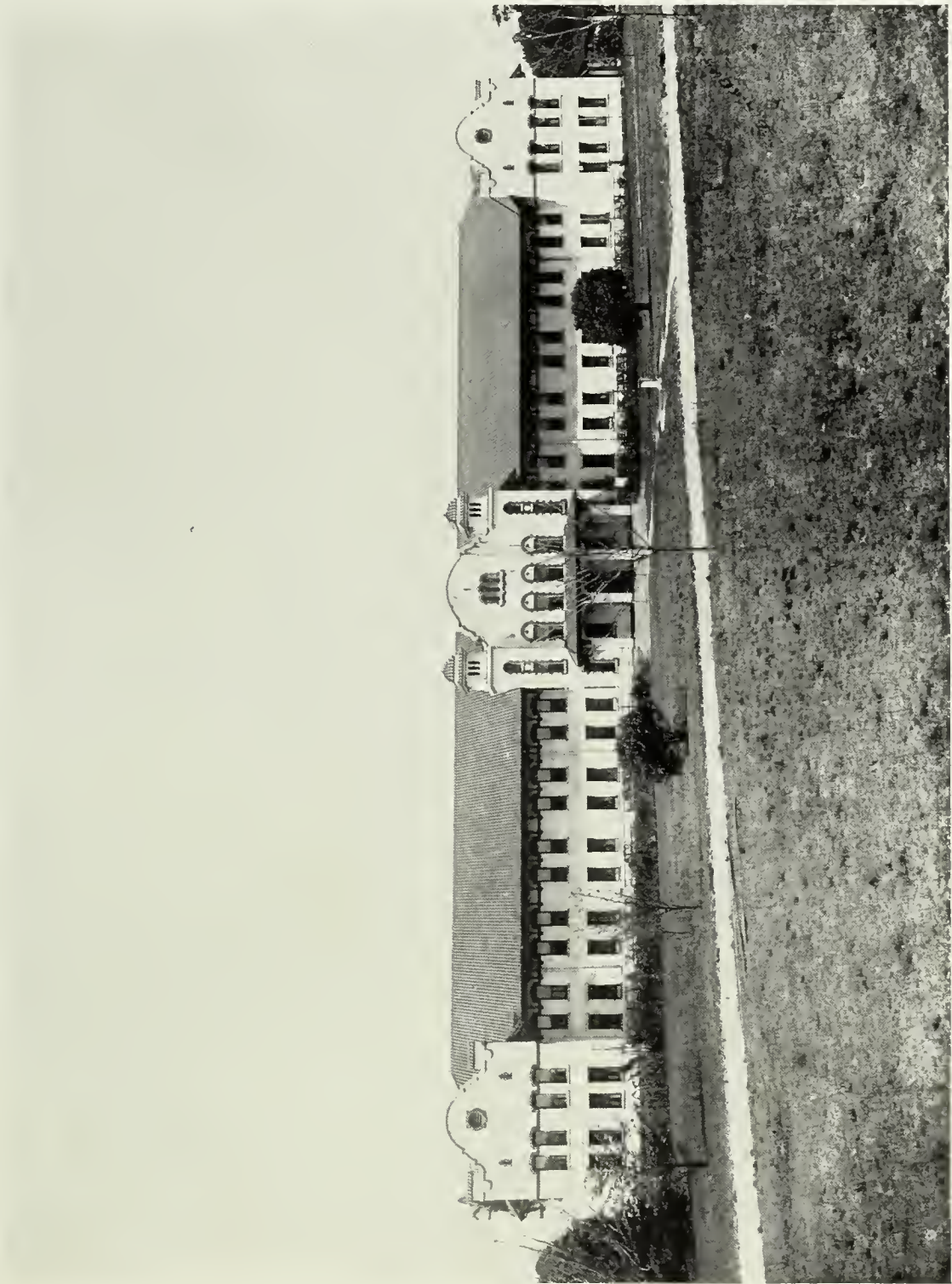
WEST HALL—Administration Building





CONVERSE AND ASHLEY HALLS





CONVERSE HALL.



PINE CONE



THE RECEPTION ROOM—Club House



PINE CONE



THE DINING ROOM—Club House



PINE CONE





PINE CONE



PRE. R.H. POWELL



DEAN J.E. WOOD



DEAN A.P. HOPPER



F.R. CARPENTER



J.M. CRAIG



C.E. POSTON



G.C. GILMER



J. BUSH



K. ABERNATHY



H. SHIBLEY



E. GOODLETT



J.R. STOKES



N.M. GROOM



S.H. GOODRICH



PINE CONE



M.E. Abernathy



M.M. Jakes



B. Lockett



I. Groover



O.B. Rogers



M. Price



W.M. Mathew



E. Patterson



E.H. Beck



D. Patterson



V. Scarborough



N. Hagan



B.H. Henderson



G.B. Rentz



Faculty



RICHARD HOLMES POWELL
President.

JAMES FRANKLIN WOOD
Dean; Professor and Head of Department of Psychology, Pedagogy, and History of Education.

ANNIE POWE HOPPER
Dean of Women and Professor of Geography.

FRANCES RUTH CARPENTER
Professor and Head of Department of Art and Manual Training.

J. MARIE CRAIG
Professor and Head of Department of Chemistry and Physics.

CHARLES EUGENE POSTON
Professor of Music and Director of the Department.

GERTRUDE CORDELLA GILMER
Professor and Head of Department of English Language and Literature.

JANIE BUSH
Professor and Head of Department of Latin.

KATHERINE ABERNATHY
Professor and Head of Department of Home Economics.

HELEN SHIBLEY
Professor of Home Economics.

EMILY GOODLET
Superintendent of Training School and Director of Practice Teaching.

JAMES R. STOKES
Professor of Biology and French.

E. CAMM CAMPBELL
Principal of High School.

NELL MARY GROOM
Critic Teacher Third and Fourth Grades.

SARA H. GOODRICH
Critic Teacher Fifth and Sixth Grades.

MARJORIE E. ABERNATHY
Critic Teacher First and Second Grades.

MARY M. JAKES
Teacher of Physical Education and Head of the Department.

BRUCE LOCKETT
Professor and Head of Department of Mathematics.

IDA GROOVER
Instructor in Physics and Chemistry.

ORRIE BELLE ROGERS
Teacher of Piano.

MILDRED PRICE
Instructor in History.

WILLIE MAE MATHEWS
Assistant Teacher of English.

EDITH PATTERSON
Librarian.

MRS. E. H. BECK
Director of Boarding Department.

DEBORAH PATTERSON
Assistant to the Dean of Women.

VERNA SCARBOROUGH
Assistant to Dean of Women.

NANNIE HAGAN
Nurse.

B. H. HENDERSON
Secretary and Bookkeeper.

GUSSIE BELL RENTZ
Assistant Secretary.

W. L. RENTZ
Superintendent of Grounds and Farm.



BEHOLD! OUR SCRUMPTIOUS SENIORS





History of the Senior Class



IT is a well-known fact that knowledge deepens appreciation. In other words, the more we know of a thing, the more we are able to appreciate it. Oftentimes a most common-place object may be a very cherished possession, just because of an interesting bit of history it happens to have. For that reason, we feel that in order to fully appreciate our Senior class, one must know something of its history. And not only for that reason alone, but for cultural reasons as well, for who could possibly claim to be a well-informed, cultured citizen and know nothing of our history? Ignorance concerning European or American history might be forgiven, but to be unacquainted with facts concerning our past would be unpardonable.

Even a historian couldn't do justice to a class of our kind in such a small space, but, nevertheless, a brief summary of the outstanding events may be given.

Diedrich Knickerbocker, in giving the history of New York, starts with the beginning of the world, for, according to his way of thinking, had the world not begun, there could have been no New York. Likewise, we must begin the history of our class with the beginning of the college, for have we not had girls in our class who began in the training school the year the college opened? However, since our space is limited, we shall begin with the Freshman class, that being possibly the most logical point.

In September, 1921, we began our college career with a roll of fifty-three. To one unacquainted with the ups and downs of our class, it is sure to seem unusual that the size of our class has so greatly diminished during the four years, but when the truth is known, there is nothing queer about it after all.

Our 1921-22 class has just been referred to as Freshman, and so it was, in reality. Yet, it would have been a grave offense to have addressed us as such at that time. Instead of Freshmen, we were called Juniors, and we carried with us the feeling that one more year would completely finish our education, and prepare us to face the world undaunted. This, however, was no fault of ours, for at that time we had not been taken into the confidence of the college officials, and therefore knew nothing of the plans that were being made. To our minds, that diploma was the goal—it was the ideal for which we were striving, for our minds failed to conceive of anything better and higher than a normal diploma. And so we labored away, having what we considered many serious difficulties—the worst of which was Arithmetic under the sympathetic guidance of Mr. Wood. When looked back upon, after a lapse of three years, our trials at that time seem trivial; in fact, the majority of them now appear quite humorous, but one would be perfectly safe in saying that





PINE CONE

even when the members of that class are gray haired, and their faces wrinkled from old age, not one of them can look back and detect anything at all funny about Mr. Wood's Arithmetic. That was an adventure which none but those who have experienced it can appreciate.

Our troubles and sorrows, however, were not sufficient to deprive us of our pep, for on Field Day the Black and Gold were triumphant, and we marched from the field with the coveted banner waving proudly. Furthermore, we *almost* won the loving cup in the basket ball tournament. In fact, we came so very near winning it that it still makes us ill to even think of it.

Toward the end of the year, something happened which caused us both joy and regret. It was announced that the time had come for the college to take the next step in its development, and add two more years to its curriculum, offering Bachelor's degrees to its graduates. This was a source of joy to us in that we were glad to see the college moving forward, making it possible for us to have, eventually, a degree conferred upon us. At the same time, however, we were naturally a little distressed, for who could be satisfied with a diploma when there was a degree a little further on?


When we returned the next fall our class numbered forty-three. This was the year we had looked forward to being called Seniors, but alas! our names had to be changed. It was suggested that we be called Sophomores, because in reality that was what we were—yet, that would never do. To change from Juniors to Sophomores was surely going backward instead of forward. So, in order to save our vanity, we were called Second Year Students. Later on in the year, however, we had become so reconciled to the new order of things, that all of us voted to be called Sophomores.

That year, instead of Math we had something equally as bad. We found ourselves laboring unceasingly over lesson plans. Of course we had made them the year before, but now it was different, because they had to be taught to real children in the Training School. Even the fact that we always had the valuable guidance of a critic teacher throughout our nervously taught lessons, failed to decrease our terror concerning this particular phase of work. This, together with the thesis we had to write before graduation, was the greatest difficulty we had to face.

Again, however, we preserved our buoyant spirit, and not only won the Field Day Banner for the second time, but actually received the loving cup which we had felt so sure of the year before.

Commencement time came, and it was then that our class so greatly decreased. All of us received our normal diplomas, and since the whole class entered with the exception of taking the two year course, the majority of them left us and went out as teachers. There were a few of us, however, that were still haunted by visions of that degree. We, too, were tempted to bid farewell to our college career and enter the teaching profession, but something seemed to hold us back.





PINE CONE

In September, 1923, there were thirteen of us on hand to begin our Junior year. One of this number was a new-comer to our group. Miss Grace Buie, who heard of our fame from afar, came to us as a graduate of Centenary College, Cleveland, Tennessee. Miss Willie Mae Mathews, one of our former normal graduates, was also added to our group.

It was rather discouraging to us to receive news of the unusual salaries that our former classmates were receiving, and of the vast amount of pleasure connected with their work, but, nevertheless, we kept our degree in mind and steadily plodded onward.

We were at least enjoying one novelty—that of being out of uniform. This was such an unusual experience that for the first few weeks we felt so much like visitors that it was difficult for us to settle down to work.

As for class activities, we accomplished very little. There was such a vast decrease in the number of our class that we felt rather helpless, so we had to take the part of spectators, even in the activities in which we had played such an important part during the preceding years.

And now our Senior year—the most interesting of all! To be called Seniors at last—real, true, bona fide, honest-to-goodness Seniors—is enough in itself to make this year memorable to us.

Our class this year lost a few more members, but we had a valuable addition, Evelyn Brown, who has been in our midst several years, but who, because of an irregular schedule, was not really one of us until this year.

In looking back over this year's work, we see several events which have made our Senior year the best of all our college years, but there is one achievement which overshadows all the rest, and that is the publication of the first annual. Even though this piece of work has meant a little extra work, it has meant an even greater joy, and the pride that we take in it now is sure to deepen as the years go by.

And so, after the various changes, trials, joys, pleasures and troubles that our class has undergone, there are ten of us left to tell the tale. Though there were many ups and downs, there were many more ups than downs; and the joys that we are now experiencing from the fact that our race is nearly run, by far surpass any of the troubles that we may have had along the way. Our only regret is that our former classmates who failed to see the whole thing through, cannot be here to receive with us the long-looked-for and well earned Bachelor's degree.

EPPIE ROBERSON.



PINE CONE



JAMES F. WOOD, JR.—*Senior Mascot*





GRACE BUIE, A. B.—HISTORY-ENGLISH.
Nashville, Ga.

"The Three Graces."

Entered 1923. Argonian Literary Society; Phi Lambda A. A.; Y. W. C. A.; President Crescendo Music Club '23-'24; President Senior Class '24-'25; Assistant Editor-in-Chief The Pine Cone '24-'25; Phi Lambda Cheer Leader '24-'25; Inter-Society Debater '24-'25; Student Court and Council '24-'25.

Grace came to us in the fall of 1923, becoming "one of those over-worked Juniors." Now that we are "those sophisticated Seniors," she is President of our brilliant band, and doing very well, if we do say it ourselves. She does everything from playing the most difficult of Chopin's Nocturnes and writing short stories to dancing the Swedish Schottische and parading fashion's latest whispers. But the most famous accomplishment of our esteemed leader deserves a line to itself. This accomplishment is rather in the nature of being a secret, here divulged for the first time. The real reason for Grace's excessive popularity with the sterner sex is because of the flute-like quality of her soprano voice. She may be an old maid, because with these popular girls

"The more they see of others
The less they can settle to one."



RUTH CARRIN, A. B.—SCIENCE.
Tifton, Ga.

"Listen much, but talk little."

Entered 1921. Argonian Literary Society; Phi Lambda A. A.; Y. W. C. A.; Treasurer Y. W. C. A. '22-'23; President Argonian Literary Society '23-'24; Secretary and Treasurer of class '24-'25; Official Student Government Association '24-'25; Annual Staff '24-'25; Corresponding Secretary Alumnae Association '23-'24.

Ruth, besides being an all-round good student, is a veritable sponge of chemistry. Entering in 1921, we soon noted that when she spoke, she spoke with authority, and we've listened respectfully since. We can see Ruth, in the years to come, smoothly eliminating some inefficient male professor and complacently taking his chair of chemistry and physics in one of our larger universities. Yet, with all her reliable efficiency, she is one of the most companionable girls in school.





NANA ALEXANDER, A. B.—LIBERAL ARTS,
Nashville, Ga.

"Say, I'm weary."

Entered 1921. Argonian Literary Society; Phi Lambda A. A.; Y. W. C. A.; Basketball Team '21-'22; Cast, Class Play '22-'23; Vice-President Argonian Literary Society '23-'24; Pine Branch Staff '23-'24; Annual Staff '24-'25; Phi Lambda Basketball Team '24-'25; President Phi Lambda A. A. '24-'25; Inter-Society Debater '24-'25.

Do you remember, in the dim and distant days when we were Freshmen, the little girl with that "Age of Innocence" expression? Yes, that was Nana, and she still makes use of that expression—on occasion. She entered in 1921, bringing an enviable record of achievement with her—may we add that the record she has written while with us is more enviable than the one she brought to us? Aside from being a mathematics shark, she is one of the athletic association presidents, and she plays a good game of basketball. She's almost always hungry, and she is notorious as a man-hater. We think, however, that her hatred is merely a pose, and we believe she likes 'em just as well as we do.



EVELYN BROWN, A. B.—EDUCATION,
Valdosta, Ga.

"Short in height, but great in deeds."

Entered 1921. Pine Branch Staff '23-'24, '24-'25; Annual Staff '24-'25; Inter-Society Debater '21-'22; Class Play '23; Secretary and Treasurer Alumnae Association '24-'25.

It was during an English 5 class, two days before the Pine Branch was to go to press, that it was discovered that there was no poetry for that number. For several moments pandemonium—and then a "chirpy giggly" little voice from the front row came to the rescue. "I have an idea for a little poem. Maybe I'll be able to give it to you in the morning." And so it happened. Evelyn had seen the Pine Branch safely through another month. There's a world of mischief lurking behind that mysterious smile of hers, and it is a continual source of wonder to the onlookers how Evelyn can succeed so well at "fan-flirtations" and "naughty eyes" with all gallants in general and then march calmly yet meaningfully to the telephone in the board room every day at chapel with "999, please, Leonard? Come for me at one-thirty." But seriously, she is a good student, fairly conscientious and laborious, spending "some" of her time on her work, taking high rank in all her classes, French being especially delightful to her. Her renderings of its romantic pages are always apt, original and interesting. We wonder how such a little girl gained such knowledge.





FRANCES DEKLE, A. B.—EDUCATION.
Valdosta, Ga.

"A violet by a mossy stone."

Entered 1917, Phi Kappa A. A.; Assistant Business Manager The Pine Branch '21-'22; Annual Staff '24-'25.

Back in 1921 Frances was also one of the charter members, as she, too, came to us from the college high school. After knowing her intimately for four years, we might add that she is a "perfect woman, nobly planned"; during these years she has acquired many friends, being especially gifted in the social graces. Frances is a very conscientious worker and is extremely well-loved as a practice-teacher. By the way, she is noted for being the most modest girl in school—and the most demure. We think she might decide to grace the teaching profession—for she's a shark in history—for a little while anyway. There's not a neater, sweeter maiden in the land.



KATIE HERRIN, A. B.—EDUCATION.
Howell, Ga.

"Youth is full of sport."

Entered 1919, Argonian Literary Society, Phi Lambda A. A.; Y. W. C. A.; Member Executive Committee Athletic Association '21-'22; Basketball Team '21-'22, '22-'23, '23-'24; Pine Branch Staff '21-'22; Vice-President Athletic Association '23-'24; Business Manager Pine Branch '22-'23, '23-'24; Class Play '22-'23; Coach High School Athletics '24-'25; Manager Phi Lambda Basketball Team '24-'25; Business Manager Annual '24-'25.

There are few who find a bigger place in college life than Katie, and few whom we will miss more. Back in 1921, when she first drifted down this way, we immediately recognized her business ability and started her in collecting ads for the Pine Branch. She is the kind of girl who is in for anything that is for the advantage of our school, ready to stand by and push projects to a successful completion. Katie is our athlete—basketball is no mystery to her; and she puts the rest of us to shame, dancing that Spanish Waltz. We think that her aim is to teach Physical Education to the rising generation; it is generally known, also, that she has a leaning toward politics, and is especially interested in world events. But what isn't so generally known is that she has a secret sorrow. It is this: Will she ever be wealthy enough to own fifteen spring hats at one time?



PINE CONE



WILLJE MAE MATHEWS, A. B.—EDUCATION,
McClenny, Fla.

"Bill."

"One who never turned his back, but marched breast forward."

Entered 1919. Honorary member Sororian Literary Society; Y. W. C. A.; Student Government Official '22-'23, '23-'24; Parliamentary Sororian Literary Society '24-'25; President Sororian Literary Society '22-'23; Inter-Society Debater '21-'22; Secretary-Treasurer Alumnae Association '22-'23, '23-'24; Secretary Student Council '22-'23.

We really believe "Bill" to have been the charter member of our Freshman class. Certain it is that when we arrived on the scene we found her wandering familiarly around the halls, having become acquainted with them during her high school days. "Bill" is a natural-born leader; she is very proficient in teaching the young idea the correct direction in which to shoot. She also has rare conversational ability. Looking at her attainments in college life, the world would call her an athlete, an orator, a politician, a dancer and a teacher, but we, looking at her gleaming record, say that she is mistress of all she surveys.



KATHLEEN MOORE, A. B.—SCIENCE,
Blackshear, Ga.

"Kane"

*"She works while she works
And plays while she plays."*

Entered 1921. Argonian Literary Society; Phi Lambda A. A.; President Junior Class '23-'24; Student Court and Council '23-'24; Y. W. C. A. Cabinet '23-'24; Annual Staff '24-'25; Student Recorder of Points '24-'25; Crescendo Club '22-'23, '23-'24.

Since entering college, in 1921, "Kane" has excelled at everything she has undertaken. Her favorite pastime is drawing correct diagrams of one-cell animals in biology lab. When not engaged in the above absorbing occupation, she may be found in the chemistry lab, chasing elusive enzymes. It may be thought that these occupations would keep her time filled, but nay, not so. Any one of these pretty, bright Spring mornings she may be found at ease in Mr. Poston's car under the spreading oak, lightly perusing Aristotelian philosophy. Added to the astuteness of her intellect is a face as pretty as any in our class. "Kane's" curly hair is always envied.





EPPIE ROBERSON, A. B.—EDUCATION,

Nahunta, Ga.

"Epps"

"And here's a hand, my trusty friend."

Entered 1918. Argonian Literary Society; Phi Kappa A. A.; Y. W. C. A.; Class Treasurer '20-'21, '21-'22; Pine Branch Staff '20-'21, '21-'22; Treasurer Argonian Literary Society '22-'23; Y. W. C. A. Cabinet '20-'21; Student Council '21-'22; Undergraduate Representative Y. W. C. A. '21-'22; Vice-President Argonian Literary Society '20-'21; President Argonian Literary Society '21-'22; Editor-in-Chief The Pine Branch '22-'23; '23-'24; Editor-in-Chief Annual '24-'25.

This, friends, is the Editor-in-Chief of the Pine Cone; that, in itself, would tell the discerning reader that she is one of the most popular girls in school. It seems that Eppie has the knack of dipping her fingers into all the college pies; her very presence makes the venture successful. Eppie is the third charter member of our class, also having come to us from the college high school. Among the many accomplishments of this versatile young lady is her inimitable gift of writing "darkey stories" which sparkle with native wit. She is chiefly noted, however, for her ability to remain true to one love during her four college years, being constantly exposed for these four years to the dashing Beau Brummels of Valdosta. During class reunions in the years to come some one will be sure to exclaim, "Say, Epps, do you remember the Junior-Senior picnic?"



CLARICE WEATHERSBEE, A. B.—EDUCATION,

Jacksonville, Fla.

"A heart to resolve,

A head to contrive,

And a hand to execute."

Entered 1921. Argonian Literary Society; Phi Lambda A. A.; Y. W. C. A.; Pine Branch Staff '21-'22; Student Government Official '22-'23; Inter-Society Debater '22-'23; Y. W. C. A. Cabinet '22-'23; Stage Manager Senior Play '22-'23; President Student Government Association '24-'25; Art Editor Pine Cone '24-'25.

We judge ourselves by what we feel capable of doing, while others judge us by what we have already done. But whether we judge Clarice or not, the fact is evident that she has done, is doing, and will do great things. Her record as a student with us is one to be held as an example of concentration, diligence and achievement. This capable Student Government President has won our hearts with her sympathy and clear understanding. If you are lonesome, call on her, for she has a never-failing flow of jolly conversation. Her never-tiring energy and bigness of heart have won many friends for her, and her assurance that anything can be accomplished by "Co-operation" has put many things over in our dormitories that would have been lost otherwise. If a play were to be put on at G. S. W. C., sponsored by any organization in school without Clarice, cast as the hero then would the student body rise up in rebellion. That place belongs to her alone.



LO! OUR INTELLIGENTSIA THE JUNIORS



PINE CONE



MARTHA YOUNGBLOOD,
President

FRANCES FARIES,
Vice-President

CLARICE IVEY,
Secretary and Treasurer

MARIE CLYATT





RUTH FOLGER

REMER JONES

MARGARET LA FAR

WILLIE LUNSFORD



PINE CONE



LOUISE McLENDON

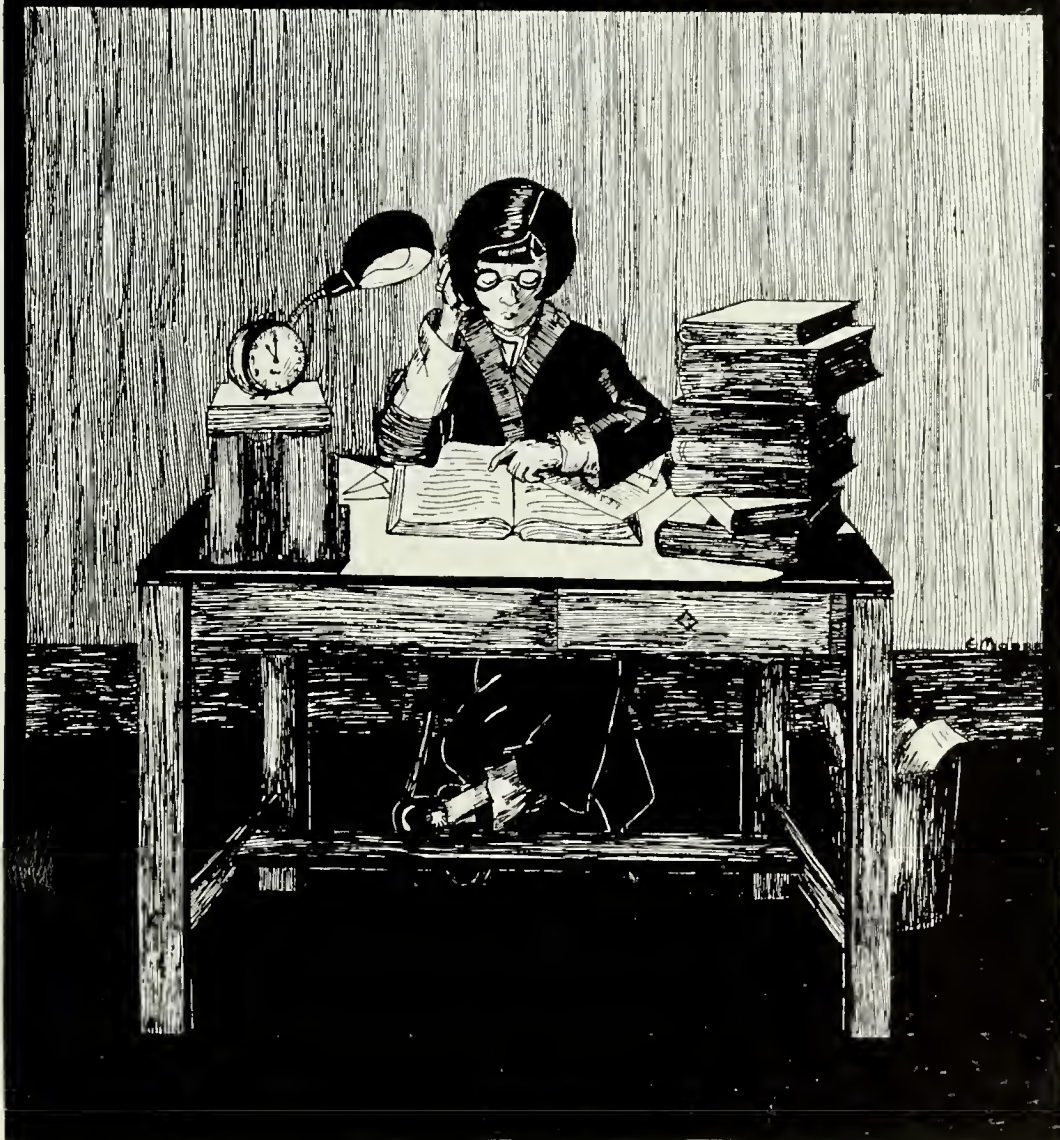
LEO PRINE

VERNA SCARBOROUGH

MARY SMALL



NEXT! OUR BONING SOPHS



PINE CONE



FLORENCE BREEN, Jesup, Ga.

*"She that was ever fair and never proud;
Had tongue at will, and yet was never loud."*

Argonian Literary Society; Phi Kappa A. A.; Secretary Y. W. C. A. '23-'24; Vice-President Y. W. C. A. '24-'25; President Sophomore Class '24-'25; Student Court '24-'25; Student Council '24-'25; Business Manager Class Play '25; Y. W. C. A. Cabinet '23-'24-'25.

EMMA MOORE, Savannah, Ga.

*"The thing that goes farthest toward making life worth while,
That costs the least, and does the most, is just a pleasant smile."*

Argonian Literary Society; Reporter Argonian Literary Society; Y. W. C. A.; Phi Kappa A. A.; Vice-President Sophomore Class '24-'25.

MINNIE GRUBER, Alma, Ga.

*"I'll be merry and free,
Sad for nobody—you just see."*

Argonian Literary Society; Phi Kappa A. A.; Secretary and Treasurer of Sophomore Class '24-'25; Y. W. C. A.; Glee Club '24-'25.

LOIS AKRIDGE, Brunswick, Ga.

*"Not too serious, not too gay,
But a rare good fellow when it comes to play."*

Argonian Literary Society; Y. W. C. A.; Phi Kappa A. A.; First Team Basketball.

ERMA BARCO, Adel, Ga.

*"She has an earnest intellect,
A perfect thirst of mind;
A heart by elevated thoughts,
And poetry renned."*

Y. W. C. A.; Argonian Literary Society; Crescendo Club '23-'24; Phi Kappa A. A.; Secretary Argonian Literary Society '23-'24; Treasurer Y. W. C. A. '24; Glee Club '23-'24-'25.

FLORENCE BATES, Waycross, Ga.

"In equal mixture of good humor and sensible, soft melancholy."

Phi Lambda A. A.; Argonian Literary Society.

MARY BELIN, Pelham, Ga.

"A light heart lives long."

Argonian Literary Society; Phi Kappa A. A.; Y. W. C. A.

EVA BOYD, Waycross, Ga.

"To full of jokes to take life seriously."

Argonian Literary Society; Phi Kappa A. A.; Y. W. C. A.; Class Play '25.



PINE CONE



NELLIE BRACEY, Savannah, Ga.

"She hath the mildest manners and the gentlest heart."

Y. W. C. A.; Argonian Literary Society; Phi Lambda A. A.; Monitor '24-'25.

LOUISE BRADLEY, Leslie, Ga.

"A maiden sweet, retiring."

Argonian Literary Society; Y. W. C. A.; Phi Lambda A. A.

CLARE BRAY, Valdosta, Ga.

"Away dull care, I prithee begone from me."

BERNICE BREWTON, Reidsville, Ga.

"A shy face is better than a forward heart."

Argonian Literary Society; Phi Lambda A. A.; Y. W. C. A.

HESTER BRUCE, Blackshear, Ga.

"The reason firm, the temperate will;

Endurance, foresight, strength and skill."

Argonian Literary Society; Phi Kappa A. A.; Y. W. C. A. Cabinet '24-'25; Pine Branch Staff '24-'25; Crescendo Club; Chairman Music for Class Play '25.

ELOISE BRUNSON, Blakely, Ga.

"Guided by faith and matchless fortitude, to peace and truth."

Argonian Literary Society; Phi Kappa A. A.; Y. W. C. A.

RENA MAE CAMPBELL, Valdosta, Ga.

"As smart as she is tall."

Argonian Literary Society; Phi Lambda A. A. Glee Club '24-'25; Chairman Advertising Committee for Class Play '25.

EMILY CHAUNCEY, Valdosta, Ga.

"A pleasing countenance is a silent recommendation."

Crescendo Music Club.





MAE CHAMBLESS, Parrot, Ga.

*"Demure and quiet she is,
And yet methinks there's something more beneath."*

Argonian Literary Society; Phi Lambda A. A.

ALMA CHURCH, Albany, Ga.

"Faithfulness and sincerity first of all."

Argonian Literary Society; Phi Kappa A. A.; Y. W. C. A.

ATHENA CHURCH, Albany, Ga.

"Love is better than fame."

Argonian Literary Society; Phi Kappa A. A.; Y. W. C. A.

ALICE CLARK, Waycross, Ga.

"Her hair is not more sunny than her heart."

Argonian Literary Society; Phi Lambda A. A.; President Glee Club '24-'25.

MARIE CLARK, Waycross, Ga.

"Better be small and shine, than great and cast a shadow."

Argonian Literary Society; Phi Lambda A. A.; Glee Club.

REBECCA COOK, Boston, Ga.

"Friendly, generous and good-natured."

Argonian Literary Society; Phi Kappa A. A.; Y. W. C. A.

INA MAE CROMARTIE, Boston, Ga.

"Great works are performed not by strength, but by perseverance."

Argonian Literary Society; Phi Kappa A. A.; Y. W. C. A.

CAROLYN CUBBEGE, Guyton, Ga.

"As true as steel."

Argonian Literary Society; Phi Kappa A. A.; Y. W. C. A.



PINE CONE



MADELINE CULBRETH, Tarver, Ga.

*"If she will, she will, and you may depend on't,
And if she won't, she won't, and there's an end on't."*

Argonian Literary Society; Phi Lambda A. A.; Y. W. C. A.; Glee Club '25; Pine Branch Staff '24-'25.

FRANCES FOLSOM, Waycross, Ga.

"She's as sweet and pure as the morning-glory at dawn."

Argonian Literary Society; Phi Lambda A. A.; Chairman Publicity Committee Y. W. C. A. '24-'25.

CARRIE GIBSON, Donaldsonville, Ga.

"A mind at peace with all below."

Argonian Literary Society; Phi Kappa A. A.

GEORGIA GIBSON, Donaldsonville, Ga.

*"A heart as soft, as heart as kind,
As in the whole world thou can't find."*

Argonian Literary Society; Phi Kappa A. A.; Secretary Y. W. C. A. '24-'25; Y. W. C. A. Cabinet '24-'25.

MARTHA GROOVER, Dixie, Ga.

"Silence is more eloquent than words."

Argonian Literary Society; Phi Kappa A. A.; Y. W. C. A.; Campus Monitor '24-'25.

ELSIE GUNN, Rome, Ga.

*"She seemed as happy as a wave
That dances on the sea."*

Argonian Literary Society; Vice-President Phi Kappa A. A.; Vice-President Argonian Literary Society '24-'25; Treasurer Y. W. C. A. '24-'25; Social Service Chairman '24-'25; Property Manager Senior Play '24-'25.

EVA JORDAN, Reidsville, Ga.

*"You know what I am now,
I know what I intend to be."*

Argonian Literary Society; Phi Kappa A. A.

REBIE HILL, Byromville, Ga.

"True friends are rare."

Argonian Literary Society; Phi Kappa A. A.; Y. W. C. A.



PINE CONE



ROSALIND IVEY, Valdosta, Ga.

*"Give to the world the best that you have,
And the best will come back to you."*

Phi Kappa A. A.; Town Girls' Club.

LUCIE JACKSON, Atlanta, Ga.

*"Her eye was bright,
A well of love, a spring of light."*

Argonian Literary Society; Phi Lambda A. A.; Y. W. C. A.; Assistant Business Manager Pine Branch '24-'25.

IRENE KINGERY, Statesboro, Ga.

*"The mild expression spoke a mind
In duty firm, composed, resigned."*

Argonian Literary Society; Phi Lambda A. A.; Y. W. C. A.; Soek and Buskin Dramatic Club '23-'24.

DOROTHY LARSEN, Valdosta, Ga.

*"All that in woman is adored
In thy dear self we find."*

Argonian Literary Society; Phi Kappa A. A.; Town Girls' Club.

ANNIE LOYD LIGGIN, Decatur, Ga.

*"Her look composed, and steady eye
Bespoke a matchless constancy."*

Argonian Literary Society; Phi Kappa A. A.; President Freshman Class '23-'24; Secretary Council '23-'24; Court Member '23-'24; U. R. on Y. W. C. A. Cabinet '24-'25.

ALMA LUKE, Habira, Ga.

"Estimable, virtuous, economical, quiet and hard-working."

Argonian Literary Society; Phi Lambda A. A.; Y. W. C. A. Cabinet; Chairman Country Store Committee '24-'25; Class Play '25.

NETTIE REID MADDON, Jackson, Ga.

"Each act of her daily toil was a manifestation of angelic grace and goodness."

Argonian Literary Society; Phi Kappa A. A.; Y. W. C. A.; Campus Committee, '24-'25.

SARA MANDEVILLE, Jesup, Ga.

*"Bright as the sun her eyes the gazers strike;
And, like the sun, they shine on all alike."*

Argonian Literary Society; Sergeant-at-Arms Argonian Literary Society '23-'24; Vice-President Y. W. C. A. '24; Y. W. C. A. Cabinet '24; Class Play '25; Crescendo Club '23-'24; First Team Basketball '24-'25; President Phi Kappa A. A. '24-'25.



PINE CONE



SARA MARDRE, Thomasville, Ga.

"She never did any harm that I heard of."

Argonian Literary Society; Y. W. C. A.; Phi Kappa A. A.

CHRISTINE MARKEY, Waycross, Ga.

*"Her eyes though clear enough,
In a figurative sense are difficult to fathom."*

Argonian Literary Society; Y. W. C. A.; Phi Kappa A. A.; Campus Monitor '24-'25.

NEVA MATHIS, Valdosta, Ga.

*"She taketh most delight
In music, instruments and poetry."*

Phi Kappa A. A.; Crescendo Club '23-'24.

EVELYN McARTHUR, Cordele, Ga.

*"With gentle yet prevailing force,
Intent upon her destined course."*

Argonian Literary Society; Y. W. C. A. Cabinet '23-'24-'25; Associate Editor Pine Branch '24-'25; Phi Lambda A. A.; Inter-Society Debater '23-'24; Class Play '25.

RUTH McKINNON, Pidcock, Ga.

"Her manners were ever sweet and harmonious."

Argonian Literary Society; Y. W. C. A.; Phi Kappa A. A.

VERDIE MILLS, Waycross, Ga.

*"A face made up
Out of no other shop
Than what nature's white hand sets ope."*

Argonian Literary Society; Phi Lambda A. A.

LYDIA MINTER, Donaldsonville, Ga.

"Silent and chaste she steals along."

Argonian Literary Society; Y. W. C. A. '23-'24-'25; Phi Lambda A. A.

FRANCES MYRICK, Thomasville, Ga.

*"Her glossy hair was clustered o'er a brow
Bright with intelligence, and fair and smooth."*

Argonian Literary Society; Y. W. C. A.; Treasurer Argonian Literary Society '24-'25; Phi Lambda A. A.; Captain First Team Basketball '24-'25; Freshman Basketball Team '23-'24.



PINE CONE



RUTHELLYN PATTEN, Ray City, Ga.

"She is herself, of best things, the collection."

Argonian Literary Society; Phi Kappa A. A.; Y. W. C. A.

HILDA PATTERSON, Cordele, Ga.

"Silence is golden."

Argonian Literary Society; Phi Lambda A. A.; Y. W. C. A. Cabinet '23-'24.

OLIVE ROGERS, Reidsville, Ga.

"Wilst thou have music?"

Then seek her."

Argonian Literary Society; Phi Lambda A. A.; Monitor Y. W. C. A. Cabinet '24-'25; Glee Club '24-'25.

MARTHA ROUNTREE, Swainsboro, Ga.

"She smiles and smiles and will not sigh."

Argonian Literary Society; Phi Lambda A. A.; Argonian Reporter for Pine Branch '23-'24; Secretary Freshman Class '23-'24; Y. W. C. A. Cabinet '23-'24; Secretary Argonian Literary Society '24-'25.

RUTH ROYAL, Crossland, Ga.

"Much could be said of her if one could read her mind."

Argonian Literary Society; Phi Lambda A. A.; Y. W. C. A.

MARY SAPP, Brunswick, Ga.

"Thy modesty's a candle to thy merit."

Argonian Literary Society; Phi Lambda A. A.; Y. W. C. A.; Class Play '25.

MARGARET SHIELDS, Valdosta, Ga.

"She seem'd all earthly matters to forget;

Of all tormenting lines her face was clear."

Phi Kappa A. A.

RUTH SIMMONS, Valdosta, Ga.

"True as the needle to the pole, or as the dial to the sun."

Phi Kappa A. A. Town Girls' Club.



PINE CONE



ANNE SMITH, Brunswick, Ga.

*"Happiness is cheaper than worry,
So why pay the higher price?"*

Argonian Literary Society; Phi Lambda A. A.; Freshman Class Cheer Leader; Class Play '25.

GRACE SMITH, Elza, Ga.

*"To say little and perform much is
A character of true greatness."*

Argonian Literary Society; Phi Lambda A. A.; Y. W. C. A.; Y. W. C. A. Library Committee '24-'25.

FRANCES SMITH, Valdosta, Ga.

*"If worry were the only cause of death,
Then would she live forever."*

MIRIAM STOKES, Savannah, Ga.

*"A perfect woman, nobly planned,
To warn, to comfort and command."*

Argonian Literary Society; Phi Lambda A. A.; Y. W. C. A. Cabinet '24-'25; Business Manager Pine Branch '24-'25; Exchange Editor Pine Branch '23-'24; Crescendo Music Club.

ALTHA MAE STRICKLAND, Jesup, Ga.

*"A maiden never bold;
Of spirit still and quiet."*

Argonian Literary Society; Phi Lambda A. A.; Y. W. C. A.; Crescendo Music Club.

FRANCES THOMAS, Jesup, Ga.

"One who never turned her back, but marched breast forward."

Argonian Literary Society '23-'24-'25; Phi Lambda A. A.; Y. W. C. A.; Inter-Society Debate '23-'24; Sock and Buskin Club '23-'24; Student Council '24-'25; President Argonian Literary Society '23-'24; Class Play '24.

ANNIE MAUD TORBERT, Albany, Ga.

*"She is gentle, she is shy,
But there's mischief in her eye."*

Argonian Literary Society; Phi Lambda A. A.; Y. W. C. A.

MAE LILLIE TOUCHTON, Lake Park, Ga.

"I will do anything to serve a friend."

Argonian Literary Society; Phi Kappa A. A.; Y. W. C. A.



PINE CONE



ANNETTE TURNER, Sylvania, Ga.

*"She's tried to make herself happy by working hard
And doing good for others."*

Argonian Literary Society; Phi Lambda A. A.; Y. W. C. A.

ALICE WESTBROOK, Americus, Ga.

"Thy heart is as light as the leaf of a tree."

Argonian Literary Society; Phi Kappa A. A.; Y. W. C. A.

RUTH WATKINS, Boston, Ga.

*"Judge me as you will,
I am what I am."*

Argonian Literary Society; Phi Kappa A. A.; Y. W. C. A.

ELLA MAE WHITE, Jacksonville, Fla.

"Not afraid of work, but rather not to be intimately associated with it."

Argonian Literary Society; Phi Kappa A. A.; Y. W. C. A.

JANIE LOU ZETTEROWER, Statesboro, Ga.

*"When thoughts serenely sweet, express
How pure, how dear their dwelling-place."*

Argonian Literary Society; Phi Kappa A. A.; Y. W. C. A.; Campus
Monitor '24-'25.



AT LAST OUR FITTED FRESHMEN!



PINE CONE



ORA MAE BYLES, *President.*

MARY ALICE SINEATH, *Vice-Pres.*

URSULA MILLER, *Secretary and Treasurer.*

ARMSTRONG, LORENE
 BEASLEY, GRACE
 BLACKSHEAR, CATHERINE
 BEVIS, ADDIE
 BRITT, VERA
 BRADLEY, BERNICE
 BYLES, ORA MAE
 CROMARTIE, RUTH
 CARMACK, THELMA
 CHAMBLESS, RUBY
 CHESTNUT, MARY
 CUBBEDGE, MARY
 DAUGHERTY, CATHERINE
 DOWLING, LUCILE
 ETHERIDGE, MARGUERITE
 ELLIS, ALMA JACK
 ELLIS, MARY BELL
 FENN, LUCY NELL
 FREEMAN, ESTHER
 FLETCHER, MARY
 GASKINS, SHIRLEY
 GLASCOCK, DOROTHY
 HENSLEE, ELIZABETH
 HARVEY, CHRISTINE
 HICKS, MILDRED
 HUMPHREY, ANNIE
 HUMPHREY, THELMA
 HERRING, CHRISTINE
 HALL, SARA
 HODGES, LAURA
 HARTSFIELD, FRANCES
 HOLDER, ELISE
 IVEY, TILDA
 JACKSON, OUIDA

JAY, DOROTHY
 JOHNSTON, FRANCES
 JONES, HARRIET
 KING, AGNES
 LLOYD, IZORA
 LITTLEFIELD, MILDRED
 LINES, MAE
 LINES, CONTENT
 LYLE, MARGUERITE
 LIVINGSTON, FRASER
 KAYLOR, FELICITE
 McMILLAN, MARY KATE
 MATHIS, IRMA
 MILLER, URSULA
 MCGREGOR, LUCILE
 MIDDLETON, OLLIE
 MIDDLETON, NORMA
 McREE, ELIZABETH
 MILAM, EUGENIA
 MILAM, LOUISE
 MARDRE, ANNE
 McLendon, MARY
 McCranie, ROSALIND
 MURRAY, MARY
 NICHOLSON, OLLIE
 O'QUINN, LOUISE
 PENDLETON, KATHRYN
 PRIM, NAOMI
 PURCELL, EVELYN
 PERHAM, ALICE
 QUARTERMAN, CLIFFORD
 REMINGTON, CATHERINE
 RIDDICK, RUTH
 RICHARDSON, ANNA

STRONG, SARA REES
 SINEATH, MARY ALICE
 SEALS, MAJORIE
 SUMMERS, RUTH
 SMITH, ELIZABETH
 SHARP, LOIS
 SLADE, VIVIAN
 STEAD, LAURA
 SLOTT, MAY
 SAWYER, ANNIE RUTH
 SIEBERT, MARGARET
 STEWART, MARY
 STALVEY, CLARENTINE
 SPIVEY, ALINE
 TRULOCK, CATHERINE
 THOMAS, SARA
 TITTLE, LORENE
 TOMLINSON, LOUISE
 THOMAS, VIRGINIA
 TILLMAN, JUANITA
 TOD, CHRISTINE
 TRAPNELL, EMYLU
 USHER, AVIS
 VISSCHER, MARTHA
 WALTON, BERTHA
 WELLS, CLELA
 WISEMAN, MARION
 WEST, MARGUERITE
 WINDHAM, HILDA
 WELLS, ANNIE L.
 YOUNG, RUTH
 YOUNGBLOOD, LEILA
 YOUNGBLOOD, HELEN
 ZETTEROWER, ERA



PINE CONE



L. Armstrong



G. Beasley



C. Blackshear



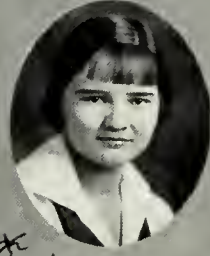
A. Bevis



V. Britt



D. Bradley



* J. Carmack



R. Chambless

** my sister*



M. Chesnut



R. Cromartie



M. Cubbege



C. Daugherty



L. Dowling



A. J. Ellis



M. B. Ellis



E. Freeman



M. Fletcher



S. Gaskins



D. Glascock



C. Harvey



PINE CONE



E. Menslee



M. Hicks



S. Hall



E. Hartsfield



C. Herring



A. Humphreys



T. Humphreys



E. Holder



L. Hodges



T. Ivey



O. Jackson



D. Jay



E. Johnston



H. Jones



A. King



C. Lines



M. Lines



F. Livingston



M. Littlefield



I. Lloyd



PINE CONE



F. Kaylor



M. Lyle



A. Madrie



I. Mathis



M.K. McMilliam



L. McGregor



E. McRee



R. McCranie



M. McLendon



E. Milam



L. Milam



M. Murray



L. N. Fenn



O. Nicholson



L. O'Quinn



C. Pendleton



N. Prim



E. Purcell



C. Quarterman



C. Remington



PINE CONE



D. Riddick



A. Richardson



A.R. Sawyer



M. Seals



L. Sharpe



M. Siebert



V. Slade



M. Slott



C. Stalvey



M. Stewart



E. Smith



L. Stead



S.R. Strong



L. Spivey



R. Summers



L. Jittle



J. Tillman



S. Thomas



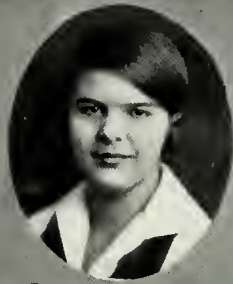
V. Thomas



C. Todd



PINE CONE



L. Tomlinson



E. Trapnell



C. Trulock



A. Usher



M. Visscher



B. Walton



A.L. Wells



C. Wells



M. Wiseman



M. West



R. Youmans



H. Youngblood

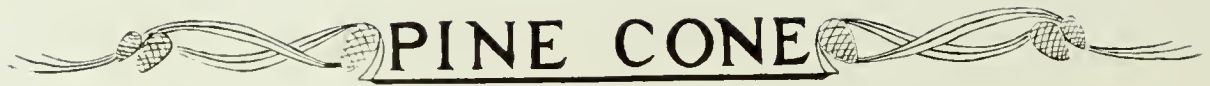


L. Youngblood



E. Zetterower





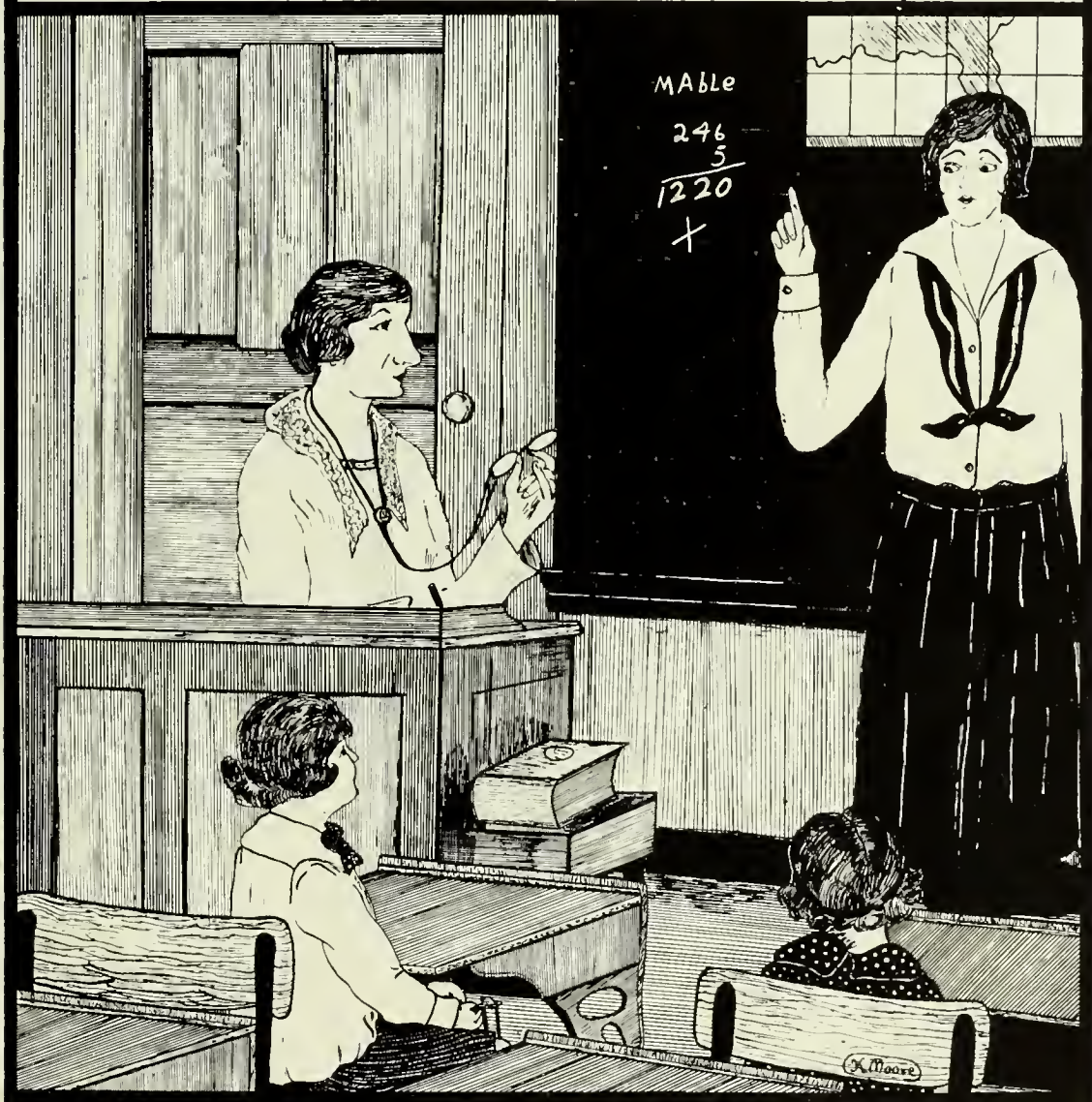
*This page is a reminder that
We, the Alumnae, ARE*

Once we—each in her turn—
Once we were Seniors, with all
The Senior's distinction, and
We had our commencement day,
And received our wonderful
Sheep skins, and all that, and all
All that.

And then—
Though we are now only
Alumnae our hearts are with
Alma Mater and the Senior
Class and all the throbbing
Life so happily expressing itself
In this annual.



TRAINING SCHOOL





Practice Teaching



We always have around us
Some poor dejected soul
Who, because of some misfortune,
Can never reach life's goal.

We're always seeing people
Filled with misery and woe,
And our hearts are filled with pity
At the trials they undergo.

But the one who needs consoling
More than any other creature—
The one who's most pathetic
Is the struggling practice teacher.

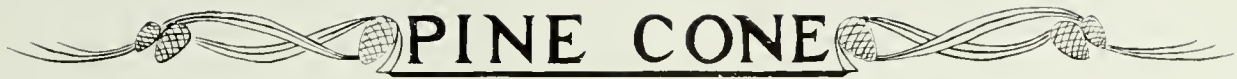
Her mind stays in a turmoil
From morning until night;
And she has so many worries
That she cannot eat a bite.

A lesson plan must be prepared
Which is an awful task;
She first must create atmosphere
By questions subtly asked.

And just this introduction
Takes a half a day to write;
Then for the thought-provoking questions
She searches late at night

At last the plan is all complete
And studied o'er with care;
But as the time for class arrives
Her heart is filled with fear.





PINE CONE

She enters very bravely
And sweetly takes her stand—
But all the while recalling
That wretched lesson plan.

The class is filled with interest;
She loses all her fears
When suddenly in the doorway
A well-known face appears.

Her brain which seemed so fertile
Is blank as any wall,
And she starts to asking questions
That bring no thought at all.

She doesn't know a word she says
Because she's stiff with fright;
The critic teacher has it though
In awful black and white.

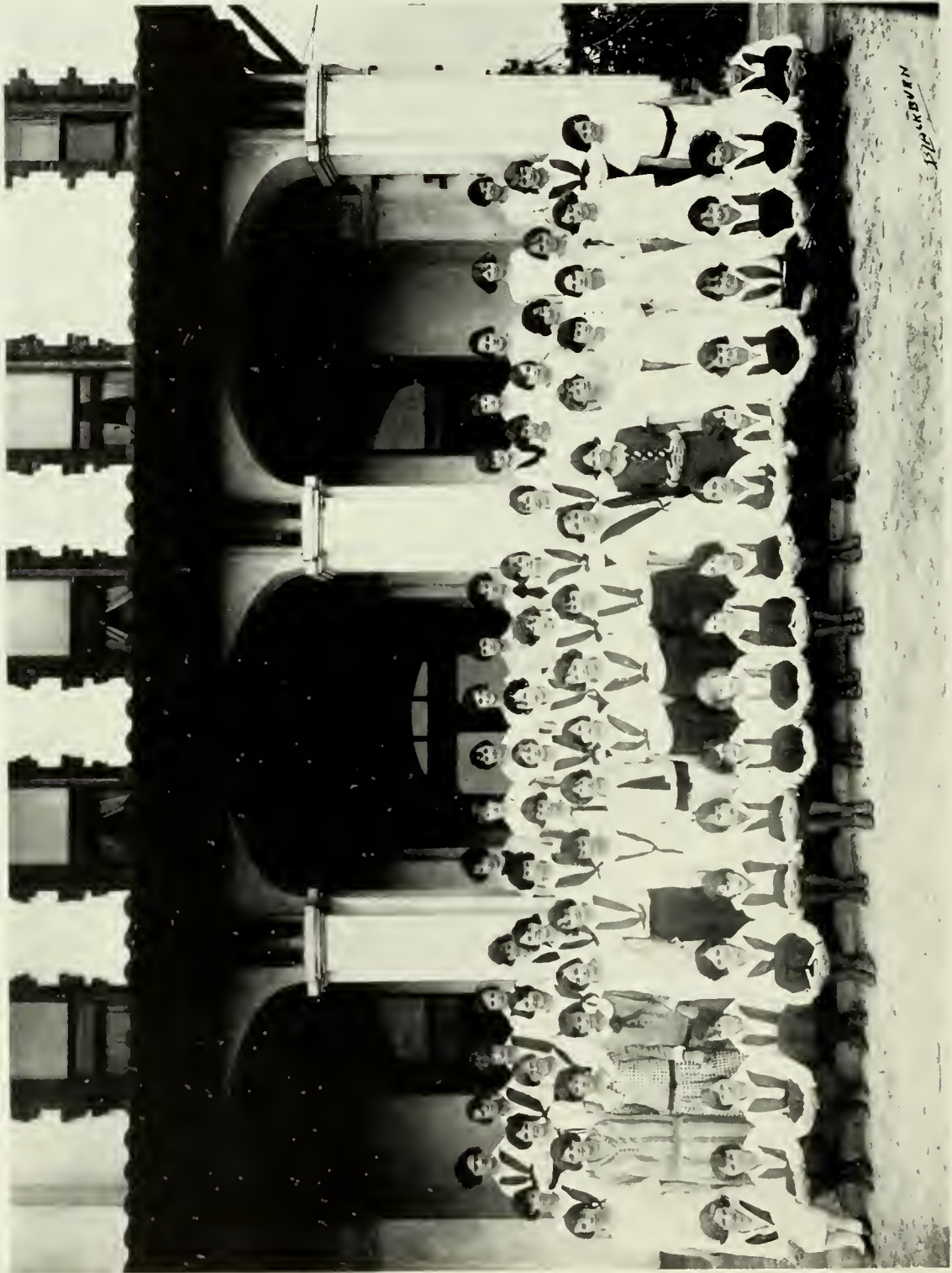
At last the ordeal's over
But a conference must be had;
And then another plan to write
Which turns out just as bad.

And so her life continues—
A pitiful affair;
Of all earth's tribulations
She certainly has her share.

So never pass unheeded
A practice teacher by;
For just a friendly greeting
Might drive away a sigh.

EPIE ROBERSON.





1915
L. B. K. B. V. E. N.

THE HIGH SCHOOL



PINE CONE



HIGH SCHOOL ATHLETIC ASSOCIATIONS



PINE CONE



VALKYRIES BASKETBALL TEAM

Dorothy Stroud, Lucius Bedell, Sara Arnold, Mary Elizabeth Boyd,
Gladys Butler,



ARGONAUT BASKETBALL TEAM

Mildred Larsen
Mary Louise Maxwell
Louise Bunn
Aurie Nelle Rountree
Elizabeth Coleman





High School Roll



ELEVENTH GRADE

Beane, Nellie
Bedell, Susan
Bunn, Louise
Coleman, Elizabeth
Deaver, Louise
Gordon, Lillian
Hiers, Lois

Larsen, Mildred
Mallory, Agnes
Mansfield, Clio
Mayo, Faye
Maxwell, Mary Louise
Mills, Annie Ruth
McConnell, Rebecca

Powell, Alfred
Richardson, Rena
Rountree, Aurie Nelle
Warlick, Inez
Wood, Marie

TENTH GRADE

Arnold, Sara
Byles, Mildred
Brinson, Clifford
Butler, Gladys
Ecker, Theresa
Edwards, Frances
Ferrell, Maude
Forbes, Louise
Ford, Marguerite

Gibson, Annie Laurie
Jackley, Martha
Knowles, Maude
Martin, Genia
McRae, Janie
McRee, Catharine
Norman, Ruth
Powell, Matile
Richardson, Margaret

Schieder, Pauline
Sirmans, Velma
Stewart, Sara Maude
Stokes, Myrtle
Touchstone, Virginia
Trowell, Elise
Wood, Lorenzo
Wood, Lucille

NINTH GRADE

Armstrong, Henrietta
Bedell, Lucius
Bowman, Zylpha
Boyd, Mary E.
Carter, Thelma
Chauncey, Rosalie

Dodds, Flossie
Ferrell, Bertha
Loggins, Jean
McLarty, Elizabeth
McNair, Grace
Pendleton, Elizabeth

Richardson, Minnie
Shadrick, Edna
Stroud, Dorothy
Studstill, Sara
Snyder, Virginia

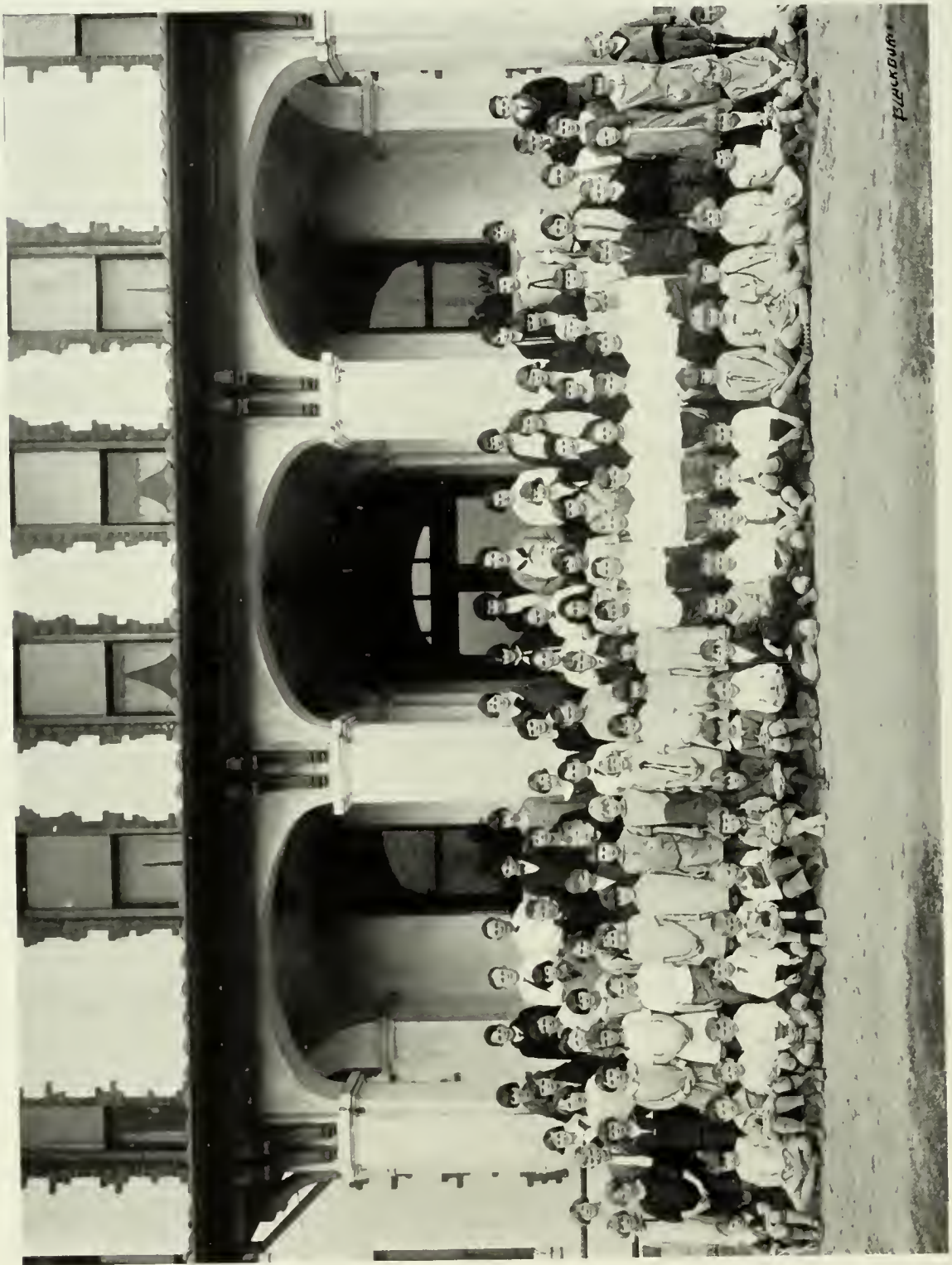
EIGHTH GRADE

Barnwell, Helen
Beck, Edmonia
Brown, Kathryn
Foster, Lonita
Harrell, Helen

Jennings, Catharine
Johns, Ottilee
Plowden, Hyta
Powell, Richard
Rentz, K. D.

Schierling, Mildred
Staten, Frances Klein
Tillman, Gordon





Blackburn

THE TRAINING SCHOOL



PINE CONE





CLARICE WEATHERSBEE
President Student Government

THE form of government of the student body of the Georgia State Women's College has been, since the opening of the college, student government.

At first only a very simple form of government was necessary or possible because of the youth, inexperience and small number of students, but as the group has grown in number and experience the form and function of the Student Government Association have become more complex.

Formerly allowed only judicial power, the student court and council have now, in addition to this in larger measure, the legislative and executive functions, their actions being subject always, of course, to the President's veto.

Through a process of evolution from primitive beginnings has come, as history tells us the government of nations today have come, not without mistakes, but ever advancing, a student government which really functions, which gives the students training in self-control and in group-control and which solves most satisfactorily the disciplinary problem of the college.



PINE CONE



G. Buie



M. Youngblood



F. Breen



O.M. Byles



C. Weathersbee



V. Scarborough



F. Faries



F. Thomas

THE STUDENT COUNCIL





Y. W. C. A. Officers

FLORENCE BREEN, *Vice-President*,
GEORGIA GIBSON, *Secretary*,
VERNA SCARBOROUGH, *President*,
ELSIE GUNN, *Treasurer*,
ANNIE LLOYD LIGGIN, *Undergraduate Representative*.



Young Women's Christian Association



THERE is a longing in every young girl to be better than she is, to live a life that will really count for something, to be a real help in someone's life. To meet this great desire she must try to live the abundant life, of which our Master speaks so much and which He came to give us. The purpose of the Young Women's Christian Association is to help the young girl realize these aspirations of her heart by providing the things necessary to make up the complete life. The blue triangle offers the physical, mental and spiritual development, all of which are necessary for the safety and happiness of anyone.

Our Y. W. C. A. has had a very successful and interesting history, having been one of the biggest influences on the campus in helping the young girl build her future womanhood. To have a really Christian campus by having each girl realize what it means to be a true follower of Christ is our one big aim. We try to measure our standards and ideals by those of Jesus.



PINE CONE



V. Scarborough



F. Breen



G. Gibson



E. Gunn



A.L. Liggins



E. McArthur



M. LaFar



R. Folger



L. Minter



H. Bruce



O. Rogers



L. Bradley



A. Luke



M. Stokes



F. Folsom

Y. W. C. A. CABINET



THE PINE BRANCH

Issued Monthly

PUBLISHED BY THE WRITERS CLUB OF THE GEORGIA STATE WOMANS COLLEGE, VALDOSTA, GEORGIA.

Accepted for mailing at special rate of postage provided for in Section 1103, Act of Oct 3, 1917 Authorized Jan 20, 1919

VOL. IX. JANUARY, 1925 NO. 3

THE STAFF

Editor-in-Chief	Martha Youngblood
Assistant Editor-in-Chief	Evelyn McArthur
Business Manager	Miriam Stokes
Assistant Business Manager	Lucie Jackson
Literary Editor	Evelyn Brown
Local Editor	Hester Bruce
Y. W. C. A. Editor	Ruth Folger
Alumnae Editor	Gussie Belle Rentz
Exchange Editor	Lucile McGregor
Joke Editor	Madeline Culbreth
Society Reporters	Ota Mae Biles, Emma Moore

CONTENTS

"Chris'mus Gif' Master"	Page 1
Enchantment of Distance	Page 5
Today	Page

SHOULD anyone wonder why our school magazine is called *The Pine Branch*, let him but come to visit us here on our campus, and he will no longer wonder. He cannot fail to appreciate the appropriateness of such a title when he sees the groves of pines all about the school.

The number and beauty of these pines, the things which they symbolize to every thoughtful beholder and their nativeness to South Georgia impressed the first students, and has continued to impress all those who followed them, so greatly that the pines have become the symbol of the college, and *The Pine Branch* under any other name could never have been so truly representative of the very spirit and essence of the college.

That it should be so truly representative of the college has been the chief consideration and purpose of those interested in the magazine. In order that this might be, the co-operation not only of the whole student body, but of the English Department and the Administrative Department has been necessary.

So well satisfied is the President that the magazine does represent the college ideals that one of the ads placed in it by the President was: "By their fruits ye shall know them"—*The Pine Branch* is a fruit of this college. 'How do you like it?'



PINE CONE



M. Youngblood



E. McArthur



M. Stokes



L. Jackson



E. Brown



H. Bruce



R. Folger



G. B. Rentz



M. Culbreth



L. McGregor



O. M. Byles



E. Moore

THE STAFF





OFFICERS ARGONIAN LITERARY SOCIETY

FRANCES THOMAS, *President.*
 MARTHA ROUNTREE, *Secretary.*

ELSIE GUNN, *Vice-President.*
 FRANCES MYRICK, *Treasurer.*

Akridge, Lois
 Alexander, Nana
 Armstrong, Henrietta
 Bates, Florence
 Bedell, Lucius
 Bedell, Susan
 Bowman, Zylpha
 Belin, Mary
 Boyd, Eva
 Bracey, Nellie
 Bradley, Louise
 Breen, Florence
 Brewton, Bernice
 Brunson, Eloise
 Bruce, Hester
 Buic, Grace
 Bum, Louise
 Carter, Thelma
 Campbell, Rena Mae
 Carrin, Ruth
 Chambless, Mae
 Church, Alma
 Church, Athena
 Clarke, Alice
 Clarke, Marie
 Coleman, Elizabeth
 Cook, Rebecca
 Cromartie, Ina Mae
 Culbedge, Carolina
 Culbreth, Madeline
 Deaver, Louise
 Ferrell, Bertha

Folsom, Frances
 Gordon, Lillian
 Gibson, Carrie
 Gibson, Georgia
 Groover, Martha
 Gruber, Minnie
 Gunn, Elsie
 Hereford, Elizabeth
 Herrin, Katie
 Heirs, Lois
 Hill, Rebekah
 Jackson, Lucie
 Jordan, Eva
 Kingery, Irene
 Langdale, Marguerite
 Larson, Dorothy
 Liggins, Annie Lloyd
 Luke, Alma
 Maddox, Nettie Reid
 Mandeville, Sara
 Mardre, Sara
 Mansfield, Cleo
 Maxwell, Mary Louise
 Markey, Christine
 Mayo, Faye
 Mills, Annie Ruth
 Mills, Verdine
 Minter, Lydia
 McArthur, Evelyn
 McKinnon, Ruth
 McLarty, Elizabeth

McNair, Grace
 Moore, Emma
 Moore, Kathleen
 Myrick, Frances
 Patten, Ruthelyn
 Patterson, Deborah
 Price, Mildred
 Rentz, Gussie Belle
 Roberson, Eppie
 Rogers, Olive
 Rountree, Martha
 Royal, Ruth
 Sapp, Mary
 Scarborough, Verna
 Smith, Anne
 Smith, Grace
 Smith, Leola
 Stokes, Miriam
 Strickland, Altha Mae
 Torbet, Annie Maude
 Thomas, Frances
 Touchton, Mae Lillie
 Turner, Annette
 Tillman, Juanita
 Warlick, Inez
 Watkins, Ruth
 Weathersbee, Clarice
 White, Ellamae
 Westbrook, Alice
 Wood, Marie
 Zetterower, Janie Lou





THE ARGONIAN LITERARY SOCIETY



PINE CONE



OFFICERS SORORIAN LITERARY SOCIETY

FRANCES FARIES, *President.*

MARY ALICE SINEATH, *Vice-President.*

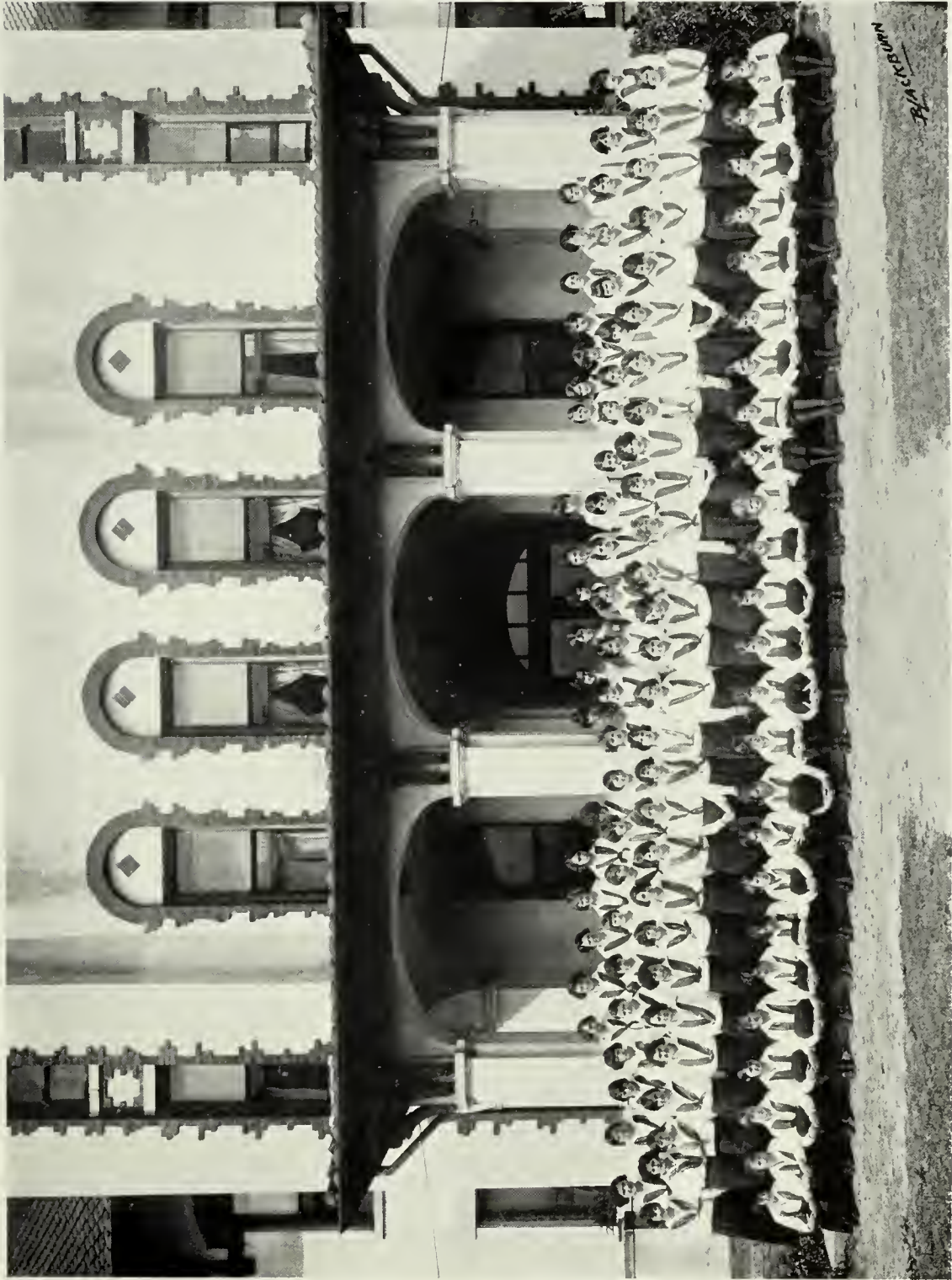
CATHERINE TRULOCK, *Secretary.*

LUCILLE MCGREGOR, *Treasurer.*

Armstrong, Lorene
 Arnold, Sara
 Beasley, Grace
 Bevis, Addie
 Byles, Ora Mae
 Blackshear, Katherine
 Bradley, Bernice
 Brinson, Clifford
 Britt, Verna
 Butler, Gladys
 Carmack, Thelma
 Chambless, Rubye
 Chestnut, Mary
 Clyatt, Marie
 Cromartie, Ruth
 Cubbedge, Mary
 Dowling, Lucile
 Ecker, Thresa
 Ellis, Mary Belle
 Ellis, Alma Jack
 Faries, Frances
 Ferrell, Annie Maude
 Fletcher, Mary
 Folger, Ruth
 Freeman, Estha
 Gaskins, Shirley
 Glascock, Dorothy
 Hall, Sarah
 Harvey, Christine
 Hartsfield, Frankie
 Heath, Nadine
 Hicks, Mildred
 Hodges, Laura
 Humphrey, Annie
 Humphrey, Thelma

Ivey, Tilda
 Jackley, Martha
 Jackson, Ouida
 Jay, Dorothy
 Jennings, Catharine
 Joyner, Helen
 Kaylor, Felicite
 King, Agnes
 Knowles, Mande
 La Far, Margaret
 Littlefield, Mildred
 Livingston, Fraser
 Lloyd, Izora
 Lunsford, Willie
 Lyle, Margaret
 Macmillian, Mary Kate
 Madre, Anne
 Mathis, Irma
 Martin, Genia
 McCranie, Rosal'nd
 McGregor, Lucile
 McRae, Janie
 Middleton, Norma
 Middleton, Ollie
 Milam, Eugenia
 Milam, Louise
 Miller, Ursula
 Murray, Mary
 Nicholson, Ollie
 Norman, Ruth
 O'Quinn, Louise
 Overstreet, Lillian
 Perham, Alice
 Powell, Matile
 Prim, Naomi

Purcell, Evelyn
 Rentz, K. D.
 Sawyer, Annie Ruth
 Seals, Majorie
 Sharpe, Lois
 Sineath, Mary Alice
 Sirmans, Velma
 Slade, Vivian
 Slott, May
 Smith, Elizabeth
 Stead, Laura
 Stokes, Myrtle
 Strong, Sara Rees
 Summers, Ruth
 Stalvey, Clarantine
 Thigpen, Mary
 Thomas, Sara
 Todd, Christine
 Tomlinson, Louise
 Touchston, Virginia
 Trapnell, Emylu
 Trulock, Catharine
 Trowell, Elise
 Usher, Avis
 Visscher, Martha
 Walton, Bertha
 West, Marguerite
 Windham, Hilda
 Wiseman, Marion
 Youmans, Ruth
 Youngblood, Martha
 Youngblood, Helen
 Zetterower, Era



SORORIAN LITERARY SOCIETY



Inter-Society Debaters



NANA ALEXANDER

ARGONIAN

GRACE BUIE



MARGARET LA FAR

SORORIAN

MARY ALICE SINEATH





GLEE CLUB

Sara Arnold

Erma Barco

Mary Chestnut

Alice Clarke

Marie Clarke

Rena Mae Campbell

Madeline Culbreth

Mildred Hicks

Harriet Jones

Rema Jones

Agnes King

Irma Mathis

Elizabeth McRee

Leo Prime

Clifford Quarterman

Olive Rogers

Marjorie Seals

Virginia Thomas

Martha Youngblood





THE MAY QUEEN

PINE CONE



MAY DAY



PINE CONE



FIELD DAY



PINE CONE



THE CARNIVAL



PINE CONE



THE CHRISTMAS FESTIVAL



STATISTICS



STATISTICS



Miss G. S. W. C.

Eppie Roberson

Our Prettiest

Grace Buie

Florence Breen

Kathleen Moore

Our Reliables

Clarice Weathersbee

Verna Scarborough

Martha Youngblood

Evelyn McArthur

Our Best All Round

Frances Faries

Nana Alexander

Katie Herrin

Sara Mandeville



Miss G ~ S ~ W ~ C



Eppie Roberson

*Our
Prettiest*



Florence Breen



Grace Buie



Kathleen Moore

Our Reliables



Verna Scarborough



Clarice Weathersbee



Evelyn McArthur



Martha Youngblood

*Our
best
all
around*



Sara Mandeville



Nana Alexander



Katie Herrin



Frances Faries

ATHLETICS



PINE CONE



OFFICERS PHI KAPPA ATHLETIC ASSOCIATION

SARA MANDEVILLE, *President.*

ELSIE GUNN, *Vice-President.*

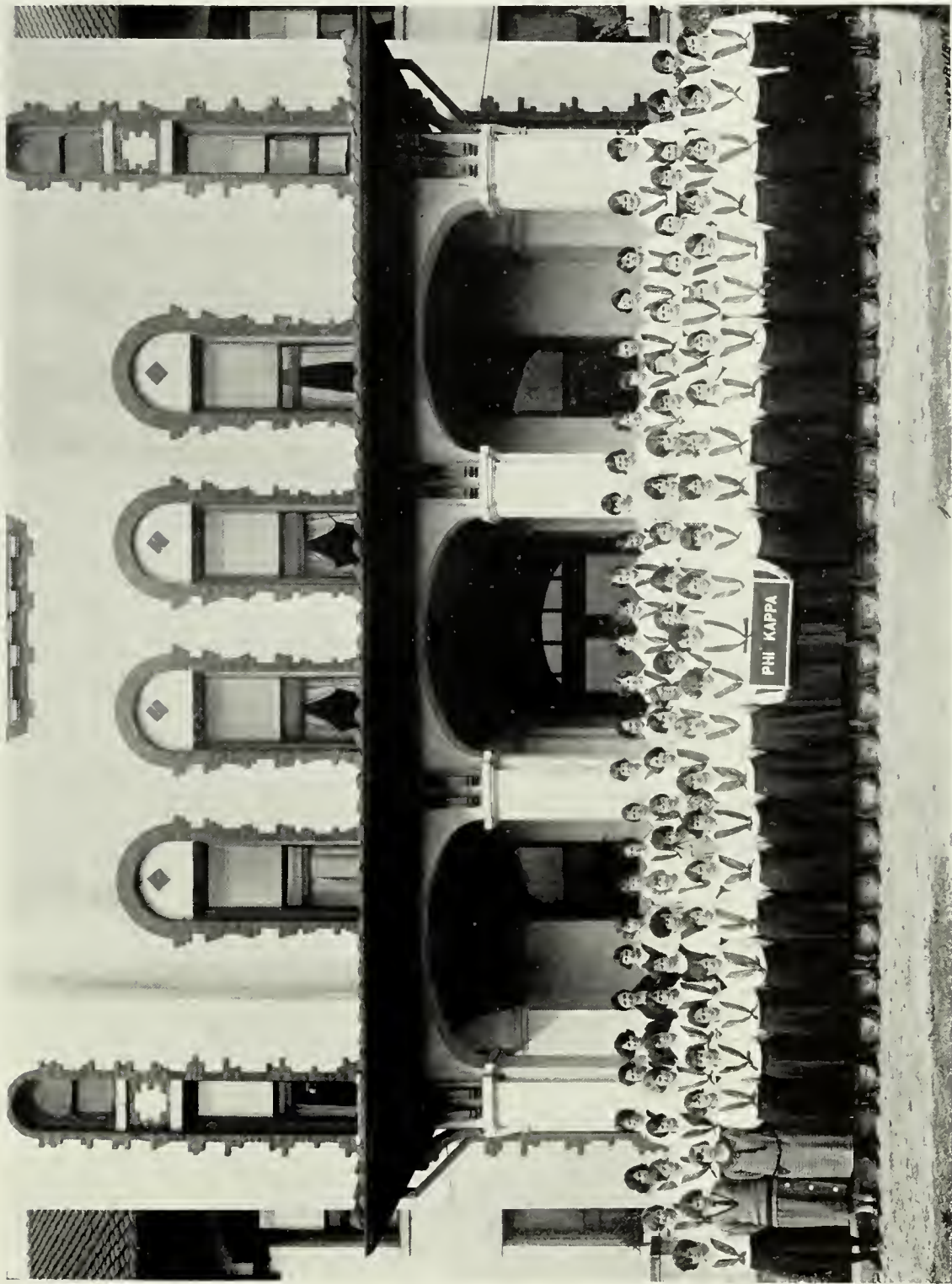
LOUISE O'QUINN, *Secretary and Treasurer.*

Akridge, Lois
 Barco, Erna
 Beasley, Grace
 Belin, Mary
 Bevis, Addie
 Boyd, Eva
 Breen, Florence
 Bruce, Hester
 Brunson, Eloise
 Church, Alma
 Church, Athena
 Carmack, Thelma
 Cook, Rebecca
 Cromartie, Ina Mae
 Cubbedge, Carolina
 Cubbedge, Mary
 Daugherty, Katherine
 Dekle, Frances
 Ellis, Alma Jack
 Ellis, Mary Bell
 Ethridge, Marguerite
 Faries, Frances
 Fletcher, Mary
 Gaskins, Shirley
 Gibson, Georgia
 Gibson, Carrie
 Groover, Martha
 Gruber, Minnie
 Gunn, Elsie
 Henslee, Elizabeth
 Hill, Reba
 Ivey, Clarice
 Ivey, Rosalinn

Ivey, Tilda
 Jackson, Ouida
 Jones, Rena
 Jordan, Eva
 Kaylor, Felicite
 King, Agnes
 Lafsen, Dorothy
 Ligen, Annie Lloyd
 Lines, Mae
 Lines, Content
 Littlefield, Mildred
 Loyd, Izora
 LaFar, Margaret
 Maddox, Nettie Reid
 Mandeville, Sara
 Mardre, Anne
 Mardre, Sara
 Markey, Christine
 Mathis, Neva
 Mathis, Irma
 Middleton, Norma
 Middleton, Ollie
 Milam, Eugenia
 Milam, Louise
 Moore, Emma
 McGregor, Lucille
 McKinnon, Ruth
 Owen, Frances
 O'Quinn, Louise
 Patten, Ruthelyn
 Pendleton, Catherine
 Prim, Naomi
 Princ, Leo

Purcell, Evelyn
 Quarterman, Clifford
 Remington, Catherine
 Richardson, Anna
 Roberson, Eppie
 Sawyer, Annie Ruth
 Scarborough, Verna
 Shields, Margaret
 Siebert, Margaret
 Simmons, Ruth
 Sineath, Mary Alice
 Stade, Vivian
 Small, Mary
 Smith, Frances
 Smith, Leola
 Spivey, Aline
 Tod, Christine
 Tomblinson, Louise
 Touchton, May Lillie
 Trapucll, Emylou
 Visscher, Martha
 Walton, Bertha
 Watkins, Ruth
 Wells, Clela
 Wells, Annie Leila
 Westbrook, Alice
 White, Ellamac
 Windham, Hilda
 Wiseman, Marion
 Youngblood, Helen
 Youngblood, Martha
 Youngblood, Leila
 Zettercower, Janie Lou





PHI KAPPA ATHLETIC ASSOCIATION



PINE CONE



OFFICERS PHI LAMBDA ATHLETIC ASSOCIATION

NANA ALEXANDER, President.

ELIZABETH McREE, Vice-President.

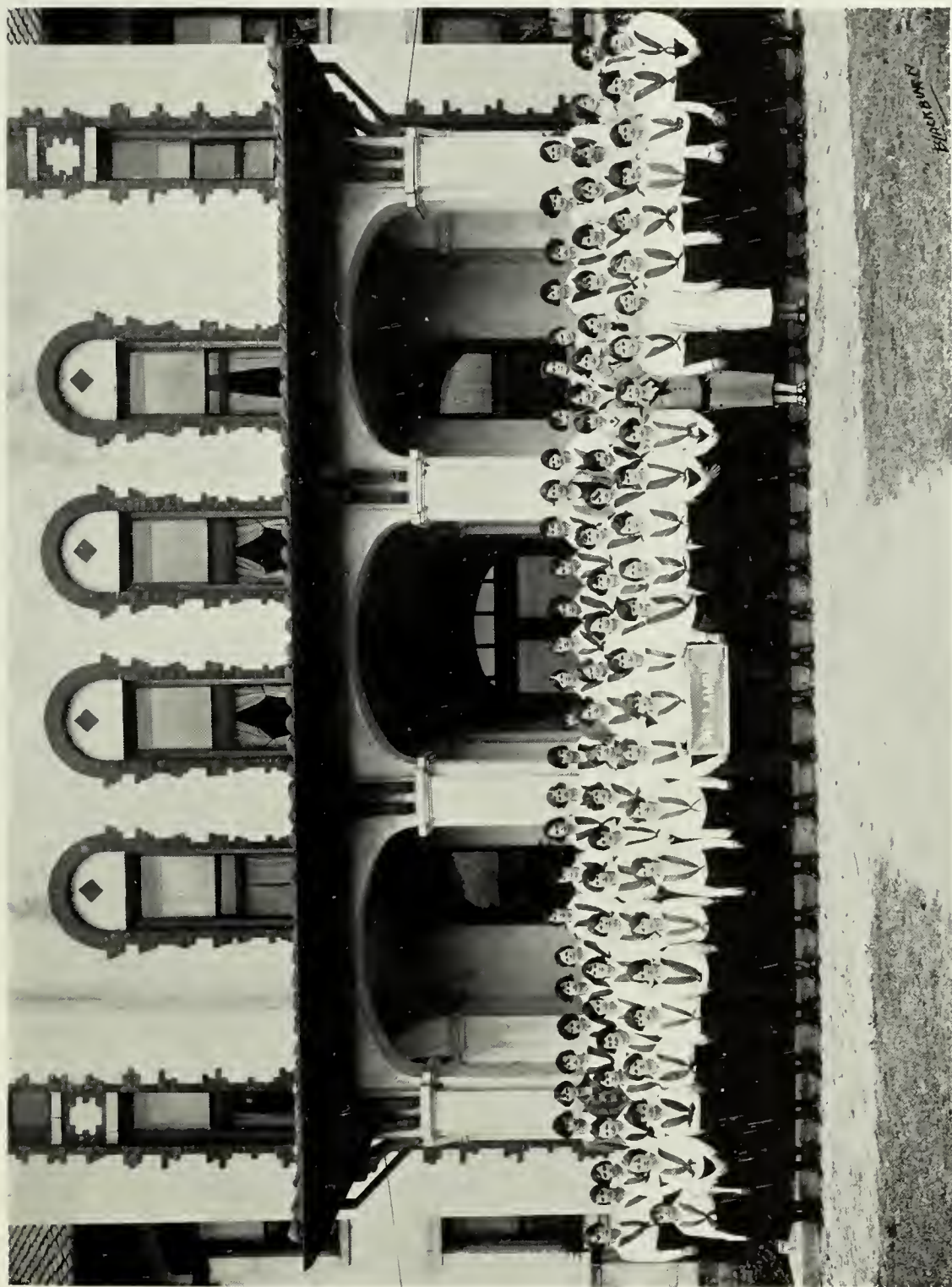
ALPHA MAE STRICKLAND, Secretary and Treasurer.

Alexander, Nana
 Armstrong, Lorene
 Bates, Florence
 Blackshear, Katherine
 Bracey, Nellie
 Bradley, Bernice
 Bradley, Louise
 Bray, Claire
 Britt, Verna
 Bruton, Bernice
 Buie, Grace
 Byles, Ora Mae
 Campbell, Rena Mae
 Carrin, Ruth
 Chambless, Mae
 Chambless, Rubye
 Chauncey, Emily
 Chestnut, Mary
 Clarke, Alice
 Clarke, Marie
 Clyatt, Marie
 Cromartie, Ruth
 Culbreth, Madeline
 Dowling, Lucille
 Folger, Ruth
 Folsom, Frances
 Freeman, Estha
 Glascock, Dorothy
 Hall, Sarah
 Hartsfield, Frankie
 Harvey, Christine
 Heath, Nadine

Herrin, Christine
 Herrin, Katie
 Hicks, Mildred
 Hodges, Laura
 Holder, Elise
 Humphrey, Annie
 Humphrey, Theima
 Jackson, Lucie
 Jay, Dorothy
 Johnston, Frances
 Jones, Harriett
 Kingery, Irene
 Littlefield, Lila
 Livingston, Fraser
 Luke, Alma
 Lunsford, Willie
 Lyle, Margaret
 Maples, Rebecca
 Mathews, Willie Mae
 McArthur, Evelyn
 McCranie, Rosalind
 McLendon, Mary
 McMillian, Mary Kate
 McRee, Elizabeth
 Miller, Ursula
 Mills, Verdie
 Minter, Lydia
 Moore, Kathleen
 Myrick, Frances
 Nicholson, Ollie
 Overstreet, Lillian
 Patterson, Hilda

Perham, Alice
 Riddick, Ruth
 Rogers, Olive
 Rountree, Martha
 Royal, Ruth
 Sapp, Mary
 Seals, Majorie
 Sharpe, Lois
 Slot, Mae
 Smith, Anne
 Smith, Elizabeth
 Smith, Grace
 Stead, Laura
 Stokes, Miriam
 Strong, Sara Rees
 Summers, Ruth
 Thigpen, Mary
 Thomas, Frances
 Thomas, Sara
 Thomas, Virginia
 Tillman, Juanita
 Tittle, Lorene
 Torbett, Anne
 Trulock, Catharine
 Turner, Annette
 Usher, Avis
 Weathersbee, Clarice
 Wells, Katie Love
 West, Marguerite
 Wood, Dora
 Youmans, Ruth
 Zetterower, Era





PHI LAMBDA ATHLETIC ASSOCIATION



PINE CONE



PHI KAPPA
Championship Team

S. Mandeville, F.; L. Akridge, G.; F. Faries, G. (Capt.); A. J. Ellis, F.;
M. Wiseman, C.; M. LaFar, C. L.

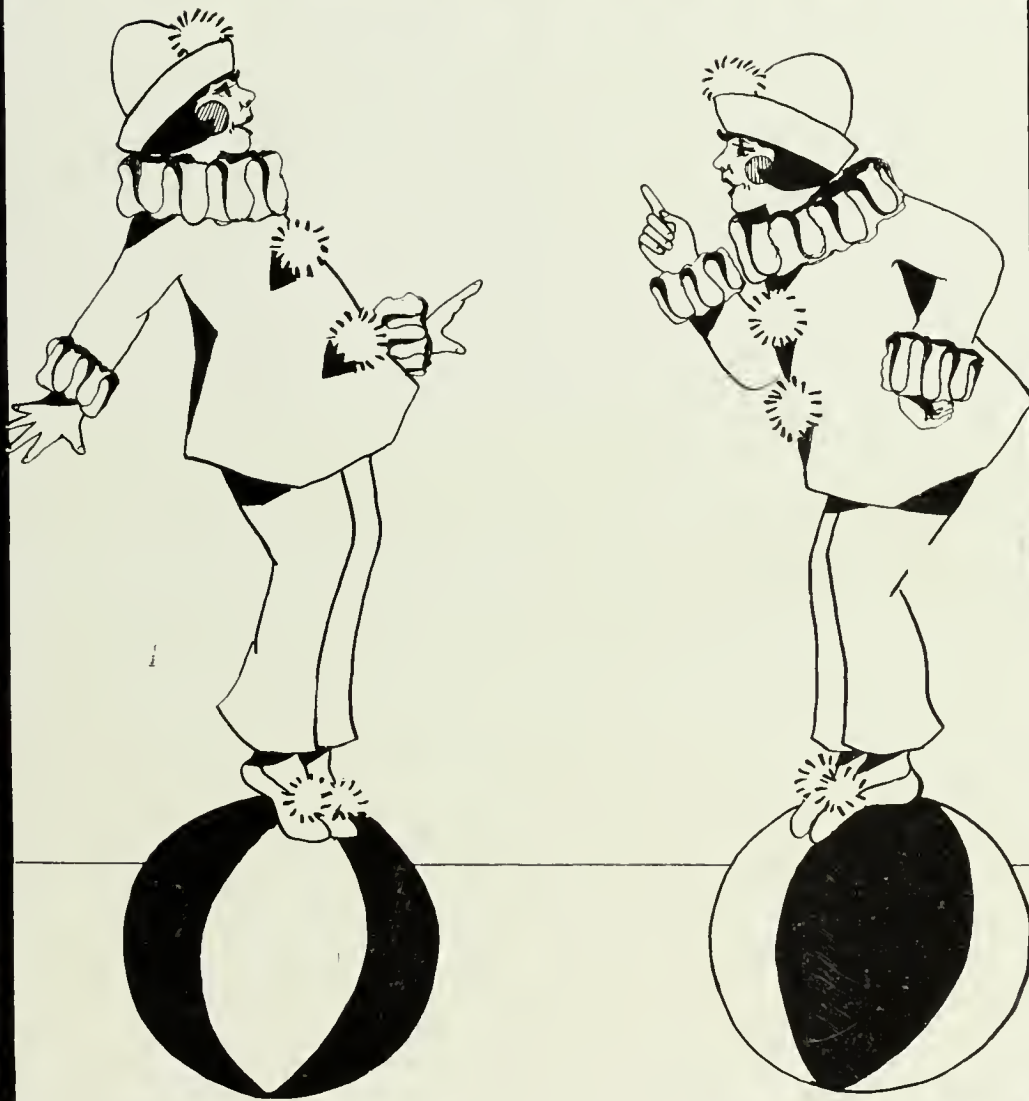


PHI LAMBDA
First Team Basketball

Nana Alexander, C.; Katie Herrm, F.; Sarah Hall, F.; Frances Myrick, G. (Capt.);
Thelma Humphrey, G.



HUMOR



1911





PINE CONE

I WONDER WHEN

Every senior will get a husband?
Every sophomore will get a job?
We, at G. S. W. C., will have breakfast served in bed?
Classes will be over at 1.30?
Miss Craig will allow students 15 minutes after last bell to be in their respective places?
Katie Herrin will change her crush again?

CAN YOU IMAGINE

Martha Youngblood flunking an exam?
Dr. Powell knocking the college?
Miss Jakes passing some one without speaking to her?
Verna Scarborough getting to an appointment on time?
E. Moore and E. Boyd's repertoire of mischief completely exhausted?
Girls not feeling at home in Clarice Weathersbee's room?
Miss Craig allowing a girl to enter classroom unnoticed one-fourth second after last bell?
A day passing without Mr. Poston sneezing?
Frances Thomas too busy to read the latest books?
Miss Mildred Price without a Phyfe?
Evelyn McArthur failing to fulfill a promise?
Miss Hopper not making an announcement after a meal?
An edition of *The Pine Branch* without a contribution from E. Brown?
Few minutes passing without Inez Warlick and Velma Sirmans saying a word?
The word "crush" dying out in G. S. W. C.?
Kathleen Moore with straight hair?
Katie Herrin refusing to play a game of basketball?
A holiday being granted so that the faculty might rest for the day?
Eppie Roberson playing basketball?
Minnie Gruber seen but not heard?
Elsie Gunn walking at a moderate pace?
Eva Boyd as Student Government President?
Lucie Jackson minus A. Torbert?
Nana Alexander without her brogue?
Margret LaFar as a man-hater?
Ruth Folger as an optimist?
Leola Smith being bold?
Alma Luke minus her blush?
Alice and Marie Clarke exhibiting sisterly affection?
Ruth McKinnon slipped for flirting?
S. Mandeville not giving her opinion?
Georgia Gibson dressed as a wood-nymph?
Mary L. Maxwell dressed in an evening dress?
Sara R. Strong not calling Dot?
Ruth Carrin doing a naturalistic dance?
Evelyn Purcell saying something unless spoken to?
Freshman in Library—"Could you tell me where i' can find Lamb's Tales by Shakespeare?"
If the sun is hot will Evelyn Brown?
If the grass is high will Kathleen Moore?
If the radio's working may Katie Herrin?





“LATEST PUBLICATIONS”

“HOW TO LOOK LIKE THE HUNCHBACK,” *By Grace Buie.*

“HOW TO WRITE POETRY,” *by Evelyn Brown.*

“HOW TO REGISTER EMOTIONS,” *by Nana Alexander.*

“HOW TO SPEND SUNDAY MORNINGS AT COLLEGE,” *by S. Mandeville, E. Boyd, E. Moore.*

“LATEST MODES OF HAIR DRESSING,” *by Katherine Trulock.*

“PROTECTION OF PROPERTY”

1. Do not drive small tacks in the walls. Use spikes so the summer students can skin the cat on them.
2. Do not leave “footprints on the sands of time.” Carve your name on the desk arms so no one will forget you.

“WANT ADS”

1. More teachers to kid.—Student Body.
2. Something to keep my Ed. class awake.—Miss Goodlet.
3. A class to take pronunciation.—Miss Campbell, Miss Price.



ALMA MATER

'Mong the stately pines of Georgia
Glorious to the view,
Stands our noble Alma Mater,
Basking 'neath the blue.

CHORUS

Alma Mater, thee we honor,
Praises never fail,
For thy fame shall never perish,
Red and Black—all hail!

Alma Mater's loving daughters
We will ever be,
Always to thy heart returning
G. S. W. C.

We love thee when the silvery morning
To thy halls return,
We love thee when thy crimson roofs
A-flame with sunset burn.

We love thee when the darkening day
Proclaims our life work o'er,
Alma Mater, know the truth,
We'll love thee ever more.



ADS



Perhaps you need a
house and lot-
Or maybe a
rubber ball,
Whatever it be-
just look and see
You're sure to
find them all.

L. Leggen

MISS ABERNATHY (to senior cooking class): "This morning I want you to prepare 'Pigs with Blankets'."

R. E. PATTEN: "Oh, are we going to have sure-enough pigs?"

THIS ANNUAL

Is about the best advertisement for

THE GEORGIA STATE WOMAN'S COLLEGE

AT VALDOSTA

That I can think of; the girls did it

R. H. POWELL,

President

MISS GILMER (on English quiz): "Name the romantic element of 'Rime of the Ancient Mariner.'" "

EVA BOYD: "The fact that the Mariner stopped a wedding guest to relate his tale to him."

STRAND THEATRE
VALDOSTA .: GEORGIA

TELEPHONE 361

*Presenting at all times the very
best Motion Pictures and Road
Attractions—and always boosting*

VALDOSTA

Mr. Wood (in Principles of Ed.): "Miss Mandeville, why do you go to school?"

Miss M.: "To train our faculties."

*We wish to express our sincere
appreciation of the patronage
given us by the College Girls.*



Southern Stationery & Printing Co.

Wholesale Paper Dealers

STATIONERS -- PRINTERS -- ENGRAVERS

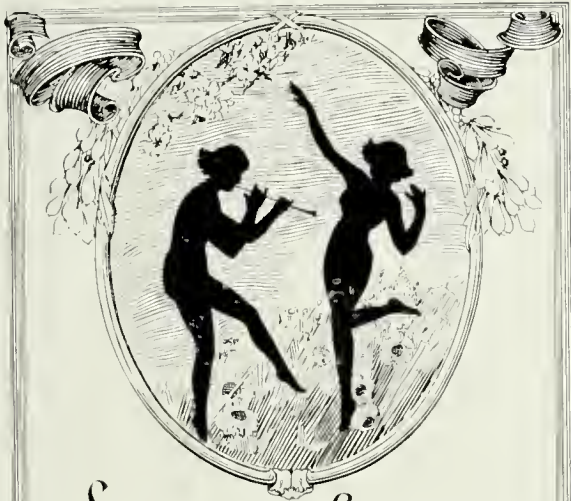
EVERYTHING FOR YOUR OFFICE

Valdosta, Georgia

FLORENCE: "Does post-mortem mean examination after death?"

MISS GILMER: "Yes."

FLORENCE: "Well, if you don't mind, I'll take the rest of mine like that."



*Specializing in College and
School annuals for over twenty
years — Write for Outline
of our Annual Service*

DIXIE ENGRAVING CO.
SAVANNAH ~ GEORGIA

A. CONVERSE COMPANY

Better Luggage For Less

Hartman Wardrobe
Trunks and Likely
Luggage for Every
Purse and Purpose.

A. Converse Company
VALDOSTA GEORGIA

Comfortable, Convenient and Dependable TRANSPORTATION By MODERN MOTOR COACHES

Double Daily Service to and from Valdosta, Cordele,
Moultrie, Albany, Thomasville, Tallahassee, Madison,
Lake City, Milltown, and intermediate points.

UNION BUS COMPANY

VALDOSTA, GEORGIA

Phones, 89 and 647

Station, Patterson Hotel Annex

Lois A. (in Math. class): "Miss Lockett, I don't know what to do with my 31 feet."

Compliments of
J. W. PINKSTON

*WHEN IN NEED
OF ANYTHING*

In Cooking Utensils
Stoves
Crockery and Glassware
Haviland China,
or anything in the
Hardware Line

CALL ON

W. H. BRIGGS
HARDWARE Co.
VALDOSTA, GEORGIA

M. M. YEARTY
& COMPANY

The Accommodating Druggists

A Real Drug Store

SANITARY SODA FOUNTAIN
COMPLICATED AND UNUSUAL
PRESCRIPTIONS FILLED

Whitman's and Nunnally's
DELICIOUS CANDIES

Phones 96 and 389

136 N. PATTERSON ST.
VALDOSTA, GEORGIA

K. MOORE: "Did you drop acid on your skirt?"

N. ALEXANDER: "No; friction caused that hole."

COLLEGE FOOTWEAR

ASK THE GIRLS—THEY KNOW

FOLKS SAY—

*and you hear it everywhere, "Turner
Jones for Shoes and Hosiery, too."*

*You will always find what is
new and stylish at*

TURNER JONES SHOE STORE

VALDOSTA GEORGIA

DOT: "Where are you from?"

ELSIE: "I'm a cosmopolitan."

DOT: "Oh, is that in North Ga.?"

YOUTH, CHARM, BEAUTY AND PERSON-
ALITY are combined in the gift that is
always appreciated—YOUR PHOTOGRAPH

*We make
Photographs
of quality*

BLACKBURN'S STUDIO

108 WEST CENTRAL AVENUE, VALDOSTA, GA.

We Believe in the Georgia State Woman's College

HESTER IN Y. W. CHOIR PRACTICE: "Hold the *A* longer, girls; don't be in such a hurry to get to the *men*, and you will get along better, has been my experience."

Ask Your Grocer For

VALDOSTA'S
OWN
DIXIE MAID
BREAD *and* ROLLS

He Handles Our Bread and Rolls
OR AUTO

Try Our Pies and Pastry
Wedding, Birthday and
Party Cakes a Specialty.

VALDOSTA BAKING
COMPANY

Home of Dixie Maid Bread

PHONE, 751

F. W. PULTAR, MGR.

Don't forget to
look through our

Toilet Goods Department

*We carry the most up-to-date line in
Valdosta.*

*Prompt service and all the latest
drinks at our Soda Fount.*

Vinson's Drug Store

Nunnally's and Norris
Candy

TELEPHONES, 245 - 246

"Dress Well
and Succeed"

*The confidence of being well
dressed will also give you
pep and enable you to do
better in your line of business.*

*Come in and allow us to out-
fit you.*

*Clothes for the young man
and men who stay young.*

BRIGG'S

Where Society Brand Clothes Are Sold

STUMP BROS

Paints and
Builders
Supplies

VALDOSTA

GEORGIA

F. THOMAS: "What is your name?"

E. W.: "Ellamae White."

F. T.: "Are you related to the Whites at Jesup?"

E. W.: "No; I have no white relatives in Georgia."

HICKEY FREEMAN QUALITY CLOTHES

*Are the Best Styles
for College Men*

MANHATTAN SHIRTS
FLORSHEIM SHOES

DAVIS BROS. & CO.
"The House of Quality"

WEST MOTOR COMPANY

VALDOSTA, GEORGIA

LINCOLN
FORD
FORDSON

BEST EQUIPPED SHOP

*Largest Stock of Genuine
Ford Parts in this section*

FORD BATTERIES

ASK FOR
THE PILOT BRAND

*Uniform Waist
Middy Blouses
Gym Bloomers
Knickers
Khaki Outfits*

MANUFACTURED BY

THE
KRAMER-KESTING
COMPANY

1182 BROADWAY MAIN OFFICE
NEW YORK CITY BALTIMORE, MD.

J. S. HEARN
YELLOW CAB CO.

*Hail Them
Anywhere*



*Telephone
1000*

113 West Central Avenue

DAY AND NIGHT

THE BENSON CO.

Cleaners and Dyers

Phone 486

IF IT IS CLEANABLE WE CAN
CLEAN IT

NELLY: "I know the names of all the girls in school but two."

EMMA: "Who are they?"

W. M. OLIVER & CO.

VALDOSTA :-: GEORGIA

*Catering especially to the Women of
South Georgia and North Florida who
are discriminating in their selection of*

READY-TO-WEAR MILLINERY
PIECE GOODS
SHOES AND ACCESSORIES

*Our desire is to so serve the public that
each and every person who trades at
our store will be happier by having
done so. No sale is considered com-
plete until our customers are pleased.*

WE INVITE NEW ACCOUNTS
21 YEARS IN VALDOSTA

W. M. OLIVER & CO.

FRESHMAN: "Do you know Tennyson's poems carry me completely away?"

SOPH.: "Sorry, but we haven't a volume in the room."

I. RICH & COMPANY

Manufacturers of Ladies' and Misses'
CLOAKS AND SUITS

211-13 NORTH 13TH STREET, PHILADELPHIA, PA.

NEW YORK OFFICE
WILSON BUILDING, 1270 BROADWAY

USE

FLUFFY - RUFFLES
and
VELVET FLOUR

*These Brands Never
Disappoint*

DISTRIBUTED BY

VALDOSTA GROCERY CO.
CURRY GROCERY CO.

Wholesale Distributors

VALDOSTA, GEORGIA

BUY

EASTER LILY
SELF - RISING

The Best of All Self-Rising Flours

WHITE ROSE PASTRY

FANCIEST PATENT

*These Flours Will Please You
Your Orders Will Please Us*

The A. S. Pendleton Co.

VALDOSTA, GEORGIA

FRESH.: "Are you going to festiver tonight?"

SOPH.: "Festival? We don't have that until Christmas."

FRESH.: "Why, I thot we had festiver every Thursday and Sunday nights."

Compliments of

KOHN, WEIL &
SIMON,
INCORPORATED

HEADQUARTERS FOR
LADIES' HATS

NEW ORLEANS
LOUISIANA

DELICIOUS FOOD
SERVICE EFFICIENCY

The College Girls feel at
home when eating the
good Southern food served at

COLONIAL TEA ROOM

The Misses Rice, Managers

113 WEST HILL AVENUE
VALDOSTA, GEORGIA

Mrs. C. Whittington

FURNISHER
TO LADIES

VALDOSTA, GEORGIA

*For the Best of Everything
go to*

Isbell Seed and Drug Co.
207 NORTH ASHLEY STREET
VALDOSTA, GEORGIA
Phone 1032

CARTER'S—

*Valdosta's Greatest
Value Store*

We cordially invite you to visit
this store. It will be well worth
your while. Remember our prices
are lower, because we sell for CASH

Ready-to-Wear Millinery
Fabrics, Stylish Footwear

CARTER'S

109 NORTH PATTERSON STREET
VALDOSTA, GEORGIA

EMMA: "What are you going to teach?"

MARTHA: "Dickens' Christmas Carol."

EMMA: "But you can't sing."

ORGANIZED 1890

FIRST NATIONAL BANK

VALDOSTA, GEORGIA

Resources \$2,500,000.00

THE ONLY NATIONAL
BANK IN THE COUNTY

Interest Paid on Time Deposits

OMEGA FLOUR

*Once Used
Always Used*

THE HOOVER

*It Beats—as It Sweeps—
as It Cleans*

Electric Supply Company
VALDOSTA, GEORGIA

MATHIS & YOUNG CO.

*Pianos - Victrolas
and Everything in Music*

112 NORTH PATTERSON STREET

THE MERCHANTS BANK

VALDOSTA, GEORGIA

Capital and Surplus \$300,000.00

NEW ACCOUNTS INVITED

*Interest Paid on Savings and
Time Deposits*

PIGGLY WIGGLY ALL OVER THE WORLD

You never graduate at Piggly
Wiggly's you find bigger and better
values with each visit to the Store.

We Thank You!

SNOW BROTHERS, Owners

W. C. GRIFFIN & SONS POPULAR PRICE CASH STORE

*Ready-to-Wear and Millinery
All kinds of Silks and Cotton
Goods. Men's, Women's and
Children's Shoes—Very Best
Makes. All colors in Silk Hose
Year Round Suitings. Pictorial
Patterns.*

MR. WOOD: "Miss Gruber, who were the Epicureans?"

M. GRUBER: "The writers of epic poetry."

C. C. VARNEDOE & CO.
"VALDOSTA'S STORE DEPENDABLE"
LADIES' OUTFITTERS

Breedlove's Delicious
ICE CREAM

HEALTH AND HAPPINESS
IN EVERY SPOONFUL

S. B. BREEDLOVE
VALDOSTA, GEORGIA

Telephone 81

The Rexall Drug Store

Perfumes

COTY'S HOUBIGANT
HUDNUTT'S JOINCARE
CARA NOME

Rouges

COTY'S MARINELLO
POMPEIAN MARY GARDEN
CARA NOME

Powders

COTY'S MARY GARDEN
LOVE-ME THREE FLOWERS
CARA NOME

Hollingsworth and Nunnally's Candies
Eastman Kodaks Purest Medicines
Sanitary Soda Fountain

INGRAM DRUG CO.
101 S. PATTERSON ST. VALDOSTA, GA.
Telephone 3

T. IVEY: "What's that I smell?"
MR. BECK: "Fertilizer, madam."
T. IVEY: "For the land's sake!"
MR. BECK: "Yes, ma'am."

VALDOSTA LIGHTING COMPANY

VALDOSTA,

GEORGIA

TELEPHONE SEVENTY

*Electric Light and Power
Ice Manufacturing Cold Storage*

MACKEY JEWELRY COMPANY

*Diamonds, Watches,
Jewelry and Gifts of
All Kinds. Fine Re-
pairing Our Specialty
Established 20 Years*

MACKEY JEWELRY
COMPANY

BANK OF VALDOSTA

VALDOSTA, GEORGIA

Resources - \$1,500,000.00

WE INVITE YOUR ACCOUNT

S. HALL: "Why did Thelma Humphrey drop History?"

A. HUMPHREY: "She was told it would broaden her."

The **GEORGIA-**
VALDOSTA



-FLORIDA CO.
GEORGIA

OUR SPECIALTY "FARMS AND CITY PROPERTY"

We Loan Money
On City Property

Fire Insurance

BUY A HOME IN
VALDOSTA



We Solicit Buyers
For Farm Lands

Hail Insurance

OWN A FARM IN
GEORGIA

If You Want To Sell A Farm: List It With Us

WE ADVERTISE AND SOLICIT IN OTHER STATES TO SECURE GOOD FARMERS

We Are Affiliated With the B. B. SAUNDERS Interests

Telephone 648

OFFICES
OLD EXCHANGE BANK BUILDING

P. O. Box No. 627

A GEORGIA COMPANY

THE GEORGIA-FLORIDA COMPANY

Stewart Candy Co.
VALDOSTA - GEORGIA

*Wholesale Distributors
of*

Baby Ruth	Peanut Bars
Love Nest	Peggy
Nelly Bly	Queen Anne
Handy Andy	Silver Bells
Hersheys Almond	Charm Pops
Hersheys Milk	Milkmaks
Seven-Eleven	Mr. Dooley

Better to Buy a
BUICK

than wish you had

*When Better Automobiles
Are Built BUICK Will
Build Them*

**VALDOSTA BUICK
COMPANY**
VALDOSTA - GEORGIA

FROM BULLETIN BOARD: "Anyone wishing to look at Venus—please see me."
—J. Marie Craig (Sci. teacher).

THE NEW VALDES HOTEL

VALDOSTA'S
HOTEL
PAR-EXCELLENT

Dining Rooms unequaled
for Quality and Service
Private Dining Room for
Dinner Parties and
Banquets

T. C. VANN, MANAGER

Herff-Jones Co.

Manufacturing
Jewelers and
Stationers

INDIANAPOLIS, INDIANA

OFFICIAL JEWELERS FOR
*G. S. W. C. Degree, Normal
and High School Rings*

H. S. CANFIELD, GEORGIA REP.

McElvey-Futch Co.

Wholesale Produce
Fruits, Vegetables

SPECIALIZING IN
CANDIES & VORIES'
Fine Cakes and Crackers

TELEPHONE 447

209 South Patterson Street

VALDOSTA

GEORGIA

S E R V I C E

We realize more and more
everyday that our thoughts
and efforts should be cen-
tered mainly on helping
folks, and that "making
money" should be a sec-
ondary consideration.
From a standpoint of real
desire, experience and
equipment we are in a po-
sition to help you in fur-
nishing that old institu-
tion called HOME.

Register Furniture
Company

VALDOSTA

GEORGIA

SOPH: "Miss Craig, is it true that Brooklyn bridge would fall if a cat walked across it?"

Miss C.: "I don't know; I've been across it several times."

PERMANENT
AND
MARCELL
WAVE

Private Booths

CORN'S Barber Shop

106 PATTERSON ST

For

FACIAL
TREATMENTS
FOR
LADIES

Private Booths

Men, Ladies and Children

10
BARBERS
FOR
MEN and BOYS
ONLY

4
OPERATORS
FOR
LADIES'
BEAUTY
PARLOR

BATHS
5 BATH-TUBS
3 SHOWERS
PRESSING WHILE
YOU WAIT

We Want Every Customer To Feel That This Is
Their Shop Whether

TONSORIAL WORK FOR MEN
BEAUTY PARLOR WORK FOR LADIES
OR
CHILDREN'S WORK IS DONE

*Every One Will Receive Every Attention and Courtesy Possible. We Employ Only
Men With Experience and Knowledge Which Assures You Perfect Satisfaction.*

THE LARGEST SHOP IN THE STATE—SAVE ONE

106 PATTERSON ST.

OPEN 8 A. M.
CLOSES 7.30 P. M.

A. D. CORN, *Proprietor*

Building Steam Heated

J. McREE: "Can you give me an example of high comedy?"

O. MIDDLETON: "Merchant of Venice."

G. McNAIR (giggling): "That's a drama."

WE wish to thank each and every college student and faculty for their patronage of the past and their continued patronage of the future.

Drugs, Patent Medicines,
Cosmetics, Cigars and Sodas

*We specialize in drinks. We are proud to say
that we have "The Cleanest Fount in Town"*

O'QUINN DRUG CO.

"Service Supreme"

PHONE _____

32

MISS CRAIG (illustrating images of mirrors): "You see this image is inverted."

A. LUKE: "But I thought it was supposed to be upside down."

McLarty Motor
Company

Studebaker

PARTS, SALES
AND SERVICE

"This is a Studebaker Year"

TELEPHONE 582

VALDOSTA

GEORGIA

George Peabody
College *for* Teachers

NASHVILLE, TENNESSEE

SUMMER QUARTER, 1925

First Term June 8-July 16

Second Term July 17-August 26

More than three hundred academic and professional courses for the training of teachers and professional leaders are offered in the summer quarter.

The College confers the degrees of Bachelor of Science, Master of Arts and Doctor of Philosophy. Requirements for these degrees are set forth fully in the annual catalog.

If Interested Address the Registrar

THANK YOU



