

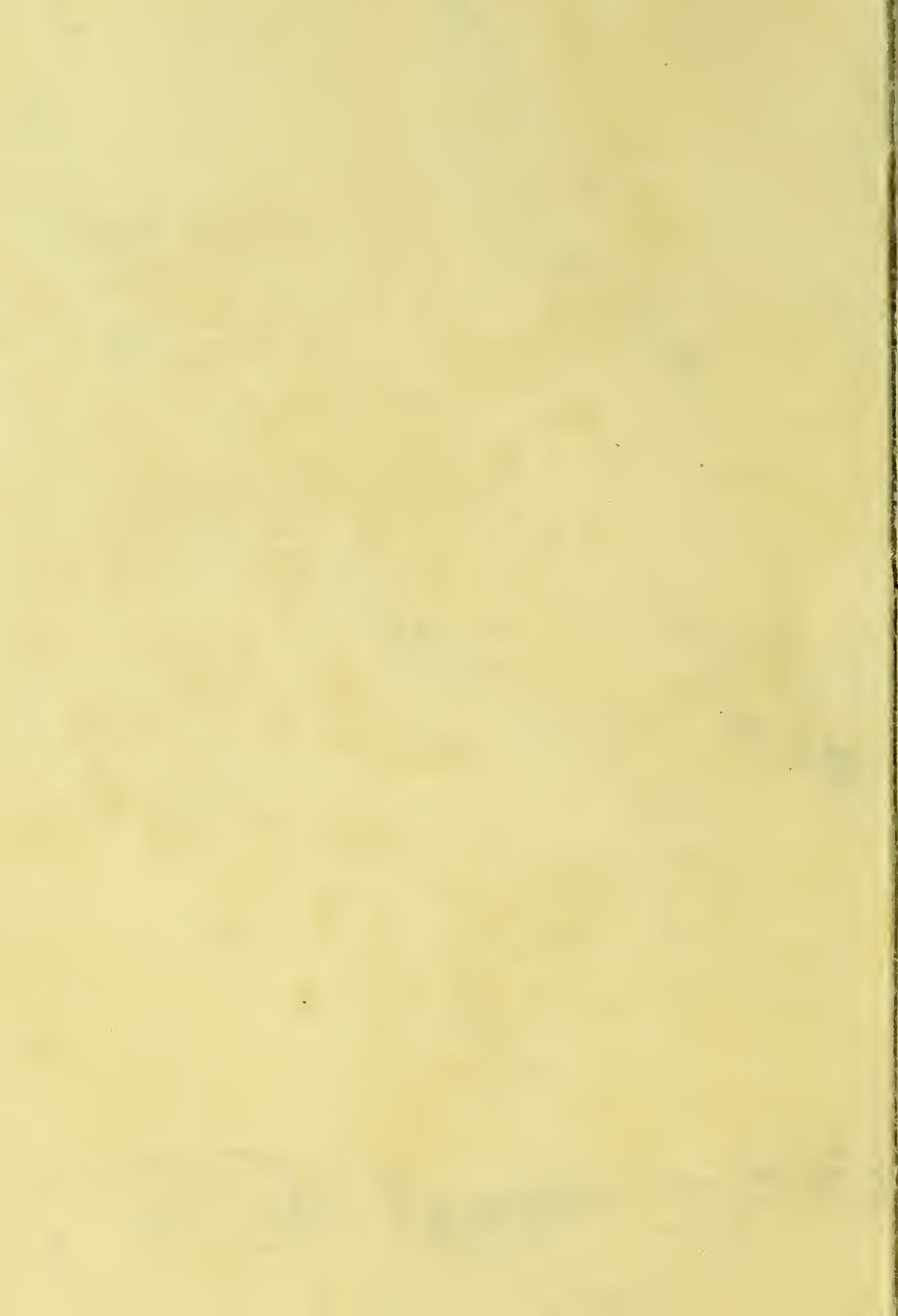


PINE CONE


1927



Compliments  
of the  
Annual Staff







Digitized by the Internet Archive  
in 2014

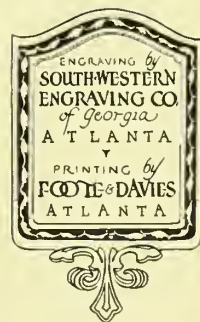
<https://archive.org/details/pinecone192703geor>

The  
Pine  
Cone



1927

Copyright, 1927  
by  
SENIOR CLASS  
GEORGIA STATE WOMAN'S COLLEGE





The  
Pine Cone  
Volume III  
1927



PUBLISHED BY THE SENIOR CLASS  
The Georgia State Womens College  
VALDOSTA, GEORGIA



## DEDICATION

BECAUSE WE RECOGNIZE HER SPIRIT OF  
DEVOTION AND LOYALTY TO ALL STU-  
DENT ACTIVITIES; BECAUSE WE APPRE-  
CIATE AND ADMIRE HER ABILITY TO  
DIRECT AS WELL AS TO INSPIRE; AND  
BECAUSE WE LOVE HER FOR HER OWN  
PERSONALITY, WE, THE SENIOR CLASS  
OF '27, DEDICATE THIS VOLUME OF THE

PINE CONE TO

MISS GERTRUDE GILMER





## FOREWORD!

*“Step out of the misty veil  
Which darkly winds 'round thee;  
Step out of the olden days,  
Thou great Divinity.*

*Across the mental vision  
Passes the godly host,  
That Bragi's melodies  
Made Asgard's proudest boast.*

*Canst thou span the bridge of  
Bifrost,  
The pathway of the gods?  
O name the mighty heroes!  
Draw pictures of the gods.”*



The College  
Administration  
- Classes -  
- Activities -  
- Features -  
Organizations  
Ads & Jokes



## *An Ode*

*O ancient Norsemen, powerful and bright  
And joyous with the joyous youth of yore,  
O ancient Norsemen, for a little light  
Of that which shineth in you evermore,  
To cleanse the newness from our weary eyes,  
And bathe our old world with a new surprise,  
That simple truth might reign o'er sea and shore.*

*O Odin, mighty father of the host  
The primary hero of those crude, real days,  
The example of thy life must not be lost  
Thou far-seeing traveler of untrodden ways;  
A captain of the body and the soul,  
A natural champion of the artist's whole,  
To thee, the father of truth, our thanks we raise.*

—MARY ALICE SINEATH, '27.



## *The College*

*"And wondrous gleamed Valhalla on the heights,  
Her walls shone bright as rows of glittering spears;  
The roof resplendent like great golden shields;  
Hundreds of open gates and welcoming doors  
For myriad warriors from the fields of earth,  
The chosen heroes of the future years."*







*"Where Beauty, mother to the Muses sits  
And comments volumes with her ivory pen."*



*"Where every sight makes music to the eye."*



*"Morning was gleaming with roscate light,  
The air was filled with scent distilled."*



*"Some chief beauty conquering you."*



*"Suddenly the piercing sunbeams  
Burst the clouds illumining all."*



*"Loveliness like a shadow."*



*"Sprang up the mighty trees  
That reared their blessings roofward."*

## *Creation of Norseland*

*In the beginning a great yawning gulf  
With twilight o'erflowing,  
Home of the Mist and the Home of the Fire  
Each in power growing;  
Water from the Home of the Mist ever springing,  
Blasts that the wind from the Gulf's ever bringing,  
Flames that the Home of the Fire's ever flinging,  
In formless mass flowing.*

*Time caused the water from the Mist to grow hard  
From cold blasts a-chilling,  
Tempered by fire the rime began to expand  
The seething void filling;  
Soon from the depths the great mass seemed to move  
The elements about took their place with a shove,  
Out from the formless stepped form from above,  
The chaos a-stilling.*

—MARY ALICE SINEATH, '27.





## *Administration*

*“They call, inviting us above,  
The heroes they bid speed  
To Odin’s glorious halls  
Where they deal out ale and mead.”*





## *The President's Greeting*

**I**T is one of the most interesting experiences of one who has been associated with the college from its beginning, to watch the beginning and development of the various student activities. At first, usually, they begin in a more or less tentative way, gradually find themselves—take their stride, so to speak—and go forward with ever-increasing certainty of purpose and with ever-increasing effectiveness of execution. So began, so have advanced, and so carry on, the May Day Festival, the Christmas Festival, the Student Government Association, the Y. W. C. A., The Pine Branch, and other characteristic student activities. The last, but by no means least, of these activities to begin its course at The Georgia State Womans College is the *Pine Cone*. Indeed, it began its career in a more developed form than did any other student undertaking. Its first issue reflected the greater maturity of the college. It was an excellent product to begin with. The second number of the annual was very properly an improvement on the first. And now appears the third issue. It is confidently to be expected that it will show its gain.

It is a pleasure to me as President of the college to welcome this issue of the *Pine Cone* as one more expression of the resourcefulness, the enthusiasm, the courage, and ability to “put things over” with distinctiveness and finish, which we believe to be a fixed characteristic of the students of the college.

—R. H. POWELL, *President*.

# Faculty



RICHARD HOLMES POWELL  
*President*

NELL MARY GROOM  
*Critic Teacher, Third and Fourth Grades*

NANNIE HAGAN  
*Nurse and Assistant to the Dean of Women*

MARY LOU METCALF  
*Professor and Head of the Department of Physics and Chemistry*

BRUCE LOCKETT  
*Professor and Head of the Department of Mathematics*

MRS. E. H. BECK  
*Director of Boarding Department*

HELEN SHIBLEY  
*Professor of Home Economics and Acting Head of the Department*



# Faculty



JAMES FRANKLIN WOOD  
*Dean and Professor and Head of Department of Education and Philosophy*

LENORA IVEY  
*Professor of Physical Education and Director of the Department*

B. H. HENDERSON  
*Bursar and Bookkeeper*

ALIMAE TEMPLE  
*Instructor in Music*

JAMES R. STOKES  
*Professor and Head of Department of Biology*

LOUISE ANNE SAWYER  
*Professor of Vocal Expression and Director of the Department*

GERTRUDE CORDELIA GILMER  
*Professor and Head of Department of English Language and Literature*



# Faculty



ANNIE POWE HOPPER  
*Dean of Women and Professor of Geography*

JAMES A. DASHER, JR.  
*Teacher of Piano and Pipe Organ*

EFFIE PEARL DEVERS  
*Critic Teacher, First and Second Grades*

LOUISE RAMSEY  
*Professor of Home Economics*

MARTHA DAVIS YOUNGBLOOD  
*Instructor in French and Critic Teacher of High School French*

SARAH JANIE BUSH  
*Professor and Head of Department of Latin*

GLADYS E. WARREN  
*Professor of Music and Director of the Department*



# Faculty



- FRANCES RUTH CARPENTER  
*Professor and Head of Department of Art*
- ANNIE GERTRUDE BRADLEY  
*Critic Teacher, Fifth, Sixth and Seventh Grades*
- EDITH PATTERSON  
*Librarian*
- EUNICE RUSTIN  
*Instructor in English and Critic Teacher of High School English*
- JAMES WELSH PATTON  
*Professor and Head of Department of History and Social Science*
- VERNA SCARBOROUGH  
*Assistant to Dean of Women*
- CLARICE IVEY  
*Instructor in Science and Critic Teacher of High School Science*
- AUGUSTA BELLE RENTZ  
*Secretary to the President*



# *Student Assistants*

*(Two Year Graduates of the Georgia State Woman's College)*

RENA MAE CAMPBELL  
*Assistant to Librarian*

ESTHA FREEMAN  
*Assistant to Librarian*

LUCILE DOWLING  
*Theme Reader in English*

SHIRLEY GASKINS  
*Assistant to Librarian*

ELIZABETH MCREE  
*Assistant in Physical Education*

CHRISTINE MEADOWS  
*Assistant in Education*

MARY ALICE SINEATH  
*Theme Reader in English*

MARY STEWART  
*Assistant to Critic Teacher,  
Fifth, Sixth and Seventh Grades*

MARY SMALL  
*Assistant in Art*

CATHERINE TRULOCK  
*Assistant in Mathematics*

MARIAN WISEMAN  
*Student Inspector of Piano Practice*

FLORENCE BREEN  
*Assistant to Dean of Women*





## *Classes*

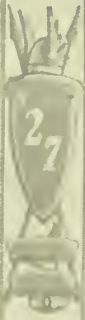
*"They taught the polished rocks to shine  
With air and lineaments divine,  
'Til Odin amazed and half afraid  
The assembled duties surveyed."*





## *Seniors*

*"Then the great powers all went  
to their elevated seats."*



RUTH FOLGER

Savannah, Georgia  
*A.B., Education*

Entered 1922; Y. W. C. A.;  
Phi Lambda Athletic Association;  
Sororian Literary Society;  
Y. W. C. A. Cabinet, '23-'24,  
'24-'25, '25-'26, '26-'27; Vice-  
President Class, '26-'27; Pine  
Branch Staff, '24-'25, '26-'27.

ELSIE GUNN

Rome, Georgia  
*A.B., Science*

Entered 1923; Y. W. C. A.;  
Phi Kappa Athletic Association;  
Argonian Literary Society; Fine  
Arts Club, '26-'27; Philharmonic  
Music Club, '25-'26; Vice-Presi-  
dent Class, '23-'24; Vice-Presi-  
dent Argonian Literary Society,  
'24-'25; Vice-President Phi  
Kappa Athletic Association, '24-  
'25; Y. W. C. A. Cabinet, '24-  
'25, '25-'26, '26-'27; Treasurer  
Argonian Literary Society, '25-  
'26; Vice-President Y. W. C. A.,  
'26-'27; Chairman Program Com-  
mittee Argonian Literary So-  
ciety, '24-'25; President Class,  
'26-'27; Advertising Manager  
*Pine Cone*, '26-'27; Phi Kappa  
Soccer Team, '26-'27; Student  
Court and Council, '26-'27.



CLARE BRAY  
Valdosta, Georgia  
*A.B., Education*

Entered 1923; Valdosta Club; Secretary and Treasurer Valdosta Club, '26-'27; Secretary and Treasurer of Class, '26-'27; *Pine Cone* Staff, '26-'27.

NELLIE BRACEY  
Savannah, Georgia  
*A.B., Primary Education*

Entered 1923; Y. W. C. A.; Phi Lambda Athletic Association; Argonian Literary Society; Secretary-Treasurer Student Government Association, '25-'26; President Argonian Literary Society, '26-'27; Student Council, '26-'27; Assistant Editor-in-Chief *Pine Cone*, '26-'27; Class Play, '24-'25; Philharmonic Club, '25-'26; Vice-President Class, '25-'26.



RENA MAE CAMPBELL

Valdosta, Georgia

*A.B., Science*

Entered 1923; Phi Kappa Athletic Association; Argonian Literary Society, '23-'24, '24-'25; Valdosta Club; Class Play, '24-'25; Secretary Glee Club, '25-'26; President Glee Club, '26-'27; Chairman Program Committee Home Economics Club, '24-'25.

FLORENCE BREEN

Jesup, Georgia

*A.B., Primary Education*

Entered 1923; Y. W. C. A.; Phi Kappa Athletic Association; Argonian Literary Society; Y. W. C. A. Cabinet, '23-'24, '24-'25; Vice-President Y. W. C. A., '24-'25; President Class, '24-'25; Business Manager Class Play, '24-'25; Phi Kappa Soccer Team, '26-'27; President Student Government Association, '26-'27; Student Court and Council, '24-'25, '26-'27; Fine Arts Club, '26-'27.



CHRISTINE MEADOWS

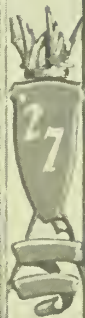
Atlanta, Georgia  
*A.B., Education*

Entered 1922; Y. W. C. A.; Phi Kappa Athletic Association; Sororian Literary Society; Sock and Buskin Dramatic Club; President Sororian Literary Society, '23-'24; Inter-Society Debater, '23-'24; Secretary-Treasurer Sock and Buskin Dramatic Club, '23-'24; Class Play, '23-'24; Y. W. C. A. Cabinet, '23-'24, '26-'27; Student Council, '23-'24; Editor-in-Chief *Pine Branch*, '25-'26; Secretary-Treasurer Alumnae Association, '25-'26; Phi Kappa Cheer Leader, '26-'27; Editor-in-Chief *Pine Cone*, '26-'27.

SARA MANDEVILLE

Jesup, Georgia  
*A.B., Education*

Entered 1923; Y. W. C. A.; Phi Kappa Athletic Association; Argonian Literary Society; Sock and Buskin Dramatic Club, '25-'26, '26-'27; Y. W. C. A. Cabinet, '23-'24; Class Play, '24-'25; Philharmonic Music Club, '25-'26; Phi Kappa Basketball Team, '24-'25, '25-'26, '26-'27; Phi Kappa Soccer Team, '26-'27; President Phi Kappa Athletic Association, '24-'25; President Class, '25-'26; Program Chairman Argonian Literary Society, '25-'26; Inter-Society Debater, '25-'26; Vice-President Argonian Literary Society, '26-'27; Secretary-Treasurer Student Government Association, '26-'27; *Pine Cone* Staff, '26-'27; Editor-in-Chief *Pine Branch*, '26-'27; Student Court and Council, '25-'26.



MARY ALICE SINEATH

Adel, Georgia

*A.B., Liberal Arts*

Entered 1924; Y. W. C. A.; Phi Kappa Athletic Association; Sororian Literary Society; Soel and Buskin Dramatic Club, '25-'26, '26-'27; Philharmonic Music Club, '25-'26; Vice-President Sororian Literary Society, '24-'25; Inter-Society Debater, '24-'25; President Sororian Literary Society, '25-'26; Phi Kappa Basketball Team, '25-'26, '25-'27; Phi Kappa Soccer Team, '26-'27; Student Council, '25-'26, '26-'27; Literary Editor *Pine Cone*, '26-'27; President Y. W. C. A., '26-'27.

EMMA MOORE

Savannah, Georgia

*A.B., Fine Arts*

Entered 1923; Y. W. C. A.; Phi Kappa Athletic Association; Argonian Literary Society; Fine Arts Club; Vice-President Class, '24-'25; *Pine Branch* Staff, '24-'25; President Argonian Literary Society, '25-'26; President Phi Kappa Athletic Association, '26-'27; Vice-President Fine Arts Club, '26-'27; Associate Art Editor *Pine Cone*, '26-'27.





MARY SMALL

Valdosta, Georgia

*A.B., Fine Arts*

Entered 1921; Phi Kappa Athletic Association; Valdosta Club; Fine Arts Club; Sock and Buskin Dramatic Club, '26-'27; President Valdosta Club, '26-'27; Associate Art Editor *Pine Cone*, '26-'27; Student Council, '26-'27.

ANNE SMITH

Brunswick, Georgia

*A.B., Physical Education*

Entered 1923; Y. W. C. A.; Phi Kappa Athletic Association; Argonian Literary Society; Sock and Buskin Dramatic Club, '25-'26, '26-'27; Fine Arts Club, '26-'27; Philharmonic Music Club, '25-'26; Class Play, '24-'25; *Pine Branch Staff*, '25-'26; President Phi Lambda Athletic Association, '26-'27; Y. W. C. A. Cabinet, '26-'27; Phi Lambda Coach, '26-'27; Business Manager *Pine Cone*, '26-'27.



MAY LILLIE TOUCHTON

Lake Park, Georgia  
*A.B., Science*

Entered 1923; Y. W. C. A.;  
Phi Kappa Athletic Association;  
Argonian Literary Society.

LEOLA SMITH

Valdosta, Georgia  
*A.B., Education*

Entered 1923; Y. W. C. A.,  
'23-'24, '25-'26; Phi Kappa Ath-  
letic Association; Argonian Lit-  
erary Society, '23-'24, '24-'25;  
Valdosta Club, '25-'26, '26-'27.



## *Juniors*

*“Fair charioteers are Sol and Mani  
Chased by herded wolves, bold only to pursue;  
As across the paths of gods they guide their  
gilded car of day,  
Giving light to the sons of men.”*



SARA THOMAS  
Adel, Georgia  
*A.B., Education*

ESTHA FREEMAN  
Camilla, Georgia  
*A.B., Liberal Arts*

DOROTHY GLASCOCK  
Waycross, Georgia  
*A.B., Primary Education*

KATHERINE BLACKSHEAR  
Sarasota, Florida  
*A.B., Education*



LUCILE DOWLING  
Jesup, Georgia  
*A.B., Liberal Arts*

SHIRLEY GASKINS  
Hazlehurst, Georgia  
*A.B., Education*

MARY BELLE ELLIS  
Statesboro, Georgia  
*A.B., Education*

SARA HALL  
Statesboro, Georgia  
*A.B., Physical Education*



FRANKIE HARTSFIELD  
Tryon, North Carolina  
*A.B., Liberal Arts*

ELIZABETH McREE  
Valdosta, Georgia  
*A.B., Physical Education*

LOIS SHARPE  
Vidalia, Georgia  
*A.B., Liberal Arts*

NORMA MIDDLETON  
Darien, Georgia  
*A.B., Liberal Arts*



MARY STEWART  
Dixie, Georgia  
*A.B., Primary Education*

LORENE TITTLE  
Valdosta, Georgia  
*A.B., Education*

MARIAN WISEMAN  
Adel, Georgia  
*A.B., Education*

CATHERINE TRULOCK  
Whigham, Georgia  
*A.B., Liberal Arts*

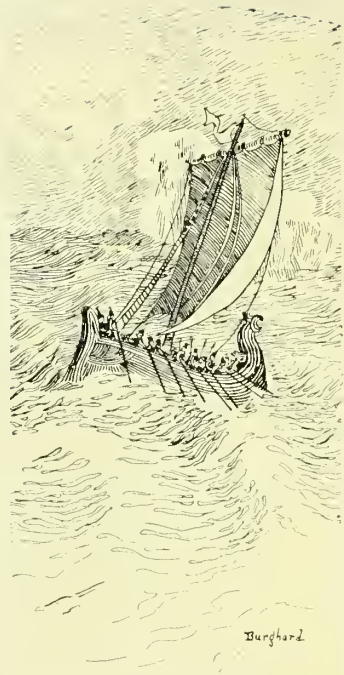
## *Alma Mater*

*'Mong the stately pines of Georgia,  
Glorious to the view,  
Stands our noble Alma Mater  
Basking 'neath the blue.*

*Alma Mater, thee we honor,  
Praises never fail,  
For thy fame shall never perish,  
Red and Black, all hail!*

*Alma Mater's loving daughters  
We will ever be,  
Always to thy heart returning  
G. S. W. C.*





## *Sophomores*

*"I see a ship come sailing  
With warriors bold aboard."*



LOUISE HARDEN  
Thomasville, Georgia

MATTIE BAKER  
Thomasville, Georgia

MARY NELL FITTS  
Americus, Georgia

LOUISE BENTON  
Donalsonville, Georgia

ZACKIE CARMACK  
Vienna, Georgia

MAYBELLE BOLLINGER  
Valdosta, Georgia

SUSAN BEDELL  
Woodbine, Georgia

MARY BLACKMAN  
Cordele, Georgia



CATHERINE BRUCE  
Valdosta, Georgia

CORA BURGHARD  
Macon, Georgia

MARGARET BRADLEY  
Valdosta, Georgia

MILDRED CASSELS  
Cairo, Georgia

SUSIE MAE BRINSON  
Brooklet, Georgia

EUNICE CHUTE  
Unadilla, Georgia

EUNICE CASSELS  
Cairo, Georgia

LAURA CLEMENTS  
Morgan, Georgia



DOROTHY DASHER  
Guyton, Georgia

RENA MAE DAVIS  
Valdosta, Georgia

ESTELLE DAVIS  
Blackshear, Georgia

MERRI NELL DAVIS  
Wrightsville, Georgia

HAZEL DEAN  
Smithville, Georgia

RUBY DUGGAN  
Chester, Georgia

HAZEL FURLONG  
Brunswick, Georgia

MARY EVA FAMBROUGH  
Boston, Georgia



MARY V. GRAMLING  
Brunswick, Georgia

NADINE HEATH  
Boston, Georgia

CATHARYN GIDDENS  
Arlington, Georgia

JULIA HEISLER  
Thomasville, Georgia

CARRIE HART  
Barwick, Georgia

HELEN HIGHTOWER  
Valdosta, Georgia

MARY GROOVER  
Lake City, Florida

LOIS HIERS  
Lake Park, Georgia



VIRGINIA HIGHTOWER  
Valdosta, Georgia

IRELLE JOHNSON  
Valdosta, Georgia

ESTHA HOLLAND  
Hawkinsville, Georgia

LYNETTE JENNINGS  
Valdosta, Georgia

VONCILE JOHNSON  
Valdosta, Georgia

CLYDE JONES  
Savannah, Georgia

EMMA JOE JOLLY  
Smithville, Georgia

ELLIE JOINER  
Statesboro, Georgia



VELMA KENNEDY  
Coolidge, Georgia

MILDRED LAVENDER  
Columbus, Georgia

EVELYN KIRKLAND  
Waycross, Georgia

CATHERINE LEE  
Dawson, Georgia

ANNA DEAN KNAPP  
Boston, Georgia

MAGGIE LAWSON  
Valdosta, Georgia

MILDRED LARSEN  
Valdosta, Georgia

MARY LOU LEE  
Valdosta, Georgia



GEORGIA LITTLEFIELD  
Folkston, Georgia

NINA McELVEN  
Brooklet, Georgia

CLIO MANSFIELD  
Morgan, Georgia

ELIZABETH MILLS  
Ochlochree, Georgia

MARY LOUISE MAXWELL  
Calvary, Georgia

OTHA MINICK  
Statesboro, Georgia

MARTHA MINTER  
Cusseta, Georgia

MARY LEE MORAN  
Waycross, Georgia





WILLIE MAE MORTON  
Waycross, Georgia

ALICE PERLAM  
Waycross, Georgia

KATHERINE MYRICK  
Thomasville, Georgia

HELEN RYON  
Hinesville, Georgia

LUCILE NIX  
Jesup, Georgia

LOUISE SASSER  
Waycross, Georgia

MARY BETH PARRISH  
Nashville, Georgia

SILARON SATTERFIELD  
Arco, Georgia



BESSIE YOUNG  
Valdosta, Georgia

JEANETTE SIMS  
Leslie, Georgia

EDNA SINEATH  
Adel, Georgia

INEZ WARLICK  
Macon, Georgia

IRENE TAYLOR  
Pelham, Georgia

HAZEL STEVENS  
Sale City, Georgia

MARIE WOOD  
Pinhurst, Georgia

HELEN SEALS  
Troy, Alabama



## *Freshmen*

*“From haunted spring and grassy ring  
Troop goblin, elf and fairy;  
And the kelpie must flit from the black bog-pit,  
And the brownie must not tar, y.”*



SARA MAUDE STEWART  
VIRGINIA MAJETTE  
MARY WILLIS NOBLES  
MARY ALEXANDER  
DERRILLE ARMSTRONG  
LOUISE ARMSTRONG

PEARL BELCHER  
THELMA BALL  
SADIE BENNETT  
GENEVIEVE BOLLINGER  
EVELYN BLANTON  
BOBBIE MAE BOOTH



FRANCES BORLAND  
ELIZABETH BORING  
ANNIE MAE BROWER  
FERDA BRUCE  
CARLEEN BURKETT  
GLADYS BUTLER

JANIE COKER  
FRANCES CANNON  
LOUISE CAUSEY  
GLADYS CHAMBLESS  
IVA CHANDLER  
EVELYN CALHOUN



MARY FRANCES CORNWALL

OLA COOK

SARA JULIA COX

SARA CRANFORD

VALLIE DALTON

NELL CROCKER

RAMELLE DAUGHERTY

KATHERINE DAVIES

LILLIAN DRAKE

JULIA DEVEREAUX

ELEANOR DIXON

ETHEL DENT



LILIAN EXUM  
LOUISE ETHERIDGE  
ANNIE MAUDE FERREL  
MYRTLE FOLSOM  
LOUISE FORBES  
ALINE FUTCH

MARGUERITE FORD  
DOROTHY GRAINGER  
WILLIE BELLE HARRELL  
DORIS HITCHCOCK  
CECIL HIERS  
MARTHA LYNN HERRING



LOUISE HOLCOMBE  
FRANCES HOLMES  
AGNES HOUSTON  
BERTHA HUDSON  
JESSIE JOHNSON  
TALLULAH JOHNSON

MERLE JOHNSON  
DOROTHY JONES  
TENNYS JONES  
MARGARET LEWIS  
MARIAN LAING  
MYRTLE JORDAN





CATHRYN McREE  
MILDRED McDONALD  
DOROTHY LYLE  
BEATRICE MEEKS  
LUCILE MOSELY  
JULIA MAE MURRAY

RUTH NORMAN  
RUTH NOWELL  
MARIE PARIHAM  
ALICE PARKER  
NANNIE POPE  
KATHERINE PATTERSON



MAYILE POWELL  
BLANCHE PRESCOTT  
AGNES RANSOME  
RUTH RANSOME  
MARY F. ROBERTSON  
ETHEL ROBINSON

MARGARET ROBINSON  
EDNA ROGERS  
LUCY ROSSMAN  
KATHERINE SAWYER  
PAULINE SCHEIDER  
JANET SCARBOROUGH



AUDREY SHELFER  
MARY SUE SCOTT  
VELMA SIRMANS  
RUTH SLADE  
RUTH SMITH  
MINNIE LEE STRICKLAND

MYRTLE STOKES  
KATHILEEN STRIPLING  
MAYE DE LOIS SUMMERLIN  
HAZEL TAYLOR  
RITA TAYLOR  
ELIZABETH TEASLEY



OPAL THORNTON  
MILDRED THIGPEN  
VIRGINIA TOUCHTON  
AGNES TRULOCK  
WEEDA TURNER

MYRTLE VICK  
MYRTICE WADE  
GLADYS WATSON  
LUCILE WOOD  
VIVIAN WALTON



## *Activities*

*"Come, let us go while we are in our prime,  
And take the harmless folly of the time."*





SOCK & BUSKIN  
CLUB





SOPHOMORE  
PLAY







CLASS  
DAY





CHRISTMAS  
FESTIVAL





CHRISTMAS  
FESTIVAL



















CAMPUS  
CELEBRITIES





CAMPUS  
CELEBRITIES







TENNIS &  
OTHER SPORTS







COLLEGE  
DIGNITARIES









## *Featuring*

The Three Fates— <i>Most Popular</i>	{ Past Present Future	HELEN SEALS MARY ALICE SINEATH ELSIE GUNN
Freya— <i>Most Talented</i> . . . . .	CORA BURGHARD	Gerda— <i>Most Beautiful</i> . . . . .
Frigga— <i>Miss G. S. W. C.</i> . . . . .	FLORENCE BREEN	Sol— <i>Most Cheerful</i> . . . . .
Iduna— <i>Most Attractive</i> . . . . .	ANNIE MAE BROWER	Brunhild— <i>Most Athletic</i> . . . . .
Saga— <i>Most Intellectual</i> . . . . .	CATHERINE TRULOCK	ANNE SMITH





The Three Fates  
HELEN SEALS, MARY ALICE SINEATH,  
ELSIE GUNN



*Freya—Favored Daughter of Asgard*  
CORA BURGHARD



Frigga—*Queen of the Asas*  
FLORENCE BREEN



*Iduna—Goddess of Youth*  
ANNIE MAE BROWER



Gerda—*Fairest Maid of Asgard*  
EVELYN CALHOUN



*Sol—The Sun Goddess*  
CHRISTINE MEADOWS





Brunhild—*The Warrior Maid*  
ANNE SMITH



Saga—*H'isest of the Asgards*  
CATHERINE TRULOCK



## *Organizations*

*"Fresh vigor fills their veins."*





# Alumnæ Association

## OFFICERS

- MISS EDITH PATTERSON . . . . . *President*
- MRS. WILLIAMS . . . . . *Vice-President*
- MISS EMMA MOORE . . . . . *Secretary-Treasurer*
- MISS MARTHA YOUNGBLOOD . . . . . *Corresponding Secretary*
- MISS AUGUSTA BELLE RENTZ . . . . . *Corresponding Secretary*





# Student Government Association

FLORENCE BREEN, *President*

## COUNCIL

- SARA THOMAS . . . . . *President Junior Class*
- ELSIE GUNN . . . . . *President Senior Class*
- NELLIE BRACEY . . . . . *President Argonian Literary Society*
- SARA MAUDE STEWART . . . . . *President Freshman Class*





# *Student Government Association*

SARA MANDEVILLE, *Secretary-Treasurer*

## COUNCIL

- MARY ALICE SINEATH . . . . . *President Y. W. C. A.*
- LOUISE HARDEN . . . . . *President Sophomore Class*
- LUCILLE DOWLING . . . . . *President Sororian Literary Society*





# Y. W. C. A.

## OFFICERS

MARY ALICE SINEATH . . . . .	<i>President</i>
ELSIE GUNN . . . . .	<i>Vice-President</i>
CATHERINE TRULOCK . . . . .	<i>Treasurer</i>
SARA THOMAS . . . . .	<i>Secretary</i>

## CABINET

HELEN RYON . . . . .	<i>Pianist</i>	EVELYN KIRKLAND . . . . .	<i>Bulletin Board</i>
RUTH FOLGER . . . . .	<i>Bible Study</i>	GEORGIA LITTLEFIELD . . . . .	<i>Library</i>
CHRISTINE MEADOWS . . . . .	<i>Religious Education</i>		







# Y. W. C. A.

SUSAN BEDELL, *Undergraduate Representative*

## CABINET

NELLIE BRACEY . . . . .	<i>World Fellowship</i>
MILDRED LAVENDER . . . . .	<i>Country Store</i>
MARY BELLE ELLIS . . . . .	<i>Room</i>
ESTHA FREEMAN . . . . .	<i>Social Service</i>
ANNE SMITH . . . . .	<i>Social Standards</i>





## *Pine Branch*

SARA MANDEVILLE . . . . .	<i>Editor-in-Chief</i>
LUCILLE DOWLING . . . . .	<i>Assistant Editor-in-Chief</i>
MILDRED LAVENDER . . . . .	<i>Local Editor</i>
MARY V. GRAMLIN . . . . .	<i>Joke Editor</i>
MARY WILLIS NOBLES . . . . .	<i>Sororian Society Reporter</i>
LUCILE NIX . . . . .	<i>Athletic Editor</i>
CATHERINE TRULOCK . . . . .	<i>Exchange Editor</i>





## *Pine Branch*

- SHIRLEY GASKINS . . . . . *Business Manager*  
 CORA BURGHARD . . . . . *Assistant Business Manager*  
 RUTH FOLGER . . . . . *Y. W. C. A. Editor*  
 MARY NELL FITTS . . . . . *Argonian Society Reporter*  
 GUSSIE BELLE RENTZ . . . . . *Alumnae Editor*  
 LOUISE BENTON . . . . . *Assistant Business Manager*





# Pine Cone

- CHRISTINE MEADOWS . . . . . *Editor-in-Chief*
- NELLIE BRACEY . . . . . *Assistant Editor-in-Chief*
- EMMA MOORE . . . . . *Associate Art Editor*
- MARY SMALL . . . . . *Associate Art Editor*
- CLARE BRAY . . . . . *Joke Editor*





# Pine Cone

ANNE SMITH . . . . . *Business Manager*  
 MARY ALICE SINEATH . . . . . *Literary Editor*  
 ELSIE GUNN . . . . . *Advertising Manager*  
 SARA MANDEVILLE . . . . . *Activities Editor*





# Argonian Literary Society

## OFFICERS

- NELLIE BRACEY . . . . . *President*  
 SARA MANDEVILLE . . . . . *Vice-President*  
 MILDRED LAVENDER . . . . . *Secretary*  
 MARY LEE MORAN . . . . . *Treasurer*





## *Argonian Literary Society*

EDNA SINEATH, *Chairman Program Committee*

### DEBATERS

MILDRED LAVENDER

LOUISE BENTON

SUBJECT FOR DEBATE: *Resolved, That the School of Thought as Typified by H. L. Mencken Is a Harmful Influence in American Life.*

ARGONIANS: *Negative*





## *Sororian Literary Society*

### OFFICERS

- LUCILLE DOWLING . . . . . *President*  
 KATHERINE BLACKSHEAR . . . . . *Vice-President*  
 FRANKIE HARTSFIELD . . . . . *Secretary*  
 SARA HALL . . . . . *Treasurer*







## *Sororian Literary Society*

LOIS SHARPE, *Chairman Program Committee*

### DEBATERS

NORMA MIDDLETON

ESTHA FREEMAN

SUBJECT FOR DEBATE: *Resolved, That the School of Thought as Typified by H. L. Mencken Is a Harmful Influence in American Life.*

SORORIANS: *Affirmative*

Affirmative Won





# Glee Club

## OFFICERS

RENA MAE CAMPBELL . . . . . *President*

CORA BURGHARD . . . . . *Secretary*

HAZEL FURLONG . . . . . *Treasurer*





# Glee Club

MISS ALIMAE TEMPLE, *Director*

## PERSONNEL

### *First Sopranos*

HENRIETTA ARMSTRONG  
RAMELLE DAUGHERTY

LOUISE ETHERIDGE  
MARY V. GRAMLIN  
IDORIS HITCHCOCK

MARY FRANCES ROBERTSON  
HELEN SEALS  
MILDRED THIGPEN

VIRGINIA TOUCHTON  
BESSIE YOUNG

### *Second Sopranos*

MAYBELLE BOLLINGER

DOROTHY DASHER  
LILLIAN DRAKE

LOIS HIERS  
TENNYS JONES

VELMA SIRMANS

### *Altos*

DERRILL ARMSTRONG  
CORA BURGHARD

RENA MAE CAMPBELL  
FRANCES CORNWALL

MARY NELL FITTS  
HAZEL FURLONG

MARTHA YOUNGBLOOD





# Phi Lambda Athletic Association

## OFFICERS

- ANNE SMITH . . . . . *President*
- KATHERINE MYRICK . . . . . *Vice-President*
- LOIS SHARPE . . . . . *Secretary-Treasurer*
- HELEN SEALS . . . . . *Cheer Leader*





# Phi Kappa Athletic Association

## OFFICERS

- EMMA MOORE . . . . . *President*
- MYRTLE VICK . . . . . *Vice-President*
- LUCILE NIX . . . . . *Secretary-Treasurer*
- CHRISTINE MEADOWS . . . . . *Cheer Leader*





# Valkyries

## OFFICERS

- THELMA CARTER . . . . . *President*  
 PAULINE FORBES . . . . . *Vice-President*  
 ELIZABETH BOYD . . . . . *Secretary-Treasurer*





# Argonauts

## OFFICERS

- MARGARET COURTNEY . . . . . *President*  
 ZYLPHA BOWMAN . . . . . *Vice-President*  
 MARY WYCHE McREE . . . . . *Secretary-Treasurer*





# Philharmonic Music Club

## OFFICERS

- HELEN SEALS . . . . . *President*
- LOIS HIERS . . . . . *Vice-President*
- MARY ALEXANDER . . . . . *Secretary-Treasurer*







## *Fine Arts Club*

### OFFICERS

- CLIO MANSFIELD . . . . . *President*  
 EMMA MOORE . . . . . *Vice-President*  
 ANNA DEAN KNAPP . . . . . *Secretary-Treasurer*





## *Sock and Buskin Club*

### OFFICERS

- MAYBELLE BOLLINGER . . . . . *President*  
 LOIS SHARPE . . . . . *Vice-President*  
 LOUISE BENTON . . . . . *Secretary-Treasurer*





## *Home Economics Club*

### OFFICERS

- |                                |                       |
|--------------------------------|-----------------------|
| MARIAN WISEMAN . . . . .       | <i>President</i>      |
| KATHERINE BLACKSHEAR . . . . . | <i>Vice-President</i> |
| DOROTHY GLASCOCK . . . . .     | <i>Secretary</i>      |
| IVA CHANDLER . . . . .         | <i>Treasurer</i>      |





# Valdosta Club

## OFFICERS

- MARY SMALL . . . . . *President*  
 EMILY DALTON . . . . . *Vice-President*  
 CLARE BRAY . . . . . *Secretary-Treasurer*





## *Ads and Jokes*

*"All pranks that fall  
On Odin's throne  
Can be traced to Loki base."*

# PATRONS' PAGE

The Abattoir Co.  
The Acorn Store, Inc.  
H. Abrahams, Jeweler  
Benson Dry Cleaners  
W. H. Briggs Hardware Co.  
Bank of Valdosta  
Blackburn's Studio  
Breedlove  
Brown & Farmer Barber Shop  
Taylor Buick Co.  
Central Service Station  
Colonial Tea Room  
A. Converse Co.  
Citizens & Southern Bank  
City Grocery  
A. H. Clark  
California Fruit Co.  
W. J. Davis Furniture  
Daniel Ashley Hotel & Coffee Shop  
Daniel Ashley Pharmacy  
Davis Bros. & Co.  
Electric Supply Co.  
Economy Electric Co.  
Finley Machinery Co.  
The Famous Store  
Freeland Motor Co.  
First National Bank  
Friedlander Brothers  
Georgia State Woman's College  
Glisson Motor Co.  
Griffin & Sons  
The Green Shop  
Herff-Jones Co.  
F. B. Harris Co.  
Ingram Drug Co.  
W. L. Jones Meat Market  
Turner Jones Shoe Co.  
Jackson Bros. Lumber Co.  
Kramer-Kesting Co.  
Lowndes Drug Co.  
Larsen-Forbes Hardware Co.  
Miller Transfer  
Mathis & Youmans Co.

McLarty Motor Co.  
Mackey Jewelry Co.  
McElvey-Futch Co.  
McRae's Boot Shop, Inc.  
Oldsmobile Motor Co.  
J. L. Oliver's Son  
W. M. Oliver & Co.  
The Ousley Co.  
O'Quinn Drug Co.  
Palace Theatre  
Proctor Furnishing Co.  
Paine Hardware Co.  
A. S. Pendleton Co.  
Piggly-Wiggly  
Pinkston's  
A. A. Parrish Co.  
Robins Limited, Inc.  
Reid & McCrary Co.  
Roscoe Rouse  
Register Furniture Co.  
Ritz Theatre  
Stevens Nash Co.  
Strickland Hardware Co.  
Sineath Feed Co.  
Sweat's Pharmacy  
Stewart Ready-to-Wear  
Star Laundry  
Southern Stationery Co.  
Smith Drug & Sced Co.  
Stump Brothers  
Thompson & Girardin  
Vinson Drug Store  
Valdes Hotel  
Valdosta Gas Co.  
Valdosta Builders Co.  
C. C. Varnedoe Co.  
Valdosta Baking Co.  
West Motor Co., Inc.  
White House Cafe  
The Woman's Shop  
Mrs. C. Whittington  
Yearty Drug Co.



*B O O S T*  
*V A L D O S T A*



*V A L D O S T A*  
*B O O S T S*  
*T H E C O L L E G E*



*Nothing that you can give those who are near and dear will  
please them more than your photograph . . . .  
and with each passing year these treasured  
records become more precious.*



*Photographs Live Forever*



B L A C K B U R N



Photographer for 1927 Pine Cone



VALDOSTA,

::

GEORGIA



# THE GEORGIA STATE WOMAN'S COLLEGE

AT VALDOSTA



I am happy to use this page as an advertisement. But the real advertisement of the college is the book itself—the Annual. A college is more perfectly revealed through its student activities than in any other way. This college is happy to be so revealed—a livable, lovable, effective organization of livable, lovable, effective people. : : :



# THE PALACE THEATRE

HOME OF GOOD PICTURES

MUSIC BY ORCHESTRA

S. Patterson St.,

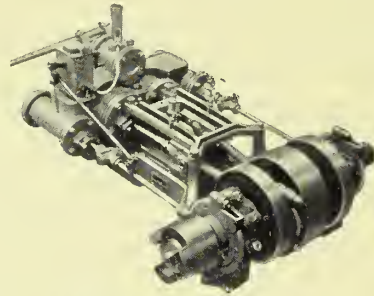
Valdosta, Georgia

---

---

## “LIGHTNING TWIN ENGINES”

■  
*Saw Mill Carriage Feed*



■  
**FINLEY MACHINERY COMPANY**

VALDOSTA, GEORGIA

---

---

## JACKSON BROS. LUMBER CO.

MANUFACTURERS OF

**YELLOW PINE LUMBER**

EDGE GRAIN FLOORING A SPECIALTY

W. SAVANNAH AVE.,

VALDOSTA, GA.

*"NOT ONLY A DESSERT, BUT A FOOD"*

**B R E E D L O V E ' S**

**DELICIOUS ICE CREAM**



*Health and Happiness  
In Every Spoonful*



VALDOSTA,

::

GEORGIA

# MATHIS AND YOUMANS

PIANOS -- VICTROLAS

AND EVERYTHING IN MUSIC

VALDOSTA,

::

GEORGIA

---

*FOR ECONOMICAL TRANSPORTATION*

*for Economical Transportation*



**GLISSON MOTOR COMPANY**

*"SERVES YOU RIGHT"*

*Chevrolet Sales and Service*

118 W. Hill Avenue

Telephone 526

VALDOSTA,

::

GEORGIA

# TAYLOR BUICK CO., INC.



VALDOSTA

::

QUITMAN

---

## SMITH DRUG & SEED COMPANY

*Prescriptions*

*Toilette Requisites*

123 : PHONES : 1077

# A. CONVERSE COMPANY

## *Better Luggage For Less*

HARTMAN WARDROBE TRUNKS  
AND LIKELY LUGGAGE FOR  
EVERY PURSE AND PURPOSE

VALDOSTA,

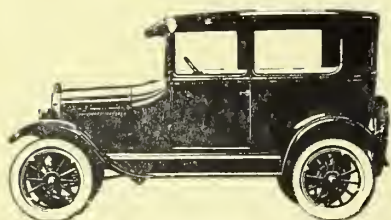
::

GEORGIA

---

## WEST MOTOR CO., INC.

*Lincoln --- Ford --- Fordson*



The TUDOR

SERVICE  
—and—  
SALES



The ROADSTER

144 : PHONES : 145

# TRADITION



TRADITION · inspires · every  
SWE CO · craftsman · to  
give · to · every · detail · of · the  
engraving · art · a · painstaking  
patient · attention · that · lends  
precious · quality · to · his  
workmanship

**SOUTHWESTERN  
ENGRAVING COMPANY**  
FORT WORTH · HOUSTON · DALLAS  
WICHITA FALLS · TULSA · ATLANTA





C. C. VARNEDOE & COMPANY



*Valdosta's Store Dependable*



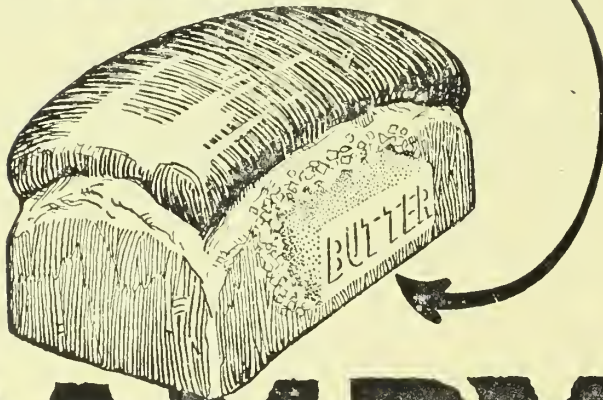
Women's Apparel  
and Accessories

VALDOSTA,

::

GEORGIA

It's the  
*Butter* that  
makes it  
better



# BAMBY BREAD



Valdosta Baking Co.

# THE WOMAN'S SHOP

## *Correct Dress For Women*

*EXCLUSIVE THOUGH NOT EXPENSIVE*

DANIEL ASHLEY HOTEL

VALDOSTA, GA.

---

## F. B. HARRIS COMPANY

### *Wholesale Bananas*

THOMASVILLE, GA.

#### *BRANCHES:*

ALBANY, GA.

FITZGERALD, GA.

COLUMBUS, GA.

VALDOSTA, GA.

DAWSON, GA.

DOTHAN, ALA.

# THE CITIZENS & SOUTHERN BANK

VALDOSTA, GEORGIA

*NO ACCOUNT TOO LARGE—NONE TOO SMALL*

---

---

## McElvey-Futch Company

Wholesale Produce, Fruits, Vegetables, Candies and Cakes  
317-319 South Patterson Street

Telephone No. 447

Valdosta, Ga.

---

---

## Vinson Drug Store

*HEADQUARTERS FOR COLLEGE GIRLS*

Patterson Street,

Valdosta, Ga.

---

---

*"TAKE PAINS IN BUYING YOUR HARDWARE"*

## PAINE HARDWARE COMPANY

EVERYTHING IN HARDWARE AND SPORTING GOODS

135 N. Ashley St.

Valdosta, Ga.

Phone 800

---

---

SMALL FARMS FOR SALE

*EASY PAYMENTS*

## ROBINS LIMITED, INC.

Cor. Ashley and Central

Valdosta, Ga.

# STAR LAUNDRY

*French Dry Cleaning*

*Pleating -- Dyeing*

*SPECIAL ATTENTION TO PARCEL POST SHIPMENTS*

VALDOSTA,

::

GEORGIA

---

---

## STEVENS NASH COMPANY

*WILLARD STORAGE BATTERIES*

*FALLS - TIRES*

Phone 96

::

Valdosta, Ga.

---

---

## REID & McCRARY

*ELECTRICAL CONTRACTORS AND DEALERS*

*WESTINGHOUSE AGENTS*

126 W. Central Ave.,

:

Valdosta, Ga.

O'QUINN DRUG COMPANY



*SERVICE SUPREME*



PHONE 32



THE BUSIEST FOUNT IN TOWN

# THE VALDOSTA ABATTOIR CO.

OFFERS to the public the advantages of a modern killing plant where carcasses are subjected to rigid inspection before and during slaughter for disease, where city water, steam, concrete floor, sewerage, and screened hanging room are available.

We believe in the future of South Georgia and will do our part toward attracting desirable and progressive people to come and live with us.

We recommend South Georgia and Valdosta to all who are interested in living in the best section among the best people in the world.

---

## STEWART'S

*Ready-to-Wear*



*FEATURING SMART WEARABLES*

*FOR LADIES AND MISSES*



VALDOSTA,

::

GEORGIA

# COLONIAL TEA ROOM

*HOME COOKING AND PROMPT SERVICE*

Valdosta,

::

Georgia

---

---

ASK FOR THE PILOT BRAND

*Uniform Waist, Gym Bloomers, Middy Blouses, Khaki Outfits  
Knickers*

**The Kramer-Kesting Company,**

Baltimore, Md.

---

---

**A. H. Clark, Hatter**

309 S. Patterson St.,

Valdosta, Georgia

---

---

## BANK OF VALDOSTA

RESOURCES \$1,400,000.00

*WE INVITE YOUR ACCOUNT*

---

---

## THE NEW VALDES HOTEL

*VALDOSTA'S HOTEL PAR-EXCELLENT*

*Dining Rooms Unequaled for Quality and Service*

Private Dining Rooms for Dinner Parties and Banquets

T. C. VANN, *Manager*



# BLANTON GROCERY STORE

---

*All Fancy Groceries*

---

ASHLEY STREET

PHONE 66

WE DELIVER

---

---

## J. W. PINKSTON

*Dry Goods, Hosiery, Notions*

---

*READY-TO-WEAR FOR LADIES AND CHILDREN*

---

VALDOSTA,

::

GEORGIA

# VIKING TIRES

WILL GIVE YOU MANY A GOOD TURN

*They Are Fully Guaranteed*

—BY THE—

## CENTRAL SERVICE STATION

Washing

Greasing

Vulcanizing

---

---

STUMP BROTHERS



*Paints and Builders'  
Supplies*



VALDOSTA,

::

GEORGIA

*"IF IT'S ALIVE  
WE FEED IT"*

## SINEATH FEED & GROCERY CO.

*—Distributors of—*

Ful-o-Pep  
Poultry Feed

Larro  
Dairy Feed

Valdosta,

::

Georgia

---

---

PROCTOR'S ON THE CORNER  
*LADIES' AND GENTS' FURNISHINGS*

*Always the Latest in Style*

Cairo,

**Proctor Furnishing Co.**

Georgia

---

---

**Economy Electric Co., Inc.**

*"DO IT THE ECONOMY WAY"*

ELECTRICAL CONTRACTORS

---

---

## THE BENSON COMPANY

117 W. Central Avenue

*DRY CLEANERS AND DYERS*

*If It Can Be Cleaned We Can Clean It.*

---

---

## W. L. JONES' MARKET

FRESH MEATS OF ALL KINDS

---

Ashley Street

Phone 586

MRS. C. WHITTINGTON

---

*Distinctive Styles for  
College Girls*

---

VALDOSTA.

::

GEORGIA

---

---

REGISTER FURNITURE CO.



***YOUR HOME  
SHOULD COME  
FIRST***



VALDOSTA.

::

GEORGIA

# McLARTY MOTOR COMPANY

STUDEBAKER

PARTS, SALES AND SERVICE

OPEN DAY AND NIGHT

*"This Is a Studebaker Year"*

Valdosta, Ga.

Telephone 582

---

---

## The A. A. Parrish Company

AUTO SUPPLIES AND ACCESSORIES

RADIO : STORAGE : BATTERIES

*The Oldest Auto Service in Valdosta*

---

---

## J. L. Oliver's Son

Grady County's Largest Store

LADIES' AND MEN'S FURNISHINGS

Cairo,

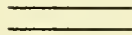
::

Georgia

---

---

## STRICKLAND HARDWARE



VALDOSTA,

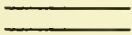
::

GEORGIA

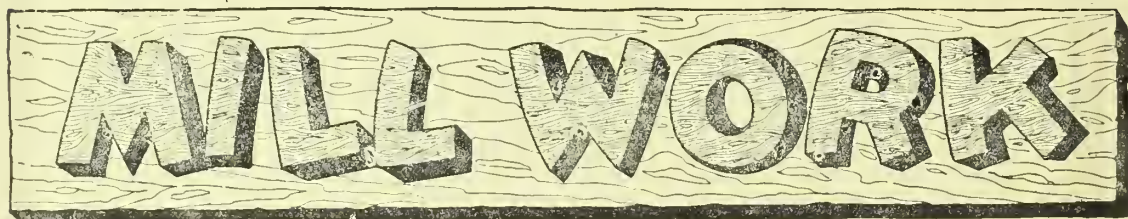
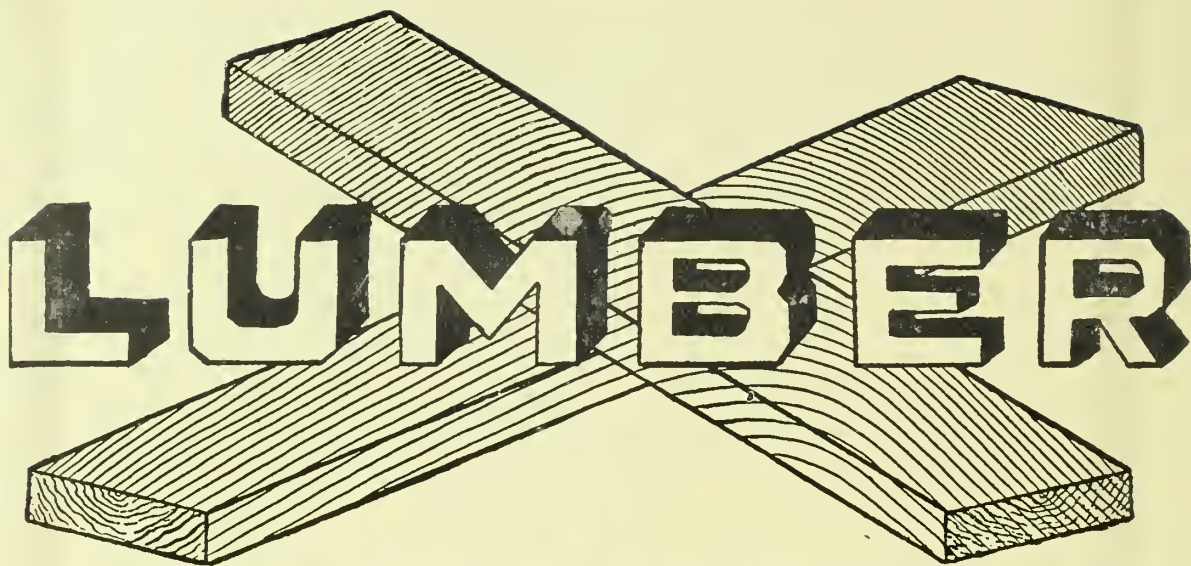
---

---

## MILLER TRANSFER



General Hauling and Building Sand



— AND —

## BUILDING MATERIAL

SASH, DOORS, SCREENS, AND FRAMES  
IN STOCK AND MADE TO ORDER

*Framing, Dressed Stock, Laths, Moulding, Upson Board,  
Cary's Roofing and Shingles, Celotex Insulating  
Board, Oak Flooring*

## VALDOSTA BUILDERS' SUPPLY COMPANY

W. L. ROBERTS

ABIAL WINN

J. M. ALDERMAN

115 E. CRANE AVE.

TELEPHONE 772

*NO SHOPPING TOUR COMPLETE WITHOUT VISITING*

## **THE ACORN STORE**

Their New Location—211-213 N. Ashley Street

**Ready-to-Wear, Millinery and Dry Goods**

VALDOSTA,

::

GEORGIA

*ALWAYS DEPENDABLE MERCHANDISE*

---

## **FRIEDLANDER BROS.**

Corner Patterson and Hill

*WE ALWAYS CARRY A COMPLETE LINE OF*

***Ladies' Ready-to-Wear***

***Millinery -- Underwear***

**ESPECIALLY FOR THE COLLEGE GIRLS**

# FREELAND MOTOR COMPANY

## *Chrysler Motor Cars*

---

*SALES AND SERVICE*

---

PHONE 389

102 E. VALLEY ST.

VALDOSTA,

::

GEORGIA

---

## FIRST NATIONAL BANK

VALDOSTA, GEORGIA

---

Resources    \$3,500,000.00

---

## W. M. OLIVER & CO.

Quality Merchandise Will Tell

VALDOSTA,

::

GEORGIA



# W. H. BRIGGS HARDWARE

---

CUTLERY : SHEARS : FINE CHINA

---

128-130 North Ashley Street

---

---

## THE GREEN SHOP

*MILLINERY*

Dalton Bldg.,

Valdosta, Ga.

---

---

## SWEAT'S PHARMACY

*TOILET ARTICLES : PRESCRIPTIONS*

Guyton,

Georgia

---

---

*NOTHING MAKES A MEAL A SUCCESS LIKE  
GOOD BISCUIT*

*— Use —*

EASTER LILY FLOUR

**THE A. S. PENDLETON CO.**

*Distributors*

---

---

## *ELECTRIC SUPPLY COMPANY*

*ELECTRICAL CONTRACTOR AND DEALER*

112 South Patterson Street

Valdosta, Georgia

Phone 80

**W**E WISH TO EXPRESS OUR SINCERE  
APPRECIATION OF THE PATRONAGE  
GIVEN US BY THE COLLEGE GIRLS



**SOUTHERN STATIONERY  
& PRINTING CO.**

*Wholesale  
Paper Dealers*

*STATIONERS : PRINTERS : ENGRAVERS*

EVERYTHING FOR YOUR OFFICE

VALDOSTA,

::

GEORGIA

# ROSCOE ROUSE

## *Plumbing and Heating Contractors*

—AND—

DEALERS IN PLUMBING AND HEATING SUPPLIES  
WATER WORK SYSTEMS, SEPTIC TANKS  
AND DRAIN TILES

VALDOSTA,

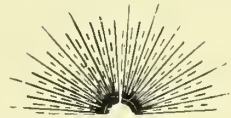
::

GEORGIA

A  
BRIGHT  
CLEAN  
KITCHEN

*G A S*  
*THE UNIVERSAL FUEL*

NO COAL  
TO SHOVEL  
NO ASHES  
TO CARRY



*O*  
*R*  
*I*  
*O*  
*L*  
*E*

THE HOUSE  
OF ALL-YEAR  
CONVENIENCE

*R*  
*U*  
*U*  
*D*

RANGES

WATER HEATERS

*GAS DEPENDABLE*

*GAS ECONOMICAL :: GAS INSTANTANEOUS*

*A PLEASURE TO USE*

## VALDOSTA GAS COMPANY

*THE REXALL STORE*

Save with Safety

INGRAM DRUG COMPANY

PHONE 3

---

THE OUSLEY COMPANY

Furniture

114 S. Patterson St.,

:

Valdosta, Ga.

---

**HOTEL DANIEL ASHLEY**

*IS NEW AND THE ONLY FIREPROOF HOTEL IN*

*VALDOSTA. GEORGIA*

EVERY ROOM WITH BATH

Rates---\$2.00, \$2.50, \$3.00, \$3.50, \$4.00

*EUROPEAN PLAN*

Dining Room and Coffee Shop

EXCELLENT FOOD AT MODERATE PRICES

THOMPSON & GIRARDIN  
*JEWELERS*

---

*Gifts For All Occasions*

---

110 W. CENTRAL AVE.,

VALDOSTA, GA.

---

---

DAVIS BROS. & COMPANY

*"THE HOUSE OF QUALITY"*

---

Hickey-Freeman Quality Clothes  
Manhattan Shirts and Florsheim Shoes

---

VALDOSTA,

::

GEORGIA



# PIGGLY - WIGGLY

ALL OVER THE WORLD

*VALDOSTA'S MOST POPULAR STORE*

WE SPECIALIZE IN

*Quality Meats and Quality Groceries*

FOUR STORES

SNOW BROTHERS, OWNERS

## W. C. GRIFFIN & SONS

READY-TO-WEAR, MILLINERY, STYLISH FOOTWEAR,  
DRY GOODS, INFANTS' AND CHILDREN'S  
WEAR, ATWATER, KENT RADIOS

VALDOSTA.

::

GEORGIA

---

## CALIFORNIA FRUIT CO.

*HEADQUARTERS*

FANCY FRUITS AND VEGETABLES

Phone 1010

Free Delivery

---

FEATURING ADVANCED STYLES IN READY-TO-WEAR  
MILLINERY AND NOVELTY FOOTWEAR

*Moderately Priced*

## THE FAMOUS STORE

*"FAMOUS FOR BARGAINS"*

107-109 N. Ashley St.,

Valdosta, Ga.

---

## H. ABRAHAMS

*JEWELER*

*"Store of Quality"*

115 N. Ashley St.,

Valdosta, Ga.



T H A T

THOSE WHO ARE GRADUATING

MAY FIND

*Happiness and Success*

IN THEIR CHOSEN LINE OF ENDEAVOR

T H A T

*Their Application of the Knowledge They Have Gained*

*Prove an Inspiration to the Friends and*

*Schoolmates They Leave Behind*

THIS IS THE WISH OF THE MANAGEMENT

—OF—

RITZ THEATRE





CLASS RINGS—PINS

INVITATIONS—CARDS

*For Colleges and High Schools*

OFFICIAL JEWELER FOR G. S. W. C.

**HERFF - JONES**

Indianapolis, Ind.

H. S. Canfield, *Rep.*

---

---

**BROWN & FARMER**

*A FIRST CLASS BARBER SHOP*

Daniel Ashley Hotel

Valdosta, Georgia

---

---

**W. J. DAVIS**

*Wholesale and Retail*

FURNITURE AND HOUSE FURNISHINGS

219 E. Hill Ave. *We Store and Ship Furniture*

Phone 481

---

---

**DANIEL ASHLEY PHARMACY**

*The G. S. W. C. Drug Store*

THE ONLY SODA FOUNT IN TOWN

EQUIPPED WITH HOT WATER

Phones 700-701

In Daniel Ashley Hotel

---

---

**WHITE HOUSE CAFE**

**Good Food**

**Promptly Served**

VALDOSTA,

::

GEORGIA

WE SPECIALIZE IN OUR PRESCRIPTION DEPARTMENTS.

SIX REGISTERED PHARMACISTS

OUR FOUNTAIN SERVICE IS THE BEST

---

—AGENCY—

*Nunnally's*

*Whitman's*

*Norris'*

*Candies*

---

TWO STORES

Lowndes Drug Co.

*"Open All Night"*

TEL. { 803  
804

Corner Ashley Street and  
Central

Yearty's Drug Store

*"The Accommodating Druggist"*

TEL. { 812  
813

136 N. Patterson Street  
Corner Patterson and Central

VALDOSTA, GEORGIA

McRAE'S BOOT SHOP, Inc.

*"STYLE : QUALITY : SERVICE"*

LADIES' SHOES, HOSE AND NOVELTIES

In Hotel Daniel Ashley

---

LARSEN-FORBES HARDWARE CO.

*"THE WINCHESTER STORE"*

---

VALDOSTA,

::

GEORGIA

---

Mackey Jewelry and Optical Company

*THE BEST OF EVERYTHING AT PRICES  
THAT PLEASE*

*We want you to look over our  
many beautiful gifts.*

MACKEY JEWELRY CO.

***“THE FIT IS THE THING”***



*YOU ARE ASSURED OF*

**STYLISH SHOES**

OF GOOD QUALITY

—THAT FIT—

WHEN YOU TRADE WITH US



**TURNER JONES SHOE COMPANY**

*“SHOES FOR ALL OCCASIONS”*

OLDSMOBILE COMPANY OF  
VALDOSTA

---

*“The Car You Can Recommend  
To Your Best Friend”*

---

111 W. CENTRAL AVENUE,

VALDOSTA, GA.

---

---



**THANK YOU**



# *Jokes*

Mary Louise Maxwell: "There's a feather in my sausage."

Ruth Norman: "Oh, that's all right; it was made from a bird dog."

\* \* \* \* \*

Student (recently expelled): "Hello, Dean, I'm back."

Dean: "What for?"

Student: "I read in that letter that I was expelled, but on the envelope it said, 'After five days return to Dean Wood.'"

\* \* \* \* \*

Mr. Patton: "Did you see the 'Big Parade?'"

Mamie Fletcher: "No, dammit—I bought a ticket, but the thing never passed."

\* \* \* \* \*

Miss Lockett: "Can you prove that the square of the hypoteneuse is equal to the sum of the square of the two sides of this triangle?"

Marie Parham: "I don't have to prove it—I admit it."

\* \* \* \* \*

First Stude: "Are you dressing for bathing?"

Second Stude: "No, just taking my clothes off to see if I have my underwear on."

\* \* \* \* \*

Mrs. Wood: "Has Mr. Wood had his breakfast?"

Martha: "I don't know, mother."

Mrs. Wood: "Well, ask him."

Martha: "I did, and he doesn't know either."

\* \* \* \* \*

Sara Mandeville (after Junior-Senior picnic): "Say, Christine, gimme a mirror, quick."

Christine: "What do you want with a mirror?"

Sara: "I wanna see who I am."

\* \* \* \* \*

Dentist: "How did you break the filling off your tooth?"

Lucille Wood: "Must have done it shifting gears on my chewing-gum."

\* \* \* \* \*

Frances Borland: "I think I'll let my hair grow."

Mary Blackman: "Why, have you been stopping it?"

# *Jokes*

Miss Gilmer gave the Freshmen the following topic sentence to write a theme on: "I always cried there but never could I laugh."

A Freshman wrote her paper on, "I always cried there but never could I weep."

\* \* \* \* \*

Sophomore: "Did you take a bath?"

Freshman: "No, is there one missing?"

\* \* \* \* \*

Velma Kennedy: "Now, honestly, what would you do if you were in my shoes?"

Estha Freeman: "Get a shine."

\* \* \* \* \*

Miss Hopper (Geography class): "Why do they have knots on the ocean instead of miles?"

Freshman: "Well, you see they couldn't have the ocean tide if there were no knots."

\* \* \* \* \*

"What's the matter, Sara? You're looking worried."

"Work—nothing but work from morning to night."

"How long have you been at it?"

"I begin to-morrow."

\* \* \* \* \*

"Why did you put that spider in your roommate's bed?"

"Because I couldn't find any roaches."

\* \* \* \* \*

Mr. Patton: "When do you think they will recognize the Russians?"

Virginia Hightower: "Not until they shave, I am sure."

\* \* \* \* \*

Miss Gilmer (in English 41): "You must relax when you read 'Lord Jim.'"

Florence Breen: "Yes, mam, I did last night and went to sleep."

\* \* \* \* \*

Miss Ivey (assigning lesson): "Next time we will go through the mosquito."

# *Jokes*

Miss Gilmer: "People can change quickly."

Elsie Gunn: "Yes, mam, just like a butterfly."

\* \* \* \* \*

Lorene Tittle (punching Frankie Hartsfield who is talking to the girl on the other side): "You had better shut up."

Frankie Hartsfield: "Don't worry, I will when Miss Youngblood calls on me."

\* \* \* \* \*

"After running three miles a man jumped from the cliffs near Calais and was picked up two miles out at sea. This we believe is the first attempt to jump the channel."

\* \* \* \* \*

Practice Teacher (to training school pupil): "Why don't you be good and study?"

Pupil: "What would you give me to be good?"

Teacher: "You should be like your teachers, good for nothing."

\* \* \* \* \*

Traffic Cop: "Don't you know you can't turn around in the middle of the block."

Catherine Ulmer: "Oh, I think I can make it, thank you."

\* \* \* \* \*

Mary Alice: "Chris, what's a waffle?"

Christine: "A baked cross-word puzzle."

\* \* \* \* \*

Sara Whitehurst: "How came that bruise on your forehead?"

Julia Mae: "Bumped it getting out of a bed on a Pullman. It's a berthmark."

\* \* \* \* \*

"Dot says she has a roommate with a haughty air. She sweeps the room with a glance, but it doesn't seem to improve its appearance very much."

\* \* \* \* \*

"When you are contemplating a rash act, consider the pin. Its head keeps it from going wrong."



# Jokes

Mary V.: "You seem to be very intimate with Florence. I didn't know you had known her long."

Hazel Furlong: "Not long, but we shared a Yellow Cab from the station once and were thrown together a great deal."

\* \* \* \* \*

"Speaking of old families," said one of the girls in History 10, "one of my ancestors was present at the signing of the Magna Charta."

"And one of mine," said Ola Barber, "was present at the signing of the Ten Commandments."

\* \* \* \* \*

Fresh: "How do you use butter in a bath?"

Another Fresh: "Gosh, I don't know. How?"

Fresh: "Search me. But I saw a sign in Piggly Wiggly—'Tub Butter, 39c.'"

\* \* \* \* \*

Mr. Patton: "Does any one know why Lucile Nix is late this morning?"

Martha Minter: "Yea. She's got one of these combination pajama suits, and when she awoke this morning she had forgotten the combination."

\* \* \* \* \*

She: "What happened to you? Were you in an accident?"

He: "No. I was being shaved by a lady barber when a mouse ran across the floor."

\* \* \* \* \*

"One night as I lay thinking  
Of the pleasant days of yore,  
I heard a swishing, swashing,  
Just outside my bedroom door.  
Up the hall a funny clicking,  
And some shuffling on the floor;  
'Twas Nan's bedroom slippers,  
Simply that and nothing more."

\* \* \* \* \*

Louise Benton: "Did you ever take chloroform?"

Minnie D. Culverhouse: "No, who teaches it?"

\* \* \* \* \*

Lucille Dowling: "Say, Elsie—have you got a dime for a poor old lady?"

Elsie: "Where is the poor old lady?"

Lucille: "Down at the Tourist Camp selling hamburgers."

\* \* \* \* \*

Miss Temple (to a talkative class): "Keep your mouths shut, please, and sing."

## LATEST PUBLICATIONS

<i>"Why Dumb Girls Should Major in Physical Education,"</i>	LEONORA ISABELLA IVEY
<i>"Bootlicking Faculty Members"</i> . . . . .	{MAMIE LOVETT FLETCHER MARY NELL FITTS
<i>"Newest Sounds and Figures in Gum Chewing"</i> . . . . .	{FERDA BRUCE ALICE PARKER
<i>"Nuts and Other Nuts"</i> . . . . .	RUTH NORMAN
<i>"Gentlemen Prefer Brunettes"</i> . . . . .	EULA NELLIE BRACEY
<i>"Contortionist Stunts"</i> . . . . .	MARY ALICE SINEATH
<i>"The Art of Crushing"</i> . . . . .	{VERNA SCARBOROUGH FRANKIE HARTSFIELD
<i>"How to Interpret Unintelligible Poetry"</i> . . . . .	GERTRUDE CORDELIA GILMER
<i>"Source Material for Argumentation"</i> . . . . .	CHRISTINE MEADOWS
<i>"Little Secrets"</i> . . . . .	ELSIE ARRINGTON GUNN
<i>"Anthology of Historical Scandals"</i> . . . . .	JAMES WELCH PATTON

## SUPPRESSED DESIRES

- MR. STOKES—To succeed the late Rudolph Valentino.
- MISS GILMER—To be a second Pavlowa.
- MARY ALICE SINEATH—To be a modern Rip Van Winkle.
- MR. PATTON—To be the last man on earth.
- VELMA KENNEDY—To be able to read at the rate of a book a minute so that she might be the world's best-read woman.
- MARTHA YOUNGBLOOD—To find the ideal man.
- SHIRLEY GASKINS—To have everyone agree with her that the University of Georgia is the world's greatest institution of learning.
- MR. DASHER—To be Martinelli's rival.
- ESTHA FREEMAN—To write a book that the general public can not understand in order that Miss Gilmer might have some literature to read to her future English classes.

# Directory of Students

## SENIOR CLASS

Bracey, Nellie, 419 East Henry St., Savannah, Ga.	Meadows, Christine, 956 Euclid Ave., N. E. .... Atlanta, Ga.
Bray, Clare ..... Valdosta, Ga.	Moore, Emma, 1226 East Duffy St., Savannah, Ga.
Breen, Florence ..... Jesup, Ga.	Sineath, Mary Alice ..... Adel, Ga.
Campbell, Rena Mae ..... Valdosta, Ga.	Small, Mary ..... Valdosta, Ga.
Folger, Ruth, 411 East Henry St., Savannah, Ga.	Smith, Anne ..... Brunswick, Ga.
Gunn, Elsie ..... Rome, Ga.	Smith, Leola ..... Valdosta, Ga.
Mandeville, Sara ..... Jesup, Ga.	Touchton, May Lillie ..... Lake Park, Ga.

## JUNIOR CLASS

Blackshear, Katherine ..... Sarasota, Fla.	McRae, Elizabeth ..... Valdosta, Ga.
Dowling, Lucile ..... Jesup, Ga.	Middleton, Norma ..... Darien, Ga.
Ellis, Mary Belle ..... Statesboro, Ga.	Sharpe, Lois ..... Vidalia, Ga.
Etheridge, Lillian ..... Valdosta, Ga.	Stewart, Mary ..... Dixie, Ga.
Freeman, Estha ..... Camilla, Ga.	Thomas, Sara ..... Adel, Ga.
Gaskins, Shirley ..... Hazlehurst, Ga.	Tittle, Lorene ..... Valdosta, Ga.
Glascoek, Dorothy ..... Waycross, Ga.	Trulock, Catherine ..... Whigham, Ga.
Hall, Sara ..... Statesboro, Ga.	Wiseman, Marian ..... Adel, Ga.
Hartsfield, Frankie ..... Tryon, N. C.	

## SOPHOMORE CLASS

Baker, Mattie ..... Thomasville, Ga.	Dukes, Johnny ..... Valdosta, Ga.
Bedell, Susan ..... Woodbine, Ga.	Fambrough, Mary Eva ..... Boston, Ga.
Benton, Louise ..... Donalsonville, Ga.	Fitts, Mary Nell ..... Americus, Ga.
Bollinger, Maybelle ..... Valdosta, Ga.	Fletcher, Mamie ..... Quitman, Ga.
Bradley, Margaret ..... Valdosta, Ga.	Furlong, Hazel ..... Brunswick, Ga.
Brinson, Susie Mae ..... Brooklet, Ga.	Giddens, Cathryn ..... Arlington, Ga.
Bruce, Catherine ..... Valdosta, Ga.	Gramlin, Mary V. .... St. Simons, Ga.
Burghard, Cora, 431 Johnson Ave., Macon, Ga.	Groover, Mary ..... Lake City, Fla.
Carmack, Zackie ..... Vienna, Ga.	Harden, Louise ..... Ideal, Ga.
Cassels, Eunice ..... Cairo, Ga.	Hart, Carrie ..... Berwick, Ga.
Cassels, Mildred ..... Cairo, Ga.	Heeth, Nadine ..... Boston, Ga.
Chute, Eunice ..... Unadilla, Ga.	Heisler, Julia ..... Thomasville, Ga.
Clements, Laura ..... Morgan, Ga.	Hiers, Lois ..... Lake Park, Ga.
Dalton, Emily ..... Valdosta, Ga.	Hightower, Helen ..... Valdosta, Ga.
Dasher, Dorothy ..... Guyton, Ga.	Hightower, Virginia ..... Valdosta, Ga.
Davis, Merri Nell ..... Wrightsville, Ga.	Holland, Esther ..... Hawkinsville, Ga.
Davis, Rena Mae ..... Valdosta, Ga.	Isbell, Annette ..... Valdosta, Ga.
Dean, Hazel ..... Smithville, Ga.	Jennings, Lynette ..... Valdosta, Ga.
Donahue, Hazel ..... Valdosta, Ga.	Johnson, Irelle ..... Valdosta, Ga.
Duggan, Ruby ..... Chester, Ga.	Joiner, Ellie ..... Statesboro, Ga.
	Jolley, Emma Joe ..... Smithville, Ga.

















*"Good were the days of yore, when men were tried  
By ring of shields, as now by ring of gold;  
But, while the gods are left, and hearts of men,  
And the free ocean, still the days are good."*







