


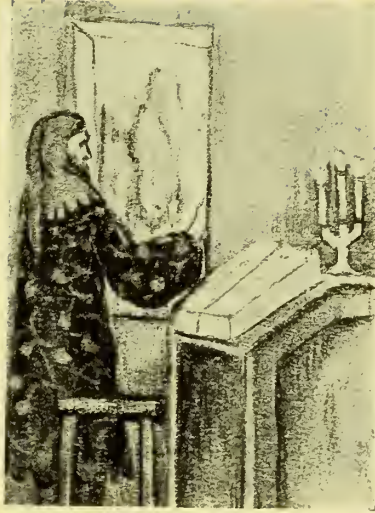


MISSOURI
UNIVERSITY



Digitized by the Internet Archive
in 2014





Ex Libris

Copyright, 1928
by
Senior Class
Georgia State Womans College

The
PINE CONE

1928

VOLUME IV

Published By

THE SENIOR CLASS

of

GEORGIA

STATE WOMANS COLLEGE

at

VALDOSTA, GEORGIA

Dedication

WE, THE SENIOR CLASS OF 1928, DEDICATE THIS
VOLUME OF THE
PINE CONE
TO



MISS FRANCES RUTH CARPENTER

Because we love her—

- For her long and fruitful activity in our college;
- For her zeal and devotion to the highest ideals of developing womanhood;
- For her unequalled patience and dignity of character;
- For the unceasing gift of her talent and of her splendid ability to our college.

Foreword



We read in Chaucerian romance the "Legende of Goode Wymmen"; we visualized with Tennyson "A Dream of Fair Women"; we searched mythical story books for the record of goddesses: and, blending with these our imagination and youth, we now portray our "Dream of Fair Women" in the pages of our annual.

Contents

COLLEGE

CLASSES

ORGANIZATIONS

ACTIVITIES

FEATURES

ADS AND JOKES



The College

*"A maiden knight—to me is given
Such hope I know not fear;
I yearn to breathe the airs of heaven
That often meet me here."*

The President's Greeting



The student activities of a college are the best index of its worth as a college. Lord Bryce, I believe it was, who described a great collection of college catalogues as a great library of fiction. At best, the catalogue is a bald statement about the college. The faculty and the field agent are prone to be partisan; and the students and alumnae naturally glorify Alma Mater. But the student activities are the students themselves in action; and as the students of a college act so the college is.

The Georgia State Womans College has always been proud of its student activities because they show a type of student behind them that the college is proud to have had a part in producing. They show originality, initiative, resourcefulness, perseverance, and that fine quality of mind and heart which keep at an undertaking until it is finished not only with businesslike effectiveness but also with artistic distinction.

Such a student activity is the PINE CONE—such have been its characteristics; and as such has the whole college community learned to be very proud of it. We are happy to have it become a voice that speaks to students and alumnae of memories of the life we live, and tells to those not of our community how beautiful our life appears to us. To the editorial and administrative staff of Volume Four, I give my most cordial greetings and my best wishes that their volume may even surpass the high excellence of former volumes.

R. H. POWELL, *President.*



Faculty



JAMES FRANKLIN WOOD
Dean of the College

JUANITA KOONTZ

Critic Teacher, Third and Fourth Grades

LOUISE RAMSEY

Professor of Home Economics

MARY LOU METCALFE

Professor of Physics and Chemistry

MARTHA YOUNGBLOOD

Professor of French

BRUCE LOCKETT

Professor of Mathematics

JAMES R. STOKES

Professor of Biology



Faculty

LEONORA IVEY

Professor of Physical Education

LOUISE ANNE SAWYER

Professor of Expression

EFFIE DEVERS

Critic Teacher, First and Second Grades

AUGUSTA RENTZ

Secretary to the President

LINNIE K. MORRELL

Critic Teacher, Fifth, Sixth and Seventh Grades

SARA ROSS WHITE

Professor of Home Economics



ANNIE POWE HOPPER
Dean of Women



Faculty



GERTRUDE C. GILMER
*Head of the English
Department*
Faculty Adviser PINE
CONE

EDITH PATTERSON
Librarian

JANIE BUSH
Professor of Latin

ELIZABETH ANNE LOWE
Assistant in Physical Education

MRS. N. HAGAN
Nurse and Assistant to the Dean

MRS. E. H. BECK
Dietitian

JAMES A. DASHER
Teacher of Piano, Voice and Pipe Organ



Faculty

GLADYS E. WARREN
Professor of Music

ALIMAE TEMPLE
Instructor of Voice

B. H. HENDERSON
Bursar and Bookkeeper

FLORENCE BREEN
Assistant Dean of Women

MRS. FRANCES PARDEE
Violin Instructor

MARY ALICE SMALL
Assistant in Art



FRANCES R. CARPENTER
Head of the Art Department
Art Critic for
PINE CONE



PINE BRANCH

*O may the Pine Branch ever wave
O'er Georgia's College fair,
And may we of G. S. W. C.
With glad songs fill the air.*

CHORUS

*Our hearts are with the Red and Black,
And may we never sever
The ties that bind our hearts to thee,
G. S. W. C. forever!*



Classes

*“For as soon as they saw the flower
Which I call the daisy, right quickly they stopp’d
And all together they kneeled down.”*



SENIORS

*"She loves Truth best who to herself is
true,
And what she dares to dream of dares
to do."*



KATHERINE BLACKSHEAR

A.B. Education

Sarasota, Florida

Y. W. C. A.; Sororian Literary Society; Phi Lambda Athletic Association; Fine Arts Club; Home Economics Club; Monitor, '26-'27; Vice-President Sororian Literary Society, '26-'27; President Senior Class, '27-'28; Y. W. C. A. Cabinet, '27-'28; PINE CONE Staff, '27-'28; Clerk of Court and Council, '27-'28.

FRANKIE HARTSFIELD

A.B. Liberal Arts

Tryon, N. C.

Y. W. C. A.; Sororian Literary Society; Phi Lambda Athletic Association; Secretary Sororian Literary Society, '26-'27; Monitor, '27-'28; PINE CONE Staff, '27-'28.

LUCILE DOWLING

A.B. Liberal Arts

Jesup, Georgia

Y. W. C. A.; Sororian Literary Society; Phi Lambda Athletic Association; Class President, '25-'26; Business Manager Class Play, '25-'26; Clerk of Court and Council, '25-'26; Philharmonic Club, '25-'26; President Sororian Literary Society, '26-'27; Member Student Council, '25-'26-'27-'28; PINE BRANCH Staff, '26-'27; PINE CONE Staff, '27-'28; President Student Government, '27-'28.



ESTHA FREEMAN

A.B. Liberal Arts

Camilla, Georgia

Y. W. C. A., Sororian Literary Society; Phi Lambda Athletic Association; Home Economics Club, '25-'26; Sock and Buskin Club, '26-'27-'28; PINE BRANCH Staff, '25-'26; Monitor, '25-'26; Class Play, '25-'26; Y. W. C. A. Cabinet, '25-'26-'27-'28; Secretary-Treasurer Junior Class, '26-'27; Inter-Society Debater, '27; Cheer Leader Phi Lambda Athletic Association, '27-'28; Editor-in-Chief PINE CONE, '27-'28.



DOROTHY GLASCOCK

A.B. Education

Waycross, Georgia

Y. W. C. A.; Sororian Literary Society; Phi Lambda Athletic Association; Vice-President Junior Class, '26-'27; Secretary Home Economics Club, '26-'27; Treasurer Home Economics Club, '27-'28; Secretary-Treasurer Alumnae Association, '27-'28; PINE CONE Staff, '27-'28; Monitor, '28.

SARAH HALL

A.B. Education

Statesboro, Georgia

Y. W. C. A.; Sororian Literary Society; Phi Lambda Athletic Association; Monitor, '25-'26; Vice-President Phi Lambda Athletic Association, '25-'26; Phi Lambda Basketball Team, '25-'26-'27-'28; Captain Phi Lambda Basketball Team, '26-'27; Baseball, '27; Volley-ball, '27; Treasurer Sororian Literary Society, '26-'27; Y. W. C. A. Cabinet, '27-'28; PINE CONE Staff, '27-'28; President Phi Lambda Athletic Association, '27-'28.

ELIZABETH MCRREE

A.B. Education

Valdosta, Georgia

Sororian Literary Society; Phi Lambda Athletic Association; Valdosta Club, '24-'25-'26-'27-'28; Vice-President Valdosta Club, '24-'25; Glee Club, '24-'25-'26; Editor PINE BRANCH, '27-'28; PINE CONE Staff, '27-'28.



NORMA MIDDLETON

A.B. Liberal Arts

Darien, Georgia

Y. W. C. A.; Sororian Literary Society; Phi Lambda Athletic Association; Monitor, '27; PINE CONE Staff, '27-'28.



CLIFFORD QUARTERMAN

A.B. Education

Valdosta, Georgia

Phi Lambda Athletic Association; Valdosta Club; Home Economics Club; Glee Club, '24-'25-'26; PINE CONE Staff, '27-'28.

LOIS SHARPE

A.B. Liberal Arts

Vidalia, Georgia

Y. W. C. A.; Sororian Literary Society; Phi Lambda Athletic Association; Sock and Buskin Club; Vice-President Sock and Buskin Club, '25-'26; Class Play, '25-'26; Secretary-Treasurer Phi Lambda Athletic Association, '26-'27; Chairman Program Committee Sororian Literary Society, '26-'27; PINE CONE Staff, '27-'28; President Y. W. C. A., '27-'28.

SARA THOMAS
A.B. Education
Adel, Georgia

Y. W. C. A.; Sororian Literary Society;
Phi Kappa Athletic Association; Philharmonic Club, '24-'25-'26; Home Economics Club; Fine Arts Club; President Fine Arts Club, '27-'28; Monitor, '24-'25; Y. W. Cabinet, '25-'26-'27; President Junior Class, '26-'27; Member Court and Council, '26-'27; Secretary-Treasurer Student Government Association, '27-'28; PINE CONE Staff, 27-'28.



LORENE TITTLE
A.B. Education
Nashville, Georgia

Valdosta Club, '24-'25-'26-'27-'28;
PINE CONE Staff, '27-'28.





CATHERINE TRULOCK

A.B. Liberal Arts

Whigham, Georgia

Y. W. C. A.; Sororian Literary Society; Phi Lambda Athletic Association; Secretary Sororian Literary Society, '24-'25; Secretary-Treasurer Phi Lambda Athletic Association, '25-'26; Secretary Y. W. C. A., '25-'26; Manager Phi Lambda Baseball Team, '26-'27; Treasurer Y. W. C. A., '26-'27-'28; Monitor, '26-'27; PINE BRANCH Staff, '25-'26-'27; Business Manager PINE CONE, '27-'28.



Juniors

*“Then to seek for Truth is noble
When they share her wicked crust
Ere her cause bring fame and profit,
And 'tis prosperous to be just.”*



CORA BURGHARD Macon, Georgia
President

KATHRYN ULMER . . Valdosta, Georgia
Secretary

SHARON SATTERFIELD . . Arco, Georgia
Treasurer

LOUISE BENTON . Donalsonville, Georgia

MARGARET BRADLEY . Valdosta, Georgia

EUNICE CHUTE . . . Unadilla, Georgia



LAURA CLEMENTS . . Morgan, Georgia



EMILY DALTON . . . Valdosta, Georgia



DOROTHY DASHER . . Guyton, Georgia



HAZEL DONAHUE . . Valdosta, Georgia





MARY EVA FAMBROUGH, Boston, Georgia

MAMIE FLETCHER . . Greenville, Florida

CATHRYN GIDDENS . Arlington, Georgia

GLADYS HADLEY . Thomasville, Georgia

HELEN HIGHTOWER . Valdosta, Georgia

VIRGINIA HIGHTOWER, Valdosta, Georgia



ANNETTE ISBELL . . . Valdosta, Georgia



MILDRED LARSEN . . . Valdosta, Georgia



MAGGIE LAWSON . . . Valdosta, Georgia



CATHERINE LEE . . . Dawson, Georgia



MARY LOUISE MAXWELL,
Calvary, Georgia





MARTHA MINTER . . . Cusseta, Georgia

JULIA MAE MURRAY, Waycross, Georgia

HELEN RYON Hinesville, Georgia

ILA SPOONER . . Donalsonville, Georgia

SARA REES STRONG . Waycross, Georgia

BESSIE YOUNG Valdosta, Georgia



Sophomores

*"They loved Truth, and lavished life's
best oil*

*Amid the dust of books to find her,
Content at last for guerdon of their toil,
With the cast mantle she had left be-
hind her."*



ETHEL DENT Douglas, Georgia
President

ELIZABETH TEASLEY . . . Lily, Georgia
Vice-President

TENNYS JONES Valdosta, Georgia
Secretary-Treasurer

DERRILLE ARMSTRONG,
Columbus, Georgia

LOUISE ARMSTRONG, Cartersville, Georgia

MARY ALEXANDER . . Nashville, Georgia

PEARL BELCHER Cairo, Georgia

SADIE BENNETT . . . Brunswick, Georgia

EVELYN BLANTON . . Valdosta, Georgia

BOBBIE MAE BOOTH . . Cordele, Georgia

FRANCES BORLAND . . Waycross, Georgia

ANNIE MAE BROWER . . Cordele, Georgia

BERTHA BIVINS Ellaville, Georgia

GLADYS BUTLER Cairo, Georgia

MARJORIE COMBS . . . Cordele, Georgia

MARTHA NELL CHANDLER,
Savannah, Georgia





SARA JULIA COX Vienna, Georgia

EVELYN CALHOUN . Jacksonville, Florida

LOUISE CAUSEY Vienna, Georgia

MINNIE D. CULVERHOUSE,
Lorane, Georgia

IVA CHANDLER Cordele, Georgia

NELL CROCKER Valdosta, Georgia

JANIE COKER Dawson, Georgia

FRANCES CANNON . . Abbeville, Georgia

LILLIAN DRAKE . . . Bainbridge, Georgia

EVELYN DEARISO . . . Sylvester, Georgia

JULIA DEVEREUX . . . Valdosta, Georgia

CATHERINE DAVIES . . Valdosta, Georgia

ELINOR DIXON . . . Glenville, Georgia

LOUISE ETHERIDGE . . Cuthbert, Georgia

LILLIAN EXUM . . . Walstonburg, N. C.

LOUISE FORBES Valdosta, Georgia





ANNIE MAUDE FERRELL,
Quitman, Georgia

ALINE FUTCH Nashville, Georgia

MARGUERITE FORD . . Valdosta, Georgia

DORIS HITCHCOCK . . Valdosta, Georgia

WILLIE BELL HARRELL,
Whigham, Georgia

DOROTHY HARPER . . Valdosta, Georgia

LOUISE HOLCOMBE . . Valdosta, Georgia

AGNES HOUSTON . . . Colquitt, Georgia

MYRTLE JORDAN . . . Reidsville, Georgia

TALLULAH JOHNSON . . Dalton, Georgia

MERLE JOHNSON . . . Surrency, Georgia

DOROTHY JONES . . . Valdosta, Georgia

MAE KEEFE Nashville, Georgia

MARGARET LEWIS . . Quitman, Georgia

MARION LAING . . . Hinesville, Georgia

DOROTHY LILE . New Philadelphia, Ohio





CATHERINE MCREE . Valdosta, Georgia

OLIVE MITCHELL . Cartersville, Georgia

RUTH NORMAN . Norman Park, Georgia

KATHERINE PATTERSON,
Fitzgerald, Georgia

CAROLINE PARRISH . . Valdosta, Georgia

BLANCHE PRESCOTT, Lake Park, Georgia

MATILE POWELL . . . Moultrie, Georgia

NANNIE POPE Valdosta, Georgia

MARIE PARHAM . . . Nashville, Georgia

ETHEL ROBINSON . . Homerville, Georgia

LILLIE MAE ROYAL . Unadilla, Georgia

EDNA ROYAL Unadilla, Georgia

LUCY ROSSMAN Moultrie, Georgia

EDNA ROGERS Moultrie, Georgia

AGNES RANSONE . . Wimauma, Florida

RUTH RANSONE . . . Wimauma, Florida





MINNIE LEE STRICKLAND,
Reidsville, Georgia

WILLIE BELLE SUMNER, Poulan, Georgia

KATHLEEN STRIPLING, Camilla, Georgia

MYRTLE STOKÈS . . . Nahunta, Georgia

LA FORREST SMITH . Valdosta, Georgia

CATHERINE SMITH . . Valdosta, Georgia

RUTH SMITH Vienna, Georgia

RUTH SLADE Cordele, Georgia

KATHERINE SAWYER,
Thomasville, Georgia

MAY DE LOIS SUMMERLIN,
Pelham, Georgia

JANET SCARBOROUGH,
Hawkinsville, Georgia

MARY SUE SCOTT Gore, Georgia

VELMA SIRMANS . . . Dupont, Georgia

AUDREY SHELFER . Attapulcus, Georgia

PAULINE SCHEIDER . . Valdosta, Georgia

SARA MAUDE STEWART . . Dixie, Georgia





DRANE THARPE . . . Ashburn, Georgia

HAZEL TAYLOR . . . Valdosta, Georgia

WEEDA TURNER . . . Boston, Georgia

VIRGINIA TOUCHTON . Valdosta, Georgia

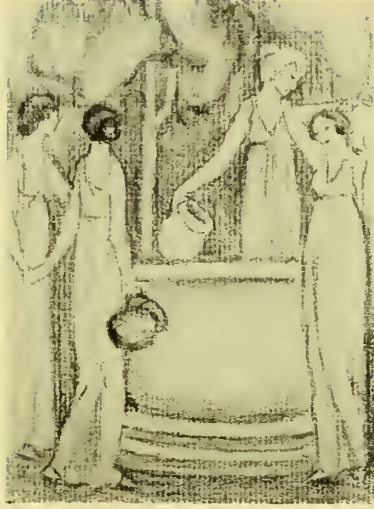
OPAL THORNTON . . Fitzgerald, Georgia

MYRTLE VICK . . . Moultrie, Georgia

MARGARET WILKES . . . Adel, Georgia

MYRTICE WADE Dixie, Georgia

LUCILE WOOD Valdosta, Georgia



Freshmen

*"They held a love for Truth,
Purposed to seek and hold it fast."*



LUCIUS BEDELL

MYRTLE McARTHUR

MARGARET JENNINGS

ETHEL ALLEN

GLADYS ARNOLD

CAPPIE BUSH

MARGARET BULLOCH

MOZELLE BYRD

MARGARET BRABHAM

ELIZABETH BOYD

IDA BURROUGHS

ZYLPHA BOWMAN

JANET BREWTON

ERMA COWART

GRACE CHASTAIN

EVELYN CONNER

SARA CUNNINGHAM

MARY CHAPMAN

MATTILU CLEGG

LILLIAN CASSELS

MAE CONNOR

MARY CARMACK

JEWELL CORDELL





GRACE COOKE

BEULAH COFIELD

FARRAR ELROD

ELISE DORSEY

MAXIE DRAKE

JEWEL DRAKE

JANET DAVIS

MYRTICE DAVIS

ANN DOLVIN

THELMA ECORD

DORIS FLEMING

VIRGINIA FRASER

BERTHA FERRELL

LUCILE FOUCHE

ADA WILMA FISHER

ELEANOR GIBSON

ZERA GAINNEY

ALENE GLEATON

NETTIE MAE GRIFFIN

ETTA GIDDENS

MINNIE B. GOODMAN

ALINE HARRIS

JANET HALL





KATHERINE HARRISON

LYNAH HUGHES

ROSELLE HATCHER

ELIZABETH HAYES

GRACE HOLLINSWORTH

MARY SMITH HODGES

CLARA HARGRAVE

LOIS HILL

IVA LEE HERRIN

MYRTIE MAE HEAD

LILLIAN HOPPER

HELEN HARGROVE

KATE JONES

MABEL JACKSON

LOUISE JOHNSON

SADIE MAE KIRBO

MOLLIE LASSETER

RUTH LYTLE

MARGARET LITTLEFIELD

JEAN LOUGHRIDGE

JEAN LOGGINS

LELLA MAE MASSEY

MILDRED MARTEL

META MCINTOSH





MARGARET MIDDLETON

CHRISTINE MADDOX

LAURA MILTON

MARJORIE MILLS

DORIS NICHOLS

LOIS NICHOLS

ELIZABETH NEWTON

MINNIE WINTER NIX

JULIA OSBORNE

GEORGIA PATTERSON

LILLIAN PATTERSON

MARGARET PARRISH

MARION POPE

JESSIE MAE PRESCOTT

OLIVE RYON

MARGUERITE RYNER

REBECCA RABUN

JOYCE ROBERSON

EUNICE SEAGRAVES

JOHNNIE RUTH STRIPLING

LETA MAC STRIPLING

DOROTHY STROUD

HATTIE MAE SOUTHWELL

HAZEL SAWYER





AUDREY SIKES

CLEO SHAW

MARY STOKES

EDNA SHADRICK

MARGARET SUMNER

LEONE SINCLAIR

DOROTHY STOVALL

JUANITA SWEAT

HELEN TAFT

ANNIE TALBERT

MINNIE JEWEL TAYLOR

ELEANOR TURNER

EVELYN TYSON

NELL TALLEY

MADGE WILSON

MARGARET WILLIAMS

MAE BESS WILLIAMS

HELEN WILLIAMS

FLORRIS WOODARD

ELOISE WARD

BIRDIE WARREN

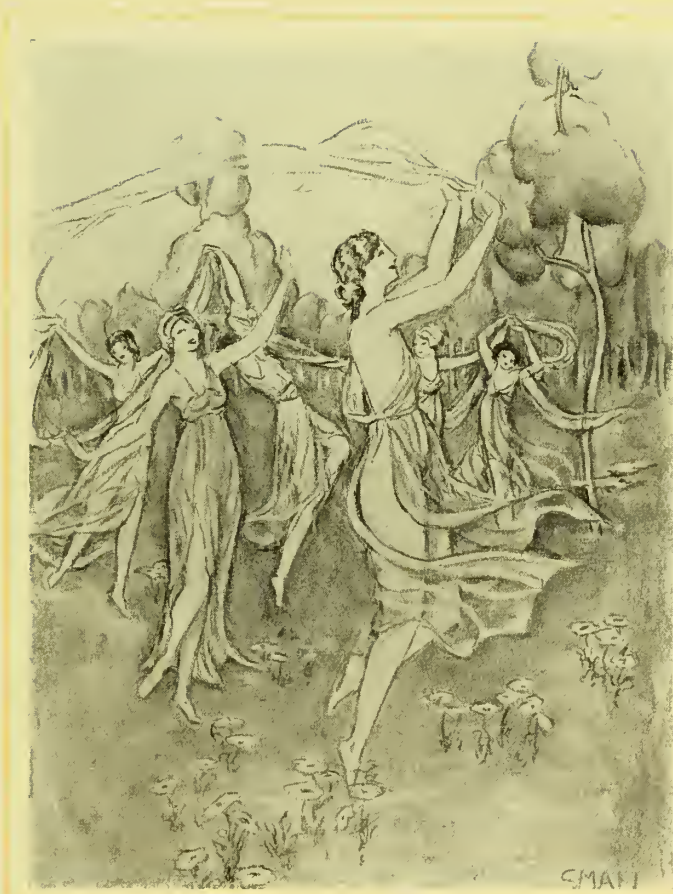
DOROTHY WHITE

ROSE WOOD

WINNIE YOUNG



“Truth wears a different face to everybody, and it would be too tedious to wait till all were agreed. She is said to lie at the bottom of a well, and whoever looks down in search of her is persuaded that she is far better looking than he had imagined.”



Organizations

*"Many a night I saw the Pleiades,
Rising through the mellow shade,
Glitter like a swarm of fireflies
Tangled in a silver braid."*

Alumnae Association

EDITH PATTERSON
President



- MRS. JOHN WILLIAMS *Vice-President*
DOROTHY GLASCOCK *Secretary-Treasurer*
AUGUSTA RENTZ *Alumnae Editor*
FLORENCE BREEN *Corresponding Secretary*



Student Government Association



LUCILE DOWLING
President

- KATHERINE BLACKSHEAR *President Senior Class*
CORA BURGHARD *President Junior Class*
ETHEL DENT *President Sophomore Class*
LUCIUS BEDELL *President Freshman Class*



Student Government Association

SARA THOMAS
Secretary-Treasurer



- LOUISE BENTON *President Argonian Literary Society*
IVA CHANDLER *President Sororian Literary Society*
LOIS SHARPE *President Y. W. C. A.*
MILDRED LARSEN *President Valdosta Club*



Y. W. C. A.



LOIS SHARPE
President

- | | |
|-----------------------------|-----------------------|
| CATHERINE TRULOCK | <i>Treasurer</i> |
| MARIE PARHAM | <i>Pianist</i> |
| OPAL THORNTON | <i>Bible Study</i> |
| JANET SCARBOROUGH | <i>Publicity</i> |
| ETHEL DENT | <i>Library</i> |
| MARY SMITH HODGES | <i>Bulletin Board</i> |



Y. W. C. A.

EUNICE CHUTE
Religious Chairman



ANN TALBERT	<i>World Fellowship</i>
WILLIE BELLE HARRELL	<i>Country Store</i>
SARAH HALL	<i>Social Activities</i>
KATHERINE BLACKSHEAR	<i>Membership</i>
WILLIE BELLE SUMNER	<i>Room</i>
ANNIE MAUDE FERRELL	<i>Social Service</i>
ESTHA FREEMAN	<i>Choir</i>



Pine Cone



ESTHA FREEMAN
Editor-in-Chief

- FRANKIE HARTSFIELD *Assistant*
KATHERINE BLACKSHEAR *Art Editor*
SARA THOMAS *Art Editor*
LUCILE DOWLING *Literary Editor*
LORENE TITTLE *Assistant Literary Editor*



Pine Cone

CATHERINE TRULOCK
Business Manager



- | | |
|-------------------------------|--------------------------------------|
| LOIS SHARP | <i>Humor Editor</i> |
| ELIZABETH McREE | <i>Advertising Manager</i> |
| DOROTHY GLASCOCK | <i>Assistant Advertising Manager</i> |
| CLIFFORD QUARTERMAN | <i>Assistant Advertising Manager</i> |
| SARAH HALL | <i>Activities Editor</i> |
| NORMA MIDDLETON | <i>Assistant Editor</i> |



Pine Branch



ELIZABETH MCRREE
Editor-in-Chief

LOUISE FORBES	<i>Assistant Editor-in-Chief</i>
SADIE BENNETT	<i>Sororian Reporter</i>
MARY SMITH HODGES	<i>Argonian Reporter</i>
VELMA SIRMANS	<i>Phi Lambda Reporter</i>
DOROTHY LILE	<i>Phi Kappa Reporter</i>
BESSIE YOUNG	<i>Local Editor</i>
LILLIAN HOPPER	<i>Joke Editor</i>



Pine Branch

LOUISE BENTON
Business Manager



OPAL THORNTON	Y. W. C. A. Editor
AUGUSTA RENTZ	Alumnae Editor
DOROTHY STOVALL	Assistant Business Manager
SHARON SATTERFIELD	Assistant Business Manager
LA FORREST SMITH	Mailing Department
ILA SPOONER	Mailing Department



Argonian Literary Society



LOUISE BENTON
President

LUCIUS BEDELL *Vice President*
MARY EVA FAMBROUGH *Secretary*
KATHRYN LEE *Treasurer*



Argonian Literary Society

BESSIE YOUNG,
Chairman Program Committee



SUBJECT FOR DEBATE: *"Resolved, That the women of the United States should make a united effort to secure at once an equal rights amendment to the Federal Constitution."*

DEBATERS

EUNICE CHUTE

MARGUERITE LANGDALE



Sororian Literary Society



IVA CHANDLER
President

- SARA MAUDE STEWART *Vice-President*
MARY ALEXANDER *Secretary*
MYRTLE JORDAN *Treasurer*



Sororian Literary Society

CAROLINE PARRISH
Chairman Program Committee



SUBJECT FOR DEBATE: *"Resolved, That the women of the United States should make a united effort to secure at once an equal rights amendment to the Federal Constitution."*

DEBATERS

OPAL THORNTON

CAROLINE PARRISH



Phi Lambda Athletic Association.



SARAH HALL
President

GLADYS BUTLER *Vice-President*
OPAL THORNTON *Secretary-Treasurer*
ESTHA FREEMAN *Cheer Leader*



Phi Kappa Athletic Association

MYRTLE VICK
President



- MARIE PARHAM *Vice-President*
LOUISE CAUSEY *Secretary-Treasurer*
RUTH NORMAN *Cheer Leader*



Glee Club



MATILE POWELL
President

MARY FRANCES ROBERTSON *Vice-President*
BERTHA FERRELL *Secretary*
LUCIUS BEDELL *Treasurer*



Philharmonic Club

HELEN RYON
President



MARY ALEXANDER *Vice-President*

DOROTHY DASHER *Secretary-Treasurer*



Fine Arts Club



SARA THOMAS
President

MARY SMALL *Vice-President*

ELIZABETH BOYD *Secretary-Treasurer*



Sock and Buskin Club

ANNIE MAUDE FERRELL
President



- ETHEL DENT *Vice-President*
ALINE FUTCH *Secretary-Treasurer*



Home Economics Club



MARY STEWART
President

- HELEN HIGHTOWER *Vice-President*
MAGGIE LAWSON *Chairman Program Committee*
DOROTHY GLASCOCK *Secretary-Treasurer*



Valdosta Club

MILDRED LARSEN
President



- MARGUERITE FORD *Vice-President*
LA FORREST SMITH *Secretary-Treasurer*
MARGARET BRADLEY *Chairman Program Committee*



*"Yet all experience is an arch where thro
Gleams that untraveled world,
Whose margin fades
Forever and forever as I move."*



Features

*"Gifts of one who loved me,—
'Twas high time they came,
When he ceased to love me.
Time they stopped for shame."*

*"But come thy goddess fair and free,
In Heaven yclept Euphrosyne,
And by men hearteasing mirth."*





*"Thou wilt find, perchance another
And a fairer, Galatea."*



*"All is dross that is not Helena
Oh, thou art fairer than the evening
air
Clad in the beauty of a thousand
stars."*





*"Penelope, the fame of thy virtue
shall never perish;
The immortals will sing for thy
gracious songs
In the ears of men on earth
To thy fame, oh constant Penelope."*



*"A daughter of the gods was she
Divinely tall and most divinely
fair."*





*"O, fond Arachne! thee I also saw,
Half spider crawling up
The unfinished web thou weaved'st."*



*"Arcadian Atalanta, snowy souled,
Fair as the snow and footed as the
wind."*



Euphrosyne Most Cheerful
ELIZABETH MCREE

Galatea Most Beautiful
EVELYN CALHOUN

Helen of Troy Most Popular
CORA BURGHARD

Penelope Miss G. S. W. C.
KATHERINE BLACKSHEAR

Aphrodite Most Attractive
LAURA CLEMENTS

Arachne Most Capable
NORMA MIDDLETON

Atalanta Most Athletic
MYRTLE VICK



Activities

*“Behold, behold! the granite gates unclose,
And down the vales a lyric people flows;
Dancing to music, in their dance they fling
Their fleecy robes to every wind that blows”*





*Seniors
in*



Uncharacteristic

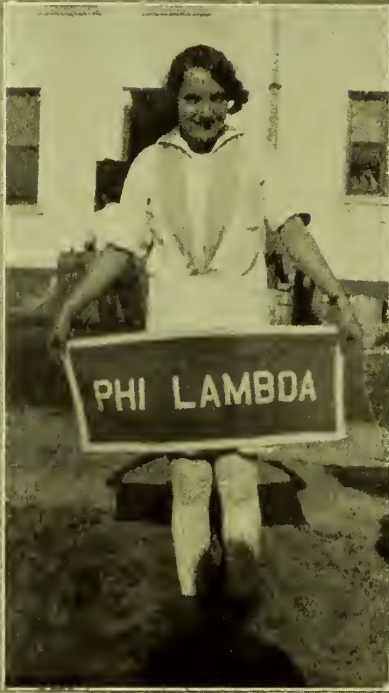
Poses





Athletics

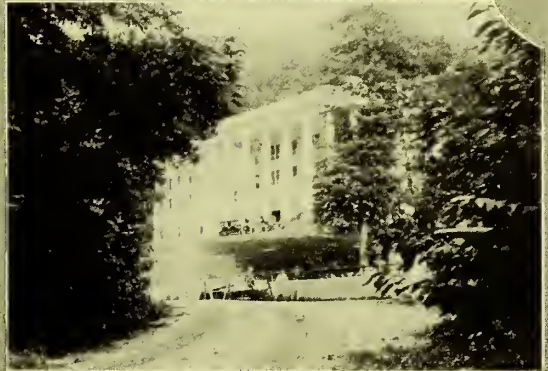




Blue



Ridge



Cheer for the Lambdas,

Lambdas to win!

Fight to the finish

Never give in.

Rah! Rah! Rah!

You do your best girls

We'll do the rest girls

Lambdas will win today!

I'm a Phi Kappa born!

I'm a Phi Kappa bred!

And when I die,

I'll be a Phi Kappa dead.

So it's Rah! Rah! Kappa!

Kappa! Rah! Rah! Kappa

Kappa! Rah! Rah! Kappa

Kappa! Rah! Rah! Rah!



Jokes and Ads

*"Mild joys like silvery waters fall;
But it is sweetest, sweetest far of all
In the calm summer night,
When the tree tops look white,
To be exhaled in dew at Dian's call."*

Chute (at county fair): "Look at the people. Aren't they numerous?"
Butler: "Yes, and ain't there a lot of them?"

* * * * *

Evelyn Calhoun: "How do you like my new dress?"
Florris Woodward: "Reminds me of a popular theatre."
Evelyn: "What do you mean?"
Florris: "Standing room only."

* * * * *

Janet Scarborough: "How long are you going to be in that bath tub?"
Olive Mitchell: "Oh! About 5 feet 2."

* * * * *

Miss Hopper (in Geography class): "Can any one tell me how iron was discovered?"

Hazel Sawyer: "I heard my dad say they smelt it."

* * * * *

"Say, Jerry, let's walk around the corner and get a drink."
"H—l no! Let's run."

* * * * *

Sarah Hall: "Oh, he says he thinks I'm the nicest girl in town. Shall I ask him to call?"

Ila: "No; let him keep on thinking so!"

* * * * *

J. P.: "Can you draw?"

Sara: "A little. Why?"

J. P.: "Well draw a little closer."

* * * * *

Hazel Donahue: "What is the greatest necessity in all the walks of life?"

Dot Jones: "My dad says, 'Shoes'."

* * * * *

The old-fashioned girl makes good material for the song-writer; but the flapper gets invited to the party!

* * * * *

Catherine Trulock: "What is the most common impediment in the speech of American people?"

Willie Belle: "Chewing gum."

* * * * *

Cappie Bush: "Martha Minter talks like a book."

Frankie: "What a pity she can't be shut up the same way."

* * * * *

*"The night shall be filled with cramming;
But somehow in class next day,
The facts like Longfellow's Arabs
Have silently stolen away."*

* * * * *

Miss Campbell: "I'm getting some rare work from those Juniors."

Miss Price: "Rare?"

Miss Campbell: "Well, you see, it's not well done!"

Miss Metcalfe: "Are you afraid of work?"

Sara Thomas: "Certainly not. I can lie right down by it and go to sleep!"

* * * * *

Max: "My roommate is so dumb she thinks canary birds come from Canary Island."

Ruth N.: "Well, don't they?"

Max: "Darned if I know."

* * * * *

Maid: "The garbage man is here, sir."

Mr. Wood (in deep thought): "Tell him we don't want any."

* * * * *

Mitch: "Mamie, what's a net?"

Mamie: "A net, my dear, is a bunch of holes tied together by little pieces of string. Now don't bother me any more."

* * * * *

Article recently published declares that profanity is merely a substitute for good vocabulary and the ability to express one's self well. Sara Julia much impressed, determines to do away with profanity and express herself in other terms. Accordingly, when she loses the paper she has been working on for two months:

"This, in truth, distresses me beyond utterance. Surely this is taxing one beyond the limits of human endurance. I do not believe I can retain my full senses, my sanity, under circumstances so harassing. I vow, one who can in silence bear so cruel a blow is deserving of a better fate, and such determination is worthy of a better cause. I am annoyed, indeed, I am ired—I approach fury, anger, wrath! Such unfairness, the cruelty of the alien powers—oh, devil take it!!! This is a helluva fix, and I'll be d—d if I write the ?!&\$\$**!??--*!?' thing over again!!!!"

* * * * *

North: "Don't you agree that speed is the curse of America?"

West: "Can't say I do. I'm an installment collector."

* * * * *

Catherine Ulmer: "Get ready to die. I'm going to shoot you."

Lucille Dowling: "Why?"

Catherine: "I've always said I'd shoot anyone who looked like me."

Lucille: "Do I look like you?"

C. U.: "Yes."

L. D.: "Then shoot."

* * * * *

"Why does Binko want a divorce? His wife had half a million when he married her."

"Well, she still has half a million."

*Weep and you're called a baby;
Laugh and you're called a fool;
Yield and you're called a coward;
Stand and you're called a mule;
Smile and they call you silly;
Frown and they call you gruff;
Put on a front like a millionaire,
And somebody'll call your bluff!*

* * * * *

"Darling, I will love you forever."
"Sounds good, but I gotta be at the college by eleven o'clock."

* * * * *

Madge Mills: "There are several things I can always count on."
Olive Ryon: "What are they?"
Madge: "My fingers."

* * * * *

Ila: "Now, what are you stopping for?"
Homer: "I've lost my bearings."
Ila: "Well—at least, you're original. Most fellows run out of gas."

* * * * *

Miss Lockett (in Math class): "Name the kinds of graphs?"
Mary Smith Hodges: "Telegraph, phonograph, and Freshman paragraph."

* * * * *

Eunice Chute (translating French): "The bottom of the page says to translate that 'Very fine'."

* * * * *

Miss Price put the following question in an examination on government:
"What is a sinking fund?"

Derrille Armstrong: "A sinking fund is an appropriation which the government sets aside each year for raising sunken ships."

* * * * *

Miss Bush: "Where is the girl who used to hang mistletoe in the parlor and blush shyly when kissed?"

Bertha Ferrell: "Oh, she's put a parking light on her roadster, now."

* * * * *

James: "Did you say I was no gentleman?"
Martha Minter: "No, I merely remarked that you preferred brunettes."

Miss Gilmer and Mr. Stokes were comparing ideas about foreign cities.

Miss G.: "You know, London is the foggiest place in the world."

Mr. S.: "Oh no! It's not either—I've been in a place much foggier than that."

Miss G.: "Where was that?"

Mr. S.: "I don't know where it was, it was so foggy."

* * * * *

Myrtie M.: "Do you know why twin beds were invented?"

Lucius: "No; why?"

M. M.: "Onions!"

* * * * *

When a man sees red, he's dangerous; when a woman sees red, she has to have one like it. ————The Senior girls are especially fond of red this season.

* * * * *

Miss Ivey says she's heard about girls who skated back from auto rides, girls who swam back from canoe rides, and girls who parachuted back from airplane rides, but she has yet to hear what happened to the girl who was taken out walking.

Patron's Page

- Ace Cleaning Co.
Acorn Store, Inc.
Dr. E. H. Anderson
- Bank of Valdosta
Beuson Dry Cleaners
Blackburn's Studio
Blanton Grocery Co.
Breedlove
Brown & Farmer Barber Shop
- California Fruit Co.
Campbell's Grocery
Central Service Station
Chamber of Commerce
A. Converse Co.
Converse's
Citizens and Southern National Bank
- Daniel Ashley Hotel
Daniel Ashley Pharmacy
Davis Bros. & Co.
Mrs. Dent's Beauty Salon
- Economy Electric Co., Inc.
Electric Supply Co.
- Famous Store
Finley Machinery Co.
First National Bank
Friedlander Bros.
- Georgia-Florida Commercial College
Georgia Lumber & Supply Co.
Georgia Power & Light Co.
Georgia State Woman's College
Gould Motor Co.
- Herff-Jones Co.
- Ish Jordon Barber Shop
Turner Jones Shoe Co., Inc.
- Knight's Pharmacy
- Lefiles Automotive Service
Lestie Poole, Contractor
- Mathis & Youmans
Miller Transfer
McElvey & Fitch Co.
McRae's Boot Shop
- W. M. Oliver & Co.
- Paine Hardware Co.
Paine Insurance Agency
A. S. Pendleton Co.
Piggly-Wiggly
Pinkston's
- Ritz Theatre
Roscoe Rouse
- Service Drug Co.
Sinclair Refining Co.
Sineath Feed & Grocery Co.
Southern Stationery & Printing Co.
Smith Drug & Seed Co.
South Georgia Motor Co.
Star Laundry
Strand Theatre
Strickland Hardware Co.
Stump Brothers
Swift & Co.
- Taylor Buick Co., Inc.
Thompson & Girardin
Traveling Protective Association
- United Service Station
- Valdosta Abattoir Co.
Valdosta Baking Co.
Valdosta Bottling Works
Valdosta Builders' Supply Co.
Valdosta Gas Co.
C. C. Varnedoe & Co.
- Warshaw's Boot Shop
Webb's Shoe Shop
West Motor Co., Inc.
Matt H. Whitham
Mrs. C. Whittington
- Yearty's Drug Co.

COGNIZANT of the fact that the
Georgia State Womans College
has no superior in the State,

WE WISH to congratulate the
young ladies who attend this
college,

AND express appreciation for their
stay in Valdosta and the hope
for happiness upon happiness for
them through the journey of life.

CHAMBER OF COMMERCE
V A L D O S T A

*NOTHING THAT YOU CAN GIVE THOSE WHO ARE NEAR
AND DEAR WILL PLEASE THEM MORE THAN YOUR
PHOTOGRAPH AND WITH EACH
PASSING YEAR THESE TREASURED
RECORDS BECOME MORE PRECIOUS.*



Photographs Live Forever



BLACKBURN



Photographer for 1928 Pine Cone



VALDOSTA,

::

GEORGIA

The Georgia State Womans College

at Valdosta



IS HAPPY to use this page as an advertisement. But the real advertisement of the college is the book itself—the ANNUAL. A college is more perfectly revealed through its student activities than in any other way. This college is happy to be so revealed—a livable, lovable, effective organization of livable, lovable, effective people. . . .



BANK OF VALDOSTA

CAPITAL \$200,000.00

WE INVITE YOUR ACCOUNT.

DR. E. H. ANDERSON

PALMER GRADUATE
CHIROPRACTOR

ROOMS 6-8
STRICKLAND BUILDING
PHONE 967

VALDOSTA,
GEORGIA

MILLER TRANSFER

GENERAL HAULING AND BUILDING SAND

STAR LAUNDRY

FRENCH DRY CLEANING

PLEATING — DYEING

Special Attention to Parcel Post Shipments

MAIL US YOUR WORK DURING VACATION

VALDOSTA,

::

GEORGIA

STRICKLAND HARDWARE COMPANY

VALDOSTA,

::

GEORGIA

SMITH DRUG & SEED COMPANY

PRESCRIPTIONS



TOILETTE REQUISITES



VALDOSTA,

::

GEORGIA

THOMPSON & GIRARDIN

JEWELERS



GIFTS FOR ALL OCCASIONS



110 W. CENTRAL AVE.,

VALDOSTA, GEORGIA

CLASS RINGS—PINS

INVITATIONS—CARDS

For Colleges and High Schools

OFFICIAL JEWELER FOR G. S. W. C.

HERFF - JONES

Indianapolis, Ind.

H. S. Canfield, *Rep.*

“The Fit Is the Thing”

YOU ARE ASSURED OF STYLISH SHOES

—*THAT FIT*—

When You Trade With Us

**TURNER JONES SHOE COMPANY
INC.**

“SHOES FOR ALL OCCASIONS”

CONVERSE'S



NORRIS AND PAGE AND SHAW
CANDIES



—PHONE 32—



*THE BUSIEST FOUNT
IN TOWN*

VIKING TIRES

WILL GIVE YOU MANY A GOOD TURN



THEY ARE FULLY GUARANTEED

—BY THE—

CENTRAL SERVICE STATION

WASHING :: GREASING :: VULCANIZING

STUMP BROTHERS



Paints and Builders'
Supplies



VALDOSTA,

::

GEORGIA

Georgia-Florida Commercial College, Inc.

Fully Accredited and Equipped

Eight Commercial Subjects—Literary Subjects

BYRNES SHORTHAND—4 TO 6 WEEKS

VALDOSTA,

::

GEORGIA

BROWN & FARMER

A FIRST CLASS BARBER SHOP

DANIEL ASHLEY HOTEL

VALDOSTA, GEORGIA

WEBB'S SHOE SHOP

J. T. WEBB, PROP.

PHONE 597

215 E. HILL AVE.

Near City Hall—Valdosta, Georgia

VALDOSTA BOTTLING WORKS

J. F. HOLMES, *Proprietor*

EXCLUSIVE BOTTLERS OF

The Coca-Cola logo is rendered in its classic, flowing script typeface. The letters are dark and have a slight shadow effect, giving it a three-dimensional appearance. The 'C' and 'C' are particularly large and ornate.

NU-GRAPE

::

ORANGE CRUSH

::

RED RACE GINGER ALE

Office and Factory: Cor. Savannah and Toombs Sts.

PHONE 225

VALDOSTA, GEORGIA

NOTHING MAKES A MEAL A SUCCESS LIKE GOOD BISCUIT

— USE —

EASTER LILY FLOUR

THE A. S. PENDLETON COMPANY

Distributors

LESTIE POOLE

General Carpenter and Contractor

LARGE OR SMALL JOBS

VALDOSTA,

::

GEORGIA

ISH JORDAN BARBER SHOP

Expert Hair Cutting — Modern Bobs

“BEST BARBER IN TOWN”

VALDOSTA,

::

GEORGIA

CAMPBELL'S GROCERY

Valdosta's Greatest Service Store

GROCERIES, MEATS, FRUITS AND VEGETABLES

THE CLEANEST PLACE IN TOWN

120 N. Ashley St.

Phone 1266

C. C. VARNEDOE & COMPANY

Valdosta's Store Dependable

WOMEN'S APPAREL AND ACCESSORIES

VALDOSTA,

::

GEORGIA

SEE THE VICTORY SIX
BY DODGE BROTHERS

THE GREATEST OF ALL MOTOR CAR VALUES

GOULD MOTOR COMPANY

210 E. CENTRAL AVE.

VALDOSTA,

::

GEORGIA

“Lightning Twin Engines”

SAW MILL CARRIAGE FEED

Finley Machinery Co.

VALDOSTA,

GEORGIA



DANIEL ASHLEY PHARMACY

The G. S. W. C. Drug Store

THE ONLY SODA FOUNT IN TOWN
EQUIPPED WITH HOT WATER

PHONES 700-701

IN DANIEL ASHLEY HOTEL


VALDOSTA,

::

GEORGIA

*WE WISH TO EXPRESS OUR SINCERE
APPRECIATION OF THE PATRONAGE
GIVEN US BY THE COLLEGE GIRLS*

**SOUTHERN STATIONERY &
PRINTING CO.**



**WHOLESALE
PAPER DEALERS**

STATIONERS PRINTERS ENGRAVERS

EVERYTHING FOR YOUR OFFICE

VALDOSTA,

::

GEORGIA

THE VALDOSTA ABATTOIR CO.

OFFERS to the public the advantages of a modern killing plant where carcasses are subjected to rigid inspection before and during slaughter for disease, where city water, steam, concrete floor, sewerage, and screened hanging room are available.

We believe in the future of South Georgia and will do our part toward attracting desirable and progressive people to come and live with us.

We recommend South Georgia and Valdosta to all who are interested in living in the best section among the best people in the world.

A
BRIGHT
CLEAN
KITCHEN

G A S
The Universal Fuel

NO COAL
TO SHOVEL
NO ASHES
TO CARRY

O
R
I
O
L
E

*The House
of All-Year
Convenience*

R
U
D
D

R A N G E S

W A T E R H E A T E R S

G A S D E P E N D A B L E

G A S E C O N O M I C A L : G A S I N S T A N T A N E O U S

A P L E A S U R E T O U S E

VALDOSTA GAS COMPANY

OPALINE MOTOR OILS

H-C GASOLENE

EXCELLENT QUALITIES

—AND—

PROMPT SERVICE

SINCLAIR REFINING COMPANY

R. L. PARRAMORE, *Agt.*

TELEPHONE 1181

VALDOSTA,

::

GEORGIA

SWIFT & COMPANY

BROOKFIELD BUTTER : EGGS AND CHEESE

SOUTH LEE STREET

PHONE 644

COMPLIMENTS TO—

G. S. W. C. GIRLS

POST M. GEORGIA, T. P. A.

MRS. C. WHITTINGTON



Distinctive Styles for
College Girls



VALDOSTA,

::

GEORGIA

FIRST NATIONAL BANK

VALDOSTA, GEORGIA



Resources Over \$3,500,000.00

GET YOUR WORK DONE AT—

MRS. DENT'S BEAUTY SALON

Permanent Marcel Wave a Specialty

Second Floor Mrs. Whittington's Ready-to-Wear Store

PHONE 1281

VALDOSTA, GA.

ECONOMY ELECTRIC CO., Inc.

"Do It The Economy Way"

ELECTRICAL CONTRACTORS

McRAE'S BOOT SHOP, INC.

"Style Quality Service"

LADIES' SHOES, HOSE AND NOVELTIES

IN HOTEL DANIEL ASHLEY

CITIZENS & SOUTHERN NATIONAL BANK

VALDOSTA, GEORGIA

Capital and Surplus

\$5,500,000.00

NO ACCOUNT TOO LARGE

NONE TOO SMALL

WE SPECIALIZE IN OUR PRESCRIPTION DEPARTMENTS

SIX REGISTERED PHARMACISTS

Our Fountain Service Is the Best

—AGENCY—

NUNNALLY'S : WHITMAN'S : NORRIS'

CANDIES

TWO STORES

Knight's Pharmacy

TELS. 803-804

CORNER ASHLEY STREET AND
CENTRAL

VALDOSTA,

Yearty's Drug Store

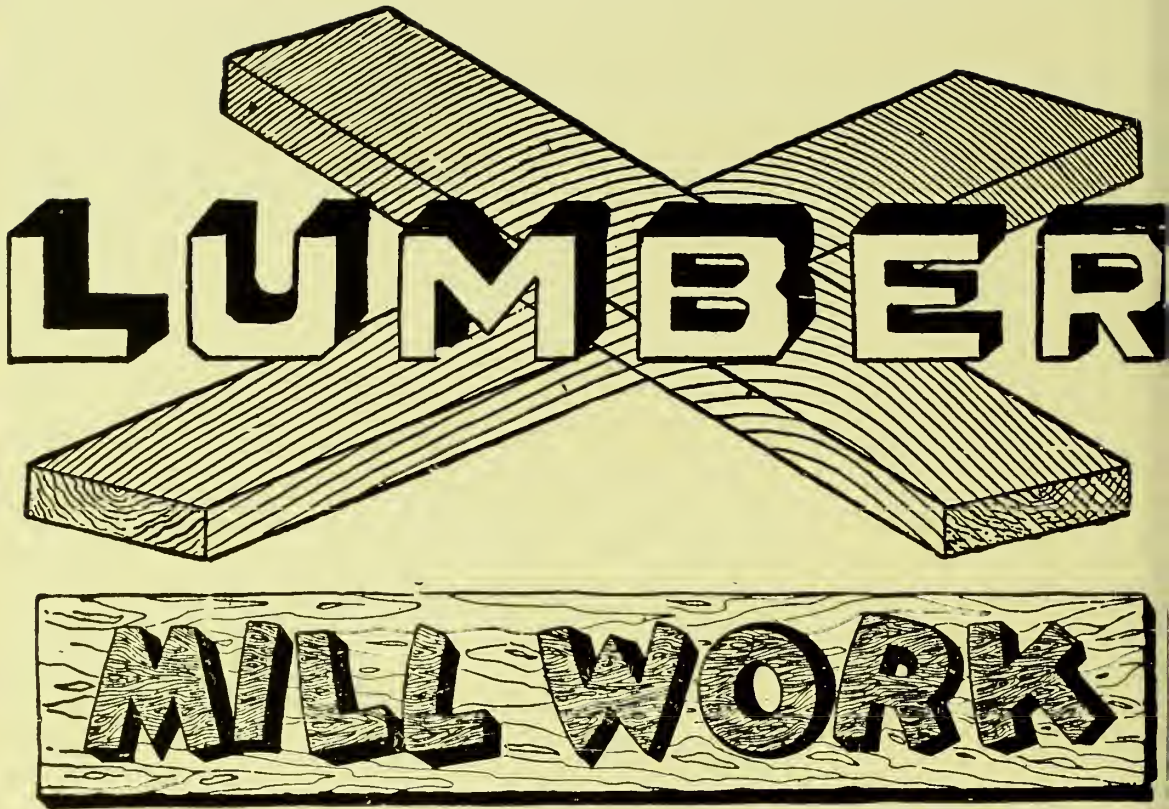
"The Accommodating Druggist"

TELS. 812-813

136 N. PATTERSON STREET
CORNER PATTERSON and CENTRAL

GEORGIA

::



— A N D —

BUILDING MATERIAL

SASH, DOORS, SCREENS, AND FRAMES
IN STOCK AND MADE TO ORDER

*Framing, Dressed Stock, Laths, Moulding, Upson Board,
Cary's Roofing and Shingles, Celotex Insulating
Board, Oak Flooring*

VALDOSTA BUILDERS' SUPPLY COMPANY

W. L. ROBERTS

ABIAL WINN

J. M. ALDERMAN

115 E. CRANE AVE.

::

TELEPHONE 772

“IF IT’S ALIVE
WE FEED IT”

SINEATH FEED & GROCERY CO.

Distributors of

FUL-O-PEP POULTRY FEED
LARRO DAIRY FEED

VALDOSTA,

::

GEORGIA

THE BENSON COMPANY

DRY CLEANERS AND DYERS

PHONE 486

VALDOSTA, GA.

EVERY MILE A NEW MOTORING ADVENTURE

If You Drive A Studebaker

SOUTH GEORGIA MOTOR CO.

VALDOSTA,

::

GEORGIA

J. W. PINKSTON

Dry Goods, Hosiery, Notions

READY-TO-WEAR FOR LADIES AND CHILDREN



VALDOSTA,

::

GEORGIA

RITZ THEATRE

"Pride of South Georgia"



*PRESENTS BEST PROGRAMS
AND ENTERTAINMENTS
IN THE SOUTH*



VALDOSTA,

::

GEORGIA

E A T

Bamby Bread

OVEN FRESH

DEMAND IT FROM YOUR GROCER

VALDOSTA'S OWN

HOTEL DANIEL ASHLEY

“Operated by Valdosta People”

IS NEW AND THE ONLY FIREPROOF HOTEL IN
VALDOSTA, GEORGIA

RATES—\$2.00 : \$2.50 : \$3.00 : \$3.50 : \$4.00

—European Plan—

DINING ROOM AND COFFEE SHOP

EXCELLENT FOOD AT MODERATE PRICES

LEFILES AUTOMOTIVE SERVICE

Parts and Repair Work for All Makes of Cars

309-13 North Ashley Street

PHONE 1083

VALDOSTA,

GEORGIA

MATHIS and YOUMANS

PIANOS :: VICTROLAS

AND EVERYTHING IN MUSIC

VALDOSTA,

GEORGIA

DAVIS BROS. & COMPANY

"The House of Quality"

FURNISHINGS AND CLOTHING

VALDOSTA,

GEORGIA

GOOD LUCK AND GOD BLESS YOU

—COMPLIMENTS—

MATT H. WHITHAM

WARSHAW'S BOOT SHOP

"The Home of Smart Foot Wear"

110 N. ASHLEY ST. :: PHONE NO. 1247

VALDOSTA,

GEORGIA

COOK

THE SAFEST WAY
THE CLEANEST WAY
THE PLEASANT WAY
THE MODERN WAY
THE ECONOMICAL WAY

"ELECTRICALLY"

Georgia Power and Light Company

CALIFORNIA FRUIT COMPANY

Headquarters

FOR FRUITS AND VEGETABLES

PHONE 1010

FREE DELIVERY

ELECTRIC SUPPLY COMPANY

Electrical Contractor and Dealer

112 SOUTH PATTERSON STREET

PHONE 80

VALDOSTA, GA.

I AM BETTING ON
THE COLLEGE GIRLS



A F R I E N D

ROSCOE ROUSE

PLUMBING AND HEATING CONTRACTORS

—AND—

*Dealers in Plumbing and Heating Supplies
Water Work Systems, Septic Tanks and Drain Tile
Oil-O-Matic Oil Burner for Heating Plant*

VALDOSTA,

::

GEORGIA

A. CONVERSE COMPANY

Better Luggage For Less



HARTMAN WARDROBE TRUNKS
AND LIKELY LUGGAGE FOR
EVERY PURSE AND PURPOSE



VALDOSTA,

::

GEORGIA

“TAKE PAINS IN BUYING YOUR HARDWARE”

PAINE HARDWARE COMPANY

Everything in Hardware and Sporting Goods

135 N. Ashley St.

Phone 800

Valdosta, Ga.

McELVEY-FUTCH COMPANY

WHOLESALE

PRODUCE, FRUITS, VEGETABLES, SPECIALTIES

12,000 Square Feet Floor Space—10 Car Capacity Cold Storage

Two Telephones: Nos. 447-317 : 319 S. Patterson Street : Valdosta, Georgia

Georgia Lumber and Supply Company

Building Material

“WE INVENTED SERVICE”

PHONE 312

VALDOSTA, GA.

FEATURING ADVANCED STYLES IN READY-TO-WEAR
MILLINERY AND NOVELTY FOOTWEAR

Moderately Priced

THE FAMOUS STORE

“FAMOUS FOR BARGAINS”

107-109 N. Ashley St.,

Valdosta, Ga.

ACE CLEANING COMPANY

CLEANERS :: DYERS

“Once A Trial—Always A Customer”

304 N. Ashley St.

PHONE 411

THE ACORN STORES, INC.

“THE FRIENDLY STORE”

“IN A FRIENDLY CITY”

The most complete department store in

Valdosta, carrying 21 departments,

Specializing in

Ladies' Ready-to-Wear!

Gents' Furnishings!

Piece Goods!

Shoes!

“ALWAYS SHOP AT THE ACORN STORE”

“FOR DEPENDABLE MERCHANDISE”

ROBERT P. SNOW, President

F. D. BURROWS, Sec. & Treas.

R. V. SNOW, Vice-Pres.

PIGGLY WIGGLY SNOW CO.

OPERATING FOUR STORES IN VALDOSTA

A L W A Y S

The Most of the Best for the Least

PIGGLY WIGGLY IS YOUR FRIEND

Come in and meet him

WE THANK YOU.

Valdosta's Clean Drug Store

WHERE BETTER DRINKS ARE MADE

SERVICE DRUG COMPANY

DRINKS, CANDY, DRUGS, SEEDS, CIGARS

PHONE 1300

VALDOSTA, GA.

BLANTON GROCERY STORE

ALL FANCY GROCERIES

PHONE 66

Ashley Street

WE DELIVER

UNITED SERVICE STATION

GAS AND OIL

Free Road Service

PHONE 592

W. M. OLIVER & COMPANY



*Valdosta's Shopping Center
for Women*



OF GOOD JUDGMENT AND TASTE

THAT
THOSE WHO ARE GRADUATING
MAY FIND
HAPPINESS AND SUCCESS
IN THEIR CHOSEN LINE OF ENDEAVOR

* * *

This is the Wish of the Management

—of—

STRAND THEATRE

ALWAYS ON HAND FOR THE BEST
QUALITY AND SERVICE

S. B. BREEDLOVE

ICE CREAM

Sherbets—Ices—Parfaits—Punch—Mousse

Special Designs

HEALTH AND HAPPINESS IN EVERY SPOONFUL

PHONE 81

VALDOSTA, GA.

TAYLOR BUICK COMPANY, Inc.



VALDOSTA,

::

GEORGIA

*WITH COMPLIMENTS FROM A BUSINESS HOUSE
WHICH THE COLLEGE GIRLS ENJOY
PATRONIZING*



WEST MOTOR COMPANY, Inc.

LINCOLN : FORD : FORDSON

Satisfactory Lincoln Service

PAINE INSURANCE AGENCY

M. J. PAINE

ALL KINDS OF INSURANCE

Service Beyond the Policy

LET US WORRY FOR YOU

Phone 162

Strickland Bldg.

NEVER BUY BEFORE YOU TRY

FRIEDLANDER BROS.

LADIES' READY-TO-WEAR

SILK UNDERWEAR

MILLINERY

CHILDREN'S DRESSES

EVERYTHING FOR YOUR CONVENIENCE IN SHOPPING

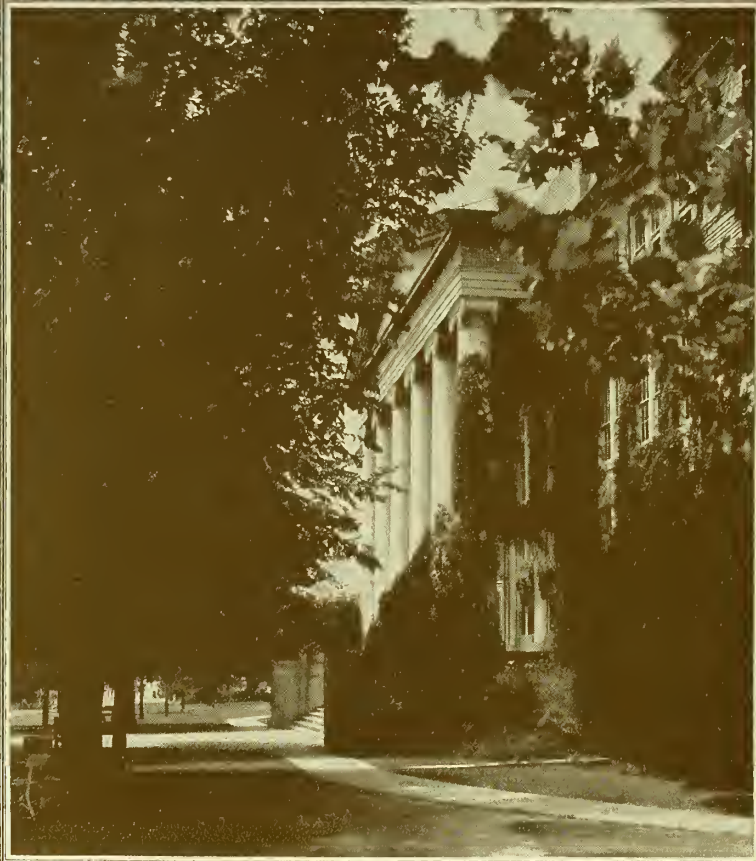
*Make US a Visit and Look Over Our Beautiful Line
of Merchandise*

THANK YOU



Where
the
Production
of your
Annual
Combines
the
Inspiration
of
Ancient
Artisans
and the skill
of Modern
Craftsmen

FOOTE & DAVIES
+ ATLANTA +



*Memories Live
through pictures*

The visual image of these dear spots will recall good times—friendships—loves. Through SWECO master-engraving, each tender memory has been preserved for you. "Your Story in Picture—Leaves Nothing Untold"—should you later have use for engraving, will you not remember kindly—

SOUTHWESTERN ENGRAVING CO.

FORT WORTH DALLAS HOUSTON
BEAUMONT WICHITA FALLS
AMARILLO TULSA ATLANTA



