



PINE CONE  
1931



**x libris**





Mildred Talley

G. S. W. C.

1931





Digitized by the Internet Archive  
in 2014

<https://archive.org/details/pinecone193100geor>



*The* **pine cone**  
**1931**



THE SENIORS OF THE  
GEORGIA STATE WOMANS

COLLEGE AT VALDOSTA.

PRESENT THEIR YEAR  
BOOK





*The*  
**PINE CONE**  
**OF**  
**1931**





## dedication

To our Alma Mater  
On her eighteenth birthday!  
A woman grown—just turned eighteen is she,  
A debutante first tasting life's real thrill.  
For many years she watched her sisters grow;  
Increase in personality, beauty, power,  
And dreamed a dream of one happy day  
When she herself would favored be,  
And dreaming thus prepared for that event  
Till now on this anticipated occasion  
She stands, a comely object of fit tribute—  
This dedication of a Birthday Book,  
And with this captivating amulet  
Looks out on life with new-found zest  
And with a heart made glad with memories.



Our Alma Mater



## foreword

O, Terpsichore, Muse of dance and song,  
Blithe spirit to youth most dear,  
Come join the birthday revelry  
And with your nymphs and maidens all  
Make this occasion one of utmost joy.  
Bring to this book, that each may play her part,  
Your humours that serve our fancies best:  
Soft candle light casting its magic glow  
Upon new romance in its first swift flame,  
Young love with tender passion all a zest,  
Recurring melodies, enhancing gayety—  
Full of the fire of youth and its great promise  
Stealing with recurring echo  
And mingling with sweet profusion  
With the heavenly fragrance  
Of mignonette and lilacs wet with dew.  
A bit of lace, a wisp of sheer chiffon,  
A new-blown rose, a song, a dance, a kiss,  
Each one a symbol—each a vital power  
In rendering ideally perfect this coming of age.



# contents

THE COLLEGE

ADMINISTRATION

CLASSES

ACTIVITIES

FEATURES

ORGANIZATIONS

ADVERTISEMENTS



## ALMA MATER

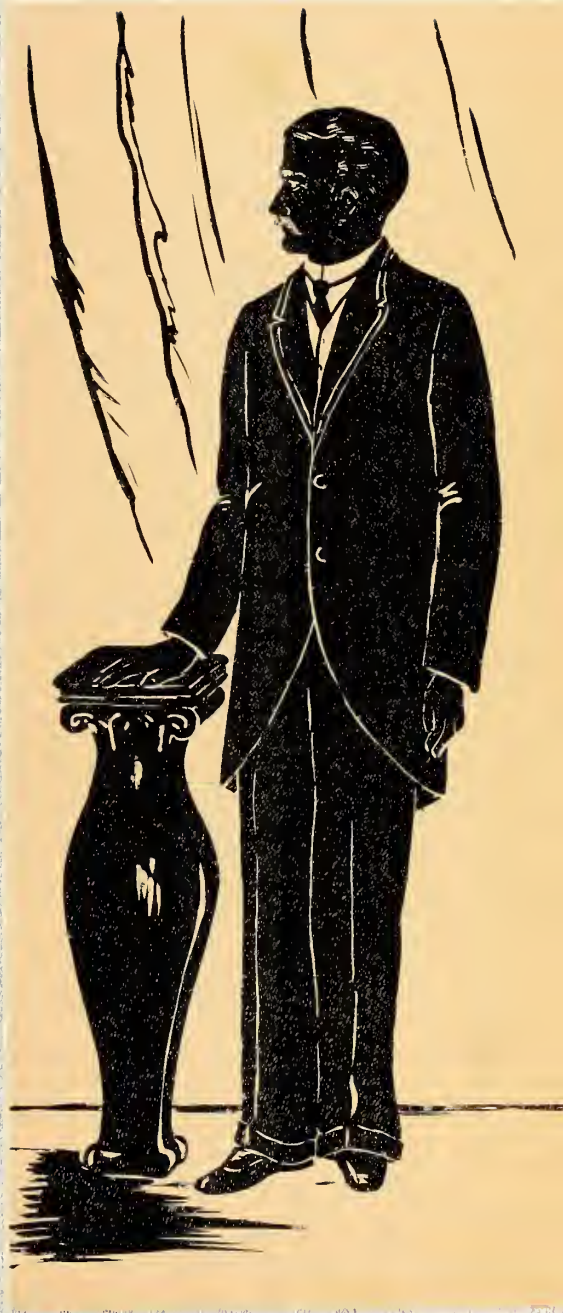
'Mong the stately pines of Georgia  
Glorious to the view,  
Stands our noble Alma Mater,  
Basking 'neath the blue.

## CHORUS

Alma Mater, thee we honor,  
Praises never fail,  
For thy fame shall never perish,  
Red and Black, all hail!

"If we can't be the biggest, we can be  
the best".

—Col. William S. West



colleqe

## The Plumed Pines

(The Georgia State Womans College is situated between two beautiful groves of pines.)

### I

*Tall, regular and dark and straight  
They stand;  
A regiment, alive and yet inanimate,  
On either hand,  
A regiment armed, plumed and uniformed—  
On duty!*

### II

*Each tree a silent sentinel!  
And in the midst a citadel;  
No enemy has stormed  
This fortress—well  
All enemies may see  
The guarding soldiery  
Protecting Beauty!*

### III

*Nor in this fortress thrice-secure  
Is Beauty unattended: There  
Goodness and Wisdom sure,  
Service and Sacrifice and fair,  
Far vision of accomplishment  
Are sheltered, that to Beauty may be lent  
An added enduring loveliness,  
A loveliness of life when its intent  
Is living  
In larger circles—life that e'er shall bless  
By giving!*

### IV

*Tall, regular and dark and straight  
They stand on guard—  
Plumed Pines to keep inviolate  
The shrine of learning,  
Above the altars, where the fires  
Lit by a love that Sacrifice inspires,  
Are burning!*

—D. G. BICKERS.

(From *Savannah Morning News*, Savannah, Ga.)





“'Mong the  
Stately Pines”



The Colonnade



Converse Hall



The Terrace of  
Converse Hall



Entrance to  
West Hall



Ashley and  
Converse Halls



Along the  
Prom Path



**College!**

*As busy as the first revolving  
door in a small town.*



"The right kind of college for the right  
kind of girl."

—Pres. Richard H. Powell



**administration**



### The President's Greeting

**Y**OU tell me that the College comes of age this year, and that the *motif* of the Annual is found in this interesting fact. Not legal age, solid twenty-one, it is true, but that more interesting age to young women, marriageable age, fair eighteen, it is. So it is; so be it. And yet what father ever realized his daughter is grown up? It is only when he compares his daughter, grown young lady that she is with the pretty, captivating "kiddie" that she used to be that he realizes what has happened. So it is with the College. Those of us who have been with the College since its birth eighteen years ago, seeing it grow from day to day, watching it develop year by year, have to stop and compare to realize how much it has developed, how graciously it has grown. This is not a place to institute such a comparison. Suffice it to say that no father was ever more proud of his eighteen-year-old daughter than we who have been on the campus longest are proud of the College. There is no phase of the College life more creditable, more suggestive of its development than its extra-curricular activities; and there is no "activity" more honorable and more honored than the PINE CONE. Accept with the President's greeting his hearty congratulations.

*R. H. Powell*



ANNIE POWE HOOPER  
B.S., A.M.  
*Dean of Women*

GERTRUDE CORDELIA GILMER  
B.S., A.M.  
*Professor of English  
Faculty Adviser PINE CONE*

FRANCES RUTH CARPENTER  
B.S., A.M.  
*Professor of Art  
Art Critic PINE CONE*



GEORGE WHORTON BESWICK  
A.B., A.M.  
*Professor of Education  
ad interim*

EARL W. PHELAN  
B. CHEM., PH.D.  
*Professor of Chemistry*

LENA JAMES HAWKS  
A.B., A.M., PH.D.  
*Professor of Mathematics  
and Physics*

JAMES RAYSOR STOKES  
B.S., M.S.  
*Professor of Biology*

MARY A. WORCESTER  
B.S., M.S.  
*Professor of Home Economics*

ELIZABETH McREE  
A.B.  
*Assistant in Physical Education*

LEONORA I. IVEY  
B.S., M.A.  
*Professor of Physical Education*



FRANCES B. PARDEE  
*Teacher of Violin*

HELEN RYON  
A.B.  
*Assistant in Music*

HAROLD STRONG GULLIVER  
B.A., A.M., PH.D.  
*Professor of English*

MARY LUCILE JENKINS  
A.B., A.M.  
*Instructor of Vocal Expression ad interim*

SARAH JANIE BUSH  
A.B., A.M.  
*Professor of Latin*

ANTOINETTE WESTBORN  
PH.D.  
*Professor of Modern Foreign Languages*

JOSEPH A. DURRENBERGER  
A.B., A.M., PH.D.  
*Professor of History and Social Sciences*

MILDRED MCCLELLAN PRICE  
A.B., A.M.  
*Professor of History*



NELL BRACEY  
A.B.  
*Training Teacher,  
First Grade*

MARY HELEN BOARD  
A.B.  
*Training Teacher  
Second and Third Grades*

LILLIAN JOHNSON  
B.S., M.A.  
*Training Teacher  
Fourth and Fifth Grades*

NELLIE GILL  
B.S.  
*Training Teacher  
Sixth and Seventh Grades*

GLADYS E. WARREN  
B.M.  
*Professor of Music  
Director of Department*

JAMES A. DASHER, JR.  
B.M.  
*Teacher of Piano and  
Pipe Organ*

RUTH E. SCOTT  
B.M.  
*Instructor in Music  
ad interim*



EDITH PATTERSON  
*Librarian*

IVA CHANDLER  
A.B.  
*Assistant Dean of Women*

AUGUSTA RENTZ  
A.B.  
*Registrar*

MRS. EDMONIA H. BECK  
*Director of Boarding Department*

MRS. NANNIE HAGAN  
*Nurse and Assistant to Dean of Women*

J. R. DUSENBURY  
*Financial Agent*

MILDRED V. LARSEN  
A.B.  
*Assistant to Financial Agent*

CAROLINE PARRISH  
A.B.  
*Secretary to the President*



**Administration!**

*In the presence of the G. S.  
W. C. Faculty I feel as in-  
conspicuous as a new filling  
station.*





**classes**





# seniors



*Jean Loughridge*

*Evelyn Blanton*

JEAN LOUGHRIDGE . . . . . *A.B., History* . . . . . ODUM, GEORGIA  
Phi Kappa Athletic Association; Y. W. C. A.; Argonian Literary Society; Student Government Association; I. R. C.; Vice-President Phi Kappas, 1930-31; Student Recorder of Points, 1929-30; President Senior Class, 1930-31; Secretary-Treasurer I. R. C., 1929-30; Honor Roll, 1927-28, 1929-30, 1930-31.

President of the class and a good sport is Jean. She and Mary Winn tied in the giggling contest sponsored by the class and open to all members. Jean has been an outstanding volley-ball player for the Kappas. As for dancing—she can aesthet with utmost grace.

*Bull Sessions and Oxfords*

EVELYN BLANTON . . . . . *A.B., English* . . . . . COLUMBUS, GEORGIA  
Student Government Association; Y. W. C. A.; Phi Kappa Athletic Association; Argonian Literary Society; Secretary Argonians, 1929-30; Secretary-Treasurer Senior Class, 1930-31; Student Recorder Points, 1930-31; Snapshot Editor PINE CONE, 1930-31.

Fawncy that! When one thinks of Evelyn one always thinks of the Junior Faculty Take-off—now wasn't she a scream? Evelyn has been outstanding in Literary Society work and in almost every other phase of campus life. At present she's a veritable Mr. Blackburn, charging upon unsuspecting girls, Kodak in hand, snap-shotting everywhere. She'll get them, too, for she's one who gets what she wants when she wants it.

*Morning Joy and Father's in Town*

# SENIORS



*Essye Allgood*

*Lucius Bedell*

ESSYE ALLGOOD . . . . . A.B., English . . . . . CAIRO, GEORGIA

Entered 1929 from G. S. C. W.; Student Government Association; Y. W. C. A.; Phi Kappa Athletic Association; Home Economics Club, 1929-30; Argonian Literary Society; Blue Ridge Delegate, 1930; Vice-President Y. W. C. A., 1930-31; Y. W. C. A. Cabinet, 1930-31; Secretary-Treasurer Junior Class, 1929-30; G. S. W. C. Letter, 1930.

Ingénue Essye! Everybody's friend is Essye. Why? Who doesn't want sympathy at some time in a busy, crowded day, and Essye is just the one to supply it. Somehow we associate Essye with a little inscription in the front of a small book—"Be sweet, my girl, and let who will be clever." She is sweet—but she won't leave cleverness for the rest—she insists upon that, too. Outstanding among Essye's many virtues is her quality of Frank-ness.

*D.D.'s, Lavender and Old Lace*

LUCIUS BEDELL . . . . . WOODBINE, GEORGIA

President Freshman Class, 1927-28; Vice-President Argonian Literary Society, 1927-28; Treasurer Glee Club, 1927-28; Vice-President Y. W. C. A., 1928-29; Cheer Leader Phi Lambdas, 1928-29.

What could be more thrilling than an ordinary wedding? Answer: A surprise wedding with a Senior as chief actor. We hated to lose Lucius, but our loss was Jack's gain. We wish them every happiness, and, although she isn't with us any more, there will always be a place reserved in the class for Lucius.

*Long Distance Calls and Orange Blossoms*



Mary Elizabeth Boyd

Margaret Brabham

MARY ELIZABETH BOYD . . . A.B., Education . . . VALDOSTA, GEORGIA  
Student Government Association; Argonian Literary Society; Valdosta Club; Phi  
Lambda Athletic Association; I. R. C.; Fine Arts Club; Y. W. C. A., 1929-30; Secre-  
tary-Treasurer Fine Arts Club, 1927-28, 1928-29; President Fine Arts Club 1930-31;  
Chairman Art Committee PINE CONE, 1930-31; Honor Roll, 1927-28, 1928-29.

Mary Elizabeth is the artful girl of our class. When any one wants anything done  
in the realm of Fine Arts she is right there to pick up the brush. As for making an-  
nouncements in chapel—Mary Elizabeth can make keener announcements than any  
radio announcer on the air.

*Art Bazaars and Manless Dances*

MARGARET BRABHAM . . . A.B., History . . . MOULTRIE, GEORGIA  
Student Government Association; Argonian Literary Society; Secretary-Treasurer  
Sophomore Class, 1928-29; President Phi Kappas, 1929-30, 1930-31; Phi Kappa Honor  
Cup, 1930; Sock and Buskin Club, 1928-31; Sophomore Class Play, 1928-29; I. R. C.,  
1928-31; "Pine Branch" Staff, 1928-29; Presidents' Club, 1929-30, 1930-31.

Popular? I've heard it said that she ran Tom's Toasted Peanuts a close race in the  
nation's popularity contest. Brabham and Phi Kappa are practically synonymous—  
she's led the Kappas for two years and a very good leader too. Brabham doesn't  
devote all of her energy to athletics, however; she's been outstanding in Dramatic  
Club, I. R. C. activities, and her engaging grin has wrested many an extra nickel  
out of a student's purse at the country store.

*Berets and Football Games*

# SENIORS



*Margaret Bullock*

*Eva Tillman Carruthers*

MARGARET BULLOCK . . . . A.B., *History* . . . . . ADEL, GEORGIA  
 Student Government Association; Argonian Literary Society; Phi Lambda Athletic Association; Home Economics Club, 1927-28; Presidents' Club, 1928-29, 1930-31; Y. W. C. A.; Glee Club, 1927-28, 1928-29; I. R. C.; Honor Roll, 1927-28, 1930; Secretary-Treasurer Lambdas, 1928-29; Secretary Glee Club, 1928-29; President Argonians, 1928-29; Council Member, 1928-29; Vice-President Phi Lambdas, 1929; President Phi Lambdas, 1930; President Student Government Association, 1930-31; Phi Lambda Honor Cup, 1930; G. S. W. C. Letters, 1929, 1930, 1931.

Margaret is truly our most representative. Good in scholastic work, in athletics, in literary society work, she has even trilled in the Glee Club. Margaret's favorite indoor sports are writing letters and holding the hand mirror for Essye, but frequently she takes time to hold court and call monitors' meetings.

*Frat Pins and Sailor Lads*

MRS. CARRUTHERS . . . . . VALDOSTA, GEORGIA

Entered 1930 from G. S. T. C.; Student Government Association; Valdosta Club.

Mrs. Carruthers, coming to us in our Senior year, is a valuable asset to our class. An excellent cook from all reports—which we believe true—witness the Mrs. degree; she is an excellent student also. Always ready with a smile for everyone, she has made many friends.

*The Color Blue and a Cozy Bungalow*

# SENIORS



*Grace Chastain*

*Mattilu Doss*

GRACE CHASTAIN . . . . . *A.B., Mathematics* . . THOMASVILLE, GEORGIA

Phi Kappa Athletic Association; Argonian Literary Society; Philharmonic Club; Presidents' Club, 1928-29, 1930-31; Secretary and Treasurer Phi Kappas, 1928-29; Treasurer Argonians, 1930-31; Vice-President Kappas, 1929-30; Clerk of Court and Council, 1928-29; President of Mathematics Club, 1929-30, 1930-31.

Touchdown! That's what the crowd yells when Grace has the ball, and they usually get their wish. Grace is one of our outstanding athletes—almost a magician in the gentle art of basket-ball. As a mathematician Grace is the last word in what the well-behaved sines and co-sines are doing this season—more power to her.

### *Loving Cups and Fox Furs*

MATTILU DOSS . . . . . *A.B., Education* . . . . . VALDOSTA, GEORGIA

Phi Kappa Athletic Association; Valdosta Club; Argonian Literary Society; I. R. C.; Treasurer I. R. C., 1930-31; Honors, 1927-28; Student Government Association.

Romance enfolds Mattilu, but who can wonder at it when one gazes at her raven hair and adorable tilted nose. Mattilu has been one of our outstanding students through all the years. A handmaiden to the May Queen and a dancer of the minuets, she has been one of our ornamental students as well as a capable one.

### *Diamonds and Dates*



# seniors



*Etta Giddens*

*Gladys Norma Lewis*

ETTA GIDDENS . . . . . *A.B., History* . . . . . ARLINGTON, GEORGIA

Student Government: Y. W. C. A.; Phi Lambda Athletic Association: I. R. C., 1929-31; Fine Arts Club, 1928-31; Art Committee, PINE CONE, 1929-30, 1930-31; Y. W. C. A. Cabinet, 1930-31; Member-at-large I. R. C., 1930-31; Argonian Literary Society.

Etta is another one of our art students, and whenever the class has occasion for Art Committees, Etta is always a prominent member. Unassuming and quiet in manner, nevertheless, Etta has made a place for herself in the class that no one else can fill.

*Palette and Brush*

MRS. CARLOS EVANS . . . . . *A.B., History* . . . . . VALDOSTA, GEORGIA

Entered 1928 from F. S. C. W.; Student Government Association; International Relations Club; Valdosta Club; Honors 1930-31.

Mrs. Evans, one of our members of the younger married set, is a charming addition to our class. It's a secret, but privately we think her husband helps her get her lessons, else how could she be so smart in International Relations?

*Lincolns and History Books*

# SENIORS



*Pauline Griffin*

*Jeannette Hall*

PAULINE GRIFFIN . . . . . *A.B., English* . . . . . VALDOSTA, GEORGIA

Phi Kappa Athletic Association; Sororian Literary Society; Fine Arts Club; President Fine Arts Club, 1929-30; Art Committee PINE CONE, 1929-30, 1930-31; Presidents' Club, 1929-30; Valdosta Club; Assistant Editor Pine Branch, 1930-31; Honor Roll, 1928-29, 1929-30; Student Government Association.

An artist of note, English student of marked intelligence, and a good French student as well as every other kind, Pauline is one of our intellectual elite. Finishing in three years, Pauline hasn't been with our class through all the mutual cares and pleasures, but she makes a great Senior and we're proud to have her.

*French Books and Fine Arts*

JEANNETTE HALL . . . . . *A.B., Latin* . . . . . SPARKS, GEORGIA

Y. W. C. A.; Argonian Literary Society; Home Economics Club 1927-28; Student Government Association; Philharmonic Club; Vice-President Philharmonic Club, 1930-31; Valdosta Symphony Orchestra; Phi Lambda Athletic Association.

Jeannette is one of our tiny members, but, as has been proved so many times, the best things come wrapped in the smallest packages. Jeannette and her violin are great additions to every program we have. Picture a Latin play with all the Latin songs and without Jeanette and her violin!

*A Day in Old Rome and Violin Music*

# SENIORS



*Emily Hallyburton*

*Dorothy Harris*

EMILY HALLYBURTON . . . . . *A.B., Education* . . . . . GRIFFIN, GEORGIA

Entered from St. Mary's School, 1929; Argonian Literary Society; Phi Lambda Athletic Association; Y. W. C. A.; Student Government Association; Honors, 1929-30; Art Editor Pine Branch, 1930-31.

Talk about Boots and her Buddies! Boots never had a longer string of the opposite sex hanging around than Emily. It must be true that gentlemen prefer blondes, for Emily's blond beauty has proved it. She finds time for studying, however; and even for teaching in the training school. On decoration committees, Emily is the last word.

*Permanent Waves and Evening Dresses*

DOROTHY HARRIS . . . . . *A.B., History* . . . . . VALDOSTA, GEORGIA

Entered 1930 from Bob Jones College; Student Government Association; I. R. C.; Honor Roll, 1930-31; Valdosta Club.

Although a new member of our class, coming in her Senior year, Dorothy has become one of us. Cheerful and always smiling is she. One reason for her smile is probably the fact that she has a head full of all the History and Novel one needs to know.

*Sunshiny Days and Picnics*

# SENIORS



*Roselle Hatcher*

*Alice Hicks*

ROSELLE HATCHER . . . . . *A.B., History* . . . DONALSONVILLE, GEORGIA

Student Government Association; Y. W. C. A.; Argonian Literary Society; Phi Kappa Athletic Association; Sock and Buskin Club, 1928-31; International Relations Club, 1928-31; Y. W. C. A. Cabinet, 1929-30; Secretary Literary Society, 1928-29; Inter-Society Debater, 1929-30; Chairman Program Committee Literary Society, 1929-30; Clerk of Council, 1930; Council Member, 1930; Editor-in-Chief, PINE CONE, 1930-31; Honor Roll, 1928-29, 1929-30; G. S. W. C. Letters, 1929-30.

Roselle is a combination of ornamentality and capability, and in the 1931 Annual, you have ample proof of both. Outstanding in all extra-curricular activities, yet always high in scholastic work, she has been one of the mainstays of our class.

*Black Lace Gowns and Spanish Shawls*

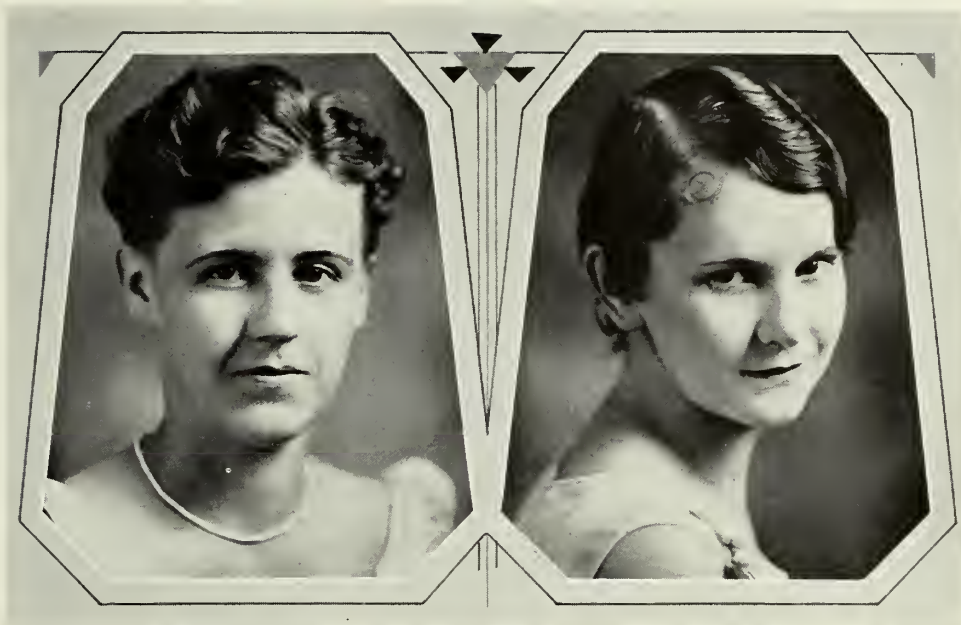
ALICE HICKS . . . . . *A.B., History* . . . . . METCALF, GEORGIA

Entered 1928 from Wesleyan; Phi Lambda Athletic Association; Y. W. C. A.; Glee Club, 1929-30, 1930-31; Philharmonic Club; Argonian Literary Society; International Relations Club, 1930-31; Student Government Association; Y. W. C. A. Cabinet, 1930-31.

Coming to us as a Sophomore, Alice has been a valuable addition to our class. Prominent in Music Club and Glee Club activities, she has been one of the most musical members.

*Bible Study and Glee Club Trips*

# SENIORS



*Lillian M. Hopper*

*Frances Hughes*

LILLIAN HOPPER . . . . . *A.B., English* . . . . . LUCEDALE, MISSISSIPPI  
 Phi Kappa Athletic Association; Student Government Association; Y. W. C. A.; Student Volunteer Movement; Home Economics Club, 1927-28; Argonian Literary Society; Sock and Buskin Club, 1927-31; Pine Branch Staff, 1927-28, 1928-29, 1930-31; Cabinet Y. W. C. A., 1928-29; Vice-President Kappas, 1928-29; Council Member, 1929; Clerk of Council, 1929; Sophomore Class Play, 1928-29; Honors, 1927-28, 1928-29; Secretary to Editor PINE CONE, 1930-31; Official Scorer Kappas, 1928-29; G. S. W. C. Letters, 1929 and 1931; Phi Kappa Honor Cup, 1930.

Lillian is the jolly member of our class, with always a wisecrack or a ready comeback. Although she can approve slips with the highest dignity, we have recollections of the snitching of fruit cake and other like escapades in the far-off days. Lillian excels in all scholastic work. Chemistry is her dish, and she can Parlez-vous with the best.

### *Boyish Bobs and Dodge Coupes*

FRANCES HUGHES . . . . . *A.B., History* . . . . . GLENNVILLE, GEORGIA  
 Entered 1928 from Andrew; Phi Kappa Athletic Association; Y. W. C. A.; Student Government Association; Argonian Literary Society; I. R. C., 1929-31; Sergeant-at-arms of Argonian Literary Society, 1929-30.

Frances coming to us from Andrew in her Sophomore year has been a peppy addition to the class. She has made a place for herself with her dry wit and back-handed compliments.

### *Wind-blown Bobs and Baby Face*

# SENIORS



*Margaret Jennings*

*Louise Johnson*

MARGARET JENNINGS . . . . *A.B., History* . . . . WAYCROSS, GEORGIA  
Secretary-Treasurer Freshman Class, 1927-28; President Argonian Literary Society,  
1929-30; Business Manager PINE CONE, 1930-31; Y. W. C. A. Cabinet, 1930-31; Phi  
Kappa Cheer Leader, 1928-31; Argonian Literary Society; I. R. C., 1929-30, 1930-31;  
Sock and Buskin Club, 1930-31; Honor Roll, 1927-28; Presidents' Club, 1929-30.

Margaret started off her college career by going to court more often than Chief Justice Taft, but all that time her courting was bringing her results. Popular with everybody, a friend to all is Margaret—even Freshmen adore her. As a cheer leader for the Kappas, she makes Joe E. Brown's yell sound like a whisper, and at every dance she's the most sought after young man there.

### *St. Louis Blues and Picture Shows*

LOUISE JOHNSON . . . . *A.B., Education* . . . . VALDOSTA, GEORGIA  
Student Government Association; Phi Kappa Athletic Association; Argonian Lit-  
erary Society; Valdosta Club; Glee Club; I. R. C.; Philharmonic Club; Treasurer  
Valdosta Club, 1929-30; Vice-President Valdosta Club, 1930-31; Vice-President Glee  
Club, 1929-30; Secretary Glee Club, 1930-31; Delegate I. R. C. Convention 1928-29;  
Honors, 1927-31.

A History shark if there ever was one, with a memory for facts that puts the rest of us to shame, Louise is also a prominent member of the Glee Club and can sing with the best of them. Although she's often been known to be tardy to class, she gets the knowledge just the same.

### *Lecture Notes and Sheet Music*

# seniors



*Kate Jones*

*Marguerite Langdale*

KATE JONES . . . . . *A.B., English* . . . . . RICEBORO, GEORGIA  
Argonian Literary Society; Phi Lambda Athletic Association; Honor Roll, 1927-31;  
Editor Pine Branch, 1929-30; Literary Editor PINE CONE, 1930-31; Chairman Program  
Committee, Argonian Literary Society, 1930-31; G. S. W. C., Letters, 1930.

Kate is just as versatile as her father's wares, and he sells everything from an egg to an automobile. She can be a rollicking gypsy or mischievous Harlequin at Christmas Festival. She likes to gad about, and she writes short stories on "What's in a name?", but when she dons her specs, she miraculously acquires the ability to read Latin or French and to do the Literary work for the Annual.

*Brookwood Pharmacy and Patterson Laughter*

MARGUERITE LANGDALE . . . *A.B., Education* . . . . . VALDOSTA, GEORGIA  
Argonian Literary Society; Phi Kappa Athletic Association; Valdosta Club; Inter-Society Debater, 1928; Chairman Program Committee Argonians, 1928-29; President Valdosta Club; Honors, 1927-31; Presidents' Club, 1928-29; Vice-President Argonians, 1929-30; Assistant Editor-in-Chief Pine Branch, 1929-30; Modern Language Medal, 1930.

Marguerite is capability, intellectuality, and other synonymous words personified. Voted once our most capable girl, the winner of the Modern Language Medal, and like honors, Marguerite must have a supermind, for she always finds time away from her books for pleasure. Marguerite's highest ambition is to make, to marry, or to get a million dollars.

*Week-end Trips and Big Words*

# SENIORS



*Margaret Littlefield*

*Blanche Parker*

MARGARET LITTLEFIELD *A.B.*, *Home Economics* . . . FOLKSTON, GEORGIA

Student Government Association; Phi Lambda Athletic Association; Argonian Literary Society; Home Economics Club; Sock and Buskin Club, 1927-31; Y. W. C. A.; President Home Economics Club, 1930-31; Presidents' Club, 1930-31.

Small and sweet is Margaret, and rather quiet. A whiz at Home Ec., she'll make some man a good wife. She'll be sure to get one—knowing so well the way to a man's heart. Industrious as well as gay, she makes a typical member of the class.

*Peter Pan Collars and Recipe Books*

BLANCHE PARKER . . . . . *A.B.*, *English* . . . . . OGEECHEE, GEORGIA

Entered 1929 from Georgia Normal at Statesboro; Student Government Association; Phi Lambda Athletic Association; Argonian Literary Society; Y. W. C. A.

Blanche is one of the newer members of the class, coming in her Junior year. However, she has found her place and become one of us with all ease. Blanche is an enthusiastic Lambda, and can be found on the athletic field almost any time. Among Blanche's many virtues is that of perseverance.

*Ball Games and Class Discussions*



# SENIORS



*Margaret Parrish*

*Georgia Patterson*

MARGARET PARRISH . . . . *A.B., Education* . . . . VALDOSTA, GEORGIA

Student Government Association; Fine Arts Club; I. R. C.; Valdosta Club; Honor Roll, 1929-30; Vice-President Fine Arts Club, 1929-30; President I. R. C., 1930-31; Art Committee PINE CONE, 1930-31.

Quiet and conscientious is Margaret, always doing things quietly while others talk of what they can do. She is another of our artists of note, and has contributed much to the art work in the annual. Prominent in I. R. C. activities and an outstanding History major, she has made a very efficient student.

*Rare Old Jewelry and Family Trees*

GEORGIA PATTERSON . . . . *A.B., Education* . . . . . BOSTON, GEORGIA

Student Government Association; Argonian Literary Society; Phi Lambda Athletic Association; Y. W. C. A.; I. R. C., 1929-31; Home Economics Club, 1927-29; Pine Branch Staff, 1928-29; Y. W. C. A. Cabinet, 1928-29; Treasurer Argonian Literary Society, 1929-30; Member-at-large I. R. C., 1929-30. Honors, 1927-31.

“Her modest looks the cottage might adorn  
Sweet as the primrose peeps beneath the thorn.”

Such a fitting epigram for Georgia was too good to be replaced by a substitute.

*Old Fashioned Pinks*

# SENIORS



*Lillian Patterson*

*Blanche Prescott*

LILLIAN PATTERSON . . . . *A.B., History* . . . . CORDELE, GEORGIA

Student Government Association; Y. W. C. A.; Argonian Literary Society; Phi Kappa Athletic Association; I. R. C., 1929-31; Vice-President I. R. C., 1930-31; Y. W. C. A. Cabinet, 1928-31; Euclidian Club, 1929-31; Vice-President Euclidian Club, 1929-30; Council, 1930-31; Assistant Corresponding Secretary of Alumni Association, 1930-31.

"Work quietly please!" Lillian has become a permanent fixture to the library desk, handing out massive volumes that appear too huge for her to lift. Lillian has never been too busy passing out these books to read them, however; for she has always been a good student. With her ready wit, she has made friends galore in the college.

### *The Library and German Classes*

BLANCHE PRESCOTT . . . . *A.B., Education* . . . . LAKE PARK, GEORGIA

Valdosta Club, 1926-27; Secretary-Treasurer Class, 1928-29; Fine Arts Club, 1929-30; Sororian Literary Society, 1928-30; Phi Lambda Athletic Association; Class Play, 1927-28.

We miss your merry prattle and your footstep on the stair! It was a great loss when Blanche left in February. Blanche has a ready tongue and would run Mark Twain a close second in a battle of wits—that is if she didn't beat him. Our chief bridesmaid for the last two years, we're wondering if Blanche won't be our next bride.

### *Blue Sport Shirts and Forget-Me-Nots*

# seniors



*K. D. Rentz*

*Joyce Roberson*

K. D. RENTZ . . . . . *A.B., Latin* . . . . . NAYLOR, GEORGIA

Phi Kappa Athletic Association; Sororian Literary Society; Treasurer Freshman Class, 1928-29; Philharmonic Club; Y. W. C. A.; Y. W. C. A. Cabinet, 1929-30, 1930-31; Council, 1930-31; Student Government Association.

K. D. is another three-year graduate, and a most welcome addition to the class. A Latin student of great note, she can amo, amas, amat with the best of them, and she makes a marvelous Gabriel in Latin Christmas plays.

*Horace's Satires and Trips Home*

JOYCE ROBERSON . . . . . *A.B., Music* . . . . . SCREVEN, GEORGIA

Student Government Association; Y. W. C. A.; Argonian Literary Society; Phi Kappa Athletic Association; Philharmonic Club; Y. W. C. A. Cabinet, 1929-30; President Philharmonic Club, 1929-30.

"Music hath charms"—especially when jingled forth from the ivories by Joyce's fingers. Joyce is our piano "major" this year and we're prophesying a career that may even surpass Little Jack Little's. What will Senior Hall be without Joyce's bright chatter and yells (no girls, not Seniorly calls)—yells for Jean, Leta Mac, and Frances.

*Volley-ball Games and Trips to Town*

# SENIORS



*Leta Mac Stripling*

*Dorothy Stroud*

LETA MAC STRIPLING . . . . A.B., English . . . . ALTAMAHA, GEORGIA

Student Government Association; Phi Kappa Athletic Association; Y. W. C. A.; Argonian Literary Society; Pine Branch Staff, 1929-30; Secretary Argonians, 1930-31; Secretary-Treasurer S. G. A., 1930-31.

Dependable is the word which describes Leta Mac. When she says she'll do a thing, consider it done. A good sport, always ready to go, yet willing to stay if need be, she holds a prominent place in all class as well as school activities. When you see Leta Mac, you can rest assured that Frances, Evelyn, Jean, and Joyce are near at hand.

*Red Dresses and Roll Books*

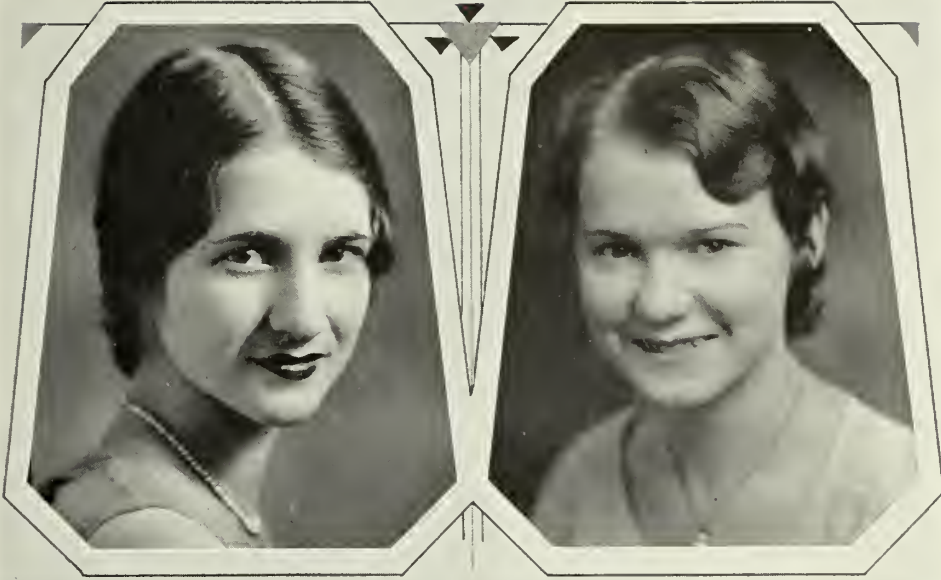
DOROTHY STROUD . . . . A.B., Education . . . . VALDOSTA, GEORGIA

Phi Lambda Athletic Association; Argonian Literary Society 1927-28; Valdosta Club; I. R. C.; Secretary-Treasurer Valdosta Club, 1928-29; President Valdosta Club, 1930-31; Honors, 1927-28, 1929-30, 1930-31; Advertising Manager PINE CONE, 1930-31; Student Government Association.

Dot is almost a permanent fixture at G. S. W. C.—coming here to the training school and through High School. Always in a good humor, keen as a blade, and always cheerful, she's a great leader in the class. Dot is an ardent supporter of all school activities, and if you want a project put across—ask Dot, she knows.

*Good Books and Radios*

# SENIORS



*Maye de Lois Summerlin*

*Margaret Sumner*

MAYE DE LOIS SUMMERLIN . . . . *A.B., English* . . . . PELHAM, GEORGIA

Student Government Association; Y. W. C. A.; Phi Kappa Athletic Association; Sororian Literary Society; Fine Arts Club; President Junior Class, 1929-30; President Sororian Literary Society; 1930-31; Feature Editor PINE CONE, 1930-31; Presidents' Club, 1929-30 1930-31; G. S. W. C. Letter, 1930-31.

An all-around good student is Maye de Lois. Full of fun and ready for a good time, she never neglects poetry preparation or any other. When you hear a *je* or *j'ai* on Senior Hall, don't get excited—it's merely Maye de Lois Frenching things up a bit. Her voice can be heard at all hours, raised in song: "If I could be with you—".

*Red Lips and Good Times*

MARGARET SUMNER . . . . *A.B., English* . . . . POULAN, GEORGIA

Y. W. C. A.; Phi Lambda Athletic Association; Home Economics Club, 1927-28; Sock and Buskin Club, 1928-31; Sophomore Play, 1929; Honor Roll, 1927-28; Y. W. C. A. Cabinet, 1928-29, 1929-30; President Y. W. C. A., 1930-31; Student Government Association.

A good sport is Margaret—and as one, she can do anything from playing good ball for the Lambdas to being Y. W. C. A. President. When she undertakes a thing you can count on its being done and done well.

*Tarleton Dresses and Old-Fashioned Locketts*

seniors



Mary Winn

MARY WINN . . . . . *A.B., Education* . . . . SAVANNAH, GEORGIA

Student Government Association; Sororian Literary Society; Phi Kappa Athletic Association; Y. W. C. A.; Home Economics Club, 1928-29, 1929-30; Glee Club; G. S. W. C. Letters, 1929-30; Y. W. C. A. Cabinet, 1929-30, 1930-31. Advertising Manager PINE CONE, 1930-31; Treasurer Home Ec. Club, 1929-30; Business Manager Pine Branch, 1929-30; Cheer Leader Kappas, 1928-29; Vice-President Freshman Class, 1928-29.

“We had fun on Toosday!” A Geechee from her heart—or is it tongue—is Mary and more power to her for it. A lover of a certain beverage—or rather two, she sometimes gets them crossed. She’s diplomatic and a convincer of tired business men that “It pays to advertise.” Not that it’s any reflection on her habits, but Senior Hall will surely miss Mary’s little yell—“Love and Kisses!”

*Rides from Town and Telephone Calls*





VIRGINIA CARSWELL  
*President*  
Waycross, Georgia

DOROTHY CHAPMAN  
*Secretary*  
Savannah, Georgia

HAZEL ALLEN  
Lenox, Georgia

CLIFFORD ARLINE  
Cairo, Georgia

SALLIE KATE BOZEMAN  
Shingler, Georgia

HELEN BRASINGTON  
Waycross, Georgia



DELIA BONNER  
Vienna, Georgia

MILDRED CHAMBLISS  
Americus, Georgia

MARY DOZIER  
Morgan, Georgia

PHARA ELARBEE  
Cairo, Georgia

MARY ELAINE FLANAGAN  
Waycross, Georgia

HELEN HARRELL  
Valdosta, Georgia





CARO HORNE  
Vienna, Georgia

FRANCES HOWELL  
Talladega, Ala.

ELIZABETH KIRKLAND  
Sylvester, Georgia

LILLIAN M. LIVELY  
Savannah, Georgia

CATHERINE MAXWELL  
Calvary, Georgia

MARJORIE MULLIS  
New Smyrna, Florida

JESSIE MAE PRESCOTT  
Lake Park, Georgia

ELSIE QUARTERMAN  
Ray City, Georgia

CAROLYN READDICK  
Folkston, Georgia

BEATRICE ROBERTS  
Donalsonville, Georgia

RUTH RUSHIN  
Vienna, Georgia

MATTIE D. SIMPSON  
Valdosta, Georgia





HELEN STEELE  
Savannah, Georgia

PEARL STRONG  
Valdosta, Georgia

EUNICE WALKER  
Brunswick, Georgia

KATHRYN WALL  
Ellaville, Georgia

MARGARET WARFIELD  
Savannah, Georgia

MARGARET WILLIAMS  
Waycross, Georgia





VIRGINIA CLARK  
*President*

ELIZABETH PARDEE  
*Secretary*

LAVERNE ADAMS

MATTIE ALLEN

ERNESTINE BAKER

EVA KATE BELFLOWER

HELEN BISHOP

MARGARET BOOTH





ANNIE SUE BRANDON

JANET BREWTON



JEANETTE BRIDGES

CAROLYN BULLARD



EMILY BURNEY

AGNES CALDWELL



WINIFRED CANADY

QUINNIE CARMACK





LOUISE CLIFFORD

DOROTHY COURTNEY



ZONA MAE CONNELL

DOROTHY DENMARK



RUTH DOZIER

ELIZABETH DURDEN



PEARL FAIRCHILD

SALLY FAIRCLOTH



PAULINE FORBES

DOROTHY FORD



VIOLET GLASCOCK

CLEO GRIFFIN



EVE HADDEN

MARY HAGAN



ANNA FRANCES HAM

EDITH HARRIS





REBA HARRISON

EDNA HENDERSON

MARTHA HORTON

MARY PEARL HOUSE

LOUISE HUGHES

KATHLEEN HURST

MADGE INGRAM

EMILY JENNINGS

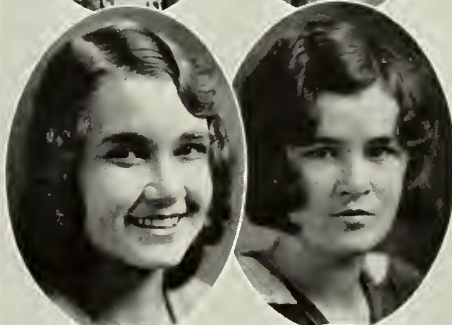
FRANCES JOHNSON

MYRTICE JOHNSON



LAURA LEE JONES

MARY LEVERETTE



BLUMA LEVITON

MILDRED McARTHUR



ALICE McCALL

SARA McEACHIN





EVELYN MCGOUGH

MARY VIRGINIA MCKEY

ETHEL McSWAIN

RUBY McSWAIN

ELIZABETH McLEMORE

LOUISE MANLEY

MILDRED MINCHEW

MARY ALICE MOSELEY

FRANCES MULLINS

MARY O'QUINN



VERA PARKER

PAULINE PARRISH



WINONA PATTERSON

MARY VIRGINIA PAULK



ESTHER PEARSON

MARY PEARSON





UNDEAN PEAVY

ILA POPPELL

MARGUERITE POWELL

NITA POWERS

MINNIE RICHARDSON

NELL ROBINSON

NANCY ROWLAND

INEZ ROYAL

HARRIET SHEPPARD

HALLY ELIZABETH SMITH



EMELIZA SWAIN

MILDRED TALLEY



ELIZABETH THOMPSON

ALINE TISON



MYRTLE VARNER

INEZ WEBB





SARA WADLEY

WYLENE WHITLEY

MARGARET WILLIAMS

BUFORD WILLIFORD

ELIZABETH WRIGHT

DORIS ZITROUER







HELEN CLARK  
*President*

GEDELLE BRABHAM  
*Secretary*

RUBY ARNETTE

ANN ANTHONY

ELIZABETH ARNOLD

MARGARET BISCHOFF

GLENN BLACKWELL

WINIFRED BLAUM

ELEANOR BOULWARE

EUGENIA BRAILSFORD



DOROTHY BRYANT

MARY BUSH

HELEN CARSWELL

WINONA COPELAND

JOHN CORN

DOROTHY CROCKER

ELVERA CROSBY

ELNITA CULPEPPER

NELLIE KATE DANIEL

MODESTA DUKES





HELENA DURHAM

ERMA EASON

MARGARET EASTERLIN

LILLIAN EDWARDS

EMILY ELKINS

LOIS EUBANKS

BESSIE FOLSOM

MGNTENE FLOYD

MILDRED GAINNEY

ANNIE LOIS GARDNER

KATHLEEN GLISSON

MARY GLOVER



JULIA GROOVER

INEZ HATCHER



LOUISA HEATH

LILLIAN HENDERSON



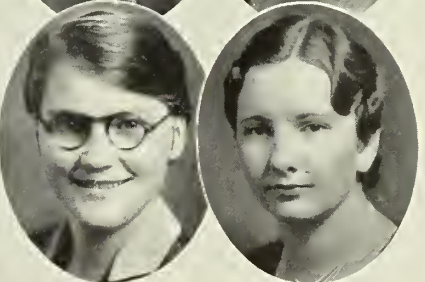
ELIZABETH HIERS

LENA MAUD HIERS



JOSEPHINE HIGHTOWER

FRANCES HILL





VIRGINIA HUTCHINSON

MARTHA JACKSON

VIRGINIA JONES

MARGARET KENNEDY

EVELYN KENNON

EUNICE KIRKLAND

DOROTHY LANG

ADAIR LANGFORD

JOSEPHINE LASHLEY

WILLIE LEE

BERNICE LEGGITT

ROMA LEVITON

ELIZABETH McELVEY

VELMA MILLER

LOUISE McNAIR

LILLIAN MORGAN

MARGARET MORRISON

MARY SUE NEAL

SARA NICHOLSON

JESSIE NORMAN





MARIE OLLIFF

GUSSIE O'QUINN

DOROTHY PATTERSON

ERNESTINE PEAVY

BEATRICE WILLIS

MARY POOLE

FLORENCE POWELL

RUBY RIGSBY

WILLENE ROBERTS

BESSIE LEE ROBERTS





PAULINE RYON

LOUISE SENTELL

MARJORIE SESSIONS

LONIE SHINGLER

BERNICE SLOAN

BRONICE SLOAN

CAROLINE SMITH

ELIZABETH SMITH

FLORENCE SMITH

MARGARET SMITH



HARRIET STEVENS

KATHERINE STOVALL

MARGARET SUMNER

MADGE SWAIN

JOAN TALBERT

FRANCES TAYLOR

EVA MAE TRAMMELL

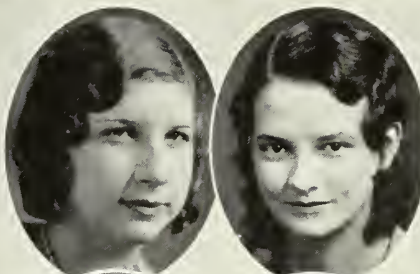
VERDA VANLANDINGHAM

POLLY WALKER

RUBY NELL WALL

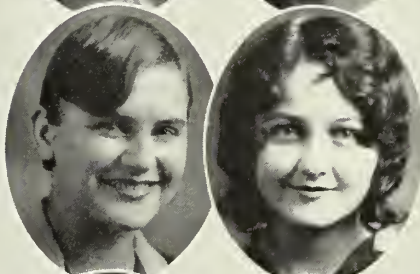
DOROTHY WALLS

CAROLYN WARD



SARA EMILY WARD

ELIZABETH WHEELER



ELIZABETH WHITE

MARGARET WILLIAMS



LOYLESS WILLIFORD

CLARICE WORSHAM



JEWEL WURST





**Time for Class!**

*Gee, I am as nervous as a  
jelly-fish on a Ford fender.*



**activities**



*The Glee Club*



*Balloon Dancers*

*A Chorus from the Glee Club*



*Scene from the Glee Club Performance*

GLEE CLUB



*Morris Dancers*



*Teasing Dancers*



*Animal Dancers*

CHRISTMAS FESTIVAL





*Shepherds and Shepherdeses*



*Skaters Hard*



*Minuet*

CHRISTMAS FESTIVAL



*Processional*



*The May Queen*



*Ladies in Waiting*



*The Queen and Her Court*

MAY DAY



*Spirits of the Night*



*Columbine and Two  
Clovers*



*Aurora and Her  
Handmaidens*

MAY DAY

*May Day Revelers*



*Bean Sticking*

*Robin Hood Band*



MAY DAY



*Winding The May Pole*



*Milk Maids*



*Queen O' the May  
and her Lords*

**MAY DAY**



*A Volley Ball Game in Progress*

*Freshman Drill*



*Tag of War*

*Competitions in the Sack Race*



PLAY DAY

*The Chariot Race*



*Phi Kappa-  
Phi Lambda  
Drill*



*Folk Dancers*



*The Flag Drill*



PLAY DAY



*The Princess Intercepts*



*Life, the Master*



*Life, the Slave*



*The Shepherd Lovers*

SENIOR PLAYS

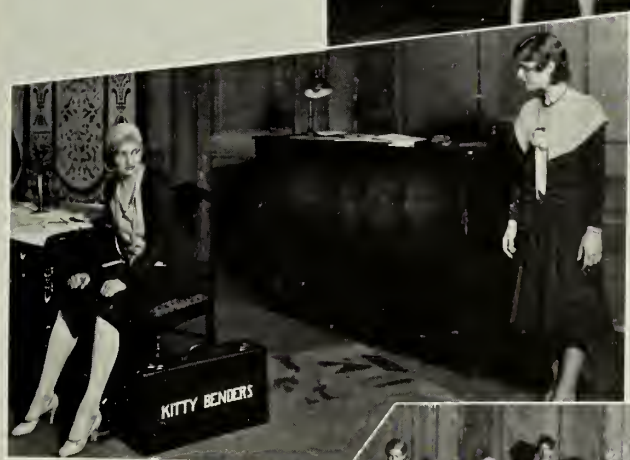




*Aunt Jane Disapproves*



*The Two Kitties*



*Bobby Pover as Kitty*



*The Last*

SOPHOMORE PLAY



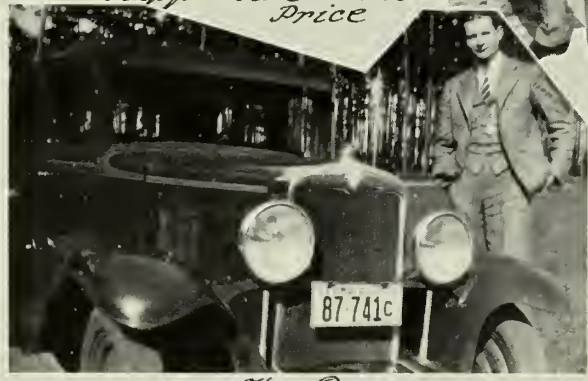
*Happy Dave & Miss Price*



*Our New Prof.*



*Just Lucite*



*The Racer*



*Registrar*



*Our Stand-By*



*Old Faithfuls Ladies of Leisure*

*Somebody's Sterog*



*A Good Sport*

FACULTY



*Most Likely to Marry*



*Funniest*



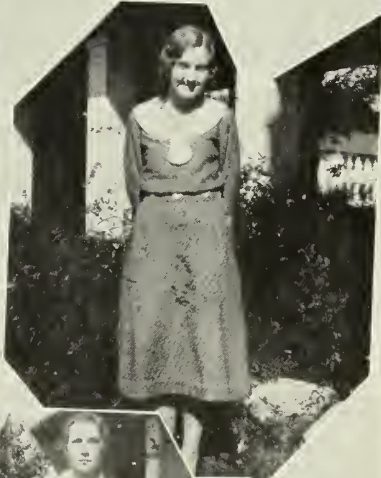
*Most "G"*



*Most Poised*



*Most Optimistic*



*Most Feminine*



*Best Liked Person*



*Biggest Heart breaker*

SENIOR WHO'S WHO



PHI KAPPA  
AMERICAN  
BALL TEAM  
CHAMPIONS

*Mullins, F.  
Baker, E.  
McSwain, D.  
Dozier, R.  
Ogwin, M.*

*Patterson, W.  
Brabham, M.  
McCall, A.  
Smith, C.  
Chastain, G. (Capt)*

PHI LAMBDA AMERICAN BALL TEAM



*Powell, F.  
McNair, L.  
Ward, S.E.  
Summer, M.*

*Powell, M.  
Wadley, S.  
Bullock, M. (Capt)  
Griffin, C.  
Bishop, H.*

AMERICAN BALL TEAMS



PHI KAPPA  
BASKET BALL  
TEAM  
CHAMPIONS

*Brabham, M.  
Quarterman, E.  
Chastain, C.  
Bryant, D.*

*Crosby, E.  
Dozier, R.  
McCall, A.  
Smith, C.  
Brabham, M. (Capt)*

PHI LAMBDA BASKETBALL TEAM

*Oggin, M.  
Ward, S. E.  
Poppell, J.  
Bullock, M.*

*Powell, F.  
Bishop, H. (Capt)  
Burney, E.*



BASKET BALL TEAMS



PHI LAMBDA  
SOCCER TEAM  
CHAMPIONS

*Powell, M.  
Culpepper, E.  
Nicholson, S.  
Griffin, C.*

*Parker, V.  
Wadley, S.  
Sumner, M. (Capt.)  
McNair, L.  
Brasington, H.*



PHI KAPPA  
SOCCER TEAM

*Mullins, F.  
Harrison, R.  
Patterson, W.  
Stovall, H.  
Gleason, H.  
Taylor, F.*

*Blackwell, G.  
Faircloth, S.  
Hopper, L.  
McSwain, R. (Capt.)*

SOCCER TEAMS



PHI LAMBDA  
VOLLEY BALL TEAM

*Thompson, E.  
Forbes, D.  
Nicholson, S.  
Horton, M.*

*Hennedy, M.  
Parker, B.  
Brasington, H. (capt.)  
Tally, M.*



PHI KAPPA  
VOLLEYBALL TEAM  
CHAMPIONS

*Readdick, C. (capt.)  
Hopper, E.  
Williford, B.  
Willis, B.  
Roberson, J.*

*Clark, V.  
Adams, L.  
Dukes, M.  
Quarterman, E.*

VOLLEY BALL TEAMS



*Kappa Spirit*



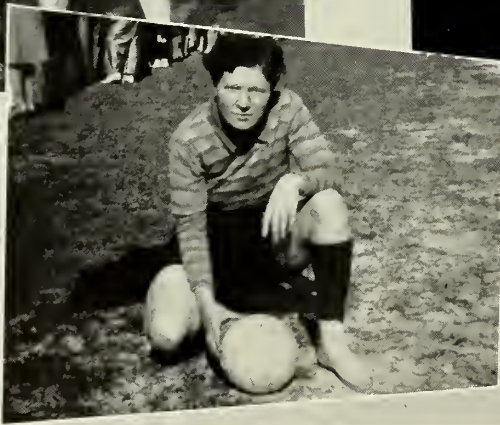
*Yea-Team*



*Come on Kappas*



*Kappa? Yes*



*Get Set*

ATHLETIC SNAPSHOTS





*Get Your Mark*



*A Lambda Leader*



*Lambda Props*



*Lambdas*



*Which Way?*

ATHLETIC SNAPSHOTS



*Play Day*



*Crushes*



*Dressed up*



*Golfing*



*Venus?*



*Sink it Now*



*G.S.W.C. Follies*



*Autumn Leaves*



*Strutting Gypsies*



*Ballooné*

HERE AND THERE



*Heart's Desires*



*Seniors off Their Dignity*



*The Semi-Circle*



*Being Struck*



*Sophisticated Seniors*



*College Taxi*



*Let Us Be Gay*



*A Two in One*



*Odd Moments*



*Poles?*



*Just Nuts*



*One of the Three*



*More Room-Mates*



*Room-Mates*



*Dodge!*

*Marianna & Betty Co-Ed*

RANDOM SHOTS



*Freshies*



*Roommates*



*Swimming*



*Just Helena*



*A Savannahian Part of us*



*True Masculinity*



*Posing*



*Margaret*



*Connie  
Lis*



*Dr Smart and  
Anne*



*Giddy-Up*



*Hands  
Faces  
and  
Feet*

FAMILIAR FACES



*Dumb,  
Dumber,  
Dumbest*



*Rat  
Court in  
Session*



*Silence  
the Superior*

*Hopeless*



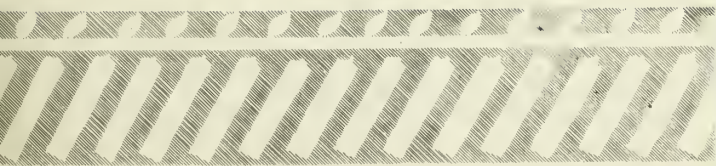
*She  
Looks it.*

*Green*

RAT POSES



*Activities at G. S. W. C. are  
as necessary as the black  
squares in a cross-word puzzle.*



**features**



## SUPERLATIVES



MARGARET BULLOCK

Miss G. S. W. C.

MARY DOZIER

Prettiest

ROSELLE HATCHER

Most Attractive

ESSYE ALLIGOOD

Most Ingénue

LILLIAN LIVELY

Most Versatile

RUBY McSWAIN

Best Sport

MARGARET BRABHAM

Most Popular





Margaret Bullock



Mary Dozier



Roselle Hatcher



Essye Alligood



Lillian Lively



Ruby McSwain

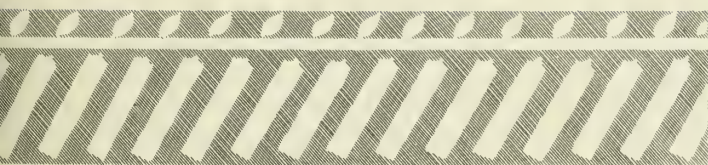


Margaret Brabham



*Most G. S. W. C. girls are as  
welcome to the feature sec-  
tion as a creaking floor to a  
burglar.*





**organizations**





### Presidents' Club

MARY E. FLANAGAN . . . . .	<i>President of Philharmonic Club</i>
JEAN LOUGHRIDGE . . . . .	<i>President of Senior Class</i>
DOROTHY STROUD . . . . .	<i>President of Valdosta Club</i>
QUINNIE CARMACK . . . . .	<i>President of Argonian Literary Society</i>
MARY O'QUINN . . . . .	<i>President of Phi Lambda Athletic Association</i>
VIRGINIA CLARK . . . . .	<i>President of Sophomore Class</i>
GRACE CHASTAIN . . . . .	<i>President of Euclidian Club</i>
HELEN CLARK . . . . .	<i>President of Freshman Class</i>
LILLIAN LIVELY . . . . .	<i>President of Sock and Buskin Club</i>
MARGARET BRABHAM . . . . .	<i>President of Phi Kappa Athletic Association</i>
KATHLEEN HURST . . . . .	<i>President of Glee Club</i>
MARGARET SUMNER . . . . .	<i>President of Y. W. C. A.</i>
MARGARET LITTLEFIELD . . . . .	<i>President of Home Economics Club</i>
MARGARET BULLOCK . . . . .	<i>President of Student Government Association</i>
MAYE DE LOIS SUMMERLIN . . . . .	<i>President of Sororian Literary Society</i>
VIRGINIA CARSWELL . . . . .	<i>President of Junior Class</i>
MARGARET PARRISH . . . . .	<i>President of International Relations Club</i>

The Presidents' Club is an organization through which every club on the campus may be reached and brought into closer harmony with campus activities. The club meets once a month and discusses the ways and means of each organization, bringing out by contrast and comparison the best means of handling club activities. When a new movement is to be presented to the campus, it is first presented to the Presidents' Club for a hearing.

The chief activity for the year 1930-31 was a study of Parliamentary procedure. As a pleasant relief from study hours, the club was entertained by a number of day students.



MARGARET SUMNER  
*President Y. W. C. A.*

MARGARET BULLOCK  
*President S. G. A.*

VIRGINIA CARSWELL  
*President Junior Class*

VIRGINIA CLARK  
*President Sophomore Class*

EMILY JENNINGS  
*Sophomore Rep. on Council*

MARY POOLE  
*Freshman Rep. on Council*

## Student Government Association

The Student Government Association is the most influential association on the campus, for the reason that it touches and to a great extent guides the actions of the whole student body. The purpose of the organization is the promotion of the highest standards of honor and integrity in all matters of personal conduct, and the strengthening of cordial relations between the faculty and the students. Every student of the college is a member of the S. G. A. after having taken a brief training course in which the handbook of the association is studied and after having signed the pledge.



K. D. RENTZ  
*Junior Rep. on Council*

JEAN LOUGHRIDGE  
*President Senior Class*

LILLIAN PATTERSON  
*Senior Rep. on Council*

HELEN CLARK  
*Pres. Freshman Class*

DR. HAROLD S. GULLIVER  
*Adviser*

MISS LEONORA IVEY  
*Adviser*

ANNIE P. HOPPER  
*Adviser*

## Student Government Association

The Court functions in the maintenance of discipline among the students. In the performance of its duty, fairness and a sense of personal responsibility are especially emphasized. The Court is composed of the four Class Presidents together with the President of the S. G. A. The Council, a deliberating body composed of members from the student body and faculty, has charge of all serious disciplinary problems, and solves all the serious problems of administration for the S. G. A. Among the speakers of 1930-31 at the open forum of S. G. A. were Mr. G. W. Beswick, Judge W. E. Thomas, Chairman of the Board of Trustees, and Miss Margaret Bullock, President of the S. G. A. and Representative at the National Council of Student Government Presidents which met at Greensboro, N. C., in the spring of 1930.



KATE JONES  
*Literary Editor*

ROSELLE HATCHER  
*Editor-in-Chief*

GRACE CHASTAIN  
*Activities Editor*

MARY ELIZABETH BOYD  
*Chairman Art Committee*

MAYE DE LOIS SUMMERLIN  
*Feature Editor*

## Pine Cone

The PINE CONE is the yearbook published by the Senior Class. The name of the annual, as that of the monthly magazine, is suggested by the indigenous beauty of the local campus. The staff for 1931 has worked earnestly and with great zeal to embody in this book the spirit of the eighteen years of achievement of their Alma Mater,—living memories for this and future classes.

Each year the PINE CONE Staff has taken a great pleasure in having every phase of the book created and designed by members of the Senior Class. The best artistic, literary and executive ability of the class of 1930-'31 has gone into the annual of this year, for it is their last contribution to the student activities and student life.



DOROTHY STROUD  
*Advertising Manager*

MARGARET JENNINGS  
*Business Manager*

EVELYN BLANTON  
*Snapshot Editor*

MARY WINN  
*Assistant Advertising Manager*

LILLIAN HOPPER  
*Secretary to Editor*

### Pine Cone

For four years the PINE CONE has received first honor rating and in 1929 the All-American-Honor rating in the National Scholastic Press Association. This year the staff has worked conscientiously to win more honor for our Alma Mater on her Eighteenth Birthday.

#### ART COMMITTEE FOR PINE CONE

- ALINE TISON
- DOROTHY COURTNEY
- PAULINE GRIFFIN
- ETTA GIDDENS

- WINONA PARRISH
- MARGARET PARRISH
- EMELIZA SWAIN
- MARGARET WARFIELD



PAULINE GRIFFIN  
*Assistant Editor*

MARGARET POWELL  
*Editor*

RUTH DOZIER  
*Phi Kappa Editor*

EMILY HALLYBURTON  
*Art Editor*

EMELIZA SWAIN  
*Department Club Editor*

MARY LEVERETTE  
*Phi Lambda Editor*

EMILY BURNEY  
*Joke Editor*

MISS IVA CHANDLER  
*Alumnae Editor*

## Pine Branch

The Pine Branch is the monthly publication on the campus. The chief aim of the publication is to serve as an expression of the literary phase of our college life, and to reflect the accomplishments of the students in literary courses. In addition to the literary efforts of the students, The Pine Branch publishes news of general interest to the students, news of each organization existent on the campus, and the work of the Alumnae.





ELIZABETH WRIGHT <i>Local Editor</i>	LILLIAN HOOPER <i>Argonian Editor</i>	EMILY JENNINGS <i>Business Manager</i>	DOROTHY CHAPMAN <i>Sororian Editor</i>	NANCY ROWLAND <i>Y. W. C. A. Editor</i>
ALICE MCCALL <i>Mailing Department</i>	SALLIE KATE BOZEMAN <i>Mailing Department</i>	RUBY McSWAIN <i>Mailing Department</i>	CAROLYN READDICK <i>Mailing Department</i>	

## Pine Branch

The Pine Branch has been in existence for many years,—almost as long as the college itself. At first only a small news sheet, with the circulation confined to the small number of students, it has developed into a magazine with real literary flavor and valued accomplishment. Furthermore, in proportion as the publication itself has increased in worth, the circulation has grown; beginning with less than one hundred copies, it has increased to over two thousand copies per month. Each year The Pine Branch sponsors a poetry contest in which three cash prizes are offered.



ELIZABETH ARNOLD <i>Pianist</i>	MARY WINN <i>Music Chairman</i>	MARGARET SUMNER <i>President</i>	ALICE HICKS <i>Bible Study Chm.</i>	MARY PEARSON <i>World Fellowship</i>
	K. D. RENTZ <i>Treasurer</i>		NANCY ROWLAND <i>Secretary</i>	

### Young Women's Christian Association

The spirit of the "blue and white" gives the feeling of "Big-Sister-Little-Sister" on the campus of G. S. W. C. The Y. W. C. A. is the first to greet the new students when they arrive and to extend invitations for membership to those who are in sympathy with its purpose: "We unite in the desire to realize full and creative life through a growing knowledge of God. We determine to have a part in making this life possible for all people. In this task we seek to understand Jesus and to follow Him."



RUBY McSWAIN <i>Room Chairman</i>	HELEN BRASINGTON <i>Membership Chm.</i>	ESSIE ALL'GOOD <i>Religious Chm.</i>	ALINE TISON <i>Bulletin Bd. Chm.</i>	ETTA GIDDENS <i>Poster Chairman</i>
LILLIAN PATTERSON <i>Librarian</i>	MARGARET JENNINGS <i>Entertainment</i>	VIRGINIA CLARK <i>Club House Chairman</i>		

## Young Women's Christian Association

The Y. W. C. A. sponsors a number of speakers and activities each year. For the past several years Dr. William A. Smart has given a lecture series of great spiritual worth. The Y. W. C. A. Library, increased by a yearly book party, has been one of the evidences of its constructive program on the campus. When the students go away at graduation time, they go with pleasant memories of delightful parties, jaunts, good times at the "House in the Woods," and tales of enchanting Blue Ridge. Contributing these memories and the spiritual uplift that is received from the Vesper services, Bible Study Classes, Morning Watches, and talks with visiting religious secretaries, the Y. W. C. A. is conceded one of the most worthwhile organizations on the campus.



MILDRED MINCHEW  
*Vice-President*

QUINNIE CARMACK  
*President*

LETA MAC STRIPLING  
*Secretary*

GRACE CHASTAIN  
*Treasurer*

## Argonian Literary Society



The objects of the Argonian Literary Society are the benefits derived from literature, fine arts, and discussion of public questions, and from association with persons of similar interests and tastes. The program for the year 1930-31 consisted of a series of studies, among which were—The Best Plays of the Year, The Pulitzer Prize Winners, Famous Actors and Actresses. The Best Short Stories of the Year, and The Poetry of John Masefield.

### MEMBERSHIP

ESSYE ALLIGOOD  
RUBY ARNETTE  
EVA KATE BELFLOWER  
EVELYN BLANTON  
MARY E. BOYD  
MARGARET BRABHAM  
MARGARET BULLOCK  
PAULINE FORBES

EMILY HALLYBURTON  
LILLIAN HOPPER  
FRANCES HUGHES  
EMILY JENNINGS  
MARGARET JENNINGS  
MYRTICE JOHNSON  
MARGUERITE LANGDALE  
JEAN LOUHRIDGE



KATE JONES  
*Chairman Program Committee*

MILDRED MINCHEW  
*Debater*

ELIZABETH WRIGHT  
*Debater*

## Argonian Literary Society



In addition to the systematized course of study, the Literary Society engages in several annual affairs, one of which this year was a Tea Dance at which the two societies were hostesses. The Inter-Society Debate is another annual event which arouses much interest and spirit among the members of the Societies. A subject of timely interest is chosen for the debate and the debaters are selected after a series of preliminary debates within the society. "Give to the world the best that you have, and the best will come back to you," is the motto of the society.

RESOLVED: *That the Cotsworth thirteen month calendar be adopted.*

### MEMBERSHIP

SARA McEACHIN  
 MIRIAM McMILLAN  
 ETHEL McSWAIN  
 MARY VIRGINIA McKEY  
 RUBY McSWAIN  
 FRANCES MULLINS  
 BLANCHE PARKER  
 MARGARET PARRISH

GEORGIA PATTERSON  
 LILLIAN PATTERSON  
 MARGUERITE POWELL  
 JOYCE ROBERSON  
 NANCY ROWLAND  
 HARRIET SHEPPARD  
 EMELIZA SWAIN  
 WYLENE WHITLEY



MAYE DE LOIS SUMMERLIN  
*President*

DELIA BONNER  
*Vice-President*

HELEN STEELE  
*Secretary*

PHARA ELARBEE  
*Treasurer*

### Sororian Literary Society



The objects of the Sororian Literary Society are similar to those of her sister society, the Argonian, the study of literature, of the fine arts, and of public questions. The members of this society, those students who graduate in the even years, use for their motto: "Building for character, not for fame."

#### MEMBERSHIP

ANN ANTHONY  
MRS. C. K. BEALE  
MARGARET BISCHOFF  
GLENN BLACKWELL  
GEDELE BRABHAM  
DOROTHY BRYANT  
VIRGINIA CARSWELL  
MILDRED CHAMBLISS  
DOROTHY CHAPMAN  
HELEN CLARK

MARY DOZIER  
HELENA DURHAM  
MARY E. FLANAGAN  
KATHLEEN GLISSON  
LOUISA HEATH  
FRANCES HOWELL  
MARGARET KENNEDY  
EVELYN KENNON  
EUNICE KIRKLAND  
MARJORIE MULLIS





LILLIAN LIVELY  
*Chairman Program Committee*

HELEN BRASINGTON  
*Debater*

MARJORIE SESSIONS  
*Debater*

## Sororian Literary Society



The variety of the programs for 1930-31 was most acceptable and pleasing to the group—consisting of one-act plays, each illustrating one of the four types of drama, presented by the Play Production Class: a study of famous actresses and actors, Pulitzer prize winners of the year, the prize short stories, best plays of the year, and book clubs and their recent selections.

One of the most constructive contributions to the members is the Library which consists largely of recent Southern Literature.

RESOLVED: *That the Cotsworth thirteen month calendar be adopted.*

### MEMBERSHIP

MARY SUE NEAL  
 SARA NICHOLSON  
 JESSIE NORMAN  
 GUSSIE O'QUINN  
 DOROTHY PATTERSON  
 MARY POOLE  
 FLORENCE POWELL  
 CAROLYN READDICK  
 PAULINE RYON  
 CAROLYN SMITH  
 KATHERINE STOVALL

LILLIAN SUMNER  
 JOAN TALBERT  
 FRANCES TAYLOR  
 EVA MAE TRAMMELL  
 MYRTLE VARNER  
 KATHRYN WALL  
 DOROTHY WALLS  
 MARGARET WILLIAMS  
 BEATRICE WILLIS  
 MARY WINN  
 CLARICE WORSHAM



JEAN LOUGHRIDGE  
*Vice-President*

MARGARET BRABHAM  
*President*

ALICE MCCALL  
*Secretary-Treasurer*

ERNESTINE BAKER  
*Scorer*

## Phi Kappa Athletic Association

*"I'm a Phi Kappa born,  
I'm a Phi Kappa bred,  
And when I die, I'll be  
A Phi Kappa dead;  
So it's Rah, Rah, Kappa,  
Kappa, Rah, Rah, Kappa,  
Kappa, Rah, Rah, Rah!"*

At the beginning of each year the Athletic Associations sponsor a dance at which bids are extended to the new girls. This marks the first of a series of social events sponsored by the Athletic Associations; such as hikes, carnivals, and treasure hunts.

Throughout the year the two associations have organized sports. In the fall they have volley-ball and American ball; basket-ball and soccer are played in the winter; and in the spring baseball and track are two of the favored activities.

Points are given for athletic ability and achievement, athletic interest and sportsmanship, participation, and leadership and health.

Each girl works for her individual points to win numerals, letters, and the Honor Cup. She also works for her association. The association winning the most points during the year has its name engraved on the Honor Plaque which hangs in the Rotunda.

By hard work combined with the "Kappa Spirit", the Kappas have had their name on the Plaque each year that it has been awarded.





MARGUERITE POWELL  
*Vice-President*

MARY O'QUINN  
*President*

HELEN BRASINGTON  
*Secretary-Treasurer*

ILA POPPELL  
*Scorer*

## Phi Lambda Athletic Association

*"Cheer for the Lambdas,  
Lambdas to win;  
Fight to the finish,  
Never give in. Rah, Rah, Rah!  
You do your best, girls,  
We'll do the rest, girls,  
Lambdas will win today."*

The Phi Lambda and Phi Kappa Athletic Associations are friendly rival associations which add the zest of competition to athletics by the effort of each to win the Plaque for the year. Every girl is given a bid in her freshman year and though she may have been indifferent or prejudiced before, from the time she really "belongs" she is an ardent supporter of her association. She has to be, there is so much pep, keen competition, and good sportsmanship back of it! The Phi Lambda colors are purple and white, and even the non-participants at the games have a chance to wear their colors for each Lambda has a purple and white over-all suit. It is a most thrilling sight, at least to the Lambdas, to see a purple and white group cheering their team on to victory! The program for the year is composed of both social and competitive events so every girl is sure to find some phase of the work that appeals to her. We work for our association, we fight for it, and above all, we love it!

It is a challenge to our loyalty that never fails.



LILLIAN PATTERSON  
*Vice-President*

MARGARET PARRISH  
*President*

RUBY McSWAIN  
*Secretary*

MATTILU DOSS  
*Treasurer*

International  Relations Club

The International Relations Club, affiliated with the National Carnegie Foundation, has for its purpose as stated in the constitution: "To co-operate with the authorities of G. S. W. C. in striving to afford to the students of this institution every opportunity possible for impartial enlightenment upon international and national issues of our times; to align G. S. W. C. with other educational institutions which have the interest of national and international life at heart; and to maintain a creditable scholastic standing among the members of this club."

As a series of studies this year the club has reviewed several books on international affairs as well as weekly bulletins published by the American League of Women Voters.

MEMBERSHIP

- MARGARET BRABHAM
- ROSALIND BLEILER
- ELIZABETH BOYD
- HELEN BRASINGTON
- MARGARET BULLOCK
- DOROTHY COURTNEY
- DOROTHY DENMARK
- MRS. CARLOS EVANS

- DOROTHY HARRIS
- ROSELLE HATCHER
- ALICE HICKS
- FRANCES HUGHES
- MARGARET JENNINGS
- LOUISE JOHNSON
- JEAN LOUGHRIDGE

- MIRIAM McMILLAN
- GEORGIA PATTERSON
- MATTIE D. SIMPSON
- DOROTHY STROUD
- MISS PRICE, *Faculty Advisor*
- MISS CHANDLER *Honorary*
- MISS LARSEN, *Honorary*
- MR. DURRENBERGER, *Honorary*



EMELIZA SWAIN  
*Vice-President*

KATHLEEN HURST  
*President*

LOUISE JOHNSON  
*Secretary*

MARY O'QUINN  
*Treasurer*

### Glee Club

The G. S. W. C. Glee Club, composed of those students who are interested in choral singing, has always taken a leading part in the college activities including the Thanksgiving program, the Christmas Festival, Commencement, and appearances at civic banquets. The chief accomplishment of the club is the presentation of some worthwhile program, either an operetta or a concert during the year at a local theatre. This year a regular concert program was given. Among the features of the social calendar for the year was a welcome party for the new-comers and a picnic at Twin Lakes.

#### MEMBERSHIP

- HAZEL ALLEN
- LOUISE JOHNSON
- MADGE INGRAM
- MIRIAM McMILLAN
- DOROTHY FORD
- MARGARET MORRISON
- MARGARET WILLIAMS
- ALICE HICKS
- BUFORD WILLIFORD
- LAURA LEE JONES
- JIMMIE ARNOLD
- CARO HORNE
- LILLIAN SUMNER

- ADAIR LANGFORD
- MARY E. FLANAGAN
- DORIS ZITTRouer
- MARY WINN
- ETHEL McSWAIN
- MILDRED MINCHEW
- CAROLYN SMITH
- KATHERINE STOVALL
- MARY POOLE
- ELIZABETH PARDEE
- VIRGINIA JONES
- LILLIAN HENDERSON
- MISS SCOTT, *Director*

Miss RYON, *Accompanist*



MISS EDITH PATTERSON  
*President*

MISS IVA CHANDLER  
*Vice-President*

MISS EVELYN DEARISO  
*Corresponding Secretary*

MISS CAROLINE PARRISH  
*Secretary-Treasurer*

## Alumnae Association

The Alumnae Association, the largest organization on the campus, is open to all students who have been the recipients of a diploma or a degree. The purpose of the association is to keep the former students of the college in close contact with the college activities and with each other. Although its members are for the most part widely scattered, the organization is most active. Every month the Alumnae news appears in *The Pine Branch*. Letters concerning the activities of the college are sent out by the officers of the association and by the class secretaries, thereby the students of the college are kept in touch with the Alumnae. The Alumnae Banquet held at Commencement is the official homecoming of the Alumnae. At this banquet the newcomers are greeted by the old.



LOUISE JOHNSON  
*Vice-President*

DOROTHY STROUD  
*President*

LOUISE CLIFFORD  
*Secretary*

DOROTHY COURTNEY  
*Treasurer*

## Valdosta Club



The Valdosta Club of G. S. W. C. is, as its name indicates, a club of the day students of the college. The purpose of this organization is to keep the day students in close harmony with the college activities and to conserve the strength of the group for the college. The membership of the club is limited in order to secure a more active group. Semi-annually members are selected by a vote of the club from the eligible day students to fill out the prescribed quota. The social life of the college is emphasized by the club. It sponsors many social affairs, monthly luncheons, "manless dances," and every spring the club entertains the Senior Class of the Valdosta High School at a banquet.

### MEMBERSHIP

MARY ELIZABETH BOYD  
DOROTHY DAVIS  
LOUISE JACKSON  
LOUISE JOHNSON  
MARGUERITE LANGDALE  
MARGARET PARRISH  
PAULINE FORBES  
HAZEL ALLEN  
PEARL STRONG

PAULINE GRIFFIN  
MARY HAGAN  
MISS HOPPER, *Faculty Adviser*  
LAURA LEE JONES  
MAXINE PURDY  
MARY ALICE MOSELEY  
MARY VIRGINIA PAULK  
VIRGINIA JONES  
WINONA COPELAND  
FLORENCE SMITH

VIRGINIA HUTCHINSON  
CATHERINE WOOTTEN  
SUE PENDLETON  
GRACE HOLCOMBE  
FRANCES HILL  
MARY GLOVER  
DOROTHY HARRIS  
MARGARET MORRISON  
HARRIET STEVENS



MARY E. FLANAGAN  
*President*

JEANNETTE HALL  
*Vice-President*

PAULINE RYON  
*Secretary-Treasurer*

## Philharmonic Club

The Philharmonic Club, open to all those students interested in the better class of music, is held in high esteem on the campus. It derives its importance chiefly from the benefits that the college receives through the musical programs that the club sponsors during the year. This year the club sponsored a very worthwhile musical attraction in the Royal Russian Chorus conducted by Princess Agrenea Slaviansky. The course of study for the year 1930-31 comprised a series of studies based on the works of the most outstanding composers from several countries famous for their musical development. Among those composers and compositions studied were: Brahms, Schubert typifying the romantic and modern periods in Germany; Rachmaninoff, Chopin, and Debussy representing Russian, Polish and French music; Mozart and Bach typifying the classical period in Germany; McDowell and others from American music, and also papers on folk and negro music.

### MEMBERSHIP

- |   |   |  |
|---|---|--|
| HAZEL ALLEN<br>JIMMIE ARNOLD<br>GLENN BLACKWELL<br>CAROLYN BULLARD<br>LOUISE CLIFFORD<br>DOROTHY CROCKER<br>DOROTHY FORD<br>ANNIE LOIS GARDNER<br>JEANNETTE HALL<br>LOUISA HEATH<br>ALICE HICKS | LILLIAN HENDERSON<br>MADGE INGRAM<br>ADAIR LANGFORD<br>FRANCES MULLINS<br>MILDRED MINCHEW<br>ETHEL MCSWAIN<br>MARGARET MORRISON<br>MARGUERITE POWELL<br>MARY POOLE<br>JOYCE ROBERSON<br>WILLENE ROBERTS | K. D. RENTZ<br>ELIZABETH THOMPSON<br>BUFORD WILLIFORD<br>CLARICE WORSHAM<br>JEWEL WURST<br>MARGARET WILLIAMS<br>MILDRED McDONALD<br>LAURA RICHARDSON<br>MISS WARREN, <i>Faculty Adviser</i><br>MISS SCOTT, <i>Honorary</i><br>MISS RYON, <i>Honorary</i> |
|---|---|--|



MARY E. BOYD  
*President*

ETHEL MCSWAIN  
*Vice-President*

MARGARET WARFIELD  
*Secretary-Treasurer*

## Fine Arts Club



The Fine Arts Club is one of the outstanding clubs on our campus, for it not only provides for its members the opportunity for the study of the arts and crafts but also has as a part of its purpose, to arouse the interest of the entire student body in Art by various bazaars and exhibits. The membership of this club is limited, and is composed of those girls who show a sincere interest in art. Besides the regular business and social meetings, at which art programs are given, the club sponsors sketching trips during the year.

### MEMBERSHIP

DOROTHY COURTNEY  
ETTA GIDDENS  
PAULINE GRIFFIN  
FRANCES HILL  
MRS. A. B. JORDAN  
MARGARET PARRISH  
WINONA PARRISH  
ELSIE QUARTERMAN

NELL ROBINSON  
ELIZABETH SCHREIDER  
MAYE DE LOIS SUMMERLIN  
EMELIZA SWAIN  
ALINE TISON  
CAROLYN WARD  
SARA EMILY WARD  
MISS CARPENTER, *Faculty Adviser*



MARGARET LITTLEFIELD  
*President*

NELL ROBINSON  
*Vice-President*

SALLY FAIRCLOTH  
*Secretary-Treasurer*

## Home Economics Club

The Home Economics Club is composed of those students of the Home Economics Department and those interested in the various fields of Home Economics. The club is affiliated with the state association. The purpose of this organization is to stimulate and interest the students in the different phases of home economics. The course of study for this year included present tendencies and attainments in the field of Home Economics. As a practical demonstration of the principles studied, a tea room was conducted periodically during the year.

### MEMBERSHIP

ETHEL McSWAIN  
QUINNIE CARMACK  
MARY LEVERETTE  
MARTHA HORTON  
RUBY McSWAIN  
WINIFRED BLAUM  
MYRTLE VARNER  
JOAN TALBERT

IRENE SAWYER  
MARIE OLLIFF  
MARY SUE NEAL  
RUTH DOZIER  
DOROTHY LANG  
GLENN BLACKWELL  
JOSEPHINE LASHLEY  
MISS WORCESTER, *Faculty Adviser*





MILDRED MINCHEW  
*Vice-President*

LILLIAN LIVELY  
*President*

RUTH DOZIER  
*Secretary-Treasurer*

## Sock and Buskin Club

The Sock and Buskin Club is, as its name implies, the dramatic club on the campus. Try-outs for the club are open to any student and are held semi-annually by a committee which includes the President of the club and the Director of Vocal Expression. Throughout the year the club has a regular course of study. This year the course was based upon the study of foreign one-act plays. In addition to the regular course of study, the club presents productions to the public. This year they gave a three-act comedy, "The Youngest," by Philip Barry.

### MEMBERSHIP

MARGARET BRABHAM  
WINONA COPELAND  
PEARL FAIRCHILD  
ROSELLE HATCHER  
LILLIAN HOPPER  
FRANCES HOWELL  
MARGARET JENNINGS  
MYRTICE JOHNSON  
LAURA LEE JONES  
MARGARET LITTLEFIELD  
MARY VIRGINIA MCKEY  
WINONA PARRISH

MARGUERITE POWELL  
MAXINE PURDY  
WILLENE ROBERTS  
NANCY ROWLAND  
HELEN STEELE  
KATHERINE STOVALL  
MARGARET SUMNER  
KATHRYN WALL  
MISS JENKINS, *Faculty Adviser*  
DR. GULLIVER, *Honorary*  
MISS IVEY, *Honorary*  
MISS GILMER, *Honorary*



LAVERNE ADAMS  
*Vice-President*

GRACE CHASTAIN  
*President*

SARA MCEACHIN  
*Secretary-Treasurer*

## The Euclidian Club

The Euclidian Club is an organization of the Mathematics Department which has a two-fold purpose: First, to promote interest in the subject; second, to encourage scholarship by having a certain qualification for membership.

This club, which is the youngest on the campus, was organized in the spring of 1930.

The programs consist of studies of some of the early mathematicians, especially Euclid for whom the club is named, of the practical application of modern Mathematics, and various tricks and devices possible through the use of Mathematics.

### THE EUCLIDIANS

DR. LENA HAWKS, *Faculty Adviser*

GEDELLE BRABHAM  
ANNIE SUE BRANDON  
DOROTHY BRYANT  
CAROLINE BULLARD  
WINIFRED CANADY  
JUANITA CHANDLER  
BLANCHE CHASTAIN  
MARGARET EASTERLIN  
MONTENE FLOYD

MARY GLOVER  
CLEO GRIFFIN  
LILLIAN HENDERSON  
MARTHA HORTON  
DOROTHY LANG  
WILLIE LEE  
MILDRED McARTHUR  
ALICE McCALL  
SARA NICHOLSON  
LILLIAN PATTERSON

MARY POOLE  
FLORENCE POWELL  
MARGUERITE POWELL  
CAROLINE SMITH  
ELIZABETH THOMPSON  
EVA MAE TRAMMELL  
VERDA VANLANDINGHAM  
RUBY NELL WALL  
ELIZABETH WRIGHT

## Organizations of G. S. W. C.

PRESIDENTS' CLUB  
STUDENT GOVERNMENT ASSOCIATION  
THE PINE CONE  
THE PINE BRANCH  
YOUNG WOMEN'S CHRISTIAN ASSOCIATION  
ARGONIAN LITERARY SOCIETY  
SORORIAN LITERARY SOCIETY  
PHI KAPPA ATHLETIC ASSOCIATION  
PHI LAMBDA ATHLETIC ASSOCIATION  
INTERNATIONAL RELATIONS CLUB  
GLEE CLUB  
ALUMNAE ASSOCIATION  
VALDOSTA CLUB  
PHILHARMONIC CLUB  
FINE ARTS CLUB  
HOME ECONOMICS CLUB  
SOCK AND BUSKIN CLUB  
THE EUCLIDIAN CLUB



*At G. S. W. C. you are as  
welcome in organizations as a  
caterpillar in a bird's nest.*

## Patrons' Page

H. Abraham

Bennett's Drug Store

Veran Blackburn

Brookwood Pharmacy

California Fruit Company

Churchwell's Department Store

Citizens and Southern Nat'l Bk.

City of Valdosta

Colonial Stages

A. Converse Company

Cowart's Beauty Parlor

Daniel Ashley Pharmacy

First National Bank

Friedlander Stores, Inc.

Georgia Fertilizer Company

Georgia Power and Light Company

Georgia State Womans College

Hotel Daniel Ashley

Hoye-Lilly Ice Cream Company

Jitney Jungle

Kress Company

## Patrons' Page---continued

Le Files Automotive Service  
Mathis and Youmans  
Model Bakery  
W. M. Oliver and Company  
Paxon's Turner Jones' Store  
A. S. Pendleton Company  
Ritz Theatre  
Service Drug Company  
Shoe Rebuilders  
Sineath Feed and Grocery Company  
Southern Stationery and Printing Co.  
Star Laundry  
W. L. Stewart  
Suitsus Dairy  
Superior Baking Company  
Style Shop  
Swift and Company  
Thompson and Girardin  
Valdes Hotel  
Valdosta Auto Part Company  
Valdosta Greenhouses  
Valdosta Insurance Agency  
C. C. Varnedoe and Company  
Vinson's Drug Store  
Mrs. C. Whittington

THE  
GEORGIA STATE WOMANS  
COLLEGE

AT VALDOSTA IS A STANDARD  
A GRADE  
LIBERAL ARTS COLLEGE.

[ In its function of teacher  
training it is a standard  
A grade teachers college. ]

*THE GEORGIA STATE WOMANS  
COLLEGE IS THE STATE'S  
FAIREST GIFT TO ITS  
DAUGHTERS.*

**W. M. OLIVER AND CO.**

*South Georgia's Largest Exclusive Ladies' Department Store*  
VALDOSTA GEORGIA

*For Better Shoe Service Try*  
**THE SHOE REBUILDERS**

Phone 150 205 N. Ashley St. Valdosta, Ga.

COMPLIMENTS OF  
**VALDOSTA MARBLE WORKS**  
**COAL :: WOOD**

*Quality and Service*  
102 South Troupe Phone 236

**SUITSUS JERSEY MILK AND CREAM**  
QUALITY PRODUCTS

*SAY IT WITH FLOWERS*  
**VALDOSTA GREENHOUSES**

Phone 662 Valdosta, Ga. Members F. D. D.

COMPLIMENTS OF  
**HOTEL DANIEL ASHLEY**

VALDOSTA, GEORGIA



*We Are Proud of the  
Georgia State Womans College*

WE ARE GLAD to take this occasion to say that the City of Valdosta is proud to list among its greatest assets the

GEORGIA  
STATE  
WOMANS  
COLLEGE

And we hope that Valdosta as a city makes a favorable and lasting impression on the minds of the young ladies who make up the Student Body of this great institution.



CITY OF VALDOSTA

**"NEVER BUY BEFORE YOU TRY"**

**FRIEDLANDER'S**

**VALDOSTA'S PREMIER DEPARTMENT STORE**

**CORNER PATTERSON STREET AND HILL**

**PHONE 538**

**A. CONVERSE COMPANY**

*"CLOTHIERS FOR DAD AND LAD"*

Valdosta

::

Georgia

**THE STYLE SHOP**

*LADIES' READY-TO-WEAR AND ACCESSORIES*

VALDOSTA

**MRS. C. WHITTINGTON**

***FURNISHER TO LADIES***

*COLLEGE GIRLS ALWAYS WELCOME*

**WHITTINGTON'S BEAUTY PARLOR**

PHONE 1281

SECOND FLOOR

YOUR PATRONAGE HAS ENABLED US TO SUCCESSFULLY  
OPERATE OUR BUSINESS FOR 23 YEARS. WE DEEPLY  
APPRECIATE YOUR CONFIDENCE AND STRIVE TO  
INCREASE OUR DEPENDABILITY AND RENDER  
YOU A MORE COMPLETE SERVICE AS  
EACH YEAR PASSES.

---

**SOUTHERN STATIONERY & PRINTING CO.**

**WHOLESALE PAPER DEALERS**

**SPORTING GOODS**

---

*A COMPLETE LINE OF OFFICE SUPPLIES  
LOOSE LEAF GOODS, OFFICE FURNITURE*

---

**VALDOSTA**

**::**

**GEORGIA**

**C. C. VARNEDOE & CO.**

*"VALDOSTA'S STORE DEPENDABLE"*

**LADIES' APPAREL AND ACCESSORIES**

*Save with Safety*

**BENNETT'S DRUG STORE**

*THE REXALL STORE*

101 S. PATTERSON

PHONE 3

**BROOKWOOD PHARMACY**

*The Community Drug Store*

*"WHERE PATRONAGE IS APPRECIATED"*

COMPLIMENTS OF

**CHURCHWELL'S  
DEPARTMENT STORE**

*"A GOOD PLACE TO TRADE"*

VERAN BLACKBURN

Valdosta, Ga.

*Photographer for*

PINE CONE

1931

*It Has To Be Good To Be*

**PLEE-ZING**

THE A. S. PENDLETON COMPANY, DISTRIBUTORS

COMPLIMENTS OF

## COLONIAL STAGES

National Bus Station

*Model Cream Bread*

*Also Sliced Bread*

*Rolls and Cake*

**MODEL BAKERY**

PHONE 22

YOUR EDUCATION NEEDS BEAUTIFUL SURROUNDINGS  
TO COMPLETE IT

### **KIRK'S STERLING SILVER FLATWARE**

*Made in Dixie with a Southern Motif*

REPOUSSE

CALVERT

*Sold Exclusively By*

## THOMPSON AND GIRARDIN

**Jewelers**

120 N. PATTERSON ST.

VALDOSTA, GEORGIA

MAIL ORDERS RECEIVE PROMPT ATTENTION

JUST TWO WORDS TO REMEMBER

*"Georgia Ace"*

The Fertilizer That Puts Money in Your Pocket

**Georgia Fertilizer Company**

VALDOSTA

::

GEORGIA

*Compliments of*

**DANIEL ASHLEY PHARMACY**

"WHERE COLLEGE FOLKS GATHER"

*Compliments of*

**KRESS COMPANY**

**Valdosta Insurance Agency, Inc.**

*All Forms of Insurance*

PHONE 593

33-36 Strickland Bldg.

Valdosta, Georgia

**Service Drug Company**

PHONE 1300

VALDOSTA

::

GEORGIA

HERE'S TO OUR GOOD FRIENDS

THE G. S. W. C. GIRLS . . . . .

**STAR LAUNDRY**

**DRY CLEANERS :: RUG CLEANERS**

PHONE 54

**H. ABRAHAM, JEWELER**

*"THE STORE OF QUALITY"*

115 N. Ashley St.

::

Valdosta Georgia

**JITNEY JUNGLE**

*"SELLS GROCERIES FOR LESS"*

**T H A T**

*Those Who Are Graduating May Find Happiness  
and Success in Their Chosen Line  
of Endeavor*

*THIS IS THE WISH OF THE MANAGEMENT*

—OF—

**RITZ THEATRE**



FIRST NATIONAL BANK

VALDOSTA

::

GEORGIA

**RESOURCES OVER \$3,500,000**

*Patronize Home Industries . . . .*

—EAT—

HOYE-LILLY ICE CREAM

*Made from pure, rich cream  
Whole milk and fresh fruits*

Hoye-Lilly Ice Cream Company

Valdosta

::

Georgia

Cook  
Electrically

THE SAFEST WAY

THE CLEANEST WAY

THE PLEASANT WAY

THE MODERN WAY

THE ECONOMICAL WAY

GEORGIA POWER AND LIGHT CO.

A BUILDER IN GEORGIA FOR GEORGIA

The  
Citizens and Southern National Bank

VALDOSTA, GEORGIA

**Total Resources Over \$85,000,000**

No Account Too Large

None Too Small

*Congratulations and Best Wishes for G. S. W. C. Girls and Faculty*

**PAXSON'S TURNER JONES' STORE**

VALDOSTA

::

GEORGIA

*Compliments of*

**VINSON'S DRUG STORE**

A good place to trade

Phones 245-246

**Le Files Automotive Service**

***Parts and Repair Work***

FOR ALL MAKES OF CARS

309-313 North Ashley Street

PHONES 160-161

VALDOSTA

:

GEORGIA

**Valdosta Auto Parts Company**

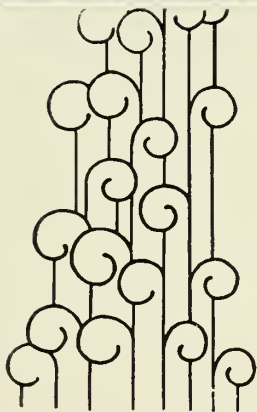
***Standard Replacement Parts and Service***

FOR ALL CARS

Phone 900

128 W. Central Avenue

bright pages . . . . .



. . . . that reflect those happy,  
carefree days has been our  
goal . . . . .

: COLLEGE : ANNUAL : DIVISION :

ALABAMA  
ENGRAVING  
COMPANY  
BIRMINGHAM

"IN THE HEART OF THE SOUTH"

**COWART'S BEAUTY PARLOR**

*Expert Service in All Branches of Beauty Culture*

Ritz Building : Valdosta, Ga. : Phone 784

**Superior Baking Company**

BAKERS OF

MOTHER'S BREAD                      BAMBY BREAD  
SUPERIOR'S CAKES

*Builds Better Bodies*

**CALIFORNIA FRUIT COMPANY**

—HEADQUARTERS—

*For Fruit and Vegetables*

FREE DELIVERY

**SWIFT AND COMPANY**

BROOKFIELD BUTTER                      PREMIUM HAMS

**W. L. STEWART**

*Wholesale*

CANDY                                      CRACKERS

COMPLIMENTS OF

**A FRIEND**

A D E Q U A C Y



*Offices and Store*

In the production of fine books, or for that matter, fine printing of any sort there must be an adequacy of

Understanding and experience to plan and interpret « Of workers who have mastered their crafts « Of materials of the best quality « And of modern equipment and exact skill in its direction. « « «

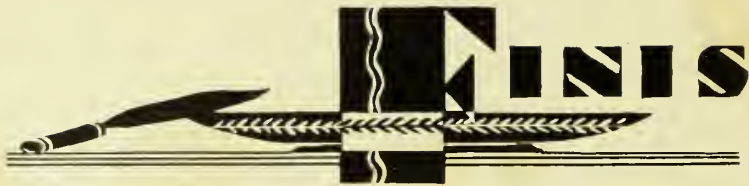
These sales and service offices and this manufacturing plant are evidences of an inflexible rule that adequacy must be maintained at « « «

FOOTE & DAVIES COMPANY  
A T L A N T A , G E O R G I A

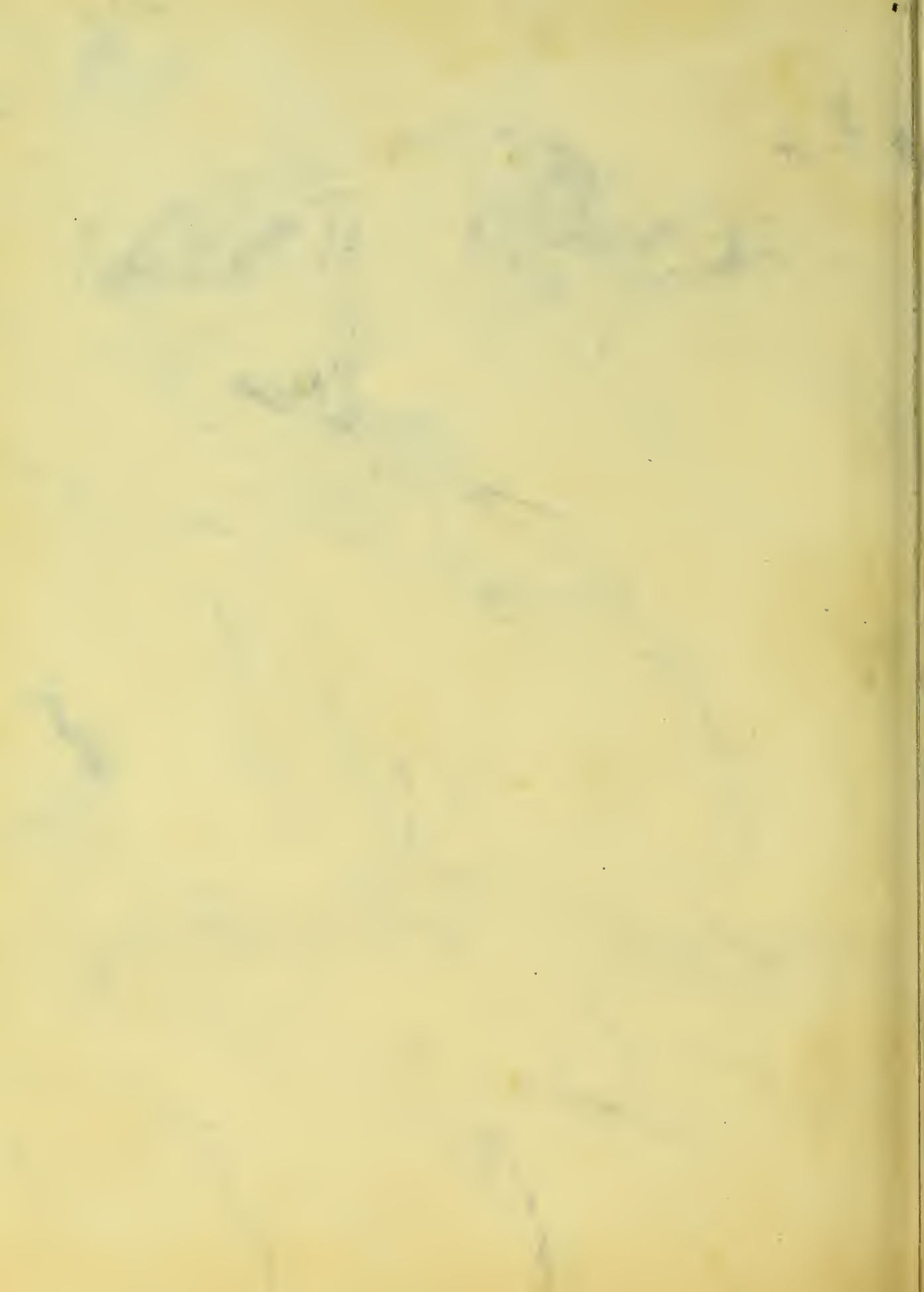
PRODUCERS  
O F F I N E  
A N N U A L S  
B O O K L E T S  
C A T A L O G S



*Manufacturing Plant*









Mildred Talley

G. S. W. C.

May 18, 1931

