

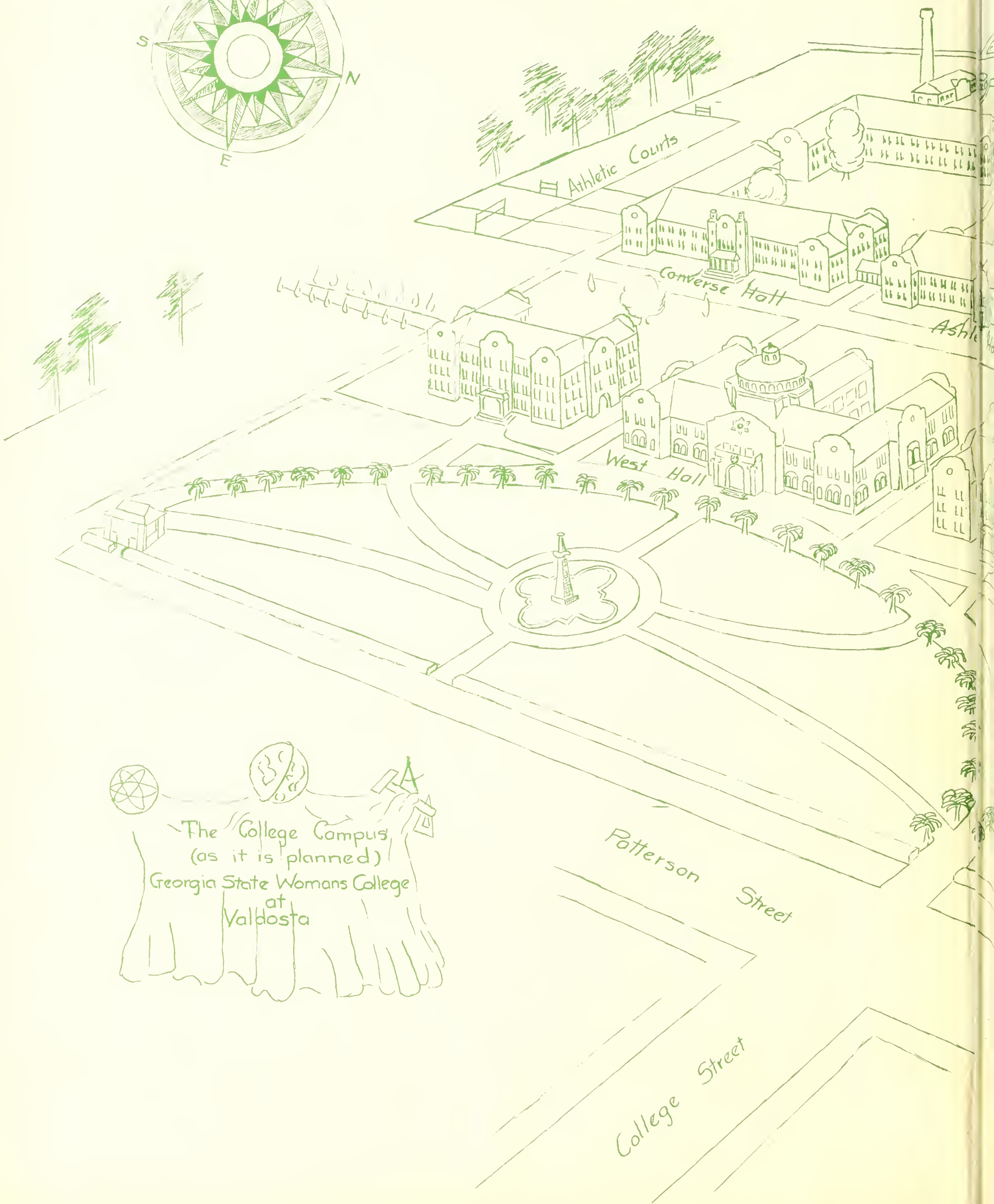
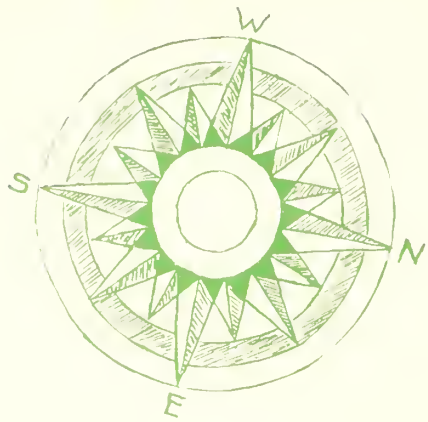


**PINE  
CONE**

**GEORGIA • STATE  
WOMANS • COLLEGE**

**VALDOSTA | | | GEORGIA**





The College Campus  
(as it is planned)  
Georgia State Womens College  
at  
Valdosta

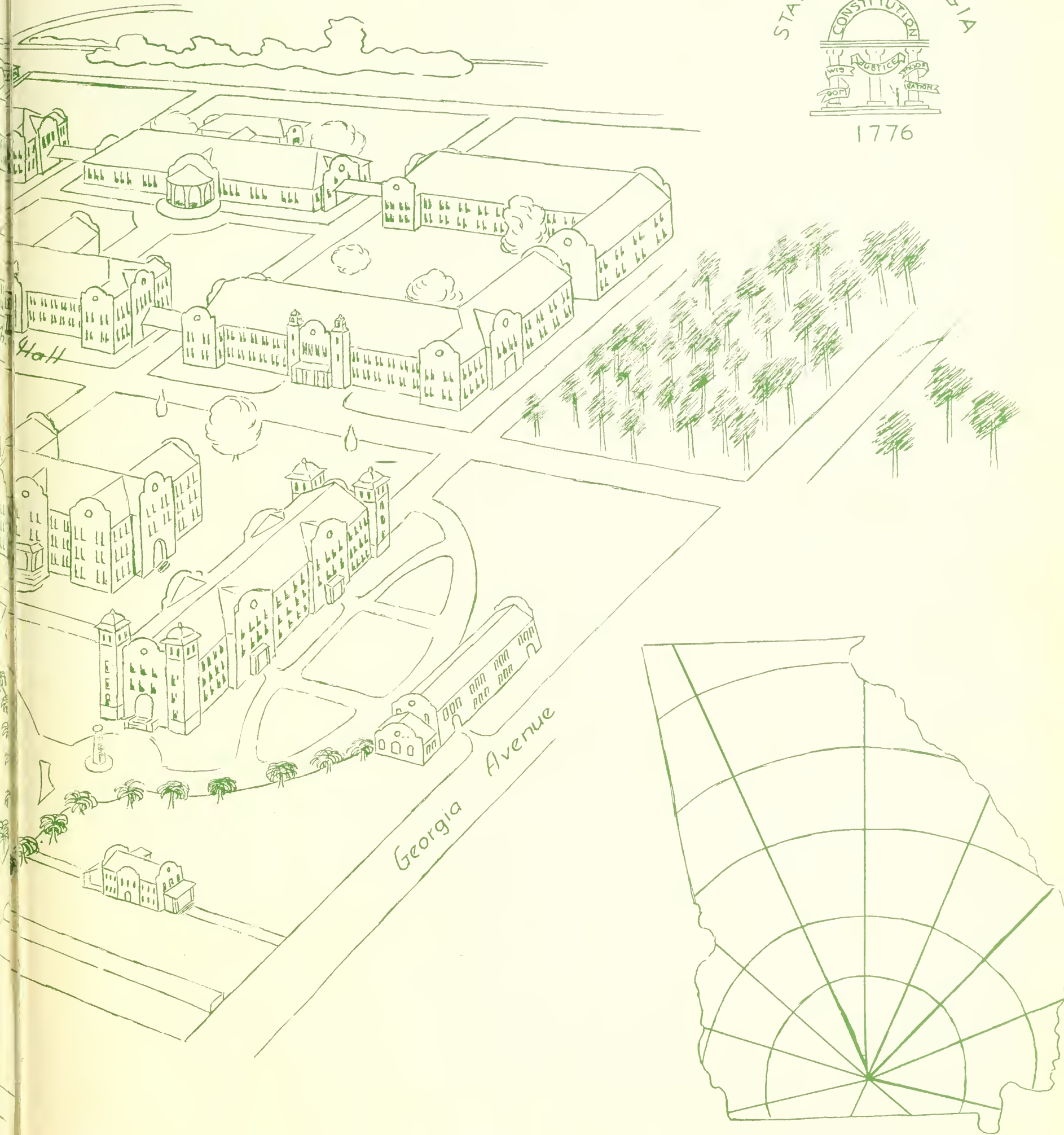
To Dr. R. H. Powell

Compliments of the Class of 1933

STATE OF GEORGIA



1776





Digitized by the Internet Archive  
in 2014

<https://archive.org/details/pinecone193309geor>



THE PINE CONE

1933



At Long & Alton Gate Door

# THE PINE CONE

VOLUME IX



PUBLISHED BY THE SENIOR CLASS

of

THE GEORGIA STATE WOMANS COLLEGE

VALDOSTA, GEORGIA

1933



## FOREWORD

If the 1933 PINE CONE conveys something of the feeling of loyalty and camaraderie that wells up in our soul when we sing our Alma Mater and Pine Branch; if in days to come our Annual shall bring a reminiscent glow to our hearts and dimmed eyes as does the melody of these songs;—in short, if we express, though inadequately, the finer ideals of our college days as embodied for us in our College songs, our work shall not have been in vain.

The words of "The Pine Branch" were written in 1916 by Miss Lucile Cushman, then a student of this college. The music was taken from the Centenary Collegiate Institute Song Book, called THE BLUE AND BLACK, and was composed by Carl L. Price, once a student at C. C. I. (Hackett's Town, N. J.)

Miss Cushman is at present living in Yonkers, N. Y., where she is teaching physical training. Speaking to a former faculty member recently of the occasion on which the song was written, Miss Cushman said: "In refreshing my memory I recall that the words came to me rather spontaneously in response to an appreciation of the location of that first building. And what a beautiful spot it was, away from everything but the tall pines which completely surrounded us."

The first mention of the "Alma Mater" occurs in our literary magazine, THE PINE BRANCH, in the May, 1924, issue. It consisted of three verses at that time and was the result of a competition. The second verse was subsequently dropped and with the exception of that one time we find nothing to indicate that it was ever sung to any extent. The names of Helen Allen Thomas (now Mrs. Alfred Thomas), Class of '21, and Evelyn Brown, Class of '24, appear as its co-authors. The music is of course national. Miss Brown is now Mrs. Linton Hoag, and she is living in Macon, Georgia.

*Our hearts are  
with the red  
and black!*

*For thy fame  
Perish - Red  
All hail!*





Alma Mater  
thee we honor



### THE PINE BRANCH

I

O may the pine branch ever wave  
O'er Georgia's college fair,  
And may we of G. S. W. C.  
With glad songs fill the air.

### CHORUS

Our hearts are with the Red and Black,  
And may we never sever  
The ties that bind our hearts to thee,  
G. S. W. C., forever.

II

O may our classes raise a song  
To Alma Mater, dear,  
And may she win new laurels true,  
Fresh honors year by year.



### ALMA MATER

I

'Mong the stately pines of Georgia  
Glorious to the view  
Stands our noble Alma Mater,  
Basking 'neath the blue.

### CHORUS

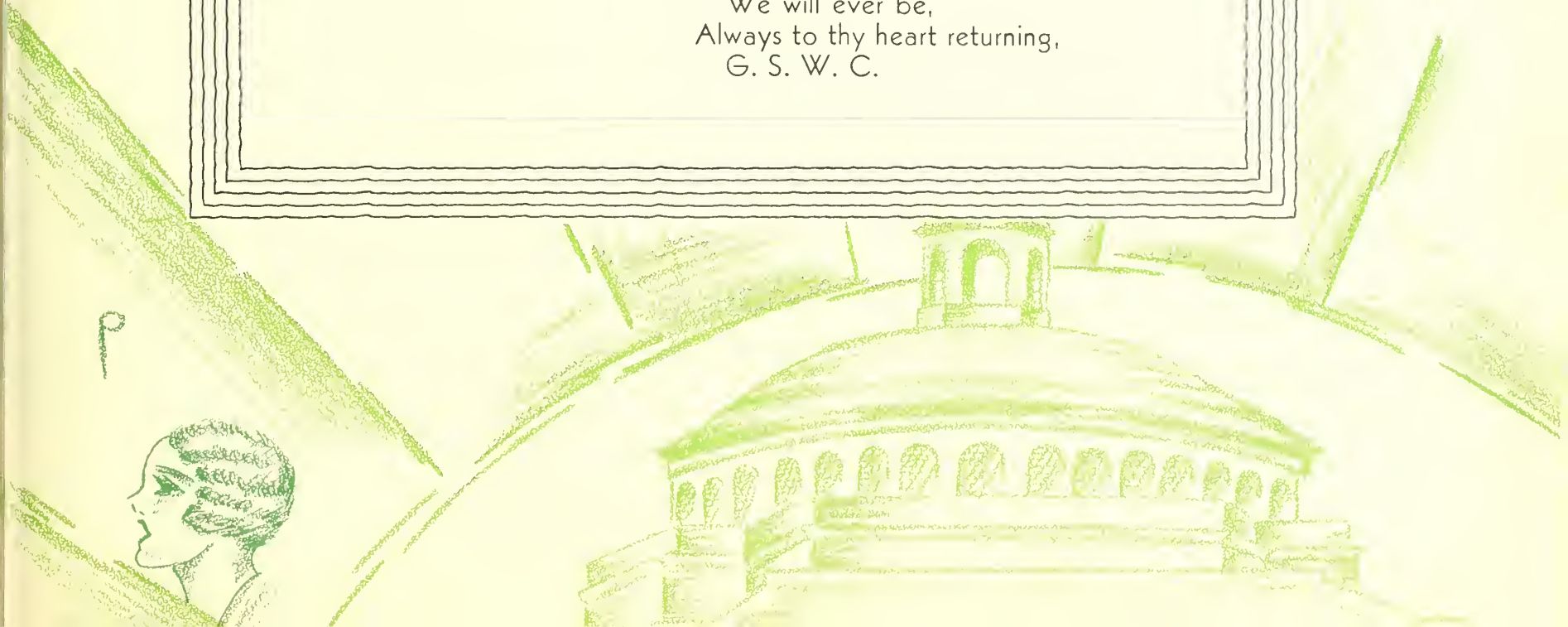
Alma Mater, thee we honor,  
Praises never fail  
For thy fame shall never perish,  
Red and Black, all hail!

II

Alma Mater's loving daughters,  
We will ever be,  
Always to thy heart returning,  
G. S. W. C.

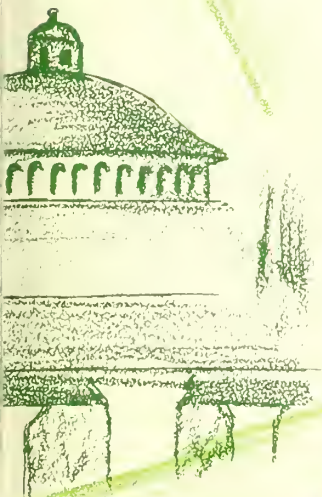


shall never  
and black

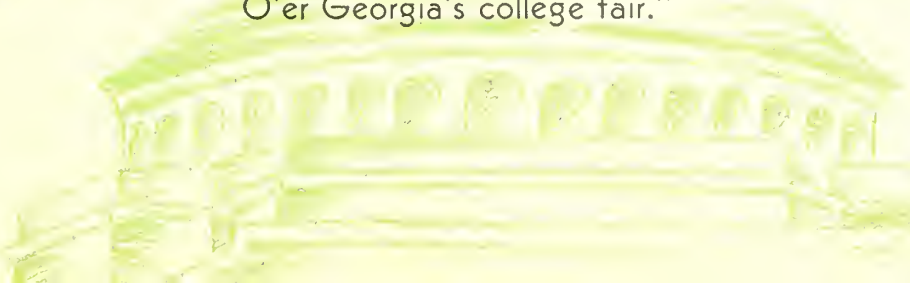




Holliman



"O may the pine branch ever wave  
O'er Georgia's college fair."





Main Entrance to West Hall



Ashley and Converse Halls from North Pines



West Hall from the Lodge

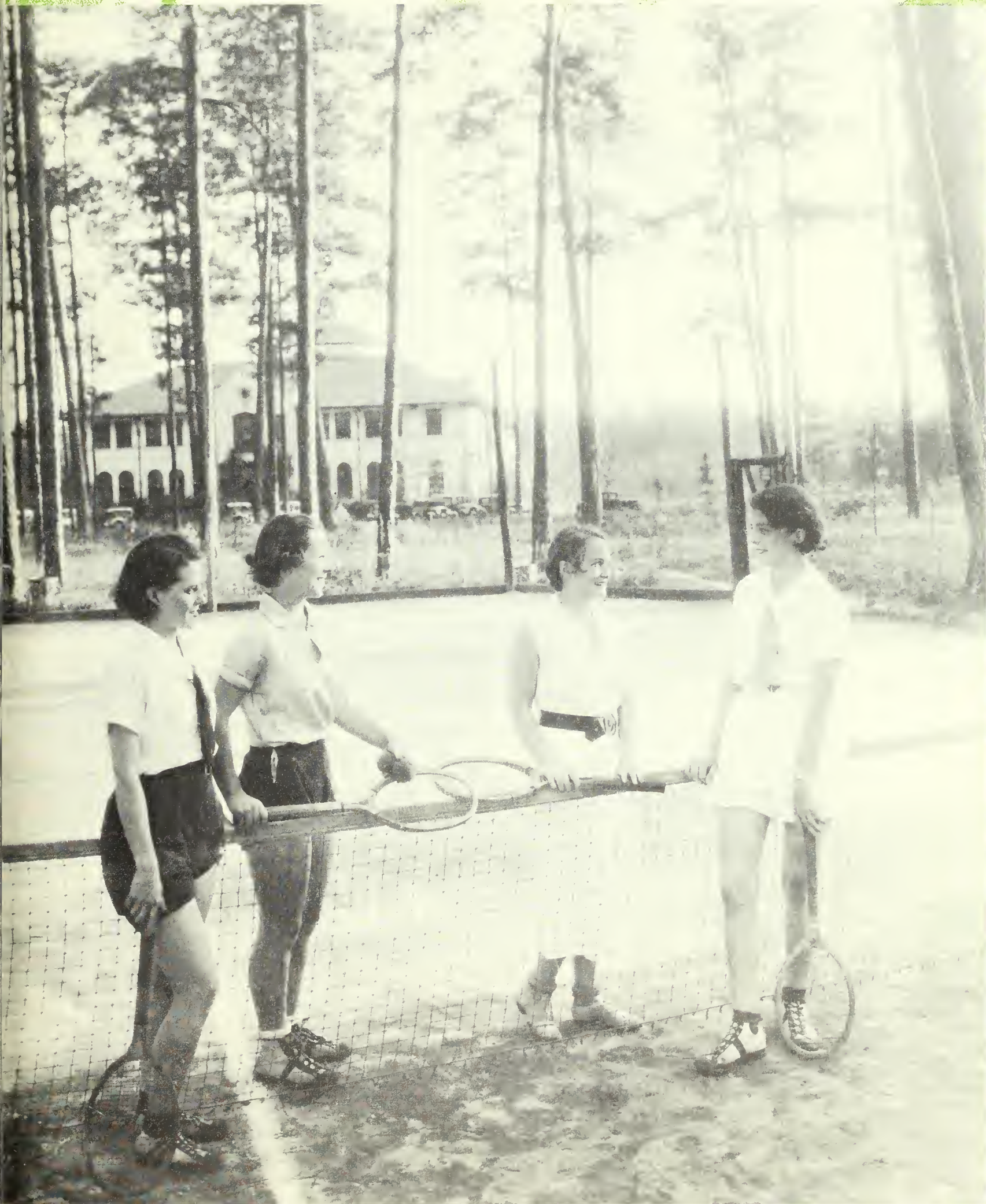


North Entrance to West Hall



Back Campus Games





The North Tennis Court



### AN OPEN LETTER FROM DR. POWELL

Someone has said that he cared not who wrote the laws of a people if he had the privilege of writing their songs. I didn't have the privilege of writing either of our College songs, but I have had the privilege of being one of the very first to know them and also of encouraging their acceptance among the students. One of the most interesting phenomena of the development of our College life has been the attitude of the school to these songs. The personality of the College, if one may speak so, the sense of the College life as a growing, deepening, aspiring reality, has developed along with, and, I think, largely through, the growth in love and reverence for the songs and the use of them as means both of developing and expressing the spirit that constitutes the real life of the school.

And now the PINE CONE takes the songs as its motivating theme this year. In doing so, the PINE CONE has honored itself as well as the songs, and has done a real service to the College in emphasizing anew the kinness between the spiritual life of the institution and the songs through which that life is expressed by the students and alumnae. I congratulate both the student body and the editorial staff of the PINE CONE on this happy selection of a theme.

Sincerely yours,



President.



For thy fame  
perish - Red  
All hail!



Our hearts are  
with the red  
and black!



Alma Mater  
thee we honor

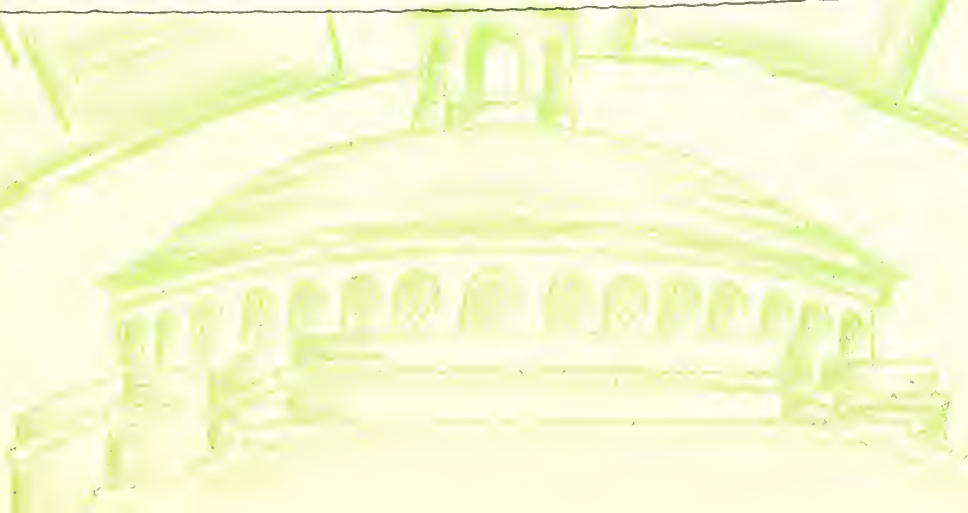


shall never  
and black



DR. R. H. POWELL  
*President*

P





## FACULTY



ANNIE POWE HOPPER  
Dean of Women  
*Professor of Geography*

B.S., George Peabody College for Teachers; A. M., Columbia University; Teachers College Diploma as Adviser of Women and Girls.



SARAH JANIE BUSH  
*Professor of Latin*

A.B., University of Georgia; A.M., University of North Carolina; Diploma, College of Classical Studies, Rome, Italy.



FRANCES RUTH CARPENTER  
*Professor of Art*

Bachelor's Diploma and B.S., Teachers College, Columbia University; A.M., Ibid.



JOSEPH AUSTIN DURRENBERGER  
*Professor of History and Social Sciences*  
A.B., Southwestern University; A.M., Columbia University; Ph.D., Ibid.



GERTRUDE CORDELIA GILMER  
*Professor of English*

B.S., George Peabody College for Teachers; A.M., Ibid.



HAROLD STRONG GULLIVER  
*Professor of English*

B.A., Yale University; A.M., Columbia University; Ph.D., Yale University



LENA JAMES HAWKS  
*Professor of Mathematics and Physics*  
A.B., Goucher College; A.M., Vanderbilt University; Ph.D., The Johns Hopkins University.

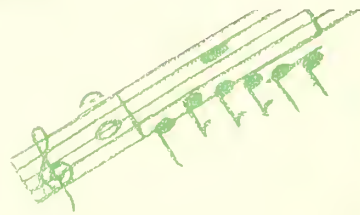


LEONORA IVEY  
*Professor of Physical Education*

Graduate Sargent School for Physical Education; B.S., Georgia State College for Women; M.A., George Peabody College for Teachers.

Our hearts are  
with the red  
and black

For thy fame  
Perish - Red  
All hail!



Alma Mater  
thee we honor



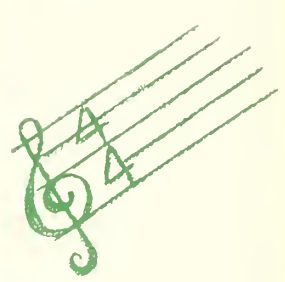
### FACULTY



ELIZABETH McREE  
*Assistant in Physical Education*  
A.B., Georgia State Womans College.



FRANCES B. PARDEE  
*Teacher of Violin*  
Graduate, Cincinnati Conservatory of Music; Pupil of Sevcik in Vienna, and of Robert Perutz and Julian Pulikowski, Cincinnati Conservatory.



EARL W. PHELAN  
*Professor of Chemistry*  
B.Chem., Cornell University; Ph.D., Ibid.



MILDRED McCLELLAN PRICE  
*Professor of History*  
A.B., Georgia State Womans College; A.M., Columbia University.

LOUISE ANNE SAWYER  
*Professor of Vocal Expression*

Graduate, Columbia College of Expression; Student, University of North Carolina; B.S., School of Speech, Northwestern University.

will never  
and black



JAMES R. STOKES  
*Professor of Biology*  
B.S., University of Georgia; M.S., University of Wisconsin.

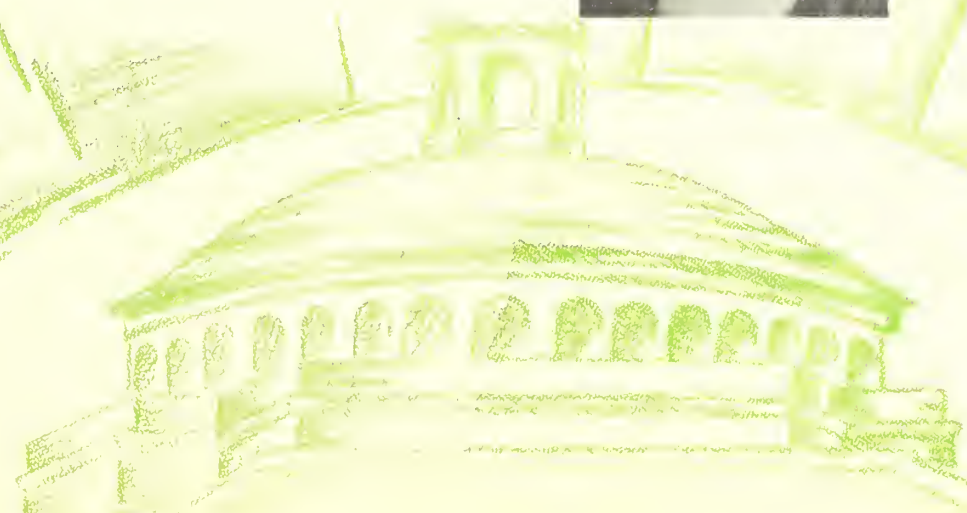


ALIMAE TEMPLE  
*Instructor in Music*

A.B., Salem College; B.M., Ibid.; Graduate Student, George Peabody College for Teachers, and Teachers College, Columbia University; Pupil of Isadore and Harold Luckstone and of Mrs. C. Dyas Standish, New York City.



HONORIA SAPELO TREANOR  
*Instructor in French*  
A.B., University of Georgia; Student at the Sorbonne, Paris, France; A.M., University of Georgia.





## FACULTY

GLADYS E. WARREN

*Professor of Music and Director of  
the Department*

B.M., Lake Erie College; Graduate, New England Conservatory of Music, Boston; Pupil of Carl Beecher, Northwestern University; of Ernest Hutcheson, New York City; of Lee Pattison, Chicago; of Tobias Matthay, Matthay School of Pianoforte, London, England; and of Arthur Alexander, Royal College of Music, London; Active Member American Matthay Association.



JAMES FRANKLIN WOOD

*Professor of Education*

A.B., Mercer University; Master's Diploma in Elementary Education; Teachers College; A.M., Columbia University.



MARY HELEN BOARD

*Training Teacher, Second and Third Grades*

A.B., Western Kentucky State Teachers College.



NELL BRACEY

*Training Teacher, First Grade*

A.B., Georgia State Womans College.



NELLIE GILL

*Training Teacher, Sixth and Seventh Grades*

B.S., George Peabody College for Teachers.



LILLIAN JOHNSON

*Training Teacher, Fourth and Fifth Grades*

B.S., George Peabody College for Teachers; M.A., Ibid.



IVA CHANDLER, A.B.

*Assistant Dean of Women*

AUGUSTA RENTZ, A.B.

*Registrar*



*Our hearts are  
with the red  
and black*

*For thy fam  
perish - Red  
All hail*



Alma Mater  
thee we honor



FACULTY



EDITH PATTERSON  
*Librarian*



J. R. DUSENBURY  
*Financial Agent*



MILDRED LARSEN, A.B.  
*Assistant to the Financial Agent*



CAROLINE PARRISH, A.B.  
*Secretary to the President*



shall never  
and black



EVELYN DEARISO  
*Assistant Librarian*  
A.B., Georgia State Womans College;  
B.L.S., Emory University.



MRS. E. H. BECK  
*Dietitian*



MRS. NANNIE HAGAN  
*Nurse, Assistant to the Dean of Women*

9









"And may our classes raise a song  
To Alma Mater, dear."





EMILY BURNEY  
*Boston, Georgia*  
 A.B. ENGLISH

Argonian Literary Society; Lambda Athletic Association; Athletic Numerals (2); *Pine Branch* Staff (2); Editor-in-Chief *Pine Branch* (3); Vice-President Lambda Athletic Association (3); Athletic Council (2, 3, 4); Athletic Letter and Cup (3); Honor Plaque (4); G. S. W. C. Emblem (3, 4); Euclidian Club (3); President Senior Class; Literary Editor *PINE CONE* (4); Sock and Buskin Club; Sock and Buskin Play (4); English Club; Honors (2, 3).

The appearance of a thirteen-year-old innocent, an intellect which appreciates both *Arrow-smith* and *Winnie the Poob*, a healthy interest in athletics of all kinds, a keen sense of humor, a power of leadership which merits the office she holds—a thousand other things could be said without doing justice to Burney. She is the kind of person who likes to get up at dawn to see the sun rise, even though she has sat up half the night in a "truth conference."



FRANCES ARRINGTON  
*Ellaville, Georgia*  
 A.B. ENGLISH

Americus Normal College (1, 2); Argonian Literary Society; Lambda Athletic Association; Athletic Council (3, 4); Athletic Numerals (3); Art Committee *PINE CONE* (3); President Argonian Literary Society (4); Presidents' Club (4); Athletic Letter (4); G. S. W. C. Emblem (4); *PINE CONE* Staff (4); Sock and Buskin Club; English Club.

Frances did not enter until her Junior year, but in her own inimitable way she soon adapted herself to her new surroundings. Joyous, fun-loving, yet withal an interested student, she is our idea of a good sport and a grand pal. Generosity and the charm of naturalness she possesses to the utmost degree as well as a certain picturesque quality that is distinctively her own. And can she portray a "poor old stricken father"!



MARGARET BAKER  
*Valdosta, Georgia*  
A.B. ENGLISH

Randolph-Macon Woman's College (1, 2); Argonian Literary Society; Kappa Athletic Association; Valdosta Club; English Club.

Margaret is one of those rare girls whom the elusive word "charming" just suits. Always pleasant and usually smiling, she has a certain subtlety that is most intriguing. Her interest and enthusiasm have done much to make the English Club successful even as her participation in all phases of class work has made her a valuable student. Visiting her former home in Savannah is her favorite diversion—and one wonders if perhaps there is a particular attraction. Years, we feel, will never erase the memory of this debonair and most pleasing of classmates.



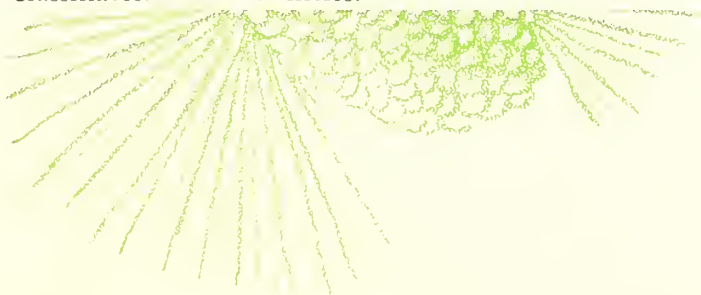
MARY ELIZABETH BELL  
*Valdosta, Georgia*  
A.B. MUSIC

Lucy Cobb (1, 2); Argonian Literary Society; Kappa Athletic Association; Philharmonic Club.

"There's a new music student here! A Junior—from Lucy Cobb. She plays the piano and takes violin too. What an addition she'll be to the Philharmonic Club!" These are bits of conversation that one might have overheard in the music practice rooms at the beginning of the year '31-'32. Now, as Mary Elizabeth's second and last year is nearly ended, we know what a great deal she really has contributed to the music circle. Three hours of daily practice have necessarily limited her activities, but that clever interpretative dance, "The Old Man", which she gave at the Athletic Party, suggests many other potential abilities.

S  
A  
V  
A  
N  
N  
A  
H  
S  
T  
R  
O  
P  
I  
C  
A  
L

1  
9  
3  
3





HELEN BISHOP  
Unadilla, Georgia  
A.B., HISTORY

G. S. T. C. (1); Argonian Literary Society (2); Lambda Athletic Association; Athletic Numerals (2); Athletic Council (2, 3, 4); Athletic Letter (3); President Lambda Athletic Association (4); Athletic Cup and Honor Plaque (4); Presidents' Club (4); Philharmonic Club (2, 3); G. S. W. C. Emblem (4); I. R. C.; Sock and Buskin Club; Sock and Buskin Play (4).

Athletics! Bishop and Lambdas are inseparable—to their mutual advantage. And we will never forget that Jack Oakie grin with its accompanying chuckle. She is one of our dancing daughters, and could dance to her own rhythm if such were possible. People always remember meeting Bishop because she has the charm of instant friendliness and of knowing and talking of the interests that are close to people's hearts.



ANNIE SUE BRANDON  
Norman Park, Georgia  
A.B., MATHEMATICS

Reinhardt College (1); Argonian Literary Society; Lambda Athletic Association; *Pine Branch* staff (3); Euclidian Club; President Euclidian Club (3); Presidents' Club (3); Athletic Numerals (3); Y. W. C. A. Cabinet (4); Student Recorder of Points (4); G. S. W. C. Emblem (4); Athletic Letter and Cup (4); Athletic Council (4); Fine Arts Club; High Honors (2, 3, 4).

High honors have become a matter of course as far as Annie Sue is concerned. Possessor of an apt mind as well as ambition and perseverance, she rarely knows what it is not to make a straight row of A's. Physical fitness and mental ability, it is said, go hand in hand; and the record of Annie Sue confirms that theory, for she has made a place for herself in the athletic life of the college as well as the academic life. Isn't it marvelous to be able to depend upon someone to do a thing, and do it well? We can answer from experience that it is—Annie Sue never fails.



CAROLYN BULLARD  
*Nashville, Georgia*  
A.B., MUSIC

Argonian Literary Society; Lambda Athletic Association; Y. W. Cabinet (2, 3, 4); Treasurer Y. W. C. A. (4); Philharmonic Club; Secretary-Treasurer Philharmonic Club (3); President Philharmonic Club (4); *Pine Branch* Staff (3); Athletic Numerals (3); G. S. W. C. Emblem (3, 4); Athletic Council (4); Athletic Letter and Cup (4); Presidents' Club (4); Euclidian Club.

We think of Carolyn as connected with many phases of our campus life, especially, Philharmonic Club, Y. W. C. A. and Lambda Athletic Association. She is always interested in her work, and goes at whatever she attempts with a wholehearted zeal that is inspirational to her associates. Music is her chosen field, and backed by her keen devotion she will undoubtedly do something most interesting with it.



MILDRED CALLAN  
*Norman Park, Georgia*  
A.B., ENGLISH

Andrew College (1, 2); Sororian Literary Society; Science Club.

Mildred joined our group in her Junior year, having attended Andrew College at Cuthbert previously. She has the knack of always being on time to class and her attendance is admirably constant. She is more interested in French than in any other subject, but like many others she has succumbed to the delights of the novel course, and can defend Fleur, or Jon, or Soames—whichever is being attacked—as well as the best.

S  
R  
O  
R  
I  
A  
N

1  
9  
3  
3



VIRGINIA CLARK  
*Tampa, Florida*  
A.B., LATIN

Argonian Literary Society; Kappa Athletic Association; High Honors (1, 2); President Sophomore Class; Y. W. C. A. Cabinet (2); Representative Blue Ridge (3); Athletic Numerals (2); G. S. W. C. Emblem (2, 4); Presidents' Club (2, 4); Vice-President Y. W. C. A. (3); President S. G. A. (4); Euclidian Club; Science Club.

It is hardly necessary to tell you that Virginia is most competent, is it? When this quality is coupled with a grand sense of humor, such as Virginia's, the combination is—a fine Student Government president and our most representative girl! She has an adorable laugh—it really is a cackle—and an enviable capacity for having a good time. Above all, she has the strength of her decisions and an individuality that merits our heartiest admiration.



JON CORN  
*Valdosta, Georgia*  
A.B., HISTORY

Kappa Athletic Association; Valdosta Club; International Relations Club; Honors (2).

Jon belongs to the intellectuals of the class and so has, of course, that intellectual attribute of enjoying her work. One feels that classes mean so much more to her than the mere acquiring of bits of knowledge. Rather do they quench for a moment an insatiable thirst to possess as her own all there is to know of many things. Jon is always glad to share her talents, and she does it in the most gracious manner imaginable, as anyone who has ever seen her smile knows.



DOROTHY DENMARK  
*Valdosta, Georgia*  
 A.B., HISTORY

Lambda Athletic Association; Valdosta Club; International Relations Club.

Dorothy is not an assertive person; rather does she have a quiet and demure manner that is notable for its very quality of unassuming acquiescence. She is particularly interested in history and the work of the International Relations Club, and her interest is of the loyal kind that means a great deal to any organization. Dorothy is not only interested in the International Relations Club, but she takes a great deal of interest in the Valdosta Club. And by the way—in case you should pass the volley-ball court when the Lambdas are playing ball you would see her boosting that organization. It is just this type of person that we need to make things move along, the steady worker, forging ahead irrespective of the grandstand idea.



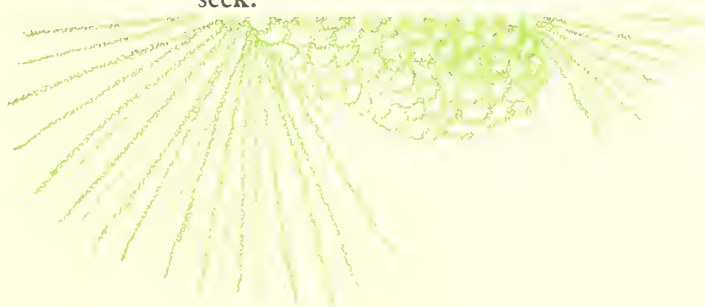
ELIZABETH DURDEN  
*Graymont, Georgia*  
 A.B., ENGLISH

Argonian Literary Society; Lambda Athletic Association; Athletic Numerals (4); Philharmonic Club; English Club; Science Club.

Elizabeth has a soft voice, an air of femininity and a general attitude which leads one to conclude that she would always choose to do the thoughtful and the kind thing,—and she does. No one can quite equal her in doing little kindnesses just at the propitious moment in her characteristically naive way. We can well imagine that "Liz" is one who will achieve that happiness and contentment in life which all of us might seek.

S  
E  
E  
S  
E  
E  
S

1  
9  
3  
3





PAULINE FORBES  
*Valdosta, Georgia*  
 A.B., MATHEMATICS

Lambda Athletic Association; Valdosta Club; Charter Member Euclidian Club; President Euclidian Club (4); Presidents' Club (4); Science Club; Honor Roll (1, 2, 3).

Imagine being able to take a few simple figures and transform them into all sorts of interesting equations! It's a sinecure for Pauline as well as a pleasure. She doesn't confine her interests to this field, however, but does splendid work in chemistry lab., where her friendliness and willingness to help afford wonderful encouragement to her co-workers. As for volley-ball and soccer—many's the point she's scored for the Lambdas in these sports, and her opponents as well as her team-mates appreciate her sportsmanlike attitude. Pauline is a perfect team-mate in every sense of the word—whether it be in the field of science or on the field of athletic strife.



MARY HAGAN  
*Valdosta, Georgia*  
 A.B., ENGLISH

Argonian Literary Society; Phi Kappa Athletic Association; Valdosta Club; Home Economics Club (1); *Pine Branch* Staff (3); Science Club; Honors (1).

It is Mary who is frequently responsible for those dainty sandwiches and other delicious morsels that make our teas a thing to anticipate with pleasure. She sews too, and makes all kinds of interesting experiments in the chemistry laboratory. Many's the pain she has eased by her cheerful presence in the infirmary, and she is occasionally wielder of the pill-box in Mrs. Hagan's absence. When we see her, we instinctively look around for Mary Alice, for they are usually together—playing or working, according to the occasion. Mary, we hope, is going to get all those good things in life that she deserves.





ANNA FRANCES HAM  
*Valdosta, Georgia*  
 A.B., ENGLISH

Argonian Literary Society; Kappa Athletic Association; Valdosta Club; Advertising Manager *Pine Branch* (3); Sock and Buskin Club; Cast of Sock and Buskin Play (3, 4); Production Staff Sock and Buskin Play (3); Feature Editor *PINE CONE* (4); English Club; Vice-President English Club (4).

Double amount of personality, more than ordinary intelligence, a keen sense of humor—a partial picture of “Ham.” Somehow we always think of her with her nose wrinkled up in laughter. And who will ever forget that red Chevrolet or those black curls. A good girl, this “Ham.”



REBA HARRISON  
*Boston, Georgia*  
 A.B., ENGLISH

Argonian Literary Society; Kappa Athletic Association; Athletic Numerals (2); Y. W. Cabinet (3); Junior Council Representative (3); Clerk of Council (3); G. S. W. C. Emblem (3, 4); Fine Arts Club; President Fine Arts Club (4); Presidents' Club (4); Athletic Council (4); Athletic Letter and Cup (4); Science Club.

Reba knows all about books—which means she is an expert librarian, and also that she is well read. A pleasing and poised manner, sympathetic understanding, and a lovable smile are her self-evident qualities, but for those who know her best she has an added appeal—which is comparable only to that of a mischievous-child. “Sweet” is a word which frequently these days has an implication of being insipid, but when applied to “Rebecca” it recalls all the lovely things of its original meaning.

S  
R  
O  
S  
A  
F  
A  
L  
S

1  
9  
3  
3



EMILY JENNINGS  
*Dawson, Georgia*  
 A.B., BIOLOGY

Argonian Literary Society; Kappa Athletic Association; President Freshman Class; Council Member (2); Business Manager *Pine Branch* (2); President Y. W. C. A. (3, 4); Presidents' Club (1, 3, 4); Representative Blue Ridge (2, 3); Science Club; G. S. W. C. Emblem (2, 3, 4).

Emily has been featured as having the most pleasing personality in school, and she has employed it admirably by becoming one of the outstanding leaders on the campus. Freshmen will always remember the most gracious girl who, as President of the Y. W., met them at the door at the first of the year. She has, too, the charm of being always immaculate, whatever the occasion. Truly we are proud to have Emily represent us by being in Miss Hopper's Office.



MYRTICE JOHNSON  
*Vidalia, Georgia*  
 A.B., ENGLISH

Bessie Tift (1); Argonian Literary Society; Lambda Athletic Association; Business Manager *Pine Branch* (3); Sock and Buskin Club; Sock and Buskin Play (2, 4); Production Staff Sock and Buskin Play (3); Secretary-Treasurer Sock and Buskin Club (4); English Club; Science Club; G. S. W. C. Emblem (4); Maid of Honor (4).

"Red" is chiefly noted as being the possessor of the most gorgeous red hair imaginable. It almost makes a spotlight superfluous on those numerous occasions when she appears on the stage, or delights us with one of her clever interpretative dances. She has charm too, and a smile that is irresistible. "Going out" with "Ham" is her favorite pastime, and one rarely sees one of them without the other.



MARY VIRGINIA McKEY  
*Valdosta, Georgia*  
A.B., ENGLISH

Argonian Literary Society; Lambda Athletic Association; Sock and Buskin Club; Vice-President Sock and Buskin Club (3); Sock and Buskin Play (2, 4); Production Staff Sock and Buskin Play (3); English Club; President English Club (4); Presidents' Club (4); G. S. W. C. Emblem (4).

Mary Virginia's activities as president of the English Club have only been equaled by her interests in the Sock and Buskin Club. She is one of the few amateur actresses who can successfully attempt emotional acting, and her impersonations of wealthy and aristocratic women of leisure are memorable. Graciousness is the keynote of her character, and our associations with her have never been anything but most delightful. Pleasant indeed shall be our memories of "Whack"!



LOUISE McMICHAEL  
*Quitman, Georgia*  
A.B., ENGLISH

Kappa Athletic Association; Doubles Tennis Champion (1); Athletic Council (1, 3, 4); Sock and Buskin Club; Sock and Buskin Play (2, 3); Fool in Christmas Festival (2, 3, 4); *Pine Branch* Staff (3); Presidents' Club (3, 4); Fine Arts Club (3); President Kappa Athletic Association (3, 4); G. S. W. C. Emblem (3, 4); Athletic Numerals (3); English Club; Glee Club; Athletic Letter and Cup (4); Honor Roll (3).

Louise has made "versatile" a trite word. Everyone of the gift fairies came to her christening, it seems, and the combination of talents they left have served her well as leader of the Kappas for the past two years. She has an enthusiasm about life that makes living interesting every moment —when she's "walking-in-the-rain" or "dancing-in-the-arms-of-the-one-I-love."

LEADER

1933



MILDRED MINCHEW  
*Baxley, Georgia*  
A.B., ENGLISH

Argonian Literary Society; Kappa Athletic Association; Freshmen Council Representative; Vice-President Argonian Literary Society (2, 3); Inter-Society Debater (2, 4); Sock and Buskin Club; Vice-President Sock and Buskin Club (2); Assistant Director Sock and Buskin Play (2); President Sock and Buskin Club (3, 4); Presidents' Club (3, 4); *Pine Branch* Staff (3); G. S. W. C. Emblem (3, 4); Glee Club (2, 3); English Club; Philharmonic Club (2, 3).

"Where is Minnie?" Down town entertaining the Kiwanians with a graceful dance or a comical mimic, riding with "Willie," planning a dramatic club tea—any one of a number of gay things. But wherever she is, there is more than likely to be something interesting or entertaining going on. She is always eager to give everybody a square deal, and has a knack for friendship that is invaluable.



MILDRED MORRIS  
*Brinson, Georgia*  
A.B., HISTORY

Argonian Literary Society; Kappa Athletic Association; Y. W. C. A. Cabinet (3); I. R. C., President I. R. C. (3, 4); Athletic Council (3); *Pine Branch* Staff (3); Presidents' Club (3, 4); G. S. W. C. Emblem (3, 4); Science Club; Honor Roll (2).

Mildred Morris is certainly a busy person—usually with the International Relations Club, the training school, or Kappa Athletic Association. She has been the able president of the I. R. C. for the last two years and an indefatigable worker in its behalf. Remember those delicious cakes and candies she sold for them! She makes honors, too, besides being one of the best tennis players on the campus. One marvels at such energy and responsibility, but Mildred moves smoothly along without ever seeming to be rushed. Some lucky people have a talent for managing life!



MARY ALICE MOSELY  
*Kinderlou, Georgia*  
A.B., ENGLISH

Argonian Literary Society; Kappa Athletic Association; Valdosta Club; Vice-President Valdosta Club (4); English Club (4); Science Club; PINE CONE Staff (4); Secretary English Club (4).

Mary Alice believes the much repeated statement "laugh and the world laughs with you, weep and you weep alone," for she has a contagious laugh that is the delight of her many friends. She is one of the members of the Valdosta Club who doesn't live in the town, but comes from home every morning. Whether she chooses to travel by train or Ford, she is always at class on time and contributes pleasure by her jolly nature. Living out of town has never prevented her participation in athletic games and sports of all kinds, and she has frequently proved her loyalty to the Kappas.



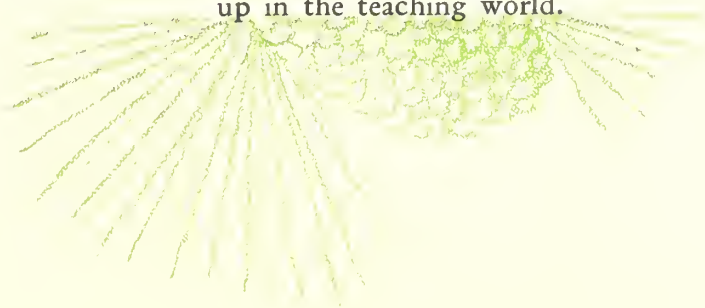
SARAH MURCHISON  
*Vidalia, Georgia*  
A.B., EDUCATION

Bessie Tift (1, 2); Argonian Literary Society; Lambda Athletic Association; Glee Club; Philharmonic Club; English Club; G. S. W. C. Emblem (4).

"Sally" has been with us for only two years, and we regret the lack of her presence those first years, now that we have known her. While some of us, with a casual interest in our college work, pass our opportunities with a shrug, Sarah has a real enthusiasm for the work she does. She is interested especially in primary education, and we have an idea that when the rest of us are wishing for a working knowledge of the psychology we might have learned in college, she will be successfully dealing with every situation that comes up in the teaching world.

SARAH

1933



PINE CONE



Mrs. W. H. OLIVER  
Valdosta, Georgia  
A.B., ENGLISH

Tennessee College (1, 2); Argonian Literary Society; English Club; Lambda Athletic Association; Valdosta Club.

Mrs. Oliver is a living example that women can go to school and maintain a lovely home at the same time—and make better grades than most anybody else while she’s doing it! Spaghetti suppers are her specialty, and the members of the English Club can vouch for the success of these affairs. Her ability to see the humorous side of every situation is notorious and equaled only by her gracious manner. The deep and enduring friendship existing between her and Mrs. Wisenbaker is well known, and the example they have set for us in that and in all other things has never proved other than inspirational.

ARGONIAN



ELIZABETH PARDEE  
Thomasville, Georgia  
A.B., ENGLISH

Argonian Literary Society; Lambda Athletic Association; Secretary Class (2); Pine Branch Staff (3); Presidents’ Club (3, 4); Glee Club; President Glee Club (3, 4); Fine Arts Club; Secretary-Treasurer Fine Arts Club (3); PINE CONE Staff (4); G. S. W. C. Emblem (3, 4).

“To know her is to love her,” might have been written of Pardee, so perfectly does it suit her. Sophisticated-looking, they say, describes her blonde attractiveness; and poised, her manner. She holds claim to that finest of qualities—innate politeness, and is as free from any form of egotism as it is possible to be. She was president of the Glee Club first in her Junior year, and her reelection to that office is ample proof of her popularity and leadership.



SENIORS

VERA ESTELLE PARKER

*Waycross, Georgia*

A.B., HISTORY

Argonian Literary Society; Lambda Athletic Association; Athletic Council (2, 3); Athletic Numerals (2); President Junior Class (3); Secretary-Treasurer Lambda Athletic Association (3); Athletic Letter (3); Presidents' Club (3); G. S. W. C. Emblem (3, 4); Council Representative (4); Science Club; Treasurer Science Club (4); PINE CONE Staff (4); Athletic Cup (4); International Relations Club.

Vera's outstanding quality is her friendly manner towards everyone from the best known seniors to the most demure freshmen. She believes in having a good time as well as studying, and one could be more or less safe in saying that she never misses a picture show. While others await the mailman with anxious uncertainty, Vera is serenely assured of at least two letters a day. The Lambdas will have a hard time finding another to replace her ability and enthusiasm.

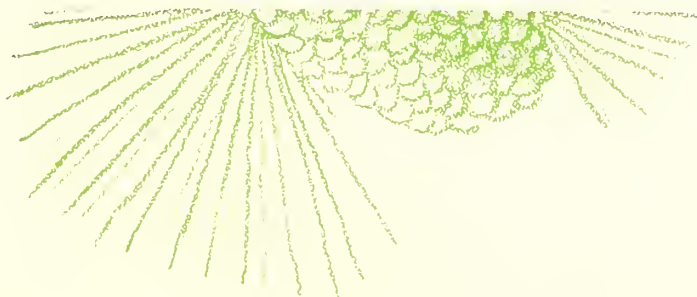
### IN MEMORIAM

WINONA DANE PATTERSON

February 16, 1913

January 14, 1932

1932





CAROLYN PATRICK  
*Quitman, Georgia*  
A.B., ENGLISH

Alabama Womans College (2, 3); Argonian Literary Society; Phi Lambda Athletic Association; Philharmonic Club.

Carolyn joined us again after having spent the two intervening years at Alabama Womans College, and we were more than pleased to welcome her back. Her quiet manner might be called reserved were it not for that friendly smile which is ever ready. We have long envied her lovely hair with its soft wave and smooth coil. Although Carolyn hasn't been on the campus very much this year, it's been a joy to know that she returned to the fold to graduate with us, and we wish her much happiness in the career which she has chosen.



MARY VIRGINIA PAULK  
*Valdosta, Georgia*  
A.B., ENGLISH

Lambda Athletic Association; Valdosta Club; Treasurer Valdosta Club (3); Secretary Valdosta Club (4); Secretary Senior Class; English Club; Honors (3); May Queen (4).

Beauty and brains are proverbially not found together, but Mary Virginia belies the truth of that statement. She is distinctively among the intellectuals of the class, and her blonde beauty speaks for itself. She is quite a linguist, being proficient in both German and French, as well as an outstanding English student. Always cordial in her contacts with students and teachers alike, Mary Virginia has won for herself an enduring popularity.





NANCY ROWLAND  
 Wrightsville, Georgia  
 A.B., BIOLOGY

Argonian Literary Society, Lambda Athletic Association, Secretary Y. W. C. A. (2); *Pine Branch* Staff (2); President Argonians (3); Presidents' Club (3, 4); Y. W. C. A. Cabinet (2, 3); G. S. W. C. Emblem (3, 4); Science Club; President Science Club (4); Secretary-Treasurer Student Government Association (4); PINE CONE Staff (4); Athletic Numerals (4); Glee Club; Sock and Buskin Club; Sock and Buskin Play (4); Honors (1).

An "insatiable curiosity" about scientific matters added to general ability in a variety of activities, make Nancy a valuable asset in the class. Her rare smile displaying priceless dimples has been observed in the presidential chair of the Literary Society and Science Club, evidence of her major interests. Valuable, too, as a devotee to the Sock and Buskin, she has proved an ideal hero in many plays. "Eternity," Nancy!



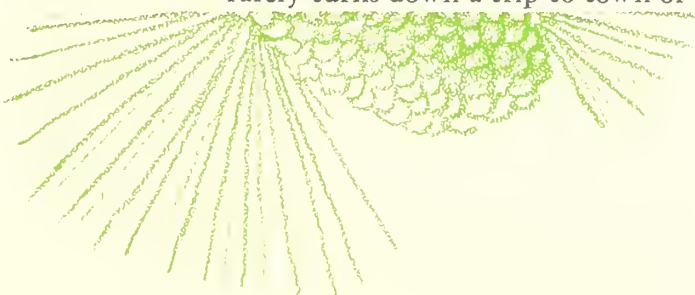
HARRIET SHEPPARD  
 Savannah, Georgia  
 A.B., HISTORY

Shorter College (1); Argonian Literary Society; Lambda Athletic Association; Treasurer Junior Class; Sergeant at Arms Argonian Literary Society (3); International Relations Club (3), Secretary International Relations Club (3); G. S. W. C. Emblem (3); Science Club; Secretary Science Club (4).

Harriet was one of the most attractive additions to our class when she entered in 1930, and our affection for her has steadily increased since that memorable time. She always seems to be having a good time, for she has that pleasant quality of being adaptable to the place and occasion, a quality that makes her liked by many. She makes good grades with no perceptible effort, for she rarely turns down a trip to town or to the show.

S  
E  
P  
T  
E  
M  
B  
E  
R

1  
9  
3  
3






P  
H  
I  
L  
A  
M  
B  
D  
A



HALLEY ELIZABETH SMITH  
*Valdosta, Georgia*  
A.B., HISTORY

Bessie Tift (1); Phi Lambda Athletic Association; Valdosta Club; International Relations Club.



1  
9  
3  
3


Why is it that you can always find Halley in the middle of the very front row in any history class? Perhaps she's interested in history? Well, one would suppose so, to say the least. She has been an active and interested member of the International Relations Club and a contributor to any class discussion on politics, international relations, or current history topics. She is one of those transfers whom we are proud to have in our class; and a town student who is able to get to nine o'clock classes even before time.



ELWYN SPARKS  
*Valdosta, Georgia*  
A.B., ENGLISH

Wesleyan College (1); Phi Kappa Athletic Association; Valdosta Club.

Elwyn is one of those additions to our class of whom we are justly proud. She is lovely looking, and has a quiet charm of manner which makes her a most pleasant companion on any occasion. In other words, she seems to symbolize the violets of that fraternity whose pin she wears! We have noticed, also, that a blue coupe usually waits to take her home after classes and that, with other things we hear, makes us wonder if Elwyn is quite as concerned about what she will do next year as most of us are. We feel assured that life can only hold the best of things for this dainty and demure maiden, and such is our sincere wish.





PEARL STRONG  
*Valdosta, Georgia*  
A.B., ENGLISH

Phi Kappa Athletic Association; Valdosta Club; Secretary Valdosta Club (3); English Club.

If you want to see somebody who reads all her parallels, just look for Pearl! Almost any time you can find her in the library studying industriously, for she never comes to class unprepared. Pearl has always been quite active as a member of the Valdosta Club, and is always ready to contribute her part. Tennis is her favorite sport, and she is seen quite frequently playing on the court on Patterson Street. Incidentally she plays a very good game. Pearl is always attractively dressed, and her curly black hair never fails to attract attention and admiration.



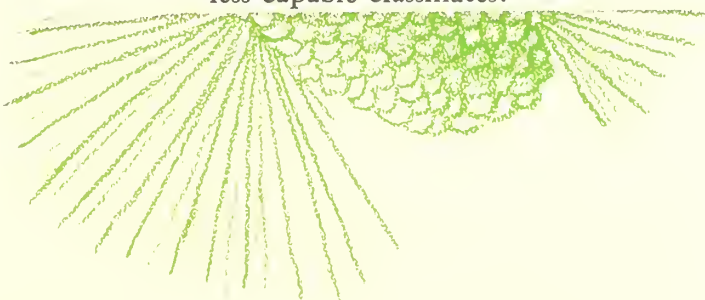
EMELIZA SWAIN  
*Rome, Georgia*  
A.B., ENGLISH

Argonian Literary Society; Kappa Athletic Association; *Pine Branch* Staff (2); Y. W. C. A. Cabinet (3); Glee Club; Vice-President Glee Club (2); Secretary Argonian Literary Society (3); Fine Arts Club; President Fine Arts Club (3); Presidents' Club (3, 4); English Club; Athletic Numerals (4); G. S. W. C. Emblem (2, 3, 4); Editor PINE CONE (4); Honors (1, 3).

It would be easier in such a short space as this to write about what Emeliza can't do—the things she can do being so in abundance. She designs, executes clever features for festivals, sketches for the PINE CONE and the Fine Arts Club bazaars, and in general is our authority on such things. She sings, she writes delightful verse and essays, is an indefatigable reader, and goes out for sports. She does it all so naturally, too, as if it were merely in the day's work. And last but not least—she is often a madcap and as crazy a one as her less capable classmates!

S  
P  
E  
R  
I  
O  
R  
S

1  
9  
3  
3





MILDRED TALLEY  
*Rome, Georgia*  
 A.B., ENGLISH

Argonian Literary Society; Lambda Athletic Association; *Pine Branch* Staff (2, 3); Y. W. C. A. Cabinet (3); Athletic Letter (4); Athletic Numerals (3); Athletic Council (2); G. S. W. C. Emblem (4); Vice-President Argonian Literary Society (4); Business Manager PINE CONE (4); English Club; Science Club.

Another girl from those seven hills! It must be the elevated atmosphere that makes them so energetic and capable. The eagerness with which she has worked on the *Pine Branch* staff for three years (Mary Winn and Helen taught her to "ad," you know) and in the Literary Society and English Club has shown us in what direction her interests lie. A surprising combination of enthusiasm, indifference, and frankness, "Talley" is refreshingly unexpected.



ANNIE LEILA WELLS  
*Valdosta, Georgia*  
 A.B., ENGLISH

Kappa Athletic Association; Valdosta Club; English Club.

Annie Leila has done what few would have had the ambition to do. She received her normal diploma several years ago and since then has taught during the year and worked toward her degree in summer schools. This year we are glad she has decided to return to attend regular session, and so graduate with us. Although she is seldom heard from in class, we always feel that she could surpass us all if she so desired.

She has a quaint charm, and a smile that causes an instinctive response. These personal qualities are combined with a more than ordinary ability in literary activities. Annie Leila has been a real asset to the English Club this year, and also to the Valdosta Club.



MARGARET WILLIAMS  
*Douglas, Georgia*  
A.B., MUSIC

Brenau College (1); Argonian Literary Society; Lambda Athletic Association; Secretary Junior Class; Treasurer Senior Class; Philharmonic Club; Glee Club; Science Club.

An inherent love and appreciation for music such as "Kid's" makes us realize how much we miss who lack that enjoyment. Her enthusiasm is so natural and so instinctive that it almost overshadows for her an ability that is the envy of others. She composes as well, having collaborated with McMichael in writing that song hit of our dormitories, "My Gal She Wears A Yellow Dress." She has, too, that subtle sense of the significance of things and a marvelous sense of humor. Oriental customs and traditions attract her particularly—even to the extent of a keen interest in dragons.



BUFORD WILLIFORD  
*Moultrie, Georgia*  
A.B., ENGLISH

Argonian Literary Society; Kappa Athletic Association; G. S. W. C. Emblem (3); International Relations Club (3); Glee Club (1, 2, 3); Student Recorder of Points (3); Athletic Council (3); Athletic Numerals (1); Letter (3); Cup (4); Philharmonic Club; English Club.

Buford is our own poet and we were very proud to learn that *Verse Craft*, too, appreciated her talent. There is magic in her words—and "words" remind one that Buford has one of the most extensive and most facile vocabularies in school. She also writes clever essays, composes music, plays the ukelele, and does any number of other things. Buford is indeed one of our most versatile girls.

S  
E  
A  
S  
O  
R  
S

1  
9  
3  
3





MRS. JOE WISENBAKER  
Valdosta, Georgia  
A.B., ENGLISH

G. S. C. W. Milledgeville (1, 2); Argonian Literary Society; Lambda Athletic Association; Valdosta Club; English Club.

It is a rare person who can again catch the spirit and rhythm of college life after several intervening years spent in creating a home. Mrs. Wisenbaker is such a person. She entered into our activities with that same interest and enthusiasm that is characteristic of everything she does, and has won the sincere admiration of all those with whom she has come in contact.

Character, ambition, intelligence, originality—do not such qualities speak for themselves in creating a mental image of our loyal and beloved classmate, Mrs. Wisenbaker?



DORIS ZITTRUER  
Savannah, Georgia  
A.B., EDUCATION

Argonian Literary Society; Kappa Athletic Association; Glee Club (2); Treasurer Argonian Literary Society (3); *Pine Branch* Staff (3); Savannah Club, President (3, 4); S. G. A. Monitor (2, 4); International Relations Club, Vice-President (4); Vice-President Senior Class; Advertising Manager PINE CONE (4); G. S. W. C. Emblem (4).

Doris is the sort of person who keeps one in a fit of laughter over her stories of various experiences. She is a perfect mimic, and that "Geechee" drawl adds to the anecdotes. She has a certain enviable quality which makes her talk to authorities with as much ease as she talks to her roommate. Such enterprises as engineering a trip to Jacksonville and getting ads for the PINE CONE have left us with the firm conviction that she is not to be surpassed.



GE DELLE BRABHAM  
PRESIDENT, JUNIOR CLASS  
*Moultrie, Georgia*



LILLA ALEXANDER  
*Nashville, Georgia*



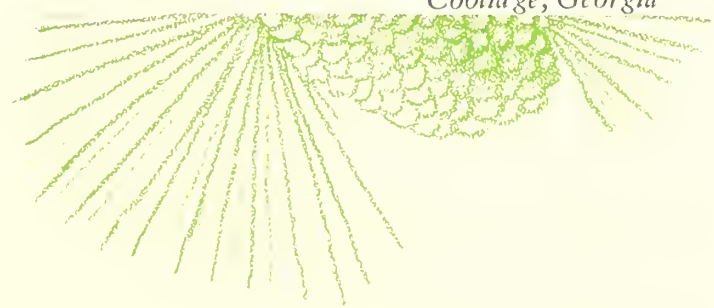
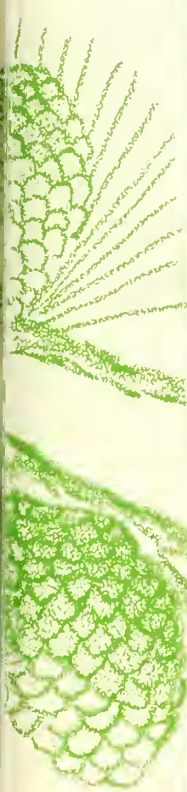
MARGARET BISCHOFF  
*Savannah, Georgia*



MADESTA DUKES  
*Coolidge, Georgia*

J  
E  
E  
N  
I  
O  
R  
S

1  
9  
3  
3



CLASS OF 1933



MARGARET EASTERLIN  
*Thomasville, Georgia*



ANNIE LOIS GARDNER  
*Camilla, Georgia*



KATHLEEN GLISSON  
*Bainbridge, Georgia*



MARY GLOVER  
*Valdosta, Georgia*





GRACE HOLCOMBE  
*Valdosta, Georgia*



VIRGINIA HUTCHINSON  
*Valdosta, Georgia*



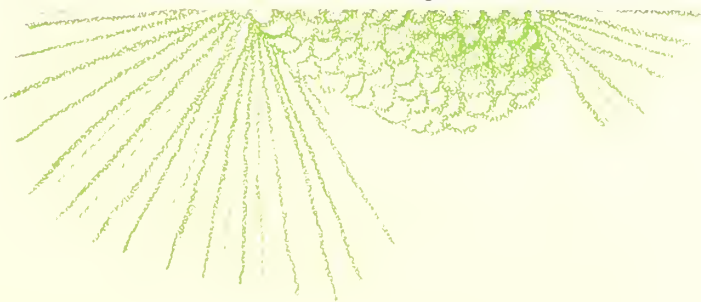
MARTHA JACKSON  
*Valdosta, Georgia*



MRS. GLEN B. JOHNSON  
*Quitman, Georgia*

LEADERS

1933



CLASS OF 1920



MARY BANCE JOINER  
*Sylvester, Georgia*



MARGARET KENNEDY  
*Dawson, Georgia*



BESSIE McRAE  
*Savannah, Georgia*



MILDRED McDONALD  
*Colquitt, Georgia*

CLASS OF 1920



VIRGINIA MARTIN  
*Arlington, Georgia*



KATHRYN MOORE  
*Douglas, Georgia*



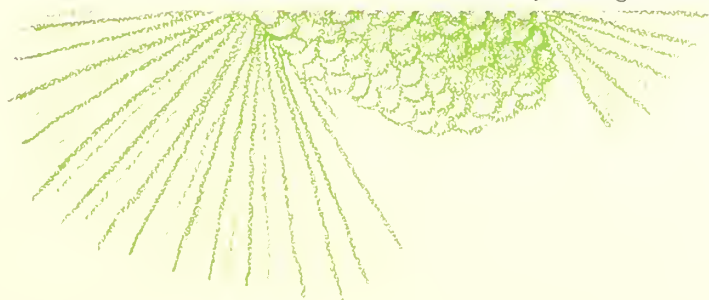
SARA NICHOLSON  
*Amsterdam, Georgia*



SUE PENDLETON  
*Valdosta, Georgia*

J  
E  
N  
E  
R  
A  
L

1  
9  
3  
3



P  
E  
E  
A  
S  
E  
S



VONICE RITCH  
*Jesup, Georgia*



WILLENE ROBERTS  
*Valdosta, Georgia*



MARJORIE SESSIONS  
*McRae, Georgia*



FLORENCE SMITH  
*Valdosta, Georgia*

S  
E  
S  
S  
I  
O  
N



ADELAIDE SPENCER  
*Savannah, Georgia*



RUBY NELL WALL  
*Ellaville, Georgia*



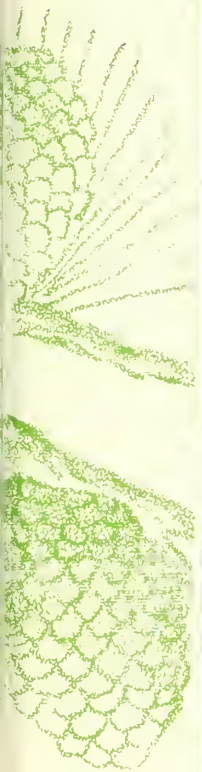
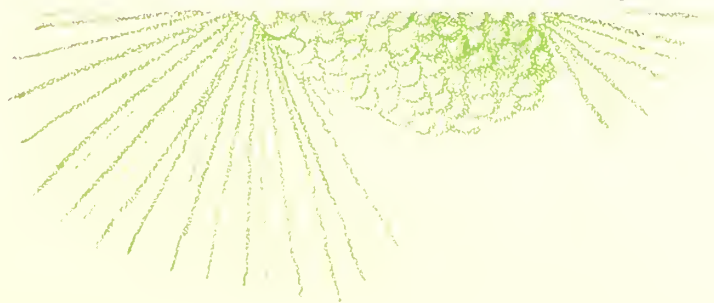
DOROTHY WALLS  
*Cordele, Georgia*



MARGARET WILLIAMS  
*Cordele, Georgia*

LEADERS

1933



P  
R  
E  
S  
I  
D  
E  
N  
T  
S  
  
C  
L  
A  
S  
S  
  
1  
9  
3  
3



LAVINIA BUCKNER  
PRESIDENT, SOPHOMORE CLASS  
Waycross, Georgia



ELISE ADAMS  
Vidalia, Georgia



MIRIAM ALLEN  
Albany, Georgia



LOUISE AMBOS  
Savannah, Georgia



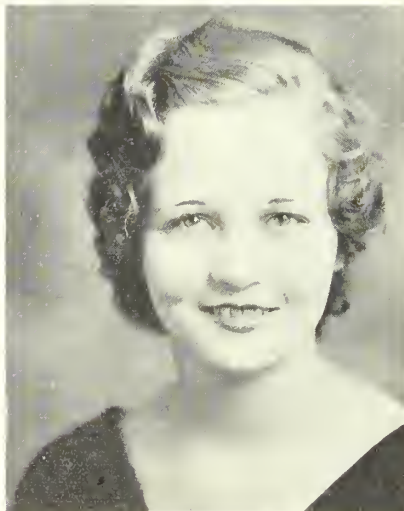
DOROTHY ANDREWS  
Plains, Georgia



ADELE BICKLEY  
Meigs, Georgia



VIRGINIA BICKLEY  
Ocilla, Georgia



RACHEL BLACKWELL  
Quitman, Georgia



ANN JONES BOLLER  
Savannah, Georgia



ANITA BRADLEY  
*Waycross, Georgia*



EDNA MAE BRANTLEY  
*Oconee, Georgia*



DOROTHY BREWTON  
*Vidalia, Georgia*



CAROLYN BRIM  
*Dawson, Georgia*



JANE BROOKS  
*Valdosta, Georgia*



CATHERINE BRUCE  
*Savannah, Georgia*



BONNIE RUTH BURNETTE  
*Lenox, Georgia*



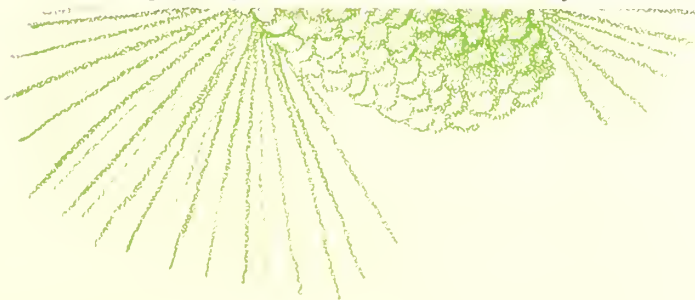
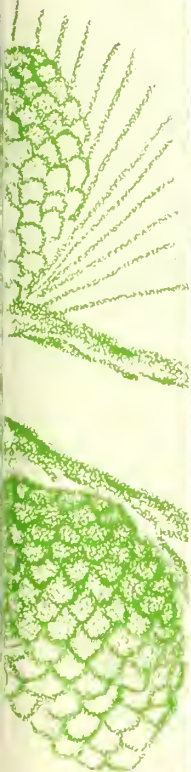
GUSSIE BURNS  
*Jesup, Georgia*



JEWEL BUSSELL  
*Waycross, Georgia*

S  
O  
P  
H  
O  
M  
O  
R  
P  
H  
S

I  
G  
N  
E



P  
E  
A  
S  
E  
C  
O  
C  
H  
R  
A  
N  
E  
S



MARJORIE BUTLER  
*Vienna, Georgia*



CHRISTINE CALLAN  
*Norman Park, Georgia*



VERDA WILL CARTER  
*Meigs, Georgia*



JUDY COCHRAN  
*Camilla, Georgia*



MABETH COKER  
*Dawson, Georgia*



MARY LOU CONNELL  
*Valdosta, Georgia*



JANET COOK  
*Boston, Georgia*



NELLIE COOK  
*Colquitt, Georgia*



MARY ELLEN CRAFT  
*Savannah, Georgia*





WINNIE DAVIS  
*Valdosta, Georgia*



EVELYN DEVANE  
*Adel, Georgia*



LOIS DORMING  
*Fitzgerald, Georgia*



FRANCES DUPRIEST  
*Sylvester, Georgia*



LOUISE DURHAM  
*Dawson, Georgia*



RUTH ELLIS  
*Savannah, Georgia*



ELIZABETH FITZGERALD  
*Camilla, Georgia*

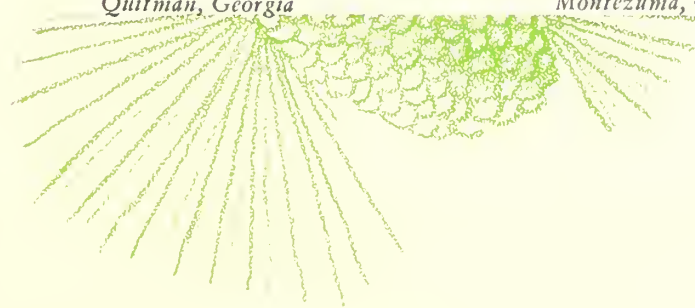
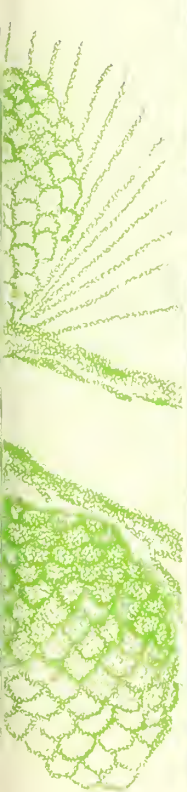


EMILY FLUKER  
*Quitman, Georgia*



MILDRED FOKES  
*Montezuma, Georgia*

S  
O  
P  
H  
O  
M  
O  
R  
E  
S  
  
I  
G  
N  
E



P  
R  
E  
S  
E  
N  
T  
A  
T  
I  
O  
N  
S



HENRY KATE GARDNER  
*Camilla, Georgia*



ELEANOR GARRETT  
*Columbus, Georgia*



MARIE GASKINS  
*Nashville, Georgia*



MARJORIE GROOVER  
*Quitman, Georgia*



MARGARET HALE  
*Jackson, Mississippi*



LUCY HAMMOND  
*Griffin, Georgia*



MARY HATCHER  
*Dawson, Georgia*



NINA WAY HOLLIMAN  
*Savannah, Georgia*



LUCILE HUDSON  
*Thomasville, Georgia*

1  
9  
3  
3



DOROTHY JOHNSON  
*Naylor, Georgia*



MARGARET JOINER  
*Griffin, Georgia*



MARY BERTHA KENNEDY  
*Morven, Georgia*



CLYDE KENDALL  
*Valdosta, Georgia*



VIRGINIA KIRKLAND  
*Metter, Georgia*



GRACE LAHEY  
*Valdosta, Georgia*



ELIZABETH LARISEY  
*Valdosta, Georgia*



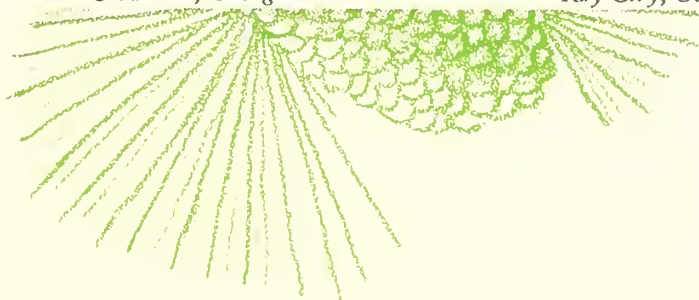
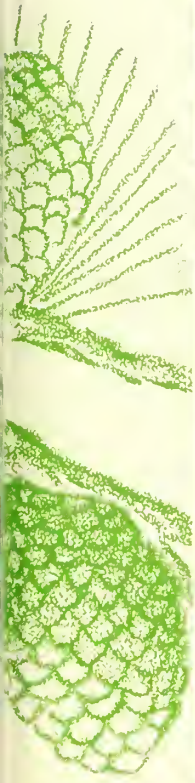
CLARE LAWSON  
*Savannah, Georgia*



MARY LEE  
*Ray City, Georgia*

S  
O  
P  
H  
O  
M  
O  
R  
E  
S

J  
U  
N  
I  
O  
R



P  
R  
E  
S  
E  
N  
T  
S  
I  
O  
N  
S



MARGARET LINDSAY  
*Blakely, Georgia*



CAROLYN LOYLESS  
*Blakely, Georgia*



ANNIE MAUD MCLEOD  
*Newton, Georgia*



JULIA MANNING  
*Bainbridge, Georgia*



LOUISE MAXWELL  
*Fitzgerald, Georgia*



ELEANOR MEADOWS  
*Vidalia, Georgia*



LEONA MILLER  
*Boston, Georgia*



ANN MYDDLETON  
*Valdosta, Georgia*



ELOISE ODOM  
*Asburn, Georgia*

I  
G  
N  
I  
T  
I  
O  
N



DOROTHY OGLETREE  
*Savannah, Georgia*



MARJORIE PATTERSON  
*Columbus, Georgia*



MARY POLHILL  
*Sylvester, Georgia*



ELIZABETH POWELL  
*Valdosta, Georgia*



RENA MAYES RHODES  
*Sylvester, Georgia*



ESTELLE ROBERTS  
*Cordele, Georgia*



MIRIAM RYON  
*Hinesville, Georgia*



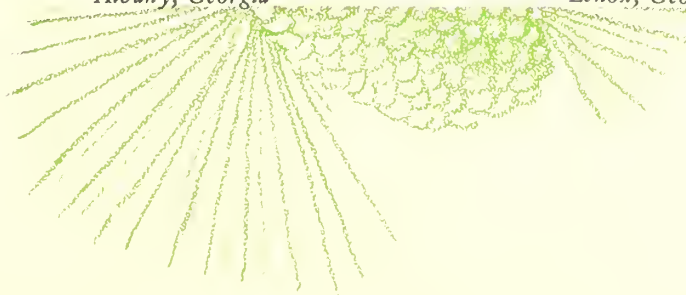
MARIAN SAPP  
*Albany, Georgia*



LUCY SEARS  
*Lenox, Georgia*

S  
O  
P  
H  
O  
M  
O  
R  
E  
S

I  
G  
N



P  
R  
E  
S  
E  
N  
T  
A  
T  
I  
O  
N



VIRGINIA SHEPPARD  
*Savannah, Georgia*



ELIZABETH SMITH  
*Meigs, Georgia*



FRANCES SMITH  
*Vidalia, Georgia*



LOU LEESE STALAND  
*Thomasville, Georgia*



ODESSA STEPHENS  
*Bainbridge, Georgia*



DOROTHY STUDSTILL  
*Lakeland, Georgia*



ELIZABETH TAYLOR  
*Bainbridge, Georgia*



KATHLYN TAYLOR  
*Valdosta, Georgia*



MARGARET TOUCHTON  
*Valdosta, Georgia*



MIRIAM TOWNSEND  
*Climax, Georgia*



MARTIELE TURNER  
*Valdosta, Georgia*



EVELYN VAN LINGHAM  
*Cairo, Georgia*



HELEN CLAIRE VARNEDOE  
*Valdosta, Georgia*



MYRTLE VARNER  
*Sasser, Georgia*



EVA STOY WALKER  
*Valdosta, Georgia*



AUDREY WALLS  
*Cordele, Georgia*



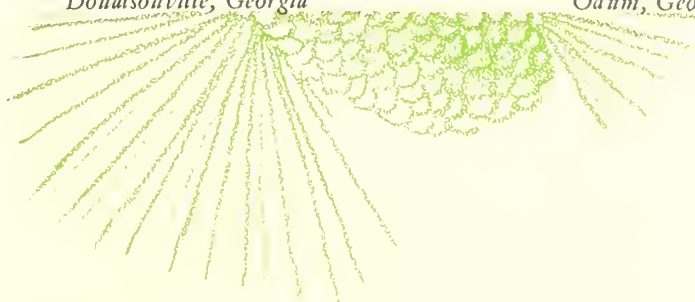
CLYDE VERNA WARD  
*Donalsonville, Georgia*



ANNIE WARREN  
*Odum, Georgia*

S  
O  
P  
H  
O  
M  
O  
R  
E  
S

I  
G  
R  
A



P  
E  
C  
E  
S  
E  
C  
E  
S  
E  
S



ESTELLE WATTS  
*Brinson, Georgia*



ANNIE BELLE WEATHERFORD  
*Savannah, Georgia*



MARY ELIZABETH WEATHERFORD  
*Savannah, Georgia*



EVELYN WEST  
*Camilla, Georgia*



MARJORIE WHITE  
*Sylvester, Georgia*



MARTHA WILKIN  
*Colquitt, Georgia*



ELIZABETH WILKES  
*Adel, Georgia*



SUELLA WILLIAMS  
*Valdosta, Georgia*



MARGARET ZIPLIES  
*Savannah, Georgia*

I  
G  
E  
S





MILDRED TURNBULL  
PRESIDENT FRESHMAN CLASS  
Moultrie, Georgia



CLARA DAVIS ADAMS  
Moultrie, Georgia



MIRIAM ADAMS  
Camilla, Georgia



MARY ALDERMAN  
Pavo, Georgia



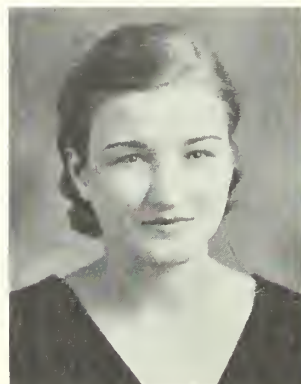
ANNE ALFORD  
Fort Gaines, Georgia



MARY ASKEW  
Arlington, Georgia



NAOMI AUSTRIA  
Waycross, Georgia



CLEO BARBER  
Bainbridge, Georgia



AMANDA BARKSDALE  
Blakely, Georgia



MARY NELSON BROWN  
Griffin, Georgia



LAURA ANNE BARTHOLOMEW  
Griffin, Georgia



MARGARET BERRYHILL  
Lakeland, Georgia



SARAH BINGHAM  
Valdosta, Georgia



MARY BISCHOFF  
Savannah, Georgia



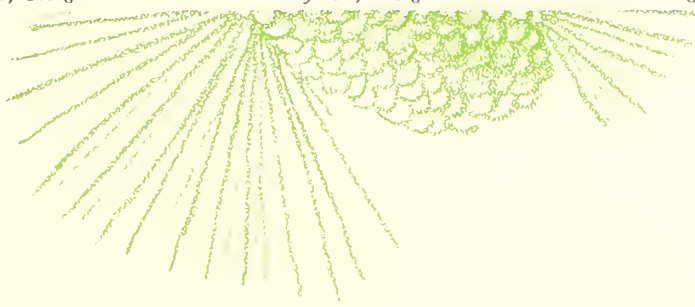
CORRIETH BLACHBURN  
Waycross, Georgia



PEGGY BOWER  
Bainbridge, Georgia

FRESHMEN

1933



P  
I  
S  
E



HARRIET BULLARD  
*Nashville, Georgia*



LUCY BUSBEE  
*Vienna, Georgia*



JUANITA, BUTLER  
*Jennings, Florida*



LUCY BUTLER  
*Byronville, Georgia*

E  
S  
E  
A



BESSIE MAE CARTER  
*Naylor, Georgia*



HELEN CARTER  
*Valdosta, Georgia*



EVELYN CHERRY  
*Bainbridge, Georgia*



MARY COKER  
*Dawson, Georgia*



MARTHA COLLINS  
*Dixie, Georgia*



MAURISE COLLINS  
*Cairo, Georgia*



INEZ COOK  
*Colquitt, Georgia*



FRANCES COPELAND  
*Valdosta, Georgia*

I  
G  
O  
N



EDNA MAE COWART  
*Donalsonville, Georgia*



HILDA JANE COX  
*Camilla, Georgia*



SARA RACHEL COXWELL  
*Leesburg, Georgia*



VIRGINIA CROSBY  
*Valdosta, Georgia*



LOIS DALEY  
*Dublin, Georgia*



LOUISE DANIELS  
*Blakely, Georgia*



CAROLYN DAVIDSON  
*Gabbettville, Georgia*



LENORE DAVIS  
*Moultrie, Georgia*



MARY DEARISO  
*Sylvester, Georgia*



ELSIE DELOACH  
*Savannah, Georgia*



CARLYNNE DIX  
*Rochelle, Georgia*



LOUISE DRISKILL  
*Surrency, Georgia*



LENORA DU FOUR  
*Albany, Georgia*



LILLY ELLIS  
*Jesup, Georgia*



FRANCES ELTON  
*Tennille, Georgia*



VIRGINIA FAIRCLOTH  
*Camilla, Georgia*



LILLIAN FLEMING  
*Hinesville, Georgia*



CAROL FORRESTER  
*Leesburg, Georgia*



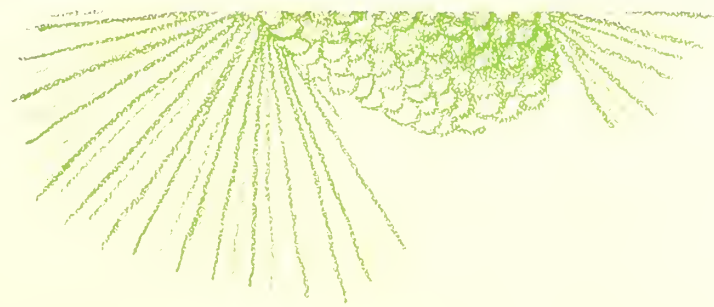
LOUIS FORT  
*Blakely, Georgia*



REBECCA FRYER  
*Blakely, Georgia*

F  
r  
e  
s  
h  
m  
e  
n

1  
9  
3  
3



P  
E  
E  
E  
E



NELLIE MAE GANNON  
Valdosta, Georgia



FRANCES GARBUTT  
Valdosta, Georgia



ALLETHEA GIBBONS  
Habira, Georgia



MARY GIBBS  
Brookfield, Georgia



VIRGINIA GIBSON  
Waycross, Georgia



LUELLE GIDDENS  
Ray City, Georgia



MRS. GRACE GRAHAM  
Valdosta, Georgia



MYRA HACKETT  
Moultrie, Georgia



JUANITA HARRELL  
Valdosta, Georgia



LOUISE HARDY  
Quitman, Georgia



SUE HARRIS  
Uvalda, Georgia



FLORRIE VIRGINIA HAWKINS  
Blackshear, Georgia



DOROTHY HESTER  
Cairo, Georgia



EDITH HIGHTOWER  
Bainbridge, Georgia



MOZELLE HINELY  
Howell, Georgia



WINIFRED HINSON  
Bainbridge, Georgia

1  
9  
3  
3



ELAH HOLLIDAY  
Vienna, Georgia



GREY HOWELL  
Blakely, Georgia



EDNA HOWELL  
Valdosta, Georgia



LAURA HOYLE  
Dawson, Georgia



VIRGINIA HUGHES  
Glenville, Georgia



BROWN HUTCHINSON  
Valdosta, Georgia



KATHRYN JENKINS  
Albany, Georgia



BESSIE JOE JOHNSON  
Scotland, Georgia



NOELLENE JOHNSON  
Valdosta, Georgia



CHRISTINE JONES  
Richland, Georgia



KATHERINE JONES  
Gadsden, Alabama



MARGARET JONES  
Lakeland, Georgia



MAURICE JONES  
Sylvester, Georgia



RUBY JONES  
Valdosta, Georgia



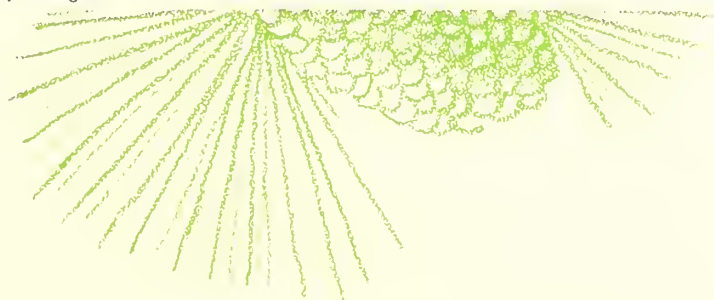
ELIZABETH KELLY  
Savannah, Georgia



VANELLE KENDALL  
Valdosta, Georgia

F  
r  
e  
s  
h  
m  
e  
n

1  
9  
3  
3



P  
I  
S  
S  
E



MARY ELIZABETH LEE  
*Waresboro, Georgia*



CAROLYN LEWIS  
*Broxton, Georgia*



RUNELLE LUNDY  
*Sylvester, Georgia*



BETTY MCCOLLUM  
*Thomasville, Georgia*

C  
S  
E  
A



LINELLE MCGOWAN  
*Valdosta, Georgia*



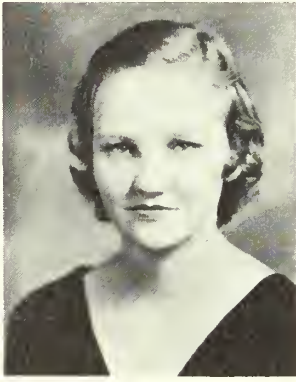
KATHRYN MADDOX  
*Dawson, Georgia*



MARJORIE MALLORY  
*Uvalda, Georgia*



MARGARET MARTIN  
*Hinesville, Georgia*



BEATRICE MATHIS  
*Ashburn, Georgia*



EVELYN MAY  
*Quitman, Georgia*



MARY MEW  
*Darien, Georgia*



ELEANOR JOY MILLER  
*Albany, Georgia*

I  
9  
3  
3



JESSLYN MOSELEY  
*Valdosta, Georgia*



IDA MAE MULLIS  
*Valdosta, Georgia*



MARY BELLE NOLAN  
*Pavo, Georgia*



LOUISE NORMAN  
*Columbus, Georgia*



LOUISE ODUM  
Asburn, Georgia



SARAH OWENS  
Valdosta, Georgia



RACHEL PARKER  
Valdosta, Georgia



EDITH PARRISH  
Valdosta, Georgia



AUDREY PATTEN  
Lakeland, Georgia



CLARYCE PAULK  
Ocilla, Georgia



IONE PEACOCK  
Perry, Florida



MYRTLE PEARCE  
Rochelle, Georgia



MARY PERRY  
Valdosta, Georgia



EDNA EARL PLEMONS  
Valdosta, Georgia



MARTHA POLLARD  
Sylvester, Georgia



HELEN POWELL  
Griffin, Georgia



UNA RITCH  
Jesup, Georgia



MARY YOUNG ROBERTS  
Valdosta, Georgia



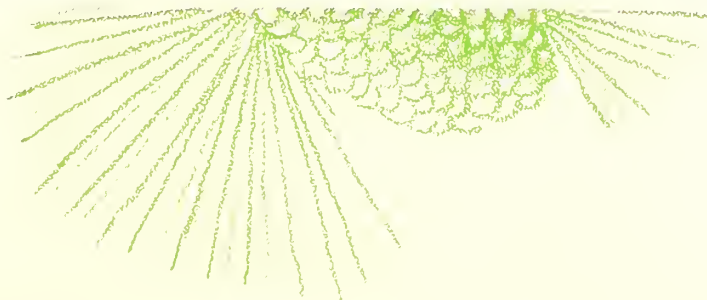
CAMILLE ROGERS  
Baxley, Georgia



MARGUERITE SANDS  
Daisy, Georgia

F  
r  
e  
s  
h  
m  
e  
n

1  
9  
3  
3



P  
R  
E  
S  
E  
N  
T



JEANNETTE SCHULMAN  
*Albany, Georgia*



MARGUERITE SCOTT  
*Savannah, Georgia*



ANNE ELIZABETH SHAW  
*Columbus, Georgia*



LOIS SIMPSON  
*Valdosta, Georgia*



FRANCES SLADE  
*Cordele, Georgia*



ELIZABETH SMITH  
*Thomasville, Georgia*



ESTHER SMITH  
*Sycamore, Georgia*



Mrs. ONYS SMITH  
*Valdosta, Georgia*



PATSY SPARKS  
*Fitzgerald, Georgia*



MARY LOUISE STUDSTILL  
*Valdosta, Georgia*



LUCILE STUDSTILL  
*Ray City, Georgia*



AETHADA SUGGS  
*St. George, Georgia*



CHARLOTTE SWEARINGEN  
*Waycross, Georgia*



KATHRYN TEAL  
*Bainbridge, Georgia*



LYALL TEMPLE  
*Lake View, South Carolina*



ELIZABETH TERRY  
*Quitman, Georgia*

I  
N  
G  
R  
A  
T  
E





ELIZABETH TILLMAN  
Valdosta, Georgia



PHENA TILLMAN  
Gainesville, Florida



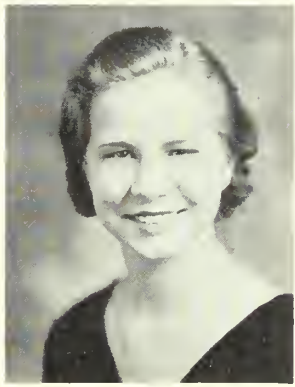
PHOSA TILLMAN  
Gainesville, Florida



JOYCE TIPTON  
Sylvester, Georgia



SADIE BELLE TREADAWAY  
Quitman, Georgia



VANGIE TRIMBLE  
Moultrie, Georgia



VIRGINIA TUCK  
Thomasville, Georgia



JEWEL TYLER  
Habira, Georgia



LEILA MAE TYSON  
Jesup, Georgia



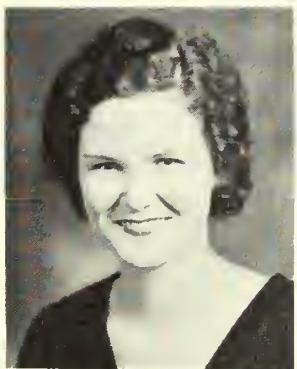
MILDRED VAIL  
Bessemer, Alabama



ELIZABETH WEBB  
Cordele, Georgia



CARRENE WEST  
Moultrie, Georgia



ELEANOR WILKES  
Meigs, Georgia



MARY JULIA WILLIAMS  
Cordele, Georgia



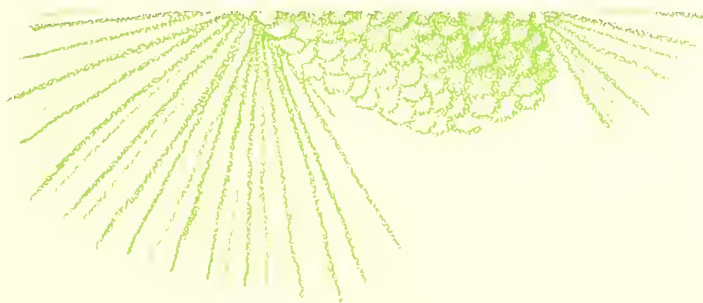
EDNA EARL WILSON  
Fort Valley, Georgia



DORIS YOUNG  
Valdosta, Georgia

F  
r  
e  
s  
h  
m  
e  
n

1  
9  
3  
3







"And may we of G. S. W. C.  
With glad songs fill the air."



### PRESIDENTS' CLUB

THE PRESIDENTS' CLUB is composed of the presidents of all classes and organizations on the campus with the editors of the publications as honorary members for the year 1932-33. The purpose of the Club is to secure co-operation among all organizations, and the problems of the organizations and the general attitude on the campus form the topics of discussion at the monthly meetings. Miss Hopper, Dean of Women, acts as faculty adviser.



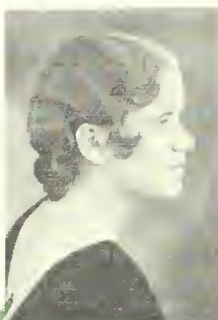
Virginia Clark



Emily Jennings



Emily Burney



GeDelle Brabham



Lavinia Buckner



Mildred Turnbull



Helen Bishop



Louise McMichael



Virginia Martin

- VIRGINIA CLARK,  
President of Student Government Association
- EMILY JENNINGS . . . . . President of Y. W. C. A.
- EMILY BURNLEY . . . . . President of Senior Class
- GEDELLE BRABHAM . . . . . President of Junior Class
- LAVINIA BUCKNER . . . . . President of Sophomore Class
- MILDRED TURNBULL . . . . . President of Freshman Class
- HELEN BISHOP,  
President of Phi Lambda Athletic Association
- LOUISE MCMICHAEL,  
President of Phi Kappa Athletic Association
- VIRGINIA MARTIN . . . . . Editor of The Pine Branch
- EMELIZA SWAIN . . . . . Editor of The PINE CONE
- FRANCES ARRINGTON,  
President of Argonian Literary Society
- BESSIE MCRAE . . . . . President of Sororian Literary Society
- MILDRED MINCHEW, President of Sock and Buskin Club
- ELIZABETH PARDEE . . . . . President of Glee Club
- CAROLYN BULLARD . . . . . President of Philharmonic Club
- VIRGINIA HUTCHINSON . . . . . President of Valdosta Club
- REBA HARRISON . . . . . President of Fine Arts Club
- MARY VIRGINIA MCKEY . . . . . President of English Club
- MILDRED MORRIS,  
President of International Relations Club
- PAULINE FORBES . . . . . President of Euclidian Club
- NANCY ROWLAND . . . . . President of Science Club



Emeliza Swain  
Virginia Hutchinson



Frances Arrington  
Reba Harrison



Bessie McRae  
Mary Virginia McKey



Mildred Minchew  
Mildred Morris



Elizabeth Pardee  
Pauline Forbes

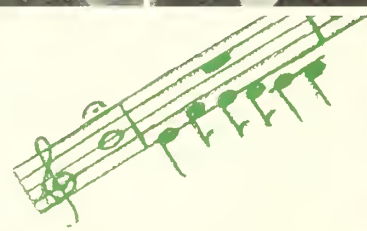


Carolyn Bullard  
Nancy Rowland



Our hearts are with the red and black

For thy for Perish - R All ha



*Alma Mater  
thee we honor*



**VALDOSTA CLUB**



*A handsome blonde*

THE VALDOSTA CLUB is an organization composed of day students; its purpose is to bring the town students into closer relationship with college activities.

The social life of the College is accentuated by the Valdosta Club. In-



formal luncheons are held monthly at the House-in-the-Woods, several teas are given during the year, and in addition the club sponsors annually a banquet for the senior class of the Valdosta High School.



*Betsy and "the car"*



VIRGINIA HUTCHINSON  
*President*



MARY ALICE MOSELY  
*Vice-President*

MARY VIRGINIA PAULK  
*Secretary*

ELIZABETH LARISEY  
*Treasurer*



*Officers of the Club  
Jon*



*Virginia Hutchinson  
Mary Virginia Paulk*



*Mary Alice Mosely  
Elizabeth Larisey*



*shall never  
and black*



*P*





Emily Burucy

### STUDENT GOVERNMENT ASSOCIATION



Virginia Clark



GcDelle Brabham



Lavinia Buckner  
Nancy Rowland



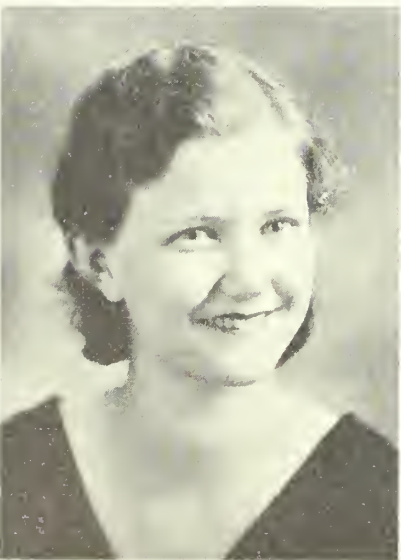
Mildred Turnbull  
Annie Sue Brandon

THE STUDENT GOVERNMENT ASSOCIATION functions on the belief that the welfare of the College will be advanced by the development of an efficient self-government among the students individually and in relation to other students. Power, authority, and responsibility in important matters affecting the whole student body are vested in the Association. It is the one organization on the campus of which every student, after taking a brief training course and after signing the pledge, becomes a member.

The Association is a member of the Southern Intercollegiate Association of Student Governments, and each year the outgoing and incoming presidents attend the annual conference of that organization.

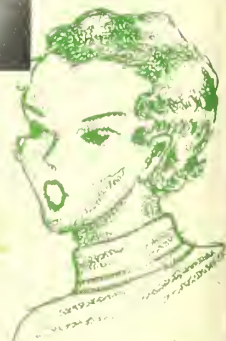
The Court, composed of the four Class Presidents and the President of the S. G. A., is the judicial body of the Association which functions in the maintenance of discipline. Impartiality and fairness are the governing principles of the actions of the Court.

The Court



Our hearts are with the red and black

For thy fame Perish - Red All hail!



Alma Mater  
thee we honor



Emily Jennings

### STUDENT GOVERNMENT ASSOCIATION

The Council, composed of members from the student body and faculty, has jurisdiction over serious disciplinary problems referred to it from the Court and takes the initiative in the enactment, amendment, or repeal of laws pertaining to the conduct of the students.

VIRGINIA CLARK  
*President S. G. A.*

NANCY ROWLAND  
*Secretary-Treasurer*

ANNIE SUE BRANDON  
*Recorder of Points*



Vera Parker



#### COURT MEMBERS

EMILY BURNEY  
*President Senior Class*

GEDELLE BRABHAM  
*President Junior Class*

LAVINIA BUCKNER  
*President Sophomore Class*

MILDRED TURNBULL  
*President Freshman Class*



Carolyn Brim  
Virginia Hutchinson



#### COUNCIL

EMILY JENNINGS  
*President Y. W. C. A.*

VERA PARKER  
*Senior Representative on Council*

MARGARET WILLIAMS  
*Junior Representative on Council*

CAROLYN BRIM  
*Sophomore Representative on Council*

BETTY MCCOLLUM  
*Freshman Representative on Council*

VIRGINIA HUTCHINSON  
*President Valdosta Club*

#### The Council



Margaret Williams  
Betty McCollum



shall never  
and black





### Y. W. C. A.

BEFORE A FRESHMAN ARRIVES at G. S. W. C. she receives a friendly letter from her "Big Sister," a member of the Y. W. C. A. The Big Sister-Little Sister Party is one of the outstanding entertainments of the first week. Other social affairs of the year sponsored by the "Y" are delightful teas, the Heart-Sister affairs in February, and social gatherings in the House-in-the-Woods.

Off-campus speakers bring inspiration to the Y. W. C. A. Among the outstanding speakers of this year were missionaries from Korea and Africa, a group of the Y. M. C. A. members from the University of Florida, and Dr. W. A. Smart, Professor of Biblical Theology at Emory University.

The "Y" plans for the year were well laid during the Retreat of the Cabinet at Twin Lakes. "Creative Living" was chosen as the theme of the year and "Living for Jesus" as the song. Some of the most impressive services of the year, based on this theme, were: the recognition service, the fire-lighting service, the hanging of the Christmas greens, the pageant of the nativity, morning watch in the pines, and musical programs given in candlelight. In addition, Miss Hopper, Miss Gilmer, and Dr. Durrenberger worked with the Y. W. C. A. in making the Sunday School a vital service each week.



Emily Jennings



Margaret Kennedy



Marie Gaskins  
Margaret Ziplies



Y. W. Girls  
Annie Sue Brandon



Freshman Commission  
Carolyn Brim

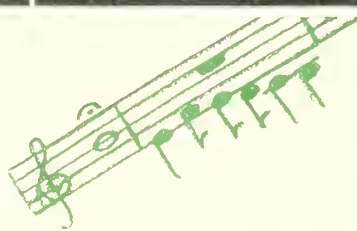


Carolyn Bullard  
Ann Jones Boller



Our hearts are with the red and black

For thy faith  
Perish - Red  
All hail





Alma Mater  
thee we honor



Mildred McDonald

### Y. W. C. A.

The project of the year 1932-33 was to make the Country Store and the House-in-the-Woods more attractive.

The Freshman Commission, which was organized this year, has proved to be a valuable asset in the work of the organization. It is composed of twelve Freshmen who bring the Freshman Class into closer contact with the Y. W. C. A. work.

- EMILY JENNINGS . . . . . *President*
- MARGARET KENNEDY . . . . . *Vice-President*
- MARIE GASKINS . . . . . *Secretary*
- CAROLYN BULLARD . . . . . *Treasurer*



Ada Jewel Cochran



### CABINET

- |                   |                   |
|-------------------|-------------------|
| MARGARET ZIPPLIES | MIRIAM TOWNSEND   |
| ANNIE SUE BRANDON | LOUISE AMBOS      |
| CAROLYN BRIM      | NINA WAY HOLLIMAN |
| ANN JONES BOLLER  | LAVINIA BUCKNER   |
| MILDRED McDONALD  | ODESSA STEPHENS   |
| ADA JEWEL COCHRAN | VIRGINIA TUCK     |

### FRESHMAN COMMISSION

- |                 |                  |
|-----------------|------------------|
| VIRGINIA TUCK   | CAROLYN DAVIDSON |
| LILLY ELLIS     | LOUISE DRISKELL  |
| EMILY HARLOW    | EVELYN MAY       |
| HARRIET BULLARD | VIRGINIA HUGHES  |
| CAMILLE ROGERS  |                  |
| CARLYNNE DIX    |                  |
| RUTH JONES      |                  |
| ELIZABETH KELLY |                  |



Miriam Townsend



Y. W. Cabinet  
Lavinia Buckner



Y. W. Officers  
Odessa Stephens



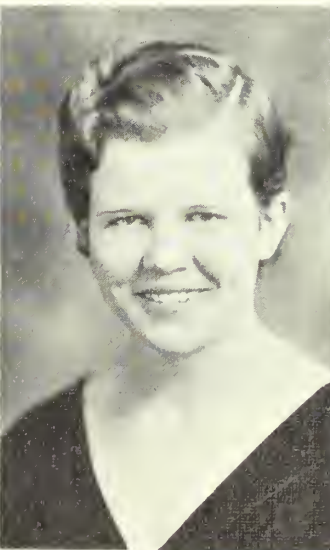
Louise Ambos  
Virginia Tuck



all never  
and black



Nina Way Holliman





*Helen Bishop*



*Dorothy Andrews*

PHI  
LAMBDA  
ATHLETIC  
ASSOCIATION

THE PHI LAMBDA ATHLETIC ASSOCIATION, with its twin, The Phi Kappa Athletic Association, has succeeded in making athletics a vital activity in the lives of G. S. W. C. students. They stand for the highest ideals of good sportsmanship and fellowship as well as for friendly competition with each other. The greatest stimulus of this competition is the desire of each association to win the most points

for the year and thereby win possession of the Athletic Plaque.

The Lambda colors are purple and white, and they are colors to reckon with in the varied sports of archery, riflery, tennis, golf, basket-ball, American ball, baseball, and the lesser games to be found on the campus.

*Janet Cook*



HELEN BISHOP  
*President of Lambda  
Athletic Association*

DOROTHY ANDREWS  
*Vice-President*

JANET COOK  
*Secretary-Treasurer*

SARAH NICHOLSON  
*Recorder of Points*

*Sarah Nicholson*





*Louise McMichael*



*Kathleen Glisson*

PHI  
KAPPA  
ATHLETIC  
ASSOCIATION

THE KAPPA COLORS of red and white stand for clean playing, keen interest, and loyalty. They are well represented colors in the awarding of honors which takes place at a party given by the Athletic Associations at the end of each year. These honors, ranged as to degree of importance from lowest to highest, are: numerals, letter—K or L—, loving cup, and Honor Plaque.

The officials of the Associations form an Athletic Council which meets informally each week for a short period and for a longer period each month at a dinner given in the House-in-the-Woods.

The Athletic Associations are members of the G. A. C. W., and Louise McMichael and Helen Bishop attended the conference of that organization which was held at Shorter College in the spring.

*GeDelle Brabham*



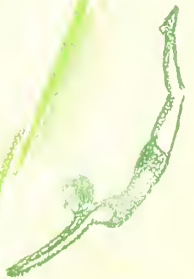
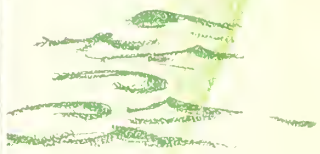
LOUISE McMICHAEL  
*President of Kappa  
Athletic Association*

KATHLEEN GLISSON  
*Vice-President*

MAGGIE JOINER  
*Secretary-Treasurer*

GEDELLE BRABHAM  
*Recorder of Points*

*Maggie Joiner*





*Clare Lawson shoots at the apple*



*Lambda managers*



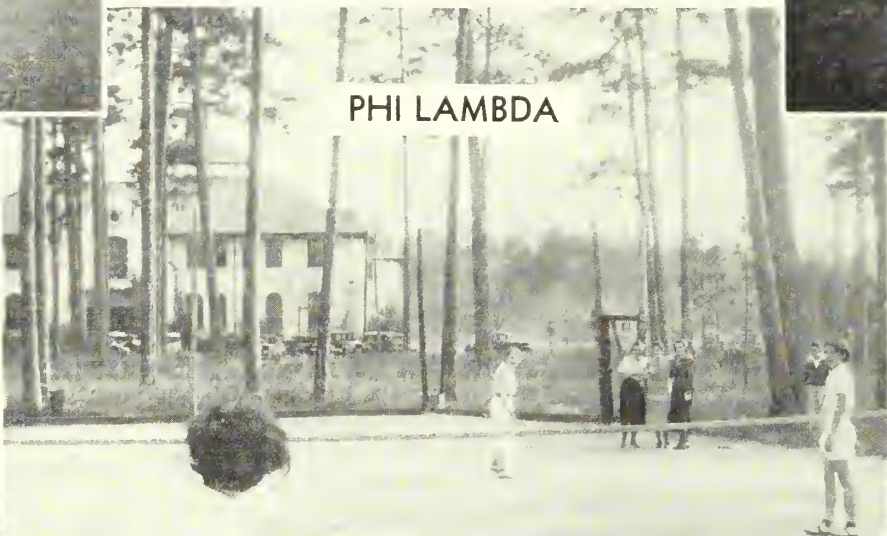
*American ball games*



*Where the Lambdas get their bower*



*"The picture machine"*



**PHI LAMBDA**



*"Hit the mark"*



*Lambdas who have numerals, letters, and cups*



*Cheer for the Lambdas*



*Lambda Fist Ball Team ready to fight*

*Lambda American Ball Team*

*And can Lambdas cheer?*

*Lambda Soccer Players*





*Kappa Soccer Team*



*Resting*



*Arching*



*Kappa Basket-ball Team*



*Misses Ivey and McRee*

**PHI KAPPA**



*Athletes three*



*Cheer leaders rest up*

*Phi Kappas bred*

*Phi Kappas born*

*Rab, Rab, Kappa, Kappa!*

*Why Kappas win*





Marjorie Sessions

### THE PINE



Pine Branch Staff



Virginia Martin

### BRANCH



Mailing Department



Nell Bracey



Margaret Bischoff



Henry Kate Gardner

THE PINE BRANCH is the monthly publication on the campus. The magazine consists of the literary efforts of the students and serves as an expression of their love for writing. In addition to reflecting the literary phase of campus life, the magazine also publishes news of each organization on the campus, and news of the activities of the Alumnae.

We are proud to be able to say that *The Pine Branch* has won first honor rating in the National Scholastic Press Contest for the two years of 1931 and 1932.

Last year the staff sponsored a literary contest, giving prizes for the best poem, the best short story, the most outstanding work on the staff, the best essay, the greatest quantity of work by one person. Their success was so great that the staff decided to have a similar contest for 1932-33.

#### PINE BRANCH STAFF

- VIRGINIA MARTIN . . . . . Editor-in-Chief
- MARJORIE SESSIONS . . . . . Local Editor
- NELL BRACEY . . . . . Alumnae Editor
- MARGARET BISCHOFF . . . . . Departmental Club Editor
- HENRY KATE GARDNER . . . . . Argonian Society Editor
- ADELAIDE SPENCER . . . . . Sororian Society Editor
- RUBY NELL WALL . . . . . Phi Kappa Athletic Editor
- FRANCES DUPRIEST . . . . . Phi Lambda Athletic Editor
- ADA JEWEL COCHRAN . . . . . Y. W. C. A. Editor
- EMILY FLUKER . . . . . Joke Editor
- MARGARET WILLIAMS . . . . . Art Editor
- KATHERINE CONNELL . . . . . Critical Tips Editor
- WILLENE ROBERTS . . . . . Advertising Manager
- KATHLEEN GLISSON . . . . . Assistant Advertising Manager
- MILDRED McDONALD . . . . . Head of Mailing Department
- SARAH NICHOLSON, MODESTA DUKES . . . . . Assistants



Adelaide Spencer



"Jenny"



Ruby Nell Wall



Frances DuPriest



Ada Jewel Cochran



Emily Fluker



Margaret Williams



Katherine Connell



Willene Roberts



Kathleen Glisson



Mildred McDonald



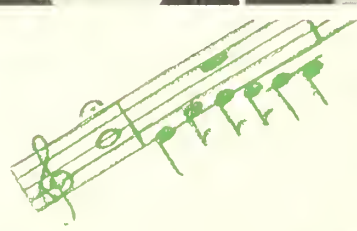
Sarah Nicholson



Modesta Dukes

Our hearts are with the red and black!

For thy fam Perish - Red All hail!



Alma Mater  
 thee we honor



Emeliza Swain

### THE PINE CONE

THE PINE CONE, published by the Senior Class, is a last attempt to express what our Alma Mater has meant to us and what we have meant to our College. It is a product of the best artistic, executive, and literary ability that the staff of '33 has to offer, and as such is offered to the student body as a storehouse of 1932-33 memories.

We take great pride in announcing that THE PINE CONE has for five years received first honor rating in the National Scholastic Press Association, and that it won an All-American-Honor rating in 1929 and 1932. Our earnest wish is that our volume shall uphold the splendid standards that our predecessors have set for us.



Mildred Talley

- |                   |                               |
|-------------------|-------------------------------|
| EMELIZA SWAIN     | Editor-in-Chief               |
| MILDRED TALLEY    | Business Manager              |
| EMILY BURNEY      | Literary Editor               |
| DORIS ZITTRUOLR   | Advertising Manager           |
| ELIZABETH PARDEE  | Assistant Advertising Manager |
| VERA PARKER       | Snapshot Editor               |
| FRANCES ARRINGTON | Snapshot Editor               |
| ANNA FRANCES HAM  | Feature Editor                |
| NANCY ROWLAND     | Activities Editor             |
| MARY ALICE MOSELY | Activities Editor             |



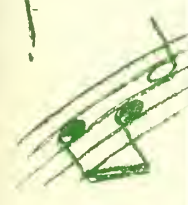
Two important persons



Out for Pine Cone ads.

- | ART COMMITTEE     |                   | LITERARY ASSISTANTS |
|-------------------|-------------------|---------------------|
| ANNIE SUE BRANDON | LEONA MILLER      | GEDELLE BRABHAM     |
| MARY BISCHOFF     | BETSY POWELL      | MARJORIE SESSIONS   |
| WINNIE DAVIS      | WILLENE ROBERTS   |                     |
| NINA WAY HOLLIMAN | LYALL TEMPLE      |                     |
| FRANCIS GARbutt   | MARGARET WILLIAMS |                     |

shall never  
 and black



Emily Burney



Doris Zittrouer



Elizabeth Pardee



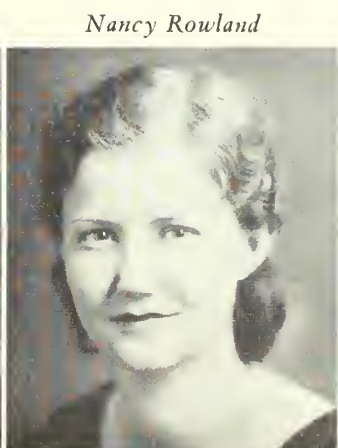
Vera Parker



Frances Arrington



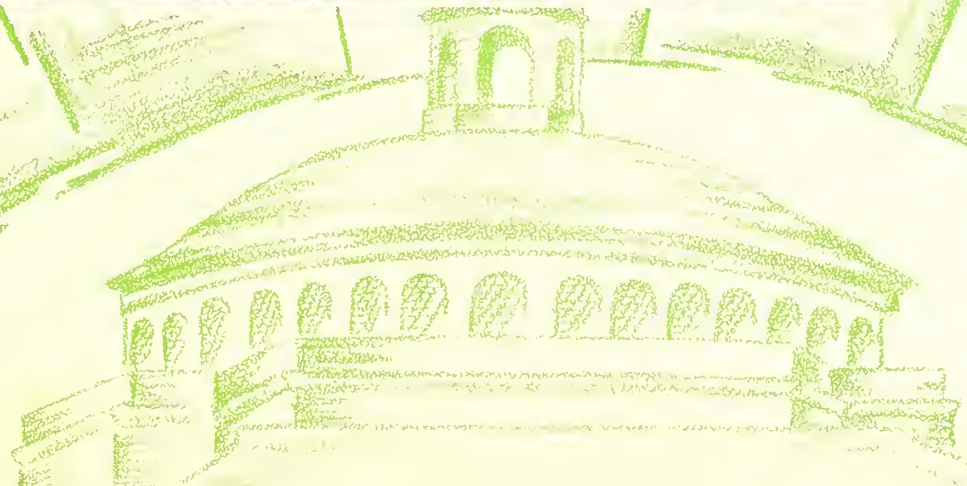
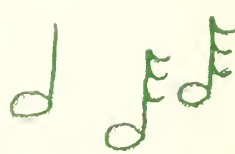
Anna Frances Ham



Nancy Rowland



Mary Alice Mosely

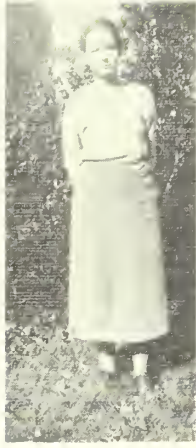




# SORORIAN LITERARY SOCIETY



ENTHUSIASM FOR THE BEST NOVELS and plays has been greatly aroused among the girls by the emphasis placed on them in the Literary Societies. A prize was given to the girl reading and reporting on the most literature during the year. Pulitzer prize winners—including novels, plays, and poetry—were reported on at the monthly meetings. Scenes from *Mourning Becomes Electra*, *Of Thee I Sing*, and *The House of Connelly* were enacted after reports on these three plays had been made; the Georgia Bicentennial and the O'Henry Memorial Award for short stories received due attention; and three one-act plays were presented by members of the Play Production Class. From the debating council debaters were chosen for an Inter-Society debate in April. Prizes in gold were given those girls who were judged to be the best orators.



Helen Powell, Chairman of Poetry Council



Marjorie Sessions, Chairman of Debaters

BESSIE McRAE  
President Sororian  
Literary Society

MARJORIE SESSIONS  
Vice-President

SARAH NICHOLSON  
Secretary

MODESTA DUKES  
Treasurer

MRS. GLEN B. JOHNSON  
Sergeant at Arms



Bessie McRae  
Sarah Nicholson



Sarah



Modern Poetry Groups  
Modesta Dukes



Marjorie Sessions  
Glen Johnson







# ARGONIAN LITERARY SOCIETY

*"The time has come," the Walrus said,  
'To talk of many things:  
Of shoes and ships and sealing wax,  
Of cabbages and kings."*

THAT CLEVER BIT OF NONSENSE from *Alice In Wonderland* very nearly expresses what the scope of the Argonian and Sororian Societies has been during the past year. They have endeavored, through interesting programs, and through reward for special merit, to interest every girl on the campus in good literature, the best of modern poetry, and the art of debating well. Not confining their activities to members alone, the societies presented some very delightful programs in chapel. These featured modern poetry and debates. Councils were then formed by the girls most interested in these two phases, the purpose of these councils being to make the members thereof better readers and orators.



*Chairmen of Debating and Readers of Modern Poetry Councils — Henry Kate Gardner and Marie Gaskins.*



*The President with "Kid"*



FRANCES ARRINGTON  
*President Argonian Literary Society*

MILDRED TALLEY  
*Vice-President*

MARY ELLEN CRAFT  
*Treasurer*

LOUISE DURHAM  
*Secretary*

ANNIE BELLE WEATHERFORD  
*Sergeant at Arms*



*Some of the officers "Electra"*

*Louise Durham*



*Mildred Talley*

*Annie Belle Weatherford*

*Frances Arrington*

*Mary Ellen Craft*



*Some of the officers "Electra"*

*Louise Durham*

*Mildred Talley*

*Annie Belle Weatherford*





Elizabeth Pardee

### GLEE CLUB



THE GLEE CLUB is composed of a limited number of students who are interested in choral singing. They meet every Monday and Wednesday for an hour's practice under the leadership of the director, Miss Alimae Temple, and on numerous occasions throughout the year entertain publicly. The culmination of the season is the annual concert which is presented each spring. The theme this year was folk songs and dances, and the concert carrying out this theme was one of the most attractive ever presented by a G. S. W. C. Glee Club.

The Glee Club has its own individual customs and traditions, which include a dinner given in the fall for the new members, caroling at Christmas, and a picnic in the spring.



Mildred McDonald



Mary Elizabeth Weatherford

- ELIZABETH PARDEE . . . . . President
- MILDRED McDONALD . . . . . Vice-President
- MARY ELIZABETH WEATHERFORD . . . Secretary
- MIRIAM RYON . . . . . Treasurer

#### Sopranos

- PEGGY BOWER . . . . . JOY MILLER
- MARIE GASKINS . . . . . ANN MYDDLETON
- ELIZABETH KELLY . . . . . ELOISE ODOM
- MARGARET LINDSAY . . . . . NANCY ROWLAND
- EVELYN MAY . . . . . ELIZABETH SMITH
- MILDRED McDONALD . . . . . ELIZABETH TAYLOR
- LYALL TEMPLE

#### Second Sopranos

- LOUISE AMBOS . . . . . LOUISE McMICHAEL
- SARA BINGHAM . . . . . SARAH MURCHISON
- ADA JEWEL COCHRAN . . . . . MIRIAM RYON
- FRANCES COPELAND . . . . . MARY E. WEATHERFORD
- MARGARET WILLIAMS

#### Altos

- ELISE ADAMS . . . . . ELIZABETH PARDEE
- ELIZABETH FITZGERALD . . . . . BETSY POWELL
- LUCY HAMMOND . . . . . ADELAIDE SPENCER
- EVELINE HENDERSON . . . . . EMELIZA SWAIN
- LOUISE ODOM . . . . . DORIS YOUNG
- DOROTHY OGLETREE . . . . . MILDRED VAIL



Miriam Ryon

Glee Club members



## PHILHARMONIC CLUB

WHO WAS THE GREATEST child musician? What rest looks like a number 7? What nationality was Grieg?

These and other questions interesting to the musically inclined are familiar to the members of the Philharmonic Club. This club has stimulated interest in and has done much to further the best type of music on the campus. The programs for this year were unique, and were cleverly planned to give a knowledge of general musical information.



Miss Warren,  
Faculty Adviser



Philharmonic Club  
Judy Cochran

CAROLYN BULLARD  
President

ANNIE LOIS GARDNER  
Vice-President

JUDY COCHRAN  
Secretary-Treasurer

### MEMBERS

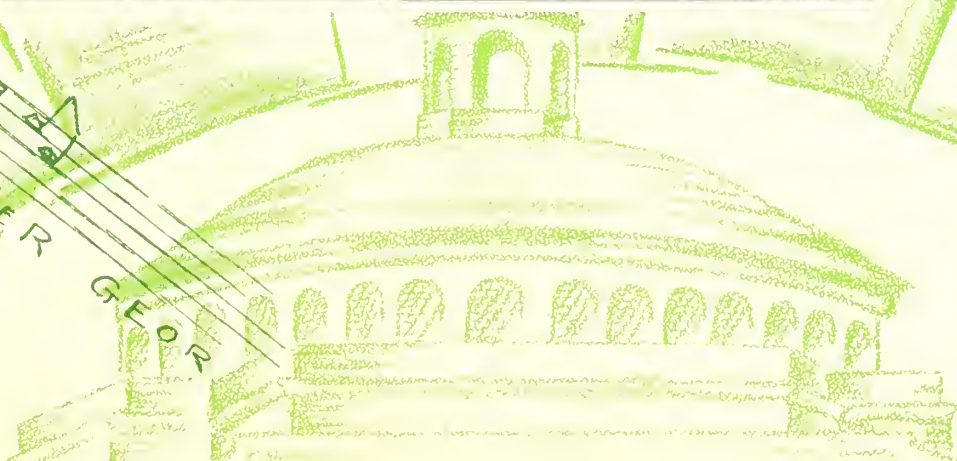
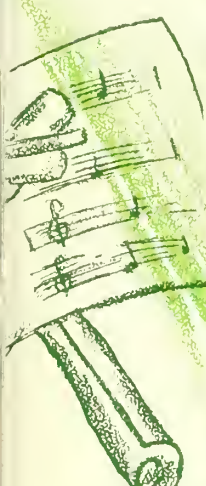
LOUISE AMBOS	MARGARET LINDSAY
MARY E. BELL	ELIZABETH LARISEY
JEWELL BUSSELL	BETTY MCCOLLUM
MARY E. CRAFT	MILDRED McDONALD
ELIZABETH DURDEN	JOY MILLER
LEONORA DUFOR	SARAH MURCHISON
MILDRED FOKES	ELOISE ODOM
EVELINE HENDERSON	CAROLYN PATRICK
VIRGINIA HUDSON	MIRIAM RYON
GLEN JOHNSON	MARJORIE SESSIONS
BANCE JOINER	ODESSA STEPHENS
ADAIR LANKFORD	ANNIE B. WEATHERFORD

MARTHA WILKIN  
MARGARET WILLIAMS  
BUFORD WILLIFORD  
MARGARET ZIPLIES

### Officers of club



Carolyn Bullard  
Annie Lois Gardner





## EUCLIDIAN CLUB



THE EUCLIDIAN CLUB derives its name from the Greek mathematician, Euclid. Any student interested in mathematics and making a grade of B or above in this subject is eligible for membership. The club meets once a month in the "math." room, and the program for 1932-33 included discussions of modern trends in mathematics, mathematical recreations, and other subjects of general interest to the club. The last meeting of the year is always turned into a social affair, usually a picnic supper at Twin Lakes.



*Dr. Hawkes,  
Faculty Adviser*



*Pauline Forbes*

PAULINE FORBES  
*President*

RUBY NELL WALL  
*Vice-President*

VIRGINIA BICKLEY  
*Secretary-Treasurer*

### MEMBERS

ANNE JONES BOLLER  
GEDELLE BRABHAM  
ANNIE SUE BRANDON  
DOROTHY BREWTON  
CAROLYN BULLARD  
VIRGINIA CLARK  
FRANCES DUPRIEST  
MARGARET EASTERLIN  
MARIE GASKINS  
MARY GLOVER  
MARY LEE  
CLARE LAWSON  
ELEANOR MEADOWS  
SARAH NICHOLSON  
FRANCES SMITH  
ODESSA STEPHENS  
MARTIELE TURNER



*Group from club*

*Ruby Nell Wall*

*The Club*

*Virginia Bickley*





## FINE ARTS CLUB



THE FINE ARTS CLUB, limited to those girls who have artistic ability and who show a sincere interest in art, strives to carry out its purpose of affording opportunity for art lovers to discuss and study the constructive phases of art in a systematic and authentic manner and of arousing the interest of the entire student body in art by various bazaars, and by soap-sculpturing, pottery, portrait, and sculpture exhibits. The basis of the 1932-33 program was the study of modern art, presented by discussions, exhibitions, and sketching trips.



Miss Carpenter  
Faculty Adviser



Officers

Mary Bischoff

REBA HARRISON  
*President*

MARY BISCHOFF  
*Vice-President*

LOIS DORMINY  
*Secretary-Treasurer*

### MEMBERS

- MARY ASKEW
- BESSIE AUTREY
- VIRGINIA BICKLEY
- ANNIE SUE BRANDON
- WINNIE DAVIS
- NELLIE MAE GANNON
- FRANCES GARBUTT
- NINA WAY HOLLIMAN
- ANNIE MAUDE MCLEOD
- ELEANOR MEADOWS
- ANN MYDDLETON
- LEONA MILLER
- ELIZABETH PARDEE
- BETSY POWELL
- WILLENE ROBERTS
- EMELIZA SWAIN
- LYALL TEMPLE
- JOYCE TIPTON
- SARA WEBSTER
- MARGARET WILLIAMS (Cordele)

President



Reba Harrison

Lois Dorminy



Fine Arts Club





# INTERNATIONAL RELATIONS CLUB



*The President, Thank you!*



THE INTERNATIONAL RELATIONS CLUB, affiliated with the Carnegie Endowment for International Peace, endeavors to carry out its purpose as stated in the constitution: "To co-operate with the authorities of G. S. W. C. in striving to give to the students of this institution every opportunity for enlightenment on national and international issues of our time by keeping at their disposal in the library an alcove full of the latest books and pamphlets of the subject; to align G. S. W. C. with other educational institutions which have the national and international life at heart by sending delegates to such conferences at other institutions; to maintain a creditable scholastic standing among the club by placing our standards so that only those students with such standing are permitted to become members; and to encourage our members to further pursuit of education by offering a scholarship."



*Honorary members*



*Mildred Morris*

MILDRED MORRIS <i>President</i>	DORIS ZITTRouer <i>Vice-President</i>
MARGARET WILLIAMS <i>Secretary</i>	VIRGINIA HUTCHINSON <i>Treasurer</i>
JULIA MANNING <i>Member-at-Large</i>	

### MEMBERS

DOROTHY ANDREWS	MARY ELLEN CRAFT
OLIVE AUTREY	DOROTHY DENMARK
ADELE BICKLEY	RUTH ELLIS
HELEN BISHOP	KATHLEEN GLISSON
VERDA WILL CARTER	MARJORIE GROOVER
JON CORN	VIRGINIA HUTCHINSON
DOROTHY COURTNEY	MARGARET JOINER



*Doris Zittrouer*



*Makers of history*

JULIA MANNING  
BESSIE McRAE  
MILDRED MORRIS  
VERA ESTELLE PARKER  
MAXINE PURDY  
HARRIET SHEPPARD  
HALLEY ELIZABETH SMITH  
MIRIAM TOWNSEND  
EVELYN VAN LANDINGHAM  
ANNIE WARREN  
MARY ELIZABETH WEATHERFORD  
MARGARET WILLIAMS (Cordele)  
DORIS ZITTRouer



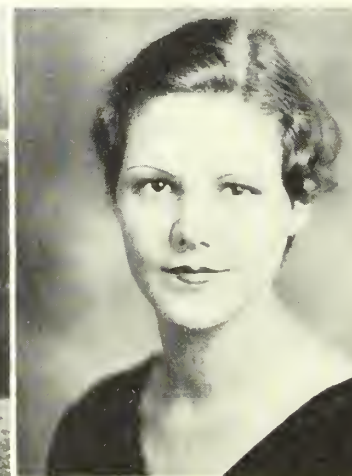
*Officers of I. R. C.*

*Virginia Hutchinson*

*Margaret Williams*

*Miss Price, Faculty Adviser*

*Julia Manning*





# SCIENCE CLUB



*Ready to go*

THE SCIENCE CLUB was organized this year to take the place of the National History Club, so that both Chemistry and Biology students might be included in the club. Any student interested in either may become a member. For special research work a group of majors and minors from each department was organized. Each group then selected the problem that it was most interested in, and through research work and observation sought to find solutions.

It is the endeavor of the club this year to help those students interested in science to obtain a broad outlook on the field and to acquaint the club with the advances that are being made in science at the present day by bringing able speakers to the campus.



*Faculty Advisers*



*Nancy Rowland*

NANCY ROWLAND  
*President*

MARGARET ZIPLIES  
*Vice-President*

HARRIET SHEPPARD  
*Secretary*

VERA PARKER  
*Treasurer*



*Margaret Ziplies*



*Harriet Sheppard*



*Next to Nature*



*Vera Parker*



*No parking, girls!*





# THE SOCK AND BUSKIN CLUB



*"All the world's a stage,  
And all the men and women merely players."*

BUT ONLY THE MORE gifted players of the College group are privileged to become members of the Sock and Buskin Club, new members being selected at the beginning of each year as the result of a try-out. The club meets monthly, and the program for 1932-33 has included presentations of one-act plays, make-up exhibitions, and discussions of contemporary theatrical movements.

MILDRED MINCHEW    WILLENE ROBERTS    MYRTICE JOHNSON  
*President*                      *Vice-President*                      *Secretary-Treasurer*

### MEMBERS

- |                    |                     |
|--------------------|---------------------|
| FRANCES ARRINGTON  | BROUN HUTCHINSON    |
| CLEO BARBER        | MYRTICE JOHNSON     |
| EDMONIA BECK       | ELIZABETH KELLY     |
| HELEN BISHOP       | GRACE LAHEY         |
| PEGGY BOWER        | JULIA MANNING       |
| LAVINIA BUCKNER    | VIRGINIA MARTIN     |
| EMILY BURNEY       | MILDRED MINCHEW     |
| MARY LOU CONNELL   | MARY VIRGINIA McKEY |
| LEONORA DU FOUR    | LOUISE McMICHAEL    |
| LOUISE DURHAM      | WINONA PARRISH      |
| HENRY KATE GARDNER | MAXINE PURDY        |
| MARIE GASKINS      | ESTELLE ROBERTS     |
| ANNA FRANCES HAM   | WILLENE ROBERTS     |
| ELAH HOLLIDAY      | NANCY ROWLAND       |

VONICE RITCH



Mildred Minchew



Willene Roberts  
Myrtice Johnson



Scene from "Happiness"

The cast of "Happiness"







*"I wonder"*



*Jenny finds happiness*

*At dinner*

*Jenny*





*Lovers of 1880*



*The cast of "Mary, The Third"*

"Mary The Third," Rachel Crothers' modern comedy, was the play put on by the club at its annual public performance on January the twentieth, 1933. The cast for the play was selected as the result of a try-out in which all the club members were eligible to participate.

*Lovers of 1903*



*Lovers of 1933*





*Mary the Third and her friends*



*Mary, The First*

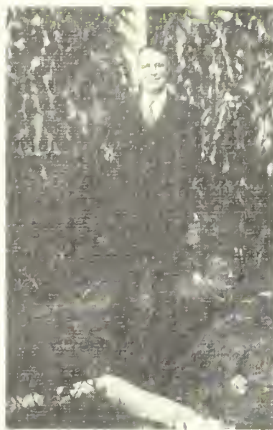
*Mary, the Second and Third*

*Mary chooses*





## ENGLISH CLUB



*Dr. Gulliver*

THE ENGLISH CLUB was organized in the spring of 1932 in order to afford an opportunity for the study of literature, past and present, in a more intensive fashion than is provided for in the classroom, and to stimulate interest in reading by discussions as well as by reports.

Activities for this first year of the club included a program on Georgia writers, a dinner for Dr. Wightman Fletcher Melton, President of the Burns Club of Atlanta and former president of the Atlanta Writers' Club, a tea at which Miss Emily Woodward was honor guest, and other meetings of like nature.

The club membership is limited to twenty-five and only Juniors and Seniors who are English majors and who have a high scholastic rating are eligible.



*At ease*

MARY VIRGINIA McKEY      ANNA FRANCES HAM  
*President*                      *Vice-President*

MARY ALICE MOSELY  
*Secretary-Treasurer*

### MEMBERS

- |                     |                     |
|---------------------|---------------------|
| FRANCES ARRINGTON   | MILDRED MINCHEW     |
| MARGARET BAKER      | SARAH MURCHISON     |
| EDMONIA BECK        | MRS. W. H. OLIVER   |
| EMILY BURNEY        | ELIZABETH PARDEE    |
| ELIZABETH DURDEN    | MARY VIRGINIA PAULK |
| GRACE HOLCOMBE      | PEARL STRONG        |
| GLEN JOHNSON        | EMELIZA SWAIN       |
| MYRTICE JOHNSON     | MILDRED TALLEY      |
| LOUISE McMICHAEL    | ANNA LEILA WELLS    |
| VIRGINIA MARTIN     | BUFORD WILLIFORD    |
| MRS. JOE WISENBAKER |                     |



*Mary Virginia McKey*  
*Anna Frances Ham*



*Getting inspiration to write*  
*Mary Alice Mosely*



*Smiling at the Birdie*  
*The literary-minded*





*Mildred Price*



*Nell Bracy*

### ALUMNAE

THE Alumnae Association has as an objective the establishment of a fund to be used at the time of its accumulation as the Association desires. Among the suggestions made at a local meeting during the past summer school were—a scholarship, an alumnae house, furnishings for a suite of alumnae rooms in an eventual college social building.

Among the activities of the Association this year were a tea given Thanksgiving afternoon in the Rotunda of Ashley Hall, and an informal get-together in the form of a Dutch dinner at Hazel Briggs' Tea Room on December 10. It is the purpose of the Association to make the Thanksgiving Tea an annual affair.

This year is the twentieth anniversary of the Georgia State Woman's College at Valdosta, and it is desirable that every member of the Alumnae Association be an active member, ready for the Anniversary Celebration of 1933.

*Iva Chandler*

*Caroline Parrish*



MILDRED PRICE  
*President*

NELL BRACEY  
*Vice-President*

IVA CHANDLER  
*Secretary-Treasurer*

CAROLINE PARRISH  
*Corresponding Secretary*





*Dolls and Soldiers*

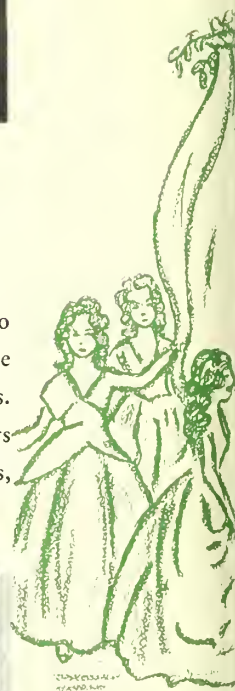


*Lady Bountiful*

### CHRISTMAS FESTIVAL

THE CHRISTMAS FESTIVAL, celebrated the last evening before Christmas holidays begin, almost creates a season of its own. For days beforehand there is all the delightful hum of preparation—costumes to be made, dances to be practiced, carols to sing! The climax of these exciting

days finds our Rotunda and dining hall transformed into an authentic reproduction of a baron's hall, even to the dais for the baron—Dr. Powell—and the special guests. Everything harkens back to the customs of olden days with Yule logs, boar's head, strolling players, court jesters,



*Minuet*



*Morris Men*





*Opening Christmas Festival*



*Knights of the Hobby Horse*

## CHRISTMAS FESTIVAL

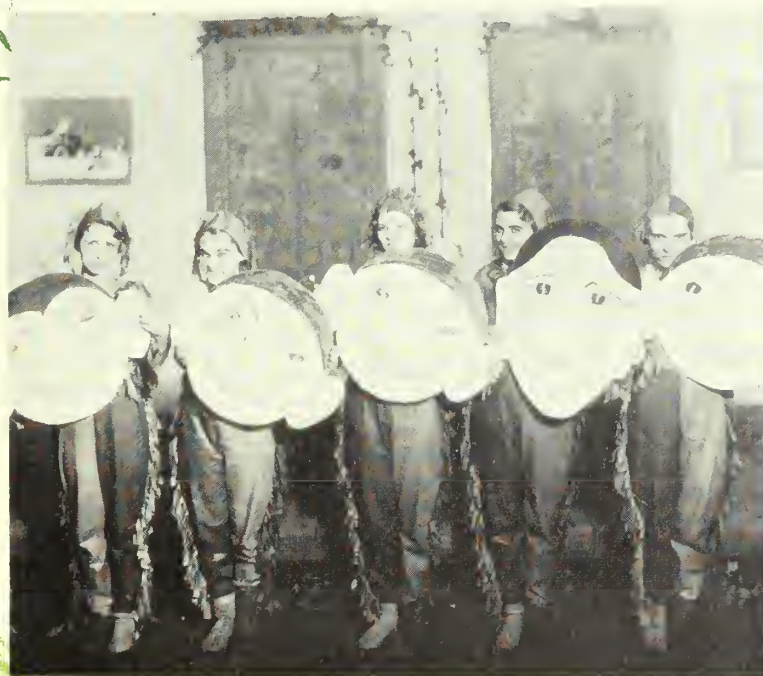
dancers, and mummers.

Towards the last there is a lessening of the spontaneous gaiety that is so in evidence in the earlier part of the evening. A more serious note is struck which culminates in the beautiful and dignified dancing of the minuet, followed

by a candlelight Recessional to the soft chant of "Silent Night."

What a beautiful Christmas gift—this Festival—from our Alma Mater!

*Jesters*



*Skaters*



*Leona C. Miller*





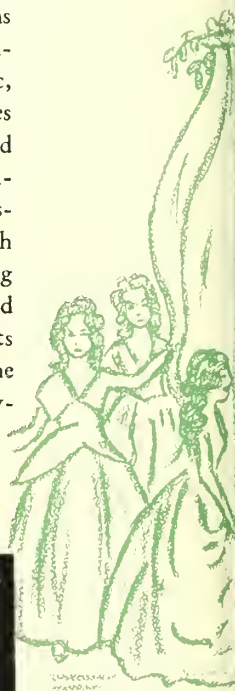
### MAY DAY

ALL THE CHARM, the mellow warmth, the capriciousness of May itself, is evidenced in the lovely ceremony of May Day. The May Queen, chosen by popular vote, accompanied by her Royal Court of Lords and Ladies ascends the dais in a stately Processional to preside over the gayest and most colorful merry-making of all the year. The peasantry in their holiday attire dance in her honor, strolling players perform their dances and pantomimes, dainty maidens pay homage to the accompaniment of rippling music, even the Royal Court dances in honor of their Queen. And when at last the sun is sinking low in the sky, the peasantry close this Old English May Day with the winding of the many May poles, and each group winds with all its skill—for a prize awaits the winders of the prettiest Maypole!



*The May Queen*

*Ladies of the Court*

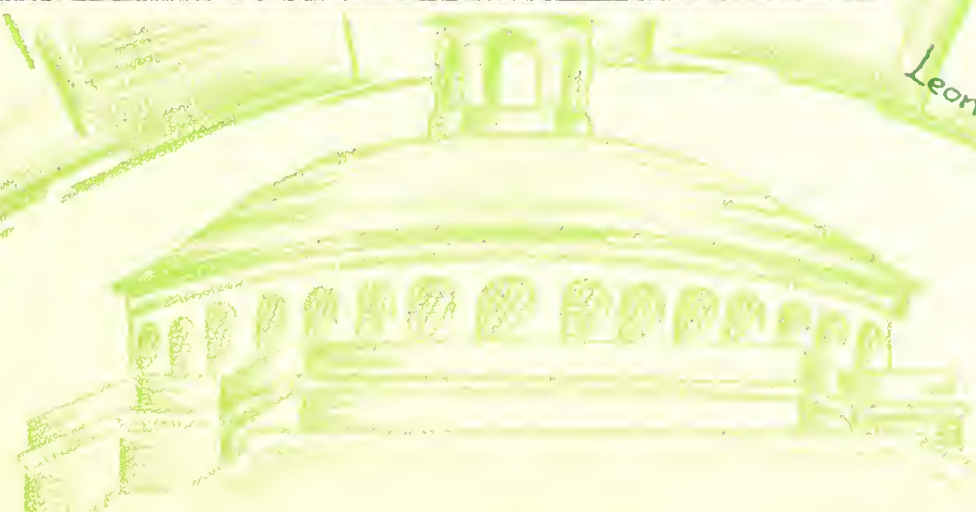
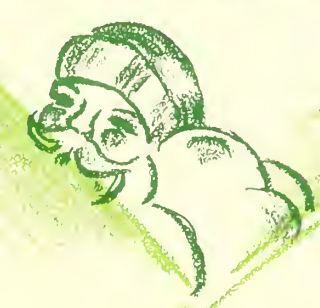






*The May Queen and her Court*

*The Waltz*



*Leona Miller*



*The Prologue*

*The Queen and Coach-bearers*





*Robin Hood and Maids*



*Scotch Dancers*



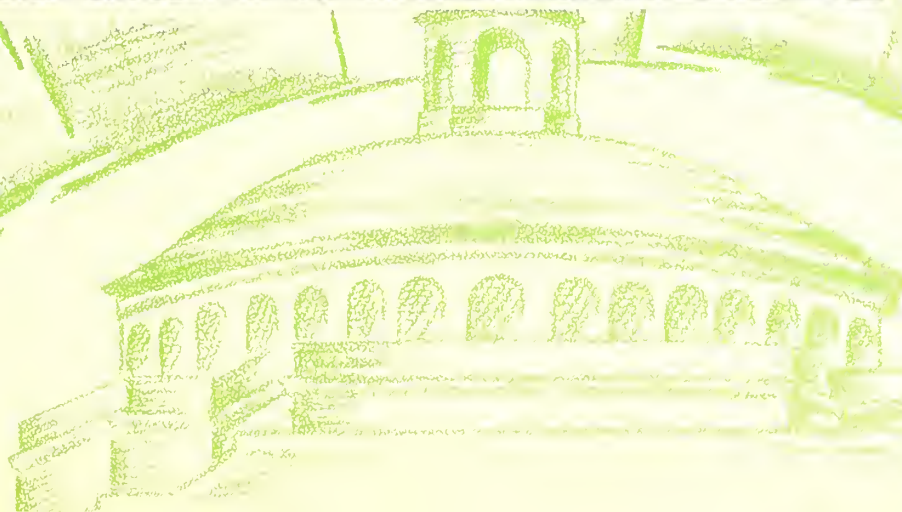
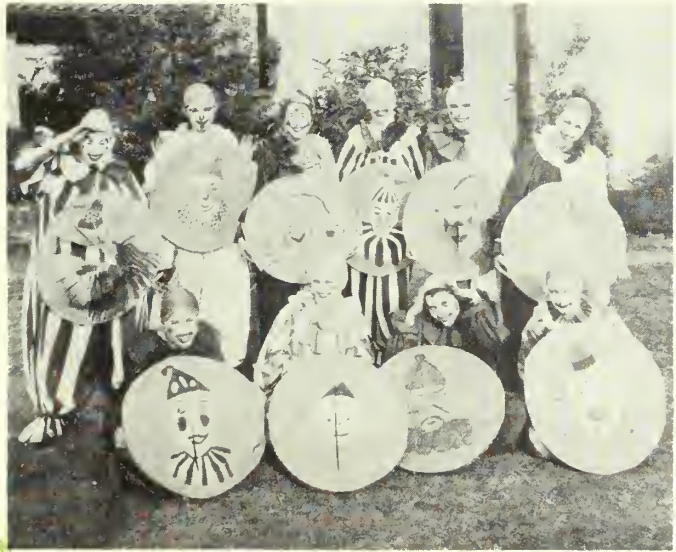
*Gypsies*



*Morris Men*

*Clowns*

*Winding the May Pole*



*Leona Miller*



*The happiest time*



*G. S. W. C. Golfers*

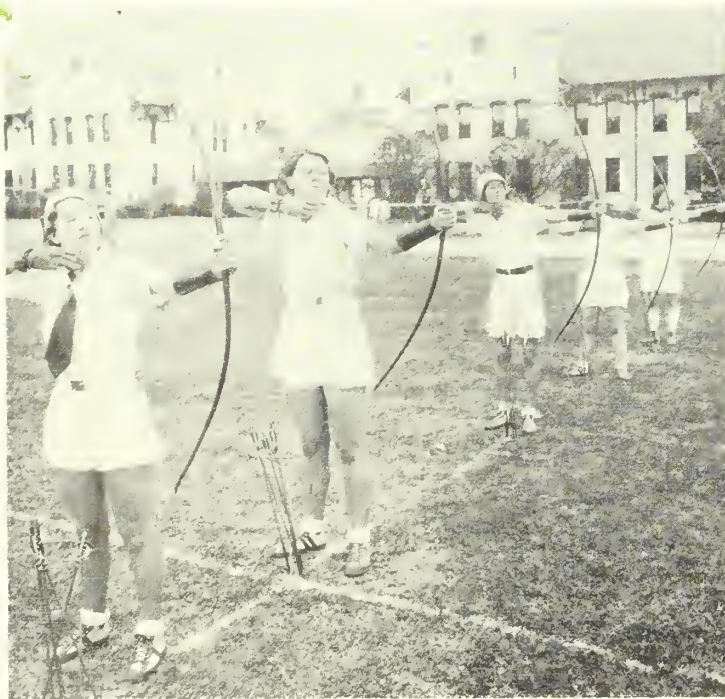
### PLAY DAY

PLAY DAY, A NEW MOVEMENT in the field of Physical Education, was instigated at G. S. W. C. in 1931. It proved so successful that it has become a full-fledged annual "activity," anticipated alike by students and guests.

The aim of Play Day is to help the work being done all over the country to spread the knowledge and use of new and interesting games to other schools, and to encourage friendship between the high schools and the colleges. Six



*The Archers at work*



*"Fed up"*

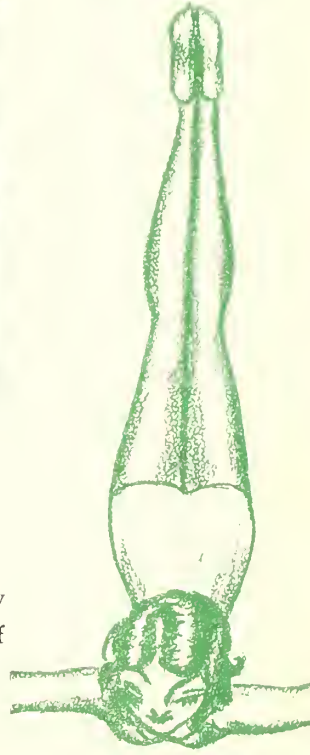




*Up in the air*



*Hurdlers*



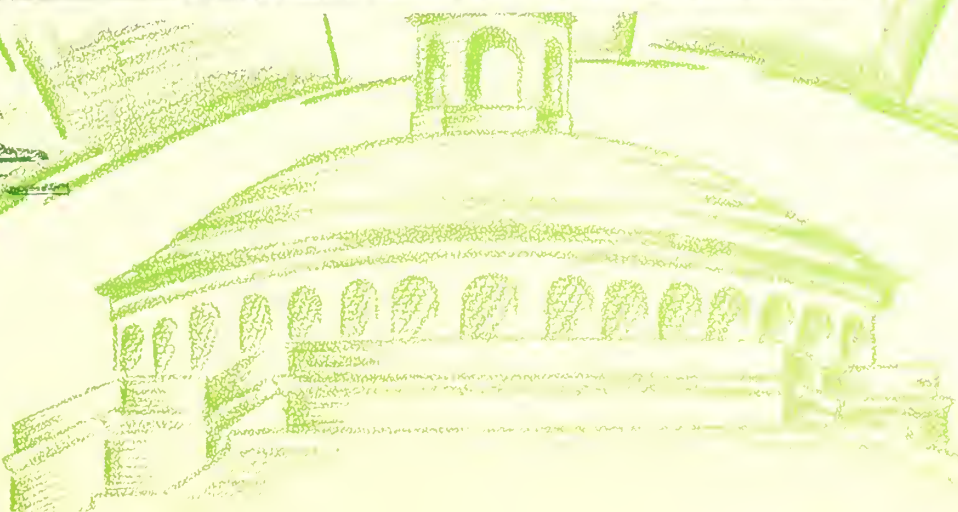
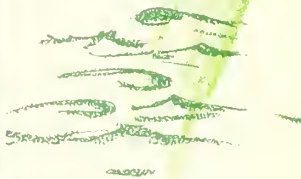
### PLAY DAY

High school seniors and two faculty members from all accredited high schools within motoring distances are invited to be the guests of the College for this day. There is no school rivalry, no playing merely to win, no indi-

vidual honor to be gained, but a day spent in learning new games, playing old ones, and enjoying the comradeship of play.

*A stilted occasion*

*Appeasing their hunger*





SENIOR CLASS PLAY  
*Ali Baba and the Forty Thieves*

LEFT—Ali Baba at the door of his cave

Our hearts are with the red and black



RIGHT—"No gold in the pot"

For thy fame  
perish - Red  
All hail!



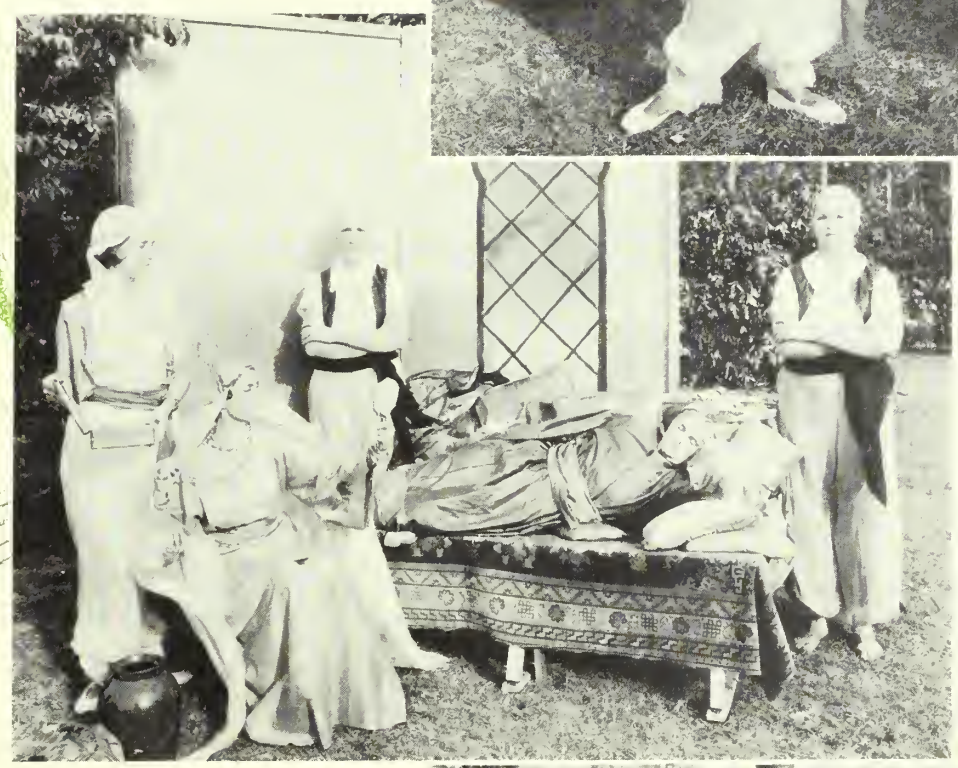
LEFT—Main characters in "Ali Baba and the Forty Thieves"



Alma Mater  
thee we honor

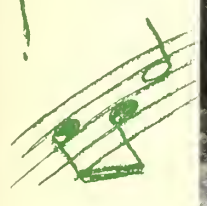


RIGHT—*Servant girl  
and robber*



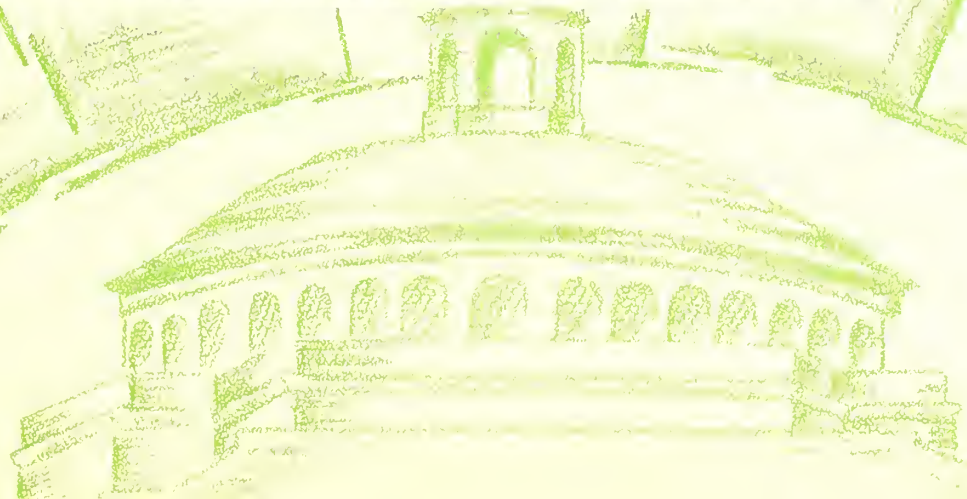
LEFT—*Vanity of the  
Rich Wife*

shall never  
and black



RIGHT—*Consolation*

P





Popular



intelligent



Overserious  
Day student



Versatile



Attractive

Athletic

Charming

"And may she win new laurels true,  
Fresh honors year by year."



VIRGINIA CLARK  
Most Representative



GeDELLE BRABHAM  
Most Popular



MARGARET ZIPPLIES  
Most Intelligent



LOUISE McMICHAEL  
Most Versatile



ANNIE MAUDE McLEOD  
Most Attractive



JULIA MANNING  
Most Charming

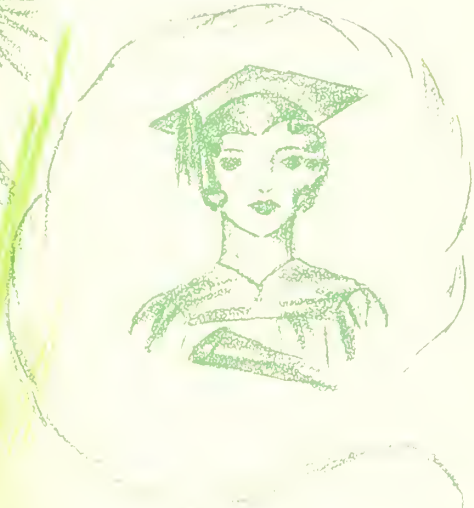
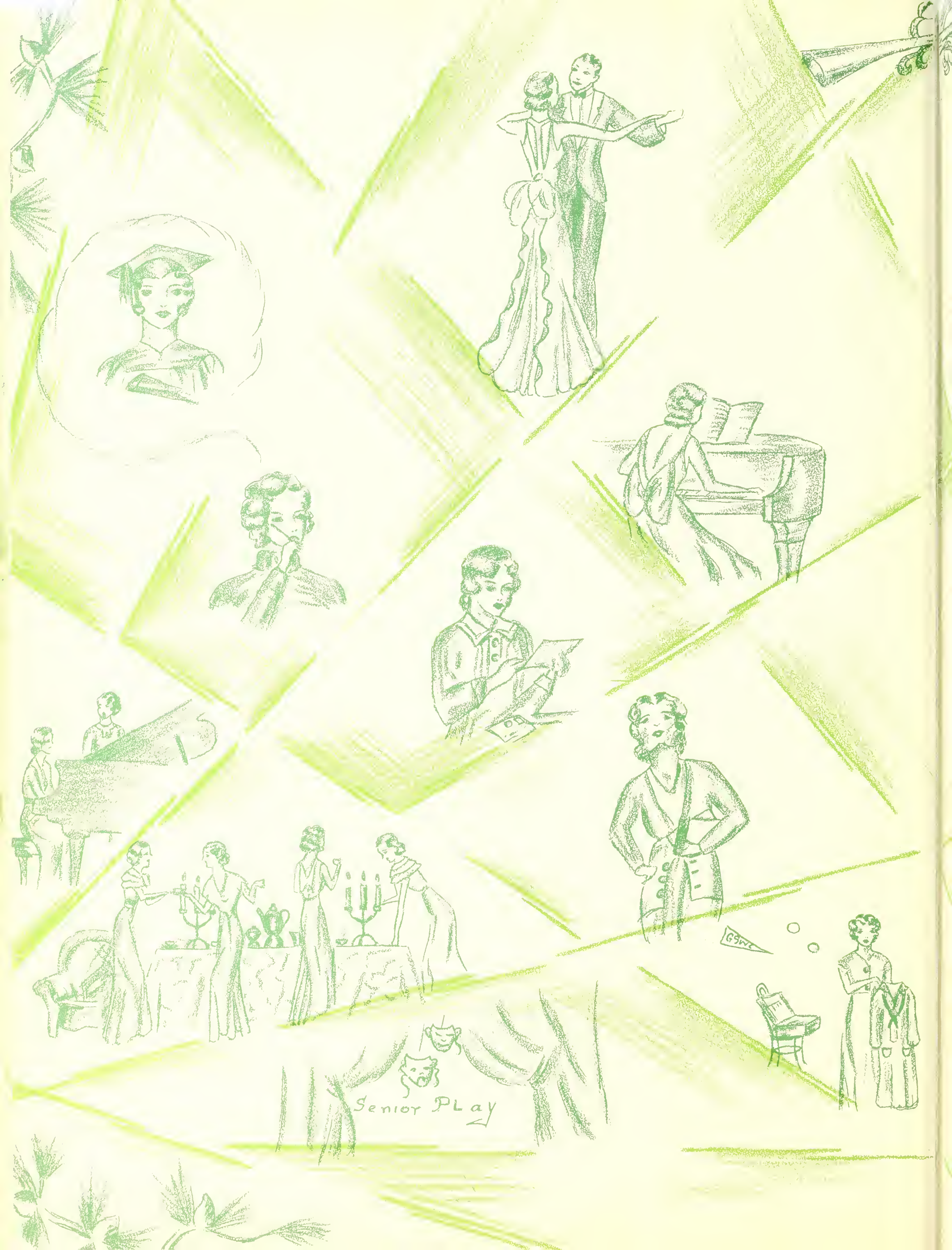


WILLENE ROBERTS  
Most Outstanding Day Student





HELEN BISHOP  
DOROTHY STUDSTILL  
Most Athletic



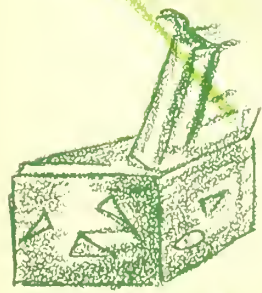
G.S.W.C.



Senior Play



Bischoff



"The ties that bind our hearts to thee,  
G. S. W. C., forever."



# PATRONS' PAGE



Bennett's Drug Company

Veran Blackburn

Brookwood Pharmacy

Carver's, Inc.

Carl's Soda Shoppe

Citizens and Southern National Bank

City of Valdosta

Churchwell's Department Store

Daniel Ashley Hotel

First National Bank

Foremost Ice Cream

W. T. Grant Co.

Georgia State Womans College

Jitney Jungle

S. H. Kress

Paxson's Turner Jones' Store

Service Drug Company

Southern Stationery Company

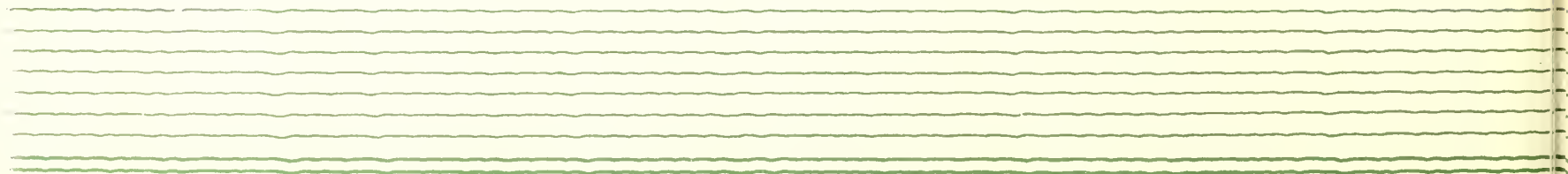
Star Laundry

Superior Baking Company

Thompson and Girardin

Varnedoe and Company

Vinson Drug Company



## AN ANNOUNCEMENT

THE Georgia State Womans College, whose annual you hold in your hand, is by a recent action of the Board of Regents of the University System of Georgia, the Liberal Arts College for Women of the University. For several years the College has been a standard A-grade liberal arts college whose department of education has been developed as a standard teachers college, including a training school. The only formal change in the College is that the training school is discontinued and the department of education is developed as is typical of such departments in liberal arts colleges. The change is merely one of emphasis. The same high standards of culture, of institutional life, of scholarship, and of efficiency in the preparation of teachers will continue.

The policy of the College has long been to offer an educational service so excellent that the wealthiest citizen can not provide a better for his daughter; a service so moderate in cost that the poorest girl, if she has the will, can share its advantages. This policy will be continued.

CARVER'S  
INCORPORATED  
VOGUE READY TO-WEAR  
131 N. PATTERSON STREET  
PHONE 127

VALDOSTA

GEORGIA

JITNEY JUNGLE

SAVES

✦

SERVES

✦

SATISFIES

SERVICE DRUG COMPANY

Phone 1300

VALDOSTA

✦

GEORGIA

THOMPSON AND GIRARDIN

✓ ✓ Jewelers ✓ ✓

VALDOSTA

✦

GEORGIA

BENNETT'S DRUG STORE

The Rexall Store

VALDOSTA ✓ GEORGIA

Here's To Our Good Friends

The G. S. W. C. Girls ✓ ✓ ✓

STAR LAUNDRY

DRY CLEANERS

✓ ✓

RUG CLEANERS

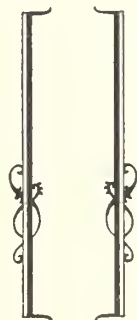
PHONE 54

# VERAN BLACKBURN

PHOTOGRAPHER FOR

PINE CONE

1933



*We Make Photographs of Quality*

... Compliments of ...

S. H. KRESS AND COMPANY

5-10 AND 25c STORE

THE CITIZENS AND SOUTHERN  
NATIONAL BANK

Valdosta • Georgia

CAPITAL \$5,000,000.00

... Compliments of ...

W. T. GRANT CO.

1c TO \$5.00 JUNIOR DEPARTMENT STORE

SUPERIOR BAKING COMPANY

‘ ‘ Bakers of ‘ ‘

MOTHER'S BREAD • BAMBY BREAD

SUPERIOR CAKES

Builds Better Bodies



*We Are Proud of the*  
*Georgia State Womans College*

We are glad to take this  
occasion to say that the

**CITY *of* VALDOSTA**

is proud to list among its greatest assets the  
**GEORGIA STATE WOMANS COLLEGE**  
and we hope that Valdosta as a city makes  
a favorable and lasting impression on the  
minds of the young ladies who make up  
the student body of this great institution

BROOKWOOD PHARMACY

THE COMMUNITY DRUG STORE

"Where Patronage Is Appreciated"

Congratulations and Best Wishes to G. S. W. C. Girls and Faculty

PAXSON'S TURNER JONES' STORE

VALDOSTA

✕

GEORGIA

FOREMOST ICE CREAM

ELECTRO PURE

... Compliments of ...

HOTEL DANIEL ASHLEY

VALDOSTA, GEORGIA

... Compliments of ...

VINSON DRUG STORE

Serving Valdosta Over a Quarter of a Century

CHURCHWELL'S DEPARTMENT STORE

COLLEGE GIRLS' HEADQUARTERS

Southern Stationery and Printing Company

Wholesale Paper Dealers

STATIONERS

PRINTERS

SPORTING GOODS

VALDOSTA

✕

GEORGIA

SUCCESSFUL ANNUALS  
REQUIRE THE SERVICES  
OF EXPERIENCED AND  
EXPERT CRAFTSMEN

FOOTE & DAVIES COMPANY

HAVE THESE SERVICES

*And* —————

*the most necessary components  
of all really fine books including*

A SPECIAL ANNUAL  
SALES AND SERVICE  
ORGANIZATION

CREATIVE DESIGNERS  
AND LAYOUT ARTISTS

ABUNDANT EQUIPMENT  
MODERN AND COMPLETE

PRICES REPRESENTING  
MAXIMUM IN VALUE



*Atlanta  
Georgia*

# FIRST NATIONAL BANK

VALDOSTA, GEORGIA

Resources Over \$2,500,000

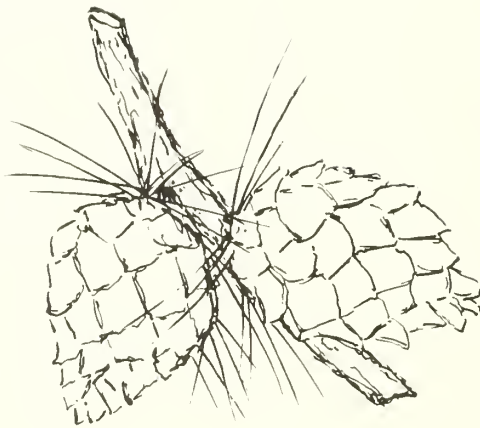
## C. C. VARNEDOE AND COMPANY

"Valdosta's Store Dependable"

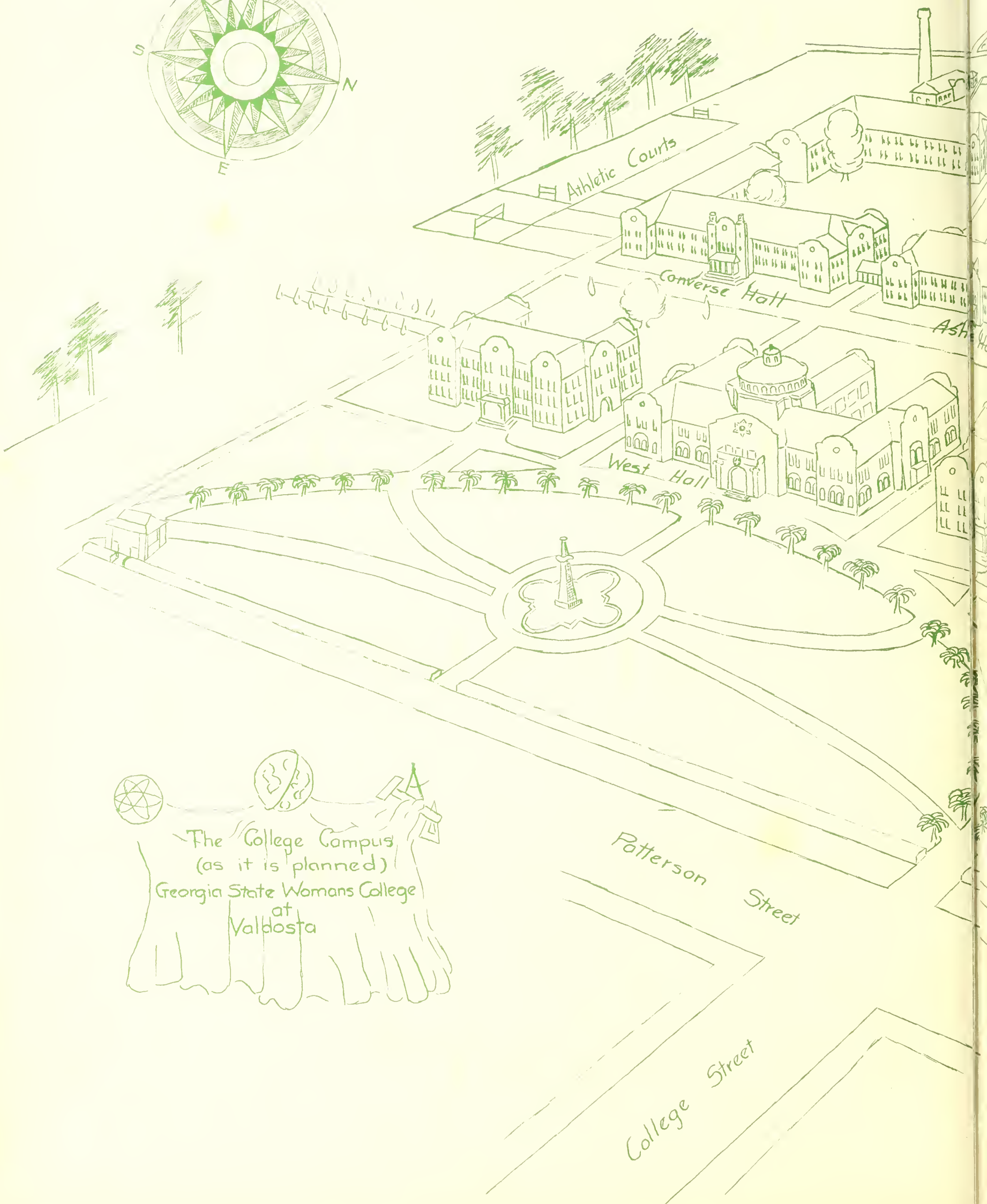
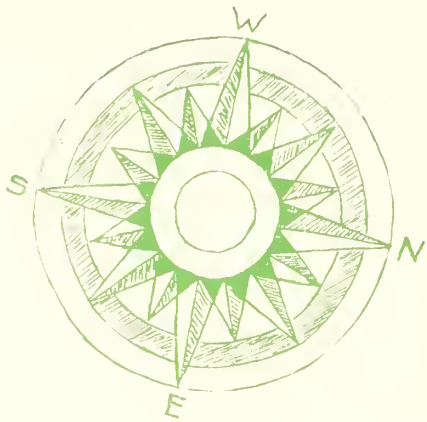
LADIES' APPAREL AND ACCESSORIES

## CARL'S SODA SHOPPE

"WHERE THE COLLEGE GIRLS MEET"







The College Campus  
(as it is planned)  
Georgia State Womens College  
at  
Valdosta

STATE OF GEORGIA



1776

