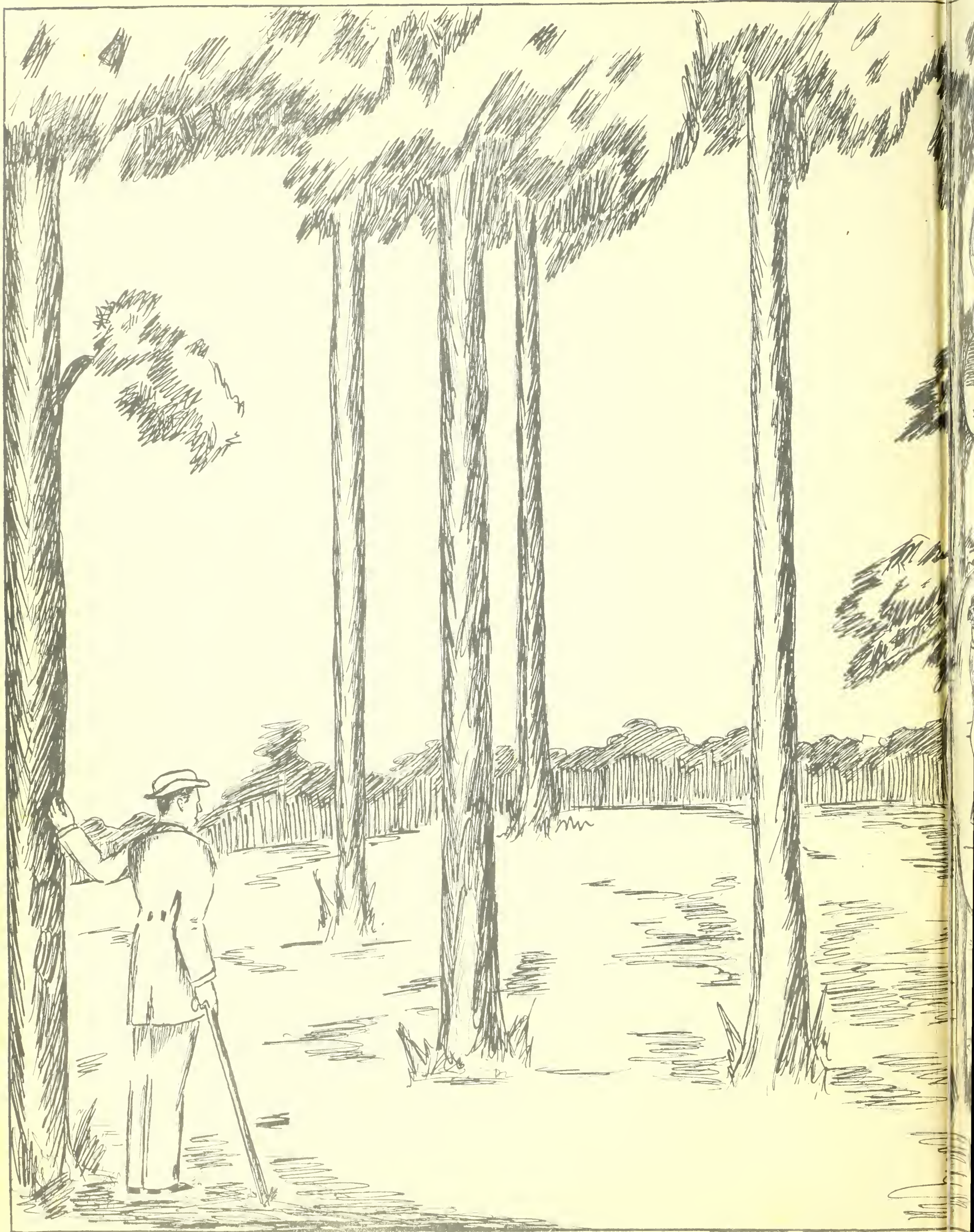


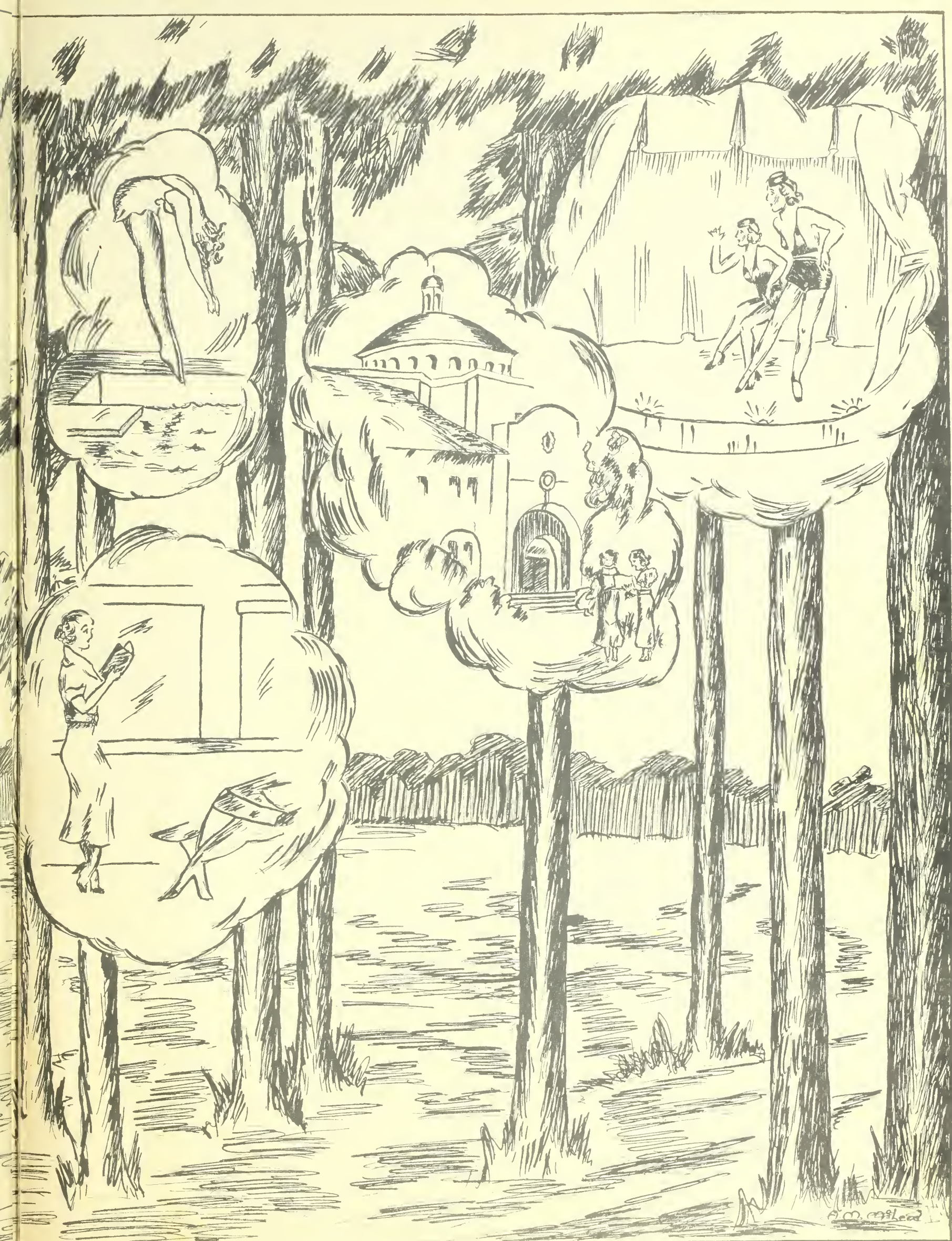
THE  
PINE CONE  
1934



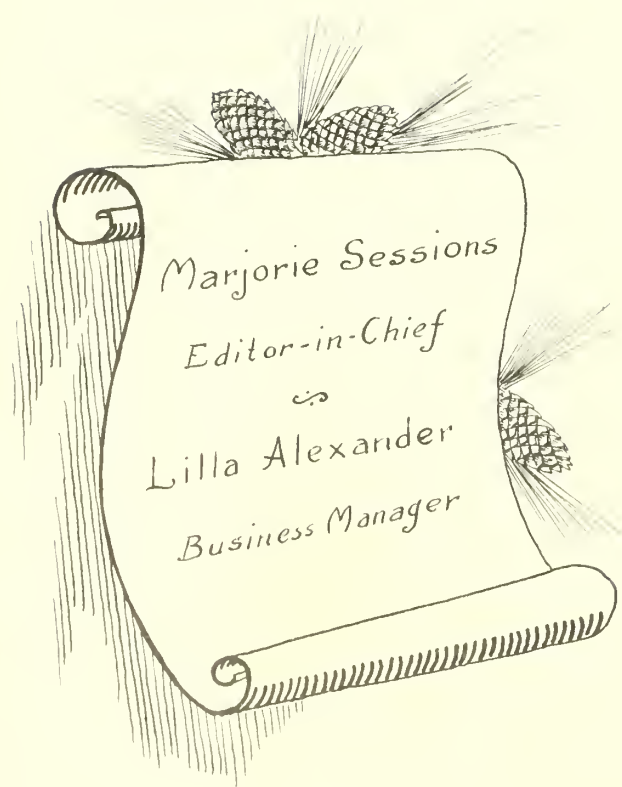












*Marjorie Sessions*

*Editor-in-Chief*

*vs*

*Lilla Alexander*

*Business Manager*





THE PINE CONE  
1934





Then—  
they were;      Now—we are.





*Presented by*

THE SENIOR CLASS

*of* THE GEORGIA STATE WOMANS COLLEGE  
VALDOSTA, GEORGIA.



## THEN AND NOW OF G. S. W. C.



MRS. W. S. WEST—at sixteen

If in the PINE CONE of 1934, we, the Senior Class, have showed the spirit and growth of the Georgia State Womans College at Valdosta from 1913 to 1934, through the contrast of THEN and NOW, and have reflected the perspective and sense of relative values of the students within the college and without, we shall have given to our Alma Mater a just glory on this her twenty-first birthday.

But even before the opening of the College, in January, 1913, the THEN of this book, a student played a very significant role in the life of the late Colonel W. S. West, one of the benefactors and founders of this the Georgia State Womans College. His sincere and ever abiding interest in one of his first pupils, Miss Ora Lee Cranford, gave to his life a direction and purpose which reached an expression in this our Alma Mater.

Colonel West often told of this early experience to his friends, and the incident here given parallels a clipping from the MACON TELEGRAPH.

"Now hold out your hands," said Mr. West—what a spirited person this pupil of his must have been! "There," and he gave her three licks with the ruler.

The offended young lady who found it so delightful to whisper in the school room, seemed to be not impressed by the sternness of her school master. She smiled at him and said, "I'll get even with you for that!"

Some years later, Mr. West married Miss Ora Lee Cranford; he had succumbed to the attractiveness of his pupil. When she had been Mrs. West only for a few moments, she looked up at her husband and said with that same tantalizing air of the girl he had punished, "I told you I'd get even."

Beginning with that small disciplinary problem, which gave to Colonel West his companion in life, his interest in students grew, until in 1906 realizing the need for a college for the young women of South Georgia, he, as president of the Georgia Senate, presented in the legislature a bill for appropriation of funds to build this institution. The administration building of our present Georgia State Womans College is named West Hall in honor of Colonel West, author of the charter of the college and the first president of the Board of Trustees.

The same student who prompted Colonel West's interest in the education of the young women of Georgia, grew to maturity along with the college. And during the last years of her life, her death occurring on December 4, 1933, was endearingly called by students and faculty the "Mother of the College."

This devotion to the education of youth so characteristic of Colonel West, was likewise one of Mrs. West's chief joys, for she provided for the education of numbers of young men and women. As another expression of her love for youth, the lawn in front of her palatial colonial residence on Patterson Street has for years been a playground and rendezvous for Valdosta children.



MRS. W. S. WEST

Alma Mater we honor thee

ONE

Germany Declares War

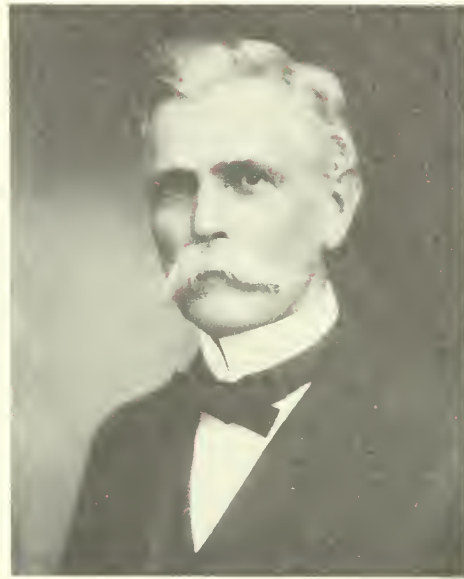
1913





## THEN AND NOW OF G. S. W. C.

The Reverend Richard W. Wallace, a very dear friend of the late Colonel W. S. West, and pastor for many years of the First Christian Church of Valdosta, said in College Assembly in November, 1928, "If you would know something of William Stanley West—look around you! This college is largely a monument to his memory. He was one of the most picturesque characters with whom one is privileged to come in contact. In appearance as well as ideals and culture, he was a typical Southern gentleman. He was a friend of education all his life, a friend of the children of the poor, a friend of the public school, and of the college. Colonel West was a lawyer, successful businessman, and a statesman. He was a very distinctive personality. Certain qualities of his character stood out conspicuously, so that you could never forget them. Among the most outstanding of his characteristics, was his absolute honesty, his unwavering sincerity.



COLONEL W. S. WEST

"Colonel West had certain definite aspirations, among which were these—to be President of the Georgia Senate, to be United States Senator, to see a finer college for women built in Valdosta; and at last in the ease of retirement from active life, to spend a few years with his family, his books, and his friends at home." All these desires of his heart he realized except the last mentioned, for Colonel West's life was suddenly brought to a close on December 22, 1914.

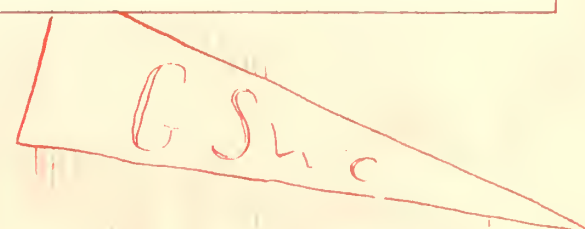
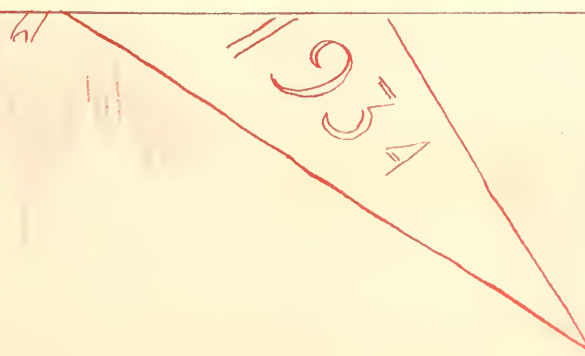
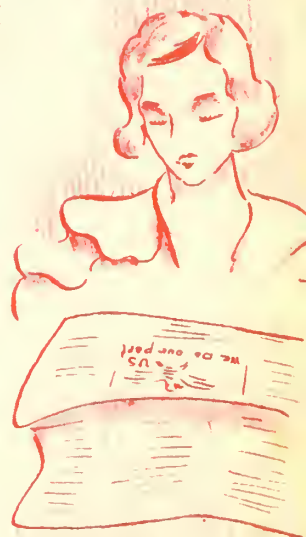
The attainments of our college in her twenty-one years have been due largely to the activities of the first president, Dr. R. H. Powell and his enthusiastic corps of faculty. He never once lowered his standards for the college nor compromised with the ideals for attainment. The college will ever be a living memorial to her first president.



DR. R. H. POWELL

On April 18, 1933, the Board of Regents directed that the Georgia State Womans College should be the Liberal Arts College for women of the University System of Georgia; and in the reorganization of the University System there were made certain changes in the personnel.

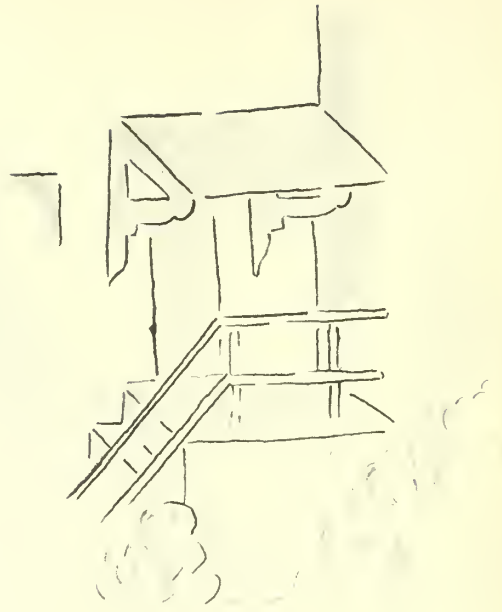
Dr. Powell went in July, 1933, to Athens to serve as Dean of the Co-ordinate College of the University of Georgia, and was succeeded by Dr. Jere M. Pound, President of the Georgia State Teachers College at Athens, Georgia, who was elected by the Board of Regents in April to the presidency of the Georgia State Womans College. Dr. Pound left Athens after serving for twenty-one years as head of a woman's institution of higher learning.



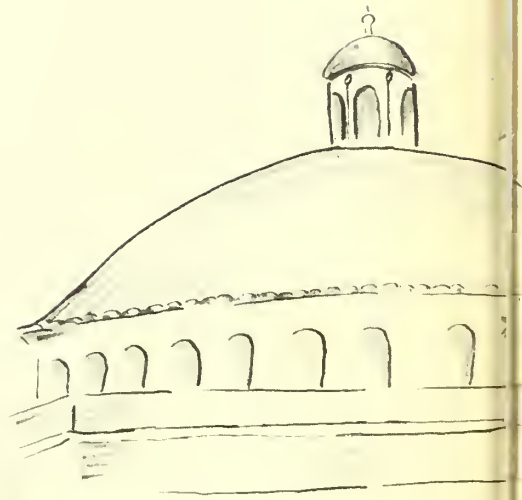




Waiting - 1913



Waiting for a street car



The Dome



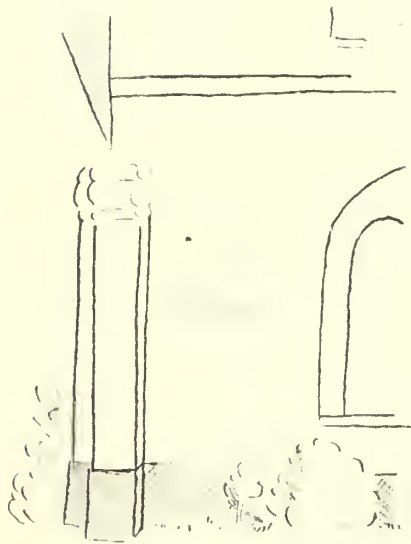
Converse Hall - only building



Still Waiting - 1934



Steak Supper



Entrance to West Hall



ANNIE MAUDE MCLEOD  
LINELLE LANG





WEST HALL





DORMITORY ROW

W. Parrish





FIRE PLACE IN THE PINES





THE NORTH TENNIS COURT

W. Parrish





IN THE LIBRARY





TEA AT FIVE

W. Parrish





Alma Mater we honor thee



### OPEN LETTER FROM DR. POUND

Measured by human standards, the Georgia State Womans College has become of age. That is to say, it has completed the first twenty-one years of its existence.

It is the purpose of this issue of the PINE CONE to give a résumé of the College's history during those twenty-one eventful years, and I have been asked to write a short article on the subject, "Then and Now". The apparent purpose of this subject was to institute a comparison between the school as it was twenty-one years ago and as it is now. No comparison, however, is possible for the reason that in 1912 there was nothing here at all except the land of which the campus is composed, marked by a beautiful pine grove at the northern and another at the southern end, with an open field in between. Whatever constitutes the College today has been put here since the year 1912.

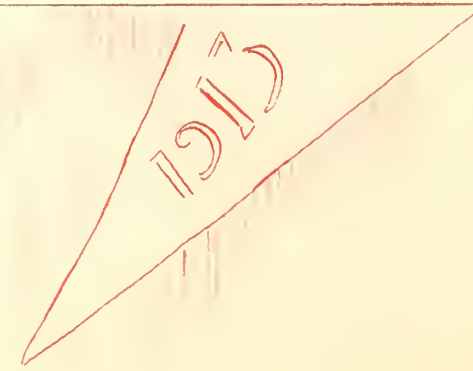
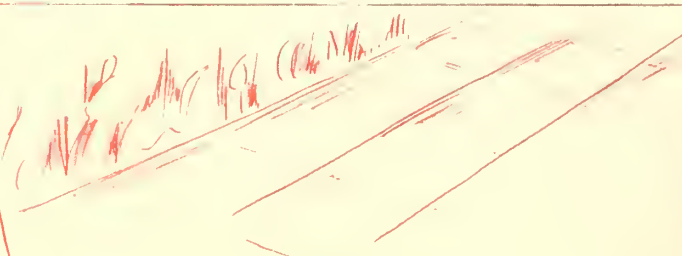
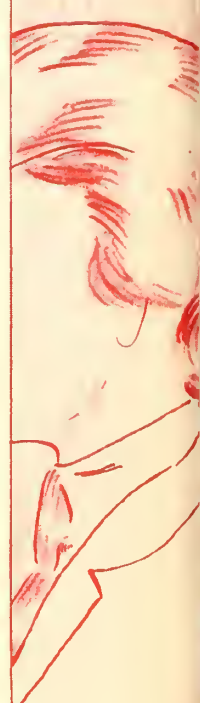
I have been connected with the school less than eight months and during that time my purpose and my work have been chiefly to study the College, its organization, its operation, its courses of study, its faculty, and its spirit. I do not pretend, therefore, to have had any influence upon its growth and development up to this time. Therefore, whatever I may say can not be regarded in any sense as self-praise, for it refers wholly to the work of others,—all those who have had any part in the expansion of the school, from its birth to its present maturity.

Like a human being growing from infancy to adulthood, the College has had its struggles and its triumphs, its periods of depression and its periods of exaltation, but during all those trying years, it has kept steadily before it as its ideal and objective, a sound and wholesome culture for the students that have come to it, and today, when it may be said that its youth is passed, it has behind it a remarkably consistent history of sanity and sincerity in all its educational conceptions.

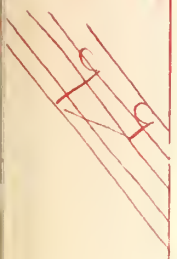
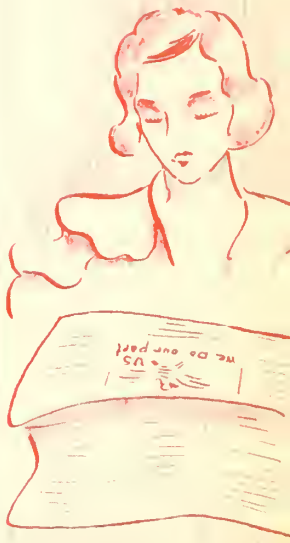
Before a brick was ever laid, or indeed, ground broken for the foundations of the first building, highly skilled architects were employed to draft a plan for a college that should house a thousand students and to create a type of architecture that should be uniform throughout and appropriate to the region, the climate, and the character of the school. The buildings now here are all of Spanish Mission style and are built of the very best materials inside and out, planned, as it were, for all time to come, and age will make them only the more beautiful. When in years to come the architect's ideals have been fully worked out and his plan completed, there will not be in this State, nor hardly anywhere else, a plant more perfect in all of its details.

But a college, to be worthwhile, is something more than buildings, beautiful though they may be. It is the spirit of the students and the faculty within those buildings that constitutes its worth or lack of it. I am glad to say that the atmosphere of the institution is as fine as any within my knowledge, that the faculty is highly trained, capable, devoted, enthusiastic, and hard-working, and that the student body is composed generally of serious-minded young women who seem to have lofty aims and ideals and are bent upon finding here the means of realizing them in actual life. I do not know of many institutions in which the student life is happier or more joyous and free. I sincerely believe that the Georgia State Womans College offers to parents for their daughters all that they may reasonably expect, and that they will find here upon examination a fine, wholesome, spiritual type of life that is highly commendable and rarely found.

PINE CONE





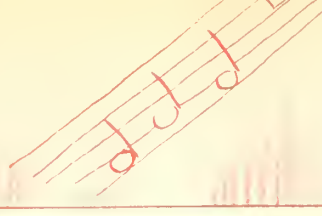


DR. JERE M. POUND  
President

11934

G. S. W. C.





Alma mater honor



### FACULTY

**ANNIE POWE HOPPER**

Dean of Women

Professor of Geography

B.S., George Peabody College for Teachers; A.M., Columbia University; Teachers College Diploma as Adviser of Women and Girls.

**MELBA YOUNG BEALE**

Assistant in Languages

A.B., Georgia State Womans College.



**SARAH JANIE BUSH**

Professor of Latin

A.B., University of Georgia; A.M., University of North Carolina; Diploma, College of Classical Studies, Rome, Italy.

**FRANCES RUTH CARPENTER**

Professor of Art

Bachelors Diploma and B.S., Teachers College, Columbia University; A.M., Ibid.



**JOSEPH AUSTIN DURRENBERGER**

Professor of History and Social Sciences

A.B., Southwestern University; A.M., Columbia University; Ph.D., Ibid.

**GERTRUDE CORDELIA GILMER**

Professor of English

B.S., George Peabody College for Teachers; A.M., Ibid.



**HAROLD STRONG GULLIVER**

Professor of English

B.A., Yale University; A.M., Columbia University; Ph.D., Yale University.



Germany Declares War

SNE



Germany Declares War

1914



**FACULTY**

**MARGARET HALL**

Instructor in German

Student at the Hilda Schule, Coblenz, Germany; A.B., Emory University; A.M., Ohio State University.



**LENA JAMES HAWKS**

Professor of Mathematics and Physics

A.B., Goucher College; A.M., Vanderbilt University; Ph.D., The Johns Hopkins University.



**LOENORA IVEY**

Professor of Physical Education

Graduate Sargent School for Physical Education; B.S., Georgia State College for Women; M.A., George Peabody College for Teachers.

**ELIZABETH McREE**

Assistant in Physical Education

A.B., Georgia State Womans College.



**FRANCES B. PARDEE**

Teacher of Violin

Graduate Cincinnati Conservatory of Music; Pupil of Sevcik in Vienna, and of Robert Perutz and Julia Pulikowski, Cincinnati Conservatory.

**EARL W. PHELAN**

Professor of Chemistry

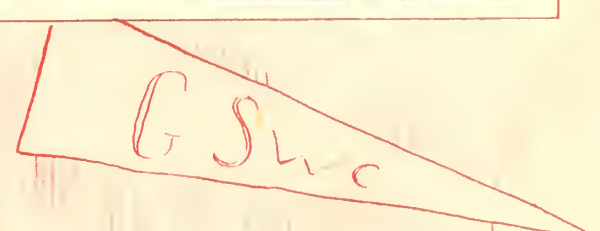
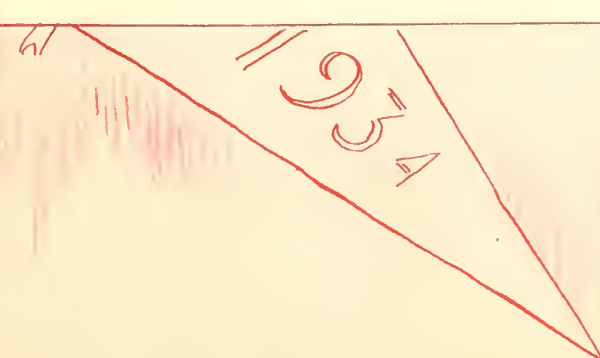
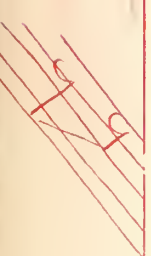
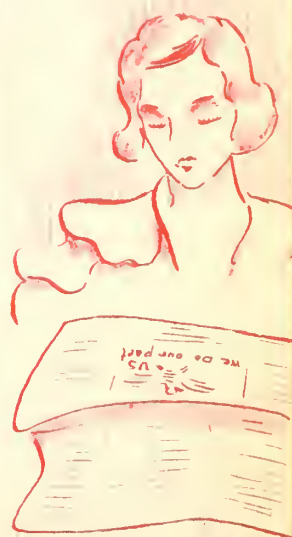
B.Chem., Cornell University; Ph.D., Ibid.



**MILDRED McCLELLAN PRICE**

Professor of History

A.B., Georgia State Womans College; A.M., Columbia University.







*Alma Ma thee honor*



## FACULTY

**HAROLD H. PUNKE**

**Professor of Education**

B.S., University of Illinois; M.S., Ibid; Ph.D., University of Chicago.

**LOUISE ANNE SAWYER**

**Professor of Vocal Expression**

Graduate Columbia College of Expression; Student of University of North Carolina; B.S., School of Speech, Northwestern University.



**JAMES R. STOKES**

**Professor of Biology**

B.S., University of Georgia; M.S., University Wisconsin.

**ALIMAE TEMPLE**

**Instructor in Music**

A.B., Salem College; B.M., Ibid; Graduate Student George Peabody College for Teachers and Teachers College, Columbia University; Pupil of Isadore and Harold Luckstone and of Mrs. C. Dyas Standish, New York City.



**HONORIA SAPELO TREANOR**

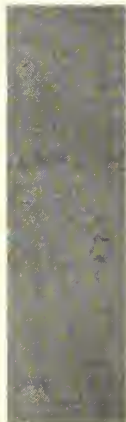
**Instructor in French**

A.B., University of Georgia; Student at Sorbonne, Paris, France; A.M., University of Georgia.

**GLADYS E. WARREN**

**Professor of Music and Director of the Department**

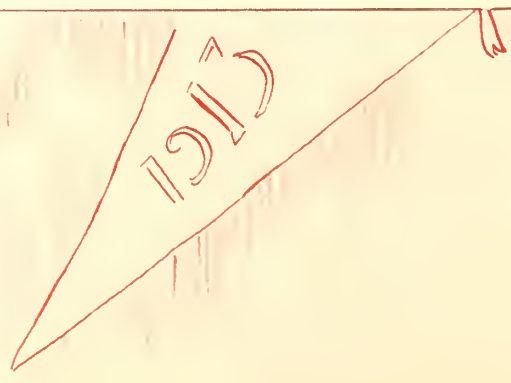
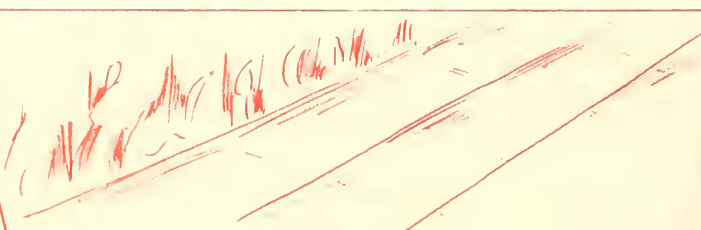
B.M., Lake Erie College; Graduate New England Conservatory of Music, Boston; Pupil of Carl Beecher, Northwestern University; of Ernest Hutcheson, New York City; of Lee Pattison, Chicago; of Tobias Matthey, Matthey School of Pianoforte, London, England; and of Arthur Alexander, Royal College of Music, London, England; Active Member American Matthey Association.



**IVA CHANDLER**

**Assistant Dean of Women**

A.B., Georgia State Womans College.







**FACULTY**

**AUGUSTA RENTZ**

Registrar

A.B., Georgia State Womans College.



**EVELYN DEARISO**

Librarian

A.B., Georgia State Womans College; B.L.S., Emory University.



**J. R. DUSENBURY**

Financial Agent

**MILDRED LARSEN**

Assistant to the Financial Agent

A.B., Georgia State Womans College.



**CAROLINE PARRISH**

Secretary to President

A.B., Georgia State Womans College.

**LILLIAN PATTERSON**

Assistant Librarian

A.B., Georgia State Womans College.

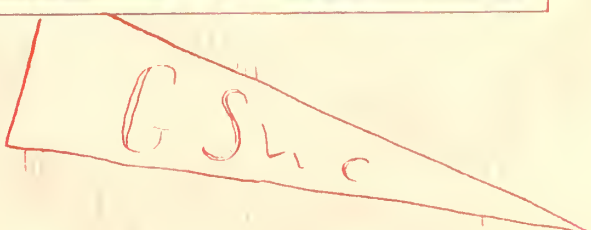
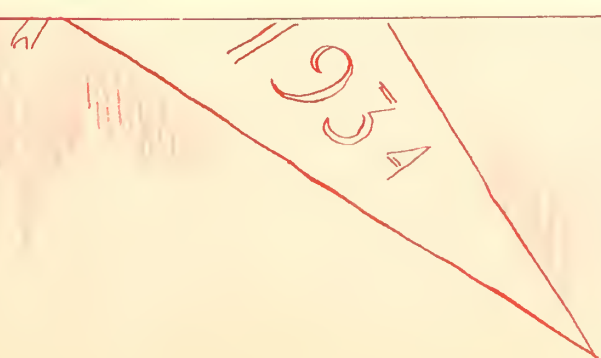


**MRS. NANNIE HAGAN**

Nurse, Assistant to the Dean

**MRS. E. H. BECK**

Dietitian







*So she hides the hat*



1913



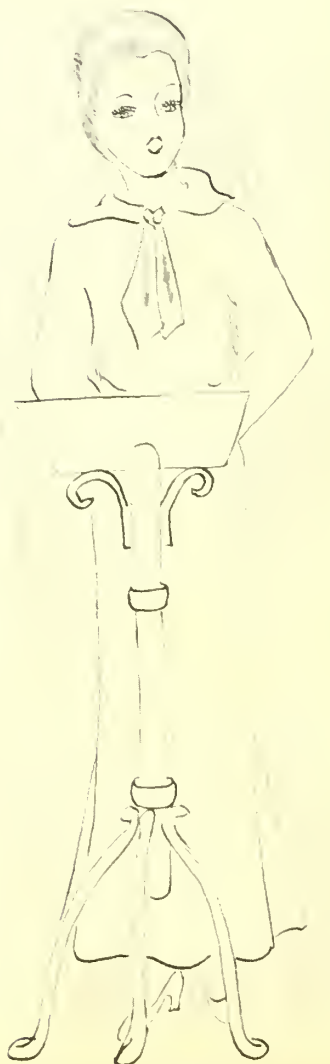
*Then - a normal diploma*



*Now - an A. B. degree*



*The Board of Trustees  
are coming to dinner!*



*Reading the Senior Exercises*







1934



After the show



W



Sunday Dating



Garbutt

Junior Politics



Freshman Week





S  
E  
N  
I  
O  
R  
S



**ANNIE LOIS GARDNER**  
Camilla, Georgia  
A.B. MUSIC

Student Government Association; Y. W. C. A.; Phi Lambda Athletic Association; Y. W. C. A. Cabinet; Philharmonic Club; President Philharmonic Club (2); Vice-President Philharmonic Club (3, 4); Senior Class President (4); PINE CONE Staff (4); G. S. W. C. Emblem; Honors (1, 3, 4); Science Club; Presidents' Club (2, 4).

Annie Lois sees the world through rose-colored glasses, a fact which makes us envious of her grand philosophy of life. She has that calm acceptance of things which always seems to keep her happy. No wonder life holds so many good things for her, including a lovely diamond on her left hand. Annie Lois has contributed much to our music circle during her college days, and especially were we proud of her at her senior piano recital. She is a student who enjoys her work, but we've seen our Senior Class President come off her dignity quite often to engage in Junior-Senior Hall bull sessions and also tell jokes with the best of them.



**LILLA ALEXANDER**  
Nashville, Georgia  
A.B. ENGLISH

Student Government Association; Argonian Literary Society; Phi Kappa Athletic Association; Y. W. C. A.; Treasurer Class (1); English Club; Sock and Buskin Club; Business Manager PINE CONE (4); Secretary-Treasurer, Student Government Association (4); Honors (3); G. S. W. C. Emblem (4).

The last but not the least of the Alexanders. Lil has had quite a bit to live up to; she had three sisters precede her who made outstanding records, but they may well be proud of her. Lil has a head on her shoulders. She must have been cut out for a business career, for she has been secretary and treasurer of two organizations, and Business Manager of the PINE CONE, but we have a vague suspicion that she has other ideas in her head. Lilla has a self-assured, independent air about her which is quite enviable, and speaks with a brogue that is unlike the South—she never misses an "ing" and rolls her r's in a very impressive manner.







**MARGARET BISCHOFF**  
Savannah, Georgia  
A.B. ENGLISH

Student Government Association; Phi Lambda Athletic Association; Y. W. C. A.; Sororian Literary Society; Sergeant-at-Arms of Literary Society (2); Secretary Class (3); PINE BRANCH Staff (3); President Sororian Literary Society (4); Presidents' Club (4); English Club (4); French Club; Literary Editor PINE CONE (4); G. S. W. C. Emblem (4).

When one first sees Bunny, one always notices that lovely red hair and those pale blue eyes. When she speaks, one immediately recognizes that Geechee drawl. She is a true Savannahian even to the extent of including within her short stories much local color from her home town. Her literary ability is evidenced by the fact that Bunny is President of the Sororian Literary Society, Literary Editor of the PINE CONE, and has made many contributions to the PINE BRANCH. Among other things Bunny has found time in her senior year to be co-manager of the Country Store.



**GeDELLE BRABHAM**  
Moultrie, Georgia  
A.B. MATHEMATICS

Student Government Association; Y. W. C. A.; Sororian Literary Society; Phi Kappa Athletic Association; Secretary-Treasurer Phi Kappa Athletic Association (2); Official Scorer Phi Kappa Athletic Association (3); Athletic Council (1, 2, 3, 4); Numerals (1); Letter (2); Cup (3); Honor Plaque (4); Euclidian Club; Vice-President Euclidian Club (2); Secretary Class (1); Honors (1); President Class (3); G. S. W. C. Emblem (2, 3); Presidents' Club (3, 4); President Student Government Association (4).

We first knew her through her enthusiasm in sports. As a reward for her activity and outstanding participation in sports her name will go on the Kappa Honor Plaque. She is one who can accept responsibility and still retain her cheerful and happy-go-lucky disposition which accounts for her wide popularity, and the fact that she was chosen President of the Student Government Association. "Teets" is philosophical in her thinking and very optimistic.



W. ROBERTS  
L. LANC





S  
E  
N  
I  
O  
R  
S



VERDA WILL CARTER  
Meigs, Georgia  
A.B. HISTORY

Student Government Association; Phi Lambda Athletic Association; Y. W. C. A.; Argonian Literary Society; Science Club; International Relations Club; Science Club; Athletic Council (4).

Verda Will is a cheerful little person, very friendly with a sweet and amiable disposition. She is the most accommodating person we know, whether assisting in Science Club programs or helping to enlarge the I. R. C. budget. She is a three-year graduate, which says much in her favor. Bill enjoys athletics and has a very special interest in riflery classes, aside from the mere desire to score bull's eye.

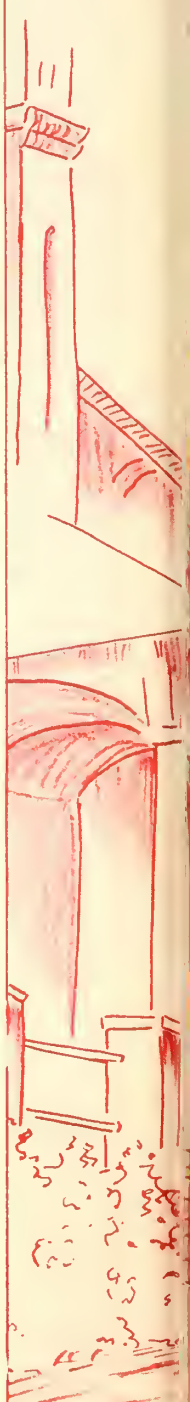


*deceased*

KATHRYNE CONNELL  
Valdosta, Georgia  
A.B. ENGLISH

Treasurer Class (1); Phi Kappa Athletic Association; Valdosta Club; Critical Tips Editor (2); Glee Club (1); Editor PINE BRANCH (4); Vice-President English Club (4); Honors (4); Sororian Literary Society.

Kathryne is a friend of the fairies and well she might be, for they bestowed upon her a fanciful imagination and a keen intellect, along with a gift of pen, of song, and of tongue. She has used her gifts to make herself the charming person that we know. Her knowledge of literature is astounding, and as "Critical Tips" she is superb. Kathrynne is the kind of person when asked what she wants Santa Claus to bring her, writes "I crave excitement and late hours, a box of caramels big enough to sit down in, and an English accent."







MARGARET EASTERLIN  
Thomasville, Georgia  
A.B. MATHEMATICS

Student Government Association; Sororian Literary Society; Phi Kappa Athletic Association; Euclidian Club; Sock and Buskin Club; Y. W. C. A.; President Euclidian Club (4); Presidents' Club (4); Secretary-Treasurer Euclidian Club (3); PINE CONE Staff (4); Science Club.

Vivacious, fun-loving Mag! Always in high spirits and ready to go places; yet she stays on the campus long enough to major in math and minor in chemistry. When you see that right eyebrow raised and that mischievous smile, you know that Mag is either going to tell about "Little Red Hooding Ride" or "Little Goldie Gotrocks." Very frequently we see Mag's name posted for a telephone call. But we don't wonder at Mag's popularity when we take a look at that radiant smile in the picture above.



MARY EARNEST FOREMAN  
Tifton, Georgia  
A.B. ENGLISH

Transfer from Georgia State College for Men; Y. W. C. A.; Student Government Association; Phi Lambda Athletic Association; Glee Club; Philharmonic Club; French Club.

While others talk of what they can do, Mary Earnest is busy doing them. She is neat, quiet, conscientious, in fact quite the perfect lady. Very musically inclined, she is a member of both the Glee Club and the Philharmonic Club. She is also a member of the newly organized French Club. Not a dynamic person, Mary has made a place for herself in our campus life in the short time that she has been here.



W. ROBERTS  
L. LANG





S  
E  
N  
I  
O  
R  
S



MARY GLOVER  
Valdosta, Georgia  
A.B. MATHEMATICS

Student Government Association; Phi Lambda Athletic Association; Sororian Literary Society; Euclidian Club; Secretary-Treasurer Euclidian Club (4); Science Club; Vice-President Science Club (4); Valdosta Club.

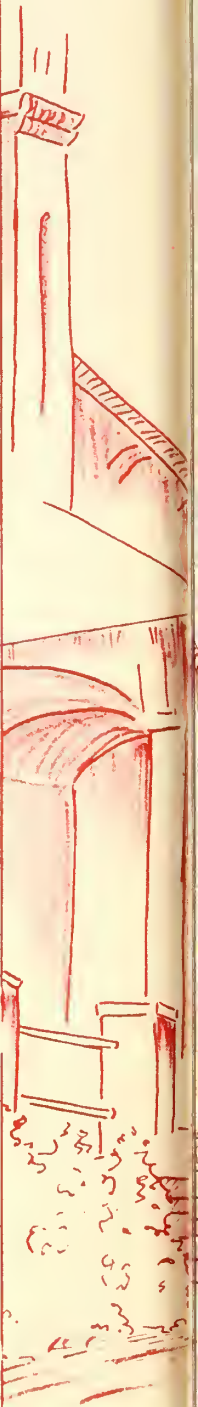
Mary's interest centers around chemistry labs, math clubs, and athletics. Though she is very studious, the results of her work are shown when her name appears on the honor roll. She conserves her time wisely so that she is frequently seen on the athletic field. Whether it's playing tennis or experimenting in the chemistry lab, Mary seems to thoroughly enjoy it.



NANNETTE HARGREAVES  
Tifton, Georgia  
A.B. HISTORY

Student Government Association; Transfer from Georgia State College for Men (4); Phi Kappa Athletic Association; Y. W. C. A.; Sororian Literary Society.

"No, No, Nannette," you can't visit during study hall. Nannette's favorite indoor sport is visiting, and well it might be since Eunice and Harriette room across the hall. Nannette is the third party in the Tiftonite trio and a very attractive one. Her light chatter and babyish ways belie the serious side of Nannette's nature. She is smart enough to be one of the few who have finished their course in three instead of the allotted four years and still have had time to play.







MRS. J. L. HARRIS, JR.  
Valdosta, Georgia  
A.B. ENGLISH

Student Government Association; Phi Kappa Athletic Association; Valdosta Club; Sororian Literary Society; English Club.

We think the writer of the popular song "Sweetheart Darling" must have had Flossie in mind when he composed it. Flossie is an idealistic sort of person who sees the best in everyone and is sweet and friendly to all. Her adorable smile and naive way makes her loved by all who know her.

Like a Parisian mannequin in evening clothes, she can be just as alluring in sport clothes on the tennis court where she played quite frequently before she began dividing her time between going to school and keeping house; for Flossie, through her irresistible charm, has been one of the first seniors to secure a husband.



GRACE HOLCOMBE  
Valdosta, Georgia  
A.B. ENGLISH

Student Government Association; Phi Lambda Athletic Association; Valdosta Club; President Valdosta Club (4); English Club (4); Sororian Literary Society; Presidents' Club (4).

Grace is a very little person in stature, but she manages to do a great many things. She is the one person on the campus who can engineer a dance without orchestra trouble. She is the proud possessor of a Pekingese pup, and greatly envied in that capacity. As Amanda Flick in the production of "Op O' Me Thumb" she attached to herself the unfortunate nickname of Cripey, but Grace doesn't let that bother her, for she has a grand sense of humor. She is noted among her friends for demanding of fortune what she wants, and usually getting it.



W. ROBERTS  
L. LANG-





S  
E  
N  
I  
O  
R  
S



VIRGINIA HUTCHINSON  
Valdosta, Georgia  
A.B. HISTORY

Student Government Association; Phi Lambda Athletic Association; Sororian Literary Society; Valdosta Club; International Relations Club; Treasurer International Relations Club (2); President Valdosta Club (3); Presidents' Club (3, 4); Council Representative (3); President International Relations Club (4); Vice-President of Southeastern Conference for International Relations Club (4); PINE CONE Staff (4).

Among Virginia's characteristics we would especially call attention to her poise, charm, and enthusiasm. She is a lover of the great outdoors, and goes in for horseback riding and hunting, is well informed, particularly in history, and makes honors with no apparent effort.

Although a town student, she takes interest in campus activities. Members of the International Relations Club are proud to have her represent them on the Southeastern Conference for International Relations Clubs.



MARTHA JACKSON  
Valdosta, Georgia  
A.B. ENGLISH

Student Government Association; Valdosta Club; English Club (4); Phi Kappa Athletic Association; President Valdosta Club (2); Presidents' Club (2); Council Representative for Day Students (4).

Her dignity and poise are a part of her, but there is another side to Martha's personality. She has a subtle way of saying things without even smiling herself, and the things she says are usually clever. Martha is a very real person, a person of whom one might use the slang expression, "swell," and have it mean a great many complimentary things. And one would use the expression because Martha would be horrified to have one say of her that she was lovely, unchanging, and lovable. And to further horrify Martha, she is very competent in managing luncheons, dances, and club meetings. And if the woman she will be is anything like the girl she is, she'll be worth knowing and admiring.







MRS. HERMAN JOHNSON  
Quitman, Georgia  
A.B. ENGLISH

Student Government Association; Phi Kappa Athletic Association; Young Woman's Athletic Association (1); Philharmonic Club (1, 2, 3); Home Economics Club (1); PINE BRANCH Staff (1); Athletic Numerals (3); Athletic Letter (3); Honor Cup (4); Sororian Literary Society (3); Honors (3); English Club (3, 4); President English Club (4); Presidents' Club (4).

For one who has such an attractive interest as a husband in Quitman, Stump has managed to spend enough time on the campus to be well-known and loved by her classmates. She shows unusual interest in campus affairs, evidenced by the fact that she is always willing to "stay over" and lend her share towards making every club meeting and class activity a success. A precious child she is, and a smart one. Whatever she attempts, she does it well, from studies to sports. She makes honors, and is a veritable William Tell with the bow and arrow.



MARGARET KENNEDY  
Dawson, Georgia  
A.B. CHEMISTRY

Sororian Literary Society; Phi Lambda Athletic Association; Y. W. C. A.; Athletic Council (4); Y. W. C. A. Treasurer (2), Vice-President (3), President (4); Delegate to Blue Ridge (2, 3), Camp Wilkins (2), Tallahassee (3); Intersociety Debate (3); Science Club; Presidents' Club (4); Honors (1, 4).

Margaret has been indispensable to the Y. W. C. A. during her whole four years in school. Through her spiritual influence and never-tiring efforts she has made the Y. W. C. A. a wide-awake organization on the campus this year.

While Margaret is vitally interested in Y. W. C. A. work, she does not devote her time to that to the exclusion of everything else—she goes in for sports and is a most loyal Lambda.

She has had the distinctive honor of being an assistant to Miss Hopper. We hope that Margaret will have a happy and successful future, for she deserves the best.



W. ROBERTS  
L. LANG





SENIORS



**HARRIETTE MASSEY**  
Tifton, Georgia  
A.B. ENGLISH

Student Government Association; Phi Lambda Athletic Association; Y. W. C. A.; Sororian Literary Society; Secretary-Treasurer Class (4); Honors (4); Transfer from Georgia State College for Men.

A charming addition to the Senior Class is Harriette. "Gentlemen prefer blonds," and why shouldn't they when they have such a pretty and capable head as Harriette, for under those blond curls is something to be envied by some of us lesser lights. Harriette has shown us just what stuff she is made of in the short time she has been with us. She is an active member of the English Club, and was elected Secretary-Treasurer of the Senior Class, besides making honors.



**MRS. HAZEL McBANE**  
Valdosta, Georgia  
A.B. BIOLOGY

Student Government Association; Science Club; Valdosta Club; Phi Kappa Athletic Association.

Hazel has made friends with everyone she has come in contact with. Her manner is gracious and poised. She has a perfect genius for doing things and doing things right. Hazel is the last one of the trio, Sarah, Mary Alice, and Hazel. We shall miss her. She has been an inspiration to many of us by her determination and ability. She is a very chic person. Congratulations, Hazel!







**MILDRED McDONALD**  
Colquitt, Georgia  
A.B. ENGLISH

Student Government Association; Phi Lambda Athletic Association; Sororian Literary Society; Y. W. C. A.; Glee Club; Philharmonic Club; Sock and Buskin Club; Secretary Glee Club (2); Vice-President Glee Club (3); President Glee Club (4); Treasurer Literary Society (2); PINE BRANCH Staff (3); Y. W. C. A. Cabinet (3, 4); Presidents' Club (4); G. S. W. C. Emblem (2, 3).

When one thinks of Mildred, she immediately thinks of her charming voice which has added so much to the many tea programs, vesper services, and club meetings in which she has participated. Mildred has done much in the last two years to help the Y. W. grow. Mildred is ever ready to lend a helping hand, and she does so in such a willing and gracious manner. Mildred possesses a gift of friendliness; she always makes one feel at home. She seems to be always having a good time, and her laughter is frequently heard on Junior-Senior Hall.



**BESSIE McRAE**  
Savannah, Georgia  
A.B. HISTORY

Student Government Association; Transfer from Virginia Intermont College (2); Y. W. C. A.; Sororian Literary Society; Phi Lambda Athletic Association; International Relations Club; President of Sororian Literary Society (3); Presidents' Club (3); Treasurer International Relations Club (4); PINE CONE Staff (4); G. S. W. C. Emblem (4).

Just a Scotch lassie and what jokes we've enjoyed at her expense. Bessie's friendly manner and good nature made her at once a welcome member to the class. She likes to have a good time, but she always manages to get all her work done. Bessie is an outstanding International Relations Club member and is frequently seen upholding the sale of butterscotch pies. Her other major interest centers around the steak suppers of the Savannah Club of which she is president.



W. ROBERTS  
L. LANC-





S  
E  
N  
I  
O  
R  
S



**KATHRYN MOORE**  
Douglas, Georgia  
A.B. ENGLISH

South Georgia State College (1, 2); Sororian Literary Society; Phi Kappa Athletic Association; English Club; Science Club; Council Representative (4); PINE CONE Staff (4).

"Roll on old world and I'll roll with you." Kathryn takes life as it comes and enjoys it. A typical Southern girl she has been called, demure with that slow, Southern drawl and friendly smile. Kathryn is gay but conscientious; she likes to play but knows when to play and when to consider the serious side of things.

It is significant that after one year on the campus she was chosen as Senior Council Representative and Advertising Manager of the PINE CONE. Incidentally Kathryn has a good "ad" line—is she quite as demure as she looks?



**SARAH NICHOLSON**  
Amsterdam, Georgia  
A.B. MATHEMATICS

Student Government Association; Phi Lambda Athletic Association; Y. W. C. A.; Sororian Literary Society; Euclidian Club; Science Club; President Phi Lambda (4); Presidents' Club (4); G. S. W.C. Emblem (2, 3); Honor Cup (4); Numerals (2); Letter (3); Secretary Literary Society (3); Official Scorer Phi Lambdas (3); Athletic Council (2, 3, 4); PINE BRANCH Staff (3).

Sarah has given inspiration to the Lambdas to go forth and conquer. At every game between the associations she is either in the line-up or cheering heartily on the sidelines. She is always interested and enthusiastic in everything she undertakes, even to math and chemistry. Ever ready to help whether it's decorating posts for field day or making wigs for lords and ladies of the minuet. She can work harder than anyone and appear just as fresh and charming on the program.







WINONA PARRISH  
Valdosta, Georgia  
A.B. BIOLOGY

Student Government Association; Valdosta Club; Phi Lambda Athletic Association; Sock and Buskin Club; Science Club; Art Staff PINE CONE (2, 3, 4); Art Editor PINE BRANCH (2); Sororian Literary Society.

Wee has a smile that is irresistible. She has a charm that is just as irresistible; always in a hurry, always amused about something, she has become a part of campus life. For such a busy little person she has a great many accomplishments. She draws beautifully, is an excellent typist, and knows the intricate art of making and keeping friends. Wee deserves everything good that life will bring her.



VONICE RITCH  
Jesup, Georgia  
A.B. VOCAL EXPRESSION

Student Government Association; LaGrange College (1, 2); PINE BRANCH Staff (3); Sock and Buskin Club; President Sock and Buskin Club (4); Athletic Council (4); Science Club; Phi Kappa Athletic Association; Sororian Literary Society.

We wonder how the Class of '34 could have thrived if Vonice had not decided to leave LaGrange at the end of her Sophomore year. With her natural ability for vocal expression mixed with a certain business ability, she could have talked Queen Elizabeth into buying an "ad" or engraved stationery.

No program would have been complete without one of her "choice" readings. She is the dramatic artist of the Senior Class. We can remember many pleasant afternoons spent at the "fine old establishment," namely the Country Store, where she entertained with tales told in that naive way which is so typical of Vonice.



W. ROBERTS  
H. LANG





SENIORS



MARJORIE SESSIONS  
McRae, Georgia  
A.B. FRENCH

Student Government Association; Y. W. C. A.; Phi Lambda Athletic Association; Sororian Literary Society; Intersociety Debater (1); Y. W. C. A. Cabinet (2); Vice-President Sororian Literary Society (3); PINE BRANCH Staff (3); Editor-in-Chief PINE CONE (4); Philharmonic Club; Science Club; French Club; Sock and Buskin Club; G. S. W. C. Emblem (2, 3).

Margie has been one of our outstanding students throughout all four years. Her capability is shown in the 1934 PINE CONE; her literary talent may be found in her contributions to the PINE BRANCH, as well as in Literary Society work—including debating. We can also vouch for her ability as a tennis player. Margie can act as sophisticated as Kay Francis or as naive as Janet Gaynor. She believes in having a good time and possesses a wonderful disposition, having a certain independence which is enviable, which all in all goes to make her a grand pal!



EUNICE SPURLIN  
Tifton, Georgia  
A.B. ENGLISH

Student Government Association; Transfer from Georgia State College for Men (3); Phi Lambda Athletic Association; Y. W. C. A.; Sororian Literary Society.

To those who do not know Eunice she may appear quiet, demure, and unassuming, but she has rare ability to send any group into gales of laughter with her dry wit which "pops" out at such unexpected moments. Eunice is a conscientious student, but she never misses a good movie—in fact from the almost life-size portraits of Clark Gable which adorn her walls, we gather that she is quite a movie star fan. We, the Senior Class, were glad to claim Eunice as one of our members.







**MARTIELE TURNER**  
Valdosta, Georgia  
A.B. MATHEMATICS

Student Government Association; Phi Kappa Athletic Association; Y. W. C. A.; Euclidian Club; President Phi Kappa Athletic Association (4); Presidents' Club (4); Vice-President Euclidian Club (4); Argonian Literary Society; Valdosta Club; Honors (1, 2, 3, 4); Athletic Council (2, 3, 4); Numerals (1); Letter (2); Cup (2); Honor Plaque (4); G. S. W. C. Emblem (4).

Martiele is like a wonderful machine that never runs down. Full of vim, vigor, and vitality with a grim determination to get what she goes after, Martiele plays and works fully and untiringly. She is a lover of sports, tennis being her long suit, and a lover of the physical sciences, namely math and chemistry. It is all in the day's work for Martiele to rise at five o'clock and begin her laboratory work and to spend from two to six on the athletic field. Sometimes we are awestruck in the presence of Martiele with her superior intellect. She loves to talk, and can converse intelligently on almost any subject mentioned.



**RUBY NELL WALL**  
Ellaville, Georgia  
A.B. BIOLOGY

Y. W. C. A.; Student Government Association; Sororian Literary Society; Euclidian Club; Vice-President Euclidian Club (2); Science Club; Secretary-Treasurer Science Club (2); Athletic Council (2, 3, 4); PINE BRANCH Staff (3); President Science Club (4); Presidents' Club (4); Secretary-Treasurer Phi Kappa (4).

Saturday afternoons frequently find Ruby Nell off with a group of biological-minded people on one of the numerous field trips—a feature of the Science Club, of which she has been a most active and capable president. Other afternoons find her on the soccer field or volley-ball courts, according to the season. She is a sports enthusiast, and is a good sport in the true sense of the word—a good loser as well as a grand winner. More said would be superfluous.



W. ROBERTS  
L. LANG





S  
E  
N  
I  
O  
R  
S



**DOROTHY WALLS**  
Cordele, Georgia  
A.B. ENGLISH

Student Government Association (3); Sororian Literary Society; Phi Kappa Athletic Association; Science Club; English Club; Secretary English Club.

Rather quiet, reserved and dignified with a pleasing disposition coupled with a fine spirit of co-operation is a true picture of Dot. Not too dignified but that she can cause much laughter and merriment in portraying eccentric characters as she did in "The Neighbors" as Mrs. Trot who had the buffalo bug in her carpet. Dorothy is a conscientious student and an interested member of the Literary Society and English Club.



**MARGARET WILLIAMS**  
Cordele, Georgia  
A.B. HISTORY

Student Government Association; Phi Kappa Athletic Association; Y. W. C. A.; Fine Arts Club; International Relations Club; Secretary International Relations Club (3); Sock and Buskin Club (4); Sock and Buskin Club Play (4); Council Member Class (3); Art Editor PINE BRANCH (3); Art Committee PINE CONE (2, 3); G. S. W. C. Emblem (4); Recorder of Points (4).

Williams is one of the most versatile members of our class. Her graceful interpretative dancing helps to make every program from Christmas Festival to May Day more enjoyable. Although her chief interest lies in the International Relations Club, she is quite an artist. Her dramatic ability was proved by her success as Lisa in "Enter Madame." A truly talented person is Williams.







ANNIE BELLE WEATHERFORD  
PRESIDENT OF JUNIOR CLASS  
Savannah, Georgia



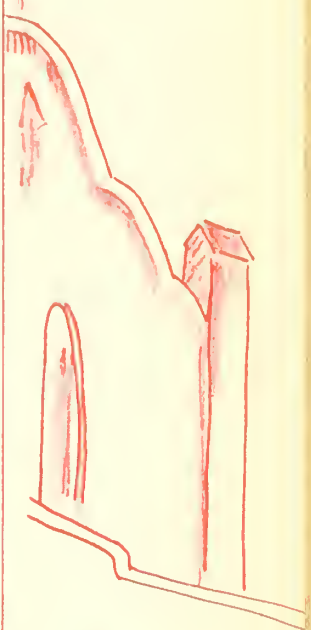
LOUISE AMBOS  
Savannah, Georgia



GERALDINE ARRINGTON  
Ellaville, Georgia



ELEANOR BAILEY  
Douglas, Georgia



W. ROBERTS  
L. LANG





JUN-IORS



ANITA BRADLEY  
Waycross Georgia



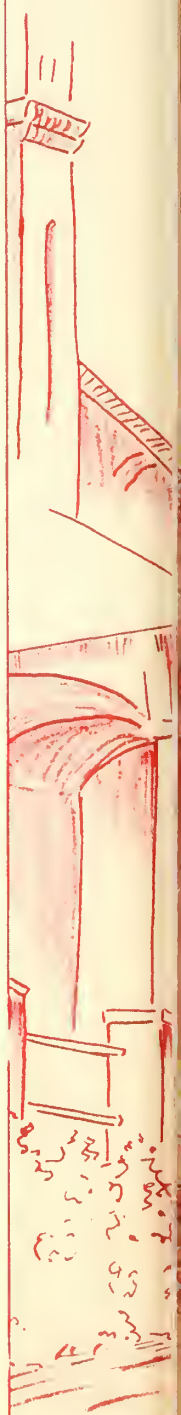
CAROLYN BRIM  
Sasser, Georgia



JEWEL BUSSELL  
Waycross, Georgia



JUDY COCHRAN  
Camilla, Georgia







WINNIE DAVIS  
Valdosta, Georgia



RUTH ELLIS  
Savannah, Georgia



EMILY FLUKER  
Quitman, Georgia



HENRY KATE GARDNER  
Camilla, Georgia



W. ROBERTS  
H. LANC-





J  
U  
N  
I  
O  
R  
S



MARJORIE GROOVER  
Quitman, Georgia



LUCY HAMMOND  
Griffin, Georgia



NOELLENE JOHNSON  
Valdosta, Georgia



MARGARET JOINER  
Griffin, Georgia







MARY BERTHA KENNEDY  
Morven, Georgia



VIRGINIA KIRKLAND  
Metter, Georgia



GRACE LAHEY  
Valdosta, Georgia



ELIZABETH LARISEY  
Valdosta, Georgia



W. ROBERTS  
H. LANG





J  
U  
N  
I  
O  
R  
S



CLARE LAWSON  
Savannah, Georgia



ANNIE MAUDE McLEOD  
Newton, Georgia



ELOISE ODOM  
Ashburn, Georgia



DOROTHY OGLETREE  
Savannah, Georgia







MARY POLHILL  
Sylvester, Georgia



ESTELLE ROBERTS  
Cordele, Georgia



WILLENE ROBERTS  
Valdosta, Georgia



LUCY SEARS  
Lenox, Georgia



W. ROBERTS  
L. LANG





J  
U  
N  
I  
O  
R  
S



VIRGINIA SHEPPARD  
Savannah, Georgia



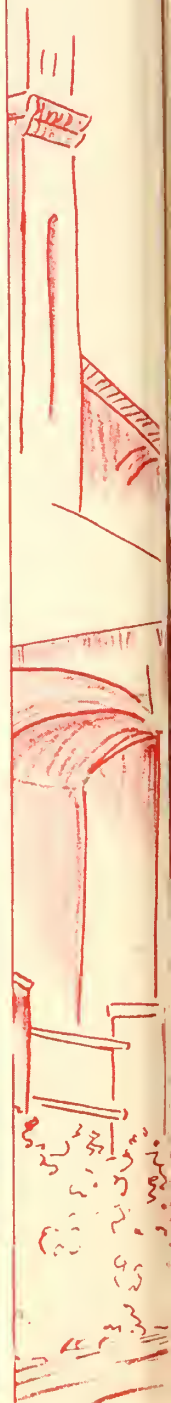
LOIS SIMPSON  
Valdosta, Georgia



LOUISE SMITH  
Fitzgerald, Georgia



DOROTHY STUDSTILL  
Lakeland, Georgia







KATHLYN TAYLOR  
Valdosta, Georgia



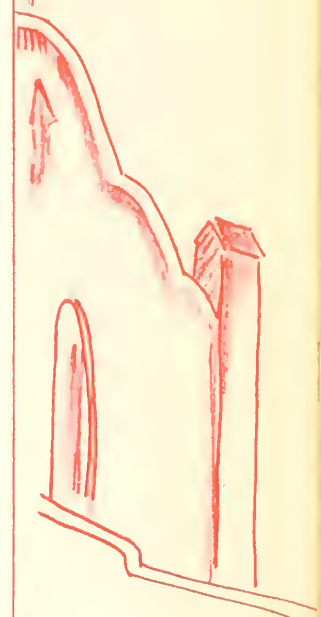
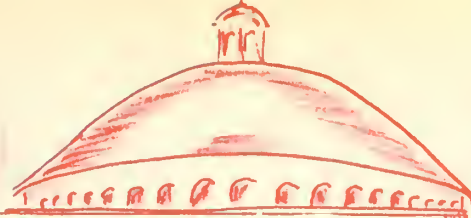
MARGARET TOUCHTON  
Valdosta, Georgia



EVELYN VANLANDINGHAM  
Valdosta, Georgia



HELEN CLAIRE VARNEDOE  
Valdosta, Georgia



W. ROBERTS  
L. LANC-





J  
U  
N  
I  
O  
R  
S



MARY ELIZABETH WEATHERFORD  
Savannah, Georgia



ELIZABETH WILKES  
Adel, Georgia



SUELLA WILLIAMS  
Valdosta, Georgia



MARGARET ZIPPLIES  
Savannah, Georgia







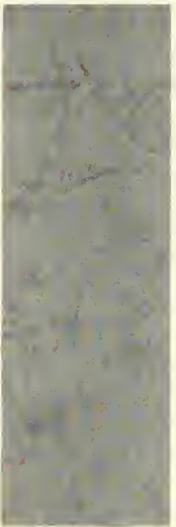
UNA RITCH  
PRESIDENT OF SOPHOMORE CLASS  
Jesup, Georgia



CLARA DAVIS ADAMS  
Moultrie, Georgia



MIRIAM ADAMS  
Camilla, Georgia



MARY ALDERMAN  
Pavo, Georgia



ANNE ALFORD  
Sylvester, Georgia



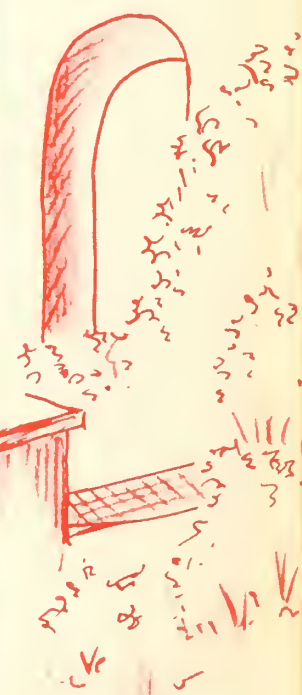
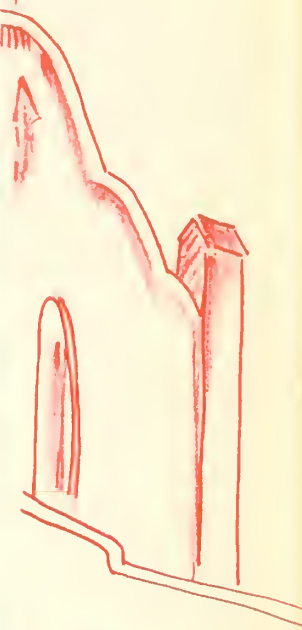
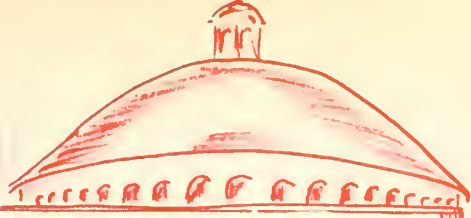
LAURA LEE ALLEN  
Climax, Georgia



MARY ASKEW  
Arlington, Georgia



NAOMI AUSTRIA  
Waycross, Georgia



W. ROBERTS  
L. LANC-





SOPHOMORES



CLEO BARBER  
Bainbridge, Georgia



AMANDA BARKSDALE  
Blakely, Georgia



MARGARET BERRYHILL  
Lakeland, Georgia



SARA BINGHAM  
Valdosta, Georgia



HARRIET BULLARD  
Nashville, Georgia



MONTEZ CAMPBELL  
Athens, Georgia



BESSIE MAE CARTER  
Naylor, Georgia



HELEN MOODY CARTER  
Valdosta, Georgia







MARY COKER  
Dawson, Georgia



MAURICE COLLINS  
Cairo, Georgia



FRANCES COPELAND  
Valdosta, Georgia



INEZ COOK  
Colquitt, Georgia



HILDA COX  
Camilla, Georgia



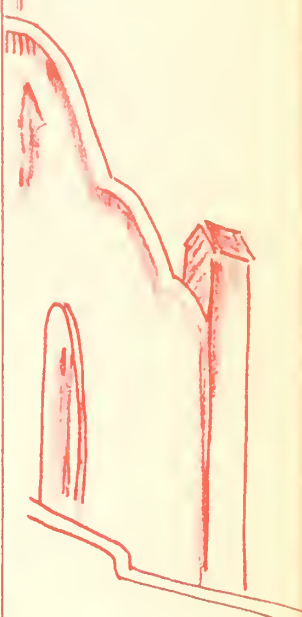
SARA RACHEL COXWELL  
Leesburg, Georgia



LOIS DALEY  
Dublin, Georgia



JOSEPHINE DANIEL  
Ludowici, Georgia



W. ROBERTS  
L. LANG





SOPHOMORES



LENORE DAVIS  
Moultrie, Georgia



CAROLYN DAVIDSON  
Gabbettville, Georgia



MARY DEARISO  
Sylvester, Georgia



ALLENE DODD  
Quitman, Georgia



CLARA LOUISE DRISKELL  
Surrency, Georgia



LENORE DUFOUR  
Albany, Georgia



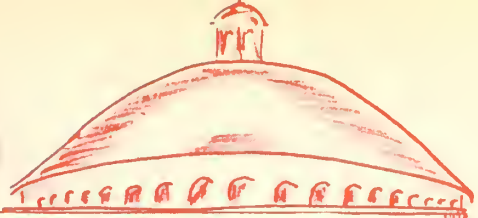
LILLY ELLIS  
Jesup, Georgia



LILLIAN FLEMING  
Hinesville, Georgia







CAROL FORRESTER  
Leesburg, Georgia



REBECCA FRYER  
Blakely, Georgia



NELLIE MAY GANNON  
Valdosta, Georgia



FRANCES GARBUTT  
Valdosta, Georgia



MARY GIBBS  
Tifton, Georgia



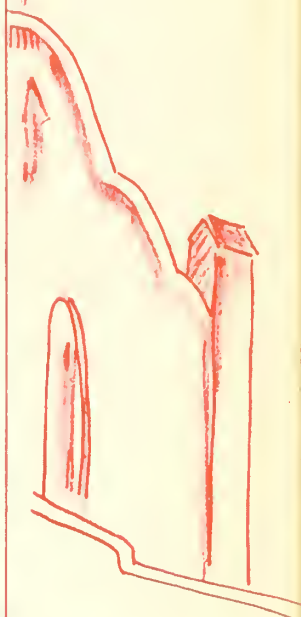
LUELLE GIDDENS  
Ray City, Georgia



VALDA GRINER  
Lenox, Georgia



MARGARET HALL  
Adel, Georgia



W. ROBERTS  
L. LANC





SOPHOMORES



BILLIE HAM  
Valdosta, Georgia



LOUISE HARDY  
Quitman, Georgia



RUBY HARRISON  
Fitzgerald, Georgia



EDITH HIGHTOWER  
Bainbridge, Georgia



DOROTHY HESTER  
Cairo, Georgia



GREY HOWELL  
Blakely, Georgia



VIRGINIA HUDSON  
Vidalia, Georgia



VIRGINIA HUGHES  
Glennville, Ga.







BROUN HUTCHINSON  
Valdosta, Georgia



BESSIE JO JOHNSON  
McRae, Georgia



NELLIE JOHNSON  
Valdosta, Georgia



NETTIE JOHNSON  
Valdosta, Georgia



MARGARET JONES  
Lakeland, Georgia



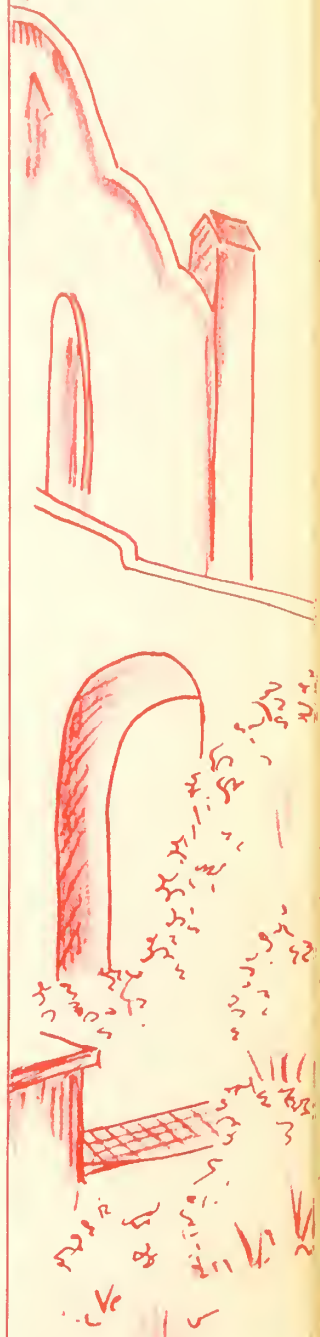
MAURICE JONES  
Sylvester, Georgia



NITA JONES  
Scotland, Georgia



RUBY JONES  
Valdosta, Georgia



W. ROBERTS  
L. LANG





SOPHOMORES



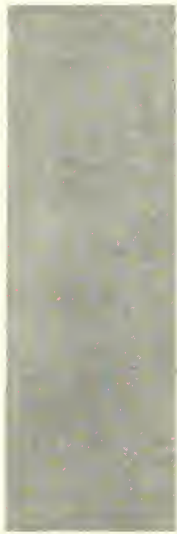
RUTH JONES  
Thomasville, Georgia



ELIZABETH KELLEY  
Savannah, Georgia



CLYDE KENDALL  
Valdosta, Georgia



VANELLE KENDALL  
Valdosta, Georgia



EVA MARTIN  
Arlington, Georgia



BEATRICE MATHIS  
Ashburn, Georgia



ETHLYN MASSEY  
Jesup, Georgia



EVELYN MAY  
Quitman, Georgia







BETH TERRY  
Quitman, Georgia



JOYCE TIPTON  
Sylvester, Georgia



ELIZABETH TILLMAN  
Valdosta, Georgia



SADIE BELL TREADAWAY  
Quitman, Georgia



LEILA MAE TYSON  
Jesup, Georgia



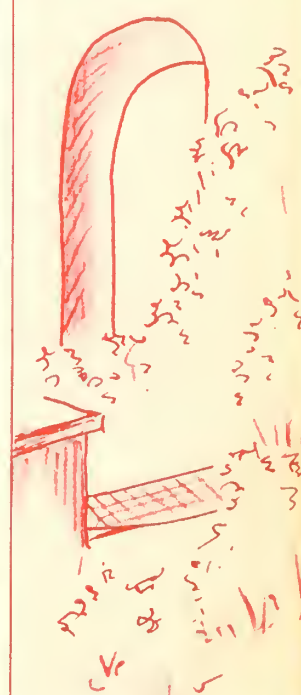
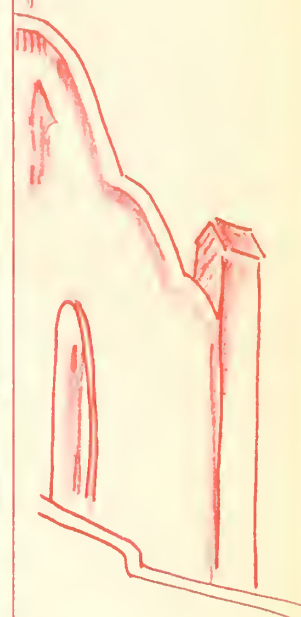
VANGIE TRIMBLE  
Moultrie, Georgia



EVELYN TOMMINS  
Savannah, Georgia



LYALL TEMPLE  
Lake View, South Carolina



W. ROBERTS  
L. LANG





SOPHOMORES



VIRGINIA TUCK  
Thomasville, Georgia



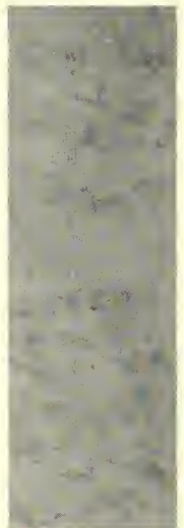
MILDRED TURNBULL  
Moultrie, Georgia



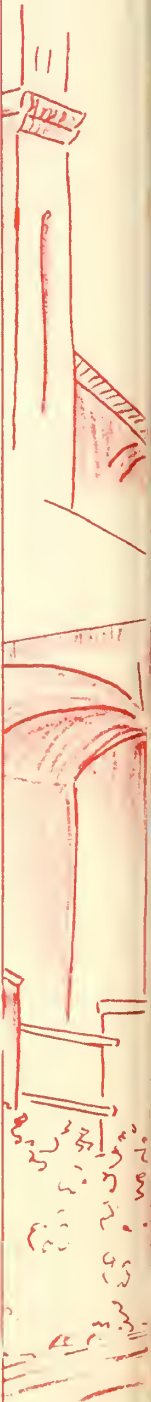
CARRENE WEST  
Moultrie, Georgia



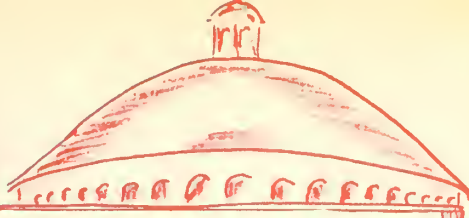
ELEANOR WILKES  
Meigs, Georgia



DORIS YOUNG  
Valdosta, Georgia







JOSEPHINE JOUBERT  
President of Freshman Class  
Savannah, Georgia



EUNICE RUTH ADAMS  
Marianna, Florida



NELL ALLEN  
Ashburn, Georgia



EMMA AMBOS  
Savannah, Georgia



ANTOINETTE ANDREWS  
Thomasville, Georgia



SHIRLEY BALKOM  
Valdosta, Georgia



DOROTHY BATES  
Waycross, Georgia



DENIESE BEASLEY  
Glennville, Georgia



MARGARET BENNETT  
Jesup, Georgia



FRANCES BINGHAM  
Valdosta, Georgia



MARIE BOWER  
Ocilla, Georgia



LILLIAN BRAGG  
Savannah, Georgia



DOROTHY BREWTON  
Waycross, Georgia



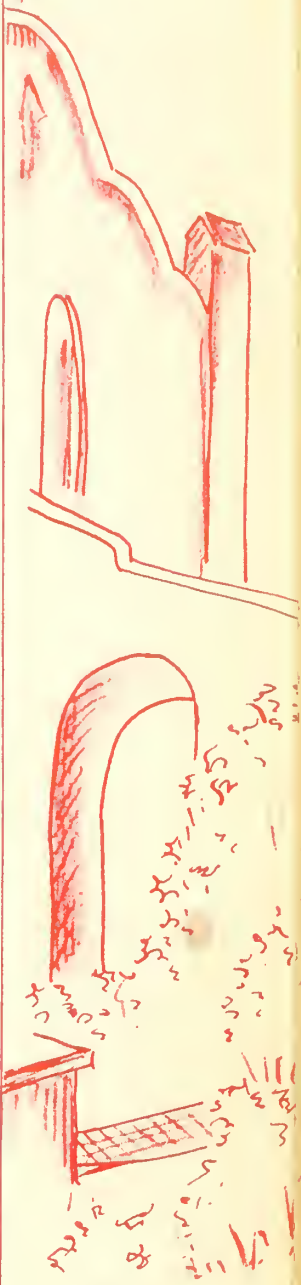
ELLIE RUTH BRYCE  
Bryceville, Florida



FRANCES CALLAHAN  
Rome, Georgia



LEILA CALLENDER  
Valdosta, Georgia



W. ROBERTS  
L. LANC-





FRESHMEN



MARY NELL CARLYLE  
Valdosta, Georgia



FRANCES CARSON  
Talbotton, Georgia



MARGARET CARTER  
Ray City, Georgia



LOUISE CHILDERS  
Quitman, Georgia



MARGARET CLOWER  
Morven, Georgia



FLORENCE COLE  
Woodbine, Georgia



MARY ELLEN CORDES  
Jacksonville, Florida



LOIS CORLEY  
Valdosta, Georgia



ALEXA DALEY  
Dublin, Georgia



LOUISE ELROD  
Tifton, Georgia



FRANCES FLUKER  
Quitman, Georgia



DOROTHY FULLER  
Quitman, Georgia



MARTHA GAY  
Quitman, Georgia



MARY EDITH GRANGER  
Blackshear, Georgia



ELIZABETH GREEN  
Jacksonville, Florida



ANNE GRIFFIN  
Valdosta, Georgia







JESSELYN GRIGGS  
Perry, Georgia



CATHERINE HAGAN  
Savannah, Georgia



MARY KATHRYN HARRELL  
Valdosta, Georgia



RUTH HATCHER  
Moultrie, Georgia



GERTIE MAE HEISLER  
Thomasville, Georgia



ETHEL HERSHBEIN  
Vidalia, Georgia



MARY BETH HIGH  
Lake Park, Georgia



MARGARET HUDSON  
Newton, Georgia



LORENE JOHNSON  
Thomasville, Georgia



ELIZABETH JONES  
Albany, Georgia



MARGARET JONES  
Lakeland, Georgia



PRISCILLA KELLEY  
Savannah, Georgia



DOROTHY KLUG  
Savannah, Georgia



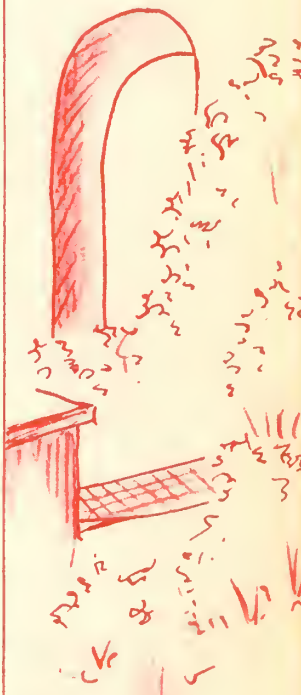
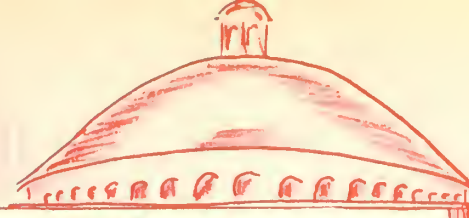
ANNIE KATE KNIGHT  
Quitman, Georgia



ELNORA LANG  
St. Mary's, Georgia



LINELLE LANG  
Tifton, Georgia



W. ROBERTS  
L. LANG





FRESHMEN



JESSIE LANGDALE  
Valdosta, Georgia



MARTIEL LUNDY  
Boston, Georgia



MARGUERITE McCALL  
Tampa, Florida



KATHARNE McGREGOR  
Quitman, Georgia



LAURA McLEOD  
Pineview, Georgia



MARGUERITE MEADOWS  
Glennville, Georgia



MARIE MIDDLETON  
Colquitt, Georgia



MARIE MILLER  
Boston, Georgia



ELEANOR MILLER  
Sylvester, Georgia



JESSIE MIMS  
Willacochee, Georgia



EDNA MOORE  
Tifton, Georgia



PAREPA MOORE  
Lyons, Georgia



VESTA MORAN  
Waycross, Georgia



CATHERINE MORGAN  
Pembroke, Georgia



SARA ELLEN MORGAN  
Mystic, Georgia



LUCILE MURPHY  
Valdosta, Georgia







BARNIE LOU NEWSOME  
Valdosta, Georgia



ELOISE OGLETREE  
Savannah, Georgia



MILDRED OGLES  
Rome, Georgia



PERMELIA OLLIFF  
Quitman, Georgia



FLORENCE OPLINGER  
Waycross, Georgia



EMILY PARRISH  
Valdosta, Georgia



CARROLL PEEPLES  
Valdosta, Georgia



DOROTHY PITTMAN  
Ocilla, Georgia



MARGARET SUE PITTS  
Milan, Georgia



ANNETTE PHILLIPS  
Eastman, Georgia



GWENDOLYN QUINKER  
Valdosta, Georgia



ANN RAINEY  
Camilla, Georgia



MAYME REGISTER  
Adel, Georgia



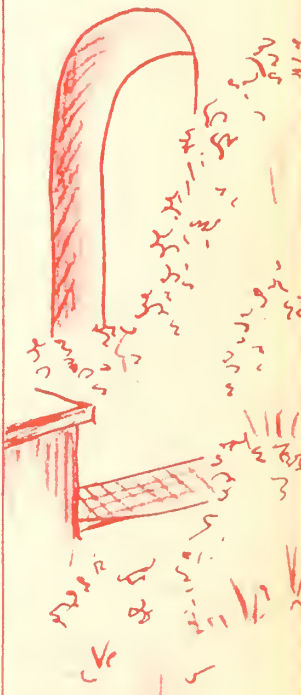
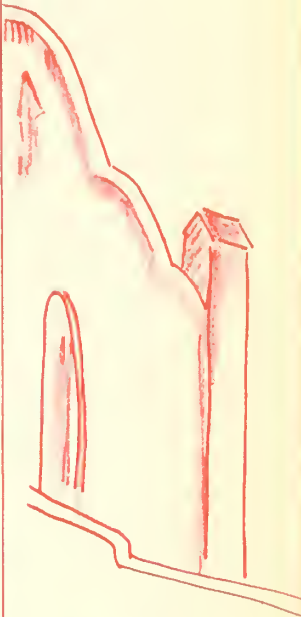
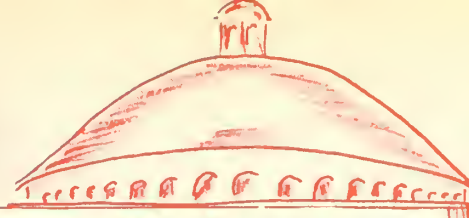
MARION REID  
Waycross, Georgia



ESTELLE RICKS  
Reynolds, Georgia



MARY AGNES ROANE  
Savannah, Georgia



W. ROBERTS  
H. LANG





FRESHMEN



DORIS ROWLAND  
Wrightsville, Georgia



MATTIE ELIZABETH SCOTT  
Argyle, Georgia



VANELLE SCRUGGS  
Naylor, Georgia



ELIZABETH SIMS  
Thomasville, Georgia



ELLYN SIMPSON  
Blackshear, Georgia



LILLIAN SLOCUMB  
Doerun, Georgia



LA FOREST SMITH  
Valdosta, Georgia



LUCILE SMITH  
Waycross, Georgia



SHELLEY SPARKS  
Fitzgerald, Georgia



IDA LEE STEARMAN  
Savannah, Georgia



HULDA SUMMER  
Cordele, Georgia



DORIS SUMMERLIN  
Pelham, Georgia



DORIS SWINDLE  
Ray City, Georgia



FLORENCE THARP  
Leesburg, Georgia



MARY WALKER THOMAS  
Jesup, Georgia



LORENE THOMAS  
Valdosta, Georgia







HARRIET TISON  
Moultrie, Georgia



ANNE TURNER  
Valdosta, Georgia



MARGARET VARN  
Waycross, Georgia



VIVIAN VINCENT  
Hahira, Georgia



FRANCES VINSON  
Valdosta, Georgia



ELIZABETH WARD  
Waycross, Georgia



CAROLYN WARNELL  
Pembroke, Georgia



MARY WHEELER  
Valdosta, Georgia



FLORENCE WILLIFORD  
Camilla, Georgia



MARTYLE WILLIAMS  
Pavo, Georgia



ELIZABETH WILSON  
Valdosta, Georgia



PEARL WILSON  
Cordele, Georgia



LUCILE WURST  
Ochlochnee, Georgia



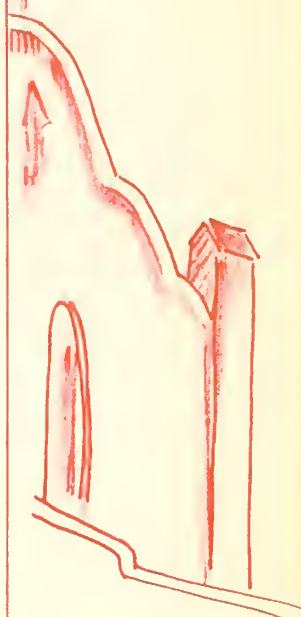
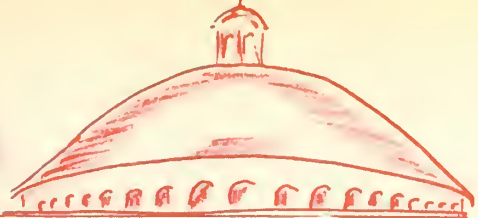
EVELYN WILKINSON  
Leary, Georgia



VIRGINIA WILKINSON  
Leary, Georgia



BEATRICE YOUMANS  
Savannah, Georgia



W. ROBERTS  
L. LANG





*A Student's Dream*



*Track Meet*



*Ready you are Prom*



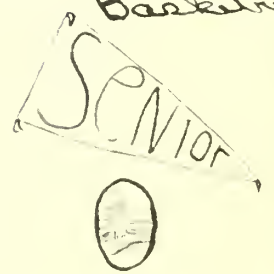
*Basketball Club*

T

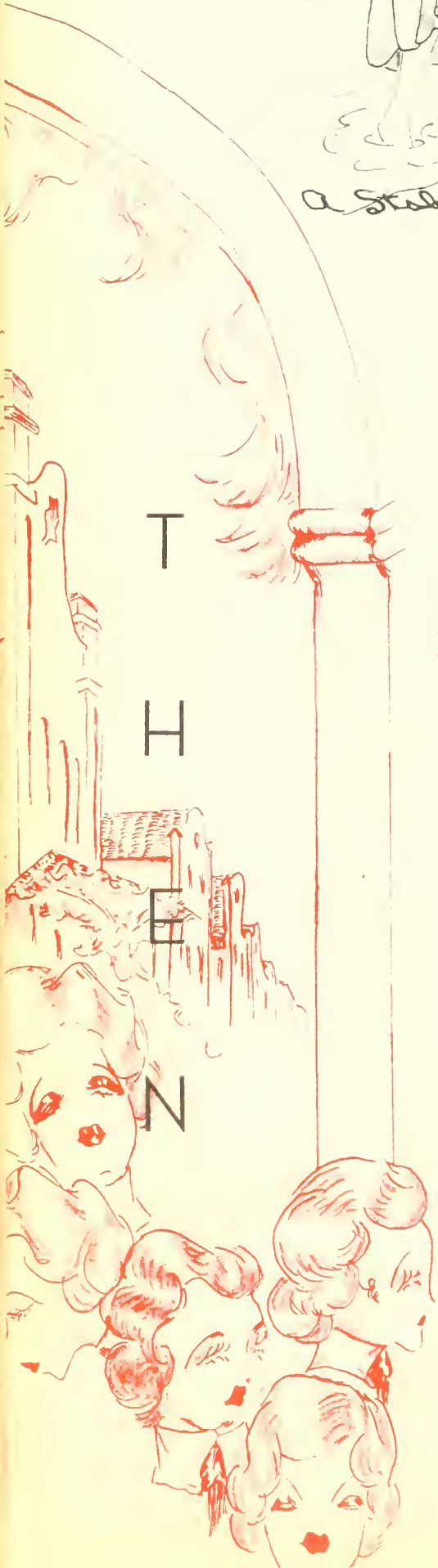
H

E

N



*After Lights!*







Prospecting for ads



Tap Dancing



the Club Concert



Campus Scrap



Pub. Lunch

At Study Hour



Garbutt

Oh, you an idea





Alma Mater honor thee



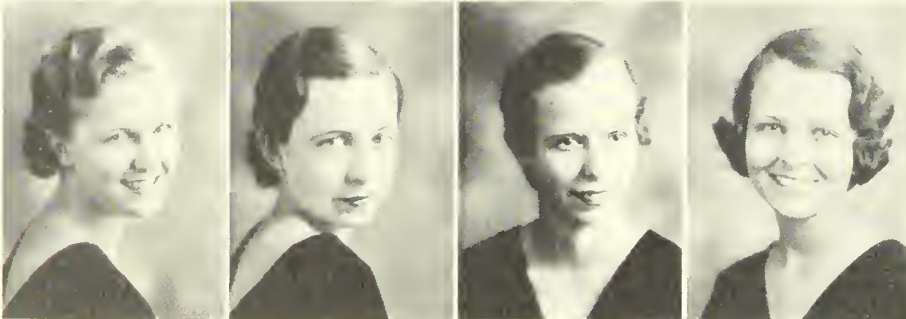
GeDELLE BRABHAM MARGARET KENNEDY ANNIE LOIS GARDNER ANNIE BELLE WEATHERFORD



UNA RITCH JOSEPHINE JOUBERT MARTIELE TURNER SARAH NICHOLSON



DOROTHY OGLETREE MARGARET BISCHOFF VONICE RITCH MILDRED McDONALD



MARGARET ZIPLIES GRACE HOLCOMBE MARY ASKEW GLEN JOHNSON  
MARGARET EASTERLIN RUBY NELL WALL KATHLYN TAYLOR VIRGINIA HUTCHINSON



### PRESIDENTS' CLUB

Because of an increasing realization of the need for co-operation among all organizations the Presidents' Club was organized in the year 1928-'29. This co-operation, as well as the problems of the organizations, the general attitude on the campus, group psychology, and like subjects are discussed at the monthly meetings. This club is composed of the Presidents of all classes and organizations on the campus. Miss Hopper, Dean of Women, acts as faculty adviser.

GeDELLE BRABHAM  
President Student Government Association

MARGARET KENNEDY  
President Young Women's Christian Association

ANNIE LOIS GARDNER  
President of Senior Class

ANNIE BELLE WEATHERFORD  
President of Junior Class

UNA RITCH  
President of Sophomore Class

JOSEPHINE JOUBERT  
President of Freshman Class

MARTIELE TURNER  
President of Phi Kappa Athletic Association

SARAH NICHOLSON  
President of Phi Lambda Athletic Association

DOROTHY OGLETREE  
President of Argonian Literary Society

MARGARET BISCHOFF  
President of Sororian Literary Society

VONICE RITCH  
President of Sock and Buskin Club

MILDRED McDONALD  
President of Glee Club

MARGARET ZIPLIES  
President of Philharmonic Club

GRACE HOLCOMBE  
President of Valdosta Club

MARY ASKEW  
President of Fine Arts Club

GLEN JOHNSON  
President of English Club

MARGARET EASTERLIN  
President of Euclidian Club

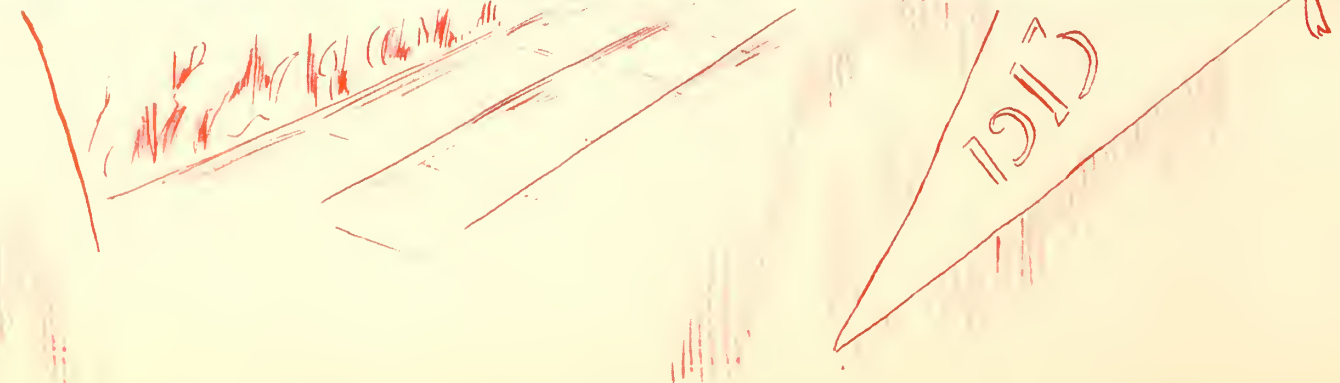
RUBY NELL WALL  
President of Science Club

KATHLYN TAYLOR  
President of French Club

VIRGINIA HUTCHINSON  
President International Relations Club

SNE

Germany declares war







# INTERNATIONAL RELATIONS CLUB



The International Relations Club was organized in 1928 with a small membership. The following year the club was reorganized and has rapidly advanced under the present constitution.

Interesting features of the club are: three eminent speakers sent to the campus by the Carnegie Endowment Fund for International Peace; books sent to the club and placed in the library by the Carnegie Foundation; organized programs presented for both campus and civic organizations; an annual scholarship of fifty dollars given to a senior member of the club; a representative to the annual meetings of the Southeastern Conference of International Relations Club. The president of the local club this year was vice-president of the Conference which met in Hattiesburg, Mississippi.

The club, which has a membership of thirty history majors, has for its faculty adviser, Miss Mildred Price, of the History Department.



VIRGINIA HUTCHINSON



MARY ELIZABETH WEATHERFORD



ESTHER SMITH



BESSIE McRAE

- VIRGINIA HUTCHINSON  
President
- MARY ELIZABETH WEATHERFORD  
Vice-President
- ESTHER SMITH  
Secretary
- BESSIE McRAE  
Treasurer
- MARGARET JOINER  
Member-at-large

### MEMBERS

- LAURA LEE ALLEN
- LOUISE AMBOS
- SARAH BINGHAM
- HARRIETTE BULLARD
- VERDA WILL CARTER
- RACHEL COXWELL
- WINNIE DAVIS
- MARY DEARISO
- CLARA LOUISE DRISKELL
- LEONORA DuFOUR
- RUTH ELLIS
- EMILY FLUKER
- LOUELLE GIDDENS
- MARJORIE GROOVER
- NANNETTE HARGREAVES
- BROUN HUTCHINSON
- VIRGINIA HUTCHINSON
- BESSIE JO JOHNSON
- NELLIE JOHNSON
- NETTIE JOHNSON
- NOELLENE JOHNSON
- MARGARET JOINER
- BESSIE McRAE
- DOROTHY OGLETREE
- VIRGINIA SHEPPARD
- LOIS SIMPSON
- ESTHER SMITH (SYCAMORE)
- EVELYN VANLANDINGHAM
- MARY ELIZABETH WEATHERFORD
- MARGARET WILLIAMS



'THE CHARIOT' DRIVER OFFICIALDOM



MARGARET JOINER



1934

G. S. W. C.



Alma Mater honor



### STUDENT GOVERNMENT ASSOCIATION

The form of government of G. S. W. C. has been, since the opening of the College, student government. At first only a very simple form of government was necessary or possible because of the youth, inexperience, and small number of students. But as the group has grown in number and experience the form and function of the S. G. A. have become more complex.

The purpose of the organization is the promotion of the highest standards of conduct, and the strengthening of the cordial relations between the faculty and the students. Every student of the College is a member of the S. G. A. after having taken a training course and signing the pledge.

The court is the judicial body of the Association which functions in the maintenance of discipline; it is composed of the four class presidents and the president of the S. G. A.

The Association is a member of the Southern Intercollegiate Association of Student Governments, and each year the outgoing and incoming president attend the annual conference of that organization.

The Council composed of members from the student body and faculty has jurisdiction over serious disciplinary problems referred to it from the court and takes the initiative in the enactment, amendment, or repeal of laws pertaining to the conduct of the students.

S. G. A.



LILLA ALEXANDER



MARGARET WILLIAMS



ANNIE LOIS GARDNER



ANNIE BELLE WEATHERFORD



UNA RITCH



JOSEPHINE JOUBERT



GeDELLE BRABHAM



Handwritten red ink scribbles at the bottom left.

1915





# YOUNG WOMAN'S CHRISTIAN ASSOCIATION

Y. W. C. A. CABINET FOR 1933-34

MARGARET KENNEDY . . . . . President  
 HENRY KATE GARDNER . . . . . Vice-President  
 HARRIET BULLARD . . . . . Secretary  
 LOUISE AMBOS . . . . . Treasurer  
 ELEANOR BAILEY . . . . . Chapel Program Chairman  
 JUDY COCHRAN . . . . . Pianist  
 CAROLYN DAVIDSON . . . . . Club House Chairman  
 RUTH ELLIS . . . . . World Fellowship Chairman  
 BETTY McCOLLUM . . . . . Pledges  
 MILDRED McDONALD . . . . . Choir Leader  
 ANNIE MAUDE McLEOD . . . . . Art Chairman  
 DOROTHY OGLETREE . . . . . Sunday School Chairman  
 VIRGINIA TUCK . . . . . Room Chairman  
 MILDRED TURNBULL . . . . . Entertainment Chairman  
 MARY ELIZABETH WEATHERFORD . . . . . Morning Watch Chairman  
 BETTY WARD . . . . . Chairman of Freshman Commission  
 MISSES GILMER, HALL AND DR. PUNKE, Sunday School Teachers



BETTY McCOLLUM



MILDRED McDONALD

## FACULTY ADVISERS

MISS HOPPER                      DR. HAWKS  
 MISS BUSH                        DR. DURRENBERGER

## FRESHMAN COMMISSION

DOROTHY BATES  
 MARTHA GAY  
 ANNIE KATE KNIGHT  
 MARY AGNES ROANE  
 ELIZABETH SIMS  
 SHELLEY SPARKS  
 IDA LEE STEARMAN  
 DORIS SUMMERLIN  
 HARRIETT TISON  
 BETTY WARD  
 FLORENCE WILLIFORD  
 MARY WALKER THOMAS  
 PEARL WILSON  
 ELOISE OGLETREE



FRESHMAN COMMISSION



ANNIE MAUDE McLEOD



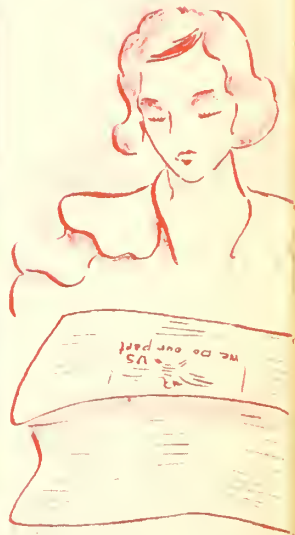
DOROTHY OGLETREE

VIRGINIA TUCK

MILDRED TURNBULL

MARY ELIZABETH WEATHERFORD

BETTY WARD



1934

G. S. U. C.





# THE PINE BRANCH

The first issue of the PINE BRANCH bears the date, 1917. The title pages inform one that the PINE BRANCH was published by the Writers' Club of the South Georgia State Normal College. Each issue had but a few pages with photographs of the college and the college activities included. It was most informal in form and content. A few years later the same magazine was a little larger, a little more sophisticated. The students and not the Writers' Club published the magazine. The Normal School was growing, taking on the proportions of the college of today. By 1926 the PINE BRANCH had grown to its present size.

The history of the PINE BRANCH is the history of the college, in its most palpable form. The first issue of the magazine stated its ideals as being a publication which would reflect the thought and life of the school. Today these objectives hold good. The PINE BRANCH is an organ of expression for the students. In literary form it has become more exacting, but the motives behind it are the same. It is now in the eighteenth volume. What the future of the PINE BRANCH will be is not for us to know, for it is hoped that the ideals of the college will expand the volume and contents of its first voice.

## STAFF

- KATHRYNE CONNELL . . . . . Editor-in-Chief
- LENORA DUFOUR . . . . . Assistant Editor
- LOUISE AMBOS . . . . . Editor of Locals
- MARGARET ZIPLIES . . . . . Argonian Literary Society Editor
- JEANNETTE SCHULMAN . . . . . Sororian Literary Society Editor
- PATSY SPARKS . . . . . Phi Kappa Athletic Association Editor
- VIRGINIA TUCK . . . . . Phi Lambda Athletic Association Editor
- DORIS YOUNG . . . . . Departmental Club Editor
- RUTH ELLIS . . . . . Y. W. C. A. Editor
- ELIZABETH LARISEY . . . . . Critical Tips Editor
- CAROLYN DAVIDSON . . . . . Business Manager
- LOIS DALEY . . . . . Assistant Business Manager
- EMILY FLUKER . . . . . Advertising Manager
- MILDRED TURNBULL . . . . . Assistant Advertising Manager
- WINNIE DAVIS . . . . . Art Editor
- CLARE LAWSON . . . . . Head of Mailing Department
- CLARA DAVIS ADAMS . . . . . Assistant in Mailing Department
- DOROTHY HESTER . . . . . Assistant in Mailing Department



KATHRYNE CONNELL



LENORA DUFOUR



LOUISE AMBOS



MARGARET ZIPLIES



JEANNETTE SCHULMAN



PATSY SPARKS



VIRGINIA TUCK



DORIS YOUNG



RUTH ELLIS



ELIZABETH LARISEY



CAROLYN DAVIDSON



LOIS DALEY



EMILY FLUKER



MILDRED TURNBULL



WINNIE DAVIS



THE EDITORS



LITERARY SATELLITES



CLARE LAWSON



CLARA DAVIS ADAMS



DOROTHY HESTER







## PINE CONE

The first yearbook of the Georgia State Womans College appeared in 1925 under the name of the PINE CONE. This name was chosen after very careful thought and study. What is more characteristic of South Georgia and of our campus than the tall, stately pines; what is more essential to the Pine than its cone? Is it not the final product which represents the growth and development of the tree? Even as the cone is the fruitage of the pine, may the annual always be the true fruitage of this college.

Beginning with the '32 PINE CONE the book departed from the conventional type of engraving to the photo process, and was changed in size and organization.

The Senior Class each year tries to make its yearbook more attractive than the ones preceding it. The annual is entirely a student production, and this class of '34 has given the best of its artistic, literary, and executive ability to the PINE CONE.

Following is a list of all the Editors-in-Chief of the PINE CONE, and the year in which each served. It is an honor roll of achievement. Three books have won All-American honor in the National Scholastic Press Association.

Eppie Roberson '25	Louise Forbes '30
Martha Youngblood '26	Roselle Hatcher '31
Christine Meadows '27	Virginia Carswell '32
Estha Freeman '28	Emeliza Swain '33
Mildred Larsen '29	Marjorie Sessions '34

Faculty Adviser—Miss Gertrude Gilmer

### STAFF

MARJORIE SESSIONS	Editor-in-Chief
LILLA ALEXANDER	Business Manager
MARGARET BISCHOFF	Literary Editor
KATHRYN MOORE	Advertising Manager
VIRGINIA HUTCHINSON	Assistant Advertising Manager
MARGARET EASTERLIN	Snapshot Editor
ANNIE LOIS GARDNER	Snapshot Editor
BESSIE McRAE	Activities Editor
ADELAIDE SPENCER	Activities Editor

### ART COMMITTEE

ANNIE MAUDE McLEOD	WINONA PARRISH
MARY ASKEW	WILLENE ROBERTS
NELLIE MAY GANNON	WINNIE DAVIS
ANNE TURNER	FRANCES GARBUTT
LINELLE LANG	LYALL TEMPLE

### LITERARY ASSISTANTS

GeDELLE BRABHAM	KATHRYNE CONNELL
-----------------	------------------

### TYPIST

MARTIELE TURNER

MARGE—  
THE EDITOR



LIL—THE  
FINANCIER



SNAPPERS  
UNAWARE



AD GETTERS



MARJORIE SESSIONS



LILLA ALEXANDER



MARGARET BISCHOFF



KATHRYN MOORE



VIRGINIA HUTCHINSON



MARGARET EASTERLIN



ANNIE LOIS GARDNER



BESSIE McRAE



1934

G. S. W. C.





*Alma Mater we honor thee*



MARTIELE TURNER



MILDRED TURNBULL

### PHI KAPPA AND PHI LAMBDA ATHLETIC ASSOCIATIONS

Inter-class sports afforded competition in athletics up until the year 1924. Very little emphasis was placed on athletics, basket-ball being the only game played. To the winning class a loving cup was awarded. The first game was played on Thanksgiving Day and the classes participated in a Field Day program of which the main event was a track meet.

In 1924 the twin athletic associations, Phi Kappa and Phi Lambda were organized. They stood for the highest ideals of good sportsmanship and fellowship as well as for friendly competition which is the purpose of the Associations today. A loving cup was awarded the Association winning the greatest number of points for the year.

Since 1928 the possession of the Athletic Honor Plaque has been the stimulus for competition in archery, riflery, baseball, tennis, golf, basket-ball, American ball, soccer, and campus games.

Purple and white versus red and white are the respective colors of the Phi Lambdas and Phi Kappas. They are well represented when individual awards are given at the annual Athletic party. The honors in order of importance range from numerals, letters, loving cup, and individual name on Honor Plaque.



RUBY NELL WALL

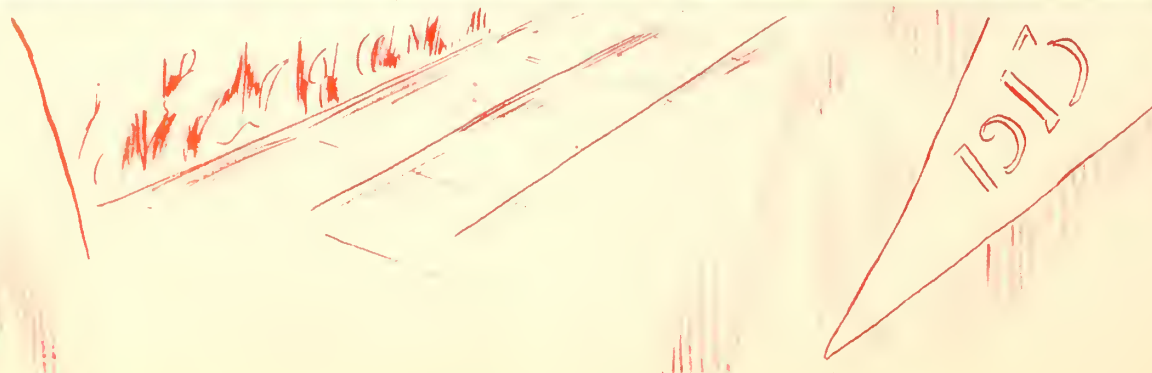


JOSEPHINE DANIEL

FIELD DAY



*SNE*





## PHI KAPPA AND PHI LAMBDA ATHLETIC ASSOCIATIONS

The Athletic Council consisting of the officials of both organizations meets informally each week, and at dinner in the House-in-the-Woods once a month, to discuss the problems and work out plans for the Associations.

The Lambdas and Kappas entertained the delegates of the G. A. A. C. W., of which organization they are members, at G. S. W. C. in the spring of 1934.

Phi Kappa  
**MARTIELE TURNER**  
 President

**MILDRED TURNBULL**  
 Vice-President

**RUBY NELL WALL**  
 Secretary-Treasurer

**JOSEPHINE DANIEL**  
 Recorder of Points

Phi Lambda  
**SARAH NICHOLSON**  
 President

**ANNIE BELLE WEATHERFORD**  
 Vice-President

**VIRGINIA TUCK**  
 Secretary-Treasurer

**CLARE LAWSON**  
 Recorder of Points



SARAH NICHOLSON



ANNIE BELLE WEATHERFORD



VIRGINIA TUCK



CLARE LAWSON

FIELD DAY







# KAPPA

AMERICAN BALL—G. Brabham, M. Joiner, M. Turner, L. Odom, M. Turnbull, M. Hall, A. Turner, J. Joubert, J. Daniel, J. Langdale.



BASKET-BALL—M. Pitts, M. Varn, M. Turner, D. Swindle, M. Register, E. Smith, M. Clower.



VOLLEY BALL—M. Ogles, P. Olliff, M. E. Weatherford, M. Gay, E. Kelley, S. Bingham, R. Ellis, B. Johnson, M. Bennett, M. McCall, F. Oplinger, E. Ogletree.



KAPPA PRESIDENT

# PHI KAPPA



GLEN IN ACTION



SOCCER—L. Odom, G. Johnson, L. Allen, G. Quinker, D. Ogletree, S. Mayo, C. West, D. Summerlin, R. N. Wall, J. Daniel, A. Turner.



FIST BALL—M. Ogles, C. Davidson, R. N. Wall, M. E. Weatherford, P. Olliff, M. B. Kennedy, V. Moran, N. Allen.



KAPPA SPIRIT







AMERICAN BALL—U. Ritch, H. K. Gardner, E. Smith, L. DuFour, R. Harrison, M. Gibbs, M. Hudson, M. Jones, D. Studstill, I. L. Stearman, E. Roberts.



FIST BALL—S. Morgan, M. Kennedy, M. Glover, S. Nicholson, S. Owens, B. McCollum, L. Driskell, M. Campbell.



SOCCER—S. Nicholson, V. Carter, M. Allen, L. Hammond, C. Lawson, V. Hughes, E. Ricks, F. Fluker, E. Tillman, L. McLeod, E. Roberts.



VOLLEY BALL—R. Hatcher, J. Schulman, B. McCollum, V. Tuck, E. Roberts, E. May, S. Nicholson, C. Lawson.

# PHI LAMBDA



THE BULL'S EYE



CHEER FOR THE LAMBDA



BASKET-BALL — L. Wurst, E. Smith, U. Ritch, M. Reid, A. K. Knight, L. Smith, R. Harrison, M. Jones, D. Studstill, M. Lundy.



LAMBDA TO WIN





## GLEE CLUB



The first record of the Glee Club was in 1914 under the direction of Miss Mary Young. Then the membership of the club was about sixteen, and the main feature was the annual operetta which was sponsored by the club with the aid of some of the talented people in town. From the very first Christmas festival the Glee Club has constituted a most enjoyable part of the program as well as various other programs during the year.

Now the membership has increased to forty-four girls selected by competitive tests as to excellence of voice and ability to read music at sight.

The club entertains at various civic functions in Valdosta as well as at chapel, teas, and dinners on the campus. At the Christmas festival the Glee Club leads the singing from the whimsical folk carols to those of a deeper religious note. One of the most delightful customs is the singing of quaint old English melodies at dawn on the morning that Christmas holidays begin.

The culmination of the club activities is the annual concert presented by the Glee Club each spring. This year the concert was a lovely and colorful affair having as its theme the color tones of music.

MILDRED McDONALD	President
ELOISE ODOM	Vice-President
FRANCES COPELAND	Secretary
ELEANOR JOY MILLER	Treasurer
MARGARET ZIPLIES	Accompanist

### MEMBERS

Front row, left to right: ADELAIDE SPENCER, REBECCA FRYER, DOROTHY OGLETREE, MARGARET ZIPLIES, JOY MILLER, MILDRED McDONALD, ELOISE ODOM, FRANCES COPELAND, JUDY COCHRAN, MARY ELIZABETH WEATHERFORD, ELIZABETH KELLEY. Second row: MARGAREITE McCALL, FLORENCE OPLINGER, PRISCILLA KELLEY, MARY EARNEST FOREMAN, DORIS YOUNG, MARIE BOWER, LOUISE ODOM, ALEXA DALEY, EVELYN MAY, LUCILE MURPHEY, ALISSOR HUDGENS, ANNE ALFORD. Third row: RUTH ELLIS, ELIZABETH SMITH, FLORENCE THARP, LYALL TEMPLE, ETHLYN MASSEY, LUCY HAMMOND, RUBY HARRISON, MARIE MIDDLETON, JESSELYN GRIGGS, LEILA MAE TYSON. Fourth row: LEONORA DUFOUR, VIRGINIA HUGHES, EVELYN TOMMINS, ELOISE OGLETREE, ELIZABETH SIMS, ANNETTE PHILLIPS, PEARL WILSON, ELEANOR BAILEY, GERALDINE ARRINGTON, AND MARGARET CARTER.



MILDRED McDONALD



ELOISE ODOM



FRANCES COPELAND



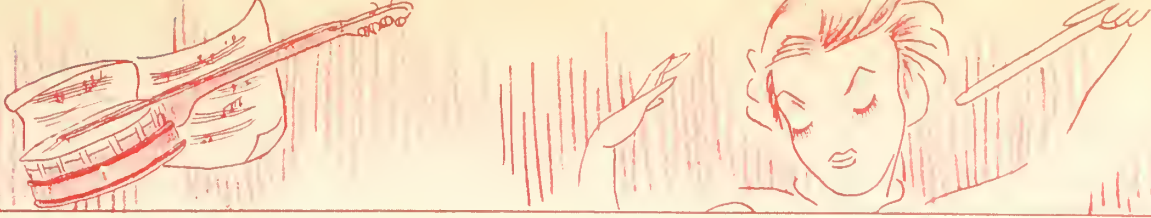
ELEANOR JOY MILLER



MARGARET ZIPLIES







## PHILHARMONIC CLUB



The Philharmonic Club was first organized in 1920 to fulfil the need of the music lovers on the campus to have programs where the best type of music could be enjoyed and where the music students could be given more contact with the masters.

Since then the Club has increased its membership, and the programs have been organized with a definite plan of study. This has added much to their interest as well as to their educational value.

In addition to its worthwhile programs it creates a distinctly social atmosphere in the musical life of the college by giving parties, teas, and programs during the year.

The subject for study this year was "How Music Grew." It was a history of music through the ages, and at each meeting one period of its growth was discussed. It was particularly well organized and made a fascinating study.

MARGARET ZIPLIES . . . . . President  
 ANNIE LOIS GARDNER . . . . . Vice-President  
 JOY MILLER . . . . . Secretary-Treasurer

### MEMBERS

ANNE ALFORD  
 JEWEL BUSSELL  
 FRANCES BINGHAM  
 JUDY COCHRAN  
 INEZ COOK  
 REBECCA FRYER  
 MARY EARNEST FOREMAN  
 ANNIE LOIS GARDNER  
 ALLISSON HUDGENS  
 VIRGINIA HUDSON  
 VIRGINIA INGRAM  
 RUTH JONES  
 MARTIEL LUNDY  
 ELIZABETH LARISEY  
 ETHLYN MASSEY

MARIE MIDDLETON  
 BETTY McCOLLUM  
 MILDRED McDONALD  
 JOY MILLER  
 ELOISE ODOM  
 FLORENCE OPLINGER  
 ANNETTE PHILLIPS  
 DORIS ROWLAND  
 ELIZABETH SIMS  
 SHELLEY SPARKS  
 VIRGINIA TUCK  
 FLORENCE THARP  
 ANNIE BELLE WEATHERFORD  
 MARGARET ZIPLIES



MARGARET ZIPLIES



ANNIE LOIS GARDNER

JOY MILLER



WARREN—CONCERTS AND TRIPS



MUSIC LOVERS



Garbutt





*Alma Mater  
thee  
honor*

### VALDOSTA CLUB



GRACE HOLCOMBE

An organization of the town and county students was begun as the Lowndes County Club, and a few years later became the Valdosta Club. The purpose of the organization is to unite the day students into an effective campus group, to foster a feeling of kinship between boarding and day students, to establish the true spirit of the college among the day students, and to organize the group that it may be a means of interpreting the activities of the college to the town.



JESELYN MOSELEY

The social life of the College is emphasized by the Valdosta Club. It sponsors annually an entertainment for the Senior class of the Valdosta High School.

- GRACE HOLCOMBE . . . . . President
- JESELYN MOSELEY . . . . . Vice-President
- DORIS YOUNG . . . . . Secretary
- FRANCES GARBUTT . . . . . Treasurer
- MISS HOPPER . . . . . Adviser



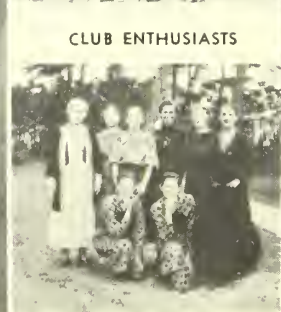
DORIS YOUNG



FRANCES GARBUTT



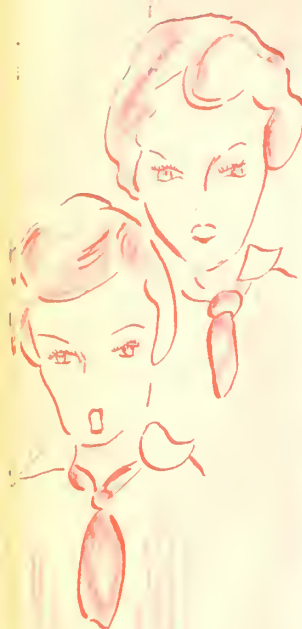
FRANCES, GRACE, AND JESELYN



CLUB ENTHUSIASTS



MISS HOPPER—Adviser



*SNC*



*Handwritten notes and scribbles at the bottom left.*

*1915*



# ENTRE NOUS



Entre Nous has not yet celebrated its first birthday, being organized in the fall of 1933, but it is in a fair way of being one of the outstanding clubs on the campus.

"To promote interest in France and French literature and civilization through reading and conversation" is the purpose of the club. Membership consists of the majors and minors of the two upper classes and the Sophomore majors with high scholastic records.

The members meet informally once a month to converse in French and discuss the works of famous French authors. One of the most delightful features was the French play put on by the club

- KATHLYN TAYLOR . . . . . President
- CAROLYN BRIM . . . . . Vice-President
- NAOMI AUSTRIA . . . . . Secretary-Treasurer

## MEMBERS

- |                       |                       |
|-----------------------|-----------------------|
| MARY ALDERMAN         | ELIZABETH KELLEY      |
| NAOMI AUSTRIA         | BETTY McCOLLUM        |
| ELEANOR BAILEY        | MARY POLHILL          |
| MARGARET BISCHOFF     | OLA LEE POWELL        |
| CAROLYN BRIM          | JEANNETTE SCHULMAN    |
| CLARA LOUISE DRISKELL | MARJORIE SESSIONS     |
| MARY EARNEST FOREMAN  | KATHLYN TAYLOR        |
| LUCY HAMMOND          | MARGARET TOUCHTON     |
| LOUISE HARDY          | HELEN CLAIRE VARNEDOE |
| RUTH JONES            | DORIS YOUNG           |



KATHLYN TAYLOR



CAROLYN BRIM  
NAOMI AUSTRIA

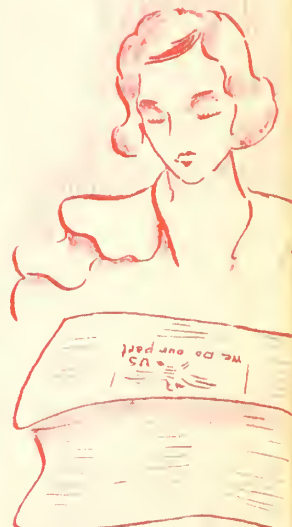
## LES OFFICIERS



## CAUSONS UN PEU



## MADAMOISELLE



1934

G. S. W. C.



## EUCLIDIAN CLUB

For the Greek mathematician Euclid the club was named when it was organized in the spring of 1930. At that time the club consisted of only a small number of students most of whom were underclassmen, there being only two majors in the math department.



The requirements have been raised from a grade of B in three semester hours, to honors in two courses and Juniors and Seniors constitute a majority of the membership.

The idea of the club is to create more interest in mathematics and encourage scholarship by having high qualifications for membership.

The monthly program consists of modern trends in mathematics and current topics.

MARGARET EASTERLIN . . . . .	President
MARTIELE TURNER . . . . .	Vice-President
MARY GLOVER . . . . .	Secretary-Treasurer

### MEMBERS

- CLEO BARBER
- GeDELLE BRABHAM
- MARGARET BERRYHILL
- INEZ COOK
- JOSEPHINE DANIEL
- CAROLYN DAVIDSON
- MARGARET EASTERLIN
- LUELLE GIDDENS
- MARY GLOVER
- EDITH HIGHTOWER
- VANELLE KENDALL
- CLARE LAWSON
- KATHRYN MADDOX
- ANNIE MAUDE McLEOD
- JESELYN MOSELEY
- SARAH NICHOLSON
- ELIZABETH TILLMAN
- MILDRED TURNBULL
- MARTIELE TURNER
- RUBY NELL WALL



MARGARET EASTERLIN



MARTIELE TURNER

MARY GLOVER



POWER SERIES



ADVISER HAWKS



MATH MINDS





## THE FINE ARTS CLUB



The present Fine Arts Club developed from an association formed by the Seniors and former graduates, organized for the purpose of coping with teaching problems relating to Art. This need was outgrown, however, and the Fine Arts Club as it is today came into being on March 9, 1924. There were twelve members, two of whom have made decided success in the Art world. The first president, Miss Cleo Mansfield, is on the Art Staff of the Atlanta Constitution, and Miss Mary Small is head of the Art Department of the Statesboro Teachers College.

The aim of the Fine Arts Club is to develop in the student body an appreciation of and interest in various forms of art-expression through exhibits of soap-sculpture, etchings, water colors, posters, etc., as well as to provide for constructive work for girls who have artistic ability. The community at large is invited to the various exhibits, bazaars, and other programs. The leader of this creative work is Miss Frances Carpenter, who has been at the Art Department since its beginning twenty-one years ago.

The project for the year of 1933-34 consists of a study of the history, construction, and the manipulation of puppets, culminating in the production of a puppet-play staged by the group.



MARY ASKEW

MARY ASKEW . . . . .	President
NELLIE MAE GANNON . . . . .	Vice-President
LYALL TEMPLE . . . . .	Secretary-Treasurer

### MEMBERS

MARY ASKEW  
 MARGARET BERRYHILL  
 SARA BINGHAM  
 LILLIAN BRAGG  
 NELLIE MAE GANNON  
 FRANCES GARBUTT  
 JOSEPHINE JOUBERT  
 LINELLE LANG  
 DOROTHY KLUG  
 ANNIE MAUDE McLEOD  
 LUCILE MURPHY  
 WILLENE ROBERTS  
 IDA LEE STEARMAN  
 HULDA SUMMER  
 DORIS SWINDLE  
 LYALL TEMPLE  
 JOYCE TIPTON  
 PEARL WILSON



NELLIE MAE GANNON  
 LYALL TEMPLE

### ARTISTIC TEMPERAMENTS



### ART FOR ART'S SAKE





## SORORIAN LITERARY SOCIETY



MARGARET BISCHOFF



BETTY McCOLLUM

JEANNETTE SCHULMAN



The second year of the College saw the organization of two literary societies whose interest centered about things dramatic. They however were soon discontinued to be reorganized later.



'Way back in 1920 when it was a gala occasion for the girls to wear white middie suits, the Argonian and Sororian Literary Societies were formed to take the place of previously disbanded clubs. They worked successfully and opened the way for departmental clubs, such as art, music, dramatics, and history.

The Sororians have marched steadily forward, and have become strictly literary with a study program in contrast to the spontaneity of early days.

The modern poetry and debaters' forum are now two of the main features of the society, prizes in gold being offered for the winner of the Modern Poetry Readers' Contest and the Inter-Society debate. Modern novels and plays are given emphasis throughout the year. As a fitting culmination of the literary year, a lovely tea is given by the two societies.

- |                              |                |
|------------------------------|----------------|
| MARGARET BISCHOFF . . . . .  | President      |
| ADELAIDE SPENCER . . . . .   | Vice-President |
| BETTY McCOLLUM . . . . .     | Secretary      |
| JEANNETTE SCHULMAN . . . . . | Treasurer      |

BUNNY BISCHOFF



SORORIAN LEADERS



POETRY READERS





# ARGONIAN LITERARY SOCIETY



The Argonian Literary Society, organized in November, 1920, spent the first few years of its existence in reviewing and presenting plays. Soon the Sororians and the Argonians, by establishing the custom of annual debate, introduced the element of competition. Next, in the eventful career of the Society, the Argonians adopted for their aim the study of art in its different phases including music, literature, dancing, and expression. From there the interest moved to poetry, plays, and famous paintings. Following this the Argonians studied the modern tendencies in Southern contemporary literature.

Since then the Argonian Society has traveled along new paths, stopping to admire the works of John Masefield and other modern poetry writers, to listen spellbound to reviews of the plays that have won the Pulitzer prize awards, and to discuss new stars of the stage.

This year the Argonians have continued their modern policy by reviewing current plays, new books, and continuing to have as their goal the desire to learn as much as possible about the vast literary world of today.

- |                     |       |                |
|---------------------|-------|----------------|
| DOROTHY OGLETREE    | ..... | President      |
| GERALDINE ARRINGTON | ..... | Vice-President |
| RUTH ELLIS          | ..... | Secretary      |
| ELOISE ODOM         | ..... | Treasurer      |



DOROTHY OGLETREE



GERALDINE ARRINGTON

ELOISE ODOM

RUTH ELLIS

## POETRY READERS



## SOCIETY OFFICERS





## THE SCIENCE CLUB

The first Science Club was organized in 1918. The club was conducted on a basis of mutual study and investigation. The program consisted of reports and round-table discussions of the various planets and constellations.

The Science Club was reorganized in 1931 and was called the Natural History Club. The members were drawn from the Biology majors and minors of the Georgia State Womans College and Emory Jr. College. One president for the whole club was elected at first but it was soon found that this did not work successfully, and the club divided into two groups with a president for each group.

The Science Club in 1933 was organized to take the place of the Natural History Club, so that both Chemistry and Biology students might be included in the club. Any student interested in either might become a member. For special research work a group of majors and minors from each department was organized.

The Science Club in 1933-34 is open only to Juniors and Seniors of the Biology and Chemistry Departments. No regular formal meetings are held, but the two groups meet once or twice each week for special research work.

RUBY NELL WALL . . . . .	President
MARY GLOVER . . . . .	Vice-President
VERDA WILL CARTER . . . . .	Secretary
GRACE LAHEY . . . . .	Treasurer



RUBY NELL WALL



MARY GLOVER  
GRACE LAHEY

VERDA WILL CARTER



### MEMBERS

LOUISE AMBOS  
EMMA AMBOS  
HELEN MOODY CARTER  
VERDA WILL CARTER  
RUTH ELLIS  
MARY GLOVER  
MARGARET KENNEDY  
VIRGINIA KIRKLAND  
GRACE LAHEY  
CLARE LAWSON  
HAZEL McBANE

KATHRYN MOORE  
SARAH NICHOLSON  
DOROTHY OGLETREE  
WINONA PARRISH  
HULDA SUMMER  
MARTIELE TURNER  
RUBY NELL WALL  
DOROTHY WALLS  
ANNIE BELLE WEATHERFORD  
MARGARET ZIPLIES

### YOUNG SCIENTISTS



### SCIENTIFIC GUIDES



### RUBY AND BILL





## ENGLISH CLUB

A comparatively new organization is the English Club which began in 1932. It is an organization devoted to the study of literature, past and present. The membership consists of English majors whose scholarship is creditable. Constitutionally the membership may not exceed twenty-five and exclusive to the first two collegiate years.

Instrumental in securing speakers and persons of note for its programs, the Club this year was honored by the presence of Georgia's young novelist, Caroline Miller, for the first program. The student body and town friends were invited to hear Mrs. Miller's delightful talk. It is also customary for the English Club to entertain at tea.

One might sum up the purpose of such an organization thus: a club where there is opportunity provided to discuss and inform oneself concerning things of a literary nature which limited class periods make impossible.

GLEN JOHNSON . . . . . President  
 KATHRYNE CONNELL . . . . . Vice-President  
 DOROTHY WALLS . . . . . Secretary-Treasurer



GLEN JOHNSON



KATHRYNE CONNELL  
 DOROTHY WALLS

### MEMBERS

- |                     |                   |
|---------------------|-------------------|
| LILLA ALEXANDER     | MARTHA JACKSON    |
| GERALDINE ARRINGTON | GLEN JOHNSON      |
| ELEANOR BAILEY      | VIRGINIA KIRKLAND |
| EDMONIA BECK        | ELIZABETH LARISEY |
| MARGARET BISCHOFF   | KATHRYN MOORE     |
| JEWEL BUSSELL       | ESTELLE ROBERTS   |
| JUDY COCHRAN        | ESTHER SMITH      |
| KATHRYNE CONNELL    | ADELAIDE SPENCER  |
| MRS. J. L. HARRIS   | MARGARET TOUCHTON |
| GRACE HOLCOMBE      | DOROTHY WALLS     |
| ALISSOR HUDGENS     |                   |

KATHRYNE, DOROTHY AND GLEN



THE CLUB



MISS GILMER



Gannon



## THE ALUMNAE ASSOCIATION

It was during the stirring time of commencement of the war-year, 1917, that the Alumnae Association was organized. Clyde Purcell was elected president. With this capable president and a membership of thirty-one, the Alumnae Association began its career.

The worthwhile purpose of the association, to keep the former students of the college in close contact with the college activities and with each other, was actively carried out by the presidents who led the organization. 1917-'18, Clyde Purcell; 1918-'19, Morgan Majette; 1919-'21, Marion Groover; 1921-'22, Morgan Majette, President pro tem; 1922-'24, Lottie Jarrell Stump; 1924-'32, Edith Patterson; 1932-'34, Mildred Price.

The students eligible for membership are those who have received a diploma or a degree.

A constitution was adopted in 1933 which focused the ideals and aims of the organization. The membership has grown to over a thousand members.

The future holds for the Alumnae Association the realization of a dream of local chapters organized and scattered throughout the State which will carry its ideals forward.

MILDRED PRICE . . . . . President  
 IVA CHANDLER . . . . . Secretary-Treasurer  
 CAROLINE PARRISH . . . . . Corresponding Secretary  
 FRANCES DEKLE . . . . . Alumnae Editor for PINE BRANCH



MILDRED PRICE



IVA CHANDLER



CAROLINE PARRISH



FRANCES DEKLE





# THE SOCK AND BUSKIN CLUB



The expression and dramatic students organized themselves into a group in the year 1922 and called themselves the Sock and Buskin Club.

In 1925 the club was reorganized under the direction of Miss Louise Sawyer, present director of the dramatic department. It consisted then of ten members selected by try-outs. The club made its first appearance in 1926 at the Strand Theatre in "The Florist Shop," a one-act play given for the benefit of the Y. W. C. A.

Today the Sock and Buskin Club is proud to claim a purpose akin to that of the now prevalent Little Theatre movement; namely that of the creation and maintenance of a National Drama. The membership is limited to thirty girls selected by annual try-outs and for their outstanding work in Play Production Classes.

Numerous performances are given throughout the year, but the main feature is the presentation of a three-act play which is a well-finished and excellent amateur production.

- VONICE RITCH . . . . . President
- ESTELLE ROBERTS . . . . . Vice-President
- ELIZABETH KELLEY . . . . . Secretary-Treasurer

## MEMBERS

- LILLA ALEXANDER
- LILLIAN BRAGG
- CLEO BARBER
- MARY NELL CARLYLE
- RACHEL COXWELL
- LEONORA DuFOUR
- MARGARET EASTERLIN
- HENRY KATE GARDNER
- BROUN HUTCHINSON
- JOSEPHINE JOUBERT
- ANNIE KATE KNIGHT
- DOROTHY KLUG
- PRISCILLA KELLEY
- ELIZABETH KELLEY
- JESSIE LANGDALE

- GRACE LAHEY
- MILDRED McDONALD
- ELOISE ODOM
- WINONA PARRISH
- WILLENE ROBERTS
- VONICE RITCH
- UNA RITCH
- MARY AGNES ROANE
- ESTELLE ROBERTS
- MARJORIE SESSIONS
- EVELYN TOMMINS
- MILDRED TURNBULL
- VANGIE TRIMBLE
- VIRGINIA TUCK
- MARGARET WILLIAMS

VONICE RITCH

ESTELLE ROBERTS

ELIZABETH KELLEY



THE OFFICERS



THE PLAYERS



MISS SAWYER





THE SOCK AND  
BUSKIN CLUB



ITALY vs. JAPAN

"I HEAR YOU ARE TO BE MARRIED AGAIN"



"YOU'LL BE OFF AGAIN BEFORE I KNOW IT"



TO LIFE, MAY ITS MEMORIES BE GENTLE





THE SOCK AND  
BUSKIN CLUB



THE VIRTUOSO OF GAS RANGE—  
OUR NOBLE ARCHIMEDE



ENTER MADAME

A TOAST TO MADAME



WIVES-IN-LAW







# CHRISTMAS FESTIVAL

"Ye Old English Christmas Festival" celebrated the beginning of the first Christmas holidays in the history of the College. The festival has grown deep into the life of the College and has become traditional. The spirit has



RAG DOLLS



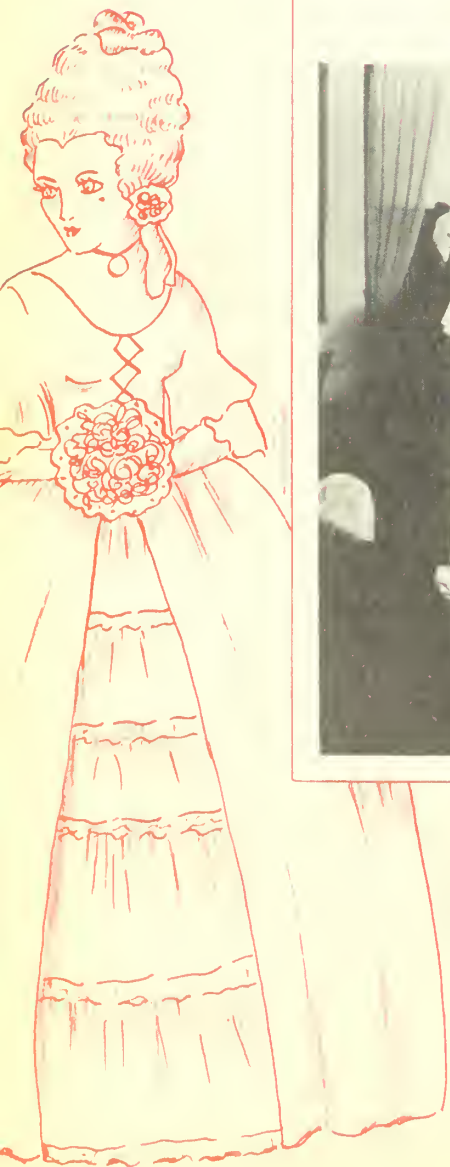
BRUNO, THE BEAR

DANCING THE MINUET

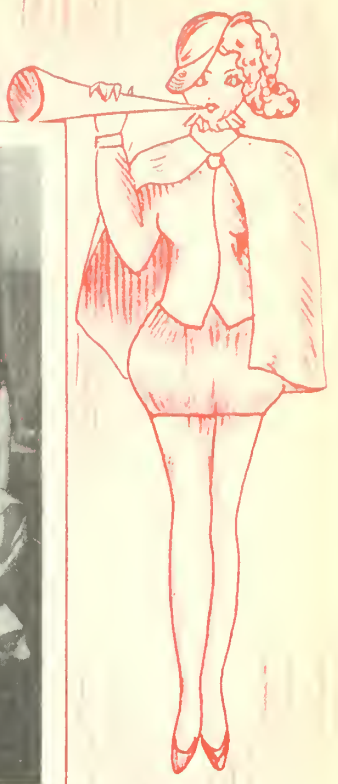


remained unchanged, and the songs are the old familiar carols. Everything hearkens back to the customs of the days with yule logs, boar's head, strolling players, court jesters, and mummers.

The dining room becomes a baronial hall of Queen Elizabeth's time. The whole school is transformed for







# CHRISTMAS FESTIVAL

the evening into the good people of "Merry England" led by the "Lord of Misrule." The evening proceeds from the comic and ludicrous to the quaint and humorous, and then on to the grace and beauty of the stately



YE FOOL'S UNDERLINGS

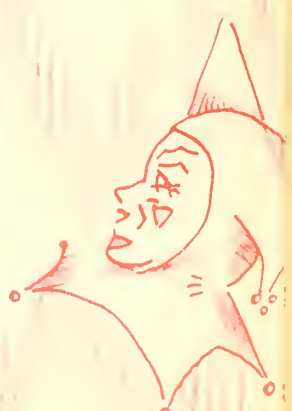


GIVERS OF CHRISTMAS WREATHS

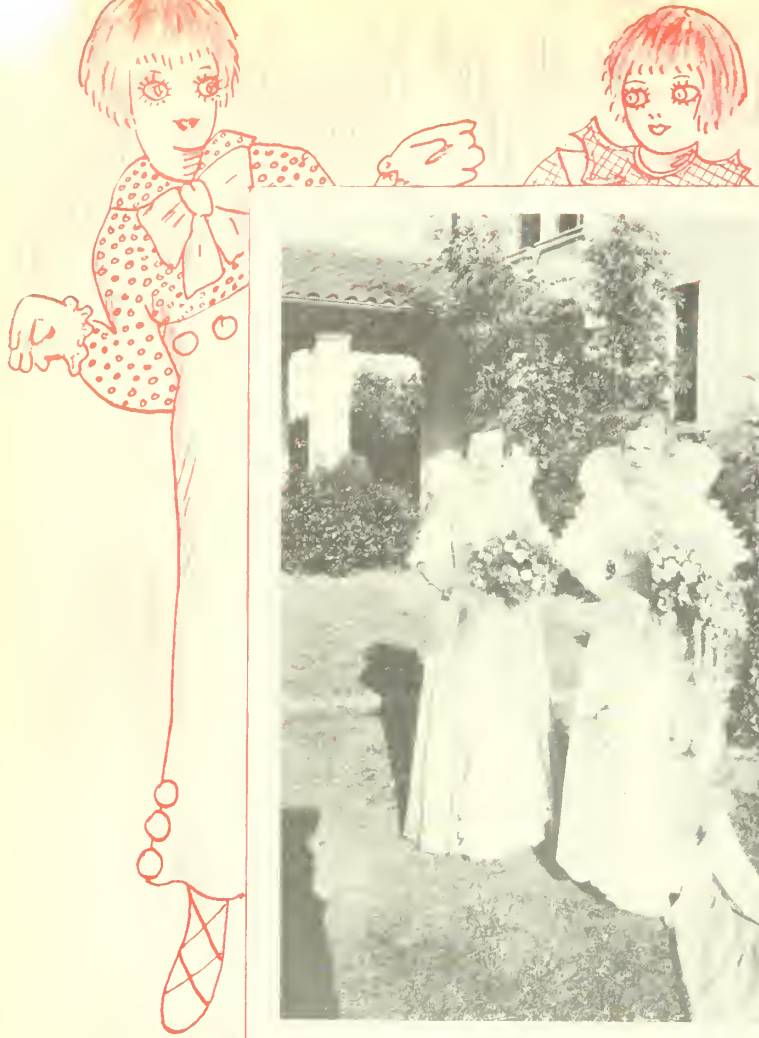
YE LORDS AND LADIES



minuet as danced by "Ye Lords and Ladies of Ye Court." The music passes from folk songs to religious carols, and as the student body, faculty, and guests pass from the hall by candlelight to the Recessional, "Silent Night, Holy Night," there comes to the hearts of the group a new interpretation of the meaning of Christmas.







## MAY FESTIVAL

The lawn in front of Converse Hall was the setting for the first May Day Festival in the spring of 1913. Lovely and simple were the costumes and dancing—the beginning of one of the most treasured traditions of the College.

Though several buildings have since come into being on the campus, the May Day festivities are still given on the green in front of Converse Hall.

As beautiful and sparkling as the day itself is this old English May Day. The May Queen, chosen from the outstanding seniors



QUEEN—MISS MARY VIRGINIA PAULK  
MAID—MISS MYRTICE JOHNSON



QUEEN AND COACH BEARERS

IRISH LASSIES



SPRING MOOD







# MAY FESTIVAL

by popular vote, seated upon a throne gayly decorated with spring flowers and greens, surrounded by the Lords and Ladies of the Royal Court, views the peasantry in their holiday festivities.

To the strains of frivolous music, dainty maidens and strolling players pay homage to their queen with dances, pantomimes, and foolish capers. The Lords and Ladies descend from the throne and dance in a most graceful and dignified manner. The climax of the afternoon is the winding of the vari-colored May poles.



MAY QUEEN—MISS VIRGINIA PAULK

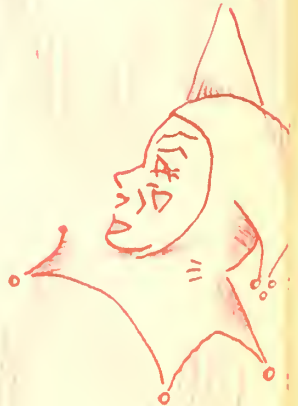
BILLOWS



STROLLING GYPSIES



FOLK DANCERS







MAY FESTIVAL

MAY QUEEN AND COURT

LAST FROLIC ON THE GREEN

HERALDS OF THE QUEEN'S COURT







MAY FESTIVAL

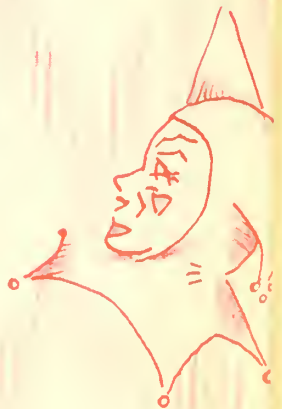


LADIES OF THE COURT



PROLOGUE OF THE SEASONS

A LORD AND LADY OF THE QUEEN'S COURT







## PLAY DAY

Two years ago a Play Day was combined with the traditional May Day. Its success placed it on the calendar of annual events of the College.

The idea is to promote friendly relations between high schools and colleges, and to teach and encourage new and interesting games in the high school.

Students and faculty representatives are invited from some ninety schools throughout the state to meet and participate in games with the students of G. S. W. C.



PICNICKING UNDER THE TREES

WAITING!

TARGET PRACTICE





## PLAY DAY

In the morning the guests are introduced to the newest campus games and old ones are also enjoyed. A spirit of comradery and fair play prevails.

At noon the groups meet in the pines for a picnic luncheon. Songs are sung and speeches of welcome are addressed to the guests. After lunch the guests are entertained by one-act plays, presented by the Sock and Buskin Club, and social dancing in the gymnasium. In the afternoon Play Day merges into the May Day Festival.

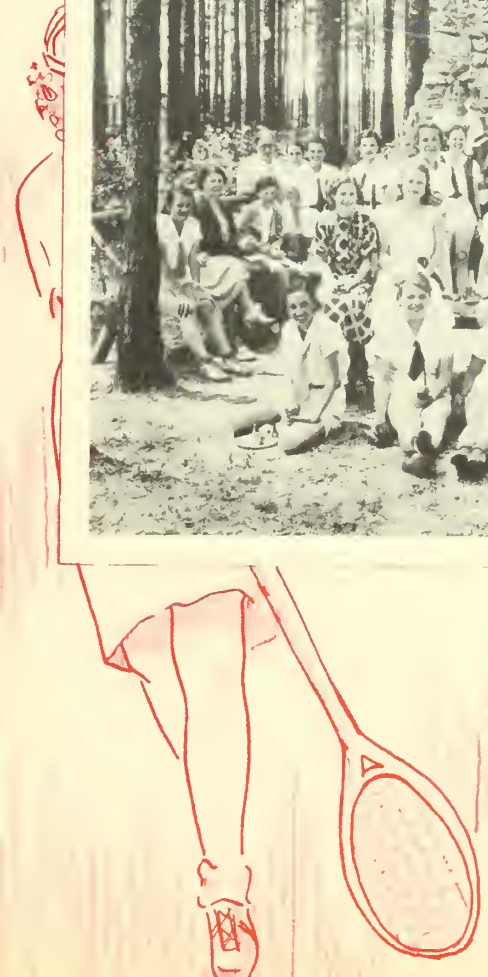
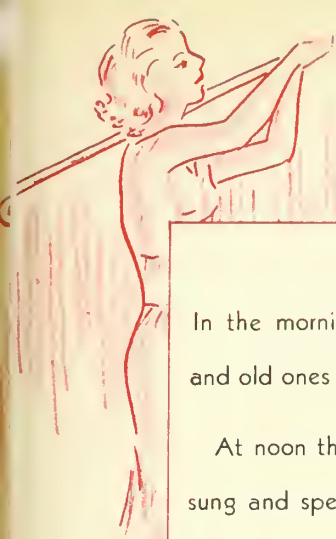


VISITORS AT PLAY DAY



AFTER LUNCH

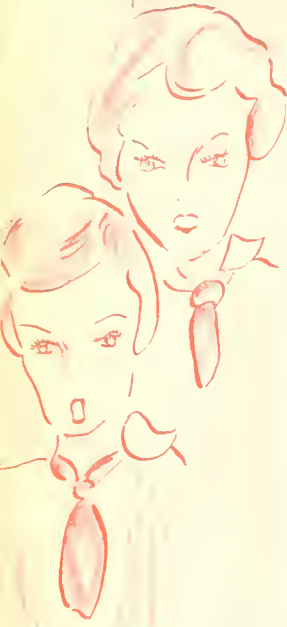
MINIATURE GOLF







Alma Mat... we honor thee



SENIOR PLAYS

SEVEN WOMEN—J. M. Barrie



RIDERS TO THE SEA—Synge

"I FEAR ME YOU HAVE LOST THE PLACE, SWEETHEART"—Millay



"I COULD EAT MY HAT"—Barrie



Germany Declares War



Handwritten notes and scribbles at the bottom left.

1915





SENIOR PLAYS



THE PRINCESS MARRIES THE PAGE—Edna St. Vincent Millay

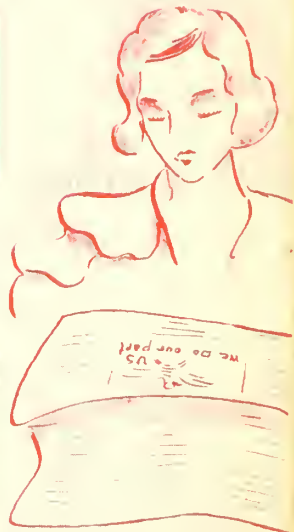


"NO MAN AT ALL CAN BE LIVING FOREVER"—Synge

THE PRINCESS AND THE PAGE



SCENE FROM SEVEN WOMEN—by J. M. Barrie



1934

C. S. W. C.



## THE SUPERLATIVES

The feature section which follows consists of the pictures of the eight most representative girls as selected by the student body according to the ideals which are listed on the opposite page. The girls selected are those who most nearly exemplify in their daily living on the campus the ideals which the student body submitted in a recent survey.


A committee appointed by responsible student officials selected twenty-four girls as candidates for this title of the Representative Girl; and the following eight, whose pictures appear in this section, are those chosen as most nearly attaining these ideals of a G. S. W. C. student.

### ENTIRE LIST OF CANDIDATES

Lilla Alexander	Margaret Kennedy
GeDelle Brabham	Mildred McDonald
Carolyn Brim	Winona Parrish
Judy Cochran	Una Ritch
Josephine Daniel	Jeannette Schulman
Ruth Ellis	Marjorie Sessions
Annie Lois Gardner	Esther Smith (Sycamore)
Henry Kate Gardner	Mildred Turnbull
Grace Holcombe	Martiele Turner
Broun Hutchinson	Annie Belle Weatherford
Virginia Hutchinson	Mary Elizabeth Weatherford
Martha Jackson	Margaret Zipplies







## IDEALS OF G. S. W. C. STUDENTS

1. Cooperation and responsibility in the activities of the school, of the home, of the community, of the nation, and of an international order.
2. Effective command of intellectual powers in order to see life as a whole and more wisely choose an objective.
3. Reverence for the spiritual.
4. Self discipline in physical, mental, and emotional activities.
5. Appreciation of the beautiful and a continuous growth of aesthetic judgment.
6. Maintenance of a courteous, friendly manner.
7. Truth in thought and in behavior.
8. Anticipation and preparation for a dynamic adulthood.







MARTIELE TURNER





HENRY KATE GARDNER





MARJORIE SESSIONS





ANNIE BELLE WEATHERFORD





MARGARET KENNEDY





JOSEPHINE DANIEL





MARGARET ZIPLIES





GeDELLE BRABHAM





JOSEPHINE JOUBERT  
Most Representative

MARY NELL CARLYLE  
Outstanding Day Student



MARGARET VARN  
Most Attractive

FRESHMAN WHO'S WHO

PRISCILLA KELLEY  
Most Popular

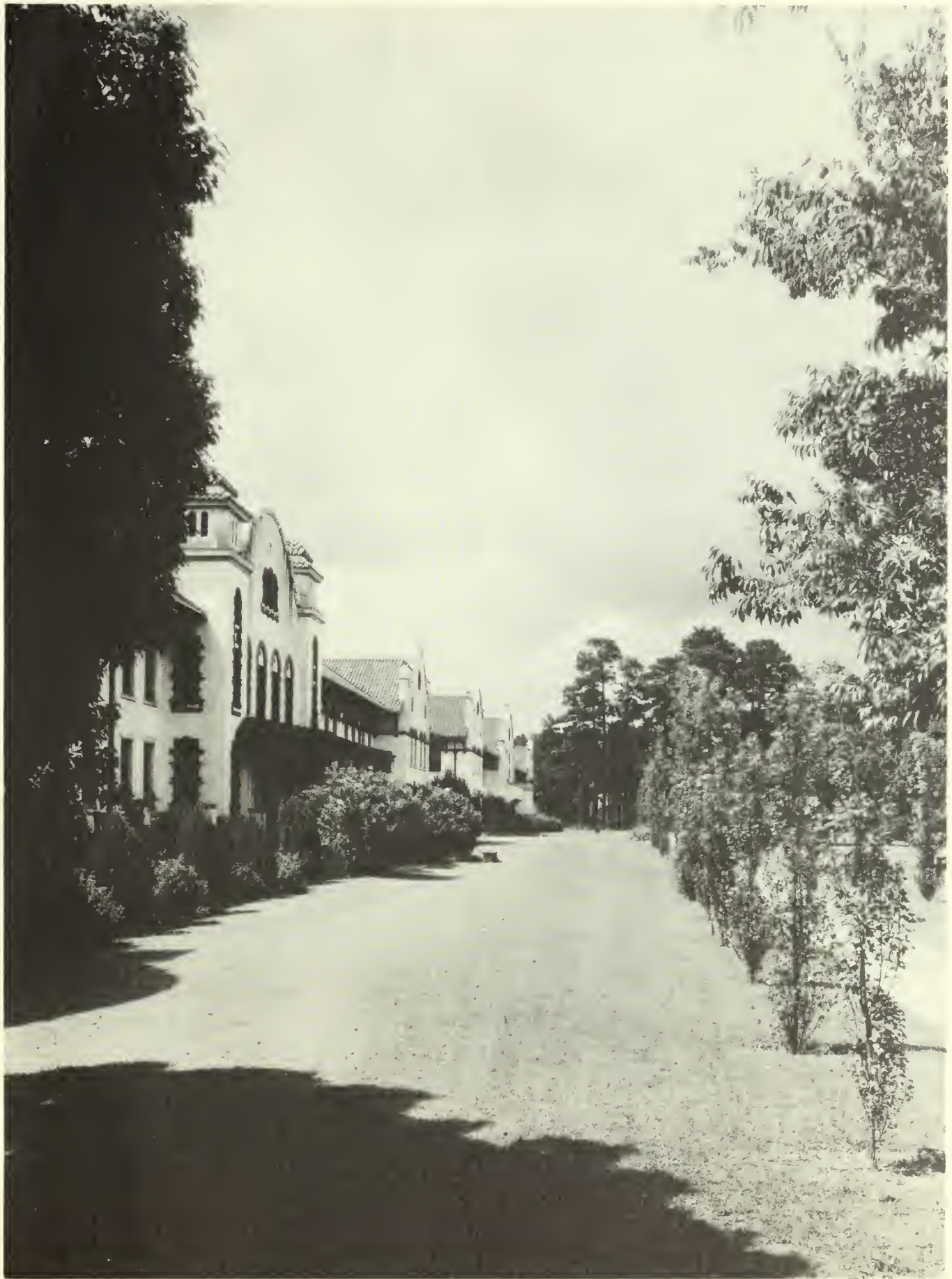


MARION REID  
Most Intellectual

MARGARET HUDSON  
Most Athletic







REPOSE AFTER THE YEAR'S ACTIVITIES





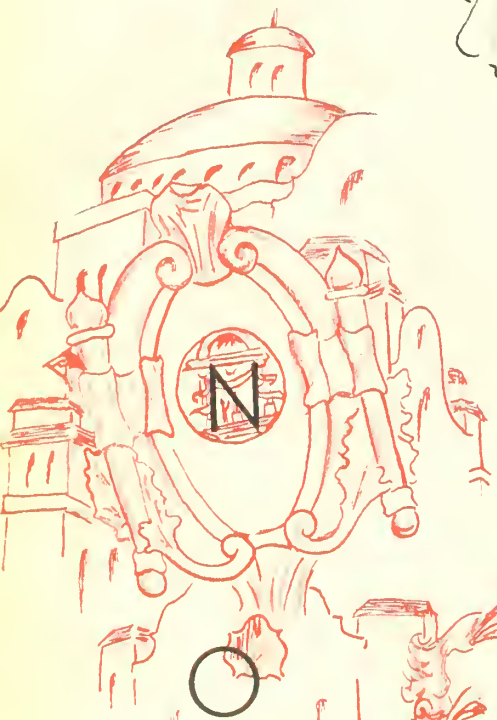
See time!



A look for the boys



June 4th



Georgia Home Coming



Senior Dance







Which role shall it be?



E

N





# PATRONS' PAGE

Bennett's Drug Company

Veran Blackburn

Brookwood Pharmacy

Churchwell's Department Store

Citizens and Southern National Bank

City of Valdosta

Coca-Cola Bottling Company

Daniel Ashley Hotel

First National Bank

Foote & Davies

Foremost Ice Cream

Friedlander's Store

W. T. Grant Company

Georgia Power and Light Company

Georgia State Womans College

Jitney Jungle

S. H. Kress Company

Mathis and Youmans

Paxson's Turner Jones' Store

A. S. Pendleton Company

Pines Camp Court

Ritz Theatre

Southern Stationery and Printing Company

Stump Brothers

Staten's Dairy

Star Laundry

Stewart Candy Company

Superior Baking Company

Thompson and Girardin

Vallotton's Dairy

C. C. Varnedoe and Company

Vinson's Drug Company



# The Georgia State Womans College

The Georgia State Womans College is, by action of the Board of Regents, the liberal arts college for women of the University System of Georgia. It is a standardized institution and is a member of the Association of Georgia Colleges, the Southern Association of Colleges and Secondary Schools, and the Association of American Colleges. All its courses are on the University level for a Bachelor of Arts degree.

It offers thorough courses in Art, Biology, Chemistry, Education, English, including Vocal Expression, Geography, History and Political Science, Economics, Sociology, Foreign Languages, ancient and modern, Mathematics, Music, instrumental and vocal, and Physical Education. Credit for any of these courses will be accepted in any branch of the University System or any standard college.

It has a beautiful plant in a very healthful region, and a climate unsurpassed during the school session. Expenses are extremely moderate, not exceeding \$230.00 a year.

"The policy of the college has long been to offer an educational service so excellent that the wealthiest citizen can not provide a better for his daughter; a service so moderate in cost that the poorest girl, if she has the will, can share its advantages."

For further information, address the Dean of the college, or Jere M. Pound, President.



MATHIS AND YOUNG COMPANY

Pianos - Victrolas - Radios  
EVERYTHING IN MUSIC

STUMP BROTHERS

Paints and Builders' Supplies

Compliments of  
S. H. KRESS AND COMPANY  
5, 10, and 25c Store

See Our New Sport, Street, and Afternoon Dresses

"Never Buy Before You Try"

FRIEDLANDER'S

JITNEY JUNGLE

Saves - Serves - Satisfies

SUPERIOR BAKING COMPANY

Bakers of

MOTHER'S BREAD

BAMBY BREAD

SUPERIOR CAKES

Builds Better Bodies



VERAN BLACKBURN  
PHOTOGRAPHER FOR  
PINE CONE  
1934



College Girls Recommend  
**QUALITY MILK**  
from  
**STATEN'S DAIRY**  
for Health

Compliments of  
**GEORGIA POWER AND LIGHT COMPANY**

**THE CITIZENS AND SOUTHERN NATIONAL BANK**  
Valdosta       '       '       Georgia  
Capital \$5,000,000.00

**C. C. VARNEDOE AND COMPANY**  
"Valdosta's Store Dependable"  
**LADIES' APPAREL AND ACCESSORIES**

**BENNETT'S DRUG STORE**  
The Rexall Store  
Valdosta       '       '       Georgia

Compliments of  
**W. T. GRANT COMPANY**  
1c to \$5.00 Junior Department Store



We are Proud of the  
Georgia State Womans College

• • •

We are glad to take this occasion to say

that the

City of Valdosta

is proud to list among its greatest assets the  
Georgia State Womans College, and we  
hope that Valdosta as a city makes a fa-  
vorable and lasting impression on the minds  
of the young ladies who make up the stu-  
dent body of this great institution.



**PINES CAMP COURT**

The South's Finest Tourist Accommodation  
In the Heart of Valdosta

**VALLOTTON'S DAIRY**

Special Milk for Babies and the College Girl Complexion

Here's to our Good Friends  
The G. S. C. W. Girls

**STAR LAUNDRY**

DRY CLEANERS

RUG CLEANERS

PHONE 54

**STEWART CANDY COMPANY**

Everything in Wholesale Candies and Crackers

Compliments of

**THE RITZ THEATRE**

"Pick of Pictures"

Phone 361

**Southern Stationery and Printing Company**

Wholesale Paper Dealers

Commercial Stationers, Printers, Office Outfitters

Valdosta, Georgia



**BROOKWOOD PHARMACY**

The Community Drug Store

"Where Patronage Is Appreciated"

**PAXSON'S TURNER JONES' STORE**

Our inexpensive footwear reflects the smartest trends in  
fashions for all occasions

**FOREMOST ICE CREAM**

Electro Pure

Compliments of

**HOTEL DANIEL ASHLEY**

Valdosta, Georgia

**VINSON'S DRUG STORE**

"Prescriptions Our Specialty"

Serving Valdosta Over a Quarter of a Century

**CHURCHWELL'S DEPARTMENT STORE**

College Girls' Headquarters

**FIRST NATIONAL BANK**

VALDOSTA · GEORGIA

Resources Over \$2,500,000



SUCCESSFUL ANNUALS  
REQUIRE THE SERVICES  
OF EXPERIENCED AND  
EXPERT CRAFTSMEN

**FOOTE & DAVIES COMPANY**

HAVE THESE SERVICES

*And*—————

*the most necessary components  
of all really fine books including*

A SPECIAL ANNUAL  
SALES AND SERVICE  
ORGANIZATION

CREATIVE DESIGNERS  
AND LAYOUT ARTISTS

ABUNDANT EQUIPMENT  
MODERN AND COMPLETE

PRICES REPRESENTING  
MAXIMUM IN VALUE



*Atlanta  
Georgia*



VALDOSTA COCA-COLA BOTTLING WORKS, INC.

*Coca-Cola*

Valdosta ' ' Georgia

Compliments of  
THE A. S. PENDLETON COMPANY

THOMPSON AND GIRARDIN

Jewelers

Valdosta ' ' Georgia













