



PINE CONE

1935

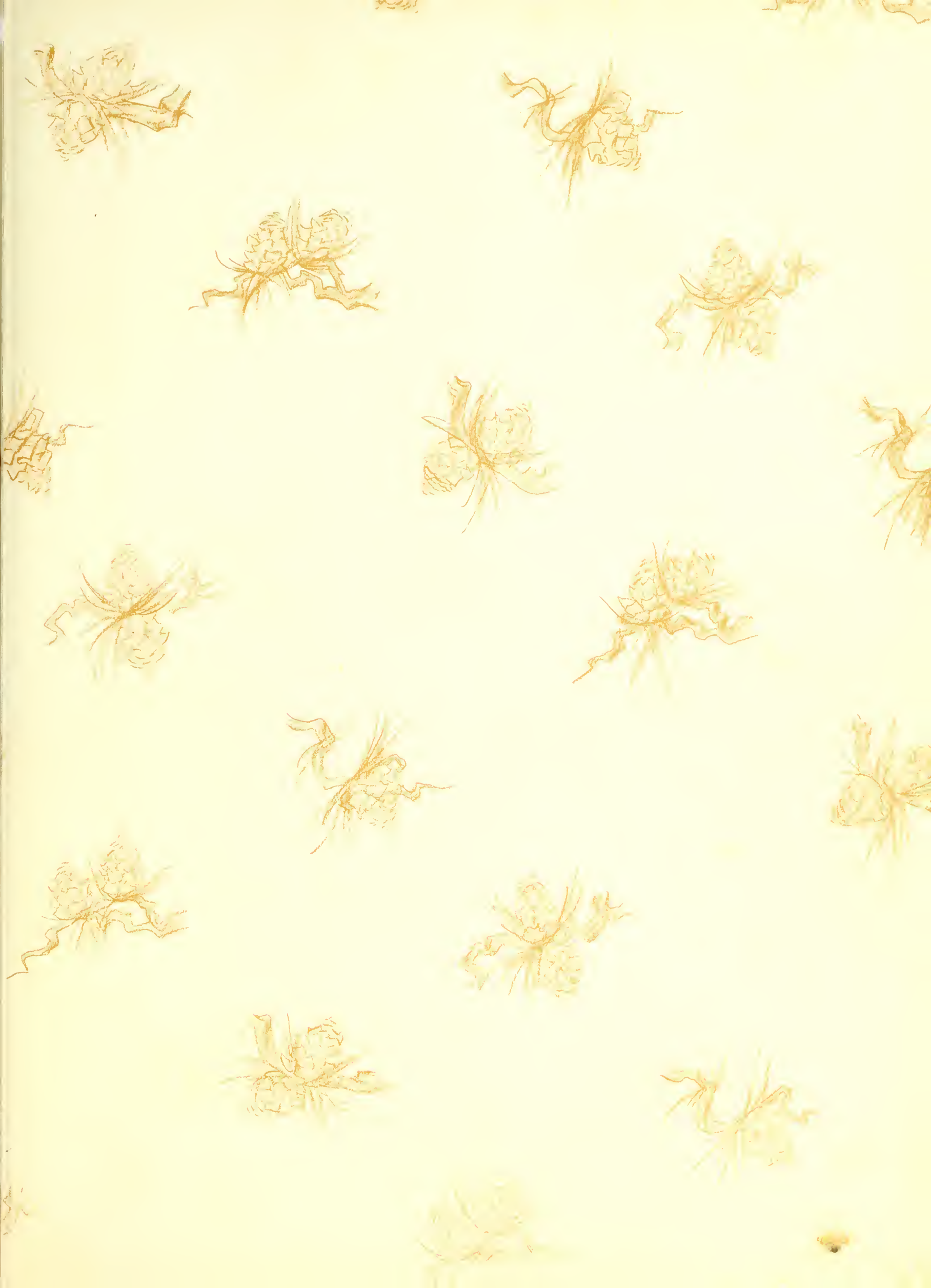




G. S. W. C. Library

compliments of the  
Annual Staff

LIBRARY  
OF THE  
GEORGIA STATE WOMANS COLLEGE  
AT VALDOSTA.





Digitized by the Internet Archive  
in 2014

<https://archive.org/details/pinecone193511geor>





*The Pine Cone*  
1935



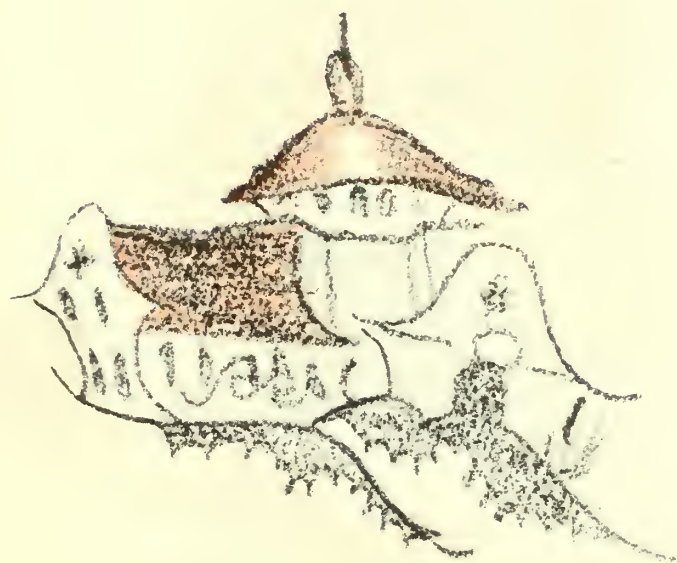


*Four Best Years of My Life*



# *The Pine Cone*

1 9 3 5



VOLUME 11

PRESENTED BY  
THE SENIOR CLASS  
OF THE

*Georgia State Womans College*  
*Valdosta, Georgia*



## The Four Best Years of My Life

Exit from a wonder-land that has been our exclusive kingdom for four glorious and eventful years. With a smiling sigh and a laughing tear we bid farewell to Alma Mater, our very dear and charming Mother Goose, — a collegiate Mother Goose, who with kindest inspiration rules her foster daughters.

So lectures and labs she's led us;  
at quizzes and cuts she's smiled.  
She's given us teas and dances  
when we've been Alma Mater's  
loving daughters. She's nodded  
at friends and frowned at enemies.  
She's guided us for these past

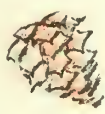




four years.

We, 31-35's, ranged to  
her games and plodded to her  
classes. We've learned to love both  
work and play. We've sung under  
her pine trees her wise little  
rhymes on living. We've lived  
beneath her friendly roof and lis-  
tened to her kind advice.

And now the class of  
31-35, Graduate-Alices, cherish  
this book of memories ghost-  
written by our Mother Goose's  
chosen seniors. The essence of  
our best four years filling the  
pages of our Pine Cone.











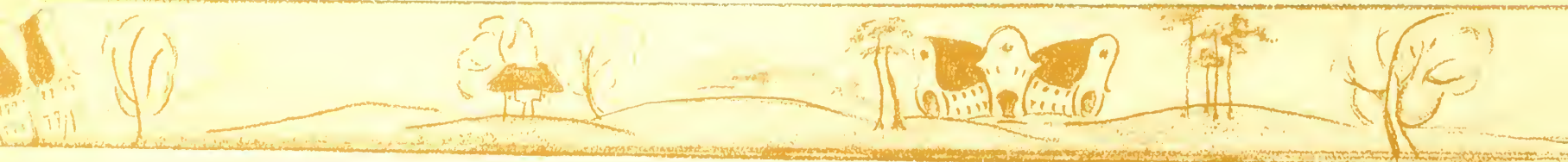
## CAMPUS SCENES

Student, Student,  
Steady and prudent,  
How does your college grow?  
With tall pine trees, and a soft warm breeze,  
And pretty girls all in a row.

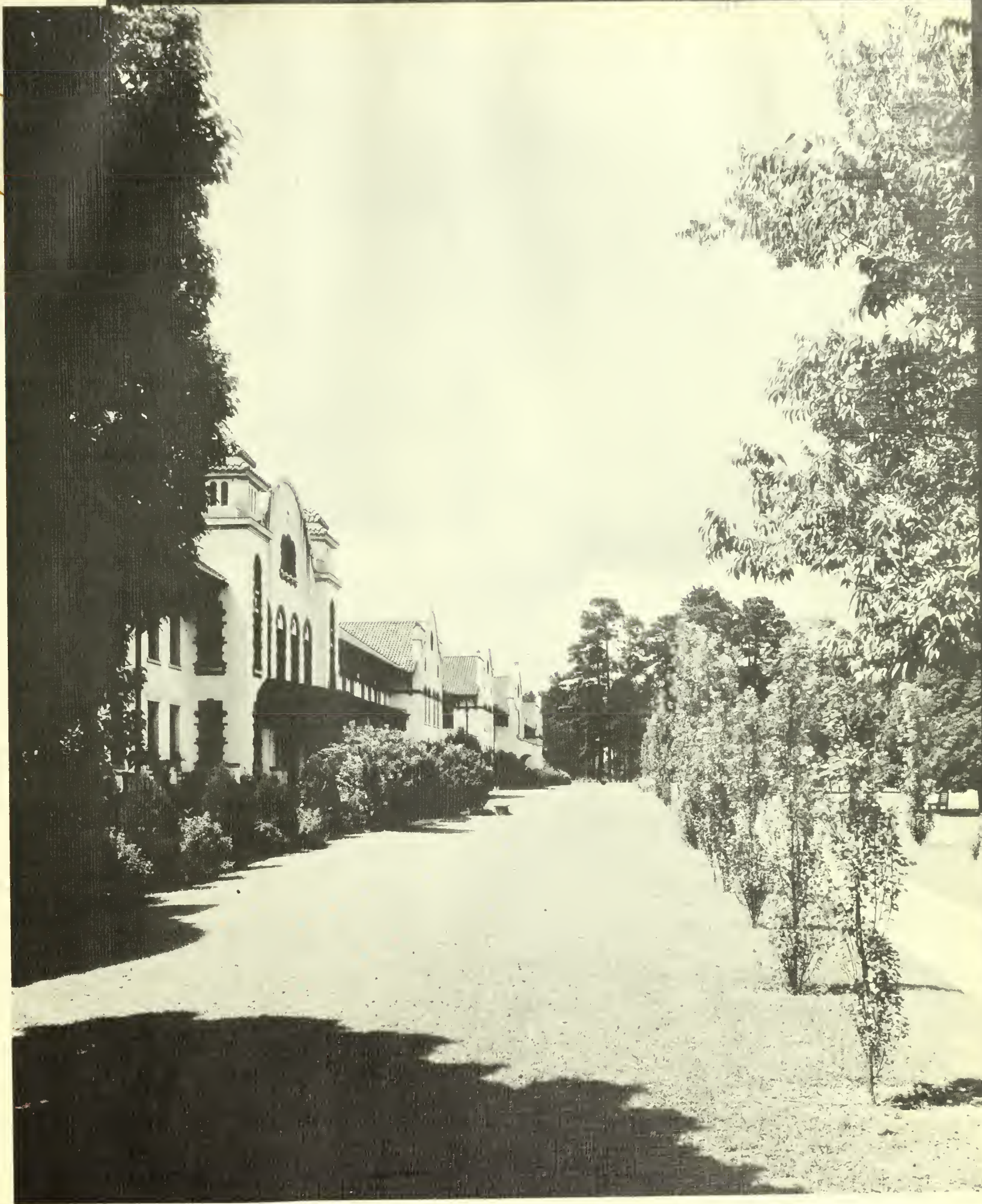




*Entrance to West Hall*







*Dormitory Row*







*Across Campus*







*An Idle Hour in the North Pines*







*At Tea with the Seniors*



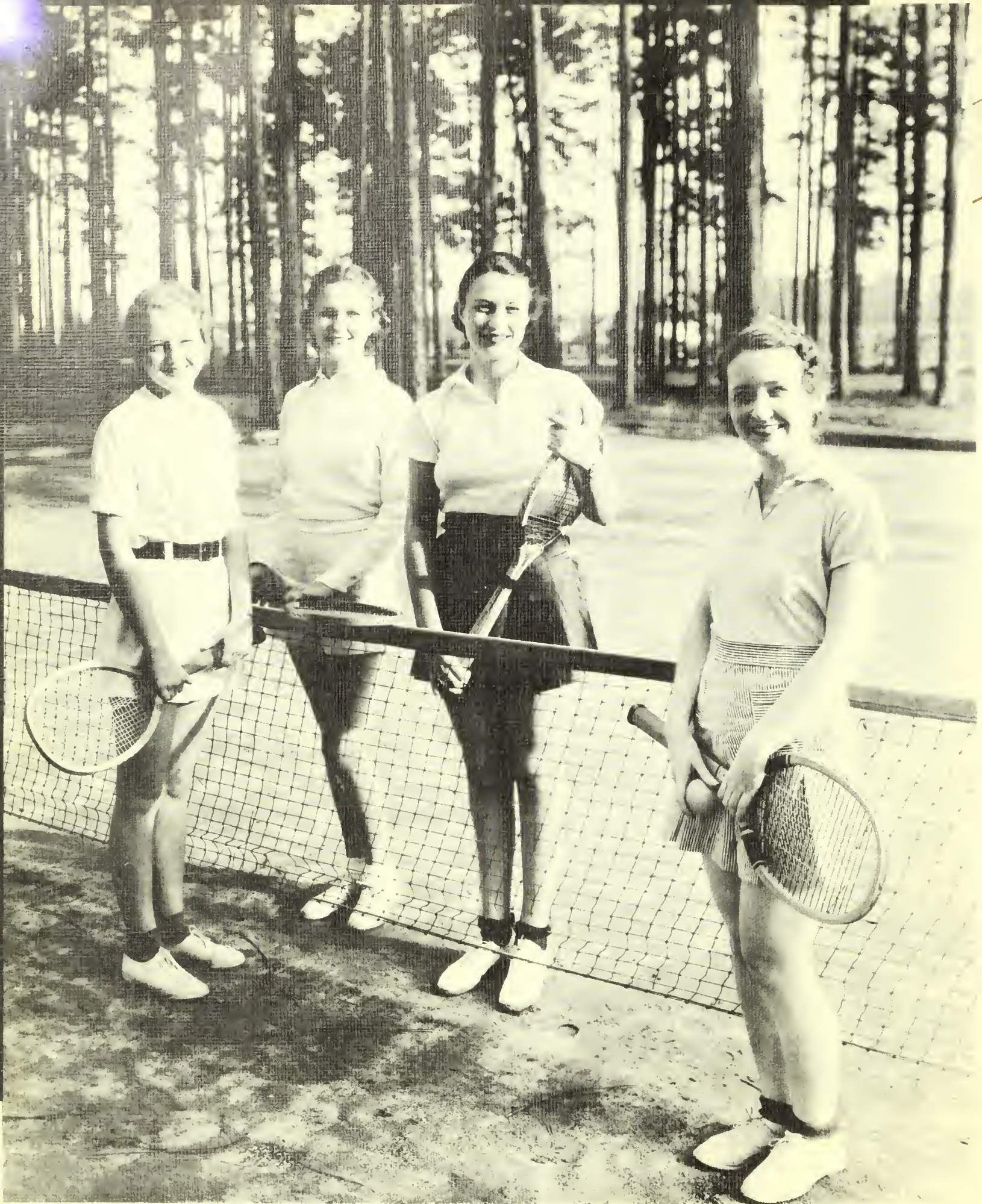




*Before the Tea Dance*



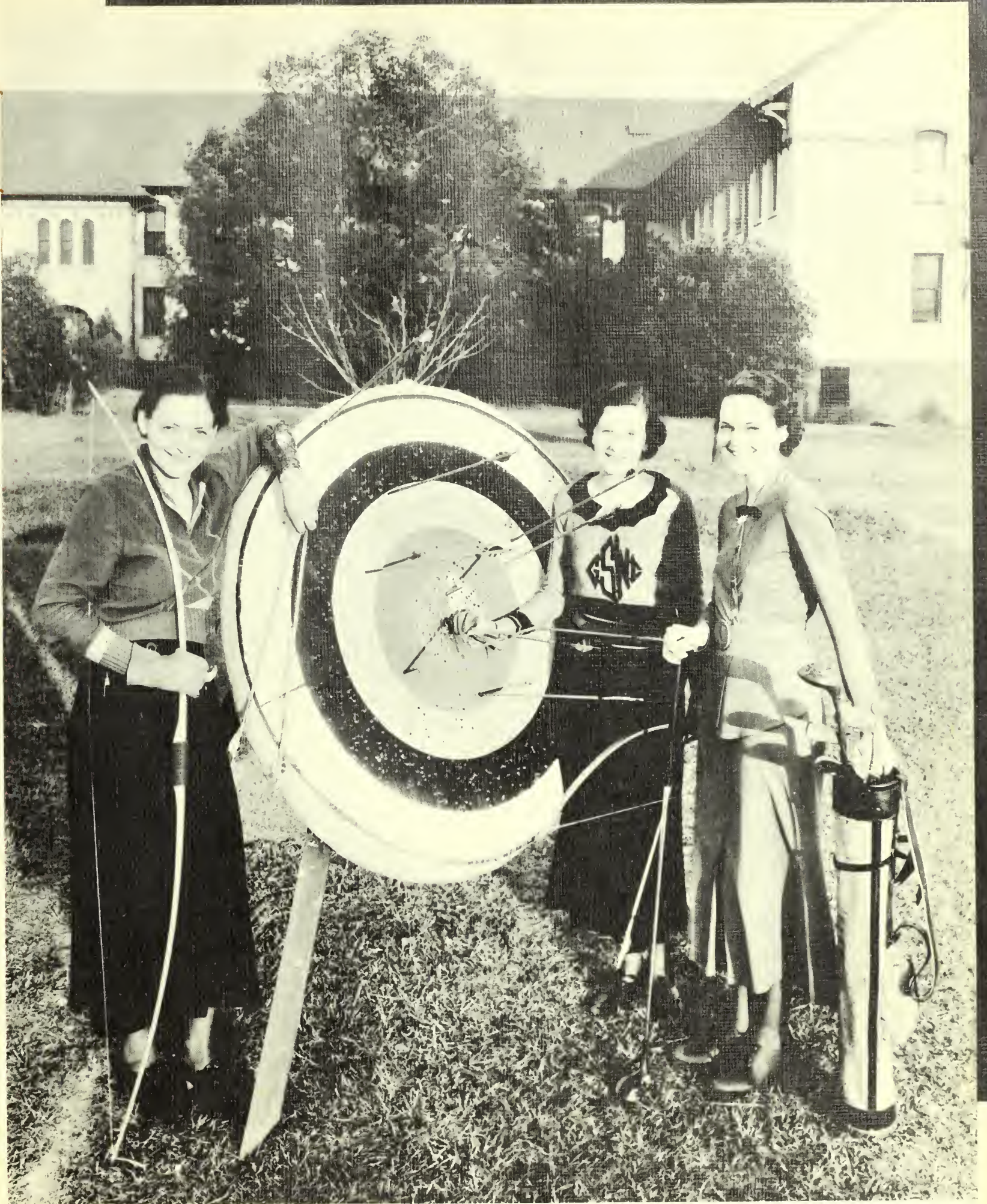




*Love All*



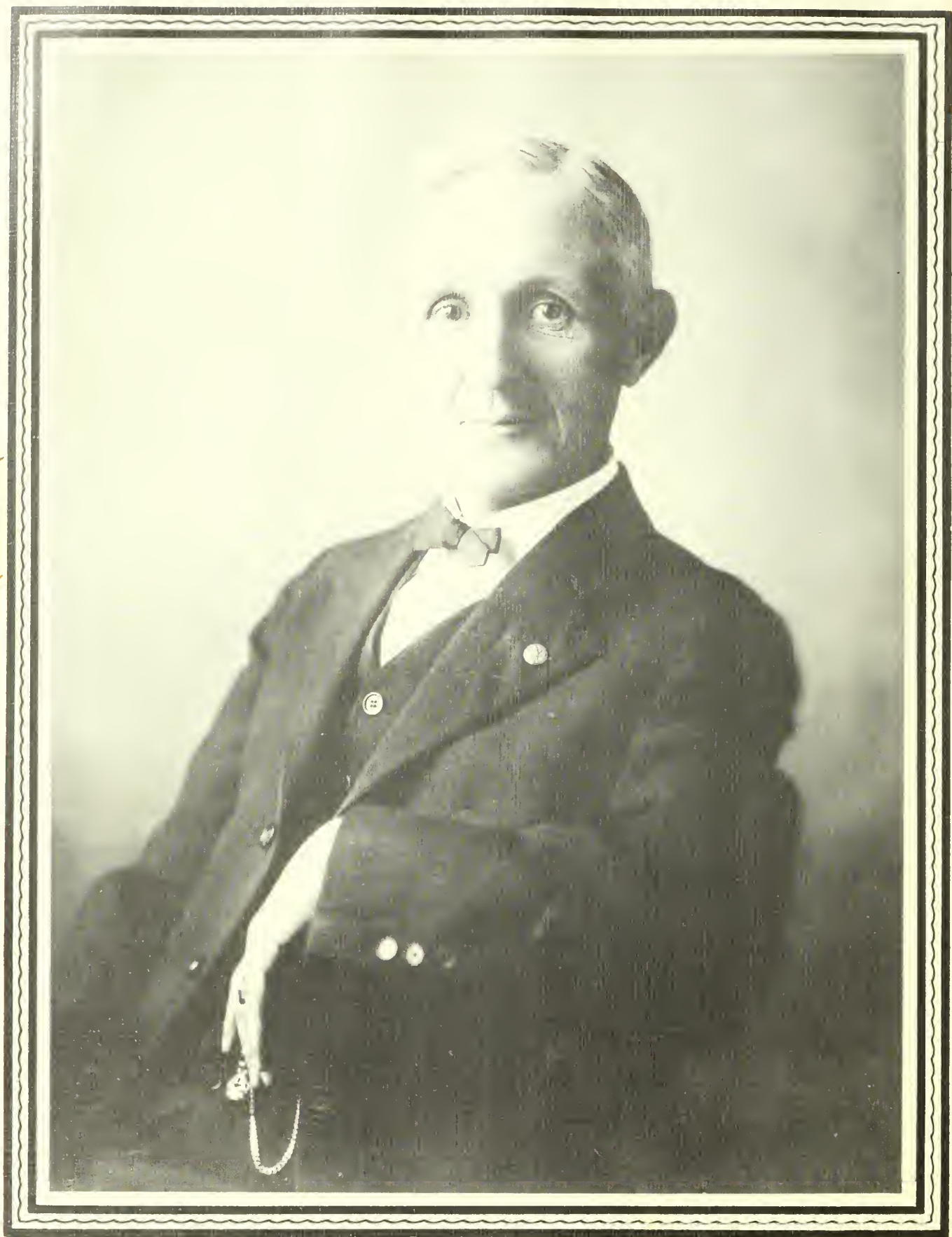




*Discussing Scores*







*Dr. Jere M. Pound*  
*In Memoriam*





DR. FRANK R. READE  
Executive-Dean

## A GREETING TO THE PINE CONE

When the 1935 PINE CONE comes from the press, the first thing you will do will be to thumb through the freshly printed pages until you come to your own picture. There you will pause for some time—to be sure that your name is spelled properly, that your home town is listed correctly, that the editors have set down after your name all of the various clubs and organizations to which you belong.

If your likeness flatters you just a little, if your biography is accurate and complete,—then, for the moment certainly, the PINE CONE for 1935 is the finest annual you have ever seen! This conviction will grow on you as you turn through the pages.

The theme song of this year's annual is that your years in college are the happiest ones in your life. Perhaps it is hard for you to believe this. What with going to school all day, standing comprehensive examinations, submitting to dormitory restrictions—how can days spent in such fashion be the happiest ones in your life?

All of you have enjoyed this or that in the past. All of you, in a dreamy sort of way, hope that you will be happy

in the future. The trick of it is to enjoy every minute of every day—now! Much of your time is filled with intellectual activity. Make the most of it. Enjoy it. Be happy in it. Believe, with the late Justice Holmes, that you have not earned the right to intellectual ambition until you have learned to lay your course by a star which you have never seen, until you have dug by a divining rod for springs that you may never reach.

And say to yourselves again and again that if these are not the happiest years surely they are the years of fullest opportunity. Wrest from them the key that will open the doors of happiness for you. Through those doors and beyond those doors lies life. The opportunity to make it a richer and a more abundant life is yours,—now.

And some day,—years and years from now,—you will again take up the PINE CONE for 1935. Just as the faint odor of jessamine or of wild grape recalls the past,—just as the memory of music fled stirs your heartstrings,—so this book will one day bring back to you the friendships, the loyalties, the little defeats and victories of your college days that will have broadened out into those latter years as an expression, satisfying and abiding, of the zest of life.







First row: ANNIE POWE HOPPER,  
SARAH JANIE BUSH, FRANCES  
RUTH CARPENTER, DAISY DANIEL  
... Second row: JOSEPH AUSTIN  
DURRENBERGER, MARIAN E.  
FARBAR, GERTRUDE CORDELIA  
GILMER

## F A C U L T Y

ANNIE POWE HOPPER, Dean of Women. B.S., George Peabody College for Teachers; A.M., Columbia University; Teachers College Diploma as Adviser of Women and Girls.

JOSEPH AUSTIN DURRENBERGER, Professor of History and Social Sciences. A.B., Southwestern University; A.M., Columbia University; Ph.D., Ibid.

SARAH JANIE BUSH, Professor of Latin. A.B., University of Georgia; A.M., University of North Carolina; Diploma, College of Classical Studies, Rome, Italy.

MARIAN E. FARBAR, Director of Health Service. M.D., Medical College, University of Illinois.

FRANCES RUTH CARPENTER, Professor of Art. Bachelor's Diploma and B.S., Teachers College, Columbia University; A.M., Ibid.

GERTRUDE CORDELIA GILMER, Professor of English. B.S., George Peabody College for Teachers; A.M., Ibid.

DAISY DANIEL, Professor of Home Economics and Director of Boarding Department. B.S., Georgia State College for Women.







First row: HAROLD STRONG GULLIVER, MARGARET HALL, LENA JAMES HAWKS, LEONORA IVEY  
 . . . Second row: ELIZABETH McREE, FRANCES B. PARDEE, EARL W. PHELAN



## F A C U L T Y

HAROLD STRONG GULLIVER, Professor of English. B.A., Yale University; A.M., Columbia University; Ph.D., Yale University.

MARGARET HALL, Instructor in German. Student at the Hilda Schule, Coblenz, Germany; A.B., Emory University; A.M., Ohio State University.

LENA JAMES HAWKS, Professor of Mathematics and Physics. A.B., Goucher College; A.M., Vanderbilt University; Ph.D., The Johns Hopkins University.

LEONORA IVEY, Professor of Physical Education. Graduate Sargent School for Physical Education; B.S., Georgia State College for Women; M.A., George Peabody College for Teachers.

ELIZABETH McREE, Instructor in Physical Education. A.B., Georgia State Womans College.

FRANCES B. PARDEE, Teacher of Violin. Graduate Cincinnati Conservatory of Music; Pupil of Sevcik in Vienna, and of Robert Perutz and Julian Pulikowski, Cincinnati Conservatory.

EARL W. PHELAN, Professor of Chemistry. B.Chem., Cornell University; Ph.D., Ibid.







First row: MILDRED McCLELLAN PRICE, HAROLD H. PUNKE, LOUISE ANNE SAWYER, JAMES R. STOKES . . . Second row: ALIMAE TEMPLE, HONORIA SAPELO TREANOR, GLADYS E. WARREN

## F A C U L T Y

MILDRED McCLELLAN PRICE, Professor of History. A.B., Georgia State Womans College; A. M., Columbia University.

HAROLD H. PUNKE, Professor of Education. B.S., University of Illinois; M.S., Ibid; Ph.D., University of Chicago.

LOUISE ANNE SAWYER, Professor of Vocal Expression. Graduate, Columbia College of Expression; B.S., School of Speech, Northwestern University.

JAMES R. STOKES, Professor of Biology. B.S., University of Georgia; M.S., University of Wisconsin.

ALIMAE TEMPLE, Instructor in Music. A.B., Salem College; B.M., Ibid; graduate student George Peabody College for Teachers, and Teachers College, Columbia University; pupil of Isadore and Harold Luckstone and of Mrs. C. Dyas Standish, New York City.

HONORIA SAPELO TREANOR, Professor of French. A.B., University of Georgia; student at the Sorbonne, Paris, France; A.M., University of Georgia.

GLADYS E. WARREN, Professor of Music and Director of the Department. B.M., Lake Erie College; graduate, New England Conservatory of Music; M.A., Iowa State University; pupil of Carl Beecher, Northwestern University; of Ernest Hutcheson, New York City; of Lee Pattison, Chicago; of Tobias Matthay, Matthey School of Pianoforte, London, England; of Arthur Alexander, Royal College of Music, London, England; and of Ashley Pettis, Eastman School of Music, Rochester, N. Y.







First row: IVA CHANDLER, EVELYN  
DEARISO, J. R. DUSENBURY,  
MILDRED LARSEN . . . Second  
row: LILLIAN PATTERSON, CARO-  
LINE PARRISH THOMAS, MRS. E.  
H. BECK.



## F A C U L T Y

IVA CHANDLER, Assistant Dean of Women. A.B.,  
Georgia State Womens College.

MILDRED LARSEN, Assistant to the Treasurer. A.B.,  
Georgia State Womens College.

EVELYN DEARISO, Librarian. A.B., Georgia State  
Womens College; B.L.S., Emory University.

LILLIAN PATTERSON, Assistant Librarian. A.B., Geor-  
gia State Womens College.

J. R. DUSENBURY, Treasurer and Purchasing Agent.

CAROLINE PARRISH THOMAS, Secretary and Re-  
corder. A.B., Georgia State Womens College.

MRS. E. H. BECK, Assistant Dietitian.











# CLASSES

So in the big hall and down  
 the main corridor where the best are  
 the freshmen take their first  
 while sophomores dance the best they can  
 So we spend our college years  
 getting the most of our time and money



# S E N I O R S



VIRGINIA SHEPPARD  
Savannah, Georgia  
A.B. HISTORY

Student Government Association; Y. W. C. A.; Phi Lambda Athletic Club (1, 2, 3); Science Club (2); Glee Club (1); International Relations Club (1, 2, 3); Honors (3) Secretary of Sophomore Class; Treasurer and Secretary of Junior Class; President of Senior Class.

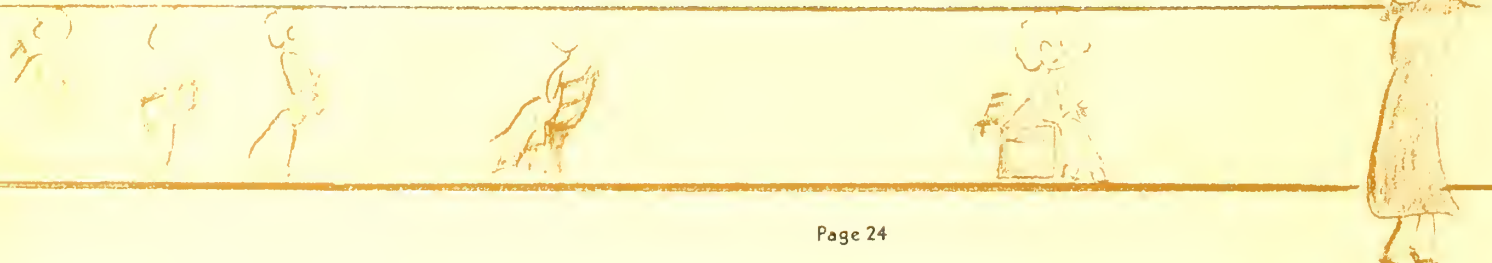
Blue-eyed Virginia, despite the fact that it might seem trite, has always reminded us of a Dresden China figure. She has that fragile quality about her. She has been the capable President of the Seniors this year, managing tea-dances, open-houses and benefit bridges with the same charm and graciousness. All of which goes far toward showing why Virginia was voted the most attractive of the Seniors this year.



LOUISE AMBOS  
Savannah, Georgia  
A.B. HISTORY

Student Government Association; Y. W. C. A.; Phi Kappa Athletic Club (1, 2, 3); Glee Club (2); Philharmonic Club (1, 2, 4); Science Club (3); Argonian Literary Society (3); International Relations Club (3, 4); Y. W. C. A. Cabinet (2, 3); PINE BRANCH Staff (3); Business Manager of PINE CONE (4); Honors (1, 2); G. S. W. C. Emblem (3).

To hear her talk you would think Louise was "just a home girl", but you should see her at a dance! You'd know positively she was a social butterfly until you saw her in the library studying. That sight would be enough to convince anyone that Louise was one of the intelligentsia. And the way she manages the business end of the PINE CONE leads us to believe that after all she was meant to be a business woman. The only thing that we can be sure of is that Louise is a girl of unusual charm—the rest must continue to depend on the moment.







GERALDINE ARRINGTON  
Ellaville, Georgia  
A.B. ENGLISH

Transfer from G. S. C. (1, 2); Student Government Association (3, 4); Y. W. C. A. (3, 4); Phi Lambda Athletic Club (3, 4); Argonian Literary Society (3); Vice-President Literary Society (3); Glee Club (3); English Club (3, 4).

We first knew Gerry after her transfer two years ago as Frances Arrington's sister, but that was only for the first few days. It didn't take her long to establish herself as a separate individual with a personality quite as likable as her sister's. One thing they hold in common is the talent for dramatics, but Gerry neglected to try out for Sock and Buskin Club, and so had to confine her acting to the Play Production class. Collecting bunny coats wouldn't be bad as a hobby, either.



ELEANOR BAILEY  
Douglas, Georgia  
A.B. ENGLISH

Transfer from S. G. S. C. (1, 2); Student Government Association (3, 4); Y. W. C. A. (3, 4); Y. W. C. A. Cabinet (3, 4); Phi Lambda Athletic Club (3); Glee Club (3, 4); Treasurer, Glee Club (4); Argonian Literary Society (3); Entre Nous (3); English Club (3, 4); PINE CONE Staff (4).

Eleanor is that rarest of rare persons, the possessor of a sympathetic nature who is never bothered with the cares of others because they like her too much to trouble her. Since her arrival two years ago she has made such a place for herself that we wonder why we didn't miss her before she came. Just being around her gives one a deep and abiding sense of the rightness of things, and it is fitting that she should have been voted the best all round senior, embodying as she does all those qualities which we should like to see in "Miss G. S. W. C."





# S E N I O R S



ANITA BRADLEY  
Waycross, Georgia  
A.B. HISTORY

Student Government Association; Y. W. C. A.; Argonian Literary Society (1, 2, 3); Phi Kappa Athletic Club (1, 2, 3); Science Club (2, 3).

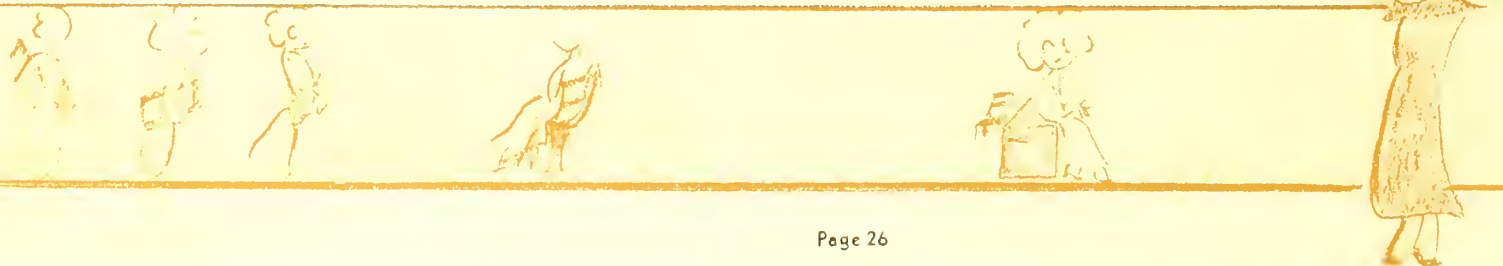
Nita is one of those few, but extremely fortunate people who have learned that nothing is ever quite as bad as it looks at first glance. She takes everything with a smile, and the best thing is that her philosophical outlook is not assumed, but is an inseparable part of her character. Always a good scout, Nita has never been known to be other than good natured, friendly, and likable.



CAROLYN BRIM  
Brinson, Georgia  
A.B. FRENCH

Student Government Association; Y. W. C. A.; Y. W. C. A. Cabinet (2); Council Representative (2); Phi Lambda Athletic Club (1, 2, 3); Argonian Literary Society (1, 2); Honors (1, 3); Entre Nous (3, 4); Vice-President Entre Nous (3); President Entre Nous (4); G. S. W. C. Emblem (4); PINE CONE Staff (4).

Who said Carolyn looked like Queen Elizabeth in that wine colored dress with the stand-up collar? Never having seen Her Majesty, we hesitate to give our opinion, but we will say that Carolyn has a stately air about her which we think especially befitting her status as a senior. That air is calculated to strike terror to the heart of any lowly freshman not fortunate enough to know her for the kind and sympathetic person she is. Never will we forget Carolyn's inspired interpretation of the Statue of Liberty in the play that Entre Nous produced this year, nor will we ever cease to envy her French accent.





# S E N I O R S



AVRYLEA BURCH  
Valdosta, Georgia  
A.B. MUSIC

Student Government Association; Phi Kappa Athletic Association; Fine Arts Club; Glee Club.

Avrylea is the young lady you've seen most frequently in the chemistry laboratory brewing mysterious concoctions over Bunsen burners, and discovering with an air of perfect composure just what happens when nucleoproteins are hydrolyzed. She has an inquisitive mind which keeps her busy discovering the whys and wherefores of everything she comes in contact with, so it is only occasionally that she can salvage a moment from her pursuit of knowledge and devote it to the arts. The particular branch of the arts for which she has a flair is music, and she plays the piano excellently. Perseverance is her watchword; she can take anything Fate has to offer without a sign of being disheartened.



HELEN MOODY CARTER  
Valdosta, Georgia  
A.B. BIOLOGY

Student Government Association; Valdosta Club; Science Club (1, 2, 3); Math-Science Club (4); Phi Kappa Athletic Club.

The younger Carter has followed closely in the footsteps of her illustrious sister, being the biologist of the senior class. To see her gazing intently into a microscope, you'd think she was watching a full dress parade at West Point or a scene from the current Gable-Crawford hit, instead of the private life of an amoeba. Biology seems to be an innate tendency of the Carters.





# S E N I O R S



JUDY COCHRAN  
Camilla, Georgia  
A.B. ENGLISH

Student Government Association; Y. W. C. A.; Y. W. C. A. Cabinet (2, 3); Council Representative (3); Phi Kappa Athletic Club (1, 2, 3); Argonian Literary Society (1, 2); Philharmonic Club (1, 2); Secretary-Treasurer, Philharmonic Club (2); PINE BRANCH Staff (2); Numerals (2); G. S. W. C. Emblem (2); English Club (3, 4); Glee Club (1, 2, 3, 4); President, Glee Club (4).

Orchids to Judy for achieving at one and the same time poised sophistication and unaffected simplicity. How she does it, we can't tell, but there it is—see for yourself. As President of the Glee Club Judy has had an opportunity to exercise that efficiency which makes her such a competent assistant to Miss Hopper. A sad thing, really, that after keeping office all afternoon in Ashley, she must live next door to the telephone at the Senior House.



GRACE LAHEY CORN  
Valdosta, Georgia  
A.B. BIOLOGY

Student Government Association; Phi Kappa Athletic Club (1, 2, 3); Science Club (1, 2, 3); Math-Science Club (4); Sock and Buskin Club (2, 3, 4); Sock and Buskin Club Play (2); Euclidian Club (2); Valdosta Club; Honors (2, 3).

She may be Mrs. Corn to some people, but we used to know her "when". A very attractive girl she was, too, and so versatile that she was equally at home as Alice in the mad tea party, a middle aged sheriff in TRIFLES, or Helen Claire's bashful beau on a bicycle built for two. Nor do her accomplishments end here—she knew how to cook even before she was married. That probably interested Mr. Corn more than her dramatic ability, or her triumphs as a devotee of the dance.





# S E N I O R S



RUTH ELLIS  
Savannah, Georgia  
A.B. HISTORY

Student Government Association; Y. W. C. A.; Y. W. C. A. Cabinet (3); Phi Kappa Athletic Club; Argonian Literary Society (1, 2, 3); Glee Club (1, 3, 4); International Relations Club (2, 3, 4); Science Club (1, 2, 3); Secretary Argonian Literary Society (3); PINE BRANCH Staff (3); Honors (3); S. G. A. Emblem (2); Athletic Numerals (2); Letter (3).

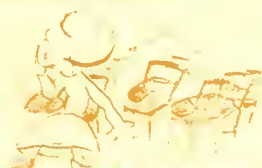
Have you ever heard of Harold? If you don't know the co-manager of the Country Store very well, perhaps you have missed hearing about him, but according to Our Ruth he's the best one and she ought to know. It's not every girl who can keep HIM in hand while she casually gets a degree, but Ruth has it down to a fine art. Perhaps the secret of her success lies in her lovely not-quite-red hair, but we'd like to wager that her sweet disposition comes in for quite a share of his admiration.



EMILY FLUKER  
Quitman, Georgia  
A.B. HISTORY

Student Government Association; Y. W. C. A.; Y. W. C. A. Cabinet (2); Phi Lambda Athletic Club (1, 2, 3); Science Club (1); Argonian Literary Society (1); PINE BRANCH Staff (2, 3); International Relations Club (2, 3, 4); Honors (2, 3, 4).

It began in the first grade, when a red-headed boy thought that "Tuker" was a better name than Fluker, and ever since then Fluker has been not Fluker, but "Tuker", if you follow us. There was a time when "Tuker" was going to be a doctor, but she changed her mind. And there was a time when she wrote poetry which was duly published and greatly admired. But she changed her mind again. Woman's privilege you know. The last time we've heard about, she showed signs of developing into a feminine Winchell. Obviously you never can tell.





# S E N I O R S



HENRY KATE GARDNER  
Camilla, Georgia  
A.B. VOCAL EXPRESSION

Transfer from University of Miami (1); Student Government Association; President, Student Government Association (4); Y. W. C. A.; Phi Lambda Athletic Club; Y. W. C. A. Cabinet (3, 4); G. S. W. C. Emblem (3); Argonian Literary Society (2, 3); Sock and Buskin Club (2, 3, 4); Council (4); PINE BRANCH Staff (2); Honors (2, 3, 4); Sock and Buskin Play (2, 4).

Our Student Government President is thrice blessed, possessing as she does an innate love for poetry and drama, an immense capacity for friendship, and the desire plus the ability to do her job well, whatever it may be. Somehow one always feels that Henry Kate can be depended on whether the occasion is an important S. G. A. Conference, Sock and Buskin rehearsal, or a basketball game. And according to the other members of the 350 dancing class "Henri" can blow imaginary soap bubbles with the best of 'em.



MAJORIE GROOVER  
Quitman, Georgia  
A.B. HISTORY

Student Government Association; Y. W. C. A.; Phi Lambda Athletic Club; Argonian Literary Society (1, 2, 3); International Relations Club (2, 3, 4); President, International Relations Club (4); Honors (3); PINE CONE Staff (4).

This year under the expert leadership of Majorie the I. R. C. has more than upheld its reputation for being one of the most active clubs on the campus. Second, of course, to history in the affections of Majorie, are the tea dances, and it is seldom that she misses one. If we ever thought we looked as stunning in a tea dress as she does, we'd make a point of attending all of them too. Only one word is necessary to describe her—svelte.





# S E N I O R S



LUCY HAMMOND  
Griffin, Georgia  
A.B. FRENCH

Student Government Association; Y. W. C. A.; Phi Lambda Athletic Club (1, 2, 3); Glee Club (2, 3, 4); Secretary Glee Club (4); Argonian Literary Society (1, 2, 3); Science Club (2, 3); Entre Nous (3, 4); Parliamentarian Entre Nous (4).

Lucy has the sort of hair that makes one want to go out and get some just like it. We've known her for four years now, and not once during that time can we remember seeing a single hair out of place. That must be a record. Another thing we especially admire about Lucy is her voice—we have a weakness for contraltos.



DOROTHY JOHNSON  
Naylor, Georgia  
A.B. FRENCH

Student Government Association; Argonian Literary Society (2); Valdosta Club (1, 2, 3); Phi Kappa Athletic Club (1, 2, 3); Entre Nous (4).

Dorothy is taking an A. B. at such a tender age that she practically amounts to an infant prodigy, but she is so utterly unpretentious that many of us probably don't realize it. She faces exams and staggering assignments with an unconcern that is little short of magnificent, and makes the grade with apparently effortless ease which keeps us baffled. Dorothy is more than witty—she's humorous, and it's fun to sit next to her in class. Her humor is subtle and consequently doesn't register on many, but those who get it love it.





# S E N I O R S



NOELLENE JOHNSON  
Valdosta, Georgia  
A.B. HISTORY

Student Government Association; Valdosta Club; Sororian Literary Society (2, 3); International Relations Club (3, 4); Phi Lambda Athletic Club (3, 4); Athletic Numerals (3).

Noellene, the eldest of the dancing Johnsons, has the admirable quality of always seeming to have a good time. Her naturally curly hair invariably looks like an advertisement for a beauty parlor, and the humor of it lies in the fact that she does it herself with a poke here and a squeeze there. Noellene is not only a history major, she's a history fan. She can read references in the twinkling of an eye, and actually likes it; and that's the worst we know about her.



MARIE JOINER  
Albany, Georgia  
A.B. ENGLISH

Student Government Association; Y. W. C. A.; Phi Lambda Athletic Club (3, 4); Sororian Literary Society (3); English Club (4); Campus Canopy Staff (4); Transfer from Shorter (3).

If Marie had been a boy instead of the attractive girl she is, she probably would have joined the Marines,—she likes to travel, and no matter what the situation, she always has it in hand. She is one of the most accommodating people we know, and she does favors for freshmen or faculty alike without the slightest hesitation. According to her, she doesn't "comprend" very readily, but no one else seems to notice that difficulty, so we suspect it is a personal prejudice.





# S E N I O R S



VIRGINIA KIRKLAND  
Metter, Georgia  
A.B. ENGLISH

Student Government Association; Y. W. C. A.; Argonian Literary Society (1, 2); Phi Kappa Athletic Club (1, 2, 3); Science Club (2, 3); PINE CONE Staff (4).

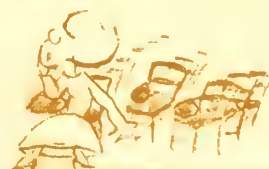
There was once a time when Virginia was one of the brightest of the stars which shone in the Play Production class. She did Hamlet and Pierrot in turn, and quoth she carelessly, "Moon is just a word to swear by". But that was before she met the Floridian. Now Virginia reads ROMEO AND JULIET and hopes the moon will be not only pale with grief, but green with envy. If the moon could see the way her eyes sparkle when she laughs, or hear her practicing her voice lesson, perhaps it would change, but being so far away, it seems likely that Virginia will have to struggle along with the same old moon.



ELIZABETH LARISEY  
Valdosta, Georgia  
A.B. ENGLISH

Student Government Association; English Club (3, 4); Vice-President English Club (4); Valdosta Club; Treasurer Valdosta Club (3); Vice-President Valdosta Club (4); Phi Lambda Athletic Club (1, 2, 3); PINE BRANCH Staff (3); Philharmonic Club (3); Co-editor PINE CONE (4); Honors (2, 3).

Rumor has it that our co-editor is the sort of person who would turn pink and fall into a spasm if some audacious soul should mention cats, fairy stories, and Richard Halliburton in the same breath. We can't be sure, since this is probably the first time it was ever done. But this we do know—she's exactly the sort of person with whom you'd like to go to a circus, or talk about modern drama, or discuss the new trends in poetry. In spite of being the author of any number of delightfully whimsical essays which have periodically graced the PINE BRANCH, she modestly counts as her most admirable accomplishments her ability to wiggle her ears and grin like the Cheshire cat in ALICE IN WONDERLAND.





# S E N I O R S



CLARE LAWSON  
Savannah, Georgia  
A.B. MATHEMATICS

Student Government Association; Y. W. C. A.; Phi Lambda Athletic Club; Athletic Numerals (1); Letter (2); Cup (3); G. S. W. C. Emblem (2); Honors (1, 2, 3, 4); Argonian Literary Society (1, 2, 3); Science Club (3); Euclidian Club (1, 2, 3); Math-Science Club (4); Vice-President Math-Science Club (4); PINE BRANCH Staff (3); Athletic Council (1, 2, 3); Secretary-Treasurer Senior Class.

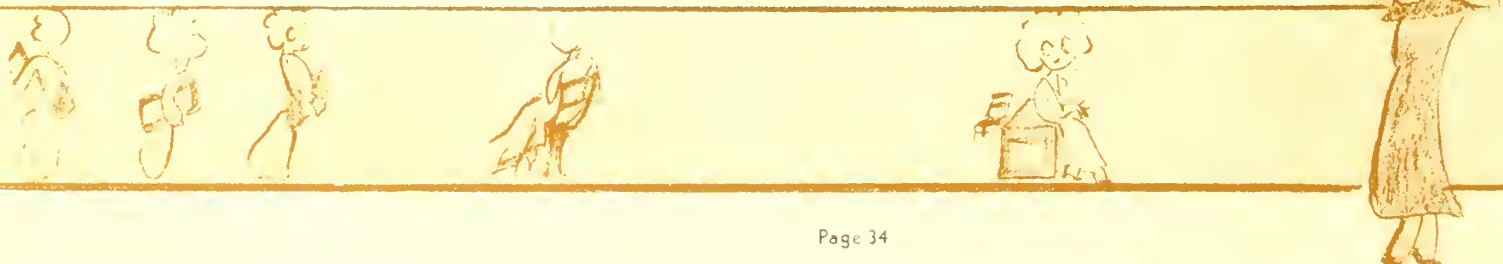
We used to think that a Math major who minored in Chemistry couldn't possibly do anything else, but Clare completely disproves that idea. Ever enthusiastic, and keenly appreciative of beauty, she is yet level-headed enough to keep her sense of values unconfused. Never too busy to help others, or too lazy to help herself, she seems to have discovered the practical wisdom of never letting her play interfere with her work—or her work interfere with her play.



DOROTHY OGLETREE  
Savannah, Georgia  
A.B. HISTORY

Student Government Association; Y. W. C. A.; Phi Kappa Athletic Club; Argonian Literary Society (1, 2, 3); Y. W. C. A. Cabinet (3); Secretary of Y. W. C. A. (4); President of Argonian Literary Society (3); Presidents' Club (3); G. S. W. C. Emblem (3); Science Club (1, 2, 3); Athletic Council (2, 4); Athletic Numerals (1); Letter (2); Cup (3); International Relations Club (3, 4); Glee Club (2, 3, 4).

"Off to the races!" Frankly we don't see how she does it. Every time we see Dot she is on the way to town or to a show, but we never hear of that smart young lady letting a lesson slide until the next day, or showing up in class without something to contribute to whatever discussion is under way at the moment. And speaking of discussions, whenever you see a half dozen seniors rallying around, it's always one of two things—a bull session, or Dot relating the Amazing Adventures of Little Audrey.





# S E N I O R S



MARY POLHILL  
Sylvester, Georgia  
A.B. FRENCH

Student Government Association; Y. W. C. A.; Argonian Literary Society (2); Phi Kappa Athletic Club; Entre Nous (3, 4); Secretary-Treasurer Entre Nous (3, 4); Fine Arts Club (4); Recorder of Points Student Government Association (4); Transfer from Bessie Tift (2); May Queen.

Bright eyes and curving lips—there's no one in the senior class with quite as stimulating a smile as Mary. You can't keep from breaking into a grin yourself when you see it. What with orchids at Easter and 'phone calls from Chicago, it's no wonder you seldom see Mary with the blues.



OLA LEE POWELL  
Valdosta, Georgia  
A.B. ENGLISH

Student Government Association; Phi Kappa Athletic Club (2); Sororian Literary Society (2); Valdosta Club (2); Entre Nous (2); English Club (2); Honors (2, 4).

Ola Lee has made us wonder with Goldsmith's villagers "that one small head should carry" all she knew. Besides doing advanced work in piano, organ, and voice, she finds it possible not only to do four years' college work in two and an half, but to do it with honors. All of which makes Ola Lee a very capable small person, but the most astounding feat she has ever performed is the reading of SO RED THE ROSE in two days. She has such a wide streak of whimsicality in her make up that she does things like persuading her family to buy a house with a balcony, so she could play Juliet. We are told that the Juliet episode never came to pass, but it was a good idea at that, wasn't it?





# S E N I O R S



ESTELLE ROBERTS  
Cordele, Georgia  
A.B. ENGLISH

Student Government Association; Y. W. C. A.; Phi Lambda Athletic Club; Athletic Council (3, 4); Argonian Literary Society (1, 2, 3); Science Club (1, 2); English Club (3); Sock and Buskin Club (2, 3, 4); Vice-President Sock and Buskin Club (3); President Sock and Buskin Club (4); Sock and Buskin Club Play (2, 4); G. S. W. C. Emblem (4); Literary Editor PINE CONE (4).

Perhaps the most engaging trait in Estelle is the way she has of making the person she is with feel most important, or witty, or talented. Estelle is an ardent dramatic clubber, and the plays and skits are legion that would have been much the poorer without her. She is no mean athlete, and when she shoots an arrow into the air it doesn't go "she knows not where". Estelle has a genius for milling around doing nothing in particular, and then suddenly producing a finished piece of work, whether doing a Robin Hood on the archery range or a short story for the PINE BRANCH. She isn't the most back-slapping person in the world, but she has for her friends an unswerving loyalty that warms one's heart to know about.



WILLENE ROBERTS  
Valdosta, Georgia  
A.B. VOCAL EXPRESSION

Student Government Association; Phi Lambda Athletic Club; Sock and Buskin Club (1, 2, 3, 4); Vice-president Sock and Buskin Club (2); Sock and Buskin Club Play (1, 2, 3, 4); Fine Arts Club (2, 3); Art Committee of PINE CONE (2, 3).

We would like to introduce Willie to the gentleman who first said, "A jack of all trades is good at none," so he could change his mind. Besides being a first-rate artist, she dances, plays the violin, is an excellent actress, and has been the pride of the Lambdas in many a golf tournament. When you add to that a pair of elevating eyebrows and a green Chevrolet, there is little more to be desired. It is difficult to imagine a Christmas Festival program or May Day program without Willie.





# S E N I O R S



LOUISE SMITH  
Fitzgerald, Georgia  
A.B. BIOLOGY

Student Government Association; Y. W. C. A.; Argonian Literary Society (3); Math-Science Club (4); Phi Lambda Athletic Club (3, 4); Transfer from Mercer (3).

Although she is apparently guileless, we yet can prove that in reality Louise is a very calculating young miss, for didn't she practice tennis for three hours every day so that she could go out to the Country Club at night and "ace" 'em? She believes in punctuality to such a degree that if she has a date for eight o'clock she expects him to arrive at seven fifty-five, or else! Maybe it's a good thing that her hair is raven instead of red.



KATHLYN TAYLOR  
Valdosta, Georgia  
A.B. FRENCH

Student Government Association; Entre Nous (3, 4); President Entre Nous (3); Presidents' Club (3); Valdosta Club (1, 2, 3); Phi Kappa Athletic Club (1, 2, 3); Secretary-Treasurer of Student Government Association (4).

Kathlyn has blondish curls and a weakness for being taken out to supper, but she is not as frivolous as that sounds. She is skilled in the domestic arts, and looks as if she were made to order for some young man to refer to proudly as "the little woman." Kathlyn is intensely interested in the modern languages and served as president of Entre Nous the first year it came into being.





# S E N I O R S



MARGARET ELIZABETH TOUCHTON  
Valdosta, Georgia  
A.B. ENGLISH

Student Government Association; Valdosta Club (2, 3, 4); Phi Lambda Athletic Club (2, 3); Entre Nous (3, 4); English Club (3, 4); President English Club (4); Transfer from Duke University.

As an English major (and president of the English Club in her Senior year), a French minor, and a history enthusiast, Margaret has her hands full. To those who have not tried that particular combination, it may not look like work, but if not, looks are again deceiving. Nevertheless, she seems to thrive on it. Aside from work, Margaret likes dogs, red bath towels, and handkerchiefs, whether separately or together is not for us to say.



HELEN CLAIRE VARNEDOE  
Valdosta, Georgia  
A.B. FRENCH

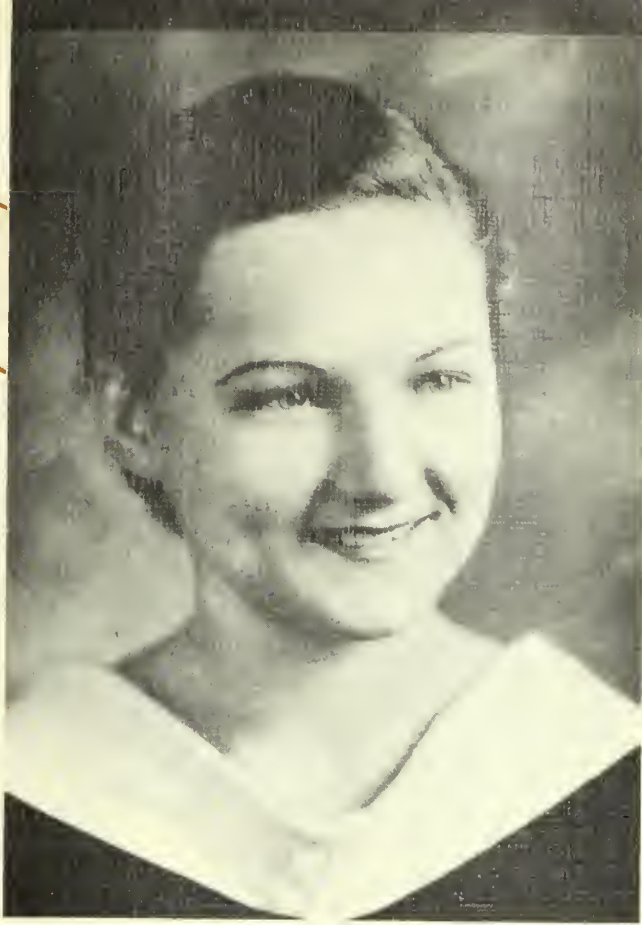
Student Government Association; Phi Lambda Athletic Club (1, 2, 3); Valdosta Club; Entre Nous (3, 4); Glee Club (1); PINE CONE Staff (4).

Dancing eyes, dancing feet, a bit of charm, a dash of merriment, and you have the picture of Helen Claire. No program is ever complete without the graceful performance of this petite Columbine who has shared all honors so often with the one who was Lahey. The two have danced their way to fame if not to fortune on our campus, and we defy anyone to take their place.





# S E N I O R S



ANNIE BELLE WEATHERFORD  
Savannah, Georgia  
A.B. BIOLOGY

Student Government Association; Y. W. C. A.; Phi Lambda Athletic Club; Vice-president Athletic Club (3); President Athletic Club (4); Athletic Council (3, 4); Philharmonic Club (1, 2); Argonian Literary Society (1, 2); Sergeant-at-Arms (2); Euclidian Club (2); Math-Science Club (1, 2, 3, 4); Secretary-Treasurer of Sophomore Class; President Junior Class; Presidents' Club (3); G. S. W. C. Emblem (3); Honors (1, 2, 3, 4); Activities Editor PINE CONE; Numerals (1); Letter (2); Cup (3).

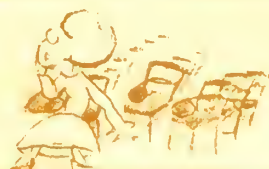
When "A.B." was voted the best sport in the Senior Class, it wasn't only her prowess as an athlete that we had in mind, considerable though it is. It's the way she plays the game that we most admire; fairly, without making excuses if she has an off day, always ready to smile whether she is on the winning or the losing side.



MARY ELIZABETH WEATHERFORD  
Savannah, Georgia  
A.B. HISTORY

Student Government Association; Y. W. C. A.; President Y. W. C. A. (4); Y. W. C. A. Cabinet (3, 4); Phi Kappa Athletic Club (1, 2, 3, 4); Athletic Council (3); Argonian Literary Society (1, 2); G. S. W. C. Emblem (3); Honors (1, 2, 3, 4); Glee Club (1, 2, 3, 4); Secretary Glee Club (2); International Relations Club (2, 3, 4); Vice-president International Relations Club (3).

Once we thought the elder Weatherford was "just too dignified for words," but that was before we really became acquainted with her. She excels in that most delightful form of humor termed dry wit, and combines it beautifully with that same dignity so becoming her office as president of the Y. W. C. A.





# S E N I O R S



ELIZABETH WILKES  
Adel, Georgia  
A.B. HISTORY

Student Government Association; Y. W. C. A.; Phi Kappa Athletic Club (1, 2, 3, 4); Argonian Literary Society (1, 2); Science Club (1, 2); PINE CONE Staff (4).

"Chillun, I'm telling you the facts," and she's off on the funniest, or the most exciting thing that ever happened. She loves a good story, does Elizabeth, and is adept in the art of telling them. We don't mean to be mysterious, but there were two people in the Senior house who wouldn't ever have made a class on time if it hadn't been for Elizabeth. Selecting clothes in a hurry may be as much of an art as story-telling. And she blossomed out into such a go-getting ad-getter these past few months that it has been all we could do to keep up with her.



MARGARET ZIPLIES  
Savannah, Georgia  
A.B. BIOLOGY

Student Government Association; Y. W. C. A.; Euclidian Club (1, 2); Y. W. C. A. Cabinet (1, 2); Freshman Council Representative; Argonian Literary Society (1, 2, 3); PINE BRANCH Staff (3); Presidents' Club (3); G. S. W. C. Emblem (3); Honors (1, 2, 3, 4); Phi Lambda Athletic Club (1, 2, 3); Philharmonic Club (1, 2, 3, 4); President Philharmonic Club (3); Science Club (1, 2, 3); Vice-President Science Club (3); Math-Science Club (4); Glee Club Accompanist (2, 3, 4); Honorary member Sock and Buskin Club (4).

If the word "charm" should ever become personified, undoubtedly it would look like Margaret in a black evening dress. That may explain why half of the unattached young men in Valdosta turned out for her senior recital, and almost as many from Savannah. After that occasion Margaret had enough flowers to start a floral shop. She often may be seen walking behind a stack of books on comparative embryology, looking like the muse of music disguised as a biology student.





# J U N I O R S



RUTH JONES  
PRESIDENT OF JUNIOR CLASS  
Thomasville, Georgia



CLARA DAVIS ADAMS  
Moultrie, Georgia



MIRIAM ADAMS  
Camilla, Georgia



MARY ALDERMAN  
Pavo, Georgia





# J U N I O R S



MARY ASKEW  
Arlington, Georgia



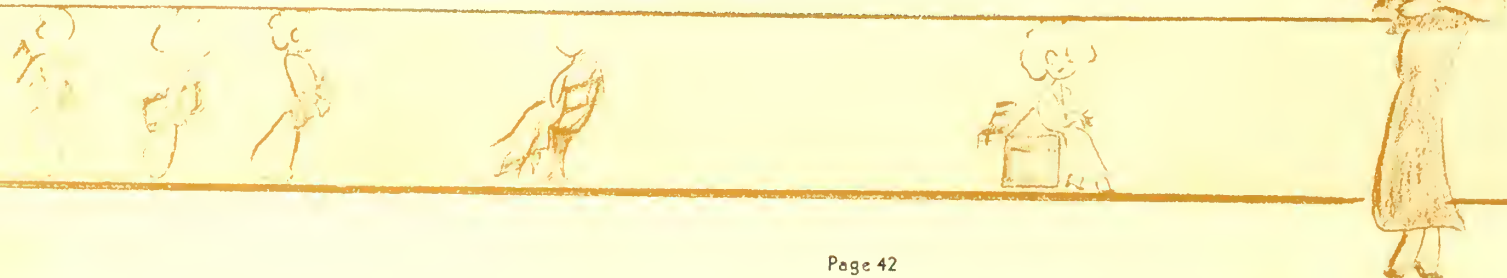
CLEO BARBER  
Bainbridge, Georgia



MARGARET BERRYHILL  
Lakeland, Georgia



AMANDA BARKSDALE  
Blakely, Georgia

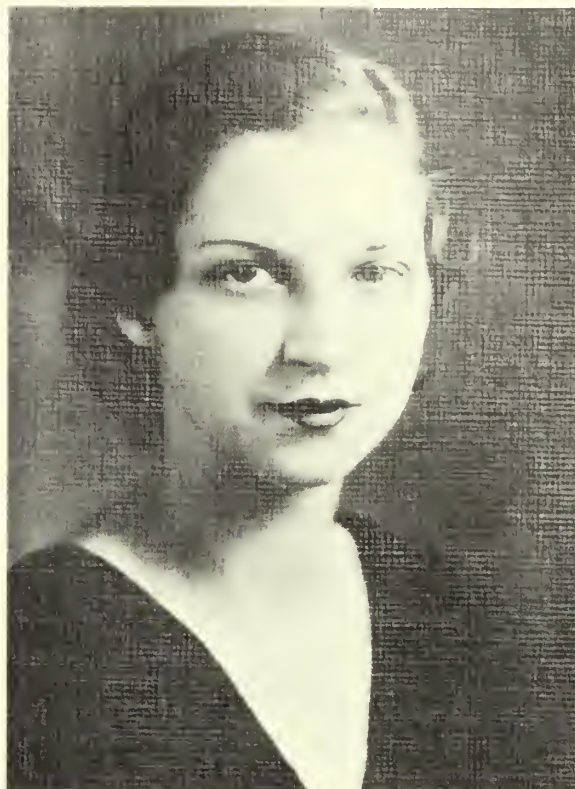




# J U N I O R S



SARA BINGHAM  
Valdosta, Georgia



JANE BROOKS  
Valdosta, Georgia



HARRIETTE BULLARD  
Nashville, Georgia



JANET COOK  
Boston, Georgia





# J U N I O R S



SARA RACHEL COXWELL  
Leesburg, Georgia



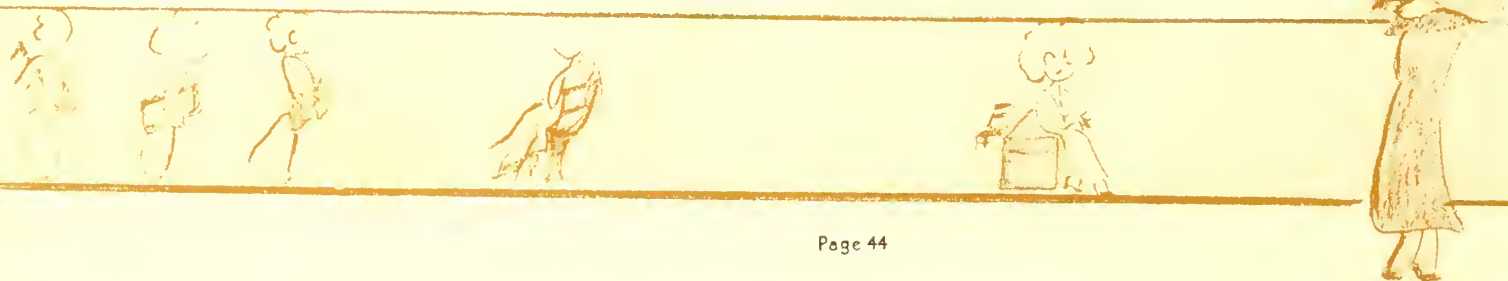
JO DANIEL  
Ludowici, Georgia



CLARA LOUISE DRISKELL  
Surrency, Georgia



MARY DEARISO  
Sylvester, Georgia





# J U N I O R S



LEONORA DU FOUR  
Albany, Georgia



ROSALYN EUBANKS  
Rochelle, Georgia



CAROL FORRESTER  
Leesburg, Georgia



NELLIE MAY GANNON  
Valdosta, Georgia





J U N I O R S



FRANCES GARBUTT  
Valdosta, Georgia



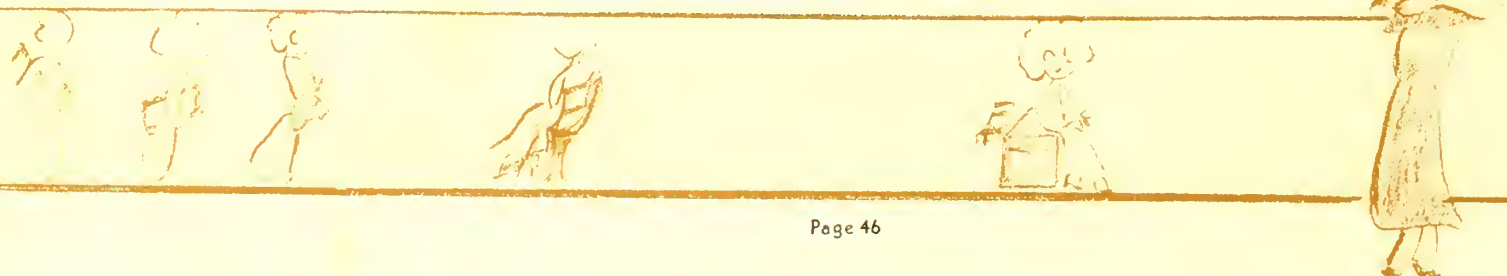
MERLE GIBSON  
Columbus, Georgia



NELL GREENE  
Valdosta, Georgia

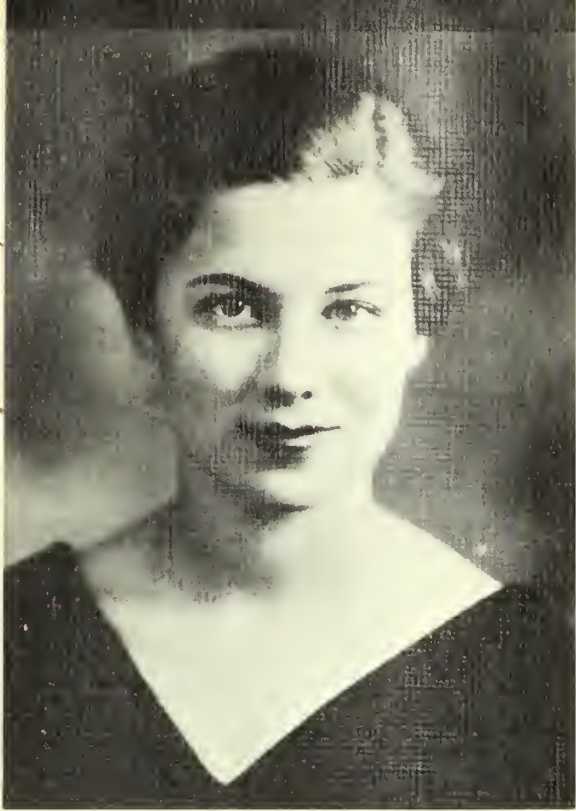


LUELLE GIDDENS  
Ray City, Georgia

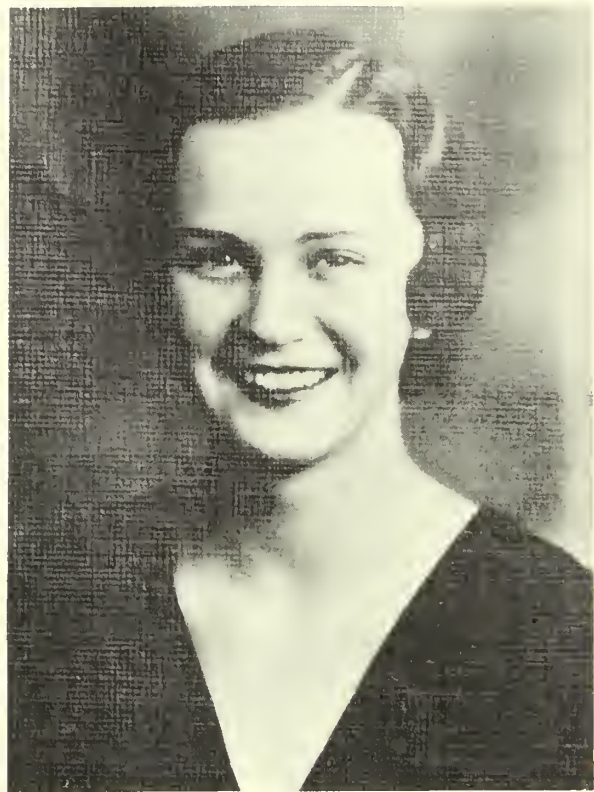




J U N I O R S



MYRA HACKETT  
Moultrie, Georgia



BILLIE HAM  
Valdosta, Georgia



LOUISE HARDY  
Quitman, Georgia



RUBY HARRISON  
Fitzgerald, Georgia





# J U N I O R S



FLORRIE HAWKINS  
Blackshear, Georgia



LOUISE ODOM HOWELL  
Valdosta, Georgia



BROUN HUTCHINSON  
Valdosta, Georgia



VIRGINIA HUGHES  
Glennville, Georgia





J U N I O R S



NELLIE JOHNSON  
Valdosta, Georgia



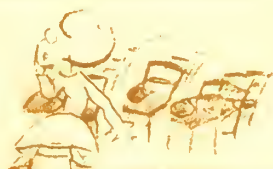
NETTIE JOHNSON  
Valdosta, Georgia



BESSIE JO JOHNSON  
McRae, Georgia



VANELLE KENDALL  
Valdosta, Georgia





J U N I O R S



MARTHA LOWREY  
Dawson, Georgia



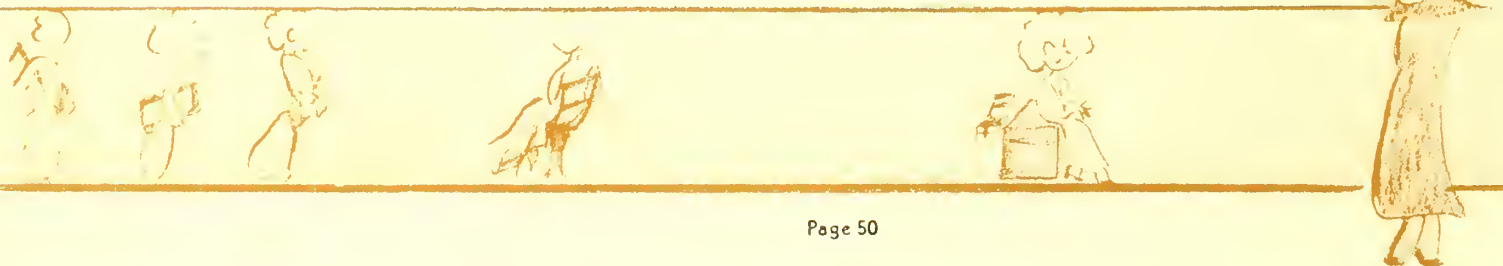
ETHLYN MASSEY  
Jesup, Georgia



JOY MILLER  
Albany, Georgia



EVELYN MAY  
Quitman, Georgia





J U N I O R S



JESELYN MOSELEY  
Valdosta, Georgia



SARAH OWENS  
Valdosta, Georgia



MARY PERRY  
Valdosta, Georgia



EDNA EARLE PLEMMONS  
Valdosta, Georgia





J U N I O R S



UNA RITCH  
Jesup, Georgia



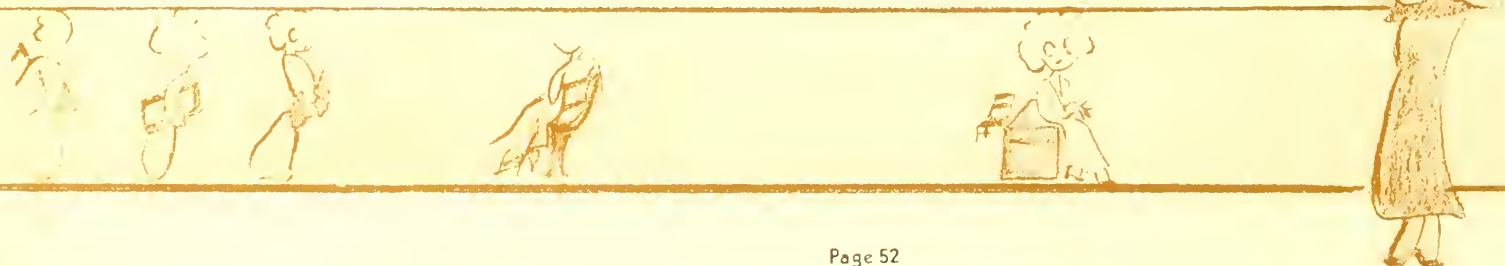
CAMILLE ROGERS  
Newton, Georgia



PATSY SPARKS  
Fitzgerald, Georgia



ESTHER SMITH  
Sycamore, Georgia





J U N I O R S



BETH TERRY  
Quitman, Georgia



LUCILE THOMPSON  
Ellaville, Georgia



ELIZABETH TILLMAN  
Valdosta, Georgia



JOYCE TIPTON  
Sylvester, Georgia





J U N I O R S



VANGIE TRIMBLE  
Moultrie, Georgia



VIRGINIA TUCK  
Thomasville, Georgia



LEILA MAE TYSON  
Jesup, Georgia



MILDRED TURNBULL  
Moultrie, Georgia





J U N I O R S



LEILA URQUHART  
Waycross Georgia



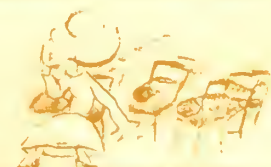
AMES WATKINS  
Metcalf, Georgia



CARRENE WEST  
Moultrie, Georgia



DORIS YOUNG  
Valdosta, Georgia







## SOPHOMORES

### FIRST ROW

EMMA AMBOS . . . . . Savannah, Georgia  
PRESIDENT OF SOPHOMORE CLASS  
EUNICE RUTH ADAMS . . . Marianna, Florida  
ANTOINETTE ANDREWS, Thomasville, Georgia

### SECOND ROW

ELIZABETH AUTREY . . . . . Valdosta, Georgia  
DENIESE BEASLEY . . . . . Glennville, Georgia  
MARGARET BENNETT . . . . . Jesup, Georgia

### THIRD ROW

FRANCES BINGHAM . . . . . Valdosta, Georgia  
RUTH NELL BOWEN . . . . . Valdosta, Georgia







## SOPHOMORES

### FIRST ROW

MARIE BOWER . . . . . Ocilla, Georgia  
 LILLIAN BRAGG . . . . . Savannah, Georgia  
 LOUISE BUSSEY . . . . . Lake Park, Georgia

### SECOND ROW

LEILA CALLENDER . . . . . Valdosta, Georgia  
 MARY NELL CARLYLE . . . Valdosta, Georgia  
 FRANCES CARSON . . . . . Talbotton, Georgia

### THIRD ROW

MARGARET CARTER . . . . . Ray City, Georgia  
 LOUISE CHILDERS . . . . . Morven, Georgia







## SOPHOMORES

### FIRST ROW

CAROLYN COOK . . . . . Geneva, Georgia  
MARY ELLEN CORDES . . Jacksonville, Florida  
LOIS CORLEY . . . . . Valdosta, Georgia

### SECOND ROW

ALEXA DALEY . . . . . Dublin, Georgia  
MARGARET L. DALTON . . Valdosta, Georgia  
LOUISE ELROD . . . . . Fort Valley, Georgia

### THIRD ROW

FRANCES FLUKER . . . . . Quitman, Georgia  
DOROTHY FULLER . . . . . Quitman, Georgia







## SOPHOMORES

### FIRST ROW

MARTHA GAY . . . . . Quitman, Georgia  
 RUTH GODWIN . . . . . Valdosta, Georgia  
 MARY EDITH GRANGER, Blackshear, Georgia

### SECOND ROW

ELIZABETH GREEN . . Jacksonville, Florida  
 LOTA GRIFFITH . . . . . Kinderlou, Georgia  
 JESSELYN GRIGGS . . . . . Perry, Georgia

### THIRD ROW

FLORA GRIMES . . . . . Valdosta, Georgia  
 CATHERINE HAGAN . . . Savannah, Georgia







## SOPHOMORES

### FIRST ROW

MARY KATHRYN HARRELL, Valdosta, Georgia  
 RUTH HATCHER . . . . Moultrie, Georgia  
 MARY BETH HIGH . . . Lake Park, Georgia

### SECOND ROW

MARY LOIS HITCH . . . Valdosta, Georgia  
 MARGARET HUDSON . . . Newton, Georgia  
 VIRGINIA INGRAM . . . Bainbridge, Georgia

### THIRD ROW

MARTHA INEZ JENNINGS, Valdosta, Georgia  
 LORENE JOHNSON . . Thomasville, Georgia







## SOPHOMORES

### FIRST ROW

RUBY JONES . . . . . Valdosta, Georgia  
JOSEPHINE JOUBERT . . Savannah, Georgia  
PRISCILLA KELLEY . . . Savannah, Georgia

### SECOND ROW

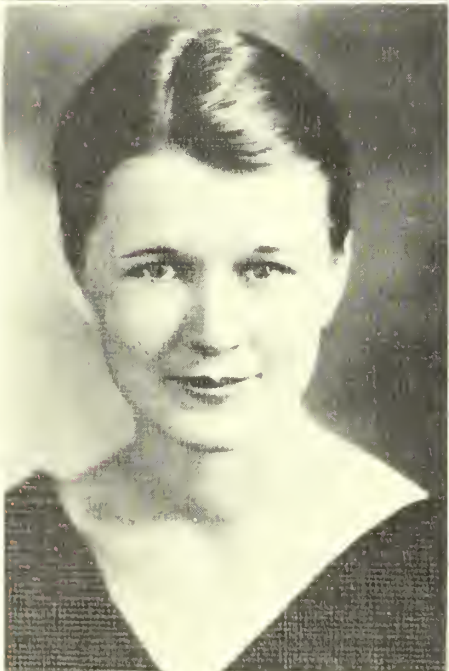
ANNIE KATE KNIGHT . . Quitman, Georgia  
LINELLE LANG . . . . . Omega, Georgia  
JESSIE C. LANGDALE . . . Valdosta, Georgia

### THIRD ROW

ARBY LEIPPRANDT . . . . Valdosta, Georgia  
MARTIEL LUNDY . . . . . Boston, Georgia







## SOPHOMORES

### FIRST ROW

MARGUERITE McCALL . . . Tampa, Florida  
LAURA McLEOD . . . Pineview, Georgia  
MARGUERITE MEADOWS, Glennville, Georgia

### SECOND ROW

MARIE MIDDLETON . . . Colquitt, Georgia  
ELEANOR MILLER . . . Sylvester, Georgia  
MARIE MILLER . . . Boston, Georgia

### THIRD ROW

MAY BELLE MOBLEY . . Bainbridge, Georgia  
ELOISE MOORE . . . Naylor, Georgia







## SOPHOMORES

### FIRST ROW

CATHARINE MORGAN . . . . . Pembroke, Georgia  
 SARAH ELLEN MORGAN . . . . . Mystic, Georgia  
 LUCILLE MURPHY . . . . . Valdosta, Georgia

### SECOND ROW

BARNIE LOU NEWSOME . . . . . Valdosta, Georgia  
 MILDRED OGLES . . . . . Rome, Georgia  
 ELOISE OGLETREE . . . . . Savannah, Georgia

### THIRD ROW

PERMELIA OLLIFF . . . . . Quitman, Georgia  
 EMILY PARRISH . . . . . Valdosta, Georgia







## SOPHOMORES

### FIRST ROW

CARROLL PEEPLES . . . . Valdosta, Georgia  
 ANNETTE PHILLIPS . . . . Eastman, Georgia  
 DOROTHY PITTMAN . . . . Ocilla, Georgia

### SECOND ROW

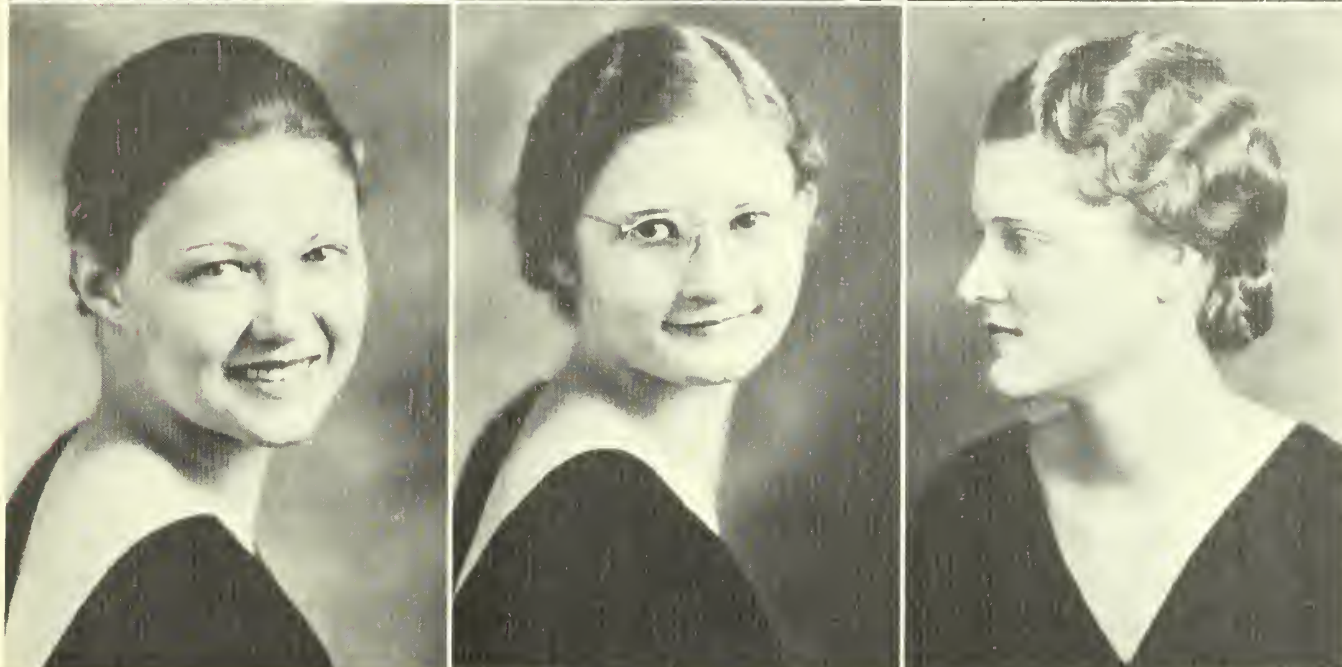
GWENDOLYN QUINKER . Valdosta, Georgia  
 MAYME REGISTER . . . . . Adel, Georgia  
 MARION REID . . . . . Homerville, Georgia

### THIRD ROW

ESTELLE RICKS . . . . . Reynolds, Georgia  
 MARY AGNES ROANE . . Savannah, Georgia







## SOPHOMORES

### FIRST ROW

DORIS ROWLAND . . . Wrightsville, Georgia  
 ELIZABETH SIMS . . . Thomasville, Georgia  
 MARGARET SIMS . . . Ousley, Georgia

### SECOND ROW

MAXINE SIMS . . . Ousley, Georgia  
 LILLIAN SLOCUMB . . . Doerun, Georgia  
 LA FOREST SMITH . . . Valdosta, Georgia

### THIRD ROW

SHELLY SPARKS . . . Fitzgerald, Georgia  
 IDA LEE STEARMAN . . . Savannah, Georgia







## SOPHOMORES

### FIRST ROW

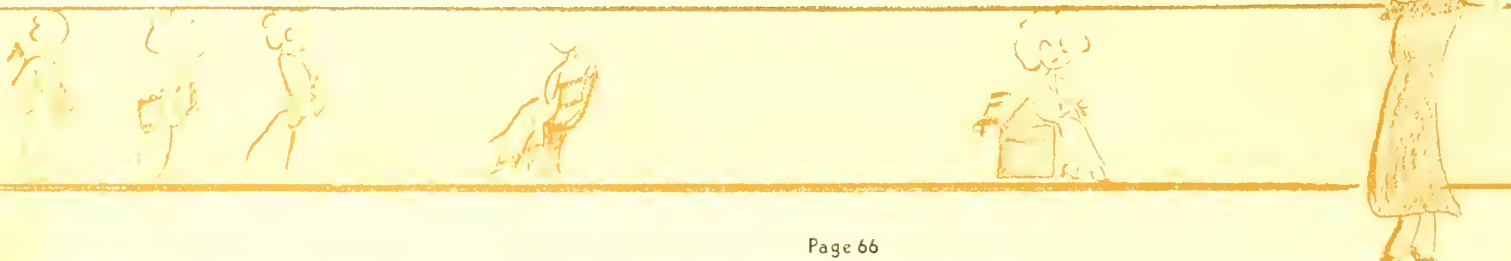
HULDA SUMMER . . . . . Cordele, Georgia  
 DORIS SWINDLE . . . . . Ray City, Georgia  
 FLORENCE THARP . . . . . Leesburg, Georgia

### SECOND ROW

LORENE THOMAS . . . . . Valdosta, Georgia  
 MARY THOMAS . . . . . Jesup, Georgia  
 MATILDA TILLMAN . . . . . Quitman, Georgia

### THIRD ROW

HARRIET TISON . . . . . Moultrie, Georgia  
 ANNE TURNER . . . . . Valdosta, Georgia







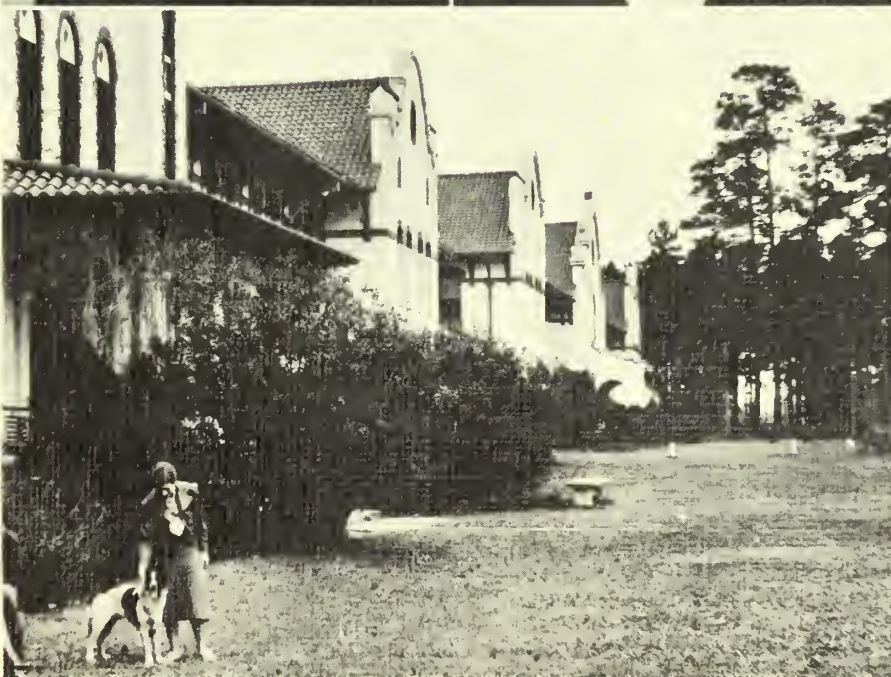
## SOPHOMORES

### FIRST ROW

MARGARET VARN . . . Waresboro, Georgia  
 VIVIAN VINCENT . . . . . Hahira, Georgia  
 MARGARET WADE . . . . . Valdosta, Georgia

### SECOND ROW

CAROLYN WARNELL . . . Pembroke, Georgia  
 PEARL WILSON . . . . . Cordele, Georgia  
 LUCILLE WURST . . . Ochlochnee, Georgia







MARGARET CANNON  
President of Freshman Class  
Cairo, Georgia

RHONA BARFIELD  
Valdosta, Georgia

MARGARET BULLARD  
Nashville, Georgia

ARRIE V. CARTER  
Fargo, Georgia

BERNICE ANDREWS  
Thomasville, Georgia

IDELLA BAUMSTEIN  
Lake City, Florida

RUTH BUNN  
Waycross, Georgia

GAYLE CHUTE  
Unadilla, Georgia

HELEN ASHBROOK  
Valdosta, Georgia

EDITH BENNETT  
Savannah, Georgia

JANIE MERLE BYRD  
Pavo, Georgia

BOBBIE COCHRAN  
Camilla, Georgia

CAROLYN ASKEW  
Arlington, Georgia

ANN BROOKS  
Valdosta, Georgia

ALVATA CARTER  
Rockingham, Georgia

GERALDINE COLLINS  
Unadilla, Georgia

## FRESHMEN







## FRESHMEN

CLARACE CONNOR  
Stockton, Georgia

MARY COOK  
Boston, Georgia

RUTH COOK  
Chula, Georgia

SUSIE BERT COPPAGE  
Valdosta, Georgia

WINIFRED CORBETT  
Pearson, Georgia

ALYS DAWN CULLENS  
Waycross, Georgia

MILDRED DANIELS  
Hawkinsville, Georgia

MAGGIE FRANCES DAVIDSON  
Gabbetville, Georgia

SARA DAVIS  
Moultrie, Georgia

LOIS DICKERSON  
Homerville, Georgia

DOROTHY DIXON  
Patterson, Georgia

BEDREW EATMAN  
Homerville, Georgia

ELLIE ETHEREDGE  
Sumner, Georgia

ANNE MARY EVANS  
Coolidge, Georgia

WILMA RUTH FAIRCLOTH  
Seville, Georgia

MARY PATTERSON FISHER  
Atlanta, Georgia







IVELYN FOLSOM  
Hahira, Georgia

THERESA GRAHAM  
Jesup, Georgia

DOROTHY HALL  
Nicholls, Georgia

BARBARA HATCHER  
Moultrie, Georgia

MARTHA FRANKLIN  
Valdosta, Georgia

CAROLYN GREENE  
Columbus, Georgia

THERA HAMBRICK  
Ray City, Georgia

JEANELLE HATCHER  
Valdosta, Georgia

RUTH GARbutt  
Valdosta, Georgia

DERRY DORRIS GRIFFIS  
Homerville, Georgia

LOUISE HARPER  
Albany, Georgia

DOROTHY HERNDON  
Lake Park, Georgia

MARTHA GARDNER  
Camilla, Georgia

LOIS HAFFORD  
Waycross, Georgia

HELEN HARRIS  
Valdosta, Georgia

FRANCES HIERS  
Quitman, Georgia

## FRESHMEN







## FRESHMEN

FRANCES HINSON  
Waycross, Georgia

LUCILLE HOLT  
Baxley, Georgia

JOAN HORTON  
McRae, Georgia

MILDRED HUDSON  
Rome, Georgia

ERNESTINE ISBELL  
Valdosta, Georgia

FLOYE IVEY  
Bridgeboro, Georgia

MARTHA JOHNSTON  
Valdosta, Georgia

EMMA RUTH JONES  
Donalsonville, Georgia

MARTHA JONES  
Lakeland, Georgia

MARY JONES  
Valdosta, Georgia

MARJORIE JORDAN  
Waycross, Georgia

RUBY JORDAN  
Waycross, Georgia

JOHNNIE MAE KELLEY  
Cordele, Georgia

JUANITA KENNEDY  
Surrency, Georgia

WINIFRED KING  
Woodbine, Georgia

LOVENIA LASSITER  
Valdosta, Georgia







JEANNETTE CLAIRE LAWRY  
Valdosta, Georgia

ELEANOR LEE  
Cairo, Georgia

BESSIE LEWIS  
Willacoochee, Georgia

ELOUISE LINEBERGER  
Valdosta, Georgia

BLANCHE LOCKLEAR  
Homerville, Georgia

RUTH LOUGHRIDGE  
Blackshear, Georgia

REBECCA LUNDY  
Boston, Georgia

BLANCHE MABBETT  
Quitman, Georgia

ELIZABETH MACON  
Moultrie, Georgia

JESSIE MAUDE MASON  
Ochlochnee, Georgia

SUSIE MATHEWS  
Valdosta, Georgia

ELIZABETH McEACHREN  
Valdosta, Georgia

FRANCES McLAIN  
Dawson, Georgia

LORA McPAUL  
Doerun, Georgia

KATHERINE MOORE  
Moultrie, Georgia

DOROTHY MORGAN  
Valdosta, Georgia

## FRESHMEN







## FRESHMEN

LOUNELL MORRIS  
Pearson, Georgia

RUTH NIXON  
Griffin, Georgia

SARA NORRIS  
Thomason, Georgia

KITTY O'NEAL  
Tifton, Georgia

LOIS PAFFORD  
Stockton, Georgia

MYRTLE PARKER  
Ludowici, Georgia

HELEN DALE PARRISH  
Metcalf, Georgia

LOIS PERRY  
Kingsland, Georgia

OLIVE PINKERTON  
Eatonton, Georgia

MARTHA POWELL  
Valdosta, Georgia

SALLY PRESCOTT  
Winokur, Georgia

SARAH ANNE PRYOR  
Fitzgerald, Georgia

SARAH MARTHA PYLE  
Valdosta, Georgia

GERALDINE QUINN  
Hazlehurst, Georgia

HARRIETTE RADFORD  
Lovett, Florida

ARDIS RAFNEL  
Moultrie, Georgia







WYNELLE RAY  
Baxley, Georgia  
CAMILLE RYCROFT  
Adel, Georgia  
JUANITA SIRMANS  
Homerville, Georgia  
WYNELLE SPELL  
Wrightsville, Georgia

FRANCES REES  
Preston, Georgia  
PAULA SAPP  
Cairo, Georgia  
EVA MAE SMITH  
McRae, Georgia  
VIVIAN STANFORD  
Adel, Georgia

NORMA RENFROE  
Vienna, Georgia  
LUCILLE SHELLEY  
Pavo, Georgia  
MRS. HENRY SMITH  
Valdosta, Georgia  
ELIZABETH STRICKLAND  
West Palm Beach, Florida

HARRIETTE ROGERS  
Fitzgerald, Georgia  
JEANETTE SHIFRIN  
New York, N. Y.  
KITSIE SMITH  
Waycross, Georgia  
MERLE SUMNER  
Waycross, Georgia

## FRESHMEN







## FRESHMEN

GRACE SWINDLE  
Ray City, Georgia

LUCILLE TYSON  
Jesup, Georgia

MADEE WATSON  
Lakeland, Georgia

CLYDE THOMAS  
Valdosta, Georgia

BETTY VAUGHAN  
Savannah, Georgia

CAROLYN WHIPPLE  
Quitman, Georgia

MARY K. WISENBAKER  
Valdosta, Georgia

KATHRYN TOOLE  
Valdosta, Georgia

MANELLE VINCENT  
Hahira, Georgia

ANNIE LAURIE WHITE  
Waycross, Georgia

FLORIDE ZIPPERER  
Lake Park, Georgia

JANE TWITTY  
Valdosta, Georgia

ELIZABETH WADE  
Valdosta, Georgia

RUTH WILLIAMS  
Waycross, Georgia

VIRGINIA ZIPPLIES  
Savannah, Georgia











# ACTIVITIES

Spice, salt, and vinegar Korma  
 and in the college kitchen a  
 salad with red and green beans  
 was served as dessert with the day.





ESTHER SMITH



KATHLYN TAYLOR



MARY POLHILL



HENRY KATE GARDNER

## STUDENT GOVERNMENT ASSOCIATION

All students of the Georgia State Womans College may become members of the Student Government Association by taking the Freshman Training Course and by signing the pledge. Each has an active part in unholding the responsibilities laid on the individual in the fundamental principles of honor and self-government.

The purpose of this association is to promote the highest standards of honor and integrity in all matters of personal conduct; to promote a general respect for law and order; to strengthen cordial relations between faculty and students; and otherwise to promote the general success of the Georgia State Womans College.

The court is the judicial body of the association which functions in the maintenance of discipline; it is composed of the four class presidents, vice-president and president of the Student Government Association.

The council composed of members from the student body and faculty, has jurisdiction over serious disciplinary problems referred to it by the court, and takes the initiative in the enactment, amendment, or repeal of laws pertaining to the conduct of the students.

The association is a member of the Southern Intercollegiate Association of Student Governments. Each year the outgoing and incoming presidents attend its annual conference.

### OFFICERS

HENRY KATE GARDNER	President
ESTHER SMITH	Vice-President
KATHLYN TAYLOR	Secretary-Treasurer
MARY POLHILL	Recorder of Points

### COURT MEMBERS

MARGARET CANNON  
EMMA AMBOS  
RUTH JONES

VIRGINIA SHEPPARD  
JO DANIEL  
MARY ELIZABETH WEATHERFORD







MARGARET CANNON

EMMA AMBOS

RUTH JONES

VIRGINIA SHEPPARD

JO DANIEL

MARY ELIZABETH WEATHERFORD



TWO OFFICERS OF THE S. G. A.



"BLUE MONDAY"



"THE HIGHER COURT"







MILDRED TURNBULL

DOROTHY OGLETREE

JO DANIEL

EVELYN MAY

## Y. W. C. A.

The Y. W. C. A. is one of the oldest activities of the campus and ranks with the Student Government Association as one of the largest student organizations in the college.

To encourage and broaden the religious life on the campus, the Y. W. C. A. provides vesper services twice each week, Bible study once a week, and a short watch service each morning before breakfast. In accordance with past customs such services as the candle lighting ceremony, the fire lighting ceremony, and the Christmas Pageant are also perpetuated.

Among the off-campus speakers brought by the Y. W. C. A. this year were Dr. W. A. Smart, Professor of Biblical Theology at Emory University; Miss Lucile McGregor, a G. S. W. C. alumnae, Instructor of Bible at Andrew College; and Mrs. J. C. Thoroughman, another G. S. W. C. alumnae and a Methodist Missionary to China who is in Georgia on furlough this year.

One of the activities continuing the work begun last year is the deputation teams which put on programs in the churches of neighboring towns. A deputation team from Emory gave a program on our campus this year.

The theme of the Y. W. C. A. this year was "Harmonious Living," and in programs emphasis was laid upon living harmoniously with one's self on the campus and off the campus.



MARY ELIZABETH WEATHERFORD

### OFFICERS

MARY ELIZABETH WEATHERFORD	President
MILDRED TURNBULL	Vice-President
DOROTHY OGLETREE	Secretary
JO DANIEL	Treasurer
EVELYN MAY	Pianist
SHELLY SPARKS	Club House Chairman
ELEANOR BAILEY	Sunday School Chairman
BLANCHE LOCHLEAR	Morning Watch Chairman
PEARL WILSON	Music Chairman
CLARA LOUISE DRISKELL	World Fellowship
ELOISE OGLETREE	Membership
MARY ASKEW	Art Chairman
IDA LEE STEARMAN	Room Chairman
VANGIE TRIMBLE	Entertainment
CLARA DAVIS ADAMS	Deputation Chairman
AMANDA BARKSDALE	Assistant to Vice-President
PRISCILLA KELLEY	Freshman Commission Chairman

### FACULTY ADVISERS

MISS BUSH  
DR. HAWKS  
DR. DURRENBERGER

### FRESHMAN COMMISSION

RUTH BUNN  
ALVATA CARTER  
LOIS DICKERSON  
CAROLYN GREEN  
BARBARA HATCHER  
WINIFRED KING  
RUTH LOUGHRIDGE

KATHERINE MOORE  
MYRTLE PARKER  
HARRIETTE ROGERS  
KITSIE SMITH  
MANELLE VINCENT  
ANNIE LAURIE WHITE  
RUTH WILLIAMS







SHELLY SPARKS  
CLARA LOUISE DRISKELL  
VANGIE TRIMBLE

ELEANOR BAILEY  
ELOISE OGLETREE  
CLARA DAVIS ADAMS

BLANCHE LOCHLEAR  
MARY ASKEW  
AMANDA BARKSDALE

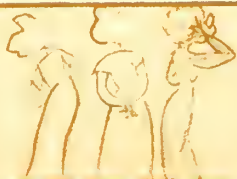
PEARL WILSON  
IDA LEE STEARMAN  
PRISCILLA KELLEY



FRESHMAN COMMISSION



"MORNING WATCHERS"







LEONORA DuFOUR

## THE PINE BRANCH

The best efforts in student writing are published in THE PINE BRANCH, the college quarterly magazine. THE PINE BRANCH has long been associated with the literary efforts of the students who receive their inspiration from Southern traditions and campus life.

Since the founding of THE PINE BRANCH, it has included both campus news and literary material; however, with the founding of the weekly newspaper this year THE PINE BRANCH has undergone a number of revisions. It has been made into purely a literary magazine; the campus news is now published in the newspaper.

Published in a section abounding in tradition and legend, THE PINE BRANCH has a brilliant future in the literary activity of South Georgia.

### PINE BRANCH STAFF

LEONORA DuFOUR . . . . .	Editor
ETHLYN MASSEY . . . . .	Assistant Editor
LORENE JOHNSON	} Contributing Editors
ANTOINETTE ANDREWS	
HULDA SUMMER	
LILLIAN BRAGG	
MARGUERITE McCALL . . . . .	Circulation Manager



LEONORA, CAMILLE and ETHLYN



ETHLYN MASSEY



LORENE JOHNSON



ANTOINETTE ANDREWS



HULDA SUMMER



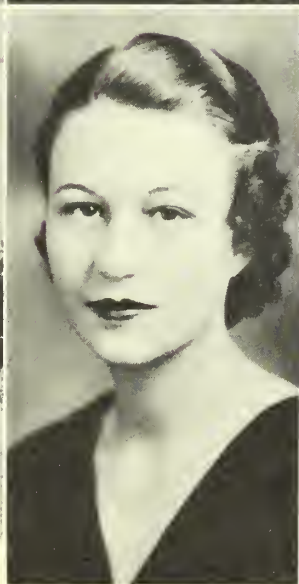
LILLIAN BRAGG



MARGUERITE McCALL







LOUISE AMBOS

VIRGINIA KIRKLAND

ESTELLE ROBERTS

CAROLYN BRIM

ELIZABETH WILKES

HELEN CLAIRE VARNEDOE

ELIZABETH

MARJORIE GROOVER

ELEANOR BAILEY



ELIZABETH LARISEY

## PINE CONE

THE PINE CONE, the year book published by the Senior Class, is a testimonial to the fine and enduring benefits conferred upon it by our Alma Mater. The staff of 1935 has endeavored to manifest a true appreciation of what we consider the four best years of our lives.

Each year the Senior Class makes an earnest effort to carry on the splendid work which has been produced in preceding years. Three PINE CONES have won All-American honor in the National Scholastic Press Association.

MISS GERTRUDE GILMER . . . Faculty Adviser

### STAFF

ELIZABETH LARISEY . . . . . Co-editor  
LOUISE AMBOS . . . Co-editor and Business Mgr.  
VIRGINIA KIRKLAND . Assistant Business Manager  
ESTELLE ROBERTS . . . . . Literary Editor  
CAROLYN BRIM . . . . . Advertising Manager  
ELIZABETH WILKES . Asst. Advertising Manager  
HELEN CLAIRE VARNEDOE . . Snapshot Editor  
MARJORIE GROOVER . . . . . Snapshot Editor  
ELEANOR BAILEY . . . . . Activities Editor  
WINNIE DAVIS . . . . . Art Editor



"WE'RE ON YOUR TRAIL" "GO-GETTING AD-GETTERS"







LEONORA DuFOUR

## THE CAMPUS CANOPY

For a number of years it was felt that one of the greatest needs on our campus was the need for a newspaper in which the latest news of important college happenings could be recorded. This year that dream was realized when THE CAMPUS CANOPY, the weekly newspaper, made its first appearance in November. The first quarter it was edited by a group of students interested in establishing a paper as a permanent publication. Later it was published by the class in news writing which used it as a practical guide in learning the technique of newspaper writing and editing.

Long one of the foremost needs in the literary activities of the college, the CANOPY occupies a prominent position in the literary activities of the college.

This year two delegates were sent to the meeting of the Georgia Press Institute in Athens in February, and to the meeting of the Georgia Collegiate Press Association at Wesleyan College in April.



EDITOR

### STAFF

LEONORA DuFOUR . . .	Editor-in-Chief	
LEILA UROUHART . . .	News Editor	
AMANDA BARKSDALE . . .	Assignment Editor	
DORIS YOUNG	. . . Assistants	
CAROL FORRESTER		
RUTH WILLIAMS		
MARY AGNES ROANE		
PRISCILLA KELLEY		
ANTOINETTE ANDREWS		
MARGUERITE McCALL		
VIRGINIA HUGHES . . .		Circulation Manager
LEILA MAE TYSON . . .		Advertising
CAMILLE ROGERS . . .		Business Manager



LEILA UROUHART

AMANDA BARKSDALE

DORIS YOUNG

CAROL FORRESTER

RUTH WILLIAMS

MARY AGNES ROANE

PRISCILLA KELLEY

ANTOINETTE ANDREWS

MARGUERITE McCALL

VIRGINIA HUGHES

LEILA MAE TYSON

CAMILLE ROGERS







MARGARET TOUCHTON



## ENGLISH CLUB

Since its organization in 1932, the English Club has been devoted mainly to the study of contemporary literature. Its monthly meetings have been given over to discussions of recent poetry, fiction, and drama.

The club endeavors from time to time to bring to the campus interesting literary figures; this year it had as guest speaker Dr. Anderson M. Scruggs, who read and discussed his poetry before the student body.

The English Club has for its aim the creation of an alert interest in contemporary literature, as well as an appreciation for that which has lived through the ages. Its membership is limited to the Junior and Senior English majors who have a high scholastic record.

### OFFICERS

MARGARET TOUCHTON	President
ELIZABETH LARISEY	Vice-President
LOUISE HARDY	Secretary-Treasurer

### MEMBERS

GERALDINE ARRINGTON  
ELEANOR BAILEY  
JUDY COCHRAN

KATHRYNE CONNELL  
MERLE GIBSON  
LOUISE HARDY  
MARIE JOINER  
VIRGINIA KIRKLAND  
ELIZABETH LARISEY  
MARTHA LOWREY  
OLA LEE POWELL  
CAMILLE ROGERS  
MARGARET TOUCHTON  
LEILA MAE TYSON  
AMES WATKINS



ELIZABETH LARISEY

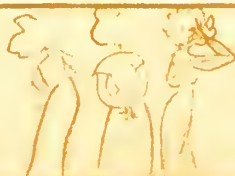
LOUISE HARDY



INTELLIGENTSIA



ENGLISH MAJORS







LOUISE ODOM HOWELL



CAROL FORRESTER



JO DANIEL

## PHI KAPPA AND PHI LAMBDA ATHLETIC CLUB

The Phi Kappa and Phi Lambda Athletic Club have as their purpose the promotion of an effort for physical efficiency, the stimulation of interest in wholesome games and athletic accomplishment, the creation of a spirit of good sportsmanship and the co-operation with other campus organizations in promoting high standards of college life.

To stimulate more interest in the athletic program of the campus, the two associations have been formed into a club whose members are required to demonstrate an active interest in sports. New members have been taken in after they have demonstrated such an interest, and obtained a satisfactory scholastic record for one quarter. The initiation week in January brought many new members into the club.

It has been the custom since 1924 to engrave on the Honor Plaque the name of the association which has obtained the highest scoring in the games played each quarter. Up until last year, when the Lambda's name was engraved the Kappa Association had won this honor. For the fall quarter, American and Fist Ball are played; in the winter quarter, Basket-ball; and in the spring quarter, Baseball is the rollicking sport. During the year the club sponsors a tennis and an archery tournament which bring a spirited challenge to all members.

This year delegates from G. S. W. C. Athletic Clubs were sent to the G. A. A. C. W. Conference held at S. G. T. C. at Statesboro.

The red and white colors of the Kappas and the purple and white of the Lambdas have been displayed in many exciting contests, with each member proud to support her team with singing, "I'm a Phi Kappa born, and a Phi Kappa bred; and when I die, I'll be a Phi Kappa dead," or "Cheer for the Lambdas, Lambdas to win, fight to the finish, never give in."

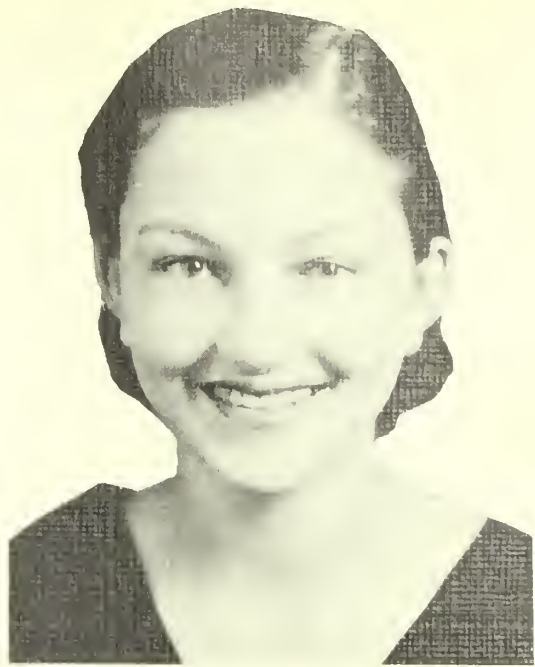






MARGARET HUDSON

PEARL WILSON



UNA RITCH

## PHI KAPPA AND PHI LAMBDA ATHLETIC CLUB

### OFFICERS

#### PHI KAPPA

LOUISE ODOM HOWELL . . . . .	President
CAROL FORRESTER . . . . .	Vice-President
JO DANIEL . . . . .	Secretary-Treasurer

#### PHI LAMBDA

UNA RITCH . . . . .	President
MARGARET HUDSON . . . . .	Vice-President
PEARL WILSON . . . . .	Secretary-Treasurer



ATHLETIC PRESIDENTS



TWO EXPONENTS OF GOOD  
SPORTSMANSHIP





# PHI KAPPA AND PHI LAMBDA ATHLETIC CLUB INTRAMURAL SPORTS

## AMERICAN BALL

LAMBDA—U. RITCH, H. K. GARDNER, G. SWINDLE, E. SMITH, H. ROGERS, R. HARRISON, M. HUDSON, B. MABBETT, P. WILSON, K. TOOLE.

KAPPA—B. LOCKLEAR, L. BRAGG, J. JOUBERT, L. JOHNSON, W. CORBETT, M. WATSON, J. DANIEL, M. TURNBULL, L. O. HOWELL.



## FIST BALL

LAMBDA—L. McPAUL, E. R. JONES, V. VINCENT, S. E. MORGAN, C. RYCROFT, J. KENNEDY, M. CANNON, M. HUDSON.

KAPPA—B. J. JOHNSON, L. CORLEY, M. K. HARRELL, M. REGISTER, F. McLAIN, P. OLLIFF, D. SWINDLE, M. MORRIS.



## BASKET-BALL

LAMBDA—U. RITCH, E. SMITH, J. BROOKS, R. WILLIAMS, J. COOK, M. REID, R. HARRISON, M. BULLARD, M. HUDSON.

KAPPA—L. UROUHART, L. BRAGG, J. JOUBERT, M. K. HARRELL, M. REGISTER, L. PAFFORD, I. BAUMSTEIN, D. SWINDLE, B. ANDREWS.







#### ARCHERY

LORENE JOHNSON  
LILLIAN BRAGG



#### DECK TENNIS

LOUISE ODOM HOWELL  
ESTHER SMITH



## PHI KAPPA AND PHI LAMBDA



#### GOLF

VIRGINIA TUCK  
WILLENE ROBERTS



## GOAT CONTEST

The Athletic Club had its first goat contest this year. Tags were cut in the shape of a goat's head, and drawn in team colors, red and white for the Kappa team, and purple and white for the Lambda team. Each contestant was given three goats. Each team attempted to get the other team's goats by defeating opponents in certain games. A girl could challenge any contestant of the opposing team to any of the specified games and the winner won a goat from the loser. As long as a girl possessed one or more goats she remained in the game. The contestants proudly displayed their goats on sweater fronts until the competition was over. After much keen rivalry and friendly locking of horns, the Lambda team won by a close margin. Challenge matches were played in tennis, archery, golf, deck tennis, horseshoe pitching, box hockey, and croquet. It was unanimously decided by the Athletic Council to make the goat contest a regular feature of our athletic program.



#### TENNIS

MILDRED TURNBULL  
UNA RITCH

#### HORSESHOE PITCHING

LUCILLE WURST  
MARY E. NIX

#### BOX HOCKEY

RUBY HARRISON  
PATSY SPARKS

#### CROQUET

MIRIAM ADAMS  
JO DANIELS







JUDY COCHRAN

EVELYN MAY

ELEANOR BAILEY



LUCY HAMMOND

MARGARET ZIPPLIES



## GLEE CLUB

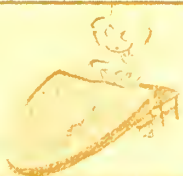
The Glee Club of the Georgia State Womans College performs an important function on the campus. This year there are forty members—selected by competitive tests as to excellency of voice and ability to read music at sight—who meet every Monday and Wednesday for an hour's practice under the leadership of Miss Alimae Temple.

The culmination of the club activities is the annual concert preserved in the spring. The program is composed of two parts: the first of classical music, and the second from semi-classical to well-known popular songs. For the first time in the history of the college, a guest artist, Mr. Paris Lee, of Atlanta, appeared on this program.

The double trio has added much to the Glee Club this year. The club has entertained at various civic functions in Valdosta, as well as at chapel teas, and dinners on the campus. At the Christmas Festival the Glee Club leads the singing from the whimsical folk carols to the soft chant of "Silent Night."

### OFFICERS

JUDY COCHRAN . . . . .	President
EVELYN MAY . . . . .	Vice-President
LUCY HAMMOND . . . . .	Secretary
ELEANOR BAILEY . . . . .	Treasurer
MARGARET ZIPPLIES . . . . .	Accompanist







"ALICE BLUE GOWN"

#### DOUBLE TRIO

JOY MILLER	Soprano
FLORENCE THARP	Soprano
EDITH BENNETT	Soprano
LOUISE ODOM HOWELL	Alto
EVELYN MAY	Second Soprano
ELIZABETH SIMS	Second Soprano
PEARL WILSON	Second Soprano
MARGARET ZIPPLIES	Accompanist



## GLEE CLUB

### MEMBERS

CAROLYN ASKEW  
 ELEANOR BAILEY  
 EDITH BENNETT  
 MARIE BOWER  
 FRANCES CARSON  
 BOBBIE COCHRAN  
 ALEXA DALEY  
 RUTH ELLIS  
 ELLIE ETHEREDGE  
 MARTHA GARDNER  
 JESSELYN GRIGGS  
 LUCY HAMMOND  
 MARY LOIS HITCH  
 LOUISE ODOM HOWELL  
 FLOYE IVEY  
 BLANCHE LOCKLEAR  
 MARGUERITE McCALL  
 LORA McPHAIL  
 EVELYN MAY  
 MARIE MIDDLETON  
 JOY MILLER  
 LUCILLE MURPHY  
 DOROTHY OGLETREE  
 JEANETTE SHIFRIN  
 ELIZABETH SIMS  
 JUANITA SIRMANS  
 EVA MAE SMITH  
 LA FOREST SMITH  
 HULDA SUMMER  
 FLORENCE THARP  
 KATHERINE TOOLE  
 LEILA MAE TYSON  
 MANELLE VINCENT  
 MARY ELIZABETH WEATHERFORD  
 RUTH WILLIAMS  
 PEARL WILSON  
 DORIS YOUNG  
 FLORIDE ZIPPERER  
 VIRGINIA ZIPPLIES



"THE SLEIGH"







JOY MILLER



MARGARET ZIPPLIES

SHELLY SPARKS

## PHILHARMONIC CLUB

The Philharmonic Club was organized to fill the needs of the music lovers on the campus, and to have programs in which only the best type of music was enjoyed. These programs have been organized for their educational value.

In addition to its worth-while programs, which were given at its regular meetings, it has also provided attractive features in the social life of the college.

The subject for study this year was "Contemporary Concert Artists." In order to familiarize the members with the most important modern musicians, the club presented a well-organized program which consisted of a study of musicians of the radio and concert world.

### OFFICERS

JOY MILLER	President
MARGARET ZIPPLIES	Vice-President
SHELLY SPARKS	Secretary-Treasurer

### MEMBERS

LOUISE AMBOS  
EDITH BENNETT  
SARA BINGHAM  
BILLIE COLLINS  
JO DANIEL  
MARY LOIS HITCH  
VIRGINIA INGRAM  
MARTHA JONES  
JOHNNIE MAE KELLEY  
MARTIEL LUNDY  
ETHLYN MASSEY  
MARIE MIDDLETON

JOY MILLER  
MYRTLE PARKER  
ANNETTE PHILLIPS  
SARA MARTHA PYLE  
ELIZABETH SIMS  
JUANITA SIRMONS  
EVA MAE SMITH

SHELLY SPARKS  
GRACE SWINDLE  
VIVIAN VINCENT  
PEARL WILSON  
DORIS YOUNG  
MARGARET ZIPPLIES  
VIRGINIA ZIPPLIES



JOY, MARGARET and SHELLY



MISS WARREN

MUSIC LOVERS





NELLIE MAY GANNON

## FINE ARTS CLUB

The Fine Arts Club, limited to those girls who have artistic ability, and who have shown a sincere interest in art, has as its objective for the 1934-35 program the promoting of art appreciation and art interest, not only of the club members, but also of the student body and of the community. The club endeavored to carry out its purpose by means of the annual Christmas bazaar, the production of a puppet play, the proposed visit to the Ringling Art Museum at Sarasota, Florida, and by various exhibits.

These exhibits included a group of Japanese block prints, soap sculpture, etchings from the Philadelphia Association of Etchers, antique jewelry, water colors by pupils of Dr. Martin, of Columbia University, one group of oil paintings loaned through the courtesy of the College Art Association, and another group of oils by Miss Ruth Carpenter, Professor of Art.

NELLIE MAY GANNON . . . . . President  
FRANCES GARbutt . . . . . Vice-President  
LILLIAN BRAGG . . . . . Secretary and Treasurer

### MEMBERS

MARY ASKEW  
MARGARET BENNETT  
SARA BINGHAM  
LILLIAN BRAGG

AVRYLEA BURCH  
WINNIE DAVIS  
MARTHA GAY  
NELLIE MAY GANNON

FRANCES GARbutt  
FRANCES HINSON  
JOSEPHINE JOUBERT  
LINELLE LANG  
KATHERINE McGREGOR  
LUCILLE MURPHY  
MARY POLHILL  
IDA LEE STEARMAN  
HULDA SUMMER  
DORIS SWINDLE  
ANNE TURNER  
FLORENCE THARP  
JOYCE TIPTON



FRANCES GARbutt

LILLIAN BRAGG



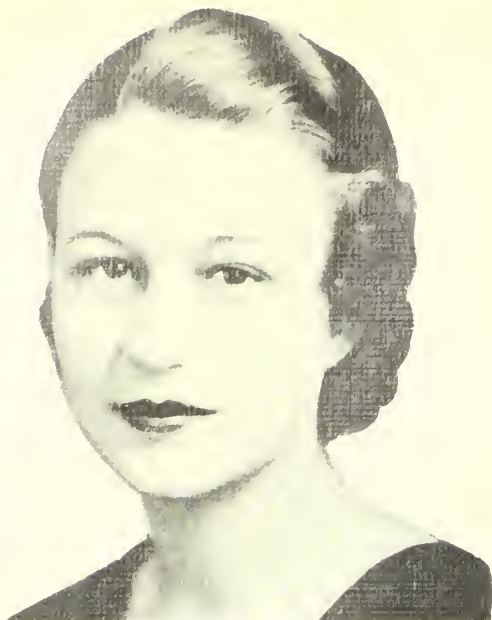
ARTIST AT EASE



PUTTING NATURE ON CANVAS







MARJORIE GROOVER



## INTERNATIONAL RELATIONS CLUB

The International Relations Club, realizing the importance of a knowledge of our country's affairs, has for its aim the study and discussion of the national and international events which are daily transpiring within and without our borders, and which vitally concern our American life and institutions.

The Carnegie Endowment for International Peace presents the International Relations Club each year with a number of books discussing the international topics of the day, thereby increasing the private library of the club.

### OFFICERS

MARJORIE GROOVER	President
SARA RACHEL COXWELL	Vice-President
ESTHER SMITH	Secretary
LUELLE GIDDENS	Treasurer
CLARA LOUISE DRISKELL	Member-at-Large

### MEMBERS

LOUISE AMBOS  
SARA BINGHAM  
HARRIETTE BULLARD  
LEILA CALLENDER  
RACHEL COXWELL  
WINNIE DAVIS  
MARY DEARISO  
CLARA LOUISE DRISKELL  
RUTH ELLIS  
EMILY FLUKER  
MARTHA GAY  
LUELLE GIDDENS  
MARJORIE GROOVER  
BROWN HUTCHINSON

BESSIE JO JOHNSON  
NELLIE JOHNSON  
NETTIE JOHNSON  
NOELLENE JOHNSON  
MARGUERITE McCALL  
KATHERINE McGREGOR  
LAURA McLEOD  
ETHLYN MASSEY  
DOROTHY OGLETREE  
VIRGINIA SHEPPARD  
LOIS SIMPSON  
ESTHER SMITH  
SHELLY SPARKS  
MARY ELIZABETH WEATHERFORD



SARA RACHEL COXWELL CLARA LOUISE DRISKELL

LUELLE GIDDENS

ESTHER SMITH

"ON THE FARM"



"WITH COSMOPOLITAN MINDS"



I. R. C.







DORIS YOUNG

MARY POLHILL

LUCY HAMMOND



CAROLYN BRIM

## ENTRE NOUS

Entre Nous was organized in the fall of 1932. It is the youngest club on the campus, but it has already created a place for itself.

The purpose of the club is "To promote interest in France and French literature through reading and conversation." Majors and minors of the two upper classes, and sophomore majors with high scholastic records are eligible for membership.

The club is taking for its project for the year the presentation of several French plays which will be of interest to the entire student body. The first play presented was "La Dame de Bronze et le Monsieur de Cristal," a one-act comedy by Henri Duvernois. The cast was as follows:

Madame Sourcier . . . . .	CAROLYN BRIM
Monsieur Sourcier . . . . .	LOUISE HARDY
Alique, the Doctor . . . . .	MARY ALDERMAN
Monsieur Passandeu . . . . .	DORIS YOUNG
Le Prince . . . . .	CLARA LOUISE DRISKELL

### OFFICERS

CAROLYN BRIM . . . . .	President
DORIS YOUNG . . . . .	Vice-President
MARY POLHILL . . . . .	Secretary-Treasurer
LUCY HAMMOND . . . . .	Parliamentarian

### MEMBERS

MARY ALDERMAN  
CAROLYN BRIM  
JANET COOK  
CLARA LOUISE DRISKELL  
LUCY HAMMOND  
LOUISE HARDY  
DOROTHY JOHNSON  
RUTH JONES  
SARAH OWENS  
MARY POLHILL

OLA LEE POWELL  
KATHLYN TAYLOR  
MARGARET TOUCHTON  
HELEN CLAIRE VARNEDOE  
DORIS YOUNG



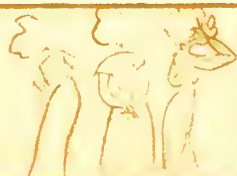
LES MEMBRES DU CLUB



MADemoiselle



"LA DAME DE BRONZE ET  
LE MONSIEUR DE CRISTAL"







AMANDA BARKSDALE



CLARE LAWSON  
MARION REID

## MATH-SCIENCE CLUB

The Math-Science Club gives students an opportunity to work on projects in which they are particularly interested. In order that this may be done to advantage, the club is divided into three groups—Math, Chemistry and Biology. Each group has its leader, although all are under the supervision of the president of the entire club.

The mathematicians have as their project this year the making of geometrical constructions which may be used in future class work.

Students who were interested in Chemistry constructed a periodic chart of the elements. This chart impressed more readily on our minds the elements, their uses, and their compounds.

The Biology department worked on the collection and classification of the flora and fauna of Valdosta.

The Math-Science Club held only one meeting each quarter, but the various departments met more frequently to plan and discuss their projects. Several outstanding speakers were guests of the club at various times.

### OFFICERS

AMANDA BARKSDALE . . . . .	President
CLARE LAWSON . . . . .	Vice-President
MARION REID . . . . .	Secretary-Treasurer

### MEMBERS

EMMA AMBOS  
ANTOINETTE ANDREWS  
CLEO BARBER  
AMANDA BARKSDALE  
MARGARET BERRYHILL  
HELEN CARTER  
JO DANIEL  
RUBY JONES  
VANELLE KENDALL

CLARE LAWSON  
JESLYN MOSELEY  
MARION REID  
IDA LEE STEARMAN  
HULDA SUMMER  
ELIZABETH TILLMAN  
LUCILLE THOMPSON  
LEILA UROUHART  
MARGARET WADE

MARGARET ZIPLIES



TRIO OF SCIENTISTS



AMANDA



SCIENTIFIC MINDS







ESTELLE ROBERTS



VANGIE TRIMBLE

MARY AGNES ROANE

## SOCK AND BUSKIN

The Sock and Buskin Club has as its purpose one akin to that of the now prevalent Little Theatre Movement; namely, the creation of a National Drama. It desires to create among the members of the student body an interest in and an appreciation of the best that may be found in the world of the theatre. Among its own members dramatic ability is encouraged through the medium of stage productions, and various interests are stimulated by means of lectures on stage technique, make-up, and lighting.

The three-act play presented this year was *The Swan*, a romantic comedy, by Ferenc Molnar. The scene is laid in a mythical European Kingdom, which forms a perfect background for Molnar's clever lines, flashing wit, and delicate pathos. In the play, the Princess Beatrice intends to marry off her daughter, Alexandra, to a prince of the reigning house, and her efforts to consummate this marriage form the basis for the plot. The cast included:

Dr. Agi, W. Roberts; George, M. Turnbull; Arsene, U. Ritch; Princess Beatrice, B. Hutchinson; Alexandra, H. K. Gardner; Father Hyacinth, E. Roberts; Symphorosa, L. Johnson; Prince Albert, L. Bragg; Colonel Wunderlich, V. Tuck; Caesar, C. Barber; Maid, V. Trimble; Princess Maria Dominica, L. Du Four; Ladies-in-waiting, R. Williams, M. Tillman; Alfred, M. Hudson.

Membership is determined by annual try-outs; the club at present is composed of thirty active members, several honorary members, and the director of the organization, Miss Louise Sawyer.

### OFFICERS

ESTELLE ROBERTS . . . . .	President
VANGIE TRIMBLE . . . . .	Vice-President
MARY AGNES ROANE . . . . .	Secretary-Treasurer



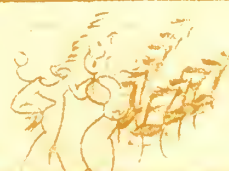
"FUTURE CORNELLS"



OFFICERS



DIRECTOR





# SOCK AND BUSKIN

## MEMBERS

CLARA DAVIS ADAMS  
CLEO BARBER  
LILLIAN BRAGG  
BOBBIE COCHRAN  
RACHEL COXWELL  
LEONORA DUFOUR  
HENRY KATE GARDNER  
MARTHA GARDNER  
MARGARET HUDSON  
BROWN HUTCHINSON  
LORENE JOHNSON  
JOSEPHINE JOUBERT  
PRISCILLA KELLEY  
ANNIE KATE KNIGHT



## ROMANCE OF THE WILLOW PATTERN

### Cast

KOONG-SEE . . . . .	Matilda Tillman
CHANG . . . . .	Martha Gardner
THE MANDARIN . . . . .	Virginia Tuck





# SOCK AND BUSKIN

## MEMBERS

JESSE LANGDALE  
KATHERINE MORGAN  
CARROLL PEEPLES  
MARION REID  
UNA RITCH  
MARY AGNES ROANE  
ESTELLE ROBERTS  
WILLENE ROBERTS  
LA FOREST SMITH  
MATILDA TILLMAN  
VANGIE TRIMBLE  
VIRGINIA TUCK  
MILDRED TURNBULL  
LEILA URQUHART  
RUTH WILLIAMS



### Above THE CONFLICT

#### Cast

EMILIE . . . . .	Willene Roberts
BOB . . . . .	Una Ritch
BESS . . . . .	Cleo Barber
THE MOTHER . . . . .	Broun Hutchinson

### Right WHEN THE WHIRLWIND BLOWS

#### Cast

MADAME ELIZABETH ANDROYA . . . . .	Vangie Trimble
JOSEFA . . . . .	Henry Kate Gardner
ANNA . . . . .	Lillian Bragg







LORD OF MISRULE, PAGES, AND COURT FOOL



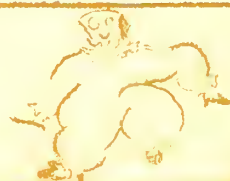
"THE FOOLISH FUNNIES"  
"CERTAYNE DANCERS"  
MORRIS MEN

## Ye Old English Christmas Festival

"Then bring with a noise, my merry boys,  
The Yule log to the firing;  
For my good dame she bids you all be free,  
And sing to your hearts desiring."

Thus with the singing of the Yule song, Ye Old English Christmas Festival, the merriest and most colorful celebration of the college, begins. The celebration, dating from the first Christmastide of the college in 1913, was instituted in the desire to enrich the life of students by leading their emotions to flow in the channels of social custom which flow down from the joyful infancy of our people. It has grown deep into the life of the college, and has become one of its loveliest traditions.

The Lord of Misrule has charge of the merrymaking during the evening, at which the Lord of the Manor and his court preside. The colorful old custom of bringing in the boar's head, accompanied by the singing of carols by the Glee Club, opens the festivities.







"SKATERS"

## Ye Old English Christmas Festival

The merriment of the Festival is furnished by the Fool of the court and her underlings who reign over the funster's frolics. As the evening progresses the mood of the entertainment changes from one of merrymaking to one of reverence and appreciation for the spirit of Christmas.

The colorful decorations of the feast hall, the quaint costumes of "ye compayne," and the general happy spirit of good will and cheer prevail through the capers of the fool, the festive dancers, and the familiar carols sung at intervals during the program. The merrymaking and revelry diminishes, and is replaced by a slower movement, and as a final number, the lords and ladies dance the stately minuet.

With the singing of *Silent Night*, the candle-light recessional forms; after which comes a general exchange of Christmas greetings.



"HOBBY HORSE"  
PIERROTS AND PIERETTES  
YE LORDS AND LADIES







MAY QUEEN—MISS VIRGINIA HUTCHINSON

## MAY DAY

One of the loveliest traditions at the college is the annual May Day celebration, a gala occasion in which every student takes part, from the Queen of the May, selected from the senior class by popular vote, to the peasantry, representing all the classes. Songs and dances on the green in which the peasant folk express the age-old sentiments regarding May Day—old English traditions featured by pirates, milk maids, Morris Men, lords and ladies—Greek mythological portrayals depicting the legend of Ceres—the winding of the vari-colored may poles—the lovely procession of the May Queen and her court—all typify the spirit of the May Day celebrations from the time of the Druids to the present day.

All of the pageantry and simple splendor that marked the celebrations of the Celts is carried on as a tradition at the college each May Day.





# MAY DAY



QUEEN, MAID-OF-HONOR,  
AND TRAIN BEARERS—MISS  
VIRGINIA HUTCHINSON,  
MISS MARIELE TURNER,  
BOBBIE SNOW, AND JOHN  
WIGGINS.



QUEEN, MAID-OF-HONOR,  
AND LADIES-IN-WAITING.



QUEEN AND HER COURT





# MAY DAY



LADIES-IN-WAITING



QUEEN, LORDS, AND HERALDS



PROSERPINE'S COMPANIONS



PIRATES' GOLD





MAY DAY



VILLAGE FLIRTATION



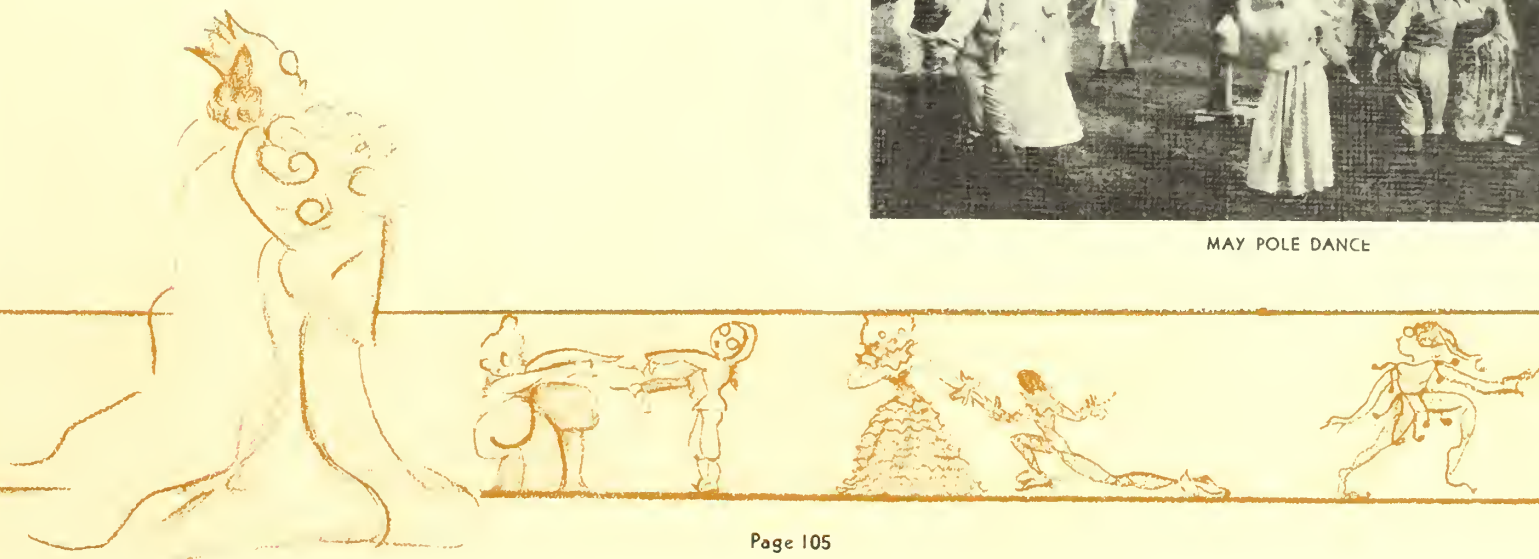
STICK DANCERS



PORTLAND FANCY



MAY POLE DANCE





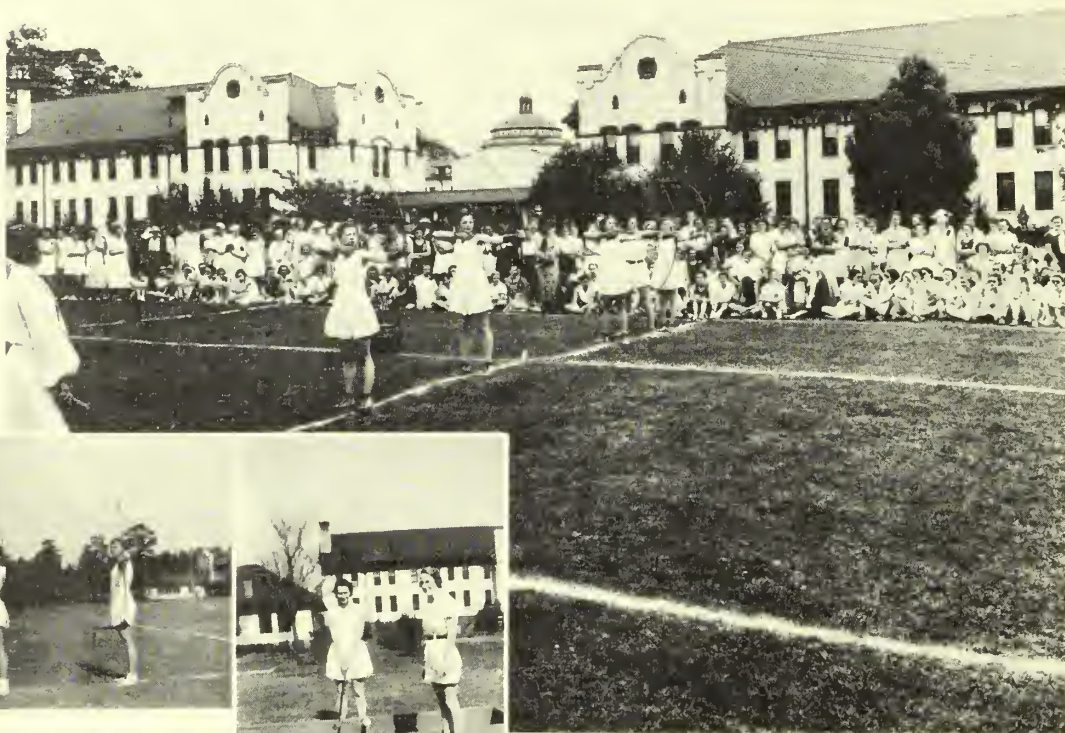
## PLAY DAY

Play Day, a new movement in the field of Physical Education, was instigated at G. S. W. C. in 1931. It proved so successful that it has become a full-fledged annual "activity," anticipated in alike by students and guests.

The aim of Play Day is to help the work being done all over the country to spread the knowledge and use of new and interesting games to other schools, and to encourage friendship between the high schools and colleges.

There is no school rivalry, no playing merely to win, no individual honor to be gained, but a day spent in learning new games, playing old ones, and enjoying the comradeship of play.

By ten-thirty, guests from high schools in all sections of the South-



DECK TENNIS



SHOOTING AT THE BULL'S EYE



PITCHING HORSE SHOES



BOX HOCKEY

CROQUET

TEEING OFF



PLAY DAY LUNCHEON

WHILE THE GALLERY LOOKS ON







## PLAY DAY

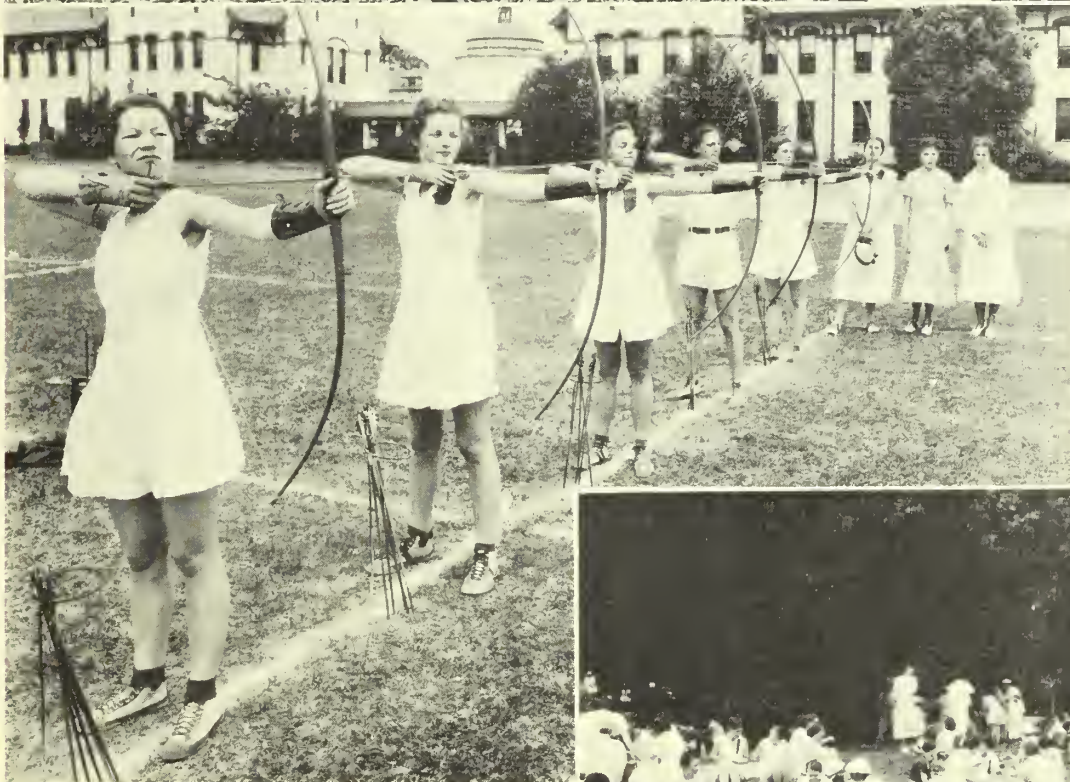
ern part of the state have arrived and been organized into teams for Play Day. The whole morning is given over to the campus games, in which sports, games and stunts predominate.

Archery, golf, tether ball, box hockey, tennis, volley ball, and soccer play a large part in the program of the day.

As the noon hour arrives points are tabulated and the winning team receives the honors that they have won.

A picnic lunch under the pines is served at one o'clock, bringing to a close the sports program of the day.

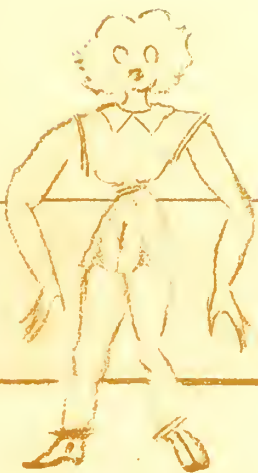
These sports are followed in the afternoon by the elaborate Old English May Day Festival.



G. S. W. C. AS HOSTESS

LOOSING THE ARROWS

AFTER THE GAMES





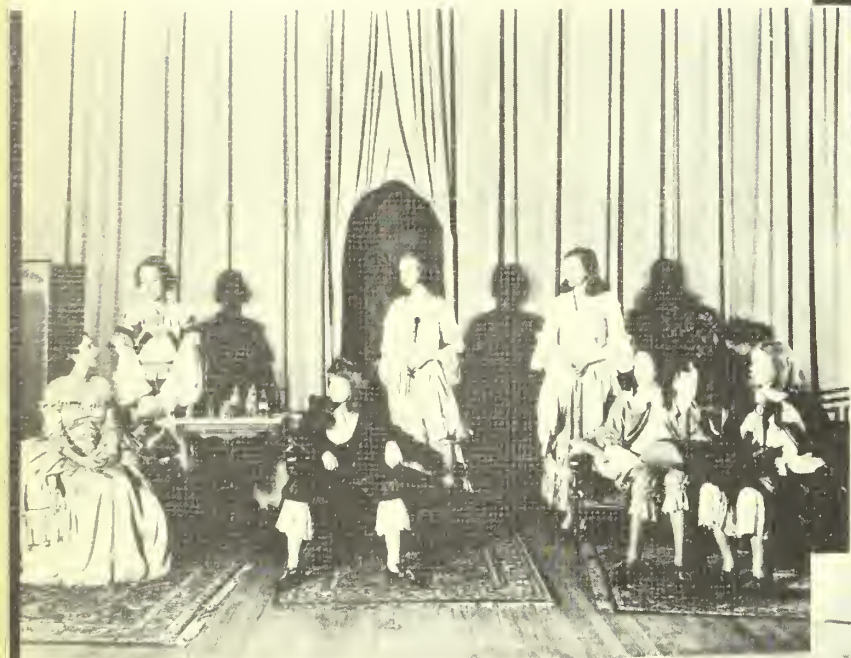
# SENIOR PLAY

## IMAGINARY INVALID

MOLIERE



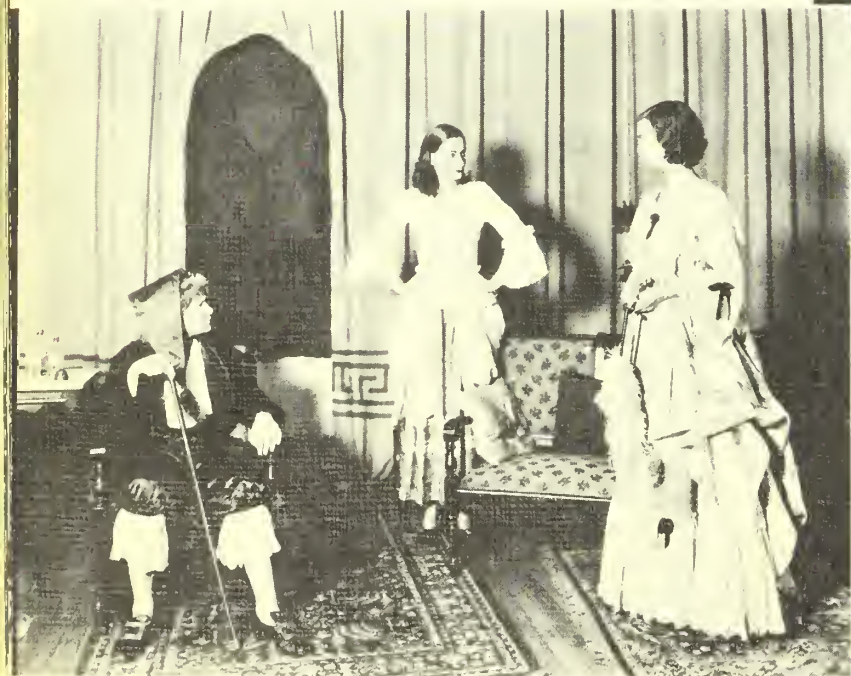
"AHI YOU DECEITFUL CHILD; YOU KNOW VERY WELL WHAT I MEAN."



"AHI MONSIEUR, BE TOUCHED BY HER PRAYERS AND MINE."



"I MUST TELL YOU THAT YOU CANNOT GIVE ANYTHING TO YOUR WIFE BY WILL."



"TOINETTE, WHY DID YOU MAKE MY HUSBAND ANGRY?"







TELL ME MY FATE; AM I TO LIVE, OR DIE?"

# SENIOR PLAY

## IMAGINARY INVALID

MOLIERE



"WITHIN FOUR DAYS YOUR CONDITION WILL BE INCURABLE!"



"BUT IT LIES WITH YOU ALONE TO DISSIPATE THIS ILL-HUMOUR."



"MONSIEUR, WILL YOU LET ME GIVE YOU SOME ADVICE—AS A FRIEND?"







BROUN HUTCHINSON

## VALDOSTA CLUB

The Valdosta Club is an organization composed of the alumnae of the Valdosta High School. It holds monthly meetings of a social nature, including luncheons, tea dances, and specialty features. The purpose of the club is to promote a friendly feeling between the boarding and day students, to emphasize the social life of the college, and to be a means of interpreting the activities of the day students and the town.



### OFFICERS

BROUN HUTCHINSON	President
ELIZABETH LARISEY	Vice-President
ANNE TURNER	Secretary
JESSIE CATLEDGE LANGDALE	Treasurer

### MEMBERS

HELEN ASHBROOK	BROUN HUTCHINSON	CARROLL PEEPLES
BESSIE AUTREY	ERNESTINE ISBELL	MARY PERRY
RHONA BARFIELD	MARTHA JENNINGS	EDNA EARLE PLEMMONS
SARA BINGHAM	NELLIE JOHNSON	MARTHA POWELL
RUTH NELL BOWEN	NETTIE JOHNSON	OLA LEE POWELL
ANN BROOKS	NOELLENE JOHNSON	SARA MARTHA PYLE
JANE BROOKS	MARTHA JOHNSTON	GWENDOLYN QUINKER
LEILA CALLENDER	MARY JONES	WILLENE ROBERTS
MARY NELL CARLYLE	RUBY JONES	LOIS SIMPSON
HELEN CARTER	CLYDE KENDALL	LA FOREST SMITH
KATHRYNE CONNELL	VANELLE KENDALL	KATHLYN TAYLOR
SUSIE COPPAGE	LINELLE LANG	CLYDE THOMAS
LOIS CORLEY	JESSIE CATLEDGE LANGDALE	LORENE THOMAS
MARGARET DALTON	ELIZABETH LARISEY	ELIZABETH TILLMAN
WINNIE DAVIS	ARBY LEIPPRANDT	KATHRYNE TOOLE
MARTHA FRANKLIN	JEANETTE LAWRY	MARGARET TOUCHTON
NELLIE MAY GANNON	ELOISE LINEBERGER	ANNE TURNER
FRANCES GARBUTT	CATHERINE MCGREGOR	JANE TWITTY
RUTH GARBUTT	SUSIE MATHEWS	HELEN CLAIRE VARNEDOE
LUELLE GIDDENS	ELIZABETH McEACHREN	SUELLA WILLIAMS
RUTH GODWIN	MAY BELL MOBLEY	MARY KATHERINE WISENBAKER
FLORA GRIMES	DOROTHY MORGAN	DORIS YOUNG
BILLIE HAM	JESELYN MOSELEY	
JEANELLE HATCHER	LUCILLE MURPHY	
MARY BETH HIGH	BARNIE LOU NEWSOM	
GRACE HILHOUSE	SARA OWENS	
MARY LOIS HITCH	EMILY PARRISH	



WHEN TOWN GIRLS PLAY



OFFICERS



ADVISER

ELIZABETH LARISEY

ANNE TURNER

JESSIE CATLEDGE LANGDALE







ELIZABETH McREE

IVA CHANDLER

CLARICE



AUGUSTA RENTZ GULLIVER

## THE ALUMNAE ASSOCIATION

The purpose of the Alumnae Association is to combine former G. S. W. C. students into an active off campus group. The organization strives to preserve the ideals of the college, and to extend its influence through its membership of more than a thousand graduates. The privileges of active membership are granted to those who have received a degree or a diploma; those who have completed one year of college work are eligible for associate membership. Each year the association provides a scholarship for some girl who meets certain definite qualifications.

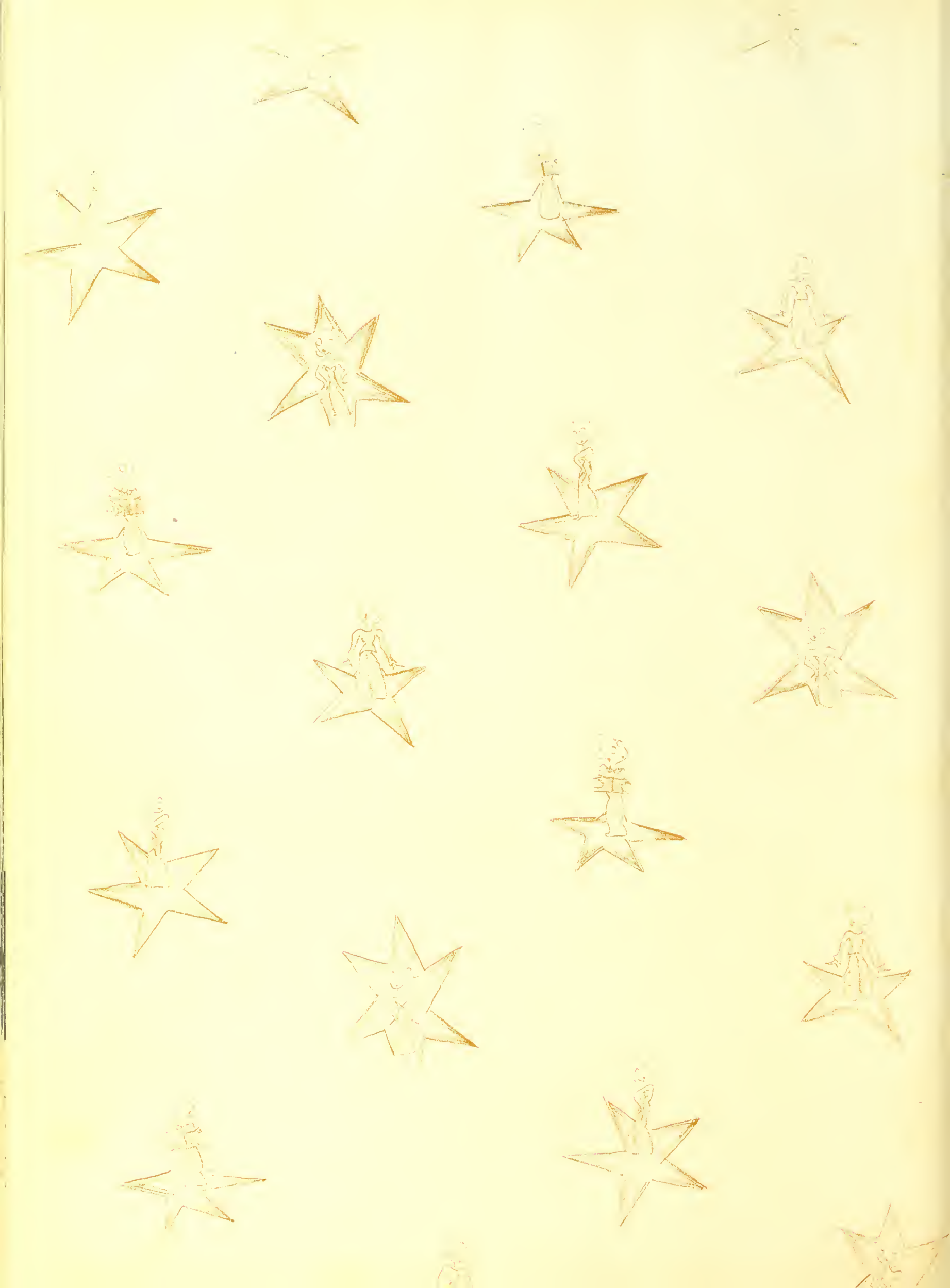
The association published an alumnae issue of **The Campus Canopy** in April as one of its projects for the year. A luncheon was given at the meeting of the Georgia Educational Association for the alumnae of the college, and a garden party was given in the park adjoining the campus for the Valdosta alumnae.

### OFFICERS

AUGUSTA RENTZ GULLIVER . . . . .	President
ELIZABETH McREE . . . . .	Vice-President
IVA CHANDLER . . . . .	Secretary-Treasurer
CLARICE IVEY . . . . .	Corresponding Secretary











## SUPERLATIVES

What are these girls made of? Made of?  
What are these girls made of? Made of?  
Sugar and spice and the best of things nice.  
What's what these girls are made of?





*Miss Henry Kate Gardner*

MOST VERSATILE





*Miss Eleanor Bailey*  
MOST REPRESENTATIVE





*Miss Emily Fluker*

MOST INTELLECTUAL





*Miss Virginia Sheppard*  
MOST ATTRACTIVE





*Miss Elizabeth Larisey*  
MOST OUTSTANDING DAY STUDENT





*Miss Annie Belle Weatherford*

MOST ATHLETIC



## Freshman Who's Who



MARGARET CANNON  
Most Representative



JANE TWITTY  
Most Outstanding Day Student



VIRGINIA ZIPPLIES  
Most Attractive



BLANCHE MABBETT  
Most Popular



RUTH WILLIAMS  
Most Versatile



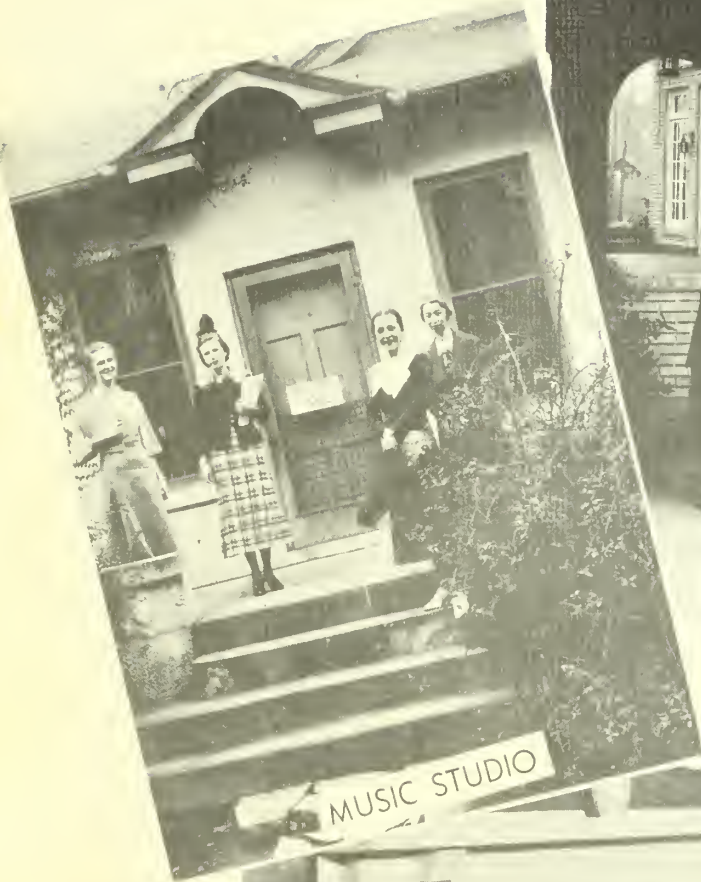
HARRIETTE ROGERS  
Most Athletic



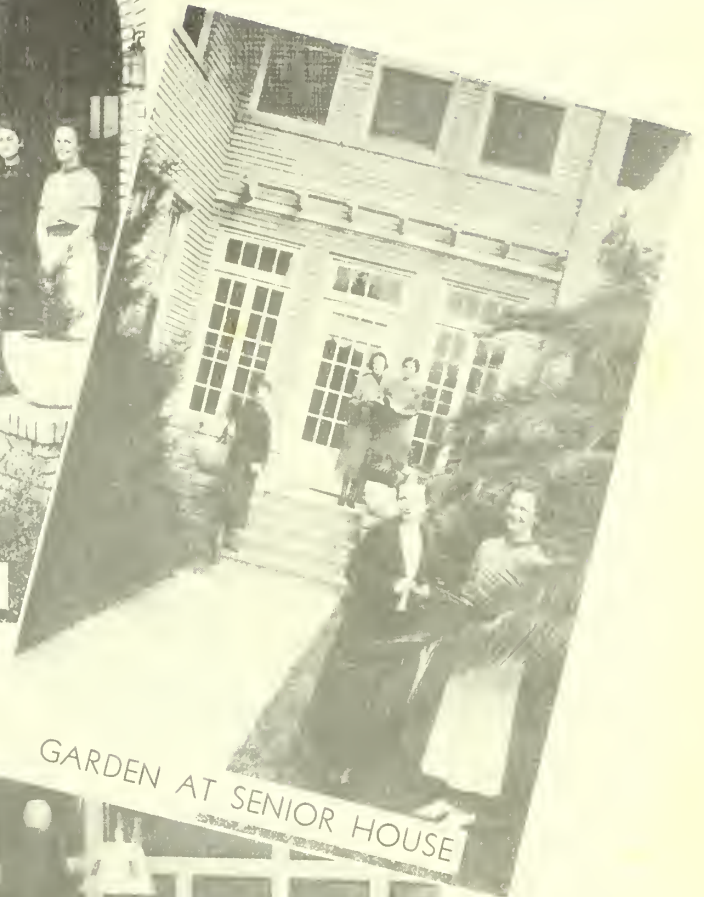
# Greater G. S. W. C.



SENIOR HOUSE



MUSIC STUDIO



GARDEN AT SENIOR HOUSE



HOUSE IN THE WOODS









# GOOD - B Y E

Student, student, full of knowledge.  
 Now is through with books and college.  
 She's learned to love, and learned to live,  
 She's ready now to graduate.



# PATRONS' PAGE

Bennett's Drug Store  
The Benson Company  
Veran Blackburn  
Brookwood Pharmacy  
Churchwell's Department Store  
Citizens and Southern National Bank  
City of Valdosta  
Coca-Cola Bottling Company  
Copeland Brothers and Company  
First National Bank  
Foote & Davies Co.  
Foremost Ice Cream  
Friedlander's Store  
W. T. Grant Company  
Georgia Power and Light Company  
Georgia State Womans College  
Hotel La Touraine Coffee  
John Oliver Service Station  
S. H. Kress and Company

Le Files Automotive Service  
Lindbergh Restaurant  
McCrory's  
McElvey-Futch Company  
Mathis and Youmans Company  
Model Bakery  
Paxon's Turner Jones' Store  
A. S. Pendleton Company  
Rhodes-Collins Furniture Company  
Ritz Theatre  
Southern Stationery and Printing Company  
Star Laundry  
Stewart Candy Company  
Stump Brothers  
Suitsus  
Superior Baking Company  
Thompson and Girardin  
Valdosta Flour Company  
Vallotton's Dairy  
C. C. Varnedoe and Company



# The Georgia State Womans College

THE Georgia State Womans College is, by action of the Board of Regents, the liberal arts college for women of the University System of Georgia. It is a standardized institution and is a member of the Association of Georgia Colleges, the Southern Association of Colleges and Secondary Schools, and the Association of American Colleges. All its courses are on the University level for a Bachelor of Arts degree.

It offers thorough courses in Art, Biology, Chemistry, Education, English, including Vocal Expression, History and Political Science, Economics, Sociology, Foreign Languages, ancient and modern, Mathematics, Music, instrumental and vocal, and Physical Education. Credit for any of these courses will be accepted in any branch of the University System or any standard college.

It has a beautiful plant in a very healthful region, and a climate unsurpassed during the school session. Additions to the physical plant for 1935-36 will include a new dormitory, a swimming pool, and an extension to the gymnasium. Expenses are extremely moderate, not exceeding \$230.00 a year.

"The policy of the college has long been to offer an educational service so excellent that the wealthiest citizen cannot provide a better for his daughter; a service so moderate in cost that the poorest girl, if she has the will, can share its advantages."

For further information, address Georgia State Womans College, Valdosta, Georgia.



MODEL BAKERY  
QUALITY BREAD, CAKES AND PIES  
Valdosta's Oldest Bakery  
T H E R E ' S   A   R E A S O N

COMPLIMENTS  
‘   O F   ‘  
W . T . GRANT COMPANY  
1c to \$5.00 Junior Department Store

COMPLIMENTS  
‘   O F   ‘  
GEORGIA POWER AND LIGHT COMPANY

COMPLIMENTS  
‘   O F   ‘  
VALDOSTA FLOUR COMPANY  
... Distributors of ...  
White Ring   ‘   Omega and Fluffy Ruffles Flour  
and Complete Line of Fancy Groceries

VALLOTTON'S DAIRY  
Special Milk for Babies and the College Girl Complexion

CHURCHWELL'S DEPARTMENT STORE  
College Girls' Headquarters

"NEVER BUY BEFORE YOU TRY"  
F R I E D L A N D E R ' S



VERAN BLACKBURN  
PHOTOGRAPHER FOR  
PINE CONE  
1935



VALDOSTA COCA-COLA BOTTLING WORKS, INC.

C O C A - C O L A

Valdosta

Georgia

F O R E M O S T   I C E   C R E A M

IT'S HEALTHFUL

L I N D B E R G H   R E S T A U R A N T

Famous for Western Steaks

Best Coffee in Town

C O M P L I M E N T S

OF

Quality  
Dairy Products

SUITSUS

Quality  
Registered Jerseys

D A I R I E S ,   I N C O R P O R A T E D

C O M P L I M E N T S

R I T Z  
A MARTIN THEATRE  
Phone 361  
*The Home of Hits!*

P A L A C E  
A MARTIN THEATRE  
Phone 1231  
*Where Pleasure Costs So Little!*

S T E W A R T   C A N D Y   C O M P A N Y

Everything in Wholesale Candies and Crackers

L E   F I L E S   A U T O M O T I V E   S E R V I C E

PHONES 160-161

Valdosta

Georgia

A Complete Service for Your Car



COMPLIMENTS  
OF  
THE A. S. PENDLETON COMPANY

JOHN OLIVER SERVICE STATION  
Firestone Tires      Amoco Products  
Valdosta, Georgia

BENNETT'S DRUG STORE  
THE REXALL STORE  
Toasted Tasty Sandwiches      McPhail's Ice Cream  
Valdosta, Georgia

COMPLIMENTS  
OF  
FIRST NATIONAL BANK  
Valdosta, Georgia

THE BENSON COMPANY  
Dry Cleaners  
Valdosta, Georgia      Phone 486

MATHIS AND YOUNG COMPANY  
Pianos      Victrolas      Radios  
Everything in Music

BROOKWOOD PHARMACY  
Just off the campus  
"YOUR PATRONAGE IS APPRECIATED"



COMPLIMENTS  
OF  
SUPERIOR BAKING COMPANY

SERVING VALDOSTA FOR MORE THAN A THIRD OF A CENTURY

Here's to Our Good Friends—The G. S. W. C. Girls

STAR LAUNDRY  
Dry Cleaners      Rug Cleaners

PHONE 54

WE SERVE TO PLEASE AND WE ARE PLEASED TO SERVE

THOMPSON AND GIRARDIN  
Jewelers  
120 North Patterson Street      Valdosta, Georgia

PAXON'S TURNER JONES' STORE  
Our inexpensive footwear of highest quality reflects the  
smartest trends in fashions for all occasions

JITNEY-JUNGLE STORES  
SAVE      SERVE      SATISFY  
Valdosta's Own Food Stores

COMPLIMENTS OF  
McCRORY'S  
Five and Ten Cent Store



We are Proud of the

Georgia State Womans College

1 1 1

WE ARE GLAD TO TAKE THIS OCCASION TO SAY

THAT THE

City of Valdosta

is proud to list among its greatest assets the Georgia State

Womans College, and we hope that Valdosta as a

city makes a favorable and lasting impression on

the minds of the young ladies who make up

the student body of this great institution.



THE CITIZENS AND SOUTHERN NATIONAL BANK

Valdosta                    ✓                    ✓                    Georgia

CAPITAL \$5,000,000.00

WE ARE PROUD OF THE FACT THAT

HOTEL LA TOURAINÉ COFFEE  
IS SERVED AT THE GEORGIA STATE WOMANS COLLEGE

W. S. QUINBY COMPANY  
Jacksonville                    ✓                    Miami

*"Successful purveyors to leading Hotels, Restaurants and Institutions  
for over 30 years"*

COMPLIMENTS

✓ OF ✓

S. H. KRESS AND COMPANY

5c, 10c and 25c Store

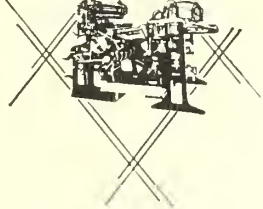
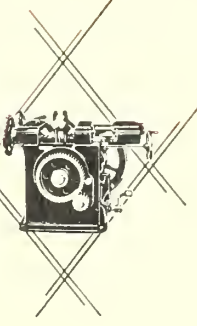
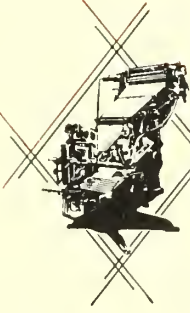
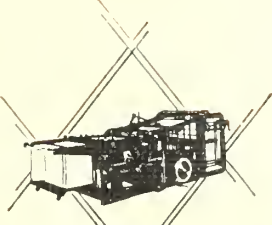
SOUTHERN STATIONERY AND PRINTING COMPANY

Wholesale Paper Dealers

Commercial Stationers   ✓   Printers   ✓   Office Outfitters

Valdosta, Georgia





**f&d**  
**Co**

*Complete*  
EQUIPMENT

A KNOWN FACTOR IN THE FORMULA  
FOR A SUCCESSFUL ANNUAL IS  
THE SERVICE OF  
**FOOTE & DAVIES COMPANY**  
WHERE EVERY DETAIL OF THE PROCESSES OF  
CREATING · PLANNING · LAYOUT AND DESIGN  
TYPESETTING · PRINTING · LITHOGRAPHY  
AND BINDING IS DONE IN ONE  
PLANT BY EXPERT CRAFTSMEN  
USING THE FINEST OF  
MATERIALS

▼



STUMP BROTHERS

Paints and Builders' Supplies

RHODES-COLLINS FURNITURE COMPANY

Complete House Furnishers

C. C. VARNEDOE AND COMPANY

"Valdosta's Store Dependable"

LADIES' APPAREL AND ACCESSORIES

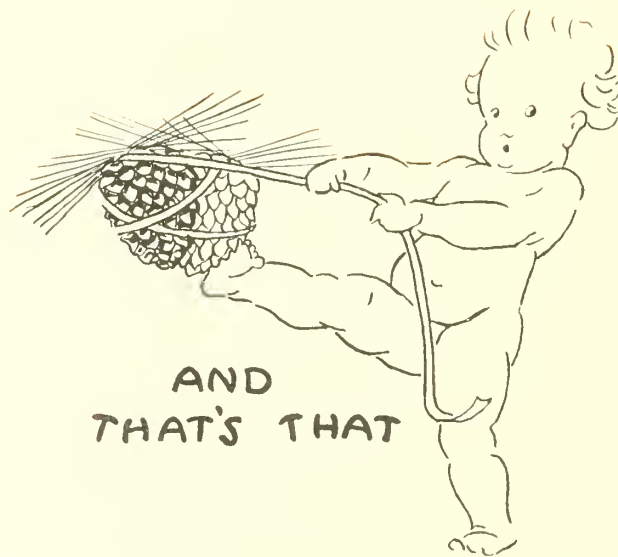
COMPLIMENTS

OF

COPELAND BROTHERS AND COMPANY, INC.

Makers of

THE BEST SAUSAGE IN GEORGIA



AND  
THAT'S THAT















