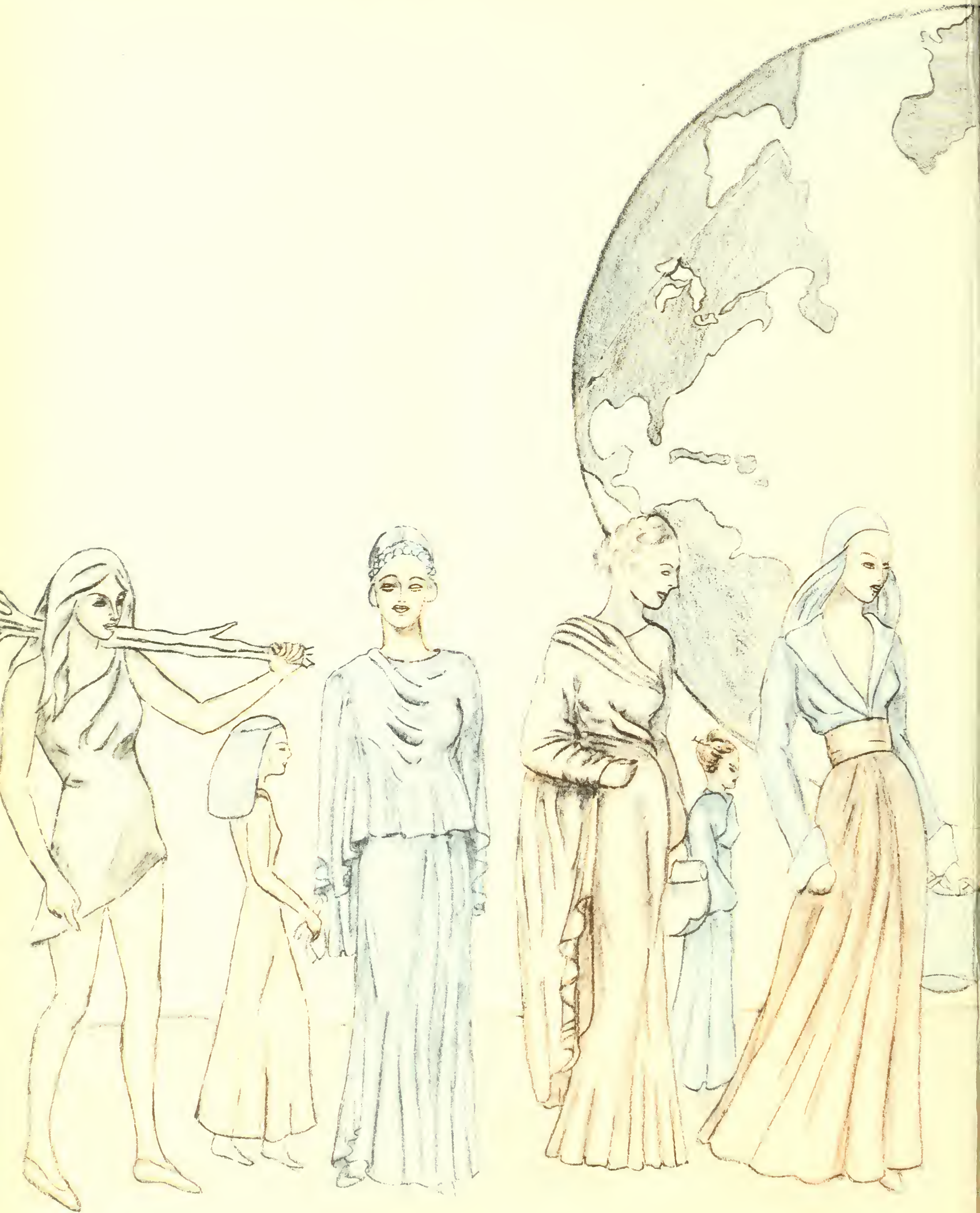


PINE CONE

1936









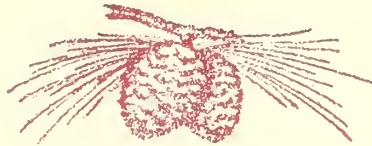
Digitized by the Internet Archive
in 2014

<https://archive.org/details/pinecone193612geor>



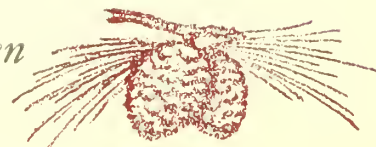
THE PINE CONE

1936





The Year 1936 in the Progress of Women

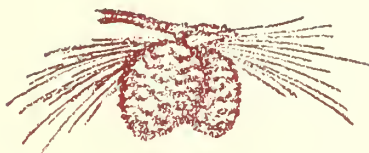




THE PINE CONE

1936

Volume 12



Presented by

THE SENIOR CLASS

of the

Georgia State Womans College

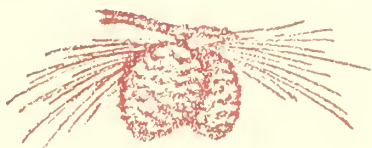
VALDOSTA, GEORGIA

T H E M E

Down through the years there marches a line of women, brave, eager, and enthusiastic, with the welfare of the world in their hearts and its progress in their minds. Slowly at first, more swiftly now, they have climbed the steps of the pursuit of happiness and life-improvement; and we, their daughters, stand on the threshold of new adventures that have been created from the experiences of the generations before us.

The line is endless, reaching from the beginnings of time to the far horizons where the last woman treads---and in between, we exist---building daily and yet appreciating the movements which are part of our heritage, among them being world co-operation, education, leisure time, and creative citizenship that have brought us to the present day achievements.

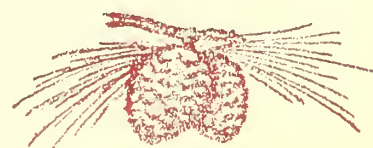
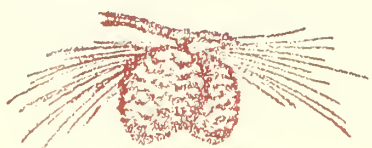
Their encouragement is yet the incentive for a more significant living than has been ours in the past. The future lies in our hands---it is ours to do with as we will.





WORLD CO-OPERATION

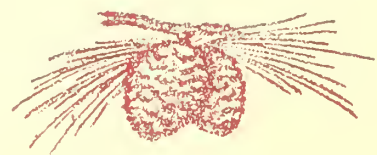
The women of the past who have created the traditions upon which woman's position rests today have been masters of the art of co-operation with the forces that ruled them. Realizing the uselessness of petty jealousies, they have seen the broader aspects of living which include a generous contribution to society as well as the use of the established customs upon which their daily living depends.

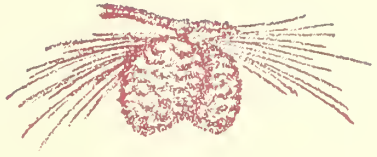






West Hall





Dormitory Row





Dormitory Room in Ashley Hall





In the Library



Along the Bridle Path

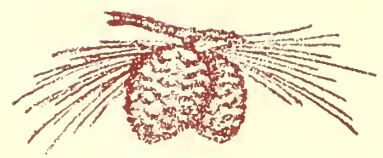




Swimming at Twin Lakes



Opening a Vesper Program





At tea in the Rotunda



MISS HOPPER and DR. READE

Administration

The Georgia State Womans College has been designated by the Regents of the University System of Georgia as the four-year Liberal Arts College for Women.

The institution is supported by the State, and approximately one-half of the cost of operation is derived from taxes. At moderate cost, therefore, parents are enabled to give their daughters an excellent general education under the direction of highly trained, able, and experienced teachers.

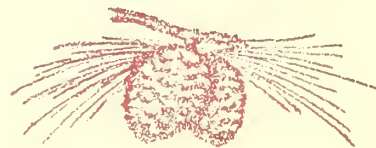
Life in the dormitories is looked upon as an opportunity for the practice of the fine art of living. It is a place where the value and importance of human relationships is known. Students learn to live together, to work together, and to play together. Thus a social consciousness is developed that makes them on graduation worthier members of society.

FRANK R. READE

B.A., M.A., Ph.D., University of Virginia. President.

ANNIE POWE HOPPER

B.S., George Peabody College for Teachers; M.A., Columbia University. Dean of Women.



Administration

Division of the Humanities

The courses in the Humanities offered at the Georgia State Womans College attempt to bring the student into immediate contact with masterpieces of thought and art in order to provide emotional outlets and a set of spiritual values which will enable the student to bring a tutored understanding to bear upon the latest version of man's eternal hopes, despairs, and ideals found expressed in art and literature.

The departments of Art, English, Speech, Languages, and Music comprise the Humanities division of study.

Instructors in this division:

JANIE BUSH, A.B., University of Georgia; M.A., University of North Carolina. Professor of Latin.

RUTH CARPENTER, B.S., M.A., Columbia University. Professor of Art.

GERTRUDE GILMER, B.S., M.A., George Peabody College for Teachers. Professor of English.

HAROLD GULLIVER, B.A., Yale University; M.A., Columbia University; Ph.D., Yale University. Professor of English.

LOUISE SAWYER, B.S., School of Speech, Northwestern University. Professor of Speech.

SAPELO TREANOR, A.B., M.A., University of Georgia. Professor of French.

Left to Right—SAWYER, BUSH, GILMER, CARPENTER, GULLIVER, and TREANOR



Music

The cultural life of the college, as well as the social life, is greatly enriched by the music department. Pupils in piano, violin, and voice contribute their talents at many of the social gatherings of the college. Graduate recitals are given by students in the department, and by faculty members.

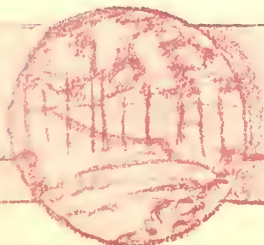
Instructors in this department:

GLADYS WARREN, B.M., Lake Erie College; M.A., Iowa State University; Pupil of Ernest Hutcheson, New York City; of Lee Pattison, Chicago; of Tobias Matthey, Matthey School of Pianoforte, London, England. Professor of Music.

FRANCES PARDEE, Graduate, Cincinnati Conservatory of Music; Pupil of Sevcik in Vienna, and of Robert Perutz and Julian Polikowski, Cincinnati Conservatory of Music. Instructor in Violin.

CLARA BANCROFT, Graduate, Cincinnati Conservatory of Music. Instructor in Voice.

Left to Right—WARREN, BANCROFT, and PARDEE



Left to Right—KNIPLING, HAWKS, and PHELAN



Administration

DIVISION OF SCIENCE

The work in the Division of Science is directed toward the needs of two types of students, those interested in science as a background for the intelligent understanding of the cosmic universe, and those desirous of such specialization as will give them a command of one field without losing their breadth of vision in other fields.

The departments of Biology, Chemistry, and Mathematics are included in this division.

Instructors in this division:

LENA HAWKS, A.B., Goucher College; A.M., Vanderbilt University; Ph.D., The Johns Hopkins University. Professor of Mathematics and Dean of Instruction.

PHOEBE KNIPLING, A.B., Catawba College; M.S., Ph.D., Iowa State College. Instructor in Biology.

EARL PHELAN, B.Chem., Ph.D., Cornell University. Professor of Chemistry.

DIVISION OF SOCIAL SCIENCE

The Social Studies are concerned with the complex forces and relationships which grow out of the association of individuals in group life, and the influence of the forces and relationships upon social, economic, and political institutions. Attention is given to the social basis of organized society as it has been inherited from the past in order to provide a suitable background for the understanding of the fundamental principles that operate in and control our systems of social expression, regulation, and education.

The departments of Education, History, and the Social Sciences are included in this division.

Instructors in this division:

JOSEPH DURRENBERGER, A.B., Southwestern University; A.M., Ph.D., Columbia University. Professor of History and Social Sciences.

MILDRED PRICE, A.B., Georgia State Womans College; A.M., Columbia University. Professor of History.

HAROLD PUNKE, B.S., M.S., University of Illinois; Ph.D., University of Chicago. Professor of Education.

HOME ECONOMICS

The courses in Home Economics are designed to supplement the courses offered in the liberal arts college, rather than to lead to a professional degree in this field. It is the desire of the department to acquaint the student with the best practices in the selection and care of clothing and foods, as well as to instruct the student in nutrition, home decoration and management, child care and training, and a profitable use of leisure time.

The college dining hall is under the supervision of a trained dietitian.

Instructors in this division:

MATILDA CALLOWAY, B.S.H.E., University of Georgia; M.A., Columbia University. Professor of Home Economics.

MARTHA McELMURRAY, B.S., Florida State College for Women; Diploma, Grasslands Hospital, Valhalla, New York. Dietitian.



Left to Right—PRICE, PUNKE, and DURRENBERGER



Left to Right—CALLOWAY and McELMURRAY



Administration

Left to Right—FARBAR, IVEY, McREE

HEALTH AND PHYSICAL EDUCATION

The Health Service, located in the southwest wing of Converse Hall, is under the personal care of the college physician, who is in residence. All students are given thorough physical examinations upon entrance, and their complete health records are immediately available.

The gymnasium is used for dancing and for classes in Physical Education. Besides the regular classes in Physical Education, instruction is offered in golf, horseback riding, tennis, and archery.

Instructors in this division:

MARIAN FARBAR, R. N., Chicago Baptist Hospital; M.D., University of Illinois Medical School. Director of Health Service.

LEONORA IVEY, B.S., Georgia State College for Women; M.A., George Peabody College for Teachers; Professor of Physical Education.

ELIZABETH McREE, A.B., Georgia State Womans College. Instructor in Physical Education.

MEMBERS OF THE ADMINISTRATIVE STAFF

The academic, financial, and dormitory records are cared for by the treasurer's office, the registrar's office, and the dormitory office.

Officers of this division:

MARJORIE CARTER, B.S., William and Mary. Assistant Dean of Women.

J. R. DUSENBURY, Treasurer, and Superintendent of Grounds and Buildings.

MILDRED LARSEN, A.B., Georgia State Womans College, Assistant Treasurer, and Instructor in Social Science.

CAROLINE THOMAS, A.B., Georgia State Womans College. Registrar.

LIBRARY

It is the object of the library to collect in the form of books and other printed material the accumulated experience of society which deals with the various interests of the individual; to have the material so organized that the library staff knows the specific location of each item; and, by ready reference shelf, cross-reference cards, and thought-provoking posters, to integrate all knowledge contained in the library.

Librarians:

EVELYN DEARISO, A.B., Georgia State Womans College; B.L.S., Emory University. Librarian.

LILLIAN PATTERSON, A.B., Georgia State Womans College. Assistant Librarian.



Left to Right—THOMAS, DUSENBURY, CARTER, LARSEN

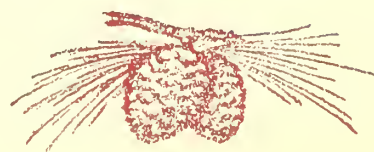
Left to Right—DEARISO, PATTERSON

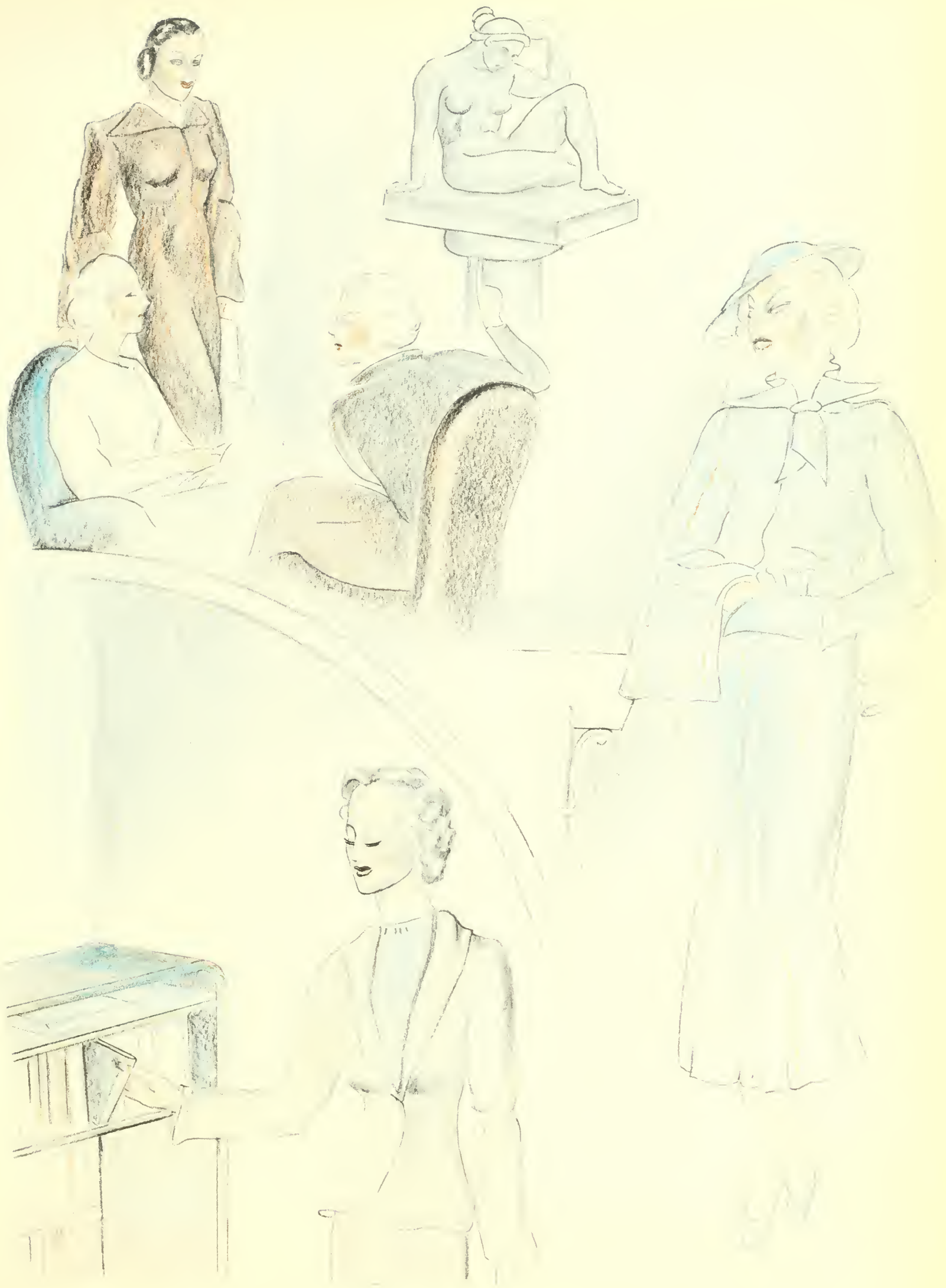


EDUCATION

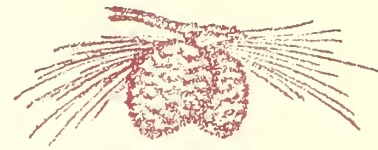
Woman has emerged from the primitive state in which she was a nonentity to occupy a position that is, in the modern world, the embodiment of the culture of her race. While her prime position is still that of home maker, through education she has learned other professions, and today she is economically independent, with a wider field of pursuit before her.

The professions that man held to be his alone in the past have been invaded by woman in her stride for independence---yet woman has not yet found her true place in industry. Thousands of tomorrows lie ahead which she may use to find her destiny, and her true position.





SENIORS



MIRIAM ADAMS
Camilla, Georgia

A.B. ENGLISH

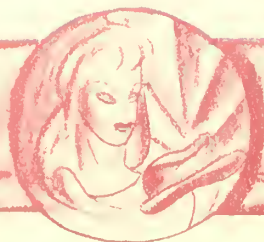
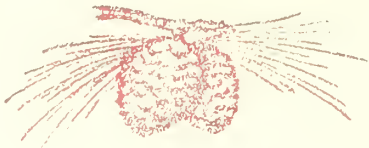
Student Government Association; Y. W. C. A.; Phi Lambda Athletic Association; Athletic Council (2); Athletic Award (3); English Club (3, 4); French Club; Secretary and Treasurer of French Club (4); Sororian Literary Society.



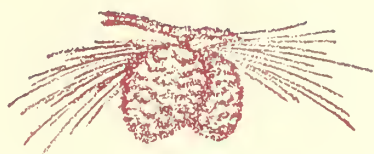
CLARA DAVIS ADAMS
Moultrie, Georgia

A.B. HISTORY

Student Government Association; Y. W. C. A.; Y. W. C. A. Cabinet (3); Phi Lambda Athletic Club; Athletic Award (3); Athletic Council (3); G. S. W. C. Emblem; Sororian Literary Society; *Pine Branch* Staff (2); Sock and Buskin Club (3, 4); International Relations Club (4); President of Senior Class; Sock and Buskin Play (4).



SENIORS



MARY ALDERMAN

Pavo, Georgia

A.B. FRENCH

Student Government Association; Y. W. C. A.; Phi Kappa Athletic Club; Sororian Literary Society (1, 2); French Club, (2, 3, 4); Vice-President French Club (4); Honors (2, 3, 4).

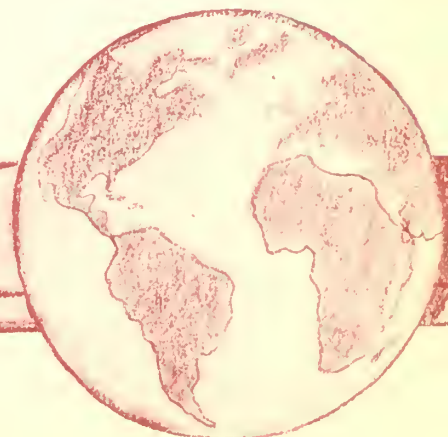


ANTOINETTE ANDREWS

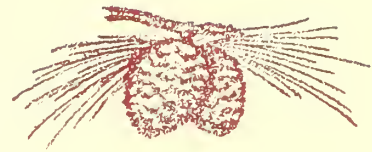
Thomasville, Georgia

A.B. ENGLISH

Student Government Association; Y. W. C. A.; Phi Kappa Athletic Association; Math-Science Club (1, 2, 3); English Club (3); Fine Arts Club (3); *Pine Branch Staff* (2, 3); Assistant Editor *Campus Canopy* (3); Secretary and Treasurer of Sophomore Class.



SENIORS



MARGARET VIRGINIA BERRYHILL
Lakeland, Georgia

A.B. BIOLOGY

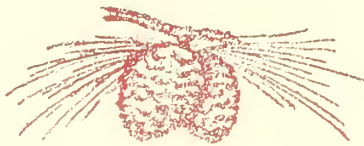
Student Government Association; Y. W. C. A.;
Phi Kappa Athletic Club; Sororian Literary So-
ciety; Science Club (1, 2); Euclidean Club (1,
2); Fine Arts Club (1, 2, 3, 4); Math-Science
Club (3, 4).



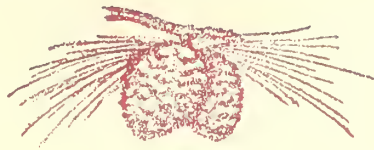
AMANDA BARKSDALE
Blakely, Georgia

A.B. CHEMISTRY

Student Government Association; Y. W. C. A.;
Y. W. C. A. Cabinet (3); Deputation Team
(3); Delegate to Blue Ridge (2); Phi Lambda
Athletic Association; Treasurer of Freshman
Class; Sororian Literary Society; Math-Science
Club (2, 3, 4); President Math-Science Club
(3); Staff of *Campus Canopy* (3); Staff of PINE
CONE (4); Honors (2, 3).



SENIORS



JANE BROOKS
Valdosta, Georgia

A.B. HISTORY

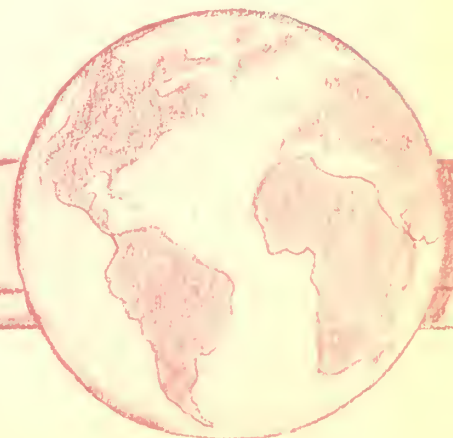
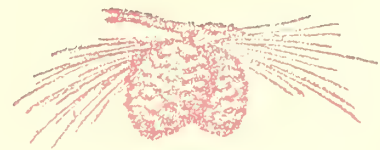
Student Government Association; Y. W. C. A.;
Phi Lambda Athletic Club; Sororian Literary
Society (1, 2); Glee Club (4); Valdosta Club
(1, 2, 3, 4).



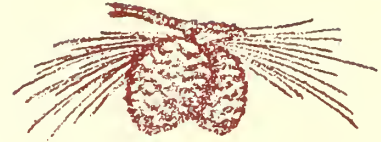
HARRIETTE BULLARD
Nashville, Georgia

A.B. HISTORY

Student Government Association; Y. W. C. A.;
Freshman Commission; Phi Kappa Athletic
Club; Athletic Awards (1, 3, 4); Athletic Council
(2, 4); Secretary Y. W. C. A. (2); Sororian
Literary Society; International Relations Club
(2, 3, 4); Vice-President of International Relations
Club (4).



SENIORS



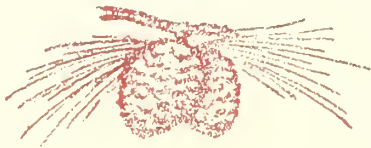
SARA RACHEL COXWELL
Leesburg, Georgia
A.B. HISTORY

Student Government Association; Y. W. C. A.; Phi Kappa Athletic Club; Sock and Buskin Club (2, 3, 4); Sororian Literary Society; International Relations Club (2, 3, 4); Vice-President of International Relations Club (3); President of International Relations Club (4); Delegate to International Relations Club Conference (2, 4).

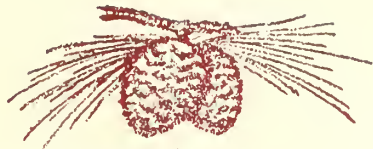


ALBERDENA WALL CEDEYCO
Valdosta, Georgia
A.B. ENGLISH

Student Government Association; Y. W. C. A.; English Club (4).



SENIORS



JOSEPHINE DANIEL

Ludowici, Georgia

A.B. MATHEMATICS

Student Government Association; Y. W. C. A.; Phi Kappa Athletic Club; Math Science Club (1, 2, 3, 4); Philharmonic Club (3); Argonian Literary Society (1); Sororian Literary Society (2); Council Representative (3); Secretary-Treasurer of Student Government Association; Y. W. C. A. Cabinet (3); Athletic Council (1, 2, 3, 4); Vice-President of Phi Kappa Athletic Club (3); Honors (1, 2, 3, 4); Athletic Awards (1, 2, 3, 4); G. S. W. C. Emblem (3).

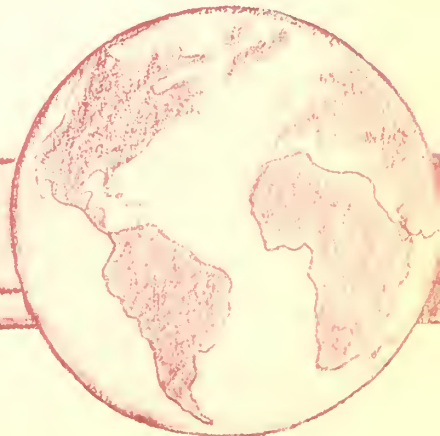
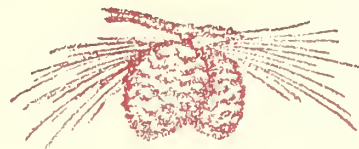


MARY DEARISO

Sylvester, Georgia

A.B. HISTORY

Student Government Association; Y. W. C. A.; Phi Lambda Athletic Club; International Relations Club (2, 3, 4); Sororian Literary Society (1).



SENIORS

LEONORA DUFOUR

Ghent, Kentucky

A.B. ENGLISH

Student Government Association; Y. W. C. A.; Phi Lambda Athletic Club; Editor Freshman *Pine Branch*; Assistant Editor *Pine Branch* (2); Editor *Pine Branch* (3, 4); Editor *Campus Canopy* (3, 4); Literary Editor PINE CONE (4); Philharmonic Club (1, 2); International Relations Club (2); English Club (3, 4); Sock and Buskin Club (1, 2, 3, 4); Glee Club (2, 3, 4); Fine Arts Club (4); Sororian Literary Society; Debating Team (1, 2); Modern Poetry Forum (1, 2); G. S. W. C. Emblem (4); Deputation Team (4); Delegate Georgia Press Association (3); Delegate Georgia Collegiate Press (3); Delegate National Scholastic Press Association (4); Honors (3); Sock and Buskin Club Play (2, 3); *Pine Branch* Literary Award (1, 3, 4).

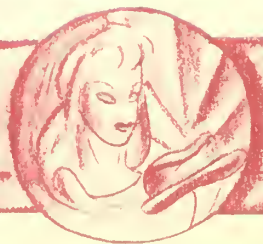
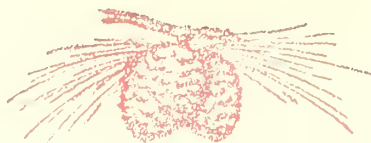


CLARA LOUISE DRISKELL

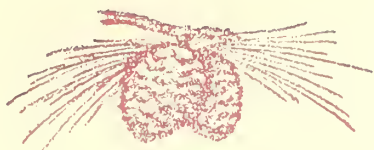
Irwinville, Georgia

A.B. HISTORY

Student Government Association; Y. W. C. A.; Student Council (4); Freshman Commission; Y. W. C. A. Cabinet (1, 3); President of Y. W. C. A. (4); Deputation Team (4); Delegate to Y. W. C. A. Conference of Southeastern States (4); Delegate to State Y. W. C. A. Conference (3); Delegate to Student Volunteer Quadrennial Convention (4); Phi Lambda Athletic Association; Athletic Awards (1); G. S. W. C. Emblem (4); Athletic Council (2); Sororian Literary Society; International Relations Club (2, 3, 4); Member at Large of International Relations Club (3); *Entre Nous* (2, 3, 4).



SENIORS



CAROL FORRESTER

Leesburg, Georgia

A.B. HISTORY

Student Government Association; Y. W. C. A.; Phi Kappa Athletic Association; Vice-President of Kappas (3); Athletic Award (2); *Campus Canopy* Staff (3); Athletic Council (3); International Relations Club (3, 4); PINE CONE Staff (4).

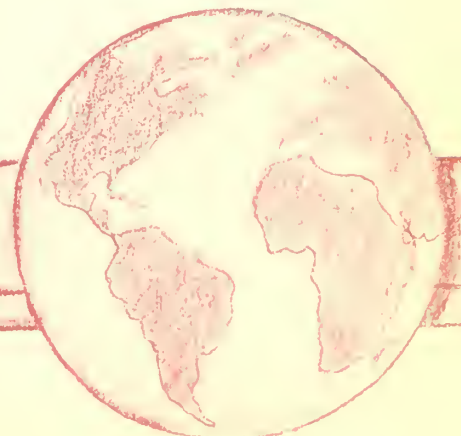
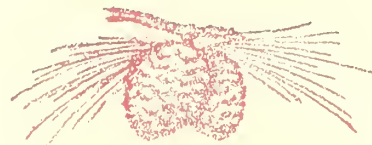


NELLIE MAY GANNON

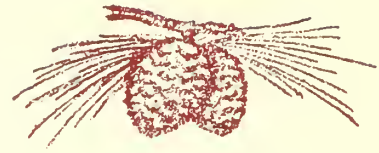
Valdosta, Georgia

A.B. ART

Student Government Association; Phi Lambda Athletic Club; Fine Arts Club (1, 2, 3, 4); Vice-President of Fine Arts Club (2); President of Fine Arts Club (3); Entre Nous (3, 4); Valdosta Club (1, 2, 3, 4); Sororian Literary Society (1, 2); Honors (1, 2); PINE CONE Staff (2).



SENIORS



LUELLE GIDDENS
Lakeland, Georgia

A.B. HISTORY

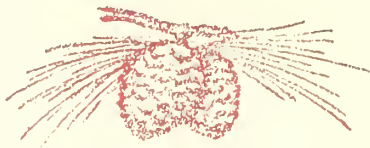
Student Government Association; Y. W. C. A.; Phi Kappa Athletic Club; Sororian Literary Society (1); International Relations Club (2, 3, 4); Treasurer of International Relations Club (3); Math Club (2); Valdosta Club (1, 2, 3, 4); PINE CONE Staff (4); Honors (1, 2, 3, 4).



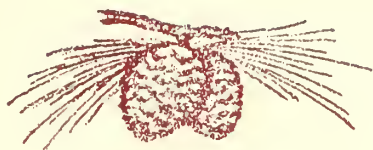
FRANCES GARBUTT
Valdosta, Georgia

A.B. ART

Student Government Association; Phi Lambda Athletic Club; Fine Arts Club (1, 2, 3, 4); Vice-President of Fine Arts Club (3); Valdosta Club (1, 2, 3, 4); Treasurer of Valdosta Club (2); President of Valdosta Club (4); French Club (3, 4); Sororian Literary Society (1); PINE CONE Staff (1, 2, 3, 4).



SENIORS



NELL GREENE
Valdosta, Georgia

A.B. HISTORY

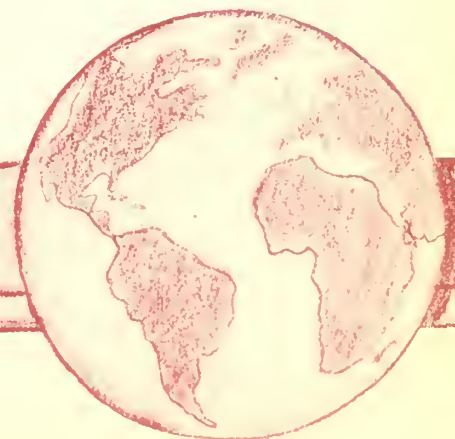
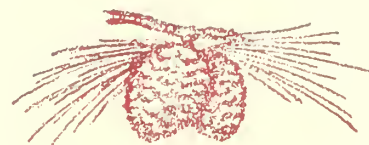
Transfer from University of Florida (2); Student Government Association; Phi Kappa Athletic Association; International Relations Club (4); Honors (3, 4); Member-at-Large International Relations Club (4).



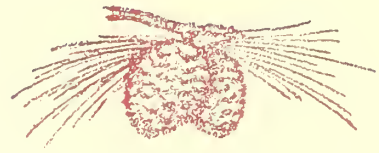
MYRA HACKETT
Moultrie, Georgia

A.B. HISTORY

Student Government Association; Y. W. C. A.; Y. W. C. A. Cabinet (4); Delegate to Student Volunteer Movement Convention (4); Phi Lambda Athletic Association; Sororian Literary Society; Math-Science Club (2); International Relations Club (4); PINE CONE Staff (4); May Queen (4).



SENIORS



LOUISE HARDY
Quitman, Georgia

A.B. ENGLISH

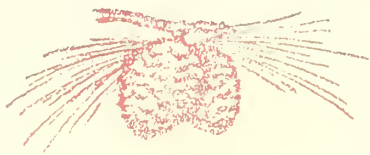
Student Government Association; Y. W. C. A.; Phi Lambda Athletic Club; Athletic Award (1); Sororian Literary Society; French Club (2, 3, 4); *Campus Canopy* Staff (3, 4); English Club (3, 4); Secretary and Treasurer of English Club (3); President of English Club (4); Honors (1, 2, 3, 4); French Club Play (3).



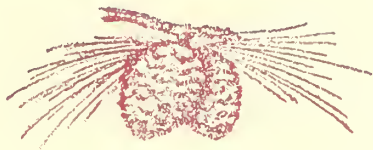
BILLIE HAM
Valdosta, Georgia

A.B. ENGLISH

Student Government Association; Phi Kappa Athletic Association; French Club (3, 4); Valdosta Club (1, 2, 3, 4); English Club (4); Sororian Literary Society (1).



SENIORS



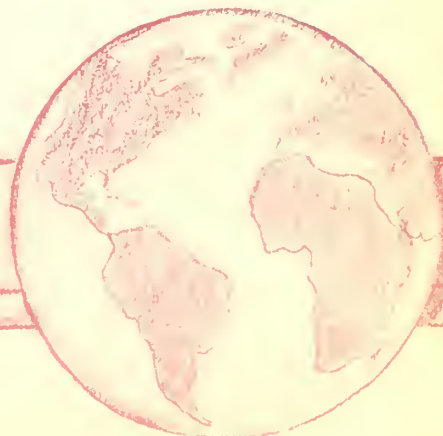
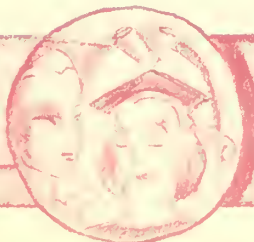
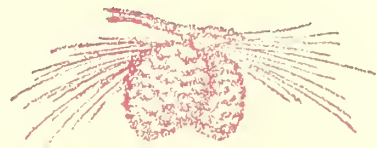
RUBY HARRISON
Fitzgerald, Georgia
A.B. HISTORY

Transfer from G. S. C. M. (1); Student Government Association; Y. W. C. A.; Phi Lambda Athletic Club; Athletic Awards (3, 4); Athletic Council (3, 4); Secretary and Treasurer of Lambda Athletic Club (4); Glee Club (2); Sororian Literary Society; International Relations Club (4).

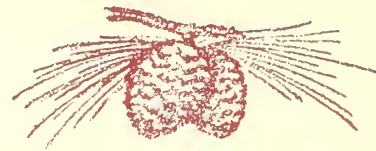


LOUISE ODOM HOWELL
Valdosta, Georgia
A.B. HISTORY

Student Government Association; Y. W. C. A. (1, 2, 3); Phi Kappa Athletic Club; President of Phi Kappas (3, 4); Athletic Awards (1, 2, 3, 4); Athletic Council (2, 3, 4); Delegate to G. A. F. C. W. (3, 4); Glee Club (1, 2, 3, 4); Sororian Literary Society (1).



SENIORS



VIRGINIA INGRAM
Bainbridge, Georgia

A.B. FRENCH

Student Government Association; Y. W. C. A.; Sororian Literary Society; Phi Kappa Athletic Club; Athletic Awards (1, 3, 4); Member of Athletic Council (4); Philharmonic Club (1, 2, 3, 4); French Club (3, 4); Manager of Orchestra (4).

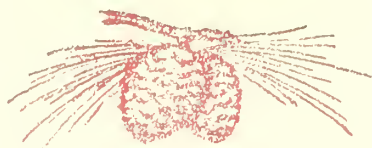


BROUN HUTCHINSON

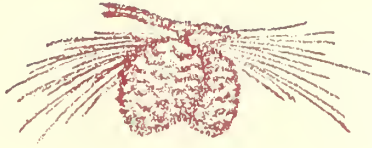
Valdosta, Georgia

A.B. HISTORY

Student Government Association; Phi Kappa Athletic Association; Math Club (1); Valdosta Club (1, 2, 3, 4); Sororian Literary Society (1); Sock and Buskin Club (1, 2, 3, 4); President of the Sock and Buskin Club (4); President of the Valdosta Club (3); International Relations Club (2, 3, 4); Honor Council; Artist Series Committee; Debating Team (1); Honors (1, 2, 3, 4); Sock and Buskin Play (3, 4).



SENIORS



NETTIE JOHNSON
Valdosta, Georgia

A.B. HISTORY

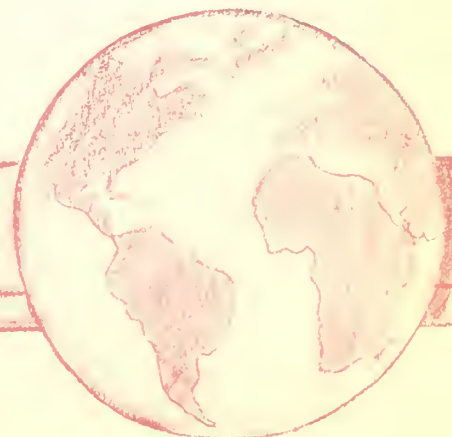
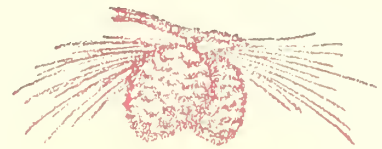
Student Government Association; Phi Kappa Athletic Club; Athletic Award (1); Glee Club (4); International Relations Club (2, 3, 4); Valdosta Club (1, 2, 3, 4); Sororian Literary Society; *Campus Canopy* Staff (4); Pine Knot Revellers (4); President of the Pine Knot Revellers (4); Treasurer of Valdosta Club (4).



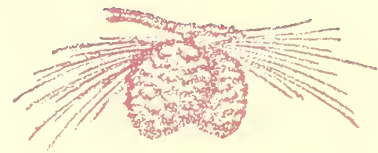
NELLIE JOHNSON
Valdosta, Georgia

A.B. HISTORY

Student Government Association; Phi Kappa Athletic Club; Valdosta Club (1, 2, 3, 4); Sororian Literary Society (1, 2); International Relations Club (2, 3, 4); *Campus Canopy* Staff (4); Pine Knot Revellers Orchestra (4); Glee Club (4); Vice-President Pine Knot Revellers Orchestra (4); Athletic Award (1).



SENIORS



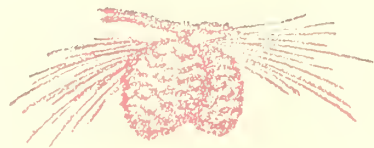
VANELLE KENDALL
Valdosta, Georgia
A.B. MATHEMATICS

Student Government Association; Phi Kappa Athletic Association (1, 2, 3); Valdosta Club (1, 2, 3, 4); Sororian Literary Society (1); Euclidean Club (1, 2); Math-Science Club (3, 4); Fine Arts Club (4); Vice-President of Fine Arts Club (4); Honors (1, 3).

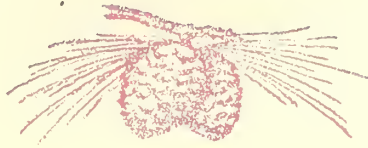


BESSIE JO JOHNSON
McRae, Georgia
A.B. HISTORY

Student Government Association; Y. W. C. A.; Phi Kappa Athletic Club; Athletic Awards (3, 4); Sororian Literary Society; International Relations Club (2, 3, 4); Treasurer of International Relations Club (4); Honors (1, 3, 4).



SENIORS



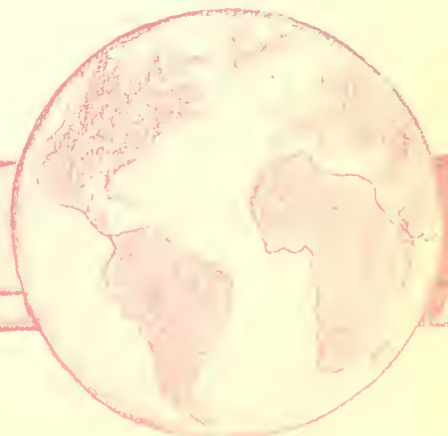
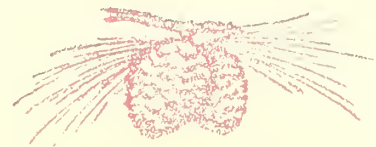
MARTHA LOWRY
Dawson, Georgia
A.B. ENGLISH

Transfer from University of Georgia (2); Student Government Association; Y. W. C. A. (3, 4); Phi Lambda Athletic Association; English Club (3, 4); Secretary and Treasurer of Senior Class (4).

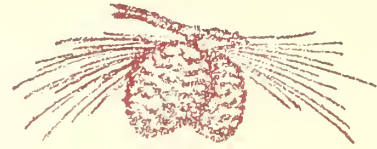


MILBREY O'HARA MCKINLEY
Valdosta, Georgia
A.B. ENGLISH

Transfer from the University of Florida (3); Student Government Association; Phi Lambda Athletic Club; English Club.



SENIORS



EVELYN MAY
Quitman, Georgia

A.B. ENGLISH

Student Government Association; Y. W. C. A.; Phi Lambda Athletic Association; Freshman Commission (1); Y. W. C. A. Cabinet (3, 4); Deputation Team (2, 4); Student Government Council (4); G. S. W. C. Emblem (4); Sororian Literary Society (1); Glee Club (1, 2, 3, 4); Vice-President Glee Club (3); English Club (3, 4).

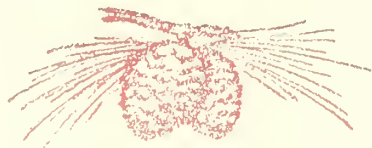


ETHLYN MASSEY

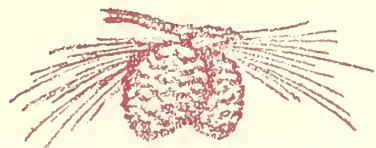
Jesup, Georgia

A.B. HISTORY

Transfer from Shorter College (1); Student Government Association; Y. W. C. A.; Phi Kappa Athletic Club; Glee Club (2); Philharmonic Club (2, 3); International Relations Club (3, 4); Sororian Literary Society (2); Associate Editor *Pine Branch* (3, 4); Editor *PINE CONE* (4); Pine Branch Literary Award (3); Delegate National Student Press Association (4).



SENIORS



ELEANOR JOY MILLER

Albany, Georgia

A.B. MUSIC

Student Government Association; Y. W. C. A.; Y. W. C. A. Cabinet (4); Deputation Team (4); Delegate to Blue Ridge (3); Philharmonic Club (1, 2, 3, 4); Secretary-Treasurer of Philharmonic Club (2); President of Philharmonic Club (3); Glee Club (1, 2, 3, 4); Secretary-Treasurer of Glee Club (2); President of Glee Club (4); Sororian Literary Society (4); Honors (4); Phi Lambda Athletic Association (1, 2, 3, 4); G. S. W. C. Emblem (4).

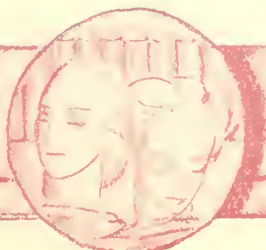
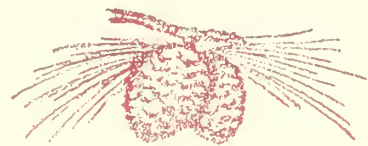


JESELYN MOSELEY

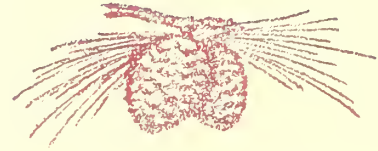
Valdosta, Georgia

A.B. MATHEMATICS

Student Government Association; Phi Kappa Athletic Club (1, 2, 3); Math-Science Club (1, 2, 3, 4); Vice-President of Math-Science Club (4); Valdosta Club (1, 2, 3, 4); Vice-President of Valdosta Club (2).



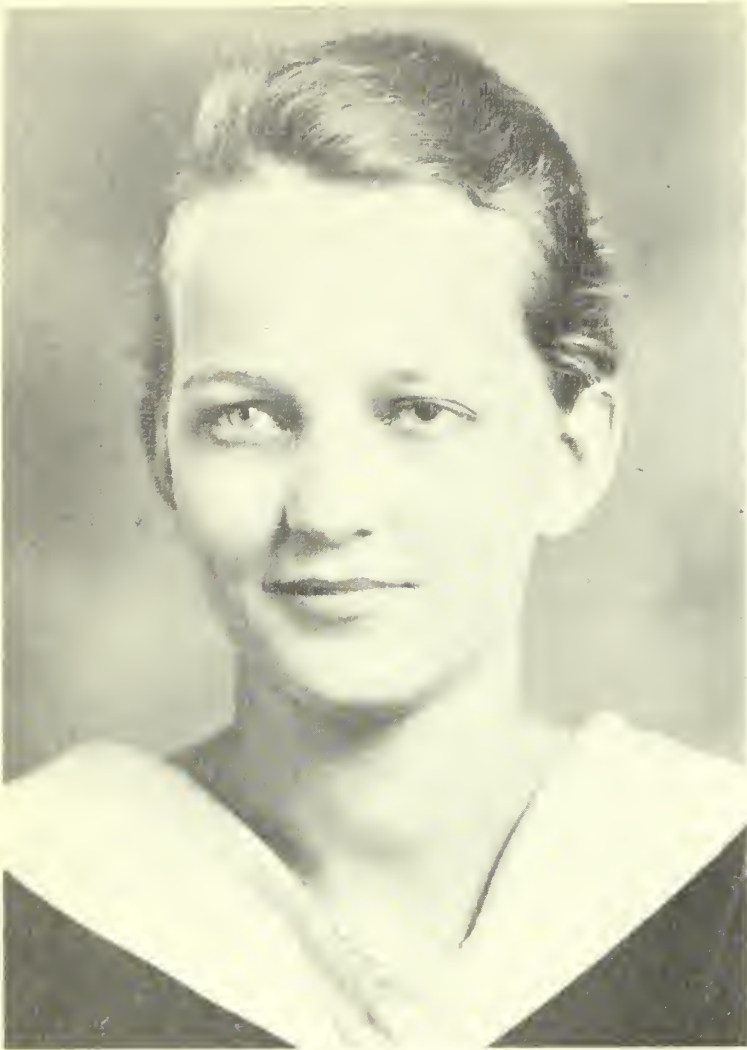
SENIORS



CARROLL PEEPLES
Valdosta, Georgia

A.B. FRENCH

Student Government Association; Phi Lambda Athletic Club; Argonian Literary Society; *Pine Branch* Staff (3); *Campus Canopy* Staff (2, 3); Sock and Buskin Club (2, 3); Valdosta Club (1, 2, 3); Glee Club (3).



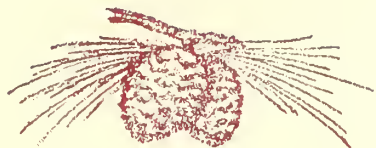
SARAH OWENS
Valdosta, Georgia

A.B. FRENCH

Student Government Association; Phi Lambda Athletic Club; Sororian Literary Society (1, 2); Valdosta Club (1, 2, 3, 4); French Club (3, 4); Honors (3).



SENIORS



MARY PERRY
Valdosta, Georgia

A.B. ENGLISH

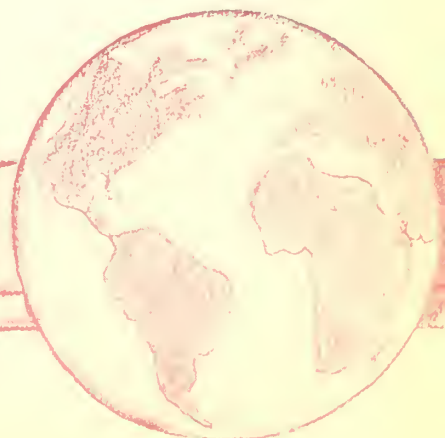
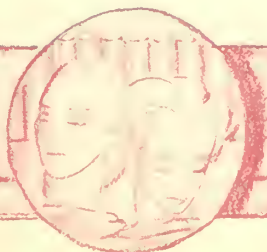
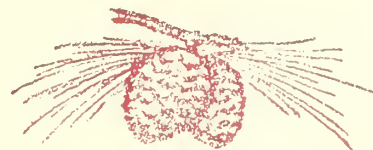
Student Government Association; Phi Lambda Athletic Club; Sock and Buskin Club (4); Valdosta Club (1, 2, 3, 4); Sororian Literary Society; Sock and Buskin Club Play (4).



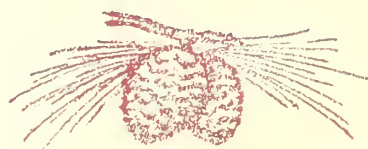
MARION REID
Homerville, Georgia

A.B. MATHEMATICS

Student Government Association; Y. W. C. A.; Phi Lambda Athletic Club; Athletic Award (1); Argonian Literary Society; Euclidean Club (1); Math-Science Club (2, 3); Secretary-Treasurer Math-Science Club (2); Dramatic Club (2, 3); *Campus Canopy* Staff (2, 3); Delegate Georgia Press Association (2); Debating Team (1); Honors (1, 2, 3); Vice-President of Freshman Class.



SENIORS



DOROTHY STUDSTILL

Lakeland, Georgia

A.B. ENGLISH

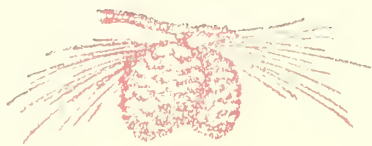
Student Government Association; Y. W. C. A.; Phi Lambda Athletic Club; Athletic Awards (1, 2, 3, 4); Captain of American Ball Team (3); Captain of Basketball Team (2); Athletic Council (4); Vice-President of Phi Lambda Association (4); Argonian Literary Society.



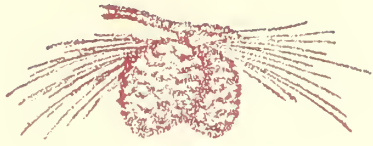
PATSY SPARKS
Fitzgerald, Georgia

A.B. HISTORY

Student Government Association; Y. W. C. A.; Phi Kappa Athletic Club (1, 2); Sororian Literary Society (1, 2); Secretary of Junior Class; *Pine Branch Staff* (2).



SENIORS



BETH TERRY
Quitman, Georgia

A.B. ENGLISH

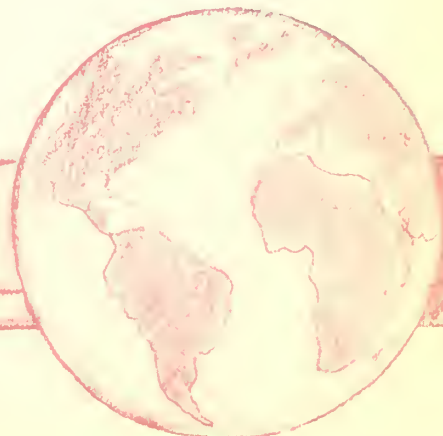
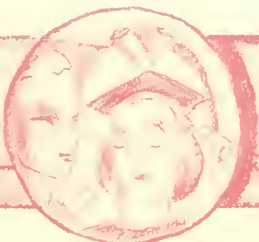
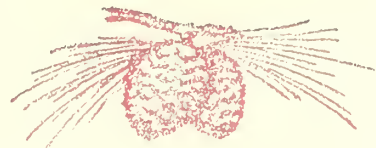
Student Government Association; Phi Kappa
Athletic Club (1, 2); Sororian Literary Society
(1).



LUCILE THOMPSON
Ellaville, Georgia

A.B. MATHEMATICS

Transfer Georgia Southwestern (2); Student
Government Association; Y. W. C. A.; Phi
Lambda Athletic Club; Athletic Council (3, 4);
Athletic Awards (3, 4); Math-Science Club (3,
4); President Math-Science Club (4); PINE
CONE Staff (4).



SENIORS

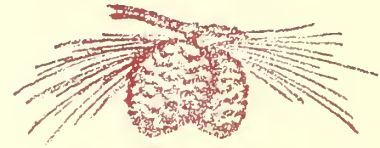


ELIZABETH TILLMAN

Valdosta, Georgia

A.B. MATHEMATICS

Student Government Association; Math-Science Club (3, 4); Euclidean Club (2); Phi Lambda Athletic Club; Valdosta Club (1, 2, 3, 4); Sororian Literary Society (1).

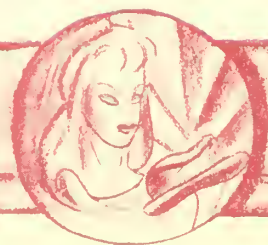
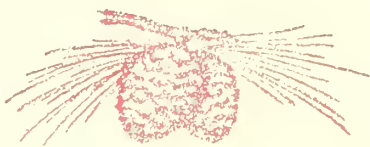


JOYCE TIPTON

Sylvester, Georgia

A.B. ART

Student Government Association; Y. W. C. A.; Phi Kappa Athletic Association; Sororian Literary Society; Fine Arts Club (1, 2, 3, 4).



SENIORS



VIRGINIA TUCK
Thomasville, Georgia

A.B. ENGLISH

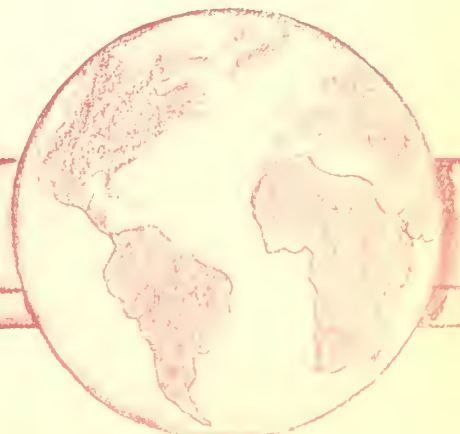
Student Government Association; Y. W. C. A.; Y. W. C. A. Cabinet (1, 2); Chairman of Freshman Commission; Phi Lambda Athletic Association; Athletic Club Awards (1, 2, 4); Athletic Council (1, 2); Recorder of Points of S. G. A. (4); Secretary and Treasurer of Phi Lambda Club (2); G. S. W. C. Emblem (4); Sororian Literary Society; Science Club (1); Philharmonic Club (1, 2); Modern Poetry Forum (2); Sock and Buskin Club (2, 3, 4); Sock and Buskin Club Play (2, 3, 4); *Pine Branch* Staff (2).



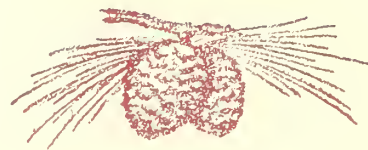
MILDRED TURNBULL
Moultrie, Georgia

A.B. MATHEMATICS

Student Government Association; Y. W. C. A.; Phi Kappa Athletic Club; Presidents Club (1); Math-Science Club (1, 4); Sock and Buskin Club (2, 3, 4); Sororian Literary Society; President Freshman Class (1); Vice-President Athletic Club (2); Vice-President Y. W. C. A. (3); President Student Government Association (4); Athletic Council Member (1, 2, 3, 4); Y. W. C. A. Cabinet (2, 3, 4); *Pine Branch* Staff (2); *Campus Canopy* Staff (3); G. S. W. C. Emblem (1, 3); Athletic Awards (1, 2, 3, 4); Sock and Buskin Play (3, 4); Y. W. C. A. Deputation Team (2, 4); Delegate to Southern Y. W. C. A. Conference, Blue Ridge, N. C. (2, 3); Delegate to Southern Association of Student Governments (3, 4); Delegate to State Y. W. C. A. Conference (2).



SENIORS



LEILA MAE TYSON

Jesup, Georgia

A.B. ENGLISH

Student Government Association; Y. W. C. A. ;
Phi Kappa Athletic Club; Sororian Literary
Society (1); *Campus Canopy* Staff (3); PINE
CONE Staff (4); English Club (3, 4); Science
Club (1); Glee Club (2, 3).



PHILENA TYSON

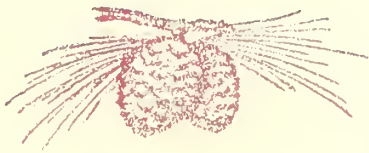
Camilla, Georgia

A.B. ENGLISH

Transfer from Wesleyan College (3); Stu-
dent Government Association; Y. W. C. A.;
Phil Kappa Athletic Club (4); English Club
(4).



SENIORS



AMES WATKINS
Metcalf, Georgia

A.B. ENGLISH

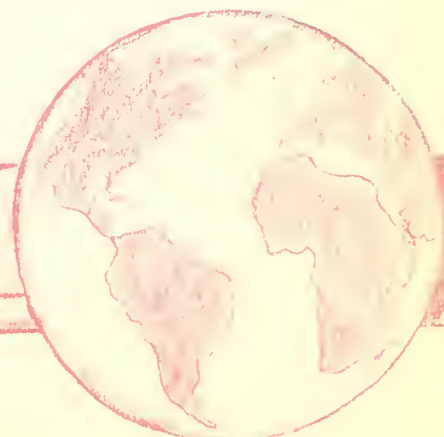
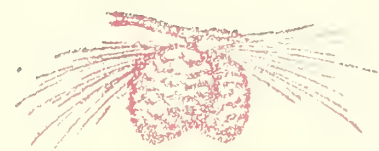
Transfer from Andrew College (2); Student Government Association; Y. W. C. A.; Phi Kappa Athletic Club; Sock and Buskin Club (4); English Club (3, 4); Vice-President of English Club (4); *Campus Canopy* Staff (3, 4); *Pine Branch* Staff (4); PINE CONE Staff (4); Honors (3, 4); Sock and Buskin Club Play (4).



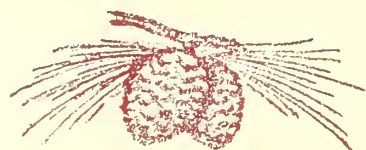
CARRENE WEST
Moultrie, Georgia

A.B. HISTORY

Student Government Association; Y. W. C. A.; Phi Kappa Athletic Club; Sororian Literary Society (1, 2).



SENIORS



DORIS YOUNG
Valdosta, Georgia

A.B. FRENCH

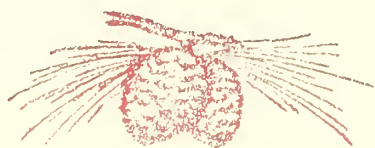
Student Government Association; Phi Kappa Athletic Club (1, 2); Sororian Literary (1, 2); Valdosta Club (1, 2, 3, 4); Secretary of Valdosta Club (2); Glee Club (1, 2, 3, 4); *Pine Branch* Staff (2); *Campus Canopy* Staff (3); Philharmonic Club (3); French Club (2, 3, 4); French Club Play (3); Vice-President of French Club (3); Honors (1, 2, 4); Orchestra (4).



PEARL WILSON
Cordele, Georgia

A.B. ENGLISH

Student Government Association; Y. W. C. A.; Freshman Commission (1); Y. W. C. A. Cabinet (2); Treasurer Y. W. C. A. (3); Deputation Team (1, 2, 3); Phi Lambda Athletic Club; Secretary-Treasurer of Lambdas (2); English Club (3); Glee Club (1, 2, 3); Philharmonic Club; Math-Science Club (2); Fine Arts Club (1); Argonian Literary Society; Honors (1, 2, 3); G. W. S. C. Emblem (3); Athletic Awards (2, 3); Athletic Council (1, 2, 3).



JUNIORS

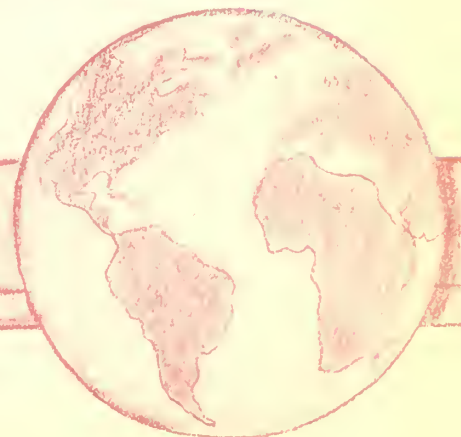
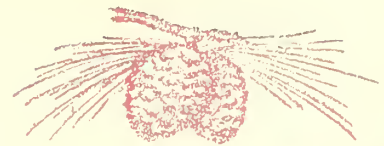
MATILDA TILLMAN
President Junior Class
Quitman, Ga.

EMMA AMBOS
Savannah, Ga.



EUNICE ADAMS
Marianna, Fla.

DENIESE BEASLEY
Glennville, Ga.



JUNIORS



LILLIAN BRAGG
Savannah, Ga.

FRANCES CARSON
Talbotton, Ga.



MARGARET BENNETT
Jesup, Ga.

LEILA CALLENDAR
Valdosta, Ga.



JUNIORS

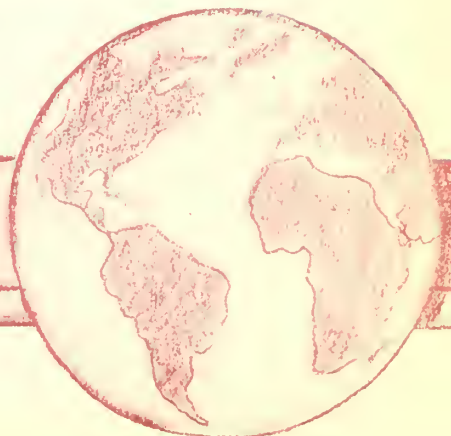
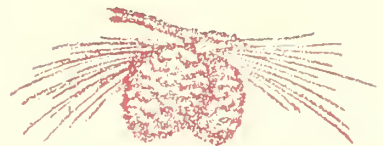
LOIS CORLEY
Valdosta, Ga.

MARGARET DALTON
Valdosta, Ga.



ALEXA DALEY
Dublin, Ga.

FRANCES FLUKER
Quitman, Ga.



JUNIORS

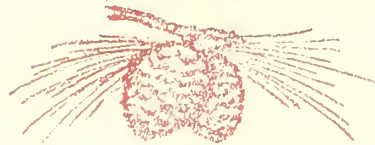
MARTHA GAY
Quitman, Ga.

LOTA GRIFFITH
Kinderlou, Ga.



DOROTHY FULLER
Quitman, Ga.

ELIZABETH GREEN
Jacksonville, Fla.



JUNIORS

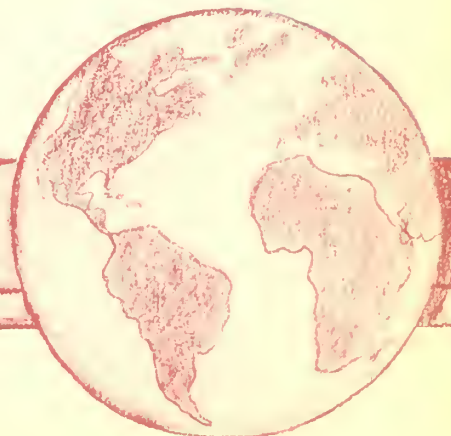
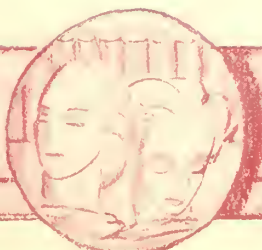
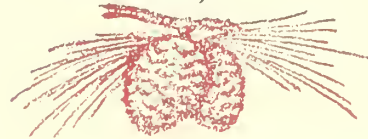
JESSELYN GRIGGS
Perry, Ga.

MARGARET HUDSON
Newton, Ga.



MARY KATHERINE HARRELL
Valdosta, Ga.

FRANCES HINES
Americus, Ga.



JUNIORS



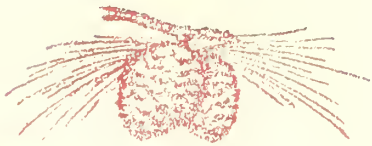
LORENE JOHNSON
Thomasville, Ga.

JOSEPHINE JOUBERT
Savannah, Ga.



MARTHA JENNINGS
Valdosta, Ga.

MARY JOHNSON
Macon, Ga.



JUNIORS

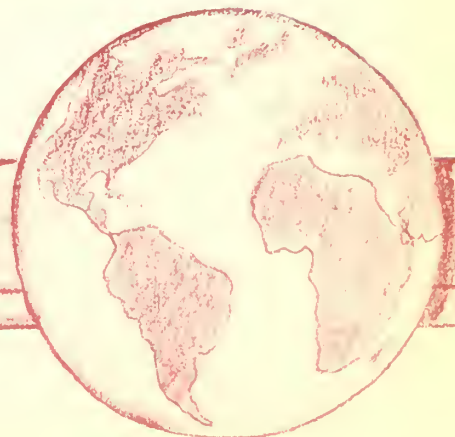
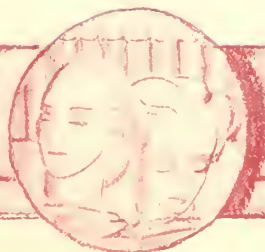
ELIZABETH KELLEY
Savannah, Ga.

LINELLE LANG
Omega, Ga.



PRISCILLA KELLEY
Savannah, Ga.

MARTIEL LUNDY
Boston, Ga.



JUNIORS



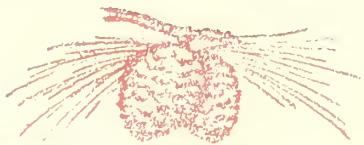
MARIE MIDDLETON
Colquitt, Ga.

CATHERINE MORGAN
Pembroke, Ga.



LAURA McLEOD
Pineview, Ga.

ELOISE MOORE
Naylor, Ga.



JUNIORS

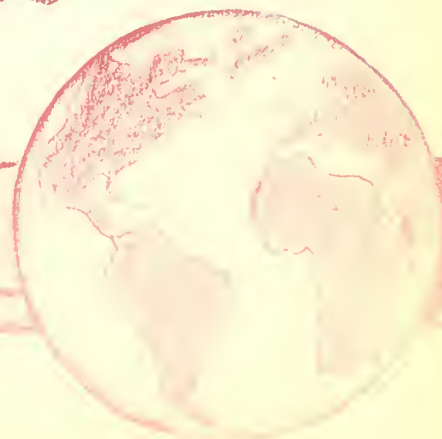
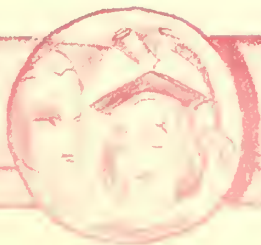
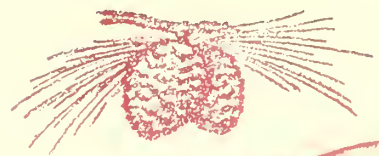
SARAH ELLEN MORGAN
Mystic, Ga.

ELOISE OGLETREE
Savannah, Ga.



BARNIE LOU NEWSOME
Valdosta, Ga.

PARMELIA OLLIFF
Quitman, Ga.



JUNIORS

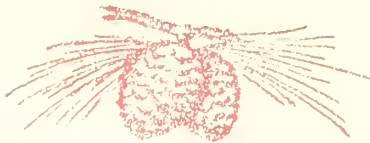
ANNETTE PHILLIPS
Quitman, Ga.

MARY AGNES ROANE
Savannah, Ga.



EMILY PARRISH
Valdosta, Ga.

ESTELLE RICKS
Reynolds, Ga.



JUNIORS

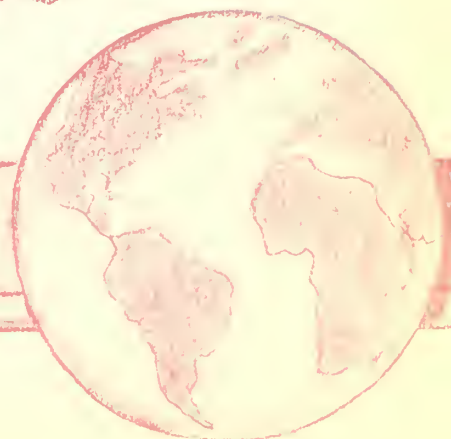
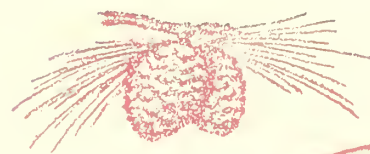
LAFOREST SMITH
Valdosta, Ga.

HULDA SUMMER
Cordele, Ga.



MARTHA STRANGE
Ellaville, Ga.

FLORENCE THARP
Leesburg, Ga.



JUNIORS

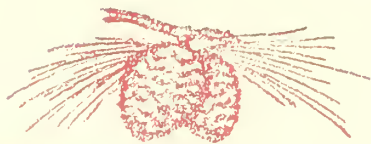
VIVIAN VINCENT
Habira, Ga.

MARTHA SUE WILLIAMS
Tifton, Ga.



ANNE TURNER
Valdosta, Ga.

MARGARET WADE
Valdosta, Ga.



SOPHOMORES

FIRST ROW

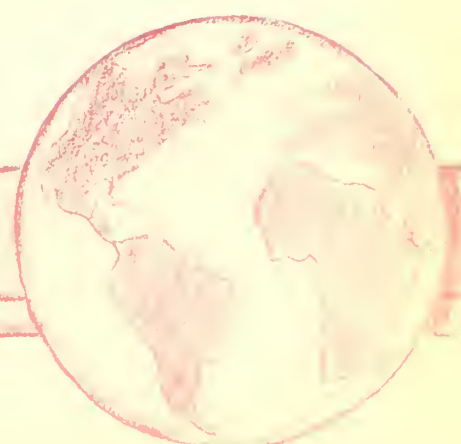
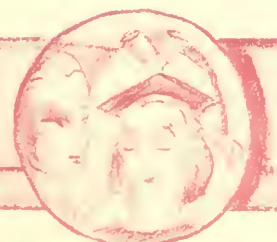
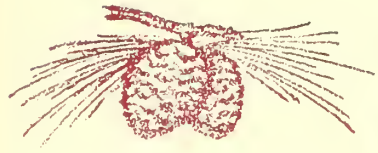
RUTH BUNN, President Douglas, Ga.
 BERNICE ANDREWS Thomasville, Ga.

SECOND ROW

HELEN ASHBROOK Valdosta, Ga.
 EDITH BENNETT Savannah, Ga.
 ANN BROOKS Valdosta, Ga.

THIRD ROW

JANIE MERLE BYRD Pavo, Ga.
 MARGARET CANNON Cairo, Ga.
 ALVATA CARTER Rockingham, Ga.



SOPHOMORES

FIRST ROW

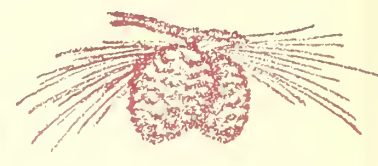
NELLIE CHISM *Nashville, Ga.*
GAYLE CHUTE *Unadilla, Ga.*

SECOND ROW

BOBBIE COCHRAN *Camilla, Ga.*
BILLIE COLLINS *Cairo, Ga.*
GERALDINE COLLINS *Unadilla, Ga.*

THIRD ROW

CLARICE CONNOR *Stockton, Ga.*
SUE COPPAGE *Valdosta, Ga.*
WINIFRED CORBETT *Pearson, Ga.*



SOPHOMORES

FIRST ROW

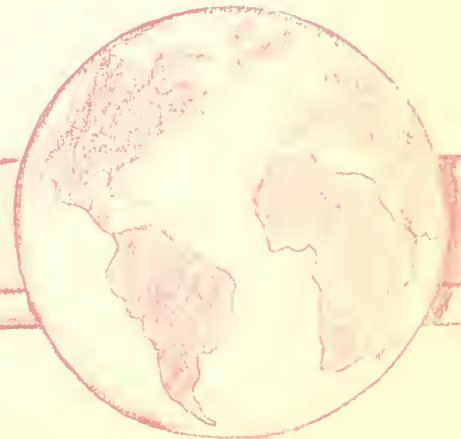
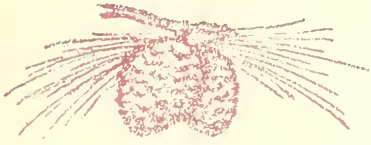
MILDRED DANIELS *Hawkinsville, Ga.*
ELIZABETH DASHER *Valdosta, Ga.*

SECOND ROW

LOIS DICKERSON *Homerville, Ga.*
DOROTHY DIXON *Patterson, Ga.*
ANNE MARY EVANS *Coolidge, Ga.*

THIRD ROW

MILDRED EVARTS *Adel, Ga.*
WILMA RUTH FAIRCLOTH *Seville, Ga.*
IVELYN FOLSOM *Habira, Ga.*



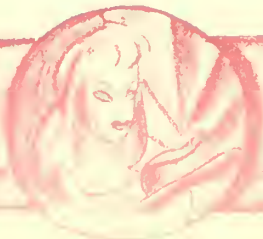
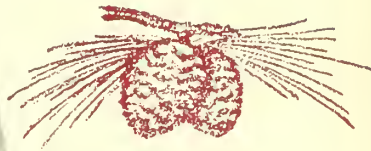
SOPHOMORES



FIRST ROW
 MARTHA FRANKLIN Valdosta, Ga.
 RUTH GARBUTT Valdosta, Ga.

SECOND ROW
 THERESA GRAHAM Jesup, Ga.
 MRS. H. L. GRAHAM Valdosta, Ga.
 CAROLYN GREENE Columbus, Ga.

THIRD ROW
 LOIS HAFFORD Waycross, Ga.
 THERA HAMBRICK Ray City, Ga.
 LOUISE HARPER Albany, Ga.



SOPHOMORES

FIRST ROW

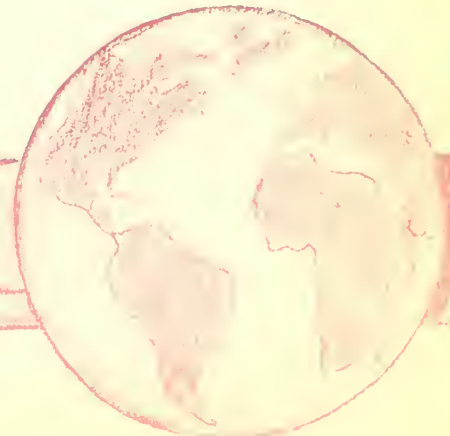
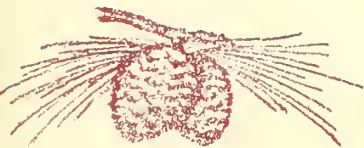
BARBARA HATCHER *Moultrie, Ga.*
FRANCES HINSON *Waycross, Ga.*

SECOND ROW

MARY HOLTZCLAW *Perry, Ga.*
JOAN HORTON *McRae, Ga.*
MARY HUDSON *Rome, Ga.*

THIRD ROW

FRANCES HUNT *Valdosta, Ga.*
ERNESTINE ISBELL *Valdosta, Ga.*
FLOYE IVEY *Bridgeboro, Ga.*



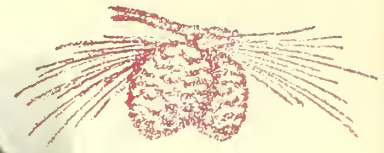
SOPHOMORES



FIRST ROW
MARTHA JOHNSTON Valdosta, Ga.
MARTHA JONES Lakeland, Ga.

SECOND ROW
MARJORIE JORDAN Cordele, Ga.
JOHNNY MAE KELLEY Cordele, Ga.
HELEN LANDEY Valdosta, Ga.

THIRD ROW
LOVENIA LASSITER Valdosta, Ga.
BESSIE LEWIS Willacoochee, Ga.
ELOUISE LINEBERGER Valdosta, Ga.



SOPHOMORES

FIRST ROW

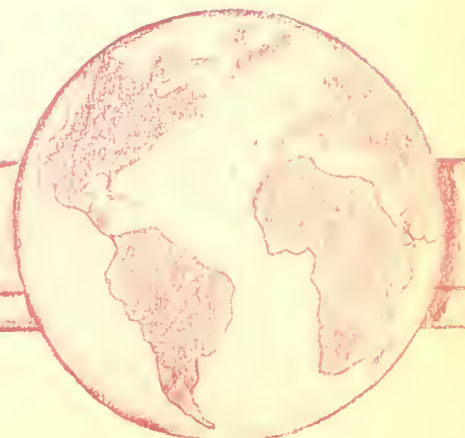
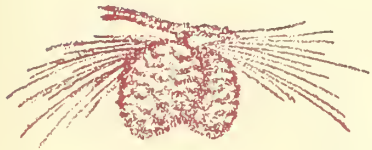
BLANCHE LOCKLEAR *Homerville, Ga.*
RUTH LOUGHRIDGE *Blackshear, Ga.*

SECOND ROW

ELIZABETH MACON *Moultrie, Ga.*
VIRGINIA MARTIN *Atlanta, Ga.*
JESSIE MAUDE MASON *Ochlochnee, Ga.*

THIRD ROW

ANNA MATHEWS *Valdosta, Ga.*
SUSIE MATHEWS *Valdosta, Ga.*
FRANCES McLANE *Dawson, Ga.*



SOPHOMORES



FIRST ROW

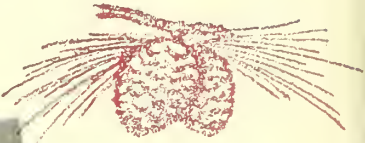
KATHERINE MOORE Moultrie, Ga.
 DOROTHY MORGAN Valdosta, Ga.

SECOND ROW

LOIS PERRY Kingsland, Ga.
 MARGARET PHILLIPS Valdosta, Ga.
 MARTHA POWELL Valdosta, Ga.

THIRD ROW

SARAH MARTHA PYLE Valdosta, Ga.
 SARAH ANN PRYOR Fitzgerald, Ga.
 FRANCES REES Preston, Ga.



SOPHOMORES

FIRST ROW

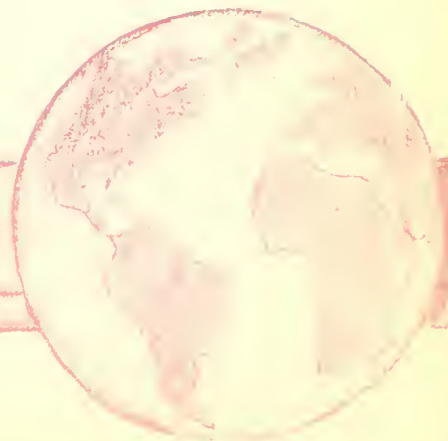
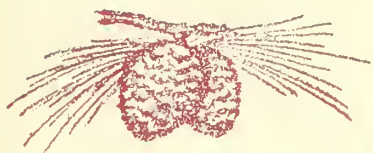
HARRIET ROGERS *Fitzgerald, Ga.*
CAMILLE RYCROFT *Adel, Ga.*

SECOND ROW

PAULA SAPP *Cairo, Ga.*
VANELLE SCRUGGS *Naylor, Ga.*
MARGARET SIMS *Ousley, Ga.*

THIRD ROW

JAUNITA SIRMANS *Homerville, Ga.*
ESSIE SKINNER *Tifton, Ga.*
KITSIE SMITH *Waycross, Ga.*



SOPHOMORES



FIRST ROW

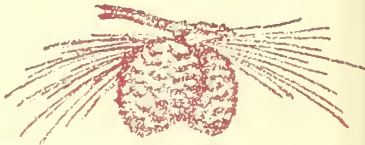
WYNELLE SPELL *Wrightsville, Ga.*
ETHEL STALLINGS *Newnan, Ga.*

SECOND ROW

VIVIAN STANFORD *Adel, Ga.*
MERLE SUMNER *Waycross, Ga.*
RACHEL SUMNER *Sylvester, Ga.*

THIRD ROW

GRACE SWINDLE *Ray City, Ga.*
MARY EDWIN THORPE *Townsend, Ga.*
KATHRYN TOOLE *Valdosta, Ga.*



SOPHOMORES

FIRST ROW

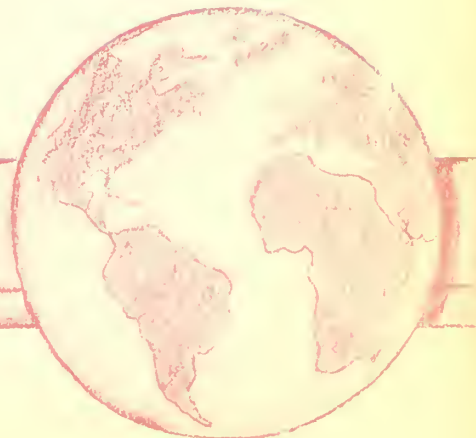
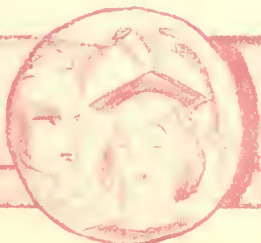
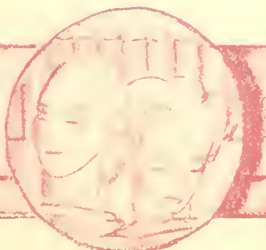
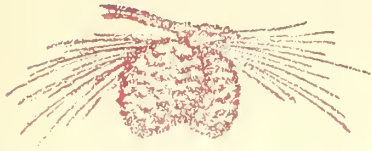
JANE TWITTY *Valdosta, Ga.*
 LUCILLE TYSON *Jesup, Ga.*

SECOND ROW

LOUISE VANN *Waycross, Ga.*
 MANELLE VINCENT *Lakeland, Ga.*
 ELIZABETH WADE *Valdosta, Ga.*

THIRD ROW

LYLLBURN WARREN *Waycross, Ga.*
 MADEE WATSON *Lakeland, Ga.*
 CAROLYN WHIPPLE *Quitman, Ga.*



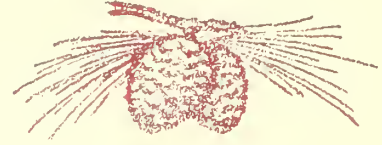
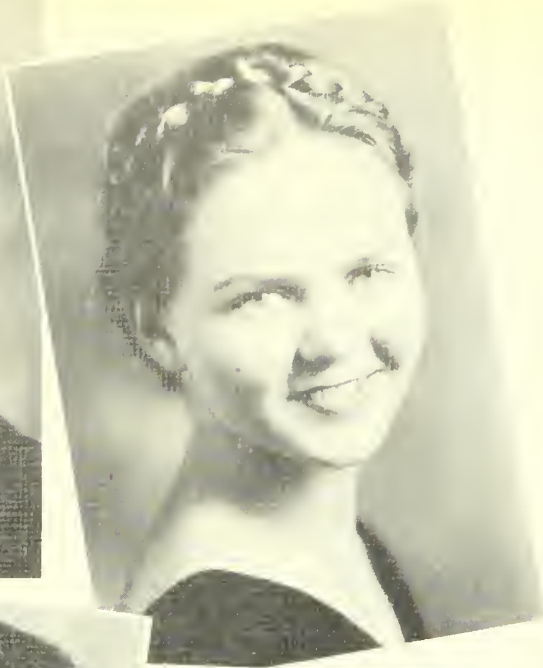
SOPHOMORES

FIRST ROW

ANNIE LAURIE WHITE Waycross, Ga.
RUTH WILLIAMS Waycross, Ga.

SECOND ROW

FLORIDE ZIPPERER Clyattville, Ga.
VIRGINIA ZIPPLIES Savannah, Ga.



FRESHMEN

FIRST ROW

ANNA RICHTER
President
Savannah, Ga.

MARGARET ABERNATHY
Moultrie, Ga.

ANNIE ADAMS
Geneva, Ala.

SECOND ROW

MARGUERITE ARNOLD
Richland, Ga.

VERA BEASLEY
Glennville, Ga.

ANNIE LAURIE BELL
Tifton, Ga.

CHARLES VIRGINIA BESSENT
Jacksonville, Fla.

THIRD ROW

HELEN BOWEN
Register, Ga.

EDITH JEWEL BROWN
Alamo, Ga.

SARAH EDITH BROWN
Lyons, Ga.

VIRGINIA BUNTIN
Albany, Ga.

FOURTH ROW

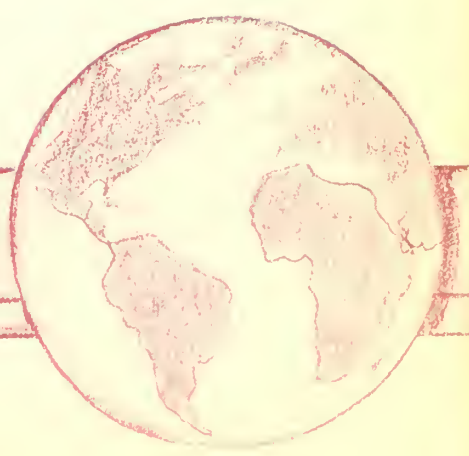
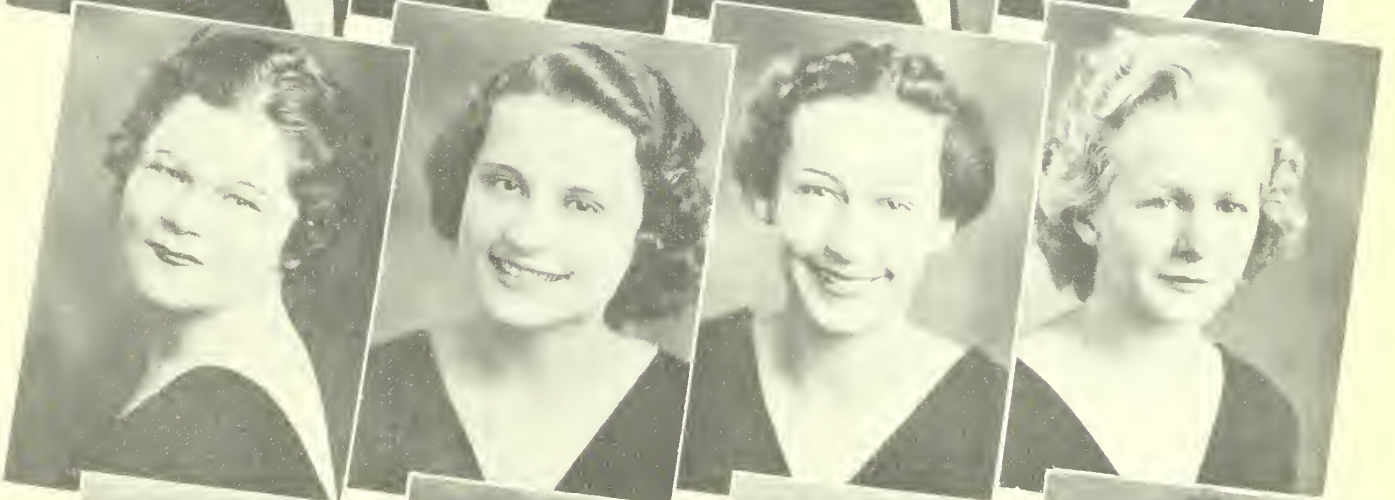
BRUTHA LEE BURNEY
Mayday, Ga.

CLAUDIA BUSSEY
Valdosta, Ga.

HELEN BUTLER
Vienna, Ga.

HILDA CARROLL
Valdosta, Ga.

MARGARET CARTER
Adel, Ga.



FRESHMEN

FIRST ROW

SUSIE MAE CARTER
Valdosta, Ga.

JULIA CASEY
Kingsland, Ga.

MILDRED CASTLEBERRY
Columbus, Ga.

SECOND ROW

ROSALIE CHAUNCEY
Valdosta, Ga.

JEANNETT CHASON
Cairo, Ga.

DOROTHY CLARY
Valdosta, Ga.

CAMILLE CLEMENTS
Adel, Ga.

THIRD ROW

JANET CLEMENTS
Rochelle, Ga.

DORIS COOK
Colquitt, Ga.

JEANNETTE COX
Valdosta, Ga.

EILEEN COX
Valdosta, Ga.

FOURTH ROW

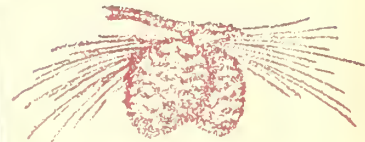
LUCY TYSON COX
Lenox, Ga.

BEVERLY CRAIGMILES
Thomasville, Ga.

LILLA CROSBY
Pavo, Ga.

DOROTHY DAVIS
Dawson, Ga.

LORRAINE DAVIS
DeSoto, Ga.



FRESHMEN

FIRST ROW

PASY DODGE
Valdosta, Ga.

BEVERLY DOUGHERTY
Valdosta, Ga.

MARY DUBOIS
Savannah, Ga.

SECOND ROW

ANN DUNBAR
Valdosta, Ga.

WILL EMMA DUNLAP
Gay, Ga.

GARNETTE FAIRCLOTH
Seville, Ga.

JANE FLANIGAN
Columbus, Ga.

THIRD ROW

EMMA FLETCHER
Parrott, Ga.

CAROLYN FOLSOM
Habira, Ga.

HARRIET FUTCH
Rochelle, Ga.

JUDY FUTCH
Carro, Ga.

FOURTH ROW

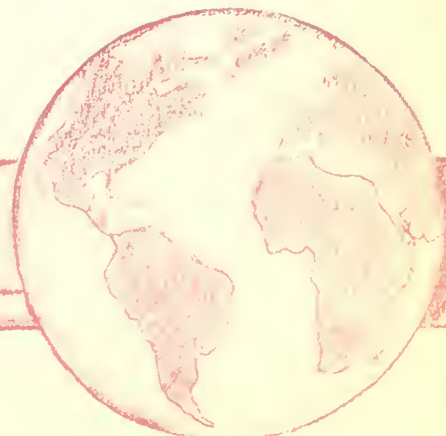
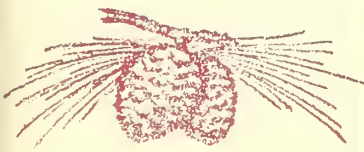
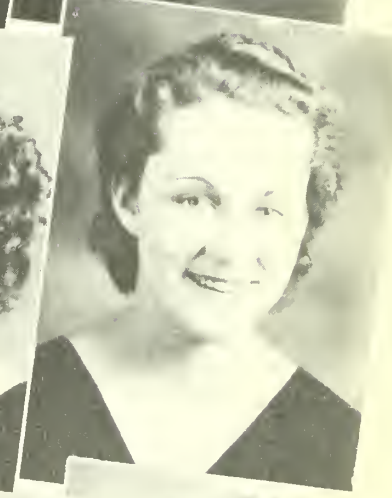
ELEANOR GARRETT
Albany, Ga.

EMOGENE GASKINS
Nashville, Ga.

VIRGINIA GIDDENS
Albany, Ga.

PARDEE GREER
Valdosta, Ga.

MARY WYNN GREER
Valdosta, Ga.



FRESHMEN

FIRST ROW

LOU GREVENBERG
Savannab, Ga.

MARY GRIFFIN
Fort Valley, Ga.

ANN GROOVER
Quitman, Ga.

SECOND ROW

CLARA HAMMOND
Griffin, Ga.

JULIA HARRELL
Dixie, Ga.

BARBARA HARRIS
Valdosta, Ga.

CHRISTINE HIERS
Moultrie, Ga.

THIRD ROW

LUCILLE HINSON
Argyle, Ga.

GERTRUDE HODGES
Waycross, Ga.

MARY HUDSON
Whigham, Ga.

MARY ETTA HUNT
Valdosta, Ga.

FOURTH ROW

LANELLE JENKINS
Edison, Ga.

MARION JOHNSON
Valdosta, Ga.

LOIS JOHNSON
Leary, Ga.

HELEN JOINER
Savannab, Ga.

LAMAR KENDALL
Valdosta, Ga.



FRESHMEN

FIRST ROW

MARY LOUISE KENDRICK
Columbus, Ga.

FREDRICA LAMBERT
Fort Valley, Ga.

MITTIE LOU LANE
Valdosta, Ga.

SECOND ROW

ROSALIND LANE
Valdosta, Ga.

JUNE LAWSON
Savannah, Ga.

KATHRYN LEDBETTER
Decatur, Ga.

DORIS LEWIS
Camilla, Ga.

THIRD ROW

AUDREY LONDON
Tifton, Ga.

TRECY LONG
Quitman, Ga.

MILDRED LOTT
Habers, Ga.

MARY LEE McDONALD
Valdosta, Ga.

FOURTH ROW

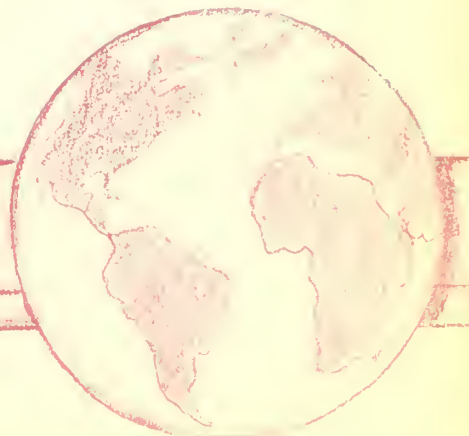
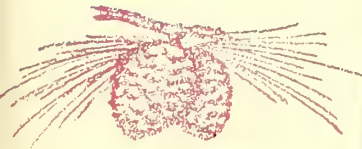
MILDRED McKIBBEN
Pavo, Ga.

CLARA McLANE
Valdosta, Ga.

VISTA MALONEY
Quitman, Ga.

MARY ALICE MARTIN
Dorchester, Ga.

NELL MARTIN
Flemington, Ga.



FRESHMEN

FIRST ROW

MARGUERITE MILLS
Folkston, Ga.

MILDRED MONTGOMERY
Charing, Ga.

MARY HELEN MOORE
Thomasville, Ga.

SECOND ROW

CATHARINE J. MORRIS
New Rochelle, N. Y.

HAZEL MUGGRIDGE
Cairo, Ga.

OUIDA MURDOCK
Meigs, Ga.

LILLIAN NEWHAM
Valdosta, Ga.

THIRD ROW

CATHARINE O'NEAL
Waycross, Ga.

EVELYN OGLETREE
Savannah, Ga.

SARAH PARKER
Lyons, Ga.

VIVIAN PAULK
Fitzgerald, Ga.

FOURTH ROW

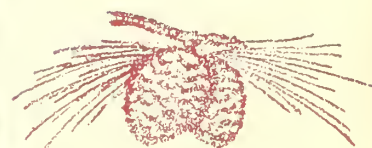
DORA PERKINS
Alma, Ga.

MARY ANNA PINCKARD
Valdosta, Ga.

SUE POPE
Zebulon, Ga.

RACHEL RAINEY
Dawson, Ga.

MARY EDNA RATLIFF
Valdosta, Ga.



FRESHMEN

FIRST ROW

MARIE REES
Preston, Ga.

THERON ROBERTS
Valdosta, Ga.

RUBY JEAN ROGERS
Valdosta, Ga.

SECOND ROW

BERNICE ROUNTREE
Sparks, Ga.

CLARA MAE SASSER
Valdosta, Ga.

ELOISE SHEFFIELD
Donalsonville, Ga.

LAURA MAE SHINKEL
Albany, Ga.

THIRD ROW

PATSY SIMPSON
Blackshear, Ga.

SARA SINGLETERRY
Coolidge, Ga.

MELBA SLADE
Vienna, Ga.

VIRGINIA SMITH
Dawson, Ga.

FOURTH ROW

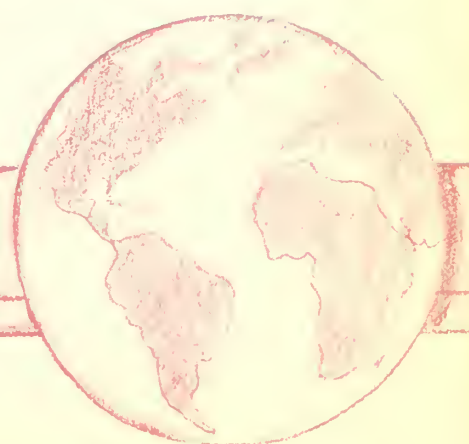
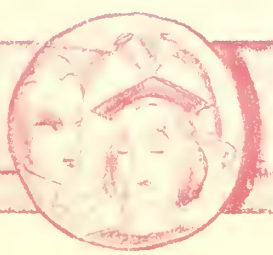
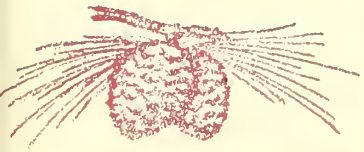
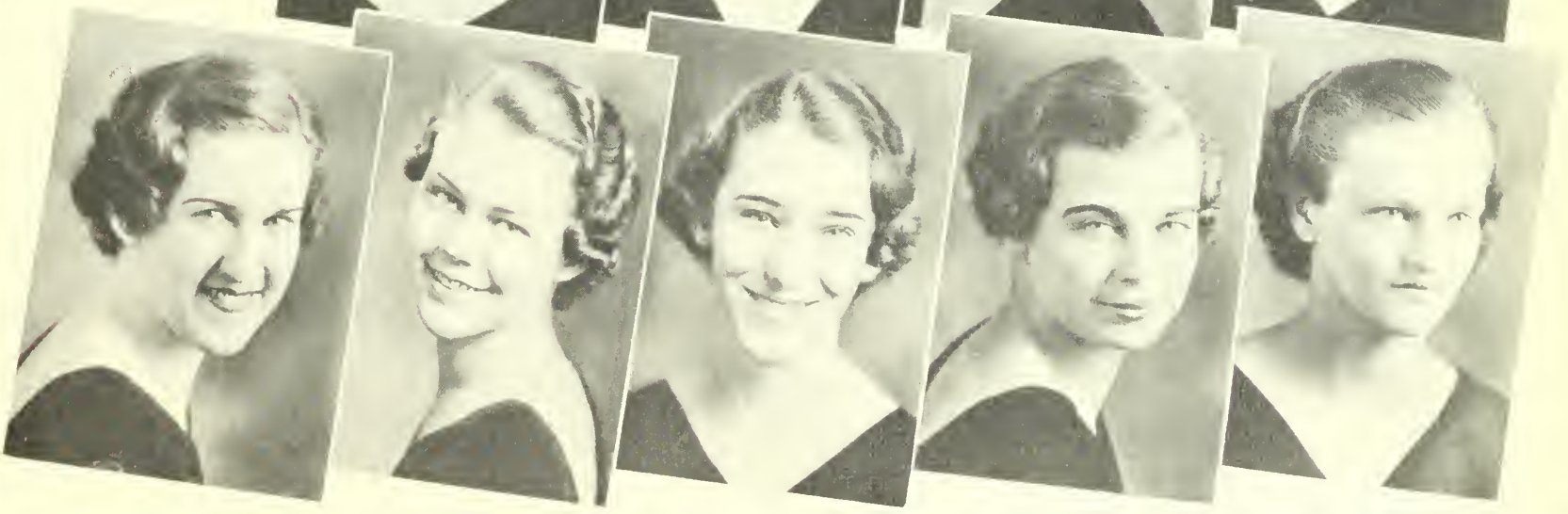
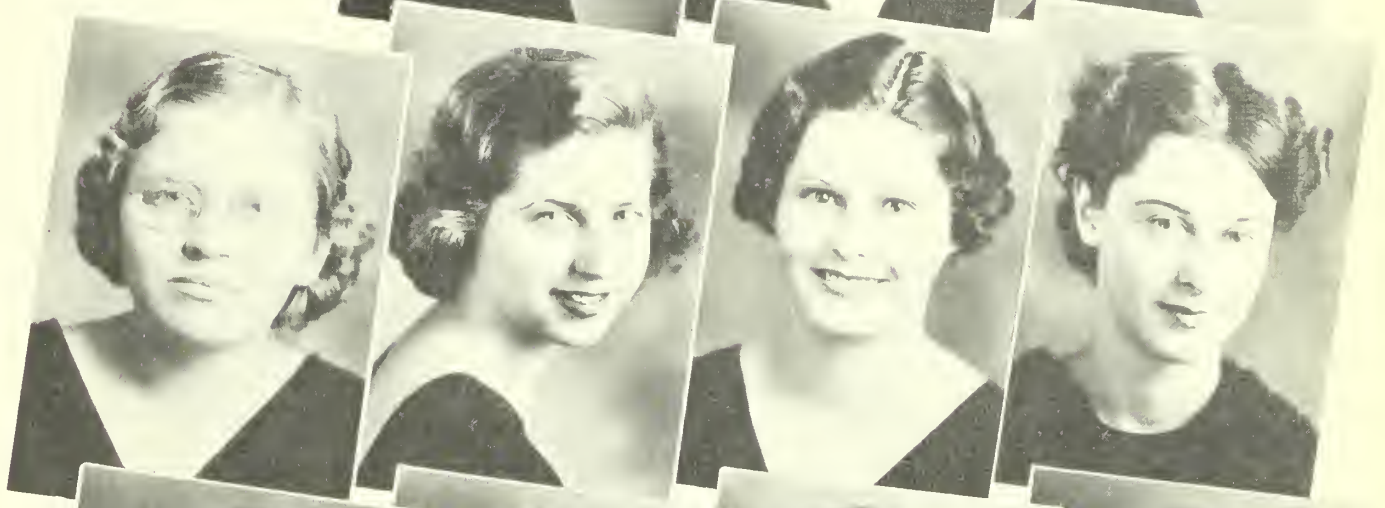
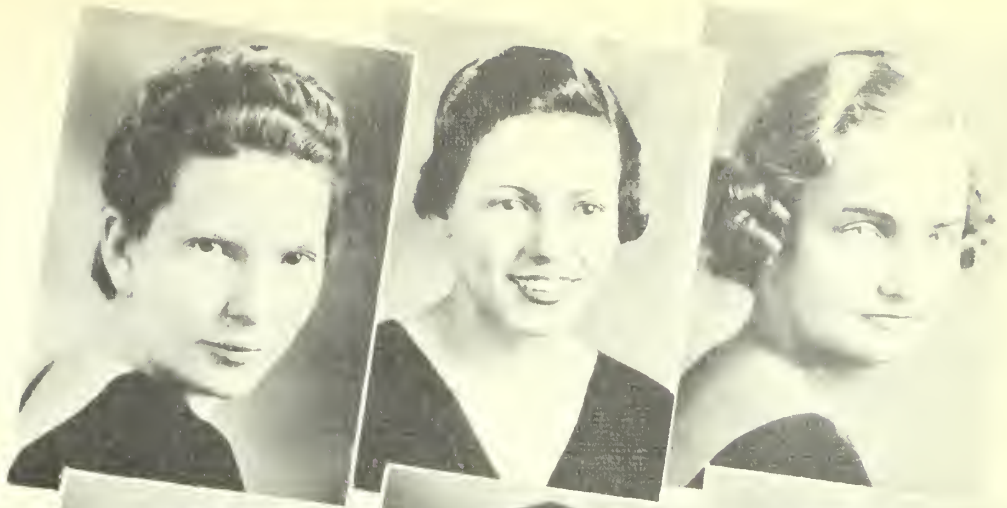
WYLENE SMITH
Patterson, Ga.

CATHERINE STEWART
Valdosta, Ga.

CARLIE MAE STOKES
Folkston, Ga.

CELESTE STUMP
Valdosta, Ga.

LOUISE STUMP
Valdosta, Ga.



FRESHMEN

FIRST ROW

AMANDA SULLIVAN
Valdosta, Ga.

VIRGINIA SUMMERFORD
Reidsville, Ga.

LERAH SUTTON
Axson, Ga.

SECOND ROW

LOUISE SUTTON
Tifton, Ga.

ALICE TAYLOR
Columbus, Ga.

VIRGINIA TEASLEY
Lilly, Ga.

FRANCES THOMAS
Valdosta, Ga.

THIRD ROW

RUBY TOMLINSON
Valdosta, Ga.

PENELOPE TULLIS
Valdosta, Ga.

GRACE VAN LANDINGHAM
Valdosta, Ga.

SARAH KATHRYN VICKERS
Norman Park, Ga.

FOURTH ROW

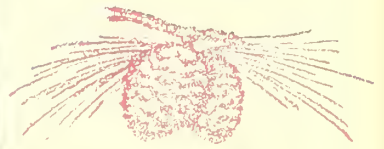
MARY ADDIS WACASER
Colquitt, Ga.

CHARLOTTE WALTON
Ellijay, Ga.

NENA WESTBROOK
Cordele, Ga.

JUDITH WHITAKER
Cordele, Ga.

EVELYN WHITMIRE
Griffin, Ga.



FRESHMEN

FIRST ROW

RUTH WHITTLE
Brunswick, Ga.

MARY VIRGINIA WILLIAMS
Quitman, Ga.

MARTHA G. WILLIFORD
Valdosta, Ga.

SECOND ROW

CATHERINE WILSON
Waycross, Ga.

DOROTHY MAE WILSON
Valdosta, Ga.

FRANCES WILSON
Valdosta, Ga.

MAUELLE WILSON
Cordele, Ga.

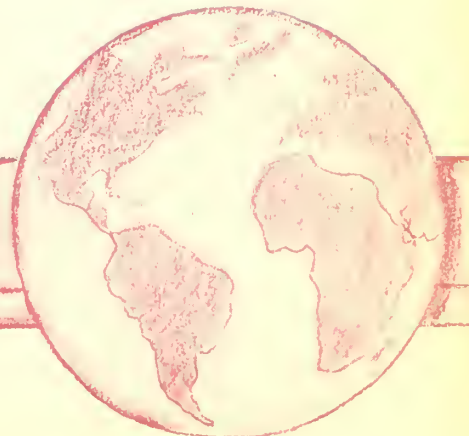
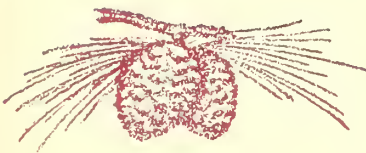
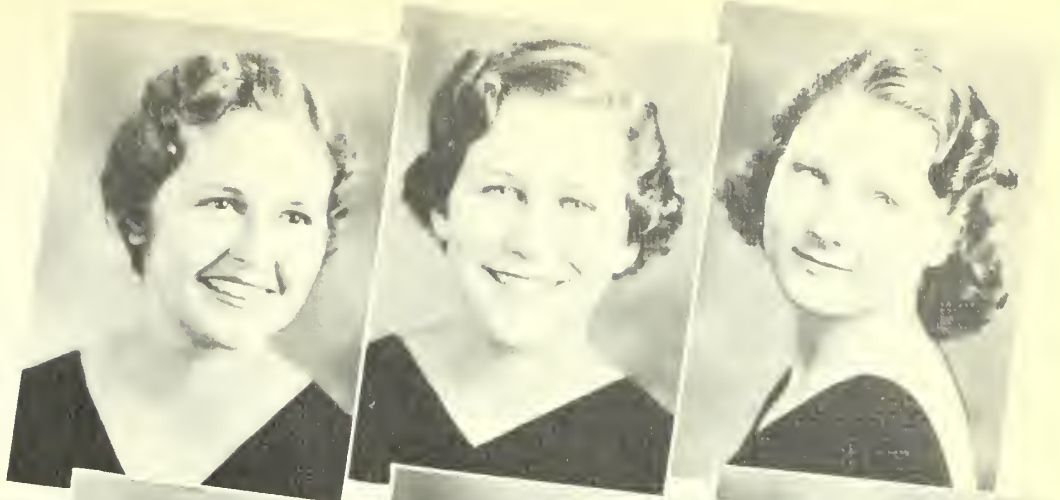
THIRD ROW

MARY SUE WISEBAKER
Valdosta, Ga.

MAYME WITHOLTER
Attapulgus, Ga.

HAZEL WOODARD
Waycross, Ga.

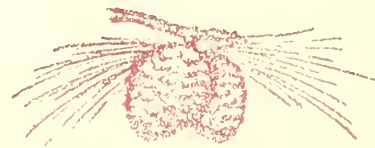
FRANCES YOUNG
Reynolds, Ga.



LEISURE TIME

As the result of the Machine Age, woman finds herself with more leisure time. This time is hers for her betterment; it is hers for learning the things she has wanted to know down through the ages; it is hers for creating new ideals for the race. A vast amount of time lies ahead for further investigation of what has been handed down to her from the past, and the correlating of this knowledge to the needs of her day.

The new leisure time is woman's for investigation of the worlds of art and science, and lastly for the employment of her own creative genius.







TURNBULL



DANIEL



AMBOS



TUCK

Student Government Association

The Student Government Association, which has as its main purpose the government of the students so as to promote the highest standards of honor and integrity in all manners of personal conduct, has seen a number of changes in the regulations of the student this year, and a number of new privileges granted.

Off-campus speakers have spoken at the regular monthly meetings of the association, among them being the Honorable Braswell Deen, congressman; Dr. Kathryn T. Abbey, head of the history department at the Florida State College for Women; and Mr. Phillip Covington of Moultrie.

The Student Government Association also fosters the social life of the college in many ways. A tea was one of the special social functions of the association this year.

OFFICERS

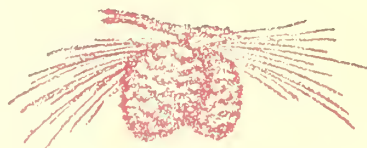
- MILDRED TURNBULL *President*
- EMMA AMBOS *Vice-President*
- JO DANIEL *Secretary-Treasurer*
- VIRGINIA TUCK *Recorder of Points*

COURT MEMBERS

- | | |
|-------------------|-----------------|
| MILDRED TURNBULL | MATILDA TILLMAN |
| EMMA AMBOS | RUTH BUNN |
| CLARA DAVIS ADAMS | ANNA RICHTER |

COUNCIL MEMBERS

- | | |
|-----------------------|------------------|
| MILDRED TURNBULL | EVELYN MAY |
| CLARA LOUISE DRISKELL | BROUN HUTCHINSON |





ADAMS



TILLMAN



BUNN



RICHTER



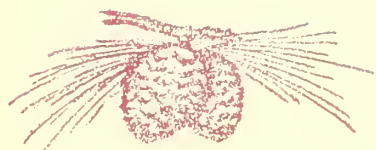
DRISKELL



HUTCHINSON



MAY





DRISKELL



KELLEY



STALLINGS



RYCROFT

Y. W. C. A.

The activities of the Y. W. C. A. include every student on the campus. This year a deputation team was sent out to the surrounding communities during each quarter; the theme was built around "Purposeful Living." Two delegates were sent to the Student Volunteer Convention in Indianapolis, Indiana, in December.

The Y. W. C. A. also sponsored amateur nights on Saturday evenings for each of the classes, and a charm school was held in connection with Valentine week celebrations.

The annual retreat was held at Twin Lakes to discuss the work of the past year and plan the program for the coming year.

The Freshman Commission was elected in order to establish a closer connection between the freshmen and the organization.



WILSON



ZIPLIES



SPELL



HAFFORD





WILLIAMS



MAY



MILLER



BENNETT

CABINET

- CLARA LOUISE DRISKELL President
- PRISCILLA KELLEY Vice-President
- CAMILLE RYCROFT, ETHEL STALLINGS Assistants to the Vice-President
- EDITH BENNETT Secretary
- PEARL WILSON Treasurer
- VIRGINIA ZIPPLIES Pianist
- WYNELLE SPELL Club House Chairman
- ELEANOR JOY MILLER Bible Study Chairman
- LOIS HAFFORD Morning Watch Chairman
- RUTH WILLIAMS Entertainment Chairman
- EVELYN MAY Music Chairman
- MARGARET BENNETT Publicity Chairman
- ELIZABETH KELLEY Deputation Chairman
- MYRA HACKETT World Fellowship Chairman
- ALVATA CARTER Room Chairman



HACKETT



KELLEY



CARTER



DEPUTATION TEAM



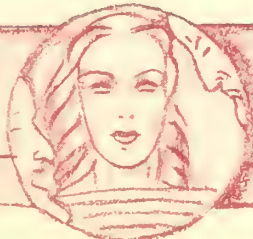
OFF TO INDIANAPOLIS



OFFICERS OF FRESHMAN COMMISSION



FRESHMAN COMMISSION



Pine Branch

The *Pine Branch* this year was made into a quarterly publication under the direction of a group of students receiving inspiration from Southern traditions and campus life and interested in creating literature indigenous to this section of the country.

Through cooperation with the English Club a banquet was given in the spring quarter, and literary awards made to members of the staff.

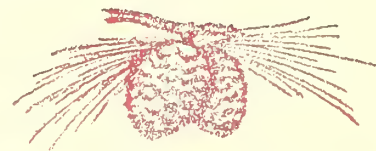
Published in a section abounding in tradition and legend, the *Pine Branch* looks to these sources for the main body of its material.

PINE BRANCH STAFF

LEONORA DUFOUR *Editor*
 ETHLYN MASSEY *Assistant Editors*

ANTOINETTE ANDREWS
 BERNICE ANDREWS
 AMES WATKINS
 CARROLL PEEPLES
 LORENE JOHNSON
 HULDA SUMMER

} . *Contributing Editors*



MASSEY

DUFOUR



WATKINS



PEEPLES



SUMMER



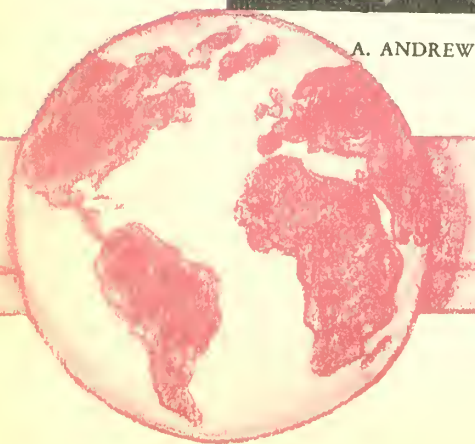
B. ANDREWS



JOHNSON



A. ANDREWS





MASSEY



THOMPSON



GIDDENS



DuFOUR



BARKSDALE



TYSON



HACKETT



FORRESTER



WATKINS

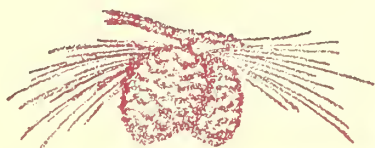
Pine Cone

In presenting the PINE CONE of 1936, the seniors make a final opportunity to express their appreciation for that rare, but somewhat intangible fitness that four years at their Alma Mater has given them. The staff of 1936 attempts to give an expression to those gifts of our college as exemplified by the theme.

For five years, the PINE CONE has received first honor ratings in the National Scholastic Press Association, with an All-American Honor rating in 1929 and 1932. May this PINE CONE likewise have attained the standard set in preceding years.

STAFF

- ETHLYN MASSEY *Editor*
- LUCILE THOMPSON *Business Manager*
- LUELLE GIDDENS *Assistant Business Manager*
- LEONORA DuFOUR *Literary Editor*
- AMES WATKINS *Activities Editor*
- MYRA HACKETT } *Snapshot Editors*
- CAROL FORRESTER }
- LEILA MAE TYSON } *Advertising Managers*
- AMANDA BARKSDALE }
- FRANCES GARBUTT *Art Editor*



AMANDA and LEILA MAE
After Ads



The Kodakers
MYRA and CAROL



MASSEY

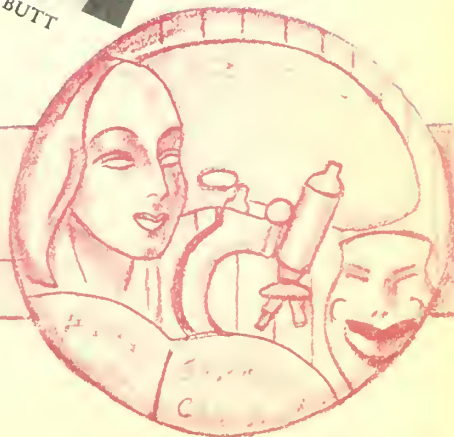
FACULTY ADVISER



DuFOUR and AMES



GARBUTT



The Campus Canopy

The second year of publication of the student newspaper has seen journalistic endeavor firmly established as an important activity on the campus. The paper has grown in size and content since the first issue was published in November, 1935.

The *Campus Canopy* became affiliated with the Associated Collegiate Press and the National Scholastic Press Association this year, and in November two delegates were sent to the national convention in Chicago.

Collegiate Digest was also distributed with each issue of the paper.

Keys were awarded members of the staff who did outstanding work during the year.

STAFF

LEONORA DUFOUR *Editor*
 ANTOINETTE ANDREWS *Managing Editor*
 ELIZABETH GREEN *News Editor*
 JO DANIEL *Business Manager*
 LORENE JOHNSON *Advertising Manager*
 AMES WATKINS *Circulation Manager*
 RUTH WILLIAMS *Assistant Circulation Manager*

ASSOCIATE EDITORS

MARGARET HUDSON LOUISE HARDY ELIZABETH KELLEY
 FLORIDE ZIPPERER

REPORTERS

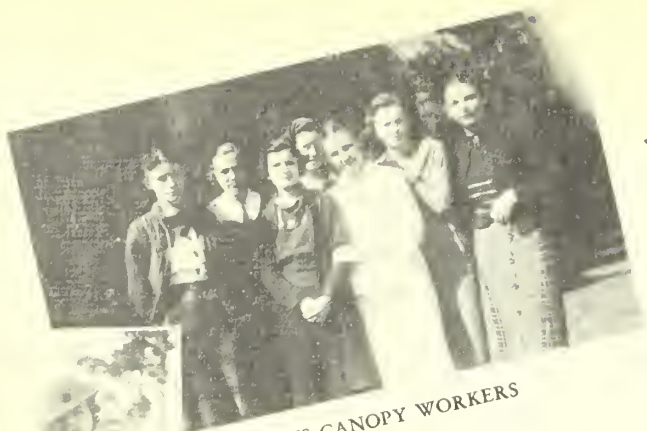
MARGARET CANNON ALVATA CARTER ELEANOR GARRETT
 EMOGENE GASKINS CAROLYN GREENE HELEN JOINER
 ANNIE LAURIE WHITE GERTRUDE HODGES ROSALIND LANE
 BERNICE ANDREWS CATHERINE MOORE MARTHA GAY
 C. J. MORRIS

ADVERTISING

CHAPPIE BRAGG PEARL WILSON VIVIAN STANFORD
 JOSEPHINE JOUBERT MARGARET BENNETT GRACE SWINDLE
 FRANCES CARSON MARGARET HUDSON LOUISE HARPER
 ALEXA DALEY CARROLL PEEPLES ALICE TAYLOR
 HELEN LANDEY

CIRCULATION

MARY GRIFFIN HELEN JOINER CLARA HAMMOND
 LILLBURN WARREN FRANCES HINES



CAMPUS CANOPY WORKERS

LEONORA LEAVES FOR CHICAGO



CIRCULATION STAFF



DuFOUR



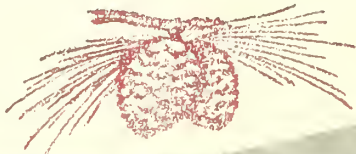
DANIEL



ANDREWS



GREEN





HARDY



WATKINS



SUMMER

English Club

The program for the English Club included one of the most delightful events of the year in the social life of the college, a lecture reading and tea at which Daniel Whitehead Hickey, internationally known Georgia poet, was the guest of honor. This reading was in direct keeping with one of the club's primary aims, the bringing to the campus of available writers and speakers of literary importance.

Another aim of the club, the fostering of interest on the campus in literature, was carried out by the offering of prizes for literature published in the *Pine Branch*, and the awarding of Keys to members of the staff of the *Campus Canopy*.

OFFICERS

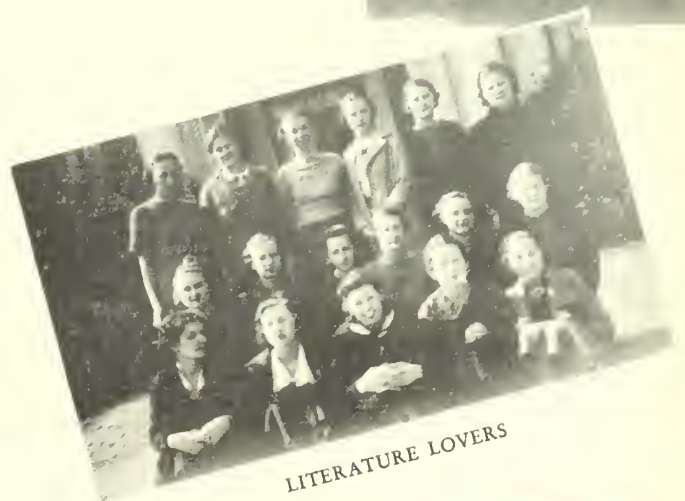
- LOUISE HARDY *President*
- AMES WATKINS *Vice-President*
- HULDA SUMMER *Secretary-Treasurer*

MEMBERS

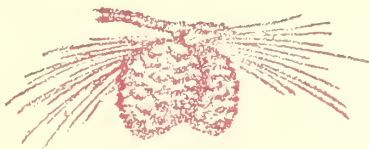
- MIRIAM ADAMS
- ANTOINETTE ANDREWS
- ALBERDENA WALL CEDEYCO
- LEONORA DUFOUR
- FRANCES FLUKER
- LOTA GRIFFITH
- LOUISE HARDY
- LORENE JOHNSON
- MARY JOHNSON
- PRISCILLA KELLEY
- MARTHA LOWREY
- EVELYN MAY
- ELOISE OGLETREE
- EMILY PARRISH
- ESTELLE RICKS
- MATILDA TILLMAN
- LEILA MAE TYSON
- AMES WATKINS
- MARTHA SUE WILLIAMS



DISCUSSING HICKEY'S POEMS



LITERATURE LOVERS



The Alumnae Association

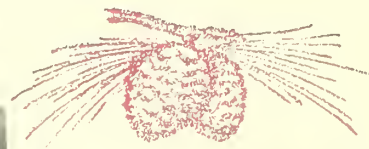
The Alumnae Association has been striving yearly to bring the students who are graduates of the college in closer contact with the college after they have graduated, and this year's program was planned with this main objective in view. An installation ceremony was held at commencement to welcome the new members to the organization. The annual alumnae luncheon was also held at commencement. A Valentine Party was given, together with other social affairs, for the graduates.

OFFICERS

- HAZEL JOYNER DURRENBERGER *President*
 ELIZABETH McREE *Vice-President*
 CLARICE IVEY *Secretary*
 GLENN JOHNSON *Treasurer*



DURRENBERGER



IVEY



JOHNSON



McREE





GARBUTT



JOHNSON



MORGAN

Valdosta Club

One of the main activities of the Valdosta Club has been to establish a better understanding between day and boarding students, and to interpret the activities of the college to the town.

Meetings were held monthly, and luncheons were given at the House in the Woods.

By receiving most of its membership from the Valdosta High School, the club has been able to unite the day students into an effective group.

OFFICERS

FRANCES GARBUTT	<i>President</i>
NETTIE JOHNSON	<i>Treasurer</i>
DOROTHY MORGAN	<i>Secretary</i>

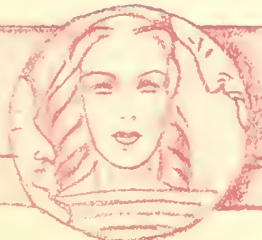
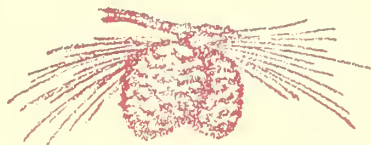
MEMBERS

HELEN ASHBROOK	FRANCES GARBUTT	ANNA MATHEWS	BEVERLY SCOTT
BESSIE AUTREY	RUTH GARBUTT	SUSIE MATHEWS	VANELLE SCRUGGS
RHONA BAREFIELD	LUELLE GIDDENS	DOROTHY MORGAN	MARGARET SIMS
ANNE BROOKS	MARY WINN GREER	JESELYN MOSELEY	LA FOREST SMITH
JANE BROOKS	PARDEF GREER	LILLIAN NEWHAM	CATHERINE STEWART
CLAUDIA BUSSEY	BILLIE HAM	BARNIE LOU NEWSOME	CELESTE STUMP
LEILA CALIENDAR	MARY K. HARRELL	SARA OWENS	LOUISE STUMP
HILDA CARROLL	BARBARA HARRIS	EMILY PARRISH	FRANCES THOMAS
DOROTHY CLARK	BROUN HUTCHINSON	CARROLL PEEPLES	EVELYN TOMLINSON
SUSIE BURT COPPAGE	ERNESTINE ISBELL	MARY PERRY	ELIZABETH TILLMAN
LOIS CORLEY	MARTHA JLNINGS	MARY ANNA PINCKARD	KATHRYN TOOLE
JEANETTE COX	NELLIE JOHNSON	EDNA EARLE PLEMMONS	PENELOPE TULLIS
EILEEN COX	NETTIE JOHNSON	MARTHA POWELL	ANNE TURNER
MARGARET DALTON	MARTHA JOHNSON	SARA MARTHA PYLE	JANE TWITTY
ELIZABETH DASHER	LAMAR KENDALL	MADELINE RACE	GRACE VAN LANDINGHAM
PATSY DODGE	CLYDE KENDALL	MARY EDNA RATLIFF	MARTHA WILLIFORD
BEVERLY DOUGHERTY	VANELLE KENDALL	THERON ROBERTS	ADELAIDE WILLIS
ANN DUNBAR	HELEN LANDEY	RUBY JEAN ROGERS	DOROTHY MAE WILSON
MARTHA FRANKLIN	ELOISE LINEBERGER	CLARA MAE SASSER	DORIS YOUNG
NELLIE MAE GANNON			

MARTHA, FRANCES, NETTIE

MISS HOPPER, Adviser

CLUB ENTHUSIASTS





MILLER



DALEY



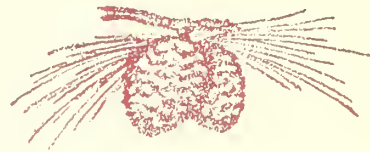
BENNETT

Glee Club

The culmination of the activities of the Glee Club this year was the concert given in the spring quarter. The program was divided into two parts, the first part being of a classical nature; the second part being composed of lighter, semi-classical numbers.

The membership of the club this year was forty members, selected by competitive tests. The club met every Monday and Wednesday for an hour's practice.

The club entertained at various civic functions in Valdosta, as well as at teas, chapel, and dinners on the campus. At the Christmas Festival the Glee Club led the singing from the whimsical folk carols to those of a deeper religious note.



THE GLEE CLUB



CHORUS FROM CONCERT





CHORUS FROM "CAPTAIN CROSSBONES"



WALTZ SCENE FROM GLEE CLUB CONCERT



DO-RE-MI

OFFICERS

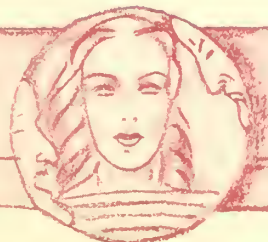
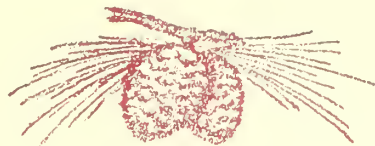
- ELEANOR JOY MILLER *President*
 ALEXA DALEY *Secretary-Treasurer*
 EDITH BENNETT *Librarian*

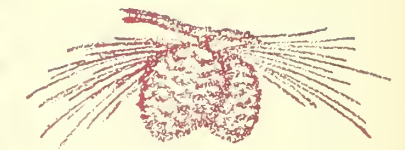
MEMBERS

- | | |
|--------------------|-------------------|
| ANNIE LAURIE BELL | JOY MILLER |
| EDITH BENNETT | DOROTHY MORGAN |
| JANE BROOKS | CARROLL PEEPLES |
| MARGARET CANNON | SARA MARTHA PYLE |
| FRANCES CARSON | CAMILLE RYCROFT |
| ALEXA DALEY | LAURA MAE SHINKLE |
| MILDRED DANIELS | LA FOREST SMITH |
| MADELINE DOUGLAS | VIVIAN STANFORD |
| BEVERLEY DOUGHERTY | LELA SUTTON |
| LEONORA DUFOUR | GRACE SWINDLE |
| MARY WINN GREER | EVELYN TOMLINSON |
| PARDEE GREER | KATHRYN TOOLE |
| LOUISE HOWELL | MARGARET WADE |
| ELIZABETH KELLEY | CHARLOTTE WALTON |
| AUDREY LONDON | RUTH WILLIAMS |
| EVELYN MAY | PEARL WILSON |
| MARIE MIDDLETON | DORIS YOUNG |



WIVES AND SWEETHEARTS IN "CAPTAIN CROSSBONES"





PINE KNOT REVELLERS

Pine Knot Revellers

An orchestra to play at the social functions of the college has long been a need at G. S. W. C. This year has seen the establishment of such a group with the desire to contribute pleasure on the occasions when music is needed.

A dance was given during the winter quarter at which the orchestra played, and it also furnished the music for the class amateur nights sponsored by the Y. W. C. A.

OFFICERS

NETTIE JOHNSON	President
NELLIE JOHNSON	Vice-President
DOROTHY FULLER	Treasurer
RUTH LOUGHRIDGE	Librarian
VIRGINIA INGRAM	Manager

MEMBERS

DORIS YOUNG	Violin	LANELIE LANG	Accordion
RUTH LOUGHRIDGE	Violin	LELA SUTTON	Piano
HAZEL VICKERS	Violin	DOROTHY FULLER	Hawaiian Guitar
JUDY FUTCH	Saxophone and Violin	NETTIE JOHNSON	Drums
VIRGINIA JONES	Saxophone	NELLIE JOHNSON	Trumpet and Guitar



NETTIE JOHNSON



NELLIE JOHNSON



FULLER



LOUGHRIDGE



"THE TWINS"





LUNDY



PHILLIPS



BENNETT

Philharmonic Club

The programs of the Philharmonic Club were organized this year with a definite plan of study in view. The subject that was studied this year was "Prominent Musicians of the Day," and current events from the musical world.

The Philharmonic Club was organized to fulfill the needs of the music lovers on the campus and to have programs where the best types of music could be enjoyed. This year's programs were organized with that need in view.

In addition to its interesting programs, the club has also provided attractive features in the social life of the college.

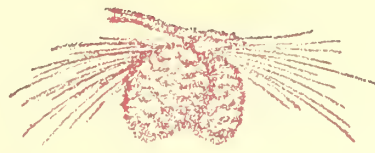
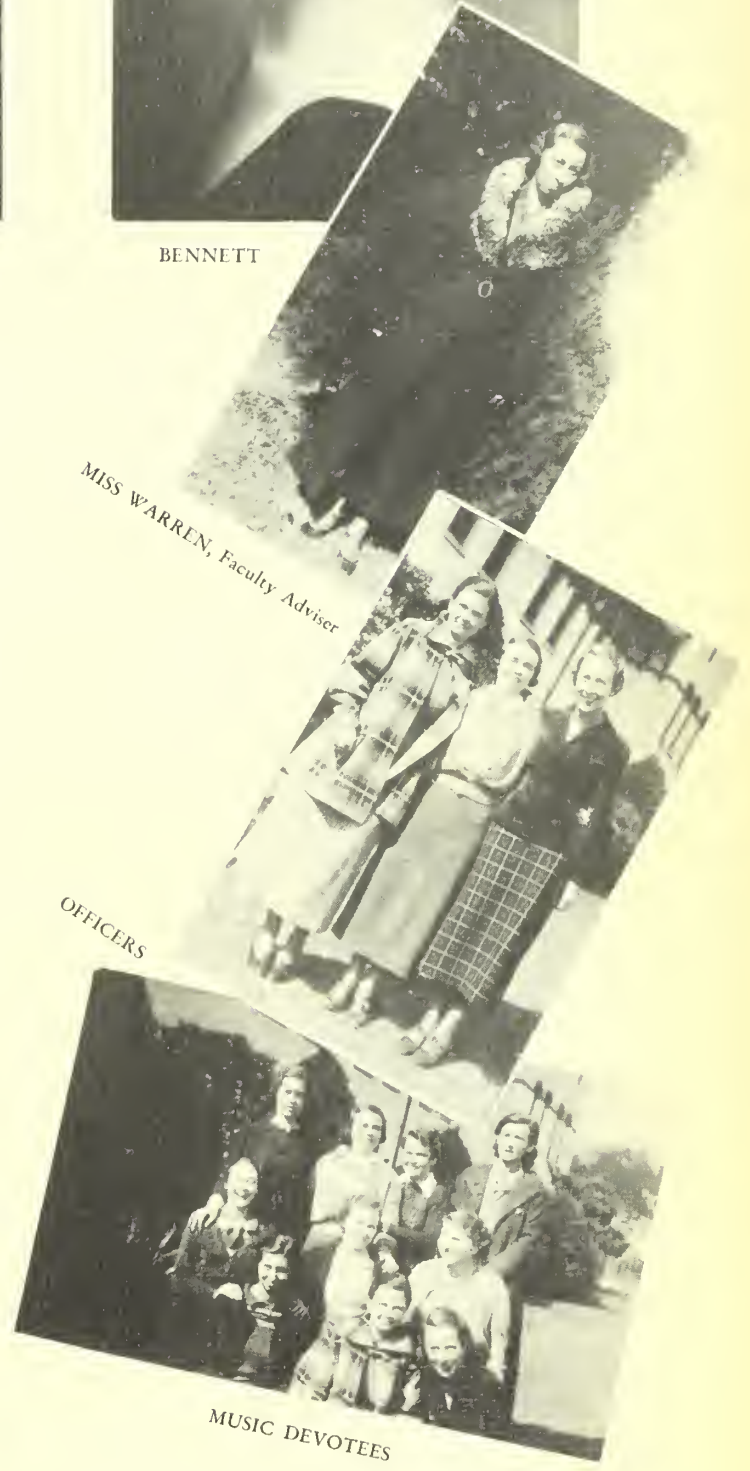
OFFICERS

- MARTEIL LUNDY *President*
- ANNETTE PHILLIPS *Vice-President*
- EDITH BENNETT *Secretary-Treasurer*

MEMBERS

- | | |
|-------------------|--------------------|
| BILLIE COLLINS | RUTH LOUGHRIDGE |
| BEVERLY DOUGHERTY | JOY MILLER |
| MARY WINN GREER | DOROTHY MORGAN |
| VIRGINIA INGRAM | MARY ANNA PINCKARD |
| LANELLE JENKINS | SARA MARTHA PYLE |
| JOHNNY MAE KELLEY | LAURA MAE SHINKLE |

VIRGINIA ZIPLIES





STUDSTILL



HARRISON



HUDSON

Phi Kappa and Phi Lambda Athletic Club

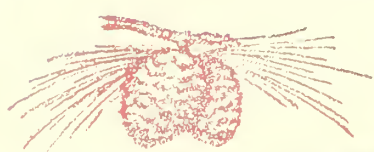
The year's activities of the Phi Kappa and Phi Lambda Athletic Club have included nearly all phases of campus sports.

In the fall quarter bids were given to the new students to become members of the club; in the winter quarter the pledges were initiated in a series of ceremonies which ended in a party in the gymnasium.

The two associations have also sponsored tournaments in campus games, and teams have been organized in American ball, basketball, soccer, baseball, and fistball.

A Goat Contest was also held by the club, and the winners, the Kappas, were given points toward having their name placed on the honor plaque of the two associations.

At the annual athletic club party in the spring quarter, athletic awards were made to the students who had made outstanding records during the year.



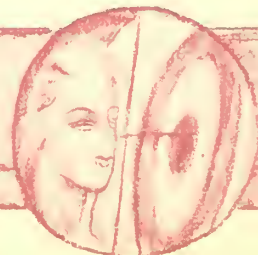
PRESIDENT'S GOLF



A HIT FOR THE KAPPAS



TURNBULL AND STUDSTILL PLAY A GAME





HOWELL



OLLIFF

OFFICERS

PHI LAMBDA

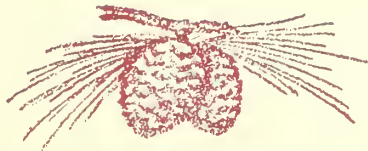
- MARGARET HUDSON *President*
- DOROTHY STUDSTILL *Vice-President*
- RUBY HARRISON *Secretary-Treasurer*

PHI KAPPA

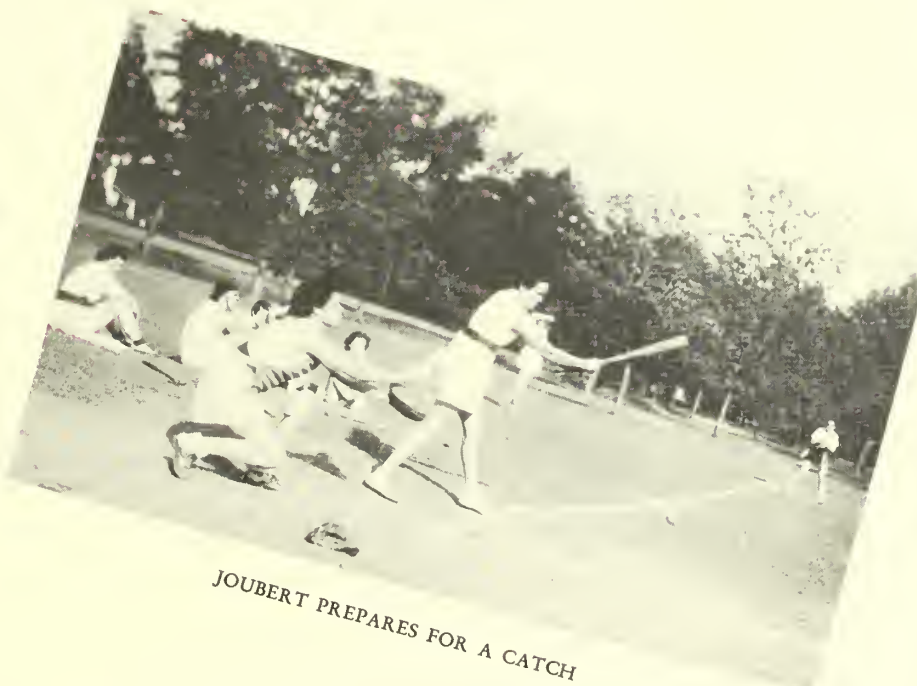
- LOUISE ODOM HOWELL *President*
- JO DANIELS *Vice-President*
- PERMELIA OLLIFF *Secretary-Treasurer*



DANIELS



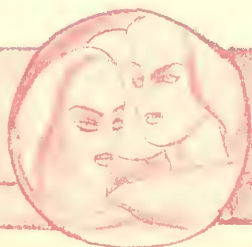
HATTIE RINGS ONE



JOUBERT PREPARES FOR A CATCH



CROQUET





THE LAMBDA AND KAPPA TEAMS



THE KAPPAS' BALL



THOMPSON MISSES



AMERICAN BALL STAND-INS



THE LAMBDA'S PREPARE TO SCORE



FRESHMEN PLEDGES



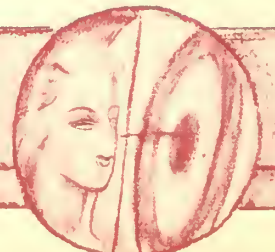
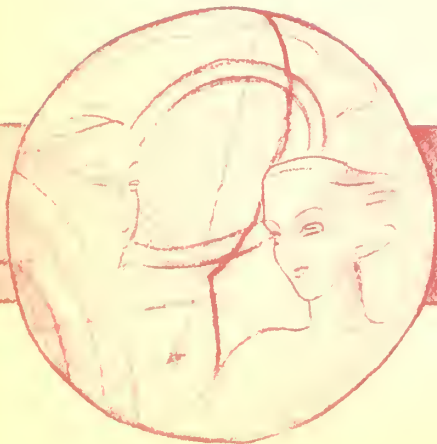
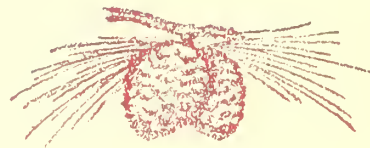
THE LAMBDA'S TRY AGAIN

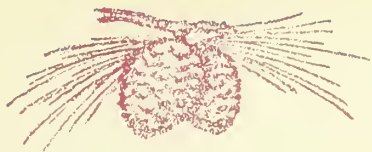


HARRISON AND MILLER CONTEMPLATE THE GOAL



HARRISON CATCHES





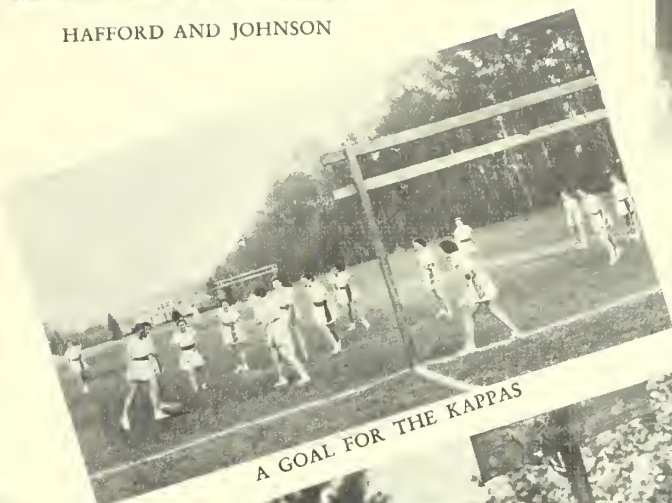
DECK TENNIS



HAFFORD AND JOHNSON



BEEP-BEEP



A GOAL FOR THE KAPPAS



ARCHERY ON PLAY DAY



BASKETBALL ON PLAY DAY



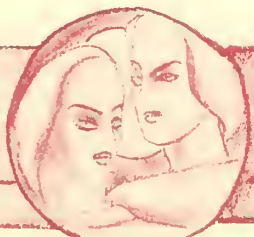
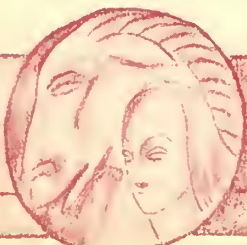
JONES SCORES



DURRENBERGER UMPIRES



READY FOR THE TIP-OFF



Fine Arts Club

The Fine Arts Club has fostered a number of artistic features on this year's program. An exhibition from the Georgia Artists' Association held in the Upper Rotunda of Ashley Hall, a tea honoring Miss Frances Ruth Carpenter, Professor of art, exhibiting some of her Provincetown compositions, the annual Christmas bazaar, and an educational trip to Charleston, South Carolina, including visits to the art museum and other places of interest, were part of the program.

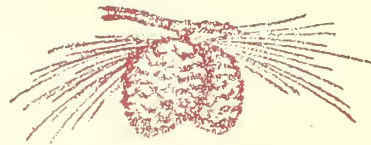
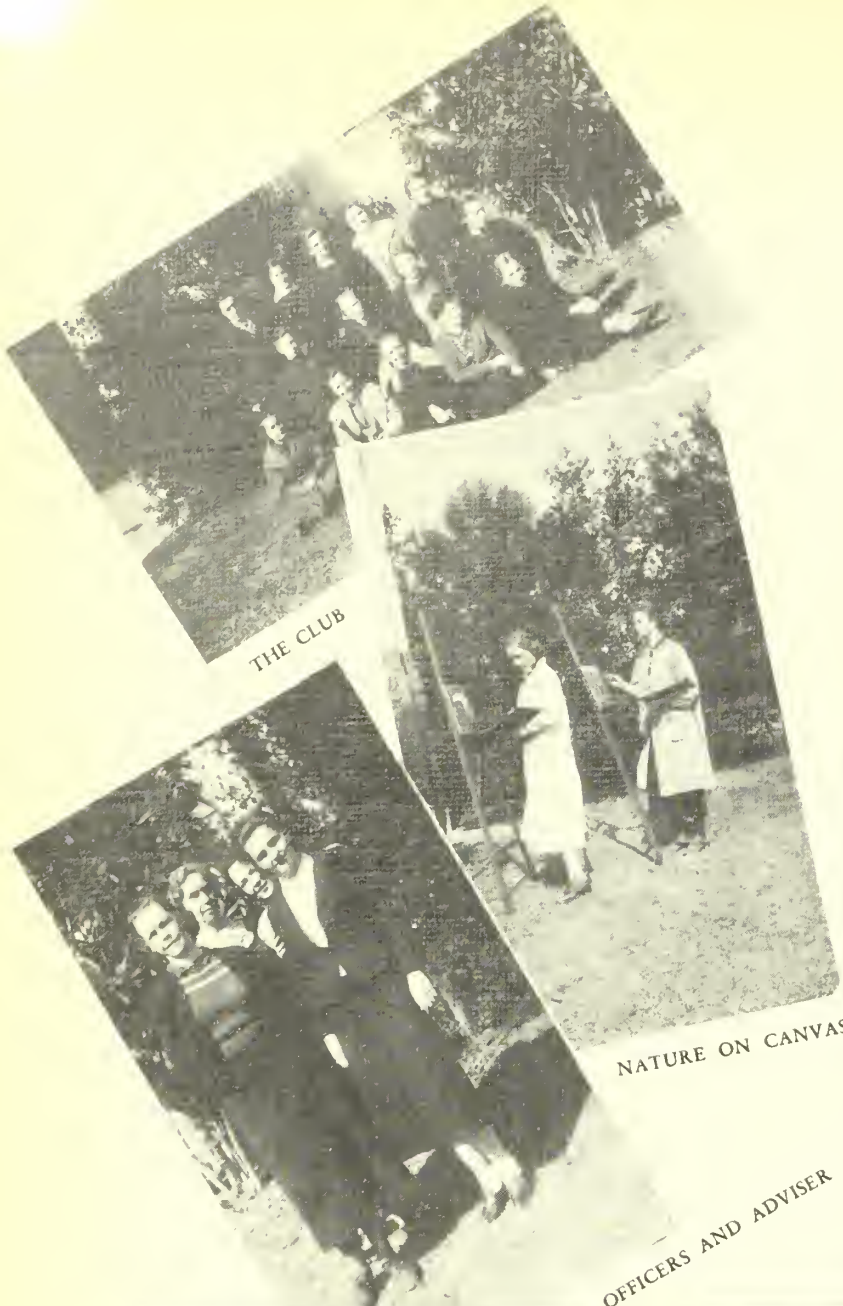
The club, through exhibitions of etchings, paintings, wood blocks, and other forms of creative compositions, has continued to foster an interest in art on the campus.

OFFICERS

ANNE TURNER *President*
 VANELLE KENDALL *Vice-President*
 MARTHA GAY *Secretary-Treasurer*

MEMBERS

ANTOINETTE ANDREWS	FRANCES HINES
BERNICE ANDREWS	FRANCES HINSON
MARGARET BENNETT	VANELLE KENDALL
CAROLYN BRENNON	LANELLE LANG
ELIZABETH DASHER	LILLIAN NEWHAM
LEONORA DUFOUR	EMILY PARRISH
CAROLE FOLSOM	BEVERLY SCOTT
MARTHA GAY	MARGARET SIMS
NELLIE MAE GANNON	JOYCE TIPTON
ELIZABETH GREEN	ANNE TURNER
PARDEE GREER	MARTHA SUE WILLIAMS



TURNER



KENDALL



GAY





Math-Science Club

The Math-Science Club gives students an opportunity to work out phases of those scientific projects in which they are particularly interested. In order that this may be done to advantage, the club is divided into three groups—Math, Chemistry and Biology. Each group has its leader although all are under the supervision of the president of the club.

The mathematicians have as their project this year the making of geometrical constructions and the making of a scrap book of mathematical interests.

Students who are interested in Chemistry have been constructing a periodic chart of the elements. This group has also made several trips to various industrial plants where chemical processes were observed.

The Biology Department has constructed a man in modeling clay, which reveals the principle organs and systems of the human body.

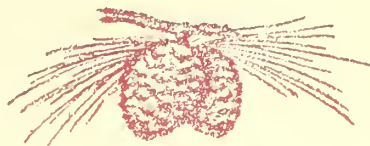
The Math-Science Club holds regular meetings each month while the different groups meet more frequently to plan and work on their separate projects.

OFFICERS

LUCILE THOMPSON *President*
JESLYN MOSELY *Vice-President*
LOIS HAFFORD *Secretary-Treasurer*

MEMBERS

EMMA AMBOS	ELIZABETH GREEN	JESLYN MOSELY	PAULA SAPP
ANTOINETTE ANDREWS	CAROLYN GREENE	HAZEL MUDDRIDGE	VIVIAN STANFORD
BERNICE ANDREWS	LOIS HAFFORD	MARTHA POWELL	ELIZABETH TILLMAN
AMANDA BARKSDALE	CLARA HAMMOND	MARION REID	LUCILE THOMPSON
MARGARET BERRYHILL	MARY HUDSON	ANNA RICHTER	MARGARET WADE
RUTH BUNN	MARTHA JOHNSTON	ESTELLE RICKS	CATHERINE WILSON
JOE DANIEL	VANELLE KENDALL		



Sock and Buskin Club

The annual three-act play presented by the Sock and Buskin Club this year was the English play *From Nine Till Six* by Amy and Phillip Stuart. Lectures were given at the regular monthly meetings on make-up and lighting. A number of one-act plays, staged and directed by members of the Club, were part of the program. The annual Frolic of the club was given in February as part of the training in the drama.

The plays given by the club were given as part of the purpose of the club to help create, together with the now prevalent Little Theater movement, the maintenance of a national drama.

OFFICERS

BROUN HUTCHINSON *President*
 MARY AGNES ROANE *Vice-President*
 LORENE JOHNSON *Secretary-Treasurer*

MEMBERS

CLARA DAVIS ADAMS	CATHERINE MORGAN
LILLIAN BRAGG	CARROLL PEEPLES
BOBBIE COCHRAN	MARY PERRY
RACHEL COXWELL	MARION REID
LEONORA DUFOUR	ANNA RICHTER
WILLEMMA DUNLOP	MARY AGNES ROANE
FRANCES FLUKER	LA FOREST SMITH
THERESA GRAHAM	ETHEL STALLINGS
MARGARET HUDSON	MATILDA TILLMAN
BROUN HUTCHINSON	VIRGINIA TUCK
LORENE JOHNSON	MILDRED TURNBULL
PRISCILLA KELLEY	AMES WATKINS
ELIZABETH KELLEY	CATHERINE WILSON
JOSEPHINE JOUBERT	JUDITH WHITAKER
	VIRGINIA ZIPLIES



HUTCHINSON



ROANE



JOHNSON



THE CLUB



MISS SAWYER, Director

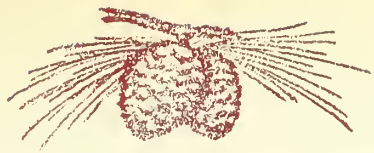


JOHNSON and BROUN

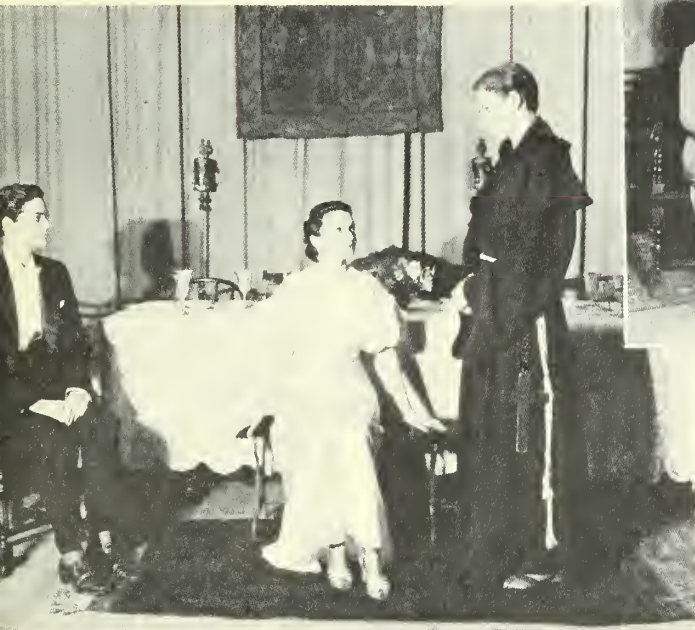


AGI: "ASTRONOMY TEACHES YOU NOT TO DESPISE EVEN THE TINIEST SPECKS."



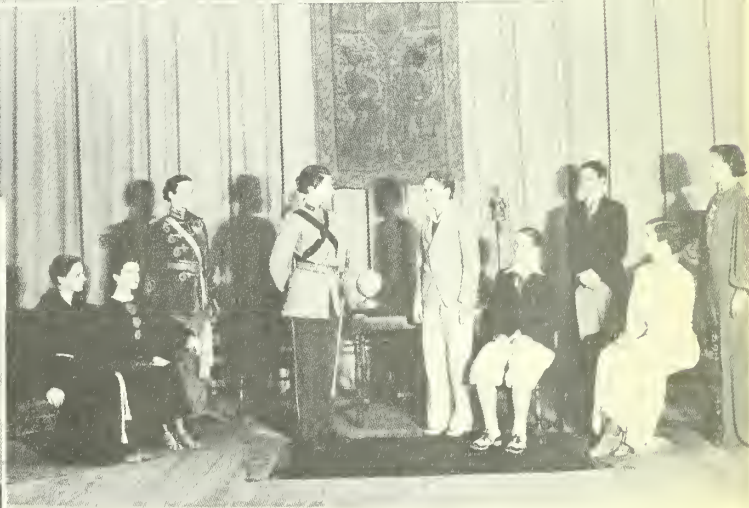


HYACINTH:
"THE PROFESSOR WAS SE-
CRETLY IN LOVE WITH ALEX-
ANDRA."



HYACINTH: "YOUR CONDUCT TONIGHT WAS QUITE JUSTIFIABLE."

AGI: "NAPOLEON WAS ONE OF THE WORLD'S GREATEST GENIUSES."



PRINCE ALBERT: "WHAT PERIOD OF HISTORY ARE YOU OCCUPIED WITH AT PRESENT?"

AGI: "WOMEN SOMETIMES DESTROY WORLDS WITH A SMILE."



The French Club

The foremost production of the French Club this year was the farce, "L'Homme Qui Epousa Une Femme Muette," presented during the meeting of the Council of the University System of Georgia on the campus. This play was one of the activities of the club presented in order to inspire the members as well as the students of the college with a love of the French language.

The lives and works of famous French men of letters were studied during the year and commented on during the meetings of the club.

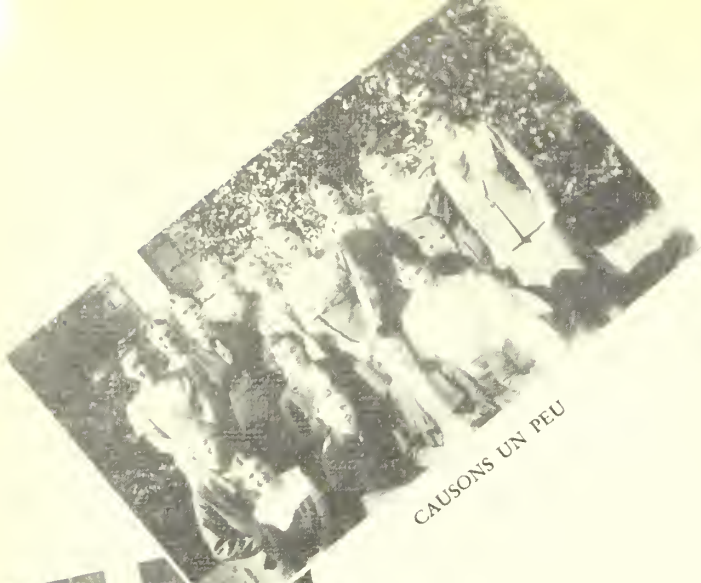
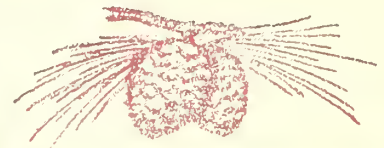
OFFICERS

MARTHA JENNINGS *President*
 MARY ALDERMAN *Vice-President*
 MIRIAM ADAMS *Secretary-Treasurer*

MEMBERS

MIRIAM ADAMS	MARY KATHERINE HARRELL
MARY ALDERMAN	VIRGINIA INGRAM
LILLIAN BRAGG	MARTHA JENNINGS
ALEXA DALEY	JOSEPHINE JOUBERT
CLARA LOUISE DRISKELL	ELIZABETH KELLEY
NELLIE MAE GANNON	ELOISE OGLETREE
FRANCES GARBUTT	PERMELIA OLLIFF
LOTA GRIFFITH	SARA OWENS
BILLIE HAM	EMILY PARRISH
LOUISE HARDY	VIVIAN VINCENT

DORIS YOUNG



CAUSONS UN PEU



LES OFFICIERS



MADAMOISELLE TREANOR



ADAMS



ALDERMAN



JENNINGS





COXWELL



BULLARD



McLEOD



BESSIE JO JOHNSON

International Relations Club

The International Relations Club has endeavored this year to inspire in its members and students of the college a spirit of impartiality in reference to national and international affairs of the present year. The Carnegie Endowment for International Peace has provided ample material for extensive study of world affairs through its gifts of books and pamphlets to the club library, and its fortnightly summary of international affairs.

This year the club sent two delegates to the Regional Conference of Southeastern States which met at Winthrop College at Rock Hill, South Carolina, to participate in the round table discussions and hear eminent speakers on international problems.

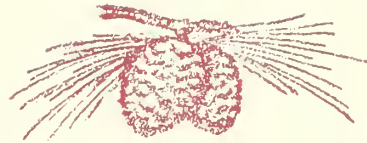
OFFICERS

- RACHEL COXWELL *President*
- HARRIETT BULLARD *Vice-President*
- LAURA McLEOD *Secretary*
- BESSIE JO JOHNSON *Treasurer*
- NELL GREEN *Member-at-Large*

MEMBERS

- CLARA DAVIS ADAMS
- HARRIETT BULLARD
- LEILA CALLENDAR
- RACHEL COXWELL
- MARY DEARISO
- CLARA LOUISE DRISKELL
- CAROL FORRESTER
- MARTHA GAY
- LUELLE GIDDENS
- NELL GREEN
- MYRA HACKETT
- RUBY HARRISON
- LOUISE HARPER
- BROUN HUTCHINSON
- BESSIE JO JOHNSON
- NELLIE JOHNSON
- NETTIE JOHNSON
- ANNA MATHEWS
- ETHLYN MASSEY
- FRANCES McLAIN
- LAURA McLEOD
- SARA ELLEN MORGAN
- LOIS PERRY
- CAMILLE RYCROFT

FLORIDE ZIPPERER



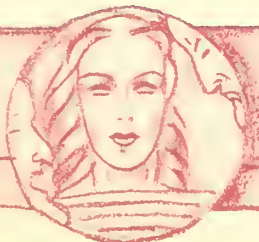
OFFICERS



NELL GREEN



MISS PRICE and WEN-WU



Christmas Festival

Each year the Christmas season at the Georgia State Womans College is celebrated with the annual Old English Christmas Festival. The dining hall in Ashley Hall is decorated to represent an English manor house and the guests are garbed in corresponding attire. The Festival, which dates from the beginnings of the college, has become one of the loveliest of the traditions on the campus. Everything harkens back to the customs of the days with yule logs, boar's head, strolling players, court jesters, and mummers.



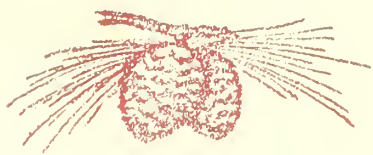
THE LORD OF MISRULE, THE FOOL, AND PAGES



A SURPRISE PACKAGE FROM SANTA



THE MINUET



Christmas Festival

The evening proceeds from the comic and ludicrous to the quaint and humorous, and then on to the grace and beauty of the stately minuet as danced by the Lords and Ladies of the court. The music passes from folk songs to religious carols, and as the student body leaves the baronial hall they march out to the strains of "Silent Night, Holy Night."

With such an effective background, the students of the college are able to appreciate the spirit of Christmas with a great deal of feeling and appreciation.



BROWNIES AND THEIR JAR OF JAM



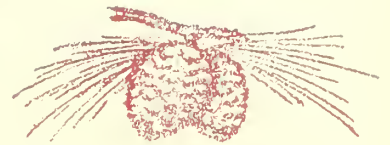
SNOW FAIRIES



SAILOR'S HORNPIPE



LADS AND LASSIES



May Festival

The green in front of Converse Hall is the scene for the annual May Day Festival which has come to be, together with the Christmas Festival, one of the firmly in-rooted traditions of the College.



QUEEN—MISS MARY POLHILL
KING—MISS ELEANOR BAILEY
MAID—MISS MARGARET ZIPPLIES



PIERROT and PIERRETTE



GYPSIES GAY



WINDING THE MAY POLES



May Festival

The May Queen is selected from the outstanding members of the senior class by the vote of the student body.



GARLANDS FOR SPRING



THE DANCE OF THE LITTLE TIN SOLDIER



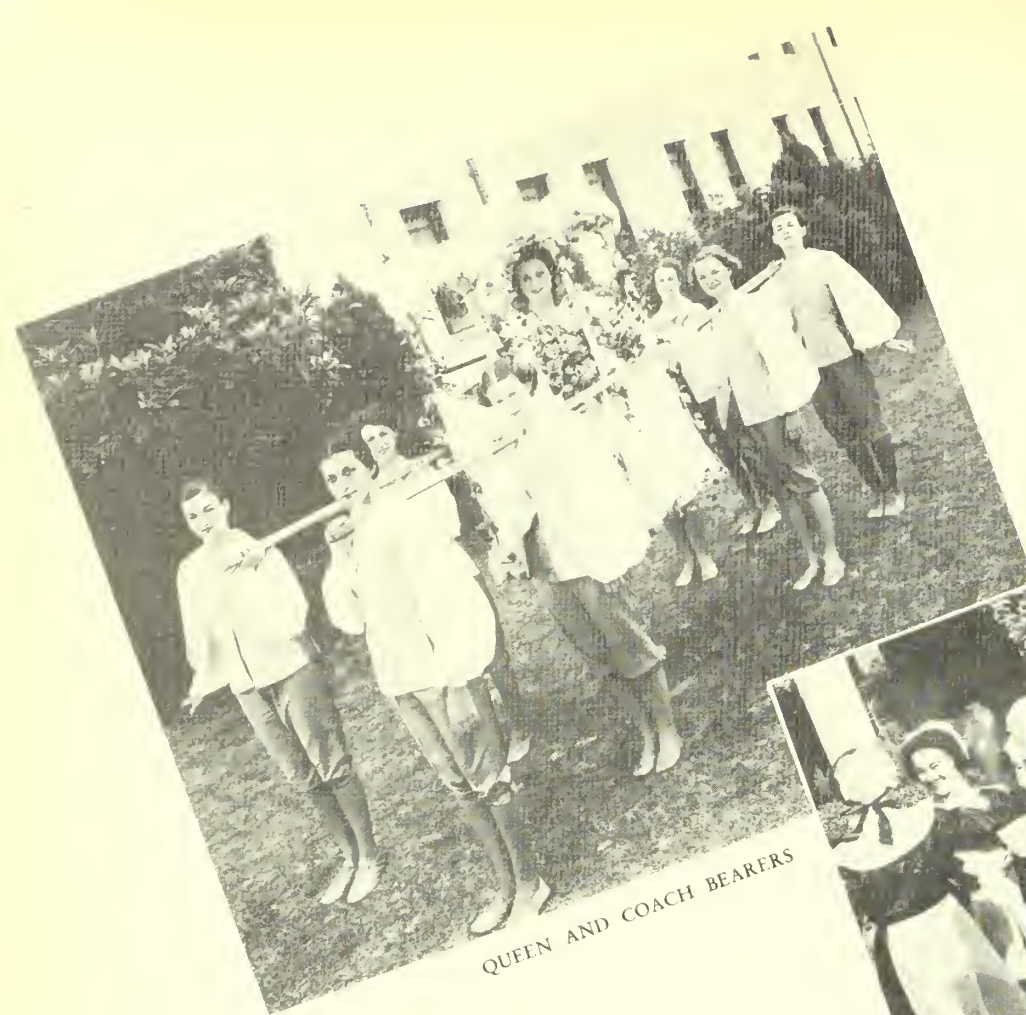
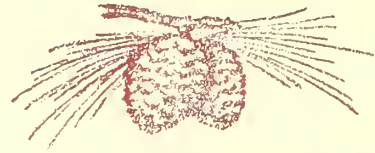
CLOWNS



HERALDS AND LADIES OF THE COURT



May Festival



QUEEN AND COACH BEARERS



ME AND MYSELF



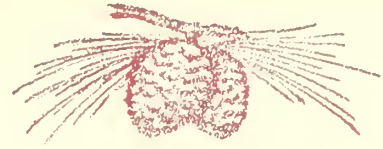
THE MORRIS' DANCE

Both the peasants and the Lords and Ladies dance during the festivities. The country folk dance their hearty, vibrant dances and the Lords and Ladies descend from the throne of the May Queen to dance the minuet on the green.

After the dancing of the peasantry, the Queen is carried to her throne by the Lords and her entry is announced by the heralds. Special dances honoring Spring are presented for the pleasure of the Queen, the court, and her guests.



May Festival



THE QUEEN AND HER COURT



LORDS AND LADIES OF THE COURT



QUEEN OF MAY AND HER ATTENDANTS

The climax of the evening's festivities comes with the winding of the May poles, after which the Queen returns to her coach, receiving homage from her loyal subjects as she passes.

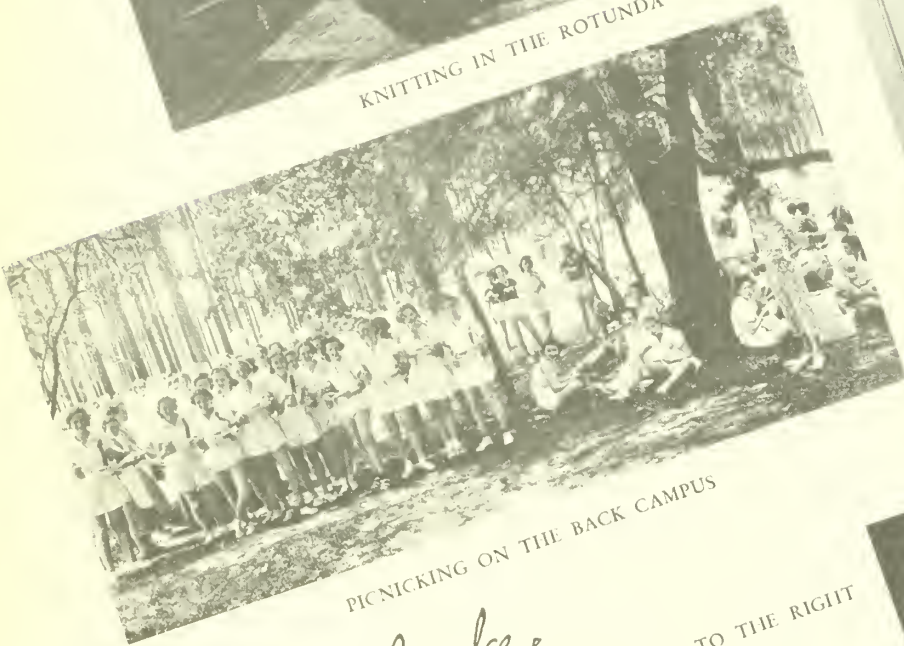




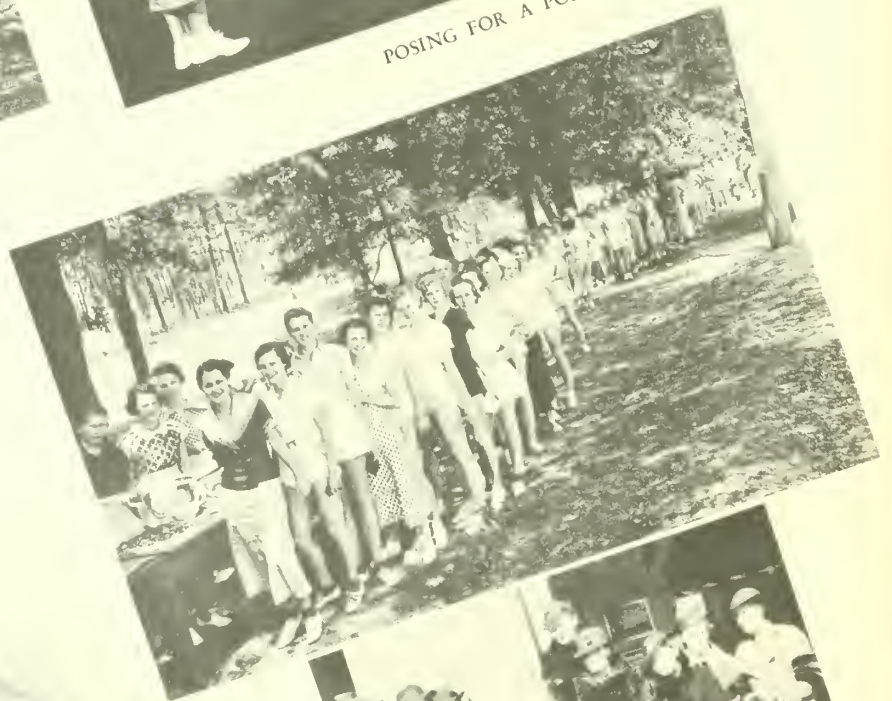
KNITTING IN THE ROTUNDA



POSING FOR A PORTRAIT



PICNICKING ON THE BACK CAMPUS



LINE FORMS TO THE RIGHT

Edna Strawbridge



PARNOVA



SENIORS IN FRONT OF THE CABILDO IN NEW ORLEANS

Lisa Parnover

**HEDGEROW
THEATRE**

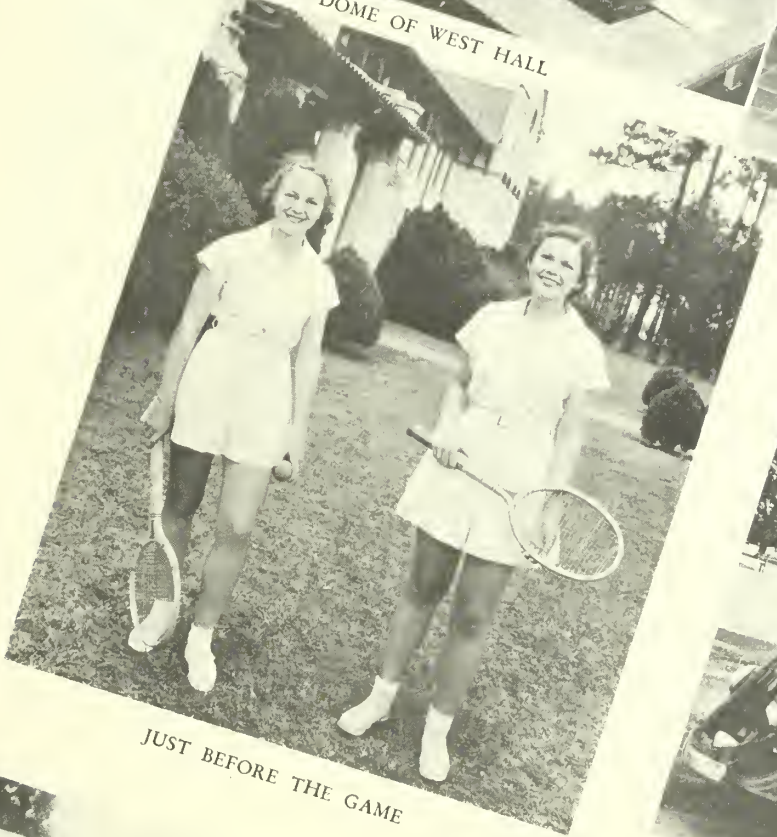
Joseph Dietter



TYPING IN THE DOME OF WEST HALL



LEAVING FOR CHURCH



JUST BEFORE THE GAME



LEAVING FOR A WEEK-END



RETURNING FROM THE SENIOR TRIP



RICHARD HALLIBURTON
"Seven League Boots"

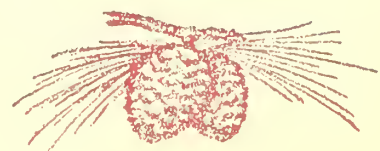
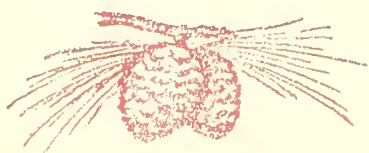
Richard Halliburton

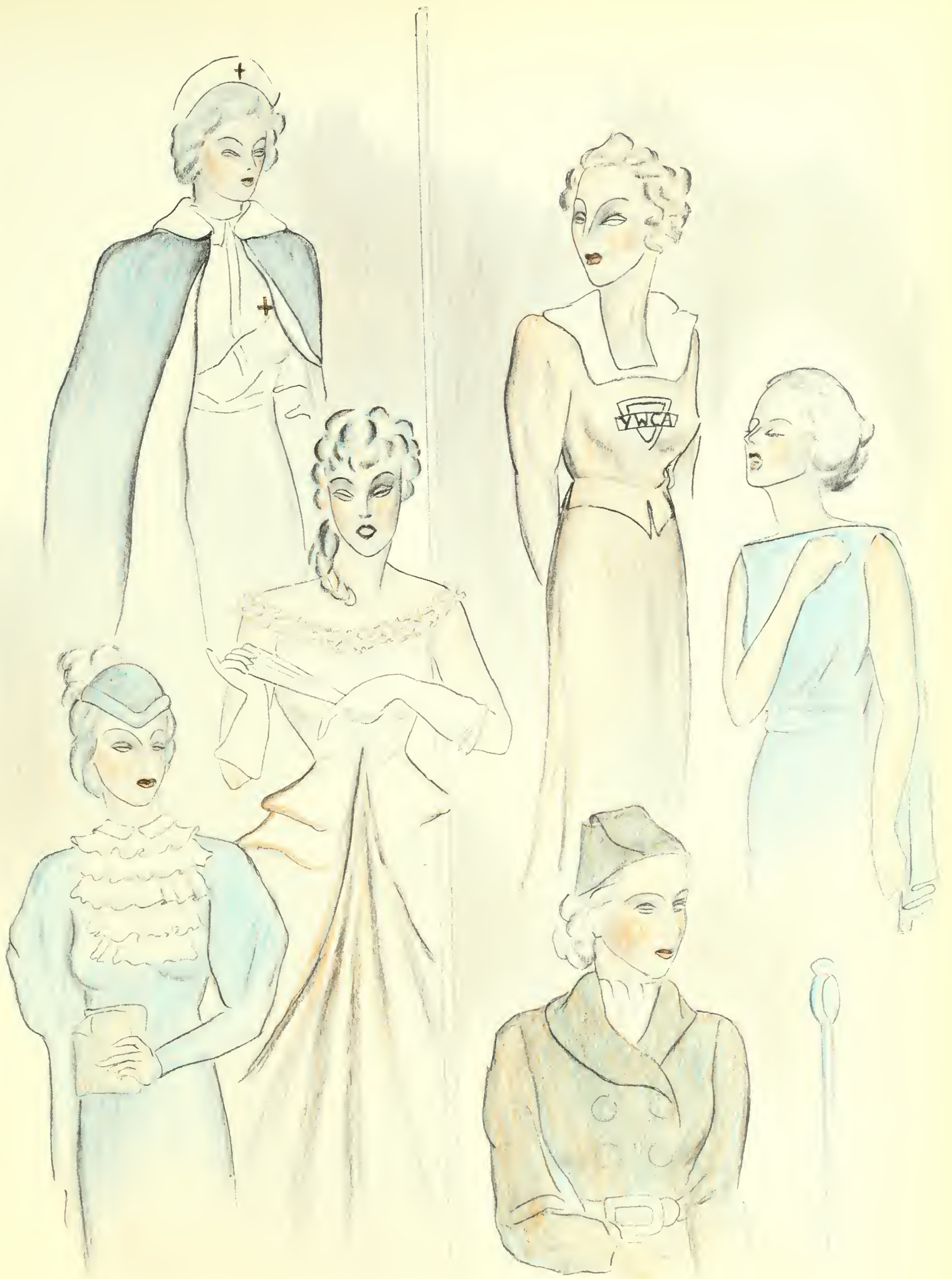
Richard Halliburton

THE IDEAL WOMAN

Women have come a long way down the road of progress, and yet the qualities that were considered ideal in the past are still considered as ideal today.

The world still admires a woman who possesses a charming manner and a poise that enables her to meet every situation squarely in the face; an intellect that helps her to interpret the world in which she lives; a tactful way of making people feel at home with her; a grace of movement; a humor that sees beyond disappointment; and finally a personality that is infectious with an appreciation of the values in living.







CHARM

CLARA DAVIS ADAMS

Her charming manner and smile have earned her a permanent place in the campus affections. Serving as class president, or presiding at a tea table, she is the efficient epitome of charm.



INTELLECT

BROUN HUTCHINSON

With a sure knowledge of whatever she undertakes, and an ability to interpret the facts so that they apply to her living, she is equally at home in the character of Mrs. Malaprop or debating a question of social significance.



JOSEPHINE DANIEL

An appreciation of the feelings of her fellow students has earned for her a reputation of being one of the best liked students on the campus. Around her there is always a feeling of the rightness of things.



EVELYN MAY

A sense of humor that helps her to laugh in any situation has seen her through four years of college in which she has earned the friendship of the student body.



POISE

ETHLYN MASSEY

Hers is the ability to be at home everywhere and with everyone. Always she displays a sense of the rightness of things and a deep sense of the beauty of her surroundings.



MILDRED TURNBULL

Her personality has led her through the difficult situations in which she has found herself as a leader since her freshman days, to these—her last days of college—as president of the student body.



APPRECIATION

LEONORA DUFOUR

A somewhat trite word, but here applied to one who restores its charm with all the warmth and vibrant potentialities that are hers. An intimate love of that which is splendidly stimulating distinguishes her as one blessed with rare discrimination.



GRACE

DOROTHY STUDSTILL

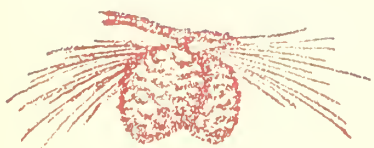
Hers is a grace that makes her swift flight down the American ball field a symphony in motion. Sports are her method of expressing a perfect coordination of bodily rhythm in speed, grace, and action.

CREATIVE CITIZENSHIP

Even with our present heritage we are aware that there are greener pastures still, and to the end of time our efforts will be concentrated so that we may harvest other than the dry grass of indifference to world progress.

We are creating a new order, and what we leave as contribution to the tradition of women's progress will in a large degree influence the generations to follow.

Our duty lies in the creation of women who see beyond the tomorrows, even past time itself, to where the last woman treads the road of her destiny.





PATRONS' PAGE

Bennett's Drug Store
The Benson Company
Veran Blackburn
Brookwood Pharmacy
Churchwell's Department Store
Citizens and Southern National Bank
City of Valdosta
Coca-Cola Bottling Company
Daniel Ashley Hotel
First National Bank
Foote & Davies Company
Foremost Ice Cream
W. T. Grant Company
Georgia Power and Light Company
Georgia State Womans College
Glisson Motor Company
Henry Hesser, Inc.
John Oliver Service Station
S. H. Kress and Company

Le Files Automotive Service
McCrary's
McElvey-Futch Company
Mathis and Youmans Company
Model Bakery
A. S. Pendleton Company
Pultar's Baking Company
Register Furniture Company
Rhodes-Collins Furniture Company
Ritz Theatre
Southern Stationery and Printing Company
Star Laundry
Stewart Candy Company
Stump Brothers
Suitsus
Thompson and Girardin
C. C. Varnedoe and Company
Vinson's Store
Zant's Yellow Cab Company

THE GEORGIA STATE WOMANS COLLEGE

● The Georgia State Womans College is, by action of the Board of Regents, the liberal arts college for women of the University System of Georgia. It is a standardized institution and is a member of the Association of Georgia Colleges, the Southern Association of Colleges and Secondary Schools, and the Association of American Colleges. All its courses are on the University level for a Bachelor of Arts degree.

● It offers thorough courses in Art, Biology, Chemistry, Education, English, including Vocal Expression, History and Political Science, Economics, Sociology, Foreign Languages, ancient and modern, Mathematics, Music, instrumental and vocal, and Physical Education. Credit for any of these courses will be accepted in any branch of the University System or by any standard college.

● It has a beautiful plant in a very healthful region, and a climate unsurpassed during the school session. Proposed building plans for 1936-37 include a new dormitory and a swimming pool. Expenses are extremely moderate, not exceeding \$250.00 a year.

● "The policy of the college has long been to offer an education service so excellent that the wealthiest citizen cannot provide a better for his daughter; a service so moderate in cost that the poorest girl, if she has the will, can share its advantages."

For further information, address

GEORGIA STATE WOMANS COLLEGE
Valdosta, Georgia

COMPLIMENTS

✓ OF ✓

S. H. KRESS AND COMPANY

5c, 10c and 25c Store

THE CITIZENS AND SOUTHERN NATIONAL BANK

Valdosta ✓ Georgia

Capital, \$5,000,000.00

COMPLIMENTS

✓ OF ✓

REGISTER FURNITURE COMPANY

ATTRACTIVE HOME EQUIPMENT

129 Ashley Street

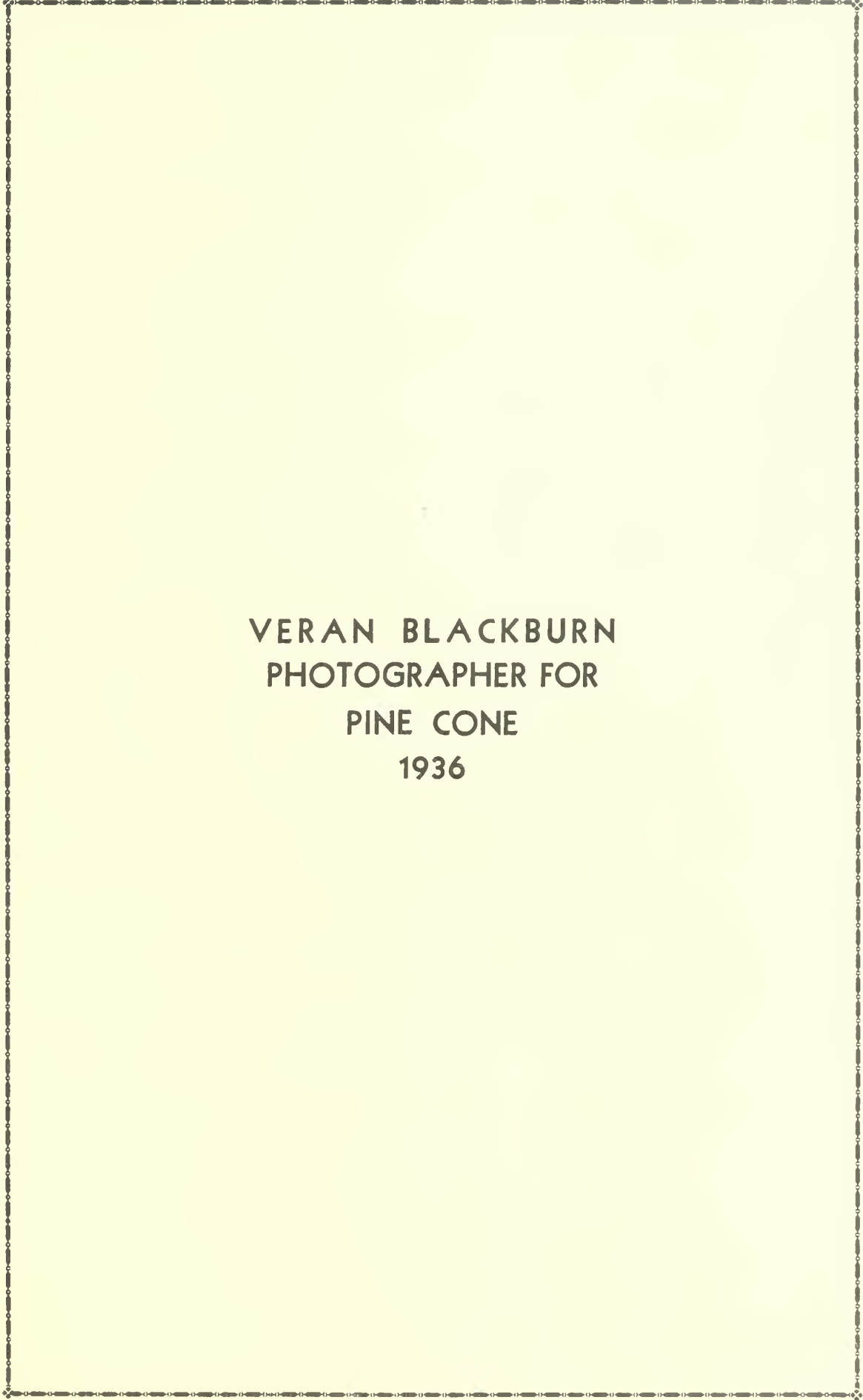
Valdosta, Georgia

SOUTHERN STATIONERY AND PRINTING COMPANY

WHOLESALE PAPER DEALERS

Commercial Stationers—Printers—Office Outfitters

Valdosta, Georgia



VERAN BLACKBURN
PHOTOGRAPHER FOR
PINE CONE
1936

CHURCHWELL'S DEPARTMENT STORE

COLLEGE GIRLS HEADQUARTERS

COMPLIMENTS

OF

Quality
Dairy Products

SUITSUS

Quality
Registered Jerseys

DAIRIES, INCORPORATED

THOMPSON AND GIRARDIN
JEWELERS

120 North Patterson Street

VALDOSTA, GEORGIA

COMPLIMENTS

OF

PULTAR'S BAKING COMPANY

Serving Valdosta for More Than a Third of a Century

Here's to Our Good Friends — The G. S. W. C. Girls

STAR LAUNDRY

DRY CLEANERS

RUG CLEANERS

Phone 54

WE SERVE TO PLEASE AND WE ARE PLEASED TO SERVE

VINSON'S DRUG STORE

"PRESCRIPTIONS OUR SPECIALTY"

Serving Valdosta Over a Quarter of a Century

BENNETT'S DRUG STORE
THE REXALL STORE

TOASTED TASTY SANDWICHES ✓ McPHAILS' ICE CREAM AND CANDY
Valdosta, Georgia

COMPLIMENTS

✓ OF ✓

THE A. S. PENDLETON COMPANY

COMPLIMENTS

✓ OF ✓

McCRORY'S
Five and Ten Cent Store

VALDOSTA

Coca-Cola

BOTTLING WORKS



Red Race Ginger Ale

T. F. HOLMES, Presiden

MATHIS AND YOUMANS COMPANY

PIANOS ✓ VICTROLAS ✓ RADIOS
Everything in Music

RITZ—PALACE
THEATRES

QUALITY ENTERTAINMENT
Two of fifty Martin Theatres

STUMP BROTHERS

PAINTS AND BUILDERS' SUPPLIES

MODEL BAKERY
QUALITY BREAD / CAKES AND PIES
Valdosta's Oldest Bakery
THERE'S A REASON

Eat / / /

FOREMOST ICE CREAM
/ / / It's Healthful

THE BENSON COMPANY
DRY CLEANERS

VALDOSTA, GEORGIA

Phone 486

COMPLIMENTS

/ OF /

FIRST NATIONAL BANK

Valdosta, Georgia

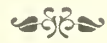
C. C. VARNEDOE AND COMPANY
"VALDOSTA'S STORE DEPENDABLE"
Ladies' Apparel and Accessories

STEWART CANDY COMPANY
Everything in Wholesale Candies and Crackers

LE FILES AUTOMOTIVE SERVICE
Phones 160-161
VALDOSTA / GEORGIA
A COMPLETE SERVICE FOR YOUR CAR

We are proud of the

GEORGIA STATE WOMANS COLLEGE



WE ARE GLAD TO TAKE THIS OCCASION TO SAY

THAT THE

CITY OF VALDOSTA

is proud to list among its greatest assets the Georgia State Womans College, and we hope that Valdosta as a city makes a favorable and lasting impression on the minds of the young ladies who make up the student

✓ body of this great institution. ✓

JOHN OLIVER SERVICE STATION
FIRESTONE TIRES ✓ AMOCO PRODUCTS
Phone 231

COMPLIMENTS
✓ OF ✓
W. T. GRANT COMPANY
1c to \$1.00 Junior Department Store

BROOKWOOD PHARMACY
Where College Girls Meet
Where College Girls Eat

COMPLIMENTS OF
Rhodes-Collins Furniture Company
COMPLETE HOUSE FURNISHERS

COMPLIMENTS
✓ OF ✓
GEORGIA POWER AND LIGHT COMPANY

JITNEY-JUNGLE STORES
Save ✓ Serve : Satisfy
VALDOSTA'S OWN FOOD STORES

HENRY MESSER, INC.
SALES ✓ FORD ✓ SERVICE
Telephones 144-145
VALDOSTA ✓ GEORGIA

COMPLIMENTS
OF
GLISSON MOTOR COMPANY
Chevrolet Sales and Service

COMPLIMENTS
OF
DANIEL ASHLEY HOTEL

ZANT'S YELLOW CAB COMPANY

Ten Cents

Phone 1000



In Printing

THERE ARE MANY REASONS WHY
SUCCESSFUL ANNUALS REQUIRE
THE SERVICES OF EXPERIENCED
AND EXPERT CRAFTSMEN

FOOTE & DAVIES CO.

HAVE THESE SERVICES . . . *and
the most necessary components of
all really fine books including*
A SPECIAL ANNUAL SALES
AND SERVICE ORGANIZATION
CREATIVE DESIGNERS AND
LAYOUT ARTISTS • ABUNDANT
EQUIPMENT . . . MODERN AND
COMPLETE • PRICES REPRESENTING
MAXIMUM IN VALUE



ATLANTA
GEORGIA



