

NUMBER OF PAGES AND THIRTY SEVEN

PINE CONE



1937  
September 31



*The* PINE CONE  
1937  
Aerial View of the Georgia State  
Womans College at Valdosta, Georgia





*The* PINE CONE

1937

Volume 13

Presented by

THE SENIOR CLASS

of the

Georgia State Womans College

VALDOSTA, GEORGIA

---



# *The* PINE CONE . . . .

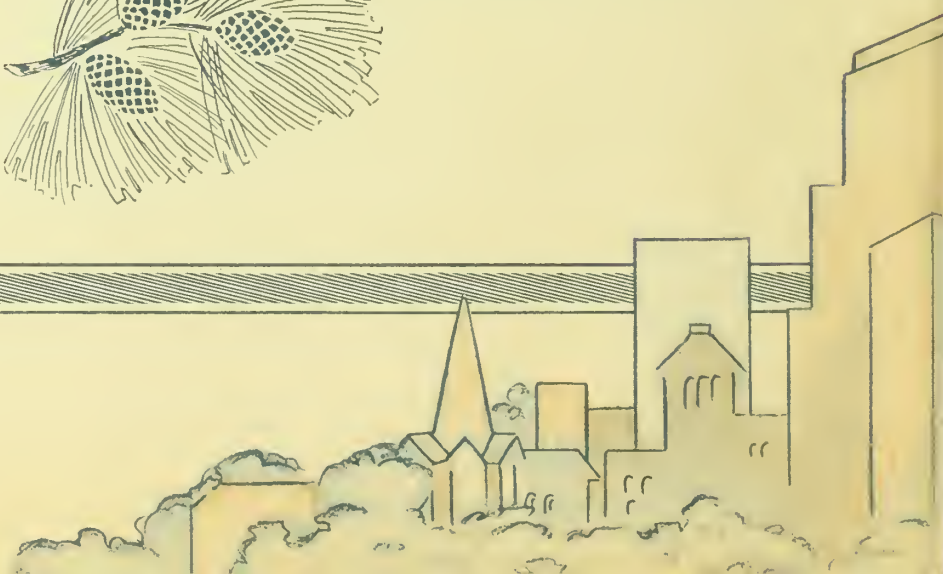
In presenting this the thirteenth volume of the PINE CONE the Senior Class has sought to make a permanent record of the scenes and events of this twenty-fifth year since the actual building and organization of the Georgia State Womans College at Valdosta, Georgia.



## *The* PINE CONE Sees the March of Alma Mater and Women

These things I would like to say:  
For thirteen years I have watched the classes;  
Have seen them cross my pages and go out into the world,  
Have seen them take their places by men—  
Establish themselves in homes, in business, in professions.  
Too, I have seen the world changing—watching these comers ad-  
just themselves.  
I have seen it looking askance, wondering, then accepting, mak-  
ing place for them.  
Women in a world of men and women—  
Women whose Alma Mater has prepared them  
For love, for success, for conflicts, and for world troubles.  
In this college they have learned patience and skill,  
Charm and culture; values of beauty and work.  
With these they follow the path of womanhood—  
A path cleared by a growing Alma Mater.  
Through me the students have praised the institution.  
I have recorded its growth and their loyalty  
For these years. At last through this Senior Class  
I can express what I have felt for both institution and students.  
My story is of a hand-in-hand march of this college and women.  
Thus I would have you know them as they work,  
Play, grow—by class, by social groups, by interest groups;  
Thus I would have you see them in picture and in story—  
Women with pleasant memories, enduring friendships, activities  
and achievements,  
Challenged by the future. I see them marching on  
With their Alma Mater—in a world where women are active.

— *The Pine Cone* —





# *The* CONTENTS

## BOOK I. COLLEGE

AROUND THE CAMPUS  
ADMINISTRATION

## BOOK II. CLASSES

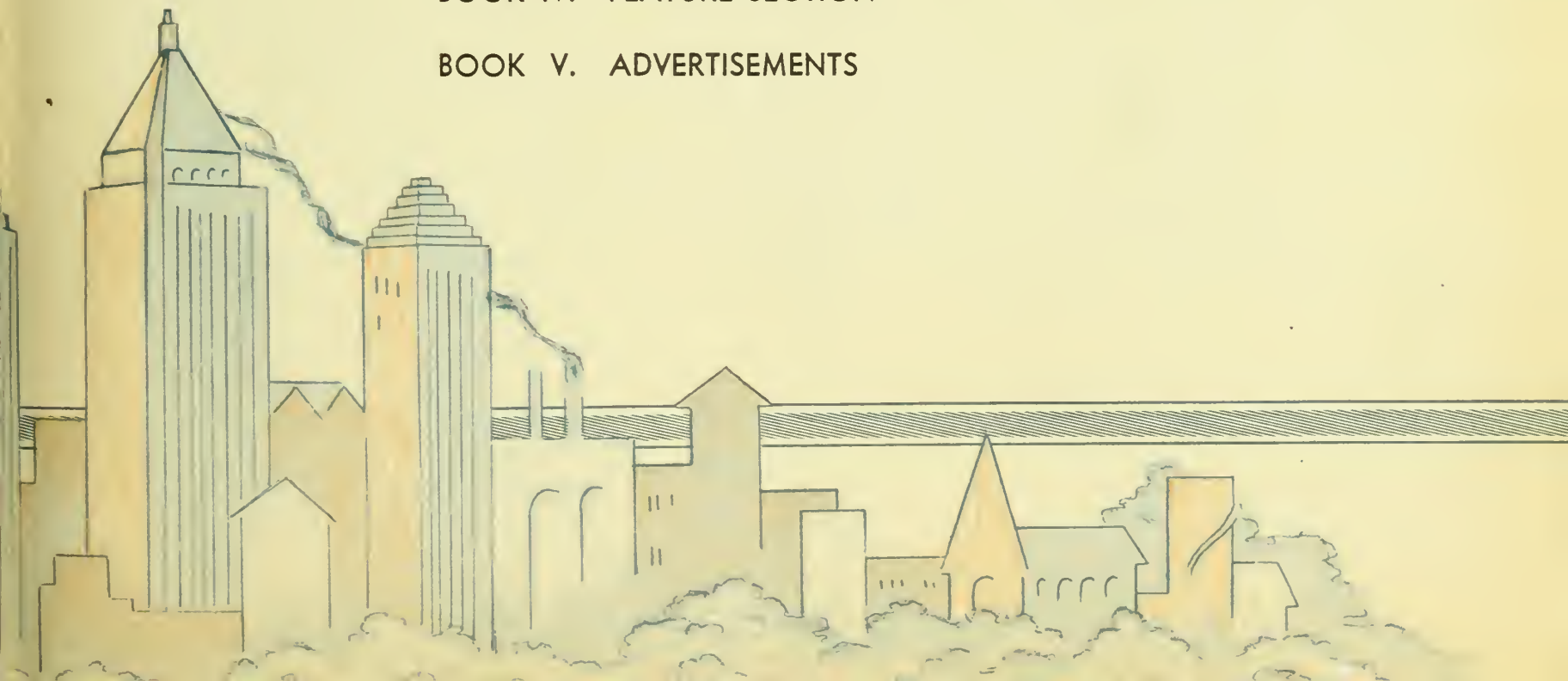
SENIOR  
JUNIOR  
SOPHOMORE  
FRESHMAN

## BOOK III. ACTIVITIES

STUDENT GOVERNMENT ASSOCIATION  
Y. W. C. A.  
PUBLICATIONS  
GLEE CLUB  
VALDOSTA CLUB  
ALUMNAE ASSOCIATION  
ATHLETIC CLUBS  
DEPARTMENTAL CLUBS  
HONOR SOCIETIES  
CHRISTMAS FESTIVAL  
MAY DAY FESTIVAL  
CAMPUS ACTIVITIES

## BOOK IV. FEATURE SECTION

## BOOK V. ADVERTISEMENTS



# *The* LIBERAL ARTS COLLEGE

What is a Liberal Arts College?

What does an A.B. degree mean?

These two questions I hear so often from those whose  
Interests have suddenly been focused on education.

I find the definitions varying where the viewpoint varies.

Each associate of a college feels that his is the perfect and  
complete one—

Whether it be young, or old, or specialized;

It is the Liberal Arts College that I know best.

Not only is intellectual study made comprehensive of learning-  
fields,

But a power and quality of perceiving and transcribing the beau-  
tiful

Is their endowment also.

To see the magnificence of yellow lights

In the dome on cool rainy nights;

To know the keen delight of the sight of

Black pine shadows under star-light; to catch a glimpse

Of a flaming sunset through the colonnades,

And to be conscious of red tiled roofs

Over green lawns—

These are sensations as essential to the students of this college

As is the knowledge they learn and the faculty

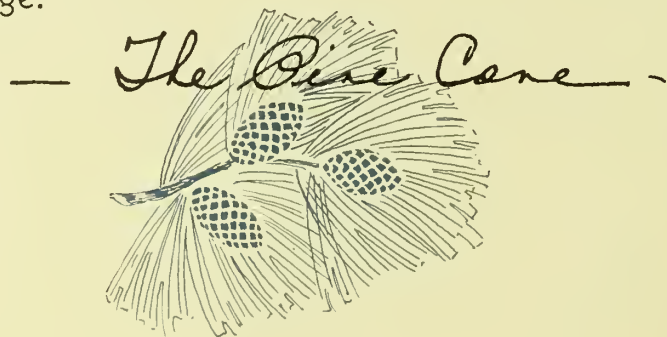
That guides them.

Open forums, student publications, vesper services, class enter-  
tainments, all,

Enhance the A.B. degree given the graduates and addressed to:

Keepers-of-the-Future

Liberal Arts College.





*Keepers of the Future*



WEST HALL

Where gratifying architecture back-  
grounds curriculum activities.



TOWERS OF CONVERSE HALL  
Like the Spanish Missions with their red  
tiled roofs and white stucco.

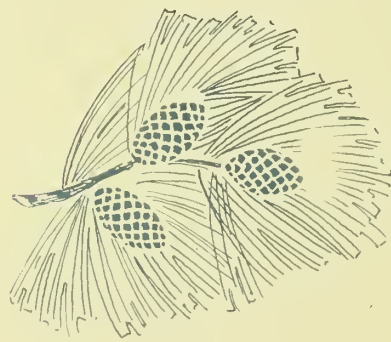
NEW DORMITORY—SENIOR HALL  
On North campus, recently  
completed.



ASHLEY AND CONVERSE HALLS  
Beauty and magnificence as glimpsed  
on dormitory row.



ROTUNDA TEA—SENIORS  
Reflecting dignity and charm, these teas  
furnish the perfect quiet social hour.





AT HOME—AFTER CLASS HOURS

Knitting and memory books reach completion during leisure time.

MORNING WATCH—SCRIPTURE  
READING

Quiet moments, friendships, favorite Biblical passages start the day.

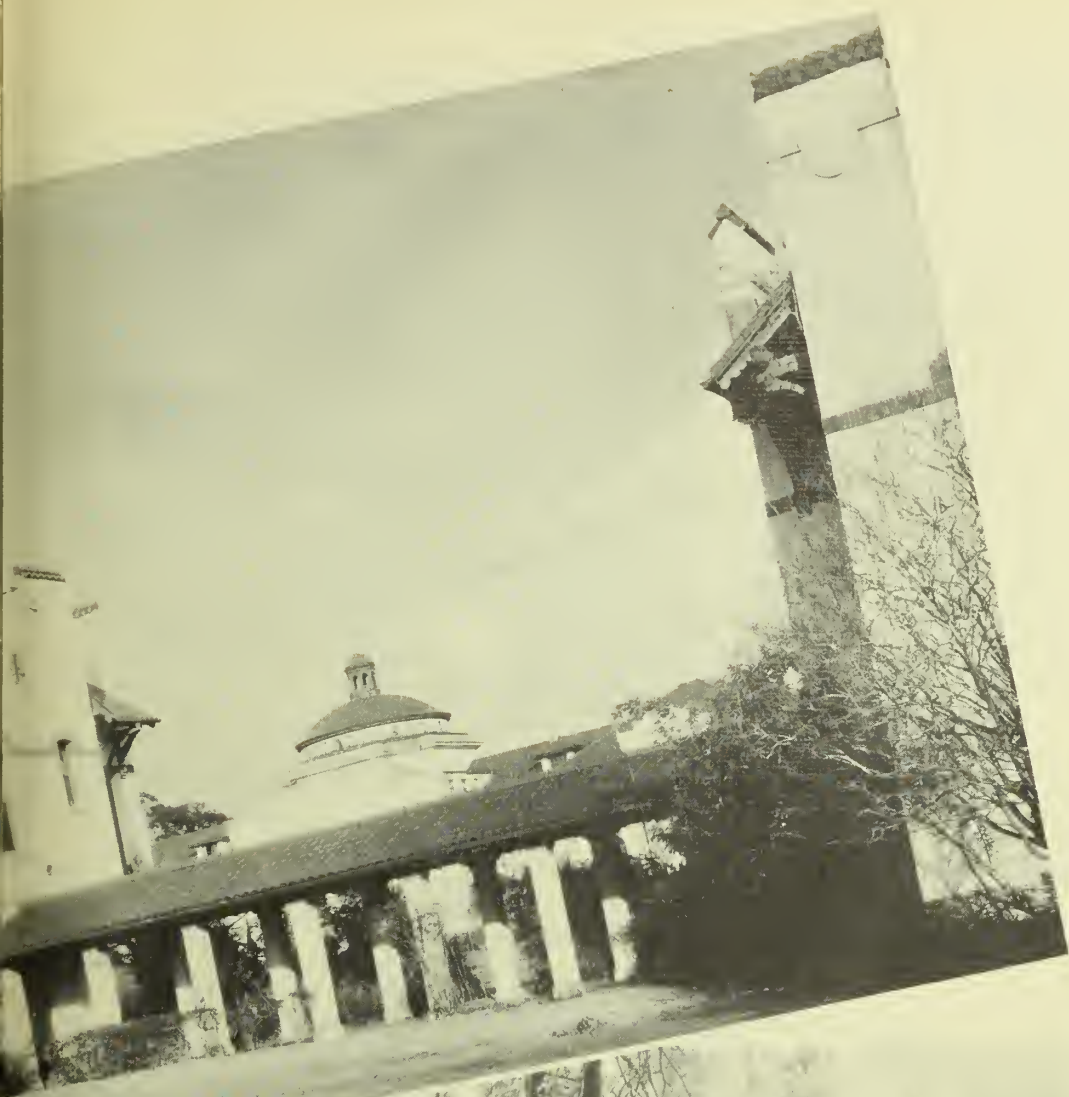




THE DOME OF WEST HALL  
The administration building is a monument  
to beauty—clouds, light, dome.

---





TOWARD THE DOME  
Each student's memory—by  
starlight and daylight.

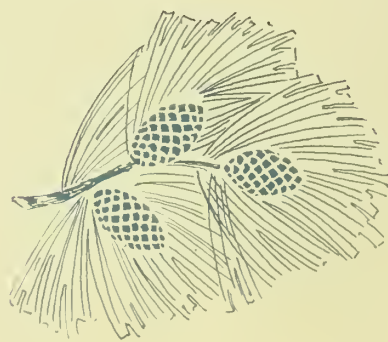
ALONG THE BRIDLE PATH  
An early morning canter on a  
woodland trail.





GROSS STRUCTURE AND MICROSCOPIC  
SECTIONS

Provide an eyefull which changes  
the universe.





IN THE LIBRARY  
Following the new trends of education the students do much of their study through references.

MAKING ACETONE  
Care, accuracy, and campus chatter.





ANNIE POWE HOPPER  
 B.S., George Peabody College for Teachers;  
 M.A., Columbia University.  
 DEAN OF WOMEN

FRANK R. READE  
 B.A., M.A., Ph.D. University of Virginia.  
 PRESIDENT

## ADMINISTRATION

The Georgia State Womans College has been designated by the Regents of the University System of Georgia as the four-year Liberal Arts College for Women.

The institution is supported by the State, and approximately one-half of the cost of operation is derived from taxes. At moderate cost, therefore, parents are enabled to give their daughters an excellent general education under the direction of highly trained, able, and experienced teachers.

Life in the dormitories is looked upon as an opportunity for the practice of the fine art of living. It is a place where the value and importance of human relationships is known. Students learn to live together, to work together, and to play together. Thus a social consciousness is developed that makes them on graduation worthier members of society.





GILMER, GULLIVER, SAWYER



CARPENTER, TREANOR, BUSH

# FACULTY

GLADYS WARREN

B.M., Lake Erie College; M.A., Iowa State University; Pupil of Ernest Hutcheson, New York City; of Lee Pattison, Chicago; of Tobias Matthay, Matthay School of Pianoforte, London, England.

PROFESSOR OF MUSIC

CLARA BANCROFT

Diploma, Cincinnati Conservatory of Music.

INSTRUCTOR IN VOICE

FRANCES PARDEE

Graduate, Cincinnati Conservatory of Music; Pupil of Sevcik in Vienna, and of Robert Perutz and Julian Polikawski, Cincinnati Conservatory of Music.

INSTRUCTOR IN VIOLIN

GERTRUDE GILMER

B.S., M.A., George Peabody College for Teachers.

PROFESSOR OF ENGLISH

WARREN, BANCROFT, PARDEE

HAROLD GULLIVER

B.A., Yale University; M.A., Columbia University; Ph.D., Yale University.

PROFESSOR OF ENGLISH

LOUISE SAWYER

Graduate, Columbia College of Expression; B.S., School of Speech, Northwestern University.

PROFESSOR OF VOCAL EXPRESSION

RUTH CARPENTER

Bachelor's Diploma and B.S., Teacher's College, Columbia University; A.M., Ibid.

PROFESSOR OF ART

SAPELO TREANOR

A.B., M.A., University of Georgia.

PROFESSOR OF FRENCH

JANIE BUSH

A.B., University of Georgia; M.A., University of North Carolina; Diploma, College of Classical Studies, Rome, Italy.

PROFESSOR OF LATIN





BRINK, DURRENBERGER, PUNKE, PRICE



PERRY, DUSENBURY, THOMAS, LARSEN

# FACULTY

MARIAN E. FARBAR

R.N., Chicago Baptist Hospital; M.D., University of Illinois Medical School.

DIRECTOR OF HEALTH SERVICE

LEONORA IVEY

B.S., Georgia State College for Women; M.A., George Peabody College for Teachers.

PROFESSOR OF PHYSICAL EDUCATION

ELIZABETH McREE

A.B., Georgia State Womans College.

INSTRUCTOR IN PHYSICAL EDUCATION

JOSEPH DURRENBERGER

A.B., Southwestern University; A.M., Ph.D., Columbia University.

PROFESSOR OF HISTORY AND SOCIAL SCIENCES

MILDRED PRICE

A.B., Georgia State Womans College; A.M., Columbia University.

PROFESSOR OF HISTORY

HAROLD PUNKE

B.S., M.S., University of Illinois; Ph.D., University of Chicago.

PROFESSOR OF EDUCATION

ELEANOR NIMS BRINK

A.B., Vassar College; Ph.D., University of Chicago.

PROFESSOR OF SOCIAL SCIENCES

J. R. DUSENBURY

TREASURER, AND SUPERINTENDENT OF GROUNDS AND BUILDINGS

MILDRED LARSEN

A.B., Georgia State Womans College.

ASSISTANT TREASURER

FARBAR, IVEY, McREE





HAWKS, PHELAN, CARTER, NEVINS



DEARISO, PATTERSON

# FACULTY

MATILDA CALLAWAY

B.S.H.E., University of Georgia; M.A., Columbia University.

PROFESSOR OF HOME ECONOMICS

MRS. EVA SHRIVALLE

Palmer College.

DIETITIAN

EVELYN DEARISO

A.B., Georgia State Womans College; B.L.S., Emory University.

LIBRARIAN

LILLIAN PATTERSON

A.B., Georgia State Womans College.

ASSISTANT LIBRARIAN

CAROLINE THOMAS

A.B., Georgia State Womans College.

REGISTRAR

THRYZA PERRY

A.B., Oglethorpe University.

DIRECTOR OF PLACEMENT AND PUBLICITY

LENA JAMES HAWKS

A.B., Goucher College; A.M., Vanderbilt University; Ph.D., The Johns Hopkins University.

PROFESSOR OF MATHEMATICS AND DEAN OF INSTRUCTION

EARL PHELAN

B.Chem., Ph.D., Cornell University.

PROFESSOR OF CHEMISTRY

MARJORIE CARTER

B.S., William and Mary.

ASSISTANT DEAN OF WOMEN AND INSTRUCTOR IN BIOLOGY

BEATRICE NEVINS

Ph.B., Ph.M., Ph.D., University of Wisconsin.

PROFESSOR OF BIOLOGY

CALLAWAY, SHRIVALLE



## *The* CLASS CYCLE

As I see the classes—four daughters of the college—  
The significance of these organizations is  
Brought more vividly to my mind.  
Classes—usually meaning merely a college group in the same  
Year of study or in the same rank because of common character-  
istics;  
Yet here are the groups that foster the keynote  
Of cooperation—college spirit.  
From these come the development of the college.  
Beginning in their first year and taking their incentive from  
Classes that have gone before,  
They contribute their part toward college camaraderie  
By living together, by experiencing adaptations  
By adventuring with learning, by appreciating the creative  
heritage  
Are the members of the classes perpetuating their kind.  
Freshmen, Sophomores, Juniors, Seniors:  
With each class the end of one cycle,  
The beginning of another.







*C l a s s e s*



PRISCILLA KELLEY  
President Senior Class  
Savannah, Georgia

A.B. ENGLISH

Student Government Association; Y. W. C. A. Vice-President, (3), Freshman Commission (1), Cabinet (2, 3); Phi Kappa Athletic Association, (1); Glee Club, (1); Sock and Buskin Club, (1, 2, 3, 4); Delegate to Y. W. C. A. Conference at Blue Ridge, (2); Delegate to Y. W. C. A. Convention at Wesleyan in Macon, (3); President Senior Class, (4); Freshman Who's Who, (1); "Miss Charming," (3); Who's Who in American Universities and Colleges, (4); G. S. W. C. Emblem, (4).



MARY HARGRAVE  
Treasurer  
Thomasville, Georgia

A.B. HISTORY

Transfer from Ripon College, Ripon, Wisconsin, (3); Student Government Association; Y. W. C. A.; International Relations Club, (4); Senior Class Treasurer.

## The SENIOR CLASS

On to New Orleans! This has been the cry of the seniors throughout the year as they rallied to cake raffles, tea-dances, and an honest-to-goodness carnival, all sponsored to raise funds for the class trip to New Orleans during the Winter quarter. Not all play though—from the Senior class, with its boundless energies, have come many of the leaders of the school, presidents of clubs and organizations; yet they have found time to sponsor tea-dances, a President's Ball, and in the fall their biggest entertainment, a carnival with games, side-shows, dancing, and lunch stands. Lastly, the class has published the year-book and presented it to the student body as a scrap book of memories.



# SENIOR CLASS

EMMA AMBOS  
Savannah, Georgia

A.B. BIOLOGY

Student Government Association Council Representative, (1); President Sophomore Class, (2); Vice-President Student Government Association, (3), President, (4); Y. W. C. A.; Phi Kappa Athletic Association, (1); Argonian Literary Society, (1); Math-Science Club, (1, 2, 3, 4); PINE CONE Staff, (4); Delegate to Southern Y. W. C. A. Conference at Blue Ridge, (3); Delegate to Southern Student Government Association, (3, 4); Student Activities Committee, (4); Who's Who in American Universities and Colleges, (4); G. S. W. C. Emblem, (3); Honors, (1, 2, 3); Senior Honor Society; Senior Adviser to Freshman Honor Society.

MARY ASKEW  
Arlington, Georgia

A.B. ENGLISH

Student Government Association Council Member from Dormitory Students; Y. W. C. A. Publicity Chairman, (3); Sororian Literary Society; Phi Lambda Athletic Association, (1, 2, 3); Fine Arts Club, (1, 2, 3, 4), President, (2); English Club, (4).



# The SENIOR



LILLIAN CHAPLIN BRAGG  
Savannah, Georgia

A.B. FRENCH

Student Government Association; Y. W. C. A.; Phi Kappa Athletic Association, (1, 2, 3, 4), Vice-President, (4), Council, (4), Awards, (2, 3); Argonian Literary Society; Sock and Buskin Club, (1, 2, 3, 4), President, (4), Plays, (2, 3); Fine Arts Club, (1, 2), Secretary-Treasurer, (2); Campus Canopy Staff, (3); Pine Branch Staff, (2); PINE CONE Staff, (4); Artist Series Committee, (4); Senior Honor Society Secretary.



LEILA CALLENDER  
Valdosta, Georgia

A.B. FRENCH

Student Government Association; Phi Kappa Athletic Association, (1, 2, 3, 4), Awards, (1, 2, 3); Argonian Literary Society, (1); International Relations Club, (2, 3); French Club, (4); Valdosta Club, (1, 2, 3, 4); Honors, (1, 2, 3, 4).



# CLASS . . .

FRANCES CARSON  
Talbotton, Georgia

A.B. ENGLISH

Student Government Association; Y. W. C. A.; Phi Lambda Athletic Association, (1, 2); Argonian Literary Society, (1); Glee Club, (1, 2, 3); English Club, (4), Vice-President, (4); Treasurer Sophomore Class, (2); Campus Canopy Staff, (3); PINE CONE Staff, (4); 1937 May Queen.



ALEXA DALEY  
Dublin, Georgia

A.B. ENGLISH

Student Government Association; Y. W. C. A.; Phi Lambda Athletic Association; Argonian Literary Society; English Club, (3, 4); French Club, (2, 3, 4); Glee Club, (1, 2, 3, 4), Secretary-Treasurer, (3), President, (4); Campus Canopy Staff, (3, 4); PINE CONE Staff, (4); Senior Honor Society Program Chairman.



# The SENIOR



MARGARET DALTON  
Valdosta, Georgia

A.B. ENGLISH

Student Government Association; Phi Lambda Athletic Association, (1, 2, 3); Argonian Literary Society; Secretary of Junior Class, (3); Valdosta Club, (1, 2, 3, 4).



FRANCES FLUKER  
Quitman, Georgia

A.B. ENGLISH

Student Government Association; Y. W. C. A.; Phi Lambda Athletic Association Award, (3); Argonian Literary Society, (1); English Club, (3, 4), President Extempore, (3), President, (4); Sock and Buskin Club, (3, 4); Play, (3); Artist Series Committee, (4).



# CLASS . . .

DOROTHY FULLER  
Quitman, Georgia

A.B. ENGLISH

Student Government Association; Lambda Athletic Association, (1); Argonian Literary Society, (1); Orchestra Treasurer, (3).

MARTHA GAY  
Quitman, Georgia

A.B. HISTORY

Student Government Association; Y. W. C. A. Freshman Commission, (1), Cabinet, (4); Phi Kappa Athletic Association, Council, (3, 4), Awards, (1, 2, 3); Argonian Literary Society, (1); International Relations Club, (2, 3, 4), Delegate to I. R. C. Conference in Auburn, Alabama, (4), Treasurer, (4); Fine Arts Club, (2, 3, 4), Secretary-Treasurer, (3), Vice-President, (4); Math-Science Club, (4); Campus Canopy Staff, (3, 4), Exchange Editor, (4); PINE CONE Staff, (4); Pine Branch Staff, (1); Honors, (1, 3); G. S. W. C. Emblem, (4). Alpha Delta, National Honorary Journalistic Fraternity.



# The SENIOR



ELIZABETH GREEN  
Jacksonville, Florida

A.B. BIOLOGY

Student Government Association; Y. W. C. A.; Phi Kappa Athletic Association; Argonian Literary Society, (1); Math-Science Club, President, (4); Fine Arts Club, (3, 4); Reporter, News Editor, and Associate Editor Campus Canopy, (3, 4); Journalism Award, (3); Delegate Georgia Press Association, (3); Delegate Georgia Collegiate Press Association, (3); Delegate National Associated Collegiate Press in Louisville, Kentucky, (4); Editor-in-Chief of PINE CONE, (4); Honors, (1, 2); Editor Senior Honor Society, (4); G. S. W. C. Emblem, (4). Alpha Delta, National Honorary Journalistic Fraternity.



LOTA GRIFFITH  
Kinderlou, Georgia

A.B. ENGLISH

Student Government Association; Phi Lambda Athletic Association, (1, 2); English Club, (3, 4); French Club, (3, 4); Glee Club, (4).





# CLASS . . .

MARY KATHRYN HARRELL  
Valdosta, Georgia

A.B. ENGLISH

Student Government Association; Phi Kappa Athletic Association, (1, 2, 3, 4), Awards, (1, 2, 3); English Club, (4); French Club, (3, 4); Valdosta Club, (1, 2, 3, 4); PINE CONE Staff, (4); Honors, (3).



FRANCES HINES  
Americus, Georgia

A.B. HISTORY

Transfer from Georgia Southwestern, (3); Student Government Association; Y. W. C. A.; Phi Lambda Athletic Association, (4); Fine Arts Club, (3, 4); Campus Canopy Staff, (3, 4); PINE CONE Staff, (4).



# The SENIOR



MARTHA JENNINGS  
Valdosta, Georgia

A.B. FRENCH

Student Government Association; Student Council, (4); Phi Kappa Athletic Association, (1, 2); Argonian Literary Society, (1); French Club, (3, 4), President, (3); Sock and Buskin Club, (4); Valdosta Club, (1, 2, 3, 4), President, (4).



M. LORENE JOHNSON  
Thomasville, Georgia

A.B. ENGLISH

Student Government Association; Y. W. C. A.; Phi Kappa Athletic Association Council, (3, 4), Awards, (2, 3); Argonian Literary Society, (1); English Club, (3, 4); Sock and Buskin Club, (2, 3, 4), Secretary-Treasurer, (3), Play, (4), Assistant Director Play, (3); Pine Branch Associate Editor, (2, 3); Campus Canopy Advertising Manager and Managing Editor, (3), Editor, (4), Awards, (3, 4); Student Activities Committee, (4); National Archery Medal, (1); PINE CONE Literary Editor, (4); Delegate to Georgia Collegiate Press Association Conventions in Athens and Atlanta, (3); Delegate to National Convention of Associated Collegiate Press in Louisville, Kentucky, (4); G. S. W. C. Emblem, (4).

Alpha Delta, National Honorary Journalistic Fraternity.



# CLASS . . .

MARY McLESTER JOHNSON  
Macon, Georgia

A.B. ENGLISH

Transfer from Mercer University, (3); Student Government Association; Y. W. C. A.; English Club, (3, 4); Glee Club, (3, 4); Sock and Buskin Club, (4).



JOSEPHINE L. JOUBERT  
Savannah, Georgia

A.B. FRENCH

Student Government Association; President Freshman Class, (1); Y. W. C. A.; Phi Kappa Athletic Association President, (4), Council, (4), Awards, (2, 3); Argonian Literary Society, (1); Presidents' Club, (1); Sock and Buskin Club, (1, 2, 3, 4), Plays, (2, 3); Fine Arts Club, (1, 2); French Club, (3, 4); Campus Canopy Staff, (4); PINE CONE Staff, (4); Freshman's Who's Who, (1); Honors, (1, 2, 3, 4); Senior Honor Society Treasurer, (4).



# The SENIOR



ELIZABETH KELLEY  
Savannah, Georgia

A.B. FRENCH

Student Government Association; Y. W. C. A. Freshman Commission, Cabinet, (3, 4), Deputation Chairman, (3), Sunday School Chairman, (4); Phi Kappa Athletic Association, (1, 2), Awards, (1, 2); Entre Nous Club, (2, 3, 4); Sock and Buskin Club, (1, 2, 3, 4), Secretary-Treasurer, (2), Plays, (1, 3); Glee Club, (1, 2, 4); Sororian Literary Society; Modern Poetry Forum, (1, 2); Winner Poetry Contest, (1, 2); Campus Canopy Staff, (3); G. S. W. C. Emblem, (3); Maid of Honor, May, 1937.



LINELLE LANG  
Omega, Georgia

A.B. ART

Student Government Association; Phi Kappa Athletic Association; Argonian Literary Society; Fine Arts Club, (1, 2, 3, 4); PINE CONE Staff Art Committee, (1, 4); Orchestra, (3).



# CLASS . . .

LAURA McLEOD  
Pine View, Georgia

A.B. HISTORY

Student Government Association; Y. W. C. A.; Phi Lambda Athletic Association, (1, 2, 3, 4), Council, (4), Awards, (3, 4); Argonian Literary Society, (1); International Relations Club, (2, 3, 4), Secretary, (3), President, (4); PINE CONE Staff, (4); Honors, (3, 4); Senior Honor Society.



CATHERINE MORGAN  
Pembroke, Georgia

A.B. ENGLISH

Student Government Association; Y. W. C. A.; Phi Kappa Athletic Association, (1, 3); Argonian Literary Society, (1); Sock and Buskin Club, (2, 3, 4); Annual Play, (3); PINE CONE Staff.



# The SENIOR



SARAH ELLEN MORGAN  
Mystic, Georgia

A.B. HISTORY

Student Government Association; Y. W. C. A.; Phi Lambda Athletic Association, (1, 2, 3, 4), Council, (2, 3, 4), Awards, (1, 2, 3), Vice-President, (4); Argonian Literary Society, (1); International Relations Club, (3, 4).



ELOISE OGLETREE  
Savannah, Georgia

A.B. ENGLISH

Student Government Association; Y. W. C. A. Freshman Commission, (1), World Fellowship Chairman, (2), President, (4), Council Member, (4); Phi Kappa Athletic Association, (1, 2); Argonian Literary Society, (1); English Club, (3, 4); French Club, (2, 3, 4); Who's Who, (4); Glee Club, (1); Campus Canopy Staff, (4); PINE CONE Staff, (4); Deputation Team, (4); Delegate to Blue Ridge, (3); Delegate to Wesleyan Conference, (1, 2, 3, 4); Delegate to Presidents' Conference at Atlanta, (4); Delegate to National Convention at Colorado Springs, (3).



# CLASS . . .

PERMELIA OLLIFF  
Quitman, Georgia

A.B. FRENCH

Student Government Association; Y. W. C. A., (1); Phi Kappa Athletic Club, (1, 2, 3, 4), Council, (2, 3, 4), Awards, (1, 2, 3), Secretary-Treasurer, (3); Argonian Literary Society, (1); French Club, (3, 4), President, (4); Honors, (1, 2, 3, 4); Senior Honor Society, President, (4).



EMILY PARRISH  
Valdosta, Georgia

A.B. ENGLISH

Student Government Association; Phi Kappa Athletic Association, (1); French Club, (3, 4), Secretary, (4); English Club, (3, 4); Fine Arts Club, (3, 4); Valdosta Club, (3, 4); PINE CONE Staff.



# The SENIOR



ANNETTE PHILLIPS  
Eastman, Georgia

A.B. MUSIC

Student Government Association; Y. W. C. A.; Phi Lambda Athletic Association, (1); Argonian Literary Society, (1); Philharmonic Club, (1, 2, 3, 4), Vice-President, (3); Glee Club, (1); PINE CONE Staff, (4).



ESTELLE RICKS  
Reynolds, Georgia

A.B. ENGLISH

Student Government Association, Secretary-Treasurer, (4); Y. W. C. A.; Argonian Literary Society, (1); Phi Lambda Athletic Association, (1); Math-Science Club, (3, 4), Vice-President, (4); English Club, (3, 4); Junior Class Treasurer, (3); PINE CONE Business Manager, (4).





# CLASS . . .

ESTHER SMITH  
Mystic, Georgia

A.B. ENGLISH

Transfer Middle Georgia College at Cochran, (2); Student Government Association; Y. W. C. A.; Phi Kappa Athletic Association, (2); English Club, (2, 3); Valdosta Club, (2).



ANNE TURNER  
Valdosta, Georgia

A.B. ART

Student Government Association; Phi Kappa Athletic Association, (1, 2, 3); Argonian Literary Society, (1); Fine Arts Club, (2, 3, 4), President, (3, 4); Valdosta Club, (1, 2, 3, 4), Secretary, (2); Art Editor PINE CONE, (1, 4); Artist Series Committee, (4).



# The SENIOR



VIVIAN VINCENT  
Lakeland, Georgia

A.B. FRENCH

Student Government Association; Y. W. C. A.; Phi Lambda Athletic Association; Argonian Literary Society, (1); French Club, (3, 4), Vice-President, (4); Honors, (4); Chairman, Library Vocational Group, (4).



MARGARET WADE  
Valdosta, Georgia

A.B. SOCIOLOGY

Transfer from Georgia State College for Men, Tifton, (1); Student Government Association; Phi Lambda Athletic Association, (2, 3, 4), Awards, (2, 3); Math-Science Club, (2, 3, 4); Glee Club, (3, 4).

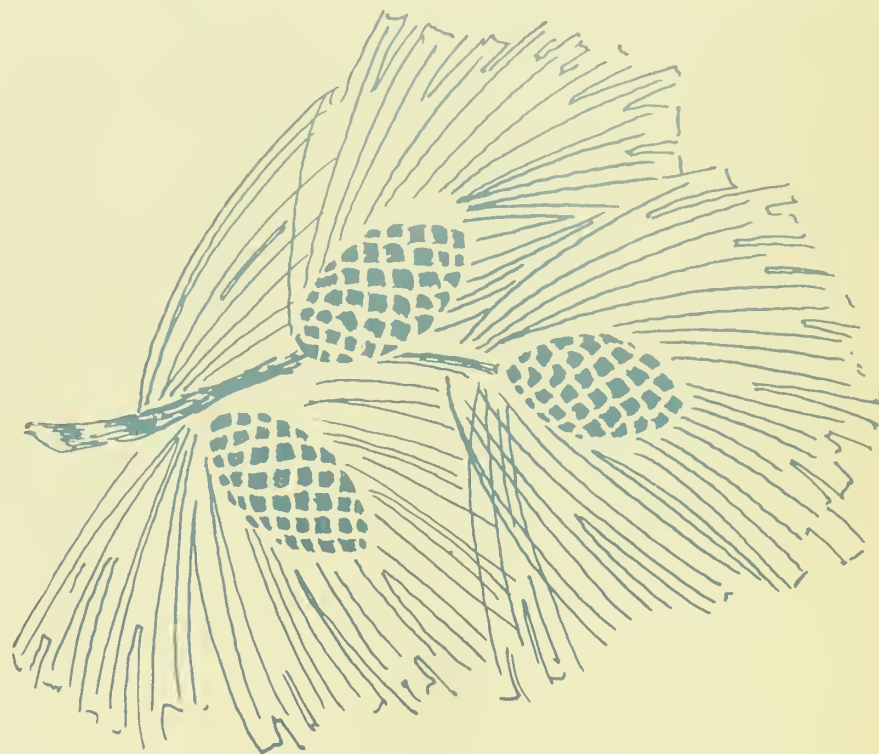


# CLASS . . .

RUTH WILLIAMS  
Waycross, Georgia

A.B. ENGLISH

Student Government Association; Y. W. C. A. Cabinet, (1, 2), Choir, (1, 2); Phi Lambda Athletic Association, (1, 2, 3); English Club, (3), Secretary-Treasurer, (3); Glee Club, (1, 2, 3); Dramatic Club, (1, 2, 3), Vice-President, (3); Campus Canopy, (1, 2); PINE CONE Staff, (3); G. S. W. C. Emblem.





VIRGINIA ZIPPLIES  
CLASS PRESIDENT  
Savannah, Georgia



CAROLYN WHIPPLE  
SECRETARY  
Quitman, Georgia



LYLBURN WARREN  
TREASURER  
Waycross, Georgia

## *The* JUNIOR CLASS

To the Junior Class go the honors for that clever bit of clowning, the faculty-take-off, which they gave in the fall. This class has been responsible for some of those memorable dances held in the gymnasium and also for an 1890 party—a gay one too. During the Winter quarter they sponsored the Presbyterian College Glee Club. The Junior Class has had an appointed committee doing research on finding a new name for the college, as their aim has been to be instrumental in having the name changed.



# JUNIOR CLASS . . .

BERNICE ANDREWS  
Thomasville, Georgia

EDITH BENNETT  
Savannah, Georgia

FRANCES BINGHAM  
Valdosta, Georgia

ANN BROOKS  
Valdosta, Georgia



*The*



RUTH BUNN  
Folkston, Georgia

MARGARET CANNON  
Cairo, Georgia



BILLIE COLLINS  
Cairo, Georgia

SUE COPPAGE  
Valdosta, Georgia



# JUNIOR CLASS . . .

ELIZABETH DASHER  
Valdosta, Georgia

RUTH GARBUTT  
Valdosta, Georgia

THERESA GRAHAM  
Jesup, Georgia

CAROLYN GREENE  
Columbus, Georgia



*The*



LOIS HAFFORD  
Waycross, Georgia



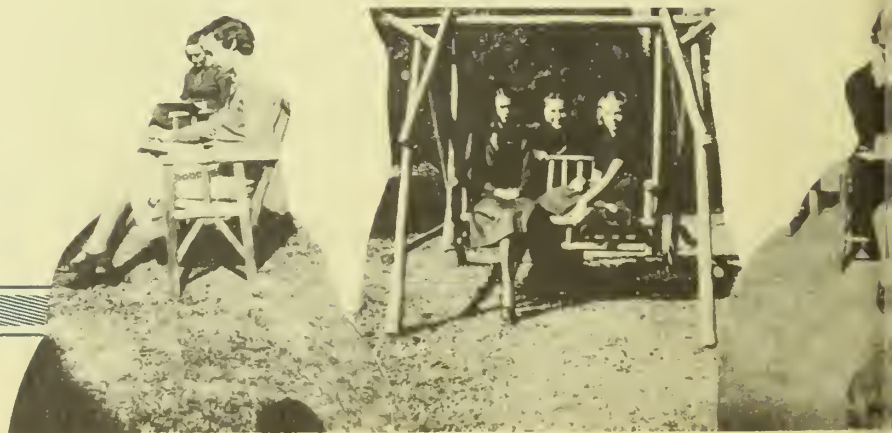
JOAN HORTON  
McRae, Georgia



ERNESTINE ISBELL  
Valdosta, Georgia



FLOYE IVEY  
Bridgeboro, Georgia





# JUNIOR CLASS . . .

MARTHA JOHNSTON  
Valdosta, Georgia

JOHNNIE MAE KELLEY  
Cordele, Georgia

LENORA LANIER  
Morgantown, Georgia

LAVENIA LASSITER  
Valdosta, Georgia



The



BESSIE LEWIS  
Willacochee, Georgia



ELOISE LINEBERGER  
Valdosta, Georgia

RUTH LOUGHRIDGE  
Blackshear, Georgia

FRANCES McLAIN  
Dawson, Georgia



# JUNIOR CLASS . . .

ANNA MATHEWS  
Valdosta, Georgia

SUSIE MATHEWS  
Valdosta, Georgia

KATHERINE MOORE  
Moultrie, Georgia

DOROTHY MORGAN  
Valdosta, Georgia



*The*



KITTY O'NEAL  
Tifton, Georgia



MYRTLE PARKER  
Ludowici, Georgia



MARTHA POWELL  
Valdosta, Georgia



SARAH ANN PRYOR  
Fitzgerald, Georgia



# JUNIOR CLASS . . .

SARAH MARTHA PYLE  
Valdosta, Georgia

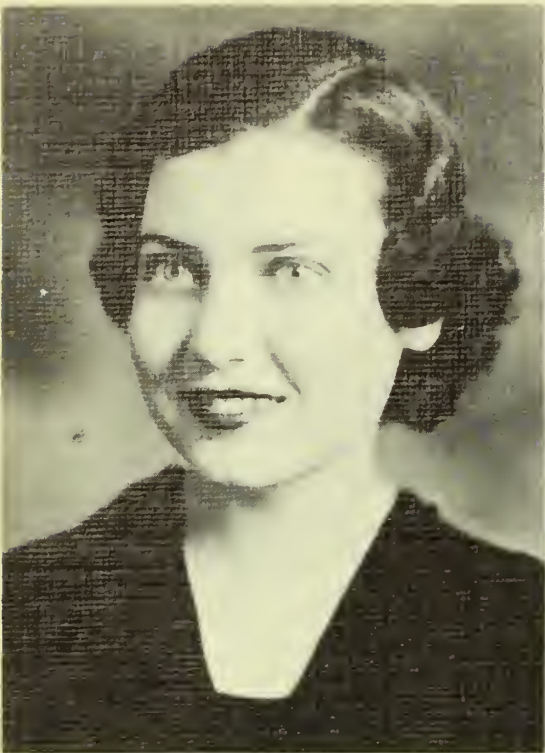
CAMILLE RYCROFT  
Quitman, Georgia

ROSE RYCROFT  
Warwick, Georgia

CATHERINE RYCROFT  
Warwick, Georgia



*The*



MARGARET SIMS  
Ousley, Georgia



JUANITA SIRMANS  
Homerville, Georgia



ETHEL STALLINGS  
Newnan, Georgia



KATHRYN THOMASON  
Canton, Georgia



# JUNIOR CLASS . . .

MARY EDWIN THORPE  
Townsend, Georgia

KATHRYN TOOLE  
Valdosta, Georgia

ELIZABETH WADE  
Valdosta, Georgia

HAZEL WARRICK  
Blakely, Georgia





CATHERINE WILSON  
Waycross, Georgia

EMILY WOOTTEN  
Americus, Georgia



End of the  
JUNIOR CLASS







CATHERINE J. MORRIS  
CLASS PRESIDENT  
New Rochelle, N. Y.



FREDRICA LAMBERT  
SECRETARY  
Fort Valley, Ga.



MARIAN JOHNSON  
TREASURER  
Southern Pines, N. C.

## *The* SOPHOMORE CLASS

In the fall of 1936, for the first time the members of the Sophomore Class were leaders of the Freshman Orientation Group—introducing the new class to the tricks as well as the facts of the campus. Later they conducted the traditional Hat-hunt for freshmen (though they rather wish they had not), and at intervals between their work and studies they have given dances in the gymnasium with the masculine and musical elements well represented. Then, climaxing the dances of the year, they sponsored a formal at the Country Club with Curtis Davidson's Orchestra in honor of the seniors.



*The*



MARGARET ABERNATHY  
Moultrie, Ga.

ANNIE ADAMS  
Geneva, Ala.

MARGUERITE ARNOLD  
Richland, Ga.



CAROLYN ASKEW  
Arlington, Ga.

ANNIE LAURIE BELL  
Tifton, Ga.

HELEN BOWEN  
Register, Ga.



CLAUDIA BUSSEY  
Valdosta, Ga.

HILDA CARROLL  
Valdosta, Ga.

MARGARET CARTER  
Adel, Ga.



# SOPHOMORE CLASS . . .

JULIA CASEY  
Kingsland, Ga.

JEANNETTE CHASON  
Cairo, Ga.

DOROTHY CLARK  
Valdosta, Ga.

CAMILLE CLEMENTS  
Adel, Ga.

JANET CLEMENTS  
Rochelle, Ga.

JENNIE CONINE  
Lakeland, Ga.

DORIS COOK  
Colquitt, Ga.

MARY JO COOK  
Broxton, Ga.

EILEEN COX  
Valdosta, Ga.



*The*



JEANNETTE COX  
Valdosta, Ga.

BEVERLY CRAIGMILES  
Thomasville, Ga.

LILLA CROSBY  
Pavo, Ga.



PATSY DODGE  
Valdosta, Ga.

BEVERLY DOUGHERTY  
Valdosta, Ga.

MADELINE DOUGLAS  
Homerville, Ga.



MARY DuBOIS  
Savannah, Ga.

ANN DUNBAR  
Valdosta, Ga.

CAROLYN FOLSOM  
Hahira, Ga.



# SOPHOMORE CLASS . . .

ELIZABETH GARBUTT  
Albany, Ga.

VIRGINIA GIDDENS  
Albany, Ga.

MARY WINN GREER  
Valdosta, Ga.

PARDEE GREER  
Valdosta, Ga.

BARBARA HARRIS  
Valdosta, Ga.

CHRISTINE HIERS  
Moultrie, Ga.

GERTRUDE HODGES  
Waycross, Ga.

MARY HUDSON  
Whigham, Ga.

EILEEN HYLAND  
New Rochelle, N. Y.



*The*



MARTHA ADA JOHNSON  
Gordon, Ga.

HELEN JOINER  
Savannah, Ga.

LAMAR KENDALL  
Valdosta, Ga.



HELENE LANDEY  
Valdosta, Ga.

MITTIE LOU LANE  
Valdosta, Ga.

ROSALIND LANE  
Valdosta, Ga.



JUNE LAWSON  
Savannah, Ga.

TRECY LONG  
Quitman, Ga.

MILDRED LOTT  
Hahira, Ga.



# SOPHOMORE CLASS . . .

EVELYN McINTYRE  
Valdosta, Ga.

MILDRED McKIBBEN  
Pavo, Ga.

VISTA MALONEY  
Quitman, Ga.

MARGUERITE MILLS  
Folkston, Ga.

MARY HELEN MOORE  
Thomasville, Ga.

HAZEL MUGGRIDGE  
Cairo, Ga.

QUIDA MURDOCK  
Meigs, Ga.

LILLIAN NEWHAM  
Valdosta, Ga.

EVELYN OGLETREE  
Savannah, Ga.



The



CATHERINE O'NEAL  
Blackshear, Ga.

DORA IDA PERKINS  
Alma, Ga.

MARY EDNA RATLIFF  
Valdosta, Ga.



RUTH RHYMES  
Valdosta, Ga.

ANNA RICHTER  
Savannah, Ga.

THONON ROBERTS  
Valdosta, Ga.



LOUISE ROGERS  
Lyons, Ga.

RUBY JEAN ROGERS  
Valdosta, Ga.

CLARA MAE SASSER  
Valdosta, Ga.





# SOPHOMORE CLASS . . .

ELOISE SHEFFIELD  
Donalsonville, Ga.

LAURA MAE SHINKLE  
Albany, Ga.

MELBA SLADE  
Vienna, Ga.

VIRGINIA SMITH  
Dawson, Ga.

WYLENE SMITH  
Patterson, Ga.

EDNA SNEAD  
Valdosta, Ga.

CARLIE MAE STOKES  
Folkston, Ga.

CELESTE STUMP  
Valdosta, Ga.

LOUISE STUMP  
Valdosta, Ga.



The



AMANDA SULLIVAN  
Valdosta, Ga.

VIRGINIA SUMMERFORD  
Reidsville, Ga.

MERLE SUMNER  
Valdosta, Ga.



LERAH SUTTON  
Axson, Ga.

LOUISE SUTTON  
Tifton, Ga.

FRANCES THOMAS  
Valdosta, Ga.



EVELYN TOMLINSON  
Valdosta, Ga.

PENELOPE TULLIS  
Valdosta, Ga.

SARA ELIZABETH UPCHURCH  
Clyattville, Ga.



GRACE VAN LANDINGHAM  
Valdosta, Ga.



# SOPHOMORE CLASS . . .

ADDIS WACASER  
Colquitt, Ga.

EVELYN WHITMIRE  
Griffin, Ga.

RUTH WHITTLE  
Brunswick, Ga.

MARY VIRGINIA WILLIAMS  
Quitman, Ga.

GORDON WILLIFORD  
Valdosta, Ga.

DOROTHY MAE WILSON  
Valdosta, Ga.

MAUELLE WILSON  
Cordele, Ga.

MAYME WITHOLTER  
Attapulgus, Ga.

HAZEL WOODARD  
Waycross, Ga.





LAURA DUNCAN  
CLASS PRESIDENT  
Quitman, Ga.



ORA KATE WISENBAKER  
SECRETARY  
Valdosta, Ga.



SARA GARBUTT  
TREASURER  
Valdosta, Ga.

## *The* FRESHMAN CLASS

Endowed with an overwhelming enthusiasm, the Freshman Class made its first big splash by defeating the sophomores in the Hat-hunt, for they made the earliest Hat-day find in the history of the school. This spirit of interest and cooperation has carried over into their activities. They have worked with the Y. W. C. A., been spirited supporters of the Athletic Clubs, sponsored a radio program in connection with their dance, and honored their sister class, the juniors, with a formal dance.



# FRESHMAN CLASS . . .

JACQUELINE ABRAHAMS  
Valdosta, Ga.

KATHRYN BARBER  
Commerce, Ga.

MILDRED BOYETT  
Morris Station, Ga.

GERALDINE BUTLER  
Donalsonville, Ga.

RUTH ASHLEY  
Rochelle, Ga.

LOUISE BELL  
Arlington, Ga.

PAULINE BREWSTER  
Valdosta, Ga.

KATHLEEN CAMPBELL  
Valdosta, Ga.

DOROTHY AUSTIN  
Savannah, Ga.

CATHERINE MAE BLACK  
Valdosta, Ga.

CAROLYN BRIDGES  
Sumner, Ga.

MARGARET HAYS CARTER  
Colquitt, Ga.

ROSEMARY BAKER  
Valdosta, Ga.

GERALDINE BOWEN  
Valdosta, Ga.

OPAL BROWN  
Dorchester, Ga.

FLORA CASEY  
Kingsland, Ga.



# The



LOUISE CONNER  
Douglas, Ga.

MILDRED CORBETT  
Lake Park, Ga.

DOROTHY COWART  
Donalsonville, Ga.

MONTINE COWART  
Waycross, Ga.



MILDRED CUMBAA  
Columbus, Ga.

DOROTHY DALTON  
Valdosta, Ga.

GLADYS RUTH DANIEL  
Pinehurst, Ga.

MARY FRANCES DANIEL  
Pinehurst, Ga.



ROSAMOND DOWLING  
Jesup, Ga.

MARY DUGGER  
Ouitman, Ga.

EDITH DUKES  
Surrency, Ga.

HELEN DUNCAN  
Valdosta, Ga.



MYRTLE EDMONDSON  
Morven, Ga.

RUTH ELLIOTT  
Commerce, Ga.

BRANCH ELLIS  
Macon, Ga.

SARA FENDER  
Jesup, Ga.



# FRESHMAN CLASS . . .

SUENITA FENDER  
Valdosta, Ga.

HELEN FLETCHER  
Hazlehurst, Ga.

ELEANOR GAMBLE  
Valdosta, Ga.

DOLLIE GANNON  
Valdosta, Ga.

RUTH GAY  
Fort Gaines, Ga.

SUE NELLE GREENLEE  
Valdosta, Ga.

MARGARET HAGAN  
Iron City, Ga.

EUGENIA HARDY  
Quitman, Ga.

DORIS HARPER  
Valdosta, Ga.

MARIBEL HARRELL  
Valdosta, Ga.

MILDRED HENDERSON  
Manor, Ga.

BELLE HINSON  
Alamo, Ga.

BETSY HOWELL  
Jennings, Fla.

DORIS JACKSON  
Williston, Fla.

CAROLYN KAY  
Moultrie, Ga.

JESSIE MAE LAMBERT  
Bainbridge, Ga.



# The

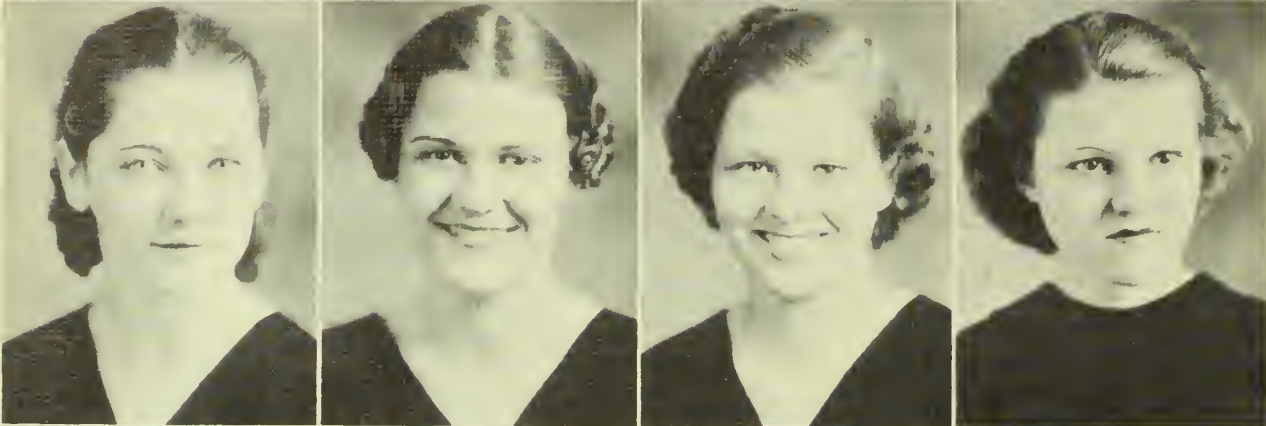


IDELLE LEE  
Ray City, Ga.

LUCY McCAY  
Cordele, Ga.

EDNA RUTH McKAIN  
Whitmore, S. C.

DAISY McNEAL  
Waycross, Ga.



UNA McRAE  
Midway, Ga.

ALICE MANN  
Valdosta, Ga.

JANET MANN  
Blakely, Ga.

JONELLE MARCHANT  
Omega, Ga.



RUTH MARTIN  
Ludowici, Ga.

SARA MATHIS  
Valdosta, Ga.

WYLENE MATHIS  
Nashville, Ga.

LOTTA MAYBERRY  
Brunswick, Ga.



CHRISTIE MOORE  
Valdosta, Ga.

ELIZABETH MOORE  
Valdosta, Ga.

DORA ELEANOR MORGAN  
Valdosta, Ga.

MAEDELLE MORGAN  
Vienna, Ga.





# FRESHMAN CLASS . . .

MARGUERITE NORTON  
Naylor, Ga.

WILLIE B. OLLIFF  
Quitman, Ga.

ELISE O'NEAL  
Uvalda, Ga.

VIRGINIA PARRISH  
Adel, Ga.

BILLIE PATTEN  
Tifton, Ga.

NELLE POPE  
Fitzgerald, Ga.

VERNA POPPELL  
Homerville, Ga.

MARIE PORTER  
Pinehurst, Ga.

MARY HELEN PULLEN  
Soperton, Ga.

ELIZABETH RENFROE  
Quitman, Ga.

ELIZABETH RHYMES  
Valdosta, Ga.

MARGUERITE ROBERTS  
Ocilla, Ga.

VIVIAN ROBINSON  
Denton, Ga.

DOROTHY ROSSEAU  
Valdosta, Ga.

ROYCE SCOTT  
Ashburn, Ga.

JANE SIMS  
Ousley, Ga.



# The



BLANCHE SMITH  
Homerville, Ga.

IRWIN SMITH  
Waycross, Ga.

HELYN SPEER  
Ochlochnee, Ga.

MARY LILLIAN SPELLS  
Homerville, Ga.



ELIZABETH SPIVEY  
Talbotton, Ga.

FRANCES SPURLIN  
Atlanta, Ga.

ALENE STRICKLAND  
Blackshear, Ga.

GLADYS STUMP  
Valdosta, Ga.



ROSALIND TAYLOR  
Valdosta, Ga.

SARA TILLMAN  
Register, Ga.

FRANCES VAN BRACKLE  
Adel, Ga.

MADGE WATKINS  
Valdosta, Ga.



MILLIE WEITMON  
Alamo, Ga.

NELL WESTBROOK  
Moultrie, Ga.

CURTIS WHATLEY  
McRae, Ga.

RUTH WHISONANT  
Blackshear, Ga.



# FRESHMAN CLASS . . .

GERALDINE WILBANKS  
Commerce, Ga.

CAROLINE WILLIAMS  
Valdosta, Ga.

NORMA WILLIFORD  
Eatonton, Ga.

ANNA LOUISE WILLIS  
Moultrie, Ga.

EDITH WILSON  
Valdosta, Ga.

EVELYN WILSON  
Denton, Ga.

MILDRED WILSON  
Waycross, Ga.

LINDA WINGATE  
Immokalee, Fla.

ROSALYN WOODALL  
Blackshear, Ga.

HARRIET WOOTTEN  
Savannah, Ga.

NELL ZIPPERER  
Valdosta, Ga.



## WOMAN'S SUCCESSFUL LIVING

Activities—the intangible definition of "college":  
Fun and laughter; sportsmanship and cooperation.  
Clubs, sports, socials—  
All are moulders of character, and welders of friendship.  
When alliances of activities so extend  
Themselves that they require something of what each student  
can give  
Then are they true activities.  
I know how much they take; I know the quality of what they re-  
turn.  
Looking on college as an introduction to the school of life,  
I would say it is learning to live—with books, with situations, with  
people.  
Years to come followers of the particular school may not know  
Dates of nouns, may not solve problems in calculus.  
But they will ever seem learned—  
Learned because their activities have given them  
Great informal knowledge—music, art, sports, dramatics;  
Background with which to listen for, to see, to follow—  
True Liberal Arts education—the advance of  
Woman's successful living.





---

*A c t i v i t i e s*



AMBOS



BUNN



RICKS



GREENE

## *The* STUDENT GOVERNMENT ASSOCIATION

Around the Student Government Association is centered the organization and interest of the student body. It has as its main purpose the promotion of the highest standards of honor and integrity in all manners of personal conduct. The association has been adjusting itself to the many new privileges that have been granted in former years.

Off campus speakers as well as one of the new faculty members have spoken at the regular monthly meetings of the association. Among them Dr. Eleanor Brink, professor of Sociology on this campus; Dean Olivia Dorman of the Florida State College for Women; and Mr. Ernest Lowe, President of the Armstrong Junior College in Savannah.

The association is a member of the Southern Intercollegiate Association of Student Governments and Misses Emma Ambos and Virginia Ziplies, President-elect, attended the annual meeting in Spartanburg, S. C.

S. G. A. Court sits in judgment.





OGLETREE



ASKEW



JENNINGS

OFFICERS

EMMA AMBOS . . . . . President  
 RUTH BUNN . . . . . Vice-President  
 ESTELLE RICKS . . . . . Secretary-Treasurer  
 CAROLYN GREENE . . . . . Recorder of Points

COURT MEMBERS

EMMA AMBOS  
 RUTH BUNN  
 PRISCILLA KELLEY

VIRGINIA ZIPLIES  
 C. J. MORRIS  
 LAURA DUNCAN

COUNCIL MEMBERS

EMMA AMBOS  
 ELOISE OGLETREE

MARY ASKEW  
 MARTHA JENNINGS





OGLETREE



STALLINGS



WILSON



McLAIN

# The Y. W. C. A.

## CABINET

- ELOISE OGLETREE . . . . . President
- ETHEL STALLINGS . . . . . Vice-President
- CATHERINE WILSON . . . . . Secretary
- FRANCES McLAIN . . . . . Treasurer
- ELIZABETH KELLEY . . . . . Sunday School Chairman
- MARY HUDSON . . . . . Morning Watch Chairman
- ANNA RICHTER . . . . . Deputation Chairman
- CAMILLE CLEMENTS } . . . . . Club House Chairmen
- HAZEL MUGGRIDGE }
- MARTHA GAY . . . . . Publicity
- HELEN JOINER . . . . . Room Chairman
- MARY VIRGINIA WILLIAMS . . . . . Assistant to Vice-President
- CAMILLE RYCROFT . . . . . World Fellowship
- EDITH BENNETT . . . . . Music Chairman

KELLEY

BENNETT

WILLIAMS

JOINER





# Y. W. C. A.

Every student on the campus is a member of the Y. W. C. A. and is included in all of its activities.

This year a deputation team was sent to neighboring Junior Colleges and churches in order to establish contacts. Two teams were sent out each quarter and the theme was built around "Youth and Its Present Day Problems."

The Y. W. C. A. helped to sponsor Freshman Week, and has aided in the social life of the school year.

The annual retreat was held at Twin Lakes in the spring to discuss the work of the past year and plan the program for the coming year. At one of the pre-Christmas Vesper services the traditional Hanging of the Greens by the senior class members was held. The Y. W. C. A. also sponsored "Big-Sister, Little-Sister" party and Heart Sister Week.

During the Winter Quarter the "Y" presented the college with an after-dinner coffee service.

HUDSON

RICHTER

GAY

MUGGRIDGE

CLEMENTS

RYCROFT





ELIZABETH GREEN  
Editor-in-Chief



ESTELLE RICKS  
Business Manager



LORENE JOHNSON  
Literary Editor



ANNE TURNER  
Art Editor

## The PINE CONE

The PINE CONE is presented to the students by the Senior Class as the final expression of appreciation for the intangible sense of fitness that four years of learning and experiences at this college have given them.

Though holding essentially to the standard set-up, the staff of 1937 has attempted several innovations in make-up and organization in an effort to keep abreast of the trends and tendencies of modern annual production.

An attempt has been made to make the whole student body more interested in its production and prouder of the final result. A junior staff was organized this year as under-studies to the senior staff, so that next year the new staff will have some foundation upon which to build. In October the Editor-in-Chief, Elizabeth Green, was sent as a delegate to Louisville, Kentucky, where the National Collegiate Press Association was convened.

It is the hope of the staff that this yearbook is in truth an enduring and complete record of the year's activities and experiences,—recorded in picture and in story. For the theme the PINE CONE has been allowed to speak of its experiences and ideas and hopes concerning the classes and personalities that have passed in review across its pages and those that are yet to come.

For six years the PINE CONE has received first honor ratings in the National Scholastic Association, with All-American Honor rating in 1929 and 1932.

MARTHA GAY  
FRANCES HINES

RUTH WILLIAMS  
ANNETTE PHILIPPS





LAURA McLEOD  
Features



JOSEPHINE JOUBERT  
Activities



CATHERINE MORGAN  
Snapshots



LILLIAN BRAGG  
Advertising Manager

### THE STAFF

ELIZABETH GREEN . . . . . Editor-in-Chief  
 ESTELLE RICKS . . . . . Business Manager  
 LORENE JOHNSON . . . . . Literary Editor  
 MARY JOHNSON . . . . . Assistant Literary Editor  
 ANNE TURNER . . . . . Art Editor  
 MARTHA GAY . . . . . Assistant Art Editor  
 JOSEPHINE JOUBERT . . . . . Activities Editor  
 RUTH WILLIAMS . . . . . Assistant Activities Editor  
 EMILY PARRISH . . . . . Assistant Activities Editor  
 FRANCES HINES . . . . . Assistant Activities Editor

LAURA McLEOD . . . . . Feature Editor  
 CATHERINE MORGAN . . . . . Snapshot Editor  
 EMMA AMBOS . . . . . Assistant Snapshot Editor  
 LILLIAN BRAGG . . . . . Advertising Manager  
 FRANCES CARSON . . . . . Assistant Advertising Manager  
 MARY ASKEW . . . . . Advertising  
 ANNETTE PHILLIPS . . . . . Advertising  
 ELOISE OGLETREE . . . . . Advertising  
 PRISCILLA KELLEY . . . . . Advertising  
 ALEXA DALEY . . . . . Advertising

EMMA AMBOS  
FRANCES CARSON

MARY JOHNSON  
ELOISE OGLETREE

MARY ASKEW  
PRISCILLA KELLEY

EMILY PARRISH  
ALEXA DALEY





LORENE JOHNSON  
Editor



KATHERINE MOORE  
Business Manager

For the first time since a student paper has been established on the campus THE CAMPUS CANOPY has followed a regular schedule of publication, being distributed—with COLLEGIATE DIGEST—each Friday. The paper is a four-column, four-page weekly publication, and is printed on magazine paper.

THE CAMPUS CANOPY is a member of the Associated Collegiate Press and of the National Scholastic Press Association, and sent delegates to press conventions in Louisville, Kentucky; Athens; Atlanta; and Savannah.

Staff meetings were held this year to discuss the problems of journalism on the campus. These meetings furthered the aims of the publication—to make the paper an essential feature of campus life, to bring an appreciation of journalism to the students, and to raise the standard of the paper itself.

Several changes have been effected this year which include the size of the paper, the kind of paper, and the shifting of the editorial page to the back page.

THE CAMPUS CANOPY is supported through advertising and through Student Activity Fees.

# The CAMPUS CANOPY

## STAFF

LORENE JOHNSON	Editor
KATHERINE MOORE	Business Manager
ROSALIND LANE	Assistant Editor
CAROLYN GREENE	Advertising Manager
C. J. MORRIS	News
BERNICE ANDREWS	Feature
LOUISE BELL	Sports
MARTHA GAY	Exchange
FRANCES HINES	Circulation
LOIS HAFFORD	

## REPORTERS

ROSEMARY BAKER  
PAULINE BREWSTER  
THERESA GRAHAM  
ELIZABETH GREEN  
EILEEN HYLAND

SUSIE MATHEWS  
LOTTA MAYBERRY  
ELOISE OGLETREE  
PRISCILLA KELLEY  
IRWIN SMITH  
ETHEL STALLINGS

ROSALIND TAYLOR  
RUTH WILLIAMS  
ORA KATE WISEBAKER  
ROSALYN WOODALL  
MARION JOHNSON

## ADVERTISING

MARY HUDSON  
MARTHA JOHNSON  
JOSEPHINE JOUBERT

HAZEL MUGGRIDGE  
VIRGINIA SMITH  
DODY WILSON

The CANOPY Staff gets out the paper

Greene and Moore leave for Athens  
These have the nose for news



Presenting an entirely different plan this year, the Glee Club not only appeared in their annual concert before the people of Valdosta in the Winter Quarter, but also made a tour of neighboring towns during the Spring Quarter.

The entire club of thirty members entertained at various school functions. A special Christmas program was featured this year. The triple quartet was heard on Sundays in the churches of Valdosta and in radio programs from Thomasville, Georgia, and Gainesville, Florida.



ALEXA DALEY  
President



LAURA MAE SHINKLE  
Secretary-Treasurer

## The GLEE CLUB

### OFFICERS

- ALEXA DALEY . . . . . President  
 LAURA MAE SHINKLE . . . . . Secretary-Treasurer  
 MISS CLARA BANCROFT . . . . . Faculty Adviser

### MEMBERS

CAROLYN ASKEW  
 GERALDINE BUTLER  
 MARGARET CARTER  
 MONTINE COWART  
 MADELINE DOUGLAS  
 BRANCH ELLIS  
 HELEN FLETCHER  
 VIRGINIA GIDDENS  
 SUE NELLE GREENLEE

PARDEE GREER  
 LOTA GRIFFITH  
 MARY JOHNSON  
 IDELLE LEE  
 DAISY McNEAL  
 JONELLE MARCHANT  
 ELEANOR MORGAN  
 MARIE PORTER  
 SARA MARTHA PYLE  
 VIVIAN ROBINSON

JUANITA SIRMANS  
 LOUISE STUMP  
 LERAH SUTTON  
 ROSALIND TAYLOR  
 EVELYN TOMLINSON  
 KATHERINE TOOLE  
 MARGARET WADE  
 RUTH WILLIAMS  
 EMILY WOOTTEN

Ready for a performance



Members of Triple Quartet leaving to sing over WRUF





JENNINGS



BROOKS



SASSER



GARBUTT

# The VALDOSTA CLUB

An outstanding accomplishment of the Valdosta Club is their entertainment of the senior class of the Valdosta High School. As membership in the club is limited to students of the college who are graduates of the Valdosta High School, the entertainment is given for prospective members.

The Valdosta Club has worked with this definite purpose in mind, and in connection with this purpose has had call business meetings and social luncheons monthly at the House-in-the-Woods.

The aim has been to establish a better understanding between day and boarding students, to interpret the activities of the college to the town, and to unite the day students into an effective group.

## OFFICERS

- MARTHA JENNINGS . . . . . President
- ANN BROOKS . . . . . Vice-President
- RUTH GARBUTT . . . . . Secretary
- CLARA MAE SASSER . . . . . Treasurer
- MISS ANNIE P. HOPPER . . . . . Adviser

## MEMBERS

- JACQUELINE ABRAHAMS
- ROSEMARY BAKER
- FRANCES BINGHAM
- GERALDINE BOWEN
- PAULINE BREWSTER
- CLAUDIA BUSSEY
- LEILA CALLENDER
- KATHLEEN CAMPBELL
- HILDA CARROLL
- DOROTHY CLARK
- SUE COPPAGE
- EILEEN COX
- JEANNETTE COX
- DOROTHY DALTON
- MARGARET DALTON
- ELIZABETH DASHER
- PATSY DODGE
- BEVERLY DAUGHERTY
- ANNE DUNBAR
- HELEN DUNCAN
- SUE FENDER
- DOLLY GANNON
- SARA GARBUTT
- MARY WINN GREER

- PARDEE GREER
- DORIS HARPER
- MARY KATHRYN HARRELL
- BARBARA HARRIS
- LUCILE HITCHCOCK
- FRANCES HOWELL
- ERNESTINE ISBELL
- MARTHA JOHNSTON
- MAYBELL JONES
- LAMAR KENDALL
- HELEN LANDEY
- ELOISE LINEBERGER
- ALICE MANN
- ROBERTA MARTIN
- ANNA MATHEWS
- SUSIE MATHEWS
- SARA MATHIS
- DOROTHY MORGAN
- ELEANOR MORGAN
- LILLIAN NEWHAM
- EMILY PARRISH
- MARY FRANCES PATTERSON
- MARTHA POWELL

- SARA MARTHA PYLE
- MARY EDNA RATLIFF
- THERON ROBERTS
- RUBY JEAN ROGERS
- MARGARET SIMS
- MARION SMITH
- CELESTE STUMP
- GLADYS STUMP
- LOUISE STUMP
- ROSALIND TAYLOR
- FRANCES THOMAS
- EVELYN TOMLINSON

- KATHRYN TOOLE
- PENELOPE TULLIS
- ANNE TURNER
- GRACE VAN LANDINGHAM
- CAROLINE WILLIAMS
- MARTHA GORDON WILLIFORD
- ADELAIDE WILLIS
- DOROTHY MAE WILSON
- ORA KATE WISENBAKER
- WILLELLA YOUMANS
- NELL ZIPPERER





DURRENBERGER



HOWELL



BRAY



JOHNSON

# The ALUMNAE ASSOCIATION

In order that graduates of this college might not be denied the privilege of continuing their active interest and participation in the progress of their Alma Mater, it has been the purpose of the Alumnae Association to keep the previous graduates in close contact with the college as it is today.

To encourage this continued interest the Association has furnished two lovely rooms in the new dormitory for the use of any member of the Association when she returns to the campus, and the dormitory staff maintains a feeling of "open-house" for any returning student. Another attractive project is the tennis court that has been set up and equipped for the exclusive convenience of members of the association.

Since the privilege of active membership is granted to anyone having received a diploma or degree from G. S. W. C., an impressive ceremony was held at commencement to welcome the new members into the association.

In addition to the mentioned projects, the association sponsored a luncheon at the meeting of the Georgia Educational Association held in Savannah, a Valentine Party, and an Alumnae luncheon at Commencement.

## OFFICERS

- HAZEL JOYNER DURRENBERGER . . . . . President
- LOUISE ODOM HOWELL . . . . . Vice-President
- CLAIRE BRAY . . . . . Secretary
- GLENN BLACKWELL JOHNSON . . . . . Treasurer

## CHILDREN OF ALUMNAE

- I. PEGGY, JOHN, AND JOE WARREN  
Children of Dr. and Mrs. J. A. Durrenberger  
Alumna—Hazel Joyner Durrenberger
- II. HAROLD GULLIVER, JR.  
Son of Dr. and Mrs. Harold S. Gulliver  
Alumna—Augusta Rentz Gulliver
- III. ANN SMITH  
Daughter of Mr. and Mrs. Frank S. Smith  
Alumna—Lena May Converse Smith
- IV. NANCY AND CHARLES SANDERS  
Children of Mr. and Mrs. C. R. Sanders  
Alumna—Virginia Hightower Sanders





GREEN



RICKS



HUDSON

# The MATH-SCIENCE CLUB

Opportunity to work out phases of those scientific projects in which the members are most interested is the aim of the Math-Science Club. In order that this may be done to advantage, the club is divided into three groups: mathematics, chemistry, and biology. Each group has its leader, although all are under the supervision of the president.

The mathematicians made geometrical constructions as aids to teaching geometry, and presented a play entitled ALICE IN DOZENLAND. The chemistry group made field trips to local industrial plants where chemical processes were observed. The biology division had as its project the building of a rock garden and fern bed.

The entire club meets regularly every month at which time programs and socials are held. Several off-campus speakers appeared before the club; movies on scientific subjects and reports from current scientific magazines and books formed the programs at various meetings.

A Hallowe'en Masquerade Ball was given by the club for the purpose of adding to the gate-fund initiated by this organization. The year's activities were brought to a close by the annual picnic in May at Twin Lakes.

## OFFICERS

- ELIZABETH GREEN . . . . . President
- ESTELLE RICKS . . . . . Vice-President
- MARY HUDSON . . . . . Secretary-Treasurer

## MEMBERS

- |                   |                      |
|-------------------|----------------------|
| ANNIE ADAMS       | MARTHA JOHNSTON      |
| EMMA AMBOS        | SUSIE MATHEWS        |
| BERNICE ANDREWS   | RUTH RHYMES          |
| CAROLYN ASKEW     | ANNA RICHTER         |
| RUTH BUNN         | MELBA SLADE          |
| BILLIE COLLINS    | GRACE VAN LANDINGHAM |
| PATSY DODGE       | CATHERINE WILSON     |
| ELIZABETH GARBUTT | DODY WILSON          |
| MARTHA GAY        | MARGARET WADE        |
| LOIS HAFFORD      | MAYME WITHOLDER      |
| CHRISTINE HIERS   | VIRGINIA ZIPLIES     |
| MARTHA JOHNSON    |                      |

## HONORARY MEMBERS

- |                      |                     |
|----------------------|---------------------|
| DR. LENA HAWKS       | DR. BEATRICE NEVINS |
| MISS MARJORIE CARTER | DR. EARL PHELAN     |
| MISS JANIE BUSH      | DR. MARIAN FARBAR   |

The president is a naturalist at heart

Mathematical minds

Chemists ready for a field trip

The biologists gather for a field trip







TURNER



GAY



ANDREWS

# The FINE ARTS CLUB

Having as its purpose the development of aesthetic appreciation, the Fine Arts Club has arranged this year's program to include not only the club members, but also the student body and the community in a series of exhibits. These exhibits were paintings by Southern artists, water colors loaned by the Treasury Department Art Project, soap sculpture, and a collection of costume designs.

In the interests of its members, girls who have artistic ability and sincere interest in art, the club studied modern illustrators, worked in soap sculpture, and gave the annual Christmas Bazaar. The club also went on a trip which included Silver Springs, Florida, Lake Wales, Florida, and the Ringling Art Museum at Sarasota, Florida.

## OFFICERS

- ANNE TURNER . . . . . President
- MARTHA GAY . . . . . Vice-President
- BERNICE ANDREWS . . . . . Secretary-Treasurer
- MISS FRANCES RUTH CARPENTER . . . . . Adviser

## MEMBERS

- MARY ASKEW
- FRANCES BINGHAM
- EDITH BRAWNER
- SUE COPPAGE
- ELIZABETH DASHER
- CAROLYN FOLSOM
- RUTH GARBUTT
- ELIZABETH GREEN
- PARDEE GREER
- DORIS HARPER
- ERNESTINE HENDRY
- FRANCES HINES
- ERNESTINE ISBELL
- ROSALIND LANE
- LANELLE LANG
- ELOISE LINEBERGER
- LILLIAN NEWHAM
- EMILY PARRISH
- MARGARET SIMS
- ELIZABETH WADE
- CAROLINE WILLIAMS
- GORDON WILLIFORD
- DOROTHY MAE WILSON
- EMILY WOOTTEN

Bargaining at the Fine Arts Bazaar





JOUBERT



BRAGG



WILSON

## The ATHLETIC CLUB

The Athletic Club is divided into two athletic organizations, Phi Kappa and Phi Lambda, for the purpose of friendly competition. The purpose is to promote an effort for physical efficiency to stimulate an interest in athletics and games, to foster high ideals and a spirit of good sportsmanship. The club cooperates with other campus organizations in promoting and maintaining the highest standards of college life.

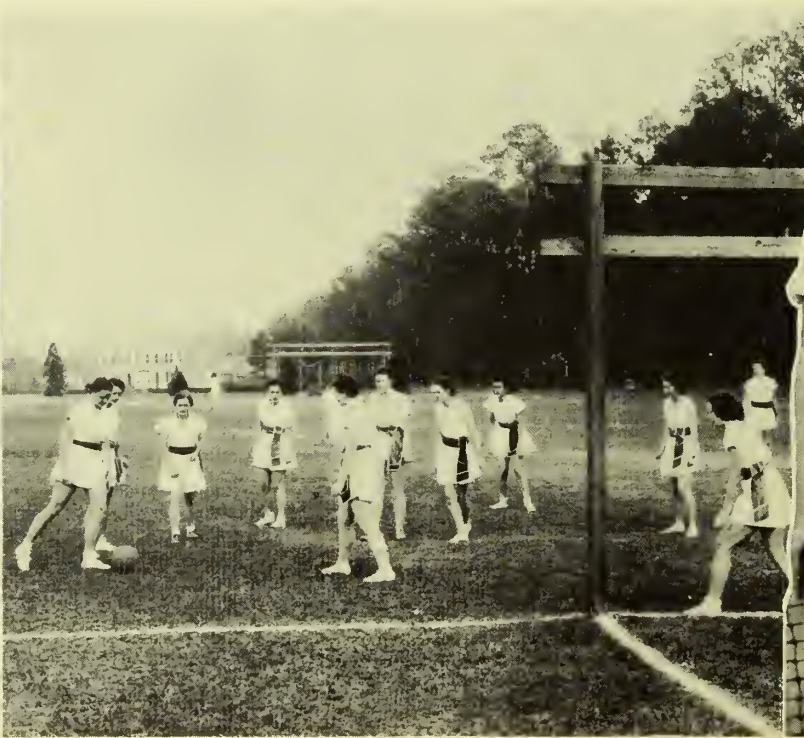
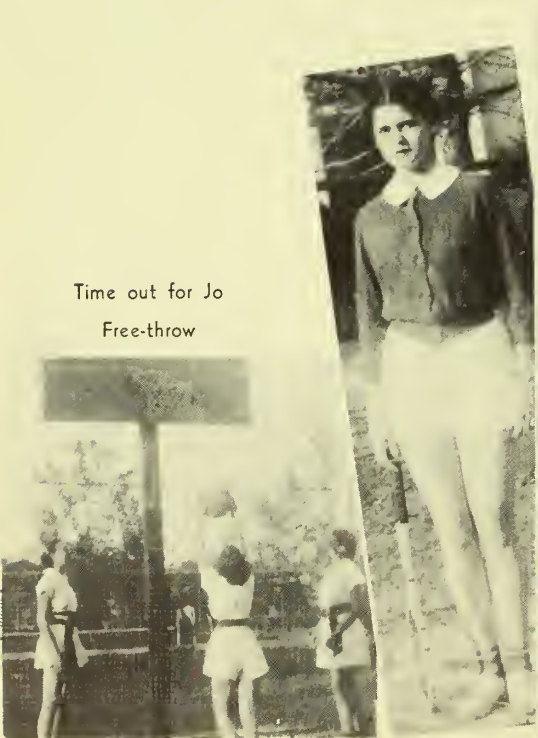
New members are taken into the club after they have demonstrated an active interest in the club and obtained a satisfactory scholastic record for one quarter. The initiation week in January is characterized by the spirit of fun, and is a test of sportsmanship of both old and new members.

During the year the club carries on organized sports, including fistball, basketball, American ball, and baseball, as well as archery, tennis, croquet, deck tennis, and horseshoe. Goat contests and tournaments serve to make lively competition between the teams. This year the club sent eight delegates to the Sports Day held at the University of Georgia and to the Georgia Athletic Association for College Women.

The year's activities were concluded with a party at which the honor guests were those members of the club who have been outstanding during the year. Four awards are given: first year, athletic numerals; second year, club letter; third year, bracelet with association seal; fourth year, name goes on Association Plaque which hangs in the Rotunda. In order to be eligible for these awards one must not only fulfill the year's requirements, but it is also necessary that one have the preceding awards.

A goal for the Kappas

Time out for Jo  
Free-throw





COPPAGE



MORGAN



PERKINS

# The ATHLETIC CLUB

## OFFICERS

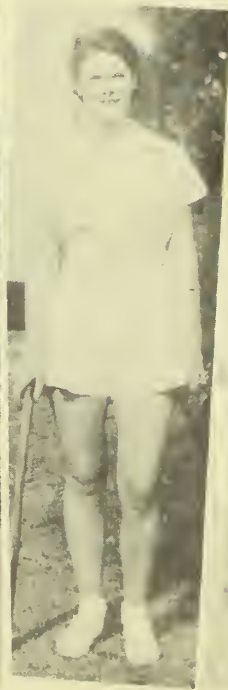
### Phi Kappas

- JOSEPHINE JOUBERT . . . . . President
- LILLIAN BRAGG . . . . . Vice-President
- MAUELLE WILSON . . . . . Secretary-Treasurer

### Phi Lambdas

- SUE COPPAGE . . . . . President
- SARA ELLEN MORGAN . . . . . Vice-President
- DORA IDA PERKINS . . . . . Secretary-Treasurer

Lambdas ring a basket



Sue goes to bat  
Spin for sides





In the ring



Anna follows through



Huddy tees off

# The ATHLE

Homerun!



Ivey poses



Vincent watches as Mathis scores

Smiles after a tumble

# I C C L U B

## IN ACTION

Fistball interest





FLUKER



CARSON



WILLIAMS

# The ENGLISH CLUB

Some years ago when the need was felt for a club that would center the literary interests of the students in one organization, the English Club was formed with membership open to those taking their major and minor hours in English.

Since then it has incorporated the values of a broader literary field. Beginning the work of this year with the incentive of last year's successful program, which culminated with a luncheon at which Mildred Sydell was the guest speaker, the members of the club have made active contributions to campus life.

A Reader's Forum was organized. The purpose of this group, meeting on alternate Sundays, has been to provide an opportunity for free discussions of current books, plays, movies, directors, and authors, under the supervision of an appointed chairman who selects the topics and posts available material.

## OFFICERS

- FRANCES FLUKER . . . . . President
- FRANCES CARSON . . . . . Vice-President
- RUTH WILLIAMS . . . . . Secretary-Treasurer

## MEMBERS

- MARY ASKEW
- ANNE BROOKS
- ELIZABETH DASHER
- ALEXA DALEY
- THERESA GRAHAM
- LOTA GRIFFITH
- MARY KATHRYN HARRELL

- LORENE JOHNSON
- MARY JOHNSON
- PRISCILLA KELLEY
- LAVENIA LASSITER
- KATHERINE MOORE
- ELOISE OGLETREE
- MYRTLE PARKER
- EMILY PARRISH

- MARTHA POWELL
- ESTELLE RICKS
- ESTHER SMITH
- ETHEL STALLINGS
- KATHRYN TOOLE
- ELISABETH WADE
- CAROLYN WHIPPLE

## HONORARY MEMBERS

MISS GERTRUDE GILMER

MISS LOUISE SAWYER

DR. HAROLD GULLIVER

Scenes from an Open Forum





BENNETT



PYLE



KELLEY

# The PHILHARMONIC CLUB

Membership in the Philharmonic Club this year has been limited to students in the music department only. Try-outs were held in the fall for those eligible.

The principle project of the year has been a detailed study of the life and activities of Paderewski and reports on the current outstanding musical events.

The club is interested in sponsoring programs of classical music, for it encourages only the best types of music.

## OFFICERS

- EDITH BENNETT . . . . . President
- SARA MARTHA PYLE . . . . . Vice-President
- JOHNNIE MAE KELLEY . . . . . Secretary-Treasurer

## MEMBERS

- MARGARET CARTER
- BILLIE COLLINS
- BEVERLY DAUGHERTY
- MADELINE DOUGLAS

- HELEN DUNCAN
- SUE NELLE GREENLEE
- MARY WINN GREER
- BARBARA HARRIS

- ELEANOR MORGAN
- ELISE O'NEAL
- BILLIE PATTEN

- ANNETTE PHILLIPS
- LAURA MAE SHINKLE
- LERAH SUTTON
- ROSALIND TAYLOR





BRAGG



WILLIAMS



RICHTER

# The SOCK AND BUSKIN CLUB

Building the work of this year around one major production, the Sock and Buskin Club concerns itself with monthly meetings where the art of dramatics is discussed and experimented with, from the first layer of make-up, through the devices of proper lighting, and on to the ultimate end,—the true interpretation of drama. The members work by example and by practice. Four of the meetings were devoted to the production of one-act plays, directed by members of the Club, and the other meetings were given to lectures and demonstrations on the technicalities of dramatic art.

The spirit of the Dramatic Club is much like that of the now prevalent Little Theatres,—a desire to help create and maintain a national drama.

Work of the Club this year was climaxed by the production of Sierra's "The Cradle Song." Then, to give the lighter side of drama free-play, they sponsored the hilarious frolic, given annually, in which all members are required to take part.

Five members of the Club were cast in the Emory production, "A Scrap of Paper," by Sardou, and other members have given their work to programs both on and off campus.

### OFFICERS

- LILLIAN BRAGG . . . . . President
- RUTH WILLIAMS . . . . . Vice-President
- ANNA RICHTER . . . . . Secretary-Treasurer
- MISS LOUISE SAWYER . . . . . Director and Adviser

### HONORARY MEMBERS

- MISS SAWYER
- MISS IVEY
- MISS GILMER
- DR. GULLIVER
- DR. PHELAN

- LOUISE BELL
- BEVERLY DAUGHERTY
- ROSAMOND DOWLING
- RUTH ELLIOTT
- FRANCES FLUKER
- THERESA GRAHAM
- DORIS HARPER
- EILEEN HYLAND
- ERNESTINE ISBELL

### MEMBERS

- MARTHA JENNINGS
- LORENE JOHNSON
- MARIAN JOHNSON
- MARY JOHNSON
- JOSEPHINE JOUBERT
- CAROLYN KAY
- PRISCILLA KELLEY
- ELIZABETH KELLEY
- CATHERINE MORGAN

- ETHEL STALLINGS
- LYLBURN WARREN
- RUTH WHISONANT
- CATHERINE WILSON
- MAUDELLA WILSON

- MILDRED WILSON
- EMILY WOOTTEN
- NELL ZIPPERER
- VIRGINIA ZIPPLIES

Freda: "MISS Roberts, please! You kids are too free by half!"





Lines from Sock and Buskin production, NINE TILL SIX by Aimee and Philip Stuart

Bridget: "But you must come. It's arranged. You'll let the whole party down if you don't."

M'selle: "But that is the way I mak' my hat. I cannot alter the crown."

Gracie: "It's either that or being a typist. I don't want to sit typewriting all the rest of my life."

Judy: "Is it something darling Dickie told you to read or are you just improving your mind?"

Lady Avonlaye: "Young people are so dreadfully impatient nowadays. But I shall mind less, knowing she's with you."

Freda: "I stole them because I wanted to have pretty things to wear—so I could look decent on a holiday."





RYCROFT

GAY

McLAIN



McLEOD  
MATHEWS

## The INTERNATIONAL RELATIONS CLUB

To foster a spirit of impartiality in reference to national and international affairs of the present time and to give an opportunity for study and discussion of these issues are the aims of the International Relations Club. In order to benefit history majors this club offers a scholarship fund to its senior members.

In the last year the Club has brought to the campus a series of moving pictures which have stimulated interest in international affairs. The meetings have been made more attractive by round-table discussions, and the innovation of panel discussions. This method was used when two members of the I. R. C. worked with two members of the Emory Junior College I. R. C. to present the latest information on Fascism and on Communism to a meeting of the local division of the American Association of University Women held during the Winter Quarter.

This year records and information regarding the Club have been filed for future reference.

Five delegates were sent to the Sixth Southwestern International Relations Club Conference at Alabama Polytechnic Institute in Auburn, Alabama.

### OFFICERS

LAURA McLEOD . . . . .	President
CAMILLE RYCROFT . . . . .	Vice-President
FRANCES McLAIN . . . . .	Secretary
MARTHA GAY . . . . .	Treasurer
ANNA MATHEWS . . . . .	Member-at-Large
MISS MILDRED PRICE . . . . .	Club Adviser

### MEMBERS

CLAUDIA BUSSEY  
 JULIA CASEY  
 DOROTHY CLARK  
 MARY HARGRAVE  
 TRECY LONG

BESSIE LEWIS  
 SARA ELLEN MORGAN  
 CATHERINE WILSON  
 MARION JOHNSON





OLLIFF



VINCENT



PARRISH

# The FRENCH CLUB

The French Club endeavors to inspire its members, as well as the students of the college, with a love of the French language and literature, and to bring to the campus a cultural atmosphere.

This year the Club's outstanding production was the modern comedy, "L'Anglais tel que qu'on le parle," by Tristan Bernard, which was presented in the Spring. Activities for the year also included an extensive study of the Seventeenth Century and the Age of Romanticism in French literature, as well as plans for making the French room more attractive through additional pictures and maps.

## OFFICERS

- PERMELIA OLLIFF . . . . . President
- VIVIAN VINCENT . . . . . Vice-President
- EMILY PARRISH . . . . . Secretary-Treasurer

## MEMBERS

- EDITH BENNETT
- LILLIAN BRAGG
- ANN BROOKS
- LEILA CALLENDER
- ALEXA DALEY
- CAROLYN GREENE

- LOTA GRIFFITH
- MARY KATHRYN HARRELL
- MARTHA JENNINGS
- JOSEPHINE JOUBERT
- ELIZABETH KELLEY

- LAVENIA LASSITER
- JUNE LAWSON
- ELOISE OGLETREE
- ANNA RICHTER
- CAROLYN WHIPPLE



Vincent and Olliff



Entre Nous





ALEXA DALEY

LILLIAN BRAGG

JOSEPHINE JOUBERT



PERMELIA OLLIFF  
ELIZABETH GREEN

## The SENIOR HONOR SOCIETY

An organization new to the campus, but one which hopes to become, after a period of probation, a national organization, is the senior honor society. It is with this in view that the program of service on the campus is being carried on. This program is designed to reward scholarship on the campus. At the end of each year a medal is to be awarded the senior who has completed her four years' work at this college with the highest scholastic standing. It is hoped that this award will encourage outstanding students to continue their studies here.

Students are eligible for membership after two and one-half years of work in the college, and are elected to the group on a basis of scholarship, leadership, and personality.

MARTHA JENNINGS  
LAURA McLEOD

EMMA AMBOS

### FACULTY ADVISERS

MISS GERTRUDE GILMER MISS FRANCES RUTH CARPENTER DR. J. A. DURRENBERGER

### OFFICERS

PERMELIA OLLIFF	.....	President
ALEXA DALEY	.....	Vice-President
LILLIAN BRAGG	.....	Secretary
JOSEPHINE JOUBERT	.....	Treasurer
ELIZABETH GREEN	.....	Editor





RICHTER



WILSON



BUSSEY



SASSER

JOHNSON

# The FRESHMAN HONOR SOCIETY

Paralleling the organization started by the Seniors, the Freshman Honor Society has been organized so that Sophomores who have made an average of B or above in their academic work during their entire Freshman year become members.

The purpose of the society is to create a favorable attitude toward high scholastic standing and to enter into some definite service program on the campus.

If the members maintain their standards, it will serve as an eligibility requirement for the Senior Honor Society.

## OFFICERS

- ANNA RICHTER . . . . . President
- CATHERINE WILSON . . . . . Vice-President
- CLAUDIA BUSSEY . . . . . Secretary
- CLARA MAE SASSER . . . . . Treasurer
- MARIAN JOHNSON . . . . . Historian
- EMMA AMBOS . . . . . Senior Adviser
- MARJORIE CARTER . . . . . Faculty Adviser

## HONORARY MEMBERS

- MISS MILDRED TURNBULL
- MISS LOUISE SAWYER
- DR. HAROLD H. GULLIVER
- CAROLYN ASKEW
- JULIA CASEY
- MARY HUDSON
- TRECY LONG
- HAZEL MUGGRIDGE
- CATHERINE O'NEAL
- GRACE VAN LANDINGHAM
- HAZEL WOODARD



## MEMBERS

- CAROLYN ASKEW
- JULIA CASEY
- MARY HUDSON
- MABEL JONES
- TRECY LONG
- HAZEL MUGGRIDGE
- CATHERINE O'NEAL
- GRACE VAN LANDINGHAM
- HAZEL WOODARD



# CHRISTMAS FESTIVAL

This feast, dating from the first Christmastide of the College, was instituted in the desire to enrich the life of the students by leading their emotions to flow in the deep channels of social custom which flow down from the joyful infancy of our people.

The spirit of the festival is Old English and the dances, costumed guests, decorated Feast Hall, as well as the social set-up of Lord, Lord of Misrule, and Court Fool, with heralds, yule log, and Boar's Head, all conform to the Old English Christmas celebration.

The evening proceeds from the comic and ludicrous to the quaint and humorous, and then on to the grace and beauty of the stately minuet as danced by the lords and ladies. The music passes from folk songs to religious carols, and as the student body leaves the baronial hall they march out to the strain of "Silent Night, Holy Night."

The festival is the official closing of college for the Christmas holidays.



The Music Box

Marionettes' Romance



Playing At Hobby Horse





Ye Minuet . . . Lords and Ladies



Impish Pranksters . . . Ye Fool's Underlings



"There Come Three Knights A-riding"



Lord of Misrule, Ye Fool and Pages



# MAY DAY

From time immemorial peoples have expressed their emotions and feelings in the dance and festivals, and to reawaken these feelings of the race, the Christmas and May Day festivals of the College are among its most cherished traditions.

The May Day Festival is a particularly happy occasion since it celebrates the coming of spring with its promise of new life. The May Court, ruled over by the queen elected from the senior class, is held on the green in front of Converse Hall. After the queen is crowned there follows a colorful program of dances for the pleasure of Her Highness, the court, and the guests. All of the classes are represented in these dances and activities.

The dances for this May Day were suggestive contributions of various times and peoples as expressed in the dance.

The festivities reached a climax with the winding of the May Poles. After this the Queen left her throne and was paid homage by her legal subjects as she passed them.

LOWER PICTURES:

## THE QUEEN AND HER COURT

Amanda Barksdale, Frances Carson, Frances Fluker, Martha Franklin, Frances Garbutt, Ernestine Isbell, Catherine Morgan, Carol Peeples, Lylburn Warren, Martha Sue Williams.

Clouds delicately tinted, playing, and weaving figures across the sky on a spring day.



QUEEN O' THE MAY . . . MISS MYRA HACKETT  
The May Queen is selected from the Senior Class by the student body.





Ladies in Waiting to the Queen



MISS MYRA HACKETT  
Queen

MISS BILLY HAM  
Maid of Honor



LOWER PICTURES:

Sea Shells (Chalif) Dancing Maidens of Greece  
Floating mist-bubbles—a rainbow—the blue of  
the sea—the sea shell's song—springtime  
and joy.



# MAY



Exit the Queen



Taking the Oath



Throwing the Discus

## LOWER PICTURES:

As the Gallant Englishman chooses his  
Shepherdess

Over the Oregon Trail



# DAY

Winding the May Poles



Said the Young Swiss Mountain Climber:  
"Come climb upon my knee."



LOWER PICTURES:

Scene from the Gay Nineties

Won't you buy a spray of flowers gay?



# PLAY



Picnicking on Back Campus



The Play-day Breadline

LOWER PICTURES:

Visitors Enjoy Play-day Lunch

The Pause Between Play-day and May-day

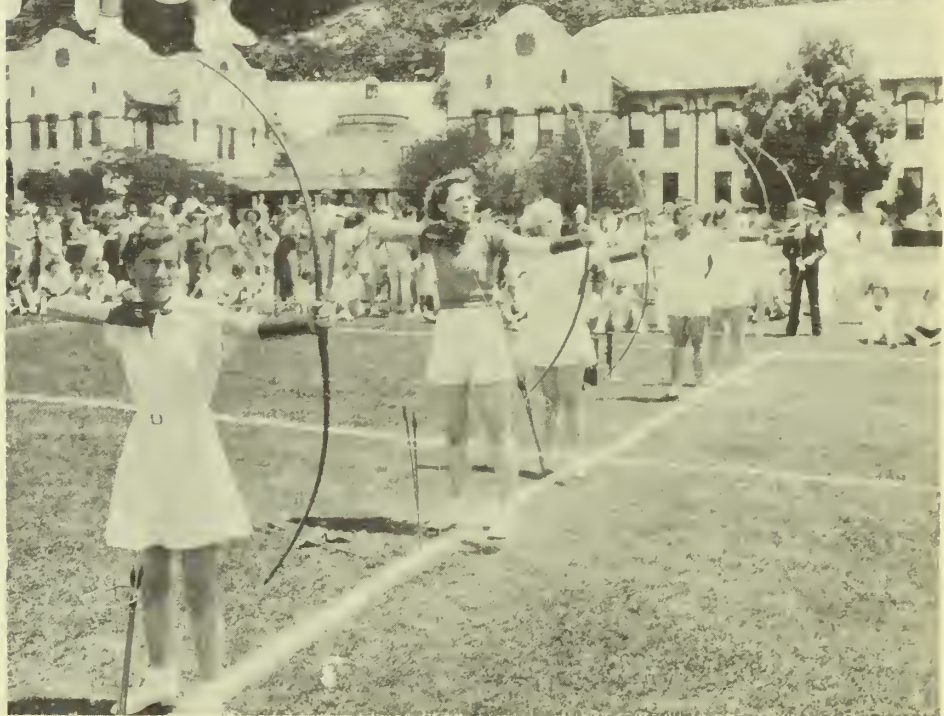


# DAY

Ready to Serve the Players



Archers at Full Draw—Look Out Bull's Eye!



LOWER PICTURES:

Next in Line for Lunch

Drinking a Toast of Health to the Spring



ARTIST'S



**CORNELIA  
OTIS  
SKINNER**

IN HER ORIGINAL  
**MODERN MONOLOGUES**

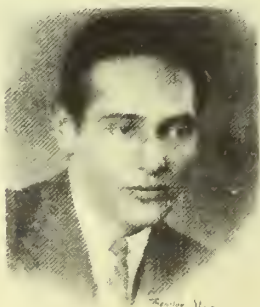
"Wickedly, devastatingly, true to life."  
London Express

Under Direction of J. F. REILLY, 1430 BROADWAY N. Y. C.

*Frank Kneisel*  
*John Alden*  
*Robert Turner*

*Cornelia Otis Skinner*

**KNEISEL**



ONE of the outstanding facts about Frank Kneisel is that he has made a distinguished name for

**ALDEN**



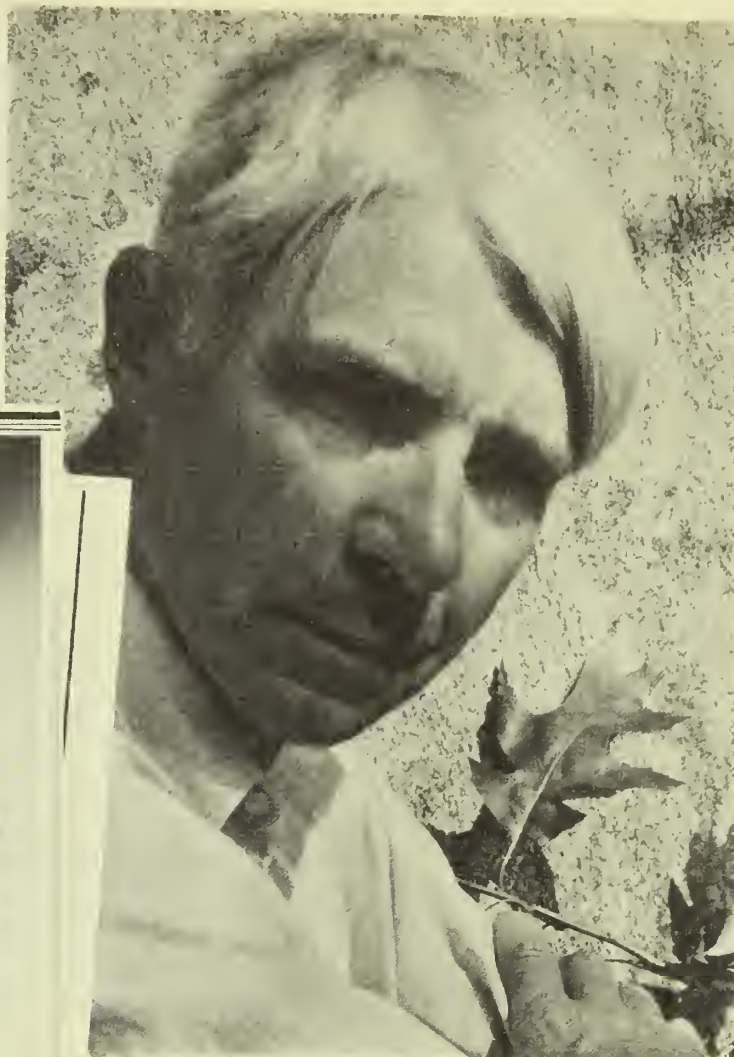
JOHN ALDEN as a boy in the nation's capital studied several instruments, including violin, piano and flute.

**TURNER**



ROBERT TURNER has been acclaimed in the United States as an outstanding American pianist. He

SERIES



**CARL  
SANDBURG**

EXCLUSIVE MANAGEMENT  
**V. Colston Leigh, Inc.**  
21 FIFTH AVENUE  
NEW YORK

ELIZABETH  
**WYSOR**

AMERICAN  
CONTRALTO

*Gro. H. Opdyke*

**ART and NATURE  
APPRECIATION**  
H. OPDYKE, M.A., Ph.D.

*Elizabeth Wysor*

**C. RAY SMITH'S**  
Famous Olvera Street  
(DIRECT FROM LOS ANGELES)

**MARIONETTES**

Mark Twain's Immortal

**HUCK FINN and TOM SAWYER**

HILARIOUS COMEDY DRAMA

## AROUND THE CAMPUS

You look at these today and laugh—twenty years from now that laugh will be mellowed with a trace of a tear for the lost youth captured for the instant in these lively snapshots.

Freshmen Decorate for May-Day

Knitting Away Their Free Time

Afternoon Shadows In Front of Converse Hall

Leroy and the Boar's Head

Typical Saturday Morning At South Converse

LOWER SNAPS:

Making Friends With Annie

Freshmen Going Home for Week-End

Attention Fists! The Ball Is Coming





# WITH A KODAK

Where and Oh Where Is That Hat?

Waiting for the Afternoon Mail

Between Classes

Two Figure 8's on Skates

Chappie Wants To Be "Next"

Chief Characters of the 1890 Party

How Brookwood Joe Saves the Day

Saturday Morning Chat—Ashley Hall

Ruth and Mary Start for a Stroll



LOWER SNAPS:

Strike Three and Out!

Admiring January Azalea Blossoms

The Four Blonde Blues Babies



## FEATURE PERSONALITIES

Often when students have been chosen  
From their classes, they have been chosen as  
Superlatives.  
But this class is building my pages concerning women in the  
world;  
They have considered the seniors from all life-phases,  
And herein are  
Included those whom they judged  
On the intangible merits of quality—  
Those who will incorporate their gifts  
With appreciation and discrimination,  
Who will have loyalty and tact and reverence—  
Ability to lead and to follow;  
Combining these with broad interests and  
An eagerness for life that will embrace  
Intellect, tolerance, self-control, cooperation  
As well as social-mindedness and sympathy.  
Eight girls have been chosen by their class  
To have, above all else, responsibility.  
These I look on with love.

— *The Pine Cone* —





---

*F e a t u r e s*



*Miss Emma Ambos*

---



*Miss Elizabeth Green*

---



*Miss Lorene Johnson*

---



*Miss Priscilla Kelley*

---



*Miss Estelle Ricks*

---





*Miss Permelia Olliff*

---



*Miss Alexa Daley*

---



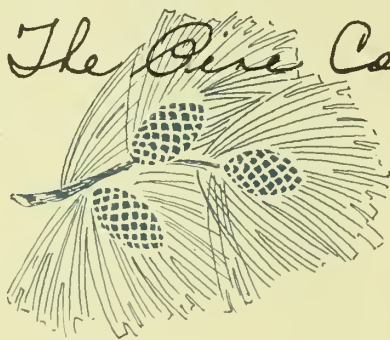
*Miss Ruth Williams*

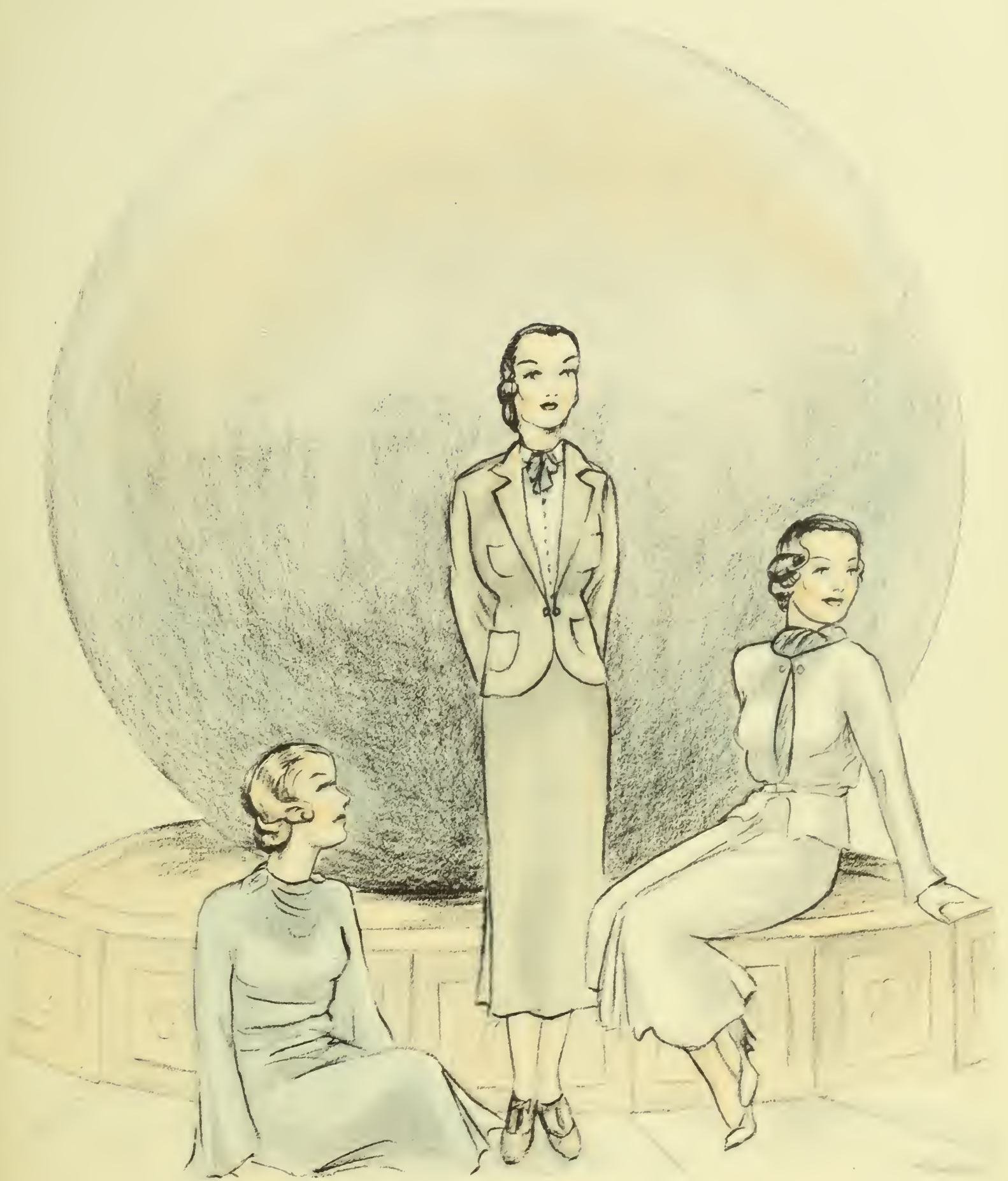
---

## IN RETROSPECT

Remembering the graduates who have gone,  
I have a feeling that belonged to the ancient prophets.  
When I hear of those students, what they are doing, how they  
are living  
I turn to the new classes,  
Wondering where they will go from here.  
Then it is that a secure feeling built by successful alumnae  
Replaces my doubts, and I know in my heart  
What happens to all our students—  
Though they take their degrees into the world,  
Something of them will remain with the college,  
And something of the college will flavor their lives and thoughts  
always;  
So when time counts this generation of women as gone,  
A delicate memory will prevail  
Of the work they did and the personalities they made.  
A delicate memory—as essential and sure to this campus  
As new buildings and growing enrollment;  
As soft breezes and warm sunshine.

— The Pine Cone —





*Advertisements*

★ *Patrons' Page* ★

Bennett's Drug Store

Brookwood Pharmacy

Carl's Soda Shoppe

C. C. Varnedoe and Company

Churchwell's Department Store

City of Valdosta

Coca-Cola Bottling Company

Foote and Davies Company

Foremost Dairies

Georgia Power and Light Company

Henry Messer, Inc.

Hotel Daniel Ashley

John Oliver Service Station

Mathis and Youmans Company

McCrary's

McElvey-Futch Company

Oliver and Twitty

Ritz Theater

S. H. Kress and Company

Southern Stationery and Printing Company

Star Laundry

Thompson and Girardin

W. T. Grant Company

Veran Blackburn

**BENNETT'S DRUG STORE**

*The Rexall Store*

TOASTED TASTY SANDWICHES     /     ICE CREAM and CANDY  
VALDOSTA, GEORGIA

**CHURCHWELL'S DEPARTMENT STORE**

College Girls' Headquarters

**RITZ THEATER**

*Quality Entertainment*

ONE OF FIFTY MARTIN THEATERS

**SOUTHERN STATIONERY and PRINTING COMPANY**

*Wholesale Paper Dealers*



*Commercial Stationers     /     Printers     /     Office Outfitters*



VALDOSTA



GEORGIA

Compliments of

**FOREMOST DAIRIES**

VALDOSTA, GEORGIA

Compliments

of

**GEORGIA POWER and LIGHT COMPANY**

**JOHN OLIVER SERVICE STATION**

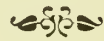
Firestone Tires

Amoco Products

Phone 231

We are proud of the

*Georgia State Womans  
College*



We are glad to take this occasion to say

that the

*City of Valdosta*

is proud to list among its greatest assets the  
GEORGIA STATE WOMANS COLLEGE,  
and we hope that Valdosta as a city makes a  
favorable and lasting impression on the  
minds of the young ladies who make up the  
student body of this great institution.



SODAS      ✓      SANDWICHES      ✓      MEALS

**CARL'S SODA SHOPPE**

110 West Hill Ave.

Compliments  
of  
**HOTEL DANIEL ASHLEY**

**THOMPSON and GIRARDIN**

*Jewelers*

120 North Patterson Street

VALDOSTA

✓      GEORGIA

*Serving Valdosta for more than a third of a century    ✓    ✓    ✓    ✓    ✓*

Here's to our good friends—The G. S. W. C. Girls



**STAR LAUNDRY**

Dry Cleaners



Rug Cleaners

Phone 54



*We serve to please and we are pleased to serve*

**MATHIS and YOUMANS COMPANY**

PIANOS



VICTROLAS



RADIOS

*Everything in Music*

**C. C. VARNEDOE and COMPANY**

*"Valdosta's Store Dependable"*

Ladies' Apparel and Accessories

**BROOKWOOD PHARMACY**

Where College Girls Meet    ✓    ✓    ✓



Where College Girls Eat



---

VERAN BLACKBURN  
PHOTOGRAPHER FOR  
PINE CONE . 1937

---



Compliments of  
**W. T. GRANT COMPANY**  
1c to \$1.00 Junior Department Store

**HENRY MESSER, INC.**  
Sales ' Ford ' Service  
Telephones 144-145  
VALDOSTA :: GEORGIA

Compliments of  
**COCA-COLA BOTTLING WORKS**  
VALDOSTA, GEORGIA ' H. F. HOLMES, *President*

Compliments  
of  
**S. H. KRESS and COMPANY**

5c, 10c and 25c Store

Shop at  
**OLIVER and TWITTY**  
Ladies' Wearing Apparel

Compliments of  
**McCRORY'S**  
Five and Ten Cent Store

Compliments  
of  
**McELVEY-FUTCH COMPANY**

# *In Printing*

THERE ARE MANY REASONS WHY  
SUCCESSFUL ANNUALS REQUIRE  
THE SERVICES OF EXPERIENCED  
AND EXPERT CRAFTSMEN

## FOOTE & DAVIES CO.

HAVE THESE SERVICES . . . *and*  
*the most necessary components of*  
*all really fine books including*  
A SPECIAL ANNUAL SALES  
AND SERVICE ORGANIZATION  
CREATIVE DESIGNERS AND  
LAYOUT ARTISTS • ABUNDANT  
EQUIPMENT . . . MODERN AND  
COMPLETE • PRICES REPRESENTING  
MAXIMUM IN VALUE



ATLANTA  
GEORGIA









*The* PINE CONE  
1937

Aerial View of the Georgia State  
Womans College at Valdosta, Georgia

