

June 1938



# PINEALONE







BLACKBU



Digitized by the Internet Archive  
in 2014

<https://archive.org/details/pinecone193800geor>

Pardee Greer

*Life*

AT THE GEORGIA



1938 EDITION  
VALDOSTA, GA.

STATE WOMANS COLLEGE

PRESENTED BY  
THE SENIOR CLASS  
IN THE ANNUAL  
PUBLICATION OF THE

*Pine Cone*



## *The Pine Cone Aims . . .*

To bring in review life at the college as it has been the experience of each student;

To present in formal and informal glimpses those who comprise the college community—from the oldest faculty member down to the youngest student;

To serve as a scrapbook of the year's work and play—for the present and for the years to come;



To preserve the high-spots of the year with a happy balance between the past and the future;

To be cognizant always of the fact that we, of the Senior Class, are merely a link in the history of the school—the 25th link—and that, as such, we attest the growth or the decline of the institution in its fullest meaning to its students.



# *This Is School Life . . .*

## I. COLLEGE

CAMPUS VIEWS, ADMINISTRATION, FACULTY

## II. CLASSES

SENIORS, JUNIORS, SOPHOMORES, FRESHMEN

## III. ACTIVITIES

STUDENT GOVERNMENT ASSOCIATION

Y. W. C. A.

PUBLICATIONS

PHILHARMONIC CLUB

GLEE CLUB

SOCK AND BUSKIN CLUB

DEPARTMENTAL CLUBS

VALDOSTA CLUB

ALUMNAE ASSOCIATION

HONOR SOCIETIES

SPORTS CLUB

CHRISTMAS FESTIVAL

ANNIVERSARY CELEBRATION

ARTIST SERIES

PLAY DAY

MAY DAY

## IV. FEATURES

SPOT-LIGHT PERSONALITIES

## V. ADVERTISEMENTS

LIGHTER LIFE

*WITH A VIEW TO THE COLLEGE—  
The campus, the administration, and the fac-  
ulty who advise students and direct their  
courses of instruction.*



C. Folsom

# The College

*With A View To The Campus . .*



ASHLEY HALL  
Dormitory and Dining Room

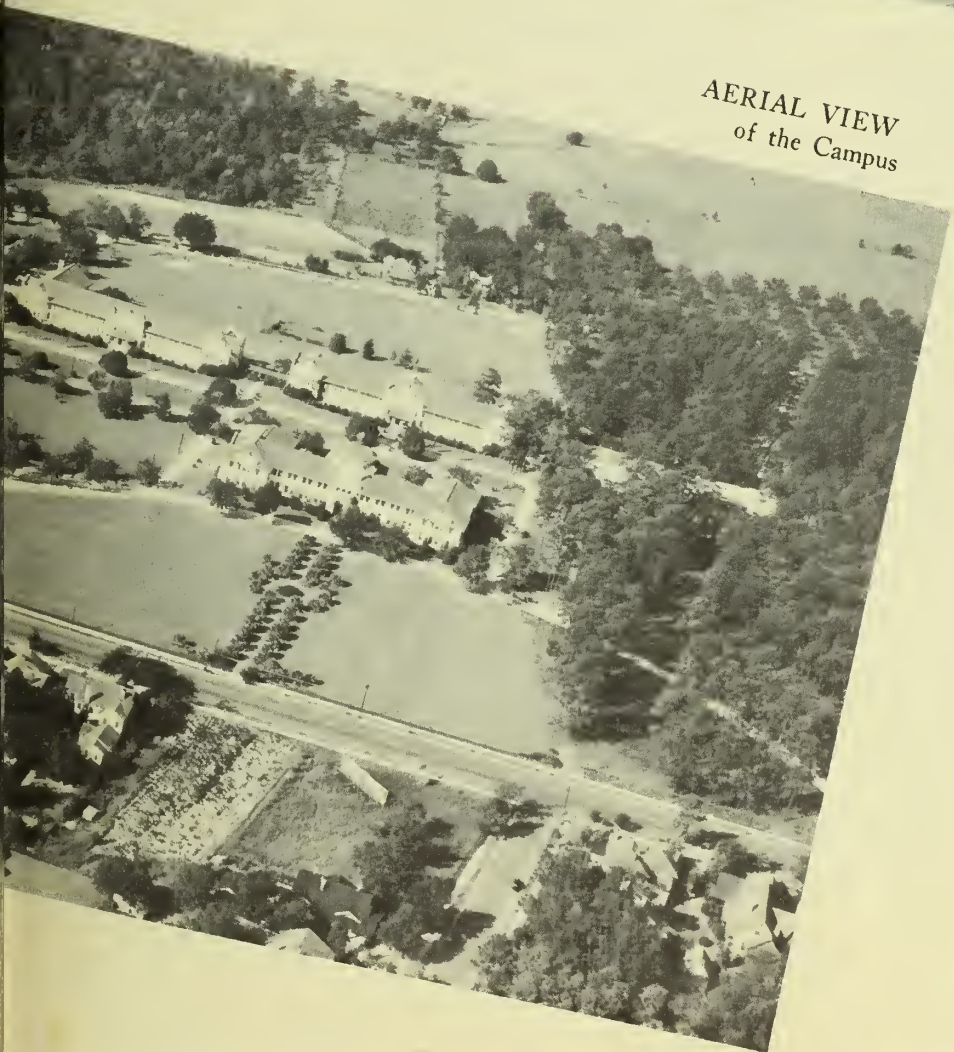


WEST HALL  
Administration Building

THE NEW DORMITORY  
With Auditorium and Recreation  
Room.



AERIAL VIEW  
of the Campus



CONVERSE HALL  
Freshman Dormitory

*And Some Favorite Spots . .*



THE ROTUNDA  
Tea with the Seniors





A RUSTIC BRIDGE  
Adjoining Campus in Azalea Time



A WOODLAND BRIDLE PATH  
An early morning out-of-doors for  
riding enthusiasts

*And Some Favorite Spots . . .*



MUSIC IN THE ROTUNDA  
Draws a crowd of admirers







**OUTDOOR FIREPLACE**  
*A picnic lunch, plus a day in Spring*



**BACK CAMPUS GOLF COURSE**  
*With a foursome in action*

# Administration



FRANK R. READE

*President*

B.A., M.A., Ph.D.—University of Virginia . . . former professor English at Georgia Tech . . . editorial writer for *Atlanta Constitution* 1923-24 . . . member Phi Beta Kappa, Phi Kappa Sigma . . . always understands students' point of view while keeping a "balance of sympathies" . . . likes: "people, places, animals—especially outdoors;" hates: "shrimp, crab, lobster—especially indoors."

ANNIE P. HOPPER

*Dean of Women*

B.S., Peabody College; M.A., Teachers College, Columbia University . . . advisor S. G. A., Valdosta Club, G. W. C. A. . . . interested in all happenings of campus from flower garden to Senior Honor Society . . . figures in Rotunda teas . . . official hostess for college . . . hobby—reading and traveling; admits no dislikes but always manages to have lunch downtown on hot-dog days in dining room.



# Administration



PERRY, DUSENBURY, THOMAS, LARSEN

## THYRZA PERRY

*Director of Placement Bureau and N. Y. A.*

A.B., Oglethorpe University . . . writes news articles about school events for the state papers . . . takes pride in her attractive office in the new dormitory . . . gives vocational advice to Seniors.

## JAMES ROBERT DUSENBURY

*Treasurer and Purchasing Agent*

Looks after repairs on the buildings, is general financial advisor to all, as well as Sunday postman . . . in addition, is secretary of the Valdosta Country Club . . . likes golf equally as well as he dislikes cats.

## CAROLINE PARRISH THOMAS

*Registrar*

Graduate of G. S. W. C. . . . broke ground for building West Hall in training-school days . . . has numbers of all courses at the tip of her tongue . . . though one of the busiest people on campus, she says her pet dislike is physical exercise.

## MILDRED LARSEN

*Assistant to Treasurer and Cashier of Student Bank*

G. S. W. C. graduate . . . always on hand at artist programs . . . likes travel, especially European . . . can be seen on fair mornings peddling her bicycle to work . . . no violent dislikes.

## MILDRED MATHEWS TURNBULL

*Assistant to Dean of Women*

Graduate, G. S. W. C. . . . advisor to Y. W. C. A. . . . honorary member Sock and Buskin Club, Math-Science Club and Phi Kappa Sports Club . . . Sunday School teacher . . . sympathetic confidant of all students . . . rides horseback . . . hates cats.

## ELIZABETH LARISEY

*Secretary to the President*

Graduate, G. S. W. C. . . . famous for stories told in her inimitable style . . . finds homes for stray dogs and cats . . . hates cold weather and vegetables.

TURNBULL, LARISEY



# Faculty



DEARISO, PATTERSON

## LILLIAN PATTERSON

*Assistant Librarian*

Graduate, G. S. W. C. . . . keeps pretty flowers on the library desk . . . helps students with references . . . enthusiastic flower gardener . . . hates squeaky floors and shaky chairs.

## EVELYN DEARISO

*Librarian and Instructor in Library Science*

A.B., G. S. W. C.; B.S., Emory University . . . plans attractive posters for library bulletin board . . . director of traveling library project . . . likes outdoor life—especially swimming, walking, and bicycling . . . hates gossip.

## GERTRUDE GILMER ODUM

*Professor of English*

B.S. and M.A. degrees from Peabody College . . . writes magazine articles and poetry—written book called *Checklist of Southern Periodicals to 1861* . . . belongs to many national, state, and local clubs . . . honorary member, advisor of English Club . . . many times guest speaker before local and out of town organizations . . . initiator and chairman of artist series . . . advisor to publications . . . Sunday school teacher, Fall quarter . . . hobbies—convincing students they should come to G. S. W. C.—since marriage last summer, exercising domesticity . . . only dislike: "Americans abroad who want to eat, live, and do everything as it is done in America. Why didn't they stay home!"

## HAROLD STRONG GULLIVER

*Professor of English*

B.A., Yale University; M.A., Columbia University; Ph.D., Yale . . . former tutor, Robert College, Constantinople . . . Lieutenant Field Artillery, A. E. F. . . . lecturer Columbia . . . Phi Beta Kappa, Modern Language Association . . . author *Thackeray's Literary Apprenticeship* . . . listed in Men Poets of America, Eminent American Poets . . . hobbies—tennis, philately (stamp collecting), travel . . . says, "No dislikes," which may account for his even disposition and eternally beaming smile.

## LOUISE SAWYER

*Professor Vocal Expression*

B.S. degree, Northwestern University . . . taught at Starrett School for Girls, Chicago . . . acted with Redpath Chautauqua and Coffey-Miller Players . . . interested in activities on and off campus . . . Pi Beta Phi, Zeta Phi Eta . . . advisor Sock and Buskin Club, directs its plays . . . enjoys reading, theatre, and movies . . . likes dogs and horseback riding . . . hates roaches, cold houses, and music machine in recreation room near her studio . . . her deepest admiration—to Garbo, Leslie Howard, Helen Hayes, Katharine Cornell.

ODUM, GULLIVER, SAWYER



# Faculty

## CLARA BANCROFT

*Instructor in Music*

Graduate, Cincinnati Conservatory . . . studied a year in Paris, Munich, Bavaria . . . pupil Frank LaForge . . . instructs Glee Club . . . hobby—placing voices.

## MARIE PANNKOKE

*Instructor in Piano*

Diploma, Wisconsin Conservatory . . . post-graduate work with Mrs. Norman Hoffman, Miss Charlotte Boebler (pupil of Listz) . . . newcomer to campus . . . hobbies—cooking, sewing . . . tries not to have any dislikes.

## GLADYS E. WARREN

*Professor of Music*

Graduate, New England Conservatory of Music; pupil Carl Bucher, Northwestern University; Tobias Matthay, Matthay School of Pianoforte, London; and of Arthur Alexander, Royal College of Music, London . . . American Matthay Association, Mu Phi . . . advisor to Philharmonic Club . . . hobby—travel by automobile, concerts (music and dancing) . . . dislikes mountain music.

## FRANCES B. PARDEE

*Instructor in Violin*

Graduate, Cincinnati Conservatory of Music . . . pupil of Sevcik in Vienna . . . published two teaching pieces for violin and piano . . . director of G. S. W. C. orchestra . . . hobbies—arranging music for Eb saxophone and untying knots . . . hates mountain music and does not like Bing Crosby.

## JANIE BUSH

*Professor of Latin*

A.B., University of Georgia . . . M.A., University of North Carolina . . . formerly principal of high schools, Tifton and Dawson . . . enthusiastic golfer . . . likes to chew cane—make chicken pies . . . only hate—cold weather.



BUSH, CARPENTER, GARDNER

## ROSALYN GARDNER

*Professor of French*

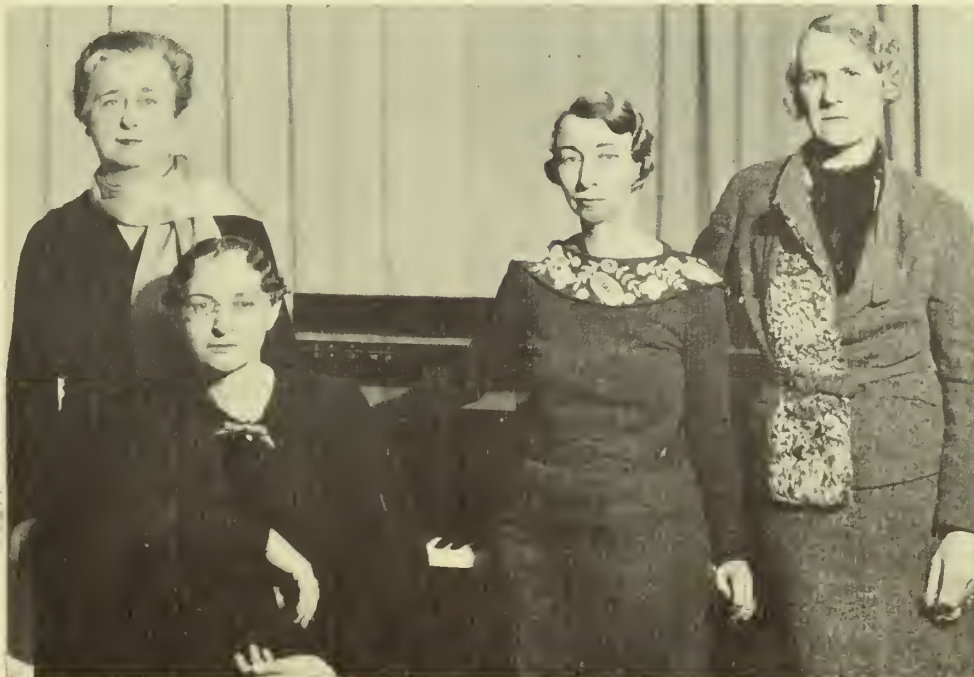
A.B., Woman's College of University of North Carolina; M.A., University of North Carolina . . . newcomer to faculty . . . advisor to French Club . . . likes to shop for shoes and handkerchiefs.

## FRANCES RUTH CARPENTER

*Professor of Art*

B.S. and M.A. degrees, Columbia University . . . studied at Heatherly School of Art in London . . . member of G. S. W. C. first faculty . . . chairman of committee in charge of silver anniversary celebration . . . collects glass and early prints . . . carves and paints.

BANCROFT, PANNKOKE, WARREN, PARDEE



# Faculty

## ELEANOR NIMS BRINK

*Professor of Sociology*

A.B. degree, Vassar; Ph.D. from University of Chicago . . . has previously taught at five other colleges and universities . . . takes active part in several professional clubs . . . writes magazine articles about sociological subjects . . . conducts talks for Valdosta Child Welfare Clinic . . . co-operated in organizing Institute for Social Workers on campus, Spring 1937 . . . likes cooking, sewing, field trips with her husband—"when everything from Hutchinson's teeth to wild orchids are collected" . . . hates anything and everything loud and noisy—as applied to colors, footsteps, voices, piano playing, preaching; people who cannot be depended upon; the smell of garlic.

## JOSEPH A. DURRENBERGER

*Professor of Social Sciences*

A.B., Southwestern University; A.M., Ph.D., Columbia University . . . American Historical Association, Pi Kappa Delta, Pi Gamma Mu . . . author of articles in *Encyclopaedia Britannica* . . . on committee to revise *Contemporary Georgia* survey . . . hobbies—fishing and flower gardening . . . violent dislike—people with dislikes.

## HAROLD PUNKE

*Professor of Psychology and Education*

B.S., M.S., University of Illinois; Ph.D., University of Chicago . . . graduate work, Hamberg University, Peabody College . . . served on Recent Social Trends Committee, Hoover administration . . . author *The Courts and Public School Property*, articles on education . . . Phi Kappa Phi, American Association for the Advancement of Science . . . hates Joan Crawford, onions, final examinations.

## MILDRED McCLELLAN PRICE

*Professor of History*

Graduate, G. S. W. C.; M.A., Columbia University . . . American Historical Association . . . advisor International Relations Club; enthusiastically accompanies delegates to conventions . . . hobby—Two-Mile Branch Farm.

BRINK, DURRENBERGER, PUNKE, PRICE



HAWKS, PHELAN, CARTER, NEVINS

## LENA JAMES HAWKS

*Dean of Instruction and Professor of Mathematics*

A.B., Goucher College; A.M., Vanderbilt University; Ph.D., Johns Hopkins University . . . author *Certain Relations Between Scholarship in High School and College* . . . member several University committees . . . sponsor Math-Science Club and Senior Honor Society . . . hobbies—painting, house planning and decoration . . . strongest dislike—"speakers who address the public as if Americans were the most gullible people on earth, and Americans who believe them."

## EARL W. PHELAN

*Professor of Chemistry*

B.Chem., Ph.D., Cornell University . . . guiding force behind Camera Club, takes movies of campus . . . writes papers on teaching of chemistry . . . Gamma Alpha, American Association for the Advancement of Science . . . member of Committee on Test and Measurement of Division of Chemical Education of the American Chemical Society . . . hobby—travel.

## MARJORIE ESTELLE CARTER

*Assistant Dean of Women and Instructor in Biology*

B.S., College of William and Mary . . . graduate work—Harvard Medical School, University of Virginia . . . taught Virginia public schools . . . says, "no time for hobbies;" but by best authority it is said she tools leather and does wood carving . . . takes pride in achievements of Converse Freshmen.

## BEATRICE NEVINS

*Professor of Biology*

Ph.D., University Wisconsin . . . former associate professor G. S. C. W., Milledgeville . . . American Association for the Advancement of Science, Sigma Delta Epsilon . . . publishes articles on botany . . . assisted Math-Science Club members in making botanical garden . . . hobbies—gardening, photography, coin collecting . . . hates clay roads during rainy seasons.

# Faculty



FARBAR, IVEY, McREE

## ELIZABETH McREE

*Instructor in Physical Education*

Graduate, G. S. W. C.; M. A., Columbia University . . .  
advisor to Sports Club . . . hobbies—people, reading,  
farming, and riding horseback on McRee Plantation.

## EVA SHRIVALLE

*Dietitian*

Serves Birthday Dinners once a month with delicious cakes  
she's iced herself . . . looks forward to artist series pro-  
grams especially musical ones . . . always ready to lend  
a helping hand to refreshment committees.

## MATILDA CALLAWAY

*Professor of Home Economics*

B.S., University of Georgia; M.A., Teachers College, Co-  
lumbia University . . . taught University of Georgia, West  
Georgia College . . . supervised Rural Resettlement Dis-  
trict 1 . . . Phi Kappa Phi . . . hobby—collecting things  
in general.

## MARIAN E. FARBAR

*Resident Physician and Teacher of Biology*

M.D., University of Illinois Medical College . . . prac-  
ticed medicine in India and at Earlham College before  
coming to G. S. W. C. . . . three years research in Chi-  
cago . . . belongs to four professional associations . . .  
writes articles for medical magazines . . . conducts health  
service on campus . . . provides special diets for students  
who need them . . . likes travel and animals . . . hates  
WAR.

## LENORA IVEY

*Professor of Physical Education*

Graduate, Sargent School for Physical Education; B.S.,  
Georgia State College for Women; M.A., George Pea-  
body College for Teachers . . . former head of P. E.  
Department Havergal College, Toronto, Canada . . .  
Delta Phi Kappa, Kappa Delta Pi . . . advises Sports  
Club . . . Lord of Misrule at annual Christmas Festival  
. . . guiding force of May Day . . . talks on recreation  
. . . likes—theatre, music, sports; hobby—"selling recrea-  
tion" . . . hates—snakes, flies, insincerity.

CALLAWAY, SHRIVALLE



*THE CLASSES IN REVIEW —  
the center of school life — around  
which all other phases revolve. Four  
classes form a unit which is com-  
pleted with stately Senior, flighty  
Junior, up-and-coming-Sophomore,  
and the campus pride and joy—the  
Freshman.*





*Classes*

## The Senior Class



FRANCES McLAIN

Dawson, Georgia

A.B. HISTORY

*Class President*

Student Government Association, Student Advisor (4); Y. W. C. A. Treasurer (3); Deputation Team (3); Phi Kappa Athletic Association (1), Awards (1); International Relations Club (2, 3, 4), Secretary (3); Senior Honor Society, President (4); President Senior Class; G. S. W. C. Emblem (4); Honors (1, 2, 3, 4).

From the Senior Class has come the spirit of enthusiastic leadership evidenced on campus, benefit bridges, the clever take-off of the Faculty members, the Senior Carnival with hot-dog stands, bingo, fortune-telling—all for the gaiety of college activities and for the financing of the Senior Trip to New Orleans in the Spring Quarter.

## The Senior Class

ANN BROOKS  
Valdosta Georgia  
A.B. ENGLISH  
*Secretary*

Student Government Association; Valdosta Club (1, 2, 3, 4), Vice-President (3); French Club (3, 4); English Club (3, 4), Vice-President (4); Secretary of Senior Class; Day Student Representative of the Student-Faculty Honor Council (4).



MARY KATHRYN THOMASON  
Canton, Georgia  
A.B. SOCIOLOGY  
*Treasurer*

Transfer from Georgia State College for Women (2); Student Government Association; Y. W. C. A.; Fine Arts Club (4); Treasurer of Senior Class; PINE CONE Staff (4).

## The Senior Class



BERNICE ANDREWS

Thomasville, Georgia

A.B. ART

Student Government Association; Y. W. C. A.; Phi Kappa Athletic Association (1, 2, 3), Award (1); Math-Science Club (1, 2, 3, 4); PINE CONE Staff (4); *Campus Canopy* Staff (2, 3); *Pine Branch* Staff (2), Award (1); Fine Arts Club (2, 3, 4), Secretary-Treasurer (3); G. S. W. C. Emblem (4).

CAROLYN ASKEW

Arlington, Georgia

A.B. MATHEMATICS

Student Government Association, Student Advisor (3); Y. W. C. A. Cabinet (3); Phi Lambda Athletic Association (1); Glee Club (1, 2, 3), President (3); Math-Science Club (2, 3), Secretary-Treasurer (3); Freshman Honor Society; Honors (2).



## The Senior Class

### EDITH BENNETT

Savannah, Georgia

A.B. MUSIC

Student Government Association, Pianist (4); Y. W. C. A., Secretary (2), Cabinet (3), Choir Director (3), Deputation Team (3); French Club (1, 2, 3, 4); Philharmonic Club (1, 2, 3, 4), Secretary-Treasurer (2), President (3); Glee Club (1, 2, 4), Librarian (2); Artist Series Committee (3); Dormitory Representative for Student-Faculty Honor Council (4).



### RUTH BUNN

Waycross, Georgia

A.B. MATHEMATICS

Student Government Association; Y. W. C. A.; President Sophomore Class (2); Vice-President Student Government Association (3); Student Recorder of Points (4); Freshman Commission (1); Phi Kappa Athletic Association (1, 2, 3, 4), Award (3); Math-Science Club (1, 2, 3, 4); Senior Honor Society, Treasurer, Senior Advisor to Freshman Honor Society; Delegate to Student Government Convention at Agnes Scott (2); PINE CONE Staff; Honors (1, 2); G. S. W. C. Emblem (4).

## The Senior Class



MARGARET CANNON

Cairo, Georgia

A.B. ENGLISH

Student Government Association; Y. W. C. A.;  
Phi Lambda Association (1, 3), Award (1);  
Glee Club (2, 4); Sock and Buskin Club (4);  
English Club (4); President Freshman Class;  
PINE CONE Staff.

BILLIE COLLINS

Cairo, Georgia

A.B. BIOLOGY

Student Government Association; Y. W. C. A.;  
Phi Lambda Athletic Association (1); Phil-  
harmonic Club (1, 2, 3, 4); Math-Science Club  
(3, 4).



## The Senior Class

### SUSIE BERT COPPAGE

Valdosta, Georgia

A.B. ENGLISH

Student Government Association; Phi Lambda Athletic Association (1, 2, 3, 4), President (3), President Phi Lambda and Phi Kappa Athletic Associations (4), Athletic Council (3, 4), Awards (1, 2, 3), Delegate to Sports Conference in Athens (3), Delegate to G. A. F. C. W. Conference in Athens (3); *Campus Canopy* Staff (3, 4); PINE CONE Staff (3, 4); Valdosta Club (1, 2, 3, 4); Fine Arts Clubs (3, 4); G. S. W. C. Emblem.



### DOROTHY MIMS FUDGE

Colquitt, Georgia

A.B. ENGLISH

Transfer from Shorter College (4); Student Government Association; Y. W. C. A.; Fine Arts Club (4).

## The Senior Class



RUTH GARBUTT

Valdosta, Georgia

A.B. ENGLISH

Student Government Association; Phi Lambda Athletic Association (1, 4); Valdosta Club (1, 2, 3, 4), Secretary (3), President (4); Fine Arts Club (3, 4).

THERESA GRAHAM

Jesup, Georgia

A.B. ENGLISH

Student Government Association; Y. W. C. A.; Phi Kappa Athletic Association (1, 2, 3); English Club (3, 4); Sock and Buskin Club (2, 3, 4), Annual Play (2, 3); *Campus Canopy* Reporter (3); Honors (3).





## The Senior Class

### CAROLYN GREENE

Columbus, Georgia

A.B. FRENCH

Student Government Association, Recorder of Points (3); Y. W. C. A.; Phi Kappa Athletic Association (1, 2); French Club (2, 3, 4), Vice-President (4); Math-Science Club (1, 2); Advertising Manager *Campus Canopy* (3), Delegate Georgia Collegiate Press Association Convention, Athens (3); Editor-in-Chief PINE CONE (4), Delegate National Associated Collegiate Press Convention, Chicago (4); Student Activities Committee (4); G. S. W. C. Emblem (2); Honors (1, 2); Senior Honor Society; Alpha Delta, National Honorary Journalistic Fraternity.



### LOIS HAFFORD

Waycross, Georgia

A.B. CHEMISTRY

Student Government Association; Y. W. C. A., Cabinet (2); Phi Lambda Athletic Association (1, 2, 3, 4); Awards (1, 2, 3); Math-Science Club (1, 2, 3, 4), Secretary-Treasurer (2), Vice-President (4); *Campus Canopy* Staff (3), Business Manager (4); G. S. W. C. Emblem (4).

# The Senior Class



MARY ERNESTINE ISBELL

Valdosta, Georgia

A.B. ENGLISH

Student Government Association; Phi Kappa Athletic Association (1); Fine Arts Club (2, 3, 4); President (4); Sock and Buskin Club (3, 4); Valdosta Club (1, 2, 3, 4); PINE CONE Staff (2, 3, 4); Artist Series Committee (4).

MARTHA JOHNSTON

Valdosta, Georgia

A.B. MATHEMATICS

Student Government Association; Valdosta Club (1, 2, 3, 4), Vice-President (4); Math-Science Club (2, 3, 4), President (4); Senior Honor Society (4), Vice-President; Photograph Editor of PINE CONE (4).



## The Senior Class

MARTHA L. JONES

Lakeland, Georgia

A.B. ENGLISH

Student Government Association; Y. W. C. A.,  
Choir (1); Phi Kappa Athletic Association  
(1, 2, 3); Philharmonic Club (1); English Club  
(3); French Club (3); Sock and Buskin Club  
(3); *Campus Canopy* Staff (3); Honors  
(1, 2, 3).



JOHNNIE MAE KELLEY

Cordele, Georgia

A.B. MUSIC

Student Government Association; Y. W. C. A.;  
Philharmonic Club (1, 2, 3, 4), Secretary and  
Treasurer (3); French Club (4).

## The Senior Class



LEONORA LANIER

Morganton, Georgia

A.B. ENGLISH

Transfer from Georgia Southwestern (3); Student Government Association; Y. W. C. A.; Phi Kappa Athletic Association (4); English Club (4).

LOVENIA LASSITER

Valdosta, Georgia

A.B. ENGLISH

Student Government Association; Phi Kappa Athletic Association (1); English Club (3, 4); French Club (3, 4); PINE CONE Staff (4).



## The Senior Class

### EVELYN ELOUISE LINEBERGER

Valdosta, Georgia

A.B. ART

Student Government Association; Phi Kappa Athletic Association (1, 2, 4); Valdosta Club (1, 2, 3, 4); Fine Arts Club (3, 4), Vice-President (4).



### TRECY LONG

Quitman, Georgia

A.B. HISTORY

Student Government Association; International Relations Club (2, 3); Member-at-large (2), Vice-President (3); Freshman Honor Society; Honors (1, 2).

# The Senior Class



RUTH ROBERTA LOUGHRIDGE

Blackshear, Georgia

A.B. SOCIOLOGY

Student Government Association, Secretary-Treasurer (4); Y. W. C. A., Cabinet (4), Freshman Commission; Phi Kappa Athletic Association (1, 2, 3), Council (3); Philharmonic Club (2); College Orchestra (3, 4), Librarian (3); Assistant Literary Editor of PINE CONE (4); *Campus Canopy* Staff (4); Student Advisor (4); G. S. W. C. Emblem.

ANNA MATHEWS

Valdosta, Georgia

A.B. SOCIOLOGY

Student Government Association; Phi Lambda Athletic Association (2); International Relations Club (2, 3, 4), Member-at-large (3); Valdosta Club (1, 2, 3, 4), Secretary (4).



## The Senior Class

### KATHERINE MOORE

Moultrie, Georgia

A.B. ENGLISH

Student Government Association; Y. W. C. A., Freshman Commission (1); Phi Kappa Athletic Association (1, 2); English Club (3, 4), Chairman Open Forum Committee (3), President (4); Business Manager *Campus Canopy* (3), Managing Editor (4); Delegate Georgia Collegiate Press Association; Literary Editor PINE CONE (4); Junior Annual Staff (3); Alpha Delta, National Honorary Journalistic Fraternity (3, 4), President (4).



### DOROTHY EVANS MORGAN

Valdosta, Georgia

A.B. ENGLISH

Student Government Association; Phi Lambda Athletic Association (1); Valdosta Club (1, 2, 3, 4), Secretary (2); Glee Club (1); Philharmonic Club (2); PINE CONE Staff (4).

## The Senior Class



KITTY O'NEAL

Tifton, Georgia

A.B. ENGLISH

Student Government Association; Y. W. C. A.;  
Phi Kappa Athletic Association (1); English  
Club (4); PINE CONE Staff (4); *Campus  
Canopy* Staff (4).

LUCILE POPE

Valdosta, Georgia

A.B. ENGLISH

Student Government Association; Phi Kappa  
Athletic Association (1, 2, 3); Glee Club (1,  
2, 3); Valdosta Club (1, 2, 3, 4).





## *The Senior Class*

MARTHA POWELL

Valdosta, Georgia

A.B. ENGLISH

Student Government Association; Valdosta Club (1, 2, 3, 4); Math-Science Club (1, 2); English Club (3, 4); French Club (4).



SARAH ANNE PRYOR

Fitzgerald, Georgia

A.B. ENGLISH

Student Government Association; Y. W. C. A.; Phi Kappa Athletic Association (1, 4); English Club (3, 4); French Club (3, 4); PINE CONE Staff.

## The Senior Class



SARAH MARTHA PYLE

Valdosta, Georgia

A.B. MUSIC

Student Government Association; Philharmonic Club (1, 2, 3, 4), Vice-President (3); Valdosta Club (1, 2, 3, 4); Glee Club (2, 3, 4); Senior Honor Society; Treasurer of Freshman Class; Honors (2); PINE CONE Staff (4).

PHYLLIS CAMILLE RYCROFT

Quitman, Georgia

A.B. HISTORY

Student Government Association; Y. W. C. A.; Phi Lambda Athletic Association (1); International Relations Club (2, 3, 4), President (4), Vice-President (3); Glee Club (2, 3, 4), Librarian (3, 4).



# The Senior Class

## JUANITA SIRMANS

Homerville, Georgia

A.B. ENGLISH

Student Government Association; Y. W. C. A.;  
Phi Kappa Athletic Association (1); Phil-  
harmonic Club (1); Glee Club (1, 2, 4), Secre-  
tary-Treasurer (4).



## LAFORREST SMITH

Valdosta, Georgia

A.B. ENGLISH

Student Government Association, Phi Lambda  
Athletic Association (1, 2); Glee Club (2, 3,  
4); Sock and Buskin Club (2, 3, 4); *Pine  
Branch* Staff (1); Argonian Literary Society  
(1); Valdosta Club (1, 2, 3, 4).

## The Senior Class



ETHEL STALLINGS

Newnan, Georgia

A.B. ENGLISH

Transfer from Bessie Tift (2); Student Government Association; Y. W. C. A., Assistant Vice-President (2), Vice-President (3), President (4); Phi Lambda Athletic Association (2); Student-Faculty Honor Committee (4); Sock and Buskin Club (2, 3, 4); English Club (3, 4); *Campus Canopy* Staff (3); PINE CONE Staff (4); Chairman of Open Forum (4); Delegate to Southern Y. W. C. A. Conference at Blue Ridge (2, 3); Delegate to Wesleyan Conference (2, 3); Delegate to Y. W. C. A. National Conference (4); Delegate to State Executive Conference (4); G. S. W. C. Emblem (4).

FLORENCE M. THARP

Leesburg, Georgia

A.B. ENGLISH

Student Government Association; Y. W. C. A.; Phi Kappa Athletic Association (1, 2, 3); Sororian Literary Society (1); Philharmonic Club (1, 2); Glee Club (1, 2, 4); Fine Arts Club (1, 2, 3, 4); PINE CONE Staff (4).



## The Senior Class

### KATHRYN TOOLE

Valdosta, Georgia

A.B. ENGLISH

Student Government Association; Phi Lambda Athletic Association (1, 2, 3, 4), Awards (2, 3), Council (3); Valdosta Club (1, 2, 3, 4); Glee Club (1, 2, 3, 4); *Campus Canopy* Staff (2); English Club (3, 4); Pine Knot Revellers Orchestra (2).



### ELISABETH WADE

Valdosta, Georgia

A.B. ENGLISH

Student Government Association; Phi Kappa Athletic Association (1); Fine Arts Club (3, 4); English Club (3, 4); Valdosta Club (1, 2, 3, 4).

## The Senior Class



LYLBURN WARREN

Waycross, Georgia

A.B. SOCIOLOGY

Transfer from Georgia State College for Women (2); Student Government Association, Class Treasurer (3), Student Advisor (4); Y. W. C. A., Cabinet (4); Phi Kappa Athletic Association (2); G. S. W. C. Emblem (4); Sock and Buskin (3, 4); Snapshot Editor PINE CONE.

MARTHA CAROLYN WHIPPLE

Quitman, Georgia

A.B. ENGLISH

Student Government Association; Y. W. C. A.; Phi Kappa Athletic Association (1, 2, 3); English Club (3, 4); French Club (3, 4), Secretary-Treasurer (4); *Campus Canopy* Staff (1); PINE CONE Staff (4); Secretary Junior Class; Honors (1, 2, 3); Student Advisor (4).



## The Senior Class

### MARTHA JOHNSON WILLIAMS

Valdosta, Georgia

A.B. ENGLISH

Transfer from Georgia State College for Women; Student Government Association; Y. W. C. A.; Math-Science Club (3, 4); Fine Arts Club (4); Monitor (4); English Club (4); *Campus Canopy* Staff (3); Advertising Manager of PINE CONE (4).



### SARA CATHERINE WILSON

Waycross, Georgia

A.B. HISTORY

Student Government Association; Y. W. C. A., Secretary (2), Cabinet (3); Freshman Honor Society, Vice-President (2); Math-Science Club (1, 2, 3); Sock and Buskin Club (1, 2, 3); International Relations Club (2, 3); Honors (1, 2, 3).

## The Senior Class



### VIRGINIA ZIPLIES

Savannah, Georgia

A.B. BIOLOGY

Student Government Association, President (4); President Junior Class (3); Secretary Freshman Class (2); Y. W. C. A., Cabinet (2), Deputation Team (2, 3), Delegate to Southern Y. W. C. A. Conference at Blue Ridge (3); Delegate to S. I. S. G. A. (3, 4); Freshman Who's Who; Glee Club (1); Philharmonic Club (1, 2); Phi Lambda Athletic Association (2, 3, 4), Athletic Council (4); "Miss Charming" in Charm School (2); Sock and Buskin Club (2, 3, 4); Math-Science Club (2, 3, 4); Artist Series Committee (4); Student-Faculty Honor Council (4); Student Activities Committee (4); Honors (1, 2, 3); Senior Honor Society (4); G. S. W. C. Emblem (4).



## The Junior Class

"NO MATTER how small, we do it well"—the Juniors cry, giving to the campus the first issue of a student-faculty address-telephone number book. They also sponsored dances, a Halloween carnival, the Shakespearean plays given by the Shakespearean Repetoire Company of New York, and the Junior-Senior Formal as a last gesture to the Seniors.



MARY HUDSON  
*Class President*  
Whigham, Georgia

GRACE VAN LANDINGHAM  
*Secretary*  
Valdosta, Georgia



EVELYN OGLETREE  
*Treasurer*  
Savannah, Georgia



# The Junior Class



MARGARET ABERNATHY  
Moultrie, Georgia



ANNIE ADAMS  
Geneva, Alabama

MARGUERITE ARNOLD  
Brewton, Alabama

FRANCES BRANDON  
Norman Park, Georgia



# The Junior Class

HILDA CARROLL  
Valdosta, Georgia



MARGARET E. CARTER  
Quitman, Georgia



CAMILLE CLEMENTS  
Ray City, Georgia

MARY Jo COOK  
Broxton, Georgia

*The Junior Class*



EILEEN COX  
Valdosta, Georgia



JEANETTE COX  
Valdosta, Georgia

PATSY DODGE  
Valdosta, Georgia

BEVERLY DOUGHERTY  
Valdosta, Georgia



*The Junior Class*

ANN DUNBAR  
Valdosta, Georgia



MARY DUBOIS  
Savannah, Georgia



CAROLYN FOLSOM  
Hahira, Georgia

ELIZABETH GARBUTT  
Albany, Georgia

# The Junior Class



MARY WINN GREER  
Valdosta, Georgia

PARDEE GREER  
Valdosta, Georgia

EILEEN HYLAND  
New Rochelle, New York

MARIAN JOHNSON  
Jamestown, North Carolina



# The Junior Class

HELEN JOINER  
Savannah, Georgia



ROSALIND LANE  
Valdosta, Georgia



JUNE LAWSON  
Savannah, Georgia



C. J. MORRIS  
New Rochelle, New York

*The Junior Class*



RUTH RHYMES  
Valdosta, Georgia



HAZEL MUGGRIDGE  
Cairo, Georgia

DORA IDA PERKINS  
Alma, Georgia



ANNA RICHTER  
Savannah, Georgia





*The Junior Class*

RUBY JEAN ROGERS  
Valdosta, Georgia



CLARA MAE SASSER  
Valdosta, Georgia



VIRGINIA SMITH  
Dawson, Georgia

LOUISE STUMP  
Valdosta, Georgia



# The Junior Class



PENELOPE TULLIS  
Valdosta, Georgia



MARGARET WEIR  
Campbellsville, Kentucky



MARY VIRGINIA WILLIAMS  
Quitman, Georgia

MAUELLE WILSON  
Cordele, Georgia

MARGARET WOOD  
Campbellsville, Kentucky



## The Sophomore Class

VICTORIOUS for the second year in the Freshman - Sophomore Hat Hunt, — the Sophomores have organized a Council for problem-discussion; they have sponsored a fashion show, dances in the Recreation room, and a Formal dance to honor their sister-class, the Seniors, at the Legion Home.



LAURA DUNCAN  
*Class President*  
Quitman, Georgia

VERNA POPPELL  
*Secretary*  
Homerville, Georgia



IRWIN SMITH  
*Treasurer*  
Waycross, Georgia





MARY CATHERINE ABERNATHY  
Moultrie, Georgia



JACQUELINE ABRAHAMS  
Valdosta, Georgia

*The Sophomore Class*



ROSEMARY BAKER  
Valdosta, Georgia



LOUISE BELL  
Arlington, Georgia



CAROLYN BRIDGES  
Sumner, Georgia

OPAL BROWN  
Dorchester, Georgia

KATHLEEN CAMPBELL  
Valdosta, Georgia

MARGARET HAYS CARTER  
Colquitt, Georgia

LORRAINE COLSON  
Valdosta, Georgia



*The Sophomore Class*



MONTINE COWART  
Waycross, Georgia



DOROTHY DALTON  
Valdosta, Georgia



GLADYS RUTH DANIELS  
Pinehurst, Georgia



MARY FRANCES DANIELS  
Pinehurst, Georgia



MARY DUGGER  
Moultrie, Georgia

HELEN DUNCAN  
Valdosta, Georgia



MYRTLE EDMONDSON  
Morven, Georgia



SUE NITA FENDER  
Valdosta, Georgia



DOLLIE GANNON  
Valdosta, Georgia





SARA GARBUTT  
Valdosta, Georgia



SUE NELLE GREENLEE  
Valdosta, Georgia

*The Sophomore Class*



EUGENIA HARDY  
Quitman, Georgia



DORIS HARPER  
Valdosta, Georgia



JUANITA HARRELL  
Valdosta, Georgia

MARIBEL HARRELL  
Valdosta, Georgia

ALICE HATCHER  
Albany, Georgia

MILDRED HENDERSON  
Manor, Georgia

BETSY HOWELL  
Jennings, Florida



*The Sophomore Class*



CAROLYN KAY  
Moultrie, Georgia



LENA LEVERETTE  
Pavo, Georgia



DAISY McNEAL  
Waycross, Georgia



LUCY McCAY  
Cordele, Georgia



SARA MATHIS  
Valdosta, Georgia

MARY BOB MILAN  
LaGrange, Georgia

ELEANOR MORGAN  
Valdosta, Georgia

MARGUERITE NORTON  
Naylor, Georgia

ELISE O'NEAL  
Uvalda, Georgia





WILLA GENE PATTEN  
Tifton, Georgia



VIRGINIA PARRISH  
Adel, Georgia

*The Sophomore Class*



NELLE POPE  
Fitzgerald, Georgia



MARY HELEN PULLEN  
McRae, Georgia



MARY EDNA RATLIFF  
Valdosta, Georgia

ELIZABETH RENFROE  
Quitman, Georgia

ELIZABETH RHYMES  
Valdosta, Georgia

MILDRED ROSSMAN  
Moultrie, Georgia

ROSALIND TAYLOR  
Valdosta, Georgia





*The Sophomore Class*



SARA TILLMAN  
Register, Georgia



JANE ELIZABETH SIMS  
Ousley, Georgia



MARIAN SMITH  
Valdosta, Georgia



ARLENE SPICER  
Thomasville, Georgia



FRANCES VAN BRACKLE  
Adel, Georgia

MADGE WATKINS  
Valdosta, Georgia

MILLIE WEITMAN  
Alamo, Georgia

CURTIS WHATLEY  
McRae, Georgia

RUTH WHISONANT  
Blackshear, Georgia



*The Sophomore Class*



EVELYN WILKINSON  
Leary, Georgia



CAROLINE WILLIAMS  
Valdosta, Georgia



HAZEL WILLIAMS  
Tifton, Georgia



EDITH GORDON WILSON  
Valdosta, Georgia

MILDRED WILSON  
Waycross, Georgia



MARIAN WISENBAKER  
Lake Park, Georgia



ORA KATE WISENBAKER  
Valdosta, Georgia



NELL ZIPPERER  
Valdosta, Georgia



## The Freshman Class

FOR ITS GOAL the Freshman Class has chosen the development of co-operation in working as a class group, entering whole-heartedly into the various campus activities. As a part of the Y. W. C. A., the Freshman Commission constitutes an open forum for discussion of campus problems and in addition entertains at social gatherings in an attempt to promote friendliness among class members. The Freshman Conference period has been organized into a definite business meeting under the guidance of Miss Hopper.



MARGARET BURNS  
*Class President*  
Macon, Georgia

RUTH REID  
*Secretary*  
Valdosta, Georgia



FRANCES HUG  
*Treasurer*  
Fort Benning, Georgia





FAYE MARIE BEATTY  
Brunswick, Georgia



SYLVIA BELL  
Arlington, Georgia



MARGARET BENNETT  
Gardi, Georgia

*The Freshman Class*



JOSEPHINE BLAND  
McRae, Georgia



LOUISE BLANKS  
Valdosta, Georgia



CORA LEE BOOTH  
Cordele, Georgia



ELIZABETH BORDERS  
LaGrange, Georgia



EVELYN BRIM  
Sasser, Georgia



JANE BRIM  
Sasser, Georgia



MARY ALICE BRIM  
Sasser, Georgia

DOROTHY BROWN  
Quitman, Georgia

MARGARET BRUCE  
Valdosta, Georgia

MARTHA BRUCE  
Valdosta, Georgia

GWENDOLYN BUSH  
Colquitt, Georgia



*The Freshman Class*



ANNELL CANTEY  
Havana, Florida



LOIS CHRISTIAN  
Valdosta, Georgia



CORNELIA COKER  
Dawson, Georgia



YOLANDE COPPAGE  
Valdosta, Georgia



MAXINE COWART  
Waycross, Georgia



EMILY CUMMING  
Cordele, Georgia



BETTY DASHER  
Valdosta, Georgia



WENONAH DUKE  
Griffin, Georgia



VIRGINIA CLAIRE FLETCHER  
Cordele, Georgia



EMMA FRANCES GAY  
Blakely, Georgia

SARA GIBBS  
Ty Ty, Georgia

FRANCES GIDDENS  
Valdosta, Georgia

ERNESTINE GIRARDIN  
Valdosta, Georgia

JOSEPHINE GRAHAM  
Valdosta, Georgia





CHARLEEN GRATER  
Lake Park, Georgia



LOIS GREEN  
Jacksonville, Florida



MARY FRANCES GREEN  
Griffin, Georgia



WILMOT GREEN  
Jacksonville, Florida



MARTHA SUE GRIFFIN  
Nashville, Georgia



MADOLON GRINER  
Nashville, Georgia



ANNIE LU HARDY  
Waycross, Georgia



GEORGIA HARPER  
Brunswick, Georgia



ANN HARRELL  
Bainbridge, Georgia



EVELYN HAY  
Leland, Mississippi



LOUISE HERNDON  
Lake Park, Georgia

MARY ELIZABETH HIGHT  
Cave Spring, Georgia

MARJORIE HOWARD  
Ludowici, Georgia

LOUISE HOWELL  
Blakely, Georgia



*The Freshman Class*



MINNIE V. INGRAM  
Byromville, Georgia



ANNE JENNINGS  
Valdosta, Georgia



EUGENIA JOHNSON  
Marianna, Florida



JEANNETTE JOHNSON  
Thomasville, Georgia



LUCILLE JOHNSON  
Pitts, Georgia



MARY FRANCES JOHNSON  
Valdosta, Georgia



LOUISE JOINER  
Pinehurst, Georgia



MARY ANN JOINER  
Griffin, Georgia



MARGIE JONES  
Cairo, Georgia



VIRGINIA KENNEMUR  
Whigham, Georgia



WINNELLÈ LANCE  
Homerville, Georgia

ALINE LANIER  
Valdosta, Georgia

FRANCES LAZARUS  
Valdosta, Georgia

RUBY LILLY  
Jacksonville, Florida



*The Freshman Class*



MARY LOVETT  
Sparks, Georgia



LOUISE MACFIE  
Bainbridge, Georgia



SARA MACKEY  
Valdosta, Georgia

*The Freshman Class*



ALMA McCONDICHIE  
Jacksonville Beach, Florida



HATTILU McINTYRE  
Valdosta, Georgia



HAZEL McLEOD  
Moultrie, Georgia



SUVAL MEADOWS  
LaGrange, Georgia



LOU NELL MEEKS  
Nichols, Georgia



MARGARET MIDDLEBROOKS  
Norman Park, Georgia



FRANCES MIDDLETON  
Colquitt, Georgia

MATTIE LOU MIMS  
Elmodel, Georgia



KATHERINE MUNDAY  
Valdosta, Georgia



MARION ORR  
Savannah, Georgia



ANN PARHAM  
Warm Springs, Georgia





*The Freshman Class*



MATTIE RUTH PARRISH  
Valdosta, Georgia



HELEN PATTEN  
Tifton, Georgia



MARY ANNE PAULK  
Fitzgerald, Georgia



JEAN PEAGLER  
Manor, Georgia



LOUIE PEEPLES  
Valdosta, Georgia



CHRISTINE POSS  
Brunswick, Georgia



HELEN QUARTERMAN  
Valdosta, Georgia



MIRIAM QUINKER  
Valdosta, Georgia



LOIS QUINN  
Hazlehurst, Georgia



JACQUELINE RAST  
Quitman, Georgia

DORIS RODGERS  
Valdosta, Georgia

FRANCES ROGERS  
Barney, Georgia

MARY LEE ROGERS  
Brunswick, Georgia

SARAH SASSER  
Valdosta, Georgia





VERA SIMPSON  
Valdosta, Georgia



SARAH SIMS  
Ousley, Georgia



BERNICE SMITH  
Valdosta, Georgia



DOROTHY SMITH  
Ochlochnee, Georgia



MARIE SMITH  
Patterson, Georgia



LEONA STRICKLAND  
Valdosta, Georgia



MARGUERITE STRICKLAND  
Hahira, Georgia



MARIGENE STRINGER  
Thomasville, Georgia



LINDA SUMMER  
Cordele, Georgia

INEZ TAYLOR  
Greensboro, Georgia



HAZEL VICKERS  
Valdosta, Georgia



*The Freshman Class*



RUTH WARREN  
Waycross, Georgia



KATHRYN WEBB  
Tifton, Georgia



WILLA JEAN WHITE  
McRae, Georgia



MARTHA WILKES  
Adel, Georgia



BETTIE WILLIAMS  
Waycross, Georgia



CAROLYN WILLIAMS  
Ty Ty, Georgia



FRANCES WILLIAMS  
Valdosta, Georgia



MARIE WILLIAMS  
Clyattville, Georgia



BEULAH WINGATE  
Brunswick, Georgia

GWENDOLYN WINTER  
Valdosta, Georgia

EVELYN WOODARD  
Waycross, Georgia



*The Freshman Class*

*THE CAMPUS IN ACTION—  
engaged from dawn till dark with  
interests ranging from academic  
studies to recreational sports, from  
artist series programs to leisure-time  
pursuits, from visiting celebrities,  
banquets, and formal dances to the  
most informal picnics.*



*Activities*

# *The Student Government Association*



ZIPLIES, PERKINS

THE PURPOSE of the Student Government Association is to promote the highest standards of honor and integrity in all matters of personal conduct, to strengthen the cordial relations between faculty and students, and to promote general respect for law and order. As all students are members, responsibility is equalized.

A student court composed of Student Government officials and class presidents regulates disciplinary problems. Higher judiciary bodies are the Executive Board, and the Student-Faculty Honor Council.

At the meetings of the association each month, off-campus speakers are heard.

# The Student Government Association

## OFFICERS

VIRGINIA ZIPLIES . . . . . *President*  
 DORA IDA PERKINS . . . . . *Vice-President*  
 RUTH LOUGHRIDGE . . . . . *Secretary - Treasurer*  
 RUTH BUNN . . . . . *Recorder of Points*

## COURT MEMBERS

VIRGINIA ZIPLIES  
 DORA IDA PERKINS  
 FRANCES McLAIN  
 MARY HUDSON  
 LAURA DUNCAN  
 MARGARET BURNS

## EXECUTIVE BOARD

DR. FRANK R. READE  
 MISS ANNIE P. HOPPER  
 DR. LENA JAMES HAWKS

## STUDENT-FACULTY HONOR COUNCIL

VIRGINIA ZIPLIES  
 ETHEL STALLINGS  
 EDITH BENNETT  
 ANN BROOKS  
 MISS MARJORIE CARTER  
 DR. JOSEPH DURRENBERGER  
 MISS ANNIE P. HOPPER  
 DR. FRANK R. READE,  
*Ex Officio*



McLAIN, HUDSON, DUNCAN, BURNS



BUNN, LOUGHRIDGE

# The Y. W. C. A.



STALLINGS, RICHTER

## OFFICERS

ETHEL STALLINGS . . . . . *President*

ANNA RICHTER . . . . . *Vice-President*

MARY VIRGINIA WILLIAMS . . . . . *Secretary*

ELIZABETH GARBUTT . . . . . *Treasurer*

WITH EVERY STUDENT a member the Y. W. C. A. organizes active religious life on the campus. The Cabinet, the executive staff, meets once a week to discuss problems and plan religious programs.

While the college is non-sectarian a sincerely spiritual atmosphere is cultivated within the institution. On Thursday and Sunday evenings vesper services are held. Sunday School is taught every Sunday morning by faculty members; and at the beginning of each day the students are given an opportunity to gather for Morning Watch.

Provisions are made for delegates to attend state and national conventions and summer conferences. Deputation teams are sent out to other colleges and towns in the vicinity. A Freshman Commission and a Sophomore Council are organized to establish a closer connection between these two classes and the organization.

Traditional services and entertainments include the Fire-lighting Ceremony, the Hanging of the Greens, the Christmas Pageant, Heart Sister Week, and the Little Sister-Big Sister Party.

An outstanding feature is Religious Emphasis Week when Dr. W. A. Smart, professor of theology at Emory University, visits the campus.



WILLIAMS

GARBUTT





# The Y. W. C. A.



DR. W. A. SMART



The Vesper Choir

## CABINET

- HAZEL MUGGRIDGE . . . . . *Assistant Vice-President*
- RUTH LOUGHRIDGE . . . . . *Sunday School Chairman*
- LYLBURN WARREN . . . . . *Morning Watch Chairman*
- ELISE O'NEAL . . . . . *Pianist*
- CAROLYN ASKEW . . . . . *Social Chairman*
- IRWIN SMITH . . . . . *Club House Chairman*
- MARY DUBOIS . . . . . *Poster Chairman*
- MARGARET ABERNATHY . . . . . *Deputation Chairman*
- MARGARET CARTER . . . . . *Choir Chairman*
- CATHERINE WILSON . . . . . *World Fellowship Chairman*
- MILDRED WILSON . . . . . *House Chairman*



ASKEW



MUGGRIDGE



LOUGHRIDGE



WARREN



O'NEAL



SMITH

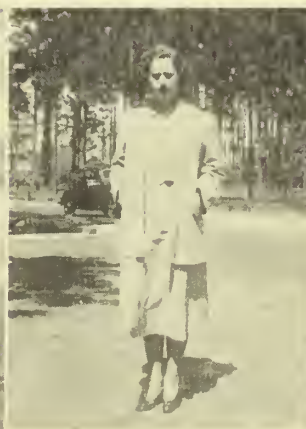
DuBois

ABERNATHY

CARTER

C. WILSON

M. WILSON



# The Pine Cone



## EDITORIAL BOARD

CAROLYN GREENE . . . . . *Editor-in-Chief*  
 KATHERINE MOORE . . . . . *Literary Editor*  
 MARTHA JOHNSTON } . . . . . *Photograph Editors*  
 MARGARET CANNON }  
 CAROLYN WHIPPLE . . . . . *Activities Editor*  
 LYLURN WARREN . . . . . *Snapshot Editor*

## ASSISTANT STAFF

RUTH LOUGHRIDGE . . . . . *Literary*  
 KITTY O'NEAL . . . . . *Activities*  
 ETHEL STALLINGS . . . . . *Snapshots*



GREENE

*Editor is Chicago-bound*

BEGINNING PLANS for a comprehensive picture and word study of the year 1937-38 at G. S. W. C., the editor-in-chief made a trip to Chicago where the National Collegiate Press Association met in October. Returning with ideas from the best authorities mingling with her own, she organized the work of staff members chosen from the senior class. The mem-



JOHNSTON

WARREN



Staff



# The Pine Cone

## BUSINESS STAFF

RUTH BUNN . . . . . *Business Manager*  
 MARTHA JOHNSON WILLIAMS . *Advertising Manager*

## ADVERTISING STAFF

SARAH ANNE PRYOR	FLORENCE THARP
DINK LASSITER	KATHRYN THOMASON
DOT FUDGE	DOROTHY MORGAN



BUNN

bers worked to present in an as attractive as possible style this yearbook.

Continuing the policy, instigated 1936-1937, of junior staff assistants to the senior staff, the PINE CONE of this year leaves behind it hope for progress of each year built upon the preceding year's experiences.



WILLIAMS



*They Bring Home the Ads*  
 LASSITER, PRYOR

Annual



# The Campus Canopy



LANE

## Staff

ROSALIND LANE . . . . .	<i>Editor-in-Chief</i>
KATHERINE MOORE . . . . .	<i>Managing Editor</i>
C. J. MORRIS . . . . .	<i>Assistant Editor</i>
LOUISE BELL . . . . .	<i>News Editor</i>
EILEEN HYLAND	} . . . . . <i>Feature Editors</i>
ROSEMARY BAKER	
ORA KATE WISENBAKER	

## Reporters

OPAL BROWN	EILEEN COX
CAROLYN FOLSOM	LOIS GREEN
MARJORIE HOWARD	JEANETTE JOHNSON
MARJIE JONES	RUTH LOUGHRIDGE
LOUISE MCFIE	FRANCES ROGERS
CLARA MAE SASSER	LINDA SUMMER

CHANGING IN its first issue from the four column publication of previous years printed on magazine paper to a five column paper on newsprint, the *Campus Canopy* brought out the first streamlined college newspaper in Georgia, October 27.

On January 13 a special twenty-page edition in connection with the Twenty-fifth Anniversary celebration came from the press.

During the year the *Canopy* has been represented at press conventions at Chicago, Athens, and Gainesville.

The *Canopy*, published entirely by students, is non-profit and is maintained by student activity allotment and by advertising.

HAFORD



# The Campus Canopy

## Staff

LOIS HAFFORD . . . . . *Business Manager*  
 MARTHA JONES . . . . . *Exchange Editor*  
 FRANCES VAN BRACKLE . . . . . *Circulation*

## Advertising Staff

MARGARET CARTER	SUE COPPAGE
MONTINE COWART	MARY DUGGER
LEONORA LANIER	EVELYN OGLETREE
DORA IDA PERKINS	MARY LEE ROGERS
LEONA STRICKLAND	MILLIE WEITMAN
CURTIS WHATLEY	RUTH WHISONANT
MILDRED WILSON	



*Lane Convention-  
ing in Chicago*

*Morris and Bell  
off to Athens  
Convention*



*Reporter Loughridge Interviews President Stallings*

*The Canopy Staff Notes the Latest Scoop*



# The Sock and Buskin Club



HYLAND

## OFFICERS

- EILEEN HYLAND . . . . . *President*  
 DORIS HARPER . . . . . *Vice-President*  
 RUTH WHISONANT . . . . . *Secretary-Treasurer*

THE SOCK AND BUSKIN CLUB aims to bring to the campus a better appreciation of art in the realm of the theatre through a study of dramatic devices—make-up, stage construction, stage direction, and play production. Members are admitted on the basis of dramatic ability.

In addition to a series of one act plays, exclusively for the club members, the group presented one public performance this year, *Fresh Fields* by Ivor Novello.

## MEMBERS

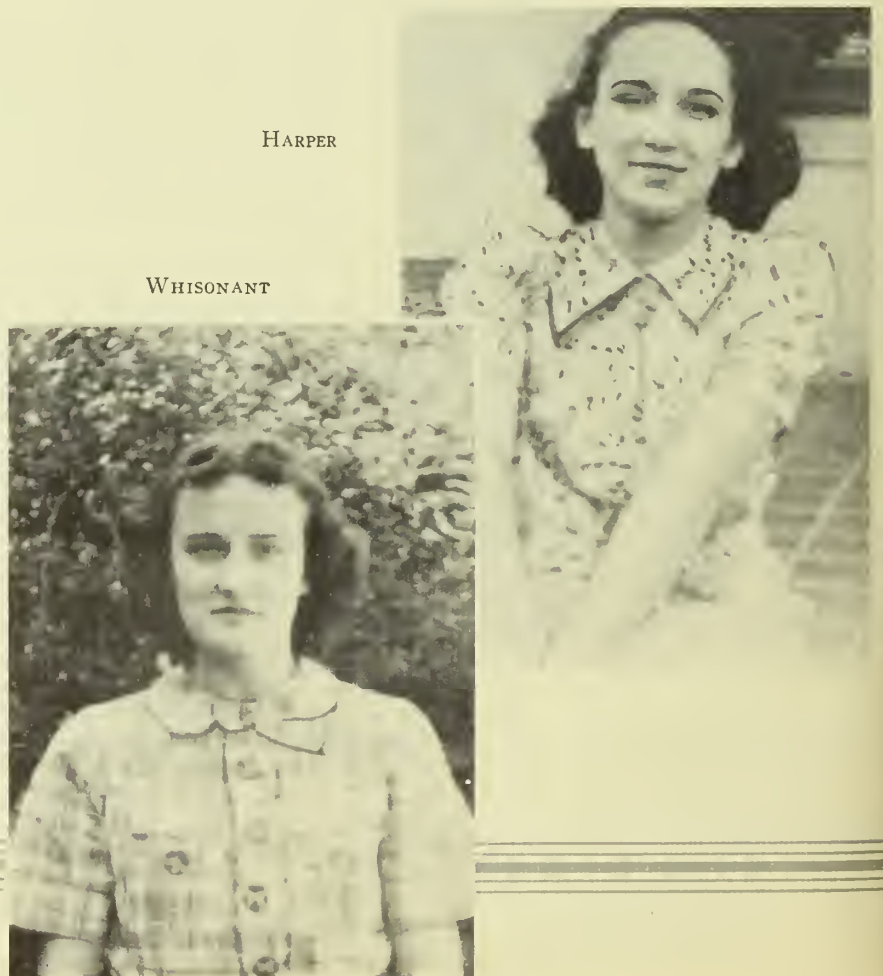
- |                    |                  |
|--------------------|------------------|
| ELIZABETH ALLEN    | CAROLYN KAY      |
| LOUISE BELL        | ALMA McCONDICHE  |
| LOUISE BLANKS      | HAZEL McLEOD     |
| MARY ALICE BRIM    | MARION ORR       |
| MARGARET CANNON    | MIRIAM QUINKER   |
| BEVERLY DOUGHERTY  | ANNA RITCHER     |
| LAURA DUNCAN       | LAFOREST SMITH   |
| CAROLYN FOLSOM     | ETHEL STALLINGS  |
| ELIZABETH GARBUTT  | LYLBURN WARREN   |
| THERESA GRAHAM     | CURTIS WHATLEY   |
| MARTHA SUE GRIFFIN | RUTH WHISONANT   |
| ANNIE LOU HARDY    | BETTIE WILLIAMS  |
| EVELYN HAY         | CATHERINE WILSON |
| MARJORIE HOWARD    | MAUDELL WILSON   |
| ERNESTINE ISBELL   | MILDRED WILSON   |
| MARION JOHNSON     | NELL ZIPPERER    |
| MARTHA JONES       | VIRGINIA ZIPLIES |

## HONORARY MEMBERS

- |                     |                     |
|---------------------|---------------------|
| MISS LOUISE SAWYER  | DR. HAROLD GULLIVER |
| MISS LEONORA IVEY   | DR. EARL PHELAN     |
| MRS. JOHN ODUM      | DR. OWENS           |
| MR. BILLY PARMENTER |                     |

HARPER

WHISONANT



# The Sock and Buskin Club



*Stage Construction Is a Project*



*Seeing a Play in the Amphitheatre*



*Making Up Before Curtain Call*

*Scenes from the Sierra's "The Cradle Song" Which Was Presented In 1937*

*Theresa Confides In Her Foster Mother*



*The Child Wins Her First Victory In Her Struggle for Love*

# The Glee Club



ASKEW

## OFFICERS

- CAROLYN ASKEW . . . . . *President*  
 JUANITA SIRMANS . . . . . *Secretary-Treasurer*  
 CAMILLE RYCROFT . . . . . *Librarian*  
 MARY WINN GREER . . . . . *Accompanist*  
 MISS CLARA BANCROFT . . . . . *Director*



SIRMANS

LIMITED TO THIRTY STUDENTS, the members of the Glee Club are selected on the basis of ability and enjoyment of singing. Its campus activities included the annual concert in March, carol singing at the Christmas Festival, and various presentations at vesper services and commencement exercises. Off-campus activities included tours to numerous towns in Georgia and Florida, and radio broadcasts given from Thomasville, Georgia, and Gainesville, Florida.

## MEMBERS

- |                     |                          |                   |
|---------------------|--------------------------|-------------------|
| JACQUELINE ABRAHAMS | VIRGINIA CLAIRE FLETCHER | SARAH MARTHA PYLE |
| CAROLYN ASKEW       | SUE NELLE GREENLEE       | CAMILLE RYCROFT   |
| EDITH BENNETT       | PARDEE GREER             | LAURA MAE SHINKEL |
| KATHLEEN CAMPBELL   | HAZEL MCLEOD             | JUANITA SIRMANS   |
| MARGARET CANNON     | DAISY MCNEAL             | LOUISE STUMP      |
| MAXINE COWART       | FRANCES MIDDLETON        | ROSALIND TAYLOR   |
| MONTINE COWART      | MATTIE LOU MIMS          | KATHRYN TOOLE     |
| EMILY CUMMING       | ELEANOR MORGAN           | KATHRYN WEBB      |
| BEVERLY DOUGHERTY   | MARY HELEN PULLEN        | BEULAH WINGATE    |



GREER



*Triple Quartette*  
 ASKEW, SIRMANS, BENNETT  
 GREER, PYLE, TAYLOR  
 TOOLE, GREENLEE,  
 MORGAN, COWART

Not in picture—  
 FLETCHER and MIDDLETON



RYCROFT



# The Philharmonic Club

## OFFICERS

BEVERLY DOUGHERTY . . . . . *President*  
 MARGARET CARTER . . . . . *Vice-President*  
 ROSALIND TAYLOR . . . . . *Secretary-Treasurer*



DOUGHERTY



CARTER



TAYLOR

WITH MEMBERSHIP limited to students in the music department, the Philharmonic Club attempts to inspire its members and the campus as a whole with a love and appreciation of good music. In the Fall Quarter the club presented Carrie Mae Woods, a colored graduate of Oberlin Conservatory, in a piano recital. In the Spring Quarter the club had as its guest for several days Julian De Gray, concert pianist and lecturer from Bennington College, sponsored by the American Association of Colleges.

In January, the club went to Jacksonville to hear the National Symphony from Washington, D. C.

## MEMBERS

JACKIE ABRAHAMS	SUSIE McKEY	KATHRYN WEBB
EDITH BENNETT	ELISE O'NEAL	MARTHA WILKES
FRANCES BRANDON	MARY ANN PAULK	HAZEL WILLIAMS
MARGARET CARTER	SARAH MARTHA PYLE	
BILLIE COLLINS	LAURA SHINKEL	
EMILY CUMMING	ROSALIND TAYLOR	
BEVERLY DOUGHERTY		
HELEN DUNCAN		
SUE NELLE GREENLEE		
MARY WINN GREER		
PARDEE GREER		
JOHNNIE MAE KELLEY		
ELEANOR MORGAN		



*Emile Baum Autographs M. W. Greer's Music*

*The President At the Keyboard      Celebrity Enjoys Conversation and Club Group*



# The International Relations Club



RYCROFT

## OFFICERS

- CAMILLE RYCROFT . . . . . *President*  
 TRECY LONG . . . . . *Vice-President*  
 MARION JOHNSON . . . . . *Secretary*  
 MILDRED WILSON . . . . . *Treasurer*  
 VIRGINIA PARRISH . . . . . *Member-at-Large*  
 MISS MILDRED M. PRICE . . . . . *Faculty Adviser*

THE INTERNATIONAL RELATIONS CLUB is an organization for training the student's perception to weigh justly and wisely the true significance of the social, economic, and political forces moving the world today. The organization does not seek to convince club members of any one point of view regarding problems, but rather to give them a background of facts which will enable them to read more accurately, intelligently, and to exert a wider influence in the communities where they may live.

The Carnegie Endowment for International Peace presents books and materials which will aid the club member in gaining adequate information regarding their studies.

Activities of the club included: presentation of programs for local clubs, open meetings to which the student body was invited, chapel and vesper programs, making available a loan scholarship, and sending delegates to the Southeastern Conference on International Relations.

LONG, JOHNSON, WILSON, PARRISH



## MEMBERS

- GERALDINE BOWEN  
 JEANNETTE COX  
 ULLAINE HURD  
 MARION JOHNSON  
 JESSIE LAMBERT  
 TRECY LONG  
 FRANCES McLAIN  
 ANNA MATHEWS  
 VIRGINIA PARRISH  
 VERA POPPELL  
 CAMILLE RYCROFT  
 PENELOPE TULLIS  
 CATHERINE WILSON  
 MILDRED WILSON  
 ORA KATE WISENBAKER

# The Math-Science Club

## OFFICERS

MARTHA JOHNSTON . . . . . *President*  
 LOIS HAFFORD . . . . . *Vice-President*  
 CAROLYN ASKEW . . . . . *Secretary-Treasurer*

To GIVE TO its members an opportunity to work out phases of those scientific projects in which they are most interested is the purpose of the Math-Science Club. In order that this may be done to advantage the club is divided into three parts: mathematics, chemistry, and biology, each group having a leader under the supervision of the club president.

This year the mathematicians made geometrical models as aids to the teaching of geometry. Field trips to local industrial plants were made by the chemistry division. The biological group's project was campus beautification with emphasis on a botanical garden in the South Woods and a fishpond near the administration building.

Movies on scientific subjects, reports from current scientific magazines and books, and off-campus speakers formed the programs at the monthly meetings of the entire club. A project of the club as a whole was the Camera Club which was started in the Fall Quarter. Members of the club learned to develop, print, and enlarge pictures.

During a trip to Silver Springs and Lake Wales, Florida, the club members observed flora and fauna characteristics of the country. The club's activities closed with the annual picnic at Twin Lakes in May.



JOHNSTON



ASKEW, HAFFORD

## MEMBERS

ANNIE ADAMS	BILLIE COLLINS	ALICE HATCHER	ELIZABETH RHYMES
BERNICE ANDREWS	PATSY DODGE	MILDRED HENDERSON	RUTH RHYMES
CAROLYN ASKEW	ELIZABETH GARBUTT	MARY HUDSON	LOUISE STUMP
ROSEMARY BAKER	SARA GARBUTT	MARTHA JOHNSTON	ROSALIND TAYLOR
RUTH BUNN	PARDEE GREER	MARGUERITE NORTON	GRACE VAN LANDINGHAM
MONTINE COWART	LOIS HAFFORD	RUTH REID	MARTHA ADA WILLIAMS
	CATHERINE WILSON	EDITH WILSON	VIRGINIA ZIPPLIES

*The Chemistry Division Conducts An Experiment*



*Botanical Garden In the Making*



*That Man-With-the-Camera, Phe-lan, Guiding Hand of the Camera Club*

# The English Club



## OFFICERS

KATHERINE MOORE . . . . . *President*  
 ANN BROOKS . . . . . *Vice-President*  
 CLARA MAE SASSER . . . . . *Secretary-Treasurer*

WITH A restricted membership of twenty-five English majors chosen from the Senior College, the English Club strives to promote interest in events of the literary world.

During the year 1937-38 the members sponsored a tea at which Gilbert Maxwell, Atlanta poet, was presented to the student body. In an effort to recognize creative ability on the campus, the club published a booklet containing literary and artistic contributions of the students. Through the Open Forum the club continued to provide an opportunity to any student to meet and to discuss current arts.



MOORE

## MEMBERS

MARGARET ABERNATHY	C. J. MORRIS
MARGUERITE ARNOLD	HAZEL MUGGRIDGE
MARGARET CANNON	MARTHA POWELL
ANN DUNBAR	SARAH ANNE PRYOR
THERESA GRAHAM	ANNA RICHTER
MARTHA JONES	ETHEL STALLINGS
ROSALIND LANE	KATHRYN TOOLE
LEONORA LANIER	ELIZABETH WADE
LAVENIA LASSITER	MARGARET WEIR
EVELYN OGLETREE	CAROLYN WHIPPLE
KITTY O'NEAL	MARTHA ADA WILLIAMS



BROOKS

SASSER

## HONORARY MEMBERS

MISS LOUISE SAWYER  
 MRS. JOHN ODUM  
 DR. HAROLD S. GULLIVER

*Maxwell Reads To  
 President Moore*

GILBERT MAXWELL  
 ELIZABETH LARISEY



*Open Forum Discussion of Current  
 Works*

# The French Club

## OFFICERS

JUNE LAWSON . . . . . *President*  
 CAROLYN GREENE . . . . . *Vice-President*  
 CAROLYN WHIPPLE . . . . . *Secretary-Treasurer*

ORGANIZED for the purpose of promoting interest in French, French literature and civilization, the French Club has a limited membership of twenty French majors and minors with a scholastic average of B or above.

This year for the first time French games were played and French songs were sung at the monthly meetings of the club. A project for the Spring Quarter was a weekly dinner with French conversation.



LAWSON

GREENE



WHIPPLE



## MEMBERS

- |                    |                    |
|--------------------|--------------------|
| MARGARET ABERNATHY | HELEN JOINER       |
| EDITH BENNETT      | MARTHA JONES       |
| ANN BROOKS         | JOHNNIE MAE KELLEY |
| BEVERLY DOUGHERTY  | LAVENIA LASSITER   |
| MARY WINN GREER    | HAZEL MUGGRIDGE    |
|                    | DORA IDA PERKINS   |
|                    | MARTHA POWELL      |
|                    | SARAH ANNE PRYOR   |
|                    | ANNA RICHTER       |
|                    | CLARA MAE SASSER   |
|                    | MARGARET WEIR      |

# The Fine Arts Club



ISBELL



LINEBERGER



FOLSOM

## OFFICERS

- ERNESTINE ISBELL . . . . . *President*  
 ELOUISE LINEBERGER . . . *Vice-President*  
 CAROLYN FOLSOM . . . *Secretary-Treasurer*

CONSISTING of those who have artistic ability and who have shown sincere interest in art, the Fine Arts Club had as its objective for 1937-38 the promoting of art appreciation and art interest, not only of club members, but also of the student body and community.

The club has endeavored to carry out its purpose through the annual Christmas bazaar; exhibits including a group of Japanese block prints, displays of the Georgia Artists Group, National Soap Sculpture Group, American Artists Group, and work done by Miss Frances Ruth Carpenter; and a trip to art centers.

## MEMBERS

- |                 |                 |                     |
|-----------------|-----------------|---------------------|
| BERNICE ANDREWS | RUTH GARBUTT    | MARTHA POWELL       |
| OPAL BROWN      | LOIS GREEN      | FLORENCE THARP      |
| SUE COPPAGE     | WILMOT GREEN    | KATHRYN THOMASON    |
| YOLANDE COPPAGE | PARDEE GREER    | ELIZABETH WADE      |
| MARY DUBOIS     | EUGENIA HARDY   | CAROLINE WILLIAMS   |
| DOROTHY FUDGE   | DORIS HARPER    | GORDON WILLIFORD    |
| DOLLIE GANNON   | MARTHA JOHNSTON | ORA KATE WISENBAKER |
|                 | ROSALIND LANE   |                     |



*Future Artists Try Their Skill In the Studio*

# Silver Anniversary Celebration

MEMBERS OF THE BOARD OF REGENTS of the University System of Georgia and educators from colleges throughout the section gathered January 14-15 to celebrate with Georgia State Womans College her twenty-fifth anniversary. On Friday the college and invited guests attended a banquet at which Dr. R. H. Powell, first president of the college, made the principal speech. The highlights of the celebration were the addresses delivered Saturday morning by Dr. Mildred C. Thompson, dean of Vassar, and Dr. Mary E. Woolley, former president of Mount Holyoke. Saturday afternoon the celebration was brought to a close at an observance of the sesquicentennial birthday of the Constitution of the United States with a speech by Governor E. D. Rivers.



SMITH, THOMPSON, WOOLLEY,  
READE



POWELL, READE, M. L. BRITTAIN



Ziplies Shows Williams Picture  
of David Barrow, Chancellor  
When G. S. W. C. was Founded

Chancellor and Mrs. S. V.  
Sanford

W. A. Edwards, Architect  
for New Dormitory



Caroline Parrish (Thomas) Spades First  
Ground for West Hall (Fall 1916)



# The Freshman Honor Society



SMITH

## OFFICERS

- IRWIN SMITH . . . . . *President*
- ROSEMARY BAKER . . . . . *Vice-President*
- HELEN DUNCAN . . . . . *Secretary-Treasurer*
- ORA KATE WISENBAKER . . . . . *Historian*
- DR. HAROLD PUNKE . . . . . *Faculty Adviser*
- RUTH BUNN . . . . . *Senior Adviser*

COMPOSED OF MEMBERS of the Junior College who are outstanding in scholarship, the Freshman Honor Society has endeavored during the year to emphasize intellectual life on the campus. In the fall quarter a Social Science study class was organized. A series of music appreciation programs was sponsored in the winter quarter. In the spring quarter the club assisted the Senior Honor Society in presenting an Honor Day program.



BAKER

## MEMBERS

- ROSEMARY BAKER
- GERALDINE BOWEN
- MONTINE COWART
- HELEN DUNCAN
- MYRTLE EDMONDSON
- SARA GARBUTT
- LUCY McCAY
- VIRGINIA PARRISH

- ELIZABETH RHYMES
- IRWIN SMITH
- ROSALIND TAYLOR
- FRANCES VAN BRACKLE
- RUTH WHISONANT
- CAROLINE WILLIAMS
- MILDRED WILSON
- ORA KATE WISENBAKER

## HONORARY MEMBERS

- MISS MILDRED TURNBULL
- MISS LOUISE SAWYER
- DR. HAROLD S. GULLIVER

DUNCAN



WISENBAKER



# The Senior Honor Society

## OFFICERS

- FRANCES MCLAIN . . . . . *President*  
 MARTHA JOHNSTON . . . . . *Vice-President*  
 SARAH PYLE . . . . . *Secretary*

## MEMBERS

- RUTH BUNN                      CAROLYN GREENE  
 VIRGINIA ZIPLIES

## FACULTY ADVISERS

- DR. LENA J. HAWKS              MRS. JOHN ODUM  
 MISS MILDRED PRICE

WITH THE IDEA of recognizing scholarship, leadership, and personality in the senior college, the Senior Honor Society was organized in 1936-37. Students are eligible for membership after two and two-thirds years of work in the college, and are selected from the group eligible on the basis of scholarship, leadership, and personality.

The society is on a five-year period of trial petitioning Mortar Board, national honor and leadership society. This year the society sponsored a school for training in Parliamentary Law.

The Senior Honor Society in co-operation with the Freshman Honor Society sponsored Honor Day Exercises emphasizing the fine arts. Featured on the program were Hugh Hodgson, head of the Music Department at the University of Georgia; Lamar Dodd, head of the Art Department at the University of Georgia; and Julian Harris, sculptor and architect from Georgia School of Technology.



MCLAIN



JOHNSTON



PYLE



BUNN



GREENE



ZIPLIES

# The Valdosta Club



GARBUTT

## OFFICERS

RUTH GARBUTT . . . . . *President*  
 MARTHA JOHNSTON . . . . . *Vice-President*  
 ANNA MATHEWS . . . . . *Secretary*  
 PARDEE GREER . . . . . *Treasurer*

THE PURPOSE of the Valdosta Club is to create a feeling of friendship and understanding between boarding and day students, to instill in its members the spirit of the college, and to organize the group so effectively that it may be a means of interpreting the activities of the college to the town.

The organization is composed of the alumnae of the Valdosta High School. Each month a social meeting is held at the House-in-the-Woods.

## MEMBERS

JACQUELINE ABRAHAMS  
 ROSEMARY BAKER  
 GERALDINE BOWEN  
 LOUISE BLANKS  
 ANN BROOKS  
 MARGARET BRUCE  
 MARTHA BRUCE  
 KATHLEEN CAMPBELL  
 HILDA CARROLL  
 LOIS CHRISTIAN  
 LOIS CORLEY  
 SUE COPPAGE

YOLANDE COPPAGE  
 EILEEN COX  
 JEANNETTE COX  
 DOT DALTON  
 BETTY DASHER  
 MIXON DAVIS  
 PATSY DODGE  
 BEVERLY DOUGHERTY  
 ANN DUNBAR  
 HELEN DUNCAN  
 SUE NITA FENDER  
 DOLLY GANNON

SARA GARBUTT  
 FRANCES GIDDENS  
 ERNESTINE GIRARDIN  
 JOSEPHINE GRAHAM  
 MARY WINN GREER  
 DORIS HARPER  
 ERNESTINE ISBELL  
 MARY FRANCES JOHNSON  
 LAMAR KENDALL  
 ALINE LANIER  
 FRANCES LAZARUS  
 ELOUISE LINEBERGER

SARA MACKAY  
 SUSIE MACKAY  
 SARA MATHIS  
 DOROTHY MORGAN  
 ELEANOR MORGAN  
 KATHERINE MUNDY  
 MATTIE RUTH PARRISH  
 LUCILLE POPE  
 LOUIE PEEPLES  
 MARTHA POWELL  
 SARAH MARTHA PYLE  
 HELEN QUARTERMAN

MIRIAM QUINKER  
 MARY EDNA RATLIFF  
 RUTH REID  
 DORIS RODGERS  
 RUBY JEAN ROGERS  
 SARAH KATHRYN SASSER  
 CLARA MAE SASSER  
 VERA SIMPSON  
 BERNICE SMITH  
 MARION SMITH  
 LAFOREST SMITH  
 JOYCE STEWART

LOUISE STUMP  
 ROSALIND TAYLOR  
 KATHRYN TOOLE  
 PENELOPE TULLIS  
 GRACE VAN LANDINGHA  
 HAZEL VICKERS  
 MADGE WATKINS  
 CAROLINE WILLIAMS  
 FRANCES WILLIAMS  
 MARTHA GORDON WILLIAMS  
 ORA KATE WISENBAKER  
 GWENDOLYN WINTER  
 NELL ZIPPERER

MATHEWS



JOHNSTON



GREER

# The Alumnae Association

## OFFICERS

- NATALIE SIRMANS WILLIAMS . . . . . *President*  
 LOUISE ODUM HOWELL . . . . . *Vice-President*  
 CLAIRE BRAY . . . . . *Secretary*  
 BROUN HUTCHINSON . . . . . *Treasurer*

THE PURPOSE of the Alumnae Association is to combine former students of G. S. W. C. into active off-campus groups. A chapter has been organized in Valdosta, and in other cities several are pending organization. By these chapters the graduates can keep in close contact and participate in the progress of their Alma Mater.

A representative number of Alumnae attended the Twenty-fifth Anniversary celebration of the college, a graduate from each class since 1914 being present.

The Association was represented at the meeting of the American Alumni Council held in Tallahassee, with the view of joining in the near future.

The main project that is being worked on this year is that of raising funds by donations from the Alumnae to build a fountain in the center of the main walk in front of West Hall.

A luncheon was sponsored at the Georgia Educational Association in Atlanta, and efforts are being made to get a correct mailing list of all Alumnae.

In addition, teas, preceded by a talk by the president of the college or one of the professors, are to be given to the high-school graduates in a number of cities. An Alumnae luncheon will be given at Commencement.



WILLIAMS



Room In New Dormitory for Use of Visiting Alumnae—Project of Association

HUTCHINSON



HOWELL

BRAY



# The Sports Club



## OFFICERS

- SUE COPPAGE . . . . . *President*  
 DODY WILSON . . . . . *Vice-President*  
 ANNIE ADAMS . . . . . *Secretary*  
 LOUISE BELL . . . . . *Treasurer*  
 MARY HUDSON . . . . . *Captain of Kappas*  
 JUNE LAWSON . . . . . *Captain of Lambdas*

TO PROMOTE physical efficiency, to stimulate an interest in sports, and to foster high ideals and a spirit of good sportsmanship is the aim of the Sports Club. Membership in the club is open to all college girls who are interested. Pledges are taken into full membership of the club after they have shown an active interest in its program and have a satisfactory scholastic record. For the purpose of friendly competition, the club is divided into two teams, Phi Kappa and Phi Lambda.

The program consists of American ball, basketball, volleyball, fist ball, baseball, archery, tennis, croquet, horseshoes, golf, badminton, shuffleboard, and swimming. The year's activities are concluded with the party at which the honor guests are those winning awards for distinction.



WILSON

COPPAGE

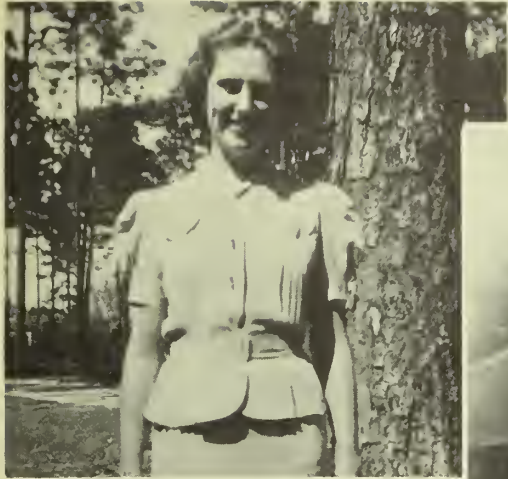
ADAMS



BELL



# The Sports Club



*June Lawson, Captain of the  
Lambda Team*



*Ivey Referees a Fist Ball Game*



*Mary Hudson, Captain of the  
Kappa Team*

*Freshman Pledges*

*Before the Game*



*Teams Compete At a Fist Ball Game*

*During Initiation Week*





SHAWN  
"Credo"



SHAWN  
"Hacendado de California"

**TED SHAWN**

AND HIS ENSEMBLE OF  
**MEN DANCERS**

Barton Mumaw  
Frank Overlee  
Wilbur McCormack  
Dennis Landers

Fred Hearn  
Foster Fitz-Simons  
John Delmar  
Frank Delmar

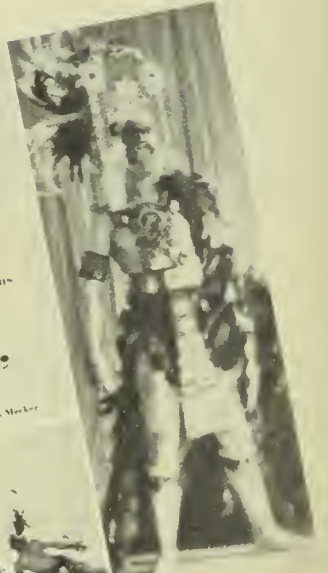
present

**"O. Libertad!"**

AN AMERICAN SAGA IN THREE ACTS

Choreography by Ted Shawn

Music composed by Jess Meeker



BARTON MUMAW  
"Basketball"

BARTON MUMAW  
"Banner Bearer"

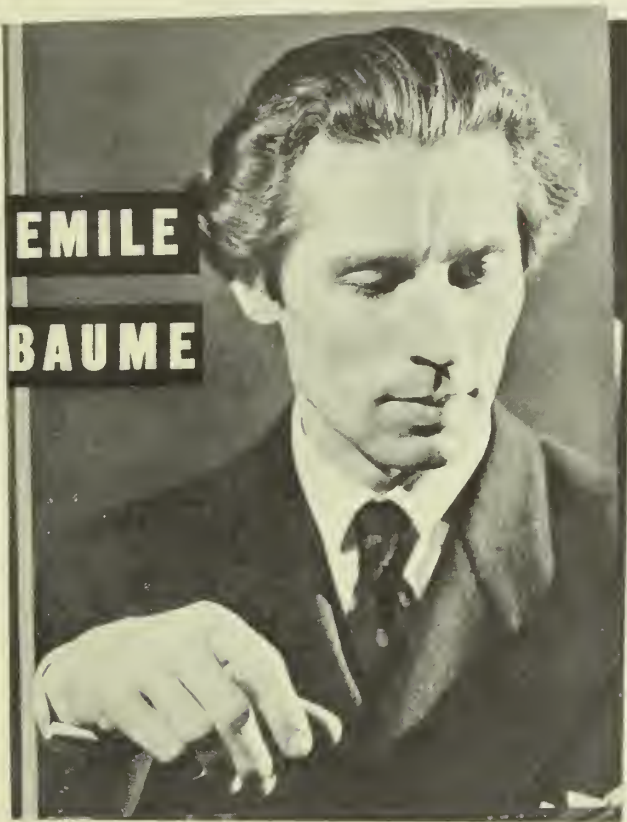
FOSTER FITZSIMONS  
"Decathlon"

"Cheer Leaders"

WILBUR MCCORMACK  
"Boxing"



Series



**EMILE  
BAUME**

*Emile Baume*

**THE AMERICAN  
REPERTORY THEATRE, INC.**  
PRESENTS



**THE  
QUEEN'S HUSBAND**  
A MODERN COMEDY IIII BY THE PULITZER PRIZE WINNER  
**ROBERT E. SHERWOOD**  
"Idiot's Delight", "Road to Rome", etc.

PLAYERS



COLUMBIA CONCERTS CORPORATION  
PRESENTS  
*Two New Young Singers in Joint Recital*  
**GRACE PANVINI** and **CONRAD MAYO**  
COLORATURA SOPRANO      BARITONE



*The*  
**BARRÈRE-BRITT  
"CONCERTINO"**



in  
31 DIFFERENT INSTRUMENTAL COMBINATIONS  
SOLI • DUETS • TRIOS • QUARTETS • QUINTETS

# *Ye Old Christmas*



FROM THE FIRST college Christmas until the present day, the Old English Christmas Festival has been the climax of the fall quarter. Held the evening of home going for the holidays, the festival begins in the Rotunda where the Yule log is lit and a toast is drunk. As the Lord of the Manor and his guests in costume go into the Feast Hall, the festivities are directed by the Lord of Misrule. Dance and song, interspersed with pranks from the Court Fool, add to the merriment and gaiety while the feast is being enjoyed. As the end of the evening approaches, the dances become more stately, the Christmas story is read from the Bible, and the guests, singing *Silent Night*, leave the candlelit room.



*Fool, Lord of Misrule, Heralds  
Morris, Ivey, Joiner, Burns*

*Christmas Wreaths*

*All On a Winter's Day—With  
the Ice Skaters*





# *Festival*



*Gift Toy Soldiers On Parade*

*Lords and Ladies Dance a Stately Minuet*

*Santa and His Tapping  
Reindeer*





*Visiting Representatives Find Their Color Teams for Campus Games*

## *Play Day*

SETTING APART THE first Saturday in May as Play Day, the college acts as hostess to hundreds of girls from the Senior classes of near-by high schools invited to spend the day on the campus.

With the arrival of the first guests, students and visitors are divided into color teams which compete in campus games throughout the morning. Features of the morning are the archery exposition and the horse show.

After a picnic lunch in the woods, the guests are entertained with an especially prepared musical and dramatic program in the auditorium.



*Archers Exhibit Their Skill*

*"Keep the Line Moving"—  
G. S. W. C. and Visitors  
Picnic At Noon*



# Play Day



*Scenes On the Fist Ball Court*



*Eating Lunch and Getting Acquainted*



*Play Day Comes To a Close With  
the May Festival In the Afternoon*



## May Day

OBSERVING the official coming of spring, the yearly May Day celebration takes place on the lawn in front of Converse Hall. The queen's throne and its setting has been decorated earlier in the day by the Freshmen.

*Queen of the Festival*  
*Frances Carson*

### THE COURT

KELLEY, CARSON,  
PARRISH, STRICKLAND, PHELAN, HARRELL,  
DALTON, TURNER, WILLIAMS, OGLETREE,  
MORGAN, ASKEW, DICKINSON, TILLMAN, DALEY, KELLEY





*Elizabeth Kelley, Maid of Honor,  
the Queen, and Her Flower Girls  
—Jane Dickinson, Jeanette Till-  
man—and the Train Bearers—  
Mary Louise Strickland, Peggy  
Phelan*

*Ladies of the Court Lead the Royal  
Procession to the Throne*



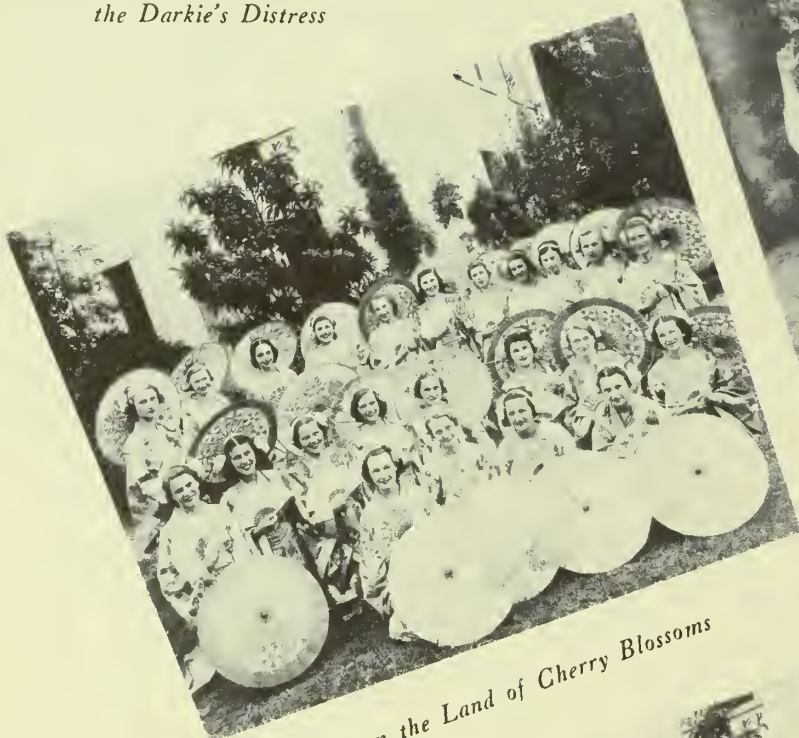
*The Queen Exits After the Dances  
Through the Lane of Spectators*



*From the Land of the Free—  
the Darkie's Distress*

## *May Day*

FOLLOWING the crowning of the May Queen and the recognition of her court, the festivities are taken over by dancers in brightly colored costumes. Taking as a theme "Over the World to Spring," there are depicted the traditional welcome to spring of many lands.



*From the Land of Cherry Blossoms*



*Springtime in Russia*



*Gypsy Revelers*



*Merrie Olde*

# May Day



Time in Holland



Dancing Kilties



A Bit of Erin



Land of the Free—Cake Walkers



Modern Maids At Play

THE FINAL DANCE is a May Pole dance in which every dancer participates, and a prize is awarded to the group winding their pole most perfectly.



*FEATURING PERSONALITIES —  
who typify the attainment of the goal of  
the college — that of developing in the  
individual — tact, co-operation and  
leadership, openmindedness, and toler-  
ance, poise, versatility, reverence, sports-  
manship, friendliness, cheerfulness, and  
intellect—both in academic work and in  
application to social and political prob-  
lems—to these Alma Mater grants recog-  
nition.*





*Features*



## *Miss Ruth Bunn*

Contagious laughter ushers her in . . . sincere and capable as vice-president of S. G. A.  
. . . an efficient business manager on the PINE CONE . . . the charm of her cheerful  
disposition attracts friends . . . a mountain of work becomes a mole-hill at her magical  
touch . . . an honor student though not a bookworm . . . a matter of give-and-take  
with the worth-while things of life.





*Miss Frances McLain*

Truly representative . . . enthusiastic . . . co-operative . . . a leader who inspires confidence . . . has admirably filled presidencies of Senior class and Senior Honor Society . . . efficient . . . a quiet charm . . . quick friendliness.



## *Miss Ethel Stallings*

Unusual . . . flutters and goes playfully coy . . . little-girlish . . . sincere in her convictions . . . an excellent Y. W. C. A. president . . . enthusiastic . . . active in dramatics and shows ability . . . friendly to all . . . enjoys the ridiculous and the sublime.





*Miss Carolyn Greene*

Combines efficiency, humor, dependability, and common sense in nice proportion . . .  
standby in emergencies . . . candid camera fiend . . . everything she does is "just  
right" . . . never passes up a dance . . . all-round.



*Miss Carolyn Whipple*

"Tad" describes her perfectly . . . the most petite Senior, she accomplishes wonders . . . co-operation to the extreme . . . sees the world through rosy glasses . . . dependable, eager, helpful.





## *Miss Sue Coppage*

The sunny-souled, red-headed girl of the Great Outdoors . . . unsurpassed sports-  
manship . . . energetic . . . president of Sports Club and one of its most enthusiastic  
supporters . . . unaffected . . . easy going.



*Miss Virginia Zippies*

Serenity is the keynote of her charm . . . a fine sense of discrimination . . . sympathetic but firm in her leadership of the Student Government Association . . . outstanding for scholarship . . . poised . . . an accomplished pianist.







## *Miss Edith Bennett*

Patron saint of the Freshmen . . . friendly to every newcomer . . . a voice with a thrill in it . . . perfectly composed before an audience . . . a happy disposition . . . impartial as representative on faculty-student honor committee . . . extends to all a helping hand and cheery encouragement.

*AND FOR A LAST WORD—  
in the practical manner, of those  
our patronizers — plus side-lights  
on the campus in the more frivo-  
lous vein, — our “lighter life,”  
which so pertinently recalls the  
gayer moments fast in the mem-  
ories of each student—those mem-  
ories so essential to the true pic-  
ture of Life at G. S. W. C.*

STORE



C. F. SUM

*Advertisements*



1. Popeye Adams eats spinach!
2. Shine, Miss Ivey.
3. Getting a lift.
4. Junior carnival preparations.
5. "Oh, Promise Me."
6. Songbird Morgan.
7. Sun or rain?
8. Attention, girls!
9. Measure for measure—Home Econ. students entertain.

# Lighter Life AT G. S. W. C.

1. Going to town.
2. Love my dog?—asks Jennie.
3. Having trouble, Joiner?
4. Will you have milk or milk?
5. Birdie in a cage with a Big Apple.
6. Tad makes an investment.
7. Time out for court members to recline.
8. Whatcha got there, Dot?



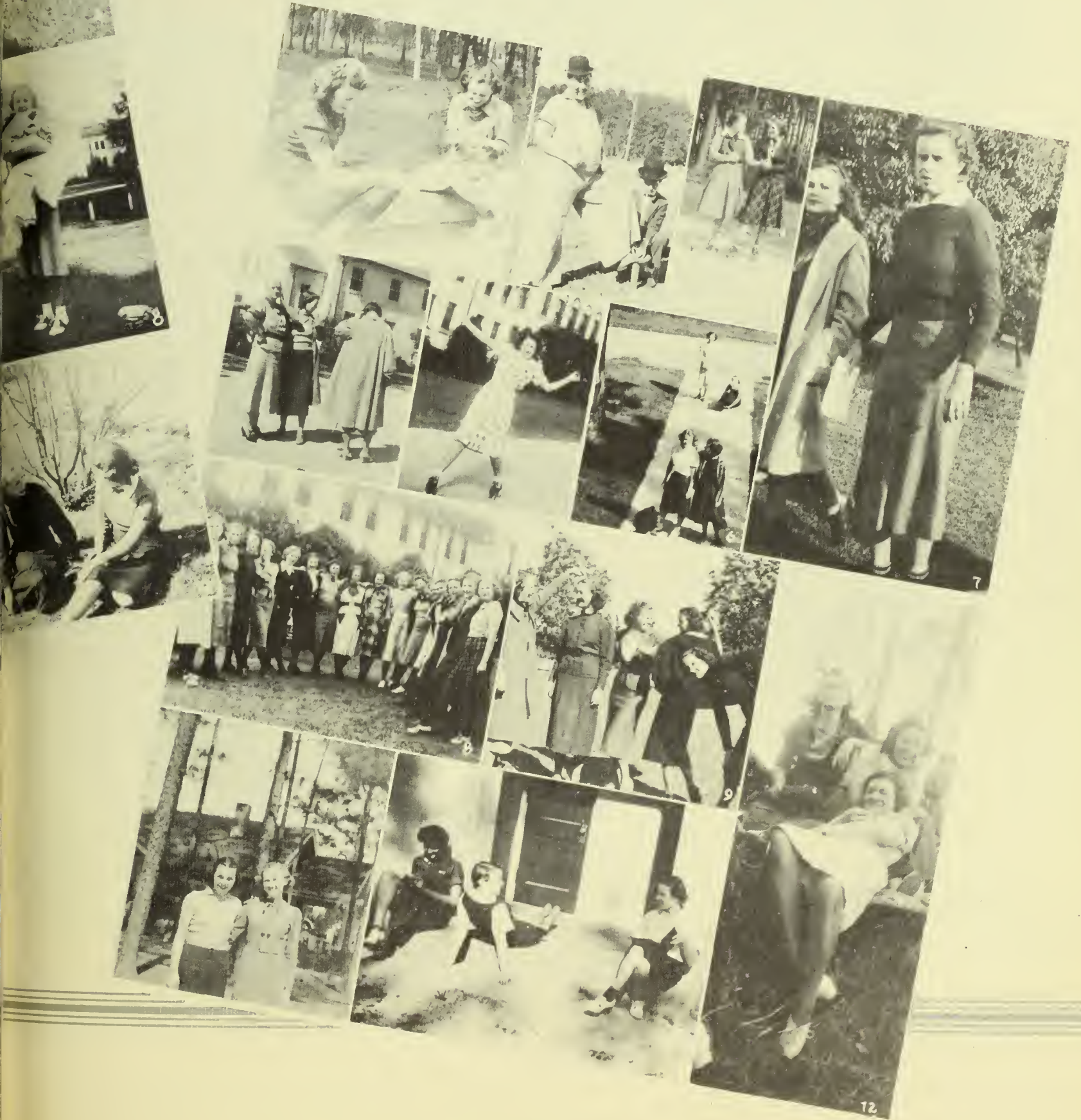


1. Keep the lunch line moving, girls.
2. Alfalfa Bush at the movie party.
3. Pull hard, Leotha—then you'll both be on time.
4. This little Perry goes to market.
5. Must be Saturday.
6. Garbutt a la Dietrich.

7. Five cute girls line up and wave.
8. Moving, Johnson? Don't forget your toothbrush.
9. Crank it up and then maybe—
10. Fo'give me!
11. Puzzled?
12. Who would have thought!

# Lighter Life AT G. S. W. C.

1. Town girls' leisure.
2. Laurel and Hardy—as only Linda and Lucy can!
3. Taylor and Wilkes take off.
4. Everybody's worried!
5. Hold it, Bebe!
6. Seniors decide to stay at home.
7. What's the matter, Laura?
8. Black stocking line-up of dramatic club initiates.
9. Big Appling.
10. Foils.
11. Saturday morning relaxation.
12. Hold that run!





1. Sleepy, Dody?
2. Miss Moore and *Strangers Garment*-Maxwell.
3. Dignity in action.
4. Madame President.
5. Don't point, Leona.
6. What does he say?
7. Need a pillow?
8. Look out, kids—Alfa's at it again.
9. Posin'.
10. Popularity.
11. Senior carnival build-up.
12. Leroy and Christmas festival boar's head.
13. Get up, Kathryn—let's go to Brookwood.

*Lighter Life*



# Echoes FROM SENIOR TRIP TO *New Orleans* . . .

- |  |  |
|--|--|
| 1. Chaperons Reade and Reade.                        | 9. Toole prefers conversation.   |
| 2. Everybody wants to help.                          | 10. Shucks, are those levees!<br>Steaming down the river—Mississippi boat ride . . . |
| 3. President Frances must have left something.       | 11. The boat.  |
| 4. Smiles before the take-off.                       | 12. Why not get on?  |
| 5. "Great Silver Fleet"—Sushan Airport, New Orleans. | 13. View of Mississippi.   |
| 6. This, girls, is an airplane.                      | 14. Come on, Dink, let's go.   |
| 7. Want to go up?                                    | 15. Sunbonnet girls give us a great big smile.                                       |
| 8. Wait for me.                                      |  |



**FOREMOST DAIRIES, INCORPORATED**

VALDOSTA :: GEORGIA

Compliments of , , ,

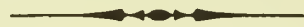
**GEORGIA PUBLIC UTILITIES**

Compliments of , , ,

**THE COLLINS BAKING COMPANY**

VALDOSTA :: GEORGIA

Serving Valdosta for more than a third of a century  
Here's to our good friends—the G. S. W. C. Girls



**STAR LAUNDRY**

DRY CLEANERS • RUG CLEANERS

— PHONE 54 —

WE SERVE TO PLEASE AND WE ARE PLEASED TO SERVE

**BROOKWOOD PHARMACY**

Where College Girls Meet , , Where College Girls Eat

Compliments of , , ,

**R. H. BASSFORD**

Corner Valley and Patterson Streets

PHONE 137 - 138

**ELLINOR MOTOR COMPANY**

SALES  SERVICE

VALDOSTA , Phone 144 , GEORGIA



WE ARE PROUD OF THE . . .

*Georgia State Womans College*



We are glad to take this  
occasion to say that the

**CITY OF  
VALDOSTA**

IS PROUD TO LIST AMONG ITS GREATEST ASSETS THE

*Georgia State Womans College*

AND WE HOPE THAT VALDOSTA AS A CITY MAKES  
A FAVORABLE AND LASTING IMPRESSION ON  
THE MINDS OF THE YOUNG LADIES WHO  
MAKE UP THE STUDENT BODY OF THIS  
GREAT INSTITUTION.

Compliments of , , ,

**McCRORY'S  
FIVE AND TEN CENT STORE**

**CHURCHWELL'S DEPARTMENT STORE**

COLLEGE GIRLS' HEADQUARTERS

**JOHN OLIVER SERVICE STATION**

Firestone Tires :: Amoco Products

PHONE 231

**SOUTHERN STATIONERY AND PRINTING  
COMPANY**

WHOLESALE PAPER DEALERS

Commercial Stationers :: Printers :: Office Outfitters

VALDOSTA :: GEORGIA

**RITZ THEATER**

QUALITY ENTERTAINMENT

ONE OF SIXTY MARTIN THEATERS

Compliments of , , ,

**WHITTINGTON'S**

**MATHIS AND YOUMANS COMPANY**

Pianos , Victrolas , Radios

EVERYTHING IN MUSIC



VERAN BLACKBURN  
PHOTOGRAPHER FOR  
PINE CONE

1938



THOMPSON AND GIRARDIN

J E W E L E R S

120 North Patterson Street

VALDOSTA :: GEORGIA



... COMPLIMENTS OF ...

**HOTEL DANIEL ASHLEY**



Compliments of ' ' '

**GEORGIA POWER AND LIGHT COMPANY**

VALDOSTA :: GEORGIA

Compliments of ' ' '

**W. T. GRANT COMPANY**

' Known for Values '



... COMPLIMENTS OF ...

**FIRST NATIONAL BANK**



Compliments of ' ' '

**McELVEY-FUTCH COMPANY**

# *In Printing*

THERE ARE MANY REASONS WHY  
SUCCESSFUL ANNUALS REQUIRE  
THE SERVICES OF EXPERIENCED  
AND EXPERT CRAFTSMEN

## FOOTE & DAVIES CO.

HAVE THESE SERVICES . . . *and*  
*the most necessary components of*  
*all really fine books including*  
A SPECIAL ANNUAL SALES  
AND SERVICE ORGANIZATION  
CREATIVE DESIGNERS AND  
LAYOUT ARTISTS • ABUNDANT  
EQUIPMENT . . . MODERN AND  
COMPLETE • PRICES REPRESENTING  
MAXIMUM IN VALUE



ATLANTA  
GEORGIA











BLACKBURN

