

The

1

9

4

1



Dinet Lone

To Dr. Reade -
With best wishes -
The 1941 "Pine Cone"
staff -

Digitized by the Internet Archive
in 2014





1941 PINE CONE

'Mong the stately pines of Georgia,
Glorious to the view,
Stands our noble Alma Mater,
Basking 'neath the blue.

Alma Mater, Alma Mater,
Praises never fail,
For thy fame shall never perish,



PINE CONE

Presented by the Student Body of the Georgia State Womans College at Valdosta, Georgia

SUSIE McKEY • EDITOR • GWENDOLYN WINTER • BU



Red and black—all hail!



ESS MANAGER



Our Library — Source of Light and Knowledge

F O R E W O R D

THIS IS SUPPOSED TO BE A YEAR-BOOK INTRODUCTION—one of the hundreds ground from the pens of editors—stilted in form and thin-worn with its phrases requesting appreciation of effort. The 1941 PINE CONE staff asks no appreciation. While it was necessary to have a guiding hand composed of a few "dependables," we could not have published an annual without your cooperation. It is you—the student body—to whom we owe a vote of thanks. You have filled the following pages with your school life. Some one has said that no scholastic publication fulfills its purpose unless it is representative of the body which it portrays. We sincerely trust that this yearbook goes down in scholastic annals as being worthy of G. S. W. C.





West Hall through the Pines



Log Cabin Provides a Suitable Place for Recreation and Fun

C O N T E N T S

C O L L E G E
C L A S S E S
A C T I V I T I E S
F E A T U R E S
A D V E R T I S E M E N T S

COLLEGE

ACTIVITIES AND FRIENDSHIP BEGIN with the student's entrance into the college. Desire for learning commences in the buildings of the college, and college life initiates desire for successful accomplishment. There is nothing that takes the place of dormitory life and the friendships that are made therein. And there is nothing to supplement the knowledge and establishment of ideals which are gained through class room work. We give you our college—the "fountain of youth"—from whence flow our dreams of the future.





Dormitory Students Enjoy Bridge Session.



The "Pause That Refreshes"—the Country Store.

Music Studio
Adjoining Campus



Library Remains Open at Night to Satisfy the Longing for Knowledge

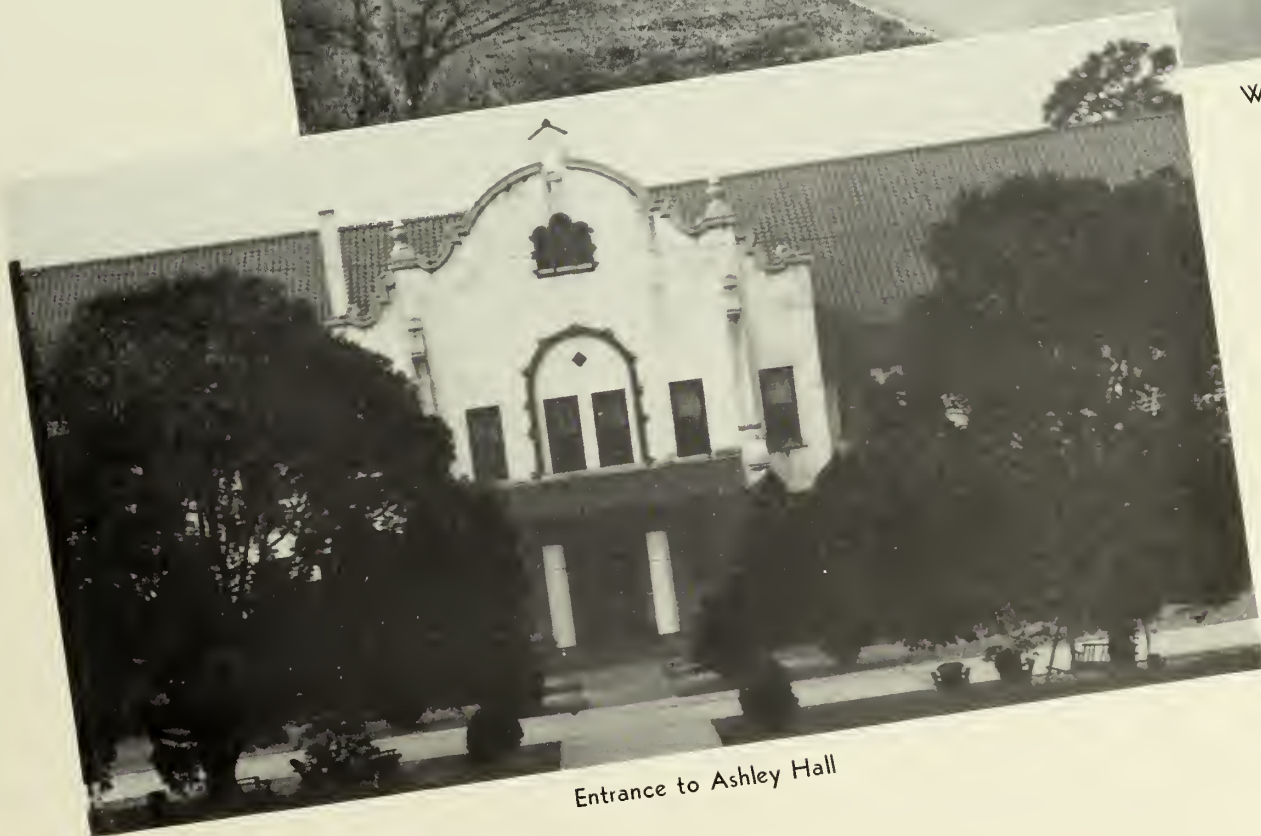
VIEWS



South End of
Senior Hall



West Hall from
South Drive



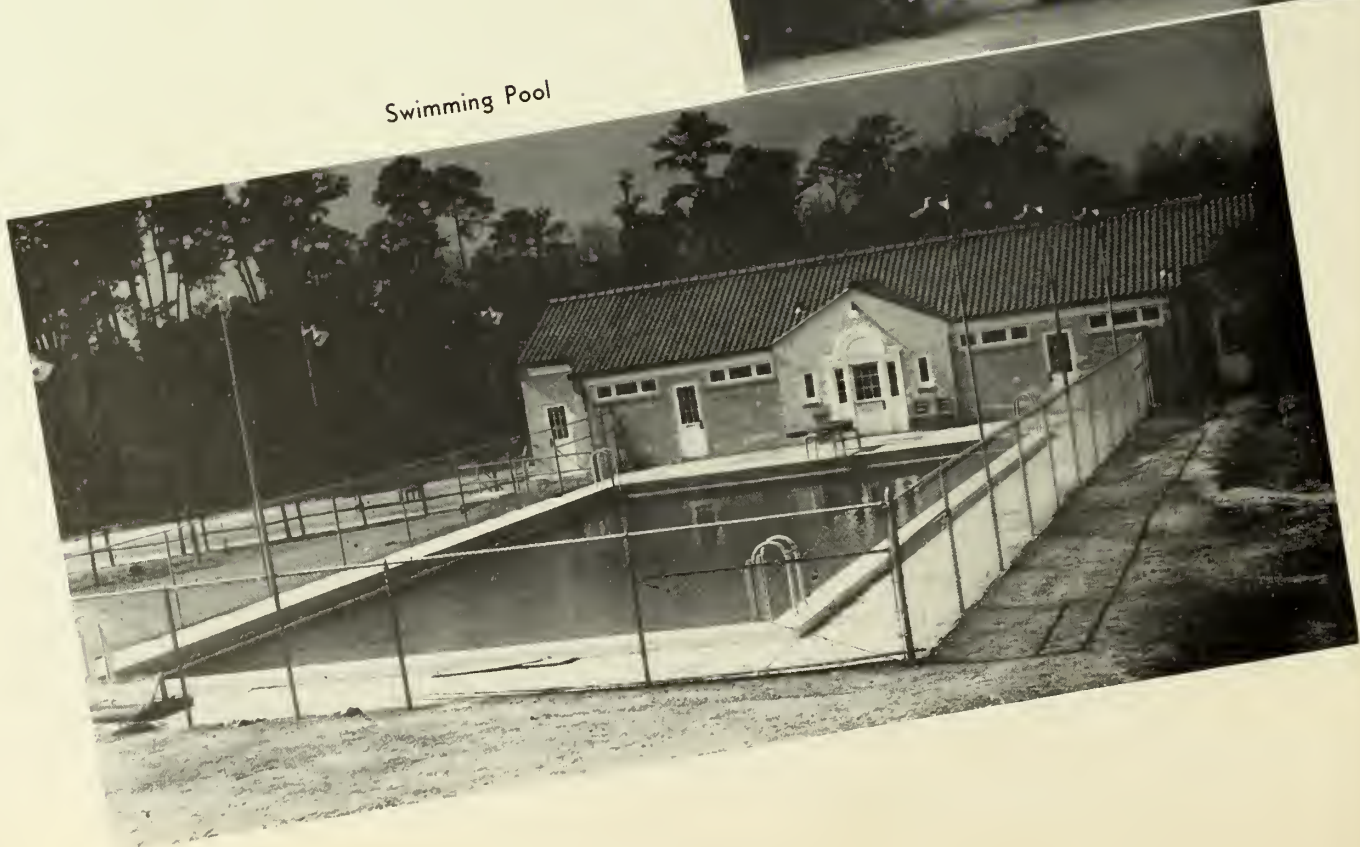
Entrance to Ashley Hall

AROUND THE CAMPUS

Entrance to Senior Hall



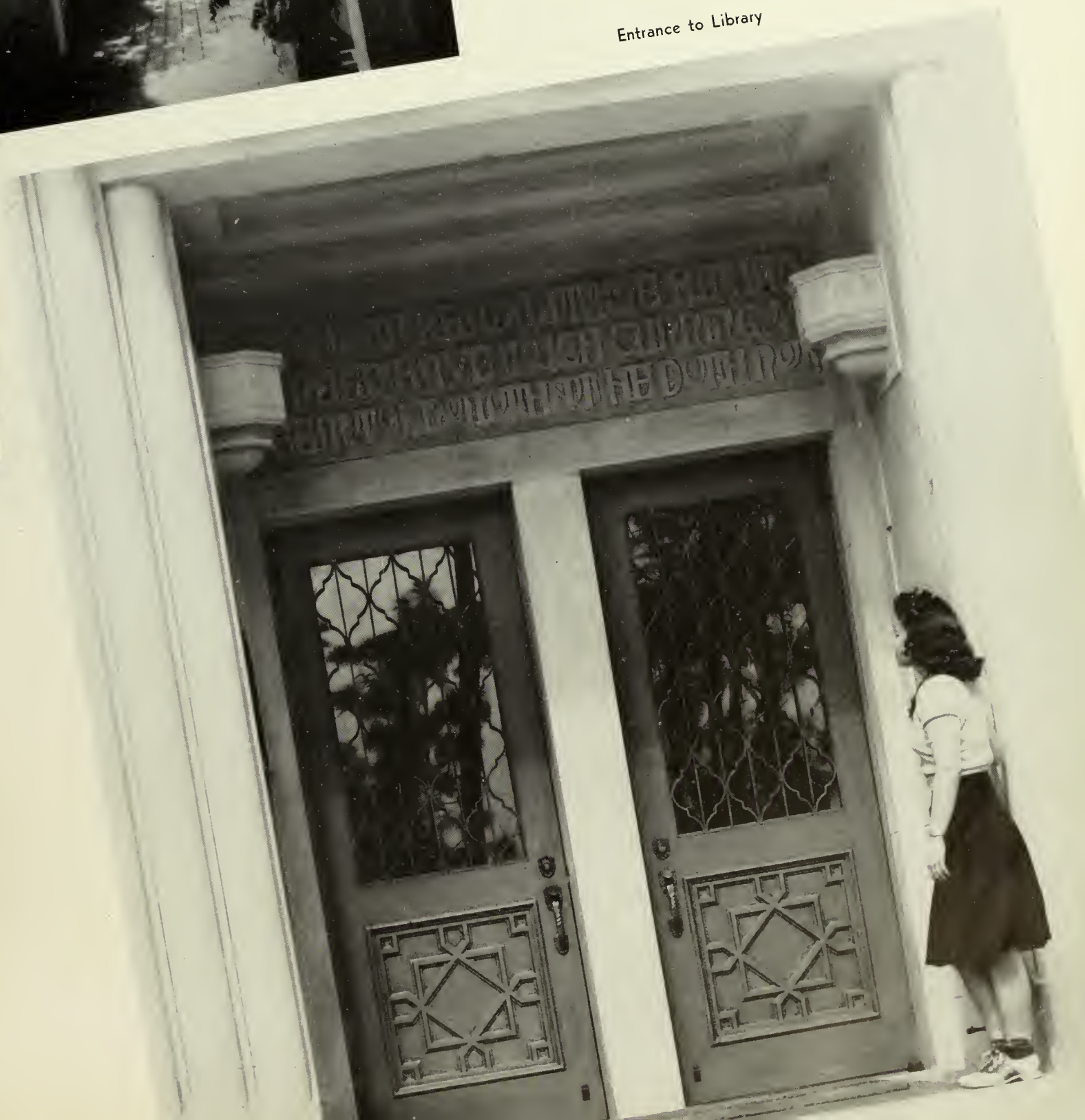
Swimming Pool





Ashley Hall Archway

Entrance to Library



FRANK R. READE
President

B.A., M.A., Ph.D., University of Virginia.



ANNIE POWE HOPPER
Dean of Women

B.S., George Peabody College for Teachers;
A.M., Columbia University; Teachers College
Diploma as Adviser of Women and Girls.



LENA JAMES HAWKS
Dean of Instruction

A.B., Goucher College; A.M., Vanderbilt University;
Ph.D., The Johns Hopkins University.



FACULTY

MISS LILLIAN PATTERSON, Librarian . . . A.B., Georgia State Womans College; B.L.S., University of North Carolina. • MISS LAURA REED, Assistant Librarian . . . A.B., Womans College of the Greater University of North Carolina; B.A.L.S., University of North Carolina. • MISS FRANCES RUTH CARPENTER, Professor of Art . . . Bachelor's Diploma, B.S., A.M., Teachers College, Columbia University. • DR. SAPELO TREANOR, Professor of French . . . A.B., A.M., University of Georgia; Student at the Sorbonne, Paris, France; Ph.D., University of North Carolina. • MISS SARA JANIE BUSH, Professor of Latin . . . A.B., University of Georgia; A.M., University of North Carolina; Diploma, College of Classical Studies, Rome, Italy. • MR. HERBERT F. KRAFT, Professor of Music . . . Special Student, Oberlin Conservatory; Sangster Studio, Cleveland; Pupil of Valjean Anderson, Organ, Washington; Edwin Lathrop Baker, Piano, New York; C. V. Rychlik, Composition, Cleveland. • MISS GLADYS WARREN, Professor of Music . . . B.M., Lake Erie College; M.A. Iowa State University; Pupil of Ernest Hutcheson, New York; Lee Pattison, Chicago; Tobias Matthay School of Pianoforte, London, England. • MISS MARIE MOTTER, Professor of Voice . . . A.B., Music, The Carnegie Institute of Technology. Further study: Ithaca Conservatory, University of Pittsburgh. Graduate study in voice choral conducting at The Carnegie Institute of Technology. Pupil of Jean Dagg Seaman, Dr. Bert Rogers Lyon. • MRS. FRANCES PARDEE, Instructor in Violin . . . Graduate, Cincinnati Conservatory of Music; Pupil of Sevcik in Vienna, and of Julian Polikawski, Cincinnati Conservatory of Music. • DR. BEATRICE I. NEVINS, Professor of Biology . . . Ph.B., Ph.M., Ph.D., University of Wisconsin. • MISS MARJORIE ESTELLE CARTER, Assistant Dean of Women and Assistant Professor in Biology and Physical Education . . . B.S., William and Mary College. • DR. LEE W. BLITCH, Instructor in Physical Science . . . B.S., Emory University; Ph. D., Johns Hopkins. • DR. EARL W. PHELAN, Professor of Chemistry . . . B.Chem., Ph.D., Cornell University. • MRS. GERTRUDE GILMER ODUM, Professor of English . . . B.S., A.M., George Peabody College for Teachers. • DR. HAROLD STRONG GULLIVER, Professor of English . . . B.A., Yale University; A.M., Columbia University; Ph.D., Yale University. • MISS LOUISE ANNE SAWYER, Professor of Speech . . . Graduate, Columbia College of Expression; Student, University of North Carolina; B.S., School of Speech, Northwestern University; Student, Columbia College of Expression. • DR. ELEANOR NIMS BRINK, Pro-

First row, left to right: Patterson and Reed. . . Carpenter, Treanor and Bush. • Second row: Kraft, Warren, Motter and Pardee. . . Hawks, Nevins, Carter, Blitch and Phelan.





Odum, Gulliver and Sawyer.



Brink, Durrenberger, Punke and Price.

FACULTY

fessor of Social Sciences . . . A.B., Vassar College; Ph.D., University of Chicago.

• DR. JOSEPH A. DURRENBERGER, Professor of History and Social Science . . .

A.B., Southwestern University; A.M., Ph.D., Columbia University. • DR. HAROLD

H. PUNKE, Professor of Education . . . B.S., M.S., University of Illinois; Ph.D.,

University of Chicago; Exchange Teacher at the University of Georgia, Fall, Winter

and Spring, 1940-'41. • MISS MILDRED McCLELLAN PRICE, Professor of History

. . . A.B., Georgia State Womans College; A.M., Columbia University. • MISS

ANNA RICHTER, Secretary to the President and Assistant in Speech Department

. . . A.B., Georgia State Womans College. • MISS MILDRED TEASLEY, Director

of Placement and Publicity . . . A.B., A.M., University of Georgia. • MR. JAMES

ROBERT DUSENBURY, Treasurer and Purchasing Agent. • MRS. CAROLINE PAR-

RISH THOMAS, Registrar . . . A.B., Georgia State Womans College. • MISS

MILDRED LARSEN, Assistant Treasurer . . . A.B., Georgia State Womans College.

• MR. EUGENE PENNINGTON MALLORY, Teacher of Education and Psychol-

ogy . . . M.A., University of Georgia; B.L., University of Virginia; LL.B., Mercer Uni-

versity; Exchange Teacher from the University of Georgia, Fall, Winter and Spring

Quarters. • DR. MARIAN E. FARBAR, Resident Physician . . . M.D., University of

Illinois Medical College; Practiced Medicine in India and at Earhan College. •

MRS. EVA ALFORD SHRIVALLE, Dietitian . . . Palmer College. • MRS. C. C.

WHITTLE, Assistant Dietitian. • MISS LEONORA IVEY, Professor of Physical

Education . . . Graduate, Sargent School for Physical Education of Boston Univer-

sity; B.S., Georgia State College for Women; M.A., Georgia Peabody College for

Teachers. • MISS EDITH LOWRY, Riding Instructor. • MISS ELIZABETH McREE,

Assistant Professor of Physical Education . . . A.B., Georgia State Womans Col-

lege; M.A., Columbia University. • MISS MATILDA CALLAWAY, Professor of

Home Economics . . . B.S., University of Georgia; M.A., Columbia University. •

MRS. OLA BEECHWOOD, House Mother of Senior Hall.



Top, left to right: Richter, Teasley, Dusenbury, Thomas and Larsen. . . . Mallory. ● Center: Farbar. . . . Whittle and Shriville. ● Bottom: Ivey, Lowry and McRee. . . . Beechwood and Callaway.



CLASSES

SCHEDULES OF CLASSES AND AFFAIRS make the tempo of college life fast moving. Last year's Seniors are now tradition, the Freshmen are making themselves felt and we who were Juniors find ourselves among the Seniors of today. To you, the bewildered Freshman—To you, the successful, confident Sophomore—To you, the superior and complacent Junior—To you, the Senior who is now to face reality we relegate the following pages.





Cook and Prance—
Tycoons of the
Test Tube.



Class Presidents Petty, Martin, Hendrick, and Burns.



Parham, Smith, Green, Dutton and Tomlinson.

SENIOR OFFICERS

MARGARET BURNS

MARION ORR

RUTH MORGAN



Burns



Orr



Morgan

POTENTIAL BLACKBOARD WIZARDS OF TOMORROW are the Seniors. And whether they turn out to be school mar'ns, slum cleaner-uppers or tycoons of the test tube, the members of this class will proudly recall having been an individual in one of the outstanding groups of the campus.

The year 1941 brings about the fulfillment of a dream conceived years ago. Under the capable leadership of Margaret Burns, three times president of her class, the two major aims of this group have been realized: to live for the welfare of the college and to have a Senior trip. Every move made for the past four years, has displayed cooperation in the highest degree and can be attributed to the desire for fulfillment of the aims of the class.

Plenty of hard work and fun for everyone was wrapped up in the many projects undertaken by the class. G. S. W. C. stationery, stickers, pennants, and address books were offered to the campus, and no one will ever forget the Senior Carnival. The University of Georgia Glee Club and several Saturday night dances kept the Seniors and the student body in tune with the country's latest "swing and sway."

Reluctant to leave, yet satisfied with their accomplishments, the girls set out for their walk in life. And if ingenuity has anything to do with success, they have a head start.

Seniors

OFF GUARD

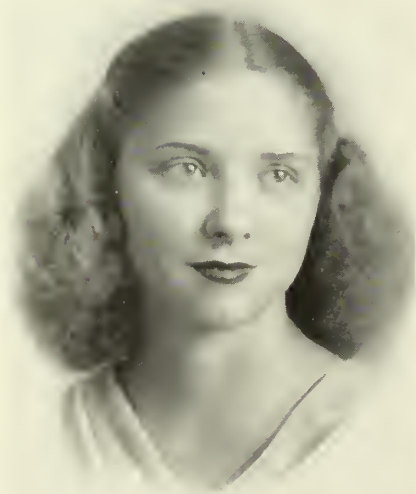
First row, left to right: Sis: "Quit it Johnnie!" . . . Lois and Ruthie Play Leap-Frog! . . . Everybody's Pal—Beeps. . . . Can This Be Tomlinson? • Second row: Reid Scores Tennis Match. . . . Winter says: "Going, going, gone—to the highest bidder!" • Third row: Simpy in One of Her More Serious Moods. . . . Dutton Absorbs Knowledge. . . . Campus Dating—Prance and Burns. . . . What Child Is This?



SENIORS



LOUIE PEEPLES ASKEW . . . Valdosta, Georgia . . . *Art Major* . . . S. G. A. (1, 2, 3, 4); Freshman Honor Society (1); Valdosta Club (1, 2, 3, 4); Fine Arts Club (2, 3, 4), President (3, 4); Glee Club (3, 4); Phi Lambda Sports Club (4); PINE CONE Staff (3), Assistant Literary Editor (3); *Campus Canopy* Staff (1, 2, 3, 4), Reporter (1, 2), Feature Editor (3, 4), Columnist (4); Alpha Delta Journalistic Fraternity (4); President's Council (4); Artist Series Committee (3, 4), Chairman (4); Who's Who in American Colleges and Universities (4). ● EVELYN BRIM . . . Sasser, Georgia . . . *English Major* . . . S. G. A. (1, 2, 3, 4), Ashley House President (2), Converse Monitor (3, 4); Y. W. C. A. (1, 2, 3, 4), Freshman Council (1), Steering Committee (1), Sophomore Council (2), Cabinet (3), Freshman Council Leader (3), "Y" Secretary (3); Phi Kappa Sports Club (1, 2, 3, 4), Council (2, 3, 4), Manager (3, 4), Awards (1, 2, 3, 4); *Campus Canopy* Staff (2), Advertising Staff (2); PINE CONE Staff (3), Advertising Staff (3); Camera Club (2); English Club (3, 4); Freshman Honor Society (2), Historian (2); Senior Honor Society (4), President (4); G. S. W. C. Emblem (3); President's Council (4); Who's Who in American Colleges and Universities (4); Business Manager of Co-op Book Store (4). ● MARY ALICE BRIM . . . Sasser, Georgia . . . *English Major* . . . S. G. A. (1, 2, 3, 4), Recorder of Points (3); Y. W. C. A. (1, 2, 3, 4), "Y" Cabinet (3); Phi Kappa Sports Club (1, 2, 3, 4), Awards (1, 2, 3); Secretary-Treasurer of Sophomore Class (2); Sock and Buskin Club (1, 2, 3, 4), Annual Play (2, 3); Math-Science Club (4); Senior Honor Society (4); President's Council (4); English Club (3, 4), President (4); *Campus Canopy* Staff (2, 3, 4), Advertising Manager (3), Business Manager (4); PINE CONE Staff (3), Junior Staff (3); G. S. W. C. Emblem (3); Who's Who in American Colleges and Universities (4).



Askew



E. Brim



M. A. Brim

ROWENA BURFORD . . . McRae, Georgia . . . *Sociology Major* . . . Transfer from Andrew College; S. G. A. (3, 4); Y. W. C. A. (3, 4); Sociology Club (3, 4). ● MARGARET BURNS . . . Macon, Georgia . . . *Biology Major* . . . S. G. A. (1, 2, 3, 4); Sports Club (1, 2, 3, 4); Fine Arts Club (2, 3, 4); Art Chairman Sports Club Council (2); President of Freshman Class (1); President of Sophomore Class (2); President of Senior Class (4); Freshman Honor Society (2); Steering Committee Sophomore Council (2); Math-Science Club (3, 4); President's Council (4); Senior Honor Society (4); Glee Club (4); *Campus Canopy* Staff (4), Feature Staff (4); Who's Who in American Colleges and Universities (4); Y. W. C. A. (1, 2, 3, 4), Room Committee (1), Choir (2). ● LOIS CHRISTIAN . . . Valdosta, Georgia . . . *Music Major* . . . S. G. A. (1, 2, 3, 4); Valdosta Club (1, 2, 3, 4); Philharmonic Club (2, 3, 4), President (4); Glee Club and Sextette Accompanist (3, 4); President's Council (4); Secretary of Student Attendance Committee (4); Senior Honor Society (4); Class Honors (3); Who's Who in American Colleges and Universities (4); Artist Series Committee (4). ● YOLANDE COPPAGE . . . Valdosta, Georgia . . . *Art Major* . . . S. G. A. (1, 2, 3, 4); Fine Arts Club (1, 2, 3, 4), Secretary-Treasurer (2), Vice-President (3); Valdosta Club (1, 2, 3, 4); Phi Lambda Sports Club (1, 2, 3, 4), Manager (2, 4), Treasurer (3), Council (2, 3, 4), Awards (1, 2, 3, 4); Sociology Club (3, 4); *Campus Canopy* Staff (2, 4), Advertising Staff (2), Advertising Manager (4); PINE CONE (4), Advertising Staff (4); G. S. W. C. Emblem (4).



Burford



Burns



Christian



Coppage



MAXINE COWART . . . Waycross, Georgia . . . *English Major*
 . . . S. G. A. (1, 2, 3, 4), Freshman Commission (1), Sophomore
 Council (2); Glee Club (1, 3, 4); Phi Kappa Sports Club (1, 2, 3,
 4); Y. W. C. A. (1, 2, 3, 4), "Y" Choir (1); Sociology Club (3,
 4); Philharmonic Club (4). ● BETTY DASHER . . . Valdosta,
 Georgia . . . *Sociology Major* . . . S. G. A. (1, 2, 3, 4); Valdosta
 Club (1, 2, 3, 4); Sociology Club (3, 4), Secretary (4). ●
 FRANCES GIDDENS DAVIS . . . Valdosta, Georgia . . . *History*
Major . . . Transfer from Shorter; S. G. A. (1, 3, 4); Valdosta
 Club (1, 3, 4); Kappa Sports Club (1, 3, 4); International Rela-
 tions Club (3, 4), President (4); President's Council (4). ●
 MARGARET ELIZABETH DUTTON . . . Savannah, Georgia
 . . . *English Major* . . . Transfer from Armstrong Junior College;
 S. G. A. (3, 4); English Club (3, 4), Vice-President (4); Sociol-
 ogy Club (3, 4), Reporter (3, 4); Phi Lambda Sports Club (3, 4),
 Council (3), Award (3); *Campus Canopy* Staff (3, 4), Advertis-
 ing Staff (3), Feature Editor (3), Reporter (3, 4); Y. W. C. A.
 (3, 4); PINE CONE Staff (4), Literary Editor (4); G. S. W. C.
 Emblem (4).



Cowart
Dasher



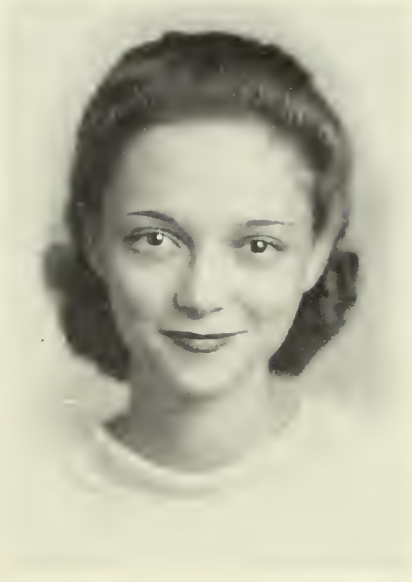
Davis

Dutton



Garner

L. Green



W. Green

Johnson

S
E
N
I
O
R
S

EMILY GARNER . . . Ashburn, Georgia . . . *English Major* . . . Transfer from University of Georgia; S. G. A. (3, 4); *Campus Canopy* (3, 4), Feature Editor (3, 4); Alpha Delta Journalistic Fraternity (4); English Club (3, 4). ● LOIS GREEN . . . Jacksonville, Florida . . . *History Major* . . . S. G. A. (1, 2, 3, 4); Y. W. C. A. (1, 2, 3, 4), Freshman Commission (1), Vesper Choir (1, 2, 3, 4); *Campus Canopy* Staff (1, 2); Sophomore Council (2); Phi Lambda Sports Club (1); Fine Arts Club (1, 2, 3, 4); International Relations Club (2, 3, 4), Treasurer (3); PINE CONE (3, 4), Junior Staff (3), Activities Editor (4). ● WILMOT GREEN . . . Jacksonville, Florida . . . *Math Major* . . . S. G. A. (1, 2, 3, 4); Y. W. C. A. (1, 2, 3, 4), Freshman Commission (1), Vesper Choir (1, 2, 3,

4); Sophomore Council (2); Phi Kappa Sports Club (1, 2); Fine Arts Club (1, 2, 3, 4), Secretary (3), Vice-President (4); Math-Science Club (2, 3, 4), Secretary (4); *Campus Canopy* (2); PINE CONE Staff (3, 4), Junior Staff (3), Make-up Staff (4); Glee Club (3); Freshman Honor Society (2); Senior Honor Society (4), Secretary (4); Student Adviser to Freshman Honor Society (4). ● JEANNETTE JOHNSON . . . Thomasville, Georgia . . . *English Major* . . . S. G. A. (1, 2, 3, 4); Y. W. C. A. (2, 4), Deputation Speaker (3), "Y" Choir (1, 3); Hall Monitor (1); G. S. W. C. Emblem (2); *Campus Canopy* (1, 2, 4), Associate Editor (4); Alpha Delta Journalistic Fraternity (4), Vice-President (4); Freshman Council (1); Sophomore Council (2); English Club (3, 4).

SENIORS



VERONICA KLEEMAN . . . Savannah, Georgia . . . *English Major* . . . Transfer from Armstrong Junior College; S. G. A. (3, 4), Secretary-Treasurer (4); Y. W. C. A. (3, 4); Sociology Club (3, 4), Vice-President (4); English Club (4); *Campus Canopy* Staff (3). • LOUISE MACFIE . . . Bainbridge, Georgia . . . *Math Major* . . . S. G. A. (1, 2, 3, 4); Y. W. C. A. (1, 2, 3, 4), Freshman Commission (1); *Campus Canopy* (1, 2, 3), Reporter (1), Headline Writer (2), Exchange Manager (3); PINE CONE (3, 4), Assistant Activities Editor (3), Make-up Staff (4); Sophomore Council (2); Freshman Honor Society (2); Senior Honor Society (4); Sports Club (1, 2, 3, 4), Sports Club Council (2, 3, 4); French Club (4); Math-Science Club (2, 3, 4); Sociology Club (3, 4); Honors (1, 2); Presbyterian Students Association (2, 3, 4). • SUSIE McKEY . . . Valdosta, Georgia . . . *English Major* . . . S. G. A. (1, 2, 3, 4); Valdosta Club (1, 2, 3, 4); Sociology Club (3, 4); English Club (3, 4), Vice-President (3); Glee Club (2, 3, 4); G. S. W. C. Serenaders (3, 4); Vice-President of Sophomore Class (2); *Campus Canopy* (2, 3, 4), Reporter (2), Feature Editor (3), Columnist (4); PINE CONE (3, 4), Assistant Editor (3), Editor (4); Philharmonic Club (1, 3, 4); President's Council (4); Student-Faculty Activities Committee (4); Who's Who in American Colleges and Universities (4); G. S. W. C. Emblem (4).



Kleeman



Macfie



McKey

RUTH MORGAN . . . Valdosta, Georgia . . . *History Major* . . . S. G. A. (1, 2, 3, 4); Valdosta Club (1, 2, 3, 4), Secretary (4); Fine Arts Club (3, 4); Glee Club (3); International Relations Club (3, 4); Sports Club (4); PINE CONE Staff (3, 4), Advertising Staff (3, 4); Vice-President of Senior Class (4). ● KATHERINE MUNDY . . . Valdosta, Georgia . . . *Math Major* . . . S. G. A. (1, 2, 3, 4); Math-Science Club (3, 4); Sports Club (1, 2, 3, 4), Awards (1, 2, 3, 4), Sports Council (3, 4), Phi Lambda Association Captain (3), Vice-President (4); Valdosta Club (1, 2, 3, 4). ● MARION ORR . . . Savannah, Georgia . . . *English Major* . . . S. G. A. (1, 2, 3, 4); Sock and Buskin Club (1, 2, 3, 4), Annual Play (2), Secretary (4); *Campus Canopy* (2), Advertising Staff (2); Phi Kappa Sports Club (1, 2, 3, 4); Y. W. C. A. (1, 2, 3, 4), Freshman Council (1), Sophomore Council (2); Secretary-Treasurer Junior Class (3); Secretary-Treasurer Senior Class (4). ● ANN PARHAM . . . Warm Springs, Georgia . . . *History Major* . . . S. G. A. (1, 2, 3, 4), Freshman Commission (1), Monitor (2), Vice-President (3), President (4); Y. W. C. A. (1, 2, 3, 4), Deputation Speaker (3); Secretary-Treasurer of Sophomore Council (2); Phi Kappa Sports Club (1, 2), Manager (2), Awards (1, 2); International Relations Club (2, 3, 4); Sock and Buskin (2, 3, 4); President's Council (4); Who's Who in American Colleges and Universities (4); G. S. W. C. Emblem (3).



Morgan



Mundy



Orr



Parham



Parrish

Prance



Quarterman

Reid

MATTIE RUTH PARRISH . . . Valdosta, Georgia . . . *English Major* . . . S. G. A. (1, 2, 3, 4); Valdosta Club (1, 2, 3, 4); Sociology Club (3, 4); Phi Kappa Sports Club (1, 2, 3, 4). ● FRANCES RUNELLE PRANCE . . . Tifton, Georgia . . . *Chemistry Major* . . . Transfer from South Georgia College; S. G. A. (3, 4); Math-Science Club (3, 4), Vice-President (4); *Campus Canopy* (3); Senior Hall Monitor (4). ● HELEN QUARTERMAN . . . Valdosta, Georgia . . . *Chemistry Major* . . . S. G. A. (1, 2, 3, 4); Sports Club (1); Math-Science Club (3, 4), Head Chemistry Division (4); Camera Club (2, 3, 4); Valdosta Club (1, 2, 3, 4), Vice-President (3), President (4); PINE CONE Staff (4), Assistant Photographer (4); President's Council (4); Presbyterian Students Association (2, 3, 4). ● RUTH REID . . . Valdosta, Georgia . . . *Math Major* . . . S. G. A. (1, 2, 3, 4); Secretary of Freshman Class (1); Sports Club (1, 2, 3, 4), Sports Council (2, 3, 4), Sports Club Awards (1, 2, 3, 4), Sports Club President (3, 4); President of Georgia Athletic Federation of College Women (4); Freshman Honor Society (2); Senior Honor Society (4), Treasurer (4); Math-Science Club (1, 2, 3, 4); Camera Club (2); President's Council (4); PINE CONE Staff (2, 3, 4); Student-Faculty Honor Council (4); Who's Who in American Colleges and Universities (4); G. S. W. C. Emblem (4); Valdosta Club (1, 2, 3, 4); G. S. W. C. Tennis Championship (1, 2, 3, 4).



SENIORS

Simpson

Smith

Spooner

Summer

VERA SIMPSON . . . Valdosta, Georgia . . . *Art Major* . . . S. G. A. (1, 2, 3, 4); Valdosta Club (1, 2, 3, 4), Treasurer (4); Fine Arts Club (3, 4); Sociology Club (3, 4); Phi Lambda Sports Club (1, 2, 3, 4). ● MARIE SMITH . . . Patterson, Georgia . . . *Art Major* . . . S. G. A. (1, 2, 3, 4); Y. W. C. A. (1, 2, 3, 4), Freshman Commission (1), Sophomore Council (2); Phi Kappa Sports Club (1, 4); Philharmonic Club (2, 3, 4); Fine Arts Club (2, 3, 4); Glee Club (4); PINE CONE Staff (4), Make-up Staff (4). ● LILA MAE SPOONER . . . Iron City, Georgia . . . *Sociology Major* . . . Transfer from Young Harris; S. G. A. (3, 4); Glee Club (3, 4); Sociology Club (3, 4); Y. W. C. A. (3, 4). ● LINDA SUMMER . . . Atlanta, Georgia . . . *Sociology Major* . . . S. G. A. (1, 2, 3, 4); Y. W. C. A. (1, 2, 3, 4), Freshman Council (1), Sophomore Council (2), "Y" Choir (1, 2, 3); Phi Lambda Sports Club (1, 2, 3, 4), Awards (1, 3, 4); *Campus Canopy* Staff (1, 2, 3, 4), Reporter (1, 2), Circulation Manager (2), Managing Editor (3), Columnist (3), Editor (4); Alpha Delta National Journalistic Fraternity (4), President (4); Sock and Buskin Club (3, 4); Sociology Club (2, 3, 4); French Club (4); President's Council (4); Camera Club (1, 2); G. S. W. C. Emblem (3).

SENIORS



INEZ TAYLOR . . . Greensboro, Georgia . . . *Sociology Major* . . . S. G. A. (1, 2, 3, 4), Monitor (1); Y. W. C. A. (1, 2, 3, 4), Freshman Council (1), Sophomore Council (2); Phi Lambda Sports Club (1, 2, 3, 4), Awards (3, 4), Sports Council (4); *Campus Canopy* Staff (2, 3), Circulation Manager (3), Advertising Staff (2); Sociology Club (3, 4), Vice-President (3), President (4); President's Council (4), Steering Committee (4), Student Attendance Committee (4); G. S. W. C. Emblem (4). ● VIRGINIA TOMLINSON . . . Statesboro, Georgia . . . *Sociology Major* . . . Transfer from Georgia Teachers College; S. G. A. (3, 4); Student-Faculty Honor Council (4); French Club (3, 4); Sociology Club (3, 4), President (3); *Campus Canopy* Staff (3, 4), Advertising Staff (3), Circulation Staff (4); Sports Club (3); Y. W. C. A. (3, 4). ● MARTHA WILKES . . . Adel, Georgia . . . *Art Major* . . . S. G. A. (1, 2, 3, 4); Y. W. C. A. (1, 2, 3, 4); Phi Lambda Sports Club (1, 2, 3, 4); Philharmonic Club (1); Fine Arts Club (4); *Campus Canopy* Cartoonist (4).



Taylor



Tomlinson



Wilkes

CAROLYN WILLIAMS . . . Ty Ty, Georgia . . . *Math Major* . . . S. G. A. (1, 2, 3, 4); Y. W. C. A. (1, 2, 3, 4), Freshman Council (1), Sophomore Council (2), Cabinet (2, 3, 4), Morning Watch Chairman (2), Vice-President (3), President (4), Member of State Conference Planning Committee (4); Freshman Honor Society (2), Secretary-Treasurer (2); Senior Honor Society (4), Vice-President (4); Math-Science Club (2, 3, 4), Head Math Division (3); Sports Club (1, 2, 4); G. S. W. C. Emblem (4); President's Council (4), Chairman (4), Chairman Student Attendance Committee (4); Who's Who in American Colleges and Universities (4); Sociology Club (4); Honors (1, 2). ● FRANCES WILLIAMS . . . Valdosta, Georgia . . . *Chemistry Major* . . . S. G. A. (1, 2, 3, 4); Valdosta Club (1, 2, 3, 4); *Campus Canopy* Staff (1), Advertising Staff (1); Math-Science Club (3, 4), President (4); Vice-President Junior Class (3); Sports Club (1, 2, 4); President's Council (4), Student Attendance Committee (4); PINE CONE Staff (4), Assistant Photographer (4). ● GWENDOLYN WINTER . . . Valdosta, Georgia . . . *English Major* . . . S. G. A. (1, 2, 3, 4); Valdosta Club (1, 2, 3, 4); English Club (3, 4); PINE CONE Staff (3, 4), Advertising Staff (3), Business Manager (4). ● EVELYN WOODWARD . . . Waycross, Georgia . . . *Art Major* . . . S. G. A. (1, 2, 3, 4); Y. W. C. A. (1, 2, 3, 4), Cabinet (2); Sports Club (1, 2), Awards (1), Sports Council (2); *Campus Canopy* Staff (3), Proof-reader (3); Fine Arts Club (2, 3, 4), Art Chairman (4); Sock and Buskin Club (4); S. G. W. C. Emblem (4).



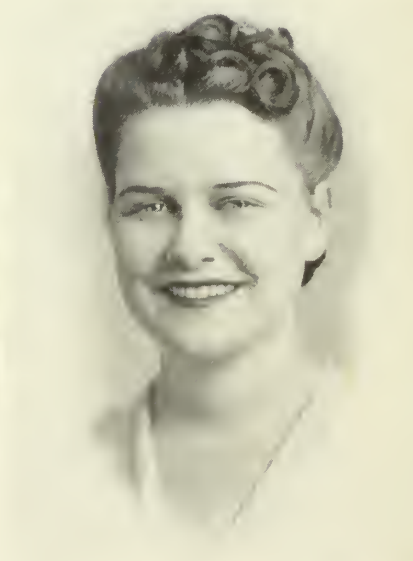
C. Williams



F. Williams



Winter



Woodward

MATURED BY TWO YEARS OF COLLEGE, the Junior Class has learned to put originality into every activity they sponsor. One of the most striking examples of their originality was evidenced in the Junior-Senior Formal which was one of the highlights of the year. This dance was a farewell given to the Seniors by the Juniors.

Christmas cards sold by the class, two Saturday night Rec-Hall frolics, and a tea in the House-in-the-Woods were just a few of the activities sponsored by the '41 Juniors.

Fun kings of the campus, this group has acquired the "rep" of having some of the choicest campus screwballs.

Although the class displayed a tendency to divide up into its own little groups, whenever the situation demanded, they could function cooperatively as a group in putting over the issue at hand.

During spring quarter, the class contributed generously to the British War Relief Fund. In fulfilling its attempt to bring enrichment not only to the Junior Class but to the entire campus as well, the group placed a most attractive picture in Senior Hall office.

Pep was a conservative apposite for the class. With its boisterous, yet wholesome attitude, it represented the whistle and bells on the engine of campus machinery.

OFFICERS: President, Gwendolyn Hendrick; Vice-President, Alice Wisenbaker; Secretary-Treasurer, Mary Jean Rockwell.

JUNIOR CLASS OFFICERS



Rockwell, Wisenbaker, and Hendrick.



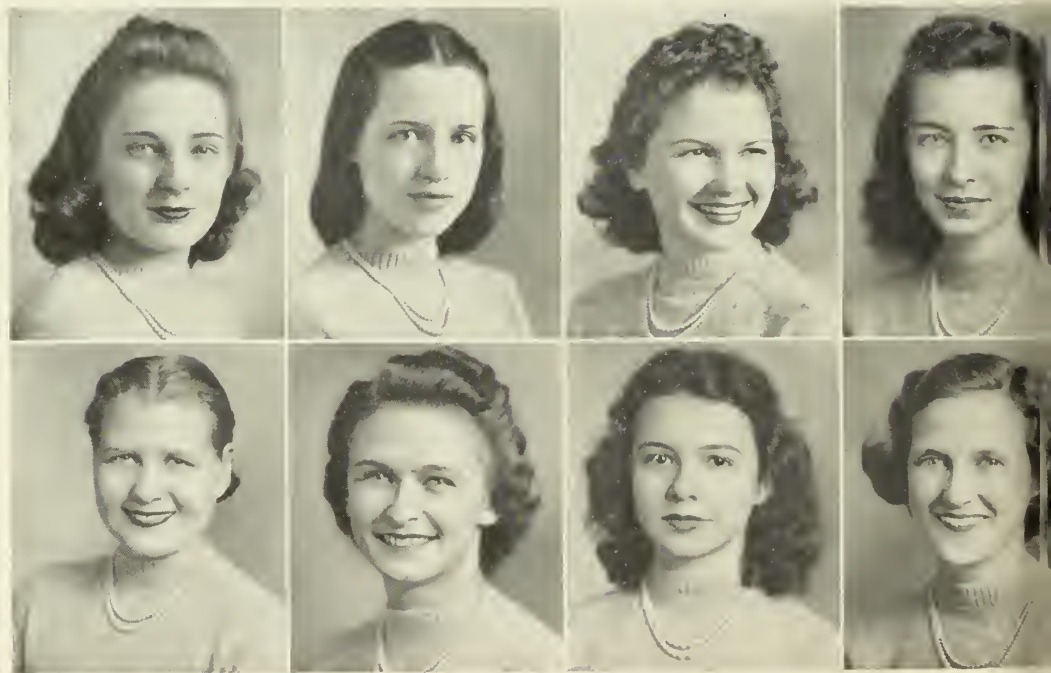
First row, left to right: Alice and Betty Cram for Exams. . . . Bottoms-up, Mac!
 . . . Cookie, Eleanor, Marie and Annie. ● Second row: Oh, Look at the Monkeys!
 —Sessoms and Mallory. . . . Koblenzer? "Rahther!" . . . For Whom the Bells
 Toll—Cole, McGill and Street. . . . The Thinker—Goodloe. ● Third row: Hi, Twerp!
 . . . 1941 Legacy. . . . Patty and Nancy. . . . Comfortable, George? ● Fourth row:
 Louie and Margaret Catch up on Their Reading at B. W. . . . This Is So Sudden!
 —Monk and Mimi.

SNAPS

JUNIORS



- EDITH ALLEN LENOX, GEORGIA
- MARIE AMBOS THUNDERBOLT, GEORGIA
- MELBA BLANTON VALDOSTA, GEORGIA
- ELIZABETH BOWEN TIFTON, GEORGIA
- MARY BUNDRICK CORDELE, GEORGIA
- MARY MARTHA BURNETTE VALDOSTA, GEORGIA
- NANCY COLE SAVANNAH, GEORGIA
- ELEANOR COOK SAVANNAH, GEORGIA



Allen
Bundrick

Ambos
Burnette

Blanton
Cole

Bowen
Cook

MARGARET COPELAND LAKE PARK, GEORGIA

RACHEL CRITTENDEN SHELLMAN, GEORGIA

CHARLOTTE DAVENPORT BAXLEY, GEORGIA

LOUISE EDWARDS EASTMAN, GEORGIA

BETTY FRANKLIN VALDOSTA, GEORGIA

ELISE GANNON CORDELE, GEORGIA

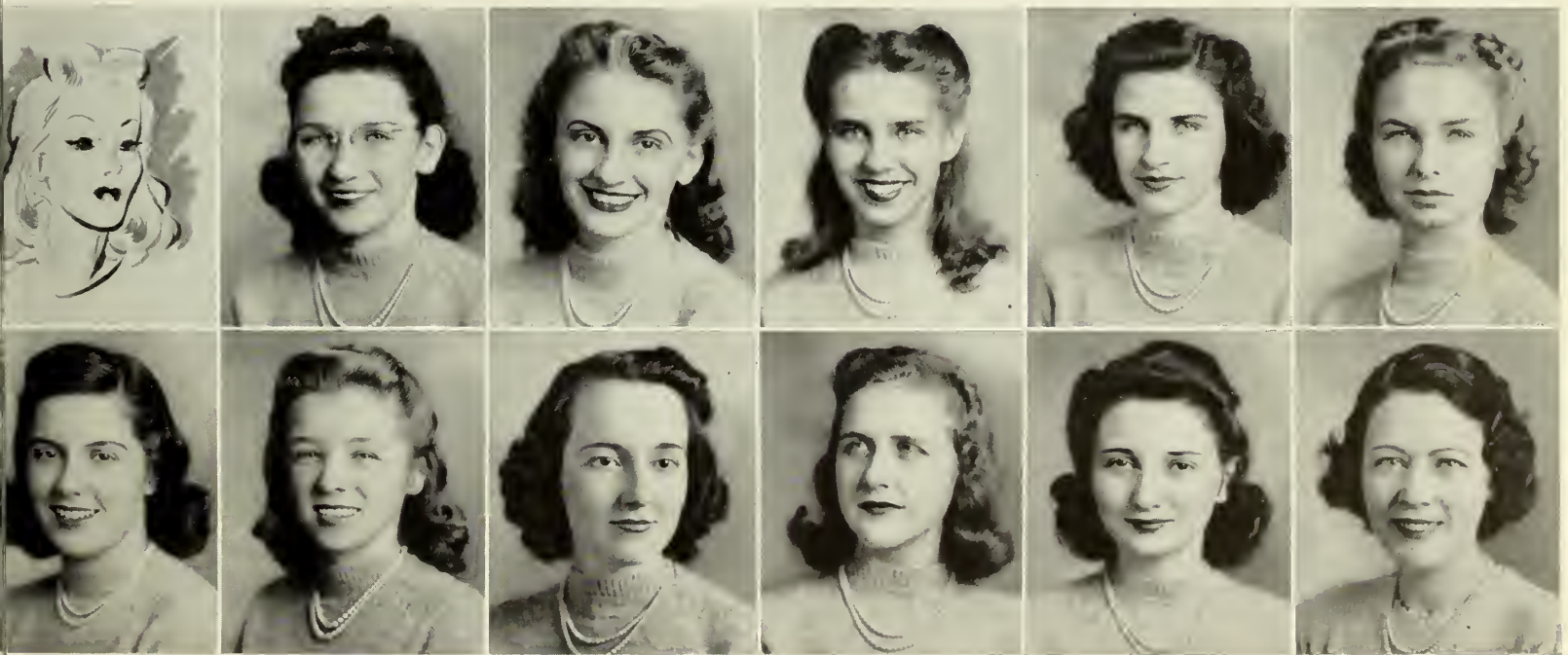
LEECY ANN GOODLOE VALDOSTA, GEORGIA

MILDRED HARRIS MOULTRIE, GEORGIA

GWENDOLYN HENDRICK MOULTRIE, GEORGIA

LOIS JOHNSON VIDALIA, GEORGIA

ORA JOHNSON VALDOSTA, GEORGIA



Gannon

Copeland
Goodloe

Crittenden
Harris

Davenport
Hendrick

Edwards
L. Johnson

Franklin
O. Johnson

JUNIORS



LOUIE MAE KRIEGER VALDOSTA, GEORGIA

ELIZABETH LYON VALDOSTA, GEORGIA

MILDRED MALLORY SAVANNAH, GEORGIA

MILDRED MARTIN HILTON, GEORGIA

SHIRLEY HOYE MARTIN VALDOSTA, GEORGIA

EMILY McCALL WILMINGTON, N. C.

VIVA McGEACHY VALDOSTA, GEORGIA

INEZ MCGILL SYLVESTER, GEORGIA



Krieger
S. H. Martin

Lyon
McCall

Mallory
McGeachy

M. Martin
McGill

HARRIET MILLER BRONWOOD, GEORGIA

MARNELL PARKER HAHIRA, GEORGIA

PATTYE PATTERSON VALDOSTA, GEORGIA

VIRGINIA POWER VIENNA, GEORGIA

KATHRYN RICHARDSON ADEL, GEORGIA

CAROLYN ROBERTS CRESCENT CITY, FLORIDA



Miller
Power

Parker
Richardson

Patterson
Roberts



JUNIORS



- MINNIE ROBERTS VALDOSTA, GEORGIA
- MARY JEAN ROCKWELL VALDOSTA, GEORGIA
- MARY ELEANOR ROGERS CAIRO, GEORGIA
- KATHRYN SCOTT PELHAM, GEORGIA
- RUTH SESSOMS COGDELL, GEORGIA
- ANNABEL SHERMAN VALDOSTA, GEORGIA
- JULIA BESS SMITH VALDOSTA, GEORGIA
- FRANCES STREET SAVANNAH, GEORGIA



Roberts
Sessoms

Rockwell
Sherman

Rogers
Smith

Scott
Street

MARTHA SUMMER ATLANTA, GEORGIA

JUSTINE TARTE VALDOSTA, GEORGIA

MARY ALICE TUMLIN CAVE SPRING, GEORGIA

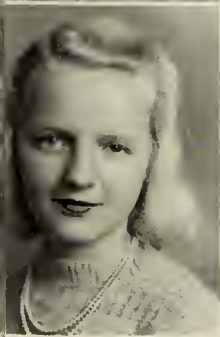
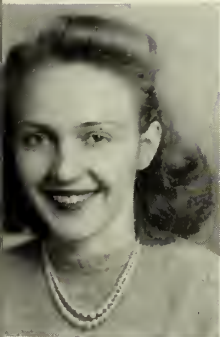
ELEANOR TURNBULL MOULTRIE, GEORGIA

VIRGINIA UPSON QUITMAN, GEORGIA

MAXWELL WILLIAMS CORDELL, GEORGIA

RACHEL WILLIAMS WOODLAND, GEORGIA

ALICE WISENBAKER VALDOSTA, GEORGIA



Summer
Upson

Tarte
M. Williams

Tumlin
R. Williams

Turnbull
Wisenbaker

SOPHOMORES ARE THE DEADDEST DOPES ON CAMPUS is the old saying which this class has thoroughly refuted. The class goal was the attainment of Edward Bok's motto, "Make ye the world a bit better for having lived in it"; and, they made rapid and interesting steps to do something about it.

Under the leadership of Catherine Martin, one hundred and two Sophomores acquired the reputation of being the most original group on campus. You could never tell what those versatile Sophomores were planning, but it always proved beneficial and entertaining to the campus.

A Sophomore Council was organized to work in cooperation with the Y. W. C. A., and this council sponsored several hikes, breakfasts, and open house at the House in the Woods each Sunday night for girls with campus dates. The girls assisted in knitting squares for blankets for the war victims.

To provide a record of the class activities, a Sophomore scrapbook was kept. Within the pages of this enviable book, future Sophomores will find a goal at which they might aim, and the present members of the class may look back with pride on a year of work and reward.

With an unusual leader and a grand group of workers, this class is slated for college history.

SOPHOMORE CLASS OFFICERS



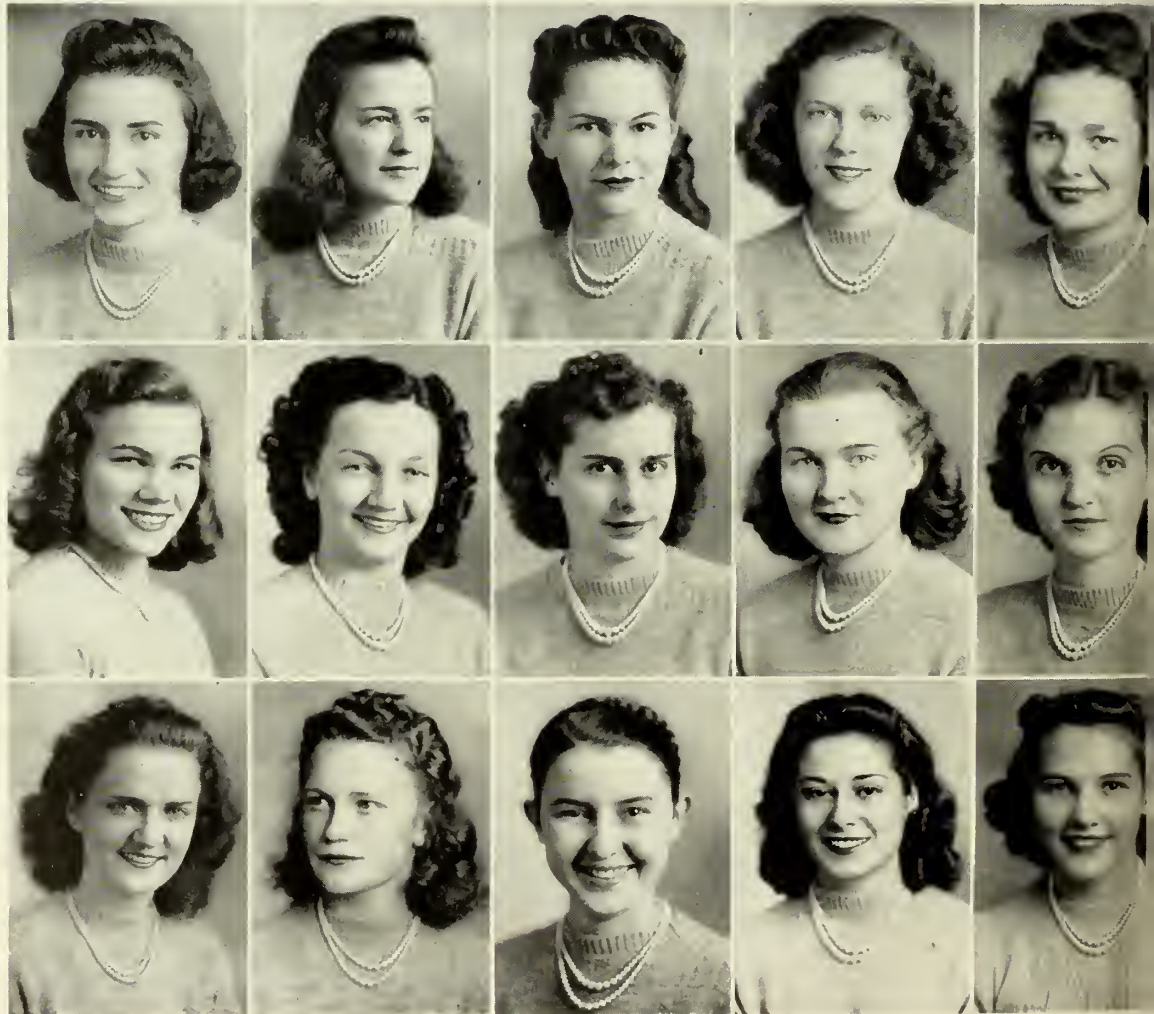
Officers Martin, O'Neal and Thompson.



First row, left to right: King and Kennedy Read Latest Edition of Canopy. . . .
 Tharpe Burns the Midnight Oil. . . . Bored of Education. . . . Sis, Ann, and Shorty.
 • Second row: Ye Ole Bulle Sessione. . . . Hurst Bikes It. • Third row: Barker
 Goes for a Ride. . . . Pryor Is Heels over Head in Knowledge. . . . Jackie and
 Jake. • Fourth row: Daisy Mae (O'Neal) Takes First Lesson from Adam Lazonga
 (Black). . . . Jimmy Hits High C.



MARY ANN BARKER	QUITMAN, GEORGIA
BETTY BARNES	VALDOSTA, GEORGIA
ELIZABETH BATEMAN	BYRON, GEORGIA
ANNETTE BLACKBURN	VALDOSTA, GEORGIA
CAROLYN BLANTON	CAIRO, GEORGIA
ANN BOOTH	QUITMAN, GEORGIA
HAZEL BROWN	DUBLIN, GEORGIA
JEAN BURNS	MACON, GEORGIA
DORRIS CALLAHAM	RUPERT, GEORGIA
MARGARET CLAY	MACON, GEORGIA
WILMA CODY	WAYCROSS, GEORGIA
TENZIE COLEMAN	VALDOSTA, GEORGIA
AVA COLLINS	CAIRO, GEORGIA
OLIVE CRAWFORD	VALDOSTA, GEORGIA
GLORIA DALTON	VALDOSTA, GEORGIA



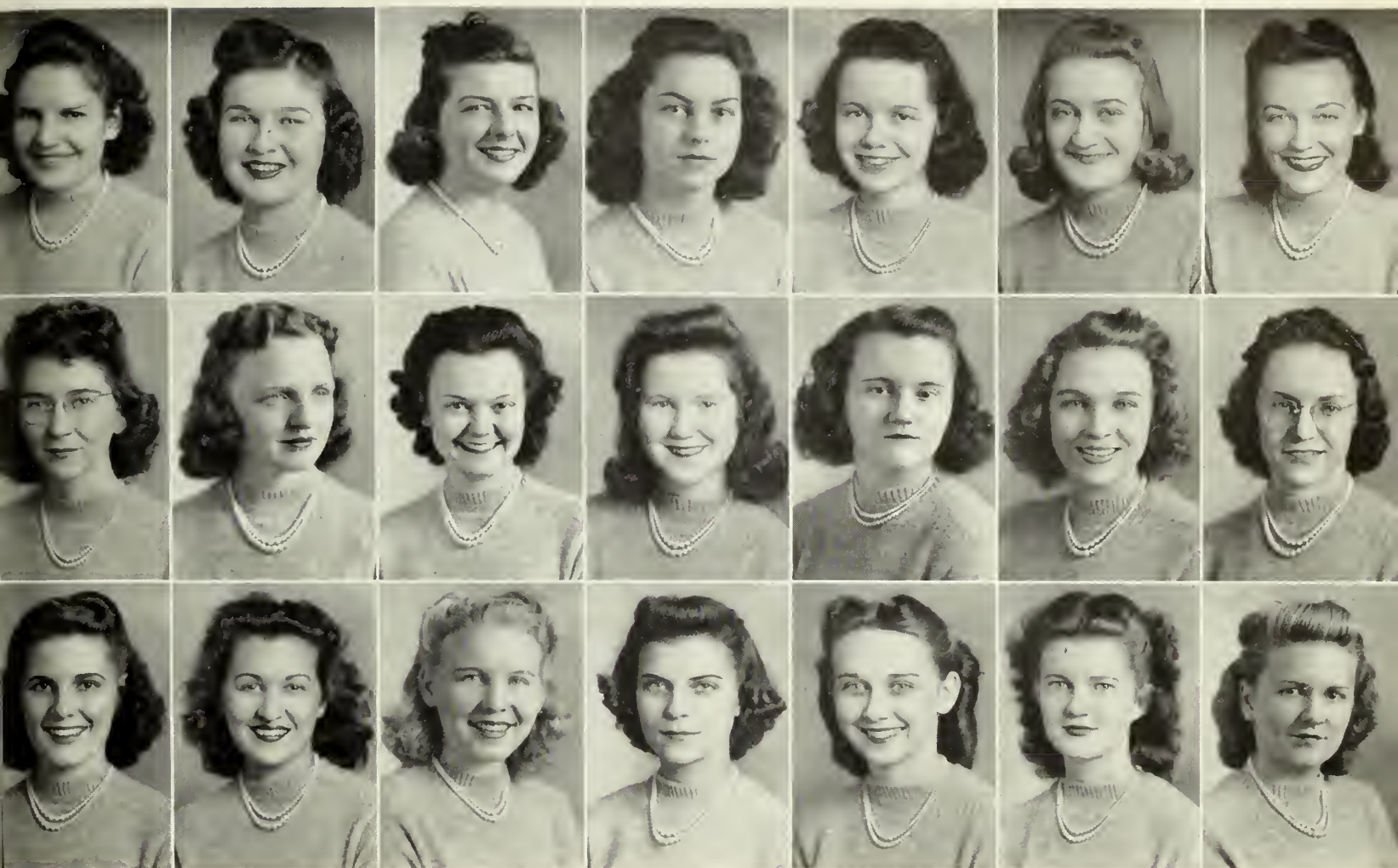
Barker
Booth
Cody

Barnes
Brown
Coleman

Bateman
Burns
Collins

Blackburn
Callaham
Crawford

Blanton
Clay
Dalton



Dame
Fairchild
Hartsfield

Daniels
Fender
Hatcher

K. Davis
Flournoy
Hinshaw

U. Davis
Ford
Hiers

Dorough
Gillis
Hodges

Duffey
Green
Hopson

Dunbar
Griffin
Johnson

EILEEN DAME	VALDOSTA, GEORGIA
NANCY DANIELS	PINE HURST, GEORGIA
KITTY DAVIS	VALDOSTA, GEORGIA
URSULA DAVIS	VALDOSTA, GEORGIA
BETTY JANE DOROUGH	QUITMAN, GEORGIA
JOYCE DUFFEY	LAGRANGE, GEORGIA
JULIA DUNBAR	VALDOSTA, GEORGIA
EUNICE FAIRCHILD	WAYCROSS, GEORGIA
ELIZABETH FENDER	VALDOSTA, GEORGIA
HARRIET FLOURNOY	FORT VALLEY, GEORGIA
MARY J. FORD	COLUMBUS, GEORGIA
ELIZABETH GILLIS	QUITMAN, GEORGIA
CATHERINE GREEN	GREENSBORO, FLORIDA
LOUISE GRIFFIN	NASHVILLI, GEORGIA
ELIZABETH HARTSFIELD	MOULTRIE, GEORGIA
ANITA HATCHER	VALDOSTA, GEORGIA
HALLIE HINSHAW	VALDOSTA, GEORGIA
DORIS HIERS	MOULTRIE, GEORGIA
LOUISE HODGES	CLAXTON, GEORGIA
ERNESTINE HOPSON	ROCHELLE, GEORGIA
BOBBIE JOHNSON	VALDOSTA, GEORGIA

SOPHOMORES



GWENDOLYN JOHNSON	LEESBURG, GEORGIA
JANET JOYNER	SCREVEN, GEORGIA
DORIS KENT	TIFTON, GEORGIA
MARGARET KING	VALDOSTA, GEORGIA
MARGUERITE LAHOOD	VALDOSTA, GEORGIA
LOUISE LAMBERT	BAINBRIDGE, GEORGIA
MARGUERITE LAWSON	CLIMAX, GEORGIA
RAYE LAZARUS	VALDOSTA, GEORGIA
ANN McDONALD	FITZGERALD, GEORGIA
KATHERINE McDONALD	VALDOSTA, GEORGIA
HARRIET MARTIN	HILTON, GEORGIA
SARA CATHERINE MARTIN	WAYCROSS, GEORGIA



Johnson
Lawson

Joyner
Lazarus

Kent
A. McDonald

King
K. McDonald

Lahood
H. Martin

Lambert
S. C. Martin



Mather
Moore

Meadors
Mosely

Means
Mullen

E. Mobley
Neal

J. Mobley
Newton

MAY MATHER HOLLYWOOD, FLORIDA

ALICE MEADORS ALBANY, GEORGIA

MARY JEAN MEANS VALDOSTA, GEORGIA

ELLEN MOBLEY MOULTRIE, GEORGIA

JEAN MOBLEY SYLVANIA, GEORGIA

ELLEN MOORE MORVEN, GEORGIA

JUNE MOSELY JAKIN, GEORGIA

MARY MULLEN COLUMBUS, GEORGIA

REBECCA NEAL MONTEZUMA, GEORGIA

MARY NEWTON VALDOSTA, GEORGIA

SOPHOMORES



ESTELLE NORMAN	TIFTON, GEORGIA
EVALYN O'NEAL	VALDOSTA, GEORGIA
WILLARD PARRISH	VALDOSTA, GEORGIA
MADGE PAULK	WAYNESBORO, GEORGIA
LEONORA PEEPLES	VALDOSTA, GEORGIA
LAVERNE PHILLIPS	JESUP, GEORGIA
MARIAN POSEY	VALDOSTA, GEORGIA
ANNA MAY PRYOR	FITZGERALD, GEORGIA
JEANNE PRYOR	FITZGERALD, GEORGIA
BETH ROLLISON	WAYCROSS, GEORGIA
MARY FRANCES RUTLAND	MOULTRIE, GEORGIA
EVELYN SAUNDERS	VALDOSTA, GEORGIA
VIVIAN SHANNON	VALDOSTA, GEORGIA
MARTHA SHELL	PITTS, GEORGIA
THELMA SIRMANS	LA BELLE, FLORIDA



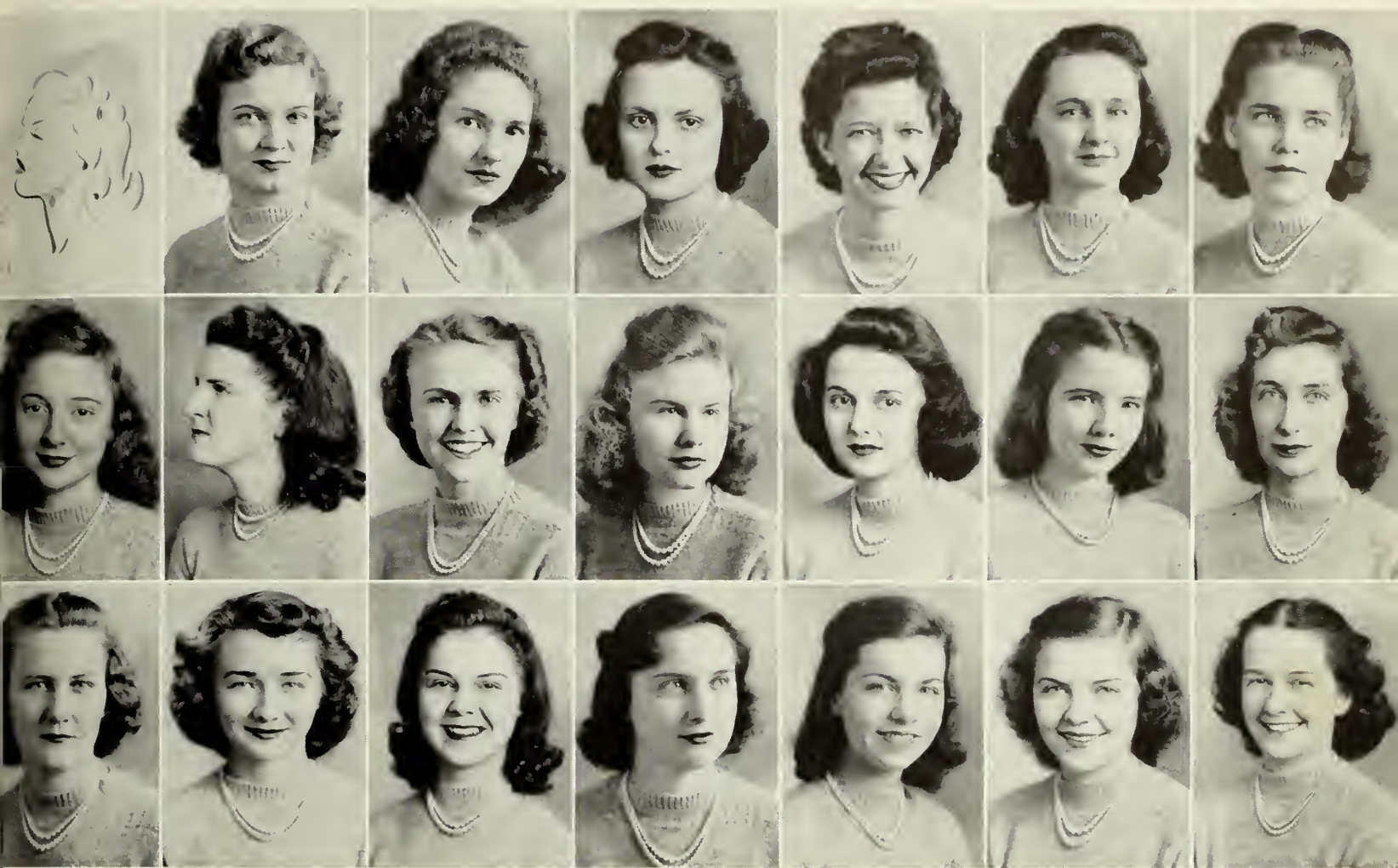
Norman
Phillips
Rutland

O'Neal
Posey
Saunders

Parrish
A. M. Pryor
Shannon

Paulk
J. Pryor
Shell

Peeples
Rollison
Sirmans



R. Taylor Walker A. Smith S. Taylor Watson C. Smith Tharpe West G. Smith Thompson B. Williams J. Smith Tuten White Strickland Twitty J. Williams Stump Wade A. Young

- | | | |
|--------------------------------|-----------|--------------------|
| ANNE SMITH | | Toccoa, Georgia |
| CORINNE SMITH | | Valdosta, Georgia |
| GLADYS SMITH | | Dawson, Georgia |
| JACQUELINE SMITH | | Waycross, Georgia |
| MARTHA STRICKLAND | | Iron City, Georgia |
| CAROLINE STUMP | | Valdosta, Georgia |
| RUTH TAYLOR | | Valdosta, Georgia |
| SUNSHINE TAYLOR | | Cordele, Georgia |
| BETH THARPE | | Arlington, Georgia |
| JEAN THOMPSON | | Lumpkin, Georgia |
| CAROLYN TUTEN | | Alma, Georgia |
| MARY JAMES TWITTY | | Atlanta, Georgia |
| SARA WADE | | Valdosta, Georgia |
| HENRIETTA WALKER | | Valdosta, Georgia |
| MARY MARTHA WATSON | | Valdosta, Georgia |
| FRANCES WEST | | Columbus, Georgia |
| MARGARET ELISE WHITE | | Hahira, Georgia |
| BETTY WILLIAMS | | Valdosta, Georgia |
| JANE WILLIAMS | | Moultrie, Georgia |
| ANNA YOUNG | | Quitman, Georgia |

SOPHOMORES

THEY CAME, THEY SAW, THEY CONCURRED and elected dynamic little Sara Petty as leader of their class. This year brought the campus a Freshman class whose inclination for animated activities has been evident since the first day they arrived.

At the beginning of the year the class staged an election that put many of the upper-class ones to shame. Banners, cards, speeches, and free chewing gum blew up candidates, and a coalition movement defeated a high school clique.

That this year's Freshman class has outgrown high school tendencies was proved by the way they entered into campus activities. A Freshman was always on hand—ready, willing, and completely capable of making a contribution.

The annual Freshman-Junior Formal was held at the Country Club in February. The Valentine season served as a theme for no-break cards, posters, decorations, and refreshments. Every Freshman and Junior was there with her heartbeat, and the frolic turned out to be a never-to-be-forgotten affair.

As is usually typical, the average Freshman spent a great deal of time Country-storing, bull-sessioning, bridge playing, and worrying because she hadn't started worrying sooner over academic problems. However, the girls came to realize that college is what you make it; and from all evidences, they reaped full benefit.

The one sad note in the class history, was the loss of a fellow class-mate—Anne Singletary. During the time that Anne was in college, she endeared herself to the students and faculty; and her friendship will not be forgotten.

FRESHMAN CLASS OFFICERS



Officers Ashley, Isom and Petty.



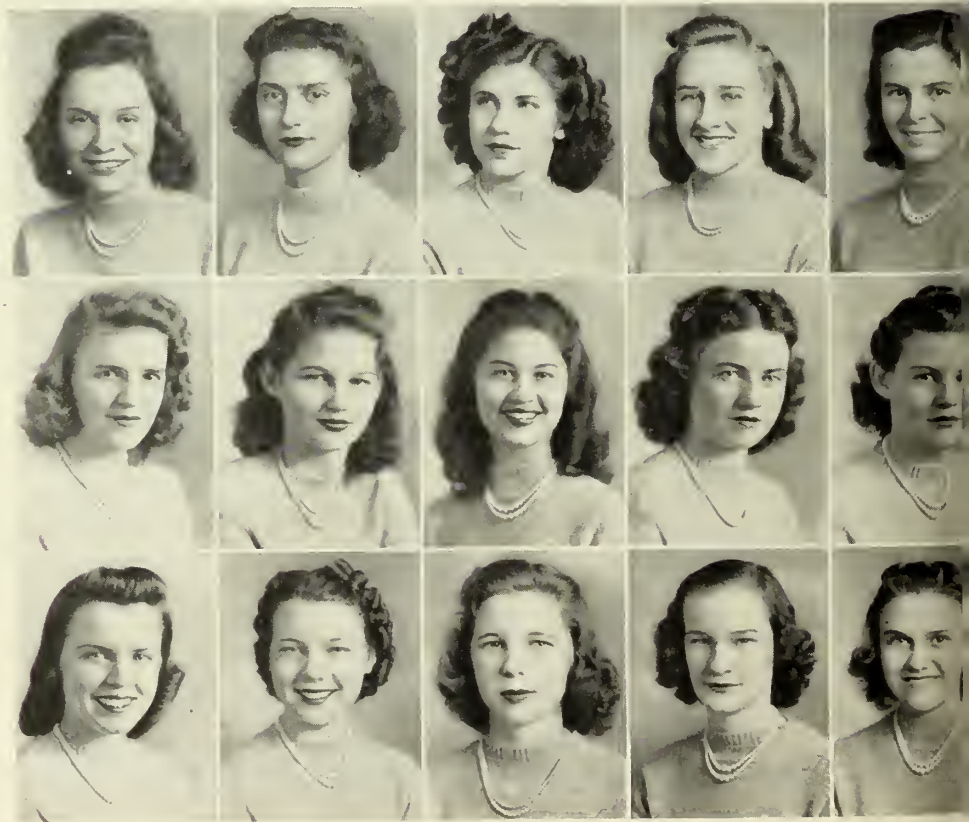
First row, left to right: Mary Lib, Lou and Twila. . . . Come on out, Miriam—We See You. . . . In the Arms of Morpheus—Jeanette. ● Second row: In the Groove—Sis and Tillie. . . . Martha and Sis. . . . Mae—"Going my way?" . . . Whoops, My Dear! ● Third row: Wishing Makes It So. . . . Virginia Orr. . . . Campus Strollers. . . . Heads up—Katie, Marjorie, Merrick, Tunky, Nazi, Virginia, Jeanette. ● Fourth row: Day Dreaming—Faye and Jane. . . . Posin'—Hunt, Murray, Adams and McAndrew. . . . Umm—Visitors! . . . Bottoms up, Gals!

SNAPS



FRESHMEN

ANNE ADAMS	TIGNALL, GEORGIA
MARGARET ADAMS	CAMILLA, GEORGIA
FAY ADCOCK	FENDER, GEORGIA
MARY CAROL ALLEN	SHELLMAN, GEORGIA
MARTHA ASHLEY	VALDOSTA, GEORGIA
ANNE BOLTON	TIFTON, GEORGIA
MIRIAM BOWEN	STATSBORO, GEORGIA
MARY THAXTON BOWEN	TIFTON, GEORGIA
DORIS BOYETTE	RAY CITY, GEORGIA
VIRGINIA BRANCH	SALT CITY, GEORGIA
NELL BRANNEN	MILLEN, GEORGIA
MARY ELIZABETH BRIDGES	HAIHRA, GEORGIA
ELIZABETH BRIMBERRY	CAMILLA, GEORGIA
BETTYE BURKE	VALDOSTA, GEORGIA
JANE CALHOUN	MILLERSBURG, KENTUCKY



A. Adams
Bolton
Brannen

M. Adams
M. Bowen
Bridges

Adcock
M. T. Bowen
Brimberry

Allen
Boyette
Burke

Ashley
Branch
Calhoun

EMMIE CARTER	WAYCROSS, GEORGIA
LUGENIA CARTER	VALDOSTA, GEORGIA
PAULINE CARTER	MEIGS, GEORGIA
TWILA CHAMBERS	VALDOSTA, GEORGIA
DOROTHY CLARK	VALDOSTA, GEORGIA
DONIS COBB	MOULTRIE, GEORGIA
FAYE COPELAND	LAKE PARK, GEORGIA
MAE COPELAND	LAKE PARK, GEORGIA
JANANNE COWART	BRUNSWICK, GEORGIA
MARGARET CULPEPPER	TIFTON, GEORGIA
RACHEL CUNNINGHAM	ARLINGTON, GEORGIA
EVELYN DALE	VALDOSTA, GEORGIA
VERA MAE DAME	VALDOSTA, GEORGIA
MATILDA DASHER	VALDOSTA, GEORGIA
HELEN DAVIS	VALDOSTA, GEORGIA
LOUELLA DAVIS	VALDOSTA, GEORGIA
LOUGENIA DAVIS	MEIGS, GEORGIA
IRENE DEADWYLER	VALDOSTA, GEORGIA
BARBARA DEKLE	CORDELE, GEORGIA
ROXIE DIX	ROCHELLE, GEORGIA
CAROLYN DIXON	RICHLAND, GEORGIA
MARY FRANCES DONALSON	ATTAPULGUS, GEORGIA
ARDITH GANNON	CORDELE, GEORGIA
ANNE GEOGHAGAN	ASHBURN, GEORGIA

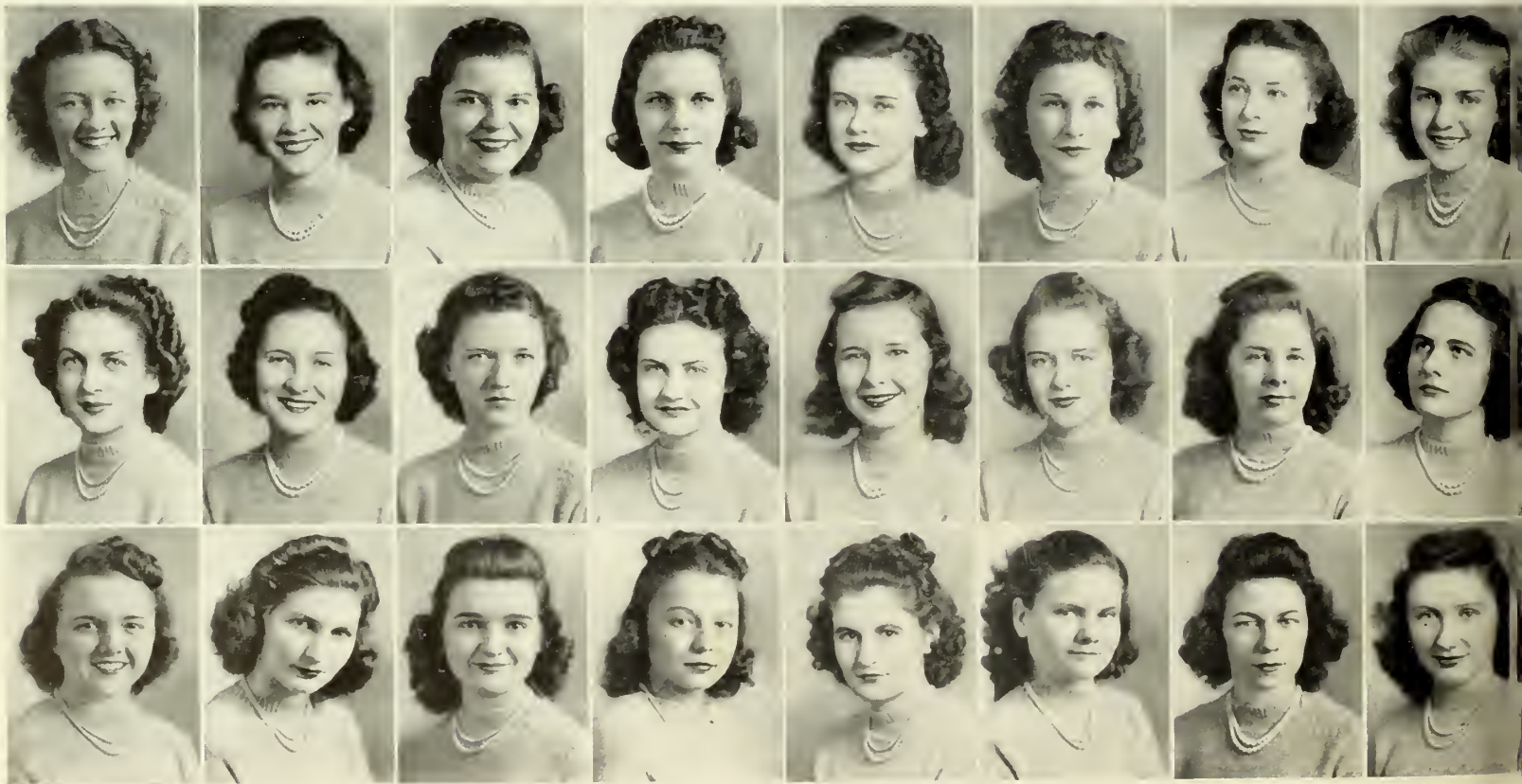


E. Carter Cowart L. Davis	L. Carter Culpepper Deadwyler	P. Carter Cunningham Dekle	Chambers Dale Dix	Clark Dame Dixon	Cobb Dasher Donalson	Copeland H. Davis Gannon	Copeland L. Davis Geoghagan
---------------------------------	-------------------------------------	----------------------------------	-------------------------	------------------------	----------------------------	--------------------------------	-----------------------------------

FRESHMEN



MARJORIE GIBSON	FOLKSTON, GEORGIA
ALICE GORDON	JACKSONVILLE, FLORIDA
MARY VIRGINIA GRANT	ATHENS, GEORGIA
JACQUELINE HACKLE	VALDOSTA, GEORGIA
MARTHA HAIRE	BAINBRIDGE, GEORGIA
MARIAN HAMBRICK	RAY CITY, GEORGIA
ETNA HARRIS	ADLL, GEORGIA
JEAN HERRING	TIFTON, GEORGIA
NAZIMOVA HOLLAND	CAMILLA, GEORGIA
EDWINA HOOD	VALDOSTA, GEORGIA
JULIA MAY HOWELL	VALDOSTA, GEORGIA
MARJORIE HOWELL	LAKELAND, GEORGIA
ANITA HUNT	VALDOSTA, GEORGIA
MARY KATE HUNTER	CRESCENT, GEORGIA
JEAN INGRAM	TALBOTTON, GEORGIA
MARY ANN ISOM	MOULTRIE, GEORGIA
DOROTHY JACKSON	PALMETTO, GEORGIA
JACQUELYN JONES	BAINBRIDGE, GEORGIA
ANNA JEAN KELLY	WASHINGTON, PENNSYLVANIA
ETTA JANE KENT	TIFTON, GEORGIA
HELEN KENT	TIFTON, GEORGIA
ODELIA KING	BLAKELY, GEORGIA
BETTY KIRKLAND	ALBANY, GEORGIA
GRACE LAWSON	JACKSONVILLE, FLORIDA



Gibson
Holland
Jackson

Gordon
Hood
Jones

Grant
J. M. Howell
Kelly

Hackle
M. Howell
E. J. Kent

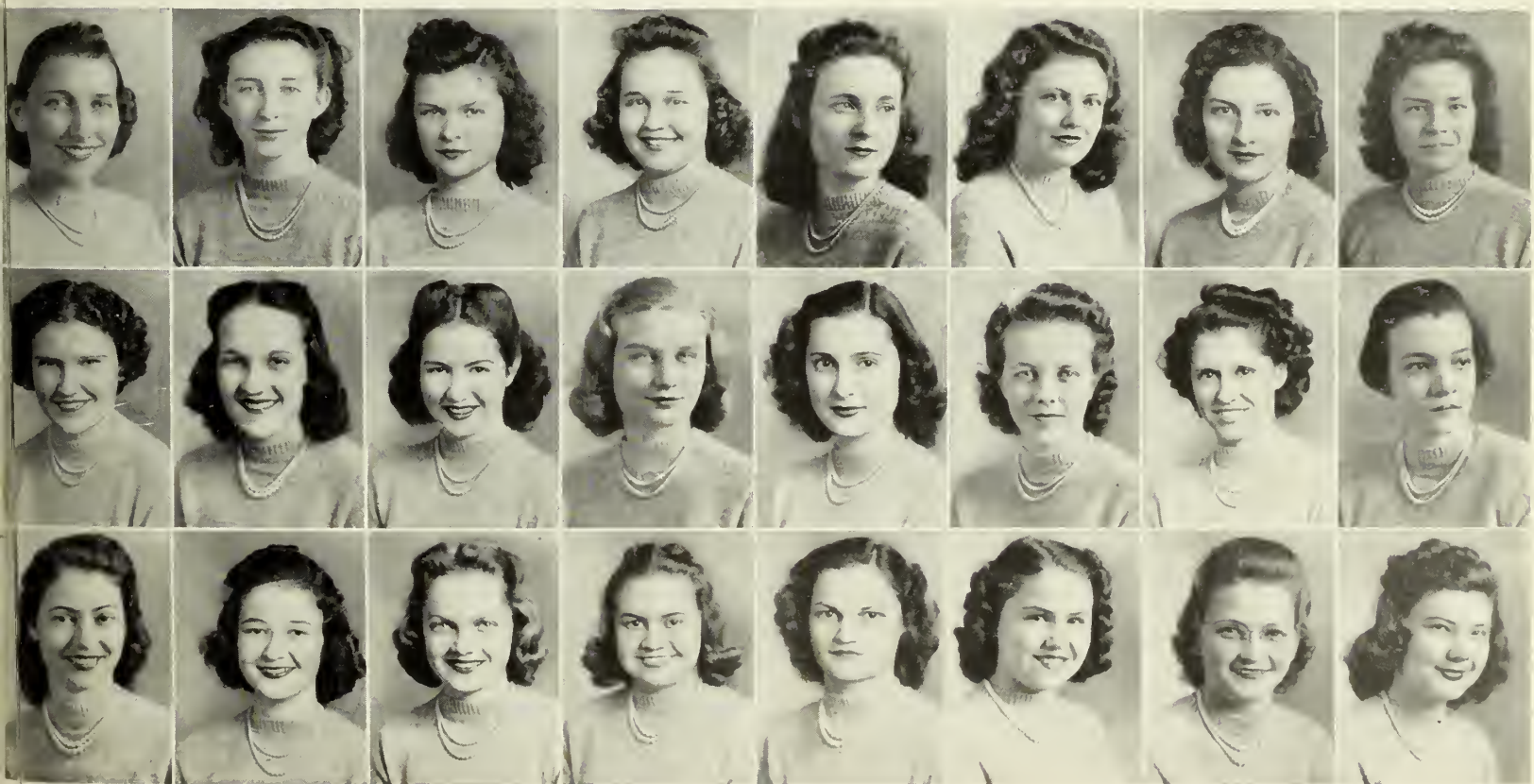
Haire
Hunt
H. Kent

Hambrick
Hunter
King

Harris
Ingram
Kirkland

Herring
Isom
Lawson

SARA LINEBERGER	VALDOSTA, GEORGIA
FRANCES LOOSIER	THOMASTON, GEORGIA
DOROTHY LOVETT	VALDOSTA, GEORGIA
ROSALYN McANDREWS	JACKSONVILLE, FLORIDA
PEGGY McBANE	VALDOSTA, GEORGIA
JULIA FRANCES McCORKLE	MONTEZUMA, GEORGIA
MILDRED McFARLIN	YATESVILLE, GEORGIA
JEANNE McGILL	SYLVESTER, GEORGIA
MERRICK McINTOSH	EUFONIA, GEORGIA
NELLE McLENDON	DAWSON, GEORGIA
MARY MASON	VALDOSTA, GEORGIA
NANCY MESCHKE	BRUNSWICK, GEORGIA
MARILYN MILLER	ALBANY, GEORGIA
SADIE MILLER	IRON CITY, GEORGIA
LOUISE MOORE	ALAPAHA, GEORGIA
JESSIE MORGAN	TIPTON, GEORGIA
RUTH MORRIS	VALDOSTA, GEORGIA
RUTH MURPH	MARSHALLVILLE, GEORGIA
MARJORIE MURRAY	ASHBURN, GEORGIA
MARY PIERCE MURRAY	BUENA VISTA, GEORGIA
ALLENE NEWBERRY	ARLINGTON, GEORGIA
LOREAN NICHOLSON	AMSTERDAM, GEORGIA
EDITH NORTON	NAYLOR, GEORGIA
FREDDIE NUNN	WAYCROSS, GEORGIA

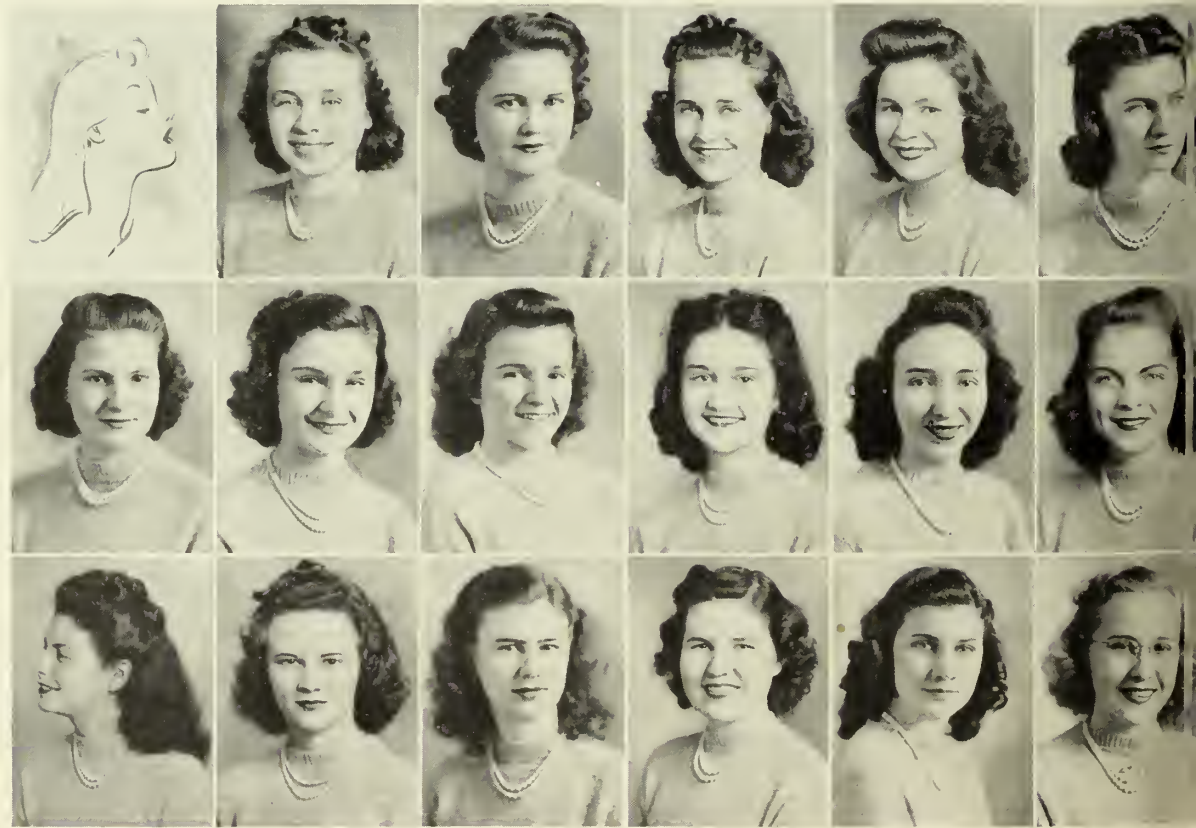


Lineberger McIntosh Morris	Loosier McLendon Murph	Lovett Mason M. Murray	McAndrews Meschke M. P. Murray	McBane M. Miller Newberry	McCorkle S. Miller Nicholson	McFarlin Moore Norton	McGill Morgan Nunn
----------------------------------	------------------------------	------------------------------	--------------------------------------	---------------------------------	------------------------------------	-----------------------------	--------------------------



LOUISE OGBURN REYNOLDS, GEORGIA
 PAULINE O'QUINN HOMERVILLE, GEORGIA
 VIRGINIA ORR EAST POINT, GEORGIA
 JACQUELYN OVERSTREET BAXLEY, GEORGIA
 RACHEL PARKS VALDOSTA, GEORGIA
 ELIZABETH PASCHAL ALBANY, GEORGIA
 NELL PATTEN LAKELAND, GEORGIA
 SARA PETTY DAWSON, GEORGIA
 ELIZABETH PILCHER MOULTRIE, GEORGIA
 MARY LILLIAN PITTMAN TITTON, GEORGIA
 MARY RAINES ASHBURN, GEORGIA
 JOSEPHINE REDDICK VALDOSTA, GEORGIA
 ANNIE LOU RICE VALDOSTA, GEORGIA
 ANNE ROBERTSON BYRON, GEORGIA
 HAZEL ROGERS MACON, GEORGIA
 JACKIE ROSE WHITE OAK, GEORGIA
 MAROLYN ROWLAND MOULTRIE, GEORGIA

FRESHMEN



Paschal
Reddick

Ogburn
Patten
Rice

O'Quinn
Petty
Robertson

Orr
Pilcher
Rogers

Overstreet
Pittman
Rose

Parks
Raines
Rowland

DOROTHY SAWYER	ARLINGTON, GEORGIA
ANNE SINGLETARY	PELHAM, GEORGIA
JEAN SLADE	VIENNA, GEORGIA
JEANETTE SMITH	WAYCROSS, GEORGIA
LA FRANCES SMITH	HAHIRA, GEORGIA
PHYLLIS STORY	ASHBURN, GEORGIA
RUBY TARTE	VALDOSTA, GEORGIA
MILDRED TAYLOR	CUTHBERT, GEORGIA
VIRGINIA TAYLOR	QUITMAN, GEORGIA
CONSTANCE THREATTE	JESUP, GEORGIA
AMY TISON	MOULTRIE, GEORGIA
CHRISTINE TRULOCK	CLIMAX, GEORGIA
CAROLYN VERNON	CHERRY LAKE, FLORIDA
SARA VINSON	VALDOSTA, GEORGIA
JEANETTE WALKER	JESUP, GEORGIA
ANNA KEY WATERS	VIENNA, GEORGIA
PATRICIA WESTBROOK	GRIFFIN, GEORGIA
BETH WHITAKER	VALDOSTA, GEORGIA
PHYLLIS WHITAKER	VALDOSTA, GEORGIA
FRANCES WILLCOX	OCILLA, GEORGIA
JEAN WILLIAMS	CORDELE, GEORGIA
EDITH WOODARD	RENTZ, GEORGIA
CHRISTINE YOUNG	REBECCA, GEORGIA
LAURA MAE YOUNGBLOOD	JESUP, GEORGIA

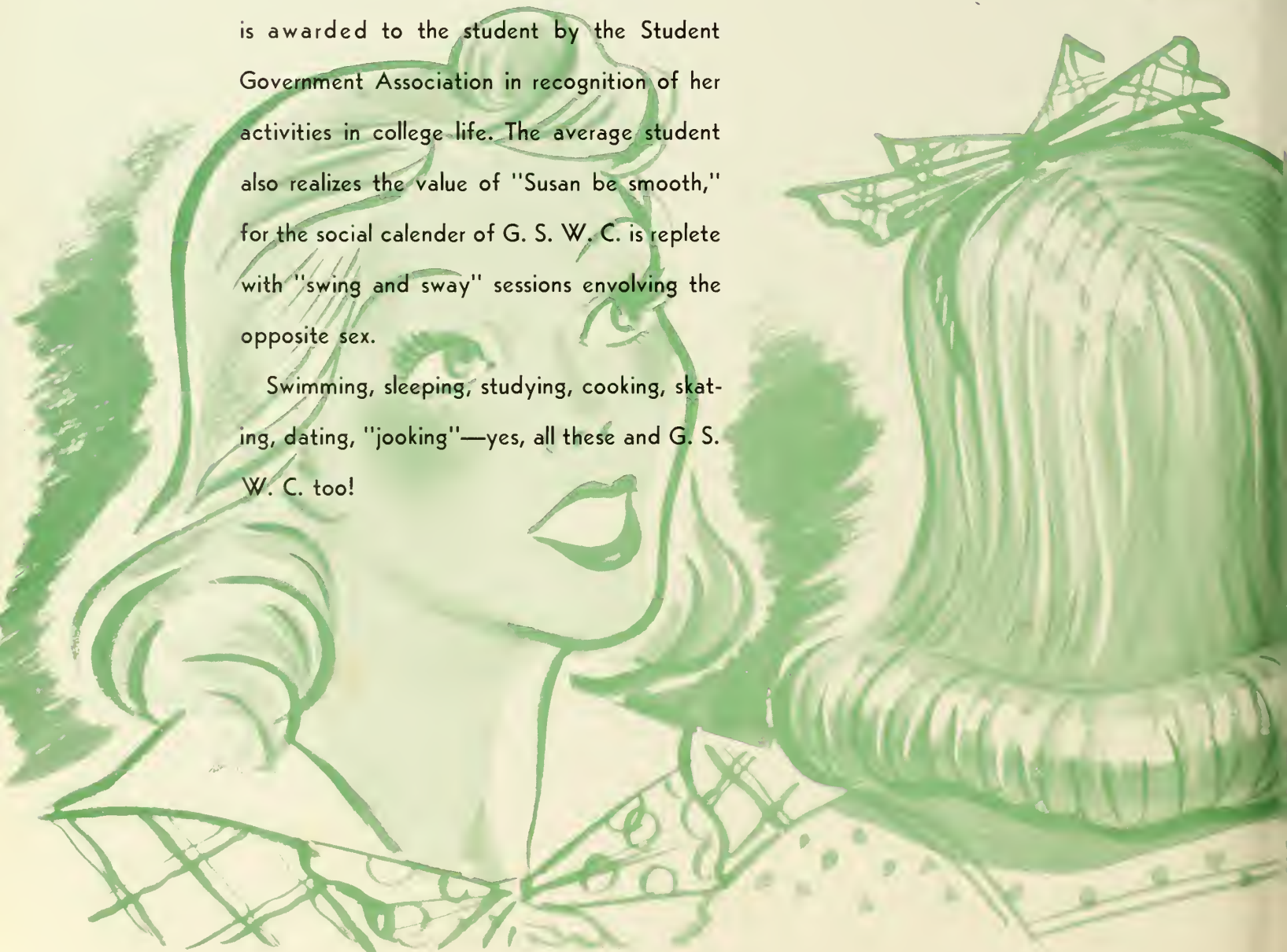


Sawyer V. Taylor Westbrook	Singletary Threatte B. Whittaker	Slade Tison P. Whittaker	J. Smith Trulock Willcox	La F. Smith Vernon Williams	Story Vinson Woodard	Tarte Walker Young	M. Taylor Waters Youngblood
----------------------------------	--	--------------------------------	--------------------------------	-----------------------------------	----------------------------	--------------------------	-----------------------------------

A C T I V I T I E S

EVERY G. S. W. C. STUDENT RELIES ON that old adage, "variety is the spice of life." The goal of each individual girl is to win her G. S. W. C. leadership emblem which is awarded to the student by the Student Government Association in recognition of her activities in college life. The average student also realizes the value of "Susan be smooth," for the social calender of G. S. W. C. is replete with "swing and sway" sessions involving the opposite sex.

Swimming, sleeping, studying, cooking, skating, dating, "jooking"—yes, all these and G. S. W. C. too!





Still Life Reflects G. S.
W. C. Student's Per-
sonality.



College Emblem Symbolizes Student's Activities.



STUDENT

Williams and Parham.

CONTROLLERS OF THE CAMPUS CUT-UPS AND CUTIES, the Student Government Association is a lubricant which keeps the bearings of campus life oiled and free from hot boxes of criticism. Including every girl in the student body in its membership, the association is a democratic organization with freedom of expression, thought, and action as its underlying principle. Its main purpose is the promotion of the highest standards of honor and integrity in all manners of personal conduct, to preserve order, and to strengthen the cordial relations between faculty and students.

In as much as S. G. A. is a barometer of student opinions including all complaints and constructions, the association sees more kicks than the under side of a bridge table. Each project undertaken this year has been very successful and campus improvement was evident. The improvement of chapel conduct, placing a coca-cola machine in Senior Hall as an addition to S. G. A. Country Store in Converse Hall, were only two of the undertakings for 1941. An S. G. A. scholarship fund is provided from the benefits derived from the Country Store. Several distinguished off-campus speakers, and two moving pictures were sponsored by the organization.

Three delegates were sent to the Southern Intercollegiate Association of Student Government in the spring. This convention was held at Sophie Newcomb in New Orleans. From a group of students representing as many student problems as colleges, new ideas were brought back to our campus to enrich and broaden our concept of student government. To the Student Christian Conference at Blue Ridge, North Carolina, delegates were also sent. From discussions with representatives from other schools, our delegates could not help but notice and be proud of the fact that G. S. W. C. has a great many more privileges than some other colleges; perhaps this proves that our students know how to use wisely those privileges which they have.

An open forum, held in the spring quarter each year, allows students to meet and voice any thoughts of theirs as to changes in regulations which they think worth while. In such a meeting the pot boils with suppressed ideas and hopes of students. Many new privileges have been granted later to the student body due to these lively gab feasts.

GOVERNMENT

A student court composed of Student Government officials and class presidents regulates disciplinary problems. Higher judiciary bodies are the Executive Board, and the Student-Faculty Honor Council.

Court was held by Chief Justice Parham only when the conduct of some students seemed to warrant the need of it. The meetings were far less frequent this past year, thereby proving that the girls are learning how to take care of themselves.

Responsibility and privileges are distributed democratically among the students. Freshmen become members of the organization after a week of intensive training and orientation.

This organization is of the students, by the students, and for the students, and it is to each individual that it looks for its constructive growth; thus, the Student Government Association takes its part in the gear works of campus life as the power chain, striving to use the power of each individual to keep moving the more burdensome loads of college.

OFFICERS: President, Ann Parham; Vice-President, Maxwell Williams; Secretary-Treasurer, Veronica Kleeman; Recorder of Points, Mary Martha Burnette; Senior Monitors, Runelle Prance, Marie Ambos; Ashley House President, Jean Thompson; Ashley Monitors, Jeanne Pryor, Anna Young, Ann Smith; Converse Monitors, Mary Alice Brim, Evelyn Brim, Mary Mullen, Harriet Miller, Elise Gannon; Freshman Monitors, Barbara Dekle, Amy Tison, Jane Spivey, Virginia Orr; Honor Council Representatives, Virginia Tomlinson, Ruth Reid.

Top: Members of the Student-Faculty Honor Council—Reid and Tomlinson. . . . Center: Kleeman. . . . Below: Holding Court—Petty, Hendrick, Williams, Parham, Kleeman, Burns and Martin.



Y. W. C. A.

PROVING THE REALITY OF RELIGION BY ITS UNTIRING SERVICE TO OUR CAMPUS, THE Y. W. C. A. exists to promote the mental, physical, and spiritual development of each person in college, and to stimulate a sincerely spiritual atmosphere within our school.

The Y. W. C. A. is the sponsor of our vital religious services and some of our most interesting and traditional programs. Morning Watch and daily morning worship service give those who attend a worthy thought to be carried and practiced throughout each day. Bi-weekly vesper programs are presented on Thursday and Sunday nights. These services bring before the students the thoughts and talents of their members of this group and, also, through these vesper programs, new and interesting ideas of visiting speakers are imparted to our campus.

Special programs are presented at Thanksgiving, Christmas, Easter, and during observation of International Prayer Week.

Among the impressive ceremonies of the year are included a Recognition Service for new members at the beginning of the year and the Installation Service of the new Y cabinet members in the spring.

Serving off campus as a Y representative, is the Deputation Team, which presents programs in the churches of Valdosta and nearby towns and colleges. The weekly news sheet of the Y, the *Y Angle*, keeps the students informed of the weekly Y programs and happenings in general. The Vesper Choir, under the direction of Mr. Kraft, appears on radio, vesper, and deputation programs. Through the Big-Little Sister Program, a spirit of cooperation and friendliness is promoted. A Religious Emphasis Week is held each year. This year Dr. Regina Wieman, noted lecturer, author, and psychologist was the speaker.

Orientation Week is planned cooperatively with other student organizations. During this pre-school week of parties and instruction, new girls become orientated into college life.

Delegates are sent to the annual state and annual Southern Student Christian Conferences. Through these contacts, inspiration, knowledge, and new ideas are brought back to our campus.

Old and new officers of the Y and S. G. A. have a joint spring Retreat at Twin Lakes. Here, aims, purposes, and activities are evaluated and stock is taken of the past year's work. The new Y cabinet has a



Williams and Scott.



Vesper Choir under Direction of Kraft.



Deputation Speakers—Green and Cole.



Hartsfield and Rockwell.



Y. Cabinet

fall Retreat before Orientation Week to make definite plans for the coming year.

The greatest aim of the Y. W. C. A. is to help each student develop an increasingly adequate philosophy of life based on Christian principles in accordance with her personality and needs. Through its far-reaching and beneficial program, it not only strives but fulfills that purpose to the highest degree.

OFFICERS: President, Carolyn Williams; Vice-President, Kathryn Scott; Assistant Vice-President, Mary Williams; Secretary, Mary Jean Rockwell; Treasurer, Elizabeth Hartsfield; Co-Chairmen of Publicity, Anna Mae Pryor, Frances West; Co-Chairmen of Entertainment, Jeannette Johnson, Virginia Power; Co-Chairmen of Morning Watch, Beth Tharpe, June Mosley; Room Chairman, Carolyn Roberts; Deputation Chairman, Nancy Cole; Pianist, Ava Collins; Assistant Pianist, Louise Griffin.



Green, Williams, Barnes, Krieger, and Dutton.

THE '41 PINE CONE



Roberts and McKey Approve Layout.

HEADACHES, HEARTACHES, FUN AND NERVOUS BREAKDOWNS were just a small portion of the ailments suffered by "ye ole" PINE CONE editors, who hope you get as much enjoyment from the edition as we have.

In attempting to diversify the usual procedure of annual composition, the staff has tried to make the 1941 edition as informal and as characteristic of college life as possible. A number of changes were made this year in the management of the subject matter of the book, and a few new ideas have been incorporated. With the very informal narrative style in use, we hope we haven't stuck our necks out, but have made the copy more readable.

Following an example set by the 1939 PINE CONE, the book is presented by the entire student body, the upper classmen sharing equally with the lower classmen the boos and bouquets which no doubt will be the result of this edition. Our editor, Susie McKey, and Alice Wisenbaker were sent as delegates to Detroit, Michigan, where the National Collegiate Press Association held its annual convention. Here, under the expert guidance of leaders in the field of yearbook journalism, the delegates mapped out temporary plans for the publication.

The staff's plans are to give the student body a complete and well-rounded picture book of the year's activities, stressing informality for pictures and snapshots as well as for the literary material. The usual has been casually mixed with the unusual. And don't hold us responsible if you see the Seniors cutting out paper-dolls; we just caught them in the act.

Studio portraits for the PINE CONE were taken by Mr. Veran Blackburn of Valdosta. Snapshots and other pictures were taken by Dr. Phelan and members of the photograph staff under the direction of Leecy Ann Goodloe, photograph editor.

Running true to tradition (for a change) the color and design of the yearbook have been kept a secret by the editors. Throughout the preparation of the book, the editors have been able to call on Mr. Johnny Long, of Foote and Davies Company, and Mr. Walter Dargan, of Photo-Process Engraving Company of Atlanta, for advice on all the many technical troubles into which we ran headlong.



Photographer Goodloe.

Looking into the future through the medium of mirrors of the past, your editors foresee that long after graduation, when faces and events are so easily forgotten, that the PINE CONE of 1941 will recreate for you a pictorial and literary history of your Alma Mater.

LITERARY STAFF: Editor, Susie McKey; Assistant Editor, Minnie Roberts; Literary Editor, Margaret Dutton; Assistant Literary Editor, Maxwell Williams; Photograph Editor, Leecy Ann Goodloe; Assistant Photograph Editors, Harriet Flournoy, Frances Williams, Helen Quarterman; Activities Editor, Lois Green; Assistant Activities Editors, Tenzie Coleman, Gwendolyn Hendrick.

MAKE-UP STAFF: Marie Smith, Betty Barnes, Frances Kennedy, Ruth Reid, Alice Wisenbaker, Louise Macfie, Billie Green.

TYPISTS: Louie Mae Krieger, Doris Hiers.

BUSINESS STAFF: Business Manager, Gwendolyn Winter; Advertising Staff, Annette Blackburn, Yolande Coppage, Ruth Morgan, Evelyn O'Neal, Evelyn Saunders.

Alice Wisenbaker of G. S. C. W. and Claire Donovan of Michigan College at C. P. A. Banquet.



Blackburn, Morgan, Winter and Coppage.



CAMPUS CANOPY

IT AMUSES, IT INFORMS, IT EDITORIALIZES, and, of course, reference is being made to the official organ of the student body, the *Campus Canopy*. The weekly newspaper symbolizes the simplicity, yet the power that is potent in this modern, progressive group of students.

Serving as an open door which receives plenty of pushes and pulls, the *Canopy* is a clearing house for the news of the college. Even though it comes out at the end of the week, it serves as a real interpretation of the march of campus events for the students and faculty.

Each year delegates have been sent to national and state conventions. Last year Linda Summer, Jeannette Johnson, and Alice Wisenbaker attended the National Collegiate Press Convention in Detroit, Michigan, in November. Ruth Sessoms was among those present at the Georgia Collegiate Press Association in Athens in February and the spring convention in Savannah at Armstrong Junior College.

Realizing that the college newspaper, as a major extra-curricular activity, can solidify and stimulate school spirit, the *Campus Canopy* has demonstrated leadership in its viewpoints directed toward student life. The success of the paper can be attributed to the great cooperation among its staff members; and the excellent "share the work" spirit is demonstrated to the highest degree when the members work side by side, late at night, so that the deadline might be met.

Second class honor rating was received for the year '39-'40 from the A. C. P., and the staff members of '40-'41 did an equally admirable job.

Work on the paper has brought a feeling of usefulness and pride in doing a worthwhile job, and a certainty that future editors will continue the efforts made toward a high rate of journalistic progress.

Thanks to the *Canopy*, a true, entertaining resume of campus news is brought to every student.

STAFF: Editor-in-Chief, Linda Summer; Associate Editor, Frances Kennedy; Managing Editor, Anna May Pryor; Business Manager, Ruth Sessoms; News Editor, Frances Loosier; Sports Editor, Mary Frances Donalson; Headline Editor, Jean Saunders; Exchange Manager, Beth Thârpe; Circulation Manager, Mary Frances Rutland; Editorial Assistants, Martha Summer, Jacqueline Smith, Louie Askew; Feature Editors, Emily Garner, Doris Hiers, Alice Wisenbaker, Teeny Hopson; Reporters, Mary Kate Hunter, Mary Frances Donalson, Margaret King, Evelyn O'Neal, Nazimova Holland, Sara Petty, Emmie Carter, Nancy Meshke, Eunice Fairchild, Louise Ogburn, Alice Gordon, Jane Ellen Smith.

ADVERTISING STAFF: Dot Sawyer, Laura Mae Youngblood, Jane Calhoun, Janet Walker, Jeanne McGill, Alice Gordon, Camille West, Pat Westbrook, Jean Saunders, Sara Catherine Martin.

Editor-in-Chief Summer.



Kennedy, Walker and Calhoun.





Clockwise: Sessoms. . . . Donalson and Tharpe. . . . Rutland
Delivers Papers. . . . Hopson and Garner. . . . Loosier Checks
up on the News.





Scene from "The Old Maid."

SOCK AND BUSKIN CLUB

PLAYING AROUND, ACTING UP, AND MAKING SCENES IN PUBLIC is all in a day's work for the dramatic club of the campus.

Although the purposes of this club are to achieve the benefits to be gained from the study and practice of dramatic art, the club members may proudly boast of having taken several trips and of having made personal contacts with outstanding people in their field.

The Sock and Buskin Club aims to bring the theater to the campus, and this year they did just that by presenting as the annual play Edith Warton's, "The Old Maid." This play has been acclaimed by critics as "one of the most distinguished dramatic successes that have graced the recent American stage." The presentation by the members of the club was acclaimed one of the most successful of their productions.

An initiation service and entertainment by the new members for the old was held early in October after the annual tryouts. During the winter quarter, Miss Willene Roberts lectured on the art of make-up and gave appropriate demonstrations. Radio work was done throughout the year, and in February the club held its annual frolic. In the spring quarter, the club gave a tea.

Any student is eligible for membership in Sock and Buskin after a successful tryout; however, membership is limited to thirty-five.

These girls may put on an act for you, but it is always a good one, and if the Cornell of tomorrow comes from this group, don't say we didn't warn you.

OFFICERS: President, Dorothy Wilkes; Vice-President, Rachel Crittenden; Secretary-Treasurer, Marion Orr.

FACULTY ADVISER: Miss Louise Sawyer.

MEMBERS: E. Allen, M. C. Allen, Askew, Blackburn, Brim, Griffin, Holland, Kent, Koblenzer, Mallory, Martin, McCorkle, McGill, Orr, Parham, Parks, A. M. Pryor, J. Pryor, Rollison, Rutland, Sirmans, Summer, Threatte, Tuten, Whitaker, White, J. Williams, R. Williams, M. W. Williams, Wilkes, Woodward.



Top to bottom: Club Pledges. . . . Mallory and Allen Up. . . . Scene from "First Lady."

FROM METHUSELAH TO OGDEN NASH is the range covered in art interest by one of the largest clubs on the campus. The Fine Arts Club intends to give art its place in college affairs and to create an art atmosphere on the campus; it brings together those students who have a deep interest in art in some form or expression for the purpose of concentrated study, experiment, and practice. The club members are very cooperative, and for those of us who can't even draw a name, lend a cheerful and willing hand.

With its surrealistic ideas and its modern tempo in thinking, this group might well be known as the campus guardians of modern culture.

During the monthly meetings of the year, emphasis was placed on pencil sketching, oil painting, clay modeling of pottery and sculpture, weaving, wall hangings, and water colors.

The club played Santa Claus to the faculty and students in the fall and winter quarters by sponsoring, on a non-profit basis, a rental art collection. Beautifully framed reproductions of masterpieces and modern painting were offered for room or office use. Celotexing the upper Rotunda, and bringing Lamar Dodd, painter, and John Held, Jr., sculptor, to the campus, were other projects. In the spring, a trip to Atlanta for opera was enjoyed by the group.

OFFICERS: President, Louie Peoples Askew; Vice-President, Wilmot Green; Secretary, Julia Bess Smith.

FACULTY ADVISER: Miss Frances Carpenter.

MEMBERS: Askew, Coppage, Crews, Graham, Lois Green, Wilmot Green, Harris, Hunt, Hurst, Bobbie Johnson, Gwendolyn Johnson, McCall, McCorkle, McGeachy, McGill, Morgan, Rockwell, Roberts, Saunders, Simpson, Julia Bess Smith, Marie Smith, Summer, Watson, Wilkes, Woodward.



Circle: Burns and Smith Choose Picture from Circulating Picture Library. . . . Above: Dodd, Askew, and Carpenter. . . . Left: Artists Simpson and Watson.



FINE ARTS' CLUB



Cook Accompanies Harris.



Griffin, Twitty, Taylor, Motter, Christian, Harris, McKey, Smith and Gannon.



Glee Club Group.

G L E E C L U B

ALWAYS FOUND TO BE IN PERFECT TUNE with every activity of the campus, the G. S. W. C. Glee Club is composed of those students who possess marked singing ability. May Day, Commencement, and the Christmas Festival are made fuller with the music furnished by the do, re, mi's of the campus.

The well carried out purpose of this organization is to provide entertainment and to promote the enjoyment and appreciation of fine music on the campus; however, the club often sings at local schools and civic organizations.

During the fall quarter, the members presented a Christmas program over the local radio station. A trip to grand opera in the spring and its annual concert brought to a close the year's activities of the club.

On joining this organization, one may be so musically ignorant as to think that sharps are pawn brokers, and flats are at least two stories high; however, through the newly created voice class, one may learn the fundamentals so essential to good singing, and to carry a tune without the aid of a basket.

Limited to thirty students, the members are chosen on a basis of their ability and enjoyment of singing.

OFFICERS: President, Mildred Harris; Secretary-Treasurer, Louise Griffin; Librarians, Thelma Sirmons and Ava Collins; Accompanist, Lois Christian; Assistant Accompanist, Eleanor Cook.

MEMBERS: Louie P. Askew, Mary M. Burnette, Margaret Burns, Pauline Carter, Eleanor Cook, Ava Collins, Maxine Cowart, Lougenia Davis, Ursulla Davis, Dorothy Dusenberry, Ardith Gannon, Elise Gannon, Louise Griffin, Mildred Harris, Dorothy Jackson, Jacquelyn Jones, Margaret King, Frances Loosier, Katherine McDonald, Susie McKey, Ruth Morris, June Moseley, Marjorie Murray, Rebecca Neal, Evelyn O'Neal, Elizabeth Pilcher, Jeanne Pryor, Minnie Roberts, Hazel Rogers, Thelma Sirmans, Corrinne Smith, Jeannette Smith, Marie Smith, Phyllis Story, Martha Strickland, Ruby Tarte, Ruth Taylor, Eleanor Turnbull, Carolyn Tuten, Mary J. Twitty, Sara Waters, Margaret White.

SERENADERS: Burnette, E. Gannon, Griffin, Harris, McKey, C. Smith, Taylor, Twitty.

THEY MAKE THE STUDENTS FACE THE MUSIC and like it, and it's no wonder with the excellent musicians to be found in this club. The purpose of the club is to further an interest in the best type of music on the campus. The club attended an opera during the spring season of opera in Atlanta, and also sponsored the Emory Glee Club in the early spring.

Many Senior members of the club put on a recital in the spring quarter, bringing to a melodious close their musical campus activities.

Paradoxically strange is the Philharmonic Club, for they are continually getting the pitch yet always hold their jobs. And playing classical music is no easy task; sometimes, quick changes must be made from pianissimo to fortissimo; and this does not refer to an Italian road map, but means the quick change from soft to loud playing.

It is well that the club upholds the classics, for with the majority of other campus music lovers becoming champions for modern pieces, a favorable balance of musical diet is offered to the students.

OFFICERS: President, Lois Christian; Secretary-Treasurer, Mary Martha Burnette.

FACULTY ADVISER: Miss Gladys Warren.

MEMBERS: Betty Barnes, Mary Martha Burnette, Lois Christian, Ava Collins, Eleanor Cook, Maxine Cowart, Ursula Davis, Dorothy Dusenberry, Louise Griffin, Mildred Harris, Ora Johnson, Margaret King, Marguerite Lahood, Frances Loosier, Katherine McDonald, Susie McKey, Ruth Morris, Lorean Nicholson, Nell Patten, Annie Lou Rice, Jackie Rose, Anne Smith, Corrinne Smith, Jacqueline Smith, Jeanette Smith, Marie Smith, Ruth Taylor, Mary James Twitty.

PHILHARMONIC CLUB



Christian.

Cook, C. Smith, J. Smith, and Twitty Listen to Carnegie Music Set.





First row, left to right: Davis, Grant, Thompson. . . . Wisenbaker, Thompson. • Second row: Reade, Franklin "Presenting Check for British War Relief."
 . . . Scott, Parham Reviewing Panel Discussion.

INTERNATIONAL RELATIONS CLUB

HISTORY MAY BE MADE AT NIGHT, but regardless of the time at which epoch making events take place, the International Relations Club is always up to the minute on the latest world developments. There is no group at the college that has a better scholastic insight into the present world situation. To this organization peace is the by-word and international friendship, its aim.

The I. R. C. is an organization for training the student's perception to weigh justly and wisely the true significance of the social, economic, and political forces moving the world. The organization does not seek to convince its members of any one point of view regarding world problems; but rather, to give them a background of facts which enables them to read intelligently, and to exert a wider influence in the communities where they live.

The Carnegie Endowment for International Peace presents to the club books and materials which aid the members in gaining information concerning their studies.

As interesting as they are varied, the activities of the organization are in keeping with its purpose. To the British War Relief, seventy-five dollars was given. The club made available a loan scholarship, and sent delegates to the Southeastern Conference on International Relations at Tallahassee. Together with representatives from Emory Junior, the club gave a panel discussion before the American Association of University Women.

The International Relations Club holds that mankind itself must preserve its culture, its advances, and treasures—and loudly proclaims that peace to all is the solution of the serious problems of today.

OFFICERS: President, Frances Giddens Davis; Vice-President, Alice Wisenbaker; Secretary, Elizabeth Fender; Treasurer, Betty Franklin; Member-at-Large, Jean Thompson.

FACULTY ADVISER: Miss Mildred M. Price.

MEMBERS: Frances Davis, Elizabeth Fender, Mary Josephine Ford, Betty Franklin, Erma Garrison, Josephine Graham, Lois Green, Mildred Martin, Shirly Hoyer Martin, Ruth Morgan, Viva McGeachy, Ann Parham, Willard Parrish, Katherine Scott, Annabel Sherman, Ruth Sessoms, Justine Tarte, Jean Thompson, Alice Wisenbaker.

MATH SCIENCE CLUB

LITTLE WILLIE TENDS THE TEST TUBE NURSERY OR LOOKS AT THE PARASITS OF SOCIETY THROUGH A MICROSCOPE.

Little William is the brain storm of the Math Division of the Math-Science Club, who portrays, by means of posters and miniature figures, the progress of math from kindergarten to college graduation. The Campus Calculus Club proudly displays the life of its heir in the show case in the hall of the Administration Building, and each quarter the mothers of Little Willie show the practical applications of math through the tactics of their son.

The Chemistry Division of the club made several field trips to industrial centers in the vicinity of the college. These tycoons of the test tube are composed of students who have a definite interest in chemistry and a willingness to devote spare time in research.

The Biology Division collected plants and set up an interesting exhibit.

The club proposes to stimulate interest in science and to acquaint its members with the practical nature of math and science as well as to provide for its members an opportunity to work on projects in which they are particularly interested. In order that the latter may be done to advantage, the club is divided into three groups—math, chemistry, and biology. Knowing figures as well as Earl Carroll, these potential DuPonts look at society's parasites through a microscope.

OFFICERS: President, Frances Williams; Vice-President, Runelle Prance; Secretary-Treasurer, Wilmot Green.

FACULTY ADVISERS: Dr. Beatrice Nevins, Miss Marjorie Carter, Dr. Earl Phelan, Dr. Marian Farbar, Dr. Lena Hawks, and Dr. Lee Blitch.

DIVISION HEADS: Biology, Mary Rogers; Chemistry, Helen Quarterman; Math, Louise Edwards.

MEMBERS: Allen, Ambos, Brim, Brown, Burns, Cody, Coleman, Cook, Dorough, Duffey, Flournoy, Ford, Goodloe, Hartsfield, Heald, Hiers, Hinshaw, Jenkins, Johnson, King, Lyon, Macfie, Miller, Mundy, Patterson, Peeples, Posey, Pryor, Reid, Roberts, Shannon, Sirmans, G. Smith, Turnbull, West, C. Williams, F. Williams.



Williams.

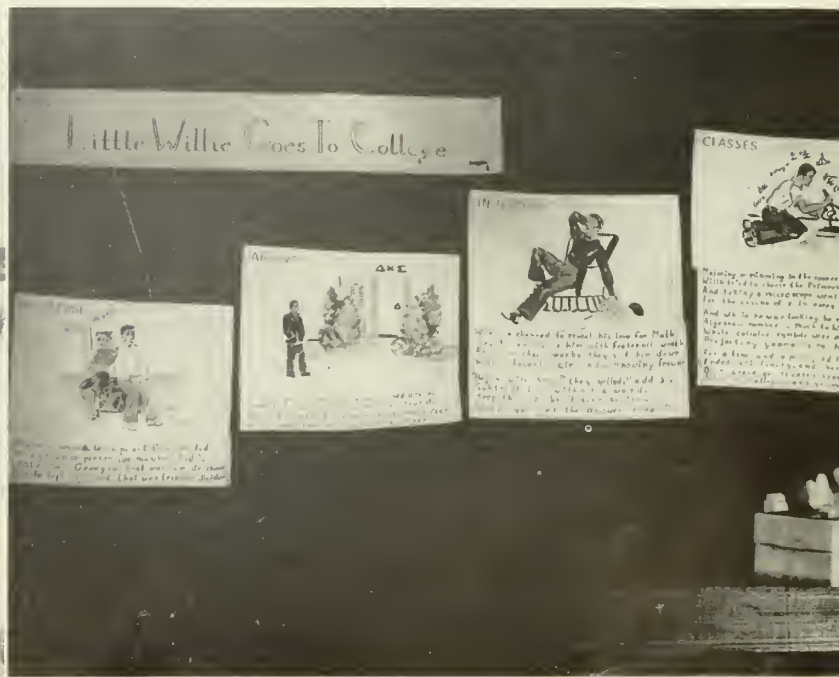
Rogers Is Biologist.



Burns Inspects Camera Club Exhibit.



Little Willie Matriculates.



ENGLISH CLUB

EXONENTS OF THE BEST RULES OF THAT DE-BUNKER OF DUNKING, EMILY POST, the English Club should be regarded with some degree of awe since its membership is restricted to Senior college majors who must obtain and maintain a high scholastic average in order to become a member and remain a member.

Noted for its smooth talkers and quick thinkers, this club may be called upon any time to produce an intelligent speaker, to conduct an open forum or a panel discussion, and for information concerning the oldest or the latest in literature, whether it be essays, poetry, fiction or non-fiction.

With twenty-five as its membership limit, the English Club believes in safety in numbers; and in doing this, affords a greater opportunity for individuals rather than cliques to develop.

Each year the club brings one or more authors of note to the campus, and this year, Daniel Whitehead Hicky, famous Southern poet, held the student body and faculty members intrigued by the composition and reading of his latest volume, "Wild Heron." Mr. Hicky also led a discussion group on the subject of poetry in its every phase.

The club endeavors to provide an opportunity for a more intensive study of literature, past and present, than is provided for in the class room. Interest in reading is stimulated by the discussion group type of programs as well as by reports and speakers. The practical side is not overlooked; and by looking over each member, one might note a walking example of the latest and proper information on the usage, pronunciation and play of words.

OFFICERS: President, Mary Alice Brim; Vice-President, Margaret Dutton; Secretary-Treasurer, Mildred Mallory.

FACULTY ADVISERS: Mrs. Gertrude Odum, Dr. Harold Gulliver, Miss Louise Sawyer.

MEMBERS: Sara Dean Adams, Evelyn Brim, Mary Alice Brim, Mary Bundrick, Margaret Dutton, Elise Gannon, Emily Garner, Gwendolyn Hendrick, Jeanette Johnson, Veronica Kleeman, Susie McKey, Mildred Mallory, Marnelle Parker, Mary Jean Rockwell, Mary Alice Tumlin, Gwendolyn Winter.



Top, left: Hicky and Brim. . . . Bottom, left: Mallory and Dutton.
. . . Right: Odum Conducts Creative Writing Class.



FRENCH CLUB

STRICTLY ENTRE NOUS, or so it might seem to an outsider who might venture into a club meeting to find talks, programs, or just the friendly conversation carried on in French. Imagination may be silly, but it's fine the way this club removes itself from actual scenery and can imagine itself in the heart of Paris.

During the year, the discussions were centered around French cuisine, couturiers, music, literature, and art. A play was presented in French, and the public was invited to attend. Though many followed the production by action only, it was remarkable the way the language was so smooth flowing that the actors seemed to have tongues with a non-skid tread. Seemingly academic verbs, nouns, and pronouns appeared as colorful, adventurous tools of description and narration.

The primary purpose of the club is to stimulate interest in the French language and the cultural heritage of the French people. Membership in the club is limited to twenty French majors or minors, of the Sophomore, Junior, and Senior Classes, with a scholastic average of B or above.

Small, yet smart, the French Club represents peaceful independence on the campus. Interesting and constructive programs are combined with a congenial social atmosphere at the club's monthly meeting. The French Club feels a definite responsibility to encourage and inspire students to broaden their horizons by becoming proficient in reading and speaking this language. At no time in history has it been more important to broaden one's knowledge of languages—*n'est-ce pas?*

OFFICERS: President, Ora Johnson; Vice-President, Elise Gannon; Secretary-Treasurer, Anna Young.

MEMBERS: Blackburn, Bundrick, Cook, Davis, Gannon, Johnson, Macfie, Rockwell, Stephensen, Summer, Tomlinson, Young.



Top, right: Johnson Welcomes Treanor to Club Meeting. . . . Bottom, left: Officers Young, Johnson, and Gannon. . . . Right: Gannon Gives Report "En Francaise."





A Tisket, A Tasket—Paschal Ring That Little Basket!

KAPPA AND LAMBDA SPORTS CLUBS

THE SHY GREEN FRESHMAN TO THE DIGNIFIED SENIOR—every student is welcome to the ranks of the Sports Club. Prevailing friendliness is the theme of this group which proudly boasts “a sport for every girl” and which earnestly wants “a girl for every sport.”

First in the hearts of every member and first in their club constitution is their purpose which “shall be to promote an effort for physical efficiency, to stimulate an interest in wholesome games and athletic accomplishment, to create a spirit of good sportsmanship, and to cooperate with other campus organizations in promoting and maintaining high standards of college life.” With a majority of girls living with such a purpose as a part of their daily lives, it is not hard to see the useful role that the Sports Club plays on the campus and in the lives of its members.

The Sports Club is divided into two teams—Lambdas and Kappas—which are the friendliest rivals on campus. These teams play match games in fistball, basketball, American ball, and softball throughout each quarter, and the winner of each game receives points which go on the Honor Plaque. At the end of the year, the team having the greatest number of points receives the plaque. This keen, wholesome competition gives to the girls the exercise of mental and physical ability that equips them better for their scholastic duties.

As one of its projects and as an effort to carry out its purpose “of stimulating an interest in wholesome games and athletic accomplishment,” the club sponsored movies on swimming, golf, and tennis.

Athletic geniuses take the spotlight in the golf and tennis tournaments and the swimming meets from which the physically fit emerge victors.

A council to direct the activities of the organization is composed of selected members of the club and faculty advisers from the physical education department.

Any girl making the required scholastic average and having a minimum of ten sports practices for one quarter may become a member and remain a member until she expresses a desire to have her name dropped from the roll.

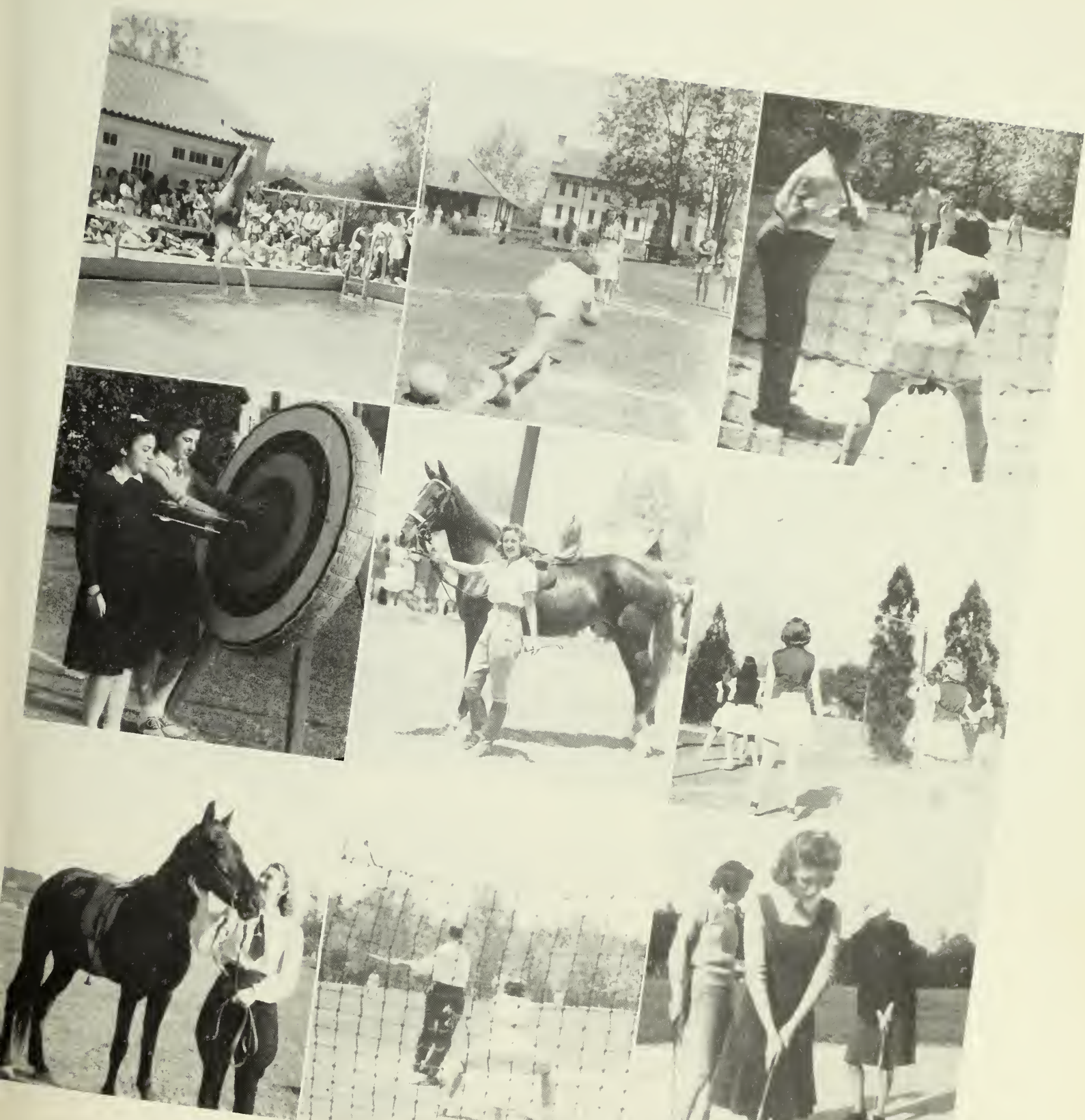
To this campus where physical and mental exercise are recognized as requirements for a well-rounded girl, the Sports Club is a necessary organization.

OFFICERS: President, Ruth Reid; Vice-President, Katherine Mundy; Secretary, Pat Ford; Treasurer, Alice Meadors.

FACULTY ADVISERS: Miss Marjorie Carter, Miss Edith Lowry, Dr. Marion Farbar, Miss Leonora Ivey, Miss Elizabeth McRee.



Tennis Champion—Reid



Top row, left to right: Goodloe Dives. . . . Match Play in Pin Ball. . . . Reade at Bat. . . . Second row: Archers Johnson and Edwards Hit the Bull's Eye. . . . Equestrian—Wilkes. . . . Match Play in Volleyball. . . . Bottom row: Reid Goes for a Ride. . . . Durrenberger Hits One to the Outfield. . . . Golfers Smith, Burnette, and Ivey.

A C T I O N



Lahood and Goodloe Broadcast over WGOV.



Top: Club Luncheon at the House-in-the-Woods.
Bottom: Coppage and Reid Aid BWR.

LOCAL GIRLS MAKE GOOD when they unite as graduates of the Valdosta High School into an effective group known as the Valdosta Club. The organization seeks to contribute its share in establishing a better understanding between day and boarding students.

The social views of this organization are paradoxically shown. They stay in their own realm, which is composed of members of their own select set, and yet they are always willing and able to mix with other groups in the promotion of good will among the college students.

The social functions of the group are of great importance. Their purpose, however, is not to "keep up with the Joneses," but to instill a greater spirit of sisterdom in its members. During the fall quarter, the club had a coca-cola party for new members. New organization plans for the club were put into effect, and these plans, we hasten to add, have not been made public to date.

With the opening of the winter quarter, the club continued its social life by holding a luncheon for its own members. Ever anxious to do their part, the members were divided into committees to offer their assistance to Dr. Reade in his commendable work for the British War Relief Fund.

A dance was sponsored by the club at the end of the winter quarter for the purpose of raising money for the annual entertainment in the next quarter.

Climaxing the year's activities of the Valdosta Club is the entertainment of the Senior Class of the Valdosta High School.

OFFICERS: President, Helen Quarterman; Vice-President, Margaret King; Secretary, Ruth Morgan; Treasurer, Vera Simpson.

MEMBERS: Ashley, Askew, Barnes, Blackburn, Blanton, Burke, Carter, Christian, Chambers, Coleman, E. Cook, F. Cook, Coppage, Crawford, Dale, Dalton, E. Dame, V. Dame, B. Dasher, T. Dasher, A. Davis, H. Davis, K. Davis, F. Davis, L. Davis, U. Davis, Deadwyler, Dunbar, Dusenbury, Fender, Franklin, Goodloe, Hackle, Hatcher, Hinshaw, Hood, Howell, Hunt, Jackson, Johnson, King, Kirk, Krieger, Lahood, Lazarus, Lineberger, Lovett, Lyon, McBane, McDonald, McGeachy, McKey, Mason, Means, Morgan, Morris, Mundy, O'Neal, Parks, M. R. Parrish, W. Parrish, Patterson, Peoples, Posey, Reddick, Reid, Rice, Roberts, Rockwell, Saunders, Shannon, Sherman, Simpson, C. Smith, H. Smith, J. B. Smith, Stump, Taylor, Tillman, Vinson, Wade, Walker, Watson, B. Whitaker, P. Whitaker, B. Williams, F. Williams, Winter, Wisenbaker.

V A L D O S T A C L U B

ALUMNAE ASSOCIATION



Howell and Sineath.

GONE BUT NOT FORGOTTEN, are the alumnae of the college. The Alumnae Association has been striving yearly to bring the students who are graduates of the college in closer contact with the college; and this year's program has been planned with that main objective in view.

The purpose of the association is to combine former G. S. W. C. students into an active off-campus group. The organization aims to preserve the ideals of the college, and to extend its influence through its membership of more than a thousand graduates. Privileges of active membership are granted to those who have received a degree or diploma; while those who have completed one year of college work are eligible for associate membership. The constitution of the association, which was adopted in 1933, focused the ideals and aims of the organization. Looking through a crystal ball, and keeping our fingers crossed, we see that the future holds for the Alumnae Association the realization of a dream—that of organization of local chapters throughout the state which will carry its ideals forward.

The publication of a news letter is a new innovation of the group; and each year a scholarship is provided for some girl who meets the specific qualifications. In order to encourage the continued interest of its members in the association, the dormitory staff maintains a feeling of "open house" for any returning students.

Social functions, including the installation ceremony, are held during commencement week for the new and old association members.

OFFICERS: President, Ann Turner Sineath; Vice-President, Louise Odum Howell; Acting Secretary, Caroline Parrish Thomas; Treasurer, Marie Strong.

Strong.
Thomas.





Bottom to top: James Melton—Leading Tenor of the Chicago Opera Company. . . . Miriam Winslow and Foster Fitz-Simons Appearing in "Landscape With Figures." . . . Cornelia Otis Skinner.



VARIETY IS THE SPICE OF LIFE, and the lives of G. S. W. C. Artist Series goers have been particularly enriched this year due to the many different types of programs presented.

Opening the seventh year of the series this year, were the dancers Winslow and Fitz-Simons, who, on November the twenty-eighth, presented their newest in modern dancing. These two young American dancers presented a never-to-be-forgotten program, which had the audience in laughter one minute and in tears the next.

With the coming of January, came Egon Petri, world famous pianist. Renowned for his immense repertoire, his program included works of Bach, Chopin, Schumann, and Liszt.

Cornelia Otis Skinner, hailed as "the greatest single attraction of the American theatre," was on campus on February the seventh; she presented three of her original modern monologues and her dramatic play, "The Wives of Henry VIII." Holding her audience spellbound, she seemed to fill the stage with people.

A product of our own state is James Melton, brilliant young tenor who made his appearance in March in front of a capacity crowd from towns and cities all over Georgia.

Daniel Whitehead Hicky, outstanding Georgia poet, was presented as a feature for National Book Week. Art Week was recognized by a program given by the distinguished Czechoslovakian architect, Jan Reiner. Here at the same time were Georgia's own outstanding artist, Lamar Dodd, and John Held, Jr., sculptor.

In January, Donald Grant, well-known scholar in international relations, gave several lectures and conducted open forums. During the month of February, Earle Spicer, baritone, presented a program of English and American ballads.

To add even more to these already varied programs presented as Artist Series, were speakers who covered such topics as: consumer education, religious education, landscape gardening, contract bridge, and creative writing.

With an outstanding artist in every field, the Artist Series for 1940-41 was deemed the most entertaining of its entire seven years.



ARTISTS SERIES



Top to bottom: Earle Spicer—America's Fore-
most Ballad Singer. . . . Egon Petri—World
Famous Pianist. . . . Jan Reiner. . . . Donald
Grant.

WAKE ME EARLY MOTHER,
for though I may not be Queen of the
May, you and I could not afford to
miss one of the loveliest traditions at
the college—the annual May Day cele-
bration. This is a gala celebration in
which nearly every student takes part
—from the Queen of the May, selected
from the Senior Class by popular vote,
to the lowliest Freshman masquerading
as a peasant.

Songs and dances on the green in
which the peasant folk express the age-
old sentiments regarding May Day—
old English traditions featuring all
classes from milkmaids to lords and
ladies—the winding of the vari-colored
May poles—the beautiful court pro-
cession of the Queen and her court—
all typify the spirit of the May Day
celebration.



May Queen and Her Court. First row: G. Bowen, M. Fountain, F. Garbutt, Z. Corn, K. Campbell, C. Whatley. . . . Second row: R. Baker, I. Smith, J. Abrahams, M. Cowart, D. Harper, E. Morgan. . . . Third row: H. Duncan, L. Godwin, M. T. Tullis, M. Norton, Maid-of-Honor, L. Bell; Queen, S. Garbutt.

All of the pageantry and simple splendor that marked the celebrations of the Celts is carried on as a tradition at the college each May Day. The festival is a particularly happy occasion since it celebrates the coming of Spring with its promise of new life. With the coming of Spring a young man's fancy may turn to thoughts of G. S. W. C. girls, but the girls' thoughts are first those of the glorious May-time celebration.

After the queen is crowned, there follows a colorful program of dances for the pleasure of Her Highness, the Court, and the guests.

Each year the May Festival has a new and different theme, although the spirit of it remains the same. Last year, the theme was that of "Sleeping Beauty." The lovely beauty, the handsome prince charming, and the wicked queen were the outstanding characterizations of the pageant.



Glee Club Lends Musical Background to Festival.

May Day



May Queen Sara Garbutt.



Prince Charming Awakens Sleeping Beauty.

and Play Day

WON'T YOU COME OVER AND PLAY is the cry set up each year on the first Saturday in May Day by the college to hundreds of girls from the Senior Classes of high schools throughout South Georgia. Invited to spend the day on the campus, the girls enjoy a combined May Day-Play Day. Students and visitors are divided into teams and compete in games throughout the morning. A feature of Play Day is the softball game held between faculty and students; and this one time of the year the students turn the tables and make it tough going for their professors.

The aim of Play Day is to help the work being done all over the country—to spread the knowledge and use of new and interesting games to other schools and to encourage friendship between the high schools and the college. There is no school rivalry, no playing merely to win, no individual honor to be gained, but a day spent in learning new games, playing old ones, and simply enjoying the comradeship of play.

Often exhibition games are played and outstanding stars of the athletic field are presented. Student exhibitions in archery, tennis, swimming, riding, and golf are presented to show how proficient the students have become in these sports.

The G. S. W. C. girls are attired in their regulation white gym suits, and the spread of white costumes all over the campus makes an attractive picture to the guests. A spirit of happiness, gaiety, and excitement grips everyone on campus; and King Fun reigns in full sway.



Student-Faculty Softball Classic.



Student Swimming Exhibition.



Students and Guests Enjoy Team Competition.



G. S. W. C. Demonstrates Good Horsemanship.

FEATURES

SEEN ABOUT THE CAMPUS, HEARD ABOUT THE CAMPUS, are these representative students . . . best known for their vivacity and expressiveness. The 1941 PINE CONE proudly presents these eight girls which the student body thinks most nearly to combine the qualities of leadership, personality, ability, and scholarship that make an ideal Senior.





Receiving Line at
Sophomore - Senior
Formal.



G. S. W. C. Sports Her Best Beau at Sophomore-Senior Formal

HERE ARE THE STARS!

Evelyn



Louie



EVELYN BRIM

LOUIE PEEPLES ASKEW

MARGARET BURNS

SUSIE McKEY



Margaret

Susie

HERE ARE THE STARS!

Ann



Ruth

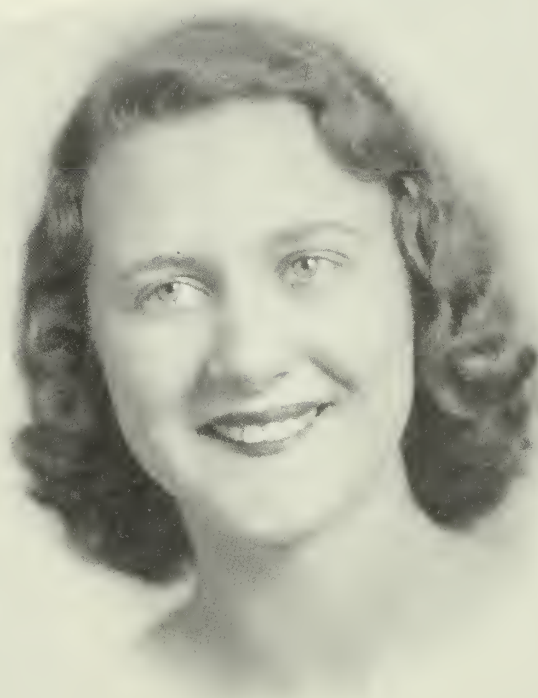


ANN PARHAM

RUTH REID

CAROLYN WILLIAMS

FRANCES WILLIAMS



Carolyn

Frances

COWART'S DRESS SHOP

RITZ BUILDING

VALDOSTA

GEORGIA

Compliments

of

**THE
FIRST NATIONAL BANK
OF VALDOSTA**

Member of the Federal
Deposit Insurance
Corporation

Compliments

of

RITZ THEATER

VALDOSTA, GEORGIA

A Martin Theater

**G. S. W. C.
Girls**

Pause to Refresh

DRINK

Coca-Cola

IN BOTTLES

*Valdosta Coca-Cola
Bottling Works, Inc.*

VALDOSTA

GEORGIA



SNAPS...

First row, left to right: Garner and Crittenden Get the Pause That Refreshes. . . . Up in the Air—Punke. . . . Mundy and Coppage. . . . What? No Bingo? ● Second row: Jean and Johnny "Go to the Dogs." . . . Mac and Nancy. ● Third row: Turner Rockwell (Ace Reporter for the Valdosta Daily Times), Presents First Lady to Emory Bass (President of the Valdosta Chamber of Commerce). . . . Ivey and Reade Welcome Marian Miley to G. S. W. C. . . . Loos on the Green. ● Bottom: Crowd Witnesses Dedication of Library by Mrs. Franklin D. Roosevelt.



VALDOSTA'S
LEADING
HOTEL

The
Daniel Ashley

HORACE CALDWELL

Manager

VALDOSTA, GEORGIA

Drink Delicious Creamy Jersey Milk
From

*High
in
Food
Value*

**SUITSUS
DAIRIES
INC.**

*High
in
Butter
Fat*

Famed For Delicacy of Flavor

Phone 1131W or 1131J

Southern Stationery
and
Printing Company

WHOLESALE
PAPER DEALERS

*Commercial Stationers
Printers — Office Outfitters*

VALDOSTA, GEORGIA

CLOTHES ARE
*cleaner * brighter*
when SANITONED

by

Star Laundry

Phone 54

Only Rug Cleaning Plant in City

VALDOSTA GREENHOUSES

Florists

MEMBER F. T. D.

TELEPHONE 1415



All Pianos used in
G. S. W. C.
were purchased from
us

*Sometime you will Buy
a Piano
Please remember us*

MATHIS & YOUNG CO.
112 N. Patterson St.
Valdosta, Ga.

Roosevelt Restaurant

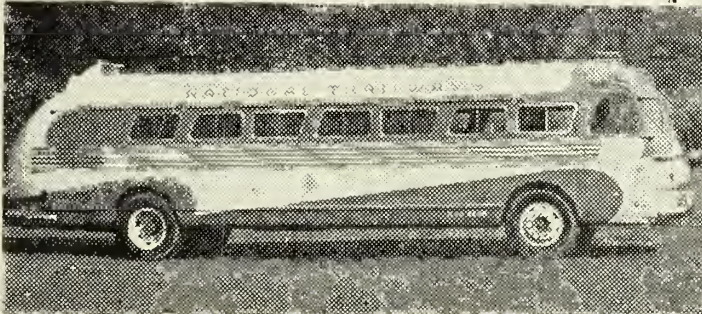
VALDOSTA'S LEADING
RESTAURANT

●
*Famous for Western
Steaks*

●
Delicious Sandwiches
Special for College Girls

VALDOSTA, GEORGIA

Travel — Trailways



Safe . . . Comfortable . . .
Economical

*See or phone your Local Agent
for Complete Travel Service*

GEORGIA STAGES, INC.
NATIONAL TRAILWAYS
BUS SYSTEM

Compliments

of

**The
Citizens and Southern
National Bank**

●
VALDOSTA
GEORGIA

Shop with the Students
at
M c C R O R Y ' S
FIVE AND TEN CENT STORES
Valdosta Georgia

To College Girls
it's
FOREMOST
Healthful Ice Cream

Good Service at
BOB BELCHER'S DRUG STORE
PATTERSON and CENTRAL
PHONES 812-813

Just Two Words To Remember
"GEORGIA ACE"
Georgia Fertilizer Co.
VALDOSTA GEORGIA

Wedding Stationery
J. P. STEVENS ENGRAVING CO.
110 PEACHTREE STREET, N. W.
Atlanta,
Georgia

BROOKWOOD PHARMACY

●
Where College Girls Meet
Where College Girls Eat

Compliments
**Smith Walgreen System
Drug Store**
DRUGS : TOBACCO : SUNDRIES
FOUNTAIN SERVICE
Phone 123
Motor Delivery — Air Conditioned

CARL'S GRILL
*Where the Girls
Get Together*
200 N. PATTERSON STREET

We are proud of the

GEORGIA STATE WOMAN'S COLLEGE

We are glad to take this
occasion to say that the

CITY OF VALDOSTA

is proud to list among
its greatest assets the

Georgia State Woman's College

and we hope that Valdosta as a city makes a favorable and lasting impression on
the minds of the young ladies who make up the student body of the great institution.

C. C. VARNEDOE & COMPANY

LADIES DEPARTMENT STORE

"The Style Center of

Valdosta"

BELK-HUDSON CO.

THE FRIENDLY STORE

Newest Kampus Styles



**Miracle Whip
Salad Dressing**

Created By

K R A F T

America's Favorite!

Looking Forward . . .

The growing network of electric transmission and distribution lines in South Georgia is a tribute to modern living in the electric way. Electrical progress has been rapid in the territory served by this Company. Low electric rates and the advantage of complete electric service is developing a trend to All-Electric Living. Get the facts from your Electrical Dealer about the new appliances. Find out also about the new types of modern lighting for better seeing. You'll enjoy living electrically. Plan to take the next step now toward All-Electric Living.

— *Electrify . . . To Satisfy* —



**GEORGIA POWER
AND LIGHT COMPANY**

**ROUSE HEATING AND
PLUMBING COMPANY**

CONTRACTING *and* REPAIRING

*A \$ Spent for Plumbing Is
a \$ Spent for Health*

L. M. BUTLER, *Owner*
VALDOSTA, GEORGIA



A

FRIEND



Best of Luck Always



**VALDOSTA BOWLING
CENTER**



SNAPS...

First row, left to right: Porky Calls the Roll. . . . All Aboard to New Orleans! . . . Wash Day. • Second row: Bye Now—Wilkes, Orr and Spooner. . . . Prance and Burns Write Home (?). . . . Jeannie with the Light Brown Hair. . . . Davis Relaxes. • Third row: Class Is out—Jeanne, Ann and Becky. • Fourth row: Twosome—Tut and Mary Martha. . . . Come and Get It! . . . Typical Monday Morning.

Colonial
is good
Bread

WE CONSIDER G. S. W. C. A GREAT ASSET TO
OUR COMMUNITY

•
WINTER HARDWARE CO.

"A Cold Name But a Warm Heart"

**CHURCHWELL'S
DEPARTMENT STORE**

•
College Girls' Headquarters

BENNETT'S DRUG STORE

The Rexall Store

TOASTY TASTY SANDWICHES
CANDY — ICE CREAM
HOT AND COLD LUNCHES

Valdosta, Georgia

THOMPSON AND GIRARDIN

Jewelers

120 N. Patterson St.

VALDOSTA, GEORGIA

**JOHN OLIVER SERVICE
STATION**

FIRESTONE TIRES
AMOCO PRODUCTS

Phone 231

W. T. GRANT CO.

•
*Known
for Values*

*Best Wishes to G. S. W. C. from the printers
of your "Campus Canopy"*

The Lowndes County News

Publishers — Printers
Stationers — Office Supplies

VALDOSTA, GEORGIA

Your Family and Friends
will enjoy a new

PORTRAIT OF YOU



Have It Made Now

VERAN
BLACKBURN

The Photographer

Official — G. S. W. C. — Standard

CLASS RINGS — PINS
(can be supplied for any graduating year)

By

HERFF-JONES CO.

Also have complete line of Trophies, Medals,
Invitations, Card, Diplomas, Caps and Gowns

H. S. CANFIELD
1560 N. Decatur Rd. Atlanta, Ga.

Insist On . . .

LANCE'S

CRACKERS



THIS BOOK
ENGRAVED BY

PHOTO-PROCESS
ENGRAVING COMPANY

ATLANTA, GEORGIA



SUCCESSFUL ANNUALS

Require the services of experienced and expert craftsmen, trained in every detail of the processes of creating • planning layout and design • typesetting • printing lithographing and binding... Throughout half a century this company has pioneered in the production of the highest type of printing... Our services include a special college annual sales and service organization... Abundant equipment • modern and complete... Prices representing maximum in value



FOOTE & DAVIES

PRINTING • LITHOGRAPHING • ENGRAVING

ATLANTA

