

Digitized by the Internet Archive  
in 2014

<https://archive.org/details/pinecone194300geor>





P I N E C O N E



1943



Presented by the student body

of the

GEORGIA STATE WOMANS COLLEGE  
at VALDOSTA, GA.

JEAN SAUNDERS . . . . . Editor

PHYLLIS WHITAKER . . . . . Business Manager

# PINE CONE








With all respect due Miss Annie Hopper, Georgia State Womans College beloved Dean of Women, who counsels and directs the lives of the students as efficiently as one of the U. S. A.'s four generals directs the men under his command, we dedicate the 1943 PINECONE.



T H E C O



AMONG THE PINES OF GEORGIA, impressive in its beautiful Spanish Architecture, stands a college dear to every G. S. W. C. student.

West Hall, with its echoing halls announcing the end of a day's classes, is the laboratory where students faithfully pursue their courses . . . the dormitories, Converse, Ashley, and Rutherford represent "home" to these girls during their four years of college . . . the house in the woods is looked upon with pride as a haven for dates, steak suppers, and club meetings, or maybe for a moment of relaxation with the Carnegie music set . . . the Recreation Hall serves as a perfect rendezvous for "swing-lovers," while potential athletes may take refuge in the lovely outdoor swimming pool . . . the newest addition, the Library welcomes in its silent stateliness, the learned and the book-lovers alike.

L L E G E



WEST HALL



RUTHERFORD HALL



ASHLEY HALL  
HEATING PLANT  
CONVERSE HALL



SWIMMING POOL

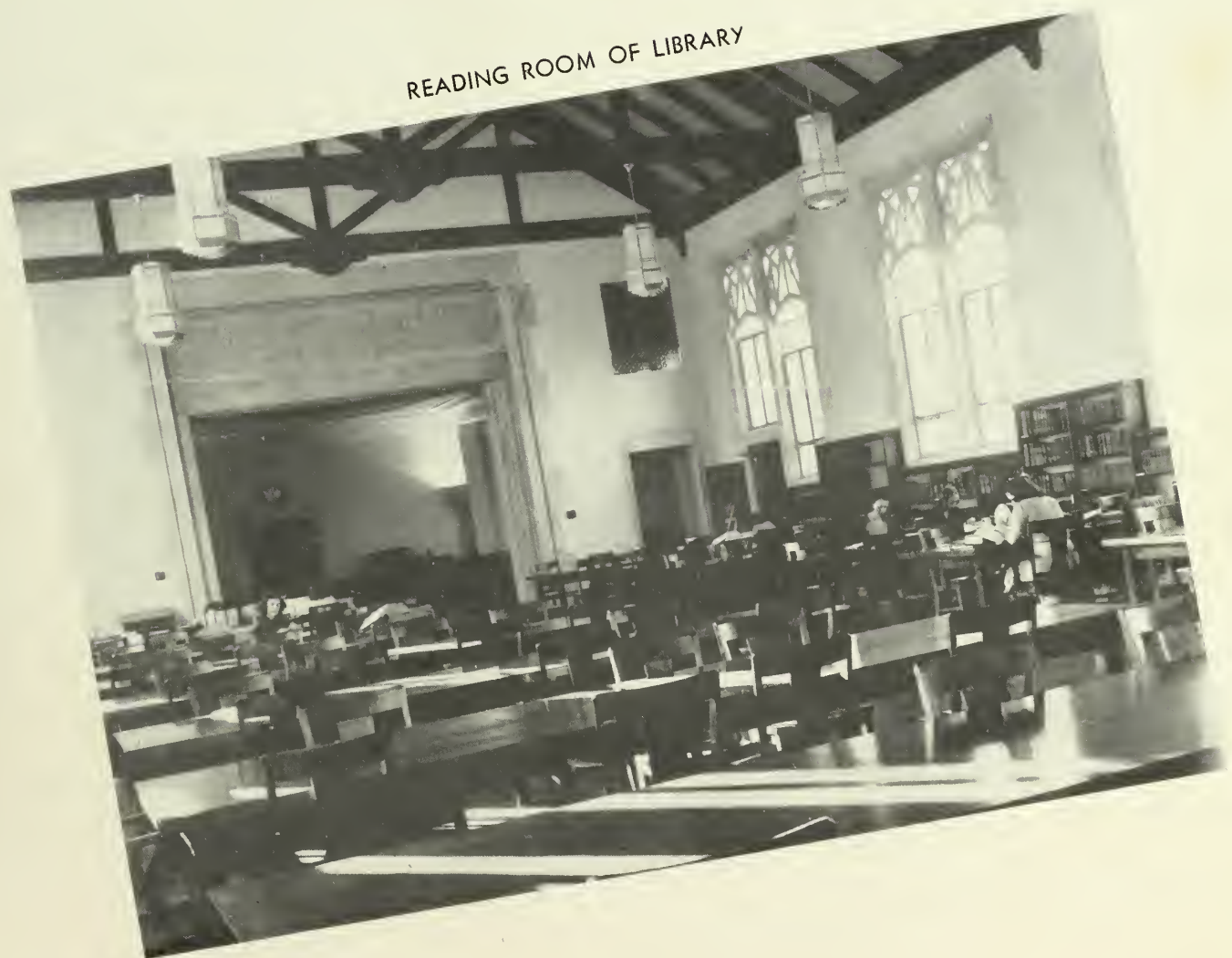
LIBRARY



# VIEWS



AUDITORIUM



READING ROOM OF LIBRARY

# P R E S I D E N T

FRANK R. READE

*President*

B.A., M.A., Ph.D., University of Virginia

ANNIE POWE HOPPER

*Dean of Women*

B.S., George Peabody College for Teachers; A.M.,  
Columbia University; Teachers College Diploma as  
Adviser of Women and Girls

MISS LILLIAN PATTERSON

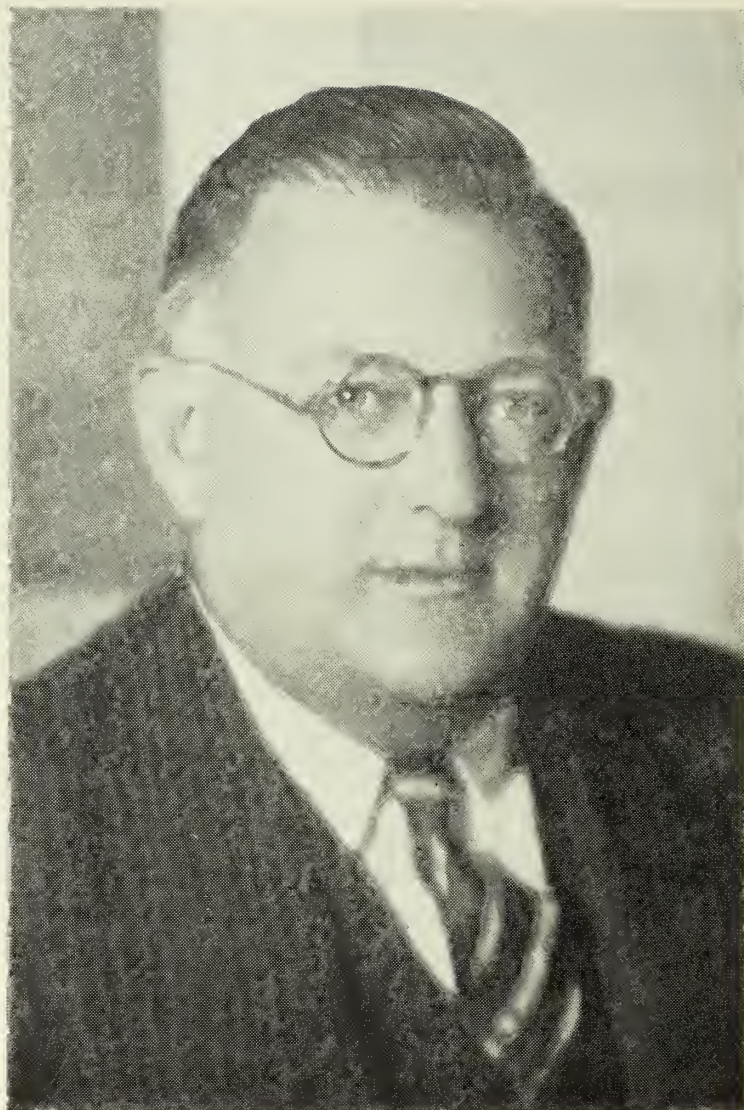
*Librarian*

A.B., Georgia State Womans College; B.L.S., Uni-  
versity of North Carolina

MISS LAURA REED

*Assistant Librarian*

A.B., Womans College of the Greater University of  
North Carolina; B.A.L.S., University of North  
Carolina



FRANK R. READE



ANNIE POWE HOPPER

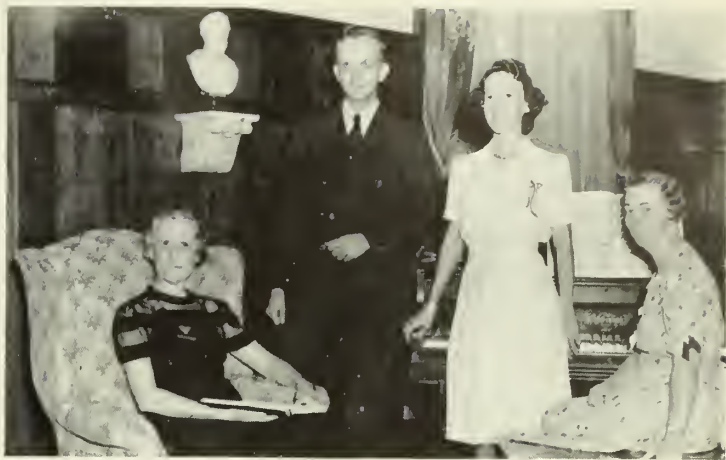


PATTERSON, REED



# FACULTY

MISS GLADYS WARREN, *Professor of Music* . . . B.M., Lake Erie College; M.A., Iowa State University; Pupil of Ernest Hutcheson, New York; Lee Pattison, Chicago; Tobias Matthay School of Pianoforte, London . . . MRS. FRANCES PARDEE, *Instructor in Violin* . . . Graduate, Cincinnati Conservatory of Music; Pupil of Sevcik in Vienna and of Julian Polikawski, Cincinnati Conservatory of Music . . . MISS MARIE MOTTER, *Professor of Voice* . . . A.B., Music, The Carnegie Institute of Technology. Further study: Ithaca Conservatory, University of Pittsburgh; Pupil of Jean Dagg Seaman, Dr. Bert Rogers Lyon . . . MR. CLIFTON WHITE, *Assistant Professor of Art and Professor of Music* . . . A.B., Emory University; M.A. Emory University . . . MISS FRANCES RUTH CARPENTER, *Professor of Art* . . . Bachelor's Diploma, B.S., A.M., Teachers College, Columbia University . . . DR. EARL W. PHELAN, *Professor of Chemistry* . . . B.Chem., Ph.D., Cornell University . . . MISS BESS KIMBROUGH, *Professor of Physics* . . . B.A., B.S., Mississippi State College for Women; graduate, Training School of Religious Education of Virginia . . . MISS MARJORIE ESTELLE CARTER, *Assistant Dean of Women and Assistant Professor of Biology and Physical Education* . . . B.S., William and Mary College . . . DR. BEATRICE I. NEVINS, *Professor of Biology* . . . Ph.B., Ph.M., Ph.D., University of Wisconsin . . . DR. LENA JAMES HAWKS, *Professor of Mathematics* . . . A.B., Goucher College; A.M., Vanderbilt University, Ph.D., The Johns Hopkins University.



PARDEE, WHITE, MOTTER, WARREN



CARPENTER, WHITE



PHELAN, KIMBROUGH



CARTER, NEVINS, HAWKS



STONE, DURRENBERGER, PISTER, PRICE



DUSENBURY, PUCKETT, THOMAS, RICHTER, FORTSON

DR. OLIVE MATTHEWS STONE, *Professor of Social Science* . . . A.B., Huntington College; A.M., University of Chicago; Ph.D., University of North Carolina . . . DR. FREDERICK PISTER, *Professor of Education* . . . B.S., New York University; M.A., Columbia University, Ph.D., New York University . . . DR. JOSEPH A. DURRENBERGER, *Professor of History and Social Science* . . . A.B., Southwestern University; A.M., Ph.D., Columbia University . . . MISS MILDRED McLELLAN PRICE, *Professor of History* . . . A.B., Georgia State Womans College; A.M., Columbia University . . . MR. JAMES ROBERT DUSENBURY, *Treasurer and Purchasing Agent* . . . MRS. ELIZABETH J. PUCKETT, *Assistant Treasurer and Professor of Shorthand and Typing* . . . A.B., Shorter College . . . MRS. CAROLINE PARRISH THOMAS, *Registrar*

. . . A.B., Georgia State Womans College . . . MISS ANNA RICHTER, *Secretary to the President and Assistant in Speech Department* . . . A.B., Georgia State Womans College . . . MRS. LAURA ROGERS FORTSON, *Director of Placement and Publicity* . . . A.B., University of Georgia . . . MISS LOLA DREW, *Professor of Home Economics* . . . B.S., Texas State College for Women; A.M., Columbia University . . . DR. SAPELO TREANOR, *Professor of Foreign Languages* . . . A.B., A.M., University of Georgia; Student at the Sorbonne, Paris, France . . . Ph.D., University of North Carolina . . . MISS SARA JANIE BUSH, *Assistant Professor of Math and English* . . . A.B., University of Georgia; A.M., University of North Carolina; Diploma, College of Classical Studies, Rome, Italy.



DREW

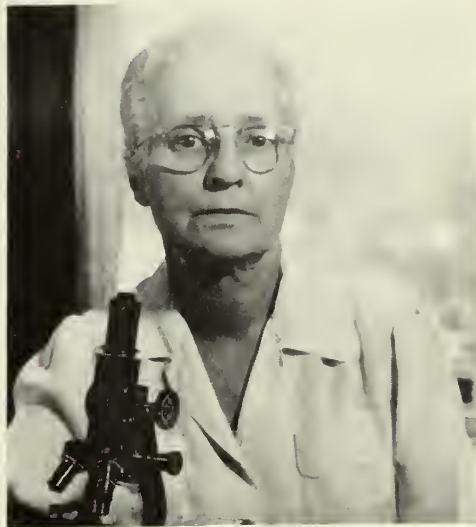


BUSH, TREANOR

# FACULTY



WHITTLE, SHRIVALLE



FARBER



STEELE, BEECHWOOD

MRS. EVA ALFORD SHRIVALLE, *Dietician* . . . Palmer College . . . MRS. C. C. WHITTLE, *Assistant Dietician* . . . DR. MARIAN E. FARBAR, *Resident Physician* . . . M.D., University of Illinois Medical College; Practiced Medicine in India and at Earlhan College . . . MRS. OLA BEECHWOOD, *House Mother of Rutherford Hall* . . . MRS. DALE N. STEELE, *Director of Country Store; House Mother of Converse Hall* . . . MISS LOUISE ANNE SAWYER, *Professor of Speech* . . . Graduate of Columbia College of Expression; Student, University of North Carolina; B. S., School of Speech, Northwestern University . . . MRS. GERTRUDE GILMER ODUM, *Professor of English* . . . B.S., A.M., George Peabody College for Teachers . . . DR. HAROLD STRONG GULLIVER, *Professor of English* . . . B.A., Yale University; A. M., Columbia University; Ph.D., Yale University . . . MISS LEONORA IVEY, *Professor of Physical Education* . . . Graduate, Sargent School for Physical Education of Boston University; B.S., Georgia State College for Women . . . MISS RUTH REID, *Assistant Professor of Physical Education* . . . A.B., Georgia State Womans College; M. A., Columbia University . . . MISS VIRGINIA BEASLEY, *Riding Instructor* . . . A.B., Sweetbriar College



SAWYER, ODUM, GULLIVER



REID, IVEY, BEASLEY

# SENIOR OFFICERS



THOMPSON

CLIMAXING ONE OF THE most colorful careers in the history of G. S. W. C., the Senior class under the direction of petite Jean Thompson proved their originality by substituting new forms of entertainment to help further the war effort. They sacrificed a senior trip and two formals, and doubled their efforts to make the Senior Carnival bigger and better.

In addition to the proceeds from the Carnival, the Seniors sponsored a dance for the benefit of the War Bond Scholarship Fund. Throughout the year they co-operated to make various parties different and surprising, but the one program they made dominant before they took their diplomas and departed was a memory picture which mirrored the events of the past four years.



THOMAS



SAUNDERS

# SENIOR SNAPS



# G. S. W. C.



ANNETTE BLACKBURN . . . Valdosta, Ga. . . . *English Major* . . . Student Government Association (1, 2, 3, 4); Sports Club (1, 2, 3, 4), Council (1, 2), Kappa Team Manager (3), Awards (1, 2, 3, 4); Sock and Buskin Club (2, 3, 4); Romance Language Club (2, 3, 4); Sociology Club (3, 4); English Club (3, 4); Senior Honor Society (4), Secretary (4); PINE CONE (2).

BAKER



ANN BOOTH . . . Quitman, Ga. . . . *English Major* . . . Student Government Association (1, 2, 3, 4); Sports Club (1); English Club (4); I. R. C. (4).

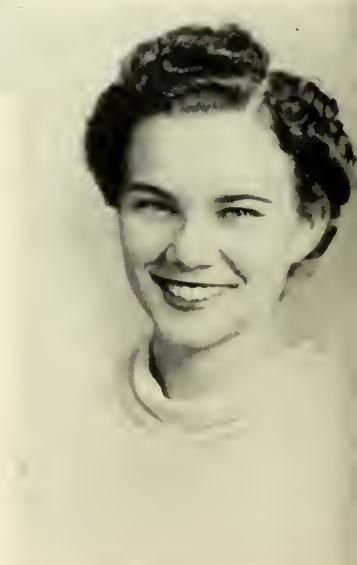
BARNES



MARY NEWTON BAKER . . . Valdosta, Ga. . . . *English Major* . . . Student Government Association (1, 2, 3, 4); Y. W. C. A. (1, 2, 3, 4); Sports Club (1); Vesper choir (1, 2); *Campus Canopy*, Reporter (1); Sociology Club (3); Sock and Buskin Club (3); Glee Club (3).

BLACKBURN

BETTY BARNES . . . Valdosta, Ga. . . . *Music Major* . . . Student Government Association (1, 2, 3, 4); Valdosta Club (1, 2, 3, 4); Fine Arts Club (3, 4); Philharmonic Club (1, 2, 3, 4), President (4); Sock and Buskin Club (3, 4); Freshman Honor Society (2); Senior Honor Society (4), Vice-President (4); Serenader Accompanist (4); *Campus Canopy* (1, 4), Reporter (1), Columnist (4); PINE CONE (2, 3, 4), Make-up (2), Associate Editor (3, 4); President's Council (4).



BOOTH

# SENIORS

DORRIS CALLAHAM . . . Rupert, Ga. . . . *Sociology Major* . . . Student Government Association (1, 2, 3, 4); Sophomore Council; Y. W. C. A. (1, 2, 3, 4); Sports Club (1, 2, 3, 4), Awards (1); Sociology Club (3, 4); International Relations Club (4).

TENZIE COLEMAN . . . Valdosta, Ga. . . . *Math Major* . . . Student Government Association (1, 2, 3, 4), Student - Faculty Honor Council (4); Sports Club (1, 2, 3, 4), Council (2, 3), Awards (1, 2); Math-Science Club (2, 3, 4), Secretary (4); Valdosta Club (1, 2, 3, 4), President (4); PINE CONE (2); Sociology Club (3, 4); President's Council (4).



DOROUGH

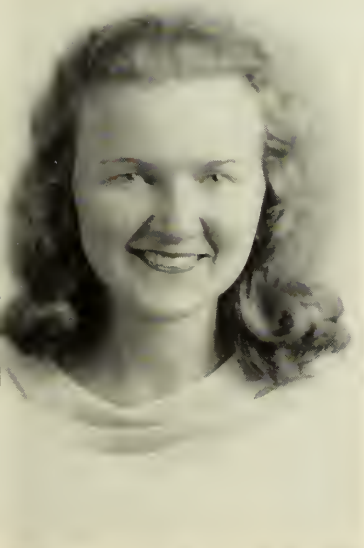


COLLINS



COLEMAN

AVA COLLINS . . . Cairo, Ga. . . . *Music Major* . . . Student Government Association (1, 2, 3, 4); Y. W. C. A. (1, 2, 3, 4), Cabinet (2, 3, 4), Vesper Choir Pianist (2, 3, 4), Director (3); Philharmonic Club (1, 2, 3, 4); Glee Club (1, 2, 3, 4), Librarian (2, 3); President's Council (4).



CALLAHAM

BETTY JANE DOROUGH . . . Quitman, Ga. . . . *Chemistry Major* . . . Student Government Association (1, 2, 3, 4); Y. W. C. A. (1, 2, 3, 4); Sports Club (1, 2); Math-Science Club (2, 3, 4); Fine Arts Club (4); Camera Club (2, 3); *Campus Canopy* (3), Feature Staff (3).



DUFFEY

FAIRCHILD

FLOURNOY

GILLIS

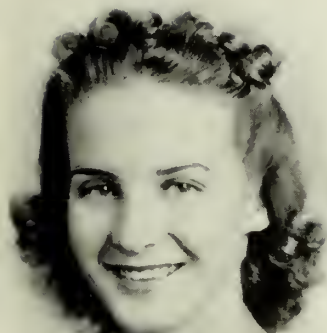
JOYCE DUFFEY . . . LaGrange, Ga. . . . *Biology Major*  
. . . Transfer from LaGrange College; Student Government Association (2, 3, 4); Y. W. C. A. (3, 4); Math-Science Club (2, 3, 4), President (4); Senior Honor Society (4), Treasurer (4).

EUNICE FAIRCHILD . . . Waycross, Ga. . . . *Biology Major*  
. . . Student Government Association (1, 2, 3, 4); Y. W. C. A. (1, 2, 3, 4); Sports Club (1, 2, 3, 4); Math-Science Club (3, 4); PINE CONE (2, 3, 4); *Campus Canopy* (1, 2, 3, 4), Advertising Staff (1, 2, 3), Reporter (2, 3), Feature Staff (3), Feature Editor (4).

HARRIET HURST FLOURNOY . . . Fort Valley, Ga.  
. . . *Math Major* . . . Student Government Association (1, 2, 3, 4), G. S. W. C. Emblem (3); Y. W. C. A. (1, 2, 3, 4), Vesper Choir (1, 2, 3, 4); Sports Club (1, 2, 3, 4), Awards (1, 2, 3, 4), Fist-ball Manager (2), Council (1, 2); *Campus Canopy* (1, 2, 3, 4), Reporter (1), Sports Editor (1, 2), Advertising Staff (1), News Editor (3), Associate Editor (4); PINE CONE (2, 3, 4), Assistant Snapshot Editor (2, 3), Photograph Editor (4); Math-Science Club (2, 3, 4).

MARY ELIZABETH GILLIS . . . Quitman, Ga. . . . *English Major*  
. . . Student Government Association (1, 2, 3, 4), Monitor (4); Y. W. C. A. (1, 2, 3, 4), Vesper Choir, Assistant Pianist (3); Sports Club (1, 2, 3, 4); English Club (3, 4), Secretary-Treasurer (3), Vice-President (4); Romance Language Club (3, 4), President (4); President's Council (4); Baptist Student Union (2, 3), Vice-President (2); Artist Series Committee (4).





JINKS



JOHNSON

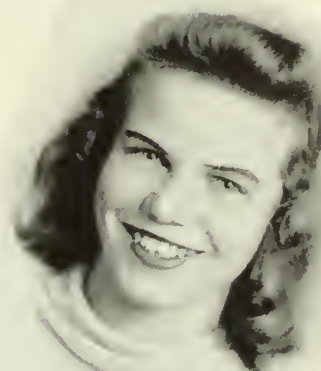


JOYNER

JOYCE RUTH JINKS . . . Colquitt, Ga. . . . *English Major* . . . Transfer from Florida Southern; Student Government Association (3, 4); Y. W. C. A. (3, 4), Vesper Choir (3); Sports Club (3, 4); Glee Club (3, 4), Serenaders (3, 4); Philharmonic Club (3, 4); *Campus Canopy* (3, 4), Circulation Manager (3, 4).

GWENDOLYN JOHNSON . . . Leesburg, Ga. . . . *Art Major* . . . Student Government Association (1, 2, 3, 4), Student Recorder of Points (3), Secretary-Treasurer (4), G. S. W. C. Emblem (4); Y. W. C. A. (1, 2, 3, 4), Council (1, 2), Cabinet (3); Fine Arts Club (2, 3, 4), Vice-President (3), President (4); President's Council (4); Chairman of Artist Series Committee (4); Sports Club (1, 2, 3, 4), Council (2), Awards (2).

MARTHA JANET JOYNER . . . Screven, Ga. . . . *English Major* . . . Student Government Association (1, 2, 3, 4); Sports Club (1, 2, 3, 4); Y. W. C. A. (1, 2, 3, 4); Sociology Club (3, 4); Romance Language Club (4), Secretary-Treasurer (4).



KENNEDY



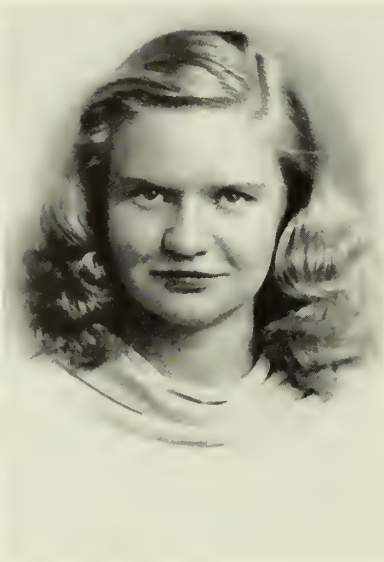
LAHOOD

FRANCES LINDSAY KENNEDY . . . Thomaston, Ga. . . . *Sociology Major* . . . Student Government Association (1, 2, 3, 4); Y. W. C. A. (1, 2, 3, 4), Freshman Council, Vesper Choir (2); Sports Club (1, 2, 3); *Campus Canopy* (1, 2, 3, 4), Reporter (1), News Editor (2), Associate Editor (2), Editor (3); President's Council (3); G. S. W. C. Emblem (3); Sociology Club (2, 3, 4); PINE CONE (2, 3, 4); Proofreader (2, 3, 4), Typist (4).

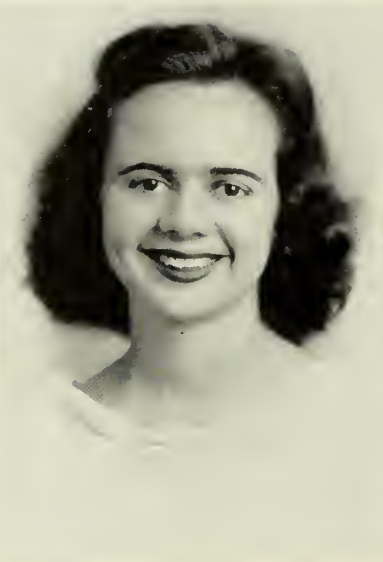
MARGUERITE LAHOOD . . . Valdosta, Ga. . . . *Music Major* . . . Student Government Association (1, 2, 3, 4); Y. W. C. A. (3, 4); Sports Club (1, 2, 3, 4); Philharmonic Club (1, 2, 3, 4); String Ensemble (2, 3, 4); Glee Club (3, 4); Valdosta Club (1, 2, 3, 4); International Relations Club (4), Member-at-Large (4).



McCRARY



MARTIN



MEADORS



MOBLEY

JACQUELINE SMITH McCRARY . . . Waycross, Ga. . . *Music Major* . . . Student Government Association (1, 2, 3, 4); Y. W. C. A. (1, 2, 3, 4), Cabinet (1, 4), Freshman Council Adviser (4); *Campus Canopy* (1, 2, 3, 4), Editorial Assistant (2), Associate Editor (3), Editor (4); PINE CONE (3), Literary Editor (3); Freshman Honor Society (2), Vice-President (2); Senior Honor Society (4), Historian (4); President's Council (4); Committee on Publications (3, 4); Sociology Club (2, 3, 4); Philharmonic Club (1, 2, 3, 4); Glee Club (1, 3); String Ensemble (2, 3, 4); G. S. W. C. Emblem (3).

SARA CATHERINE MARTIN . . . Waycross, Ga. . . *Sociology Major* . . . Student Government Association (1, 2, 3, 4), Vice-President (3), President (4); Y. W. C. A. (1, 2, 3, 4), Freshman Council, Deputation Speaker (3); Sports Club (1, 2, 3, 4), Awards (1, 2, 3, 4), Council (4); Sophomore Class President; President's Council (2, 4), Chairman (2); Student Attendance Committee (2); Artist Series Committee (4); *Campus Canopy* (1, 2, 3, 4), Reporter (1), Feature Staff (2), Columnist (3, 4), Advertising Staff (1, 3); PINE CONE (1, 2, 3, 4), Advertising Staff (1), Photograph Staff (2), Make-up Staff (3), Literary Staff (4); Sock and Buskin Club (1, 2, 3, 4), Annual Play (1, 4); Sociology Club (3, 4); Philharmonic Club (3); String Ensemble (2, 3); G. S. W. C. Emblem (2).

ALICE BELLE MEADORS . . . Albany, Ga. . . *English Major* . . . Student Government Association (1, 2, 3, 4); Y. W. C. A. (1, 2, 3, 4), Freshman Council, Cabinet (3, 4), Vesper Choir (2), Adviser to Freshman Council (4); Sports Club (1, 2, 3, 4), Awards (2), Council (2, 3, 4), Treasurer (2, 3), Vice-President (4); *Campus Canopy* (1), Advertising Staff (1); Sociology Club (2, 3, 4); Methodist Student Organization (3); Artist Series Committee (4); G. S. W. C. Emblem (4).

JEAN MOBLEY . . . Sylvania, Ga. . . *English Major* . . . Student Government Association (1, 2, 3, 4); Y. W. C. A. (1, 2, 3, 4), Freshman Council, Cabinet (3, 4), Vesper Choir (2), Adviser to Freshman Council (4); Sports Club (1, 2, 3, 4), Awards (2), Council (2, 3, 4), Kappa Team Captain (2), Secretary (3, 4); English Club (3, 4), President (4); International Relations Club (4); *Campus Canopy* (4), Typist (4); Senior Honor Society (4); Artist Series Committee (4); President's Council (4).



MOSELY



O'REILLY



PEEPLES



POSEY



ROLLISON

JUNE COLLINS MOSELY . . . Jakin, Ga. . . . *English Major* . . . Student Government Association (1, 2, 3, 4); Y. W. C. A. (1, 2, 3, 4), Freshman Council, Cabinet (1), Assistant Vice - President (2), Vice - President (3), President (4); Sports Club (1, 2, 3, 4); Glee Club (2, 3, 4), Secretary (2); English Club (3, 4); Sociology Club (2, 3, 4); President's Council (4); Chairman Student Attendance Committee (4); G. S. W. C. Emblem (3); Student-Faculty Honor Council.

ANNE SMITH O'REILLY . . . Toccoa, Ga. . . . *English Major* . . . Transfer from Georgia State College for Women; Student Government Association (2, 3, 4); Y. W. C. A. (2, 3, 4); Philharmonic Club (2, 3, 4); English Club (4).

LEONORA PEEPLES . . . Valdosta, Ga. . . . *Biology Major* . . . Student Government Association (1, 2, 3, 4); Sports Club (1); *Campus Canopy* (1); Valdosta Club (1, 2, 3, 4); Math - Science Club (2, 3, 4), Division Head (3), Vice-President (4); Sock and Buskin Club (2, 3, 4), Secretary-Treasurer (3), President (4); PINE CONE (3, 4), Photograph Staff (3, 4); President's Council (4); Artist Series Committee (4); Camera Club (2, 3, 4).

MARION BLAIR POSEY . . . Valdosta, Ga. . . . *Biology Major* . . . Student Government Association (1, 2, 3, 4); Sports Club (1, 2, 3, 4), Council (2, 3), Awards (1, 2, 3, 4), Lambda Team Captain (3), Swimming Team Captain (3); Math-Science Club (2, 3, 4), Division Chairman (3); Sociology Club (3, 4); Valdosta Club (1, 2, 3, 4).

BETH ROLLISON . . . Waycross, Ga. . . . *Sociology Major* . . . Transfer from Oglethorpe University; Student Government Association (1, 2, 4); Y. W. C. A. (1, 2, 4); *Campus Canopy* (1, 2, 4), Advertising Staff (1), Reporter (2, 4), Feature Staff (4); Sock and Buskin Club (2, 4), Vice-President (4), Annual Play (4); Sociology Club (2, 4).



SAUNDERS

JEAN GARVIN SAUNDERS . . . St. Petersburg, Fla. . . . *Biology Major* . . . Student Government Association (1, 2, 3, 4); Y. W. C. A. (1, 2, 3, 4), Vesper Choir (2); Sports Club (1, 2); *Campus Canopy* (2, 3, 4), Typist and Headline Editor (2), Managing Editor (3, 4); PINE CONE (3, 4), Make-up (3), Editor (4); Fine Arts Club (3, 4); Math-Science Club (2, 3, 4); Secretary of Senior Class; President's Council (4); G. S. W. C. Emblem (4); Camera Club (2, 3).



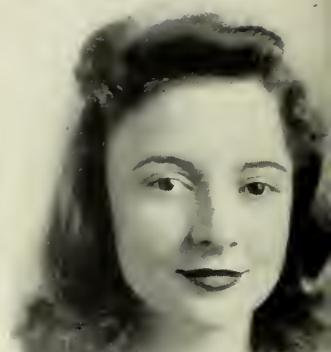
SHANNON

VIVIAN MARIE SHANNON . . . Valdosta, Ga. . . . *English Major* . . . Student Government Association (1, 2, 3, 4); Sports Club (1, 2, 3); Math-Science Club (2, 3, 4); Valdosta Club (1, 2, 3, 4).



SMITH

CORINNE BRIGGS SMITH . . . Valdosta, Ga. . . . *Music Major* . . . Student Government Association (1, 2, 3, 4), Town Girl Representative to Student-Faculty Honor Council (3); Valdosta Club (1, 2, 3, 4); Philharmonic Club (1, 2, 3, 4), Secretary-Treasurer (2, 3); Freshman Honor Society (2); Senior Honor Society (4), President (4); Glee Club (1, 2, 3, 4), President (3, 4), Serenaders (2, 3, 4); Vice-President of Freshman Class; President's Council (3, 4).



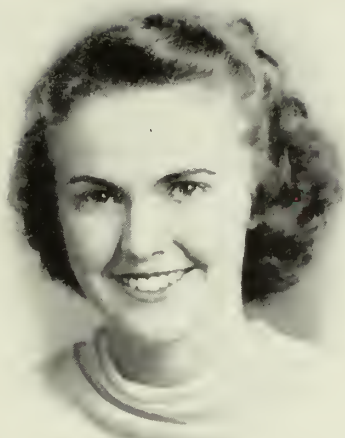
R. TAYLOR

RUTH TAYLOR . . . Valdosta, Ga. . . . *Music Major* . . . Student Government Association (1, 3, 4); Valdosta Club (1, 2, 3, 4); Fine Arts Club (3, 4); Philharmonic Club (1, 3, 4); Glee Club (1, 2, 3, 4), Vice-President (3), Business Manager (4); Math-Science Club (3, 4); Sock and Buskin Club (4); Serenaders (1, 2, 3, 4); *Campus Canopy* (1), Reporter (1); PINE CONE (3), Business Staff (3).



S. TAYLOR

SUNSHINE TAYLOR . . . Cordele, Ga. . . . *Sociology Major* . . . Student Government Association (1, 2, 3, 4); Y. W. C. A. (1, 2, 3, 4); Sports Club (1, 2, 3, 4); Awards (2, 3, 4), Council (3, 4); Sociology Club (3, 4).



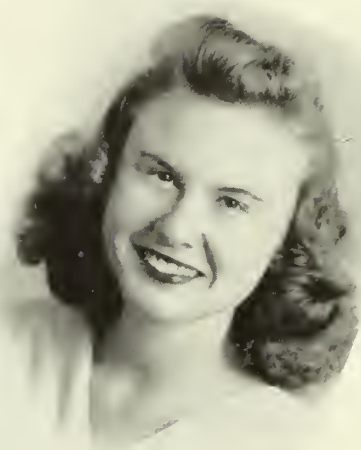
THARPE

BETH THARPE . . . Arlington, Ga. . . . *Math Major* . . . Student Government Association (1, 2, 3, 4); Y. W. C. A. (1, 2, 3, 4), Cabinet (2); *Campus Canopy* (1, 2); Math-Science Club (3, 4); Sports Club (1, 2, 3); PINE CONE, Typist (4).



THOMAS

ELIZABETH FENDER THOMAS . . . Valdosta, Ga. . . . *History Major* . . . Student Government Association (1, 2, 3, 4); Valdosta Club (1, 2, 3, 4), Treasurer (3, 4); Sports Club (1, 2, 3, 4); Council (2), Awards (1, 2, 3); International Relations Club (2, 3, 4), Secretary (2, 3), President (4); Junior Class Vice-President; Senior Class Vice - President; President's Council (4); Math - Science Club (4); Freshman Honor Society; Senior Honor Society.



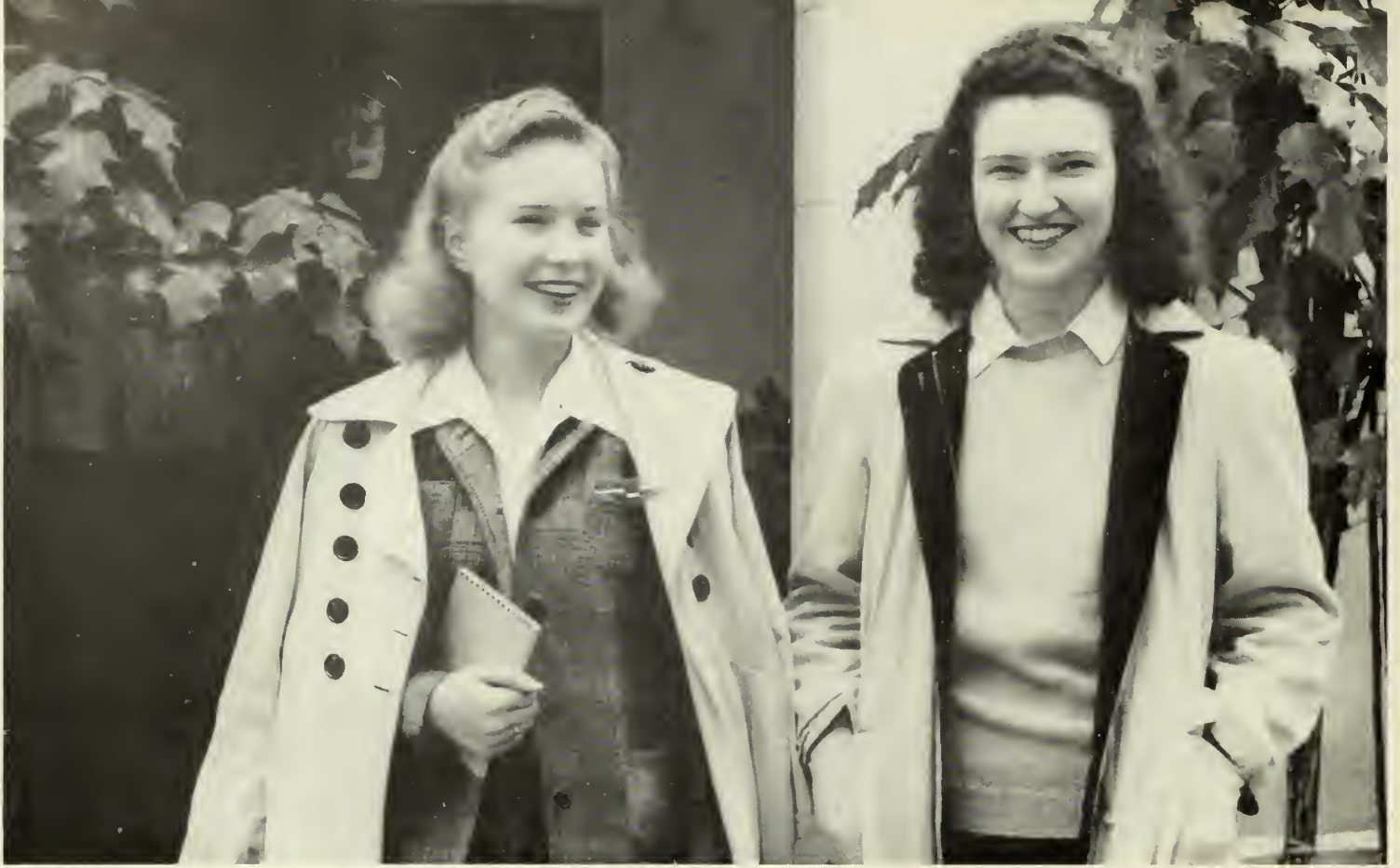
THOMPSON

JEAN ELDER THOMPSON . . . Lumpkin, Ga. . . . *Sociology Major* . . . Student Government Association (1, 2, 3, 4), Monitor (2, 3); Y. W. C. A. (1, 2, 3, 4), Cabinet, Treasurer (3); Secretary-Treasurer Sophomore Class; House President Ashley Hall (2); Member-at-Large of International Relations Club (2); Sociology Club (3, 4); Senior Honor Society (4); President's Council (4), Chairman (4); President of Senior Class; G. S. W. C. Emblem (3).



WILLIAMS

JANE JAUDON WILLIAMS . . . Moultrie, Ga. . . . *Sociology Major* . . . Student Government Association (1, 2, 3, 4); Y. W. C. A., Sports Club (1, 2); Sociology Club (2, 3, 4), President (4); Sock and Buskin Club (2, 3, 4), Annual Play (2); President's Council (4); *Campus Canopy* (2), Circulation Staff (2).



ROWLAND AND McINTOSH

## JUNIOR CLASS OFFICERS

Next year's Seniors, some who attended summer school under the War Acceleration Plan, did not wait for regular session to start their usual outstanding activities. In July, the Junior Class sponsored a street dance for the benefit of the War Bond Scholarship Fund.

At the beginning of fall quarter, under the leadership of Marolyn Rowland, thoughtful and capable president, the class arranged a wiener roast in honor of the new members of the class.

Carrying on their tradition of animated and clever activities, the outstanding hit came later in the year when they sponsored a Formal Dance for the benefit of student enjoyment only. Highlight of the evening was a faculty takeoff by members of the class, which began with a formal receiving line and ended with a short skit during intermission.



PARKS



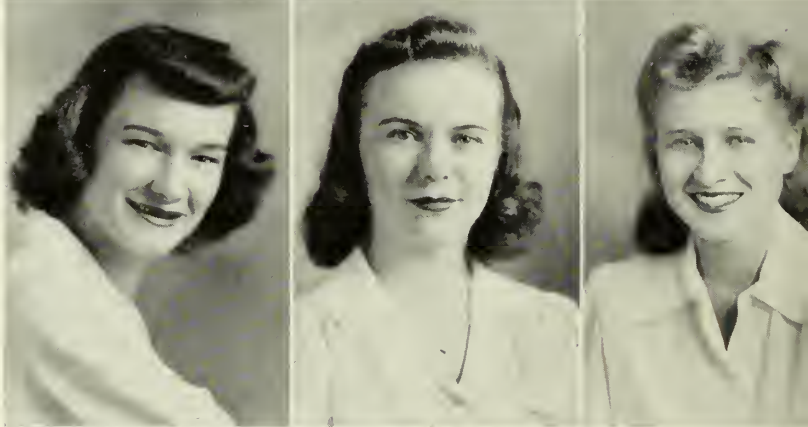
# JUNIOR SNAPS



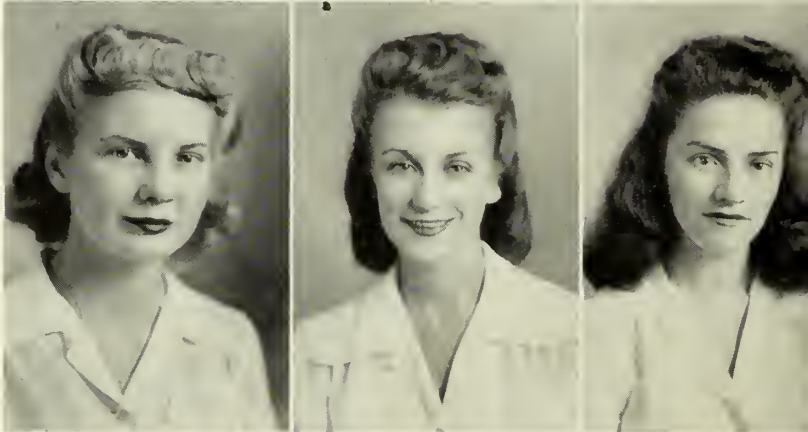
ALLEN, SARA . . . . Ft. Mitchell, Ala.  
 ASHLEY, MARTHA . . . . Valdosta, Ga.  
 BOWEN, MARY THAXTON . . . Tifton, Ga.



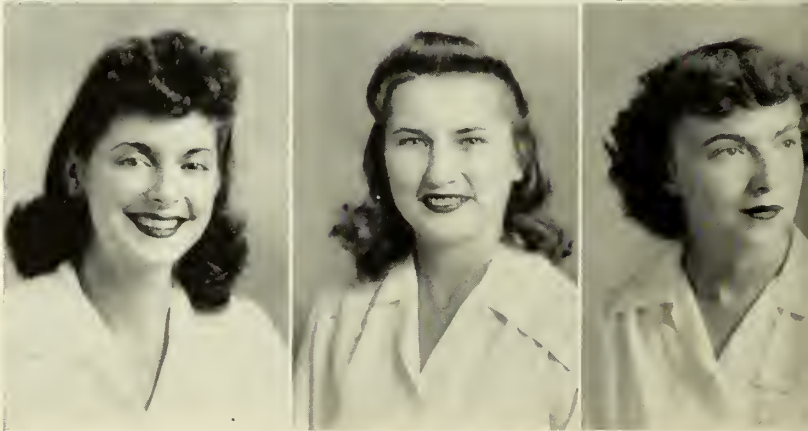
BURKE, BETTYE . . . . Valdosta, Ga.  
 BUTLER, MONTESE . . . . Ft. Valley, Ga.  
 CANNADY, EDYTHE . . . Panama City, Fla.



CARTER, EMMIE . . . . Waycross, Ga.  
 CARTER, PAULINE . . . . Meigs, Ga.  
 CULPEPPER, MARGARET . . . Tifton, Ga.



DAVIS, LOUGENIA . . . . Meigs, Ga.  
 DEKLE, BARBARA . . . . Cordele, Ga.  
 DONALSON, MARY FRANCES . Attapulcus, Ga.



G. S. W. C.





GORDON, ALICE . . . Jacksonville, Fla.

GRIFFIN, MILDRED . . . Alapaha, Ga.

HARMS, KITTY . . . Savannah, Ga.



HUNT, ANITA . . . Valdosta, Ga.

JONES, JACQUELYN . . . Bainbridge, Ga.

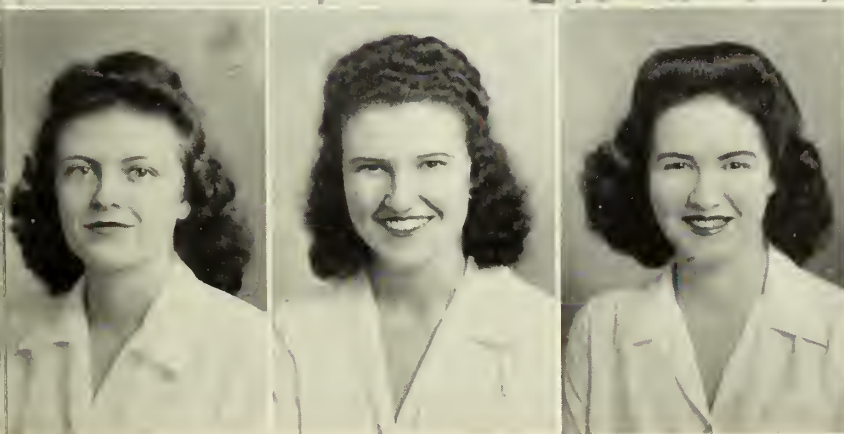
KING, ODELIA . . . Blakely, Ga.



KIRK, HELEN . . . Valdosta, Ga.

LAWSON, GRACE . . . Jacksonville, Fla.

LOOSIER, FRANCES . . . Thomaston, Ga.



MCCORKLE, JULIA FRANCES, Montezuma, Ga.

MCINTOSH, MERRICK . . . Eulonia, Ga.

MASON, MARY . . . Valdosta, Ga.

# JUNIORS

MORAN, ERVYL . . . . . Americus, Ga.

OGBURN, LOUISE . . . . . Reynolds, Ga.

PARKS, RACHEL . . . . . Valdosta, Ga.

PATTEN, NELL . . . . . Lakeland, Ga.

PETTY, SARA . . . . . Dawson, Ga.

ROWLAND, MAROLYN . . . . . Moultrie, Ga.

SAWYER, DOROTHY . . . . . Arlington, Ga.

SPIVEY, JANE . . . . . Talbotton, Ga.



G. S. W. C



STREET, BETTY . . . . . Savannah, Ga.

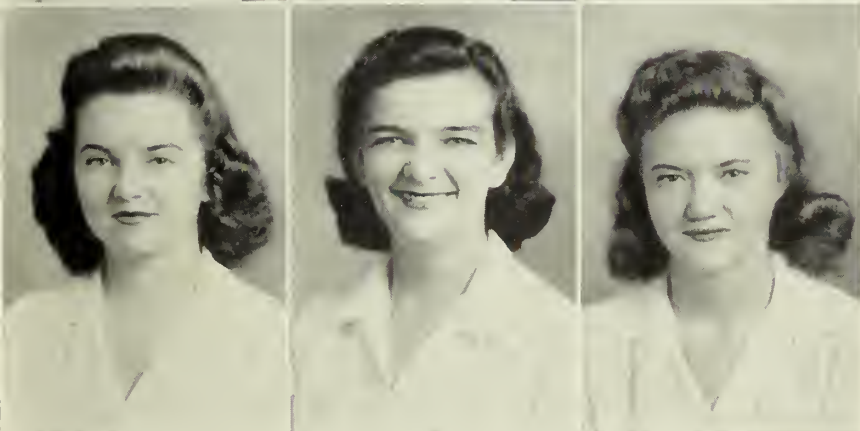
VINSON, SARA . . . . . Valdosta, Ga.



WHITAKER, BETH . . . . . Valdosta, Ga.

WHITAKER, PHYLLIS . . . . . Valdosta, Ga.

WILLIAMS, JEAN . . . . . Cordele, Ga.



WILLIAMS, MARTHA . . . . . Savannah, Ga.

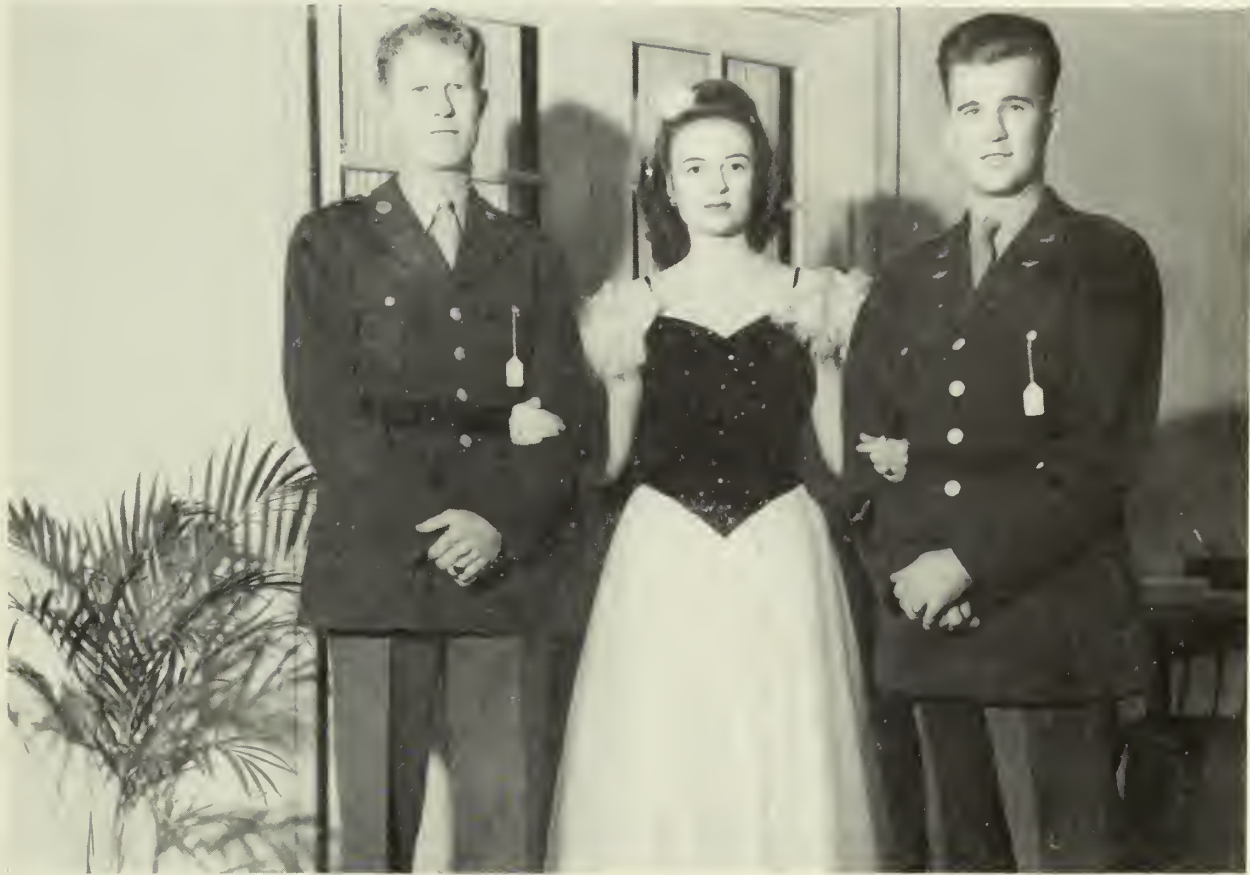
YOUNG, CHRISTINE . . . . . Rebecca, Ga.

YOUNGBLOOD, LAURA MAE . . . . . Jesup, Ga.

# JUNIORS

# SOPHOMORE SNAPS





GARBUTT

## SOPHOMORE CLASS OFFICERS

BELIEVING IN CO-OPERATION with a capital C, Catherine Garbutt, attractive president of the Sophomores, strived to bring out that spirit in the class with a council having an integral part in aiding her.

Entertainment for the class and campus in general consisted of a get-acquainted party for the freshmen, a dance in the Rec Hall, an informal Christmas party, and a Beauty Contest for the War Bond Scholarship Fund.

Mary Sue Griffin served as vice-president for the class and Betty Collins as secretary.



GRIFFIN



COLLINS

# G. S. W. C.

BACON, ANNE . . . . . Doerun, Ga.  
 BARNHILL, ROSALIND . . . . . Homerville, Ga.  
 BECTON, WILLIE PEARL . . . . . Valdosta, Ga.

BELL, BARBARA . . . . . Colquitt, Ga.  
 BLACK, MADGE . . . . . Lake Park, Ga.  
 BOWEN, SARA . . . . . Tifton, Ga.

CARTER, MARY ESTHER . . . . . Valdosta, Ga.  
 CASTLEBERRY, ALPHIA MAY . . . . . Richland, Ga.  
 CLYATT, LORRAINE . . . . . Reynolds, Ga.

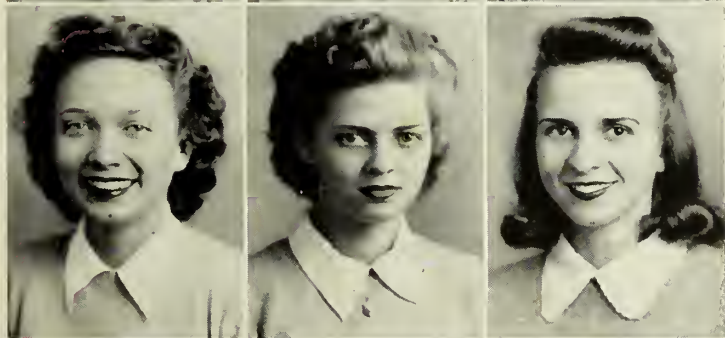
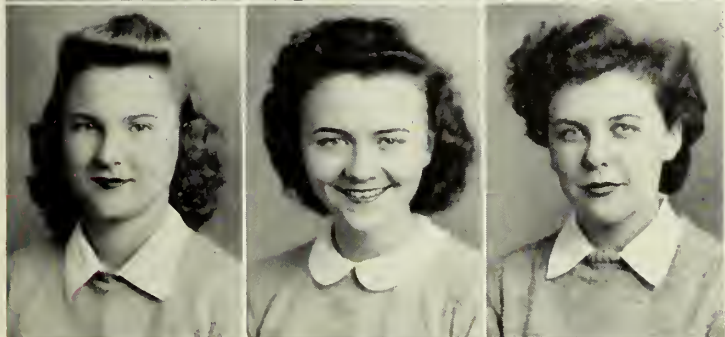
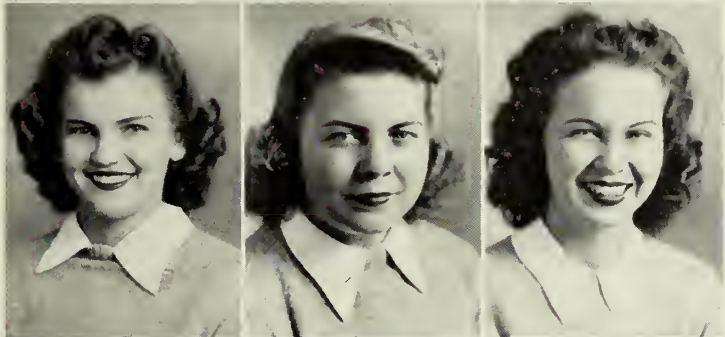
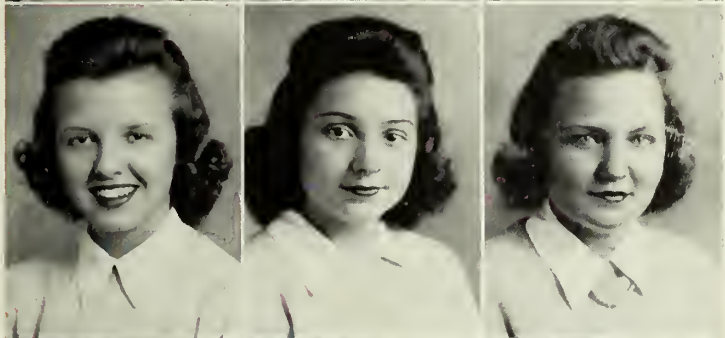
COLLINS, BETTY . . . . . Cairo, Ga.  
 CREECH, MARY . . . . . Moultrie, Ga.  
 CULBRETH, ELIZABETH . . . . . Valdosta, Ga.

CUNNINGHAM, RACHEL . . . . . Arlington, Ga.  
 DAMPIER, HELEN . . . . . Adel, Ga.  
 DAVIS, MARIA . . . . . Wilmington, N. C.

DUKES, BETTY . . . . . Pembroke, Ga.  
 EVERETTE, REAUNETTE . . . . . Waycross, Ga.  
 FORRESTER, PATRICIA . . . . . Donalsonville, Ga.



# S O P H S



GARBUTT, CATHERINE . . . . . Jesup, Ga.

GLENN, DOROTHY . . . . . Pelham, Ga.

GOODSON, ELSIE . . . . . Valdosta, Ga.

GOODWIN, MARTHA . . . . . McRae, Ga.

GOOGE, FRANCES . . . . . Savannah, Ga.

GRIFFIN, MARY SUE . . . . . Valdosta, Ga.

HALL, KATHLEEN . . . . . Swainsboro, Ga.

HARRIS, NINA . . . . . Waycross, Ga.

HICKSON, CATHERINE . . . . . Perry, Ga.

HINTON, DOROTHY . . . . . Reynolds, Ga.

KIMBROUGH, ANNE . . . . . Richland, Ga.

KING, DORIS . . . . . Cairo, Ga.

KINSLER, CONSTANCE . . . . . Arlington, Ga.

LINDSEY, MARTHA . . . . . Thomaston, Ga.

MCNEILL, JOSEPHINE . . . . . Archer, Fla.

MAJETTE, BETTY . . . . . Jesup, Ga.

MANN, CAROLYN . . . . . Milner, Ga.

MASSEY, ANNETTE . . . . . Bronwood, Ga.

# G. S. W. C.

MATTHEWS, SARA ALLEN . . . Buena Vista, Ga.

MEADORS, ELIA . . . Albany, Ga.

MEINERT, EVELYN . . . Savannah, Ga.

MELVIN, MARY . . . Leary, Ga.

MESCURE, CLEO . . . Waycross, Ga.

MILLER, HELEN . . . Valdosta, Ga.

MOORE, NORMA LEE . . . Valdosta, Ga.

OESTERREICHER, JEAN . . . Quitman, Ga.

PATILLO, VIRGINIA . . . Darien, Ga.

PETERS, BETTY . . . Moultrie, Ga.

PLOWDEN, ELOISE . . . Valdosta, Ga.

POWELL, MARGY . . . Valdosta, Ga.

POWER, JUDY . . . Vienna, Ga.

REED, EUGENIA . . . Cedar Springs, Ga.





# S O P H S



REHBERG, MACY . . . . . Cairo, Ga.

ROGERS, JANE . . . . . Quitman, Ga.

SWAIN, MARY LAURA . . . . . Pinehurst, Ga.

TARVER, HENRIETTA . . . . . Albany, Ga.

TORBERT, VIRGINIA . . . . . Greensboro, Ga.

TURNER, NELL . . . . . Columbus, Ga.

WHITTENDALE, JEANNE . . . . . Norman Park, Ga.

WILLIAMS, SELINA . . . . . Hollywood, Fla.

WILLIAMSON, CHARLOTTE . . . . . Albany, Ga.

WILSON, MARY SUE . . . . . Valdosta, Ga.

WOLFF, MARY AGNES . . . . . Fernandina, Fla.

WOODS, JACQUIE . . . . . Cairo, Ga.

WOODWARD, MARY BETH . . . . . Valdosta, Ga.

ZIPPERER, DOROTHY . . . . . Lake Park, Ga.

# FRESHMAN OFFICERS



ALDERMAN, COMPTON, SMITH



WITH CHARMING MARY ELLEN COMPTON leading the class, the Freshmen, largest class on campus, were very outstanding on the campus.

They were sponsors for a dance for the War Bond Scholarship Fund in the full quarter. Following an old tradition of the college, members of the class serenaded the upperclassmen with Christmas carols the Sunday before Christmas holidays.

Other class officers are: Georgia Smith, vice-president; Martha Dell Alderman, secretary-treasurer; Ruth Allen, court representative.



# FRESHMAN SNAPS



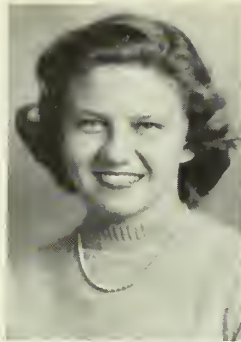
ALDERMAN, MARTHA DELL  
Valdosta, Ga.

ALLEN, RUTH  
Sloatsburg, N. Y.

ANCHORS, LORRAINE  
Savannah, Ga.

ARMSTRONG, TERRY  
Albany, Ga.

BEDFELL, SUSIE  
Woodbine, Ga.



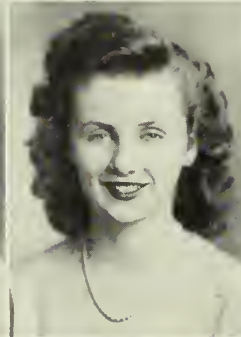
BENTLEY, ETHYL  
Pelham, Ga.

BEST, MILDRED  
Fort Gaines, Ga.

BIRD, VIRGINIA  
Metter, Ga.

BIVINGS, HILDA  
Donalsonville, Ga.

BLAIR, MAUDINE  
Tifton, Ga.



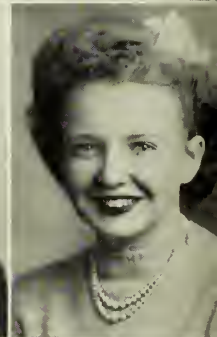
BLOUNT, MARTHA  
Senoia, Ga.

BONNER, MARY VIRGINIA  
Valdosta, Ga.

BOWEN, ELIZABETH ANNE  
Claxton, Ga.

BRUMMITT, TIPPIE  
Valdosta, Ga.

CHASTAIN, MARTHA  
Thomasville, Ga.



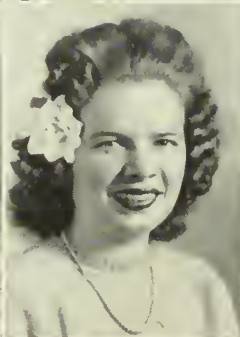
CHISM, OINDA  
Nashville, Ga.

CLEMENTS, ANNIE RUTH  
Ray City, Fla.

CLEMENTS, FRANCES  
Ray City, Fla.

COLGAN, JEAN  
Waycross, Ga.

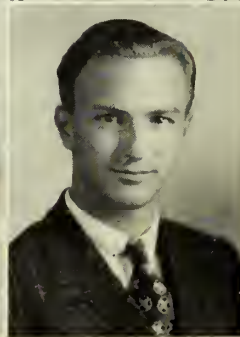
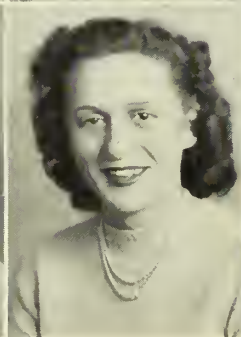
COMPTON, MARY ELLEN  
Columbus, Ga.



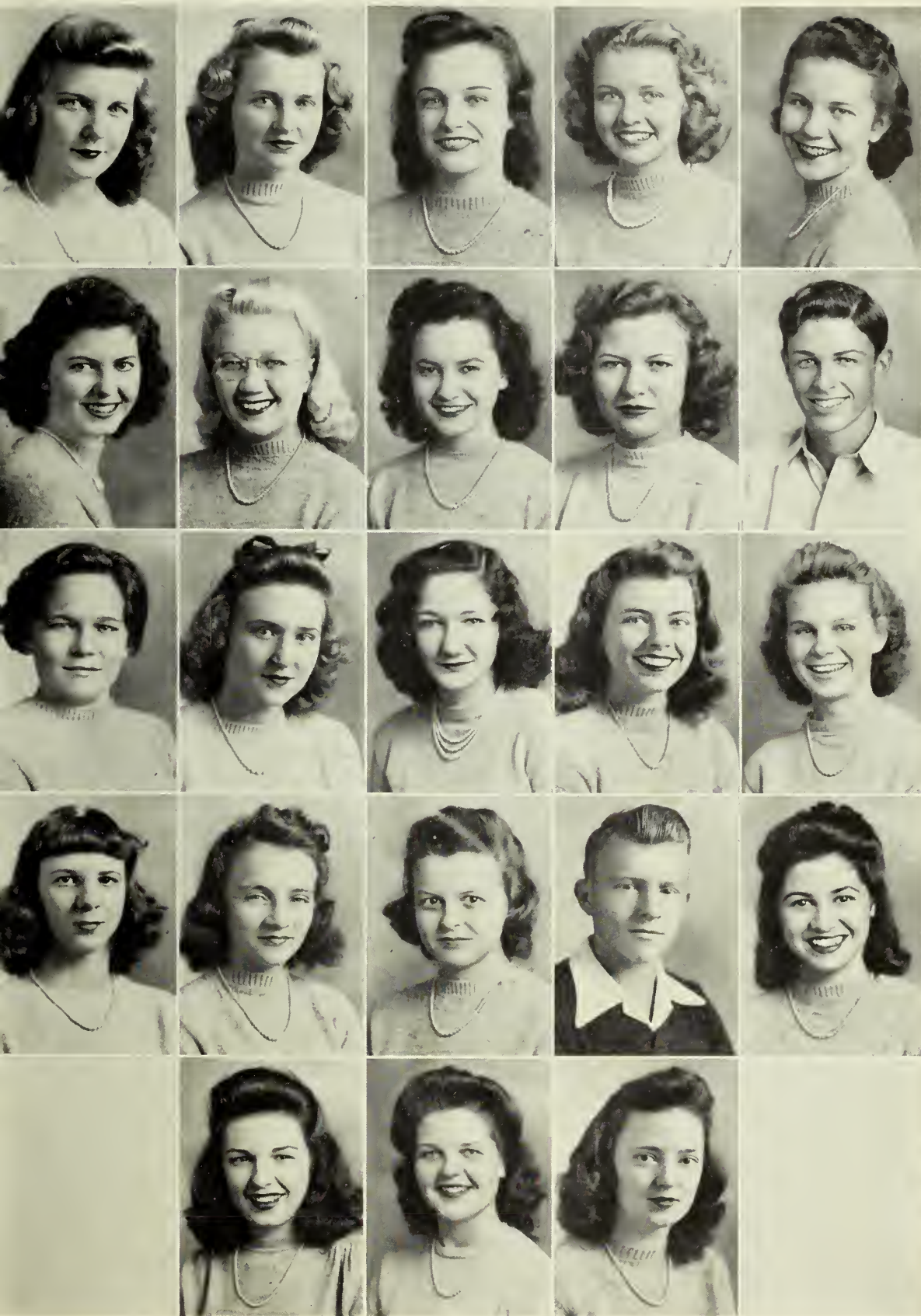
CONNELL, MAMIE CLYDE  
Valdosta, Ga.

CRANE, FRANCES  
Dixie, Ga.

CROUCH, THOMAS  
Valdosta, Ga.



# G. S. W. C. FRESH



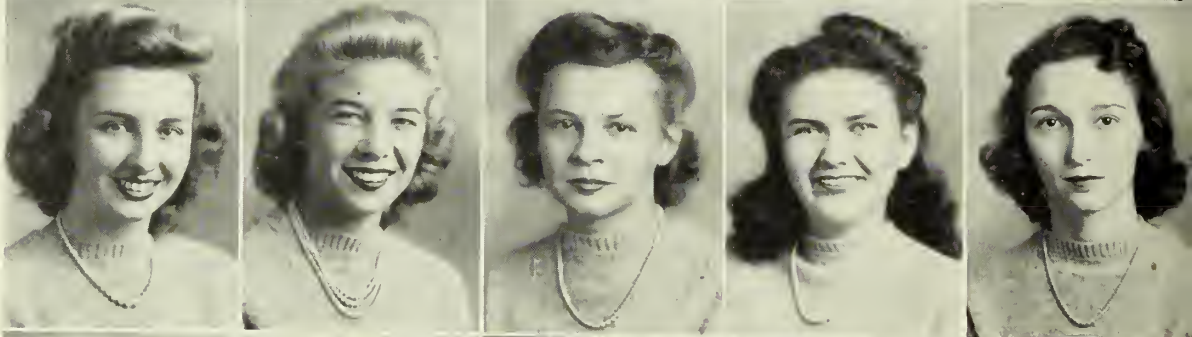
DAVIS, MARY LOUISE  
 Moultrie, Ga.  
 DEKLE, EMILY  
 Cordele, Ga.  
 DOROUGH, MARJORIE CLAIR  
 Cordele, Ga.  
 EDENFIELD, BARBARA  
 Savannah, Ga.  
 EDWARDS, ONEDA  
 Valdosta, Ga.  
 FINKLEA, MARY ANN  
 Valdosta, Ga.  
 FOSTER, JOYCE  
 Patterson, Ga.  
 GAINY, MARY ALICE  
 Boston, Ga.  
 GIDDENS, GERALDINE  
 Ray City, Fla.  
 HARPER, BERTIE  
 Valdosta, Ga.  
 HENDERSON, MARIE  
 Statenville, Ga.  
 HILL, GLYNN  
 Moultrie, Ga.  
 HOPE, FLORENCE  
 Brunswick, Ga.  
 HOPPER, MARY ELIZABETH  
 New Smyrna Beach, Fla.  
 JOHNSON, ELIZABETH  
 Fitzgerald, Ga.  
 JOHNSON, VO HAMMIE  
 Valdosta, Ga.  
 JOINER, HELEN  
 Valdosta, Ga.  
 JONES, BETH  
 Valdosta, Ga.  
 JOYNER, STEPHEN  
 Valdosta, Ga.  
 KIRKLAND, CHRISTINE  
 Pearson, Ga.  
 LANE, LUCY  
 Brunswick, Ga.  
 LANGDALE, ROSALINE  
 Council, Ga.  
 LEWIS, ALICE  
 Chinagrove, N. C.

# MAN CLASS

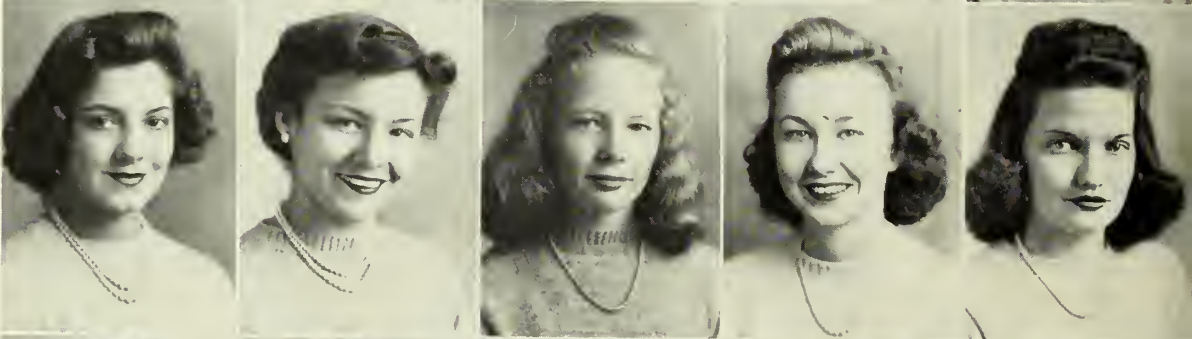
LEWIS, BETTY  
Nashville, Ga.  
McGEACHY, IMA JEAN  
Valdosta, Ga.  
McGEHEE, EMILY  
Talbotton, Ga.  
McGOWAN, BETTY  
Waycross, Ga.  
McKINNON, IDA MAUDE  
Adel, Ga.



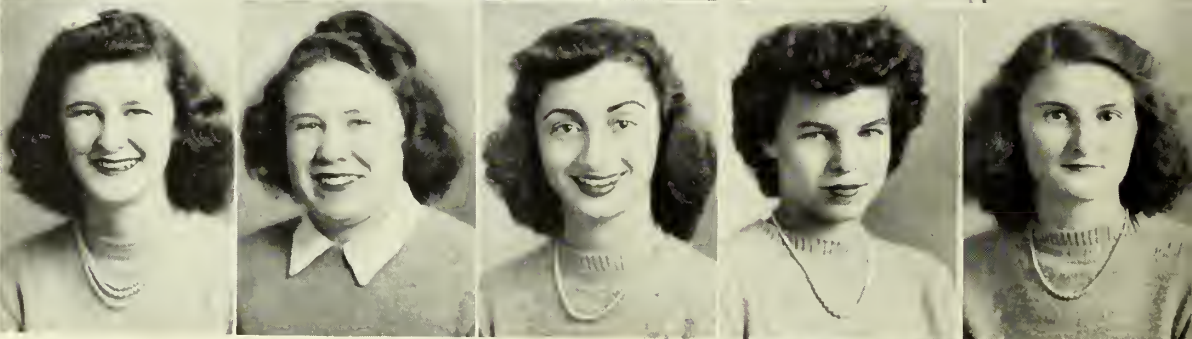
MAXWELL, SUE  
Barney, Ga.  
MAYES, BETTY  
Valdosta, Ga.  
MITCHELL, MARY VIRGINIA  
Porterdale, Ga.  
NICHOLLS, IDA VIRGINIA  
Jesup, Ga.  
NOELL, DOROTHY  
Valdosta, Ga.



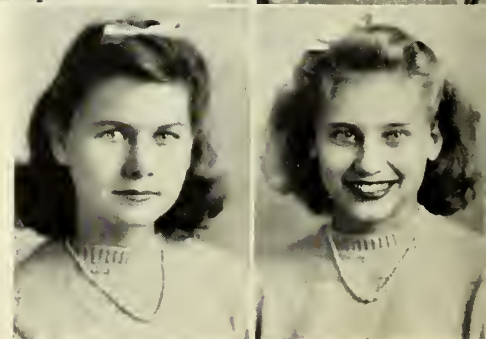
ODUM, DOROTHY  
Waycross, Ga.  
PATTILLO, ROBBELEE  
Moultrie, Ga.  
PENLAND, GLADYS  
Chula, Ga.  
POWELL, EFFIE  
Vienna, Ga.  
POWELL, ETHELYN  
Albany, Ga.



POWELL, JAYNE  
Albany, Ga.  
PRIOR, FLORIDA  
Madison, Ga.  
PSAKI, DIANA  
Athens, Greece  
RAPP, FREDDA  
Adel, Ga.  
ROBERTS, EDITH  
Valdosta, Ga.



ROBERTS, MARION ANICE  
Valdosta, Ga.  
ROUSE, MARY RUTH  
Waycross, Ga.



# G. S. W. C. FRESH



ROWE, JEAN Claxton, Ga.  
 ROWLAND, LOUISE Cordele, Ga.  
 SAYRE, REBECCA Valdosta, Ga.  
 SHERROD, GWENDOLYN Boston, Ga.  
 SINGLETARY, HARRIET Pelham, Ga.  
  
 SMITH, GEORGIA Valdosta, Ga.  
 SMITH, MARGARET Valdosta, Ga.  
 SNOW, VIRGINIA Valdosta, Ga.  
 STATHAM, BETTY Moultrie, Ga.  
 STORY, NANCY Nashville, Ga.  
  
 SULLIVAN, MARY ELIZABETH Valdosta, Ga.  
 TALLEY, SYLVIA Adel, Ga.  
 TARTE, RUBY Valdosta, Ga.  
 THOMAS, MILDRED Eastman, Ga.  
 THOMASON, EMILY ANN Columbus, Ga.  
  
 THRASHER, CAROLYN Barwick, Ga.  
 TUTEN, GLORIA Patterson, Ga.  
 VAUGHAN, JUNE Cobbtown, Ga.  
 WADE, MERLE Boston, Ga.  
 WATERMAN, HELEN Jacksonville, Fla.  
  
 WILLIAMSON, ALINE Valdosta, Ga.  
 WISDOM, MILDRED West Point, Ga.

# M A N C L A S S



# THE AC



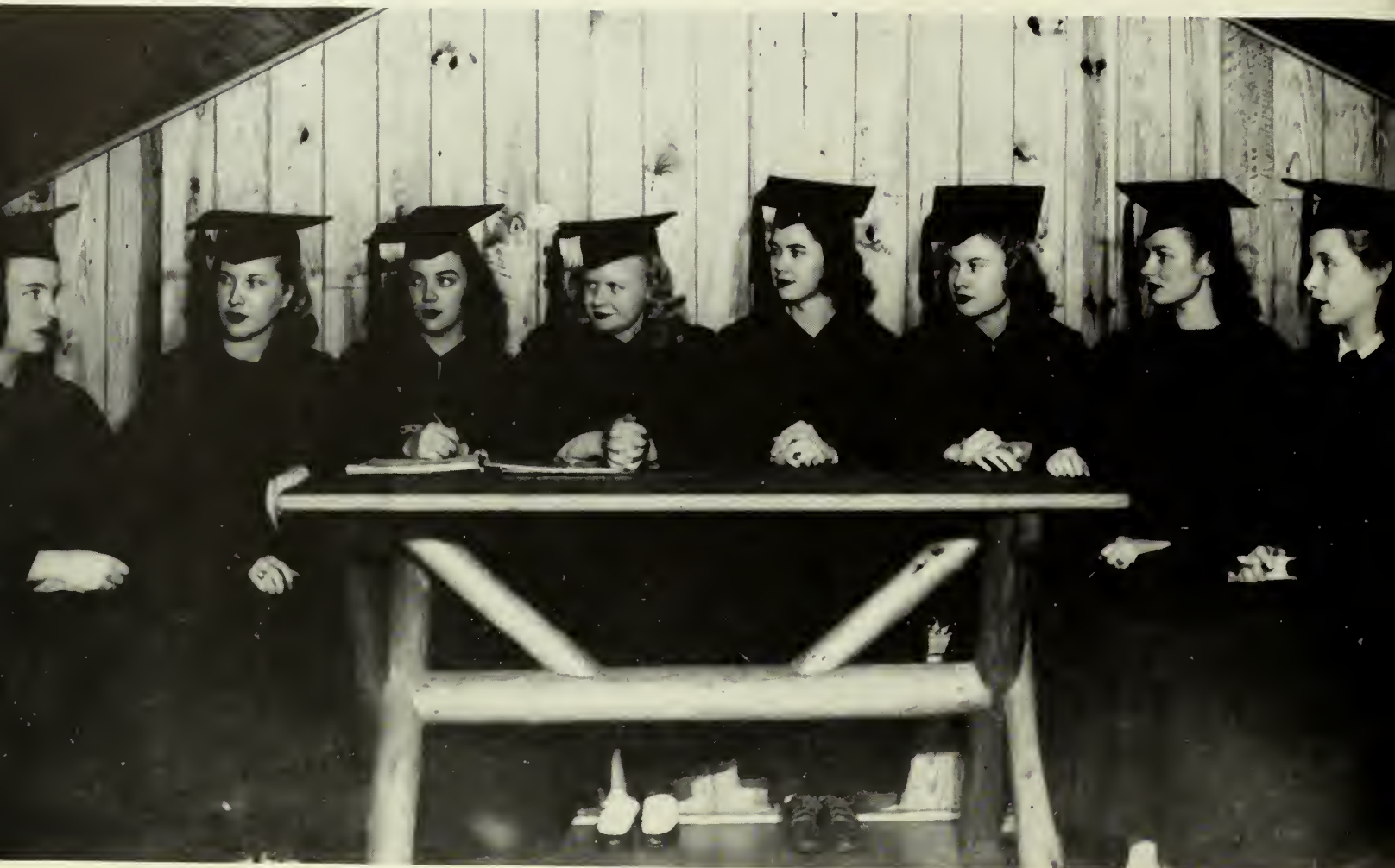


The activities offered the girls at G. S. W. C. are many and varied. These activities could very well be called the intangible definition of "college." They represent fun, laughter, sportsmanship and cooperation to all. The welders of friendship and the moulders of character are the clubs, socials, and sports in which a student participates during the years.

In the future a student may not remember a great deal about some of the classwork, but she will remember and treasure her G. S. W. C. emblem, the publications, sports, religion, government, dramatics, records from the Carnegie set, and Saturday night dances in the "Rec" Hall.

# TIVITIES

# STUDENT GOVERN



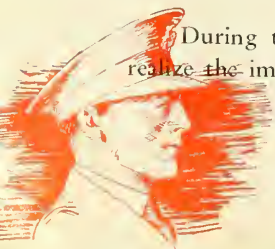
ALLEN, ROWLAND, JOHNSON, MARTIN, WILLIAMS, THOMPSON, GARBUTT, COMPTON

- |                                 |                                |
|---------------------------------|--------------------------------|
| SARA CATHERINE MARTIN . . . . . | <i>President</i>               |
| JEAN WILLIAMS . . . . .         | <i>Vice-President</i>          |
| GWEN JOHNSON . . . . .          | <i>Secretary-Treasurer</i>     |
| LAURA MAE YOUNGBLOOD . . . . .  | <i>Recorder of Points</i>      |
| RUTH ALLEN . . . . .            | <i>Freshman Representative</i> |

SERVING AS THE COG around which the wheel of student activities on our campus turns, the Student Government Association stands behind all other campus organization, uniting them in its democratic purpose: that of offering to all students the privileges of self-expression and self-government. Every girl may, on completing a brief training course and taking the pledge, become a member of the Student Government Association and is expected to do her part toward promoting the highest standards of honor and integrity.

Judicial authority is vested in a student court composed of Student Government officials and class presidents. Its function lies in the maintenance of discipline with impartiality and fairness. Also a Student-Faculty Honor Council and Executive Board have been maintained for cases concerning honor.

During the year 1942-43 programs were designed to open new fields of thought to the students and to help them realize the importance of succeeding that thought with action. From this seed grew a campus discussion group which



# MENT ASSOCIATION

have forums twice monthly to study, discuss, and help illuminate important current problems. It co-operated with the International Student Assembly to study war and post war problems and supported movements to organize discussion groups in overseas campus, to send news, books and other material to members of these groups and to better prepare them for the places they will have to fill in the future.

This discussion group also assisted the Red Cross in rolling bandages wrote letters to men overseas presented a play, "Land of the Free" by James Reach, for the student body and designed a campus clinic and conference on world affairs.

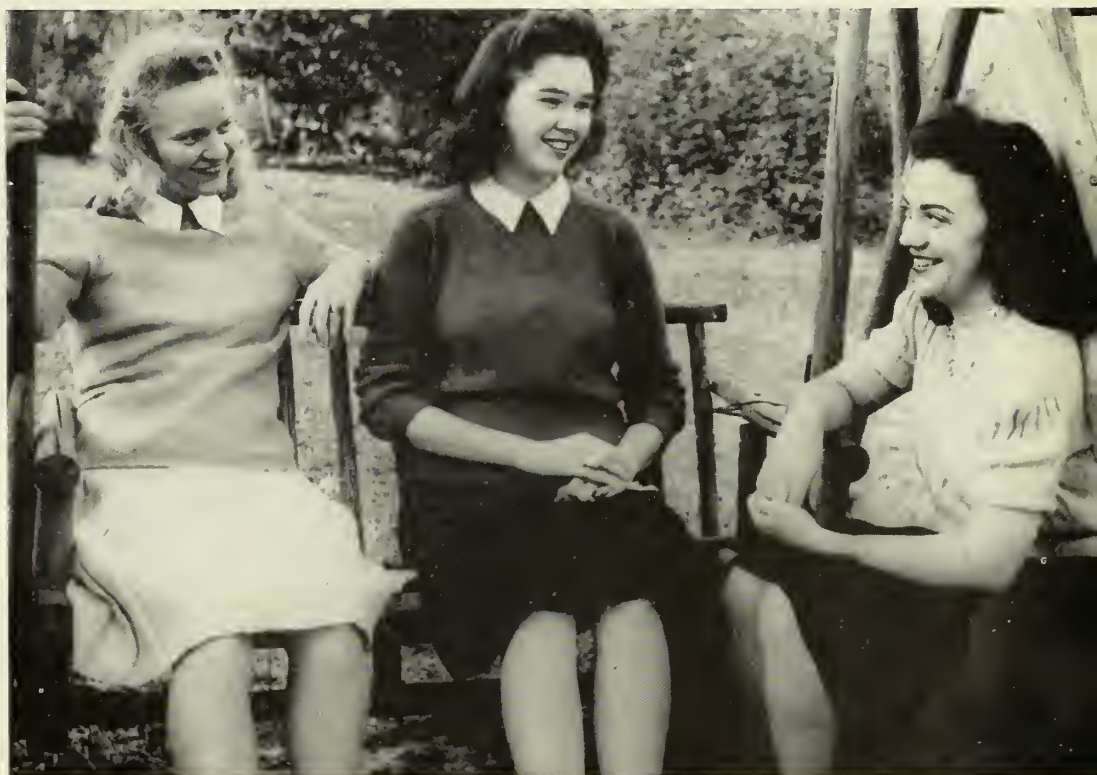
As in the past, S. G. A. continued to sponsor the country store in Converse Hall. Delegates were sent to the S. G. A. convention at Wesleyan College Macon, Ga., which resulted in many new and practical ideas.

Representatives to Student-Faculty Honor Council are: Laura Mae Youngblood, dormitory representative, and Tenzie Coleman, town student representative.

Dormitory monitors are: Converse—Glynn Hill, Nancy Story, Harriet Singletary; Ashley—Evelyn Mienert, Judy Power, Sara Allen Matthews; Ashley House President, Betty Collins; Rutherford—Louise Ogburn, Elizabeth Gillis.



Youngblood and Coleman—Student-Faculty Honor Council Representatives.



Martin, Williams, and Johnson—resting after hours.





"Y" Cabinet

## Y. W. C. A.

COMPETENTLY AND ADEQUATELY meeting the spiritual needs of the students, the Young Woman's Christian Association is one of the most active and valuable organizations of the campus. Although every student is considered a member, the activities of the Y. W. C. A. are directed by the cabinet which is composed of fifteen members appointed by the president.

The Y. W. C. A. is responsible for many of the most cherished traditions of the school. There is the very lovely and effective Hanging of the Greens by the seniors at Christmas; the Big Sister-Little Sister plan through which many firm friendships are formed; the impressive Recognition Service in which all the club presidents participate; and the Heart-Sister Week around Valentine Day which helps to kindle a warm feeling among the girls.



MOSELEY



McCORKLE



PETERS



B. DEKLE



# THE CHAPEL CHOIR



*"Always kneel reverently when you light a fire."*

Among the various other activities of the Y. W. C. A. are the popular Morning Watch and Vespers; the Vesper Choir, which adds so much to the "Y" services; the Y-Angle, a weekly news sheet; the Freshman and Sophomore Councils in which emphasis is placed on some phase of character building; and Freshman Week entertainment.

The most important accomplishment of the Y. W. C. A. during the past year has been the addition of a much-needed chapel. Located in the upper rotunda, it is a very inspirational room—all the more so because of its simplicity and student-stained glass windows. Mr. Clifton White, one of the faculty advisers designed the chapel.

Members of the 1942-43 cabinet are: June Moseley, president; Julia Frances McCorkle, vice-president; Pat Forrester, assistant vice-president; Betty Peters, secretary; Barbara Dekle, treasurer; Jacquie McCrary, deputation chairman; Alice Meadors, entertainment; Jackie Jones and Alpha Mae Castleberry, morning watch committee; Betty Street, publicity chairman; Jo McNeil, publicity co-chairman; Ava Collins, pianist; Nell Patten, violinist; Maria Davis, room chairman. The faculty advisors are Miss Hopper and Mr. White.



# THE 1943

## EDITORIAL STAFF

Literary Staff: Jean Saunders, Editor; Betty Barnes and Kitty Harms, Associate Editors; Martha Williams, Literary Editor; Nell Patten, Assistant Editor; Reaunette Everette and Catherine Hickson, Art Editors; Harriet Flournoy, Photograph Editor; Leonora Peeples, Assistant Photograph Editor; Betty Majette, Activities Editor; Catherine Garbutt, Assistant Activities Editor; Betty Jane Dorough, Pat Forrester, and Julia Storer, Make-up Staff; Beth Tharpe and Frances Kennedy, Typists.



SAUNDERS

RISE IN ONE ACCORD, the student body protested loudly against the abolition of the PINE CONE for the duration. Although several less expensive alternatives were suggested, G. S. W. C. girls were willing to sacrifice something else or to pay for the publication themselves, but, on any terms—they wanted it!

Some of the traditional information has been omitted to cut down the expense of the book. However, the editors have made an attempt to preserve the most integral parts. They have also tried to feature the part of the typical G. S. W. C. girl in the



Make-up approved.



Five great minds.



# PINE CONE

## BUSINESS STAFF

BUSINESS STAFF: Phyllis Whitaker, Business Manager; Effie Powell, Advertising Manager; Anne Kimbrough, Geraldine Giddens, Betty Mayes, Selina Williams, Robbie Lee Pattillo, Ida Virginia Nichols, Betty Street, Georgia Smith, Elsie Goodson, Anita Hunt, and Jane Rogers, Advertising Staff.



P. WHITAKER

world of war today, and to give some idea of her preparation for life after graduation.

Working under budgetary cuts and staff shortages, the editors have made a special effort to give to the student body, who seem to consider the yearbook such an important phase of college life, a book they may treasure in after-graduation years. So, as, the result of that effort, we present the 1943 war-time edition of the PINE CONE to the students with the assurance that will accept the necessary alterations along with the other changes this war has produced.



Captionists

Mercenary Minds functioning





McCRARY



HARMS

# CAMPUS CANOPY

IT IS THE *Campus Canopy's* duty and the staff's good fun to gather and edit the news of the week at G. S. W. C. Front page stories of the year included the appointment of a committee empowered to restore the Georgia colleges to the Southern Association's accredited list, and the omission of the traditional Christmas Festival and Play Day for the duration.

The *Canopy*, keeping before the eye of the public the existing spirit of patriotism, added an American flag at each end of the banner line. Pictures were not often seen on the pages of the paper because of the war-time difficulty of obtaining cuts. Another war-time change was the decision not to send delegates



Ad seekers gather at Brookwood.



Circulation Managers—Williams and Jinks.



# G. S. W. C.'S NEWSPAPER

to the National Associated Press Convention to Chicago.

The members of the staff are: Jacqueline McCrary, editor; Kitty Harms, business managers; Mary Frances Donalson and Harriet Flournoy, associate editors; Louise Ogburn, news editor; Edythe Cannady, assistant news editor; Eunice Fairchild, feature editor; Julia Storer, sports editor; Pat Forrester, assistant sports editor; Odelia King, make-up editor; Betty McGowan, headline editor; Betty Street, exchange editor; Betty Barnes and Sara C. Martin, columnists; Beth Rollison and Jean Mobley, typists; circulation staff, Ruth Jinks, manager, Martha Williams and Selina Williams, assistant circulation managers.

Reporters: Jean Osterreicher, Betty McGowan, Betty Majette, Virginia Torbert, Mary Beth Woodward, Martha Lindsey, Nina Harris and Effie Powell. Feature staff: Beth Rollison, Annette Massey, Ethelyn Powell, Phyllis Whitaker, Laura Mae Youngblood, Georgia Smith, and Catherine Garbutt. Business staff: Frances Googe, Virginia Torbert, Sue Bedell, Betty Lewis, Lorraine Anchors, Lucy Lane.



Oggie hands out assignments.

Check and double check.



So that's who writes the stuff!





ASHLEY



MEADORS



MOBLEY

# S P O R T S C L U B

WITH PHYSICAL FITNESS as its keynote, the Sports Club has as its goal the physical and mental well-being of the G. S. W. C. students.

Guiding this active organization and planning its activities is the Sports Council, headed by the Club's dynamic president, Martha Ashley. The Council meets every Tuesday afternoon and once a month has a supper where business and pleasure are cleverly combined. The Council is composed of one Kappa and one Lambda manager for every activity in addition to the officers of the club and faculty advisers.

To aid in the matched games and to help create a competitive spirit among the girls, the Sports Club is divided into two teams, the Kappas and Lambdas. At the beginning of the year the new members are impartially given bids to one of the two teams. Then at the end of the year the team scoring the most points has their name and year printed on the silver plaque that has held such records for a number of years.



Advisors



Come one, come all!

A new phase has been added this year—Co-rec entertainment. A committee to take care of this new development has been added to the Council; the committee in turn cooperates with the Student Government Date Bureau.

This year emphasis is being placed on the War Bond Scholarship Fund. The Sports Club has directed several of its activities toward this end. One of them being the Physical Fitness Campaign during which the students penalized themselves for over-indulgence. A horse show, under the direction of Miss Beasley, which included races, relays, and good horsemanship was held and the funds presented to the War Bond Scholarship Fund along with the proceeds from an aquacade, with Miss Carter as sponsor; and finally the Club sponsored the selling of War Stamps at the Country Store.

Officers: Martha Ashley, president; Alice Meadors, vice-president; Jean Mobley, secretary; Mary Frances Donalson, treasurer; Sports Council: Jean Williams (L), Catherine Hickson (K), art chairmen; Mary Sue Griffin (L), Mary Laura Swain, Julia Storer, sports editor; (K), team captains; Marolyn Rowland (L), Sunshine Taylor (L), archery managers; Pat Forrester (K), Dorothy Hinton (L), minor sports managers; Mary Creech (K), Dorothy Hinton (L), fistball managers; Grace Lawson (L), Mary Frances Donalson (K), supper and hike chairmen; Betty Majette (K), Jeanne Whittendale (K), swimming team managers; Elia Meadors (K), Louise Ogburn (L), American Ball managers; Sara Catherine Martin, honorary member.

Faculty advisers: Leonora Ivey, Marjorie Carter, Ruth Reid, Virginia Beasley.



Council





# SNAPS OF SPORTS ACTIVITIES



# SOCK AND BUSKIN CLUB



PEEPLS



PARKS



YOUNG

TO ACT OR NOT TO ACT is definitely not the question for members of this club. Students interested in stage craft as well as the Judith Andersons and Katherine Cornells of the campus comprise the membership of the Sock and Buskin Club, campus dramatic organization.

In December the club presented *Letters to Lucerne*, proceeds of which were given to the American Theater Wing, sponsors of the Stage Door Canteen.

Active in aiding the War Bond Scholarship Fund, the Sock and Buskin Club donated the proceeds from their spring production to this cause and also sponsored a dance for the fund.

President of the Sock and Buskin Club is petite, capable Leonora Peeples, and the other officers: Rachel Parks, vice-president; Christine Young, secretary-treasurer; Beth Whitaker, historian. The faculty advisers are Miss Louise Sawyer and Miss Anna Richter.

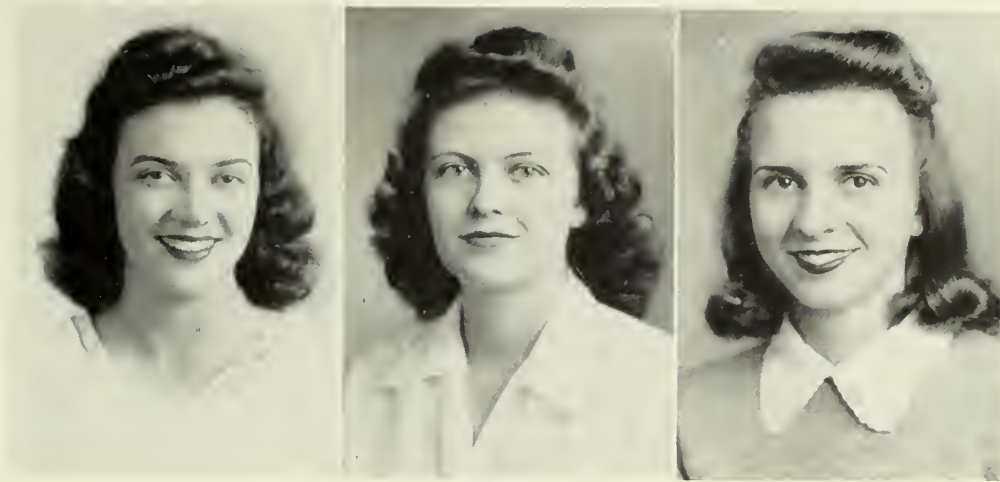
Members are: Betty Barnes, Annette Blackburn, Edythe Cannady, Luisa Castro, Rachel Cunningham, Maria Davis, Reaunette Everette, Elsie Goodson, Julia Frances McCorkle, Jean McGeachy, Ida McKinnon, Betty Majette, Sara Catherine Martin, Rachel Parks, Diana Psaki, Leonora Peeples, Beth Rollison, Ruth Taylor, Virginia Torbet, Herrietta Walker, Helen Waterman, Beth Whitaker, Jean Whittendale, Jane Williams, Mary Agnes Wolff, Christine Young.

Scene from "Letters."



Spreading it on.





JOHNSON

McCORKLE

McNEILL

Creating an interest and an appreciation of art by giving not only its members, but the entire Student body the benefit of the club activities, makes this organization a vital part of the everyday life of each student.

Activities of the club consisted of a rental art collection on a non-profit basis, art exhibits, posters, and in furthering the War Bond Scholarship Fund, the annual Christmas Bazaar, a Dance, an Open-House Art Gallery, where the students creative best is exhibited and for sale, and by the War Stamps brought to each meeting by its members.

Officers of the club are: Gwen Johnson, president; Julia Frances McCorkle, vice-president; Jo McNeill, secretary-treasurer; and Reaunette Everette, poster chairman.

Members: B. Barnes, E. Carter, L. Castro, M. E. Compton, Maria Davis, B. J. Dorrough, C. Garbutt, K. Hall, A. Hunt, E. Meadors, J. Rogers, J. Saunders, V. Snow, R. Taylor, and Beth Whitaker.

# FINE ARTS CLUB



McNeill adds finishing touches.



Students rush to art bazaar.



Glee Club

## GLEE CLUB



Serenaders

The Glee Club started its activities for the year by honoring the new members with a spaghetti supper, at which time a program was given. Soloists from the Glee Club have appeared on the programs at the U. S. O., at Vespers, and at the various clubs in Valdosta.

The Serenaders, a small group of Glee Club members, presented and sold copies of the song, "Fairest of Schools," composed by Drs. Phelan and Gulliver, the money obtained was also contributed to the War Bond Scholarship Fund. The Serenaders have presented programs at the Moody Field Cadet Mess, at civic clubs, and on campus.

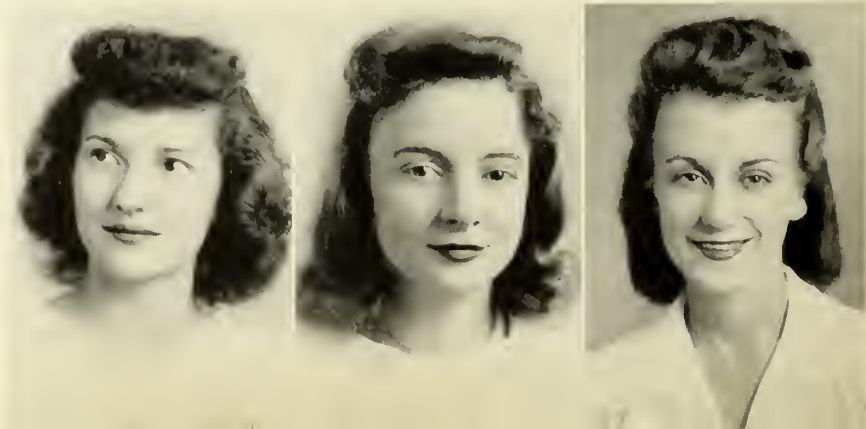
Glee Club officers: Corinne Smith, president; Ruth Taylor, vice-president; Pauline Carter, secretary-treasurer; Eloise Plowden, Jo McNeill, librarians.

Members: L. Anchors, R. Barnhill, W. P. Becton, E. A. Bowen, P. Carter, A. M. Castleberry, A. Collins, E. Davis, B. Dekle, M. Dorough, B. Edenfield, M. Goodwin, G. Hill, R. Jinks, B. Jones, J. Jones, C. Kirkland, M. Lahood, F. Loosier, J. McGeachy, J. McNeill, M. Melvin, C. Mescure, J. Moseley, E. Plowden, F. Prior, M. Rowland, C. Smith, G. Smith, V. Snow, B. Sullivan, R. Taylor, N. Turner, M. B. Woodward; Accompanist, Doris Baumil.

SMITH

TAYLOR

P. CARTER







Planning Recitals

# PHILHARMONIC

MORE AND BETTER music might well be the motto of the Philharmonic Club, for the purpose of this group is to further an interest in the best type of music. The Philharmonic members not only sponsor student programs on campus, but frequently take part on musical programs in Valdosta and nearby towns. As a climax to their musical college efforts, several senior members give recitals in the spring. This year the club has devoted all its efforts to the War Bond Scholarship Fund by sacrificing opera trips, and taking the sponsorship of a dance.

Betty Barnes, nimble-fingered piano major, is president, and Frances Loosier is vice-president. Miss Gladys Warren is the faculty adviser.

Members: B. Barnes, R. Barnhill, B. Briggs, M. C. Connell, A. Collins, P. Forrester, G. Hill, R. Jinks, V. H. Johnson, J. Jones, M. Lahood, L. Lane, F. Loosier, C. Mann, C. Mescure, G. Miller, A. O'Reilly, V. Patillo, N. Patten, F. Prior, C. Smith, J. Smith, R. Taylor, M. S. Wilson, M. B. Woodward.



Listening to records.



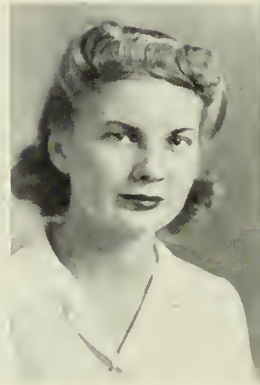
BARNES  
LOOSIER



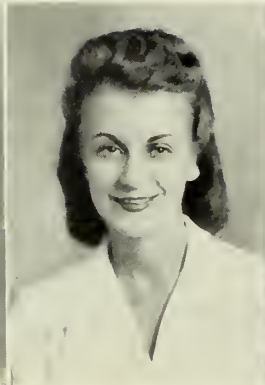
# INTERNATIONAL RELATIONS CLUB



THOMAS



E. CARTER



P. CARTER



KING

THE FIRST YEAR of America's entrance into the Second World War gave the members of the International Relations Club a stellar opportunity for studying the effects of war and peace. The internationally-minded group started out in the fall by making an afghan for the American Red Cross. It did its share for the American war needs after Christmas by sponsoring a dance for the War Bond Scholarship Fund and sewing regularly for the Valdosta Branch of the American Red Cross.

An I. R. C. shelf is maintained in the library, providing books and pamphlets on current national and international issues for student use.

The club invites foreign exchange students for membership. This year Luisa Castro, Venezuela and Diana Psaki, Athens, Greece have worked with I. R. C. in the quest for further understanding of world friendship.

Club officers are: Elizabeth F. Thomas, president; Emmie Carter, vice-president; Pauline Carter, secretary; Doris King, treasurer; Marguerite Lahood, member-at-large; Miss Mildred Price, faculty adviser.

Members: Dorris Callaham, Emmie Carter, Pauline Carter, Luisa Castro, M. F. Donaldson, Doris King, Marg. Lahood, Evelyn Meinert, Jean Mobley, Diana Psaki, Elizabeth F. Thomas.



"It was like this"

International Relation Club members study world affairs.





DUFFY

PEEPLES

COLEMAN

# MATH - SCIENCE CLUB

THE MATH-SCIENCE CLUB proposes to stimulate interest in science and to acquaint its members with the practical nature of math and science as well as to provide for its members an opportunity to work on projects in which they are particularly interested. Divided into the three divisions of math, chemistry and biology, club meetings are held monthly.

The 1942-43 club, headed by honor student Joyce Duffy, has contributed part of the dues and script from dances to the War Bond Scholarship Fund.

Other officers are: Leonora Peeples, vice-president; Tenzie Coleman, secretary-treasurer; division heads, Martha Goodwin, Mary S. Griffin, Alice Gordon. Faculty advisers are Carter, Nevins, Phelan, Farbar, Hawks, Kimbrough.

Members: Allen, Ashley, Burke, Cannady, E. Carter, M. Carter, Coleman, Dampier, Dorough, Duffey, Fairchild, Flournoy, Goodwin, Gordon, M. S. Griffin, M. Griffin, King, Mason, Meadors, Mescure, Ogburn, Peeples, McKinney, Posey, Saunders, Shannon, Tharpe, Thomas, Turner, Vinson, Wilson, Youngblood.



GRIFFIN  
GOODWIN



GORDON





War and Peace discussion



Gulliver points out important details

# ENGLISH CLUB

THE CREATION OF AN ALERT interest in contemporary literature, as well as an appreciation for that which has lived through the ages constitutes the aims of the English Club. Made up of Junior and Senior English majors, club membership is limited to those who have the highest scholastic records.

The club did its part for the War Bond Scholarship Fund by sponsoring a dance and in selling copies of Dr. Gulliver's book of poems, "Out of the Bog."

Headed by Jean Mobley, the club sponsored the *War and Peace* club, a discussion group of Tolstoy's novel.

Other officers are: Eliz. Gillis, vice-president; M. Williams, secretary-treasurer.

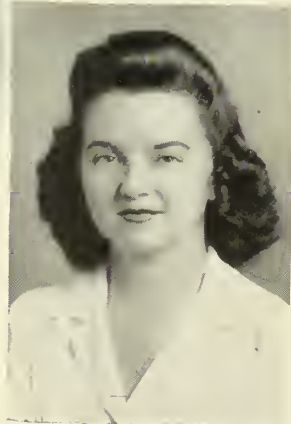
Members: A. Blackburn, A. Booth, M. F. Donalson, Eliz. Gillis, J. Mobley, J. Mosely, A. O'Reilly, B. Street, B. Whitaker, M. Williams.



MOBLEY



GILLIS



M. WILLIAMS



# ROMANCE LANGUAGE CLUB



GILLIS

KING

JOYNER

THIS YEAR THE FRENCH CLUB was changed into the Romance Language Club in order to include students in the Spanish Department. Membership in the Romance Language Club is granted to those students who have chosen French or Spanish as their major or minor, or to those who have taken advanced courses in a foreign language.

The club programs are based on customs, traditions, literature, art, music, and existing conditions of the countries of France and Spain.

During the fall quarter the club sponsored the appearance of the famous French artist and poet, Jean-Marie Guislain. They were sponsors of a dance and a benefit bridge party for the War Bond Scholarship Fund.

Officers are: Elizabeth Gillis, president; Odelia King, vice-president; Janet Joyner, secretary-treasurer; Dr. Sapelo Treanor, faculty adviser.

Members: Elizabeth Gillis, Dorothy Glenn, Nina Harris, Janet Joyner, Odelia King, Cleo Mescure, Ervyl Moran, Jackie Wood.



Serving at monthly meeting



Treanor aids in planning program



C. SMITH

BARNES

BLACKBURN

DUFFEY

# SENIOR HONOR SOCIETY

NOT ONLY MUST A STUDENT have an outstanding record for two and two-thirds years of academic work, but she must also be active in the extra-curricular affairs of the campus to be eligible for membership in this group.

The most outstanding contribution of the Senior Honor Society is the maintenance of a Student Cooperative Bookstore, whereby students may purchase books with the least expense possible.

Together with the Freshman Honor Society, a dance was sponsored for the benefit of the War Bond Scholarship Fund, and a day was set aside during winter quarter as Honor Day. At this time, the members of the two honor groups were recognized at chapel exercises.

Officers are: Corinne Smith, president; Betty Barnes, vice-president; Annette Blackburn, secretary; Joyce Duffey, treasurer; Dr. Durrenberger, faculty adviser.

Members are: B. Barnes, A. Blackburn, J. Duffey, J. Mobley, C. Smith, J. Smith, McCrary, E. Fender, Thomas and Jean Thompson.



Duffey and Thomas go intellectual



Thompson, Blackburn and Smith discuss the higher things

# FRESHMAN HONOR SOCIETY

REPRESENTING THE SOPHOMORE intelligentsia, the Freshman honor society has as its purpose to promote, to recognize, and to encourage high scholastic standing on the campus and also to render service to the college whenever possible. Eligibility for membership implies an average of B for the first two quarters of work during the Freshman year.

Together with its sister organization, the Senior Honor Society, they sponsored a dance for the War Bond Scholarship Fund, and a day was set aside during the winter quarter as Honor Day.

The organization has contributed magazines for the House in the Woods and added recordings to the Carnegie Musical library. Members act as ushers at Artist Series Programs and were influential in the movement to get students to help at the Red Cross Center.

Officers: Betty Peters, president; Jean Oesterricher, vice-president; Mary Carter, secretary-treasurer; Sara Allen Matthews, historian; Mrs. Odum, faculty adviser.

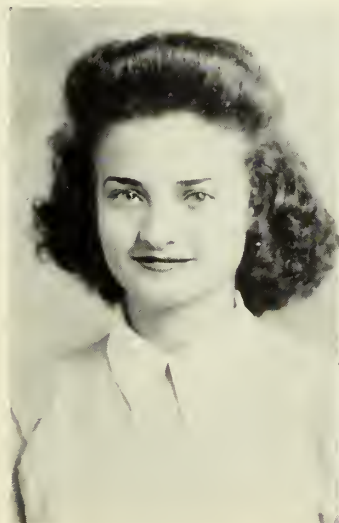
Members: M. Carter, D. Glenn, D. King, S. A. Matthews, J. Oesterricher, B. Peters, M. Powell, M. S. Wilson.



Looking over magazines donated by society



Matthews and King



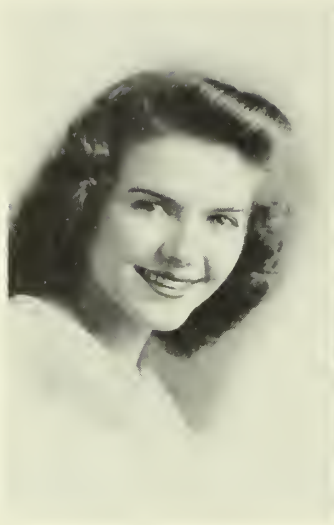
PETERS



OESTERRICHER



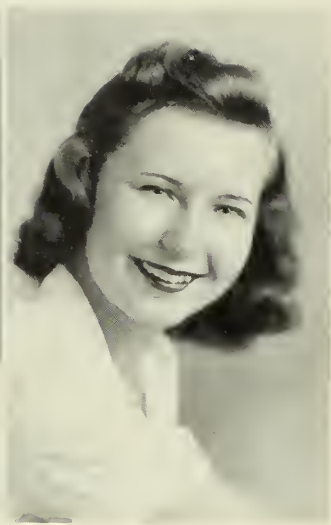
M. CARTER



WILLIAMS



SAWYER



HUNT

# SOCIOLGY CLUB

THE MELTING POT of social problems boils with greater activity each year as potential social workers gather to discuss prospective problems. The club was organized to further interest in social science and to seek ways to enrich the lives of those who need the help of others.

Through unique and interesting presentations the Child Welfare Class gave life to the problems and remedies for care of children during wartime. Other monthly programs during the year were related to wartime problems with student and local social work leaders heading discussions.

For the benefit of the War Bond Scholarship Fund the club sponsored two dances, a benefit bridge, and beginning with the winter quarter each member brought a War Stamp to each meeting.

At Jane William's graduation at the end of fall quarter, Dorothy Sawyer became president, with Betty Street, vice-president. Anita Hunt served as secretary-treasurer.

Members: Blackburn, Bowen, Callaham, D. Carter, P. Carter, Davis, Dekle, Harms, Hunt, Joyner, Majette, Martin, Mason, McIntosh, Meadors, Mosely, Ogburn, Petty, Posey, Rollison, Rowland, Sawyer, Spivey, Storer, Street, Torbert, Taylor, Thompson, Kennedy.

## CLASS IN CASE WORK

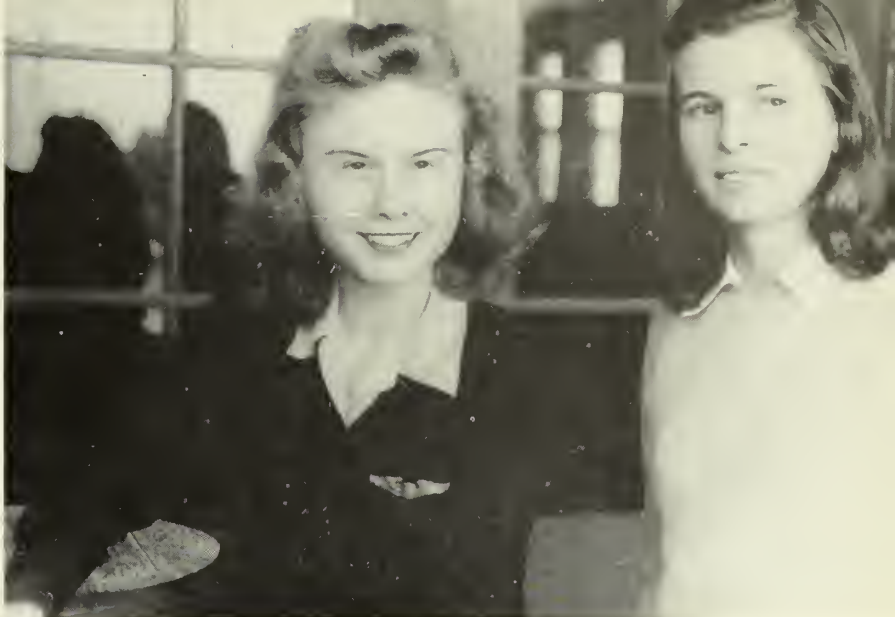


Time out for relaxation  
At benefit bridge





# PRESIDENTS' COUNCIL



Chairmans Thompson and Ashley

MADE UP OF the campus BWOC's, the membership of the Presidents' Council includes the presidents of all clubs and classes and editors of the publications. Organized in 1941, the Council's purpose is to bring about active cooperation between clubs, students, and faculty.

The Council is led by a chairman, elected each quarter. Jean Thompson served as chairman the fall quarter; Martha Ashley acted as chairman the winter quarter, and Dot Clem Sawyer was chairman spring quarter.

Several standing committees, including the Student Activities Committee, the War Bond Scholarship Committee, and the Student Attendance Committee, are made up of members of the Council.

Members: Martha Ashley, Betty Barnes, Tenzie Coleman, Mary Ellen Compton, Joyce Duffy, Catherine Garbutt, Elizabeth Gillis, Gwen Johnson, S. C. Martin, Jean Mobley, June Mosely, Betty Peters, Marolyn Rowland, Jean Saunders, Dot Sawyer, Corinne Smith, Jackie Smith, Elizabeth Thomas, Jean Thompson, and Leonora Peeples.



Presidents' Council



Entire Club assembles

## VALDOSTA CLUB

WITH THE PURPOSE of propagating feeling of friendship and understanding between day students and dormitory girls, the Valdosta Club, made up of graduates of Valdosta High School, has meant much to the students as a campus club and, in turn, to the town as an interpreter of the activities of the college. The club holds monthly luncheon meetings on campus.

Individual contributions were made by the club members to the War Bond Scholarship Fund. Money received from admission to a dance in the Rec Hall also went to the Fund. Every club member enrolled for Red Cross work after class hours.

Officers: Tenzie Coleman, president; Rachel Parks, vice-president; Mary Sue Griffin, secretary; Sara Vinson, treasurer.

Members: Alderman, Ashley, Baker, Barnes, Becton, Blackburn, Bonner, Burke, Carter, Coleman, Connell, Culbreth, Edwards, Finklea, Garbutt, Goodson, Griffin, Hunt, Joiner, Jones, Kirk, Lahood, Mason, Mayes, Meadows, Miller, Moore, McGeachy, Noell, Parks, Posey, Powell, E. Roberts, M. A. Roberts, Shannon, C. Smith, G. Smith, M. Smith, Snow, Sullivan, Tarte, Taylor, Thomas, Walker, B. Whitaker, P. Whitaker, White, Wilson, Williams, Woodward.



COLEMAN



PARKS



GRIFFIN



VINSON

# ALUMNAE ASSOCIATION

THE ALUMNAE ASSOCIATION has been striving yearly to bring the women who are graduates of the college in closer contact with the college after they have graduated, and this year's program was planned with this main objective in view.

To bring the members in closer contact with one another, the Association published an alumnae bulletin twice during the year.

The annual business meeting of the association is held on May-Day-Play-Day of each college year.

Officers: Virginia Tuck Parrish (Mrs. J. C.), president; Rena Mae Campbell, vice-president; Anna Richter, secretary.



PARRISH



CAMPBELL



RICHTER



MAJOR WEST, PATTERSON, CAPTAIN CALDWELL



McREE

# ARTISTS SERIES



NABOKOV



DODD—CHARLOT



KUO



GUISLAIN

# OUR PART IN DEFENSE

ROLLING BANDAGES at the Red Cross, collecting a truck-load of scrap for the nationwide scrap-iron drive, a Victory garden, under the sponsorship of the Sports Club, numerous War Bond Scholarship drives and benefits have all been a part of our small aid in defense and for Victory. A contest between the dormitories in blotting out the faces of our enemy leaders with Defense stamps was held during Winter quarter. Numbers of dances and class skits have been presented for the War Bond Scholarship. As small as our part has been, we like to think that it has helped and hastened Victory.



Students lend helping hand to Red Cross . . .



Putting knowledge into practice . . .



Scrap drive goes all out for defense . . .

# HONORS

GWENDOLYN JOHNSON



JACQUELINE SMITH McCRARY



SARA CATHERINE MARTIN



ALICE BELLE MEADORS



JUNE COLLINS MOSELY



JEAN GARVIN SAUNDERS



CORINNE BRIGGS SMITH



JEAN ELDER THOMPSON





# MORRIS' LUNCH

ADJOINING RITZ  
BUILDING

“WE DELIVER”

OUR BEST WISHES

Pianos, Radios, Musical Instruments,  
Records and Supplies

*Books, Sales and Rentals*

Serving Valdosta's Musical Needs 40 Years

**MATHIS and YOUMANS**

VALDOSTA

**C. C. VARNEDOE & CO.**

For the 64th Year

VALDOSTA'S STORE DEPENDABLE

*The Style Center of Valdosta*

INSIST ON . . .

**LANCE'S**

CRACKERS

GIFTS FOR HIM

. . . AT . . .

**BRIGGS' CLOTHING**

*THINGS MEN WEAR*



COMPLIMENTS

... OF ...

THE

**CITIZENS & SOUTHERN  
NATIONAL BANK**

VALDOSTA

GEORGIA

VALDOSTA'S  
LEADING  
RESTAURANT

**THE ROOSEVELT**

FAMOUS

... for ...

WESTERN STEAKS

VALDOSTA

GEORGIA

G. S. W. C. Girls . . .

*Pause to Refresh*

DRINK . . .

COCA-COLA IN BOTTLES

**VALDOSTA COCA-COLA  
BOTTLING WORKS, INC.**

VALDOSTA'S  
LEADING  
HOTEL

The

**DANIEL ASHLEY**

HORACE CALDWELL

*Manager*

VALDOSTA

GEORGIA

*Compliments*

... of ...

**DUNCAN'S SHOE STORE**

SMART SHOES

*for*

COLLEGE GIRLS

*The*

**BENSON COMPANY**

*DRY CLEANERS*

117 W. Central Avenue

PHONE 486

*Congratulations and  
Best Wishes . . .*

**Ritz Palace**

**Dosta**

**MARTIN THEATRES**

VALDOSTA

GEORGIA

W E L C O M E

G. S. W. C.

**WHITTINGTON'S**

*DRESS SHOPPE*

B E S T O F L U C K

A L W A Y S

**VALDOSTA**

**BOWLING CENTER**

FOR THE NEWEST STYLE IN  
FOOTWEAR, FIRST . . .

**GRIFFIN'S**

127 N. Patterson St.

Telephone 674

*Satisfaction Assured*

S A V E Y O U R S O L E S

B Y

R I D I N G T H E

**VALDOSTA COACHES**

FOR THE BEST

IN REPAIR

. . . VISIT . . .

**KIRBY'S SHOE SHOP**

W H E N I N V A L D O S T A

I T ' S T H E

**ELLINOR MOTOR CO.**

F O R . . .

FIT, COMFORT, STYLE  
... V I S I T ...

**PAXSON'S-TURNER-JONES**

*The Home of Good Shoes  
for 40 Years*

**KELLER CLOTHING CO.**

*Everything For Men and Boys*

PHONE 307  
106 N. Patterson

GOOD SERVICE AT

**BOB BELCHER'S DRUG STORE**

Patterson and Central

PHONES 812-813

**MATHER BROS. CO.**

LARGEST STOCK OF FUR

COATS SOUTH OF

ATLANTA, GA.

PHONE 170

**THOMPSON and GIRARDIN**

*Jewelers*

EXPERT REPAIRING

120 N. Patterson St.

VALDOSTA

GEORGIA

Best Wishes to G. S. W. C. from  
the Printers of your  
*"Campus Canopy"*

**THE LOWNDES COUNTY NEWS**

*Publishers • Printers • Stationers*

*Office Supplies*

VALDOSTA

GEORGIA

**JOHN OLIVER**

*Service Station*

FIRESTONE TIRES

AMOCO PRODUCTS

Phone 231

**W. T. GRANT CO.**

•

**Known for Values**

TO SUIT YOURSELF  
AND YOUR PERSONALITY

... Buy At ...

**THE DIANA SHOP**

**BROOKWOOD PHARMACY**

*Under Management of*

CHARLIE ADAMS

PHONE 336

SPECIAL SERVICE FOR G. S. W. C.

*Everything You Need ...*

At a price that will fit  
your collegiate purse

... Buy at ...

**CHURCHWELL'S**

DEPARTMENT STORE

*College Girls' Headquarters*

Phone 608

**The**

**MCCRORY STORE**

OF

VALDOSTA

WELCOMES YOU

**VERAN BLACKBURN**



*Photographer for the*

1943 PINE CONE



VALDOSTA, GA.

**THE  
FIRST NATIONAL  
BANK**

OF VALDOSTA



*Member of the Federal*

*Deposit Insurance*

*Corporation*

WE ARE PROUD OF THE

**Georgia State Womans College**

*We are glad to take this  
occasion to say that the*

**CITY OF VALDOSTA**

*is proud to list among  
its greatest assets the*

**Georgia State Womans College**

**and—**

WE HOPE THAT VALDOSTA AS A CITY MAKES A FAVOR-  
ABLE AND LASTING IMPRESSION ON THE MIND OF  
THE YOUNG LADIES WHO MAKE UP THE  
STUDENT BODY OF THIS GREAT  
INSTITUTION.

**VALDOSTA GREENHOUSES**

FLORISTS

Member F. T. D. Phone 1415

WEDDING STATIONERY

**J. P. STEVENS ENGRAVING CO.**

110 Peachtree St., N. W.  
ATLANTA GEORGIA

**BELK-HUDSON CO.**

*The Friendly Store*

Newest Campus Styles

Just Two Words to Remember . . .

“GEORGIA ACE”

**GEORGIA FERTILIZER CO.**

VALDOSTA GEORGIA

*Enjoy . . . .*

**FOREMOST**

**ICE CREAM**

*. . . . It's Healthful*

**SOUTHERN STATIONERY AND  
PRINTING COMPANY**

WHOLESALE  
PAPER DEALERS

COMMERCIAL STATIONERS  
PRINTERS  
OFFICE OUTFITTERS

VALDOSTA GEORGIA



One hundred years ago our grandmothers carded, spun and wove wool and cotton. Men built factories to do the same work quicker, and went into the dress-making business. Men preserved, canned and cooked; they baked bread and did the family wash. When machine-minded man invaded the home to compete with women in their traditional domestic tasks, it was but natural they should have followed their jobs into a competitive world to seek the employment of which they had been deprived. So men and women, working together, formed a way of life peculiar to this Republic. It is the way of business and industrial freedom—freedom of individual effort and collective enterprise. American grew great and waxed strong because men and women were free to act. With America's traditional freedoms and very independence now seriously threatened by Japan, Italy and Germany, women volunteer their services on many fronts. Whether in Army camp, Red Cross work or munitions plant, they do their part. Whether it be home-making or home defense, modern elastic services give you the time to help keep democracy at work.



**GEORGIA POWER & LIGHT CO.**

*A Civic-Minded Employing Industry—Serving  
Customer, Community and Country*





## SUCCESSFUL ANNUALS

Require the services of experienced and expert craftsmen, trained in every detail of the processes of creating • planning layout and design • typesetting • printing lithographing and binding ... Throughout half a century this company has pioneered in the production of the highest type of printing ... Our services include a special college annual sales and service organization ... Abundant equipment • modern and complete ... Prices representing maximum in value

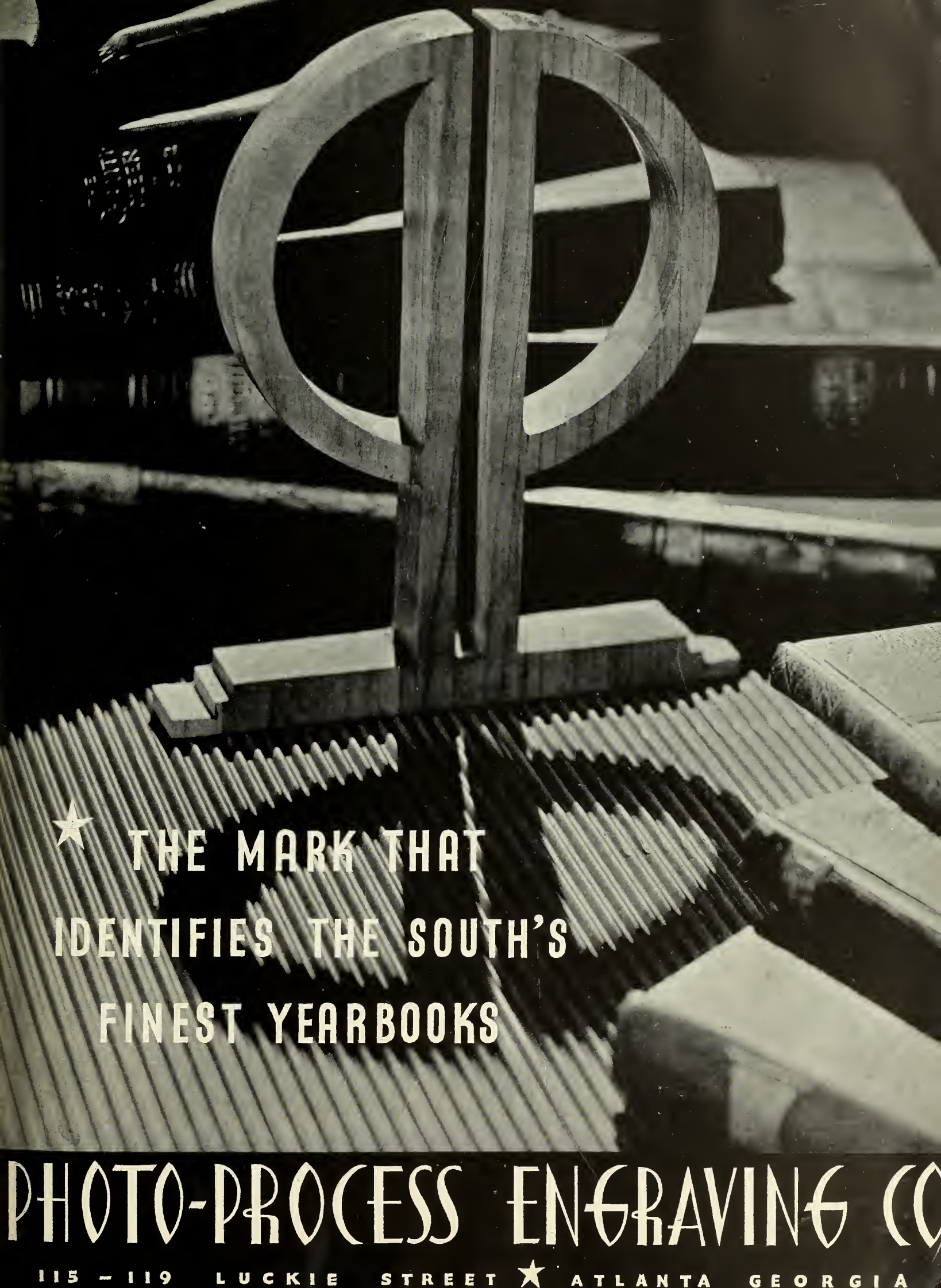


**FOOTE & DAVIES**

PRINTING • LITHOGRAPHING • ENGRAVING

ATLANTA





★ THE MARK THAT  
IDENTIFIES THE SOUTH'S  
FINEST YEARBOOKS

PHOTO-PROCESS ENGRAVING CO

115 - 119 LUCKIE STREET ★ ATLANTA GEORGIA











