

Pine Cone

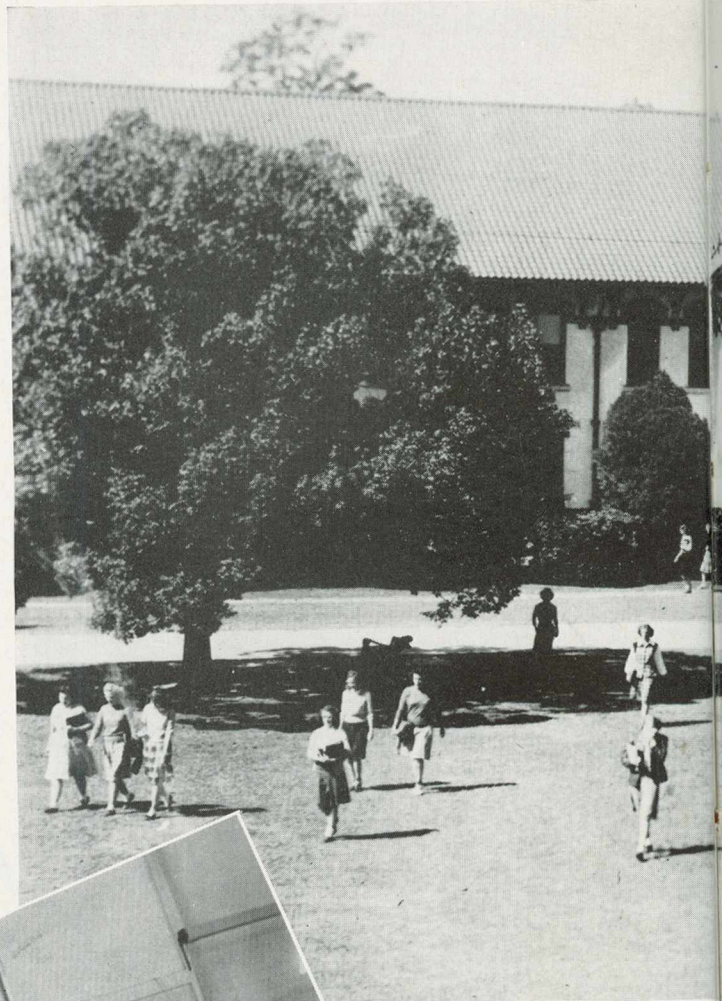
nineteen 47

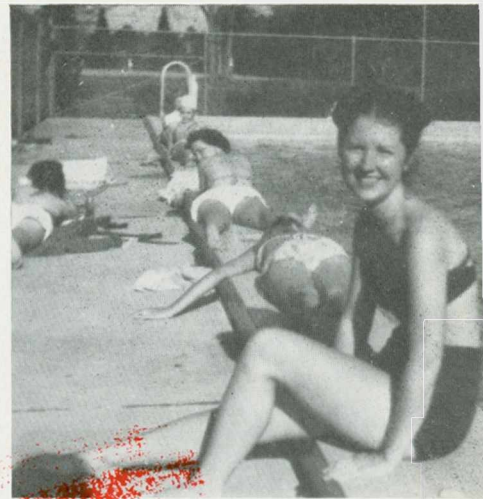
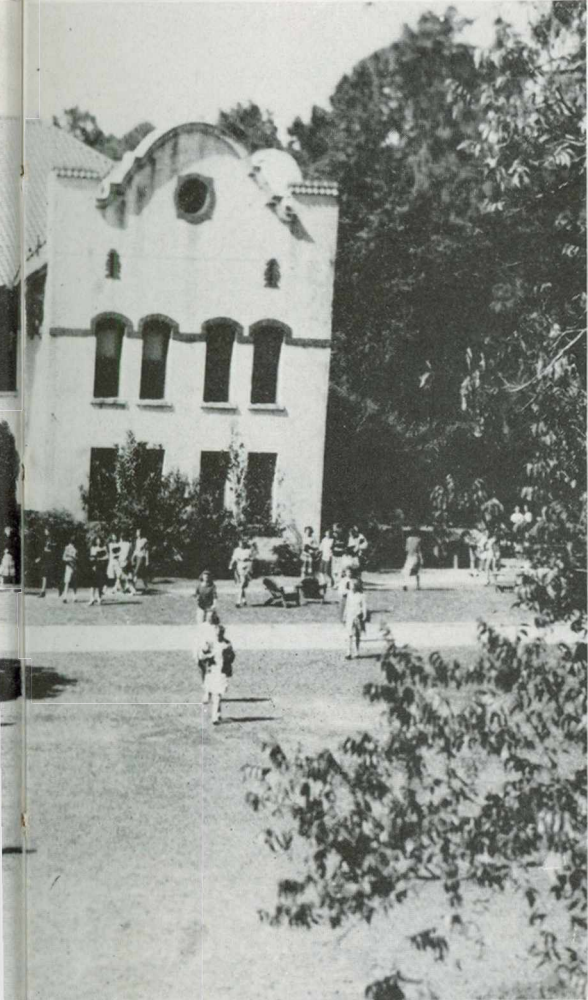


87/8/9

Pine Cone

~~21264~~





BIG DAY --- FROSH ARRIVE

SANTA COMES TO FINE ARTS BAZAAR

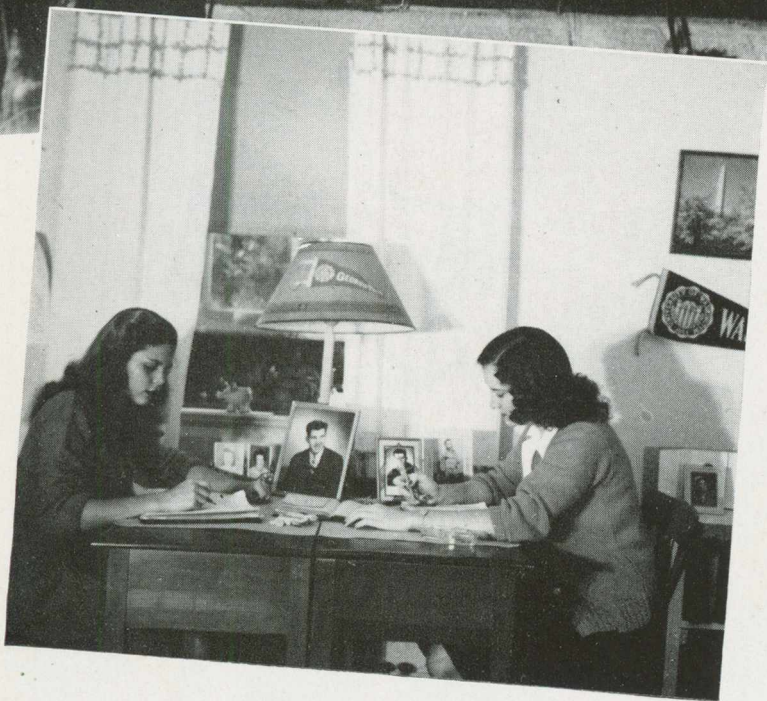
GLORIOUS TO OUR VIEW

ORANGES BETWEEN INNINGS

CALIFORNIA WAS NEVER LIKE THIS



Orange Slicing
For Sports — Club Games



Corresponding or Studying?

Experiments!



MONG THE STATELY PINES...



Club Contests



Form on the Diving Board



Hikes



REGISTRATION



FROM BETH



FROM
AD BUILDING
FOR CLASSES



TO "SUGIE"



TO "DR. D."



TO
LIBRARY
FOR RESEARCH



GEORGIA STATE WOMANS COLLEGE YOUR 1947 PINE CONE

The combined activities of work, study and play in a setting of stately pines surrounding gleaming white buildings of Spanish architecture unite to build well-rounded students who every year leave to take their places in the ranks of leaders.



DEDICATED TO



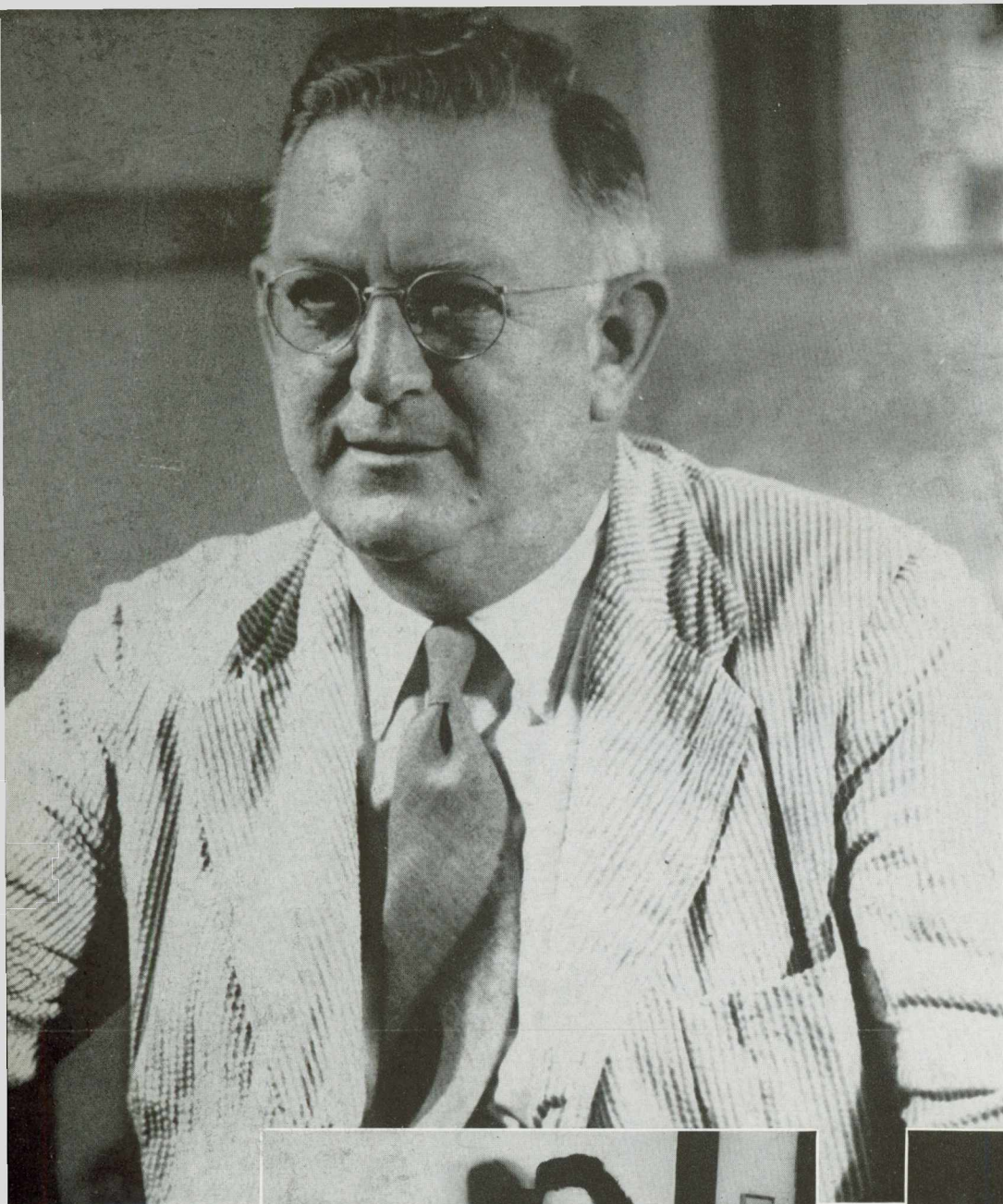
DR. HAROLD STRONG GULLIVER

"A Smile for Everyone"

---AND DIVIDED INTO THESE
2 SECTIONS---

1 People—the faculty and administrative staff directing the academic life on campus and a portrayal of the students who are G.S.W.C.'s contribution to a better world.

2 Organizations which offer the opportunity for the development of the skills and abilities possessed by the students.



FRANK R. READE, *President*
A.B., M.A., Ph.D.,
University of Virginia



MARJORIE ESTELLE CARTER
Dean of Junior College
Associate Professor of Biology; B.S., William and
Mary; M.A., University of Virginia



MRS. W. M. THOMAS, A.B.
Registrar
B.A., Georgia State Woman's College

ADMINISTRATION and FACULTY



FRANCES LOUISE STUMP, *Assistant to Treasurer and Purchasing Agent*; B.A., Georgia State Womans College

J. R. DUSENBURY, *Treasurer and Purchasing Agent*

BETH WHITAKER, *Secretary to the President*; B.A., Georgia State Womans College

ELIZABETH FINK, *Director of Placement and Publicity*; B.A., East Tennessee State College

LILLIAN PATTERSON, *Librarian*; B.A., Georgia State Womans College; B.S. in L.S., University of North Carolina

THERA HAMBRICK, *Assistant Librarian*; B.A., Georgia State Womans College; B.S. in L.S., Louisiana State University

ALICE MEADORS, *Assistant Librarian*; B.A., Georgia State Womans College; B.S. in L.S., George Peabody College for Teachers





DIVISION OF SOCIAL

JOSEPH AUSTIN DURRENBERGER, *Professor of Social Sciences*; B.A., Southwestern University; M.A., Columbia University; Ph.D., Ibid

WILLARD E. RUGGLES, *Associate Professor of Social Sciences*; B.A., M.S., Furman University

GERTRUDE GILMER ODUM, *Professor of English*; B.S., George Peabody College for Teachers; M.A., Ibid

HAROLD STRONG GULLIVER, *Professor of English*; B.A., Yale University; M.A., Columbia University; Ph.D., Ibid

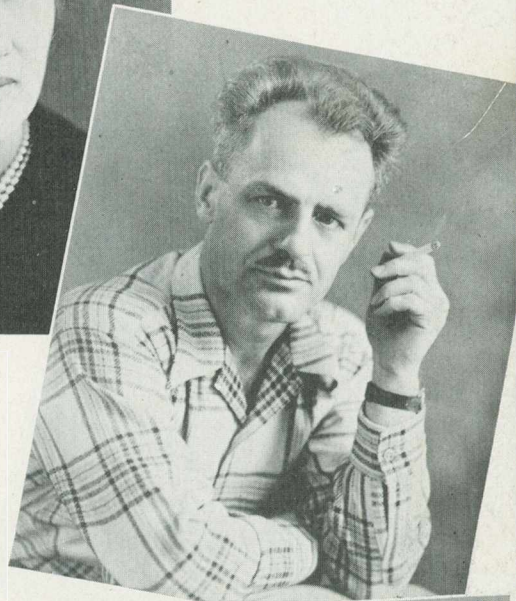
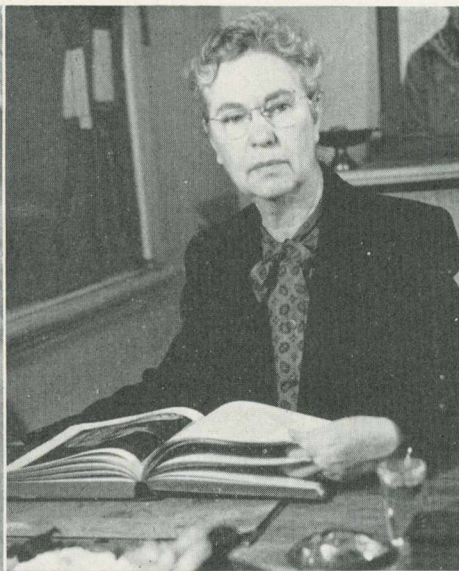
MRS. N. E. FRY, *Professor of Sociology*; B.S., Georgia State College for Women; M.A., Tulane

MRS. CLAUDE KNIGHT, *Professor of Education*; B.S., M.A., George Peabody College for Teachers

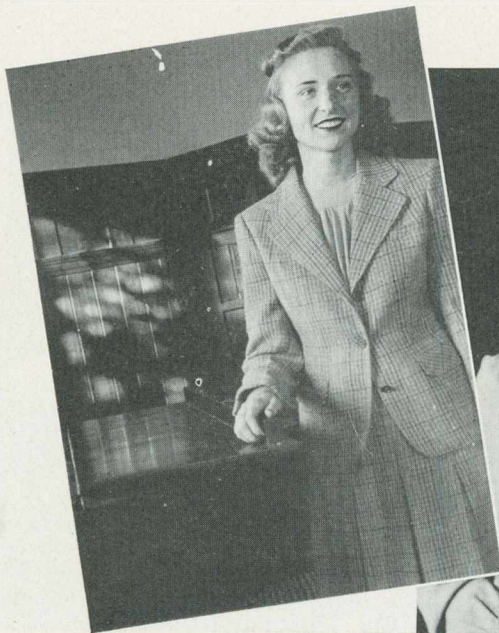
MILDRED McCLELLAN PRICE, *Professor of History*; B.A., Georgia State Womans College; M.A., Columbia University

HONORIA SAPELO TREANOR, *Professor of French and Spanish*; B.A., University of Georgia; M.A., Ibid; Ph.D., University of North Carolina





SCIENCES AND HUMANITIES



CLIFTON HUNTINGTON WHITE, *Associate Professor of Art and Music and Dean of Chapel*; B.A., Emory University; M.A., Ibid.

FRANCES RUTH CARPENTER, *Professor of Art*; Bachelor's Diploma and B.S., Teachers College, Columbia University; M.A., Ibid.

LOUISE ANNE SAWYER, *Professor of Speech*; Graduate, Columbia College of Expression; B.S., School of Speech, Northwestern University; M.A., Columbia University.

RAIMONDE AUBREY, *Associate Professor of Music*; F.T.C.L., Trinity College of Music, London.

MARTUA CARRINGTON AUBREY, *Accompanist, Music Department*.

GLADYS E. WARREN, *Professor of Music*; B.M., Lake Erie College; Graduate, New England Conservatory of Music; M.A., Iowa State University; Pupil of Carl Beecher, Northwestern University; of Ernest Hutcheson, New York City; of Lee Pattison, Chicago; of Tobias Matthay, Matthay School of Pianoforte, London, England; of Arthur Alexander, Royal College of Music, London, and of Ashley Pettis, Eastman School of Music, Rochester, N. Y.

FRANCES B. PARDEE, *Instructor in Violin*; Graduate, Cincinnati Conservatory of Music; Pupil of Sevcik in Vienna, and of Robert Perutz and Julian Pulikowski, Cincinnati Conservatory.

GLYNN HILL, *Assistant Professor of Voice*; B.A., Georgia State Womans College.

FACULTY

DIVISION OF PRACTICAL ARTS, NATURAL SCIENCES and MATHEMATICS

JEAN LOWRY, *Business Education Instructor*; B.A., East Tennessee State College; M.S., University of Kentucky

MRS. VENNIS A. KENDRICK, *Professor of Home Economics*; B.S., Auburn Polytechnic Institute

EARL W. PHELAN, *Professor of Chemistry*; B.Chem., Ph.D., Cornell University

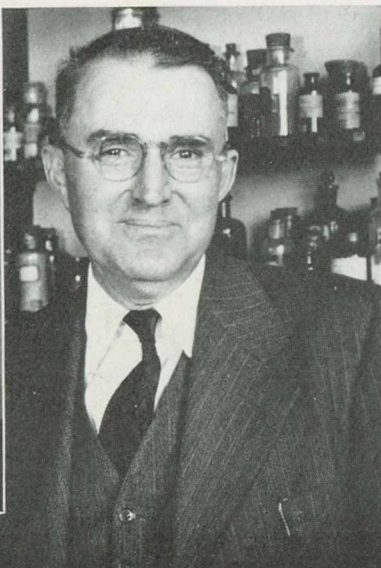
LENA PHELPS HAWKS, *Professor of Mathematics*; B.A., Goucher College; M.A., Vanderbilt University; Ph.D., The Johns Hopkins University

ROLF EARL MOSELEY, *Associate Professor of Chemistry*; B.Ph., Emory University; B.S., Ibid.

BEATRICE NEVINS, *Professor of Biology*; B.Ph., M.Ph., D.Ph., University of Wisconsin

LEONORA IVEY, *Professor of Physical Education*; Graduate, Sargent School for Physical Education; B.S., Georgia State College for Women; M.A., George Peabody College for Teachers

PHYSICAL



DORMITORY STAFF



MRS. FLORINE W. MIERS, *Superintendent of Dormitories*

MRS. J. A. SCONYERS, *Director of Social Activities*

MRS. EVA A. SHRIVALLE, *Dietitian*

MRS. C. C. WHITTLE, *Assistant Dietitian*

MARIAN E. FARBAR, M.D., *Resident Physician*

MATILDA DASHER MATHIS, *Instructor in Physical Education; B.S., Louisiana State University*

FRANCES ALEX, *Instructor in Physical Education; Graduate nurse; B.S. in Physical Education and Health*

MRS. PHYLLIS VALENTE, *Dancing Instructor; B.A., Oklahoma A. & J. M.; M.S., Louisiana State University; attended Bennington School of Dance in Vermont*



EDUCATION



SENIOR OFFICERS

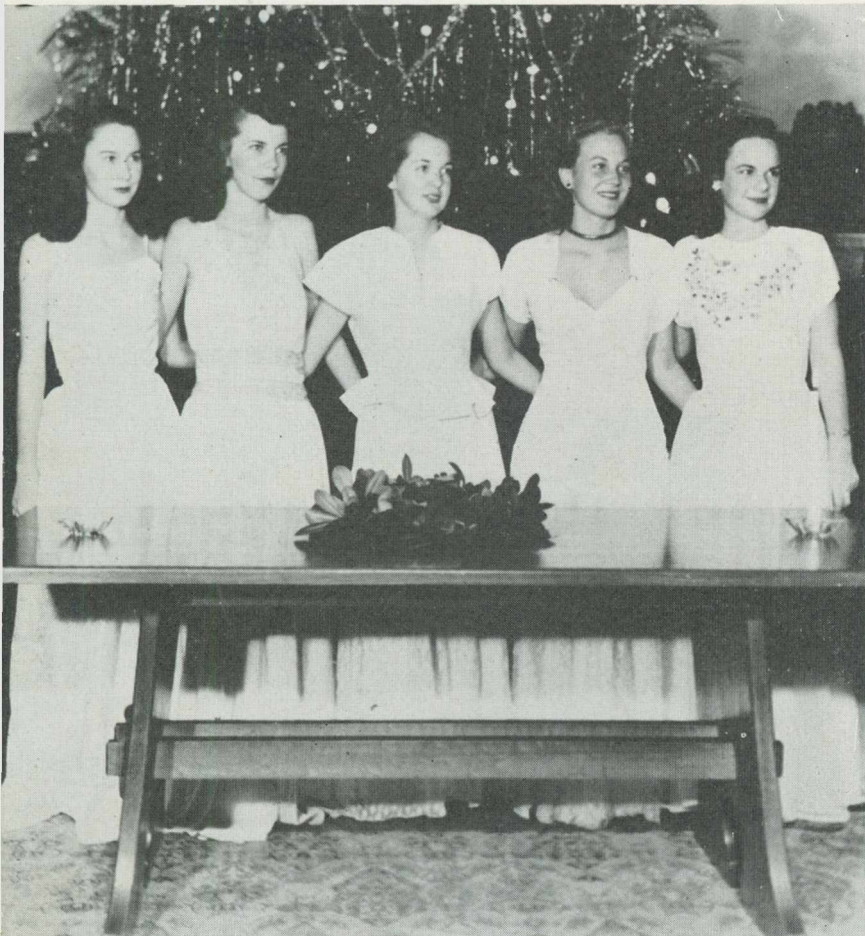
MARJORIE MASSEY, *Vice-President*



ELIZABETH PATE, *President*



ANNE WHITTLE, *Secretary-Treasurer*



June 11, 1946

Dear Diary:

Tomorrow we march down the aisle in our caps and gowns and get the "container" and the "thing contained." Four years have gone by so swiftly, and I want to remember as much as I can that has happened, particularly in my Senior year.

It seemed funny at first to be "big wigs," top class on campus, and it took us a while to get used to the fact that people like the presidents of organizations and editors of publications were from our class—people we ran around with and whose sardines we shared at midnight.

Being "big wigs" has had its responsibilities, too, and we realized that more than once this year.

However, all work and no play makes Jill a dull gal, and we certainly have not been dull. Birthday

SENIOR ACTIVITY

parties, square dances, and the fun we had with the Senior Carnival will live in our memories a long time, especially that "can-can" number in the side show.

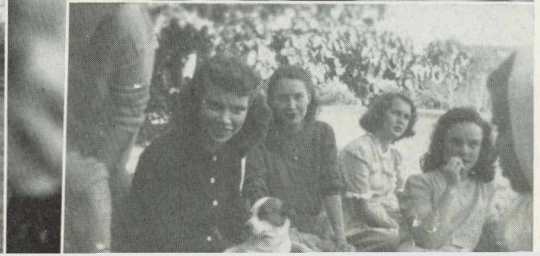
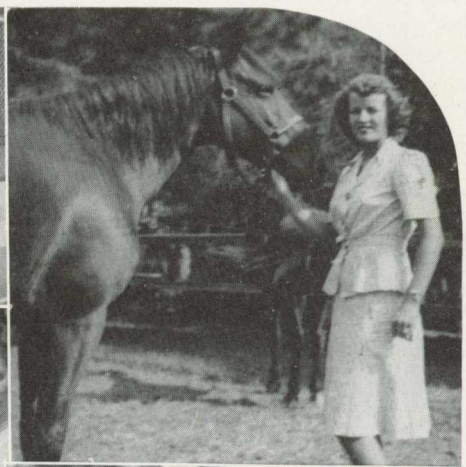
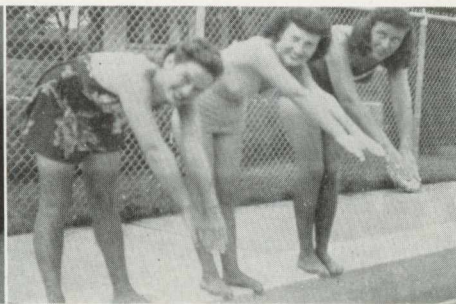
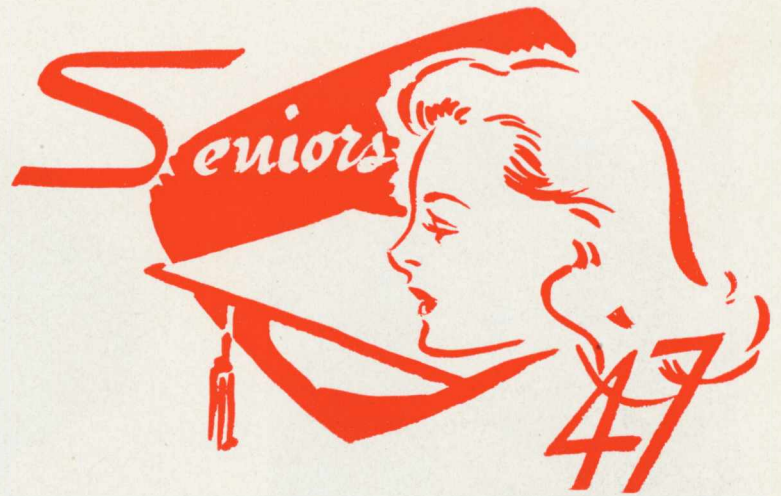
We have brought out our white evening dresses twice; for the "Firelighting Service" and the "Hanging of the Greens," and we have worked together on the Christmas mailing list.

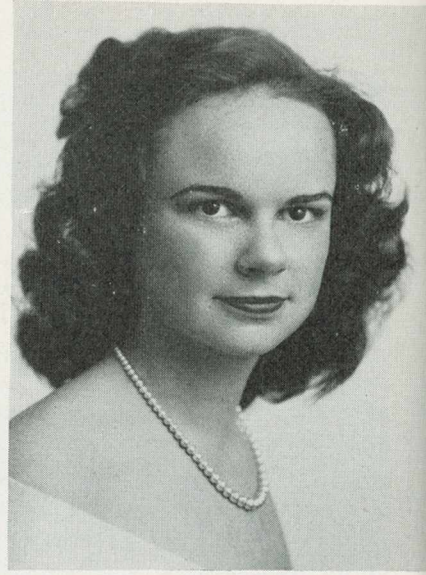
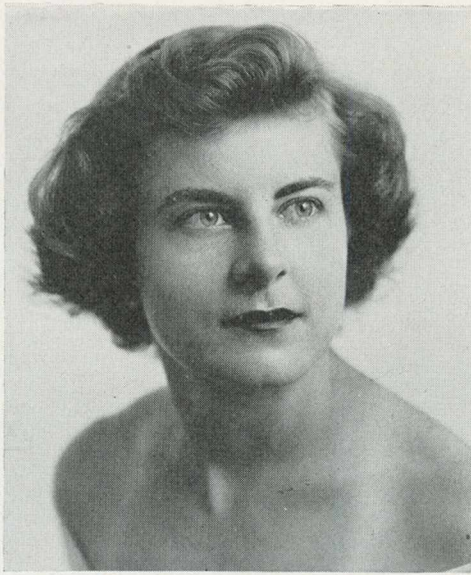
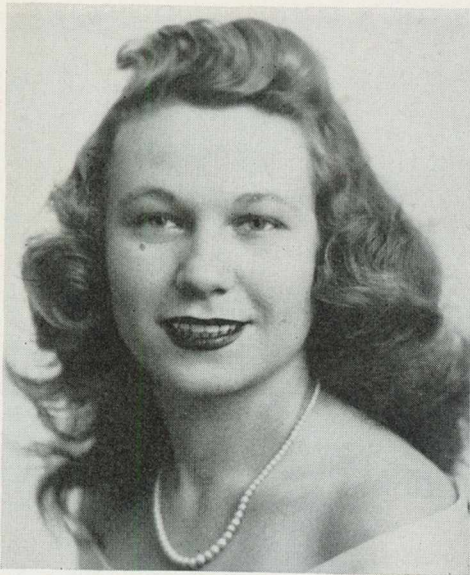
We have heard the call of "Last time" as we did the traditional things that we have grown to love so well, and when members of our class started leaving in December and March, then we realized that, in truth, we were graduating this year.

We have tried to do our best in whatever we have done, and we leave behind a record of which we need have no shame.

And now tomorrow we go out to face the cold civil world. Well, look out, World, here we come!

Seniors





SARAH KATE ADCOCK—Fender, Ga.

Humanities; Emphasis in English

Sports Club 1, 2, 3, 4; Glee Club 1, 3; Home Economics Club 1, 2; Sociology Club 3; Y.W.C.A. 1, 2, 3, 4; Dance Club 3, 4; League of Women Voters 4; S.G.A., 1, 2, 3, 4.

HARRIET LOUISE ARRINGTON—Dixie, Ga.

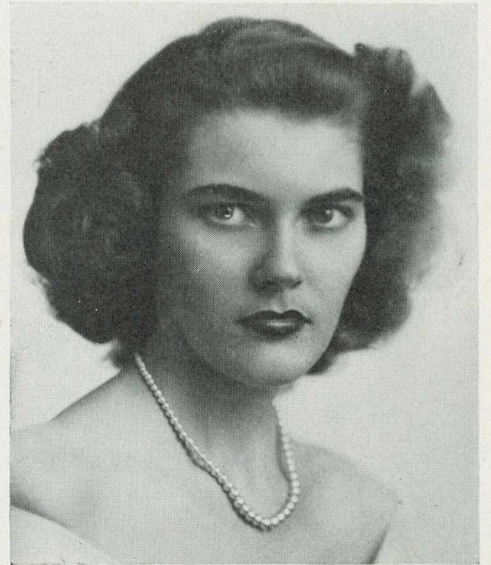
History, major; English and Biology, minors

Y.W.C.A. 1, 2, 3, 4; "Y" Cabinet 2, 3, 4, Treasurer 2, 3, 4; S.G.A. 1, 2, 3, 4; Monitor 1, 2, 3, 4; I.R.C. 2, 3, 4, Vice-Pres. 2, Pres. 3, Vice-Pres. 4; Math Science 2, 3, 4; Senior Honor Society 3, 4, Pres. 4; League of Women Voters 3, 4, Pres. 3.

MILDRED SIMONE BASSETT—Fort Valley, Ga.

French, major; English, minor

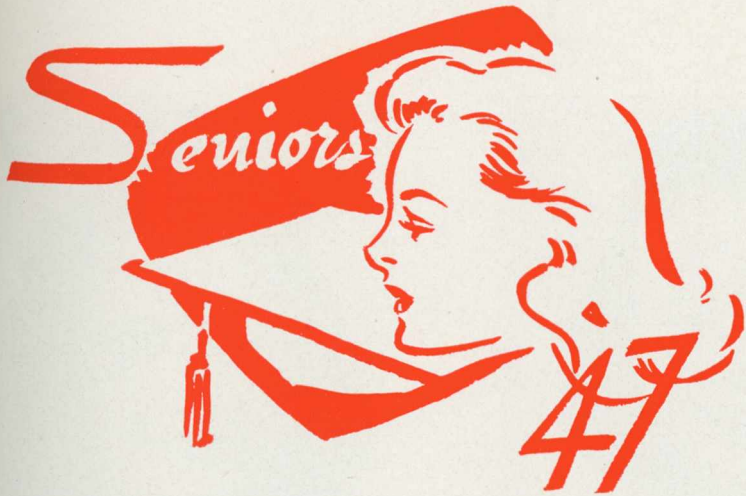
S.G.A. 1, 2, 3, 4; Sports Club 1; Y.W.C.A. 1, 2, 3, 4; I.R.C. 2, 3, 4, Sec. 2; Romance Language Club 2, 3, 4, Pres. 3, Sec.-Treas. 4; Senior Honor Society 3, 4; Math Science Club 3; E.C.A. 3; Campus Canopy 2, 4.



LISETTE CATHERINE BLACK—Savannah, Ga.

English, major; History, minor

Transfer from Armstrong Junior College, Savannah, Ga. English Club 4, Vice-Pres. 4; Romance Language Club 4; I.R.C. 4; House Council 4; Y.W.C.A. 3, 4; S.G.A. 3, 4.



EDITH RUTH COLLINS—Waycross, Ga.

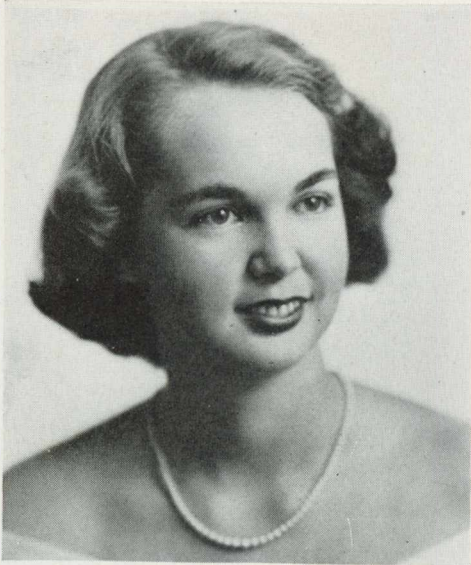
Sociology, Major

Y.W.C.A. 1, 2, 3, 4, Vice-Pres. 3, Pres. 4; "Y" Cabinet 2, 3, 4, Organist 2; Chapel Choir 1, 2, 3; S.G.A., 1, 2, 3, 4; Executive Committee 4; House Council 3; Monitor 4; Sports Club 1, 2, 3, 4; *Campus Canopy* 1, 2, 3, 4, News Editor 1, Managing Editor 2, Columnist 3, 4; PINE CONE 3, 4, Assistant Activities Editor 3, Literary Co-Editor 4; Sociology Club 2, 3, 4; Math Science Club 2, 3; Philharmonic Club 1; Glee Club 1, 2; Fellowship of St. Martin 2, 3, 4, Pres. 2.

VIRGINIA ELIZABETH BOLEN—Mayo, Fla.

Secretarial Science, major; History, minor

Sports Club 1, 2, 3, 4, Lambda Team Captain 2, Pres. 3; Sports Council 1, 2, 3, 4; Awards 1, 2, 3, 4; Freshman Honor Society 2; Senior Honor Society 3, 4; Business Club 3, 4, Vice-Pres. 3, Pres. 4; Valdosta Club 1, 2, 3, Vice-Pres. 2; Math Science Club 2, 3; Sociology Club 3; S.G.A. 3, 4; Executive Committee 3; E.C.A. 4; League of Women Voters 3, 4; I.R.C. 4; PINE CONE Staff 4; Glee Club 1.



DATHINE ELEANOR BRUNSON—Reynolds, Ga.

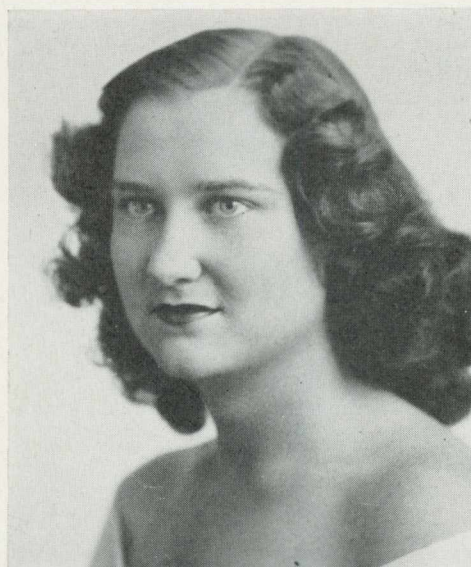
Secretarial Science, major; History, minor

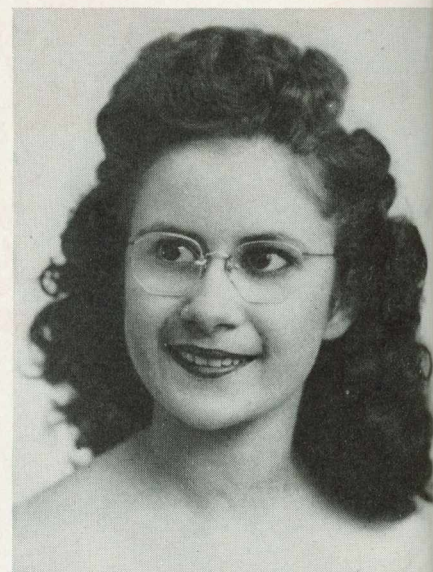
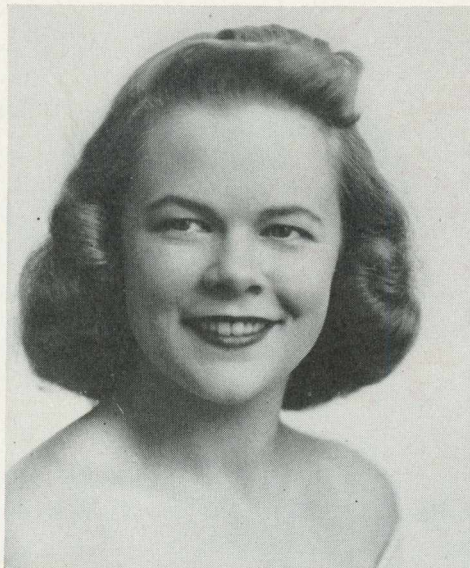
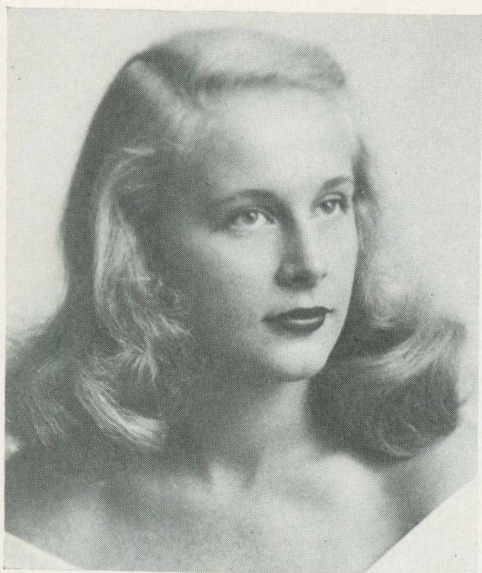
Sports Club 1, 2, 3, 4; Sports Club Council 3, 4; Awards 1, 2, 3, 4; Y.W.C.A. 1, 2, 3, 4; S.G.A. 1, 2, 3, 4; Sociology Club 3; Business Club 3, 4, Treas. 4; PINE CONE Photograph Editor 4; *Campus Canopy* Sports Editor 3, 4.

DOROTHY CLARE CARSON—Savannah, Ga.

Social Work, major

Y.W.C.A. 1, 2, 3, 4; S.G.A. 1, 2, 3, 4, Vice-Pres. 3; House Council 1; E.C.A. Chairman 3; Monitor 2, 3, 4; Sophomore Class Pres. 2; Sports Club 1, 2, 3, 4, Sec. 3; Sports Club Council 2, 3, 4; Awards 1, 2, ,; Math Science Club 3; Romance Language Club 2, 3, 4, vice-Pres. 3; *Campus Canopy* 1, 2, 3; League of Women Voters 3, 4.





MARY ELLEN COMPTON—Columbus, Ga.

Humanities Division, Emphasis on Art

Y.W.C.A. 1, 2, 3, 4; "Y" Cabinet 2; Chapel Choir 1; S.G.A. 1, 2, 3, 4; Monitor 2, 3, 4; Pres. of Freshman Class; Sports Club 1, 2, 3, 4; Sports Club Council 2, 3, 4; Fine Arts Club 1, 2, 3, 4; Sock and Buskin Club 1, 2, 3, 4; Math Science Club 2, 3, 4; Romance Language Club 3, 4; PINE CONE 3.

LAURA CLARKE CONVERSE—Valdosta, Ga.

Secretarial Science, major; Political Science, minor

Y.W.C.A. 1, 2, 3, 4; Sports Club 1, 2, 3, 4; S.G.A. 1, 2, 3, 4; E.C.A. 3; Executive Committee 4; Philharmonic Club 1, 2, 3; Glee Club 1, 2, 3, 4, Sec. 4; Business Club 3, 4, Pres. 3; Math Science Club 2, 3, 4; Senior Honor Society 3, 4; Dance Club 1, 2; Valdosta Club 1, 2, 3, 4; I.R.C. 4; Fellowship of St. Martin 2; League of Women Voters 3, 4, Sec. 3, 4; Activities Editor of Pine Cone 4; *Campus Canopy* 3, 4, Assistant Business Manager 3.

MARGUERITE DICKERSON—Ambrose, Ga.

Biology, major; English, minor

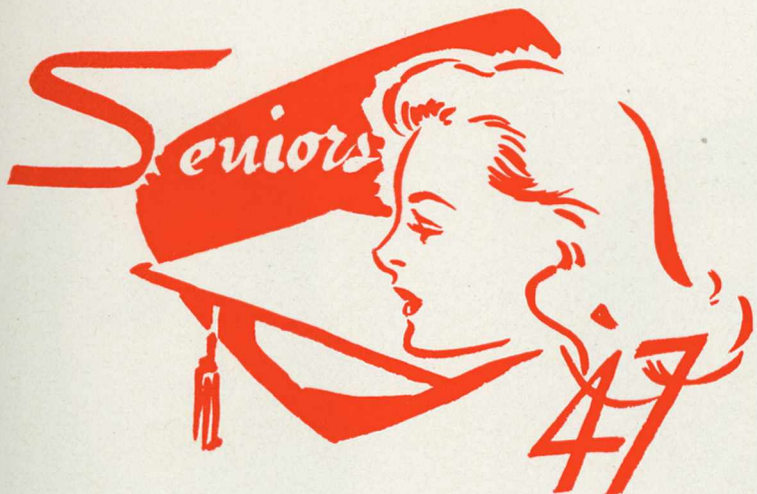
Math Science Club 2, 3, 4; Sociology Club 2, 3, 4; Sports Club 1, 2; Y.W.C.A. 1, 2, 3, 4; S.G.A. 1, 2, 3, 4; Log Cabin Committee 3, 4; Business Staff of *Canopy* 2, 3, 4; B.S.U. 1, 2, 3.



VIRGINIA CORINNE DELLINGER—Thomaston, Ga.

Chemistry, major; Biology, minor

S.G.A. 1, 2, 3, 4; Executive Committee 3; Y.W.C.A. 1, 2, 3, 4; Sports Club 1, 2, 3, 4, Historian 4; Sports Club Council 2, 3, 4; Awards 1, 2, 3, 4; Math Science Club 2, 3, 4, Chairman of Chemistry Div. 4; *Campus Canopy* 2, 3, 4, Sports Editor 2, Editor 3, Make-up Editor 4; Assistant Literary Editor of PINE CONE 3; League of Women Voters 3, 4, Member of Board 3, 4.



MARY JOSEPHINE EVERETT—Pavo, Ga.

Humanities Division, Emphasis on English

S.G.A. 1, 2, 3, 4; House Council 2, 4; Y.W.C.A. 1, 2, 3, 4; Sports Club 1, 2; Glee Club 1, 2, 3, 4; Serenaders 4; Methodist Choir 3; *Campus Canopy* Reporter 2; Business Club 3; English Club 3, 4, Sec.-Treas. 4; Romance Language Club 3, 4.

ILA DOWNIE—Uvalda, Ga.

Home Economics, major; Sociology, minor

Transfer from Brewton Parker. Y.W.C.A. 3, 4; S.G.A. 3, 4; Sports Club 3, 4; Home Economics Club 3, 4, Secretary 4; Sociology Club 3, 4; Monitor 4.

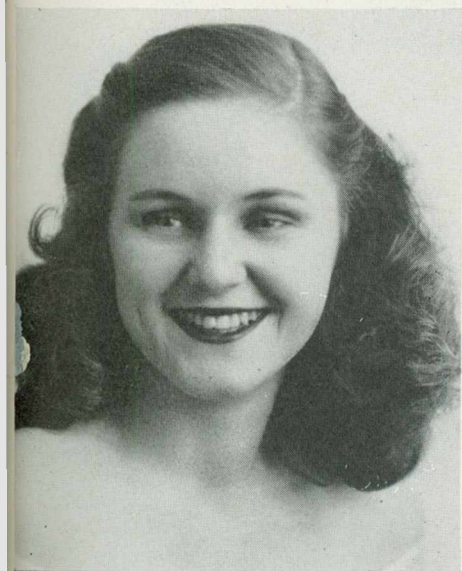
BERTHA DREXEL—Valdosta, Ga.

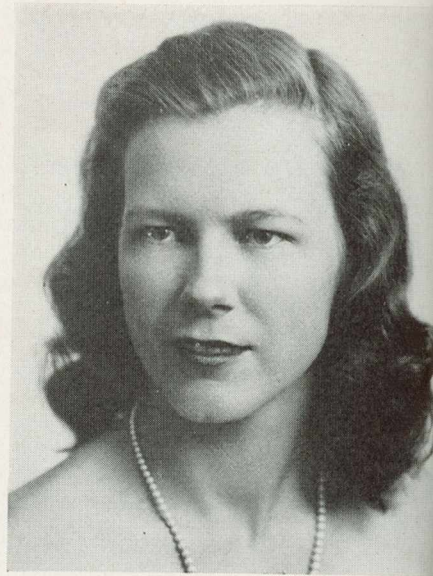
Fine Arts Club 3, 4, Reporter 4; Valdosta Club 1, 2, 3, 4; Sports Club 1, 2, 3, 4; S.G.A. 1, 2, 3, 4.

MARY MERRITT DYAL—Woodbine, Ga.

Biology, major; Chemistry, minor

S.G.A. 1, 2, 3, 4; House Council 4; Y.W.C.A. 1, 2, 3, 4; "Y" Cabinet 3, 4; Math Science Club 2, 3, 4, Chairman of Biology Div. 3, Pres. 4; Sophomore Council 2; Methodist Student Council 4; Sports Club 1, 2; League of Women Voters 3, 4; E.C.A. 4; Circulating Manager *Campus Canopy* 2, 3.





JULIA M. FLYNT—Decatur, Ga.
Mathematics, major; English, minor

Transfer from University System Center, Atlanta, Ga.
Sports Club 1, 4; Math Science Club 4; S.G.A. 1, 4;
Y.W.C.A. 1, 4; Fellowship of St. Martin 4; League of
Women Voters 4.

DOROTHY PEARL FUTCH—Elberton, Ga.
Sociology, major

S.G.A. 1, 2, 3, 4; Y.W.C.A. 1, 2, 3, 4; Sports Club 1, 2, 3,
4; Math Science Club 3, 4; Sociology Club 3, 4; B.S.U.
1, 2, 3, 4.

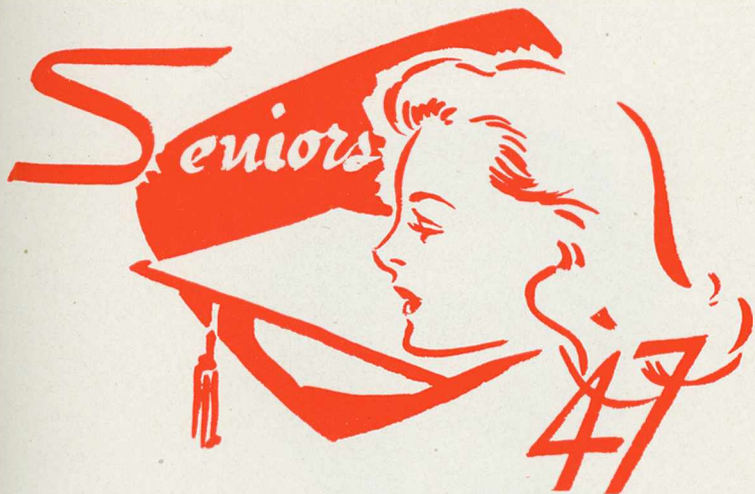
PATRICIA GAINNEY—Thomasville, Ga.
Humanities Division, Emphasis on English

Transfer from Central College, Fayette, Mo. Sports Club
3, 4; Sports Club Council 4; Executive Committee 3, 4;
Log Cabin Chairman 4; English Club 4; Sock and Buskin
Club 3, 4.

NORMA COLLEEN GEIGER—McRae, Ga.
Humanities Division, Emphasis on Art

S.G.A. 1, 2, 3, 4; Y.W.C.A. 1, 2, 3, 4; Sports Club 2, 3, 4;
Sports Club Council 3; Fine Arts Club 2, 3, 4, Sec.-Treas.
3, 4; Romance Language Club 3, 4; *Campus Canopy* 2, 3, 4;
PINE CONE Art Editor 4; Log Cabin Committee 3; Student
Handbook 3; Junior Class Sec.-Treas.





DORIS ANNE GIBBS—Waycross, Ga.

Biology, major; English, minor.

S.G.A. 1, 2, 3, 4; House Council 3; Y.W.C.A. 1, 2, 3, 4; "Y" Cabinet 2, 3, 4; Vesper Choir 3, 4; Sports Club 1, 2, 3, 4; Math Science Club 1, 2, 3, 4; *Campus Canopy* Ad Staff 2; B.S.U. 1, 2, 3, 4.

KATHLEEN GRANTHAM—Thomaston, Ga.

Humanities Division, Emphasis on English

Sociology Club 1; *Campus Canopy* 1, 2, 3, 4, Columnist 2, 3, Exchange Editor 4; PINE CONE Photography Editor 4; S.G.A. 1, 2, 3, 4, Executive Committee 4; Y.W.C.A. 1, 2, 3, 4; Sports Club 1, 2, 3, 4, Sec. 2, Vice-Pres. 3, Pres. 4; Sports Council 1, 2, 3, 4; Awards 1, 2, 3, 4; Sock and Buskin Club 3, 4; Romance Language Club 3, 4; English Club 3, 4, Sec.-Treas. 3; Fire Lt. 3.



JEAN CAROLYN HALL—Hahira, Ga.

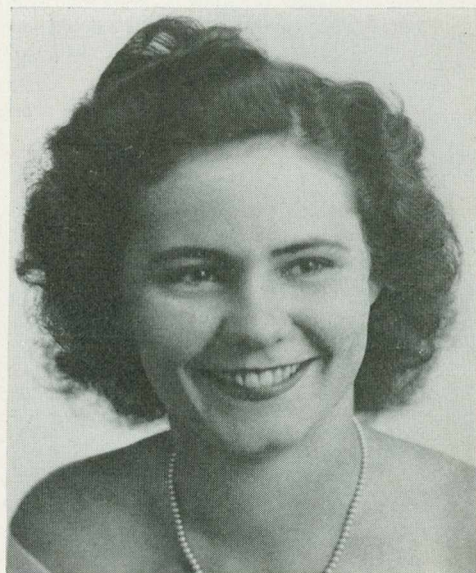
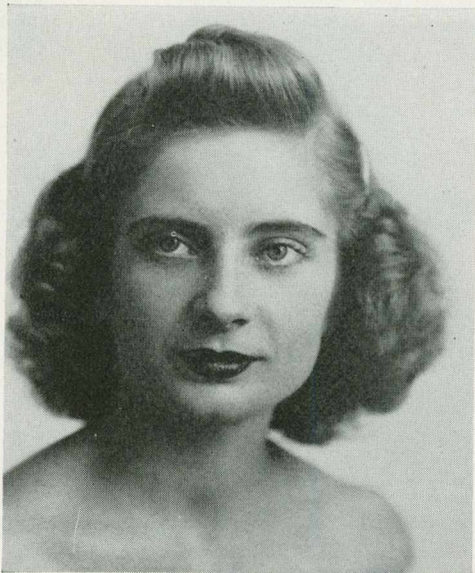
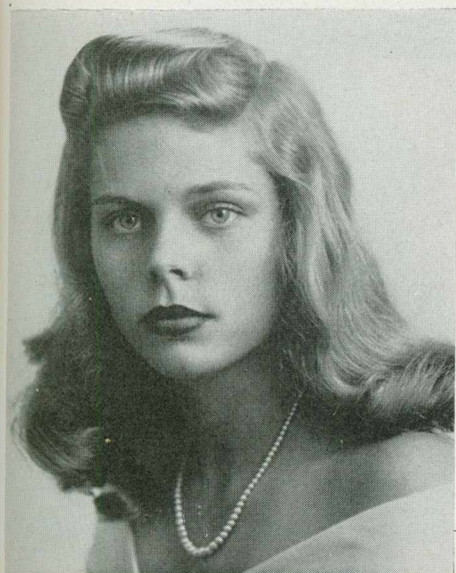
Divisional Major, Emphasis on History

S.G.A. 1, 2, 3, 4; Y.W.C.A. 1, 2, 3, 4; Sports Club 1; I.R.C. 2, 3, 4, Treas. 4.

ANNETTE HERNDON—Sardis, Ga.

Humanities Division, Emphasis on English

S.G.A. 1, 2, 3, 4; Math Science Club 3, 4, Sec.-Treas. 4; Y.W.C.A. 1, 2, 3, 4; Sports Club 1, 2; *Campus Canopy* 3, 4, Business Manager 3, 4; PINE CONE 2; English Club 3, 4; Romance Language Club 3, 4; House Council 3.





DOROTHY KEATON HIGHTOWER—Damascus,
Georgia

Humanities Division, Emphasis on English

S.G.A. 1, 2, 3, 4; Y.W.C.A. 1, 2, 3, 4; Sock and Buskin
3, 4; English Club 4.

SANCIL EMILY HOLDER—Tifton, Ga.

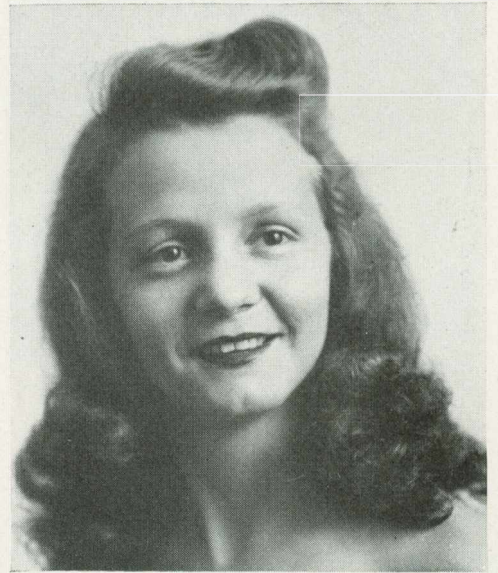
Humanities Division, Emphasis on English

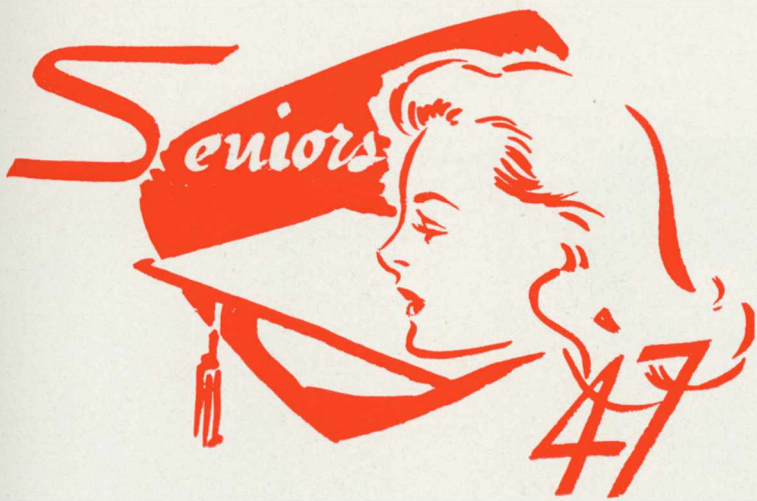
Y.W.C.A. 1, 2, 3, 4; S.G.A. 1, 2, 3, 4; Sports Club 1, 2, 3;
Sophomore Council; Log Cabin Committee 3; English
Club 3, 4; Math Science Club 3, 4; B.S.U. 1, 2, 3, 4,
First Vice-Pres. 3, 4.

ELIZABETH (BETTY) HUTCHINSON—Valdosta,
Georgia

Humanities Division, Emphasis on English

Valdosta Club 1, 2, 3, 4, Pres. 3; Glee Club 1; Sports
Club 1; Y.W.C.A. 1, 2, 3, 4; S.G.A. 1, 2, 3, 4; Executive
Committee 3; *Campus Canopy* 3, 4; PINE CONE 2, 3, Ad
Manager 2, Business Manager 3; English Club 3, 4, Pres.
3; Romance Language Club 3, 4; E.C.A. 3; League of
Women Voters 3, 4, Pres. 4.





LOIS GIBSON JOHNSON—Milan, Ga.

Biology, major; English, minor

S.G.A. 1, 2, 3, 4; Y.W.C.A. 1, 2, 3, 4; Vesper Choir 2, 3; Math Science Club 3, 4; Sports Club 1, 2, 3, 4; Glee Club 4.

MARGARET JUNE JOYNER—Screven, Ga.

Social Work, major; English, minor

Sports Club. 1, 2; S.G.A. 1, 2, 3, 4; Y.W.C.A. 1, 2, 3, 4; Sociology Club 2, 3, 4; PINE CONE 2; *Campus Canopy* 1; Sophomore Council.

NEIL MILDRED KENNEY—Moultrie, Ga.

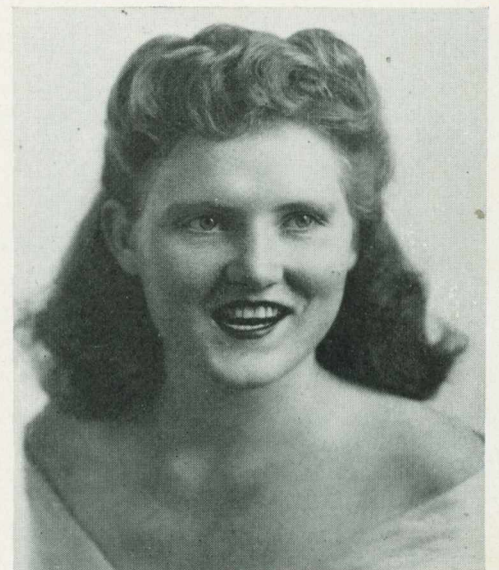
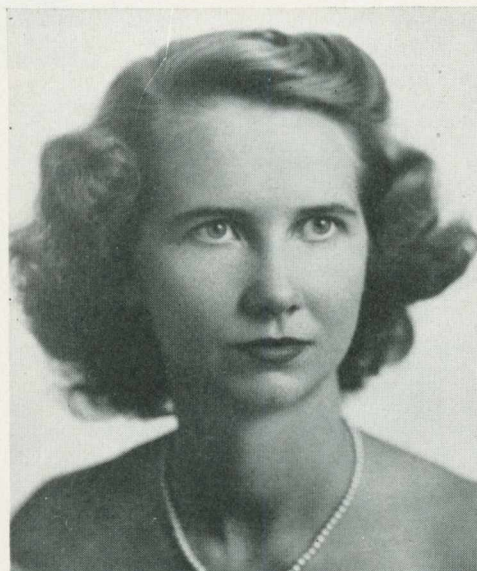
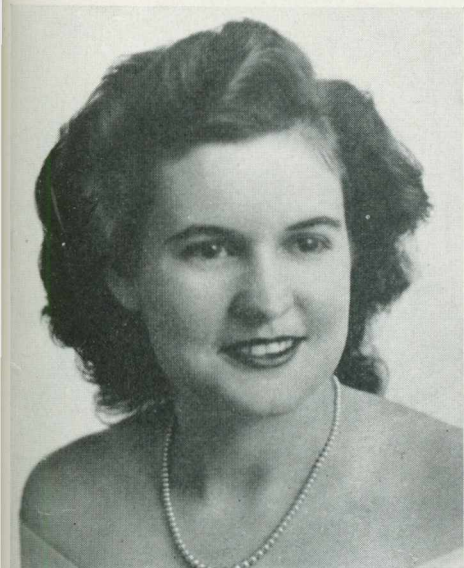
Chemistry, major; Biology, minor

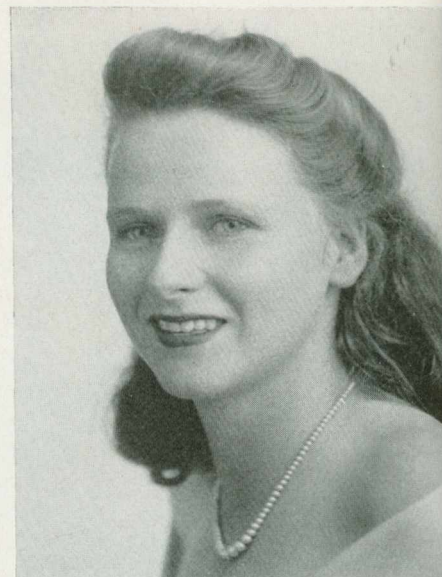
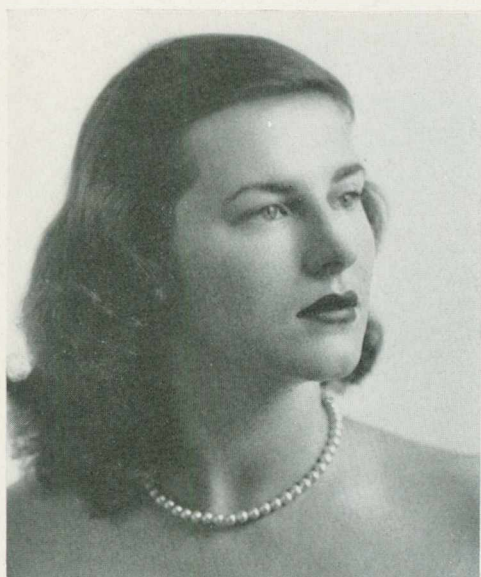
S.G.A. 1, 2, 3, 4; Y.W.C.A. 1, 2, 3, 4; Sports Club 1, 2, 3, 4; Sports Council 1, 2, 3, 4; Awards 1, 2, 3, 4; Math Science Club 2, 3, 4; Senior Honor Society 4; League of Women Voters 3, 4.

JULIA FRANCES McINTYRE—Valdosta, Ga.

Humanities Division, Emphasis on English

S.G.A. 1, 2, 3, 4; Y.W.C.A. 1, 2, 3, 4; Valdosta Club 1, 2, 3, 4; Sports Club 1, 2, 3, 4.





JEAN MARTIN—Fitzgerald, Ga.

History, major; English, minor

Sports Club 1; S.G.A. 1, 2, 3, 4, Pres. 4; Executive Committee 1, 4; Pres. of Freshman Class; Y.W.C.A. 1, 2, 3, 4; Glee Club 1, 2, 3, 4; Librarian 2, 3; Serenaders 2, 3, 4; Chairman of Sophomore Council; I.R.C. 3, 4; Sock and Buskin Club 1, 2, 3, 4; Math Science Club 1, 2, 3; Freshman Honor Society 2; Senior Honor Society 3, Pres. 3; Romance Language Club 3, 4; League of Women Voters 3, 4; E.C.A. 1, 3, 4; Artist Series Committee 4; Philharmonic Club 1; *Campus Canopy* 2, 3.

SARAH MARGIE MASSEY—Valdosta, Ga.

Home Economics, major; Art, minor

Glee Club 1, 2, 3, 4; Sports Club 1, 2; Dance Club 4; Valdosta Club 1, 2, 3, 4; Y.W.C.A. 1, 2, 3, 4; E.C.A. 3, 4; S.G.A. 1, 2, 3, 4; Artist Series Committee 3, 4; League of Women Voters 3, 4; Sock and Buskin Club 3, 4; Fine Arts Club 2, 3, 4, Pres. 3, 4; Home Economics Club 2, 3, 4, Vice-Pres. 3; Vice-Pres. of Senior Class.



BETH MIDDLETON—Hortense, Ga.

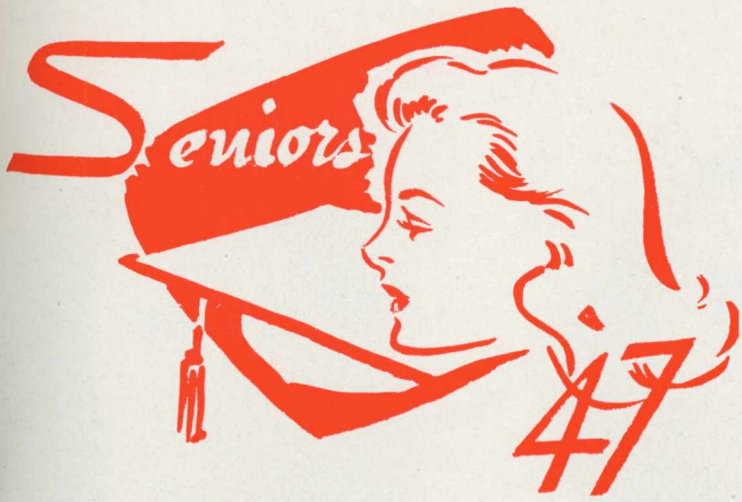
Biology, major; Chemistry, minor

S.G.A. 1, 2, 3, 4; Sophomore Council; House Council 2; Math Science Club 2, 3, 4, Chairman of Biology Division 3; Sports Club 1, 4; Y.W.C.A. 1, 2, 3, 4; *Campus Canopy* 2.

BLANCHE HAYMAN MYERS—Valdosta, Ga.

Humanities Division, Emphasis on English

S.G.A. 1, 2, , 4; Y.W.C.A. 1, 2, 3, 4; Glee Club 1, 2, 3, 4; Valdosta Club 1, 2, 3, 4; Sports Club 1.



FRANCES MARION NEWSOM—Reynolds, Ga.
Secretarial Science, major; Math, minor

Sports Club 1, 2, 3, 4, Treas. 3, Lambda Team Capt'n 3, Vice-Pres. 4; Sports Club Council 2, 3, 4; Awards 1, 2, 3, 4; S.G.A. 1, 2, 3, 4, Vice-Pres. 3; Executive Committee 3, 4; Monitor 2, 3, 4; House Council 2; E.C.A. Chairman 4; I.R.C. 2, 3, 4, Treas. 2, Vice Pres. 3, Pres. 4; Freshman Honor Society 2; Senior Honor Society 3, 4; Math Science Club 2, 3, Sec.-Treas. 2; Y.W.C.A. 1, 2, 3, 4; Business Club 3, 4, Vice-Pres. 4; Literary Co-Editor of PINE CONE 4; League of Women Voters 3, 4, Member of Board 4.

VIVIAN LOUISE NEWTON—Camilla, Ga.
Biology, major; Chemistry, minor.

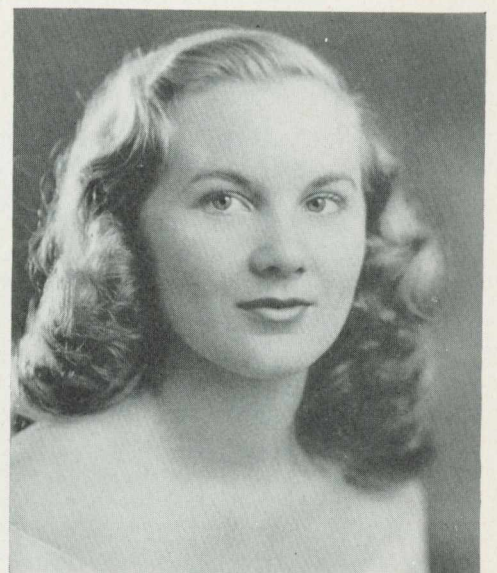
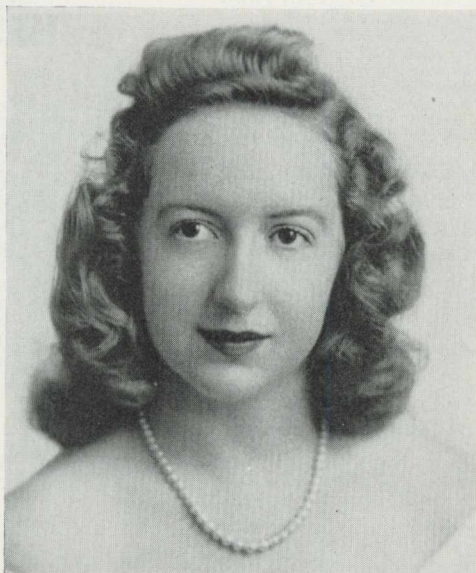
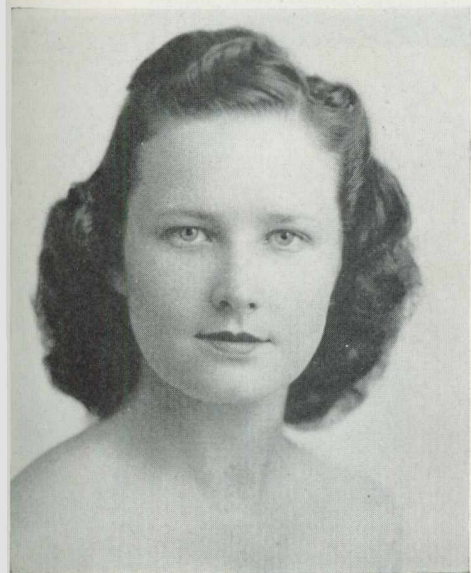
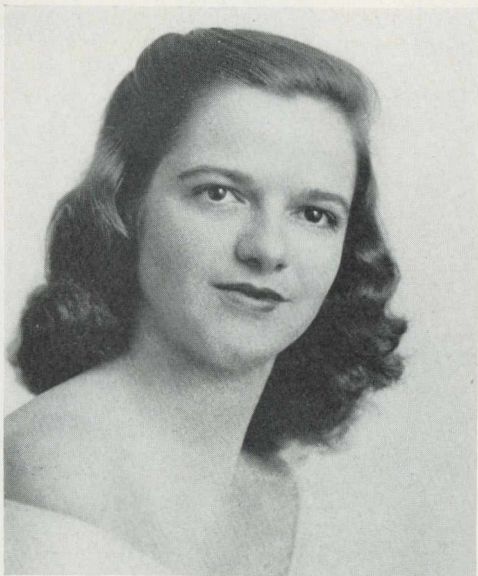
S.G.A. 1, 2, 3, 4; Freshman Representative; Sports Club 1, 2, 3, 4; Math Science Club 2, 3, 4; Y.W.C.A. 1, 2, 3, 4; Business Manager of PINE CONE 4.

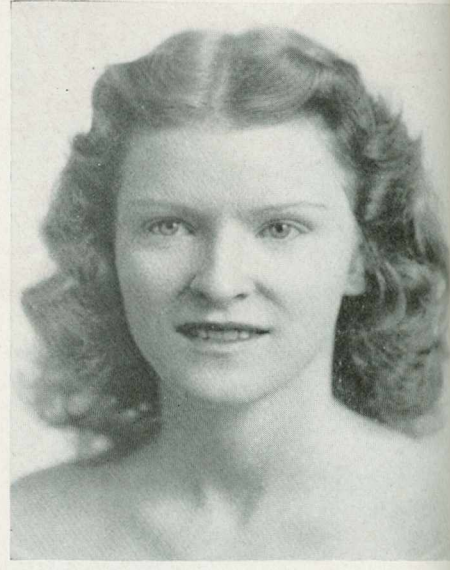
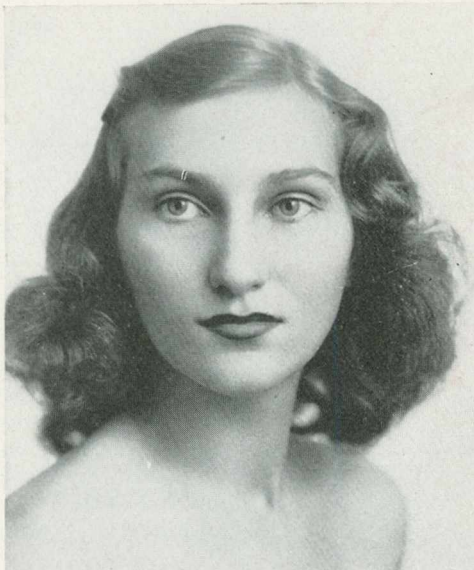
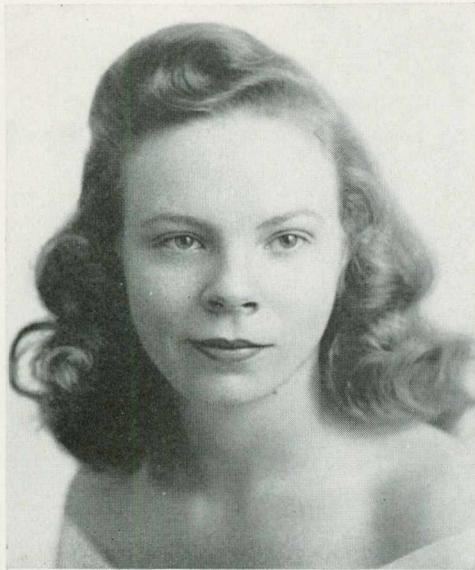
KATHERINE PARHAM—Barnesville, Ga.
Math, major; English, minor.

Transfer from Gordon Military College, Barnesville, Ga. S.G.A. 3, 4; Y.W.C.A. 3, 4; Math Science Club 3, 4; Log Cabin Committee 3, 4; PINE CONE 3.

ELIZABETH PATE—Montezuma, Ga.
Biology, major; Speech, minor

Y.W.C.A. 1, 2, 3, 4; S.G.A. 1, 2, 3, 4; Monitor 2; Executive Committee 4; Senior Class President; Math Science Club 2, 3, 4; Freshman Honor Society 2; Senior Honor Society 3, 4, Vice-Pres. 3; Sock and Buskin Club 1, 2, 3, 4, Sec.-Treas. 3; Fine Arts Club 3, 4; I.R.C. 2; Dance Club 2, 3, 4; *Campus Canopy* Staff 2; Fire Lt. 2; Social Dance Committee 4; Sports Club 1, 2, 3, 4; Awards 1.





MARGARET ANNE RAIFORD—Norfolk, Va.

Sociology, major

S.G.A. 1, 2, 3, 4; Monitor 3, 4; House Council 1; Sophomore Council; Math Science Club 2; Dance Club 2, 3, 4; Sociology Club 3, 4; Sock and Buskin Club 3, 4; Ad Staff of *Canopy* 2; Ad Staff of PINE CONE 4; Sports Club 1, 2, 3, 4.

LEONA ROBERTS REDLES—Valdosta, Ga.

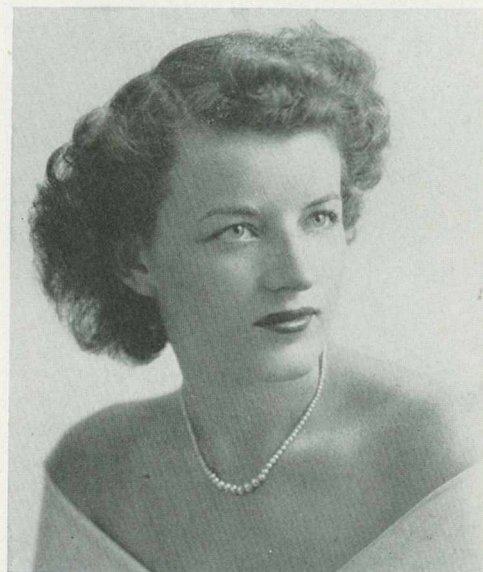
Humanities Division, Emphasis on Art

Transfer from Ward Belmont, Nashville, Tenn. Fine Arts Club 3, 4; Valdosta Club 3, 4.

LOUISE REES—Preston, Ga.

Social Work, major

S.G.A. 1, 2, 3, 4; Monitor 3, 4; Y.W.C.A. 1, 2, 3, 4; Sophomore Council; Sports Club 1, 2, 3, 4; Sock and Buskin Club 2, 3, 4, Vice-Pres. 3, Pres. 4; Math Science Club 3; Sociology Club 3, 4, Pres. 4; E.C.A. 4; Chairman of Artist Series Committee 4; *Campus Canopy* 1, 2, Ad Staff 1, 2, News Staff 1.



ELIZABETH HADEN RENTZ—Columbus, Ga.

Humanities Division, Emphasis on English

S.G.A. 1, 2, 3, 4; Monitor 3, 4; Sophomore Council; Y.W.C.A. 1, 2, 3, 4; "Y" Cabinet 3, 4; Chapel Choir 1, 2, 3, 4, Director 4; House Council 2; Glee Club 1, 2, 3, Vice-Pres. 3; Serenaders 1, 2, 3; Philharmonic Club 1, 2, 3, 4, Sec.-Treas. 3; Math Science Club 3, 4; English Club 4; B.S.U. 1, 2, 3, 4.



JUNE LILLIAN SEARS—Sasser, Ga.
History, major; Biology, minor

Glee Club 1, 2, 3; Dance Club 3; Romance Language Club 3, 4; *Campus Canopy* Ad Staff 1, 2; I.R.C. 2, 3, 4, Sec. 3; B.S.U. 2, 3, Vice-Pres. 2, Pres. 3; Sports Club 1, 2, 3, 4; Awards 3, 4; Y.W.C.A. 1, 2, 3, 4; PINE CONE 3, 4, Activities Editor 3, Co-Editor 4; Chapel Choir 2; S.G.A. 1, 2, 3, 4.

GERALDINE SHEFFIELD—Blakely, Ga.
Humanities Division, Emphasis on English

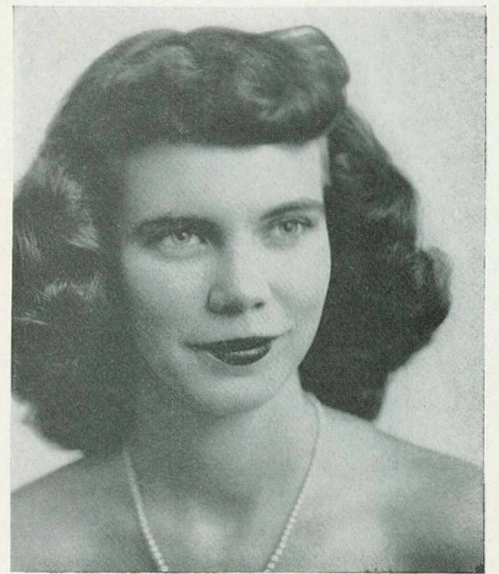
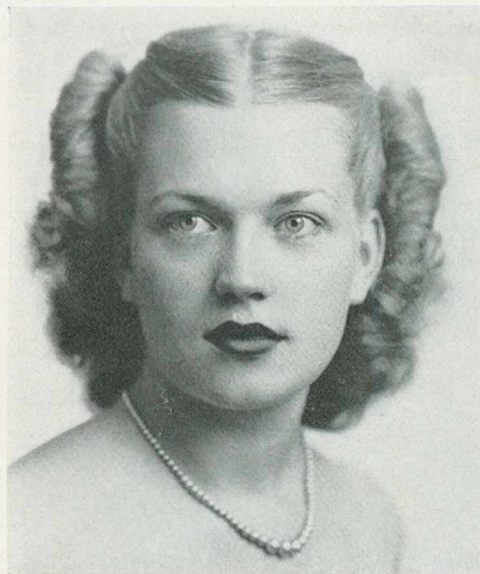
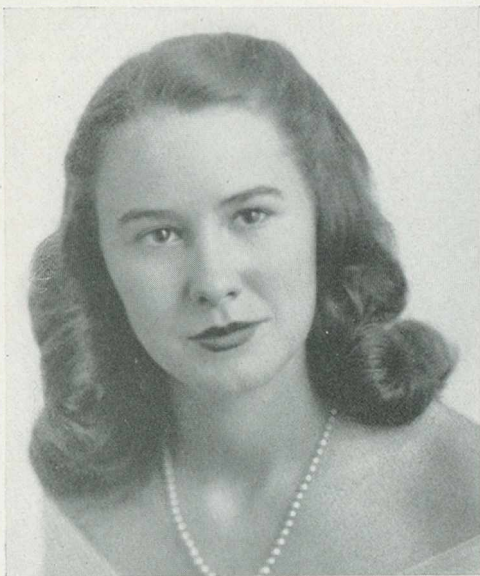
S.G.A. 1, 2, 3, 4; Sports Club 1, 2, 3; PINE CONE 2; Sociology Club 1, 2; Sock and Buskin Club 3, 4.

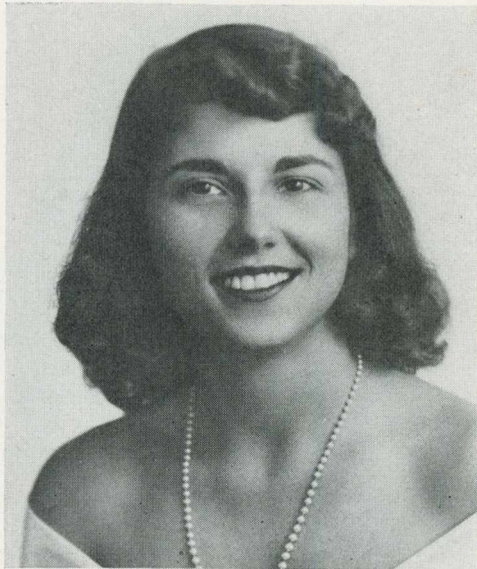
IRIS ANNE SHIPP—Talbotton, Ga.
Humanities Division, Emphasis on English

Campus Canopy 1, 2, 3, 4, Feature Editor 4; Y.W.C.A. 1, 2, 3, 4; "Y" Cabinet 1, 2, 3, 4, Sacristan 2, Deputation 3, Sec. 4; English Club 3, 4; Sock and Buskin Club 3, 4; Sports Club 1, 2, 3, 4; S.G.A. 1, 2, 3, 4; Social Committee 3.

MARGUERITE MORRISSY STORER—Savannah, Ga.
French, major; English, minor

Transfer from Armstrong Junior College, Savannah, Ga. *Campus Canopy* 3, 4, Managing Editor 3, Editor 4; Dance Club 3, 4, Pres. 3; Romance Language Club 3, 4, Sec. Treas. 3, Pres. 4; S.G.A. 3, 4; Executive Committee 4; Monitor 4; Y.W.C.A. 3, 4; "Y" Cabinet 3; Senior Honor Society 3, 4; PINE CONE 3, 4, Lay Out Editor 3; Sports Club 3, 4; League of Women Voters 3, 4; E.C.A. 3, 4; Artist Series Committee 3, 4.





BEVERLY JANE SWANSON—Salisbury, N. C.

Math, major; Art, minor

Transfer from Brenau College, Gainesville, Ga. Fine Arts Club 2, 3, 4. Vice-Pres. 2, Art Chairman 4; Fellowship of St. Martin 2, 3, 4, Pres. 4; Math Science Club 3, 4; PINE CONE Staff 4; Valdosta Club 2, 3; S.G.A. 4; Sports Club 1, 2, 3, 4; Y.W.C.A. 1, 2, 3, 4; League of Women Voters 4.

BOBBIE ELIZABETH TOWNSEND—Darien, Ga.

Sociology, major

S.G.A. 1, 2, 3, 4; Y.W.C.A. 1, 2, 3, 4; Sports Club 1, 2, 3, 4; Kappa Team Captain 4; Sports Club Council 3, 4; Sociology Club 2, 3, 4, Vice-Pres. 3, Sec.-Treas. 4; *Campus Canopy* 1, 2, 3, Ad Manager 2, 3; P.S.A. 1, 2.

EUGENIA RUTH TURNER—Barwick, Ga.

Secretarial Science, major; English, minor

S.G.A. 1, 2, 3, 4; Y.W.C.A. 1, 2, 3, 4; Sports Club 1, 2; *Campus Canopy* Staff 2; Math Science Club 3, 4; Business Club 3, 4.



HAZEL VERNELL WALKER—Valdosta, Ga.

Secretarial Science, major; English, minor

Valdosta Club 1, 2, 3, 4; Glee Club 1, 2; Dance Club 3, 4; Business Club 4; Sports Club 1; League of Women Voters 4.



LAURIE CARNES WHITE—Valdosta, Ga.
Secretarial Science, major; History, minor

S.G.A. 1, 2, 3, 4; Sports Club 1, 2, 3, 4; Y.W.C.A. 1, 2, 3, 4; Valdosta Club 1, 2, 3, 4; Glee Club 1, 2; Sociology Club 3, 4; Business Club 3, 4; Romance Language Club 3, 4; League of Women Voters 3, 4.

ANNE WOOLDRIDGE WHITTLE—Brunswick, Ga.
Humanities Division, Emphasis on English

Valdosta Club 1, 2; Fine Arts Club 2, 3, 4, Art Chairman 3, Vice-Pres. 4; English Club 3, 4, Vice-Pres. 3; Sock and Buskin Club 3, 4; Dance Club 3, 4; Sports Club 3, 4; S.G.A. 1, 2, 3, 4; Y.W.C.A. 1, 2, 3, 4; B.S.U. 1, 2, 3, Treas. 3; Co-Editor PINE CONE 4.



MARTHA MOOR WILCOX—Elberton, Ga.
English, major; Spanish, Minor

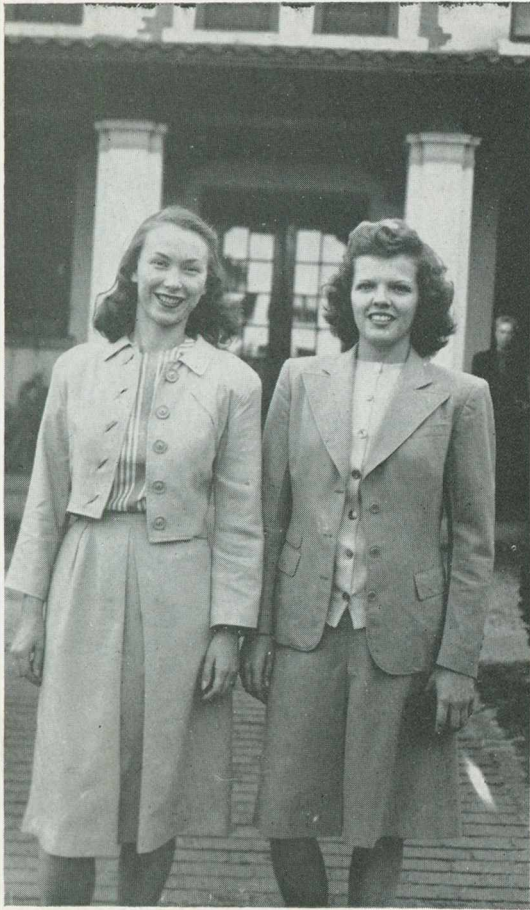
S.G.A. 1, 2, 3, 4; Executive Committee 3; Monitor 2, 3, 4; Y.W.C.A. 1, 2, 3, 4; "Y" Cabinet 2; Sports Club 1, 2, 3, 4; Freshman Honor Society 2, Pres. 2; Senior Honor Society 3, 4, Sec.-Treas. 3; English Club 3, 4, Pres. 4; Romance Language Club 2, 3, 4, Vice-Pres. 2; Math Science Club 2, 3, 4; Glee Club 1, 2, 3, 4; League of Women Voters 3, 4, Treas. 4; *Campus Canopy* 4; P.S.A. 1, 2, 3, 4, Pres. 2.

MARY NIX WILLIAMS—Gainesville, Ga.
Humanities Division, Emphasis on Music.

Glee Club 1, 2, 3, 4, Assistant Librarian 2, Pres. 3; Philharmonic Club 1, 2, 3, 4; Serenaders 1, 2, 3, 4; Dance Club 2, 3, 4, Pres. 4; League of Women Voters 3, 4; E.C.A. 3, 4; Artist Series Committee 3, 4; Sports Club 1, 2, 3, 4; Sock and Buskin Club 3, 4; Y.W.C.A. 1, 2, 3, 4; Chapel Choir 1.



JUNIOR OFFICERS



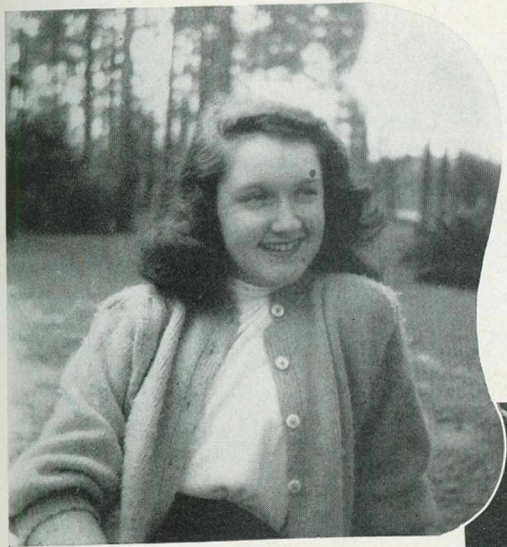
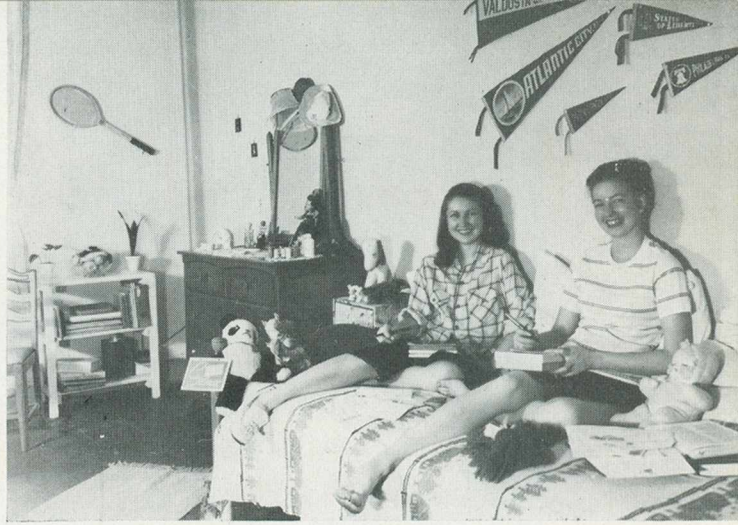
MYDDLETON and WILKIN



LANE

- ANN WILKIN *President*
 ADAIR MYDDLETON *Vice-President*
 CLEMMIE LANE *Secretary-Treasurer*

*Take a group of gay young lasses.
 Add a lot of books and classes.
 Move them o'er to Senior Hall
 Where, at first, there's not a wall
 In the wing where they shall stay,
 Debris blocking all the way.
 Give them patience to move in
 Minus curtains, doors, and then
 Crown their toil with victory—
 'Lectric lights so they can see.
 Watch them as they next assume
 Home-like atmosphere in room
 Where before was all confusion.
 (Gee, I'd need a blood transfusion!)*
*Settle down to work once more,
 Club work, lessons by the score,
 Training to become the leaders,
 Following their class precedents;
 Map a program, make a plan
 For a good "Homecoming" band.
 Help the Seniors with their work
 Not a girl there is to shirk.
 Every one's a top-notch lass—
 These members of the JUNIOR CLASS.*



ANNIE RUTH BLACK

Valdosta, Georgia

ALICE CAROLYN BOWEN

Register, Georgia

MRS. MARY BALLINTINE BROOKS

Valdosta, Georgia

MARY ANNE BROWN

Sasser, Georgia

LOUISE BRUMLOW

Lake Park, Georgia

MARION DELORIS BRYCE

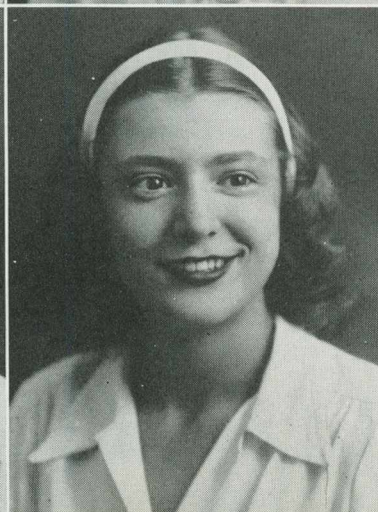
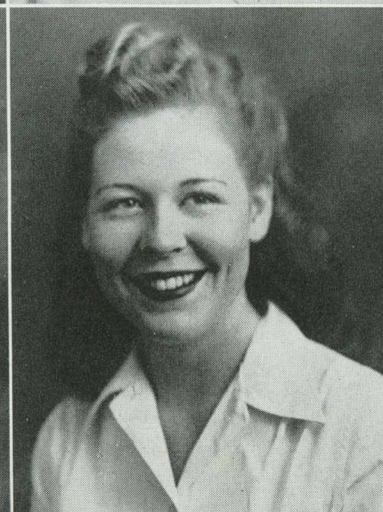
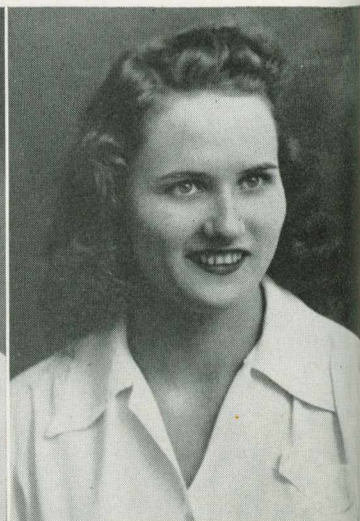
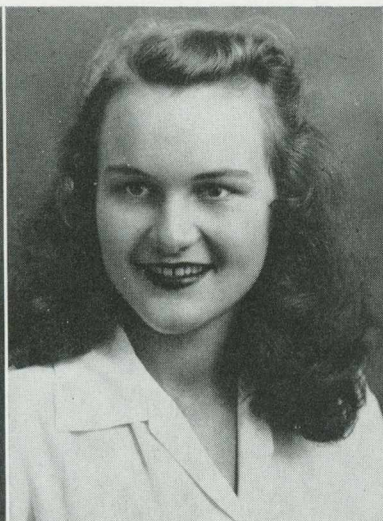
Bryceville, Georgia

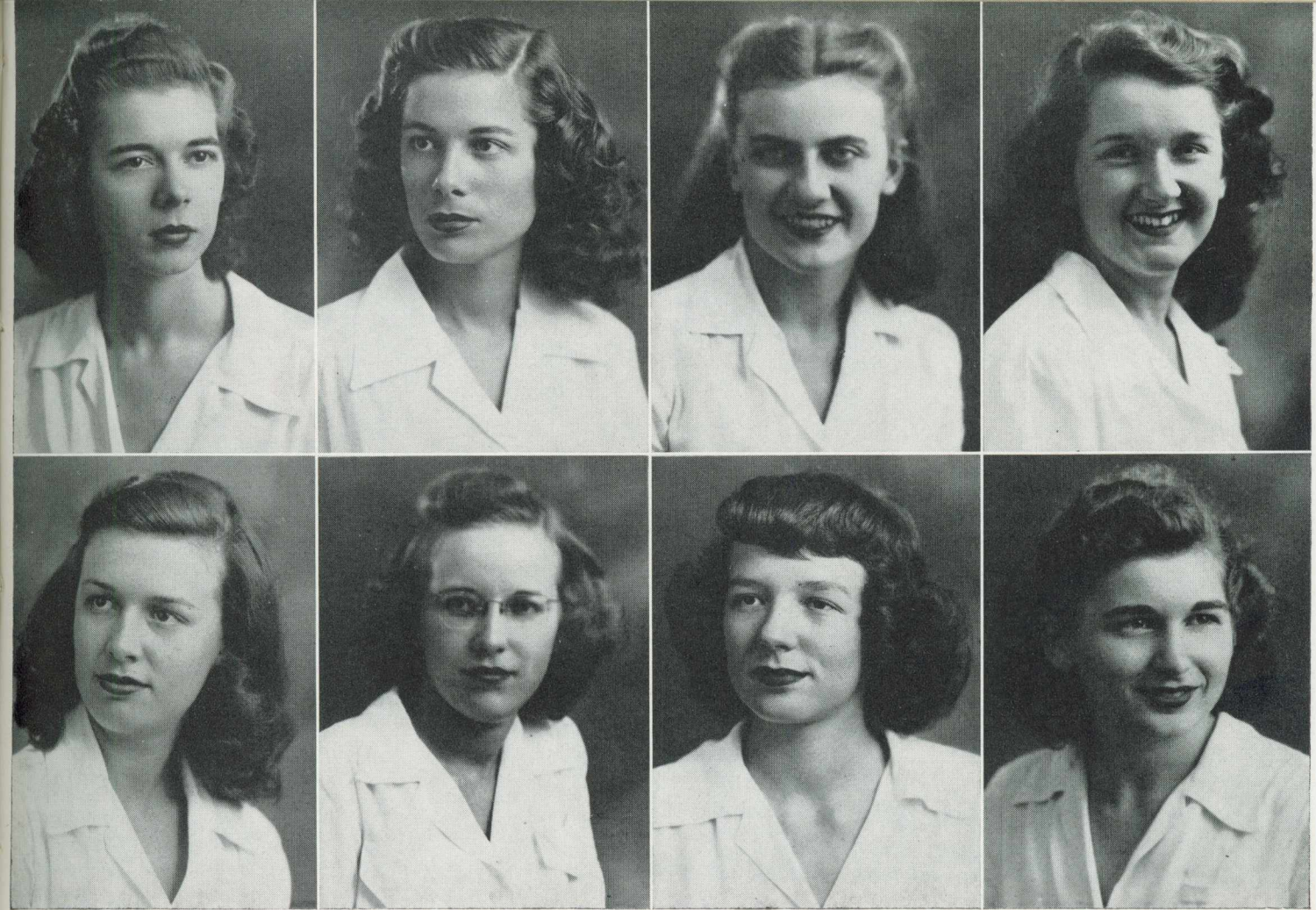
MARGARET CLAGHORN

Savannah, Georgia

JANNIE EVELYN CONNELL

Valdosta, Georgia





FAYE COOK

Valdcsta, Georgia

VIRGINIA COOK

Valdosta, Georgia

HILDA JOHNNIE CRUM

Valdosta, Georgia

ALICE JANE DANCER

Colquitt, Georgia

JOAN KELLEY DAVIS

Donalsonville, Georgia

JEAN DICKSON

Nashville, Georgia

CHARLOTTE MARTIN GOODWIN

McRae, Georgia

HELEN MARIE GRAYDON

McRae, Georgia

Juniors

BETTY JO GUNTER

Statesboro, Georgia

MARY VIRGINIA HAGAN

Valdosta, Georgia

JOANNE HAMILTON

Arabi, Georgia

MARY HENDERSON

Ocilla, Georgia

LOLLA LEE HOLDER

Tifton, Georgia

FRANCES ERSULA HURN

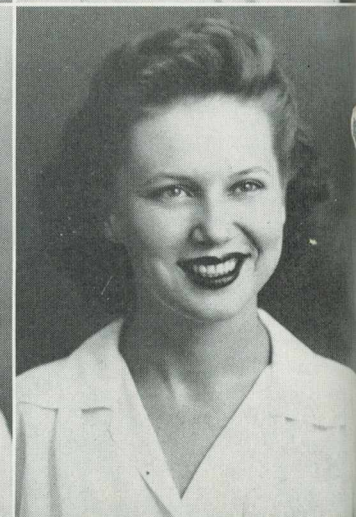
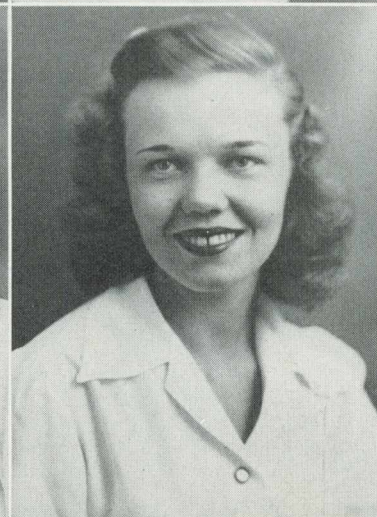
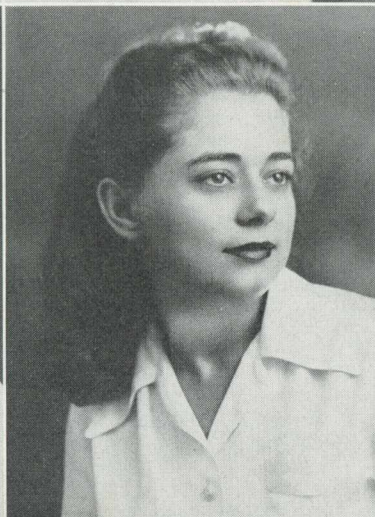
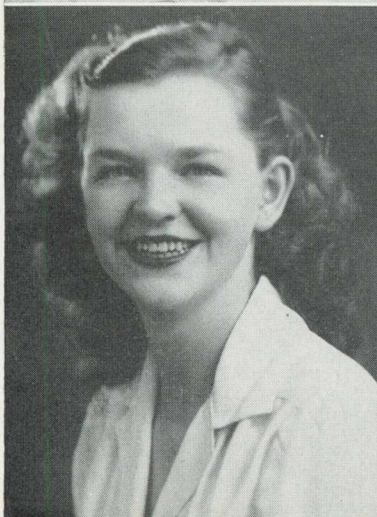
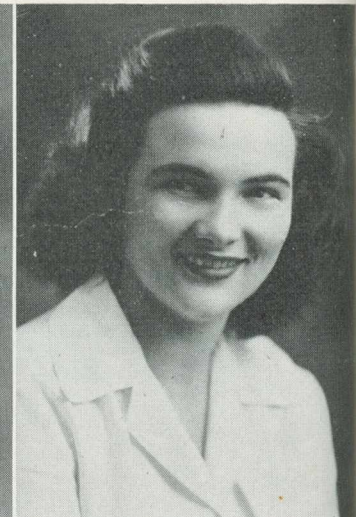
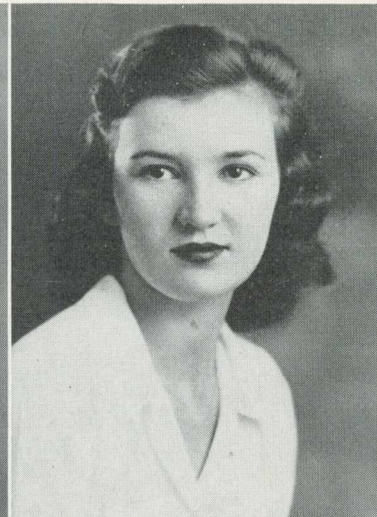
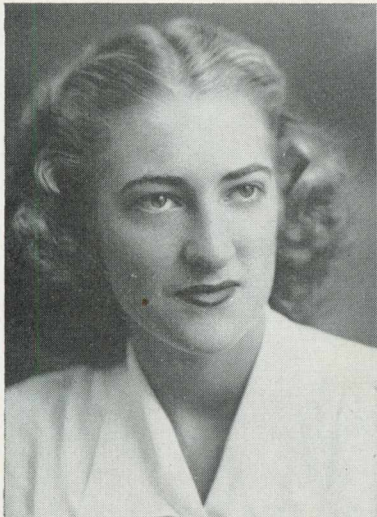
St. Simons Island, Georgia

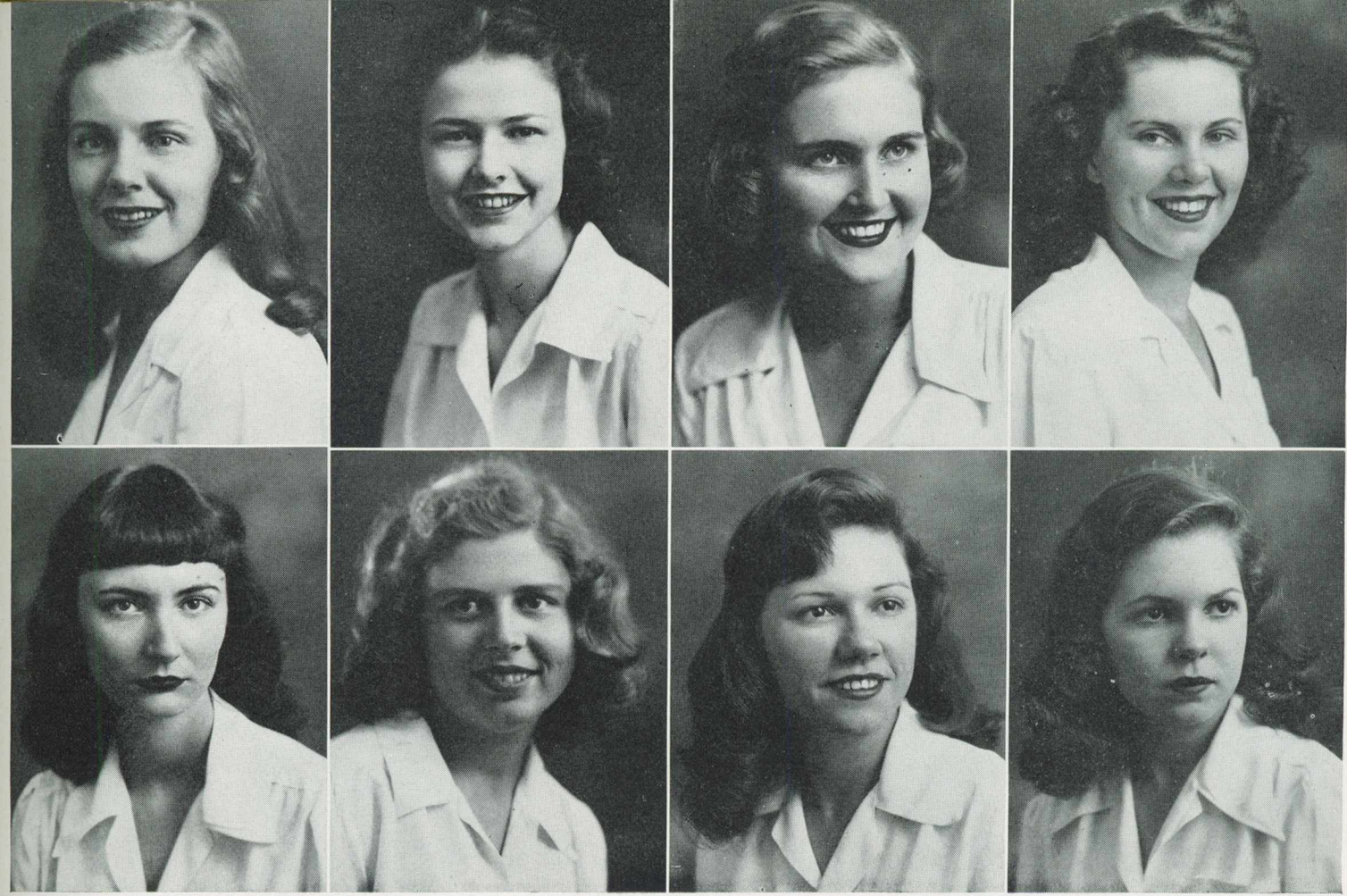
REBECCA WOOD JENNINGS

Dawson, Georgia

EDITH JONES

Homerville, Georgia





MARGARET JONES
Valdosta, Georgia

PAULINE JORDAN
Coolidge, Georgia

JEAN MONTEZ LAND
Griffin, Georgia

ESTHER ELAINE LANDEY
Valdosta, Georgia

CLEMMIE JOYCE LANE
Ashburn, Georgia

ISABEL McLEOD
Valdosta, Georgia

MARY JEAN MAYO
Richland, Georgia

VENETTE CATHERINE MORGAN
Vienna, Georgia

Juniors

FRANCES ADAIR MYDDELTON

Valdosta, Georgia

RAY JEAN NORMAN

Moultrie, Georgia

VALERA PARRISH

Adel, Georgia

CATHERINE MULLANEY PHILLIPS

Colquitt, Georgia

MIRIAM BUTLER POWELL

Atlanta, Georgia

RUTH ROLAND REYNOLDS

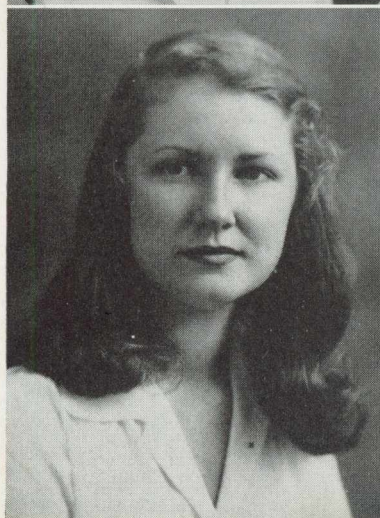
Blakely, Georgia

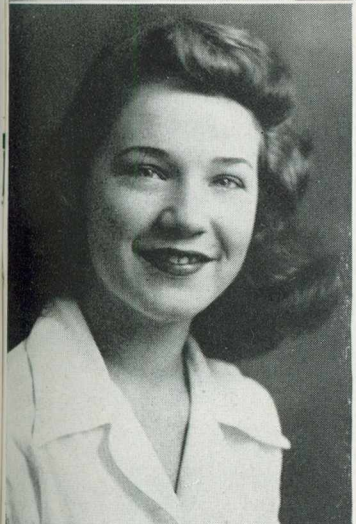
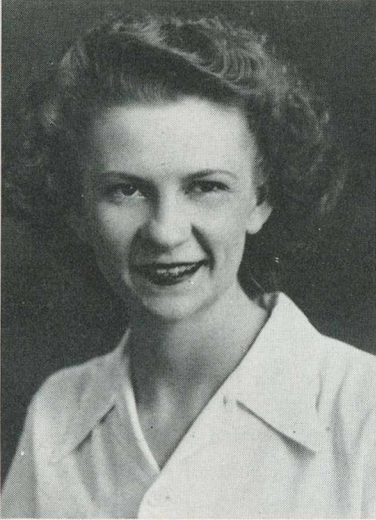
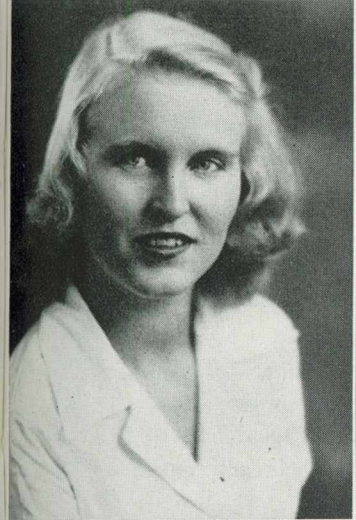
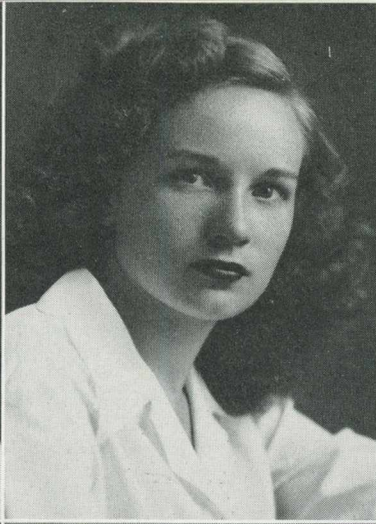
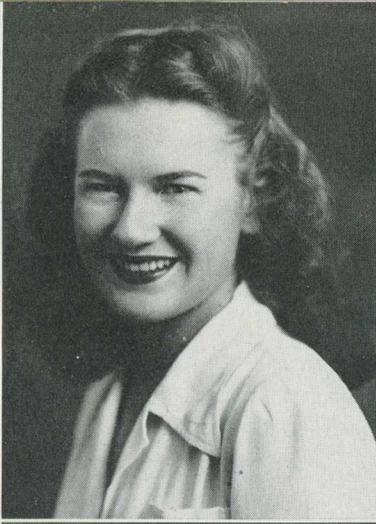
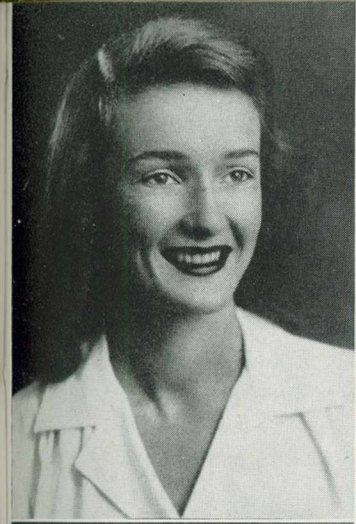
REBECCA HANSON ROGERS

Quitman, Georgia

BETTY JOY ROLAND

Donalsonville, Georgia





LOU SIMS
Fitzgerald, Georgia

ELSIE WEST
Moultrie, Georgia

JACQUELINE TALTON
Valdosta, Georgia

SARA ANN WILKIN
Colquitt, Georgia

GLADYS SUSAN THAMES
Thomasville, Georgia

PEGGY JUNE WILLIAMS
Vidalia, Georgia

BETTY JUNE THOMPSON
Donalsonville, Georgia

VERA VIRGINIA WILSON
Valdosta, Georgia

BETTY LYNN TOLER
Americus, Georgia

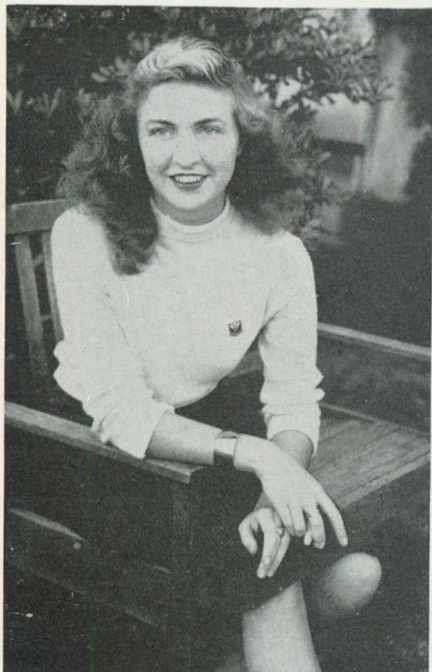
No Pictures:

- VIRGINIA FREEMAN—Valdosta, Ga.
- BETTY KEENE—Columbus, Ga.
- SHERLA MELEESE MILLER—Jacksonville, Florida

- MRS. BARBARA K. PASSMORE—Valdosta, Georgia
- EDWINA ROBERTS—Valdosta, Ga.
- HELEN RUTH SMITH—Ocilla, Ga.

SOPHOMORE OFFICERS

CAROLYN MATHIS *President*
BETTY JANE ALDERMAN *Vice-President*
MARY JOHN RODGERS *Secretary-Treasurer*



MATHIS

COLONEL QUIZ, SPEAKING

And now, ladies and gentlemen, for our jackpot question I am going to give you a series of clues which will describe a group which you are to name. The first person to name the group correctly gets two free tickets to last week's production. Is everybody ready?

All right, here is the first clue. This group of girls is headed by a long, lean, lanky blond from Fitzgerald.

Next, this group is responsible for the successful Sweetheart Dance in February. Does anyone have the answer yet? No? Well, here is the third clue. Among the activities belonging exclusively to these girls are the decorating of the Christmas tree in the Rotunda in December, and the hooding of the graduates in June.

What's that? No, it's not Kilroy and his little helpers. However, that is a good guess. Keep on trying. Here is your next clue. This group of girls has learned to assume responsibility and leadership after a very brief period of indoctrination to their new surroundings.

A part of this group is able to rise upon the sounding of the five-minute bell and still make it to breakfast.



ALDERMAN

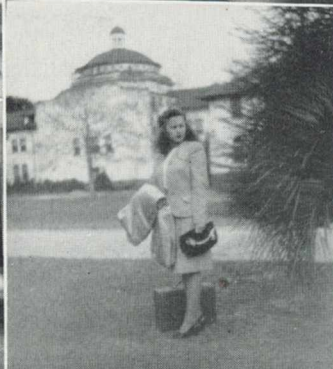
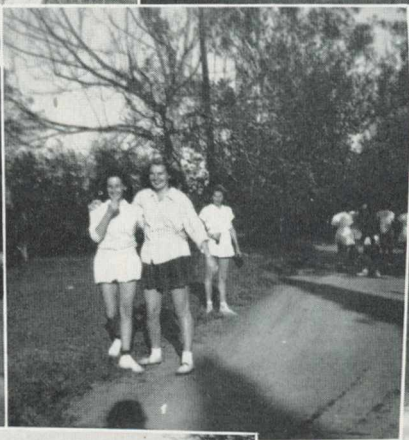


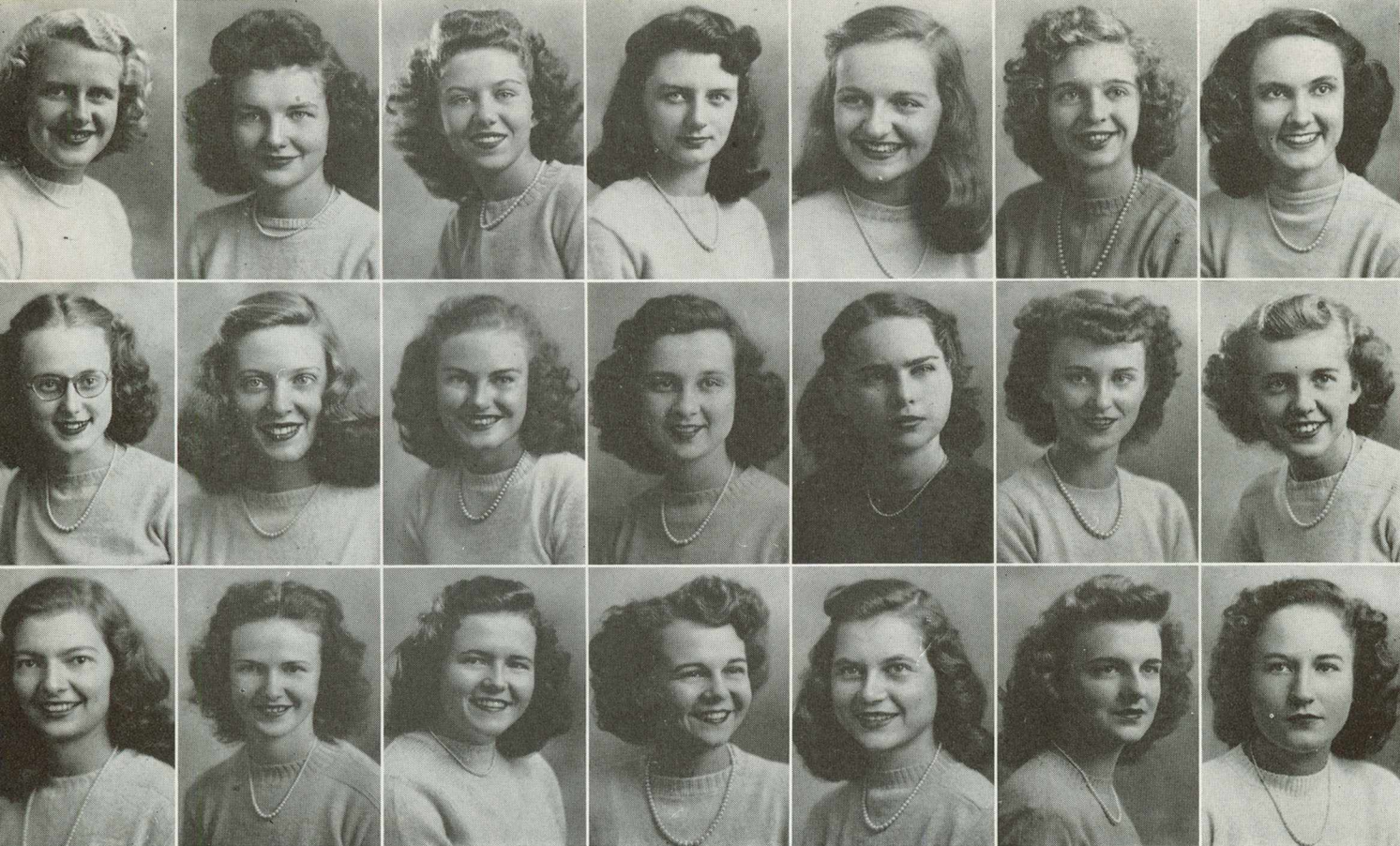
RODGERS

They can also get to meals without the ordeal of braving the elements. Both of these feats can be accomplished because these girls are housed in the same building with the dining room.

At last, light begins to dawn upon your bright and shining faces! Here is your final clue. This group comprises the second-year students of the college "Among the stately pines of Georgia."

That's right! You've got it! The SOPHOMORE CLASS of the Georgia State Womans College.





ANNE ELIZABETH ADAMS
Dublin, Georgia

GLORIA JEAN ADAMS
Quitman, Georgia

BETTY JANE ALDERMAN
Valdosta, Georgia

VILMA RACHAEL ANSLEY
Valdosta, Georgia

FRANCES JOSEPHINE BALLIET
Donalsonville, Georgia

DORIS MERLE BATEMAN
Sylvester, Georgia

BETTY GRACE BELL
Americus, Georgia

ZONA CLYDE BENNETT
Nashville, Georgia

CHARLENE ANN BOWEN
Valdosta, Georgia

VIRGINIA LEE BRAY
Monroe, Georgia

JOYCE WANDA BURCH
Tifton, Georgia

ELLEN LATRELLE CARTER
Valdosta, Georgia

MARY GAILE CARTER
Lake Park, Georgia

ROSELYN CARTER
Callahan, Florida

FRANCES ANN CASTLEBERRY
Lumpkin, Georgia

MARION ANITA COLLINS
Cobbtown, Georgia

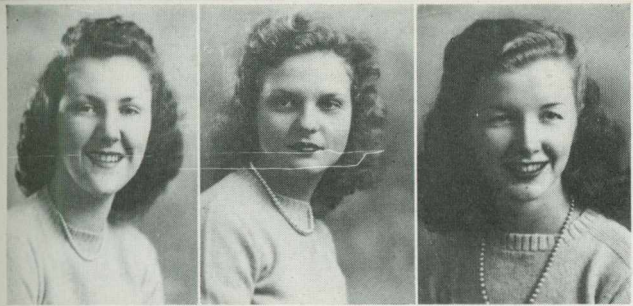
MARY ELINORE POLLOCK CREA
College Park, Georgia

BETTY LOUISE DAVIS
Jesup, Georgia

JANE LUCILE DEKLE
Cordele, Georgia

EVA ELIZABETH DELOACH
Valdosta, Georgia

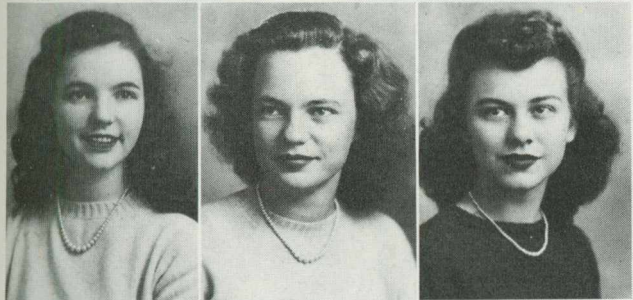
BUNNIE AQUILLA DEMOTT
Moultrie, Georgia



PATTY COOK DIXON
Richland, Georgia

FLORENCE LUCILLE DOUGLAS
Alma, Georgia

ANN ELIZABETH DUPRIEST
Sylvester, Georgia



ALETHIA EDWARDS
Claxton, Georgia

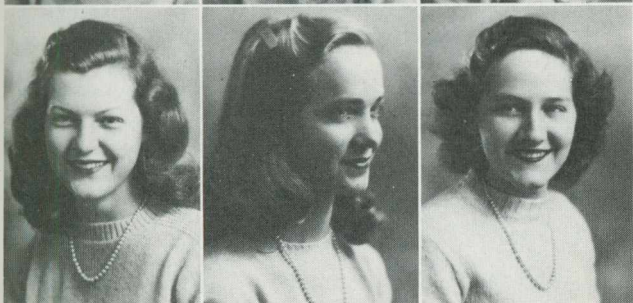
ELIZABETH MACRAE EFIRD
Albany, Georgia



HARRIETTE ANN FOLSOM
Hahira, Georgia

MARY NELL FOREHAND
Sylvester, Georgia

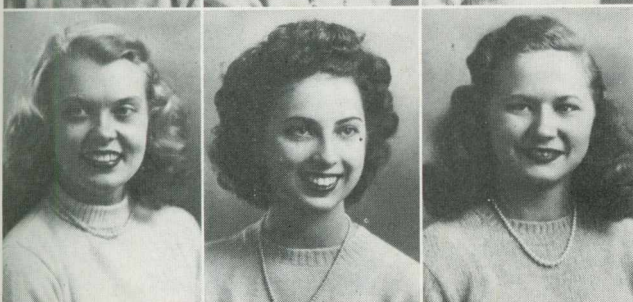
ANN McNEILL FORTSON
Washington, Georgia



ILEANA GILBERT
Donalsonville, Georgia

RUTH ELIZABETH GILL
Darien, Georgia

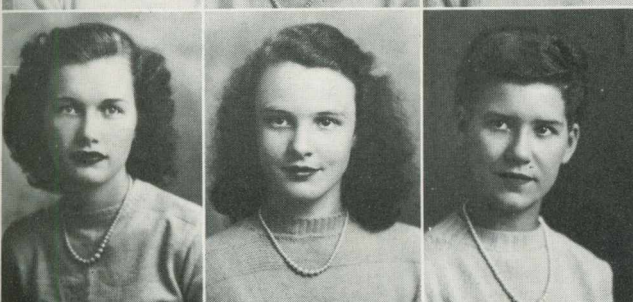
ELSIE MARIAN HARVEY
Donalsonville, Georgia



MINNIE VIRGINIA HEISLER
Thomasville, Georgia

ELEANOR JEAN HELTON
Fitzgerald, Georgia

LUCILLE JACKSON
Thomasville, Georgia



MARTHA CAROLYN JACKSON
Macon, Georgia

JOELLA JOHNSON
Nashville, Georgia

JANE CECELIA KENNEDY
Ashburn, Georgia

CAROLYN BLANCHE KING
Brunswick, Georgia



LENA ROZANE KING
West Point, Georgia

ALA McBRIDE
Alston, Georgia

MARTHA ANN MORGAN
Pembroke, Georgia

ANNE DARLING KNEPTON
Thomasville, Georgia

PATRICIA McCOLLOUGH
Woodbine, Georgia

FRANCES LECYOLA MOXLEY
Swainsboro, Georgia

RUBY ARDITH LACEY
Hazlehurst, Georgia

ALICE DEVANE McGEACHY
Valdosta, Georgia

BETTY ANNE NEWBERRY
Arlington, Georgia

BARBARA ALICE LEE
Alma, Georgia

JESSIE LOUISE MASSEY
Valdosta, Georgia

JACQUELINE NORMAN
Moultrie, Georgia

ELAINE MAE LEWIS
Atlanta, Georgia

ANNA CAROLYN MATHIS
Fitzgerald, Georgia

PATRICIA ANN PORTER
Sylvester, Georgia

LILA ANNE LEWIS
Waycross, Georgia

ANN ELIZABETH MIDDLEBROOKS
Dublin, Georgia

MILDRED ANNETTE PRICE
Vidalia, Georgia

GLORIA LOVE
Columbus, Georgia

ROSE WALTON MILLS
Hazlehurst, Georgia

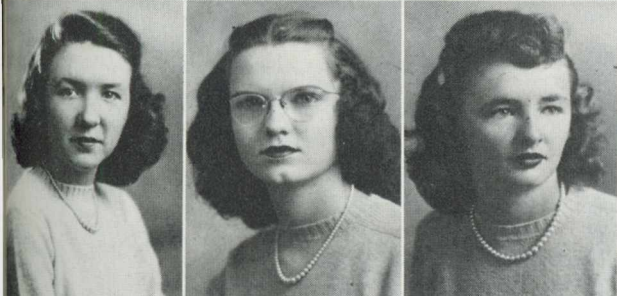
MARY JOHN RODGERS
Sycamore, Georgia



SALLY ALTHEA ROYAL
Valdosta, Georgia

MARTHA ANN SANDERS
Fitzgerald, Georgia

NAN SEAMAN
Cordele, Georgia



BETTY JEAN SMITH
College Park, Georgia

SUE NELL SMITH
Statesboro, Georgia

WAYNE MORRIS SMITH
Valdosta, Georgia



AMY WILHELMINA SPENCE
Blakely, Georgia

HARIETTE BALDWIN STORY
Nashville, Georgia

MARTHA JANE THOMPSON
Ailey, Georgia



JEAN TIPPENS
Waycross, Georgia

CORNELIA ANNE TUTEN
Alma, Georgia

FAYE VICKERS
Valdosta, Georgia



PHYLLIS WADE
Valdosta, Georgia

ANNE CALLAWAY ZIPLIES
Savannah, Georgia

No Pictures:

BARBARA COBB
Quitman, Georgia

BARBARA BETH COLE
Norman, Oklahoma

JULIA BRASHER JACKSON
Valdosta, Georgia

MARGARET CLARE McINTYRE
Valdosta, Georgia

VERA CHRISTEENE REGISTER
Valdosta, Georgia

HENRIETTA LATRELLE SMITH
Valdosta, Georgia

JOHNNIE VIOLA STOKES
Valdosta, Georgia

FRESHMAN OFFICERS

GLORIA McQUAIG *President*
 FRANCES PAINE *Vice-President*
 ROLINE THOMPSON *Secretary-Treasurer*

GATHERED THOUGHTS OF A FRESHMAN, 1946-47

So this is Converse Hall! But who are those people coming to greet us? Golly, they are upper-classmen! Helping me, a FRESHMAN Gee, I thought all upper-classmen did was to frighten poor Freshmen. And this is my room, my place of abode for the next nine months. I wonder what my roommate's like? . . .

At last Freshman Week is over. I thought I'd never see the end of those tests and classes. Now I have passed my Student Government exam and can go out without a chaperon. Oh, happy day! I hope I can remember all the regulations. . .

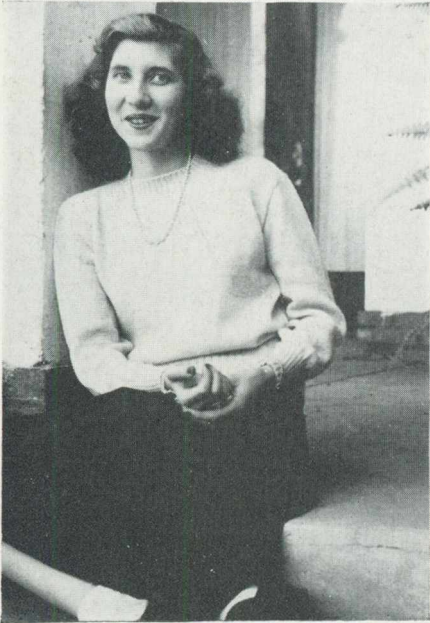
Rat Day! I knew it was bound to come. It really hasn't been bad though, now that I can rest my weary bones and think back over it. How many pairs of shoes have I polished? . . .

Christmas time is a wonderful time here, with the "Hanging of the Greens," the carol services, and the Christmas Dinner. Those carols early Sunday morning were pretty, and I'm proud of my classmates who sang them. . .

Why didn't somebody tell me college was like this? Exams—and what exams! I wonder if I'll ever pass. Now let's see—the nervous system is composed of . . .

Heart Sisters—I wonder who drew my name. And how can I get mine her gifts without her finding out my name? I can hardly wait for the Sweetheart Dance. . .

The Campus is so beautiful now. I've never seen so many plants blooming at once, and so early, too. . .



McQUAIG



PAINE



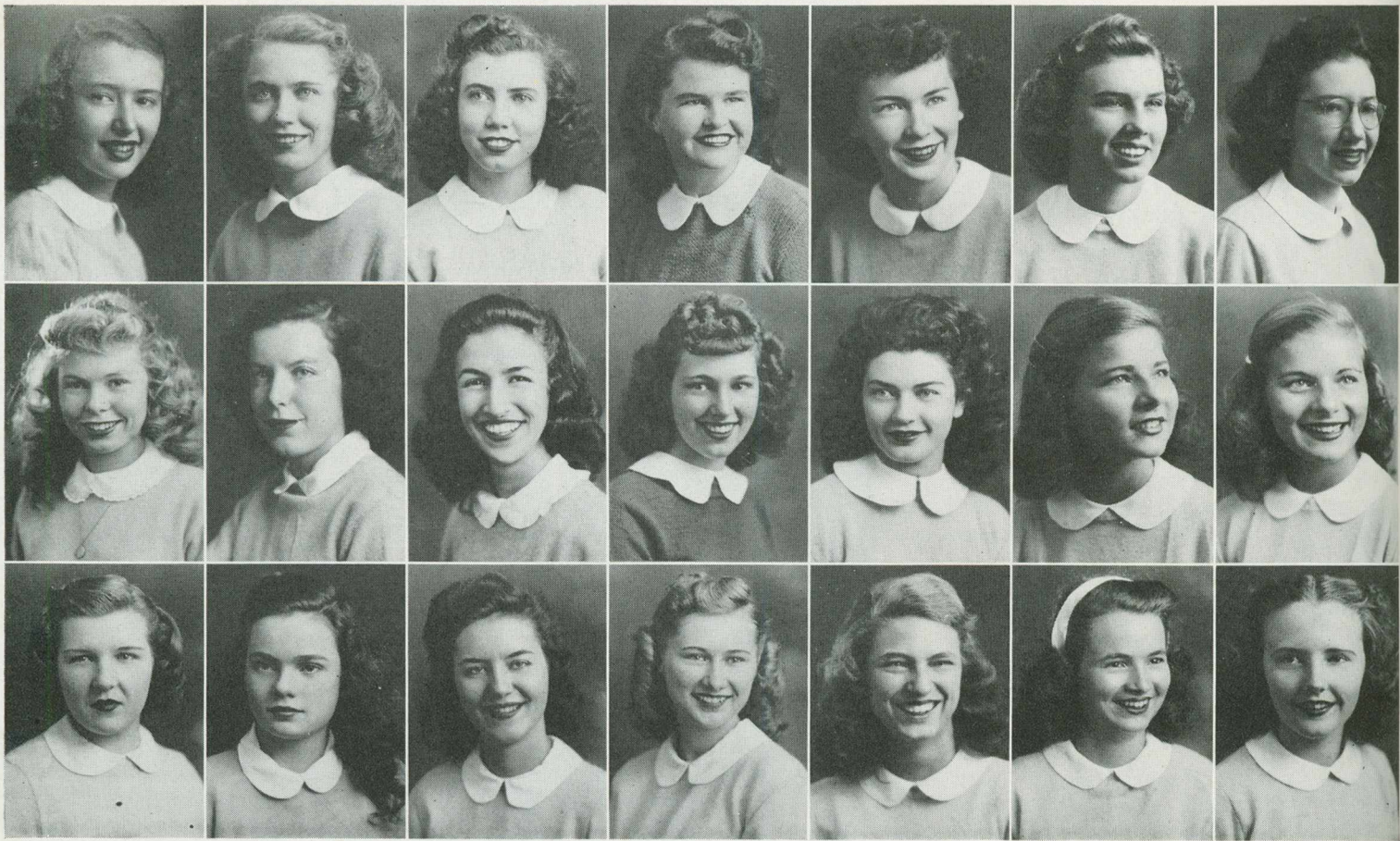
THOMPSON

That coke box comes in mighty handy these days. I need something to pick me up from this Spring fever attack. . .

Gee, it's June already. I didn't think I would ever stay nine months, and look, it has gone already. I've gotta pack so I can leave right after graduation tomorrow.

Jean! What's your address? . . .





GLORIA JEANNE ABRAHAMS
Valdosta, Georgia

HELEN JOYCE ALFORD
Columbus, Georgia

MARY ANNE ARNOLD
Vienna, Georgia

LUCILLE AVERA
Lakeland, Georgia

JEAN ELIZABETH BAILEY
Waycross, Georgia

JULIA BAILEY
Ashburn, Georgia

MARY ELIZABETH BAILEY
Camilla, Georgia

LOIS MARIE BALDY
Fitzgerald, Georgia

MAYEBELLE BEDELL
Woodbine, Georgia

SUE BELLOFF
Brookline, Massachusetts

VIRGINIA BLOUNT
Vidalia, Georgia

SARA ANNOLENE BONE
Leslie, Georgia

JULIA CLAY BRIGGS
Valdosta, Georgia

SARA FRANCES BRIGGS
Valdosta, Georgia

SARA EVELYN BROOKS
Sylvester, Georgia

DELIA GRAY BROWN
Brunswick, Georgia

DANISE BRYANT
Moultrie, Georgia

JEAN ELIZABETH BRYANT
Moultrie, Georgia

JOYCE HOPE BULLINGTON
Valdosta, Georgia

MARJORIE HARRIS BUSH
Decatur, Georgia

HELEN MARGARET CHESTER
Whigham, Georgia

Freshmen

MARY FRANCES CHESTER
Whigham, Georgia

JOYCE CHARLOTTE CHILDS
Thomaston, Georgia

MARY ELIZABETH CHISHOLM
Moultrie, Georgia

BARBARA ELIZABETH CLARKE
Moultrie, Georgia

CHRISTINE CLIFTON
Albany, Georgia

ALCYONE COLLIER
Bartow, Florida

SARA ELIZABETH CONNELL
Augusta, Georgia

CONSTANCE MONROE
Valdosta, Georgia

CONVERSE

LOMA JEAN COOK
Boston, Georgia

VIVIAN COOPER
Moultrie, Georgia

DOROTHY COPPAGE
Hahira, Georgia

ANNE McLANE COX
Fayetteville, Georgia

VELMA ELIZABETH CRUMMEY
Brunswick, Georgia

NANCY COUPERY DANIEL
Rome, Georgia

PEGGY JEANNE DAVIS
Waycross, Georgia

FRANCES ANN DeVANE
Miami, Florida

BETTYE CAROLYN DICKSON
Tifton, Georgia

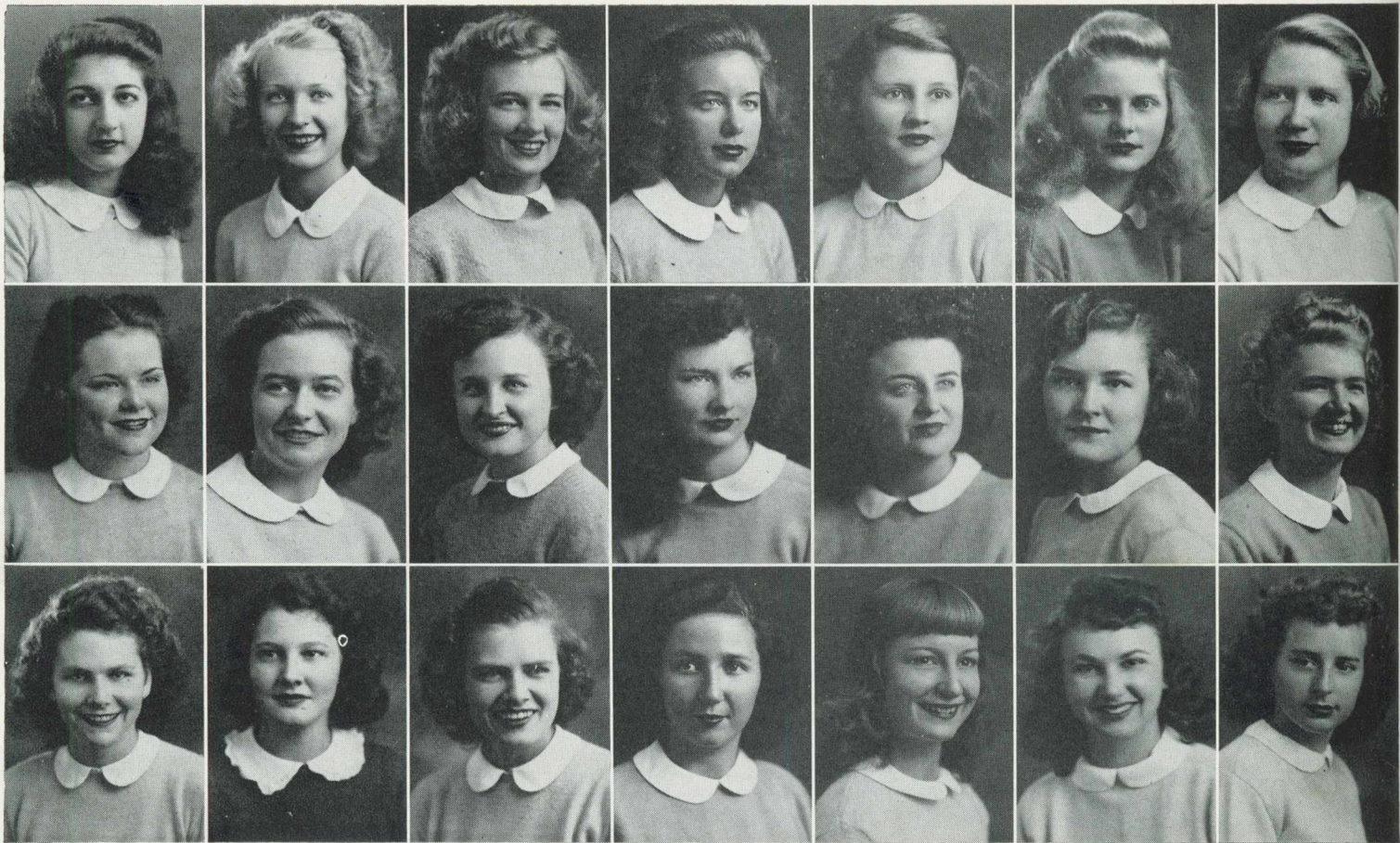
PATSY DILLARD
Waycross, Georgia

MARY CLAIRE DUNCAN
Leslie, Georgia

MARTHA SARILLA DUNLAP
Madison, Georgia

MARTHA LUCILLE ELDER
Monroe, Georgia





JEAN ELIJAH
Vidalia, Georgia

BETTY SUE ETHERIDGE
Dublin, Georgia

MRS. ANNE SLATER FAULKNER
Thomasville, Georgia

NONA MARIE FERDON
Homerville, Georgia

BILLIE DALE FINLEY
Waycross, Georgia

JANE FLETCHER
Valdosta, Georgia

MARTHA LEE GEORGE
Valdosta, Georgia

ELIZABETH JANE GIBSON
Donalsonville, Georgia

MADELINE ELAINE GILL
Hinesville, Georgia

LOUISE GODBEE
Vidalia, Georgia

JACQUELINE MAE GOODROE
Waycross, Georgia

ANNA MARTHA GRISSETT
Valdosta, Georgia

RAVONDA ANN HAMMOND
Danielsville, Georgia

MERLE DeCARR HANCOCK
Valdosta, Georgia

ELIZABETH JEANETTE
HANDLEY
Ocilla, Georgia

MARGARET EUNICE HARDY
Pine Grove, Georgia

OUIDA NELL HARPER
Ocilla, Georgia

INA GRACE HARRELL
Whigham, Georgia

BENNIE WILLA HARRINGTON
Homerville, Georgia

ALICE JOSEPHINE
HENDERSON
Hampton, Georgia

BEVERLY ANNE HENDERSON
Waycross, Georgia

Freshmen

ANNA JEAN HIGHTOWER
Damascus, Georgia

VELMA GENE HILL
Homerville, Georgia

BETTY KATHRYNE HOLLAND
Cordele, Georgia

EMMA LOU HURSEY
Douglas, Georgia

JULIANE JOHNSON
Miami, Florida

HULDA ROBERTA JONES
Albany, Georgia

LAVARA JONES
Sycamore, Georgia

MARY HELEN JONES
Cairo, Georgia

UNA REA KELLEY
Clyattville, Georgia

ANNA RIVIERE KENNEDY
Thomaston, Georgia

BARNADINE CLYDE KING
Brunswick, Georgia

LEAH MARIE KING
Leesburg, Georgia

DOLORES LAW
Ashburn, Georgia

BARBARA HUNT LAWSON
Savannah, Georgia

MARY VIRGINIA LAWSON
Climax, Georgia

MARY RUTH LEAK
Boston, Georgia

DOROTHY JANE LEGER
Ocilla, Georgia

FREIDA LILLIAN LEVIN
Nashville, Georgia

ELLIE LUNDY
Boston, Georgia

MAURINE L. McCONNELL
Hahira, Georgia

MARGARET McGREGOR
Quitman, Georgia





MARY JOAN McINTOSH
Valdosta, Georgia

ADA CAROLYN McLENDON
Hazlehurst, Georgia

MARY ANN McLENDON
Dawson, Georgia

GLORIA MYRISE McQUAIG
Waycross, Georgia

MILDRED MANLEY
Griffin, Georgia

HANNAH LOU MANSFIELD
Moultrie, Georgia

MELBA MARTIN
Mount Vernon, Georgia

PAULA JOCELYN MATTHIAS
Marietta, Georgia

DORIS ELAINE MIMS
Waycross, Georgia

DORIS CLAIRE MOBLEY
Moultrie, Georgia

ANNIE LAUVIE MOORE
Pine Grove, Georgia

JANE MOSES
Uvalda, Georgia

EUGENIA ARMATHA MORGAN
Hinesville, Georgia

DOROTHY JEAN MULLIS
Valdosta, Georgia

JANE ANNE NEWTON
Lake City, Florida

MARJORIE MITCHELL NOELL
Valdosta, Georgia

MARY ALICE NORMAN
St. George, Georgia

JACQUELINE NORTON
Boston, Georgia

STEWART ELLEN ODOM
Albany, Georgia

MARY WILLIAMS OWEN
Hinesville, Georgia

FRANCES BRISCOE PAINE
Valdosta, Georgia

Freshmen

JESSIE NELL PERRY
Uvalda, Georgia

FRANCES CAROLYN PHILLIPS
Savannah, Georgia

FLORENCE AGNES PIRKLE
Alma, Georgia

BARBARA RAE PITTMAN
Blackshear, Georgia

JOHNNIE ALLENE PRINGLE
Bryceville, Florida

BETTY JUNE RACHALS
Albany, Georgia

MARY ELLEN REDMAN
McRae, Georgia

VERA ARISTEENE REGISTER
Valdosta, Georgia

NARENE LaRUE REGISTER
Valdosta, Georgia

SARAH LOUISE REGISTER
Valdosta, Georgia

GENEVA ROSS
Ashburn, Georgia

EDITH NELLREE RYALS
Homerville, Georgia

MARY FRANCES SANDERS
Fitzgerald, Georgia

MARY ANNE SAULS
Albany, Georgia

MAISIE SHARMAN
Albany, Georgia

PATTIE LEE SHEPHERD
Dawson, Georgia

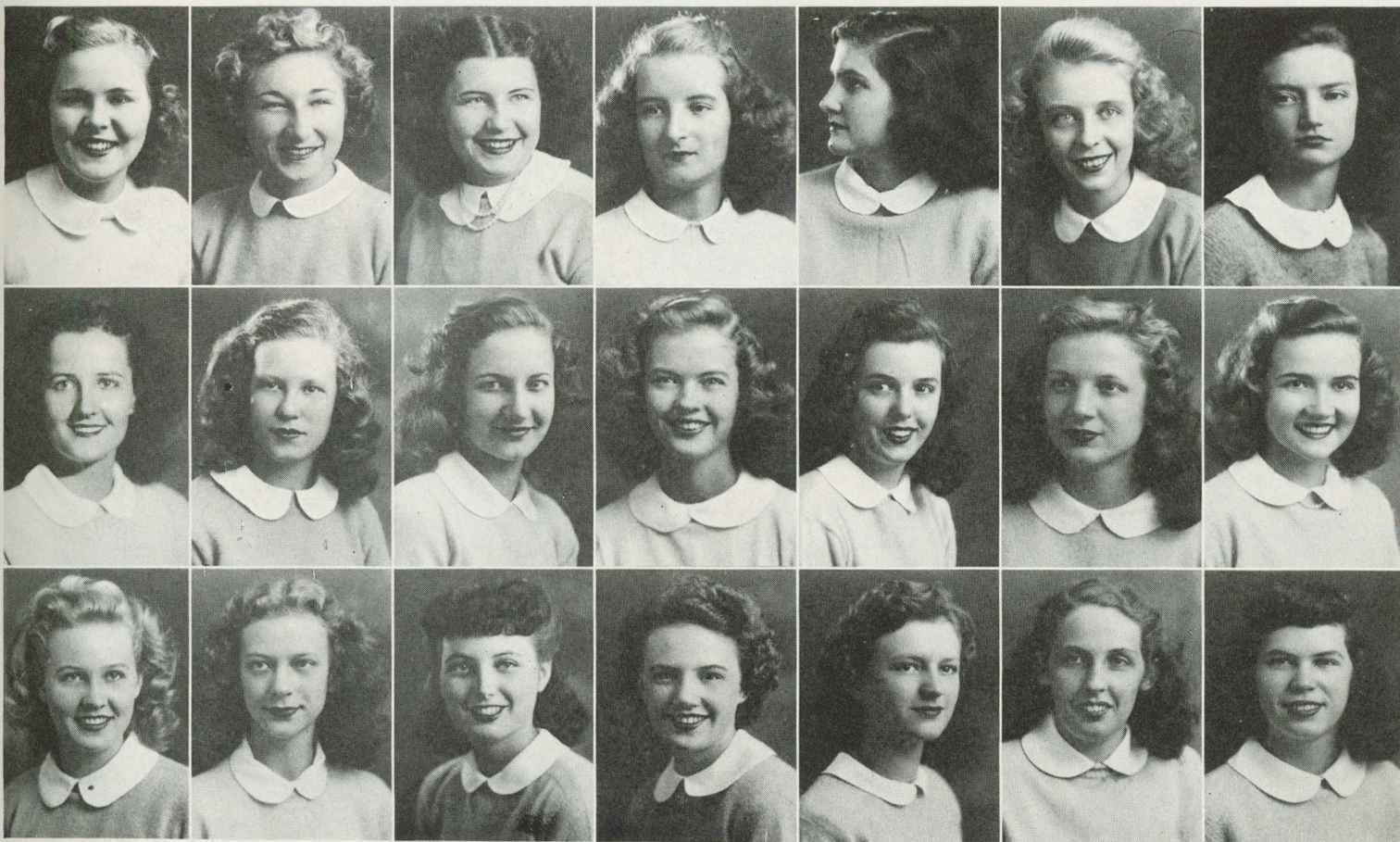
CLARE LOUISE SINGLETARY
Meigs, Georgia

BETTY JEAN SMILEY
Hinesville, Georgia

EVELYN VIRGINIA SMITH
Broxton, Georgia

MARGARET ANN SMITH
Waycross, Georgia

SUSAN BELLE SMITH
Waycross, Georgia





WILLA LEE SMITH
Folkston, Georgia

JO ANNE STORY
Albany, Georgia

WILDA GLYNETTE STORY
Ashburn, Georgia

GLENDIA STRICKLAND
Cairo, Georgia

SALLY PATRICIA
SUTHERLAND
Atlanta, Georgia

ROLINE ELIZABETH
THOMPSON
Thomaston, Georgia

MARGARET LOUISE
TRAYNHAM
Broxton, Georgia

MARY ELLEN WHITEHEAD
Albany, Georgia

JEAN DELORIS USHER
Savannah, Georgia

JOANNE VAN BRACKLE
Adel, Georgia

JANICE LORRAINE WALKER
Bryceville, Florida

MAXIE ANNETTE WARREN
Donalsonville, Georgia

CAROLYN ELIZABETH
WHELCHER
Moultrie, Georgia

MARJORY ANN WHELCHER
Cordele, Georgia

ANNETTE ANDREE TREYER
Hollywood, Florida

JULIA ANN WILLIAMS
Fitzgerald, Georgia

BETTY WILLIS
Coolidge, Georgia

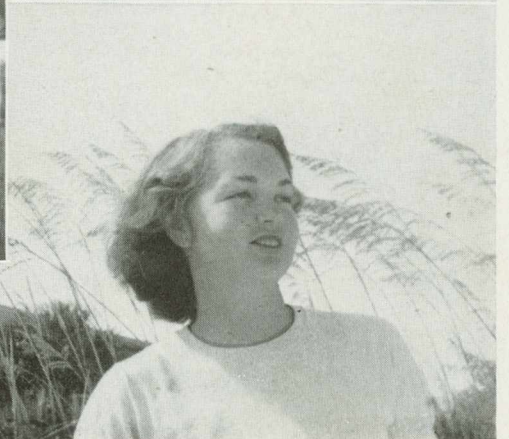
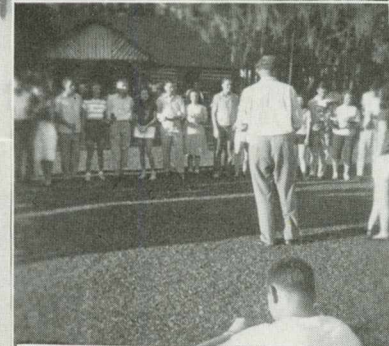
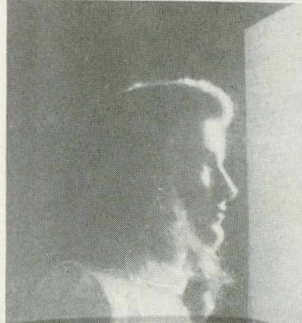
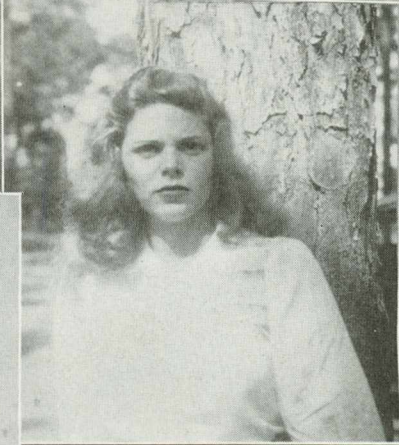
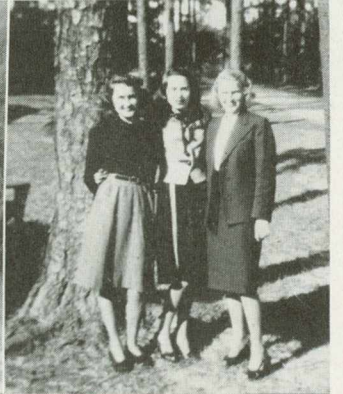
IRENE SELINA WILSON
Waycross, Georgia

CAROLYN WINN
Thomaston, Georgia

ALLIE JANIE WRIGHT
Elberton, Georgia

DOROTHY ELOISE YANCEY
Brunswick, Georgia

Freshmen





ORGANIZATIONS





EXECUTIVE COMMITTEE STUDENT GOVERNMENT ASSOCIATION

EXECUTIVE COMMITTEE OFFICERS

JEAN MARTIN	<i>President</i>
JOAN DAVIS	<i>First Vice-President</i>
GLADYS THAMES	<i>Second Vice-President</i>
EDITH JONES	<i>Secretary-Treasurer</i>

The Executive Committee is the governing branch of the Student Government Association, in which all students on campus may become members upon passing examination. The Student Government officials are responsible for Freshman Week, and they are the ones who helped you feel more at home, helped you find your place in college life, and helped you to understand the principles upon which Student Government works.



MEMBERS OF EXECUTIVE COMMITTEE

- | | |
|----------------|-------------------|
| Pat Gainey | Edith Collins |
| Carolyn Mathis | Kathleen Grantham |
| Ann Wilkin | Virginia Heisler |
| Elizabeth Pate | Jean Land |
| Marion Newsom | Marguerite Storer |
| Laura Converse | |



DAVIS and THAMES

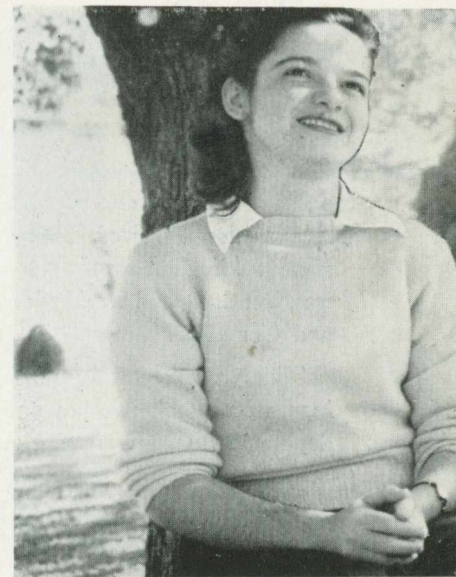


E. C. A.

E. C. A.

MEMBERS

Marion Newsom, Chairman—International Relations Club
 Harriet Arrington—Senior Honor Society
 Charlene Bowen—Freshman Honor Society
 Virginia Bolen—Business Club
 Joan Davis—Home Economics Club
 Merritt Dyal—Math Science Club
 Charlotte Goodwin—Glee Club
 Nickey Williams—Dance Club
 Betty Hutchinson—G.S.W.C. League of Women Voters
 Margie Massey—Fine Arts Club
 Adair Myddelton—Valdosta Club
 Louise Rees—Sock and Buskin Club
 Louise Rees—Sociology Club
 Marguerite Storer—Romance Language Club
 Gladys Thames—Philharmonic Club
 Martha Wilcox—English Club



NEWSOM, *Chairman*

EXTRA CURRICULAR ACTIVITIES

Formed to better co-ordinate the various activities of clubs on campus, the E. C. A. Committee is composed of the presidents of all campus organizations with the exception of the presidents of the Sports Club and the Y.W.C.A.

The meetings of this committee furnish a fine medium for the interchange of constructive and progressive ideas between the clubs and make for "smooth sailing" in campus activities.

The E. C. A. chairman represents the committee on the Student Government Executive Committee, and is a representative to the Faculty Judicial Board.



CABINET

Y. W. C. A.

The "Y" sponsors all religious activities on campus, not only the annual traditional ones such as the Recognition Service, Firelighting Service, Thanksgiving, Hanging of the Greens, and Lenten Services, but daily and weekly Vespers, Morning Watch, and Compline.

This year the "Y" published the Book of Blessings, which took two years to compile. Also several deputation teams were sent out over South Georgia.

OFFICERS

- EDITH COLLINS *President*
- BETTY GUNTER *Vice-President*
- VENETTE MORGAN *Associate Vice-Pres.*
- ANN SHIPP *Secretary*
- HARRIET ARRINGTON *Treasurer*



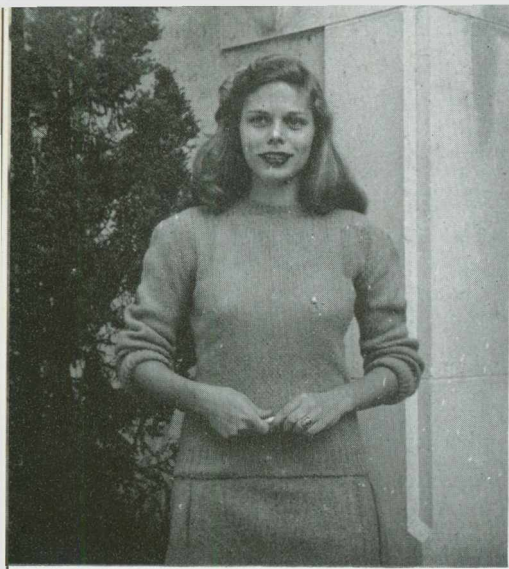
COLLINS

CABINET

- Carolyn Bowen—Publicity Co-chairman
- Betty Jean Smith—Publicity Co-chairman
- Merrit Dyal—Deputation Co-chairman
- Charlotte Goodwin—Deputation Co-chairman
- Doris Gibbs—Organist
- Jean Land—Social Chairman
- Gloria Love—Morning Watch Co-chairman
- Betty Newberry—Morning Watch Co-chairman
- Louise Massey—Town Girl Representative
- Betty Rentz—Chapel Choir Director
- Ruth Reynolds—Sacristan
- Sue Nell Smith—Sacristan
- Jane Kennedy—Head of Sophomore Council
- Martha Ann Sanders—Organist
- Rev. C. H. White—Adviser



MORGAN, ARRINGTON, SHIPP, GUNTER



GRANTHAM

SPORTS CLUB

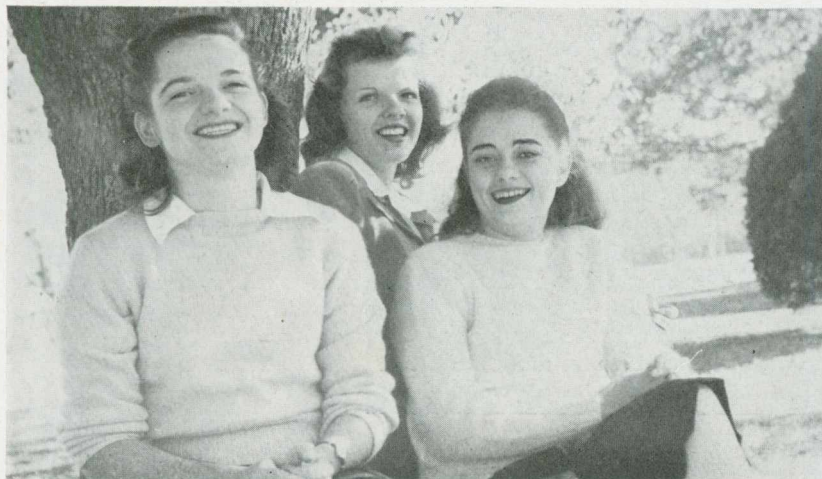
The Sports Club is composed of all girls who are interested in sports and who participate in them on campus.

The members of Sports Council are the leaders of the Sports Club; team captains and managers, coaches, and various activity heads.

SPORTS COUNCIL

SPORTS COUNCIL:

- Betty Jane Alderman
- Virginia Bolen
- Virginia Bray
- Dathine Brunson
- Clare Carson
- Mary Ellen Compton
- Corinne Dellinger
- Pat Gainey
- Kathleen Grantham
- Frances Hurn
- Martha Jackson
- Betty Keene
- Nell Kenny
- Ann Knepton
- Frances Moxley
- Marion Newsom
- Frances Phillips
- Joy Roland
- Morris Smith
- Roline Thompson
- Betty Toler
- Bobbie Townsend
- Ann Wilkin

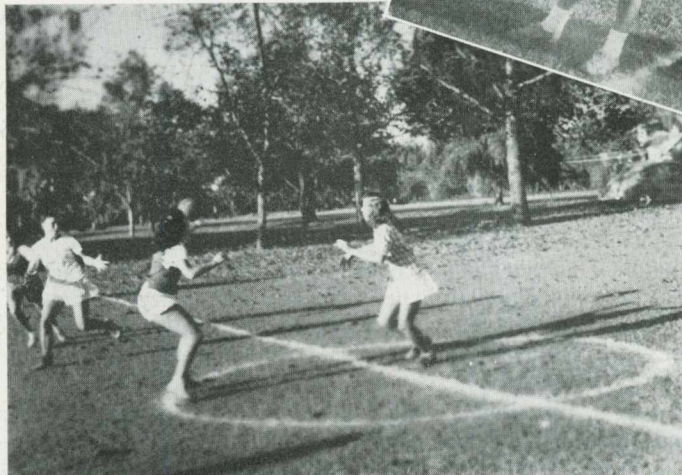
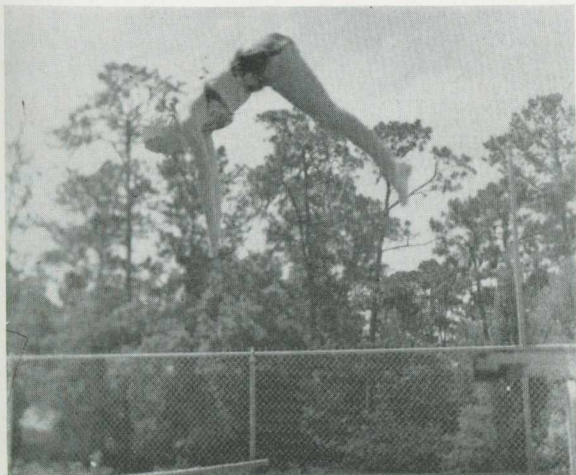


NEWSOM, WILKIN, HUHN



OFFICERS

- KATHLEEN GRANTHAM *President*
 MARION NEWSOM *Vice-President*
 ANN WILKIN *Secretary*
 FRANCES HURN *Treasurer*
 CORINNE DELLINGER *Historian*



HONOR SOCIETIES



SENIOR HONOR SOCIETY

OFFICERS

- HARRIET ARRINGTON *President*
- BETTY KEENE *Vice-President*
- MRS. MARY B. BROOKS *Secretary-Treasurer*
- SIMONE BASSETT *Historian-Reporter*

The purpose of this Society is to further and enrich the intellectual activities of the students.

The club selected pins this year which will become the permanent emblem of the club. A service project was also undertaken to make a definite contribution to campus life.

The members of this Society are selected to encourage high scholastic standing among the students, and to encourage the wholehearted allegiance to the ideals of G. S. W. C.

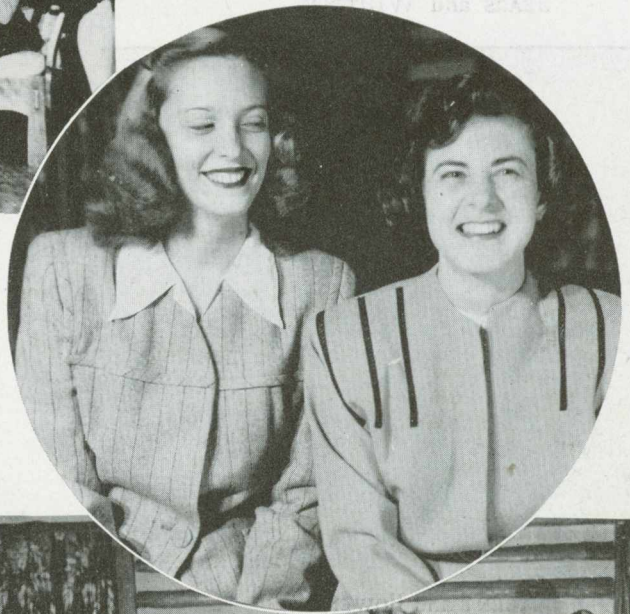
MEMBERS

Harriet Arrington, Virginia Bolen, Laura Converse, Carolyn Bowen, Simone Bassett, Mary B. Brooks, Edith Collins, Evelyn Connel, Betty Gunter, Edith Jones, Betty Keene, Barbara Passmore, Nell Kenney, Marion Newsom, Elizabeth Pate, Marguerite Storer, Jackie Talton, Gladys Thames, Martha Wilcox.

FRESHMAN HONOR SOCIETY OFFICERS

- CHARLENE BOWEN *President*
- ANNE ZIPLIES *Vice-President*
- GLORIA LOVE *Secretary-Treasurer*
- BETTY JEAN SMITH *Historian*

This Society is for the purpose of stimulating higher scholastic activities among junior college students. Freshman students who, after two quarters' work, have an average of B or above, are eligible for membership.



FRESHMAN HONOR SOCIETY

MEMBERS

- | | |
|--------------------|------------------|
| Zona Clyde Bennett | Gloria Love |
| Charlene Bowen | Carolyn Mathis |
| Gaile Carter | Betty Jean Smith |
| Latrell Carter | Morris Smith |
| Anne DuPriest | Anne Ziplies |

THE 1947

At last. It's ready to be revealed to the eyes of the students and faculty. The staff of the 1947 PINE CONE hope that this annual will live up to that ideal of a yearbook that will be treasured throughout the years.

We have endeavored to give a complete picture of the working organizations on the G.S.W.C. campus.

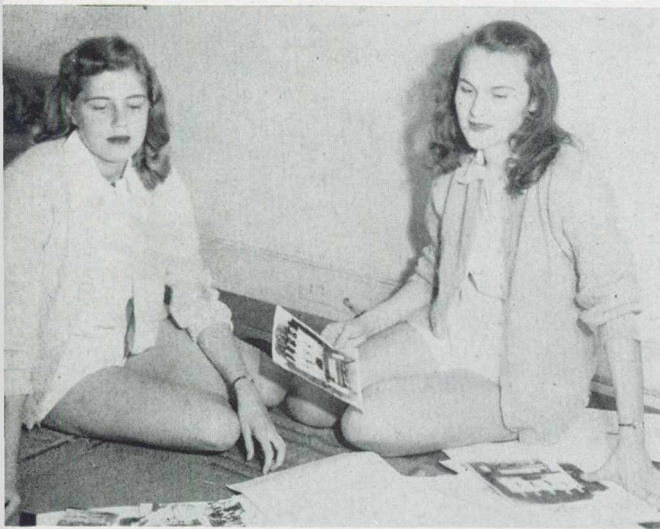
This year we welcomed Dr. Phelan back to the staff as Campus Photographer, and we deeply appreciate his patience and cooperation. Our thanks also go to Blackburn Studio for their fine work.



SEARS and WHITTLE

EDITORIAL STAFF

JUNE SEARS	<i>Co-editor</i>
ANNE WHITTLE	<i>Co-editor</i>
CAROLYN BOWEN	<i>Layout Editor</i>
BETTY KEENE	<i>Layout Editor</i>
MARION NEWSOME	<i>Literary Editor</i>
EDITH COLLINS	<i>Assistant Literary Editor</i>
LAURA CONVERSE	<i>Activities Editor</i>
ADAIR MYDDLETON	<i>Assistant Activities Editor</i>
COLLEEN GEIGER	<i>Art Editor</i>
BEVERLY SWANSON	<i>Assistant Art Editor</i>
DATHINE BRUNSON	<i>Photograph Editor</i>
KATHLEEN GRANTHAM	<i>Assistant Photograph Editor</i>
DR. PHELAN	<i>Photographer</i>

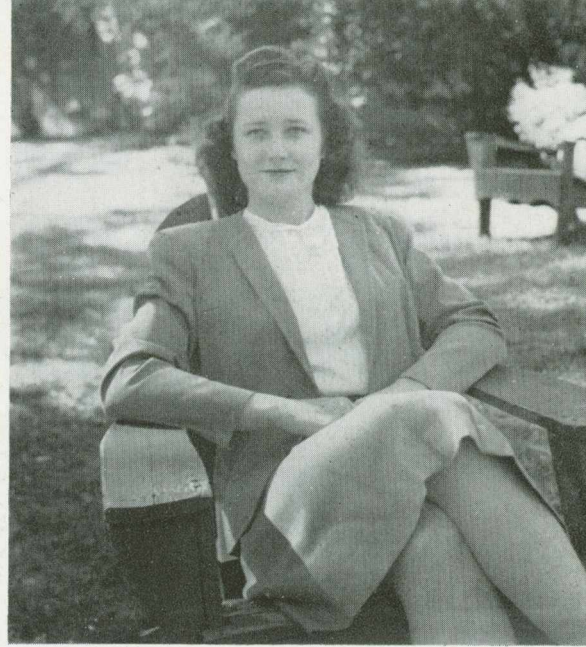


KEENE and BOWEN

EDITORIAL STAFF



PINE CONE



NEWTON



BUSINESS STAFF



BOLEN and ADAMS

LOUISE NEWTON *Business Manager*

Ad Staff:

- VIRGINIA BOLEN
- BOBBIE TOWNSEND
- ANN ADAMS
- ANN FORTSON
- ANNE ZIPLIES
- LOUISE MASSEY
- ALICE JANE DANCER



HERNDON and STORER

The *Campus Canopy*, a bi-weekly publication of the student body, attempts through its columns, editorials, features, and news stories to be representative of student opinion on the G.S.W.C. Campus.

The *Canopy* is a member of the Associated Collegiate Press and the Intercollegiate Press.



Business Staff

Alice Jane Dwyer
Lillian Hester
Lillian Hester
Alice Jane Dwyer
Lillian Hester
Lillian Hester
Alice Jane Dwyer
Lillian Hester
Lillian Hester
Alice Jane Dwyer

CANOPY

SOCIOLOGY CLUB

EDITORIAL STAFF

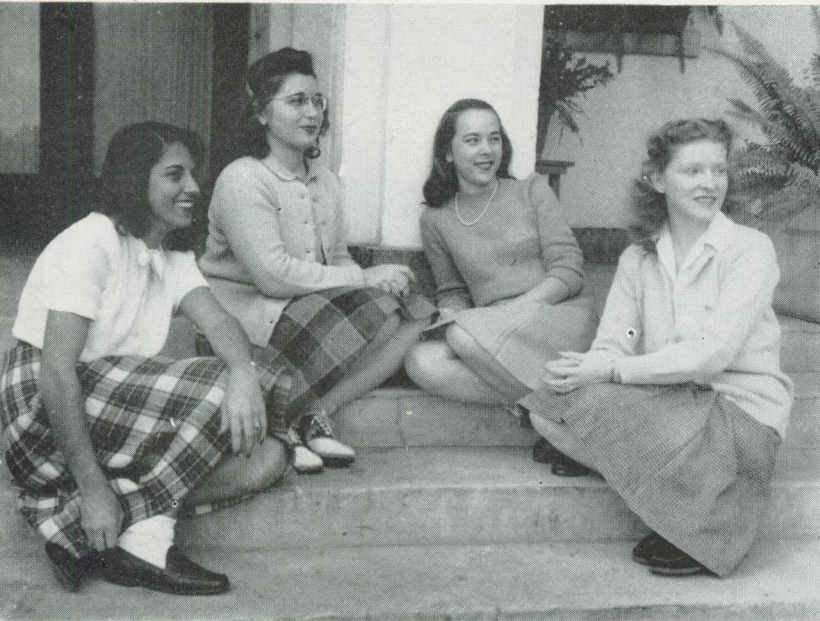
- MARGUERITE STORER *Editor*
- BETTY JEAN SMITH *Associate Editor*
- MARY ELINORE CREA *News Editor*
- SIMONE BASSETT *Columnist*
- MARTHA WILCOX *Columnist*
- EDITH COLLINS *Columnist*
- BETTY HUTCHINSON *Columnist*
- JEAN LAND *Columnist*
- CATHERINE PHILLIPS *Columnist*
- CAROLYN MATHIS *Sports Editor*
- KATHLEEN GRANTHAM *Exchange Editor*
- MARGUERITE DICKERSON *Circulation Manager*
- ANNETTE HERNDON *Business Manager*
- ANN WILKIN *Advertising Manager*



SMITH and CREA

STAFF





SOCIOLOGY CLUB

OFFICERS

LOUISE REES *President*
 HELEN GRAYDON *Vice-President*
 BOBBIE TOWNSEND *Secretary-Treasurer*
 CATHERINE PHILLIPS *Reporter*

TOWNSEND, GRAYDON, PHILLIPS, REES



MEMBERS:

Marguerite Dickerson, Margaret Joyner, Edith Collins, Louise Rees, Peggy Raiford, Ila Downie, Helen Graydon, Catherine Phillips, Hanson Rogers, Laurie White, Sara Adcock, Dorothy Futch, Jean Land, Sherla Miller, Clare Carson, Mary Brooks, Jean Dickson, Frances Hurn, Rebecca Jennings, Venette Morgan, Johnnie Stokes, Betty Toler, Peggy Williams, and Bobbie Townsend.

The Sociology Club is composed of all majors and minors in the field of Sociology. At each meeting of the group, an outside speaker who is a worker in some field of Sociology speaks on some pertinent subject, which helps acquaint the girls with the field they are interested in.

The club members have visited the Valdosta Boys' Club on several occasions, where they assisted in entertaining and directing the activities.

HOME ECONOMICS CLUB

The Home Economics Club, whose forty-two members are all Home Economics majors and minors, is affiliated with the Georgia and American Home Economics Associations. The purpose of this club is to develop worthy self-expression, good leadership, and intelligent fellowship, and to provide social, business, and professional experience through the various aspects of the club.

OFFICERS

JOAN DAVIS	<i>President</i>	ELSIE HARVEY	<i>Historian</i>
MIRIAM POWELL	<i>Vice-President</i>	ISABEL MCLEOD	<i>Parliamentarian</i>
ILA DOWNIE	<i>Secretary</i>	BETTY JUNE THOMPSON	<i>Reporter</i>
RAY JEAN NORMAN	<i>Treasurer</i>	MRS. KENDRICKS	<i>Faculty Adviser</i>



VALDOSTA CLUB

This organization, made up of all students who are either bona fide residents of Valdosta or graduates of the Valdosta High School, endeavors to unite the day students, to further and better the relations between the day and dormitory students, to interpret the college to the town, and to aid the civic organizations of Valdosta in any way possible.

During the year the members of this club enjoyed a wiener roast at the House in the Woods, and helped sponsor the Christmas dance.

OFFICERS

ADAIR MYDDELTON . *President*
 BETTY JANE ALDERMAN
Vice-President
 CHARLENE BOWEN
Secretary-Treasurer
 MRS. W. M. THOMAS
Faculty Adviser



BOWEN, ALDERMAN, MYDDELTON

MEMBERS

Gloria Abrahams	Martha Lee George	Leona Reddles
Betty Jane Alderman	Virginia Hagan	Edwina Roberts
Vilma Ansley	Merle Hancock	Frances Paine
Ruth Black	Margaret Hardy	Betty Jane Phillips
Charlene Bowen	Martha Ellen Hatcher	Katheryn Phillips
Julia Clay Briggs	Faye Hemmingway	Narene Register
Sara Frances Briggs	Gaye Hemmingway	Louise Register
Joyce Bullington	Mary Catherine Hillhouse	Aristene Register
Barbara Cole	Judy Jackson	Sally Royal
Evelyn Connell	Margaret Jones	Anne Shelton
Sara Elizabeth Connell	Esther Landey	Henrietta Smith
Connie Converse	Alice McGeachy	Morris Smith
Laura Converse	Frances McIntyre	Johnnie V. Stokes
Faye Cook	Margaret McIntyre	Viva Ruth Southall
Virginia Cook	Joan McIntosh	Jackie Talton
Dorothy Coppage	Louise Massey	Ruth Templeton
Hilda Crum	Margie Massey	Nona Lee Touchton
Jean Davis	Sherla Miller	Faye Vickers
Elizabeth DeLoach	Vennette Morgan	Phyllis Wade
Bertha Drexel	Jean Mullis	Hazel Walker
Jane Fletcher	Adair Myddelton	Laurie White
Virginia Freeman	Blanche Myers	Vera Wilson
Anne French	Margie Noell	Betty Hutchinson

OFFICERS

MERRITT DYAL . *President*

ANN WILKIN
Vice-President

ANNETTE HERNDON
Secretary-Treasurer

BETTY JEAN SMITH
Reporter



HERNDON, WILKIN. BOWEN, DYAL

MATH SCIENCE CLUB

The Math-Science Club is composed of majors and minors in the fields of mathematics and science, and other interested students of high scholastic achievement in these fields.

The Club consists of three divisions: Biology, Chemistry, and Mathematics, each of which sponsors special projects. Among these are the making of "Little Willies" each year, which are good luck charms against the ever-present examinations.

MEMBERS

Harriet Arrington
Corinne Dellinger
Merritt Dyal
Nell Kenny
Beth Middleton
Louise Newton
Martha Wilcox
Marguerite Dickerson
Doris Gibbs
Delores Bryce
Edith Jones
Barbara Passmore
Clemmie Lane
Betty Tolar
Joan Davis

Evelyn Connell
Betty Gunter
Frances Hurn
Betty Keene
Simone Bassett
Dorothy Futch
Annette Herndon
Sancil Holder
Betty Rentz
Ruth Turner
Mary Ann Brown
Beverly Swanson
Joy Roland
Lois Johnson
Mary Ellen Compton

Ann DuPriest
Jane Kennedy
Carolyn Mathis
Betty Jean Smith
Ann Ziplies
Katherine Parham
Ann Wilkin
Patty Dixon
Jacquelyn Norman
Lucille Jackson
La'Trelle Carter
Martha Ann Sanders
Helen Graydon
Edwina Roberts

Cornelia Tuten
Zona Clyde Bennett
Peggy Williams
Margaret McGregor
Margaret Claghorn
Adair Myddelton
Jean Tippins
Frances Moxley
Mary Gaile Carter
Carolyn Bowen
Judy Flynt
Lolla Lee Holder
Betty Bell
Elia Meadors



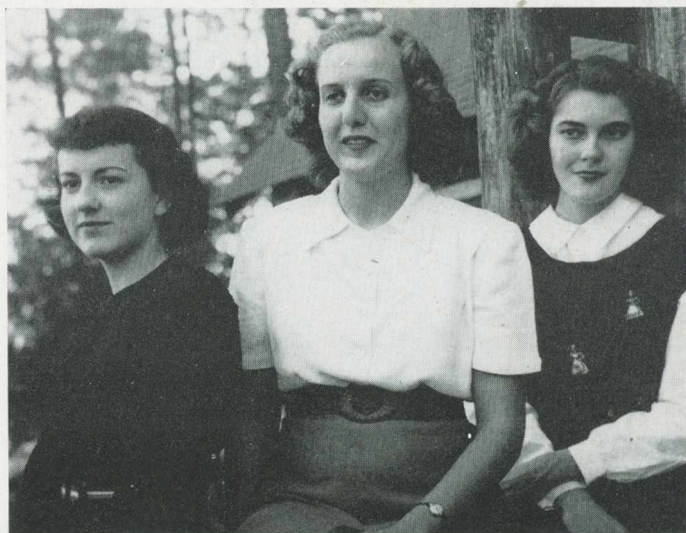
ENGLISH CLUB

The purpose of the English Club is to stimulate interest in literature and literary activities on the campus and among members of the group particularly.

This year the English Club brought an interesting outside speaker before the student body in chapel; another interesting activity was the giving of a prize in a contest among all students to encourage literary creation.

OFFICERS

- MARTHA WILCOX *President*
 LISETTE BLACK *Vice-President*
 JOSEPHINE EVERETTE *Secretary and Treasurer*
 MRS. ODUM *Faculty Adviser*



EVERETT, WILCOX, BLACK

MEMBERS

- | | | | |
|--------------------|-------------------|------------------|---------------|
| Louise Brumlow | Virginia Freeman | Lolla Lee Holder | Betty Rentz |
| Lisette Black | Pat Gainey | Sancil Holder | Anne Shipp |
| Evelyn Connell | Kathleen Grantham | Betty Hutchinson | Ann Whittle |
| Alice Jane Dancer | Annette Herndon | Margaret Jones | Martha Wilcox |
| Josephine Everette | Dot Hightower | Edwina Roberts | |

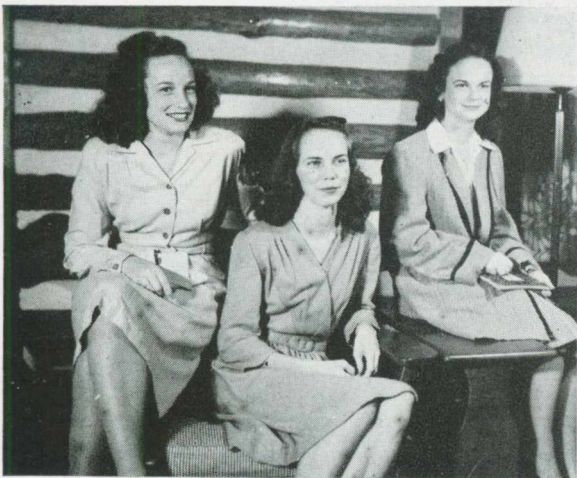
ROMANCE LANGUAGE CLUB

This club, made up of advanced students in French and Spanish who have maintained an average of B in all such courses, was organized in order to afford to interested students a better understanding of French and Spanish and of those countries in which these languages are spoken.

As its yearly project the club again sent boxes of food and clothes to a French war orphan.

OFFICERS

MARGUERITE STORER *President*
 GLADYS THAMES *Vice-President*
 SIMONE BASSETT *Secretary-Treasurer*



THAMES, STORER, BASSETT

MEMBERS

Simone Bassett	Lolla Lee Holder
Lisette Black	Betty Hutchinson
Mrs. Mary Brooks	Betty Keene
Clare Carson	Jean Martin
Mary Ellen Compton	June Sears
Evelyn Connell	Marguerite Storer
Josephine Everett	Gladys Thames
Colleen Geiger	Martha Wilcox
Kathleen Grantham	Laurie White
Annette Herndon	



PHILHARMONIC CLUB

This year the Philharmonic Club has brought to the students through its program a well-balanced representation of classical and modern music.

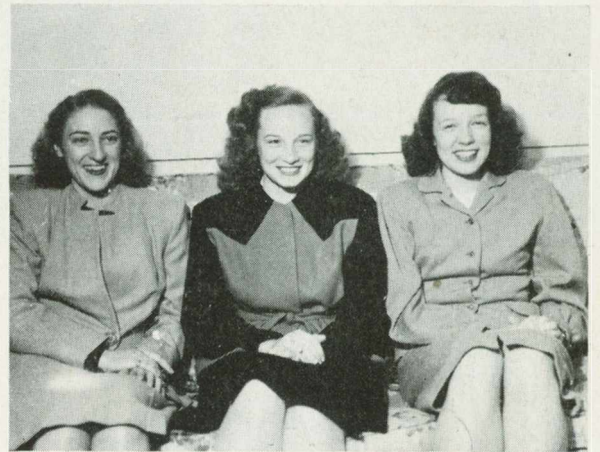
Members of the group attended symphony concerts which were available in surrounding towns.

OFFICERS

GLADYS THAMES *President*
BETTY GUNTER *Vice-President*
CHARLOTTE GOODWIN *Secretary and Treasurer*

MEMBERS

Annolene Bone	Betty Rentz
Carolyn Bowen	Ruth Reynolds
Joyce Childs	Margaret Smith
Jane Dekle	Susan Belle Smith
Charlotte Goodwin	Gladys Thames
Betty Gunter	Nickey Williams
Rebecca Jennings	Anne Ziplies



GUNTER, THAMES, GOODWIN





DANCE CLUB

OFFICERS

NICKEY WILLIAMS *President*
 ADAIR MYDDELTON *Vice-President*

MEMBERS

Sara Adcock, Doris Bateman, Carolyn Bowen, Louise Brumlow, Frances Castleberry, Sally Connell, Hilda Crum, Joan Davis, Betty Gunter, Margie Massey, Adair Myddelton, Barbara Lawson, Joselyn Matthias, Elizabeth Pate, Mary Frances Sanders, Anne Whittle, Marguerite Storer, Hazel Walker, and Nickey Williams.

The Dance Group has been very active this year under the able leadership of Mrs. Valente. Besides the regular performances at the Christmas Dinner and Spring Festival, the Dance Club presented its first dance recital in the Spring. All the members of the group participated, and several outstanding solo numbers were presented.



WILLIAMS and STORER

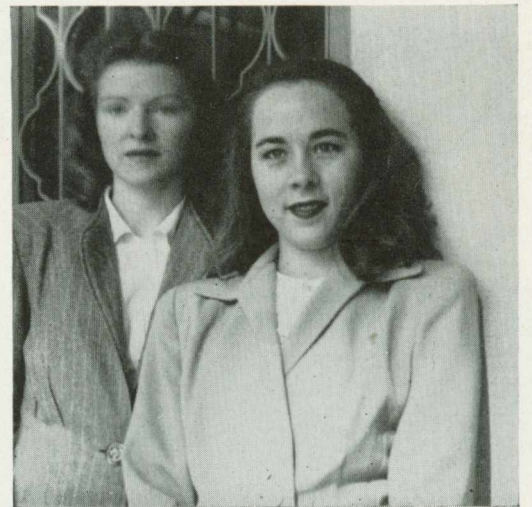


SOCK and BUSKIN

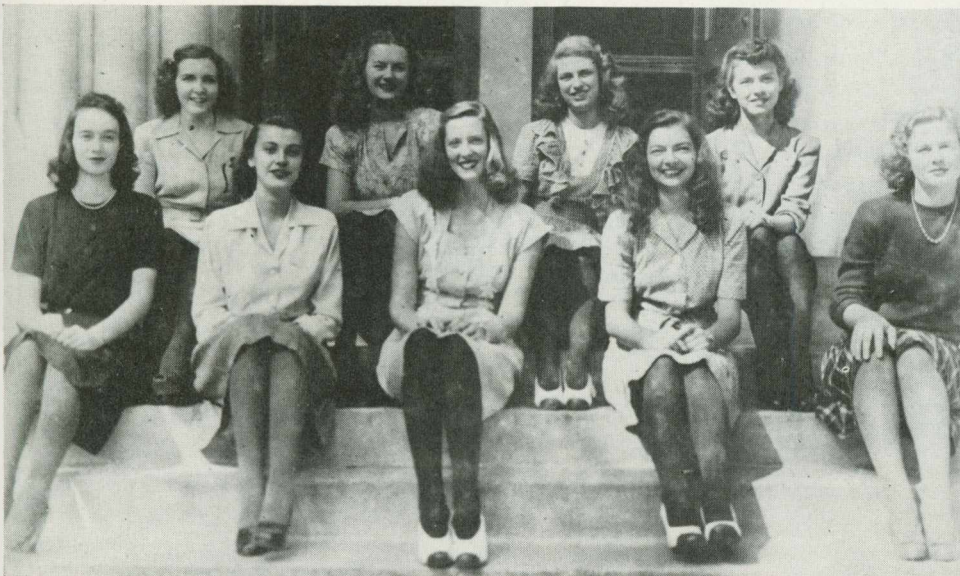
Our campus Thespians may be found as members of the Sock and Buskin Club. These girls present two major productions each year. An outstanding production of this year was "Night Must Fall," roduced under the able leadership of Miss Louise Sawyer, director of the club. Once this year the club journeyed to a neighboring city to see a current play. This trip proved to be entertaining and informative to all.

OFFICERS

- LOUISE REES *President*
- CORNELIA TUTEN *Vice-President*
- CATHERINE PHILLIPS *Secretary-Treasurer*



REES and PHILLIPS



TUTEN and ROGERS

Fellowship of St. Martin

The Fellowship of Saint Martin is composed of Episcopal students and their friends. A branch of the Fellowship group located at the Cathedral of St. Philip in Atlanta, the Fellowship strives to promote Christian ideals of service and to forward intellectual and cultural association thus following in the model of its patron St. Martin. Christian sharing is the summation of a member's duty.

- BEVERLY SWANSON *President*
 PAT AUBREY *Vice-President*
 MARY ELINOR CREA *Recorder*
 BETTY JEAN SMITH *Bursar*



FELLOWSHIP OF ST. MARTIN

RELIGIOUS ORGANIZATIONS

Baptist Student Union

The purpose of this organization is to serve as a link between the school and the church and to interest and enlist the college students in the church activities.

Members of the B.S.U. Council include all students on campus who belong to any local Baptist Church organization.

- LOLLA LEE HOLDER *President*
 SANCIL HOLDER *First Vice-President*
 LOUISE MASSEY *Second Vice-President*
 BETTY KEENE *Third Vice-President*
 SUE NELL SMITH *Secretary*
 RUTH REYNOLDS *Treasurer*
 ISABEL McLEOD *Publicity*
 CAROLYN BOWEN *Sunday School Representative*
 EDITH JONES *B.T.U. Representative*
 MRS. KENDRICKS *Faculty Adviser*

Methodist Student Movement

This is an organization for all Methodist girls on campus. The council serves to link them and the First Methodist Church. Its purpose is to encourage Sunday School, Church, and Fellowship attendance.

COUNCIL

- MERRITT DYAL, *Chairman*
 CHARLOTTE GOODWIN
 VIRGINIA HEISLER
 HULDA JONES
 CHARLENE BOWEN



BAPTIST STUDENT UNION



METHODIST STUDENT MOVEMENT COUNCIL



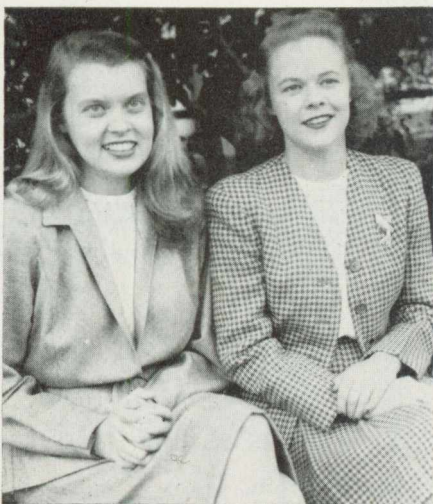
GOODWIN

GLEE CLUB

Under the able direction of Mr. Raimonde Aubrey this club has enlarged its enrollment and has become one of the most outstanding attractions to the college. Besides its annual spring concert in May, this organization has made several appearances in nearby cities.

MEMBERS

- | | | |
|---------------------|-------------------|----------------------|
| Gloria Abrahams | Louise Godbey | Jean Mayo |
| Julia Bailey | Charlotte Goodwin | Adair Myddelton |
| Sue Belloff | Doris Gibbs | Mary Alice Norman |
| Zona Bennett | Bennie Harrington | Frances Paine |
| Annolene Bone | Grace Harrell | Valera Parrish |
| Charlene Bowen | Jean Helton | Elizabeth Pate |
| Danise Bryant | Rebecca Jennings | Miriam Powell |
| Frances Castleberry | Julianne Johnson | Ann Shelton |
| Frances Chester | Hulda Jones | Ruth Reynolds |
| Margaret Claghorn | Louis Johnson | Martha Sanders |
| Constance Converse | Barbara Lawson | Claire Singletary |
| Laura Converse | Freida Levin | Betty Jean Smith |
| Vivian Cooper | Mildred Manley | Henrietta Smith |
| Mary Elinor Crea | Carolyn Mann | Margaret Ann Smith |
| Hilda Crum | Jean Martin | Susan Bell Smith |
| Alice Jane Dancer | Louise Massey | Harriette Story |
| Jane Dekle | Margie Massey | Ruth Templeton |
| Frances DeVane | Alice McGeachy | Martha Jane Thompson |
| Patsy Dillard | Carolyn Mathis | Jean Tippins |
| Patty Dixon | Jocelyn Matthias | Cornelia Tuten |
| Lucille Douglas | Sherla Miller | Claire Walker |
| Mary Duncan | Armatha Morgan | Martha Wilcox |
| Alethia Edwards | Martha Morgan | Mary Nix Williams |
| Josephine Everett | Venette Morgan | Irene Wilson |
| Ann Fortson | Jane Moses | Anne Zipplies |



HELTON and CONVERSE

SERENADERS

MEMBERS

JANE DEKLE
JOSEPHINE EVERETT
CHARLOTTE GOODWIN
GLYNN HILL
JEAN MARTIN
VENETTE MORGAN
NICKEY WILLIAMS



The Serenaders, selected from the Glee Club for their unusual ability, have represented the College at many special events around town during the year, and have increased their already outstanding reputation.



ICELANDIC SINGERS

ARTIST SERIES



LA MERI



MICHAEL STRANGE



YVES TINAYRE



INTERNATIONAL RELATIONS

The I.R.C. is under the sponsorship of the Carnegie Endowment for International Peace.

The club endeavors to deal with all topics of national and international importance in an impartial manner, always endeavoring to search out the truth of each situation under investigation.

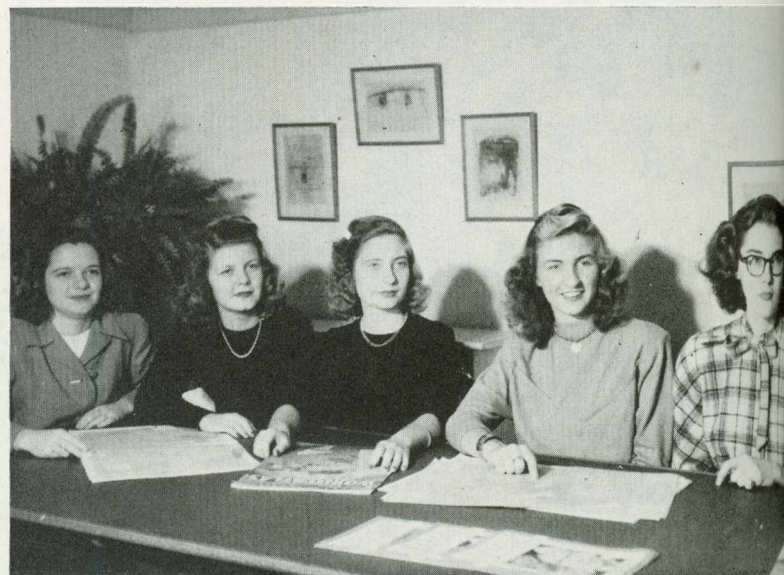
This year the club participated in American Relief to Europe by sending boxes of necessities and gifts to a person of need in Belgium.

OFFICERS

- MARION NEWSOME *President*
- RUTH BLACK *Vice-President*
- CAROLYN MATHIS *Secretary*
- JEAN HALL *Treasurer*
- LISETTE BLACK *Member-at-Large*

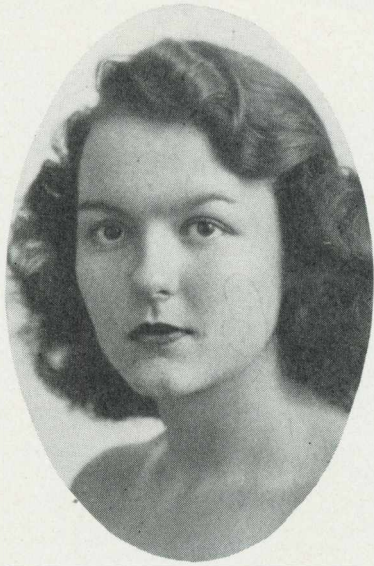
MEMBERS

- Simone Bassett
- Virginia Bolen
- Laura Converse
- Harriet Arrington
- Jean Martin
- June Sears
- Martha Ann Morgan



NEWSOM, BLACK, HALL, MATHIS, BLACK

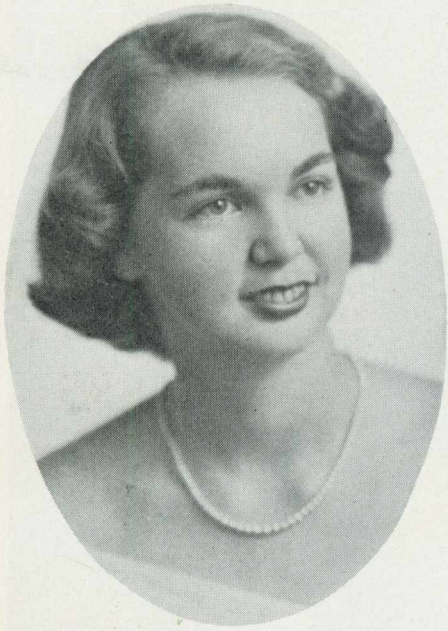




CLARE CARSON

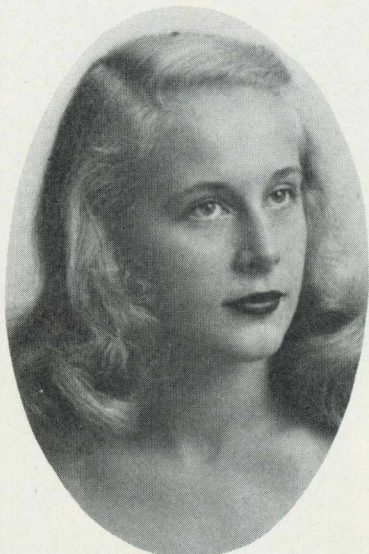


VIRGINIA BOLEN

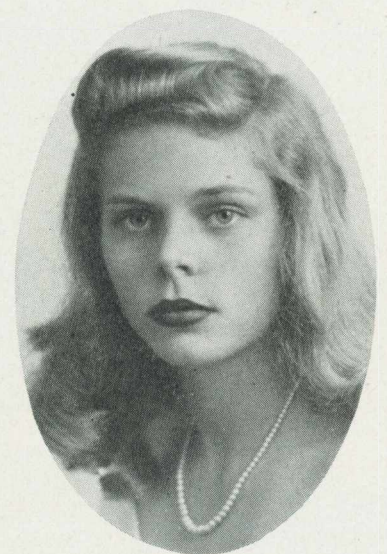


EDITH COLLINS

OUTSTANDING



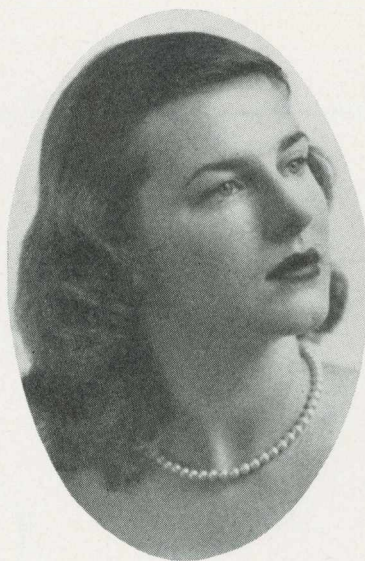
MARY ELLEN COMPTON



KATHLEEN GRANTHAM

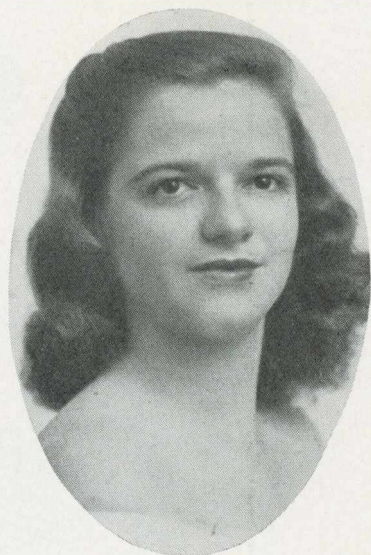


BETTY HUTCHINSON



JEAN MARTIN

SENIORS



MARION NEWSOM



MARGUERITE STORER



ELIZABETH PATE

Congratulations to the

1947 SENIORS

of the

Georgia State Womans College

and . . .

Welcome to the

UPPERCLASSMEN and FRESHMEN

"THE CITY OF AZALEAS"

*welcomes the opportunity of being your home during
your college days and of sharing your culture.*

*May your associations and your memories of our
city be such that you will return after college days.*

CONGRATULATIONS

G. S. W. C.

Graduates

We are proud of the records that you have made at college in Valdosta and will always hold a warm spot in our hearts for you.

Welcome
Upperclassmen and
Freshmen

We are proud to have you as a part of Valdosta, and extend to you our every facility to make your stay in Valdosta pleasant and long remembered.



Luke Brothers

Georgia's Finest Store, South

COMPLIMENTS

. . of . .

THE CITIZENS and SOUTHERN
NATIONAL BANK



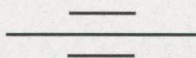
VALDOSTA

GEORGIA

Valdosta's Leading Restaurant

THE ROOSEVELT

FAMOUS FOR WESTERN STEAKS



VALDOSTA --- GEORGIA

BEST WISHES

--- from ---

The
WHITE HOUSE RESTAURANT



VALDOSTA, GEORGIA

The other day, a man wrote that he considered me his ice man, cook and laundress, doing the washing and ironing in addition to bringing music and drama into his well-lighted home.

In short, he said that I was his "chief cook and bottle washer" . . . and that my wages would be cheap at *twice* the price. But by the same token, I'll bet he's glad that his electrical dollar is buying *three times* as much as it did fifteen years ago.

So when you build your new home or remodel your present kitchen . . . remember that electricity can do it best for less.

Georgia Power
AND
LIGHT COMPANY



GOOD SERVICE

... at ...

**BOB BELCHER'S
DRUG STORE**

PATTERSON and CENTRAL

Phone 812-813



108 W. Central Ave.

Valdosta, Ga.

**BLACKBURN'S
STUDIO**

Portraits of Distinction

FRAMES

--

FRAMING

Phone 201

Photographers of
PINE CONE

**LANGDALE TIMBER
COMPANY**

NAVAL STORES
PULPWOOD
CROSSTIES

106 WEST HILL AVENUE

Valdosta

Georgia

Compliments of ...

**BELK-HUDSON
COMPANY**

*Valdosta's Largest and
Leading Department Store*

Newest Campus Styles

**SOUTHERN STATIONERY
& PRINTING COMPANY**

Wholesale Paper Dealers

•
COMMERCIAL STATIONERS
PRINTERS
OFFICE OUTFITTERS

•
VALDOSTA, GEORGIA

COMPLIMENTS

. . . of . . .

**Lowndes County Board
of County Commissioners**

D. E. COLEMAN, *Chairman*

T. M. DASHER

E. P. STATEN

Congratulations and

Best Wishes . . .

RITZ **DOSTA**

PALACE

MARTIN THEATRES

•
VALDOSTA, GEORGIA

**BROOKWOOD
PHARMACY**

*Congratulations Seniors
of '47 and Welcome
All Students of G. S. W. C.*

•
PHONE 336-337

Compliments of . . .

**C. C. VARNEDOE
and COMPANY**

For the 68th Year
Valdosta's Store Dependable

The Style Center
of Valdosta

Compliments of . . .

M. & F. FOOD STORES

•
VALDOSTA,
GEORGIA

**MILAM FURNITURE
COMPANY**

110 W. Hill Avenue
Valdosta, Georgia
Phone 1170

*"It's Really 'Home Sweet Home'
When We Furnish It"*

TERRY'S DRUG STORE

The Rexall Store

•
Patterson at Hill Valdosta, Ga.

Phone 115-116

DUNCAN'S SHOE SHOP

•
Smart Footwear of Known
Quality for College Girls

Compliments of . . .

**REGISTER CLOTHING
COMPANY**

122 N. Patterson St. Valdosta, Ga.

Home of Michael Stern Clothes

Do Your Banking at . . .



**THE FIRST
NATIONAL BANK
OF VALDOSTA**



Best Wishes from . . .

PAXON-JONES, Inc.

The Home of Good Shoes for 43 Years

April
1903

April
1947

Compliments of . . .

**SHIVER'S PINES
RESTAURANT**

•
1515 N. ASHLEY ST.
•

VALDOSTA

GEORGIA



TRAILWAYS

*Safe and Courteous Service
Modern Comfortable
Clipper Coaches*

GEORGIA STAGES, Inc.

ALBANY, GEORGIA

OLIVER BROTHERS

PHILCO RADIOS AMOCO PRODUCTS
PENNSYLVANIA TIRES

Phone 231

NORWOOD'S, Inc.

LITHOGRAPHERS PRINTERS
STATIONERS

*Read the Lowndes County
News Each Week for Local News*

Compliments of . . .

The VALDOSTA DAILY TIMES

A Good Afternoon Paper

*Congratulations to the Seniors
of 1947*

RHODES - COLLINS FURNITURE COMPANY

BRIGG'S CLOTHING

"THINGS MEN WEAR"

VALDOSTA, GA.

114 N. Patterson St.

Phone 168

COMPLIMENTS

. . . of . . .

COWART'S DRESS SHOP

Smart Styles for College Girls

Compliments of . . .

VALDOSTA BOWLING CENTER

125 W. Central Ave.

Phone 22

MUSIC

For a Profession or for Pleasure

Mathis & Youmans Co.

112 N. Patterson St.

Pianos, Radios, Electric Organs,
Records and Supplies

COMPLIMENTS

. . . of . . .

HALL'S CHILDREN'S SHOP

"Tots Through Teens"

COMPLIMENTS

. . . of . . .

VALDOSTA DRUG CO.

For the best in flowers . . .

**VALDOSTA
GREENHOUSES**

908 Williams Street

Compliments of . . .

TAYLOR'S BAKERY

We Appreciate Your Patronage

VALDOSTA

GEORGIA

**VALDOSTA
MUSIC SUPPLY**

Sheet Music, Majestic Radios,
Records, Albums, Recording Studio

127 W. Central Ave.

Valdosta, Ga.

Phone 2188

VALDOSTA COACHES

CITY BUS
YELLOW CAB

Phone 1000

Compliments of . . .

STAR LAUNDRY, Inc.

Over Fifty Years of Faithful Service

"Satisfaction a Habit"

H. D. BEVILLE, *Mgr.*

Phone 54

G.S.W.C. Girls . . .

PAUSE and REFRESH

. . . DRINK . . .

COCA-COLA

IN BOTTLES

**Valdosta Coca-Cola Bottling
Works, Inc.**

LESLIE R. DAVIS

Complete line of watches,
jewelry, and greeting cards

132 N. Ashley St.

Phone 1826

DUTCH'S GRILL

NEXT TO BUS TERMINAL

Steaks — Chicken — Chops —
Sandwiches

HOME OF 350 CAB CO.

COMPLIMENTS

. . . of . . .

HOTEL DANIEL ASHLEY

Valdosta

Georgia

**KELLER CLOTHING CO.,
Inc.**

EVERYTHING FOR MEN and BOYS

Phone 307

106 N. Patterson

Enjoy

Foremost Ice Cream

It's Delicious

FOREMOST FARMS, Inc.

Valdosta

Georgia

COMPLIMENTS

. . . of . . .

HOTEL VALDES

Valdosta

Georgia

COMPLIMENTS

. . . of . . .

PAINÉ HARDWARE CO.

Everything in Hardware

PHONE 800

Valdosta

Georgia

COMPLIMENTS

. . . of . . .

BRIGGS LADIES SHOP

WHERE QUALITY COUNTS

COMPLIMENTS

. . . of . . .

FRIEDLANDER'S

The Finest in Fashions

Valdosta

Georgia

COMPLIMENTS

. . . of . . .

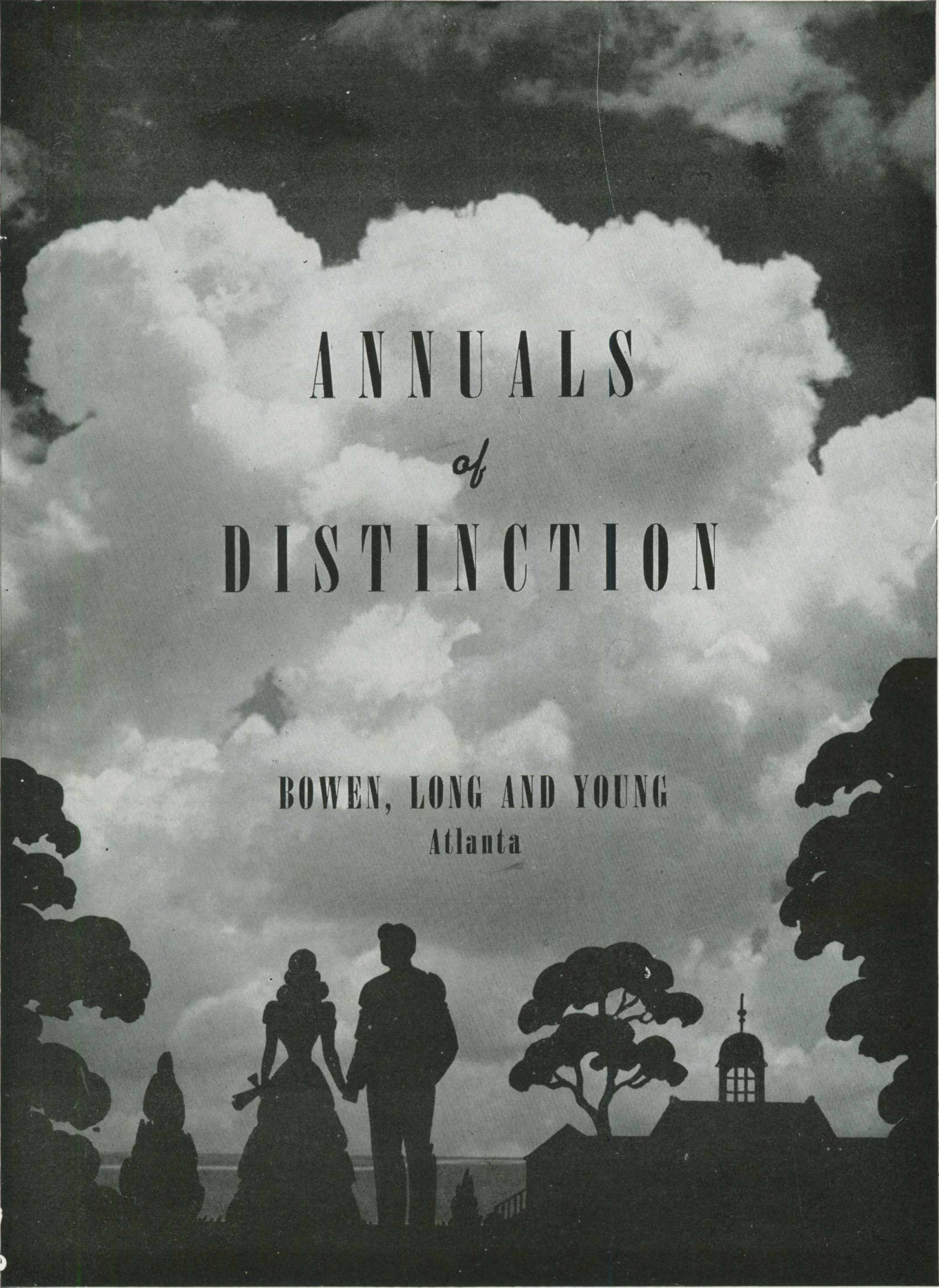
SERVICE TIRE COMPANY

709 N. Ashley St.

Valdosta

Georgia

We, the Staff of the 1947 PINE CONE, take this opportunity to extend our sincere appreciation to those loyal friends of our institution who, by their generous support, have made possible the publication of this book.

The background of the cover is a black and white photograph of a sky filled with large, fluffy clouds. In the foreground, there are dark silhouettes of trees and a couple standing together, holding hands. To the right, a building with a dome is also visible in silhouette.

ANNUALS
of
DISTINCTION

BOWEN, LONG AND YOUNG
Atlanta