



Pine

cone

Alumni Relations



Digitized by the Internet Archive
in 2014

<https://archive.org/details/pinecone194800geor>



Rebecca, Carolyn, Betty, and Polly Pine Cone Have a Story to Tell

A STORY AND ...

A Sort of



Registration



Merry-Go-Round



Recreation

Graduation



Study

Of



AT THE GEORGIA STATE
AS SEEN BY YOUR

1948

WOMANS COLLEGE, VALDOSTA
PINE CONE

OUR STORY IS DEDICATED TO . . .



DR. MARIAN E. FARBAR
Who so kindly, graciously, and unselfishly takes care of our health.



and is divided into these sections

THE PEOPLE

THE ACTIVITIES

and

THE FEATURES

ALL THE STUDENTS



THE FACULTY



THE MIGHTY SENIORS



SOPHISTICATED JUNIORS



MEEK SOPHOMORES



AND LOWLY FRESHMEN



"It takes all kinds of people to make up a college . . . and here they are!"





THE PEOPLE



DR. FRANK R. READE
President



MRS. CAROLINE P. THOMAS
Registrar



MR. J. R. DUSENBURY
Comptroller



MISS ELIZABETH FINK
*Director of Placement and
Publicity*

THE ADMINISTRATION

AND FACULTY

Alice Meadors, Assistant Librarian; Lillian Patterson, Librarian; and Thera Hambrick, Assistant Librarian.



Mrs. Beth W. McRae, Secretary to the President, Assistant in Speech; Louise Stump, Assistant to the Comptroller; and Betty Hutchinson, Assistant to the Registrar.



Mrs. Charlotte Amason, Resident Head, Converse Hall; Mrs. Florine Myers, Resident Head, Ashley Hall; Dr. Marian E. Farbar, Physician; and Mrs. J. A. Sconyers, Resident Head, Senior Hall.



Mrs. Eva Shrivalle, Dietitian, and Mrs. C. C. Whittle, Assistant Dietitian.

FACULTY



Willard E. Ruggles, Assistant Professor of Sociology; Mildred M. Price, Professor of History, and J. A. Durrenberger, Professor of Sociology.



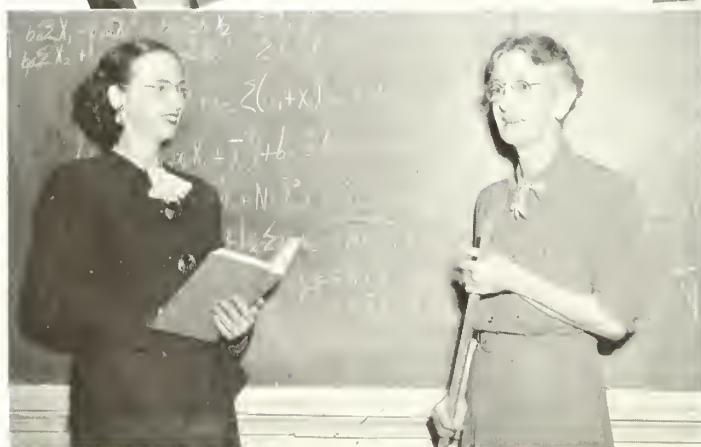
Mrs. Corinne S. Knight, Assistant Professor of Education, and Mrs. N. E. Fry, Instructor of Sociology.



Mrs. Gertrude G. Odom, Professor of English; Harold S. Gulliver, Professor of English, and Louise A. Sawyer, Professor of Speech.



C. H. White, Associate Professor of Art and Music; Sapelo Treanor, Professor of Foreign Languages, and Frances Ruth Carpenter, Professor of Art.



Mrs. Martha J. Coleman, Instructor of Mathematics, and Lena J. Hawks, Professor of Mathematics.



Thomas D. Brown, Associate Professor of Biology; Beatrice Nevins, Professor of Biology; and Earl W. Phelan, Professor of Chemistry.



Mrs. Vennis K. Tullis, Professor of Home Economics; and Jeanne C. Lowry, Assistant Professor of Secretarial Science.



Mrs. Phyllis P. Valente, Assistant Professor of Physical Education; and Frances C. Alex, Assistant Professor of Physical Education.
Glynn Hill, Instructor of Music; Mrs. Martha C. Aubrey, Instructor, Accompanist of Music; and Raimonde Aubrey, Associate Professor of Music.

Mrs. Matilda D. Mathis, Instructor of Physical Education; and Leonora Ivey, Professor of Physical Education.
Gladys E. Warren, Professor of Music; and Mrs. W. A. Pardee, Instructor of Music.

Not Pictured: Mary Sue Wilson, Accompanist.



PAULINE JORDAN
President

ADAIR MYDDLITON
Vice-President

JOANNE HAMILTON
Secretary-Treasurer

SENIORS

Their Officers and Activities

Dear Liz:

Well, it's almost over—in a few days I'll be a woman of the world! And don't think I'm not scared, because I surely am. Maybe not so scared as "homesick" when I think of leaving "W. C." These four years have been grand and the friends I've made have been ever more wonderful.

When I first came to school, I didn't have a clear idea of education—what it was and what it embodied. It's a mighty fine thing—and mighty big, too. Thanks to my advisors and teachers, I have a clearer view of it, just enough to make me want more!

I don't like to think that this was my last year for the traditional things—trying to orientate the Freshmen—"ratting" them, seasonal "Y" services (especially the "Hanging of the Greens" in which only Seniors participate), Sadie Hawkins Day, Junior-Senior Frolics, etc., etc. It has been a full year, but a good one. I know I shall never forget one minute of it—nor any member of this Senior Class.

And now it will soon be the day of reckoning, when I'll be walking down the aisle with my sweet Sophomore Hood Sister beside me, the one I chose to share in this most important day in my life. Somehow I feel as if I should be a Freshman all over again!

I think the second verse of the Alma Mater suits me pretty well right now—

"Alma Mater's loving daughters
We will ever be,
Always to thy heart returning
G. S. W. C."

See you soon,

Love,

BETH.



JEAN · CLEMMIE · ISABEL · LOLLA LEE



Here's to these girls who always have a smile for every joy, always a minute to share, always an encouragement for hope!



JEAN DICKSON
Nashville, Ga.

Social Science Division, Emphasis on Sociology

S.G.A. 1, 2, 3, 4; Y.W.C.A. 1, 2, 3, 4; B.S.U. 1, 2, 3, 4, Council 3; Sports Club 1, 2, 3, 4; PINE CONE Staff 2; Sociology Club 3, 4; League of Women Voters 4.



CLEMMIE JOYCE LANE
Ashburn, Ga.

Biology, Major; Art, Minor

Y.W.C.A. 1, 2, 3, 4; Sports Club 1, 2, 3, 4; S.G.A. 1, 2, 3, 4, House Council 3; Fine Arts Club 3, 4; League of Women Voters 3, 4; Junior Class Secretary-Treasurer; PINE CONE Staff 4; Math-Science Club 1, 2, 3, 4; Historian 4.



ISABEL McLEOD
Valdosta, Ga.

Home Economics, Major; English, Minor

S.G.A. 1, 2, 3, 4; Y.W.C.A. 1, 2, 3, 4; Sports Club 1; Fine Arts Club 1, 2, 3, 4, Reporter 4; Home Ec Club 1, 2, 3, 4, Parliamentarian 3, 4; League of Women Voters 4, Membership Chairman 4; B.S.U. 1, 2, 3, 4, Publicity Director 3, President 4; Valdosta Club 1, 2, 3, 4; *Campus Canopy* Reporter 3, 4; House Council 3.



LOLLA LEE HOLDER
Tifton, Ga.

Humanities Division; Emphasis on English

Y.W.C.A. 1, 2, 3, 4; S.G.A. 1, 2, 3, 4, House Council 4; Sophomore Council 2; Sports Club 1, 2; Sock and Buskin Club 1, 2, 3, 4; B.S.U. 1, 2, 3, 4, Council 2, 3, 4, President 3; English Club 3, 4, Vice-President 3, President 4; Romance Language Club 2, 3, 4; Math-Science Club 3, 4; League of Women Voters 4; F. C. A. 4; Chairman Artist Series Committee 4.

ADAIR · HILDA · VERA · VENETTE



Talent and personality make good company. And having combined both of these sought-for qualities, these "town girls" are an integral part of G. S. W. C.



ADAIR MYDDLETON
Valdosta, Ga.

Secretarial Science, Major

Y. W. C. A. 1, 2, 3, 4; S. G. A. 1, 2, 3, 4; Valdosta Club 1, 2, 3, President 3; Dance Club 1, 2, 3, Secretary-Treasurer 2, Vice-President 3; Glee Club 1, 2, 3, Secretary 2; PINI CONL Staff 3; Math-Science Club 3; Business Club 2, 3, 4; Sports Club 1, 2, 3; E. C. A. 3; Vice-President Junior Class 3; Vice-President Senior Class 4.



HILDA JOHNGIE CRUM
Valdosta, Ga.

Home Economics, Major; Art, Minor

S. G. A. 1, 2, 3, 4; Y. W. C. A. 1, 2, 3, 4; Sports Club 3, 4; E. C. A. 4; Home Ec Club 1, 2, 3, 4; Glee Club 1, 2, 3, 4, Vice-President 4; Dance Club 3, 4, President 4; Valdosta Club 1, 2, 3, 4; Fine Arts Club 1, 2, 3, 4.



VERA WILSON
Valdosta, Ga.

Secretarial Science, Major; History, Minor

Y. W. C. A. 1, 2, 3, 4; S. G. A. 1, 2, 3, 4; Dance Club 1; Valdosta Club 1, 2, 3, 4; Business Club 1, 2, 3, 4, President 4; I. R. C. 4; E. C. A. 4.



VENETTE CATHLRINE MORGAN
Vienna, Ga.

Social Science Division; Emphasis on Sociology

S. G. A. 1, 2, 3, 4, House Council 1; Y. W. C. A. 1, 2, 3, 4, Cabinet 2, 3, 4, Assistant Vice-President 2, Secretary 4; Glee Club 1, 2, 3, 4, Librarian 3; Serenaders 3, 4; Sports Club 1; Sociology Club 3, 4, President 4; E. C. A. 4; Campus Canopy 4; Valdosta Club 3, 4.

GLADYS . CATHY . BECCA . BETTY



Talent, versatility, friendliness, and personality plus make these four girls an unforgettable part of their class.



GLADYS SUSAN THAMES
Thomasville, Ga.

Humanities Division; Emphasis on Music

S.G.A. 1, 2, 3, 4, Vice-President 3, President 4; Executive Committee 3, 4; Philharmonic Club 1, 2, 3, 4, President 3, 4; Glee Club 2; *Campus Canopy* 1, 2, 4; Secretary-Treasurer Sophomore Class; Monitor 2, 3, 4; Romance Language Club 2, 3, 4, Vice-President 3; Artist Series Committee 3, 4; E.C.A. 3, 4; Student-Faculty Committee 3, 4; PINE CONE 4; Freshman Honor Society 2; Senior Honor Society 3, 4; League of Women Voters 4; Y.W.C.A. 1, 2, 3, 4.



CATHERINE MULLANLY PHILLIPS
Colquitt, Ga.

Secretarial Science, Major; Sociology, Minor

S.G.A. 1, 2, 3, 4; Social Committee 3, 4; Y.W.C.A. 1, 2, 3, 4; Sports Club 1; *Campus Canopy* 1, 2, 3, 4, Columnist 3, Business Manager 4; PINE CONE 1, 2; Sociology Club, 2, 3, 4, Reporter 3, Vice-President 4; Business Club 2, 3, 4; Sock and Buskin Club 2, 3, 4, Reporter 2, 3, 4, Secretary-Treasurer 3; Methodist Student Chairman 4; B.S.U. 1.



REBECCA WOOD JENNINGS
Dawson, Ga.

Secretarial Science, Major; Sociology, Minor

S.G.A. 1, 2, 3, 4; Monitor 2, 3, 4; House Council 1; Y.W.C.A. 1, 2, 3, 4; Sports Club 3, 4; Glee Club 1, 2, 3; Philharmonic Club 2, 3; Business Club 2, 3, 4, Vice-President 4; Sociology Club 3, 4, Secretary-Treasurer 4; *Campus Canopy* 2; Business Manager of PINE CONE 4; League of Women Voters 4; Co-Editor of S.G.A. Handbook 3.



BETTY JO GUNTER
St. Simons Island, Ga.

Humanities Division; Emphasis on Music

S.G.A. 1, 2, 3, 4; Monitor 2, 3, 4; Executive Committee 2, 4; Secretary-Treasurer Freshman Class; President Sophomore Class; Y.W.C.A. 1, 2, 3, 4, Associate Vice-President 2, Vice-President 3, President 4; Sports Club 1, 2, 3; Dance Club 3; Freshman Honor Society 2; Senior Honor Society 3, 4; *Campus Canopy* 4; PINE CONE 4; Philharmonic Club 2, 3, 4, Vice-President 3, 4; Sock and Buskin Club 3, 4; Romance Language Club 4; League of Women Voters 2, 3, 4; E.C.A. 2, 4.



A song and a smile, a joke—maybe two—go a long way toward happiness and success.



CHARLOTTE MARTIN GOODWIN
McRae, Ga.

Humanities Division; Emphasis on Music

Sports Club 1; Y.W.C.A. 1, 2, 3, 4, Cabinet 2, 3, 4; Glee Club 1, 2, 3, 4, President 3, 4; Serenaders 1, 2, 3, 4; Sock and Buskin Club 1, 2, 3, 4; Dance Club 4; Philharmonic Club 1, 2, 3, 4, Secretary-Treasurer 3, 4; E.C.A. 3, 4; Sophomore Council 2; Methodist Youth Fellowship 2, 3; S.G.A. 1, 2, 3, 4; Artist Series Committee 3, 4.



MIRIAM BUTLER POWELL
Atlanta, Ga.

Home Economics, Major; Art, Minor

Glee Club 1, 2, 3, 4, Secretary-Treasurer 4; Home Economics Club 1, 2, Vice-President 3, 4; *Campus Canopy* 2, 4; Fine Arts Club 4; Sports Club 1; Sophomore Council 2; B.S.U. 2, 3, 4, Council 3; PINE CONE 4.



JOANNE HAMILTON
Arabi, Ga.

Humanities Division; Emphasis on English

S.G.A. 1, 2, 3; Y.W.C.A. 1, 2, 3; Sports Club 1, 2, 3; English Club 2, 3, Vice-President 3; Secretary-Treasurer of Senior Class; B.S.U. 2, 3.



PEGGY JUNI WILLIAMS
Vidalia, Ga.

Home Economics, Major; Social Work, Minor

Home Economics Club 1, 2, 3, 4; Monitor 3, 4; Math-Science Club 2, 3, 4; Sociology Club 3, 4; Sports Club 1, 2, 3; S.G.A. 1, 2, 3, 4; Log Cabin Committee 4; Sophomore Council 2; PINE CONE 4; Y.W.C.A. 1, 2, 3, 4; League of Women Voters 4.

VIRGINIA • JACKIE • FAYE • ESTHER



Valdosta offers four sugar-and-spice ingredients—work, talent, versatility, friendliness—for that all-purpose recipe which gives G. S. W. C. the atmosphere we love.



VIRGINIA COOK
Valdosta, Ga.

Home Economics, Major; Sociology, Minor

S.G.A. 1, 2, 3, 4; Y.W.C.A. 1, 2, 3, 4; Valdosta Club 1, 2, 3, 4; Sports Club 1; PINE CONE Staff 1; Home Economics Club 2, 3, 4, Treasurer 4.



JACQUELYN TALTON
Valdosta, Ga.

Home Economics, Major; Chemistry, Minor

S.G.A. 1, 2, 3, 4; Y.W.C.A. 1, 2, 3, 4; Valdosta Club 1, 2, 3, 4; Sock and Buskin Club 3, 4, Secretary-Treasurer 4; Senior Honor Society 3, 4; Home Economics Club 1, 2, 3, 4; Math-Science 2; Member of Spring Festival Court 3.



FAYE COOK
Valdosta, Ga.

Biology, Major; Chemistry, Minor

S.G.A. 1, 2, 3, 4; Y.W.C.A. 1, 2, 3, 4; Sports Club 1, 2; Valdosta Club 1, 2, 3, 4; Math-Science Club 1, 2, 3, 4; Romance Language Club 4.



ESTHER LANDEY
Valdosta, Ga.

Humanities Division; Emphasis on Speech

S.G.A. 1, 2, 3, 4; Valdosta Club 1, 2, 3, 4; Sock and Buskin Club 1, 2, 3, 4; Math-Science Club 1.



With such friendly dispositions these girls can't go wrong, for they are good in play, better in work—ready for whatever comes along.



REBECCA HANSON ROGERS
Quitman, Ga.

Social Science Division; Emphasis on Sociology

Y.W.C.A. 1, 2, 3, 4; S.G.A. 1, 2, 3, 4; Business Club 2, 3; Sociology Club 1, 2, 3, 4; League of Women Voters 4; Board 4; House Council 3; Sports Club 1, 3; PINE CONE Ad Staff 4.



ELSIE WEST
Moultrie, Ga.

Social Science Division; Emphasis on History

Y.W.C.A. 1, 2, 3, 4; S.G.A. 1, 2, 3, 4; Sports Club 1, 2; Romance Language Club 4; League of Women Voters 4.



JOYCE MOON
Vienna, Ga.

Home Economics, Major; Chemistry, Minor

Y.W.C.A. 1, 2, 3, 4; S.G.A. 1, 2, 3, 4; Sports Club 1, 2; Home Economics Club 1, 2, 3, 4; Math-Science Club 2, 3, 4; League of Women Voters 4; House Council 3; PINE CONE Ad Staff 4.



HELEN GRAYDON
McRae, Ga.

Social Work, Major; Secretarial Science, Minor

Y.W.C.A. 1, 2, 3, 4; S.G.A. 1, 2, 3, 4; Freshman Honor Society 2; Chairman Students' Attendance Committee 2; Sociology Club 2, 3, 4; Business Club 2, 3, 4, Secretary 4; B.S.U. 1, 2, 3, 4; Math-Science Club 3, 4; Sports Club 1, 2; Social Committee 3, 4; Georgia League of Women Voters 4; House Council 4.

LONNIE • GAILE • RUTH • VIRGINIA



Enthusiasm, self-reliance, keen minds—these qualities equip anyone for the tomorrows to come.



EDNA LOUISE SHAW
Macon, Ga.

Chemistry, Major; English, Minor

Math-Science Club 1, 2, 4; Dance Club 1; Transfer to University of Georgia 3; Transfer from University of Georgia 4; Y.W.C.A. 1, 2, 4; S.G.A. 1, 2, 4.



MARY GAILE CARTER
Lake Park, Ga.

Humanities Division; Emphasis on English

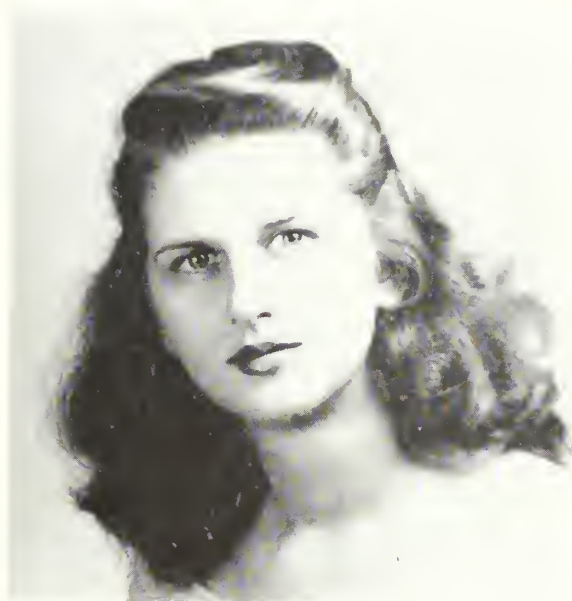
Sports Club 1, 2; Freshman Honor Society 1, 2; Math-Science Club 1, 2, 3, 4; S.G.A. 1, 2, 3, 4, 2nd Vice-President 3, Fire Lieutenant 2; Y.W.C.A. 1, 2, 3, 4; Sophomore Council; English Club 4; Sock and Buskin Club 4; B.S.U. Council 3, 4.



ANNIE RUTH BLACK
Valdosta, Ga.

Social Science Division; Emphasis on History

S.G.A. 1, 2, 3, 4; E.C.A. 4; Artist Series Committee 4; Y.W.C.A. 1, 2, 3, 4; Valdosta Club 1, 2, 3, 4; *Campus Canopy* 1; Romance Language Club 4; International Relations Club 3, 4, Vice-President 3, President 4; Sock and Buskin Club 1, 2, 3, 4, Play 1, 3; Sports Club 1.



VIRGINIA FREEMAN KILCREASE
Waycross, Ga.

Humanities Division; Emphasis on English

S.G.A. 1, 2, 3, 4; Y.W.C.A.; Sports Club 1, 2; Valdosta Club 1, 2, 3, 4; English Club 3, 4; League of Women Voters 3, 4.



What are W. C. girls made of? All things nice, of course—beauty, loyalty, cheerfulness.



FRANCIS ERSULA HURN
St. Simons, Ga.

Secretarial Science, Major; Sociology, Minor

S.G.A. 1, 2, 3, 4; Y.W.C.A. 1, 2, 3, 4; Math-Science Club 2, 3, 4; Sports Club 1, 2, 3, 4, Sports Council 2, 3, 4, Team Captain and Minor Sports Chairman 2, Treasurer 3, Vice-President 4, American Ball Coach 4; Business Club 2, 3, 4; League of Women Voters 2, 3, 4; Sociology Club 3, 4; PINE CONE STAFF 4.



CAROLYN BOWEN CHRISTIAN
Valdosta, Ga.

Secretarial Science, Major; History, Minor

Y.W.C.A. 1, 2, 3, 4, Cabinet 2, 3, Treasurer 3; S.G.A. 1, 2, 3, 4; Sports Club 1, 2, 3, 4; Business Club 1, 2, 3, 4, Treasurer 2; Math-Science Club 2, 3, Reporter 3; Sock and Buskin Club 2, 3, 4; League of Women Voters 3, 4; Philharmonic Club 2, 3; PINE CONE STAFF 3, Co-Editor 4; B.S.U. Council 1, 2, 3; Dance Club 3.



RAY JEAN NORMAN
Moultrie, Ga.

Home Economics, Major; Art, Minor

S.G.A. 1, 2, 3, 4, Executive Committee 2; House Council 2; Monitor 2, 3, 4; E.C.A. 4; PINE CONE STAFF 4; Y.W.C.A. 1, 2, 3, 4; Sports Club 3, 4, Sports Council 3, 4; Home Economics Club 1, 2, 3, 4, Treasurer 3, President 4.



BETTY SUSH KEENE
Columbus, Ga.

Mathematics, Major; English, Minor

S.G.A. 1, 2, 3, 4, Fire Chief 2; F.C.A. 2, Chairman 4, Executive Committee 2, 3, 4; Y.W.C.A. 1, 2, 3, 4; Monitor 2, 3, 4; Freshman Honor Society 2, President 2; Senior Honor Society 3, 4, Vice-President 3; Math-Science Club 2, 3, 4; Romance Language Club 2, 3, 4; PINE CONE STAFF 3, Co-Editor 4; Sports Club 1, 2, 3, 4, Sports Council 2, 3, 4; Sock and Buskin Club 1, 2, 3, 4; House Council 3, 4; League of Women Voters 2, 3, 4; Editor Student Government Handbook 3; B.S.U. 1, 2, 3, 4, Vice-President 2, 3.

TUG · MARY · POLLY · BETTY



Ask for these girls and find ability, wit, sportsmanship—the essence of all-around college girls.



SARA ANN WILKIN

Colquitt, Ga.

Biology, Major; English, Minor

Y.W.C.A. 1, 2, 3, 4; Sports Club 1, 2, 3, 4, President 4, Sports Council 1, 3, 4, Secretary 3; S.G.A. 1, 2, 3, 4; Executive Committee 3, 4; E.C.A. 4; Math-Science 2, 3; Vice-President 3; League of Women Voters 3, 4; *Campus Canopy*; Advertising Manager 3.



MARY REBECCA HENDERSON

Ocilla, Ga.

Social Work, Major; English, Minor

S.G.A. 1, 2, 3, 4, House Council 3; Y.W.C.A. 1, 2, 3, 4; Sports Club 2, 3, 4; Sociology Club 2, 3, 4; Glee Club 4; *Campus Canopy* 2, 3, 4, Advertising Manager 4; PINE CONE Staff 4; B.S.U. 3, 4; Social Committee 4.



WILLA PAULINE JORDAN

Hartsfield, Ga.

Secretarial Science, Major; History, Minor

S.G.A. 1, 2, 3, 4; Monitor 3; Executive Committee 4; E.C.A. 4; Senior Class President; Y.W.C.A. 1, 2, 3, 4; Sophomore Council 2; Sports Club 1, 2; Math-Science Club 2, 3, 4; Business Club 2, 3, 4, Secretary 2; I.R.C. 4; League of Women Voters 2, 4; PINE CONE Staff 4; Glee Club 2; Freshman Honor Society 3, 4, President 4.



BETTY LYNN TOLER

Americus, Ga.

Social Work, Major; Physical Education, Minor

Transfer From Georgia Southwestern College; S.G.A. 2, 3, 4, House Council 3; Y.W.C.A. 2, 3, 4; Sports Club 2, 3, 4, Sports Council 3, 4, Awards 2, 3, 4, Kappa Team Captain 3; Math-Science Club 2; Log Cabin Committee 2; Sociology Club 3, 4; League of Women Voters 4; PINE CONE Staff 4.

VIRGINIA · MARGARET · LOUISE · EVELYN



Sincerity is the easiest boon to ask—the hardest to give. Add to this a calm view on a life of work well done and you have something worth more than gold.



MARY VIRGINIA HAGAN

Valdosta, Ga.

Home Economics, Major; Art, Minor

Y.W.C.A. 1, 2, 3, 4; S.G.A. 1, 2, 3, 4; Home Economics Club 1, 2, 3, 4; Fine Arts Club 2, 3, 4; Historian 3.



MARGARET MCINTYRE

Valdosta, Ga.

Humanities Division; Emphasis on English

Y.W.C.A. 1, 2, 3, 4; S.G.A. 1, 2, 3, 4; Valdosta Club 1, 2, 3, 4; English Club 4; Sports Club 1, 2.



LOUISE BRUMLOW

Valdosta, Ga.

Humanities Division; Emphasis on English

Dance Club 2, 3, 4; Y.W.C.A. 1, 2, 3, 4; English 3, 4, Secretary-Treasurer 4; S.G.A. 1, 2, 3, 4; Valdosta Club 3, 4; Sports Club.



EVELYN CONNELL

Valdosta, Ga.

Humanities Division; Emphasis on English

Math-Science 2; Fine Arts Club 2, 3, 4; Senior Honor Society 3, 4; Romance Language Club 3, 4, President 4; E. C. A. 4; Y.W.C.A. 1, 2, 3, 4; S.G.A. 1, 2, 3, 4.

BARBARA • JEAN • EDITH • PUDGY



Winning personalities are their most charming traits; and, for good measure, dependability, alertness, and a wonderful sense of humor.



BARBARA KENNEDY PASSMORE

Valdosta, Ga.

Mathematics, Major; Secretarial Science, Minor

Y.W.C.A. 1, 2, 3, 4; S.G.A. 1, 2, 3, 4; Sports Club 1, 2; Glee Club 1, 2; Math-Science Club 2, 3, 4; Freshman Honor Society 2; Senior Honor Society 3, 4; Business Club 2, 3, 4; League of Women Voters 3, 4.



JEAN MONTEZ LAND

Griffin, Ga.

Secretarial Science, Major; Sociology, Minor

S.G.A. 1, 2, 3, 4, Executive Committee 2, 3, 4; Y.W.C.A. 1, 2, 3, 4; "Y" Cabinet 1, 2, 3, 4; Sports Club 1, 2, 3; Sock and Buskin 1, 2, 3, 4, Historian 2, President 4; *Campus Canopy* 1, 2, 3, Feature Editor 2, Columnist 3, Special Feature Editor 4; PINE CONE 2, 4; Business Club 2, 3, 4, Secretary 3; Sociology Club 3, 4; League of Women Voters 2, 4; Social Chairman 3, 4; E.C.A. 4.



EDITH JONES

Homerville, Ga.

Biology, Major; Home Economics, Minor

S.G.A. 1, 2, 3, 4, Secretary-Treasurer 3, Executive Committee 3, 4; Y.W.C.A. 1, 2, 3, 4; "Y" Cabinet 4; Math-Science Club 1, 2, 3, 4, President 4; Home Economics Club 3, 4; League of Women Voters 2, 3, 4, President 4; B.S.U. 1, 2, 3, 4, Secretary-Treasurer 4; Freshman Honor Society 2; Secretary-Treasurer 2; Senior Honor Society 3, 4; Sports Club 1, 2, 3.



MARY JEAN MAYO

Richland, Ga.

Home Economics, Major; Art, Minor

S.G.A. 1, 2, 3, 4; Y.W.C.A. 1, 2, 3, 4; Sports Club 1, 2, 3, 4; Glee Club 3, 4; Home Economics Club 3, 4, Secretary 4; Log Cabin Committee 2; PINE CONE Staff 4.



BETTY EIRD
Secretary-Treasurer

ZONA BENNETT
President

ELIZABETH DELOACH
Vice-President

JUNIORS

Their Officers and Activities

Dear Bun:

I have a minute between final exams—so here goes. It's a shame you don't get home 'til next week. I'll already be there when you start your finals.

So much has happened this year that I could almost write a book about it. Getting to live in Senior Hall was exciting enough! 'Member how I used to envy these girls with maple furniture and two closets?

I sure do hate to think that so many of my friends in the Senior Class will be graduated in a few days. We've worked together so often this year—especially on the big Homecoming Dance. What a swell time—the orchestra was wonderful and, of course, our decorations looked grand! A group of us made it a perfect day by having a picnic that afternoon at Twin Lakes. Complete the picture with a handsome man and you'll understand why Juniors and Seniors live for Frolics.

There have been a lot of changes this year and new adjustments to make—the times we walked to the Woman's Building for meals, the redecoration of the Rotunda, the dining hall, and scads of others. We even had a new resident head to come the middle of the year. All this kept us pretty much on our toes!

I'll be late for the exam if I don't stop now. Good luck to you on your tests.

Love,
KITTY.



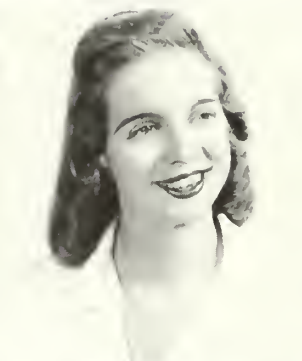
JUNIORS



BETTY ALDERMAN
Valdosta, Georgia



VILMA ANSLEY
Valdosta, Georgia
ZONA BENNETT
Nashville, Georgia



DORIS BATIMAN
Sylvester, Georgia
CHARLINE BOWEN
Valdosta, Georgia
MARY EMINORE CRAIG
College Park, Georgia



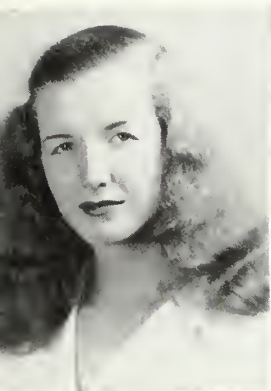
SALLY BEATTY
Dawson, Georgia
PATRELL CARTER
Naylor, Georgia
ELIZABETH DILOACH
Valdosta, Georgia



BETTY BELL
Americus, Georgia
MARION COLLINS
Cobbtown, Georgia
PATTY DIXON
Richland, Georgia



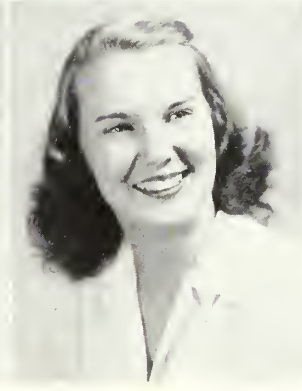
OF 1948



VIRGINIA HEISLER
Thomasville, Georgia



ANN FRENCH
Valdosta, Georgia
LUCILLE JACKSON
Thomasville, Georgia



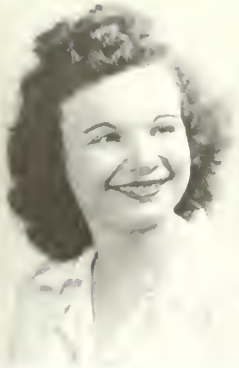
ANN DU PRIEST
Sylvester, Georgia
JEAN HEETON
Fitzgerald, Georgia
MARTHA JACKSON
Macon, Georgia

BETTY EHIRD
Albany, Georgia
GRACE HIERS
Valdosta, Georgia
ANNE KNEPTON
Thomasville, Georgia

HARRIETT FOLSOM
Hahira, Georgia
JUDY JACKSON
Valdosta, Georgia
RUBY LACEY
Hazelhurst, Georgia



JUNIORS



MARI MARTIN
Albany, Georgia



CAROLYN MATHIS
Fitzgerald, Georgia
BETTY NEWBERRY
Arlington, Georgia



ALICE McGEACHY
Valdosta, Georgia
MARJORIE NICHOLS
Shellman, Georgia
MARY C. PINKSTON
Valdosta, Georgia

SHERLA MILLER
Valdosta, Georgia
JACQUILINE NORMAN
Moultrie, Georgia
PAT PORTER
Sylvester, Georgia

MARTHA A. MORGAN
Pembroke, Georgia
CLARA OVERBY
Cuthbert, Georgia
CELESTE PURVIS
Pembroke, Georgia



OF 1948



HENRIETTA SMITH
Valdosta, Georgia

ELLEN SMITH
Waycross, Georgia
HARRIETT STORY
Nashville, Georgia

MARY JOHN RODGERS
Sycamore, Georgia
MORRIS SMITH
Valdosta, Georgia
CORNILIA TUTEN
Alma, Georgia

MARTHA ANN SANDERS
Fitzgerald, Georgia
SUE NELL SMITH
Statesboro, Georgia
FAYE VICKERS
Valdosta, Georgia

BETTY JEAN SMITH
College Park, Georgia
WILHELMINA SPENCE
Blakely, Georgia
PHYLLIS WADI
Valdosta, Georgia





FRANCIS PHILLIPS
Vice-President

CAROLYN WHEELER
Secretary-Treasurer

MARGARET TRAYNHAM
President

SOPHOMORES

Their Officers and Activities

Dear Porky:

Just so I won't owe you a letter next week when we get home, I'm going to dash you a note. I really haven't time for much more—I'm dating Tony tonight! These dating privileges all year have been wonderful—but then so have all the rest. I've felt so free—wonder if all girls feel this way when they become Sophomores?

You know, much to my surprise, I found it easier to settle down to work this year. I've decided on my major and that helped a lot. Even the inconvenience of living in three-girl rooms at the first of the year didn't get us Sophomores down. Anyway, look what we've got—a new kitchen, freshly painted rooms and a gorgeous rotunda!

You should have seen how hard we worked on our Sweetheart Dance, and we say it was the best function of the year. It's an annual affair, you know, along with our heart-sister observance that comes the same week. Tony's box of candy and my first orchid made the week just perfect!

Speaking of Tony, it's almost time for him to come and I haven't taken down my hair—I'll have to tell you about the rest of the year (and Tony) when I see you. That won't be long, so 'bye now!

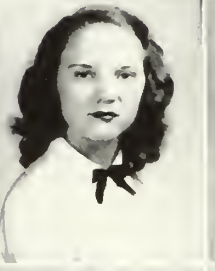
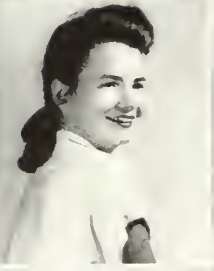
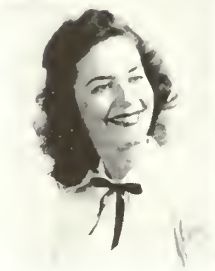
MIMI.



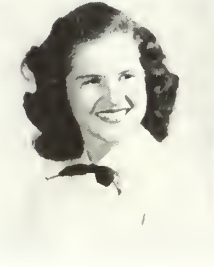
SOPHOMORES



Mary Anne Arnold
Vienna, Georgia



Jean Bailey
Waycross, Georgia
Danise Bryant
Moultrie, Georgia



Maybelle Bedell
Woodbine, Ga.
Jean Bryant
Moultrie, Georgia
Joyce Childs
Thomaston, Ga.

Sue Beloff
Brookline, Mass.
Joyce Bullington
Valdosta, Ga.
Barbara Clarke
Moultrie, Ga.

Annolene Bone
Leslie, Ga.
Marjorie Bush
Decatur, Ga.
Alycye Collier
Bartow, Fla.

Frances Briggs
Valdosta, Ga.
Frances Chester
Whigham, Ga.
Sally Connell
Valdosta, Ga.

Julia Briggs
Valdosta, Ga.
Helen Chester
Whigham, Ga.
Constance Converse
Valdosta, Ga.



OF 1948



Betty Dickson
Tifton, Ga.



Frances Devane
Miami, Fla.
Ann Grissett
Ray City, Ga.

oma Jean Cook
Boston, Ga.
Mary Duncan
Leslie, Ga.
Merle Hancock
Sebring, Fla.

Vivian Cooper
Moultrie, Ga.
Billie Dale Finley
Waycross, Ga.
Margaret Hardy
Valdosta, Ga.

Ann Cox
Fayetteville, Ga.
Martha Lee George
Valdosta, Ga.
Bennie Harrington
Fargo, Ga.

Velma Crumney
Brunswick, Ga.
Jane Gibson
Donaldsonville, Ga.
Faye Hemingway
Valdosta, Ga.

Nancy Daniel
Rome, Ga.
Louise Godbee
Vidalia, Ga.
Gaye Hemmingway
Valdosta, Ga.



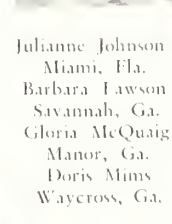
SOPHOMORES



Ann Hightower
Damascus, Ga.



Betty Holland
Cordele, Ga.
Dolores Law
Ashburn, Ga.



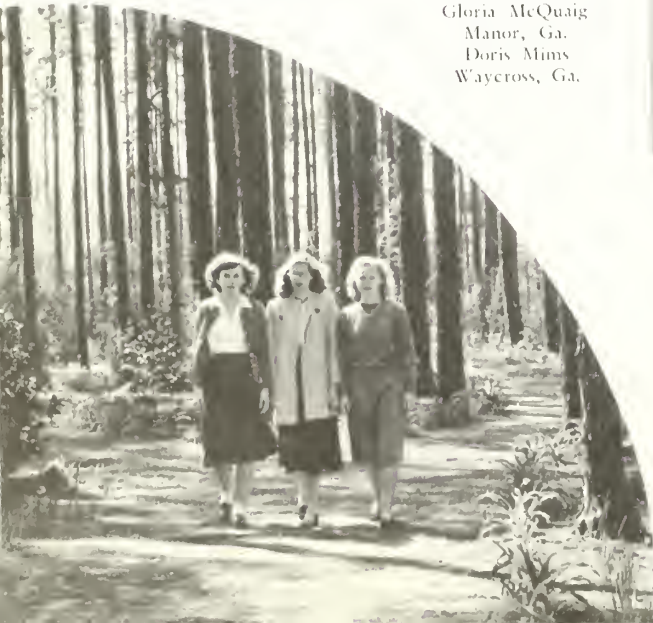
Julianne Johnson
Miami, Fla.
Barbara Lawson
Savannah, Ga.
Gloria McQuaig
Manor, Ga.
Doris Mims
Waycross, Ga.

Hulda Jones
Albany, Ga.
Virginia Lawson
Climax, Ga.
Mildred Manley
Griffin, Ga.
Claire Mobley
Moultrie, Ga.
Mary Alice Norman
St. George, Ga.

Lavera Jones
Sycamore, Ga.
Freida Levin
Nashville, Ga.
Mildred Mann
Leary, Ga.
Ann Moore
Valdosta, Ga.
Jacqueline Norton
Boston, Ga.

Anna Kennedy
Thomaston, Ga.
Carolyn McLendon
Hazlehurst, Ga.
Melba Martin
Uvalda, Ga.
Jean Mullis
Valdosta, Ga.
Ellen Odum
Albany, Ga.

Bernadine King
Brunswick, Ga.
Mary Ann McLendon
Bronwood, Ga.
Jocelyn Matthias
College Park, Ga.
Jane Newton
Lake City, Fla.
Mary Owen
Allenhurst, Ga.



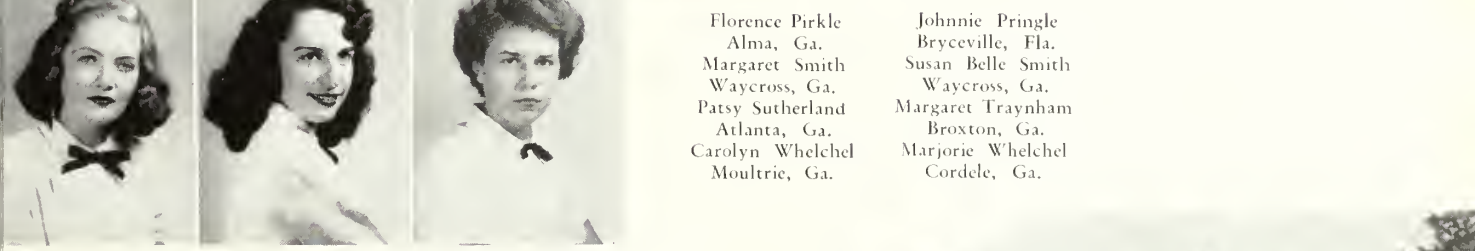
OF 1948



Edith Ryals
Lakeland, Ga.



Geneva Ross
Ashburn, Ga.
Virginia Smith
Broxton, Ga.



Florence Pirkle
Alma, Ga.
Margaret Smith
Waycross, Ga.
Patsy Sutherland
Atlanta, Ga.
Carolyn Wheelchel
Moultrie, Ga.

Johnnie Pringle
Bryceville, Fla.
Susan Belle Smith
Waycross, Ga.
Margaret Traynham
Broxton, Ga.
Marjorie Wheelchel
Cordele, Ga.

Betty Phillips
Valdosta, Ga.
Mary Anne Sauls
Albany, Ga.
Glynette Story
Ashburn, Ga.
Jean Usher
Savannah, Ga.
Betty Willis
Coolidge, Ga.

Frances Phillips
Savannah, Ga.
Maisie Sharman
Albany, Ga.
Jo Ann Story
Albany, Ga.
Frances Ware
Smyrna, Ga.
Irene Wilson
Waycross, Ga.

Katherine Phillips
Valdosta, Ga.
Betty Smiley
Hinesville, Ga.
Glenna Strickland
Cairo, Ga.
Maxie Warren
Donaldsonville, Ga.
Eloise Yancey
Brunswick, Ga.

Sophomores not pictured are:

Betty Cathones
West Point, Ga.
Joan McIntosh
Valdosta, Ga.
Virginia Smith
Valdosta, Ga.
Ruth Templeton
Valdosta, Ga.





MARY TALBOT TULLIS
Vice-President

POLLY MANN
Secretary-Treasurer

BETTY HENDERSON
President

FRESHMEN

Their Officers and Activities

Dear "Butch",

I never thought I'd live through it, but here it is the end of school and a whole year of college is behind me. I guess you feel the same way.

Never will I forget Freshman Week—one long nightmare of placement exams, upperclassmen entertainment and faces, faces, faces! And rat day—you've called me "ugly" before, but you should have seen me that day. The worst came at rat court, but what fun!

And all through that first hectic quarter my "big sister" stood by me. It was mighty nice having an "old hand" at college life there when I needed her. These first friends I knew at college I'll never forget. And my roommate—what a peach.

Before I knew it, Christmas was here and gone, spring had come and it was time to figure up my accomplishments. Academically, I realized that the more I learned, the more there was to learn. You know, this education business is fascinating and my instructors only make it more so. Maybe a little bit of my Freshman "greenness" is finally wearing off.

Can't wait to see you so we can have a gab-fest like old times.

Love,

TOOTS.



FRESHMEN



June Aldridge
Moultrie, Ga.



Violet Altman
Alma, Ga.
Martha Boatwright
Douglas, Ga.



Ral Aubrey
Valdosta, Ga.
Mary Boone
Willacoochee, Ga.
Jeanne Bray
Columbus, Ga.



Jacqueline Becton
Pooler, Ga.
Theta Booth
Manor, Ga.
Edith Briscoe
Monroe, Ga.
Peggy Bush
Baxlev, Ga.

Norma Bennett
Valdosta, Ga.
Carolyn Bowen
Brookfield, Ga.
Lenora Brown
Pelham, Ga.
Nina Jo Calhoun
Columbus, Ga.

Faye Bethune
Waycross, Ga.
Frances Bowen
Unadilla, Ga.
Betty Buckner
Montezuma, Ga.
Sue Carson
Boston, Ga.

Julianne Blount
Senoia, Ga.
Mary Brand
Montezuma, Ga.
Lucy Bush
Colquitt, Ga.
Mary Alice Carter
Coffee, Ga.



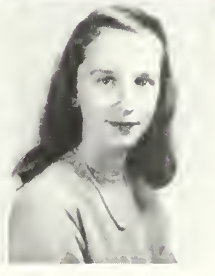
OF 1948



Iris Clifton
Millen, Ga.



Joyce Clegg
Tifton, Ga.
Nancy Dean
TyTy, Ga.



Betty Clark
Valdosta, Ga.
Anita Dancer
Atlanta, Ga.
Mary Sue Fletcher
Parrott, Ga.

Constance Chastain
Thomasville, Ga.
Marie Corbett
Fernandina, Fla.
Mary Frances Devane
Nashville, Ga.
Edwina Ford
Sylvester, Ga.

Shirlee Chernoff
Broxton, Ga.
Sue Coulter
Columbus, Ga.
Jeanelle Ellerbee
Ashburn, Georgia
Martha Jo Fulmer
Mt. Vernon, Ga.

Flaine Cheshire
Colquitt, Ga.
Claire Council
Waycross, Ga.
Betty English
Homerville, Ga.
Virginia Gardner
Pavo, Ga.

Jean Chitwood
Valdosta, Ga.
Bonnie Cunningham
Jennings, Fla.
Patsy Fiveash
Atlanta, Ga.
Dorothy Gibson
Thomasville, Ga.



FRESHMEN



Mary Gibson
Valdosta, Ga.



Beth Glover
Columbus, Ga.
Juanita Haralson
Ashburn, Ga.



Andrewnette Goff
Ashburn, Ga.
Betty Jean Harvey
Lanier, Ga.
Marian Higginbotham
Waycross, Ga.



Barbara Jean Greene
Valdosta, Ga.
Ann Heard
Kathleen, Ga.
Joyce Hines
Feesburg, Ga.
Dorothy Keefe
Nashville, Ga.

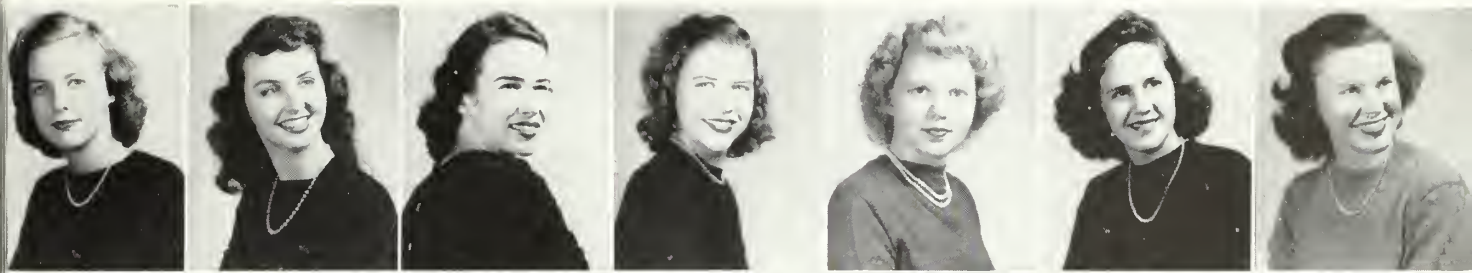
Emily Griner
Valdosta, Ga.
Marian Heard
Kathleen, Ga.
Janie Jenkins
Waycross, Ga.
Eleanor King
Blakeley, Ga.

Sherrie Grow
Colquitt, Ga.
Betty Henderson
Alma, Ga.
Monteen Johnson
Stockton, Ga.
Sue Kirkland
Pearson, Ga.

Jo Carroll Guthrie
Valdosta, Ga.
Betty Jo Hendry
Hinesville, Ga.
Emily Justice
Attapulgus, Ga.
Martha Krupp
Columbus, Ga.



OF 1948



Polly Mann
Starke, Fla.



Gwen McQuaig
Manor, Ga.
Joyce Miles
Alma, Ga.



Winnie McDonald
Pavo, Ga.
Earlene Mathis
Waycross, Ga.
Jean O'Neal
Waycross, Ga.

Betty Lee
Alma, Ga.
Anna Marangas
Valdosta, Ga.
Betty Jean Morgan
Pembroke, Ga.
Sarah Jane Parker
Richland, Ga.

Betty Lovett
Statesboro, Ga.
Annette Marsh
Statesboro, Ga.
Anise Morgan
Vienna, Ga.
Peggy Phillips
Colquitt, Ga.

Rhonwyn Lowry
Moultrie, Ga.
Eleanor R. Martin
Valdosta, Ga.
Anne Murray
Waycross, Ga.
Florence M. Pindar
Valdosta, Ga.

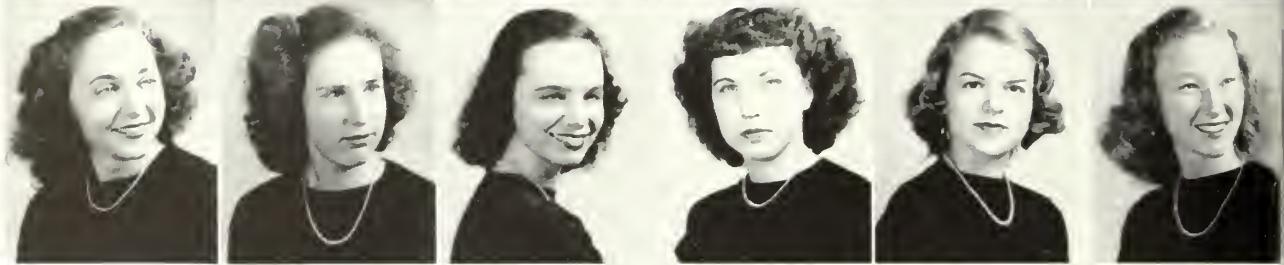
Miriam McCullough
Woodbine, Ga.
Jacqueline Martin
Leesburgh, Ga.
Peggy Myers
Valdosta, Ga.
Thadyne Pitt
Brunswick, Ga.



FRESHMEN



RAMONA POWELL
Brinson, Ga.



MARY ANN POWELL
Omega, Ga.
SHIRLEY ROBERTS
Douglas, Ga.



NANN RACHELS
Waycross, Ga.
MARGARET RULLIN
Columbus, Ga.
ALICE SMALLWOOD
Waycross, Ga.
JACQUELINE RAMSLEY
Alma, Ga.
ANN SCHALLER
Colquitt, Ga.
ANN SMITH
Quitman, Ga.



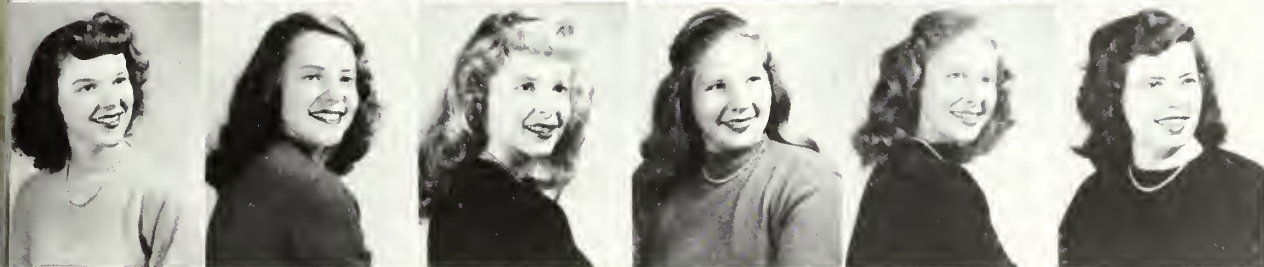
WILLIE F. RICH
Brinson, Ga.
JEANINE SCOTT
Unadilla, Ga.
PATSY SMITH
Valdosta, Ga.
SAMMIE STEEDLY
Homerville, Ga.
ANN RICHARDSON
Lynn Haven, Fla.
MARYAN SIGLER
Thomasville, Ga.
BARBARA STEEDLY
Argyle, Ga.
SHIRLEY STEELE
Waycross, Ga.
GERELDA RIGGINS
Homerville, Ga.
MARY SINGLETARY
Pelham, Ga.
AMARYLISE STEEDLY
Alma, Ga.
SARA PAUL STEWAR
Ashburn, Ga.



OF 1948



Vivian Towles
Valdosta, Ga.



Sara Tillman
Valdosta, Ga.
Elizabeth Waters
St. Mary's, Fla.



Charlotte Thompson
Cordele, Ga.
Pat Tyson
Bainbridge, Ga.
Dorothy West
Cairo, Ga.

Mary L. Thornton
Valdosta, Ga.
Polly Walker
Colquitt, Ga.
Jeannette Whelchel
Cordele, Ga.



Aleece Strickland
Waycross, Ga.
Jean Tucker
Manchester, Ga.
Jo Webb
Greenville, Ga.
Mary Whittle
Brunswick, Ga.

Monteen Strickland
Cairo, Ga.
Mary Tullis
Valdosta, Ga.
Ann Wellborn
Hinesville, Ga.
Claire Wilkes
Meigs, Ga.

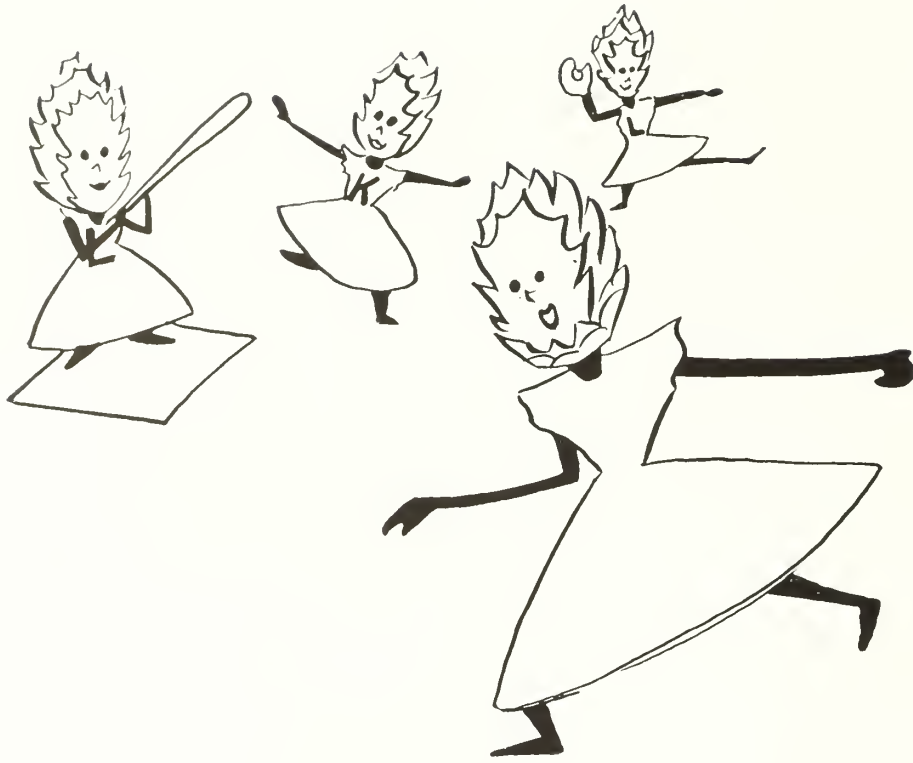
Bobbie Taylor
Revecca, Ga.
Suzanne Twitty
Manchester, Ga.
Annella Wells
Mt. Vernon, Ga.
Betty Young
Waycross, Ga.

Freshmen Not Pictured Are:

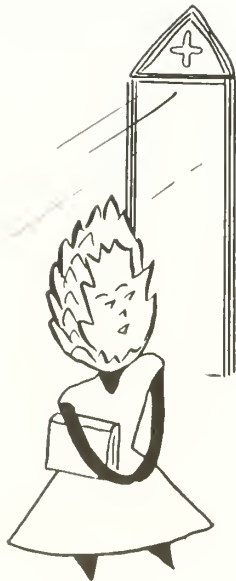
Harriet Bradford
Columbus, Ga.
Florence Nelson
Valdosta, Ga.
Dorothy Overstreet
Valdosta, Ga.

Mary Remer
Parramore
Valdosta, Ga.
Lucy Urquhart
Valdosta, Ga.
Olleta Templeton
Valdosta, Ga.





Activities—Clubs, Sports, Student Government, "Y" Services—are wonders for you
and wonderful fun!





THE ACTIVITIES



THAMES



MATHIS, KNEPTON, CARTER

OFFICERS

- GLADYS THAMES *President*
- CAROLYN MATHIS . *First V.-Pres.*
- GAIL CARTER . . . *Second V.-Pres.*
- ANNE KNEPTON . . . *Sect.-Treas.*

STUDENT GOVERNMENT

The Student Government Association is made up of the students with the Executive Committee as the governing body. Membership into the Association is obtained by passing an examination. Along with the Executive Committee, the House Councils help in carrying out the rules and regulations of Student Government.

MEMBERS OF THE EXECUTIVE COMMITTEE

ZONA BENNETT
 VILMA ANSLEY
 BETTY GUNTIE
 ANN WILKIN

PAULINE JORDAN
 MARGARET TRAYHAM
 BETTY KEENE
 BETTY JEAN SMITH

BENNE HARRINGTON
 JEAN LAND
 EDITH JONES
 BETTY HENDERSON

EXECUTIVE COMMITTEE



E. C. A.

The Extra Curricular Activities Committee is composed of the presidents of the classes and clubs and the editor of the Campus Canopy. This committee strives to coordinate the activities on campus so that more can be accomplished by working together.



MEMBERS

BETTY KEENE	Chairman
GLADYS THAMES	S. G. A. and Philharmonic Club
BETTY GUNTER	Y. W. C. A.
ANN WILKIN	Sports Club
BETTY JEAN SMITH	Campus Canopy
BENNIE WILLA HARRINGTON	Honor Society
HARRIETT FOLSOM	Fine Arts Club
VERETTE MORGAN	Sociology Club
VERA WILSON	Business Club
RAY JEAN NORMAN	Home Ec Club
LOUISE MASSEY	Valdosta Club
RUTH BLACK	I. R. C.
EDITH JONES	Math.-Science Club
LOLLA LEE HOLDER	English Club
EVELYN CONNELL	Romance Language Club
HILDA CRUM	Dance Club
JEAN LAND	Sock and Buskin Club
CHARLOTTI GOODWIN	Glee Club
BETTY HENDERSON	Freshman Class
MARGARET TRAYNHAM	Sophomore Class
ZONA BENNETT	Junior Class
PAULINE JORDAN	Senior Class



KEENE



Y. W. C. A. CABINET MEMBERS

Y. W. C. A. Cabinet Members: Jean Land, Edith Jones, Mary Elinore Crea, Betty Jean Smith, Ann DuPriest, Susan Belle Smith, Virginia Heisler, Jocelyn Matthias, Doris Mims, Louise Massey, Charlotte Goodwin, Marjorie Bush, Velma Crummev, Hulda Jones, Betty Gunter, Doris Bateman, Floise Yancey, Venette Morgan, Margaret Traynham, and Rev. C. H. White.

THE Y.



YANCEY, TRAYNHAM, MORGAN, BATMAN

GUNTER



- BETTY GUNTER, President
- DORIS BATMAN, Vice President
- FLOISE YANCEY, Associate Vice-President
- VENETTE MORGAN, Secretary
- MARGARET TRAYNHAM, Treasurer
- REV. C. H. WHITE, Advisor



CHAPEL CHOIR



SOPHOMORE COUNCIL

All the religious services on campus are sponsored by the "Y". The daily service is Morning Watch, and Vespers and Compline are held weekly. The "Y" also sponsors the traditional services such as the Recognition Service, Firelighting Service, Thanksgiving, Hanging of the Greens, and Lenten that the students' dream of chapel can be realized.

Services.

W. C. A.

FIRELIGHTING SERVICE



THE SPORTS



WILKIN

- ANN WILKIN *President*
 FRANCIS HURN *Vice-President*
 JOANNE STORY *Secretary*
 BETTY ALDERMAN *Treasurer*
 VIRGINIA BRAY *Historian*
 MISS LYNORA IVLY *Advisor*
 MISS FRANCIS ALIX *Advisor*
 MRS. MATHILDA MATHIS *Advisor*



STORY, HURN, ALDERMAN, BRAY

The Sports Club on our campus represents those girls who take an active part in the sports events. The members of the Sports Council are the leaders of the Sports Club; team captains, managers, coaches, and various activity heads.



COUNCIL MEMBERS

- Betty Alderman, Bim Ansley, Maybelle Bedell, Virginia Bray, Barbara Clark, Aleyone Collier, Bennie Harrington, Frances Hurn, Judy Jackson, Betty Keene, Ann Knepton, Carolyn Mathis, Sherla Miller, Ray Jean Norman, Frances Phillips, Geneva Ross, Shirley Roberts, Mary Ann Sauls, Morris Smith, JoAnne Story, Betty Toler, Jeanette Wheelchel, and Ann Wilkin.

CLUB

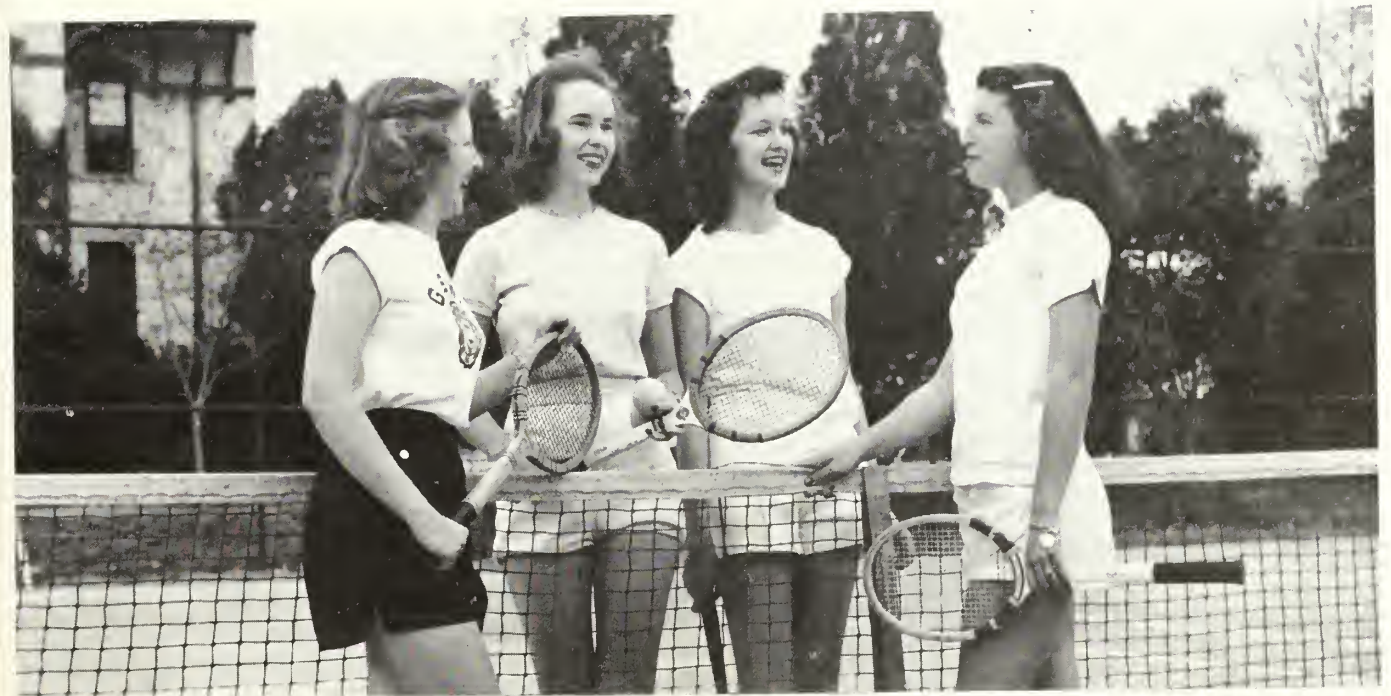


ALEX, IVY, MATHIS

The Sports Club members are divided into two teams, the Kappas and the Lambdas. Throughout the year points are awarded the winning team in all individual and group sports and at the end of the year of sports a Club Placque is awarded to the team which has accumulated the most points.



GOLF



TENNIS

FINE ARTS CLUB

OFFICERS

- HARRIET FOLSOM *President*
 GRACE HIERS *Vice-President*
 MARY OWEN *Secretary-Treasurer*
 CLEMMIE LANE *Historian*
 ISABEL McLEOD *Reporter*
 MISS CARPENTER *Faculty Advisor*



FOLSOM, HIERS, OWEN



MEMBERS

Betty Alderman, Doris Bateman, La Trelle Carter, Betty Clark, Evelyn Connell, Virginia Dixon, Harriet Folsom, Ann Grissett, Virginia Hagan, Grace Hiers, Clemmie Lane, Carolyn Mathis, Isabel McLeod, Joan McIntosh, Mary Alice Norman, Mary Owen, Frances Phillips, Mirian Powell, Betty Jean Smith, Ruth Templeton, Cornelia Tuten.



WHITI, CARPENTER

The Fine Arts Club is composed of those girls who have artistic ability and have shown a sincere interest in art. This club provides an opportunity for the study of both contemporary artists and art methods, gives an opportunity for a more intensive study of some chosen art or craft than is provided for in classroom activity, and arouses the interest of the entire student body in art through the exhibits and the bazaar.

This year the club operated the rental art collection on a non-profit basis, gave art exhibits, made posters, and gave the annual Christmas bazaar.



FRESHMAN HONOR SOCIETY

FRESHMAN HONOR SOCIETY
MEMBERS

Virginia Smith, Anne Moore, Claire Mobley, Alcyone Collier, Susan Belle Smith, Joyce Bullington, Martha Lee George, Mary Alice Norman, Doris Mims, Bennie Willa Harrington, and Barbara Lawson.

JORDAN, HARRINGTON



HONOR SOCIETIES

The Freshman and Senior Honor Societies are the honorary scholastic organizations on campus composed of students who maintain an average of B or above. The societies work to promote and maintain all activities which tend to stimulate and enrich intellectual living by creating an interest in high scholastic standing in academic work.

Each spring Honors Day is observed, and at this time the members of the Honor Societies are recognized.

As its special project this year, the societies sponsored a contest to elect the best all-around girl in each class.

SENIOR HONOR SOCIETY
OFFICERS

PAULINE JORDAN *President*

MORRIS SMITH *Vice-President*

BETTY JEAN SMITH *Sec.-Treas.*

FRESHMAN HONOR SOCIETY
OFFICERS

BENNIE WILLA HARRINGTON . . . *President*

ALCYONE COLLIER *Vice-President*

MARTHA LEE GEORGE *Sec.-Treas.*



SENIOR HONOR SOCIETY MEMBERS

Zona Bennett, Charlene Bowen, Evelyn Connell, Betty Gunter, Betty Keene, Edith Jones, Pauline Jordan, Carolyn Mathis, Barbara Passmore, Morris Smith, Betty Jean Smith, Jackie Talton, Gladys Thames, and Cornelia Tuten.



KEENE



CHRISTIAN

EDITORIAL STAFF

BETTY KEENE Co-Editor
 CAROLYN CHRISTIAN Co-Editor
 BETTY JEAN SMITH Layout Editor
 MARY ELLINORE CREA Layout Editor
 BETTY GUNTHER Literary Editor
 GLADYS THAMIS Literary Editor
 JEAN LAND Activities Editor
 CHARLENE BOWEN Activities Editor
 CLEMMIE LANE Art Editor
 FRANCIS PHILIPS Art Editor
 RAY JEAN NORMAN, ANN DUPRIEST, JEAN MAYO,
 MIRIAM POWELL, FRANCIS HURN Photograph Editors

MISS ELIZABETH FINK, MISS JEANNI LOWRY
 Faculty Advisors

THE PINE





JENNINGS



And Polly Pine Cone

CONE STAFF

BUSINESS STAFF

- | | |
|------------------|-------------------------|
| RIBECCA JENNINGS | <i>Business Manager</i> |
| HANSON ROGERS | JOYCE MOON |
| PAULINE JORDAN | BETTY TOLER |
| MARJORIE NICHOLS | MORRIS SMITH |
| MARY HENDERSON | ELIZABETH DELOACH |
| SILVERA MILLER | MARTHA JACKSON |
| | PIGGY WILLIAMS |



FINK & LOWRY





"A girl can't have a page of her own!" says Miss Canopy to Polly Pine Cone.

SMITH



PHILLIPS



CANOPY STAFF



CREA AND DUPRIEST

THE CAMPUS CANOPY

The Campus Canopy is the college newspaper, published every other week by the G. S. W. C. students. Tryouts are held for the news and feature staffs at the beginning of each school year.

During Freshman Week, members of the staff publish *The Canopy Junior*, a mimeographed paper, to keep the Freshmen informed about the week's events.

STAFF

BETTY JEAN SMITH *Editor*
 MARY ELINORE CREA *Associate Editor*
 ANN DUPRIEST *News Editor*
 JEAN LAND *Special Features Editor*
 ALCYONE COLLIER *Features Editor*
 VIRGINIA BRAY *Sports Editor*
 ANNE KNEPTON *Make-Up Editor*

VIRGINIA HEISLER *Exchange Editor*
 BETTY GUNTLE, CHARLENI BOWEN,
 PAULINE JORDAN, GLADYS THAMES . . . *Columnists*
 CATHY PHILLIPS *Business Manager*
 MARY HENDERSON *Advertising Manager*
 MARGARET SMITH *Circulation Manager*
 DR. DURRENBERGER *Faculty Advisor*

HENDERSON, PHILLIPS AND DR. "D"

CREA, SMITH, KNEPTON



SOCIOLOGY CLUB



JENNINGS, PHILLIPS,
MORGAN

OFFICERS

- VENETTE MORGAN *President*
 CATHERINE PHILLIPS *Vice-President*
 REBECCA JENNINGS *Secretary-Treasurer*



The purpose of the Sociology Club is to further the members' interest in sociology, and in the entire field of social work. Some of the projects which the club members sponsor are the Community Chest Drive on campus, the Red Cross Drive, and activities at the Girls' Club.

MEMBERS

Betty Bell, Sue Beloff, Marion Collins, Venette Morgan, Catherine Phillips, Rebecca Jennings, Frances Hurn, Mary Henderson, Betty Toler, Betty Ffird, Anne Knepton, Barbara Lee, Martha Jackson, Carolyn McLenJon, Jean Land, Jean Dickson, Hanson Rogers, Helen Graydon, Ann Du Priest, Morris Smith, Sherla Miller, Peggy Williams, Faye Vickers, Patty Dixon, Freida Levin, Mildred Manley, Maisie Sharman, Mary Ann Sauls, Johnnie Stokes, Julianne Johnson, Virginia Cook, and Marion Jones.

HOME ECONOMICS CLUB

Fifty Home Economics majors and minors make up the Home Economics Club whose purpose is to educate the girls on campus about the various fields of home economics. The club has had a tea in honor of the faculty, has redecorated the teachers' lounge and has sponsored a questionnaire on present-day styles on campus and has worked with the local Boys Club.

OFFICERS

- RAY JEAN NORMAN *President*
 NANCY DANIELS *Vice-President*
 JEAN MAYO *Secretary*
 VIRGINIA COOK *Treasurer*
 MARJORIE BUSH *Historian*



COOK, DANIELS, NORMAN, BUSH, MAYO

MEMBERS

Betty Alderman, Jacqueline Becton, Carolyn Bowen, Jean Bryant, Marjorie Bush, Helen Chester, Virginia Cook, Jean Corbett, Hilda Crum, Bonnie Cunningham, Nancy Daniels, Nancy Dean, Betty Dickson, Patsy Fiveash, Edwina Ford, Dorothy Gibson, Anne Grisset, Virginia Hagan, Faye Hemmingway, Edith Jones, Hulda Jones, Bernadine King, Sue Kirkland, Ruby Lacey, Rhonwyn Lowry, Annette Marsh, Melba Martin, Marie Martin, Earline Mathis, Jean Mayo, Isabel McLeod, Maty Ann McLendon, Joyce Moon, Ray Jean Norman, Clara Overby, Sarah Parker, Mary Remer Parramore, Pat Porter, Mary Ann Powell, Miriam Powell, Jeanine Scott, Mary Singleterry, Sue Nell Smith, Virginia Smith, Wilhelmina Spence, Johnnie Stokes, Glenn Strickland, Monteen Strickland, Jackie Talton, Maxie Warren, Peggy Williams.



BUSINESS CLUB



MEMBERS

Mary Ann Arnold, Vilma Ansley, Carolyn Christian, Danise Bryant, Barbara Clarke, Sarah Connell, Helen Graydon, Merle Hancock, Frances Hurn, Rebecca Jennings, Jean Land, Alice McGeachy, Clare Mobley, Adair Myddleton, Jean Mullis, Jacquelyn Norman, Jacquelyn Norton, Barbara Passmore, Catherine Phillips, Glynette Story, Jo Ann Story, Vera Wilson, Pauline Jordan, Martha Sanders.

OFFICERS

VERA WILSON *President*
 REBECCA JENNINGS *Vice-President*
 HELEN GRAYDON *Secretary*
 JEAN MULLIS *Treasurer*
 MISS JIANNI LOWRY *Advisor*

The purpose of the Business Club is to promote interest in business training among the students, and to provide social, cultural, and business experiences through club activities. One of the club's important projects is to promote the use of correct parliamentary procedure on campus, and to further this by a condensation of the rules of order into convenient form.



GRAYDON, WILSON, JENNINGS, MULLIS



VALDOSTA CLUB

The membership of the Valdosta Club is composed of all the Valdosta students at college. The Valdosta Club seeks to organize the day student and try to make a better understanding between day and dormitory students.



MASSEY, DeLOACH, ANSLEY

OFFICERS

- LOUISE MASSEY *President*
 VILMA ANSLEY *Vice-President*
 ELIZABETH DeLOACH *Secretary-Treasurer*

MEMBERS

Betty Jane Alderman, Vilma Ansley, Rai Aubrey, Norma Bennett, Ruth Black, Charlene Bowen, Judy Briggs, Frankie Briggs, Joyce Bullington, Millie Jean Chitwood, Evelyn Connell, Connie Converse, Faye Cook, Virginia Cook, Hilda Crum, Elizabeth DeLoach, Ann French, Martha Lee George, Mary Gibson, Barbara Green, Emily Griner, Jo Carrol Guthrie, Virginia Hagan, Margaret Hardy, Faye Hemmingway, Gaye Hemmington, Grace Hiers, Judy Jackson, Virginia Kilcrease, Esther Landey, Alice McGeachey, Joan McIntosh, Eleanor Martin, Anna Marangos, Louise Massey, Venette Morgan, Anise Morgan, Jean Mullis, Adair Myddleton, Peggy Myers, Marjorie Noell, Dorothy Overstreet, Mary Remer Parramore, Kathryn Phillips, Frances Phillips, Florence Pindar, Tommie Riggins, Henrietta Smith, Morris Smith, Virginia Smith, Patsy Smith, Johnnie Stokes, Jackie Talton, Ruth Templeton, Olleta Templeton, Mary Louise Thornton, Sara Marie Tillman, Vivian Towles, Mary Tullis, Lucy Urquhart, and Phyllis Wade.

MATH-SCIENCE CLUB

Through varied programs and activities, the Math-Science Club acquaints its members with the practical nature of mathematics and the sciences and stimulates interest in these subjects. This Club has one of the largest memberships on campus.

EDITH JONES *President*

ANN DUPRIEST *Vice-President*

JOYCE MOON *Secretary-Treasurer*

CLEMMIE LANE *Reporter*

DR. BEATRICE NEVINS, DR. EARE PHELAN,
MR. THOMAS D. BROWN *Advisors*



MOON, DUPRIEST, JONES

MEMBERS

Zona Bennett, Carolyn Bowen, Gaile Carter, Faye Cook, Patty Dixon, Helen Graydon, Lolla Lee Holder, Frances Hurn, Lucile Jackson, Edith Jones, Betty Keene, Clemmie Lane, Carolyn Mathis, Barbara Passmore, Ann DuPriest, Martha Sanders, Cornelia Tuten, Peggy Williams, Pauline Jordan, Doris Bateman, Martha Lee George, Bennie Willa Harrington, Emma Lou Hursey, Barbara Lawson, Doris Mims, Claire Mobley, Susan Belle Smith, Irene Wilson, Eloise Yancey, Maybelle Bedell, Sue Belloff, Marjorie Bush, Helen Chester, Delores Law, Carolyn McLendon, Annie Laurie Moore, Marjorie Whelchel, Louise Godbee, Loma Jean Cook, Ellen Odum, Frances DeVane, Jocelyn Matthais, Virginia Smith, Thadyne Pitts, Mary Frances DeVane, Louise Shaw, Emily Justice, Betty Waters, Joyce Bullington, Lavara Jones, Jeannette Whelchel, and Miriam McCullough.





ENGLISH CLUB

OFFICERS

LOLLA LEE HOLDER *President*

JOANNI HAMILTON *Vice-President*

LOUISE BRUMLOW *Secretary-Treasurer*

HAMILTON, HOLDER, BRUMLOW

The purpose of the English Club is to stimulate interest in literature and literary activities on the campus, particularly among members of the club. Some activities of the club are conducting forums, and reviewing plays and current books. The club gives a prize each year to some student who shows exceptional literary ability.

MEMBERS

Evelyn Connell, Joanne Hamilton, Virginia Kilcrease, Gaile Carter, Mary Elinore Crea, Elizabeth DeLoach, Anne Fortson, Jean Helton, Virginia Heisler, Julia Jackson, Lucille Jackson, Margaret McIntyre, Celeste Purvis, Lolla Lee Holder, Mary John Rodgers, Ellen Smith, Henrietta Smith, Harriette Story, and Louise Brumlow.





ROMANCE LANGUAGE CLUB

This club, made up of advanced students in French and Spanish who have maintained an average of B in all such courses, was organized in order to offer a better understanding of France and Spain, and of the languages spoken there, to interested students.

As its yearly project the club again sent boxes of food and clothes to a French war orphan.

OFFICERS

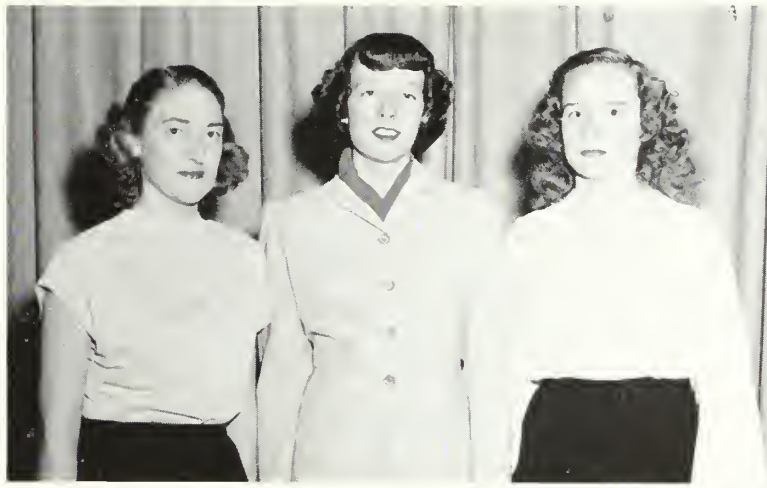
EVELYN CONNELL *President*
 ALCYONI COLLIER *Vice-President*
 SUSAN BELLI SMITH *Secretary-Treasurer*



SMITH, COLLIER, CONNELL

MEMBERS

Ruth Black, Charlene Bowen, Aleyone Collier, Evelyn Connell, Faye Cook, Mary Elinore Crea, Ann DuPriest, Betty Gunter, Bennie Willa Harrington, Lola Lee Holder, Betty Keene, Anna Kennedy, Doris Mims, Anne Moore, Florence Pirkle, Pat Porter, Margaret Smith, Susan Belle Smith, Gladys Thames, Elsie West, Irene Wilson, Floise



GUNTER, GOODWIN, THAMES

PHILHARMONIC CLUB

The Philharmonic Club is composed of the more advanced piano and voice students of GSWC. Tryouts for membership are held at the beginning of each school year. The programs are planned to promote interest in the best type of music and usually consist of performances and demonstrations by the club members.

OFFICERS

- GLADYS THAMES *President*
 BETTY GUNTER *Vice-President*
 CHARLOTTE GOODWIN *Secretary-Treasurer*
 MISS GLADYS WARREN, MRS. FRANCES PARDEE,
 AND MR. AND MRS. RAIMONDE AUBREY . . . *Advisors*

MEMBERS

- Annolene Bone
 Jacqueline Becton
 Mary Elinore Crea
 Betty Gunter
 Charlotte Goodwin
 Joyce Hines
 Bernadine King
 Susan Belle Smith
 Sammie Steedley
 Annella Wells





DANCE CLUB

OFFICERS

HILDA CRUM . *President and Production Mgr*

JOCLYN MATTHIAS . . . *Secretary-Treasurer*

The Dance Club has performed this year at the Christmas Party, the Spring Festival, and at their second annual recital. Composed of advanced dance students, the club gives the girls training in composition as well as in practice and performance.

MEMBERS

Mary Boone, Grace Hiers, Barbara Lawson, Jocelyn Matthias, Charlotte Goodwin, Jo Webb, Suzanne Twitty, Ann French, Sally Connell, Hilda Crum, Harriette Folsom, Nina Calhoun, Charlene Bowen, Frances Devane, Julianne Johnson, Hulda Jones, and Louise Brumlow.



SOCK AND BUSKIN CLUB

OFFICERS

JUAN LAND *President*
 VILMA ANSLEY *Vice-President*
 JACKIE TALTON *Secretary-Treasurer*
 MARY OWEN *Historian*

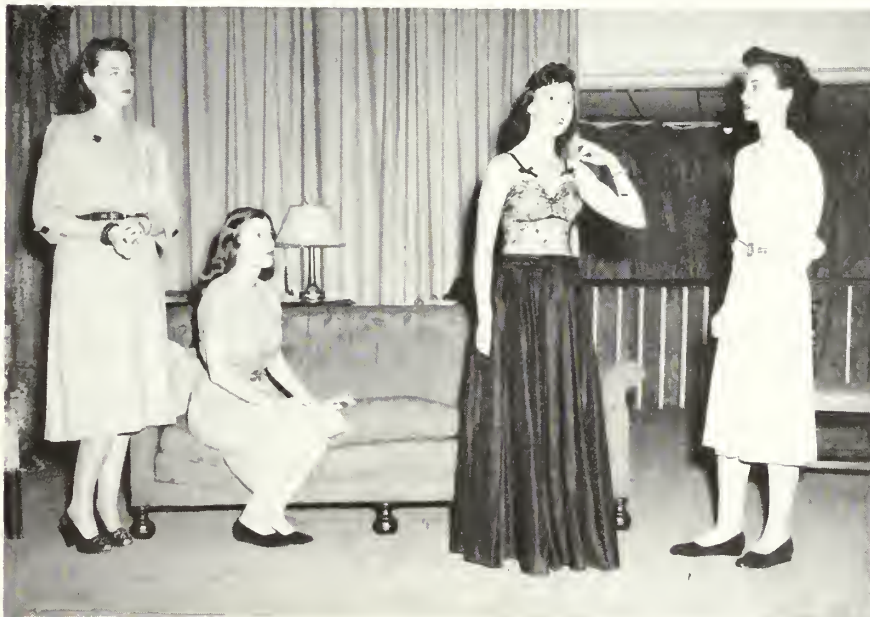


LAND, ANSLEY, OWEN,
AND TALTON



MEMBERS

Vilma Ansley, Ruth Black, Ann Bone, Charlene Bowen, Joyce Bullington, Marjorie Bush, Gaile Carter, Carolyn Christian, Alcyone Collier, Ann Cox, Mary Duncan, Harriet Folsom, Charlotte Goodwin, Sherrie Grow, Betty Gunter, Jean Helton, Lolla Lee Holder, Ann Hightower, Betty Keene, Jean Land, Esther Landey, Barbara Lawson, Sherla Miller, Ann Moore, Marjorie Nichols, Mary Owen, Catherine Phillips, Mary John Rogers, Ann Smith, Aleece Strickland, Jackie Talton, Jean Tucker, Cornelia Tuten, Suzanne Twitty, Betty Young, Jo Webb.



Scene From *Stage Door*

The Sock and Buskin Club is open to any student on campus who successfully passes a tryout, or who has shown outstanding work either in a college dramatic club or in a college art club of any kind. This year the club has produced two plays with the ever-capable Miss Sawyer directing. This year the club took its annual trip to Jacksonville to see "Knickerbocker Holiday."

RELIGIOUS ORGANIZATIONS



THE BAPTIST STUDENT UNION
COUNCIL MEMBERS

President Isabel McLeod; first vice-president, Gaile Carter; second vice-president, Lolla Lee Holder; third vice-president, Louise Massey; secretary-treasurer, Edith Jones; BTU representative, Joyce Bullington; S. S. representative, Jackie Norton; publicity director, Merle Hancock; editor of Baptist Binder, Ann DuPriest.



METHODIST YOUTH MOVEMENT
COUNCIL

Catherine Phillips, Chairman; Charlotte Goodwin, Jean Land, Charlene Bowen, Vilma Ansley, Hulda Jones, Jocelyn Matthias, Betty Buckner, Jean O'Neal, Sammie Steedly, and Mary Whittle.



PRESBYTERIAN STUDENT ASSOCIATION
MEMBERS

Ann Smith, Mary Owen, Jackie Martin, Alcyone Collier, Patsy Sutherland, Sue Carson, Patsy Fiveash, Julianne Blount, and Joyce Hines.



GLEE CLUB

MEMBERS

Jacqueline Becton, Sue Belloff, Norma Bennett, Zona Bennett, Martha Boatwright, Theta Booth, Frances Bowen, Mary Brand, Lenora Brown, Danise Bryant, Betty Buckner, Lucy Bush, Alice Carter, Elaine Cheshire, Frances Chester, Sally Connell, Vivian Cooper, Hilda Crum, Anita Dancer, Mary Duncan, Betty English, Mary Sue Fletcher, Mary Gibson, Charlotte Goodwin, Ann Grissett, Jo Carroll Guthrie, Jean Helton, Betty Henderson, Bernadine King, Betty Jane Lee, Miriam McCullough, Mildred Manley, Margaret Mann, Anna Marangos, Louise Massey, Carolyn Mathis, Jocelyn Matthias, Jean Mayo, Anise Morgan, Venette Morgan, Marjorie Nichols, Mary Alice Norman, Ellen Odom, Jean O'Neal, Thadyne Pitt, Miriam Powell, Jacqueline Ramsey, Gerelda Riggins, Shirley Roberts, Martha Sanders, Mary Singletary, Ann Smith, Henrietta Smith, Margaret Smith, Amaryeese Steedley, Barbara Steedley, Harriette Story, Mary Aleece Strickland, Margaret Traynham, Jean Tucker, Mary Talbot Tullis, Cornelia Tuten, Jean Usher, Gwendolyn Elizabeth Waters, Dorothy West, and Mary Whittle.



CRUM, GOODWIN, MATTHIAS, BELLOFF, POWELL
 President, Charlotte Goodwin; vice-president, Hilda Crum; secretary, M
 Powell; librarian, Jocelyn Matthias; assistant librarian, Sue Belloff.
 SERENADERS



LEAGUE OF WOMEN VOTERS

The G. S. W. C. chapter of the League of Women Voters was organized just two years ago. Since then it has done much to encourage the students to be intelligent voters. Through programs, forums, discussion groups, and outside speakers the League helps its members to keep informed about current events.



OFFICERS

EDITH JONES *President*
 BETTY GUNTER *Vice-President*
 VILMA ANSLY *Secretary*
 JEAN USHER *Treasurer*

BOARD MEMBERS

Mary Owen, Hanson Rogers, Zona Bennett, Ann DuPriest,
 Virginia Bray, Isabel McLeod.



GUNTER, USHER, ANSLY, JONES

INTERNATIONAL RELATIONS CLUB



OFFICERS

- RUTH BLACK *President*
 CHARLENE BOWEN *Vice-President*
 CAROLYN MATHIS *Secretary*
 BETTY NEWBERRY *Treasurer*
 CAROLYN WHELCHL *Member-at-Large*
 MISS MILDRED PRICE *Advisor*



MATHIS, WHELCHL, BOWEN, NEWBERRY, BLACK

Organized in 1928, the I. R. C. is under the sponsorship of the Carnegie Endowment for International Peace. It is the club's intention to deal with all topics and questions in impartial manner, always endeavoring to search out and appreciate the truth of each situation under consideration.

MEMBERS

Sally Beaty
 Ruth Black
 Charlene Bowen
 La'Trelle Carter

Pauline Jordan
 Carolyn Mathis
 Jean Mullis

Betty Newberry
 Betty Jean Smith
 Margaret Traynham



"Here they are . . . the ones we chose. . . . Aren't we proud of them?"

And so, with the presentation of these, our best, Polly and the PINE CONE Staff say, "So long for now."



THE FEATURES

SENIORS WHO



ESTHER LANDIY, *Speech*



CHARLOTTE GOODWIN, *Voice*



GLADYS THAMES, *Piano*

GAVE RECITALS



BETTY GUNTER, *Piano*



GAILL CARTER, *Speech*

LOLLA LEE HOLDER, *Speech*

Our Margas



Sophomore
"BOO" HARRINGTON

Junior
"BETTY" SMITH

Freshman
MARIAN HIGGINBOTHAM

Senior
BETTY GUNTER

Our Sweethearts



Freshman
JEAN O'NEAL

Senior
BETTY TOLER

Junior
RUBY LACEY

Sophomore
FRANCIS DE VANE

OUTSTAND



EDITH JONES



These six girls were chosen as the most outstanding members of the committee of faculty members and students. They possess all the traits that have



ANN WILKIN



BETTY KEENE

ING SENIORS



GLADYS THAMES

if the
track
have
nior Class by the Junior and Senior Classes from a group selected by a
. . . intelligence, personality, leadership . . . that a G.S.W.C. girl should



PAULINE JORDAN



BETTY GUNTER

Congratulations

... to the ...

1948 Seniors

OF THE

**GEORGIA STATE WOMANS COLLEGE
and**

Welcome to the

UPPERCLASSMEN and FRESHMEN

"THE CITY OF AZALEAS"

**welcomes the opportunity of being your home during
your college days and of sharing your culture.**

**May your associations and your memories of our city
be such that you will return after college days.**



H. B. EDWARDS, *Mayor*

COUNCILMEN

N. N. LANGDALE

CHARLIE SINGLETON

J. F. HOLMES

GEORGE SHELTON, SR.

NELSE HOLCOMBE

MAXWELL OLIVER

Forward with the Class of '48



Congratulations

G. S. W. C. GRADUATES

We are proud of the enviable record that you have made in college. We want you to know that you will always have a warm place in our hearts.

Welcome

Our every facility to make your stay in Valdosta a pleasant one is at your disposal.

Upperclassmen and Freshmen

In Valdosta It's

LUKE BROTHERS

Georgia's Finest Store, South

With Best Wishes

... TO THE SENIORS OF 1948

Whose association here will be long remembered.

... TO THE UPPERCLASSMEN

AND FRESHMEN

We are looking forward to your return next year.



Brookwood Pharmacy

Delivery Service

Phone 336



GRADUATES...
SINCERE BEST
WISHES AND
CONGRATULATIONS!



As I LOOK into the future I can see you in your new roles as homemakers and teachers and business women. And I'm in the picture, too . . . still giving you dependable service . . . doing the chores for pennies - a - day wages . . . helping you to enjoy modern electrical living.

REDDY KILOWATT
Your Electrical Servant

GEORGIA POWER & LIGHT COMPANY

Best Wishes

... from ...

**THE
WHITE HOUSE RESTAURANT**



VALDOSTA

GEORGIA

Compliments

of

**THE CITIZENS and SOUTHERN
NATIONAL BANK**



VALDOSTA

GEORGIA

C. C. VARNEDOE & COMPANY

The Style Center of Valdosta
Authentic Fashions

for
Juniors, Misses, and Women



... For the 70th Year ...

VALDOSTA'S STORE DEPENDABLE

Do Your Banking At . . .

The First National Bank

of Valdosta



Compliments

of

Lowndes County Board
of
County Commissioners

D. E. COLEMAN, *Chairman*



Valdosta's Leading Restaurant

THE ROOSEVELT

FAMOUS FOR
WESTERN STEAKS



Valdosta -- Georgia

LANGDALE TIMBER COMPANY



NAVAL STORES
PULPWOOD
CROSSTIES



106 WEST HILL AVENUE
Valdosta -- Georgia

GOOD SERVICE

... AT ...

BOB BELCHER'S DRUG STORE

PATTERSON AND CENTRAL

PHONE 812 - 813



Dorothy Gray Beauty Preparation

Compliments

of

VALDOSTA DRUG COMPANY



**SOUTHERN
STATIONERY
and
PRINTING
COMPANY**

WHOLESALE PAPER DEALERS

— For More Than 40 Years —

COMMERCIAL STATIONERS

PRINTERS

OFFICE OUTFITTERS

VALDOSTA

GEORGIA

Terry's
Rexall Drug Store
PATTERSON AT WILL
VALDOSTA, GA.

THE PLACE TO SHOP

FOR YOUR

REXALL NEEDS



VALDOSTA

GEORGIA

BOWL FOR HEALTH

WHERE

YOUNG AND OLD FRIENDS MEET

**VALDOSTA BOWLING
CENTER**

125 W. Central Ave.

Phone 22

G.S.W.C. GIRLS . . .

Pause and Refresh
DRINK

COCA - COLA

In Bottles

**Valdosta Coca-Cola Bottling
Works, Inc.**

WE SPECIALIZE IN . . .

BIRTHDAY CAKES

WEDDING CAKES

AND

CAKES FOR ALL OCCASIONS

TAYLOR'S BAKERY

VALDOSTA

GEORGIA

FLOWERS . . .

FRESH AND BEAUTIFUL

CHRISTIAN FLORAL CO.

307 W. Park Ave.

Phone 1745

SEARS ORDER OFFICE



SHOP AT SEARS
AND SAVE

Your Musical Headquarters
PIANOS - RADIOS - RECORDS
"EVERYTHING IN MUSIC"



Mathis & Youmans Co.

Compliments of . . .

Belk-Hudson Company

VALDOSTA'S LARGEST AND LEADING
DEPARTMENT STORE

•
NEWEST CAMPUS STYLES
•

Compliments of

SERVICE TIRE COMPANY

709 N. ASHLEY ST.



VALDOSTA

GEORGIA

*Compliments
... of ...*

GEORGIA FERTILIZER CO.



VALDOSTA

GEORGIA

OLIVER BROTHERS

PHILCO RADIOS AMOCO PRODUCTS
PENNSYLVANIA TIRES



Phone 231

Delicious Foods, Inc.

1138 N. ASHLEY ST. Phone 2396



*FROZEN FOOD LOCKERS
SUPER MARKET*

ENJOY

FOREMOST ICE CREAM

... It's DELICIOUS ...
FOREMOST FARMS, INC.

VALDOSTA

GEORGIA

*Compliments
... of ...*

FRIEDLANDER'S

READY-TO-WEAR DEPARTMENT
2ND FLOOR

Home of
"VALDOSTA'S CLOTHES BEAUTIFUL"

HALL'S CHILDREN SHOP

"WE MAJOR IN MINORS"



VALDOSTA

GEORGIA

REGISTER *Clothing Co., Inc.*
122 N. PATTERSON STREET
VALDOSTA, GEORGIA

MICHAELS • STERN *Value First* CLOTHES

GIRARDIN, JEWELERS

DIAMONDS - WATCHES

SILVERWARE



303 N. PATTERSON

VALDOSTA, GA.

International Harvester



11 Cubic Feet Freezer

\$395.00

DELIVERED

FRANK ROSE

Compliments

... of ...

COWART'S DRESS SHOP

SMART STYLES
for
COLLEGE GIRLS

*Compliments
... of ...*

HOTEL DANIEL ASHLEY



VALDOSTA

GEORGIA

For the Best in ...

FLOWERS



Valdosta Greenhouses

908 WILLIAMS ST.

*Congratulations
to the*
SENIORS OF 1948

**Rhodes-Collins Furniture
Company**

*Congratulations
and
Best Wishes*

**RITZ DOSTA
PALACE
Martin Theatres**

VALDOSTA, GEORGIA

HOME OF GOOD SHOES SINCE 1903
... Serving ...
G.S.W.C. FACULTY AND STUDENT
BODY

SINCE ITS ORGANIZATION IN 1913

Patterson & Jones

*Compliments
... of ...*

HOTEL VALDES

VALDOSTA

GEORGIA

*Compliments
... of ...*

J. L. SINEATH

AMBULANCE SERVICE

TELEPHONE 111

BRIGG'S CLOTHING

"THINGS MEN WEAR"

114 N. Patterson St. :: Phone 168

VALDOSTA, GEORGIA

DUNCAN'S SHOE SHOP

SMART FOOTWEAR

OF KNOWN QUALITY

FOR

COLLEGE GIRLS

*Compliments
... of ...*

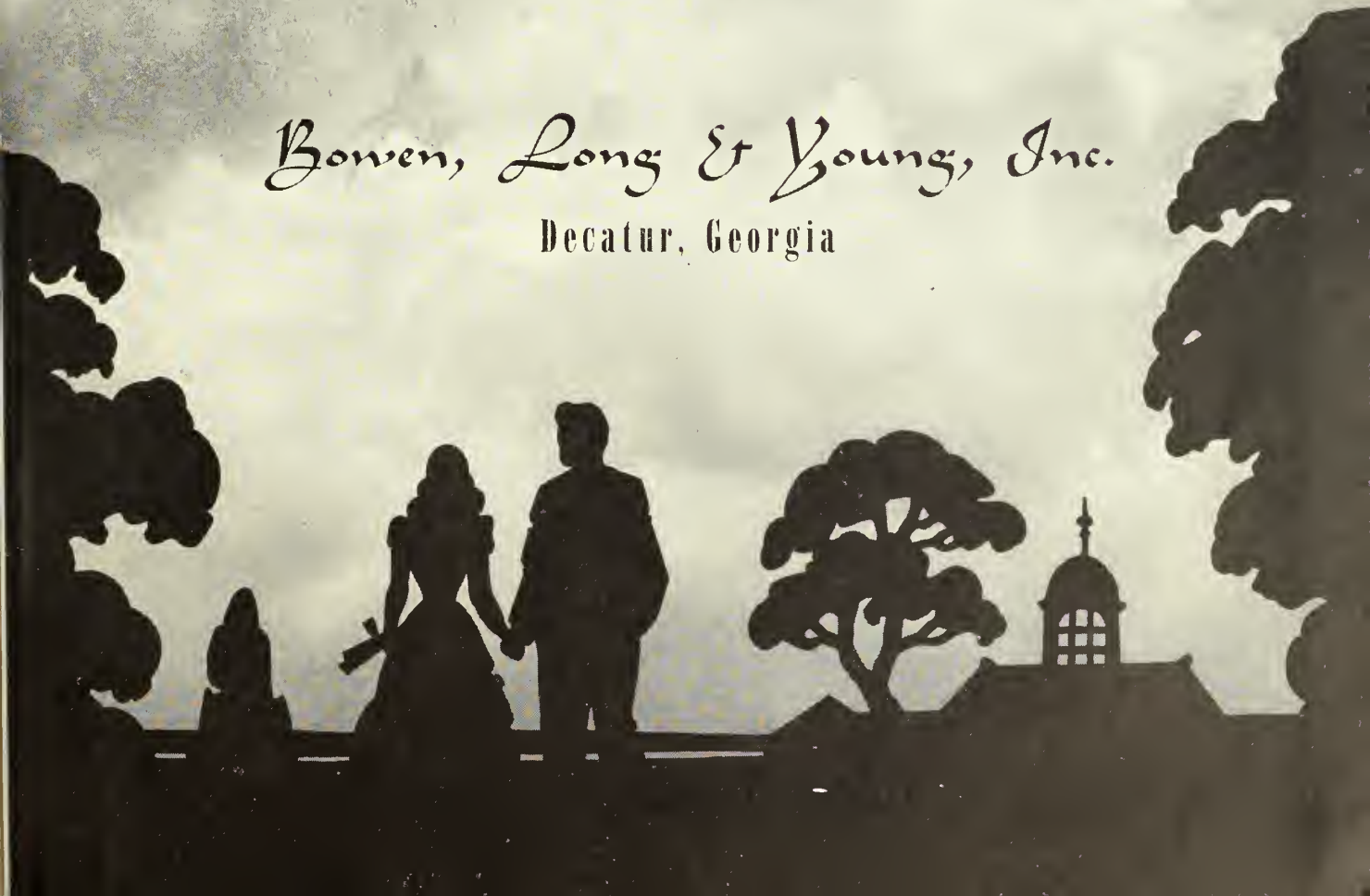
**ELECTRIC SUPPLY
COMPANY**


COMPLIMENTS
...OF...
BRIGGS LADIES SHOP
WHERE QUALITY COUNTS

ANNUALS
of
DISTINCTION

Bowen, Long & Young, Inc.

Decatur, Georgia





★ THE MARK THAT
IDENTIFIES THE SOUTH'S
FINEST YEARBOOKS

PHOTO-PROCESS ENGRAVING CO.
115 · 119 LUCKIE STREET
ATLANTA 3, GEORGIA

