



# *The Pine Cone*

1949

**LIBRARY**  
OF THE  
**GEORGIA STATE WOMANS COLLEGE**  
AT VALDOSTA

Presented to the library of DSWC  
by the staff of the 1947 Pine Cone.



*The Pine Cone—1949*



# *Reminiscing*



**About**

**1949**

at the  
Georgia State Womans College  
Valdosta

*Through the cloud pictures and the real  
pictures on the pages of your Pine Cone*

*And recalling all*

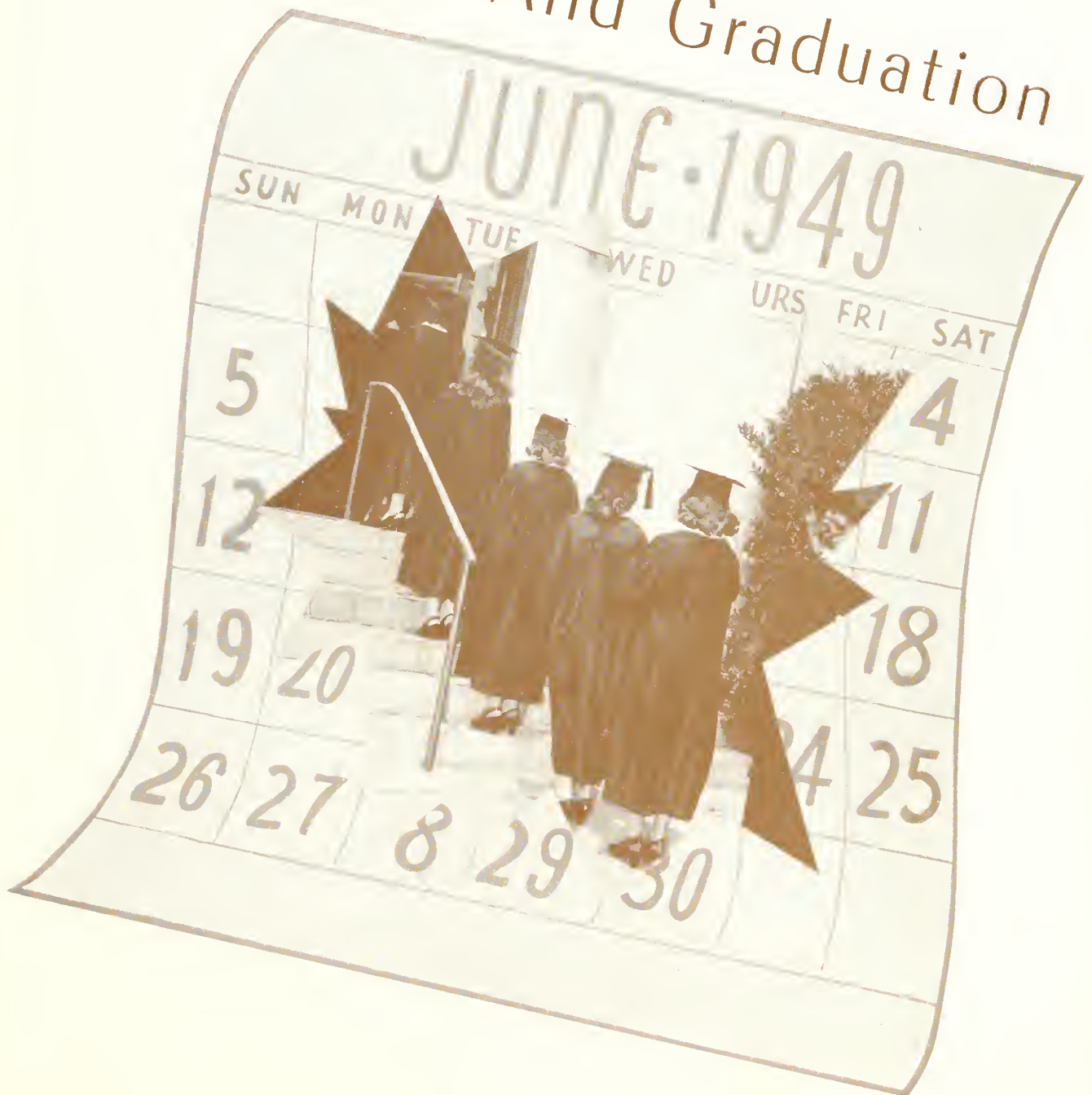
Freshman Week





*that happened between*

*And Graduation*



*We Dedicate Our  
Recollections to*



DR. FRANK R. READE

President Emeritus of the Georgia State Womens College

*who has encouraged so many "to seek the truth."*

# We Shall Always Remember

The Administration . . . Faculty . . . Seniors  
Juniors . . . Sophomores . . . Fresh-  
man . . .

## The People We Knew

SGA . . . YWCA . . . Sports Club . . .  
Honorary Societies . . . Glee Club . . . Publi-  
cations . . . Departmental Clubs . . .

## The Organizations We Joined

Classes . . . Study . . . Dates . . . Club  
meetings . . . Hikes . . . Receptions . . .  
Big Sisters . . .

## The Things We Did

Recitalists . . . May Queen . . . Sweet-  
hearts . . . Margas . . . Who's Who . . .  
Beauties . . .

## The Girls We Admired



*Faculty, classmates, roommates . . . friends.  
Each one has a place in our memories of 1949 . . .  
There were our own "most unforgettable characters" . . . the people we knew.*

*The People*

*We Knew*





DR. J. RALPH THAXTON  
*President*



MRS. JOHN W. JENKINS  
*Dean of Students*

## *The Administration*



MISS ELIZABETH FINK  
*Director of Placement and Publicity*



MR. J. R. DUSENBURY  
*Comptroller*



MISS BETTY GUNTER  
*Assistant Registrar*

# The Faculty

Mrs. Julia W. Margan, Secretary to the President, and Mr. George B. Maare, Assistant Camptroller.



Mrs. Claude D. Ingram, Resident Head of Senior Hall, Mrs. Florine Myers, Resident Head of Ashley Hall, and Dr. Marian Farbar, Colledge Physician.



Mrs. C. C. Whittle, Assistant Dietitian, and Mrs. Eva Shrivalle, Dietitian.



Miss Alice Meadors, Assistant Librarian, Miss Lillian Patterson, Librarian, and Miss Thera Hambrick, Assistant Librarian.

# Humanities Department



Dr. Harold S. Gulliver, Professor of English, Mrs. Gertrude G. Odum, Professor of English, and Miss Louise A. Sawyer, Professor of Speech



Miss Ruth Carocnter, Professor of Art, Mr. Clifton H. White, Associate Professor of Art and Music, and Dr. Sapelo Treanor, Professor of French and Spanish.

# Social Science Department

Mrs. Claude Knight, Assistant Professor of Education, and Mr. William Gabard, Assistant Professor of Social Science.



Dr. J. A. Durrenberger, Professor of Social Science, and Miss Mildred Price, Professor of History





## Science and Mathematics Department

Dr. Lena J. Hawks, Professor of Mathematics, and  
Mr. Ralf E. Moseley, Associate Professor of Chemistry.



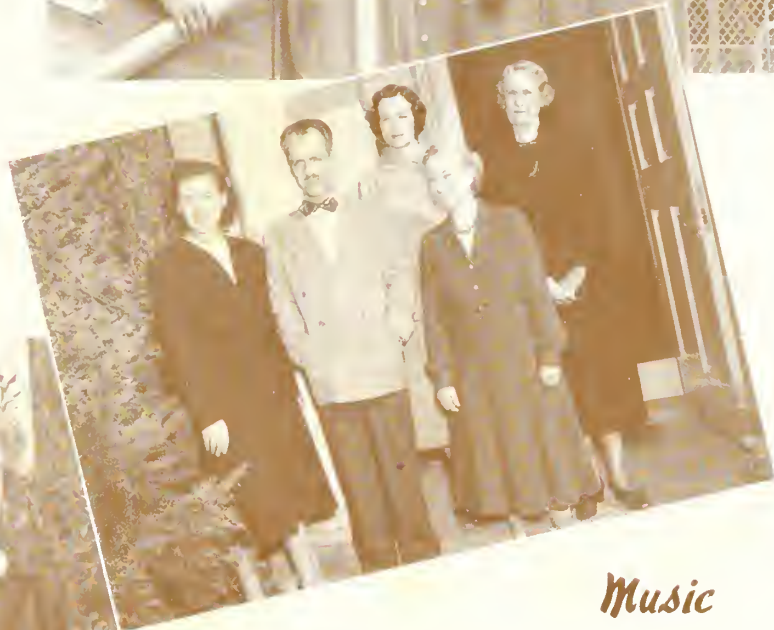
Miss Marjorie E. Carter, Associate Professor of Biology and Resident Head of Converse Hall, Dr. Beatrice Nevins, Professor of Biology, and Dr. Earl W. Phelan, Professor of Chemistry.

## Physical Education Department

Mrs. Matilda D. Mathis, Instructor of Physical Education, Mrs. Phyllis P. Valente, Assistant Professor of Physical Education, Miss Leonora Ivey, Professor of Physical Education, and Mrs. Frances Hopkins, Assistant Professor of Physical Education.



## Practical Arts Department



## Music Department

Mrs. Martha C. Aubrey, Accompanist of Music, Mr. Raimonde Aubrey, Associate Professor of Music, Miss Charlotte Godwin, Assistant in Voice, Miss Gladys Warren, Professor of Music, and Mrs. W. A. Pardee, Instructor of Music.

Miss Emily Heath, Assistant Professor of Home Economics, and Miss Margaret Deavor, Associate Professor of Secretarial Science.



## Senior Class

It was hard to believe it was all so nearly over. They hadn't thought it would ever happen four years ago when that Senior told them that "It seems no time at all since we were Freshmen!"

What would they think about that day when they met their sophomore hood-sisters in the center of the stage and received the long-awaited diplomas? Maybe it would all be over so quickly they'd have time to think of nothing. But through the days before graduation there were so many thoughts and memories! Of all the four years, of course, but mostly of the things they'd done together that last year—the strictly Senior events.

At last the fun and hard work of the Senior Hallowe'en Carnival had been theirs; then making wreaths for decorating the Rotunda in the "Hanging of the Greens," Y. W. C. A. Christmas service.

They had been proud of their "Sweetheart" and "Marga," but especially proud of their May Queen, her maid of honor, and court, because they were theirs exclusively!

The parties for the graduates each quarter were fun, if a little sad. And through everything else were the money-making projects for the class trip.

Spring Frolics was unforgettable, as that week-end had been for every other class.

No—there wouldn't be time that day in the caps and gowns to reminisce about it all, but there would be time before and time afterward.



# The Seniors



## Class Officers

BET ALDERMAN  
*Vice-president*

MARY JOHN RODGERS  
*President*

JEAN HELTON  
*Secretary-Treasurer*

# Seniors

MARJORIE NICHOLS

Shellman, Georgia

*Division of Humanities; Emphasis  
on English*

Transfer from Georgia Southwestern College,  
Americus, Georgia. S. G. A., 3, 4; Monitor  
3, 4; Y. W. C. A., 3, 4; Sports Club, 3; PINK  
CONI, 3, 4; Business Staff 3, Business Man-  
ager 4; English Club, 4; Sock and Buskin  
Club, 3, 4; Glee Club, 3, 4; Serenaders, 3, 4.



"Nichols"

MARY JOHN RODGERS

Sycamore, Georgia

*Division of Humanities; Emphasis on  
English and Speech*

S. G. A., 1, 2, 3, 4; Student Council, 4;  
House Council, 2; Monitor, 3; Secretary-Treas-  
urer, Sophomore Class; President, Senior Class;  
Y. W. C. A., 1, 2, 3, 4; Sports Club, 1; *Camp-  
us Canopy* 2, 3, 4; Feature Editor, 3; PINK  
CONI Photograph Editor, 3; English Club, 3,  
4; Sock and Buskin Club, 1, 2, 3, 4; F. C. A., 4.





"Story"

HARRIETTE BALDWIN STORY

Nashville, Georgia

*Division of Humanities; Emphasis on English*

S.G.A. 1, 2, 3, 4; House Council 2; Y.W.C.A. 1, 2, 3, 4; Sports Club 1; PINE CONE 4; English Club 3, 4; Sock and Buskin Club 1, 2, 3, 4; Glee Club 1, 2, 3, 4; Sophomore Council 2.



"Celox"

FRANCES CELESTE PURVIS

Pembroke, Georgia

*Division of Humanities; Emphasis on English*

Transfer from Andrew Junior College, Cuthbert, Georgia. S.G.A. 3,4; Y.W.C.A. 3, 4; English Club 3, 4; Westminster Club 3.



# Seniors

CHARLENE ANN BOWEN

Valdosta, Georgia

*History major; English minor*

S.G.A. 1, 2, 3, 4; Vice-President Freshman Class; Y.W.C.A. 1, 2, 3, 4; Sports Club 1, 2, 3, 4; Sports Council 4; *Campus Canopy* editorial staff 2, 3; PINE CONI editorial staff 2, 3; Freshman Honor Society 1, 2; President 2; Senior Honor Society 3, 4; historian, 4; Valdosta Club 1, 2, 3, 4; secretary-treasurer 2; Romance Language Club 3; Dance Club 2, 3; Sock and Buskin Club 2, 3, 4; president 4; I.R.C. 3, 4; vice-president 3, 4; League of Women Voters 3, 4; Glee Club 1, 2; Methodist Youth Organization 1, 2, 3, 4; May Court 2; Artist Series Committee Chairman 4; E.C.A. 4.



Charlene

BETTY JANE ALDERMAN

Valdosta, Georgia

*Home Economics major; English minor*

S.G.A. 1, 2, 3, 4; Vice-President Sophomore and Senior Classes; Y.W.C.A. 1, 2, 3, 4; Sports Club 1, 2, 3, 4; Sports Council 1, 2, 3, 4; treasurer 3; PINE CONI 1, 4; Fine Arts Club 3, 4; Home Economics Club 2, 3, 4; president 4; Valdosta Club 1, 2, 3, 4; vice-president 2; Math-Science Club 3; League of Women Voters 3, 4; E.C.A. 4.



Bet



WAYNE MORRIS SMITH

Valdosta, Georgia

*Sociology major; English and Physical Education minor*

S.G.A. 1, 2, 3, 4; Y.W.C.A. 1, 2, 3, 4; Sports Club 1, 2, 3, 4; Sports Council 1, 2, 3, 4; vice-president 3; president 4; PINE CONE 2, 3; Freshman Honor Society 2; Senior Honor Society 3, 4; vice-president 3; Sociology Club 3, 4; Valdosta Club 1, 2, 3, 4; Math-Science Club 1; League of Women Voters 3, 4; E.C.A. 4.



Morris



Grace

ANNA GRACE HIERS

Lake Park, Georgia

*Division of Humanities; Emphasis on Art*

S.G.A. 1, 2, 3, 4; Y.W.C.A. 1, 2, 3, 4; Sports Club 1; PINE CONE 2; Fine Arts Club 1, 2, 3, 4; vice-president 3; president 4; Valdosta Club 1, 2; reporter 1; Dance Club 2, 3; Glee Club 1, 2, 3, 4; Serenaders 3, 4; Artist Series Committee 4; E.C.A. 4; Class Beauty 4.



# Seniors

CORNELIA ANN TUTEN

Alma, Georgia

*Biology major; English minor*

S.G.A. 1, 2, 3, 4; Y.W.C.A. 1, 2, 3, 4; Sports Club 1, 2, 3, 4; *Campus Canopy* 3; PINI CONI 4; Senior Honor Society 3, 4; Fine Arts Club 2, 3, 4; Art Chairman 3; Math-Science Club 2, 3, 4; Chairman of Biology Division 4; Sock and Buskin Club 1, 2, 3, 4; vice-president 2, 4; League of Women Voters 2, 3, 4; Glee Club 1, 2, 3; B.S.U. 4; E.C.A. 4.



"Tootie"



Jean

ELEANOR JEAN HELLON

Fitzgerald, Georgia

*Division of Humanities; Emphasis on English*

S.G.A. 1, 2, 3, 4; House Council 2; Senior Class Secretary-Treasurer; Y.W.C.A. 1, 2, 3, 4; English Club 2; Dance Club 1; Sock and Buskin Club 3; Glee Club 1, 2, 3, 4; Methodist Youth Organization 1; Sophomore Council; Serenaders 3, 4; Chapel Choir 3.







"Mac"

ANN McNEILL FORTSON

Washington, Georgia

*Humanities major; Emphasis on English*

S.G.A. 1, 2, 3, 4; House Council 3; Y.W.C.A. 1, 2, 3, 4; Sports Club, 1, 2, 3; *Campus Canopy* 4; PINK CONE 2, 4; Copy Editor 4; English Club 3, 4; League of Women Voters 3, 4; Glee Club 1, 2; May Court 2; Social Committee 3, 4.



"B. B."

BETTY GRACE BELI

Americus, Georgia

*Social Work major; English minor*

S.G.A. 1, 2, 3, 4; House Council 3; Y.W.C.A. 1, 2, 3, 4; Sports Club 1; Sociology Club 3, 4; May Court 2; Class Sweetheart 2; Math-Science Club 2.



# Seniors

EVA ELIZABETH DILOACI

Valdosta, Georgia

*Division of Humanities; Emphasis on English*

S.G.A. 1, 2, 3, 4; Vice-President Junior Class; Y.W.C.A. 1, 2, 3, 4; Sports Club 1, 2, 3, 4; *Campus Canopy* 1, 2, 3, 4; PINE CONE 2, 3, 4; Valdosta Club 1, 2, 3, 4; secretary-treasurer 3; Math-Science Club 1; English Club 3, 4; president 4; League of Women Voters 3, 4; program chairman 4; B.S.U. 1, 2, 3, 4; Artist Series Committee 4; E.C.A. 4.



Libby

PHYLLIS WADE

Valdosta, Georgia

*Division of Social Science; Emphasis on Sociology*

S.G.A. 1, 2, 3, 4; Y.W.C.A. 1, 2, 3, 4; Sports Club 1, 2, 3, 4; Business Club 1, 2; Sociology Club 4; Valdosta Club 1, 2, 3, 4; League of Women Voters 3, 4; Glee Club 1.



"Phyl"



VILMA RACHEL ANSLEY

Valdosta, Georgia

*Secretarial Science major; Sociology minor*

S.G.A. 1, 2, 3, 4; Town Girl Representative 3;  
 Y.W.C.A. 1, 2, 3, 4; Sports Club 1, 2, 3, 4;  
 Sports Council 3, 4; Business Club 1, 2, 3, 4;  
 Valdosta Club 1, 2, 3, 4; vice-president 3;  
 president 4; Dance Club 1; Sock and Buskin  
 Club 1, 2, 3, 4; vice-president 3; secretary 4;  
 League of Women Voters 2, 3; secretary 3;  
 M.Y.F. 1, 2, 3, 4.



"Bim"



Sherla

SHERLA MELEESE MILLER

Valdosta, Georgia

*Division of Social Science; Emphasis on  
 Sociology*

S.G.A. 1, 2, 3, 4; Y.W.C.A. 1, 2, 3, 4; Sports  
 Club 1, 2, 3, 4; vice-president 4; Sports Council  
 2, 3, 4; *Campus Canopy* 3, 4; PINE CONE  
 3; Sociology Club 2, 3, 4; Valdosta Club 1, 2,  
 3, 4; Math-Science Club 1; Sock and Buskin  
 Club 3, 4; Glee Club 2, 3, 4; B.S.U. 1, 2, 3, 4.



# Seniors

BETTY JEAN SMITH

College Park, Georgia

*History major; English minor*

S.G.A. 1, 2, 3, 4; Student Council 2, 3, 4; monitor 2, 3; Y.W.C.A. 1, 2, 3, 4; Cabinet 2, 3, 4; Sports Club 1; *Campus Canopy* 1, 2, 3, 4, Editor 3; PINI CONI 3, 4, Editor 4; Freshmen Honor Society 1, 2; Senior Honor Society 3, 4, Secretary-Treasurer 3; Fine Arts Club 2, 3; Math-Science Club 1, 2; I.R.C. 3, 4; League of Women Voters 3, 4; Fellowship of St. Martin 1, 2, 3, 4, President 3, 4; "Marga" 3; E.C.A. 3, 4; *Handbook* 1, 3, Associate Editor 1, Editor 3.



"Beejee"



"Crea"

MARY ELINORE CREA

College Park, Georgia

*Division of Humanities; Emphasis on English*

S.G.A. 1, 2, 3, 4; Student Council 3, 4; Monitor 3, 4; Y.W.C.A. 1, 2, 3, 4; Cabinet 2, 3, 4; Sports Club 1; *Campus Canopy* 1, 2, 3, 4, Editor 4; PINI CONI 3, 4, Copy Editor 4; Fine Arts Club 2, 3; English Club 3, 4; Romance Language Club 3; Philharmonic Club 3, 4; Glee Club 1, 2; Fellowship of St. Martin 1, 2, 3, 4, President 2, Secretary 3; E.C.A. 3, 4; Sophomore Council 2; Chapel Choir 1.





"Liz"

ANN ELIZABETH DUPRIEST

Sylvester, Georgia

*Division of Social Science; Emphasis on Sociology*

S.G.A. 1, 2, 3, 4; E.C.A. 3, Chairman 4; Student Council 3, 4; Monitor 3, 4; Y.W.C.A. 1, 2, 3, 4; Cabinet 3, 4; Sports Club 1; *Campus Canopy* 2, 3, News Editor 3; PINE CONE 3, 4, Copy Editor 4; Freshmen Honor Society 1, 2; Senior Honor Society 3, 4; Sociology Club 3, 4; Math-Science Club 1, 2, 3, Vice-President 3; Romance Language Club 3; League of Women Voters 3; Glee Club 1; B.S.U. Council 2, 3; Co-Editor of *Student Handbook* 2.



Doris

DORIS MERLE BATEMAN

Sylvester, Georgia

*Biology major; Physical Education minor*

S.G.A. 1, 2, 3, 4; House Council 2; Monitor 3, 4; Y.W.C.A. 1, 2, 3, 4, Vice-President 3, President 4; Sports Club 1, 2, 3, 4; Council 4; PINE CONE 4; Fine Arts Club 2, 3; Math-Science Club 2, 3, 4; Philharmonic Club 1; Dance Club 2, 3; Glee Club 1, 3, 4; Methodist Student Organization 1, 3, 4; Sophomore Council 2; Serenaders 3, 4.



# Seniors

RUBY ARDITH LACY

Hazlehurst, Georgia

*Home Economics major; English minor*

S.G.A. 1, 2, 3, 4; Monitor 3, 4; Y.W.C.A. 1, 2, 3, 4; Sports Club 1, 2, 3, 4; *Campus Canopy* 1, 2, 3, 4, Exchange Editor 3, 4; PINK CONI 4; Home Economics Club 2, 3, 4, Secretary 4; Dance Club 3, 4, Secretary-Treasurer 4; Glee Club 1; M.Y.I. 1, 2, 3, 4; Class Sweetheart 3; Sophomore Council 2; Log Cabin Chairman 4; E.C.A. 4.



Ruby

ANNE DARIING KNEPTON

Thomasville, Georgia

*Social Work major; Physical Education minor*

S.G.A. 1, 2, 3, 4, Secretary-Treasurer 3; Monitor 3, 4; Y.W.C.A. 1, 2, 3, 4; Sports Club 1, 2, 3, 4, Secretary 4; Sports Council 2, 3, 4; *Campus Canopy* 1, 2, 3, 4, Make-Up Editor 3, 4; PINK CONI 4, Lay-Out Editor 4; Sociology Club 3, 4; M.Y.F. 1, 2, 3, 4; Council 2, 4; Sophomore Council 2; Student-Faculty Committee 3.



Knep



VIRGINIA HEISLER

Thomasville, Georgia

*Division of Humanities; Emphasis on English*

S.G.A. 1, 2, 3, 4; Fire Chief 2; House Council 1; Monitor 3, 4; Y.W.C.A. 1, 2, 3, 4; Cabinet 3, 4; Sports Club 1, 2, 3, 4; Historian 4; Sports Council 3, 4; *Campus Canopy* 3, Exchange Editor 3; PINE CONE 4; Business Club 1, 2; English Club 3, 4; Glee Club 1; M.Y.F. 1, 2, 3; Planning Council 1, 2, 3; Social Chairman 4; E.C.A. 4.



"Gina"



"Mina"

AMY WILHELMINA SPENCE

Blakely, Georgia

*Home Economics major; English minor*

S.G.A. 1, 2, 3, 4; Y.W.C.A. 1, 2, 3, 4; Sports Club 1, 4; *Campus Canopy* 3, 4, Exchange Editor 3, 4; PINE CONE 4, Photograph Editor 4; Home Economics Club 3, 4; Dance Club 4; B.S.U. 1, 2, 3, 4; Publicity Director 4.



# Seniors

PATRICIA ANN PORTER

Sylvester, Georgia

*Home Economics major; English minor*

S.G.A. 1, 2, 3, 4; Y.W.C.A. 1, 2, 3, 4; PINT  
CONT 4; Home Ec Club 3, 4; Romance Lan-  
guage Club 3; Sock and Buskin Club 3, 4; Glee  
Club 1; B.S.U. 1, 2, 3, 4; House Council 4;  
Monitor 3, 4; Sophomore Council 2.



Pat



Sue

SUE NELL SMITH

Statesboro, Georgia

*Home Economics major; English minor*

S.G.A. 1, 2, 3, 4; Y.W.C.A. 1, 2, 3, 4; Y  
Cabinet 1; Sports Club 1, 2; Business Club 1;  
Home Ec Club 2, 3, 4; B.S.U. 1, 2, 3, 4.







"Jack"

MARTHA CAROLYN JACKSON

Macon, Georgia

*Division of Social Science; Emphasis on  
Sociology*

S.G.A. 1, 2, 3, 4; Y.W.C.A. 1, 2, 3, 4; Sports  
Club 1, 2; Sports Council 1, 2; PINE CONE  
3, 4; Sociology Club 3, 4; President Sociology  
Club 4; Sophomore Council 2.



"Koot"

MARION ANITA COLLINS

Cobbtown, Georgia

*Division of Social Science; Emphasis on  
Sociology*

S.G.A. 1, 2, 3, 4; House Council 3; Y.W.C.A.  
1, 2, 3, 4; Sports Club 1; Business Club 2;  
Sociology Club 3, 4; B.S.U. 1.



# Seniors

ANNA CAROLYN MATHIS

Fitzgerald, Georgia

*Art major; History minor*

S.G.A. 1, 2, 3, 4, First Vice-President 3, President 4, Monitor 3, 4; Treasurer Freshman Class; President Sophomore Class; Y.W.C.A. 1, 2, 3, 4; Sports Club 1, 2, 3, 4; Sports Council 3; *Campus Canopy* 1, 2; Sports Editor; *PINK CONE* 4, Art Editor 4; Freshman Honor Society 2; Senior Honor Society 3, 4; Fine Arts Club 2, 3, 4; Art Chairman 3; Math-Science Club 1, 2, 3, 4; I.R.C. 2, 3, 4, Secretary 3; League of Women Voters 1, 2, 3, 4, Board 2, 4; Glee Club 2, 3, 4; M.Y.F. 1; E.C.A. 2, 4.



Mathis

ZONA CLYDE BENNETT

Nashville, Georgia

*Biology major; English minor*

S.G.A. 1, 2, 3, 4, Secretary-Treasurer 3; President Junior Class; House Council 2; Monitor 3, 4; Y.W.C.A. 1, 2, 3, 4; Sports Club 3, 4; Freshman Honor Society 2; Senior Honor Society 3, 4; Math-Science Club 1, 2, 3, 4; Biology Division Chairman 3, President 4; Sock and Buskin Club 4; League of Women Voters 3, 4; Glee Club 1, 2; Sophomore Council.



Zona



ALA FRANCES McBRIDE

Alston, Georgia

*Division of Social Science; Emphasis on Sociology*

S.G.A. 1, 2, 3, 4; Student Council 3, 4, Secretary-Treasurer 3, Monitor 3, 4; Y.W.C.A. 1, 2, 3, 4; Sports Club 1, 2; Sociology Club 4; Math-Science Club 3, 4; Romance Language Club 4; League of Women Voters 3, 4; M.Y.F. 1, 2, 3, 4; Student-Faculty Committee 3.



Ala



"Nan"

EDNA ANN HUTCHINS

Savannah, Georgia

*Biology major; Chemistry minor*

Transfer from Armstrong Junior College, Savannah, Georgia

S.G.A. 3, 4; Monitor 4; Y.W.C.A. 3, 4; Senior Honor Society 3, 4, Secretary-Treasurer 4; Math-Science Club 3, 4; League of Women Voters 3, 4; Log Cabin Committee 3.



# Seniors

ELLEN ELIZABETH SMITH

Waycross, Georgia

*Division of Humanities; Emphasis on English*

Transfer from Georgia State College for Women, Milledgeville, Georgia.

S.G.A. 3, 4; House Council 3; Y.W.C.A. 3, 4; *Campus Canopy* 4; PINK CONE 4; English Club 3, 4; League of Women Voters 4.



"Smith"



Jackie

JACQUILINE NORMAN

Moultrie, Georgia

*Secretarial Science major; English minor*

S.G.A. 1, 2, 3, 4; Y.W.C.A. 1, 2, 3, 4; Sports Club 1; Business Club 1, 2, 3, 4.





Clara

CLARA AUGUSTA OVERBY

Cuthbert, Georgia

Transfer from Andrew College, Cuthbert,  
Georgia.

S.G.A. 3, 4, Y.W.C.A. 3, 4; Home Economics  
Club 3, 4.



Sally

SALLY BEATTY

Dawson, Georgia

*History major; English minor*

Transfer from Middle Georgia College,  
Cochran, Georgia.

S.G.A. 3, 4; Y.W.C.A. 3, 4; I.R.C. 3, 4.



# Seniors

ANNEVERETTE FRENCH

Valdosta, Georgia

*Division of Social Science; Emphasis on History*

S.G.A. 1, 2, 3, 4; Y.W.C.A. 1, 2, 3, 4; Sports Club 1, 2, 3, 4; Sociology Club 4; Valdosta Club 1, 2, 3, 4; Dance Club 3; League of Women Voters 4; I.R.C. 4; Member-at-Large 4; B.S.U. 1, 2, 3, 4.



"Frenchy"



ALICE DEVANE MCGILACHY

Valdosta, Georgia

*Secretarial Science major; English minor*

S.G.A. 1, 2, 3, 4; Y.W.C.A. 1, 2, 3, 4; Fine Arts Club 3, 4; Valdosta Club 1, 2, 3, 4, Secretary 4; Dance Club 3; Glee Club 1, 2.



Alice



JESSIE LOUISE MASSEY

Valdosta, Georgia

*Division of Humanities; Emphasis on English*

S.G.A. 1, 2, 3, 4; Y.W.C.A. 1, 2, 3, 4; Y Cabinet 1, 2, 3; PINI CONI 2; Senior Honor Society 3; Fine Arts Club 1, 2; Valdosta Club 1, 2, 3; President Valdosta Club 3; Math-Science Club 1; Glee Club 1, 2, 3; Serenaders 3; B.S.U. 1, 2, 3, 4.



"Sister"



Martha Lee

MARTHA LEE GEORGE

Valdosta, Georgia

*Chemistry major; Biology minor*

S.G.A. 1, 2, 3; Y.W.C.A. 1, 2, 3; Sports Club 1; Freshman Honor Society 1, 2, Secretary and Treasurer 2; Senior Honor Society 3; Valdosta Club 1, 2, 3, Vice-President 3; Math-Science Club 1, 2, 3; Chairman Chemistry Div. 2; League of Women Voters 2.



# Seniors

ELLEN LATRELLE CARTER

Valdosta, Georgia

*History major; English minor*

S. G. A., 1, 2, 3, 4; Y. W. C. A., 1, 2, 3, 4;  
Sports Club, 1, 2, 3, 4; Freshman Honor Society,  
1, 2; Fine Arts Club, 3, 4; Math-Science Club,  
1, 2; I. R. C., 3, 4; Treasurer, 4.



"Tomi"



ANNIE PEARL JOHNSON

Valdosta, Georgia

*Social Science Division;*

*History Emphasis*







Virginia

EVELYN VIRGINIA SMITH

Broxton, Georgia

*Home Economics major; English minor*

S. G. A., 1, 2, 3; Y. W. C. A., 1, 2, 3; Sports Club, 1; Freshman Honor Society, 2; Senior Honor Society, 3; Historian, 3; Fine Arts Club, 2, 3; Home Economics Club, 1, 2, 3; Vice-president, 2, 3; Math-Science Club, 2, 3; B.S.U., 1, 2, 3; Secretary-Treasurer, 3.



Judy

JURELLE WRIGHT GIRTMAN

Denton, Georgia

*Mathematics major; French minor*

Transferred from

Belhaven College, Jackson, Mississippi.

S. G. A., 4; Y. W. C. A., 4; Sports Club, 4; Math-Science Club, 4.



# Seniors

ETHEL MAE WHITE BLACK

Valdosta, Georgia

*Secretarial Science Major*

Transfer from Harding College,  
Searcy, Arkansas.



Marion

MARION JONES

Valdosta, Georgia

*Biology major; Social Work minor*



MARY CRUM PINKSTON

Valdosta, Georgia

*Home Economics major; Art minor*

S. G. A., 1, 2, 3, 4; Y. W. C. A., 1, 2, 3, 4;  
Sports Club, 1, 2; Fine Arts Club, 1, 2; Home  
Economics Club, 1, 2; Historian, 1; Valdosta  
Club, 1, 2; Glee Club, 1, 2.



Mary



## Junior Class

The sophomores of last year *did* make it to Senior Hall! Two closets, unlimited light extension, and maple furniture awed these "Jolly Juniors" for a time, but not for long! The class was the "jolliest" Junior Class seen in many an age and it started the school year off by sponsoring the first dance.

Prompted by the unusually warm weather, midnight bridge games and "Candy parties" became the fad, and Fall Quarter slipped by like so many hands of bridge.

Winter Quarter, the Jolly Juniors changed! The reason? Plans for the Junior-sponsored Junior-Senior Frolics had to be made. Class meetings, arrangements, and get-togethers over cups of coffee occupied their time. Emerging from this blanket of worry over funds and the time-element, the Juniors presented a campus-wide amateur contest. Next on the agenda was a dance and they found, surprisingly enough, that they could afford to give the Seniors their annual week-end of fun and frivolity.

The day of swimming and picnicking, the dance that night at the Country Club, Sunday dinner in the dining hall, all added up to making this year's Junior-Senior a long-to-be-remembered event.

It didn't seem possible that the year could come and go so quickly. What seemed even more impossible to the Juniors was the fact that next year they would be solemn Seniors.



# The Juniors



## Class Officers

JOYCE BULLINGTON  
*Vice-president*

MARY ANN SAULS  
*President*

CAROLYN McLENDON  
*Secretary-Treasurer*



Sue Belloff  
Albany

Annolene Bone  
Leslie

Julia Clay Briggs  
Valdosta

Danise Bryant  
Moultrie

Joyce Bullington  
Valdosta

Barbara Clarke  
Moultrie

Velma Crumney  
Brunswick

Mary Duncan  
Leslie



Jane Gibson  
Donalsonville

Miriam Girtman  
Denton

Louise Godbee  
Vidalia



# Junior



Mary Lena Green  
Wroy

Anno Mortho Grissett  
Ray City

Faye Hemmingway  
Voldosta

Gaye Hemmingwoy  
Voldosta

Lavara Janes  
Sycamore

Momie Belle Jordan  
Hohiro

Anna Kennedy  
Thomastan

Dolares Law  
Ashburn



Joon McIntosh  
Voldosta

Carolyn McLendan  
Hozlehurst

Mory Ann McLendan  
Bronwood

# Class





Mildred Manley  
Griffin

Daris Mims  
Waycross

Claire Mobley  
Moultrie

Iris Constance Moore  
Douglas

Jean Mullis  
Valdosta

Marjorie Naell  
Valdosta

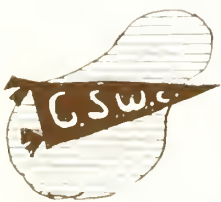
Mary Alice Narman  
St. George

Jacqueline Narton  
Baston



Ellen Odam  
Albany

Mary Owen  
Allenhurst



# Junior





Mary Ann Sauls  
Albany

Margaret Smith  
Waycross

JoAnne Story  
Albany

Glenna Strickland  
Cairo

Patricia Sutherland  
Atlanta

Margaret Traynham  
Broxton

Maxie Warren  
Donalsonville

Irene Wilson  
Waycross

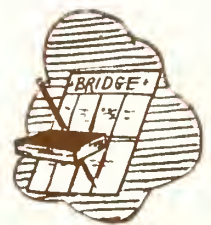


Eloise Yancey  
Brunswick

Not pictured:

Sara Frances Briggs  
Valdosta

Ruth Templeton  
Valdosta



*Class*



## Sophomore Class

Ah yes . . . no more lowly underclassmen but wise Sophomores! It seemed strange to be living in Ashley Hall instead of Converse, and it seemed even more strange to be among those who were welcoming rather than those who were being welcomed to 'W.C. Plans for the year unfolded and the Fall quarter slipped by practically unheeded until the sudden realization came upon them that they were the ones to decorate the Christmas Tree in the Rotunda . . . and a beautiful job they did, too!

Coming back from the Christmas Holidays, the Sophomores started to work on plans for the annual "Sweet-heart Dance" and, in the midst of all their planning, competed in SGA Week and walked away with the Silver cup awarded to the class with the least number of court warnings per student! The rest of the year passed by with the usual parties and studying and Spring Quarter came and went with comparative ease . . . and all these "wise Sophomores" could look back to a happy year, well spent.



# The Sophomores



## Class Officers

JEAN O'NEAL  
*Secretary-Treasurer*

MILLIE JEAN CHITWOOD  
*Vice-president*

BETTY BUCKNER  
*President*

# Sophomores



Not Pictured:

- Theto Booth  
Manor
- Sue Carson  
Boston
- Jeon Corbett  
Fernandina, Fla.

## FIRST ROW

Violet Altmon  
Alma

Julianne Blount  
Senoio

Mortho Jeon Bootwright  
Douglos

Carolyn Bowen  
Brookfield

Horriet Brodford  
Columbus

## SECOND ROW

Mory Brand  
Montezuma

Lenoro Brawn  
Pelhom

Betty Buckner  
Montezuma

Lucy Bush  
Colquitt

Mary Alice Carter  
Alma

## THIRD ROW

Elaine Cheshire  
Calquitt

Millie Jeon Chitwood  
Valdosta

Bannic Cunningham  
Jennings, Fla.

Mary F. DeVane  
Noshville

Jeonelle Ellerbee  
Ashburn

## FOURTH ROW

Betty English  
Homerville

Mary Sue Fletcher  
Porrott



Not Pictured:

Norma Bennett  
Valdosta



Not Pictured:

Claire Council  
Waycross

Emily Griner  
Valdosta

Betty Henderson  
Alma

Edwina Ford  
Sylvester

Martha Jo Fulmer  
Mt. Vernon

FIRST ROW

Mary Gibson  
Valdosta

Andrewnette Goff  
Ashburn

Barbara J. Green  
Valdosta

Sherrie Grow  
Colquitt

Jo Carroll Guthrie  
Valdosta

SECOND ROW

Juanita Haralson  
Ashburn

Betty Jean Harvey  
Lanier

Joyce Hines  
Leesburg

Dianne Hughes  
Douglas

Emily Justice  
Attapulus

THIRD ROW

Dorothy Keefe  
Nashville

Eleanor J. King  
Blakely

Sue Kirkland  
Pearson

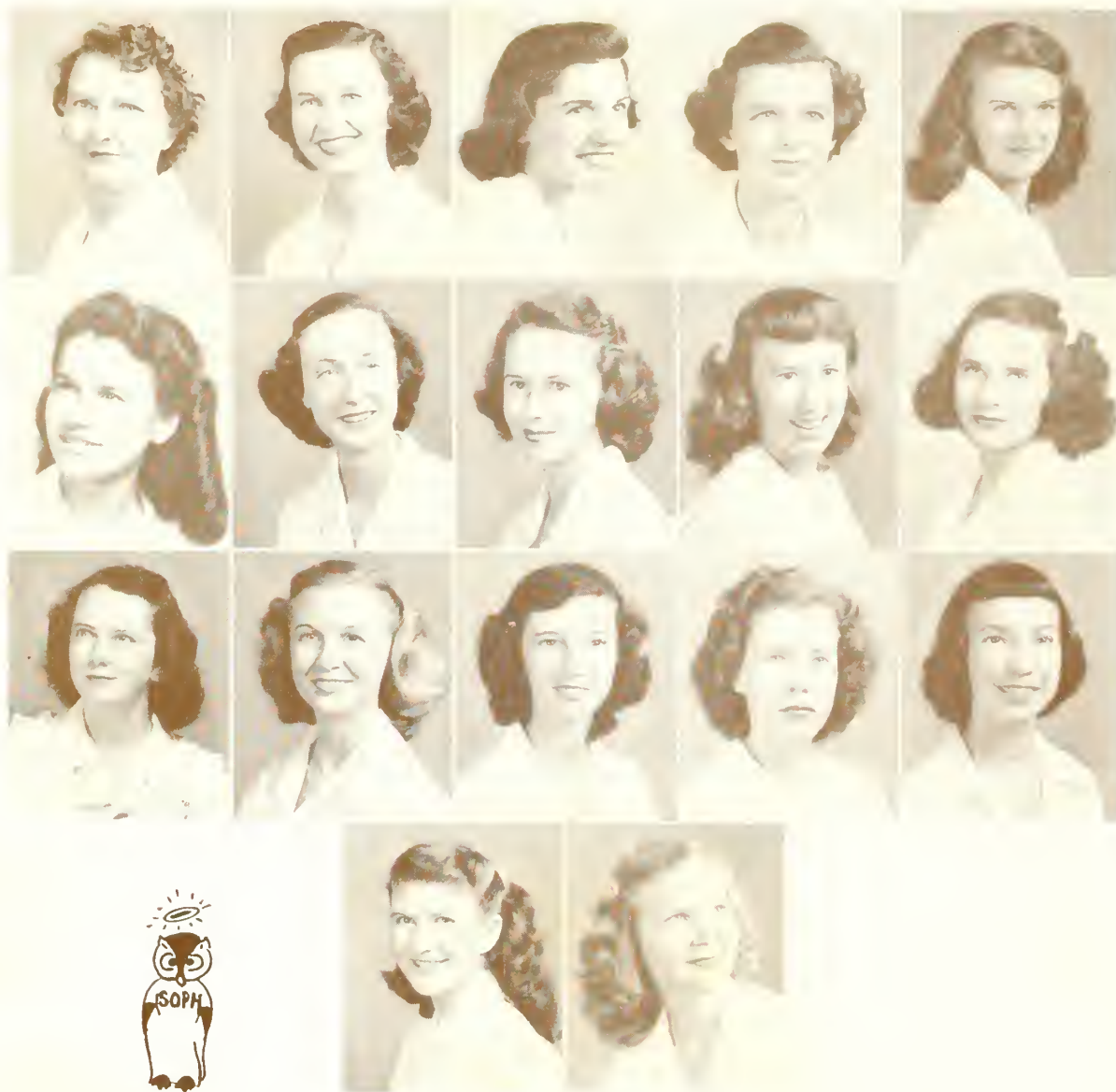
FOURTH ROW

Betty J. Lee  
Alma

Winnie McDonald  
Pavo

# Sophomores

# Sophomores



## FIRST ROW

Maurine McConnell  
Valdosta

Margaret Mann  
Starke, Fla.

Anna Marangos  
Valdosta

Annette Marsh  
Statesboro

Joyce Miles  
Coffee

## SECOND ROW

Betty Jean Morgan  
Ade!

Anne Murdock  
Meigs

Jean O'Neal  
Waycross

Sarah Parker  
Richland

Mary Remer Parramore  
Valdosta

## THIRD ROW

Peggy Phelan  
Valdosta

Peggy Phillips  
Colquitt

Mary Ann Powell  
Omega

Ramona Powell  
Brinson

Jacqueline Ramsey  
Alma

## FOURTH ROW

Willie Florence Rich  
Brinson

Gerelda Riggins  
Homerville



Not Pictured:

Oleta Templeton  
Valdosta  
  
Lucy Urquhart  
Valdosta

FIRST ROW

Shirley Roberts  
Douglas

Margaret Ruffin  
Albany

Ann Schaeffer  
Maultric

Maryan Segler  
Thamasville

Mary Singletary  
Pelham

SECOND ROW

Ann Smith  
Quitman

Amarylese Steedley  
Alma

Sammie Steedley  
Hamerville

Sara Paul Stewart  
Ashburn

Aleece Strickland  
Waycross

THIRD ROW

Monteen Strickland  
Caira

Babbie Taylor  
Rebecca

Sara M. Tillman  
Valdosta

Vivian Tawles  
Valdasta

Mary T. Tullis  
Valdasta

FOURTH ROW

Patricia Tysan  
Bainbridge

Mary Whittle  
Brunswick

Betty Waters  
St. Marys, Fla.

# Sophomores



## *Freshman Class*

Did you ever see such a busy class? Of course, at the first of the year the Freshmen were a little bit homesick, but who could stay homesick long in a building as pretty as Converse Hall was this year with all of its new paint and furniture?

Appointment of the House Councilors and the election of the class officers highlighted Fall Quarter and before they could get settled, Christmas Holidays came!

Winter Quarter passed with one of the Freshmen being elected a Beauty "Queen" to represent 'W.C. at another college's function.

Spring Quarter was rushed in with the usual hustle of preparing for Play Day-May Day, the Glee Club Concert, and the Freshman picnic at Twin Lakes. At this "last gathering of the clan," hearts were a little bit heavy at the thought of leaving 'W.C. and all of the gals, but still there was a glimmer of looking forward to September when they would be oh-such-wise Sophomores.





# The Freshmen



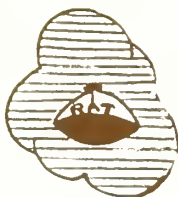
## Class Officers

VIRGINIA MASSEY  
*Vice-president*

SUE NELL WHITE  
*Secretary-Treasurer*

MILDRED ROBERTS  
*President*

# Freshman Class



Not Pictured:

Mattie R. Bennett, Adel  
 Martha Ellen Daniel, Douglas  
 Dorothy Deadwyler, Brunswick



Cornelia Ashley  
 Valdosta

Julia Ellen Askew  
 Athens

Patricia Aubrey  
 Valdosta



Martha J. Banks  
 Glennville

Betty Bashlor  
 Pembroke

Edith E. Bassett  
 Fort Valley



Luceil C. Bauer  
 Hamilton

Beverly Beeland  
 Athens

Frances Bennett  
 Valdosta



Jane Benton  
 Albany

Betty Ann Bishop  
 Alma

Elaine Boatwright  
 Douglas



Jane Bowen  
 Homerville

Martha Ann Bruce  
 Homerville

Jacqueline Bryan  
 Tifton



Rosaline Bunn  
 Montezuma

Virginia Chandler  
 Blakely

Betty Cheek  
 Senoia

# Freshman Class



Billie Cliett  
Bainbridge

Norma Coffee  
Valdosta

Betty Jane Collins  
Adel



Carolyn Conrad  
Warner Robins

Anna Courson  
Pearson

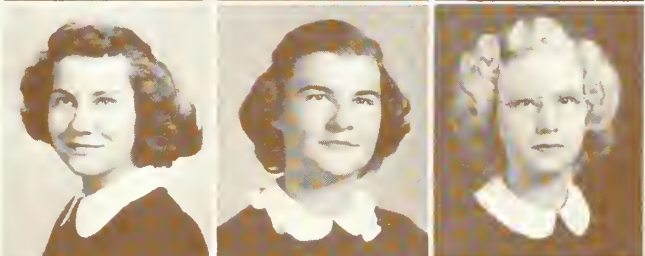
Abbie Gayle Croom  
Pembroke



Dorothy Crowe  
Athens

Patricia Crozier  
Fort Gaines

Sara Davis  
Tifton



Joan Dekle  
Cordele

Marguerite DeLoach  
Valdosta

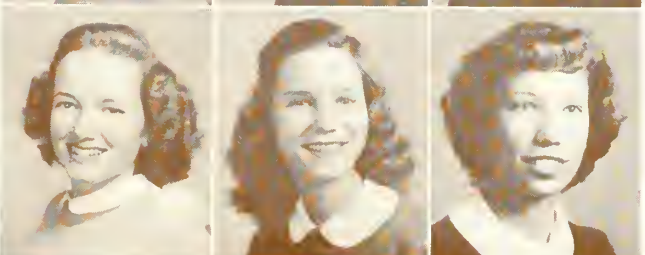
Betty Ruth Dickens  
Omega



Ruth Dinkins  
Valdosta

Clare Dismuke  
Nashville

Ann Dixon  
Valdosta



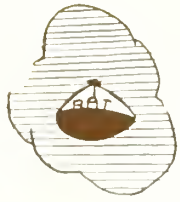
Dorothy Drexel  
Valdosta

Mary Otho Efird  
Albany

Jean Eidson  
Tifton



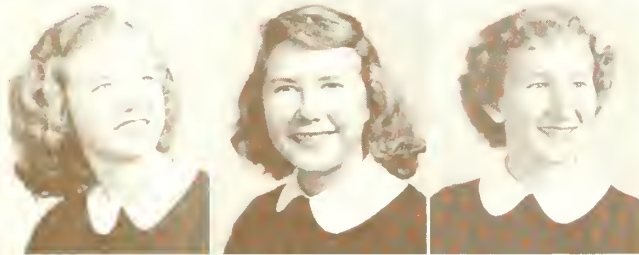
# Freshman Class



## Not Pictured:

Jeanine Jackson, Dawson  
Helen Johnson, Moultrie  
Juanta Keel, Valdosta  
Lovie Keene, Valdosta

Virginia Massey, Valdosta  
Ann Owens, Newnan  
Lenoir Rabun, Valdosta  
Marjorie Smith, Valdosta



Jean Elton  
Hazlehurst

Marjorie Carolyn Fiveash  
Habira

Jeanne Gaillard  
Moultrie



Norma Gaskins  
Nashville

Ruby Gibson  
Folkston

Joanne Gilmer  
Tifton



Josephine Gooding  
Woodbine

Doris Gothard  
Thomasville

Barbara Green  
Sylvester



Thelma Mae Griffin  
Valdosta

Johnnie Gruber  
Alma

Sara Grace Hagins  
Albany



Genevieve Ham  
Waverly

Leila Harmon  
Albany

Betty John Henderson  
Ocilla

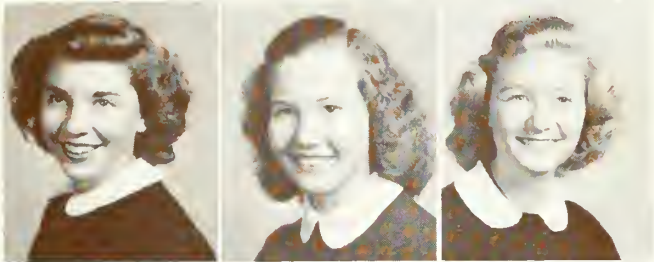


Betty Sue Hill  
Homerville

Katherine Hill  
Valdosta

Mary Catherine Hill  
Moultrie

# Freshman Class



Mary Louise Holder  
Tifton

Eugenia Howard  
Columbus

Barbara Howell  
Valdosta



Betty Hughes  
Homerville

Gloria Humphreys  
Barwick

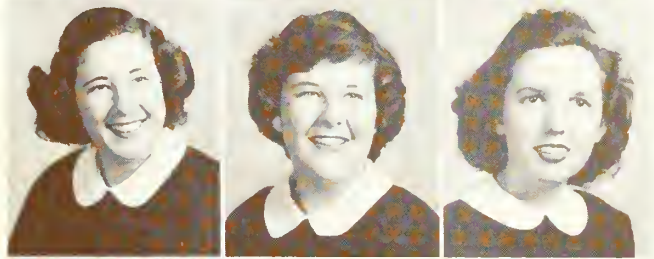
Robley Jobe  
Valdosta



Dorris Marie Johnson  
Valdosta

Gloria Johnson  
Quitman

Sylvia Johnson  
Hazlehurst



Elinor Jones  
Quitman

Jeannette Jones  
Quitman

Glenda Kemp  
Pelham



Emmie Kenney  
Moultrie

Betty Jane King  
Fort Gaines

Mary E. King  
Tifton



Louise Late  
Valdosta

Betty Jean Lee  
Valdosta

Jessie Carrol LeGette  
Hahira

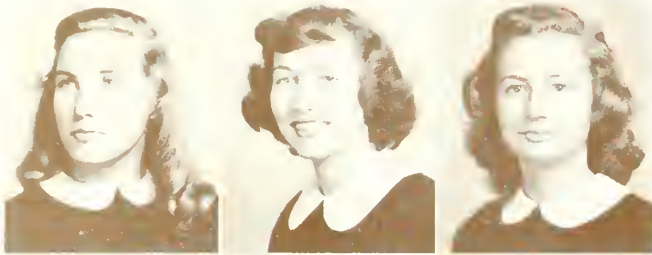


# Freshman Class



Not Pictured:

Joanne Webb, Columbus  
Dorothy Williford, Rebecca  
Dorothy Yates, Quitman



Lois Lindsey  
Fitzgerald

Joyce Long  
Valdosta

Mary Jo Lott  
Douglas



June McAfee  
Albany

Alice Lee McCall  
Cairo

Flo McCall  
Hinesville



JoAnn McCord  
Albany

Evelyn McLain  
Lake Park

Flora Jean McLendon  
Dawson



Joan Megahee  
Cordele

Nancy Mills  
Hazlehurst

Ruth Miller  
Pembroke



Bettye Jo Mims  
Hartsfield

Melba Moon  
Vienna

Frankie Morgan  
Waycross



Mary Kate Morgan  
Homerville

Carleen Newell  
Albany

Elizabeth Norris  
Tifton

# Freshman Class



Elizabeth Norton  
Boston

Patricia O'Neal  
LaGrange

Mary Ann Palmer  
Cairo



Ruby Flora Parker  
Richland

Ada Alice Parramore  
Valdosta

Rose Parrish  
Adel



Sara Patterson  
Fort Valley

Mary Anne Perkins  
Columbus

June Pitman  
Cedar Springs



Ovedia Pitts  
Moultrie

Annette Player  
Bainbridge

Joan Price  
Moultrie



Gloria Proctor  
Bainbridge

Jean Rackley  
Camilla

Argen Raines  
Cordele



Nelle Reed  
Rebecca

Nona Jane Reeves  
Sylvester

Barbara Richardson  
Richland



# Freshman Class



Yvonne Roberson  
Screven

Mildred Roberts  
Columbus

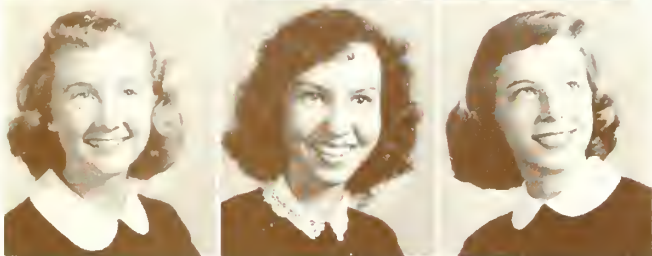
Elaine Ryals  
McRae



Joan Scarboro  
Lyons

Nancy Sellers  
Adel

Norma Shearer  
Cordele



Jacquelyne Sikes  
Claxton

Lanola Simpson  
Cairo

Martha Simpson  
Athens



Joanne Smith  
College Park

Betty J. Spell  
Valdosta

Doris Spradley  
Tifton



Martiel Sterling  
Tifton

Jean Stewart  
Blakely

Lydia Story  
Ashburn



Dorothy Stover  
Sycamore

Gwendolyn Taylor  
Rochelle

Betty Jean Taylor  
Quitman

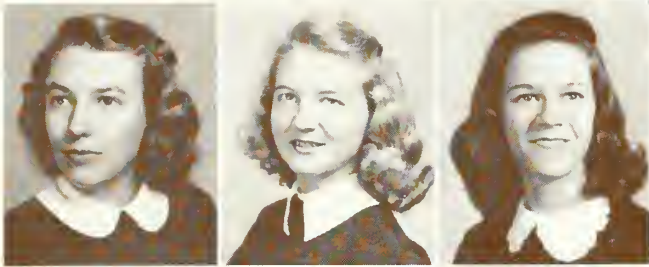


Carol Taylor  
Rebecca

Shirley Tharpe  
Vienna



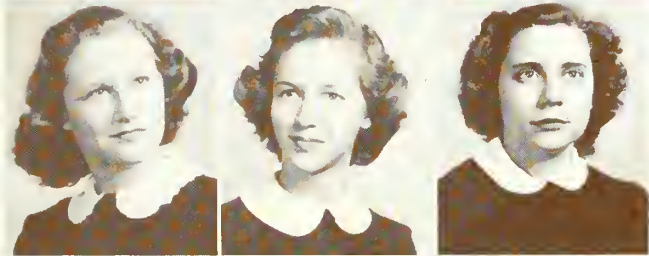
# Freshman Class



Jean Thomas  
Waycross

Mary Thompson  
Valdosta

Blount Trammell  
Columbus



Bobbie Tuggle  
Camilla

Mary Alice Tygart  
Nashville

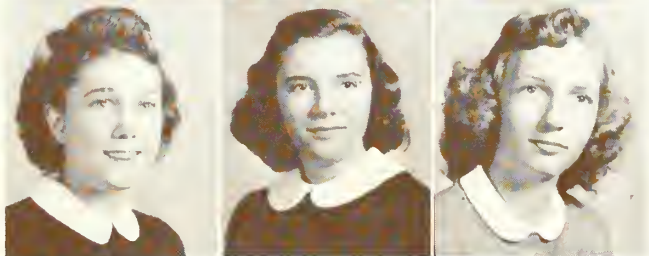
Gloria Tyson  
Adel



Margaret Vonier  
Boston

Nell Waddell  
Iron City

Anne Waller  
Nashville



Marian Waters  
Blackshear

Bobbie Watson  
Fort Gaines

Greta Weathers  
Cairo



Marilyn Weaver  
Ray City

Doris Wells  
Cordele

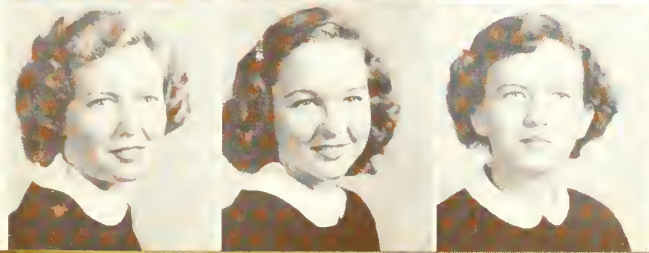
Sue Nell White  
Cairo



Fleta Lou Williamson  
Sylvester

Martha Ann Willis  
Bainbridge

Jane Wimberly  
Albany



Elaine Windham  
Reynolds

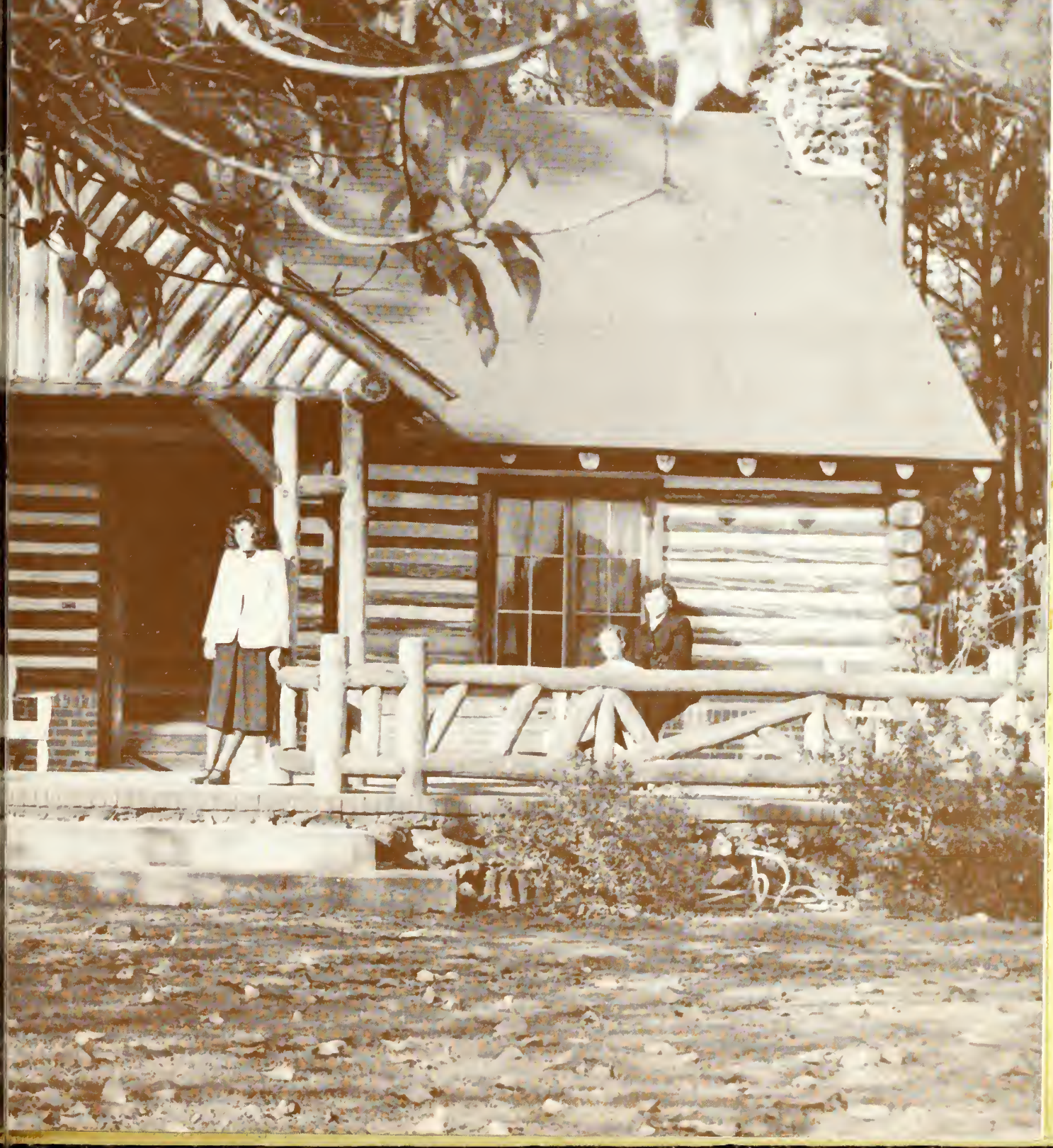
Sue Wingate  
Camilla

Virginia Wright  
Valdosta



*The bids to join . . . the first meeting . . . Pinning programs . . . giving refreshments . . . Having parties . . . taking trips . . . being an officer . . . or just belonging . . . All are unforgettable parts of the organizations we joined . . .*

*The Organizations  
We Joined*



# The Student Government Association



CAROLYN MATHIS, *President.*

Besides co-operating with the administration in making rules by which students could live together better as a group, the S.G.A. sponsored an assembly program concerning its activities and history, entertainment during Freshman Week.

Membership in the Student Government Association was held by every student and was acquired by attending classes and passing an examination on the S.G.A. handbook. By making suggestions for improvement, by voting for members to serve on Student Council, the governing body of the Association, each student was an integral part of the group.

House Councilors, elected quarterly in each dormitory, and S.G.A. monitors, helped carry out regulations.



OFFICERS

*Left to right:* Mary Owen, First Vice-president; Eloise Yancey, Second Vice-president; Ala McBride, Secretary-Treasurer.



THE STUDENT COUNCIL

*Left to right, first row:* Mary Ann Sauls, Mildred Roberts, Carolyn Mathis, Joyce Bullington; *Second row:* Betty Jean Smith, Ann Du Priest, Mary Elnore Crea, Ala McBride, Mary Owen, Eloise Yancey, Betty Buckner. Not pictured, Mary John Rodgers.



# Extra-Curricular Activities Committee



The Extra-Curricular Activities Committee served to co-ordinate the activities of clubs, organizations, and publications. Included are club and class presidents, editors of publications, and the Social Chairman and Log Cabin Chairman.

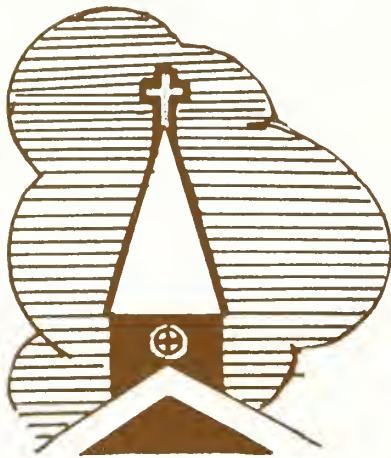
Ann Du Priest, Chairman; Ruby Lacey, Log Cabin Chairman; Virginia Heisler, Social Chairman.



## MEMBERS

Left to right, first row: B. J. Smith, B. Clarke, C. Tuten, Virginia Heisler, (Social Chairman), M. E. Crea, D. Bateman, M. Smith, B. Alderman, G. Hiers, I. Wilson, S. Bellaff, V. Ansley; Second row: J. Mullis, J. Nartan, M. A. Sauls, B. Buckner, C. Bawen, C. Mathis, Ruby Lacey, (Log Cabin Chairman), Z. Bennett, A. Bane, Ann Du Priest, (Chairman), and L. Delaach. Not in picture, M. J. Radgers, M. Jackson, S. Fletcher.

# Y W C A



DORIS BATEMAN, *President*

Members of the Young Womans Christian Association were recognized at an impressive candle-lighting service when they were Freshmen, and remained members as long as they were in college.

Regular "Y" services were morning watch, Thursday night vespers, and compline on Sunday nights. Seasonal services, looked forward to from year to year, were the Big Sister-Little Service, Firelighting Service, Hanging of the Greens, Easter Services, Chapel Fund Services, and Senior Vespers. Also, the "Y" sponsored the Freshman room decoration contest, and Heart Sister Week.

The "Y" Cabinet, the governing body of the association, met weekly to plan and discuss activities.



THE Y W C A. CABINET

*Left to right, first row:* E. Ford, B. Buckner, D. Botmon, M. Traynham; *Second row:* B. J. Smith, M. E. Cree, D. Mims, S. Steedley, P. Monn; *Third row:* V. Crummy, M. Whittle, J. Romsy, E. Yoncy, V. Heisler; *Fourth row:* Mr. C. H. White, S. Belloff, M. Brond, A. Bone, A. Du Priest.

OFFICERS

Left to right: Velma Crummey, secretary; Margaret Traynham, vice-president; Daris Mims, treasurer; Sammie Steedley, associate vice-president.



Officers view site for proposed chapel on campus.

SOPHOMORE COUNCIL

Left to right, first row: B. Henderson, E. Cheshire, B. Lee, A. Carter, J. Hines, M. Brand, (Chairman); Second row: S. Raberts, L. Bush, M. J. Baatwright, B. Waters, W. McDaniel, A. Smith.

Sophomore Council members were elected by the Y.W.C.A. cabinet, and worked with the "Y" on the chapel fund and other projects.



CHAPEL CHOIR

Top to bottom: L. Gadbee, E. Odam, A. Grissett, M. Singletary, P. Sutherland, S. Fletcher, J. Story, S. Bellaff, director. The chapel choir sang at Thursday vespers.



# Sports Club



MORRIS SMITH, *President*



OFFICERS

*Left to right: Sherla Miller, Vice-president; Ann Knepton, Secretary; JoAnne Story, Treasurer; Virginia Heister, Historian.*



SPORTS COUNCIL MEMBERS DISCUSS SOCCER GAME

*Cheshire, A. Knepton, M. Mann, D. Crowe, L. Bauer. Left to right: D. Bateman, M. Smith, M. J. Boatwright, E.*





"FORE!"

Left to right: J. Mullis, V. Heisler, J. Story, S. Miller, V. Ansley.

The activities of the Sports Club's Kappas and Lambdas kept its members busy from the day they got their bids as Freshmen 'til the last award was made, and the team plaque awarded at the Spring Quarter Aquacade.

Besides participating in team and individual sports, hikes, and tournaments, Sports Club members co-operated with the Physical Education Department in planning a successful Play Day-May Day and Aquacade.



IT'S A BULLS EYE!

Left to right: S. Roberts, B. Alderman, M. A. McLendon, C. Bowen, and J. Norton.



# The Campus Canopy

PAGE TWO

## The Campus Canopy.

Published Weekly during the school year by students at the Georgia State Woman's College at Valdosta, Georgia

Member  
Intercollegiate Press

EDITOR — MARY ELINORE CREA  
 News Editor — Velma Crummey  
 Special Features Editor — Mary John Rodgers  
 Feature Editor — Ann Smith  
 Sports Editor — Bun Ansley  
 Make-up Editor — Anne Knepton  
 Exchange Editors — Ruby Lacey, Mina Spence  
 Columnists — Betty Smith  
 Betty Waters, Ann Fortson, Eloise Yancey  
 Special Features Staff — Margaret Smith  
 Ellen Smith.  
 News Staff — Wm. McDonald  
 Dolores Law, Mary Ann Sauls, Sheila Miller,  
 Libby DeLoach, Jo Ann McCord, June Pittman,  
 Julia Ellen Askew, Wilhe Florence Rich, Joan  
 Webb, Sammie Steedly, Doris Gothard, Yvonne  
 Roberson  
 Feature Staff — Gloria Johnson, Evelyn Jones  
 Betty Henderson.

REPRESENTED FOR NATIONAL ADVERTISING BY  
**National Advertising Service, Inc.**  
*College Publishers Representative*  
 420 MADISON AVE. NEW YORK, N. Y.  
 CHICAGO - BOSTON - LOS ANGELES - SAN FRANCISCO

BUSINESS MANAGER — BETTY HENDERSON  
 Circulation Manager — Betty Waters  
 Advertising Staff — Dotsy Deadwyler  
 Sally King, Snookey Steedly, Sarah Parker,  
 Blount Trammell, Jane Benton, Glenda Kemp,  
 and Ruth Miller  
 Faculty Advisor — Dr. J. A. Durrenberger



MARY ELINORE CREA  
Editor



Ann Smith, Feature Editor, and Velma Crummey, News Editor, conferred on rewriting stories.

Editor, Crea, and Make-up Editor, Anne Knepton, slaved over the weeks issue.





**THE EDITORIAL STAFF**

*Left to right, first row: E. Smith, W. Spence, V. Crummey, A. Fortson, A. Smith; Second row: B. J. Smith, C. Mothis, M. J. Rodgers, M. Smith, R. Lacey, A. Knepton, E. Yoncey, and B. Waters.*



**BETTY HENDERSON**  
*Business Manager*



**THE AD STAFF**

*Left to right, seated: B. Waters, E. Smith, A. Steedly, J. Benton, M. Roberts, B. Trommell, R. Bunn, G. Kemp; Standing: B. Henderson, D. Deadwyler, S. Parker, S. King, R. Miller.*



BETTY JEAN SMITH, *Editor*

*The*

*Pine*

*Cone*



Carolyn Mathis, *Art Editor*, and Doris Mims, *Associate Editor*

*Staff*

- Betty Jean Smith . . . . . *Editor*
- Marjorie Nichols . . . . . *Business Manager*
- Doris Mims . . . . . *Associate Editor*
- Carolyn Mathis . . . . . *Art Editor*
- Ann Knepton
- Mary Owen . . . . . *Lay-out Editors*
- Mary Elinore Crea
- Ann DuPriest
- Ann Fortson . . . . . *Copy Editors*
- Wilhelmina Spence . . . . . *Photograph Editor*
- Patty Porter
- Margaret Smith . . . . . *Associate Photograph Editors*



"Beejee" Smith, *Editor*, and Miss Elizabeth Fink, *Advisor*

Between the covers of the *Pine Cone*, G.S.W.C.'s annual, are recorded, in pictures and words, the years activities!



MARJORIE NICHOLS, *Business Manager*

EDITORIAL STAFF

Left to right, first row: C. Tuten, A. Knepton, B. Smith, D. Mims, M. E. Crea, P. Porter, A. Grissett, A. Fortson, W. Spence; Second row: M. Owen, A. Du-Priest, C. Mathis, M. Smith.



AD STAFF

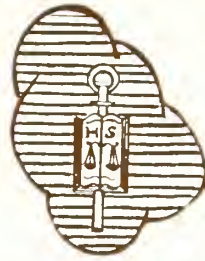
Left to right, first row: H. Story, E. Smith, L. DeLooch, M. Noell, B. Alderman, M. Traynham, M. A. McLendon, M. Collins; Second row: R. Lacey, M. Jackson, D. Boteman, M. A. Sauls, V. Heisler.

# Honor Societies



SENIOR HONOR SOCIETY OFFICERS

Seated: Cornelio Tuten, President; Standing, left to right: Doris Mims, Vice-president; Virginia Smith, Historian; Ann Hutchins, Secretary-Treasurer.



FRESHMAN HONOR SOCIETY OFFICERS

Left to right: Mory Whittle, Secretary-Treasurer; Sue Fletcher, President; Betty Jean Harvey, Historian.

The Freshman and Senior Honor Societies aimed to promote higher scholastic standards among all students. Members were students with a minimum average of "B".

Electing class "Margas" (Most All Round Girls) was continued for the second year as a project of the societies. Also, they sponsored the Student Co-operative Book Store and continued to maintain a Scholarship Loan Fund for former members who wished to become graduate students.

Both old and new members of these groups were recognized in Assembly on Honors Day.



SENIOR HONOR SOCIETY

Left to right, first row: A. DuPriest, A. Hutchins, M. Smith, C. Tuten, C. Bowen; Second row: B. J. Smith, D. Mims, M. Owen, C. Mathis, Z. Bennett, V. Smith, C. Mobley, M. A. Norman



FRESHMAN HONOR SOCIETY

Left to right, first row: M. Monn, S. Fletcher, B. Buckner; Second row: B. J. Harvey, M. Whittle, W. F. Rich, V. Towles, S. Steeley, M. J. Fulmer.

# Fine Arts Club



OFFICERS

Left to right: Jacque Ramsey, Reporter; Patsy Sutherland, Historian; Grace Hiers, President; La-Trelle Carter, Secretary-Treasurer. Not in picture, Ann Grissett, Vice-president.

The excellent art exhibits sponsored by the Fine Arts Club in the upper rotunda of Ashley Hall attracted the interest and attention of students, faculty, and visitors.

Other club projects were: maintaining the rental art collection, poster-making for other organizations, and the annual Christmas bazaar. At meetings, various types of creative work were enjoyed by members, who had received invitations to membership by successfully "trying out."

National Art Week—November 2 - 7—was observed by the club with a special exhibit in the upper rotunda.



Christmas Bazaar



Left to right, first row: G. Hiers, A. Grissett, D. M. Johnson, L. Carter, C. Tuten, B. Alderman, G. Johnson, M. Noell, P. Sutherland J. Ramsey; Back row: C. Mathis, V. Smith. Not in picture: M. Owen, R. Templeton.



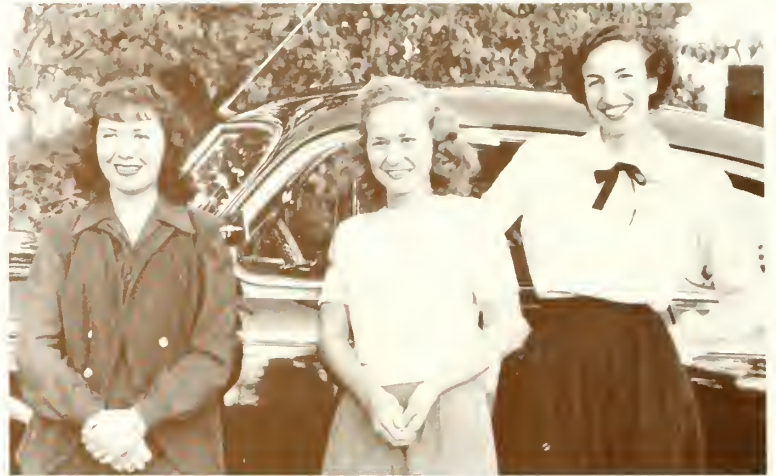


# Sociology Club

Sociology Club members, who are majors or minors in Sociology or Social Work, began to understand more of what social work included through helping with the Community Chest Drive, Red Cross Drive, Valdosta Boys' Club, and plans for a Valdosta Girls' Club.

Outside speakers from local social agencies enlivened the monthly meetings.

Selling G.S.W.C. pennants and jewelry was the money making project for the year.



OFFICERS

Left to right: Mildred Monley, Secretary-Treasurer; Mortho Jockson, President; Sue Belloff, Vice-president.

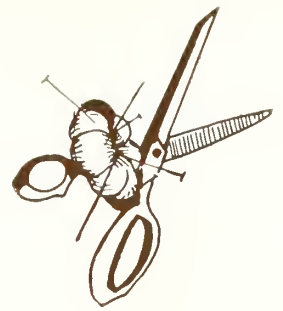


MEMBERS

Left to right, first row: M. Smith, B. Buckner, A. McBride, C. McLendon, D. Law, M. Manley; Second row: A. Du-Priest, A. Knepton, M. Jockson, L. Jones, P. Wade; Third row: V. Crummey, M. Warren, M. Noell, M. Collins, B. Bell, G. Strickland, M. A. Souls, S. Miller. Not in picture: V. Ansley, M. Jones, F. Vickers, W. F. Rich.



# Home Economics Club



## OFFICERS

Left to right: Virginia Smith, Vice-president; Betty Alderman, President; Mary Ann McLendon, Treasurer; Edwina Ford, Historian; Ruby Lacey, Secretary.



The Home Economics Club's new project for the year was the sale of coffee and doughnuts during assembly period every day. Also, club members re-decorated the food and clothing laboratories and were hostesses at the annual Faculty Tea.

Informing its members, who were majors and minors in Home Economics, of the opportunities in the fields of Home Economics was the aim of the club.

Club officers, and sponsor, Miss Emily Heath, attended the State Convention of Home Economics Clubs in Savannah in October.

## MEMBERS

Left to right, first row: A. Marsh, M. Singletary, M. R. Parramore, S. N. Smith; Second row: C. Bowen, J. Ellerbee, A. Murdock, N. Sellers, N. Shearer, A. McCall, P. Porter; Third row: B. Richardson, E. Ford, S. Kirkland, G. Ham, D. Gothard, J. Gooding, D. Spradley, M. Strickland, J. Haralson, R. Gibson, C. Overby, M. Spence, M. Traynham.



Left to right, first row: M. Moon, J. Gilmer, E. Norris, S. Tharpe, G. Croom, G. Strickland, M. Warren, F. Hemmingway, E. King; Second row: Miss Emily Heath, S. Patterson, R. Jobe, B. Lee, M. Simpson, M. A. McLendon, A. Grissett, M. Gibson, M. Whittle. Not in picture: S. Parker, M. A. Powell, N. Waddell, V. Smith, B. Cunningham, V. Massey, M. McConnell.



# Business Club



## OFFICERS

Left to right: Jean Mullis, Vice-president; JaAnn Story, Secretary; Cloire Mobley, Treasurer; Jackie Nartan, President.



Left to right, first row: V. Altman, C. Mobley, V. Towles, J. Norton, J. Gruber, M. T. Tullis; Second row: B. Clorke, B. Dickens, E. McLain, W. McDonold, B. J. Harvey, D. Wells, C. Council; Third row: J. Megahee, D. Bryont, M. Girtman, J. Norman, M. J. Chitwood, M. A. Perkins, J. Dekle, J. Thomas. Not in picture: V. Ansley, L. Brown, J. Hines, A. McGeachy, J. Mullis, A. Schoeffer, J. Story, B. Taylor, S. M. Tillman, E. Baatwright, J. Corbett, M. E. Daniel, M. Efir, B. Green, S. G. Hagins, J. Jocksan, E. Justice, G. Kemp, J. McAfee, D. McLain, R. Powell, M. Sterling, D. Stover, M. Vonier, B. Watson, F. L. Williamsan, E. Windham.



OFFICERS

Left to right: Vilma Ansley, President; Alice McGeachy, Secretary-Treasurer; and Martha Lee Geoge, Vice-president.



Day students, who comprised the membership of the Valdosta Club, worked hard on the club's money making project — selling candy in the town girls' lounge in the Ad Building.

This club, by organizing the students who did not live on campus, encouraged their participation in other clubs, and promoted understanding and cooperation between them and the dormitory students.

## Valdosta Club



MEMBERS

Left to right, first row: V. Ansley, E. L. Carter, E. Griner, A. Marangos, K. Hill, B. J. Spell, F. Hemmingway, G. Hemmingway, Mr. Wm. Gabard; Second row: B. Lee, A. McGeachy, G. Jahnsan C. Ashey, B. Taylor, F. Bennett, M. R. Parramare, D. Jahnsan, V. Wright; Third row: T. Griffin, M. T. Tullis, B. Green, A. A. Parramare, M. Jones, J. McIntash, J. Guthrie, M. Smith, M. Smith; Fourth row: J. Keel, J. Long, E. DeLaach, S. Miller, B. Hawell, M. Thampsan, B. Alderman, J. Briggs, M. Noell; Fifth row: J. Bullington, P. Aubrey, L. Keene, S. Tillman, M. DeLaach, C. Bawen, P. Wade, J. Mullis, R. Jabe, L. Rabun, F. Briggs, M. Gibson.



# Math - Science Club

The Math-Science Club, having one of the largest memberships on campus, is divided into three groups: Math, Biology, and Chemistry. Through its varied programs, the club stimulates interest in the practical aspects of these three subjects.



## OFFICERS

Left to right: Joyce Bullington, Secretary-Treasurer; Ann Hutchins, Vice-president; Zana Bennett, President.

## MATH DIVISION MEMBERS

Left to right: B. J. Harvey, C. Mabley, D. Law, J. Bullington, J. Girtman.

## BIOLOGY DIVISION MEMBERS

Left to right, first row: R. Pawell, E. Yancey, E. Odom, V. Tawles, B. Buckner, M. A. Narman, S. Steedley; Second row: V. Smith, L. Janes, M. F. DeVane, L. Gadbee, C. McLendan, M. J. Fulmer, M. Brand, D. Keefe; Third row: C. Tuten, C. Mathis, B. Waters, D. Bateman, S. Bellaff, A. Hutchins, Z. Bennett.



## CHEMISTRY DIVISION MEMBERS

Left to right: S. Fletcher, E. Justice, I. Wilson, A. McBride.  
Not in pictures: M. Whittle, D. Mims, A. Murdock, M. Janes, P. Mann, V. Gardner.



# English Club



Only English majors were members of the English Club, which aimed to promote interest in current literature among its members and among other students.

The club invited an outside speaker to the campus, and continued its annual practice of awarding a prize to the student in the creative writing class who showed the most literary ability.

Meetings were made interesting by members conducting forums, and reviewing current plays and books.



## OFFICERS

*Left to right:* Irene Wilson, Vice-president; Libby DeLoach, President; and Jean Helton, Secretary-Treasurer.



## MEMBERS

*Left to right, first row:* M. Nichols, C. Purvis, H. Story, M. E. Creo, J. Helton; *Second row:* V. Heisler, M. Smith, I. Wilson; *Third row:* E. Smith, L. DeLoach, A. Fortson, M. Duncan, P. Sutherland, J. Gibson, A. Kennedy, and M. Owen

# Romance Language Club



Officers: Margaret Smith, secretary, and Irene Wilson, president.



Members, first row, left to right—M. Smith, M. J. Fulmer, Doris Spradley, B. King, M. Holder, J. Bryon, K. Hill, and J. Wimberly.  
Second row—B. Check, I. Wilson, P. Wade, Dr. Treanor, G. Weathers, G. Johnson, J. Price, B. Cliett, and J. Benton.

Meetings of the Romance Language are made interesting by programs concerning the countries where French and Spanish are spoken. The club has had guest speakers who have lived or visited in these countries and who have brought to meetings pictures, pottery, clothing and other objects with which to illustrate their talks.

Sending boxes of food and clothing to a French war orphan has been one of the club's most worthwhile projects.

# Philharmonic



## Club



### OFFICERS

Left to right: Sammie Steedley, Vice-president; Joyce Hines, Secretary-Treasurer; Annolene Bone, President.



### MEMBERS

Left to right: F. McCall, O. Pitts, Miss Gladys Warren, I. Wilson, E. Windham, A. Bone, E. Howard, On stairs: S. Steedley, B. Beeland, J. Ramsey, P. Phelan, M. E. Crea, J. Hines.

Programs, with members participating, were entertaining and informative for the Philharmonic Club. Assembly programs were also presented by club members, who were advanced piano and voice students.

One of the high-lights of the club's year was the concert it sponsored Spring Quarter, featuring Mary Frances Lehnerts, Lieder singer.

# Dance



# Club



Left to right, first row: M. Thompson, M. Monley, S. Kirkland; Second row: C. Newell, B. Green, F. Briggs, J. Wimberly, A. Smith, S. Grow; Third row: M. Singletory, E. Ford, J. O'Neol, E. Ryals, A. Owens, N. Sheorer, M. Spence.



### OFFICERS

Left to right: Ruby Lacey, Secretary-Treasurer; Mildred Monley, Costume Manager; Barbara Clarke, President.



### ADVISORS

Mrs. Dorothy Woldron, Pianist; and Mrs. Phyllis Volente, Director.

Members of the Dance Club, and of the Junior Group, presented an eighteen number recital Spring Quarter. Also, they performed at the Christmas dinner, at assembly programs, and at the festival on Play Day-May Day.

Membership in this club, which rehearses twice each week, counts as membership in the Sports Club.



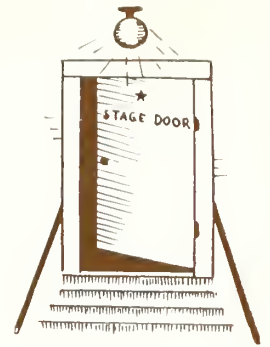


OFFICERS

Left to right, Chorlene Bawen, President; Bim Ansley, Secretary-Treasurer; Cornelia Tuten, Vice-president.

The annual Fall production of the club was "Brief Music," directed by Miss Louise Sawyer. Winter quarter they presented a play with the Emory Junior Dramatic Club, and also Winter Frolics, as a program for a regular monthly meeting.

A week-end in Jacksonville during Spring Quarter climaxed the year's activities.



# Sock and Buskin Club

MEMBERS

Left to right, first row: S. Grow, S. Miller, A. Morangos, H. Story, P. Porter, F. Morgon, M. Roberts; Second row: M. Morgan, J. Benton, B. King, M. L. Halder, V. Ansley, J. Long, M. J. Lott, J. Bullington, J. E. Askew; Third row: M. Simpson, C. Tuten, M. C. Duncon, M. Owen, C. Bowen, Z. Bennett, J. Helton, A. Smith, M. Nichols, J. Smith.



In a scene from the first act of the Fall production, "Brief Music," presented by the Club and the Ploy Production Closs, is the entire cast. They are (Left to right): Sherrie Grow, Anno Marangos, Sherlo Miller, Mory Owen, Cornelio Tuten, Jinx Smith, and Bim Ansley.



# International Relations Club



## OFFICERS

Left to right, seated: Ann Smith, Secretary; Jeon Mullis, President; Chorlene Bowen, Vice-president; Kneeling: Ann French, Member-at-Large; LoTrelle Carter, Treasurer.  
Not pictured: Miss Mildred Price, Advisor.

Membership in the IRC was limited to History majors and minors. This organization is under the sponsorship of the Carnegie Endowment for International Peace. Programs of the group kept members informed on national and world affairs.



## MEMBERS

Left to right, first row: M. Girtman, A. Smith, M. Gibson, S. Beotty, M. A. Sauls, J. Mullis; Second row: C. Bowen, L. Carter, A. French, B. J. Smith.





# League of Women Voters

## OFFICERS

*Left to right: Jackie Norton, Secretary; Patsy Sutherland, President, Jone Gibson, Treasurer; Maxie Warren, Vice-president.*

The League helped its members keep informed about current events through programs, forums, discussion groups, and talks by guest speakers. Since its organization at GSWC just three years ago, it has done much to encourage the students to be intelligent voters.



## MEMBERS

*Left to right, first row: A. Morongos, R. Parrish, G. Strickland, J. Gibson, M. Warren, R. Templeton, S. Kirkland, A. Schoeffler, A. Grisset, P. Sutherland, L. DeLooch; Second row: A. McBride, E. Smith, M. Whittle, S. Steedley, Z. Bennett, C. Purvis, J. O'Neal, M. Jones, C. Mathis, S. Fletcher, C. Tuten, M. J. Fulmer, O. Templeton, B. Beelond, B. Morgan.*



# Glee Club

## SERANADERS

Left to right, seated: M. Nichols, J. Helton; Standing: M. Moon, M. J. Lott, B. Waters, S. Belloff, D. Bryant, G. Hiers, M. Duncan, E. Bassett, D. Bateman, M. Gibson, J. McIntosh; Second row: V. Massey, P. O'Neal, J. Reeves, N. Coffee, J. Ramsey.



## OFFICERS

Left to right, Mary Gibson, Vice-president; Sue Belloff, President; Betty Waters, Librarian; and Ellen Odom, Secretary-Treasurer.

Left to right, first row: Mr. Raimonde Aubrey, J. Gilmer, M. A. Norman, E. King, B. English, M. Singletary, F. Morgan, G. Humphreys, N. Sellers, L. Bauer, Mrs. Martha C. Aubrey; Second row: E. Cheshire, M. Lott, M. Nichols, G. Riggins, G. Tyson, A. Player, G. Croom, J. Sikes, S. Johnson, J. Elton, J. Reeves, G. Kemp, B. Lee, A. Steedley, D. Deadwyler, E. Bassett; Third row: M. Manley, B. Dickens, E. Odom, L. Brown, V. Massey, V. Wright, J. Pittman, M. Gibson, L. Simpson, G. Weathers, F. McCall, C. Taylor, F. L. Williamson, M. Smith, B. Waters, M. Whittle; Fourth row: J. Dekle, R. Bunn, B. Beeland, B. J. King, P. Crozier, J. Stewart, J. Benton, B. Hughes, M. Morgan, S. Davis, E. Jones, J. Eidson, B. King, C. Dismuke, J. Ramsey, A. Carter, E. Howard; Fifth row: B. Bishop, B. Cliett, B. Henderson, A. Courson, G. Hiers, J. Helton, D. Drexel, M. Moon, B. Tuggle, L. Bush, D. Crowe, J. E. Askew, L. Lindsey, M. A. Perkins, M. C. Duncan, S. Belloff, M. Simpson, P. Aubrey.





**BAPTIST STUDENT UNION COUNCIL**

*Left to right, seated: M. Mann, L. Massey, J. Norton; Standing: M. Spence, M. Tullis, V. Smith, E. Ford, L. Bush, M. Green, V. Crumme, C. McLendon.*

# Religious Organizations

These denominational religious organizations served to unite the students with the local churches.



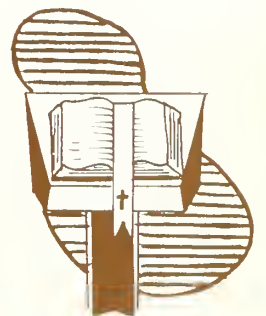
**METHOIST YOUTH ORGANIZATION**

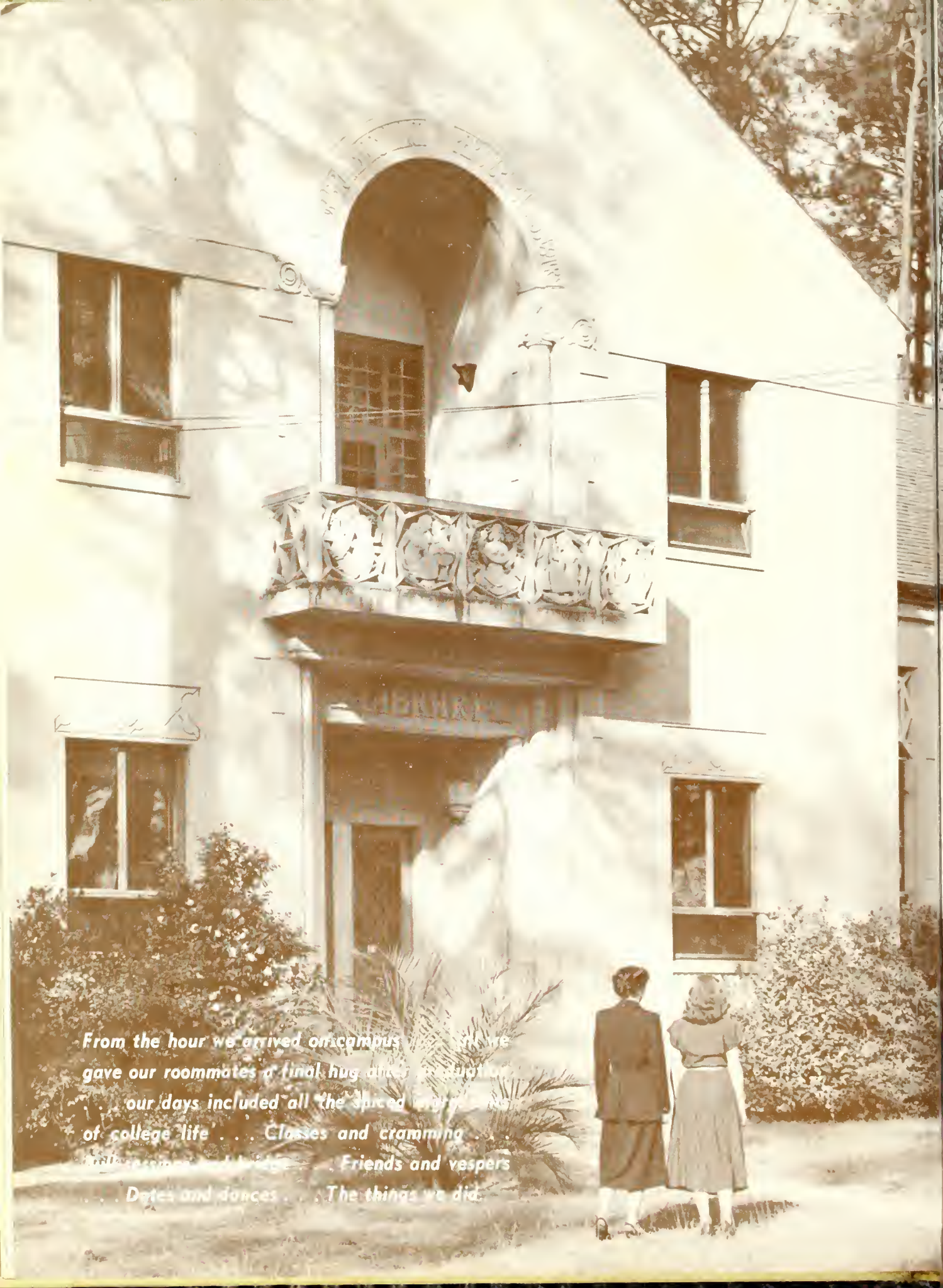
*Left to right, first row: B. Waters, V. Heisler, D. Bateman, M. Traynhom; Second row: E. Yancey, A. Knepton, S. Steedley, B. Buckner, J. O'Neal, M. J. Boatwright, M. Whittle.*



**PRESBYTERIAN STUDENT ASSOCIATION**

*Left to right, seated: M. Efird, D. Minis, M. Simpson, D. Keefe; Standing: S. G. Hogins, J. Hines, S. Fletcher, P. Bassett, M. Owen, A. McColl, P. Sutherland.*





*From the hour we arrived on campus . . . until we  
gave our roommates a final hug and a goodbye  
our days included all the spiced ingredients  
of college life . . . Classes and cramming . . .  
trills and songs and bridges . . . Friends and vespers  
Dates and dances . . . The things we did.*

*The Things*

*We Did*



# From Morn 'Til Night



Up and at 'em!



What — late again!

He *would* assign a test!







The pause that refreshes



Study, study —  
All we do is  
study?

Senior Hall from seven 'til twelve.



*We Were Busy!*

# So Much to Do!



Wanna go to Venice?



The afternoon rush for the Ritz.



Well why can't you come?

Have you a second-hand copy?





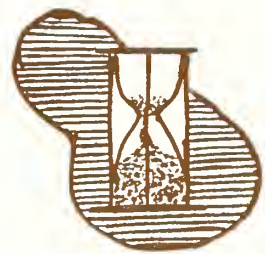
Looks like a goal  
for the Kappas!



Ummm! Refreshments!



Please may I take my late  
leave tonight?



*So Little Time!*

Betcha it'll go 300 yards!



Down the beaten path.

# *But, Oh, How*

Reception in the Rotunda.



Coffee every Sunday

To the Fire of Fellowship we bring . . .





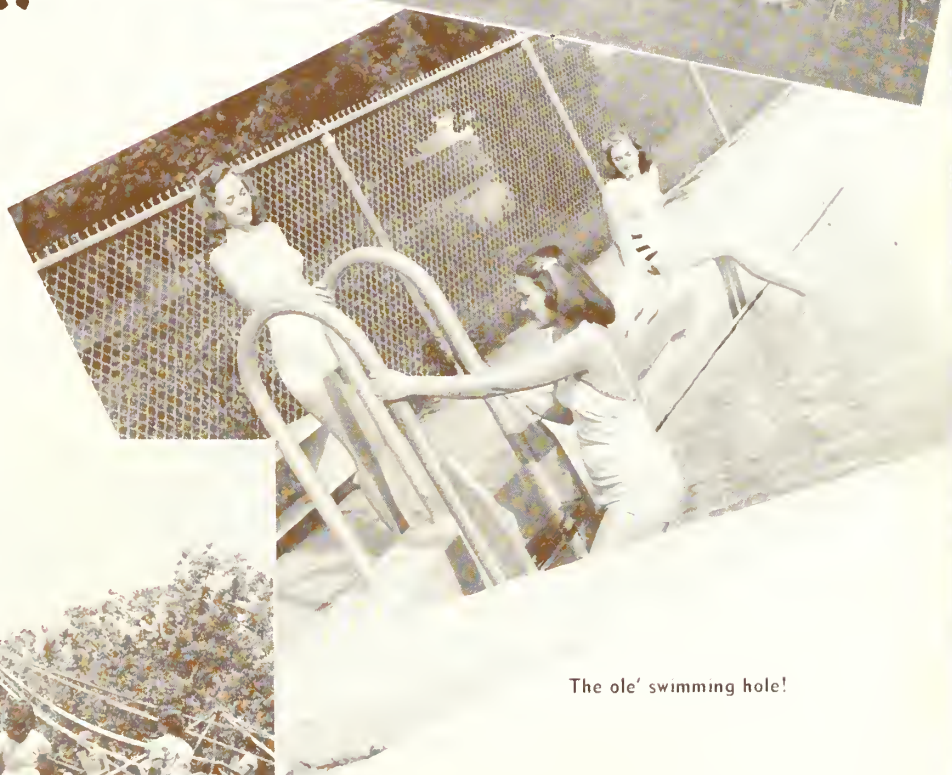
With Christmas comes the Hanging of the Greens . . .

# *We Loved It!*

... It only happens when I dance with you.



Here we are a Maying!



The ole' swimming hole!





*The smartest . . . the friendliest . . . the prettiest  
. . . the most popular . . . the most talented . . .  
the most loyal . . . these were our superlatives  
. . . the girls we admired.*

*The Girls*

*We Admired*



# Recitalists



Cornelia Tuten

Two Seniors, Cornelia Tuten and Mary John Rodgers, gave Speech recitals. Both girls were Speech minors.

Mary John Rodgers





Chosen by their fellow students for these positions of honor, the May Queen and her Court, all members of the Senior class, reigned over the festivities at the annual Play Day—May Day celebration.



## May Queen

Marjorie Nichols, Maid of Honor, and Ann Fortson, May Queen.

## And Court

Back row, left to right: Charlene Bowen, Jean Helton, Bet Alderman, Patty Porter, Jacqueline Norman; middle row, left to right: Betty Bell, Martha Jackson, Mary John Rodgers, and Morris Smith; front row: Ann Fortson and Marjorie Nichols. Not pictured, Grace Hiers.



# Sweethearts

Martha Jackson—Senior



Sarah Grace Hagins—Freshman



Mildred Manley—Junior



Annette Marsh—Freshman

# Margas



Most All-Round Girls at GSWC

JoAnne Story, Junior; Mildred Roberts, Freshman; Betty Buckner, Sophomore; Mary Elinore Crea, Senior.

"Who's Who Among Students In American Universities and Colleges" is a national publication in which the biographies of outstanding students in four-year colleges and universities appear each year.



Daris Bateman

*Who's*



Charlene Bowen



Mary Elinore Crea



Carolyn Mathis



Morris Smith

*Who*



Betty Jean Smith

G.S.W.C.'s students to appear in the publication were selected by a committee of faculty members and students, on the basis of character, scholarship, leadership, and participation in extra-curricular activities.

*G. S. W. C. 's*



MARTHA SIMPSON

*Freshman*

MARTHA JEAN BOATWRIGHT

*Sophomore*



# *Beauties*

MARY OWEN  
*Junior*



GRACE HEIRS  
*Senior*

CONGRATULATIONS  
TO THE  
1949 SENIORS  
OF THE  
**GEORGIA STATE WOMANS  
COLLEGE**

*and*

WELCOME TO THE  
UPPERCLASSMEN AND FRESHMEN

***"THE CITY OF AZALEAS"***

Welcomes the opportunity of being your home during your college days  
and of sharing your culture.

May your associations and your memories of our city be such that  
you will return after college days.

★ ★ ★

**J. E. MATHIS, Mayor**

COUNCILMEN

HENRY H. BECK

JAMES A. PARRAMORE

JULIAN D. MCKEY

CARL D. MINCHEW

ROBERT F. STEINBERG

W. HARRY GRIFFIN



**FORWARD WITH THE CLASS OF**

**'49**



**CONGRATULATIONS  
G.S.W.C. GRADUATES**

We are proud of the enviable record that you have made in college. We want you to know that you will always have a warm place in our hearts.

*Welcome*

Our every facility to make your stay in Valdosta a pleasant one is at your disposal.

*UPPERCLASSMEN AND FRESHMEN  
IN VALDOSTA IT'S*

**LUKE BROTHERS**

GEORGIA'S FINEST STORE, SOUTH



**W**HETHER your next career is in  
the homemaking, business or pro-  
fessional world, I'll be ready to serve  
you . . . 365 days a year . . . 24 hours a  
day.

**GEORGIA POWER**

*and*

**LIGHT COMPANY**

Partners in the Progress of Georgia

Compliments

*of*

**THE CITIZENS AND SOUTHERN  
NATIONAL BANK**

★ ★ ★

VALDOSTA

GEORGIA

**C. C. VARNEDOE AND CO.**

*The Style Center of Valdosta*

AUTHENTIC FASHIONS

*for*

JUNIORS, MISSES, AND WOMEN

★ ★ ★

Valdosta's Store Dependable

For the 71st Year

A  
COMPLETE FLOOR  
DEVOTED TO  
*JUNIOR FASHIONS*



**WHITTINGTON'S  
INC.**

132 N. PATTERSON ST.

DO YOUR BANKING AT...

**THE  
FIRST NATIONAL  
BANK  
OF VALDOSTA**



*Member of*

FEDERAL DEPOSIT  
INSURANCE CORPORATION

COMPLIMENTS  
OF  
**LOWNDES COUNTY  
BOARD  
OF  
COUNTY COMMISSIONERS**



JACK STATEN, *Chairman*

GOOD SERVICE  
*at*  
**BOB BELCHER'S  
DRUG STORE**  
PATTERSON AND CENTRAL

**Phone 812-813**

*DOROTHY GRAY BEAUTY  
PREPARATIONS*

Compliments

of

*Your Ford Dealer*

**ELLINOR MOTOR  
COMPANY**

PHONE 144

*Valdosta, Ga.*

**STUMP BROTHERS**



*PAINTS  
BUILDERS' SUPPLIES*



Phone 36

*Compliments*

*of*

**AMERICAN  
LEGION  
CLUB**



Compliments

of

**A FRIEND**



**CENTRAL FLORAL CO.**

502 N. PATTERSON  
Phones 2006—2007  
Valdosta, Ga.

We wire orders for flowers  
anywhere

*G.S.W.C. GIRLS . . .*

PAUSE AND REFRESH

Drink

***Coca-Cola***

In Bottles

**VALDOSTA COCA-COLA  
BOTTLING WORKS, INC.**

Compliments  
of

**STATEN'S DAIRY**



**Sineath's Funeral Home**



AMBULANCE

PHONE 111

Compliments  
of

**GEORGIA FERTILIZER  
COMPANY**



Valdosta, Ga.

**REGISTER CLOTHING  
COMPANY, INC.**

122 N. PATTERSON ST.  
*Valdosta, Ga.*

**MICHAELS-STERN VALUE FIRST  
CLOTHES**

**SOUTHERN STATIONERY AND  
PRINTING COMPANY**

*Wholesale Paper Dealers*  
FOR MORE THAN FORTY YEARS  
*COMMERCIAL STATIONERS*  
*PRINTERS*  
*OFFICE OUTFITTERS*

Valdosta

Georgia



*"Tire and Wheel Service  
Headquarters"*

**PHONE 680**



*Congratulations—*

*and Best Wishes*

**MARTIN THEATERS**

RITZ — DOSTA — PALACE

Valdosta, Ga.

Compliments

of

**PAINE HARDWARE CO.**

*EVERYTHING IN HARDWARE*

Compliments of

**LESLIE R. DAVIS**

*Jewelers*

*WATCHES — DIAMONDS  
SILVERWARE*

132 N. Ashley

Valdosta, Ga.

**The**

**VALDOSTA DAILY TIMES**

A Good Newspaper

*Published*

Every Afternoon Except Sunday

Compliments

of

**COWART'S DRESS SHOP**

SMART STYLES

*for*

COLLEGE GIRLS

**GIRARDIN JEWELERS**

*DIAMONDS — WATCHES*

*SILVERWARE*

*CHINA and CRYSTAL*

303 N. Patterson

Valdosta, Ga.

Compliments

of

**W. T. GRANT CO.**



Compliments  
of  
**KIRBY'S SHOE SHOP**



**OLIVER BROTHERS**

*PHILCO RADIOS*  
AMOCO PRODUCTS  
*PENNSYLVANIA TIRES*

Phone 231

**HALL'S CHILDREN  
SHOP**

*"We Major in Minors"*



VALDOSTA, GA.

Compliments  
of

**FREEMAN'S DAIRY**



**BRIGG'S CLOTHING**

*"Things Men Wear"*

114 N. PATTERSON ST.

Phone 168



VALDOSTA, GA.

Compliments  
of

**HOTEL DANIEL ASHLEY**



*Valdosta, Ga.*

**ELECTRIC SUPPLY CO.**

---

*Bendix Home Laundry*

---

FRIGIDAIRE and HOTPOINT  
APPLIANCES

Compliments of

**BENSON'S DRY CLEANING  
COMPANY**

117 WEST CENTRAL

Phone 2938



Your Musical Headquarters

PIANOS            RADIOS  
RECORDS

"Everything in Music"

**MATHIS & YOUNG  
COMPANY**

*Compliments of*

**BELK-HUDSON COMPANY**

*Valdosta's Largest and Leading  
Department Store*

NEWEST CAMPUS STYLES

**DUNCAN'S SHOE SHOP**

SMART FOOTWEAR  
OF KNOWN QUALITY

*for*

COLLEGE GIRLS

Compliments  
of

**BRIGG'S LADIES SHOP**



*Where Quality Counts*

*With Best Wishes*

*To the Seniors of 1949*

Whose association here will be long remembered

*To the Upperclassmen and Freshmen*

We are looking forward to your return next year!



**BROOKWOOD PHARMACY**

DELIVERY SERVICE

PHONE 336

●  
HERE IS THE PLACE  
FOR YOUR CAR  
TO GET

*ITS HIGHEST EDUCATION!*

**CASTLEBERRY COMPANY**

Best Wishes

from

THE

**WHITE HOUSE  
RESTAURANT**

Valdosta's Best Restaurant



VALDOSTA

GEORGIA

**ROOSEVELT  
RESTAURANT**



*Finest and Cleanest in the South*

OPEN DAY AND NIGHT

Compliments  
of

**BOOKMAN'S STUDIO**



*Everything Photographic*

ANNUALS  
of  
DISTINCTION

*Bowen, Long & Young, Inc.*  
Decatur, Georgia

