

---

# Community Archives - Turner Center for the Arts Scrapbook Collection

CA/007-02-bn004

---

2000-2002

## Turner Center Binder 4 2000-2002

Turner Center for the Arts

---

For this and additional works see: [Vtext - Scholarly Texts and Research at Valdosta State University](#)

UUID: 9CFC1FF7-7773-4899-81B5-6172221C79F9

### **Recommended Citation:**

Turner Center for the Arts. "Turner Center Binder 4 2000-2002." *Turner Center for the Arts Scrapbook Collection*, Valdosta State University Archives and Special Collections, Valdosta, Georgia. <https://hdl.handle.net/10428/7101>

This item is part of the *Community Archives: Turner Center for the Arts Scrapbook Collection* at Valdosta State University Archives and Special Collections. Physical and intellectual rights are reserved by the Turner Center. Physical materials were loaned to Valdosta State University Archives and Special Collections for the purposes of digital preservation. The digital items here are part of an online collection only. If you have any questions or concerns contact [archives@valdosta.edu](mailto:archives@valdosta.edu)



# Cultural Arts Center

Calendar of Events  
July/August

## Center Hours

10 am - 6 pm Mon-Fri.  
10 am - 4 pm Sat.  
2:00 pm - 4 pm Sun.



Non-Profit Org.  
U.S. Postage  
PAID  
Permit No. 51  
Valdosta, GA 31601

July 16, 2001, Reception 5 - 7 pm

1204 N. Patterson Street  
Post Office Box 1966  
Valdosta, Georgia 31603-1966

### Albany Artists

#### Main Gallery

Six Albany, Georgia, artists; Carole Hall Gum, Janice Ritz Rinz, Doug Wolfe, Diane Johnson, Barbara DeLung, and Bill DeLung exhibit mixed-media work in the Main Gallery.

#### Hall Gallery

An exhibition of photographs of Florida lighthouses by Dr. Jean Marani of Tallahassee, Florida.

<b>Broadway Series</b>	<i>Honky Tonk Angels</i> .....	Tuesday, October 30, 2001
<b>Tickets On Sale</b>	<i>Sunshine Boys - Neil Simon</i> .....	Monday, January 14, 2002
	<i>Funny Girl</i> .....	Monday, February 18, 2002
	<i>The Platters</i> .....	Tuesday, March 19, 2002

Adult's & Children's Art Classes, Writing, and Yoga Classes, starting in July.

For more information, call 247-2787.

Colson Printing Company 35281

### For Hearing/Speech Disabled



TT/Voice  
1-800-255-0056 (TTY)  
1-800-255-0135 (Voice)



**Diane Johnson**  
*Belgian Street Scene*

July 16 - August 30



# ARTIST OF THE MONTH

## Artist David Rowswell initiates dialogue with his viewers

By Dean Poling

dean.poling@gaffnews.com

Monday, January 28, 2002

VALDOSTA — Flashes of color in complex compositions mark the work of Sparks and Artist of the Month exhibit with the South Georgia Museum of Art.

Geometric shapes are juxtaposed against each print, creating an bursts of color and sign.

Rowswell's prints are viscosity monochromatic in 1998 as part of a series for his master's thesis.

"The viscosity method of printing involves using inks with varying degrees of slipperiness by varying parts of those layers to create areas of color on a plate before printing on paper," Rowswell notes. "The resulting image often has a quality that is both mysterious and familiar."

There is a certain comfort in viewing Rowswell's prints, which often feature falling leaves floating on an otherwise transparent background.

"I believe art should be a dialogue between the creator and the viewer," Rowswell says in an artist's statement. "My work is an attempt to initiate that dialogue. It is familiar enough to evoke a memory, a personal association. The rest of the dialogue is for the viewer to discover. The works are only intended for that art viewer who is looking beyond the artwork and into the artist."

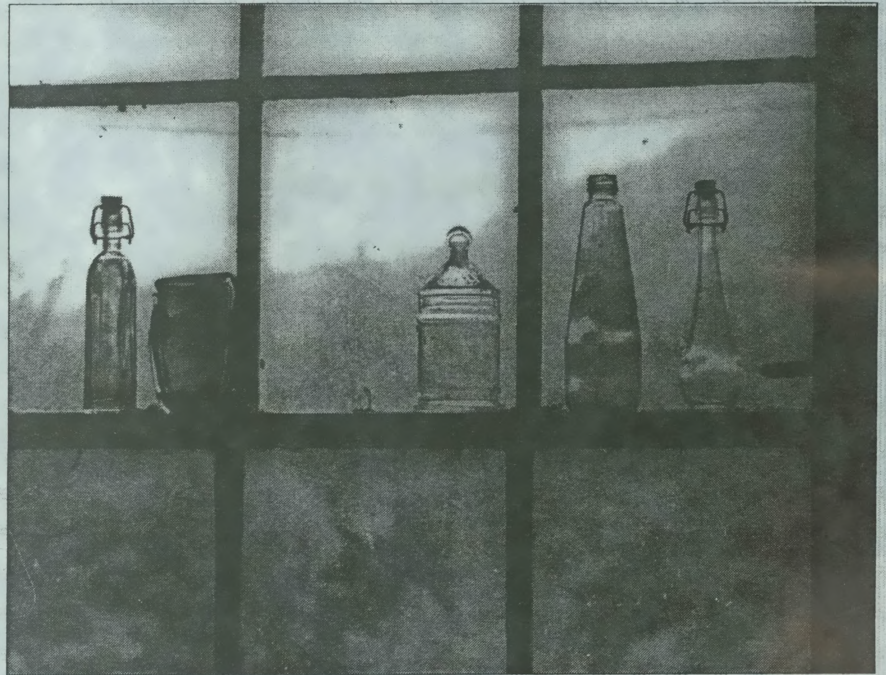
Rowswell is an art teacher with Coolidge College. Last month he was voted Teacher of the Year. He lives with his wife and fellow artist, Georgia Rowswell, and their two children, son Ian and daughter Abigail.

*David Rowswell's work is on display at the Valdosta Daily Times' 201 N. Trade Street.*



'Summer Breeze,' artist David Rowswell

# Rachael L. Cowart "Revealed by Light"



Hall Gallery Art Exhibit  
October 21- November 30, 2002

Lowndes/Valdosta Arts Commission

1204 North Patterson Street  
Valdosta, Georgia 31601  
(229) 247-2787

Georgia  
COUNCIL FOR THE Arts  
OFFICE OF THE GOVERNOR

NATIONAL  
ENDOWMENT  
FOR THE ARTS



*Judy Blanchard*

*Lena Massara*

*&*

*Barbara St. Denis*

**Main Gallery Art Exhibit**

June 3-July 15, 2002

**Lowndes/Valdosta Arts Commission**

1204 North Patterson Street

Valdosta, Georgia 31601

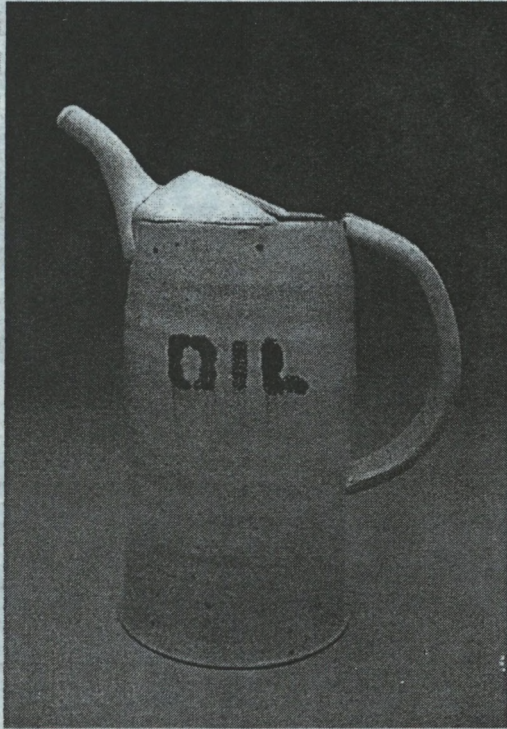
(229) 247-2787





# Michael T. Schmidt

## Recent Works



**Hall Gallery Art Exhibit**  
**June 3 - July 7, 2002**

---

**Lowndes/Valdosta Arts Commission**

1204 North Patterson Street

Valdosta, Georgia 31601

(229) 247-2787





# Students shine in art show

By Dean Poling

dean.poling@gafnews.com

VALDOSTA — It's an eclectic collection of work ranging from sculpture in wood and metal to ceramics to illustrations in pastels, pencils, acrylics to painting from various schools of artistic thought.

And all of the artists are high school students.

Lowndes/Valdosta Arts Center, 1204 N. Patterson St., is currently hosting an exhibit of work from seven South Georgia high schools.


Sponsored by LVAC and Valdosta State University's art department, the show displays dozens of works from Valdosta High School, Lowndes High School, Brooks County High School, Lanier County High School, Thomas County Central High School, Suwannee High

School and Coffee County High School. It is an impressive show. There are fewer entries than in past high school shows, but what this exhibit lacks in quantity, it more than makes up for in quality.


The artwork was juried and evaluated and prizes winners were selected. On this page, we present some of the winners, honorable mentions, as well as other entries representing Lowndes, Valdosta, Brooks County and Lanier County high schools, all of which are within The Valdosta Daily Times' coverage area. There are exceptional winning, and non-prized, entries from the other three schools, as well.

The high school art exhibit runs through mid-January at LVAC. It ends with a 3 p.m., Jan. 12 reception for the students and the public.

More info: LVAC, 247-2787.



'Girl', oil pastel, collage,  
Dennis Rothfuss, 12th grader,  
Valdosta High School.



'Abracadabra', pastels, Pamela Harrell, 12th grader,  
Brooks County High School, 'Best In Show'.





Mixed Media,  
Roderick  
Dawson, 12th  
grader,  
Brooks High  
School,  
second place.



'The Guitarist', pastels, Aryn Rosenbaum, 12th grader,  
Valdosta High School, honorable mention.



'Peppers', oil pastel, Paige Lester, 9th grader, Lowndes  
High School, honorable mention.





Name	Medium	Price
------	--------	-------

**Diane L. Johnson**

49 <i>Pete (dog)</i>	Watercolor	\$575
50 <i>Digger (cat)</i>	Watercolor	550
51 <i>Only Two Left (puppies)</i>	Watercolor	850
52 <i>Owl</i>	Watercolor	350
53 <i>Black &amp; Tan (dog)</i>	Watercolor	550

Name	Medium	Price
------	--------	-------

**Janice Ritz Rentz**

54 <i>Girl with Sunflowers (or Dawn)</i>	Watercolor	\$400
55 <i>Tomatoes</i>	Watercolor	150
56 <i>Jimi</i>	Watercolor	225
57 <i>Eggplants <u>Are</u> Shiny</i>	Watercolor	300
58 <i>At the Gulf</i>	Watercolor	150
59 <i>Resting</i>	Watercolor	165
60 <i>Is dinner ready?</i>	Watercolor	75
61 <i>Father &amp; Son Covenant</i>	Watercolor	300
62 <i>Seaside</i>	Watercolor	325
63 <i>Watering Pitcher</i>	Watercolor	125

Name	Medium	Price
------	--------	-------

**Doug Wolfe**

64 <i>Sunday Afternoon Shadow</i>	BW Photography	\$285
65 <i>Fern Haven</i>	Photography	285
66 <i>"Where Ed 'n Gator used to live"</i>	Photography	285
67 <i>Church with Imagination</i>	BW Photography	285
68 <i>Foreclosure</i>	BW Photography	285
69 <i>Memory of a Tree</i>	BW Photography	285
70 <i>Easter</i>	Photography	285
71 <i>Friends at the Edge of Paradise</i>	Photography	285
72 <i>Coral Cousins</i>	Photography	285

# Albany Artists

Carol Hall Gum	Janice Ritz Rentz
Doug Wolfe	Diane Johnson
Barbara DeLung	Bill DeLung

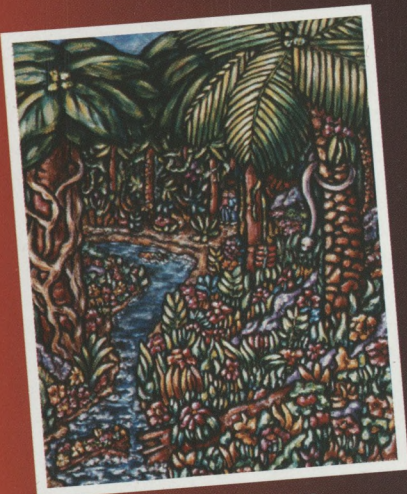
## Main Gallery Art Exhibit July 2001

### Lowndes/Valdosta Arts Commission

1204 North Patterson Street  
Valdosta, Georgia 31601  
(229) 247-2787







Sally Newman

*The Southern  
Artists' League*

presents

"Sou

# Three for the gallery

LVAC presents new show

Staff reports

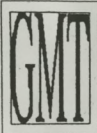
*Gum's work is on display in LVAC's Hall Gallery.*



Albany artist Carole Hall Gum.







# GMT PRODUCTIONS

GEORGIA'S PREMIER THEATRICAL TOURING COMPANY

---

## Acting Workshops

*Given by professional artists, workshops cover auditioning, character study, use of imagination, motivation, diction, projection, movement and the development of internal and external characters. How a young actor develops subtext for his or her character. Listening as the actor's greatest tool. The workshops are hands-on utilizing the Alexander Technique, Comedia Circus Skills, Viewpoints and Improvisation. Students participate with the artists.*

Number of participants: Up to 30.  
Number of Observers: Up to 300.  
Space Needed: Auditorium or large open space.  
Time: 50 minutes and up.

## Stage Combat

*Given by Fight Directors in the company. Students learn simple hand to hand combat, circus skills, and the use of weaponry in a staged fight (user-friendly weapons). Students learn how to move and fall.*

Participants: 30 (must wear loose clothing and sneakers – no skirts).  
Observers: Up to 200  
Space: Gymnasium/large room or stage area with wood floor.

## Creative Writing Workshops

Available with all elementary school programs.

*A team of two or more artists use drama, movement, music and voice to write creatively.*

*Description: Artists, students and teachers create a story together through role playing. Using the 5 senses – sight, touch, hearing, taste and smell – students create an original story. Students act out action, character description, time, place, dialogue and development of the plot. Everyday items (such as a spoon), music and vocabulary are used in the creation of the work. All students write their own ending to the tale. Two of these workshops can be given simultaneously in different spaces.*

Participants: 25 students and 2 artists from the acting company  
Space: Classroom, library, media center or auditorium, theatre  
Needs: Open space - teacher is asked to write down story.  
Time: 45-50 minutes.



LOWNDES VALDOSTA ARTS COMMISSION AND



*GMT PRODUCTIONS*

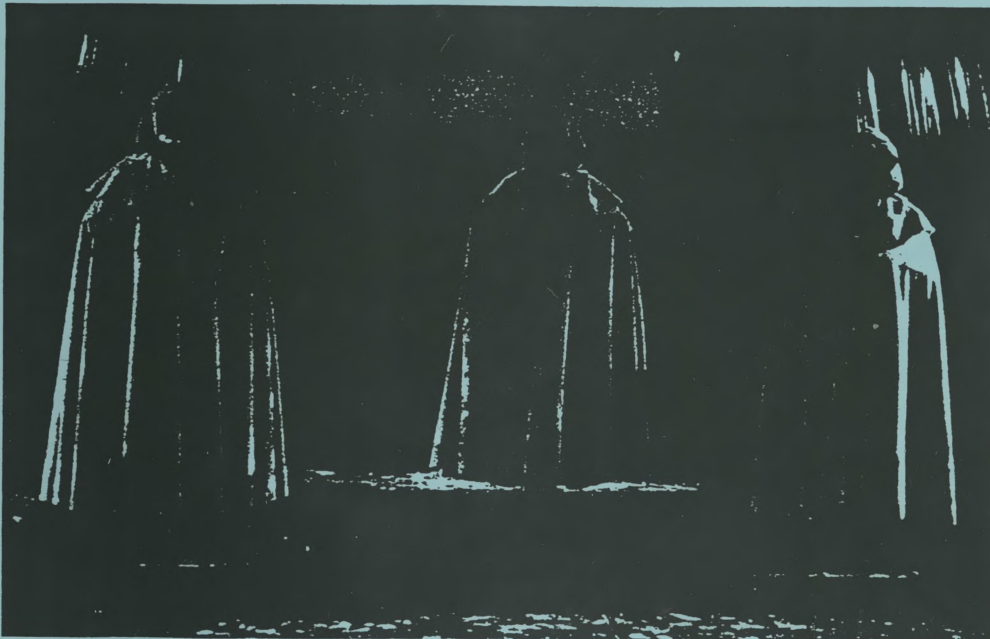
*PRESENT SHAKESPEARE'S*

# Macbeth

*GREED, POWER, MAYHEM, AND MURDER!*

*MATHIS AUDITORIUM, VALDOSTA, GA*

*NOVEMBER 6, 2002, at 9:30AM & <sup>12:00</sup>~~11:30AM~~*



*Witches, spellbinding sorcery and a scheming wife propel a great and noble man to AMBITION, MURDER, and REVENGE! Shakespeare's most riveting play is celebrated for its ghosts, sword fights and is guaranteed to have all audiences on the edge of their seats!*

**TICKETS \$ 6.00 PER STUDENT**

INFORMATION AND BOOKINGS call: 229-247-2787 or 1-888-464-3130 (toll-free)

GMT is on the State of Georgia Touring Roster, the South Carolina Arts Commission's Roster, the Broward County (FL) Schools Students Enrichment Roster, the Lee County (FL) Roster for Outside Agencies, and the Fulton Arts Council (GA), School Arts Program and other Arts Program Rosters throughout its touring area.





# GMT PRODUCTIONS

GEORGIA'S PREMIER PROFESSIONAL THEATRICAL TOURING COMPANY

# MACBETH

By *William Shakespeare*

## STUDY GUIDE

### INTRODUCTION

There is a strong possibility that *Macbeth* was first presented before King James at Hampton



Lowndes / Valdosta Arts Commission  
1204 N. Patterson Street  
Post Office Box 1966  
Valdosta, Georgia 31603-1966  
Phone: (912) 247-ARTS

October 17, 2002

Dear English Teacher,

Please encourage your students by giving them extra credit to attend *The Taming of the Shrew* on November 4, 2002, 7 PM, at Mathis Auditorium. The cost to students is \$6, half price, because the L/VAC Arts Center pays the other half. Teachers and chaperones may attend free of charge. There will be a program handed out at the play, which can be turned in, to prove attendance. Also a seven-page study guide is available by calling me at 247-2787.

GMT Productions, which is bringing us this play, is directed by Gail Deschamps, formerly head of the Florida Shakespeare Festival.





# GMS PRODUCTIONS

GEORGIA'S PREMIER PROFESSIONAL THEATRICAL TOURING COMPANY

## *The Taming of the Shrew*

By *William Shakespeare*

### STUDY GUIDE

#### ABOUT THE AUTHOR

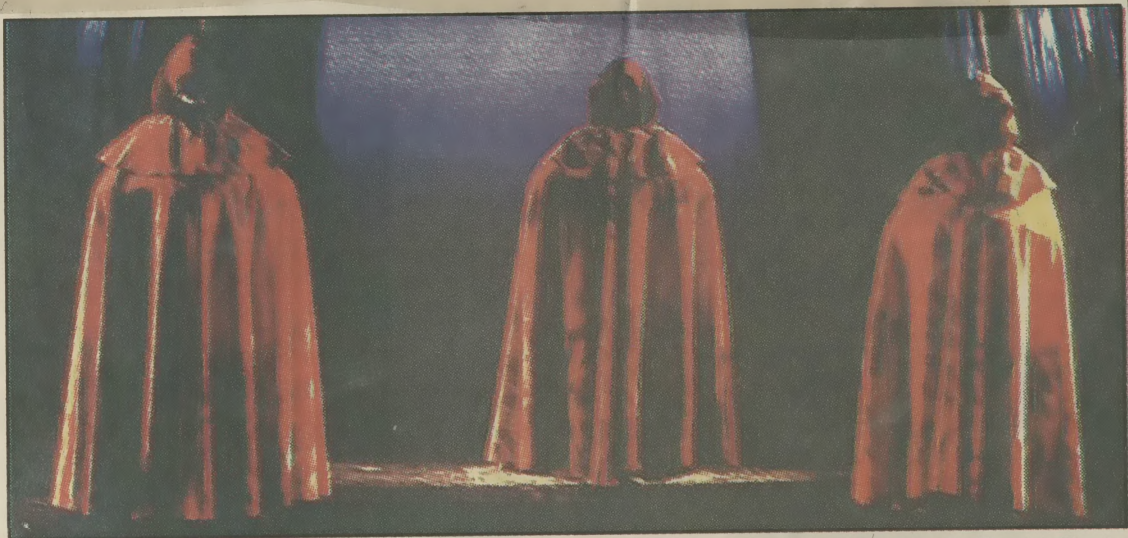
**Shakespeare, William** (1564-1616), the supreme English poet and playwright, recognized in much of the world as the greatest of all dramatists. A complete, authoritative account of Shakespeare's life is lacking; much supposition surrounds relatively few facts. His day of birth is traditionally held to be April 23; it is known he was baptized on April 24, 1564, in Stratford-upon-Avon, Warwickshire. The third of eight children, he was the eldest son of John Shakespeare, a locally prominent merchant, and Mary Arden, daughter of a Roman Catholic member of the landed gentry. He was probably educated at the local grammar school. In 1582 he married Anne Hathaway, the daughter of a farmer. He is supposed to have left Stratford after he was caught poaching in the deer park of Sir Thomas Lucy, a local justice of the peace. Shakespeare and Anne Hathaway produced a daughter in 1583 and twins—a boy and a girl—in 1585. The boy did not survive.

Shakespeare apparently arrived in London about 1588 and by 1592 had attained success as an actor and a playwright. Shortly thereafter, he secured the patronage of Henry Wriothesley, 3rd Earl of Southampton. The publication of Shakespeare's two fashionably erotic narrative poems *Venus and Adonis* (1593) and *The Rape of Lucrece* (1594) and of his *Sonnets* (1609) established his reputation as a gifted and popular Renaissance poet. The *Sonnets* describe the devotion of a character, often identified as the poet himself, to a young man whose beauty and virtue he praises and to a mysterious and faithless dark lady with whom the poet is infatuated. The ensuing triangular situation, resulting from the attraction of the poet's friend to the dark lady, is treated with passionate intensity and psychological insight. However, Shakespeare's modern reputation is based mainly on the 38 plays that he apparently wrote, modified, or collaborated on. Although generally popular in his day, these plays were frequently little esteemed by his educated contemporaries, who considered English plays of their own day to be only vulgar entertainment.

Shakespeare's professional life in London was marked by a number of financially advantageous arrangements that permitted him to share in the profits of his acting company, the Chamberlain's Men, later called the King's Men, and its two theaters, the Globe Theatre and the Blackfriars. His plays were given special presentation at the courts of Queen Elizabeth I and King



Friday, November 1, 2002



PLAY PHOTOS: Georgia Mountain Theater

MACBETH PLAYS WEDNESDAY, VALDOSTA.

# A Vocal Bard

## Two Shakespeare plays come to region next week

By Dean Poling

dean.poling@gafnews.com

### VALDOSTA

Shakespeare in an English class environment — sitting at a desk on an afternoon when dust seems to sparkle like stars in a beam of sunlight, reading the pages of a Shakespearean work, or listening to an untutored student colleague read the lines in a droning monotone — is a dull business. Hard to imagine how many English classes have ruined Shakespeare for the mass public by forcing teens to read his works without ever seeing a Shakespeare play performed. Without the vocal inflection and unfolding action, Shakespeare is often viewed as a collection of old, incomprehensible words — beautiful, poetic, powerful words — but without some proper introduction, for many students, Shakespeare's words rattle around on the page meaning nothing.

Well, to put it bluntly, there is a reason so many students, and later adults, find the bard





boring — Shakespeare was meant to be heard not read. Shakespeare was a playwright. He wrote plays to be performed by trained actors. He wrote “scripts” to be heard and seen. Imagine reading the scripts to some of your favorite movies; imagine reading “Casablanca” without Humphrey Bogart playing Rick, just you in a room reading “Play it, Sam,” without hearing the world-weary loss in Bogart’s voice. Or imagine reading a script to one of the early James Bond movies, reading 007’s famed introduction, “Bond. James Bond,” without hearing Sean Connery’s famed brogue, without the light of the cigarette, and the arching of an eyebrow. Becomes pretty dull stuff. So too Shakespeare.

It would be great if every classroom study of a Shakespeare work opened with a well-done live performance or a filmed version. Then study the work and discuss it, like people sitting around talking about parts of their favorite movies. This could happen. Shakespeare, after all, knew what he was doing; there is a reason why his plays are still performed, read, and discussed hundreds of years after they were first written and performed. William Shakespeare, whomever he was or wasn’t (which is a discussion for another day) wrote plays that could be appreciated by royals as well as the unruly crowds that massed into the Globe Theatre to watch them. In college, I studied theater and acted in several plays; one year, we performed “Othello” and one of our stops was a performance at a women’s prison. The inmates were restless at first, ah but the magic of Shakespeare performed and a captive audience, by the end, they booed the villainous Iago, they yelled warnings to Othello not to kill the beautiful Desdemona, they sat in rapt attention as the plot unfolded and the damage was done. The inmates of the women’s prison represented the best audience we had for the show.

As for Shakespeare, he wrote something for everybody. He wrote broad comedies and towering tragedies, and almost every play opens with a scene meant to either amuse, shock,



## THE TAMING OF THE SHREW PLAYS MONDAY, VALDOSTA; THURSDAY, MADISON, FLA.

frighten or titillate the audience. An attention grabber before the main plot fully unfolds — a device that is still used regularly in movies today. He wrote plays that delved into human emotions, humor and pathos, greed, lust, ambition, betrayal, love, friendship. In Shakespeare scholar Harold Bloom’s book, “Shakespeare: The Invention Of The Human,” he writes “Literary character before Shakespeare is relatively unchanging; women and men are represented as aging and dying, but not as changing because their relationship to themselves, rather than to the gods or God, has changed. In Shakespeare, characters develop rather than unfold, and they develop because they reconceive themselves. Sometimes this comes about because they overhear themselves talking, whether to themselves or to others. Self-overhearing is their royal road to individuation, and no other writer, before or since Shakespeare, has accomplished so well the virtual miracle of creating utterly different yet self-consistent voices for his more than 100 major characters and many hundreds of highly distinctive minor personages.”

If you are a teen-ager and that sentence leaves you shaking your head and still wondering why Shakespeare still means something today then look to the shelves of video stores at recent teen movies. “O” is the story of Shakespeare’s “Othello” set in a sports-driven high school. “Romeo + Juliet” is the modern telling of Shakespeare’s doomed teen lovers “Romeo and Juliet.” “Ten Things I Hate About You” is based on “The Taming Of The Shrew.”

So, you see Shakespeare still has something to say and it should be heard. There are three opportunities coming

soon to South Georgia and North Florida to hear Shakespeare.

■  
**THE TAMING OF THE SHREW:** Described by Bloom as being “as much a romantic comedy as it is a farce,” “Shrew” is a grand comedy of the meeting of a spirited man and an equally spirited woman. Though heavily male chauvinistic for today’s audiences, it is still a funny play.

“*The Taming Of The Shrew*,” presented by Georgia Mountain Theater Productions, plays 7 p.m. Monday, Mathis City Auditorium, 2311 Williams St., Valdosta, and is sponsored by the Lowndes/Valdosta Arts Commission. Tickets: \$6. More information: LVAC, 247-2787. **ALSO:** GMT’s “*The Taming Of The Shrew*” plays 7:30 p.m. Thursday, Van H. Priest Auditorium, North Florida Community College, Madison, Fla. Tickets: \$6; students, teachers; \$11, general public. More information: (850) 973-1613.

■  
**MACBETH:** “A killing machine,” Bloom writes, “MacBeth is endowed by Shakespeare with something less than ordinary intelligence, but with a power of fantasy so enormous that pragmatically it seems to be Shakespeare’s own.” Full of witches and the cunning Lady MacBeth, “MacBeth” is a primary study in dark ambition.

“*MacBeth*,” presented by Georgia Mountain Theater Productions, plays 10 a.m. Wednesday, Mathis City Auditorium, 2311 Williams St., Valdosta, and is sponsored by the Lowndes/Valdosta Arts Commission. Tickets: \$6 (though mostly this show is scheduled for area school students at a discounted rate). More information: LVAC, 247-2787.

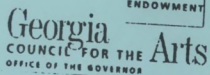




# GMT PRODUCTIONS

GEORGIA'S PREMIER PROFESSIONAL THEATRICAL TOURING COMPANY

R. H. DESCHAMPS, Producer



presents

# The Taming of the Shrew

by William Shakespeare

Directed by: **Gail Deschamps**

Set Design: **Jeff Horsley** \* Lighting Design: **Tim Moon**

Costumes: **Tony Smithey** \* Movements: **Ax Norman**

Sound Design: **Gail Deschamps** \* Stage Manager: **Tim Moon**

## Cast in alphabetical order

Grumio, Gremio ..... **Kenny Braziel**

Lucentio, Pedant, Curtis ..... **Nicholas Jaeger**

Trainio, Nathaniel, Tailor ..... **Ax Norman**

Baptista, Gregory ..... **Ian Oldaker**

Petruchio ..... **Ed Roggenkamp**

Hortensio, Vincentio, Haberdasher, Widow ..... **Tony Smithey**

Kate ..... **Teri Watts**

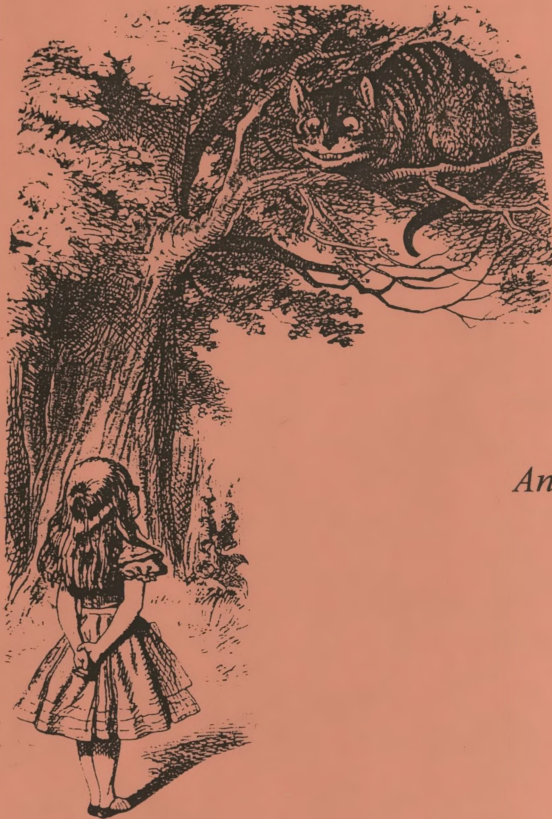
Bianca, Biondello, Phillip ..... **Virginia Worley**





# GMT PRODUCTIONS

GEORGIA'S PREMIER PROFESSIONAL THEATRICAL TOURING COMPANY



## *Alice in Wonderland*

*An original musical adaptation of Lewis Carroll's tale  
Book and Lyrics by Gail Deschamps  
Musical Score by Paul Hamilton*

ON TOUR: JANUARY – MAY, 2001  
IN REPERTORY WITH GMT'S MUSICAL ADAPTATION OF

*The Emperor's New Clothes*

*This new musical will enchant thousands. Full of witty dialogue, clever songs and the magic of the animals that people Alice's dream. This musical and its unusual, fresh and exciting score is ideal for young audiences' fare, and a lot of fun for adults, too!*



**Suitable for grades K-9 - Duration: 50/55 minutes - Study Guides are available**

**Please write, fax, e-mail, or call GMT Productions: 503 East 3<sup>rd</sup> Street, Rome, GA 30161-3117**

**Phone: 1-888-464-3130 (toll-free) - (706) 295-3130 or Fax: (706) 232-4164**

**e-mail: [rhd@gmtproductions.com](mailto:rhd@gmtproductions.com)**

---

**GMT's productions ARE DESIGNED TO BUILD YOUNG AUDIENCES' CHARACTERS AND TEACH VALUES:  
INTEGRITY, HONOR, PERSISTENCE, FAIRNESS, GENEROSITY, AND RESPECT OF OTHERS AND SELF!**

---

---

• GMT is on the State of Georgia Touring Roster, the South Carolina Arts Commission's Roster, the Broward County (FL) Schools Students Enrichment Roster, the Lee County (FL) Roster for Outside Agencies, and the Fulton Arts Council (GA), School Arts Program Roster.

---





# Lowndes Valdosta Arts Commission, and GMT Productions

Present

## THE UGLY DUCKLING

*(The 1998 Piccolo Spoleto Festival's Acclaimed Production)*

HANS CHRISTIAN ANDERSEN'S CLASSIC TALE IN THE SMASH MUSICAL HIT ADAPTATION BY  
GAIL DESCHAMPS AND PAUL HAMILTON

OCTOBER 8, 2002 AT ~~9:30~~ & 10:45AM

*Sold out*

MATHIS AUDITORIUM, VALDOSTA, GA

CELEBRATE WITH US THE YEAR OF THE CHILD



◆ **"THE UGLY DUCKLING IS A SWAN OF A SHOW"**

- ◆ "Audience members ranged from grandparents to toddlers all of whom stayed, mesmerized by the singing and the dancing ..."
- ◆ "A fun time for the entire family ...  
"Spoleto Today" Post Courier, Charleston, SC
- ◆ "The 'Ugly Duckling' was just wonderful! The theme, story, message, music, characters, costumes ... everything was fantastic." Susan Childers, Principal, Cave Spring Elementary, GA

**INFORMATION AND BOOKINGS call: (229) 247-2787 or 888-464-3130 (toll-free)**

**TICKETS \$3.00 per Student**

DURATION: 50/55 MINUTES \* STUDY GUIDES & WORKSHOPS are available.

503 EAST THIRD STREET, ROME,, GA 30161-3117

• GMT is on the State of Georgia Touring Roster, the South Carolina Arts Commission's Roster, the Broward County (FL) Schools Students Enrichment Roster, the Lee County (FL) Roster for Outside Agencies, and the Fulton Arts Council (GA), School Arts Program Roster, and many other Arts Councils' Rosters in its touring area.



Lowndes/Valdosta Arts Commission

&

# GMT PRODUCTIONS

GEORGIA'S PREMIER PROFESSIONAL THEATRICAL TOURING COMPANY

*Alice in*

## *Wonderland*

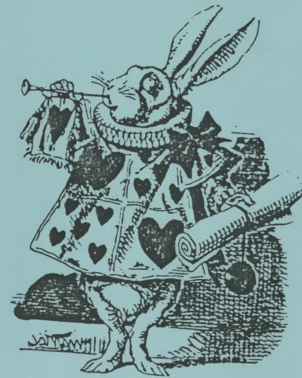
*An original musical adaptation of Lewis Carroll's tale  
Book and Lyrics by Gail Deschamps  
Musical Score by Paul Hamilton*

ON TOUR: JANUARY – MAY, 2001

IN REPERTORY WITH GMT'S ADAPTATION OF

**Trail of Tears**

*This new musical will enchant thousands. Full of witty dialogue, clever songs and the magic of the animals that people Alice's dream. This musical and its unusual, fresh and exciting score is ideal for young audiences' fare, and a lot of fun for adults, too!*



Suitable for grades K-9 - Duration: 50/55 minutes – Study Guides are available

Please write, fax, e-mail, or call Lowndes/Valdosta Arts Center:  
1204 N. Patterson Valdosta GA 31601 Phone: 1-888-837-2906 (toll-free)  
e-mail: lvac@surfsouth.com 1-912-247-2787

---

**GMT's productions ARE DESIGNED TO BUILD YOUNG AUDIENCES' CHARACTERS AND TEACH VALUES:  
INTEGRITY, HONOR, PERSISTENCE, FAIRNESS, GENEROSITY, AND RESPECT OF OTHERS AND SELF!**

---

• GMT is on the State of Georgia Touring Roster, the South Carolina Arts Commission's Roster, the Broward County (FL) Schools Students Enrichment Roster, the Lee County (FL) Roster for Outside Agencies, and the Fulton Arts Council (GA), School Arts Program Roster.



## LOWNDES VALDOSTA ARTS COMMISSION &amp;



GMT PRODUCTIONS

PRESENT

# TRAIL OF TEARS

## MATHIS AUDITORIUM, VALDOSTA, GA

Winner of the prestigious "National Endowment for the Arts Award for Excellence"  
*The Cherokee Indian History, adapted by Kathryn Schultz Miller*

**OCTOBER 14, 2002 at 9:30 & 10:45AM\***  
 \* THE PERFORMANCE LASTS APPROXIMATELY 50 MINUTES

Meet the Cherokee Indian hero who fights for the survival of his people and their way of life in this play about Cherokee Indian history. The music of drums, flutes, gourd, and turtle-shell's rattle underscore the play and students learn the meaning behind Indian masks and the Cherokees' sacred beliefs. Eagles, eagle feathers, rattlesnakes, fire, smoke, sun and moon all play a part in the play. The play is filled with Native American legends, folklore, Indian culture and sign language.



**Curriculum Connections:** Grades 3-5: Think about words, author's viewpoint, fact and opinion, cause and effect; **Language:** vocabulary, metaphor. **Social Studies:** Native Americans, Exploration, Colonization, Location, Direction and Distance. **Art:** Masks, Indian Art and American Music. **Grades 6-8: Social Studies:** Georgia History, Early Inhabitants, European Exploration, Colonial Georgia, History of the Cherokee Trail of Tears.

*"Trail of Tears told a story that was cross cultural, the message reached across racial boundaries. ... A magnificent performance!"* College Hill, Cincinnati, OH

*Both children and adults were spellbound!"* Arts Council of Murfreesboro, TN

Recommended: 3<sup>rd</sup> to 5<sup>th</sup> grades & Middle School students. STUDY GUIDES & WORKSHOPS are available.

**TICKETS \$ 3.00**

**INFORMATION AND BOOKINGS call: 229-247-2787 or 1-888-464-3130 (toll-free)**

*GMT is on the State of Georgia Touring Roster, the South Carolina Arts Commission's Roster, the Broward County (FL) Schools Students Enrichment Roster, the Lee County (FL) Roster for Outside Agencies, and the Fulton Arts Council (GA), School Arts Program and other Arts Program Rosters throughout its touring area.*