
Community Archives – Brooks County Museum and Cultural Center Collection

CA-009-006-001

Ca.1917 - 2013

Historic Homes 6

For this and additional works see: <https://vtext.valdosta.edu/xmlui/handle/10428/7250>

UUID: 49A8C72A-9751-40BA-BDF5-9E9380802CB9

Recommended Citation:

Brooks County Museum and Cultural Center, Brooks County (Ga.) History: Historic Homes 6, ca. 1917-2013. Retrieved from Valdosta State University Archives and Special Collections, Brooks County Museum Collection.

<https://vtext.valdosta.edu/xmlui/handle/10428/7624>

This item is part of the Community Archives – Brooks County Museum and Cultural Center Collection at Odum Library Valdosta State University Archives and Special Collections. All rights reserved by the Brooks County Museum and Cultural Center. If you have any questions or concerns contact archives@valdosta.edu.

Canape Road typical of Indian Trail, Spanish Trail, Oglethorpe Trail and Short route to Florida



Brooks County

Board of Tax Assessors

Search produced the following results. Select one by clicking the parcel number link in the first column below.

Parcel Number	Owner Name	Address	Legal Information	GIS Map
0500008A	JOE & DRUS PLACE, LLC	BARWICK RD	PB 17-184	Map It
0490033A	REAVES JOAN ANTIONETTE	BARWICK RD	PB 10-125	Map It
049 0033	PRICE NANCY W & ROGER T	BARWICK RD	& LL 447, 475 PLAT IN DB 555-42/43	Map It
034 0020	MESSER SAMUEL L & SHEILA A	BARWICK RD	& LL 519 PB 15-108	Map It
034 0013	PRICE HERBERT	BARWICK RD	PB 15-278	Map It
023 0004	DREW CAPERS	BARWICK RD	180-249	Map It
0230004B	PRICE ROGER	BARWICK RD	741-206	Map It
0230012A	POPE EDWIN	BARWICK RD	& LL 426, 449, 450, 472	Map It
06500291	RED IRON FARMS LLC	BARWICK RD	& LL 398 PB 21-78A TR D1	Map It
06500052	MCDONALD FAMILY FARM I LLC	BARWICK RD	ALSO LL 432 DB 636-273	Map It
0640011A	RED IRON FARMS LLC	BARWICK RD	PB 11-107 TRACT F	Map It
0640011B	RED IRON FARMS LLC	BARWICK RD	PB 11-108 TRACT B	Map It
0640011C	A & M PLANTATION, LLC	BARWICK RD	& LL 398, 431, 432 PB 11-107 TRACTS C, G, & H	Map It
0650010BB	TYRE DANNY	BARWICK RD	CLAMSHELL HANGAR AT AIRPORT	Map Not Available
064 0009	JONES FRED	BARWICK RD	420-350	Map It
065 0010	BROOKS COUNTY AIRPORT	BARWICK RD	397-397	Map It
06400162	MCDONALD FAMILY FARM III, LLC	BARWICK RD	742-136	Map It
064 0007	KIMBLE RENTALS LLC	BARWICK RD	739-342	Map It
02300123	POPE EDWIN	BARWICK RD		Map It
02300124	POPE EDWIN	BARWICK RD	DEED RECORDED 11-2-82	Map It
Q19 0196	BUTLER MARY	200 BARWICK RD	512-134	Map It
Q19 0195	IRICK STEVEN F & VICKI S	202 BARWICK RD	NE SECT	Map It
Q19 0194	PHILLIPS RICKY D & CLEMENTINE	204 BARWICK RD	432-166	Map It
Q19 0193	CHURCH OF PERFECTING SAINTS	205 BARWICK RD	537-074	Map It
Q19 0152	MONTGOMERY ROBERT EARL	206 BARWICK RD	240-147	Map It
Q19 0141A	BOARD OF TRUSTEES OF THE BROOKS COUNTY	404 BARWICK RD	180-350	Map It
Q19 0078	CUNNINGHAM, R L & SONS INC	500 BARWICK RD	188-345 PEANUT HOUSE	Map It
Q19 0080	PROCTOR NADINE	517 BARWICK RD	525-283	Map It
Q19 0080Z	PROCTOR NADINE	525 BARWICK RD	STORE BLDG	Map It
Q19 0079	LOWE JEAN	542 BARWICK RD	725-223	Map It
Q19 0067	CARTER EDWARD & MYRION	601 BARWICK RD	507-164	Map It
Q19 0077	WILLIAMS JOSEPHINE B ESTATE	624 BARWICK RD	260-241	Map It
Q19 0068	SPRAY PROPERTIES LLC	627 BARWICK RD	740-144	Map It
Q19 0063	TANNER JACK	639 BARWICK RD	132-419	Map It

Q19 0029	CHISM GARY WAYNE	701 BARWICK RD	280-313	Map It
Q19 00271	BROOKS COUNTY	702 BARWICK RD	624-010	Map It
Q19 0028	HERNDON FRANCES LEE	703 BARWICK RD	270-086	Map It
Q19 0026	MCRAE ANTHONY WEST &	707 BARWICK RD	179-093 ROSE HEIGHTS S/D	Map It
Q19 0017	CUMMINGS EDITH &	709 BARWICK RD	PB 3-176	Map It
Q19 0016	OLIVETO LINDA	715 BARWICK RD	565-058	Map It
Q19 0002	LAND LOREN MARIE	718 BARWICK RD	484-035	Map It
Q19 0007	NAIL PAUL ANDRE & VIOLET	719 BARWICK RD	PB 14-119 227-090	Map It
Q19 0005	KIMBLE RENTALS LLC	723 BARWICK RD	433-135	Map It
Q19 0004A	GRIFFIN JAKE R & HILDA B	728 BARWICK RD	162-085	Map It
Q19 0004	HAYNES MARION C & KASEY K	748 BARWICK RD	675-243	Map It
Q25 0011	THIGPEN ALLEN M &	761 BARWICK RD	699-249	Map It
Q26 0005	RAINES ALICE	803 BARWICK RD	SMITH ADDN "S-128" LOTS 2 & 3 BLK 4	Map It
Q25 0010	BASSHAMS VETERINARY HOSPITAL, INC	818 BARWICK RD	152-148	Map It
Q25 0004A	DAVIS EARNESTINE	826 BARWICK RD	ALSO LL 396 524-001	Map It
Q25 0006	OSLANCE VICTORIA LYN	844 BARWICK RD	700-263	Map It

[Search Next 50 Parcels](#)

The Assessor's Office makes every effort to produce the most accurate information possible. No warranties, expressed or implied, are provided for the data herein, its use or interpretation. The assessment information is from the last certified taxroll. All data is subject to change before the next certified taxroll. Website Updated: May 13, 2016

[Return to Main Search](#)

[Brooks Home](#)

Brooks County

Board of Tax Assessors

Search produced the following results. Select one by clicking the parcel number link in the first column below.

Parcel Number	Owner Name	Address	Legal Information	GIS Map
050 0005	BRANCO FARMS, LLC	1110 TALLOKAS RD	& LL 425, 403, 402, 404, 446, 447, 427/8/9	Map It
050 0004	SUNBURY A M E CHURCH	1557 TALLOKAS RD	81-225	Map It
051 0012B	BRANCO FARMS, LLC	1592 TALLOKAS RD	320-176	Map It
051 0012	BRANCO FARMS, LLC	1814 TALLOKAS RD	PB 8-100 MARY SPIRES TRACT	Map It
051 0010	BRANCO FARMS, LLC	1871 TALLOKAS RD	374-068	Map It
051 0009	TISON JASON	2011 TALLOKAS RD	& LL 473	Map It
051 0003C	KIMBLE RENTALS LLC	2641 TALLOKAS RD	PB 14-217	Map It
051 0003D	KIMBLE KINCH H JR	2727 TALLOKAS RD	PB 14-217	Map It
051 00033	BASULTO STEVEN	2868 TALLOKAS RD		Map It
051 0004	PRICE ROGER	3508 TALLOKAS RD	573-216	Map It
052 0011	OKAPILCO FARMS, LLC	5323 TALLOKAS RD	& LL 498 PB 6-34	Map It
052 00011	POHLMAN MARTY P & RODNEY L	5888 TALLOKAS RD	PB 21-188	Map It
052 0002	BUTLER MODENE	5951 TALLOKAS RD	130-355	Map It
053 0009A	TUCKER BRUCE M & SHELIA M	6376 TALLOKAS RD	PB 15-104	Map It
053 0007A	REAMS WILLIE & SANDRIA	6560 TALLOKAS RD	PB 12-223	Map It
053 00071	STACY PAULA M &	6600 TALLOKAS RD	PB 12-223	Map It
053 0007F	BEBEE ALBERT	6662 TALLOKAS RD	329-189	Map It
053 0007C	KRIEGER GARY	6976 TALLOKAS RD	418-228 PB 17-171	Map It
053 0004A	WILLIAMS JOHNNY MITCHELL	7487 TALLOKAS RD	116-533	Map It
053 0002D	JONES ERIC & VONDA	8065 TALLOKAS RD	PB 15-161	Map It
053 0002	WELDON KIRK &	8066 TALLOKAS RD	& LL 512 PB 16-156 5 ACRES	Map It
053 0002B	PRICE ROGER	8080 TALLOKAS RD	SANDHILL FARM 291-290	Map It
053 0017	NICHOLS FRANKLIN LAMAR &	8461 TALLOKAS RD	99-245	Map It
053 0001	LAKE NICHOLS, LLC	8635 TALLOKAS RD	& LL 511, 512, 513	Map It
054 0007	MANLEY SUE	9107 TALLOKAS RD	& LL 512	Map It
031 00301	MANLEY JAMES CHRISTOPHER &	9111 TALLOKAS RD	SURVEY BY L OUTZS 7-28-95	Map It
031 0030D	MANLEY JAMES CHRISTOPHER	9111 TALLOKAS RD	PB 20-115	Map It
031 00183	ALLEN GARY RANDALL	9854 TALLOKAS RD	PB 19-235	Map It
031 0018	YARBROUGH LINDA CARLTON	9951 TALLOKAS RD	500-270	Map It
031 00185	BCT GIN CO, INC	9951 TALLOKAS RD	PB 21-79	Map It
031 0009	BEVERLY IVELYN & BOBBIE	10177 TALLOKAS RD	115-050	Map It
031 0008	OCHOA NICOLAS	10248 TALLOKAS RD	TRT 2 PB 14-82	Map It
031 000812	SANTOS-RUIZ CLAUDIO	10271 TALLOKAS RD	TRT 12 PB 14-95	Map It
031 000811	FREDERICKS DIANE	10291 TALLOKAS RD	TRT 11 PB 14-95 & PB 21-94A	Map It
031 000810	ALCANTARA NICOLAS	10307 TALLOKAS RD	TRT 10 AND PORTION OF TRT 11 PB 14-95	Map It
031 00089	CLEMENTS BOBBY A & MARTHA M	10397 TALLOKAS RD	TRT 9 PB 14-95	Map It
031 00088	DORMINEY JAMES LAWTON JR &	10489 TALLOKAS RD	226-136	Map It
031 00087	CASTANON ALBERTO	10543 TALLOKAS RD	TRT 7 PB 14-95	Map It
031 00086	ASHMORE JASON EUGENE &	10567 TALLOKAS RD	TRT 6 PB 14-95	Map It
031 00085	BENTLEY ELISE BLANKENSHIP	10571 TALLOKAS RD	TRT 5 PB 14-95	Map It
031 00084	MEDLIN MARY	10685 TALLOKAS RD	& LL 526, 13TH TRACT 4 PB 14-95	Map It
031 00083	VENTURA GAUDENCIO & IVONNE	10689 TALLOKAS RD	TRT 3 PB 14-95	Map It
031 00082	FLOUNORY KENT & JOHNNIE MAE	10739 TALLOKAS RD	TRT 2 PB 14-95	Map It
031 00081	BOATMAN BENNY & SABRINA	10749 TALLOKAS RD	TRT 1 PB 14-95	Map It

031 0005	WATERS JAMES BERRY	10926 TALLOKAS RD	121-697	Map It
031 00051	WATERS JAMES BERRY	10926 TALLOKAS RD	121-697	Map It
031 0006	CROSBY DORTHA	10959 TALLOKAS RD	384-130	Map It
030 0025	LIPSEY JOHNNY R & DONNA C	11420 TALLOKAS RD	TRTS 1 & 2 PB 15-7	Map It
030 0024	ROBINSON NADINE	11692 TALLOKAS RD	157-103	Map It
030 0014	KEEL COLON J JR &	12046 TALLOKAS RD	& LL 528	Map It

[Search Next 50 Parcels](#)

The Assessor's Office makes every effort to produce the most accurate information possible. No warranties, expressed or implied, are provided for the data herein, its use or interpretation. The assessment information is from the last certified taxroll. All data is subject to change before the next certified taxroll. Website Updated: May 13, 2016

[Return to Main Search](#)

[Brooks Home](#)

Brooks County

Board of Tax Assessors

Search produced the following results. Select one by clicking the parcel number link in the first column below.

Parcel Number	Owner Name	Address	Legal Information	GIS Map
PB-2757	ARNOLD LATRALA	TALLOKAS RD	MHP: Lot:	Map Not Available
PB-2969	BRANCO FARMS, LLC	1592 TALLOKAS RD	MHP: Lot:	Map Not Available
PB-1100	KIMBLE HARRIS	2641 TALLOKAS RD	MHP: Lot:	Map Not Available
PB-73	BEBEE ALBERT	6662 TALLOKAS RD	MHP: Lot:	Map Not Available
PB-5460	WELDON KIRK	8066 TALLOKAS RD	MHP: Lot:	Map Not Available
PB-4193	SANTOS-RUIZ CLAUDIO	10271 TALLOKAS RD	MHP: Lot:	Map Not Available
PB-6947	ALCANTARA NICOLAS	10307 TALLOKAS RD	MHP: Lot:	Map Not Available
PB-2945	CASTANON ALBERTO	10543 TALLOKAS RD	MHP: Lot:	Map Not Available
PB-4747	ASHMORE JASON E & SHAYLA D	10567 TALLOKAS RD	MHP: Lot:	Map Not Available
PB-4317	BENTLEY CATHERINE	10571 TALLOKAS RD	MHP: Lot:	Map Not Available
PB-3322	BENTLEY ELISE BLANKENSHIP	10571 TALLOKAS RD	MHP: Lot:	Map Not Available
PB-3710	VENTURA GAUDENCIO	10689 TALLOKAS RD	MHP: Lot:	Map Not Available
PB-4960	CROSBY DORTHA B &	10951 TALLOKAS RD	MHP: Lot:	Map Not Available
PB-4938	HILL JANINE	10959 TALLOKAS RD	MHP: Lot:	Map Not Available
PB-1158	MOJICA GABRIEL	14125 TALLOKAS RD	MHP: Lot:	Map Not Available
PB-5348	CASTANEDA MARCO	14125 TALLOKAS RD	MHP: Lot:	Map Not Available
051 0008	BEULAH HILL CEMETERY	TALLOKAS RD	86-237(MTG BK)	Map It
053 0007	T L CROSBY FAMILY FARMS LLC	TALLOKAS RD	HART PLACE	Map It
053 0005	HARRISON JAN BAKER &	TALLOKAS RD	& LL 500	Map It
053 0004	WILLIAMS JOHNNY MITCHELL	TALLOKAS RD	& LL 501, 512, 513	Map It
052 0013	ROBINSON WAVELL & BRIAN T	TALLOKAS RD	719-127	Map It
052 0001B	BUTLER MODENE	TALLOKAS RD	& LL 499	Map It
052 0001	T L CROSBY FAMILY FARMS LLC	TALLOKAS RD	& LL 498 STONE PLACE	Map It
053 0008	NEW GROVE BAPTIST CHURCH	TALLOKAS RD	171-01/02	Map It
053 0018	HENCO INVESTMENT COMPANY LLC	TALLOKAS RD	& LL 512	Map It
030 0014B	KEEL COLON J JR &	TALLOKAS RD	& LL 486, 527, 528	Map It
051 0009A	BRANCO FARMS, LLC	TALLOKAS RD	& LL 473 SPIRES PLACE	Map It
030 0033	ROBINSON R B JR HEIRS	TALLOKAS RD	285-248 "SHIP FARM EAST"	Map It
050 00051	BRANCO FARMS, LLC	TALLOKAS RD	ALSO LL 449,474	Map It
053 00072	YORK EDDIE	TALLOKAS RD	PB 12-196 LATNER PLACE	Map It
031 00184	YARBROUGH LINDA CARLTON,	TALLOKAS RD	500-270 ISOLATED BY SPLIT PER PB 19-235	Map It
051 00041	PRICE HERBERT	TALLOKAS RD	615-297	Map It
030 0015	T L CROSBY FAMILY FARMS LLC	TALLOKAS RD	& LL 486 702-286 PARCEL 3 TR 1	Map It
051 0003B	ARGENCE CAROL	TALLOKAS RD	& 495	Map It
051 0003	PRICE NANCY	TALLOKAS RD	& LL 497 MCGIBONEY PLACE	Map It
050 0010	HUNTER CEMETERY	TALLOKAS RD	& LL 475, 476 N.D.	Map It
028 0005	ROBINSON R B JR HEIRS	TALLOKAS RD	& LL 483, 484 "SHIP FARM"	Map It
029 0001A	CROSBY H R	TALLOKAS RD	136-147 TOMMY CARTER REFERENCE	Map It
030 0014A	T L CROSBY FAMILY FARMS LLC	TALLOKAS RD	LINDA DEAN FARM	Map It
031 0013A	YARBROUGH, LINDA CARLTON TRUSTEE	TALLOKAS RD	500-270	Map It

030 0024B	ROBINSON BRIAN	TALLOKAS RD	& LL 527 PLAT ATTACHED TO DEEDS	Map It
030 0024D	ROBINSON R B, JR HEIRS	TALLOKAS RD	133-068 "GRANDDADDY'S PLACE"	Map It
031 0007	ROBINSON BRIAN	TALLOKAS RD	& LL 526	Map It
030 0026	CROSBY TIMOTHY	TALLOKAS RD	& LL 527 ROGERS PLACE	Map It
030 0031	ROBINSON WAVELL	TALLOKAS RD	590-080	Map It
028 0004B	LIPSEY J R	TALLOKAS RD	187-110	Map It
051 0003A	KIMBLE ROBERT BEFNER ETAL	TALLOKAS RD	& LL 472	Map It
031 0030C	MURRAY NICK	TALLOKAS RD	PB 14-245	Map It
031 0004	MISKELL TERESA CAMPBELL	TALLOKAS RD	& LL 527	Map It
050 0007	NEW WALTER	TALLOKAS RD	& 475 D/B/A HUNTER FARM	Map It

[Search Next 50 Parcels](#)

The Assessor's Office makes every effort to produce the most accurate information possible. No warranties, expressed or implied, are provided for the data herein, its use or interpretation. The assesment information is from the last certified taxroll. All data is subject to change before the next certified taxroll. Website Updated: May 13, 2016

[Return to Main Search](#)

[Brooks Home](#)

Brooks County

Board of Tax Assessors

Search produced the following results. Select one by clicking the parcel number link in the first column below.

Parcel Number	Owner Name	Address	Legal Information	GIS Map
PB-2670	CHAPPELL EDDIE & TONICA	GREENVILLE HWY	MHP: Lot:	Map Not Available
PB-2758	BLAIR BRENDA	GREENVILLE HWY	MHP: Lot:	Map Not Available
PB-2251	GARVITTE WANDA	GREENVILLE HWY	MHP: Lot:	Map Not Available
PB-3087	WARNER JAMES	GREENVILLE HWY	MHP: Lot:	Map Not Available
PB-510	WARNER JAMES	GREENVILLE HWY	MHP: Lot:	Map Not Available
PB-5175	KING PAULINE	5724 GREENVILLE HWY	MHP: Lot:	Map Not Available
PB-406	UNDERWOOD PATRICIA ANN	5728 GREENVILLE HWY	MHP: Lot:	Map Not Available
PB-1244	CONE GLORIA A &	5784 GREENVILLE HWY	MHP: Lot:	Map Not Available
PB-929	CONE GLORIA	5800 GREENVILLE HWY	MHP: Lot:	Map Not Available
PB-3317	SAPP JIMMY	5970 GREENVILLE HWY	MHP: Lot:	Map Not Available
PB-1196	CONE ROY H & KATHERINE	6460 GREENVILLE HWY	MHP: Lot:	Map Not Available
PB-4344	HUFFMASTER DONALD & JUDY R	8614 GREENVILLE HWY	MHP: Lot:	Map Not Available
PB-6449	SIMMONS WILLIAM D & HELEN	8870 GREENVILLE HWY	MHP: Lot:	Map Not Available
PB-6075	LAMBERT TIMOTHY	9065 GREENVILLE HWY	MHP: Lot:	Map Not Available
PB-394	GRAY ALFRED	9069 GREENVILLE HWY	MHP: Lot:	Map Not Available
075 0019B	MICKENS PRESTON JR	GREENVILLE HWY	265-340	Map It
075 0019	MICKENS FRANCES	GREENVILLE HWY	123-639	Map It
074 0036	BANK OF THE OZARKS	GREENVILLE HWY	676-337	Map It
075 0020	HOLLIS JAY VINCENT	GREENVILLE HWY	389-198	Map It
068 0008	JOHNSON JANET THERESA ETAL	GREENVILLE HWY	73-235	Map It
067 0017	BURTON MARJORIE	GREENVILLE HWY	PB 8-25	Map It
069 00014	SLAYTON MAGDALENE C &	GREENVILLE HWY	PB 15-34	Map It
068 00041	CONE GLORIA	GREENVILLE HWY	357-336	Map It
067 00171	ANDERSON CATHERINE	GREENVILLE HWY	618-105	Map It
067 00183	BURTON MARJORIE L &	GREENVILLE HWY	ISOLATED AFTER SPLIT DB 625-321	Map It
075 0015	JEFFERSON GRACIE W &	GREENVILLE HWY	636-234	Map It
Q8 0005	VETERANS OF FOREIGN WARS POST 5659 &	GREENVILLE HWY	636-144	Map It
067 0018	DODD LAND, LLC	GREENVILLE HWY	PB 21-9A	Map It
068 0002	DODD LAND, LLC	GREENVILLE HWY	& LL 42 656-045	Map It
075 0021	MICKENS FRANCES & PRESTON	GREENVILLE HWY	207-306	Map It
074 0037	JOHNSON JEREMY T &	GREENVILLE HWY	490-299	Map It
069 0005	INGRAM DEBRA KAY WORTMAN	GREENVILLE HWY	& LL 96 "TAYLOR STANLEY"	Map It
069 0004	J & M SMITH OF LAKELAND LTD PARTNERSHIP	GREENVILLE HWY	& LL 89, 96, 97	Map It
068 0010	COBB VIRGINIA D & GEORGE	GREENVILLE HWY	PB 18-90	Map It
075 0033	GAY LEFELS WASDEN	GREENVILLE HWY	464-135 COUNTY PORTION	Map It
068 0003	GARVITTE RUTHIE E HEIRS	GREENVILLE HWY	& LL 42	Map It
068 0009	J & M SMITH OF LAKELAND LTD PARTNERSHIP	GREENVILLE HWY	PB 8-187	Map It
075 0033A	GAY LEFELS WASDEN	GREENVILLE HWY	105-301 CITY PORTION	Map It
068 00191	WORTMAN HENRY CLINTON JR	GREENVILLE HWY	PB 18-146 TR 1 & 2	Map It
067 00182	BURTON MARJORIE L &	GREENVILLE HWY	ISOLATED AFTER SPLIT PB 19-166	Map It

067 0009	WORTMAN HENRY C & SANDRA J	GREENVILLE HWY	626-253	Map It
044 00051	LANE WAYNE	GREENVILLE HWY	& LL 95, 136 430-050 PB 17-193	Map It
043 0002	SUMMERHILL METHODIST CHURCH	GREENVILLE HWY		Map It
044 0004	SCHMOE C W & NANCY Y	1548 GREENVILLE HWY	& LL 136 PB 15-51	Map It
043 0001	SCHMOE FAMILY LIMITED PARTNERSHIP	1548 GREENVILLE HWY	& LL 140, 141, 142, 143	Map It
044 0005A	CONNELL JULIE	1825 GREENVILLE HWY	ALSO LL 95,136 PB 15-214 DB 333-076	Map It
069 0007	BLAIR W O II	2141 GREENVILLE HWY	& LL 96, 97	Map It
074 0029	REAVES HENRY L III	2984 GREENVILLE HWY		Map It
069 00015	COFFEE JERRY	3580 GREENVILLE HWY	PB 16-246	Map It
069 00011	CARMICHAEL PATRICK	3601 GREENVILLE HWY	PB 15-34 TRACT I & II/ PB 16-96 TRACT I	Map It

[Search Next 50 Parcels](#)

The Assessor's Office makes every effort to produce the most accurate information possible. No warranties, expressed or implied, are provided for the data herein, its use or interpretation. The assesment information is from the last certified taxroll. All data is subject to change before the next certified taxroll. Website Updated: March 1, 2013

[Return to Main Search](#)

[Brooks Home](#)

Brooks County

Board of Tax Assessors

Search produced the following results. Select one by clicking the parcel number link in the first column below.

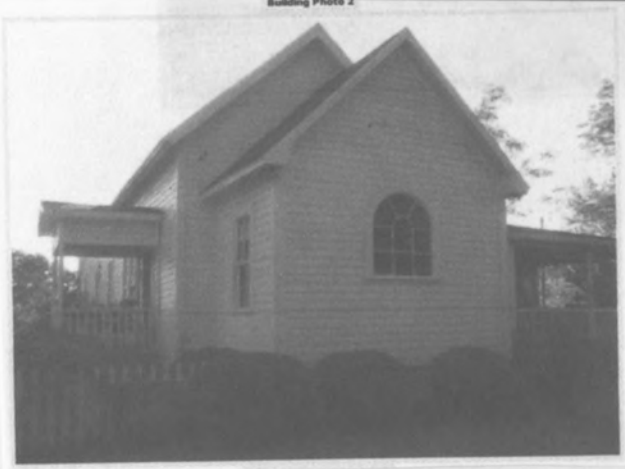
Parcel Number	Owner Name	Address	Legal Information	GIS Map
PB-1415	STRICKLAND HARVEY	MADISON HWY	MHP: Lot:	Map Not Available
PB-4566	FOSTER FRED & GLORIA	1964 MADISON HWY	MHP: Lot:	Map Not Available
PB-6160	BROWN HELEN	2213 MADISON HWY	MHP: Lot:	Map Not Available
PB-3523	BROWN ARTHUR & HELEN	2217 MADISON HWY	MHP: Lot:	Map Not Available
PB-3849	STOREY ELEEKIT DURAN JR &	2349 MADISON HWY	MHP: Lot:	Map Not Available
PB-4905	KERR TYE WAYNE	7585 MADISON HWY	MHP: Lot:	Map Not Available
PB-4197	EXUM JASON	8212 MADISON HWY	MHP: Lot:	Map Not Available
PB-2364	WORTMAN SANDRA	8312 MADISON HWY	MHP: Lot:	Map Not Available
PB-3376	JC & GG ENTERPRISES LLC	9683 MADISON HWY	MHP: Lot:	Map Not Available
PB-4745	WISE MORRIS & JUNE	9880 MADISON HWY	MHP: Lot:	Map Not Available
BN2 0010	COOPER WALLACE TRUMAN	MADISON HWY	158-286	Map It
104 00032	INGRAM ERIC J ETAL	MADISON HWY	TRACT 1 PB 19-230	Map It
096 00131	SEWELL JOHN T JR &	MADISON HWY	& LL 346 PORTION OF PB 18-177	Map It
097 0010	COWART & SON DEVELOPMENT CO, INC	MADISON HWY	PB 6-199	Map It
096 0016	BROOKS COUNTY	MADISON HWY	RECYCLE CENTER & DIRT PIT	Map It
096 0013	SEWELL JOHN T JR &	MADISON HWY	& LL 346 PB 18-177 TR 1	Map It
103 0009C	FERNSIDE LLC	MADISON HWY	PB 20-143 & 20-144 FERNSIDE LAKE	Map It
097 0011A	DREW CRAIG	MADISON HWY	& LL 37 PB 15-138 L&E PB 19-61	Map It
Q9 0001D	SPRING CREEK QUITMAN LP	MADISON HWY	PB 20-134 PB 12-203	Map It
096 00055	DUKES MICHAEL	MADISON HWY	486-278 PB 19-141 (PORTION OF TR 3)	Map It
103 0009B	HIERS DONALD VANCE SR	MADISON HWY	& LL 105 PB 20-141	Map It
096 0002	HORTON JOHN R & BETTY K	MADISON HWY	254-232	Map It
096 00052	BARBER JACQUELINE A & ALLEN	MADISON HWY	533-097 PB 19-141	Map It
104 0005B	SMART LULA &	MADISON HWY	PB 19-116	Map It
Q9 0001	SCARBORO JOHN	MADISON HWY	565-251	Map It
075 0054	BROOKS COUNTY DEVELOPMENT AUTH	MADISON HWY	& 348 PB 18-99 TR 1-2	Map It
096 0001F2	BROOKS COUNTY & CITY OF QUITMAN	MADISON HWY	PINE HEIGHTS S/D LOT 2 PB 9-52	Map It
096 0001E	HORTON JOHN R & BETTY K	MADISON HWY	304-007	Map It
096 0001B	BROOKS COUNTY	MADISON HWY	& LL 345 WEST EXT OF LANDFILL	Map It
Q9 0001C	BROOK FOREST APARTMENTS, LTD	MADISON HWY	SE SECT 129-416	Map It
Q8 0007	CRUSADERS FOR CHRIST CHURCH, INC	MADISON HWY	230-067	Map It
Q8 0004	YOUNG J E JR ESTATE	MADISON HWY	191-603 FAIRGROUNDS	Map It
128 0029B	SUBLETT FAMILY LANDS LLC	MADISON HWY	652-124	Map It
129 0011	SUBLETT FAMILY LANDS LLC	MADISON HWY	PB 18-165 & PB 11-86	Map It
130 0001	RIVER BEND PLANTATION, INC	MADISON HWY	& LL 170 PB 15-13	Map It
104 00053	COWART J C ESTATE &	MADISON HWY	PB 19-130 LOT 5	Map It
104 00054	BASS DEBBIE	MADISON HWY	PB 21-62B	Map It
104 00055	MORRISON KENTON A JR	MADISON HWY	PB 19-130 LOT 3 & EXHIBIT B IN DB 673-294	Map It
129 0007B	SHELTON WILLIE MACK, MARY	MADISON HWY	173-67	Map It
096 0003	CITY OF QUITMAN	MADISON HWY		Map It
103 0004	LAMB NANCY R ETAL	MADISON HWY	369-399/304	Map It
103 0003A	HALL JEAN	MADISON HWY	173-107	Map It
	SOUTH BROOKS VOLUNTEER FIRE			



Angus Morrison built this house in 1856.....874 Morrison Rd
The front room of this house was a part of the first Morrison dwelling on this site (date unknown). It has remained in the Morrison family for over 150 years.



Building Photo 1



Washnock.....built in 1800's.....12433 Moultrie Hwy
The census from 1850 shows the DeVane family owns this property, however, at this time the exact date of this dwelling is unknown.



12847 Moultrie Highway.....circa 1870

The original part of this house was built c. 1870 by the Griffin family. Over the years it has had several owners each of whom renovated it. The Franklin Sapp family and the Spencer family all have made improvements while keeping the integrity of the old house.



Morton House

Circa 1850 , James Oliver Morton built this large two story house , located about 2 miles south of Quitman off the Old Madison Hwy. The house is L shaped with fluted Doric columns supporting the roof which overhangs a wide veranda on the first floor and a balcony on the second floor. The house is made of local virgin heart pine and features a floating spiral stairway with spooled mahogany bannister posts. Judge Morton was active in the early founding of Brooks County, serving as Justice of the Inferior Court , Chr. of the County Commission, and one of the founders of the Bank of Quitman.



Built by the Late J. O. Morton, This Two-Story Colonial House Is Off the Old Madison Road

QUITMAN — Between 1845 and 1850, the late J. O. Morton built a tall, two-story Colonial house off the Old Madison Road near Quitman.

In the early 1880's, his son-in-law, Henry G. Turner, built a tall, three-story Victorian house nearby.

Both of the old, historical houses are still standing today. The fate of the first one is uncertain, but the latter is soon destined for complete restoration in all its former grandeur.

Distinctive features of the old Morton house include stately columns, a "floating" or curved stairway with spool bannisters, and a balcony over the front porch. According to the area's history, it was maintained in excellent style and condition for a very long time.

Typical of its day, the large kitchen was built separately from the main part of the house and connected to it by a covered breezeway. A wash stand complete with cedar bucket stood on it near the family well.

The master bedroom boasted a bay window, and the "middle" room next to it was the children's or grandchildren's room.

Magnolia trees, almost by the dozen, still stand in the front yard, and a great-grand-

son, Archer Turner of Quitman, remembers how he had to rake up all their leaves on the ground before he could go fishing on Saturdays.

This property is now owned by a lumber company, and the fate of the house is uncertain. But in spite of its obvious deterioration, it stands regally reminiscent of its graceful past.

Morton, originally from Screven County, came to Brooks County with his wife and, reportedly, five or six slaves. He acquired about 4,000 acres of land and with his slave help, cleared the land for his farm and home, cut the timber and split rails for the fence.

Later he became one of the founders and presidents of the Bank of Quitman, and was one of the Justices of the first Inferior Court in the county.

His only son, Simeon L. Morton, served in the Civil War for four years but was killed in battle just two days before the war ended.

The Morton's daughter, Lavinia, married Henry Turner, a native of North Carolina, after he returned to his adopted home in Quitman following the war. At one time a school teacher, Turner became a lawyer, a member of the Georgia Legislature and was elected to the United States Congress. Turner County in Georgia was named for him in 1905.

Morton Mansion Still Brooks Landmark



J. O. Morton House Was Built In The 1850's

By Archer Turner

The J.O. Morton house, built in the 1850's by my great grandfather is located on the old Madison road three miles south of Quitman. It is a unique style colonial house built in an L shape without the typical large entrance hall. The ground floor contained a parlor accessible only from the front porch (used only for high company, weddings and funerals), entrance hall, dining room, sitting room, master bedroom and small children's room. The entrance hall led through the back porch and contained a floating spiral stairway leading to the second floor. The kitchen and back store room were separate from the main building and con-

nected by the back porch.

The upstairs (second floor) contained 4 bedrooms, two of which were accessible only by going out and around by way of a second story balcony.

The only heat was fireplaces, the ceilings were high and the walls papered. In places the paper was loose and let the air breeze through especially in the winter time.

Sanitary facilities consisted of a wash bench overhanging the back yard, out door privies, zinc tubs with kettle heated water. A well accessible from the back porch with a windless to draw up the bucket furnished the water supply.

My father moved us kids out there in 1913 horse and buggy

days. It was a wonderful place in the summertime with fishing, swimming and camping down on the river (until we got big enough to do farm chores). In winter the house was like Siberia.

My family sold the place to the J.N. Bray Co. in 1922. For years thereafter it was occupied by farm tenants and came into a state of delapidation and was about to give up the ghost when the Bray Co. decided to restore it. It is now undergoing extensive repairs and restoration and I am sure that Billy Peebles and his wife who are living there and supervising the work will transform this fine old house into what it formerly was with

its grand two story doric columns sitting at the head of a beautiful lane.

WEIGHT-LOSS TIP

Set short-term goals for losing weight, and you may find it goes a little better. Your final goal, say Extension home economists, may be so far in the future that you become discouraged. Set short-term realistic goals—five or ten pounds a time. Meeting one goal give you a boost and help stick with your diet until reach the next milestone.



In the 9th century, the city of Persia was known as the illustrious Jam.



**Mill Rock 1908-1910..... 8355 Old Madison Rd.
Spain - Edelman - Horton**

Built by Guy Spain, son of an early settler, this Italianate house has many interesting features. It was under construction for several years since much of the materials were imported. The down stairs floors as well as seven fireplace mantles feature mahogany wood. One room features a large turquoise marble fireplace. Both porches are floored with tiny Italian marble tiles. The house is located south of Quitman on the Old Madison Road.

Kingfisher
Plantation



ACCEPTED DESIGN FOR COLONIAL RESIDENCE FOR
MR. EDWARD YOUNG QUITMAN, GA.
W. B. CAMP, Architect
JACKSONVILLE, FLA.

KINGFISHER PLANTATION



Kingfisher – Young – Bradshaw – Fiske – McAllister.....circa 1910

James Everette Young owned a large acreage of land in what became Brooks County before the county was created. Part of the land on which to build the new county seat was purchased from J. E. Young. Edwin Jelks Young built this Greek Revival house around 1910. The property was sold after the death of J. E. Young II in 1950. Over the years it has had several owners. The present owners, James and Holly McAllister, have done much repair, restoring the house to its former elegance.



UDC introduces new book at tea

The Quitman Chapter No. 112, United Daughters of the Confederacy and Mr. and Mrs. Terry Bradshaw hosted a tea and reception November 14 to introduce the new book "Historic Treasures of Brooks County" Volume II. This lovely affair was held at Kingfisher Plantation, the former James Everett Young home. Mr. and Mrs. Bradshaw



Mr. and Mrs. Terry Bradshaw who won this magnificent house graciously opened it for the UDC tea.

Mr. and Mrs. Bradshaw are restoring the house and the work is almost completed. It is a handsome place in a beautiful setting. The afternoon of the tea, ferns, potted plants and

arrangements of flowers were used throughout the house and flags were prominently displayed.

Scores of guests called during the hours of 3 to 5 p.m. Those who had bought books during the pre-publication promotion and those who were interested in buying that afternoon were invited, as well as those who had written stories for the book.

Among the guests from out of town were Ms. Bell Young Valdosta, granddaughter of James Everett Young, and Mrs. Ida Jane Lumpkin Ferrell, great granddaughter. Ms. Young had collaborated with Mrs. Bradshaw in writing the story of Kingfisher

Also at the party having written the story for the book was Katherine Oglesby Mixson, of Valdosta who wrote about the James Wood Oglesby home, a palatial landmark in the city for many years.

Also from out of town were Mrs. Ida Long White and Mrs. Tracy Long Chandler from Atlanta, who with their brother the late Mr. Harrell W. Long wrote about the William Berry Long home where they grew up.

Coming up from Tallahassee



Kingfisher Plantation home

for the tea was Mrs. Colin English, Jr. The Colin English Trust with Mr. English, Jr. as Trustee, now owns the Brice house (c.1840), the story of which is in the book.

Another guest of special interest was Mrs. Elizabeth McRee Mencaccy of Los Angeles whose grandmother Rachel Lavinia Spain grew up at Forest Hill and married George McRee of Kinderlou, Lowndes County. Forest Hill is also featured in the book. Mrs. Mencaccy was in Brooks County as a guest of Mrs.

Leland Hatcher of Dixie. Many others, the number conservatively estimated at 200, enjoyed the tea and the hospitality of the UDC and Mr. and Mrs. Bradshaw.

The tea table, covered in white linen and lace, was handsome with gleaming silver and sparkling crystal. White candles burned in silver candelabra. Punch and coffee with an array of party dainties were served to the guests.

The Quitman Chapter is especially indebted to Mrs. Judy Bland who so ably directed the

members in planning the tea and in coordinating their efforts.

Members of the chapter who served on the Historical Committee in compiling the book were Nancy Young Schmoie, Doris Ferrell Bowen, Nelle Radford Jones, Ruth Treadaway Ramsey, Jane Wood Comer and Permelia Olliff Hope. Artist for the book was Nan Piland.

Copies of the book, both hard back and paperback, are now available.

KINGFISHER PLANTATION

by
Mrs. Terry Bradshaw and Bell Young



James Everett Young and Lavinia Jones Young were natives of Bulloch County. They were prominent pioneer citizens of what is now presently Brooks County. They came here in the mid 1840s. They acquired approximately 2,000 acres, called Kingfisher Plantation. Initially, cotton was planted on the plantation. Cane replaced cotton. Later a cane syrup mill was built which employed thirteen men and women. Melons, grain crops, tobacco,

and hogs were also produced on the plantation.

Part of the land for the city of Quitman was purchased from James Everett Young. The deed from Mr. Young was for 283.1 acres. It was dated February 19, 1859. The old Bank of Quitman is on the corner of what was one of Mr. Young's town blocks. Young's Cotton Warehouse occupied the rest of this block.

Edwin Jelks Young, the son of James

Everett Young, was married to Ida Jane Arrington, of Brooks County. Mr. Young was noted for giving his close personal supervision to every detail in all that he did. Thus he engaged W. B. Camp, an architect from Jacksonville, Florida, to design his residence. This magnificent two-story Greek Revival house with four Corinthian columns was built around 1910. It was built next to the site of Edwin Jelks' father's first house. Upon completion of this house, the original home was dismantled. The lumber was used to build additional out-buildings. Mr. Young's home was a model of comfort and elegance. Unique details throughout the house include twelve foot ceilings, hardwood and pine floors, transoms above the doors, and original beveled glass in the side windows and pediments of the front and back doors. Even though the home was beyond the city limits, the Youngs enjoyed the conveniences of electric lights and city water. Ice was delivered from town. Even the pressing club boy came on his bicycle.

Four generations of Youngs lived at Kingfisher Plantation until the death of James Everett Young II, in 1950. At that time the plantation was sold and has passed through several owners. Members of the original Young family as of 1990 are Bell Young, Valdosta, the granddaughter of James Everett Young, and James Everett Young III, of Quitman, the great grandson. Other family members include Mrs. Converse Ferrell, also of Valdosta, great-granddaughter, and her children and her grandchildren. The children of Mrs. Ferrell include: Jane Ferrell Burgsteiner, of Valdosta, with her two children, great, great, great grandchildren of James Everett Young; Deborah Ferrell Christy of Jack-



sonville, Florida, with her two children, also great, great, great grandchildren, George William Ferrell, of Atlanta; and Harriett Converse Smith of Washington, D. C.

The present handsome white-columned home on Kingfisher Plantation is nestled among majestic live oak trees and grand century old cedars. In November of 1988, Terry and Joanie Bradshaw purchased Kingfisher Plantation, and are its current owners.

Bibliography

- Huxford, Folks, *The History of Brooks County Georgia*; 1949, The McGregor Company, Athens, Georgia.
- Knight, Lician L., *Encyclopedia of Georgia Biography*; 1931, A.H. Cawston, Atlanta, Georgia, pages 576-581.
- A special thanks to Mrs. Converse Ferrell for supplying newspaper clippings and photographs of the Young family.
- A special thanks to James Everett Young III for sharing his memories.



THE BANK OF QUITMAN

ESTABLISHED 1888

QUITMAN, GEORGIA

Assets of the Estate of
E. J. Young, August 21, 1953.

Cash on deposit in the Bank of Quitman.	\$20,145.27
\$4,000. Fulton County School Dist. $2\frac{1}{2}\%$ Bonds	4,000.00
\$4,000. U. S. Treasury $2\frac{1}{2}\%$ Bonds., 1970-65	4,000.00
68- Shares Bank of Quitman stock, Estimated value	14,620.00
1- Lot on S. Lee Street with Ilex Theater Building & Shop., estimated value	19,000.00
1- Lot on S. Lee St., with 2 story Brick store, occupied by Harley Mitchell Hdw. So. Est. val.	<u>13,750.00</u>
Total	75,515.27.

	<i>Mama's</i>	
Cash in Bank of Quitman	187.15	
33 shrs. Coca-Cola Co-	3,700.00	
12 Shrs Wesson Oil, about	900.00	



B8139 Threshing Brooks Co. Peanuts, Quitman, Ga.

POST
Threshing Peanuts
on our plantation
TOPEKA, KANS.



B8138 Hog Raising, Brooks Co., Quitman, Ga.

Picture of hogs
on our place
~~King~~
Kingfisher
M. L. ZERCHER - TOPEKA, KANS.



Tree - planted by granddaddy
before war - this place now
called - On Kingfisher Plantation
That Was Between the States

BANK OF QUITMAN
SALE OF PERSONAL PROPERTY
YOUNG PLANTATION.

Date:	Sold To:	Item:	Amount:
12/27/50	J.R. Pilcher	119 Bbls. Syrup, \$3422.30 Less exch. 4.27	3418.03
1/3/51	Brooks Cty, Farmers Coop.	48 head cattle.	5796.71
1/4/51	Brooks County Pack.Co.	55 head hogs.	2132.14
1/5/51	West End Milling Co.	6900# Corn @ 1.45 per bushel.	124.99
1/6/51	West End Milling Co.	7010# Corn @ 1.50 per bushel	132.10
		7270# Corn @ 1.50 per bushel	136.20
1/9/51	H.C.Wms, for Roddenberry	160 & 1/6 Gal.#2 Syrup @ .65	65.10
1/9/51	West End Milling Co.	7090# Corn @ 1.50 per bushel	132.90
		7100# Corn @ 1.50 per bushel	133.05
1/9/51	West End Milling Co.	6990# Corn @ 1.50 per bushel	130.95
1/10/51	Brooks County Pkg. Co.	14 #3 hogs - 2090# @ 17 1/2	360.52
1/10/51	Garrett & Jordan	2 mules	160.00
		1 Distributor	20.00
		1 Drill	25.00
		2 plow stocks	5.00
		2 Hames & traces	6.00
		2 Bridles	5.00
		1 lot scrapes & scooters	4.00
			225.00
1/10/51	Cash	1 pig	15.00
1/11/51	S. H. Pedrick	1 J.Deere "B" tractor, cultivators and distributors	800.00
		19 used scrapes	14.00
			814.00
1/11/51	West End Milling Co.	6850# Corn @ 1.50 per bushel	128.40
		6420# Corn @ 1.50 per bushel	120.30
		7230# Corn @ 1.50 per bushel	135.45
			384.15
1/15/51	West End Milling Co.	5710# Corn @ 1.50 per bushel	106.95
		7680# Corn @ 1.50 per bushel	144.00
		14040# Corn @ 1.50 per bushel	263.25
		7460 # Corn @ 1.50 per bushel	139.80
		6980# Corn @ 1.80 per bushel	104.64
		12300# Corn @ 1.20 per bushel	184.44
			943.08
1/16/51	G. H. Blair	62 head feeder shoats & pigs @ 15 1/2 lb.	705.00
1/17/51	W. E. Garrett	12 small pigs	\$ 40.00
	Cash	2 small pigs	7.00
			47.00
1/20/51	Dr. A. F. Saunders	1 Combine, \$675 less .80 exchange	674.20
1/20/51	J. P. Duncan	3 wagons	\$ 93.00
		1 ensilage cutter	100.00
		1 harrow	60.00
			253.00
1/20/51	H. W. Stubbs	1 wagon	40.00
		1 Cub Tractor	455.00
		1 lot plow points	10.00
			505.00
1/24/51	W. S. McMichael	# 126 2-horse plow	3.00
		# 128 1 plow stock	2.00
		# 130 1 cultivator	20.00
		# 118 1 mid-buster	2.50
			27.50
1/24/51	G. W. Johnson	2 old syrup kettles	10.00
1/24/51	H. P. Renfroe	19,280# scrap iron @ 1.00 per CWT	192.80
1/20/51	Cash	4 hogs	35.00
	Fernside Farms	1 mule	80.00
	H. H. Elsberry	4 sows, 2 shoats, 16 small pigs	\$ 235.00
1/20/51	Cash	Proceeds from sale at plantation 1/19/51	350.00
		\$ 6713.30 less \$4.15 exchange	6709.15
12/20/50	Swifts, Moultrie	24 hogs	1023.00
12/21/50	Swifts, Moultrie	25 hogs, \$1006.17 less 1.25 exchange	1004.92
12/26/50	C. L. Duncan	Part payment for tobacco allotment- 1951	75.00
4/28/51	J. P. Bass	1 Old wagon	30.00
4/28/51	J. T. Fender	Oil Boilers, scrap iron & tin, old engines, pipes, fittings, etc., for cane mill & cold storage.	445.00
5/1/51	E. L Burnette	1 set platform scales	27.50
5/10/51	Thompson Mchry. Co.	Full payment for small cane mill	500.00
2/5/51	Sou. Fertilizer Co.	To correct error in their invoice for fert.	1.00
5/12/51	J. H. Ragan	Seed cane	20.00
5/31/51	Thompson Mchry Co., T'ville	Large cane mill, \$500.00 less exch. .63	499.37
			\$ 28,043.36

DISBURSEMENTS AT YOUNG PLANTATION

Date:	To:	For:	Amount:
12/20/50	J. F. Welch	Repairs to tractor for J. E. Young	24.20
12/20/50	Tax Collector, Brooks Cty.	State & County taxes on plantation and equipment	767.10
12/29/50	The Bank of Quitman	Cover overdraft, personal acct. J. E. Young	1697.40
12/30/50	G. W. Johnson	Payroll at farm, week ending 12/30/50	26.25
12/30/50	The Bank of Quitman	Note #40571, J.E. Young-\$1000.00, Past due interest <u>3.50</u>	1003.50
12/30/50	Denmark Groover, Agt.	Ins. Prem., Sou. Mutual Policy #111953 on residence	20.00
1/6/51	The Bank of Quitman	Note #40811, J.E. Young 11/9 to 1/6	2500.00
1/6/51	G. W. Johnson	Payroll at farm, week ending 1/6/51	90.25
1/6/51	Major Johnson	Help in rounding up cattle	6.00
1/11/51	G. W. Johnson	Payroll at farm, week ending 1/13/51	81.25
1/13/51	R. G. Wilson	Hauling cattle to market	10.00
1/16/51	R. C. Holzendorff	Trip to Madison for Mr. Wood to conduct sale	5.00
1/9/51	Thompson Machinery Co.	Parts, labor, & tax in repairing cane cutter for J. E. Young, per invoice 12/4/50	317.16
1/9/51	Randall Fuel Co.	1 car Stoker coal, L&N-52317, Inv. #A3405	363.75
1/9/51	Randall Fuel Co.	1 car Stoker coal, L&N-58966, Inv. #A4383	378.00
1/20/51	G. W. Johnson	Payroll at farm, week ending 1/20/51	81.00
1/20/51	J. F. Welch	Full payment, repairing tractors	74.45
1/19/51	Ted Hughes	Conducting auction sale at plantation, 4% of \$8121.55	324.86
1/24/51	G. W. Johnson	2 days payroll \$24.00, lock on tobacco barn <u>.75</u>	24.75
1/23/51	Valdosta Times	Advertising sale at plantation, 3 days Jan. 16, 17, & 18	31.50
1/31/51	The Bank of Quitman	5 telephone calls <u>2.68</u> Water & lights, cane mill, 10.83 (Dec.) Mrs. R. Young for labor <u>5.00</u> City Taxes, 4th Q., 138 acres land <u>25.00</u>	43.51
1/31/51	Swann's Repair Shop	Payment in full, acct. J. E. Young	16.50
1/31/51	Hugh's Service Station	Payment in full, acct. J. E. Young	2.00
1/31/51	Hancock Lumber Co.	Payment in full, acct. J. E. Young	20.88
1/23/51	Times Enterprise Co.	Adv. sale at plantation, Jan. 16, 17, & 18	34.65
1/31/51	R. J. Mitchell Gro. Co.	Payment in full, acct. J. E. Young	48.76
2/2/51	F. M. Renfroe	Cruising Timber	150.00
1/31/51	Taylor & Co.	Payment in full, acct. J. E. Young	11.46
1/31/51	Young-Jones Hdwe. Co.	Payment acct. J. E. Young for 1946 - 47	163.17
1/31/51	Young-Jones Hdwe. Co.	Payment acct. J. E. Young 1948-49-50	428.65
1/31/51	Quitman Liq. Fert. Co.	Payment in full, acct. J. E. Young	53.91
1/31/51	Young-Jones Hdwe. Co.	Payment a/c J.E. Young, 1950, tractor parts	127.20
1/31/51	Young-Jones Hdwe. Co.	Payment invoices dated 1/16/51, \$68.20, 24.80 & 117.50	210.50
1/31/51	West End Milling Co.	Payment in full, acct. J. E. Young	230.87
1/31/51	Quitman Elec. Co.	Payment in full, acct. J. E. Young	238.83
1/31/51	Sinclair Ref. Co.	Payment in full, acct. J. E. Young \$67.96 less credit 1/20/51 <u>36.70</u>	31.26
2/1/51	Quitman Free Press	Advertising sale \$6.40, 200 circulars \$1.75	8.15
2/1/51	Sou. Fert. & Chem. Co.	Payment in full, acct. J. E. Young	2000.00
2/1/51	Schroer Implement Co.	Payment in full, acct. J. E. Young	267.04
1/31/51	Harrison Oil Co.	Payment in full, acct. J. E. Young	235.65
1/31/51	Farm Utility Exchange	Payment in full, acct. J. E. Young	139.11
1/31/51	Ballard & Ballard, T'ville	Payment in full, acct. J. E. Young	196.00
2/2/51	J. W. Rieley	Gas used in arranging sale at plantation	22.65
1/31/51	E.J. Williamson Elec. Co.	Payment in full, acct. J. E. Young	23.95
2/5/51	Dixie Weld, & Mch. Shop	Payment in full, acct. J. E. Young	48.00
1/31/51	Hope Hines Co.	Payment in full, acct. J. E. Young	1.20
1/31/51	Gill Equip. Co., Atlanta	Payment in full, acct. J. E. Young Invoices \$65.88, 94.18 & 86.27	246.33
1/31/51	The Texas Compano	Payment in full, acct. J. E. Young	144.01
2/8/51	G. W. Johnson	Payment for 32 1/2 days labor at farm \$325.00 Use of truck <u>32.50</u>	357.50
1/29/51	Fed. Mut. Imp. & Hdwe. Ins.	Premium, Ins. Pol. \$799664, dwelling on plantation	105.00
1/31/51	Hillcrest Seed Co.	Payment in full, acct. J. E. Young	54.15
2/7/51	Moultrie Observer	Advertising sale, Jan. 16, 17, & 18	21.00
2/7/51	Radio Station WGOV	9 announcements of sale at plantation	31.50
1/31/51	Boston Implement Co.	Payment in full, acct. J. E. Young	43.46
2/14/51	Mrs. Bell Y. Fender	1/4 of distribution of \$8000 from net sales	2000.00
2/14/51	Mrs. India Y. Stubbs	1/4 of distribution of \$8000 from net sales	2000.00
2/17/51	E. Chaney	Self & 3 carpenters, week ending 2/17/51 labor on Young dwelling	236.00
2/19/51	Wallace Barker	Labor, helping Mr. G. W. Johnson	5.00

SOLD TO
SOUTH GA. GRO. C
BY MR. EVERETT YOUNG
32,000 POUNDS
SIX LOADS
COUNTRY CURED
HICKORY SMOKED
BROOKS
COUNTY
MEATS

1917



Return to Free Press

Anteann. Pa

Everett - Jr - II

Picture of brother - meat
from Young Plantation -
Brother is a brother of
sister Bell and India -
brother was named for my

grand father Young -

Do not err destroy this picture
The plantation was named
(King fish. Plantation)



your great, great
grandfather with
his hams at the
Brooks County Fair
E. J. Young (with cane)



**802 Old Madison Highway.....1894
Turner - Knight**

This three story Victorian mansion was built by Congressman Henry Gray Turner. Heart pine woodwork is evident throughout the house. After the death of the Turner family the house stood empty for many years. In 1971 the Roland Knights bought the house and began a total restoration. Today it is uninhabited but maintained.



OLD KNIGHT HOUSE

Every house has a story. If the walls and floors could talk, what would they say? They would tell stories of joy and sadness, of hope and despair. Then you would hear of struggles and endurance. The Knights had a house that endured and lasted for generations.

This house sits on an 80 acre farm purchased by Z. T. Knight in 1885. It is in southern Brooks County in the Nankin community and is located at the corner of Dewey Road and Garrett Road. The exact time of the building of this house is not known(to me) . Z. T. Knight and Sarah Elizabeth Wade were married in 1878 and both lived in this house until they died.

The house was built in three sections. The oldest and first was built with rough lumber and the boards were very wide. The kitchen and dining room were attached to the back with an outside entrance from the porch. The front two rooms and porch were built last. There were seven rooms and two porches. The front steps were very high, having about ten steps. The front porch was high enough for the children to play under it.

Only Knights and descendants have lived in the Knight House. Z. T and Sarah Elizabeth lived all their married life on this property and raised seven sons and two daughters. After the death of Sarah Elizabeth in 1939, Douglas Knight (son of Z.T.) continued to live there. He was married to Tennys Ingram. Their four children, Zack, Charlotte, Wade, and June were born and raised in this house. Douglas and Tennys lived the rest of their married life in the Old Knight House. In 1985, June and Phil Furney and their son, Matthew, lived one year in the house. June is the daughter of Charlotte Knight Collins and the great grand daughter of Z. T.

Knight. They were the last family to live there.

Ownership is as follows. As stated above this property was purchased by Z.T Knight in 1885. (Charlotte Knight Collins has this deed.) At his death, ownership was passed to his wife, Elizabeth. At her death Doris Knight was owner who then deeded it to Douglas Knight. At the death of Douglas, his four children inherited this property with the house. Donna Collins Whitney and her husband Stephen Whitney bought this property in 2001. Donna is the great grand daughter of Z. T. Knight and the daughter of Charlotte Knight Collins.

In 2006 Scott Gregor approached Stephen Whitney about buying the house. Scott wanted to restore an old house in this area and when he saw this house he became interested. After much persuasion, Stephen agreed to sell him five acres and the house. God is always in charge and Stephen Whitney, son-in-law of Charlotte Collins, died suddenly with a massive heart attack. Donna honored and finalized the sale of the house to Scott Gregor in 2006.

Presently Scott Gregor owns the Old Knight House and five surrounding acres. Donna Collins Whitney and her son William Whitney own the farm of seventy acres and grow pine trees.

Scott has been working on the house since he purchased it. He is doing most of the work himself. The outside is being restored to its original appearance. All of the Z.T. Knight descendants are excited about this restoration that is in progress. The family and the neighbors are pleased to see this landmark and past history remain in the Nankin community. Now, this old house will have a new beginning! There will be new floors and walls, fresh paint and modern fixtures. But most of all new friends!

Charlotte Knight Collins

12-14-2012

Our Heritage — The Valdosta Daily Times, June 30, 1972 (15-D)



The Late Henry G. Turner Built This House in 1880's; It's Destined for Complete Restoration

The Victorian house, with gables and a tall ironed-glass fanlight around the front door, was designed by a New York architect. It was well-built from timber cut on the place, and the large three-story house was equipped with the very latest intercom system of its day: a speaking tube, that had to be blown into for a signal before speaking, was connected from each bedroom to the kitchen.

The first floor, with 14 feet ceilings, consisted of a huge library the Congressman used as his office, a parlor, family sitting room, dining room, butler's pantry and kitchen.

Twelve foot ceilings on the second story gave spaciousness to the five bedrooms, and Turner, being a great admirer of England after visiting there several times, had English-style corner fireplaces built in each one.

The bath rooms had pull-chains for the commodes and built-in zinc bath tubs, but the lavatories had marble consoles as modern as today's.

Quarters for live-in servants were located on the third floor, and all three floors were accessible by the traditional "back" stairway.

Life and lights will glow once again from the many windows of this house, for an architect is already at work on extensive restoration plans. Roland Knight of Atlanta, a native of Quitman, has purchased the house and plans to occupy it with his family upon his retirement a couple of years from now.



Nocturne Turner/Knight

This two and one-half story late 19th Century Victorian Home was built in 1894 by Henry Gray Turner. Plans for this house were ordered from an architectural firm in New York. It has many unique features not seen in the typical Southern homes. It has been completely restored by the Roland Knights . Mr. Turner served in Congress .



910 Old Madison Road.....1880

This house was probably built by Henry G. Turner. Cooper and Beth Williams (editor of the Free Press) Powers lived here. She named it "The Ridge" and filled the grounds with Camellias and other flowers and shrubs. The Gerald Spencer's then owned the property.



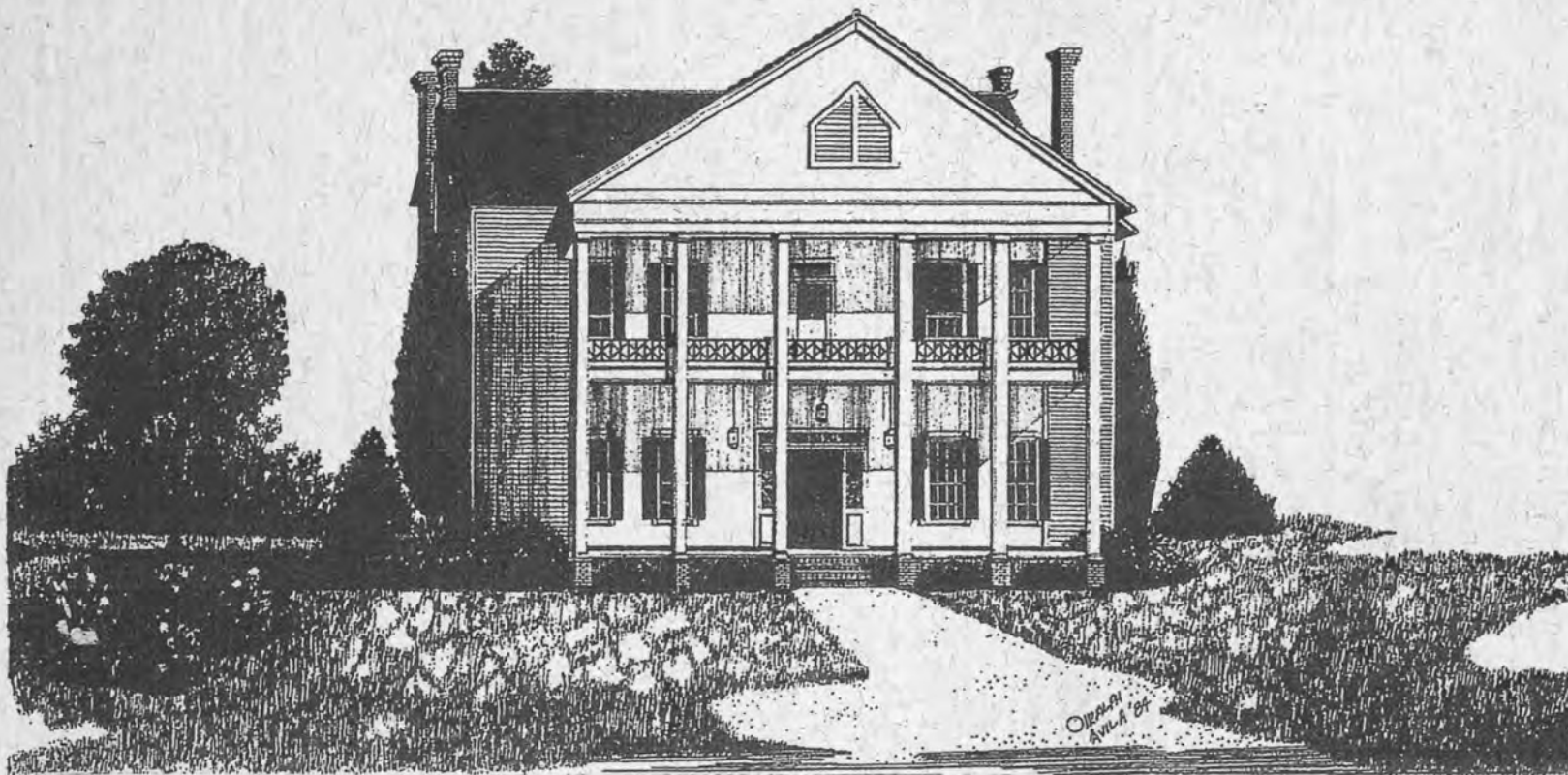
Patrick/Miller....built in 1910.....326 Patrick Rd.
This home was owned by Harley and Maud Patrick.



Hickory Head Plantation 1954



Hickory Head 1840.....2889 Ramsey Road
The article "Brooks County Landmark to Host Benefit Open House" is from the
Quitman Free Press May 9, 2001.



John McMullen House

C 1840's

This house built by John McMullen is located on Hickory Head Plantation about 10 miles south of Quitman , just off of Hwy. 221. The architectural lines of this classic Greek Revival style plantation house have hardly been altered over the years ; the interior has been restored in authentic detail. During the War Between the States , John McMullen devoted much of his farming operation to the production of food for the Confederate troops .



great great
grandmother Young's
name

CHARLES REED 5143

Agalea copy

STUDIO 1957

WADSWORTH, GEORGIA

Hickory Head Plantation

Brooks County Landmark to host

Dwayne and Mary Louise Hoven have generously offered to open their newly renovated and refurbished home, "Hickory Head" to host a benefit for the Brooks County Museum and Cultural Center. This event will be held May 23rd from 4 to 7 p.m. The proceeds will be used to establish a communications museum in the back room of the Free Press building.

The Hovens purchased a portion of the Hickory Head Plantation, located 10 miles south of Quitman, just off Hwy. 221, in 1999. They immediately began a renovation of the stately old Greek revival house, the homeplace of the John McMullen family.

William McMullen, John's father, immigrated to America with his family settling in South Carolina before the Revolutionary War. By 1820, he had moved his family, including sons John and James, to what was then Thomas County, becoming a part of Brooks in 1859.

In 1830, John married Nancy Roundtree of Lowndes County. Together they had eight children. One son, Eli, died in service with the "Brooks Rifles" in 1862. His grave, along with those of other family members may be found in the family cemetery, located about one mile south of the plantation house. Restoring the old cemetery,

which had suffered from neglect in recent years, is an upcoming project for the Hovens. The restoration will be done under the supervision of The Center for Historic Preservation in Tallahassee.

John McMullen was a successful farmer and business man. He was prominent in the affairs of the new county of Brooks, promoting and investing in the east-west railroad through Quitman- the Atlantic and Gulf Railroad. During the war years, he planted only food crops, making a significant contribution toward the reputation of Brooks County as the "Bread Basket" of the Confederacy.

5-9-2001
A.P.P. See LANDMARK Page 2

LANDMARK

Benefit Open House

The John McMullen's Hickory Head home was built circa 1840; his brother James built a home nearby which is still owned by his descendants. Originally John's house consisted of eight 17 ft. by 17 ft. rooms, four downstairs and four upstairs, both floors intersected by a wide hallway. The kitchen was detached. Perhaps the most distinctive architectural feature of the house is the suspended balcony across the upper story. Six 40 foot columns rise from the ground to support the roof above the balcony. The banister is accented with a diamond trim, one which is used throughout the house.

This old house remained in the McMullen family until 1926. Eight different owners preceeded the Hovens. During these years, some additions were made to accommodate modern conveniences.

Dwayne and Mary Louise wanted to return this house to its original simple dignity. They removed the plastered ceilings,

replacing them with wooden ones as were the originals. They also replaced the crystal chandeliers with handsome brass ones in the keeping with the character of the old farmhouse. Their research showed that the walls of this house would have been painted many different colors. Mrs. Hoven stated - "we chose the colors of autumn because we plan to use the home and land as a hunting preserve."

With this use of the house in mind, they added an extension of the downstairs to create the "hunters" room. This work was done by C.H. (Charlie) Whitney of Thomasville who used old wood and glass to integrate perfectly the old with the new. The focal point of this room is a gun rack that Mr. Whitney made using as a base the counter salvaged from the old Hickory Head store. The rack itself is made of matching old wood.

Among all the beautiful furnishings and accessories, one stands out not only for its appro-

priateness but also for its unusual history. Mrs. Hoven tells that during the work of the house, some of the workers kept telling her there was a painting of Hickory Head hanging in one of the Burger Kings in Tallahassee. She finally decided to investigate and indeed there hung this beautiful painting of the house and grounds.

When this restaurant was redecorated, the manager gave her the painting. Today it is handsomely displayed in the upstairs hall.

In keeping with the Museum and Cultural Center's purpose to preserve the history and heritage of Brooks County, the Museum and Cultural Center is pleased to sponsor this Open House. We are fortunate the However, newcomers to our community, appreciate these efforts and they, too feel, as Mrs. Hoven states, "Hickory Head belongs to the history of Brooks County and we are just the current caretakers."



James McMullen – Ramsey.....5315 Ramsey Rd.

This house built circa 1840 by James McMullen, has belonged continuously to members and descendants of the McMullen family. The present owner, Charles O. Ramsey represents the seventh generation of the Ramsey family, descendant of James McMullen.



James McMullen House

C 1840

Early settlers in what would later become Brooks County, James and Harriet McMullen built their home about 12 miles south of Quitman in the Hickory Head community. Their property adjoined that of James' brother John. Over the years, the house has been enlarged and remodeled, but the original hand-hewn pine used in the main part of the house, the beautiful stairway and old mantel pieces have been lovingly refinished by the sixth generation of the family to have lived there.

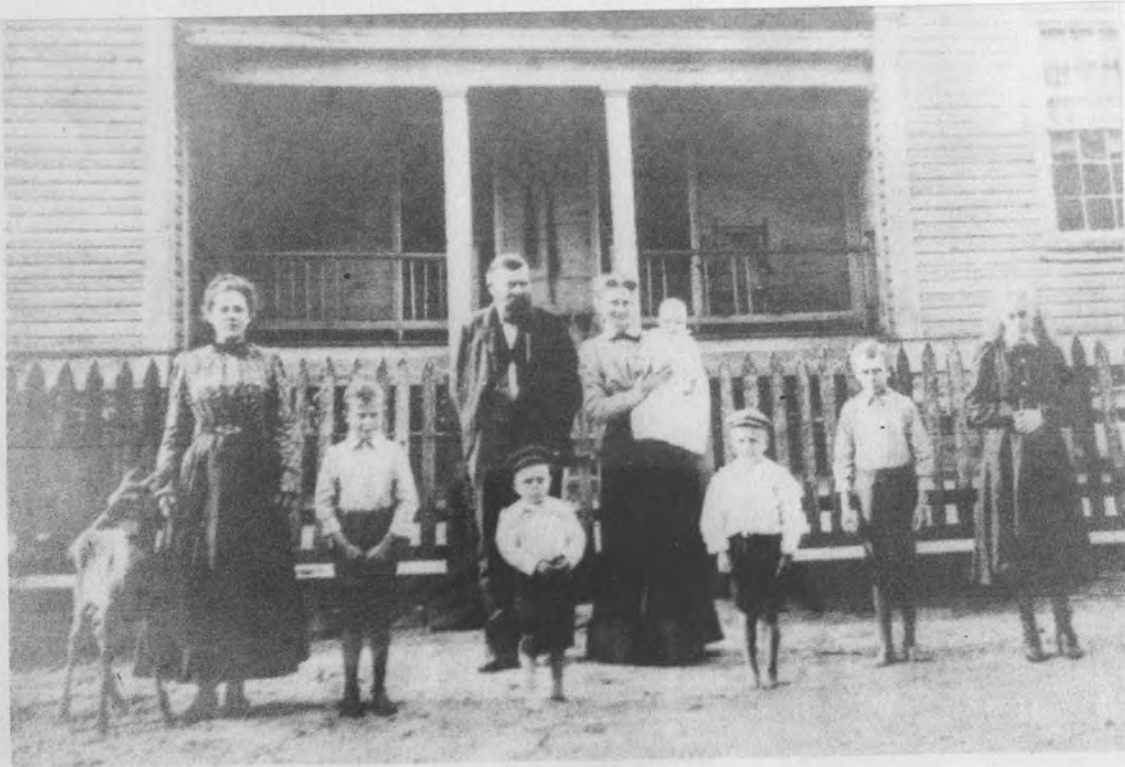


Harris - Emerson circa 1900.....9472 Highway 84 West
George Harris built this farm home and lived here until his death. His daughter and her husband, Russell Emerson did extensive restoration and remodeling in the 1940's and lived there for a number of years. Since then, the property has had a number of owners.



THE THRASHER HOUSE ... 1438 Minnow Farm Road
Was built in the late 1800's was updated and restored
in 2016.

THRASHER FAMILY: Jesse Whitfield Thrasher, Mary
Jane McMullen Thrasher





Catledge/Thagard....built in 1881.....1369 Stanley Road
S. L. Thagard bought the house and farm from the Oscar Catledge family in 1946. According to oral history the original part of the house was built for a school. Over the years, it has had several additions.



General	2,475	Shelwood	Wood	59,850	Year	1910	Location
Bed Type	4/0	4/0	4/0	4/0	4/0	4/0	4/0
General	Hardwood	Carpet	Hardwood	Hardwood	Hardwood	Hardwood	Hardwood

Accessory Information

**The Branch - Stewart Home.....circa late 1800's
555 Stewart Road, Dixie, Georgia**

The Stewart family moved in 1910 to this house in Dixie, Georgia in Brooks County. It remained in the family until the death of Mary Stewart Hatcher who lived in the home as it appears in the second picture. Today the property has been changed to appeal to a more contemporary market.

10-27-2007	100,000	10,000	0	100,000	10,000	10,000	10,000
01-22-2007	100,000	10,000	0	100,000	10,000	10,000	10,000

Brooks County

Board of Tax Assessors

[Recent Sales in Area](#)
 [Previous Parcel](#)
 [Next Parcel](#)
 [Field Definitions](#)
 [Return to Main Search Page](#)
 [Brooks Home](#)

Owner and Parcel Information

Owner Name	WILENIUS ROBERT & SARAH	Today's Date	February 15, 2013
Mailing Address	FRANCINE	Parcel Number	038 0003
Location Address	PO BOX 512 ALVA, FL 33920	Tax District	Unincorporated (District 02)
Legal Description	555 STEWART RD	2011 Millage Rate	25.553
Property Class(NOTE: Not Zoning Info)	PB 18-241	Acres	11
Zoning	R4-Residential	Neighborhood	
Landlot/District	AG	Homestead Exemption	No (S0)
Water	510/13	Parcel Map	Show Parcel Map
Electric		Sewer	
Topography		Gas	
Road Class		Drainage	
		Parcel Road Access	Paved

2012 Tax Year Value Information

Land Value	Improvement Value	Accessory Value	Total Value	Previous Value
\$ 61,000	\$ 262,600	\$ 26,440	\$ 350,040	\$ 256,500

Land Information

Type	Description	Calculation Method	Soil Productivity	Acres	Photo
RUR	Small Parcels	Rural	1	11	NA

Improvement Information

Style	Heated Sq Ft	Interior Walls	Exterior Walls	Attic Area Sq Ft	Basement Area Sq Ft	Year Built	Photo
One Family	1,034	Sheetrock	Wood	0	0	2004	Building Images
Roof Type	Flooring Type	Heating Type	Rooms Bedrooms/Bathrooms	Value	Cond	Number Fire PI	Sketch
Metal - Galvanized	Carpet/Tile	Central Heat/AC	0/2/1.0	\$ 82,100	Average	0	Sketch Building 1

Style	Heated Sq Ft	Interior Walls	Exterior Walls	Attic Area Sq Ft	Basement Area Sq Ft	Year Built	Photo
One Family	3,470	Sheetrock	Wood	No Attic	None	1890	Building Images
Roof Type	Flooring Type	Heating Type	Rooms Bedrooms/Bathrooms	Value	Cond	Number Fire PI	Sketch
Enamel Metal	Hardwood	Central Heat/AC	0/4/3.5	\$ 180,500	Average	1	Sketch Building 2

Accessory Information

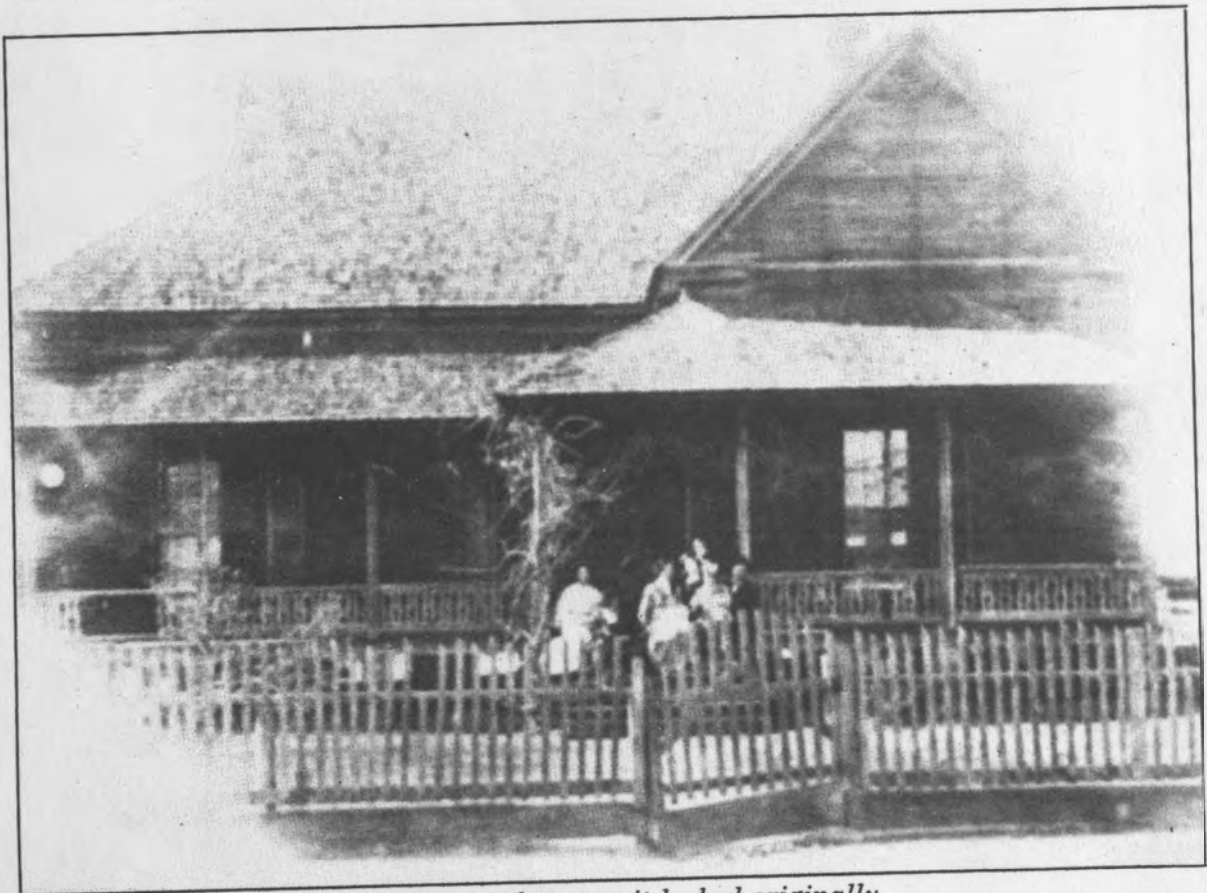
Description	Year Built	Dimensions/Units	Value
*SOLID WASTE FEE	2007	0x0 0	\$ 0
*Site Improvement B Grade	2007	1x1 1	\$ 5,000
RT2 CONCRETE OR BRICK PATIO Show Photo	2007	22x30 0	\$ 2,900
RP2 CONCRETE OR GUNITE POOL Show Photo	2004	16x30 0	\$ 8,100
RZ1 GAZEBO (USUALLY BY SQ FT)	2004	12x15 0	\$ 1,000
CAB1 CABANA-BATH HSE-GUEST HSE Show Photo	2004	15x21 0	\$ 8,600
AP6 SHED WD 4 SIDES OPEN Show Photo	2004	14x20 0	\$ 840

Sale Information

Sale Date	Deed Book	Plat Page	Price	Reason	Grantor	Grantee
02-01-2010	612 054	18 241	256,500 ^{\$}	Bank Sale	BANK OF AMERICA	WILENIUS, ROBERT & SARAH
10-27-2009	605 111	18 241	\$ 0	Foreclosure	DUKE, JAMES N & DANNA G	BANK OF AMERICA
01-19-2007	348 350	18 241	\$ 0	No Consideration	DUKE, JAMES N & DANNA G,	DUKE, JAMES N & DANNA G



The Stewart home as it looks today.



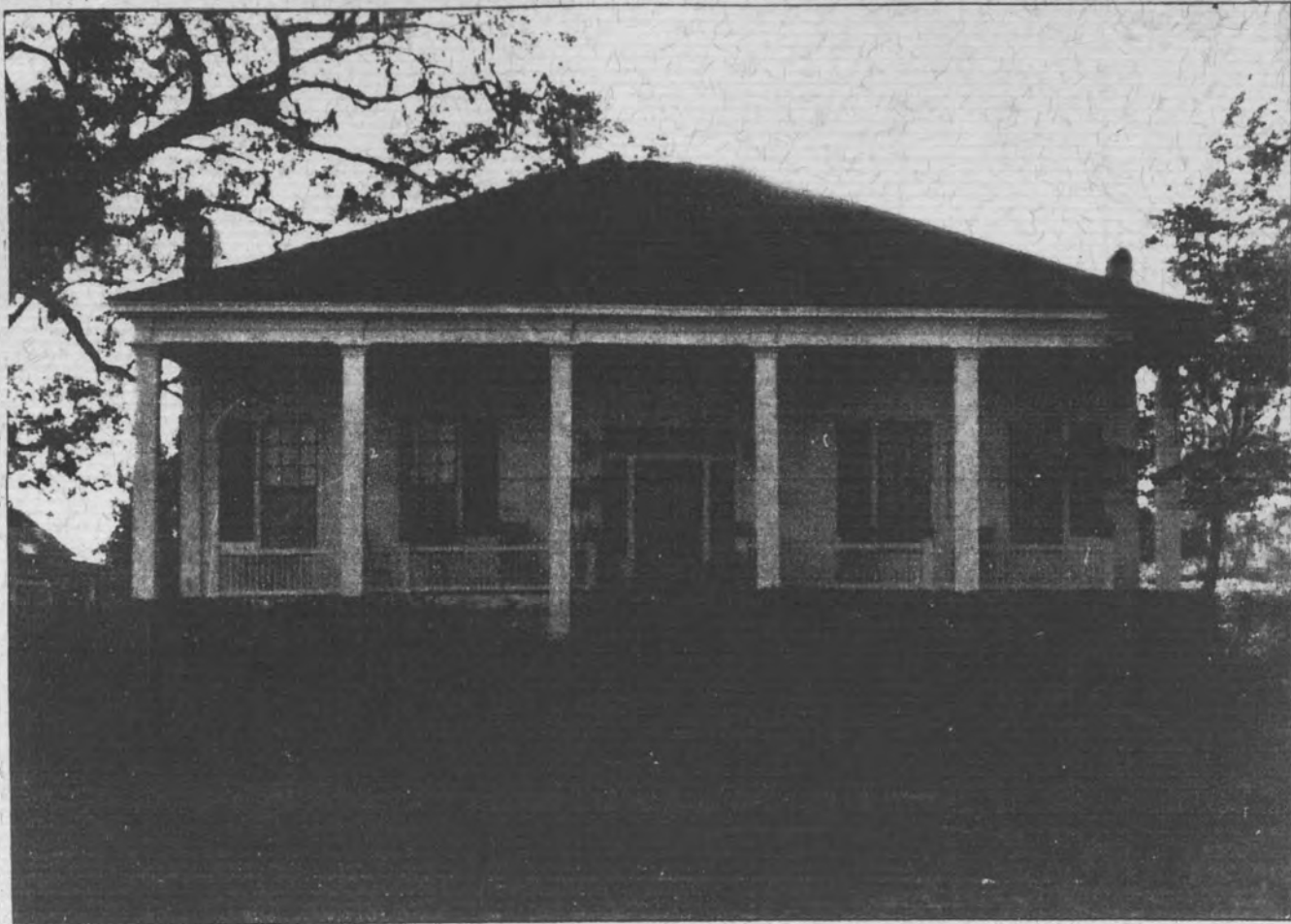
The Stewart home as it looked originally.



Patrick/Holland.....built in 1880.....3034 Troupeville Rd.
This home was owned by Paul and Nadine Patrick and then by Bill Holland.



Avera - Whipple - Morgan - Hall.....1858 - 2011
The Whipples made many alterations in both the interior and exterior, adding columns on the front. Sadly it burned down in 2011.



Fearnside

Fearnside, located in the Nankin community about 10 miles south of Quitman , was built in 1854 by Dr. Henry M. Fearnside. This one story Colonial originally had wings on each side of the house , one used for the kitchen and dinning room, the other , for the doctor's office , pharmacy and infirmary.

Quitman Free Press
5/27/2009



Henry M. Fearnside (back) is pictured with, L-R: Cousin Genie, H.M. Fearnside Cousin Helen.



Fearnside - Garrett.....circa 1856.....Nankin Community

This land was purchased in 1854 by Dr. Henry M. Fearnside, a highly acclaimed Civil War era surgeon. Fearnside soon built an impressive colonial home on the property, which also housed his medical office, pharmacy and infirmary. In the late 1930's the plantation was purchased by H. R. Garrett and has remained in the family ever since.

Among the many interesting stories attached to this property is the tale of the sunken Magnolia Tree located near the home. It's said that after the sale of the plantation by the Fearnside family, a subsequent owner removed several wagon loads of Dr. Fearnside's office contents, including old bottles, instruments and records. After dumping the items down an old well in the front yard, the well was filled with dirt and a magnolia tree was planted on that spot. Over the years, the tree continued to sink into the well. Today the tree's trunk remains totally submerged with only the limbs visible above ground. Article from Quitman Free Press May 27, 2009.

Historic Brooks County, Georgia Plantation to be offered at Public Auction, May 30

United Country to Auction Fernside Plantation

A piece of history – a community's history and a family's history – will be offered at public auction on May 30. Located in Quitman, Ga., the 1253-acre property has been a working plantation since the 1800s.

"This land was purchased in 1854 by Dr. Henry M. Fearnside, a highly acclaimed Civil War era surgeon. Fearnside soon built an impressive colonial home on the property, which also housed his medical office, pharmacy and infirmary. In the late 1930s the plantation was purchased by H.R. Garrett and has remained in the family ever since," said Myers Jackson, auctioneer/broker with United Country – Certified Real Estate.

Dr. Fearnside and many members of his family are buried in the Madison Cemetery and the story of the Fernside Plantation was chronicled by Janie Garrett Jordan for *The United Daughters of the Confederacy* publication, *Historic Treasures of Brooks County, Georgia* (volume two).

Among the many interesting stories attached to this property is the tale of the sunken Magnolia Tree located near the home. It's said that after the sale of the plantation by the Fearnside family, a subsequent owner removed several wagon loads of Dr. Fearnside's office contents, including old bottles, instruments and records. After



Henry M. Fearnside (back) is pictured with, L-R: Cousin Genie, H.M. Fearnside Cousin Helen.

dumping the items down an old well in the front yard, the well was filled with dirt and a magnolia tree was planted on that spot. Over the years, the tree continued to sink further into the well. Today, the tree's trunk remains totally submerged with only the limbs visible above ground.

"This property has not been available for purchase since the

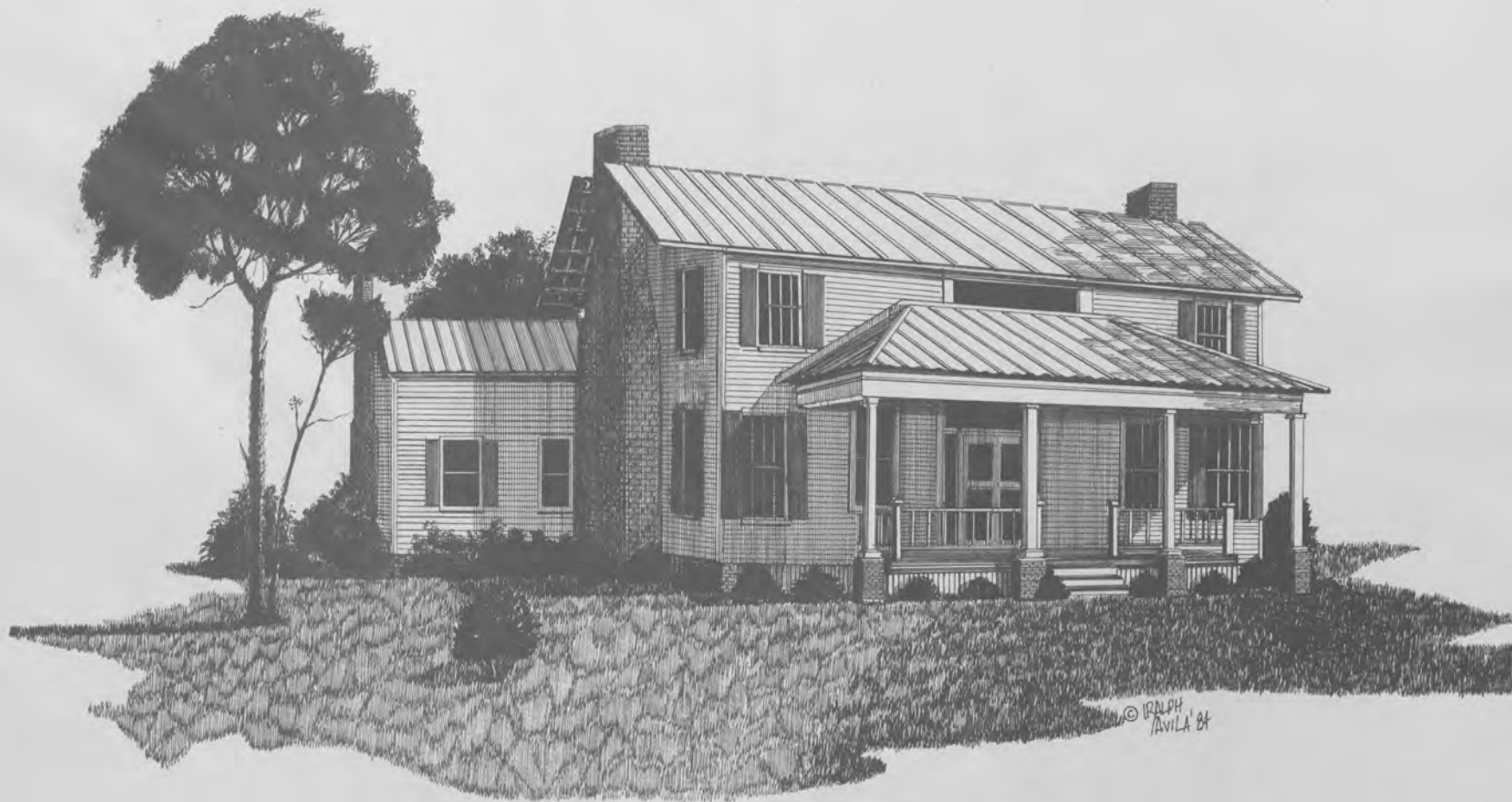
1930s, so the auction presents a great opportunity for buyers," said Myers Jackson.

Rich in both history and future potential, the 1,255-acre Fernside Plantation offers a perennial peanut hay crop with irrigation, 100-acre pond, excellent timber growth and year-round hunting



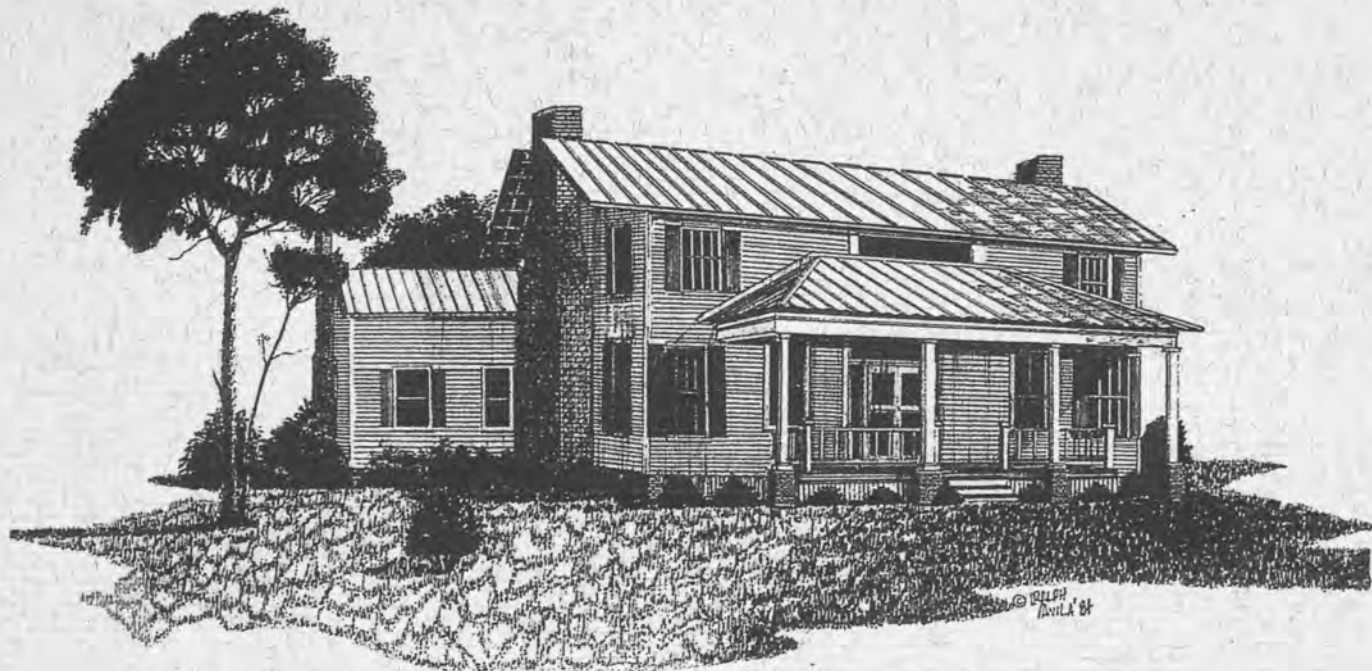
Hulett - Haddock - Stanley - Blair.....circa 1830's

This house began as a two room log house circa 1830's. Later the logs were sealed over with pine siding. Over the years the house has evolved with several additions. It has been in the Blair family since 1949. It is located south of Quitman on Highway 221.



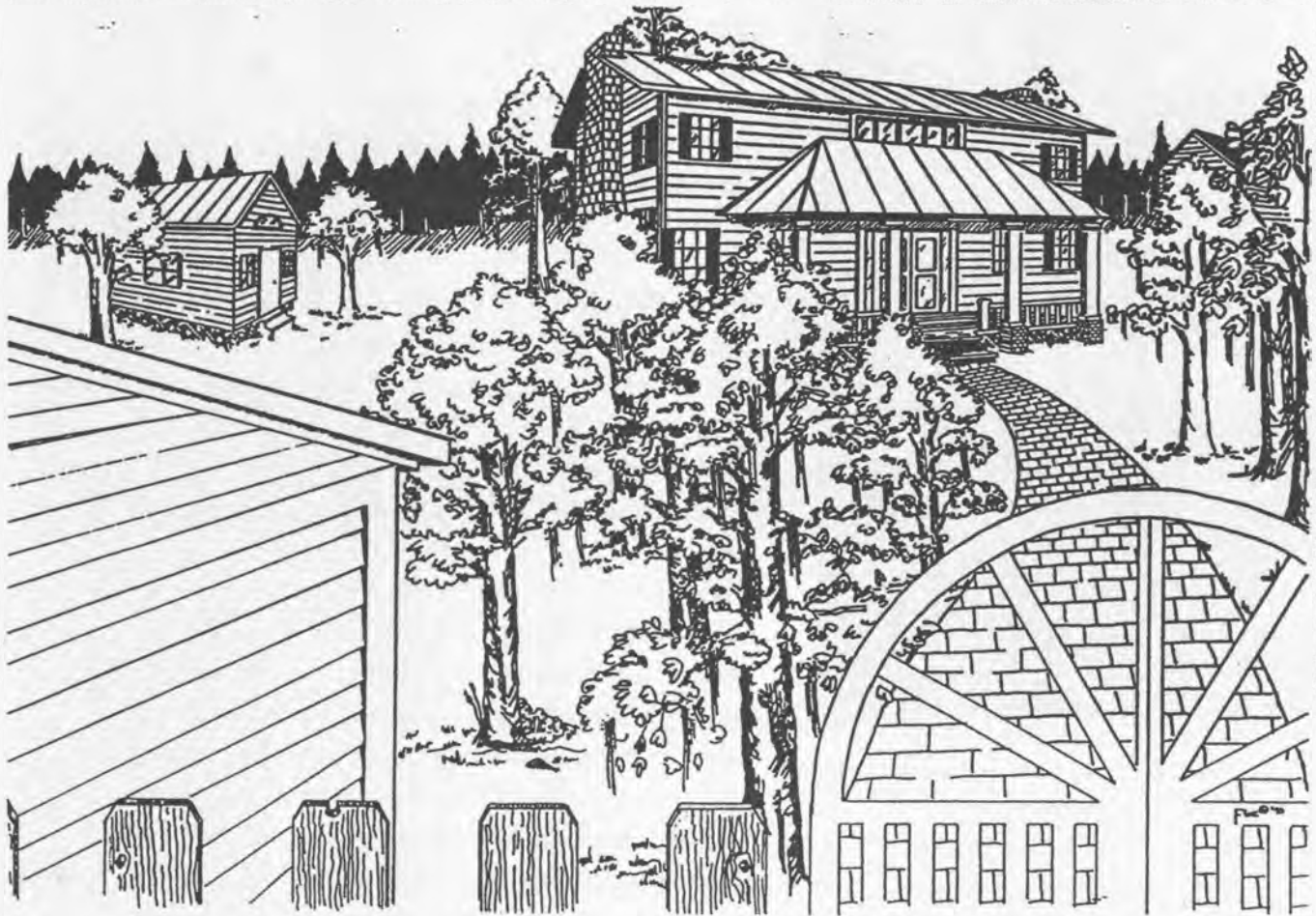
Forest Hill

October 2, 1832 Major Francis Jones purchased a tract of land and built this home for his wife Rachael Spain Jones. A small section of the original house remains and is used as a hunting club. It is located in Southern Brooks County, near Spains Crossing on the Withlacoochee River.



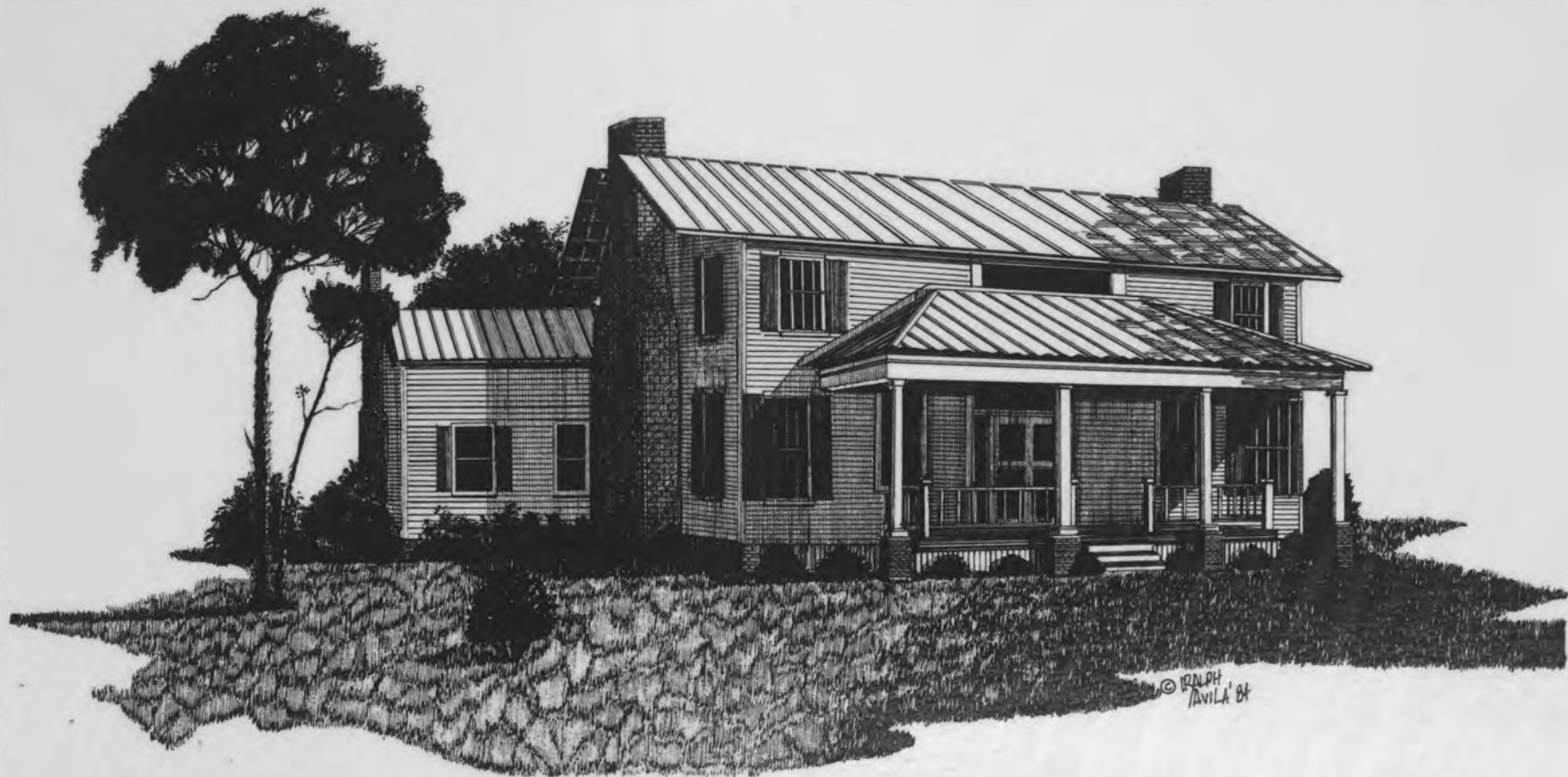
Forest Hill

This picture is an etching of the original structure built by John William Spain circa 1830. Today, the house is in poor repair and is used as a hunting club. It is located about six miles southeast of Quitman off the old Madison Road, near where the ferry crossed the Withlacoochee River which became known as "Spain's Crossing". It remained in the Spain family for six generations before being sold.



Drawing of Forest Hill and surrounding structures as it originally stood.

Drawing of Forest Hill and surrounding structures
As it originally stood, as remembered by Lavenia S.
Kennedy who grew up there in the 1920's



Forest Hill

October, 2, 1832 Major Francis Jones purchased a tract of land and built this home for his wife Rachael Spain Jones. This house sits in what once was Lowndes County but now is Brooks County. It is located at Ferry Road on the Withlacoochee River.

Brooks Plantation Is Restored By Real 'Do-It-Yourselfers'



“Eudora – the old Jones’ Place”.....circa mid 1800’s
Restoration began mid 1960’s, the house burned in the 1980’s.

By KAY POWELL
Times Staff Writer

An unfinished 19th Century mansion, left to ruin for more than 100 years, is being restored by a California family which is determined to bring the six column home to its full antebellum beauty.

QUITMAN

The home, referred to as "the old Jones place" by Brooks Countians, is located one-half mile off the Madison Highway south of here.

The California family, which is more southern than western, is the Jinnin Worns of San Francisco. Mr. and Mrs. Worn began living in San Francisco during World War II, and their two children, Jinnia Jr., 16, and Virginia, 13, were born there.

Worn is from Decatur County, Ga., and Mrs. Worn calls Tennessee home. They still consider themselves southerners, even though they had lived in California about 20 years before moving here.

The Worns are living in the unfinished house while they are working on it.

"When we bought the house we thought we would live in Jacksonville or Atlanta and do the restoring at our leisure—which made sense.

"But then my husband was hurt on the job and was permanently disabled. We had to do something, so we decided to go ahead and move into this house," explained Mrs. Worn.

(Worn had worked as a construction foreman in California and was disabled by a back injury.)

But the house wasn't exactly in livable condition when the Worns made this decision. The downstairs had been completed before the house was abandoned around 1858, but the four rooms upstairs had nothing but the outside walls and the lathe for the dividing walls inside.

"The families who lived here before us used the upstairs to store hay and string tobacco," said Mrs. Worn. "And I think they used my bedroom to cure hams," she laughed.

Shotgun Under Bed

Before the Worns moved into the house permanently, Mrs. Worn and the children lived in it during the summer of 1963 and cleaned up some.

"Jinnin, Virginia and I slept on cots set up in the only room with windows. I kept a shotgun under my bed and Jinnin kept a hatchet under his. There are all kinds of wild animals around here," she said.

But neither wild animals, moonshiners, floods, nor sickness could keep Mrs. Worn from the restoring job. And she said she

plans to have the house completed by December.

In November 1962 when the Worns bought the house, Mrs. Worn started researching its history and architecture.

"As far as I can find, this is the only house of its kind. It is similar to D'Evereux in Natchez, Miss., and the two may have been designed by the same architect, John Wind," she said.

The house is also similar to Greenwood Plantation at Thomasville and the Kingfisher Home near Quitman, she added.

In her research at libraries in California and Georgia, Mrs. Worn found that her house had several distinctive features.

"The house is Greek revival architecture and there is nothing Georgian or Victorian in its style. The brackets around the underside of the roof are distinctive and so are the ventilator doors," she said.

Ventilator doors are wooden doors about 18 inches high which are built under the front windows. They reach from the bottom of the window to the floor.

Cupid's Bow Is Unique

"These doors were opened in the summer for air circulation because the windows couldn't be opened," she said. There were no screens then.

The most unique feature of the house is the cupid's bow over the front door, said Mrs. Worn.

"I haven't been able to find another house with a doorway like this," she said.

There has been an explanation offered for cupid's bow doorway, but no facts can be found to support it.

"The Brooks County History says that this house was built by Mitchell Jones for his son, Francis, and Francis' bride, Rachel Inman Spain. I think maybe the cupid's bow was used over the door as a symbol, but I haven't been able to prove it," explained Mrs. Worn.

The pendils on the balcony are a mark of the architect which Mrs. Worn says is a key in her research. Pendils are the wooden balls hanging from the corners of the balcony.

Another distinctive feature of the house is its corner beams. "I haven't been able to find beams and supports like this in any architecture book. Some of the vertical beams are cured heart-pine timbers which run continuously for two stories," she said.

"Architecturally, I think this is one of the most important houses in the South," she added.

But the beauty of the ante-bellum mansion has been ignored for more than 100 years, and the Worns are reviving interest in the old home for "history's sake and for the sake of the South."

"This house belongs to the South. It is a part of our heritage. It is important to history. And it should get the recognition it deserves," said Mrs. Worn.

The easy way to restore the house to its proposed grandeur would be to hire a team of interior decorators to come in and do all the work and planning.

But Mrs. Worn said she didn't want anyone touching the house who didn't know what they were doing.

She Replaced Column

One of the columns in front of the house was accidentally knocked down with a truck in 1958, and the people who were living there never bothered to fix it, she said.

So Mrs. Worn and a neighbor erected the two-story pillar by themselves.

"I just drove my truck up to the column, and using a few ropes, my neighbor and I replaced it. Then I wired it into place," she explained.

Besides making the house livable, the Worns had to do something about the yard.

"You just wouldn't believe the mess this yard was in when we bought the house. Trash was piled a foot high," said Mrs. Worn.

"I bought a tractor and plowed up the back yard, harrowed it and planted grass. I felt like Scarlett O'Hara on that plow!" she said.

Since her husband could not work, Mrs. Worn knew they had to begin farming the land, which had been leased by previous owners.

The Worns grow corn, peanuts, cotton, cattle and hogs on the land, with only one man helping them.

"Back in the spring when we had such hard rains, the corn crop was almost flooded out. The roof on the house leaked. I woke up one morning just drenched, and rain was pouring in. I sat there and cried, so Jinnin said we would get away and go to Bainbridge," said Mrs. Worn.

"We all packed up and got in the car to leave. But when we got a little way down the road we had to turn around and come home because the dam had broken and the road was flooded," she said.

Tromped the Land

"When we got back to the house I tromped around the land until I found a dry spot. When it stopped raining we took a bulldozer and built a new road on higher ground," she said.

None of the more than 500 acres of farm land is leased now.

There were some moonshine stills on the place when the Worns first moved here. "We could lie in bed at night and hear revenue agents dynamiting stills around our house," said Mrs. Worn.

After living in the house during the summer of 1963, Mrs. Worn and the children moved back to their home in California. The entire family moved here in March of 1964.

"I haven't been able to find out the exact number of families that have lived in the house and farmed the land," she said, "however, from the looks of things, it appears to us there have been several through the years."

None of the families who have occupied the house since 1884

have really appreciated the beauty and its significance, she said.

But because of her research and her love of the South, Mrs. Worn is determined that the house is going to be restored correctly.

"Jinnin and I began to realize, while living in California, that our children were missing a lot of the things which we had in our childhood. The pace on the West Coast is so hectic. Everything is so chaotic and disorganized," said Mrs. Worn.

"We had known for a long time we wanted to move back to the South some day," she added.

"When I married her I told her that one day I'd buy her a colonial home in Georgia," said Worn, "and this is it."

Worn's sister, Mrs. M. L. Parrish of Quitman, is the one who told them of the house.

Mrs. Worn said she thought she was going to have a hard time getting windows, but she was lucky enough to find the original ones.

Windows Lucky Find

"Years ago the windows from this house were taken to a shop in Quitman to be repaired and were never picked up. I happened to see them in there one day and bought them for the house. All of the windows fit perfectly and some of them still have the original glass," she said.

All of the wallpaper, light fixtures, and drapery and upholstery materials have already been bought. Mrs. Worn had all of her wallpaper reproduced from original patterns of this period.

"This house is English from start to finish. I don't plan to have any Victorian touches at all. The beauty is in its simplicity. This is something which is appreciated now," Mrs. Worn said.

Mrs. Worn said she has not been able to find, in her research, if the Jones family ever gave the plantation a name.

"If they didn't, we plan to call it Eudora, after Jinnin's mother and our daughter. But if the Joneses did name the plantation, we certainly will keep that name in honor of the family.

"Because of the historical significance of the house, we feel that right now it belongs to Brooks County and the South. We invite anyone who is interested to come here to see the house and photograph it. When the house is completed," she said, "it will be our home, and we will let people see it by appointment."

"The pioneers had nothing on us," says Mrs. Worn in referring to their work with the house.

"We looked like a modern day wagon train traveling from California with a 20,000-pound load of furniture in a station wagon, truck and trailer," said Worn.

In the future, the Worns plan to make a recreation spot of the grounds around the house.

"We've got one pond which is good for fishing, and we plan to make another one," said Worn, "and there is plenty of hunting around here."

"There are two or three houses on the property which can easily be converted into hunting lodges," added his wife.

The Worns said the natural shrubbery of the area would not be changed and there are to be picnic spots on the land.



Eudora Plantation

Built between 1825 and 1830, this Greek revival structure was designed by Architect John Wind for Major Francis Jones. Presently owned by Mrs. Jinnin P. Worn. This plantation was placed on the National Register of historical places on April 26, 1975. Located three miles South of Quitman on Hwy 33.

Do It Yourself

"I've always been taught the best way to get something done like you want it is to do it yourself," said Mrs. Worn.

And when Mrs. Worn says "do it yourself," she means exactly that. She and her husband and children are doing the majority of the work on the house.

"Jinnin can't do any heavy work since he is disabled, so the children and I are doing practically everything," said Mrs. Worn. Mrs. Worn, who has a master's degree in English, is a small woman who says she doesn't mind hard work.

"After the chores are done in the morning, I move the scaffolding around the house to begin sanding and painting," she said.

When asked if she was afraid to climb the scaffolding to paint the top of the house, Mrs. Worn said, "This is a job I must do to be sure that it is done correctly. I know if I do the painting it will be done right."

Jinnin Jr. helps his mother with the painting, and Virginia helps with the kitchen work.

Virginia says she misses the kitchen in her home in California, but Jinnin Jr. likes living in Georgia better than living in San Francisco.

"The first summer the children and I lived here we cleaned up as much as possible. We swept all the hay and fertilizer out of the house, scrubbed the floors, and began fixing up the yard," she said.

Mrs. Worn said she had trouble finding people to help her with the painting and other work, so she decided she would just do it herself.

Using a ladder and a crowbar Mrs. Worn ripped down all the ceilings in the house because hay and debris had fallen between the walls.

"All of these downstairs walls had been put up around the turn of the century and I would have had to tear them down anyway because they are not in period with the style of the house," she said.

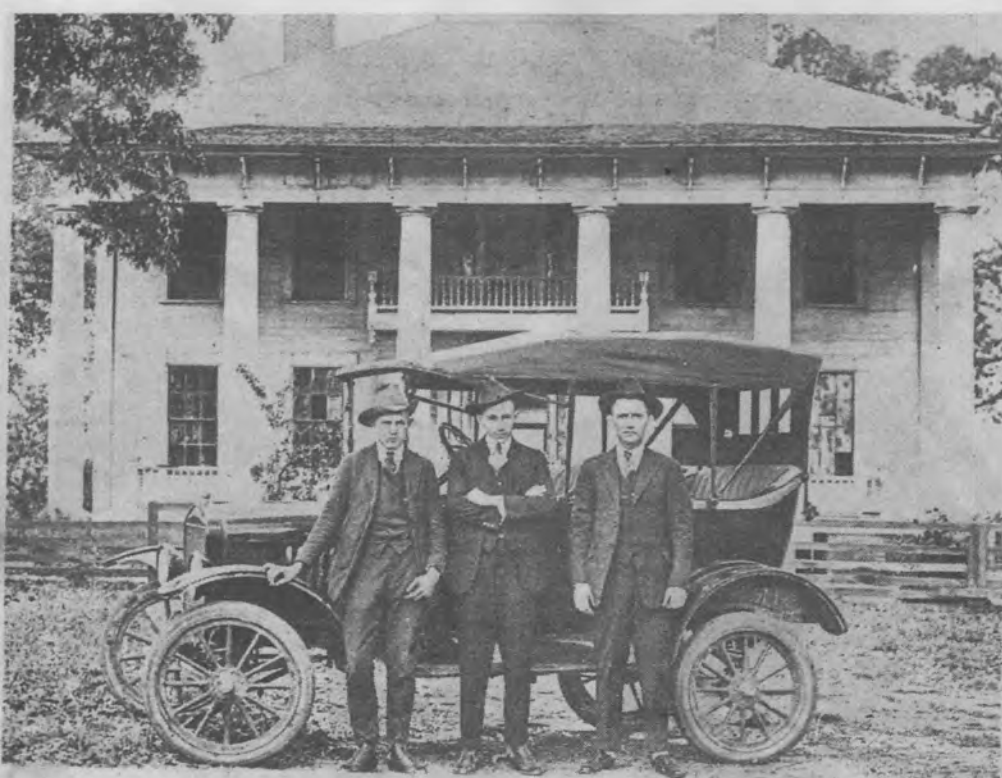
"We will sheetrock them later," she said.

"Three of us, with the help of a handyman, scrubbed all the floors with disinfectant."

"In each room there are small scrub holes in the floors. The floors in the house are so level that the handyman and I had to get on opposite sides of the scrub hole with brooms and sweep like fury to get the water down the hole," Mrs. Worn said.



Walls Are Gone, But Worns Make It Home; Virginia Reads in Her Bedroom



Ray, Sam and Gordon Strickland standing in front of Eudora in 1920. They had just returned from their father's funeral.



carefully nailed with square nails, the woodwork hand-planed.

Francis Jones died in 1849, and with the coming of the Civil War, Rachel was buried beside him in the family cemetery (1862). In 1860 her granddaughter Sara, 19, had married Mitchell Jones, Jr., a nephew of Francis, and her father, John Spain, had given them the mansion and 2000 acres before Mitchell joined the Piscola Brigade and left for war.

After the war Mitchell built "Wildwood" in Lowndes County but continued paying taxes on the mansion until his death in 1900. He willed the property to his daughters, Ada Paine and Bessie Smith and eventually, the 25,000 acres was divided among many buyers. Many tenants came and left the mansion, the roads passed it by, and numerous people were born and lived and died in the county with no knowledge of its existence.

While the land and house were being restored, the house was opened informally to those who appreciated beautiful architecture. Visitors from many nations came throughout the years, some returning periodically to enjoy the progress of the restoration.

The dream came to an end on July 14, 1973 while Mr. Worn was moving the front driveway in expectation of out-of-state guests. His long-expected death came quickly as the tractor came to rest against a beautiful pine and he was buried on a small hill overlooking the area he liked best. On December 16, 1974, the plantation was placed on the National Registry of Historic Homes. To mark the occasion officially, 350 guests were invited from other states and locally to re-dedicate "Eudora" to God's service. Among the many guests were John Wind's descendants, the Wind brothers of Cairo, Georgia.

On Confederate Memorial Day, April 26, 1975, while the Confederate flag again moved lazily in the breeze, Virginia Eudora Worn sang her father's beloved "Dixie", and the house was formally opened as a memorial to a man of dreams realized—to serve his God and his country by sharing with others a symbol of the South he cherished, the America for which he fought on two continents. He "asked not what his country could do for him" it was his heritage to ask "What can I do for my country"

EUDORA

A Boy, A Dream, A House

BY MRS. VERLA WORN

Through the damp mist of a late November morning, 1962, two red-bricked chimneys rose above a long row of giant ligustrum. The muddy Georgia clay ruts of the lane ended abruptly beside an ancient cedar that marked the end of the row of trees and the realtor turned his car into a yard overgrown with camellias, myrtle and azaleas. Half-hidden behind four towering ligustrum, five magnificent Doric columns stood on weathered brick piers. A sixth column leaned against a balcony hung above two massive doors framed by a perfect ogee arch. Four windowless holes marked the second floor and four 12-paned windows rested over four small double doors of the first floor. Water dripped softly from a metal roof onto the board steps that led to the veranda. The once white-painted siding was now a barren grey and, except for a few boards, hanging haphazardly, the ceiling above the veranda had been torn away.

"That is it! This is what I have been hoping to find!"—and a young lad, now a man long since grown, found his boyhood dream—a princess behind her thicket, put to sleep by the old witch "War", long, long before he was born, to wait for him to claim her.

He named her "Eudora" to honor the beloved and beautiful mother of his childhood, and his adored daughter, her namesake. To her he brought his treasures: his Southern-born wife, his San Francisco-

born son and daughter, his skills, his money, his hopes, his courage, his faith in the God he served. He returned to San Francisco, and when he again saw "Eudora," he was disabled from an industrial accident, his plans for the future changed. Undaunted, on a beautiful May morning, 1964, he lifted the damaged column from the balcony, set in place, and with great love, began the restoration of "Eudora" without an army of workmen, without painters to hang from ladders, without decorators from Atlanta with fabrics and furnishings—only a disabled native Georgian, a wife, a 12 year-old daughter, a 14-year old son.

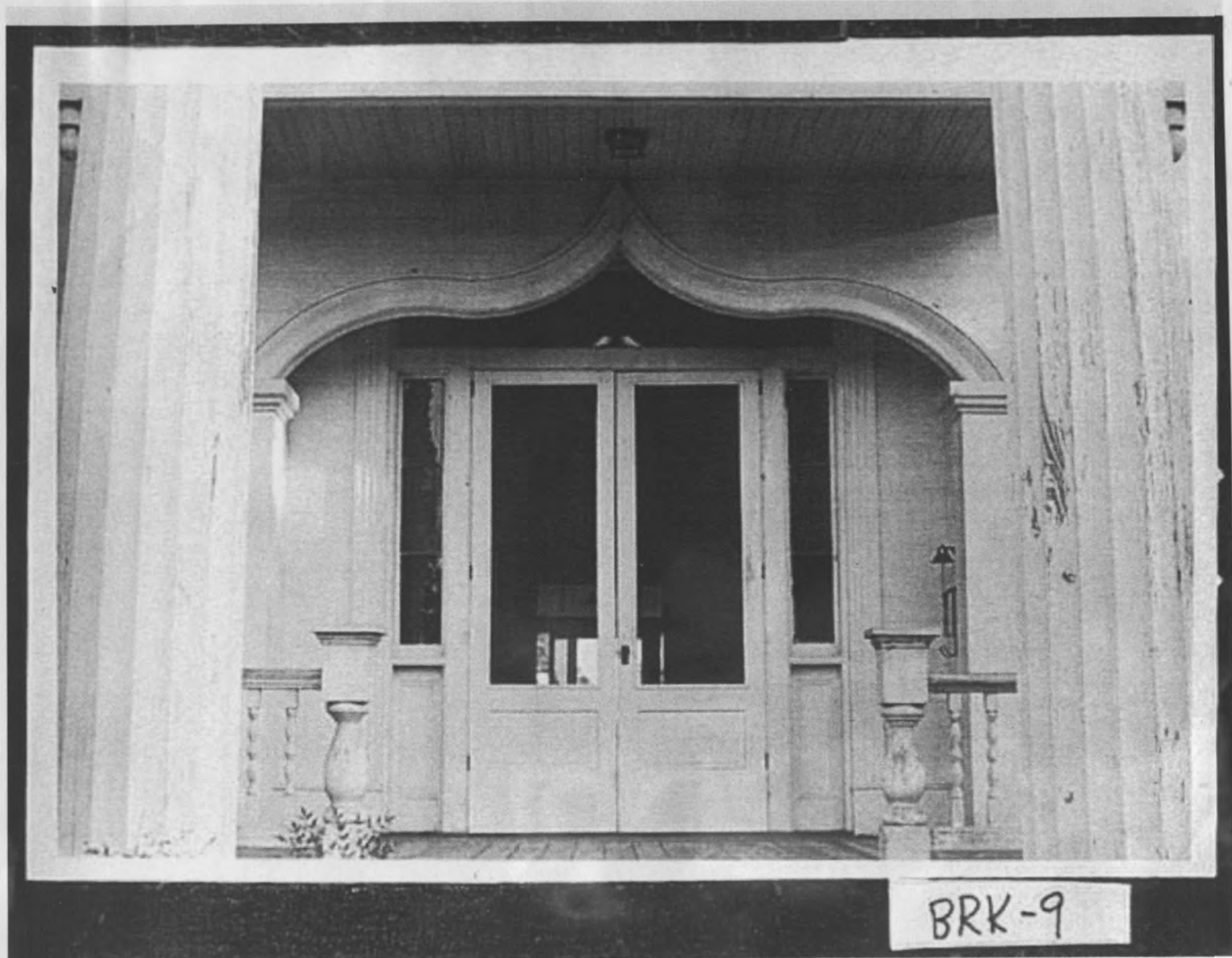
Thus "Eudora" the first of the numerous mansions in Lowndes County, built by Francis Jones, his wife Rachel and his step-son John Spain, for their 25,000 acre plantation, "Forest Hills" became once again a part of the busy world. When Francis Jones brought his widowed mother and nine brothers and sisters to Thomas County in 1826, he left his brother Thomas to build "Greenwood" and settled himself at Jones' Crossing (now Kinderlou) in Lowndes County. An extensive land holder, he married the widow of Levi Spain of Burke County and, with her son, John, bought 25,000 acres in present-day Brooks County. He engaged John Wind of Thomasville (said to have been an English cousin) to design the new mansion for the plantation. Mr. Wind designed "Greenwood" for Thomas Jones and later, "Fair Oaks,"

"Susina," and other plantations, Thomas County courthouse and Brooks County courthouse.

On a rolling hill, surrounded by huge live-oak, cedar and virgin pine, the mansion faced south, the summer breeze cooling the high-ceilinged rooms. On both the first and second floors four 20'x20' rooms opened into 12'x40' halls. Two enormous chimneys served eight fireplaces and a ninth fireplace was placed at the north end of the 20'x25' dining ell. The two-room kitchen with eight-foot fireplaces was placed on the north side of the house, several yards away from the dining room, a precaution against fire.

In his combination of six Doric columns, an ogee arch above the silver-hinged doors and brackets below the roof, Mr. Wind followed the trend in Southern architecture of using details, materials, and classical styles to develop the characteristic plan for the South. The ogee arch and brackets reflect the decided Gothic influence prevalent throughout the South from 1835-1861, while the Doric columns were a result of the general revival of interest in Renaissance architecture of the old world from 1820-1861.

The massive sills were hand-hewn. Four virgin pines, added to a 90-degree angle, were placed at each corner and supported by large heart-pine braces. The heart-pine flooring 1¼ inches thick, 20' long tongue-and-grooved boards, was laid north-to-south on the first floor, east-to-west on the second floor. The 5/8 inch cypress siding was



Brooks County, around 1964... this is the gothic portico of Eudora Plantation before its restoration. Locals know this place as the "old Jones place". It was built in 1835. Is this place still standing? I couldn't verify... Burned down February 1987.



BRK-8



Only its two magnificent chimneys stand upright as beautiful Eudora Plantation house burns to the ground Tuesday morning in a fire, the cause of which, is as yet undetermined.

The Brooks County Sheriff's department received the call at 11:40 a.m. and the Forestry Department responded, but the fire ravaged out of control.

The Sheriff's department has called in the state fire marshal and GBI to investigate the probable cause.

The loss of the antebellum National Register landmark owned by Verla Worn, marks a grievous loss to not only its owner but the county as well.

Eudora Plantation home destroyed by fire

Eudora, one of Brooks County's oldest and most outstanding houses burned to the ground late Tuesday morning.

The Brooks County Sheriff's office received the call at 11:40 a.m. The Brooks County Forestry firefighting unit and other local units arrived on the scene too late to save any portion of the historic structure.

The ante-bellum Greek Revival mansion was built between 1825 and 1830. Its designer was the famed architect John Wind. Wind also designed the Brooks County and Thomas County Courthouses and other area plantation homes including Greenwood and Susina.

The house was built of heart pine, all hand-hewn and hand-planed. Iron and wooden pegs joined the timbers. The siding and roof were cypress. The two story plan was plantation plain style with four rooms on each floor separated by a large central hall.

The front of the house was designed with six Doric columns and an Ogee arch over the double front doors. A balcony was centered on the second floor. An unusual feature of the large windows on the front were the small doors beneath the windows which were for ventilation. The hardware including the hinges and doorknobs in the house were

made of silver. Two huge chimneys which served eight fireplaces are all that remain.

The house was built by Francis Jones II and presented to a granddaughter Sarah Spain as a wedding gift in 1860. It changed owners many times over the next 100 years.

The plantation was purchased by Mr. and Mrs. Jinnin Worn in 1962 and the couple worked over a period of ten years restoring the house. Mr. Worn died in 1973.

Eudora was listed in the National Register of Historic Places in 1975 and was the only structure in Brooks County with this prestigious designation for several years.

Many visitors including many from foreign countries visited the home after its restoration and it has been featured in numerous newspaper and magazine articles as well as television features.

More recently it was the scene in the fall of 1985 of an HBO movie, "As Summers Die", filmed on location in Brooks County. Several of Bette Davis's main scenes were shot from the interior of Eudora.

The historic home has been an important part of the heritage of Brooks County and south Georgia for over 100 years. Its loss is immeasurable.



Brooks County, 1968.....Folks picking purple knuckle hull peas on Eudora Plantation. In foreground, Jinnin Worn, Jr. talks with Jim McGhee who is holding basket of peas. I've pictured the Eudora home here before.....an HBO movie was filmed there starting Jamie Lee Curtis and Bette Davis....."As Summers Die" in 1985. The house was destroyed by fire in 1987.

The Editor

Continued

Dear Editor:

The deep red of the blossoming oak nestled among the tall pines, the greening pastures and purple redbuds announce that Spring has arrived in South Georgia. March's full moon rises and sets while the peafowl's mating call and the mockingbird's song break the spell of a wearisome winter. Once again new life appears in the 144-year-old span of Eudora Plantation's history. There is no joy in this Spring, however—only sadness as a Dream dies.

Long ago, in the early 1800's, a young English architect used virgin pine and native cypress to fashion a mansion which he located upon a knoll overlooking the untouched woodlands and pond to the south, the meandering Piscola Creek to the north. With classic Greek columns and Gothic Roman ogee arch, he created a superior example of southern Greek Revival architecture for the owner of the surrounding 25,000-acre plantation.

The "War" passed the plantation, the stage-line from Savannah to Tallahassee left broken pieces of wheels and coaches where the horses had watered at the "spring," and tenants moved in-and-out during the many, many years. Neglect, weather and abuse left the once beautiful structure without paint, without windows, with a handcrafted column lying against the balcony. Hay, peanuts, tobacco, etc. had been stored in the upper rooms of the two-story mansion.

A native Georgian, returning home after a 25-year-absence in San Francisco, bought the plantation in 1962. Despite a totally and permanently disabled body, with the knowledge of approaching death, Mr. Jinnin P. Worn, together with his wife and two children, worked to restore both mansion and land to its rightful beauty. Mr. Worn died July 14, 1973, while mowing the beautiful woodland "to make it pretty" for some of the in-



Eudora Plantation Closes

Eudora Plantation, home of Mrs. Verla Worn and the late Mr. Jinnin P. Worn.
Picture by the Photo Shop, Moultrie, Ga.

numerable guests who have come from all countries of the world (except Russia) since the plantation was opened in 1964. My husband felt that the plantation was a stewardship from God and its beauty should be shared without charge. The edges of the lakes and creek were mowed so the elderly could fish with no fear of rattlers and mocassins. The woodlands' underbrush was cleared so that the dogwood could be enjoyed in Spring and paths were created for the deer to be tracked, the red fox observed and the fat fox squirrel watched at play among the pines.

Since the property is so unique, so historically valuable, it was offered to the state of Georgia to be used as a park after Mr. Worn died and both children, now grown up, declined to live in Brooks County. The state of Georgia could not accept the property unless maintenance money accompanied the gift. Since Mr. Worn was not a wealthy man, but retired on his pensions, the property was placed on the registry of Historic Homes in order that the state might have access to Federal funds. Unfortunately, at the time of registration, a "cut" in Georgia's budget resulted in the closing of 35 parks, and Eudora could not be acquired.

With the assistance of Coastal Plains Planning Commission, I opened the mansion and grounds on a regular daily and hourly schedule, charging a small amount for the restoration and maintenance since I felt it immoral to accept the Federal funds which were also available to me.

The usual problems of safety appeared but, to date, I have lived through a break-in and attempted murder; a local conspiracy to obtain the land for residential development; theft of cattle while I was ill; people climbing over locked gates when a telephone call could have arranged an appointment; one locked gate removed from its hinges so the intruder could enter; an apparent rapist entering at 11:00 a.m.; etc. etc.

However, the wonder of

children's faces at the miracle of new calves aborning; the excited voices of young deer trackers; the quiet faces of the elderly as they fished; a small black boy clutching a handful of violets, picked for his mother; a 90-year-old man climbing the stairs to caress a lovely Sheraton sideboard; a blind girl "seeing" her first Palomino colt; the Confederate flag, silhouetted against a blue sky, moving lazily in the April breeze; the sound of a mourning dove across the field of hay; a motherless, salivating calf chasing the Volkswagon which contained his bottle of milk; a small, gray poodle yelping at the head of a huge Charolais bull as he backed across the pasture—all memories that diminish the agonies of unending fence building, of chasing roaming cattle home in torrential rain and frightening wind.

During 15 years the appreciation of so many wonderful people has strengthened us and encouraged us to continue the tremendous endeavor which we had begun. This Spring of 1978 was the beginning of the end, the fields again producing, the cattle fattening, the house awaiting warm weather and new paint.

Unfortunately, a legal argument over a specific trespass by a wealthy business man, Mr. Wm. "Billy" Langdale, was ruled upon by a Judge Rehberg in the Lowndes County courthouse on March 20. The decision of Judge Rehberg, that Mr. Langdale "is such a fine gentleman that he could not have had any criminal intent" when he entered the property after being told not to enter, leaves me unprotected and unable to determine who and who shall not enter my land. As a result of Mr. Langdale's visit, while I was worming a herd of cattle, I became upset and, being exhausted from the worming, was crushed against the corral wall by a cow and barely escaped death. Since it is impossible to determine the character and intent of the many who enter the property, there is no longer any protection under the law. True, Mr. Langdale held a timber-cutting contract which allowed him

access "to cut and haul timber." It does not specify that he can enter the property for any other purpose, after being told not to do so.

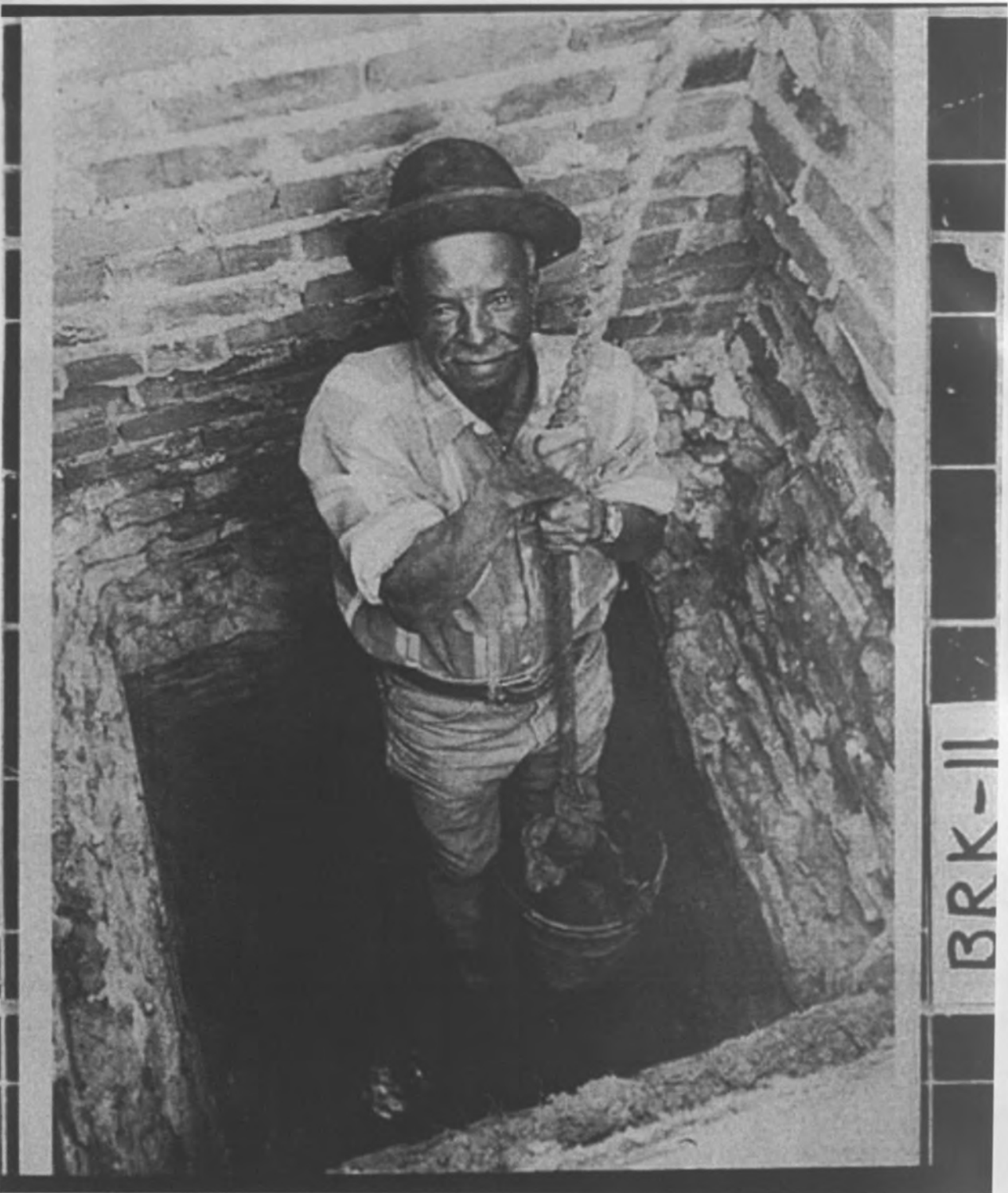
Consequently, after 15 years of sharing and dreaming, I sadly and regretfully announce the closing of the plantation to all except authorized visitors, business acquaintances and very close friends.

It is a sad time for a Dream to die—but when should Dreams die? In dreary winter? In summer's heat? Or while Fall gradually but surely approaches? Is it not best to put aside that which cannot be while life returns so gloriously as April's warmth follows the winds of March? Or does it matter at all?

Notwithstanding, I wish to thank all those who came with encouraging smiles and gifts, with prayers and songs.

On this, my 42nd wedding anniversary, I wish you well and promises to remember you all through the years to come.

Sincerely,
Verla Worn
Eudora Plantation



Brooks County, 1976. "Half a pint" Johnson (Henry) excavating 60-foot well using 5 gallon plastic bucket. The well was located on the Eudora Plantation. See the link in comments regarding the plantation home.....