







COME ON GANG!
GRAB YOUR HATS.
AND LET'S HEAD
FOR . . .



Seniors on parade!



Seniors after that money again!



THE GREATEST SHOW ON EARTH

. . . RIGHT HERE AT

VALDOSTA STATE



Atom bomb just struck on Rat Day





Freshmen arriving!



Election Day



Senior





CROWD . . . THE SHOW . . .

THE PERFORMERS . . . ALL

TOP-RATE ENTERTAINMENT!



Student and Faculty Reception



Dance

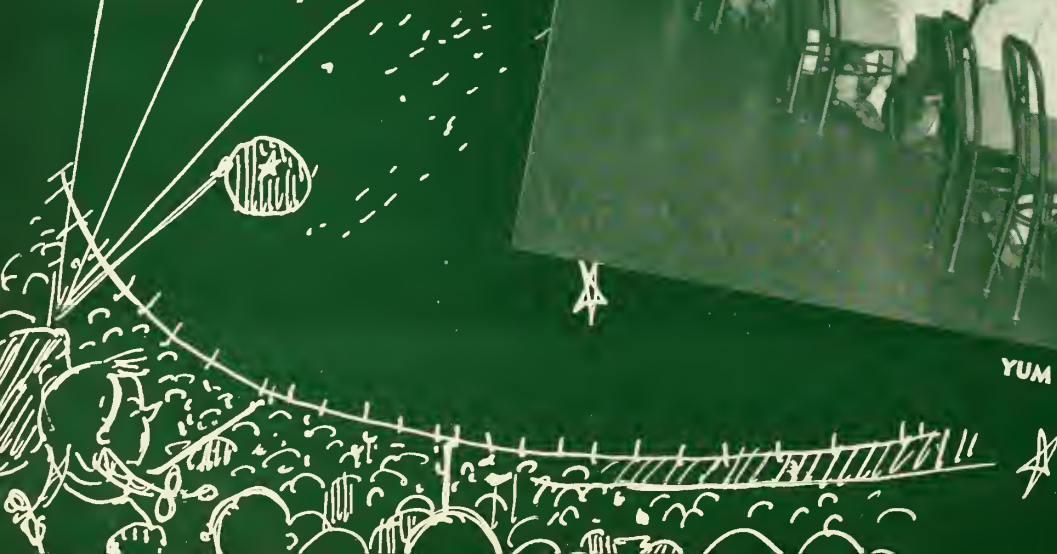


Look what Santa Claus brought

**PUBLISHED BY
STUDENTS OF
VALDOSTA STATE COLLEGE
VALDOSTA, GEORGIA**

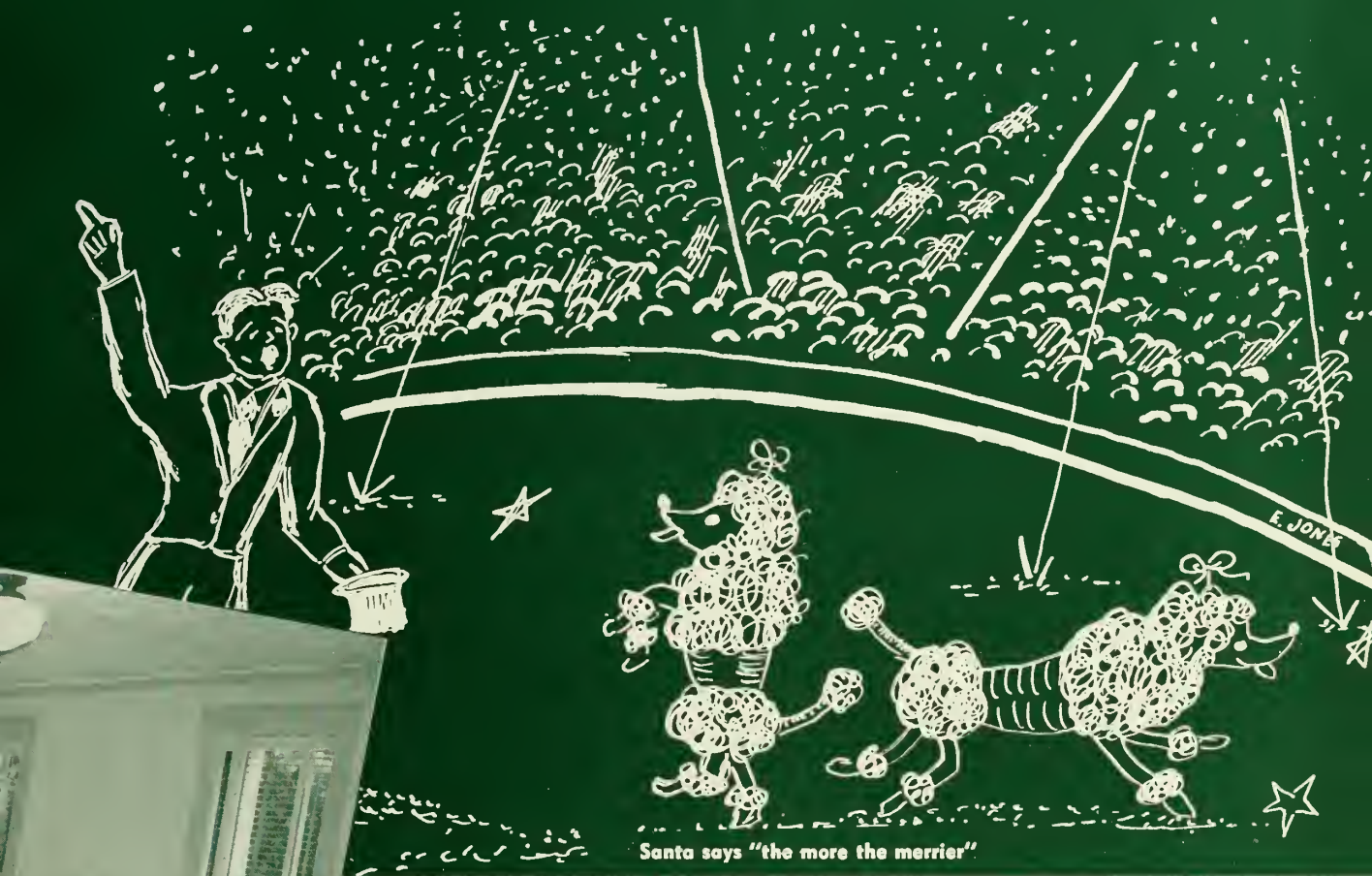


YUM..... YUM!!



OUR OWN 3-RING CIRCUS . . .

THE 1952 PINE CONE



Santa says "the more the merrier"

SMANSHOW

THE CROWD

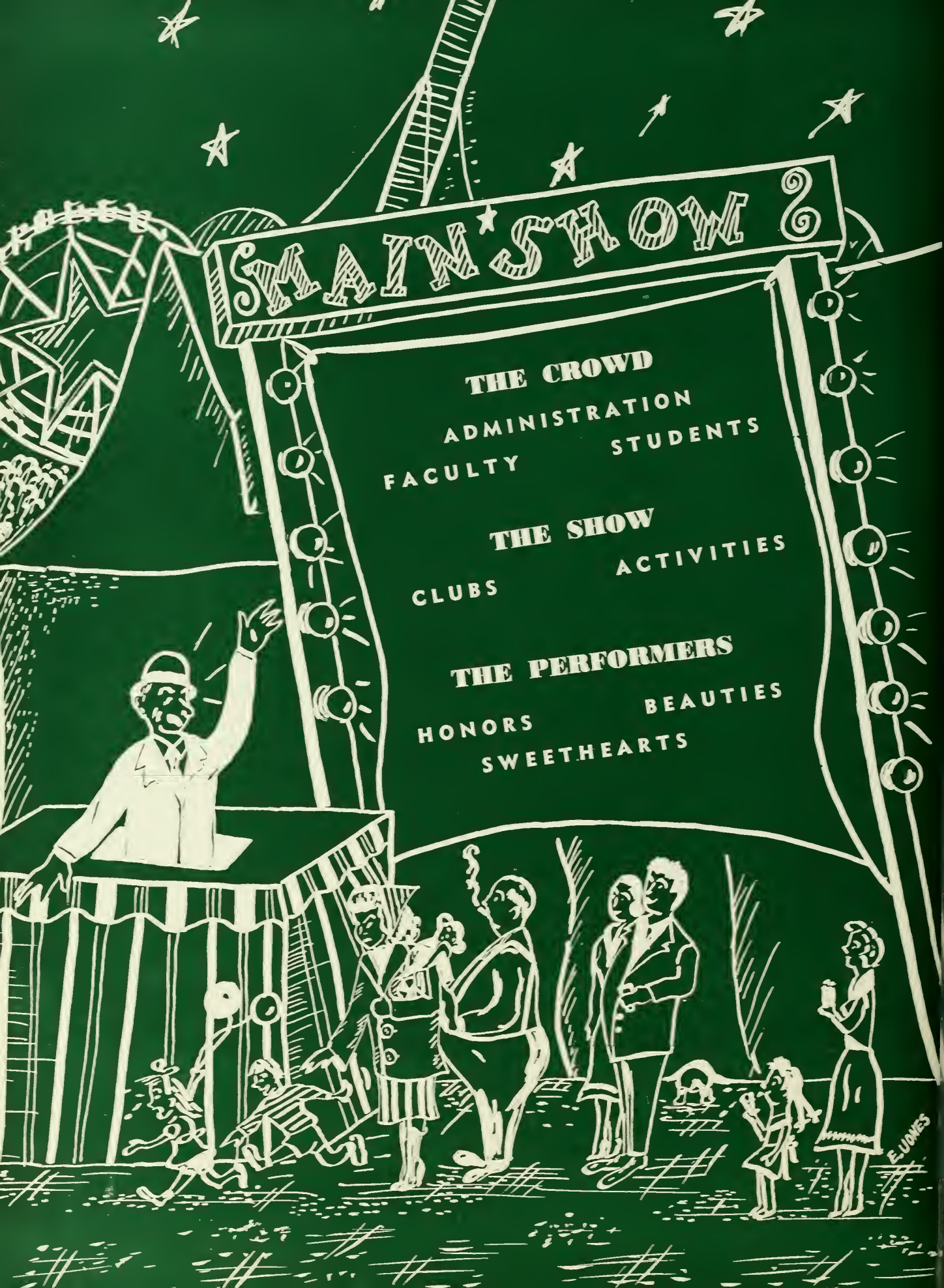
ADMINISTRATION
FACULTY STUDENTS

THE SHOW

CLUBS ACTIVITIES

THE PERFORMERS

HONORS BEAUTIES
SWEETHEARTS



ADMINISTRATION
FACULTY
STUDENTS



THE CROWD

I N M E M O R Y . . .



When we think of Mr. George Moore, we remember him as a friend who knew us by our first names and who would not want us to be sad because of his death. As assistant controller for many years, he gave us our money when we needed it, but, with our money, he gave us much more. He gave us cheer when we were homesick, advice when we were worried, sympathy when we were sad, and above all else, he gave everyone the sweetest smile that has ever been — one that we shall remember always as being typical of Mr. Moore. We feel certain that somewhere, Mr. Moore has been to the Great Treasurer and found that his account has been paid in full.

D E D I C A T I O N

To the teacher who has inspired us in his History and Social Science classes. . . .

To the advisor who has helped us in our publications and club work. . . .

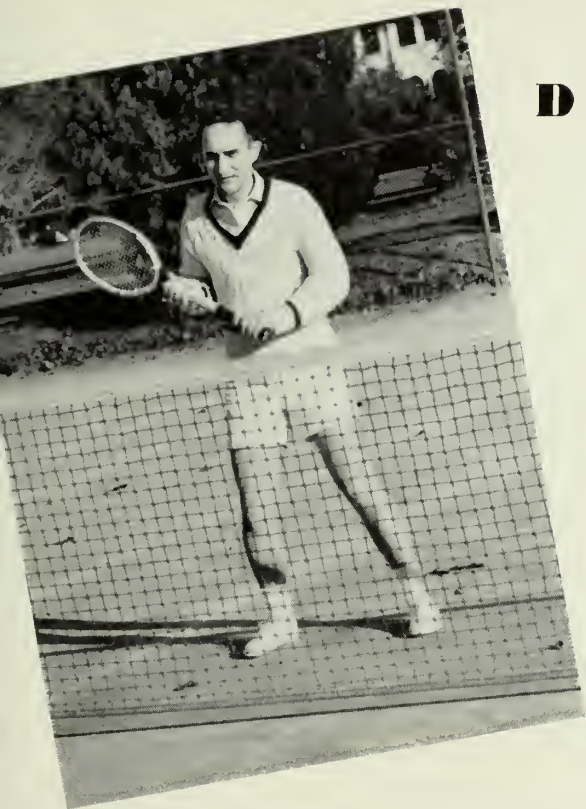
To the friend who always has a smile and a personal greeting for everyone. . . .

To the faculty member, who, though having been with us a comparatively short time, has become an indispensable part of our life at V.S.C. . . .

To our Dean of Men and Director of Publicity—

MR. WILLIAM GABARD

We dedicate the 1952 PINE CONE



MR. WILLIAM GABARD





DR. JAMES RALPH THAXTON
President
A.B., M.A., Ph.D.

A D M I N I S T R A T I O N

MRS. JOHN W. JENKINS
Dean of Women
A.B., A.M.

MRS. DAVID CARTER
Secretary to President

MRS. JULIA W. MORGAN
Assistant to Treasurer

MRS. W. M. THOMAS
Registrar
A.B.





MISS LILLIAN PATTERSON
Librarian
A.B., B.S. in L.S.

MISS BETTY JOE GUNTER
Resident Counsellor, Ashley Hall
A.B.

MISS THERA HAMBRICK
Assistant to Librarian
A.B., B.S. in L.S.

MRS. EVA A. SHRIVALLE
Dietitian

DR. ROBERT E. PERRY, M.D.
College Physician

MRS. FLORINE MYERS
Housekeeper

MRS. GRADY BENNETT
Resident Nurse

MRS. C. C. WHITTLE
Assistant Dietitian

MR. SHEALY C. McCOY
Comptroller and Treasurer
B.B.A., LL.B.

DR. JOSEPH A. DURRENBERGER
Academic Dean
A.B., A.M., Ph.D.

MR. WILLIAM GABARD
Dean of Men
Director of Publicity
A. B., A.M.



F A C U L T Y



MISS LEONORA IVEY, B.S., M.A.
Professor of Physical Education

MISS MARTHA ROOKS, B.S., M.S.
Assistant Professor of Physical Ed.

MRS. DOROTHY D. WALDRON, A.B.
Accompanist, Physical Ed. Department

MRS. PHYLLIS VALENTE, B.A., M.S.
Assistant Professor of Physical Ed.

MR. WALTER COTTINGHAM, A.B., M.Ed.
Assistant Professor of Physical Ed.

DR. H. S. GULLIVER, B.A., A.M., Ph.D.
Professor of English

MISS LOUISE SAWYER, B.S., M.A.
Professor of Speech

MRS. GERTRUDE C. ODOM, B.S., A.M.
Professor of English

MISS MILDRED PRICE, A.B., A.M.
Professor of History

MRS. REBECCA H. FRY, B.S.
Instructor in Social Science

MR. JAMES E. SPEAR, B.S., M.S.
Assistant Professor of Social Science

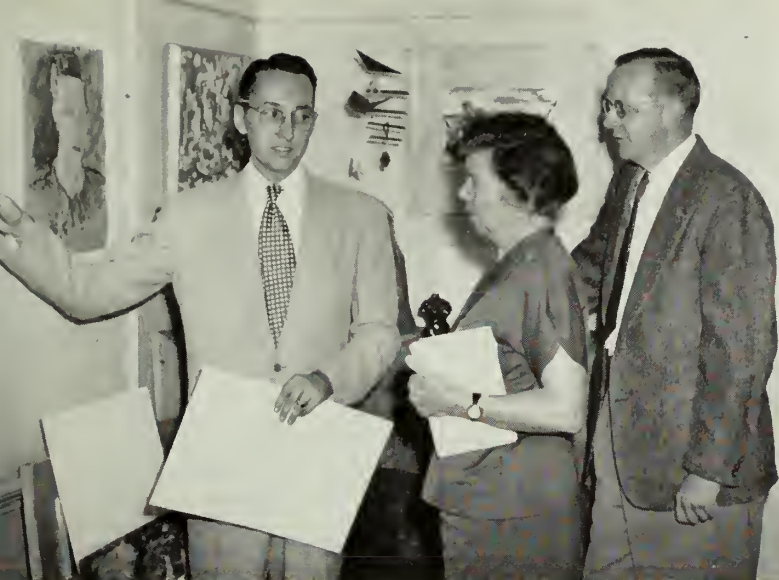


MRS. W. A. PARDEE, Graduate of Cincinnati Conservatory of Music
Instructor of Violin

MR. CLAYTON LOGAN, B.A., M.F.A.
Associate Professor of Music

MISS GLADYS WARREN, B.M., M.A.
Professor of Music





JOSEPH W. PEMBER, A.B., M.F.A.
Assistant Professor of Art

DR. SAPELO TREANOR, A.B., A.M., Ph.D.
Professor of French and Spanish

MR. CLIFTON H. WHITE, A.B., M.A.
Professor of Fine Arts

MR. LEROY BABOCK, B.S., M.S.
Associate Professor of Mathematics

DR. EARL W. PHELAN, P.Chem., Ph.D.
Professor of Chemistry

DR. BEATRICE NEVINS, Ph.B., Ph.M., Ph.D.
Professor of Biology

MISS MARJORIE E. CARTER, B.S., M.A.
Associate Professor of Biology, Resident Counsellor of Converse Hall

MR. ROLF EARL MOSELEY, B.Ph., M.S.
Associate Professor of Mathematics

MISS LORENE HERNDON, B.S., M.A.
Assistant Professor of Education, Resident Counsellor of Senior Hall

MRS. H. A. ASKEW, B.S., M.Ed.
Co-ordinator of Elementary Education

MRS. CLAUDE KNIGHT, B.S., M.A.
Associate Professor of Education



MISS MARGARET DEAVOR, A.B., M.A.
Associate Professor of Secretarial Science

MISS SARAH WEEMS, B.S.H.E., M.S.H.E.
Assistant Professor of Home Economics



MRS. JAMES JONES, B.S.
Cooperating Teacher

MRS. J. W. PINKSTON, A.B.
Cooperating Teacher

MISS FRANCES DEKLE, A.B.
Cooperating Teacher





Jackie Sikes, *President*; Tom Stroud, *Vice-President*; Elaine Boatwright, *Secretary and Treasurer*.

Senior Class . . . 1952

When we find ourselves ordering invitations and trying to raise money and saying "our last Firelighting Service—our last May Day" we suddenly awake with a start and realize that we are Seniors. Not so long ago, we felt that we were undoubtedly the lowest form of human life—freshmen in college. Now after four of our happiest years we know it's about that time to bid farewell to the life we loved the most and go on to take our places in the biggest show on earth.

Our Senior year was one of hard work and happiness. We sponsored dances and our carnival,

we sold Christmas cards, stationery and magazines and saved all our pennies in order to have a last fling at the end of school.

In all of our activities, we tried to set good examples, as Seniors should, but somehow, we could not be dignified when we knew that never again would we have the chance to be footloose and fancy-free.

We hope through our work and play, that we have set good examples and to you who will take our place, may your reign as Seniors be as happy as ours has been.



FRED S. BONNER
Valdosta, Ga.

Biology Major; Sociology and History Minor

Transferred from University of Georgia
Valdosta Club 3, 4; Math-Science
Club 3, 4; Y.M.C.A., Vice-President 3,
Men's Council 3, 4, Vice-President 3.



PAUL MYDDLETON
Valdosta, Ga.

Social Work Major; Math Minor

Transferred from South Georgia Col-
lege 3; Sociology Club 3, 4; Valdosta
Club 3, 4; Math-Science Club 3, 4.



RUBY PEACOCK
Quitman, Ga.

Elementary Education Major

Transferred from Sue Bennett College
and Florida State University 1, 2;
S.G.A. 3, 4; Y.W.C.A. 3, 4.



Senior Class . . . 1952

FAYGE"

"VIRGINIA"

"MARGUERITE"

"BARBARA"

"BETTY"

"RUTH"





RUTH MARTHA DINKINS
Valdosta, Ga.

**Social Work Major;
English Minor**

S.G.A. 1, 2, 3, 4; Council 4; Vice-President Junior Class; Sport's Club 1, 2, 3, 4; Council 1, 2, 3, 4; Sociology Club 3, 4; President 4; Valdosta 1, 2, 3, 4; Sock and Buskin 1, 2, 3, 4; Senior Honor 3, 4; Who's Who 4.

VIRGINIA WRIGHT STEWART
Valdosta, Ga.

**Secretarial Science Major;
English Minor**

S.G.A. 1, 2, 3, 4; Y.W.C.A. 1, 2, 3, 4; Sport's Club 1, 2, 3, 4; Campus Canopy 4; Business Club 2, 3, 4; President 4; Valdosta Club 1, 2, 3, 4; English Club 3, 4; Dance Club 1, 2; Glee Club 1, 2, 3, 4; E.C.A. 4.

BARBARA HOWELL
Valdosta, Ga.

**Home Economics Major;
English Minor**

S.G.A. 1, 2, 3, 4; Sport's Club 1, 2, 3, 4; PINE CONE 3, 4; Home Ec. Club; President 4; Valdosta Club 1, 2, 3, 4; Vice-President 3; English Club 3, 4; Dance Club 1, 2, 3; President 3; E.C.A. 3, 4.

FAYGE GAIL SISKIND
Valdosta, Ga.

**Social Work Major;
English Minor**

Transferred from University of Ga. 2; S.G.A. 2, 3, 4; Y.W.C.A. 2, 3, 4; Sport's Club 2, 3, 4; Council 4; Sociology Club 3, 4; Valdosta 2, 3, 4; English Club 3, 4.

BETTY LEE
Miami, Fla.

**Home Economics Major;
History Minor**

S.G.A. 1, 2, 3, 4; Sport's Club 1, 2, 3, 4; Freshman Honor Society 1, 2; Senior Honor Society 3; Home Economics Club 1, 2, 3; Valdosta Club 1, 2, 3, 4; Treasurer 3; I.R.C. 3, 4.

MARGUERITE DELOACH
Valdosta, Ga.

**Secretarial Science Major;
English Minor**

S.G.A. 1, 2, 3, 4; Y.W.C.A. 1, 2, 3, 4; Sport's Club 3, 4; Business Club 1, 2, 3, 4; Secretary 3; Valdosta Club 1, 2, 3, 4; Secretary 4; English 3, 4; Secretary 4.

Senior Class . . . 1952

"BLOUNT"

"LEILA"

"JO"

"ELINOR"

"BETTY RED"

"JEANNETTE"





MARY ELIZABETH KING
Athens, Ga.

English Major; History Minor

S.G.A. 1, 2, 3, 4; Vice-President 4; Y.W.C.A. 1, 2, 3, 4; Sport's Club 1, 2; Campus Canopy 1, 2, 3, 4; PINE CONE 3, 4; Freshmen Honor Society 1, 2; Senior Honor Society 3, 4; Fine Art's Club 1, 2, 3; English Club 3, 4; Romance Language Club 1; Vice-President 1; Sock And Buskin 1, 2, 3, 4; Vice-President 3; Glee Club 1, 2, 3; I.R.C. 3, 4; E.C.A. 4; Who's Who 4.

JEANNETTE JONES
Quitman, Ga.

Chemistry Major; Home Economics Minor

S.G.A. 1, 2, 3, 4; Y.W.C.A. 1, 2, 3, 4; PINE CONE 3; Fine Arts 3, 4; Home Ec. 4; Math-Science 2, 3, 4.

MARY BLOUNT TRAMMELL
Columbus, Ga.

Elementary Education Major

S.G.A. 1, 2, 3, 4; Y.W.C.A. 1, 2, 3, 4; Campus Canopy 1, 2, 3, 4; Business Manager 3, 4; PINE CONE 3, 4; English Club 1; A.C.E. 3, 4; President 3; E.C.A. 3; Senior Hall President 1.

ELINOR JONES
Quitman, Ga.

Chemistry Major; Art Minor

S.G.A. 1, 2, 3, 4; Sport's Club 1, 2, 3, 4; Campus Canopy 1, 2, 3, 4; PINE CONE 3, 4; Fine Arts Club 1, 2, 3, 4; President 3; Math-Science Club 1, 2, 3, 4; Sock And Buskin 3, 4; Vice-President 4; Glee Club 1, 2, 3; E.C.A. 3; Senior Hall Vice-President 4.

JOANNE GILMER
Hyattsville, Maryland

Biology Major; Home Economics Minor

S.G.A. 1, 2, 3, 4; Junior Class Treasurer; Y.W.C.A. 1, 2, 3, 4; Sports Club 1, 2, 3, 4; Freshman Honor Society; President 2; Senior Society 3, 4; Home Ec. Club 1, 2, 3, 4; Vice-President 4; English Club 2, 3, 4; President 4; Glee Club 1, 2; B.S.U. 1, 2, 3, 4; Who's Who 4.

LEILA HARMON
Albany, Ga.

Elementary Education Major

S.G.A. 1, 2, 3, 4; Sport's Club 1, 2, 3, 4; Council 3, 4; Campus Canopy 2, 3, 4; PINE CONE 4; Fine Arts Club 1, 2, 3, 4; Vice-President 3; Math-Science 1, 2; A.C.E. 3, 4.

Senior Class . . . 1952

"OLLIE"

"B. C."

"EMY LU"

"MARTHY"

"RALPH"





EMILY LOU REICHERT

Boston, Ga.

Elementary Education Major

Transferred from Emory University 2; S.G.A. 2, 3, 4; Y.W.C.A. 2, 3, 4; Sports Club 2, 4; PINE CONE 4; Fine Arts Club 4; A.C.E. 3, 4; Sociology Club 3.

BETTY JANE COLLINS

Adel, Ga.

Elementary Education Major

S.G.A. 1, 2, 3, 4; Y.W.C.A. 1, 2, 3, 4; Cabinet 4; Sports Club 1; PINE CONE 4; Business Manager 4; B.S.U. 1, 2, 3, 4; A.C.E. 3, 4; Treasurer 4; E.C.A. 4.

DOCK FRANKLIN DIXON, JR.

Blackshear, Ga.

Biology Major; Chemistry Minor

Transferred from South Georgia 3; PINE CONE 4; Y.M.C.A. 4; Mixed Chorus 4; Math-Science 3, 4.

MARTHA ELIZABETH McKEMIE

Bluffton, Ga.

Elementary Education Major

Transferred from Andrew College 2; S.G.A. 2, 3, 4; Y.W.C.A. 2, 3, 4; Treasurer 3; PINE CONE; Editor, 4; Fine Arts Club 4; Philharmonic Club 2, 3; A.C.E. 3, 4; Secretary 3.

OLLIE JEAN TRAWICK

Iron City, Ga.

Elementary Education Major

Transferred from Andrew College 3; S.G.A. 3, 4; Y.W.C.A. 3, 4; PINE CONE 4; Fine Arts Club 3, 4; Sociology 3; A.C.E. 3, 4.

RALPH E. BROWN

Valdosta, Ga.

Elementary Education Major

Transferred from Emory Junior 3; Campus Canopy 3; PINE CONE 4; Valdosta Club 3; A.C.E. 3, 4; Vice-President 4; S.G.A. Council 4.



EVELYN McLAIN
Lake Park, Ga.

Secretarial Science Major;
English Minor

Business Club 2, 3, 4; Vice-President 4;
Valdosta Club 3, 4; English 3, 4;
B.S.U. 4.

SALLY ROYAL HUDSON
Valdosta, Ga.

Humanities Division with
English Emphasis

English Club 2; Romance Club 1;
Dance Club 2.

DORIS RUTH GROOVER
Dixie, Ga.

Elementary Education Major

Transferred from Norman Junior Col-
lege 3; S.G.A. 3, 4; Y.W.C.A. 3, 4.

EMILY LOUISE GROOVER
Dixie, Ga.

English Major; French Minor

Transferred from Norman Junior Col-
lege 3; S.G.A. 3, 4; Y.W.C.A. 3, 4.

DORIS MARIE JOHNSON
Valdosta, Ga.

Art Major; English Minor

Y.W.C.A. 1, 2, 3, 4; Sports Club 1, 2,
3, 4; Fine Arts Club 1, 2, 3, 4; Secre-
tary 3; President 4; Valdosta Club 1,
2, 3, 4; English Club 3, 4.

MABLE WHITE
Valdosta, Ga.

Elementary Education Major

Freshman Honor Society 1, 2; Senior
Honor Society 3, 4; A.C.E. 4.

Senior Class . . . 1952

"ALEECE"

"ANNE"

"B. J."

"REMA"

"ELAINE"

"FLO"





MARY ALEECE STRICKLAND
Waycross, Ga.

**Humanities Division with
Emphasis on English**

S.G.A. 1, 2, 3, 4; Y.W.C.A. 1, 2, 3, 4;
Sports Club 1, 2, 3, 4; Fine Arts Club
3, 4; English 3, 4; Sock and Buskin 1,
2, 3, 4; Glee Club 1; League of Women
Voters 3, 4.

FLORENCE LORAIN McCALL
Hinesville, Ga.

**Humanities Division with
Emphasis on English**

S.G.A. 1, 2, 3, 4; Y.W.C.A. 1, 2, 3, 4;
Sports Club 1, 2, 3, 4; English Club
3, 4; Philharmonic Club 1, 2, 3; Glee
Club 1, 2, 3.

REMA H. SAPP
Douglas, Ga.

**Business Administration Major;
Math Minor**

Transferred from Emory University 3;
Fine Arts 4; Mixed Chorus 4; Y.M.C.A.
4.

MARTHA ANNE MURRAY
Waycross, Ga.

Public Welfare Major

S.G.A. 1, 2, 3, 4; Y.W.C.A. 1, 2, 3, 4;
Campus Canopy 3, 4; Sociology Club
2, 3, 4.

ELAINE WINDHAM
Reynolds, Ga.

Social Work Major

S.G.A. 1, 2, 3, 4; Campus Canopy 3, 4;
Fine Arts Club 1; Business Club 1;
Sociology Club 4; Romance Language
Club 1.

BETTIE JO PERRITT
DuPont, Ga.

Biology Major; Chemistry Minor

S.G.A. 1, 2, 3, 4; Y.W.C.A. 1, 2, 3, 4;
Sports Club 1, 2, 3, 4; Math-Science
Club 2, 3, 4; Glee Club 1.

Senior Class . . . 1952

"DORIS ANNE"

"JO"

"ANNE"

"LAINE"

"JACKIE"

"GLORIA"





JACQUELINE SIKES
Claxton, Ga.

Secretarial Science Major;
Social Work Minor

S.G.A. 1, 2, 3, 4; Student Council 3, 4; Class President 3, 4; Y.W.C.A. 1, 2, 3, 4; Cabinet 3, 4; Sports 1, 2, 3, 4; Campus Canopy 2, 3; Business Club 3, 4; Sociology Club 2, 3, 4; Vice-President 3; English Club 4; B.S.U. 1, 2, 3, 4; Chapel Choir 3.

DORIS GIBSON GOTHARD
Thomasville, Ga.

Home Economics Major;
Art Minor

S.G.A. 1, 2, 3, 4; Y.W.C.A. 1, 2, 3, 4; Cabinet 2, 4; Secretary 3; President 4; Sports Club 1, 2, 3, 4; Campus Canopy 1, 2, 3, 4; PINE CONE 3; Assistant Editor 3; Fine Arts Club 1, 2, 3, 4; Vice-President 1, 2; Home Ec. Club 1, 2, 3, 4; Secretary 3; Vice-President 3; B.S.U. 1, 2, 3, 4; Class Sweetheart 3.

ANNE OWENS
Newnan, Ga.

Home Economics Major;
Art Minor

S.G.A. 1, 2, 3, 4; Y.W.C.A. 1, 2, 3, 4; Sports Club 1, 2, 3, 4; Home Ec. Club 1, 2, 3, 4; Dance Club 1, 3, 4; B.S.U. 1, 2.

MARY JO LOTT
Douglas, Ga.

Humanities Division with
Emphasis on Speech

S.G.A. 1, 2, 3, 4; Secretary Treasurer 3; Y.W.C.A. 1, 2, 3, 4; Freshman Honor Society 2; Senior Honor Society 3, 4; Romance Language 3; Philharmonic Club 2; Sock and Buskin Club 1, 2, 3, 4; President 4; Glee Club 1, 2, 3, 4; Serenaders 1, 2, 3, 4; Chapel Choir 1, 2, 3, 4.

ELAINE BOATWRIGHT
Douglas, Ga.

Secretarial Science Major;
English Minor

S.G.A. 1, 2, 3, 4; Class Secretary-Treasurer 4; Y.W.C.A. 1, 2, 3, 4; Sport's Club 1, 2; Campus Canopy 2; PINE CONE 3, 4; Associate Editor 4; Business Club 1, 2, 3, 4; Vice-President 3; Store Manager 4; English Club 4; Class Sweetheart 2.

GLORIA PROCTOR
St. Petersburg, Fla.

Secretarial Science Major;
English Minor

S.G.A. 1, 2, 3, 4; Y.W.C.A. 1, 2, 3, 4; PINE CONE 3, 4; Business Club 2, 3, 4; President 3.

Senior Class . . . 1952

"RUSSELL"

"PATSY"

"ROSE"

"LITTLE BIT"

"MELBA"

"CEILL"





MRS. RUSSELL HILLIARD
Sparks, Ga.

Education Major; Art Minor

S.G.A. 1, 2, 3; Y.W.C.A. 1, 2, 3, 4; Freshman Honor Society 1, 2; Senior Honor Society 3, 4; Historian 3, 4; Fine Arts Club 3, 4; Philharmonic Club 1, 2; Glee Club 1; Westminster Fellowship 1, 2, 3, 4; Vice-President 2, 3; President 4; A.C.E. 2, 3, 4; Vice-President 3.

RUSSELL HILLIARD
Sparks, Ga.

English Major; Biology Minor

Transferred from Emory University 3; PINE CONE 4; Math-Science Club 4; English Club 3, 4; A.C.E. 3, 4; Y.M.C.A. 4; Who's Who 4.

MARIAN WATERS
Blackshear, Ga.

Elementary Education Major

S.G.A. 1, 2, 3, 4; Y.W.C.A. 1, 2, 3, 4; PINE CONE 4; Sock And Buskin Club 3, 4; Westminster Fellowship 2, 3, 4; Secretary 3; Treasurer 4; A.C.E. 3, 4; Reporter 4.

MELBA JANE GROGAN
Calhoun, Ga.

**Secretarial Science Major;
Social Science Minor**

Transferred from Montreat College 2; S.G.A. 2, 3, 4; Y.W.C.A. 2, 3, 4; Sports Club 2, 3, 4; Campus Canopy 3, 4; PINE CONE 4; Assistant Business Manager 1; Business Club 2, 3, 4; Treasurer 3; Sociology Club 2, 3, 4; B.S.U. 2, 3, 4.

LUCEIL COOPER BAUER
Hamilton, Ga.

Chemistry Major; Biology Minor

S.G.A. 1, 2, 3, 4; Y.W.C.A. 1, 2, 3, 4; Sports Club 1, 2, 3, 4; Counril 1, 2, 3, 4; Campus Canopy 3, 4; Freshman Honor Society 1, 2; Senior Honor Society 3, 4; President 4; Math-Science Club 1, 2, 3, 4; Vice-President 3; Dance Club 1, 2, 3, 4; Secretary-Treasurer 3; President 4; Sock And Buskin Club 3, 4; Glee Club 1, 2, 3; E.C.A. 4; Who's Who 4.

ROSE PARRISH
Adel, Ga.

Divisional Major in History

S.G.A. 1, 2, 3, 4; Y.W.C.A. 1, 2, 3, 4; Sports Club 1, 2; Sociology Club 3; Romance Language Club 4; I.R.C. 4; League of Women Voters 3, 4; Secretary 3.

Senior Class . . . 1952

"MARJORIE"

"SISTER"

"CORNELIA"

"BOBBIE"

"VIRGINIA"

"BETTY JEAN"





THELMA GRIFFIN
Valdosta, Ga.

Elementary Education Major

S.G.A. 1, 2, 3, 4; Sophomore Class Vice-President 2; Y.W.C.A. 1, 2, 3, 4; Cabinet 2; Sports Club 1, 2, 3, 4; Vice-President 3; President 4; Council 1, 2, 3, 4; Sociology Club 3; Valdosta Club 1, 2, 3, 4; English Club 3; Marga 2, A.C.E. 4.

BETTY JEAN SPELL
Valdosta, Ga.

Social Work Major; English Minor

S.G.A. 1, 2, 3, 4; Y.W.C.A. 1, 2, 3, 4; Sports Club 1, 2, 3; PINE CONE 4; Business Club 1; Sociology Club 3, 4; Vice-President 4; Valdosta Club 1, 2, 3, 4; English Club 3, 4; Glee Club 1.

ROBLEY ELAM JOBE
Valdosta, Ga.

**Home Economics Major;
History Minor**

S.G.A. 1, 2, 3, 4; Y.W.C.A. 1, 2, 3, 4; Sports Club 1; PINE CONE 4; Freshman Honor Society 1; Senior Honor Society 2, 3, 4; Secretary-Treasurer 4; Home Ec. Club 1, 2, 3, 4; Secretary 3; State Officer 4; Dance Club 1; I.R.C. 2, 3, 4; Vice-President 3.

VIRGINIA MASSEY
Valdosta, Ga.

**Home Economics Major;
Art Minor**

S.G.A. 1, 2, 3, 4; Class Officer 1, Vice-President; Y.W.C.A. 1, 2, 3, 4; Home Ec. Club 1, 2, 3, 4; Glee Club 1, 2, 3, 4; President 4; Serenaders 1, 2, 3, 4; B.S.U. 1, 2, 3, 4.

CORNELIA CURRIE ASHLEY
Valdosta, Ga.

**Secretarial Science Major;
English Minor**

S.G.A. 1, 2, 3, 4; Y.W.C.A. 1, 2, 3, 4; Sports Club 1, 2, 3, 4; Council 3, 4; Historian 4; PINE CONE 4; Freshman Honor Society 1, 2; Business Club 1, 2, 3, 4; Valdosta Club 1, 2, 3, 4; English Club 2, 3, 4; Vice-President 4; Westminster Fellowship 1, 2, 3, 4; Vice-President 2.

MARJORIE SMITH
Valdosta, Ga.

Senior Class . . . 1952

"EMMIE"

"DOT"

"JOSEPHINE"

"GUINN"

"MARIE"





DOROTHY VICTORIA DREXEL
Valdosta, Ga.

**Humanities Major with
Emphasis on Art**

S.G.A. 1, 2, 3, 4; Y.W.C.A. 1, 2, 3, 4;
Fine Arts Club 2, 3, 4; Secretary-Treasurer 3, 4; Home Ec. Club 1; Romance Language Club 1.

JOSEPHINE ELLEN GOODING
Woodbine, Ga.

**Home Economics Major;
Art Minor**

S.G.A. 1, 2, 3, 4; Y.W.C.A. 1, 2, 3, 4;
Fine Arts Club 1, Home Ec. Club 2.

EMMIE KENNY
Moultrie, Ga.

History Major; Biology Minor

S.G.A. 1, 2, 3, 4; Y.W.C.A. 1, 2, 3, 4;
Sports Club 1, 2, 3, 4; Freshman Honor Society 2; Senior Honor Society 3, 4;
Vice-President 3; Math-Science 3, 4;
Romance Language 2, 3, 4; I.R.C. 3, 4;
Treasurer 3, 4.

GUINETTA MIXON
Griffin, Ga.

Social Work Major; History Minor

Transferred from G.S.C.W. 3; S.G.A. 3, 4; Y.W.C.A. 3, 4; Sociology Club 3, 4; Secretary-Treasurer 4; I.R.C. 3, 4;
Glee Club 3, 4.

MARIE THERESE BERGEN
Anglet, France

**English Major; American
History Minor**

Exchange Student; S.G.A. 4; Y.W.C.A. 4; Romance Language Club 4; I.R.C. 4; Glee Club.

JOHN FEAZELL
Valdosta, Ga.

Senior Class . . . 1952

"RUFUS"

"ALICE"

"MARY"

"BUNKER"

"SUSIE"

"JO"





JOAN DEKLE
Cordele, Ga.

Elementary Education Major

S.G.A. 1, 2, 3, 4; Vice-President 3; President 4; Student Council 2, 3, 4; Class Officer 2; President; Y.W.C.A. 1, 2, 3, 4; Cabinet 2, 3, 4; Sports Club 1, 2, 3, 4; Home Ec. Club 2, 3; Glee Club 1, 2, 3, 4; Serenaders 3, 4; Dormitory Representative 4.

SUE NELL WHITE
Cairo, Ga.

Elementary Education Major

S.G.A. 1, 2, 3, 4; Student Council 3, 4; Class Officer 1; Secretary-Treasurer; Y.W.C.A. 1, 2, 3, 4; Cabinet 2, 3, 4; Sports Club 1, 2, 3, 4; Treasurer 2; Council 1, 2, 3, 4; Campus Canopy 4; Sociology Club 3; English Club 3; B.S.U. 1, 2, 3, 4; Marga 3; E.C.A. 3, 4.

MARY CATHERINE HILL
Moultrie, Ga.

Elementary Education Major

S.G.A. 1, 2, 3, 4; Y.W.C.A. 1, 2, 3, 4; Sports Club 1, 2; Campus Canopy 3; Fine Arts Club 3, 4; Vice-President 1; Home Ec. Club 1, 2, 3, 4; Sock And Buskin Club 3, 4; Historian 3; Glee Club 1, 2; B.S.U. 1; A.C.E. 1; E.C.A. 4.

MARY LOUISE HOLDER
Tifton, Ga.

Elementary Education Major

S.G.A. 1, 2, 3, 4; Student Council 3, 4; E.C.A. Chairman 4; Y.W.C.A. 1, 2, 3, 4; Cabinet 2, 4; Sports Club 1, 2; PINE CONE 3; Sock And Buskin Club 1; B.S.U. 2, 3, 4; President 3; A.C.E. 3, 4; Treasurer 3.

ALICE LEE McCALL
Cairo, Ga.

Elementary Education Major

S.G.A. 1, 2, 3, 4; Y.W.C.A. 1, 2, 3, 4; Sports Club 1, 2, 3, 4; Campus Canopy 3, 4; PINE CONE 1; Fine Arts Club 3, 4; Home Ec. Club 1, 2, 3; Treasurer 3; Westminster Fellowship 1, 2, 3, 4; Secretary 3; Vice-President 4; A.C.E. 3, 4; President 4; E.C.A. 4.

RUTH MILLER
Pembroke, Ga.

Math Major; History Minor

S.G.A. 1, 2, 3, 4; Y.W.C.A. 1, 2, 3, 4; Cabinet 1, 2, 3, 4; Sports Club 1, 2, 3, 4; Campus Canopy 1, 2, 4; Editor 4; Math-Science Club 1, 2, 3, 4; Vice-President 2; I.R.C. 3, 4; B.S.U. 1, 2, 3, 4; E.C.A. 4.

Senior Class . . . 1952

"BILLIE"

"MARY DINN"

"LYDIA"

"DORIS"

"DOT"





CLARA NELL WADDELL
Iron City, Ga.

Social Work Major

S.G.A. 1, 2, 3, 4; Y.W.C.A. 1, 2, 3, 4;
Sociology 1, 2, 3, 4; Home Ec. Club 1.

DORIS SPRADLEY
Tifton, Ga.

**Biology Major; Home
Economics Minor**

S.G.A. 1, 2, 3, 4; Y.W.C.A. 1, 2, 3, 4;
Sports Club 1, 2, 3, 4; Freshman Honor
Society 1, 2; Senior Honor Society 3,
4; Secretary-Treasurer 3; Home Ec.
Club 1, 2, 3, 4; Treasurer 4; Math-
Science Club 2, 3, 4; Romance Lan-
guage Club 1; B.S.U. 1, 2, 3, 4.

BILLIE HILDA CLIETT
Bainbridge, Ga.

Music Major

S.G.A. 1, 2, 3, 4; Y.W.C.A. 1, 2, 3, 4;
Cabinet 2, 3, 4; Vice-President 3; Ro-
mance Language Club 1; Philharmonic
Club 1, 2, 3, 4; Vice-President 2; Pres-
ident 4; Glee Club 1, 2; Chapel Choir
3, 4; B.S.U. 1, 2, 3, 4; President 4.

LYDIA STORY
Ashburn, Ga.

Math Major; History Minor

S.G.A. 1, 2, 3, 4; Y.W.C.A. 1, 2, 3, 4;
Sports Club 1, 2, 3, 4; Campus Canopy
2, 3, 4; PINE CONE 3; Freshman
Honor Society 1, 2; Secretary-Treasurer
2; Senior Honor Society 3, 4; Vice-
President 4; Math-Science 1, 2, 3, 4;
Secretary-Treasurer 3; Vice-President
4; I.R.C. 3, 4; B.S.U. 1, 2, 3, 4.

DOROTHY WILLIFORD
Rebecca, Ga.

**Secretarial Science Major;
English Minor**

S.G.A. 1, 2, 3, 4; Y.W.C.A. 1, 2, 3, 4;
Sports Club 1, 2, 3, 4; Business Club
2, 3, 4; B.S.U. 1, 2, 3, 4.

MARY DINN CORDRAY
Savannah, Ga.

Elementary Education Major

Transferred from Armstrong College;
S.G.A. 3, 4; Y.W.C.A. 3, 4; Cabinet 4;
Sports Club 3, 4; PINE CONE 3, 4;
Senior Honor Society 3, 4; Glee Club
3, 4; B.S.U. 3, 4; A.C.E. 3, 4; Secre-
tary 4.

Senior Class . . . 1952

"TOM"

"JACK"

"SONNY"

"JACK"





F. W. FOGG, JR.
Valdosta, Ga.

Chemistry Major; Business Administration Minor

S.G.A. 4; President 4; Business Club 4; Valdosta Club 3, 4; President 4; Math-Science 4; Y.M.C.A. 4; Filii Fortunae 4; Treasurer 4.

JACK CROZIER INMAN
Thomasville, Ga.

English Major; History Minor

Transferred from Asbury College 3; S.G.A. 3, 4; English Club 4; Sock And Buskin 4; I.R.C. 4; Mixed Chorus 4; Y.M.C.A. 4; President 4; Men's Dormitory Council 4; President 4.

HENRY OWEN WELCH, JR.
Waycross, Ga.

Business Administration Major; English Minor

S.G.A. 4; Treasurer 4; Valdosta Club 3; Sock And Buskin 3; Glee Club 3, 4; Y.M.C.A. 4; Filii Fortunae 4; Secretary 4.

WARREN EVERETT BEAL
Valdosta, Ga.

Chemistry Major; Biology Minor

Transferred from South Georgia College; S.G.A. 3, 4; Valdosta Club 3, 4; Math-Science Club 3, 4; Mixed Chorus 3, 4; Y.M.C.A. 3, 4; Filii Fortunae 4.

TOM STROUD
Alma, Ga.

Business Administration Major; History Minor

Transferred from South Georgia College; Class Vice-President 4; PINE CONE 4; Valdosta Club 3; Sock And Buskin Club 3, 4; Vice-President 3; Secretary-Treasurer 4; Mixed Chorus 3, 4; Y.M.C.A. 4; Filii Fortunae 4.

Senior Class . . . 1952

"JACK"

"SAM"

"CLEON"

"KEITH"





WILLARD KEITH DAME
Valdosta, Ga.

History Major; English Minor

Transferred from Emory Junior; S.G.A. 3, 4; Campus Canopy 3, 4; Assistant Editor 3, 4; Valdosta Club 3, 4; I.R.C. 3, 4; Vice-President 4; Filii Fortunae.

HORACE C. HUNT, JR.
Valdosta, Ga.

**Business Administration Major;
History Minor**

Transferred from South Georgia College 3; S.G.A. 3, 4; Business Club 4; Valdosta Club 3, 4; I.R.C. 3, 4; Filii Fortunae 4.

SAMUEL B. TODD
Valdosta, Ga.

History Major; Biology Minor

Transferred from Emory Junior 3; S.G.A. 4; Off-Campus Representative 4; Campus Canopy 4; PINE CONE 4; Senior Honor Society 3, 4; Valdosta Club 3, 4; Math-Science Club 4; English Club 3; I.R.C. 3, 4; President 3; E.C.A. 3; Filii Fortunae 4; Second Vice-President; Who's Who 4.

R. ALEX DUKES
Valdosta, Ga.

Biology Major; Chemistry Minor

Transferred from South Georgia College 3; S.G.A. 3, 4; Valdosta Club 3, 4; Math-Science Club 3, 4.

MANNING HICKS
Pinetta, Fla.

Sociology Major

Transferred from Norman Junior College.

NIEL WILSON
Valdosta, Ga.

**Social Work Major;
English Minor**

Transferred from Norman Junior College.



Betty Jean Daniel, *Secretary-Treasurer*; Harriet Howell, *President*; Marie Wellmaker, *Vice-President*.

Junior Class . . . 1952

Juniors at last! We found that the great sensation of being in Senior College passed too swiftly away. Being a Junior certainly did not mean we could slack up on studying—it meant studying and living up to our new status of being dignified Juniors.

Our dance, "The Magnolia Room," with its repeat performance was even more spectacular this year than last. The ever present subject of sponsoring Junior-Senior Frolics was a booster to accumulate funds. The way was rugged but our journey was

completed. The fun, the gaiety, and the almost sadness of the wonderful weekend, our first Junior-Senior Frolics, was immensely successful.

Our Junior year is now over, and we look back upon it as a year in which we acquired a broader outlook on life and one in which we enjoyed life to the fullest with all the prospects of an even greater future to come. Next year we will be Seniors, and somehow we feel that, if it is a better year for us, it will have to be an extraordinary good one.

MARTHA BARRS
Quitman



DOLORES BARRY
Savannah



VIRGINIA BENNETT
Adel



SARA VIRGINIA BOLIN
Columbus



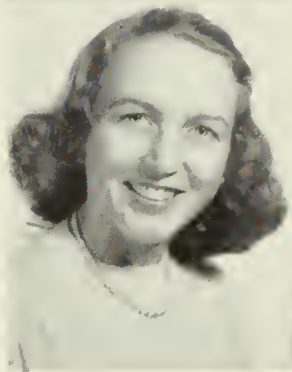
LAURA ANN BOWEN
Tifton



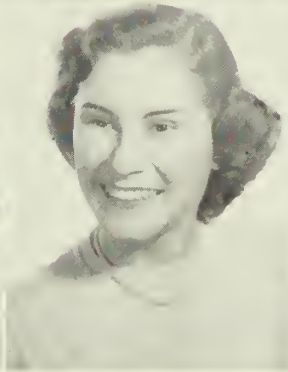
JACKIE BOWER
Dixie



ELEANOR BOWMAN
Blakely



ANN BRYANT
Moultrie



SAMUEL S. BUCHANAN
Remerton



ANN CAMP
Sylvester



MARGARET ANN CANNON
Blakely



JESSIE MAE CARTER
Lake Park

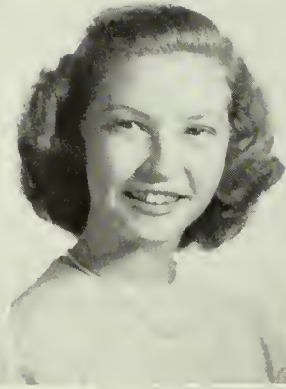


WEBSTER LEE CARTER
Waco



FLORENCE CATIKOS
Valdosta





LOUISE CLAYTON
Lake Park

MARY HELEN COOPER
Douglas

REBEKAH CULBRETH
Moultrie

BETTY JEAN DANIELS
Montezuma

GLENICE DAUGHARTY
Fargo

ERNESTINE DONALDSON
Quitman

PEGGY ANN DUKE
Adel

WILLIAM FLOURNOY
Albany

Junior Class . . . 1952

HELEN GRACE FORD
Sylvester

MARY GALLAGHER
Nashville

NORMA GASKINS
Nashville

PATRICIA HEATH
Leesburg



BETTY HERBERT
Fort Valley

HARRIETT HOWELL
Americus

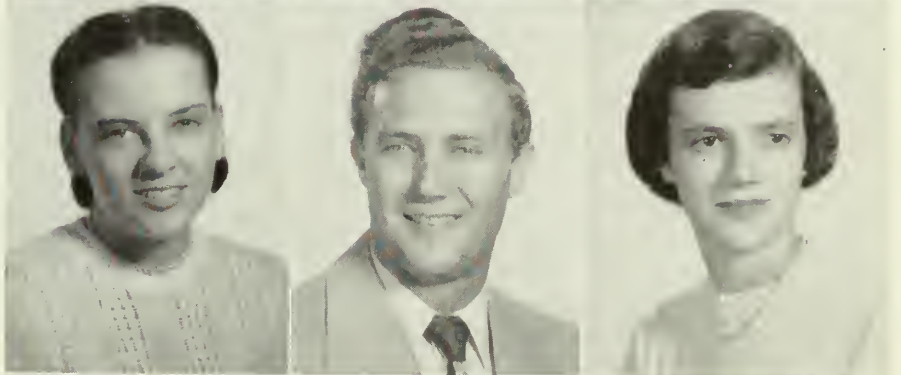
BETTYE JACKSON
Macon



MRS. RALPH B. JOHNSON
Valdosta

WILLIAM JOHNSON
Morgan

MARIANNE JOINER
Coleman



PEGGY JONES
Uvalda

ROSE MARGARET JONES
Sylvester

MARY FRANCES KIGHT
Douglas



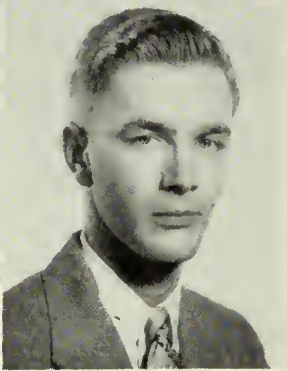
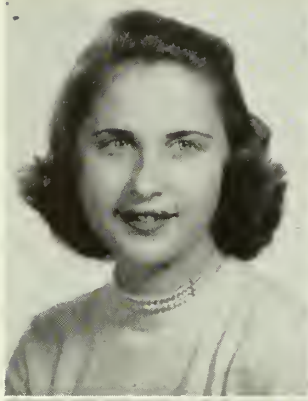
CLEON KING
Douglas

JAMES ROBERT LANE
Quitman

ARLICE B. LEONARD
Lake Park

PAUL MATHIS
Adel





KATHLEEN MEEKS
Blackshear

BARBARA McELVEY
Valdosta

GRACE McCORD
Sylvester

JANE McHUGH
Richland

MARY ANN MYERS
Valdosta

NATALIE NEPP
Gainesville

JAMES W. OGLESBY
Valdosta

VAN OPDENBROW
Valdosta

Junior Class . . . 1952

ASPASIA PANOS
Valdosta

MARILYN PEACOCK
Brunswick

GLORIA PETERS
Cairo

SARAH IRIS RIZE
Hahira



MARY SIMMONS
Alamo

BARBARA SMITH
Columbus

VALLIE STATEN
Atlanta



JEAN STEWART
Arlington

ANN STUBBS
Lanier

CLARYCE THOMAS
Lake Park



RALPH TILLMAN
Adel

JEAN VAN LANDINGHAM
Cairo

BETTY GRACE VIRDEN
Marshallville



MARIE WELLMAKER
Valdosta

FREDDIE WHEELER
Valdosta

GUY COOK
Colquit





Carolyn Gaines, Treasurer; Joyce Parham, President; Judith Tyre, Secretary.

Sophomore Class . . .

Sophomores—how wonderful to, at last, be able to “Rat”; to be called upperclassmen; and to be known as those studious Sophomores.

The year was fine and glorious, and our second year of college life proved to be more exciting than our first. It brought about such changes as our second year in Converse, the loss of so many of our class by means of matrimony, and the honored chance to give orders to the poor “li’l” freshmen. We also sponsored the most spectacular dance of

the year, the Sweetheart Dance. We worked hard on our first dance of the year, “The Harvest Dance,” and those Saturday morning breakfasts, which brought such comfort to those who over-slept, for the funds needed to sponsor such a wonderful dance.

Now we go on to enter Senior college life and to work even harder for those, still in the future, degrees. We say to you who will be Sophomores next year, “Treat the year well and it will give you bounteous rewards.”

of 1952

Dorothy Barinean
Cairo



Mrs. Mayne C. Beal
Valdosta



Rheda Blackwell
Monticello



Edith Bowman
Blakely



Betty Brady
Bainbridge



Betty Brown
Bainbridge



Malette Brown
Folkston



Dot Bush
Decatur



Jane Burdette
Moultrie



Cornelia Caldwell
Valdosta



Geraldine Calloway
Attapulgus



Bess Carswell
Quitman



Carleen Chalk
Adel



Winnie M. Chandler
Blakely



Kate Childree
Donalsonville



Ivaline Chitwood
Valdosta



Shirley Chitwood
Valdosta



Florence Clark
Valdosta



Naney Coile
Cuthbert



Cutab Jane Crauc
Douglas



Barbara Crew
Cairo



Ruth DeLoach
Pitts



Louis Dewey Eudy
Valdosta



Elvida Feazell
Valdosta



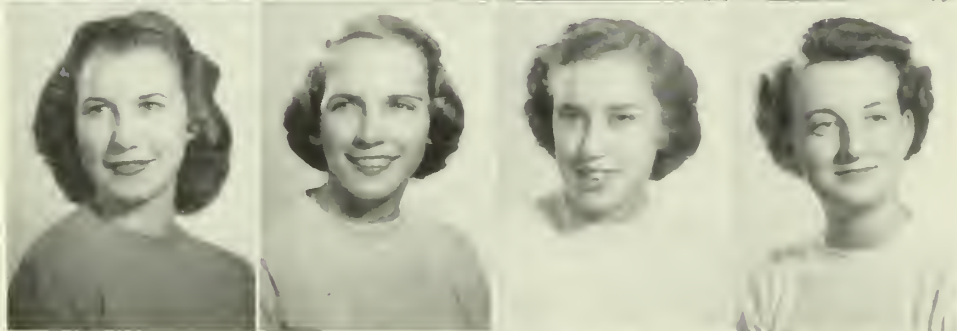
Carolyn Gaines
Cordele



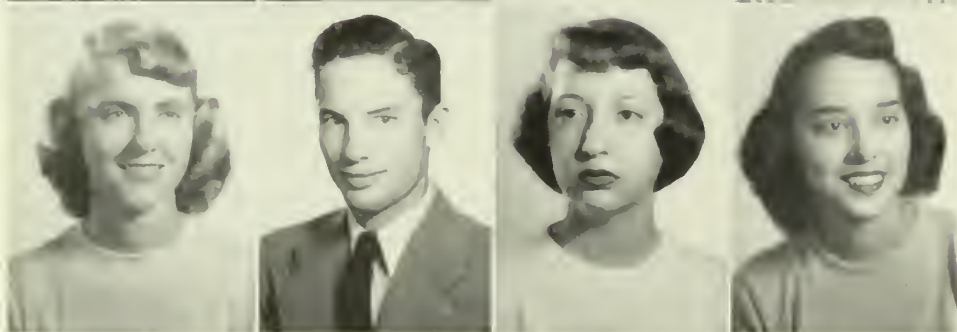
Sophomore Class . . .



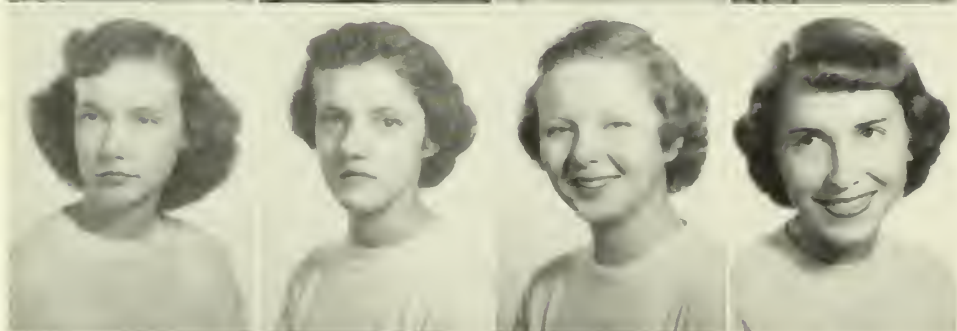
Gloria George
Valdosta
Jeannette Grimes
Quitman
Sara Elizabeth Hammond
Jackson
Jane Ann Harrison
Moultrie



Barbara Hill
Valdosta
Angelyn Holmes
Tifton
Billie Jones
Pelham
Mattie Bell Jones
Valdosta



Marian Kelly
Rochelle
Randall Kelly
Valdosta
Sara King
Montezuma
Anne Kirby
Valdosta



Ouida Renee Lanier
Pembroke
Kathryn Milhous
Valdosta
Betty Jean Mills
Pavo
Joyce Parham
Moultrie



Mary Florence Porter
Ashburn
Mrs. Minnie Staten Ray
Statenville
Sonya Scoggins
Camilla
Betty Sellars
Quitman

of 1952

Nita Sessions
Valdosta

Beverly Sue Shoaf
Quitman

Dois Smith
Doerun

A. L. Strickland
Nicholls



Shirley Taylor
Valdosta

Barbara Threatte
Lakeland

Aurelia Tillman
Adel

Susan Tullis
Valdosta



Judith Tyre
Coffee

Beverly Tyson
Cairo

Florine Wells
Tifton

Harold Wisenbaker
Ousley





Malcolm Davis, *President*; Liz Clark, *Vice-President*; Jean Thompson, *Secretary*; Barbara Stahl, *Treasurer*.

Freshman Class . . . 1952

We came to V.S.C. holding tightly to our high school pennants and mementoes and wondering if anything could compare with our high school days. We started the college year with an innovation; we elected a male student as our class president, the first in the school's history. Then, in a very short while, we began to pledge our whole-hearted allegiance to our college—for college life was a new, exciting experience for us, or rather a combination of experiences—study, which proved inevitable; the fun, which no Freshman can help having, even on

Rat Day; and occasional twinges of homesickness from which we recovered in time.

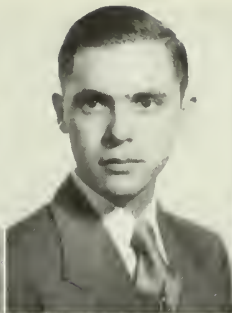
We made new friends, discovered hidden talents by working in clubs and publications, and found that the best way to get the most out of college is by putting our heart into our work, fun, and fellowship.

Now, as we end our first year as college students and look forward to our Sophomore life, our only wish is that we have set a good example for the future Freshman classes.

Patsy Allen
Alapaha



Lanier Allen
Valdosta



Jane Anderson
Pearson



Donald Bonner
Valdosta



Evelyn Brogdon
Nashville



Mary Brounlee
Blakely



Lallie Burt
Camilla



Angeline Bush
Camilla



Patricia Ann Camp
Lenox



Mary B. Carter
Lake Park



Glenda Chastain
Thomasville



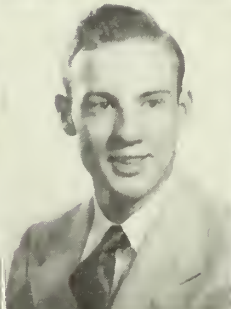
Elizabeth Clark
Moultrie



Jannell Connell
Valdosta



Charles Cox
Adel



Jane Corbett
Pearson



Rebecca Crawford
Blakely



Faye Dasher
Valdosta



Barbara Davenport
Atlanta



Malcolm Davis
Dunwoody



James Davis
Miami, Fla.



Jimmie Dennis
Valdosta



Marvin Dennis
Valdosta



Ann Durham
Bainbridge



Shirley A. Ellington
Moultrie



Patricia Exum
Enigma



Ray Fields
Hahira



Floye Franklin
Valdosta



Jo Ann Gentry
Hinesville



Marjorie Glenn
Valdosta



Bankhead Green
Valdosta





Nancy Griffin
Nashville
Woodville Guy, Jr.
Valdosta
Jo Ann Hall
Lake Park
Martha Ann Hall
Valdosta



Lowell V. Hall
Lake Park
DeAlva Harper
Ocilla
Jeannette Harper
Alapaha
Janet Harris
Thomasville

Dorothy Heaton <i>Quitman</i>	Joan Johnson <i>Alma</i>	Anita Carol Jones <i>Sylvester</i>	Susan Kennedy <i>Bainbridge</i>	Peggy Maxwell <i>Moultrie</i>	Berocha Miller <i>Nashville</i>
Betty Jean Hogan <i>White Springs, Fla.</i>	Frances Jackson <i>Valdosta</i>	Lila Carol Jones <i>Quitman</i>	Betty King <i>Blakely</i>	Patricia Ann McGee <i>Moultrie</i>	Joan Parrish <i>Valdosta</i>
Geraldine Hutchinson <i>Valdosta</i>	Wayne Joiner <i>Pelham</i>	Jeanette M. Jordan <i>Quitman</i>	Nancy Lovett <i>Sparks</i>	Mary J. McMillan <i>Osierfield</i>	Elizabeth Pate <i>Atlanta</i>



Lucy Pattillo
Darion



Jo Ann Petrey
Barwick



Martha Ann Powell
Pearson



Eugene Paulk
Valdosta



Barbara Ragan
Moultrie



Barbara Anne Ray
Nashville



Wannie J. Register
Doerun



Milton Roberts
Nashville



Bonnie Roquemore
Lakeland



Barbara Tankersley
McRae



Elaine Thomas
Douglas



Jackie Thomas
Camilla



LaJeanne Thompson
Bainbridge



Shirley Tomlinson
Brunswick



Sylvia Shiver
Quitman



Rosalind Sirmans
Stockton



Janet Simpson
Athens



Sherrill Smith
Moultrie



Virgileen Smith
Nashville



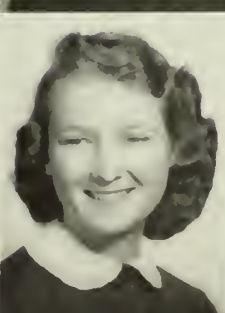
Barbara Stahl
Moultrie



Barbara Strickland
Brunswick



DeLayne Strickland
Moultrie



Nancy Wainer
Valdosta



Carey Wells
Valdosta



Jennell Wilbanks
Atlanta



Redetha Wilson
Valdosta





Hanging of the Greens



Hall of Silence



Between Classes with the Faculty



March of the Rats



Our Beauties and Their Dates

CLUBS
ACTIVITIES



THE SHOW



BETTY COLLINS
Business Manager



Melba Grogan, Assistant Business Manager; Delores Barry and Elaine Boatwright, Associate Editors; Miss Rooks, Faculty Advisor.

T H E P I N E C O N E

AD STAFF

First row, left to right: Betty Jean Spell, Cornelia Ashley, Marian Waters, Melba Grogan, Gloria Proctor, Eleanor Bowman, Mary Cordray. Second row: Betty Collins, Bobbie Jobe, Barbara Howell, Alice McCall, Grace McCord, Blount Trammel, Frank Dixon.



We of the staff, haggard but happy, wish to present the PINE CONE, the little book that has inspired so many daydreams, so many nightmares, and so much work. We hope you will approve of it now and cherish it in the future.

Though we are tired, we feel real pleasure when we realize that you will probably look back through this book and ask yourself why you ever wore such a hairdo, and wish for all those teeth showing in that toothy grin that was meant for a smile, and wonder who wrote all those ridiculous things in your annual of '52, for then we know that we have helped to contribute to a tangible evidence of some of your happiest moments. So from us to you, good luck and happy reminiscing.



MARTHA McKEMIE
Editor

Top picture: Art Editors, Elinor Jones and Harriette Howell.

Bottom picture: Lay-Out Editors, Laura Ann Bowen, Leila Harmon, Helen Grace Ford, Rosa Margaret Jones.

Top picture: Photography Editors, Jean Trawick, Tom Stroud, Betty Jean Daniel, Emily Reichert.

Bottom picture: Copy Editors, Jean Van Landingham, Russell Hilliard, Sam Todd, Betty King.





RUTH MILLER
Editor

Published bi-monthly during the school year by students at Valdosta State College at Valdosta, Georgia.

O U R C A M P U S C A N O P Y

NEWS STAFF

Left to right: Vallie Staten, Virgileen Smith, Florine Wells, Eleanor Bowman, Sue Nell White, Doris Gothard, Luceil Bauer.





FEATURE STAFF

Wayne Joiner, Ann Camp, Sam Todd, Bonnie Jo Roquemore, Elinor Jones, Betty King.



BLOUNT TRAMMELL
Business Manager

KEITH DAME
Associate Editor

AD STAFF

Blount Trammell, Melba Grogan, Alice McCall, Betty Brown, Ronnie Donehoo, Elaine Windham, Ann Murray.





OFFICERS

Betty King, *Vice-President*; Bill Fogg, *President*; Sonny Welch, *Treasurer*; Ann Camp, *Secretary*.



BILL FOGG
President

We represent the Student Government Association. We, as the governing group on our campus, cooperate with the administration in making and carrying out our rules and regulations, thus, making our life at Valdosta State College more orderly and unified.

STUDENT GOVERNMENT ASSOCIATION



MEMBERS

- Tom Stroud
- Ralph Brown
- Ann Camp
- Betty King
- Sonny Welch
- Bill Fogg
- Mary Jo Lott
- Sam Todd
- Joan Dekle
- Van Opendbrow
- Martha Barrs

Front row:
Elizabeth Clark
Jackie Sikes
Joan Dekle

Second row:
Betty Collins
Laura Ann Bowen
Martha Barrs
Ann Camp

Third row:
Joyce Parham
Harriett Howell
Mary Holder



D O R M I T O R Y C O U N C I L S

We represent the men and women dormitories. Our councils are composed of the Class Presidents and elected members to the Student Government. We strive to make our home life at V.S.C. orderly and happy, with the interest of every student and faculty member at heart.

Jack Inman
Malcolm Davis
Harold Wisenbaker





DORIS GOTHARD
President



OFFICERS

Bettye Jackson, Treasurer; Ann Bryant, Secretary; Helen Grace Ford, Vice-President; Marianne Joiner, Associate Vice-President.

T H E Y . W . C . A .

Y.W.C.A. CABINET

First row, left to right: Marianne Joiner, Martha McKemie, Mary Holder, Miss Gunter, Advisor; Sue Nell White, Delores Barry, Billie Cliett. Second row: Judith Tyre, Helen Grace Ford, Jo Dekle, Grace McCord, Ann Camp, Rheda Blackwell, Betty Collins, Doris Gothard, Mary Cordray, Joyce Parham.





SOPHOMORE COUNCIL

First row, left to right: N. Coile, M. Brown, B. Jones, J. Parham, F. Wells, C. Gaines, D. Barineau, B. Shoaf, D. Smith, E. Bowman. Second row: B. Crew, C. Crane, B. Brown, B. Threatte, J. Grimes, B. Carswell, W. Chandler, B. Hammond, S. Scoggins, J. Burdette, S. King, J. Tyre, K. Childree, R. Blackwell.

THE CHAPEL CHOIR

First row, left to right: Peggy Jones, Mary Jo Lott, Becky Culbreth. Second row: Jo Dekle, Luccil Bauer, Billie Cliett, Becky Tyson.

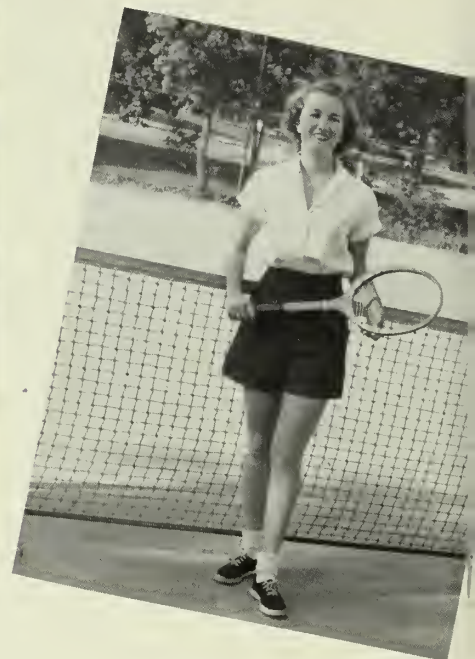
Every girl is a member of the Y.W.C.A. from the time of the Big Sister-Little Sister candle lighting service at the first of our Freshman year. Under the leadership of the "Y" Cabinet, we receive inspirational guidance to help us with our daily problems. The impressive services, such as Morning Watch, Vespers, Compline, Fire-lighting Service, the Hanging of the Greens, and the Heart Sister Week, all sponsored by the "Y", make it one of the most influential organizations on campus.





OFFICERS

Cornelia Ashley, *Historian*; Delores Barry, *Vice-President*; Rheda Blackwell, *Secretary*; Winnie Mac Chandler, *Treasurer*.



SISTER GRIFFIN
President

T H E S P O R T S C L U B

We of the Sports Council represent a portion of the student body which enjoys and participates in the sports program of our college. The Physical Education Department advises us and supplies the equipment with which we attempt to bring to this campus healthful living, pleasure, and enjoyment, all leading to a well proportioned college student.

Our club conducts Rat Day as a test of good sportsmanship for Freshmen and as an initiation into the Sports Club. We are found aiding the Physical Education staff with May Day. Our Sports Council also sponsors the Aquacade in the spring. We are nearly always very busy, if not working, then eating at one of our famous Tuesday night suppers.

Someone hit the gold at archery practice!

Swimming Class Mermaids at V.S.C.



Left to right:
 Miss Ivey, Advisor
 Ruth Dinkins
 Kathleen Meeks
 Delores Barry
 Martha Barrs
 Jean VanLandingham
 Winnie Mae Chandler
 Ann Stubbs
 Rheda Blackwell



Left to right:
 Sister Griffin
 Ruth Miller
 Miss Rooks, Advisor
 Leila Harmon
 Sue Nell White
 Doris Gothard
 Cornelia Ashley
 Luccil Bauer
 "Butch"



Typical moment at volleyball practice.





Sam Buchanan, Bill Flournoy, Jack Smith, Freddie Wheeler, Jack Inman, Virlon Griner, Russell Hilliard, Arlice Leonard.

We are one of the newest clubs on the campus. Because of the large number of ministers and pre-ministerial students on the campus, we decided to unite into one single body. Our group was formed in order to learn more about and further our work.

M I N I S T E R I A L G R O U P



Webster Carter, Charlie Cox, Frank Dixon, Malcolm Davis, Jack Smith, Sam Buchanan, Bob Lane, Woody Guy, Sam Todd, Edward Kicklighter, Kenneth Rozier, Bill Fogg, Rema Sapp, Jack Inman, Phelps Mathews, Van Opdenbrow, Max Roberts, Bill Flournoy, Burrell Dinkins, Freddie Wheeler, Sonny Welch, Wayne Joiner, Cleon King, Tom Stroud.

MEN'S CHRISTIAN ALLIANCE



We, the Men's Christian Alliance, seek to encourage interest in the religious life of the students. One of our projects this year was to renovate the dome, changing it into a chapel.

OFFICERS

Phelps Mathews, *Secretary*; Jack Inman, *President*; Don Dennis, *Vice-President*; Sam Buchanan, *Chaplain*.

E N G L I S H C L U B



Our members are English majors and minors. In our meetings during the year, we strive to promote better understanding and appreciation of contemporary literature. We also further original writing on the campus by awarding prizes for the best articles from the Creative Writing class.

OFFICERS

Cornelia Ashley, *Vice-President*; Betty King, *President*; Marguerite DeLoach, *Secretary-Treasurer*.



ENGLISH MAJORS

Flo McCall, Aleece Strickland, Betty King, Sally Hudson.

Front Row, left to right: Dois Williford, Jackie Sikes, Elaine Boatwright, Betty Jean Spell, Evelyn McLain.

Back Row: Dorris Johnson, Virginia Wright, Marjori Smith, Marguerite DeLoach, Cornelia Ashby, Ruth Dinkins, Grace McCord.



D A N C E C L U B

"Come dance with me!" Yes, our interest is in the beautiful art of dancing. Tango, ballet, can-can, or what you will, we do them all. We have shown our talent in the annual try-outs; and, during the year, we create our own dances. We contribute greatly to the Christmas Feast and the May Day Festival, and we climax our year of long practices and hard work by presenting our always-enjoyable recital.



OFFICERS

Anne Owens, *Costume Manager*; Luceil Bauer, *President*; Ann Camp, *Secretary and Treasurer*.



***Left to right:* Martha Hall, Ann Camp, Marian Godwin, Dot Bush, Nancy Wainer, Anne Owens, Dot Barineau.**



Left to right,

First row:

**Barbara Strickland
Barbara Smith
Luceil Bauer
Susan Kennedy**

Second row:

**Jeanelle Wilbanks
Babs Threatte
Aspasia Panos
Marie Wellmaker
Lallie Burt
Bonnie Roquemore**

Third row:

**Helen Grace Ford
Janet Simpson
Lucy Pattillo
Glenda Chastain
Peggy Maxwell**

S E R E N A D E R S

Do, ra, me, fa,—We sing and we . . . sing and, huh, we sing. Our members are picked according to their vocal abilities. We can and do sing for several programs and concerts during the year. Our nine

Serenaders sing at club meetings in Valdosta and on our Glee Club Concert programs.

Glad you came to our concert this spring. We simply loved having everyone.

Left to right: Becky Culbreth, Bettye Jackson, Mary Jo Lott, Becky Tyson, Peggy Jones, Ivaline Chitwood, Barbara Hill, Jo Dekle, Virginia Massey.





G L E E C L U B

MEMBERS

Left to right: P. Shoaf, M. Joiner, C. Gaines, M. Smith, E. Clark, J. Dekle, B. Jackson, L. Bowen, M. J. Lott, R. Culbreth, V. Massey, B. Mills, P. Jones, B. McElvey, B. Tyson, B. Stahl, F. Wells N. Wainer, E. Thomas, N. Nepp, J. Johnson, J. Harris, S. Shiver, L. C. Jones, B. Strickland, J. Register, I. Chitwood, S. Smith, B. Ragan, J. Connell, J. Anderson, B. Hill, J. Burdette, L. Branch, L. Burt, N. Lovett, A. Durham, M. Bergen, R. Crawford, B. King, F. Franklin, L. Carter, B. J. Riquemore, V. Wright, M. Cordray.

OFFICERS

Laura Ann Bowen, *Librarian*; Virginia Massey, *President*; Barbara Hill, *Vice-President*; Marianne Joiner, *Secretary and Treasurer*; Rebecca Culbreth, *Accompanist*.





Seated: Mr. Logan, Director; First row, left to right: Ivalene Chitwood, Becky Tyson, Becky Culbreth, Joan Dekle, Barbara Hill, Peggy Jones, Mary Jo Lott, Betty Jackson, Frank Dixon, Donald Bonner. Secoud row: A. L. Strickland, Travis Higginbotham, Ben Porter, Conrad Durham, Sonny Welch, Jobie Oglesby, Woody Guy, Jack Inman, Tom Stroud, Rema Sapp.

We are a new group on the campus; and, like the other musical clubs, we enjoy our singing and fellowship. The men students who are interested, along with the Serenaders, make up our group.



The chorus at work.

M I X E D C H O R U S

PHILHARMONIC CLUB



We are advanced students in the fields of violin, piano, and voice who have organized a club for the enjoyment and appreciation of music. At our monthly meetings, we are entertained by the music of our fellow members; and, in addition, we present an annual assembly program.

OFFICERS

Delores Barry, *Vice-President*; Barbara Hill, *Secretary-Treasurer*; Billie Cliett, *President*.

Left to right, front row: Delores Barry, Rebekah Culbreth, Beverly Shoaf, Betty Sellars, Barbara Hill, Miss Warren, Advisor. *Second row:* Dot Bush, Aspasia Panos, Barbara Ragan, Floy Franklin, Marjorie Glenn, Billie Cliett, Laura Bowen, Janet Simpson, Peggy Jones.



F I N E A R T S C L U B

With the work of our hands, we of the Fine Arts Club try to express our own ideas in material form . . . be it oils, ceramics, or water colors. In our programs and art exhibits which we sponsor during the year we try to cultivate an interest in art for everyone.

OFFICERS

Dorris Johnson, *President*; Mary C. Hill, *Vice-President*.



Standing, left to right: P. Maxwell, B. Strickland, S. Tomlinson, E. Brogden, P. McGee, E. Bowman, L. Harmon, J. Gooding, P. Hilliard, A. McCall, D. Barineau, D. Johnson. Seated, left to right: D. Bush, C. Gaines, E. Reichert, J. Trawick, C. Caldwell, M. Smith, A. Strickland.



SOCK and BUSKIN CLUB

"One man in his time plays many parts"
—and how we enjoy them! We promote
dramatics on campus and, by producing
two plays during the year, we learn about
not only acting, but also about the impor-
tance of backstage work. New members try
out at the beginning of each year, and we
celebrate a successful year by going on a
trip in the spring quarter.



OFFICERS

Luceil Bauer, *Historian*; Mary Jo Lott, *President*;
Tom Stroud, *Secretary-Treasurer*; Elinor Jones, *Vice-
President*.

Left to right, back row: Sonya Scoggins, Ruth Dinkins, Robert Lane, Martha Barrs, Jean VanLandingham, Tom Stroud, Barbara Smith, Miss Sawyer, *Advisor:* Helen Grace Ford, Webster Carter, Sally Hudson, Mary Jo Lott, Betty King, Elinor Jones, Mary C. Hill, Aleece Strickland. *Front row:* Babs Threatte, Ann Kirby, Betty Brown, Marion Godwin, Mary V. McDonald, Janet Harris, Mary F. Porter, Mary J. McMillan, Angelyn Holmes, Janet Simpson, Marion Waters, Barbara Tankersley, Luceil Bauer, Mary Holder, Barbara Strickland.



SIGMA ALPHA CHI HONOR SOCIETY

FRESHMAN OFFICERS

Ruth DeLoach, *Vice-President*; Jeanette Grimes, *President*; Nancy Coile, *Secretary-Treasurer*.



To be a member of the Freshmen and Senior Honor Societies, we have to maintain a "B" average during the school term. We promote higher scholastic achievements, and we sponsor the selection of the most all 'round girl and most all 'round boy in every class. The Margas, Macs, and the Societies are recognized at the annual Honor's Day Program.

SENIOR OFFICERS

Lydia Story, *Vice-President*; Luceil Bauer, *President*; Robley Jobe, *Secretary-Treasurer*.



Left to right: Judy Tyre, Harold Wisenbaker, Nancy Coile, Jeannette Grimes, Joyce Parham, Ruth DeLoach.

Left to right, standing: Emmie Kenney, Martha Barrs, Joanne Gilmer, Betty King, Sam Todd, Ruth Dinkins, Margie Smith, Mary Jo Lott. *Seated:* Lydia Story, Doris Spradley, Patsy Hilliard, Robley Jobe, Delores Barry, Mary Cordray, Luceil Bauer.





OFFICERS

Lydia Story, *Vice-President*; Joanne Gilmer, *President*; Grace McCord, *Secretary-Treasurer*.



MATH DIVISION

Lydia Story, Ruth Miller, Ernestine Donaldson.

MATH - SCIENCE CLUB

Microscopes — slide rules — Bunsen burners — beakers — formulas — these are only a few of our tools. You see, we are a club easily divided into three sections, Math, Chemistry and Biology divisions. We are supposed to be “brains” but sometimes, when mitosis is staring us in the face, we

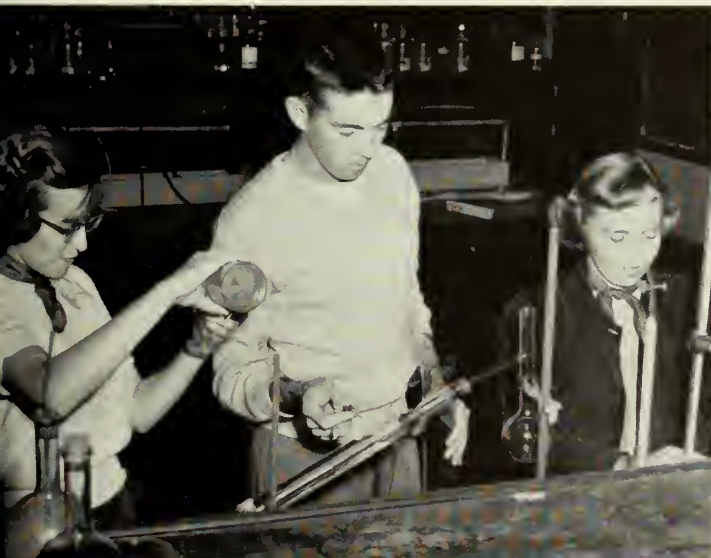
don't even recognize it. We know you have noticed our display case with science exhibits in it. We also have a scholarship fund for a student majoring in one of the sciences which is fast becoming a popular scholarship.

CHEMISTRY DIVISION

Martha Barrs, Everette Beal, Luceil Bauer.

BIOLOGY DIVISION

Seated, left to right: Joanne Gilmer, Doris Spradley, Emmie Kenney. *Standing:* John Feazell, Grace McCord, Sam Todd, Dr. Nevins, Advisor; Bettie Ja Perritt, Frank Dixon, Renee Lanier.





Left to right, standing: Miss Weems, Jeanette Jones, Anne Owens, Sara Hammond, Shirley Tomlinson, Carol Jones, Shirley Taylor, Lucy Pattillo, Pat McGee, Jerry Calloway, Barbara Howell, Nancy Wainer, Floy Franklin, Dot Bush, Joanne Gilmer, Doris Spradley, Dot Barineau, Bobbie Jobe, Mary C. Hill, Doris Gothard, Josephine Gooding, Mary Gallagher, Cornelia Caldwell, Susan Tullis.

H O M E E C O N O M I C S C L U B

"Too many cooks spoil the broth." That's the old saying, but our broth is seldom spoiled. Our seams are usually of the straightest type, too, French felled or flat. Our clothing clinic demonstrates along that line. Then, of course, our Faculty Tea is always one of our highlights of the year. We sent delegates to conferences in Clemson and Athens. Really, you will have to call us one of the most active clubs on campus. Do we sound a bit proud of our club? Well, we "sorta" are!

OFFICERS

Doris Spradley, Treasurer; Cornelia Caldwell, Secretary; Barbara Howell, President; Joanne Gilmer, Vice President; Dot Bush, Historian.





Front row, left to right: Joyce Parham, Becky Culbreth, Aspasia Panos, Betty Herbert, Mary Jane McMillan. Second row: Emmie Kenney, Rose Parrish, Marie Bergen, Iris Rizer. Third row: Florence Catikos, Nancy Coile, Ann Kirby.

ROMANCE LANGUAGE CLUB

OFFICERS

Iris Rizer, Vice-President; Betty Herbert, President; Aspasia Panos, Secretary-Treasurer.



"Hable usted espanol?" "Mais oui, je le parle." We of the Romance Language Club are equally interested in these two languages. Our programs help us to develop our interest as we hear speakers from both home and abroad.



First row, left to right: L. Harmon, A. Holmes, M. Waters, J. Dekle, T. Griffin, M. Holder. Second row: B. Daniel, J. Trawick, Mrs. Knight, Advisor; G. Peters, J. McLugh, J. Stewart, B. Trammell, Mrs. Johnson. Third row: R. Jones, G. Daugherty, L. Bowen, P. Heath, Mrs. Askew, Advisor; A. McCall, M. Simmons, J. VanLandingham. Fourth row: M. McKemie, E. Reichert, R. Brown, B. Collins, S. White, Mrs. White, M. Cordray, D. Smith.

This is our second and very successful year on campus. Our purpose, to further childhood education, is brought forth in educational films. We hope with our new education program we can strengthen tomorrow's teachers.

OFFICERS

Alice McCall, *President*; Ralph Brown, *Vice-President*; Mary Cordray, *Secretary*; Betty Collins, *Treasurer*; Marian Waters, *Publications Representative*; Rosa Margaret Jones, *Historian*.



ASSOCIATION FOR CHILDHOOD EDUCATION

S O C I A L S C I E N C E C L U B



During the year we had many projects of interest to us students of social science. We helped with the Red Cross Roll Call; and, in doing this work, our organization rendered a valuable service. At our regular monthly meetings we enjoyed talks given to us by outstanding and informative speakers. All of this served to stimulate our interest in the social sciences, which, after all, is our purpose as an organization.

OFFICERS

Fayge Siskind, *Social Chairman*; Melba Grogan, *Reporter*; Ruth Dinkins, *President*; Gwinnetta Mixon, *Secretary and Treasurer*; Betty Jean Spell, *Vice President*.

Left to right: Vallie Staten, Fayge Siskind, Betty Jean Spell, Ruth Dinkins, Gwinnetta Mixon, Ann Murray, Elaine Windham. *Second row:* Helen Grace Ford, Nell Waddell, Betty Jackson, Melba Grogan, Mrs. Fry, Marie Wellmaker, Dr. Durrenberger, Jackie Sikes, Betty Grace Virden, Barbara Smith, Paul Myddleton, Sara Bolin.



INTERNATIONAL RELATIONS CLUB

Current international events are our interest, and through the investigation of the social, political, economic, and historical circumstances involved we try to interpret these events in respect to their effects upon us. In this way we make our programs both interesting and instructive. We are sponsored by The Carnegie Endowment for International Peace.

OFFICERS

Keith Dame, *Vice-President*; Phelps Matthews, *President*; Lydia Story, *Member-at-Large*; Emmie Kenny, *Treasurer*; Marjorie Smith, *Secretary*.



Front row, left to right: Bill Roberts, Miss Price, Tom Stroud, Emmie Kenny, Phelps Matthews, Sam Todd, Cleon King, Aspasia Panos, Lydia Story, Keith Dame, Marjorie Smith, Edward Kiekligher, Rose Parrish. Back row: Neil Palmer, Horace Hunt, Louis Eudy, Marian Kelly, Bobbie Jobe, Marie Bergen, Betty Lee, Ruth Miller, Guinn Mixon, Kenneth Rozier.



F I L I I F O R T U N A E

We, the Fili Fortunae Fraternity, are a social organization whose purpose is to promote fellowship and good will among our fellow students and to sponsor and present such social functions as is in keeping with the dignity and integrity of organization.

We have the distinction of being the first fraternity on campus and we hope to always have the distinction of being the best. Like the automobile, our beginnings have been humble, but like the automobile, we are here to stay.

OFFICERS

Seated: Sam Todd, Second Vice-President; Tom Stroud, Vice-President; Standing: Bill Fogg, Treasurer; Everett Beal, Parliamentarian; Jack Mabbett, President; Sonny Welch, Secretary.



Left to right: Sam Todd, Travis Higginbotham, Bob Colgan, Bill Fogg, Phelps Matthews, Jack Mabbett, Tom Stroud, Horace Hunt, Ronnie Donahoo, Sonny Welch, Everett Beal, Keith Dame.





First row, left to right: K. Meeks, M. Wellmaker, N. Nepp, E. Boatwright, J. Sikes, A. Stubbs, E. McLain, M. Grogan. Secoud row: R. DeLoach, D. Williford, I. Rizer, B. Jones, M. DeLoach, C. Ashley, R. Blackwell, C. Crane, V. Wright.

OFFICERS

Marie Wellmaker, *Secretary*; Ann Stubbs, *Treasurer*; Elaine Boatwright, *Store Manager*; Virginia Wright, *President*; Evelyn McLain, *Secretary*.

Our special project is our Business Club Store, by which we supply the dormitory girls with everything from bobby pins to jelly beans. We are also called upon to help our students and faculty when they need any mimeographing or typing done. Since we are Secretarial Science major and minors, the work of our club contributes valuable training for us while in college.



B U S I N E S S C L U B

V A L D O S T A C L U B



As our name implies, we are the Valdosta representatives of the student body. We are one of the largest clubs on campus, and we have no faith in the old adage about good things coming in small packages.

Our purpose is to encourage the participation of our membership in all college activities, and to promote good will and cooperation between dormitory and day students. In line with this policy, we give the graduating seniors a party in the spring, which is enjoyed by all.

OFFICERS

Barbara Hill, *Treasurer*; Cornelia Caldwell, *Vice-President*; Bill Fogg, *President*; Marguerite DeLoach, *Secretary*; Barbara McElvey, *Social Chairman*.

Front row, left to right: Fayge Siskind, Susan Tullis, Cornelia Caldwell, Betty Higginbotham, Jannell Connell, Mary Gallagher, Lauraline Carter, Sara Jo Carter. *Second row:* Betty Lee, Donald Bonner, Margie Smith, Marguerite DeLoach, Aspasia Panos, Barbara Hill. *Third row:* Sam Todd, Marion Godwin, Barbara McElvey, Dorris Johnson, Mary Virginia McDonald, Ruth Dinkins, Barbara Howell. *Fourth row:* Bill Fogg, Keith Dame, Phelps Matthews, Paul Myddleton, Frances Jackson, Louise Blankenship, Mayne Beal. *Fifth row:* Ben Porter, Travis Higginbotham, Jobie Oglesby, Woody Guy, Norman Lahood, Everett Beal.





May we present the Sweethearts.



Everyday life in the LOUNGE.

"To the Fire of Fellowship . . ."



The Sweethearts lead this dance.



Come fishing with us.



Greeted with a smile.

HONORS
BEAUTIES
SWEETHEARTS



THE **P**ERFORMERS



ANNE OWENS
SENIOR



SARA BOLIN
JUNIOR

MARIAN KELLY
SOPHOMORE



BARBARA STAHL
FRESHMAN

VSC's BEAUTIES
presented by the
PINE CONE
at the
'HOLLY HOP'

V . S . C ' S

B E A U T I E S



RUTH DINKINS

SAM TODD



RUSSELL HILLIARD

LUCEIL BAUER



W H O ' S

W H O

We have been selected for this honor by our faculty, administrative officers, and representatives from each of our major campus organizations on the basis of character, scholarship, and leadership. Our biographies will appear in the publication of "Who's Who Among Students in American Universities and Colleges." Our certificates were awarded to us by Dr. Thaxton in an assembly in November.

JOANNE GILMER



BETTY KING

Not Pictured

T. W. HAMBY, JR.

R E C I T A L I S T S



MARY JO LOTT
SPEECH MINOR



BILLIE CLIETT
MUSIC MAJOR



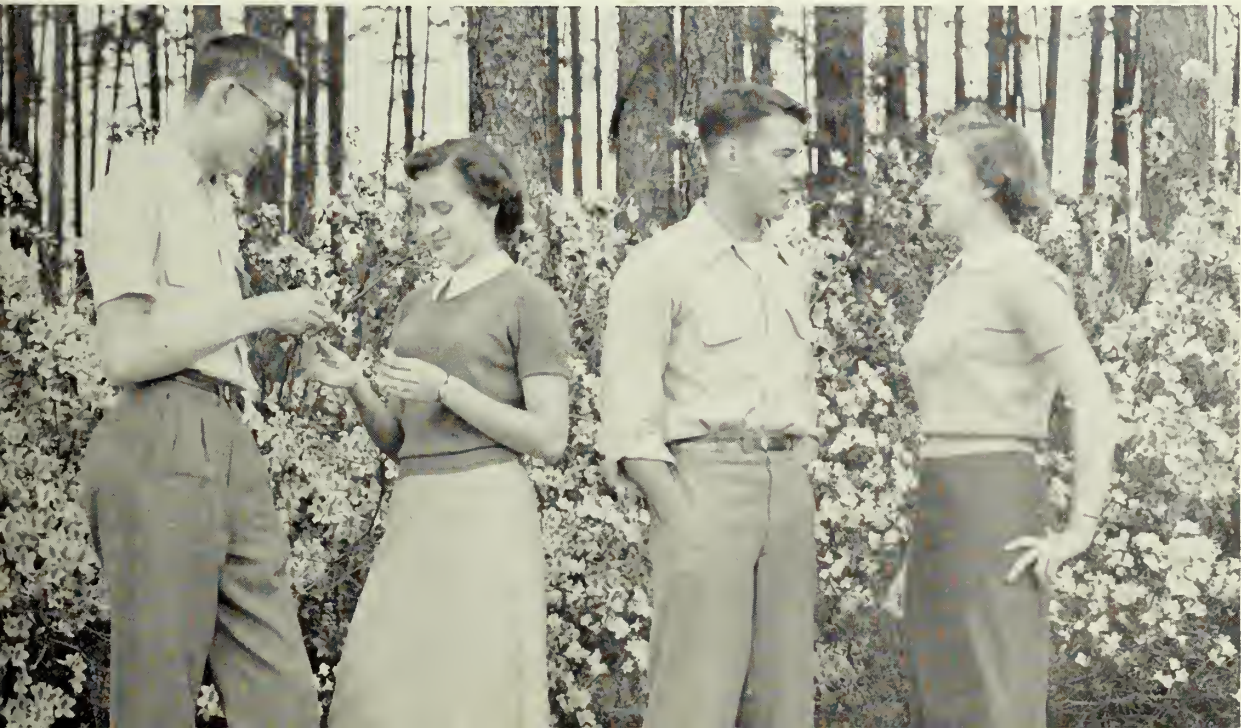
SENIOR COLLEGE

Left to Right: Bob Lane, Martha Barrs, Luciel Bauer, Tom Strond.

A L L - A R O U N D S T U D E N T S

JUNIOR COLLEGE

Left to right: Harold Wisenbaker, Winnine Mae Chandler, Trevis Higgenbotham, Lucy Pattilo.





JACKIE SIKES
SENIOR



MARIE WELLMAKER
JUNIOR

S W E E T H E A R T S

CAROLYN GAINES
SOPHOMORE



CAROL JONES
FRESHMAN



M A Y
Q U E E N
and
C O U R T

MARY JO LOTT
MAY QUEEN

JACKIE SIKES
MAID OF HONOR



Back row: Doris Gothard, Joanne Gilmer, Mary Jo Lott, Jackie Sikes, Betty Collins, Gloria Proctor. *Front row:* Jean Trawick, Joan Dekle, Anne Owens, Barbara Howell, Elaine Boatwright, Martha McKemie, Billie Cliett.



Campus Scenes



Music Studio



Library



House-in-the-Woods



Administration Building

Goodnight, Sweetheart.



Dr. Gulliver's Lit Class

Sock and Buskin presents
"The Heiress"



A scene from
"The Heiress"



Lending a helping hand
to the Freshman.



GOODBYE

CONGRATULATIONS
TO THE
1952 SENIORS
OF THE
VALDOSTA STATE COLLEGE

and

WELCOME TO THE
UPPERCLASSMEN AND FRESHMEN

“THE CITY OF AZALEAS”

Welcomes the opportunity of being your home during your college days
and of sharing your culture.

May your associations and your memories of our city be such that
you will return after college days.

★ ★ ★

J. E. MATHIS, Mayor

COUNCILMEN

JOHN BRAY GIDDENS

GEORGE L. CONVERSE

JAMES A. PARRAMORE

J. CHARLTON GREENE

CARL D. MINCHEW

E. W. JACKSON

Compliments

of

**GEORGIA POWER
AND
LIGHT COMPANY**

PARTNERS IN THE PROGRESS OF GEORGIA

CONGRATULATIONS

V. S. C. GRADUATES

WE ARE PROUD OF THE ENVIABLE RECORD THAT YOU
HAVE MADE IN COLLEGE

Welcome

Our every facility to make your stay in Valdosta a pleasant
one is at your disposal.

UPPERCLASSMEN AND FRESHMEN

In Valdosta It's

Luke
BROTHERS

Georgia's Finest Store, South

Compliments

**Lowndes
County
Commissioners**



JACK STATEN, Chairman

J. C. HUNT

GEORGE SHELTON

GOOD SERVICE

at

**BOB BELCHER'S
DRUG STORE**

PATTERSON AND CENTRAL

Phone 812-813

*DOROTHY GRAY BEAUTY
PREPARATIONS*

A Gift

from

Whittington's

Means More



132 N. Patterson St.

**Southern Stationery and
Printing Company**

Wholesale Paper Dealers



. . . . for More Than Forty Years

Commercial Stationers

Printers

Office Outfitters



VALDOSTA

GEORGIA

*Compliments
of*

**ARTHUR'S
INN**

**Register Clothing
Company, Inc.**

122 N. Patterson St.
Valdosta, Georgia

NUNN-BUSH SHOES
GRIFFON CLOTHES
STETSON HATS
ARROW SHIRTS

**The
VALDOSTA DAILY TIMES**
YOUR HOME NEWSPAPER



109-11 W. Hill Avenue

Compliments of

**Friedlander's Stores,
Inc.**

HOME OF CLOTHES BEAUTIFUL

Patterson-Jones, Inc.

*"The Home of Good Shoes
Since 1903"*



VALDOSTA, GEORGIA

**First Federal Savings
and Loan Association
OF VALDOSTA**

Savings Accounts Solicited
Each Deposit Insured Up to
\$10,000

Loans on Real Estate
J. L. Newbern, President

**Valdosta Coca-Cola
Bottling Works, Inc.**

Valdosta, Georgia



*Compliments
of*

COWART'S DRESS SHOP

SMART STYLES

for
COLLEGE GIRLS

Compliments
of

Terry's
Rexall Drug Store
PATTERSON AT HILL
VALDOSTA, GA.

Acme Transfer and Storage Company

Local, Long Distance
Moving and Storage

Compliments
of the

Central Barber Shop



203 East Central Avenue

OLIVER BROTHERS

U. S. Royal Tires
Amoco Products

410 N. Patterson Street
Phone 231

Congratulations—

and Best Wishes

MARTIN THEATERS

RITZ — DOSTA — PALACE
FORREST DRIVE-IN

Valdosta, Ga.

Minchew's Restaurant

Fine Foods

Air Conditioned



Private Dining Rooms



Phone 3156

Valdosta Greenhouses

Flowers of Distinction
Corsages — Specialty

VALDOSTA, GA.

Phone 1415

●

Briggs' Clothing

Things Men Wear

●

Congratulations and Best Wishes



Photographs in this Issue

by

VALDES STUDIO



VALDES HOTEL

PHONE 423

Compliments

of

**THE CITIZENS AND SOUTHERN
NATIONAL BANK**



VALDOSTA

GEORGIA

MEMBER OF FEDERAL DEPOSIT INSURANCE CORPORATION

Compliments
of
S and K Drive-In

Compliments
of
**Christian Floral
Company**

Compliments of
**Star Laundry and
Dry Cleaning**

☆
PHONE 54

Compliments
of
Valdosta Flour Co.

Distributors of
FLUFFY RUFFLES FLOUR

Compliments of
Carroll Packing Co.

SUNSET FARM BRAND
PORK AND BEEF PRODUCTS

Valdosta, Ga.

Phone 840

Belk-Hudson Company
Valdosta's Largest and Leading
Department Store
Dry Goods, Clothing, Notions,
Toys, Shoes, and Hats

VALDOSTA

GEORGIA

Compliments of
**ELLINOR MOTOR
COMPANY**

Your FORD Dealer
IN
VALDOSTA

BE DOLLAR-WISE
Clean Up
with
Benson Dry Cleaners

PHONE 2938

GIRARDIN JEWELERS
DIAMONDS **WATCHES**

Silverware by
Gorham, Wallace, Towle, International
China and Crystal
Imported and Domestic
303 N. Patterson Street
VALDOSTA GEORGIA

Compliments of

Hall's Children's Shop

—★—
"WE MAJOR IN MINORS"

—★—
Valdosta, Georgia

MATHIS & YOUNG COMPANY

PIANOS—ORGANS—RADIOS

—★—
Everything Musical Since 1907

**Carson McLane Funeral
Home, Inc.**

Funeral Home—Ambulance Service

2215 N. Patterson St.

Telephone 1234

VALDOSTA

GEORGIA

*Compliments
of*

THE BELL SHOP

Where Quality Counts



W G A F

Your Georgia-Florida Station
Appreciates the Many College
Students Who Come Into Our
Community

910 on Your Dial

ABC Network

Valdosta, Georgia

Compliments
of

**Radio Station
WGOV, Inc.**

VALDOSTA

GEORGIA

**"A Satisfied Customer Is Our
Rule"**

Tom Hewitt Auto Co.

South Patterson, U. S. 41

VALDOSTA GEORGIA

Telephones 1848 - 1849

C.C. Varnedoe & Co.

» THE STYLE CENTER OF VALDOSTA «

●

Authentic Fashions

for

Juniors - Misses - Women



Hotel Daniel Ashley

VALDOSTA, GEORGIA



WITH BEST WISHES

To the Seniors of 1952
Whose associations here will long
be remembered.

To the Upperclassmen and
Freshmen

We are looking forward to your
return next year!

BROOKWOOD
PHARMACY

Delivery Service Phone 336

DO YOUR BANKING AT...

THE
FIRST NATIONAL
BANK
OF VALDOSTA



Member of

FEDERAL DEPOSIT
INSURANCE CORPORATION

North—South—East—West

America Approves

O K

TRAILWAYS

O K

•

Route of the Thruliners

Best by Travel Test

•

BUS DEPOT

308 East Central
Phone 148

TRAILWAYS

Compliments of

White House Restaurant

We Specialize in Western Steaks
and Chop Suey

SEA FOOD PLATTER

Compliments of

ZANT'S

Yellow Cab Company

TWO-WAY RADIO STATION

Phone 1000

ANNUALS
of
DISTINCTION

Bowen, Long & Young, Inc.
Decatur, Georgia



