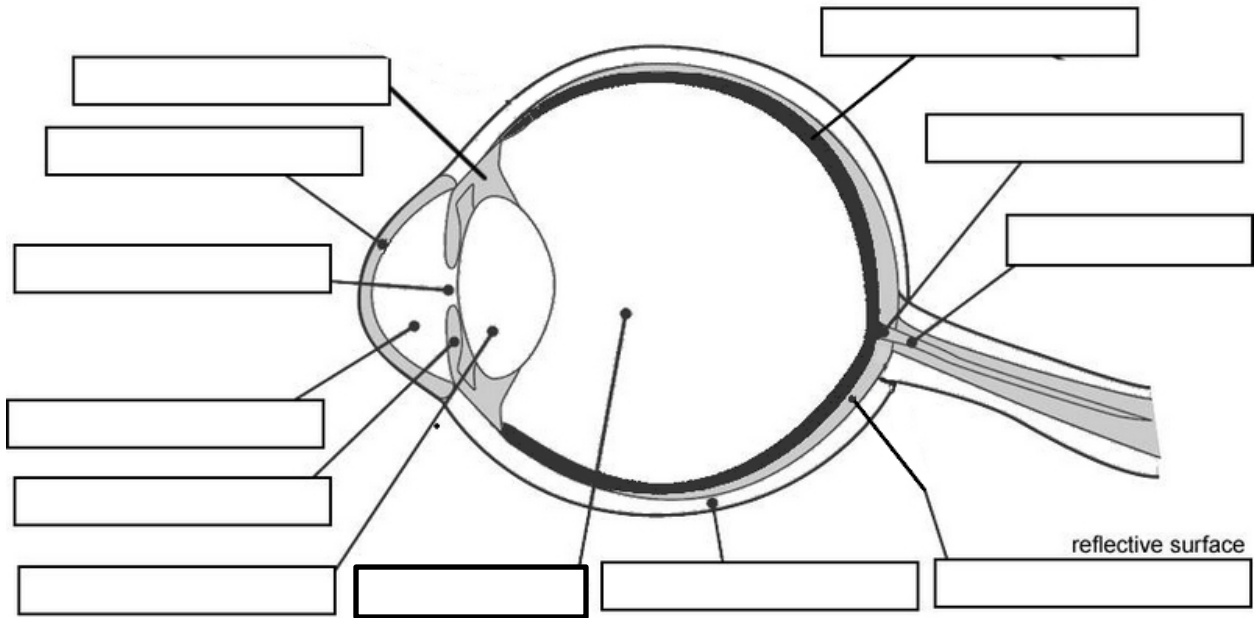


## Chapter 26

### Example Problems

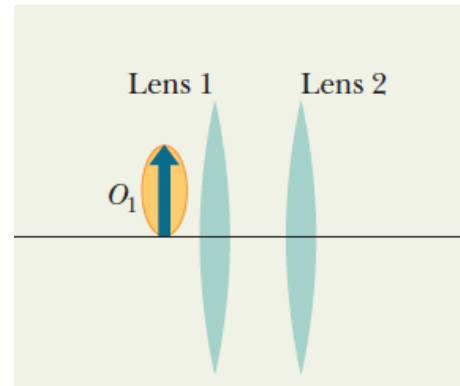
1. Fill in the blanks for the parts of the eye.



2. What is myopia and how do we correct for it?

3. What is hyperopia and how do we correct for it?

4. The figure shows a jalapeno seed  $O_1$  that is placed in front of two thin symmetrical coaxial lenses 1 and 2, with focal lengths  $f_1 = 24$  cm and  $f_2 = 9.0$  cm, and lens separation  $L = 10.0$  cm. The seed is 6.0 cm from lens 1. Where does the system of two lenses produce an image of the seed?



5. If the angular magnification of an astronomical telescope is 36 and the diameter of the object is 75 mm, what is the minimum diameter of the eyepiece required to collect all the light entering the object from a distant point source on the telescope axis?