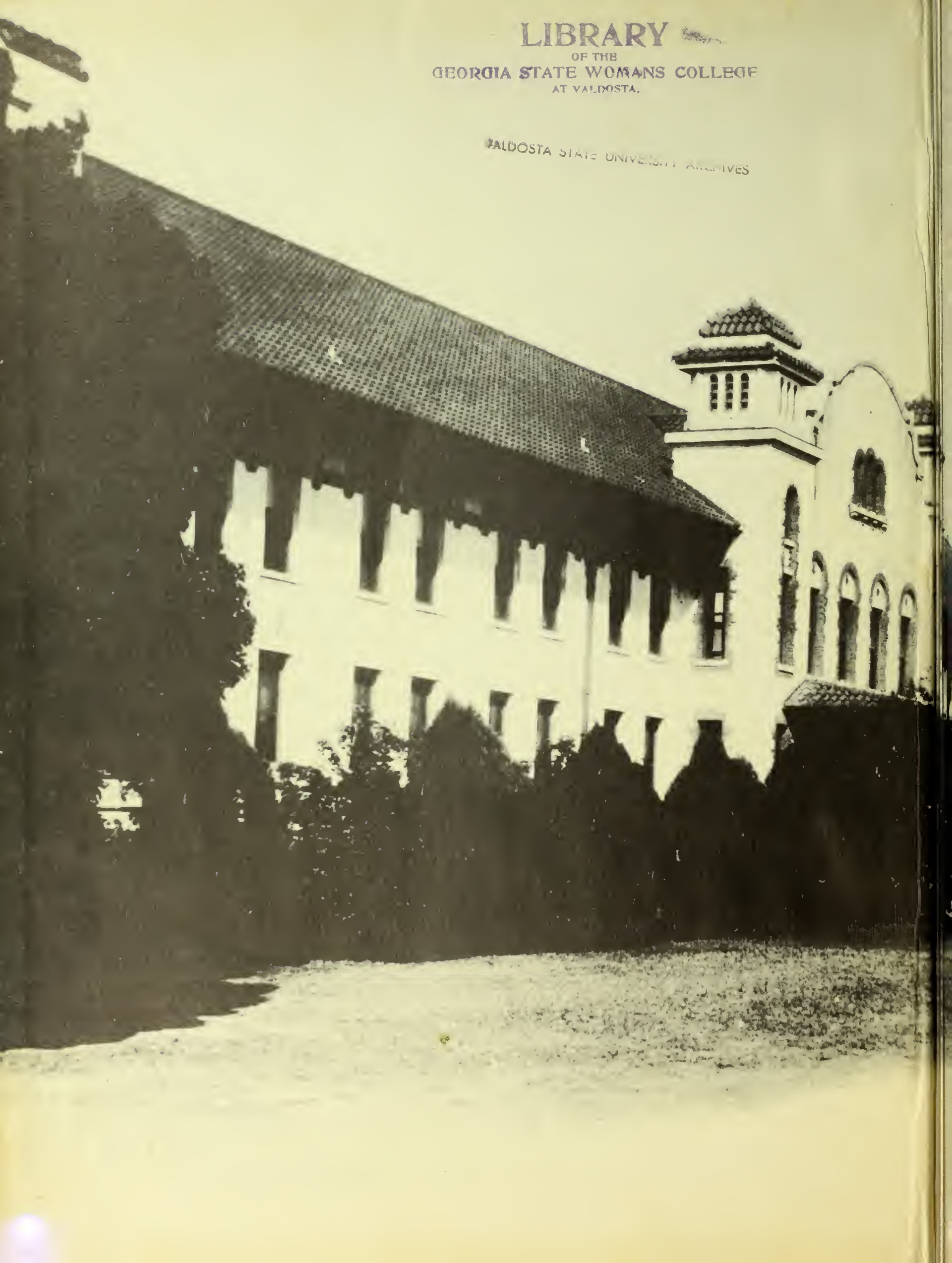


PINE CONE



LIBRARY  
OF THE  
GEORGIA STATE WOMANS COLLEGE  
AT VALDOSTA.

VALDOSTA STATE UNIVERSITY ARCHIVES



Compliments of the  
1939 Pine Cone Staff





Digitized by the Internet Archive  
in 2014

<https://archive.org/details/pinecone193900geor>





PRESENTED  
AT THE

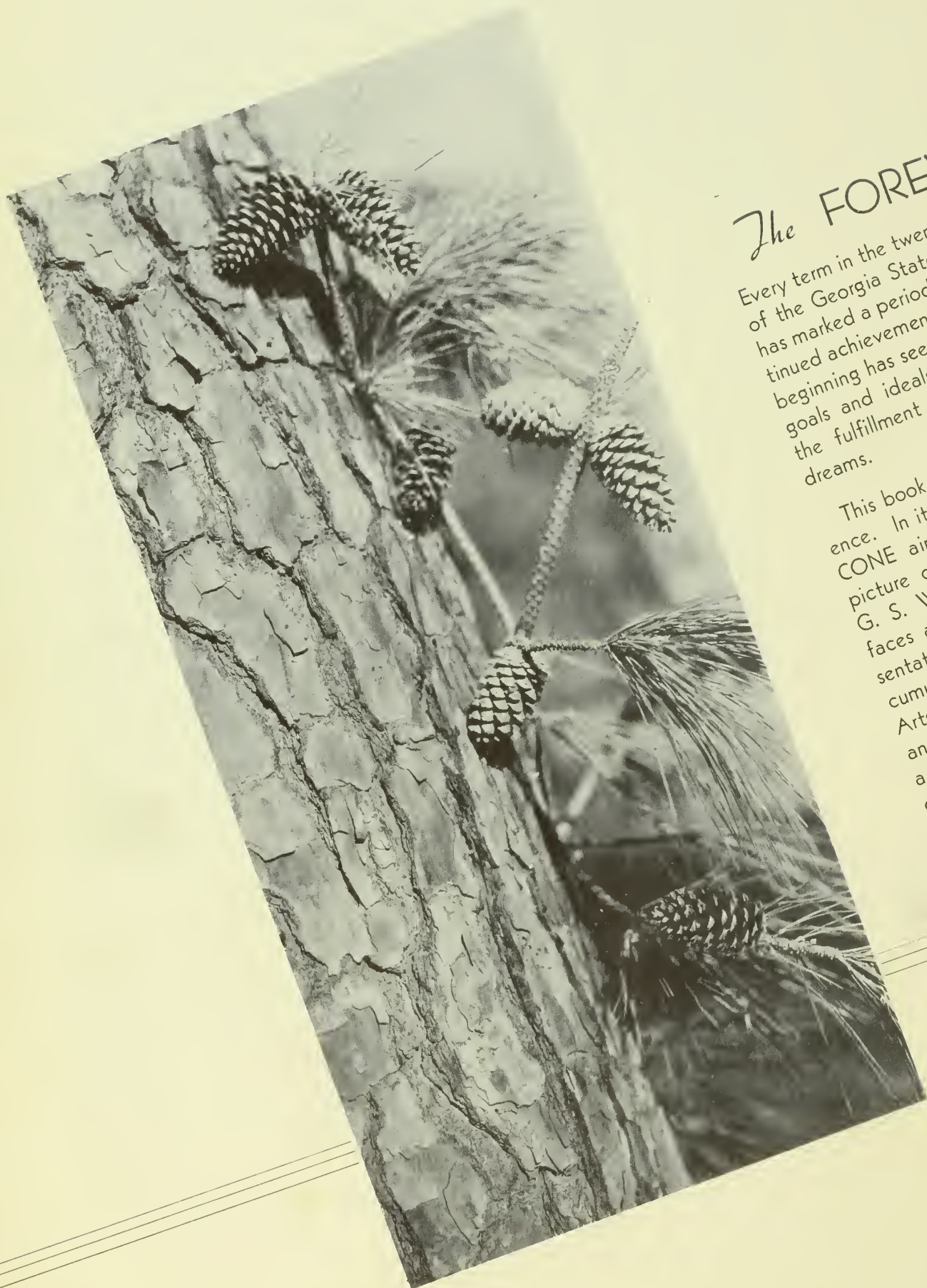


BY THE STUDENT BODY  
GEORGIA STATE *Womans College*

*The* 1939 PINE CONE

Presenting an illustrated chronicle of student life,  
both academic and social, on the campus of the  
Georgia State Womans College.





## The FOREWORD

Every term in the twenty-six year history of the Georgia State Womans College has marked a period of growth and continued achievement. Each year since its beginning has seen the setting of higher goals and ideals—each year has seen the fulfillment of more hopes and dreams.

This book is its own reason for existence. In its fifteenth edition, the PINE CONE aims to present a composite picture of life as it is in 1938-39 at G. S. W. C.—not just a pageant of faces and buildings, but a true representation and interpretation of the accumulated activities at the Liberal Arts College of the University System, and a portrayal of the students who are a liberal arts college's most sound endorsement.

# The CONTENTS

I. COLLEGE  
Campus Scenes, Administration

II. CLASSES  
Seniors, Juniors, Sophomores, Freshmen

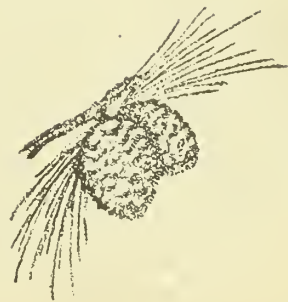
III. ACTIVITIES  
Student Government Association . . . Y. W. C. A. . . .  
Publications . . . Sock and Buskin Club . . . Glee Club  
. . . Philharmonic Club . . . Departmental Clubs . . .  
Honor Societies . . . Fine Arts Club . . . Valdosta Club  
. . . Alumnae Association . . . Sports Club . . . Christmas  
Festival . . . Artist Series . . . May Day . . . Play Day.

IV. ADVERTISEMENTS

10-3-39



~~1550~~



*Introducing* THE COLLEGE

—the buildings and grounds which are the student's background,  
and the faculty and administration which direct their academic  
life.

---



*The* COLLEGE



ASHLEY HALL  
Dormitory and Dining Room



SWIMMING POOL  
Newest Addition to the Campus





BIDENBURG



SENIOR DORMITORY  
Recreation Hall and Auditorium

The ADMINISTRATION



FRANK R. READE

FRANK R. READE  
*President*  
B.A., M.A., Ph.D., University of Virginia.

LENA JAMES HAWKS  
*Dean of Instruction*  
A.B., Goucher College; A.M., Vanderbilt University;  
Ph.D., The Johns Hopkins University.

ANNIE POWE HOPPER  
*Dean of Women*  
B.S., George Peabody College for Teachers; A.M.,  
Columbia University; Teachers' College Diploma as Ad-  
visor of Women and Girls.

LENA J. HAWKS



ANNIE P. HOPPER



# ATION AND THOSE WHO INSTRUCT

EVELYN DEARISO

*Librarian*

A.B., Georgia State Womans College; B.L.S., Emory University.

LILLIAN PATTERSON

*Assistant to the Librarian*

A.B., Georgia State Womans College.

MILDRED TEASLEY

*Director of Placement and Publicity*

A.B., A.M., University of Georgia.

MILDRED LARSEN

*Assistant to Treasurer and Cashier of Student Bank*

A.B., Georgia State Womans College.

JAMES ROBERT DUSENBURY

*Treasurer and Purchasing Agent*

CAROLINE THOMAS

*Registrar*

A.B., Georgia State Womans College.

ELIZABETH LARISEY

*Secretary to the President*

A.B., Georgia State Womans College.



DEARISO, PATTERSON

TEASLEY, LARSEN, DUSENBURY, THOMAS, LARISEY





KRAFT, DRUCKENMILLER, WARREN

# FACULTY

## HERBERT F. KRAFT

Special Student, Oberlin Conservatory; Sangster Studio, Cleveland; Pupil of Valjean Anderson, Organ, Washington; Edwin Lathrop Baker, Piano, New York; C. V. Rychlik, Composition, Cleveland.

## ELIZABETH W. DRUCKENMILLER

Diploma in Voice and Post-Graduate Teachers Diploma; Institute of Musical Art of the Julliard School of Music.

## GLADYS WARREN

*Professor of Music*

B.M., Lake Erie College; M.A., Iowa State University; Pupil of Ernest Hutcheson, New York; Lee Pattison, Chicago; Tobias Matthay School of Pianoforte, London, England.

## ELEANOR NIMS BRINK

*Professor of Social Sciences*

A.B., Vassar College; Ph.D., University of Chicago.

## JOSEPH A. DURRENBERGER

*Professor of History and Social Sciences*

A.B., Southwestern University; A.M., Ph.D., Columbia University.

## HAROLD PUNKE

*Professor of Education*

B.S., M.S., University of Illinois; Ph.D., University of Chicago.

## MILDRED McCLELLAN PRICE

*Professor of History*

A.B., Georgia State Womans College; A.M., Columbia University.

BRINK, DURRENBERGER, PUNKE, PRICE



# FACULTY

GERTRUDE GILMER ODUM

*Professor of English*

B.S., A.M., George Peabody College for Teachers.

HAROLD STRONG GULLIVER

*Professor of English*

B.A., Yale University; A.M., Columbia University;  
Ph.D., Yale University.

LOUISE ANNE SAWYER

*Professor of Speech*

Graduate, Columbia College of Expression; Student,  
University of North Carolina; B.S., School of Speech,  
Northwestern University.



CARPENTER, TREANOR, BUSH

FRANCES RUTH CARPENTER

*Professor of Art*

Bachelor's Diploma, B.S., A.M., Teachers College,  
Columbia University.

SAPELO TREANOR

*Professor of French*

A.B., A.M., University of Georgia; Student at the  
Sorbonne, Paris, France.

SARAH JANIE BUSH

*Professor of Latin*

A.B., University of Georgia; A.M., University of North  
Carolina; Diploma, College of Classical Studies, Rome,  
Italy.

ODUM, GULLIVER, SAWYER





CALLOWAY, SHRIVALLE

# FACULTY

LENA J. HAWKS  
*Dean of Instruction*

A.B., Goucher College; A.M., Vanderbilt University;  
Ph.D., The Johns Hopkins University.

EARL W. PHELAN  
*Professor of Chemistry*

B.Chem., Ph.D., Cornell University.

MARJORIE ESTELLE CARTER

*Assistant Dean of Women and Instructor in Biology*  
B.S., William and Mary College.

BEATRICE I. NEVINS  
*Professor of Biology*

Ph.B., Ph.M., Ph.D., University of Wisconsin.

MATILDA CALLOWAY  
*Professor of Home Economics*

B.S., University of Georgia; M.A., Columbia University.

EVA ALFORD SHRIVALLE  
*Dietitian*

Palmer College.

HAWKS, PHELAN, CARTER, NEVINS



# FACULTY

ELIZABETH McREE

*Assistant Professor of Physical Education*  
A.B., Georgia State Womans College; M.A., Columbia University.

JOE PRATHER

*Riding Instructor*  
B.S., Major in Physical Education, University of Georgia.

MARIAN E. FARBAR

*Resident Physician and Teacher of Biology*  
M.D., University of Illinois Medical College; Practiced Medicine in India and at Earlhan College.

LENORA IVEY

*Professor of Physical Education*  
Graduate, Sargent School for Physical Education; B.S., Georgia State College for Women; M.A., George Peabody College for Teachers.

MARY T. MIDDLEBROOKS

*House Mother of New Dormitory*

MRS. C. C. WHITTLE

*Assistant Dietitian*



McREE, PRATHER, FARBAR, IVEY

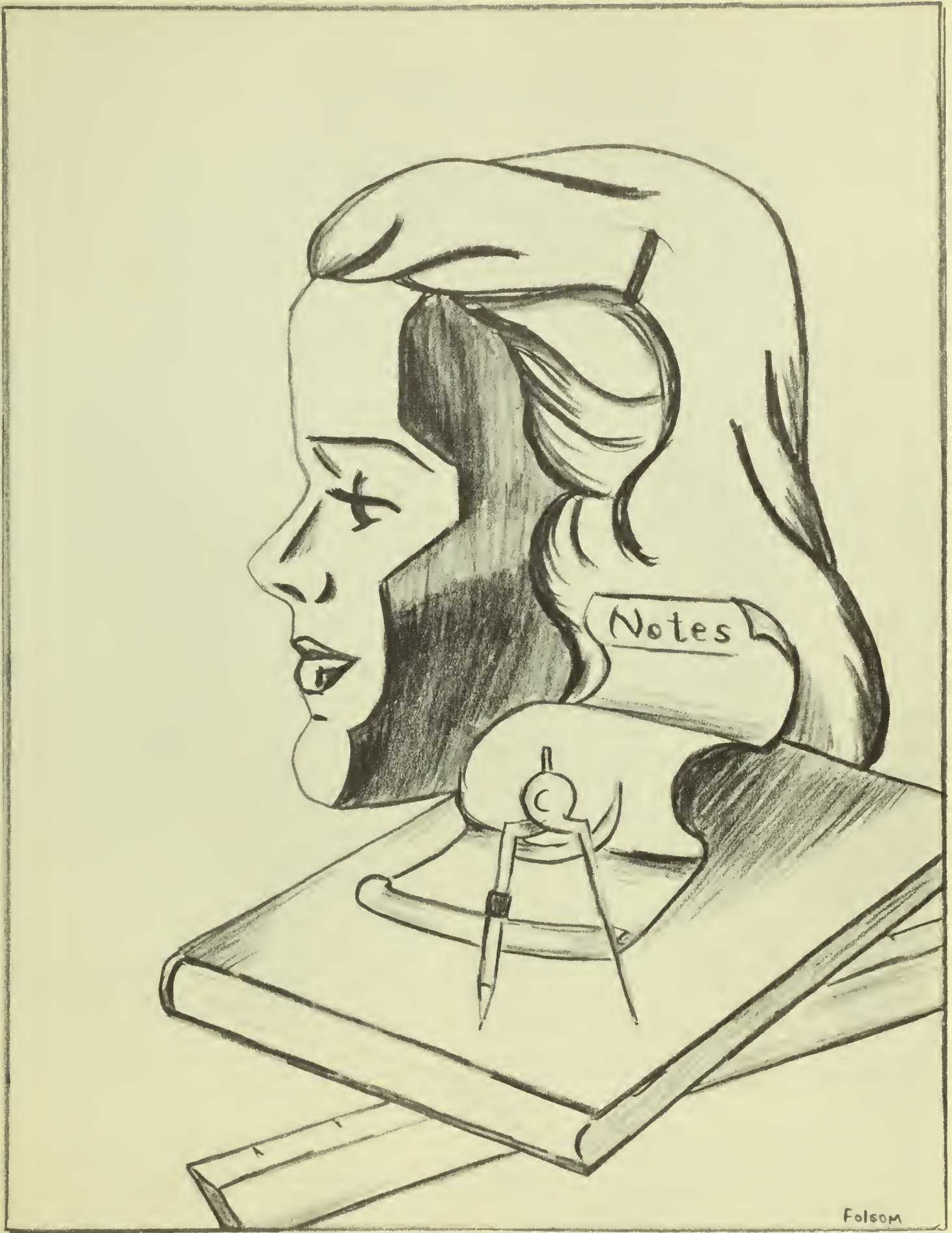
MIDDLEBROOKS, WHITTLE



THE LIBERAL ARTS STUDENT at the Georgia State Womans College utilizes classes and academic work as the basis of her college life and shapes her other campus activities around this central sphere.

Each of the four classes has an individual goal it hopes to achieve during the year; all classes have the common goal of giving their best efforts to the college. There is a mutual giving and taking and the student's life is enriched as a result of the experience.

---



*The* CLASSES

# The Senior Class



LAWSON, ARNOLD, RHYMES  
OFFICERS

JUNE LAWSON . . . . . *President*  
RUTH RHYMES . . . . . *Vice-President*  
MARGUERITE ARNOLD . . . . . *Secretary-Treasurer*

COMPOSED OF LEADERS in every phase of campus activity, the Senior Class has endeavored to lead intelligently and to develop a spirit of cooperation and friendliness. To encourage an interest in campus activity for the enjoyment of every student, it has taken time to edit a student-faculty address and telephone book, and to present a carnival, bridge, Spring fashion show, faculty take-off, several dances, moving pictures, Tech Glee Club performance, and recitals in voice, piano and speech.

# R CLASS OF 1939



ANNIE ADAMS

Geneva, Alabama

A.B. CHEMISTRY

Student Government Association (1, 2, 3, 4); Y. W. C. A. (1, 2, 3, 4); Phi Lambda Sports Club (1, 2, 3, 4), Secretary (3), President (4); Athletic Awards (1, 2, 3); Freshman Commission (1); Math-Science Club (2, 3, 4); Hall Monitor (3); *Campus Canopy* Staff (2); Athletic Council (2, 3, 4); Delegate State Athletic Convention, Athens (2); Delegate National Athletic Convention, Atlanta (2).



MARGARET ABERNATHY

Moultrie, Georgia

A.B. ENGLISH

Student Government Association (1, 2, 3, 4), Secretary (4), Student Advisor (2, 3, 4); Y. W. C. A. (1, 2, 3, 4), Cabinet (3), Deputation Team (3); Phi Lambda Sports Club (1, 2, 3); Council (3), Manager (3); Athletic Award (3); PINE CONE Staff (4); French Club (3, 4); English Club (3, 4), President (4); G. S. W. C. Emblem (4); Freshman Commission (1); Monitor (2, 4).

# The SENIO



MARGUERITE ARNOLD

Brewton, Alabama

A.B. ENGLISH

Student Government Association (1, 2, 3, 4);  
Monitor (1); Y. W. C. A. (1, 2, 3, 4); Fresh-  
man Commission (1); English Club (3, 4);  
Sports Club (1, 2, 3); Council (3); Secretary-  
Treasurer Senior Class (4).



FRANCES BRANDON

Norman Park, Georgia

A.B. ENGLISH

Transfer from Norman Junior College; Student  
Government Association (3, 4); Y. W. C. A.  
(3, 4); Philharmonic Club (3); French Club  
(4); English Club (4); College Orchestra (2).

# R CLASS OF 1939



OPAL BROWN  
Brunswick, Georgia

A.B. ART

Student Government Association (1, 2, 3); Y.  
W. C. A. (1, 2, 3); *Campus Canopy* Staff (2,  
3); Fine Arts Club (2, 3), Vice-President (3);  
Sock and Buskin Club (3).

HILDA CARROLL

Valdosta, Georgia

A.B. ENGLISH

Student Government Association (1, 2, 3, 4);  
Valdosta Club (1, 2, 3, 4), President (4); Eng-  
lish Club (4); Phi Kappa Sports Club (1, 2).



# The SENIO



MARGARET CARTER

Quitman, Georgia

A.B. MUSIC

Transfer from Bessie Tift College; Student Government Association (1, 2, 3, 4); Y. W. C. A. (1, 2, 3, 4), Cabinet (3, 4); Choir (2, 3, 4), Director (3, 4); Deputation Team (3, 4); Orchestra (2); Philharmonic Club (2, 3, 4), Vice-President (3); Glee Club (2, 3, 4); Quartet (2, 3); *Campus Canopy* Staff (3, 4); G. S. W. C. Emblem (4).



MARJORIE COMBS

Sylvester, Georgia

A.B. HISTORY

Student Government Association (1, 2, 4); Y. W. C. A. (1, 2, 4); International Relations Club (4); Phi Kappa Sports Club (1).

# R CLASS OF 1939



MARY JO COOK  
Broxton, Georgia  
A.B. ENGLISH

Transfer from M. G. C.; Student Government-  
Association (2, 3, 4); Y. W. C. A. (2, 3, 4);  
English Club (4); Math-Science Club (4).



LOIS CORLEY  
Valdosta, Georgia  
A.B. FRENCH

Student Government Association (1, 2, 3, 4);  
Valdosta Club; Phi Kappa Athletic Club (3  
awards); French Club (3, 4); Athletic Council (2).

# The SENIOR



MARY BARTLETT DUBOIS

Savannah, Georgia

A.B. SOCIOLOGY

Student Government Association (1, 2, 3, 4);  
Y. W. C. A. (1, 2, 3, 4); Vesper Choir (1, 2);  
Cabinet (3); Phi Lambda Sports Club, (1, 2,  
3); *Campus Canopy* Staff (1, 2); PINE CONE  
Staff (3, 4); Fine Arts Club (1, 2, 3, 4); Soci-  
ology Club (1, 2, 3, 4); Freshman Commission  
(1); Presbyterian Student Association (3, 4).



ANNE DUNBAR

Valdosta, Ga.

A.B. ENGLISH

Student Government Association (1, 2, 3, 4);  
Phi Kappa Sports Club (1, 2, 3, 4); Valdosta  
Club (1, 2, 3, 4); English Club (3, 4); French  
Club (4); Senior Honor Society (4); Secretary  
(4).

# R CLASS OF 1939



ELIZABETH GARBUTT

Albany, Georgia

A.B. SOCIOLOGY

Transfer from G. S. C. W.; Student Government Association (2, 3, 4); Y. W. C. A. (2, 3, 4), Treasurer (3), President (4), Sophomore Council Advisor (3, 4); Math-Science Club (2, 3, 4); Phi Kappa Sports Club (3); Sock and Buskin Club (3, 4); Representative on Student Government Honor Council (4).



CAROLYN FOLSOM

Hahira, Georgia

A.B. ART

Student Government Association (1, 2, 3, 4); Fine Arts Club (1, 2, 3, 4), Secretary-Treasurer (3), President (4); Sock and Buskin Club (3, 4); *Campus Canopy* Staff (3, 4); PINE CONE Staff (3, 4); Glee Club (4); Artist Series Committee (4); G. S. W. C. Emblem (4); Alpha Delta Journalism Fraternity (4); Honors (4).

# The SENIOR



BARNIE LOU GORNTO

Valdosta, Georgia

ENGLISH

Student Government Association (1, 2, 3, 4);  
Sock and Buskin Club (2, 3, 4); English Club  
(3, 4); Valdosta Club (2, 3, 4); Argonian  
Society (1).



MARY WINN GREER

Valdosta, Georgia

A.B. MUSIC

Student Government Association (1, 2, 3, 4);  
Phi Kappa Sports Club (1, 2); Philharmonic  
Club (1, 2, 3, 4), President (4); Valdosta Club  
(1, 2, 3, 4), Vice-President (4); French Club  
(3, 4); Glee Club Accompanist (1, 2, 3, 4);  
Artist Series Committee (4); Who's Who  
Among Students in American Universities and  
Colleges (4); Secretary Presbyterian Student  
Association (4).

# R CLASS OF 1939



MARY HUDSON

Whigham, Georgia

A.B. MATHEMATICS

Student Government Association (1, 2, 3, 4), President (4); Y. W. C. A. (1, 2, 3, 4), Cabinet (2), Representative to Blue Ridge (3), Freshman Commission (1); Student Advisor (2, 3, 4); Freshman Honor Society (2); Phi Kappa Sports Club (1, 2, 3, 4), Council (2, 3, 4), Manager (3); Athletic Awards (1, 2, 3); Math-Science Club (1, 2, 3, 4); Secretary-Treasurer (2); Treasurer Freshman Class (1); President Junior Class (3); G. S. W. C. Emblem (2); Who's Who Among Students in American Universities and Colleges (4); Representative on Student Government Honor Council (4).



PARDEE GREER

Valdosta, Georgia

MATHEMATICS

Student Government Association (1, 2, 3, 4); Valdosta Club (1, 2, 3, 4), Treasurer (3); Glee Club (1, 2, 3, 4), Vice-President (2); Phi Lambda Sports Club (1, 2); Fine Arts Club (1, 2, 3); Philharmonic Club (3, 4); Math-Science Club (3, 4), President (4).

# The SENIOR



EILEEN HYLAND  
Pelham Manor, New York

A.B. ENGLISH

Transfer from College of New Rochelle; Student Government Association (2, 3, 4); Y. W. C. A. (2, 3, 4); Phi Kappa Sports Club (2, 3, 4); Sock and Buskin Club (2, 3, 4), President (3); English Club (4); *Campus Canopy* Staff (2, 3, 4); PINE CONE Staff (4); G. S. W. C. Emblem (4); Delegate National Collegiate Press Association, Cincinnati (4); Dormitory Representative on Student Faculty Honor Council (4); Alpha Delta Journalistic Fraternity (4).



HELEN JOINER  
Savannah, Georgia

A.B. FRENCH

Student Government Association (1, 2, 3, 4); Y. W. C. A. (1, 2, 3, 4); Freshman Commission (1); Cabinet (2); *Campus Canopy* Staff (1); French Club (3, 4), President (4).

# R CLASS OF 1939



ROSALIND LANE

Valdosta, Georgia

A.B. HISTORY

Student Government Association (1, 2, 3, 4); Day Student Representative of the Student-Faculty Honor Council (4); Phi Kappa Sports Club (1, 2, 3); Athletic Award (1); *Campus Canopy* Staff (1, 2, 3), Editor (3); PINE CONE Staff (4); International Relations Club (4); English Club (3); Fine Arts Club (2, 3, 4); G. S. W. C. Emblem (4); Delegate National Scholastic Press Association, Chicago (3); Delegate Georgia Collegiate Press Association, Savannah (2); Delegate Georgia Collegiate Press Association, Gainesville (3); Freshman Honor Society (2); Alpha Delta Journalism Fraternity (2, 3, 4), Vice-President (3), President (4); Sociology Club (4); Who's Who Among Students in American Universities and Colleges (4); Freshman Journalism Award (1).

JUNE LAWSON  
Jacksonville, Florida

A.B. FRENCH

Student Government Association (1, 2, 3, 4); Y. W. C. A. (1, 2, 3, 4); French Club (2, 3, 4); President (3); Phi Lambda Sports Club (1, 2, 3, 4), Council (2, 3, 4), Manager (3); Athletic Awards (1, 2, 3, 4); Freshman Commission (1), President Senior Class (4); *Campus Canopy* Staff (2); G. S. W. C. Emblem (4); Student Advisor (4).



# The SENIOR



ELEANOR MCINTYRE

Valdosta, Georgia

A.B. ENGLISH

Transfer from Bessie Tift College; Student Government Association (2, 3, 4); Senior Honor Society (4); Honors (2, 3).



CATHERINE J. MORRIS

New Rochelle, New York

A.B. ENGLISH

Student Government Association (1, 2, 3, 4); Y. W. C. A. (1, 2, 3, 4); Phi Lambda Sports Club (1, 2, 3, 4); Council (3, 4); Athletic Awards (1, 2, 3); *Campus Canopy* Staff (1, 2, 3), Editor (4); English Club (3, 4); Freshman Commission (1); President Sophomore Class (2); PINE CONE Staff (4); Delegate Georgia Collegiate Press Association, Savannah (2), Vice-President (3); Delegate Georgia Collegiate Press Association, Athens (3); Delegate Associated Collegiate Press Association, Cincinnati (4); Delegate Georgia Collegiate Press Association, Gainesville (3); G. S. W. C. Emblem (2); Who's Who Among Students in American Universities and Colleges (4); Alpha Delta Journalism Fraternity (2, 3, 4), Secretary-Treasurer (3), Vice-President (4).

# R CLASS OF 1939



HAZEL MUGGRIDGE

Cairo, Georgia

A.B. ENGLISH

Student Government Association (1, 2, 3, 4); Y. W. C. A. (1, 2, 3, 4); Freshman Commission (1), Cabinet (2, 3, 4); Deputation Team (4); Math-Science Club (1); Freshman Honor Society (1); French Club (3, 4), Secretary (4); *Campus Canopy* Staff (2); English Club (3, 4); Vesper Choir (3); Senior Honor Society (4), President (4); Phi Lambda Sports Club (1, 2).

EVELYN OGLETREE

Savannah, Georgia

A.B. ENGLISH

Student Government Association (1, 2, 3, 4); Y. W. C. A. (1, 2, 3, 4); Freshman Commission (1); Vesper Choir (4); *Campus Canopy* Staff (3, 4); French Club (4); English Club (3, 4); Treasurer Junior Class (3); Phi Lambda Sports Club (1, 2); PINE CONE Staff (4).



# The SENIOR



DORA IDA PERKINS

Alma, Georgia

A.B. FRENCH

Student Government Association (1, 2, 3, 4), Vice-President (3); Y. W. C. A. (1, 2, 3, 4); Freshman Commission (1); Student Advisor (2, 3, 4); Phi Lambda Sports Club (1, 2, 3, 4); Council (1, 2, 3, 4), Secretary-Treasurer (2, 4); Athletic Awards (1, 2, 3); Math-Science Club (1); French Club (3, 4); Vice-President (4); *Campus Canopy* Staff (2, 3, 4); G. S. W. C. Emblem (3); Delegate National Athletic Convention, Atlanta (3); Delegate N. A. A. F. Conference Wesleyan (3).



RUTH RHYMES

Valdosta, Georgia

A.B. CHEMISTRY

Transfer from M. S. C. W.; Student Government Association (2, 3, 4); Math-Science Club (2, 3, 4); Senior Honor Society (4), Vice-President (4); PINE CONE Staff (4).

# R CLASS OF 1939



ANNA RICHTER

Savannah, Georgia

A.B. ENGLISH

Student Government Association (1, 2, 3, 4);  
Y. W. C. A. (1, 2, 3, 4), Vice-President (3);  
Deputation Team (2); Representative to Blue  
Ridge (2); Student Advisor (2, 3, 4); Sock and  
Buskin Club (1, 2, 3, 4); Secretary-Treasurer  
(2), President (4); English Club (3, 4);  
French Club (2, 3); Phi Lambda Sports Club  
(1, 2, 4); Athletic Awards (1, 2); President  
Freshman Class (1); G. S. W. C. Emblem (2);  
Freshman Honor Society (2), President (2);  
Who's Who Among Students in American Uni-  
versities and Colleges (3).

RUBY JEAN ROGERS

Valdosta, Georgia

A.B. SOCIOLOGY

Student Government Association (1, 2, 3, 4);  
Valdosta Club (1, 2, 3, 4); Sociology Club (4);  
Phi Kappa Sports Club (1).



# The SENIOR



CLARA MAE SASSER

Valdosta, Georgia

A.B. ENGLISH

Student Government Association (1, 2, 3, 4); Phi Kappa Sports Club (1); Freshman Honor Society (2), Treasurer (2); Philharmonic Club (1); Valdosta Club (1, 2, 3, 4), Treasurer (2); French Club (3, 4); English Club (3, 4), Secretary-Treasurer (3); Senior Honor Society (4), Editor (4); Who's Who Among Students in American Universities and Colleges (4); *Campus Canopy* Staff (3); Editor of PINE CONE (4); Delegate Georgia Collegiate Press Association, Gainesville (3); Delegate Associated Collegiate Press Association, Cincinnati (4).



ESSIE SKINNER

Tifton, Georgia

A.B. SOCIOLOGY

Student Government Association (1, 2, 4); Y. W. C. A. (1, 2, 4); Phi Kappa Sports Club (1, 2); Vesper Choir (1); Sociology Club (4), Secretary-Treasurer (4).

# R CLASS OF 1939



LOUISE STUMP

Valdosta, Georgia

A.B. CHEMISTRY

Student Government Association (1, 2, 3, 4);  
Valdosta Club (1, 2, 3, 4); Glee Club (2, 3, 4);  
Math-Science Club (2, 3, 4).

PENELOPE TULLIS

Valdosta, Georgia

A.B. HISTORY

Student Government Association (1, 2, 3, 4);  
Valdosta Club (1, 2, 3, 4); International Relations Club (3, 4), Secretary (4); Phi Lambda Sports Club (1, 2, 3); Sociology Club (4).



# The SENIO



GRACE VAN LANDINGHAM

Valdosta, Georgia

A.B. CHEMISTRY

Student Government Association (1, 2, 3, 4); Valdosta Club (1, 2, 3, 4); Math-Science Club (2, 3, 4), Vice-President (4); Freshman Honor Society (2); Senior Honor Society (4); Secretary Junior Class (3).



MARGARET WEIR

Campbellsville, Kentucky

A.B. ENGLISH

Transfer from Campbellsville Kentucky Junior College; Student Government Association (3, 4); Y. W. C. A. (3, 4), Cabinet, Sunday School Chairman (4); French Club (3, 4); English Club (3, 4), Vice-President (4).

# R CLASS OF 1939



MARTHA GORDON WILLIFORD

Valdosta, Georgia

A.B. SOCIOLOGY

Student Government Association (1, 2, 3, 4);  
Phi Lambda Sports Club (1); Valdosta Club  
(1, 2, 3, 4); Fine Arts Club (2, 3, 4); Sociology  
Club (4).



MARY VIRGINIA WILLIAMS

Quitman, Georgia

A.B. SOCIOLOGY

Student Government Association (1, 2, 3, 4);  
Y. W. C. A. (1, 2, 3, 4), Assistant to Vice-Presi-  
dent (2), Secretary (3), Deputation Team (4);  
Sports Club (1); Advertising Staff *Campus*  
*Canopy* (1); President Sociology Club (4);  
Freshman Commission.

# SENIOR



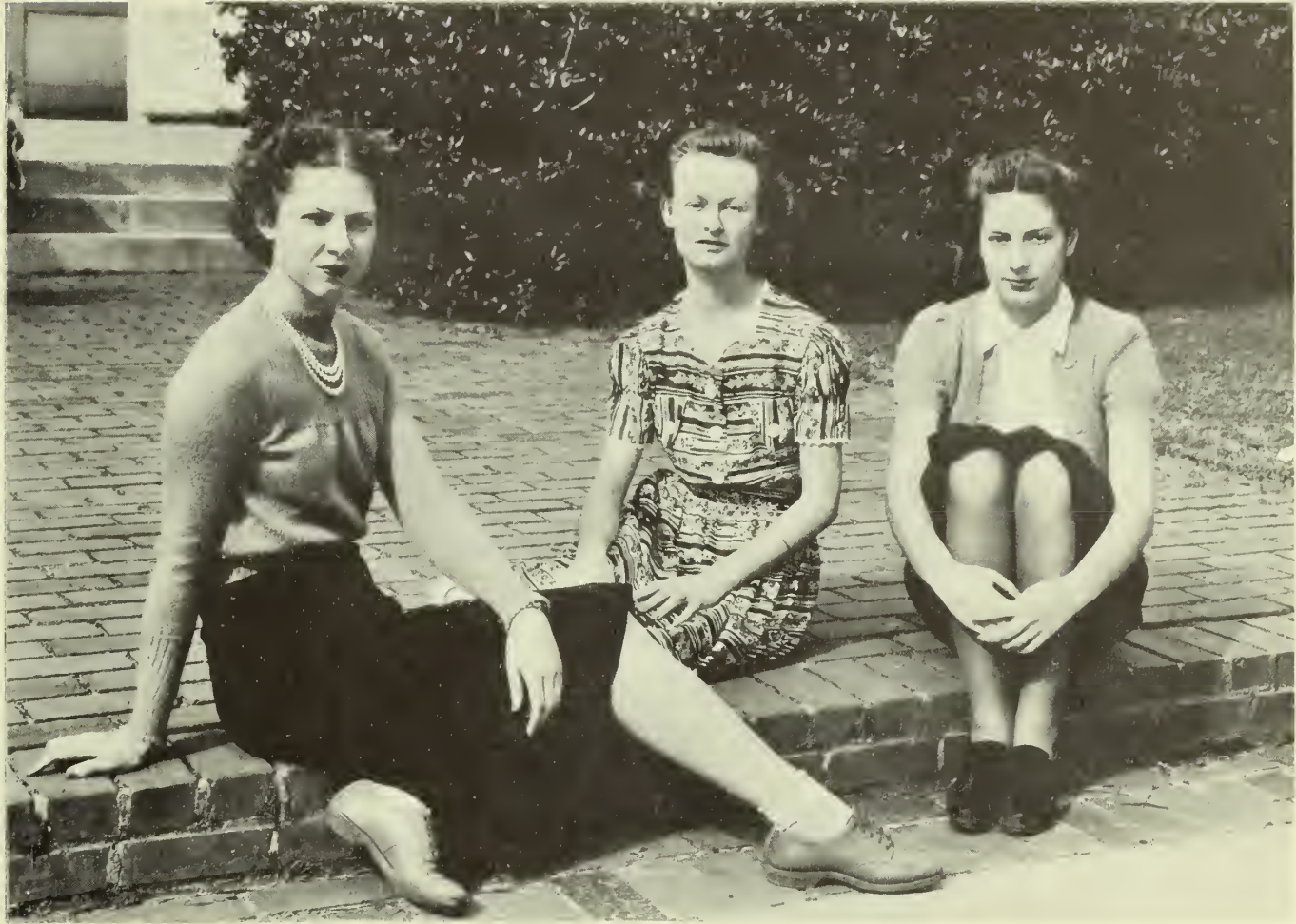
MAUDELLÉ WILSON

Cordele, Georgia

A.B. BIOLOGY

Student Government Association (1, 2, 3, 4);  
Y. W. C. A. (1, 2, 3, 4); Phi Kappa Sports Club  
(1, 2, 3, 4), Secretary-Treasurer (2), Vice-  
President (3, 4); Council (1, 2, 3, 4); Sock and  
Buskin Club (2, 3, 4); *Campus Canopy* Staff  
(2); Business Manager of PINE CONE (4);  
Delegate National Scholastic Press Association,  
Cincinnati (4); G. S. W. C. Emblem (4);  
Freshman Commission (1); Math-Science Club  
(3).

# The *Junior* Class



ABERNATHY, WILLIAMS, GARBUTT  
OFFICERS

MARY CATHERINE ABERNATHY . . . . . *President*  
SARA GARBUTT . . . . . *Vice-President*  
HAZEL WILLIAMS . . . . . *Secretary-Treasurer*

BREAKING RECORDS of not only other classes but of their own, the Junior Class started the social year with a dance that attracted the largest crowd ever witnessed at a Saturday frolic.

After tasting of the fruits of success the Juniors clamored for more. In a drive to sell engraved stationery the class met with even more astounding success.

Following the Christmas holidays the Juniors again led out with a swingster. In this function the record from their previous dance of the year was excelled. A cake-walk was an added feature, resulting in a crowd almost too large for the Recreation Hall to accommodate.

The Junior-Senior Formal at the Country Club was a brilliant event of Spring Quarter.



MARY CATHERINE ABERNATHY  
Moultrie, Georgia

# *The* JUNIO



JACQUELINE ABRAHAMS  
Valdosta, Georgia



ROSEMARY BAKER  
Valdosta, Georgia



LOUISE BELL  
Arlington, Georgia

R C L A S S



GERALDINE BOWEN  
Valdosta, Georgia



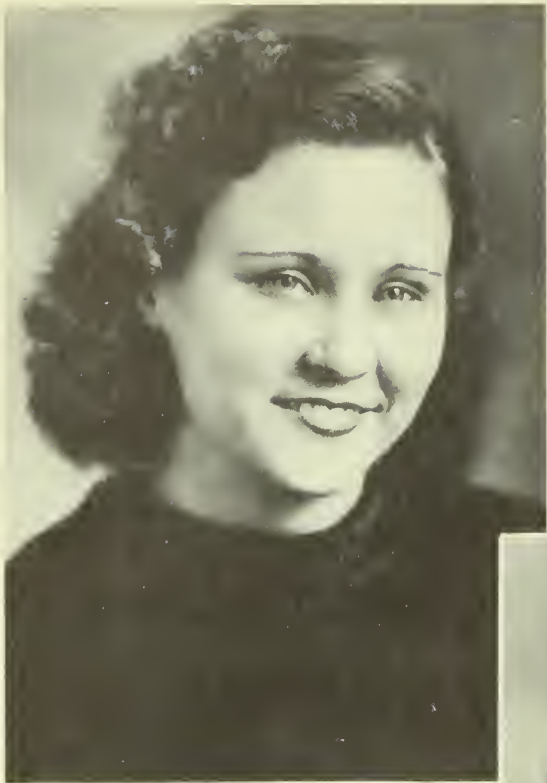
CAROLYN BRIDGES  
Sumner, Georgia



KATHLEEN CAMPBELL  
Valdosta, Georgia



MONTINE COWART  
Waycross, Georgia



GEORGIA CREWS  
Waycross, Georgia



DOROTHY DALTON  
Valdosta, Georgia



HELEN DUNCAN  
Valdosta, Georgia



SARA GARBUTT  
Valdosta, Georgia

*The* JUNIOR

R C L A S S



SUE NELLE GREENLEE  
Valdosta, Georgia



DORIS HARPER  
Valdosta, Georgia

ANNE JOLLY  
Smithville, Georgia



ALICE HATCHER  
Albany, Georgia



*The* J U N I O



MARY LEE MARTINDALE  
Blakely, Georgia



ELEANOR MORGAN  
Valdosta, Georgia



MARGUERITE NORTON  
Naylor, Georgia



CAROL O'NEAL  
Valdosta, Georgia

R C L A S S



VIRGINIA PARRISH  
Adel, Georgia



VERNA POPPELL  
Homerville, Georgia



MARY HELEN PULLEN  
McRae, Georgia



ELIZABETH RHYMES  
Valdosta, Georgia



IRWIN SMITH  
Waycross, Georgia

*The* J U N I O



EDNA SNEAD  
Valdosta, Georgia



ROSALIND TAYLOR  
Valdosta, Georgia



FRANCES VAN BRACKLE  
Adel, Georgia

R C L A S S



CURTIS WHATLEY  
McRae, Georgia



RUTH WHISONANT  
Baxley, Georgia



HAZEL WILLIAMS  
Tifton, Georgia



EDITH GORDON WILSON  
Blountstown, Florida



MILDRED WILSON  
Waycross, Georgia

*The* J U N I O R  
C L A S S



ORA KATE WISENBAKER  
Valdosta, Georgia



NELL ZIPPERER  
Valdosta, Georgia

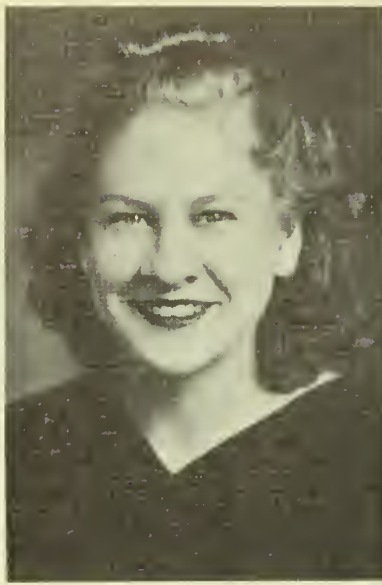
# The Sophomore Class



CUMMING, BRIM, McKEY  
OFFICERS

EMILY CUMMING . . . . . *President*  
SUSIE McKEY . . . . . *Vice-President*  
MARY ALICE BRIM . . . . . *Secretary-Treasurer*

THE SOPHOMORE CLASS has continued to show the characteristic of cooperation that has made it outstanding in various campus activities the two years its members have worked together. The Class has for its ultimate goal the achievement of being the first class to make a trip to Cuba in its Senior year. They have entered into many social activities on the campus, sponsoring several dances, teas, a benefit bridge, and the Sophomore-Senior Formal in honor of their sister class.



ELIZABETH ALLAN  
Shellman, Georgia



GEORGIA BAISDEN  
Jacksonville, Florida



SYLVIA BELL  
Arlington, Georgia



FRANCES BIRD  
Valdosta, Georgia



ELIZABETH BORDERS  
LaGrange, Georgia



LOUISE BLANKS  
Valdosta, Georgia



EVELYN BRIM  
Sasser, Georgia



MARY ALICE BRIM  
Sasser, Georgia



DOROTHY BROWN  
Staunton, Virginia



MARGARET BURNS  
Macon, Georgia



RUTH BURROUGHS  
Pelham, Georgia



MARGARET BUSH  
Camilla, Georgia

*The* S O P H O M



LOIS CHRISTIAN  
Valdosta, Georgia



YOLANDE COPPAGE  
Valdosta, Georgia



MAXINE COWART  
Waycross, Georgia



EMILY CUMMING  
Cordele, Georgia



VIRGINIA FLETCHER  
Cordele, Georgia



EMMA F. GAY  
Blakely, Georgia



SARAH GIBBS  
Ty Ty, Georgia



JOSEPHINE GRAHAM  
Valdosta, Georgia



CHARLINE GRATER  
Lake Park, Georgia



LOIS GREEN  
Jacksonville, Florida



WILMOT GREEN  
Jacksonville, Florida



EVELYN HAY  
Leland, Mississippi

O R E C L A S S



LOUISE HOWELL  
Blakely, Georgia



FRANCES HUG  
Fort Benning, Georgia



MINNIE V. INGRAM  
Byromville, Georgia



JEANETTE JOHNSON  
Thomasville, Georgia



LUCILLE JOHNSON  
Pitts, Georgia



MAMIE JOHNSON  
Valdosta, Georgia



MARGIE JONES  
Cairo, Georgia



AILENE LANIER  
Valdosta, Georgia



FRANCES LAZARUS  
Valdosta, Georgia



RUBY LILLY  
Jacksonville, Florida



MARY LOVETT  
Sparks, Georgia



LOUISE MCFIE  
Bainbridge, Georgia

*The* S O P H O M



SUSIE McKEY  
Valdosta, Georgia



REBA MANGHAM  
Barnesville, Georgia



MARGARET MIDDLEBROOKS  
Norman Park, Georgia



FRANCES MIDDLETON  
Colquitt, Georgia



KATHERINE MUNDY  
Valdosta, Georgia



MARION ORR  
Savannah, Georgia



ANNE PARHAM  
Warm Springs, Georgia



MARIANNE PAULK  
Fitzgerald, Georgia



LOUIE PEEPLES  
Valdosta, Georgia



CHRISTINE POSS  
Brunswick, Georgia



HELEN QUARTERMAN  
Valdosta, Georgia



LOIS QUINN  
Hazlehurst, Georgia

O R E C L A S S S



JACQUELINE RAST  
Quitman, Georgia



RUTH REID  
Valdosta, Georgia



DOROTHY SMITH  
Ochlochnee, Georgia



MARIE SMITH  
Patterson, Georgia



LEONA STRICKLAND  
Valdosta, Georgia



LINDA SUMMER  
Atlanta, Georgia



INEZ TAYLOR  
Greensboro, Georgia



EDNA THAMES  
Valdosta, Georgia



MARTHA WILKES  
Adel, Georgia



CAROLYN WILLIAMS  
Ty Ty, Georgia



FRANCES WILLIAMS  
Valdosta, Georgia



GWENDOLYN WINTER  
Valdosta, Georgia



EVELYN WOODWARD  
Waycross, Georgia



VIRGINIA ZACKERT  
Bainbridge, Georgia

# The Freshman Class



HOWARD, GRAHAM, CULPEPPER  
OFFICERS

MAY HOWARD . . . . . *President*  
CATHERINE Y. GRAHAM . . . . . *Vice-President*  
JANE CULPEPPER . . . . . *Secretary-Treasurer*

THE FRESHMAN CLASS has chosen as its aims the attainment of higher ideals in its practices and the achievement of all its undertakings through cooperation. It has chosen as its objective the promotion and maintenance of quietness in Assembly.

The Formal, in honor of her sister class, the Junior Class, was a memorable occasion.

Because it was unable to find the hat on the Annual Hat Days the class was forced to entertain the Sophomores.



SHIRLEY ABRAHAMS  
Valdosta, Georgia

CAROL ADAMS  
Fitzgerald, Georgia

EDITH ALLEN  
Lenox, Georgia



FRANCES ASHLEY  
Rochelle, Georgia

SUE AVRIET  
Homerville, Georgia

MARY ALICE BALDWIN  
Naylor, Georgia

LOIS BEATTY  
Moultrie, Georgia

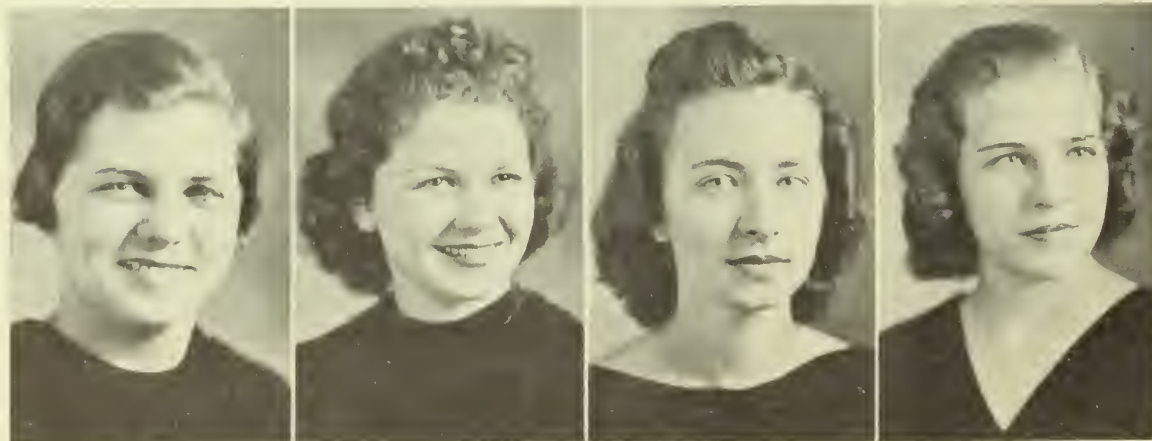


LUCILLE BEDGOOD  
Arabi, Georgia

ROBINETTE BELL  
Ludowici, Georgia

RUTHANN BELLOFF  
Syracuse, New York

SARA BELOTE  
Valdosta, Georgia



MARGARET BENNETT  
Jesup, Georgia

MELBA BLANTON  
Valdosta, Georgia

ELIZABETH BOWEN  
Tifton, Georgia

EVELYN BOZEMAN  
Sylvester, Georgia

*The* F R E S H M



PATSY BREWSTER  
Valdosta, Georgia



DOROTHY BRIDGES  
Valdosta, Georgia



VIRGINIA BRIDGES  
Jasper, Florida



AILEEN BRIM  
Sasser, Georgia



LORENA BROOKER  
Nahunta, Georgia



MARY PAYNE BROWN  
Nashville, Georgia



BILLIE BRUCE  
Homerville, Georgia



MARY BUNDRICK  
Cordele, Georgia



MARY FRANCES BURKE  
Valdosta, Georgia



MARY M. BURNETTE  
Valdosta, Georgia



DORIS CHILDS  
Albany, Georgia



ANEILDA CLARK  
Albany, Georgia



MARGARET CLAY  
Macon, Georgia



WILMA CLEMENTS  
Rochelle, Georgia



SYBYL COLEMAN  
Omega, Georgia

A N C L A S S



MARY E. COLLINS  
Valdosta, Georgia

ELEANOR COOK  
Savannah, Georgia

ELIZABETH COOK  
Atlanta, Georgia



EVELYN COOK  
Valdosta, Georgia

LAVERN COOK  
Colquitt, Georgia

MARGARET COPELAND  
Lake Park, Georgia

RACHEL CRITTENDON  
Shellman, Georgia

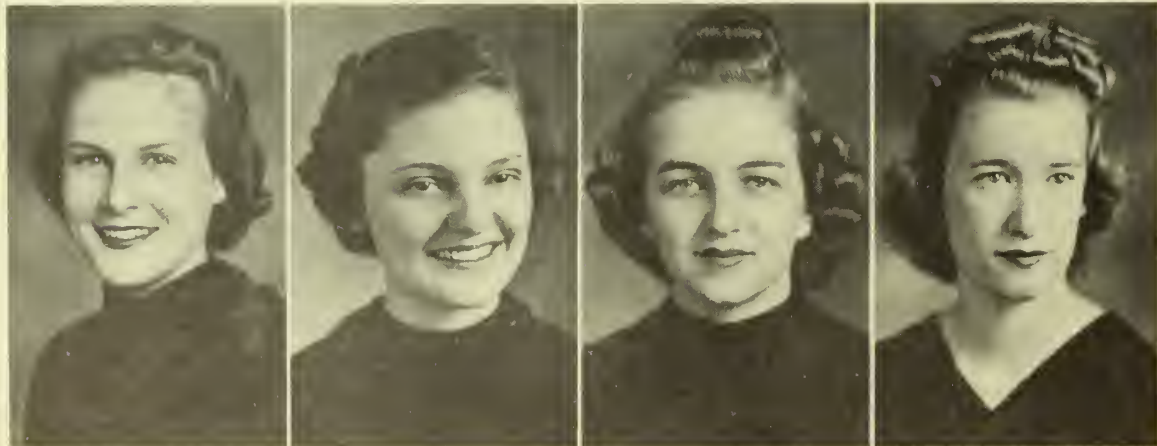


ANNIE B. CROFT  
Valdosta, Georgia

JANE CULPEPPER  
Cordele, Georgia

ANGELINE CUNNINGHAM  
Arlington, Georgia

CHARLOTTE DAVENPORT  
Baxley, Georgia



MARJORIE DEKLE  
Cordele, Georgia

DORIS DICKSON  
Fitzgerald, Georgia

RUTH DIXON  
Baxley, Georgia

MARJORIE DRAKE  
Colquitt, Georgia

*The* F R E S H M



LOUISE EDWARDS  
Fastman, Georgia



RITA EVANS  
Fitzgerald, Georgia



DOROTHY FAIRCLOTH  
Seville, Georgia



BETTY FRANKLIN  
Valdosta, Georgia



VIRGINIA FRYER  
Blakely, Georgia



ELISE GANNON  
Cordele, Georgia



ELIZABETH GARBUTT  
Valdosta, Georgia



LEECY ANNE GOODLOE  
Valdosta, Georgia



HARRIET GOODSON  
Valdosta, Georgia



CATHERINE Y. GRAHAM  
Valdosta, Georgia



MARY GRAY  
Valdosta, Georgia



KATHLEEN GROOVER  
Ochlochnee, Georgia



LAURA HAMILTON  
Arabi, Georgia



KATHRYN HANDORF  
Valdosta, Georgia



MARY HARDY  
Cordele, Georgia



MILDRED HARRIS  
Moultrie, Georgia



SARA HATHCOCK  
Blakely, Georgia



MARGARET HEAD  
Brunswick, Georgia



ANNIE HEALD  
Thomasville, Georgia



FLORENCE HEDRICK  
Albany, Georgia



LAVERN HERRING  
Valdosta, Georgia



MARGARET HIERS  
Moultrie, Georgia



HELEN HIGHTOWER  
Columbus, Georgia



GERALDINE HILL  
Jasper, Georgia



FLORENCE HINES  
Americus, Georgia



BETTY MAE HODGES  
Moultrie, Georgia



MAY HOWARD  
Savannah, Georgia



ISABELLE HUGHES  
Homerville, Georgia



AUDREY JENKINS  
Sylvester, Georgia



VIRGINIA JENKINS  
Alma, Georgia

*The* F R E S H M



LOIS JOHNSON  
Millen, Georgia



MARY E. JOHNSON  
Valdosta, Georgia



SARA ELLEN JOHNSON  
Newnan, Georgia



DAISY JONES  
Albany, Georgia



RAY KIEVE  
Albany, Georgia



LOUIE KREIGER  
Valdosta, Georgia



SARA LACY  
Albany, Georgia



MARY LANIER  
Albany, Georgia



GRACE S. LINEBERGER  
Valdosta, Georgia



ELIZABETH LOGAN  
Valdosta, Georgia



EDITH LONG  
Colquitt, Georgia



IRENE LOTT  
Hahira, Georgia



ELIZABETH LYON  
Valdosta, Georgia



MARY E. McLIN  
Albany, Georgia



JANIE MACON  
Moultrie, Georgia

A N C L A S S



GAY MARTIN  
Shellman, Georgia



MILDRED MARTIN  
Hilton, Georgia



RICHMOND MARTIN  
Brunswick, Georgia



CAROLYN MATHIS  
Hahira, Georgia



GERALDINE MILES  
Blackshear, Georgia



HARRIET MILLER  
Bronwood, Georgia



JEWEL MILLER  
Thomasville, Georgia



ELIZABETH J. MILLIGAN  
Columbus, Georgia



HAZEL MIXON  
Patterson, Georgia



RUTH MORGAN  
Valdosta, Georgia



ELIZABETH MORRISON  
Waycross, Georgia



GWENDOLYN MULLIS  
Moultrie, Georgia



CAROLYN NEWBERRY  
Arlington, Georgia



MARY N. NORMAN  
Moultrie, Georgia



HELEN PARKER  
Hahira, Georgia

*The* F R E S H M



GLADYS PARRISH  
Howell, Georgia



MARIE PARRISH  
Adel, Georgia



VIRGINIA PASSMORE  
Hahira, Georgia



MARY F. PATRICK  
Quitman, Georgia



PATTYE PATTERSON  
Valdosta, Georgia



LOUISE PAULK  
Ray City, Georgia



ELIZA PEEPLES  
Valdosta, Georgia



MARY E. PURDUE  
Columbus, Georgia



ALBERTA PLEMMONS  
Valdosta, Georgia



VIRGINIA POWER  
Vienna, Georgia



SUE PRITCHETT  
Albany, Georgia



IONE QUINKER  
Valdosta, Georgia



KATHRYN RAYNOR  
Folkston, Georgia



LUCILLE ROBERSON  
Ochlochnee, Georgia



CAROLYN ROBERTS  
Crescent City, Florida

A N C L A S S S



MINNIE ROBERTS  
Valdosta, Georgia

MARY E. ROGERS  
Cairo, Georgia

WINIFRED RUFFIN  
Reynolds, Georgia



KATHRYN SCOTT  
Pelham, Georgia

RUTH SESSOMS  
Cogdell, Georgia

ANNA B. SHERMAN  
Valdosta, Georgia

HILDA SIKES  
Valdosta, Georgia



SARA SIMS  
Ousley, Georgia

EFFIE SMITH  
Lakeland, Georgia

JULIA BESS SMITH  
Valdosta, Georgia

JANE STANALAND  
Valdosta, Georgia



DELENE THOMAS  
Folkston, Georgia

DOROTHY THOMAS  
Savannah, Georgia

GWENDOLYN THOMAS  
Waycross, Georgia

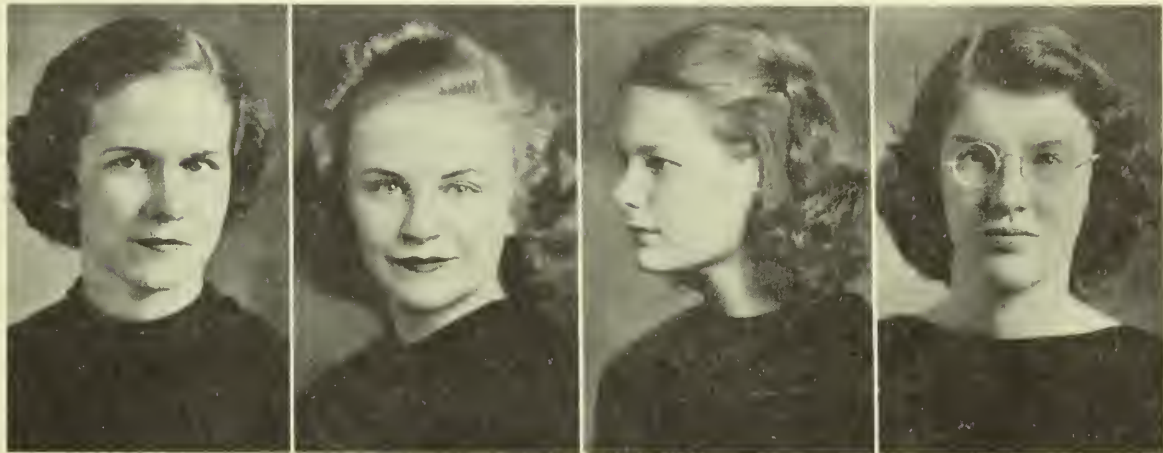
KATHERINE THRIFT  
Valdosta, Georgia

HENRIETTA TILLMAN  
Register, Georgia

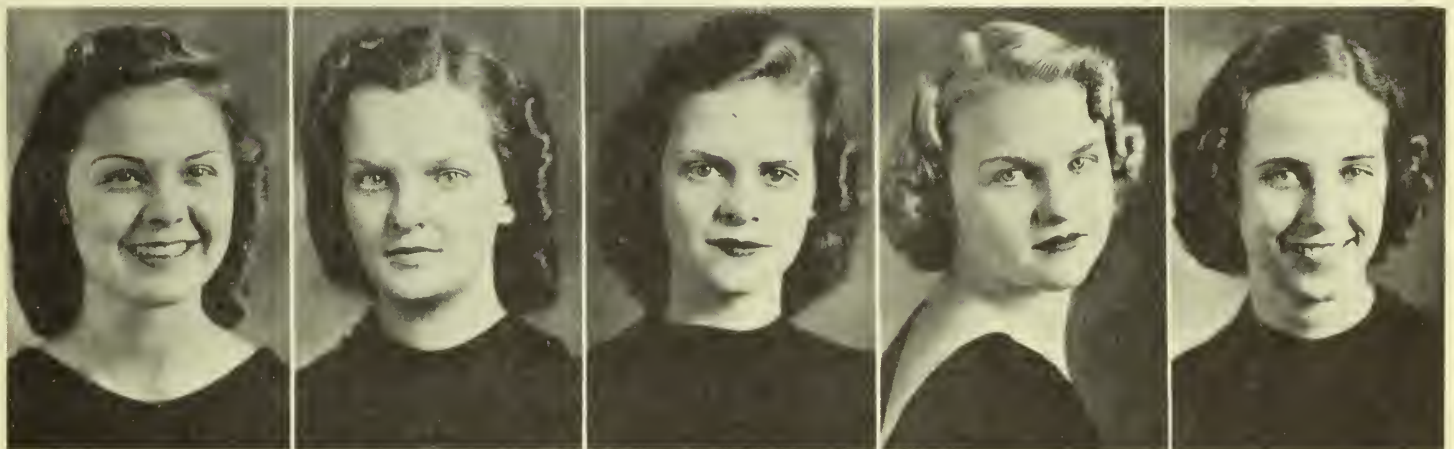
*The* F R E S H M



ELIZABETH TOMBERLIN    ELLA SUE TRAYNHAM    MARY ALICE TUMLIN  
 Irvinville, Georgia    Broxton, Georgia    Cave Spring, Georgia



ELEANOR TURNBULL    MARY E. TURNER    HILDA WARD    ELIZABETH WATERHOUSE  
 Moultrie, Georgia    Chipley Georgia    Blackshear, Georgia    Ochlochnee, Georgia



FRANCES WEST    JANIE WHITE    CHRISTINE WIGGINS    FRANCES WILLIAMS    GRACE WILLIAMS  
 Columbus, Georgia    Hahira, Georgia    Leary, Georgia    Cordele, Georgia    Millen, Georgia



MARY WILLIAMS    MAXWELL WILLIAMS    MARY WISEMAN    ALICE WISEBAKER    LEAH YARBOROUGH  
 Fitzgerald, Georgia    Cordele, Georgia    Adel, Georgia    Valdosta, Georgia    Albany, Georgia

A N C L A S S

THERE IS A WEALTH OF CLUBS and organizations on the Georgia State Womans College campus. Provisions are made for students interested in a wide range of out-of-class activities—religion, government, sports, dramatics, publications, music, languages, fine arts.

The liberal arts student who is wise chooses a variety of activities—she arranges her hours for academic work and then fills her leisure time with the student activities which interest her.

As her education progresses, her interests become diffused. Proceeding from the smaller number of fields which originally may have her attention, she becomes a well-rounded individual and acquires an appreciation for the different activities around her.



# ACTIVITIES

# The Student GOVERNMENT



## OFFICERS

MARY HUDSON . . . . . *President*  
RUTH WHISONANT . . . . . *Vice-President*  
MARGARET ABERNATHY . *Secretary-Treasurer*  
VERNA POPPELL . . . . . *Recorder of Points*



Huddy and Ruth off to Blue Ridge



## COURT MEMBERS

MARY HUDSON  
RUTH WHISONANT  
MARY CATHERINE ABERNATHY  
EMILY CUMMING  
MAY HOWARD  
JUNE LAWSON

# ASSOCIATION

---

## AND ITS FUNCTIONS

THE PURPOSE of the Student Government Association is to promote the highest standards of honor and integrity in all matters of personal conduct, to strengthen the cordial relations between faculty and students, and to promote general respect for law and order.

The Student Government Association is a democratic organization with responsibility and privileges democratically distributed.

The court is composed of the President and Vice-President of this organization and the class presidents. The Student-Faculty Honor Council and the Executive Board work in cooperation with the Student Government.



HYLAND and LANE  
of Student-Faculty Honor Committee



Miss Hopper talks with Huddy



BRIM, WHATLEY, COWERT  
Hall Monitors



The Student Government Court  
in an informal pose

# The Y. W. C. A.



GARBUTT



SMITH



WILSON

## OFFICERS

ELIZABETH GARBUTT . . . *President*  
MILDRED WILSON . . . *Vice-President*  
IRWIN SMITH . . . *Secretary-Treasurer*

## CABINET MEMBERS

ELIZABETH GARBUTT  
MILDRED WILSON  
IRWIN SMITH  
JEANNETTE JOHNSON  
SARA GIBBS  
FRANCES HUG  
MARGARET CARTER  
MARY L. ROGERS  
HAZEL WILLIAMS  
EVELYN WOODWARD  
HAZEL MUGGRIDGE  
CAROLYN WILLIAMS  
FRANCES MIDDLETON  
MARGARET WEIR

"Y" Cabinet



Open forum in the park



## Activities

THE RELIGIOUS ACTIVITIES on the campus are directed by the Y. W. C. A., a non-denominational organization. The Cabinet, the executive staff, meets once a week to discuss problems and plan the "Y" program. The faculty advisor for the year 1938-39 is Miss Annie P. Hopper.

Through the "Y" and its program a sincerely spiritual atmosphere is stimulated within our college. On Sunday and Thursday evenings vesper services are held. Sunday School is taught on the campus every Sunday morning; and each morning students gather in the Rotunda for Morning Watch.

The campus and its Y. W. C. A. are represented each year at the state conferences, Blue Ridge, North Carolina, and at other smaller conferences. Three deputation teams are sent out to other colleges and towns in the vicinity—the theme for this year has been "Christianity and Democracy." Freshman and Sophomore Councils are organized to establish a closer connection between the students and their organization.

Highlights of this year's program have been Religious Emphasis Week with Dr. W. A. Smart of Emory University, Atlanta, Georgia, the Firelighting Ceremony, the Hanging of the Greens, the Christmas Pageant, Heart Sister Week, and installation services. The Vesper Choir under the direction of Mr. Kraft and Margaret Carter has given to the vesper service a distinctive atmosphere. During the year the choir took trips to nearby towns and gave programs at the churches.



DEPUTATION TEAMS  
MUGGRIDGE, CARTER, WILLIAMS  
CARTER, MUGGRIDGE, WILSON



The traditional "Hanging of the Greens"  
by the seniors

# Building the Book

# PINE CONE



SASSER

## The STAFF

- CLARA MAE SASSER . . . . . *Editor-in-Chief*  
DODY WILSON . . . . . *Business Manager*  
MARGARET ABERNATHY . . . . . *Activities Editor*  
ROSALIND LANE . . . . . *Literary Editor*  
CAROLYN FOLSOM . . . . . *Art Editor*  
RUTH RHYMES . . . . . *Photograph Editor*  
C. J. MORRIS . . . . . *Assistant Editor*  
MARY DUBOIS . . . . . *Assistant Activities Editor*  
EILEEN HYLAND . . . . . *Assistant Literary Editor*  
EVELYN OGLETREE . . . . . *Assistant Photograph Editor*

The staff at work on the annual





FOLSOM, DUBOIS and LANE  
Junior Staff

PRESENTED BY the student body with a staff headed by seniors, the PINE CONE this year has attempted to give in words and pictures a comprehensive representation of activities and experiences of the year 1938-39 at G. S. W. C.

The policy begun in 1936-37 of having a junior staff organized as under-studies to the senior staff was continued this year. Thus, next year's new staff will have past experience upon which to build. In October, the Editor-in-Chief, Clara Mae Sasser, was sent as a delegate to Cincinnati, Ohio, where the National Collegiate Press Association was convened.

For seven years the PINE CONE has received first honor rating in the National Scholastic Association with All-American Honor Rating in 1929 and 1932.

ABERNATHY



RHYMES



WILSON

# Press Work The '39 C A M



MORRIS

## EDITORIAL STAFF

- C. J. MORRIS . . . . . *Editor-in-Chief*
- ORA KATE WISENBAKER . . . . . *Managing Editor*
- ROSEMARY BAKER . . . . . *Assistant Editor*
- LOUISE BELL . . . . . *Assistant Editor*
- OPAL BROWN . . . . . *News Editor*
- CAROLYN FOLSOM . . . . . *Feature Editor*
- MARGIE JONES . . . . . *Feature Editor*

Off to Convention



McKey interviews O'Neal



PRESENTING an accurate account of the news, features on campus life and activities, and an editorial page that serves as a clearing house for student opinion, the *Campus Canopy*, in the Fall of 1938, entered its fifth year of publication. A four-page, five-column edition, it is regular tabloid size, printed in news print with streamlined typography.

A member of the Georgia Collegiate Press Association, the *Canopy* sent C. J. Morris, Rosemary Baker and Louise Bell as delegates to the February meeting at Athens, and was host at the Spring meeting at the Valdosta campus. *Canopy* representatives at the Associated Collegiate Press Convention at Cincinnati in November were C. J. Morris, Ora Kate Wisenbaker, Curtis Whatley and Eileen Hyland.

# P U S C A N O P Y

## BUSINESS STAFF

CURTIS WHATLEY . . . . . *Business Manager*

FRANCES VAN BRACKLE . . . . . *Exchange Manager*

MARIE AMBOS . . . . . *Circulation Manager*



WHATLEY

Whatley gives instructions



Orr and Taylor get ads.



The staff at work



# The SOCK



BLANKS, RICHTER, and HARPER

## OFFICERS

- ANNA RICHTER . . . . . *President*  
 DORIS HARPER . . . . . *Vice-President*  
 LOUISE BLANKS . . . . . *Secretary-Treasurer*

Left, top to bottom: Parham, Burroughs and Abernathy inspect a model stage . . . A lesson in make-up . . . Looking over script for Stage Door . . . Actors in Fresh Fields, Wibby McKey and Louise Blanks . . . Approaching a climax on the Fresh Fields set.

# and BUSKIN CLUB

THE SOCK AND BUSKIN CLUB aims to bring the world of the theater to the campus. Each year the members, with the aid of their faculty advisor, present a three-act play and a series of private one-act plays at their monthly meetings. The annual play for this year was the Ferber-Kaufman "Stage Door."

As a new project for this year the club members went to Atlanta to see Ethel Barrymore in "White-oaks."

Membership is based on dramatic ability, and limited to thirty-five.

Miss Sawyer, Faculty Advisor



Sock and Buskin members



An outdoor meeting



## MEMBERS

MARY CATHERINE ABERNATHY  
 ELIZABETH ALLEN  
 LOUISE BELL  
 LOUISE BLANKS  
 ROBINETTE BELL  
 MARY ALICE BRIM  
 OPAL BROWN  
 RUTH BURROUGHS  
 RACHEL CRITTENDEN  
 DORIS DICKSON

RUTH DIXON  
 CAROLYN FOLSOM  
 ELIZABETH GARBUTT  
 MARTHA SUE GRIFFIN  
 CATHERINE HANDORF  
 DORIS HARPER  
 EVELYN HAY  
 MARJORIE HOWARD  
 EILEEN HYLAND  
 ELEANOR MORGAN

MARION ORR  
 ANNE PARHAM  
 ANNA RICHTER  
 BETTY TOMBERLIN  
 CURTIS WHATLEY  
 RUTH WHISONANT  
 FRANCÈS WILLIAMS  
 MAUELLE WILSON  
 MILDRED WILSON  
 NELL ZIPPERER

BARNIE LOU GORNTO

# The GLEE Club



ABRAHAMAS and GREENLEE



FLETCHER



GREER

## OFFICERS

SUE NELLE GREENLEE . . . *President*  
 JACQUELIN ABRAHAMAS . *Secretary-Treasurer*  
 VIRGINIA FLETCHER . . . . *Librarian*  
 MARY W. GREER . . . . *Accompanist*

LIMITED TO thirty students, the members of the Glee Club are chosen on the basis of singing ability. The annual Spring Concert is the largest offering the group makes to the campus. They also lend their services to the Christmas festival carols and commencement exercises.

For social activities, the Glee Club this year put on a small dance for the entire school and a private picnic for its own members.

Club Group



## MEMBERS

JACQUELINE ABRAHAMAS	KATHLEEN GROOVER
SHIRLEY ABRAHAMAS	MARGIE JONES
PAYNE BROWN	MILDRED HARRIS
MARY MARTHA BURNETTE	EDITH LONG
ANNELLE CANTY	FRANCES MIDDLETON
MARGARET CARTER	SUSIE McKEY
ELEANOR COOK	MARY ELIZABETH McLIN
RACHEL CRITTENDEN	ELEANOR MORGAN
EMILY CUMMING	WINIFRED RUFFIN
MARGIE DRAKE	JANE STANALAND
VIRGINIA FLETCHER	LOUISE STUMP
CAROLYN FOLSOM	VIRGINIA PASSMORE
PARDEE GREER	ROSALIND TAYLOR
SUE NELLE GREENLEE	ELEANOR TURNBULL
LEECY ANNE GOODLOE	ELIZABETH WATERHOUSE

# The PHILHARMONIC Club

## OFFICERS

MARY WINN GREER . . . . . *President*

HELEN DUNCAN . . . . . *Secretary-Treasurer*



GREER



DUNCAN



Philharmonic Club Members

## MEMBERS

JACQUELINE ABRAHAMS  
 MARY M. BURNETTE  
 MARGARET CARTER  
 LOIS CHRISTIAN  
 ELEANOR COOK  
 HELEN DUNCAN  
 SUE NELLE GREENLEE  
 MARY WINN GREER  
 PARDEE GREER

MILDRED HARRIS  
 ELLEN JOHNSTON  
 BETTY LOGAN  
 ELEANOR MORGAN  
 MARY ANNE PAULK  
 MARIE SMITH  
 JANE STANALAND  
 ROSALIND TAYLOR  
 HAZEL WILLIAMS

IN ITS EFFORT to bring to the campus an outstanding musician, the Philharmonic Club sponsored, in the fall, a concert by the young Jacksonville pianist, Ben Jones. The program of this artist and the regular monthly programs presented by the members of the club were part of the plan to give the students a chance to hear and appreciate the best in music.

The outstanding club event during the winter quarter was a trip to Jacksonville to hear the Philadelphia Symphony Orchestra under the direction of Eugene Ormandy.

The Philharmonic Club is composed of twenty members selected from the music department at try outs held at the beginning of the fall quarter.

# INTERNATIONAL RELATIONS *Club*



TULLIS, BOWEN, PRICE, WILSON, WISENBAKER

## OFFICERS

- ORA KATE WISENBAKER . . . . . *President*  
 GERALDINE BOWEN . . . . . *Vice-President*  
 PENELOPE TULLIS . . . . . *Secretary*  
 MILDRED WILSON . . . . . *Treasurer*  
 VERNA POPPELL . . . . . *Member at Large*  
 MILDRED PRICE . . . . . *Faculty Advisor*

REALIZING THE IMPORTANCE of a knowledge of our country's international affairs and feeling the need of a systematic study of the problems which are constantly confronting the American people, the International Relations Club analyzed, studied, and discussed those problems which vitally concern this country in which we live. In order to acquaint students and faculty with current hap-

penings in the news, the International Relations Club sponsored a weekly forum during the year 1938-1939. Each year the International Relations Club has received from the Carnegie Endowment for International Peace an allotment of timely and well chosen books which add materially to its fast growing library.

The club was represented at the Southeastern Conference of International Relations held at the College of William and Mary in Williamsburg, Virginia. Here discussions on latest international development were given by eminent lecturers.

## MEMBERS

- |                     |                     |
|---------------------|---------------------|
| ORA KATE WISENBAKER | MARJORIE COMBS      |
| GERALDINE BOWEN     | ANN PARHAM          |
| MILDRED WILSON      | LOIS GREEN          |
| PENELOPE TULLIS     | SYLVIA BELL         |
| VERNA POPPELL       | FRANCES VAN BRACKLE |
| MARGIE JONES        | VIRGINIA PARRISH    |
| MARY LOVETT         | ROSALIND LANE       |
| JOSEPHINE GRAHAM    |                     |



Club members listen to Wisenbaker

# Math - Science CLUB

## OFFICERS

PARDEE GREER . . . . . *President*  
 GRACE VAN LANDINGHAM . . . . . *Vice-President*  
 ROSEMARY BAKER . . . . . *Secretary-Treasurer*

THE MATH-SCIENCE CLUB offers to its members an opportunity to work out phases of scientific projects in which they are interested. In order that this may be done to best advantage, the club is divided into three parts: mathematics, chemistry and biology. Each group is headed by a leader, but the activity of the organization as a whole is supervised by the club president.

Projects this year included:

Math Division—purchasing a Math kit and constructing figures to be used in the Mathematics Department. A beginning was made in surveying on campus.

Chemistry Division—made field trips to the Sulphuric Acid Plant, Paint factory, and to other industrial centers in the vicinity.

The Biology Division assisted in some transplanting on the campus and continued work in the botanical garden.



GREER, VAN LANDINGHAM, BAKER



Chemistry Lab



Biology group at work

## MEMBERS

ANNIE ADAMS	LOUISE STUMP
ROSEMARY BAKER	ROSALIND TAYLOR
MARGARET BENNETT	GRACE VAN LANDINGHAM
CAROLYN BRIDGES	EDITH WILSON
MONTINE COWART	MAUELLE WILSON
SARA GARBUTT	MARY JANE JONES
WILMOT GREEN	VIRGINIA ZACHERT
PARDEE GREER	MARY LEE ROGERS
ALICE HATCHER	LOUISE MCFIE
MARY HUDSON	SARA GIBBS
MARGUERITE NORTON	CAROLYN WILLIAMS
RUTH REID	MARY JOE COOK
ELIZABETH RHYMES	SUE NELLE GREENLEE
RUTH RHYMES	

# The English CLUB



ABERNATHY



WEIR



ZIPPERER

## OFFICERS

- MARGARET ABERNATHY . . . . . *President*  
 MARGARET WEIR . . . . . *Vice-President*  
 NELL ZIPPERER . . . . . *Secretary-Treasurer*

THE ENGLISH CLUB is the center of the literary interests of the students on the campus. It endeavors to widen the knowledge of the students of the accomplishments in the field of literature by bringing to the campus outstanding people of the literary world.

This year the English Club presented as their contribution to the campus Mr. Robert P. Tristram Coffin. Mr. Coffin is the Pulitzer Prize Poet of 1936 and is an outstanding poet of the day. Before his lecture he was guest of the English Club at a dinner party at which his personality was the outstanding feature.

A Reader's Forum was organized at the first of the year and many interesting programs have been given. The Forums were held on Sunday afternoons and were opened to all the students.

Another highlight on the calendar of the club this year was a tea held in the Rotunda on Sunday afternoon. The members, restricted to English majors of the senior college, acted as hostesses to the entire student body and faculty.

## MEMBERS

- |                          |                 |
|--------------------------|-----------------|
| MARGARET ABERNATHY       | EILEEN HYLAND   |
| MARY CATHERINE ABERNATHY | HAZEL MUGGRIDGE |
| MARGUERITE ARNOLD        | EVELYN OGLETREE |
| LOUISE BELL              | C. J. MORRIS    |
| FRANCES BRANDON          | ANNA RICHTER    |
| KATHLEEN CAMPBELL        | CLARA M. SASSER |
| HILDA CARROLL            | IRWIN SMITH     |
| MARY J. COOK             | MARGARET WEIR   |
| ANNE DUNBAR              | CURTIS WHATLEY  |
| BARNIE L. GORNTA         | NELL ZIPPERER   |



Hyland leads an open forum

English Club Honors Robert P. Tristram Coffin at Reception

# The French CLUB

## OFFICERS

HELEN JOINER . . . . . *President*  
 DORA IDA PERKINS . . . . . *Vice-President*  
 HAZEL MUGGRIDGE . . . . . *Secretary-Treasurer*  
 MISS SAPELO TREANOR . . . . . *Faculty Advisor*

ORGANIZED for the purpose of promoting French, French literature and civilization, the club aims to foster this knowledge on the campus. Membership is limited to twenty French majors and minors of the Junior and Senior classes with the scholastic average of B or above.

In the fall quarter a joint tea was given with the English Club. Also in March the club presented Dr. Lucien Wolfe, lecturer, to the students.



MUGGRIDGE, JOINER



PERKINS

## Members of the club



## MEMBERS

MARGARET ABERNATHY	JUNE LAWSON
FRANCES BRANDON	HAZEL MUGGRIDGE
KATHLEEN CAMPBELL	EVELYN OGLETREE
LOIS CORLEY	DORA IDA PERKINS
ANN DUNBAR	ANNA RICHTER
MARY WINN GREER	CLARA MAE SASSER
HELEN JOINER	MARGARET WEIR

# FRESHMAN *Honor* SOCIETY



HUG

## OFFICERS

- FRANCES HUG . . . . . *President*  
 MARGIE BRUCE . . . . . *Vice-President*  
 CAROLYN WILLIAMS . . . . . *Secretary-Treasurer*  
 EVELYN BRIM . . . . . *Historian*

FRESHMAN HONOR SOCIETY has as its purpose to promote and maintain among the members of this organization and the campus at large, all activities which tend to stimulate and enrich their intellectual living. By creating an interest in high scholastic standing in academic work, the organization recognizes students who have maintained high standing.

In other words, the group attempts to recognize and encourage high scholastic standing on the campus, and render service to the college whenever possible.

## MEMBERS

- MARGARET BURNS  
 EMILY CUMMING  
 SARA GIBBS

- LOIS GREEN  
 LOUISE MACFIE  
 LOUIE PEEPLES

RUTH REID

Freshman and Senior Societies entertain students and faculty at tea



# SENIOR *Honor* SOCIETY

## OFFICERS

HAZEL MUGGRIDGE . . . . . *President*  
 RUTH RHYMES . . . . . *Vice-President*  
 CLARA MAE SASSER . . . . . *Editor*  
 ANN DUNBAR . . . . . *Secretary*  
 ANNA RICHTER . . . . . *Treasurer*

ORGANIZED IN 1936-37 with the purpose of recognizing scholarship, leadership and personality, the Senior Honor Society is composed of a group selected from students who have completed two and two-thirds years of work in the college and who are outstanding for academic work and leadership.

The society is on a five-year period of trial, petitioning Mortar Board, national honor and leadership society.

This year, the Senior Honor Society, with the Freshman Honor Society, gave a tea honoring the student body. An interesting chapel program during the winter quarter was also



MUGGRIDGE

arranged by members of the group. During the spring quarter, the society sponsored a school for training in Parliamentary Law.

In cooperation with the Freshman Honor Society, the Senior Honor Society sponsored Honor Day Exercises, which were held at the college in April during the Institute of Citizenship. Speakers at the event, which recognized incoming and old members of the societies, were Philip Davidson, professor of history at Agnes Scott College, and W. Harry Vaughan, director of the state engineering experiment station at the Georgia School of Technology.

## MEMBERS

ANN DUNBAR	ELEANOR MCINTYRE
HAZEL MUGGRIDGE	GRACE VAN LANDINGHAM
ANNA RICHTER	RUTH RHYMES
CLARA MAE SASSER	



# THE *Sociology* CLUB



SKINNER and WILLIAMS



MIDDLETON

## OFFICERS

MARY V. WILLIAMS . . . . . *President*  
 FRANCES MIDDLETON . . . . . *Vice-President*  
 ESSIE SKINNER . . . . . *Secretary*

FOR ITS PURPOSE the Sociology Club has chosen the furthering of interest in the Social Sciences. This club is the youngest on the campus, having been organized in the Fall Quarter by a group of interested majors. All Sociology Majors maintaining a certain scholastic standing are eligible for membership.

On Lincoln's Birthday the club presented a program on Race Relations. The speaker, Mary DuBois, was introduced by Frances Middleton. Special music was rendered by the Y Choir.

During Spring Quarter some of the members attended the Southern Sociology Meeting in Atlanta.

## Sociology Club members

### MEMBERS

RUBY JEAN ROGERS	EMILY CUMMING
PENELOPE TULLIS	DOROTHY BROWN
MARY DUBOIS	LILA MAE SPOONER
GORDAN WILLIFORD	DOROTHY DALTON
ROSALIND LANE	CHRISTIE MOORE
GEORGIA CREWS	MARGARET WOOD
FRANCES HUG	LOUISE HOWELL
REBA MANGHAM	CAROLYN BRIDGES
MARY HELEN PULLEN	VIRGINIA PARRISH
RUTH WHISONANT	



# THE *Fine Arts* CLUB

## OFFICERS

- CAROLYN FOLSOM . . . . . *President*  
 OPAL BROWN . . . . . *Vice-President*  
 YOLANDE COPPAGE . . . . . *Secretary-Treasurer*

EARLY IN THE FALL QUARTER tryouts for the Fine Arts Club were held under the direction of Miss Frances Ruth Carpenter, with the result that the club membership grew to twenty-five, which is its limit.

Shortly before Christmas holidays the Fine Arts Bazaar was held. Imported objects and work done by the members were offered for sale.

In April the club went on a tour of the gardens in Savannah and Charleston, which climaxed a successful year.

An exhibit of student work, as well as an off-campus exhibit, was sponsored during Spring Quarter.



FOLSOM



BROWN



COPPAGE

Campus artists paint a classmate



## MEMBERS

- |                     |                      |
|---------------------|----------------------|
| FRANCES BIRD        | DORIS HARPER         |
| DOROTHY BRIDGES     | FLORRIE HINES        |
| VIRGINIA BRIDGES    | LUCILLE JOHNSON      |
| OPAL BROWN          | MARY FRANCES JOHNSON |
| MARGARET BROWN      | ROSALIND LANE        |
| MARGARET BURNS      | VIVA MCGEACHY        |
| YOLANDE COPPAGE     | LOUIE PEEPLES        |
| ANGELINE CUNNINGHAM | IRWIN SMITH          |
| MARY DUBOIS         | MARIE SMITH          |
| CAROLYN FOLSOM      | JANIE RAY WHITE      |
| JOSEPHINE GRAHAM    | GORDAN WILLIFORD     |
| LOIS GREEN          | ORA KATE WISENBAKER  |
| WILMOT GREEN        | EVELYN WOODWARD      |

# THE Valdosta CLUB



CARROLL, BAKER, ZIPPERER, GREER

## OFFICERS

- HILDA CARROLL . . . . . *President*  
 MARY WINN GREER . . . . . *Vice-President*  
 ROSEMARY BAKER . . . . . *Secretary*  
 NELL ZIPPERER . . . . . *Treasurer*  
 MISS ANNIE P. HOPPER . . . *Faculty Advisor*

CLIMAXING THE YEAR'S accomplishments of the Valdosta Club is their entertainment of the senior class of the Valdosta High School. Membership of the club is limited to students in the college who are graduates of the Valdosta High School.

The aim of the club has been to establish a better understanding between day and boarding students and to unite the day students into an effective group. With this definite purpose in mind, the club has had called business meetings and social luncheons at the House-In-The-Woods.

JACQUELINE ABRAHAMS  
 SHIRLEY ABRAHAMS  
 ROSEMARY BAKER  
 AILEEN BARTLETT  
 SARA BELOTE  
 FRANCES BIRD  
 LOUISE BLANKS  
 MELBA BLANTON  
 GERALDINE BOWEN  
 PATSY BREWSTER  
 MARGARET BRUCE  
 MARTHA BRUCE  
 MARY F. BURKE  
 KATHLEEN CAMPBELL  
 HILDA CARROLL  
 LOIS CHRISTIAN

MARY E. COLLINS  
 EVELYN COOK  
 YOLANDE COPPAGE  
 LOIS CORLEY  
 ANNIE B. CROFT  
 DOROTHY DALTON  
 FERRELL DALTON  
 BETTY DASHER  
 MARGARET DASHER  
 ANNELLE DAVIS  
 CHARLOTTE DELOACH  
 HELEN DUNCAN  
 BETTY FRANKLIN  
 ELIZABETH GARBUTT  
 SARA GARBUTT  
 ERNESTINE GIRADIN

LEECY ANN GOODLOE  
 HARRIET GOODSON  
 BARNIE L. GORNTO  
 CATHERINE Y. GRAHAM  
 JOSEPHINE GRAHAM  
 MARY GRAY  
 MARY W. GREER  
 PARDEE GREER  
 KATHRYN HANDORF  
 DORIS HARPER  
 LAVERNE HERRING  
 MARY E. JOHNSON  
 LOUIE M. KREIGER  
 AILEEN LANIER  
 FRANCES LAZARUS  
 GRACE LINEBERGER

ELIZABETH LYON  
 SUSIE MACKEY  
 RUTH MASON  
 VIVA MCGEACHY  
 ELEANOR MORGAN  
 RUTH MORGAN  
 KATHERINE MUNDY  
 MATTIE R. PARRISH  
 PATTYE PATTERSON  
 ELIZA PEEPLES  
 LOUIE PEEPLES  
 ALBERTA PLEMMONS  
 IONE QUINKER  
 RUTH REID  
 FRANCES RIVERS  
 MINNIE ROBERTS  
 MARY J. ROCKWELL  
 DORIS ROGERS  
 RUBY J. ROGERS

CLARA M. SASSER  
 ANNABEL SHERMAN  
 VERA SIMPSON  
 HILDA SIKES  
 JULIA B. SMITH  
 MARION SMITH  
 JANE STANALAND  
 LOUISE STUMP  
 ROSALIND TAYLOR  
 KATHERINE THRIFT  
 JEANNETTE TILLMAN  
 PENELOPE TULLIS  
 GRACE VAN LANDINGHAM  
 MARTHA M. WALKER  
 FRANCES WILLIAMS  
 GORDON WILLIFORD  
 ALICE WISENBAKER  
 ORA KATE WISENBAKER  
 NELL ZIPPERER



Members Picnic at an open fireplace



Business meeting following a luncheon

# THE *Alumnae* ASSOCIATION

HAVING AS ITS OBJECT for the year the furtherance of closer relations between the alumnae and the college, the Alumnae Association has organized several local chapters in near-by towns.

The Alumnae Association sent members to G. E. A. Meetings at Bainbridge, Waycross, and Atlanta to contact alumnae, and entertained members at a breakfast in Atlanta during the G.E.A. meeting there.

The Association also entertained the Valdosta High School seniors this year, and gave a tea for the college freshmen. For the first time, the Association has been a member of the American Alumni Council.



WILLIAMS



JACKSON



KENDALL



HUTCHINSON

# The SPORTS



ADAMS



PERKINS

WILSON

TO PROVIDE FRIENDLY COMPETITION, the Sports Club is divided into two teams, Phi Kappa and Phi Lambda. In the match games through the year, each team sets as its goal the winning of the Honor Plaque, given each year to the team totaling the greatest number of points.

The aim of the Sports Club is to promote a higher degree of physical efficiency by fostering an interest in physical education activities. It also serves as a guide towards better leadership, sportsmanship, social poise and ability to get along with one's team mates.

Membership in the club is open to all students. Pledges are taken into full membership after they have shown an active interest in its program, and have a satisfactory scholastic record.

Team games and individual sports are planned in a well rounded program. The activities included are tennis, archery, swimming, golf, horse-back riding, ping pong, deck tennis, box hockey, croquet, American ball, basketball, baseball and badminton.

Manager Holds a Team Meeting

Miss Ivey and Miss McRee

Freshman pledge



# CLUB



SPORTS CLUB POINTS FOR HONOR PLAQUE 1938-'39

Sport	Kappas	Lambdas
Swimming . . . . .	0	5
Fistball . . . . .	0	10
Basketball . . . . .	0	15
Archery . . . . .	5	0
Tennis . . . . .	5	0
American Ball . . . . .	15	0
Volleyball . . . . .	10	5



Archery competition

View of the tennis courts

Just before the horse show



Riding enthusiast

During Initiation Week

Time out in an American ball game



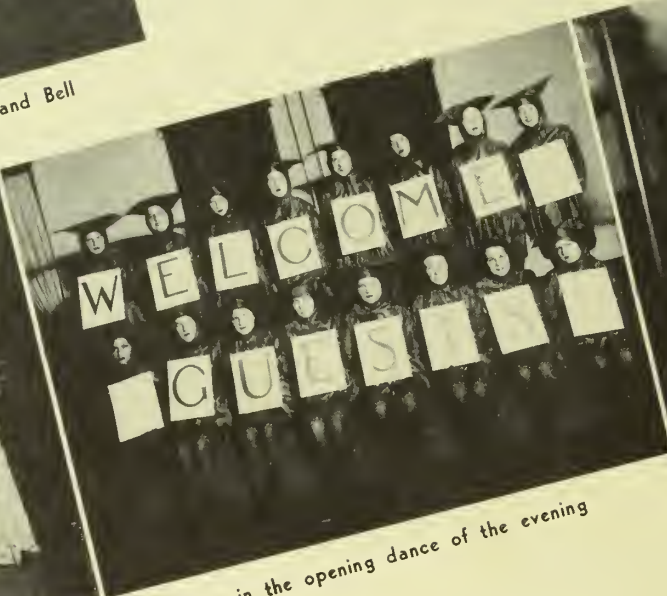
# Ye Olde



Ivey as Lord of Misrule with heralds Williams and Bell and fool Morris



Bringing in the Yule log



Court Jesters in the opening dance of the evening



Knights of the hobby

CELEBRATING CHRISTMAS in the manner of the Old English, the Festival is held on the evening before home going for the holidays. After the Lord of the Manor and his guests light the yule log and drink a toast to the season, they progress into the feast hall, followed by the dances. The tone of the evening progresses from the pranks of the fool to stately, with the Minuet, and closes with the guests singing Silent Night as they leave the hall.

# Christmas Festival



Carol Adams holds the wassail bowl up to the Choral Reading Group



The Minuet Group in star formation

a tournament



The fool looks on while organ grinder Bell instructs the trained bear, Yarborough



Richter, Abernathy and Poppell in the Christmas Tree Dance



楊秀

500 YONG

EXCLUSIVE MANAGEMENT IN  
Alkahest Celeb:  
RUSSELL BADGER, P.  
Mortgage Guarantee Bldg.


THE EMERSO



ROBERT P. TRISTRAM COFFIN  
Author of  
"Maine Ballads," "Strange Holiness," etc.  
(Macmillan)

RETREAT  
OF THE WEST

The White Man's Adventure in Eastern Asia  
By NO-YONG PARK, PH.D.



Pearl S. Buck says—  
"Required Reading for the White Race."  
—Asia

RECOMMENDED BY THE BOOK-OF-THE-MONTH CLUB





Jacket design for  
"MAINE BALLADS"  
By Robert P. Tristram Coffin  
(Macmillan)

# The Russian Cathedral Quartette

In a Colorful Program of  
Liturgical, Folk and Gypsy Songs

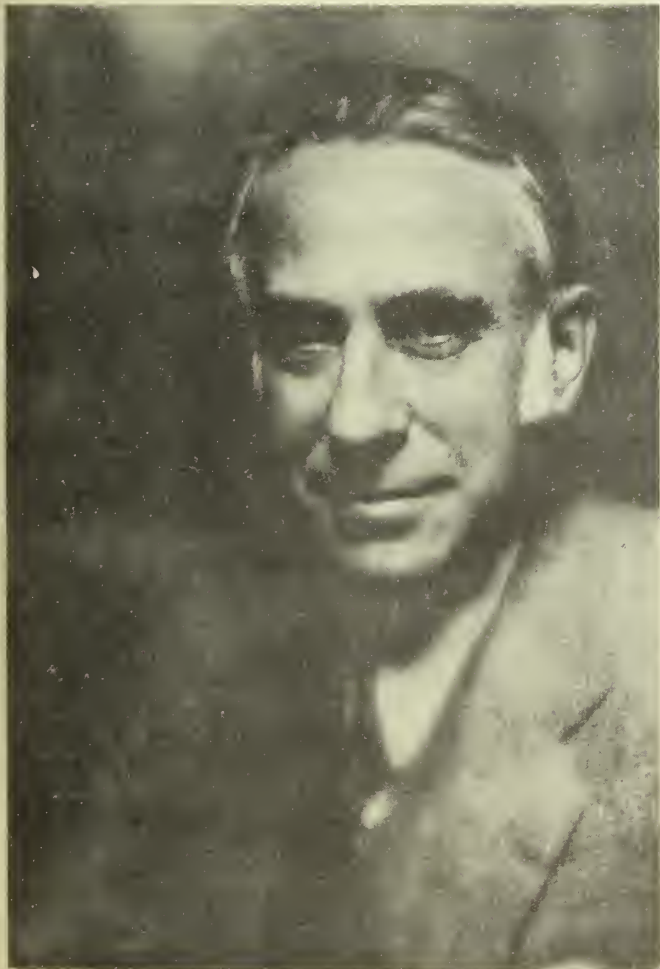
In March of 1939 THE RUSSIAN CATHEDRAL QUARTETTE was put on the air by the National Broadcasting Company. Such a high feature such as their popularity with the radio audience that soon many requests for personal appearances were received.

Their concert engagements have taken them from coast to coast, and the beauty and charm of their presentation is enhanced by their appearance in authentic native costume. The four singers are a host of high quality, yet ensemble and singing without accompaniment their voice blend like the tones of a pipe organ.

Rooted in the rich musical life of old Russia, THE RUSSIAN CATHEDRAL QUARTETTE today represents one of the most authoritative interpreters in the world of Russian church and folk music. The thrilling mysticism of the concert chants and the savage strength of weird Slavonic tunes serve to provide one of the most interesting and entertaining programs now presented on any concert stage.

## Press Comments

THE NEW YORK TIMES  
"The Russian Cathedral Quartette..."  
THE NEW YORK HERALD TRIBUNE  
"The Russian Cathedral Quartette..."  
THE NEW YORK JOURNAL OF COMMERCE  
"The Russian Cathedral Quartette..."  
THE NEW YORK POST  
"The Russian Cathedral Quartette..."  
THE NEW YORK WORLD  
"The Russian Cathedral Quartette..."  
THE NEW YORK SUN  
"The Russian Cathedral Quartette..."  
THE NEW YORK EVENING POST  
"The Russian Cathedral Quartette..."  
THE NEW YORK TIMES  
"The Russian Cathedral Quartette..."  
THE NEW YORK HERALD TRIBUNE  
"The Russian Cathedral Quartette..."  
THE NEW YORK JOURNAL OF COMMERCE  
"The Russian Cathedral Quartette..."  
THE NEW YORK POST  
"The Russian Cathedral Quartette..."  
THE NEW YORK WORLD  
"The Russian Cathedral Quartette..."  
THE NEW YORK SUN  
"The Russian Cathedral Quartette..."  
THE NEW YORK EVENING POST  
"The Russian Cathedral Quartette..."



JOHN ERSKINE



MAX BERN-COHEN



LUCIEN WOLFF

May



May Queen Virginia Ziplies with Maid of Honor Ruth Bunn. Flower Girls: Mary Winn and Nancy Elizabeth King. Train Bearers: Mary Anne Edens and Mary Elizabeth Gibson.

#### THE QUEEN'S COURT

Johnnie Mae Kelley, Kitty O'Neal, Camille Rycroft, Theresa Graham, Edith Bennett, Lovenia Lassiter, Kathryn Thomason, Carolyn Askew, Margaret Cannon, Kathryn Toole, Martha Powell, and Ethel Stallings.

WITH SNOW WHITE as the theme of its activities, May Day ushered Spring in with a joyful note. Presiding over the activities were the Queen of the May and her court. Freshmen, rising with the sun, decorated front campus for the affair.



# Day



The Queen has been crowned

The Court procession starts the Festival



# May Day



Opal Brown as Snow White meets Prince Charming, Louise Bell

BUILDING THE DANCE groups around the activities of Snow White, Prince Charming and the Wicked Queen, May Day marks the official recognition of the spring season. A note of joy and gaiety characterizes their frolicking before the May Queen's throne.



Snow White embracing Dopey



Clowns in pyramid formation

Lords and Ladies



The ballet dancers bring in a garland of flowers

# AT G. S. W. C.



Peasants do homage before the court



All the dancers take part in winding up the Maypoles for the big prize

dancing on the green



Mary Catherine Abernathy, the Wicked Queen, gives a message to the Huntsman, Curtis Whatley

# Play Day

EACH YEAR on the first Saturday in May, the college acts as hostess to hundreds of girls from the Senior Classes of South Georgia high schools.

Invited to spend the day on the campus, the girls enjoy a combined May Day - Play Day. Students and visitors are divided into teams and compete in games throughout the morning. After a horse show and archery exposition, a picnic lunch is spread in the grove. Early in the afternoon, before the May Festival, an especially prepared musical and dramatic program is given in the G. S. W. C. auditorium for the high school guests.

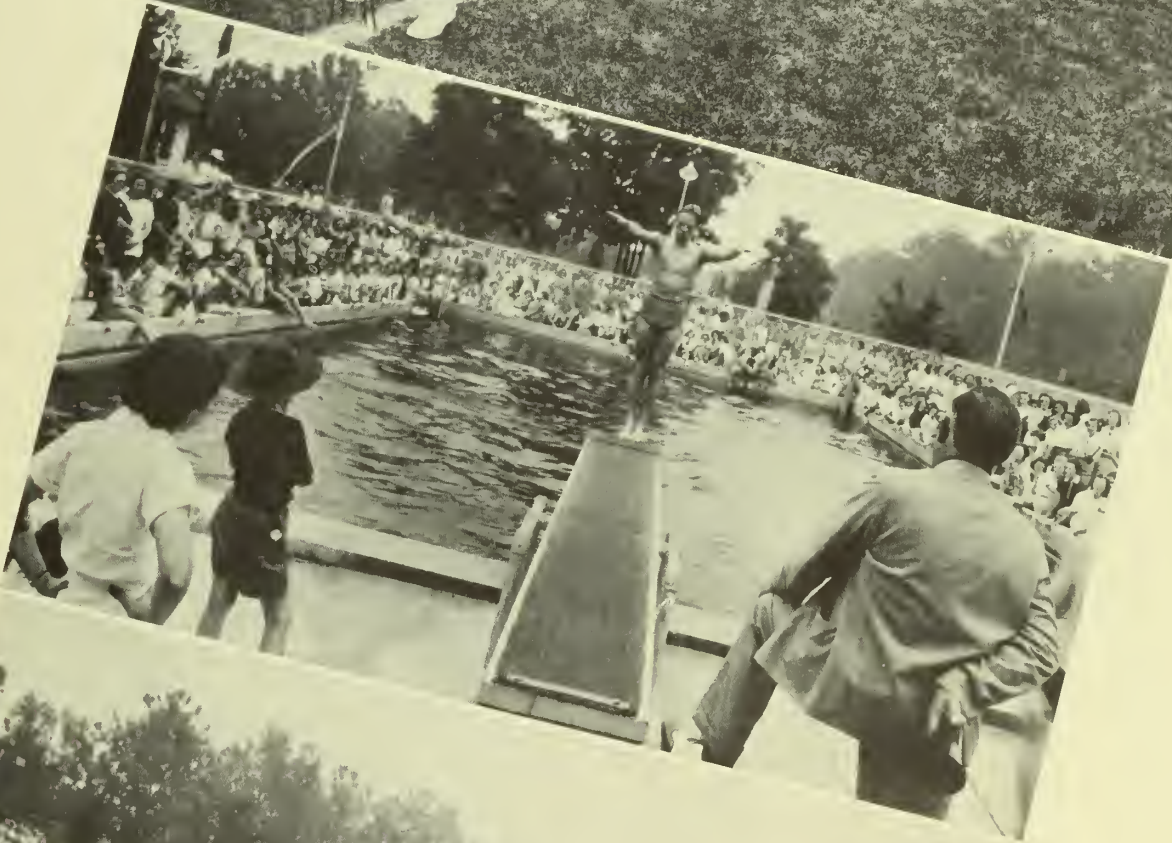


Visitors and students play basketball

Teams compete at fistball



Picnic lunch in the grove



Archery exhibition

Tech swimming team dedicates  
new pool

Students present horse show

ADVERTISEMENTS FROM business firms and institutions which the  
college and college students patronize.

---



# ADVERTISEMENTS

REMEMBER , , ,

Colonial is good bread  
**THE COLLINS BAKING COMPANY**  
VALDOSTA

COMPLIMENTS OF , , ,

**M c C R O R Y ' S**  
FIVE AND TEN CENT STORE

**BENNETT'S DRUG STORE**  
The Rexall Store

Toasted Tasty Sandwiches : Ice Cream and Candy : Hot and Cold Lunches  
VALDOSTA • GEORGIA

THE MODERN GAS EQUIPMENT

in the log cabin shows better than words can express  
how well gas can do the four big jobs in the home,  
cooking, water heating, refrigeration and room heating.

**GEORGIA PUBLIC UTILITIES COMPANY**

**BROOKWOOD PHARMACY**

Where College Girls Meet • Where College Girls Eat

COMPLIMENTS OF , , ,

**R. H. BASSFORD**  
CORNER VALLEY *and* PATTERSON STREETS  
PHONES 137-138

**COWART'S DRESS SHOP**

Ritz Building  
VALDOSTA • GEORGIA

INSIST ON  
L A N C E ' S  
CRACKERS

C H U R C H W E L L ' S  
D e p a r t m e n t S t o r e  
•  
College Girls' Headquarters

JOHN OLIVER SERVICE STATION  
FIRESTONE TIRES • AMOCO PRODUCTS  
P H O N E 2 3 1

HERE'S TO OUR GOOD FRIENDS, THE G. S. W. C. GIRLS  
S T A R L A U N D R Y

LICENSED  
SANITONE  
CLEANERS

Only Rug Cleaning Plant in City

COMPLIMENTS OF , , ,

W H I T T I N G T O N ' S

R I T Z T H E A T E R  
Quality Entertainment  
ONE OF SIXTY MARTIN THEATERS

MATHIS AND YOUMANS COMPANY  
PIANOS , VICTROLAS , RADIOS  
Everything in Music



—◆◆—  
VERAN BLACKBURN  
PHOTOGRAPHER FOR  
PINE CONE • 1939  
—◆◆—

ATTENTION SENIORS . . . Make a note now to write to—

**THE MCGREGOR COMPANY**

ATHENS :: GEORGIA

For School Supply Catalogue. This will help you in your work.

**SOUTHERN STATIONERY AND PRINTING  
COMPANY**

•  
**Wholesale Paper Dealers**

Commercial Stationers ✓ Printers ✓ Office Outfitters

VALDOSTA

•  
GEORGIA

*Never Buy Before You Try . . .*

**FRIEDLANDER'S**

YOUR MONEY'S WORTH OR YOUR MONEY BACK

VALDOSTA

•  
GEORGIA

**W. T. GRANT COMPANY**

•  
KNOWN FOR VALUES

*COMPLIMENTS OF* ✓ ✓ ✓

**FIRST NATIONAL BANK**

VALDOSTA

*Member of Federal Deposit Insurance Corporation*

**LINDBERGH RESTAURANT**

*VALDOSTA'S LEADING RESTAURANT*

FAMOUS FOR WESTERN STEAKS

Delicious Sandwiches Special for College Girls

VALDOSTA

•  
GEORGIA

WE ARE PROUD OF THE...

*Georgia State Womans College*



We are glad to take this  
occasion to say that the

**CITY OF  
VALDOSTA**

IS PROUD TO LIST AMONG ITS GREATEST ASSETS THE

*Georgia State Womans College*

AND WE HOPE THAT VALDOSTA AS A CITY MAKES  
A FAVORABLE AND LASTING IMPRESSION ON THE MINDS  
OF THE YOUNG LADIES WHO MAKE UP THE STUDENT  
BODY OF THE GREAT INSTITUTION.

THOMPSON AND GIRARDIN

... JEWELERS ...

120 NORTH PATTERSON ST.

VALDOSTA, GEORGIA

COMPLIMENTS OF *\*\*\**

THE CITIZENS & SOUTHERN NATIONAL BANK

VALDOSTA



GEORGIA

COMPLIMENTS OF *\*\*\**

GLISSON MOTOR COMPANY

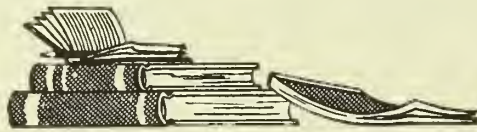


VALDOSTA

GEORGIA

COMPLIMENTS OF

HOTEL DANIEL ASHLEY



## SUCCESSFUL ANNUALS

Require the services of experienced and expert craftsmen, trained in every detail of the processes of creating • planning layout and design • typesetting • printing lithographing and binding ... Throughout half a century this company has pioneered in the production of the highest type of printing ... Our services include a special college annual sales and service organization ... Abundant equipment • modern and complete ... Prices representing maximum in value



**FOOTE & DAVIES COMPANY**

PRINTING • LITHOGRAPHING • ENGRAVING

ATLANTA











