



*Pine Cone*  
1942







Digitized by the Internet Archive  
in 2014

<https://archive.org/details/pinecone194200geor>

*Presenting*

T H E 1 9 4 2

# Fine Cone

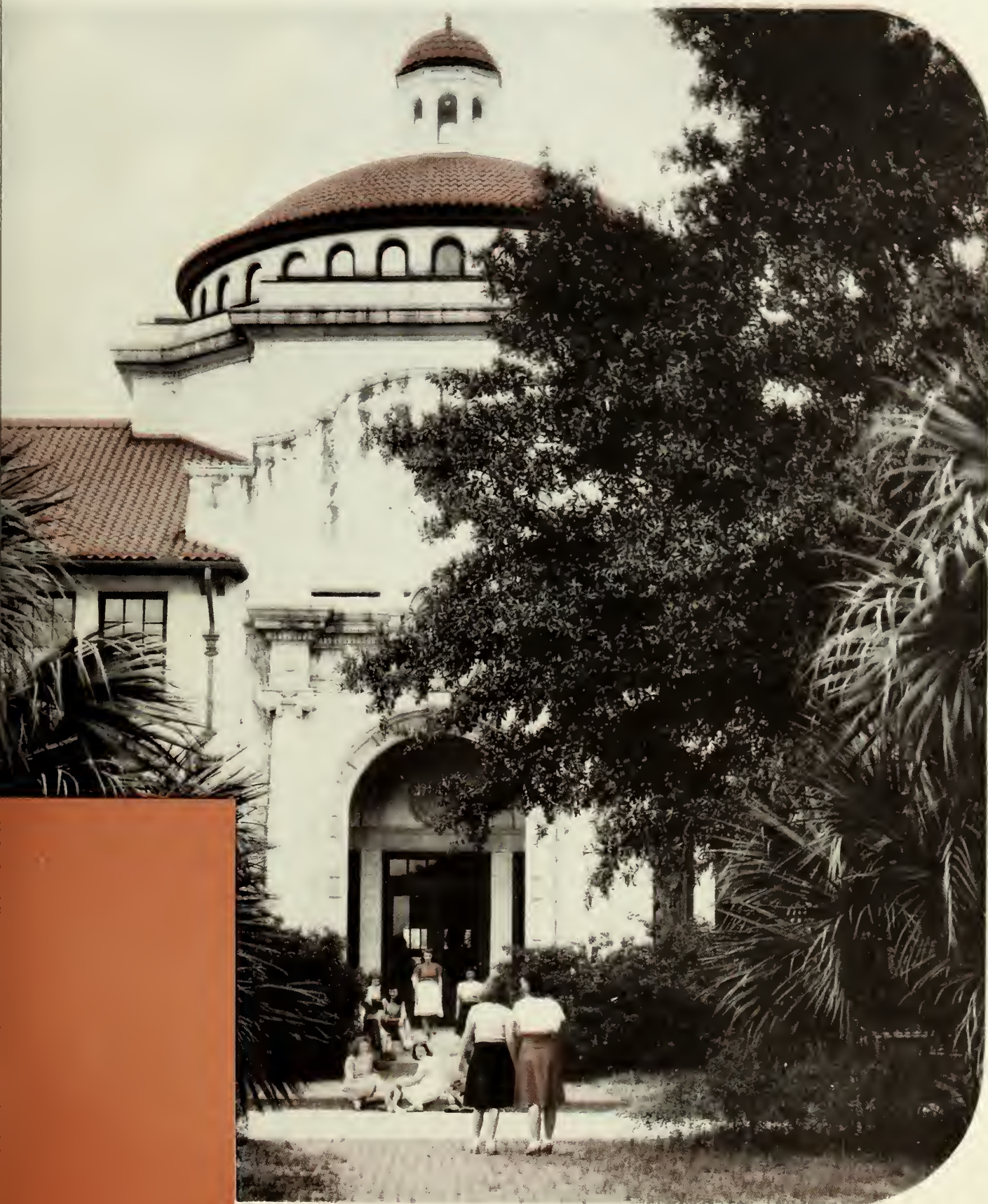
PRESENTED BY THE STUDENT BODY  
OF THE  
GEORGIA STATE WOMANS  
COLLEGE

AT VALDOSTA, GEORGIA

MARY ALICE WISENBAKER  
Editor

EVALYN O'NEAL  
Business Manager





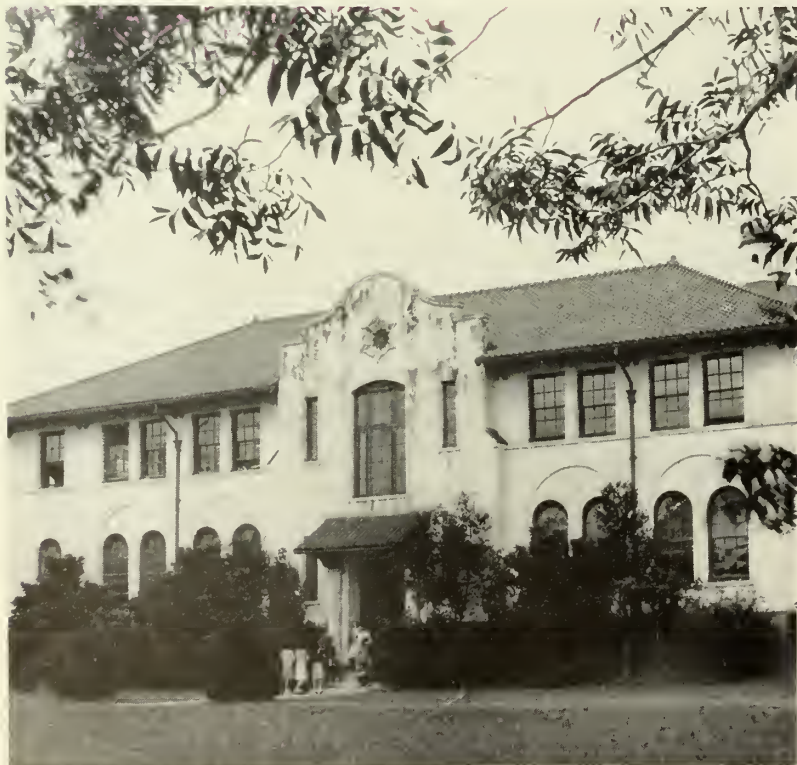
West Hall's Entrance is a mecca for students between classes



# In EXPLANATION

1941-42 has been a year of sensation; of unprecedented state political strife overshadowed by the nation's entry into the Second World War. The excitement of meeting attractive young men in neat uniforms has been cooled by apprehension for the sake of other young men, dearer perhaps, and nearer to the scene of conflict. There were compelling desires to give up education for something more colorful, more pertinent to the defense of our country, but above all, came the mature realization that this thing called college education is to be most vital in the end.

Calmly the year has slipped by. Calmly the usual campus activities, supplemented by what help a woman's college can offer a nation at war, have been pursued. The PINE CONE presents a picture of G. S. W. C. life as it has been in this, the first year of the first war of our generation, a picture not appreciably different from any record of G. S. W. C. activity of this decade.



South Entrance to West Hall—going and coming



Students trek to classes from Ashley



Above: Library—haven for students and book-lovers



Left: The Log Cabin—center of activities, social and academic

" 'NEATH THE STATELY PINES OF GEORGIA—  
stand the gleaming Spanish-type buildings in which G. S. W. C.  
girls become women. Intriguing, exciting facts absorbed in Ad  
building classes form the foundation on which this womanhood  
is built. Humor and pleasant compatibility achieved from light  
hilarious "gab sessions," and deep analytical parleys in the dormi-  
tories, create the ability to make and keep friends. Steak suppers,  
club meetings, teas and dates held in the cozy "House-in-the-  
Woods" give poise and social ease to G. S. W. C.'s woman of  
tomorrow. Whanging balls across a tennis net, riding sleek horses  
among sighing pine trees, diving into a sun-dappled pool, mount-  
ing a fist-ball score for the glory of her sports team,—these  
things mould good sportsmanship and a realization of God in  
nature into the hearts of our girls. Poring over war-bulletins, edi-  
torials, biographies and novels in the spacious library produces  
minds that are quick and active in circles of well-read persons.

Over our stately pines of Georgia warplanes throb every day.  
Brutal realization of a changing world does not fill the G. S. W. C.  
girl with fright and uneasiness, she, through her well-integrated  
college life has the qualities to meet an uncertain future.

# G. S. W. C.

# College



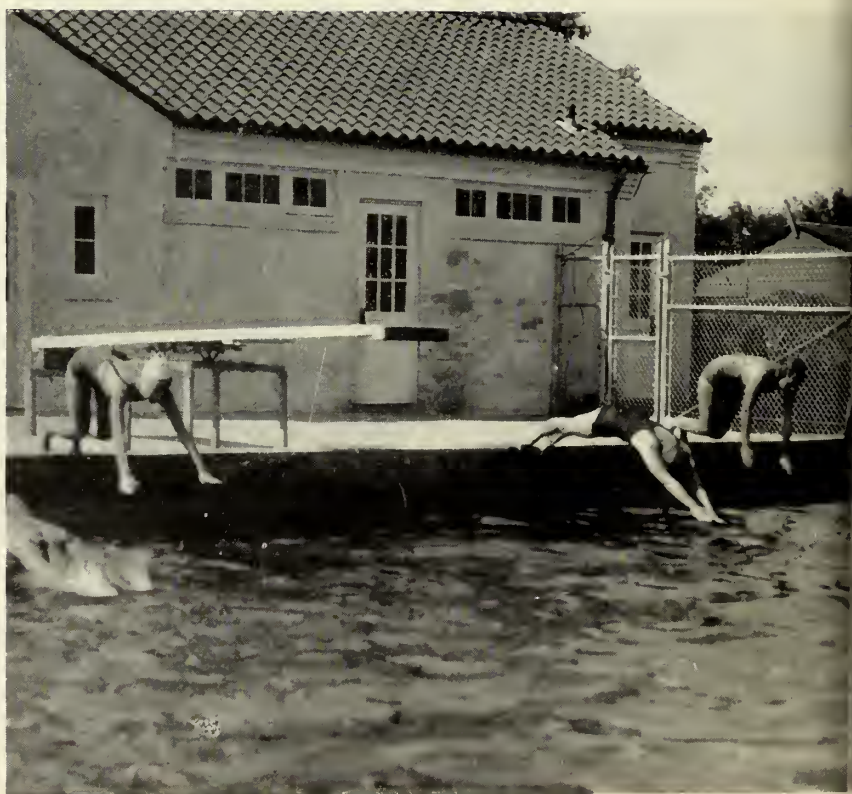
Sophs and Juniors stream to Ashley between classes for mail

# VIEWS



Al fresco learning—near side entrance to Library

The Swimming Pool—for the dip that refreshes



# OF VIEWS

Ashley Hall—Abode of  
Sophomores



Senior Hall—Where the Seniors  
hold forth

# COVERING



"The Little House on the Corner"



Girls enjoy a "snack" at the Country Store—South end of Converse Hall



Newest Addition—Heating Unit

# THE CAMPUS

Approaching West Hall from  
South Drive



Freshman Home Sweet Home—  
Converse Hall

The Music Studio—Adjoining  
Campus



# P R E S I D E N T   R E A D E . . .



FRANK R. READE  
President

B.A., M.A., Ph.D., University of Virginia



ANNIE POWE HOPPER  
Dean of Women

B.S., George Peabody College for Teachers; A.M.,  
Columbia University; Teachers College Diploma as  
Adviser of Women and Girls



LENA JAMES HAWKS  
Dean of Instruction

A.B., Goucher College; A.M., Vanderbilt University;  
Ph.D., The Johns Hopkins University

# THE FACULTY



MISS LAURA REED, Assistant Librarian . . . A.B., Womans College of the Greater University of North Carolina; B.A.L.S., University of North Carolina. ● MISS LILLIAN PATTERSON, Librarian . . . A.B., Georgia State Womans College; B.L.S., University of North Carolina. ● MISS RUTH CARPENTER, Professor of Art . . . Bachelor's Diploma, B.S., A.M., Teachers College, Columbia University. ● DR. SAPELO TREANOR, Professor of Foreign Languages . . . A.B., A.M., University of Georgia; Student at the Sorbonne, Paris, France; Ph.D., University of North Carolina. ● MISS SARA JANIE BUSH, Professor of Latin . . . A.B., University of Georgia; A.M., University of North Carolina; Diploma, College of Classical Studies, Rome, Italy. ● DR. BEATRICE I. NEVINS, Professor of Biology . . . Ph.B., Ph.M., Ph.D., University of Wisconsin. ● DR. EARL W. PHELAN, Professor of Chemistry . . . B.Chem., Ph.D., Cornell University. ● MISS MARJORIE ESTELLE CARTER, Assistant Dean of Women and Assistant Professor in Biology and Physical Education . . . B.S., William and Mary College. ● DR. EMIL JOHN HELLUND, Professor of Physics . . . B.S., University of Washington; Ph.D., University of Washington. ● MRS. FRANCES PARDEE, Instructor in Violin . . . Graduate, Cincinnati Conservatory of Music; pupil of Sevcik in Vienna, and of Julian Polikawski, Cincinnati Conservatory of Music. ● MR. CLIFTON WHITE, Assistant Professor of Art and Instructor of Music . . . A.B., Emory University of Georgia; M.A., Emory University of Georgia. ● MISS MARIE MOTTER, Professor of Voice . . . A.B., Music, The Carnegie Institute of Technology. Further study: Ithaca Conservatory, University of Pittsburgh. Graduate study in voice choral conducting at The Carnegie Institute of Technology. Pupil of Jean Dagg Seaman, Dr. Bert Rogers Lyon. ● MISS GLADYS WARREN, Professor of Music . . . B.M., Lake Erie College; M.A., Iowa State University; Pupil of Ernest Hutcheson, New York; Lee Pattison, Chicago; Tobias Matthay School of Pianoforte, London.



From top, left to right:  
Carpenter, Treanor, Bush.  
● Nevins, Phelan, Carter, Hellund, Hawks. ● Pardee, White, Motter, Warren.



Reed and Patterson





Left to right: Thomas, Teasley, Dusenbury, Richter, Puckett

MRS. CAROLINE PARRISH THOMAS, Registrar . . . A.B. Georgia State Womans College. • MISS MILDRED TEASLEY, Director of Placement and Publicity . . . A.B. A.M., University of Georgia. • MR. JAMES ROBERT DUSENBURY, Treasurer and Purchasing Agent. • MISS ANNA RICHTER, Secretary to President and Assistant in Speech Department . . . A.B., Georgia State Woman College. • MRS. ELIZABETH J. PUCKETT, Assistant Treasurer . . . A.B., Shorter College.

MISS MAXINE RUSTAD, Professor of Home Economics . . . B.S., North Dakota Agricultural College; M.A., Teachers College of Columbia University. • MRS. DALE N. STEELE, Director of Tearoom and in charge of Country Store, Assistant to Dean of Women. • MRS. OLA BEECHWOOD, House Mother of Senior Hall. • MISS LOUISE ANNE SAWYER, Professor of Speech . . . Graduate of Columbia College of Expression; Student, University of North Carolina; B.S., School of Speech, Northwestern University; Student, Columbia College of Expression. • MRS. GERTRUDE GILMER ODUM, Professor of English . . . B.S., A.M., George Peabody College for Teachers. • DR. HAROLD STRONG GULLIVER, Professor of English . . . B.A., Yale University; A.M., Columbia University; Ph.D., Yale University.



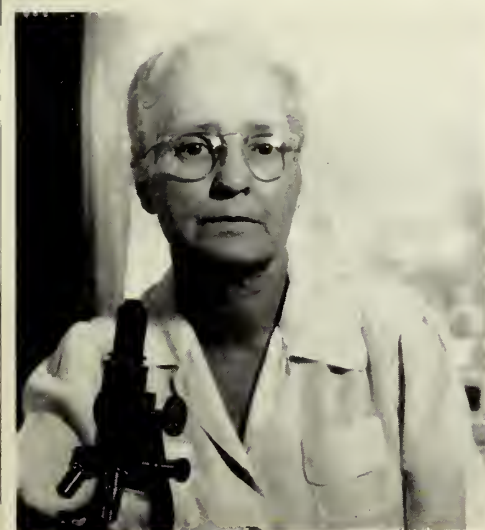
Top row, left to right: Rustad, Steele, Beechwood. • Bottom row, left to right: Sawyer, Odum, Gulliver.

# FACULTY

G. S. W. C.

MRS. EVA ALFORD SHRIVALLE, Dietitian . . . Palmer College. • MRS. C. C. WHITTLE, Assistant Dietitian. • MISS MILDRED McCLELLAN PRICE, Professor of History . . . A.B., Georgia State Womans College; A.M., Columbia University. • DR. JOSEPH A. DURRENBERGER, Professor of History and Social Science . . . A.B., Southwestern University; A.M., Ph.D., Columbia University. • MISS LOLA McCOLLOUGH, Professor of Education and Psychology . . . A.B., Alabama State Teachers College; Ph.B., University of Chicago; A.M., Columbia University. • MISS MARY E. LONGLEY, Professor of Social Science . . . A.B., Brown University; M.A., Bryn Mawr College. • DR. MARIAN E. FARBAR, Resident Physician . . . M.D., University of Illinois Medical College; Practiced Medicine in India and at Earlhan College. • MISS LEONORA IVEY, Professor of Physical Education . . . Graduate, Sargent School for Physical Education of Boston University; B.S., Georgia State College for Women. • MISS EDITH LOWRY, Riding Instructor. • MISS ELIZABETH McREE, Assistant Professor of Physical Education . . . A.B., Georgia State Womans College; M.A., Columbia University. • DR. HAROLD H. PUNKE, Professor of Education . . . B.S., M.S., University of Illinois; Ph.D., University of Chicago.

Top row, left to right: Shrivalle, Whittle . . . Price, Durrenberger, McCollough, Longley. • Bottom row, left to right: Farbar . . . Ivey, Lowry, McRee . . . Punke.



"ALMA MATER'S LOVING DAUGHTERS—" are the sanguine and susceptible freshmen, the garrulous sophomores, the progressive and dextrous juniors, and the sure and suave seniors. The following pages are dedicated to them for sake of reminiscence—to look back on, remembering outstanding personalities, recalling an old-time love of your room mate's, chuckling silently about the terrific feud over a town "perennial," listening to your grandchildren's convulsing giggles over the 1941 "hairdos." You will realize that these days were the happiest, most carefree of your life.

# G.S.W.C.

## *Classes*



Approaching the Doorway to Knowledge—Library



Top row, left to right: Bingo . . . Mother B. goes patriotic . . . Wilkes on the wagon. • Second row: Some people's chillun . . . "Why don't we do this more often?" . . . Marketing for husbands or grades? • Bottom row: A couple of pick-ups . . . Escape . . . Just Nancy's reaction to food.

# WE SENIORS

. . . Being Seniors in a year so different from the last as 1942, had to be different also. We gave up, for the first time in years, the senior trip.

With Gwendolyn Hendrick president for the second time, the class sponsored the annual Halloween Carnival in October. Offering to the students address books, stationery, and a chance to play bridge at its benefit party, the group showed cooperation and a surprising capacity for work.

Minnie Roberts served as vice-president, and Edith Allen as secretary-treasurer.



*The Girls Who Guide Us*  
OUR OFFICERS



Hendrick



Roberts



Allen



Tillman

Parker

Roberts

Franklin



**EDITH ALLEN** . . . Lenox, Georgia . . . English Major . . . Student Government Association (1, 2, 3, 4); Y. W. C. A. (1, 2, 3, 4); Phi Kappa Sports Club (1); Sock and Buskin Club (3, 4); Math-Science Club (3, 4); Secretary and Treasurer of Senior Class.



**MARIE AMBOS** . . . Thunderbolt, Georgia . . . Biology Major . . . Student Government Association (1, 2, 3, 4); S. G. A. Hall Monitor (1, 3, 4); Y. W. C. A. (1, 2, 3, 4); Freshman Council; Sophomore Council; Freshman Council Adviser (4); Phi Lambda Sports Club (1, 2, 3, 4); Circulation Manager of **Campus Canopy** (1); Freshman Honor Society (2); Senior Honor Society President (4); Student Adviser of Freshman Honor Society (4); Math-Science Club (2, 3, 4); President's Council (4).

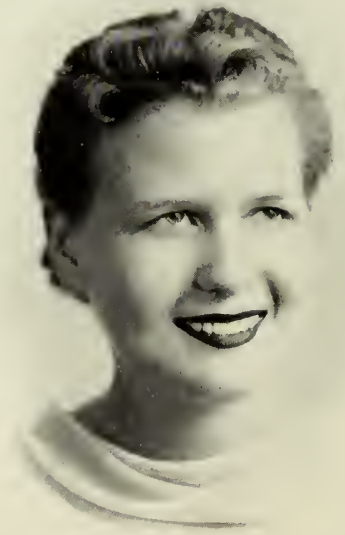
**HAZEL BROWN** . . . Dublin, Georgia . . . Chemistry Major . . . Transfer from Georgia State College for Women (2); Student Government Association (2, 3); Y. W. C. A. (2, 3); Presbyterian Student Association (2, 3), President (3); Sophomore Council (2); Math-Science Club (2, 3).

**MARY BUNDRICK** . . . Cordele, Georgia . . . English Major . . . Student Government Association (1, 2, 3, 4), Secretary and Treasurer (4); Y. W. C. A. (1, 2, 3, 4); Freshman Council; Phi-Lambda Sports Club (1, 2, 3, 4), Sports Council; Awards (1, 2, 3, 4); Archery Manager (2, 3, 4); French Club (2, 3, 4), President (2), Vice-President (4); English Club (3, 4); Freshman Council Leader (4); G. S. W. C. Emblem (4); Who's Who in American Universities and Colleges (4).

Allen  
Ambos



Brown



Bundrick

# SENIORS



Cole



Eleanor Cook



Evelyn Cook  
Crittenden

**NANCY COLE** . . . Savannah, Georgia . . . Sociology Major . . .  
Transfer from Armstrong Junior College (3); Student Government  
Association (3, 4); Y. W. C. A. Cabinet (3, 4); Phi Lambda Sports  
Club (3, 4); Sociology Club (3, 4).

**ELEANOR COOK** . . . Savannah, Georgia . . . Music Major . . .  
Student Government Association (1, 2, 3, 4); Y. W. C. A. (1, 2,  
3, 4), Assistant Pianist (1); Glee Club (1, 2, 3, 4), Librarian (3),  
Assistant Pianist (3, 4); Vesper Choir (1); Philharmonic Club (1,  
2, 3, 4), President (4); Freshman Honor Society (2); French Club  
(3, 4); Senior Honor Society (4), Secretary (4); Artist Series Com-  
mittee (4).

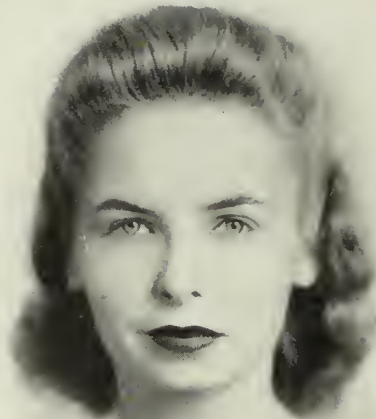
**EVELYN COOK** . . . Valdosta, Georgia . . . Chemistry Major  
. . . Student Government (1, 2, 3, 4); Phi Kappa Sports Club (1,  
2, 3); Math Science Club (3, 4); Camera Club (3, 4); Valdosta  
Club (1, 2, 3, 4).

**RACHEL CRITTENDEN** . . . Shellman, Georgia . . . English Major  
. . . Student Government Association (1, 2, 3, 4); Y. W. C. A.  
(1, 2, 3, 4); Glee Club (1, 2); Sock and Buskin Club (1, 2, 3, 4),  
Vice-President (3), President (4); Annual Play (1, 2, 3, 4); Presi-  
dent's Council (4); Vesper Choir (1); Plymouth Theatre (3); Artist  
Series Committee (4).





Edwards



Franklin

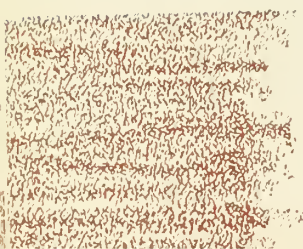
**LOUISE EDWARDS** . . . Eastman, Georgia . . . Math Major . . . Student Government Association (1, 2, 3, 4); Y. W. C. A. (1, 2, 3, 4); Sports Club (1, 2, 3, 4), Awards (1, 2, 3, 4); Sports Council (2, 3, 4); Lambda Team Captain (3); President (4); Freshman Council; Freshman Honor Society (2); Math-Science Club (2, 3, 4); Chairman Math Division (3); Senior Honor Society (4); Who's Who in American Colleges and Universities (4).

**BETTY FRANKLIN** . . . Valdosta, Georgia . . . History Major . . . Student Government Association (1, 2, 3, 4); Valdosta Club (1, 2, 3, 4), Vice-President (4); Sports Club (1); International Relations Club (2, 3, 4), Treasurer (3, 4); Pine Cone Activities Editor (4); Campus Canopy Reporter (2).

**ELISE GANNON** . . . Cordele, Georgia . . . English Major . . . Student Government Association (1, 2, 3, 4); Y. W. C. A. (1, 2, 3, 4); French Club (2, 3, 4), Vice-President (3), President (4); Vesper Choir (2); Glee Club (2, 3); Serenaders (3); English Club (3, 4), President's Council (4); Student Government Monitor (2, 3, 4).

**IRMA GARRISON** . . . Milam, Georgia . . . History Major . . . Transfer from Piedmont College (3); Student Government Association (3, 4); Y. W. C. A. (3, 4); International Relations Club (3, 4).

Gannon  
Garrison



# SENIORS

**MILDRED HARRIS** . . . Moultrie, Georgia . . . Music Major . . . Student Government Association (1, 2, 3, 4); Y. W. C. A. (1, 2, 3, 4); Glee Club (1, 2, 3, 4), President (3, 4); Philharmonic Club (1, 2, 3, 4); Vesper Choir (1, 2), Leader (2); President's Council (3, 4); Y. W. C. A. Cabinet (2); Fine Arts Club (2, 3); Serenaders (1, 2, 3, 4).

**ANNIE HEALD** . . . Thomasville, Georgia . . . Sociology Major . . . Student Government Association (1, 2, 3, 4); Y. W. C. A. (1, 2, 3, 4); Sociology Club (2, 3, 4); Math-Science Club (3); Phi Lambda (1, 2, 3, 4); Awards (2, 3, 4).

**GWENDOLYN HENDRICK** . . . Moultrie, Georgia . . . English Major . . . Student Government Association (1, 2, 3, 4); Y. W. C. A. (1, 2, 3, 4); Freshman Council; Vesper Choir (2); **Canopy** Staff (1, 2); S. G. A. Monitor (2); English Club (3, 4); Sociology Club (3, 4); Junior Class President; **Pine Cone** Staff (3); Sock and Buskin Club (4); Senior Class President (4); President's Council (3, 4); Steering Committee (3); G. S. W. C. Emblem (3); Who's Who in American Colleges and Universities (4).

**ORA JOHNSON** . . . Valdosta, Georgia . . . French Major . . . French Club (2, 3), President (3); Valdosta Club (2, 3); Philharmonic Club (3); President's Council (3); Artist Series Committee (3).



Harris



Heald



Hendrick



Johnson

**LOUIE MAE KRIEGER** . . . Valdosta, Georgia . . . English Major . . . Student Government Association (1, 2, 3, 4); Phi Lambda Sports Club (1, 2, 3, 4); Valdosta Club (1, 2, 3, 4); Sociology Club (3, 4); **Pine Cone Staff** (3, 4), Typist (3), Make-Up Staff (4); English Club (4).



Krieger

**ELIZABETH LYON** . . . Valdosta, Georgia . . . Math Major . . . Student Government Association (1, 2, 3, 4); Sports Club, Phi Lambda (1, 2, 3); Math-Science Club (3, 4); Valdosta Club (1, 2, 3, 4).

**EMILY McCALL** . . . Wilmington, North Carolina . . . Art Major . . . Transfer from Saint Mary's Junior College, Raleigh, N. C.; Fine Arts Club (2, 3, 4), Secretary (4); Camera Club (4); Student Government Association (2, 3, 4); **Pine Cone Art Staff** (4).



Lyon

**MILDRED MALLORY** . . . Savannah, Georgia . . . English Major . . . Transfer from Armstrong Junior College (3); Student Government Association (3, 4); Y. W. C. A. (3, 4); English Club (3, 4); Sock and Buskin Club (3, 4); Secretary and Treasurer English Club (3); Historian of Sock and Buskin Club (4); Artist Series Committee (4).



McCall



Mallory



**MARNELL PARKER** . . . Hahira, Georgia . . . English Major . . . Student Government Association (1, 2, 3, 4); English Club (3, 4), Vice-President (4); Sociology Club (3, 4), Secretary and Treasurer (4); Senior Honor Society (4), Treasurer (4); Sports Club (2, 3); Class Honors (3).

**VIRGINIA POWER** . . . Vienna, Georgia . . . English Major . . . Student Government Association (1, 2, 3, 4); S. G. A. Monitor (1, 2); Y. W. C. A. (1, 2, 3, 4); Cabinet (3); Freshman Council; Historian Freshman Honor Society (2); Sociology Club (3, 4), Vice-President (4); Student-Faculty Honor Council (4); Who's Who in American Colleges and Universities (4).

Parker



**LOTTIE REED** . . . Atlanta, Georgia . . . Sociology Major . . . Transfer from Georgia Evening College; Student Government Association (3, 4); Sociology Club (4); Sports Club (4).

**CAROLYN ROBERTS** . . . Crescent City, Florida . . . Math Major . . . Student Government Association (1, 2, 3, 4); Y. W. C. A. (1, 2, 3, 4), Assistant Room Chairman (2), Room Chairman (3); Freshman Council; Sophomore Council; Group Leader of Freshman Council (3); Sports Club (1, 2, 3, 4); Sports Council (2, 3, 4); Sports Club Awards (1, 2, 3, 4); Silver Archery Medal (1); Math-Science Club (2, 3, 4).

Power



Reed



Roberts

SENIORS



**MINNIE ROBERTS** . . . Valdosta, Georgia . . . Sociology Major . . . Student Government Association (1, 2, 3, 4); Phi Lambda Sports Club (1); Fine Arts Club (1, 2, 3, 4); Glee Club (2, 3); Sociology Club (3, 4); Vice-President Sophomore Class; Assistant Editor **Pine Cone** (3, 4); Vice-President Senior Class.



**MARY JEAN ROCKWELL** . . . Valdosta, Georgia . . . English Major . . . Student Government Association (1, 2, 3, 4); Y. W. C. A. (1, 2, 3, 4); Valdosta Club (1, 2, 3, 4); Y. W. C. A. Cabinet (2, 3, 4), Secretary (3, 4); Vesper Choir (2, 3); English Club (3, 4), President (4); Secretary and Treasurer of Junior Class; President's Council (4); Sports Club (1); Freshman Honor Society, Secretary and Treasurer (2); Senior Honor Society (4); French Club (2, 3, 4), Vice-President (2); Artist Series Committee (4); Student Attendance Committee Chairman (4); Who's Who in American Colleges and Universities (4).

**MARY E. ROGERS** . . . Cairo, Georgia . . . Biology Major . . . Student Government Association (1, 2, 3, 4); Y. W. C. A. (1, 2, 3, 4); Sports Club, Phi Kappa (1, 2, 3, 4); Math-Science Club (2, 3, 4), Head of Biology Division (3), Vice-President (4); Senior Honor Society (4); Adviser to Freshman Council (4); Freshman Council; Sophomore Council.

**KATHRYN SCOTT** . . . Pelham, Georgia . . . History Major . . . Student Government Association (1, 2, 3, 4); Y. W. C. A. (1, 2, 3, 4), Cabinet (2), Vice-President (3), President (4); Freshman Honor Society (2); Senior Honor Society (4); Sports Club (1); Philharmonic Club (1); International Relations Club (2, 3, 4); Ashley House President (2); President's Council (4); Who's Who in American Colleges and Universities (4).

Roberts  
Rockwell



Rogers



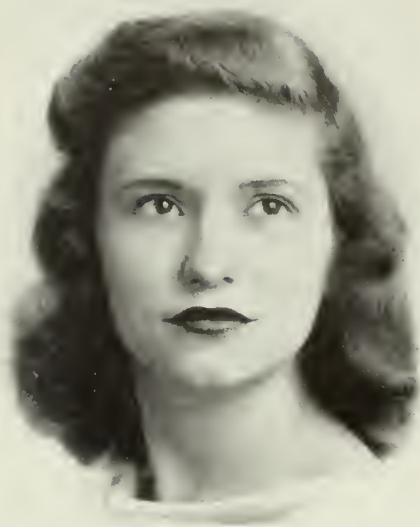
Scott

# SENIORS





Sessoms



Smith

**RUTH SESSOMS** . . . Cogdell, Georgia . . . History Major . . . Student Government Association (1, 2, 3, 4); Y. W. C. A. (1, 2, 3, 4); Sports Club (1, 2, 3); Freshman Council; Sophomore Council; Sociology Club (2, 3); International Relations Club (3, 4), President (4); **Campus Canopy** Staff (1, 2, 3, 4), Business Manager (3, 4); President's Council (4); Georgia Press Institute (3, 4); GSWC Emblem (3).

**JULIA BESS SMITH** . . . Valdosta, Georgia . . . Art Major . . . Student Government Association (1, 2, 3, 4); Valdosta Club (1, 2, 3, 4); Phi Lambda Sports Club (1); Fine Arts Club (2, 3, 4), Secretary-Treasurer (3), President (4); Artist Series Committee (4); President's Council (4); **Pine Cone** Staff (4), Art Editor (4).

**FRANCES STREET** . . . Savannah, Georgia . . . Sociology Major . . . Transfer from Armstrong Junior College; Student Government Association (3, 4); Y. W. C. A. (3, 4), Deputation Chairman (4); Vesper Choir (3); Phi Lambda Sports Club (3, 4); Sports Council (3, 4); Sociology Club (3, 4), President (4); President's Council (4); **Campus Canopy** Advertising Staff (3); President of Methodist Student Organization (4).

**JUSTINE TARTE** . . . Valdosta, Georgia . . . History Major . . . Transfer from Montreat College, Montreat, N. C. (3); International Relations Club (3, 4); Student Government Association (3, 4).

Street  
Tarte





**JANET TILLMAN** . . . Valdosta, Georgia . . . Sociology Major . . . Student Government Association (1, 2, 3, 4); Valdosta Club (1, 2, 3, 4); Sociology Club (3, 4); Sports Club, Phi Kappa (1, 2); Presbyterian Student Association (3, 4).

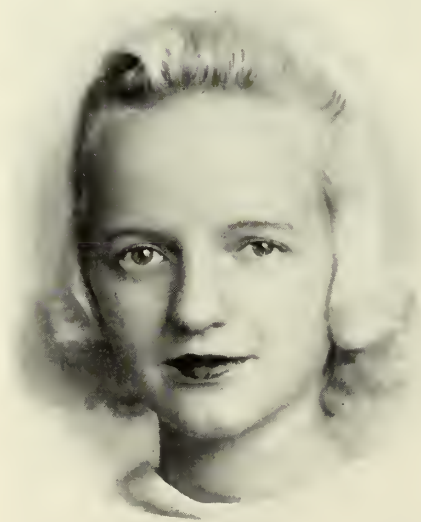
**ELEANOR TURNBULL** . . . Moultrie, Georgia . . . Biology Major . . . Student Government Association (1, 2, 3, 4); Y. W. C. A. (1, 2), Cabinet (2); Freshman Council; Glee Club (1, 2); Vesper Choir (1); Freshman Honor Society (2); Camera Club (3, 4); Math-Science Club (3, 4), President (4); **Pine Cone** Photograph Editor (4); Sports Club (1); Award (1); President's Council (4).



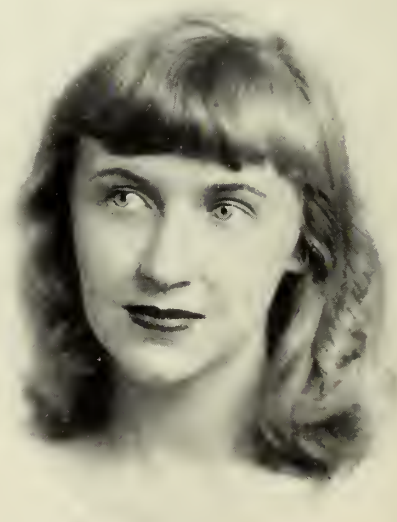
**VIRGINIA UPSON** . . . Quitman, Georgia . . . Sociology Major . . . Transfer from Shorter College; Student Government Association (3, 4); Sociology Club (3, 4).

**DOROTHY DODD WILKES** . . . Adel, Georgia . . . English Major . . . Transfer from Bessie Tift College; Student Government Association (2, 3, 4); Y. W. C. A. (2, 3, 4); Sock and Buskin Club (2, 3, 4), President (3); Annual Play (2, 3, 4); President's Council (3); Steering Committee (3); Artist Series Committee (3, 4); Plymouth Theatre (3).

Tillman  
Turnbull



Upson



Wilkes



M. Williams



R. Williams



**MAXWELL WILLIAMS** . . . Cordele, Georgia . . . Art Major . . . Student Government Association (1, 2, 3, 4), Vice-President (3), President (4); Y. W. C. A. (1, 2, 3, 4); Sophomore Council (2); Sports Club (1, 2, 3, 4); Awards (1, 2, 3, 4); Sports Council (2); Freshman Honor Society (2); Senior Honor Society (4); **Pine Cone Staff** (3); Sophomore Class President; President's Council (4), Chairman (4); G. S. W. C. Emblem (3); Who's Who in American Colleges and Universities (4).

**RACHEL WILLIAMS** . . . Manchester, Georgia . . . English Major . . . Transfer from Bessie Tift College; Student Government Association (3, 4); Y. W. C. A. (3, 4); Sock and Buskin Club (3, 4).



Wisenbaker

**MARY ALICE WISENBAKER** . . . Valdosta, Georgia . . . History Major . . . Student Government Association (1, 2, 3, 4); Sports Club, Phi Lambda (1, 2); International Relations Club (2, 3, 4), Member-at-Large (2), Vice-President (3); Sociology Club (3); **Campus Canopy** (1, 2, 3), Reporter (1), News Editor (2), Editorial Assistant (3); Junior Class Vice-President; **Pine Cone** (3, 4), Make-Up Staff (3), Editor-in-Chief (4); President's Council (4); Valdosta Club (1, 2, 3, 4); GSWC Emblem (4); Who's Who in American Colleges and Universities (4).



Ye Ole Bull Session—Mobley, Hiers, Jacquie Smith, Mather, Kennedy, Jane Smith



*The Class of '43 Picked Capable*  
**JUNIOR OFFICERS**

Junior Class money-making efforts, which were combined with fun at clever parties, were for the benefit of American war needs. Candy-making parties and a "Keep 'em Flying" dance were outstanding.

"Shorty" Sirmans, brilliant, 59-inch class president, arranged a Saturday morning breakfast at the House in the Woods for a get-reacquainted party in the fall. The class was hostess to the seniors at the year's social highlight, the Junior-Senior Formal.

Top left: President Sirmans. • Below: Vice-President Fender. • Left: Secretary-Treasurer Mather.

Top left, left to right: The long and short of it—Taylor and King . . . Smith, Newberry—law breakers at heart . . . Hinshaw arrives in the nick of time . . . Keep 'em flying, girls. ● Top, right: O. K., watch the birdie, Senator—says Peeples. ● Bottom, left to right: Beth puts on a double feature . . . Hiers and Joyner about to do a bit of apple polishing . . . What're they plottin' now?

Outstanding Junior Events in

# Snaps



# JUNIORS

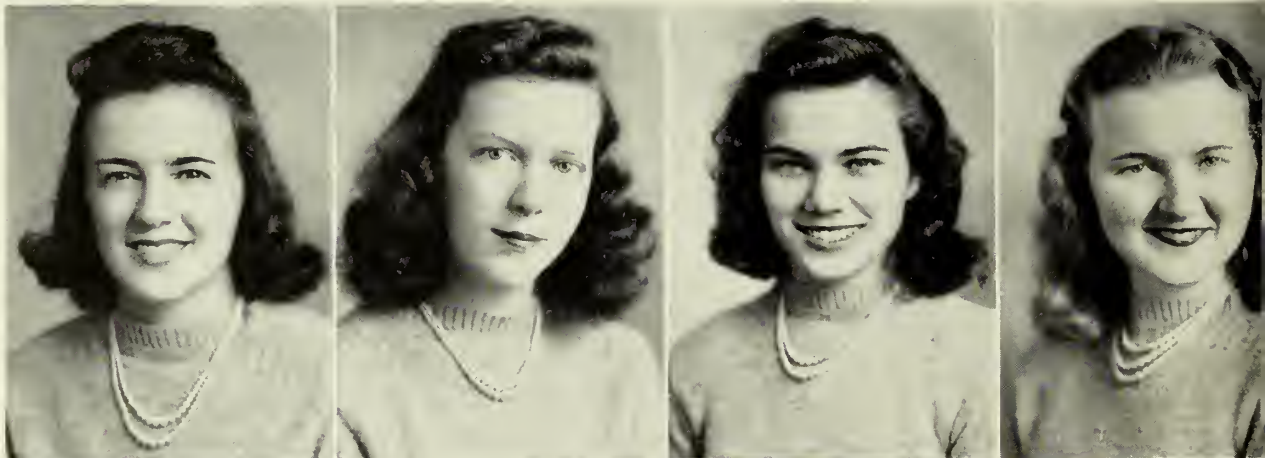
BETTY BARNES	Valdosta, Georgia
ANNETTE BLACKBURN	Valdosta, Georgia
ANN BOOTH	Quitman, Georgia
DORRIS CALLAHAM	Rupert, Georgia
TENZIE COLEMAN	Valdosta, Georgia
AVA COLLINS	Cairo, Georgia
ANNELLE COOPER	Eastman, Georgia
URSULA DAVIS	Valdosta, Georgia

Barnes

Blackburn

Booth

Callaham

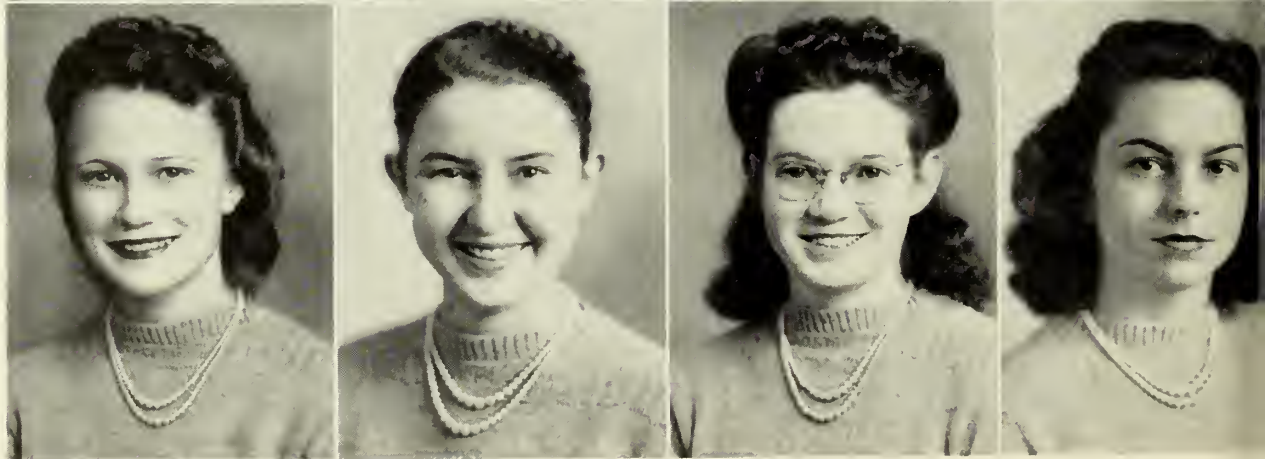


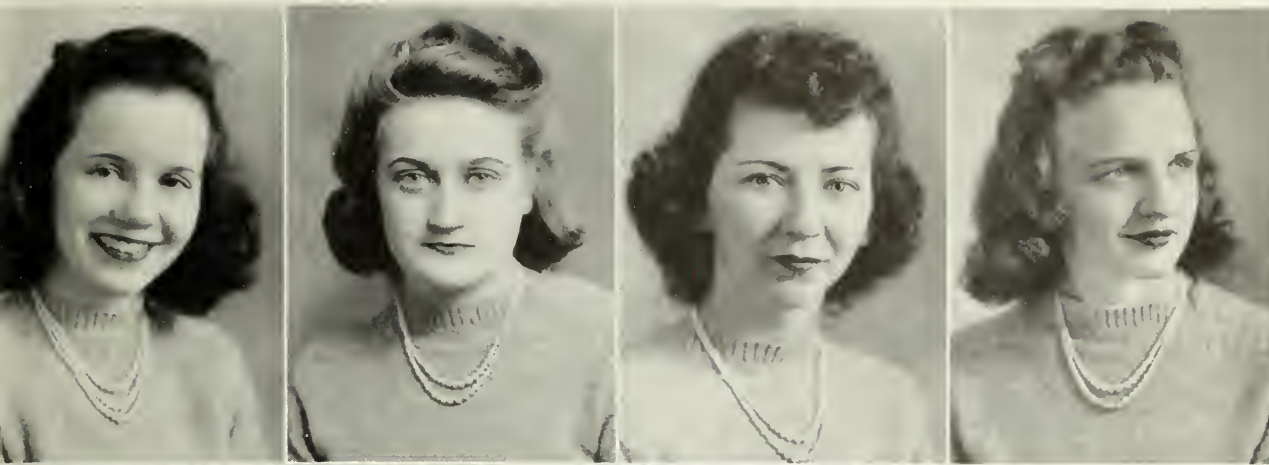
Coleman

Collins

Cooper

Davis



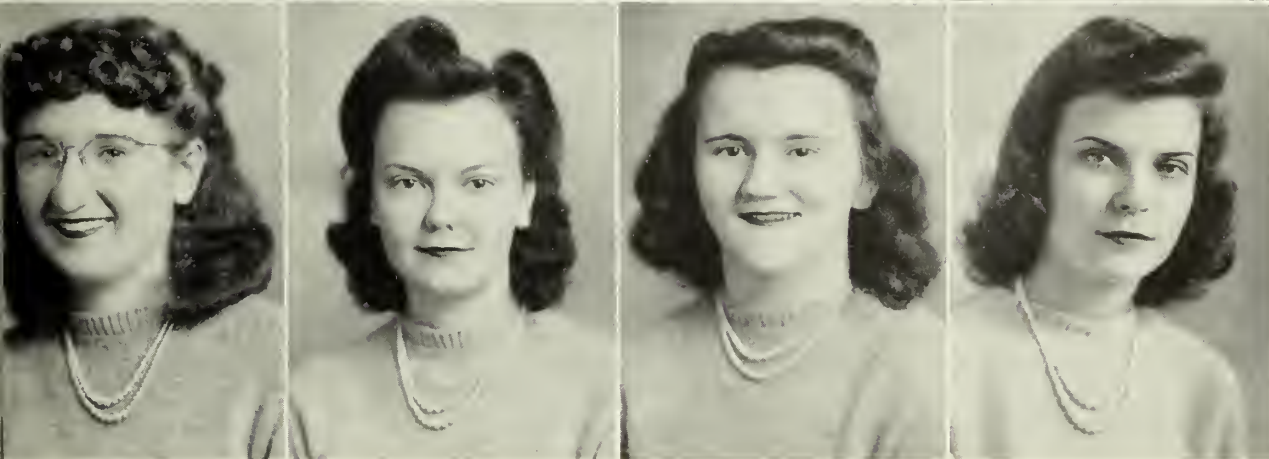


Dorough

Duffey

Fairchild

Fender



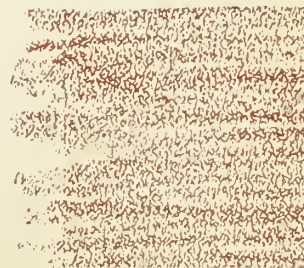
Fincher

Flournoy

Gillis

Hiers

BETTY JANE DOROUGH . . . . . Quitman, Georgia  
 JOYCE DUFFEY . . . . . LaGrange, Georgia  
 EUNICE FAIRCHILD . . . . . Waycross, Georgia  
 ELIZABETH FENDER . . . . . Valdosta, Georgia  
 MARTHA FINCHER . . . . . Doerun, Georgia  
 HARRIET FLOURNOY . . . . . Fort Valley, Georgia  
 ELIZABETH GILLIS . . . . . Quitman, Georgia  
 DORIS HIERS . . . . . Moultrie, Georgia



# JUNIORS

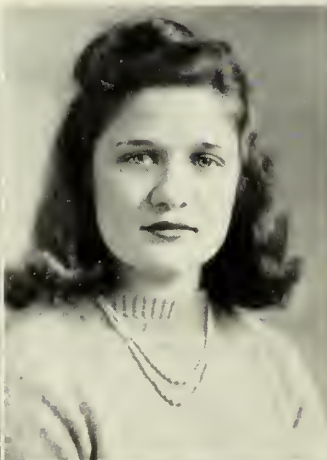
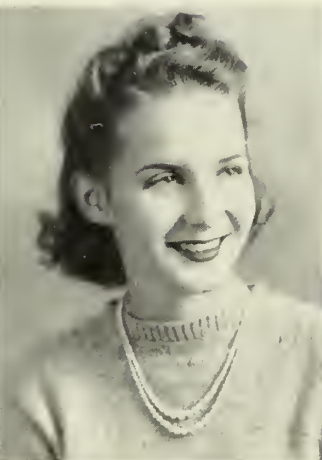
ERNESTINE HOPSON . . . . .	Rochelle, Georgia
RUTH JINKS . . . . .	Colquitt, Georgia
JANET JOYNER . . . . .	Screven, Georgia
GWENDOLYN JOHNSON . . . . .	Leesburg, Georgia
FRANCES KENNEDY . . . . .	Thomaston, Georgia
HELEN KIRK . . . . .	Valdosta, Georgia
MARGUERITE LAHOOD . . . . .	Valdosta, Georgia
SARA CATHERINE MARTIN . . . . .	Waycross, Georgia

Hopson

Jinks

Joyner

Johnson

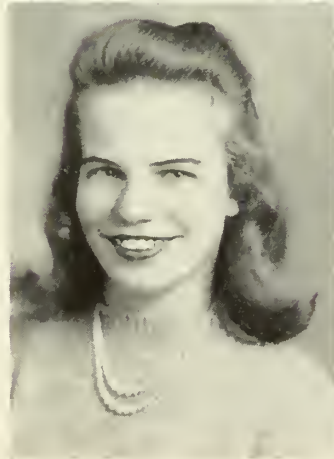


Kennedy

Kirk

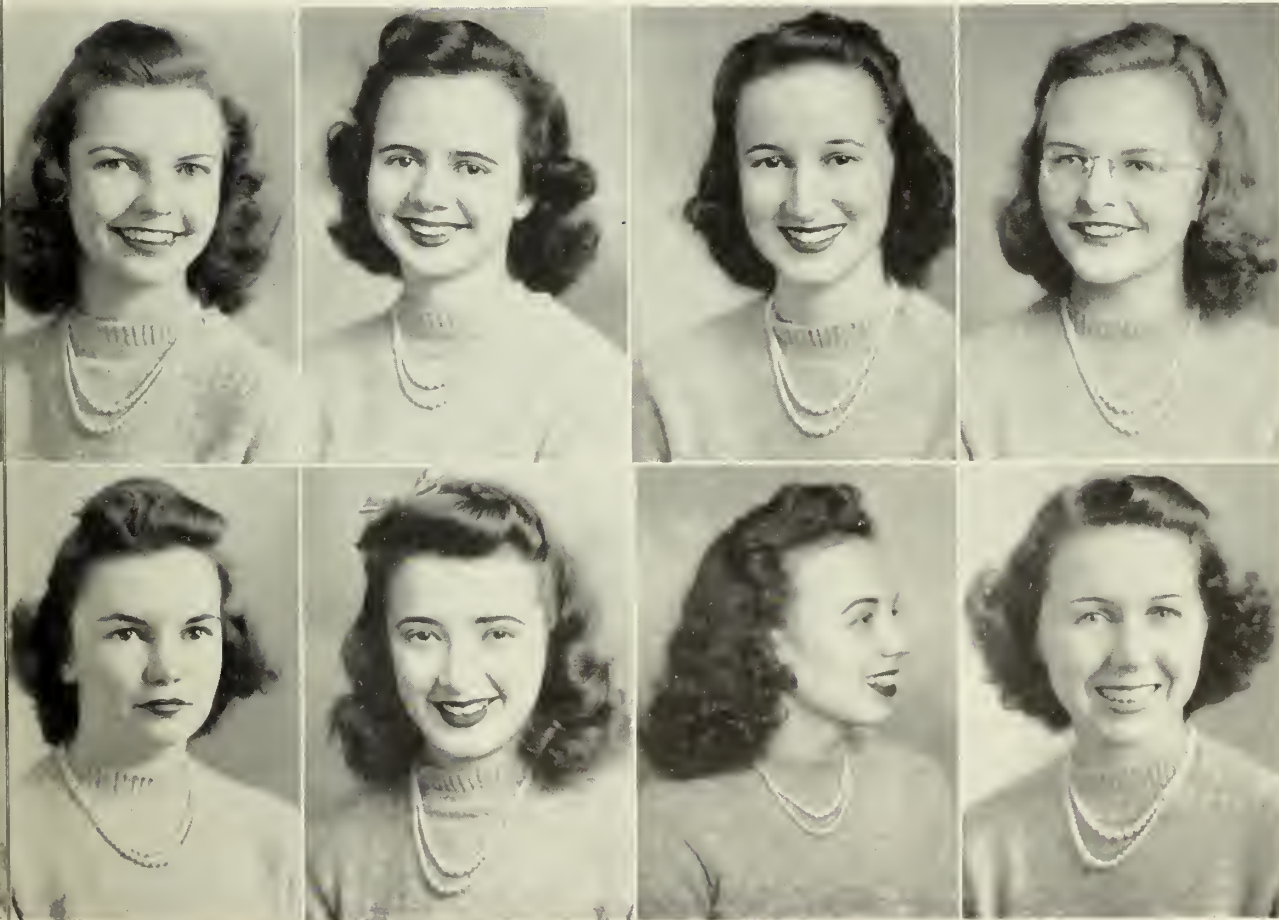
Lahood

Martin



# JUNIORS

MAY MATHER . . . . .	Hollywood, Florida
ALICE MEADORS . . . . .	Albany, Georgia
JEAN MOBLEY . . . . .	Sylvania, Georgia
JUNE MOSELY . . . . .	Jakin, Georgia
LENORA PEEPLES . . . . .	Valdosta, Georgia
MARY NEWTON . . . . .	Valdosta, Georgia
ESTELLE NORMAN . . . . .	Tifton, Georgia
WILLARD PARRISH . . . . .	Valdosta, Georgia



Mather

Meadors

Mobley

Mosely

Peeples

Newton

Norman

Parrish



# JUNIORS

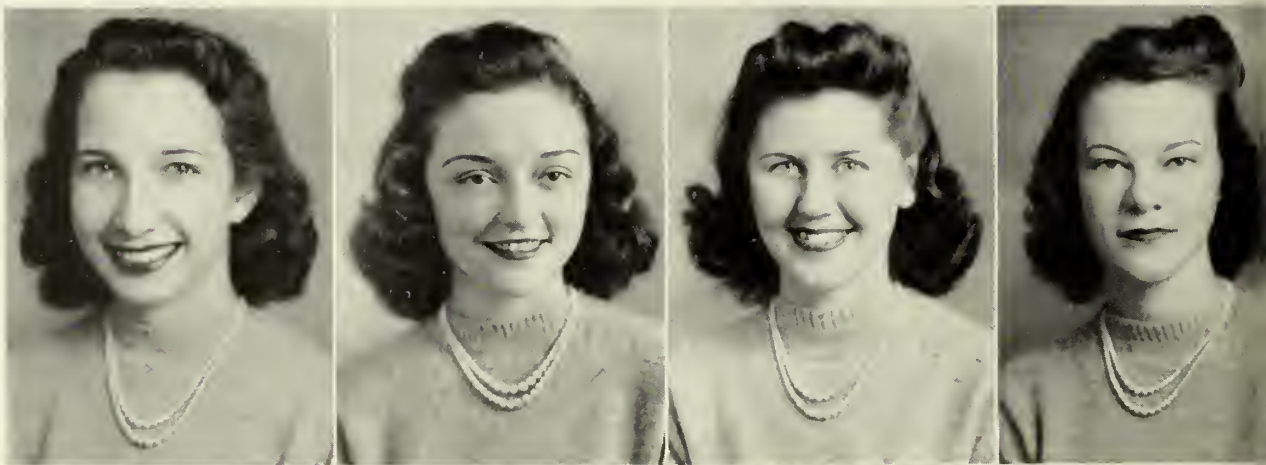
MARION POSEY . . . . .	Valdosta, Georgia
EVELYN SAUNDERS . . . . .	Valdosta, Georgia
JEAN SAUNDERS . . . . .	St. Petersburg, Florida
VIVIAN SHANNON . . . . .	Valdosta, Georgia
THELMA SIRMANS . . . . .	La Belle, Florida
ANNE SMITH . . . . .	Toccoa, Georgia
CORINNE SMITH . . . . .	Valdosta, Georgia
JACQUELINE SMITH . . . . .	Waycross, Georgia

Posey

Saunders, E.

Saunders, J.

Shannon

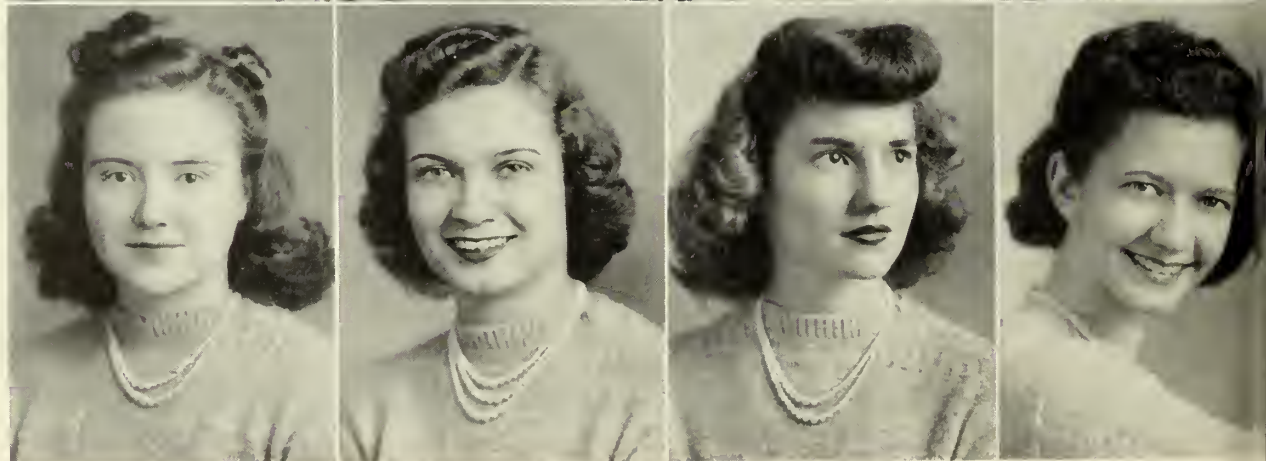


Sirmans

Smith, A.

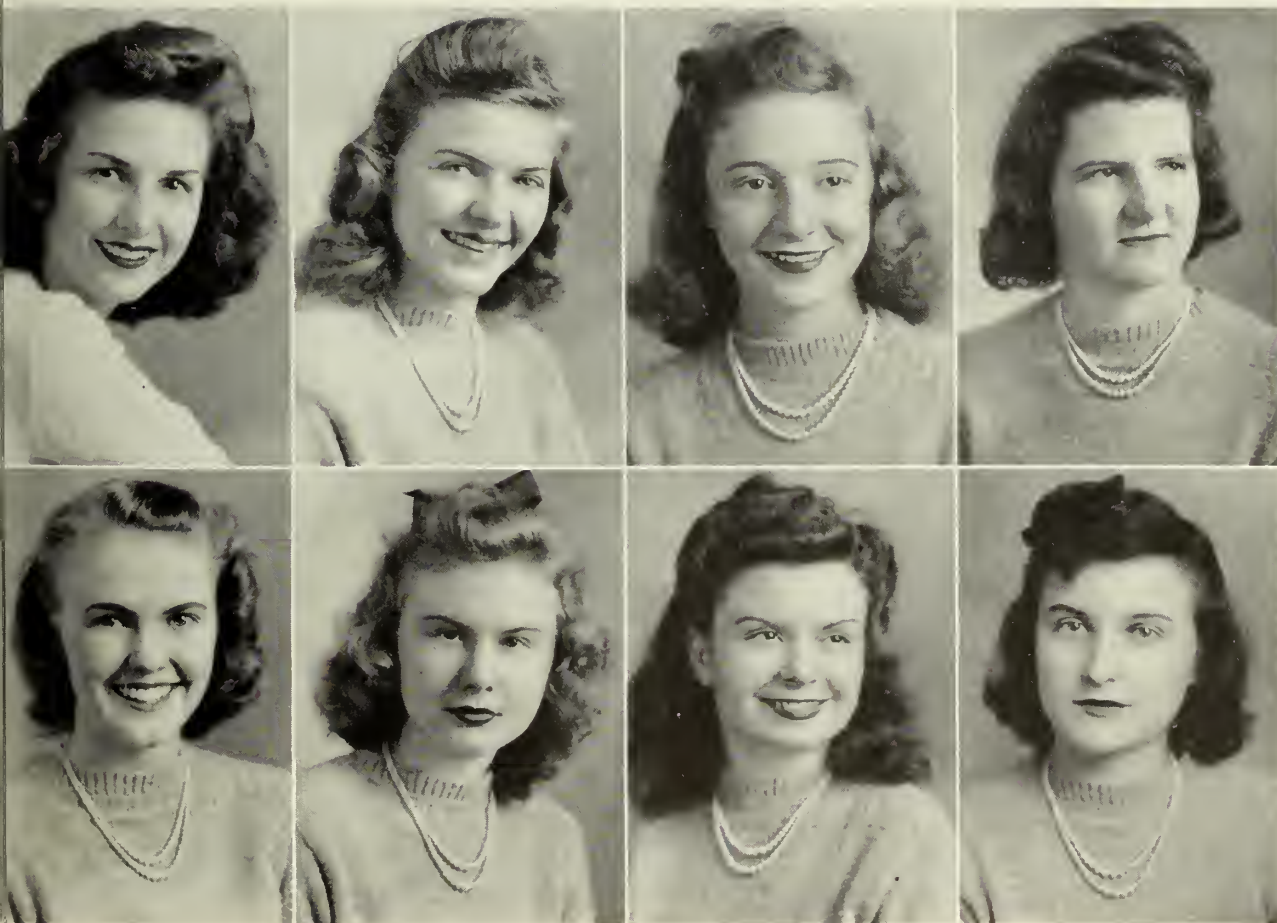
Smith, C.

Smith, J.





JANE ELLEN SMITH . . . . .	Fitzgerald, Georgia
JANE WILLIAMS . . . . .	Moultrie, Georgia
RUTH TAYLOR . . . . .	Valdosta, Georgia
SUNSHINE TAYLOR . . . . .	Cordele, Georgia
BETH THARPE . . . . .	Arlington, Georgia
JEAN THOMPSON . . . . .	Lumpkin, Georgia
HELEN WALDRON . . . . .	Valdosta, Georgia
BETTY WILLIAMS . . . . .	Valdosta, Georgia



Smith, J. E.  
 Williams, J.  
 Taylor, R.  
 Taylor, S.  
  
 Tharpe  
 Thompson  
 Waldron  
 Williams, B.



Left to right: Bowen, Petty, McIntosh, Crummev

*G.S.W.C.'s Hope For '44 Are The*

**SOPHOMORES**

A brilliant formal at the Valdosta Country Club on February 7, given in honor of the Senior Class, was the most memorable event of the year for most sophomores. At Christmas the class had an informal party in the Rotunda.

The sophomores, guided by good-looking Anna Key Waters, spent the year trying to live down the universal reputation of college sophomores who think they know so much and in reality know so little. For their other officers the class members chose Tillie Dasher, vice-president, and Jean Williams, secretary.



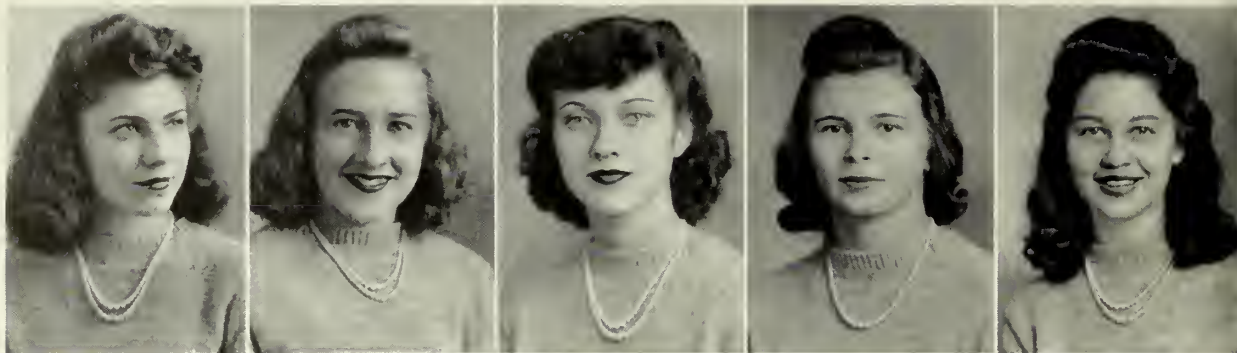
Above: Waters. • Below: Dasher and Williams.

# Snaps

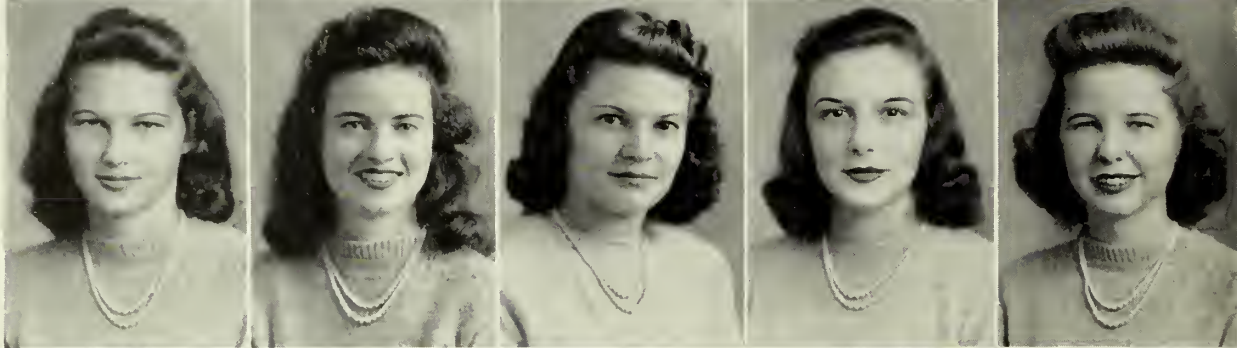
Top row, left to right: Martha Raye? . . . Just a little cog in a big machine . . . Strawberries? . . . Could it be "The Veronica?" •  
Second row: V for Victory . . . Harpo, the Marx . . . "Pardon, Is That the Chattanooga Choo Choo?" . . . "For Whom the Bells Toll"—Dekle . . . Truckin'. • Bottom row: Sitting on the threshold of knowledge . . . "Stage Door."



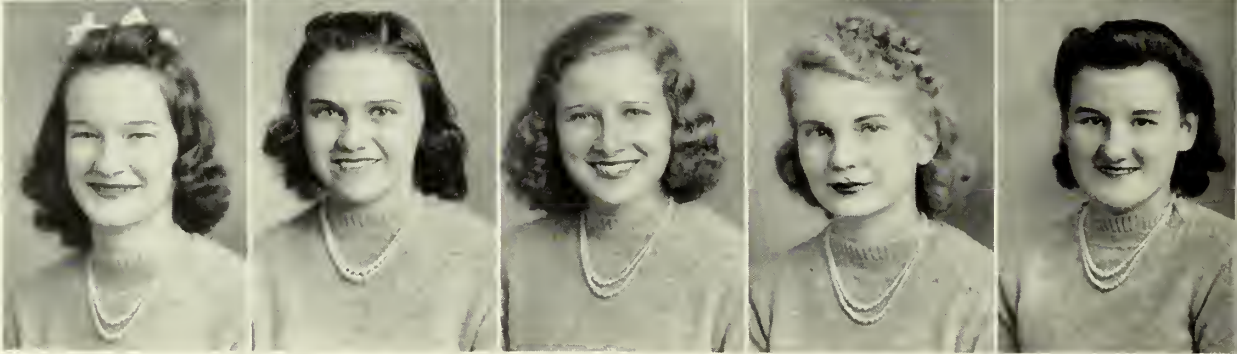
Adcock  
 Allen, M.  
 Allen, S.  
 Ashley  
 Bowen, M. T.



Bowen, M.  
 Boyette  
 Branch  
 Brice  
 Brimberry

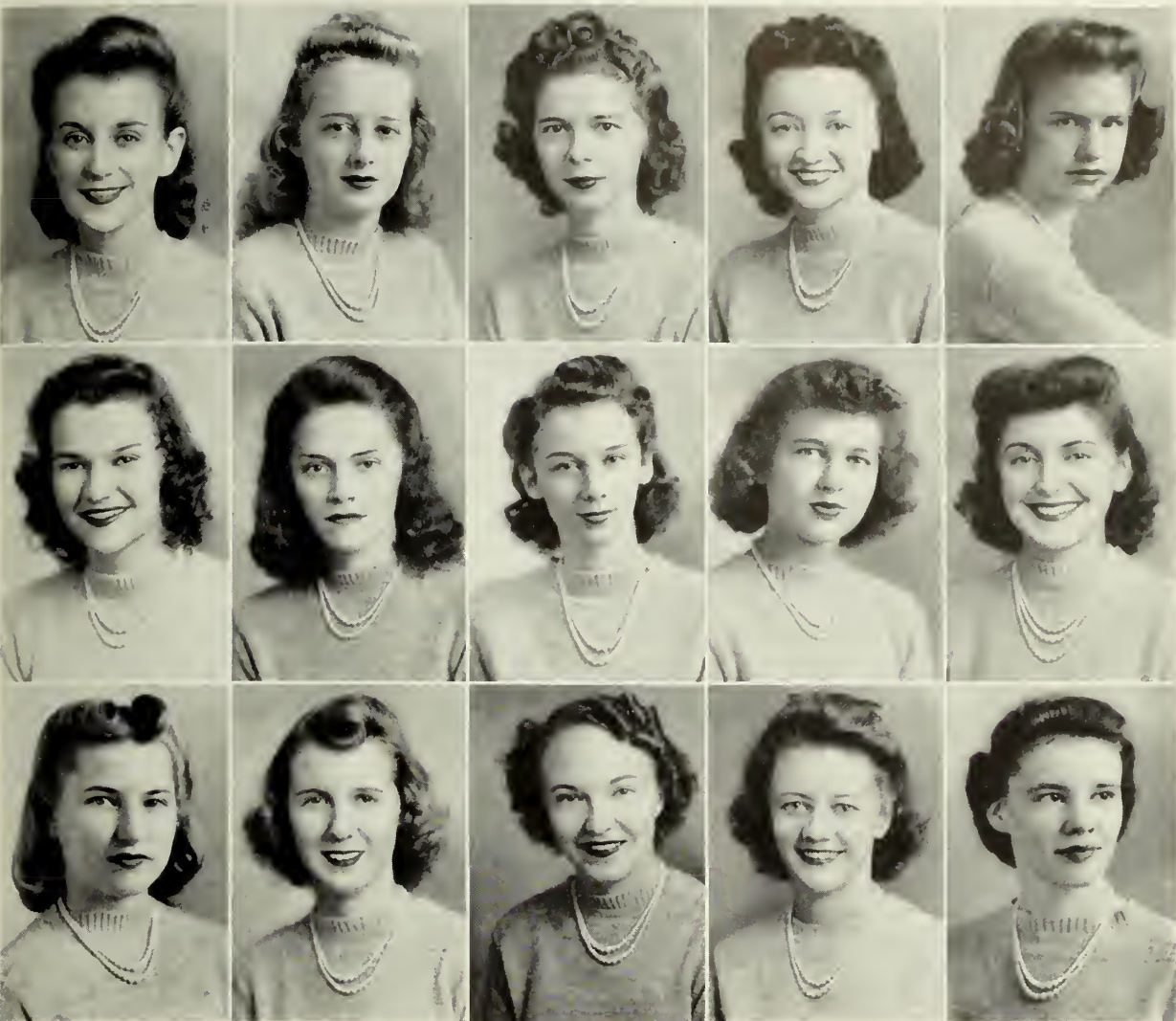


Burke  
 Calhoun  
 Cannady  
 Carter, E.  
 Carter, L.



FAYE ADCOCK . . . . .	Fender, Georgia
MARY CAROL ALLEN . . . . .	Shellman, Georgia
SARA ALLEN . . . . .	Fort Mitchell, Alabama
MARTHA ASHLEY . . . . .	Valdosta, Georgia
MARY THAXTON BOWEN . . . . .	Tifton, Georgia
MIRIAM BOWEN . . . . .	Statesboro, Georgia
DORIS BOYETTE . . . . .	Lakeland, Georgia
VIRGINIA BRANCH . . . . .	Sale City, Georgia
MARIE BRICE . . . . .	Quitman, Georgia
BETTY BRIMBERRY . . . . .	Camilla, Georgia
BETTYE BURKE . . . . .	Valdosta, Georgia
JANE CALHOUN . . . . .	Millersburg, Kentucky
EDYTHE CANNADY . . . . .	Thomasville, Georgia
EMMIE CARTER . . . . .	Waycross, Georgia
LUGENIA CARTER . . . . .	Valdosta, Georgia





Carter  
Chambers  
Cook  
Copeland  
Coward

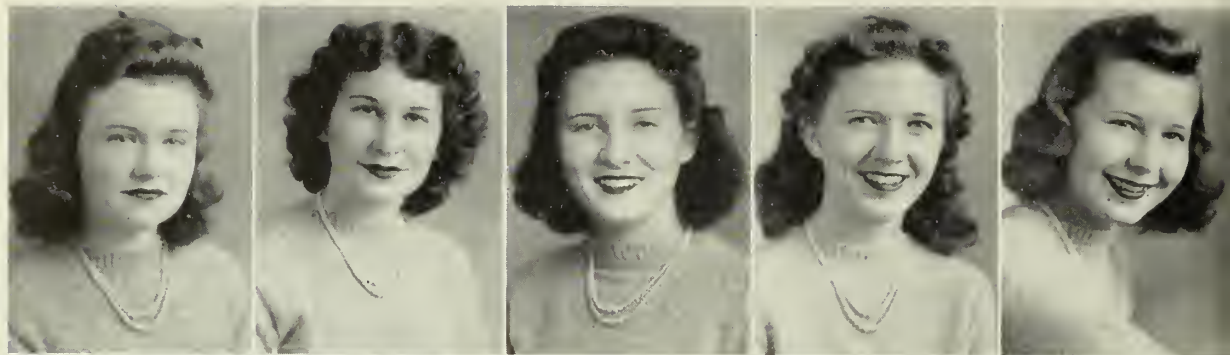
Crummey  
Culpepper  
Dale  
Dasher  
Davis

Dekle  
Dixon  
Donalson  
Gibson  
Gordon

PAULINE CARTER . . . . . Meigs, Georgia  
 TWILA CHAMBERS . . . . . Valdosta, Georgia  
 FAYE COOK . . . . . Valdosta, Georgia  
 MAYE COPELAND . . . . . Valdosta, Georgia  
 JANANNE COWART . . . . . Bronwood, Georgia  
 GLORIA CRUMMEY . . . . . Rochelle, Georgia  
 MARGARET CULPEPPER . . . . . Tifton, Georgia  
 EVELYN DALE . . . . . Valdosta, Georgia  
 TILLIE DASHER . . . . . Valdosta, Georgia  
 LOUGENIA DAVIS . . . . . Meigs, Georgia  
 BARBARA DEKLE . . . . . Cordele, Georgia  
 CAROLYN DIXON . . . . . Richland, Georgia  
 MARY FRANCES DONALSON . . . . . Attapulcus, Georgia  
 MAJORIE GIBSON . . . . . Folkston, Georgia  
 ALICE GORDON . . . . . Jacksonville, Florida

# SOPHOMORES

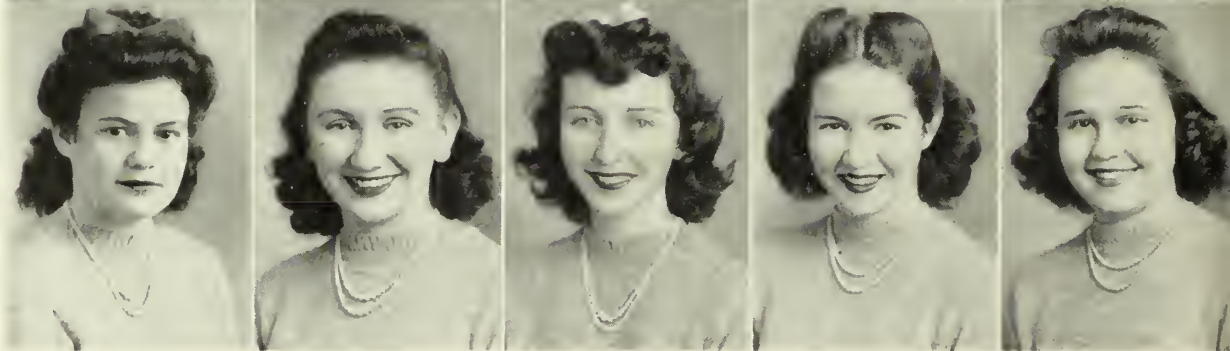
Haire  
 Hambrick  
 Hood  
 Howell  
 Hunt



Hunter  
 Isom  
 Jones  
 Kent  
 King

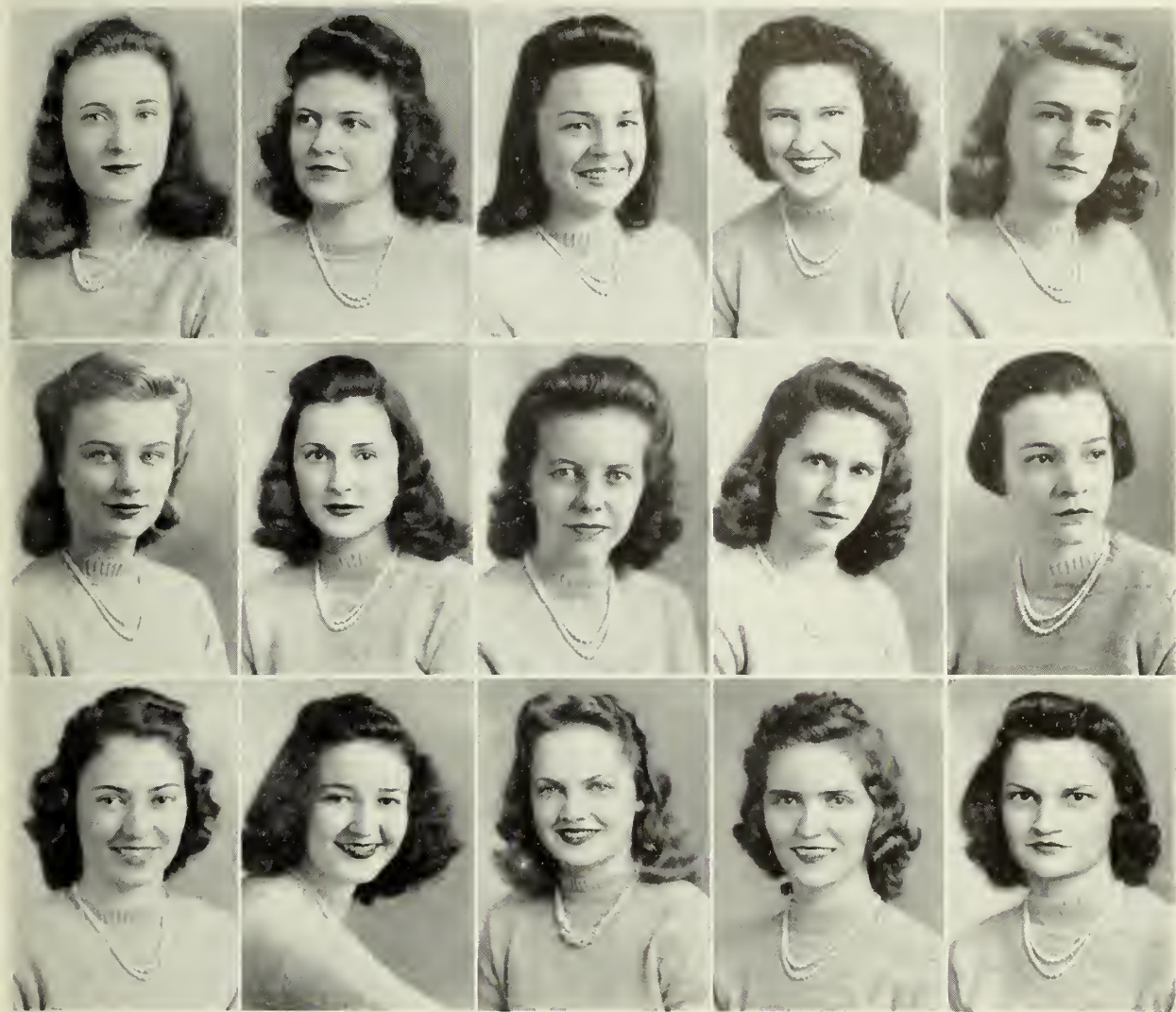


Kirkland  
 Lawson  
 Loosier  
 Mason  
 McAndrews



MARTHA HAIRE . . . . .	Bainbridge, Georgia
MARION HAMBRICK . . . . .	Hahira, Georgia
EDWINA HOOD . . . . .	Valdosta, Georgia
JULIA MAE HOWELL . . . . .	Valdosta, Georgia
ANITA HUNT . . . . .	Valdosta, Georgia
MARY KATE HUNTER . . . . .	Crescent, Georgia
MARY ANN ISOM . . . . .	Moultrie, Georgia
JACQUELYN JONES . . . . .	Bainbridge, Georgia
HELEN KENT . . . . .	Tifton, Georgia
ODELIA KING . . . . .	Blakely, Georgia
LUCILLE KIRKLAND . . . . .	Willacoochee, Georgia
GRACE LAWSON . . . . .	Jacksonville, Florida
FRANCES LOOSIER . . . . .	Thomaston, Georgia
MARY MASON . . . . .	Valdosta, Georgia
ROSALYNE McANDREWS . . . . .	Jacksonville, Florida





McBane

McCorkle

McGill

McIntosh

McLeod

Meschke

Miller, M.

Miller, S.

Moore

Morgan

Morris

Murph

Murray

Nelson

Newberry

PEGGY McBANE . . . . .	Valdosta, Georgia
JULIA FRANCES McCORKLE . . . . .	Montezuma, Georgia
JEANNE McGILL . . . . .	Sylvester, Georgia
MERRICK McINTOSH . . . . .	Eulonia, Georgia
ROSE McLEOD . . . . .	Pineview, Georgia
NANCY MESCHKE . . . . .	Brunswick, Georgia
MARILYN MILLER . . . . .	Albany, Georgia
SADIE MILLER . . . . .	Iron City, Georgia
LOUISE MOORE . . . . .	Alapaha, Georgia
JESSIE MORGAN . . . . .	Tifton, Georgia
RUTH MORRIS . . . . .	Valdosta, Georgia
RUTH MURPH . . . . .	Marshallville, Georgia
MARJORIE MURRAY . . . . .	Ashburn, Georgia
PATRICIA NELSON . . . . .	Valdosta, Georgia
ALLENE NEWBERRY . . . . .	Arlington, Georgia

# SOPHOMORES

Nicholson

Ogburn

Parks

Paschal

Patten



Petty

Proctor

Reddick

Rice

Ricks

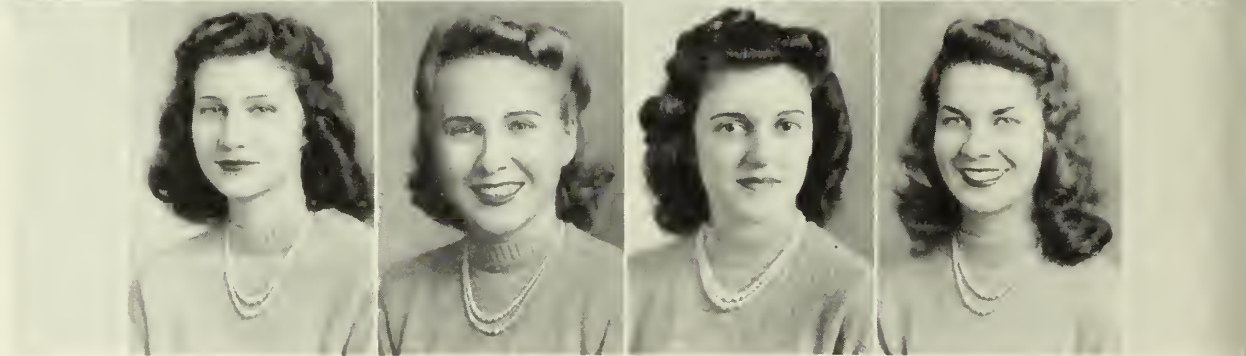


Rose

Rowland

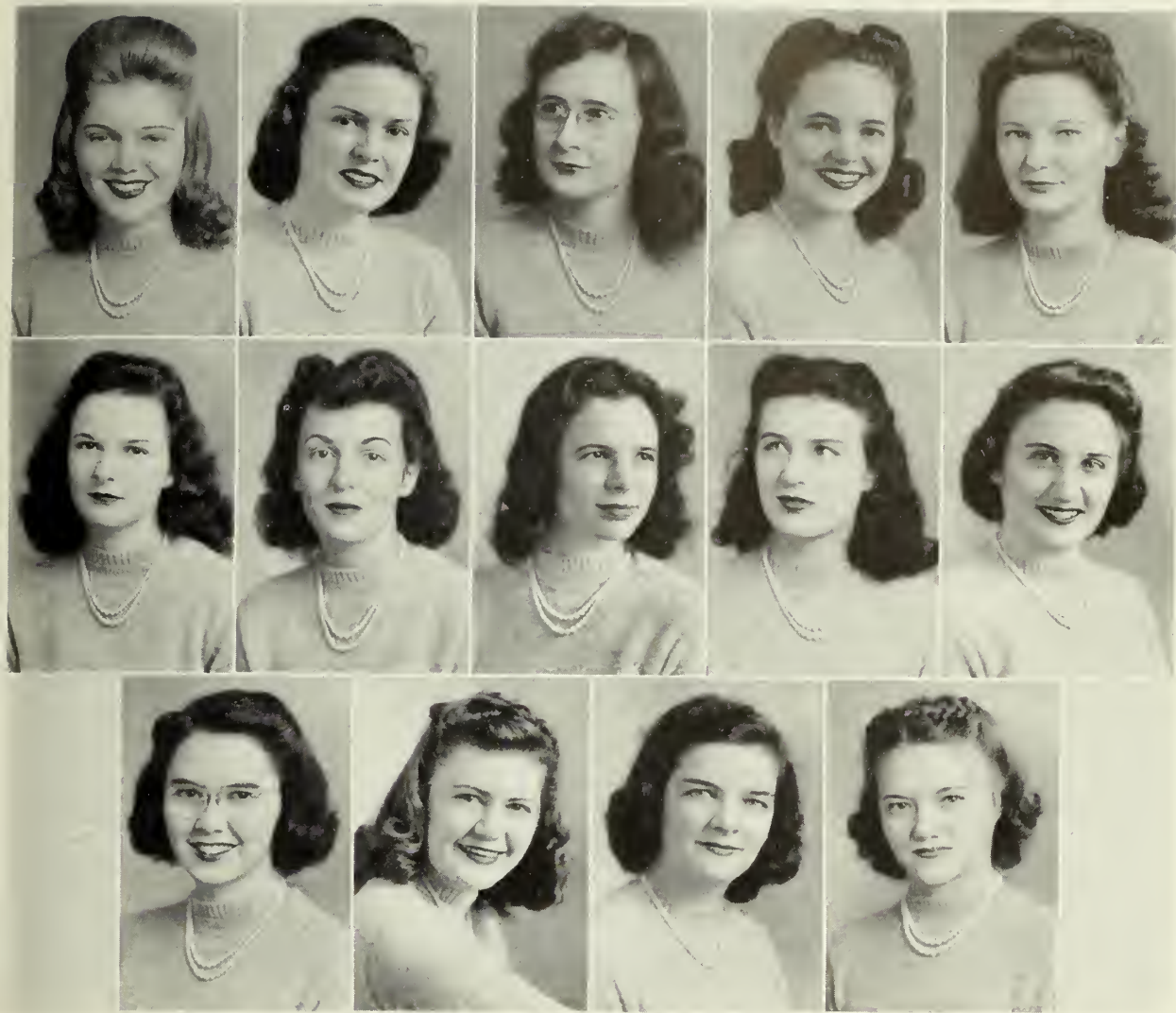
Sawyer

Slade



LOREAN NICHOLSON . . . . .	Amsterdam, Georgia
LOUISE OGBURN . . . . .	Reynolds, Georgia
RACHEL PARKS . . . . .	Valdosta, Georgia
ELIZABETH PASCHAL . . . . .	Albany, Georgia
NELL PATTEN . . . . .	Lakeland, Georgia
SARA PETTY . . . . .	Dawson, Georgia
CAROLYN PROCTOR . . . . .	Brooklet, Georgia
JOSEPHINE REDDICK . . . . .	Valdosta, Georgia
ANNIE LOU RICE . . . . .	Valdosta, Georgia
BARBARA RICKS . . . . .	Eastman, Georgia
JACKIE ROSE . . . . .	White Oak, Georgia
MAROLYN ROWLAND . . . . .	Moultrie, Georgia
DOROTHY SAWYER . . . . .	Arlington, Georgia
JEAN SLADE . . . . .	Vienna, Georgia





Spivey  
 Taylor  
 Threatte  
 Tison  
 Trulock  
  
 Vinson  
 Waters  
 Wheeler  
 Whitaker, B.  
 Whitaker, P.  
  
 Williams  
 Woodward  
 Young  
 Youngblood

JANE SPIVEY . . . . .	Talbotton, Georgia
MILDRED TAYLOR . . . . .	Cuthbert, Georgia
CONSTANCE THREATTE . . . . .	Jesup, Georgia
DOROTHY TISON . . . . .	Moultrie, Georgia
CHRISTINE TRULOCK . . . . .	Climax, Georgia
SARA VINSON . . . . .	Valdosta, Georgia
HELEN WALDRON . . . . .	Valdosta, Georgia
ANNA KEY WATERS . . . . .	Vienna, Georgia
JESSICA WHEELER . . . . .	Longmeadow, Massachusetts
BETH WHITAKER . . . . .	Valdosta, Georgia
PHYLLIS WHITAKER . . . . .	Valdosta, Georgia
JEAN WILLIAMS . . . . .	Cordele, Georgia
EDITH WOODARD . . . . .	Rentz, Georgia
CHRISTINE YOUNG . . . . .	Rebecca, Georgia
LAURA MAE YOUNGBLOOD . . . . .	Jesup, Georgia

# SOPHOMORES



"Typical Sunday Afternoon"

*G. S. W. C.'s Largest Class Chose These For*

# FRESHMEN OFFICERS

For the first time in G. S. W. C. history the college's largest class had two representatives to the court of the Student Government Association. They were glamour gal Mary Wilkie, president of the class, and attractive Maria Davis, court representative. Other class officers were Elsie Goodson, vice-president, and Betty Peters, secretary-treasurer.

Freshmen amazed upperclassmen by providing more than the usual share of good-looking girls. With a Christmas party, a class picnic, and a St. Valentine's Day formal, they proved to be charming hostesses, too.



Top to bottom: Wilkie, Goodson, Peters.

Private Life Featured An

# Snaps

Top, left: Spring Fever. • Below, top row, left to right: The favorite diversion—going home . . . Maria plays the frog . . . That famous front campus bench . . . Those Valdosta belles. • Bottom row: Autumn leaves . . . And Spring Holidays . . . Seen sight-seeing . . . Just two little bunnies at heart.





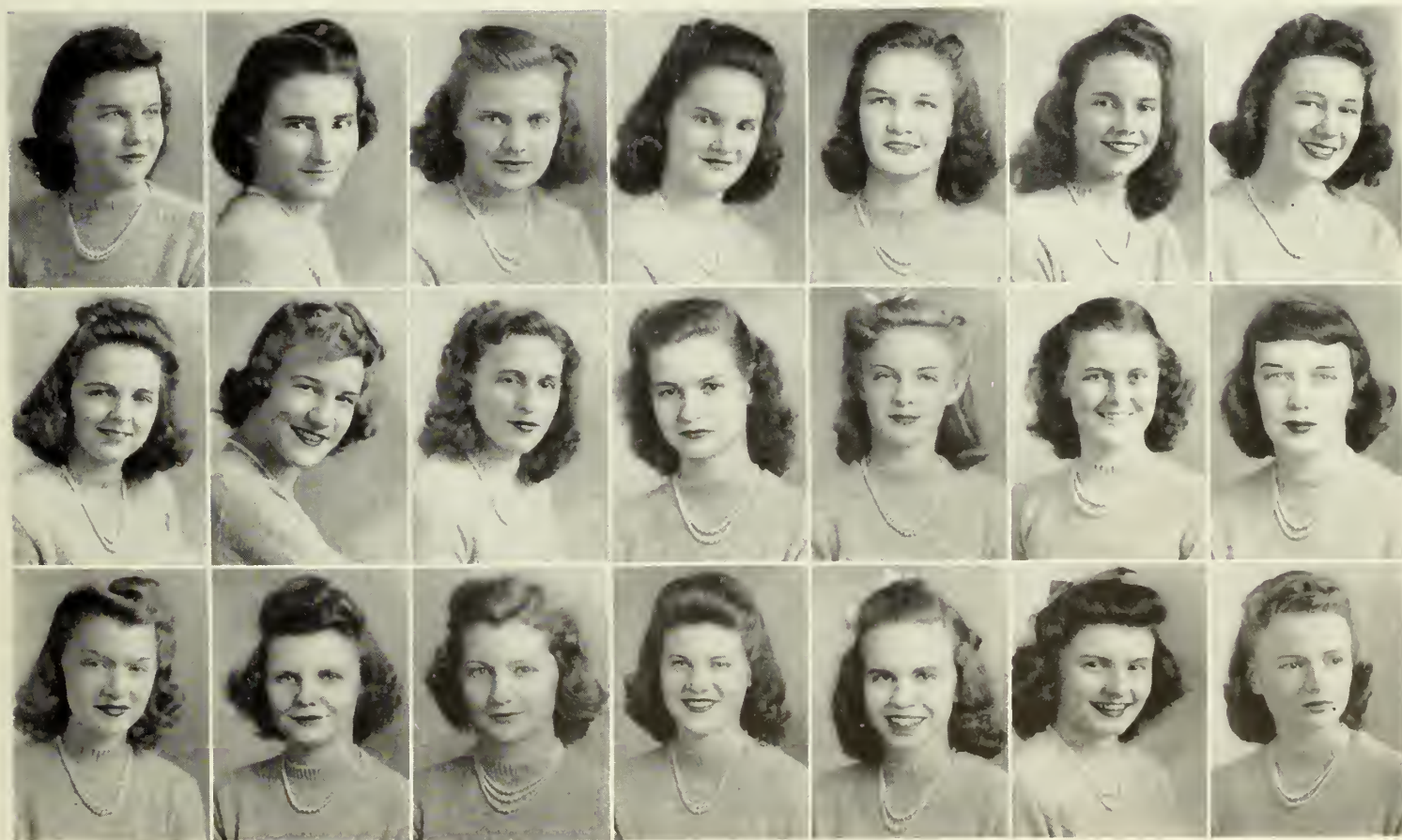
Top row, left to right: Allen, A., Allen, C., Allen, H., Bacon, Bader, Barbre, Barfield. • Second row: Barrett, Becton, Bell, B., Bell, F., Black, Blakely, Bowen. • Bottom row: Boyette, Brantley, Braziel, Brown, Bruce, Bruns, Burford.

ANITA ALLEN . . . . .	Waycross, Georgia
CHARLOTTE ALLEN . . . . .	Valdosta, Georgia
HELEN ALLEN . . . . .	Lenox, Georgia
ANNE BACON . . . . .	Doerun, Georgia
DORIT BADER . . . . .	New York City, New York
PEGGY BARBRE . . . . .	Albany, Georgia
KATIE BESS BARFIELD . . . . .	Hahira, Georgia
HONORA BARRETT . . . . .	Albany, Georgia
WILLIE PEARL BECTON . . . . .	Valdosta, Georgia
BARBARA BELL . . . . .	Colquitt, Georgia
FRANCES BELL . . . . .	Norfolk, Nebraska
RUTH BLACK . . . . .	Valdosta, Georgia
BEATRICE BLAKELY . . . . .	Pittsburgh, Pennsylvania
SARAH BOWEN . . . . .	Tifton, Georgia
KATIE BOYETTE . . . . .	Nashville, Georgia
MARGARET BRANTLEY . . . . .	Wrightsville, Georgia
MILDRED BRAZIEL . . . . .	Rochelle, Georgia
SARAH BROWN . . . . .	Athens, Georgia
DOROTHY BRUCE . . . . .	Greensboro, Georgia
PEGGY BRUNS . . . . .	Clearwater, Florida
WILMA BURFORD . . . . .	McRae, Georgia

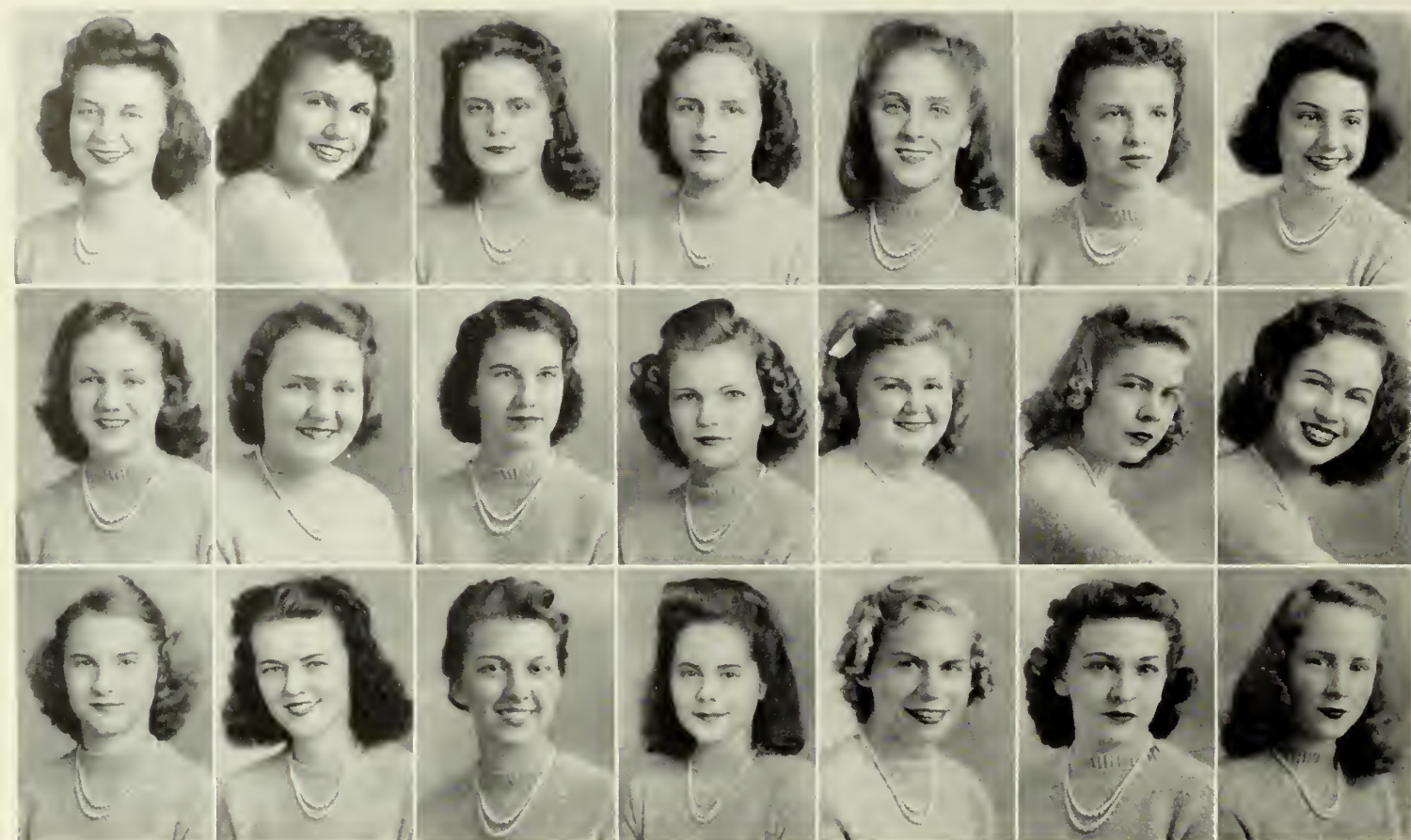


# FRESHMEN

CAROLYN BURKHALTER . . . . .	Claxton, Georgia
DOROTHY CARTER . . . . .	Jasper, Florida
MARY ESTHER CARTER . . . . .	Valdosta, Georgia
ALPHIA MAE CASTLEBERRY . . . . .	Richland, Georgia
DOROTHY CLEMENTS . . . . .	Plains, Georgia
FRANCES COFER . . . . .	St. Simons, Georgia
BETTY COLLINS . . . . .	Cairo, Georgia
MARGARET COOK . . . . .	Dawson, Georgia
BETTI CORN . . . . .	Valdosta, Georgia
FRANCES CRANE . . . . .	Dixie, Georgia
MARY CREECH . . . . .	Moultrie, Georgia
ELIZABETH CULBRETH . . . . .	Valdosta, Georgia
HELEN DAMPIER . . . . .	Adel, Georgia
MARIA DAVIS . . . . .	Wilmington, North Carolina
JESSIE ANNE DRAKE . . . . .	Colquitt, Georgia
BETTY DUKES . . . . .	Pembroke, Georgia
REAUNETTE EVERETTE . . . . .	Waycross, Georgia
MARY LILLIAN FARMER . . . . .	Hazlehurst, Georgia
JUDY FLYNT . . . . .	College Park, Georgia
PATSY FORRESTER . . . . .	Donalsonville, Georgia
CATHERINE GARBUTT . . . . .	Jesup, Georgia



Top row, left to right: Burkhalter, Carter, D., Carter, M., Castleberry, Clements, Cofer, Collins. • Second row: Cook, Corn, Crane, Creech, Culbreth, Dampier, Davis. • Bottom row: Drake, Dukes, Everette, Farmer, Flynt, Forrester, Garbutt.

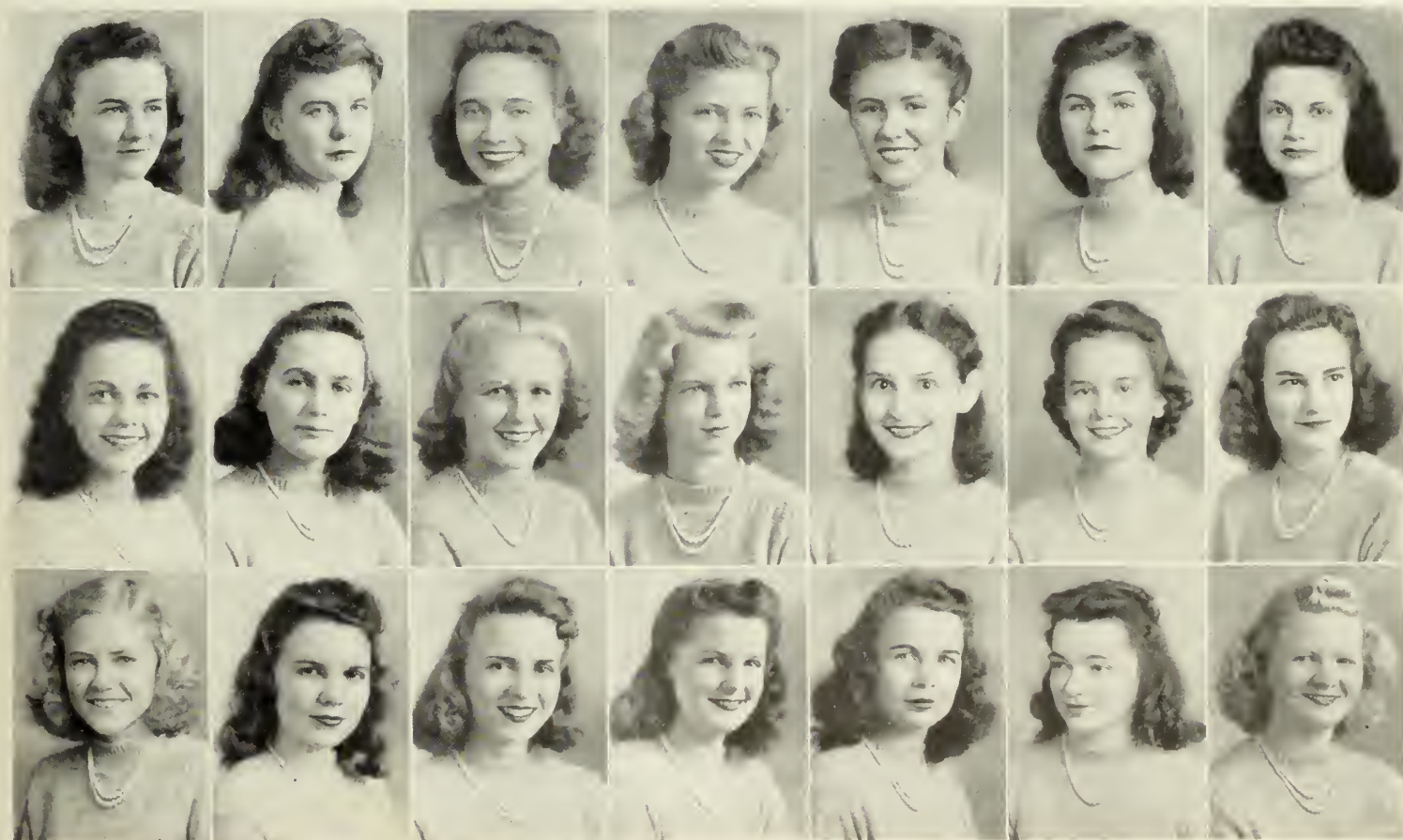


Top row, left to right: Gatewood, Gillis, Glenn, Godwin, Goodson, Goodwin, Googe. • Second row: Gray, Griffin, M., Griffin, W., Hall, Hamilton, Harris, Hickson. • Bottom row: Hinton, Howard, Hunter, Jones Jordan, A., Jordan, M., Kay.

JANE GATEWOOD . . . . .	Richland, Georgia
EVELYN GILLIS . . . . .	Waycross, Georgia
DOROTHY GLENN . . . . .	Pelham, Georgia
HELEN GODWIN . . . . .	Lenox, Georgia
ELSIE GOODSON . . . . .	Valdosta, Georgia
MARTHA GOODWIN . . . . .	McRae, Georgia
FRANCES GOOGE . . . . .	Savannah, Georgia
ANNE GRAY . . . . .	Butler, Georgia
MARY SUE GRIFFIN . . . . .	Valdosta, Georgia
WYNELLE GRIFFIN . . . . .	Attapulgus, Georgia
KATHLEEN HALL . . . . .	Swainsboro, Georgia
ERNESTINE HAMILTON . . . . .	Wrightsville, Georgia
NINA HARRIS . . . . .	Waycross, Georgia
CATHERINE HICKSON . . . . .	Perry, Georgia
DOROTHY HINTON . . . . .	Reynolds, Georgia
DEAN HOWARD . . . . .	Middleburg, Florida
CHLOE HUNTER . . . . .	Lake Butler, Florida
SALLY JONES . . . . .	Waycross, Georgia
ANNE JORDAN . . . . .	Monticello, Georgia
MARY JEAN JORDAN . . . . .	Waycross, Georgia
BETTY KAY . . . . .	Albany, Georgia

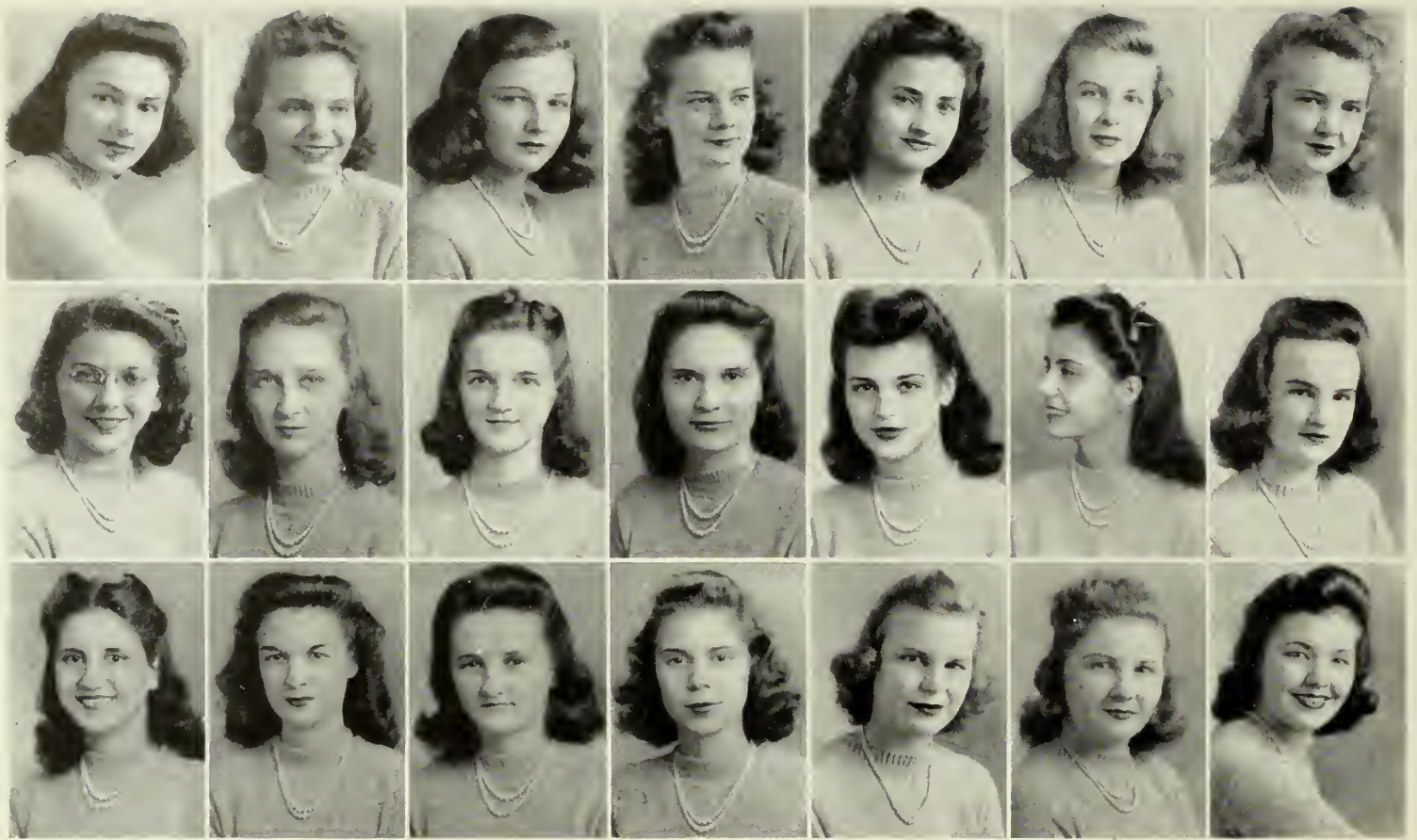
# FRESHMEN

ANNE KIMBROUGH . . . . .	Kimbrough, Georgia
DORIS KING . . . . .	Cairo, Georgia
CONSTANCE KINSLER . . . . .	Arlington, Georgia
MARTHA LINDSEY . . . . .	Thomaston, Georgia
ELSIE LONG . . . . .	St. Marys, Georgia
BETTY MAJETTE . . . . .	Jesup, Georgia
CAROLYN MANN . . . . .	Milner, Georgia
AVICE RHEA MARTIN . . . . .	Valdosta, Georgia
JOAN MARTIN . . . . .	Waycross, Georgia
ANNETTE MASSEY . . . . .	Bronwood, Georgia
JEAN MATHER . . . . .	Hollywood, Florida
SARA ALLEN MATHEWS . . . . .	Buena Vista, Georgia
BETTY MATHIS . . . . .	Valdosta, Georgia
DOROTHY McCOY . . . . .	Quitman, Georgia
MARIE McDONALD . . . . .	Valdosta, Georgia
SYBIL McDUGALD . . . . .	Claxton, Georgia
JOSEPHINE McNEILL . . . . .	Archer, Florida
BETSY McPHAUL . . . . .	Doerun, Georgia
ELIA MEADORS . . . . .	Albany, Georgia
MARY MELVIN . . . . .	Leary, Georgia
NORMA LEE MOORE . . . . .	Valdosta, Georgia



Top row, left to right: Kimbrough, King, Kinsler, Lindsey, Long, Majette, Mann. • Second row: Martin, A. R., Martin, J., Massey, Mather, Mathews, Mathis, McCoy. • Bottom row: McDonald, McDougald, McNeill, McPhaul, Meadors, Melvin, Moore.





Top row, left to right: Moraitakis, Oesterreicher, Pattillo, Patterson, Peters, Plowden, Powell, L. • Second row: Powell, M., Power, Reed, Rehberg, Reid, Rogers, Stacey. • Bottom row: Stemson, Stone, Swain, Tarver, Taylor, Thomason, Torbert.

CALIOPE MORAITAKIS . . . . .	Cordele, Georgia
JEAN OESTERREICHER . . . . .	Quitman, Georgia
VIRGINIA PATTILLO . . . . .	Darien, Georgia
MARY PATTERSON . . . . .	Lumpkin, Georgia
BETTY PETERS . . . . .	Moultrie, Georgia
ELOISE PLOWDEN . . . . .	Valdosta, Georgia
LAURENE POWELL . . . . .	Bainbridge, Georgia
MARJORIE POWELL . . . . .	Valdosta, Georgia
JUDY POWER . . . . .	Vienna, Georgia
EUGENIA REED . . . . .	Cedar Springs, Georgia
MACY REHBERG . . . . .	Cairo, Georgia
BETTY REID . . . . .	Greensboro, Georgia
JANE ROGERS . . . . .	Quitman, Georgia
BETTY STACEY . . . . .	Flemington, Georgia
MARGUERITE STEMSON . . . . .	St. George, Georgia
MARGARET STONE . . . . .	Doerun, Georgia
MARY LAURA SWAIN . . . . .	Pinehurst, Georgia
HENRIETTA TARVER . . . . .	Albany, Georgia
VIRGINIA TAYLOR . . . . .	Greensboro, Georgia
SARA THOMASON . . . . .	Canton, Georgia
VIRGINIA TORBERT . . . . .	Greensboro, Georgia

# FRESHMEN



BOBBIE TURNER . . . . .	Millen, Georgia
NELLE WADE . . . . .	Ocala, Florida
EVELYN WEINERT . . . . .	Savannah, Georgia
DOROTHY WHITE . . . . .	Valdosta, Georgia
VIRGINIA WHITAKER . . . . .	Valdosta, Georgia
JEAN WHITTENDALE . . . . .	Norman Park, Georgia
DOROTHY WIGHTMAN . . . . .	Albany, Georgia
MARY WILKIE . . . . .	Griffin, Georgia
ANABEL WILKINSON . . . . .	Valdosta, Georgia
BEATRICE WILLIAMS . . . . .	Jesup, Georgia
MARY FRANCES WILLIAMS . . . . .	Valdosta, Georgia
SELINA WILLIAMS . . . . .	Hollywood, Florida
MARY ELLEN WILSON . . . . .	Hahira, Georgia
MARY SUE WILSON . . . . .	Valdosta, Georgia
MARY BETH WOODWARD . . . . .	Valdosta, Georgia
GRACE YOUNCE . . . . .	Jesup, Georgia
DOROTHY ZIPPERER . . . . .	Lake Park, Georgia



Top row, left to right: Turner, Wade, Weinert, White, Whitaker, Whittendale. • Second row: Wightman, Wilkie, Wilkinson, Williams, B., Williams, M. F., Williams, S. • Bottom row: Wilson, M. E., Wilson, M. S., Woodward, Younce, Zipperer.

"PRAISES NEVER FAIL—"

when a girl is awarded a G. S. W. C. emblem, which is recognition of her outstanding extra-curricular achievements on campus. Clubs and publications are the stimuli from which these attainments grow. Each girl can work in pursuit of her own interest, whether it be making chemicals bubble in a test tube, exploring old annals in history and analysis of modern events, splashing brilliant colors from palette to canvas, bringing higher mathematics down to earth, emoting in the Cornell manner, or writing furiously with Kilgallen aspirations. However, the girls do not spend all their time in such erudite activities. They can date, dance, and formalize with all the sophistication and savoir faire of a New York debutante!

G.S.W.C.

Activities



Fun for all at the Log Cabin



Holding Court—Wilkie, Davis, Martin, Williams, Bundrick, Sirmans, Hendrick, and Waters

A privilege as well as a responsibility of each student is the Student Government Association of which every girl on campus is a member. Student Government is another way of saying that the administration of G. S. W. C. wants its students to govern themselves "with faculty aid and not with faculty interference." Many years of successful work have helped make that trust a reality.

Realizing that some students fall down from time to time in their responsibility to their classmates and themselves, a student court functions to handle disciplinary problems and to guide the organization throughout the year. Student Government is as democratic as the students who compose it; besides the student court, there is the Student-Faculty Honor Council which determines cases concerning a student's honor; the Executive Council, the highest body to which any student may appeal, is the final judge in extreme cases.

Through capable speakers at the monthly meetings, this year's theme has been presented in many different ways. The thought is this, student government is not rules, robed officials, and court, but rather, it is of the student, by the student, and for the student, and is effective in so much as each student speaks and lives her best.

S. G. A. continued to sponsor a "country store" in Converse Hall and a Coca-Cola machine in the Senior Hall this year. The campus Christmas tree enjoyed during the pre-holiday season was lighted by the S. G. A. Student elections were held by officials of the organization, and a Standards Committee which was created during the winter quarter reminded students, through attractive posters, of the dignity of neatness. Delegates were sent to the S. G. A. convention at Randolph-Macon in Lynchburg, Va. From this experience came inspiration and suggestions for improvements on our own campus.

Our student government is not a government of force but a way of life and to that end will it continue to grow.



*Democracy in Education As Expressed Through The*

S T U D E N T G O V E R N M E N T

Officers of S. G. A.: Maxwell Williams, president; Sara Catherine Martin, vice-president; Mary Bundrick, secretary-treasurer; Gwendolyn Johnson, recorder of points.

Dormitory Monitors: Converse—Constance Kinsler, Jean Mather, Alpha Mae Castleberry, Betty Peters; Ashley—House president Sara Petty, Barbara Dekle, Mary Carol Allen, Mary Grant; Senior Hall—Jean Thompson, Marie Ambos.



Martin, Williams, and Bundrick

Left: Freshman studies S. G. A. handbook. • Right: Virginia Power, Student-Faculty Honor Council Representative.





President Scott

In meeting the spiritual needs on the campus the Young Women's Christian Association finds plenty of work to do. Sixteen girls comprise the Cabinet, directing the many affairs of this organization of which every person on campus is a member. They meet each week to plan and polish their various programs.

Morning Watch, an inspirational devotion, is given each morning for those who care to attend. Vespers on Sunday and Thursday nights are religious programs. These programs are given by the students with guest speakers on occasions. Special programs at Easter, Thanksgiving, and Christmas shed a new meaning on old themes.

The Recognition Service for the new members of the "Y," the Installation Service for "Y" officers, and the Fire-Lighting Service in which the club presidents participate, are all sponsored by the "Y." The Hanging of the Greens by the Seniors at Christmas, Big-Little Sister throughout



Rockwell, Mosely, and Thompson



"Y" Cabinet

# Brought To The Campus Through Y. W. C. A.

news sheet, the **Y-Angle**. The Deputation team carries the spirit of the "Y" into nearby towns and furnishes a training ground for the potential speakers of tomorrow. As a part of the training program, Freshman and Sophomore Councils are organized and in these groups emphasis is placed on some phase of character building.

For one week each year, the "Y" sponsors a definite program of religious emphasis called "Religion In Life Week." The pre-school retreat to plan for the incoming freshmen gives opportunity for the shaping of the final plans of the year. Sharing its time, talents, and cabinet with the Student Government Association, the Y. W. C. A. plans entertainment for Freshman Week and aids in various other ways during that time.

Through its many activities, the Y. W. C. A. definitely carries its theme—"An Invitation To Live"—to every student on the campus.



Annual Firelighting Service



Vesper Choir

Members of the Cabinet are: Kathryn Scott, president; June Moseley, vice-president; Mary Jean Rockwell, secretary; Jean Thompson, treasurer; Julia Frances McCorkle, assistant vice-president; Nancy Cole and Marolyn Rowland, morning watch committee; Frances Street, deputation; Gwen Johnson, Mary Carol Allen, publicity; Alice Meadors, entertainment; Ava Collins, Odelia King and Nell Patten, music; Laura Mae Youngblood, Alpha Mae Castleberry, room chairman.



In a corner of the work room—Hiers, Smith, Barnes, Roberts



Turnbull snaps Franklin and Peebles

With a deadline of less than one half of the usual time the **1942 Pine Cone** has had a frenzied winter. Because of the increasing difficulty of obtaining metals needed in the publication of the book, the publishers warned that delay was not only dangerous but also expensive.

Actual work was begun a week after the fall quarter began, when appointments for pictures were made. By mid December much of the copy had been mailed to the publisher. In early January the book was completed and the final copy was mailed.

Following the example set by the 1940 and 1941 **Pine Cones**, the book is again a nine by twelve engraved one. As this type book is still more or less a novelty, mistakes are natural. Attempts have been made to discard unimportant, uninteresting features of the preceding books and to incorporate their more successful ones.

Many of the newer ideas for the book were garnered at the National Scholastic Press Association which met in St. Louis, Missouri. The editor, Alice Wisenbaker, accompanied by business manager Evelyn O'Neal, Jacqueline Smith and Betty Barnes, spent three days absorbing yearbook ideas and information at the feet of the learned. Since the book had not gotten well underway much of the profits of their association with yearbook intelligentsia was incorporated in the **1942 Pine Cone**.



Wisenbaker plans lay-out

*Typical Col*  
**THE 1942**



Roberts, Williams, Fairchild, Brown, Rogers, Forrester



In seeking to picture the college life in the troubled times of 1942, both before and after the United States entered the World War II, the **Pine Cone** finds G. S. W. C. student life remains the same. This book has attempted to review that campus life, the usual hum drum and ordinary events of a girl's life as well as the special events of campus wide interest.

Throughout the entire planning and building of the book, the editors have relied on Messrs. Johnny Long and Walter Dargan, publisher's representatives, for expert technical advice.

Literary Staff: Editor, Alice Wisenbaker; assistant editors, Minnie Roberts, Betty Barnes; literary editor, Jacqueline Smith; assistant literary editor, Jane Ellen Smith; photograph editor, Eleanor Turnbull; assistant photograph editor, Leonora Peebles, the Camera Club; activities editor, Betty Franklin; art editors, Emily McCall, Julia Bess Smith.

Make-Up Staff: May Mather, Frances Kennedy, Jean Saunders.

Typists: Louie Mae Krieger, Doris Hiers.

Business Staff: Business manager, Evalyn O'Neal; advertising manager, Carolyn Roberts; advertising staff, Sara Allen, Ruth Black, Sara Brown, Edyth Cannady, Elizabeth Dunlap, Eunice Fairchild, Patsy Forrester, Dorothy Glenn, Elsie Goodson, Frances Googe, Alice Gordon, Jean Osterreicher, Jane Rogers, Evelyn Saunders, Ruth Taylor, Selina Williams.



O'Neal debates the Budget

*Life Reviewed In*

# PINE CONE



Big Chief Kennedy

Edited by a junior, Frances Kennedy, for the second time in the history of the school, the **Campus Canopy**, weekly student publication, gave G. S. W. C. girls news and food for thought on pertinent problems. The editorial staff was composed of five members of



Sessoms vs. Budget

Flournoy, Mather, Jane Smith



Saunders and Jackie Smith



# CAMPUS CANOPY

the Junior Class, two sophomores, and a freshman, the seniors being conspicuous by their absence. Ruth Sessoms, a senior with an eagle eye on the purse strings she controlled, was business manager of the **Canopy**.

Having rated second-class in 1940-41, the **Canopy** set its cap for a higher honor by modernizing the make-up with an occasional picture page, dropped banner, and magazine-like appearance. Among the college reforms campaigned for through editorial columns was the abolition of the stagger system, which was granted in the early fall.

In November, Editor Kennedy and Associate Editor Jacqueline Smith attended the national convention of Associated Collegiate Press in St. Louis, Missouri.

Members of the **Campus Canopy** staff are: Frances Kennedy, editor; Ruth Sessoms, business manager; Jacqueline Smith, associate editor; Jean Saunders, managing editor; Harriet Flournoy, news editor; Jane Ellen Smith, feature editor; Mary Frances Donaldson, sports editor; Pat Forrester, headline editor; May Mather, circulation manager; Sara Catherine Martin, Marie Brice, columnists; Alice Gordon, advertising manager.

On the feature staff are: Ruth Black, Betty Jane Dorough, Catherine Garbutt, Doris Hiers, Ernestine Hopson, Doris King, Thelma Sirmans, and Betty Wallace. Reporters are: Barbara Ricks, Martha Lindsey, Mary Patterson, Virginia Whitaker, and Emmie Carter. Members of the business staff are: Dorothy Carter, Edythe Cannady, and Frances Googe.

Carter, and Gordon study the Canopy



Dorough works while Hopson "gabs"—



Newberry and Mather read the headlines





Crittenden



Peeples, Smith, and Mallory



Pledges don traditional black stockings

## Rising Young Actresses Gather In The SOCK AND BUSKIN

The Sock and Buskin Club, campus dramatic organization, has been unusually fortunate in having two such actresses as President Rachel Crittenden and ex-president Dorothy Wilkes for leading ladies in its major productions of the last three years. These two spent the summer vacation playing summer stock in New York state and came back to the campus to be good examples of tireless martyrs to their art.

The Sock and Buskin, under the direction of Miss Louise Sawyer, began with an early start by presenting the eerie, three-act "Ladies in Retirement" in November.

Besides working up full length productions with finer technique than anything the group has ever undertaken, members found time to offer "Why the Chimes Rang," traditional Christmas play, before Yuletide holidays, to stage the Senior play on the night of the Alumnae Association banquet, and to present a Vesper program.

Officers of the Sock and Buskin Club are: Rachel Crittenden, president; Jane Ellen Smith, vice-president; Leonora Peeples, secretary-treasurer; Mildred Mallory, historian; Miss Louise Sawyer, Miss Anna Richter, faculty advisers.

Members of the club are: E. Allen, M. C. Allen, Bader, Barnes, Black, Blackburn, Crittenden, Davis, Futch, Hendrick, Hopson, Kay, McCorkle, Majette, Mallory, Martin, Mather, Meschke, Miller, Nelson, Newton, Parks, Peeples, Sirmans, J. E. Smith, Threatte, Walker, Wilkes, Williams, B. Whitaker, V. Whitaker, Woodward, and Young.

Annual Play—Ladies in Retirement



*[Handwritten text in red ink, mostly illegible due to blurring and angle.]*

*Artists Of Campus Gather In The*

# FINE ARTS CLUB

Seeking to create an interest in art and to enrich the life of every G. S. W. C. girl by giving art its place in college affairs, this club brings excellent modern art exhibits to our campus. The club also presents to G. S. W. C. and to all of Valdosta their own masterpieces.

Christmas Bazaar offers gifts for sale



McCall, Johnson devise new decorations



Smith adds a few finishing touches

Surrealistic brainstorm, in the form of posters, products of the Fine Arts girls, colorfully and originally tell of parties, meetings, books, clubs and what have you, from September to June.

The friendly cooperation of all the members makes for the success of the club. The girls help each other even to the extent of showing those members who cannot draw a straight line some of the high points in art, for it is not necessary to be an artist to be a member of this cultural organization.

The girls chalk up points for themselves by doing more than their daily good deed, for they bring to the campus each year a rental art collection, on a non-profit basis, through which beautifully framed reproductions of masterpieces and modern paintings may be secured for room or office use.

The highlight of the year's activities is the annual Christmas Bazaar in which the girls sell various gifts and to which they give their artistic best.

Officers: Julia Bess Smith, president; Gwendolyn Johnson, vice-president; Emily McCall, secretary; Mr. Clifton White, faculty adviser 1941; Miss Ruth Carpenter, faculty 1942.

Members of the club are: Barnes, Carter, Davis, H., Davis, M., Hunt, Johnson, McCall, McCorkle, McNeill, Nelson, Roberts, Saunders, E., Saunders, J., Smith, J. E., Smith, J. B., Taylor, Whitaker, B.

*They Shall Have Music  
Wherever They Go*

# GLEE CLUB

Varsity Glee Club and  
Serenaders



Freshman  
Glee Club



In an effort to build a better-trained Glee Club and to participate in more campus affairs, Marie Motter, dynamic director of the club, organized in the fall G. S. W. C.'s first Varsity Glee Club. Under the leadership of Clifton H. White, newcomer to the faculty, a promising group of voices was molded into the Freshman Glee Club.

With the aid of the two faculty advisers a Christmas program was presented at a Valdosta church, an assembly program was arranged, and music furnished for May Day, Christmas Festival, and Graduation, traditionally the three most important programs each year. In the spring a concert was presented.

The Serenaders, composed of a small group from the Varsity Glee Club, appeared on programs with the club and frequently performed on civic club programs in Valdosta and nearby towns. Serenaders

are: Jinks, Harris, Futch, Jones, Smith, Taylor, Loosier and Ashley.

Varsity Glee Club Officers: Mildred Harris, president; June Mosely, secretary-treasurer; Ava Collins, Lougenia Davis, librarian; Jacqueline Jones, business manager; Lois Christian, accompanist.

Club Members are: Ashley, P., Carter, Cook, Davis, Dekle, Futch, Harris, Jinks, J. Jones, Lahood, Loosier, Meschke, Morris, Mosely, Murray, Newton, Norman, Rowland, Sirmans, C. Smith, J. Smith, Taylor, Threatte.

Freshman Glee Club Members: Allen, Bacon, Becton, Bell, Blakely, Brantley, Brown, Burford, Carter, Castleberry, Davis, Dukes, Forrester, Garbutt, Godwin, Pattillo, Gray, Hall, Hamilton, Hunter, Kimbrough, King, Lindsay, McNeill, Mann, Mather, Melvin, Mescure, Peters, Plowden, Powell, Reid, Swain, Tolbert, Wade, Woodward, Zipperer.

*Music As Work And Play for The*

# PHILHARMONIC CLUB

Interested in creating campus-wide appreciation of good music, the Philharmonic Club, under the leadership of petite, talented Eleanor Cook, has emphasized this phase of liberal arts by bringing concerts to campus and by participating in student programs.

In April, Miss Margaret Pardee, a student at the Julliard School of Music, was presented in a violin recital. Sponsored by the Philharmonic, the University of Florida Glee Club appeared in the spring.

Seniors who are members of the club were presented in graduation recitals. Early in the year the group arranged an assembly program. Members are active in Christmas Festival, May Day Festival, and National Music Week programs.

Highlight of the year for club members was a trip to Jacksonville to hear a symphony orchestra. Since such orchestras appear only in the larger cities, these trips provide unusual opportunities for most of the members.

Meetings of the club are musical programs presented each month by members of the group. Once a year the meeting is open to all students. Membership is limited to twenty music majors and minors.

Officers of the club are: Eleanor Cook, president; Corinne Smith, secretary-treasurer; Miss Gladys Warren, faculty adviser.

Members are: Betty Barnes, Frances Bell, Ava Collins, Eleanor Cook, Louise Futch, Mildred Harris, Ruth Jinks, Jacquelyn Jones, Marguerite Lahood, Frances Loosier, Lorean Nicholson, Estelle Norman, Nell Patten, Virginia Pattillo, Annie Lou Rice, Ann Smith, Corinne Smith, Jacqueline Smith, Ruth Taylor, and Mary Sue Wilson.



C. Smith and Cook

Entire Club Enjoys Carnegie Music Set





Members add the finishing touches to the afghan

*World Friendship Is Stimulated  
In The*  
**INTERNATIONAL RELATIONS  
CLUB**

The year of America's entry into the Second World War gave members of the International Relations Club a stellar opportunity for studying the effects of war and peace. Responsible for the creation of interest in international affairs on campus, club members found it an easy task in 1941-42.

I. R. C., which was organized in 1928 under the sponsorship of the Carnegie Endowment for International Peace, started out in the fall by making an afghan for Britain and sponsoring a dance for the benefit of the British War Relief. It did its share for the American war needs after Christmas, as well as sewing regularly for the Valdosta Branch of the B. W. R. Society.

An I. R. C. shelf in the library provides books and pamphlets on current national and international issues for student use.

The club, led by capable, ever-busy Ruth Sessoms, invite foreign exchange students for membership. This year Dorit Bader, 26 Warick, Earls Court, SW 5, London, England, has worked with I. R. C. in the quest for a further understanding of world friendship.

Club Officers are: Ruth Sessoms, president; Willard Parrish, vice-president; Elizabeth Fender, secretary; Betty Franklin, treasurer; Helen Davis, member-at-large; Miss Mildred Price, faculty adviser.

Members: Bader, Emmy Carter, Pauline Carter, Cooper, Davis, Fender, Fincher, Franklin, Garrison, Morgan, Parrish, Scott, Sessoms, Tarte and Wisenbaker



Sessoms knits for Britain

Officers—Davis, Parrish, Franklin and Fender

*We Figure And Figure In The*

# MATH SCIENCE CLUB



The father of "Little Willie," campus lucky charm, and the creator of the 1942 Pine Cone's pictures is the Math-Science Club. To give its members a chance to follow the scientific projects in which they are most interested the club is divided into math, biology, and chemistry divisions.

The chemistry division, now better known perhaps as the Camera Club, worked with the Pine Cone staff in making photographs for the yearbook. The club members do their own developing and enlarging.

Two years ago, to show the lighter side of mathematics, "Little Willie" was invented by members of the math division as a medium through which math's application to living could be explained. The lucky "Willies" are still sold by the club at exam time.

Stressing individual projects this year, the biology division has tried to create a lasting interest in science for each biology major and minor in the club. The group also cares for a botanical garden on the campus.

Programs feature a sharing of the work of the three divisions. Eleanor Turnbull, president of the club was doing work at the University during winter quarter, and vice-president, Mary E. Rogers, led the club during her absence. Doris Hiers is secretary-treasurer; division chairmen are: Hallie Hinshaw, math; Leonora Peeples, chemistry; Marian Posey, biology.

Club members are: E. Allen, M. C. Allen, S. Allen, Ambos, Ashley, Brown, Burke, Carter, Coleman, E. Cook, F. Cook, Dorough, Duffey, Edwards, Fairchild, Flournoy, Gay, Hiers, Jinks, Lyon, Mather, Miller, Ogburn, O'Neal, Peeples, Posey, Roberts, Rogers, Saunders, Sirmans, Taylor, Tharpe, Turnbull, Vinson, Woodard.



Turnbull's rendezvous with bugs



Rogers and Hiers



Peeples



Hinshaw



Posey



Gillis and Parker



English Club entertains Author Morgan

*Literature Is Featured At The*

ENGLISH CLUB

Through varied activities, which have provided entertainment and intellectual inspiration for the entire campus, the English Club has definitely succeeded in creating a lively interest in individual thinking, writing, and speaking. Those eligible for membership are senior college students who are majoring in English and who maintain a high scholastic standing. To stimulate an interest in literature as one aspect of the liberal arts is the purpose of this organization.

Cooperating with the faculty-student committee on chapel programs, the English Club presented Vereen Bell, noted Georgia author of *Swamp Water*, which is one of the outstanding novels of the year. A lecture by the contemporary English novelist and lecturer, Charles Morgan, was sponsored by this club. Student interest in Book Week and good reading was stimulated by an original window display arranged by the members of this group.

Officers of the club are: Mary Jean Rockwell, president; Marnell Parker, vice-president; Elizabeth Gillis, secretary-treasurer; Mrs. John B. Odum and Dr. Harold Gulliver, faculty advisers.

Members of the club are: Annette Blackburn, Mary Bundrick, Elise Gannon, Gwendolyn Hendrick, Louie Mae Krieger, Millred Mallory, May Mather, Jean Mobley, Evalyn O'Neal.



President Rockwell greets Author Bell

*French Culture Is Studied In The*  
**FRENCH CLUB**



Treanor confers with  
 Allen and Blackburn

The cream of foreign-language intelligentsia on the campus compose the roster of the French Club. The privilege of membership is granted to those students who have chosen French as their major or minor and who maintain a scholastic average of "B" or above.

Club programs reflect the organization's name by centering around the customs, menus, traditions, music, literature, art, and conditions of the country of France. Exchange programs with the Emory Junior College French Club and guest speakers add variety to the programs of the year. Through skits, which are spoken entirely in French, presented on chapel programs, the club members share with the student body their knowledge of the French language and traditions.

The easy flow of "oui's" and "mademoiselles" from the lips of the French Club members is the envy of every student who has ever puzzled over the pronunciations of phonetics, and the aim of every French class which wonders for at least one hour each day how the club members "do it." With France and her people now crushed beneath the foot of invading forces, the French Club continues to bring to our campus the beauties of the arts and language and traditions of French culture.

Officers of the French Club are: Elise Gannon, president; Mary Bundrick, vice-president; Odelia King, secretary-treasurer; Dr. Sapelo Treanor, faculty adviser.

Members: Mary Carol Allen, Annette Blackburn, Mary Bundrick, Eleanor Cook, Elise Gannon, Elizabeth Gillis, Odelia King, Mary Jean Rockwell.



President Gannon



King and Bundrick

*Orchids To The*

# SENIOR HONOR SOCIETY



Ambos prepares for a spot of "boning"

"To serve" is the motto of the Senior Honor Society of G. S. W. C. It is composed of a small group of girls whose academic standing during three years at G. S. W. C. is worthy of recognition.

The Cooperative Book Store was a project undertaken by the society in 1939 in an effort to provide text books for G. S. W. C. students at the lowest possible cost. It was continued by the group this year and extended to accommodate those studying in the music department by the sale of sheet music.

Finding that the turntable, a part of the Carnegie Music Set in the House in the Woods, was in need of repair, the club had it adjusted. Always on the alert for some service the organization might render to the campus, the girls were ushers at Artist Series Programs and were hostesses at a formal dance to which the entire student body was invited. Above all, these girls are leaders in the effort to encourage high standards of scholarship on the campus.

Officers of the Senior Honor Society are: Marie Ambos, president; Eleanor Cook, secretary; Marnell Parker, treasurer; Dr. J. A. Durrenberger, faculty adviser.

Members of the club are: Marie Ambos, Eleanor Cook, Louise Edwards, Marnelle Parker, Mary Jean Rockwell, Mary E. Rogers, Kathryn Scott, and Maxwell Williams.



Cook takes time out



Edwards and Rogers keep Book Store

*The Tops In Junior College—Scholastically*

# FRESHMAN HONOR SOCIETY

Sister organization of the senior honor group is the Freshman Honor Society. Like the Senior Honor Society their aim is service and their membership restricted to superior students. Eligibility for membership implies an average of B for the first two quarters of work during the freshman year.

Program Chairman Jackie Rose, who is vice-president of the club, arranged the meetings around the theme, "Personality and Charm."

Top: Miller and Allen

Bottom: McLeod, Williams, and Rose



Youngblood

The club brought added charm to the log cabin, student activities house, by subscribing to magazines for the House in the Woods and by increasing the Carnegie music set library of recordings. Each month, under the auspices of the club, the student body chose records which the Honor Society purchased for the collection.

Brilliant, attractive Laura Mae Youngblood is president of the club. Other officers are: Jackie Rose, vice-president; Sadie Miller, secretary-treasurer; Mary Carol Allen, historian. Marie Ambos is student adviser and Mrs. Gertrude Gilmer Odum is faculty adviser.

Members are: Mary Carol Allen, Emmie Carter, Maye Copeland, Rose McLeod, Mary Mason, Sadie Miller, Jackie Rose, Jean Williams, Laura Mae Youngblood.

*Prospective Social Workers  
Gather In The*  
**SOCIOLOGY CLUB**

Even though the youngest in point of years, the Sociology Club is one of the largest clubs on campus, having a membership of 43. The club roster includes all students who are majoring or minoring in sociology or public welfare.

Gingham dogs and calico elephants were made by club members for the W. P. A. Nursery School in Valdosta at Christmas time. Other programs dealt with the various cultural and vocational aspects of the field of sociology.

During the fall quarter ten senior members of the club borrowed the station wagon of WGOV, local radio station, for a field trip to Atlanta. At the state capitol, the girls discovered numbers of possibilities for sociology graduates. Ideas gathered on the trip were shared with the student body at an assembly hour in a panel discussion.



Street finds Sociology a problem



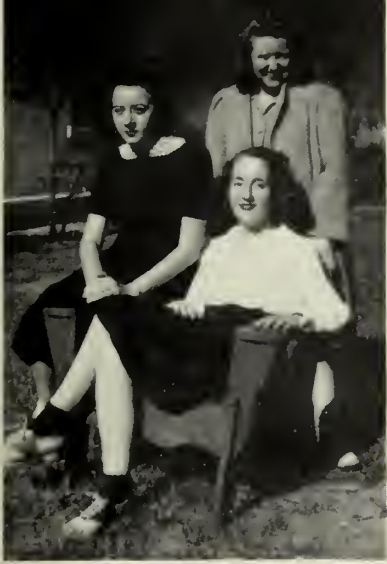
In January members of the club wrote, enacted, and directed two original skits. These were presented at assembly to show phases of the club's work.

A course in supervised recreation was offered to members interested in the study of child development and welfare. Games and suggestions from this course, presented by members enrolled, made up one of the club programs.

Officers of the Sociology Club are: Frances Street, president; Virginia Power, vice-president; Marnell Parker, secretary-treasurer.

Members are: Blackburn, Booth, Bowen, Callaham, Cole, Coleman, Dasher, Davis, Heald, Hendrick, Hiers, Hinshaw, Hood, Howell, Hunt, Joyner, Kennedy, Kirk, Krieger, Martin, Mason, McAndrews, Meadows, Morgan, Mosely, Newton, Ogburn, Parker, Posey, Power, Reed, Roberts, Rowland, Sawyer, Smith, J., Spivey, Street, Taylor, Thompson, Tillman, Upton, Williams, B., Williams, J.

Top: Power and Parker  
Bottom: Sociologists off to Atlanta



Sessoms, Sirmans and Harris



Wilkie and Waters



Kennedy, Street, Wisenbaker and Turnbull

## Campus Leaders Compose The

# PRESIDENTS' COUNCIL

This year marks the first birthday of the youngest organization on campus—the Presidents' Council. Organized to help maintain and strengthen an understanding between clubs, students, and faculty, this organization has set about to realize that purpose.

A committee from the Council handles the Student Attendance System, which was drawn up by the Council and approved by students and faculty. The Student Activities Committee functions to integrate the financial activities of the campus clubs. These committees act upon recommendations of the entire Council which serves as a clearing house for clubs and student problems.

The presidents and heads of every organization on campus are members of this organization, whose aim is service to every one on campus.

The organization is guided by a chairman selected each quarter, and faculty advisers are Miss Annie P. Hopper, Miss Leonora Ivey, Dr. J. A. Durrenberger, and Mr. J. R. Dusenbury.

Members are Marie Ambos, Eleanor Cook, Rachel Crittenden, Louise Edwards, Elise Gannon, Mildred Harris, Gwendolyn Hendrick, Leecy Goodloe Henry, Frances Kennedy, Mary Jean Rockwell, Kathryn Scott, Frances Street, Ruth Sessoms, Thelma Sirmans, Julia Bess Smith, Eleanor Turnbull, Anna Kay Waters, Mary Wilkie, Maxwell Williams, Alice Wisenbaker, and Laura Mae Youngblood.



Williams, Fall Quarter Chairman



Edwards, Winter Quarter Chairman



Cook





*Keen Competition Is Found In The*  
**S P O R T S C L U B**

PHI KAPPA  
 PHI LAMBDA

Left: Edwards  
 Below: Meadors, O'Neal, Mobley

Guided by the motto, "A sport for every girl and every girl in a sport," the G. S. W. C. Sports Club encourages everyone in the student body to maintain active membership in the organization. The club is under the leadership of versatile Louise Edwards and governed by a large council, which finds its activities so diversified that it is necessary to meet once a week.

When bids to the association's two teams were announced to new members at the annual Sports Club party in October, a wedding of Phi Lambda and Phi Kappa was staged to symbolize the unity of the club. Throughout the year intense rivalry was evident between the teams, both of them seeking the Honor Plaque awarded each year to the team winning the greatest number of points in match games.

Match games in basketball, fistball, American ball, volleyball, and softball are played by Kappa and Lambda teams. The Sports Club also sponsors tournaments in archery, golf, tennis and ping pong.

Progressive honors are awarded members for outstanding interest, ability, and sportsmanship during the year. The awards range from a letter to the engraving of the girl's name on the Sports Club Honor Plaque.

Officers of the Sports Club are: Louise Edwards, president; Evalyn O'Neal, vice-president; Alice Meadors, treasurer; Jean Mobley, secretary; Annette Blackburn, Kappa team captain; Marion Posey, Lambda team captain; Jananne Cowart, Kappa campus games manager; Odelia King, Lambda campus games manager; Frances Street, co-recreation manager; Mary Frances Donalson, sports, editor; Grace Lawson, outdoor activities manager. Managers for various match game teams sit on council, but are changed each quarter.

Faculty advisers are Miss Leonora Ivey, Miss Elizabeth McRee, and Miss Edith Lowry.



Right: Sports Council  
 Monthly Supper



CAMPUS ATHLETES  
IN

# Snaps

Top row, left to right: Golfing Champ —Dasher . . . Match-game in American Ball . . . Max serves a wicked ball. • Second row: One, two, three shoot! . . . "That refreshing cold dip." • Bottom row: Riding practice in the ring . . . Corn guards that ball!

Tense moment in Fistball

McRee, Ivey, and Lowry



# The Town Girls Gather In The VALDOSTA CLUB



Left: Franklin. • Below: Davis and Fender. • Bottom: Plowden, Garbutt, Franklin, Williams, O'Neal enjoy a club supper.



Prior to 1941 the Valdosta Club, of which all Valdosta High School graduates at G. S. W. C. are members, was the most loosely organized campus activity. This year the club adopted a constitution, and resolved to mean more to its members and the college than a luncheon club.

The chief purpose of the organization is to establish a better understanding between day students and dormitory girls. On a campus where it is not unusual to have half a dozen Valdosta girls on Presidents' Council, the group has proved that town girls can be outstanding in extra-curricular activities as well as in scholarship.

Valdosta Club meetings are held once a month at the House in the Woods. The outstanding social affair sponsored by the club is the party given each year in honor of members of the Senior Class of Valdosta High School.

Betty Franklin, vice-president of the club, capably led the organization, while the president, Leecy Goodloe Henry, did work at the University of Georgia. Other officers are Helen Davis, secretary, and Elizabeth Fender, treasurer.

Members of the club are: Allen, Ashley, Barnes, Becton, Black, Blackburn, Burke, L. Carter, M. E. Carter, Chambers, Coleman, E. Cook, F. Cook, Corn, Culbreth, Dale, Dasher, H. Davis, U. Davis, Fender, Franklin, Goodson, Garbutt, Griffin, Hinshaw, Hood, Howell, Hunt, Kirk, Krieger, Lahood, Lyon, McBane, McDonald, Martin, Mason, Mathis, Moore, Morris, O'Neal, Parks, Parrish, Peebles, Plowden, Posey, Powell, Reddick, Rice, Rockwell, Roberts, Saunders, Shannon, C. Smith, J. B. Smith, Taylor, Tillman, Vinson, Walker, B. Whitaker, P. Whitaker, V. Whitaker, White, B. Williams, M. F. Williams, Wilson, A. Wisenbaker, D. Wisenbaker, Woodward.



# Former Students Renew School Ties In The

# ALUMNAE ASSOCIATION

With the purpose of promoting the welfare of the college and its alumnae by increasing the interest of its members in the college and one another, the Alumnae Association is active throughout the school year.

In the Fall Quarter they play their part in welcoming the new students, and at the same time they may be found in all sections of the southern part of the state meeting with the Georgia Education Association, keeping alive with the alumnae their memories of the college. Again in the Spring, they are represented at the state conventions of teachers, are present in large numbers at Play Day-May Day, and join with us in our Commencement Week in June by gathering on the campus for their annual business meeting and banquet, on the evening of the Seniors' Play.

Of the approximately six thousand former students of the Georgia State Womens College, anyone who has completed one year of residence is eligible for associate membership in the Association, and either diploma or degree graduates are permitted to become members.

Membership during 1941-42 received a new spurt with the publication of a quarterly magazine, carrying personal items as well as articles of general interest.

In good times or in bad, the Association, speaking for thousands of G. S. W. C. girls, gives its complete support to the College, and welcomes every opportunity to be of help with campus activities and with individual students.

The officers and executive board for the year 1941-42 are: Mildred Turnbull Workman (Mrs. W. G.), president; Pinky Odum Howell (Mrs. Jack), vice-president; Caroline Parrish Thomas (Mrs. William), secretary; Marie Strong, treasurer; Ora Kate Wisenbaker, editor; Broun Hutchison Parmenter (Mrs. William) and Anne Turner Sineath (Mrs. John), members of the board.

The officers of the Valdosta Chapter are: President, Nettie Johnson; vice-president, Virginia Tuck Parrish (Mrs. J. C.); secretary, Hazel Durrenberger (Mrs. J. A.); treasurer, Lena Smith (Mrs. Frank).



Top: Workman. • Above: Johnson. • Left: Howell, Workman, and Thomas.

*Celebrities Come To G. S. W. C. With The*

# ARTIST SERIES



Top, left: Chekhov Theatre Players in Shakespeare's "Twelfth Night" Malvolio. • Above: Duo Pianists, Jacques Fray and Mario Braggiotti. • Below, left: The Graff Players in "Singing Earth." • Below, right: Charles Morgan.





*Old England Comes to Our Campus With*  
**CHRISTMAS FESTIVAL**

Climax of the first quarter at G. S. W. C. is the Christmas Festival, when Ashley Hall becomes a medieval manor and students are transformed into lords and ladies and peasants and Robin Hoods of Old England. The festival is held on the evening before going home for the holidays, and has become one of the loveliest traditions of the college.



Top, left: Ye Olde English Fool. • Top, right: St. George and the Dragon. • Above: The Knights of the Hobby Horse. • Left: The Soldier and the Shepherdess.

*Outstanding 's Out.*

MAY DAY



May Queen Martha Wilkes



Wilkes, Koblenzer, stars of May the Maiden  
The Three Seasons—Waters, Cunningham  
and Adams



Queen of the May, selected from the Senior Class by popular vote, presides over the May Festival. Finding a new and different theme each year is the brain-spraining problem of Miss Lenora Ivey and Miss Marie Motter, but the pageant is always a beautifully-staged triumph for those responsible. A gala occasion in which every student takes part, it is held each year in the amphitheatre and attracts scores of visitors to the campus.

Left, Top: May Queen and her court preside over festivities.  
• Bottom: Glee Club furnishes choral background.

*Fun For All On*

# PLAY DAY

Hundreds of girls from Senior Classes of South Georgia high schools are the guests of G. S. W. C. on the first Saturday in May each year. The girls divide into teams and compete in games and stunts throughout the morning.

Feature of the morning activities is the exciting softball game, in which President Frank R. Reade is invariably cynosure of all eyes. A horse show and exhibitions in swimming, archery, and golf always command a crowd of interested spectators.

A picnic lunch is spread in the grove on back campus. Early in the afternoon, before the May Festival, a dramatic program is presented by the speech department in the college auditorium. Other departments prepare colorful exhibits which are on display in West Hall.

An Aquatic Merry-go-round



Top: Meadors records points  
Below: Walking the straight and narrow

## "THEE WE HONOR"

superlative seniors, by having your pictures on the following pages for you are the eight girls which the student body thinks most nearly combine the qualities of leadership, personality, ability and scholarship that make an ideal senior. You were chosen by ballot of the student body from a hand-picked list of sixteen of the most representative seniors. To you, the student body has accorded one of the highest honors on the campus. You may gaze and be proud for it represents your standing among students after four years of college life. Undergraduates may gaze and aspire, for this is one of the most coveted honors on campus.

# G.S.W.C.

# Features



Sessoms, Wisenbaker, Street, Ambos, standing, Bundrick—Five runners-up gather for a jam session. • Missing: Harris, Turnbull, Wilkes.



*Eleanor Cook*



*Rachel Crittenden*



SUPERLATIVES



Louise Edwards



Gwendolyn Hendrick





Mary Jean Rockwell



Virginia Lower



*Kathryn Scott*



*Maxwell Williams*

SUPERLATIVES

ENJOY—

•

FOREMOST  
ICE CREAM

•

—IT'S HEALTHFUL

THE  
FIRST NATIONAL  
BANK  
OF VALDOSTA

•

Member of The Federal  
Deposit Insurance  
Corporation

Clothes Are

Cleaner—

Brighter—

WHEN SANITONED

by

STAR LAUNDRY

Phone 54

•

*Only Rug Cleaning Plant in City*

VALDOSTA'S

LEADING

HOTEL

THE  
DANIEL ASHLEY

HORACE CALDWELL

*Manager*

•

VALDOSTA

GEORGIA

SOUTHERN STATIONERY AND  
PRINTING COMPANY

•  
W H O L E S A L E  
P A P E R D E A L E R S

•  
C O M M E R C I A L S T A T I O N E R S - P R I N T E R S  
O F F I C E O U T F I T T E R S

•  
V A L D O S T A

G E O R G I A

BELK-HUDSON CO.

*The Friendly Store*

•  
N E W E S T C A M P U S S T Y L E S

GIFTS FOR HIM

A T

B R I G G S ' C L O T H I N G

T H I N G S M E N W E A R

**Lipstick News!**



**Tussy**  
*Kiltie Red*

• Strong, deep red — thrilling as bag-pipe music! Wear Tussy *Kiltie Red* with plaids, bold colors, evening pastels. Like all Tussy lipsticks, *Kiltie Red* is smooth-textured, indelible as you could wish. One of 11 Tussy high-style shades. Lipstick, Cream Rouge to match, each \$1. Compact Rouge, 55¢. Nail Polish, 50¢.

SMITH'S

WALGREEN

DRUG

STORE

•  
Phone

123

Drink Delicious Creamy Jersey Milk  
from

*High*     S U I T U S     *High*  
*in*       D A I R I E S     *in*  
*Food*       I N C .       *Butter*  
*Value*                             *Fat*

Phone 1131-W or 1131-J

### SERVICE CAB COMPANY

216 E. Hill Ave.

873 - PHONE - 310

*All New Cars!*  
*All Experienced Drivers!*

J. A. NESMITH, Owner

*Your Patronage Appreciated*

### BROOKWOOD PHARMACY

*Opened Under New Management of*

CHARLIE ADAMS

PHONE 336

*Special Service for G. S. W. C.*

### W. T. GRANT CO.

●  
*Known for Values*

### SNAPS—



Water's  
Wahoo's!!



Bingo  
Banker—  
Allen



Strollers—Parker  
and Powell



Sociologists see  
Houses—in Atlanta

MORE OF 'EM—!!



"Madame"  
and  
"Max"—



Out with it  
"Strut"



Gwen off  
guard  
Studying (?)



Laurels for the Lambdas—again!

*"Your Credit Is Good—Use It."*

**LESLIE R. DAVIS**

JEWELER

Valdosta's Newest and Finest Jewelry  
Store

132 N. ASHLEY ST.      PHONE 1826

**JOHN OLIVER**

*Service Station*

FIRESTONE TIRES

AMOCO PRODUCTS

PHONE 231

**"TOM'S" TOASTED PEANUTS**

Fine Candies and Peanut Butter

Sandwiches

*Distributed by*

**MELVILLE HARRIS**

PHONE 430-R

VALDOSTA, GA.

*Good Service at*

**BOB BELCHER'S DRUG STORE**

Patterson and Central

PHONES 812-813

*Congratulations and  
Best Wishes*

RITZ PALACE  
DOSTA  
MARTIN THEATRES

VALDOSTA

GEORGIA

VALDOSTA GREENHOUSES  
FLORISTS

Member F. T. D.

Phone 1415

WEDDING STATIONERY

J. P. STEVENS ENGRAVING CO.

110 Peachtree St., N. W.

ATLANTA

GEORGIA

*Best of Luck  
Always*

VALDOSTA BOWLING  
CENTER

Best Wishes to G. S. W. C. from the  
Printers of your "Campus Canopy"

THE LOWNDES COUNTY  
NEWS

PUBLISHERS - PRINTERS - STATIONERS  
OFFICE SUPPLIES

VALDOSTA

GEORGIA

*Compliments of*

BENNETTS DRUG STORE

VALDOSTA, GEORGIA

KELLER CLOTHING CO.

*Everything for Men and Boys*

PHONE 307

106 N. PATTERSON

"SHOP AT SEARS AND SAVE"

*Compliments of*

SEARS, ROEBUCK AND  
COMPANY

ORDER OFFICE

100 S. Patterson St.

Phone 1572



Everything you need . . .

At a price that will fit  
your collegiate purse . . .

*Buy at—*

**CHURCHWELL'S**  
DEPARTMENT STORE



College Girls'  
Headquarters

PHONE 608



Ridin' the Line!!  
"Monkey" Crams on a Cot!



Those Silly Freshies!!  
Alice Broke the Swing.

*Compliments*

*of*

THE  
CITIZENS AND SOUTHERN  
NATIONAL BANK

VALDOSTA, GA.

Valdosta's Leading Restaurant

**THE ROOSEVELT**

*Famous for Western Steaks*

VALDOSTA, GEORGIA

*For the newest styles in  
footwear, first . . .*

**GRIFFIN'S**

127 N. Patterson Street

Telephone 674

"Satisfaction Assured"

G. S. W. C. GIRLS

Pause to Refresh

*Drink . . .*

COCA-COLA in Bottles

**Valdosta Coca-Cola  
Bottling Works, Inc.**

**COWART'S DRESS SHOP**

Ritz Building

VALDOSTA, GEORGIA

**CARL'S GRILL**



Where the Girls  
Get Together



200 N. PATTERSON ST.

*Quick!*

*Dependable!*

*Service!*

Call 1000

**YELLOW CAB CO.**

301 N. ASHLEY ST.

**TRAVEL—TRAILWAYS**

*Safe . . . Comfortable . . . Economical*

**GEORGIA STAGES INCORPORATED  
NATIONAL TRAILWAYS BUS SYSTEM**

See or phone your Local Agent for Information

Under our democracy woman first formed an active partnership with man in their joint task of improving the lot of humanity. And in the American woman's singular triumph, labor-saving conveniences played a part. Household electric appliances released her from many washtub drudgeries, that her energy and talent might be directed to the building of a better citizenship. ¶ Surely, whether our democratic way of living is preserved for our children, depends as much upon woman's active patriotism as upon any other arm of our national defense. ¶ Woman's superior moral and spiritual strength can save us. More than ever before she gives serious thought to our economic, social and political problems. Through study circles, garden groups, business and professional clubs, church societies and parent-teacher associations, she already changes the complexion of communities. ¶ The employees of this company know that electricity steadily advances the American way of life—that it is a good influence in the ever-expanding sphere of woman's greater usefulness. *Modern electric services give you the time to help keep democracy at work.*

**GEORGIA POWER AND LIGHT  
COMPANY**

*Your Family and Friends  
will enjoy a new*

**PORTRAIT OF YOU**



Have it made now

**VERAN  
BLACKBURN**

*The Photographer*

*Just Two Words To Remember*

"GEORGIA ACE"

**GEORGIA FERTILIZER CO.**

VALDOSTA, GEORGIA

**The  
BENSON COMPANY**

*Dry Cleaners*

117 W. CENTRAL AVENUE

PHONE 486

**C. C. VARNEDOE & COMPANY**

FOR THE 64TH YEAR

VALDOSTA'S STORE DEPENDABLE

*The Style Center of Valdosta*

We are proud of the

**Georgia State Woman's College**

We are glad to take this  
occasion to say that the

**CITY OF VALDOSTA**

is proud to list among its  
greatest assets the

**Georgia State Woman's College**

and—

We hope that Valdosta as a city makes a favorable and lasting impression on the minds  
of the young ladies who make up the student body of the great institution.



## SUCCESSFUL ANNUALS

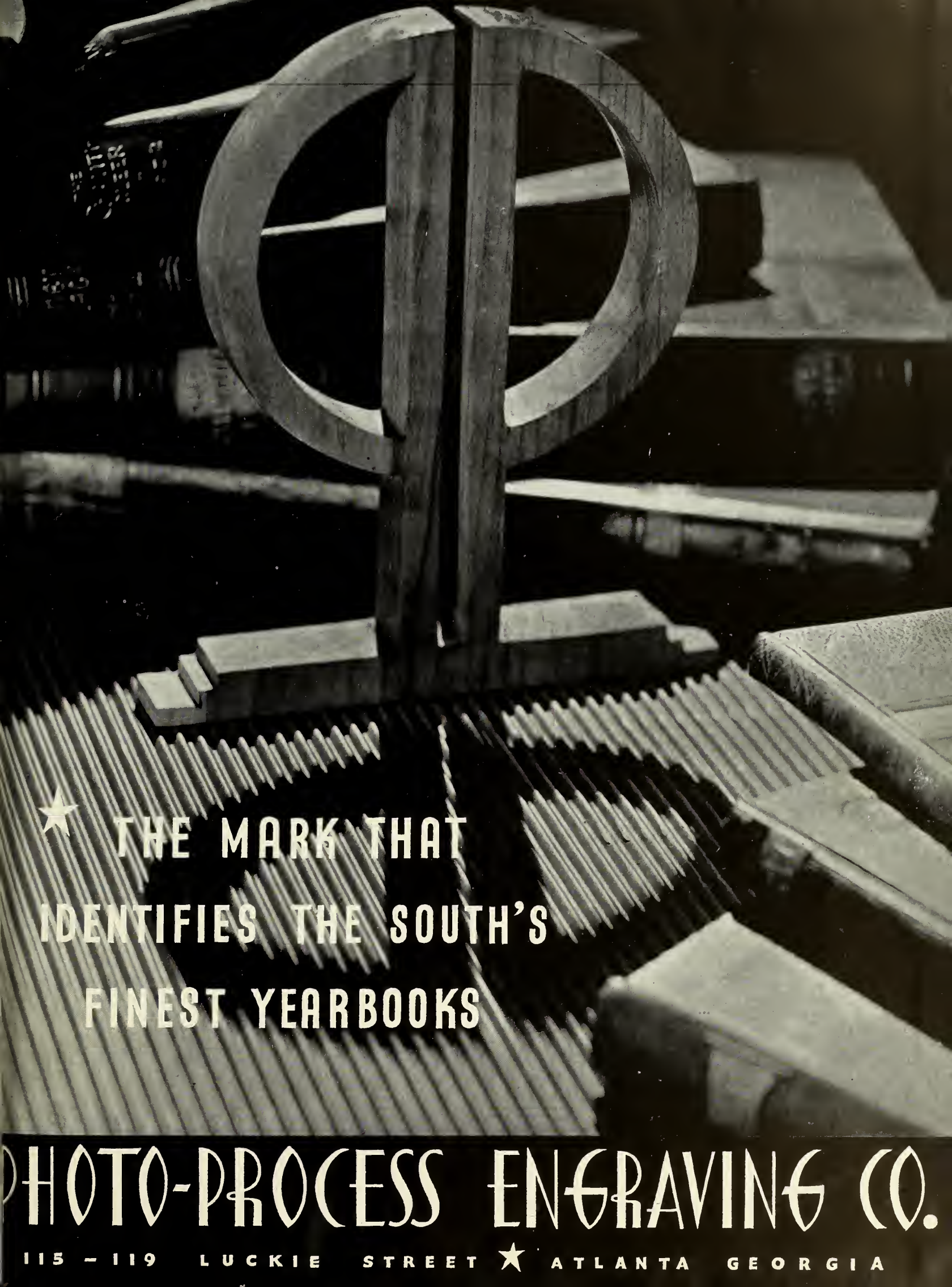
Require the services of experienced and expert craftsmen, trained in every detail of the processes of creating • planning layout and design • typesetting • printing lithographing and binding... Throughout half a century this company has pioneered in the production of the highest type of printing... Our services include a special college annual sales and service organization... Abundant equipment • modern and complete... Prices representing maximum in value



**FOOTE & DAVIES**

PRINTING • LITHOGRAPHING • ENGRAVING

ATLANTA



★ THE MARK THAT  
IDENTIFIES THE SOUTH'S  
FINEST YEARBOOKS

PHOTO-PROCESS ENGRAVING CO.

115 - 119 LUCKIE STREET ★ ATLANTA GEORGIA

---

---

# INDEX

---

---

ACTIVITIES . . . . .	54-83	Presidents' Council . . . . .	75
Alumnae Association . . . . .	79	Senior Honor Society . . . . .	72
Artist Series . . . . .	80	Sociology Club . . . . .	74
Campus Canopy . . . . .	62, 63	Sock and Buskin Club . . . . .	64
Christmas Festival . . . . .	81	Sports Club . . . . .	76, 77
Dramatic Club . . . . .	64	Student Government Association . . . . .	56, 57
English Club . . . . .	70	Valdosta Club . . . . .	78
Fine Arts Club . . . . .	65	Yearbook . . . . .	60, 61
French Club . . . . .	71	Y. W. C. A. . . . .	58, 59
Freshman Honor Society . . . . .	73	CLASSES . . . . .	16-53
Glee Club . . . . .	66	Freshman Class . . . . .	46-53
International Relations Club . . . . .	68	Junior Class . . . . .	30-37
Math-Science Club . . . . .	69	Senior Class . . . . .	18-29
May Day . . . . .	82	Sophomore Class . . . . .	38-45
Newspaper . . . . .	62, 63	COLLEGE . . . . .	6-15
Phi Lambda . . . . .	76, 77	Administrative Officers . . . . .	12
Philharmonic Club . . . . .	67	Faculty . . . . .	13-15
Phi Kappa . . . . .	76, 77	Views . . . . .	4, 5, 8-11
Pine Cone . . . . .	60, 61	DIVISIONAL SECTIONS . . . . .	3, 7, 17, 55, 85
Play Day . . . . .	83	FEATURES . . . . .	84-89

---

---











