




1958 PINE CONE

VALDOSTA STATE COLLEGE



Digitized by the Internet Archive
in 2014

<https://archive.org/details/pinecone195800vald>

For

Mrs. Frank Reade

With best wishes from

The Pine Cone Staff

May 9, 1958



1958

PINE CONE

Published At

VALDOSTA STATE COLLEGE
VALDOSTA, GEORGIA

EDITOR: Ema Dell Hendley

FAMILIAR SCENES ON CAMPUS...



The Administration Building as seen from Patterson Street.

The 1958 *Pine Cone* presents a story—life on V.S.C. campus. Won't you join us in this story? . . .



THE LIBRARY



POUND HALL ON NORTH CAMPUS

FRANK ROBERTSON READE

IN MEMORIAM

President, Valdosta State College, 1934-1948

President Emeritus, 1948-1957



Philosopher, gentleman and scholar, with a sensitive consciousness of honesty and honor, he touched the lives of many through his insistence upon high ideals, principles and scholarship. Brilliant and witty, he achieved a rare state of balance that endeared him to all who were privileged to know him. With a keen and sincere interest in life and people, he brought forth a fuller understanding of the meaning of life and the purpose of mankind. His contributions in education and in other fields established a legacy that will shine through and illumine with rare luster the paths of posterity.



READE HALL

PINE CONE CONTENTS . . .

Administration and Faculty . 5



STAFF

Editor
EMA DELL HENDLEY

Business Manager
RUDY BAXTER

Associate Editors
RAYMOND WILSON
JEROME CLEGG

Photography Editor
MURRAY STEWARD

Layout Editor
BETTY LOU BROWN

Copy Editor
ALAN PENDLETON

Seniors Editor
FAYE LANIER

Organizations Editor
CHARLOTTE COPPAGE

Sports Editor
MARJORIE BROOKS

Class Editor
MARCIA WHALEY

Features Editor
ANN HAMILTON

Greeks Editor
JEAN MORRIS

Layout Staff
TOMMIE LASTINGER
DOROTHY HARRELL
THERESIA ARNOLD
WAYNE WELCH



CLASSES

Seniors	17
Juniors	43
Sophomores	49
Freshmen	55

Organizations
and Activities 63



Sports 91

Features 99



ADMINISTRATION

FACULTY and

DEPARTMENTS

at V. S. C.

Certainly the administrative staff and faculty of any institution are an integral part of student life—the same is true at V.S.C. The people on the following pages are responsible for leading, guiding, and directing us in the proper channels of educational and social activities.

ADMINISTRATIVE



Dr. J. Ralph Thaxton
A.B., M.A., Ph.D.
President



Dr. J. A. Durrenberger
A.B., M.A., Ph.D.
Academic Dean



Mrs. Joe Wisenbaker
A.B., M.S., Ed.
Dean of Women



Dr. J. Graham Wall
A.B., M.A., Ed.D.
Dean of Men



Mr. Shealy E. McCoy
B.B.A., LL.B.
Comptroller



Mrs. William M. Thomas
A.B.
Registrar



Mr. Wallace L. Waites
A.B.J., M.A.
Director of Public Relations



Miss Thera Hambrick
A.B., B.S. in L.S.
Assistant Librarian



Miss Lillian Patterson
A.B., B.S. in L.S.
Librarian



Mrs. Grady Bennett
A.R., R.N.
College Nurse



Mrs. Eva A. Shrivalle
Dietitian



Mrs. Marjorie Bland
Assistant Comptroller



Mrs. Joseph S. Maddox
Secretary to the President



Mr. Murray Jolley
Manager: Student Center



Mrs. Murray Jolley
*Assistant Manager:
Bookstore*



Mrs. Millie B. Knowles
*House Director,
Ashley Hall*



Mrs. J. A. Sconyers
*Assistant Dietitian
House Director, Reade Hall*



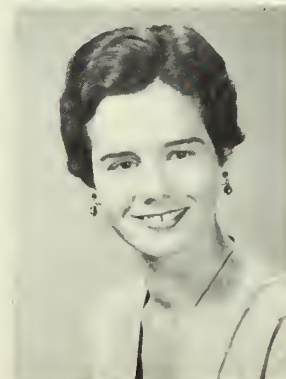
Mrs. Janet S. Maynard
*House Director,
Converse Hall*



Mrs. Grace B. Jones
*Assistant to the
Registrar*



Mrs. Mary H. Croom
*Secretary to Academic Dean;
Secretary to Registrar*



Mrs. Rosario Nicotra
*Secretary to
Comptroller*



Mrs. Lois Hancock
Secretary and Cashier

NATURAL SCIENCES and



Dr. Marjorie E. Carter
B.S., M.A. and Ph.D.
Associate Prof. of Biology



Dr. Beatrice Nevins
Ph.B., Ph.M., Ph.D.
Professor of Biology



Mr. Leonard J. Wagner
A.B., M.A.
*Assistant Professor of
Biology*

This department prepares students to help meet the current demand for graduates with technical training in the sciences. This program provides for majors in Chemistry, Biology, and Mathematics.



Working an Analytical Balance.

MATHEMATICS



Dr. Bernard Bettman
B.A., M.A., Ph.D.
*Professor of
Chemistry*



Mr. Maurice W. Lindauer
A.B., M.A.
*Assistant Professor of
Chemistry*



Mr. Leroy Babcock
B.Ed., M.S.
*Associate Professor of
Mathematics and Physics*



Dr. J. Graham Wall
A.B., M.A., Ed.D.
*Associate Professor of
Mathematics*



Analyzing Copper Ore.



Isolating Bacteria.



Math Class.

EDUCATION



Mr. Spencer Jarnigan
A.B., M.A.
*Assistant Professor of
Education and Psychology*



Mrs. Corinne S. Knight
B.S., M.A.
*Associate Professor of
Education*



Mr. Donald E. Gerlock
B.S., M.Ed.
*Assistant Professor of
Education*

For students desiring teaching careers the Education Department has an approved program for teacher preparation. This program adequately meets requirements for professional certification as a teacher for the public schools.



Mrs. Mildred Evans
*Secretary to Department
of Education*



Educational Psychology Class Learns from Visual Aids.



Student Teachers Meet Supervising Teachers.

BUSINESS ADMN. and SEC. SCIENCE



Mr. James B. Dales
B.B.A., M.A.
*Assistant Professor of
Accounting*



Mr. Douglas B. Robinson
A.B., M.A.
*Associate Professor of
Business Administration
and Economics*



Mr. Shealy E. McCoy
B.B.A., LL.B.
*Associate Professor of
Business Administration*



Miss Saralyn Sammons
A.B., M.A.
*Associate Professor of
Secretarial Science*



Mrs. Elmina McKneely
A.B., M.A., M.S.
*Assistant Professor of
Secretarial Science*

The career-seeking young businessmen and secretaries of tomorrow pursue their course of study in this Division, by securing majors in Business Administration, Accounting, or Secretarial Science.

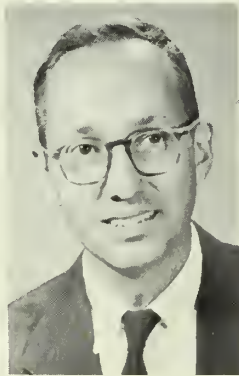


Studying Labor Relations.



Working on Saturday.

HUMANITIES



Mr. Joseph W. Pember
A.B., M.F.A.
*Associate Professor of
Art*



Mrs. Lee M. Bennett
A.B.
Instructor in Art



Miss Louise A. Sawyer
B.S., M.A.
*Associate Professor of
Speech*



Dr. Harold S. Gulliver
B.A., A.M., Ph.D.
Professor of English

The Humanities Department embodies some of the more fascinating fields of study—Art, Speech, Foreign Languages, English and Music. This program is designed for those students whose interests turn to the more artistic side of life.



Student Receives Instructions in Piano.



English Class Reports on Plays.



Mrs. Gertrude G. Odum
B.S., A.M.
Associate Professor of English



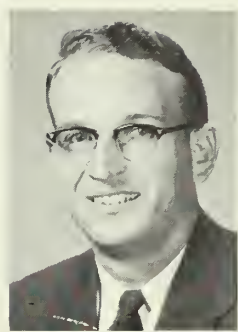
Mr. Marvin R. Evans
A.B., M.A.
Assistant Professor of English



Dr. Sapelo Treanor
A.B., A.M., Ph.D.
Professor of Modern Foreign Languages



Mr. J. Clayton Logan
B.F.A., M.F.A.
Associate Professor of Music



Mr. Webster W. Teague
B.M., M.M.E.
Assistant Professor of Music



Learning German.



Speech Class Studying Stage Make-up.



Miss Sawyer Instructs in Make-up.



Working With Clay.

SOCIAL SCIENCE



Mr. William M. Gabard
A.B., M.A.
*Associate Professor of
History*



Miss Mildred M. Price
A.B., A.M.
*Associate Professor of
History*



Dr. J. Ralph Thaxton
A.B., M.A., Ph.D.
Professor of History



Mrs. Joe Wisenbaker
A.B., M.S.Ed.
*Associate Professor of
Sociology*



Dr. J. A. Durrenberger
A.B., A.M., Ph.D.
Professor of Sociology

Students wishing to concentrate in the social sciences find satisfaction in exploring societies of the past, or in dealing with problems in present-day societies. This is accomplished by acquiring a major in History, Sociology, or Social Work.

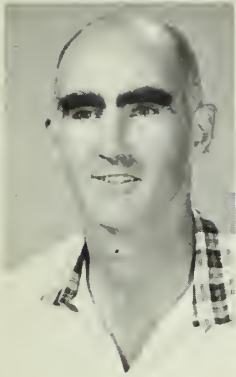


Sociology Class.



Group Reports in Social Science Class.

PHYSICAL EDUCATION



Mr. Walter Cottingham
A.B., M.Ed.
*Assistant Professor of
Physical Education*



Mrs. Matilda Mathis
B.S.
*Instructor in Physical
Education*



Mrs. Charles L. Floyd
B.S.
*Instructor in Physical
Education*

A unique phase of instruction that enters into the life of all students includes such activities as dancing, swimming, golf, archery, tennis, and many others.



Tennis Class in Session.



Student Golfers Tee Off.

CAMPUS SCENES



ASHLEY HALL.

FRESHMEN ARE GREETED.



FRESHMEN EXPLORE NEW HOME.



RECEIVING LINE AT FACULTY
RECEPTION — FRESHMAN DANCE.



SENIOR CLASS

1
9
5
8



SENIOR OFFICERS

NANCY SOUTHWELL, *Treasurer*; ELAINE BARBER, *Vice-President*; SUE BRIDGES, *Secretary*; NORMA LIGHTSEY, *President*.

The beginning or the end? For the Seniors it is both; the end of college life as a student and the beginning of a new role elsewhere.

SENIORS

KHALDON ABDULLAH
 Baghdad, Iraq
 Major: ENGLISH
 I.R.C. 3, 4; English Club 3, 4.

DOTTIE ALFORD
 Columbus, Georgia

Major: BIOLOGY Minor: ART

Sports Club 1, Historian 2; Fins and Flippers 1, 2, 3. President; Math-
 Science Club 2, 3, Secretary-Treasurer 4; W.R.H.C. 4, President;
 Who's Who Among Students 4.



ABDULLAH
 ALFORD



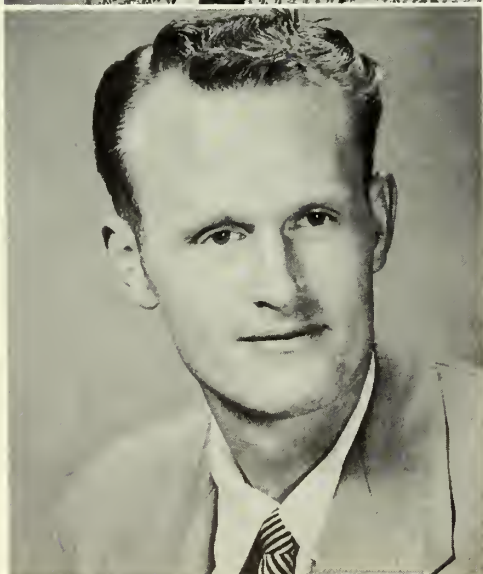
ALLEN
 BAILEY



RONALD ALLEN
 Stockton, Georgia

Major: CHEMISTRY Minor: BIOLOGY
 Baseball 3, 4.

JAMES BAILEY
 Valdosta, Georgia
 Major: ENGLISH Minor: ART





BENNIE BAKER

Tifton, Georgia

Transfer from Atlanta Division and Abraham Baldwin.

Major: BIOLOGY Minor: HISTORY

Glee Club 3; I.R.C. 3, Vice-President 4; Sigma Alpha Chi 3, 4; Math-Science 3, 4; Homecoming Court 3.

ELAINE BARBER

Columbus, Georgia

Major: SECRETARIAL SCIENCE Minor: ENGLISH

Education Club 1; Sports Club 1, 2, 3; English Club 3, Reporter 4, Vice-President; Business Club 2, 3, 4, Reporter; W.R.H.C. 4, Sec. and Treas.; Senior Class Officer, Vice-President.



BAKER

BARBER



BASS

BATES

FAYE BASS

Doerun, Georgia

Major: SECONDARY EDUCATION Minor: ENGLISH

Education Club 4; Fins and Flippers 4; Sports Club 4; Glee Club 1, 2; Dance Club 1, 2.

JACK HILL BATES

Valdosta, Georgia

Major: BUSINESS ADMINISTRATION

Wesley Foundation 1, 2; V-Club 1, 2, 3, 4; Baseball Team 1.



SENIORS



DAVID BAYLESS
Valdosta, Georgia
Major: BUSINESS ADMINISTRATION



◀ BAYLESS
BELCHER



BENNETT ▶
BLACKLEDGE

GRADY BENNETT
Winter Garden, Florida

Major: BUSINESS ADMINISTRATION

Dance Club 1; Business Club 1; Sigma Alpha Chi 1, 2, 3, 4; Circle K Club 2, 3, Board of Directors 4; Sigma Epsilon Fraternity 1, Pledge President, 2, 3, Corresponding Sec. 4.

CAROLYN BLACKLEDGE
Homerville, Georgia

Major: ELEMENTARY EDUCATION

Education Club 3, 4; Zeta Chi Sorority 3, 4; Pine Cone Staff, Layout Editor 4; Glee Club 4.



ALLEN BOOKER
Sylvester, Georgia

Major: HISTORY *Minor:* ENGLISH
I.R.C. 2, 3, 4.



JOHNNIE MAE BRANNEN
Madison, Florida
Major: ELEMENTARY EDUCATION
Education Club 1, 2, 3, 4.



BOOKER
BRANNEN



BRIDGES, S.
BRIDGES, J.



SISSY BRIDGES
Valdosta, Georgia

Major: BIOLOGY *Minor:* SOCIAL WORK

Fins and Flippers 1, 2, 3, 4, President 2, 4; Campus Canopy 2; Glee Club 2; S.G.A. 4; Sports Club 1.

JEAN BRIDGES
Donalsonville, Georgia

Major: SECRETARIAL SCIENCE *Minor:* ENGLISH

Business Club 1, 2, 3, Secretary; English Club 3; Sports Club 1; Delta Xi Sorority 3, 4.

SENIORS

SUE BRIDGES

Donalsonville, Georgia

Major: SECRETARIAL SCIENCE *Minor:* ENGLISH

Education Club 1; Sports Club 1, 2, 3; Sigma Alpha Chi 1, 2, 3, 4; English Club 3, 4; Business Club 2, 3, 4; Delta Xi Sorority 3, 4; Senior Class Officer, Secretary; Senior Class Sweetheart; Who's Who Among Students 4.

BETTY LOU BROWN

Rochelle, Georgia

Major: ART *Minor:* ENGLISH

Pine Cone Staff 3, 4.



BRIDGES

BROWN

BRUCE

CHAMBLESS



THELMA BRUCE

Homerville, Georgia

Major: ELEMENTARY EDUCATION

Education Club 1, 2, 3, 4; Sports Club 1, 2, 3, 4; Women's Recreation Council; Student Government Association 3.

BETTY JANE CHAMBLESS

Richland, Georgia

Major: ELEMENTARY EDUCATION

Education Club 3; Assistant Editor of News Paper 4; Zeta Chi Sorority 3, Historian 4; "Y" Cabinet 3, Devotional Leader 4; Dance Club, Treasurer 3; B.S.U.-B.T.U. Representative 3, 4; Y.W.C.A. 3, 4.



JEANNE CONNELL

Perry, Georgia

Major: BIOLOGY Minor: HISTORY AND MUSIC

Serenaders 1, 2, 3, 4; Glee Club 1, 3, Business Manager 3; Math Science Club 2, 3, 4; Sigma Alpha Chi 1, 2, 3, 4, Historian and Reporter 4; International Relations Club 1, 2, 3, 4, Secretary 2; Miss V.S.C. Talent of 1957; Hostess for Sigma Phi Epsilon Fraternity 2, 3, 4; Senior Representative to S.G.A.; B.S.U. Cabinet 2, 3, 4; Y.W.C.A. Cabinet 2, 3, 4; Who's Who Among American Colleges and Universities.

LAVON COOK

Colquitt, Georgia

Major: BUSINESS ADMINISTRATION Minor: HISTORY
Trans. Ga. S. W.; Dormitory Council 4, President 4.



DAVIS, L. ▶

DAVIS, M. ▶

◀ CONNELL

◀ COOK



LEWIS M. DAVIS

Folkston, Georgia

Major: BIOLOGY Minor: ENGLISH

MOLLY DAVIS

Blackshear, Georgia

Zeta Chi 1, Vice President 2, 4; S.G.A. 2; Sophomore Representative; Fins and Flippers 1, 2, Secretary-Treasurer 4; Sports Club 1, 2, 4; Education Club 1, 2, 4; W.R.H.C. 2; English Club 4; Y.W.C.A. 1, 2, 4; "Y" Cabinet 2.



SENIORS



ELIZABETH DEAN
Valdosta, Georgia

Major: BIOLOGY *Minor:* ENGLISH

Y.W.C.A. 1, 2; Glee Club 1; Canopy 1; *Pine Cone* 1, 2, 3; Math Science Club 2, 3, 4; English Club 3, 4, Sec. and Treas. 4; Delta Xi Sorority 3, 4, Corresponding Sec.

MARGIE DECHAU
Valdosta, Georgia

Major: ELEMENTARY EDUCATION
Education Club 2, 3.



◀ DEAN

DECHAU



DONALDSON ▶

DUPREE ▶

VIRGINIA DONALDSON
Blackshear, Georgia
Major: ELEMENTARY EDUCATION
Education Club.

ELTON DUPREE
Unadilla, Georgia
Major: BIOLOGY *Minor:* CHEMISTRY



OF 1958

BENJAMIN DUQUE
Valdosta, Georgia
Major: HISTORY Minor: ENGLISH
I.R.C. 3, 4; Camera Club 3.

CARL DUREN
Valdosta, Georgia
Major: BIOLOGY



◀ EDWARDS
ELLIS

DUQUE ▶
DUREN



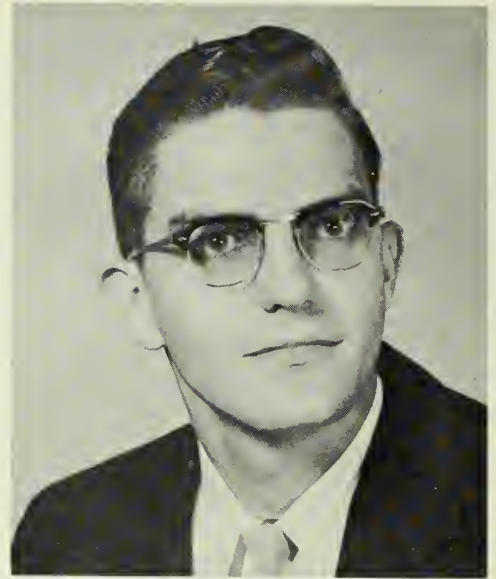
JEAN EDWARDS
Valdosta, Georgia
Major: SOCIAL WORK Minor: SECRETARIAL WORK
Tran. Stetson U.; Glee Club 2, 3; Serenaders 3, 4; B.S.U. 2, 3, 4,
Pres. 4; Bus. Club 2; Honor Society 2.

EDWARD ELLIS
Cordele, Georgia
Major: BIOLOGY Minor: SOCIOLOGY

SENIORS

KARL FREE
Albany, Georgia

Major: BUSINESS ADMINISTRATION *Minor:* ENGLISH
Sigma Epsilon Fraternity, Secretary 3.



ED GAMBLE
Valdosta, Georgia

Major: CHEMISTRY *Minor:* BIOLOGY
Math-Science Club 4.



◀ GEORGE
GIBBS

FREE ▶
GAMBLE

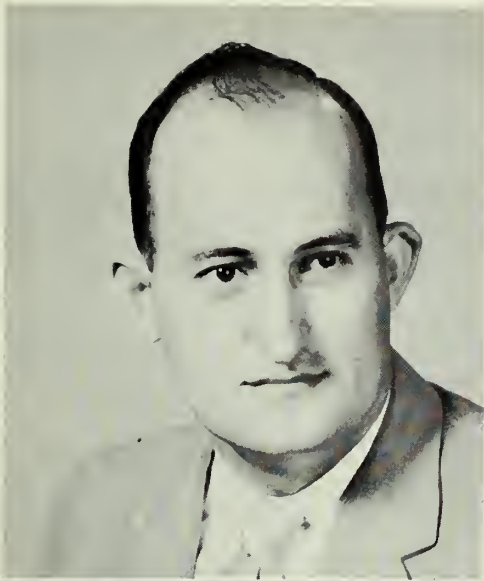
NOEL GEORGE
Valdosta, Georgia

Major: ACCOUNTING
Filli Fortunae Fraternity.



GENE GIBBS
Moultrie, Georgia

Major: CHEMISTRY *Minor:* BIOLOGY-ENGLISH
B.S.U. 1, 2, 3, 4; Math-Science 2, 3, President 4; Circle K Club 3, 4.



SEABORN GRAHAM
Pavo, Georgia
Major: ENGLISH Minor: SOCIOLOGY



◀ GRAHAM
GREEN

BOBBY HARDEN
Fitzgerald, Georgia
Major: BUSINESS ADMINISTRATION

CAROL KEENE HARDEN
Abbeville, Georgia
Major: MUSIC Minor: ENGLISH
Serenaders 1, 2, 3; Glee Club 1, 2, 3, 4, Sec. 3; Y.W.C.A. 1, 2, 3, 4;
Y. Cabinet 2, 3, 4; B.S.U. 1, 2, 3, 4; Council 1, 2, 3, 4; English Club
4; Sig Ep Sponsor 2; Mu Alpha Sponsor 3; Zeta Chi 2, 3, 4, Historian
2, Chaplain 3; Sports Club 1, 2, 3; Council 2, 3; Soph. Counselor.



HARDEN, B. ▶
HARDEN, C.



SENIORS



LESTER HAYMONS

Moultrie, Georgia

Major: CHEMISTRY *Minor:* BIOLOGY

Transfer from Norman College; Y.M.C.A. 3, 4, Treasurer 3; Circle K Club 3, Board of Directors 4; Dance Club 3; Math-Science Club 3, 4; B.S.U. 3; The Campus Canopy, Editor 4; Tau Kappa Epsilon Fraternity 4, Vice-President; Photography Club 4; Who's Who Among Students.

EMA DELL HENDLEY

Nashville, Georgia

Major: JUNIOR HIGH EDUCATION

Education Club 1, 2; Historian 3, 4; *Pine Cone* Staff, Layout Editor 2, Assistant Editor 3, Editor 4; Junior Class President; W.R.H.C., 2nd Vice-President 3, 4; Glee Club 2; Sports Club 1; Treasurer of S.G.A. 4; Who's Who Among Students.



HAYMONS

HENDLEY

HERRINGTON

HILL



ROBERT HERRINGTON

Lake Park, Georgia

Major: SOCIAL WORK *Minor:* ENGLISH

I.R.C. 1, 2; Sigma Alpha Chi 1, 2.

ASHLEY HILL

Valdosta, Georgia

Major: BUSINESS ADMINISTRATION

Sigma Epsilon Fraternity; Letterman's Club 2, 3, 4.



OF 1958

CAROLYN HOLTON

Thomasville, Georgia

Major: SPEECH Minor: ENGLISH

Transfer—Huntington College, Montgomery, Alabama. Sock and Buskin 3, 4; Delta Xi 3, 4, President 3, 4; English Club 4; Education Club 3, 4; Panhellenic Council 3, Sec. 4.

BUTLER HORTON

Valdosta, Georgia

Major: ENGLISH Minor: HISTORY

Glee 2, 3; English Club 4; International Relations 4.



◀ HOUSTON
JOINER

HOLTON ▶
HORTON



STANLEY HOUSTON

Blakely, Georgia

Major: BUSINESS ADMINISTRATION Minor: ENGLISH

Junior Class Treasurer 3; Fili Fortuna Fraternity 4.

GORMAN JOINER

Valdosta, Georgia

Major: ACCOUNTING

SENIORS

BETTY JONES
Sylvester, Georgia

Major: BIOLOGY Minor: SECRETARIAL SCIENCE
Glee Club 1.



ROY JUMP
Valdosta, Georgia

Major: SOCIAL WORK Minor: HISTORY



◀ KEY
KING

JONES ▶
JUMP ▶



JOANN KEY
Columbus, Georgia

Major: ELEMENTARY EDUCATION
Education Club 1, 2, 3; Cheerleader 1, 2, 3; Zeta Chi 1, 2, 3, Vice Pres. 3; Panhellenic Council 1, 3, Treas

DALE KING
Valdosta, Georgia
Major: MATH Minor: HISTORY
Math-Science Club.



MARY ALICE LEWIS

Dixie, Georgia

Major: ELEMENTARY EDUCATION

Transfer Student: Andrew Junior College, Cuthbert, Georgia; Education Club 4.

NORMA LIGHTSEY

Valdosta, Georgia

Major: ENGLISH Minor: HISTORY

Sigma Alpha Chi Honor Society 1, 2, 3, 4; International Relations Club 3, 4; English Club, Sec. and Treas. 3, President 4; Senior Class President 4; Who's Who Among Students 4.



◀ LEWIS
LIGHTSEY



McLEAN ▶
MASON

FRED McLEAN

Folkston, Georgia

Major: BIOLOGY Minor: CHEMISTRY

Math-Science Club, Historian and Reporter 3; Sigma Alpha Chi 1, 2, 3, 4; Who's Who Among Students.

LINDSEY MASON

Valdosta, Georgia

Major: BIOLOGY Minor: CHEMISTRY



SENIORS



LARRY MASSEY
Valdosta, Georgia

Major: BUSINESS ADMINISTRATION

Baseball 2; Circle "K" 2, 3; Sigma Phi Epsilon 2, 3; Baptist Student Union 2; Trans. U. Ala.

MARILYN E. MILLER
Tifton, Georgia

Major: ELEMENTARY EDUCATION

Education Club 2, 3, Pres. 2, 3; Y.W.C.A. 1, 2, 3; Y. Cabinet 2, 3, 1st Vice Pres. 2, 3; W.R.H.C., 1st Vice Pres., 3; Zeta Chi 1, 2, 3, Chaplain 2, Pledge Trainer 3; Panhellenic Council 2, 3; Sigma Alpha Chi 1, 2, 3; 57 V. Book Editor 3; Glee Club 1; Math-Science 1; Sig Ep Hostess 2; Campus Canopy 1; Wesley Foundation 1, 2, 3; Who's Who Among Students 4.



◀ MASSEY

MILLER



MONCRIEFF ▶

MORGAN

WILLIAM MONCRIEFF
Columbus, Georgia

Major: BUSINESS ADMINISTRATION *Minor:* HISTORY

Sigma Phi Epsilon 3, 4; Math-Science Club 3, 4; Business Club 3, 4.
Transferred from North Georgia.

WILLIAM MORGAN
Jasper, Florida

Major: SOCIAL SCIENCE *Minor:* SECRETARIAL SCIENCE
Ed. Club. 3, 4.



JOAN NASTASI
Mullica Hill, New Jersey

Major: ELEMENTARY EDUCATION

Transferred from Rutgers University; Education Club 3, 4, Treasurer; V-Book Staff 3; Y.W.C.A. 3, 4; "Y" Cabinet 4; Delta Xi Sorority 4; Assistant Editor of Education Newspaper 4.

LuNEDRA NeSMITH
Dixie, Georgia

Major: SECONDARY EDUCATION (GENERAL SCIENCE)

Minor: ENGLISH AND SOCIAL STUDIES

Education Club 3, 4; Sigma Alpha Chi 3, 4; Math-Science Club 4.



NASTASI

NeSMITH



NORTON

O'BRIEN



CHARLES NORTON
Lakeland, Georgia

Major: SOCIAL WORK *Minor:* ENGLISH

Transfer from Young Harris College and Abriham Baldwin; Filli Fortuna Fraternity.

PAT O'BRIEN
Naylor, Georgia

Major: BUSINESS ADMINISTRATION *Minor:* HISTORY
Dance Club 2, 3.

SENIORS

GRACE OTT

Hahira, Georgia

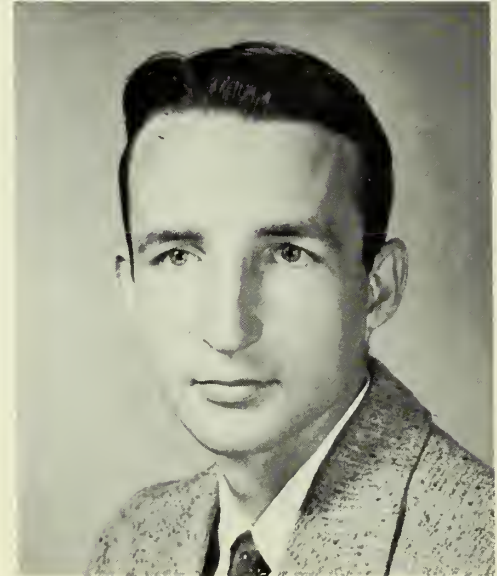
Major: ELEMENTARY EDUCATION

BUCK PAFFORD

Valdosta, Georgia

Major: BUSINESS ADMINISTRATION *Minor:* ENGLISH

Glee Club 1, 2; Quartet 1, 2; Basketball 1; Baseball 1; Circle K 2, Treasurer; Senior Representative to S.G.A. 4.



OTT

PAFFORD



PERKINS

PERRY

PEGGY PERKINS

Jennings, Florida

Major: ELEMENTARY EDUCATION

Education Club 2, 3, 4; Fins and Flippers 3, 4.

ALICE PERRY

Columbus, Georgia

Major: ELEMENTARY EDUCATION

Education Club 1, 2, 3; Zeta Chi Sorority 1, 2, 3, Secretary.



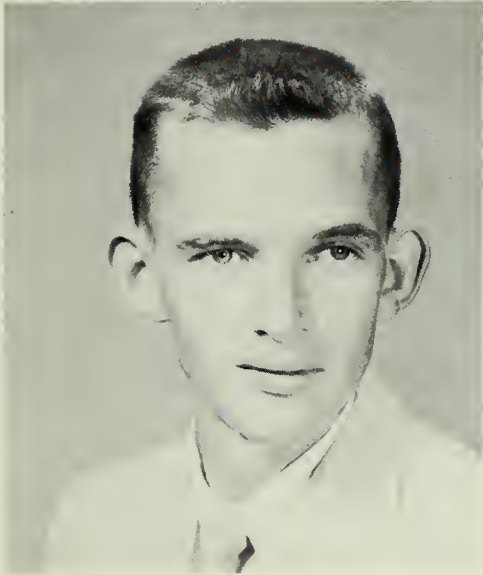


JOHNNY PURVIS
Norman Park, Georgia

Major: BUSINESS ADMINISTRATION *Minor:* ECONOMICS
Transfer from Norman College, Norman Park, Georgia; Basketball Team 3, 4; Baseball Team 3, 4; V-Club 4.

GLEN PUTNAL
Ray City, Georgia

Major: BIOLOGY *Minor:* CHEMISTRY



◀ PURVIS
PUTNAL



RAULERSON ▶
REGISTER

DELLA RAULERSON
Patterson, Georgia

Major: BIOLOGY *Minor:* ENGLISH

Math-Science Club 3, Treasurer 4; English Club 4; Delta Xi Sorority 3, 4; Photography Club 3, 4.

LEONA REGISTER
Adel, Georgia

Major: SECONDARY EDUCATION (GENERAL SCIENCE)
Minor: SOCIAL SCIENCE

Transfer from A.B.A.C., Tifton, Georgia; Education Club 2, 3, 4; Delta Xi Sorority 3, 4, Treasurer.



SENIORS



CYNTHIA RICE
Lakeland, Georgia
Major: ELEMENTARY EDUCATION



RUTH RIGSBY
Valdosta, Georgia
Major: ELEMENTARY EDUCATION

◀ RICE
RICHARDSON

RIGSBY ▶
ROWE



MARYAN RICHARDSON
Valdosta, Georgia
Major: SOCIAL WORK *Minor:* SPANISH

Campus Canopy 1, 2; *Pine Cone*, Business Staff 1; Glee Club 1, 2; Fins and Flippers 3, 4; Sports Club 1.



JACK ROWE
Columbus, Georgia

Major: BUSINESS ADMINISTRATION *Minor:* ECONOMICS

Trans. from Ga. S.W. College; Filli Fortunae Fraternity 3, Sec. 4, Treas.; M.C.A. 3, 4; Vice Pres.; Photographer's Club 3, Vice Pres.; Letterman's Club 3, 4; Business Club 3, 4; Circle "K" 3, 4; Baseball 3, 4; Basketball 3; Dance Club 3.

JANE ROWE
Valdosta, Georgia

Major: SECONDARY EDUCATION Minor: ENGLISH
Education Club, Social Chairman.



MYRTICE SLOAN
Pavo, Georgia

Major: HISTORY Minor: ENGLISH
Transfer from Berry College; I.R.C. 3, 4.



SMITH, P.
SMITH, T.

ROWE
SLOAN



PATSY SMITH
Valdosta, Georgia

Major: ELEMENTARY EDUCATION
Transferred from University of Georgia; Education Club.

TOM BUSH SMITH
Valdosta, Georgia

Major: BUSINESS ADMINISTRATION
Transferred from University of Georgia.

SENIORS

NANCY CAROL SOUTHWELL
Arabi, Georgia

Major: MATHEMATICS AND SECONDARY EDUCATION *Minor:* SPANISH
B.S.U. 1, 2, 3, 4; Math-Science Club 4; Senior Class Treasurer; Sigma
Alpha Chi 1, 2, 3, 4; Who's Who Among Students 4.



HUGH STEPHENSON
Valdosta, Georgia

Major: BUSINESS ADMINISTRATION



STEWARD

STOVALL

SOUTHWELL

STEPHENSON

MURRAY STEWARD
Valdosta, Georgia

Major: CHEMISTRY *Minor:* HISTORY

Pine Cone 3, Photography Editor 4; Photography Club, Sec. 3, Pres. 4;
International Relations Club 3, Treas. 4.

JIMMY STOVALL
Hapeville, Georgia

Major: CHEMISTRY *Minor:* BIOLOGY

S.G.A., Vice Pres. 4; Dormitory Council, Vice Pres. 3, 4; Photography
Club, Vic. Pres. 3, Sec. 4; V-Club 2, 3, Vice Pres. 4; Dance Club 3;
Math-Science Club 3, Reporter 4; Circle K 3, Vice Pres. 4; Sigma Phi
Epsilon 2, 3, Vice Pres. 4; Basketball Team 1, 2, 3, 4. Who's Who
Among Students 4.





WANELL STROM
Valdosta, Georgia
Major: SECONDARY EDUCATION
Education Club 3, 4; Sigma Alpha Chi 3, 4.

ERIK SVERRE
Oslo, Norway
Major: BUSINESS ADMINISTRATION
Transferred from University of Oslo.



◀ STROM
SVERRE



SWEET ▶
VAUGHN

VIRGINIA SWEET
Thomasville, Georgia
Major: ENGLISH

Transferred from University of New Mexico; English Club 3, 4;
Sigma Alpha Chi 3, 4.

JANET VAUGHN
Americus, Georgia
Major: ELEMENTARY EDUCATION

Education Club 3, 4; Y Cabinet 3, 4, Treasurer 3; Delta Xi Sorority
3, 4, Vice-President 3, 4; Panhellenic Council 4, Pledge Trainer 4;
1957 V-Book Editor 4; B.S.U. 3, 4, Publicity Chairman; Eighth Dis-
trict Director of G.E.T.A.



SENIORS

GEORGE WALLACE

Valdosta, Georgia

Major: BUSINESS ADMINISTRATION

Wesley Foundation 2, 3, 4, Pres. 4; I.R.C. 2, 3, 4, Treas. 3, Pres. 4; Sigma Alpha Chi 3, 4, Pres. 4; S.G.A., Junior Representative 3. Who's Who Among Students 4.

WILLIAM WATSON

Valdosta, Georgia

Major: ACCOUNTING

Honor Society 3.



WALLACE

WATSON



WILLIS

WILSON

RETHA WILLIS

Albany, Georgia

Major: EDUCATION

Education Club 1, 2, 3, 4; Program Chairman 3; Sock and Buskin Club, Pres. 4; Y. Cabinet 3.

JOE WILSON

Valdosta, Georgia

Major: BUSINESS ADMINISTRATION



RAYMOND B. WILSON

Decatur, Georgia

Major: CHEMISTRY Minor: BIOLOGY

Transfer from North Georgia College; Student Government Association 3, President 4; *Pine Cone* Staff 2, Business Manager 3, Assistant Editor 4; Y.M.C.A. 2, Vice Pres. 3, 4; Math-Science Club 2, 3, 4; Sigma Alpha Chi Honor Society 2, Historian-Reporter 3, 4; Circle K Club 2, Board of Directors, Vice Pres. 3, 4; Sigma Epsilon Fraternity, Pledge Treasurer 2, Treasurer 3; Homecoming Parade Marshal 3, "Mac" (Best All-Round) 3; Who's Who 4.



FAIN YATES

Quitman, Georgia

Major: ELEMENTARY EDUCATION

Education Club 3, 4



WILSON

YATES



YEOMANS

EARL (BABE) YEOMANS

Valdosta, Georgia

Major: ACCOUNTING Minor: HISTORY



Another of those busy mornings at the student center.



Locked out by any chance???



Oh those bus rides!!



Spring already?

AROUND CAMPUS...

Running wild—collecting pictures for the annual.



JUNIOR CLASS



JUNIOR OFFICERS

MARCIA WALTERS, *Treasurer*; CHARLES DASHER, *Secretary*; LUCILLE HELMS, *President*; GAYE GRIFFIS, *Vice-President*.

Anticipation is an outstanding characteristic of the Juniors. These students are looking forward to the coming year and the long-awaited event in college life.



Mogens Andersen
Ronne, Denmark

A. J. Bentley
Quitman, Ga.

Mary Ann Carter
Lake Park, Ga.

Charles Dasher
Valdosta, Ga.

Julian Baker
Albany, Ga.

Sonia Bergvall
Stockholm, Sweden

William Carter
Lake Park, Ga.

Willena Daugharty
Fargo, Ga.

Miriam Barnes
Americus, Ga.

Raymond Braddy
Manchester, Ga.

Corine Castleberry
Ray City, Ga.

James David
Jacksonville, Fla.

Rudy Baxter
Celio, Ala.

Sheldon Broomberg
Valdosta, Ga.

Horace Chitty
Moultrie, Ga.

Ira Dent
Douglas, Ga.

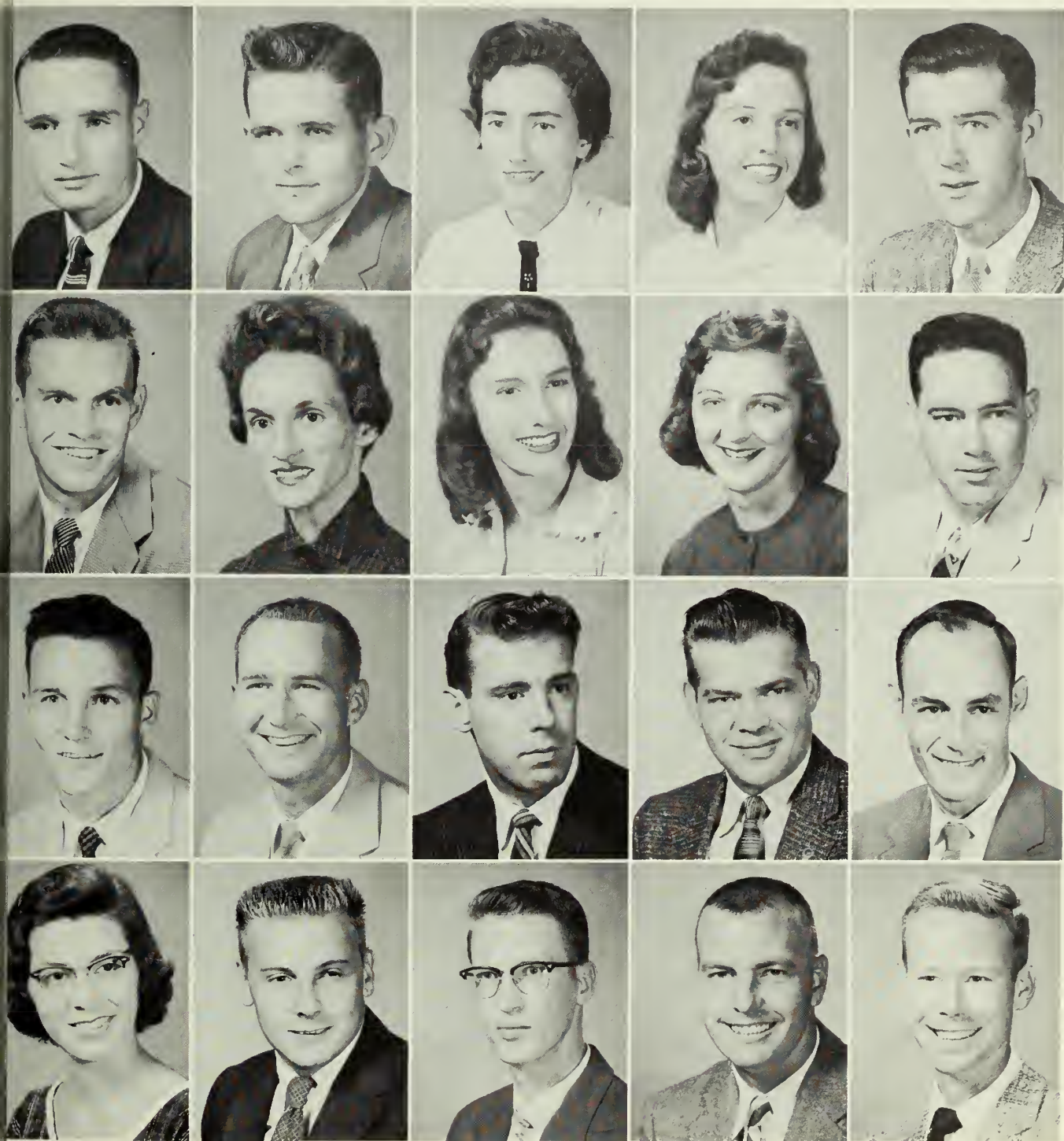
David Bennett
Waycross, Ga.

Marion Carrington
Tifton, Ga.

Ray Cox
Waycross, Ga.

Wayne Dickson
Adel, Ga.

JUNIORS.



Nelson Dupree
Unadilla, Ga.

Ed Gandy
Valdosta, Ga.

Michael Hampton
Quitman, Ga.

Lucille Helms
Valdosta, Ga.

Donald Duren
Cooledge, Ga.

Barbara Gregory
Moultrie, Ga.

Charles Hancock
Valdosta, Ga.

Jimmy Hicks
Cooledge, Ga.

Glenda Ellis
Cordele, Ga.

Gaye Griffis
Homerville, Ga.

Jim Hathaway
Douglas, Ga.

Glenn Hobby
Ashburn, Ga.

Barbara Evans
Hazelhurst, Ga.

Charlene Griffith
McRae, Ga.

Jack Hawthorne
Valdosta, Ga.

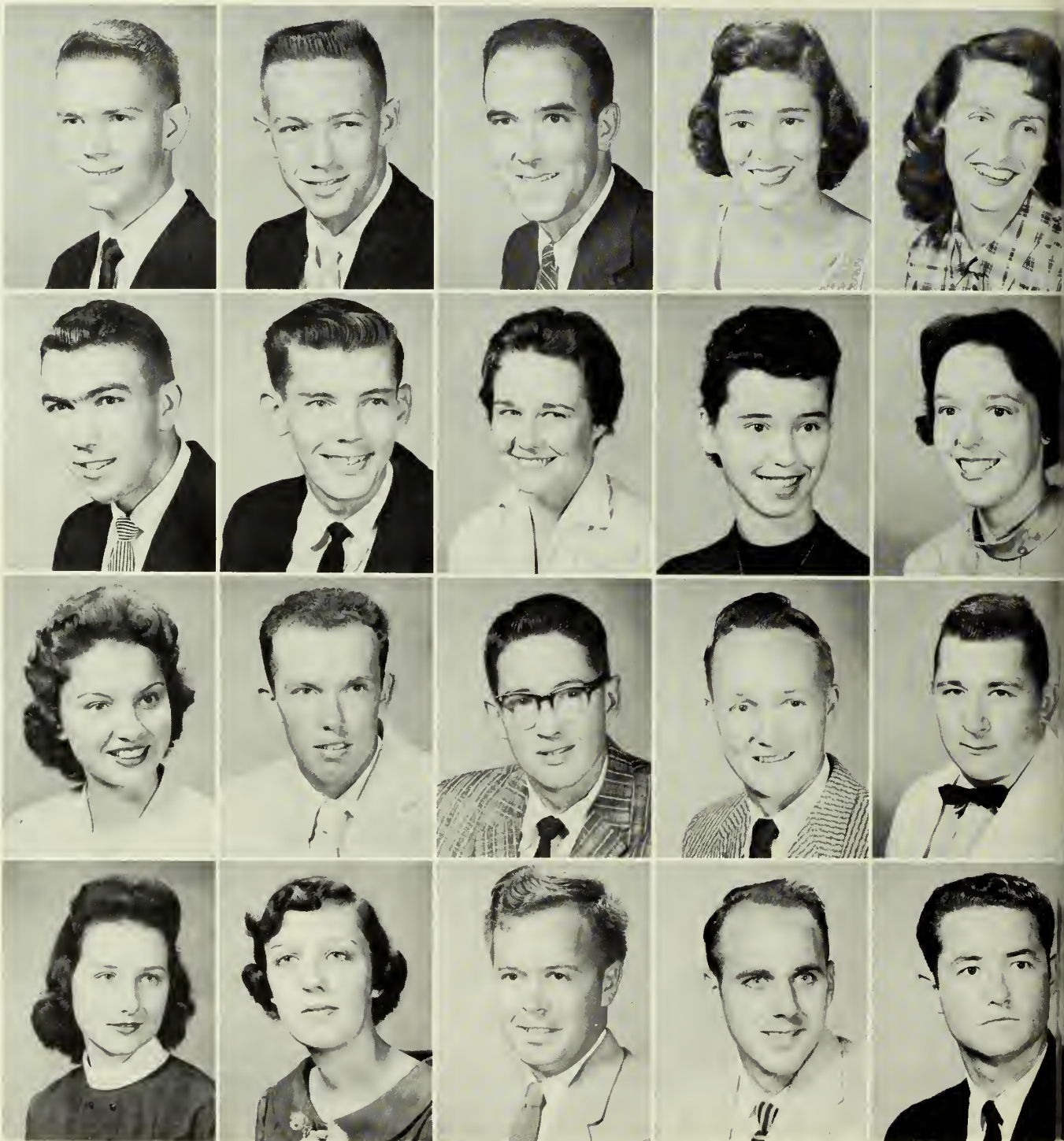
O. W. Hodge
Pitts, Ga.

Wayne Fowler
Live Oak, Fla.

Wayne Haire
Colquitt, Ga.

Bill Hay
Manchester, Ga.

Jim Holt
Valdosta, Ga.



William Holt
Waycross, Ga.

Don Lyons
Valdosta, Ga.

Mary Lou Martin
Richmond Hill, Ga.

Mary Jo Norman
Norman Park, Ga.

John Hulett
McRae, Ga.

Fred McDonald
Valdosta, Ga.

James May
Ray City, Ga.

Sally O'Neal
Valdosta, Ga.

Bill Kitchens
Quitman, Ga.

Louise McDonald
Quitman, Ga.

Benny Mitcham
Montezuma, Ga.

Tiller Phillips
Panama City, Fla.

Laura Leonard
Valdosta, Ga.

Betty McLaurin
Statenville, Ga.

Billy Moncrief
Manchester, Ga.

Charles Pittman
Boston, Ga.

Betty Jo Little
Moultrie, Ga.

Brinkley McNeal
Valdosta, Ga.

Felton Morris
Pearson, Ga.

Silas Pittman
Stillmore, Ga.

JUNIORS



Christine Pitts
Valdosta, Ga.

Kay Shaw
Lennox, Ga.

Ann Strickland
Quitman, Ga.

Marian Thomas
Jennings, Fla.

Doyle Price
Valdosta, Ga.

Dwaine Skiles
Valdosta, Ga.

Harriet Stubbs
Hahira, Ga.

Darlene Wallace
Cartersville, Ga.

Robert Sabo
Lennox, Ga.

Clyde Smith
Brunswick, Ga.

Joe Tarpley
Manchester, Ga.

Marcia Walters
Albany, Ga.

Bill Sears
Valdosta, Ga.

Joe Smith
Hahira, Ga.

Charles Templeton
Valdosta, Ga.

Dixie Lee Weger
Quitman, Ga.

Carl Shapiro
Valdosta, Ga.

Sandra Stanfield
Barwick, Ga.

Fred Thomas
Patterson, Ga.

Ellis Wiley
Bainbridge, Ga.

... 1958



Dorothy Williford
Tifton, Ga.



Ben Wood
Sparks, Ga.



Janet Zipperer
Lake Park, Ga.

JUNIORS OF 1958



Working late in the Biology Lab.



Participating in extra-curricular activities.



Taking a break.

SOPHOMORE CLASS



SOPHOMORE OFFICERS

GLENNIE COOPER, *Treasurer*; JEROME CLEGG, *President*; MILLIETTE REESE, *Secretary*;
PALSY LANGFORD, *Vice-President*.

These students have reached the halfway mark—this is the ideal year in their college life. They have disassociated themselves with high school days, and are not yet fully aware of what lies beyond graduation.



Wayne Adkins
Valdosta, Ga.

Rene Barnett
Albany, Ga.

Lawrence Bishop
Greenville, Fla.

Joe F. Browning
Lakeland, Ga.

Robert Carroll
Valdosta, Ga.

Norma Akins
Nashville, Ga.

John Baskin
Naylor, Ga.

Lillie Mae Black
Valdosta, Ga.

Jimmy Broxson
Colquitt, Ga.

Susan Chance
Quitman, Ga.

Wayne Allen
Valdosta, Ga.

Elton Belch
Pearson, Ga.

Betty Bland
Valdosta, Ga.

Deany Buford
Hazlehurst, Ga.

Jerome Clegg
Waynesboro, Ga.

Leon Aronson
Adel, Ga.

Karen Belcher
Valdosta, Ga.

Laura Nell Bowen
Unadilla, Ga.

Grady Bullington
Cairo, Ga.

Karen Clements
Moultrie, Ga.

Curtis Bailey
Hahira, Ga.

Kathryn Bell
Doerun, Ga.

Richard Bragg
Folkston, Ga.

Mary Helen Butler
Moultrie, Ga.

Mary Alice Clyatt
Nashville, Ga.

Huey Barker
Ray City, Ga.

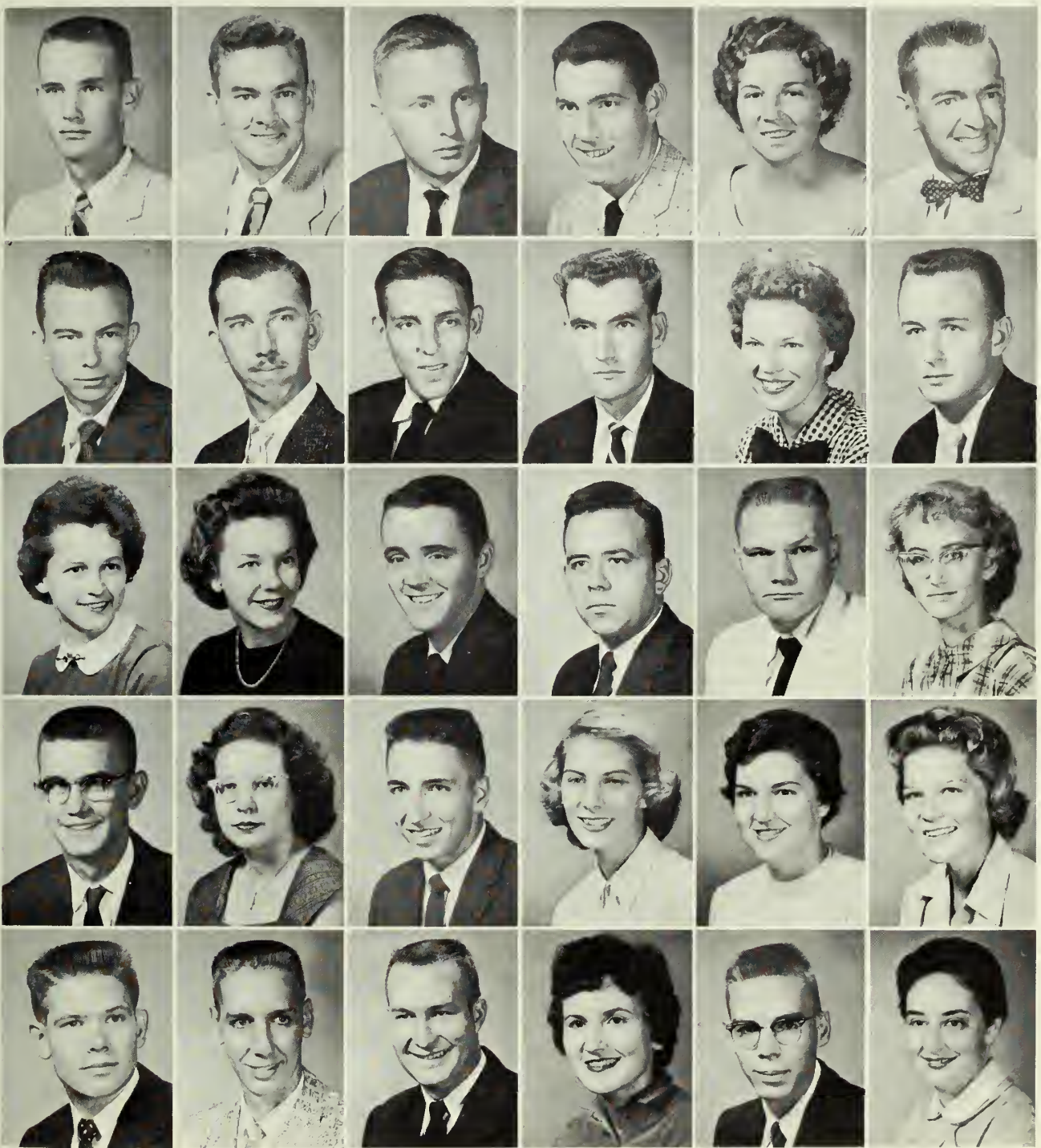
Folks Bennett
Millwood, Ga.

Marjorie Brooks
Climax, Ga.

Gene Cargile
Valdosta, Ga.

Glennie Cooper
Atlanta, Ga.

SOPHOMORES



Charles Corbett
Lakeland, Ga.

John Davis
Valdosta, Ga.

Marcia Duren
Valdosta, Ga.

Edward Fountain
Nashville, Ga.

Benny Hassell
Quitman, Ga.

Edward Coyle
Valdosta, Ga.

Gene Deal
Hinesville, Ga.

Pat Edwards
Valdosta, Ga.

Jacqueline Gaskins
Lakeland, Ga.

William Hay
East Point, Ga.

Larry Crawford
Lenox, Ga.

Kemp Dorsett
Bryon, Ga.

Ben Force
Valdosta, Ga.

Willard Griffis
Quitman, Ga.

Billy Hayes
Valdosta, Ga.

Jerome Crawley
Waycross, Ga.

William Drury
Valdosta, Ga.

Ken Ferrell
Cairo, Ga.

Rena Hanahan
Valdosta, Ga.

Lucy Henderson
Ocilla, Ga.

Jean Culpepper
Lake Park, Ga.

Elaine Duckett
Vinings, Ga.

David Forehand
Vienna, Ga.

Dorothy Harrell
Donalsonville, Ga.

Russell Horner
Valdosta, Ga.

Eugene Davis
Pearson, Ga.

Lester Duncan
Quitman, Ga.

Juanice Forte
Adel, Ga.

Jeanne Harrell
Waycross, Ga.

Pat Hortman
Doerun, Ga.

... OF 1958



Billy John Hughes
Nashville, Ga.

Houston Kemper
Riverdale, Ga.

Frances Little
Waycross, Ga.

Johnny Maloney
Adel, Ga.

Leland Moore
Valdosta, Ga.

Dewey Hulsey
Cordele, Ga.

William Kent
Adel, Ga.

Janice McCranie
St. Simons Is., Ga.

L. C. Martin
Adel, Ga.

Mary Ann Morgan
Atlanta, Ga.

Francine Jones
Valdosta, Ga.

Mary King
Valdosta, Ga.

Shirley McGowan
Valdosta, Ga.

Mary Mashburn
Abbeville, Ga.

Mavis Morris
Coolidge, Ga.

Max Jones
Douglas, Ga.

Palsy Langford
Waycross, Ga.

Becca McGraw
Moultrie, Ga.

James Maxwell
Valdosta, Ga.

Nelle Morris
Valdosta, Ga.

Leila Jones
Thomasville, Ga.

Joyce Ledbetter
Cordele, Ga.

Mary Ann McLean
Valdosta, Ga.

Terry Meeks
Alma, Ga.

Rosario Nicotra
Valdosta, Ga.

Sara Joyce
Valdosta, Ga.

Jimmy Lewis
Nashville, Ga.

Jerry Mackley
Valdosta, Ga.

Beverly Monroe
Ashburn, Ga.

Lamb Parramore
Valdosta, Ga.

SOPHOMORES



Gail Parrish
Valdosta, Ga.

Charlie Pittman
Valdosta, Ga.

Willie Roberts
Thomasville, Ga.

Tommy Sessions
Valdosta, Ga.

Walter Stovall
Douglas, Ga.

Douglas Parrish
Quitman, Ga.

Charles Powell
Valdosta, Ga.

Pat Rowan
Nashville, Ga.

Errol Sewell
Valdosta, Ga.

Sarah Strickland
Waycross, Ga.

Joe Patterson
Columbus, Ga.

Murdine Pridmore
Quitman, Ga.

Jan Scruggs
Nashville, Ga.

Louie Shipes
Lakeland, Ga.

Stuart Summerford
Donalsonville, Ga.

Lou Jean Pearce
Valdosta, Ga.

Jane Purvis
Pembroke, Ga.

Jo Segraves
Fitzgerald, Ga.

Mel Smith
Valdosta, Ga.

Dorothy Thurman
Taylorsville, Ga.

Ben Perkins
Thomasville, Ga.

Jo Rabun
Valdosta, Ga.

Carol Sellers
Valdosta, Ga.

Al Stevens
Bainbridge, Ga.

Bob Trammell
Sumner, Ga.

James Pinson
Valdosta, Ga.

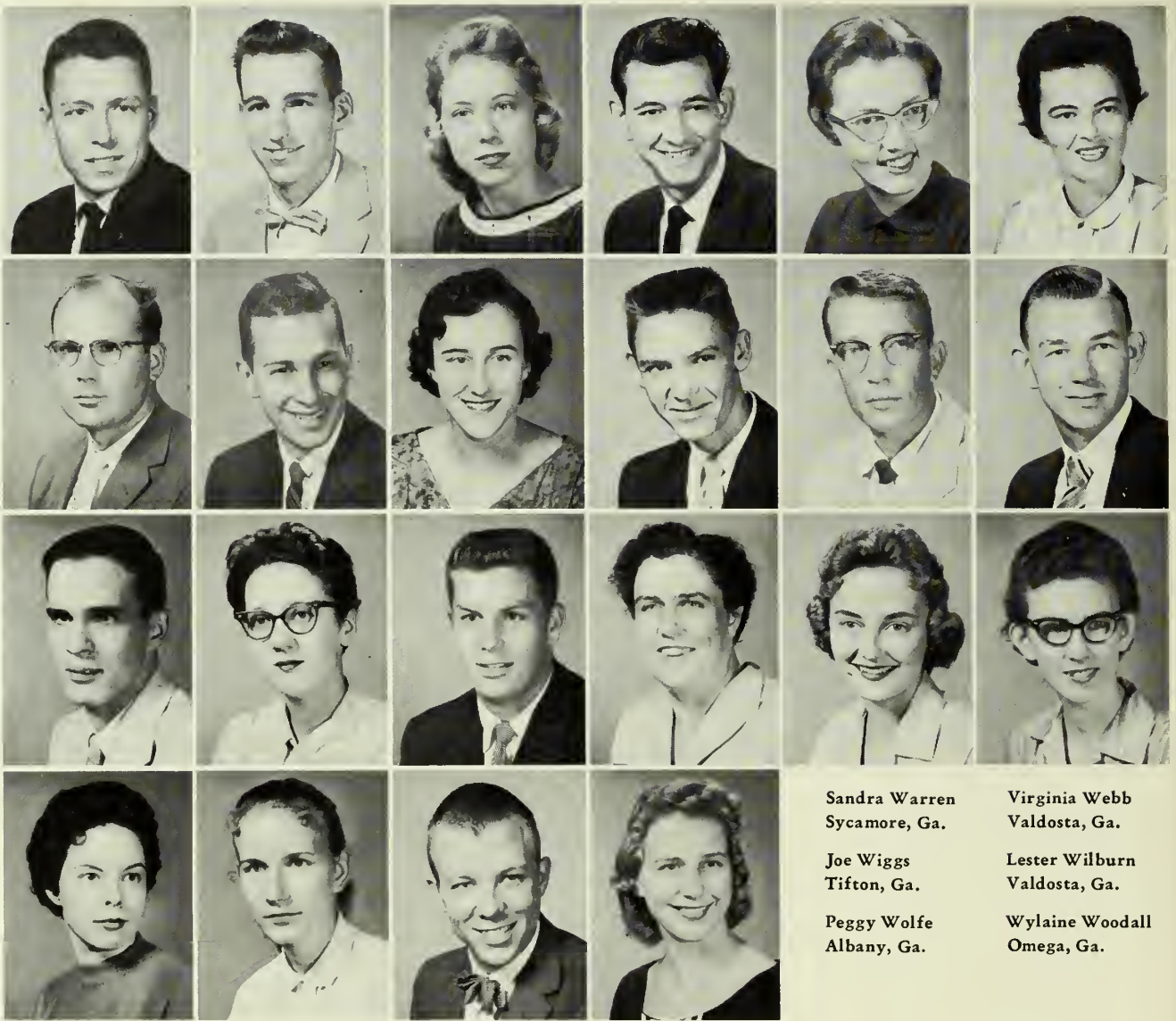
Milliette Reese
Cordele, Ga.

E. W. Sellers
Pelham, Ga.

Sylvia Stone
Whigman, Ga.

Sylvil Tucker
Moultrie, Ga.

... OF 1958



Sandra Warren
Sycamore, Ga.

Virginia Webb
Valdosta, Ga.

Joe Wiggs
Tifton, Ga.

Lester Wilburn
Valdosta, Ga.

Peggy Wolfe
Albany, Ga.

Wylaine Woodall
Omega, Ga.

Charles Tyson
Sparks, Ga.

Jimmy Wainright
Statenville, Ga.

Elaine Walker
Blackshear, Ga.

Jimmy Walke
Valdosta, Ga.

D. Wetherington
Lenox, Ga.

Roy Wetherington
Valdosta, Ga.

Carolyn Whitfield
Nashville, Ga.

Jimmie Wiggins
Valdosta, Ga.

Paul Williams
Quitman, Ga.

Sonja Williams
Camilla, Ga.

Bill Williams
Valdosta, Ga.

Dorcas Wisenbaker
Valdosta, Ga.

Gail Woodard
Tifton, Ga.

Gail Wynn
Hazlehurst, Ga.

Bill Yarian
Valdosta, Ga.

Helen Zeigler
Valdosta, Ga.

SOPHOMORES OF 1958

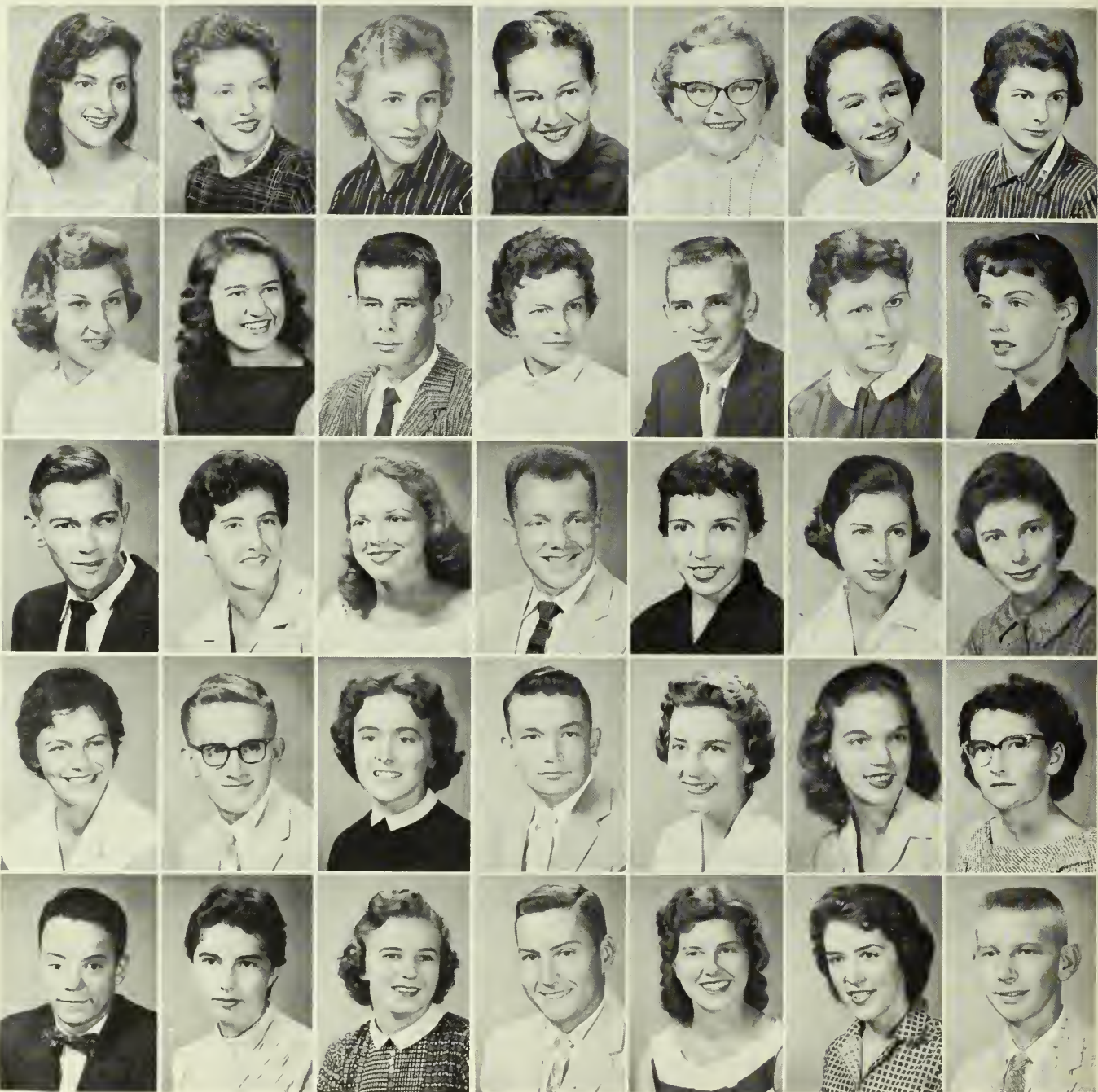
FRESHMAN CLASS



FRESHMAN OFFICERS

KAYE BROWN, *Vice-President*; FAYE LANIER, *Secretary*; PENNY WILLIAMS, *Treasurer*;
TOMMY NEWSOM, *President*.

This group has had their first taste of college life and are left somewhat bewildered by their new experiences. However, they have overcome many obstacles in adjusting to their new environment and are ready to continue life on the college campus.



Dayle Alderman
Griffin, Ga.

Connie Baugh
Moultrie, Ga.

George D. Boyd
Aiken, S. C.

Chris Bruu
Oslo, Norway

Larry Chelena
Clarkston, Ga.

Theresia Arnold
Atlanta, Ga.

Judy Bennett
Sylvester, Ga.

Dale Briggs
Albany, Ga.

Gene Burnette
Quitman, Ga.

Chandler Christian
Valdosta, Ga.

Ann Arrington
Cordele, Ga.

Billy Bob Berry
Fitzgerald, Ga.

Lysbeth Brooks
Valdosta, Ga.

Lawanna Carter
Coffee, Ga.

Sandra Clements
Valdosta, Ga.

Frances Austin
Valdosta, Ga.

Arden Nan Bishop
Waycross, Ga.

David Brooks
Valdosta, Ga.

Terry Carter
Lake Park, Ga.

James Cody
Valdosta, Ga.

Rose Ann Baldwin
Smyrna, Ga.

Danny Blanton
Valdosta, Ga.

Kaye Brown
Sylvester, Ga.

Charlotte Chapman
Valdosta, Ga.

Marie Converse
Valdosta, Ga.

Peggy Barry
Cordele, Ga.

Donna Boone
Valdosta, Ga.

Leslie Brown
Valdosta, Ga.

Carolyn Chapman
Moultrie, Ga.

Camille Cook
Reynolds, Ga.

Barbara Bates
Bainbridge, Ga.

Rosalie Boone
Cairo, Ga.

Harriett Browne
Valdosta, Ga.

Nell Chason
Lakeland, Ga.

Larry Cooper
Valdosta, Ga.

FRESHMEN



Charlotte Coppage
Valdosta, Ga.

Tony Corso
New Brunswick,
N. J.

Lloyd Courson
Valdosta, Ga.

Dan Cowart
Adel, Ga.

Martha Croll
Moultrie, Ga.

Gerald Culpepper
Valdosta, Ga.

Bobby Davis
Jacksonville, Fla.

Gloria Davis
Douglas, Ga.

Phyllis Davis
Valdosta, Ga.

Gayle Dean
Pearson, Ga.

Drucilla Dell
Waycross, Ga.

Riley Deloach
Valdosta, Ga.

W. L. Dent
Fort Valley, Ga.

Phillip Dillard
Thomasville, Ga.

Jimmy Dooley
Quitman, Ga.

Ralph Dorsett
Byron, Ga.

Martha Doster
Donalsonville, Ga.

Raymond Drown
Tampa, Fla.

Sandra Dubose
Waycross, Ga.

Myron Duchon
Adel, Ga.

Gloria Duque
Valdosta, Ga.

Betty Lou Eldridge
Thomasville, Ga.

Joan Ellington
Albany, Ga.

Dillard Ensley
Sparks, Ga.

Ruby Farmer
Valdosta, Ga.

Julian Fields
Ray City, Ga.

Jimmy Fountain
Ray City, Ga.

Sidney Futch
Hahira, Ga.

Gwen Gay
Pavo, Ga.

Roberta George
Valdosta, Ga.

Clement Green
Valdosta, Ga.

Janice Guernsey
Jasper, Fla.

Herman Hall
Ocilla, Ga.

Ann Hamilton
Arabi, Ga.

Gaynelle Haralson
Rebecca, Ga.

. . . 1958



Cynthia Harrell
Eastman, Ga.

Darla Harris
Nashville, Ga.

Wayne Harris
Nashville, Ga.

Cynthia Harrison
Sylvester, Ga.

Larry Hartzog
Sylvester, Ga.

Ricky Herndon
Valdosta, Ga.

James Hewett
Quitman, Ga.

Linda Hiers
Thomasville, Ga.

A. L. Hinson
Millhauen, Ga.

Autry Hoffman
Orlando, Fla.

Marion Horn
Doerun, Ga.

Bill Hough
Naylor, Ga.

Carroll Howard
Albany, Ga.

Marilyn Hughes
Valdosta, Ga.

Phoebe Humphries
Valdosta, Ga.

Jerry Hurst
Cairo, Ga.

Pat Hydrick
Bacon, Ga.

John Jackson
Jasper, Fla.

Helen Jenkins
Albany, Ga.

James Johnson
Ray City, Ga.

Jimmy Johnson
Adel, Ga.

Joe Johnston
Montezuma, Ga.

Robert Joiner
Moultrie, Ga.

Connie Jones
Perry, Ga.

Judy Jones
Thomasville, Ga.

Sandra Jones
Albany, Ga.

Sanford Jones
Valdosta, Ga.

Linda Gail Key
Nashville, Ga.

Bryan Killeen
Twin Lakes, Ga.

Jane Kinsey
College Park, Ga.

William Kirby
Valdosta, Ga.

Roger Knoll
Moody AFB, Ga.

Michael LaHood
Valdosta, Ga.

Faye Lanier
Valdosta, Ga.

Tommie Lastinger
Pearson, Ga.

FRESHMEN



Eleanor Leonard
Valdosta, Ga.

Sissie Lester
Quitman, Ga.

Richard Leverette
Griffin, Ga.

Donald Lineburger
Valdosta, Ga.

Mickell Lovett
Waycross, Ga.

Gayle Luke
Valdosta, Ga.

Emily McBride
Thomasville, Ga.

Paul McCollum
Thomasville, Ga.

Carolyn McGee
Valdosta, Ga.

John McGurk
Orlando, Fla.

Patsy McLendon
Cairo, Ga.

Billie McNeely
Lenox, Ga.

Wayne Martin
Hahira, Ga.

Jeri Martin
Decatur, Ga.

Katherine Marwede
Columbus, Ga.

John Massey
Valdosta, Ga.

Vance Mathis
Adel, Ga.

Robert Mitchell
Thomasville, Ga.

Rosa Lee Mitchell
Albany, Ga.

Leon Mixer
Valdosta, Ga.

Barbara Monk
Smyrna, Ga.

Tillman Moore
Valdosta, Ga.

Mary Moore
Nashville, Ga.

Ellen Moorman
Waycross, Ga.

William Morgan
Lyons, Ga.

Jean Morris
Gainesville, Fla.

Mary Mullin
Albany, Ga.

Eddie Nelms
Sylvester, Ga.

Linda NeSmith
Statenville, Ga.

Marilu NeSmith
Valdosta, Ga.

Susan Newham
Valdosta, Ga.

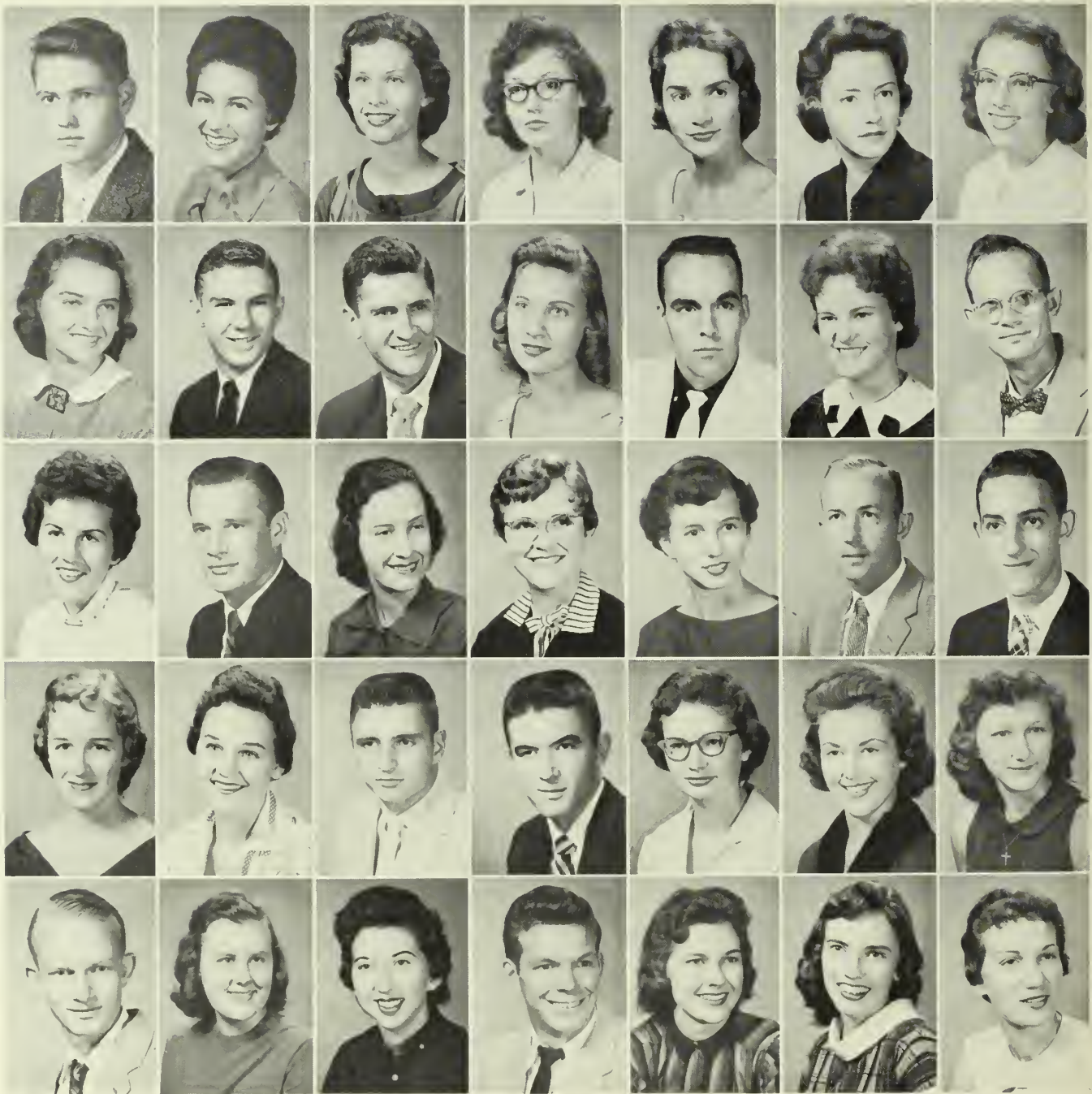
Mike Newman
Valdosta, Ga.

Tommy Newsom
Valdosta, Ga.

Tommy Nichols
Valdosta, Ga.

Betty Norman
Norman Park, Ga.

. . . 1958



Lancewell O'Neal
Nahunta, Ga.

Anna O'Neal
Doerun, Ga.

Sylvia O'Steen
Quitman, Ga.

Lynn Park
Doerun, Ga.

Sally Parramore
Quitman, Ga.

Ginna Parramore
Valdosta, Ga.

Gwyn Parrish
Valdosta, Ga.

Pam Paulk
Valdosta, Ga.

Lamar Pearson
Sparks, Ga.

Alan Pendleton
Valdosta, Ga.

Jerwann Phillips
Valdosta, Ga.

Cleon Phillips
Lake Park, Ga.

Patricia Pinkston
Waycross, Ga.

Ronald Plair
Hahira, Ga.

Betty Jane Pope
Barwick, Ga.

Blanton Prince
Cairo, Ga.

Jane Reese
Jakin, Ga.

Latrelle Reynolds
Sylvester, Ga.

Alice Richardson
Evanston, Ga.

Horace Rogers
Valdosta, Ga.

Gabriel Saliba
Valdosta, Ga.

Ann Scala
Valdosta, Ga.

Joan Schroer
Ray City, Ga.

Walter Schroer
Valdosta, Ga.

Ferrell Scruggs
Valdosta, Ga.

Pat Shaw
Lenox, Ga.

Carol Short
Alma, Ga.

Latrelle Sirmons
Valdosta, Ga.

Raymond Sirmans
Nashville, Ga.

Angela Smith
Valdosta, Ga.

Frankie Smith
Monticello, Fla.

Troy Spicer
Alapaha, Ga.

Judy Starling
Hahira, Ga.

Fonda Starnes
Albany, Ga.

Elaine Studstill
Valdosta, Ga.

FRESHMEN



Sonia Sutton
Albany, Ga.

Mack Tharpe
Moultrie, Ga.

Georgia Lyn
Touchton
Ray City, Ga.
Myrna Walters
Albany, Ga.

Sammy Weldon
Moultrie, Ga.

Frederick Swift
Hopewell Junction,
N. Y.
Harriett Thigpen
Bainbridge, Ga.

Hal Trammell
Sumner, Ga.

Gay Warwick
Valdosta, Ga.

Bobby
Wetherington
Hahira, Ga.

Ted Swindle
Nashville, Ga.

Shirley Thomas
Lee, Fla.

Juree Trawick
Iron City, Ga.

Larry Waters
Blackshear, Ga.

Marcia Whaley
Nashville, Ga.

Charles Tanner
Alma, Ga.

Carolyn Thrift
Cobbtown, Ga.

Stephen Vaughn
Albany, Ga.

Robert Waters
Ludowici, Ga.

Donald White
Valdosta, Ga.

Ray Tatch
Lake Park, Ga.

Joe Tinsley
Remerton, Ga.

William Voight
Valdosta, Ga.

Greta Watson
Blackshear, Ga.

Calvin White
Bainbridge, Ga.

Mary Tatum
Sylvester, Ga.

Janice Tomberlin
Valdosta, Ga.

Beverly Walker
Valdosta, Ga.

Joe Webb
Bryn Mawr, Pa.

Buddy Whitlock
Perry, Fla.

Jackson Taylor
Adel, Ga.

John Tomlinson
Valdosta, Ga.

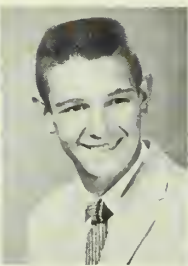
James Walker
Nahunta, Ga.

Wayne Welch
Valdosta, Ga.

Deiva Whitston
Moultrie, Ga.



Louise Wight
Cairo, Ga.



Johnny Williams
Valdosta, Ga.



Penny Williams
Valdosta, Ga.



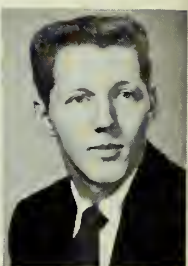
Tommy Williamson
Valdosta, Ga.



Louie Wisenbaker
Lake Park, Ga.



Dennis Wood
Valdosta, Ga.



Jerry Ziegler
Moultrie, Ga.

FRESHMEN OF 1958



These campus scenes represent three varied forms of study—In a group inside the Student Center, in couples around campus and a lone soul cramming before an exam. (Which, incidentally, is the only one having anything to do with text books.)



ORGANIZATIONS

and ACTIVITIES

at V. S. C.

This phase of student life is referred to as extra-curricular activities and embraces some of the more pleasant campus experiences.

STUDENT GOVERNMENT ASSOCIATION



OFFICERS

- LUCILLE HELMS *Secretary*
JIM STOVALL *Vire-President*
RAYMOND WILSON *President*
EMA DELL HENDLEY . . . *Treasurer*

This is an organization designed to represent, lead, and unify the student body. The SGA acts as a coordinating body between the faculty and the student body. It plans and initiates many social events and strives to maintain the highest standards of conduct on campus.

Standing: Houston Kemper, Ed Gandy, Joe Patterson, Horace Chitty, Hal Trammell.
Seated: Gaye Griffis, Sandra Stanfield, Mrs. Joe Wisenbaker, Sponsor, Jean Harrell, Jeanne Connell.



DORMITORY COUNCILS

WOMEN'S RESIDENCE HALL COUNCIL

GLEND A ELLIS
Second Vice-President

KATHERINE BELL
Social Chairman

DOTTIE ALFORD
President

ELAINE BARBER
Secretary-Treasurer

MARILYN MILLER
First Vice-President



The purpose of the Dormitory Councils is: to regulate the dormitory student's life for the good of the majority; to develop not only a sense of honesty but a sense of responsibility in each student; to

encourage and provide opportunities for the development of leadership among students; and to promote a practical government that will carry over into democratic life.



MEN'S DORMITORY COUNCIL

LAVON COOK
President

JIM STOVALL
Vice-President

JIMMY BROXSON
Secretary

1958 PINE

The Pine Cone Staff is made up of a group of students who are interested in producing better yearbooks for V.S.C.

Editor:
EMA DELL HENDLEY



WAYNE WELCH . . . *Sports Staff*
TOMMIE LASTINGER . . . *Layout Staff*
THERESIA ARNOLD . . . *Layout Staff*

JEAN MORRIS . . . *Greeks Editor*
ALAN PENDLETON . . . *Copy Editor*
MARCIA WHALEY . . . *Class Editor*
BETTY LOU BROWN . . . *Layout Editor*
MARJORIE BROOKS . . . *Sports Editor*



CONE STAFF



Business Manager:
RUDY BAXTER

Assistant Editors:
RAYMOND WILSON
JEROME CLEGG

DOROTHY HARRELL . . . *Layout Staff*
CHARLOTTE COPPAGE, *Organizations Editor*
FAYE LANIER *Seniors Editor*
MURRAY STEWART . *Photography Editor*



Advisors:
MR. JOE PEMBER, MR. WALLACE WAITES

CAMPUS CANOPY



EDITORS

SANDRA STANFIELD *Society Editor*
 SIDNEY FUTCH *Associate Editor*
 LESTER HAYMONS *Editor*
 DILLARD ENSLEY *Associate Editor*



BUSINESS STAFF

JOE PATTERSON *Business Manager*
 JACQUINE GASKINS
 ELEANOR LEONARD
 GWYN PARRISH

The Campus Canopy is the voice of the students of Valdosta State College. A staff composed of students who have an interest in journalism as a career or hobby strives to present news as it happens to its readers and to promote college activities.



Reporters: Lysbeth Brooks, Ann Scala, Marilyn Hughes, Miriam Barnes, John McGurk, Kathryn Bell, Stephan Vaughn, Milliette Reese.

CAMERA CLUB

OFFICERS

- MURRAY STEWARD *President*
WAYNE HAIRE *Vice-President*
JIM STOVALL *Secretary*
MISS THERA HAMBRICK . . . *Treasurer*

The Photography Club is one of the newest and fastest growing clubs on campus. The primary objectives of the club are to provide for its members opportunities to learn the basic elements of photography and to exchange ideas and criticism. The club was designed to appeal to all persons interested in photography, regardless of degree of proficiency. The club has planned programs and lectures and plans to initiate annual exhibitions of its members' work. The club is a contribution to both the Pine Cone and the Campus Canopy.

Front Row: Murray Steward, Miss Hambrick, Dr. Wall, Kaldon Abdullah, Della Raulerson, Jim Stovall. *Back Row:* Lester Haymons, Wayne Haire, John McGurk, Wayne Adkins, Sheldon Broomberg.



Y. W. C. A.

The Young Women's Christian Association seeks to unite the students in the desire to realize a full and creative life through a growing knowledge of God. Every girl is invited to join this organization. As the governing body of the organization, the "Y" Cabinet furnishes leadership and guidance to help with the girls' daily problems. The traditional services sponsored by the "Y" are: Big Sister-Little Sister Candle-Lighting Service, The Fire-Lighting Service, The Hanging of the Greens, and The Week of the Heart Sister.

OFFICERS

GLEND A ELLIS *President*
MARILYN MILLER *Vice-President*
MARY JO NORMAN *Secretary*
BARBARA GREGORY *Treasurer*
MRS. JANET MAYNARD *Sponsor*

"Y" CABINET

Standing: Sylvil Tucker, Jeanne Harrell, Kathryn Bell, Joan Nastasi, Mavis Morris, Jo Seagraves, Miriam Barnes, Mary Lou Martin. *Sitting:* Betty J. Chambless, Glenda Ellis, Marilyn Miller, Mrs. Janet Maynard, Barbara Gregory, Mary Jo Norman, Pat Hortman.



M. C. A.

OFFICERS

STEPHEN VAUGHN *President*
JACK ROWE *Vice-President*
STUART SUMMERFORD . . *Secy.-Treas.*
IRA DENT *Program Chairman*

The Men's Christian Alliance is an organization formed for the purpose of furthering and developing Christian fellowship and deepening spiritual life on the campus. This year the group has enjoyed many interesting speakers as well as highly inspirational devotionals. The MCA co-sponsors vespers and Religious Emphasis Week.

Front row: Dr. Durrenberger (Sponsor), Stephen Vaughn, Stuart Summerford. Second row: Robert Waters, Joe Webb, Buzz Baker, Arthur Forehand. Third row: Houston

Kemper, Lamar Pearson, Ben Perkins, Larry Chelena, Larry Waters. Fourth row: Raymond Wilson, Ira Dent, Ben Wood, Wayne Haire.



BAPTIST STUDENT UNION

OFFICERS

JEAN EDWARDS *President*

GLEND A ELLIS *Vice-President*

MARCIA WALTERS *2nd Vice-President*

JEANNE HARRELL *Secretary*

JOYCE LEDBETTER *Treasurer*

The Baptist Student Union seeks to provide a program whereby the student may experience Christian growth during his college years. Its activities are designed to lead the student to a deeper sense of dedication to Christ and to a constant awareness of God in our daily lives. It also seeks to permeate the campus with Christian principles and ideals.

A "home away from home" for the B.S.U. members is the Baptist Student Center at 111 West Brookwood Drive.

Front row: Mary Jo Norman, Pattie Edwards, Betty Jane Chambliss, Myrna Walters, Ann Hamilton. *Second row:* Jean Edwards, Marian Thomas, Jo Seagraves, Jeanne Harrell, Barbara Gregory, Glenda Ellis, Kathryn Bell,

Phoebe Humphries, Dixie Lee Weger, Marcia Walters, Joyce Ledbetter. *Back row:* John Baskin, Ben Perkins, Mr. and Mrs. Willis Harper, Directors.



SOCK and BUSKIN CLUB

OFFICERS

JEROME CLEGG *President*
 DIXIE LEE WEGER *Vice-President*
 MARILU NESMITH *Historian*
 FRANCINE JONES *Secretary-Treasurer*
 ALAN PENDLETON *Publicity Chairman*
 MISS LOUISE SAWYER *Director*

The Sock and Buskin Club attempts to create for that great illusion—the theatre. . . .

It is composed of men and women who have an interest in the theatre whether before the footlights or behind the scenes.

The club endeavors to produce at least three major productions and several minor ones a year.



Front row: Sissie Lester, Peggy Barry, Ann Arrington, Theresia Arnold. *Second row:* Marcia Whaley, Tommie Lastinger, Jo Rabun, Gene Cargile, Francine Jones, Charlotte

Coppage, Dixie Lee Weger, Phyllis Davis. *Back row:* Marilu Nesmith, Alan Pendleton, Jerome Clegg, Lester Haymons, Stephen Vaughn, Kaldon Abdullah, Miss Sawyer.



BUSINESS CLUB



Standing: Carl Shapiro, Business Administration Representative; Elaine Barber, Reporter; Charlene Griffith, President; Silas Pittman, Business Representative. *Seated:* Francine Jones, Vice-President; Jean Bridges, Secretary; Helen Zeigler, Treasurer; Mary King, Business Representative; Sue Bridges, Business Representative.

The club gives experience to its members for serving the faculty and student body and for work in the future. The purposes of this club are to promote interest in business education and training among its members and to provide social, cultural, and business experiences through club activities.



Back row: Carl Shapiro, Charles Tyron, Larry Crawford, Jack Rowe, Silas Pittman, Bill Moncrief, Kemp Dorsett. *Second row:* Mr. Dales, Charlene Griffith, Sandra Stanfield, Elaine Barber, Miss Sammons, Dorothy Harrell,

Helen Zeigler, Dorcas Wisenbaker, Mr. Robinson. *Front row:* Francine Jones, Jean Bridges, Mary King, Sue Bridges, Jean Morris, Jane Purvis, Shirley Daughtery.

ENGLISH CLUB

OFFICERS

NORMA LIGHTSEY *President*
ELAINE BARBER *Vice-President*
ELIZABETH DEAN . *Secretary-Treasurer*
GAYE GRIFFIS *Reporter*
MOLLY DAVIS *Social Chairman*
MRS. JOHN ODUM *Advisor*

The English Club is an organization composed of Juniors and Seniors who major or minor in English. The club strives to stimulate interest in all phases of literature and to promote creativeness in the students.



Standing: Kaldon Abdullah, Glenn Hobby, Dixie Lee Weger, Virginia Sweet, Brinkley McNeal, Laura Leonard, Carolyn Holton, Don Lyons, Joe Smith. *Seated:* Jean

Bridges, Elizabeth Dean, Mrs. Odum, Norma Lightsey, Elaine Barber, Gaye Griffis, Sue Bridges, Della Raulerson.



SECONDARY AND JUNIOR HIGH MAJORS: *Back row:* James Cody, Tiller Phillips, Errol Sewell, Joe Patterson, Ben Perkins, Lamar Pearson, Bill Holt, Phillip Dillard. *Second row:* Mrs. Knight, Carolyn Holton, Patsy Shaw, Darlene

Wallace, Leslie Brown, Ema Dell Hendley, Molly Davis, Nancy Southwell. *First row:* Leona Register, Laura Nell Bowen, Deiva Whitston, Jan Scruggs, Dorothy Willaford, Terry Meeks, Lewana Carter.

OFFICERS

- MARILYN MILLER *President*
 SALLY O'NEAL *Vice-President*
 JOE PATTERSON *Secretary*
 JOAN NASTASI *Treasurer*

The V.S.C. chapter is a part of the Student N.E.A. organization on the state and national level. All members of the club are potential teachers on the elementary, junior high or high school level. The club works toward the advancement of education and a more thorough knowledge of its profession through its projects, programs, district and state meetings, films, speakers, and fellowship together.

EDUCATION CLUB



ELEMENTARY MAJORS: *Back row:* Mavis Morris, Janice McCranie, Janet Zipperer, Mrs. Pitts, Faye Bass, Willena Daugharty, Frankie Smith, Janet Vaughn, Alice Perry, Betty Norman. *Second row:* Mr. Gerlock, Pat Hortman, Sybil Tucker, Connie Jones, Cynthia Rice, Pat Rowan, Carolyn

Whitfield, Carol Short, Mrs. Bozeman, Marilyn Miller, Joan Nastasi. *First row:* Sally O'Neal, Gail Woodard, Mary Jo Norman, Palsy Langford, Gail Alderman, Betty Jane Chambliss, Jo Seagraves.



BIOLOGY MAJORS: *Standing:* A. J. Bently, Wayne Dickson, James Maxwell, Leon Aronson, James May, Horace Chitty, Charles Hancock, Hansen Carter, Johnny Malony, Clyde Smith, Bill Moncrieff, Alan Pendleton, Sonny Duncan. *Seated:*

Julian Baker, William Kent, Jeanne Connell, Dottie Alford, Lucille Helms, Elizabeth Dean, Faye Lanier, Bennie Baker, Larry Waters, Robert Waters.

MATH-SCIENCE CLUB

An organization composed of majors or minors in Biology, Chemistry, Physics, and Mathematics. The Math-Science Club is dedicated to the promotion of Sciences in the space age through experimenting, studying and intelligent reasoning.

OFFICERS AND ADVISORS: *Standing:* Dr. Nevins, Dr. Wall, Mr. Lindauer, Dr. Bettman, Dr. Carter, Mr. Babcock, Mr. Wagner. *Seated:* Della Raulerson, Treasurer; Gaye Griffis, Vice-President; Gene Gibbs, President; Darlene Wallace, Secretary; Jim Stovall, Historian and Reporter.



CHEMISTRY AND MATH MAJORS: *Standing:* Raymond Wilson, Ted Swindle, Lester Haymons, Robert Carroll, Gene Cargile, Ed Gamble, Wayne Haire, Ronald Allen. *Seated:*

Charles Tanner, Ralph Dorsett, Betty McLaurin, Nancy Southwell, Connie Baugh, Miriam Barnes, Murray Steward, Bobby Joiner.

INTERNATIONAL RELATIONS CLUB

OFFICERS

- GEORGE WALLACE *President*
BENNIE RUTH BAKER *Vice-President*
MIRIAM BARNES *Secretary*
MURRAY STEWARD *Treasurer*

The International Relations Club was organized in 1928, and is sponsored by the Foreign Policy Association. The club endeavors to deal with all topics of national and international significance in an impartial manner, always endeavoring to search out and appreciate the truth of each situation under observation. An effort is made to develop a practical understanding of current happenings through various projects, conferences, and programs. The motto of the club is: "To ignore world problems is to ignore your own future."



Front row: Deany Buford, Norma Lightsey, Miriam Barnes, Bennie Baker, Jeanne Connell, Myrtice Sloan, Ben Duque. *Members not in picture:* Murray Steward, Erik Sverre, Chris

Bruu, Sonia Bergvall. *Back row:* Robert Herrington, George Wallace, Doyle Wetherington, Khaldon Abdullah, Allen Booker, Miss Price. Standing in front is Daniel Duque, a future member.

INTERNATIONAL CIRCLE K

Circle K Club, sponsored by Kiwanis International, is the only club on campus with international affiliation. A service organization, Circle K holds weekly luncheon meetings during which business is transacted and outstanding guest speakers are heard. Campus projects of the club include collection of funds for the United Fund Campaign, the erection of entrance signs to the campus, better student backing of V.S.C. athletic teams, and an Employment Agency for students.



OFFICERS

SEATED:

JIM STOVALL *Vice-President*
 DEWAINE SKILES *President*

STANDING:

WAYNE ADKINS *Treasurer*
 HORACE CHITTY *Secretary*



Standing: Raymond Wilson, Billy Moncrief, Gene Gibbs, Jerome Clegg, Lester Haymons, Grady Bennett. *Sitting:*

Murray Steward, Wayne Adkins, Dewaine Skiles, Jim Stovall, Horace Chitty, Mr. Clayton Logan, Advisor.

THE SERENADERS

"The Serenaders," popular VSC vocal ensemble, is composed of four men and four women students selected for their outstanding musical ability. This versatile group appears before many civic, school, radio, and television audiences each year. Prior to 1955, "The Serenaders" consisted of nine talented young ladies; contralto Jeanne Connell, a fourth year member from Perry, Georgia, is the only present member to have sung in the all-girl group. Other members returning from

last year are: Jean Edwards, Silver Spring, Maryland; John Baskin, Naylor, Georgia; and Dwaine Skiles, Valdosta, Georgia. First year members are Marcia Walters, Albany, Georgia; Myrna Walters, Albany, Georgia; John Hulett, McRae, Georgia; and Stephen Vaughn, Albany, Georgia.

Mr. Clayton Logan, head of the music department, serves as accompanist and director of The Serenaders.

Back row: Stephan Vaughn, John Hulett, John Baskin, Dewaine Skiles and Mr. Logan,
Front row: Jeanne Edwards, Jeanne Connell, Marcia Walters, Myrna Walters.





Back row: Ray Tatch, Fred McDonald, Stephen Vaughn, Dwaine Skiles, John Baskin, Stuart Summerford, Reni Barnett.
Second row: Joan Ellington, Fonda Starnes, Charlotte Chapman, Carolyn McGee, Marjorie Brooks, Lou Jean Peace, Gail Parrish, Marcia Walters, Dale Briggs, Carl Harden, Jo Rabun.

First row: Mary Moore (accompanist), Glenda Ellis, Darla Harris, Jane Reese, Sonia Sutton, Camille Cook, Carol Short, Linda Gail Key, Marian Thomas, Kathryn Bell, Myrna Walters, Gail Wynn, Mary Lou Martin, Mr. Teague, director.

GLEE CLUB

Thirty-two voices become one when the Glee Club members harmonize in song. Ranging from the plaintive ballads of Stephen Foster to Bach's chorales, the Glee Club programs have been unique and rewarding throughout the year. Those long hours at rehearsal on Tuesdays and Thursdays were not in vain.

"I breathed a song into the air, it fell to earth, I knew not where . . . and the song, from beginning to end, I found again in the heart of a friend."



OFFICERS

- STUART SUMMERFORD . *Business Mgr.*
- MARJORIE BROOKS . *Publicity Chmn.*
- JOAN ELLINGTON *Secretary*
- MARION THOMAS . . . *Vice-President*
- GAIL PARRISH *Librarian*
- FRED McDONALD *President*
- STEPHEN VAUGHN *Treasurer*

PANHELLENIC COUNCIL

The Panhellenic Association was organized in 1957 for the purpose of promoting cooperation among the sororities on the campus of V.S.C. This organization strives to maintain high social standards and to further intellectual accomplishment and sound scholarship. All rules governing rushing, pledging, and initiation are compiled by this association. It is composed of three members from each sorority on campus.



Seated: Jane Purvis, President; Marcia Walters, Vice-President; Carolyn Holton, Secretary; JoAnn Key, Treasurer;

Charlene Griffith, Reporter. Standing: Della Raulerson, Lucille Helms, Marilyn Miller, Janet Vaughn.

INTERFRATERNITY COUNCIL

The Interfraternity Council was organized to promote a better relationship among fraternities at V.S.C. Although not too active in past years, it will try, this year, to act as a medium for closer harmony among brothers of all fraternities.

This organization will act to coordinate the three existing fraternities on V.S.C. campus in the future—in such a fashion as to preserve better understanding among all students at V.S.C.



Back: Jim Hathaway, Wayne Adkins. *Front:* Jimmy Stovall, Houston Kemper, "Babe" Yeomans and Ellis Wiley.

SIGMA ALPHA CHI



OFFICERS

Standing: Joe Wiggs, Secretary; George Wallace, President; Bill Hayes, Treasurer. *Seated:* Darlene Wallace, Vice-President; Jeanne Connell, Historian and Reporter.

The Sigma Alpha Chi requires a scholastic average of "B" or better for eligibility. Freshmen are initiated after completion of two quarters. Upper-classmen must maintain a "B" average and show outstanding qualities of leadership and character. The purpose of the organization is to encourage scholarship and stimulate interest in academic activities.



Standing: Billy Watson, Bill Kent, Grady Bennett, Marilyn Miller, James Maxwell, Leon Aronson, Raymond Wilson. *Seated:* Virginia Sweet, Nancy Carol Southwell, Glennie

Cooper, Sue Bridges, Dr. Nevins, Jeanne Harrell, Jane Purvis, Glenda Ellis, and Bennie Ruth Baker.

DELTA XI



SISTERS: *Standing:* Leona Register, Treasurer; Ann Strickland, Secretary; Della Raulerson, Mrs. Floyd, Sponsor. *Seated:* Janet Vaughn, Vice-President; Jean Bridges, Carolyn Holton, President; Sue Bridges, Elizabeth Dean.

Delta Xi, colony to petition Alpha Xi Delta. Delta Xi was founded in the spring of 1957. Though it is the newest social sorority on campus, it has built a strong chapter that has been one of the most active organizations on campus. It features many projects that are of interest to the student body as

well as to its members. It stands for sincere development of character, for high standards of scholarship, for wholehearted interest in college affairs, and for wholesome social life above reproach or criticism. (Members not pictured: Susan Chance, Sally O'Neal, Sarah Strickland.)



PLEDGES: *Standing:* Jerwann Phillips, Joan Nastasi, Dorothy Harrell, Rosalie Boone, Betty Lou Eldridge, Eleanor Leonard. *Second row:* Angela Smith, Frankie

Smith, Harriet Brown, Rena Hanahan, Lynn Park. *First row:* Laura Nell Bowen, Arden Nan Bishop, Joan Schroer, Gloria Davis.

SIGMA ALPHA OMEGA

Sigma Alpha Omega, which was founded in 1953, was the first sorority on the V.S.C. campus. It aids its members in maintaining high scholastic and social standards, and it strives to promote fuller and richer experiences during college days for its members.



SISTERS: *Standing:* Palsy Langford, Shirley McGowan, Charlene Griffith, Lucille Helms, Sonja Williams. *Seated:* Miss Louise Sawyer, Advisor; Jane Purvis, President; Jeanne Harrell, Vice-President; Frances Little, Secretary; Karen Clements, Treasurer.



PLEDGES: *Standing:* Penny Williams, Chris Bruu, Lamb Parramore, Susan Newham, Marie Converse, Gail Luke, Becca McGraw, Gaye Griffith, Elaine Duckett, Milliette Reese, Barbara Jo Seagraves, Carolyn McGee, Marilyn Hughes.

Seated: Jeanne Harrell, Pledge Trainer; Lysbeth Brooks, Ginna Parramore, Peggy Barry, Judy Starling, Sandra Clements, Ann Arrington, Faye Lanier, Chandler Christian, Pam Paulk. *Not pictured:* Louise Wight, Gail Woodard, Elaine Studstill.

ZETA CHI

Zeta Chi Sorority was organized in the spring of 1955. Zeta Chi, under the leadership of Mrs. Odum, strives to promote college spirit and friendship, to provide greater social development and recognize scholarship among all students. The sorority takes as its symbols, the red carnation and the colors, red and white. Zeta Chi is a colony to petition Kappa Delta.

"Hand in hand, heart to heart, as one we stand."



SISTERS: *Front:* Betty Jane Chambless, Historian; Joyce Ledbetter; Peggy Wolfe, Treasurer; Alice Perry, Secretary; Marcia Walters, President. *Back:* JoAnn Key, Vice-President; Marilyn Miller, Pledge Trainer. *Not pictured:* Molly Davis.

Advisor: Mrs. John Odum



PLEDGES: *Back:* Faye Bass, Katherine Bell, President; Sonia Sutton, Vice President; Myrna Walters, Secretary. *Front:*

Charlotte Coppage, Historian; Barbara Bates, Carroll Howard, Treasurer. *Not Pictured:* Marilu Nesmith, Chaplain.



OFFICERS: *Standing:* Jimmy Johnson, Treasurer; Alan Pendleton, Chaplain; Ben Force, Historian; Jerome Clegg, Secretary; Joe Patterson, Pledge Trainer. *Seated:* Houston Kemper, President; Richard Bragg, Sergeant-at-Arms; Lester Haymons, Vice-President.



SPONSORS: Elaine Studstill, Lamb Parramore, Penny Williams, Mary Lou Martin.

MU ALPHA



TAU KAPPA EPSILON—the Fraternity for life.
 "Above all else TKE stands for the man."

A member is not chosen for his wealth or social standing but his personal worth. Mu Alpha, the local affiliate, was founded November, 1952. The first Greek letter fraternity on campus, it affiliated with Tau Kappa

Epsilon National Fraternity in 1955. TKE strives to sponsor many functions not only beneficial to themselves but to the college also.



MEMBERS: *Standing:* Leon Mixer, Ted Swindle, Bill Hay, John McGurk, Shirley McGowan (Sweetheart), Larry Cooper, John Massey, Silas Pittman, Tommy Williamson. *Seated:* Larry Waters, Pat Tomlinson, Sonny Greene, George Boyd, Robert Waters, Joe Webb. *Members not pictured:* Charles Corbett, Robert Joiner, William Kirby, Ellis Wiley.



OFFICERS: *Standing:* Wayne Adkins, President; Wayne Allen, Secretary. *Seated:* Jim Stovall, Vice-President; Gene Cargile, Treasurer.



HOSTESSES: Ann Arrington, Marian Horne, Helen Jenkins, Sandra Clements, Mary Mullins.

SIGMA EPSILON



The Sig Eps were established on the campus in the spring of 1955. It is the youngest fraternity on the campus and is affiliated nationally with Sigma Phi

Epsilon. The fraternity stresses scholastic achievement and social development, among the students as well as the brothers.

BROTHERS AND PLEDGES: *Standing:* Wayne Harris, Russell Hornor, Larry Crawford, Brian Killeen, Autrey Hoffman, Curtis Bailey, Ricky Herndon, Bobby Davis, William Moncrieff, Murray Steward. *Seated:* Tommy Sessions, Jimmy Broxson, Al Hinson, James David, Michael Lahood.



FILII FORTUNAE



BROTHERS: *Back row:* Bill Kitchens, Jim Hathaway, Jack Rowe, Bill Hayes, Bill Kent. *Second row:* Joe Smith, Ken Ferrell, Dale King, Charlie Powell, "Babe" Yeomans. *Front*

row: Sponsors: Mary Ann Morgan, Lucille Helms, Charlene Griffith, Miriam Barnes, Beverly Monroe.

The Filii Fortunae Fraternity, first social fraternity organized at V.S.C., is an active and integral part of college life on campus. Filii was organized to promote fellowship and brotherhood among its brothers. Through the years, the fraternity has a record to well be proud of. To cite some of the fraternity's accomplishments: It sponsors the annual Miss V.S.C. Beauty Contest, awarding the outstanding male of the

year and recognizing a member of the faculty who we consider has given unselfishly of his time to aid students in personal and non-academic activities.

In the future, Filii Fortunae will strive to maintain the prestige which it has at the present on V.S.C. campus.



PLEDGES: *Back row:* Walter Stovall, Stanley Houston, John Jackson, Charles Templeton, Ed Gandy. *Second row:* Buddy Whitlock, Walter Schroer, Louie Shipes, Tony

Corso, Johnny Purvis. *Front row:* Blanton Prince, Betty Lou Eldridge, Sweetheart; Bill Voight, Gloria Davis, Sweetheart; Benny Mitchum.

SPORTS at

V. S. C. 1957-1958

Sports at V.S.C. are not limited to those who participate in actual sporting events, but offer excellent entertainment for student spectators as well.

SPORTS CLUB



"To bring to campus pleasure and enjoyment through sports."

On our campus, there is always competition between two teams—the Kappas and the Lambdas. It is a friendly rivalry but never let it be said that one team is better than the other; they are both tops. Each girl is invited to become either a Kappa or a Lambda. These two teams compete against each other in different games during the year. Our Physical Education Department advises us and supplies the equipment with which we try to bring to the campus pleasure and enjoyment through sports. All this leads to healthful living and helps to make a well rounded college student.

OFFICERS

BEVERLY MONROE *President*
 MAVIS MORRIS *Vice-President*
 DEANY BUFORD *Treasurer*
 CARROLL HOWARD *Secretary*



Standing: Marian Horne, Mavis Morris, Jane Reese, Gay Warwick, Mrs. Mathis, Advisor-Director; Deany Buford,

Juree Trawick. *Kneeling:* Beverly Monroe, Lysbeth Brooks, Marilyn Hughes, Carolyn McGee, Carroll Howard.

FINS and FLIPPERS

The Fins and Flippers is a campus organization for students interested in synchronized swimming. Formerly for women students only, the club was opened to men students also in 1955.

The Fins and Flippers present an aquacade each spring quarter with club members responsible for deciding on a theme and a way to present the theme. Club Advisor is Mrs. Harris Mathis.



OFFICERS

- SISSY BRIDGES *President*
 BEVERLY MONROE *Secretary and Treasurer*
 CHARLENE GRIFFITH *Vice-President*



Back row: Beverly Monroe, Sandra Clements, Sissy Bridges, Sonja Williams, Laura Leonard, Charlene Griffith. First row: Sylvia O'Steen, Jane Kinsey, Milliette Reese, Maryan Richardson.

LETTERMAN'S CLUB

OFFICERS

JOE TARPLEY *President*

JIM STOVALL *Vice-President*

ASHLEY HILL *Secretary-Treasurer*

Membership of the Letterman's Club, or better known as the "V" Club, is composed of those men students at V.S.C. who have earned a letter by playing on the varsity basketball or baseball team. Aims of the club are the promotion of sports to help create leadership, courtesy and understanding both on and off the playing field.



Back row: Coach Cottingham, Johnny Purvis, Dewaine Skiles, Jack Rowe, Jack Bates. Second row: Ashley Hill, Jim Stovall, Joe Tarpley. Front row: Jim Hathaway, Ben Wood.

CHEERLEADERS

The Cheerleaders lead the student body in supporting our basketball team. They sponsor pep rallies and lend spice to all ball games.



CHEERLEADERS: *Left to right:* Sandra Clements, Penny Williams, Miriam Barnes, Jo Ann Key, (Captain), Shirley McGowan, Susan Chance, Mary Ann Morgan, Gloria Davis.

THE REBELS



Standing: Mike Newman, Jimmy Stovall, Al Stephens, Gene Cargile, Douglas Parrish, Ben Wood, Coach Cottingham.

Kneeling: Johnny Pervis, Louie Shipes, Ed Gandy, O. W. Hodge and James David.



The Rebels, our varsity basketball team, is one of the most outstanding groups on campus and furnishes much enjoyment to team members and fans.

... of V. S. C.



REBELS AND
CHEERLEADERS
IN ACTION!



... MORE CAMPUS SCENES



ELVIS? ? ?



MISS FIFI BARNETT
(Winner of Male Beauty Contest)



ART EXHIBIT OR FLOOR SHOW?



AT THE STUDENT CENTER



SWEETHEARTS

OUTSTANDING

FEATURES at

V. S. C.

This section caters to the more sophisticated and glamorous side of college life. It includes special honors and events at V.S.C.

WHO'S WHO IN AMERICAN



DOTTIE ALFORD
Columbus, Georgia



SUE BRIDGES
Donalsonville, Georgia



JEANNE CONNELL
Perry, Georgia

Candidates for Who's Who, on V.S.C. campus, are selected by a delegation of two representatives from the student body and four faculty representatives. These candidates must be from the Senior Class.

This is the highest honor that can be received by students.



LESTER HAYMONS
Moultrie, Georgia



EMA DELL HENDLEY
Nashville, Georgia



NORMA LIGHTSEY
Valdosta, Georgia

UNIVERSITIES AND COLLEGES



FRED McLEAN
Folkston, Georgia



MARILYN MILLER
Tifton, Georgia



NANCY SOUTHWELL
Arabi, Georgia



JIMMY STOVALL
Hapeville, Georgia



GEORGE WALLACE
Valdosta, Georgia



RAYMOND WILSON
Decatur, Georgia



GEORGE WALLACE *and* DARLENE WALLACE
MARGA *and* MAC

Best All Round

SENIOR COLLEGE



TOMMY NEWSOM *and* GLENNIE COOPER
MARGA *and* MAC

Best All Round

JUNIOR COLLEGE



GAYE GRIFFIS

Homecoming Queen



JANET VAUGHN



MIRIAM BARNES

Homecoming Court



GLENNIE COOPER



PENNY WILLIAMS



SUE BRIDGES



Senior Sweetheart



LUCILLE HELMS

Junior Sweetheart



GLENNIE COOPER

Sophomore Sweetheart





BETTY LOU ELDRIDGE

Freshman Sweetheart



*Miss V.S.C.
of 1958*

BETTY LOU ELDRIDGE



Susan Chance, second runner-up; Betty Lou Eldridge, Miss V.S.C. 1958; Shirley McGowan, Miss V.S.C. 1957; Penny Williams, first runner-up.

HOMECOMING 1958



Homecoming Queen, Gaye Griffis, being crowned by Student Body President Raymond Wilson. The queens' court and their escorts surround the throne.



Presentation of Homecoming Queen and Court at assembly.



Homecoming Float for the Queen and court—
Entered by S.G.A.

HOMECOMING 1958



The best float of 1958
Snow White, entered by Education Club



Alumni Association
float for
Homecoming Parade



Noah Langdale, Jr., addresses Alumni Banquet.



Prelude to Homecoming . . .
2 inches of snow





