

MINERALOGY AND GENESIS OF SMECTITES IN AN ALKALINE-SALINE ENVIRONMENT OF PANTANAL WETLAND, BRAZIL

SHEILA APARECIDA CORREIA FURQUIM^{1,*}, ROBERT C. GRAHAM², LAURENT BARBIERO^{3,†}, JOSÉ PEREIRA DE QUEIROZ NETO¹, AND VINCENT VALLÈS⁴

¹ Laboratório de Pedologia, Departamento de Geografia, Universidade de São Paulo (USP), Av. Prof. Dr. Lineu Prestes, 338, 05508-900, São Paulo, Brazil

² Soil & Water Sciences Program, Department of Environmental Sciences, University of California, Riverside, CA 92521-0424, USA

³ Laboratoire des Mécanismes de Transfert en Géologie, UMR 5563 CNRS-IRD-UPS-OMP, 14 Av. E. Belin, 31400, Toulouse, France

⁴ Laboratoire d'Hydrogéologie, Université d'Avignon et des Pays du Vaucluse, 74 Rue Louis Pasteur, 84029, Avignon, France

Abstract—Smectite formation in alkaline-saline environments has been attributed to direct precipitation from solution and/or transformation from precursor minerals, but these mechanisms are not universally agreed upon in the literature. The objective of this work was to investigate the mineralogy of smectites in the soils surrounding a representative alkaline-saline lake of Nhecolândia, a sub-region of the Pantanal wetland, Brazil, and then to identify the mechanisms of their formation.

Soils were sampled along a toposequence and analyzed by X-ray diffraction, transmission electron microscopy-energy dispersive X-ray analysis, and inductively coupled plasma-mass spectrometry. Water was collected along a transect involving the studied toposequence and equilibrium diagrams were calculated using the databases PHREEQC and AQUA.

The fine-clay fraction is dominated by smectite, mica, and kaolinite. Smectites are concentrated at two places in the toposequence: an upper zone, which includes the soil horizons rarely reached by the lake-level variation; and a lower zone, which includes the surface horizon within the area of seasonal lake-level variation. Within the upper zone, the smectite is dioctahedral, rich in Al and Fe, and is classified as ferribeidellite. This phase is interstratified with mica and vermiculite and has an Fe content similar to that of the mica identified. These characteristics suggest that the ferribeidellite originates from transformation of micas and that vermiculite is an intermediate phase in this transformation. Within the lower zone, smectites are dominantly trioctahedral, Mg-rich, and are saponitic and stevensitic minerals. In addition, samples enriched in these minerals have much smaller rare-earth element (*REE*) contents than other soil samples. The water chemistry shows a geochemical control of Mg and saturation with respect to Mg-smectites in the more saline waters. The *REE* contents, water chemistry, and the presence of Mg-smectite where maximum evaporation is expected, suggest that saponitic and stevensitic minerals originate by chemical precipitation from the water column of the alkaline-saline lake.

Key Words—Chemical Precipitation, Ferribeidellite, Mg-smectite, Mica-smectite Interstratification, Neof ormation, Transformation, Trioctahedral Smectite, Saline Lake.

INTRODUCTION

Smectites are commonly reported in soils and sediments associated with alkaline-saline lakes subjected to concentration by evaporation. The formation of these minerals in alkaline-saline environments has been described as a function of the concentration factor and the amount of detrital material available. According to Darragi and Tardy (1987), in a gradient ranging from the least to the most concentrated solution and from the most to the least detrital input, the sequence of smectite formation would be beidellite, saponite, and stevensite.

Based on these conclusions, dioctahedral Al-rich beidellite would be primarily allogenic or formed through transformation of detrital materials, while trioctahedral Mg-rich stevensite would be formed by precipitation from concentrated aqueous solutions, inasmuch as the availability of precursor materials for transformation is minimal.

Although authigenic dioctahedral smectites, such as montmorillonite and beidellite, are generally believed to have been formed by transformation from precursor clay minerals in alkaline-saline lakes (Gac *et al.*, 1977; Torrez Ruiz *et al.*, 1994; Mayayo *et al.*, 2000; Cuevas *et al.*, 2003), genesis of saponite and stevensite in these environments has been attributed either to precipitation from solution (Tettenhorst and Moore, 1978; Darragi and Tardy, 1987; Torrez Ruiz *et al.*, 1994; Mayayo *et al.*, 2000; Akbulut and Kadir, 2003) or to transformation of precursor clays (Banfield *et al.*, 1991; Pozo and Casas, 1999; Mayayo *et al.*, 2000; Cuevas *et al.*, 2003). The last

* E-mail address of corresponding author: sfurquim@usp.br

† Current address: Université de Toulouse, UPS (SVT-OMP), LMTG, 14 Av, Edouard Belin, France
DOI: 10.1346/CCMN.2008.0560511

process seems contrary to the general idea of stevensite formation proposed by Darragi and Tardy (1987), but is in agreement with the observation of Jones (1986), who pointed out that formation of clay minerals in lake environments is more commonly by transformation than by precipitation.

Discrimination of neoformed clays has been a difficult task in alkaline evaporative environments because these sites usually are clay-enriched areas by virtue of their low landscape positions (Hillier, 1995). Moreover, although the geochemical control of Mg from the solution is significant, the quantity of Mg-clays precipitated is generally small compared to the amount of clay already present in the soil profile.

Nhecolândia is a sub-region of the Pantanal wetland, the largest wetland complex in the world (Por, 1995), mostly located in western Brazil (Figure 1). A distinctive feature of this sub-region is the presence of thousands of fresh-water and alkaline-saline lakes. These lakes exist in close proximity, yet display a huge chemical variability. The salinity has been attributed to inheritance from the past (Tricart, 1982; Ab'Saber, 1988; and others), but more recently Barbiero *et al.* (2002, 2007) showed that saline water arises from present-day evaporative concentration of fresh water. Statistical analysis of the major elements in a regional context indicated that two independent processes are probably responsible for most of the chemical variability between fresh and saline waters: precipitation of calcite or Mg-calcite and formation of Mg-silicates as solutions become more saline (Barbiero *et al.*, 2002).

The lakes of Nhecolândia offer a good opportunity to study phyllosilicates in modern alkaline-saline environments because most of the sediments and soils are very sandy (Cunha, 1980; Amaral Filho, 1986), which facilitates the discrimination of neoformed clays. In spite of this advantage and the huge size of the Pantanal wetland, the mineralogy of the materials related to the alkaline-saline lakes is still unknown.

In this context, the objectives of this research were to study the mineralogy of smectites associated with a

representative alkaline-saline lake of Nhecolândia and to identify the mechanisms responsible for their formation.

ENVIRONMENTAL SETTING

The Pantanal wetland is a huge and still active alluvial plain situated between 15° and 22°S and 55° and 60°W, with a total area of ~200,000 km². Characterized by extremely low slope gradients (0.03 to 0.50 m/km) and altitudes between 100 and 200 m (Silva, 1986; Scott, 1991), the plain is partially covered by seasonal flooding mainly in the summer (November to March). During the dry period, the flood areas are replaced by a complex mosaic of grasslands and forests dotted with thousands of lakes and marshes.

Quaternary sediments underlying the wetland are alluvial deposits of the Paraguai River and tributaries, carried from surrounding escarpments, hills, and monadnocks (Del'Arco *et al.*, 1982; Por, 1995). These highlands have altitudes between 200 and 900 m and are composed of Precambrian crystalline rocks and Mesozoic sedimentary rocks (Alvarenga *et al.*, 1984; Godoi Filho, 1986).

The Nhecolândia sub-region (27,000 km²) is located in the central-southern part of the Pantanal wetland (Figure 1), on a huge alluvial fan dominated by sediments composed of 95% of sand (Cunha, 1980). The dominant soil orders are Spodosols and Entisols, both with <15 wt.% of clay in surface and subsurface horizons. Some associated sodic soils, with >15% Na⁺ in exchangeable sites (Cunha, 1980; Amaral Filho, 1986), are also present.

The coexistence of fresh-water ('baías') and alkaline-saline lakes ('salinas'), generally associated with temporary channels ('vazantes') and sand hills ('cordilheiras') (Figure 2), occurs only in the south-southwestern, lowland portion of Nhecolândia (Fernandes *et al.*, 1999). These special features of the landscape will be referred to throughout the text, being defined as the following. (1) Fresh-water lakes ('baías') are temporary lakes with different forms and dimen-

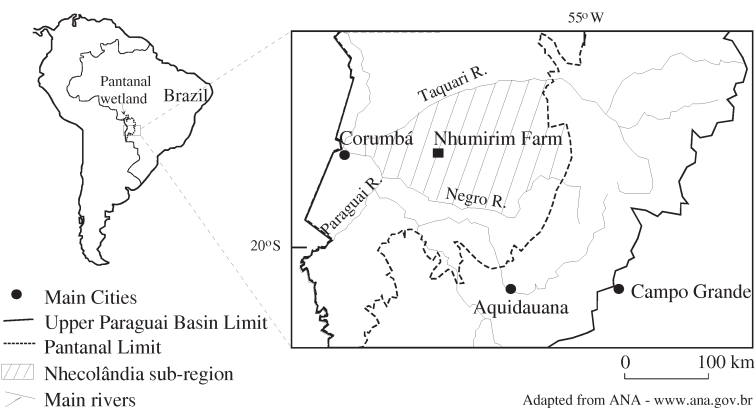


Figure 1. Location of Pantanal wetland, Nhecolândia sub-region, and Nhumirim Farm, Brazil.

sions, up to 2 m deep. (2) Temporary channels ('vazantes') are formed by the coalescence of fresh-water lakes during the flooding periods. They can be several km long and 10 to 40 m wide. (3) Alkaline-saline lakes ('salinas') are permanent salt lakes that are generally 500–1000 m in diameter and 2–3 m deep. They are isolated, rounded depressions located inside sand hills, occupying the lowest topographical position of the landscape. (4) Sand hills ('cordilheiras') are narrow, elongated, 2–3 m higher than the surrounding landscape, and covered by dense savanna vegetation. These higher strips of dry land and the isolated salt lakes are fed by ground water and, in general, are not reached by surface waters during flooding.

A hypothesis of the ground-water flow connecting the different lakes was given by Barbiero *et al.* (2007). The alkaline-saline lakes are surrounded by an impervious, green, sandy loam, Na-rich, subsurface horizon, which is frequently indurated by amorphous silica. During the wet season the water table rises and moves from the freshwater lakes towards the alkaline-saline lake passing into and over the impervious sandy loam horizon. However, during the dry season the water table is lower and the sandy loam horizon acts as a barrier against the return flow of ground water from the

alkaline-saline lakes toward the fresh-water lakes. Thus, the water is flowing seasonally towards the saline lake where it evaporates, increasing the ion activities. This model explains how saline and fresh-water lakes coexist in close proximity having such different ion concentrations, inasmuch as they are subjected to the same amount of evaporation and rainfall.

As a result of the evaporative concentration process, a large geochemical variability between waters in this system has been observed (Barbiero *et al.*, 2002, 2007). The less saline waters (fresh-water lakes and temporary channels) have pH values near 5.5, electrical conductivity (EC) values of ~0.02 dS/m, and a CO₃-Cl and Na-K chemical profile. On the other hand, the most saline waters (alkaline-saline lakes and surrounding water-table) have pH values ranging from 9.0 to 10.5, EC values from 4 to 20 dS/m, and a CO₃-Na chemical profile. Furthermore, the most saline waters have significantly lower Ca²⁺ and Mg²⁺ activities.

In contrast to the arid and semi-arid conditions of the alkaline-saline lakes commonly reported in the literature, the lakes of Pantanal are in a tropical climate (Aw, according to Koeppen's classification, Sparovek *et al.*, 2007). The mean annual temperature is ~22°C and mean annual precipitation is between 850 and 1100 mm, being

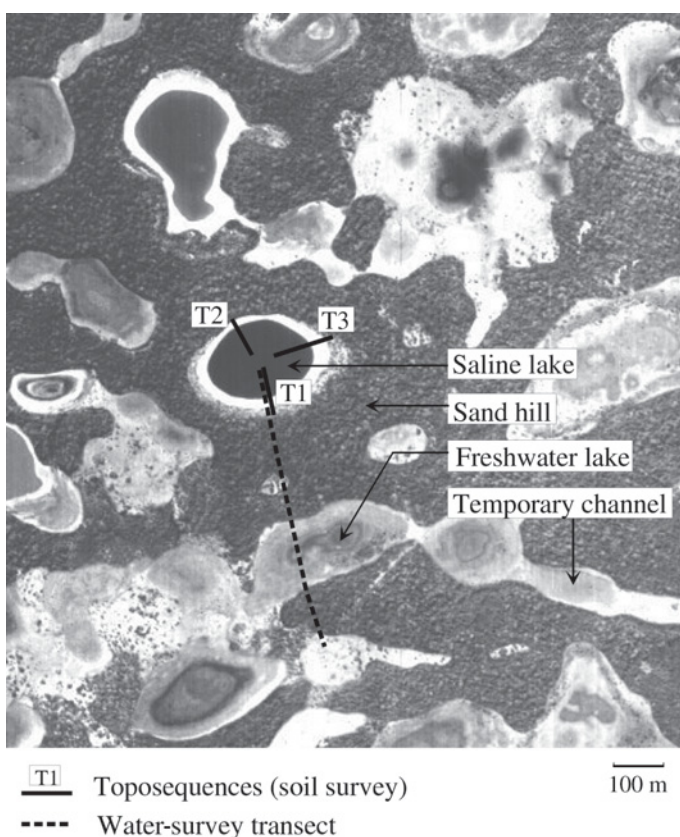


Figure 2. Aerial photograph showing the main landscape features of Nhecolândia, the surveyed toposequences around the studied alkaline-saline lake, and the water-survey transect.

strongly concentrated in the summer (December to March). However, the wetland presents an annual hydrological deficit of at least 300 mm, resulting from a mean annual evapotranspiration of ~1400 mm (Por, 1995; Alfonsi and Camargo, 1986).

METHODS

Field work

The study was carried out at the Nhumirim Farm (Figure 1), which is representative of Nhecolândia and managed by the Brazilian Institute for Agricultural Research (Embrapa-Pantanal).

The soil morphology was studied in detail at the peak of the dry season (September and October) using auger holes and trenches along three toposequences (Figure 2). The toposequences extended from the surface-water level of an alkaline-saline lake to the border of the local sand hill. Because soils along the three toposequences were very similar, only one (T1 – Figures 2 and 3) was chosen for soil sampling and subsequent laboratory analyses. A total of 20 soil samples from horizons of five pedons (listed in Tables 1 and 2) were collected from trenches along the 100 m transect.

A set of 15 piezometers has been in place since 1998, along a transect involving the studied alkaline-saline lake, the adjacent sand hill, and the neighboring fresh-

water lake (Figure 2). In addition, 13 water-table samplers were set up along the same transect during the dry season of October, 2000. Subsurface and surface waters were collected at several periods. The water-sampling and analytical procedures were described by Barbiero *et al.* (2007), who also presented a detailed analysis of the water chemistry. The same set of data was used in the present study.

Soil analyses

The whole soil of the 20 collected samples was used to measure: (1) pH by the 1:1 soil:water method, using a Denver instrument UB-10; (2) EC on the saturated paste, using a compact Horiba C-173 device; and (3) particle size by the pipette method.

Coarse-clay (2–0.2 μ m) and fine-clay (<0.2 μ m) fractions of the 20 samples were separated by centrifugation and sedimentation after destruction of the organic matter with NaOCl (pH 9.5) (Anderson, 1963). These fractionated samples were used in soil analyses described hereafter.

X-ray diffraction (XRD) analyses of oriented and randomly oriented specimens were made of both coarse- and fine-clay fractions of the 20 soil samples. Oriented specimens were obtained by smearing a paste onto glass slides (Theisen and Harward, 1962) and analyzed with five different treatments: Mg saturation kept at 52%

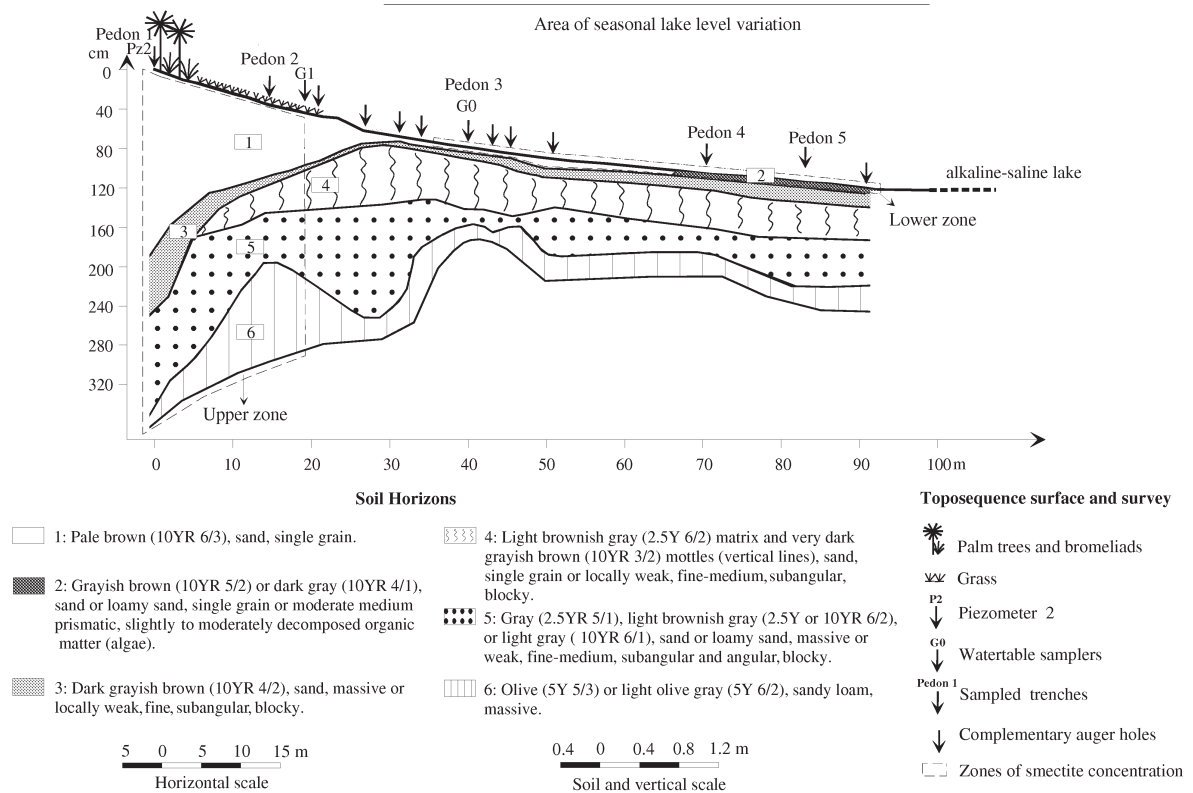


Figure 3. Soil distribution along toposequence T1.

Table 1. Physical and chemical properties of soils along T1.

Horizon	pH	EC* (dS/m)	Sand (wt.%) Total	Silt (wt.%) Total	Clay (wt.%)		
					Coarse	Fine	Total
Pedon 1							
1	5.4	0.4	96.1	0.8	1.9	1.3	3.2
3	9.9	6.8	83.4	5.0	8.6	3.1	11.7
5	9.6	7.2	81.7	9.5	6.0	2.9	8.8
6	9.5	4.7	70.6	10.5	10.9	8.0	18.9
Pedon 2							
1	8.1	0.3	95.7	1.4	2.8	0.1	2.9
4	9.2	0.5	96.1	1.1	1.7	1.2	2.9
5	10.5	11.5	89.9	4.5	4.8	0.8	5.6
6	11.0	14.9	72.7	11.9	12.5	2.9	15.4
Pedon 3							
1	10.4	9.6	95.4	1.0	1.1	2.5	3.6
4	10.2	17.7	93.2	3.1	1.7	2.0	3.7
5	10.2	19.2	85.7	7.9	4.0	2.5	6.5
6	10.6	17.7	74.3	12.5	8.9	4.3	13.3
Pedon 4							
2	10.3	30.3	94.6	1.8	2.1	1.5	3.6
4	10.1	11.4	90.2	5.6	3.4	0.8	4.2
5	10.8	13.3	88.2	6.8	3.4	1.6	5.0
6	10.4	11.4	78.3	10.1	8.1	3.4	11.6
Pedon 5							
2	10.2	43.0	82.3	9.2	6.3	2.3	8.5
4	10.4	9.8	90.2	6.4	1.9	1.5	3.4
5	10.8	13.9	80.3	12.2	5.7	1.9	7.5
6	10.6	13.2	76.2	13.8	7.7	2.3	9.9

* EC = Electrical conductivity

Table 2. Semi-quantitative mineral proportions in the fine-clay fraction.

Horizon	Minerals (semi-quantitative, %)				Dominant octahedral sheet type of smectite	Zones of smectite concentration
	Kaolinite	Smectite	Mica	Quartz		
Pedon 1						
1	50	17	32	0	Diocahedral	Upper zone
3	34	40	26	0	Diocahedral	Upper zone
5	41	34	24	0	Diocahedral	Upper zone
6	49	50	1	0	Diocahedral	Upper zone
Pedon 2						
1	36	10	51	3	Diocahedral	Upper zone
4	46	10	26	18	Diocahedral	Upper zone
5	49	11	40	0	Diocahedral	Upper zone
6	34	14	52	0	Diocahedral	Upper zone
Pedon 3						
1	5	73	22	0	Triocahedral	Lower zone
4	53	6	23	18	Diocahedral	_____
5	29	0	71	0	_____	_____
6	15	0	84	1	_____	_____
Pedon 4						
2	4	70	26	0	Triocahedral	Lower zone
4	29	0	71	0	_____	_____
5	19	0	81	0	_____	_____
6	21	4	75	0	Diocahedral	_____
Pedon 5						
2	4	69	27	0	Triocahedral	Lower zone
4	36	10	47	7	Diocahedral	_____
5	24	0	67	9	_____	_____
6	16	0	84	0	_____	_____

Table 3. Major elements (%) in the fine-clay fraction, measured by ICP-MS.

Zones of smectite concentration	Horizon	Si	Al	Fe	Mn	Mg	Ca	Na	K	Ti	P
Pedon 1											
Upper zone	1	59.14	17.14	6.14	0.37	1.26	0.15	0.46	2.08	1.39	0.13
Upper zone	3	52.63	20.37	9.20	0.12	1.70	0.09	0.72	2.03	0.68	0.07
Upper zone	5	49.31	22.76	8.84	0.08	1.41	0.07	0.50	1.66	0.61	0.07
Upper zone	6	49.81	21.91	9.43	0.06	1.37	0.08	0.84	1.41	0.59	0.06
Pedon 2											
Upper zone	4	62.87	15.18	5.52	0.36	1.35	0.15	0.72	2.96	1.95	0.08
Upper zone	5	58.48	16.44	6.94	0.51	2.16	0.15	0.73	3.33	1.25	0.07
Upper zone	6	51.49	18.84	8.93	0.20	1.91	0.06	1.48	3.48	0.50	0.07
Pedon 3											
_____	4	58.45	15.86	4.31	0.36	1.75	0.29	1.93	2.93	2.15	0.11
_____	5	51.42	15.76	9.74	0.62	2.24	0.07	1.32	4.84	0.83	0.08
_____	6	54.26	15.16	10.64	0.72	2.35	0.06	1.44	5.15	0.54	0.08
Pedon 4											
Lower zone	2	50.57	3.75	3.40	2.69	15.04	1.21	0.12	1.15	0.22	0.23
_____	4	54.63	11.79	5.86	6.28	2.77	0.37	0.19	3.82	1.28	0.09
_____	5	53.03	15.76	9.65	0.42	3.00	0.09	1.16	4.87	0.48	0.10
_____	6	54.86	14.68	9.04	0.74	2.61	0.15	0.33	4.12	0.69	0.09
Pedon 5											
Lower zone	2	44.39	3.50	3.33	2.43	13.11	2.00	0.13	1.04	0.17	0.24
_____	4	62.82	12.33	4.72	0.68	3.46	0.18	0.30	3.12	1.74	0.08
_____	5	55.81	14.85	9.54	0.47	2.79	0.09	0.99	4.88	0.65	0.09
_____	6	55.54	14.14	10.02	0.62	2.80	0.20	0.41	4.72	0.57	0.08

relative humidity, ethylene-glycol solvation of Mg-saturated clays, air-dried K saturation, and heating of the K-saturated clays at 350°C and 550°C (Jackson, 1979). Randomly oriented specimens for measurement of d_{060} values were achieved by side-packing freeze-dried clay powder in an aluminum sample holder. The analyses were carried out using a Siemens D-500 diffractometer (CuK α radiation with graphite crystal monochromator), using a step size of a 0.02°2 θ and a count time of 1.0 s per step. Semi-quantitative estimations of mineral proportions of the fine clay fraction in each sample were determined based on the calculation of XRD peak area proportions on ethylene glycol patterns, following the procedures of Biscaye (1965).

Quantitative analyses of major elements (Si, Al, Fe, Mn, Mg, Ca, Na, K, Ti, and P) and rare earth elements (REE) (La, Ce, Pr, Nd, Sm, Eu, Gd, Tb, Dy, Ho, Er, Tm, Yb, Lu, and Y) were performed on the fine-clay fraction of 18 samples (listed in Tables 3 and 5) by inductively coupled plasma-mass spectrometry (ICP-MS). The REE contents were normalized according to the North America Shale Composition (NASC) (Gromet *et al.*, 1984).

The fine-clay fraction of three samples (listed in Table 4), selected due to the substantial proportion of smectites in the assemblages, was analyzed using an FEI-CM300 transmission electron microscope (TEM) linked to an energy-dispersive X-ray microanalyser (EDS). For analysis, a drop of a dilute suspension

containing the fine clay was placed on a standard Cu grid with carbon film. The chemical composition of one to three crystals of smectite was determined by EDS for each sample. The data collected were used to calculate the chemical formulae of the individual crystals. The amounts of Mg were maintained in the octahedral position in all calculated formulae, with the exception of one, where a minor part was attributed to the interlayer position to adjust to beidellite modal charge, which ranges from 0.30 to 0.35 (Weaver and Pollard, 1973). Mössbauer spectrometry data (not shown in the present work) revealed that the amounts of Fe²⁺ are $\leq 8\%$ in these samples (R. Morris, pers. comm., 2006), therefore only Fe³⁺ was included in the formulae.

Equilibrium diagram calculations

The ionic speciation, activity, and the water saturation with respect to minerals (Figure 9) were calculated using two databases, PHREEQC and AQUA (Parkhurst, 1995; Vallès *et al.*, 1996). Both are ion-pair models built around the law of Debye-Huckel but differing from their extension for saline waters. PHREEQC takes into account the Scatchard (1936) extension, which is the most commonly used, whereas AQUA is using a specific extension that takes into account the solvent/solute interactions under strong ionic strengths. The two databases yielded very similar results. The choice of ion-pair models is justified by the dominance of carbonates and bicarbonates in the solution, which

Table 4. Oxides (wt.%) and calculated chemical formulas of individual crystals of smectite.

Crystal number	Pedon 1 – horizon 6	Pedon 4 – horizon 2		— Pedon 5 – horizon 2 —		
	upper zone	lower zone		lower zone		
	1	2	3	4	5	6
SiO ₂	52.3	60.8	62.0	57.7	60.7	59.2
Al ₂ O ₃	35.0	9.9	7.0	9.8	10.7	1.5
Fe ₂ O ₃	10.0	6.2	6.3	3.7	4.2	3.7
MgO	1.3	15.7	17.7	16.4	17.1	22.8
CaO	0.8	1.5	1.2	2.5	1.3	2.9
K ₂ O	0.6	1.7	1.6	0.7	0.9	0.2
Cl	0.0	1.4	1.3	6.2	2.4	5.7
Si	3.18	3.88	3.96	3.86	3.87	4.01
Al	0.82	0.12	0.04	0.14	0.13	0.00
Σtet.	4.00	4.00	4.00	4.00	4.00	4.01
Al	1.69	0.63	0.49	0.63	0.67	0.12
Fe	0.46	0.30	0.30	0.19	0.20	0.19
Mg	0.04	1.49	1.69	1.63	1.63	2.30
Σoct.	2.19	2.42	2.48	2.45	2.50	2.61
K	0.05	0.14	0.13	0.06	0.07	0.02
Ca	0.05	0.10	0.08	0.18	0.09	0.21
Mg	0.08	0.00	0.00	0.00	0.00	0.00
Anions – O10						
OH	2.00	0.85	1.86	1.30	1.74	1.35
Cl	0.00	0.15	0.14	0.70	0.26	0.65
Tetrahedral sheet charge	-0.82	-0.12	-0.04	-0.14	-0.13	0.03
Octahedral sheet charge	0.51	-0.22	-0.25	-0.28	-0.12	-0.47
Total charge	-0.31	-0.34	-0.29	-0.42	-0.25	-0.44
Interlayer charge	0.31	0.34	0.29	0.42	0.25	0.44

have propensity to form ion pairs, although some imprecision has to be expected with respect to the saturation of Na-carbonate or Na-silicate salts. During the modeling, the partial pressure of CO₂ was calculated from the field pH and from alkalinity data, while theoretically equilibrating O₂ fugacity was calculated from field pH, Eh, and T.

Saturation with respect to silicate minerals, which commonly occurs in alkaline-saline environments, was studied, such as for Mg-silicate types (stevensite, sepiolite, saponite) and Na-silicate types (kenyaite, magadiite, and kanemite) (Gueddari, 1984). Although talc is more stable than other Mg-silicates (stevensite, sepiolite, *etc.*), its precipitation has not been taken into consideration due to reaction kinetics, which determine that talc does not precipitate in sedimentary conditions (Birsoy, 2002).

Saturation limits are illustrated graphically in two dimensions as a function of $\log [a_{\text{Mg}^{2+}}/(a_{\text{H}^+})^2]$ vs. $\log [a_{\text{H}_4\text{SiO}_4^0}]$ for stevensite and sepiolite, $\log [a_{\text{Na}^+}/a_{\text{H}^+}]$ vs. $\log [a_{\text{H}_4\text{SiO}_4^0}]$ for Na-silicates, or a combination for mixed Na- and Mg-minerals (such as saponite) according to their stoichiometry (*a* denotes activity) (Figure 9). Components not shown on the graphs, such as $\log [a_{\text{Al}^{3+}}/(a_{\text{H}^+})^3]$ were assigned as the activity ratio of saturated

kaolinite. The method of calculating activity diagrams has been described in detail elsewhere (Garrels and Christ, 1965; Bowers *et al.*, 1984) and the same thermodynamic database was used here. The solubilities of quartz, amorphous silica, MgO, brucite, magnesite, and dolomite were also plotted as dashed lines because they are phases commonly associated with silicates in this type of alkaline environment (Figure 9).

RESULTS AND DISCUSSION

Soil characterization

The soil is mostly sandy, with sand values commonly >80 wt.%. The total clay is mainly concentrated in horizons 2 (8.5 wt.%) and 6 (10–19 wt.%) (Table 1). The former is situated on the surface, close to the center of the lake depression, and is characterized by dark colors due to the accumulation of slightly to moderately decomposed algae. The latter is the deepest soil horizon sampled and is identified as the green, sandy loam horizon always associated with the alkaline-saline lakes of Nhecolândia (Barbiero *et al.*, 2007) (Figure 3). Horizon 6 also has a very to extremely hard, dry consistency and firm to extremely firm, moist consistency. It is probably cemented by amorphous silica.

The soil pH is strongly alkaline, with most of the measurements being >9. However, lower values (as low as 5.4) are found close to the sand hill (pedons 1 and 2), in the highest topographical position of the toposequence (Table 1). The EC values present a wide range (from 0.3 to 43.0 dS/m), but are highest toward the saline lake (Table 1).

The surface-water level of the lake varies throughout the year according to the water-table dynamics (Figure 3): from November to March (wet season), the level is high and the water commonly covers pedons 3, 4, and 5; from April to October (dry season), the level goes down, exposing pedons 3 and 4, and pedon 5 only during severe drought or at the very end of the dry season.

X-ray characterization

The XRD patterns of coarse clay indicated an overwhelming dominance of kaolinite and quartz, and traces of mica, calcite, microcline, and albite (data not shown). The fine-clay fraction is dominated by smectite, mica, and kaolinite and has traces of quartz and microcline (Figure 4).

Smectite was identified by a shift of the 001 peak from the range of 14.1–15.3 Å for Mg-saturated samples, to the range 17.0–18.7 Å for ethylene glycol-solvated (EG) samples, and by the shift of the peak to ~10.0 Å after heating the samples at 350°C. Semi-quantitative results for fine-clay minerals along the toposequence show assemblages with substantial per-

centages of smectite in two different zones (Table 2; Figure 3): an upper zone – all horizons of pedons 1 and 2, both located in the area rarely reached by the surface water level of the alkaline-saline lake; and a lower zone – horizons 1 and 2 of pedons 3, 4, and 5, which are within the area of seasonal water-level variation of the lake. The fine-clay assemblages of the lower zone present the greatest percentages of smectite (69–73%). From this point on, the terms ‘upper zone’ and ‘lower zone’ will be referred to throughout the text.

The broadening of all the studied smectite peaks accompanied by high background at low angles (Figure 4) may indicate a small size of coherent scattering domains of individual smectite crystals (Moore and Reynolds, 1997; Cuevas *et al.*, 2003) and/or interstratification between smectite and another clay mineral (Moore and Reynolds, 1997; Tettenhorst and Moore, 1978). Both of these conditions are probably present in the study area. Estimation of smectite crystallite size from EG patterns using the Scherrer equation showed small crystallites, with sizes ranging from 103 to 220 Å. Additionally, random interstratification of smectite with mica and vermiculite was detected in the upper zone. The mixed-layer mica-smectite was identified in most slides from this zone (pedon 1, horizons 1, 3, 5, 6; pedon 2, horizons 5 and 6) by the partial coalescence of the d_{001} mica and smectite peaks in K- and Mg-saturated patterns accompanied by a clear separation of these peaks in the EG-solvated patterns (Figure 5). Vermiculite-smectite interstratification was

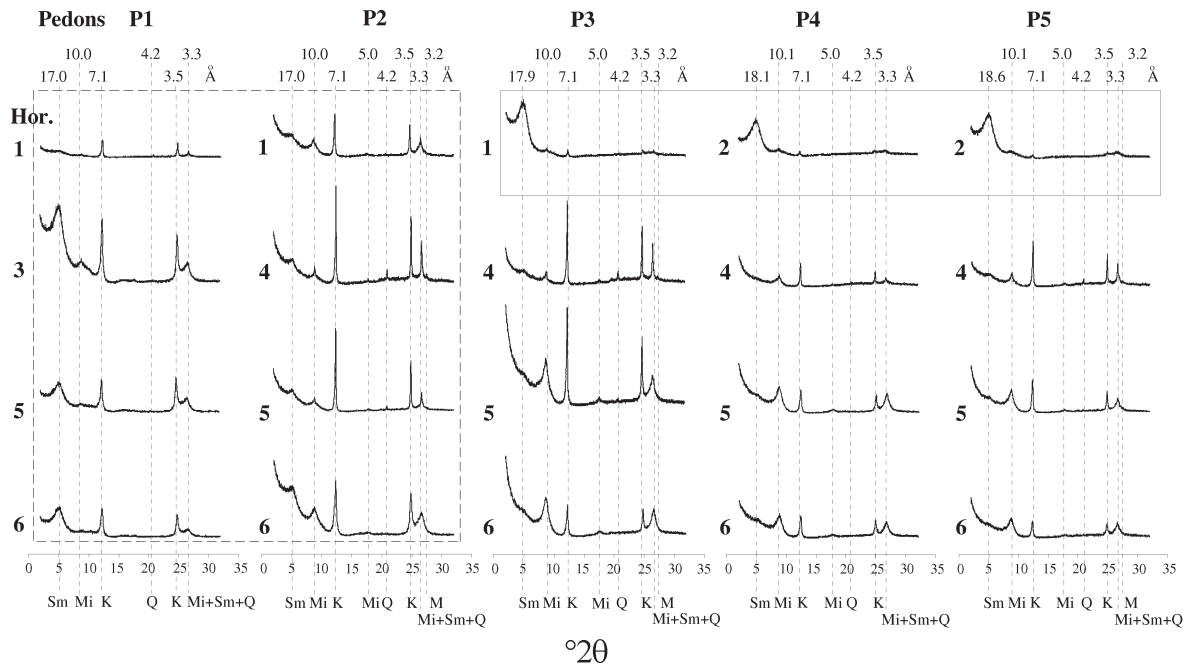


Figure 4. EG-solvated XRD peaks of the fine-clay fraction along the toposequence T1. Sm – smectite, Mi – mica, and K – kaolinite; traces: M – microcline, and Q – quartz. Square (dashed line): upper zone of smectite concentration; rectangle (solid line): lower zone of smectite concentration.

suggested by the full or partial collapse of smectite peaks to 10.0 Å in some air-dried K-saturated samples (pedons 1 and 2, horizons 1 and 6) (Figure 5), behavior not expected for pure smectite end-members but typical of vermiculites (Badraoui *et al.*, 1987; Douglas, 1989; Kohut and Dudas, 1994; Moore and Reynolds, 1997).

The XRD patterns from randomly oriented samples of fine clay display different 060 diffraction peaks for the two main zones of smectite concentration. The 1.52 Å peak indicates a trioctahedral domain in all the samples of the lower zone, which is marked by the seasonal variation of the lake level, while peaks between 1.49 and 1.50 Å indicate a dioctahedral character in all the samples of the upper zone, which is rarely reached by the variation of the lake level. The value of 1.52 Å may indicate stevensite (Decarreau, 1980) and/or saponite (Moore and Reynolds, 1997) and 1.49-1.50 Å may indicate montmorillonite, kaolinite, and/or illite (Moore and Reynolds, 1997). Thus, the 060 peaks suggest the

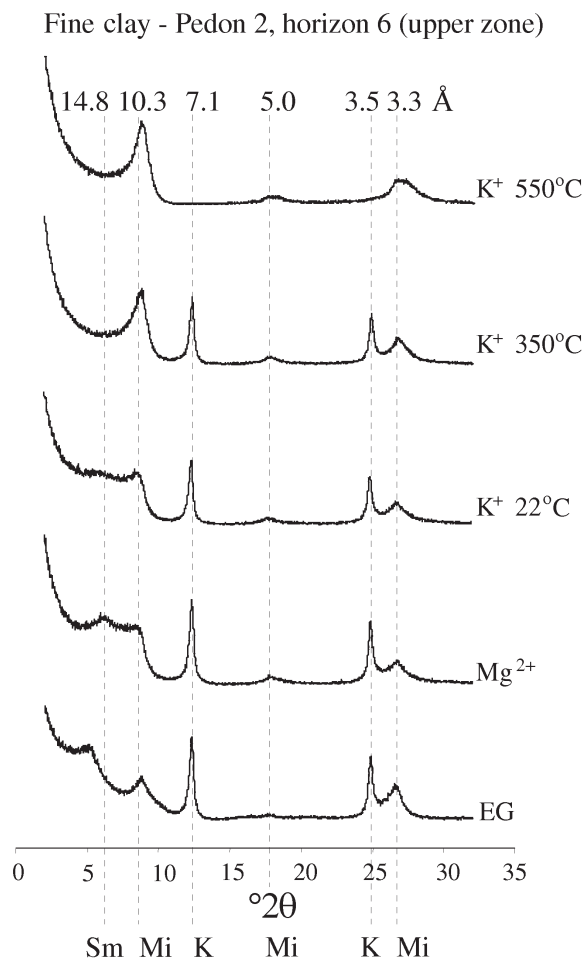


Figure 5. Example of smectite peak behavior under different treatments: partial coalescence of the d_{001} mica and smectite peaks in K- and Mg-saturated patterns, clear separation of these peaks in the EG-solvated sample, and full or partial collapse of the d_{001} smectite peak to 10.0 Å in the K-saturated sample.

occurrence of different types of smectite along the toposequence.

Major chemical composition and structural formulae of smectites

The ICP-MS analysis of major elements in the fine-clay fraction revealed the dominance of Si and Al in samples of the upper zone and Si and Mg in samples of the lower zone (Table 3). It suggests that Al and Mg are the main cations of the octahedral sheet in the upper and lower zone, respectively, which corroborates the dominance of dioctahedral smectites in the former and trioctahedral smectites in the latter. In the lower zone, the average Mg is 6.5 times higher and the average Al is 4.5 times lower than the average Mg and Al of all other analyzed samples.

The TEM/EDS analysis of individual smectite particles (Table 4) confirms the trend indicated by the 060 XRD peaks and ICP-MS analysis. The crystal representing the upper zone (number 1, Table 4), where dioctahedral minerals predominate, has comparatively higher values of Al_2O_3 (35 wt.%) while crystals of the lower zone (numbers 2 to 6, Table 4), where clays with trioctahedral domains prevail, have comparatively higher values of MgO (16–23 wt.%).

In the upper zone, the calculated chemical formula (number 1, Table 4) indicates an excess of negative charge in the tetrahedral sheet, which is a typical characteristic of both the dioctahedral smectites beidellite and nontronite (Reid-Soukup and Ulery, 2002). The main difference between these two phases is the predominant octahedral cation: Al in beidellite and Fe^{3+} in nontronite. Iron substitution of octahedral Al in beidellite is very limited, commonly <0.1 atoms per formula unit on the basis of 22 negative charges (a.p.f.u./22) (Güven, 1988). The predominance of Al in the octahedral sheet and an amount of Fe^{3+} of ~0.5 a.p.f.u./22 qualify the specimen listed as number 1 in Table 4 as Fe-rich beidellite (ferribeidellite), an intermediate mineral commonly reported in the literature (e.g. Aoki and Kohyama, 1991; Mayayo *et al.*, 2000).

Noticeably, the calculated chemical formula of this ferribeidellite (number 1, Table 4) has a sum of octahedral cations >2.0 a.p.f.u./22. The following explanations can be proposed: (1) interstratification of ferribeidellite with mica, as indicated in the upper zone by the XRD patterns (Figure 5); (2) the presence of some hydroxyl-Al, -Fe in the interlayer position, which can occur in beidellites when tetrahedral Al is >0.5 a.p.f.u./22 (Weaver and Pollard, 1973), such as in the studied ferribeidellite; and/or (3) the presence of free Fe oxides, which were not removed during the clay preparation. Interstratification of ferribeidellite with a trioctahedral clay is probably not occurring because TEM/EDS analysis of the individual crystal of ferribeidellite (number 1, Table 4) revealed small amounts of MgO (1.3%). Weaver and Pollard (1973) also rejected

the hypothesis of some interlayered trioctahedral sheets in beidellites with large octahedral sums because of the small total of Mg in the samples analyzed, which are compatible with the amount found in our sample.

In the lower zone, chemical formulae suggest the presence of two different Mg-smectites. In one group (numbers 3 and 6, Table 4) the amount of tetrahedral Al is zero or very small and an excess of negative charge is present in the octahedral sheets. In the other group (numbers 2, 4, and 5, Table 4), the Al contents in the tetrahedral sheets are greater, increasing the contribution of tetrahedral charge slightly. The total Al is also greater in this second group.

Saponite and stevensite are the trioctahedral smectites rich in Mg. Differences in chemical composition between these two end-members rely on the amount of Al and the consequent origin of the layer charge. Stevensite contains little or no Al substitution in the tetrahedral sheet and most of its charge comes from vacant octahedral sites. Saponite has a greater Al substitution in the tetrahedral sheet, and thus more negative tetrahedral charge (Faust and Murata, 1953; Weaver and Pollard, 1973). Based on these criteria, smectites from the first group resemble stevensite while those from the second group resemble saponite.

However, some characteristics of these Mg-rich formulae prevent their classification as saponite and stevensite end-members and suggest these minerals to be saponitic and stevensitic smectites instead. The first is that all these samples have an amount of Cl not found in stevensite/saponite specimens described in the literature. Cl substitutes for OH^- in a range of 0.14 to 0.70 a.p.f.u./22 (Table 4), having a greater mean in the closest pedon of the alkaline-saline lake (pedon 5, horizon 2). The second is that all the Mg-rich formulae (numbers 2 to 6, Table 4) have a small total number of octahedral atoms. Faust and Murata (1953) and Faust *et al.* (1959) pointed out that octahedral sums of stevensite are slightly <3.00 a.p.f.u./22, with these incompletely filled positions being the main mechanism of charge production in the mineral. Nevertheless, the sum of the octahedral atoms indicated by these authors (2.92 a.p.f.u./22) is considerably greater than that found in our samples (2.42–2.61 a.p.f.u./22). Two reasons are probably responsible for the low octahedral occupancy in the studied Mg-rich smectites: (1) although the 060 XRD patterns clearly show the presence of trioctahedral minerals in all samples of the lower zone, most of the structural formulae of individual crystals from these samples display an intermediate di- and trioctahedral composition (Figure 6). Hence, the Mg-rich smectites identified seem to have a dominant trioctahedral character, but present a dioctahedral component. Kodama *et al.* (1988) and Pozo and Casas (1999) also attributed a similar large octahedral deficiency in saponites and stevensites to the occurrence of dioctahedral layers. (2) Sodium was not detected in the interlayer

of the smectites studied, an unexpected result for minerals associated with Na-rich saline waters. This absence probably occurred due to an interference of Cu from the Cu-grid of the TEM samples holder (Hover *et al.*, 1999) and may contribute to the small octahedral sum.

REE composition of minerals

Samples enriched in saponitic and stevensitic smectites (lower zone) clearly have the smallest REE contents of the data set (Table 5). Their total REE contents are mostly less than half that of all other samples. Some depletion in heavy REE ($1.16 < \text{La/Lu} < 2.49$) was observed in most of the samples (Figure 7), as expected for REE data of sediments and soils (Fleet, 1984). Cerium and Eu positive anomalies, visible in Figure 7 due to a clear deviation from the slight decreasing trend toward heavy REE, are the most important in the data set. The Ce anomalies were found in 12 samples, located mainly in the area seasonally flooded by the alkaline-saline lake (anomaly values near or >0.10 – Ce and Eu anomalies have been calculated using the following formulae: $\log [5\text{Ce}/(4\text{La}+\text{Sm})]$ (Wilde, 1996) and $\log [2\text{Eu}/(\text{Sm}+\text{Gd})]$ (adapted from Ito *et al.*, 2004)), and are probably a function of alternating oxidation-reduction conditions established in the area of lake-level variation (Wilde, 1996). On the other hand, Eu anomalies were observed in all the analyzed samples (anomaly values $\geq 0.10^4$). This characteristic was probably inherited from the sediment source area and might be due to substitution for Ca as commonly occurs in other silicate systems.

Water chemistry

A detailed analysis of the water chemistry from the same studied transect was presented by Barbiero *et al.* (2007). Drastic changes are observed along the transect from where subsurface and surface waters were collected. The pH ranges from 3.8 to 10.2 and, among the

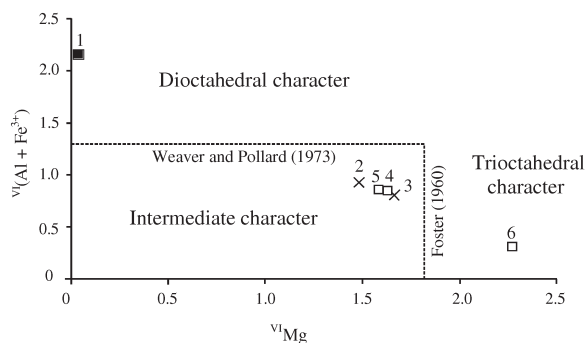


Figure 6. Diagram showing dioctahedral, trioctahedral, and intermediate character of the smectite formulae. Symbols: ■ – pedon 1, horizon 6 (upper zone; formula number 1, Table 4); × – pedon 4, horizon 2 (lower zone; formulae numbers 2 and 3; Table 4); □ – pedon 5, horizon 2 (lower zone; formulae numbers 4, 5, and 6; Table 4).

Table 5. REE contents (ppm) and La/Lu ratio of the samples analyzed.

Zones of smectite concentration	Horizon	La	Ce	Pr	Nd	Sm	Eu	Gd	Tb	Dy	Ho	Er	Tm	Yb	Lu	Y	Sum	La/Lu*
Pedon 1																		
Upper zone	1	43.06	88.68	10.05	37.29	7.01	1.72	6.14	0.93	5.31	1.01	2.70	0.39	2.56	0.38	30.43	237.69	1.65
Upper zone	3	63.04	178.60	19.16	77.35	16.39	4.24	15.28	2.26	12.50	2.27	6.11	0.87	5.48	0.83	67.56	471.96	1.11
Upper zone	5	68.06	189.20	21.69	90.81	19.28	5.03	18.30	2.74	15.56	2.90	7.75	1.05	6.35	0.92	89.27	538.93	1.08
Upper zone	6	27.37	47.69	5.93	22.64	4.79	1.22	4.20	0.68	4.10	0.83	2.53	0.37	2.71	0.41	22.98	148.50	0.96
Pedon 2																		
Upper zone	4	51.39	143.40	14.51	55.96	10.38	2.36	7.71	1.11	5.95	1.05	2.79	0.41	2.73	0.41	30.42	330.61	1.82
Upper zone	5	51.82	178.40	14.91	61.78	12.18	2.97	10.22	1.43	7.70	1.38	3.60	0.49	3.16	0.46	40.38	390.92	1.62
Upper zone	6	51.39	115.20	13.64	53.98	11.30	2.90	10.27	1.59	8.97	1.67	4.43	0.60	3.84	0.56	49.93	330.30	1.33
Pedon 3																		
	4	53.38	119.30	11.61	42.28	7.74	1.78	6.47	0.97	5.70	1.07	3.04	0.45	3.07	0.46	31.18	288.55	1.68
	5	53.65	180.90	13.64	51.87	10.32	2.52	8.82	1.34	7.46	1.39	3.74	0.54	3.49	0.52	37.02	377.26	1.49
	6	25.08	65.43	5.75	21.40	4.40	1.13	4.13	0.69	4.18	0.82	2.33	0.34	2.25	0.35	23.75	162.07	1.05
Pedon 4																		
Lower zone	2	12.97	37.11	3.27	12.70	2.55	0.62	2.26	0.34	1.89	0.35	0.92	0.13	0.90	0.13	9.84	86.02	1.41
	4	64.16	179.20	17.41	66.99	13.55	3.25	10.73	1.55	8.04	1.32	3.21	0.43	2.69	0.37	33.58	406.51	2.49
	5	49.94	154.70	14.26	55.95	11.97	3.00	10.85	1.61	8.95	1.66	4.53	0.63	4.15	0.63	48.10	370.96	1.16
	6	58.32	183.90	15.29	59.41	12.05	2.96	10.60	1.55	8.59	1.58	4.28	0.59	3.81	0.58	45.51	409.06	1.47
Pedon 5																		
Lower zone	2	11.17	30.82	2.84	10.78	2.20	0.52	1.95	0.29	1.64	0.29	0.78	0.11	0.76	0.12	8.45	72.75	1.36
	4	54.79	138.50	12.32	45.18	8.14	1.83	6.44	0.97	5.19	0.95	2.61	0.38	2.58	0.39	27.02	307.32	2.04
	5	58.33	180.10	16.48	65.37	13.36	3.25	11.42	1.71	9.43	1.74	4.75	0.68	4.61	0.69	49.29	421.26	1.23
	6	46.00	127.80	11.46	45.08	8.95	2.19	8.04	1.19	6.70	1.27	3.59	0.50	3.27	0.49	38.31	304.88	1.36

* Values normalized to NASC

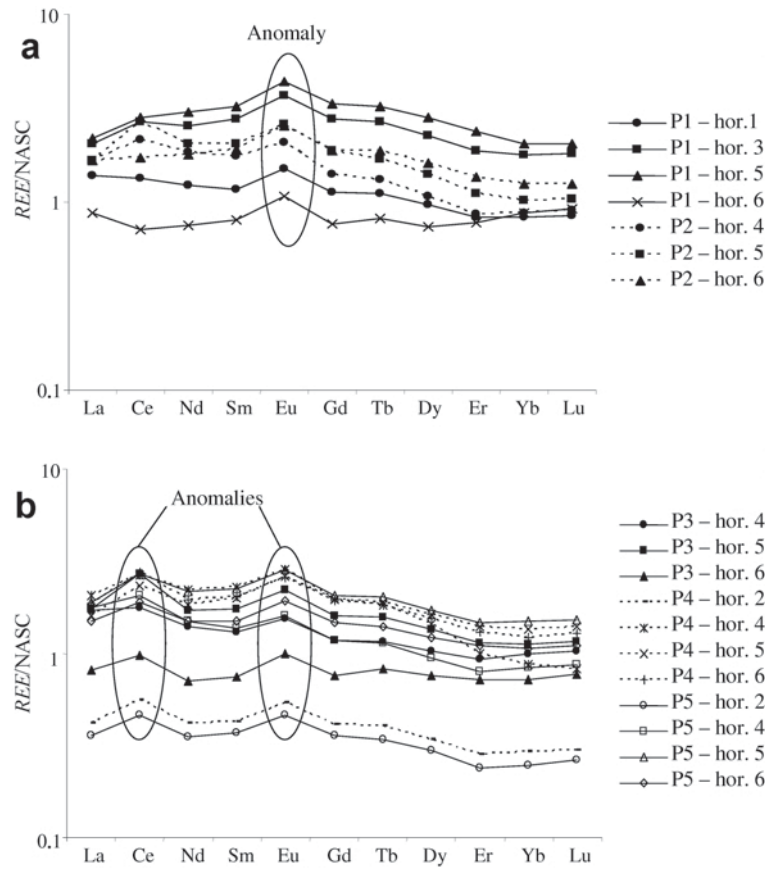


Figure 7. NASC-normalized REE patterns of: (a) samples from the area rarely reached by lake-level variation; and (b) samples from the area reached seasonally by lake-level variation.

cations, Na showed the largest standard deviation (Table 6).

The concentration diagram for Mg vs. Na, elaborated by Barbiero *et al.* (2007), is plotted in Figure 8. Sodium proved to be relevant for tracing the evaporative concentration in the studied environment. Although the plot is relatively scattered, Mg increases in proportion to Na for Na ranging from 0.05 to 2 mM and then decreases

for greater Na values. Hence, Mg does not have a conservative behavior and apparently undergoes geochemical control through the precipitation of a solid phase during the concentration process. This evolution is in agreement with the simulation of evapo-concentration and precipitation of Mg-calcite and a Mg-silicate, represented by the solid line in Figure 8 (Barbiero *et al.*, 2007). Fresh waters are clearly undersaturated with

Table 6. Descriptive statistics of the major ions of waters.

Variable	Unit	Average value	Minimum	Maximum	Variance (v)*	Standard deviation
pH	—	7.49	3.77	10.18	1.86	1.36
Carbonate alkalinity	(eq L ⁻¹)	0.365 × 10 ⁻¹	-0.45 × 10 ⁻³	0.941	0.122 × 10 ⁻¹	0.11
K ⁺	(eq L ⁻¹)	0.861 × 10 ⁻²	0.500 × 10 ⁻⁴	0.317	0.107 × 10 ⁻²	0.327 × 10 ⁻¹
Na ⁺	(eq L ⁻¹)	0.545 × 10 ⁻¹	0.250 × 10 ⁻⁴	1.16	0.197 × 10 ⁻¹	0.14
Ca ²⁺	(eq L ⁻¹)	0.253 × 10 ⁻³	0.100 × 10 ⁻⁵	0.147 × 10 ⁻²	0.840 × 10 ⁻⁷	0.290 × 10 ⁻³
Mg ²⁺	(eq L ⁻¹)	0.177 × 10 ⁻³	0.500 × 10 ⁻⁶	0.164 × 10 ⁻²	0.922 × 10 ⁻⁷	0.304 × 10 ⁻³
Cl ⁻	(eq L ⁻¹)	0.222 × 10 ⁻¹	0.11 × 10 ⁻⁴	0.393	0.242 × 10 ⁻²	0.492 × 10 ⁻¹
SO ₄ ²⁻	(eq L ⁻¹)	0.207 × 10 ⁻³	0.500 × 10 ⁻⁶	0.277 × 10 ⁻²	0.225 × 10 ⁻⁶	0.475 × 10 ⁻³

* $v = \frac{1}{n} \sum_{i=1}^n (x_i - \bar{x})^2$ $\bar{x} = \frac{1}{n} \sum_{i=1}^n x_i$

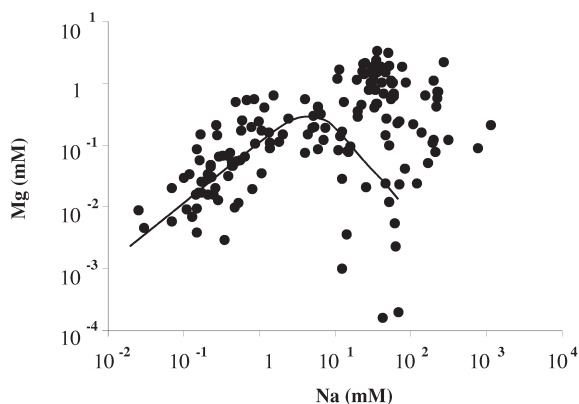


Figure 8. Concentration diagram showing the evolution of amounts of Mg during concentration of waters by evaporation. The amounts of Na represent the concentration factor. The solid line denotes the simulation of evaporation with precipitation of Mg-calcite and a Mg-silicate (sepiolite) (Barbiero *et al.*, 2007).

respect to Mg-silicates such as saponite (Figure 9a), stevensite, and sepiolite (Figure 9b), whereas saline waters are at equilibrium or slightly oversaturated. Therefore, the formation of Mg-silicates is possible in this environment from saline solutions. Saline solutions also reached saturation with respect to kenyaite $\text{Na}_2\text{Si}_{22}\text{O}_{41}(\text{OH})_8 \cdot 6(\text{H}_2\text{O})$ and magadiite $\text{NaSi}_7\text{O}_{13}(\text{OH})_3 \cdot 4(\text{H}_2\text{O})$ (Figure 9c). Although these Na-silicates have not been identified in the field due to the absence of a specific sampling, they are typical silicates of alkaline environments and may fleetingly form during the dry season.

Genesis of ferribeidellite

The XRD data from samples containing dioctahedral smectite (upper zone) suggest some degree of mica interstratification in most of the samples (Figure 5). Smectites transformed from micas are likely to be

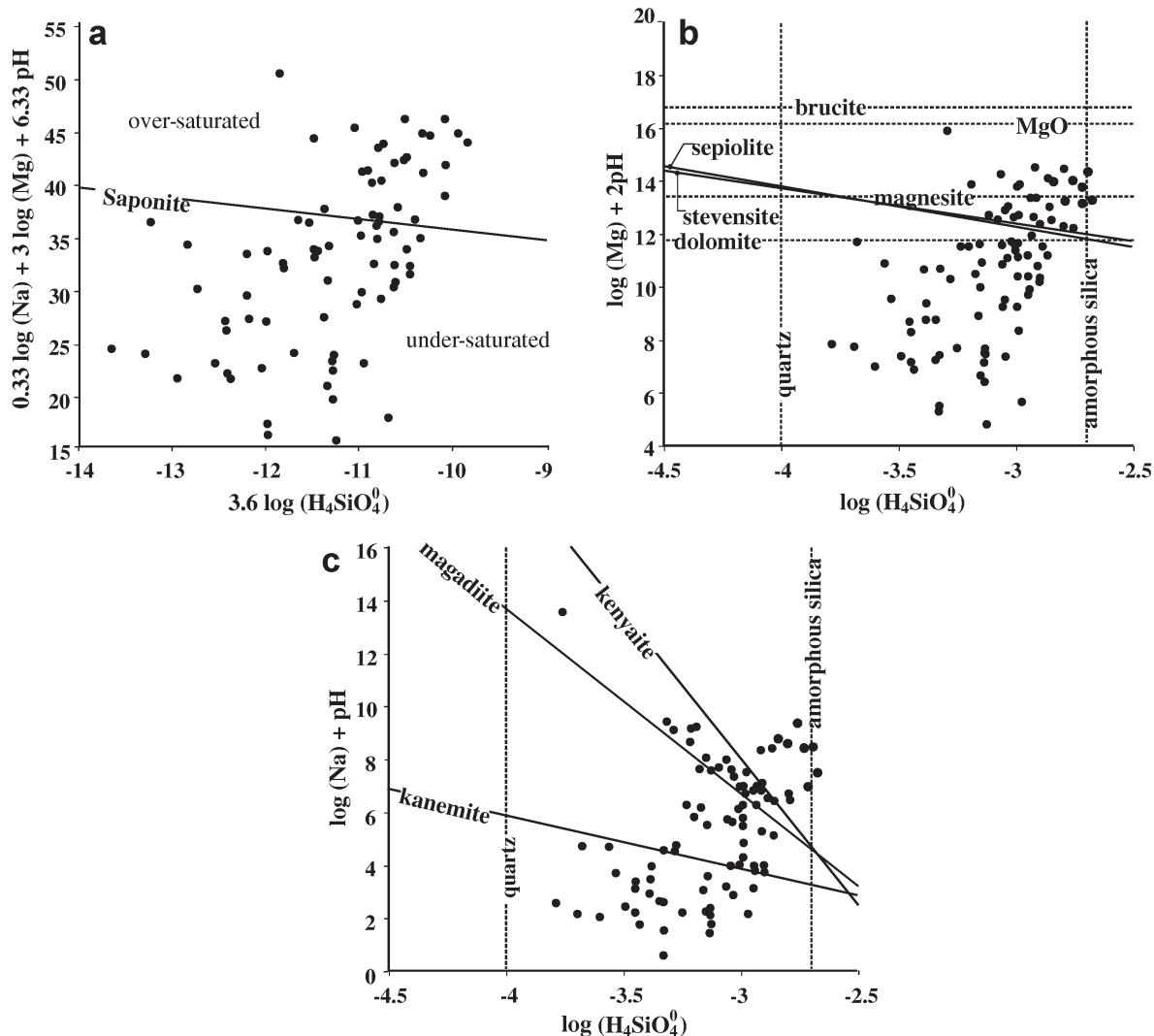


Figure 9. Diagrams showing equilibrium conditions in solution for different minerals.

tetrahedrally substituted (Borchardt, 1989), just like the ferribeidellite described in this paper (Table 4, pedon 1, horizon 6, n.1). Furthermore, the micas in the studied toposequence are also Fe-enriched specimens, consisting mostly of neoformed Fe-illite and glauconite, both interstratified with smectite layers (Furquim *et al.*, 2004). Thus, ferribeidellite may originate from transformation of the neoformed micas in the upper zone.

The seasonal variation of the lake level and the consequent wetting-drying cycles of the adjacent soils probably contribute to the transformation of mica in the upper zone. Scott and Smith (1968) verified that drying can release K in the inner mica core either by separating silicate layers across the entire particle or by proliferating cracks from the edge to the inner core of the particle. The former mechanism apparently is the most common in clay-size micas (Fanning *et al.*, 1989). Because the upper zone is in the highest area of the studied toposequence, it is subjected to longer drying periods and, consequently, results in more K-release from mica particles.

A mixed-layer vermiculite-smectite is also present in horizons 1 and 6 of the upper zone, as indicated by the total or partial collapse of the smectite peak to 10 Å in air-dried K-saturated samples (Figure 5). Vermiculite has commonly been reported as an intermediate phase in the transformation of mica toward smectite in soils (Crawford *et al.*, 1983; Badraoui *et al.*, 1987; Ransom *et al.*, 1988). Indeed, stability-diagram predictions have shown that vermiculites are considered unstable and then undergo a short-lived transition state in the process of mica transformation under room temperature and pressure conditions (Kittrick, 1973). Experimental transformation of trioctahedral (phlogopite, biotite) and dioctahedral micas (phengite, sericite, muscovite, glauconite, and illite), carried out by Robert (1973), showed that only illites and glauconites transformed to smectites and presented vermiculites as an intermediate phase. Thus, the formation of vermiculite is possible in the study area before the transformation of interstratified Fe-illite and glauconite into ferribeidellite is complete.

Genesis of saponitic and stevensitic smectites

Analysis of the REE distribution along the toposequence (Table 5) gives interesting clues about the genesis of these dominantly trioctahedral smectites. Most natural waters have extremely small REE concentrations in comparison to rocks (McLennan, 1989). Because most of the REEs remain concentrated in clay-mineral structures and only minor amounts go into solution during weathering, transportation, and deposition processes (Fleet, 1984), detrital or transformed minerals are expected to have much greater amounts of REE than minerals formed by direct precipitation from water. This has been used as a tool in the study of sediments of lacustrine environments to distinguish minerals that can be formed by chemical precipitation

(sepiolite, stevensite) from those inherited (Al-smectite) or transformed (palygorskite) (Torrez Ruiz *et al.*, 1994; López-Galindo *et al.*, 1996; Jamoussi *et al.*, 2003). In the present study, samples dominated by trioctahedral smectites clearly have much smaller amounts of REE than samples where other minerals are dominant (Table 5). This suggests that the saponitic and stevensitic smectites observed under and around the alkaline-saline lake are formed by chemical precipitation.

The water chemistry provides two other lines of evidence that support the chemical precipitation of saponitic and stevensitic smectites found in the study area. First, the concentration diagram (Figure 8) shows that the Mg is not a conservative element, constantly evolving in proportion to the concentration factor (represented by Na⁺ evolution), instead it precipitates during the concentration process. Therefore, this element can be involved in the precipitation of the Mg-smectites around the studied alkaline-saline lake. Second, the equilibrium diagrams (Figure 9a,b) indicate that the most saline waters are at equilibrium or oversaturated with respect to Mg-silicates (saponite, sepiolite, stevensite). This observation reveals that these or similar minerals can originate from the saline waters.

More evidence of the origin of these trioctahedral smectites is given by the soil organization along the toposequence. Figure 3 shows that the soil horizons that contain Mg-smectites (pedon 3, horizon 1; pedon 4, horizon 2; pedon 5, horizon 2) are only within the area of seasonal variation of the lake level. This suggests a direct association of these minerals with the lake dynamics. The exclusive occurrence of these minerals on the surface suggests a genesis related to a direct contact to the lake-water body itself and not to processes occurring beneath, within the soils. Thus, these data support our hypothesis that the saponitic and stevensitic smectites have formed by chemical precipitation directly from the lake and not by transformation of a precursor clay.

Moreover, the chemical characteristics of the surface and subsurface lake water are ideal for neoformation of these Mg-smectites (Table 6). Mg is essential for the Mg-smectite neoformation. However, because the formation of Mg-smectites also involves exchange of protons, the saturation with respect to Mg-smectite minerals is easier under high-pH conditions (Siffert, 1962), which is the case in the study area. Evidence of precipitation of Mg-smectites with intermediate composition between di- and tri-octahedral sheets was also shown by Tettenhorst and Moore (1978) and Pozo and Casas (1999) in lacustrine Tertiary sediments.

CONCLUSIONS

The dioctahedral and dominantly trioctahedral smectites present under and around the alkaline-saline lake studied are formed by different processes. The ferribeid-

dellite transforms from a precursor clay mineral (Fe-enriched micas), a mechanism of genesis commonly reported for dioctahedral smectites of alkaline-saline environments. On the other hand, several lines of evidence indicate that saponitic and stevensitic smectites have been formed by chemical precipitation from the water column of the alkaline-saline lake, contrasting with other genetic pathways described in the literature.

As postulated by Barbiero *et al.* (2002), the current evaporative concentration of waters from Nhecolândia is probably promoting precipitation of some elements from the more saline solutions and their consequent participation in authigenic mineral phases, processes that would be responsible for most of the chemical variability between fresh and saline waters. Thus, the control of Mg from the waters and the neof ormation of Mg-smectites on the shore of the alkaline-saline lake reinforce the attribution of the saline water of Nhecolândia to present-day processes of evaporation and weaken the traditional and widely accepted hypothesis of salt inheritance from an arid period during Pleistocene (Tricart, 1982; Ab'Saber, 1988).

ACKNOWLEDGMENTS

The authors thank CAPES for the doctoral fellowship to S.A.C.F. and for financial support of the research through a CAPES-COFECUB cooperation (412/03); they are also grateful to Dr Arnaldo Sakamoto, Dr Rosely Pacheco Dias Ferreira, Dr Sônia Furian, and Ary Tavares; to undergraduate and graduate students of the University of Mato Grosso do Sul (UFMS); and to employees of the Nhumirim Farm for their assistance in the field; to Paul Sternberg and Marcos Pinheiro for general help with laboratory work; to Dr Richard Morris and Dr Douglas Ming for Mössbauer spectroscopy analyses; and to Dr Krassimir Bozhilov for assistance with the TEM.

REFERENCES

- Ab'Saber, A.N. (1988) O Pantanal Mato-Grossense e a Teoria dos Refúgios. *Revista Brasileira de Geografia*, **50**, 9–57.
- Akbulut, A. and Kadir, S. (2003) The geology and origin of sepiolite, palygorskite and saponite in Neogene lacustrine sediments of the Serinhisar-Acipayam Basin, Denizli, SW Turkey. *Clays and Clay Minerals*, **51**, 279–292.
- Alfonsi, R.R. and Camargo, M.B.P. (1986) Condições climáticas para a região do Pantanal Matogrossense. Pp. 105–106 in: *Anais do 1º Simpósio sobre Recursos Naturais e Sócio-Econômicos do Pantanal*. Corumbá, Brazil.
- Alvarenga, S.M., Brasil, A.E., Pinheiro, R., and Kux, H.J.H. (1984) Estudo Geomorfológico Aplicado à Bacia do Alto Rio Paraguai e Pantanaís Matogrossenses. *Boletim Técnico Projeto Radambrasil*, **1**, 187 pp.
- Amaral Filho, Z.P. (1986) Solos do Pantanal Matogrossense. Pp. 91–103 in: *Anais do 1º Simpósio sobre Recursos Naturais e Sócio-Econômicos do Pantanal*. Corumbá, Brazil.
- Anderson, J.U. (1963) An improved pretreatment for mineral-analytical analysis of samples containing organic matter. *Clays and Clay Minerals*, **10**, 380–388.
- Aoki, S and Kohyama, N. (1991) The vertical change in clay mineral composition and chemical characteristics of smectite in sediment cores from the southern part of the Central Pacific Basin. *Marine Geology*, **90**, 41–49.
- Banfield, J.F., Jones, B.F., and Veblen, D.R. (1991) An AEM-TEM study of weathering and diagenesis, Abert Lake, Oregon: II. Diagenetic modification of the sedimentary assemblage. *Geochimica et Cosmochimica Acta*, **55**, 2795–2810.
- Badraoui, M., Bloom, P.R., and Rust, R.H. (1987) Occurrence of high-charge beidellite in a vertic Haplaquoll of north-western Minnesota. *Soil Science Society of America Journal*, **51**, 813–818.
- Barbiero, L., Furian, S., Queiroz Neto, J.P., Ciornei, G., Sakamoto, A.Y., Capellari, B., Fernandes, E., and Vallès, V. (2002) Geochemistry of water and ground water in the Nhecolândia, Pantanal of Mato Grosso, Brazil: variability and associated processes. *Wetlands*, **22**, 528–540.
- Barbiero L., Furquim, S.A.C., Vallès, V., Furian, S., Sakamoto, A., Rezende Filho, A., and Fort, M. (2007) Natural arsenic in groundwater and alkaline lakes at the Upper Paraguay Basin, Pantanal, Brazil. Pp. 101–126 in: *Arsenic in Soil and Groundwater Environment: Biogeochemical Interactions, Health Effects and Remediation* (P. Bhattacharya, A.B. Mukherjee, J. Bundschuh, R. Zevenhoven, R.H. Loeppert, editors). Trace Metals and Other Contaminants in the Environment series, **9**, Elsevier, Amsterdam.
- Birsoy, R. (2002) Formation of sepiolite-palygorskite and related minerals from solution. *Clays and Clay Minerals*, **50**, 736–745.
- Biscaye, P. (1965) Mineralogy and sedimentation of recent deep-seaclay in the Atlantic Ocean and adjacent seas and oceans. *Geological Society of America Bulletin*, **76**, 803–832.
- Borchardt, G. (1989) Smectites. Pp. 675–728 in: *Minerals in Soil Environments* (J.B. Dixon and S.B. Weed, editors). SSSA Book Series, **1**, Soil Science Society of America, Madison, Wisconsin.
- Bowers, T.S., Jackson, K.J., and Helgeson, H.C. (1984) *Equilibrium Activity Diagrams for Coexisting Minerals and Aqueous Solutions at Pressures and Temperatures to 5 kb and 600°C*. Springer-Verlag, New York, 397 pp.
- Crawford, T.W., Whittig, L.D., Begg, E.L., and Huntington, G.L. (1983) Eolian influence on development and weathering of some soils of Point Reyes Peninsula, California. *Soil Science Society of America Journal*, **47**, 1179–1185.
- Cuevas, J., De La Villa, V., Ramirez, S., Petit, S., Meunier, A., and Leguey, S. (2003) Chemistry of Mg smectites in lacustrine sediments from the Vicalvaro sepiolite deposit, Madrid Neogene Basin (Spain). *Clays and Clay Minerals*, **51**, 457–472.
- Cunha, N.G. (1980) Considerações sobre os solos da sub-região da Nhecolândia, Pantanal Mato-Grossense. *Circular Técnica Embrapa*, **1**, 1–45.
- Darragi, F. and Tardy, Y. (1987) Authigenic trioctahedral smectites controlling pH, alkalinity, silica and magnesium concentrations in alkaline lakes. *Chemical Geology*, **63**, 59–72.
- Decarreau, A. (1980) Cristallogène expérimentale des smectites magnésiennes: hectorite, stévensite. *Bulletin de Minéralogie*, **103**, 579–590.
- Del'Arco, J.O., Silva, R.H., Tarapanoff, I., Freire, F.A., Pereira, L.G.M., Souza, S.L., Luz, D.S., Palmeira, R.C.B., and Tassinari, C.C.G. (1982) Geologia da Folha SE.21-Corumbá e Parte da Folha SE.20. Pp. 25 a 160 in: *RADAMBRASIL-Levantamento dos Recursos Naturais*. Rio de Janeiro.
- Douglas, L.A. (1989) Vermiculites. Pp. 635–674 in: *Minerals in Soil Environments* (J.B. Dixon and S.B. Weed, editors). SSSA Book Series, **1**, Soil Science Society of America, Madison, Wisconsin, USA.
- Fanning, D.S., Vissarion, Z.K., and El-Desoky, M.A. (1989)

- Micas. Pp. 551–634 in: *Minerals in Soil Environments* (J.B. Dixon and S.B. Weed, editors). SSSA Book Series, **1**, Soil Science Society of America, Madison, Wisconsin, USA.
- Faust, G.T. and Murata, K.J. (1953) Stevensite, redefined as a member of the montmorillonite group. *American Mineralogist*, **38**, 973–987.
- Faust, G.T., Hathaway, J.C., and Millot, G. (1959) A restudy of stevensite and allied minerals. *American Mineralogist*, **44**, 342–370.
- Fernandes, E., Sakamoto, A.Y., Queiroz Neto, J.P., Lucati, H.M., and Capellari, B. (1999) Le ‘Pantanal da Nhecolândia’ Mato Grosso: Cadre Physique et Dynamique Hydrologique. *Geografia física e Dinâmica Quaternária*, **22**, 13–21.
- Fleet, A.J. (1984) Aqueous and sedimentary geochemistry of the rare earth elements. Pp. 343–373 in: *Rare Earth Element Geochemistry* (P. Henderson, editor). Developments in Geochemistry Series, **2**, Elsevier, Amsterdam.
- Foster, M.D. (1960) Interpretation of the composition of trioctahedral micas. *US Geological Survey Professional Paper*, **354 B**, 11–43.
- Furquim, S.A.C., Graham, R.C., Queiroz Neto, J.P., Furian, S., and Barbiero, L. (2004) Fe-illite neof ormation in an alkaline environment, Pantanal Wetland, Brazil. In: *Proceedings of the Soil Science Society of America Annual Meeting*. Seattle, Washington, USA.
- Gac, J.Y., Droubi, A., Fritz, B., and Tardy, Y. (1977) Geochemical behavior of silica and magnesium during the evaporation of waters in Chad. *Chemical Geology*, **19**, 215–228.
- Garrels, R.M. and Christ, C.L. (1965) *Solutions, Minerals, and Equilibria*. Harper and Row, New York, 450 pp.
- Godoi Filho, J.D. (1986) Aspectos Geológicos do Pantanal Mato-grossense e de sua Área de Influência. Pp. 63–76 in: *Anais do 1º Simpósio sobre Recursos Naturais e Sócio-Econômicos do Pantanal*. Corumbá, Brazil.
- Gromet, L.P., Dymek, R.F., Haskin, L.A., and Korotev, R.L. (1984) The ‘North American shale composite’: its compilation, major and trace element characteristics. *Geochimica et Cosmochimica Acta*, **48**, 2469–2482.
- Guèddari, M. (1984) Géochimie et thermodynamique des évaporites continentales. Etude du lac Natron en Tanzanie et du Chott El Jerid en Tunisie. *Mémoire des Sciences Géologiques*, **76**, 1–143.
- Güven, N. (1988) Smectites. Pp. 497–559 in: *Hydrous Phyllosilicates (exclusive of Micas)* (S.W. Bailey, editor). Reviews in Mineralogy, **19**, Mineralogical Society of America, Washington, D.C.
- Hillier, S. (1995) Erosion, sedimentation and sedimentary origin of clays. Pp. 162–219 in: *Origin and Mineralogy of Clays. Clays and the Environment* (B. Velde, editor). Springer, Berlin.
- Hover, V.C., Walter, L.M., Peacor, D.R., and Martini, A. (1999) Mg-smectite authigenesis in a marine evaporative environment, salina Ometepc, Baja California. *Clays and Clay Minerals*, **47**, 252–268.
- Ito, T., Komuro, K., Hatsuya, K., and Nishi, H. (2004) Chemical composition of ferromanganese micronodules in sediments at site 1216, ODP Leg 199, Paleogene equatorial transect. Pp 1–20 in: *Proceedings of the Ocean Drilling Program*. Scientific Results, **199** (on line publication at www-odp.tamu.edu/publications/SR.HTML).
- Jackson, M.L. (1979) *Soil Chemical Analysis – Advanced Course*. Published by the author, Madison, Wisconsin, 895 pp.
- Jamoussi, F., Ben Aboud, A., and López Galindo, A. (2003) Palygorskite genesis through silicate transformation in Tunisian continental Eocene deposits. *Clay Minerals*, **38**, 187–199.
- Jones, B.F. (1986) Clay mineral diagenesis in lacustrine sediments. Pp. 291–300 in: *Studies in Diagenesis* (F.A. Mumpton, editor). US Geological Survey Bulletin, **1578**.
- Kittrick, J.A. (1973) Mica-derived vermiculites as unstable intermediates. *Clays and Clay Minerals*, **21**, 479–488.
- Kodama, H., De Kimpe, C.R., and Dejou, J. (1988) Ferrian saponite in a gabbro saprolite at Mont Mégantic, Quebec. *Clays and Clay Minerals*, **36**, 102–110.
- Kohut, C.K. and Dudas, M.J. (1994) Characteristics of clay minerals in saline alkaline soils in Alberta, Canada. *Soil Science Society of America Journal*, **58**, 1260–1269.
- López-Galindo, A., Ben Aboud, A., Fenoll Hach-Ali, P., and Casas Ruiz, J. (1996) Mineralogical and geochemical characterization of palygorskite from Gabasa (NE Spain). Evidence of a detrital precursor. *Clay Minerals*, **31**, 33–44.
- Mayayo, M.J., Bauluz, B., and Gonzalez Lopez, J.M. (2000) Variations in the chemistry of smectites from the Calatayud Basin (NE Spain). *Clay Minerals*, **35**, 365–374.
- McLennan, S.M. (1989) Rare earth elements in sedimentary rocks: influence of provenance and sedimentary processes. Pp. 169–200 in: *Geochemistry and Mineralogy of Rare Earth Elements* (B.R. Lipin and G.A. McKay, editors). Reviews in Mineralogy, **21**, Mineralogical Society of America, Washington, D.C.
- Moore, D. and Reynolds, R.C. (1997) *X-ray Diffraction and the Identification and Analysis of Clay Minerals*. Oxford University Press, New York, 378 pp.
- Parkhurst, D.L. (1995) Users Guide to PHREEQC – A Computer program for speciation, reaction-path, advective-transport, and inverse geochemical calculations. *US Geological Survey – Water-Resources Investigations Reports*, **95-4227**.
- Por, F.D. (1995) *The Pantanal of Mato Grosso (Brazil) – World’s Largest Wetland*. Kluwer Academic Publishers, Dordrecht, The Netherlands, 122 pp.
- Pozo, M. and Casas, J. (1999) Origin of kerolite and associated Mg clays in palustrine–lacustrine environments. The Esquivias deposit (Neogene Madrid Basin, Spain). *Clay Minerals*, **34**, 395–418.
- Ransom, M.D., Bigham, J.M., Smeck, M.E., and Jaynes, W.F. (1988) Transitional vermiculite-smectite phases in Aqualfs in southwestern Ohio. *Soil Science Society of America Journal*, **52**, 873–880.
- Reid-Soukup, D.A. and Ulery, A. (2002) Smectites. Pp. 467–499 in: *Soil Mineralogy with Environmental Applications* (J.B. Dixon and D.G. Schulze, editors). SSSA Book Series, **7**, Soil Science Society of America, Madison, Wisconsin.
- Robert, M. (1973) The experimental transformation of mica toward smectite: relative importance of total charge and tetrahedral substitution. *Clays and Clay Minerals*, **21**, 167–174.
- Scatchard, G. (1936) Concentrated solutions of strong electrolytes. *Chemistry Review*, **19**, 309–327.
- Scott, A.D. and Smith, S.J. (1968) Mechanism for soil potassium release by drying. *Soil Science Society of America Proceedings*, **32**, 443–444.
- Scott, D.A. (1991) Latin America and Caribbean. Pp. 85–114 in: *Wetlands: A Global Perspective* (C.M. Finlayson and M.E. Moser, editors). Facts on File, New York.
- Siffert, B. (1962) Quelques réactions de la silice en solution: la formation des argiles. *Mémoires du Service de la Carte Géologique d’Alsace et de Lorraine*, **21**, 86 pp.
- Silva, T.C. (1986) Contribuição da Geomorfologia para o Conhecimento e Valorização do Pantanal. Pp. 77–90 in: *Anais do 1º Simpósio sobre Recursos Naturais e Sócio-Econômicos do Pantanal*. Corumbá, Brazil.
- Sparovek, G., Van Lier, Q.J., and Dourado Neto, D. (2007) Computer-assisted Koeppen climate classification: A case

- study for Brazil. *International Journal of Climatology*, **27**, 257–266.
- Tettenhorst, R. and Moore G.E., Jr. (1978) Stevensite oolites from the Green River formation of Central Utah. *Journal of Sedimentary Petrology*, **48**, 587–594.
- Theisen, A.A. and Harward, M.E. (1962) A paste method for preparation of slides for clay mineral identification by X-ray diffraction. *Soil Science Society of America Proceedings*, **26**, 90–91.
- Torrez-Ruiz, J., López-Galindo, A., Gonzalez-López, J.M. and Delgado, A. (1994) Geochemistry of Spanish sepiolite-palygorskite deposits: genetic considerations based on trace elements and isotopes. *Chemical Geology*, **112**, 221–245.
- Tricart, J. (1982) El Pantanal: Un ejemplo del impacto de la Geomorfología sobre el medio ambiente. *Geografía*, **7**, 37–50.
- Vallès V., Ribolzi O., de Cockborne A.M. and Cornieles M. (1996) *Presentation de AQUA, logiciel de géochimie appliqué aux problèmes environnementaux*. Gressap, ORSTOM, Montpellier, France.
- Weaver, C.E. and Pollard, L.D. (1973) *The Chemistry of Clay Minerals*. Elsevier, Amsterdam. 213 pp.
- Wilde, P. (1996) The whole-rock Ce anomaly: a potential indicator of eustatic sea-level changes in shales of the anoxic facies. *Sedimentary Geology*, **101**, 43–53.

(Received 2 November 2007; revised 6 August 2008; Ms. 0095; A.E. R.E. Ferrell)