

# The Campus Canopy

VOLUME XIII

THE GEORGIA STATE WOMANS COLLEGE, SATURDAY, 18, 1947

NUMBER 1

## Sophomore Class Elects Traynham President

In one of the closest elections ever witnessed at G. S. W. C. Miss Margaret Traynham defeated Miss Carolyn Whelchel yesterday to become president of the Sophomore Class.

Conducted by the Student Government Association, the election was held from 8:30 a.m. until 3:00 p. m. with the members of the Sophomore class voting almost one hundred per cent. Nominations were made last week and after being approved by the student and faculty Executive Committees, were posted Tuesday, the election being held Friday, October 17.

Miss Traynham hails from Broxton, Georgia. An outstanding member of the Sophomore Class, she is treasurer of the Y. W. C. A., and a member of the Glee Club, I. R. C., Sports Club, and ad staff of the Campus Canopy.

As Sophomore president, Miss Traynham is filling the vacancy left by Miss Roline Thompson of Thomaston, Ga., who was elected

## "Y" Chooses New Cabinet Members

At the October meeting of the Y.W.C.A. cabinet Miss Margaret Traynham, former Sacristan on the cabinet, was elected treasurer. She fills the vacancy left by Mrs. Carolyn Bowen Christian, who recently resigned from this office.

Miss Traynham is a member of the International Relations Club, the Glee Club, and the Ad Staff of the Campus Canopy.

To replace Miss Traynham as Sacristan, the "Y" cabinet elected Miss Velma Crumme. Miss Crumme is a Sophomore and a member of the news staff of the Campus Canopy.

A Sophomore Council was chosen with Miss Hulda Jones as chairman.

The girls elected to serve with Miss Hulda Jones on the council are: Misses Barbara Lawson, Virginia Smith, Marjorie Welchel, Mary Owen, Jo Ann Story, Sue Belloff, Gloria McQuaig, Mary Ann Sauls, Frances DeVane, Julianne Johnson, Maybelle Bedell, Barbara Clarke, Alcyone Collier, Bennie Harrington and Mildred Mann.

The duties of this group include keeping the halls quiet during all "Y" services, selling doughnuts for the Chapel fund, serving as hostesses at the House-in-the-Woods on Sundays, and decorating the Christmas tree in the Rotunda.

## DESCRIBES WEAPONS OF TOMORROW Dr. Phelan Is Co-Author Of Recently Published Book

Dr. Earl Phelan, head of the Chemistry Department at G.S.W.C., has written a section of a book recently published by Little, Brown and Co., entitled, "New Weapons for Warfare." The name of the division which he contributed is "Guided Missiles—Their Past and Future."

During a two year leave of absence from the college, Dr. Phelan did research work on guided missiles for the United States government. He resumed his teaching duties in the chemistry department of G.S.W.C. in the fall quarter of 1946.

In his book Dr. Phelan says that, "If a Third World War should come, guided missiles would be as potent a factor in its prosecution as the tanks and the bombing planes were in the Second World War."

The guided missile is a projectile which can be controlled during its flight and can be brought home to any desired target. It may be guided manually or automatically.

last spring but was unable to return to school this year.

The other nominee, Miss Carolyn Whelchel, is a popular member of the Sophomore class and belongs to the I. R. C. and the Sports Club.

The other class officers will be elected at a later date during a class meeting.

## Story Is Sports Club Secretary

Recording minutes and keeping books for the G.S.W.C. Sports Club this year will be Miss Jo Ann Story, the newly elected secretary-treasurer.

In an election held Tuesday, October 14, Miss Story defeated Miss Alcyone Collier in a close contest for the office of secretary-treasurer. This office was formerly held by Miss Roline Thompson, of Thomaston, who did not return to school this year.

Miss Story, a sophomore, is from Albany and has been an active member of the Sports Council for the past two quarters as Team Coach for the Kappa Freshmen. She is also on the Sophomore Council, the House Council, and is a member of the Business Club.

Other officers of the Sports Club for this year are: Miss Ann Wilkin, president; Miss Frances Hurn, vice president; and Miss Virginia Bray, historian.

## I. R. C. Quizzes New Members

The International Relations Club held its first meeting of the year Wednesday evening, October 15, at 7:30 o'clock, in the House-in-the-Woods. In an opening talk, the president, Miss Ruth Black, of Valdosta, extended a welcome to the new members. The main event of the program was a quiz on topics of international interest.

New members of the club for the year 1947-48 include: Misses Sally Beatty, Charlene Bowen, LaTrelle Carter, Jean Mullis, Betty Newberry, Betty Jean Smith, Margaret Traynham, and Carolyn Whelchel.

The officers are Miss Ruth Black, president; and Miss Carolyn Mathis, secretary-treasurer. Other officers to replace those who graduated last June, will be elected at an early date.

"To the military man, the guided missile is of more interest than the atomic bomb. The latter, although devastating, is after all merely another explosive. It is an explosive surpassing anything previously known but is in the same category with T.N.T. The projectile is truly a new weapon, a versatile addition to the nation's armament."

According to Dr. Phelan, the guided missiles of the future will be much better than those which exist now, but they have difficulties inherent in their design which must be minimized and can never be completely overcome. Guided missile research has been going on for over forty years but it has produced only two weapons which have reached actual combat.

Dr. Phelan stated in his conclusion that if we are to put any trust in experience, we must conclude that the day of pushbutton warfare may be on the way, but it will be a long time before it is actually here.

## Budget Planned for 1947-48 Student Activities Fund

Miss Gladys Thames, president of the Student Government Association, announced this week that the 1947-48 budget for the disbursement of the Student Activities Fund has been planned by the college Allocation Committee. The estimated budget for the year is \$6,020.00, to be divided among the campus organizations.

Serving on the Allocation Committee are faculty members Mr. Dusenbury, college treasurer, Dr. J. A. Durrenberger, head of the Social Science Department, Mrs. John Odom, instructor in English and chairman of the Artist Series Committee, and Miss Lenora Ivy, head of the Physical Education Department; students include: Miss Gladys Thames, president of S.G.A., Miss Betty Keene, chairman of E.C.A. and editor of the Pine Cone, Miss Betty Gunter, president of Y.W.C.A., Miss Ann Wilkin, president of the Sports Club, and Miss Betty Jean Smith, editor of the Campus Canopy. Miss Thames served as chairman of the committee.

The campus organizations are divided into five groups. Group I, includes the Pine Cone, Campus Canopy and Student Handbook; Group II, is the Log Cabin; Group III, includes the Artist Series and the Social Dance Fund; Group IV, is made up of the four classes and S.G.A., Sports Club, Y.W.C.A., Glee Club, and Valdosta Club; Group V, includes the departmental clubs. Of the \$6,020.00, \$2,454 will go to Group I, \$350 to Group II, \$2,150 to Group III, \$790 to Group IV, and \$260 to Group V.

These allocations are made in quarterly payments and are deposited in the Student Bank.

## Home Ec Club Has Tea for Members

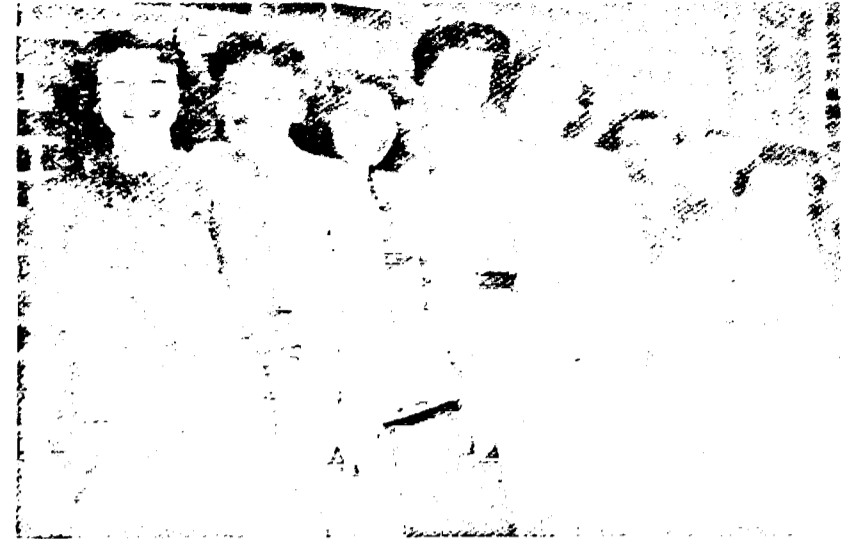
The Home Economics Club entertained its new members at a tea on Tuesday night, October 14, at the House-in-the-Woods. The party was preceded by a short business meeting at which time the plans for the year were discussed.

Miss Ray Jean Norman, the president of the club, introduced the new members. They are Misses Jacqueline Becton, Carolyn Bowen, Jean Bryant, Helen Chester, Jean Corbett, Bonnie Cunningham, Nancy Dean, Patsy Fiveash, Edwina Ford, Dorothy Gibson, Anne Grissett, Sue Kirkland, Rhonwyn Lowery, Annette Marsh, Melba Martin, Earlene Mathis, Clara Overby, Mary Remer Parramore, Pat Porter, Mary Ann Powell, Jeanine Scott, Mary Singletary, Wilhelmina Spence, Glenna Strickland, Montine Strickland, Maxie Warren and Marie Martin.

The projects of the club for the coming year will include: The Clothing Clinic on Saturday mornings, programs for the Boys' Club, the redecoration of the faulty Rest Rooms, a Good Grooming Clinic, and a Faculty Tea.

## HOW NOW?

Latest reports indicate that Dr. Frank R. Reade, president of the Georgia State Womens College, will return to the campus before Christmas holidays. Dr. Reade is now in Abingdon, Virginia, where he is reported to be improving rapidly. In the absence of Dr. Reade, a committee of five has been selected as the Faculty Executive Committee to attend to all matters pertaining to the college and the students. Members of this committee are Dr. Lena Hawks, Mrs. Carolyn P. Thomas, Dr. Harold S. Gulliver, Dr. J. A. Durrenberger and Dr. Earl Phelan.



Accepting good-naturedly the inconvenience of eating cafeteria style at the Valdosta Womens Building while the college kitchen is rebuilt are left to right: Thadyne Pitt, Mary Whittle, Emily Justice, Maybelle Bedell, Jo Ann Story, and Ellen Odum.

## Kitchen To Be Completed In Four To Six Weeks

In the near future it will not be necessary for the students at GSWC to walk to the Valdosta Womens building for meals.

If plans are completed according to schedule, they will be back in their own dining hall in four to six weeks.

Having just returned from a meeting of the Executive Council of the University System, Dr. J. A. Durrenberger states that every effort is being made by university engineers to expedite repair work and most of the furnishings for the temporary kitchen have been purchased.

"As soon as the repairs on the dormitory have been completed," says Dr. Durrenberger, "carpenters will put up a pre-fabricated kitchen. This should be ready for use in four to six weeks."

At the meeting of the Council, Dr. Durrenberger received assurance that a permanent dining hall is to be one of the first projects undertaken in the building program of the University System. This build-up according to the present ground plans of the College, is to be erected on back campus directly behind Ashley Hall. He also learned that architects are drawing up plans and

## Sixteen Added To Sock and Buskin

Try outs for the Sock and Buskin Dramatic Club attracted more than thirty aspiring actresses this week. After much deliberation the club officers and faculty advisors selected the following new members: Misses Anolene Bone, Margie Bush, Gail Carter, Alcyone Collier, Ann Cox, Sherrie Grow, Barbara Lawson, Sherla Miller, Ann Moore, Marjorie Nichols, Ann Smith, Aleese Strickland, Suzanne Twitty, Jean Tucker, Betty Young, and Jo Webb.

The Sock and Buskin Club has chosen the play "Stage Door" for its production this quarter. This brilliant comedy was written by Edna Ferber and George S. Kaufman, and is one of the most successful plays ever offered.

The story is concerned with a group of young girls who come to New York to study acting and find jobs. The scene is Mrs. Orcutt's boarding house for girls. Here the hopes and ambitions of sixteen young women are revealed in scenes of entertaining comedy. In contrast to this are the cases of girls without talent, and of the elderly actress whose days of stardom are over. The central plot concerns Terry Randall, who fights her way against discouragement to a position in the theater where the audience is sure she will triumph.

The cast for the play will be announced next week by Miss Louise Sawyer, club advisor, following try-outs. She will also announce a tentative date for the play.

## Phillips Elected Canopy Manager

The Campus Canopy is beginning the school year of 1947-48 with eight new staff members. Miss Cathy Phillips is replacing Miss Annette Herndon, who graduated last year, as Business Manager. Miss Phillips is prominent in several clubs and organizations on campus. He is a member of the Business Club, reporter for the Sock and Buskin Club, vice-president of the Sociology Club, president of the Methodist Youth Fellowship on campus, a member of the S.G.A. social committee, and a member of the Business Staff of the Pine Cone.

Other new staff members are: Miss Ann DuPriest, news editor; Miss Alcyone Collier, feature editor; Miss Jean Land, special feature editor; Miss Anne Knepton, make-up editor; Miss Virginia Heisler, exchange editor; Miss Margaret Smith, circulation manager; and Miss Mary Henderson, advertising manager.

## Women Voters To Add Members

Miss Edith Jones, head of the Georgia League of Women Voters at G.S.W.C. has made an important announcement regarding the League's activities. A membership drive will be launched next week, and all students who are interested are urged to join the League. Thursday and Friday of next week are registration days, and a fee of one dollar is to be paid at that time. A regular meeting of this organization is scheduled for October 27.

Members of the League discuss current political issues and are supplied with information concerning our state and national governments. An interesting pamphlet called "The Georgia Voter" is made available to the members.

The present members of the League are: Misses Betty Guntr, Velma Ansley, Clemmie Lane, Jean Land, Carolyn Mathis, Cornelia Tuten, Frances Hurn, Betty Keene, Edith Jones, Ann Wilkin, and Mrs. Carolyn Christian, Mrs. Virginia F. Kilcrease, Mrs. Barbara K. Passmore, and Mrs. Odum. Miss Betty Hutchinson is junior advisor for the group.

# The Campus Canopy

Published Weekly during the school year by students at the Georgia State Woman's College

## Member Intercollegiate Press

EDITOR.....BETTY JEAN SMITH  
 Associate Editor.....Mary Elnore Crea  
 News Editor.....Ann Dupriest  
 Special Features Editor.....Jean Land  
 Feature Editor.....Alcyone Collier  
 Sports Editor.....Virginia Bray  
 Make-up Editor.....Anne Knepton  
 Exchange Editor.....Virginia Heisler  
 Columnists.....Pauline Jordan, Gladys Thames, Betty Gunter, and Charlene Bowen.

News Staff.....Barbara Lawson, Susan Belle Smith, Margie Bush, Sherla Miller, Velma Crumme, Libby DeLoach, Barbara Lee, Sue Kirkland, Dot West, Frances Bowen, and Charlotte Thompson.

Feature Staff.....Edith Ryals, Shirlee Chernoff, Betty Newberry, Patty Dixon, Eloise Yancey, Betty Henderson, and Joan McIntosh.

BUSINESS MANAGER.....CATHY PHILLIPS  
 Advertising Manager.....Mary Henderson  
 Circulation Manager.....Margaret Smith  
 Advertising Staff.....Ann Schaeffer, Ann Richardson, and June Aldridge.

REPRESENTED FOR NATIONAL ADVERTISING BY  
**National Advertising Service, Inc.**  
*College Publishers Representative*  
 420 MADISON AVE. NEW YORK, N. Y.  
 CHICAGO • BOSTON • LOS ANGELES • SAN FRANCISCO

## And This Means You!

YOU are the most important person on this campus! Not because you are president of S.G. A., secretary of your club, the best American ball player, or just a hard-working member of your class, but because you are an individual attending G. S. W. C. You are important not because of the offices you hold, but because you yourself are "making or breaking" this college by the things you do and say.

Actions may speak louder than words, but that doesn't make what you say less important. All too often girls can ruin the spirit of a school by the thoughtless things they say in a few "bull sessions." Praise the college's best points instead of playing-up its bad ones; repeat facts instead of rumors; let your criticism be constructive rather than sarcastic. Whatever you do or say is a reflection on G. S. W. C. People make a place; and you are able to make this the best college in the state if that is what you want it to be.

Public opinion is one of the strongest forces in the world. You can do more to keep your fellow students from breaking rules by showing YOUR disapproval than an S. G. A. official can do with a dozen court warnings; and more to show others what kind of college G. S. W. C. is by the way you talk and act than a dozen illustrated catalogs can tell.

YOU are the most important person at G. S. W. C. What sort of college do YOU want it to be?

## Hearts and Flowers Department

Orchids to MRS. SHRIVALLE and MRS. WHITTLE for the excellent way they have carried on in the planning and serving of meals at the Womans Building—alias the dining hall. Working under such handicaps as shortage of stoves, utensils, and space, they have continued to serve fine, well-balanced meals.

Orchids to the Log Cabin Committee for volunteering to chaperone the House-in-the-Woods on Saturday nights so that the Freshmen (and upperclassmen) may go there from 7:30 until 10:00 for games and dancing.

Orchids to the girls who have been having blessings before meals. Cafeteria style meals have made it necessary to dispense with group blessings, but many have continued to ask the blessing at their individual tables.

## Ten Years Ago In The Canopy

BOBBY LEE

Looking back ten years in the Canopy, we find that the students of 1937 were just as interested in new movie stars, activities of the faculty members, and "latest out" dance steps as we are. Let's glance back a few years, and see exactly what was going on then.

Mrs. John Odum, Professor of English, formerly Miss Gertrude Gilmer, began her honeymoon with a trip across the Atlantic on the NOMANDIE, which she described as a "floating paradise."

"To the new students go the big apples, for bringing the "Big Apple," the fastest steps in swing time, to the campus."

"Anyone who would put chewing gum on a public thoroughfare would drown a cat"—Elizabeth Lausy.

Definition: Reade--ism — "of course, this is just a suggestion,

## S. G. A. Note Book

Actions of the S. G. A. Executive Committee and Student-Faculty Committee are items of interest and importance to all students. Given below are the decisions made by these groups at this year's weekly meetings.

The Sophomores will be allowed three nights out each week, either as dates or in groups of four girls.

The Log Cabin Committee, appointed by Edith Jones, Chairman, was read and approved. Those serving on the committee are: Sammie Steedley, Polly Mann, Jane Newton, Frances Chester, Betty Newberry, Betty Bell, and Peggy Williams.

Students are not to smoke in the Rotunda, Dormitory rooms in which girls smoke must be provided with metal or glass ash

## Campus Scenes

Two red-faced Freshmen being told that it wasn't necessary to sign out on their cards to go to the library.

Dignified Senior remarking after chairs and benches had been placed in front of Senior Hall, "It looks like an Old Ladies Rest Home"; but secretly glad, for several reasons, that they had been put there.

Mrs. Sconyers praising the Juniors and Seniors at a hall meeting for finding all the shades down in Senior Hall when she came home one night with a gentleman friend—and his wife.

After asking "Is this combustion?" and receiving only a few scattered answers, Dr. Phelan said, "Well, I hear a couple of 'no's' and three 'yes's' and fifteen 'duhhh's'."

I know we'll get along fine. Just follow my suggestion."

Poll finds that Spencer Tracy is considered the best actor by far in the opinion of GSWC girls, but they also find Robert Taylor and Jimmie Stewart irresistible.

## JORDAN

### Taking A Chance On Life

Life is such an interesting gamble. Have you ever thought of the chances you take even when you cross a street? Why, gracious, you could be "bumped off" on almost any corner!

Walking across streets opens the way for new environments for you. At some time or other you will find yourself chancing the direction you will take. It is the same in any course of life. Hardly a profession exists that is without a gamble somewhere along the avenue. Even a poor farmer takes grave chances on crop seasons and prices every time he sows a seed.

Then, if such be the case, how do we manage to exist? Why are we still alive when there are so many snags to puncture our tires? Only by careful selection of the correct road to pursue, at the proper time to cross a street, do we maintain our lively dignity.

Life affords many opportunities—good, bad, and indifferent. From the time you enter ye olde world you are exposed to choices. At the beginning your choices are made for you. Then gradually you begin making your own selections—which toy to play with, which child you prefer, etc. As you grow still older you are confronted with still more serious thoughts and ideas until by the time you reach your high school career days you are deciding about your clothes, friends, interests, and even school work!

But that does not end the story. Now you are in college, beginning your first real gamble. The selections are here for you; YOUR job is to select.

Select with prudence each course you take, each friend you choose, each mannerism you acquire, each garment you attire, each thought you think, each idea you express, and each street you cross.

Your life is yours to live and account for. Gamble wisely!

## THAMES

### Tells How To Diet In Eight Easy Lessons

After years of diets that leave you dizzy and weak—one has been devised (Desired weight plus appetite divided by seven on a rainy night) which is sure fire stuff—no stuff. The most remarkable thing about the diet is that "it isn't," because it looks like any other old before-after recipe except for the exceptions. They are what make this diet or break it. Take a peep.

1. S'prises from home (anybody's—this is important in case you have friends).
2. S'prises from town (probably used only on birthdays).
3. Parties at the H. in W. (Some people's cooking aids our Cause.)
4. Parties not at the H. in W. (This is what Busy signs are for.)
5. Occasional cokes or other beverages (not to exceed four per day—dieting isn't easy—you must sacrifice something!)
6. Necessary trips to B. W. (Doc Adams gives us a commission for this one.)
7. Necessary trips to town and Shiver's. (It's getting too close to Christmas to leave anyone out.)
8. Meals (this is perhaps the least important. Anyone who plans well-balanced snacks doesn't need to bother with meals—and snacks have been defined as anything left in the can by the ants for not more than four days, with catsup.)

If this diet is strictly enforced, its goal firmly entrenched in the will of the victim, said "will" will soon be hanging on the bones. However, let us whisper, if it doesn't bring the results desired within a decent trial period of six or eight exceptions there's one last chance—exercise. You know the one—place hands firmly on table and push up!

This is a Diet. You really ought to try-it. For best results just ask B. G. Or for that matter—ME!

## Letters To The Editor

(All "Letters to the Editor" should be handed in to a member of the Canopy staff or put in the Canopy mailbox by Wednesday noon and must be signed.)

In ye olde Dorm  
 One Dark and Stormy Night

Dear Editor:

I would like to tell the world the wonders of G. S. W. C. and especially of Freshmen Week. Since one person can't make very much noise, the CAMPUS CANOPY is elected for the job.

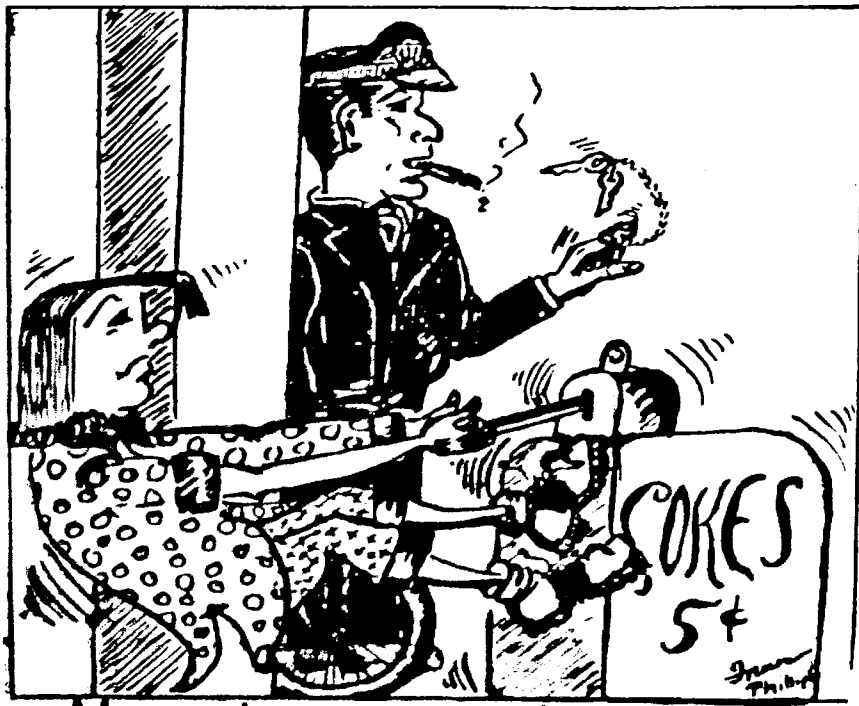
"Freshmen Week" was the most exciting experience in many of our lives. At first it was rather confusing, with all of the new names, faces and unfamiliar surroundings, but just couldn't help getting in the spirit of things with so many friendly upperclassmen ready and willing to help you get adjusted.

I guess we all lived for the nights, when we were entertained by the "Y", S. G. A., and Sports Club with parties, skits, shirt-tail parade, fashion show, and the traditional play, "Pygmalion and Galatea."

Last but not least, came the grand climax. The dance! I was beginning to think I had stumbled into the land of the Amazons until that Saturday night. But they do have men in this section of the country—and what men!

All in all, we owe a great deal to the students and faculty of G. S. W. C. for making our first week such a memorable one!

Sincerely,  
 SHERRIE ANN GROW



Haivin' a little trouble?

# As One Bookworm to Another

By SIURLEE CHERNOFF

Dear Liza Mae, I know you must be looking forward to the time when you will start a "life of your own" namely the day you start college. Well believe me it's JUST as wonderful as it's cracked up to be.

Your mother says you are worried about the studies. Well, take advice from one who knows—don't worry! I have a perfect schedule and I'll pass the word to you.

For instance—I was assigned a test for today so I came straight from class and started the proverbial cramming.

I hadn't studied five minutes before I was called to the phone. It was "Goon-Face" Jackson asking me to the big Saturday night dance. (You know, Lizzie I wish I weren't so popular—it's positively sickening the way boys flock around me).

But getting back to the subject I studied a real long time (almost fifteen minutes) before the supper bell rang. I really wasn't hungry but you know it isn't good for one to skip meals so—I went to supper. I really rushed through

that meal and ran back to the dorm so I wouldn't miss too much studying.

But you know I was so sleepy I couldn't concentrate so I decided to just give in. After all, I could finish during quiet hour. Well, you know me, I overslept. But it wasn't too late when I woke so I grabbed up 'ye ole book' once more. I really concentrated for actually ten minutes when—Bong! Lights Out!

I had every intention of getting up at 6 o'clock BUT I forgot to wind my clock. I really had to rush to get to breakfast.

Anyway, I'm sure I knew enough to make a good pass because I do listen in class (except, of course, today I'm writing you).

Well, as I was saying, if you follow MY routine you can't help but pass.

All my love  
HARD LUCK SUZY

P. S. That horrible teacher just gave my paper back to me and can you imagine? I FLUNKED. I mean actually. But then I guess we can't make GOOD all the time.

# Bits From Books

By "BOOTS"

A new and interesting type of autobiography is "Where the Sabia Sings" by Henriqueta Chamberlain. Mrs. Chamberlain was born in Brazil of Baptist missionary parents. She was sent to the United States for her college education and although she promised her return, she never went back. In her young girlhood, she learned many things from the Brazilians concerning their religion, poverty, education, and social morality. However, this book is written from a really human viewpoint rather than a sociological one. She is now married, has three boys, is a teacher of Portuguese, co-author and translator. Her husband is a prominent cartoonist and the illustrator of this entertaining book.

The New York Herald Tribune weekly states that Mrs. Chamberlain's book is a "well-written, easily read, delightfully unaffected, and straight-forward narrative." The drawings by her painter-husband, Ken Chamberlain, add to the charm of the book.

"Learning How To Behave" by Arthur M. Schlesinger is the fascinating story of the evolution of manners in America. It has its humorous as well as serious side as the "quaint and curious sidelights on the American morals and manners" are brought to light by the author.

Book Review Digest sums the book up in this way: "It is the study of books of etiquette produced in this country from the 17th Century to the handy little volumes supplied to our troops in World War II."

# The Social Slant

By JEAN LAND

Reigning with graciousness and dignity, JACKIE TALTON, one of our Seniors, was selected as Queen of Valdosta's first Forest Festival held last week! Jackie and the King wore costumes that were once used at the Mardi Gras in New Orleans. In addition to riding on a special float in the parade, Jackie was crowned Queen at a brilliant pageant held at Pendleton Park.

Also adorning floats in the parade were JEAN HELTON, CORNELIA TUTEN, BETTY KEENE, MARY OWEN, HILDA CRUM, CHARLENE BOWEN, RAI AUBREY, ANN FORTSON, and JEAN LAND. And did you know that the float that Ann and Jean rode on won second place in the contest to select the most attractive one?

Contributing their talent to the Forest Festival were JOCELYN MATTHIAS, BARBARA LAWSON, BIM ANSLEY, MORRIS SMITH, BET ALDERMAN, ADAIR MYDDLETON, JEAN MULLIS, HILDA CRUM, and CHARLENE BOWEN, who all portrayed Plastic Figurines in a dance sequence which climaxed the pageant.

CUPID INVADES

Cupid has invaded the hearts of several of our students during the summer vacation, ESTHER LANDEY'S engagement was announced recently in the Valdosta papers and JEAN BRYANT and MARION COLLINS also joined the ranks of "engaged women."

WEDDING BELLES

In case you haven't heard or

figured it out for yourself from the beaming expression on BETH WHITAKER'S face, she is to be married next week to Vernon McRae, Jr. Among the pre-nuptial parties given for her was a tea last Saturday with MISSES JEANNE LOWRY, ELIZABETH FINK, LOUISE STUMP, and BETTY HUTCHINSON as hostesses in the House-in-the-Woods. MISS LOUISE SAWYER and MRS. CLAUDE KNIGHT also entertained Beth recently at a tea in the House-in-the-Woods.

Dignified Seniors who also have joined the young married sets in Valdosta and Waycross are Carolyn Bowen Christian and Virginia Freeman Kilcrease. And did you know that at Carolyn's wedding all the church and reception decorations as well as the bridal and attendants gowns were pink.

Glimpsed Here and There—

SUE COULTER walking around campus last week-end with an out-of-town male visitor... SAMMY STEEDLEY stunning in a black crepe worn with an unusual bracelet and necklace... PATTY DIXON and Jack Gill in front of Senior Hall eating large slices of a cake sent from home; and CATHY PHILLIPS taking a caramel cake, which her mother brought her from home, to the White House last Sunday night where she and some friends from town, G. S. W. C., and Emory devoured it, along with numerous cups of coffee... NANCY DANIELS in a light blue ostrich-feather hat... HULDA JONES dating the new Chemistry professor at Emory.

# DOSTA SUNDAY ONLY

**Cursed! Irresistible!**  
**Jewels of Brandenburg**  
RICHARD TRAVIS • MICHELINE CHEIREL  
RICHARD STRONG • CAROL THURSTON  
Plus: "AROUND THE WORLD IN CALIFORNIA"

MONDAY and TUESDAY

**Gene Autry**  
**Twilight on the Rio Grande**  
Sterling HOLLOWAY  
Adele MABA  
Plus: NEWS and POPULAR SCIENCE

WEDNESDAY ONLY

**IDA LUPINO**  
Robert ALDA  
Andrea KING  
Bruce BENNETT  
**"WHAT I KNOW COULD HANG A LOT OF PEOPLE!"**  
**THE MAN I LOVE**  
Plus: NEWS and ANSWER MAN, NO. 1

THURSDAY ONLY

**ON THE STAGE!**  
**IN PERSON!**  
**ALLAN "Rocky" LANE**  
**RED RYDER**  
OF REPUBLIC PICTURES  
and **BOBBY CLARK**  
World's Champion Jr. Trick Roper  
**SEE THIS BATTLE BUCKAROO!**  
**AMERICA'S FAVORITE TWO-FISTED WESTERN STAR!**

Including—THE SAGE BRUSH SERENADERS

ALSO ON THE SCREEN

ROBERT LOWERY in "KILLER AT LARGE"

ADMISSION THIS SHOW ONLY

Children 25c — Adults 50c

# Glee Club Lists New Members

Miss Charlotte Goodwin, president of the Glee Club, has announced that the following officers have been elected for the coming year: vice-president, Miss Hilda Crum; secretary-treasurer, Miss Miriam Powell; librarian, Miss Jocelyn Matthias, and assistant librarian, Miss Frances DeVane.

Fifty-four new members have been added to the Glee Club roll. They are: Misses Jacqueline Becton, Norma Bennett, Faye Bethune, Martha Boatwright, Theta Booth, Frances Bowen, Mary Brand, Jeanne Bray, Lenora Brown, Betty Buckner, Lucy Bush, Alice Carter, Elaine Cheshire, Sara Connell, Claire Council, Anita Dancer, Betty English, Mary Sue Fletcher, Mary Gibson, Ann Grissett, Jo Carroll Guthrie, Merle Hancock, Betty Jean Harvey, Mary Henderson, Betty Jo Hendry, Marian Higginbotham, Janie Jenkins, Bernadine King, Eleanor Joyce King, Martha Krupp, Betty Jane Lee, Betty Lovett, Miriam McCullough, Margaret Mann, Mildred Mann, Anna Marangos, Anise Morgan, Marjorie Nichols, Ellen Odom, Jean O'Neal, Thadyne Pitt, Nann Rachels, Jacqueline Ramsey, Gerald Riggins, Shirley Roberts, Jeannine Scott, Mary Singleary, Alice Smallwood, Ann Smith, Amaryeese Steedley, Barbara Steedley, Sammie Steedley, Shirley Steele, Aleece Strickland, Charlotte Thompson, Sara Tillman, Margaret Traynham, Jean Tucker, Mary Talbot Tullis, Gwendolyn Walker, Elizabeth Waters, Dorothy West, Mary Whittle, and Betty Young.

# The Art Of Getting A Coke

By BETTY HENDERSON

Ah-Ha! Classes are over for the day! Boy, was that last one tough! Feeling sorta' dry? Well why not amble over to the coke machine and draw out a nice, cold coca-cola for only five cents, one twentieth of a dollar?

This is easier said than done. There are five major steps to be taken before the refreshing liquid pours down your throat.

Step No. 1—Getting a nickle. This, too, is easier said than done. After trying several dozen rooms, one sweet soul finally comes up with a nickle from gosh-knows-where.

Step No. 2—Walking from your dorm to the machine. Sounds simple, does it? After running into poles, trees, bushes, and lumber for the new dining hall, there you are.

Step No. 3—Persuading the machine that your nickle is NOT a

slug. This is about the hardest one yet. May I say now that that is the most suspicious machine in the whole United States of Georgia.

Step No. 4—Prying loose the coke bottle from its little rubber holder. A thorough investigation into the machine's family history will reveal a good bit of Scotch ancestry.

Step No. 5—The top won't come off! Holding it at right angles is useless. Try a forty-five degree angle. That won't work either? Then use your teeth!

By this time you are thoroughly worn out, and you wonder if the bottle you hold in your hand has been worth the trouble, but because you have it out and open, you drink it anyway.

The moral to my story is—drink water!

When You Need a Cab Call

# 350

Quick — Dependable — Service

Bob Belcher's  
Drug Store

For Complete

DRUG SERVICE

CALL 812

136 North

Patterson Street

# BELK-HUDSON COMPANY

Valdosta's Largest and Leading

DEPARTMENT STORE

# SPORT SIDELIGHTS

By BRAY

Another year, another column, and lots of new talent on the sports field! Both Lambda and Kappa teams are expecting strong support from their members so now that all freshmen and upperclassmen have received bids to the Sports Club here's looking for some keen competition on the sports field this quarter.

For the more rugged students, there is American Ball, one of the most popular group sports on campus.

There is Volley Ball too for those who wish to exercise some of those lazy muscles. We'll be expecting you on Mondays and Wednesdays at 4:15 so get the gang together and be there.

You who aren't so strenuously inclined and want to learn an interesting sport how about trying Archery? Practices are held Tuesdays and Wednesdays at 4:15 and Saturday mornings at 10:30. We hear there is going to be a lot of variety in Archery this quarter such as balloon shoots and Archery Golf.

One look at the tennis courts proves that there are some aspiring Champs on campus! A tournament will be held this quarter—so Kappas and Lambdas keep practicing! We hear via the grape vine that the freshman class has some real talent in the field.

The Sports Club president, Ann Wilkin, attended the G.A.F.C.W. (Georgia Athletic Federation of College Women) meeting in Athens, Georgia last Saturday. Another meeting will be held November 14. Be sure to mark up all your practices on your sports Calendar.

Always save the best until last! FRESHMEN, here is what you have been waiting for. The date has been set!! NOVEMBER 7 will be Rat Day. Aren't you excited!

## Eleven Pledged To English Club Has Philharmonic First Meeting

The Philharmonic Club held its first meeting of the year Wednesday night, October 15, at the Episcopal Church, Gladys Thames, president, presided and welcomed as guests of the club Carolyn Bowen, Rai Aubrey, Bernadine King, Mary Elinore Crea, Jacqueline Becton, Polly Walker, Lucy Bush, Annella Wells, Joyce Hines, Sammie Steedley, and Elaine Cheshire, who are pledges for the fall quarter. Tryouts for piano students were held October 13, with Miss Warren and officers of the club as judges. These students will be received as members during the winter quarter if their musical work continues to meet the standards for membership set up by the club. A pledge pin, fashioned as a tiny music lyre, has been ordered for each prospective member.

The English Club met for the first time this year in the Town Girls' Lounge on Tuesday night October 14. Miss Lolla Lee Holder, president of the organization, welcomed fourteen new members. They are: Misses Gail Carter, Mary Elinore Crea, Elizabeth DeLoach, Anne Fortson, Jean Helton, Virginia Heisler, Julia Jackson, Lucille Jackson, Margaret McIntyre, Celeste Purvis, Mary John Rodgers, Ellen Smith, Henrietta Smith and Harriette Story.

The club elected two new officers. Miss Louise Brumlow secretary-treasurer. As a project for the year, the members decided to sell subscriptions to READER'S DIGEST. Also, they plan to sell Christmas cards and note paper.

College Bred—A four year loaf made with dad's dough.

## Roommates

By ONE WHO KNOWS (Chinese Poet)

Who listens to your tales of woe  
Who knows your middle name?  
Who frets because your hair won't grow—

Or dreams with you of distant fame?

Who plucks your eyebrows, paints your nails,

Sympathizes when you fail—  
Your roommate!

Who knows the secrets of your heart

Who gets you up on time?  
Who shares her coke or apple tart  
And to your faults is blind?

Who knows your boy friend's dying love

Who loans you her new shoes?  
Who sighs and cries at holidays  
And drives away your blues—  
Your roommate!

Who wakes you at unearthly hours  
Drowns out the Hit Parade?  
Who gets there first at daily showers

Takes your last razor blade?  
Who pouts, or frets until HE calls  
Sings his praises all the day,  
Leaves sweaters, shoes, on all the chairs?

Who wears your new suit, steals your date,

Loses your schoolbooks — makes you late?  
Your roommate!

Did you ever hear about the little moron who ran his car over a cliff to test his air brake?

## Prize To Be Awarded For Best Fresh Room

Is there an interior decorator in the house? Yes, her name is Miss Miriam "Boots" Powell and she resides in Senior Hall. She is the consulting decorator for the contest sponsored by the Y.W.C.A. to select the most originally decorated freshmen room in Converse Hall.

Miss Powell will be in her room after four o'clock each day to offer suggestions to the Freshmen in the planning and care of their rooms. At the end of two weeks a committee will be appointed to judge the rooms in Converse Hall and choose the most attractive one. A prize will be awarded by the Y. W. C. A. at assembly to the girls whose room is selected.

If you have doubts as to whether you should have pink drapes or purple striped curtains and whether you should hang your Varga girl calendar over your desk or your radio, see Miss Powell at once. Start now to make your room the "best dressed" in Converse Hall!

### IT PAYS TO READ THE CANOPY

If you find your name misspelled in this or any successive issue of the Campus Canopy this year you are entitled to a Free Soda! Just report the mistake to one of the editors within three days after publication.

## ROOSEVELT RESTAURANT

DINE WITH US

GOOD MEALS ALWAYS

CLOSED TUESDAY

VISIT

## SHIVER'S RESTAURANT

IN WALKING DISTANCE

OF THE COLLEGE

VISIT

## BELK-HUDSON'S BEAUTY SHOPPE

FOR EXPERT HAIR STYLING

100 SOUTH

PATTERSON STREET

## WHITE HOUSE RESTAURANT

FINEST RESTAURANT

IN THE SOUTH

## BRIGGS LADIES SHOP

114 NORTH PATTERSON STREET

STYLES OF DISTINCTION

## STATIONERY

Engraved Papeterie of Distinction

NEW DESIGNS

MANY TINTS

Also

A Full Line of

School Supplies, Fountain Pens, Athletic

Equipment and Text Books

Student Cooperative Bookstore

For a Quick Build-up  
After Class Let-Down

## BROOKWOOD PHARMACY

DRUGS and SCHOOL

SUPPLIES

The Presbyterian Church welcomes all the students to G. S. W. C. and Valdosta. Our Westminster Club for college-aged young people meets every Sunday evening at 6:00 P. M. Bring a friend or a date. If you have no transportation, cars will be at the front of the Administration Building at 10:00 A. M., to take you to Sunday School; at 11:15 A. M., to take you to church; and at 5:45 P. M. to take you to Westminster Club meeting. Supper is served at 6:00 P. M. The evening church service is at 7:30 P. M. Afterwards we go to the Mause for an hour of singing and fun. On Tuesday, October 28, at 6:30 P. M. we will have a Welcoming Banquet. Turkey dinner and all the trimmings! We'll be looking for you!

## RITZ—NOW!

Sunday - Monday

### ROMANCE! ADVENTURE!

VAN JUNE JOHNSON-ALLYSON



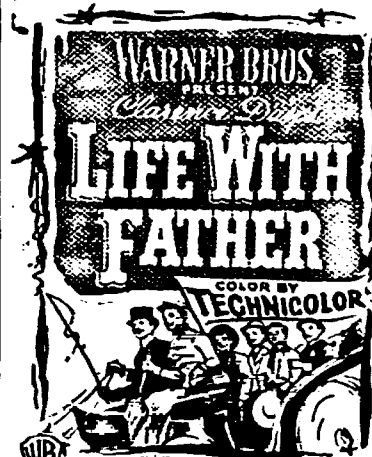
### HIGH BARBAREE

ADDED

Plus: ANSWER MAN NEWS OF THE DAY

SPECIAL!

Tuesday - Wednesday



WILLIAM POWELL IRENE DUNNE  
ELIZABETH TAYLOR  
EDMUND GWENN · ZASU PITTS  
Directed by MICHAEL CURTIZ  
From the Original Play by HOWARD LINDSAY & RUSSEL CROUSE  
From Oscar Serlin's Stage Production  
Screen Play by Donald Ogden Stewart  
Music by Max Steiner

Prices for This

### ROAD SHOW ATTRACTION

As Set by Producer

Matinee till 6:00 P. M.

ADULTS 90c CHILD 50c

Evening:

ADULTS \$1.25 CHILD 50c

Tax Included