



Home Come





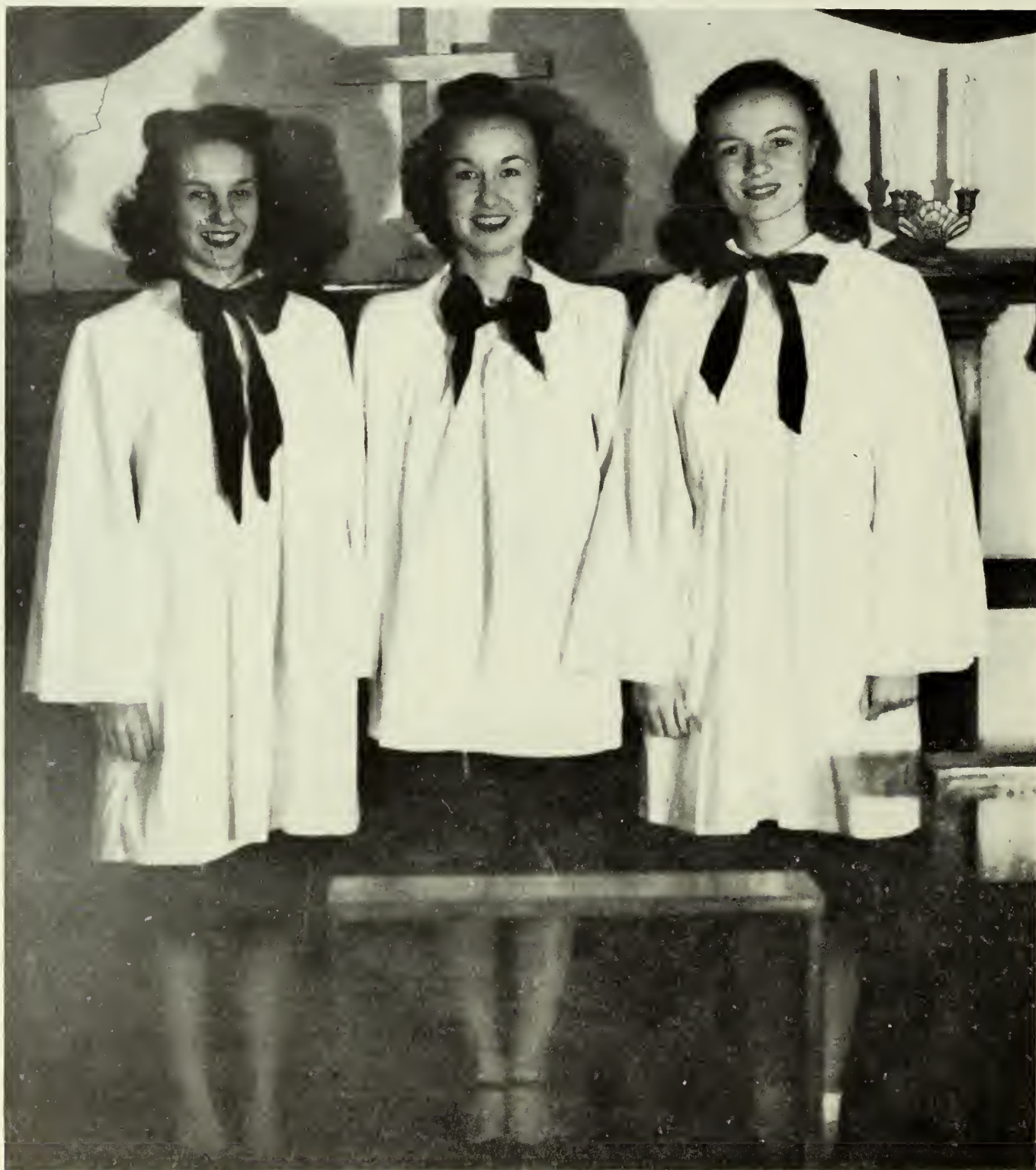
Digitized by the Internet Archive
in 2014

<https://archive.org/details/pinecone194500geor>

This is a Book of Tomorrow



Of Peacetimes to Come



Of Activities Unmarred by War



Of a Consciousness of War Unended



Of a Hope for the Future



THIS IS A BOOK OF TOMORROW

KATHLEEN HALL *Editor*

GEORGIA SMITH *Business Manager*

The
PINE CONE
of 1945

YEARBOOK OF
GEORGIA STATE WOMANS COLLEGE
Valdosta, Georgia

Dedicated to—

the fighting spirit of all Americans. This spirit which was kindled in 1941 and has flamed ever higher to bring us victory over Germany. . . . This fighting spirit which was truly represented in the staunch courage of the late President Roosevelt. The American fighting spirit has not wavered but has continued its forcefulness in the fight against the Japanese.

Through the pages of this book can be seen the activities and efforts of the faculty and students of the Georgia State Woman's College in looking toward a new peacetime world. Through the untiring efforts of all Americans these plans will become a reality.

The message of this book will be . . .

AND NOW TOMORROW—

DIVIDED INTO THE
FOLLOWING BOOKS—

The PLACE

The PEOPLE

The ACTIVITIES

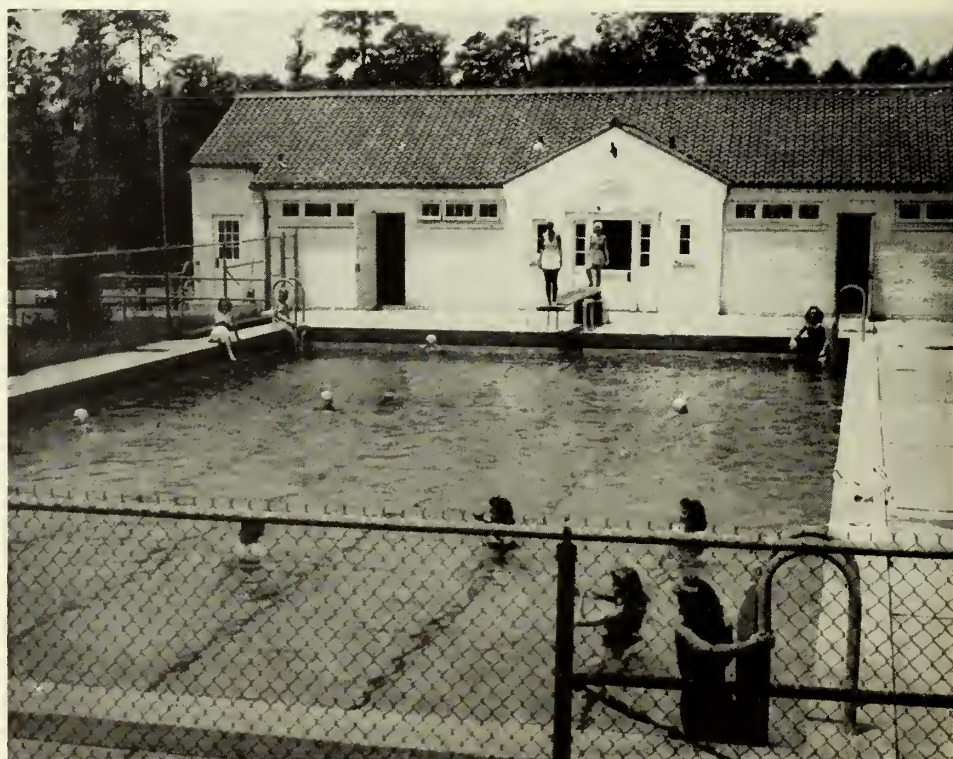


THE

WEST HALL



LIBRARY



BATH HOUSE

PLACE

STUDENT ACTIVITIES HOUSE



ASHLEY HALL



CONVERSE HALL



PRESIDENT FRANK R. READE

THE PEOPLE



MISS MARJORIE CARTER
Resident Head of Converse Hall

MRS. FLORINE MYERS
Superintendent of Dormitories

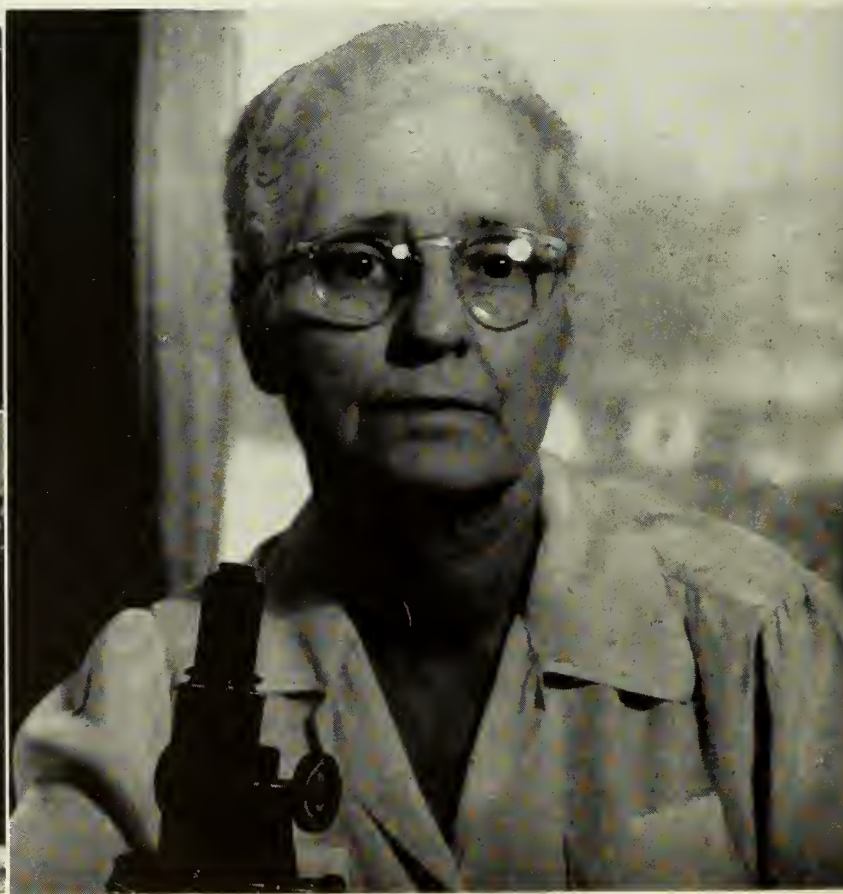
MISS MARTHA R. GOODWIN
Social Activities Chairman

MISS AILEEN SCHOEPPE
Resident Head of Senior Hall

FACULTY



- MISS LILLIAN PATTERSON Librarian
- MRS. LAURA REED JOOST Assistant Librarian
- MISS JUNE MOSELY Director of Placement and Publicity
- MRS. CAROLINE P. THOMAS Registrar
- MISS LOUISE STUMP Assistant Treasurer
- MISS BETH WHITAKER Secretary to President
- MISS OLEEN MAJORS Professor of Shorthand and Typing
- MR. J. R. DUSENBURY Treasurer
- MRS. EVA A. SHRIVALLIE Dietician
- MRS. C. C. WHITTLE Assistant Dietician
- DR. MARIAN E. FARBAR Resident Physician
- DR. BEATRICE I. NEVINS Professor of Biology
- MRS. FRANCES PARDEE Instructor in Violin
- MISS GLADYS WARREN Professor of Music
- MISS RUTH CARPENTER Professor of Art
- MR. CLIFTON WHITE Assistant Professor of Art and Music
- MR. W. H. SPRAGENS Professor of Mathematics and Physics
- DR. LENA J. HAWKS Professor of Mathematics
- DR. J. A. DURRENBERGER Professor of History and Social Science
- MISS HELEN DAVIS Assistant History Instructor
- MISS LEONORA IVEY Professor of Physical Education
- MRS. GERTRUDE G. ODUM Professor of English
- MISS LOUISE SAWYER Professor of Speech
- DR. HAROLD S. GULLIVER Professor of English
- MR. WILLIAM MOSELEY Professor of Chemistry
- MISS JANE BALDWIN Riding Instructor
- DR. SAPELO TREANOR Professor of Foreign Language
- MISS LUCY LAMPKIN Professor of Dance
- MRS. ROBERT TALBERT Professor of Sociology
- MISS MILDRED M. PRICE Professor of History
- MR. RAIMONDE AUBREY Professor of Voice
- MRS. RAIMONDE AUBREY Accompanist
- MISS LOLA M. DREW Professor of Home Economics







PRESSLEY

SENIOR OFFICERS

BARBARA PRESSLEY *President*
 BETTY MATHIS *Vice-President*
 ANNETTE MASSEY *Secretary-Treasurer*

Under the capable leadership of Barbara Pressley the senior class sponsored a dance and went on several picnics at Twin Lakes. Topping the year's activities was the annual Senior Carnival which was a great success.

This senior class also graduated in shifts. Two members of the class are serving now in the service of our country, in the Nurse's Cadet Corps and in the Waves.



MATHIS AND MASSEY



Fortune Telling at Senior Carnival.



SENIOR



SNAPS





HELEN ALLEN Lenox, Ga.

Humanities

Y. W. C. A., 1, 2, 3, 4; S. G. A., 1, 2, 3, 4; Sports Club, 1, 2; "Y" Cabinet, 3, 4; Sock and Buskin Club, 3, 4.



WILLIE PEARL BECTON Valdosta, Ga.

Humanities

Y. W. C. A., 1, 2, 3, 4; S. G. A., 1, 2, 3, 4; Sports Club, 1, 2, 3, 4; Glee Club, 1, 2, 3, 4; Valdosta Club; English Club, 4; Vice-President Junior Class, 3.

BARBARA BELL Colquitt, Ga.

English

Y. W. C. A., 1, 2, 3, 4; S. G. A., 1, 2, 3, 4; Sports Club, 1, 2; *Campus Canopy*, 3, 4, Make-up Editor, 4; PINE CONE, 4; Romance Language Club, 4; Sophomore Council, 2; Fire Lieutenant, 3; House Council, 4.

RUBY BURGAMY Irwinton, Ga.

Home Economics

Transfer, Andrew College; Y. W. C. A., 3, 4; S. G. A., 3, 4; Fine Arts Club, 4; PINE CONE, 4; Home Economics Club, 4.





ALPHA MAE CASTLEBERRY . . . Richland, Ga.

Humanities

Y. W. C. A., 1, 2, 3, 4, Vice-President, 2, 3, President, 4; S. G. A., 1, 2, 3, 4; Monitor, 1; Glee Club, 1, 2; Sports Club, 1, 2; Chapel Choir, 1; Fine Arts Club, 3, 4; Sociology Club, 3, 4, President, 4; *Campus Canopy*, 1, 3; Executive Committee, 4; W. S. F., 4; President's Council, 3.

MARY CREECH . . . Moultrie, Ga.

Biology

Y. W. C. A., 1, 2, 3, 4; S. G. A., 1, 2, 3, 4; Executive Committee, 4, Secretary-Treasurer, 3, 4; Monitor, 2, 3, 4; Sports Club, 1, 2, 3; Council, 1, 2, 3; Fine Arts Club, 3, 4; Math-Science Club, 3, 4, Chairman Chemistry Division, 3, President, 4; B. S. U. President, 3, Council, 4.



BETTY COLLINS . . . Cairo, Ga.

English

Y. W. C. A., 1, 2, 3, 4; S. G. A., 1, 2, 3, 4; Sports Club, 1, 2; Ashley House President, 2; Secretary-Treasurer Sophomore Class, 2; Fine Arts Club, 3, 4; English Club, 3, 4, Secretary, 3; Math-Science, 3, 4.

RACHEL CUNNINGHAM . . . Arlington, Ga.

Home Economics

Y. W. C. A., 1, 2, 3, 4; S. G. A., 1, 2, 3, 4; Executive Committee, 3; Sports Club, 1, 2, 3, 4; Council, 1, 2, 3, 4, President, 4; Sock and Buskin Club, 2, 3, 4, Historian, 3; *Campus Canopy*, 4; Assistant Editor *Student Handbook*, 3; President's Council, 3; Counselor Athletic Association, 4; Sports Club, Awards, 1, 2, 3.





HELEN DAVIS Thomasville, Ga.

History

Y. W. C. A., 1, 2, 3, 4; S. G. A., 1, 2, 3, 4; Sports Club, 1; Fine Arts Club, 2, 3, 4, Vice-President, 3; "Y" Cabinet, 3, Treasurer, 3; Valdosta Club, 1, 2, 3, Secretary, 2; Math-Science, 3; I. R. C., 1, 2, 3, 4, President, 3; *Campus Canopy*, 4; Chapel Choir, 3, 4; Senior Honor Society, 4; President's Council, 3.

PATRICIA FORRESTER Donalsonville, Ga.

Mathematics

Y. W. C. A., 1, 2, 3, 4; Cabinet, 2, Assistant Vice-President, 2; S. G. A., 1, 2, 3, 4; Sports Club, 1, 2, 3, 4; Council, 2, 3, 4; *Campus Canopy*, 1, 2, 3, 4, Associate Editor, 3, Editor, 4; PINE CONE, 1, 2, 3; Math-Science, 3, 4, Chairman Math Division, 3, 4; Editor *Student Handbook*, 4; Sock and Buskin, 4; Chapel Choir, 1, 2, 3; Glee Club, 1, 2; Philharmonic Club, 2; Chairman Young Democrat League, 4; Southern Representative Executive Committee of U. S. S. A., 4.



EMILY DEKLE Cordele, Ga.

Home Economics

Y. W. C. A., 1, 2, 3, 4; Cabinet, 1; S. G. A., 1, 2, 3, 4, First Vice-President, 3, Executive Committee, 3; President Sophomore Class, 2; Sports Club, 1, 2, 3, 4; Council, 1, 2, 3, 4; Home Economics Club, 4; *Campus Canopy*, 2.

CATHERINE GARBUTT Jesup, Ga.

English

Y. W. C. A., 1, 2, 3, 4, Secretary, 4; S. G. A., 1, 2, 3, 4; Monitor, 3; Sports Club, 1; Council, 1; Sophomore Class President, 2; Glee Club, 1; Freshman Glee Club, 1; Fine Arts Club, 2, 3, 4, President, 3; President's Council, 2, 3, Chairman, 3; War Bond Scholarship Chairman, 2; E. C. A. Chairman, 4; English Club, 3, 4, President, 4; Artist Series Committee, 3, 4, Chairman, 4; Chapel Choir, 3, 4; Valdosta Club, 1, 2; *Campus Canopy*, 1, 3; PINE CONE, 2; P. S. A., 1, 2, 3, 4, President, 3.





DOROTHY GLENN Pelham, Ga.

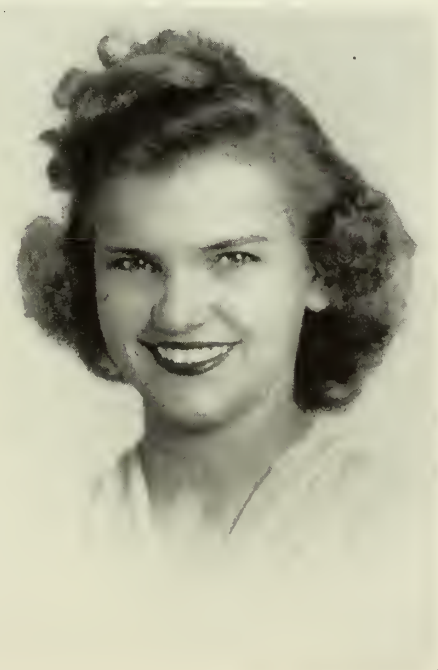
English

Y. W. C. A., 1, 2, 3, 4; S. G. A., 1, 2, 3, 4; Sports Club, 1, 2; *Campus Canopy*, 1, 2, 3, 4; Freshman Honor Society; Senior Honor Society, Secretary, 4; Romance Language Club, 3, 4, Vice-President, 3; Math-Science Club, 3, 4; PINE CONE, 4, Make-up Editor, 4.

KATHLEEN HALL Swainsboro, Ga.

Home Economics

Y. W. C. A., 1, 2, 3, 4; S. G. A., 1, 2, 3, 4; Monitor, 3, 4; Sports Club, 1, 2; Freshman Glee Club, 1; Chapel Choir, 2; Fine Arts Club, 2, 3, 4, Art Chairman, 3, President, 4; Home Economics Club, 4, Vice-President, 4; PINE CONE, 3, 4, Editor, 4; Sophomore Council 2; President's Council, 3; Artist Series Committee, 4.



MARTHA GOODWIN McRae, Ga.

Biology

Y. W. C. A., 1, 2, 3, 4; Cabinet, Honorary Member; S. G. A., 1, 2, 3, 4, Vice-President, 3, President, 4; Sports Club, 1, 2; Freshman Glee Club, 1; Glee Club, 1, 2; Sophomore Council, 2, Chairman, 2; Chapel Choir, 2, 3; *Campus Canopy*, 2, 3; Math-Science Club, 2, 3, 4, Chairman Biology Division, 3; Fine Arts Club, 3, 4; W. S. F., 4; Artist Series Committee, 4; Chairman Allocations Committee, 4.

MARIE HENDERSON Statenville, Ga.

Sociology

Y. W. C. A., 1, 2, 3, 4; S. G. A., 1, 2, 3, 4; Sports Club, 1, 2; Sociology Club, 1, 2, 3, 4; Math-Science Club, 1, 2, 3, 4; *Campus Canopy*.





DOROTHY HINTON Reynolds, Ga.

Humanities

Y. W. C. A., 1, 2, 3, 4; S. G. A., 1, 2, 3, 4; Sports Club, 1, 2, 3, 4; Council, 1, 2, 3, 4, Treasurer, 3, Vice-President, 4; Awards, 1, 2, 3, 4; Math-Science Club, 3, 4; English Club, 4, Secretary-Treasurer, 4.



VIRGINIA HODGES Americus, Ga.

English

Transfer, Georgia Southwestern College and University of Wisconsin; Y. W. C. A., 3, 4; S. G. A., 3, 4; Sports Club, 4; English Club, 4.

DOROTHY JACKSON Palmetto, Ga.

Home Economics

Y. W. C. A., 1, 3, 4; S. G. A., 1, 3, 4; Glee Club, 1; Sports Club, 1; Fine Arts Club, 4; Home Economics Club, 4; B. S. U., 3, 4, Secretary, 3, 4.

DORIS KING Cairo, Ga.

History

Y. W. C. A., 1, 2, 3, 4; S. G. A., 1, 2, 3, 4; Monitor, 3, 4; Sports Club, 1; Freshman Honor Society, 2; Senior Honor Society, 4; Freshman Glee Club, 1; Math-Science Club, Biology Division, 2, 3, 4; International Club, 2, 3, 4, Treasurer, 2, 3, Vice-President, 4; *Campus Canopy*, 1, 2, 3, 4; PINE CONE, 4; Young Democrats Club, 4.





CONSTANCE KINSLER Arlington, Ga.

Biology

Y. W. C. A., 1, 2, 3, 4; S. G. A., 1, 2, 3, 4; Sports Club, 1, 2, 4; Monitor, 1; *Campus Canopy*, 3; Math-Science, 3, 4.



MARTHA LINDSEY Thomaston, Ga.

Biology

Y. W. C. A., 1, 2, 3, 4; S. G. A., 1, 2, 3, 4; Senior House Council, 4; Sports Club, 1, 2; Fine Arts Club, 3, 4, Secretary-Treasurer, 4; Sociology Club, 4; Math-Science Club, 3, 4, Secretary-Treasurer, 3, Vice-President, 4; Freshman Glee Club, 1; Representative to Student Faculty Honor Council, 3; *Campus Canopy*, 1, 2, 3.

CAROLYN MANN Milner, Ga.

Piano

Y. W. C. A., 1, 2, 3, 4; S. G. A., 1, 2, 3, 4; Sports Club, 1; Glee Club, 1, 3, 4, Secretary-Treasurer, 3; Fine Arts Club, 4; PINE CONE, 1, 4; Log Cabin Committee, 4; E. C. A. Committee, 4.

ANNETTE MASSEY Bronwood, Ga.

Home Economics

Y. W. C. A., 1, 2, 3, 4; S. G. A., 1, 2, 3, 4; Sports Club, 1; *Campus Canopy*, 2, 3, 4, News Editor, 3, 4; Chapel Choir, 2; Sophomore Council, 2; PINE CONE, 3, 4, Associate Editor, 4; Chairman Log Cabin Committee, 3, 4, Secretary-Treasurer Senior Class, 4; Sociology Club, 3, 4, Secretary-Treasurer, 4; Home Economics Club, 4, Publicity Chairman, 4.





BETTY MATHIS Valdosta, Ga.

Humanities

Y. W. C. A., 1, 2, 3, 4; S. G. A., 1, 2, 3, 4; Valdosta Club, 1, 3, 4, Vice-President, 4; English Club, 3, 4; Vice-President Senior Class, 4.



SARA ALLEN MATTHEWS . . . Buena Vista, Ga.

Humanities

Y. W. C. A., 1, 2, 3, 4; S. G. A., 1, 2, 3, 4; Monitor, 2; Junior House Council, 3; Senior House Council, 4; Sports Club, 1, 2, 3, 4; Freshman Honor Society, 2, Historian, 2; Senior Honor Society, 3, 4, President, 4; Math-Science Club, 3, 4; Biology Division Chairman, 3; President's Council, 3; Artist Series Committee, 3, 4; Romance Language Club, 3, 4, President, 4; English Club, 3, 4; B. S. U., 3, 4; E. C. A., 4.

ELIA MEADORS Albany, Ga.

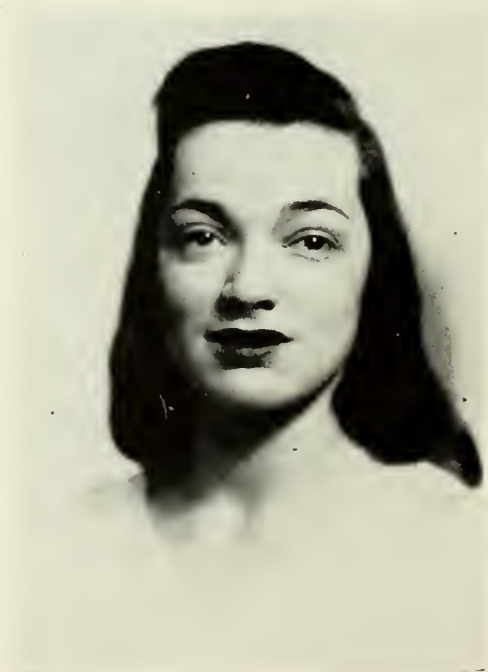
Biology

Y. W. C. A., 1, 2, 3, 4; S. G. A., 1, 2, 3, 4; House Council, 3; Sports Club, 1, 2, 3, 4, Council, 2, 3, Team Captain, 2, Vice-President, 3; Fine Arts Club, 2, 3, 4; Math-Science Club, 2, 3, 4; P. S. A., 2, 3, 4.

MARY MELVIN Leary, Ga.

English

Y. W. C. A., 1, 2, 3, 4; S. G. A., 1, 2, 3, 4; Sports Club, 1, 2; Glee Club, 1, 2, 3, 4; English Club, 3, 4; PINE CONE, 3.





EVELYN MEINERT Savannah, Ga.

Humanities

Y. W. C. A., 1, 2, 3, 4; S. G. A., 1, 2, 3, 4; Monitor, 3, 4; Sports Club, 1; I. R. C., 2, 3, 4, Treasurer, 3; Math-Science Club, 2, 3, 4.



JESSIE MORGAN Tifton, Ga.

Humanities

Y. W. C. A., 1, 2, 3, 4; S. G. A., 1, 2, 3, 4; Sports Club, 1; Sociology Club, 3, 4.

BETTY PETERS Moultrie, Ga.

English

Y. W. C. A., 1, 2, 3, 4; S. G. A., 1, 2, 3, 4; Monitor, 3, 4; Court, 3; Sports Club, 1, 2; Freshman Honor Society, 2; Senior Honor Society, 3, 4, Treasurer, 4; Sock and Buskin Club, 3, 4; Student Attendance Chairman, 3; Secretary "Y," 2.

BARBARA PRESSLEY Americus, Ga.

Home Economics

Transfer, Georgia Southwestern College, Americus, Ga.; Y. W. C. A., 3, 4; S. G. A., 3, 4; Executive Committee, 4; Senior Class President, 4; Home Economics Club, 4; Student Activities Chairman, 3; Fire Chief, 3; Sociology Club, 4; Senior Honor Society, 4.





FRANCES GOOGE PRINE . . . Savannah, Ga.

Humanities

Y. W. C. A., 1, 2, 3, 4; S. G. A., 1, 2, 3, 4; Sports Club, 1, 2, 3, 4; I. R. C., 3, 4, Secretary, 3; Fine Arts Club, 3, 4; *Campus Canopy*, 1; Dance Club.



JANE ROGERS . . . Quitman, Ga.

Humanities

Y. W. C. A., 1, 2, 3, 4; S. G. A., 1, 2, 3, 4; Sports Club, 1, 2; Secretary-Treasurer Junior Class, 3; House Council, 3; Sophomore Council, 2; Fine Arts Club, 2, 3, 4, Art Chairman, 3; Romance Language Club, 3, 4, Vice-President, 4; PINE CONE, 1, 2, 3.

VIRGINIA SNOW . . . Valdosta, Ga.

Humanities

Y. W. C. A., 1, 2, 3, 4; S. G. A., 1, 2, 3, 4; Sports Club, 1, 2, 3, 4; Glee Club, 1, 2, 3, 4; Freshman Honor Society, 2, Secretary-Treasurer, 2; Senior Honor Society, 3, 4; Math-Science Club, 2, 3, 4; Fine Arts Club, 1, 2, 3, 4, Secretary-Treasurer, 2, Vice-President, 4; PINE CONE, 3, 4, Art Editor, 4; Valdosta Club, 1, 2, 3, 4; B. S. U., 1, 2, 3, 4.

HENRIETTA TARVER . . . Albany, Ga.

Humanities

Y. W. C. A., 1, 2, 3, 4; S. G. A., 1, 2, 3, 4; Executive Committee, 4; Sports Club, 1, 2, 3, 4; Council, 3, 4, Treasurer, 3, President, 4; Sophomore Council, 2; *Campus Canopy*, 3, 4, Sports Editor, 3, 4; English Club, 4; Sock and Buskin Club, 4; House Council, 4.





LOIS WILEY Leary, Ga.

Humanities

Transfer, Bessie Tift; Y. W. C. A., 3, 4; S. G. A., 3, 4; English Club, 4; Glee Club, 4; Philharmonic Club, 4; Serenaders, 4; Sock and Buskin Club, 4; Senior House Council, 4.



MARY AGNES WOLFF Fernandina, Fla.

Chemistry

Transfer, Wesleyan College; Y. W. C. A., 2, 3, 4; S. G. A., 2, 3, 4, Second Vice-President, 4, Executive Committee, 4; Sports Club, 2, 3, 4; Council, 3; Math-Science Club, 3, 4, President, 3; Sock and Buskin Club, 2, 3, 4, Secretary-Treasurer, 3, President, 4; Major Production, 2, 3, 4; Senior Honor Society, 4, Vice-President, 4; President's Council, 3; Artist Series Committee, 3, 4; War Bond Scholarship Chairman, 3.



ROWE



SINGLETARY



STORY

JUNIOR CLASS OFFICERS



ROBERTS AND WISDOM

Many of the Juniors in this class became senior class members during the year due to the accelerated program. However, the class still kept its spirit. They sponsored a dance, from which the proceeds went to the War Bond Scholarship Fund. Among other activities the Junior Class prepared for the after dinner coffees in the rotunda.

Three girls served as president of the class this term; Jean Rowe, Harriet Singletary, and Nancy Story. Edith Roberts was vice-president; Mildred Wisdom, secretary-treasurer.

MARTHA LADELLE ALDERMAN
Valdosta, Georgia



MARTHA COOK BARROW
Barwick, Georgia



MRS. JEAN F. BATEMAN
Valdosta, Georgia



ETHEL FOY BENTLEY
Pelham, Georgia



BARBARA EDENFIELD
Savannah, Georgia



REGINA GEIGER
McRae, Georgia





GLYNN HILL

Moultrie, Georgia



HELEN JOINER

Valdosta, Georgia



JEAN McGEACHY

Valdosta, Georgia



IDA MAUD MCKINNON

Adel, Georgia



HARRIETTE HURST McPHAUL

Sylvester, Georgia



DOROTHY RAY NOELL

Valdosta, Georgia

ANNIE RUTH NORMAN
Norman Park, Georgia



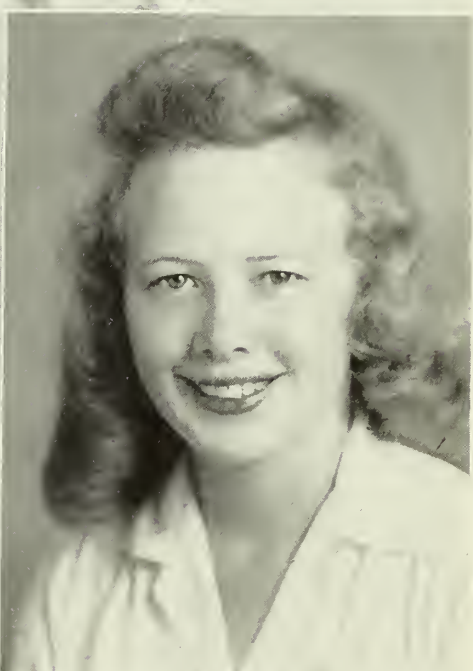
DOROTHY DORENE ODUM
Waycross, Georgia



ROBBEELEE PATTILLO
Moultrie, Georgia



GLADYS PENLAND
Lumpkin, Georgia



EFFIE POWELL
Vienna, Georgia



ELIZABETH JANE REMSON
Washington, D. C.





EDITH ROBERTS

Valdosta, Georgia



JEAN ROWE

Claxton, Georgia



HARRIET SINGLEARY

Pelham, Georgia



GEORGIA WINN SMITH

Valdosta, Georgia



NANCY STORY

Nashville, Georgia



KATHRYN STROUD

Valdosta, Georgia

JEAN STUBBS

Douglas, Georgia



BETTY SULLIVAN

Valdosta, Georgia

CHARLOTTE TAYLOR

Moultrie, Georgia



BEATRICE WILLIAMS

Jesup, Georgia

MILDRED WISDOM

West Point, Georgia





CARSON



BOLEN

SOPHOMORE CLASS OFFICERS

The most outstanding annual activity of the Sophomore Class is the Valentine Sweetheart Dance at which the Class Sweethearts are announced as chosen by the student body.

During the year a garden was begun near the Log Cabin and arrangements were made for flower boxes around the windows.

A fund was begun by the sophomores to purchase a new juke box for the Recreation Hall.



HILL AND HUTCHINSON



CLASS SWEETHEARTS



SOPHOMORE SNAPS





SARA ADCOCK
Fender, Georgia

BETTY ALTMAN
Valdosta, Georgia

BARBARA ANDERSON
LaFayette, Georgia



MARIE ARMSTRONG
Clinchfield, Georgia

HARRIET ARRINGTON
Dixie, Georgia

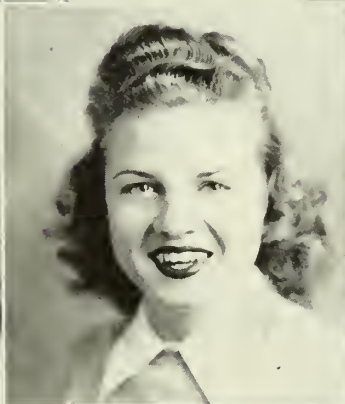
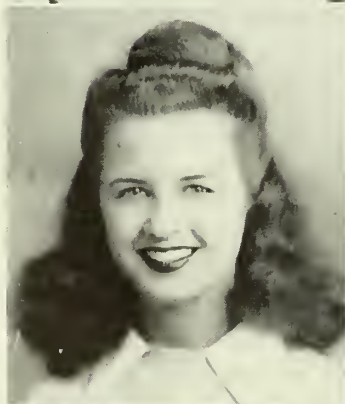
JANE BALDWIN
Sparks, Maryland



JOANNA BARINEAU
McRae, Georgia

SIMONE BASSETT
Fort Valley, Georgia

VIRGINIA BOLEN
Valdosta, Georgia



BETTYE BOWEN
Tifton, Georgia

DOROTHY BOYETT
Ray City, Georgia

DATHINE BRUNSON
Reynolds, Georgia



CLARE CARSON
Savannah, Georgia

EDITH COLLINS
Waycross, Georgia

MARY CRUM
Valdosta, Georgia

CAROLINE DAVIS
Baxley, Georgia

DOROTHY DAVIS
Marshallville, Georgia

CORINNE DELLINGER
Albany, Georgia



MARGURETE DICKERSON
Ambrose, Georgia

LAURA HELEN DOWNS
Thomaston, Georgia

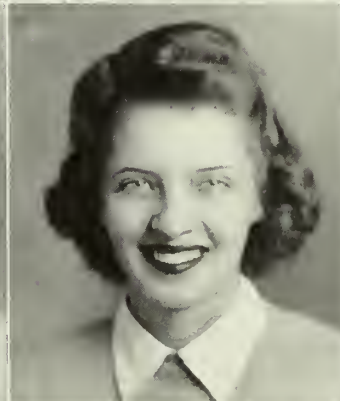
CAROLYN DOZIER
Leary, Georgia



BERTHA DREXEL
Valdosta, Georgia

MERRITT DYAL
Woodbine, Georgia

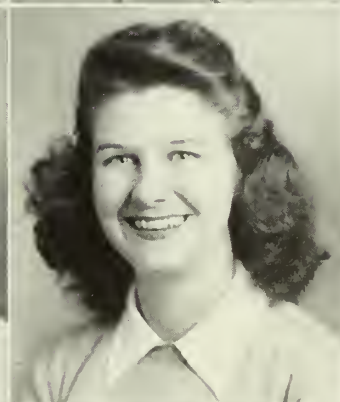
JOSEPHINE EVERETT
Pavo, Georgia



MARJORIE FERGUSON
Valdosta, Georgia

PEGGY FORD
Sylvester, Georgia

DOROTHY FUTCH
Ellenton, Georgia



COLLEEN GEIGER
McRae, Georgia

DORIS GIBBS
Waycross, Georgia

KATHLEEN GRANTHAM
Thomaston, Georgia

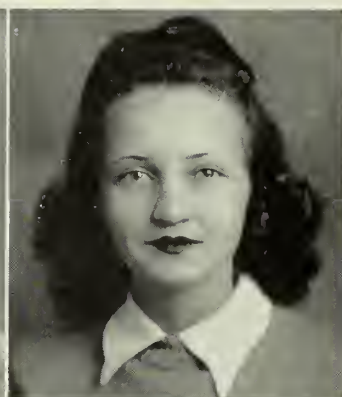




KATHERINE GREEN
Lexington, Georgia



JEAN HALL
Hahira, Georgia



ROSELYN HALL
Nicholls, Georgia



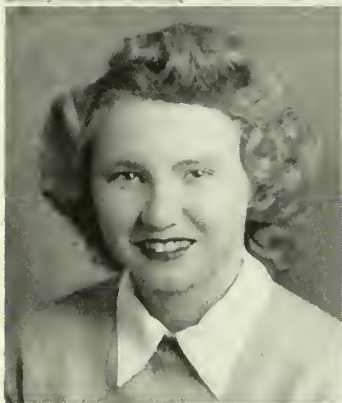
ANNETTE HERNDON
Ludowici, Georgia



DOROTHY HIGHTOWER
Damascus, Georgia



ELIZABETH HILL
Kingsland, Georgia



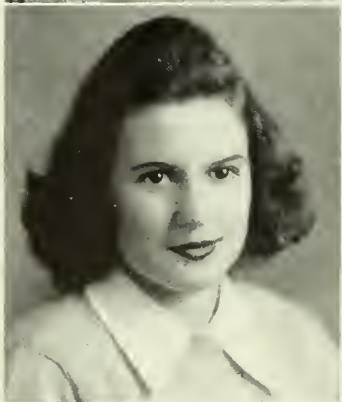
ELIZABETH HINTON
Reynolds, Georgia



SANCIL HOLDER
Tifton, Georgia



BETTY HUTCHINSON
Valdosta, Georgia



MARGARET JOINER
Screven, Georgia



MARGARET JONES
Valdosta, Georgia



ANNE KEENE
Columbus, Georgia



NELL KENNEY
Moultrie, Georgia



ELIZABETH KING
Valdosta, Georgia



ELLEN LAHOOD
Valdosta, Georgia

BETTY LEE
Leesburg, Georgia

WYNELLE LUNSFORD
Sasser, Georgia

JEAN MARTIN
Fitzgerald, Georgia



MARJORIE MASSEY
Valdosta, Georgia

BETH MIDDLETON
Hortense, Georgia

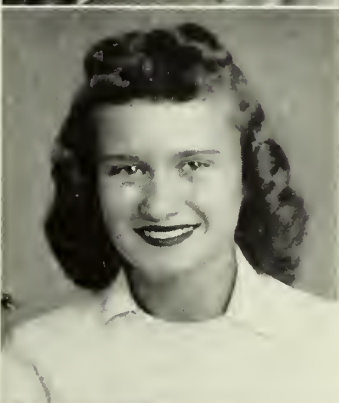
CATHERINE MONSEES
Savannah, Georgia



BLANCHE MYERS
Valdosta, Georgia

BERNICE NEWBERRY
Arlington, Georgia

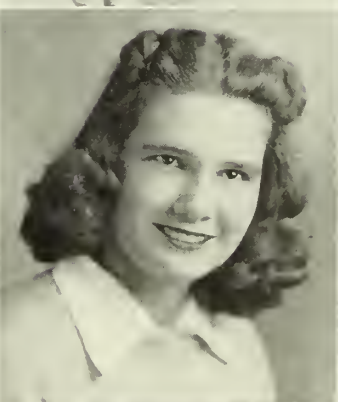
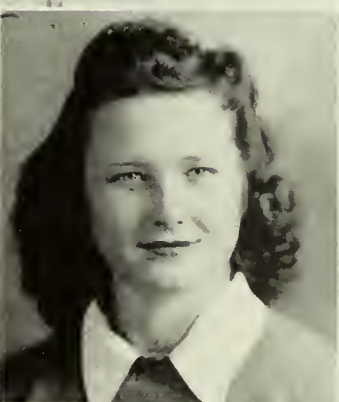
MARION NEWSOM
Reynolds, Georgia



LOUISE NEWTON
Camilla, Georgia

PATRICIA PARROTT
Hahira, Georgia

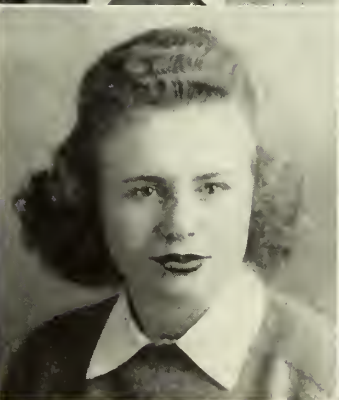
ELIZABETH PATE
Montezuma, Georgia



CAROLYN PITTMAN
McRae, Georgia

MARGARET PORTER
Valdosta, Georgia

EMILY PRYOR
Douglas, Georgia





MARGARET RACKLEY
Camilla, Georgia



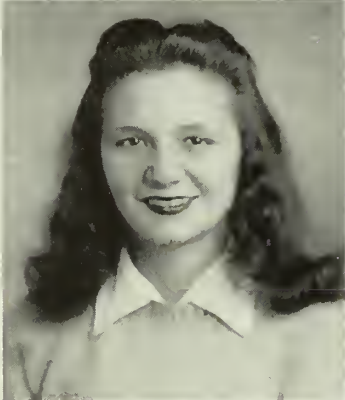
MARGARET ANNE RAIFORD
Norfolk, Georgia



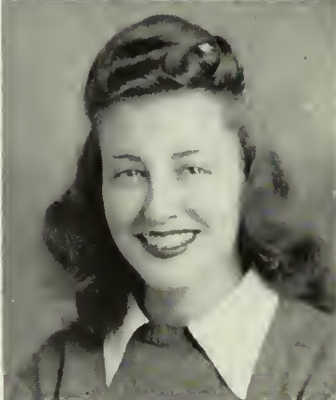
LOUISE REES
Preston, Georgia



BETTY RENTZ
Columbus, Georgia



DOROTHY REYNOLDS
Arabi, Georgia



LYNETTE ROBISON
Dublin, Georgia



JUNE SEARS
Sasser, Georgia



GERALDINE SHEFFIELD
Blakely, Georgia



NEZZIE LOU SIMS
Fitzgerald, Georgia



BILLIE SMITH
Statenville, Georgia



MRS. NORMA STABLER
Bainbridge, Georgia



SARA SUDDERTH
Morgan, Georgia



VIRGINIA SUMNER
Tifton, Georgia



BEVERLY SWANSON
Valdosta, Georgia



BOBBIE TOWNSEND
Darien, Georgia

RUTH TURNER
Barwick, Georgia

HAZEL WALKER
Valdosta, Georgia

WILLETTE WHITTENDALE
Norman Park, Georgia



ANNE WHITTLE
Brunswick, Georgia

MARTHA WILCOX
Elberton, Georgia

FRANCES W. WILKINS
Jesup, Georgia



LAURIE WHITE
Valdosta, Georgia

IRMA LOU WILLIAMS
Valdosta, Georgia

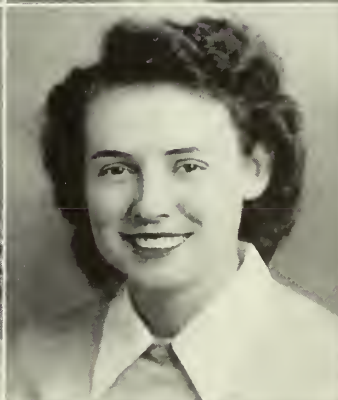
MADGE WILLIAMS
McRae, Georgia



MARY NIX WILLIAMS
Gainesville, Georgia

JEAN WILLIS
Nashville, Georgia

FRANCES WISDOM
Elberton, Georgia



ELAINE YOUNG
Bainbridge, Georgia





THOMPSON



SNOW AND GUNTER



THE CO-EDS

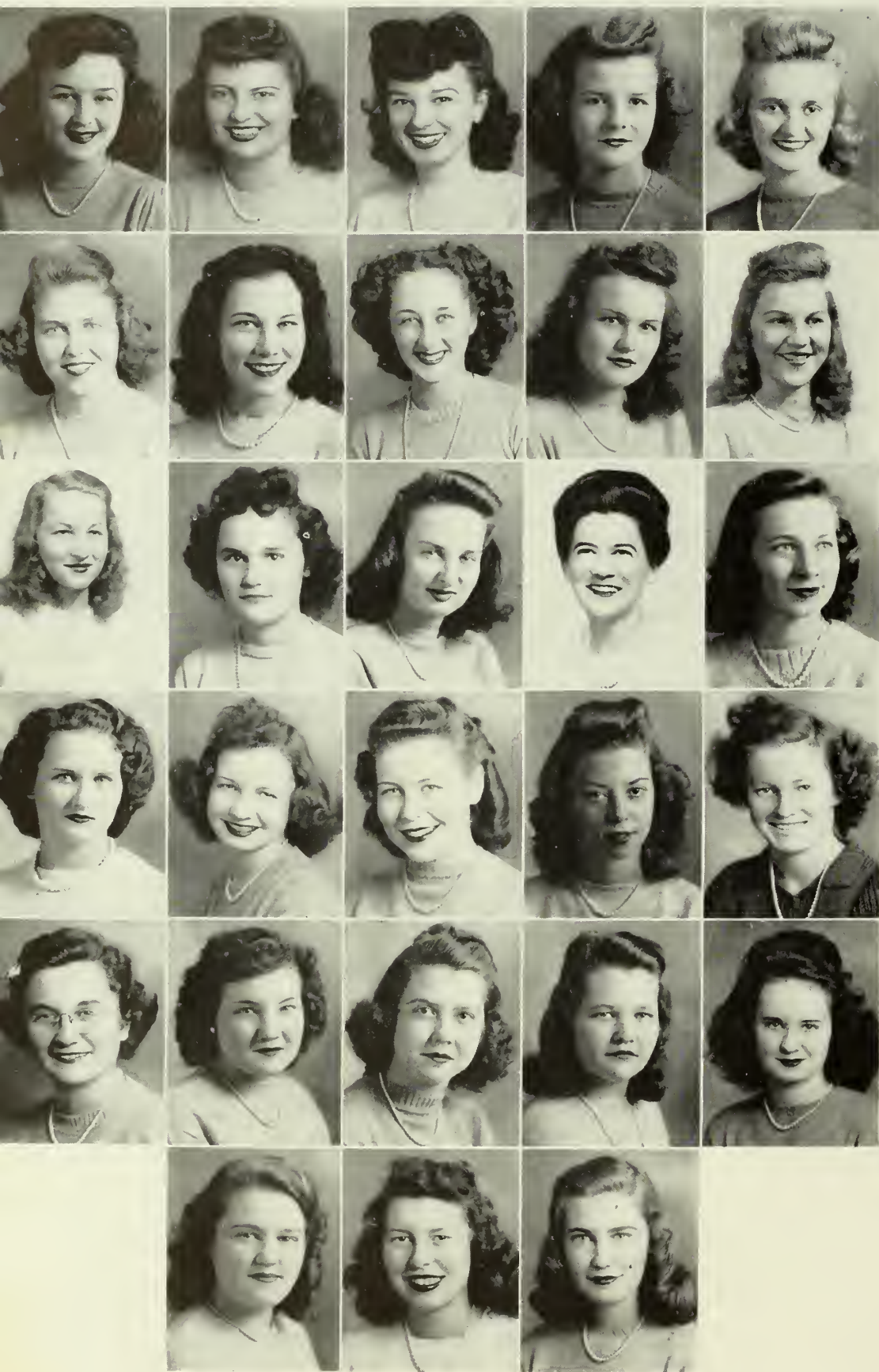
The Freshman Class sponsored two dances and entertained the upperclassmen after Rat Day with a skit and dance. They contributed the benefits of one dance to the "Foster Parent's Plan for War Children."

The three co-eds of campus are included in the Freshman Class—Julian Wilson, Lewis Holder, and Hubert Alexander.

Betty June Thompson was president; Bobby Snow, vice-president, and Betty Gunter, secretary-treasurer.



FRESHMAN SNAPS



PATRICIA ALLXANDER . . . Stone Mountain, Ga.
 JEANETTE ALGONAS . . . Bainbridge, Ga.
 SARAH ELLYN ALDRED . . . Thomasville, Ga.
 EMMA JEANE AMOS . . . Valdosta, Ga.
 KATHRYN POPE AMOS . . . Butler, Ga.

EULA MAE BLACKBURN . . . Valdosta, Ga.
 JANE CONSTANCE BOOTH . . . Quitman, Ga.
 SARAH JANE BOOTH . . . Valdosta, Ga.
 ALICE CAROLYN BOWEN . . . Register, Ga.
 JACQUELYN BOWEN . . . Register, Ga.

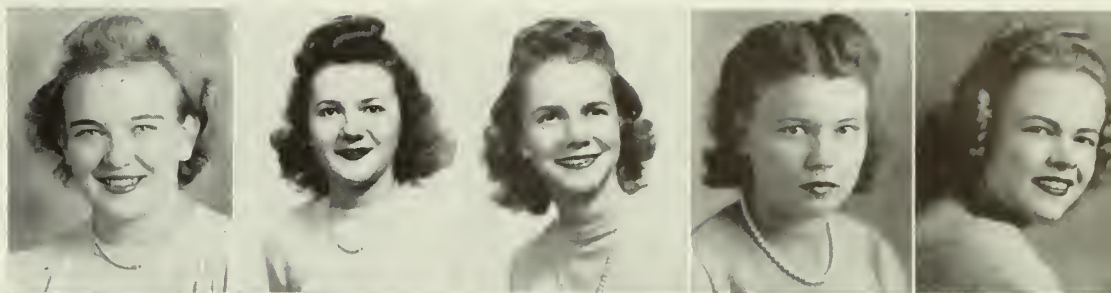
MARTHA ROSE BOWEN . . . Register, Ga.
 MYRA NELL BOWEN . . . Pelham, Ga.
 HELEN JOSEPHINE BRANCH . . . Valdosta, Ga.
 MRS. MARY B. BROOKS . . . Valdosta, Ga.
 MARY NELL BROOKS . . . Tifton, Ga.

MARY ANNE BROWN . . . Sasser, Ga.
 BETTY JANE BRYANT . . . Blakely, Ga.
 DELORIS BRYCE . . . Bryceville, Fla.
 MILDRED BULLOCK . . . Valdosta, Ga.
 IRMA NELL BURKHALTER . . . Valdosta, Ga.

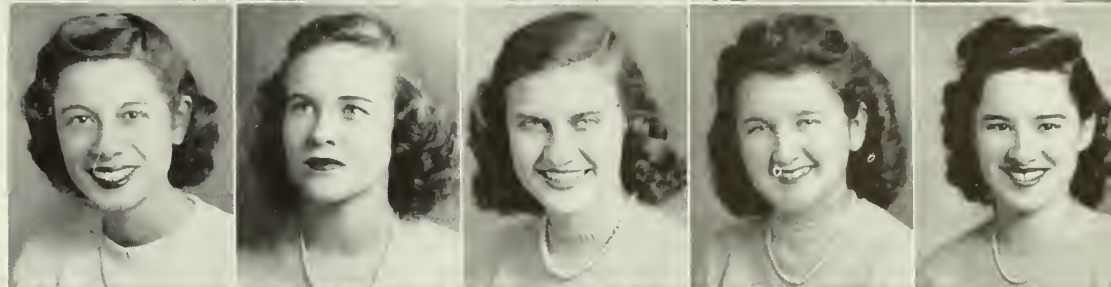
ROSAMOND BURNS . . . Madison, Fla.
 DOROTHY BUTLER . . . Metcalf, Ga.
 CAROLYN CAMPBELL . . . Camilla, Ga.
 MARY CAROLYNN CARTER . . . Climax, Ga.
 MARY FRANCES CARTER . . . Poulan, Ga.

VIRGINIA CARTER . . . Colquitt, Ga.
 CELESTE CHAMPION . . . Vienna, Ga.
 ANNICE BOYD CASEY . . . Cedartown, Ga.

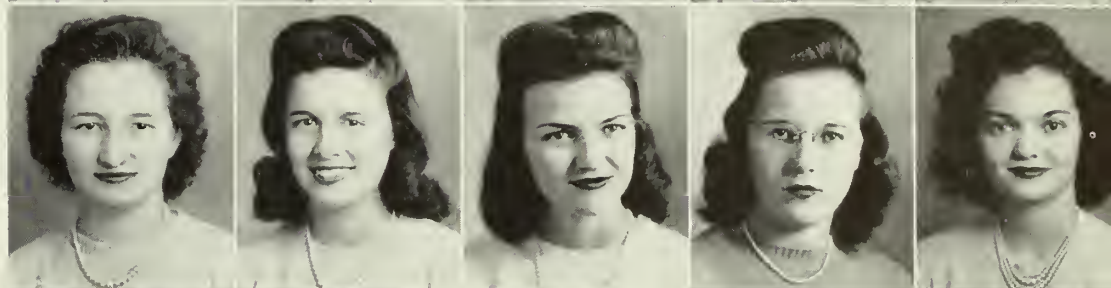
MARY CHASTAIN Thomasville, Ga.
 MARTHA CHRISTIAN Ocilla, Ga.
 MARTHA GLYNN COLLINS . . . Claxton, Ga.
 EVELYN CONNELL Valdosta, Ga.
 LAURA C. CONVERSE Valdosta, Ga.



VIRGINIA FOY COOK Valdosta, Ga.
 VIRGINIA COPELAND Valdosta, Ga.
 HILDA JOHNNIE CRUM Valdosta, Ga.
 ALICE JANE DANCER Colquitt, Ga.
 MAGGIE SUE DANIEL Hahira, Ga.



HATTIE LOUISE DAVIS Valdosta, Ga.
 JOAN KEELEY DAVIS Donalsonville, Ga.
 CAROLYN DeVANE Ray City, Ga.
 JEAN DICKSON Nashville, Ga.
 FAYE DIXON Patterson, Ga.



BETTY FORCE Valdosta, Ga.
 VIRGINIA FREEMAN Valdosta, Ga.
 KATHRYN ANN GAULDEN . . . Camilla, Ga.
 MARY SCOTT GENTRY Hinesville, Ga.
 CHARLOTTE MARTIN GOODWIN . McRae, Ga.



ROSALYN VIRGINIA GORDON . . . Pitts, Ga.
 HELEN MARIE GRAYDON McRae, Ga.
 ODESSA GRIFFIN Ochlochnee, Ga.
 BETTY JO GUNTER Statesboro, Ga.
 MARY VIRGINIA HAGAN Valdosta, Ga.



BARBARA VANDORIS HAM . . . Parrott, Ga.
 EMMA LAURIE HARDY Valdosta, Ga.
 MARGARET RUTH HARDY . . . Quitman, Ga.





DOLORES RUBY HAYGOOD . Thomaston, Ga.
 MARY REBECCA HENDERSON . . . Ocilla, Ga.
 AUDREY HENDERSON Waycross, Ga.
 OKIE ANN HENDRIX Manassas, Ga.
 ANNA GRACE HIERS Valdosta, Ga.

JOYCE HILL Kingsland, Ga.
 LOLLA LEE HOLDER Tifton, Ga.
 GLORIA HOLLAND Pelham, Ga.
 FRANCES HURN . . . St. Simon Island, Ga.
 ELAINE SIMS HURT Valdosta, Ga.

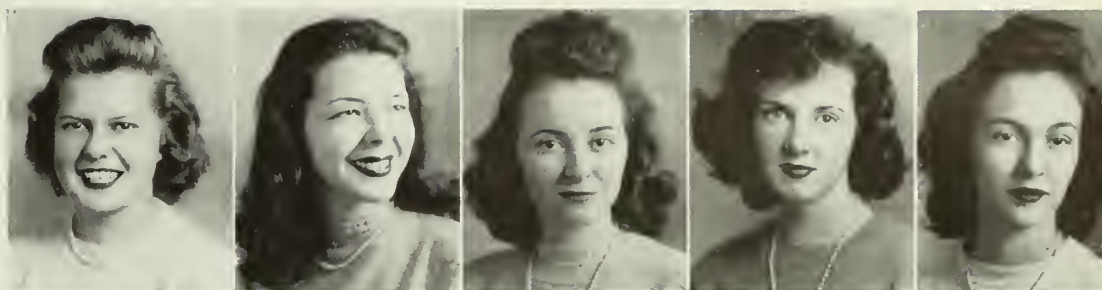
BETTY JOYCE IVES Quitman, Ga.
 REBECCA JENNINGS Dawson, Ga.
 EDITH EDNA JONES Homerville, Ga.
 LOUISE JONES Colquitt, Ga.
 ROBERT FRANCES JONES Valdosta, Ga.

BETTY ANN JORDAN Arlington, Ga.
 MAMIE BELLE JORDAN Hahira, Ga.
 PAULINE JORDAN Hartsfield, Ga.
 BETTY SUSIE KEENE Columbus, Ga.
 BARBARA ANNE KENNEDY . . . Coolidge, Ga.

RUTH KENT Lakeland, Ga.
 NANCY KIDDER Charlottesville, N. C.
 LOUA ELLEN KING Moultrie, Ga.
 VIRGINIA ANN KING Leesburg, Ga.
 JEAN LAND Griffin, Ga.

ESTHER LANDEY Valdosta, Ga.
 CLEMMIE JOYCE LANE Rebecca, Ga.
 BESS CAROLYN LESTER Fairhope, Ala.

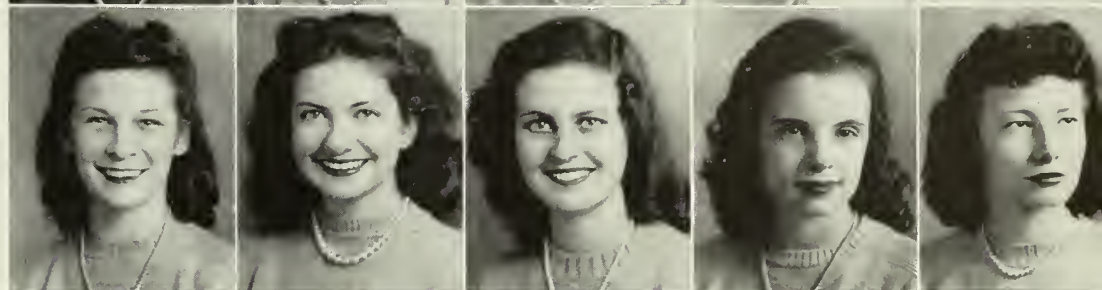
DORIS ELIZABETH LUPO . . . Claxton, Ga.
 LAWANDA MCCALLAR . . . Richmond Hill, Ga.
 DOROTHY HELEN MCCORD . . . Pelham, Ga.
 MARGARET RUTH MCEADDY . . . Quitman, Ga.
 MABLE CLAIRE McELVLY . . . Valdosta, Ga.



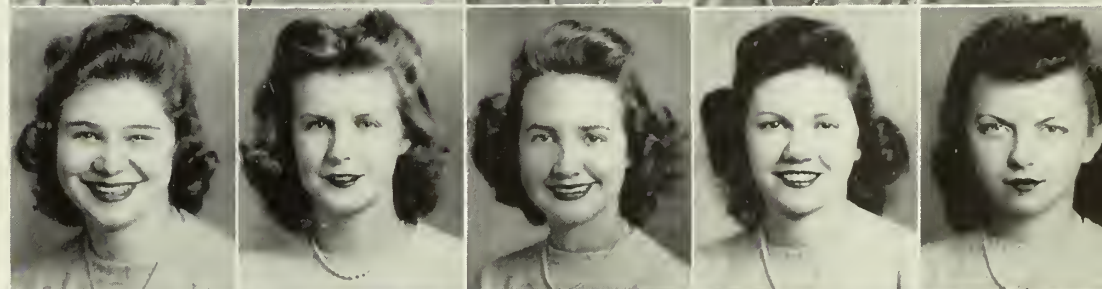
NORMA ANN MCGOWAN . . . Valdosta, Ga.
 DERYL MCKENDREE . . . Woodbine, Ga.
 MIRIAM MCKOWN . . . Moultrie, Ga.
 ISABEL McLEOD . . . Valdosta, Ga.
 JOYCE McMANUS . . . Cairo, Ga.



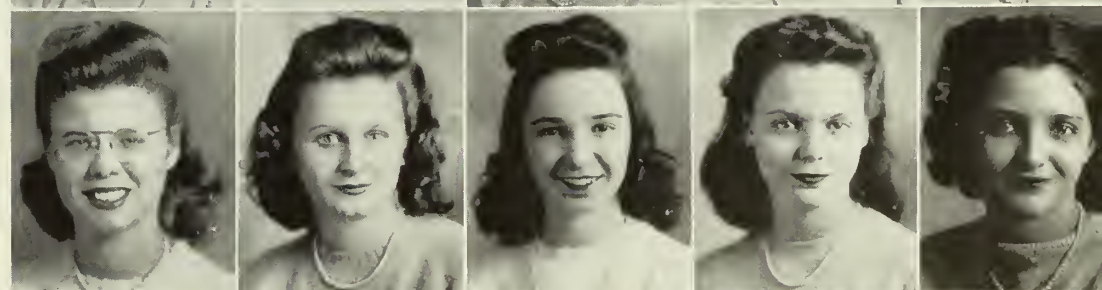
HARRIETTE HURST McPHAUZ . . . Tuskegee, Ala.
 BETTY McPHERSON . . . Dawson, Ga.
 BETTY SUE McRAE . . . Kissimmee, Fla.
 MARILYN MACE . . . Arcola, Ill.
 ANN ESTELLE MADDOX . . . Rochelle, Ga.



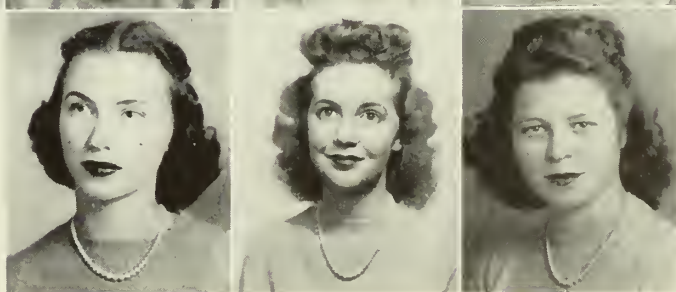
ANNETTE MANLEY . . . Griffin, Ga.
 BETTY ANN MARKERT . . . Albany, Ga.
 MARY EUNICE MAYO . . . Richland, Ga.
 MARY JEAN MAYO . . . Richland, Ga.
 MADGE MOBLEY . . . Moultrie, Ga.



JOYCE LOUISE MOON . . . Vienna, Ga.
 ELSIE MOORE . . . Thomasville, Ga.
 EULALIE MURDAUGH . . . McRae, Ga.
 GLORIA KATHRYN MURPHY . . . Hahira, Ga.
 JANICE MUSGROVE . . . Atlanta, Ga.



ADAIR MYDDLETON . . . Valdosta, Ga.
 ANNIS JEAN NeSMITH . . . Perry, Ga.
 RAY JEAN NORMAN . . . Moultrie, Ga.





SARAH ANN NORRIS Jesup, Ga.
 ROBERTA ELIZABETH NYE . . Fairhope, Ala.
 JEANNE PAINTER Cairo, Ga.
 BETTY SUE PARKER Homerville, Ga.
 MARTHA PARKER Valdosta, Ga.

LILLIAN PERDUE Kathleen, Ga.
 KIRSTEN PETERSON-EGEBACH . Fairhope, Ala.
 CATHERINE M. PHILLIPS . . . Colquitt, Ga.
 ANNETTE PICKREN Argyle, Ga.
 MAYORA POTTS Moultrie, Ga.

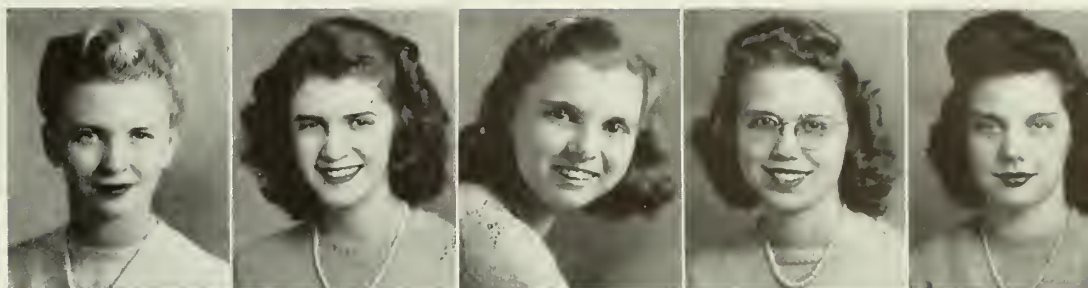
MIRIAM POWELL Atlanta, Ga.
 MARTHA REGISTER Valdosta, Ga.
 MARY JANE REGISTER . . Norman Park, Ga.
 NELL REHBERG Cairo, Ga.
 RUTH ROLAND REYNOLDS . . Blakely, Ga.

EDWINA ROBERTS Valdosta, Ga.
 HANSON ROGERS Quitman, Ga.
 BETTY JOY ROLAND . . . Donalsonville, Ga.
 MARY ELIZABETH ROSE . . White Oak, Fla.
 CAROLYN SANDERLIN . . . Bainbridge, Ga.

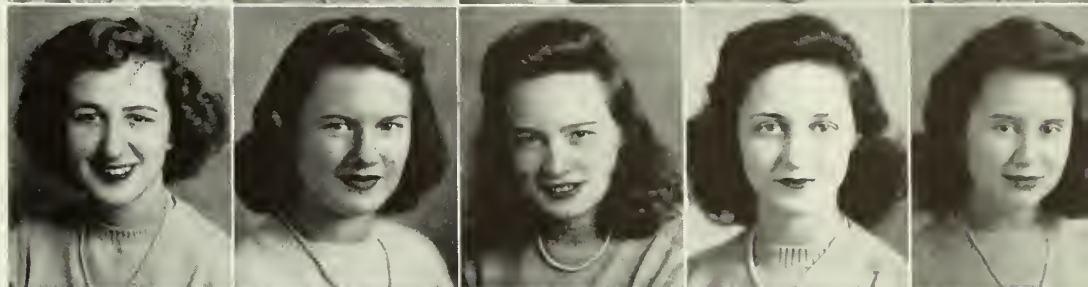
JULIA SELLERS Baxley, Ga.
 EDNA LOUISE SHAW McRae, Ga.
 IRIS ANNE SHIPP Talbotton, Ga.
 LUCILLE SLADE Vienna, Ga.
 WINNETTE SMITH Fairburn, Ga.

SARA SMITH Toccoa, Ga.
 MARJORIE BOBBIE SNOW . . . Valdosta, Ga.
 MARY ELIZABETH SPEER . . . Valdosta, Ga.

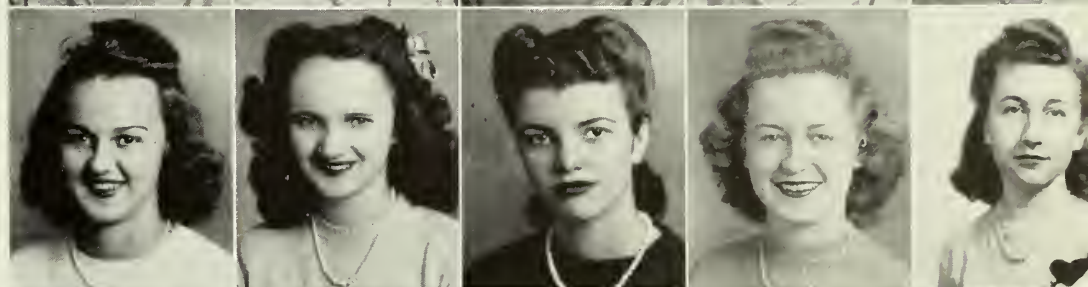
CAROLYN MEIGS STAFFORD . Savannah, Ga.
 DELTA DAVIS STANLEY . . . Quitman, Ga.
 JOHNNIE VIOLA STOKES . . . Valdosta, Ga.
 DOROTHY HELEN STROZIER . Valdosta, Ga.
 MARTHA LEE SYMS Abbeville, Ga.



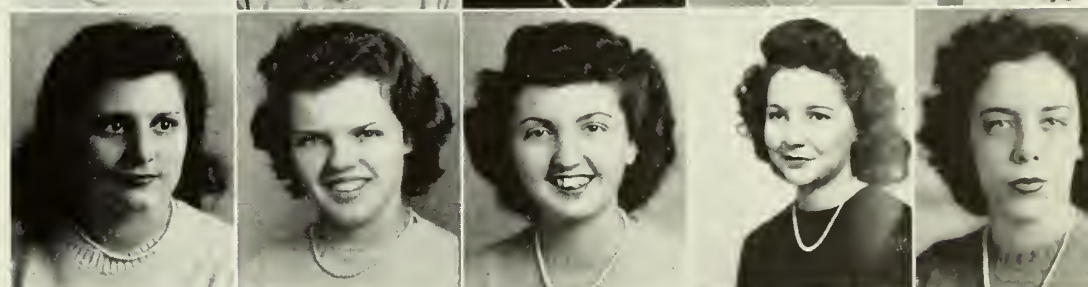
JOYCE TABOR Decatur, Ga.
 JACQUELIN TALTON Valdosta, Ga.
 GLADYS SUSAN THAMES . Thomasville, Ga.
 MARY NEWBY THARPE Vienna, Ga.
 BETTY JUNE THOMPSON . Donalsonville, Ga.



ANNIE PEARLI THORNTON . . Dawson, Ga.
 SARA FRANCES TUTTLE Tifton, Ga.
 ALTHEA TYRE Brunswick, Ga.
 ELEANOR LOUISE WAGGONER . Cordele, Ga.
 MARTHA LOUISE WALKER . . Waycross, Ga.



BARBARA WHITE Trenton, Fla.
 SARA ANN WILKIN Colquitt, Ga.
 PEGGY WILLIAMS McRae, Ga.
 GLADYS WILLIS Valdosta, Ga.
 MARGARET DENT WILLIS . Bainbridge, Ga.



MARY SUZANNE WILLIS . . . Pelham, Ga.
 VERA WILSON Valdosta, Ga.
 BOBBYE RUTH WOOD Pitts, Ga.
 MARGARET CAMILLA WOOD . Fairhope, Ala.



THE ACTIVITIES



The House in the Woods.

The numerous and varied activities of G. S. W. C. offer outlets and inspiration for the students' talents and interests. These are based on the principles of good sportsmanship, cooperation, and sociability. In all the clubs, sports, publications, religious activities, socials, and government individual character is moulded and everlasting friendships are initiated.

It is from these activities that each student carries into her future years the essentials for a well rounded life which will enable her to make the best of any environment.





Christmas Festival.



Camellia Trail.



Polio Drive.



Scrap Paper Salvage.

Saturday Night Formal.



Reception for Artists.



Sports Meet.

STUDENT GOVERN



GOODWIN

All students are eligible for membership in the Student Government Association and may become members after passing an examination. G. S. W. C. offers democratic living to its students.

It is the responsibility of the Student Court, made up of S. G. A. officials and class presidents, to maintain discipline with fairness and impartiality. Cases concerning honor are turned over to the Student-Faculty Honor Court.

DEKLE AND WOLFF
CREECH AND PATILLO



Executive Committee.



MENT ASSOCIATION

McKINNON AND SINGLETARY



DEKLE

OLD OFFICERS

MARTHA GOODWIN	<i>President</i>
EMILY DEKLE	<i>First Vice-President</i>
MARY AGNES WOLF	<i>Second Vice-President</i>
MARY CREECH	<i>Secretary-Treasurer</i>

NEW OFFICERS

EMILY DEKLE	<i>President</i>
IDA MAUDE McKINNON	<i>First Vice-President</i>
HARRIETT SINGLETARY	<i>Second Vice-President</i>
ROBBEELEE PATTILLO	<i>Secretary-Treasurer</i>

Freshman, Sophomore, and Junior House Council.

Working in cooperation with the Y. W. C. A., Student Government was in charge of all activities during Freshman Week.

Due to the accelerated program, officers for the 1944-45 school year were elected twice. Shown here are both old and new officers.





CASTLEBERRY



POWELL



KEENE

OFFICERS

ALPHIA MAE CASTLEBERRY	<i>President</i>
EFFIE POWELL	<i>First Vice-President</i>
ANNE KEENE	<i>Second Vice-President</i>
CATHERINE GARBUTT	<i>Secretary</i>
HARRIETTE ARRINGTON	<i>Treasurer</i>

ARRINGTON AND GARBUTT

Proving the reality and vitality of religion by its untiring services, the Young Woman's Christian Association is adequately and effectively meeting the spiritual needs of the students. One of the most valuable and active organizations on campus, its activities are guided by the "Y" Cabinet, composed of sixteen members appointed by the president and a committee. Every student is considered a member of the "Y" and a growing, non-denominational atmosphere has helped the girls to feel more a part of a working whole.

The year is started by the impressive Recognition Service for all members; Old Man Winter is ushered in with the lovely, effective Fire Lighting Ceremony, at which time all the club presidents contribute to the Fire of Fellowship; the Seniors at Christmas deck the Rotunda in best fashion at the Hanging of the Greens. The Big Sister-Little Sister plan helps the old and new girls become better acquainted; and Heart Sister Week at Valentine time kindles the warm feeling of fellowship among the girls. The youngest tradition, and one which is fast becoming one of the most loved is the series of Easter Services culminated by a Rededication Service on Easter Sunday.

Among other more every-day activities of the Y. W. C. A. are the daily Morning Watch and bi-weekly Vesper programs. The Sophomore Council with its good work on Christian character has been very valuable.

The Reverend Mr. Clifton White has been appointed Dean of the Chapel.





Vesper Choir.



"Y" Cabinet.



Sophomore Council.



Hanging of the Greens.



Firelighting Service.



TARVER



HINTON AND GRANTHAM



DAVIS

OFFICERS

HENRIETTA TARVER	<i>President</i>
DOROTHY HINTON	<i>Vice-President</i>
KATHLEEN GRANTHAM	<i>Secretary</i>
DOROTHY DAVIS	<i>Treasurer</i>

The aim of the Sports Club is to promote physical fitness and mental well-being. It also serves as a guide towards better leadership, sportsmanship, social poise, and ability to get along with one's teammates.

Membership in the club is open to all students. Pledges are taken into full membership after they have shown an active interest in its program, and have a satisfactory scholastic record.

The Council meets every Tuesday afternoon and once a

month has a supper when business and pleasure are combined. This Council is made up of one Lambda and one Kappa manager for every activity in addition to the officers of the club and faculty advisers. To create a competitive spirit toward the match games, the team having the most points at the end of year has its name engraved on the silver plaque which has held such records for a number of years.

The highlights of the year were the Polio Drive, which was most successful, and the Annual Retreat held at Twin Lakes.

SPORTS CLUB







HALL

EDITORIAL STAFF

Literary Staff

KATHLEEN HALL	Associate Editor
ANNETTE MASSEY	Associate Editor
BARBARA BELL	Associate Editor
DORIS KING	Literary Editor
ETHEL BENTLEY	Assistant Editor
CAROLYN MANN	Art Editor
ROBBEELE PATTILLO	Art Editor
VIRGINIA SNOW	Art Editor
GERALDINE SHEFFIELD	Photograph Editor
CAROLYN DOZIER	Asst. Photograph Editor
PEGGY FORD	Activities Editor
CAROLYN STAFFORD	Asst. Activities Editor
RUBY BURGAMY	Snapshot Editor
CATHERINE PHILLIPS	Asst. Snapshot Editor
DOROTHY GLENN	Make-up Editor
GLADYS THAMES	Make-up Editor
NELL KENNEY	Student Photographer

PINE



The staff of the 1945 PINE CONE is happy to present to you the annual publication. Because of many difficulties the PINE CONE will again come out in the latter part of the summer.

The editors attempted to present the life of a G. S. W. C. girl in a peaceful world—the one we are all eagerly awaiting—the World of Tomorrow.



BUSINESS STAFF

GEORGIA SMITH *Business Manager*

JACKIE TALTON *Assistant Manager*

BETTY HUTCHINSON *Ad Manager*



SMITH

CONE

Staff: Annette Herndon, Margaret Joyner, Sara Sudderth, Jeanette Algonas, Sara Frances Tuttle, Peggy Raiford, Emily Pryor, Dolores Haygood, Martha Bowen, Betty Lee, Alice Jane Dancer, Sarah Booth, Dot Reynolds, and Virginia Cook.

Typists: Dot Noell, Kitty Stroud, and Betty Sullivan.



Business Staff.



FORRESTER

THE CAMPUS CANOPY

STAFF

PAT FORRESTER	<i>Editor</i>
GLADYS PENLAND	<i>Business Manager</i>
HARRIETTE SINGLETARY	<i>Associate Editor</i>
EDITH COLLINS	<i>Managing Editor</i>
ANNETTE MASSEY AND DORIS KING	<i>News Editors</i>
BARBARA BELL AND DOROTHY GLENN	<i>Make-up Editors</i>
MARY MITCHELL	<i>Feature Editor</i>
DOT DAVIS	<i>Sports Editor</i>
RACHEL CUNNINGHAM	<i>Exchange Editor</i>
HENRIETTA TARVER	<i>Editorial Assistant</i>
CLARE CARSON	<i>Advertising Manager</i>
HELEN DAVIS, KATHLEEN GRANTHAM, AND JEAN MARTIN	<i>Columnists</i>
MERRITT DYAL AND MARGUERITE DICKERSON	<i>Circulation Managers</i>

Circulation Staff: Merritt Dyal and Marguerite Dickerson.

Feature Staff: Beth Meddleton, Louise Reese, Alice Jane Dancer, Althea Tyre, Lou Sims, Emily Pryor, Sarah Alred, Harriette McPhaul, Dolores Haygood, Sarah Booth, Gladys Thames, Elsie Moore, Dorothy Davis, Helen McCord, Catherine Phillips, and Julia Sellars.

Business Staff: Bobbie Townsend, Peggy Ford, Lynette Robinson, Louise Reese, June Sears, Anne Stevens, Katherine Green, Doris Gibbs, Mary Mitchell, and Elizabeth Hill.



PENLAND



The *Campus Canopy* is a student publication, by and for the students. Appearing weekly or bi-monthly, the *Canopy* presents the news of the campus from assembly speakers to dormitory gossip. Student opinion is freely expressed through its columns, and an open editorial policy is maintained.

Any student interested in journalism is eligible for the staff of the *Campus Canopy*, and regular try-outs are held early in the year for prospective reporters and feature writers. The newspaper has its own office in the student activities house. The actual printing, however, is done at a local newspaper office.



WOLFF



McKINNON



HILL

SOCK AND BUSKIN CLUB



PATTILLO

OFFICERS

MARY AGNES WOLFF *President*
 IDA MAUDE McKINNON *Vice-President*
 GLYNN HILL *Secretary-Treasurer*
 ROBBELEE PATTILLO *Historian*

Students interested in stage craft, as well as acting, comprise the membership of the Sock and Buskin Club, the campus dramatic organization.

The two plays presented this year were "The Damask Cheek" and "The Cradle Song."



New Members.



FINE ARTS CLUB

Seeking to stimulate an interest in art and to enrich the creative life of every G. S. W. C. girl by giving art its place in college affairs, this club brings excellent modern art exhibits to our campus.

The girls bring to the campus a rental art collection, on a non-profit basis, through which beautifully framed paintings may be secured for room or office use.

Posters, products of the Fine Arts girls, colorfully and originally tell of parties, meetings, books, and club activities from September to June.

This year the traditional Christmas Bazaar custom was resumed in all its loveliness.

OFFICERS

KATHLEEN HALL	<i>President</i>
VIRGINIA SNOW	<i>Vice-President</i>
MARTHA LINDSEY	<i>Secretary-Treasurer</i>
FRANCES WISDOM	<i>Art Chairman</i>
MARGIE MASSEY	<i>Art Chairman</i>



HALL



LINDSEY AND SNOW



WISDOM AND MASSEY



BATEMAN



MEINERT

INTERNATIONAL RELATIONS CLUB

OFFICERS

Mrs. JEAN BATEMAN *President*
 EVELYN MEINERT *Vice-President*

Realizing the importance of a knowledge of our country's international affairs and feeling the need of a systematic study of the problems which are constantly confronting the American people, a group of students in 1928 organized the International Relations Club under the sponsorship of the Carnegie Endowment for International Peace.

It is the club's intention to deal with all topics and questions in an impartial and non-partisan manner, always endeavoring to search out and appreciate the truth of each situation under investigation. Such investigation is made possible by the I. R. C. shelf in the library, which provides books and pamphlets on current national and international issues.





The Glee Club.

THE GLEE CLUB

OFFICERS

GLYNN HILL	<i>President</i>
JEAN McGEACHY	<i>Vice-President</i>
GEORGIA SMITH	<i>Secretary-Treasurer</i>

The Glee Club, one of the largest organizations on campus, has lived up to its reputation of fine entertainment this year as it has done previously.

The activities this year have been as varied as they have been outstanding. Music was presented at programs for the U. S. O. and at Moody Field. The annual spring concert was

very successful. At a dance festival for the graduating seniors the Glee Club will present music, and also for graduation.

The Serenaders, a small choral group, and an integral part of the Glee Club, has presented many fine programs at the school and throughout the community.



HILL



SMITH AND McGEACHY



Serenaders.

SENIORS WHO GAVE RECITALS

WOLFF



MANN





MANN

OFFICERS

CAROLYN MANN *President*
 GLYNN HILL *Secretary-Treasurer*

PHILHARMONIC CLUB

The Philharmonic Club fulfilled its purpose to further an interest on campus in the best type of music.

The club gave a reception for Tetley-Kardos, visiting artist, and entertained other guest musicians.

During National Music Week, the club brought to the campus Miss Snowden, well-known English musician and lecturer. A chapel program was given in the winter quarter. The club also sponsored a dance, and as in years before, gave student recitals.





DUDLEY



ABBOT



BROWNLEE



RAE

ARTIST SERIES



EMILIO OSTA



DR. RALPH W. SOCKMAN



TERSITA OSTA



RICHARD TETLEY-KARDOS



CUNNINGHAM



HALL AND SUMNER



CRUM AND GREEN

The newest club on campus, organized in the spring of 1944, the Home Economics Club has made itself very outstanding. It sponsored two dances, and used the proceeds to add equipment to the department which is rapidly growing.

The girls in the clothing class presented a fashion show at Assembly after completing their dresses; the girls in the Child Development Class held a play school for two weeks. The senior majors had a very enjoyable trip to Atlanta during the fall quarter to be present at the G. H. E. A. meeting.

OFFICERS

RACHEL CUNNINGHAM	<i>President</i>
KATHLEEN HALL	<i>Vice-President</i>
VIRGINIA SUMNER	<i>Secretary</i>
KATHERINE GREEN	<i>Treasurer</i>
MARY CRUM	<i>Historian</i>

HOME ECONOMICS CLUB



MATH—SCIENCE CLUB



CREECH



TAYLOR



FORRESTER

The club aims to further the interest of the students in the field of science. There are three divisions: Chemistry, Biology, and Mathematics; and the students may become a member of any one of these groups according to their chief interest. These divisions present monthly programs and bring the practical nature of the sciences to the members.

DIVISION HEADS

MARY CREECH
Biology

CHARLOTTE TAYLOR
Chemistry

PATRICIA FORRESTER
Mathematics

OFFICERS

MARTHA LINDSEY
Vice-President

HARRIET SINGLETARY
Secretary-Treasurer



LINDSEY



SINGLETARY



GARBUTT

ENGLISH CLUB

OFFICERS

CATHERINE GARBUTT *President*
 MARTHA BARROW *Vice-President*
 DOROTHY HINTON *Secretary-Treasurer*

The purpose of the English Club is to promote a higher interest in the literary world. It endeavors to widen the students' knowledge of the accomplishments in the field of literary arts by sponsoring enlightening programs and lectures. The membership of the club is composed of English and Humanities majors from the junior and senior classes with a "C" average.

This year the club has had several outstanding speakers for club programs; participated in a forum on "What To Do With Germany and Japan After the War;" were inspired by the Creative Writing Classes; had fun with a novel, "Information Please," contest provoked by the radio program; and entertained the student body at an after dinner coffee in the rotunda with Miss Louise Sawyer as guest speaker.



BARROW AND HINTON

ROMANCE LANGUAGE CLUB



The Members.



MATTHEWS

The Romance Language Club is an organization to promote a better understanding and interest in the romance languages.

They too have sponsored dances and contributed to the war effort in every way possible to make this world of tomorrow a triumphant one.

OFFICERS

SARA ALLEN MATTHEWS *President*
 JANE ROGERS *Vice-President*
 CAROLYN MANN *Secretary-Treasurer*



ROGERS

SENIOR HONOR SOCIETY



MATTHEWS

The Senior Honor Society recognizes scholarship in the senior college. Not only must a student have an outstanding record for two and two-thirds years of academic work, but she must also be active in extra-curricular activities of the campus to be eligible for membership in the group.

The most outstanding contribution of the group is the maintenance of the Student Cooperative Bookstore, whereby students may purchase books with the least expense possible.



WOLFF



GLENN



PETERS



OFFICERS

SARA ALLEN MATTHEWS *President*
 MARY AGNES WOLFF *Vice-President*
 DOROTHY GLENN *Secretary*
 BETTY PETERS *Treasurer*

FRESHMAN HONOR SOCIETY



WILCOX



ALTMAN



MARTIN

The Freshman Honor Society has as its purpose to promote, to recognize, and to encourage high scholastic standing on the campus and to render service to the college whenever possible.

Eligibility for membership implies an average of "B" for the first two quarters of work during the freshman year.

The Freshman Honor Society subscribed for magazines for the House in the woods.

OFFICERS

MARTHA WILCOX *President*
 BETTY ALTMAN *Vice-President*
 JEAN MARTIN *Secretary-Treasurer*



SOCIOLOGY CLUB



CASTLEBERRY



WILLIAMS AND MASSEY

OFFICERS

ALPHA MAE CASTLEBERRY	<i>President</i>
BEATRICE WILLIAMS	<i>Vice-President</i>
ANNETTE MASSEY	<i>Secretary-Treasurer</i>

The Sociology Club, composed of the majors and minors in this field, has carried on a variety of activities during the 1944-45 year.

A dance was sponsored for the benefit of the War Bond Scholarship Fund, and a War Savings Stamp was brought to each meeting by all members. A donation to the Chapel Fund was made.

The club became foster parents to a refugee child in a colony in England by a \$50 contribution which provides a bed for the child a year. Programs during the year were related to various conditions in the field of social work.



NOELL

The Valdosta Club, made up of graduates of Valdosta High School, has for its chief purpose to establish a better understanding between day students and dormitory girls and to interpret the activities of the college to the town.

The club contributed this year to the War Bond Scholarship Fund and to the Chapel Fund.

Dorothy Noel was the club's president this year.

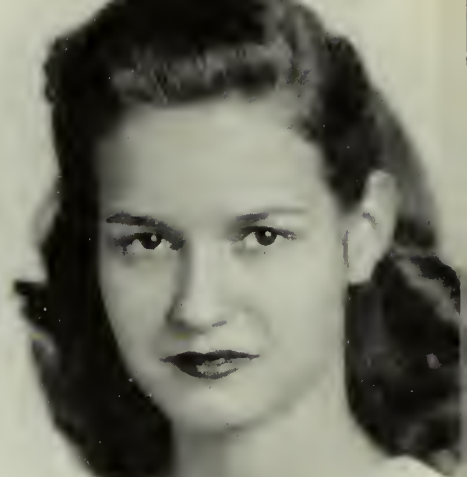
VALDOSTA CLUB



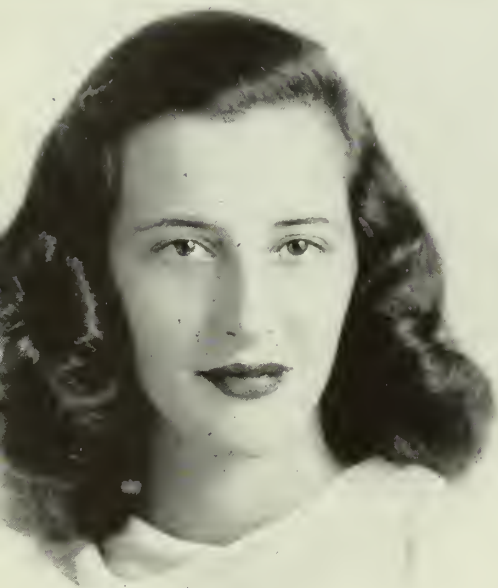
The Members.



CASTLEBERRY



CREECH



OUTSTANDING

DAVIS

DEKLE

CUNNINGHAM





FORRESTER



GARBUTT



SENIORS



TARVER

WOLFF



GOODWIN



We are proud of the

GEORGIA STATE WOMANS COLLEGE

We are glad to take this occasion to
say that the

CITY OF VALDOSTA

Is proud to list among its greatest
assets the

GEORGIA STATE WOMANS COLLEGE

and

We hope that Valdosta as a city makes a favorable and lasting impression
on the mind of the young ladies who make up the student body of this
great institution.

Valdosta's Leading Restaurant

THE ROOSEVELT

FAMOUS FOR WESTERN STEAKS

VALDOSTA

GEORGIA

How'd you like to carry home 500 POUNDS OF CANDLES?

YOU: *What on earth for? What would I do with all those candles?*

Why, they'd light your home for a month.

YOU: *Light my home? But I've got electricity!*

Yes, but if you didn't have it, you'd need about a quarter-ton of candles to do the same job.

YOU: *A quarter-ton? That's a lot of candles!*

It's a lot of money, too. It would cost you about \$200.

YOU: *Wow! I couldn't afford that. My monthly electric bill now is only three dollars or so.*

Well that's just about average. But remember that only about 85c of it goes for light. The rest runs your radio and refrigerator—

YOU: *Say, electricity's pretty cheap when you come to think of it.*

Yes sir! Cheaper than it's ever been. You're getting about twice as much electricity for your money today as you got fifteen years ago.

YOU: *How can that be? My bill hasn't changed.*

But think of the appliances you've added. Fifteen years ago, did you have an electric refrigerator?

YOU: *N-no.*

Radio? Electric mixer? Electric clock?

YOU: *No . . . Say, how come I do get more electricity now?*

That's easy. Experience—efficiency—sound business methods—

YOU: *I don't get it.*

It's simple. The electric companies under business management know their job. That job is to give you the best possible service at the lowest possible price. And they're doing it! Today—with many other prices going up—ELECTRICITY IS STILL CHEAP!

GEORGIA POWER & LIGHT COMPANY

In The Service of Customer, Community and Country

**APRIL
1903**

**APRIL
1945**

42 years of continuous business of selling shoes. 32 years of selling shoes to the G.S.W.C. Faculty and Student Body of this wonderful institution. Our firm is proud to be one of the first advertisers of the College in it's first edition of the PINE BRANCH, it was then called, back in 1914. Here's hoping we'll have the pleasure of serving the College many more years. We are proud to have a share in your College Annual.

PAXSON-JONES INC.

The home of good shoes for 42 years.

Enjoy

FOREMOST

ICE CREAM and TWIRL

IT'S HEALTHFUL

Save Your Soles by Riding the

VALDOSTA COACHES

and

YELLOW CABS

PHONE 1000

COMPLIMENTS OF

THE

CITIZENS & SOUTHERN

NATIONAL BANK

+

VALDOSTA

GEORGIA

COMPLIMENTS OF

LESLIE R. DAVIS

Jeweler

♦

132 N. ASHLEY ST.

PHONE 1826

KELLER CLOTHING COMPANY

Everything for Men and Boys

Phone 307

106 N. PATTERSON ST.

DUNCAN'S SHOE SHOP



*Smart Footwear of Known
Quality for College Girls*

Compliments of . . .

**COWART'S
DRESS SHOP**

SMART STYLES FOR COLLEGE GIRLS

**JOHN OLIVER
SERVICE STATION**

FIRESTONE TIRES
AMOCO PRODUCTS

Phone 231

THOMPSON AND GIRARDIN

Jewelers

Expert Repairing

120 N. PATTERSON ST.

VALDOSTA

GEORGIA

Compliments of . . .

TAYLOR'S BAKERY



VALDOSTA

GEORGIA

Compliments of . . .

SMITH'S WALGREEN STORE



VALDOSTA

GEORGIA

*Congratulations and
Best Wishes . . .*

RITZ

PALACE

DOSTA

MARTIN THEATRES

VALDOSTA

GEORGIA

**THE
FIRST NATIONAL
BANK
OF VALDOSTA**



*Member of the Federal Deposit Insurance
Corporation*

GOOD SERVICE

at

**BOB BELCHER'S
DRUG STORE**

PATTERSON *and* CENTRAL



Phone 812-813

**SOUTHERN STATIONARY
& PRINTING COMPANY**

WHOLESALE PAPER DEALERS



Commercial Stationers

Printers

Office Outfitters

VALDOSTA

GEORGIA

SEARS ORDER OFFICE



Shop at Sears and Save



104 N. PATTERSON ST.

PHONE 1316

**LANGDALE TIMBER
COMPANY**



NAVAL STORES
PULPWOOD
CROSSTIES



106 West Hill Avenue

VALDOSTA

GEORGIA

C. C. VARNEDOE & CO.

For 67th Year

VALDOSTA'S STORE DEPENDABLE

The Style Center of Valdosta

Just Two Words to Remember . . .

"GEORGIA ACE"



GEORGIA FERTILIZER CO.

VALDOSTA

GEORGIA

G. S. W. C. Girls . . .

Pause to Refresh

Drink

COCA-COLA IN BOTTLES

**VALDOSTA COCA-COLA
BOTTLING WORKS, INC.**

M. & F. FOOD STORES

VALDOSTA'S OWN



Pleasing Service

Clean

Convenient

Variety

Quality

MUSIC

For a Profession or for Pleasure

MATHIS & YOUNG CO.

112 N. Patterson St.

PIANOS, RADIOS, ELECTRIC ORGANS, RECORDS, SUPPLIES
BOOKS, SALES AND RENTALS

*For the newest styles in footwear,
first . . .*

LUKE BROTHERS

127 N. Patterson St.

Telephone 674

SATISFACTION ASSURED

TERRY'S DRUG STORE

The Rexall Store

PATTERSON AT HILL

VALDOSTA, GA.

Phone 115-116

When in Valdosta

It's The

ELLINOR MOTOR COMPANY

JEWELRY — FURS

*A Good Place to Buy Fine Furniture at
Low Prices*

MATHER OF VALDOSTA

128-130 N. Patterson St.

PHONE 170

VALDOSTA, GA.

Compliments of . . .

THE BRIGGS LADIES SHOP



Best Wishes . . .

PINEVIEW GARDENS

FLORISTS

For The Best In Repair

Visit

KIRBY'S SHOE SHOP

Trailways is serving America by providing transportation for both military and civilian armies . . .

Phone for fares and schedules

GEORGIA TRAILWAYS

member

NATIONAL TRAILWAYS BUS SYSTEM

VALDOSTA'S LEADING HOTEL

**THE
DANIEL ASHLEY**

HORACE CALDWELL

Manager

VALDOSTA

GEORGIA

BELK-HUDSON COMPANY

*Valdosta's Largest and Leading
Department Store*

Newest Campus Styles

PURE GUM TURPENTINE

The Universal Household Cleaner

It is easy to keep a truly clean home with Pure Gum Spirits of Turpentine. It cleans furniture, woodwork, floors, windows, bathtubs, toilets, all porcelain fixtures, linoleum, silver and other metals. Be sure to clean all waxed surfaces with Gum Turpentine.

A small quantity of Gum Turpentine added to water will keep your windows clear and bright.

8, 16 and 32-ounce size.

For sale by drug, hardware, paint and 5c and 10c stores everywhere.

**AMERICAN TURPENTINE FARMERS
ASSOCIATION**

***We, the Staff of the 1945 PINE CONE, take
this opportunity to extend our sincere appre-
tion to those loyal friends of our institution
who, by their generous support, have made pos-
sible the publication of this book.***



SUCCESSFUL ANNUALS

Require the services of experienced and expert craftsmen, trained in every detail of the processes of creating • planning layout and design • typesetting • printing lithographing and binding... Throughout half a century this company has pioneered in the production of the highest type of printing... Our services include a special college annual sales and service organization... Abundant equipment • modern and complete... Prices representing maximum in value



FOOTE & DAVIES

PRINTING • LITHOGRAPHING • ENGRAVING

ATLANTA



