

PINE

DOME



1946







Digitized by the Internet Archive
in 2014

<https://archive.org/details/pinecone194600geor>



We Present



West Hall "Ad" Building



Library

Senior Hall



"'Neath the Stately Pines of Georgia"

Places



House-in-the-Woods



Converse Hall



Ashley Hall

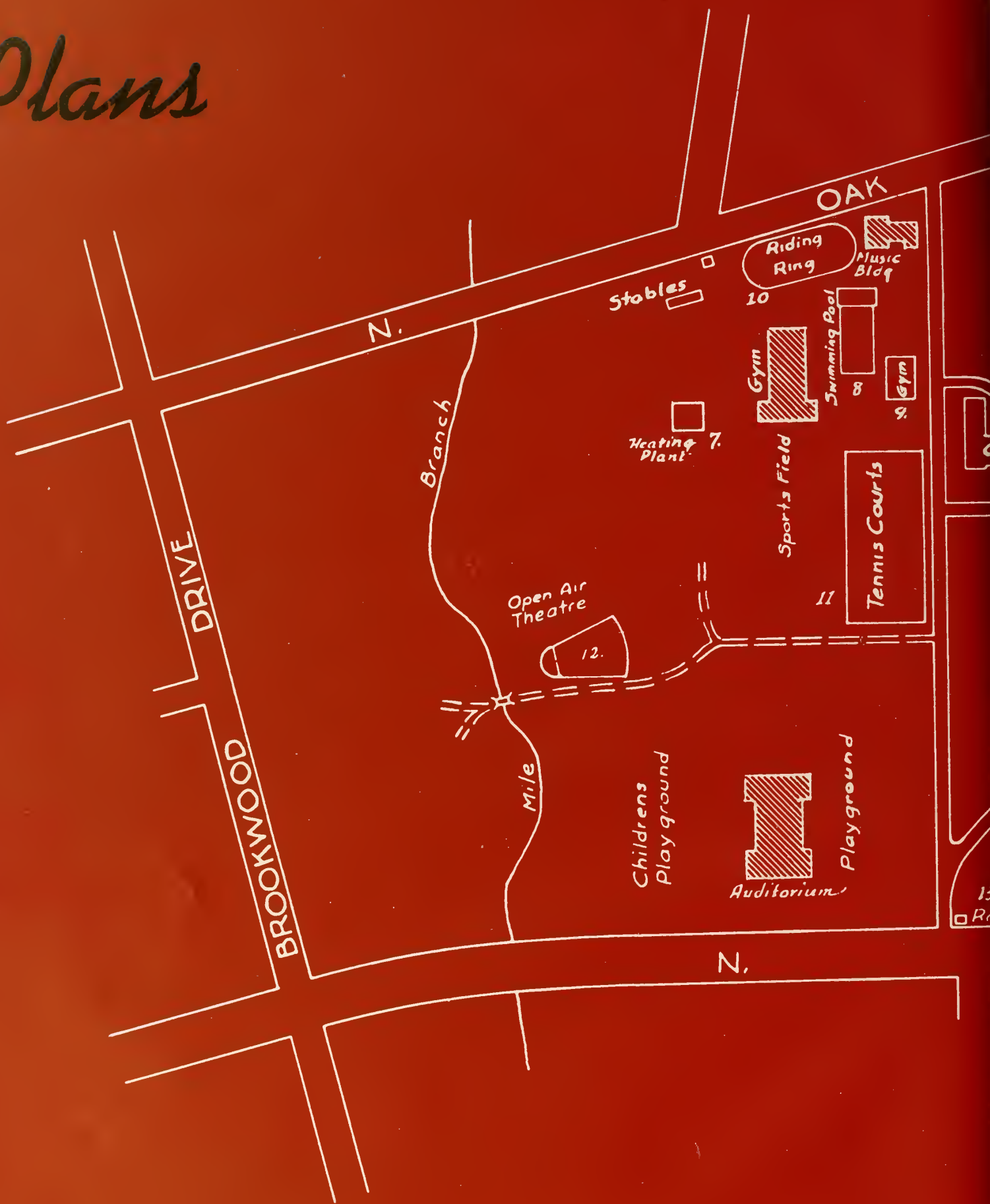
Auditorium

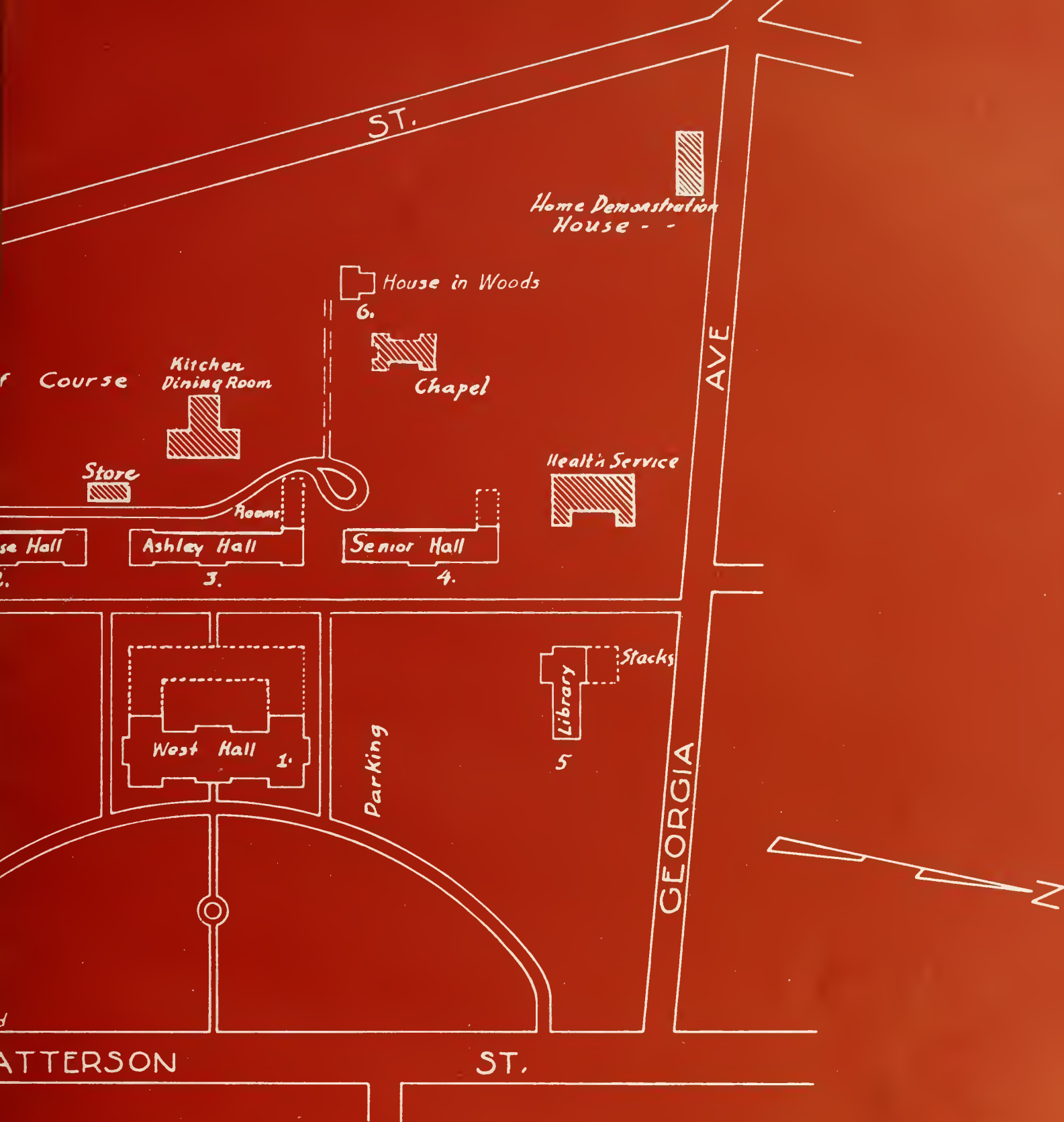


Swimming Pool



Plans





CAMPUS OF
 GEORGIA STATE WOMAN'S COLLEGE
 VALDOSTA GEORGIA

and
Dreams

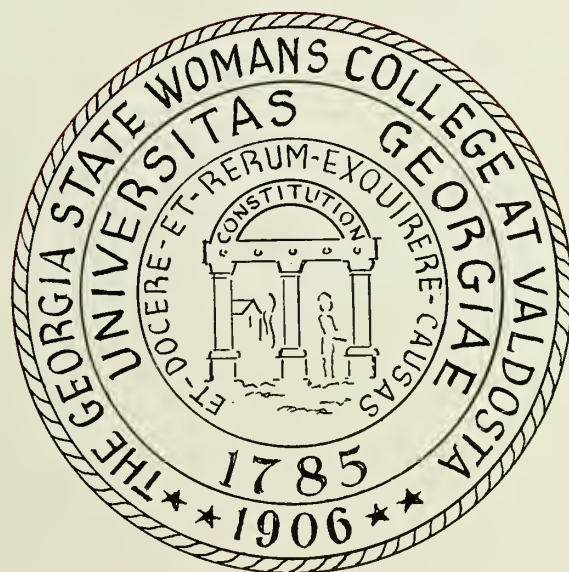
*Broken lines indicate additions to present buildings.
 Proposed new buildings are shaded.*

In Our Nineteen



Blackburn's

Hundred and Forty-six Edition of the Pine Cone



Published by
THE STUDENTS OF
GEORGIA STATE WOMEN'S COLLEGE

GEORGIA SMITH *Editor*
BETTY HUTCHINSON *Business Manager*
KITTY STROUD *Editor*

Dedicated to



DR. JOSEPH A. DURRENBERGER

With Our Fondest Affection

The Pine Cone Is Divided Into Two Main Sections

The People . . .

WHICH INCLUDE ALL THE FACULTY, STUDENTS AND PERSONNEL ON THE G. S. W. C. CAMPUS.

and the Organizations . .

WHICH COVER ALL ORGANIZED ACTIVITIES, EXTRA CURRICULAR AND ACADEMIC. ALSO IN THIS SECTION WE PRESENT THE TEN OUTSTANDING SENIORS AND THE NOTICES OF OUR ADVERTISERS.



Blackburn's

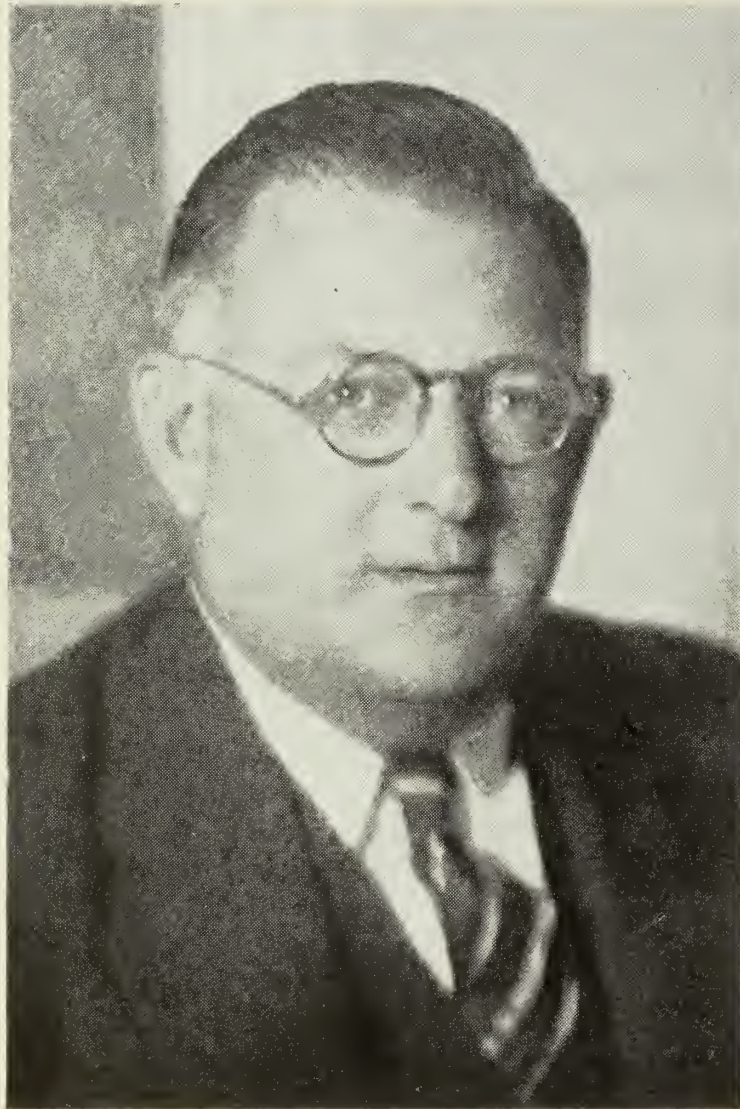
This is the Section of Our Book Devoted to People

OUR PRESIDENT AND OUR FACULTY WHO HAVE OUR INTEREST AT HEART.

THEN . . . THE CLASSES . . . THE DIGNIFIED SENIORS, THE JOLLY JUNIORS, THE WISE (?) SOPHOMORES, AND THE WHOOPIN' UP FROSH.

THIS IS THE SECTION OF G. S. W. C. LIFE DEPICTING

THE PEOPLE



FRANK R. READE, *President*
A.B., M.A., Ph.D., University of Virginia

Administration



MRS. W. M. THOMAS, A.B.
Registrar



BETH WHITAKER, A.B.
Secretary to the President



FRANCES LOUISE STUMP, A. B.
Assistant to Treasurer and Purchasing Agent



J. R. DUSENBURY
Treasurer and Purchasing Agent



CAROLYN WILLIAMS, A.B.
Director of Placement and Publicity



DR. GULLIVER

HAROLD STRONG GULLIVER
Professor of English
B.A., Yale University; A.M., Columbia University; Ph.D., Ibid.

LOUISE ANNE SAWYER
Professor of Speech
Graduate, Columbia College of Expression; B.S., School of Speech, Northwestern University; M.A., Columbia University.

MARTHA CARRINGTON AUBREY
Accompanist, Music Department



MRS. ODUM

GERTRUDE GILMER ODUM
Professor of English
B.S., George Peabody College for Teachers; A.M., Ibid.

HONORIA SAPEDO TREANOR
Professor of French and Spanish
A.B., University of Georgia; A.M., Ibid; Ph.D., University of North Carolina.

CAROLYN MANN
Assistant Accompanist
A.B., Georgia State Woman's College.



DR. TREANOR



MISS SAWYER



MRS. AUBREY



MISS MANN

FULTY

the Humanities

MUSIC, SPANISH, SPEECH



MISS CARPENTER

FRANCES B. PARDEE
Instructor in Violin
Graduate, Cincinnati Conservatory of Music; Pupil of Sevcik in Vienna, and of Robert Perutz and Julian Pulikowski, Cincinnati Conservatory.

FRANCES RUTH CARPENTER
Professor of Art
Bachelor's Diploma and B.S., Teachers College, Columbia University; A.M., Ibid.

CLIFRON HUNTINGTON WHITE
Associate Professor of Art and Music, and Dean of Chapel
A.B., Emory University; M.A., Ibid.



MR. WHITE

GLADYS E. WARREN
Professor of Music
B.M., Lake Erie College; Graduate, New England Conservatory of Music; M.A., Iowa State University; Pupil of Carl Beecher, Northwestern University; of Ernest Hutcheson, New York City; of Lee Pattison, Chicago; of Tobias Matthay, Matthay School of Pianoforte, London, England; of Arthur Alexander, Royal College of Music, London, and of Ashley Pettis, Eastman School of Music, Rochester, N. Y.

RAIMONDE AUBREY
Associate Professor of Music
F.T.C.L., Trinity College of Music, London.

GLYNN HILL
Assistant Professor of Voice
A.B., Georgia State Woman's College.



MRS. PARDEE



MR. AUBREY



MISS WARREN



MISS HILL



MISS SCHOEPPE



MISS PRICE



DR. DURRENBERGER

Division of the Social Sciences



MRS. TALBERT

AILEEN SCHOEPPE
*Associate Professor of
Education*
B.S., Northwestern University;
M.S., Ibid.

MILDRED McCLELLAN PRICE
Professor of History
A.B., Georgia State Woman's
College; A.M., Columbia Uni-
versity.

JOSEPH AUSTIN DURRENBERGER
Professor of Social Sciences
A.B., Southwestern University;
A.M., Columbia University;
Ph.D., Ibid.

KATHRYN NELSON TALBERT
*Associate Professor of Social
Sciences*
B.A., University of Iowa; M.A.,
University of Alabama.

ROBERT H. TALBERT
Professor of Social Sciences
B.A., B.S., in Education, South-
western Missouri Teachers Col-
lege; A.M., University of Mis-
souri; Ph.D., Duke University.



DR. TALBERT



MISS CARTER



MR. MOSELY



DR. NEVINS

Division of Natural Sciences and Mathematics



DR. HAWKS

MAJORIE ESTELLE CARTER
Associate Professor of Biology
B.S., William and Mary; M.A., University of Virginia.

ROLF EARL MOSELEY
Associate Professor of Chemistry
B.Ph., Emory University; B.S., Ibid.

BEATRICE NEVINS
Professor of Biology
Ph.B., University of Wisconsin; Ph.M., Ibid; Ph.D., Ibid.

LENA PHELPS HAWKS
Professor of Mathematics
A.B., Goucher College; A.M., Vanderbilt University;
Ph.D., The Johns Hopkins University.

WILLIAM HENRY SPRAGENS
Associate Professor of Physics and Mathematics
A.B., University of Kentucky; M.S., Ibid.



MR. SPRAGENS

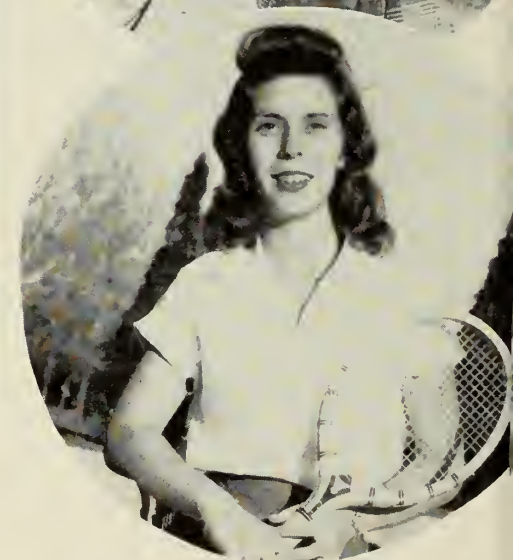
PHYSICAL EDUCATION



MISS GROSS
MRS. MATHIS



MISS IVEY



MISS AVERELL
MISS TARVER

Division of Practical Arts

HOME ECONOMICS



MISS DREW

KATHERINE FRANCES GROSS
Assistant Professor in Physical Education
A.B., University of California; M.A.,
Ibid.

MATILDA DASHER MATHIS
Instructor in Physical Education
B.S., Louisiana State University.

LEONORA IVEY
Professor of Physical Education
Graduate, Sargent School for Physical Education; B.S., Georgia State College for Women; M.A., George Peabody College for Teachers.

DOROTHY AVERELL
Instructor in Equitation

HENRIETTA TARVER
Instructor in Physical Education
A.B., Georgia State Woman's College.

LOLA MARIE DREW
Professor of Home Economics
B.S., Texas State College for Women; M.A., Teachers College, Columbia University.

THELMA OLEEN MAJORS
Professor of Secretarial Science
B.S., Tennessee Polytechnic Institute; M.A., in Education, University of Kentucky.

SECRETARIAL SCIENCE



MISS MAJORS



MRS. SHRIVALLE
MRS. WHITTLE



MRS. MYERS
DR. FARBAR



MRS. SCONYERS



MRS. JOOST

- MRS. EVA A. SHRIVALLE
Dietitian
- MRS. C. C. WHITTLE
Assistant Dietitian
- MRS. FLORINE W. MYERS
*Suprintendent of
Dormitories*
- MRS. J. A. SCONYERS
Director of Social Activities
- MARIAN E. FARBAR, M.D.
Resident Physician
- MRS. LAURA REED JOOST
A.B., B.L.S.
Assistant Librarian
- LILLIAN PATTERSON
A.B., B.L.S.
Librarian



MISS PATTERSON

Dormitory and Library Staff



NANCY STORY
President



EDITH ROBERTS
Vice-President



MARY RUTH ROUSE
Secretary-Treasurer

DOINGS OF SENIORS

September:

Back to school — upstairs in Senior Hall. After a grand reunion and a hand of bridge, plans for the year arc the main matters under discussion. Somehow we can't quite get accustomed to our newly acquired status, but people begin to eye us with a certain respect.

October:

The proverbial "Bright Blue Weather" is made to order for the Senior Carnival. Just enough chill in the air to give us pep for all the work with a jam-up carnival. The memorable skit, "The Lamp Went Out" convinced everyone of our absolute lunaey — then the dance, where there were actually enough men — and new records on the juke.

November:

The unbelievable happens—Thanksgiving holidays, the first in three years. In addition to this there is the traditional Thanksgiving dinner at

school and the inspiring program in assembly. Those mid-term exams are only a bad memory now and we already count the days 'til Christmas.

December:

"Comes the Revolution"—and the eternal rush — but we wouldn't miss it for the world — the Firelighting Service, Hanging the Greens, printing the Christmas address list, elub and class pictures for the PINE CONE (and those formal pictures with the drapes!) and "The Women," the Sock and Buskin Club play. The climax is the Christmas dinner, when each of us is hostess at a table with the faculty as guests. Then final exams, after which we all congratulate our one December graduate and hurry to catch the first bus home.

January:

The new year begins with a bang — class attendance is better than usual (must be those

Seniors

new resolutions) and we mercenary souls slave enthusiastically to finance a Senior trip — New York sounds wonderful. Pig banks grow fat as we save nickels and dimes for the souvenirs we'll want to collect. A Bingo Party provides both fun and funds.

February:

Now is the time all hopeful Seniors begin to get romantic ideas — the advent of warmer weather, the gorgeous azaleas and wistaria among pine trees in Brookwood Park, and the Camellia Trail add atmosphere — puts us in exactly the mood to elect our class sweetheart and dress up for the Valentine dance. We take more interest in the trip and give a benefit bridge party in the Woman's Club Building.

March:

MY, MY . . . THE TRIP!!!

April:

Comin' in on the home stretch — think of it — no more worry over schedules and registration. From now on our advisors will have someone else to get gray over. We feel kinda' lost without the girls who graduated in March but time is getting short and there are so many things to think about. What a celebration is in store at our first Homecoming — a dance at the Country Club and a very late leave for everyone.

May:

Life is wonderful — we order caps and gowns, graduation invitations and class pins. The Juniors gave a "Gi-normous" dance for us. Settling down with our books behind a busy sign we cram for those last finals — and the meaning of the word begins to be clear.

June:

All over but the congratulations — our families arrive and after making cracks at each other about the "glamour rags" we march down for Dr. Reade to give us the "Container for the thing contained." Packing our diplomas, clothes, and a carload of memories, we quickly take one last look and leave — determined to keep G. S. W. C. with us always.



Sentimental Journey

ETHEL BENTLEY

BETTY ALTMAN



A Door Will Open

ROBBELLE PATILLO

NANCY STORY

REGINA GEIGER



A Pretty Girl is Like a Melody

MILDRED WISDOM

DORIS HEIRS

HARRIET SINGLETARY



It Might As Well Be Spring

BEA WILLIAMS

IDA MAUDE MCKINNON

EFFIE POWELL



A Lovely Way To Spend An Evening

JEAN ROWE

MARY RUTH ROUSE

BETTY STATHAM



Strollin' Thru the Park One Day

GEORGIA SMITH

DOT NOELL

KITTY STROUD



Don't Fence Me In

MARY ANN FINKLEA

EDITH ROBERTS

MARTHA DELL ALDERMAN



Seeing You in All the Old Familiar Places

MARTHA CHASTAIN

HELEN TITCHE

BETTY KING





MARTHA DELL ALDERMAN
Biology Major; Chemistry Minor

Sports Club 1, 2, 3, 4; Sports Club Council 2, 3, 4; Awards 1, 2, 3, 4; Y. W. C. A. 1, 2, 3, 4; Cabinet 4; B. S. U. 1, 2, 3, 4, Council 2, 3; Secretary-Treasurer of Class 1; Valdosta Club 1, 2, 3, 4. Treasurer 2; Glee Club 1, 2, 3, 4; Math-Science Club 2, 3, 4. Chairman of Biology Division 3. President 4; Senior Honor Society 3, 4. Treasurer 4; S. C. A. 1, 2, 3, 4; E. C. A. 4.



BETTY ALTMAN

S. G. A. 1, 2, 3, 4; Y. W. C. A. 1, 2, 3, 4; Freshman Honor Society 1, 2. Vice-President 2; Senior Honor Society 3, 4; I. R. C. 2, 3; Math-Science Club 2, 3, 4, Secretary-Treasurer 3; Fine Arts Club 3; Senior House Council 3; Sports Club 1, 2, 3, 4.



MRS. JEAN F. BATEMAN

I. R. C. 3, 4. President 4; Valdosta Club 1, 2, 3, 4; Y. W. C. A. 1, 2, 3, 4; Sports Club 1, 2, 3, 4; S. G. A. 1, 2, 3, 4; Math-Science Club 3.



ETHEL BENTLEY

Home Economics Major; Business and English Minor

Sports Club 1, 2, 3, 4. Council 2; Y. W. C. A. 1, 2, 3, 4. Cabinet 3; Freshman Honor Society 2; Sophomore Council 2; Home Economics Club 3, 4. President 4; Secretary Science Club 4; I. R. C. 3, 4; Monitor 3, 4; *Campus Canopy* 2; PINE CONE 3, 4; S. G. A. 1, 2, 3, 4.



MARTHA CHASTAIN
Social Work Major

Sports Club 1, 2, 4; Y. W. C. A. 1, 2, 3, 4; S. C. A. 1, 2, 3, 4; Sophomore Council 2; House Council 2, 3, 4; Fine Arts Club 2, 3; Sock and Buskin Club 2, 3, 4; Sociology Club 2, 3, 4; Romance Language Club 2, 3, 4; *Campus Canopy* 2, 4.



MARY ANN FINKLEA
Humanities Divisional Major; Art Emphasis

Y. W. C. A. 1, 2, 3, 4; S. G. A. 1, 2, 3, 4; Sports Club 1, 2, 3, 4; Valdosta Club 1, 2, 3, 4; Glee Club 1, 2.





REGINA GEIGER
Sociology Major

Transferred from Middle Georgia College 2; Y. W. C. A. 2, 3, 4; S. G. A. 2, 3, 4; Log Cabin Committee 2, 3; House Council 4; Sociology Club 2, 4; Chapel Choir 2; Sports Club 2, 3, 4.



DORIS IHERS
Mathematics Major; Sociology Minor

S. G. A. 1, 2, 3, 4; Math-Science Club 2, 3, 4, Secretary-Treasurer 3; Y. W. C. A. 1, 2, 3, 4, Cabinet 1; Sports Club 1, 2, 3, 4; Sociology Club 3, 4; *Campus Canopy* 1, 2, 3, Feature Editor 2; PINE CONE 3; Secretary-Treasurer of Junior Class 3; Senior Honor Society 3, 4.



BETTY KING
Chemistry Major

Sports Club 1; Home Ec. Club 2, 3, 4; Math-Science Club 2, 3, 4, S. G. A. 1, 2, 3, 4; Valdosta Club 1, 2, 3, 4.



IDA MAUD McKINNON
Sociology Major; Speech Minor

Sports Club 1, 2, 3, 4; S. G. A. 1, 2, 3, 4, Vice-President 2, 3, President 4; Executive Committee 2, 3, 4; Y. W. C. A. 1, 2, 3, 4, Cabinet 1, 2, 3; Sociology Club 2, 3, 4; Sock and Buskin Club 1, 2, 3, 4, Vice-President 4; Chapel Choir 1, 2, 3.



DOROTHY NOELL
Mathematics Major; Sociology Minor

S. G. A. 1, 2, 3, 4; Y. W. C. A. 1, 2, 3, 4; Sports Club 1, 2, 3, 4, Vice-President of Sophomore Class 2; Valdosta Club 1, 2, 3, 4, President 4; E. C. A. 3; Math-Science Club 2, 3, 4, Chairman of Math Division 4; Sociology Club 3, 4; PINE CONE 3; P. S. A. 1, 2, 3, 4.



ROBBELEEE PATTILLO
Social Work Major; Speech Minor

Y. W. C. A. 1, 2, 3, 4; S. G. A. 1, 2, 3, 4, Secretary-Treasurer 3, Executive Committee 3, 4; Chairman E. C. A. 4; Chairman Student Attendance Committee 2; Chairman Student Activities Fund Committee 4; Monitor 3; House Council 4; Sock and Buskin Club 1, 2, 3, 4, Historian 3, President 4; Sociology Club 3, 4; Sports Club 1; Chapel Choir 1; Sophomore Council 2; *Campus Canopy* 1, 3; PINE CONE 3, 4; Chairman Artist Series Committee 4.





EFFIE POWELL

Biology Major; Chemistry Minor

Y. W. C. A. 1, 2, 3, 4, Assistant Vice-President 2, Vice-President 3, President 4; Sports Club 1, 2, 3, 4; S. G. A. 1, 2, 3, 4, Monitor 2, 3, 4, Executive Committee 4; Glee Club 1, 2, 3, 4; Serenaders 1, 2, 3, 4; Math-Science Club 2, 3, 4; Freshman Honor Society 2; Senior Honor Society 3, 4; *Campus Canopy* 2, 3; Chapel Choir 2, 3, 4; Sock and Buskin Club 1, 2, 3, 4.



EDITH ROBERTS

Biology Major; Chemistry Minor

S. G. A. 1, 2, 3, 4; Y. W. C. A. 1, 2, 3, 4; Sports Club 1, 2, 3, 4, Council 2, 3, Valdosta Club 1, 2, 3, 4; Math-Science Club 2, 3, 4; Vice-President of Junior and Senior Classes 3, 4.



MARY RUTH ROUSE

Chemistry Major; English Major

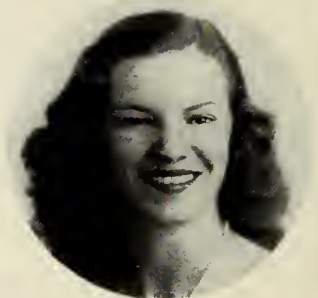
S. G. A. 1, 2, 3, 4; Y. W. C. A. 1, 2, 3, 4; Math-Science Club 4, Vice-President 4; Senior Class Secretary-Treasurer; Sports Club 1, 2, 3, 4.



REBECCA JEAN ROWE

Social Work Major; History Minor

Sports Club 1, 2, 3, 4, Council 1, 2; Kappa Team Captain 3, Historian 4; S. G. A. 1, 2, 3, 4, Executive Committee 2, 3; President of Sophomore Class Third Quarter and for Junior Class First and Second Quarters; Sociology Club 2, 3, 4; I. R. C. 4; Dance Club 3; House Council 3; Monitor 3; Chapel Choir 2.



HARRIETT SINGLETARY

S. G. A. 1, 2, 3, 4; Monitor 2, 3, 4, Executive Committee 3, 4; Vice-President 3; Secretary-Treasurer 4; Y. W. C. A. 1, 2, 3, 4, Cabinet 2, 3, 4, Secretary 4; Freshman Honor Society 2, President 2; President's Council 2; Senior Honor Society 3, 4; Sock and Buskin Club 3, 4; Math-Science Club 2, 3, 4, Secretary-Treasurer 3; English Club 3, 4; *Campus Canopy* 2, 3; I. R. C. 4; Sports Club 1; Dance Club 4.



GEORGIA WINN SMITH

Sociology Major

Glee Club 1, 2, 3, 4, Librarian 2, Secretary-Treasurer 4; Sports Club 1, 2, 3, 4; Valdosta Club 1, 2, 3, 4, Vice-President 2; Philharmonic Club 1, 2, 3, 4; Sociology Club 3, 4; P. S. A. 1, 2, 3, Vice-President 2; PINE CONE 3, 4, Business Manager 3, Co-Editor 4; Serenaders 3, 4; Vice-President of Freshman Class 1; Y. W. C. A. 1, 2, 3, 4; Town Girl Representative in the Executive Committee 3.





BETTY STATHAM

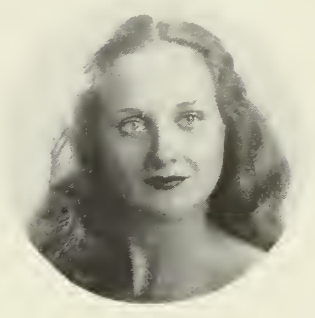
Sophomore Council; Secretary-Treasurer of Sociology Club 4; Y. W. C. A. 1, 2, 3, 4, Cabinet 4; House Council 3; Sports Club 1, 2, 3, 4; S. C. A. 1, 2, 3, 4.



NANCY STORY

Social Work Major

S. G. A. 1, 2, 3, 4; Y. W. C. A. 1, 2, 3, 4; House Council 1; Executive Committee 3, 4; President of Junior and Senior Classes 3, 4; "Y" Cabinet 1, 2, 3; *Campus Canopy*, Exchange Editor 4; PINE CONE Photograph Editor 4; Sock and Buskin Club 3, 4; Sociology Club 2, 3, 4, Secretary-Treasurer 2, Monitor 3, 4; Log Cabin Committee 3.



KITTY STROUD

Chemistry Major; Biology Minor

Transfer from South Georgia College 2; Y. W. C. A. 2, 3, 4; Sports Club 2, 3, 4; Glee Club 2, 3, 4; Valdosta Club 3, 4; Math-Science Club 2, 3, 4; Monitor 2; *Campus Canopy* 2; Chairman of Log Cabin Committee 2; PINE CONE 3, 4, Co-Editor; S. G. A. 2, 3, 4.



HELEN TITCHE

Sociology Major

Y. W. C. A. 1, 2, 3, 4; Sports Club 1, 2, 3, 4; Sociology 2, 3, 4; S. C. A. 1, 2, 3, 4.



BEATRICE WILLIAMS

Sociology Major

S. G. A. 1, 2, 3, 4; Y. W. C. A. 1, 2, 3, 4; Sports Club 1, 2, 3, 4; Monitor 3; Fire Lieutenant 3; E. C. A. 4; House Council 3; Glee Club 4; *Campus Canopy* 3; Sports Council 2, 3, 4; Historian 4; Sociology Club 3, 4, Vice-President 3, President 4.



MILDRED WISDOM

Humanities Divisional Major; English

S. G. A. 1, 2, 3, 4; Y. W. C. A. 1, 2, 3, 4; Sports Club 1, 2, 3, 4, English Club 3, 4; Sock and Buskin Club.



Jolly Juniors

DAVIS



PARROTT



GEIGER

CLASS OFFICERS

DOT DAVIS	President
PAT PARROTT	Vice-President
COLLEEN GEIGER	Secretary-Treasurer

JUNIORS

A JUNIOR CLASS

Take ½ the class of one year ago,
a sprinkle of transfers,
3 times as much pep as ever before,
a little more maturity,
a mixture of several different spices,
a capable leader,
more unity than in the past,
added ability and dependability.

Double their activities of the past. Add a generous amount of privileges.

Stir lightly and mix with the Seniors. Put into 18 rooms in Senior Hall, bake for three quarters, and you have a well done Junior Class.

Results guaranteed.





SARA ADCOCK Fender, Ga.

MILDRED SIMONE BASSETT Fort Valley, Ga.



VIRGINIA ELIZABETH BOLEN Valdosta, Ga.

MRS. WILMA ADAMS BROWN Hortens, Ga.



DATHINE BRUNSON Reynolds, Ga.

PAULINE ELIZABETH BUSH Fitzgerald, Ga.



DOROTHY CLARE CARSON Savannah, Ga.

EDITH RUTH COLLINS Waycross, Ga.

MARY ELLEN COMPTON Columbus, Ga.

LAURA CONVERSE Valdosta, Ga.



DOROTHY JACQUELINE DAVIS Marshallville, Ga.

VIRGINIA CORINNE DELLINGER Thomaston, Ga.



MARGUERITE DICKERSON Ambrose, Ga.

ILA DOWNIE Uvalda, Ga.



BERTHA DREXEL Valdosta, Ga.

MARY MERRITT DYAL Woodbine, Ga.





MARY JOSEPHINE EVERETTE Pavo, Ga.

DOROTHY PEARL FUTCH Ellenton, Ga.



NORMA COLLEEN GEIGER McRae, Ga.

DORIS ANNE GIBBS Waycross, Ga.



D. KATHILEEN GRANTIAM Thomaston, Ga.

JEAN HALL Hahira, Ga.



ANNETTE HERNDON Sardis, Ga.

DOROTHY HIGHTOWER Damascus, Ga.

MRS. MARY CATHERINE HILLHOUSE Valdosta, Ga.

SANCIL EMILY HOLDER Tifton, Ga.



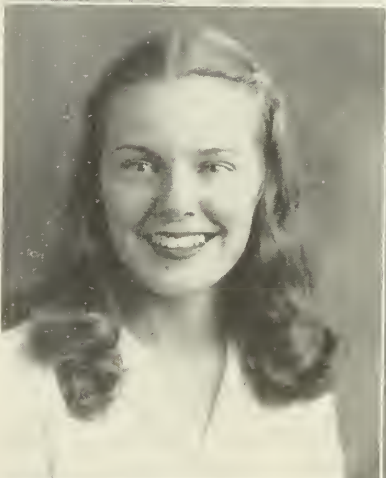
BETTY HUTCHINSON Valdosta, Ga.

HELEN JOINER Valdosta, Ga.



MARGARET JONES Valdosta, Ga.

MARGARET JUNE JOYNER Screven, Ga.



EUGENIA MARTIN Fitzgerald, Ga.

MARJORIE MASSEY Valdosta, Ga.





BETH MIDDLETON Hortense, Ga.

BLANCHE MYERS Valdosta, Ga.



FRANCES MARION NEWSOME Reynolds, Ga.

VIVIAN LOUISE NEWTON Camilla, Ga.



KATHERINE PARHAM Barnesville, Ga.

PATRICIA PARROTT Hahira, Ga.



ELIZABETH PATE Montezuma, Ga.

MARGARET ANNE RAIFORD Norfolk, Va.

LEONA ROBERTS REDLES Valdosta, Ga.
LOUISE REES Prenton, Ga.



BETTY RENTZ Columbus, Ga.
JUNE LILLIAN SEARS Sasser, Ga.



GERALDINE SHEFFIELD Blakely, Ga.
IRIS ANNE SHIPP Talbotton, Ga.



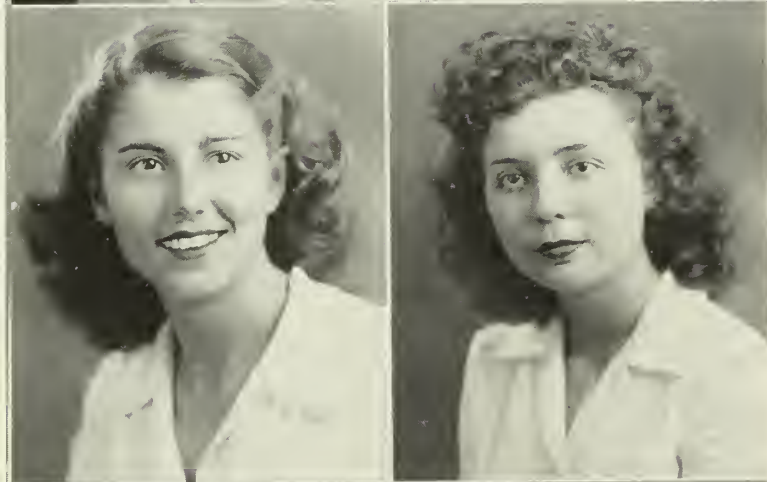
MRS. NORMA LAVELLE STABLER Georgiana, Ala.





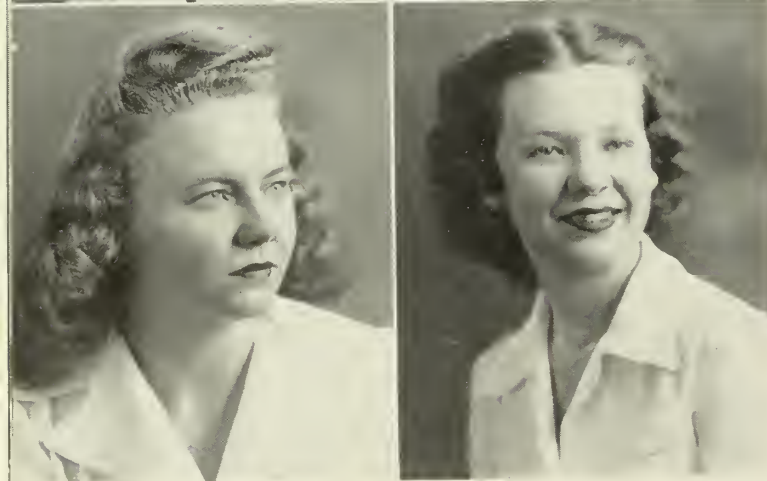
MARGUERITE STORER Savannah, Ga.

BEVERLY SWANSON Valdosta, Ga.



BOBBIE ELIZABETH TOWNSEND Darien, Ga.

EUGENIA RUTH TURNER Barwick, Ga.



HAZEL WALKER Valdosta, Ga.

LAURIE WHITE Valdosta, Ga.

ANNIE W. WHITTLE Brunswick, Ga.

MARTHA MOOR WILCOX Elberton, Ga.



IRMA LOU WILLIAMS Valdosta, Ga.

MARY NIX WILLIAMS Gainesville, Ga.



JEAN EVELYN WILLIS Nashville, Ga.



The Wise ? Sophomores

CLASS OFFICERS

BETTY GUNTER *President*
JAN MUSGROVE *Vice-President*
GLADYS THAMES *Secretary-Treasurer*

Dear Roommate:

Here we've been at home for summer vacation only one week, and already I miss G. S. W. C. more than you can imagine. I keep thinking about all the fun (and otherwise) we had.

Remember Freshman Week — how strange it seemed to be away from home? And all the things we had to keep us busy — advisor's classes, physical examinations, Pygmalion and Galatea, the Sports Club party, the Student Government exam.

Those freshman privileges seemed so hard, and we could never remember to stay in the room during quiet hour. The monitors were forever after us to make less noise. It only took about two warnings to teach us the right way to sign out, though. At first we were scared stiff when a "Hall Meeting" was announced — just knew we'd done something wrong.

I like to think of morning watch and vespers, Saturday night dances, the Christmas dinner, and the last Sunday before we left for Christmas holidays, when we got up before dawn to sing carols.

Going to church and church suppers on Sunday nights were occasions to look forward to — and you always had to hold the bus 'til I got ready. But you were accustomed to that — having to roll me out for breakfast every morning at the five-minute bell.



GUNTER



MUSGROVE



THAMES

Before anyone could realize it, the year was almost over. We really felt we had come into our own after the terrors of initiation and "Rat Court" — those bids to the Sports Club might have been on solid gold we were so proud of them.

With the warm weather came spring fever, as well as more trips to Brookwood and the coke machine in the Rec Hall. It seemed no time at all before we had our last exams, cried on

each other's shoulders, and set sail for home, just bursting with education.

Now I spend half the time raving about school — can't wait 'til September, when we move into that front campus room in Ashley.

Love,

JANE



RUTH BLACK
Valdosta, Ga.

ALICE CAROLYN BOWEN
Register, Ga.

JACQUELINE BOWEN
Register, Ga.

MARTHA ROSE BOWEN
Register, Ga.

HELEN JOSEPHINE BRANCH
Valdosta, Ga.

MRS. MARY B. BROOKS
Valdosta, Ga.

MARY NELL BROOKS
Cordele, Ga.

MARY ANNE BROWN
Sasser, Ga.

LOUISE BRUMLOW
Lake Park, Ga.

MARION DELONG BRYCE
Bryceville, Ga.

DOROTHY ELIZABETH BUTLER
Metcalf, Ga.

MARY CAROLYN CARTER
Climax, Ga.

VIRGINIA LOUISE CARTER
Colquitt, Ga.

CELESTE CHAMPION
Hazelhurst, Ga.

MARTHA GLYNN COLLINS
Claxton, Ga.





EVELYN CONNELL
Valdosta, Ga.

VIRGINIA COOK
Valdosta, Ga.

HILDA CRUM
Valdosta, Ga.



ALICE JANE DANCER
Colquitt, Ga.

MAGGIE SUE DANIELS
Valdosta, Ga.

JOAN KELLY DAVIS
Donalsonville, Ga.



JEAN DICKSON
Nashville, Ga.

EDNA FAYE DIXON
Patterson, Ga.

VIRGINIA FREEMAN
Valdosta, Ga.



KATHRYN ANN GAULDEN
Camilla, Ga.

MARY SCOTT GENTRY
Hinesville, Ga.

CHARLOTTE MARTIN GOODWIN
McRae, Ga.



HELEN MARIE GRAYDON
McRae, Ga.

BETTY JO GUNTER
Statesboro, Ga.

MARY VIRGINIA HAGAN
Valdosta, Ga.

BARBARA VAN DAVIS HAM
Parrott, Ga.

MARGARET RUTH HARDY
Quitman, Ga.

RUBY DOLORES HAYGOOD
Thomaston, Ga.



MARY REBECCA HENDERSON
Ocilla, Ga.

GRACE IIERS
Valdosta, Ga.

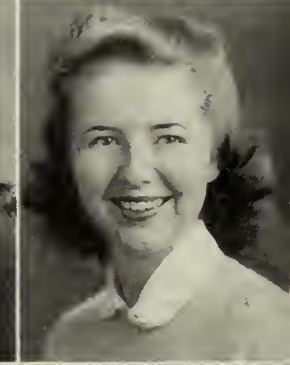
JOYCE HILL
Kingsland, Ga.



LOLLA LEE HOLDER
Tifton, Ga.

FRANCES ERSULA HURN
St. Simons Island, Ga.

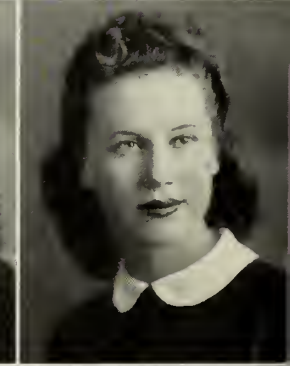
ELAINE SIMS HUNT
Valdosta, Ga.



BETTY JOYCE IVES
Quitman, Ga.

REBECCA WOODS JENNINGS
Dawson, Ga.

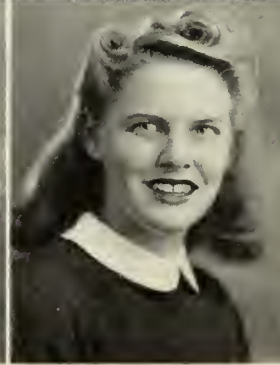
EDITH JONES
Homerville, Ga.



LOUISE JONES
Donalsonville, Ga.

ROBERT FRANCES JONES
Valdosta, Ga.

BETTY JORDON
Arlington, Ga.





MAMIE BELLE JORDON
Hahira, Ga.

WILLA PAULINE JORDON
Hartsfield, Ga.

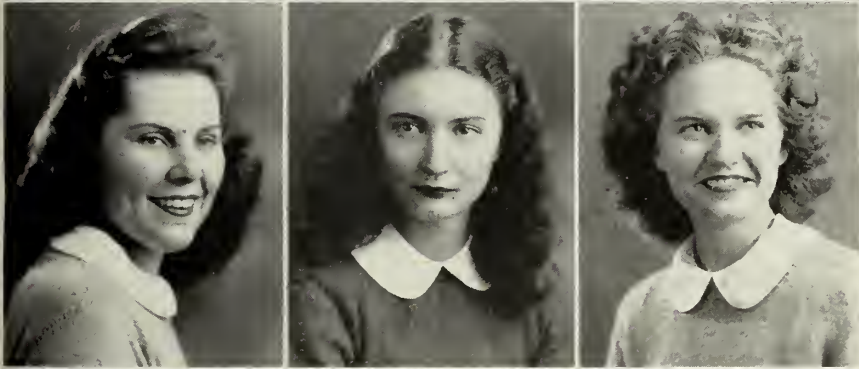
BETTY SUSIE KEENE
Columbus, Ga.



BARBARA ANNE KENNEDY
Coolidge, Ga.

RUTH KENT
Lakeland, Ga.

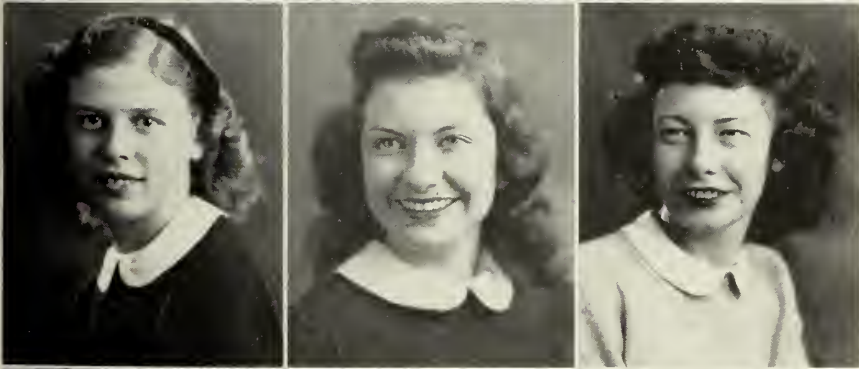
JEAN MONTEZ LAND
Griffin, Ga.



ESTHER ELAINE LANDEY
Valdosta, Ga.

CLEMMIE JOYCE LANE
Rebecca, Ga.

DERYL LaBLANCHE McKENDRE
Woodbine, Ga.



ISABEL McLEOD
Valdosta, Ga.

BETTY McPHERSON
Dawson, Ga.

ANN ESTELLE MADDOX
Rochelle, Ga.



ANNETTE LYNN MANLEY
Griffin, Ga.

JEAN MAYO
Richland, Ga.

MARY EUNICE MAYO
Richland, Ga.

SHERLA MELEESE MILLER
Jacksonville, Fla.

ALMA MADGE MOBLEY
Moultrie, Ga.

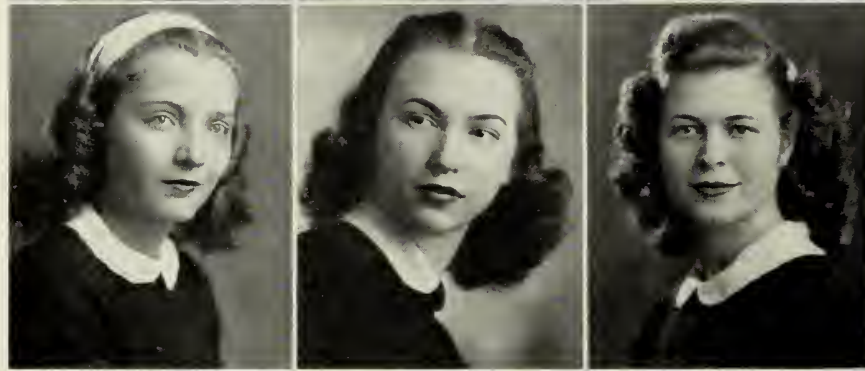
JOYCE LOUISE MOON
Vienna, Ga.



JAN MUSGROVE
Valdosta, Ga.

ADAIR MYDDLETON
Valdosta, Ga.

RAY JEAN NORMAN
Moultrie, Ga.



SARA ANN NORRIS
Jesup, Ga.

JEANNE THERESA PAINTER
Cairo, Ga.

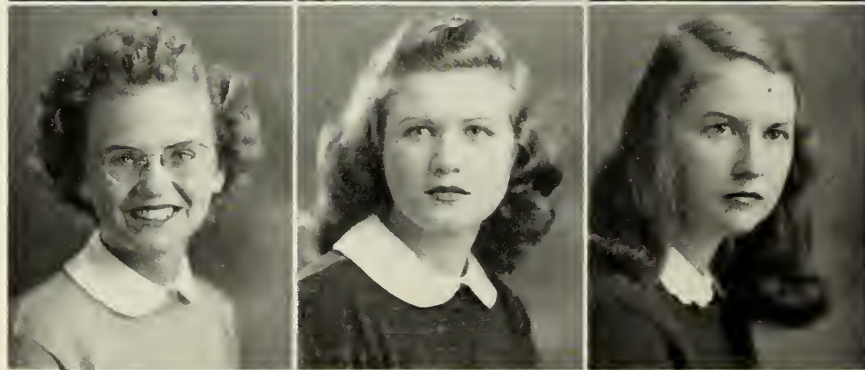
CATHERINE M. PHILLIPS
Colquitt, Ga.



ANNETTE PICKREN
Argyle, Ga.

MAYORA POTTS
Moultrie, Ga.

MIRIAM BUTLER POWELL
Atlanta, Ga.



RUTH ROLAND REYNOLDS
Blakely, Ga.

JEAN ROBERSON
Screven, Ga.

EDWINA ROBERTS
Valdosta, Ga.





REBECCA HANSON ROGERS
Quitman, Ga.

BETTY JOY ROLAND
Donalsonville, Ga.

EDNA LOUISE SHAW
Decatur, Ga.



MARTHA LUCILLE SLADE
Vienna, Ga.

SARA SMITH
Toccoa, Ga.

BOBBY SNOW
Valdosta, Ga.



CAROLYN MEIGS STAFFORD
Savannah, Ga.

DOROTHY STROZIER
Valdosta, Ga.

MARTHA LEE SYMS
Abbeville, Ga.



JACQUELINE TALTON
Valdosta, Ga.

GLADYS THAMES
Thomasville, Ga.

MARY NEWBY THARPE
Vienna, Ga.



BETTY JUNE THOMPSON
Donalsonville, Ga.

BETTY TOLER
Americus, Ga.

SARA FRANCES TUTTLE
Tifton, Ga.

ELEANOR LOUISE WAGGONER
Cordele, Ga.



PEGGY JUNE WILLIAMS
Vidalia, Ga.



SARA TYSON
Nashville, Ga.

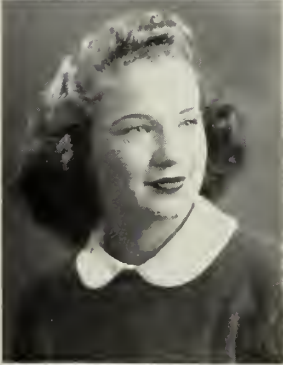


MARTHA LOUISE WALKER
Waycross, Ga.





GLADYS CAROLYN WILLIS
Meigs, Ga.



VERA WILSON
Valdosta, Ga.



BOBBYE RUTH WOOD
Pitts, Ga.



MABLE McELVEY
Valdosta, Ga.

Whoopin Up Freshmen



DEKLE



ZIPLIES



MATHIS



BOWEN

FRESHMEN OFFICERS

JANE DEKLE	President
CHARLENE BOWEN	Vice-President
ANNE ZIPLIES	Secretary
CAROLYN MATHIS	Treasurer

Flash!

Flash!

FORMER FROSH NOW WORLDLY WISE

The time has come after so long. The Sophomores are now upper-classmen in all that word means. They have left the home of the Frosh and moved up to Ashley.

There are many things they will remember for a long time. That first week and the excitement of seeing everyone you hadn't seen for three long months . . . the strangeness of all the new faces of the Freshmen . . . the first night four Sophs went up town during the week and saw the night life of Valdosta in all its glory . . . the feeling of being in the center of all activity with so much going on in the Rotunda . . . watching dates come

in . . . the thrill of it all when you were chosen to be on Sophomore Council and knew you were a part of the "Y" . . . the fun of planning the Valentine Sweetheart Dance . . . and last of all, the white dresses, the slightly scared feeling, and the dignity that went with being a Hood Sister.

Being a Sophomore is really grand. You're no longer a Freshman, forever and a day wondering if you're doing the right thing. You've pulled that trick out of the bag they call "initiative" and you're learning to use it. You're a leader!





ANN ELIZABETH ADAMS
Dublin, Ga.

BILLIE RUTH AKIN
Valdosta, Ga.

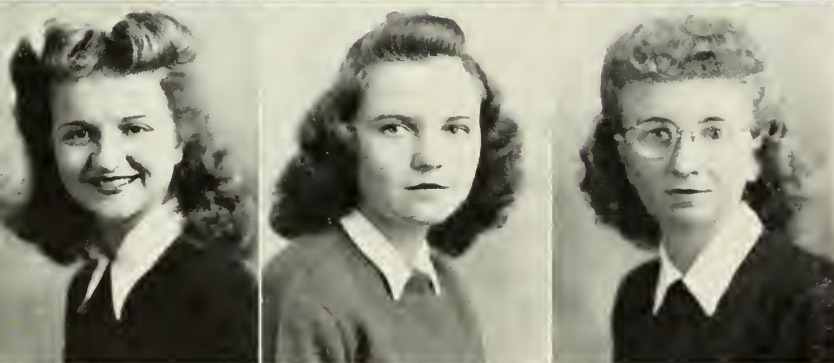
BETTY JANE ALDERMAN
Valdosta, Ga.



EMMA JEAN AMOS
Valdosta, Ga.

VILMA ANSLEY
Valdosta, Ga.

MILDRED GRACE ASHLEY
Donalsonville, Ga.



FRANCES JOSEPHINE BALLIET
Donalsonville, Ga.

ANNE BARBRE
Albany, Ga.

ANN ELLA BASS
Warwick, Ga.



DORIS MERLE BATEMAN
Sylvester, Ga.

FRANCES BEDGOOD
Arabi, Ga.

BETTY GRACE BELL
Americus, Ga.



ZONA CLYDE BENNETT
Nashville, Ga.

EVELYN BOATWRIGHT
Waycross, Ga.

CHARLENE ANN BOWEN
Valdosta, Ga.

VIRGINIA LEE BRAY
Monroe, Ga.

CLAUDIA ANN BROWN
Cairo, Ga.

WANDA JOYCE BURCH
Tifton, Ga.



ELLEN LATRELLE CARTER
Valdosta, Ga.

MARY GAILE CARTER
Lake Park, Ga.

FRANCES CASTLEBERRY
Lumpkin, Ga.



HARRIETE JUNE CLARK
Pinetta, Fla.

BARBARA ANN COBB
Quitman, Ga.

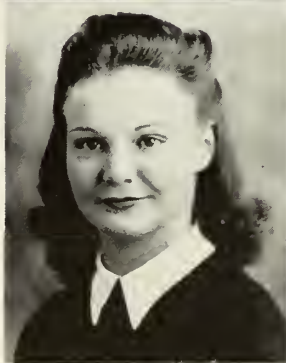
MARION ANITA COLLINS
Cobbtown, Ga.



MRS. FAUSTINA WEBB COOPER
Morven, Ga.

MARY ELINORE CREA
College Park, Ga.

BETTY LOUISE DAVIS
Jesup, Ga.



DOROTHY ANNE DAVIS
Waycross, Ga.

JANE LUCILE DEKLE
Cordele, Ga.

EVA ELIZABETH DELOACH
Valdosta, Ga.





BUNNIE AQUILLA DeMOTT
Moultrie, Ga.

PATTY COOK DIXON
Richland, Ga.

LUCILLE DOUGLAS
Nicholls, Ga.



ANNA ELIZABETH DuPRIEST
Sylvester, Ga.

ELIZABETH McRAE EFIRD
Albany, Ga.

HARRIETTE ANN FOLSOM
Hahira, Ga.



PHYLLIS LORRAINE FORBES
Waycross, Ga.

MARY NELL FOREHAND
Sylvester, Ga.

ANN McNEILL FORTSON
Washington, Ga.



ANN FRENCH
Valdosta, Ga.

PATRICIA JEAN FUQUA
Valdosta, Ga.

DOROTHY MAE GAY
Moultrie, Ga.



BETTY JEAN GELDERS
Fitzgerald, Ga.

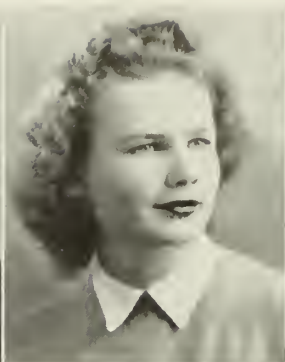
SYLVIA ANN GELDERS
Fitzgerald, Ga.

CHARLOTTE YVONNE GIDDENS
Albany, Ga.

ILEAN GILBERT
Donalsonville, Ga.

REPSIE ROSE CODWIN
Lenox, Ga.

MRS. HARRIETTE SMITH GWALTNEY
Valdosta, Ga.



BARBARA SUE HALL
Ft. Lauderdale, Fla.

JOANNE HAMILTON
Arabi, Ga.

ELSIE MARIAN HARVEY
Jakin, Ga.



VIRGINIA HEISLER
Thomasville, Ga.

ELEANOR JEAN HELTON
Fitzgerald, Ga.

MILDRED JULIENE HIERS
Moultrie, Ga.



THERESA JEAN HODGES
Ludowici, Ga.

CHARLOTTE HOLZENDORF
Albany, Ga.

BETTY JEANNE HULBERT
Jacksonville, Fla.



BETTY GRACE IVEY
Albany, Ga.

JULIA BRASHER JACKSON
Valdosta, Ga.

LUCILE JACKSON
Thomasville, Ga.

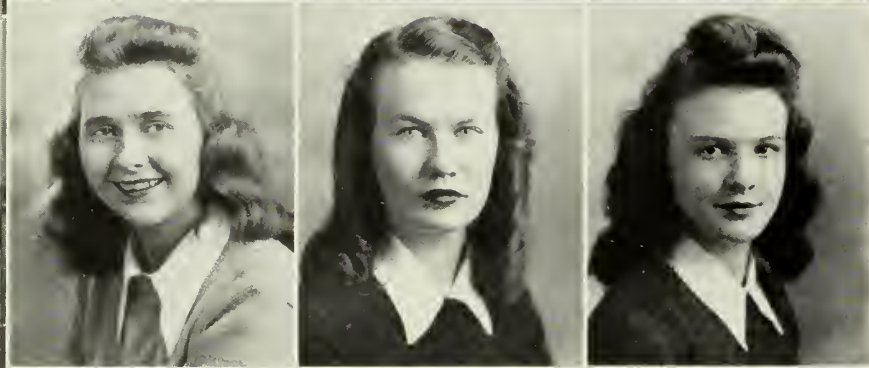




MARTHA CAROLYN JACKSON
Macon, Ga.

JOELLA JOHNSON
Nashville, Ga.

JOLEEN JOHNSON
Waycross, Ga.



GLORIANNE JONES
Valpariso, Fla.

VERDI MAE JONES
Valdosta, Ga.

CECELIA JANE KENNEDY
Ashburn, Ga.



CAROLYN BLANCHE KING
Brunswick, Ga.

LENA ROZANE KING
Gabetteville, Ga.

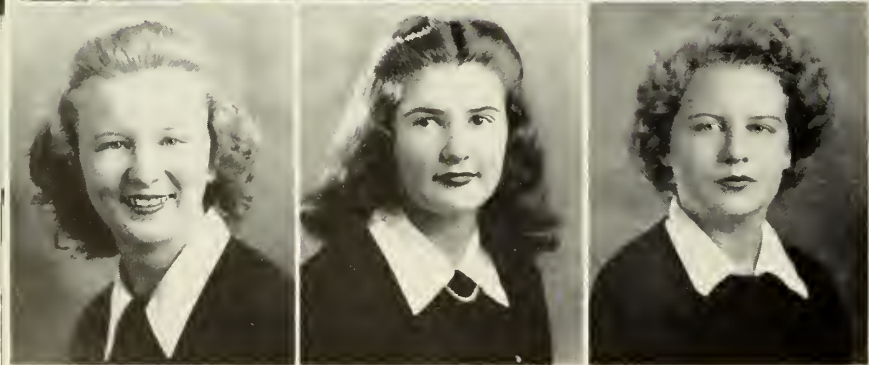
ANN DARLING KNEPTON
Thomasville, Ga.



RUBY ARDITH LACEY
Hazelhurst, Ga.

LILA ANNE LEWIS
Waycross, Ga.

GLORIA LOVE
Columbus, Ga.



ADA FRANCES McBRIDE
Alston, Ga.

JEANETTE RUTH McCLUNG
Albany, Ga.

PATRICIA McCOLLOUGH
Woodbine, Ga.

ALICE DeVANE McGEACHY
Valdosta, Ga.

DOROTHY DOLORES McGINTY
McRae, Ga.

JUANITA McGOWAN
Valdosta, Ga.



JESSIE LOUISE MASSEY
Valdosta, Ga.

ANNA CAROLYN MATHIS
Fitzgerald, Ga.

ANN ELIZABETH MIDDLEBROOKS
Dublin, Ga.



MARTHA JANE MILLER
Valdosta, Ga.

ROSE WALTON MILLS
Hazellurst, Ga.

DORIS WYNELL MORGAN
Dorchester, Ga.



MARTHA ANN MORGAN
Pembroke, Ga.

VENETTE CATHERINE MORGAN
Vienna, Ga.

FRANCES LECY OLA MOXLEY
Swainsboro, Ga.



BETTY ANNE NEWBERRY
Arlington, Ga.

BERNICE GERALDINE PACE
Monroe, Ga.

DOROTHY JEWELL PAFFORD
Jennings, Fla.

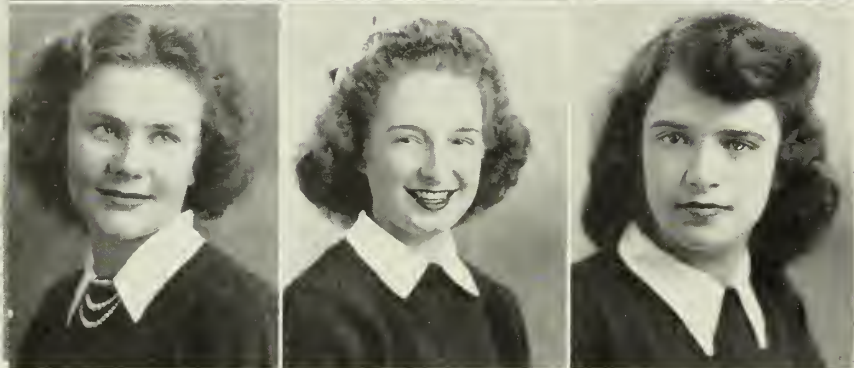




MILDRED PAGE
Vidalia, Ga.

DOROTHY JUANITA PARKER
Moultrie, Ga.

HELEN LOUISE PARRAMORE
Valdosta, Ga.



MARY VIRGINIA PATRICK
Omega, Ga.

PATRICIA ANN PORTER
Sylvester, Ga.

MILDRED ANNETTE PRICE
Vidalia, Ga.



ANNA KATE ROBBINS
Bainbridge, Ga.

SARA ELLEN ROBERTS
Cordele, Ga.

TOMMIE JEAN ROBERTS
Valdosta, Ga.



MARY JOHN RODGERS
Sycamore, Ga.

MARTHA ANN SANDERS
Fitzgerald, Ga.

NAN SEAMAN
Cordele, Ga.



BETTY ALLEN SMITH
Columbus, Ga.

BETTY JEAN SMITH
College Park, Ga.

HENRIETTA LATRELLE SMITH
Valdosta, Ga.

SUE NELL SMITH
Statesboro, Ga.

WAYNE MORRIS SMITH
Valdosta, Ga.

AMY WILHELMINIA SPENCE
Blakely, Ga.



HARRIETTE BALDWIN STORY
Nashville, Ga.

WENONAH SEIFRIED THOMAS
Hapeville, Ga.

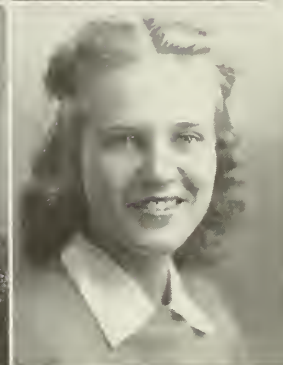
MARTHA JANE THOMPSON
Ailey, Ga.



JEAN TIPPINS
Waycross, Ga.

ELEANOR LOUISE TOMPKINS
Jacksonville, Fla.

CORNELIA ANNE TUTEN
Alma, Ga.



EARLINE UPSHAW
Luthersville, Ga.

PHYLLIS WADE
Valdosta, Ga.

MARY WEBB
Cordele, Ga.



AMANDA WHEELER
Cairo, Ga.

LONNIE ELIZABETH WINGATE
Gallahan, Fla.

BARBARA WREN
Wrens, Ga.



ANNE CALLAWAY ZIPLIES
Savannah, Ga.





This is the Section Devoted to Organizations

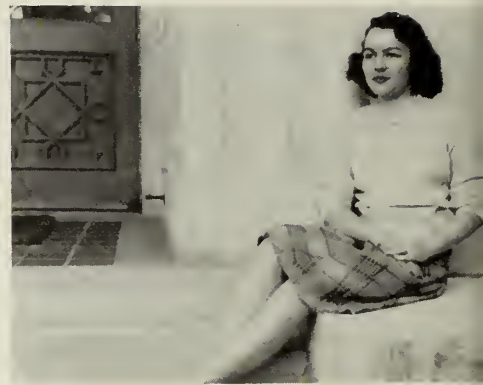
IN IT ARE INCLUDED THE STUDENT GOVERNMENT ASSOCIATION, THE Y. W. C. A., THE SPORTS CLUB, THE RELIGIOUS ORGANIZATIONS, THE PUBLICATIONS, THE HONOR SOCIETIES, AND MANY ACADEMIC ORGANIZATIONS. ALSO IN THIS SECTION WE INCLUDE THE TEN OUTSTANDING SENIORS, AND THE NOTICES OF OUR ADVERTISERS.

Organizations

Student Government Association



McKINNON



CARSON

EXECUTIVE COMMITTEE OFFICERS

- IDA MAUDE MCKINNON *President*
 CLARE CARSON *First Vice-President*
 MARION NEWSOME . . . *Second Vice-President*
 HARRIETTE SINGLETARY . . *Secretary-Treasurer*



SINGLETARY



NEWSOME

Remember the girl who met you with a cherry smile that first day of freshmen week and helped you find your place in college life? She was a Student Government Official.

Membership in Student Government is available to all students upon passing an examination. Through its executive committee, house councils, etc., it makes government at G. S. W. C. just what the name implies — Student Government

MEMBERS

- VIRGINIA BOLEN
 BETTY HUTCHINSON
 JEAN LAND
 BETTY JORDON
 BETTY KEENE

- DOROTHY DAVIS
 BETTY GUNTER
 EFFIE POWELL
 JANE DEKLE
 MARION NEWSOME
 IDA MAUDE MCKINNON

- CLARE CARSON
 HARRIETTE SINGLETARY
 MARTHA WILCOX
 CORRINNE DELINGER
 ROBBELEE PATILLO



EXECUTIVE COMMITTEE

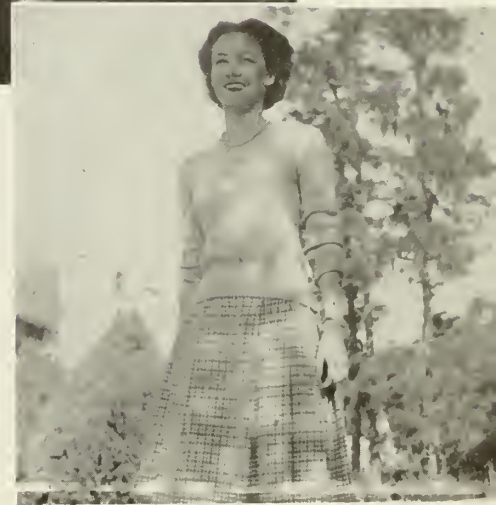
E. C. A.



E. C. A.

MEMBERS

- ROBBELEE PATTILLO, *Chairman* — Sock and Buskin Club
BETTY HUTCHINSON — Valdosta Club, English Club
BETTY KEENE — Freshmen Honor Society
JEAN MARTIN — Senior Honor Society
SIMONE BASSETT — Romance Language Club
MARTHA DELL ALDERMAN — Math-Science Club
BOBBIE JONES — Philharmonic Club
HARRIETTE ARRINGTON — International Relations Club
NICKEY WILLIAMS — Glee Club
MARGUERITE STORER — Dance Club
ELAINE HUNT — Dance Club
LAURA CONVERSE — Secretarial Science Club
MARGIE MASSEY — Fine Arts Club
BEATRICE WILLIAMS — Sociology Club
ETHEL BENTLEY — Home Economics Club



PATTILLO, *Chairman*

EXTRA CURRICULAR ACTIVITIES

The E. C. A. Committee is composed of the presidents of all the clubs on campus with the exception of the Y. W. C. A. and Sports Club, and strives to co-ordinate the activities of the various clubs so that more can be accomplished through working together. The chairman of this group represents the clubs on the S. G. A. Executive Committee.

Y. W. C. A.

Responsible for the religious activities of the students is the Y. W. C. A. on campus. Non-sectarian in character, the "Y" imposes no religious obligations on anyone. Membership is entirely voluntary, and the members are recognized when they are Freshmen, continue to be members until they graduate.

Under the leadership of the "Y" Cabinet, this organization sponsors Morning Watch and Vespers, not to mention the traditional programs such as the firelighting service, "The Hanging of the Greens," the Good Friday services, and others dear to the heart of every G. S. W. C. girl.



POWELL
President



COLLINS
Vice-President

ALDERMAN
ARRINGTON
BUTLER
CARTER
CHAMPION
COLLINS
DAVIS

MEMBERS

DYAL
GIBBS
GUNTER
HAYGOOD
LAND
MCKINNON (Honorary)

POWELL
RENTZ
REYNOLDS
SHIPP
SINGLETARY
STATHAM
THOMPSON



CABINET

SINGLETARY, *Secretary*
ARRINGTON, *Treasurer*





WHITE, POWELL, COLLINS
Making Plans for the New Chapel

Chapel Choir

Under the sponsorship of the "Y," the Chapel Choir furnishes the music for many of the services on campus. Reorganized this year, the choir, composed of selected Glee Club members, presents to the students the hymns, chants, and anthems appropriate to the services of the chapel.

MEMBERS

JOSEPHINE BALLIET
 DORIS BATEMAN
 MARY ELINORE CREA
 MILDRED ASHLY
 BETTY GELDERS
 SYLVIA GELDERS
 DORIS GIBBS

ILEANA GILBRET
 JEAN HELTON
 BETTY RENTZ
 SIS ROBBINS
 MARTHA SANDERS
 HARRIETTE STORY
 BEATRICE WILLIAMS



Hanging of the Greens

Firelighting Service



SPORTS CLUB



BOLEN



GRANTHAM

OFFICERS

VIRGINIA BOLEN
President

KATHLEEN GRANTHAM
Vice-President

DOROTHY DAVIS
Secretary

MARION NEWSOME
Treasurer

BEA WILLIAMS
Historian



DAVIS



NEWSOME

SPORTS COUNCIL



Sports at G. S. W. C.

Not one, but all the girls of G. S. W. C. are members of the Sports Club. Its aim is to promote fitness and well-being as well as leadership and better sportsmanship.

Sports practice is the place everyone dashes to at 4:15. The Kappas and the Lambdas are right there yelling for their team. At the end of the year the team with the most points has its name engraved on the silver Sports Club plaque.



HONOR SOCIETIES



SENIOR HONOR SOCIETY

SENIOR HONOR SOCIETY

The members of the Senior Honor Society are selected for the promotion of student honor, the maintenance of high standards of scholarship and the encouragement of a wholehearted allegiance to the ideals of G. S. W. C.

OFFICERS

JEAN MARTIN *President*
 ELIZABETH PATE . . . *Vice-President*
 MARTHA WILCOX . . . *Secretary-Treas.*
 PATRICIA PARROTT *Historian*

MEMBERS

Martha Dell Alderman, Betty Altman, Harriett Arrington, Simone Bassett, Virginia Bolen, Edith Collins, Dorothy Davis, Jean Martin, Marian Newsome, Patricia Parrott, Elizabeth Pate, Effie Powell, Harriet Singletary, Marguerite Storer, Martha Wilcox.

FRESHMAN HONOR SOCIETY

Chosen because of their high grades during their freshman year, these sophomores, together with the Senior Honor Society, encourage high academic standing among the students.

OFFICERS

BETTY KEENE *President*
 PAULINE JORDAN *Vice-President*
 EDITH JONES *Secretary-Treasurer*
 BOBBY SNOW *Historian*

MEMBERS

Mrs. Mary B. Brooks, Faye Dixon, Helen Graydon, Betty Gunter, Margaret Hardy, Joyce Ives, Edith Jones, Robert Frances Jones, Betty Jordan, Pauline Jordan, Betty Keene, Barbara Kennedy, Jan Musgrove, Bobby Snow, Gladys Thames.



FRESHMAN HONOR SOCIETY

FINE ARTS CLUB

The Fine Arts Club, limited to those girls who show a sincere interest in art, strives to carry out its purpose of promoting art appreciation and art interest, not only of club members, but also of the student body and community. One of their outstanding activities of the year was the traditional Christmas Bazaar.

OFFICERS

MARGIE MASSEY	President
BEVERLY SWANSON	Vice-President
BOBBY SNOW	Secretary-Treasurer
ANN WHITTLE	Art Chairman
GRACE HIERS	Art Chairman
MR. CLIFTON WHITE	Advisor
MISS FRANCES RUTH CARPENTER	Advisor



SNOW, MASSEY, SWANSON

MEMBERS

BETTY ALTMAN
 ETHEL BENTLEY
 MARTHA BOWEN
 MARY B. BROOKS
 EVELYN CONNELL
 HILDA CRUM
 BERTHA DREXEL
 MARY ANNE FINKLEA
 COLLEEN GEIGER
 VIRGINIA HAGAN
 GRACE HIERS
 MARY CATHERINE HILLHOUSE



Fine Arts' Christmas Bazaar

MEMBERS

MARGARET JONES
 LOUISE MASSEY
 MARGIE MASSEY
 ISABEL MCLEOD
 ELIZABETH PATE
 ROBBIE LEE PATILLO
 LEONA REDLES
 BOBBY SNOW
 BEVERLY SWANSON
 ANNE WHITTLE
 JEAN WILLIS
 FRANCES WISDOM



The 1946

EDITORIAL STAFF

GEORGIA SMITH	Co-Editor
KITTY STROUD	Co-Editor
ETHEL BENTLEY	Literary Editor
CORINNE DELLINGER	Assistant Literary Editor
MARY ELLEN COMPTON	Art Editor
BOBBY SNOW	Assistant Art Editor
ROBBELLE PATTILLO	Photograph Editor
NANCY STORY	Photograph Editor
LOUISE REES	Assistant Photograph Editor
MARY CATHERINE HILLHOUSE	Assistant Photograph Editor
MARGUERITE STORER	Make-up Editor
KITTY PARHAM	Make-up Editor
JUNE SEARS	Activities Editor
EDITH COLLINS	Assistant Activities Editor
NELL KENNEY	Student Photographer



SMITH AND STROUD



KENNEY, COMPTON, SNOW



EDITORIAL STAFF

Pine Cone

With the writing of this, another PINE CONE goes to press. You can't imagine the relief it gives unless you were a member of the staff.

The staff's plans are to give the students a well-rounded picture of the plans for the school in future years, as well as the activities of this past year.

Blackburn's Studio took most of our pictures this year, but we could not have managed without the assistance of our photographer, Nell Kenney, and the photograph editors.

Through all our headaches and heartaches we, the Staff, have had a lot of fun putting out the PINE CONE and hope that you will enjoy it as much as we enjoyed putting it out.

We, the Staff of the 1946 PINE CONE, hope it will be a pleasure to you in future years after graduation.



HUTCHINSON



BUSINESS STAFF

CAMPUS CANOPY

EDITORIAL STAFF



HERNDON AND DELLINGER

CORINNE DELLINGER	Editor
ANNETTE HERNDON	Business Manager
LAURA CONVERSE	Assistant Business Manager
MARGUERITE STORER	Managing Editor
GLADYS THAMES	News Editor
DELORES HAYGOOD	Assistant News Editor
JEAN LAND	Feature Editor
DATHINE BRUNSON	Sports Editor
NANCY STORY	Exchange Editor
BOBBY TOWNSEND	Advertising Manager
EDITH COLLINS	Columnist
JEAN MARTIN	Columnist
KATHLEEN GRANTHAM	Columnist
CLARE CARSON	Columnist
MERRITT DYAL	Circulation Manager
MARGUERITE DICKERSON	Circulation Manager

"Extra! Extra! Read all about it."

Our paper, the *Campus Canopy*, carries the news of interest on campus, from other campuses, and world events. *The Canopy*, which originated in 1934, has remained a weekly publication for the students, and of the students.





The Campus Canopy



VOLUME XI

THE GEORGIA STATE WOMAN'S COLLEGE, VALDOSTA, GEORGIA, SATURDAY, MARCH 2, 1946

NUMBER 11

COLLINS INAUGURATED "Y" PREXY

Y.W.C.A. Holds Annual Installation Service

The new members of the Y. W. C. A. Cabinet who go in office Monday, March 4, are: President, Edith Collins; Vice-President, Betty Gunter; Associate Vice-President, Venette Morgan; Secretary, Celeste Champion; Treasurer, Harriet Arrington; Sacristans, Ruth Reynolds and Merritt Dyal; Morning Watch Co-Chairmen, Betty Jean Smith and Gloria Love; Entertainment, Jean Land; Music-Organists, Doris Gibbs and Martha Anne Sanders; Preceptor, Betty Rentz; Publicity, Marguerite Storer, and Carolyn Bowen; Deputation, Anne Shipp and Charlotte Goodwin; Town Girl Representative, Louise Massey.

The old members are: President, Effie Powell; Vice-President, Edith Collins; Associate Vice-President, Betty Gunter; Secretary, Harriet Arrington; Sacristans, Anne Shipp and Virginia Carter; Morning Watch Co-Chairmen, Ruth Reynolds and Celeste Champion; Entertainment, Delores Haygood; Music-Organists, Doris Gibbs and Betty Gunter; Preceptor, Betty Rentz; Publicity, Dorothy Davis and Merritt Dyal; Deputation, Jean Land and Betty Stat-



EDITH COLLINS, new president of the "Y," was installed last Wednesday evening.

ham; Town Girl Representative, Martha Dell Alderman. A weiner roast is being planned for the new and old members of the Cabinet at the out-door fireplace of the House in the Woods.

BUSINESS CLUB CONTRIBUTES TO POLIO DRIVE

The Business Club met Tuesday, February 26, in the House in the Woods.

During the business session of the meeting, the roll was called and the minutes read by the secretary, Pauline Jordan. Carolyn Bowen, treasurer, reported the club balance and stated that \$5.00 had been given to the Infantile Paralysis Drive. Laura Converse, president, told the club that it had been voted by the Executive Committee to have after-dinner coffee on Sundays. It was then voted and approved that the Business Club have after-dinner coffee on March 10.

The president discussed with the club the possibility of organizing on campus a stenographic bureau, directed by the club, for the benefit of students, teachers and organizations. This will be a permanent project. A mimeographic room, machine, and furniture will be given to the club for the office. The motion to accept this proposal was voted and approved by the members.

A movie on "Champion Short-hand Writers" was shown to the club by Mr. Spragens.

Reverend Fuller Is Vesper Speaker

The town girls were in charge of Vespers February 20 in the chapel. Martha Dell Alderman lead the service with the Reverend James W. Fuller, Religious Director of the First Baptist church of Valdosta, as the speaker. Reverend Fuller spoke on the subject, "Are You Afraid?"

Clare Carson and Corinne Dellinger were in charge of Late Vespers Sunday night, February 24. They spoke on "Peace."

The annual installation service of Y. W. C. A. officers was held in the Rotunda Wednesday, February 27.

Students Attend Concert in Thomasville

Approximately one hundred and seventy students and faculty members went to Thomasville on Thursday, February 21, to hear the Baltimore Symphony Orchestra in a concert at the Thomasville City Auditorium. The trip made on specially chartered buses was arranged by Miss Gladys Warren of the GSWC Music Department.

Reginald Stewart conducted the orchestra in a varied and delightful program, which included:

"The Russian Sailor's Dance"—Giere
Symphony No. 6 ("Pathétique")—Tchaikovsky

Intermission
"Tod and Verklarung" ("Death and Transfiguration")—Richard Strauss

Suite from opera, "Der Rosenkavalier"—Richard Strauss

"The Russian Sailor's Dance," the first selection on the program, reflected the vigorous and lush style of the Russian composer. The popular "Pathétique" Symphony by Tchaikovsky received a great ovation from the audience. In the last and most "Pathétique" movement the orchestra seemed to literally sob and sigh. In Richard Strauss's tone poem, "Death and Transfiguration," was depicted the struggle of a fever stricken and delirious man with death, and later the glorious transfiguration of his soul after death overcomes him. The final selection, a suite from the opera "Der Rosenkavalier" also by Strauss, was a combination of the outstanding dances of this work.

After taking numerous curtain calls, Mr. Stewart remarked that, "I can see you people are very determined," and so offered as an encore Tchaikovsky's beautiful "Andante Cantabile" from his String Quartet, Opus 11.

Ted Shawn Addresses Students At Chapel

The Student Artist Series was in charge of the program at assembly period on February 20. They presented Mrs. Terah Cowart Smith, who spoke on the Bahai religion. Mrs. Smith used as her theme, "World Peace—how to obtain it."

The Student Artist Series was also in charge of the program at assembly period on February 26. No introduction was necessary for the speaker because Mr. Ted Shawn, world-famous dancer, was already familiar to many of the students and faculty since he has appeared at G. S. W. C. before. One of his pupils showed beautiful technical slides of Mr. Shawn's school in the hills of Massachusetts called "Jacob's Pillow," and many of Mr. Shawn's pupils in their dancing costumes, while Mr. Shawn discussed each picture.

At the end of his talk, Mr. Shawn revealed that the purpose of touring the country with the pictures was to prove dancing an art, not merely a profession. His main hope is to build up "Jacob's Pillow" into a large school where people from all over the world can come to learn the art of dancing.

Artist Series Presents Noted Metropolitan Star

Josephine Antoine, first coloratura soprano of the Metropolitan Opera, was trained at the University of Colorado, the Curtis Institute of Music, and the Juilliard Graduate School of Music in New York. She made her debut in 1936, singing the role of Philine in "Mignon." Since then, her rise to fame has been meteoric. Miss Antoine has sung every season at the Metropolitan Opera since 1936, in addition to appearing with 6 other opera companies, many symphony orchestras, and nearly every major network program. For nearly 3 years, Miss Antoine has been solo star of the Carnation Contented Hour. Altogether, she has sung more than 800 performances of opera, concert and radio.

Miss Antoine, accompanied by Mr. Claude Murphree, presented a delightful program on the campus last Thursday evening. This program included:

I.
Aria: Non so piu, from the Marriage of Figaro—Mozart.

Aria: Ah! Lo so, from the Magic Flute—Mozart.
The Wren—Benedict.

II.
Lullaby, from "Jocelyn"—Goddard.

Le Rossignol des Lilas—Hahn
L'Heure Exquise—Hahn.
Les Filles de Cadix—Delibes

III.
Waltz in C-sharp Minor—Chopin
Clair de Lune—Debussy.
Malaguena—Lecouona

Mr. Murphree
Cara Nome—Verdi

V.
The Crystal Cup—Robert Childs.

Our Lives Together—A. Walter Kramer.



EFFIE POWELL, outgoing president of the "Y," handed over her duties to the new president Wednesday evening.

Don't Miss The Valdosta Club Dance

May-Day Carol—Arr. by Deems Taylor.

VI.
Jewel Song, from "Faust"—Gounod.

This program received a large ovation from the delighted students and visitors, and was thoroughly enjoyed by everyone. Miss Antoine's charming voice and amazing range made her singing extremely pleasing to the most untrained ears. Mr. Murphree's rendition of 3 extremely popular numbers was excellent.

Mr. White Will Conduct Study of Job During Lent

During the Lenten season, which begins with Ash Wednesday, Mar. 6, and lasts until Easter Sunday, April 21, the Fellowship of St. Martin will sponsor a study of the Book of Job.

The Fellowship of St. Martin is the Episcopal young peoples group and is made up of college girls and young people in town. The study will be presented as a drama by Mr. White and the characters include:
Job, a man in the land of Uz on the borders of Edom.
Job's wife, mother of his ten children.
The Lord, ruler and creator of all.
Satan, prince of the world, the adversary.
Eliphaz the Temanite
Bildad the Shuhite—friends of Job.

Jophar the Naamathite
Elihu, son of Barachel the Buzite, judge of debates
Miscellaneous sacred and secular persons

This study will begin Sunday, March 10, and will be held each Sunday at 6:30 through April 14. These will last from forty-five minutes to an hour and everyone is invited, regardless of denomination.

The order of study is as follows:

SUNDAY, MARCH 10:
1st Sunday in Lent:
THE PROLOGUE and
Act I, Scene 1, chapter 1, verses 1-12,
Act I, Scene II, chapter 1, verses 13-22.

Act I, Scene III, chapter 2, verses 1-10.

SUNDAY, MARCH 17:
2nd Sunday in Lent:
Act II, Scene 1, chapter 2, verses 11-13; chapter 3

SUNDAY, MARCH 24:
3rd Sunday in Lent:
Act III, Scene 1, chapters 4-7
Act III, Scene II, chapters 8-10
Act III, Scene III, chapters 11-14

SUNDAY, MARCH 31:
4th Sunday in Lent:
Act IV, Scene I, chapters 15-17
Act IV, Scene II, chapters 18,19
Act IV, Scene III, chapters 20,21

SUNDAY, APRIL 7:
5th Sunday in Lent (Passion Sunday):
Act V, Scene I, chapters 22-24
Act V, Scene II, chapters 25-31

SUNDAY, APRIL 14:
Sunday before Easter (palm Sunday):
Act VI, Scene I, chapters 32-37
Act VI, Scene II, chapters 38-41
Act VI, Scene III, chapter 42, verses 1-9
Act VI, Scene IV, chapter 42, verses 10-15
THE EPILOGUE, chapter 42, verses 16, 17.

SOCIOLOGY CLUB



WILLIAMS

The Sociology Club is composed of majors and minors in this field. It is the purpose of this organization to promote actual experience in the field of Sociology. Programs during the year were related to the various fields of social work.

OFFICERS

BEA WILLIAMS	President
BOBBIE TOWNSEND	Vice-President
BETTY STATHAM	Secretary-Treasurer

MEMBERS

SARA ADCOCK
 VIRGINIA BOLEN
 DATHINE BRUNSON
 DOROTHY BUTLER
 CELESTE CHAMPION
 MARTHA CHASTAIN
 EDITH COLLINS
 DOT DAVIS
 MARGUERITE DICKERSON

ILA DOWNIE
 DOROTHY FUTCH
 REGINA GEIGER
 HELEN GRAYDON
 BETTY GUNTER
 MARY HENDERSON
 DORIS HIERS
 DOT HIGHTOWER
 MARGARET JOYNER

IDA MAUDE MCKINNON
 DOT NOELL
 ELIZABETH PATE
 ROBBIE LEE PATTILLO
 CATHERINE PHILLIPS
 PEGGY RAIFORD
 LOUISE REES
 HANSON ROGERS
 JEAN ROWE

LUCILLE SLADE
 GEORGIA SMITH
 ANNE STEVENS
 NANCY STORY
 HELEN TITCHE
 LAURA WHITE
 IRMA LOU WILLIAMS
 DOT ZALUNIUS

HOME ECONOMICS CLUB



The club, affiliated with the Georgia and American Home Economics Associations, is composed of forty-three members, all Home Economics majors and minors. Its purpose is to develop worthy self-expression, good leadership and intelligent fellowship, and to provide social, business, and professional experiences through the various aspects of the club.

THARPE, HILL, BENTLEY, MASSEY

OFFICERS

ETHEL BENTLEY	President
MARGIE MASSEY	Vice-President
MARY THARPE	Secretary
JOYCE HILL	Treasurer
VIRGINIA HAGAN	Historian
JEANNE PAINTER	Parliamentarian
JACKIE BOWEN	Reporter
MISS LOLA MARIE DREW	Advisor



BUSINESS CLUB



CONVERSE, BOLEN

BOWEN, JORDAN

The Business Club was organized during the fall of this year, and has become one of the most active organizations on the campus.

During the year, the Club sponsored a dance, and several interesting speakers were guests of the club.

The members also had a weiner roast at the House-in-the-Woods, and spent a day at Twin Lakes.

OFFICERS

LAURA CONVERSE	President
VIRGINIA BOLEN	Vice-President
PAULINE JORDAN	Secretary
CAROLINE BOWEN	Treasurer
MISS OLEEN MAJORS	Advisor

CHARTER MEMBERS OF BUSINESS CLUB

BILLIE RUTH AKIN
 VILMA ANSLEY
 MILDRED ASHLEY
 ETHEL BENTLEY
 VIRGINIA BOLEN
 CAROLYN BOWEN
 TACK BRUNSUN
 LAURA CONVERSE
 DOROTHY DAVIS
 BETTE DAVIS
 JOAN DAVIS

JOSEPHINE EVERETT
 PHYLLIS FORBES
 DOROTHY GAY
 MARY GENTRY
 ILEANA GILBERT
 HELEN GRAYDON
 BETTY GUNTER
 HARRIET GWALTNEY
 BARBARA HALL
 DO-DO HAYGOOD
 VIRGINIA HEISLER

FRANCES HURN
 REBECCA JENNINGS
 PAULINE JORDAN
 BARBARA KENNEDY
 JEAN LAND
 ADAIR MYDDELTON
 MARIAN NEWSOME
 JACKIE NORMAN
 CATHERINE PHILLIPS
 MAYORA POTTS
 ANNETTE PRICE

JEAN ROBERSON
 HANSON ROGERS
 NORMA STABLER
 SUE NELL SMITH
 BETTY JUNE THOMPSON
 SARA TYSON
 RUTH TURNER
 EARLENE UPSHAW
 LAURIE WHITE
 IRMA LOU WILLIAMS
 VERA WILSON

VALDOSTA CLUB

Including all the Valdosta students at the college, the Valdosta Club seeks to organize the day students, to make a better understanding between day and dormitory students, and to present the college to the city of Valdosta.

OFFICERS

BETTY HUTCHINSON	President
JACKIE TALTON	Vice-President
EDWINA ROBERTS	Secretary-Treasurer
GRACE HIERS	Reporter



B. HUTCHINSON
President



MEMBERS

BILLIE RUTH AKIN	MARJORIE FERGUSON	ELIZABETH KING	DOROTHY NOELL	JACQUELYN TALTON
BETTY JANE ALDERMAN	MARY ANN FINKLEA	ESTHER LANDEY	LEONA REDLES	FAYE VICKERS
MARTHA DELL ALDERMAN	VIRGINIA FREEMAN	MABLE McELVEY	EDITH ROBERTS	PHYLLIS WADE
JEAN AMOS	ANN FRENCH	ALICE McGEACHY	EDWINA ROBERTS	AMANDA WHEELER
VILMA ANSLEY	JEAN FUQUA	FRANCES McINTYRE	TOMIE JEAN ROBERTS	LAURIE WHITE
VIRGINIA BOLEN	MRS. H. SMITH GWALTNEY	MARGARET McINTYRE	GEORGIA SMITH	ROSALIND WILKINS
CHARLENE BOWEN	VIRGINIA HAGAN	ISABEL McLEOD	HENRIETTE SMITH	IRMA LOU WILLIAMS
HELEN BRANCH	GRACE HIERS	LOUISE MASSEY	MORRIS SMITH	VERA WILSON
EVELYN CONNELL	MRS. MARY C. HILLHOUSE	MARGIE MASSEY	BOBBY SNOW	<i>Honorary Member</i>
LAURA CONVERSE	ELAINE SIMS HURT	SHERLA MILLER	ELIZABETH SPEER	MARTHA JANE MILLER
VIRGINIA COOK	JULIA BRASHER JACKSON	JAN MUSGROVE	JOHNNIE V. STOKES	<i>Honorary Faculty Member</i>
HILDA CRUM	HELEN JOINER	ADAIR MYDDELTON	KITTY STROUD	BETH WHITAKER
ELIZABETH DeLOACH	MARGARET JONES	BLANCHE MYERS	DOROTHY STROZIER	<i>Faculty Advisor</i>
BERTHA DREXEL	BOBBIE JONES	DOROTHY MYERS	BEVERLY SWANSON	MRS. CAROLINE P. THOMAS

MATH-SCIENCE CLUB



ALDERMAN

"Little Willies," scrap paper drives, and scientific programs are all examples of the work done by the Math-Science Club. Made up of students interested in mathematics and natural sciences, this organization had its beginning in the Natural History Club organized in 1933. This club later expanded into the present day Math-Science Club.

OFFICERS

MARTHA DELL ALDERMAN	President
MARY RUTH ROUSE	Vice-President
BETTY ALTMAN	Secretary-Treasurer
DOT NOELL	Math
PAT PARROTT	Chemistry
MERRIT DYAL	Biology

MEMBERS

MARTHA DELL ALDERMAN
 BETTY ALTMAN
 HARRIET ARRINGTON
 SIMONE BASSETT
 VIRGINIA BOLEN
 MARTHA ROSE BOWEN
 MARY ANN BROWN
 DELORES BRYCE
 CLARE CARSON
 VIRGINIA CARTER
 EVELYN CONNELL
 LAURA CONVERSE
 JOAN DAVIS
 CORINNE DELLINGER

MARGUERITE DICKERSON
 FAYE DIXON
 MERRIT DYAL
 DOROTHY FUTCH
 KATHRYN GUALDEN
 DORIS GIBBS
 BETTY GUNTER
 MARGARET HADBY
 ANNETTE HERNDON
 DORIS HIERS
 SANCIL HOLDER
 FRANCES HURN
 JOYCE IVES

HELEN JOINER
 BOBBIE JONES
 EDITH JONES
 BETTY JORDAN
 PAULINE JORDAN
 BETTY KEENE
 BARBARA KENNEDY
 NELL KENNY
 ESTHER LANDEY
 CLEMIE LANE
 ANNETTE MANLEY
 JEAN MARTIN
 BETH MIDDLETON
 SHIRLA MILLER

JOYCE MOON
 JAN MUSGROVE
 LOUISE NEWTON
 DOROTHY NOELL
 KATHERINE PARHAM
 PATRICIA PARROTT
 ELIZABETH PATE
 ROBBELEE PATULLO
 EFFIE POWELL
 PEGGY RAIFORD
 LOUISE REES
 BETTY RENTZ
 EDITH ROBERTS

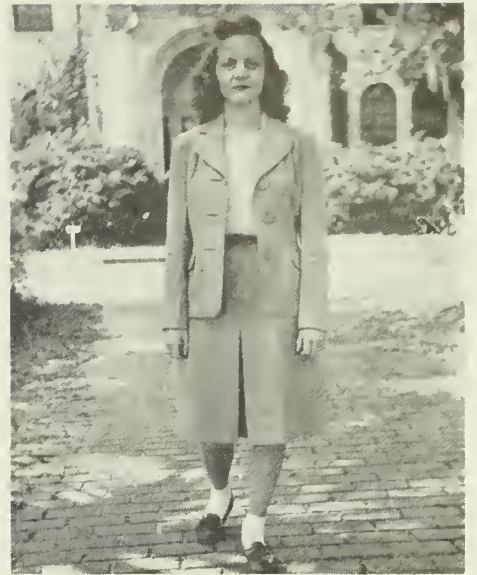
JOY ROLAND
 MARY RUTH ROUSE
 LOUISE SHAW
 HARRIETT SINGLETARY
 LUCILLE SLADE
 BOBBY SNOW
 ANNE STEVENS
 KITTY STROUD
 BEVERLY SWANSON
 JACKIE TALTON
 MARY THARPE
 BETTY TOLER
 RUTH TURNER
 MARTHA WILCOX

ENGLISH CLUB

English majors compose the membership of the English Club, and carry on its activities of reviewing plays, current books, and conducting forums. An annual program presented by the students of the Creative Writing Class make one of the high points of the year for this organization.

OFFICERS

BETTY HUTCHINSON	President
ANNE WHITTLE	Vice-President
KATHLEEN GRANTHAM	Secretary-Treasurer



HUTCHINSON



MEMBERS

MRS. WILMA BROWN
 JOSEPHINE EVERETT
 KATHLEEN GRANTHAM

ANNETTE HERNDON
 SANCIL HOLDER
 BETTY HUTCHINSON
 HARRIETT SINGLETARY

ANNE WHITTLE
 MARTHA WILCOX
 MILDRED WISDOM

ROMANCE LANGUAGE CLUB



BASSETT, CARSON, STORER

Organized in an effort to afford the students a better understanding of French and Spanish-speaking countries and to develop an interest in these languages, the Romance Language Club is made up of advanced language students who have maintained a "B" average in all such courses. Included among its activities are the sponsoring of a French orphan and the entertaining of French cadets.

OFFICERS

SIMONE BASSETT	President
CLARE CARSON	Vice-President
MARGUERITE STORER	Secretary-Treasurer

MEMBERS

SIMONE BASSETT	COLLEEN GEIGER	JEAN MARTIN
BETTY BUSII	KATILEEN GRANTHAM	JUNE SEARS
CLARE CARSON	ANNETTE HERNDON	MARGUERITE STORER
CELESTE CHAMPION	LOLA LEE HOLDER	GLADYS THAMES
MARTHA CHASTAIN	BETTY HUTCHISON	LAURIE WHITE
MARY ELLEN COMPTON	BETTY JORDAN	MARTHA WILCOX
JOSEPHINE EVERETT	BETTY KEENE	JEAN WILLIS

PHILHARMONIC CLUB

The Philharmonic Club, composed of outstanding music students, brings to the students every year representative programs of classical and modern music. Among the programs presented this year was an illustrated lecture on Elizabethan music by Miss Marion Snowden. Miss Snowden brought with her a Virginal, an Elizabethan musical instrument, on which she played many selections.

OFFICERS

BOBBIE JONES	<i>President</i>
BETTY RENTZ	<i>Secretary-Treasurer</i>
GLADYS THAMES	<i>Publicity</i>
MISS G. E. WARREN	<i>Faculty Advisor</i>



BOBBIE JONES

MEMBERS

MILDRED ASHLEY
 DORIS BATEMAN
 CAROLYN BOWEN
 LAURA CONVERSE
 MARJORIE FERGUSON
 CHARLOTTE GOODWIN

BARBARA HAM
 BOBBIE JONES
 ANNE KNEPTON
 MARY MAYO
 JAN MUSGROVE

BETTY RENTZ
 GEORGIA SMITH
 ELIZABETH SPEER
 GLADYS THAMES
 NICKEY WILLIAMS
 ANN ZIPPLIES



DANCE CLUB



ELAINE HURT
President

One of the newest and most popular clubs on campus is the Dance Club. Drawing its membership from those who love to dance, the club presents various programs through the year. Among them are the dances at the annual Christmas dinner. Under the direction of the P. E. Department, this club promises to develop into one of the outstanding clubs on campus.

MISS LENORA IVEY, *Advisor*

MEMBERS

SARA ADCOCK
BILLIE RUTH AIKEN
VILMA ANSLEY
MARY ELLEN COMPTON
DOROTHY DAVIS
JOAN DAVIS

BARBARA HALL
CHARLOTTE HOLZENDORF
ELAINE HURT
BETTY HURLBERT
BETTY GRACE IVEY

ADAIR MYDDLETON
HARRIETT SINGLETON
SARA SMITH
MAGUERITE STORER
LOUISE WALKER
PEGGY RAIFORD

SOCK AND BUSKIN CLUB



PATILLO

OFFICERS

ROBBELEE PATILLO *President*
 LOUISE REES *Vice-President*
 ELIZABETH PATE *Secretary-Treasurer*

Our campus Thespians may be found as members of the Sock and Buskin Club. Chosen from those who try out at the beginning of the year, those who belong to this club present several plays during the year as well as the senior recitals given by speech majors and seniors. Outstanding among this year's productions was THE WOMEN.

MEMBERS

VILMA ANSLEY	ANNETTE MANLEY	NAN SEAMAN
CAROLYN BOWEN	JEAN MARTIN	ANNE SHIPP
MARTHA BOWEN	JAN MUSGROVE	HARRIETT SINGLETARY
MARTHA CHASTAIN	IDA MAUDE MCKINNON	NORMA STABLER
MARY ELLEN COMPTON	ELIZABETH PATE	CAROLYN STAFFORD
ALICE JANE DANCER	ROBBELEE PATILLO	HARRIETT STORY
LOLLA LEE HOLDER	CATHERINE PHILLIPS	NANCY STORY
LOLA LEE HOLDER	ANNETTE PICKREN	CORNELIA TUTEN
BETTY KEENE	EFFIE POWELL	LOUISE WALKER
ESTHER LANDEY	PEGGY RAIFORD	NICKEY WILLIAMS
JEAN LAND	LOUISE REES	MILDRED WISDOM
	MARY JOHN RODGERS	



PATE, REES, LAND



Religious



FELLOWSHIP OF ST. MARTIN

THE FELLOWSHIP OF ST. MARTIN

DOROTHY DAVIS
President

JEANNE PAINTER
Vice-President

MARY ELINORE CREA
Recorder

BETTY JEAN SMITH
Bursar

THE REV. C. H. WHITE
Advisor

The local branch of the Fellowship of St. Martin had its beginning in the Episcopal Youth in October, 1944. The group became affiliated with the Fellowship Group at the Cathedral of St. Philip in Atlanta in November of that year and has operated as such ever since. Composed of Episcopal students and their friends the Fellowship of St. Martin strives to promote Christian ideals of service. Christian sharing is the summation of a member's duty.

B. S. U.

OFFICERS

JUNE SEARS	<i>President</i>
SANCIL HOLDER	<i>First Vice-President</i>
LOUISE MASSEY	<i>Second Vice-President</i>
BETTY KEENE	<i>Third Vice-President</i>
VIRGINIA BOLEN	<i>Secretary-Treasurer</i>
CAROLYN BOWEN	<i>Sunday School Representative</i>
LOLLA LEE HOLDER	<i>B. T. U. Representative</i>
BOBBY SNOW	<i>Reporter</i>
RUTH REYNOLDS	<i>Choirister</i>

The Baptist Student Union includes all Baptist girls who are members of Sunday School and the Baptist Training Union. The B. S. U. council members are Christian student leaders who, working with the First Baptist Church, seek to link each G. S. W. C. girl to the church during college days and to effect a unified program for all Baptist religious activities.

P. S. A.

OFFICERS

DOROTHY BUTLER	<i>President</i>
SIMONE BASSETT	<i>Vice-President</i>
LOUISE WAGGONER	<i>Secretary</i>
REV. CECIL THOMPSON	<i>Advisor</i>
MISS HELEN GLENN	<i>Advisor</i>

Including such activities as recreational leadership at West End Chapel and an annual retreat at Twin Lakes among its year's activities, the Presbyterian Student Association serves to promote a closer relationship between Presbyterian students and the local Presbyterian church.

Organizations



B. S. U.

P. S. A.



GLEE CLUB

"Do-Re-Mi" — Those old familiar musical phrases take on an added effect when sung by the G. S. W. C. Glee Club. Under the direction of Mr. Raimonde Aubrey, the Glee Club has enlarged its enrollment and has extended their places other than the college. Its spring concerts are an event looked forward to by the students and the people of Valdosta.

OFFICERS

NICKEY WILLIAMS	President
BETTY RENTZ	Vice-President
ADAIR MYDDLETON	Secretary-Treasurer
JEAN MARTIN	Librarian
GLADYS THAMES	Publicity
PROF. RAIMONDE AUBREY	Director
MRS. MARTHA CARRINGTON AUBREY	Accompanist

MEMBERS

Sara Adcock, Martha Dell Alderman, Mildred Ashley, Frances Balliet, Ann Barber, Doris Bateman, Zona Bennett, Charlene Bowen, Carolyn Carter, Frances Castleberry, Laura Converse, Faustina Cooper, Mary Crea, Hilda Crum, Alice Jane Dancer, Jane Dekle, Faye Dixon, Lucille Douglas, Pat Dixon, Ann Dupriest, Josephine Everett, Marjorie Ferguson, Mary Nell Forehand, Ann Fortson, Dorothy Gay, Regina Geiger, Betty Gelders, Sylvia Gelders, Doris Gibbs, Ileana Gilbert, Charlotte Goodwin, Harriette Gwaltney, Virginia Heisler, Jean Helton, Grace Hiers, Glynn Hill, Charlotte Holzendorf, Betty Hurlbert, Betty Ivey, Rebecca Jennings, Bobby Jones, Pauline Jordan, Barbara Kennedy, Ruby Lacey, Carolyn Mann, Annette Manley, Jean Martin, Louise Massey, Margie Massey, Anna Mathis, Mary Mayo, Jean McClung, Alice McGeachy, Rose Mills, Vennette Morgan, Jan Musgrove, Adair Myddleton, Blanche Myers, Elizabeth Pate, Pat Porter, Effie Powell, Miriam Powell, Betty Rentz, Ruth Reynolds, Anna Kate Robbins, Martha Sanders, June Sears, Betty Jean Smith, Georgia Smith, Henrietta Smith, Sara Smith, Elizabeth Spear, Harriett Story, Kitty Stroud, Betty Sullivan, Gladys Thames, Mary Tharpe, Jean Tippins, Eleanor Tompkins, Cornelia Tuten, Sarah Tyson, Phyllis Wade, Martha Wilcox, Beatrice Williams, Nickey Williams, Ann Zipples.



WILLIAMS

RENTZ AND MIDDLETON



SERENADERS



These nine pretty misses have sung their way into the hearts of all who have heard them. Selected from the Glee Club for their unusual ability, they represent the college at many outstanding events.

SENIORS WHO GAVE RECITALS



McKINNON AND PATILLO

MEMBERS

MARJORIE FERGUSON
 CHARLOTTE GOODWIN
 GLYNN HILL
 JEAN MARTIN
 EFFIE POWELL
 BETTY RENTZ
 RUTH REYNOLDS
 GEORGIA SMITH
 NICKEY WILLIAMS

LEAGUE OF WOMEN VOTERS



The G. S. W. C. branch of the National League of Women Voters was organized in December of 1945. The League was sponsored by the Executive Committee and the E. C. A., from which membership the original members of the League were drawn. This organization is affiliated with the State and National League of Women Voters.

The purpose of the League is to encourage an intelligent interest in current issues and to afford to its members an opportunity to form their opinions through group discussion.

From the E. C. A. and the Executive Committee the following charter officers were elected: President, Harriet Arrington; Vice-President, Jean Martin; Secretary, Laura Converse; Treasurer, Betty Gunter; Faculty Advisor, Miss Aileen Schoeppe.

The Executive Board is composed of: Dorothy Davis, Publicity; Corinne Dellinger, Chairman of National Material; Betty Hutchinson, Registration; Martha Dell Alderman, Membership; Marguerite Storer, Program Chairman.

The charter members are: Martha Dell Alderman, Harriet Arrington, Ethel Bentley, Virginia Bolen, Clara Carson, Laura Converse, Dottie Davis, Jane Dekle, Corinne Dellinger, Betty Gunter, Betty Hutchinson, Betty Jordan, Betty Keene, Jean Land, Ida Maude McKinnon, Jean Martin, Margie Massey, Marian Newsome, Robbelee Pattillo, Effie Powell, Harriet Singletary, Marguerite Storer, Nancy Story, Martha Wilcox, Bea Williams, Nickey Williams.

ALUMNAE ASSOCIATION

OFFICERS

MRS. SMITH COLEMAN	<i>President</i>
MRS. MARGAURITE L. PIZER	<i>Vice-President</i>
MISS LILLIAN PATTERSON	<i>Secretary</i>
MISS JULIA BESS SMITH	<i>Treasurer</i>

The purpose of the Association is to combine former G. S. W. C. students into an active off-campus group.

The organization aims to preserve the ideals of the college and to extend its influence through its membership.

This year a large group of the Association returned to the campus for the March Festival and a week-end of festivities.



DR. STEFAN OSUKA

Artists Series



JOAQUIN NIN-CULMELL



JUSTINE JOHNSTON (The Nurse) AND OLGA BALISH (Juliet)



JOSEPHINE ANTOINE



OLGA BALISH (Juliet) AND JOHN REILLY (Romeo)
Romeo and Juliet



ANGNA ENTERS

INTERNATIONAL RELATIONS CLUB

Organized in 1928 the International Relations Club is under the sponsorship of the Carnegie Endowment for International Peace. It's the club's intention to deal with all topics and questions in an impartial and nonpartisan matters always endeavoring to search out and appreciate the truth of each situation under investigation. This year the Club sponsored the Community Chest and National War Fund Drive on the campus.

OFFICERS

HARRIET ARRINGTON	President
MARION NEWSOME	Vice-President
JUNE SEARS	Secretary
JEAN ROWE	Treasurer
JEAN HALL	Member-at-large
MISS MILDRED PRICE	Advisor

MEMBERS

BETTY ALTMAN	ETHEL BENTLEY	JEAN MARTIN
SIMONE BASSETT		HARRIETT SINGLETARY





First row, left to right: Christmas Festival . . . Ole Stand By . . . A little sunshine . . . Garbutt . . . Xmas Festival . . . Remember (?) . . . Lazybones . . . Yea or Nay . . . Xmas Bazaar . . . Class Sweethearts . . . Interesting (??) . . . Simone's doing alright . . . Fashions (!!) . . . Guess Who (?)



MARTHA DELL ALDERMAN



EFFIE POWELL



ROBBELEE PATTILLO



IDA MALDE Mc KINNON

The Pine Cone Presents



JEAN ROWE



Ten Outstanding Seniors



HARRIETT SINGLETARY



KITTY STROUD



NANCY STORY



GEORGIA SMITH



BEA WILLIAMS

We are proud of the . . .

GEORGIA STATE WOMAN'S COLLEGE

We are glad to take this
occasion to say that the

CITY OF VALDOSTA

is proud to list among
its greatest assets the

GEORGIA STATE WOMAN,S COLLEGE

and —

We hope that Valdosta as a city makes a favorable and lasting
impression on the mind of the young ladies who make up the
student body of this great institution.

WHETHER it's baseball or business Americans expect fair play all the way.

In baseball, the umpire sees to it that the game is played according to the rules. But he is *not* a player.

In business, the government should be the umpire who enforces fair rules.

But when government goes into business and competes with its own citizens the American tradition of fair play is set aside. The umpire then becomes a player, and he enjoys advantages that are denied to all the other players in the game.

For example, *government and municipal power-plans are not required to pay federal taxes; often get money from the U. S. Treasury at little or no interest; make up losses out of the pockets of the taxpayers.*

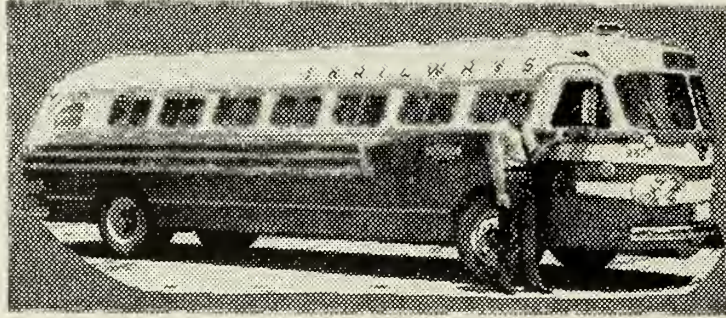
Maybe you run a store or service station or beauty shop. Would *you* like to have a next-door competitor who has little or no rent, or taxes, or interest to pay, and who is kept in business partly by *your* tax money?

Fortunately for America today, over 80 per cent of the tremendous amount of electric power in this country is produced by tax-paying, self-supporting electric light and power companies, owned and operated by several million folks like us.

These *business*-managed companies are a big reason why there is enough electricity to meet even the gigantic demands of war — and why, when most things cost more, electricity continues to cost *less* so that the average customer in this territory actually gets three times more electricity for the same money they did 15 years ago.

GEORGIA POWER AND LIGHT COMPANY

— *In the Public Service* —



TRAILWAYS

SAFE
COURTEOUS



MODERN
COMFORTABLE
CLIPPER
COACHES

Low Fares — Frequent Convenient Schedules

Charter a Coach for Special Trips

"Our Bus Station Is The Starting Place To Everywhere"

GEORGIA STAGES, INC.

ALBANY, : GEORGIA

Valdosta's Leading Restaurant

THE ROOSEVELT

FAMOUS FOR WESTERN STEAKS



VALDOSTA : GEORGIA

APRIL
1903

APRIL
1946

43 years of continuous business of selling shoes. 33 years of selling shoes to the G. S. W. C. faculty and student body of this wonderful institution. Our firm is proud to be one of the first advertisers of the College in its first edition of the PINE BRANCH, it was then called, back in 1914. Here's hoping we'll have the pleasure of serving the College many more years. We are proud to have a share in your College Annual.

PAXSON-JONES, INC.

The Home of Good Shoes for 43 Years.

BEST WISHES

... FROM ...

THE

WHITE HOUSE RESTAURANT

•

•

VALDOSTA : GEORGIA

ENJOY . . .

**FOREMOST
ICE CREAM**

ITS HEALTHFUL

FOREMOST FARMS, INC.

VALDOSTA

GEORGIA

COMPLIMENTS

. . . OF . . .

**THE CITIZENS AND SOUTHERN
NATIONAL BANK**

VALDOSTA

GEORGIA

LANGDALE TIMBER
COMPANY

•
NAVAL STORES
PULPWOOD
CROSSTIES

•
106 WEST HILL AVENUE

VALDOSTA

GEORGIA

VALDOSTA
COACHES

•
CITY BUS
YELLOW CABS

PHONE 1000

SEARS ORDER
OFFICE

•
Shop at Sears and Save

•
104 N. PATTERSON ST.

PHONE 13166

GOOD SERVICE

... at ...

BOB BELCHER'S
DRUG STORE

PATTERSON AND CENTRAL

Phone 812-813

Do Your Banking at . . .

•
**THE FIRST
NATIONAL BANK
OF VALDOSTA**
•

108 W. CENTRAL AVE. VALDOSTA, GA.

**BLACKBURN'S
STUDIO**

Portraits of Distinction

FRAMES : FRAMING

Phone 201

*Photographers of
PINE CONE*

**BROOKWOOD
PHARMACY**

Congratulates Seniors of '46
and Welcomes All Students
of G. S. W. C.

•
PHONE 336-337

**C. C. VARNEDOE
AND COMPANY**

For the 68th Year

Valdosta's Store Dependable

*The Style Center
of Valdosta*
•

LESLIE R. DAVIS

Registered Jeweler
American Gem Society

132 N. ASHLEY ST.

PHONE 1826

COMPLIMENTS

. . . OF . . .

LOWNDES COUNTY BOARD
OF COUNTY COMMISSIONERS

D. E. COLEMAN, *Chairman*

T. M. DASHER

E. P. STATEN

Congratulations and

Best Wishes . . .

RITZ

DOSTA

PALACE

MARTIN THEATRES

VALDOSTA

GEORGIA

SOUTHERN STATIONERY
& PRINTING COMPANY

Wholesale Paper Dealers

COMMERCIAL STATIONERS

PRINTERS

OFFICE OUTFITTERS

VALDOSTA

GEORGIA

*For the newest styles in
footwear, first . . .*

LUKE BROTHERS

127 N. Patterson St. Telephone 674

Satisfaction Assured

MUSIC

For a Profession or for Pleasure

MATHIS & YOUMANS CO.

112 N. Patterson St.

Pianos, Radios, Electric Organs, Records,
Supplies, Books, Sales and Rentals

For the best in flowers . . .

VALDOSTA GREENHOUSES

908 Williams Street

*Compliments
... of ...*

SMITH'S WALGREEN STORE

VALDOSTA

GEORGIA

**JOHN OLIVER
SERVICE STATION**

FIRESTONE TIRES
AMOCO PRODUCTS

Phone 231

THE LOWNDES COUNTY NEWS

The Family Newspaper

OFFICE SUPPLIS : JOB PRINTING

113 W. Central Ave — Telephone 1678

Just two words to remember . . .

“GEORGIA ACE”

GEORGIA FERTILIZER CO.

VALDOSTA

GEORGIA

Compliments of . . .

TAYLOR'S BAKERY

We appreciate your patronage

VALDOSTA

GEORGIA

BELK-HUDSON COMPANY

*Valdosta's Largest and
Leading Department Store*

Newest Campus Styles

**THOMPSON AND GIRARDIN
JEWELERS**

Expert Repairing

120 N. Patterson St.

VALDOSTA

GEORGIA

Compliments of . . .

STAR LAUNDRY, INC.

Over fifty years of faithful service

"Satisfaction a Habit"

H. D. BEVILLE, Mgr. PHONE 54

Congratulations to the Seniors
of 1946 . . .

**RHODES-COLLINS FURNITURE
COMPANY**

TERRY'S DRUG STORE

The Rexall Store

Patterson at Hill

Valdosta, Ga.

Phone 115-116

DUNCAN'S SHOE SHOP

*Smart Footwear of Known
Quality for College Girls*

*Compliments
. . . of . . .*

THE BRIGGS LADIES SHOP

G. S. W. C. Girls . . .

PAUSE AND REFRESH

. . . DRINK . . .

**COCA-COLA
IN BOTTLES**

**VALDOSTA COCA-COLA BOTTLING
WORKS, INC.**

*Compliments
...of...*

COWART'S DRESS SHOP

Smart Styles for College Girls

PAINÉ HARDWARE CO.

Everything in Hardware

•
Phone 800

VALDOSTA

GEORGIA

PHILLIPS-WARE MOTORS

PONTIAC CARS AND GMC TRUCKS

SALES and SERVICE

108 South Ashley Street

PURE GUM TURPENTINE

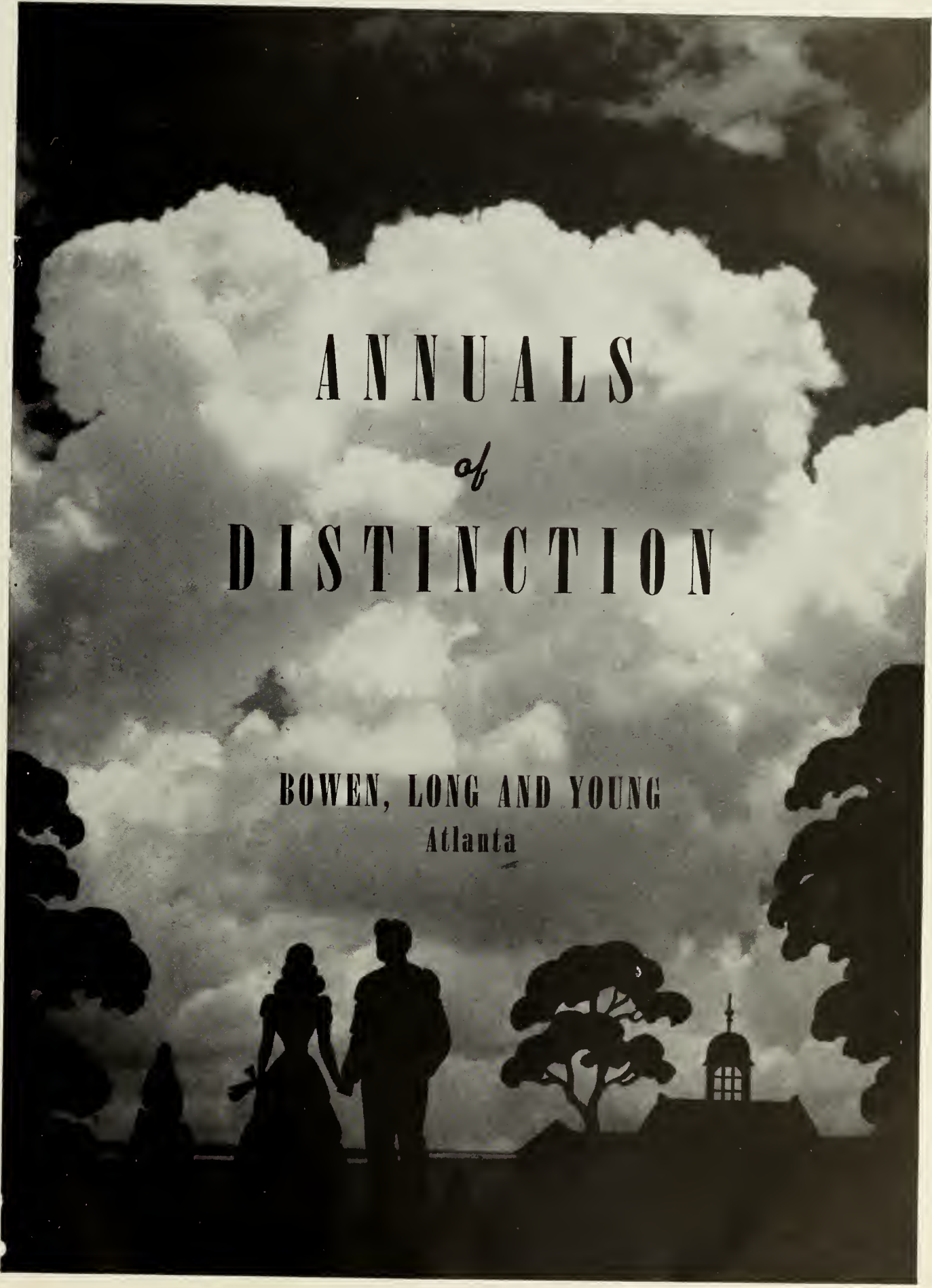
The Universal Household Cleaner

**AMERICAN TURPENTINE
FARMERS ASSOCIATION**

•
•

We, the Staff of the 1946 PINE CONE, take this opportunity to extend our sincere appreciation to those loyal friends of our institution who, by their generous support, have made possible the publication of this book.

•
•

The background of the entire page is a black and white photograph. It depicts a dramatic sky filled with large, bright, billowing clouds. In the foreground, there are dark silhouettes of trees and a couple standing together, holding hands. To the right, a building with a prominent dome is also visible in silhouette. The overall mood is romantic and classic.

ANNUALS
of
DISTINCTION

BOWEN, LONG AND YOUNG
Atlanta





