



1950

THE PINE CONE







Digitized by the Internet Archive
in 2014

<https://archive.org/details/pinecone195000geor>

G.
S.
W.
C.



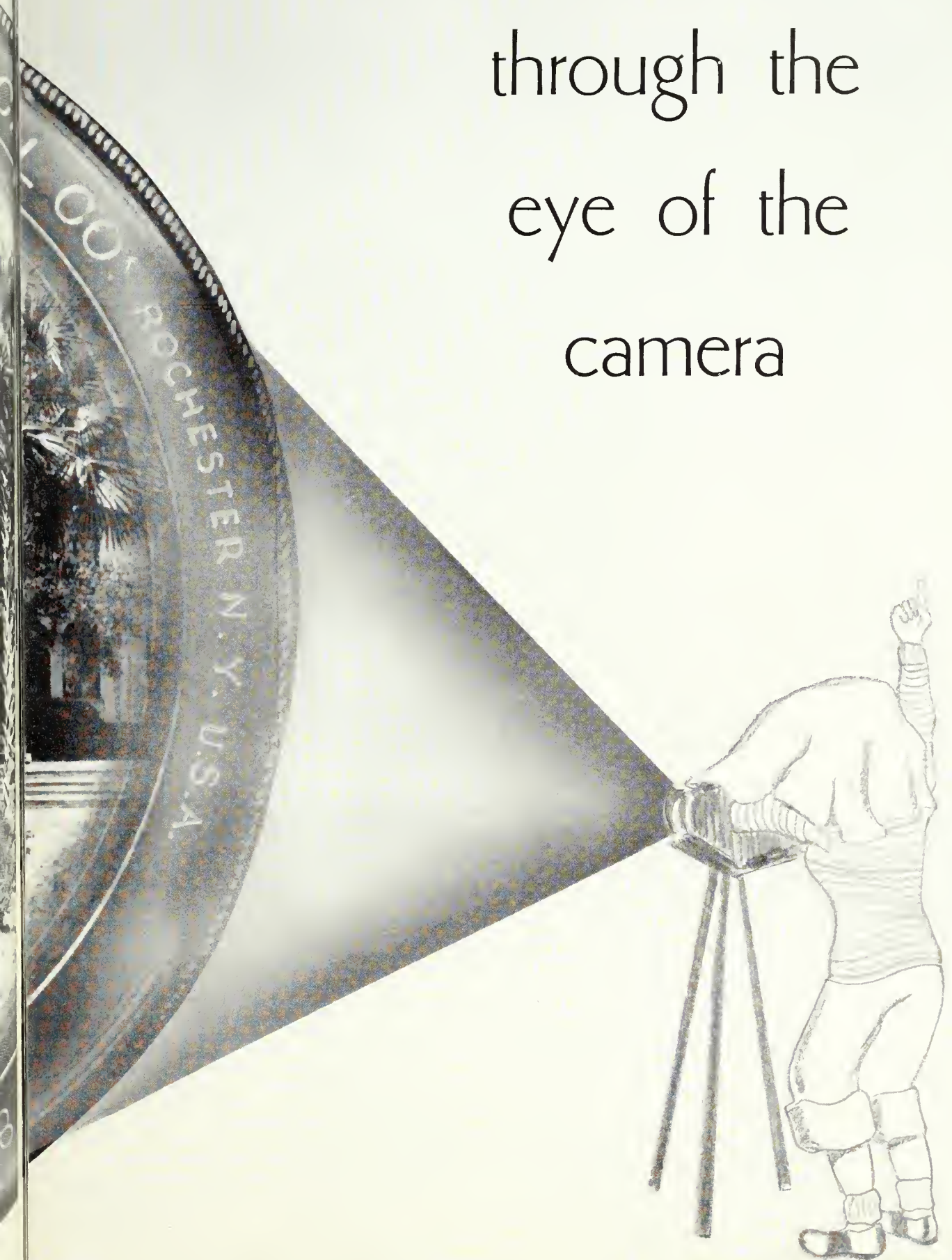
as seen

BAUSCH & LOMB OPTIC



8X10 TESSAR I₀ 113/16 IN. E.F.

through the
eye of the
camera

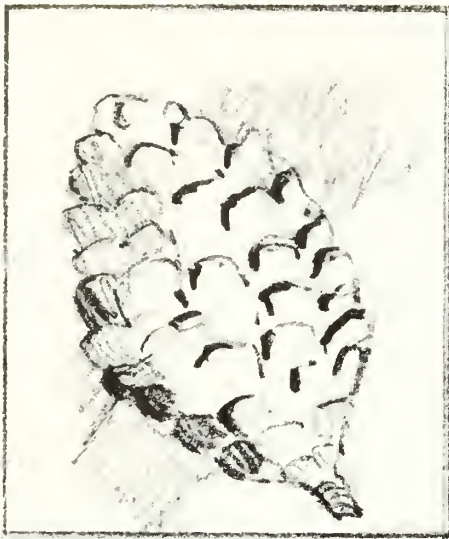




and as printed in the 1950

Pine Cone

OF THE GEORGIA STATE WOMAN'S COLLEGE
AT VALDOSTA



HIGHLIGHTING

Our Students, Faculty, and Staff Members. For we have all had a part in making G. S. W. C.'s past, present, and future. We honor G. S. W. C.'s traditions and purposes, thus achieving academic and cultural goals. Our vibrant enthusiasm and faithful loyalty makes G.S.W.C. the place we all love. To each one of us is dedicated this 1950 edition of the Pine Cone.



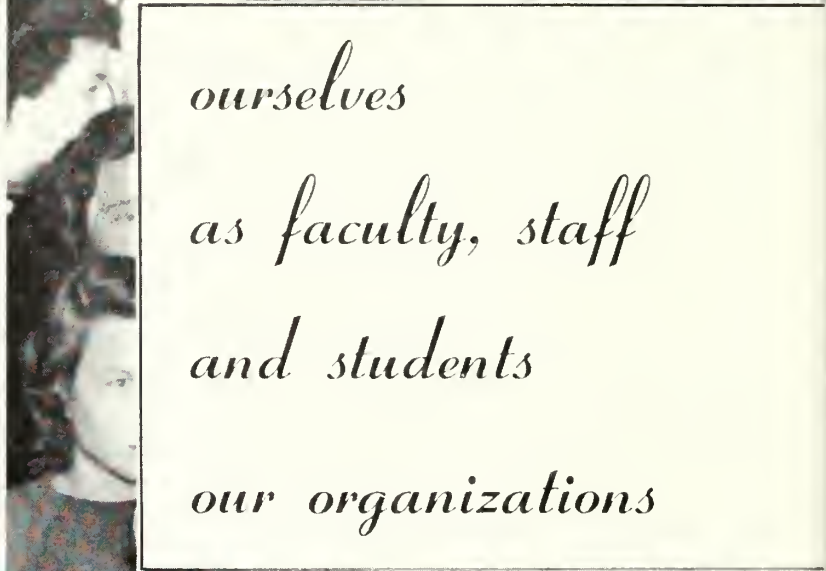
with focus
on


ourselves

as faculty, staff

and students

our organizations





*our features
and clubs
including folks
and events*

THE ADMINISTRATION



DR. JAMES RALPH THANTON,
President
A. B., M. A., Ph. D.

MRS. JOHN W. JENKINS,
Deau of Women
A. B., A. M.



MR. J. R. DUSENBURY,
Treasurer and Purchasing Agent



MRS. W. M. THOMAS,
Registrar
A. B.

and

MRS. JULIA W. MORGAN,
Secretary to the President

MR. GEORGE B. MOORE,
*Assistant to Treasurer and
Purchasing Agent*



DR. JOSEPH A. DURRENBERGER,
Academic Dean
A. B., A. M., Ph. D.



MISS LILLIAN PATTERSON,
Librarian.
A. B., B. S. in L. S.

MISS THERA HAMBRICK,
Assistant Librarian.
A. B., B. S. in L. S.



MISS ELIZABETH FINK,
Director of Placement.
B. S.
MISS BETTY JOE GUNTER,
Resident Head of Ashley Hall.
A. B.
DR. MARIAN E. FARBAR,
Resident Physician.
M. D.



MRS. FLORINE MYERS,
Dormitory Assistant
MRS. C. C. WHITTLE,
Assistant Dietitian
MRS. EVA ALFORD SHRIVALLE,
Dietitian

T H E F A C U L T Y



MISS LOUISE SAWYER,
Professor of Speech
B. S., M. A.

DR. HAROLD S. GULLIVER,
Professor of English
B. A., A. M., Ph. D.

DR. SAPELO TREANOR,
Professor of French and Spanish
A. B., A. M., Ph. D.

MRS. GERTRUDE G. ODUM,
Professor of English
B. S., A. M.

Humanities *Department*

MR. CLIFTON H. WHITE,
Associate Professor of Art and Music
A. B., M. A.

MR. JOSEPH W. PEMBER,
Assistant Professor of Art
A. B., M. F. A.



Practical Arts *Department*

MISS SARAH WEEMS,
Assistant Professor of Home Economics
B. S., H. E.

MISS MARGARET DEAVOR,
Associate Professor of Secretarial Science
A. B., M. A.

Social Science Department

MRS. J. W. PINKSTON,
Cooperating Principal
A. B.

MISS FRANCES DEKLE,
Cooperating Teacher
A. B.



MRS. JAMES JONES,
Cooperating Teacher
B. S.

MRS. CLAUDE KNIGHT,
Assistant Professor of Education
B. S., M. A.

MISS MILDRED PRICE,
Professor of History
A. B., A. M.

MISS LORENE HERNDON,
Assistant Professor of Education
B. S., M. A.

MR. WILLIAM GABARD,
*Assistant Professor of Social Science
and Director of Publicity*
A. B., M. A.



Music Department

MRS. C. C. CLARK,
Music Instructor
B. A.

MRS. W. A. PARDEE,
*Instructor of Music
Graduate*

MISS GLADYS WARREN,
Professor of Music
B. M., M. A.

CLAYTON LOGAN,
Associate Professor of Music
B. A.

Science and Mathematics Department

DR. EARL W. PHELAN,
Professor of Chemistry
Ph. D.

MR. ROLF EARL MOSELEY,
Associate Professor of Chemistry
B. Ph., M. S.



MISS MARJORIE E. CARTER,
*Associate Professor of Biology and Resident Head
of Course Hall*
B. S., M. A.

DR. BEATRICE NEVINS,
Professor of Biology
Ph. B., Ph. M., Ph. D.



Physical Education Department

MISS LEONORA IVEY,
Professor of Physical Education
B. S., M. A.

MISS MARTHA ROOKS,
*Assistant Professor of
Physical Education*
B. S., M. S.

MRS. PHYLLIS VALENTE,
*Assistant Professor of
Physical Education*
B. A., M. S.



Dr. Phelan's Hobby!!



Top picture: At work in general office.

Bottom picture: In sitting room after Sunday dinner.

Coffee between classes.



Our faculty can play basketball, too!!



The Lord's Table at Ye Olde English Christmas Feaste.

THE



Jackie Norton, *President*; Barbara Clarke, *Secretary-Treasurer*; Frankie Briggs, *Vice President*

CLASS OFFICERS

Cuba! Cuba! Cuba! That's our battle cry, our motto, our dream come true. For four years we have lived together, studied together and dreamed together, and to us this last year seems much as the others. Maybe we know the people a little better, our hopes are higher, and although we still bear the same nauties and have the same faces, few of us can deny that these four years have wrought great changes in all of us. There are so many good times to remember, but there is also so much to look forward to, that we have already be-

gun to look yearningly toward the future, maybe some of us will live as far, or further away than Cuba, but at least a bit of our hearts will always remain here. Perhaps the reason that Cuba means so much to us is the fact that it seems to be what our class stands for, and what we have done to earn it. Our Hallowe'en Carnival, Dances, selling Christmas cards, Constitutions, rosters, Amateur show, and etc. have all brought us closer together into a more unified group.

SENIOR CLASS



Top picture: Senior Carnival.

Bottom picture: Tickets for Cuba!



HILDA GAYE HEMMINGWAY
Valdosta, Georgia



SUE BELLOFF
Boston, Massachusetts



ELLEN ODOM
Albany, Georgia

GAYE HEMMINGWAY, Division of Humanities; Emphasis on English. S. G. A., 1, 2, 3, 4; Y. W. C. A., 1, 2, 3, 4; Sports Club, 1, 2, 3, 4; Pine Cone, 4; Valdosta Club, 1, 2, 3, 4; English Club, 3, 4; I. R. C., 4; League of Women Voters, 4.

SUE BELLOFF, Social Work Major, English Minor. S. G. A., 1, 2, 3, 4; Student Council, 4; Monitor, 3, 4; House Council, 1; Y. W. C. A., 1, 2, 3, 4; Cabinet, 3, 4; Sociology Club, 2, 3, 4; Vice-President, 3; Math-Science Club, 1, 2; Glee Club, 1, 2, 3, 4; Librarian, 2; President, 3; E. C. A. Chairman, 4; E. C. A., 3; Sophomore Council, 2; Chapel Choir, 1, 2, 3, 4; Artist Series Committee, 3; Who's Who, 4.

ELLEN ODOM, Biology Major, Physical Education Minor. S. G. A., 1, 2, 3, 4; Monitor, 3, 4; House Council, 2; Y. W. C. A., 1, 2, 3, 4; Cabinet, 3, 4; Sports Club, 1, 2, 3, 4; Council, 3, 4; Pine Cone, 4; Fine Arts Club, 3, 4; President, 3, 4; Math-Science Club, 1, 2, 3, 4; Glee Club, 2, 3; Secretary, 3; E. C. A., 3, 4; Chapel Choir, 3, 4; Sophomore Council, 2; Artist Series Committee, 3, 4.

FAYE HEMMINGWAY, Home Economics Major, English Minor. S. G. A., 1, 2, 3, 4; Y. W. C. A., 1, 2, 3, 4; Sports Club, 1, 2, 3, 4; Pine Cone, 4; Valdosta Club, 1, 2, 3, 4; Home Economics, 1, 2, 3, 4; English Club, 4; League of Women Voters, 4.



gaye sue ellen faye



MAURICE FAYE HEMMINGWAY
Valdosta, Georgia

"Gaye, how does it feel to be a twin?"
Sue's northern accent.
Ellen's pencil slim desire.
"No, I'm Faye!"

Seniors of 1950





ELOISE YANCEY
Brunswick, Georgia



ANNE BONE
Leslie, Georgia



LYDIA RUTH KOST
Ernstmehl, Werttemberg

ELOISE YANCEY, *Biology Major; Education Minor.* S. G. A., 1, 2, 3, 4; Student Council, 3; Second Vice-President; Monitor, 3, 4; Y. W. C. A., 1, 2, 3, 4; Cabinet, 2, 3, 4; Associate Vice-President, 2; President, 4; *Campus Canopy*, 2, 3; Math-Science Club, 1, 2, 3, 4; Romance Language Club, 2; E. C. A., 4; Who's Who, 4. **ANN BONE, *Piano Major.*** S. G. A., 1, 2, 3, 4; Y. W. C. A., 1, 2, 3, 4; Cabinet, 3, 4; House Council, 2; Philharmonic Club, 1, 2, 3, 4; President, 3, 4; Sock and Buskin Club, 2, 3, 4; Glee Club, 1; Artist Series Committee, 3, 4; E. C. A., 3, 4; Pine Cone, 4; **LYDIA KOST, *Special Student from Germany; English Major; Education Minor.*** S. G. A., 4; Y. W. C. A., 4; Fine Arts Club, 4; Glee Club, 4. **IRENE WILSON, *Division of Humanities; Emphasis on English.*** S. G. A., 1, 2, 3, 4; Y. W. C. A., 1, 2, 3, 4; House Council, 3; Pine Cone, 4; Math-Science Club, 2, 3, 4; English Club, 3, 4; Vice-President, 3; Romance Language Club, 2, 3, 4; President, 3, 4; Glee Club, 1; Artist Series Committee, 3, 4; E. C. A., 3, 4.





IRENE WILSON
Waycross, Georgia

eloise anne lydia irene

Eloise's quiet helpfulness.

Anne's musical ability.

Bringing us another part of the world, came
Lydia.

Irene's eagerness.

Seniors of 1950





LAVARA JONES
Sycamore, Georgia



MIRIAM GIRTMAN
Denton, Georgia



MARIAN YVONNE HAYES
Sasser, Georgia

LAVARA JONES, *Social Work Major; English Minor.* S. G. A., 1, 2, 3, 4; Y. W. C. A., 1, 2, 3, 4; Sports Club, 1; House Council, 1; Sociology Club, 3, 4; Secretary-Treasurer, 4; English Club, 2, 3; Sock and Buskin Club, 4; League of Women Voters, 4; Log Cabin Chairman, 4; E. C. A., 4.

MIRIAM GIRTMAN, Transfer from South Georgia College, Douglas, Georgia. *Secretarial Science Major; History Minor.* S. G. A., 3, 4; Y. W. C. A., 3, 4; House Council, 3; Business Club, 3, 4; I. R. C., 3, 4; Treasurer, 4; League of Women Voters, 4.

MARIAN HAYES, Transfer from Alabama Polytechnic Institute, Auburn, Alabama. *Mathematics Major; English and History Minor.* S. G. A., 3, 4; Y. W. C. A., 3, 4; Sports Club, 4; House Council, 3; Math-Science Club, 3, 4; English Club, 4; I. R. C., 4; Secretary, 4; League of Women Voters, 4; Treasurer, 4.

MILDRED MANLEY, *Social Work Major; Physical Education and English Minor.* S. G. A., 1, 2, 3, 4; Y. W. C. A., 1, 2, 3, 4; Sports Club, 3; House Council, 2; Sociology Club, 2, 3, 4; Secretary-Treasurer, 3; President, 4; English Club, 4; Dance Club, 3; Glee Club, 1, 2, 3; Class Sweetheart, 3; E. C. A., 4.





MILDRED CLAIRE MANLEY
Griffin, Georgia

“red” “midge” marian
mildred claire

“Red”—our redhead.

“Midge”—our young Broadway star.

“Always on the go Marion”.

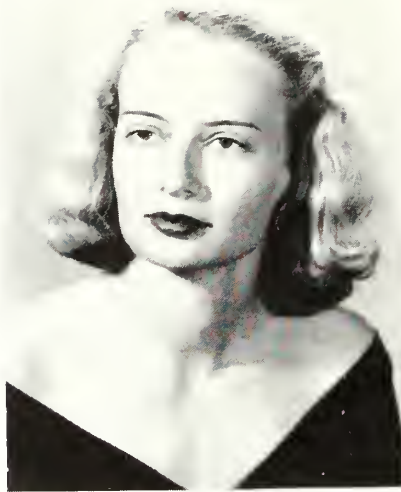
“Going to Belcher’s, Mildred?”

Seniors of 1950





MARGARET LOUISE TRAYNHAM
Broxton, Georgia



MARY ANN McLENDON
Bronwood, Georgia



ANNA RIVIERE KENNEDY
Thomaston, Georgia

MARGARET TRAYNHAM, *English Major, Education Minor.* S. G. A., 1, 2, 3, 4; Student Council, 2, 4; Monitor, 3, 4; President, Sophomore Class; Y. W. C. A., 1, 2, 3, 4; Cabinet, 2, 3, 4; Vice-President, 3; Campus Canopy, 3; Pine Cone, 4; Editor, 4; Home Economics Club, 3; Dance Club, 3; I. R. C., 1, 2; Glee Club, 2; Handbook, 3; Editor, 3; Social Chairman, 4; E. C. A., 2, 4; Who's Who, 4. MARY ANN McLENDON, *Home Economics Major, Biology Minor.* S. G. A., 1, 2, 3, 4; Monitor, 3, 4; Y. W. C. A., 1, 2, 3, 4; Sports Club, 1, 2, 3, 4; Sports Council, 3, 4; Pine Cone, 3, 4; Home Economics Club, 1, 2, 3, 4; Treasurer, 2, 3; President, 4; Math-Science Club, 3, 4; League of Women Voters, 4; E. C. A., 4. ANNA KENNEDY, *Division of Humanities; Division of English.* S. G. A., 1, 2, 3, 4; House Council, 2, 3; Y. W. C. A., 1, 2, 3, 4; Sports Club, 1, 2; Romance Language, 3; English Club, 3, 4; Vice-President, 4; League of Women Voters, 4; Secretary, 4; Log Cabin Committee, 4; Social Committee, 3; Class Beauty, 4. JACKIE NORTON, *Secretarial Science Major, English Minor.* S. G. A., 1, 2, 3, 4; Student Council, 4; House Council, 2; Monitor, 4; President, Senior Class; Y. W. C. A., 1, 2, 3, 4; Cabinet, 4; Treasurer, 4; Sports Club, 1, 2, 3, 4; Council, 3, 4; Pine Cone, 4; Associate Editor, 4; Business Club, 1, 2, 3, 4; President, 3; Sociology Club, 3; League of Women Voters, 2, 3; Secretary, 3; E. C. A., 3, 4; Handbook, 3; Associate Editor 3.





JACQUELINE NORTON
Boston, Georgia

margaret
"anna-ree"

mary ann
"jackie"

"What did you say, Margaret?"
Mary Ann's enthusiastic laugh.
"Anna-Ree's" blond hair.
Jackie's boundless energy.

Seniors of 1950





ELIZABETH JANE GIBSON
Doualsouville, Georgia



MAXIE ANNETTE WARREN
Doualsouville, Georgia



CHARLOTTE JOYCE CHILDS
Thomaston, Georgia

JANE GIBSON, *Division of Humanities; Emphasis on English.* S. G. A., 1, 2, 3, 4; House Council, 3; Y. W. C. A., 1, 2, 3, 4; Sports Club, 3; *Campus Canopy*, 4; Pine Cone, 4; English Club, 3, 4; I. R. C., 4; League of Women Voters, 3, 4; Treasurer, 3; President, 4. **MAXIE WARREN, *Home Economics Major, Social Work Minor.*** S. G. A., 1, 2, 3, 4; House Council, 3, 4; Y. W. C. A., 1, 2, 3, 4; Pine Cone, 4; Sociology Club, 3, 4; Home Economics Club, 2, 3, 4; Vice-President, 4; League of Women Voters, 3, 4; Vice-President, 3, 4; Log Cabin Committee, 4. **JOYCE CHILDS, *Division of Humanities; Emphasis on English; Music Minor.*** S. G. A., 1, 2, 3, 4; House Council, 2, 3; Y. W. C. A., 1, 2, 3, 4; Sports Club, 1; English Club, 4; Philharmonic Club, 1, 2; Glee Club, 1; Chapel Choir, 1. **MARY DUNCAN, *Division of Humanities; Emphasis on English.*** S. G. A., 1, 2, 3, 4; House Council, 1; Y. W. C. A., 1, 2, 3, 4; *Campus Canopy*, 1, 4; Pine Cone, 4; English Club, 3, 4; Sock and Buskin Club, 1, 2, 3, 4; Glee Club, 1, 2, 3; Seranaders, 2, 3.





MARY CLAIRE DUNCAN
Leslie, Georgia

jane

maxie
mary claire

"jerce"

Jane's big dimples.

Maxie's green housecoat.

"Play 'Twelfth Street Rag', Jerce."

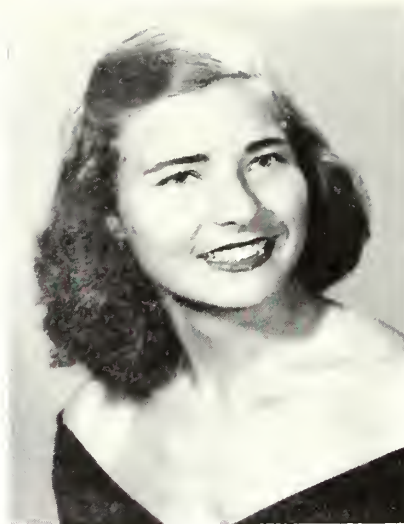
Mary Claire, "Anybody want to play bridge?"

Seniors of 1950





MARJORIE MITCHELL NOELL
Valdosta, Georgia



JULIA CLAY BRIGGS
Valdosta, Georgia



FRANCIS BRISCOE PAINE
Valdosta, Georgia

MARJORIE NOELL, *Social Work Major, English Minor.* S. G. A., 1, 2, 3, 4; Y. W. C. A., 1, 2, 3, 4; Sports Club, 1, 2, 3, 4; Pine Cone, 3; Fine Arts Club, 3, 4; Sociology Club, 3, 4; Valdosta Club, 1, 2, 3, 4; Secretary-Treasurer, 4; I. R. C., 4; League of Women Voters, 2. JUDY BRIGGS, *Secretarial Science Major, English Minor.* S. G. A., 1, 2, 3, 4; Y. W. C. A., 1, 2, 3, 4; Sports Club, 1, 2, 3, 4; Vice-President, 4; Council, 3, 4; Business Club, 3, 4; Valdosta Club, 1, 2, 3, 4; Glee Club, 1. FRANCIS PAINE, *Social Science, Emphasis on Social Work.* S. G. A., 1, 3, 4; Student Council, 4; Vice-President of Freshmen Class; Sports Club, 1; Sociology Club, 3, 4; Valdosta Club, 1, 3, 4; President, 4; I. R. C., 4; Glee Club, 1; E. C. A., 4. FRANKIE BRIGGS, *Secretarial Science Major, English Minor.* S. G. A., 1, 2, 3, 4; Vice-President of Senior Class; Y. W. C. A., 1, 2, 3, 4; Sports Club, 1, 2, 3, 4; Council, 4; Pine Cone, 4; Fine Arts, 3, 4; Business Club, 3, 4; Valdosta Club, 1, 2, 3, 4; Dance Club, 3, 4.



margie judy frances frankie

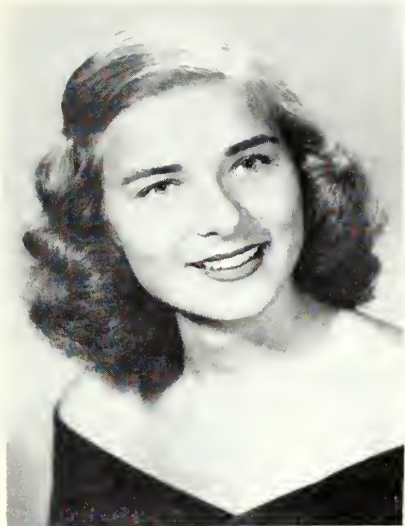
Margie's good looking clothes.

Judy's good tan.

Frances, our link between town girls and
dormitory students.

Frankie in a bathing suit!

Seniors of 1950



SARA FRANCES BRIGGS
Valdosta, Georgia





MARY WILLIAMS OWEN
Allenhurst, Georgia



SALLY PATRICIA SUTHERLAND
Atlanta, Georgia



LOUISE GODBEE
Vidalia, Georgia

MARY OWEN, *Division of Humanities; Emphasis on English.* S. G. A., 1, 2, 3, 4; Vice-President, 3; President, 4; House Council, 3, 4; Monitor, 3, 4; Student Council, 3, 4; Y. W. C. A., 1, 2, 3, 4; *Campus Canopy*, 3; Pine Cone, 3, 4; Senior Honor Society, 3; Fine Arts Club, 1, 2; Secretary-Treasurer, 2; English Club, 4; Sock and Buskin, 1, 2, 3, 4; Historian, 2; I. R. C., 3; League of Women Voters, 2, 4; E. C. A., 4; Sophomore Council, 2; Class Beauty, 3.

PATRICIA SUTHERLAND, *Division of Humanities; Emphasis on English.* S. G. A., 1, 2, 3, 4; House Council, 3; Monitor, 4; Y. W. C. A., 1, 2, 3, 4; Sports Club, 1, 3, 4; Pine Cone, 4; Fine Arts Club, 2, 3, 4; Historian, 3; Secretary-Treasurer, 4; English Club, 3, 4; President, 4; Sock and Buskin Club, 4; League of Women Voters, 2, 3, 4; President, 3; Chapel Choir, 3, 4; Artist Series Committee, 4; E. C. A., 3, 4.

LOUISE GODBEE, *Biology Major, Chemistry Minor.* S. G. A., 1, 2, 3, 4; Y. W. C. A., 1, 2, 3, 4; Pine Cone, 4; Math-Science Club, 2, 3, 4; President, 4; English Club, 4; Secretary-Treasurer, 4; League of Women Voters, 3, 4; Glee Club, 1; Chapel Choir, 3; Sophomore Council, 2; E. C. A., 4.

JO ANNE STORY, *Secretarial Science Major, English Minor.* S. G. A., 1, 2, 3, 4; House Council, 2; Monitor, 3; Y. W. C. A., 1, 2, 3, 4; Cabinet, 4; Sports Club, 1, 2, 3, 4; Council, 1, 2, 3, 4; Secretary, 2; Treasurer, 3; President, 4; Business Club, 1, 2, 3, 4; Secretary, 2; Math-Science Club, 3; English Club, 4; League of Women Voters, 3; "Marga", 3; Chapel Choir, 3, 4; Sophomore Council, 2; E. C. A., 4; Who's Who, 4.



mary patsy louise jo anne

Mary's acting ability.

Patsy's outstanding vocabulary.

Louise's sparkling eyes.

"Who's the sweetest girl I know?" Jo Anne,
of course.

Seniors of 1950



JO ANNE STORY
Albany, Georgia





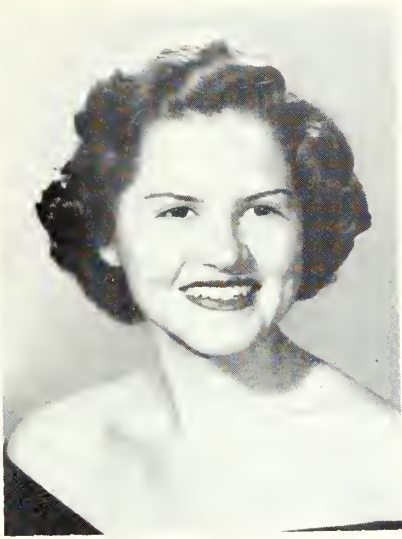
IRIS CONSTANCE MOORE
Douglas, Georgia



DORIS CLAIRE MOBLEY
Moultrie, Georgia

IRIS MOORE, Transfer from South Georgia College, Douglas, Georgia. *Division of Humanities; Emphasis on English.* S. G. A., 3, 4; House Council, 3; Y. W. C. A., 3, 4; *Campus Canopy*, 3, 4; I. R. C., 3, 4; Vice-President, 4. CLAIRE MOBLEY, *Secretarial Science Major and Sociology Minor.* S. G. A., 1, 2, 3, 4; Y. W. C. A., 1, 2, 3, 4; Freshman Honor Society, 1, 2; Senior Honor Society, 3, 4; President, 4; Business Club, 1, 2, 3, 4; Treasurer, 3; Sociology Club 3, 4; Vice-President, 4; Math-Science Club, 1, 2, 3, 4; League of Women Voters, 4; E. C. A., 4. BARBARA CLARKE, *Secretarial Science Major, English Minor.* S. G. A., 1, 2, 3, 4; House Council, 2; Secretary-Treasurer of Senior Class; Y. W. C. A., 1, 2, 3, 4; Sports Club, 1, 2, 3; Council, 2; Pine Cone, 4; Business Manager, 4; Business Club, 1, 2, 3, 4; English Club, 4; Dance Club, 2, 3, 4; President, 3; Artist Series Committee, 3; E. C. A., 3; Sophomore Council, 2.





BARBARA CLARKE
Moultrie, Georgia

iris

claire

barbara

Iris's long fingernails.

Our Honor Student, Claire.

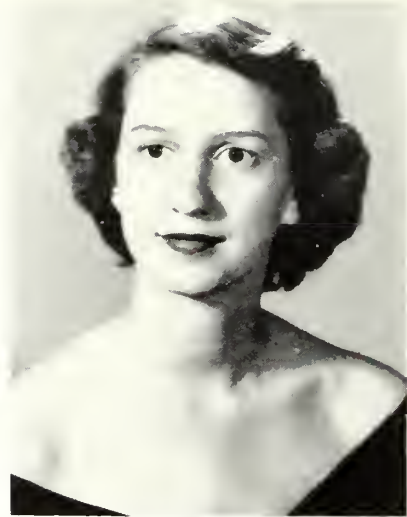
Barbara's verbal shorthand.

Seniors of 1950





MARGARET ANN SMITH
Waycross, Georgia



JEAN MULLIS
Valdosta, Georgia

MARGARET ANN SMITH, *Division of Humanities; Emphasis on English.* S. G. A., 1, 2, 3, 4; House Council, 3, 4; Student Council, 4; Y. W. C. A., 1, 2, 3, 4; Sports Club, 1, 2, 3, 4; *Campus Canopy*, 1, 2, 3, 4; Editor, 4; Pine Cone, 3; English Club, 3, 4; Romance Language Club, 2, 3; Secretary-Treasurer, 3; League of Women Voters, 2; Glee Club, 1, 2; E. C. A., 4. JEAN MULLIS, *Secretarial Science Major, History Minor.* S. G. A., 1, 2, 3, 4; Y. W. C. A., 1, 2, 3, 4; Sports Club, 1, 2, 3, 4; Council, 2, 3, 4; Business Club, 2, 3, 4; Treasurer, 2; Vice-President, 3; President, 4; Valdosta Club, 1, 2, 3, 4; I. R. C., 2, 3, 4; Treasurer, 2; President, 3; League of Women Voters, 2; E. C. A., 3, 4. RUTH TEMPLETON, *Art Major.* S. G. A., 1, 2, 3, 4; Y. W. C. A., 1, 2, 3, 4; *Campus Canopy*, 3; Fine Arts Club, 1, 2, 3, 4; Valdosta Club, 1, 2, 3, 4; League of Women Voters, 1, 2, 3, 4; Glee Club, 1.





RUTH WALTON TEMPLETON
Valdosta, Georgia

"smitty"

jean

ruth

"Smitty" with her flash camera.

Jean's friendliness.

Design me a hat for Easter, will you Ruth?

Seniors of 1950





Mary Gibson, *Vice-President*; Thadyne Pitt, *President*; Lucy Bush, *Secretary-Treasurer*

CLASS OFFICERS

Our first year in Senior! Oh, what a wonderful year, but cheer up, don't be sad we've still another year to live in Senior Hall. We can still love the atmosphere that is here, the friendships in our own class and others, but how will we think without our Seniors to help us? As we have spent the days and nights playing, studying, sleeping, planning, and generally enjoying life in Senior Hall, we have been conscious of our responsibility, we see in our future, work, tears, good times, happiness, our A. B. or our B. S., the Hang-

ing of the Greens and other activities that will be ours. We leave behind for our memories our Faculty-Student Basketball game, our dance, the weekend of Junior-Senior Frolics, and our presence in Junior Wing and upstairs too. Our trunks are packed and expressed, our suitcases are closed, the curtains are down, the room looks bare, we've kissed the furniture goodbye, here we go home for the summer to come back next fall as the mighty Seniors of G. S. W. C.

JUNIOR CLASS



*Top picture: Student-Faculty ballgame.
Bottom picture: Off to town!*

Juniors



Martha J. Boatwright
Douglas



Theta Booth
Waycross

FIRST ROW

Mary Brand
Montezuma

Lenora Brown
Pelham

Betty Buckner
Montezuma

Lucy Bush
Colquitt

SECOND ROW

Alice Carter
Alma

Elaine Cheshire
Colquitt

Millie J. Chitwood
Valdosta

Betty Clark
Valdosta

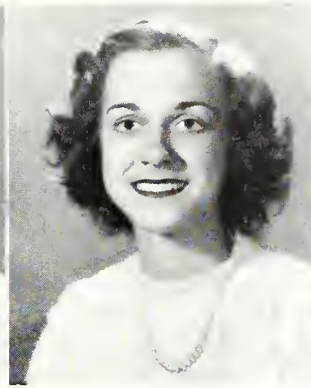




Betty English
Homerville



Sue Fletcher
Parrott



Edwina Ford
Sylvester



Mary Gibson
Valdosta

FIRST ROW

Jeanell Grogan
Calhoun

Jo Carroll Guthrie
Valdosta

SECOND ROW

Emily Justice
Attapulcus

Dorothy Keefe
Nashville



Juniors



Eleanor J. King
Blakely



Margaret Mann
Starke, Fla.



Anna Marangos
Valdosta

FIRST ROW

Anne Murdock
Meigs

Sarah Parker
Richland

Mary R. Parramore
Valdosta

Peggy Phelan
Valdosta

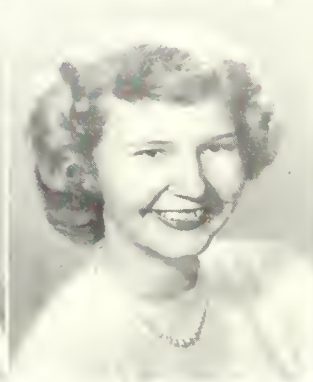
SECOND ROW

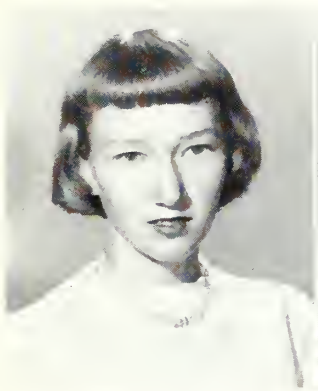
Thadyne Pitt
Lincolnton

Jacqueline Ramsey
Alma

Gerelda Riggins
Homerville

Margaret Ruffin
Albany





Mary Singletary
Pellham



Ann Smith
Quitman



Amarylese Steedley
Alma



Monteen Strickland
Cairo

FIRST ROW

Bobbie Taylor
Rebecca

Olleta Templeton
Valdosta

SECOND ROW

Mary T. Tullis
Valdosta

Betty Waters
St. Marys





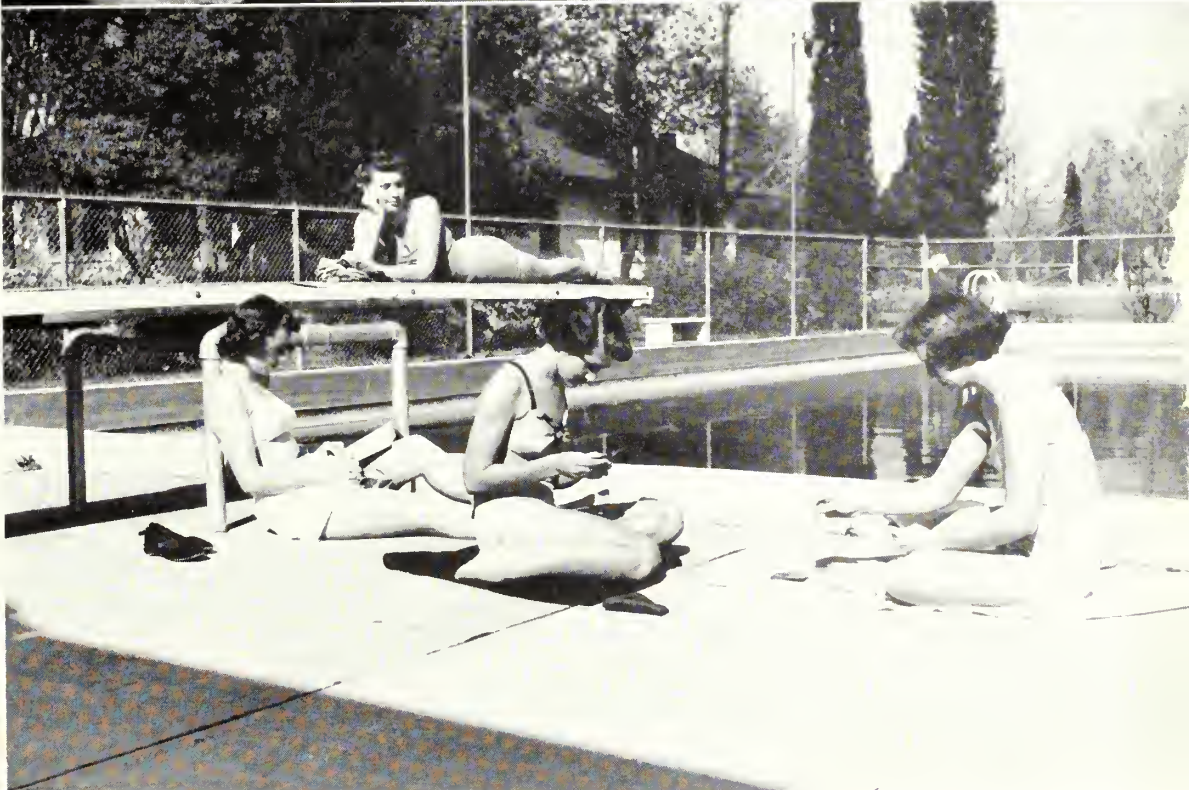
Sister Griffin, Vice-President; Joan Dekle, President; and Betty Jane King, Secretary and Treasurer

CLASS OFFICERS

Be a Sophomore!! The word echoes up and down Converse Hall. Now that we are, we're the happiest ones in the world. We're seasoned veterans of the School of Labs, Lit, and Life. We've been to college two whole wonderful years. We've gotten our revenge for Rat Day, we've had our Sweetheart Dance. The Sophomore Council was our very own and we decorated our gorgeous Christmas tree. Here we go, blithely over to that fabulous hall—Senior. The joy of double closets, unlimited light extension and no quiet hour, that marvellous place we've dreamed of ever since Converse came into view. We've loads of things to carry with us, the memories, and

the curtains that are slightly torn, the love, and towels that are getting thin in the middle, the friends and the bedspreads, faded by many trips to the laundry on Thursdays. Give us time and we'll prove to be the best class that ever got degrees from G. S. W. C. We'll be the most loyal, we've proved that already by having so many members that some of us lived in Converse all year, we'll be the most versatile and the best loved. We've loads of Seniors to help us and experience to back us up, so with enthusiasm written all over us, we say "Look out 1952 and Senior Hall, here we come"!!

SOPHOMORE CLASS



Top picture: Our dream come true—Sweetheart Dance.

Bottom picture: Spring Quarter comes and you will find us at the pool!



Sophmores

FIRST ROW

Cornelia Ashley
Valdosta

Pat Askin
Barnesville

Edith Bassett
Fort Valley

Luceil Bauer
Hamilton

Jane Benton
Albany

Betty Bishop
Alma

SECOND ROW

Elaine Boatwright
Douglas

Jane Bowen
Homerville

Martha Bruce
Homerville

Jackie Bryan
Tifton

Rosaline Bunn
Montezuma

Virginia Chandler
Blakely

THIRD ROW

Billie Clift
Bainbridge

Betty Collins
Idel

Anna Courson
Pearson

Gayle Croom
Pembroke

Martha E. Daniel
Douglas

Dotsy Deadwyler
Brunswick



Sophmores



FIRST ROW

Joan Dekle
Cordele

Marguerite DeLoach
Valdosta

Ruth Dinkins
Valdosta

Ann Dixon
Camilla

Dot Drexel
Valdosta

Mary Efird
Albany

SECOND ROW

Norma Gaskin
Nashville

Ruby Gibson
Folkston

Joanne Gilmer
Tifton

Josephine Gooding
Woodbine

Doris Gothard
Thomasville

Barbara Green
Sylvester

THIRD ROW

Thelma Griffin
Valdosta

Melba Grogan
Calhoun

Leila Harmon
Albany

Katherine Hill
Valdosta

Mary C. Hill
Moultrie

Mary Holder
Tifton





Sophmores

FIRST ROW

Barbara Howell
Valdosta

Betty Hughes
Homerville

Gloria Humphreys
Barwick

Betty Jernigan
Homerville

Robley Jobe
Valdosta

Dorris Johnson
Valdosta

SECOND ROW

Gloria Johnson
Quitman

Elinor Jones
Quitman

Jeannette Jones
Quitman

Emmie Kenney
Moultrie

Betty J. King
Fort Gaines

Mary King
Tifton

THIRD ROW

Betty Lee
Valdosta

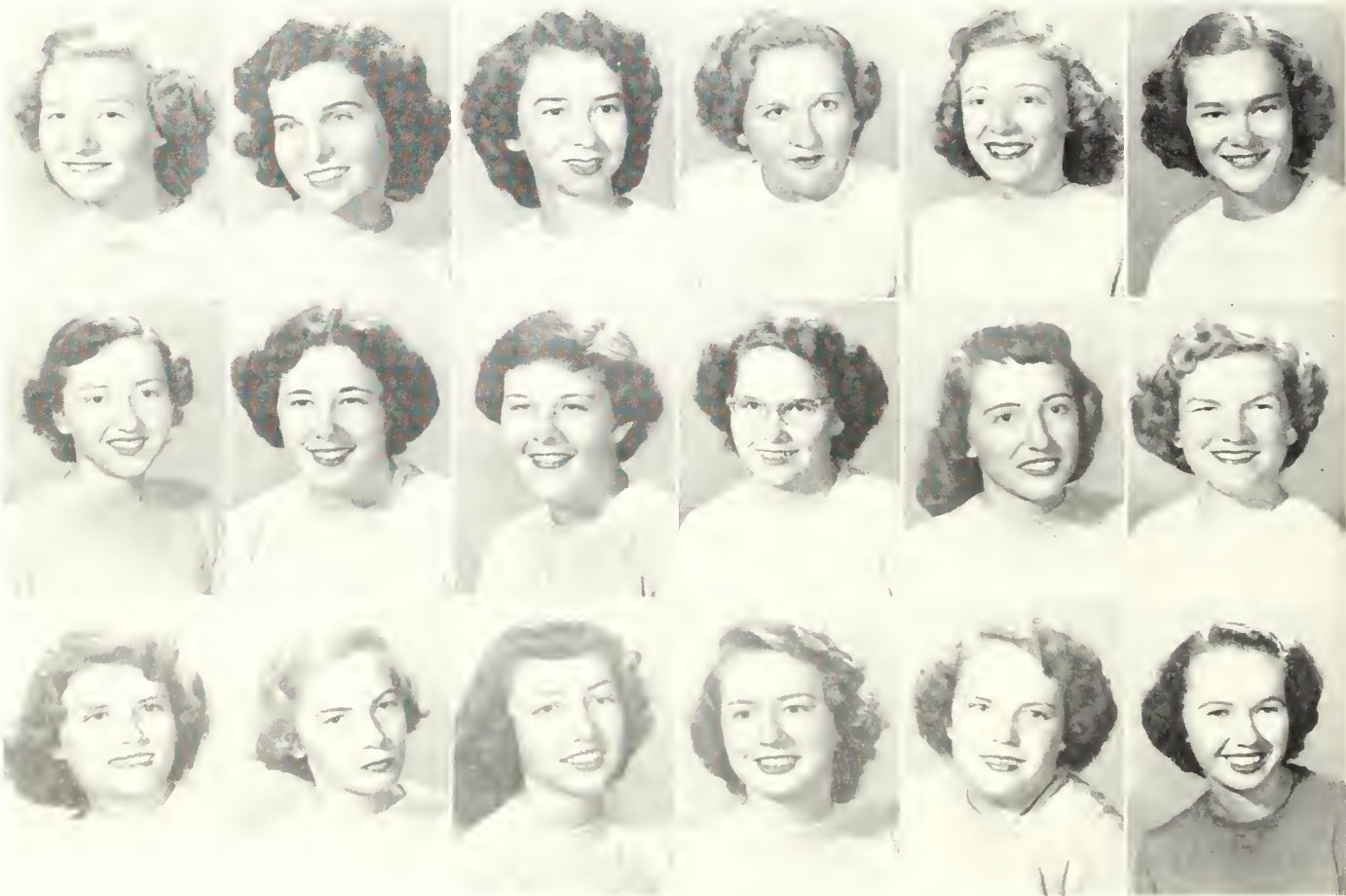
Margaret Looper
Dalton

Joyce Long
Valdosta

Mary Jo Lott
Douglas

Alice McCall
Cairo

Flo McCall
Hinesville



Sophmores



FIRST ROW

Martha McKemie
Bluffton

Evelyn McLain
Lake Park

Ruth Miller
Pembroke

Betty Jo Mims
Hartsfield

Judy Moore
Ray City

Carleen Newell
Albany

SECOND ROW

Patricia O'Neal
LaGrange

Anne Owens
Newnan

Ann Palmer
Cairo

Rose Parrish
Adel

Annette Player
Bainbridge

Joan Price
Moultrie

THIRD ROW

Gloria Proctor
Bainbridge

Lenoir Rabun
Valdosta

Nelle Reed
Rebecca

Jane Reeves
Sylrester

Emily Reichert
Boston

Elaine Ryals
McRae





Sophmores

FIRST ROW

Joan Searboro
Lyons

Nancy Sellers
Adel

Jacquelyne Sikes
Claxton

Fayge Siskind
Valdosta

Marjorie Smith
Valdosta

Betty Spell
Valdosta

SECOND ROW

Doris Spradley
Tifton

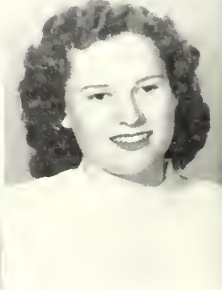
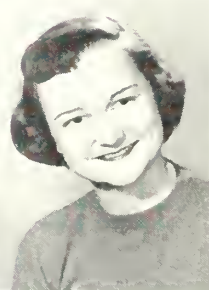
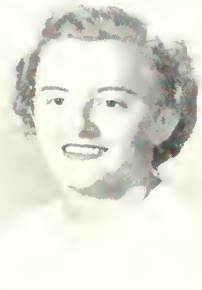
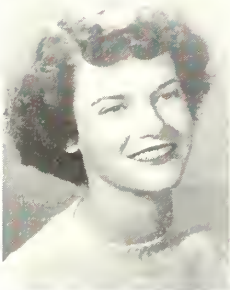
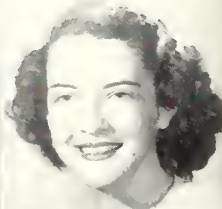
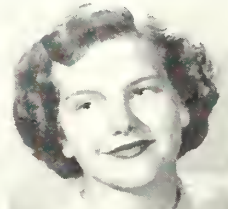
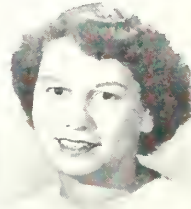
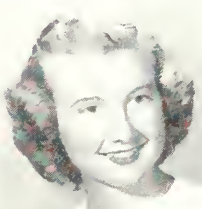
Lydia Story
Ashburn

Dorothy Stone
Sycamore

Shirley Tharpe
Vienna

Blount Trammell
Columbus

Margaret Vonier
Boston



Sophmores



FIRST ROW

Marian Waters
Blackshear

Bobbie Watson
Fort Gaines

Greta Weathers
Cairo

Sue N. White
Cairo

Fleta L. Williamson
Sylrester

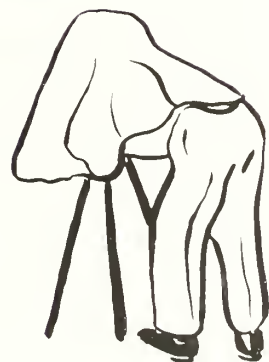
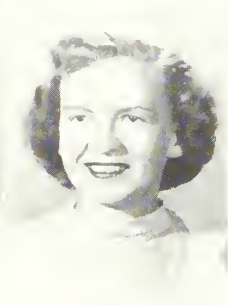
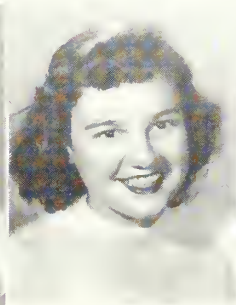
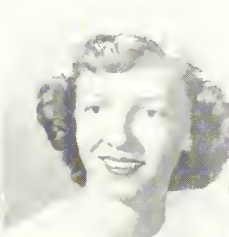
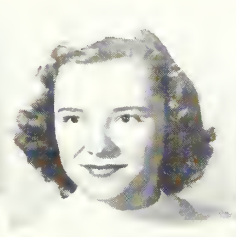
SECOND ROW

Dorothy Williford
Rebecca

Jane Wimberly
Albany

Elaine Windham
Reynolds

Virginia Wright
Valdosta





Ann Bryant, *Treasurer*; Jean VanLandingham, *Secretary*; Barbara McElvey, *Vice-President*; Pat Owens, *President*

CLASS OFFICERS

Heah we are honey child, the newest little old Freshman Class on campus, and one of the busiest. Maybe we aren't as big as the ones in the past few years, but what we lack in size we have fully made up for in pep and enthusiasm. Yes, we still get homesick, but it doesn't seem nearly as bad as it did at first, and there is never time to really think about it much anymore anyway. There are so many things we participate in, and when

we elected our class president, we began to feel more like a class with plenty of spirit and unity instead of just a confused group of new Freshmen. Our "beauty" was elected for the Christmas dance and we feel mighty proud of her. There are other things that we participate in too, such as: Play Day-May Day, the Glee Club Concert, and Freshman picnic at Twin Lakes.

FRESHMAN CLASS



Top picture: I AM a rat!!

Bottom picture: From beginning to end—we sign out.



FIRST ROW
 Sara C. Alford *Ponlan* Jo Anne Allison *DuPout* Jackie Baldwin *Fort Gaines*
SECOND ROW
 Martha Barrs *Quitman* Virginia Bennett *Adel* Laura A. Bowen *Tifton*

FIRST ROW
 Jackie Bower *Dixie* Eleanor Bowman *Blakely* Peggy Blanton *Valdosta* Ann Brooker *Blackshear* Mary J. Brooks *Valdosta* Ann Bryant *Moultrie*

SECOND ROW
 Janette Burt *Ochlochnee* Ann Camp *Sylvester* Jessie Carter *Lake Park* Joan Chastain *Ochlochnee* Dorothy Coarsey *Brookfield* Betty Connell *Perry*

THIRD ROW
 Virginia Crosby *Valdosta* Rebecca Culbreth *Moultrie* Betty J. Daniel *Mouthezuma* Joan Daniel *Sylvester* Glenice Daugharty *Fargo* JoAnn Dorminey *Douglas*





FIRST ROW

Mary Ann Dykes *Montezuma* Elizabeth Eason *Collins* Helen G. Ford *Sylvester* Mary Gallagher *Valdosta* JoAnn Gardner *Houerrille* Peggy Gorday *Dothan, Ala.*

SECOND ROW

Ruth Gray *Ocala, Fla.* Betty J. Green *Hartsfield* Elizabeth Green *Valdosta* Janice Harrington *Fargo* Ida J. Hatcher *Boston* Pat Heeth *Leesburg*

Freshmen

FIRST ROW

Betty Herbert *Fort Valley* Carolyn Hinson *Houerrille* Harriett Howell *Americus* Betty Jackson *Macon* Ann James *Valdosta* Jacquelyn Joiner *Boston*

SECOND ROW

Martha Jones *Marshallville* Peggy Jones *Uvalda* Rose M. Jones *Sylvester* Jean Jordan *Macon* Jane Krumrine *Brunswick* Mary Lee *Waycross*

THIRD ROW

Jeanne McBride *Thomasville* Helen McCord *Sylvester* Gloria McCoy *Sylvester* Sue McDonald *Moultrie* Jane McHugh *Richmond* Carolyn McLeod





Theda McMillan
Enigma



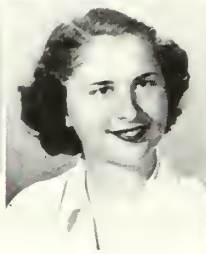
FIRST ROW
Joann Martin
Ellabelle



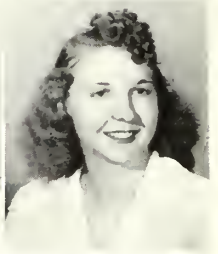
Jackie Mathis
Fitzgerald



SECOND ROW
Frances Meadows
DuPont



SECOND ROW
Kathleen Meeks
Blackshear



Mary Ann Myers
Valdosta

FIRST ROW

Sarah E. Mitchell
Porterdale

Hylda Morris
Valdosta

Marthann Newton
Valdosta

Dorothy Ogletree
Perry

Barbara Oliver
Barnesville

Pat Owens
Tifton

SECOND ROW

Aspasia Panos
Valdosta

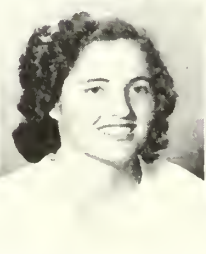
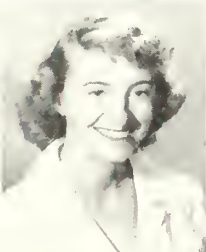
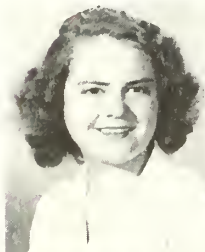
Marilyn Peacock
Brunswick

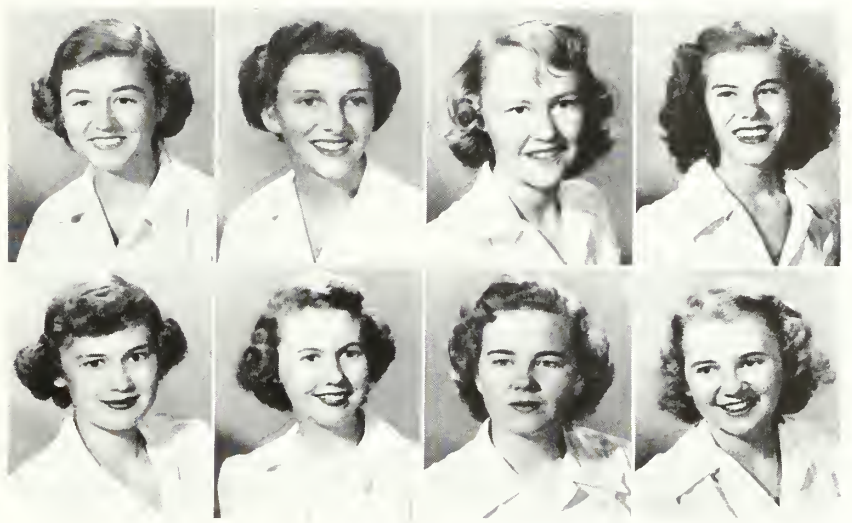
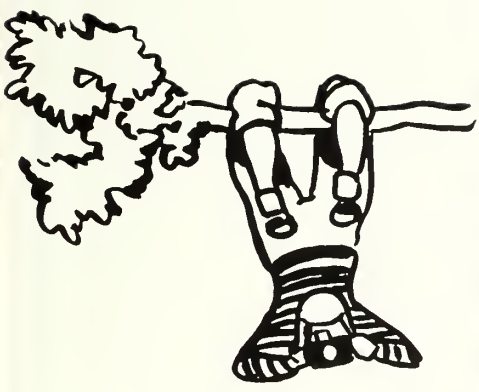
Betty J. Perritt
DuPont

Gloria Peters
Cairo

Dot Pindar
Valdosta

Janice Player
Bainbridge





FIRST ROW

Peggy Pope Barwick Hilda Scruggs Hahira Mary Singletary Ochlochnee Audrey Sizemore Sylvester

SECOND ROW

Lily Starling Hahira Vallie Staten Atlanta Mary Steedley Homerville Ann Stubbs Lanier

Freshmen

FIRST ROW

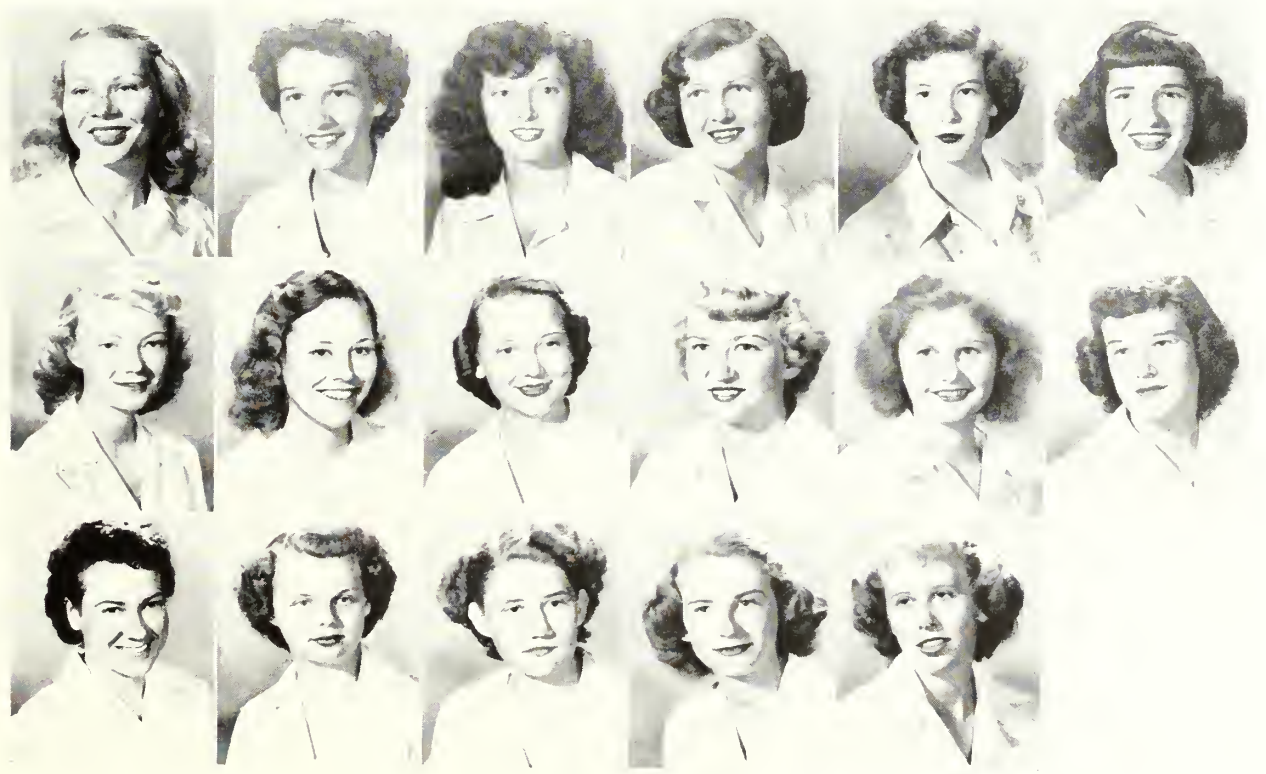
Barbara Suber Moultrie Claryce Thomas Lake Park Louise Thompson Quitman Jean VanLandingham Cairo Betty Virden Marshallville Margaret Warbington Fitzgerald

SECOND ROW

Marie Wellmaker Valdosta Virginia Westberry Lake Park Jean Whaley Shellman Clara N. Wheelchel Moultrie Harriette Whitcomb Camilla Arva Ward Albany

THIRD ROW

Mable White Valdosta Mattie L. Wilson Screven Evelyn Zant Lake Park Katherine Zeigler Valdosta Sylvia Zeigler Adel



Out



ORGANIZATIONS

and clubs



THE STUDENT GOVERNMENT ASSOCIATION



MARY OWEN,
President

As members and participant of the Student Government Association, we have the privileges of making suggestions for improvements, of voting for members to serve on Student Council, and of our own actual self-government. We elect our own president and officers of the Association, including our House Councilors, who aid the monitors, and serve as Fire Lieutenants, and in other general capacities in concern with the regulations of S. G. A. We, as members of S. G. A. co-operate with the administration in making our own rules and regulations, and through this we are able to have a better understanding and greater unity in working out our problems.



OFFICERS

Mary Brand, *Secretary-Treasurer*; Edwina Ford, *Second Vice-President*; Polly Mann, *First Vice-President*; and Sue Belloff, *E. C. A. Chairman*.



Left to right standing: Joan Dekle, Mary Brand, Jackie Norton, Francis Paine, Polly Mann, Margaret Traynham; *Seated:* Thadyne Pitt, Sue Belloff, Mary Owen, Edwina Ford. *Not pictured,* Margaret Smith and Patricia Owens.



EXTRA CURRICULAR ACTIVITIES COMMITTEE



We, as the Extra-Curricular Activities Committee, serve in the capacity of co-ordinators for the publications, clubs, and various organizations on campus. The members of E. C. A. are the club presidents, class presidents, editors of publications, and the Social and Log Cabin Chairman.



Lavara Jones, *Log Cabin Chairman*;
Sue Belloff, *Chairman*; Margaret
Traynham, *Social Chairman*.



Left to right, standing: Jackie Norton, Margaret Traynham, Mary Gibson, Mary Owen, Irene Wilson, Jane Gibson, Ann Bone, Patsy Sutherland, Francis Paine, Margaret Smith, Mary Ann McLendon, Jo Anne Story, Sue Belloff; *Back row seated:* Louise Godbee, Claire Mobley, Lavara Jones, Ann Smith, Eloise Yancey; *Front row seated:* Ellen Odom, Jean Mullis, Betty Waters, Mildred Manley, Thadyne Pitt, and Barbara Green.



ELOISE YANCEY,
President



OFFICERS

Left to right: Nancy Sellers, Associate Vice President; Mary Brand, Secretary; Jackie Norton, Treasurer; Betty Buckner, Vice-president.



THE Y. W. C. A. CABINET

First row left to right: D. Gothard, M. Holder, B. Buckner, E. Yancey, P. Mann, M. Brand, N. Sellers, J. Norton, E. Odom; Back row: T. Griffin, S. White, E. Ford, L. Bush, S. Belloff, J. Ramsey, B. Cliett, M. Traynham, J. A. Story.

Y. W. C. A.

Since the Annual Ceremony, when we as Freshmen became members of the "Y", the "Y" is something which is so much a part of our college life that it forms an inspirational background for our life on campus. Through its quiet help and daily encouragement, it adds much to our entire outlook and attitude. We all have a chance to participate in the activities which include morning watch, Thursday night vespers, compline on Sunday night, and the annual services of Big Sister-Little Sister, Firelighting, Hanging of the Greens, Easter, Chapel Fund, Senior Vespers, and Heart Sister Week.



CHAPEL CHOIR

Left to right: Ellen Odom, Jo Anne Story, Joan Dekle, Betty Waters, Sue Belloff, Patsy Sutherland, Betty Henderson, Mary Jo Lott.



SOPHOMORE COUNCIL

Left to right, first row: D. Stover, B. Hughes, E. Boatwright, L. Story, B. Green, M. E. Daniel, B. Trammell. *Second row:* S. N. White, B. Jernigan, J. Bryan, F. McCall, L. Harmon, C. Newell, L. Bauer, J. Gilmer, M. King, R. Miller.



SPORTS COUNCIL

Left to right: J. Mullis, M. Tullis, J. Norton, J. Briggs, F. Briggs, M. A. McLendon, C. Newell, Miss Ivey, Advisor, R. Denkins, S. White, E. Odom, D. Gothard, J. A. Story, B. Waters, L. Bowers, A. Carter, T. Griffin, R. Miller, B. King, M. J. Boatwright, E. Cheshire, and P. Mann.



JO ANNE STORY,
President

THE SPORTS

The Physical Education Department and the Sports Council worked hand in hand throughout the year to promote sportsmanship and healthful recreation for each girl at "W. C." With these groups and the cooperation of other groups May Day-Play Day was presented as a climax on the year's activities for our entire Student Body.

OFFICERS

Left to right: Judy Briggs, *Vice-President*; Sue Nell White, *Treasurer*; Ruth Denkins, *Secretary*.



CLUB

Keep your eye on the Sport Club for enjoyment, healthful living, pleasure, and education—our club!



THE CAMPUS

Published Bi-Monthly during the school year by students at the Georgia State Woman's College at Valdosta, Georgia

MEMBER

ASSOCIATED COLLEGIATE PRESS

<i>Editor</i>	Margaret Ann Smith
<i>Associate Editor</i>	Ann Smith
<i>News Editor</i>	Betty Waters
<i>Feature Editor</i>	Gloria Johnson
<i>Sports Editor</i>	Doris Gothard
<i>Make-up Editors</i>	Vallie Staten.
	Eleanor Bowman, Mattie Lou Wilson
<i>Exchange Editors</i>	Mary Duncan, Jane Gibson
<i>Columnists</i>	Gloria Johnson,
	Thad Pitt, Eloise Yancey, Betty Watters,
	Ann Smith.
<i>Feature Staff</i>	Anna Marangas.
	Betty King, Ellinor Jones, Jane Bowen,
	and Rosaline Bunn.
<i>News Staff</i>	Doris Gothard.
	Mary Ann Dykes, Iris Moore, Sarah Parker,
	Pat Owens, Jane Benton, Jane Krumrine,
	Jean Jordan, Peggy Phelan, Jackie Mathis,
	Vallie Staten, Anne Bryant, Lydia Story,
	Eleanor Bowman.



MARGARET ANN SMITH
Editor



BETTY HENDERSON
Business Manager

MEMBERS

Left to right, seated: B. Waters, D. Gothard, M. Duncan, S. Parker, J. Gibson, P. Phelan. *Standing:* A. Marangos, L. Story, G. Johnson, B. Henderson, M. King, J. Krumrine, J. Jordan.



CANOPY

Represented for National Advertising by
NATIONAL ADVERTISING SERVICE, INC.

College Publishers Representatives
 420 Madison Ave. New York, N. Y.

Chicago - Boston - Los Angeles - San Francisco
Business Manager ————— Betty Henderson
Circulation Manager ————— Lelia Harmon
Advertising Staff ————— Mickey Newton.

Kathleen Meeks, Mary Dumean, Amarylese Steedley, Blount Trammell, Jane Benton, Margaret Warbinton, Mary Ann Dykes, Anna Marangos, Jackie Sikes, Mattie Lou Wilson, Betty Ann Bishop, Vallie Staten, Elaine Boatwright, and Pat Owens.

Faculty Advisor ————— Mr. William Gabard



Left to right: Betty Waters, News Editor; Mr. Gabard, Faculty Advisor; Ann Smith, Associate Editor; Gloria Johnson, Feature Editor.

AD STAFF

Left to right, standing: A. Marangos, B. Bishop, E. Boatwright, A. Steedley. Seated: J. Sikes, J. Benton, B. Trammell, M. C. Dumean, V. Staten, and K. Meeks.





EDITORIAL STAFF

Left to right, first row: E. Cheshire, M. Brand, M. C. Duncan, M. Owen, P. Sutherland; Second row: J. Ramsey, F. Hemmingway, J. Norton, B. Waters; Third row: A. Kennedy, M. Traynham, E. Ford, M. Warren, M. A. McLendon.



MARGARET TRAYNHAM,
Editor

THE PINE

We are the people who work to give you each year an annual, which serves to remind us of so many good times, and swell friends that we wish never to forget.

Associate Editors: Mary Brand and Jackie Norton. Mr. C. H. White, Faculty Adviser.



STAFF

Margaret Traynham	<i>Editor</i>
Barbara Clarke	<i>Business Manager</i>
Jackie Norton	<i>Associate Editors</i>
Mary Brand	
Jackie Ramsey	<i>Art Editor</i>
Mary Owen	<i>Lay-out Editors</i>
Gaye Hemmingway	
Elaine Cheshire	
Patsy Sutherland	
Betty Waters	<i>Copy Editors</i>
Mary Ann McLendon	
Auna Kennedy	<i>Photograph Editor</i>
Mary Duncan	
Edwina Ford	
Maxie Warren	
	<i>Associate Photograph Editors</i>



BARBARA CLARKE
Business Manager

CONE

We hope to give you just such a record in pictures, words, and thoughts, so that what you experienced at G. S. W. C. will always be fresh in your memories and hearts.



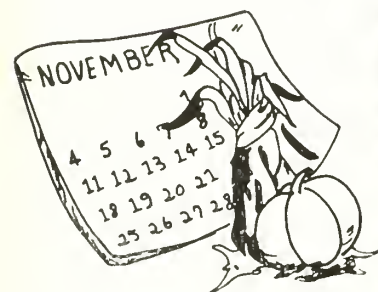
AD STAFF

Left to right, first row: E. Odom, M. J. Boatwright, L. Godbee, E. Cheshire, I. Wilson, I. Moore, B. Buckner; Secoud row: A. Bone, J. Gibson, G. Hemmingway, L. Bush, and J. Mullis.



Left to right, first row: B. J. Green, S. King, A. Carter, L. Brown, A. Steedley, L. Bush, T. Pitt, B. Waters, M. J. Lott, B. Cliett, J. Dekle, D. Deadwyler, B. Bishop, N. Sellers. *Second row:* J. Krumrine, B. Jackson, A. Brooker, B. Culbreth, M. A. Dykes, B. English, L. Keene, J. Whaley, F. L. Williamson, M. Lee, H. Howell, L. Bauer, G. Weathers, M. L. Gallagher, L. Kost, K. Zeigler, S. Belloff, D. Keefe, T. Booth, B. J. Mims, J. Bryan, J. Reeves, D. Ogletree, A. Player, J. Baldwin, B. Hughes, J. A. Gilmer, P. Jones. *Third row:* S. Fletcher, B. Henderson, A. Marangos, H. G. Ford, M. Singletary, P. Phelan, F. McCall, M. K. Hill, E. Jones, M. Smith, G. Riggins, L. A. Bowen, B. Suber, B. McElvey, M. Gibson, V. Wright, J. Ramsey.

GLEE CLUB



OFFICERS

Left to right: Betty Waters, *President;* Thad Pitt, *Librarian;* Amarylese Steedley, *Secretary;* Mary Jo Lott, *Asst. Librarian;* Lucy Bush, *Vice-President.*



SERANADERS



SERANADERS AT WORK

Left to right: B. Suber, S. Belloff, B. Waters, Mr. Clayton Logan, Director of Glee Club and Seranaders.



Left to right, first row: J. Baldwin, B. Cliett, V. Massey, B. Lee, J. Ramsey, P. Bassett. Second row: B. Waters, A. Brooker, M. Gibson, B. Jackson, D. Ogletree, M. J. Lott, B. Suber, S. Belloff.



HONOR SOCIETIES

We are the officers and members of the Senior and Freshmen Honor Societies. To be a member of this group, we have to have an average of "B". Every year all members of our group are recognized by the college at an Honors Day program in assembly, and our purpose of promoting higher scholastic standards and interests on campus are submitted to the Student Body and Faculty. Among our yearly activities we sponsor an election from each class for the Margas, which is their most all round girl.



FRESHMAN HONOR SOCIETY OFFICERS

B. Green, Vice-President; J. Gilmer, President; M. King, Historian; L. Story, Secretary-Treasurer.



MEMBERS

Left to right, seated: H. Hill, G. Johnson, C. Newell, C. Ashley, B. Green, M. King, B. King, D. Spradley, B. Jobe. Second row: B. Buckner, L. Bauer, P. Phelan, C. Mobley, J. Gilmer, B. Lee, S. Fletcher, E. Kenny, L. Story, and



SENIOR HONOR SOCIETY OFFICERS

S. Fletcher, Secretary-Treasurer; C. Mobley, President; P. Phelan, Vice-President.



FINE ARTS CLUB

Hey, wipe that paint off my nose, will you? There! That's better, I don't look quite as much like an artist now. Each year we sponsor art exhibits of different types in the upper rotunda. These exhibits are aimed to promote interest and appreciation of art by the students, faculty, and visitors who are always welcome. We urge creativeness in our members through programs which are designed to teach as well as to entertain, and we all have to "try out" or in other words take a test in order to enter the club.



MEMBERS

Left to right, seated: Mr. White, Faculty Adviser; D. Johnson, D. Drexel, R. Templeton, G. Johnson, F. Briggs, E. Jones, B. Clark, J. Briggs, M. King. *Standing:* P. Ambrey, D. Gothard, S. McDonald, L. Harmon, S. Parker, B. Henderson, P. Sutherland, M. Owen, and E. Odom.

OFFICERS

P. Sutherland,
Secretary-Treasurer

E. Odom,
President

D. Gothard,
Vice-President



SOCIOLOGY CLUB



Dogs, elephants, a whole box of them? Yes, we have them as our project this year to raise money. We have also been helping with the Community Chest Drive, Red Cross Drive, Valdosta Boys' Club. To be a member of the Sociology Club, you are a major or minor in Sociology or Social Work. Through our monthly meetings, we try to learn more about what our work means, and what we can accomplish through it.

OFFICERS

Mildred Manley, *President*;
Lavera Jones, *Secretary-Treasurer*;
Claire Mobley, *Vice-President*



MEMBERS

Left to right, first row: F. Paine, M. Warren, L. Jones, M. Manley, C. Mobley. *Second row:* B. Bishop, M. Noell, J. C. Guthrie, J. Sikes, A. Murray, T. Booth, L. Bush, B. Buckner, S. Belloff, and E. Cheshire.

HOME ECONOMICS CLUB

Does your hair look soft and lustrous? If it does, it is probably due to the shampoo that the Home Economics Club sold this year to earn a new coffee maker for the House In the Woods. This coffee maker will be a great help to all the clubs on campus, for it will save a lot of time in fixing refreshments. The members of the club who are majors and minors in Home Economics, have as the aim of their club the plan of informing its members of the opportunities in the fields of Home Economics.

OFFICERS

N. Sellers, *Treasurer*; G. Croom, *Historian*; M. Warren, *Vice-President*; M. A. McLendon, *President*. Not Pictured: D. Gothard, *Secretary*.



MEMBERS

Left to right, seated: Miss Weems, *Faculty Advisor*, J. McHugh, S. Parker, M. K. Hill, B. Gobe, S. Tharpe, M. A. McLendon, G. Croom, M. Warren, D. Gothard, S. King, A. McCall, E. Ford, E. Bowman, J. Dekle. *Standing:* A. Murdock, N. Sellers, J. A. Gilmer, D. Spradley, G. Riggins, B. English, M. Singletary, M. Strickland, and M. R. Parramore.



MEMBERS

Left to right, seated: G. Weathers, L. Brown, J. A. Story, B. Green, Miss Deavor, *Faculty Adviser*, M. DeLoach, S. M. Tillman, E. Boatwright, S. Wingate, D. Stover, M. E. Daniel, C. Mobley, M. Grogan, M. Girtman, B. Clarke, J. Briggs, M. Vonier. *Standing:* B. Watson, F. L. Williamson, M. A. Myers, V. Wright, M. T. Tullis, J. Mullis, M. Hancock, J. Grogan, M. J. Chitwood, and F. Briggs.

BUSINESS CLUB

Hear ye, hear ye, all members of the department of Secretarial Science, who major or minor in this field. Lend an ear—

Question—Who runs the Busi-Club-Stor?

Answer—The Business Club.

Question—Who buys helpful items for the school?

Answer—The Business Club.

Question—Who gets excellent training while having fun too?

Answer—The Business Club.

Yes, we are the Business Club and we really mean business when we say that through the varied activities of our club, we feel we have gained a world of experience in our field of endeavor. All majors and minors in this department will find that to be true of our Business Club.



OFFICERS

Left to right: B. Taylor, *Vice-President*; M. E. Daniel, *Secretary*; J. Mullis, *President*; B. Green, *Treasurer*.



MEMBERS

Left to right, first row: D. Pinder, K. Zeigler, M. J. Brooks., M. DeLoach, A. Marangos, B. Howell, P. Phelan, F. Paine. Second row: R. Dinkins, B. Lee, J. Mullis, G. Hemmingway, D. Johnson, B. McElvey. Third row: M. Gallagher, M. R. Parramore, C. McLeod, H. Hill, P. Blanton, V. Wright, T. Griffin, B. Jobe, A. Panos, B. Howell, F. Hemmingway, M. Noell, C. Ashley, E. Green. Fourth row: H. Morris, M. Hancock, J. C. Guthrie, M. Wellmaker, L. Keene, B. J. Spell, B. Clark, J. Briggs, M. Gibson, V. McDonald, F. Briggs, M. T. Tullis, Mr. Gabard. Faculty Adviser: J. Long, and M. Smith.



VALDOSTA CLUB

Our club is organized to make us feel more as a part of the whole than as day students, which we are, who only come to school from 9-4. We encourage participation in all the campus happenings and since we are quite large in number, we fill our place very well. Our club has helped promote a feeling of comradship between the dormitory students and the "town girls", as we are known. We are proud of our organization—the Valdosta Club.

OFFICERS

F. Paine, *President*; M. Noell, *Secretary-Treasurer*; M. T. Tullis, *Vice-President*.





CHEMISTRY DIVISION MEMBERS

Left to right: Sue Fletcher, Emily Justice, Luceil Bauer, Nancy Thornton, and Irene Wilson.



MATH DIVISION MEMBERS

Left to right, seated: C. Mobley, C. Newell, L. Story, Standing: M. Hayes, J. Grogan, and R. Miller.



OFFICERS

Carleen Newell, Secretary-Treasurer; Sue Fletcher, Vice-President; Louise Godbee, President.

BIOLOGY DIVISION MEMBERS

First row: D. Keefe, D. Spradley, H. G. McCord, J. A. Gilmer, B. Waters, Second row: T. Pitt, M. A. Dykes, B. Buckner, L. Harmon, M. A. McLendon, E. Yancey, L. Bodbee, and M. Brand.



MATH-SCIENCE CLUB

We are a large club with three divisions, Math, Chemistry, and Biology, but don't get us wrong; we don't walk logs, make carbontetrachloride or dissect grasshoppers all the time. Our programs and activities are designed, however, to stimulate our interest in the enjoyment of our fields of work.





ENGLISH MINORS

Left to right, first row: G. Riggins, B. English, S. King, B. Clarke, M. Hayes, L. Godbee. Second row: A. Murdock, L. Bush, S. Belloff, J. A. Story, E. Cheshire.

ENGLISH CLUB

Ma deah, what's the latest dope on T. S. Eliot? This year the Club invited the minors as well as the majors to join. We have as one of our projects the awarding of prizes Winter and Spring quarter to the best of creative writing papers, and among our programs we conduct reviews of coming artist series, and reviews of newest plays, short stories, and novels.



OFFICERS

Louise Godbee, *Secretary-Treasurer*; Anna Kennedy, *Vice-President*; Patsy Sutherland, *President*.



ENGLISH MAJORS

Left to right, first row: M. A. Smith, J. Gibson, M. Duncan, A. Smith, I. Wilson, G. Hemmingway. Second row: M. J. Boatwright, M. Ruffin, A. Kennedy, J. Childs, E. Justice, and P. Sutherland.

ROMANCE LANGUAGE CLUB



OFFICERS

Left to right: Dr. Treanor, Faculty Advisor; I. Wilson, E. Ryals, and T. Pitt.



Left to right, first row: E. Ryals, A. Marangos, L. Stafling, A. Bryant, S. McDonald. *Second row:* I. Wilson, T. Pitt, P. Phelan, M. Brand, and G. Weathers.



MEMBERS

Left to right, first row: A. Panos, B. Lee, J. Baldwin, M. J. Lott, M. McKemie, Miss Warren, faculty adviser, M. A. Dykes, B. Jackson, A. Carter, B. Cliett. Second row: A. Bone, I. Wilson, J. Ramsey, E. Bassett, B. Culbreth, P. Jones, B. Suber, D. Ogletree, F. McCall, B. McElvey, and P. Phelan.

PHILHARMONIC CLUB

Sing, play the piano or the violin, these are our fields to shine in for our information and entertainment. Our members are advanced students in voice or piano. We are not one of the very large clubs but that has served to unify us. Our projects have been interesting and our meetings enjoyable with programs executed by our own talented members. Here we are, the Philharmonic Club of G. S. W. C.!



OFFICERS

J. Ramsey, Secretary-Treasurer; B. Cliett, Vice-President; and Ann Bone, President.

DANCE CLUB



MEMBERS

Right to left, first row: L. Bauer, A. Smith, B. Clarke, B. Green, E. Ryals. *Second row:* B. Mitchell, V. Wright, A. Camp, A. Panos, M. Wellmaker, H. G. Ford, E. Ford, E. Cheshire, S. C. Alford, J. Mathis, M. Singletary, F. Briggs, M. A. Dykes, C. Newell, and J. Sikes.

Largo? Waltz? Rumba? Jitterbug? Well you bet! And we do that modern dance too. We are the G. S. W. C. Dance Club. We have performed at the Christmas "Olde English Feast", in several programs at organizations in Valdosta, and in our recital. We have demonstrated our talents to the student body in assembly and also helped with the Play-Day May-Day Festival.



OFFICERS

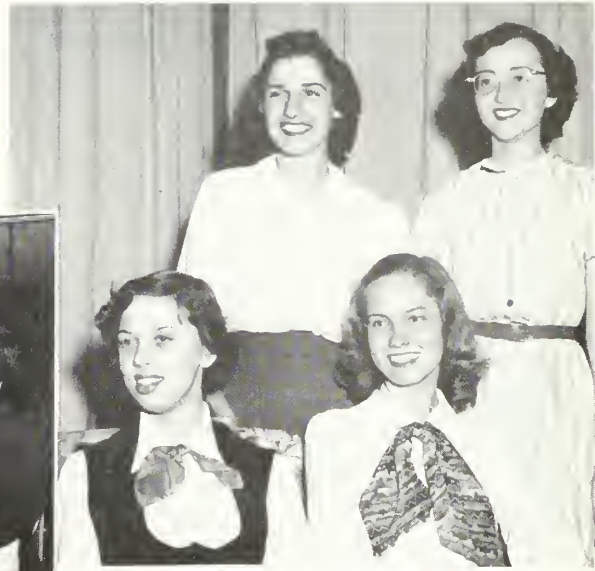
Co-Chairman, Elaine Ryals; *Chairman,* Barbara Green.



ADVISORS

Mrs. Dorothy Waldron, pianist; *Mrs. Phyllis Valente, director.*

A scene from the play, "Moor Born"



OFFICERS

Left to right, seated: A. Smith, President; R. Dinkins, Secretary-Treasurer; Standing: A. Marangos, Historian; G. Johnson, Vice-President.

SOCK AND BUSKIN CLUB

Ah, drama! To be or not to be—This is our field! We present two plays a year and these may be of many varieties. Fall Quarter we presented "Moor Born" which was a story of the famous Bronte Sisters. Even if we do say so, our productions are excellent with the assistance and guidance of our adviser Miss Louise Sawyer.

Left to right, first row: A Bone, M. Looper, M. Holder. Second row: M. Duncan, L. Jones, M. Owen, A. Marangos, P. Gorday, E. Ryals. Third row: M. Brand, G. Johnson, J. Bowen, J. Long, B. King, M. Barris, H. Hill, M. Lott, R. Dinkins, and M. McDonald.





MEMBERS

Left to right, first row: Miss Price, Faculty Adviser; M. Noell, M. Girtman, J. Mullis, M. Gibson. Second Row: I. Moore, G. Hemmingway, B. Jobe, H. Hill, F. Paine, J. Gibson, M. Hayes.

INTERNATIONAL RELATIONS CLUB

Our membership is usually limited to History majors and minors but still our membership maintains one of the most interesting clubs on campus. Our members are generally well informed on international relations and problems and we pride ourselves on our programs that convey to us that information. The Carnegie Endowment for International Peace is our sponsor.



OFFICERS

First row: M. Gibson, President; M. Hayes, Secretary; B. Jobe, Member-at-Large; M. Girtman, Treasurer; I. Moore, Vice-President.



OFFICERS

M. Warren, *Vice-President*; M. Hayes, *Treasurer*; J. Gibson, *President*; A. Kennedy, *Secretary*.

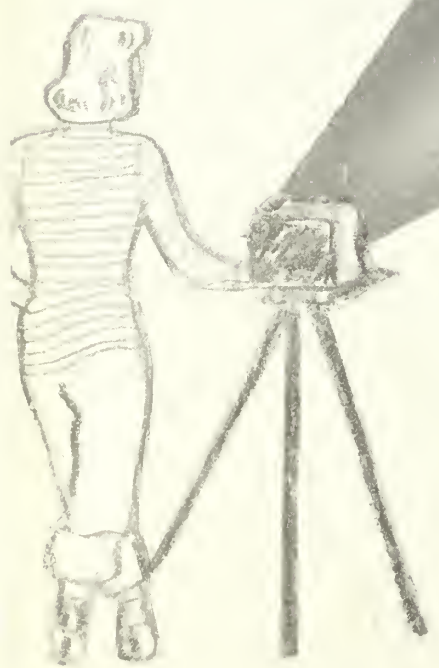
LEAGUE OF WOMEN VOTERS

For four years now our club has tried, and succeeded many times, to encourage G. S. W. C. students to vote and vote and vote intelligently. Many speakers, programs and meetings have stimulated us to better voting. We are justly proud of our achievements in this field. We are affiliated with the National and Georgia League of Women Voters.

MEMBERS

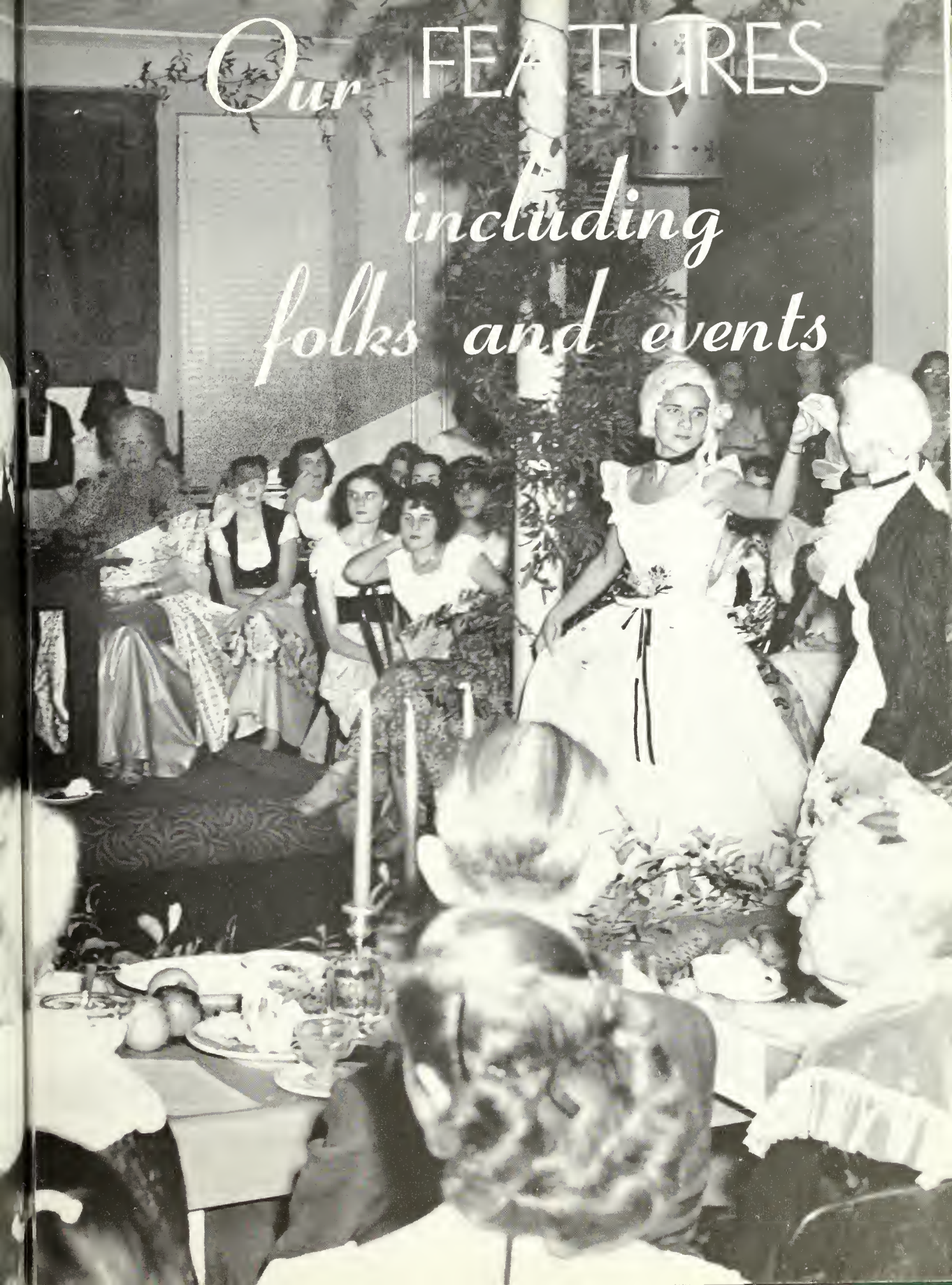
Left to right, seated: M. Hayes, J. Gibson, M. Warren, L. Godbee, M. Owen, P. O'Neal. *Standing:* R. Parrish, R. Templeton, A. Courson, C. Mobley, L. Jones, M. A. McLendon, G. Hemmingway, E. Ryals, F. Hemmingway, A. Kennedy, P. Sutherland, M. Duncan, J. Childs, and J. Krumrine.





Our FEATURES

*including
folks and events*



SPECIAL EVENTS

Everyday



Our year began with Student-Faculty Reception.



Back from Church on Sunday.



After-dinner coffee with English Club as hostess.

and
Happenings

We salute our Honor Students.



Second picture from top: Visiting Artist entertain students.

Bottom picture: Fun at Hallowe'en supper.

Presidents join in lighting Fire of Fellowship

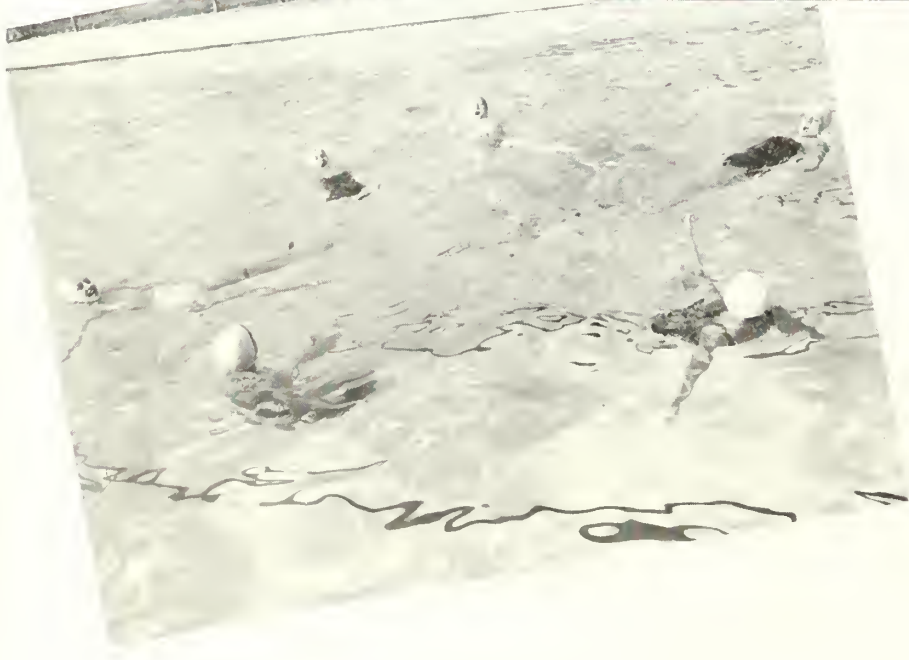


One minute late!



Helping Seniors go to Cuba.

Student teachers at work.



Practice for the Aquacade.

At
G. S. W. C.



Seniors deck the hall with boughs of holly.



"Aggravatin' ain't it?" greets our night watchman, Mr. Warren.



Final exams just around the corner.



A Senior is hooded by a Sophomore.

RECITALISTS

MARY WILLIAMS OWEN

Speech Minor



A N N E B O N E

Piano Major



MAY QUEEN AND COURT

Chosen by their fellow students for these positions of honor, the May Queen and her Court, all members of the Senior class, reigned over the festivities at the annual Play Day—May Day celebration.

RUTH TEMPLETON, *Maid of Honor*, and JO ANNE STORY, *May Queen*.



Back row, left to right: Mildred Manley, Sue Belloff, Anna Kennedy, Jackie Norton, Margaret Traynham; middle row: Barbara Clarke, Ruth Templeton, Jo Anne Story, Mary Ann McLendon; front row: Anne Bone, Frankie Briggs, Judy Briggs, Francis Paine, and Maxie Warren.

WHO'S WHO



SUE BELLOFF

JO ANNE STORY



A M O N G S T U D E N T S

"Who's Who Among Students In American Universities and Colleges" is a national publication in which the biographies of outstanding students in four-year colleges and universities appear each year. G. S. W. C.'s students to appear in the publication were selected by a committee of faculty members and students, on the basis of character, scholarship, leadership, and participation in extra-curricular activities.

MARGARET TRAYNHAM



ELOISE YANCEY



BARBARA CLARKE
Senior



ALICE CARTER
Junior



ELAINE BOATWRIGHT
Sophomore



BETTY JACKSON
Freshman

SWEETHEARTS

MARGAS



MOST ALL-ROUND GIRLS AT G. S. W. C.
Left to right: Thelma Griffin, Sophomore;
Polly Mann, Junior; Sylvia Ziegler, Fresh-
man; Jackie Norton, Senior.

ANNA KENNEDY

Senior



O U R

presented

by

Pine Cone

ELAINE CHESHIRE

Junior



JANE WIMBERLY
Sophomore

BEAUTIES

at the
"Holly Hop"

PEGGY GORDAY
Freshman



CONGRATULATIONS
TO THE
1950 SENIORS
OF THE
**GEORGIA STATE WOMANS
COLLEGE**

and

WELCOME TO THE
UPPERCLASSMEN AND FRESHMEN

“THE CITY OF AZALEAS”

Welcomes the opportunity of being your home during your college days
and of sharing your culture.

May your associations and your memories of our city be such that
you will return after college days.

★ ★ ★

J. E. MATHIS, Mayor

COUNCILMEN

HENRY H. BECK

CARL D. MINCHEW

JAMES A. PARRAMORE

ROBERT F. STEINBERG

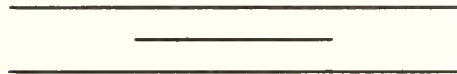
JULIAN D. MCKEY

W. HARRY GRIFFIN

Compliments

of

**GEORGIA POWER
AND
LIGHT COMPANY**



PARTNERS IN THE PROGRESS OF GEORGIA

**Congratulations
G. S. W. C. GRADUATES**

**WE ARE PROUD OF THE ENVIABLE RECORD THAT YOU
HAVE MADE IN COLLEGE**

Welcome

**Our every facility to make your stay in Valdosta a pleasant
one is at your disposal.**

UPPERCLASSMEN AND FRESHMEN

In Valdosta It's



Georgia's Finest Store, South

Compliments

of

**THE CITIZENS AND SOUTHERN
NATIONAL BANK**

★ ★ ★

VALDOSTA

GEORGIA

MEMBER OF FEDERAL DEPOSIT INSURANCE CORPORATION

WITH BEST WISHES

To the Seniors of 1950

Whose association here will long
be remembered.

To the Upperclassmen and
Freshmen

We are looking forward to your
return next year!

**BROOKWOOD
PHARMACY**

Delivery Service Phone 336

GOOD SERVICE

at

**BOB BELCHER'S
DRUG STORE**

PATTERSON AND CENTRAL

Phone 812-813

*DOROTHY GRAY BEAUTY
PREPARATIONS*



Hotel Daniel Ashley

VALDOSTA, GEORGIA



**Southern Stationery and
Printing Company**

Wholesale Paper Dealers



For More Than Forty Years

Commercial Stationers

Printers

Office Outfitters



VALDOSTA

GEORGIA

BRIGG'S LADIES SHOP

College Girls Welcome

Phone Number 1870

114 North Patterson

PAINE HARDWARE CO.

"Take Pains in Buying Your Hardware"

135 N. Ashley St. Valdosta, Ga.

Phone 800

Congratulations—

and Best Wishes

MARTIN THEATERS

RITZ — DOSTA — PALACE

Valdosta, Ga.

Compliments

of

STATEN'S DAIRY



Compliments
of

**The Valdosta
Shrine Club**

Valdosta, Georgia

Compliments
of

**Register Clothing
Company, Inc.**



**The
VALDOSTA DAILY TIMES**
YOUR HOME NEWSPAPER



109-11 W. Hill Avenue

Compliments
of

KIRBY'S SHOE SHOP



Compliments
of
**GEORGIA FERTILIZER
COMPANY**



**ROOSEVELT
RESTAURANT**
Finest and Cleanest in the South



**INCOMPARABLE FOOD
at
POPULAR PRICES**

Compliments of
LESLIE R. DAVIS
Jewelers
*WATCHES — DIAMONDS
SILVERWARE*
132 N. Ashley
Valdosta, Ga.

NORWOODS INC.

113 W. Central Avenue



**OFFICE SUPPLIES AND EQUIPMENT
UNDERWOOD TYPEWRITERS**

Patterson-Jones, Inc.

*"The Home of Good Shoes
Since 1903"*



VALDOSTA, GEORGIA

Your Musical Headquarters

*PIANOS RADIOS
RECORDS*

"Everything in Music"

**MATHIS & YOUNG
COMPANY**

Compliments
of
COWART'S DRESS SHOP
SMART STYLES
for
COLLEGE GIRLS

Compliments of
White House Restaurant

*We Specialize in Western Steaks
and
Chop Suey, Sea Food Platter*

DO YOUR BANKING AT...

**THE
FIRST NATIONAL
BANK
OF VALDOSTA**



Member of

FEDERAL DEPOSIT
INSURANCE CORPORATION

The Style Center of Valdosta

AUTHENTIC FASHIONS
for
JUNIORS, MISSES AND WOMEN

**C. C. VARNEDOE
AND COMPANY**



**A
FRIEND**



COMPLIMENTS

OF

**LOWNDES COUNTY
BOARD
OF
COUNTY COMMISSIONERS**

JACK STATEN, Chairman



J. C. Hunt

George Shelton

Compliments of

**ELLINOR MOTOR
COMPANY**

YOUR DEALER
IN
VALDOSTA

Compliments
of

W. T. GRANT & CO.



OLIVER BROTHERS

MOTOROLA RADIOS
U. S. ROYAL TIRES
AMOCO PRODUCTS

Phone 231

Compliments of

**Star Laundry and
Dry Cleaning**



PHONE 54

Valdosta Greenhouses

Flowers of Distinction
Corsages — Specialty

VALDOSTA, GA.

GIRARDIN JEWELERS

DIAMONDS — WATCHES
SILVERWARE
CHINA and CRYSTAL

303 N. Patterson Valdosta, Ga.

DUNCAN'S SHOE SHOP

SMART FOOTWEAR
OF KNOWN QUALITY
for
COLLEGE GIRLS

Compliments of

BELK-HUDSON COMPANY

Valdosta's Largest and Leading
Department Store
NEWEST CAMPUS STYLES

A
COMPLETE FLOOR
DEVOTED TO
JUNIOR FASHIONS

★
WHITTINGTON'S
INC.

132 N. PATTERSON ST.

Compliments
of

AMERICAN
LEGION
CLUB



Compliments of
Bookman and Wallace's
Studio



EVERYTHING PHOTOGRAPHIC

Compliments
of
A Friend

FACULTY DIRECTORY

Carter, Marjorie	1501 Little Bay Ave.	Norfolk, Va.
Clark, Mrs. C. C.	506 West Alden Ave.	Valdosta, Ga.
Deavor, Margaret	Box 203	Umatilla, Fla.
Dekle, Frances	102 Georgia Ave.	Valdosta, Ga.
Durrenberger, J. A.	1612 N. Patterson St.	Valdosta, Ga.
Dusenbury, J. R.	110 Georgia Ave.	Valdosta, Ga.
Farber, Marian E.	G. S. W. C.	Valdosta, Ga.
Fink, Elizabeth	212 West Main	Jonesboro, Tenn.
Gabard, William M.		Chapel Hill, Tenn.
Gulliver, Harold S.	216 W. Alden Ave.	Valdosta, Ga.
Gunter, Betty Jo	The Anchorage	St. Simons Island
Hambriek, Thera		Ray City, Ga.
Herndon, Lorene		Trion, Ga.
Ivey, Leonora		Boston, Ga.
Jenkins, Mrs. John W.	259 South Finley	Athens, Ga.
Jones, Mrs. J. C.	JoRec Road	Valdosta, Ga.
Knight, Mrs. Claude C.	402 E. Jane St.	Valdosta, Ga.
Logan, Clayton	120 High St.	Valdosta, Ga.
Moore, George B.	1607 N. Patterson St.	Valdosta, Ga.
Morgan, Mrs. Julia W.	418 Cherokee Ave.	Valdosta, Ga.
Moseley, Rolf	1912 Marion St.	Valdosta, Ga.
Myers, Mrs. Florine	1020 Relswood Terrace	Albany, Ga.
Nevins, Beatrice	R. F. D. 2	Jefferson, Wis.
Odum, Mrs. John	108 W. Force St.	Valdosta, Ga.
Pardee, Mrs. W. A.	311 Jackson St.	Valdosta, Ga.
Patterson, Lillian	402 4th Ave.	Cordele, Ga.
Pember, Joseph	Hill Station, P. O. Box 2007	Augusta, Ga.
Phelan, Earl W.	1200 N. Toombs St.	Valdosta, Ga.
Pinkston, Mrs. J. W.	308 Webster St.	Valdosta, Ga.
Price, Mildred	Oak Street Extension	Valdosta, Ga.
Rooks, Martha		Brownsville, Tenn.
Sawyer, Louise A.	115 South B St.	Monmouth, Ill.
Shrivalle, Mrs. Eva		Chipley, Fla.
Thaxton, J. Ralph	305 E. Jane St.	Valdosta, Ga.
Thomas, Mrs. William M.	2000 Oak St.	Valdosta, Ga.
Treanor, H. Sapelo	1234 South Lumpkin St.	Athens, Ga.
Valente, Mrs. Phyllis	2000 Oak St.	Valdosta, Ga.
Waldron, Mrs. D. W., Jr.	120 East Park Ave.	Valdosta, Ga.
Warren, Gladys E.	Box 34	Neptune Beach, Fla.
Weems, Sarah Park	150 Morton Ave.	Athens, Ga.
White, Clifton H.	115 W. North St.	Valdosta, Ga.
Whittle, Mrs. C. C.	106 W. Moore St.	Valdosta, Ga.

STUDENT DIRECTORY

Alford, Sara Clyde	Route 1	Poulan, Ga.
Allison, Frances Jo Anne		DuPont, Ga.
Ashley, Cornelia	800 N. Patterson	Valdosta, Ga.
Askin, Patricia Ann		Barnesville, Ga.
Aubrey, Patricia	Route 4, Box 80	Quitman, Ga.
Baldwin, Jacquelyn		Fort Gaines, Ga.
Barrs, Martha Frances		Quitman, Ga.
Bashlor, Betty		Pembroke, Ga.
Bassett, Edith Eugenia		Fort Valley, Ga.
Bauer, Luceil	Blue Springs Farms	Hamilton, Ga.
Belloff, Sue	24 Sidlaw Road	Brighton 35, Mass.
Bennett, Mrs. H. M.	303 E. Cranford	Valdosta, Ga.
Bennett, Virginia	Route 2	Adel, Ga.
Benton, Betty Jane	315 S. Jefferson	Albany, Ga.
Bishop, Betty Ann		Alma, Ga.
Blanton, Peggy Sue	902 Oak St.	Valdosta, Ga.
Boatwright, Elaine	312 Madison Ave.	Douglas, Ga.
Boatwright, Martha Jean	312 Madison Ave.	Douglas, Ga.
Bone, Annolene		Leslie, Ga.
Booth, Theta Ann	Route 3	Waycross Ga.
Bowen, Jane Anne		Homerville, Ga.
Bowen, Laura Ann	211 E. 12th St.	Tifton, Ga.
Bower, Jacqueline		Dixie, Ga.
Bowman, Eleanor		Blakely, Ga.
Brand, Mary Elizabeth		Montezuma, Ga.
Briggs, Julia Clay	505 N. Patterson St.	Valdosta, Ga.
Briggs, Sara Frances	505 N. Patterson St.	Valdosta, Ga.
Brooker, Ann		Blackshear, Ga.
Brooks, Mary Jane	200 Wells St.	Valdosta, Ga.
Brown, Lenora	Box 55	Pelham, Ga.
Bruce, Martha Anne		Homerville, Ga.
Bryan, Jacqueline	213 E. 8th St.	Tifton, Ga.
Bryant, Ellen Annette	822 Hill Crest	Moultrie, Ga.
Buekner, Betty		Montezuma, Ga.
Bunn, Rosaline		Montezuma, Ga.
Burt, Janette Elizabeth		Ochlocknee, Ga.
Bush, Lucy Grace		Colquitt, Ga.
Camp, Ann		Sylvester, Ga.
Carter, Alice		Coffee, Ga.
Carter, Jessie Mae	Route 3	Lake Park, Ga.
Carter, Sara Jo	107 E. College St.	Valdosta, Ga.
Catikos, Florence	405 E. Brookwood Drive	Valdosta, Ga.
Canley, Muriel	Albany Avenue	Waycross, Ga.
Chandler, Virginia		Blakely, Ga.
Chastain, Joan	Box 136	Ochlocknee, Ga.
Cheshire, Elaine		Colquitt, Ga.
Childs, Joyce	Route 1	Thomaston, Ga.
Chitwood, Millie Jean	614 North Ashley	Valdosta, Ga.
Clark, Betty	200 E. Mary	Valdosta, Ga.
Clark, Mrs. Russell H.	314 E. Park Ave.	Valdosta, Ga.
Clarke, Barbara	809 Hill Crest	Moultrie, Ga.
Cliett, Billie	416 W. Shotwell	Bainbridge, Ga.
Coarsey, Dorothy Jean		Brookfield, Ga.
Collins, Betty Jane		Adel, Ga.
Council, Betty Ruth		Perry, Ga.
Conner, Mrs. Bonnie L.	Route 4	Nashville, Ga.
Conson, Anna		Pearson, Ga.
Croom, Gayle		Pembroke, Ga.
Crosby, Virginia	Route 1	Valdosta, Ga.
Culbreth, Rebekah	708 Hill Crest	Moultrie, Ga.

Daniel, Betty Jean		Montezuma, Ga.
Daniel, Joan		Sylvester, Ga.
Daniel, Martha Ellen	412 W. Ward	Douglas, Ga.
Dangharty, Glenice		Fargo, Ga.
Deadwyler, Dorothy	3218 Reynolds St.	Brunswick, Ga.
Dekle, Joan	211 13th Ave.	Cordele, Ga.
DeLoach, Marguerite	700 Ulmer St.	Valdosta, Ga.
Dinkins, Ruth	Box 419	Valdosta, Ga.
Dixon, Olive Ann	221 South Scott St.	Camilla, Ga.
Dorniney, JoAnn	524 Sellers St.	Douglas, Ga.
Drexel, Dorothy	1211 Marion St.	Valdosta, Ga.
Duncan, Mary		Leslie, Ga.
Dykes, Mary Ann		Montezuma, Ga.
Eason, Elizabeth		Collins, Ga.
Efird, Mary Otho	Box 404	Albany, Ga.
English, Betty		Homerville, Ga.
Fletcher, Mary Sue		Parrott, Ga.
Ford, Edwina		Sylvester, Ga.
Ford, Helen Grace		Sylvester, Ga.
Gallagher, Mary Lavinia	506 Charlton St.	Valdosta, Ga.
Gardner, JoAnn		Homerville, Ga.
Gaskins, Norma		Nashville, Ga.
Geiger, Regina		McRae, Ga.
Gibson, Jane		Donalsonville, Ga.
Gibson, Mary	124 E. Park Ave.	Valdosta, Ga.
Gibson, Ruby		Folkston, Ga.
Gilmer, Joanne	12th St.	Tifton, Ga.
Girtman, Miriam		Denton, Ga.
Godbee, Louise	3rd St.	Vidalia, Ga.
Gooding, Josephine	Box 186	Woodbine, Ga.
Gorday, Peggy Ann	1101 W. Newton	Dothan, Ala.
Gothard, Doris	201 S. Love St.	Thomasville, Ga.
Gray, Lillian Ruth	Fifth St.	Ocala, Fla.
Green, Barbara		Sylvester, Ga.
Green, Betty Jean		Hartsfield, Ga.
Green, Elizabeth Westwood	c/o Green Shop	Valdosta, Ga.
Griffin, Gloria		Pelham, Ga.
Griffin, Thelma	311 Webster St.	Valdosta, Ga.
Grogan, Jeanell	Route 2	Calhoun, Ga.
Grogan, Melba Jane	Route 2	Calhoun, Ga.
Guthrie, Jo Carroll	526 N. Lee	Valdosta, Ga.
Hancock, Merle	1017 Marion St.	Valdosta, Ga.
Harmon, Leila	1107 N. Monroe	Albany, Ga.
Harrington, Janice		Fargo, Ga.
Harris, Mrs. Ann Patterson		Nashville, Ga.
Harris, Mrs. Richard A.	123 East Park Ave.	Valdosta, Ga.
Hatcher, Ida Jane		Boston, Ga.
Haworth, Mrs. N. R.	Carolyn Apt. E.	Valdosta, Ga.
Hayes, Marian		Sasser, Ga.
Heath, Patricia		Leesburg, Ga.
Hemmingway, Faye	400 E. Jane St.	Valdosta, Ga.
Hemmingway, Gaye	400 E. Jane St.	Valdosta, Ga.
Henderson, Betty Jane	Box 247	Alma, Ga.
Hendley, Mrs. Belle Sutton	Route 4	Nashville, Ga.
Herbert, Betty Caroline	507 W. Church St.	Fort Valley, Ga.
Hill, Katherine	411 N. Ashley	Valdosta, Ga.
Hill, Mary Catherine	515 1st St., S. W.	Montrie, Ga.
Hinson, Carolyn		Homerville, Ga.
Holder, Mary Louise	1013 N. Ridge	Tifton, Ga.
Howell, Barbara	207 E. Cranford Ave.	Valdosta, Ga.
Howell, Betty Jo	Gronto Road	Valdosta, Ga.
Howell, Harriett	706 Hancock Drive	Ameriens, Ga.
Hughes, Betty		Homerville, Ga.

Humphreys, Gloria		Barwick, Ga.
Jackson, Betty	2472 2nd St.	Macon, Ga.
James, Ann	106 Stephens St.	Valdosta, Ga.
Jernigan, Betty Jane	Box 1	Homerville, Ga.
Jobe, Robley	110 Webster St.	Valdosta, Ga.
Johnson, Dorris	Route 1	Valdosta, Ga.
Johnson, Gloria		Quitman, Ga.
Joiner, Jacquelyn	Route 1	Boston, Ga.
Jones, Elinor		Quitman, Ga.
Jones, Jeannette		Quitman, Ga.
Jones, Lavara		Sycamore, Ga.
Jones, Marian	508 E. Central	Valdosta, Ga.
Jones, Martha		Marshallville, Ga.
Jones, Peggy June		Uvalda, Ga.
Jones, Rose Margaret		Sylvester, Ga.
Jordan, Jean	173 DeSoto Place	Macon, Ga.
Justice, Emily		Attapulgus, Ga.
Keefe, Dorothy	Route 1	Nashville, Ga.
Keene, Lovie	600 West Gordon	Valdosta, Ga.
Kennedy, Anna	308 Howell	Thomaston, Ga.
Kenney, Emmie	18 1st St., S. W.	Moultrie, Ga.
King, Betty Jane		Fort Gaines, Ga.
King, Eleanor Joyce		Blakely Ga.
King, Mary Elizabeth	c/o Experiment Station	Tifton, Ga.
Kost, Lydia		Neckartailfinger, Germany
Krumrine, Jane	Blythe Island	Brunswick, Ga.
Lee, Betty Jean	1714 Iola Drive	Valdosta, Ga.
Lee, Mary Ellen	Route 4	Waycross, Ga.
Long, Joyce	413 East Magnolia	Valdosta, Ga.
Looper, Margaret	809 Thornton Place	Dalton, Ga.
Lott, Mary Jo		Douglas, Ga.
McBride, Jeanne	115 Dellwood Dr.	Thomasville, Ga.
McCall, Alice		Cairo, Ga.
McCall, Emily	417 E. Hill Ave.	Valdosta, Ga.
McCall, Flo		Hinesville, Ga.
McCord, Helen Grace	306 Willingham St.	Sylvester, Ga.
McCoy, Gloria Claire	505 Isabella St.	Sylvester, Ga.
McDonald, Mary Virginia	212 West Alden Ave.	Valdosta, Ga.
McDonald, Sue Helen	303 2nd St.	Moultrie, Ga.
McElvey, Barbara Ethel	1610 Iola Drive	Valdosta, Ga.
McHugh, Jane Carol		Richland, Ga.
McKemie, Martha		Bluffton, Ga.
McLain, Evelyn		Lake Park, Ga.
McLendon, Mary Ann		Bronwood, Ga.
McLeod, Mildred Carolyn	105 Stevens St.	Valdosta, Ga.
McMillan, Theda Jane		Enigma, Ga.
Manley, Mildred	Route A.	Griffin, Ga.
Mann, Margaret	Box 568	Starke, Fla.
Marangos, Anna	310 North Lee St.	Valdosta, Ga.
Martin, Marie Joann		Ellabelle, Ga.
Massey, Virginia	1003 Williams St.	Valdosta, Ga.
Mathis, Jacquelyn	407 W. Suwanee	Fitzgerald, Ga.
Meadows, Mrs. Frances	Box 93	DuPont, Ga.
Meeks, Kathleen	508 E. Main St.	Blackshear, Ga.
Miller, Ruth		Pembroke, Ga.
Mims, Bettye Jo		Hartsfield, Ga.
Mitchell, Sarah Elizabeth	30 N. Broad St.	Porterdale, Ga.
Mobley, Claire	813 Hill Crest	Moultrie, Ga.
Moore, Iris	Box 327	Douglas, Ga.
Moore, Judith Ann		Ray City, Ga.
Morris, Hylda	220 High St.	Valdosta, Ga.
Mullis, Jean	104 Varndoe St.	Valdosta, Ga.
Murdock, Anne		Meigs, Ga.

Murray, Martha Ann	408 Brunel	Waycross, Ga.
Myers, Mary Ann	1408 E. Hill Ave.	Valdosta, Ga.
Newell, Carleen	1013 Dawson Road	Albany, Ga.
Newton, Marthann	409 West Alden	Valdosta, Ga.
Noell, Marjorie	Webster Court Apts.	Valdosta, Ga.
Norton, Jacqueline	Box 3	Boston, Ga.
Odm, Ellen	724 Tift Ave.	Albany, Ga.
Ogletree, Dorothy Ann		Perry, Ga.
Oliver, Barbara Jean	643 Greenwood St.	Barnesville, Ga.
O'Neal, Letty Ann	2124 George St.	Columbus, Ga.
O'Neal, Patricia		LaGrange, Ga.
Owen, Mary		Alleenhurst, Ga.
Owens, Anne	Box 217	Newnan, Ga.
Owens, Patricia	210 N. Central Ave.	Tifton, Ga.
Paine, Frances	106 Georgia Ave.	Valdosta, Ga.
Palmer, Ann		Cairo, Ga.
Panos, Aspasia	319 Virginia Ave.	Valdosta, Ga.
Parker, Sarah Jane		Richland, Ga.
Parramore, Mary Remer	206 Wells St.	Valdosta, Ga.
Parrish, Rose	a	Adel, Ga.
Peacock, Marilyn	3714 Brantley Ave.	Brunswick, Ga.
Perritt, Bettie Jo	Box 93	DuPont, Ga.
Peters, Gloria	Box 395	Cairo, Ga.
Phelan, Peggy	1200 North Toombs	Valdosta, Ga.
Phillips, Bobbie Jean	1527 4th Ave.	Columbus, Ga.
Pinda, Dorothy Oleeta	Bemis Road	Valdosta, Ga.
Pitt, Thadyne		Lincolnton, Ga.
Player, Annette	201 West Street	Bainbridge, Ga.
Player, Janice	201 West Street	Bainbridge, Ga.
Pope, Peggy Ann		Barwick, Ga.
Price, Joan		Moultrie, Ga.
Proctor, Gloria	115 W. Shotwell	Bainbridge, Ga.
Rabun, Lenoir	107 E. Adair	Valdosta, Ga.
Rackley, Jean		Camilla, Ga.
Ramsey, Jacquelyn		Alma, Ga.
Reed, Nelle		Rebecca, Ga.
Reeves, Jane		Sylvester, Ga.
Reichert, Emily		Boston, Ga.
Riggins, Gerelda		Homerville, Ga.
Ruffin, Margaret	520 5th Ave.	Albany, Ga.
Ryals, Elaine		McRae, Ga.
Scarboro, Joan		Lyons, Ga.
Scruggs, Hilda Mae		Hahira, Ga.
Segler, Maryan	401 E. Jefferson	Thomasville, Ga.
Sellers, Nancy	4109 West Cass	Tampa, Fla.
Shadrick, Mrs. Bonnie	607 North Toombs	Valdosta, Ga.
Sikes, Jacquelyne		Claxton, Ga.
Singletary, Mary Lilla	Route 1	Ochlochnee, Ga.
Singletary, Mary Margaret		Pelham, Ga.
Siskind, Fayge	Box 644	Valdosta, Ga.
Sizemore, Audrey	Route 3	Sylvester, Ga.
Smith, Ann		Quitman, Ga.
Smith, Barbara Ann	1183 Tate Drive	Columbus, Ga.
Smith, Margaret Ann	1004 Isabella St.	Waycross, Ga.
Smith, Marjorie Ellen	204 East Alden Ave.	Valdosta, Ga.
Smith, Mrs. Patricia M.	1401 Palmetto Ave.	Brunswick, Ga.
Spell, Betty Jean	1810 Oak St.	Valdosta, Ga.
Spradley, Doris	Box 329	Tifton, Ga.
Starling, Lily		Hahira, Ga.
Staten, Vallie Dalton	1347 Fairview Rd., N. C.	Atlanta, Ga.
Steedley, Amarycelese		Alma, Ga.
Steedley, Mary Love		Homerville, Ga.
Stone, Theta	Little-Griffin Hospital	Valdosta, Ga.

Story, Jo Anne	Dawson Road	Albany, Ga.
Story, Lydia		Ashburn, Ga.
Stoyer, Dorothy		Sycamore, Ga.
Strickland, Monteen		Cairo, Ga.
Stubbs, Ann		Lanier, Ga.
Suber, Barbara Ann	Route 1	Moultrie, Ga.
Sutherland, Patricia	55 Delmont Drive	Atlanta, Ga.
Taylor, Bobbie		Rebecca, Ga.
Templeton, Oleta	100 Patterson St.	Valdosta, Ga.
Templeton, Ruth	100 Patterson St.	Valdosta, Ga.
Tharpe, Shirley		Vienna, Ga.
Thomas, Barbara Charlotte	Box 2	Cotton, Ga.
Thomas, Claryce Jeannette		Lake Park, Ga.
Thompson, Margaret Louise	Route 1	Quitman, Ga.
Thornton, Nancy	22 E. Jones St.	Savannah, Ga.
Tillman, Sara Marie	211 East Force	Valdosta, Ga.
Tomlinson, Mrs. John I.	Route 3	Valdosta, Ga.
Trammell, Blount	3333 Cherokee Ave.	Columbus, Ga.
Traynham, Margaret		Broxton, Ga.
Tullis, Mary Talbot	107 West Force	Valdosta, Ga.
VauLaudingham, Mary Engenia	Route 2	Cairo, Ga.
Virden, Betty Grace		Marshallville, Ga.
Voiner, Margaret	Route 2, Box 207	Boston, Ga.
Waddell, Clara Nell		Iron City, Ga.
Warbington, Margaret	706 South Grant St.	Fitzgerald, Ga.
Ward, Ava Joy	612 Florence Drive	Albany, Ga.
Warren, Maxie		Donalsonville, Ga.
Waters, Betty	Box 3	St. Mary's, Ga.
Waters, Marian	407 Main	Blackshear, Ga.
Watson, Bobbie		Fort Gaines, Ga.
Weathers, Greta	525 9th Ave., N. E.	Cairo, Ga.
Wellmaker, Lois Marie	209 West Ann St.	Valdosta, Ga.
Westberry, Virginia	Route 3	Lake Park, Ga.
Whaley, Martha Jean		Shellman, Ga.
Whechel, Clara Nell	1st St.	Moultrie, Ga.
Whiteomb, Harriette Ann		Camilla, Ga.
White, Mrs. H. D.	307 North Troupe St.	Valdosta, Ga.
White, Sue Nell	1st St., N. C.	Cairo, Ga.
Williamson, Fleta Lou		Sylvester, Ga.
Williford, Dorothy	Route 1, Box 106	Rebecca, Ga.
Wilson, Irene	228 Riverside	Waycross, Ga.
Wilson, Mattie Lon		Screven, Ga.
Wimberly, Jane	1503 Dawson Road	Albany, Ga.
Windham, Elaine		Reynolds, Ga.
Wingate, Sue		Camilla, Ga.
Wright, Virginia	1522 Oak St.	Valdosta, Ga.
Yancey, Eloise	Route 2	Brunswick, Ga.
Zant, Mary Evelyn		Lake Park, Ga.
Zeigler, Mrs. Ernesteen		Ray City, Ga.
Zeigler, Orrie Katherine	c/o Patterson Hotel	Valdosta, Ga.
Zeigler, Sylvia	Box 267	Adel, Ga.

ANNUALS
of
DISTINCTION

Bowen, Long & Young, Inc.
Decatur, Georgia

