

THE PINE CONE

PRESENTS IT'S

ANNUAL PRODUCTION OF . . .

VALDOSTA STATE COLLEGE

A FOUR ACT DRAMA OF
COLLEGE LIFE IN 1953



ADMINISTRATION BUILDING

by . . .

F A C U L T Y

S T U D E N T S

A C T I V I T I E S

A N D C L U B S



"CHRISTMAS BELLES"



FACULTY
STUDENT
TEA

"A WHITE
CHRISTMAS"



In the Spotlight



D E D I C A T I O N

In each successful performance, behind every great feat is a person of unfaltering faith and never ending source of encouragement. They seldom enter the spotlight but spend endless time and effort in the improvement and perfection of each individual.

Such a person is Doctor Carter. We of VSC are the more fortunate for Dr. Carter enters the dual role of teacher and advisor.

By her conscientious and never faltering efforts and work she has gained the admiration and respect of colleagues and students alike.

The success of her students and the lasting friendships she has formed stand as mute and proven evidence of her understanding and sympathy as well as ability in guiding and molding students for their performance in life.

Lacking her ability and guidance we forsake the grandeur and compensate with sincerity in our following words:

"Dedicated to Dr. Carter in the fervent hope that the future students and teachers of VSC may receive, as we have, the stable teachings of her class and the genuine humility of her friendship."



DR. MAJORIE ESTELLE CARTER

Director . . . DR. THAXTON

Assistant Directors . . .

DR. DURRENBUGER
MRS. WISENBAKER
AND MR. GABARD

Casting Director . . . MRS. THOMAS

Business Manager . . . MR. MCCOY

Board of Directors . . .

F A C U L T Y M E M B E R S



TIME OUT FOR COFFEE . . .



DR. JAMES RALPH THAXTON, A.B., M.A., Ph.D.
President

A D M I N I S T R A T I O N

MRS. JOE WISEBAKER, A.B., M.Ed.
Dean of Women



MR. WILLIAM GABARD, A.B., A.M.
Dean of Men
Director of Publicity





MRS. DAVID CARTER
Secretary to President

MISS JEAN HANSON
Secretary to Comptroller

MRS. ILA VANN JENKINS
Assistant to Comptroller



MISS THERA HAMBRICK CONVERSE,
A.B., B.S. in L.S.

Assistant Librarian
MISS LILLIAN PATTERSON, A.B., B.S. in L.S.

A T S T A T E



MRS. C. C. WHITTLE
Assistant Counsellor

MRS. EVA A. SHRIVALLE
Dietitian

MR. SHEALY C. McCOY, B.B.A., LL.B.
Comptroller and Treasurer

MRS. W. M. THOMAS, A.B.
Registrar

DR. JOSEPH A. DURRENBERGER,
A.B., A.M., Ph.D.
Academic Dean



F A C U L T Y



DR. H. S. GULLIVER, B.A., A.M., Ph.D.
Professor of English

MRS. GERTRUDE G. ODOM, B.S., A.M.
Professor of English

MISS LOUISE SAWYER, B.S., M.A.
Professor of Speech

MISS LEONORA IVEY, B.S., M.A.
Professor of Physical Education

MRS. PHYLLIS VALENTE, B.A., M.S.
Assistant Professor of Physical Ed.

MR. WALTER COTTINGHAM, A.B., M.Ed.
Assistant Professor of Physical Ed.

MRS. DOROTHY D. WALDRON, A.B.
Accompanist, Physical Ed. Dept.

MRS. ELISABETH W. SMITH, B.S., M.A.
Assistant Professor of Physical Ed.



MISS GLADYS WARREN, B.M., M.A.
Professor of Music

MR. CLAYTON LOGAN, B.A., M.F.A.
Associate Professor of Music

MRS. W. A. PARDEE,
Graduate of Cincinnati Conservatory of Music
Instructor of Violin

MR. JAMES E. SPEAR, B.S., M.S.
Assistant Professor of Social Science

MISS MILDRED PRICE, A.B., A.M.
Professor of History

MRS. JOE WISENBAKER, A.B., M.Ed.
Associate Professor of Social Science





DR. SAPELO TREANOR, A.B., A.M., Ph.D.
Professor of French and Spanish

MR. CLIFTON H. WHITE, A.B., M.A.
Professor of Fine Arts

MR. JOSEPH W. PEMBER, A.B., M.F.A.
Assistant Professor of Art



MISS LORENE HERNDON, B.S., M.A.
Assistant Professor of Education
Resident Counsellor of Converse Hall

MISS NADINE PATTON, B.S., M.Ed.
Consultant in Teacher Education

DR. TED W. BOOKER, B.S. Ed., M.A., Ph.D.
Professor of Education

MRS. CLAUDE KNIGHT, B.S., M.A.
Associate Professor of Education

DR. BEATRICE NEVINS, Ph.B., Ph.M., Ph.D.
Professor of Biology

DR. MARJORIE E. CARTER, B.S., M.A., Ph.D.
Associate Professor of Biology
Resident Counsellor of Ashley Hall

MR. LEROY BABCOCK, B.S., M.S.
Associate Professor of Mathematics

MR. RUDOLF HOWELL, B.S., M.S.
Instructor in Mathematics and Physical Science

DR. BERNARD BETTMAN, B.A., M.A., Ph.D.
Professor of Chemistry



MISS SARAH WEEMS, B.S.H.E., M.S.H.E.
Assistant Professor of Home Economics
Assistant Dietitian

MISS MARGARET DEAVOR, A.B., M.A.
Associate Professor of Secretarial Science



VALDOSTA STATE COLLEGE

Act One

S E N I O R C L A S S

Act Four

J U N I O R C L A S S

Act Three

S O P H O M O R E C L A S S

Act Two

F R E S H M A N C L A S S

SENIOR CLASS BRINGS...



"THE HANGING OF THE GREENS"



"THAT FIRST DAY..."



"SOPHOMORES BRING"

SENIOR CLASS OF 1953



Sara Bolin, Vice-President; **Barbara Smith**, President; **Patricia Heath**, Secretary-Treasurer.

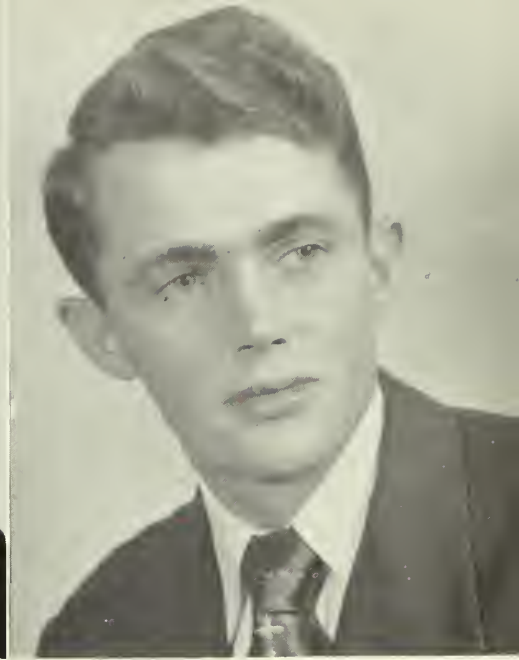
Seniors at last! It's hard to realize, but the four-act drama called college is over. But in reality, it is not over and done. There are memories that will be forever a part of us to carry with us and cherish always. The joys, heartaches, the problems . . . everything that makes college worthwhile are the things that we wouldn't swap for a kingdom. They are the lasting souvenirs of life.

How could we ever forget the trials and tribulations of the Senior Carnival or the heart attacks that went along with every project the senior tackled. No, they will never be forgotten nor will the excitement of New Orleans die

away. That senior trip was really an occasion, one that made all of the work and worry of making money to finance it, worthwhile.

As seniors, we tried very hard to live up to the dignity of the position and to set good examples for those that will follow us. In leaving this campus, we hope that we have left a bit of good and that the wonderful experiences that we have had will be enjoyed by every senior class in the years to come.

Yes, the drama is over, but a little part of us will remain at VSC and we will carry a part with us. This is what makes four years of hard work worth every bit of the struggle.



BILL ROBERTS

Cherry Lake, Fla.

**Business Administration Major;
Math Minor.**

Transferred from Emory - at Valdosta;
S.G.A. 3, 4; Vice-Pres. 3, 4; Filii Fortuna
Sec. 4; Who's Who 4; S.G.A. 3, 4;
s. 4; Dormitory Council Sec. 4;
e Club 3, 4; Business Club 3, 4;
-Science 3.

HAROLD WISENBAKER

Ousely, Ga.

Education Major

osta Club 2; S.G.A. 2, 3; Dormitory
cil 2, 3; Sec. 3; Filii Fortuna 2, 3;
2 M.C.A. 1, 2, 3; Romance Lan-
e Club 1; Sigma Alpha Chi 1, 2, 3;
r Campus Canopy 4; Who's Who

SARAH IRIS RIZER

Hahira, Ga.

**Secretarial Science Major;
Spanish Minor.**

Business Club 2, 3, 4; Sec. 4; Romance
Language Club 2, 3, 4; Vice-Pres. 3;
Home Ec.-Fine Arts Club 2, 3, 4.

ERNEST B. COFFEE

Valdosta, Ga.

English Major; History Minor.

Transferred from Asbury College; Eng-
lish Club 3, 4; M.C.A. 3, 4.

WEBSTER LEE CARTER

Waco, Ga.

Art Major

Transferred from West Georgia College;
Dormitory Council 3, 4; Pres. 4; Home
Ec.-Fine Arts Club 3, 4; Sock and Buskin
Club 3, 4; Filii Fortuna 3, 4; Vice-Pres.
4; Dance Club 4; M.C.A. 3, 4.

S E N I O R C L A S S O F 1 9 5 3

"KAT"

"VALLIE"

"JACKSON"

"MARIE"

"KOOTA"

"LAURA ANN"

NATIONAL AIR LINES





BETTY JACKSON

Macon, Ga.

S.G.A. 1, 2, 3, 4; Y.W.C.A. 1, 2, 3, 4; Serenaders.

KATHLEEN MEEKS

Ft. Lauderdale, Fla.

Secretarial Science Major

S.G.A. 1, 2, 3, 4; Y.W.C.A. 1, 2, 3, 4; Sports Club 1, 2, 3, 4; Sports Council 3, 4; Business Club 1, 2, 3, 4; English Club 4; Campus Canopy 1; Fitch Force Sponsor 3; Kappa Pi Delta 4; President 4.

LAURA ANN BOWEN

Elementary Education Major

S.G.A. 1, 2, 3, 4; Y.W.C.A.; Dormitory Council 1, 2, 3, 4; Secretary-Treasurer 3; Vice-Pres. 4; Sports Club 1, 2, 3, 4; Pine Cone 1; Glee Club 1, 2, 3, 4; Librarian 4; Chapel Choir 4; Philharmonic Club 3; A.C.E. 1, 2, 3, 4.

HARRIET HOWELL

Americus, Ga.

Elementary Education Major

S.G.A. 1, 2, 3, 4; Y.W.C.A. 1, 2, 3, 4; A.C.E. President of Junior Class.

MARIE WELLMAKER

Valdosta, Ga.

Secretarial, Science.

S.G.A. 1, 2, 3, 4; Dance Club 1, 2; Social Science Club 3, 4, Secretary-Treasurer 4; Business Club 1, 2, 3, 4; Secretary 3; Store Manager 4; Vice-President Junior Class; Sweetheart 3; Valdosta Club 1, 2, 4.

VALLIE STATEN

Atlanta, Ga.

Social Work Major

S.G.A. 1, 2, 3, 4; Y.W.C.A. 1, 2, 3, 4; Social Science Club 1, 2, 3, 4.

S E N I O R C L A S S O F 1 9 5 3

"WINONA"

"JANIE-BELL"

"BERIT"

"PEGGY"

"GLORIA"





REBEKAH CULBRETH

Moultrie, Ga.

English Major; Piano Minor.

S.G.A. 1, 2, 3, 4; Y.W.C.A. 1, 2, 3, 4; Cabinet 3, 4; Sophomore Council 2; Glee Club 1, 2, 3, 4; Accompanist 2, 3, 4; Serenaders 2, 3, 4; Philharmonic 1, 2, 3, 4; Vice-President 4; English Club 3, 4; President 4; Sports Club 1, 2, 3, 4; Council 3, 4; Fins & Flippers 4; Romance Language Club 1, 2, 3, 4; Vice-President 2; Education Club 4; Canopy Staff 3, 4; Pine Cone 3, 4; Who's Who Chapel Choir 3, 4; Director 4.

BERIT HALDIN

Helsinki, Finland

Exchange Student

S.G.A. 4; Y.W.C.A. 4; Business Club 4; R.C. 4; Fins & Flippers 4; Sports Club

PEGGY JUNE JONES

Uvalda, Ga.

Humanities Division with Music Emphasis

S.G.A. 1, 2, 3, 4; Y.W.C.A. 1, 2, 3, 4; Glee Club 1, 2, 3, 4; Serenaders 1, 2, 3, 4; Philharmonic Club 1, 2, 3, 4; Secretary-Treasurer 4; Chapel Choir 2, 3, 4; Alpha Sigma Sorority 4; Treasurer 4.

JANE CAROL McHUGH

Richland, Ga.

Elementary Education Major

Sports Club 1, 2, 3, 4; S.G.A. 1, 2, 3, 4; Y.W.C.A. 1, 2, 3, 4; Sports Council 3, 4; Home Ec. Club 1, 2; A.C.E. 2, 3, 4; Treas. 4; Fins and Flippers 4; Alpha Sigma 4; Vice-Pres. 4.

WINONA VICKERS

Iron City, Ga.

Elementary Education Major

S.G.A. 2, 4; Y.W.C.A. 2, 4; A.C.E. 2, 4.

GLORIA PETERS

Cairo, Ga.

Elementary Education Major

S.G.A. 1, 2, 3, 4; Y.W.C.A. 1, 2, 3, 4; A.C.E. 1, 2, 3, 4; Treas. 3; Sports Club 1, 2, 3.

S E N I O R C L A S S O F 1 9 5 3

"JANICE"

"BETTY JEAN"

"ROSA"

"HELEN"

"LANIE"

"JEAN"





HELEN GRACE FORD

Sylvester, Ga.

Elementary Education Major; English Minor.

Y.W.C.A. 1, 2, 3, 4; S.G.A. 1, 2, 3, 4; Social Science Club 2, 3, 4; Pres. 2; English Club 3, 4; Sports Club 1, 2, 3, 4; Dance Club 1, 2, 3, 4; Sec.-Treas. 4; Sock and Buskin Club 2, 3, 4; Pine Cone Staff 3; Alpha Gamma 4; Pres. 4.

ELAINE HORTON RYALS

McRae, Ga.

Humanities Division with Speech Emphasis.

S.G.A. 1, 2, 3, 4; Y.W.C.A. 1, 2, 3, 4; Dance Club 1, 2, 3, 4; Vice-Pres. 2; Pres. 4; Sock and Buskin 1, 2, 3, 4; Pres. 3; Romance Language Club 2, 3; Sec.-Treas. 2; Sports Club 1, 2, 3, 4.

JANICE HARRINGTON

Fargo, Ga.

Elementary Education Major

S.G.A. 1, 2, 3, 4; Y.W.C.A. 1, 2, 3, 4; Sigma Alpha Chi 1, 2, 3, 4; A.C.E. 2, 3, 4.

ROSA MARGARET JONES

Sylvester, Ga.

Elementary Education Major.

Y.W.C.A. 1, 2, 3, 4; S.G.A. 1, 2, 3, 4; Sports Club 1, 2, 3; A.C.E. 2, 3, 4; Student Council 3; Pine Cone Staff 3, 4; Student Council 4; Kappa Delta Epsilon 4.

FRANCIS JEAN STEWART

Arlington, Ga.

English Major; History Minor.

S.G.A. 1, 2, 3, 4; Y.W.C.A. 1, 2, 3, 4; A.C.E. 2, 3; Sports Club 2; Glee Club 1.

BETTY JEAN DANIEL

Montezuma, Ga.

Elementary Education Major

S.G.A. 1, 2, 3, 4; Y.W.C.A. 1, 2, 3, 4; Sports Club 3; Social Science Club 1, 2; A.C.E. 3, 4; Vice Pres. 4; Pine Cone Staff 3; Sec.-Treas. of Junior Class; Kappa Delta Epsilon 4; Sophomore Council 2.

S E N I O R C L A S S O F 1 9 5 3

"RALPH"

"WILMA"

"FLO"

"ARLIS"

"JOHN"

"BOB"





RALPH TILLMAN

Adel, Ga.

Chemistry Major; Biology Minor.

Transfer from Emory-at-Valdosta; MCA
4; S.G.A. 3, 4; Math-Science Club 3,
Sigma Alpha Chi 3, 4.

WIMA R. TILLMAN

Adel, Ga.

Home Economics Major

Transfer from G.T.C.; S.G.A. 4; Home
Ec.-Fine Arts Club 4.

JOHN LEWIS MCGOWAN

Valdosta, Ga.

Humanities Division

Transferred from Emory-at-Valdosta;
English 3, 4; Social Science Club 3, 4.

ROBERT LANE

Quitman, Ga.

Business Administration

Transferred from the University of Geor-
gia, Atlanta; M.C.A. 3, 4; Sock and
Buskin 3, 4; Sec.-Treas. 4; Business
Club 3, 4; Pres. 4; Pine Cone 4; Busi-
ness Manager 4; Campus Canopy Staff
Best-all-Around Boy 3; Who's Who 4.

FLORENCE DAIGREPONT CLARKE

Valdosta, Ga.

Transferred from G.S.C.W.; Romance
Language Club 3, 4; Pres. 4; Home Ec-
Fine Arts Club 4; English Club 4.

ARLIS B. LEONARD

Lake Park, Ga.

Social Work Major

Transferred from Middle Georgia Col-
lege; S.G.A. 4; Sock and Buskin 4.

S E N I O R C L A S S O F 1 9 5 3

"FLORENCE"

"ASPASIA"

"VIRGINIA"

"BARBARA"

"MARY VIRGINIA"

"MARY"





VIRGINIA CROSBY

Valdosta, Ga.

Elementary Education Major

S.G.A. 1, 2, 3, 4; A.C.E. 1, 2, 3, 4.

ASPASIA PANOS

Valdosta, Ga.

History Major; Biology Minor.

S.G.A. 1, 2, 3, 4; I.R.C. 2, 3, 4; Dance Club 1, 2, 3, 4; Philharmonic Club 2, 4.

MARY VIRGINIA McDONALD

Valdosta, Ga.

Humanities Division with Speech Emphasis.

S.G.A. 1, 2, 3, 4; Pres. 4; Sock and Buskin Club 1, 2, 3, 4; Valdosta Club 1, 2, 3, 4; Pres. 4; Vice-Pres. Sophomore Class; English Club 3, 4; Who's Who 4; Campus Canopy Staff 4; Pine Cone 4.

FLORENCE CATIKOS

Valdosta, Ga.

History Major

S.G.A. 1, 2, 3, 4; I.R.C. 1, 2, 3, 4; English Club 2, 3, 4.

BARBARA McELVEY

Valdosta, Ga.

Social Work Major; English Minor.

S.G.A. 1, 2, 3, 4; Glee Club 1, 2, 3, 4; Philharmonic Club 1; Valdosta Club 1, 2, 3, 4; English Club 3, 4; Sec. 4; Social Science Club 3, 4; Pres. 4; Pine Cone 4; Campus Canopy 3, 4; Bus. Manage. 4; Sock and Buskin 4; Vice-Pres. of Freshman Class.

MARY GALLAGHER

Valdosta, Ga.

Home Economics Major

S.G.A. 1, 2, 3, 4; Valdosta Club 1, 2, 3, 4; Glee Club 1, 2; Home Ec. Club 2, 3, 4; Pres. 4; English Club 3, 4.

S E N I O R C L A S S O F 1 9 5 3

"MAY-LIN"

"VAN"

"TEENY"

"WILLIE"





MARILYN PEACOCK

Cordele, Ga.

Social Work Major

Phi Kappa Phi 1, 2, 3, 4; Y.W.C.A. 1, 2, 3, 4; Freshman Council Dance Club 1, 2, 3; K and Buskin 2, 3; Treas. 3; Social Science Club 4; Sports 1, 2, 3, 4.

ALBERT VAN DOVER OPDENBROW

Valdosta, Ga.

English Major; History Minor.

Transferred from Emory - at Valdosta; Student Council 3, 4; Vice-Pres. 4; M.C.A. 3; Filii Fortunae 4; Sec. and Chaplain 4.

ERNESTINE DAVIS DONALDSON

Quitman, Ga.

Math Major; English Minor.

Transferred from G.S.C.W.; S.G.A. 2, 3, 4; Y.W.C.A. 2, 3, 4; Math-Science Club 3, 4.

JAMES WILBUR OGLESBY

Valdosta, Ga.

Chemistry Major; Biology Minor.

Transferred from Emory; Filii Fortunae 3, 4; Treas. 3; Pres. 4; Math-Science Club 3, 4; S.G.A. 3, 4; Tennis Team 4.

S E N I O R C L A S S O F 1 9 5 3

"DUMBO"

"MARTHIE"

"GRACIE"

"MARI-NAN"

"MA-HA"

"JEANNIE VAN"





HELEN GRACE McCORD
Sylvester, Ga.

Biology Major; English Minor.
A. 1, 2, 3, 4; Y.W.C.A. 1, 2, 3, 4;
3; Y Cabinet 1, 2, 3, 4; Math-
science Club 1, 2, 3, 4; Sec.-Treas. 3;
ident 4; Campus Canopy 3, 4;
s Editor 3; Associate Editor 3, 4;
ish 3, 4; Pine Cone 3; Sports Club
S.U. 1, 2, 3.

RY EUGENIA VANLANDINGHAM
Cairo, Ga.

Elementary Education Major
A. 1, 2, 3, 4; Y.W.C.A. 1, 2, 3, 4;
Freshman Class; Sec. Sports Club
3, 4; Sports Council 1, 2, 3, 4;
4; Treas. 2; A.C.E. 1, 2, 3, 4; Sock
skin 2, 3, 4; Pine Cone 3, 4; Editor
Kappa Pi Delta 4; Student Leader 4.

MARTHA BARRS
Quitman, Ga.

Chemistry Major; Biology Minor.
S.G.A. 1, 2, 3, 4; Representative 3;
W.R.H.C. Vice-President 3; President 4;
Sports Club 1, 2, 3, 4; Sports Council
2, 3, 4; Historian 4; Campus Canopy 3,
4; News Editor 3; Co-Editor 4; Pine
Cone 3; Sigma Alpha Chi 1, 2, 3, 4;
Sec.-Treas. 2; Romance Language Club
1, 2; Sock & Buskin 1, 2, 3, 4; Home
Economics-Fine Arts Club 3, 4; Reporter
4; Who's Who 4; Kappa Pi Delta 4;
Vice-President 4; Math-Science Club 2,
3, 4; Marqa 3.

MARY HELEN COOPER
Douglas, Ga.

Math Major; English Minor.
Transferred from S.G.C. 3; S.G.A. 3, 4;
Y.W.C.A. 3, 4; Math-Science Club 4;
House Councilor 3.

MARIANNE JOINER
Coleman, Ga.

Elementary Education Major
S.G.A. 1, 2, 3, 4; Y.W.C.A.; Transferred
from Bessie Tift 2; Y Cabinet 2, 3, 4;
Glee Club 2, 3, 4; E.C.A. 3, 4; President
4; Sec. S.G.A. 4; Filii *Fortunea 4;
Chapel Choir 3, 4; Sports Club 2, 3, 4;
Sorority 4.

EVA DOLORES BARRY
Savannah, Ga.

Music Major; Art Minor.
Transferred from Armstrong 3; S.G.A.
3, 4; Y.W.C.A. 3, 4; Y Cabinet 2, 3, 4;
Sports Club 2, 3, 4; Sports Council
Vice-President 3; President 4; Philhar-
monic Club 2, 3, 4; Vice-Pres. 3; Pres.
4; Kappa Delta Epsilon 4; Pine Cone 3;
Asst. Editor 3; Sigma Alpha Chi 2, 3, 4;
Editor Campus Canopy 4; Fine Arts
Club Vice-Pres.; Who's Who 4; Fins &
Flippers 4; Student Leader 4.

S E N I O R C L A S S O F 1 9 5 3

"MARY"

"STUBBY"

"TRICIA"

"SARA"

"MAC"

"SMITTY"





PATRICIA HEATH
Leesburg, Ga.

Elementary Education Major

Transferred from G.S.C. 3; S.G.A. 3, 4; Y.W.C.A. 3, 4; A.C.E. 3, 4; Sec. Treas. Senior Class; Kappa Delta Epsilon 4; President 4.

MARY SIMMONS
Alamo, Ga.

Elementary Education Major

G.A. 1, 2, 3, 4; Y.W.C.A. 1, 2, 3, 4; Home Economics Club 1, 2; Sports Club 2.

BARBARA SMITH
Columbus, Ga.

Social Work Major; English Minor.

Transferred from G.S.C. 3; S.G.A. 3, 4; Y.W.C.A. 3; Y Cabinet 4; Sock & Buskin 3, 4; English Club 3, 4; Vice-Pres. 4; Home Economics and Fine Arts Club 3, 4; Secretary 4; Sports Club 3, 4; Sports Council 4; Dance 3, 4; Pine Cone 4; ? ? ? 4; Social Science Club 3, 4; Pres. Senior Class; Fins & Flippers 4; Dormitory Council 4; Class Sweetheart 4; Kappa Delta Epsilon 4; Student Leader 4.

MARGARET ANN CANNON
Blakely, Ga.

Elementary Education Major

Transferred from G.S.C. 3; S.G.A. 3, 4; Y.W.C.A. 3, 4; A.C.E. 3, 4; Kappa Pi Delta 4; Secretary 4.

ANN STUBBS
Lanier, Ga.

Secretarial Science Major; English Minor.

S.G.A. 1, 2, 3, 4; Y.W.C.A. 1, 2, 3, 4; Sports Club 1, 2, 3, 4; Sports Council 2, 3; Business Club 1, 2, 3, 4; Treas. 2; English Club 4; Kappa Delta Epsilon 4; Sec. 4.

SARA BOLIN
Columbus, Ga.

Social Work Major; English Minor.

Transferred from G.S.C. 3; G.S.A. 3, 4; Y.W.C.A. 3, 4; Sociology Club 3, 4; Vice-President 4; Class Beauty 3; Vice-President Senior Class; Kappa Pi Delta 4; Historian 4; Pine Cone 4.

J U N I O R C L A S S O F 1 9 5 3



Sara King, Secretary-Treasurer; **Donald Bonner**, Vice-President; **Carolyn Gaines**, President.

Though it seems incredible, we have passed the halfway mark of our college career and here we are—Juniors. The past two years hold many memories near and dear to us as we strive toward that ultimate goal—graduation. Becoming upperclassmen meant new standards to be maintained and more responsibilities assumed, but the work we accepted, along with the play.

Our Paradise Island dance was something

new and different for our school. The grass skirts, with the full paper moon combined to make the dance a gay event.

The climax was, of course, the Junior-Senior Frolics. Though it seemed all year to be a "headache for the class", it resulted in being our most enjoyable weekend of the year.

So now the year is ended and we turn toward the future with a brighter look. Next year, the all-coveted title—Seniors.

RHEDA BLACKWELL
Monticello

BETTY BRADY
Bainbridge

JANE BURDETTE
Moultrie



JERRY CALLOWAY
Attapulgus

LAURALENE CARTER
Valdosta

KATE CHILDREE
Donalsonville



NANCY COILE
Cuthbert

ELVIDA FEAZELL
Valdosta

BUFORD FULFORD
Cairo



CAROLYN GAINES
Fitzgerald

GLORIA 'GEORGE
Valdosta

MARION GODWIN
Valdosta

JACKIE GREEN
Alma

JEANETTE GRIMES
Quitman





MOZELLE JOINER
Adel

SARA KING
Montezuma

ANNE KIRBY
Valdosta

RENEE LANIER
Pembroke

RUTH MEADOWS
Valdosta

KATHRYN MILHOUS
Valdosta

MARY FLORENCE PORTER
Ashburn

HILDA SCRUGGS
Valdosta

J U N I O R C L A S S O F 1 9 5 3

NITA SESSIONS
Valdosta

SHIRLEY TAYLOR
Valdosta

BARBARA THREATTE
Lakeland

SUSAN TULLIS
Valdosta



The seance scene from "Blithe Spirit" brought forth the talent of Junior Class member Ann Kirby.



"Babs" is in a trance.



S O P H O M O R E C L A S S O F 1 9 5 3



Jane Anderson, President; **Mary Jane McMillan**, Secretary; **Nancy Lovette**, Treasurer; **Lucy Patillo**, Vice-President.

With two parts of the four-act drama of college life over, we, as Juniors-to-be, look back on our Sophomore year with many exciting memories. We have accomplished a lot this year but still there is that element of wonder when we think of senior college.

The Saturday morning breakfasts seem to characterize the Sophomores. Life savers to our fellow students, who were too lazy to get up for breakfast on Saturdays, they called us.

Then there was the Sweetheart Dance, the big event for a Sophomore. It took a lot of work and planning to get ready for the big dance, but all of the work was worthwhile when we think back over the fun that everyone had that night. Our creative ability came forth when we presented our skit, for Skit Night. Oh yes, the Sophomore year is a grand one, one that will be hard to forget.

Next year, we hope to accomplish as much and work with the same undying spirit.

SOPHOMORE CLASS OF 1953



Lanier Allen
Valdosta

Patsy Allen
Alapaha

Jennie Allen
Thomasville

Jane Anderson
Pearson

Evelyn Brogdon
Nashville

Mary Brownlee
Blakely

Lallie Burt
Camilla

Ann Camp
Lenox

Peggy Camp
Cairo

Glenda Chastain
Thomasville

Liz Clarke
Moultrie

Jannell Connell
Valdosta

Jane Corbett
Pearson

Rebecca Crawford
Blakely

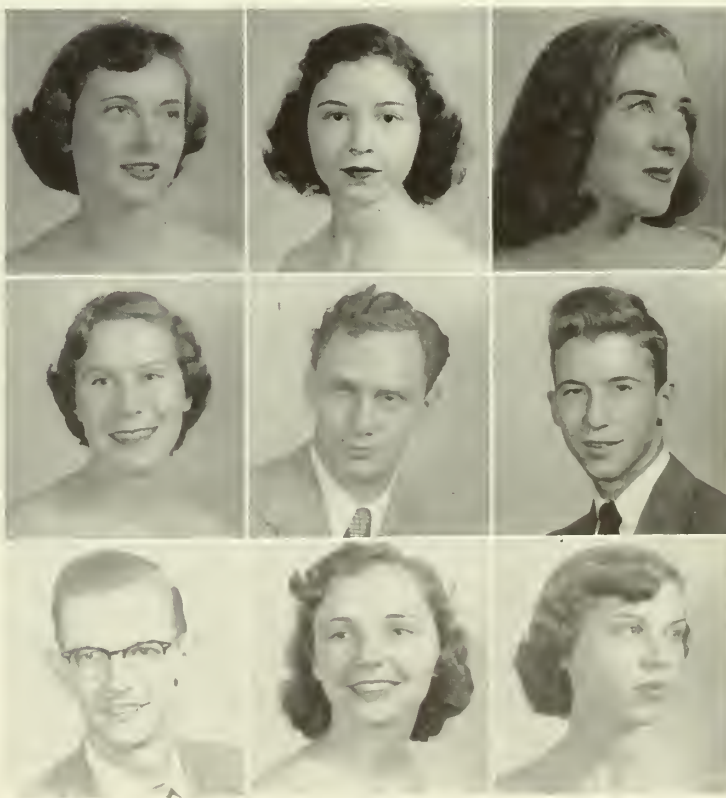
Jimmy Davis
Cave Spring

Malcolm Davis
Dunwoody

Marvin Dennis
Valdosta

Virginia Donaldson
Blackshear

Ann Durham
Bainbridge



SOPHOMORE CLASS OF 1953



Shirley Ellington
Moultrie

Patsy Exum
Enigma

Marjorie Glenn
Valdosta

Rosalie Green
Valdosta

Julian Griner
Adel

Jo Ann Hall
Lake Park

DeAlva Harper
Ocilla

Janet Harris
Thomasville

Joan Johnson
Alma

Mrs. Jeanette Jordan
Quitman



Peggy Stewart
Arlington

Barbara Strickland
Brunswick

DeLayne Strickland
Moultrie

Jackie Thomas
Camilla

Shirley Tomlinson
Brunswick

La Jeanne Thompson
Bainbridge

Billie Wages
Valdosta

Earl Yeomans
Valdosta

Jack Wooten
Valdosta

SOPHOMORE CLASS OF 1953



Jobey Oglesby
Valdosta

Joan Parrish
Valdosta

Lucy Pattillo
Darien

Lonnie Paulk
Valdosta

Martha Ann Powell
Pearson

Myrlene Sheffield
Newton

Sylvia Shiver
Quitman

Sherrill Smith
Moultrie

Virgileen Smith
Nashville

Barbara Stahl
Moultrie

Susan Kennedy
Bainbridge

Betty King
Blakely

William Knight
Ray City

Nancy Lovett
Sparks

Peggy Maxwell
Moultrie

Martha Mays
Thomasville

Mary Jane McMillan
Osierfield

Bill Mobley
Valdosta

Mamie Jo McElroy
Quitman



FRESHMAN CLASS OF 1953



Carolyn Sinclair, Secretary; Wanda Bishop, Vice-President; Mary Ann Kent, Treasurer; Jane Keen, President.

Every year the Freshman Class has an unforeseen and unpracticed four-act play. The first act consists of a bunch of very scared girls and boys as they walk into Converse and Senior Halls to make their new home and to make their new friends.

As the curtain rises on the second act, we can see the girls and boys as they begin worrying about what to wear to the activities that take place during Freshman Week.

In the third act the Freshmen are struggling

with their placement test and getting their schedules fixed for the year. There is a big sigh of relief when all of this is done, and now they can begin enjoying the great life of the dormitory.

When the curtain rises on the fourth act we see the Freshmen starting their classes with a feeling of belonging to a great big wonderful family. They are now beginning to join the clubs on the campus and participate in their activities. This is the Freshman Class as we see it on the stage every year.

Russell Acree
Twin Lakes

Wanda Bishop
Waycross

Betty Lou Braswell
Thomasville

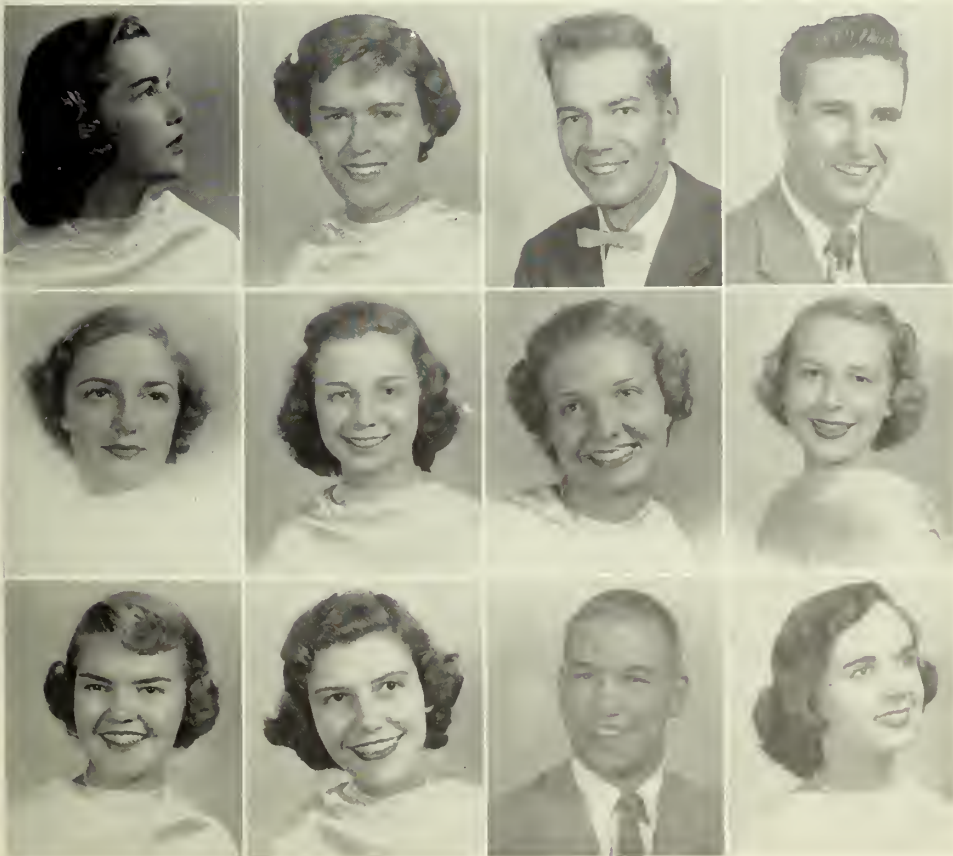


Betty Kate Brightwell
Fitzgerald

Nancy Brown
Colquitt

Alice Cauley
Brunswick

FRESHMAN CLASS OF 1953



Ksena Champion
Argyle

Dorothy Conner
Waycross

Emory Cook
Valdosta

Fred Cook
Clyatville

Frances Dukes
Lake Park

Ann Gill
Atlanta

Maldine Griffis
Fargo

Carianne Gothard
Thomasville

Beverly Grimes
Athens

Kathleen Harwell
Albany

Charles Hill
Valdosta

Deleta Hodge
Waycross

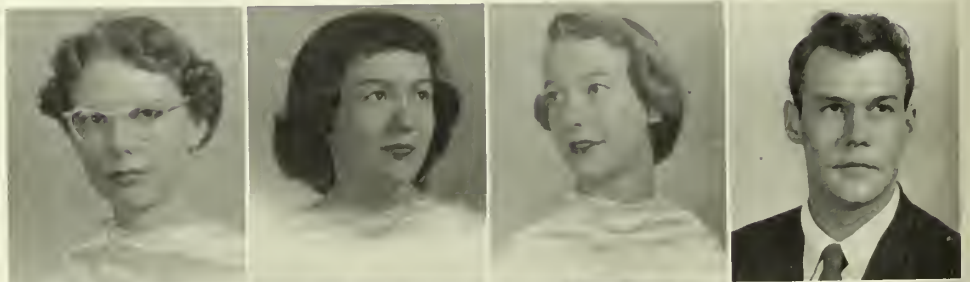


Jean Hoover
Valdosta
Jo Ann Jackson
Macon
Jane Kean
Savannah

Mary Ann Kent
St. Simons
Anne Killingsworth
Fort Gaines
Barbara Little
Lyons

F R E S H M A N

Jean Lytle
Vienna
Lynette McQueen
Folkston
Joanne Moon
Brunswick
Donald Murray
Quitman



Bobby Myers
Valdosta
Saralyn Perry
Waycross
Max Roberts
Nashville
Roslyn Rouse
Waycross



Jean Russell
Montezuma
Bill Pharris
June Porterfield
Athens
Frances Powell
Fitzgerald



Joan Sirmans
Waycross
Dorothy Swindell
Jesup
Ann Taylor
Rebecca

Betty Sears
Jasper, Fla.

Connie Sikes
Folkston

Carolyn Sinclair
Tifton



C L A S S . . .



Emily Thomas
Patterson

Jananne Tyler
Albany

Larave Vann
Moultrie

Jack Weaver
Hahira

Tedford Weaver
Nashville

Claire Wiggins
Valdosta

Joan Williams
Jesup

Nan Williams
Valdosta

Jo Ann Williams
Fitzgerald

Caroline Willis
Coolidge

Mary Wilson
St. Simons Island

Martha Ray Wright
West Point

PRODUCTION STAFF

Music

GLEE CLUB, SERENADERS

Choreography

DANCE CLUB

Costumes

FINE ARTS AND HOME EC CLUB

Lighting

MATH-SCIENCE CLUB

Makeup

SOCK AND BUSKIN CLUB

Advertisement

CAMPUS CANOPY



"MAKE UP"



"SETTING"



"ADVERTISING"



"COSTUMES"



"SETTING"



MARIANNE JOINER
Secretary

MARY VIRGINIA McDONALD
President

VAN OPDENBROW
Vice-President

CLEON KING
Treasurer

STUDENT GOVERNMENT ASSOCIATION

Every plan must have director, assistant and otherwise, but it is not every cast that can choose its directors. We are your student government association council and throughout the year we have directed your activities and helped play the course of your organizations.

We have played a major role in your play in many ways both apparent and from a distance, and though we have directed we were directed, by you. You have been the decisions and we but the voice. We think they were wise decisions and the play was a success.



MEMBERS

- Marianne Joiner
- Van Opendbrow
- Mary V. McDonald
- Cleon King
- Susan Tullis
- Carianne Gothard
- Bubber Hill
- Rosa M. Jones
- Harold Wisenbaker
- Helen Grace Ford
- Joby Oglesby
- Wilbur Oglesby
- Babs Threatte
- Malcolm Davis

MARTHA BARRS
President

MEMBERS

Barbara Smith
Laura Ann Bowen
Carolyn Gaines
Jane Kean
Rheda Blackwell
Jeanette Grimes
Jane Burdette
Jane Anderson



D O R M I T O R Y C O U N C I L S

We represent the men and women dormitories. Our councils are composed of the Class Presidents and elected members to the Student Government. We strive for a situation on our dormitories of clearer understanding, leading to happier dormitory life with the interest of all at heart.

Malcolm Davis

Webster Carter

Bill Roberts





LAY-OUT EDITORS

Ann Kirby, Jeanette Grimes, Donald Bonner, Rosa Margaret Jones, Virginia Crosby.



PHOTOGRAPHY EDITORS

Sara Bolin, Harriet Howell, Liz Clark, Web Carter, Becky Culbre



T H E

P I N E

C O N E

COPY EDITORS

Lucy Pattillo, Jackie Green, Jobey Oglesby, Frankie Powell, Claire Wiggins.

AD STAFF

Nita Sessions, Jane Ledford, Bob Green, Barbara McElvey, Mary V. McDonald, Babs Threatte, Jane Anderson, Catherine Milhous, Rheda Blackwell.



THE PINE CONE

Every play must have a program. We cry "Get your program, you can't tell the players without a program." And if it was a particularly enjoyable play your program is something to be cherished. This is your program for the play that has lasted from 52 to 53, and quite a play it was. Cherish it and remember your friends and friendships because a little bit of a priceless period of your life is entrapped here for your future enjoyment. We are the ones who were responsible for your programs and wish for your future, many happy memories.



JEANNE VANLANDINGHAM
Editor



BOB LANE
Business Manager



ASSOCIATE EDITORS
Jeannette Grimes, Jobey Oglesby,
Mary Florence Porter.



HAROLD WISENBAKER
Editor

Every play must have the opinion of the critics, and every member of the cast eagerly awaits the paper that contains the review. Few plays are in the fortunate circumstances of being able to write their own reviews, but such is our case. We are actors in the great play and reviewers at the same time. We are critics that criticize our own antics and it is only just.

C A M P U S

NEWS STAFF

First Row: Harold Wisenbaker, Jimmy Copeland. Second Row: Becky Culbreth, Mary Virginia McDonald, Babs Threatte, Bob Lane, Malcolm Davis, Marvin Dennis, Jackie Green, Dolores Barry.





BUSINESS MANAGERS

Ann Kirby, Barbara McElvey.



ASSOCIATE EDITORS

Dolores Barry, Grace McCord, Martha Barrs.

C A N O P Y

AD STAFF

Seated: Nita Sessions. Standing: Babe Yeomans, Nan Williams, Marvin Dennis.



Y. W. C. A.

The Young Women's Christian Association needs no introduction to the part it plays in the life of the students, because the encouragement it gives daily through morning watch is outstanding in the minds of everyone throughout the year. It gives everyone a chance to participate in every service. The services include:

Morning Watch, Thursday Night Vespers, Compline on Sunday Night, and the annual services of Big Sister-Little Sister, Firelighting Hanging of the Greens, Easter Services, Chapel Fund, Senior Vespers and Heart Sister Week. The YWCA is a part of man's oldest and most loved plays.

Y CABINET

First Row: Sherrill Smith, Barbara Stahl, Lucy Pattillo, Marianne Joiner, Barbara Smith. Second Row: Nancy Coile, Carolyn Gaines, Helen Grace Ford, Mary Florence Porter, Rheda Blackwell. Third Row: Liz Clarke, Jeanne Thompson, Barbara McElvey, Becky Culbreth, Marilyn Peacock, Dolores Barry, Jane Burdette, Janet Harris, Peggy Stewart.



Y. W. C. A. OFFICERS

HELEN GRACE FORD President
 CAROLYN GAINES Vice-President
 RHEDA BLACKWELL Treasurer
 MARY FLORENCE PORTER Secretary
 NANCY COILE Associate Vice-President



CHAPEL CHOIR

Jane Burdette
 Becky Tyson
 Becky Culbreth
 Marianne Joiner
 Carolyn Gaines
 Laura Ann Bowen
 Peggy Jones



SOPHOMORE COUNCIL

Lucy Pattillo
 DeLayne Strickland
 Patsy Exum
 Liz Clarke
 Jane Anderson
 Mary Brownlee
 Patsy Allen
 Shirley Ellington
 Janet Harris
 Jackie Thomas
 Barbara Stahl
 Peggy Stewart
 Barbara Strickland
 Sherrill Smith
 Susan Kennedy
 Shirley Tomlinson





Jane Ledford, June Porterfield, Rosalind Rouse, Larae Vann, Peggy Stewart. Second Row: Peggy Maxwell, Ann Killingsworth, Betty Grimes, Alice Cauley, Kathy Milhouse, Berit Haldin, Becky Tyson, Claire Wiggins. Third Row: Dolores Barry, Becky Culbreth, Susan Tullis, Lanie Ryals, Rheda Blackwell, Barbara Smith, Frankie Powell, Wanda Bishop, Jananne Tyler, Jane McHugh, Patti Carson, Nan Williams, Mrs. Smith, Adviser.

F I N S A N D F L I P P E R S



DOLores BARRY
President of Sports Club

S P O R T S C L U B

Yea! Kappa! Yea! Lambda!

These are typical expressions around V. S. C. The reason? Why the friendly competition among the two teams which make up the Sports Club, of course. Through this club we are able to develop and exercise a quality which is desired by all good sportsmen.



Jean Van Landingham, Secretary; **Martha Barrs**, Historian; **Rheda Blackwell**, Vice-President; and **Shirley Tomlinson** (not pictured), Treasurer.

SPORTS COUNCIL

Rosalind Rouse, Jane McHugh, Jane Burdette, Peggy Stewart, Shirley Tomlinson, Barbara Smith, Babs Stahl, Martha Barrs.
Second Row: **Jean Van Landingham, Miss Ivey, Mrs. Smith, Kat Meeks, Casey Gothard, Patti Carson, Susan Tullis, Dolores Barry, Becky Culbreth, Becky Tyson, Rheda Blackwell.**





Mary Florence Porter, Iris Rizer, Marie Wellmaker, Sherry Smith, Bob Lane. Second Row: DeLayne Strickland, Susan Kennedy, Janet Harris, Rheda Blackwell, Jimmy Mancil. Third Row: LaJeanne Thompson, Nancy Lovett, Lallie Burt, Bunkie Greene, Nita Sessions, Bill Roberts. Third Row: Donald Murray, Ann Stubbs, Kathleen Meeks, Peggy Camp, Mr. Spear, Advisor.

B U S I N E S S C L U B

Yes, this is the Business Club performing now on the stage. They are providing business administration and training among the members through club activities, for that is the purpose of the club. They are also buying useful things for the school.

OFFICERS

Bob Lane, President; **Iris Rizer**, Vice-President; **Marie Wellmaker**, Storekeeper; **Sherry Smith**, Secretary.



Our cast is made up of all the men on campus. Our aim is to give the play a deeper meaning by bringing to the campus worthwhile activities that include God. We show that fellowship with our friends and Christ at the same time can be the most enjoyable aspect of campus life.



OFFICERS

Virlon Griner, Secretary; **Malcolm Davis**, Vice-President; **Fred Wheeler**, Treasurer; **Buford Fulford**, President.

MEN'S CHRISTIAN ALLIANCE



First Row: **Ernest Coffee**, **Bob Lane**, **Malcolm Davis**, **Buford Fulford**, **Arlis Leonard**. Second Row: **Cleon King**, **Jimmy Davis**, **Max Roberts**, **F. J. Beverly**.

E N G L I S H C L U B



Ann Stubbs, Barbara Smith, Becky Culbreth, Barbara McElvey, Mary Florence Porter. Second Row: Kat Meeks, Florence Catikos, Lauialine Carter, Patti Carter, Rheda Blackwell, Helen Ford, Mrs. Odum, Advisor; Vallie Staten, John McGowan, Gloria George, Buford Fulford, Flo Clark.

OFFICERS

Barbara McElvey, Secretary-Treasurer; **Barbara Smith**, Vice-President; **Becky Culbreth**, President.

The English Club endeavors to promote an interest in and enjoyment of modern authors, creative writing, and modern and classical literature. The English Club has as members the Juniors and Seniors who are majoring or minor- ing in English.





Peggy Stewart, Lucy Pattillo, Marion Godwin, Lynette McQueen, Freddie Flournoy. Second Row: Mary Jane McMillan, Dee Harper, Lallie Burt, Peggy Camp, Helen Ford, Lanie Ryals, Aspasia Panos, Barbara Smith, Frankies Powell, Peggy Maxwell, Jean Russell, Babs Threatte, Nita Sessions. Third Row: Russell Avery, Russell Frier, Web Carter, Jack Wooten, Bill Roberts.

D A N C E C L U B

We are the strophe and anti-strophe. Our goal has been to add a touch of the classic to the play. We have blended the classic and the modern and presented it through rhythm. The results—

"An exceptionally well done job."

—Critics.

OFFICERS

Elaine Ryals, President; **Helen Grace Ford**, Secretary and Treasurer; **Aspasia Panos**, Costume Manager.





Mr. Logan, Liz Clarke, Barbara Strickland, Becky Tyson, Jane Anderson, Becky Culbreth, Jane Burdette, Jeannette Grimes, Peggy Jones, and Laura Ann Bowen.

With a song in our hearts, we bring music to our fellow students by presenting programs and singing at the Faculty tea. Music is a universal art understood by all who appreciate it. Therefore, it is our purpose to bring as much enjoyment through songs to VSC. Our Spring concert brings our year's activities to a wonderful close.

The Serenaders, nine talented girls, are the part of us bringing special programs to the school and neighboring towns. Come hear us and we'll sing just for you.

S E R E N A D E R S

G L E E C L U B

OFFICERS

Barbara McElvey, Historian; Jane Anderson, Vice-President;
Janet Harris, Publicity Chairman; Jane Burdette, Secretary-
Treasurer; Becky Tyson, President.



First Row: Barbara Strickland, Liz Clarke, Becky Tyson, Jane Anderson, Jane Burdette, Becky Culbreth, Janet Harris, Barbara McElvey, Laura Ann Bowen. Second Row: Mr. Logan, Mary Rowe, Sherrill Smith, Babs Stahl, Peggy Jones, Marianne Joiner, Carolyn Gaines, Jannell Cornell, Ruth Meadows. Third Row: Saralyn Perry, Martha Ray Wright, Kathy Harwell, Betty Brady, Ann Kirby, Nan Brown, Rosalyn Rouse, Jananne Tyler, June Porterfield, Ann Taylor. Fourth Row: Jeannette Grimes, Jackie Thomas, Ann Gill, Claire Wiggins, Beverly Grimes, Jean Lytle, Mary Ann Kent, Jane Kean, Carolyn Sinclair, Joan Williams, Nan Williams, Jane Ledford, Jo Ann Moon, Mary Wilson, Bettye Sears, Dot Swindell, Wanda Bishop.





Left to right: Jane Anderson, Nancy Coile, Glenda Christian, Kate Childree, Iris Riezer, Aspasia Panos, Mary Jane McMillian, Clara Smith, Florence Catikos, Dr. Treanor, Florence Clark.

R O M A N C E L A N G U A G E

OFFICERS

Seated: Dr. Treanor, Florence Clark, President; Mary Jane McMillian, Secretary-Treasurer; Ann Kirby, Vice-President.



The love of the languages inspires our club to learn more about the countries from which the languages come. We have speakers from other countries to tell us of the unfamiliar and thereby we gain a great appreciation of home and abroad.

PHILHARMONIC CLUB

The Philharmonic Club, made up of students interested in the field of music, has a very successful year. Many worthwhile projects were undertaken and interesting meetings held with the talent of the members being put to use to provide very enjoyable programs.



OFFICERS

Peggy Jones, Secretary-Treasurer; **Dolores Barry**, President; and **Becky Culbreth**, Vice-President.

Aspasia Panos, **Dolores Barry**, **Becky Culbreth**, **Mary Wilson**, **Mr. Logan**, Advisor; **Peggy Jones**, **Deleta Hodge**, **Ivaleen Chitwood**, **Conrade Durham**, **Miss Warren**, Advisor.





OFFICERS

Barbara Smith, Secretary; Susan Tullis, Vice-President; Mary Gallagher, President, and Lucy Pattillo (not pictured), Treasurer.

Look! Am I seeing right? Yes, that is right! The students of V.S.C. play a big part in the way of Home Making and Fine Arts. Their purpose is to bring together all those who are interested in Home Economics and Fine Arts, and to inform their members as to the opportunities in their respective fields.

A R T H O M E E C C L U B

Seated: Martha Barrs, Barbara Smith, Flo Clark, Hilda Scruggs, Dolores Barry, Donald Bonner. Standing: Mary Gallagher, Jannelle Connell, Babs Stahl, Evelyn Brogden, Carolyn Gaines, Ruth Meadows, Lucy Pattillo, Susan Tullis, Babs Threattle.



S O C K A N D B U S K I N



Miss Louise Sawyer, Advisor; Babs Threatte, Ann Kirby, Bob Lane, Janet Harris. Second Row: Mary Florence Porter, Jean Van Landingham, Lanie Ryals, Helen Ford, Barbara Smith, Dee Harper, Martha Barrs. Third Row: Barbara Strickland, Alice Cauley, Virginia Crosby, Kathy Milhouse, Martha Wright, Wanda Bishop, Rosalind Rouse. Fourth Row: Mary Jane McMillan, Joan Jackson, Malcolm Davis, Mary Virginia McDonald, Nita Sessions, Frances Girtman, Marion Godwin.

"The world is a stage and each must play a part . . ." and we, as the dramatics club on campus, play our parts well. The lure of the theater and the love of acting characterize the Sock and Buskin Club. Our members work hard to present a play each year, which is one of the highlights of the campus. You will find us always with the backstage excitement of a first night, learning the art of acting, directing, and casting.

OFFICERS

Ann Kirby, Vice-President; **Janet Harris**, Historian; **Babs Threatte**, President; and **Bob Lane**, Secretary and Treasurer.



H O N O R S O C I E T Y



First Row: Janice Harrington, Vallie Staten, Martha Barrs, Becky Culbreth, Harold Wisenbaker, Barbara Strickland, Lallie Burt. Second Row: Dolores Barry, Ann Kirby, Nancy Coile, Malcolm Davis, Jeanette Grimes, Jeanne Thompson, Lucy Pattillo, Barbara Stahl, Nancy Lovette.



These are players that we are very proud of; quietly they have lifted the level of our performance. They are the serious students of the play and among the keenest actors in it. They have been honored for their knowledge of the play and immensely benefited from it. We applaud them.

OFFICERS

Becky Culbreth, President; Nancy Coile, Secretary-Treasurer; Janice Harrington, Vice-President.

Ours is an ever changing play, in this modern world. Great strides are being made in Science daily, and Math is coming to assume an ever growing importance in the practical application of these advances. We keep ourselves abreast with our ever expounding mediums and receive a great deal of excitement in the process.



OFFICERS

First Row: **Tiny Donaldson**, Secretary-Treasurer; **Grace McCord**, President. Second Row: **Kate Childree**, Historian-Reporter; **Nancy Coile**, Vice-President.

M A T H - S C I E N C E C L U B

First Row: Joan Parrish, Elvida Fizzell, Dr. Bettman, Wilbur Oglesby. Second Row: James Seasholtz, Lanier Allen, Max Roberts, Kate Childree, Nancy Coile. Third Row: Tiny Donaldson, Ralph Tillman, Martha Barrs, Malcolm Davis. Fourth Row: Grace McCord, Dr. Nevins, Mary Helen Cooper, Jackie Thomas, Mr. Babcock, Lucy Pattillo, Bubber Hill, Russell Acree, Gene Paulk.





First Row: Clarie Wiggins, Bill Mobley, Lauralene Carter, Susan Tullis, Nita Sessions, Mary Virginia McDonald, Jannell Connell, Nan Williams. Second Row: Marvin Dennis, Barbara McElvey, Donald Bonner, Marion Godwin, Marie Wellmaker, Fred Cook, Virginia Crosby. Third Row: Ruth Meadows, Mal Smith, Ernest Coffee, Cathrine Milhous, Jo Ann Hall, Marjorie Glenn, Billie Bird.

OFFICERS

Jannell Connell, Susan Tullis, Mary Virginia McDonald,
Lauralene Carter.



We feel that our club is one of the most worthwhile at V. S. C. We are not only encouraged to join in the extra-curricular activities on campus, but also through the Valdosta Club the ties which make the town students and the dormitory students one are strengthened.



First Row: Patricia Heath, Sara King, Jackie Greene, Janice Harrington, Becky Culbreth, Winona Vickers, Rosa Jones, Liz Clarke, Jane McHugh, Barbara Strickland, Harriet Howell. Second Row: Dr. Booker, Mrs. Knight, Betty Jean Daniels, Becky Tyson, Carolyn Gaines, Cathrine Milhous, Gloria Peters, Laura Bowen, Jane Burdette, Mary Jane McMillian, Ginger Donaldson. Center: Marianne Joiner.

ASSOCIATION FOR CHILDHOOD ED

Our play is concerned with advancement of education. We meet and hear speakers who are wise in the ways of education. We all have an interest in the advancement of education and through our progress we keep abreast of the latest techniques and innovations in education. Education is our chosen field and we feel that it is a worthwhile and rewarding field.

OFFICERS

Marianne Joiner, President; **Gloria Peters**, Treasurer; **Jackie Greene**, Secretary; **Betty Jean Daniel**, Vice-President.





Our aim is a better understanding of the phases of social science. At our regular monthly meetings we enjoyed talks given to us by outstanding and informative speakers. The Social Science Club gives assistance to the welfare activities in Valdosta and helps to conduct charity drives on campus.

OFFICERS

Barbara McElvey, President; **Sara Bolin**, Vice-President; **Marie Wellmaker**, Secretary-Treasurer.

S O C I A L S C I E N C E C L U B

Marilyn Peacock, Barbara McElvey, Vallie Staten, Helen Grace Ford, Marie Wellmaker. Second Row: Arliss Leonard, Sara Bolin, Marjorie Glenn, Dr. Durrenburger, Advisor; Barbara Smith, Hilda Scruggs, John McGowan.





Kenneth Rozier, Nita Sessions, Florence Catikos, Cleon King, Miss Price, Advisor; Aspasia Panos, Bill Roberts. Second Row: Ed Kicklighter, Elvida Feazell, Phelps Mathews, Archie Thomas, Nancy Coile. Third Row: LaHood, Marvin Dennis, Bill Mobley, James Seasholtz.

OFFICERS

Cleon King, Treasurer; Kenneth Rozier, President; Aspasia Panos, Vice President; Bill Roberts, Secretary.

"All the world is a stage" and we of the I.R.C. are students of that stage. Ours is a study of the themes of the continuous play that is presented upon the stage. In our time it is wisdom no longer, but a necessity to understand international relations and this is the aim of our club. In a democracy, opinion shapes the policy of the government, and our aim is to stir ourselves and others to think and have opinions and by our opinions to stir still others.



INTERNATIONAL RELATIONS CLUB

F I L I I F O R T U N A E



NEW MEMBERS

First Row: **Kenneth Rozier, Emory Cook, Donald Bonner, Van Opdenbrow.** Second Row: **Don Murray, Jimmy Davis, Marvin Dennis.**

Filii Fortunae accepted for themselves a dual role on our campus. Even with expectation high, the social aspect proved more than graciously successful. Beyond even the hopes of the founders is the outstanding record of its members, a large number appearing in Who's Who and the unusual number of awards in recognition of outstanding achievement.

One of the first organizations on campus to substitute a worthwhile initiation for new members, the fraternity proudly reviews its accomplishments; working with community chest, sponsoring the blood drive, working with the boys club, sponsoring Miss VSC, awarding the outstanding male of the year, and giving recognition to a faculty member whom we consider had done the extra and uncalled for in helping students in personal and non-academic work. We think our role has been successfully fulfilled for another year.

OLD MEMBERS

Front: **Marianne Joiner, Sponsor.** Second Row: **Archie Thomas, Phelps Matthews, Webster Carter, Bill Roberts, Jerry Brown, Harold Wisenbaker, Jimmy Copeland, Jobey Oglesby, Wilbur Oglesby, Cleon King, Bob Green, Malcolm Davis, Babe Yeomans.**





First Row: Mal Smith, Bubber Hill, Jane Anderson. Sponsor: Dr. Thaxton. Advisor: Lanier Allen. Second Row: Steve Pittman, Dizzy Stephenson, Huddie Barker, Gary Phillips, Jerry Bosmon, Jack Wooten, Jimmy Mancil.

M U A L P H A

BUBBER HILL
President

Ours is a new role, a new star upon the stage, a new advance toward making the play that is V. S. C. a success. Already success has greeted us in the review of the critics.

"Something new has been added; just what was needed to make the play a greater success."—Critics.



STARRING PLAYERS

R E C I T A L I S T S

A L L - A R O U N D S T U D E N T S

M A Y C O U R T

M I S S V . S . C .

W H O ' S W H O



"RING IT FILII"



"VICTORY"



"DO BE QUIET, ELVIRA . . ."



"CHEESE"



"STAIRWAY TO . . ."

Recitalists



MARY VIRGINIA McDONALD
Speech Major



REBEKAH CULBRETH
Music Minor



ELAINE RYALS
Speech Major



PEGGY JONES
Music Major



DOLORES BARRY
Music Major

M A Y C O U R T



First Row: Betty Jean Daniel, Rosa Margaret Jones, Marianne Joiner, Mary Helen Cooper, Peggy Jones, Patricia Heath.
Second Row: Laura Ann Eowen, Jeanne Van Landingham, Becky Culbreth, Jane McHugh, Maid of Honor; Barbara Smith,
May Queen; Martha Barrs, Dolores Barry, Marie Wellmaker.

Junior College

Rosalind Rouse, Peggy Stewart, Steve Pittman, and
Jack Knight.



A L L - A R O U N D S T U D E N T S

Senior College

Wilbur Oglesby, Jean Van Landingham, Babs Threatte, Donald Bonner.





First Row: Ann Kirby, Caroline Willis, Sara Bolin, Marianne Joiner. Second Row: Donald Bonner, Babe Yeomans, Malcolm Davis, Emory Cook, Jobey Oglesby, Archie Thomas, Jimmy Copeland. Third Row: Phelps Matthews, Web Carter, Van Opdenbrow, Jerry Brown, Ben Porter, Wilbur Oglesby.

CAROLINE WILLIS

Miss USC



Who's Who

These are the stars of our show, they have played many parts, both large and small, but regardless of the size of their parts they have played them well. They are the stars that, regardless of the inconvenience to them, have had the time to help us in a thousand ways. They are the stars that have taken the tedious and thankless but necessary old parts and done them without complaint. Our thanks to them with a well deserved curtain call.



MARTHA BARRS

BILL ROBERTS



DOLORES FARRY





BOB LANE



MARY VIRGINIA McDONALD

REBEKAH CULBRETH



HAROLD WISEBAKER



FEATURED ATTRACTIONS

B E A U T I E S

S W E E T H E A R T S

M A Y Q U E E N

M A I D O F H O N O R



"TO THE BEAUTIES FROM
THE PINE CONE"



"THE SWEETEST OF
THEM ALL"



B E T T Y J E A N D A N I E L

Senior

S U S A N T U L L I S

Junior





S Y L V I A S H I V E R

Sophomore



C A R O L I N E W I L L I S

Freshman

B A R B A R A S M I T H

Senior





M A R Y F L O R E N C E P O R T E R

Junior



M A R Y J A N E M c M I L L A N

Sophomore

J O A N W I L L I A M S

Freshman





B A R B A R A S M I T H

May Queen



J A N E M c H U G H

Maid of Honor

BETWEEN

THE

SCENES





"SILENCE IS GOLDEN"

"THE LAST ONE IN IS A . . ."



"THAT LONG WALK TO . . ."

"MORE FUN!"





Won't you have tea?



Dr. J. Ralph.



Lovely to look at.

D I D Y O U S E E ?



Did he make it?



Where to now?

Let's dance.



CONGRATULATIONS
TO THE
1953 SENIORS
OF THE
VALDOSTA STATE COLLEGE

and

WELCOME TO THE
UPPERCLASSMEN AND FRESHMEN

“THE CITY OF AZALEAS”

Welcomes the opportunity of being your home during your college days
and of sharing your culture.

May your associations and your memories of our city be such that
you will return after college days.

★ ★ ★

JOHN BRAY GIDDENS, Mayor

COUNCILMEN

J. Carlton Green

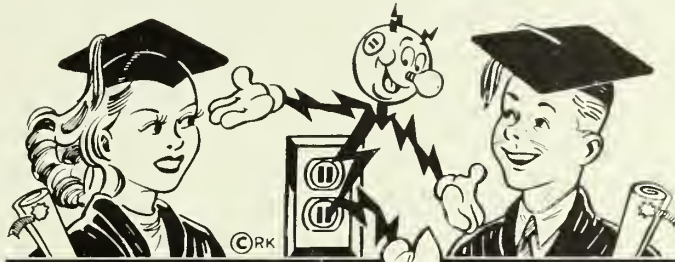
Roy McLane

Jack E. Howell

Carl D. Minchew

N. N. Langdale

Jas. A. Parramore



Live Electrically!

In home and business I do a lot
I'm little Reddy Kilowatt
I work for you every day
The more I work the less you pay
All household items except mine
Now cost more than in '39
So use me often the whole year thru
I'll make life easier for you.

Now and Forever Yours,
Reddy Kilowatt

GEORGIA POWER
AND
LIGHT COMPANY



Hotel Daniel Ashley

VALDOSTA, GEORGIA



C.C. Varnedoe & Co.

THE STYLE CENTER OF VALDOSTA



Authentic Fashions

for

Juniors - Misses - Women

Congratulations and Best Wishes



Photographs in this Issue

by

VALDES STUDIO



VALDES HOTEL

PHONE 423

S and K DRIVE-IN

Terrible (good) Food

Lousy Service

Sandwiches

Fountain Drinks

Shrimp

Chicken

GOOD SERVICE

at

BOB BELCHER'S DRUG STORE

PATTERSON AND CENTRAL

Phone 812-813

*DOROTHY GRAY BEAUTY
PREPARATIONS*

Southern Stationery and Printing Company

Wholesale Paper Dealers



... for More Than Forty-five Years

Commercial Stationers

Printers

Office Outfitters



VALDOSTA

GEORGIA

WITH BEST WISHES

To The Seniors of 1953

Whose Associations Here
Will Long Be Remembered

To the Upperclassmen and
Freshmen

We are looking forward to your
return next year!

BROOKWOOD PHARMACY

Delivery Service Phone 336

*Compliments
of*
**Thompson Insurance
Agency**

Insurance of All Kinds
REAL ESTATE LOANS
123 W. Hill Ave. Tel. 1144

**NEHI BOTTLING
COMPANY**

BOTTLERS OF
ROYAL CROWN COLA — UPPER 10
401 S. Stevens Street Phone 621
J. L. HARRIS, JR.

Compliments of
**HOLTON FURNITURE
CO., INC.**

Phone 2937 116 W. Central Avenue

*Compliments
of*
**GEORGIA FERTILIZER
COMPANY**

*Compliments
of*
Mathis and Youmans

*Compliments
of*
COWART'S DRESS SHOP
SMART STYLES
for
COLLEGE GIRLS

Compliments of
**WHITE HOUSE
RESTAURANT**

**First Federal Savings
and Loan Association**
OF VALDOSTA

Savings Accounts Solicited
Each Deposit Insured Up to
\$10,000

3% Return on All Savings

J. L. Newbern, President

BRIGGS' CLOTHING

- SCHWOBILT CLOTHES
- VAN HEUSEN SHIRTS
- JARMAN SHOES
- KNOX HATS

Exclusive With Briggs'
in Valdosta

BELL SHOP

LADIES SPECIALTY and
GIFT SHOP

Phone 1870

Come to See Us

109 W. Central Avenue

Compliments of

Star Laundry and Dry Cleaning



PHONE 54

The

VALDOSTA DAILY TIMES

YOUR HOME NEWSPAPER



109-11 W. Hill Avenue

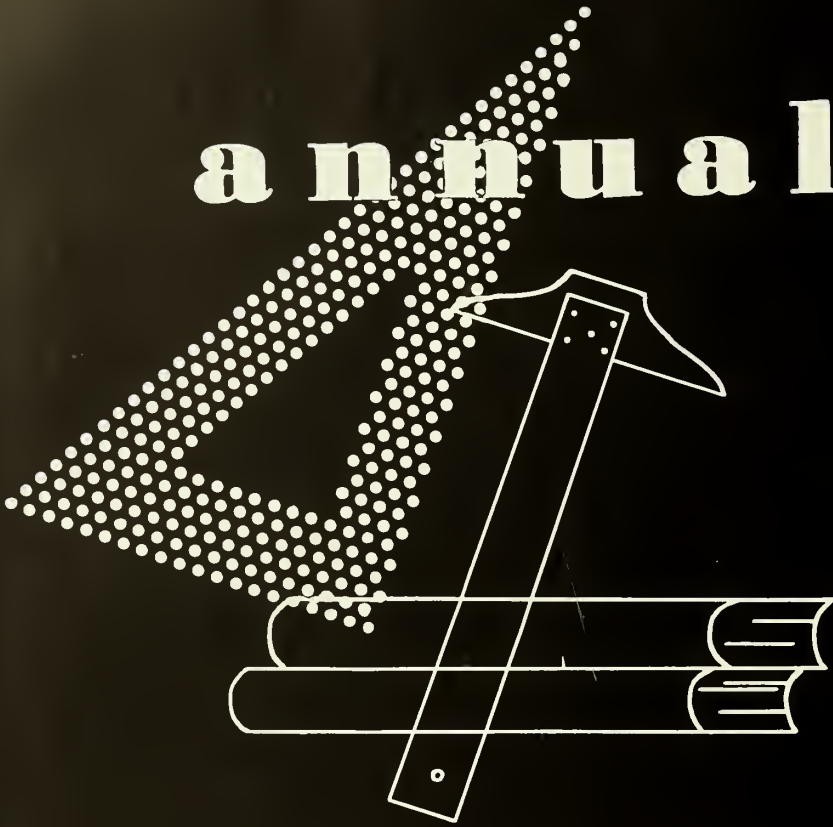
Register Clothing Company, Inc.

122 N. Patterson St.
Valdosta, Georgia

NUNN-BUSH SHOES
GRIFFON CLOTHES
STETSON HATS
ARROW SHIRTS

annuals of

distinction . . .



Original layouts, distinctive typography and sparkling reproduction that give your annual the luxurious appearance impossible to obtain by standard layout, mass-production methods.

Bowen, Long & Young, Inc.

110 TRINITY PLACE
DECATUR, GEORGIA





