



PINE CONE
NINETEEN FIFTY FOUR



Digitized by the Internet Archive
in 2014

<https://archive.org/details/pinecone195400vald>





*'Mong The Stately Pines of Georgia
Glorious To The View . . .*

Stands Our Noble Alma Mater . . .





Basking 'neath The Blue



*For Thy Fame Shall Never Perish
Red And Black All Hail . . .*

*Alma Mater Thee We Honor
... Praises Never Fail*



C O N T E N T S

DEDICATION

ADMINISTRATION

CLASSES

ORGANIZATIONS

ACTIVITIES

FEATURES

ADVERTISEMENTS



the **Pine** **Cone**



Published By

VALDOSTA STATE COLLEGE

. . . Student Body

D E D I C A T I O N

MR. JOSEPH W. PEMBER



As a painting invariably reflects the personality of its creative artist, so does the artist, educator, and leader reveal his personality through directed students and their activities. Their activities and accomplishments are products of common understanding, endeavor, and goals. Their activities and accomplishments, moreover, are the ultimate expression of one who commands the admiration and respect of faculty and students.

Such a leader is Mr. Joseph W. Pember, assistant professor of art, to whom we gratefully dedicate the Pine Cone of 1954.

ADMINISTRATION



Thee We Honor



DR. JAMES RALPH THAXTON
A.B., M.A., Ph.D.
President



MRS. JOE WISENBAKER
A.B., M.Ed.
Dean of Women

T H E

MR. WILLIAM GABARD
A.B., A.M.
Director of Publicity

DR. J. A. DURRENBERGER
A.B., A.M., Ph.D.
Academic Dean

MR. SHEALY E. McCOY
B.B.A., LL.B.
Comptroller and Treasurer



MRS. ILA VANN JENKINS
Assistant to Comptroller

MISS FRANCES JACKSON
Secretary to Comptroller

MRS. J. S. MADDOX
Secretary to President



MRS. J. A. SCONYERS
Resident Counselor of Senior Hall

MRS. C. C. WHITTLE
Resident Counsellor of Converse Hall

DR. MARJORIE E. CARTER
B.S., M.A., Ph.D.
Associate Professor of Biology
Resident Counsellor of Ashley Hall



F A C U L T Y

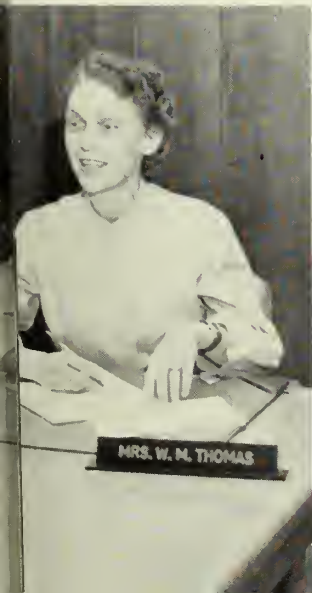
MISS THERA HAMBRICK
A.B., B.S. in L.S.
Assistant Librarian

MRS. J. A. SCONYERS
Assistant Dietitian

MRS. W. M. THOMAS
A.B.
Registrar

MISS LILLIAN PATTERSON
A.B., B.S. in L.S.
Librarian

MRS. EVA A. SHRIVALLE
Dietitian





DR. H. S. GULLIVER
B.A., A.M., Ph.D.
Professor of English

MRS. GERTRUDE G. ODOM
B.S., A.M.
Associate Professor of English

MRS. LOUISE SAWYER
B.S., M.A.
Associate Professor of Speech



MRS. JOE WISENBAKER
A.B., M.Ed.
Associate Professor of Social Science

MR. JAMES E. SPEAR
B.S., M.S.
Assistant Professor of Social Science

MISS MILDRED PRICE
A.B., A.M.
Associate Professor of History



MRS. W. A. PARDEE
Graduate of Cincinnati Conservatory of
Music
Instructor of Violin

MISS GLADYS WARREN
B.M., M.A.
Associate Professor of Music

MR. CLAYTON LOGAN
B.A., M.F.A.
Associate Professor of Music



MRS. ELIZABETH SMITH
B.S., M.A.
Assistant Professor of Physical Ed.

MRS. PHYLLIS VALENTA
B.A., M.S.
Assistant Professor of Physical Ed.

MRS. DOROTHY WALDREN
A.B.
Assompanist, Physical Ed. Dept.

MISS LEONORA IVEY
B.S., M.A.
Associate Professor of Physical Education

T H E



MISS NADINE PATTON
B.S., M.Ed.
Consultant in Teacher Education

DR. T. W. BOOKER
B.S., Ed., M.A., Ph.D.
Professor of Education

MRS. CLAUDE KNIGHT
B.S., M.A.
Associate Professor of Education



DR. ROBERT PERRY
M.D.
College Physician
MRS. GRADY PENNETT

F A C U L T Y

MISS SARAH WEEMS
B.S.H.E., M.S.H.E.
Associate Professor of Home Economics

MISS MARGARET DEAVOR
A.B., M.A.
Associate Professor of Secretarial Science

MR. J. G. WALL
B.S., M.S.
Assistant Professor of Mathematics

DR. BEATRICE NEVINS
Ph.B., Ph.M., Ph.D.
Professor of Biology

MR. LEROY BABCOCK
B.S., M.S.
Associate Professor of Mathematics

DR. MARJORIE CARTER
B.S., M.A., Ph.D.
Associate Professor of Biology

DR. BERNARD BETTMAN
B.A., M.A., Ph.D.
Professor of Chemistry

DR. BERNARD BETTMAN
B.A., M.A., Ph.D.
Professor of Chemistry



MRS. HAROLD BENNETT
A.B., M.A.
Instructor in Art

MR. JOE PEMBER
A.B., M.F.A.
Assistant Professor of Art

DR. SAPELO TREANOR
A.B., A.M., Ph.D.
Professor of French and Spanish



Valdosta State College

SENIOR CLASS

JUNIOR CLASS

SOPHOMORE CLASS

FRESHMAN CLASS





Ann Kirby, President; May May Porter, Vice-President; Kathryn Milhouse, Secretary-Treasurer.

It was nearly over. How had four years passed so quickly? "Why, only yesterday we were Freshmen." At the beginning of the year, we Seniors were busy with the Halloween Carnival, Junior-Senior Frolics, informal dances, then the last Hanging of the Greens, in the Rotunda of Ashley Hall.

Then came May-Day, the Queen and her Court, and we felt as if four wonderful years at V.S.C. were fun, if a little sad. Caps and gowns—graduation—no, there wouldn't be time to reminisce about it all, but there would be time afterward and for years to come.

S E N I O R S O F 1 9 5 4



VIRLON GRINER
Adel, Georgia
Elementary Education Major



BECKY TYSON
Cairo, Georgia
Elementary Education Major



WILLIAM WOODWARD
Valdosta, Georgia
Social Work Major



MARY FLORENCE PORTER
Ashburn, Georgia

S.G.A. 1, 2, 3, 4; Y.W.C.A. 1, 2, 3, 4, Sec. 4; Cabinet 4; Glee Club 3, 4, Sec. 4; Chapel Choir 4; Sock and Buskin 2, 3, 4, Vice-Pres. 4; English Club 3, 4, Pres. 4; Vice-Pres. Senior Class; Pine Cone 3, 4; Business Club 1, 2, 3, 4, Vice-Pres. 3, 4; Class Sweetheart 3; Sigma Alpha Omega 4, Pres. 4; Who's Who 4.



JACKIE GREENE
Alma, Georgia

Elementary Education

Transferred from South Georgia College 3; S.G.A. 3, 4; Y.W.C.A. 3, 4; Cabinet 4; Glee Club 3, 4; English Club 4; Education Club 3, 4, Sec. 3, 4; Campus Canopy 3, 4; Pine Cone 3, 4; Sigma Alpha Chi 4, Pres. 4; House Councilor 4; Best All Around Girl 4.

S E N I O R S

BABS THREATTE
Lakeland, Georgia
Elementary Education

S.G.A. 1, 2, 3, 4, Vice-Pres. 4; Y.W.C.A. 1, 2, 3, 4; Cabinet 4; B.S.U. 4, 2nd Vice-Pres. 4; Sock and Buskin 1, 2, 3, 4, Pres. 3; Art Home Ec Club 3, 4, Historian 4; Glee Club 3, 4; Dance Club 1, 2, 3; Sports Club 1, 2, 3, 4; Education Club 3, 4; English Club 3, 4, Reporter 4; Pine Cone 3, 4; Campus Canopy 2, 3; Filii Fortunae Sponsor 4; Best All Around Girl 3; Sigma Alpha Omega 4; Who's Who 4.





1 9 5 4

ANN KIRBY
Valdosta, Georgia
Speech Major

S.G.A. 1, 2, 3, 4; Y.W.C.A. 1, 2, 3, 4; Y Cabinet 4; Chapel Choir 4; Glee Club 3, 4; Serenaders 4; Sock and Buskin Club 1, 2, 3, 4, Vice-Pres. 3, Pres. 4; English Club 4; Sigma Alpha Chi 2, 3, 4, Vice-Pres. 3, Sec. and Treas. 4; Romance Language Club 2, 3, Vice-Pres. 3; Art Home Ec Club 3, 4, Sec. 4; Campus Canopy 3; Pine Cone 3, 4; Sigma Alpha Omega 4; B.S.U. 4, Vice-Pres. 4; Senior Class President; Who's Who 4.

"ANN" . . . "JACKIE" . . . "MAY MAY"





"JERRY" . . . "JUDY" . . . "DOT" . . . "PATTI"

S E N I O R S O F 1 9 5 4



PATTI JEAN CARSON
Boston, Georgia
 Secretarial Science



DOT BARINEAU
Cairo, Georgia
 Home Economic Major

S.G.A. 1, 2, 3, 4; Y.W.C.A. 1, 2, 3, 4; Sports Club 1, 2, 3, 4; Council 3, 4, Historian 4; Fins and Flippers 3, 4, Pres. 4; Business Club 1, 2, 3, 4, Treas. 4; English Club 3, 4; Campus Canopy 3.

S.G.A. 1, 2, 3, 4; Y.W.C.A. 1, 2, 3, 4; Sports Club 1, 2; Dance Club 1, 2; Home Ec Club 1, 2, 4; Fine Arts Club 2, 4; English Club 4.



JERRY CALLOWAY
Attapulcus, Georgia
 Elementary Education

S.G.A. 1, 2, 3, 4; Y.W.C.A. 1, 2, 3, 4; Home Ec and Art Club 1, 2, 3; Education Club 3, 4; Sports Club 1, 2, 3, 4.



JUDITH TYRE
Coffee, Georgia
 Elementary Education

S.G.A. 1, 2, 3, 4; Y. W. C. A. 1, 2, 3, 4; Sports Club 1, 2; Glee Club 4; Education Club 3, 4; Secretary Sophomore Class.



MARJORIE GLEN
Valdosta, Georgia
English Major

S.G.A. 1, 2, 3, 4; Sports Club 1; English Club 4; Philharmonic Club 1; Valdosta Club 1; Sociology Club 2; I.R.C. 4, Treas. 4; Campus Canopy 4.



SHIRLEY TAYLOR
Valdosta, Georgia
Home Economics Major

S.G.A. 1, 2, 3, 4; Sports Club 1, 2, 3, 4; Valdosta Club 1, 2; English Club 3, 4; Art and Home Economics Club 1, 2, 3, 4.

S E N I O R S

RUTH MEADOWS
Valdosta, Georgia
Home Economics Major

S.G.A. 1, 2, 3, 4; Sports Club 1, 2; Valdosta Club 1, 2; Art Home Economics Club 3, 4; English Club 4, Vice-Pres. 4; Glee Club 3, 4.





1 9 5 4

KATHRYN MILHOUSE

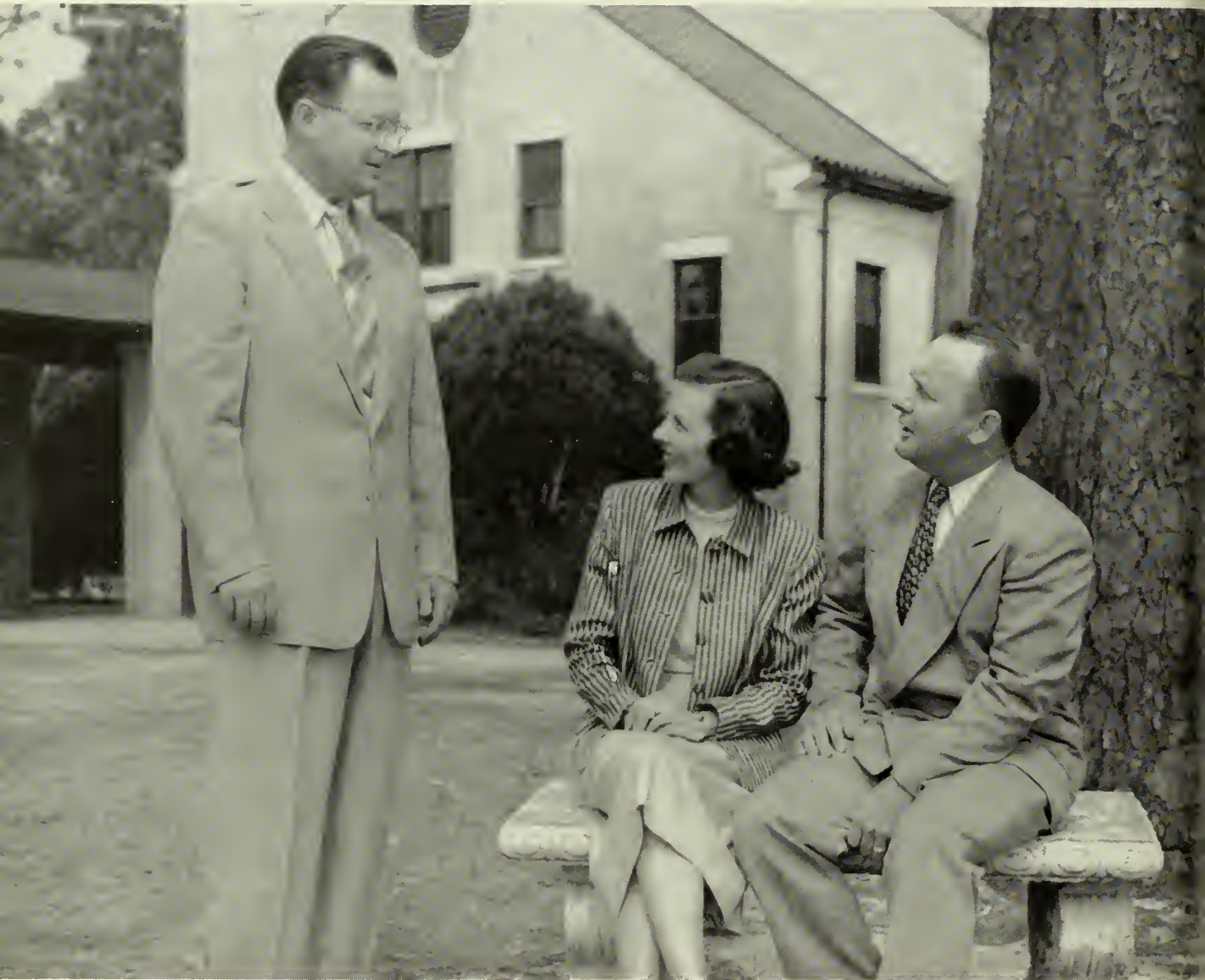
Valdosta, Georgia

Elementary Education

S.G.A. 1, 2, 3, 4; Education Club 3, 4; Sock and Buskin 3, 4; Fins and Flippers 3, 4; Sports Club 1, 2, 3, 4; Council 4; Valdosta Club 1, 2; Sec. and Treas. Senior Class; Art Home Economics Club 4; Freshman Honor Society 1, 2; Pine Cone 3, 4; Campus Canopy 4.

"MARJORIE" . . . "KATHRYN" . . . "SHIRLEY" . . . "RUTH"





"CLYDE" . . . "LYNETTE" . . . "REED"

S E N I O R S O F 1 9 5 4



MRS. REED SESSIONS
 Clyattville, Georgia
 Home Economics Major

S.G.A. 4; Home Economics and Art Club 4; Transfer from the University of Georgia 4.



REED SESSIONS
 Clyattville, Georgia
 English Major

S.G.A. 4; Y.M.C.A. 4; Transfer from Emory University.

CLYDE E. CONNELL
 Naylor, Georgia
 Biology Major

S.G.A. 3, 4; Sigma Alpha Chi 3, 4; Math-Science Club 3, 4; English Club 3, 4; Who's Who 4; "Mac" of Senior Class; Transfer from Emory Junior College 1.





MYRTICE CAROLYN GAINES
 Fitzgerald, Georgia
 Elementary Education Major

S.F.A. 1, 2, 3, 4; Y.W.C.A. 1, 2, 3, 4, Vice-Pres. 3, Pres. 4; Home Ec and Art Club 1, 2, 3, 4, Vice-Pres. 3, Treas. 4; Treas. Sophomore Class; Pres. Junior Class; Philharmonic 1, 2; W.R.H.C. 2, 3; Class Sweetheart 2; A.C.E. 2, 3, 4; Glee Club 1, 2, 3, 4; Chapel Choir 2, 3, 4; Sophomore Council 2.



SARA KING
 Montezuma, Georgia
 Elementary Education Major

S.G.A. 1, 2, 3, 4; Y.W.C.A. 1, 2, 3, 4; A.C.E. 2, 3, 4, Vice-Pres. 4; W.R.H.C. 1, 2, 3, 4, Vice-Pres. 4; Junior Class Sec.-Treas.; Sophomore Council 2; Pine Cone Staff 2; Sigma Alpha Chi 4.

S E N I O R S

RHEDA BLACKWELL
 Monticello, Georgia
 Secretarial Science Major

S.G.A. 1, 2, 3, 4; Y.W.C.A. 1, 2, 3, 4, Cabinet 1, 2, 3, 4, Treasurer 3; Sophomore Council 2; Sports Club 1, 2, 3, 4, Council 1, 2, 3, 4, Sec. 2, Vice-Pres. 3, Pres. 4; Fins and Flippers 3, 4, Pres. 3; Business Club 1, 2, 3, 4; English Club 3, 4; Pine Cone 3, 4; W.R.H.C. 3, Sec. 3; Margo 1; Glee Club 3, 4.





1 9 5 4

JANE BURDETTE

Moultrie, Georgia

Elementary Education Major

S.G.A. 1, 2, 3, 4, Representative 4; Y.W.C.A. 1, 2, 3, 4, Cabinet 2, 3, 4, Treas. 4; Chapel Choir 3, 4; Sophomore Council 2; Glee Club 2, 3, 4, Secretary 3, Vice-Pres. 4; Serenaders 3, 4; Sports Club 1, 2, 3, 4, Council 3, 4, Secretary 4; Education Club 3, 4, Pres. 4; W.R.H.C. 3, 4, Activities Chairman 3, Pres. 4; Class Sweetheart 4.

"CAROLYN" . . . "BURDO" . . . "RHEDA" . . . "INKY"





"LOVIE" . . . "LAURALINE" . . . "SUSAN" . . . "ROSALINE"

S E N I O R S O F 1 9 5 4



SUSAN TULLIS
Valdosta, Georgia

Home Economics Major

S.G.A. 1, 2, 3, 4; Sports Club 1, 2, 3, 4; Council 2, 3, 4; B.S.U. 1, 2, 3, 4; Who's Who 4; Fins and Flippers 3, 4; Pine Cone Staff 3; Home Economics and Art Club 2, 3, 4, Vice-Pres. 3, 4.



LAURALENE CARTER

Secretarial Science Major

S.G.A. 1, 2, 3, 4; Sports Club 1; Valdosta Club 1, 2, 3, Social Chairman 3; Glee Club 1, 2, 3, 4; Dance Club 3; Business Club 2, 3, 4, Secretary 4; English Club 3, 4.



MARION GODWIN
Valdosta, Georgia

Speech Major

S.G.A. 1, 2, 3, 4; Sock and Buskin 1, 2, 3, 4; Dance Club 1, 2, 3, 4, Pres. 4; Sports Club 1, 2, 3; English Club 4; Valdosta Club 1, 2, 3.



ROSALIND SIRMANS
Stockton, Georgia

Elementary Education Major

Sports Club 1, 2; Education Club 1, 2, 4.



TOM DAVIS
Valdosta, Georgia

Business Administration Major



EVELYN EDWARDS
Valdosta, Georgia

Elementary Education Major

S E N I O R S



DONALD BONNER

Business Administration Major

S.G.A. 1, 2, 3, 4; Fili Fortucae Fraternity 3, 4, Vice-Pres. 3; Pine Cone 3, 4, Editor 4; Campus Canopy 1, 2; Business Club 3, 4; Art Club 3; Valdosta Club 1, 2, 3; Mac 3.

S E N I O R S O F 1 9 5 4

"BABS" . . . "DONALD"





"GLORIA" . . . "MO" . . . "JOAN"

S E N I O R S O F 1 9 5 4



GLORIA GEORGE
Valdosta, Georgia

Social Work Major, English Minor

S.G.A. 1, 2, 3, 4; Sports Club 1, 2; Y.W.C.A. 1, 2, 3, 4; Valdosta Club 1; English Club 3, 4; Business Club 3, 4; Pine Cone Advertising Staff 4.



JOAN PARRISH
Valdosta, Georgia

Biology Major

S.G.A. 1, 2, 3, 4; Sports Club 1, 2; Math-Science Club 2, 3, Pres. 3; Valdosta Club 1, 2; B.S.U. 3; Y.W.C.A.



MOZELLE JOINER
Adel, Georgia

Secretarial Science Major; English Minor

English Club; S.G.A. 2, 3; Business Club 4; Y.W.C.A. 3, 4; Transfer from South Georgia College.



RENEE LANIER
Pembroke, Georgia

Biology Major

S.G.A. 3, 4; Y. W. C. A. 3, 4; Math-Science Club 3, 4; Transfer from Young Harris College.

T H E J U N I O R C L A S S

"Praises Never Fail . . ."

Class meetings, arrangements, get-togethers over coffee at Brookwood and cokes in the lounge—these were the beginning of every important Junior Class-sponsored V.S.C. activity. Fall, winter, and spring quarters—these active students kept pace with everything and, for the

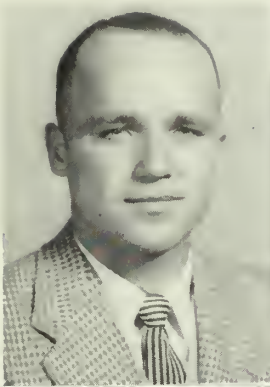
most part, stayed ahead of everyone else. The reason? They were Juniors.

It hardly seemed possible that the year could come and go so quickly. What seemed even more impossible, to the Juniors themselves, was the fact that next year they would be solemn Seniors.

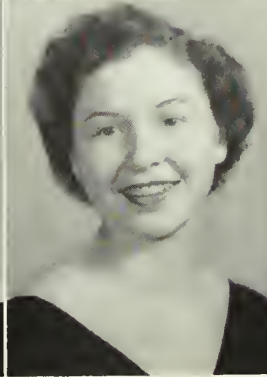
Bob Dixon, Secretary; Sylvia Shiver, Treasurer; Nancy Lovett, President; and Peggy Maxwell, Vice-President.



HAROLD ALLEN
Valdosta
LELAND BRANCH
Ludowici
EVELYN BROGDEN
Nashville
MARY BROWNLEE
Blakely



MARY B. CARTER
Lake Park
JANELL CONNELL
Valdosta
EMORY COOK
Valdosta
BARBARA CREW
Cairo



J U N I O R S

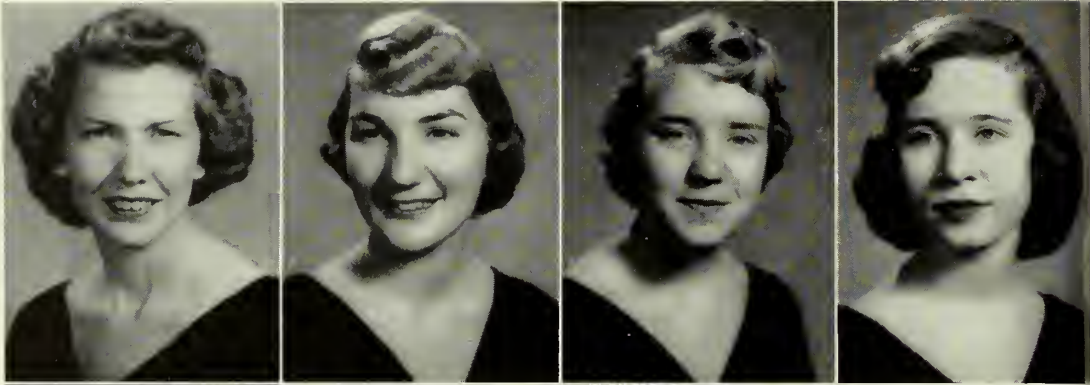


IRIS COLL
Moultrie
V. L. DAUGHERTY
Adel
PERRY DAVIS
Valdosta
BOB DIXON
Albany



TOMMY DOLLAR
Valdosta
ALLEN DRAKE
Mill'edgeville
PATSY EXUM
Enigma
CARIANNE GOTHARD
Thomasville

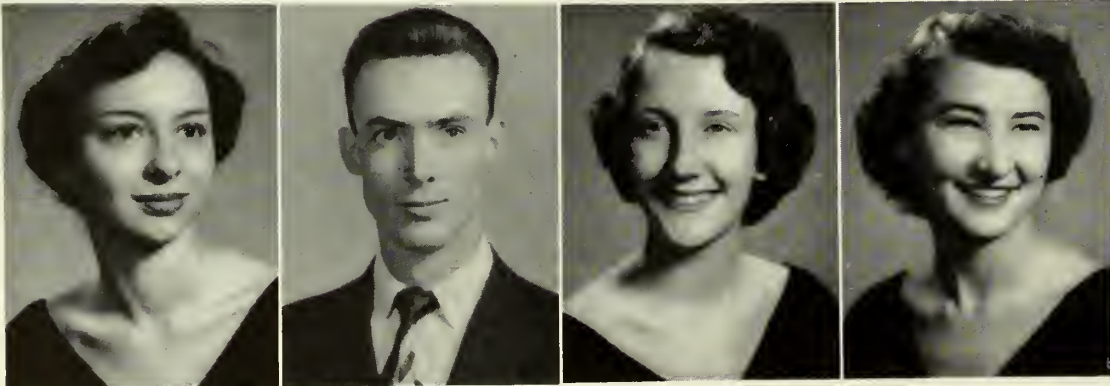
JO ANN HALL
Lake Park
BETTY HARVEY
Moultrie
NELL JOHNSON
Moultrie
CAROL JONES
Sylvester



MRS. JEANETTE
JORDAN
Quitman
ED KEEL
Albany
BETTY KING
Blakely
NORMAN LAHOOD
Valdosta



J U N I O R S



NANCY LOVETT
Sparks
MAX ROBERTS
Nashville
SILVIA SHIVER
Quitman
PEGGY STEWART
Arlington



BARBARA
STRICKLAND
Brunswick
BILLIE WAGES
Valdosta

T H E S O P H O M O R E C L A S S

Two wonderful years at V.S.C. We've had our revenge for Rat Day; we've had our Sweet-heart Dance — this year more wonderful than ever! There we were at the beginning of the year . . . no more lowly Freshmen but wise Sophomores — and now that word took on

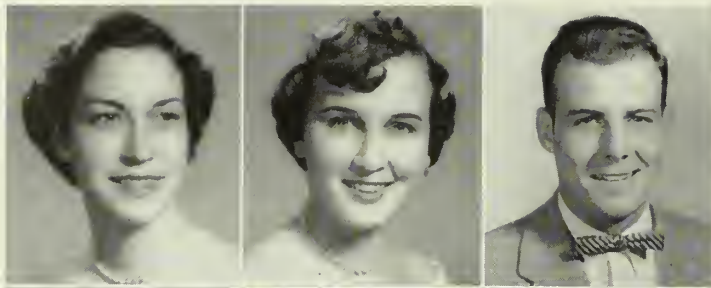
greater meaning. And so did we, in the midst of every V.S.C. activity.

With enthusiasm written all over us, another year completed, look out Juniors — here we come!

"Red and Black all Hail"

Frankie Powell, Secretary-Treasurer; Russell Acree, President; Peggy Burns, Vice-President.

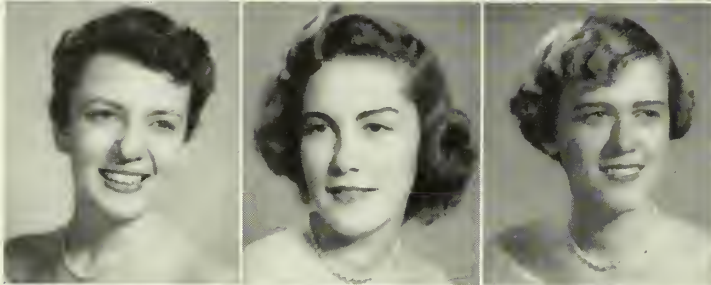




WANDA BISHOP
Waycross

NANCY CAROL BROWN
Colquitt

EMORY BROWNING
Waycross



PEGGY ANN BURNS
East Point

KSENA MAE CHAMPION
Argyle

DOROTHY CONNOR
Waycross



MAYNELLE CROSBY
Valdosta

FREDDIE FLOURNOY
Fitzgerald

RUSSEL ACREE
Twin Lakes



KATHLEEN ANN HARWELL
Albany

WILLIE MAE HERRIN
Howell

SALLY VIRGINIA HOUSE
Cairo

S O P H O M O R E S

JANE KEAN
Savannah

BARBARA LITTLE
Lyons

JEAN LYTLE
Vienna

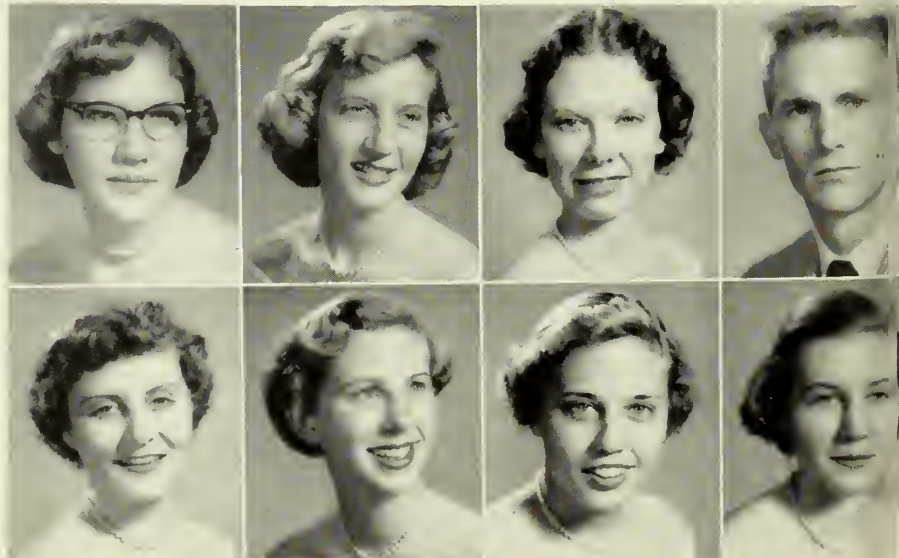
OMER McLEAN
Folkston

SARALYN PERRY
Savannah

FRANCES POWELL
Fitzgerald

ROSLYN ROUSE
Waycross

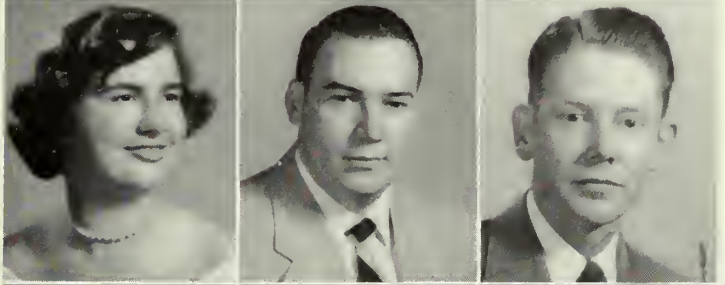
JEAN RUSSELL
Montezuma



BETTYE SEARS
Jasper, Fla.
JANE ANN TAYLOR
Rebecca
NAN TYLER
Albany



LARAVE VANN
Thomasville
JACK WEAVER
Hahira
TEDFORD WEAVER
Nashville



CLAIRE WIGGINS
Valdosta
JO ANN WILLIAMS
Fitzgerald
MARTHA RAY WRIGHT
West Point



. . . of nineteen hundred and fifty-four

THE FRESHMAN CLASS

Classes had hardly begun before the Freshman Class was "formally" initiated by S.G.A. into its membership—and how! Rat Day, of course, with scores of humble Freshmen, accepting commands of upperclassmen and happily performing their duties.

Then the fall quarter was over before even the Freshmen were ready for Christmas holidays. Then came winter quarter, and Fresh-

man activities were highlighted by the Freshman Annual Dance, held at the Valdosta Country Club.

Finally spring quarter was rushed in, with Freshman rushing May-Day, the annual Glee Club concert, and the "Spring-Hop."

Then those V.S.C. Freshmen, with expectant faces, looked forward to another fall quarter when they would be o-so-wise sophomores.

"Alma Mater Sons and Daughters We Will Ever Be"

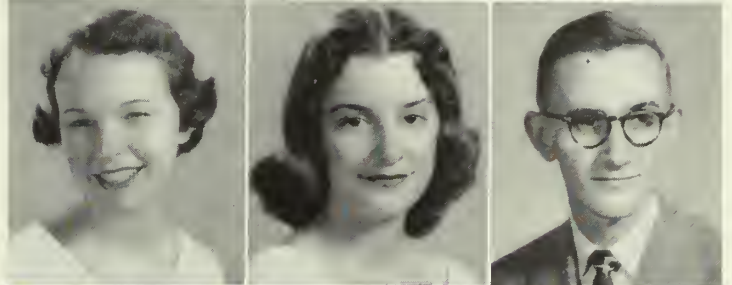
Jimmy Hathaway, President; Marilyn Bazemore, Treasurer; Betty Westar, Vice-President; and Faye Remsen, Secretary.



JEAN AMMONS
Manor
MERLE BAKER
Norman Park
DONALD BENNETT
Bainbridge



SUSAN BRIDGES
Dublin
PATRICIA CARROLL
Valdosta
HAROLD CARTER
Meigs



MARY ELLEN CAUSEY
Vienna
AUBURN CHITTY
Moultrie
ROSEMARY CLARK
Valdosta



PRESTINE COPELAND
Bainbridge
ZOE CORN
Valdosta
VINA CRISP
Valdosta



FRESHMAN CLASSES



SHIRLEY DAUGHARTY
Fargo
MARJORIE DAVIS
Ocilla
MARSHA DAVIS
Ocilla



JOHN NELSON DEMING
Valdosta
LYNDAL DRINKWATER
Bainbridge
NORMA JEAN EWING
Ocilla
KAY FERGUSON
De Soto



BARBARA FREDERIC
Thomasville

JANICE FUSSEL
Moultrie

WILLIAM GARBUTT
Quitman



FRANCES GARBUTT
Valdosta

ORA LEE GRAYBEAL
Jacksonville, Fla.

JANIE RUTH GREEN
Valdosta



PEGGY HAMBY
Valdosta

PATRICIA HARDEN
Ashburn

JEAN HARRELL
Valdosta



MARTHA HARRINGTON
Fargo

SARALYN HUBERT
Crawfordville

WILLIAM JACKSON
Sylvester

F R E S H M E N

EMILY JOBE
Waycross

NAOMI JOHNSON
Alma

CAROLYN JONES
Cairo

THERESA LAHOOD
Valdosta

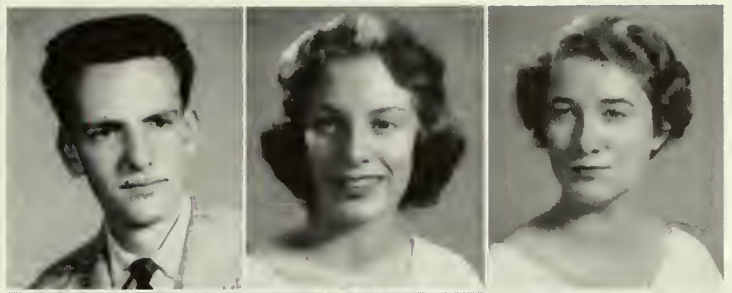
DORIS ETTA LAW
Thomasville

PAULINE LOVETT
Sparks

WAYNE McCULLERS
Hahira



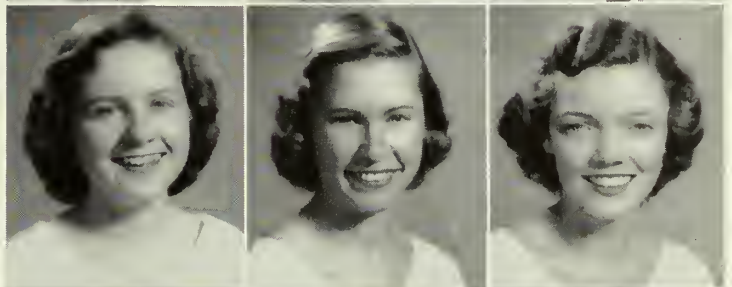
HARRISON McDONALD
Jessup
BEVERLY MARSHALL
St. Simon's Island
PATRICIA MASSEY
Thomasville



MITTIE MAULDIN
Doerun
MARTHA MITCHELL
Quitman
FRED NEWLIN
Sylvester



CORA JEAN NORMAN
Moultrie
JESSLYN PARKER
Abbeville
JO ANN PARROTT
Nashville



ALICE CAROLYN PEACE
Valdosta
MARGARET RAGIN
Coolidge
FAY REMSEN
Valdosta



. . . of nineteen hundred and fifty-four



SHIRLEY RODGERS
Valdosta
MARY JEAN RIZER
Quitman
KAY ROSE
Ashburn
DON PERRY ROSS
Decatur

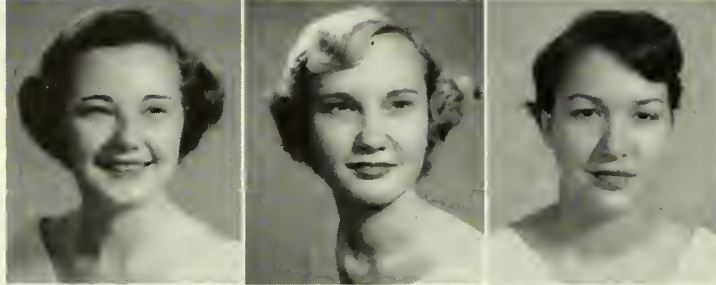
GENEVE SHEFFIELD
Valdosta
NELSON SINGLETARY
Meigs
NINA SINGLETARY
Remerton
LAVELLE SMITH
Valdosta



MARGIE LEE SMITH
Abbeville

VIRGINIA SMITH
Quitman

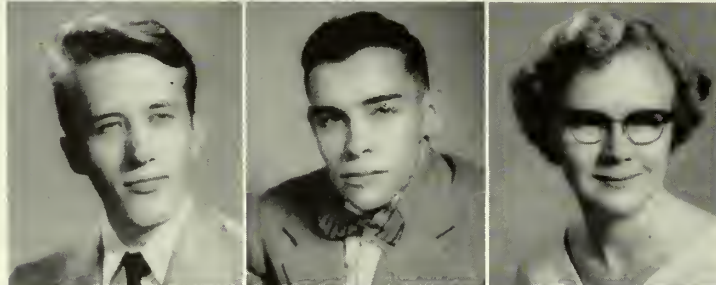
NANCY JANE STARLING
Thomasville



FAYE STEPHENS
Calvary

JANICE LEE THOMAS
Hazlehurst

JANIE TILLIE
Thomasville



JAAN HAROLD TIEF
Stockholm, Sweden

BILLY WADE
Berlin

JACQUELYN WADE
Cairo



MARY OLLIE WARD
Iron City

KATHLEEN WEEKS
Valdosta

BETTY JOYCE WESTER
Bainbridge

F R E S H M E N

MILDRED WETHERINGTON
Valdosta

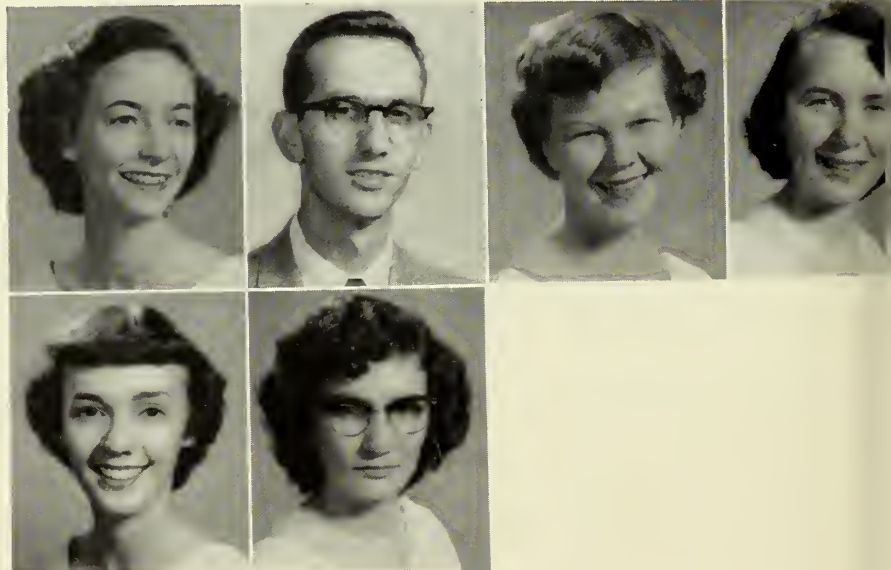
BENJAMIN WILLIAMS
Madison, Fla.

JO WILLIAMS
Quitman

BARBARA ANNE WILLIS
Ochlochnee

JO ANN WILSON
Hazlehurst

CAROL WISE
Waycross



Faculty entertain



Faculty minstrel

A good time was had



Valdosta State College

STUDENT GOVERNMENT ASSOCIATION

Y W C A

DANCE CLUB SOCK AND BUSKIN

CAMPUS CANOPY

GLEE CLUB SERENADERS

HONOR SOCIETY

BUSINESS CLUB SPORTS CLUB

EDUCATION CLUB



F E A T U R E S

"Glorious to the View"



Claire Wiggins, Frankie Powell, Mr. Wall, Advisor; Babs Threatte, Bob Cannady, Wanda Bishop, Mrs. Wisenbaker, Advisor; V. L. Daugherty, Jane Kean. Standing: Jack Weaver, Susan Bridges, Earl Paulk, Bob Green, Charlie Handcock, Buford Fulford.

STUDENT GOVERNMENT ASSOCIATION

OFFICERS

V. L. Daugherty, Treasurer; Babs Threatte, Vice-President; Wanda Bishop, Secretary; Bob Cannady, President.

We represent the Student Government Association. We, as the governing group on our campus, cooperate with the administration in making and carrying out our rules and regulations, thus, making our life at Valdosta State College more orderly and unified.



Casey Gothard
Barbara Strickland
Jane Burdette
Sara King
Ann Kirby
Nancy Lovett
Barbara Crew
Peggy Burns
Betty Wester



D O R M I T O R Y C O U N C I L

We represent the women and men dormitories. Our councils are composed of the class presidents and elected members to the Student Government. We strive for a situation in our dormitories of clearer understanding, leading to happier life with the interest of all at heart.

Russell Acree
Omer McLean
Jack Weaver
Max Roberts



T H E P I N E C O N E

"Mongst the stately pines of Georgia, Glorious to our View." Thus begins our "Alma Mater," the song that captures the spirit of Valdosta State College, your Alma Mater and mine.

To present to you a pictorial history of personalities and events which made news during the past year, we have striven to give to you, the students, a permanent memento of the happy, profitable days spent at V.S.C. The task has not been easy, but the results have been rewarding.

To all those students, faculty and Pine Cone staff, who helped to make possible this year's Pine Cone, we owe a profound debt of gratitude for the excellent advice and cooperation received.

It is our hope that the quality of faithfulness which you have shown while here at V.S.C. will remain with you throughout life and that you will always be, "Alma Mater's sons and daughters . . . Always to thy heart returning, Our Dear V.S.C."

AD STAFF

Frances Garbutt, Rhea Blackwell, Marilyn Bazemore, May May Porter, Martha Goodloe, Jane Ledford, Ann Long.

PHOTOGRAPHY EDITORS

Babs Threatte and Frankie Powell





LAYOUT EDITORS

hood, Ann Kirby, Zoe Corn, Claire Wiggins, and Faye Remsen.

DONALD BONNER
Editor



JACKIE GREENE, BOB DIXON
Associate Editors



MAY MAY PORTER
Business Manager



THE CAMPUS

The Campus Canopy, the college paper, is published monthly by the students at Valdosta State College.



VIRGIL LACY DAUGHTERY
Editor



CANOPY



BUSINESS MANAGERS

Left to Right: Nelson Singletary, Bob Green, Fay Remsen, Sam McGowan.

NEWS STAFF

Wayne McCullers, Jo Ann Hall, Zoe Corn, Rosemary Clark, Lee Graybeal, Zelma Yarbrough, Norma Wright, Frances Garbutt.

ASSOCIATE EDITORS

Jackie Greene, Ruth Meadows, Bob Dixon, Bill Almonrode, Harold Carter, Anne Long, Martha Goodloe, Norma Wright.





OFFICERS

Seated: Carolyn Gaines, Pres. Standing: Wanda Bishop, Secretary; Jane Burdette, Treas.; Barbara Strickland, Vice-Pres.



CHAPEL CHOIR

Ann Kirby, Jane Burdette, Nan Tyler, Barbara Strickland, May May Porter, Carolyn Gaines.

Y . W . C . A .

Every girl is a member of the Young Woman's Christian Association from the time of the Big Sister-Little Sister candle lighting service at the first of our Freshman year. Under the leadership of the "Y" Cabinet, we receive inspirational guidance to help us with our daily problems. The impressive services, such as Morning Watch, Vespers, Compline, Fire-lighting Service, the Hanging of the Greens, and the Heart-Sister Week, all sponsored by the "Y" make it one of the most influential organizations on campus.



FIRE-LIGHTING SERVICE

Jackie Greene, Frankie Powell, Mrs. Whittle, Advisor; Barbara Strickland, Carolyn Gaines, Jane Burdette, Wanda Bishop, Rheda Blackwell, Sylvia Shiver. Standing: Judy Tyre, Kathy Harwell, Martha Ray Wright, Ann Kirby, Nan Tyler, Saralyn Perry, May May Porter, Peggy Stewart, Claire Wiggins, Nancy Lovett.



MEN'S CHRISTIAN ALLIANCE

We, the Men's Christian Alliance, seek to bring to the campus worthwhile activities that include God. We show that fellowship with our friends and Christ at the same time can be the most enjoyable aspect of campus life.



Arron Sellars, Pres.; Bob Dixon, Treas.; Max Roberts, Sec.; and V. L. Daughtery, Vice-Pres.



Violin Griner, V. L. Daughtery, Buford Fulford, Arron Sellars, Max Roberts, Felton Rowan, David Robb, Bob Dixon, and Reed Sessions.

B U S I N E S S C L U B

As Secretarial Science and Business Administration majors and minors, we are being trained not only to give service to students and faculty, but to give us experience for our future occupations. Through our special project, the Business Club Store, we are able to provide additional equipment for the use of our members.



OFFICERS

Patti Carson, Treasurer; Nancy Lovett, President. Standing: Mary Florence Porter, Vice-President; Lauraline Carter, Secretary.

Lee Graybeal, Barbara Willis, Jo Ann Parrott, Pat Massey, May May Porter. Second Row: Polly Lovett, Janie Tillie, Mary Ellen Causey, Carolyn Jones, Faye Stephens, Rachel Greer, Virginia Smith, Nancy Lovett, Miss Deavor, Advisor. Third Row: Mary Brownlee, Nina Singletary, Mildred Wetherington, Prestine Copeland, Shirley Daughtery, Lyndal Drinkwater, Betty Wester, Patti Carson, Rheda Blackwell, Lauraline Carter, Ann Taylor, Saralyn Perry. Fourth Row: Jerry Brown, Billy Harvey, Don Royal.



E N G L I S H C L U B



OFFICERS

Gloria George, Secretary and Treasurer; May May Porter, President; Ruth Meadows, Vice-President; Babs Threatte, Reporter; Shirley Taylor, Social Chairman.

The English Club endeavors to promote and interest in and enjoyment of modern authors, creative writing, and modern and classical literature. The English Club has as members the Juniors and Seniors who are majoring in English.



Jackie Greene, Shirley Taylor, Mrs. Odum, Advisor; Gloria George, May May Porter, Ruth Meadows, Babs Threatte, Patsy Exum. Second Row: Peggy Stewart, Buford Fulford, Betty King, Barbara Crew, Carole Jones, Patti Carson, Jannell Connell, Patsy Allen, Ann Kirby. Third Row: Jo Ann Hall, Rheda Blackwell, Rebecca Crawford, Dot Baraneau, Lauraline Carter, Nancy Lovett, Marjorie Glynn, V. L. Daughtery. Fourth Row: Clyde Connell, Bill Almondrode, Dick Aspen, W. J. Bennett.

Organized in 1928, the I.R.C. helps its members to understand as well as to be informed regarding national and world events through programs, discussion groups, and outside speakers.

Activities such as a series of radio programs, offering speakers for various organizations, and, for 1954, the adoption of an orphan keep club members busy.



Jane Kean, Sec.; Norman Lahood, Pres.; Helen Abel, Vice-Pres.; V. L. Daugherty, Historian; Marjorie Glynn, Treas.

I . R . C . C L U B

Patsy Exum, Carolyn Sellars, Norman Lahood, Marjorie Glynn, Mrs. Price, Advisor; Arron Sellars. Standing: Bill Almonrode, Jaan Tiel, Jane Kean, Martha Rzy Wright, Bob Dixon, Billie Bird Wages, Helen Abel, and V. L. Daughtery.





M. Porter, J. Greene, F. Stephens, G. Jones, C. Gaines, J. Johnson, Z. Yarbrough, Mr. Logan, Director; V. L. Daughtery, P. Jones, C. Hancock, E. Paulk, B. Strickland, R. Meadows, J. Parrott, P. Copeland, R. Greer. Second Row: L. Graybeal, J. Parker, J. Williams, K. Champion, J. Tyre, J. Connell, M. Davis, D. Law, E. Leverette, J. Tillie, C. Duren, E. Keel, J. Kelly, B. Wade, M. Baker, R. Blackwell, J. Burdette F. Remsen, L. Carter, N. Ewing. Third Row: M. Mauldin, T. Lahood, A. Kirby, C. Wise, B. Willis, J. Ammons, M. Causey, P. Harden, N. Tyler, S. Shiver, N. Lovette, A. Griffis, M. Roberts, B. Register, B. Garbut, B. Frederic, N. Starling, M. Wright, S. Perry, M. Davis, N. Johnson, J. Ledford.

G L E E C L U B



The Glee Club is the largest and most popular student participation group on the Valdosta State College Campus. They have presented many concerts in Valdosta and surrounding cities, meeting with enthusiastic response. This is the first year they have had a mixed group, both men and women students.

OFFICERS

Charlie Hancock, Pres.; Carolyn Gaines, Librarian; May May Porter, Sec. and Treas.; Jane Burdette, Vice-Pres.

S E R E N A D E R S

The Serenaders, nine lovely young ladies singing music with popular appeal, have appeared with unusual success before many schools, civic, and religious groups as well as in a movie premiere on a Mutual Radio Network program, and on Television.

Jessalyn Parker, Nan Tyler, Naomi Johnson, Ann Kirby, Barbara Strickland, Jane Burdette, Lyndal Drinkwater, Faye Remsen, Elaine Leverette, Mr. Logan.





Ruth Meadows, Casey Gothard, Dot Baraneau, Jannell Connell, Barbara Little, Carolyn Gaines, Ksena Champion, Nan Tyler, Jo Ann Hall, Ruth Clifton, Ann Kirby. Standing: Shirley Taylor, Frankie Powell, Peggy Maxwell, Iris Croll.

A R T H O M E E C C L U B



Susan Tullis, Bob Dixon, Harold Carter.

The purpose of our club is to bring together all those who are interested in Home Economics and Fine Arts, and to inform its members as to the opportunities in their respective fields.



Naunie Wright, Jo Browning, Barbara Strickland, Wanda Bishop, Lovie Godwin, Miss Louise Sawyer, Advisor. Standing: Ann Kirby, Saralyn Hubert, Norman Lahood, Martha Ray Wright, Beverly Marshall, May May Porter, Lee Graybeal, Ann Long, V. L. Daughtery, Zelma Yarborough.

S O C K A N D B U S K I N

OFFICERS

Ann Kirby, President; Beverly Marshall, Historian; May May Porter, Vice-President; Wanda Bishop, Secretary and Treasurer.



"All the world is a stage . . ." and we help to make it so! From the time of our first tryouts to the triumph of our Big Scene, we further dramatics on campus, ably assisted by our advisor and director, Miss Louise Sawyer. You will find us learning the art of acting, directing, and casting.

We are the serious students who work toward a high level of performance. We have to maintain an average of "B." Each year we are recognized at the Annual Honor's Day program. Our project is to sponsor the election of Marga and Mac in each class.

We are the serious students who work toward a high level of performance. We have to maintain an average of "B." Each year we are recognized at the Annual Honor's Day program. Our project is to sponsor the election of Marga and Mac in each class.



OFFICERS

Lanier Allen, 1st Vice-President; Jackie Greene, President; Nan Brown, 2nd Vice-President. Standing: Saralyn Perry, Historian; Ann Kirby, Secretary and Treasurer.

H O N O R S O C I E T Y

Bob Cannady, Jackie Greene, Jean Russell, Barbara Crew, Saralyn Perry, Nan Brown, Sylvia Shiver, Nancy Lovett, Kathy Harwell. Standing: Lanier Allen, Clyde Connell, Russell Acree, Ann Kirby.



Microscopes — slide rules — Bunsen burners — beakers — formulas — only a few of our tools. We are a club easily divided into three sections: Math, Chemistry, and Biology divisions. We keep ourselves abreast with our ever expanding mediums and receive a great deal of excitement in the process.



OFFICERS

Peggy Burns, Math Chm.; Jack Weaver, Vice-President; Russell Acree, Historian and Reporter; Omer McLean, Bio. Chm.; Joan Parrish, President; Gene Paulk, Chemistry Chm.. Standing: Lanier Allen, Secretary.

MATH - SCIENCE CLUB

Mr. Babcock, Dr. Bettman, Advisors; Peggy Burns, Joan Parrish, Martha Ray Wright, Barbara Frederic, Freddie Flourney, Kay Ferguson, Dr. Nevins, Advisor; Nan Starling. Standing: Max Roberts, Jack Weaver, Russell Acree, Gene Paulk, Omer McLean, Lanier Allen, Aurbin Chitty, Wayne McCullers, and Clyde Connell.





Judy Tyre, Sylvia Shiver, Jackie Wade, Jackie Greene, Barbara Strickland, Sara King, Jane Burdette, Nell Johnson, Cora Jean Norman, Mrs. Knight, Advisor. Standing: Claire Wiggins, Dean Davis, Jerry Calloway, Nell Newman, Wanda Bishop, Jo Williamson, Beverly Marshall, Emily Jobe, Susan Bridges, Dr. Booker, Advisor, Carolyn Gaines.

E D U C A T I O N C L U B



OFFICERS

Jane Burdette, President; Sara King, Vice-President; Jackie Greene, Secretary; Barbara Strickland, Treasurer.

Our club is concerned with advancement of Education. Our purpose to further childhood education, is brought forth through club projects, educational talks and films. Education is our chosen field and we feel that it is a worthwhile and rewarding field.



Lovie Godwin, Frankie Powell, Ann Long, Peggy Burns, Kathy Harwell. Standing: Jackie Wooten, Saralyn Hubert, Susan Bridges, Bill Jackson, Claire Wiggins and Nelson Singletery.

DANCE CLUB

Ah, to dance is to really live. To dance is to live anew, to express with movement that which words cannot. By dance, we do not mean just waltz or rumba, you see we do them all. At the May Festival or our Spring recital you can see all our talents on display.

OFFICERS

Lovie Godwin, President; Frankie Powell, Secretary and Treasurer; Claire Wiggins, Vice-President.





Leland Branch, Frankie Fowell, Peggy Stewart, Betty Harvey, Freddie Flourney, Rosaline Rouse, Jane Ledford, Pattie Carson, Beverly Marshall, Peggy Burns, Claire Wiggins, Casey Gothard. Back Row: Jane Burdette, Rheda Blackwell, Susan Tullis, Kay Rose, Wanda Bishop.

REC CLUB

Yea! Lambda! Yea! Kappa! These are typical expressions around V.S.C. The reason? Why the friendly competition among the two teams which make up the Sports Club. Of course, the Physical Education Department advises us and supplies the equipment with which we attempt to bring to this campus healthful living, pleasure and enjoyment, all leading to a well proportioned college student.

RHEDA BLACKWELL
President





OFFICERS

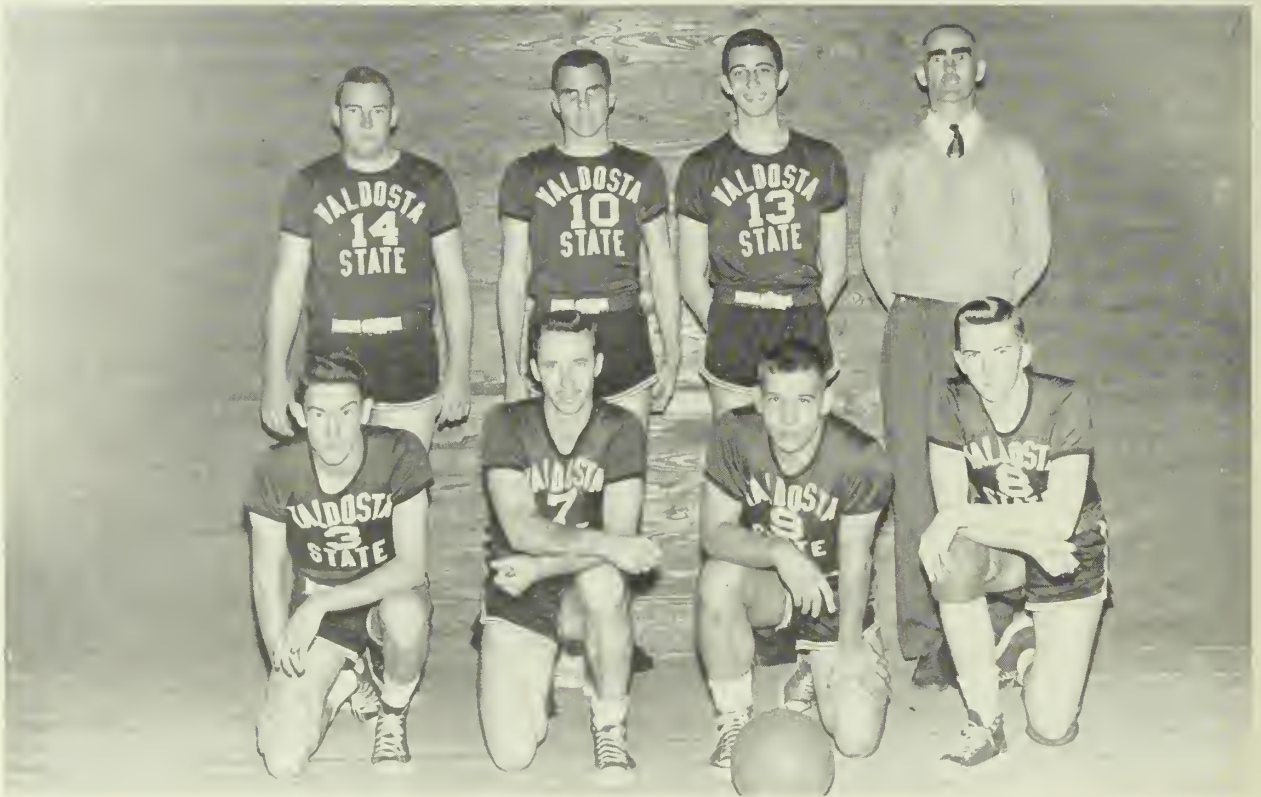
Susan Tullis, Vice-President; Pattie Carson, President; Claire Wiggins, Secretary and Treasurer.

Formed to promote interest and unity among swimmers, the Fins and Flippers was organized. Disregarding the segregation between Kappas and Lambdas, we all work together for a common goal—the annual Aquacade. Mrs. Elizabeth Smith of the Physical Education Department acts as advisor and director of the group.

F I N S A N D F L I P P E R S

Larave Vann, Rosemary Clark, Peggy Burns, Peggy Maxwell, Beverly Marshall, Susan Tullis, Rheda Blackwell, Kay Rose, Barbara Frederic, Kay Ferguson, Frankie Powell, Jane Ledford, Janie Tillie, Lyndal Drinkwater, Patti Carson, Peggy Stewart, Claire Wiggins, Martha Harrington, Nell Johnson.





Jack Weaver, Barny Purvis, Leo Helms, Coach Cottingham, Robert McElvey, Clarence Folsom, Bubba Hill, Nelson Singletary.

B A S K E T B A L L T E A M

JANIE TILLIE
 ANN LONG
 SUSAN BRIDGES
 FRANCES GARBUTT





MAY MAY PORTER
President

The Sigma Alpha Omega sorority was founded during the month of December 1953. The sorority was organized not to form cliques or to create an undemocratic atmosphere, but to aid them in every way in maintaining high scholastic and social standards, promote a greater interest in the college and to give each member fuller and richer experiences during her college days.

S I G M A A L P H A O M E G A

Leland Branch, Ksena Champion, Bette Harvey, May May Porter. Standing: Peggy Stewart, Jane Ledford, and Ann Kirby.





Jimmy Hathaway, Edwin Griffis, Phillip Jones, Jimmy Crea, Don Ross, Donald Bonner, Ronald Little, "Babe" Yeomans, Earl Paulk, Harold Allen, Emory Cook, John Deming, Nelson Singletary, Sonny Crisp, Don Royal, Ed Keel, Travis Higginbotham.

F I L I I F O R T U N A E



OFFICERS

Emory Cook, Parliamentarian; Harold Allen, Treasurer; Earl Paulk, President; "Babe" Yeomans, Vice-President; Ronald Little, Secretary; Donald Bonner, Historian.



BABS THREATTE
Sponsor



EARL PAULK
President

NAOMI JOHNSON
Miss V.S.C.

The Filii Fortunæ Fraternity was the first organization of its kind on the campus. It was founded for the purpose of offering fellowships and close brotherhood to its brothers. Filii has firmly dedicated itself to this purpose.

Its accomplishments include assistance in the Community Chest, Blood Drive, sponsoring Miss V.S.C., awarding the outstanding male of the year, and giving recognition to a faculty member who we consider has done extra and un-

called-for duties in aiding students in personal and academic work. The registrar, Mrs. Caroline Thomas, was given the award last year.

We are also sponsoring a radio program to promote the College and to enable the community to become familiar with both the College and students.

We are dedicated, then, to progress both for our organization and for Valdosta State College.



OFFICERS

Charles "Bubber" Hill, President and Jack Wooten, Vice-President.

Ever since its proud founding in 1952, Mu Alpha, the first Greek letter fraternity installed at V.S.C., has risen in prominence and prestige until today it has become one of the leading social organizations on campus.

Through the years, the fraternity has upheld its constitution to the utmost degree of excellence. Never once has it deviated from its major constitutional provisions, neither through error nor intention.

Mu Alpha has created an invaluable atmosphere of equality, loyalty, and sociality among its members — an accomplishment of brotherhood and friendship which will live through future years as a priceless memory in the mind of every fraternal brother.

M U A L P H A

Jack Wooten, Jack Carter, Brother Parramore, Leo Helms, Robert McElvey, Charles Hill, Jack Weaver, Russell Friar. Standing: Harrison MacDonald, Price Strong, Carl Duren, Wanda Bishop, Sponsor; Charlie Hancock, Frankie Powell, Co-Sponsor; Maurice Whid-
don, Gary Phillips.





BOBBY MYERS

It is extremely difficult for one to express, in mere words, our feelings and sentiments toward a person we all admired and respected as much as we did Bobby.

The fact that he has been removed from us by the strange hand of God, only magnifies to a much greater extent, the bond of friendship which we had sealed together. Some of us had known Bobby ever since grammar school; others had known him for only a short while. But no matter the length of time we knew him, he left the same impression on all with whom he came in contact.

An outstanding leader? No, he wasn't. A brilliant scholar? Neither was he this. But a young man with a magnetic personality, a beaming smile, and an uncanny way of making friends with everyone. This describes the Bobby we knew. He was a person you could laugh with and enjoy yourself, but he was also a person you could sit down and talk to and get problems off your mind.

He was a true and loyal friend. What better compliment can we bestow on a fellow Brother?

It is with this thought in mind that we respectfully dedicate this page in remembrance of him. May his memory linger with us forever.

THE BROTHERS OF MU ALPHA FRATERNITY.

Valdosta State College

WHO'S WHO

RECITALISTS

ALL - AROUND STUDENTS

MISS V S C

MAY COURT



ORGANIZATIONS

"Thee We Honor"



CLYDE E. CONNELL



ROBERT BRUCE CANNADY

W H O ' S W H O

We have been selected for this honor by our faculty, administrative officers, and representatives from the Student Body on the basis of character, scholarship, and leadership. Our biographies will appear in the publication of "Who's Who Among Students in American Universities and Colleges."

W H O ' S W H O



ANN KIRBY

MAY MAY PORTER



SUSAN TULLIS

BABS THREATTE



Senior College

CLYDE CONNELL
JACKIE GREENE
NANCY LOVETT
BOB DIXON



B E S T A L L R O U N D

Junior College

FREDDIE FLOURNEY
HERMAN PARRAMORE
SUSAN BRIDGES
RUSSELL ACREE





ANN KIRBY
Speech Major

R E C I T A L I S T S



MARION GODWIN
Speech Major



Frances Garbutt, Mr. Jack Cowart, Mr. Gordon Southwell, Naomi Johnson, Mr. Broyles Plemmons, and Ann Kirby.

Miss U.S.C.

NAOMI JOHNSON



**B
E
A
U
T
I
E
S**



Patsy Exum, Junior; Dot Barineau, Senior; Peggy Burns, Sophomore; and Marilyn Bazemore, Freshman.

Iris Croll, Junior; Barbara Little, Sophomore; Jane Burdette, Senior; and Lee Graybeal, Freshman.

**S
W
E
E
T
H
E
A
R
T
S**





DOT BARINEAU

Senior



PATSY EXUM

Junior

MARILYN BAZEMORE

Freshman



PEGGY BURNS

Sophomore



JANE BURDETTE

Senior



IRIS CROLL

Junior





BARBARA LITTLE

Sophomore



LEE GRAYBEAL

Freshman



SUSAN TULLIS

May Queen

Maid of Honor

MARY FLORENCE PORTER



M A Y C O U R T



Babs Threatte, May May Porter, Susan Tullis, Lovie Godwin, Kathryn Milhouse, Jane Burdette. Standing: Dot Barineau, Jackie Greene, Rheda Blackwell, Patti Carson, Ann Kirby and Carolyn Gaines.



Home of USC's President



Ashley Hall



New Gym

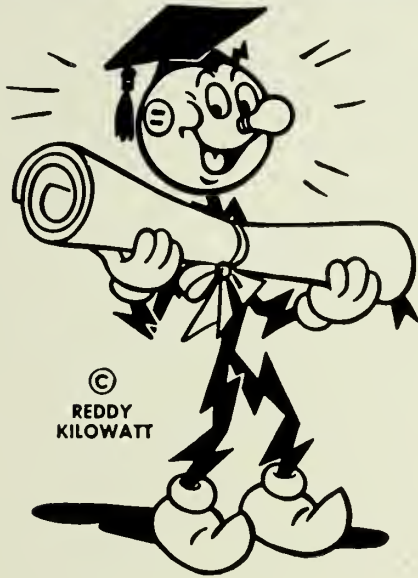


Faculty quartet



*Alma Mater, thee we honor
Praises never fail.
For thy fame shall never perish
Red and Black—all hail!*

A D V E R T I S E M E N T S



Graduate
TO
Better
Living!

Now that you're bidding college adieu
Let me do more work for you
All household items except mine
Now cost more than in '39
I'll work for you **every** day
And the more I work the less you pay
So use me often the whole year thru
I'll make life easier for you.

Now and Forever Yours,
REDDY KILOWATT

**GEORGIA POWER & LIGHT
COMPANY**

CONGRATULATIONS
TO THE
1954 SENIORS
of the
VALDOSTA STATE COLLEGE
and
welcome to the
Upperclassmen and Freshmen

“THE CITY OF AZALEAS”

WELCOMES THE OPPORTUNITY OF BEING YOUR HOME DURING YOUR COLLEGE DAYS AND OF SHARING YOUR CULTURE.

MAY YOUR ASSOCIATIONS AND YOUR MEMORIES OF OUR CITY BE SUCH THAT YOU WILL RETURN AFTER COLLEGE DAYS.

JOHN BRAY GIDDENS, *Mayor*

Councilmen

J. CARLTON GREEN
JACK E. HOWELL
N. N. LANGDALE

ROY McLANE
CARL D. MINCHEW
BOB HALL

W G A F

A B C

910 on your dial

THE PROGRAM STATION

Compliments of

Girardin Jewelers

VALDOSTA, GEORGIA

Compliments of

**Dixie Cream
Donut Shop**

VALDOSTA, GEORGIA

Patterson-Jones, Shoes

"THE HOME OF GOOD SHOES

SINCE 1903"

CHICKEN — SHRIMP — RIBS
BURGERS — FRANKS — SANDWICHES

S and K Drive-in

Genuine Pit Bar-B-Q

PHONE 3364

VALDOSTA

GEORGIA

Compliments of

Georgia Fertilizer Co.

VALDOSTA

GEORGIA

Compliments of

Smith-Walgreen Drugs

VALDOSTA

GEORGIA

Compliments of

Martin Theaters

RITZ
DOSTA

MARTIN } Drive-
FORREST } Ins
PALACE

**Hotel
Daniel Ashley**

Valdosta, Georgia

Compliments of
Whittington's

Valdosta, Georgia

**Southern Stationery
and Printing Company**

WHOLESALE PAPER DEALERS

. . . For More Than Forty-Five Years

Commercial Stationers — Printers

Office Outfitters

Phone 2641-2642

Valdosta, Georgia

Good Service at

**BOB BELCHER'S
DRUG STORE**

PATTERSON AND CENTRAL

PHONE 812-813

Dorothy Gray Beauty Preparations



**Valdosta Coca-Cola
Bottling Works, Inc.**

VALDOSTA

GEORGIA

C. C. Varnedoe & Co.

The Style Center of Valdosta



AUTHENTIC FASHIONS

FOR

JUNIORS—MISSES—WOMEN

Congratulations and Best Wishes

Photographs In This Issue

by

VALDES STUDIO

Valdes Hotel

Phone 423

**The Valdosta
Daily Times**

YOUR HOME NEWSPAPER

Full Associated Press Dispatches
Leading Features and Comics
Every Afternoon Except Sunday
Published Continuously Since 1867
The Oldest Institution in Valdosta

Compliments of

Cowart's Dress Shop

SMART STYLES
FOR
COLLEGE GIRLS

STEINWAY PIANOS
HAMMOND ORGANS

Everything in Music

Mathis and Youmans

SINCE 1907

VALDOSTA

GEORGIA

Bell Shop

LADIES SPECIALTY AND GIFT SHOP

Come to See Us

109 W. CENTRAL AVENUE

Minchew's Restaurant

1515 N. ASHLEY ST.

Private Dining Rooms for Parties

— AIR CONDITIONED —

**Register Clothing
Company, Inc.**

122 N. Patterson St. — Valdosta, Georgia

NUNN-BUSH SHOES
GRIFFON CLOTHES
STETSON HATS
ARROW SHIRTS

Compliments of

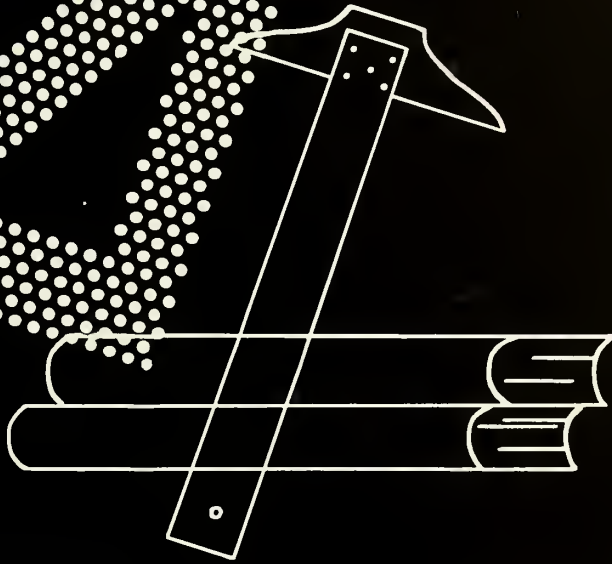
**The Citizens & Southern
National Bank**

NO ACCOUNT TOO LARGE
NONE TOO SMALL

*Member Federal Deposit
Insurance Corporation*

annuals of

distinction



Original layouts, distinctive typography and sparkling reproduction that give your annual the luxurious appearance impossible to obtain by standard layout, mass-production methods.

Bowen, Long & Young, Inc.

110 TRINITY PLACE
DECATUR, GEORGIA







