

The Pine

YEARBOOK OF GEORGIA STATE WOMANS COLLEGE

MARTHA WILLIAMS Editor



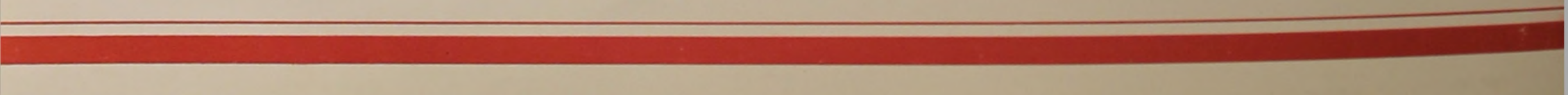
1944

Cone

AT VALDOSTA, GEORGIA

BETTY STREET Business Manager

Foreword





The presentation of the 1944 PINE CONE represents, to the best of each staff member's ability, during the confusion and strife of a war torn world, the memories cherished by each G. S. W. C. student.

It has been the purpose of the PINE CONE staff to relate in words and pictures the events that have been impressed upon each student of G. S. W. C. during the record year, 1943-44.

This year has brought changes, new environments, the lack of funds and commodities which we once thought essential, and all our efforts have been unselfishly concentrated on various ways in which we might best serve and help to make a better post-war world. In our hearts we have a new purpose and new determination that those who have died and those that will die in this war will not have died in vain.

To you who will share such a responsibility in the various walks of life which each of you will choose and to you who will continue to share your responsibility here—we offer these pages with the hope that always they will represent cherished memories and ideals.

Our Part



Selling bonds.

In this school year of 1943-44 nearly every girl at G. S. W. C. has been touched in some way by this war—maybe it was a relative, friend or sweetheart, killed or missing. With each unhappiness, the efforts and will power to do something to make this war shorter has become stronger. As usual, dances have been given to add bonds to the War Bond Scholarship Fund and in the scrap paper drive every girl became more conscious of the value of paper. Girls and faculty have been to the Red Cross and rolled bandages; knitted sweaters and scarfs; and carried money to the club meetings to buy War Stamps.

Hundreds of service men have spent many a pleasant hour on the G. S. W. C. campus at entertainments sponsored by the girls. The girls have been proud to be a part of the social life of the boys at Moody Field.

The college sponsored the Fourth War Loan and the Red Cross Drives for Lowndes County; the quotas were surpassed both times.



Rolling bandages at the Red Cross.

In This War



Entertaining the boys.



Collecting scrap paper.



Busily knitting.



The

Our college, among the stately pines of Georgia, is composed of the buildings and grounds which are the students' background, and the faculty and administration which direct their academic life.

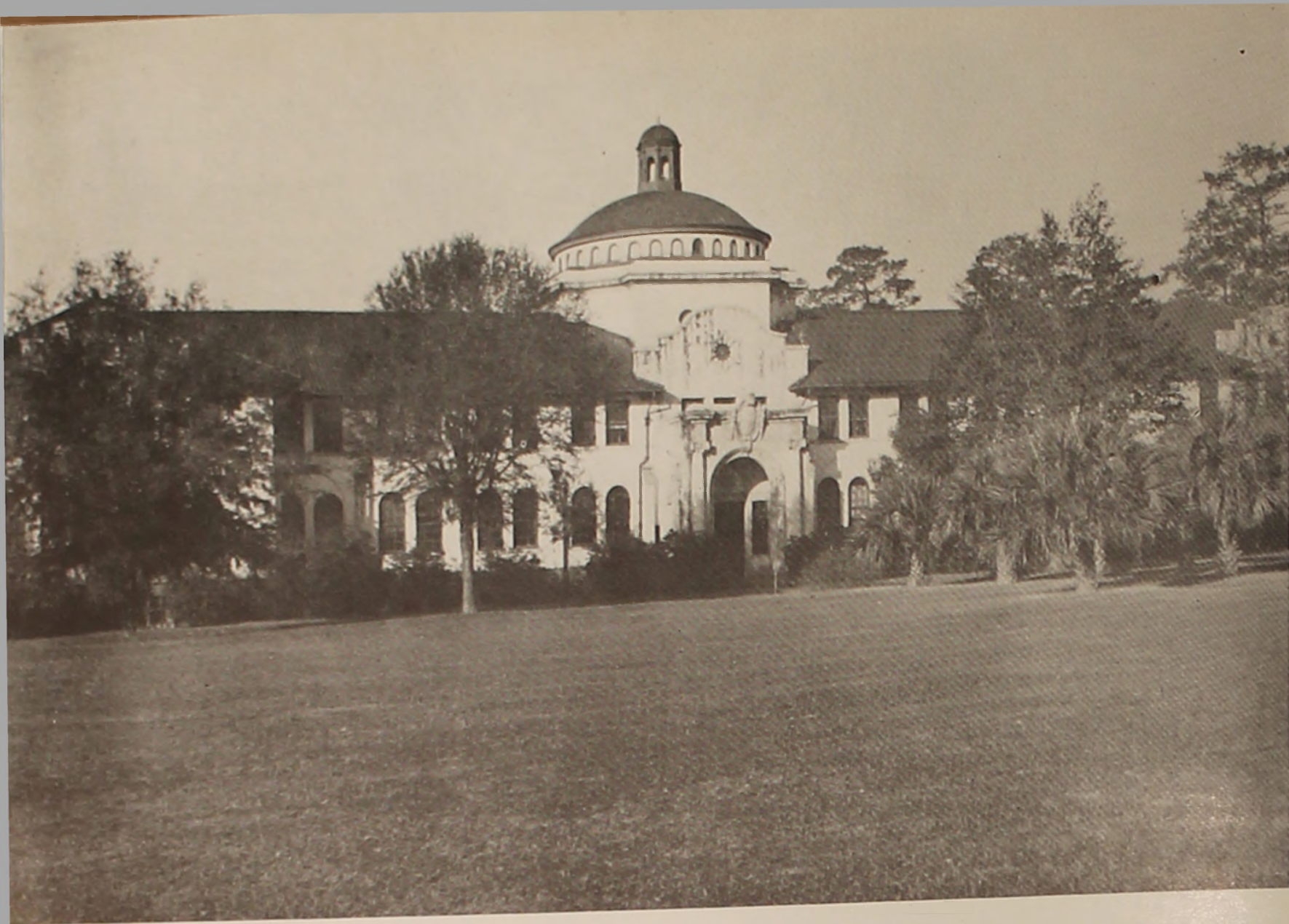
The buildings . . . towers of Converse and Ashley like the Spanish Missions with red tiled roofs and white stucco; Senior Hall, the final home of the 'W. C. girls. West Hall, with its aspiring dome, is the center of learning. The House in the Woods, our pride, is tops for dates, club meetings and cooking. The studios and book lovers find the Library capable of filling all of their desires. To the gym, the pool, the stables and the golf course go the athletes, while the dance queens prefer the Recreation Hall.

The faculty and administration . . . loved and respected by all, help to make four years of college life complete.

All of these furnish the settings and inspirations for memories which will forever be enshrined in the heart of every student.



College

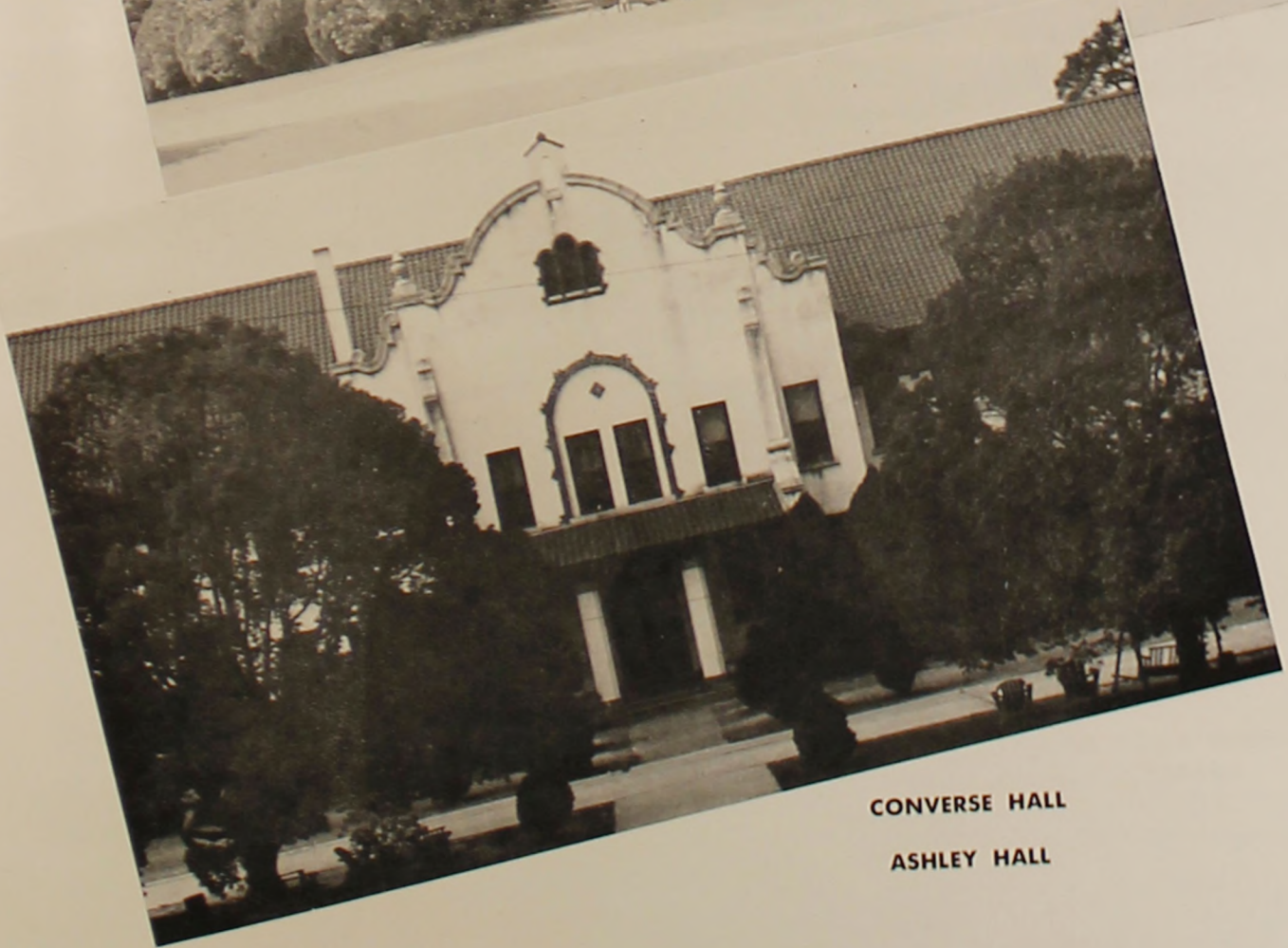


WEST HALL



SENIOR HALL

Views



CONVERSE HALL

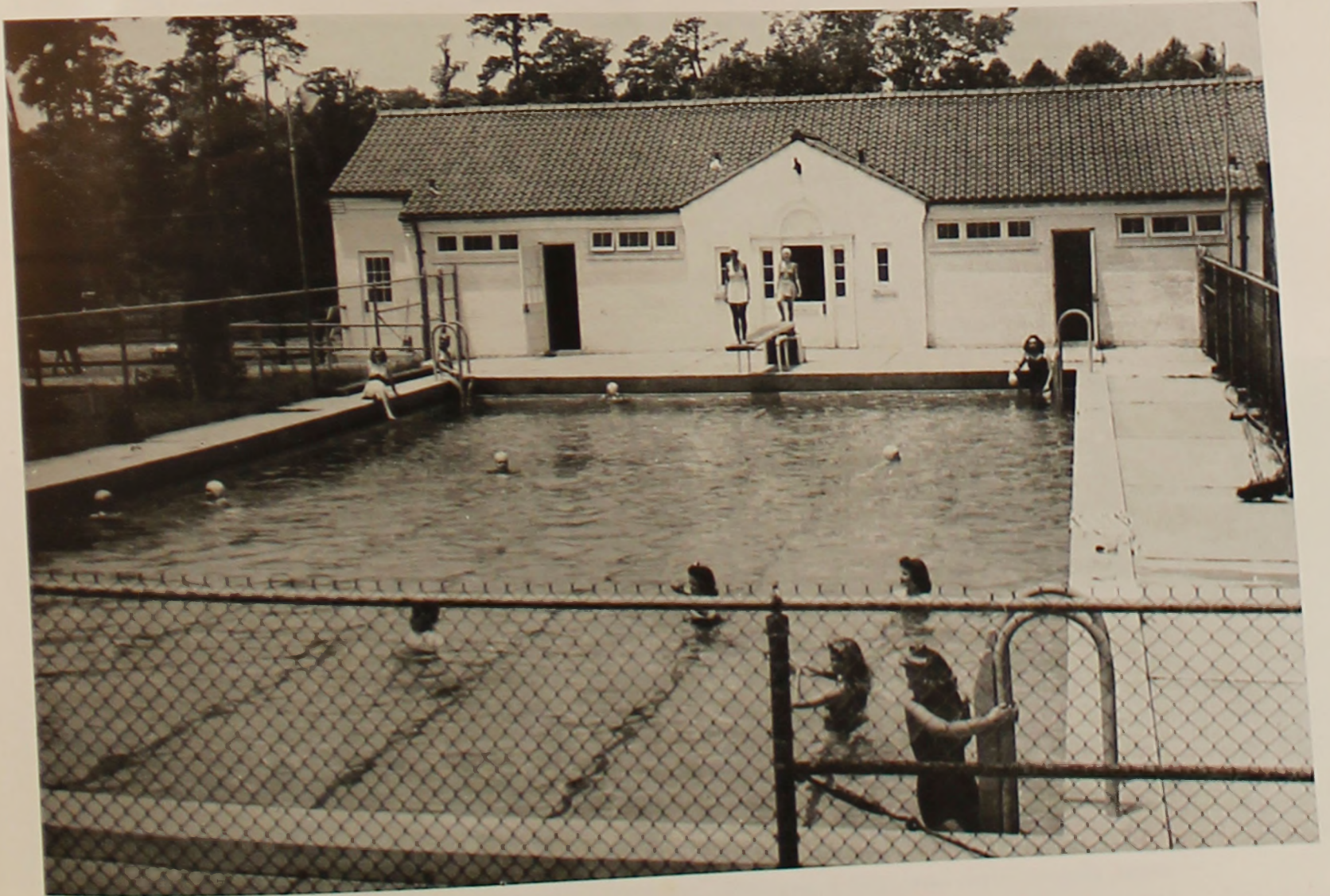
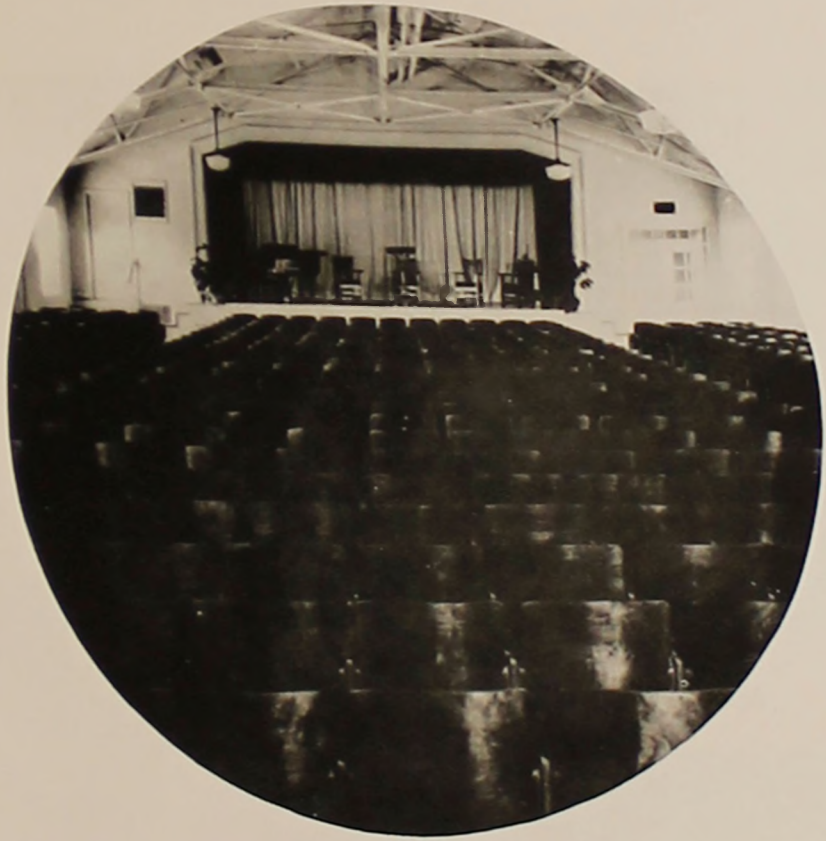
ASHLEY HALL



LIBRARY
READING ROOM OF
LIBRARY



AUDITORIUM
SWIMMING POOL



President

FRANK R. READE
President

B.A., M.A., Ph.D., University of Virginia

MISS FLORINE MYERS
Superintendent of Dormitories

MISS AILEEN SCHOEPPPE
Resident Head of Senior Hall

MISS SADIE PATY
Resident Head of Ashley Hall

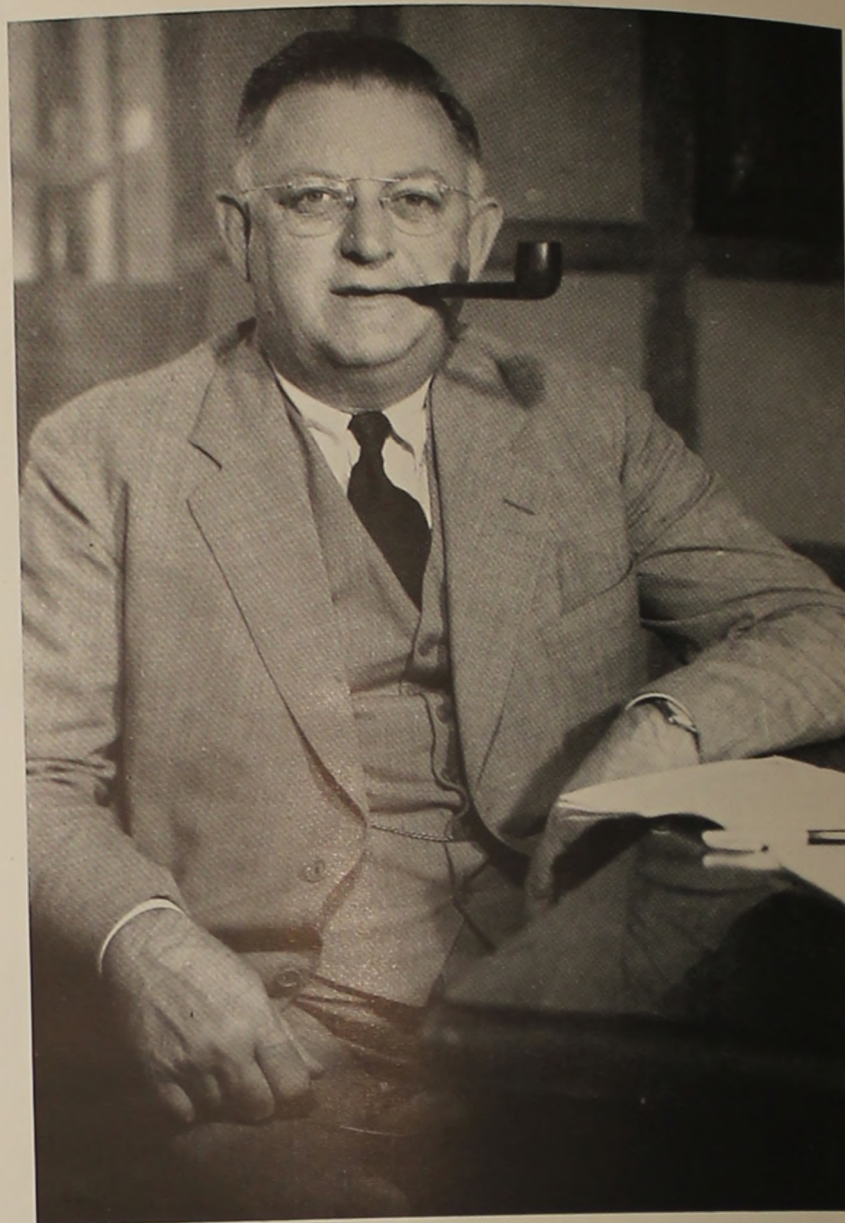
MISS MARJORIE CARTER
Resident Head of Converse Hall

MISS LILLIAN PATTERSON
Librarian

A.B., Georgia State Womans College; B.L.S.,
University of North Carolina

MRS. LAURA REED JOOST
Assistant Librarian

A.B., Womans College of the Greater University
of North Carolina; B.A.L.S., University of North
Carolina



FRANK R. READE



CARTER, SCHOEPPPE, MYERS, PATY



PATTERSON, JOOST

Faculty

MRS. FRANCES PARDEE, *Instructor in Violin* . . . Graduate, Cincinnati Conservatory of Music; Pupil of Sevcik in Vienna and of Julian Polikawski, Cincinnati Conservatory of Music . . . MR. CLIFTON WHITE, *Assistant Professor of Art and Professor of Music* . . . A.B., Emory University; M.A., Emory University . . . MISS GLADYS WARREN, *Professor of Music* . . . B.M., Lake Erie College; M.A., Iowa State University; Pupil of Ernest Hutcheson, New York; Lee Pattison, Chicago; Tobias Matthay School of Pianoforte, London . . . MISS MARIE MOTTER, *Professor of Voice* . . . A.B., Music, The Carnegie Institute of Technology. Further study: Ithaca Conservatory, University of Pittsburgh; Pupil of Jean Dagg Seaman, Dr. Bert Rogers Lyon . . . MISS JEAN VAN SHUTE, Accompanist.



PARDEE, WHITE, WARREN, MOTTER, VAN SHUTE

MISS FRANCES RUTH CARPENTER, *Professor of Art* . . . Bachelor's Diploma, B.S., A.M., Teachers College, Columbia University . . . MISS LOLA DREW, *Professor of Home Economics* . . . B.S., Texas State College for Women; A.M., Columbia University . . . MRS. LUCILLE DARDEN, *Professor of Spanish* . . . A.B., University of New Mexico. Further study: University of Mexico . . . DR. SAPELO TREANOR, *Professor of Foreign Language* . . . A.B., A.M., University of Georgia; Student at the Sorbonne, Paris, France; Ph.D., University of North Carolina . . . MRS. ELIZABETH J. PUCKETT, *Professor of Shorthand and Typing* . . . A.B., Shorter College.



CARPENTER, WHITE



DREW



DARDEN, TREANOR



PUCKETT



DURRENBERGER, PRICE, PATY



DUSENBURY, STUMP, MOSELY, RICHTER, THOMAS



HAWKS, SPRAGENS, PHELAN



NEVINS, CARTER



SCHOEPPE

DR. JOSEPH A. DURRENBERGER, *Professor of History and Social Science . . . A.B., Southwestern University; A.M., Ph.D., Columbia University . . .*
 MISS MILDRED McLELLAN PRICE, *Professor of History . . . A.B., Georgia State Womans College; A.M., Columbia University . . .*
 MISS SADIE PATY, *Professor of History and English . . . A.B., Randolph-Macon Womans College; M.A., Vanderbilt University. Further study: Western Kentucky State College; University of Tennessee . . .*
 MR. JAMES ROBERT DUSENBURY, *Treasurer and Purchasing Agent . . .*
 MISS LOUISE STUMP, *Assistant Treasurer . . . A.B., Georgia State Womans College . . .*
 MISS JUNE MOSELY, *Director of Placement and Publicity . . . A.B., Georgia State Womans College . . .*
 MISS ANNA RICHTER, *Secretary to the President and Assistant in Speech Department . . . A.B., Georgia State Womans College . . .*
 MRS. CAROLINE PARRISH THOMAS, *Registrar . . . A.B., Georgia State Womans College . . .*
 DR. LENA JAMES HAWKS, *Professor of Mathematics . . . A.B., Goucher College; A.M., Vanderbilt University; Ph.D., Johns Hopkins University . . .*
 MR. W. H. SPRAGENS, *Professor of Mathematics and Physics . . . A.B., M.S., University of Kentucky . . .*
 DR. EARL W. PHELAN, *Professor of Chemistry . . . B.Chem., Ph.D., Cornell University . . .*
 DR. BEATRICE I. NEVINS, *Professor of Biology . . . Ph.B., Ph.M., Ph.D., University of Wisconsin . . .*
 MISS MARJORIE ESTELLE CARTER, *Assistant Professor of Biology and Physical Education . . . B.S., William and Mary College . . .*
 MISS AILEEN SCHOEPPE, *Professor of Education . . . B.S., M.S., Northwestern University.*

MRS. GERTRUDE GILMER ODUM, *Professor of English* . . . B.S., A.M., George Peabody College for Teachers . . . MISS LOUISE ANNE SAWYER, *Professor of Speech* . . . Graduate of Columbia College of Expression, University of North Carolina; B.S., School of Speech, Northwestern University . . . DR. HAROLD STRONG GULLIVER, *Professor of English* . . . B.A., Yale University; A.M., Columbia University; Ph.D., Yale University . . . DR. OLIVE MATTHEWS STONE, *Professor of Social Science* . . . A.B., Huntington College; A.M., University of Chicago; Ph.D., University of North Carolina . . . MRS. EVA ALFORD SHRIVALLE, *Dietician* . . . Palmer College . . . MRS. C. C. WHITTLE, *Assistant Dietician* . . . MISS RUTH REID, *Assistant Professor of Physical Education* . . . A.B., Georgia State Womans College; M.A., Columbia University . . . MISS LEONORA IVEY, *Professor of Physical Education* . . . Graduate, Sargent School for Physical Education of Boston University; B.S., Georgia State College for Women . . . MISS VIRGINIA BEASLEY, *Riding Instructor* . . . A.B., Sweet Briar College . . . DR. MARIAN E. FARBAR, *Resident Physician* . . . M.D., University of Illinois Medical College; Practiced Medicine in India and at Earlham College.



ODUM, SAWYER, GULLIVER



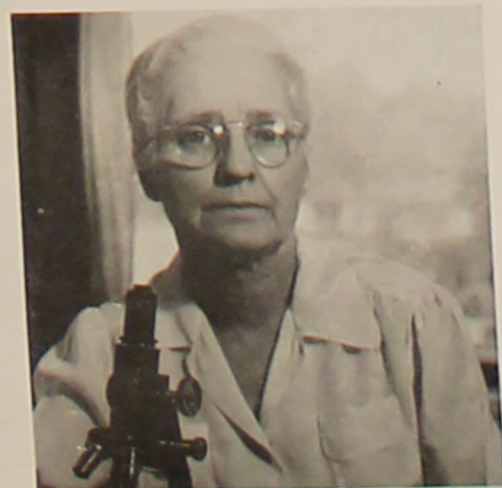
STONE



SHRIVALLE, WHITTLE



REID, IVEY, BEASLEY



FARBAR

Senior Officers

Graduating their class by bits did not deprive the Senior Class of its enthusiasm. As each graduation again cut the class into half, the remaining ones got together and renewed their efforts to make this one of the best years ever. The Senior Carnival, with all the class participating, presented in the fall was a tremendous success. The large proceeds from it were donated to the Scholarship Fund.

With vivacious Kitty Harms as class president, the Seniors edited a student address book, gave a dance and carnival for the War Bond Scholarship Fund, sponsored Sunday coffees, and gave Senior recitals. Lastly, they have published the yearbook and presented it to the student body.

A steak supper at Van's, honoring the March graduates, climaxed the varied activities of the winter quarter.



HARMS



DAVIS, MASON



Train scene from the Senior Carnival.



Seeing
the
Seniors



Favorite pastimes for Donnie and Corkie . . . Rough and ready . . . Grace to the rescue! . . . Studyin'? . . . Barbara and Jean find out "what's news" . . . "Over hill, over dale" . . . Goin' somewhere? . . . Off to Sunday movies! . . . Peek-a-boo! . . . It's a deep subject! . . . Jus' takin' it easy!



G. S. W. C.



ALLEN

SARA ALLEN . . . Fort Mitchell, Ala. . . . *Biology Major* . . . Transfer from Andrew College; Student Government Association (2, 3, 4); Y. W. C. A. (2, 3, 4); Vesper Choir (2); *Campus Canopy* (3, 4), Feature Write (3), Feature Editor (3, 4); PINE CONE (2), Business Staff (2), Math-Science Club (2, 3, 4).

MARY THAXTON BOWEN . . . Tifton, Ga. . . . *Humanities Division — English Emphasis* . . . Student Government Association (1, 2, 3, 4); Y. W. C. A. (1, 2, 3, 4), Cabinet (3, 4), Assistant Organist (3), Organist (4); Sophomore Council Adviser (3); Sports Club (1); Sociology Club (3, 4).

BETTY BURKE . . . Valdosta, Ga. . . . *Chemistry Major* . . . Student Government Association (1, 2, 3, 4); Y. W. C. A. (1, 2, 3, 4); Math-Science Club (2, 3, 4), President (4); President's Council (4); Valdosta Club (1, 2, 3, 4).

EMMIE CARTER . . . Jacksonville, Fla. . . . *History Major* . . . Student Government Association (1, 2, 3, 4); Y. W. C. A. (1, 2, 3, 4); Sports Club (1, 2, 3, 4); *Campus Canopy* (1, 2), Reporter (1, 2); Freshman Honor Society (2); Senior Honor Society (4), Historian (4); Fine Arts Club (2); Math-Science Club (2, 3, 4), Secretary-Treasurer (4); International Relations Club (2, 3, 4), President (4); President's Council (4).



BOWEN
BURKE



CARTER

SENIORS



MARY ESTHER CARTER . . . Valdosta, Ga. . . . *Public Welfare Major* . . . Student Government Association (1, 2, 3); Valdosta Club (1); Freshman Honor Society (2); Senior Honor Society (3); Sociology Club (3); Math-Science Club (2, 3).



CARTER

PAULINE CARTER . . . Meigs, Ga. . . . *Sociology Major* . . . Student Government Association (1, 2, 3, 4); Y. W. C. A. (1, 2, 3, 4); Sports Club (1, 2, 3, 4); Glee Club (1, 2, 3, 4), Secretary-Treasurer (3); Sociology Club (3, 4); International Relations Club (1, 2, 3, 4), Secretary (3, 4).



MAYE COPELAND . . . Lake Park, Ga. . . . *Sociology Major* . . . Student Government Association (1, 2, 3, 4); Y. W. C. A. (1, 2, 3, 4); Sociology Club (3, 4); Senior Honor Society (4); Math-Science Club (4).

CARTER
COPELAND



CULPEPPER

MARGARET CULPEPPER . . . Tifton, Ga. . . . *Humanities Division — English Emphasis* . . . Student Government Association (1, 2, 3, 4); Y. W. C. A. (1, 2, 3, 4); English Club (4).

G. S. W. C.



DAVIS

HELEN DAVIS . . . Thomasville, Ga. . . .
English Major . . . Transfer from Middle
Georgia College; Student Government As-
sociation (4); Y. W. C. A. (4); Secre-
tary-Treasurer of Senior Class; English
Club (4); Sock and Buskin Club (4);
Campus Canopy (4), Feature Staff (4);
PINE CONE (4), Associate Editor (4).

LOUGENIA DAVIS . . . Meigs, Ga. . . .
Sociology Major . . . Student Govern-
ment Association (1, 2, 3, 4); Y. W. C. A.
(1, 2, 3, 4); Sports Club (1, 2, 3, 4);
Glee Club (1, 2, 3), Librarian (3);
Sociology Club (3, 4).

BARBARA DEKLE . . . Cordele, Ga. . . .
Sociology Major . . . Student Government
Association (1, 2, 3, 4), Monitor (1, 2);
Y. W. C. A. (1, 2, 3, 4), Cabinet (3, 4),
Treasurer (3, 4); Sports Club (1, 2, 3, 4),
Council (3, 4); PINE CONE (3), Literary
Staff (3); Glee Club (1, 2, 3, 4); Vesper
Choir (1, 2); Camera Club (1, 2); Math-
Science Club (4); Sociology Club (2, 3,
4), President (4); President's Council
(4); Chairman, War Bond Scholarship
Fund (4).

MARY FRANCES DONALSON . . . Atta-
pulgus, Ga. . . . *English Major* . . . Stu-
dent Government Association (1, 2, 3, 4),
Emblem (3); Y. W. C. A. (1, 2, 3, 4);
Sports Club (1, 2, 3, 4), Council (1, 2,
3, 4), Treasurer (3), Awards (2, 3, 4);
Campus Canopy (1, 2, 3, 4), Reporter
(1), Sports Editor (2), News Editor (2),
Advertising Staff (2), Columnist (3), As-
sociate Editor (3), Acting Editor (3),
Editor (4); English Club (3, 4); Interna-
tional Relations Club (3, 4), Program
Chairman (4); President's Council (3, 4);
PINE CONE (4), Activities Editor (4).



DONALSON



DAVIS
DEKLE

SENIORS

MARTHA ASHLEY FREEMAN . . . Valdosta, Ga. . . *Biology Major* . . . Student Government Association (1, 2, 3, 4); Sports Club (1, 2, 3, 4); Awards (1, 2, 3), President (3); Glee Club (2, 3), Serenaders (2, 3, 4); Valdosta Club (1, 2, 3, 4); Vice-President of Freshman Class; Math-Science Club (2, 3, 4); President's Council (3), Chairman (3), Chairman, War Bond Scholarship Fund (3).



FREEMAN

ALICE PITTMAN GORDON . . . Jacksonville, Fla. . . *Math Major* . . . Student Government Association (1, 2, 3, 4); Y. W. C. A. (1, 2, 3, 4); Sports Club (1, 2, 4), Council (1, 2, 4); Math-Science Club (2, 3, 4), Head of Math Division (3); *Campus Canopy* (1, 2, 4), Feature Staff (1), Advertising Staff (1), Advertising Manager (2), Business Manager (4); PINE CONE (2, 4), Advertising Staff (2), Snapshot Editor (4).

MILDRED GRIFFIN . . . Alapaha, Ga. . . *Math Major* . . . Transfer from South Georgia College; Student Government Association (1, 3, 4); Y. W. C. A. (1, 3, 4); Math-Science Club (3, 4).

KATHLEEN HARMS . . . Savannah, Ga. . . *Sociology Major* . . . Transfer from Armstrong Junior College; Student Government Association (3, 4); Y. W. C. A. (3, 4); Sports Club (3, 4), Council (3, 4); *Campus Canopy* (3, 4), Business Manager (3), Associate Editor (4); PINE CONE (3, 4), Associate Editor (3, 4); Sociology Club (3, 4); Math-Science Club (4); President of Senior Class; President's Council (4).



HARMS



GORDON
GRIFFIN

G. S. W. C.



HARRIS

NINA HARRIS . . . Waycross, Ga. . . .
Humanities Division — English Emphasis
. . . Student Government Association (1,
2, 3); Y. W. C. A. (1, 2, 3); *Campus*
Canopy (1, 2), News Editor (2); PINE
CONE (3); Sock and Buskin Club (2, 3);
Romance Language Club (2, 3); English
Club (2, 3); Math-Science (3).

ANITA HUNT . . . Valdosta, Ga. . . .
Sociology Major . . . Student Govern-
ment Association (1, 2, 3, 4); PINE CONE
(3), Advertising Staff (3); Fine Arts
Club (1, 2, 3, 4); Sports Club (1); Soci-
ology Club (2, 3, 4), Secretary-Treasurer
(3); Valdosta Club (1, 2, 3, 4).

JACQUELYN CAROLYN JONES . . .
Bainbridge, Ga. . . . *Voice Major* . . .
Student Government Association (1, 2, 3,
4); Y. W. C. A. (1, 2, 3, 4), Cabinet (3,
4) Secretary (4), Vesper Choir (3, 4);
Sports Club (1, 2, 3, 4); *Campus Canopy*
(3, 4), Reporter (3, 4); Glee Club (1, 2,
3, 4), Business Manager (2), President
(4); Serenaders (1, 2, 3, 4); Philhar-
monic Club (2, 3, 4), President's Council
(4); Artist Series Committee (4).

MARGARET KING . . . Valdosta, Ga.
. . . *Biology Major* . . . Student Govern-
ment Association (1, 2, 3, 4); *Campus*
Canopy (2), Reporter (2); Sports Club
(1, 2, 3, 4); Valdosta Club (1, 2, 3, 4),
Vice-President (2); Glee Club (1, 2);
Math-Science Club (1, 2, 3, 4); Philhar-
monic Club (2).



HUNT
JONES



KING

SENIORS



ODELIA KING . . . Blakely, Ga. . . .
French Major . . . Student Government
 Association (1, 2, 3, 4); Y. W. C. A. (1,
 2, 3, 4), Cabinet (2); Vesper Choir (1,
 2); Sports Club (1, 2, 3, 4), Council (2);
 Romance Language Club (2, 3, 4), Secre-
 tary-Treasurer (2), Vice-President (3),
 President (4); *Campus Canopy* (2, 3, 4),
 Reporter (2), Make-up Editor (3), As-
 sistant News Editor (4); President's Coun-
 cil (4); Artist Series Committee (4).



KING

GRACE MADELINE LAWSON . . . Jack-
 sonville, Fla. . . . *Humanities Divisional
 Major* . . . Student Government Associa-
 tion (1, 2, 3, 4); Y. W. C. A. (1, 2, 3, 4);
 Sports Club (1, 2, 3, 4), Council (2, 3,
 4), Secretary (4); *Campus Canopy* (3),
 Reporter (3).



KATHLYN FRANCES LOOSIER . . .
 Thomaston, Ga. . . . *Voice Major* . . .
 Student Government Association (1, 2, 3,
 4); Y. W. C. A. (1, 2, 3, 4), Vesper Choir
 (1); Sports Club (1); *Campus Canopy*
 (1), News Editor (1), Advertising Staff
 (1); Glee Club (1, 2, 3, 4), Vice-Presi-
 dent and Student Director (4), Serenaders
 (2, 3, 4); Philharmonic Club (2, 3, 4),
 Secretary-Treasurer (3).



McCORKLE

JULIA FRANCES McCORKLE . . . Mon-
 tezuma, Ga. . . . *Art Major* . . . Student
 Government Association (1, 2, 3, 4), Mon-
 itor (3); Y. W. C. A. (1, 2, 3, 4), Cabinet
 (1, 2, 3, 4), Assistant Vice-President (2),
 Vice-President (3), President (4); Sock
 and Buskin Club (1, 2, 3, 4); Fine Arts
 Club (1, 2, 3, 4), Art Chairman (2), Vice-
 President (3); President's Council (4);
 Student-Faculty Honor Council (4).

LAWSON
 LOOSIER

G. S. W. C.



McINTOSH

MERRICK McINTOSH . . . Eulonia, Ga.
. . . *Sociology Division—Public Welfare
Emphasis* . . . Student Government Asso-
ciation (1, 2, 3, 4); Y. W. C. A. (1, 2,
3, 4); Secretary-Treasurer of Junior Class;
Sociology Club (3, 4).



MARY MASON . . . Valdosta, Ga. . . .
Sociology major . . . Student Government
Association (1, 2, 3, 4), Vice-President
(4); Freshman Honor Society (1, 2);
Math-Science Club (3, 4); Valdosta Club
(1, 2, 3, 4); Senior Honor Society (3, 4),
Secretary (4); Vice-President of Senior
Class; Town Representative to Student
Faculty Honor Council (4).



MASON
MORAN

ERVYL MORAN . . . Americus, Ga. . . .
French Major . . . Transfer from Georgia
Southwestern; Student Government (3, 4);
Y. W. C. A. (3, 4); *Campus Canopy* (4),
Feature Staff (4); Language Club (3, 4),
Secretary-Treasurer (4).



PATTEN

NELL PATTEN . . . Lakeland, Ga. . . .
Violin Major . . . Student Government
Association (1, 2, 3, 4); Y. W. C. A. (1, 2,
3, 4), Cabinet (2, 3, 4); *Campus Canopy*
(1), Advertising Staff (1); PINE CONE
(3, 4), Assistant Literary Editor (3, 4);
Sports Club (1); Philharmonic Club (1,
2, 3, 4), President (4); President's Coun-
cil (4); Fine Arts Club (4); Sophomore
Council (2); Artist Series Committee (4).

SENIORS



PETTY

SARA PETTY . . . Dawson, Ga. . . .
Sociology Major . . . Student Govern-
 ment Association (1, 2, 3, 4); Y. W. C. A.
 (1, 2, 3, 4); Sports Club (1, 2, 3, 4),
 Council (3, 4); *Campus Canopy* (1, 2, 3,
 4), Reporter (1, 2), Assistant Sports Edi-
 tor (3), Sports Editor (4); President of
 Freshman Class; President's Council (1);
 Sociology Club (3, 4); Emblem (2);
 House President of Ashley (2).

MAROLYN ROWLAND . . . Moultrie,
 Ga. . . . *Sociology Major* . . . Student
 Government Association (1, 2, 3, 4); Y. W.
 C. A. (1, 2, 3, 4), Cabinet (2); Sports
 Club (1, 2, 3, 4), Council (3, 4); *Campus
 Canopy* (4), Columnist (4); President of
 Junior Class; Sociology Club (2, 3, 4);
 Math-Science Club (4); Glee Club (2,
 3); President's Council (3); Student's At-
 tendance Committee Chairman (3).

DOROTHY CLEM SAWYER . . . Arling-
 ton, Ga. . . . *Sociology Major* . . . Stu-
 dent Government Association (1, 2, 3, 4);
 Y. W. C. A. (1, 2, 3, 4), Cabinet (1, 2),
 Sophomore Council; Sports Club (1, 2);
Campus Canopy (1, 2, 3, 4), Advertising
 Staff (1), Feature Staff (2, 3, 4); Soci-
 ology Club (2, 3, 4), Vice-President (3),
 President (3, 4); Math-Science Club (4);
 President's Council (3, 4), Chairman (3);
 Chairman of War Bond Scholarship Fund
 (3); Senior Honor Society (4), Vice-
 President (4).

EVELYN SAUNDERS . . . Valdosta, Ga.
 . . . *Sociology Major* . . . Student Gov-
 ernment Association (1, 2, 3, 4); PINE
 CONE (2, 3), Advertising Staff (2, 3); Fine
 Arts Club (1, 2, 4); Valdosta Club (1, 2);
 Sports Club (1, 2); Sociology Club (4).



SAUNDERS



ROWLAND
 SAWYER

G. S. W. C.



STORER

JULIA STORER . . . Savannah, Ga. . . .
Sociology Major . . . Transfer from Arm-
strong Junior College . . . Student Gov-
ernment Association (3, 4); Y. W. C. A.
(3, 4); *Campus Canopy* (3, 4), Sports
Editor (3), Columnist (4); PINE CONE (3,
4), Make-up Staff (3), Literary Staff (4);
Sports Club (3, 4), Council (3, 4); So-
ciology Club (3, 4).



BETTY STREET . . . Savannah, Ga. . . .
English Major . . . Transfer from Arm-
strong Junior College; Student Govern-
ment Association (3, 4); Y. W. C. A.
(3, 4), Cabinet (3, 4); Sports Club (3, 4);
Campus Canopy (3, 4), Exchange Editor
(3), Columnist (4); PINE CONE (3, 4),
Business Staff (3), Business Manager (4);
English Club (3, 4); Sociology Club (3,
4), Vice-President (3); Senior Honor
Society (4).



STREET
WALKER

HENRIETTA WALKER . . . Valdosta,
Ga. . . . *English Major* . . . Student
Government Association (1, 2, 3, 4);
Sports Club (4); Sock and Buskin Club
(2, 3, 4), President (4); Artist Series
Committee (4); President's Council (4).



WHITAKER

BETH WHITAKER . . . Valdosta, Ga.
. . . *English Major* . . . Student Govern-
ment Association (1, 2, 3, 4); Sock and
Buskin Club (1, 2, 3, 4), Historian (3);
Valdosta Club (1, 2, 3, 4), President (3);
Fine Arts Club (2, 3, 4); English Club
(3, 4); Senior Honor Society (4), Treas-
urer (4); President's Council (3); Artist
Series Committee (4).

SENIORS



JEAN WILLIAMS . . . Cordele, Ga. . . .
Art Major . . . Student Government Association (1, 2, 3, 4), Vice-President (3), President (4); Student-Faculty Honor Council (4); Y. W. C. A. (1, 2, 3, 4); Sports Club (1, 2, 3, 4), Council (2, 3, 4); Freshman Honor Society (2); Sophomore Council (2); Secretary-Treasurer of Sophomore Class; Senior Honor Society (4); Fine Arts Club (4); Math-Science Club (4); President's Council (4); Artist Series Committee (4).



WILLIAMS

MARTHA EUNICE WILLIAMS . . . Savannah, Ga. . . . *English Major* . . . Transfer from Armstrong Junior College; Student Government Association (3, 4); Y. W. C. A. (3, 4); *Campus Canopy* (3, 4), Circulation Staff (3), Circulation Manager (4); PINE CONE (3, 4), Literary Editor (3), Editor (4); English Club (3, 4), Secretary-Treasurer (3), President (4); International Relations Club (4); President of Senior Class; President's Council (4); Chairman of Artist Series Committee (4).



CHRISTINE YOUNG . . . Rebecca, Ga. . . . *Humanities Divisional Major* . . . Student Government Association (1, 2, 3, 4); Y. W. C. A. (1, 2, 3, 4); Sock and Buskin Club (2, 3, 4), Secretary-Treasurer (3), Vice-President (4).



YOUNGBLOOD

LAURA MAE YOUNGBLOOD . . . Jesup, Ga. . . . *Biology Major* . . . Student Government Association (1, 2, 3, 4), Recorder of Points (3); Y. W. C. A. (1, 2, 3, 4), Cabinet (2); Sports Club (1, 2); *Campus Canopy* (1, 3); Math-Science Club (3, 4); Freshman Honor Society (1, 2), President (2); Senior Honor Society (3, 4), President (4); Student-Faculty Honor Council (3); President's Council (2, 4).

WILLIAMS
YOUNG



PETERS

Junior Class Officers



BECTON, ROGERS

Breaking records of not only other classes but of their own, the Junior class started the social year with an informal get together at the House in the Woods.

In spite of the fact that Juniors were a house divided, as housing conditions brought about a Junior Annex, they managed to enjoy many activities together.

Under the leadership of petite Betty Peters, the class sponsored a most original "Silver Slipper Saloon" dance and a skit inspired by the Stage Door Canteen. The proceeds from both went into the War Bond Scholarship Fund.

The class honored the Seniors with a candle light formal at Christmas time. The activities for the year were made complete with a hamburger supper in the spring.



WOLFF



GOODWIN



PETERS

OUTSTANDING JUNIORS



Target practical . . .
 Watch the birdie! . . .
 Ooops — that obstacle
 course! . . . Must be
 interesting!

Junior menagerie . . .
 Sunday! . . . Jitter-
 bugging again! . . .
 Stick - 'em - up!

Helen puts out the
 spark! . . . In step
 with the times . . . Let
 us in on it, Betty . . .
 Jus' posin'! . . . All
 aboard!



ALLEN, HELEN Lenox, Ga.

BACON, ANNE Doerun, Ga.



BARNHILL, ROSALIND Homerville, Ga.

BECTON, WILLIE PEARL Valdosta, Ga.



BELL, BARBARA Colquitt, Ga.

BURGAMY, RUBY Irwinton, Ga.

CASTLEBERRY, ALPHIA MAE Richland, Ga.



**G. S. W. C.
JUNIORS**



COLLINS, BETTY Cairo, Ga.

CREECH, MARY Moultrie, Ga.



CUNNINGHAM, RACHEL Arlington, Ga.

FORRESTER, PATRICIA Donalsonville, Ga.



GARBUTT, CATHERINE Jesup, Ga.

GILLIS, EVELYN Waycross, Ga.



GLENN, DOROTHY Pelham, Ga.

GOODWIN, MARTHA McRae, Ga.



HALL, KATHLEEN Swainsboro, Ga.

HAUSER, RUTH Litchfield, Ill.

HINTON, DOROTHY Reynolds, Ga.

JACKSON, DOROTHY Palmetto, Ga.

KING, DORIS Cairo, Ga.



**G. S. W. C.
JUNIORS**



LINDSEY, MARTHA Thomaston, Ga.

MANN, CAROLYN Milner, Ga.



MASSEY, ANNETTE Bronwood, Ga.

MATHEWS, SARA ALLEN . . . Buena Vista, Ga.



MATHIS, BETTY Valdosta, Ga.

MEADORS, ELIA Albany, Ga.



MELVIN, MARY Leary, Ga.

MESCURE, CLEO Waycross, Ga.



PATTILLO, VIRGINIA Darien, Ga.

PETERS, BETTY Moultrie, Ga.

PRESSLEY, BARBARA Americus, Ga.

PRINE, FRANCES GOOGE Savannah, Ga.

REHBURG, MACY Cairo, Ga.



**G. S. W. C.
JUNIORS**



ROGERS, JANE Quitman, Ga.

TARVER, HENRIETTA Albany, Ga.



WHITE, DOROTHY Valdosta, Ga.

WHITTENDALE, JEANNE Norman Park, Ga.



WILSON, MARY SUE Valdosta, Ga.

WOLFF, MARY AGNES Fernandina, Fla.

OUTSTANDING SOPHOMORES



SMITH



DEKLE



PENLAND



What's the latest in the news? . . .
 Free wheeling. . . Serious thoughts
 on such a lovely day? . . . The gang's
 all here. . . Sho 'nuff Georgia
 peaches. . . There are smiles that
 make us happy. . . Just loafing.

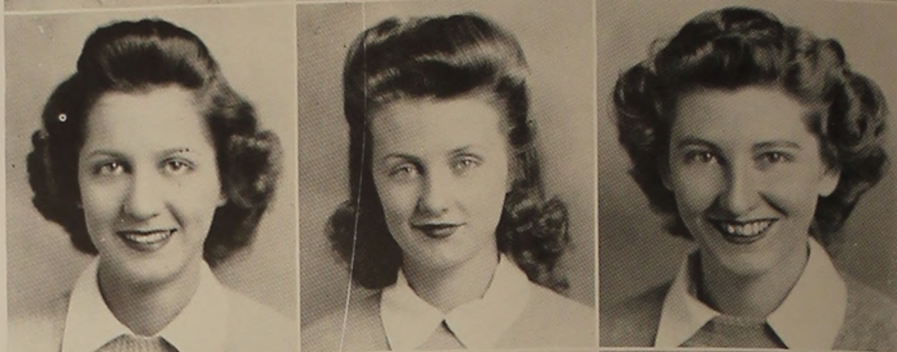


G. S. W. C.

ALDERMAN, MARTHA DELL . Valdosta, Ga.
 ANCHORS, LORRAINE . Savannah, Ga.
 BATEMAN, JEAN FINKLEA . Valdosta, Ga.



BENTLEY, ETHEL Pelham, Ga.
 BIRD, VIRGINIA Metter, Ga.
 BLAIR, MAUDINE Tifton, Ga.



BLOUNT, MARTHA Senoia, Ga.
 BUSH, ELIZABETH . . . Fitzgerald, Ga.
 CHASTAIN, MARTHA . . Thomasville, Ga.



CLEMENTS, FRANCES . . Ray City, Ga.
 COMPTON, MARY ELLEN . Columbus, Ga.
 DEKLE, EMILY Cordele, Ga.



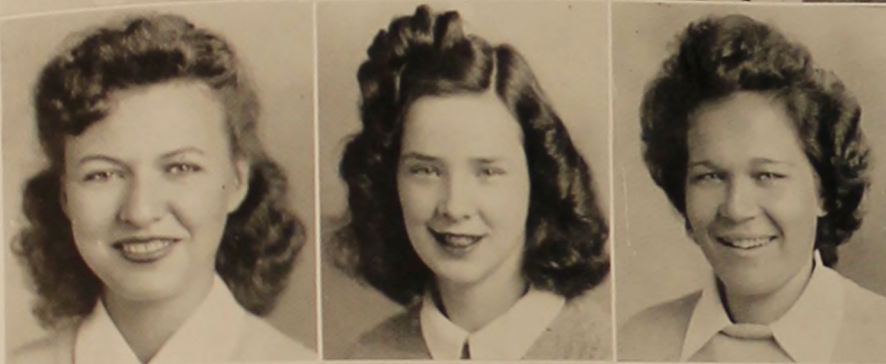
DOROUGH, MARJORIE . . Cordele, Ga.
 EDENFIELD, BARBARA . Savannah, Ga.
 EDWARDS, ONEDA . . . Valdosta, Ga.



SOPHOMORES



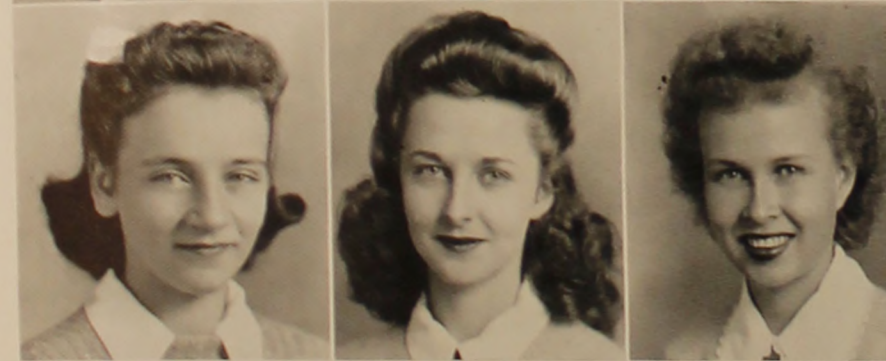
FINKLEA, MARY ANN . . . Valdosta, Ga.
 GAINNEY, MARY ALICE . . . Boston, Ga.
 GEIGER, REGINA McRae, Ga.



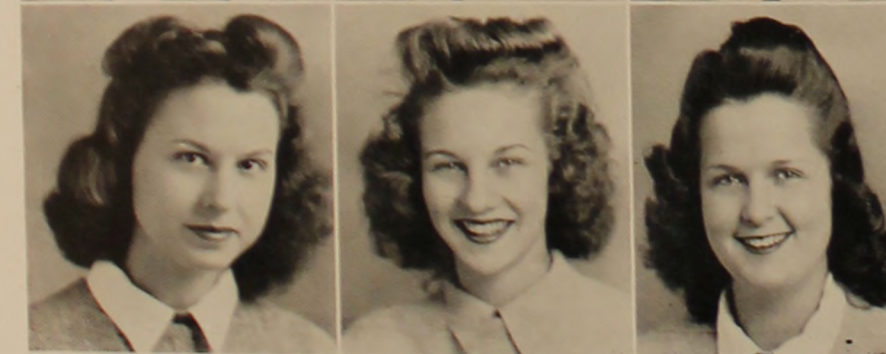
GIDDENS, GERALDINE . . . Ray City, Ga.
 HALL, WILMONTINE . . . Valdosta, Ga.
 HENDERSON, MARIE . . . Statenville, Ga.



HILL, GLYNN Moultrie, Ga.
 HOPPER, MARY ELIZABETH
 New Smyrna Beach, Fla.
 JOHNSON, VO HAMMIE . Washington, Ga.



JOINER, HELEN Valdosta, Ga.
 KEMP, KATHRYN Tifton, Ga.
 KIRKLAND, ANITA . . . West Green, Ga.



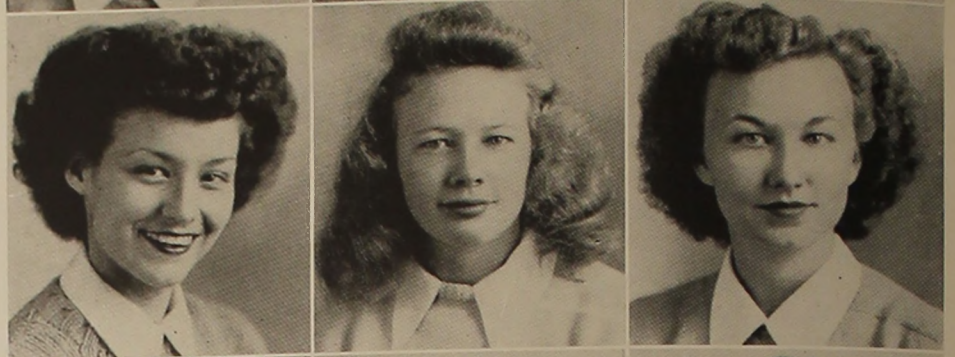
LAROCHE, MARY Waycross, Ga.
 MCKINNON, IDA MAUDE . . . Adel, Ga.
 MCPHAUL, BETSY Doerun, Ga.

G. S. W. C.

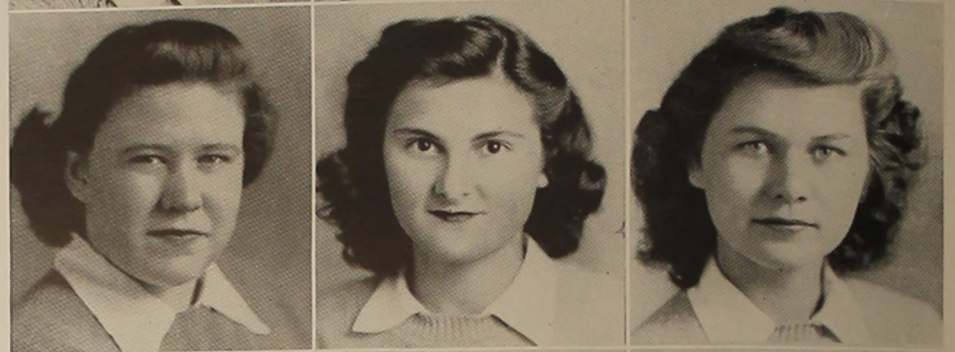
MITCHELL, MARY V. Porterdale, Ga.
 NOELL, DOROTHY Valdosta, Ga.
 ODUM, DOROTHY Waycross, Ga.



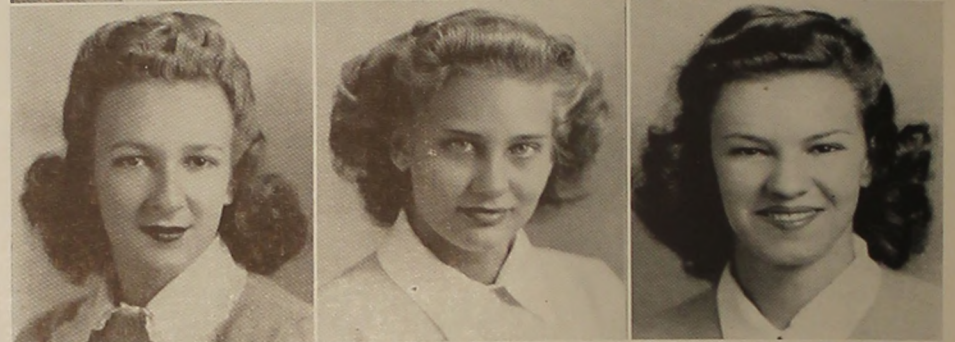
PATILLO, ROBBELEE Moultrie, Ga.
 PENLAND, GLADYS Chula, Ga.
 POWELL, EFFIE Vienna, Ga.



PRIOR, FLORIDA Madison, Ga.
 ROBERTS, EDITH Valdosta, Ga.
 ROBERTS, MARION ANICE Valdosta, Ga.



ROGERS, ALICE Pelham, Ga.
 ROUSE, MARY RUTH Waycross, Ga.
 ROWE, JEAN Claxton, Ga.



ROWLAND, LOUISE Cordele, Ga.
 SHERROD, GWENDOLYN Boston, Ga.
 SINGLETARY, HARRIET Pelham, Ga.



SOPHOMORES



SMITH, GEORGIA . . . Valdosta, Ga.
 SNOW, VIRGINIA . . . Valdosta, Ga.
 SOUTHWELL, ROSALIE . . . Folkston, Ga.



STATHAM, BETTY . . . Moultrie, Ga.
 STORY, NANCY . . . Nashville, Ga.
 STROUD, KATHRYN . . . Douglas, Ga.



SULLIVAN, MARY E. . . . Valdosta, Ga.
 TAYLOR, CHARLOTTE . . . Moultrie, Ga.
 TAYLOR, SARA KATHRYN . . . Tifton, Ga.



THOMAS, MILDRED . . . Eastman, Ga.
 THOMASON, EMILY ANN . . . Columbus, Ga.
 THRASHER, CAROLYN . . . Barwick, Ga.



VAUGHAN, JUNE . . . Cobbtown, Ga.
 WADE, MERLE . . . Boston, Ga.
 WHALEY, VIRGINIA . . . Pelham, Ga.



WILLIAMS, ALINE . . . Valdosta, Ga.
 WILLIAMS, BEATRICE . . . Jesup, Ga.
 WISDOM, MILDRED . . . West Point, Ga.

Freshman Officers

Headed by vivacious Jean Martin, the Freshman Class was one of the most active on the campus.

The class activities included a "Lonely Hearts" Dance in February, an "after-hike" breakfast for the Sports Club, Christmas Carol Serenade, and a surprise class party. Each member's originality and wit were integrated into every activity sponsored by the Freshmen.

The other officers are: Margaret Porter, Vice-President; Anna Jones, Secretary-Treasurer.



MARTIN



PORTER AND THOMPSON



WILCOX



MARTIN



BOLEN

OUTSTANDING FRESHMEN



MAUPIN



Waiting for class to begin. . . Just a thinking. . . Take it easy, Grantham. . . On top of the world. . . We didn't say what kind of an institution. . . It'll all come out in the wash. . . Hanging out the welcome mat. . . Long needed rest.

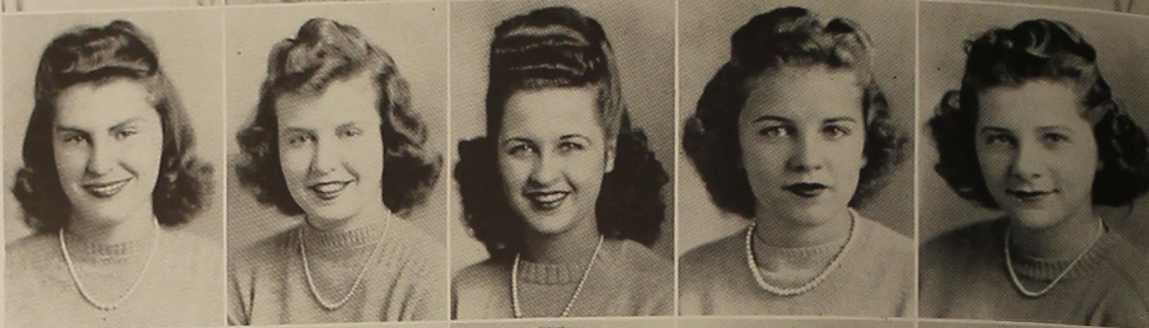
ADCOCK, SARA KATE Fender, Ga.
 ADKINS, GWENDOLYN Valdosta, Ga.
 ALLEN, VIRGINIA Sasser, Ga.
 ALTMAN, BETTY JEAN Valdosta, Ga.
 ALTMAN, MARSHIE Alma, Ga.



ARMSTRONG, MARIE Clinchfield, Ga.
 AVERA, MYRTIS Valdosta, Ga.
 BAILEY, MARY GENE Williston, Fla.
 BARINEAU, JOANNA McRae, Ga.
 BASSETT, SIMONE Fort Valley, Ga.



BELCHER, WYNELLE W. Morven, Ga.
 BOLEN, VIRGINIA Valdosta, Ga.
 BOWEN, BETTYE Tifton, Ga.
 BOYETT, DOROTHY Ray City, Ga.
 BRASINGTON, MARY DELL Waycross, Ga.



BRUNSON, DATHINE Reynolds, Ga.
 CAMPBELL, JEAN Savannah, Ga.
 CARSON, CLARE Savannah, Ga.
 CARTER, IONE Gainesville, Fla.
 CARTER, JANICE Columbus, Ga.



CHALKLEY, MARY JEAN Doerun, Ga.
 COLLINS, EDITH Waycross, Ga.
 COWART, MARGARET Valdosta, Ga.



1944 G. S. W. C.



CRUM, MARY Valdosta, Ga.
 CULBRETH, GLADYS Albany, Ga.
 DAVIS, DOROTHY Marshalville, Ga.
 DELLINGER, CORINNE Albany, Ga.
 DICKERSON, MARGUERITE Ambrose, Ga.

DOWNES, LAURA HELEN Thomaston, Ga.
 DOZIER, CAROLYN Leary, Ga.
 DREXEL, BERTHA Valdosta, Ga.
 DYAL, MARY MERRITT Woodbine, Ga.
 EVERETT, JOSEPHINE Pavo, Ga.

FERGUSON, MARJORIE Valdosta, Ga.
 FLANAGAN, GWENDOLYN Baxley, Ga.
 FLICK, CHARLOTTE Valdosta, Ga.
 FORD, PEGGY Sylvester, Ga.
 FULLER, GERALDINE Dawson, Ga.

FUTCH, DOROTHY Ellenton, Ga.
 GAUHF, LOUISE Albany, Ga.
 GEIGER, COLLEEN McRae, Ga.
 GIBBS, DORIS Waycross, Ga.
 GRANTHAM, KATHLEEN Thomaston, Ga.

GREEN, KATHERINE Lexington, Ga.
 GREEN, MARY Waycross, Ga.
 GREEN, MELBA Doerun, Ga.

FRESHMAN CLASS

HALL, EMILY CLAIRE Atlanta, Ga.
 HALL, JEAN CAROLYN Hahira, Ga.
 HALL, ROSELYN Nicholls, Ga.
 HARPER, EDITH FAYE Valdosta, Ga.
 HART, LILLIAN Bainbridge, Ga.



HERNDON, ANNETTE Ludowici, Ga.
 HIGHTOWER, DOROTHY Damacus, Ga.
 HILL, ELIZABETH Kingsland, Ga.
 HINTON, ELIZABETH Reynolds, Ga.
 HOLDER, SANCIL Tifton, Ga.



HUTCHINSON, BETTY Valdosta, Ga.
 JONES, ANNA Albany, Ga.
 JOYNER, LOUISE Screven, Ga.
 JOYNER, MARGARET Screven, Ga.
 KEENE, ANNE Columbus, Ga.



KERNEY, NELL Moultrie, Ga.
 KILLINGSWORTH, MARY SUE Fort Gaines, Ga.
 KING, ELIZABETH Valdosta, Ga.
 KING, LANEZ Blakely, Ga.
 LAHOOD, ELLEN Valdosta, Ga.



LASSITER, WILLODEAN Haylow, Ga.
 LEE, BETTY JEAN Leesburg, Ga.
 LUNSFORD, NELL Sasser, Ga.



1944 G. S. W. C.



McALLISTER, BETTY
Hawkinsville, Ga.
McGINTY, ELIZABETH
McRae, Ga.
McGIRT, MARY NELL
Waycross, Ga.
MARTIN, JEAN
Fitzgerald, Ga.
MASSEY, MARGIE
Valdosta, Ga.

MAUPIN, JOAN
Athens, Ga.
METHVIN, MARY
Bainbridge, Ga.
MIDDLETON, BETH
Hortense, Ga.
MILLER, MADGE
Valdosta, Ga.
MIZELL, FRANCES
Folkston, Ga.

MOORE, EDITH
Valdosta, Ga.
MORATAKIS, ANNA
Cordele, Ga.
MULKEY, MARY MARGARET
Buena Vista, Ga.
MYERS, BLANCHE
Valdosta, Ga.
NEWBERRY, BERNICE
Arlington, Ga.

NEWELL, DOROTHY
Albany, Ga.
NEWSOME, MARION
Reynolds, Ga.
NEWTON, LOUISE
Camilla, Ga.
PAFFORD, ANNE
Jacksonville, Fla.
PARROTT, PATRICIA
Hahira, Ga.

PATE, ELIZABETH
Montezuma, Ga.
PEACOCK, CLAIRE
Adel, Ga.
PITTMAN, CAROLYN
Helena, Ga.

FRESHMAN CLASS

PORTER, MARGARET Valdosta, Ga.
 POSS, JENELLE Washington, Ga.
 PROCTOR, ELIZABETH Valdosta, Ga.
 PRYOR, EMILY Douglas, Ga.
 RACKLEY, MARGARET Camilla, Ga.



PAIFORD, MARGARET ANNE Norfolk, Va.
 RAINBOW, BERNICE Adel, Ga.
 REES, LOUISE Preston, Ga.
 REMSON, ELIZABETH JANE Washington, D. C.
 RENTZ, ELIZABETH Columbus, Ga.



REYNOLDS, DOROTHY Arabi, Ga.
 ROBERTS, ANICE Macon, Ga.
 ROBERTS, MARION Macon, Ga.
 ROBISON, LYNETTE Dublin, Ga.
 SEARS, JUNE Sasser, Ga.



SHAW, BETTY JEAN Adel, Ga.
 SHEFFIELD, GERALDINE Blakely, Ga.
 SIMMONS, SALLY Columbus, Ga.
 SIMS, LOU Fitzgerald, Ga.
 SMITH, JAYNELLE Cordele, Ga.



SMITH, JETTA Waycross, Ga.
 SMITH, WILLIE BLANCHE Statenville, Ga.
 STALVEY, GLORIA Valdosta, Ga.



1944 G. S. W. C.



STEGALL, MARY ELLEN
Thomasville, Ga.
STEVENS, ANNE
Waycross, Ga.
SUMNER, VIRGINIA
Tifton, Ga.
THOMPSON, BRUCE
Byronville, Ga.
TOWNSEND, BOBBIE
Darien, Ga.

TURNER, RUTH
Barwick, Ga.
TUTEN, LUCILLE
Blackshear, Ga.
WADE, WILDA
Waycross, Ga.
WALKER, HAZEL
Valdosta, Ga.
WARREN, JACQUELINE
Montezuma, Ga.

WEBB, CECILIA
Edison, Ga.
WHITE, LAURIE
Valdosta, Ga.
WHITTENDALE, WILLETTE
Norman Park, Ga.
WILCOX, MARTHA
Elberton, Ga.
WILKINSON, MARY
Ludowici, Ga.

WILLIAMS, IRMA LOU
Valdosta, Ga.
WILLIAMS, MARY NIX
Gainesville, Ga.
WILLIS, JEAN
Nashville, Ga.
WILLIS, EMMAGENE
Jackson, Ga.
WISDOM, FRANCES
Elberton, Ga.

YARBROUGH, ROSA
Columbus, Ga.
YOUNG, ELAINE
Bainbridge, Ga.
ZEIGLER, VIRGINIA
Adel, Ga.

FRESHMAN CLASS



THE HOUSE IN THE WOODS



Entertaining inside.

Activities



The numerous and varied activities of G. S. W. C. offer outlets and inspiration for the students' talents and interests. These are based on the principles of good sportsmanship, cooperation, and sociability. In all the clubs, sports, publications, religious activities, socials, and government individual character is moulded and everlasting friendships are initiated.

It is from these activities that each student carries into her future years the essentials for a well rounded life which will enable her to make the best of any environment.



STUDENT GOVERNMENT



PETERS, HARMES, MARTIN, NEWTON, DEKLE, GOODWIN, WILLIAMS, CREECH

- JEAN WILLIAMS *President*
- MARTHA GOODWIN *Vice-President*
- MARY CREECH *Secretary-Treasurer*
- LOUISE NEWTON *Freshman Representative*

Believing that democratic living affords great opportunities for self-expression and abundant living, G. S. W. C. offers its students the privileges and responsibilities of self-government. Every girl may become a member of the Student Government Association after a brief training course and is then expected to do her part toward promoting high standards of honor and integrity.

It is the responsibility of the Student Court, made up of S. G. A. officials and class presidents, to maintain discipline with fairness and impartiality. Cases concerning honor are turned over to the Student-Faculty Honor Council.

ASSOCIATION

A new addition to Student Government is the Student Council. Its bi-monthly meetings are for the purpose of discussing any problems or new ideas and activities concerning the campus and thus keep the individual students, who may come to any of the meetings to bring suggestions or problems, aware of their importance to the successful functioning of the Government Association.

During the year 1943-44 the Constitution was revised, abolishing the monthly Student Government meetings with required attendance and establishing the Student Council with bi-monthly meetings and voluntary attendance. The Student Council was given the power of setting the dates of elections, according to the promotion or graduation of officials, because of the accelerated program.

The Council has worked out a new system of monitors and of distribution of mail.

Working in cooperation with the Y. W. C. A. Student Government was in charge of all activities during Freshmen Week.

Representatives to the Student-Faculty Honor Council are: Martha Lindsay, dormitory representative, and Mary Mason, town student representative.



WILLIAMS



CREECH, GOODWIN



McCORKLE



CASTLEBERRY



JONES



DEKLE

Y. W. C. A.

Proving the reality and vitality of religion by its untiring services, the Young Woman's Christian Association is adequately and effectively meeting the spiritual needs of the students. One of the most valuable and active organizations on campus, its activities are guided by the Y Cabinet, composed of sixteen members appointed by the president and a committee. Every student is considered a member of the "Y" and a growing, non-denominational atmosphere has helped the girls to feel more a part of a working whole.

Many of the school's most cherished traditions are outgrowths of the Y. W. C. A. The year is started by the impressive Recognition Service for all members; Old Man Winter is ushered in with the lovely, effective Fire Lighting Ceremony, at which time all the club presidents contribute to the Fire of Fellowship; at Thanksgiving a Prayer Service is held in which the whole school participates; the Seniors at Christmas deck the Rotunda in best fashion at the Hanging of the Greens; and the



The "Y" Cabinet.

Christmas season is really begun with a lovely musical service and scripture story program. The Big Sister-Little Sister plan helps the old and new girls become better acquainted; and Heart Sister week at Valentine time kindles a warm feeling of fellowship among the girls. The youngest tradition, and one which is fast becoming one of the most loved is the series of Easter Services. Beginning with Ash Wednesday, we follow the Lenten Season all the way and culminate with a Rededication Service on Easter Sunday.

Among other more every-day activities of the Y. W. C. A. are the daily Morning Watch and bi-weekly Vesper programs, both of which have been very valuable this year; and the Sophomore Council, with its good work on Christian character and Christian citizenship building.

This year the most important accomplishment of the Y. W. C. A. is in the form, yet, of a dream—but a growing and fast materializing one.

The little Chapel in the upper Rotunda has been outgrown, and plans are in the making for a new chapel building—set apart all to itself. To raise the funds, a system of pledges has been adopted and to date the Chapel Fund totals \$546.00. Mr. White is responsible again for the chapel plans.

Members of the Cabinet are: Julia Frances McCorkle, President; Alpha Mae Castleberry, Vice-President; Jacquelyn Jones, Secretary; Barbara Dekle, Treasurer; Effie Powell, Assistant Vice-President; Betty Street, Deputation Chairman; Helen Davis, Entertainment; Catherine Garbutt and Ida Maude McKinnon, Morning Watch Co-Chairmen; Emily Dekle and Mary Ellen Compton, Publicity Co-Chairmen; Mary Thaxton Bowen, Organist; Helen Allen, Assistant Organist; Nell Patten, Violinist; Nancy Story, Room Chairman; and Lorraine Anchors, Sophomore Council Chairman. The faculty advisers are: Miss Paty, Mrs. Odum, Miss Schoeppe and Mr. White.



The chapel choir.



"Kneel always when you light a fire."

EDITORIAL STAFF

Literary Staff: Martha Williams, Editor; Helen Davis and Kitty Harmes, Associate Editors; Julia Storer, Literary Editor; Nell Patten, Assistant Editor; Julia Frances McCorkle and Jean Williams, Art Editors; Kathleen Hall, Photograph Editor; Annette Massey, Assistant Photograph Editor; Mary Frances Donalson, Activities Editor; Mary Melvin, Assistant Activities Editor; Alice Gordon, Snapshot Editor; Pat Forrester, Make-up Editor.



WILLIAMS

THE 1944

Back by popular demand is the PINE CONE, presented by the Senior Class as the final expression of appreciation for the intangible sense of fitness that four years of study and experience at G. S. W. C. has given them.

In spite of the difficulties under which the editors



GORDON, HALL, MASSEY



DAVIS, MELVIN, PATTEN

Make-up Editor; Jeanne Whittendale, Exchange Editor; Betty Street, Martha Goodwin, and Helen Allen, Columnists; Gladys Penland, Advertising Manager; Martha Williams, Circulation Manager; Martha Goodwin, Marion Roberts, Jean Martin, Circulation Staff.

Feature Staff: Martha Blount, Nell Turner, Ethel Bentley, Mary Mitchell, Helen Davis, Senior; Reporters: Jackie Jones, Alpha Mae Castleberry, Martha Lindsey, Effie Powell, Virginia Pattillo, Joanna Barineau, Cecelia Webb, Betty Bush, Janelle Poss, Barbara Bell, Mary Wilkinson, Louise Rees.

Business Staff: Clare Carson, Lynette Robinson, Ann Pafford, Virginia Zeigler, Jean Campbell, Virginia Allen, Mary Mitchell, Harriet Singletary, Anna Jones. Typists: Lillian Hart and Janelle Smith.



Gordon figures finances



Reporters at work



The ad-getters



CUNNINGHAM



MEADOWS

Sports Club

The aim of the Sports Club is to promote physical fitness and mental well-being. It also serves as a guide towards better leadership, sportsmanship, social poise, and ability to get along with one's teammates.

Membership in the club is open to all students. Pledges are taken into full membership after they have shown an active interest in its program, and have a satisfactory scholastic record.

The Council meets every Tuesday afternoon and once a month has a supper where business and pleasure are combined.



LAWSON



HINTON

This Council is made up of one Lambda and one Kappa manager for every activity in addition to the officers of the club and faculty advisers.

To aid in the match games and to help create a more competitive spirit among the girls, the Sports Club is divided into two teams, the Lambdas and Kappas. At the beginning of the year the new members are given bids to one of the two teams. At the end of the year the team scoring the most points has its name engraved on the silver plaque that has held such records for a number of years.

This year the constitution for the club was revised. Also a new system of games between the dormitories and classes was initiated during the year. The Polio Drive which was sponsored by the club was most successful—the quota was surpassed. Another highlight of the year was the annual Retreat which was held at Twin Lakes.

The officers of the club are: Rachel Cunningham, President; Elia Meadows, Vice-President; Grace Lawson, Secretary; Dorothy Hinton, Treasurer.

Other members of the Council are: Martha Dell Alderman, Lorraine Anchors, Ethel Bentley, Virginia Bolen, Mary Ellen Compton, Mary Creech, Emily Dekle, Mary Frances Donalson, Laura Helen Downs, Oneda Edwards, Pat Forrester, Alice Gordon, Kathleen Grantham, Kitty Harmes, Nell Kenny, Gladys Penland, Edith Roberts, Mary Anice Roberts, Jean Rowe, Julia Storer, Henrietta Tarver, Jean Williams, Mary Agnes Wolff.

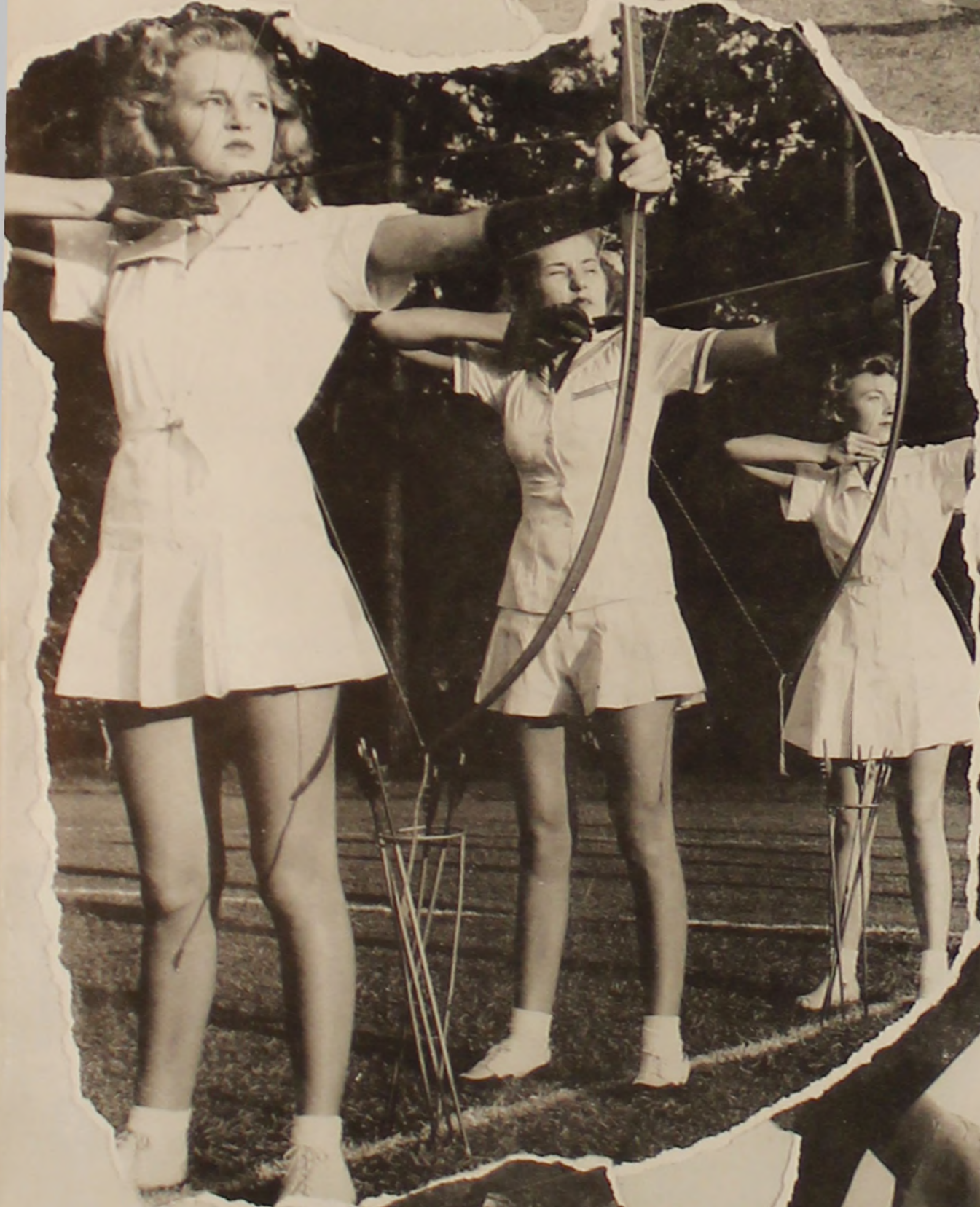


COUNCIL

Snaps of



Sports Activities





CUNNINGHAM AND WALKER



YOUNG



WOLFF

Sock and Buskin Club

Students interested in stage craft, as well as acting, comprise the membership of the Sock and Buskin Club, the campus dramatic organization.

In December the play, *Heart of a City*, was presented by the club and the proceeds were donated to the War Bond Scholarship Fund. A dance was also sponsored by the club and the proceeds given to the same fund. *Ali Baba and the Forty Thieves*, was presented by the club to the public schools of Valdosta.

The officers of the Sock and Buskin Club are: Henrietta Walker, President; Christine Young, Vice-President; Mary Agnes Wolff, Secretary-Treasurer; Rachel Cunningham, Historian; Miss Louise Sawyer and Miss Anna Richter, faculty advisers.

Members of the club include: Cunningham, McCorkle, McGeachy, McKinnon, Walker, Whitaker, Whittendale, Wolff, Young, Barnhill, Chastain, Compton, Harris, Patillo, Powell, White, Penland, Carter, Allen, Peters, Hill, Pate, Dozier, Davis, Sr., Byrd, and Martin.



"Heart of a city"



New members

Fine Arts Club

Seeking to stimulate an interest in art and to enrich the creative life of every G. S. W. C. girl by giving art its place in college affairs, this club brings excellent modern art exhibits to our campus. The club also presents to G. S. W. C. and to all of Valdosta their own creative best.

The girls bring to the campus a rental art collection, on a non-profit basis, through which beautifully framed reproductions of masterpieces and modern paintings may be secured for room or office use.

Posters, products of the Fine Arts girls, colorfully and originally tell of parties, meetings, books, and club activities from September to June.

A real knowledge of art and its creators is secured in study groups each month conducted by members at meetings.

In sponsoring the War Bond Scholarship Fund, the members bring defense stamps to each meeting and sponsor a dance each year.

Officers are: Catherine Garbutt, President; Helen Davis, Jr., Vice-President; Virginia Snow, Secretary; and Mary Ellen Compton and Kathleen Hall, Art Co-Chairman.

Members are: A. M. Castleberry, M. E. Compton, B. Collins, M. Chastain, H. Davis, C. Garbutt, M. Goodwin, K. Hall, A. Hunt, M. Lindsay, E. Meadors, V. Nichols, M. C. Pindar, N. Patten, J. Rogers, E. Saunders, V. Snow, J. Williams, B. Whitaker, J. F. McCorkle, and F. Prine.



GARBUTT



SNOW, DAVIS



COMPTON, HALL

Glee Club

The Glee Club, with the largest membership in years, hit new heights in entertainment this school year.

For the first time in the history of the Glee Club the members were given academic credit for their participation in the club, one of the most outstanding and active organizations on campus.

The activities of the club this year have been as varied as they have been outstanding. Music for two graduation exercises, December and June, was presented. Then there was the annual Christmas party. Highlighting the year's activities, however, was the presentation of the annual spring concert, an event eagerly awaited all year by students, faculty and townspeople.

The Serenaders, a small choral group, and an integral part of the Glee Club, has presented during the past term many fine programs at the school and throughout the community. Members of the Serenaders are: Verna Atkinson, Rosalind Barnhill,



The Glee Club



JONES

Marjorie Dorough, Marjorie Ferguson, Martha Freeman, Jacquelyn Jones, Glynn Hill, Frances Loosier, Effie Powell, Betty Rentz, Betty Sullivan, and Nicky Williams.

The officers of the Glee Club are: Jacquelyn Jones, President; Frances Loosier, Vice-President; Carolyn Mann, Secretary-Treasurer; Georgia Smith, Lorraine Anchors, and Louise Rowland, Librarians.

Members: Adcock, Allen, Anchors, Atkinson, Alderman, Avera, Barnhill, Becton, Brasington, Brushwood, Carter, Collins, Dorough, Finklea, Flick, Ferguson, Geiger, Gibbs, Green, Hill, Hutchinson, Jones, LaHood, LaRoche, Loosier, Mann, Martin, Maupin, McGeachy, Melvin, Myers, Pattillo, Powell, Prior, Rentz, Reynolds, Roberts, Rowland, Sears, Smith, Snow, Stroud, Sullivan, Summerford, Taylor, Warren, Wilcox, Williams, Young, Pafford, Methvin, Armstrong, Everett, Massey, Crum, Bolen, Walker, White, Carter, Williams, Mescure, and Roberts.



Serenaders



Seniors who gave recitals



Loosier and Mann

Glee Club

The Glee Club, with the largest membership in years, hit new heights in entertainment this school year.

For the first time in the history of the Glee Club the members were given academic credit for their participation in the club, one of the most outstanding and active organizations on campus.

The activities of the club this year have been as varied as they have been outstanding. Music for two graduation exercises, December and June, was presented. Then there was the annual Christmas party. Highlighting the year's activities, however, was the presentation of the annual spring concert, an event eagerly awaited all year by students, faculty and townspeople.

The Serenaders, a small choral group, and an integral part of the Glee Club, has presented during the past term many fine programs at the school and throughout the community. Members of the Serenaders are: Verna Atkinson, Rosalind Barnhill,



The Glee Club



JONES

Marjorie Dorough, Marjorie Ferguson, Martha Freeman, Jacquelyn Jones, Glynn Hill, Frances Loosier, Effie Powell, Betty Rentz, Betty Sullivan, and Nicky Williams.

The officers of the Glee Club are: Jacquelyn Jones, President; Frances Loosier, Vice-President; Carolyn Mann, Secretary-Treasurer; Georgia Smith, Lorraine Anchors, and Louise Rowland, Librarians.

Members: Adcock, Allen, Anchors, Atkinson, Alderman, Avera, Barnhill, Becton, Brasington, Brushwood, Carter, Collins, Dorough, Finklea, Flick, Ferguson, Geiger, Gibbs, Green, Hill, Hutchinson, Jones, LaHood, LaRoche, Loosier, Mann, Martin, Maupin, McGeachy, Melvin, Myers, Pattillo, Powell, Prior, Rentz, Reynolds, Roberts, Rowland, Sears, Smith, Snow, Stroud, Sullivan, Summerford, Taylor, Warren, Wilcox, Williams, Young, Pafford, Methvin, Armstrong, Everett, Massey, Crum, Bolen, Walker, White, Carter, Williams, Mescure, and Roberts.



Serenaders



Seniors who gave recitals



Loosier and Mann



Philharmonic Club

Philharmonic

Filling its purpose, to further an interest in the best type of music, the Philharmonic Club has sponsored student programs both on campus and in Valdosta.

Following the precedent established last year, the club has devoted all its efforts to the War Bond Scholarship Fund by sacrificing opera trips, and by sponsoring a dance. In the fall the members of the club gave an after-dinner coffee in honor of Klaus Liepmann, noted violinist and Director of the Yale Symphony Orchestra, and Edwin Gerschewski, pianist and composer, who visited our campus for several days. During National Music Week a chapel program was presented by Philharmonic Club members. In the spring several of the senior members presented their graduation recitals.

Philharmonic Club officers are: Nell Patten, President; Rosalind Barnhill, Secretary-Treasurer for fall quarter; and Virginia Pattillo, secretary-treasurer for winter and spring quarters.

Members of the club are: Barnhill, Campbell, Collins, Dorough, Halla, Hill, Johnson, Jones, LaRoche, Loosier, Mann, Martin, McGeachy, Pattillo, Patten, Prior, Rentz, Simmons, Smith, Sullivan, Williams, Wilson.



PATTEN



BARNHILL



Don Cossack Chorus

Artists Series



DUNNINGER



PETRI



PAGE

International Relations Club

Realizing the importance of a knowledge of our country's international affairs and feeling the need of a systematic study of the problems which are constantly confronting the American people, a group of students in 1928 organized the International Relations Club under the sponsorship of the Carnegie Endowment for International Peace.

It is the club's intention to deal with all topics and questions in an impartial and non-partisan manner, always endeavoring to search out and appreciate the truth of each situation under investigation. Such investigation is made possible by the I. R. C. shelf in the library, which provides books and pamphlets on current national and international issues.



CARTER



KING AND CARTER

This year the members have been active in the war effort—rolling bandages every Tuesday and sponsoring knitting on the campus for the Red Cross. Proceeds from a dance were given to the War Bond Scholarship.

Due to the accelerated program new officers were elected after the first quarter. The present officers are: D. Helen Davis, President; Doris King, Vice-President; Frances Prine, Secretary; Evelyn Meinert, Treasurer; Dorothy White, Member-At-Large.

Club members are: Emmie Carter, Pauline Carter, Helen Davis, Mary Frances Donalson, Doris King, Evelyn Meinert, Frances Gooze Prine, Dorothy White, and Martha Williams.



Knitting on campus



Rolling bandages at the Red Cross



BURKE



WILSON

Math - Science Club

Our rendezvous with frogs, formulas, and figures combines our interest into one club, the Math-Science Club. There are three divisions: Chemistry, Biology, and Mathematics; and the students may become a member of any one of these groups according to their chief interest. These divisions present monthly programs and bring the practical nature of the sciences to the members.

This year the club has endeavored to do its bit for the war effort by contributing part of the dues, and proceeds from a dance and the scrap paper drive to the War Bond Scholarship Fund.

Fall quarter the club was headed by Betty Burke, President; Mary Sue Wilson, Vice-President; and Emmie Carter, Secretary-Treasurer. Due to the accelerated program and the December graduation it was necessary to elect two new officers. These were: Mary Agnes Wolff, President, and Martha Lindsey, Secretary-Treasurer.

Division heads are Sara Allen Mathews, Mary Creech, and Pat Forrester. Faculty advisers are: Carter, Nevins, Farbar, Hawks, and Spragens.

Members: Anchors, Alderman, Blair, Carter, Clements, Copeland, Collins, Compton, Creech, Davis, Edwards, Forrester, Goodwin, Gordon, Griffin, Glenn, Gainey, Hinton, Harms, Henderson, Joiner, D. King, M. King, Lindsey, LaRoche, Mason, Meadors, Mescure, Meinert, Melvin, Mathews, McGeachy, Mitchell, Pattillo, Penland, Powell, Noell, Roberts, Rehberg, Stroud, Singletary, Snow, Turner, Thomason, Wilson, Williams, Wolff, Youngblood.



FORRESTER



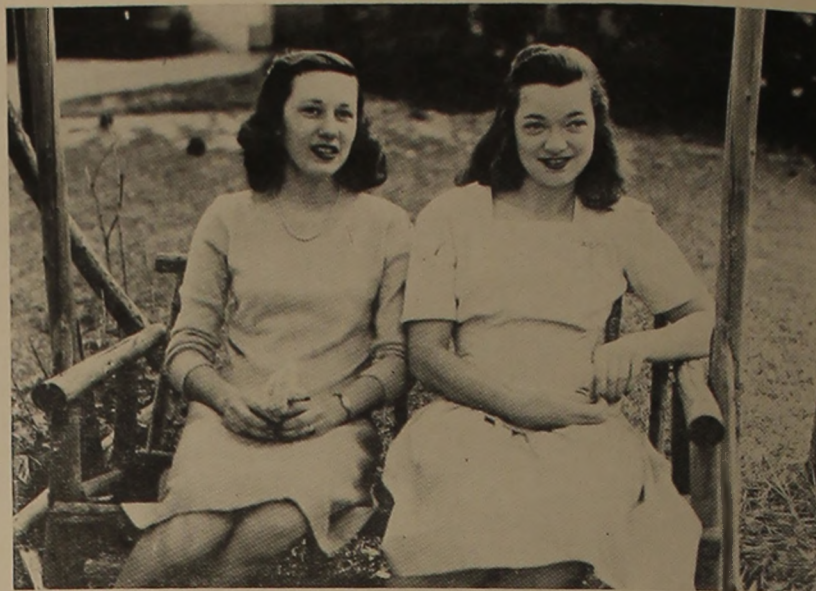
MATHEWS



CREECH



WILLIAMS



COLLINS AND MELVIN

English Club

The purpose of the English Club is to promote a higher interest in the literary world. It endeavors to widen the students' knowledge of the accomplishments in the field of literary arts by sponsoring enlightening programs and lectures. The membership of the club is composed of English majors from the Junior and Senior classes.

During this year the club has contributed to War Bond Scholarship Fund, as well as the Chapel Fund, by sponsoring a dance.

The officers of the club are: Martha Williams, President; Mary Melvin, Vice-President; Betty Collins, Secretary-Treasurer.

Other members of the club are: Margaret Culpepper, Helen Davis, Mary Frances Donalson, Catherine Garbutt, Dorothy Glenn, Ruth Hauser, Sara Ellen Mathews, Betty Mathis, Betty Peters, Betty Street, Beth Whitaker.



Members gather



Ready for discussion



The Linguists

Romance Language Club

The Romance Language Club is an organization to promote a better understanding and interest in the romance languages.

The club has participated in the war activities in which the campus as a whole has been engaged. Proceeds from dances sponsored by the club have gone to the War Bond Scholarship Fund. Rolling bandages and knitting for the Red Cross were two of the foremost activities of the club.

A French play was presented at one of the meetings of the club and was enjoyed by the members.

Officers of the club are: Odelia King, President; Dorothy Glenn, Vice-President; and Eryvl Moran, Secretary-Treasurer.

Other members are: Chastain, Harris, Mathews, Mann, Mescure, Patten, and Rogers.



KING



GLENN



MORAN

Senior Honor Society

The Senior Honor Society recognizes scholarship in the senior college. Not only must a student have an outstanding record for two and two-thirds years of academic work, but she must also be active in the extra-curricular activities of the campus to be eligible for membership in the group.



SAWYER AND YOUNGBLOOD



MASON

The most outstanding contribution of the group is the maintenance of a Student Cooperative Bookstore, whereby students may purchase books with the least expense possible. There has been a scholarship fund established to encourage eligible students to do graduate work.

This year the society has undertaken to provide furniture for the lounge room in the administration building for the convenience of all.

Officers: Laura Mae Youngblood, President; Dorothy Sawyer, Vice-President; Mary Mason, Secretary, Beth Whitaker, Treasurer; Emmie Carter, Historian.

Members: J. Williams, E. Carter, M. Copeland, D. Sawyer, M. Mason, B. Whitaker, L. Ogburn, L. M. Youngblood, and Betty Street.



Some of the members

Freshman Honor Society

The Freshman Honor Society has as its purpose to promote, to recognize, and to encourage high scholastic standing on the campus and to render service to the college whenever possible.

Eligibility for membership implies an average of B for the first two quarters of work during the Freshman year.

The organization acted as ushers at Artist Series Programs. In cooperation with the Sophomore Council, the



SINGLETARY

members as a body helped roll bandages at the Red Cross Center.

The Freshman Honor Society subscribed for magazines for the House in the Woods and bought several recordings for the Carnegie Music Library.

During the spring quarter a dance was sponsored for the benefit of the Chapel Fund. The Society added two bonds to the War Bond Scholarship Fund.

Officers are: Harriett Singletary, President; Lorraine Anchors, Vice-President; Virginia Snow, Secretary-Treasurer; Gladys Penland, Historian; and Mrs. Odum, Faculty Adviser.

Members are: Anchors, Bentley, Johnson, McGeachy, Mitchell, Penland, Powell, Singletary and Snow.



ANCHORS



The club assemblies

Sociology Club



DEKLE

Barbara Dekle, President, graduated in December and was succeeded by Mary Mason. Ruth Hauser became Vice-President, and Nancy Story served as Secretary-Treasurer.

Members of the club include: Bacon, Bowen, Carter, Castleberry, Clements, Copeland, Davis, Dekle, Edenfield, Giddens, Grantham, Harms, Hauser, Henderson, Hunt, McIntosh, McKinnon, Mason, Massey, Petty, Sawyer, Statham, Storer, Story, Street and Rowland.



MASON



HAUSER AND STORY

Presidents' Council

Being the newest organization on campus has not hindered the progress of the Presidents' Council. Since its organization in 1941, the Council has been very active in carrying out its purpose, to bring about cooperation between clubs, students and faculty.



GARBUTT



PATTEN

The membership of the Presidents' Council includes the presidents of all clubs and classes and editors of publications. The Council is headed by a chairman, elected each quarter. Catherine Garbutt was chairman for fall quarter and Nell Patten served as chairman the winter quarter.

Several standing committees, including the Student Activities Committee, the War Bond Scholarship Committee, and the Student Attendance Committee, are made up of the members of the Council.

Members: Betty Burke, Emmie Carter, Rachel Cunningham, Barbara Dekle, Emily Dekle, Mary Frances Donalson, Catherine Garbutt, Kathleen Harms, Jacquelyn Jones, Odelia King, Julia Frances McCorkle, Jean Martin, Nell Patten, Betty Peters, Harriet Singletary, Henrietta Walker, Jean Williams, Martha Williams and Laura Mae Youngblood.



The BWOC'S of the campus



Club assemblies

Valdosta Club

The Valdosta Club, made up of graduates of Valdosta High School, has for its chief purposes to establish a better understanding between day students and dormitory girls and to interpret the activities of the college to the town.

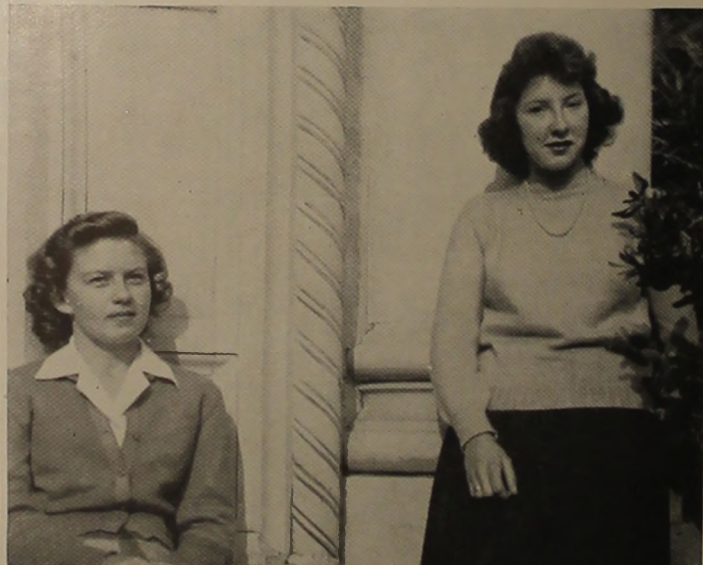
Money received from admission to a dance sponsored by the club went to the Chapel Fund. The club also contributed to the War Bond Scholarship Fund.

Officers of the club are: Mary Sue Wilson, President; Georgia Smith, Vice-President; Jean McGeachy, Secretary; Martha Dell Alderman, Treasurer.

Membership of the club includes: Adkins, Alderman, Altman, Avera, Becton, Bolen, Burke, Carter, Cowart, Crum, Drexel, Davis, Edwards, Ferguson, Finklea, Flick, Freeman, Garbutt, Grizell, Hall, Hunt, Joiner, B. King, M. King, Hutchinson, McGeachy, Mason, Massey, Mathis, Miller, Moore, Myers, Noell, Pindar, Porter, Proctor, Roberts, M. A. Roberts, Saunders, Smith, Snow, Stalvey, Sullivan, Walker, H. Walker, Whitaker, D. White, L. White, A. Williams, I. L. Williams, Wilson.



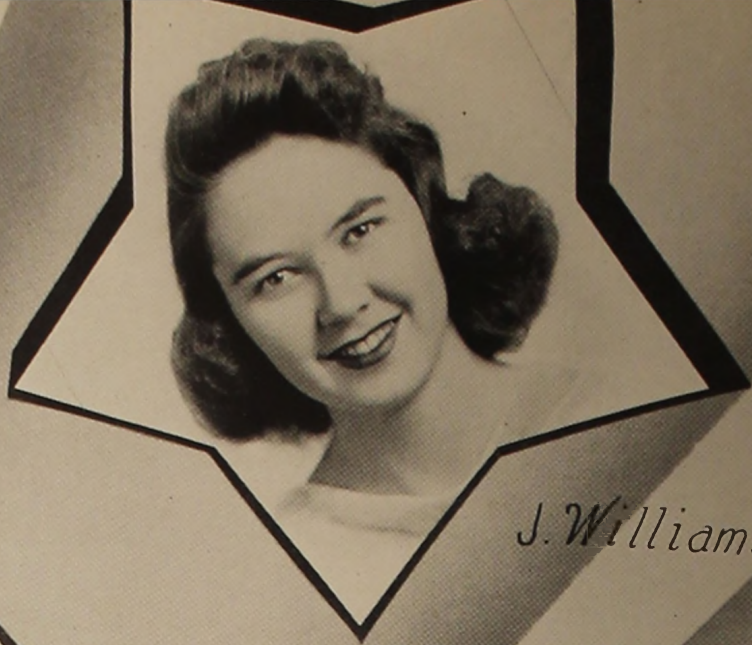
SMITH AND WILSON



ALDERMAN AND McGEACHY



Mc Corkle



J. Williams

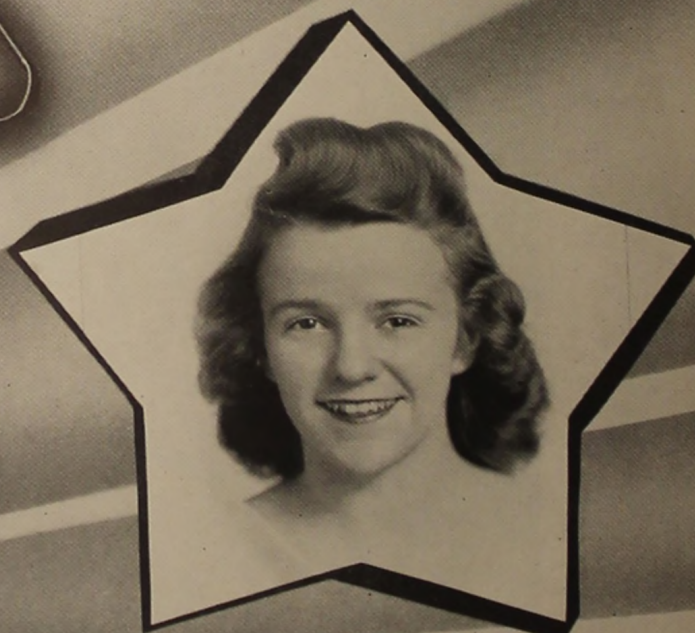


Harms



Donalson

PRESENTING
OUTSTANDING
SENIORS



Petty



Dekle



M. Williams



Freeman



Jones



Sawyer

**LANGDALE TIMBER
COMPANY**



NAVAL STORES

PULPWOOD

CROSSTIES



106 West Hill Avenue

VALDOSTA

GEORGIA

**Southern Stationery &
Printing Company**

WHOLESALE
PAPER DEALERS



COMMERCIAL STATIONERS

PRINTERS

OFFICE OUTFITTERS

VALDOSTA

GEORGIA

*For the newest style in
footwear, first . . .*

LUKE BROTHERS

127 N. Patterson St.

Telephone 674

SATISFACTION ASSURED

M. & F. FOOD STORES

Valdosta's Own



PLEASING SERVICE

CLEAN

CONVENIENT

VARIETY

QUALITY

G. S. W. C. Girls . . .

Pause To Refresh

Drink

COCA-COLA IN BOTTLES

**VALDOSTA COCA-COLA
BOTTLING WORKS, INC.**

SEARS ORDER OFFICE

Shop at Sears and Save

104 N. Patterson St.

Tel. 1572

GIFTS FOR HIM

AT

BRIGGS' CLOTHING

Things Men Wear

FOR THE BEST IN REPAIR

Visit

KIRBY'S SHOE SHOP

ENJOY . . .

FOREMOST

ICE CREAM

. . . IT'S HEALTHFUL

Valdosta's Leading Hotel

**THE
DANIEL ASHLEY**

HORACE CALDWELL

Manager

VALDOSTA

GEORGIA

W. T. GRANT CO.

KNOWN FOR VALUES

Best Wishes

from

McRAE DRUGS

BEST OF LUCK

ALWAYS

**VALDOSTA
BOWLING CENTER**

G A S

is the fuel used for ranges,
water heaters and refrigerator
in the House in the Woods.

Best Wishes

**PINEVIEW GARDENS
FLORISTS**

TERRY'S DRUG STORE

THE REXALL STORE

Patterson at Hill

Valdosta, Ga.

PHONE 115 - 116

Compliments
of

**COWART'S
DRESS SHOP**

Smart Styles for College Girls

*Congratulations and
Best Wishes . . .*

RITZ

PALACE

DOSTA

MARTIN THEATRES

VALDOSTA

GEORGIA

What d'ya mean— "FREE ENTERPRISE"?

That's just a name for the way America works.

It's the simple principle that human beings like to get on in the world.

That when a man sets out to be a doctor or a shoe salesman or an electrical engineer—that's what he wants to be. *And he can be.*

That when a farmer plows his field and plants his seed, he's got a right to a fair return. A right to buy more land—and extend his fences.

That when a business man founds a business, he's building for a future—and nobody can take that future from him.

That when any man works hard and saves his dollars, those dollars are his. He can spend them if he likes. Or he can invest his money, secure in the knowledge it's working for him.

Call that any name you like. Call it Free Enterprise or Democracy or Opportunity. Whatever you call it, it's American-bred-in-the-bone.

Without it, nobody's going to plan any further than tomorrow. Without it, there's no incentive to invent or invest, discover or develop. Without it—and don't let any one tell you otherwise—this country would lose its high place among the nations of the world.

GEORGIA POWER AND LIGHT COMPANY

VERAN BLACKBURN

•
PHOTOGRAPHER FOR THE
1944 PINE CONE
•

VALDOSTA

GEORGIA

*Compliments of
the*

**Citizens & Southern
National Bank**

VALDOSTA

GEORGIA

We are proud of the

GEORGIA STATE WOMANS COLLEGE

We are glad to take this
occasion to say that the

CITY OF VALDOSTA

is proud to list among
its greatest assets the

GEORGIA STATE WOMANS COLLEGE

and—

We hope that Valdosta as a city makes a favorable and
lasting impression on the mind of the young ladies who
make up the student body of this great institution.

SAVE YOUR SOLES BY RIDING THE

VALDOSTA COACHES

and

YELLOW CABS

PHONE 1000

**The
First National
Bank
of Valdosta**

•
Member of the Federal
Deposit Insurance
Corporation

Compliments

of

SMITH'S WALGREEN STORE

VALDOSTA

GEORGIA

Best Wishes

WHITE HOUSE RESTAURANT

VALDOSTA

GEORGIA

**JOHN OLIVER
SERVICE STATION**

FIRESTONE TIRES
AMOCO PRODUCTS

Phone 231

BROOKWOOD PHARMACY

Under Management of

CHARLIE ADAMS

Phone 336

Special Service for G. S. W. C.

*Best Wishes to G. S. W. C. from the Printers
of Your "CAMPUS CANOPY"*

THE LOWNDES COUNTY NEWS

PUBLISHERS — PRINTERS — STATIONERS

OFFICE SUPPLIES

VALDOSTA

GEORGIA

Just Two Words to Remember . . .

"GEORGIA ACE"

GEORGIA FERTILIZER CO.

VALDOSTA

GEORGIA

KELLER CLOTHING COMPANY

Everything for Men and Boys

Phone 307

106. N. Patterson

THOMPSON AND GIRARDIN

JEWELERS

Expert Repairing

120 N. Patterson St.

VALDOSTA

GEORGIA

C. C. VARNEDOE & CO.

For the 66th Year

VALDOSTA'S STORE DEPENDABLE

The Style Center of Valdosta

WHEN IN VALDOSTA

IT'S THE

ELINOR MOTOR COMPANY

Valdosta's Leading Restaurant

THE ROOSEVELT

FAMOUS FOR WESTERN STEAKS

VALDOSTA.

GEORGIA

Congratulations to the Graduates of 1944

STAR LAUNDRY

DRY CLEANING — RUG CLEANING

PHONE 54



PURE GUM TURPENTINE

The Universal Household Cleaner

It is easy to keep a truly clean home with Pure Gum Spirits of Turpentine. It cleans furniture, woodwork, floors, windows, bathtubs, toilets, all porcelain fixtures, linoleum, silver and other metals. Be sure to clean all waxed surfaces with Gum Turpentine.

A small quantity of Gum Turpentine added to water will keep your windows clear and bright.

8, 16 and 32 ounce size.

For sale by drug, hardware, paint and 5c and 10c stores everywhere.

**AMERICAN TURPENTINE
FARMERS ASSOCIATION**





SUCCESSFUL ANNUALS

Require the services of experienced and expert craftsmen, trained in every detail of the processes of creating • planning layout and design • typesetting • printing lithographing and binding ... Throughout half a century this company has pioneered in the production of the highest type of printing ... Our services include a special college annual sales and service organization ... Abundant equipment • modern and complete ... Prices representing maximum in value



FOOTE & DAVIES

PRINTING • LITHOGRAPHING • ENGRAVING

ATLANTA