

THIS IS THE

1957

PINE

CONE

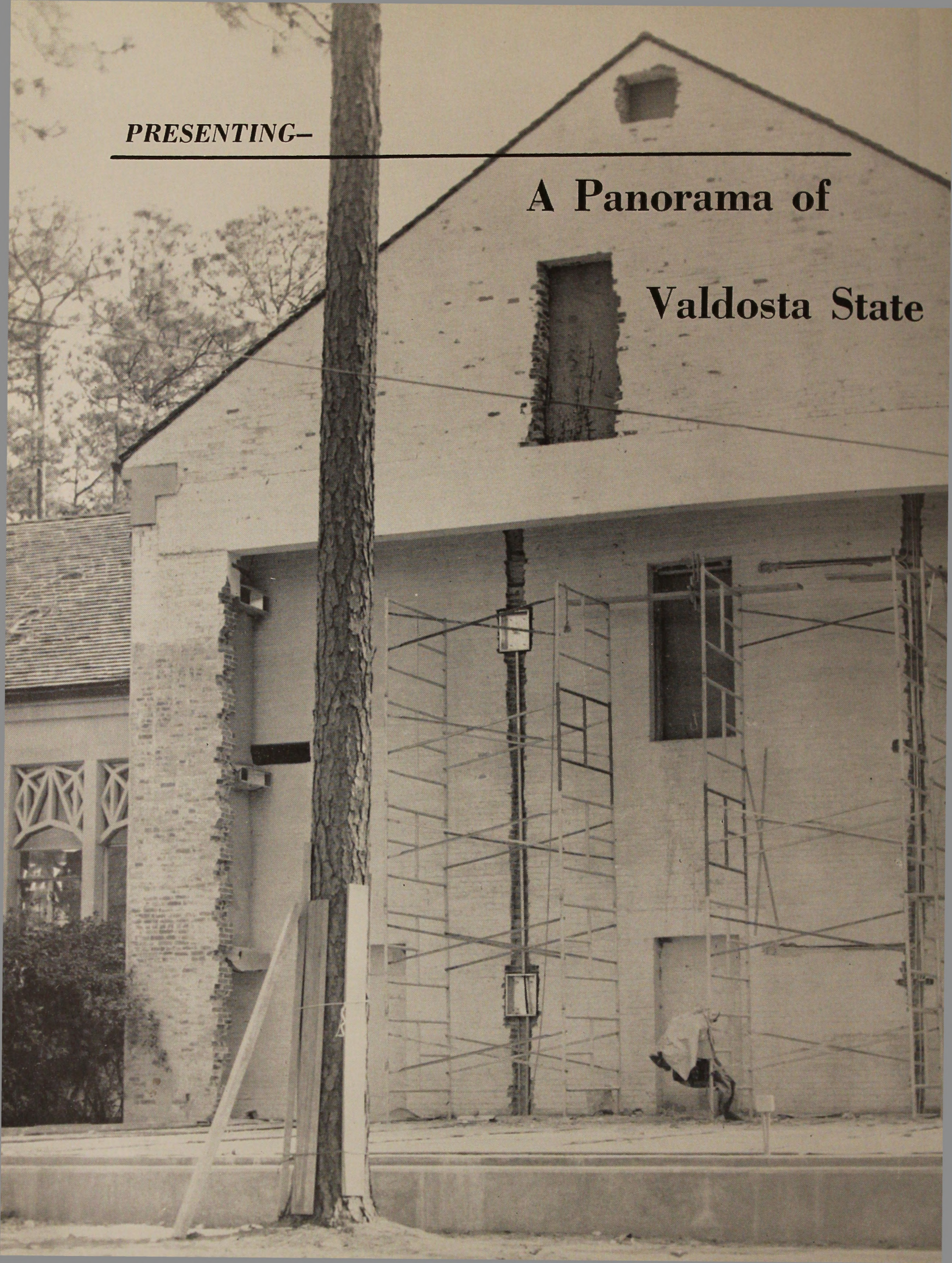
Published by the
Student Body of
VALDOSTA
STATE COLLEGE

Valdosta Georgia

PRESENTING—

A Panorama of

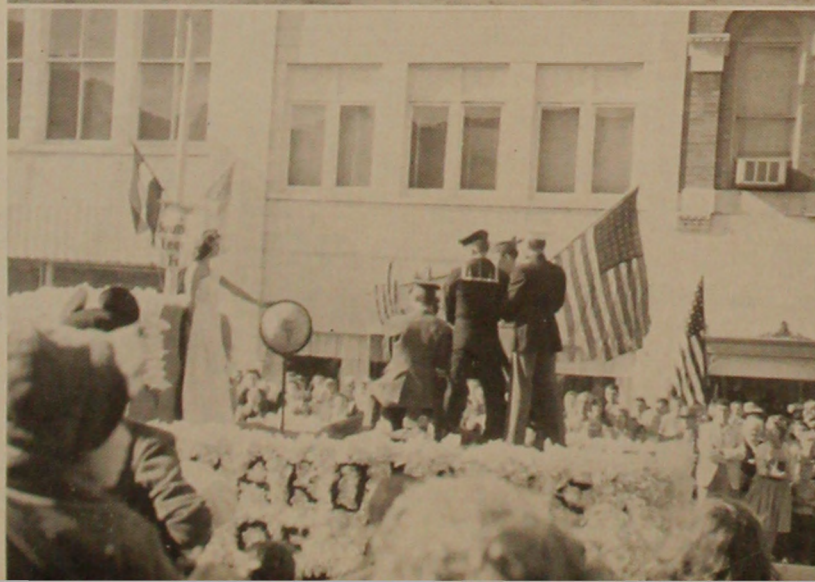
Valdosta State



This Is a Complete Picture of

Student Life

AT
VALDOSTA STATE



6-18-57

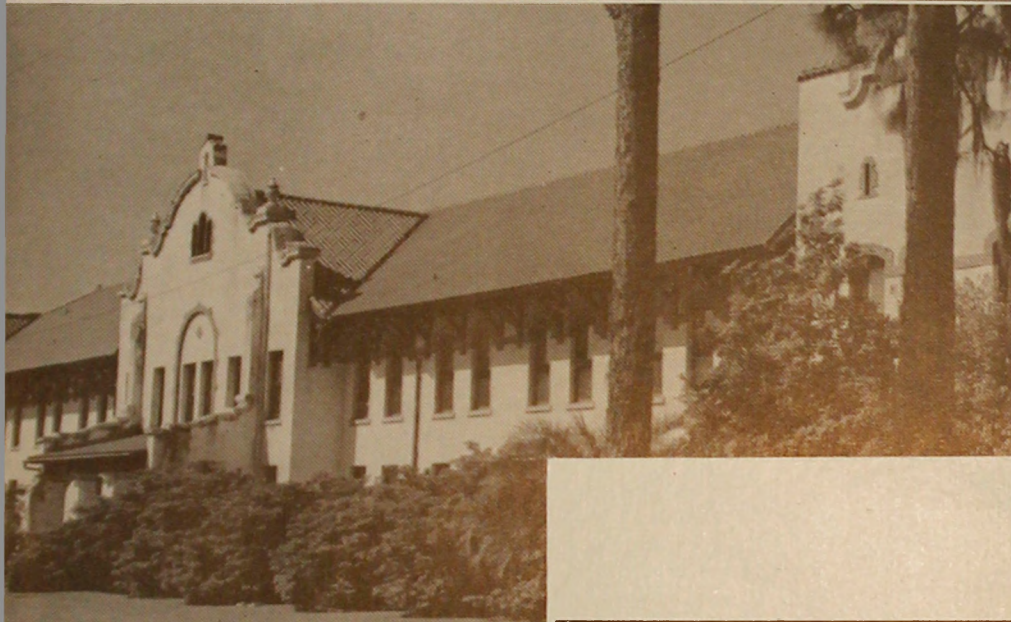
~~33115~~



DR. BEATRICE NEVINS

Into every student's life, there usually comes one person who is the ideal friend, mentor and guide; the sort of person that always stands ready to aid a student with a problem, or to provide a few moments of genuine friendship. Dr. Nevins is that kind of person. To the departing seniors, she will always be remembered as the smiling little lady of the Biology labs.

DEDICATION

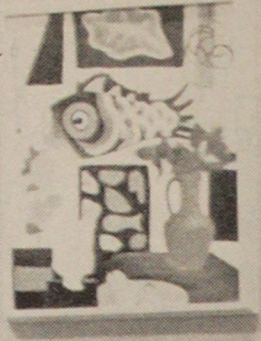


CONTENTS

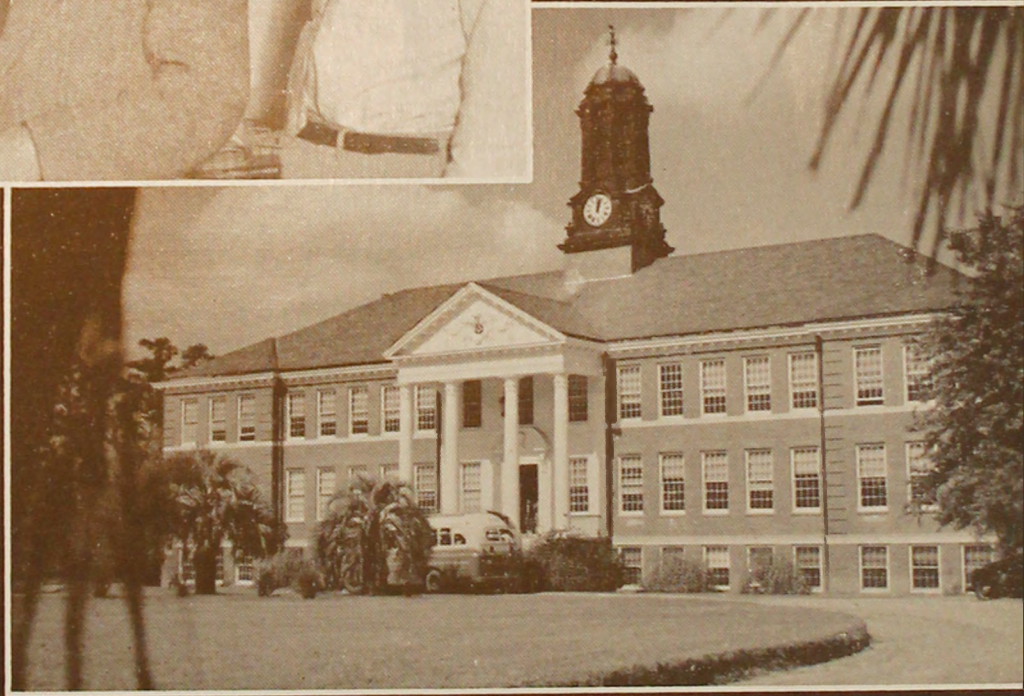
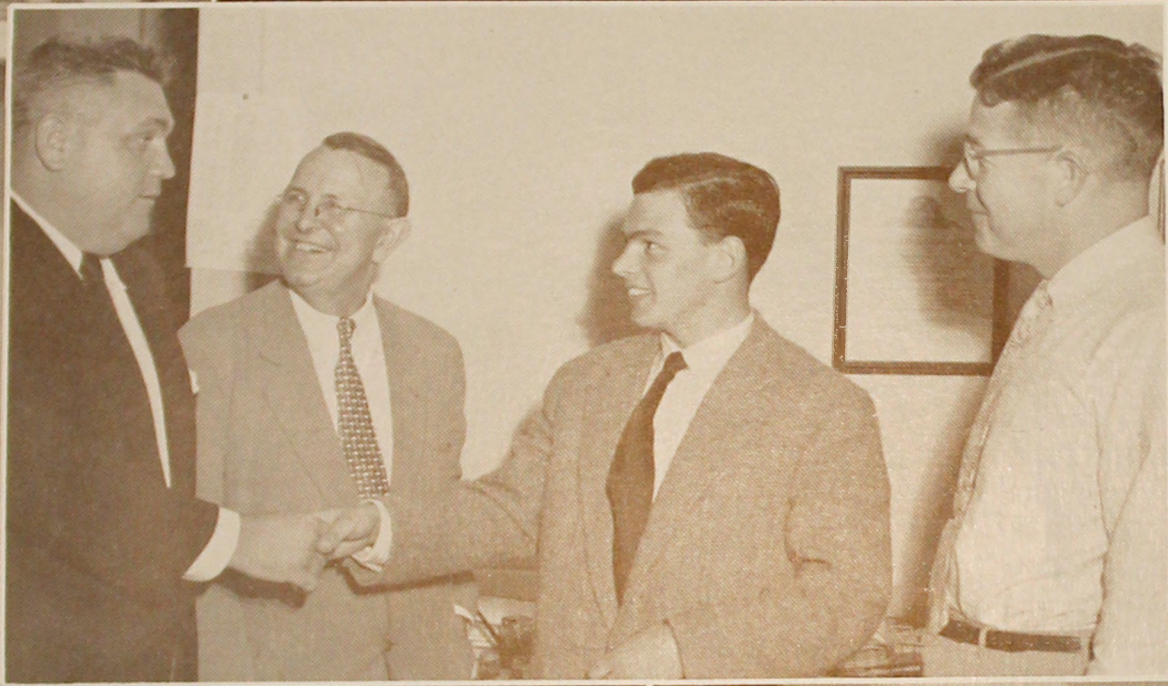
OPENING	1
ADMINISTRATION AND FACULTY	6
ACTIVITIES	55
SPORTS	83
BEAUS AND BELLES	90

— *We hope you like our*
VALDOSTA STATE

THIS IS THE



ADMINISTRATION
FACULTY
CLASSES





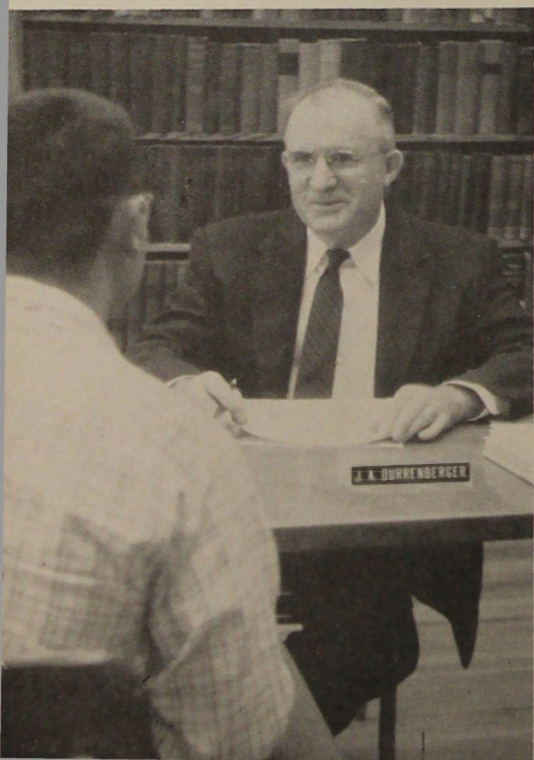
DR. J. RALPH THAXTON
A.B., M.A., Ph.D.
President

THE PRESIDENT AND DEANS

DR. J. A. DURRENBERGER
A.B., A.M., Ph.D.
Academic Dean

MRS. JOE WISENBAKER
A.B., M.S.Ed.
Dean of Women
Associate Professor of Sociology

DR. J. GRAHAM WALL
A.B., M.A., Ed.D.
Acting Dean of Men
Assistant Professor of Mathematics





MR. SHEALY E. McCOY
B.B.A., LL.B.
Comptroller



MRS. WILLIAM M. THOMAS
A.B.
Registrar

S T A F F

MRS. GRACE B. JONES
Assistant to the Registrar

MR. JACK E. McGRAW
B.S.
Director of Public Relations



This Is the



MR. LEROY BABCOCK
B.Ed., M.S.

*Associate Professor of
Mathematics and Physics*



MRS. LEE M. BENNETT
A.B.

Instructor in Art



DR. BERNARD BETTMAN
B.A., M.A., Ph.D.

Professor of Chemistry



DR. TED W. BOOKER
B.S.Ed., M.A., Ph.D.

Professor of Education



MR. WILLIAM M. CALHOUN
A.B., B.S., M.A.

Assistant Professor of English



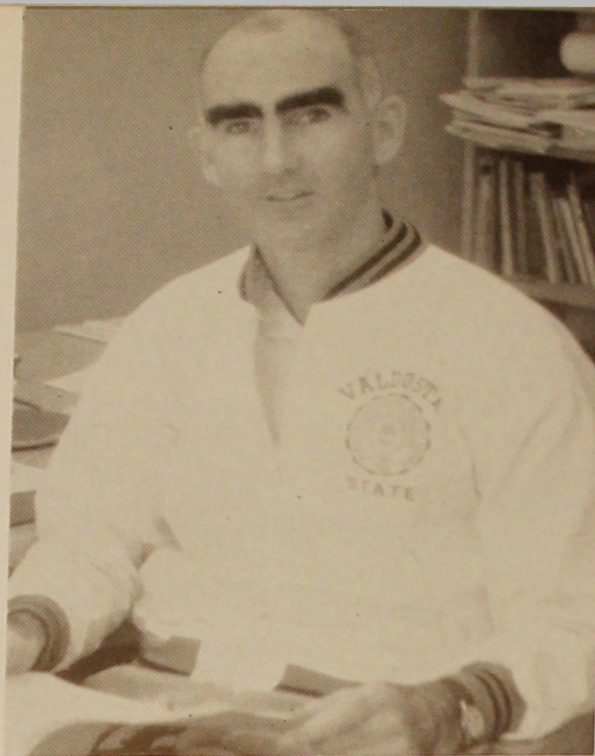
DR. MARJORIE E. CARTER
B.S., M.A., Ph.D.

Associate Professor of Biology

1957

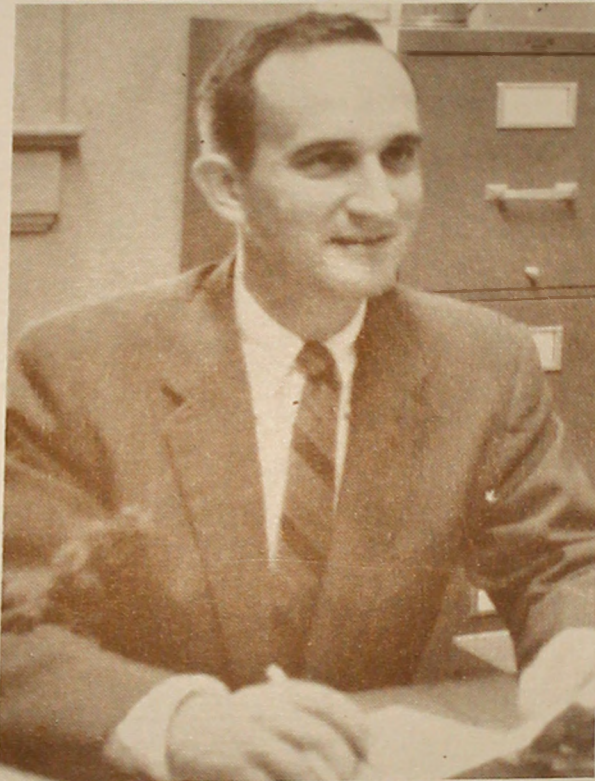
FACULTY

MR. WALTER COTTINGHAM
A.B., M.Ed.
*Assistant Professor of
Physical Education*



MR. JAMES B. DALES
B.B.A., M.A.
*Assistant Professor of
Accounting*

MR. WILLIAM M. GABARD
A.B., M.A.
Assistant Professor of History



DR. HAROLD S. GULLIVER
B.A., A.M., Ph.D.
Professor of English

MR. A. SPENCER JARNIGAN
A.B., M.A.
*Assistant Professor of
Education and Psychology*



MR. UNO KASK
B.S., M.A.
*Assistant Professor of
Chemistry*

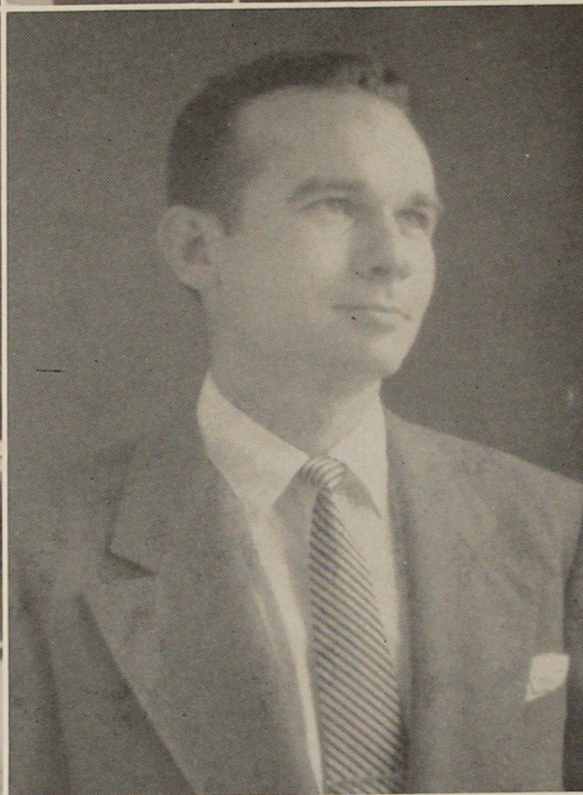




This Is the

MISS THERA HAMBRICK
A.B., B.S. in L.S.
Assistant Librarian

MRS. CORINNE S. KNIGHT
B.S., M.A.
*Associate Professor of
Education*



MR. NOAH LANGDALE, JR.
A.B., LL.B., M.B.A.
*Assistant Professor of
Economics and Social Science*

MR. J. CLAYTON LOGAN
B.F.A., M.F.A.
Associate Professor of Music



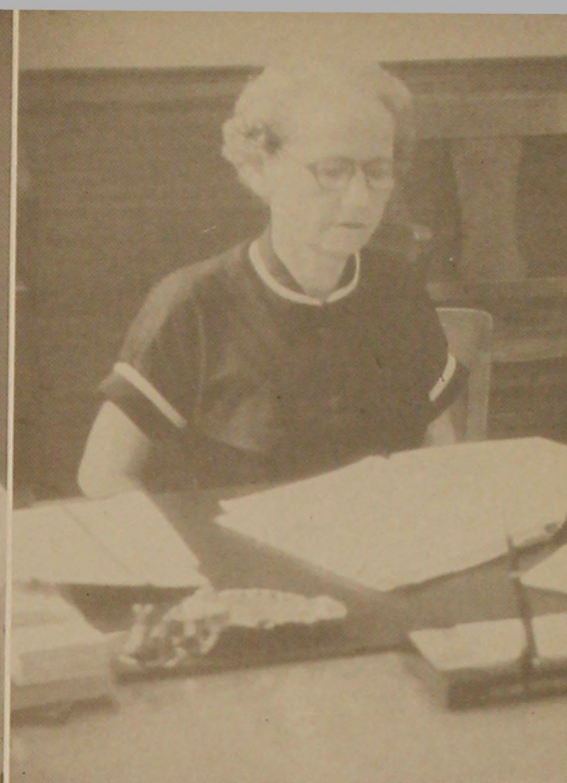
MRS. MATILDA MATHIS
B.S.
*Instructor in
Physical Education*

DR. BEATRICE NEVINS
Ph.B., Ph.M., Ph.D.
Professor of Biology

1957

FACULTY

MRS. GERTRUDE G. ODUM
B.S., A.M.
Associate Professor of English



MISS LILLIAN PATTERSON
A.B., B.S. in L.S.
Librarian



MR. JOSEPH W. PEMBER
A.B., M.F.A.
Associate Professor of Art

MISS MILDRED M. PRICE
A.B., A.M.
Associate Professor of History



MISS SARALYN SAMMONS
A.B., M.A.
Associate Professor of Secretarial Science

MISS LOUISE A. SAWYER
B.S., M.A.
Associate Professor of Speech

FACULTY

MR. WEBSTER W. TEAGUE
B.M., M.M.E.
Assistant Professor of Music

DR. SAPELO TREANOR
A.B., A.M., Ph.D.
*Professor of Modern
Foreign Languages*

MRS. CHARLES L. FLOYD
*Instructor in
B.S.
Physical Education*

MRS. JOSEPH S. MADDOX
Secretary to the President

MRS. MARJORIE BLAND
Assistant Comptroller

MRS. LOIS HANCOCK
Secretary to Comptroller

STAFF





MRS. MARY H. CROOM
Secretary to Academic Dean
Secretary to Registrar

MRS. J. A. SCONYERS
Assistant Dietitian
House Director, Senior Hall

MRS. MILLIE B. KNOWLES
House Director, Ashley Hall

S T A F F

MRS. JANET S. MAYNARD
House Director, Converse Hall

MRS. GRADY BENNETT
A.R., R.N.
College Nurse

DR. R. L. STUMP
M.D.
College Physician



THIS IS THE

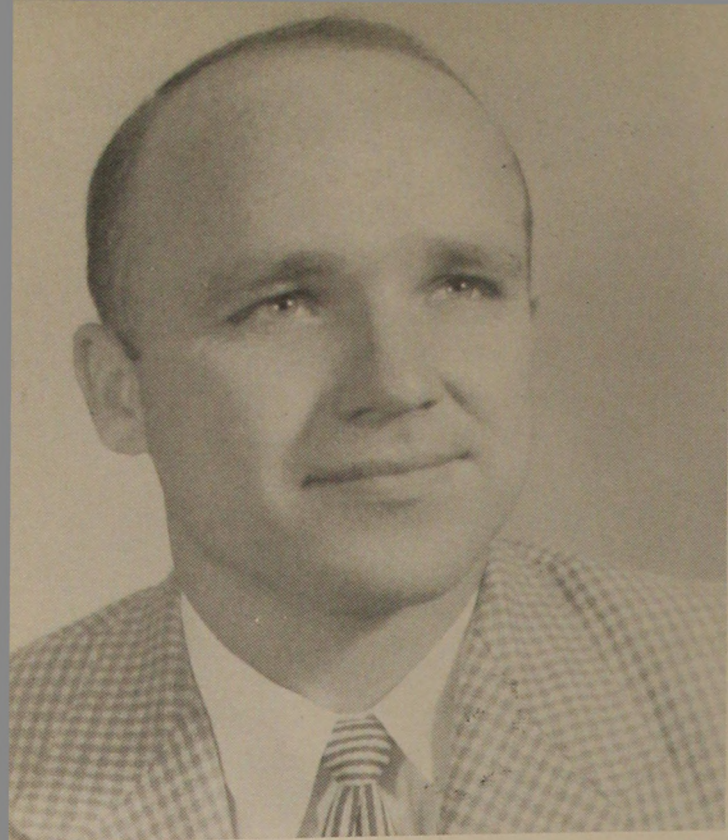
1957

SENIOR CLASS

THESE ARE THE SENIOR CLASS OFFICERS:
At Their Favorite Occupation!

TRAVIS HIGGINBOTHAM, *President*; MARY OLLIE WARD, *Treasurer*;
MARGIE SMITH, *Secretary*, and RONNIE HAIRE, *Vice-President*





HAROLD ALLEN
Valdosta, Georgia



MERLE MELISSA BAKER
Norman Park, Georgia

Major: History **Minor: Music**
IRC 2, 4, President 3, Vice-Pres. 4; WRHC 1, 2, 3, 4, 2nd Vice-Pres. 3, Pres. 4; Glee Club 1; YWCA 1, 2, 3, 4; "Y" Cabinet 2, 3, 4, Secretary 3; BSU 2, 3, 4, Secretary 3, Treasurer 4.

S E N I O R S . . .

WALTER STEWART BARTEE
Cordele, Georgia

Major: Economics **Minor: History**
"V" Club 3, 4; Circle K 3, 4, Treasurer 4; BSU 3, 4; IRC 3, 4; Fins and Flippers 3, 4; Basketball 3, 4; Baseball 3, 4; Transfer from Middle Georgia College Junior Year.

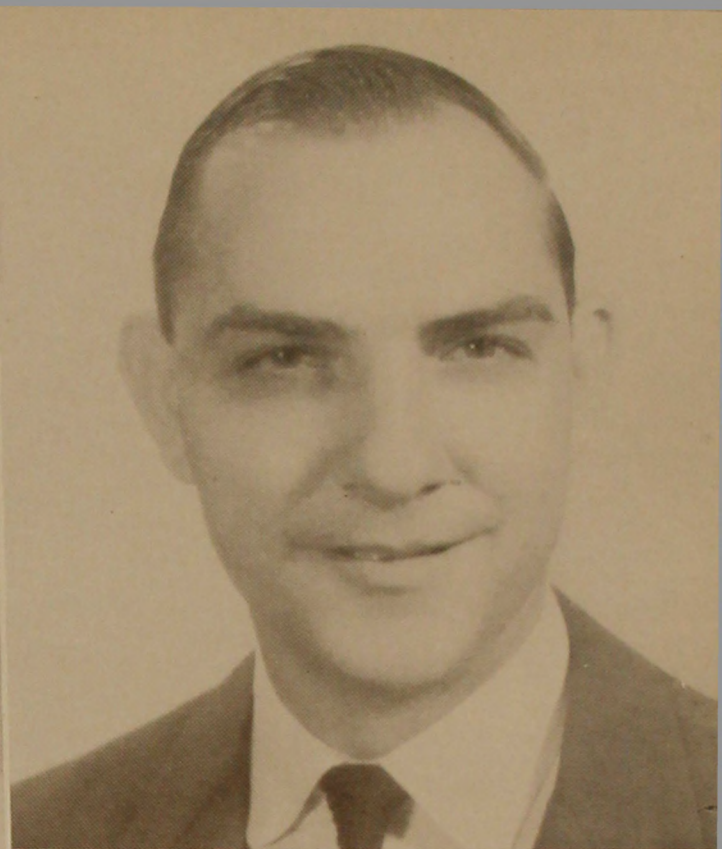
MINNIE LEE BASKIN
Lakeland, Georgia

Transfer from Tift College at Forsyth, Georgia.





JACK HILL BATES
Valdosta, Georgia



ZEPHPOE BELCHER
Lenox, Georgia
Major: Social Work Minor: English
English Club 1, 2, 3, 4.

. . . S E N I O R S

WILLIAM BRIGMAN
Hahira, Georgia

Major: Bus. Admn. Minor: History
IRC 2, 3, 4.

JAMES ALLEN BROOKS
Alapaha, Georgia

Major: Sociology Minor: English
Circle K 3, 4, Secretary 4; YMCA 3, 4, Secretary 3,
4; Dormitory Council President 4; Transfer from
South Georgia College.





BILLIE LANG BURNEY
Valdosta, Georgia

Education Club 4.



PAULINE L. BUSH
Eastman, Georgia, and Dyke, Virginia
Major: Sociology
Minor: English

S E N I O R S . . .

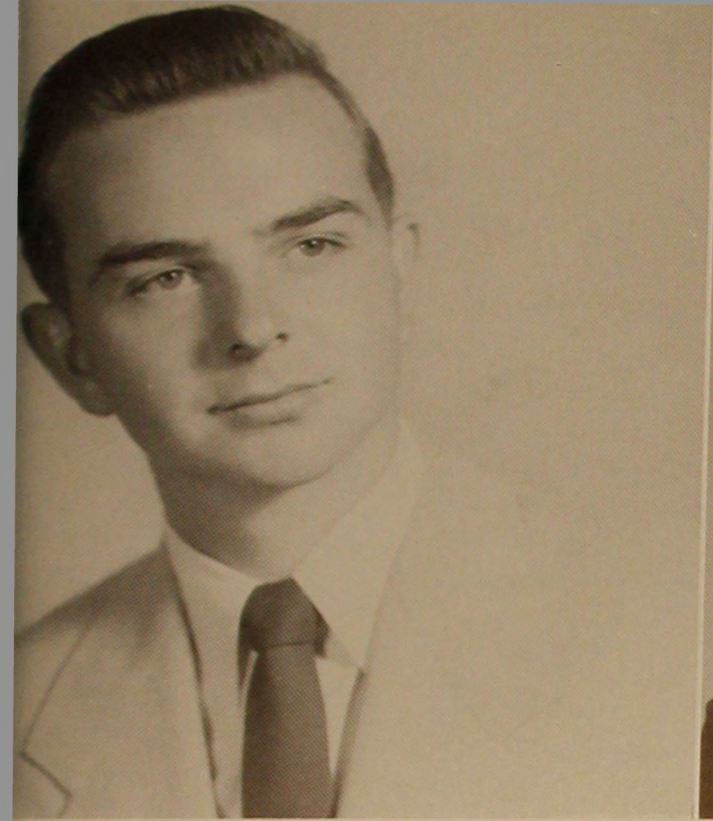
HANSON R. CARTER
Valdosta, Georgia

Major: Bus. Admn. Minor: History
Filli Fortunae 3.

JACK CARTER
Valdosta, Georgia

Managing Editor Campus Canopy 1, Editor 2; Mu Alpha 1, 2, 3, 4, Secretary 1, 2, Vice-Pres. 4; SGA 2, 4; Who's Who in American Colleges and Universities.





AUBURN PLEMON CHITTY
Valdosta, Georgia

Major: Biology **Minor: Chemistry**
Math-Science Club 1, 2, 3, 4; Sigma Alpha Chi.



PERSIS CLARK
Valdosta, Georgia

Major: Secretarial Science
Transfer from Stetson University; Business Club
Vice-Pres. 4; BSU; BSU Council 4.

. . . **S E N I O R S**

EDWARD V. COYLE
Quitman, Georgia

JO ANN DANIEL
Montezuma, Georgia

Major: Humanities (Speech Emphasis)
Freshman Class Secretary; Freshman Class Sweet-
heart; Dance Club 1; Sock and Buskin 1, 2, 3, 4;
Home Ec. 2; YWCA 1, 2; Y Cabinet 2; Wesley
Foundation 1, 2, 3; Cheerleader 1; Sigma Alpha
Omega 1, 2, 3; Filli Fortunae Pledge Sponsor 1;
Sophomore Class Beauty; Miss VSC 2; Homecoming
Queen 2.





SHIRLEY DAUGHARTY
Fargo, Georgia

Major: Secretarial Science



EDWARD V. DEATON
Columbus, Georgia

Major: Bus. Admn. Minor: English
Baseball 3, 4; V Club 3, 4, Vice-Pres. 4; Business Club 3; English Club 3, 4; Mu Alpha 3, 4, Treasurer 3; Campus Canopy 3.

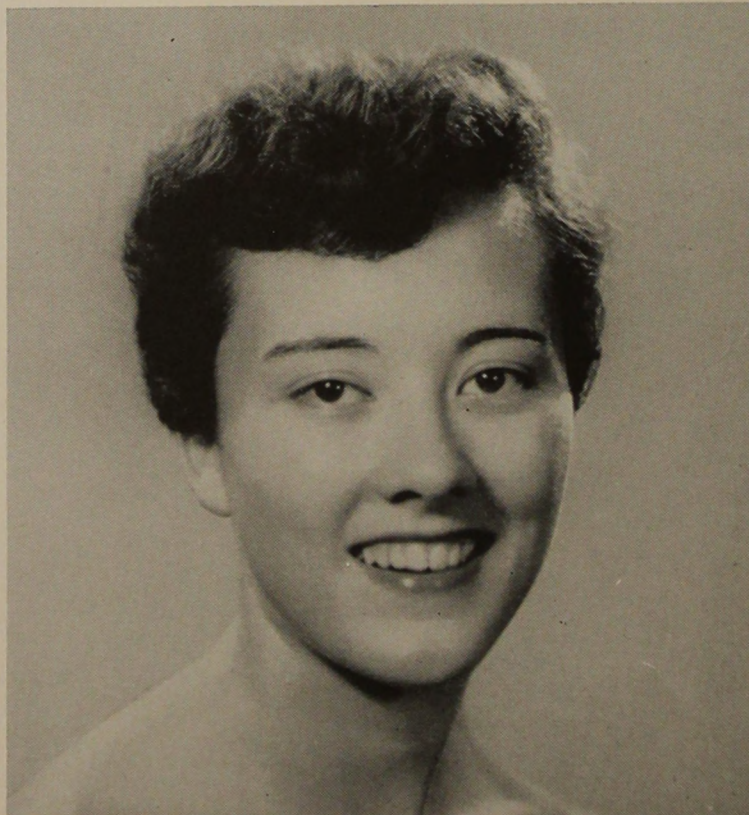
S E N I O R S . . .

PATSY WRIGHT DEVANE
Valdosta, Georgia

Major: Elementary Education
Transfer from Andrew College; Education Club 2, 3, 4; Glee Club 2, 3; Sigma Alpha Chi 2, 3, 4.

NORMA JEAN EWING
Ocilla, Georgia

Major: Secretarial Science





JACK GIDDENS
Valdosta, Georgia

Major: Business Administration
IRC 2, 3, 4.



URSULA WILLIS GOODSON
Valdosta, Georgia

Major: Secretarial Science
Transfer from Flora McDonald College; Fins and
Flippers 3; Business Club 4; English Club 4.

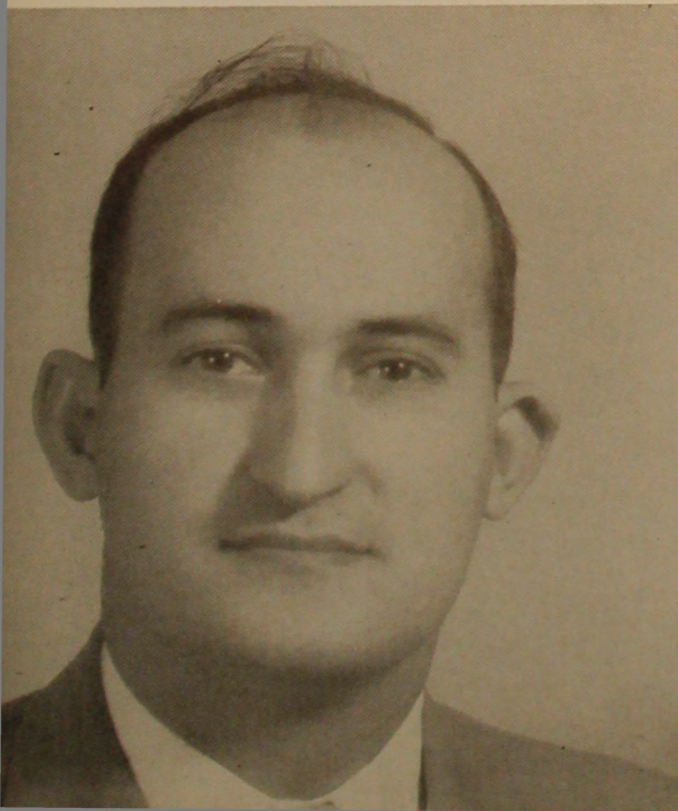
. . . **S E N I O R S**

SEABORN J. GRAHAM
Valdosta, Georgia

EWELL J. GRINER
Valdosta, Georgia

Major: History
IRC 2, 4.

Minor: English





RONNIE HAIRE
Colquitt, Georgia

Major: Chemistry **Minor: Math**
Math-Science 3, President 4; Photography Club
President 4; Sigma Alpha Chi 3, 4; Who's Who in
American Colleges and Universities; Vice-President
Senior Class.



CHARLIE HANCOCK
Valdosta, Georgia

S E N I O R S . . .

PAT HARDEN
Ashburn, Georgia

Major: Secondary Ed. **Minor: Social Science**
Glee Club 1, 2; Education Club 2, 3, 4, Secretary 4;
WRHC Secretary 4; YWCA 1, 2, 3, 4; Y Cabinet 4;
Wesley Foundation 2.

JEAN HARRELL
Valdosta, Georgia

Major: Secretarial Science
English Club President 4; Business Club.





MRS. INEZ D. HENDLEY
Nashville, Georgia

Major: Elementary Education
Education Club 4.



ROBERT HERRINGTON
Valdosta, Georgia

. . . S E N I O R S

TRAVIS HIGGINBOTHAM
Valdosta, Georgia

Major: Bus. Admn. Minor: History
Freshman Marga; Business Club 1, Treasurer 2, 3, 4; Fili Fortunae 1, 2, 3, 4; Senior Class President 4.

LUCIA ANNE HORNE
Doerun, Georgia

Major: Secondary Education (English)
Dance Club 1; Business Club 1; Fins and Flippers 1, 2, 3; Glee Club 3; Sports Club 1, 2; Education Club 3, 4.





WILLIAM EDWARDS JACKSON
Sylvester, Georgia

Major: English

SGA 1, 2, 3, 4, Treasurer 3, President 4; Sophomore Class Vice-Pres.; Junior Class President; Mu Alpha 1, 2, 3, 4, Treasurer 2, President 3, 4; Dance Club 1, 2, 3; Sock and Buskin Club 3, 4; English Club 3, 4; Circle K 3, 4, Board of Directors 4; Campus Canopy 2, Feature Editor 3; Who's Who in American Colleges and Universities 4; Men's Dormitory Council Treasurer 3.



CAROLYN JONES
Cairo, Georgia

Major: Secretarial Science Minor: English

Glee Club 1, 2; Wesley Foundation 1, 2, 3; Business Club 1, 2, 3, 4, Publicity Chairman 4; YWCA 1, 2, 3, 4; "Y" Cabine 4; English Club 3, 4, Vice-Pres. 4.

S E N I O R S . . .

EMMA JONES
Colquitt, Georgia

Major: Elementary Education

YWCA; "Y" Cabinet; Glee Club; Sophomore Counselor.

WILLIAM L. JOHNSON
Morgan, Georgia

Major: Biology

Minor: History

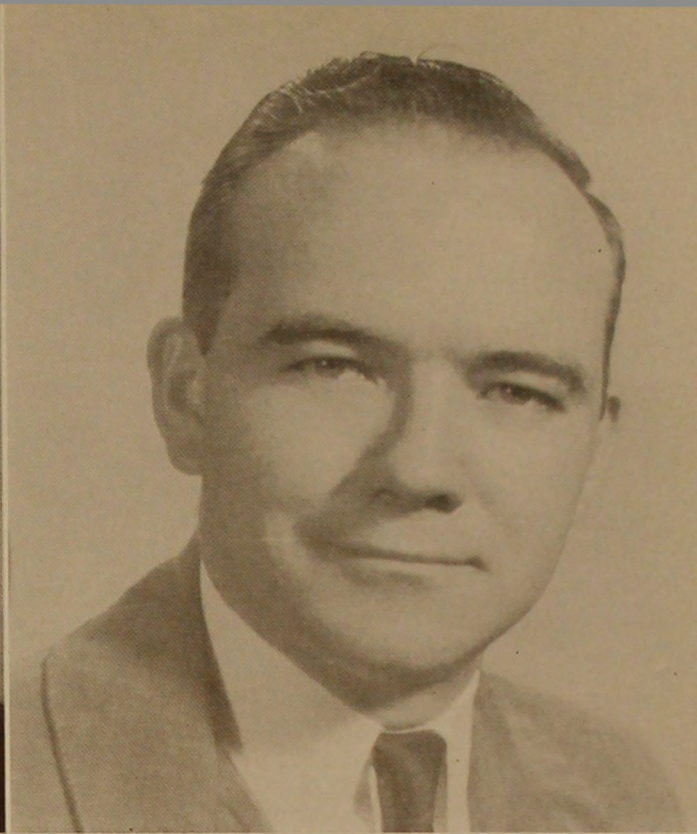
Math-Science Club; English Club.





LEVON KING
Screven, Georgia

Major: Humanities (Speech Emphasis)



JOEL DONALD LEE
Homerville, Georgia

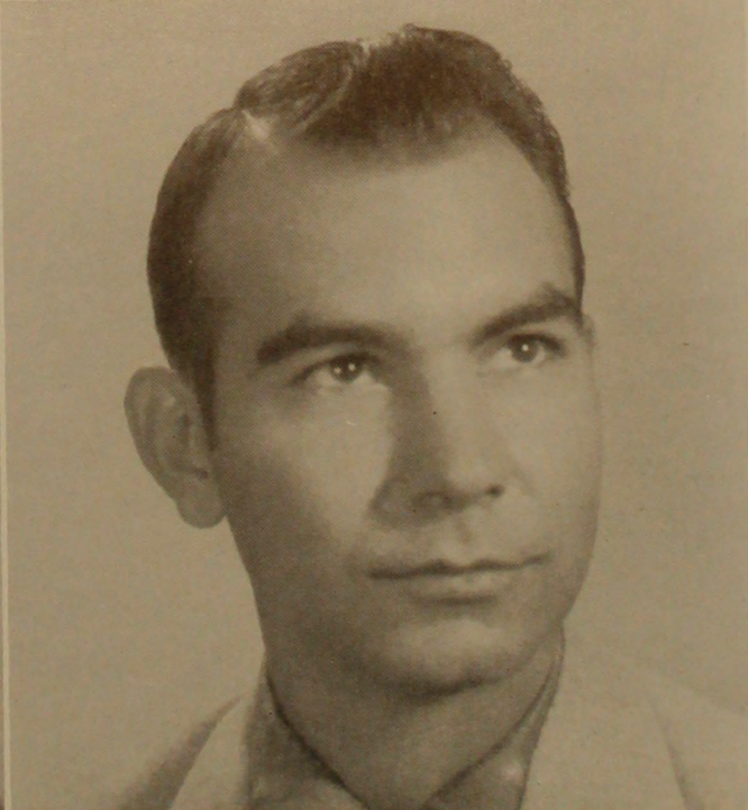
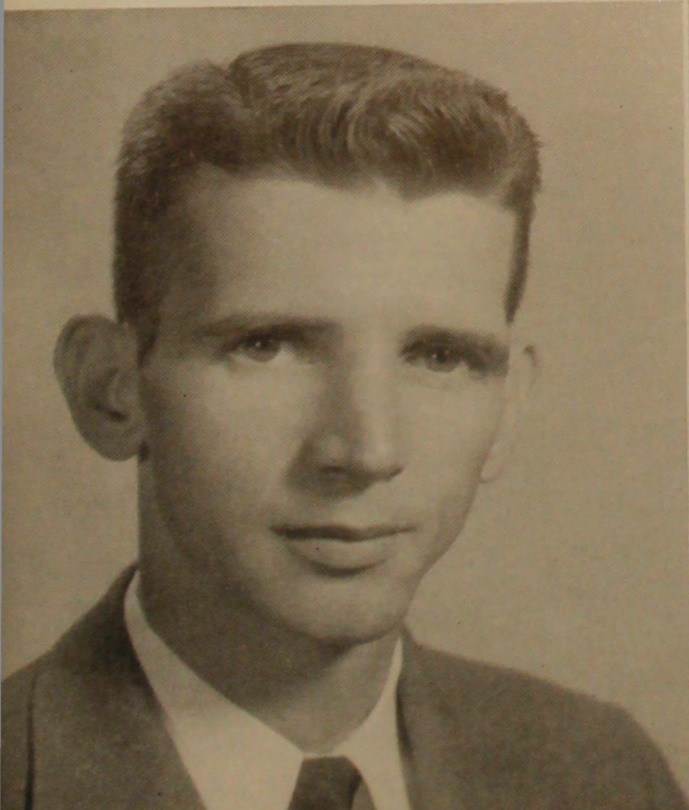
Major: Bus. Admn.

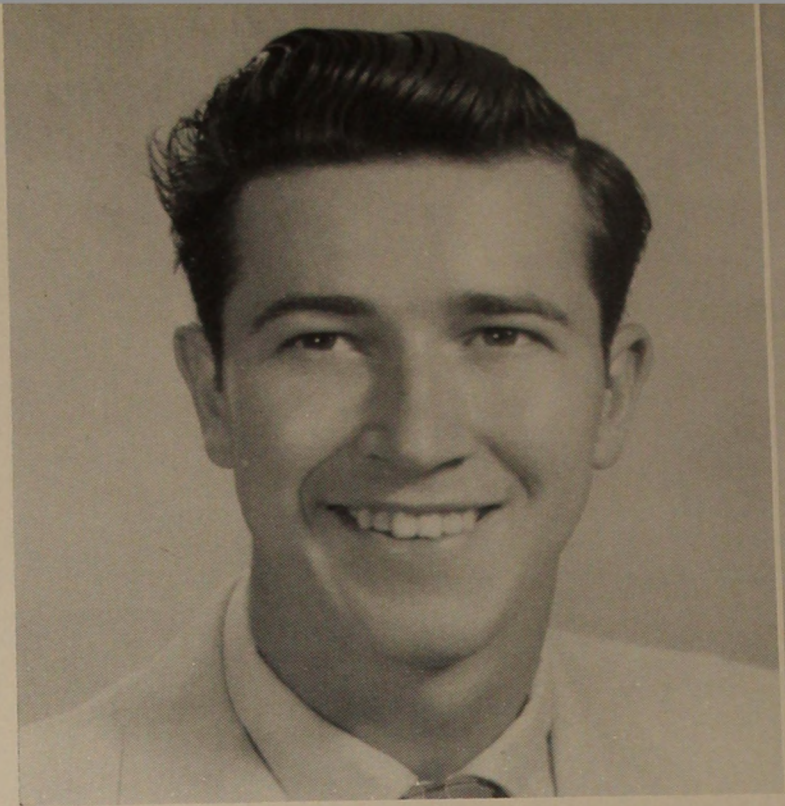
Minor: History

. . . . S E N I O R S

RONALD L. LITTLE
Lyons, Georgia

JAMES HIRAM MANCIL
Lakeland, Georgia





JAMES NOEL MARTIN
Coolidge, Georgia

Major: Bus. Admn. Minor: History
Sock and Buskin Club 1, 2; V Club 3, 4; Basketball 3.



FRANCES GARBUTT MAUGHON
Valdosta, Georgia

Major: Secretarial Science Minor: English
Business Club President 4; Dance Club Stage Manager 2, Vice-Pres. 3; Sigma Alpha Chi 1, 2, 3, 4; Cheerleader 1, 2, Co-captain 2; Pine Cone Staff 1; Campus Canopy Staff 1; Who's Who in American Colleges and Universities 4.

S E N I O R S . . .

WAYNE MATTHEW McCULLERS
Hahira, Georgia

Major: History Minor: English
IRC 2, 3, 4, Vice-Pres. 3, President 4; Sock and Buskin Club 1, 2, 3, 4, Secretary-Treasurer 2, 3; Circle K 3, 4, Board of Directors 4; Math-Science 1; Sigma Alpha Chi; Campus Canopy 1, 3; Pine Cone 2, 3, 4, Editor 4.

ROBERT McELVEY
Valdosta, Georgia

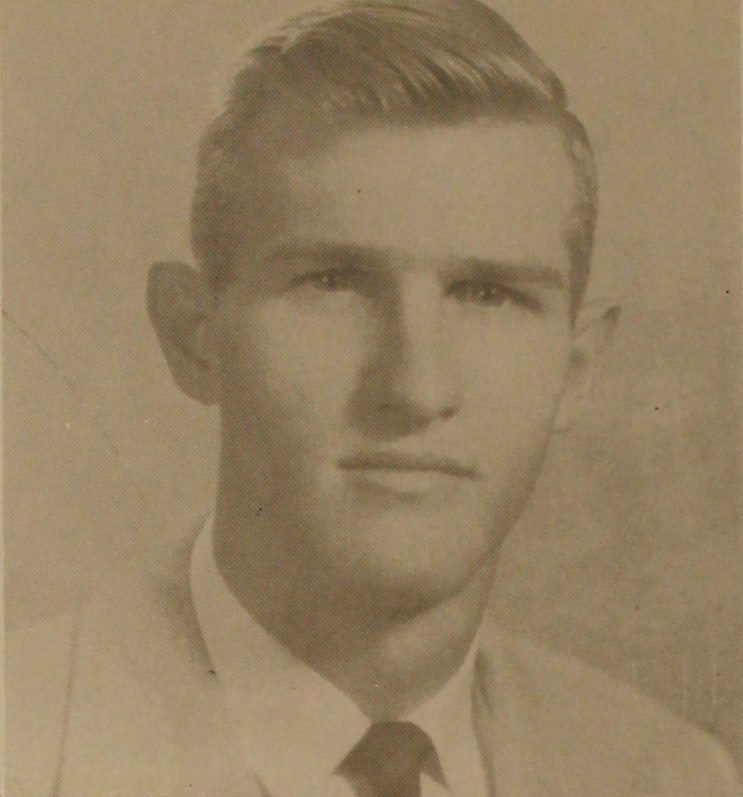
Mu Alpha 1, 2; Basketball 1, 2; Baseball 1, 2, 4; V Club 4, President 4.





ROSALIE McLAURIN
Statenville, Georgia

Major: Secondary Education (English)
Education Club 1, 2, 3, 4; English Club 1, 2, 3, 4.



TOMMY OSCAR MORGAN
Valdosta, Georgia

Dance Club.

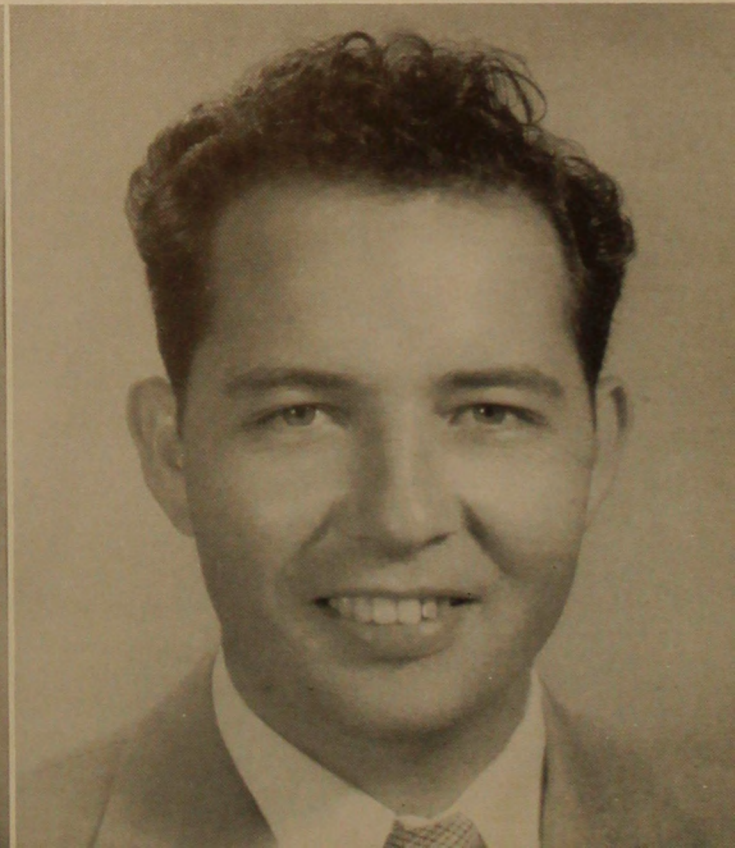
. . . **S E N I O R S**

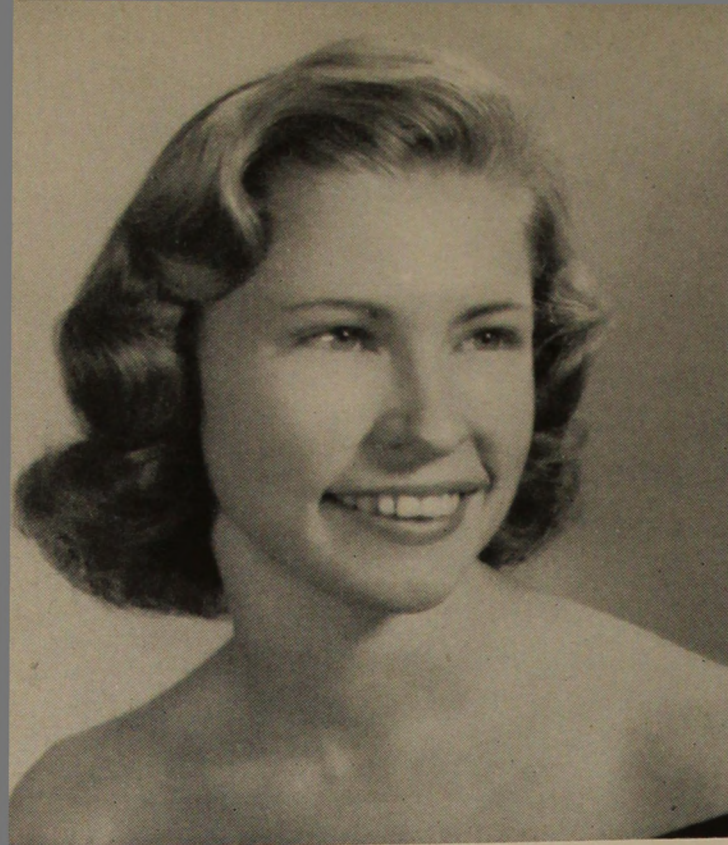
CORA JEAN NORMAN
Moultrie, Georgia

Major: Secondary Education Minor: English
BSU 1, 2, 3, 4, Devotional Vice-Pres. 2; Education Club 1, 2, 3, 4, Treasurer 2; YWCA 1, 2, 3, 4, Vice-Pres. 3, President 4; English Club 3, 4; Who's Who in American Colleges and Universities.

TRAVIS JAMES OUTZ, JR.
Valdosta, Georgia

Major: Secondary English
Education Club; Transfer from South Georgia College.

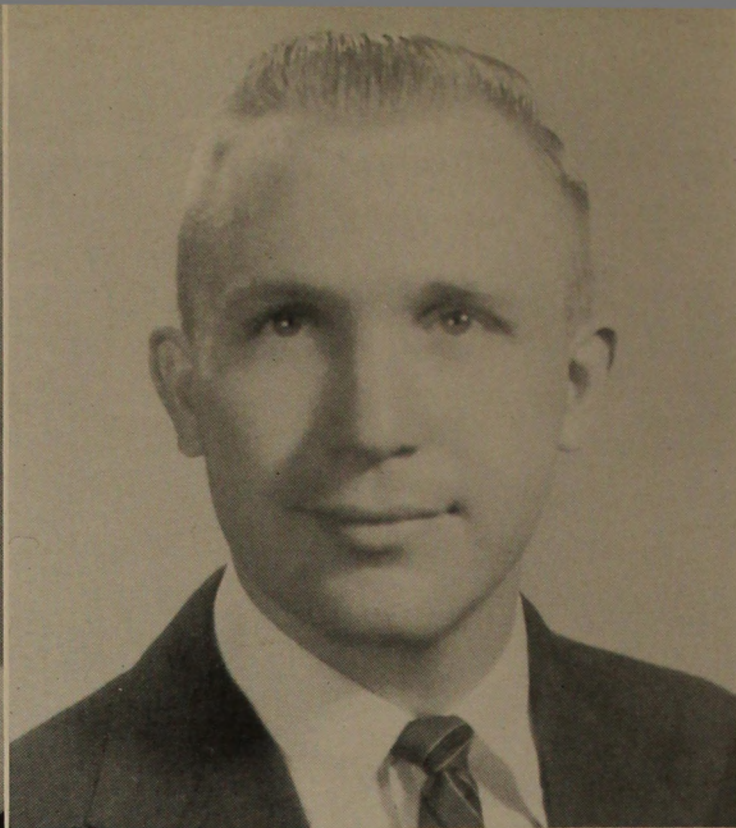




JESSLYN PARKER
Abbeville, Georgia

Major: Voice

Serenaders 1, 2, 3, 4; Glee Club 1, 2, 4, President 2;
BSU 1, 2, 3, 4; Council 2, 3, 4; YWCA 1, 2, 3, 4;
"Y" Cabinet 1, 2, 3, 4; Sports Club 1.



LORENZO PRICE
Valdosta, Georgia

S E N I O R S . . .

MARGARET MAY RAGIN
Coolidge, Georgia

Major: Sec'dary Ed. (Math) Minor: English
Math-Science Club 1, 2, 3, 4; Education Club 3, 4;
English Club 3, 4; Sports Club 1, 2, 3, 4; Council
2, 3, 4, Secretary 3, Treasurer 4; BSU 1, 2; YWCA
1, 2, 3, 4.

NELL ROGERS
Valdosta, Georgia

Major: Elementary Education
Transfer from Stetson University; Glee Club 1, 2,
4; Serenaders 2; BSU 1, 2, 3, 4; Council 2, 3, Pres-
ident 3; YWCA 2, 3, 4; Council 3, 4; Education
Club 2, 3, 4.



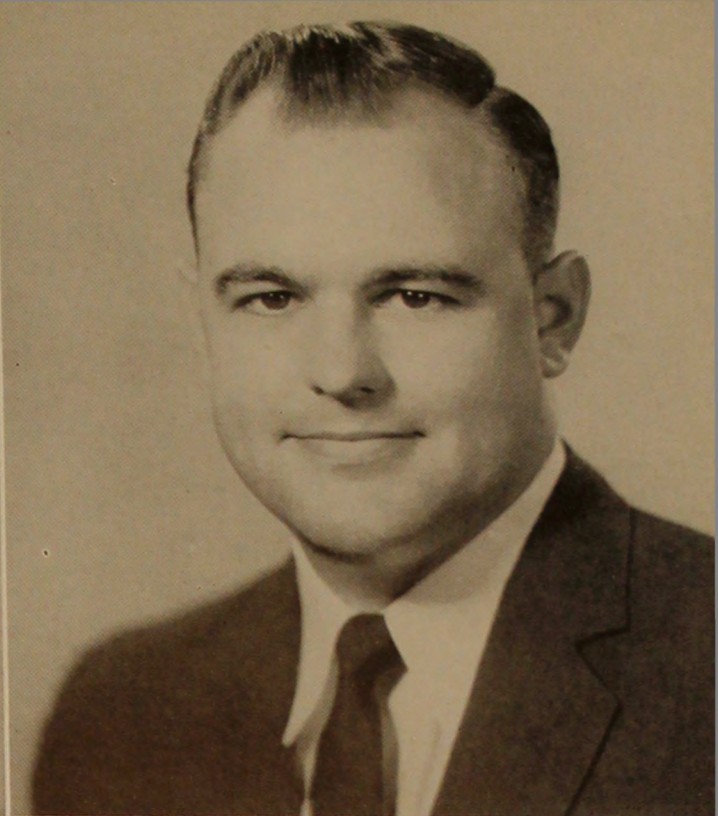


MARGARET B. SCAFF

Waycross, Georgia

Major: Elementary Education

Education Club 1, 2, 3, 4.



JOHN CHARLES SHEFFIELD

Moultrie, Georgia

. . . S E N I O R S

AMANDA SHEFFIELD

Blakely, Georgia

Major: Secretarial Science **Minor: History**

Transfer from Middle Georgia College; Sports Club 3, 4; Sports Council 3, 4, Secretary 4; Sigma Alpha Chi 3, 4; Business Club 3, 4, Treasurer 4; BSU 3, 4, Secretary 4; IRC 3, 4.

CHARLES SKIPPER

Valdosta, Georgia





MARGIE LEE SMITH
Abbeville, Georgia

Major: Biology **Minor: Social Work**
Math-Science Club 1, 2, 3, 4; Home Ec. 1, 2, Vice-Pres. 2; Sigma Alpha Chi 1, 2, 3, Secretary 3; Sports Club 1, 2, 3, 4; Council 3, 4, Vice-Pres. 4; YWCA 1, 2, 3, 4; Cabinet 3, 4, Secretary 4; BSU 1, 2; Sock and Buskin Club 2, 3, 4, Vice-Pres. 3; Secretary of Senior Class; WRHC 4.



VIRGINA ADELLE SMITH
Quitman, Georgia

Major: Secretarial Science **Minor: English**
Sigma Alpha Chi 1, 2, 3, 4, President 4; Business Club 1, 2, 3, 4, Secretary 2; Sports Club 1, 2, 3, 4; Council 4; YWCA 1, 2, 3, 4; Cabinet 2, 3, 4; SGA 4; Sig Ep Hostess 4.

S E N I O R S . . .

WILLIAM T. SMITH
Valdosta, Georgia



BETTY KAY SPRINGER
Valdosta, Georgia





RAY STALLINGS
Valdosta, Georgia



NANCY JANE STARLING
Tallahassee, Florida

Major: Biology **Minors: Chemistry and English**

Sports Club 1, 2, 3, 4; Council 1, 2, 3, 4, Treasurer 2, Vice-Pres. 3, President 4; Fins and Flippers 3; Math-Science Club 1, 2, 3, 4; Glee Club 1, 2; Sigma Alpha Chi 1, 2, 3, 4; WRHC 3, Vice-Pres. 3; YWCA 1, 2, 3, 4; Chapel Choir 2; "Y" Cabinet 2; Zeta Chi 3, 4, Pledge President 3; Sigma Epsilon Sweetheart 4.

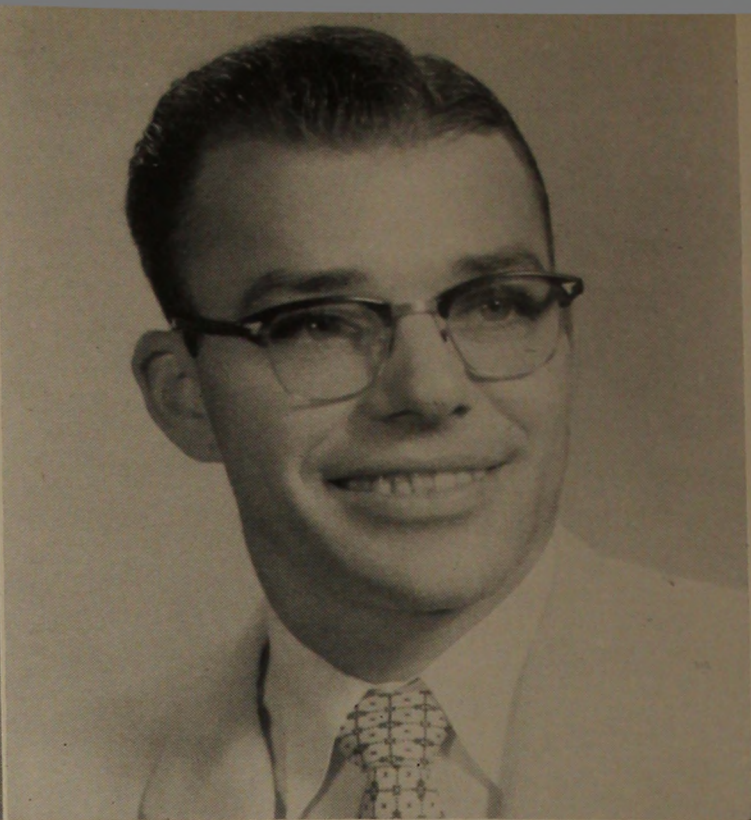
. . . **S E N I O R S**

RAYMOND L. TAYLOR
Valdosta, Georgia

ELIZABETH WALTMAN
Jacksonville, Florida

Major: Social Work **Minor: History**
Glee Club 2, 3, 4, President 3; Sports Club 2, 3, 4; Council 2, 3, 4; Pine Cone 2, 3, Assistant Editor 3; Campus Canopy 2, 3; Math-Science Club 2, 3; Sock and Buskin 2, 3; Education Club 3; SGA 3, Treasurer 4; Editor V Book 4.





MARY OLLIE WARD
Iron City, Georgia

Major: Secondary Ed. (Eng.) Minor: History
Education Club 2, 3, 4; Sock and Buskin 2, 3; IRC
4; English Club 4; YWCA 2, 3 Treasurer of Senior
Class.

FRANK WELCH
Moultrie, Georgia

S E N I O R S . . .

GEORGE F. WHEELER
Valdosta, Georgia

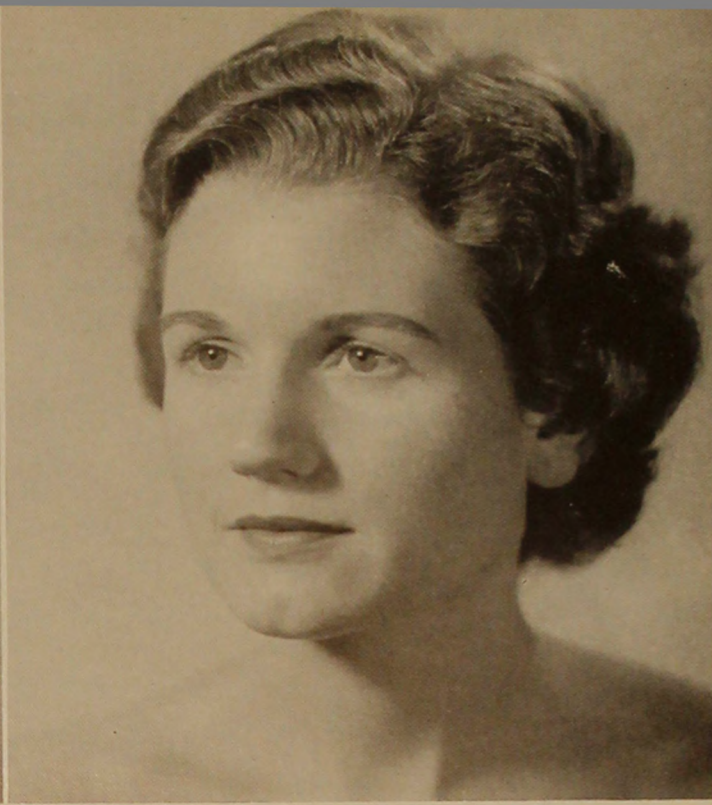
ALMA JO WILLIAMS
Valdosta, Georgia

Major: Elementary Education
Sports Club 1, 2, 3 Council 2, 3; Education Club
1, 2, 3, 4, Vice-Pres. 3; Sock and Buskin Club 1, 2,
3, 4, President 3; Campus Canopy 2, 3, Feature
Editor 3; Mu Alpha Sponsor 3; Secretary of Junior
Class.





JULIA ANN WILLIAMS
Valdosta, Georgia



RETHA WILLIS
Albany, Georgia

Major: Education

YWCA; "Y" Cabinet; Education Club, President 4;
Secretary Junior Class; Sock and Buskin Club 3;
Pine Cone Staff 3; Wesley Foundation.

. . . S E N I O R S

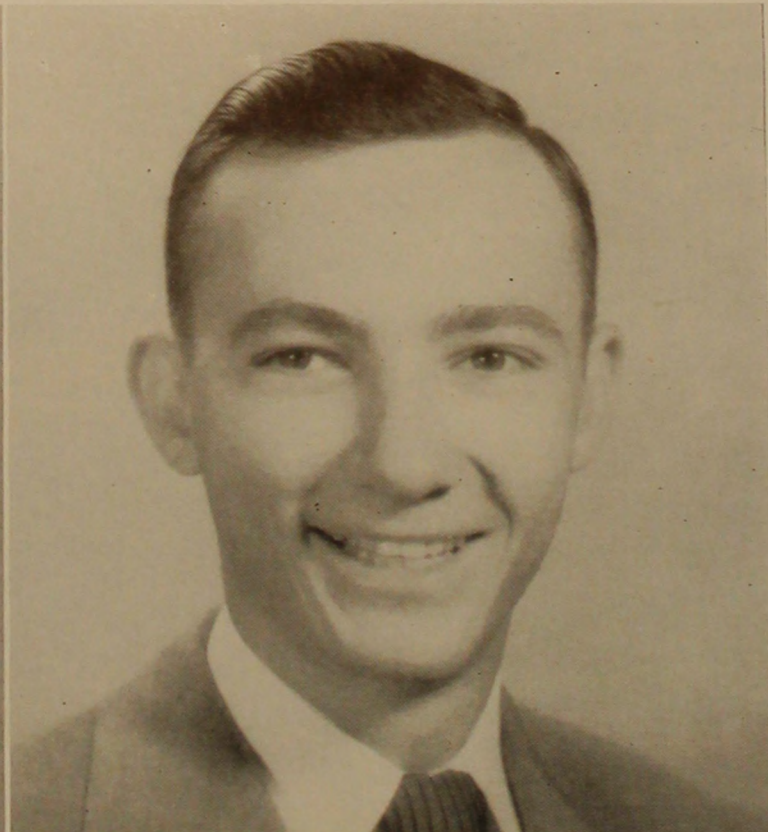
GEORGIA NEAL WOLFE
Albany, Georgia

Major: Secondary Ed. (Math., Soc. Science)

Zeet Chi 2, 3, President 3; SGA Secretary 3; Filii
Fortunae Sponsor 3; Sigma Alpha Chi 1, 2, 3, Vice-
Pres. 3; Wesley Foundation 1, 2, 3, President 3;
YWCA 1, 2, 3 Treasurer 3; Cabinet 2, 3; Edu-
cation Club 2, 3, Vice-Pres. 3; Cheerleader 1;
Freshman Math Award; Glee Club 1; Dormitory
Council 1; Pine Cone Staff 1; Math-Science Club 1;
Sock and Buskin Club 1; Sophomore Class Vice-
Pres. 2; Who's Who in American Colleges and Uni-
versities.

ROYAL DENSON WOOD
Tifton, Georgia

Transfer from Emory-at-Oxford; SGA 3, Vice-Pres.,
President 4; Sigma Epsilon Fraternity 2, President
3, 4; YMCA 2, 3, President 4; Math-Science Club
2, 3, Vice-Pres. 4; Dance Club 4; English Club 4;
IRC 4; Glee Club 2, 3; Circle K 2, 3, Board of
Directors 4; Who's Who in American Colleges and
Universities.





IRA DENT
Vice-President

RETHA WILLIS
Secretary

JACKIE GEIGER
Treasurer

EMA DELL HENDLEY
President

THIS IS THE CLASS OF

1958

THE JUNIORS

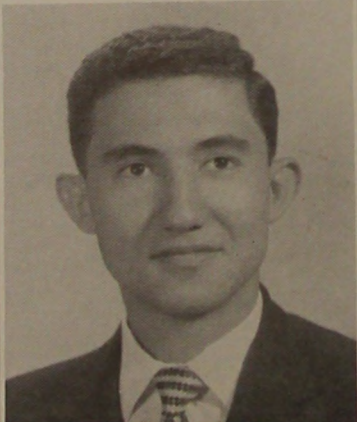
Andrew Abbott

Chaldon Ahmed Abdulah

Dottie Alford

Ronald Allen

Asim Hashim Azzai





Sam Bailey

Bennie Baker

Elaine Barber

Ruby Baxter

Jo Beam

Carolyn Blackledge

Allen Booker

Johnnie Mae Brannon

Doris Bridges

Sue Bridges

Sheldon Broomberg

Betty Lou Brown

Thelma Bruce

Claire Buchannan

Betty Jane Chambless

Bobby Coleman

Jeanne Connell

Lloyd Cowart

Jeanne Davis

Louis Davis

. . . J U N I O R S



Elizabeth Dean
 Jean Edwards
 Jackie Geiger
 Katherine Hackle

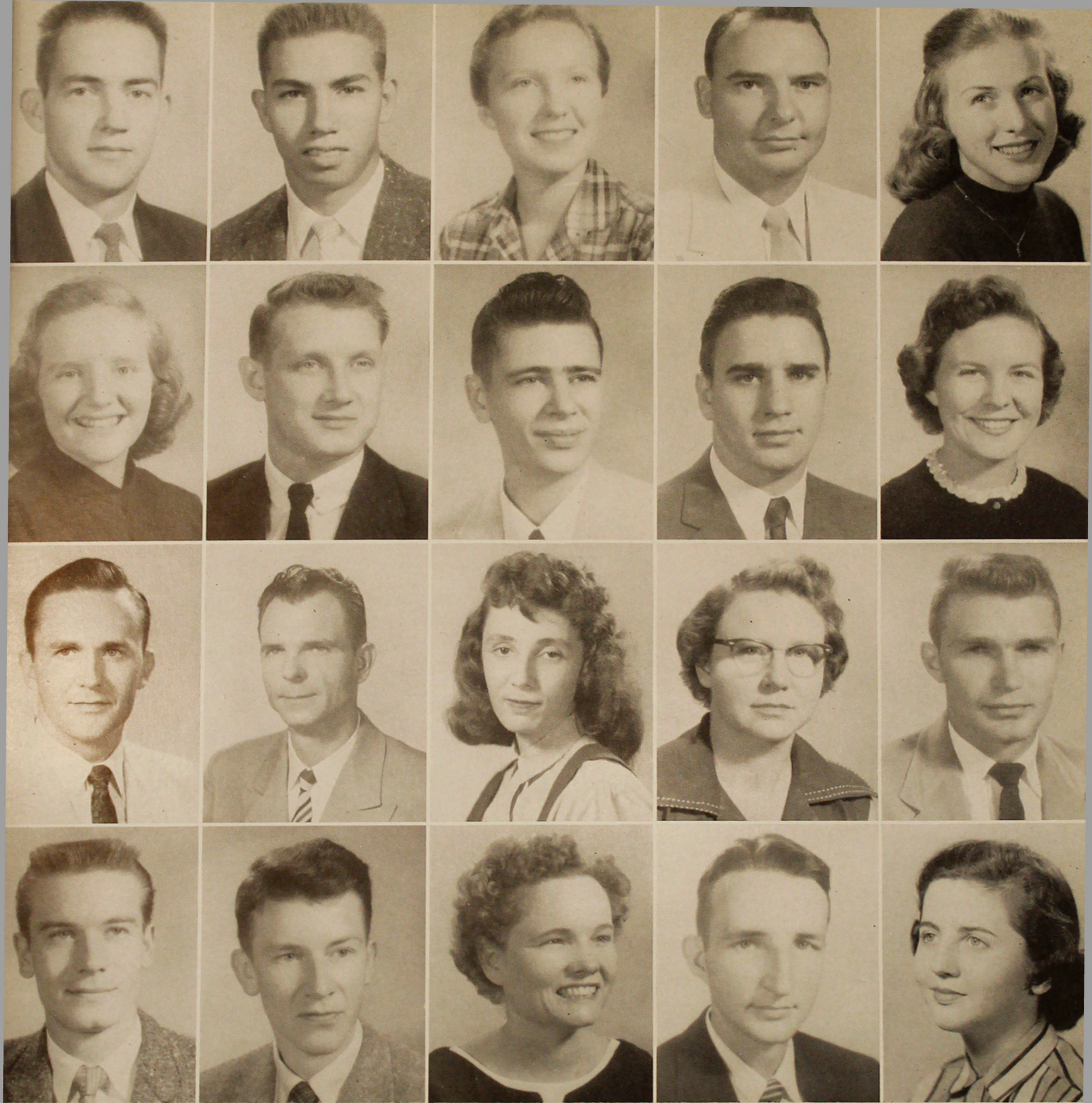
Margie Dechau
 William Ellis
 Noel George
 Hoyt Harrell

Ira Dent
 Naomi Forte
 Eugene Gibbs
 Ema Dell Hendley

Wayne Dickson
 Carl Free
 Lawton Greene
 Mary Ann Hogg

Alton Dupree
 Ed Gamble
 Charlene Griffith
 Carolyn Holton

J U N I O R S . . .



Stanley Houston
 Jan Lanier
 Freddie McLean
 Pat O'Brien

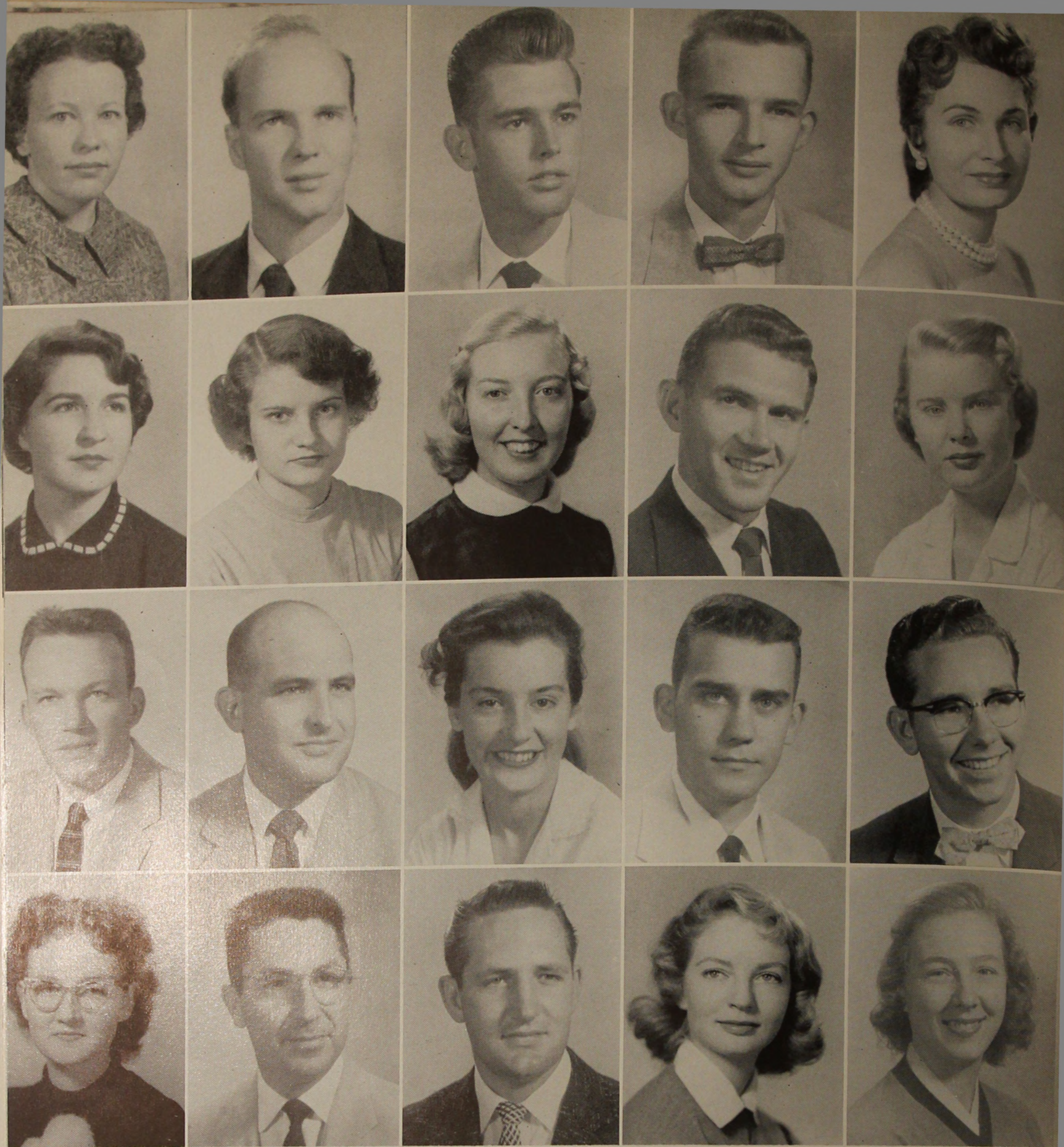
A. J. Jarvis
 James Lastinger
 William Morgan
 Leif Onarheim

Betty Jones
 Lindsey Mason
 Joan Nastasi
 Grace Ott

Roy Jump
 Larry Massey
 LeNedra Nesmith
 Buck Pafford

Carol Keene
 Bobbie McKinnon
 Charles Norton
 Marsha Paulk

. . . J U N I O R S



Peggy Perkins
 Della Raulerson
 John Sheffield
 Nancy Southwell

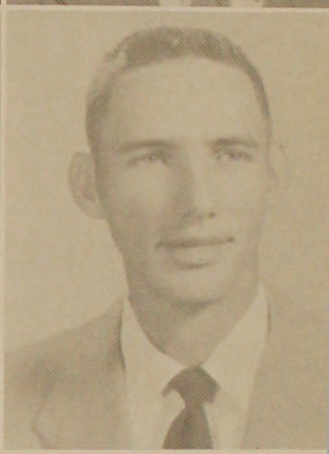
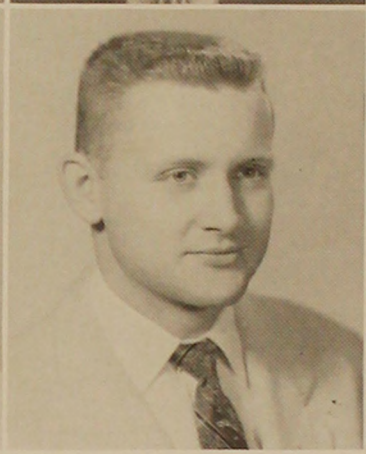
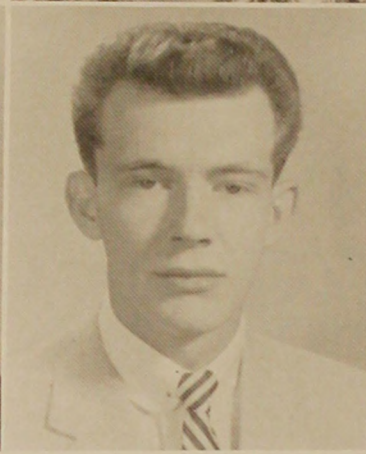
Joe Porterfield
 Leona Register
 Mel Smith
 Murray Steward

Johnny Purvis
 Mary Ann Richardson
 Patsy Smith
 Jim Stovall

Glenn Putnal
 Jack Rowe
 Tom Smith
 Virginia Sweet

Lillie Mae Ragsdill
 Jane Rowe
 Billy Southerland
 Marion Thomas

J U N I O R S . . .



Edith Tisdale
Shirley Wilson

Marcia Walters
Lee Yarbrough

Rose Marie Weyer
Tom Young

Fred Wilkerson
Carl Duren

Raymond Wilson
Hugh Stephenson

. . . J U N I O R S

"Play Production"





The Soph Class Officers at an executive meeting . . .

THE CLASS OF '59

SOPHOMORES

June Baggs

Wynette Baker

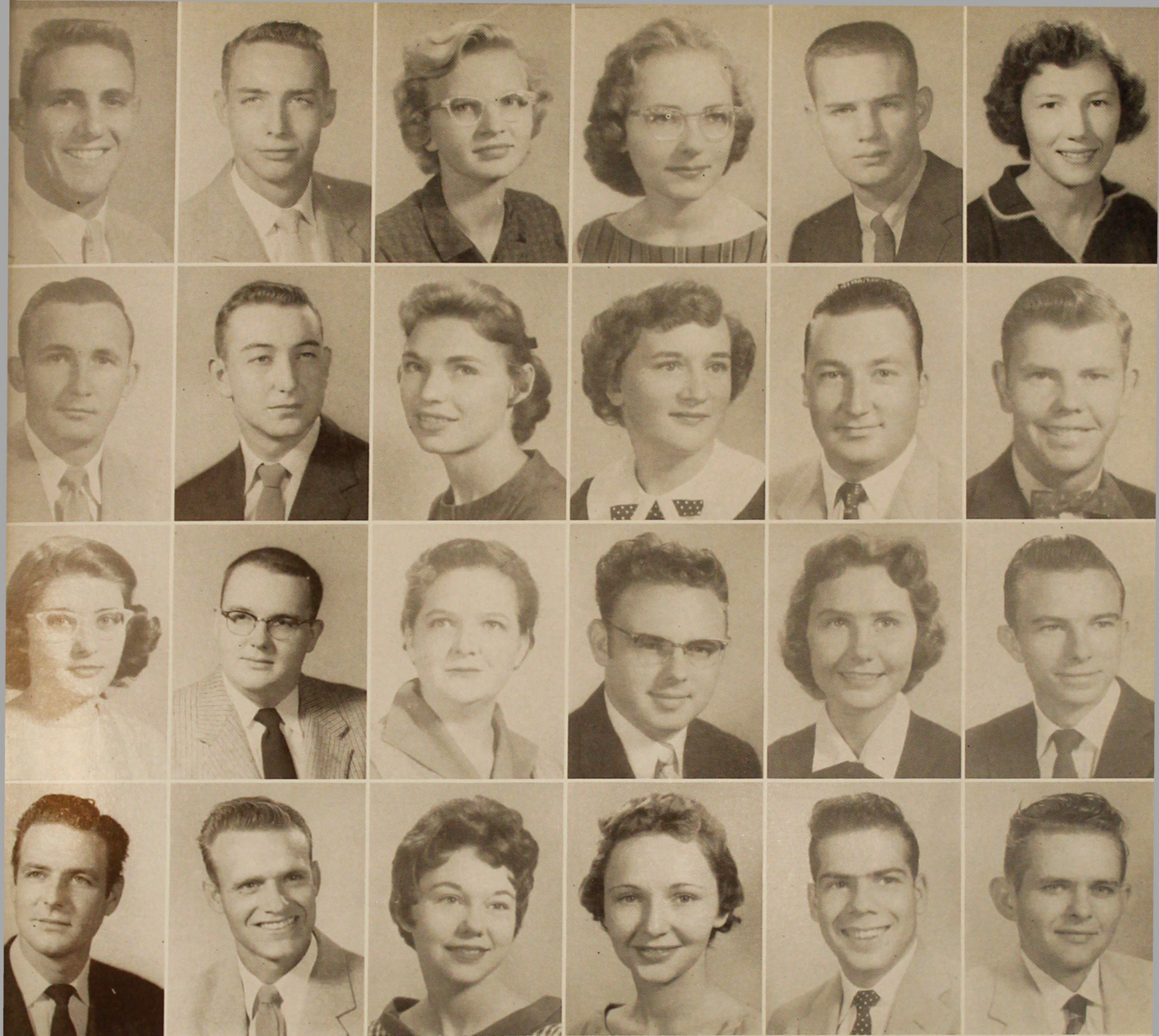
Jim Barrs

Vann Beasley

Elton Belch

Grady Bennett





A. J. Bentley
 David Byless
 Corine Casleberry
 Denny Denman

Bobby Bridges
 Horace Chitty
 John Corbitt
 Jim DeVane

Jean Bridges
 Edna Carter
 Eva Crump
 Gloria Dickinson

Evelyn Brown
 Mary Ann Carter
 Charles Dasher
 Virginia Donaldson

Jimmy Burnett
 William Carter
 Willena Daugharty
 Ben Duque

Paula Butler
 Lamar Cason
 Davis
 Don Duren

. . . S O P H O M O R E S

S O P H O M O R E S . . .

Glenda Ellis

Joyce F. Fields

Wayne Fowler

Ann Giddens

Bill Giddens

Gloria Gill

Walter Godwin

Gaye Griffis

Jim Hathaway

Jack Hawthorne

Lucille Helms

Ashley Hill

Odd Haugen

Jim Holt

Gail Houston

Ruth James

Billy Frank Kent

JoAnn Key

Billy King

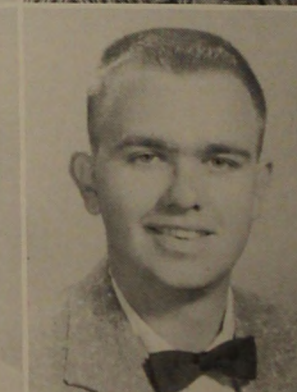
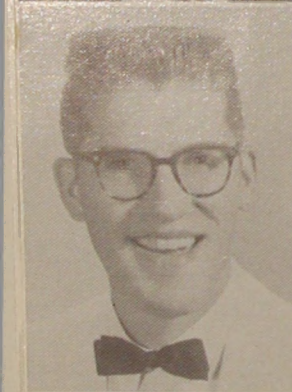
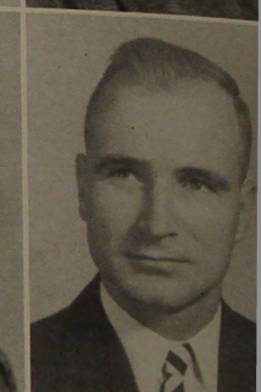
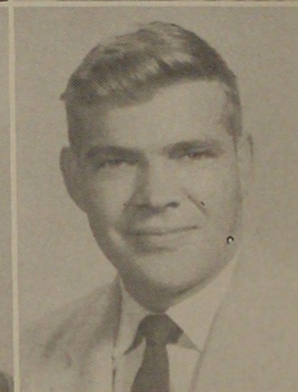
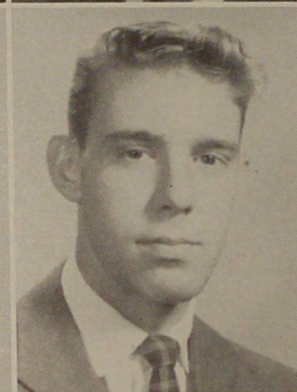
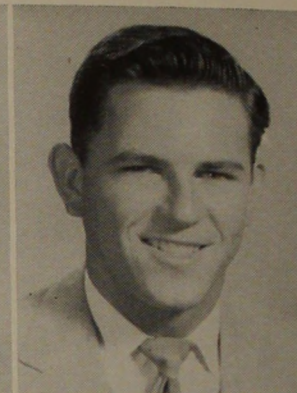
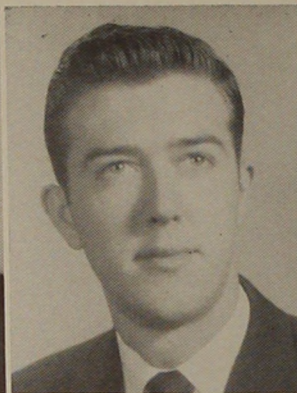
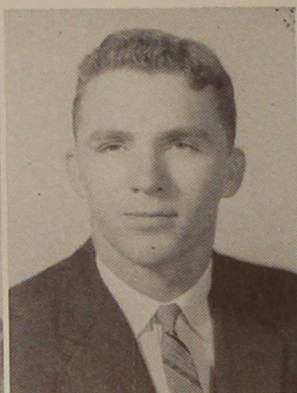
Joyce Ledbetter

Linda Lee

Laura Leonard

Norma Lightsey

Susie Lindstrom

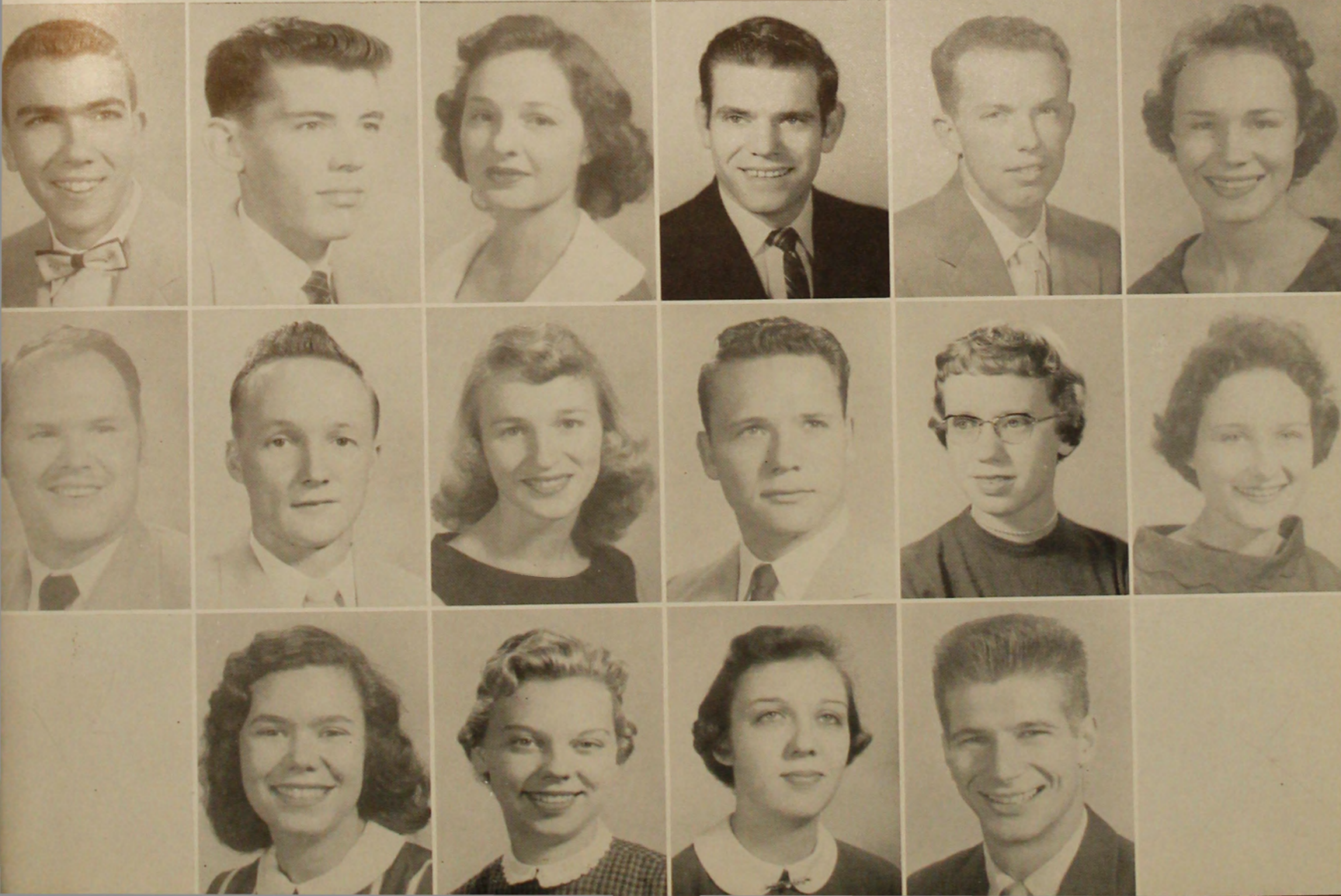


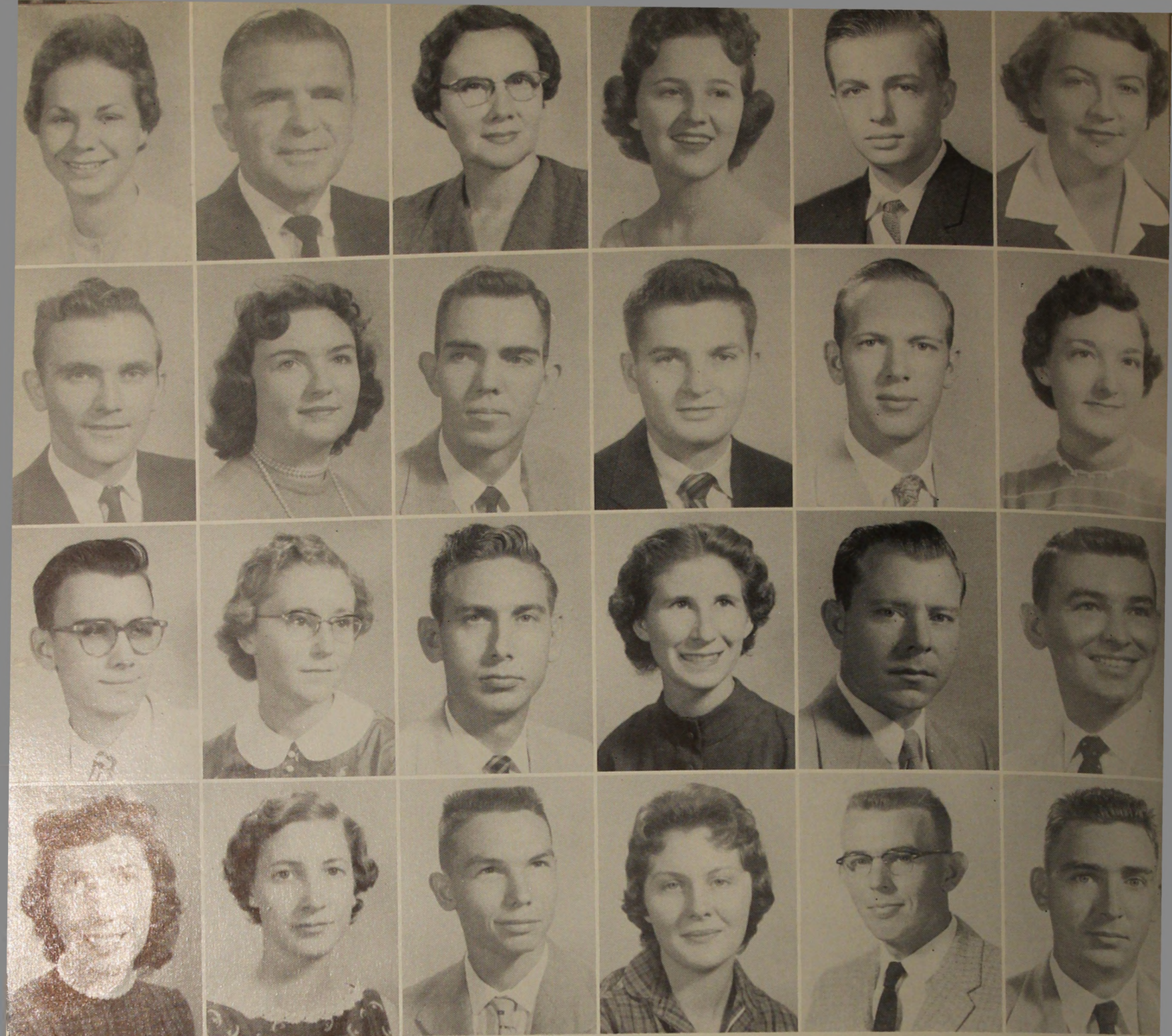


Ah . . . Monday Morning!

. . . S O P H O M O R E S

- | | | | | | |
|---------------|----------------|---------------|-------------------|----------------|----------------|
| Don Lyons | Fred McDonald | Norma Mathews | Jimmy Maxwell | James May | Marilyn Miller |
| Bill Monerief | Billy Monerief | Jackie Moore | Bobby Musselwhite | Sandy Neal | Mary Jo Norman |
| | Helen Nussbaum | Molly Oden | Sally O'Neal | George Peagler | |





Alice Perry	William T. Perry	Catherine Pitts	Helen Porter	Doyle Price	Cynthia Rice
Robert Sabo	Sampson	Tom Sawyer	Bill Sears	Sid Shaw	Helen Sherrod
Dewaine Skiles	Myrtice Sloan	Weldon Sloan	Jerry Smith	Jerry Smith	Joe Smith
Darlene Sproull	Ann Stalvey	Country Strickland	Ann Strickland	James R. Studstill	John Studstill

S O P H O M O R E S . . .

. . . S O P H O M O R E S

Frank Studstill

Marilyn Sumner

Joe Tarpley

Nancy Thorpe

Mawrren Tillman

Gail Voight

Janet Vaughn

Shelby Vaughn

Jimmy Walker

George Wallace

Buster Wasden

Lewis Washington

William Watson

Dixie Weger

Mildred Wetherington

Patsy White

Joe Wilson

Ben Wood

Gene Wynne

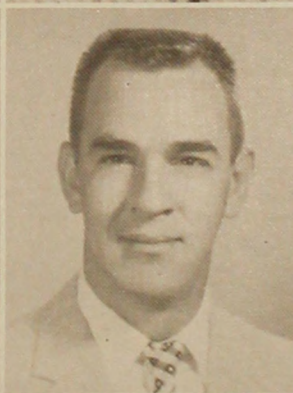
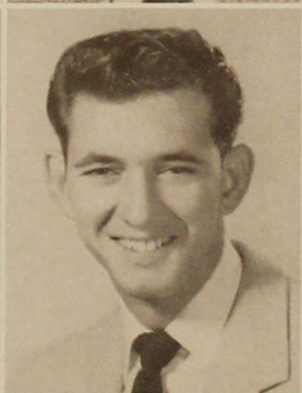
Fain Yates

Frances Zant

Richard Zell

Robert Zell

Janet Zipperer



FRESHMAN CLASS OFFICERS

Left to right—

- SHIRLEY McGOWAN
- SMOKEY BRINSON
- MARILUCY HENDERSON
- ROY WETHERINGTON
- GENE CARGILE
- WAYNE ADKINS



THIS IS THE CLASS OF

1960

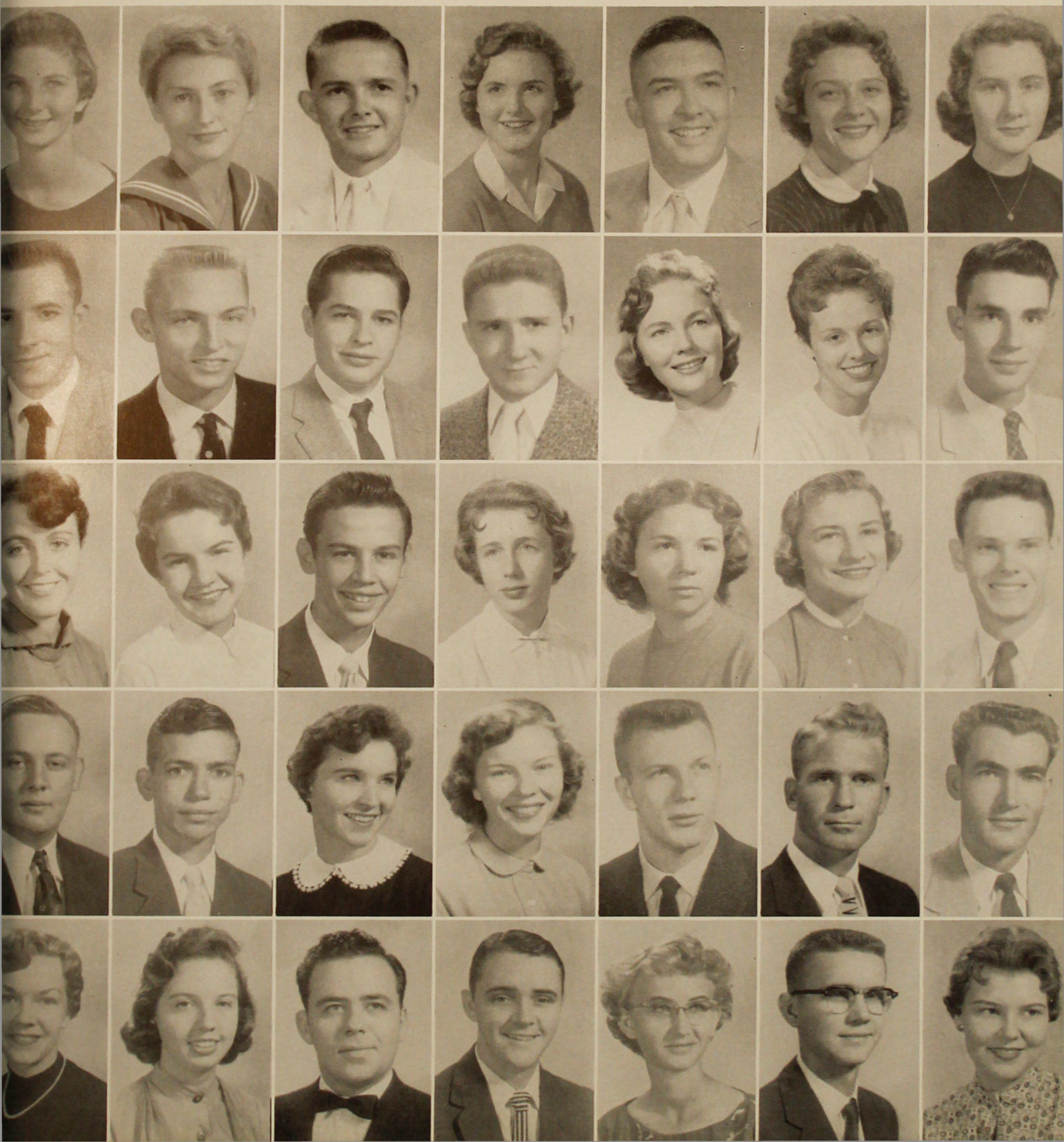
FRESHMEN

Wayne Adkins	Tom Alderman	Wayne Allen	Irwin Aronson	John Ashe	Huey Baker	John Baskin
Donald Belcher	Kathryn Bell	Folks Bennett	Joyce Beverly	Lawrence Bishop	Lillie Mae Black	James Blair



. . . F R E S H M E N

Betty Bland	Pat Boyko	Richard Bragg	Smokey Brinson	Jimmy Bronson	Marjorie Brooks	Deany Buford
dy Bullington	Gene Cargile	Michael Carnehan	Jack Carter	Sandra Champion	Susan Chance	Jerome Clegg
ren Clements	Glennie Cooper	Robert Coppedge	Judy Crenshaw	Jean Culpepper	Edmee Darley	Frank Daughtry
ley DeLoach	Donald Dial	Kay James	Elaine Duckett	Gerald Dulaney	Carrol Durrance	Bill Drury
ttie Edwards	Barbara Evans	Kenneth Ferrell	Ben Force	Janice Forte	Edward Fountain	Janet Fowler



Gerald Garrett
 Paul Garrett
 Huey Gaskins
 Jacqueline Gaskins
 Margaret Holmes



Freshmen having the time of their life . . . Rat Court, 1957



F R E S H M E N . . .

Dorothy Gaskins
 Annie Hamm

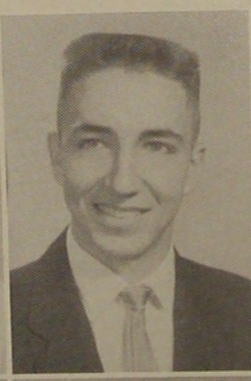
Bill Griffis
 Russell Horner

Janice Griffin
 Jean Harrell

Audrey Griner
 Janet Harrison

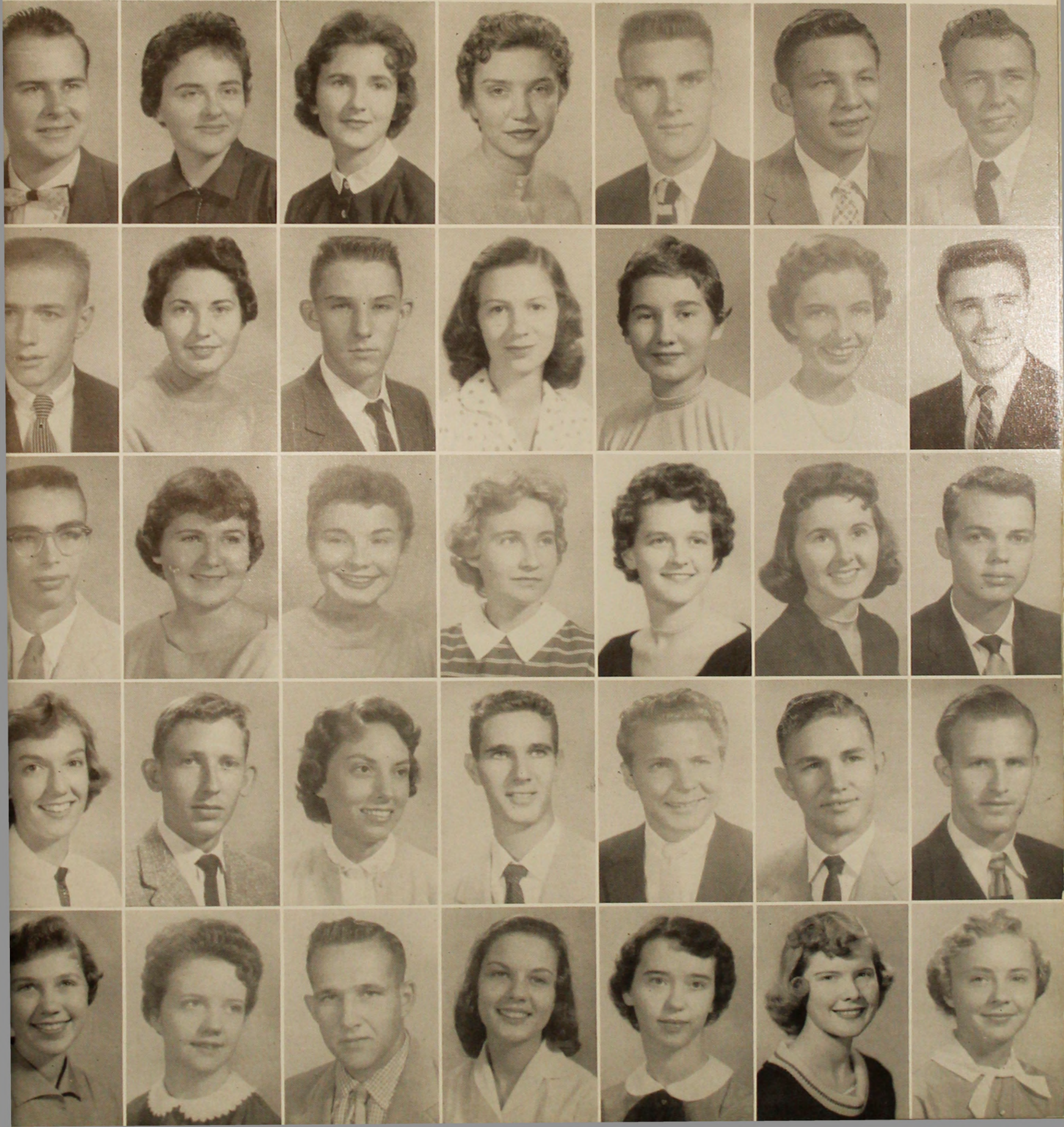
Shirley Grieshaber
 Patricia Hortman

Jimmy Gerlock
 Billy Hayes



. . . F R E S H M E N

ter Haymons	JoAnn Hand	Lucy Henderson	Ann Hill	Billy Hughes	Dewey Hulsey	Carl Ivey
ennie James	Frances Johnson	James Johnson	Francine Jones	Sona Jo Joyce	Virginia Joyce	Kekey Kemp
ston Kemper	Ann King	Mary King	Patsy Langford	Marcia Lastinger	Stella Ann Lee	Jimmy Lewis
Mary Lines	Jimmy Lineberger	Frances Little	Franklin Lodge	Stanley Lynds	Guy Maddox	Johnny Malone
selia McCall	Janice McCranie	Herman McDonald	Shirley McGowan	Betty McLauren	Terry Meeks	Beverly Monroe



FRESHMEN . . .

Leland Moore
 Joe Patterson
 Don Grover
 Barbara Seagraves
 Mary Stone

Mary Morgan
 Barbara Peace
 Jeanie Rodgers
 Anne Sells
 Jean Strickland

Mavis Morris
 Mary Maddox
 Ann Rouse
 Errol Sewell
 Sarah Strickland

Barbara Music
 Charles Pittman
 Frank Rouse
 Sue Sheffield
 Stuart Summerford

Carolyn Outlaw
 Charles Powell
 Patricia Rowan
 Mike Smith
 Peggy Trotman

Calvin Pafford
 Janet Pruitte
 Ann Saunders
 Gloria Starling
 Linda Trulock

Gail Parrish
 Jo Ann Rabun
 Jan Scruggs
 Mary Stokes
 Sybil Tucker



. . . F R E S H M E N

Ann Turner
na Wheeler
ard Willaford
ck Wright

Gail Wachtel
Ellen Whipple
Paul Williams
Bill Yarian

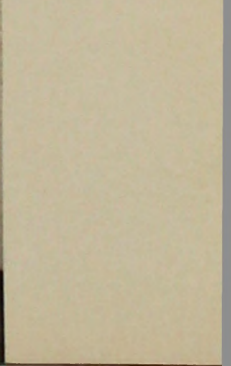
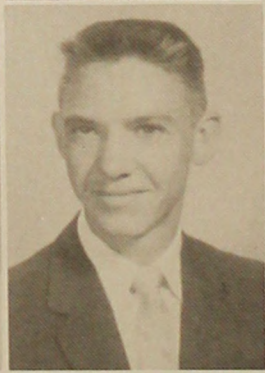
Jim Wainwright
Carol Whitehead
Sonja Williams
Richard Yale

Earl Wallace
Jim Wiggins
Dorcas Wisenbaker
Helen Ziegler

Sandra Warren
Joe Wiggs
Peggy Wolfe
Billy Moore

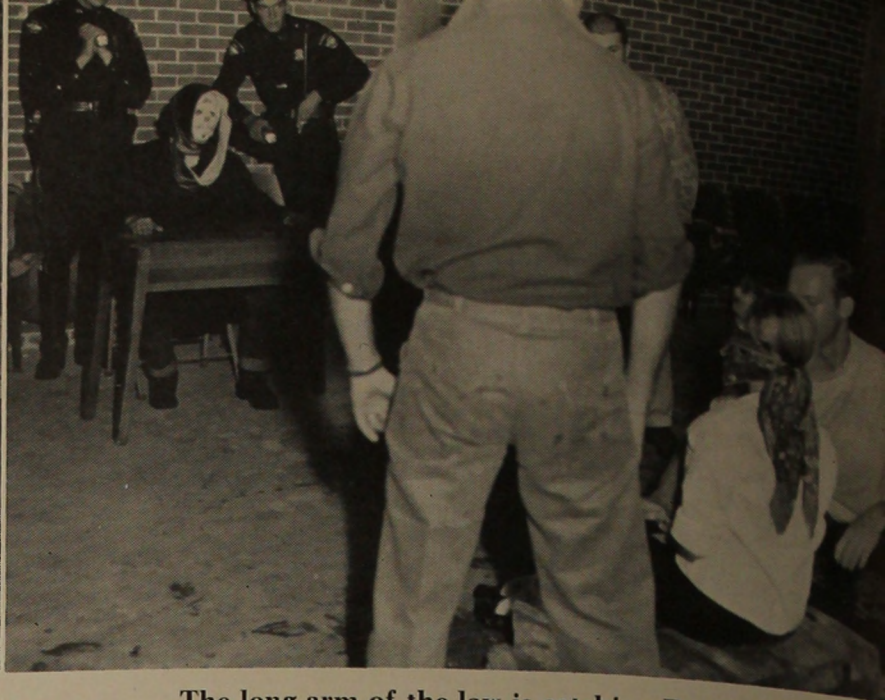
Betty Ann Webb
Buddy Wilburn
Becky Wood
Hans Heinrich

Roy Wetherington
Jean Wilkins
Janet Woodall





Oh, Rats!



The long arm of the law is catching Rats!



Mr. Pember
at work

Art Exhibit



Signing the
Proclamation

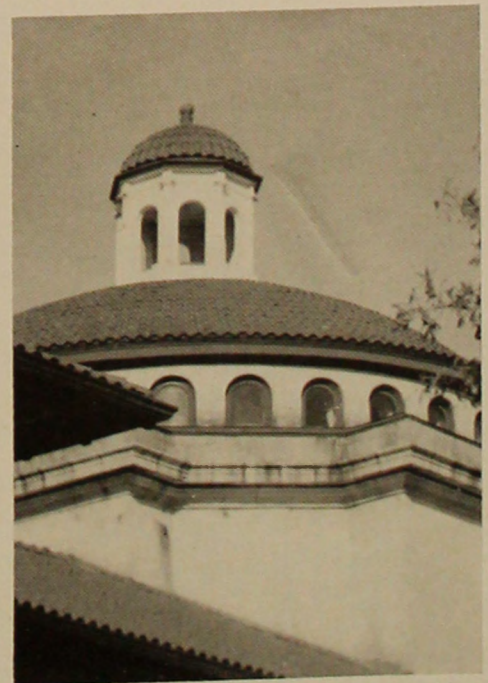
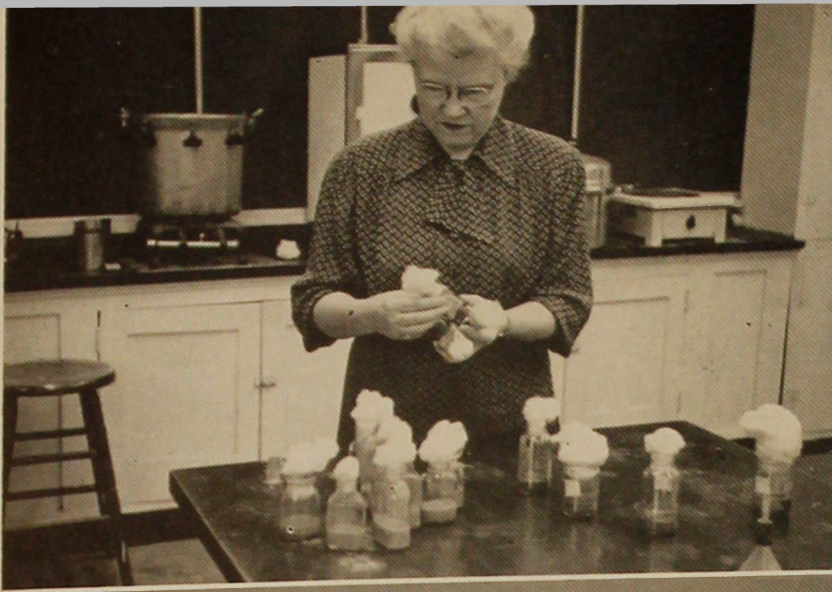


THESE ARE THE

1957

Activities

AT
VALDOSTA STATE



THE STUDENT GOVERNMENT ASSOCIATION

*“Governing Relations
Between Students
and Faculty”*

OFFICERS

BILL JACKSON

President

ELIZABETH WALTMAN

Treasurer

GEORGIA WOLFE

Secretary

DENSON WOOD

Vice-President



We represent the Student Body. We, as the student governing group on campus, cooperate with the administration in making and carrying out our rules and regulations.

Standing: Bobby Coleman, Mr. Jack McGraw, Raymond Wilson.

Sitting: Jeanne Davis, Mrs. Wisenbaker, Marsha Paulk.



“WE STRIVE TOWARD A
MORE ORDERLY AND
UNITED VALDOSTA
STATE COLLEGE.”

Standing: Jack Carter, Ben Wood
and Wayne Adkins.

Sitting: Virginia Smith, Thelma
Bruce, Molly Oden, Lucy
Henderson.



Left to right:
GAIL HOUSTON
MARGIE SMITH
Activities Chmn.

EMA DELL
HENDLEY
JEANNE DAVIS
1st Vice-President

MERLE BAKER
President

PAT HARDEN...
Sec.-Treas.

SHIRLEY
DAUGHARTY
2nd Vice-President



WOMAN'S RESIDENCE HALL COUNCIL DORMITORY COUNCIL

"The purpose of the Residence Hall Council is to regulate the dormitory student's life for the good of the majority."

It strives to develop not only a sense of honesty but a sense of responsibility in each student; to encourage and provide opportunities for the development of leadership among students; and to promote a practical government that will carry over into democratic life.



Left to right:
JIMMY STOVALL
Vice-President
BUSTER WASDEN
Sec.-Treas.
ALLEN BROOKS
President



THIS IS THE

PINE

WAYNE McCULLERS
Editor

**EMA DELL HENDLEY and
JACKIE GEIGER**
Associate Editors



RAYMOND WILSON
Business Manager

1957

C O N E

LAYOUT STAFF

JOHNNY CORBETT
CAROLYN BLACKLEDGE
ELIZABETH DEAN



PHOTOGRAPHY STAFF

JEANNE DAVIS
BETTY LOU BROWN
RONNIE HAIRE
MURRAY STEWARD

“Working on pics—
which ones to use?”



CAMPUS CANOPY

"Covering the Daily Life of Valdosta State"



FRED McDONALD, Editor

The daily life of a Valdosta State student is covered by the publication of the Campus Canopy. From the start of the year to the end, all the big moments—all are faithfully recorded in the pages of the Canopy.

"Working to Beat the Deadline!"



THE CAMERA CLUB

“Shutterbugs Running Wild Over Campus”

Though the Camera Club is the youngest club on campus—being organized just this year—it is still an active organization. Examples of the work of the club graces these pages. Enthusiasm is strong, and the Club is looking forward to many happy and successful years

MEMBERS

Ben Duque, Della Raulerson, Mel Smith, Murray Steward, Jimmy Stovall, Jack Rowe,
Ronnie Haire, Dr. Wall, Doyle Price.





THE "Y" CABINET

Y W C A

"The Young Woman's Christian Association helps to create a religious atmosphere on the college campus."

Every girl is given the opportunity to join this organization and many take advantage of it. The "Y" Cabinet furnishes leadership and guidance to help with the girls' daily problems. The traditional services sponsored by the "Y" are:

Big Sister-Little Sister Candle-Lighting Service,
Compline,
The Fire-Lighting Service,
The Hanging of the Green,
The Week of the Heart Sister.

This club is made one of the most active and popular ones on campus by such influence.

MEN'S CHRISTIAN ASSOCIATION

"The M. C. A. tries to bring to the male student body a closer awareness of God."

OFFICERS

BEN WOOD, *President*

RAYMOND WILSON, *Vice-President*

ALLEN BROOKS, *Secretary*

LESTER HAYMONDS, *Treasurer*

The club tries to show that fellowship with our fellow man and God at the same time can be the most enjoyable prospect of campus life.

The M. C. A. co-sponsors Vespers, Morning

Watch and deputation committees with the Y. W. C. A. They also conduct "Cell Meetings," nightly devotions, in the men's dormitory.

Left to right, standing: Frank Rouse, Raymond Wilson, Ben Wood, Ira Dent, Jimmy Gerlock, Johnny Corbitt, Ronnie Haire. *Seated:* Stuart Summerford, Allen Brooks, Denson Wood, Vann Beasley, Lester Haymons.





THE WESLEY FOUNDATION

“Promotes religious life on campus for Methodist students.”

The Wesley Foundation strives to bring together the college students who are members of the Methodist Church or who are associated with this church.

It encourages participation in the activities of the church and tries to bring the students closer together through this work and worship.

BAPTIST STUDENT UNION

"The Baptist Student Union strives to enrich Baptist student life on campus."

The Baptist Student Union serves as a link between the student's church at home and his religious life at school. It seeks to aid the student in his search for peace of mind and soul and it endeavors to establish a more satisfying Christian atmosphere

on the campus. The students who support the Baptist Student Union are encouraged to dedicate their time and talents to the advancement of Christ's kingdom on earth.





THE BUSINESS CLUB

“A club for Secretarial Science and Business Administration majors and minors.”

OFFICERS

FRANCES B. MAUGHON, *President*

PERSIS CLARK, *Vice-President*

HELEN PORTER, *Secretary*

AMANDA SHEFFIELD, *Treasurer*

MISS SAMMONS, MR. DALES, *Advisors*

The club gives experience to its members for serving the faculty and student body and for work in the future. The purposes of this club are to pro-

mote interest in business education and training among its members and to provide social, cultural, and business experiences through club activities.

ENGLISH CLUB

“Stimulates interest in all phases of literature.”

The English Club works to stimulate an interest in all phases of literature and to promote creativeness in the students. The English Club is composed of all Juniors and Seniors who major or minor in English.

OFFICERS

JEAN HARRELL, *President*

CAROLYN JONES, *Vice-President*

NORMA LIGHTSEY, *Secretary and Treasurer*

ELAINE BARBER, *Reporter*

MARGARET RAGAN, *Social Chairman*

MRS. ODUM, *Advisor*





Secondary and
Junior High
Education Majors

THE EDUCATION CLUB

"A club concerned with the advancement of education."

Our purpose is brought forth through club projects, educational talks, and films. Education is our

chosen field, and we feel that we could not have chosen a more rewarding and worthwhile one.

Elementary
Education
Majors





THE MATH-SCIENCE CLUB

“An organization made up principally of majors or minors in Mathematics, Biology, and Chemistry.”

The Math-Science Club purposes to foster and cultivate a lively interest in the wonders of the

physical world about us as viewed through the eyes of intelligent inquiry and mathematical logic.





- OFFICERS**
WAYNE McCULLERS
President
- MERLE BAKER**
Vice-President
- JO BEAM**
Secretary
- GEORGE WALLACE**
Treasurer
- ODD HAUGEN**
Member-at-Large

THE INTERNATIONAL RELATIONS CLUB

“Devoted to a study of world affairs.”

This organization is sponsored by the Foreign Policy Association. The club endeavors to deal with all topics of national and international significance in an impartial manner, always endeavoring to search out and appreciate the truth of each situa-

tion under observation. An effort is made to develop a practical understanding of current happenings through various projects, conferences, and programs. The motto of this club is: “To ignore world problems to to ignore your own future.”





THE DANCE CLUB

"A toe-tapping, light-hearted club."

Ah, to dance is to really live. To dance is to live anew, to express with movement that which cannot be expressed with words. By dance we do not mean just the waltz or rumba, we mean them all.



THE CIRCLE K CLUB

“Circle K is an intricate part of campus life, offering to the college and community a goal of service.”

OFFICERS

JOHN ROBERT COLEMAN, *President*

RAYMOND WILSON, *Vice-President*

ALLEN BROOKS, *Secretary*

WALTER BARTEE, *Treasurer*

In its third year, Circle K has put useful projects to work for the benefit of the entire student body. Sponsored by Kiwanis International the club has become a member of Circle K International.





THE SOCK AND BUSKIN CLUB

“ ‘Curtain Time!’ This is the cry that brings out the best in us.”

The producing of the play is hard work, but we revel in the grease paint, the muffed lines and the many things that go into the production of a play. The applause of an audience is our only reward, but we love the lines on the program beginning: “The Sock and Buskin Club Presents . . .”

OFFICERS

SHIRLEY WILSON
President

JOHN CORBETT
Vice-President

JO ANN DANIEL
Secretary

GERRY SMITH
Treasurer

A scene from
“Time Out for Ginger”





SERENADERS

“Singing is their delight.”

The Serenaders is a double-mixed quartet composed of voice students selected from the Glee Club. Singing music with popular appeal, the group appears before educational, civic, military, radio and television audiences, presenting thirty to forty programs in Georgia and Florida each year. The members of Serenaders receive academic credit for their participation.

MEMBERS OF THE SERENADERS

Jean Connell
Jean Edwards
Carol Keene
Jesslyn Parker

Wayne Fowler
Dwaine Skiles
Buster Wasden
John Baskins

THE GLEE CLUB

"Our Glee Club gains yearly in strength and numbers."

We have been exceptionally active the past year, presenting concerts in Valdosta and surrounding cities. The highlights of the year were our presentation of Handel's "Messiah," and our Spring Tour. We were received in many of the major cities of Georgia with much enthusiasm. We have enjoyed much success, and our hopes of more and continued success are very bright.





OFFICERS

SUSIE LINDSTROM, *President*

SHIRLEY DAUGHARTY, *Vice-President*

GLORIA DICKENSON, *Secretary*

LUCILLE HELMS, *Treasurer*

Sisters

SIGMA ALPHA OMEGA

“The sorority was founded during the month of December, 1953.”

Sigma Alpha Omega was organized not to form cliques or to create an undemocratic atmosphere, but to aid its members in every way in maintaining high scholastic and social standards. It strives to promote a greater interest in the college and to give each member fuller and richer experiences during her college days.

Pledges



Members



ZETA CHI

"One of our youngest and strongest organizations."

Since its organization in the Spring of 1955, Zeta Chi Sorority has grown rapidly and now takes its place among the outstanding organizations on campus. It has provided an even balance in the sorority life at V. S. C. Zeta Chi is a social organization to promote a well rounded campus life. Also, it stresses the academic side of college.



Pledge Class



FILII FORTUNAE FRATERNITY

Sponsors

“One of our oldest organizations.”

Filii Fortunae was founded in the spring quarter of 1951, and granted its charter in the fall quarter of 1951. The fraternity has played a major role in the progress of V. S. C. by sponsoring and promoting events both on campus and in the community. By doing this the brothers have well fulfilled its purpose of bringing fellowship and brotherhood to the members as well as improving the school spirit of the students. At present Filii is a colony of Pi Kappa Phi National Fraternity. The first step toward its ultimate goal of becoming a national chapter of this fine organization.



Officers

Members and Sponsors



SIGMA EPSILON

The Sigma Epsilon Colony was organized as a colony of Sigma Phi Epsilon Fraternity in June of 1955. The purpose of the Sig Ep Colony is to provide a fraternal organization of ideal concepts and dedicated to the welfare of its membership. The brothers of this colony emphasize scholarship and an active social life. They provide various activities for the brothers and the student body at V. S. C.

OFFICERS

BOBBY COLEMAN, *President*
GEORGE WALLACE, *Vice-President*
CARL FREE, *Secretary*
RAYMOND WILSON, *Treasurer*
BILLY MONCRIEF, *Historian*



BROTHERS

Grady Bennett
Lavon King
Billy King
Buster Horton
Fred Wilkinson
Joe Tarpley
Denson Wood
Ashley Hill



PLEDGES

Stuart Summerford
William Moncrief
Wayne Adkins
Gene Cargill
Wayne Allen
Wayne McCullers
Murray Steward
Lester Haymons
Richard Zell



OFFICERS

BILL JACKSON, President; JACK CARTER, Vice-President; JEROME CLEGG, Secretary and Treasurer; HOUSTAN KEMPER, Historian.
BROTHERS: Bill Jackson, Jack Carter, Gorman Joiner.
PLEDGES: Jerome Clegg, Ben Force, Kelsey Kemp, Houston Kemper.

MU ALPHA FRATERNITY

“One of our three prospering fraternities on campus.”



SHIRLEY McGOWAN

Sweetheart

**ANN HILL
 CAROL KEENE
 GAIL HOUSTON**

Sponsors

SIGMA ALPHA CHI

Eligibility for membership for Freshmen implies an average of "B" for the first two quarters of the Freshman year. Eligibility for upperclassmen is set up so that a student must maintain an average of "B" and have outstanding qualities of leadership and character. The purpose of this organization is to encourage scholarship and stimulate interest in academic activities.





THE LETTERMAN'S CLUB

"A club for young athletes."

A letterman's club was established on the V. S. C. campus for the first time last year. To qualify for the Letterman's Club, a person must win a varsity letter in baseball or basketball. The purpose of this club is to increase interest in varsity sports on the campus.



THESE ARE THE

1957

Sports

AT
VALDOSTA STATE

an important part of the picture

OFFICERS

NAN STARLING, *President*

MARGIE SMITH, *Vice-President*

AMANDA SHEFFIELD, *Secretary*

MARGARET RAGIN, *Treasurer*

COUNCIL MEMBERS

Nan Starling

Dottie Alford

Margie Smith

Elaine Barber

Amanda Sheffield

Sue Bridges

Margaret Ragin

Carol Keene

Elizabeth Waltman

Wynette Baker



WOMEN'S RECREATION ASSOCIATION

"To bring to campus pleasure and enjoyment through sports."

On our campus, there is always competition between two teams—the Kappas and the Lambdas. It is a friendly rivalry but never let it be said that one team is better than the other; they are both tops. These two teams make up the "Rec" Club, and each girl is invited to become either a Kappa or

a Lambda. Our Physical Education Department advises us and supplies the equipment with which we try to bring to the campus pleasure and enjoyment through sports. All this leads to healthful living and helps to make a well rounded college student.

CLUB MEMBERS: Anyone attending sports practice.

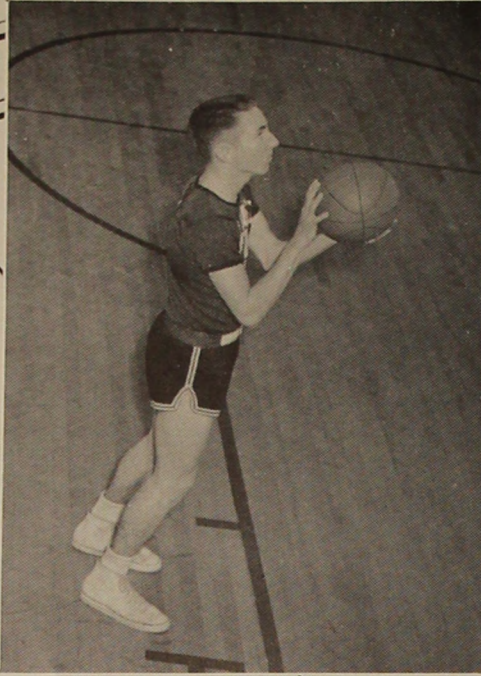


FINS AND FLIPPERS

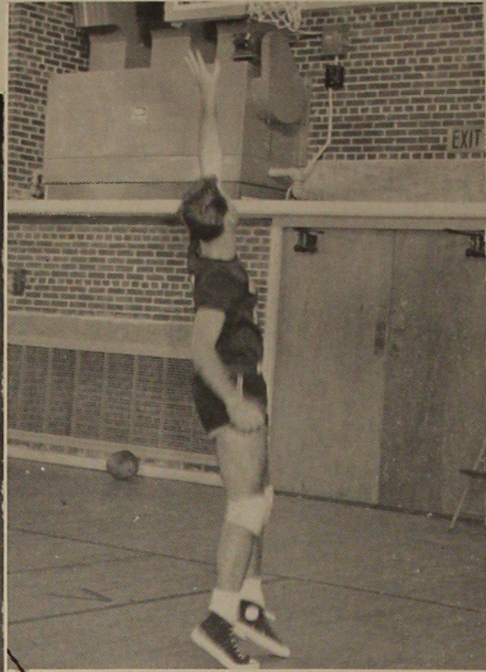
“Synchronized swimming at its best.”



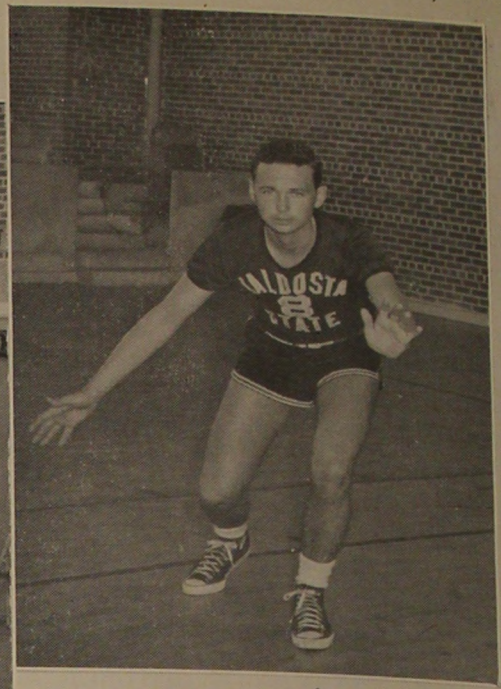
REBELS



EDWARD ELLIS



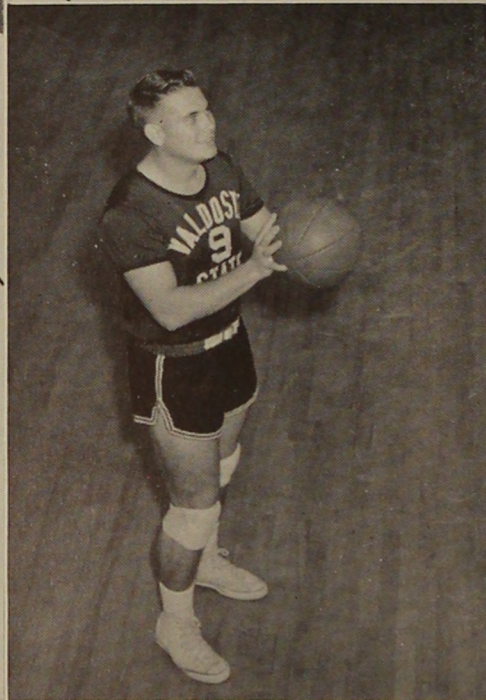
JIMMY HATHAWAY



HOYT HARRELL

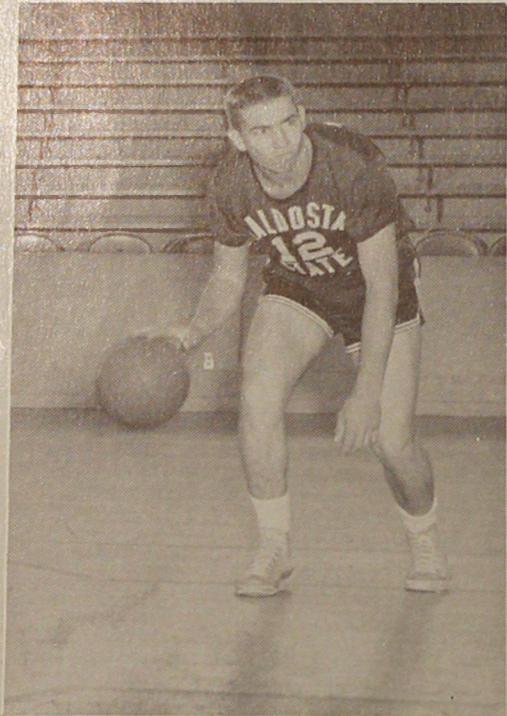
WALTER BARTEE

A. J. JARVIS

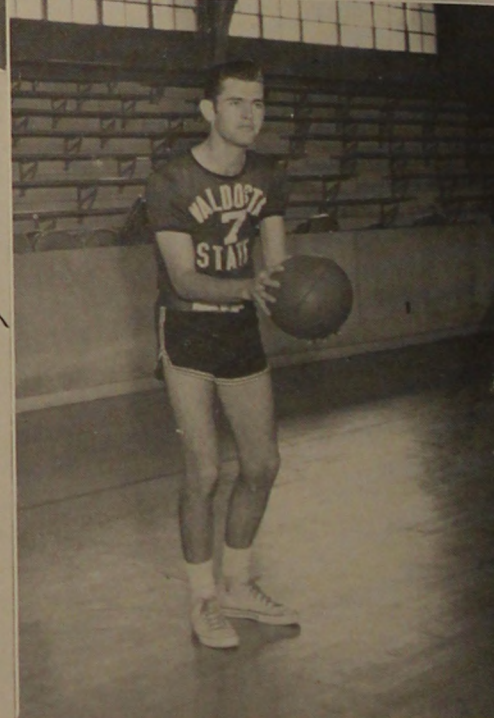


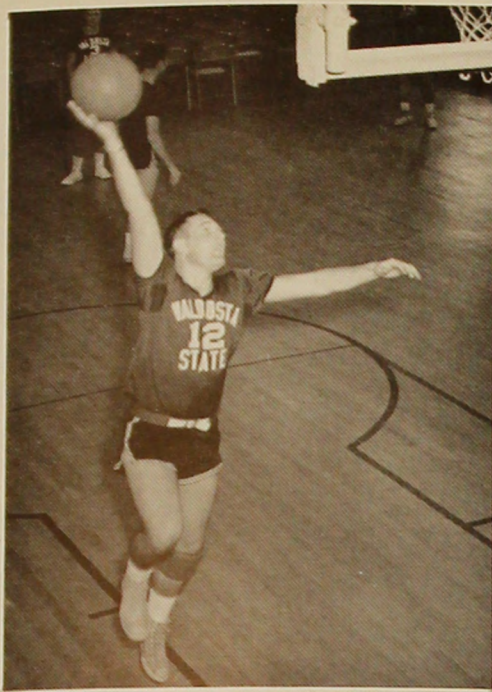
THE
REBELS

JOHNNY PURVIS



GENE CARGILE

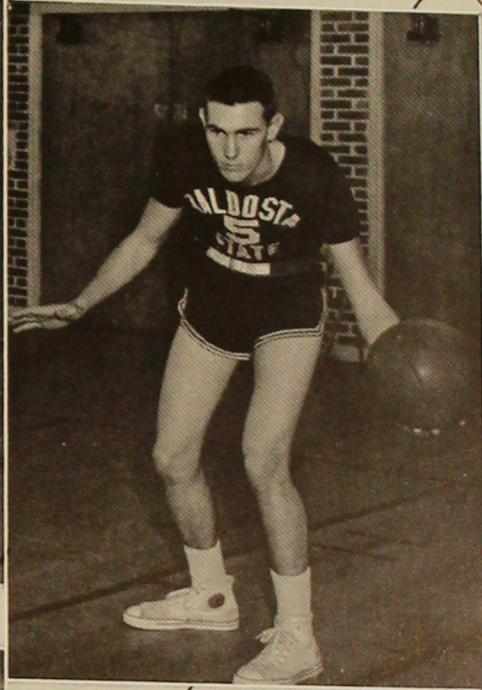




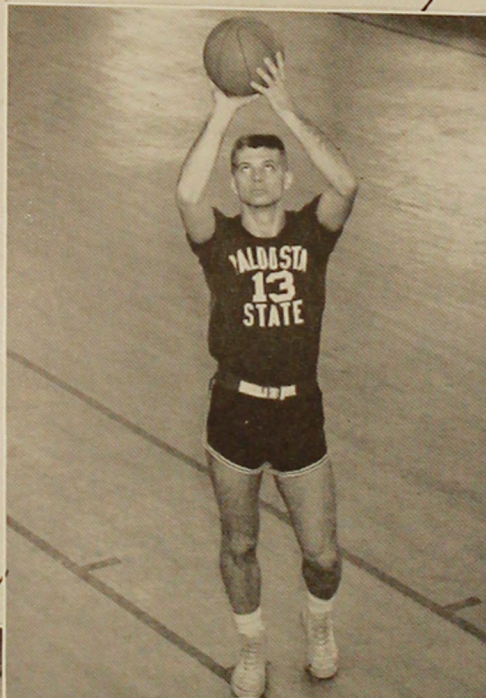
JIMMY STOVALL



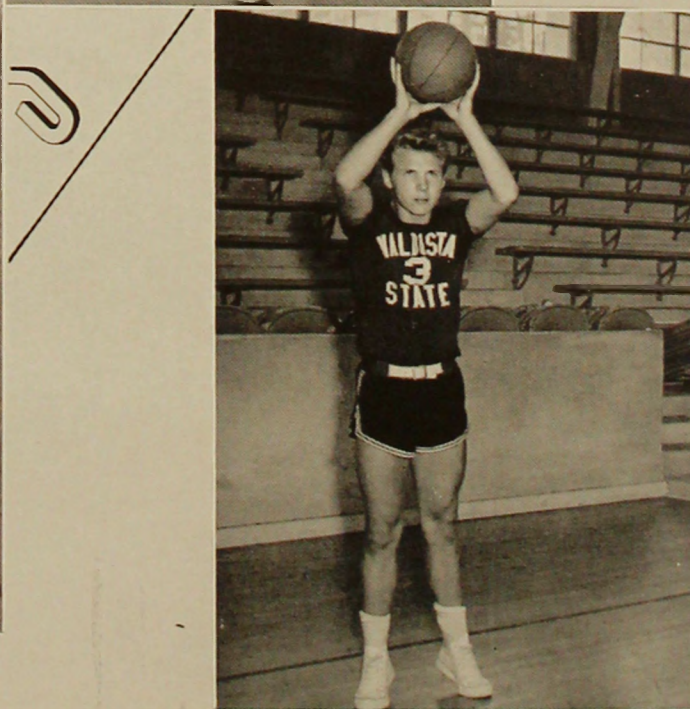
JACK ROWE



BEN WOOD



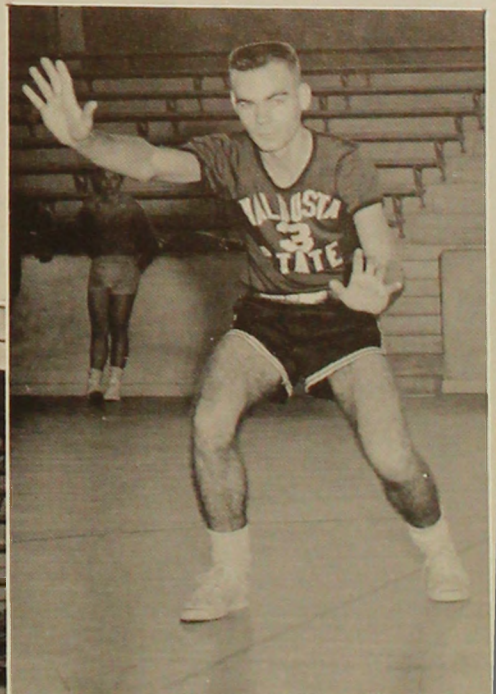
GEORGE PEAGLER



GENE WYNNE

PRIDE
OF
VALDOSTA
STATE

DWAINE SKILES



VANN BEASLEY

VALDOSTA STATE

VALDOSTA STATE



JoAnn King, Pat Boyko, Susan Chance, Shirley Grieshaber, Shirley McGowan,
Mary Ann Morgan, Janice Griffin, Mary Sidney Lines.

CHEERLEADERS



PRESENTING... 1957
BEAUS
AND
BELLES



“WHO’S WHO”

In American Universities and Colleges

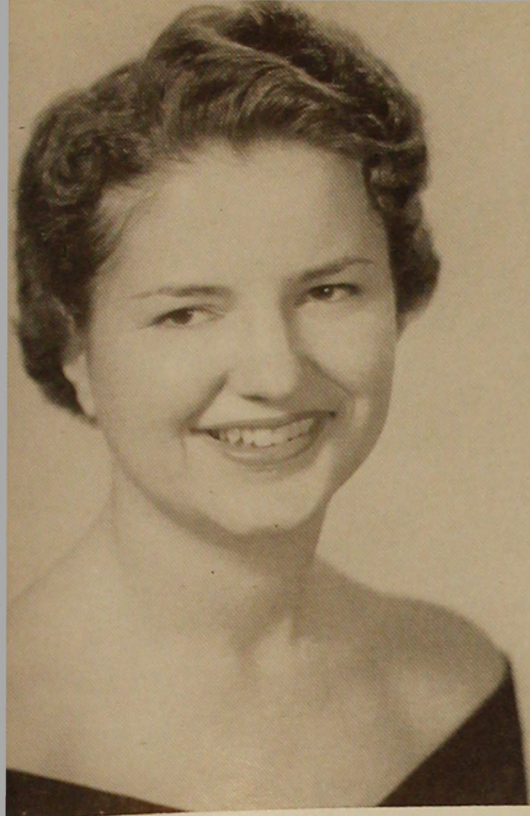
The Elite of the Class of '57, these seniors were selected for this high honor because of their scholastic record, social activities, and all-around record of student activities.

NANCY STARLING

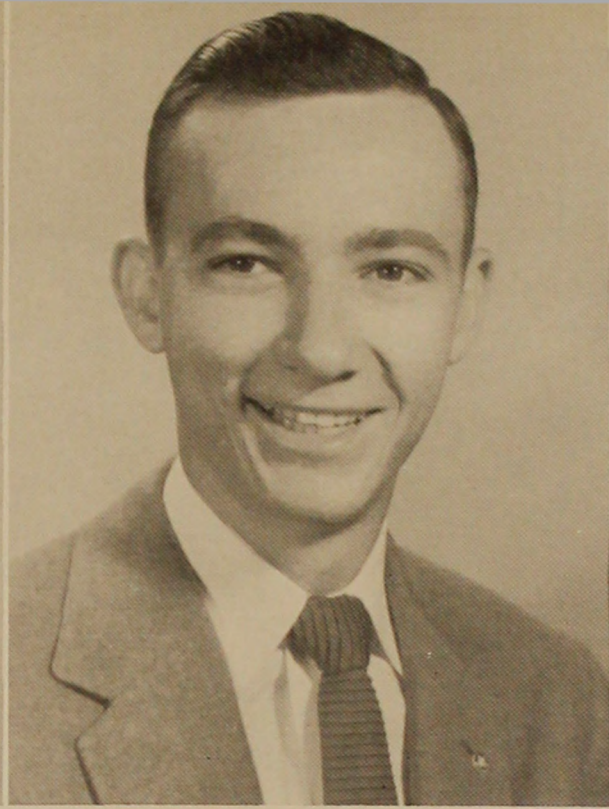
WILLIAM E. JACKSON

FRANCES MAUGHON

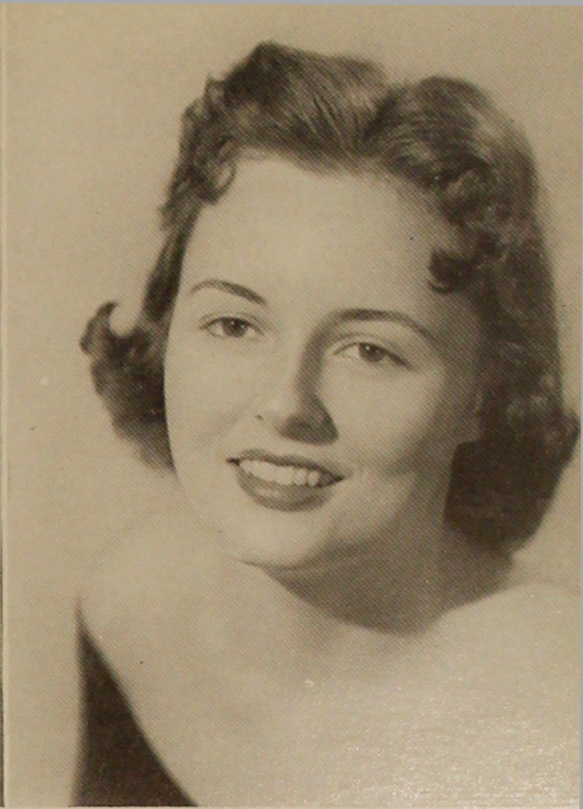




VIRGINIA SMITH



R. DENSON WOOD, JR.



GEORGIA NEAL WOLFE

“WHO’S WHO”

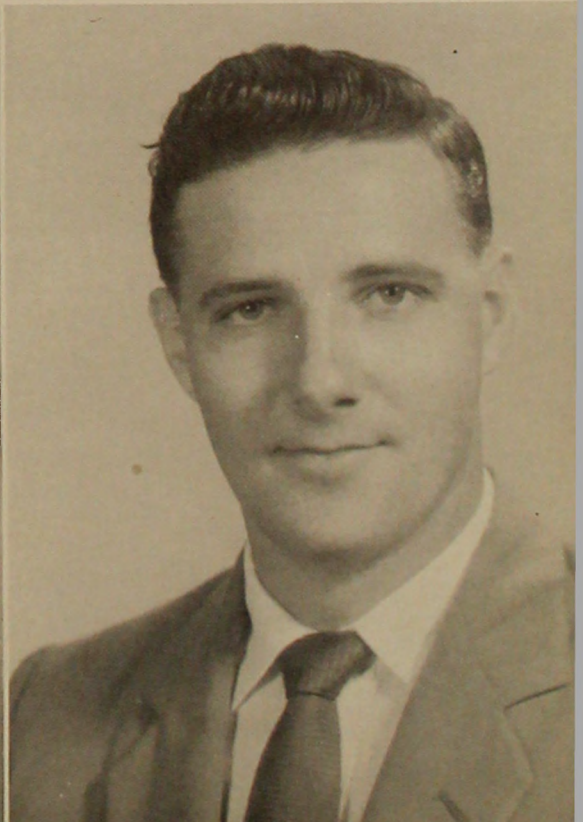
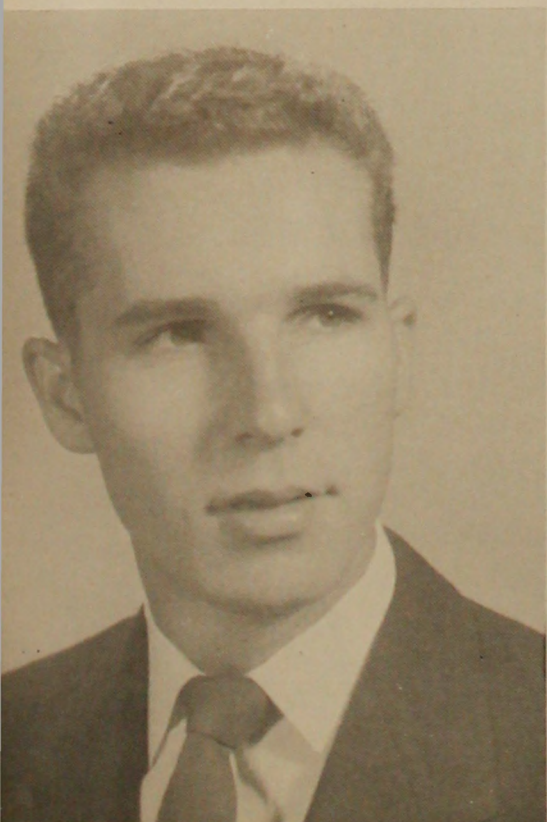
College seniors of Valdosta State rewarded for their service . . .

The college career of these students has been devoted to making college life better and more pleasant for all students. Homecoming . . . Student Publications . . . Dances . . . Student Assistants . . . These are but a few of the many jobs which these students undertook—successfully—in their respective roles as morale builders of Valdosta State.

JACK CARTER

CORA JEAN NORMAN

RONNIE HAIRE





SIGMA ALPHA CHI

Presents **BEN WOOD and LUCY HENDERSON**

MARGA and MAC

Best All Round



SIGMA ALPHA CHI

Presents **NAN STARLING and RAYMOND WILSON**

MARGA and MAC

Best All Round

MISS VALDOSTA STATE COLLEGE

miss shirley mcgowan





miss georgia neal wolfe

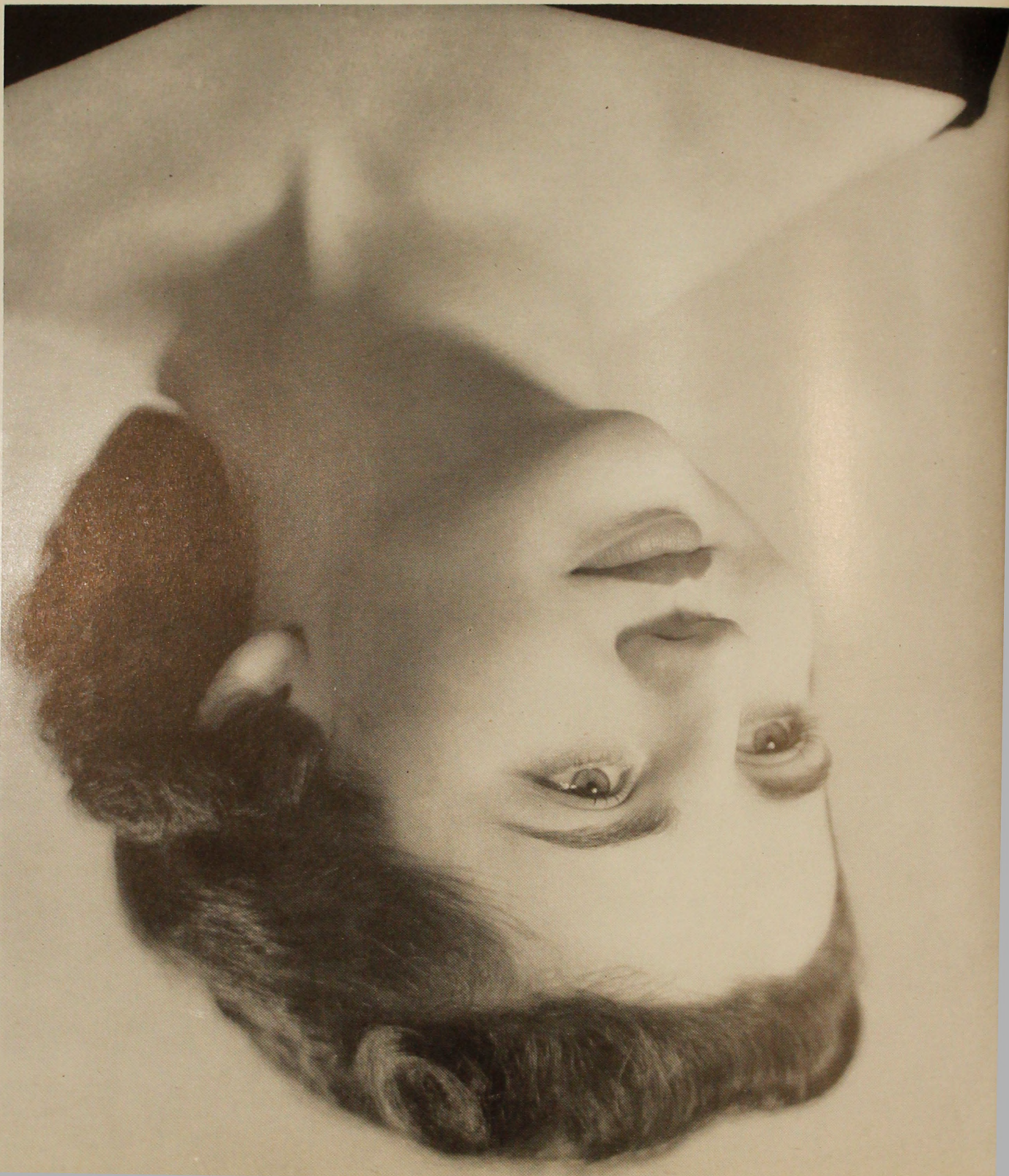
HOMECOMING QUEEN



miss jo ann daniel

SENIOR BEAUTY

miss marsha paulk





miss shirley mcgowan

FRESHMAN BEAUTY



miss frances zant

SOPHOMORE BEAUTY

HOMECOMING COURT

miss bennie baker



HOMECOMING COURT

miss lucy henderson



HOMECOMING COURT

miss marsha paulk



HOMECOMING COURT

miss mary sidney lines



"Songs of the South"

HOMECOMING



Moody's Color Guard

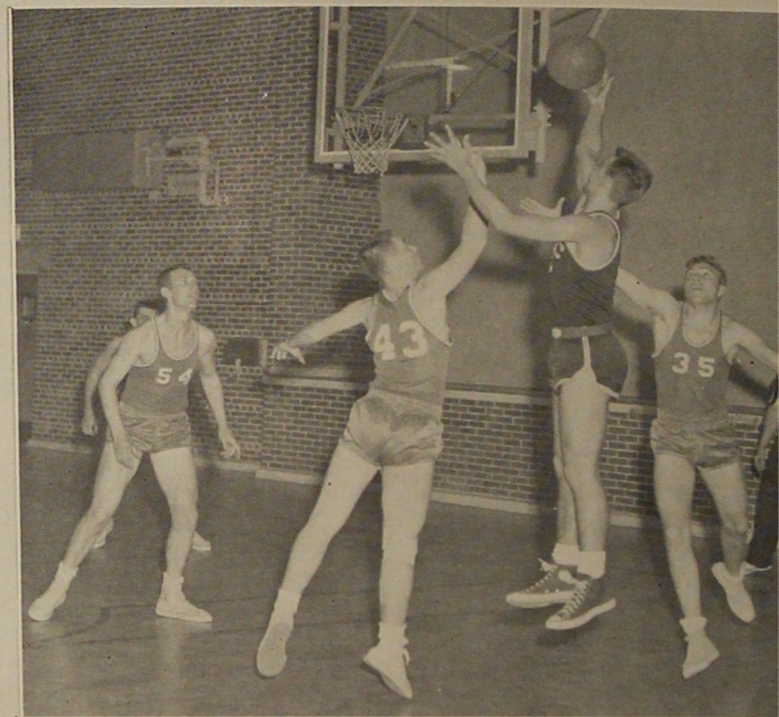


"The Car"



"Jes waitin' fer the pe-rade"

Rebel
Ball
Game



Modern Car!



Valdosta High Band



V. S. C. HOMECOMING DANCE

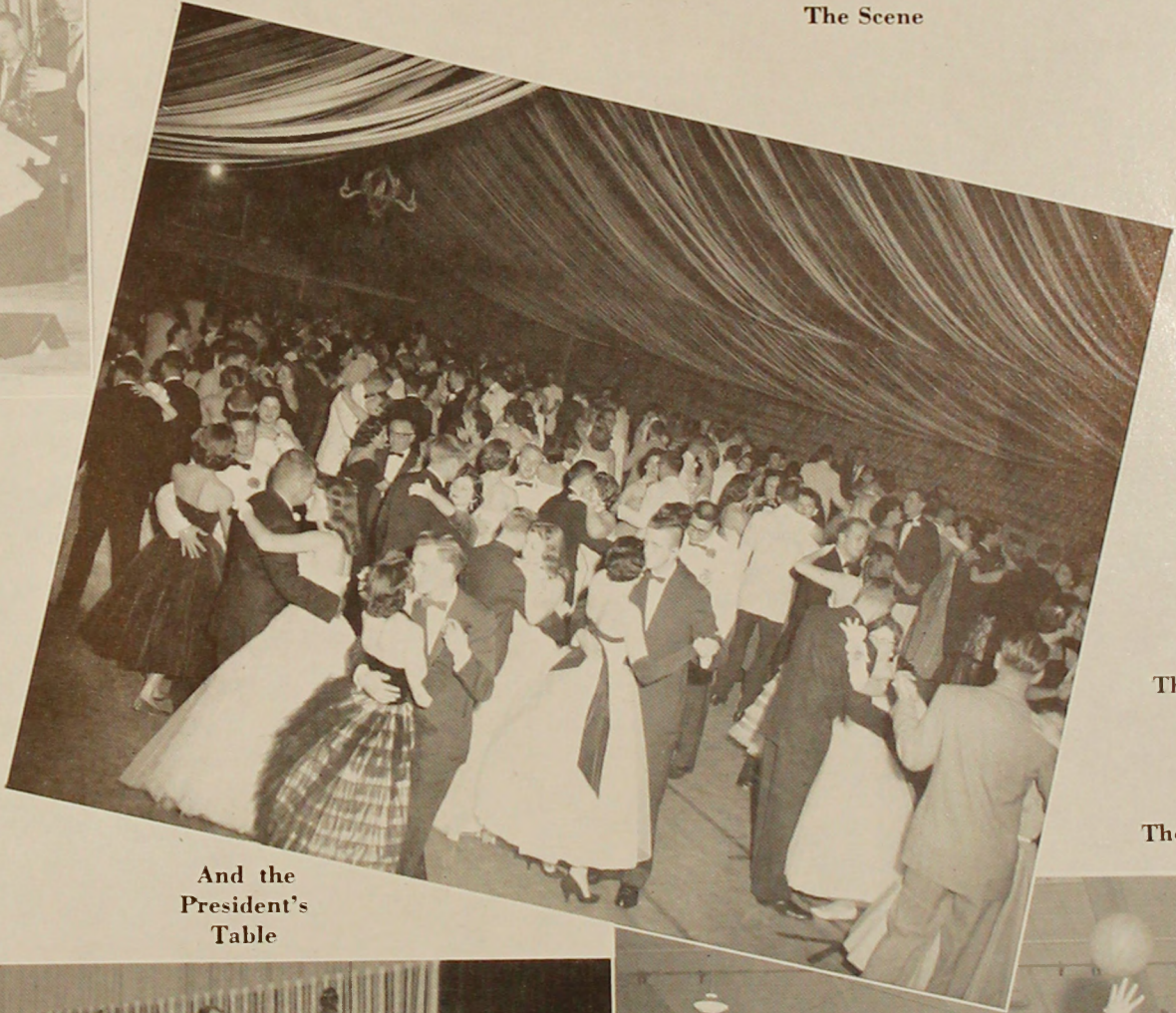
"Show Boat"



The Petticoats



The Scene



The Crowd

The Game

Billy Butterfield

And the President's Table





V. S. C. Meets the President

THE YEAR'S MEMORABLE EVENTS

Homecoming Float



Crowning the Queen



Congratulations

to the

1957 SENIORS

of the

VALDOSTA STATE COLLEGE

and

welcome to the

Upperclassmen and Freshmen

"THE CITY OF AZALEAS"

welcomes the opportunity of being your home during
your college days and of sharing your culture.

May your associations and your memories of our city
be such that you will return after your college days.

Emory P. Bass, Mayor
Councilmen:

Leslie R. Davis

J. Charlton Green

N. N. Langdale

Dr. Harry Mixson

James A. Paramore

W. W. Warwick

Congratulations
to the Class of '57
and best wishes from

OWENS-ILLINOIS

Makers of (I) Products



Mill Division
Multi-Wall Bag Division
Valdosta Southern Railroad
VALDOSTA, GEORGIA

BELCHER'S DRUGS

310 N. Patterson St.

(Just North of Ritz Theater)

FOUNTAIN SERVICE AND
SANDWICHES

Revlon and Dorothy Gray
Cosmetics

Phone 812

FOR QUICK DELIVERY

Best Wishes from the Place

Where the Students Gather

THE STUDENT CENTER

Books • Monogrammed Goods • Sodas
Sundries • Cosmetics

To You, the Student Body, We Have

Presented the

1957 PINE CONE

May Your Memories of VSC Be Enshrined Here

THE 1957 PINE CONE STAFF

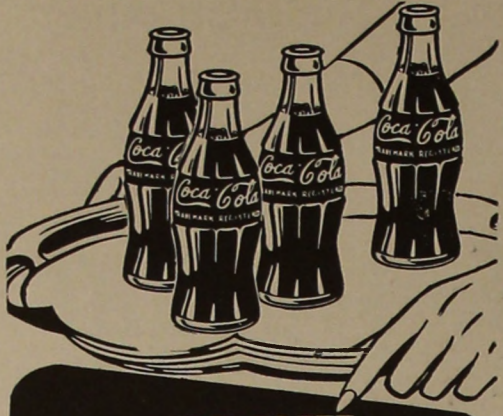
WAYNE McCOLLERS

Editor

RAYMOND WILSON

Business Manager

There's nothing like giving
folks what they want



BOTTLED UNDER AUTHORITY OF THE COCA-COLA COMPANY BY

Valdosta Coca-Cola Bottling Works
VALDOSTA, GEORGIA

All Portraits in This Issue
of the Pine Cone

Are by

GOLDEN

1519 N. Ashley St.

VALDOSTA, GA.

fine photography in

all its phases

BROOKWOOD PHARMACY

Where All Our College
Students Gather

PHONE 336

"Can't Be Beat"

Compliments of

VALLOTTON'S DAIRY

VALDOSTA, GA.

Compliments of

MARTIN THEATRES

RITZ

MARTIN DRIVE-IN

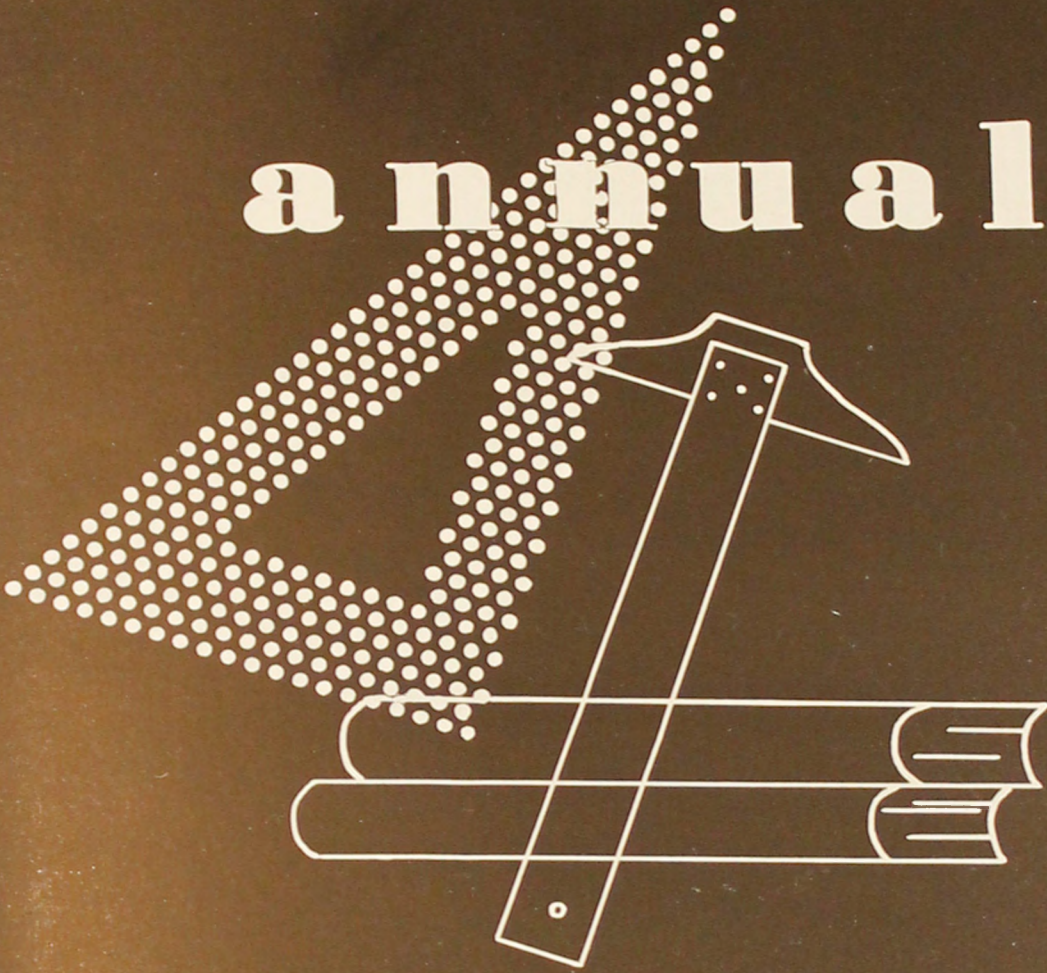
DOSTA

FORREST DRIVE-IN

PALACE

annuals of

distinction . . .



Original layouts, distinctive typography and sparkling reproduction that give your annual the luxurious appearance impossible to obtain by standard layout, mass-production methods.

Bowen, Long & Young, Inc.

110 TRINITY PLACE
DECATUR, GEORGIA