
Rowan Tree Church Periodicals Collection

MS/150-5

1999-2000

The Rowan Tree Church 18th Annual Report, Hallows 1999 ce-Hallows 2000 ce

Rowan Tree Church

For this and additional works see: <https://vtext.valdosta.edu/xmlui/handle/10428/2169>

UUID: BDB75372-D047-C09C-449D-0BE4CFB23935

Recommended Citation:

Rowan Tree Church. The Rowan Tree Church 18th Annual Report, Hallows 1999 ce-Hallows 2000 ce. Kirkland: WA: Rowan Tree Church, 2000. Rowan Tree Church Periodicals Collection, New Age Movements, Occultism, and Spiritualism Research Library. Archives and Special Collections. Valdosta State University. Valdosta, GA.
<http://hdl.handle.net/10428/3047>.

This item is free and open source. It is part of the Rowan Tree Church Periodicals Collection at Odum Library Valdosta State University Archives and Special Collections. If you have any questions or concerns contact archives@valdosta.edu



The Rowan Tree Church

18th Annual Report
Hallows 1999 ce - Hallows 2000 ce



This past year was one filled with significance for your Church. We observed the 20th anniversary of our legal recognition as a religious, nonprofit organization. We celebrated this historical year by holding our XVI Annual Retreat in a far different venue than ever before. The Rowan Tree Church reserved cabins in Yellowstone National Park. Andrius played in the geysers and the Church gathered in a glade among the trees right next to the cabins. From the cabins and from the ritual site we could actually see Old Faithful erupt. One morning's ritual was briefly delayed as we waited for a buffalo to finish his morning ritual, rolling on his back in the dust looking no different than a puppy.

It is true, is it not, that *all* acts of 'mirth' are Her rituals?

Last year's Annual Report reflected upon the events of the previous cycle. These included the publishing of the newest edition of *A Wiccan Bardo, Revisited* and the creation of www.therowantreechurch.org, the Church's web site. We have not had many 'new' projects although a new 'Rowan Tree' t-shirt is now available to help raise money for the Church. Sales of these great shirts are pretty slow but they're available and don't cost us money while they wait the opportunity to become part of your wardrobe.

This past year has been a process by which our Rowan Tree further settles its roots deep into the earth, growing strong so as to survive for many generations to come. We have been blessed, this past year, as several new Members came into Lothloriën and emerged by taking on responsibilities within the BOD, library and in helping with the work to be done at the Grove.

The Rowan Tree Church is an unusual Church. It grew up around my Wiccan Priesthood when I lived in Minneapolis. Initially, all but a few Members were part of our 'local' Community. As Lothloriën grew and others asked to learn of her Mysteries, The Rowan Tree Church extended its branches and an increasing number of Members participated by correspondence and by working Lothloriën's rituals in their personal temples.

Ten years ago a strong gust of wind blew loose even the most stubborn of leaves and I was sent on a journey. First the wind from the north took me south to Dallas, Texas. The Universe had tempted me for I was not about to forsake my gardens in Minneapolis. I had lived in that lovely city for over 20 years and intended to remain there until I could become compost.

And then, in May of 1991 a wind from the east carried me along my journey to Los Angeles, which was to be temporary. By now I was less certain that I could easily

return to Minneapolis, but that is where my heart was. And I found the desert soil fertile and the Church continued to grow.

But much to my surprise I was only being prepared for the wind from the south to sweep me north to Rose Hill. In March of 1993 I flew up here to teach a weekend of workshops. Gerry and I had known of each other for many years but had never had the opportunity to fully connect. One evening he showed me the stone circle he had begun years before and, just like that, we were touched by the gods. A handful of days later we spent six and a half hours talking by telephone and the rest is history.

By the time we moved here I had been transformed. I was no longer an old leaf blowing about in the wind, but had undergone an intense spiritual transformation during this long journey. I arrived with the seeds of Lothloriën and, with Gerry's devoted help, we transplanted The Rowan Tree Church to Kirkland and it has thrived ever since.

We exist as a most unusual Church, with many of us scattered about North America like leaves. Although some Members think of our Church as little more than the monthly newsletter, most participate in our healing rituals. Many of you work with us collectively when we observe our ritual calendar.

Rev. Paul V. Beyerl

postage and shipping = \$1,887.52

Rowan Tree general budget	271.97
postal box rent	66.00
<i>The Rowan Tree News</i>	313.10
BOD mailing	383.97
bookkeeping mailing	11.69
subtotal	1046.73
The Mystery School	331.19
Subscription Library	69.85
Periodical Library	100.44
cassette tape mailing	76.30
<i>The Unicorn</i>	182.53
<i>The Littlest Unicorn</i>	77.28
Annual Retreat	3.20
	\$1,887.52

To clarify one of these listings, BOD mailing and printing includes sending information to those who inquire, mailing the Annual Report to Members, sending Church catalogs, Welcome Packets and all legal mail. The postage figure represents an *increase* of \$158.54 over the previous year. All promotional material printing costs are also allocated as "BOD" expenses. Our printing costs *decreased* \$107.26, in large part due to some printing jobs being done on the laser printer owned by The Hermit's Grove.

printing = \$1,093,95

<i>The Rowan Tree News</i>	\$139.70
BOD printing	164.91
Misc. general Church	2.50
Mystery School	133.08
Subscription Library	200.91
Periodical Library	88.74
<i>The Unicorn</i>	231.26
<i>The Littlest Unicorn</i>	132.85
	\$1093.95

Since not all of our Members can participate regularly in our Sunday Circles, Lunar and Sabbat Rituals, we rely upon networks of communication, the primary of which is through our publications which are sent by postal mail requiring not only postage but considerable printing as well.

Financial Statements 1999-2000

Looking at the individual budgets we can compare the beginning and ending balances for a quick overview of the year's progress. The following is an account of every penny the Church has in its sole checking account:

budget:	begin	end	difference
Church's general operations	\$90.85	462.70	+ 371.85
Mystery School	169.11	390.08	+ 220.91
Subscription Library	169.61	311.32	+ 141.71
Periodical Library	096.61	138.21	+ 141.60
Tape Library expenses	000.00	001.80	+ 1.80
<i>The Unicorn</i>	087.96	019.70	- 68.26
<i>The Unicorn</i> contest prize money	000.00	400.00	+ 400.00
<i>The Littlest Unicorn</i>	240.04	191.93	- 48.11
Annual Retreat	242.88	239.51	- 3.37
Retreat Scholarship fund	000.00	010.00	+ 10.00
computer fund set-aside	000.00	067.02	+ 67.02
Land Fund	033.84	332.99	+ 299.15
property tax set-aside	377.53	364.36	- 13.17
t-shirt reorder money	195.70	031.20	- 164.50
sales tax set-aside	047.98	049.85	+ 1.87
POP book project	041.01	000.00	- 41.01
HG Community funds	025.00	000.00	- 25.00
totals	\$1,818.12	\$3,010.67	+ 1192.55

In addition to this, the Church holds three Certificates of Deposit for our "Land Fund," money to be used toward the purchase or non-maintenance money toward our property holdings. The Fund was originally established toward the purchase of a small acreage of land in or near the Mothervalley.

Opening date	07/28/1999	\$1,450.00
Opening date	10/28/1999	1,051.67
Opening date	12/06/1999	4,050.00
		\$6,551.67

Before you celebrate our good fortune, the above reflects some significant donations made by only three of our Member households, one of whom provided the prize money for *The Unicorn's* anniversary contest and made a \$4,050 donation to the Church's land fund. A more accurate

reflection of how we are doing may be found in looking at our Member donations:

Member donation for the year: \$4310.98

Our target goal has been \$300.00 a month and it is a relief to report that we met our goal this year. I would like to ask that we all give thanks to a few Members who faithfully donate far more than the recommended \$10.00. With more than 40 Member households we averaged a third per month (14.5) who made a donation with their monthly form.

This money was allocated as follows:

General operations	\$4,075.70
Subscription Library	21.50
Periodical Library (± 5%)	213.78
	\$4,310.98

In addition to the monthly donations, some Members made individual donations toward specific needs of the Church. One Member donated \$500.00 to the computer fund. We had a wonderful gift of \$4,050.00 from Tony Miranda given to the Land Fund for the Church's future and donated \$400.00 for *The Unicorn's* prize money. Rev. Paul, through The Hermit's Grove, donated \$1,590.00 to cover the Church's property tax bill.

Special donations dedicated to specific causes totaled \$7,152.31. In an average year we receive about two thousand dollars, most of which is from the money Rev. Paul has pledged from the royalties to *A Compendium of Herbal Magick* which have been paying the Church's property tax. [Encourage people to purchase that book!]

dedicated donations

to the land fund	\$4,105.92
to pay property tax	1,595.00
to <i>The Unicorn</i>	453.85
toward computer expense	500.00
for library book purchases	236.01
Noël Knower to <i>The Littlest Unicorn</i>	120.83
to help the Periodical Library budget	5.00
for tape library postage	78.10
to the Retreat	10.00
gift to the Eldermentor	27.40
for the Retreat Scholarship Fund	10.00
misc.	10.20
	\$7,152.31

Membership donations represent our largest single source of income. Over the past year we have heard some Members object to donations, maintaining that the Church should meet its expenses through the sale of books and items (which would require changing our belief system to one of being a for-profit business) and in one case, maintaining that donations should not go to support the Beyerls.

For the record, the Beyerls derive no income and are the largest single donor among all Church Members. Without their financial help we simply would not exist.

Rowan Tree General Operations

The following shows all sources of income which were available for Church expenses:

balance from last year	\$90.85
Member Donations	4,075.70
Member's special donation	3.20
sale of sapphires to raise money	10.00
sale of Merry Meet notepaper	14.00
Rowan Tree t-shirt sales	78.96
donations from non-members	21.00
<u>Church's portion of sample packet sales</u>	<u>60.00</u>
total income	\$4,353.71

The following are all operating expenses paid out of the Rowan Tree's General Budget:

postage and box rent	\$1,041.33
travel expenses	115.00
web site expenses	276.00
Minnesota Agent (legal expense)	240.00
printing	307.11
office supplies	333.81
advertising	49.10
ritual supplies	53.70
equipment	277.14
computer software	29.95
telephone and fax line expense	410.87
electricity	65.68
water	8.00
misc. maintenance	8.69
rent (storage locker for records, archives)	367.00
portion of portable toilet rental	352.41
legal fees	10.00
<u>bank fees</u>	<u>11.23</u>
subtotal	\$3,957.02
'fund' money	- 66.01
total	\$3,891.01
balance at end of year	\$462.70

This is what it takes to provide the services essential in keeping our Membership, ranging from the cost of preparing and publishing *The Rowan Tree News* to the cost of office supplies for the Membership Secretary's letters and notices. We are a legal entity which requires corporate work, including occasional phone calls to discuss matters with Directors as well as phone calls made to provide counselling and encouragement to Members in need. If you have any questions about our expenses, please let us know and they will be answered in *The Rowan Tree News*.

The 'fund' money represents leftover money from two now defunct projects (POP Books and local donations toward a renting ritual site) which was used to offset Church expenses.

Communication from the Board

President and Founder

Over this past year, the Board of Directors has explored a number of issues. Nothing major has arisen, although as this year's BOD completed its term, the IRS' computer has decided to assess a \$10,000 fine which we expect to be waived. If anything, the lack of important

issues has sometimes made it difficult to keep all Directors actively involved and responding.

One of our accomplishments was the holding of our Annual Retreat at Yellowstone National Park. This was a great success which offered us private accommodations for a most modest cost within sight of Old Faithful and a lovely ritual site just waiting for us in a small clearing in the wooded area adjacent the cabins.

One of the changes I've observed over this past year is the increase in the number of Members who live in western Washington State. Puget Sound area Members are now nearly half of our total Membership. Until now these Members have automatically been considered part of the Hermit's Grove Community but our facilities here are now often capacity and we are considering the need for making a change in this process.

The President of the BOD in his capacity as General Manager and Treasurer is currently exploring the possibility of sending our financial records on disk or as hardcopy to Jane Anderson, a Church Member and CPA who participates in the Board of Directors. The President has also asked the Vice President of the BOD to give serious thought to taking the role of President so that our Founder may begin to pass on some of the (too many) duties which he now performs for you as Church Members.

There are times that the President becomes weary. This year he will observe his 13th year living with HIV. Generally, that does not deter him from his duties which in addition to being President of the Board of Directors include, as an unpaid volunteer for the Church, editing and publishing the Annual Report, *The Unicorn* and *The Rowan Tree News*; providing all Mentoring for The Mystery School as well as managing its administrative and publishing duties; managing the Church's libraries; and handling the work as bookkeeper and as General Manager. You may have notice that he is sometimes a bit defensive when pressed by well-meaning Members to increase his workload and he asks your understanding.

Humbly, Rev. Paul V. Beyerl

Vice President, Board of Directors

It has been my privilege to serve on the Board of Directors this year and to sit in the Vice President's Chair.

I have participated in the Board of Directors meetings and attended the Annual Meeting in August. The Church continues to do well, in large part because of the unceasing efforts of Rev. Paul and Gerry at the Grove. It is our challenge build the Church by fostering communication between Church Members; forming local groups and growing long-distance friendships. This way we will be able to strengthen and widen the base of the Rowan Church. As we all become more active, perhaps the Beyerls will be able to consider 40 hour weeks. (Well, 50 hour weeks? ... 60 hours? ...)

Blessings, Jim Saigle

Secretary, Board of Directors

For another year, i have been privileged to serve in the capacity of Secretary to the Board of Directors. i thank you all for assisting me in fulfilling my duties by sending in your donations and monthly forms.

You have written many marvelous letter, poems and notes which i have been able to use as part of the RTNews. You have sent requests for healing energies from the Child of Light Rituals each month. You have voted on changes to the Book of Legislation, and you have voted in the Board of Directors election. Thank you for participating.

my goal for the coming year (though i may not be able to reach it every time) is to have a response time to your correspondence of one week maximum. The exception to this would be if you write more than once a month. Because of the number of letters that come in, i am able to respond to each person just once in a month. Maybe, like me, each of you could save up all your news for a single big letter each month.

The number of Members in the Rowan Tree Church has grown slightly in the past year. i hope you have benefitted from seeing the number of forms returned each month, compared with the number of Member households. i also hope you are finding out how many of us are located in different parts of the continent

This year, i was not granted the proxies of any of the other voting Directors because we all were able to attend the Annual Board Meeting held at Yellowstone during the Annual Retreat. We were able to make many motions and have them passed immediately at the Annual Meeting concerning new Members in the Church. We also discussed the possibilities of expanding the web-site or other on-line interactions with Members around the continent.

i continue to send out the two- and three-month reminders to Members who have not submitted Membership forms or responded during a past two or three month period. One month this year, i was greatly pleased to have no three-month reminders to send. That is something i would enjoy encountering often. HINT! ;-) Also, at least three times this year, no Members were taken off the roster for missing three months of communication; that is a very positive movement. (i guess Membership forms are becoming a good habit with you all.) Current Membership lists are kept in the archives, with copies of current lists sent to the Tape Librarian each month.

If you have any questions about your Membership, or about my duties as Secretary, please send me a note. And please keep those monthly forms arriving at the Grove!

Blessings, gerry Beyerl

Treasurer, Board of Directors

This has been another busy year for The Rowan Tree, and I am happy to have had a chance to contribute, even in a small way. The Church's membership continues to grow, especially in the Seattle area. And the annual retreat this year was held in Yellowstone, a great adventure for all who

were able to attend. However, the financial condition of the Church does not reflect the growth.

Although we have not faced the financial crunches that we have faced in the past, we continue to have only a small reserve to draw upon if a major expense should arise. Because of this, the Board of Directors has considered asking members to consider raising their monthly donation from \$5.00 to \$10.00 per month. For those members who support the Church financially, I thank you. For those who are unable to do so, I understand, but encourage each of you to consider ways in which you can support The Rowan Tree.

As treasurer, I have continued to assist in the quarterly audits, helping to insure that no bookkeeping errors have been made, and to assess the Church's financial situation. I look forward to continue serving our community in this way in the coming year.

Blessed Be, Donna Lewin

Scribe, Board of Directors

I have served a number of years in my capacity as a Director of The Rowan Tree Church - enough years that I have lost count. I also hold the position of Scribe.

My duties on the Board do not seem to have changed a lot over the years. As Scribe, I write the column - Notes From the Board - which appears in the Rowan Tree News each month. This column is a means of letting the Church Membership stay in touch with the functioning of the Board.

Also as part of my duties I provide written response to each months Board agenda, receive and tabulate the ballots for Board elections, and am one of three persons working on the quarterly audit. I am also responsible for the burning of the ballots at Hallows.

Respectfully submitted, Tricia Youngquist

Voting Director

This was my first year as a voting Board Member. I did not hold a specific position, such as Secretary, but I feel that I still had an important role and one that I take quite seriously. There were several serious issues this year that were discussed and voted on. I felt honored to contribute to the well-being of the Rowan Tree. Being a Board Member is, also, a way to keep up on the business aspect of the church. I think it is important to remember that while the Rowan Tree feeds us spiritually, that we need to provide for her to encourage growth and sustainability. I think that is one aspect that I am able to see as a Voting Board Member. This year has brought me more of an appreciation of the responsibility of the Board.

This year all of the voting directors were at the retreat at Yellowstone. So often we don't get a chance to communicate except as a board member discussing issues. This was a chance for us to renew old bonds and establish new ones. It was quite an experience.

Many Blessings to you all, Cat McCabe

The Unicorn

Life as editor of *The Unicorn* continues as always. A plan was created to hold a major contest to celebrate the 25th anniversary of this publication which will occur next year. Over a thousand dollars in cash and prizes has been collected.



Concurrent with next year's Annual Report *The Unicorn* will begin its 25th year. Our subscription levels are up just slightly, on the average. Although I would like to hope that our readership would grow, we appeal to a limited audience and must compete with the seductiveness of the vast number of sites on the Internet.

The Unicorn published 'The Hatchling' so that new readers may have access to the entire story. *The Unicorn* has as its goal (once again) the fervent hope that someone will come forth who believes in sustaining the lifeblood of *The Unicorn* is worthy of learning to assist with the editing and production of this historic newsletter. It was *The Unicorn* which was the first light around which the earliest being of our Church gathered and it remains *The Unicorn* which is our primary outreach and ministry.

beginning of the year	87.96
Member Donations	53.85
Member Subscriptions	153.00
nonmember subscriptions	323.25
sample packet revenue	18.00
Hatchling revenue	28.50
<u>samples, misc.</u>	28.28
total income	692.84
postage	182.53
printing	231.26
advertising	103.20
office supplies	100.56
web site expense	25.00
telephone	7.79
rent (storage locker)	29.00
<u>bank fees</u>	.80
total	680.14
end of year balance	\$12.70
money in reserve for contest prizes	400.00

The Littlest Unicorn

We've had a fun and informative year of 'The Littlest Unicorn.' We've had a great deal of Member contributions, including artwork, articles and stories. The parents' page has been revitalized by the wonderful sharing by two parents in particular, Gray Fire and Michelle S. Many thanks to out to both of them. Dancing Fox continues to share her wonderful stories and Connie M. started a new series, "Magick," which has been delightful. Our regular



features this past year have been 'Rune Talk,' 'Celtic Tree Alphabet,' 'Furry Friends' (dealing with totem animals), 'Magickal Moments,' 'Crafty Corner,' and Rev. Paul's Deva stories. A new addition is 'Fairy Folk' due to many kids requesting stories, articles and coloring pages dealing with fairies.

Last September, 1999, we had 14 households subscribing to TLU and two exchanges. It seems to me that we hover between 14 and 20 all year. At this writing, due to three subscriptions not being renewed, we will be down to 11 households and two exchanges (non-paying). Hopefully, an ad placed in "Circle News" will bring new subscribers.

In the coming year, Lizard Frank will be working on a new website for TLU.

Many thanks to all how have contributed over the past year.

Bright Blessings, Noël Knower, Editor, TLU

beginning of the year	\$240.04
donations by editor	120.83
fund raising purchase	6.00
Member subscriptions	9.75
sample packet allocation	18.00
subscriptions	117.45
<u>sample copy sales</u>	5.00
total income	517.07
postage	\$77.28
printing	132.85
advertising	60.75
t-shirt purchase for fundraising	17.00
telephone expense	3.97
storage locker rent for archives	26.00
<u>misc. expenses</u>	7.29
total	325.14
end of year balance	191.93

The Mystery School

We accepted four new students this past year, two of whom are Novices and two who are Novice Supplicants as we entered this new cycle. Our congratulations to Morning Star and to Dakini upon becoming Novices of Lothloriën. And we welcomed, with joy, the return of a Novice Supplicant who had been on a Leave of Absence.

We celebrated the Initiation of a new Priestess, Lilith. We now have five Priests and Priestesses within Lothloriën. The goal before them is to embrace their duties which include working simultaneous ritual, maintaining regular communication and learning to assemble together in Temple of Loriën. Our Second Degree Initiate, Rev. Ron Weroski, is emerging from a descent into the Cauldron which has brought him face to face with the realities of darkness. He is now healing and is daily embraced with the love we have for him. And then there's our one Third Degree Initiate, the Elder and Founder of Lothloriën and there's not much to say about him.

The work within The Mystery School is subtle, visible to the Church as a whole only at the level of the Second

Degree Initiate (our ordained Clergy) except for those brief glimpses when a written work may be published in *The Unicorn* or in *The Rowan Tree News*.

Despite this veil of secrecy (not unlike that found within all Mystery Traditions), it is The Mystery School which is the foundation of The Tradition of Lothloriën. The knowledge to sustain our Tradition is being placed in their hands. It is not a quick process. Unlike many Traditions, the training which leads to ordination and the public declaration of impending Initiation and Priest/esshood is thorough, taking many years. Not only does it embrace the actual Pathworking, but the Novice and First Degree Initiate must learn numerous skills including learning to balance 'real life' with its employment, home and family, with one's 'religious life' which means increased volunteer service and dedication to Lothloriën.

Any Church Member who *meets all the requirements* may request an application for study in The Mystery School at those times applications are available. Typically this is in the autumn. We accept neither new nor returning students as we work toward the Tarot Ritual. In addition to completing the reading and learning the ritual skills, applicants are expected to have participated by cassette tape in Sunday Circles and to have taken a role in sustaining our Church through volunteer service, fund-raising or in other supportive ways. In addition, it is expected that an applicant be able to demonstrate the ethical nature which Lothloriën expects of a candidate.

If you have any questions, please contact me. For the immediate future those working within The Mystery School have the opportunity to be brought to the Mysteries of Lothloriën directly from its founder. This is the most important work of my life and it brings me joy.

With humility, Rev. Paul V. Beyerl

Mystery School Operating Budget

beginning of the year	\$169.11
45% of tuition paid	1,375.65
sales of spiral bound books, etc.	433.08
total	\$1,977.84
postage	\$331.19
travel expense	132.41
printing	133.08
office supplies, expense	317.85
RT advertising share	19.10
educational materials	65.66
ritual supplies	74.10
office equipment	89.05
telephone, fax expense	252.59
electricity	29.53
water	5.85
storage locker rent	68.00
portable toilet expense	58.12
bank fees	11.23
total	1,587.76
end of year balance	\$390.08

The Mystery School, as mandated by the Book of Legislation (our legal by-laws) encompasses more than its general operations. The Land Fund (all sacred land is under

The Mystery School's aegis), the libraries (Subscription, Periodical and Tape) and, at present, even the Annual Retreat are all functions of The Mystery School.

Annual Retreat

Much has been written this past year about our XVI Annual Retreat. In the first years of our Church we gathered annually at Whitewater State Park in southeastern Minnesota near the Mothervalley. With our founder's move to Kirkland and the founding of The Hermit's Grove, the Church's center of activity shifted as well and now the Annual Retreat is held at the Grove. This past year, however, at the suggestion of Cris Bear several years ago, we tried something different and gathered at Yellowstone National Park. It was a great success. Everyone was satisfied with the accommodations. Working ritual in a small glade in the wooded area adjacent the small village of cabins, we were in full sight of Old Faithful. The next two Annual Retreats will again be at The Hermit's Grove and in 2003 ce we will again be at Yellowstone. Toward that end we have established a scholarship fund, hoping that Member donations might provide some small financial assistance to Member(s) who might otherwise be unable to attend. Whether this fund will be a reality or a dream we do not know but we hope that each of you will see the wisdom in working to establish it.

beginning of year	\$242.88
Member donation	10.00
donation to scholarship fund	10.00
participant payments toward cabins	2,619.59
donation from nonmember	10.00
total	\$2,892.47
postage	\$3.20
lodging contract	\$2,636.55
telephone	3.21
total	2,642.96
end of year	\$249.51

Total Tuition Income - \$3,057.00

The Mystery School received a total of \$3,057.00 in tuition revenues. Many years ago the BOD made the decision to allocate every tuition dollar according to a formula. 45% goes toward operating expenses; 25% goes to the Subscription Library; 25% goes toward the Eldermentor's expenses; and 5% goes into the Land Fund.

Mystery School operations	\$1,375.65
Subscription Library	764.25
Eldermentor Expenses	764.25
Land Fund	152.85
	\$3,057.00

The Land Fund

beginning of year	\$33.64
Member donations	4,105.92
5% of tuition revenues	152.85
% of spiral publication sales	88.58
total	\$4380.99
converted to CD	4,050.00
misc. expense	2.00
balance at end of year	\$332.99

Subscription Library



The library has continued to grow although expansion is carefully managed to ensure that we are not simply adding books so as to fill every available shelf. The section called "Herbals" has shown the most growth. Last winter we added the Miranda Collection which was a significant addition of books for research in the field of herbal medicine purchased with a most benevolent grant to the Hermit's Grove by Church Member Tony Miranda. Throughout the year The Hermit's Grove has added many dozens of new and used herbal books which we did not previously have through an aggressive program of seeking inexpensive, used texts through the Internet (eBay) and purchasing them with monies generated by Rev. Paul who donates all of the income generated by his teaching of the Grove's educational programs.

The third source of books are those donated to the library through *The Unicorn's* book review program. Most of these books come from Llewellyn although we also receive books from many other publishers. Church Members are reminded that the reviews published in *The Unicorn* are the best way to learn of new books being added to the library.

We have begun to place some books in storage in order to avoid over-crowding some sections of the library. Books temporarily removed are older, dated books; duplicate copies when we have more than what we need; books which are superficial and not necessarily accurate (which applies to many of the 'spell magick' texts).

Charly Barker has taken over with the work to establish a card catalog. When completed it will allow us to locate a book by author and title as our computer records have a separate file for each library division and are in alphabetical listing by author. The card catalog will also allow Members to look through those files while in the classroom which is far more accessible than the Beyerls' private home.

beginning of year	\$169.61
Member donations	257.51
% of Mystery School tuition	764.25
donations from nonmembers	12.5
sales of books by Rev. Paul	320.55
sales of library catalogs	6.00
<u>books sold in Hermit's Grove shop</u>	<u>648.74</u>
total	\$2,179.16
postage	\$69.85
printing	200.91
office supplies, expense	232.58
book purchases for resale	1,198.73
magazine subscription	20.00
equipment	87.29
telephone	37.47
electricity	3.28
storage locker rent	15.00
<u>bank expense</u>	<u>2.73</u>
total	<u>1,867.84</u>
end of year	\$311.32

The Periodical Library

Housing 25 years' of neopagan and Wiccan publications, the fragile nature of these publications is such that they are housed stored in the shipping cartons in a safe space provided by Tricia Youngquist in Illinois. It is our hope that this history of the modern Wiccan movement will some day be preserved, perhaps through microfilm, CD-Rom or other technology, should the Church be able to afford the expense. In the interim, the Periodical Library continues to collect publications, primarily through the exchange program in which copies of *The Unicorn* are exchanged for other periodicals. Many years ago the BOD allocated 5% of monthly donations to the Periodical Library, almost its only source of income.

beginning of year	96.61
Member donations	218.78
portion of sample packet revenue	<u>18.00</u>
	\$333.39
postage	100.44
printing	88.84
office supplies	<u>6.00</u>
	<u>195.18</u>
end of year	\$138.21

The Tape Library

As Tape Librarian of The Rowan Tree Church, I am responsible for most facets of the Tape Library. This includes copying and mailing tapes when appropriate, deciding what should be kept permanently on file or not, and knowing who has access to the tapes and who does not. At times this can be a bit confusing - such as when I am dealing with several tapes at once. Part of this responsibility also involves knowing who has blank tapes on file and who does not.

Also part of this is the periodic update on tapes which have been added to the Library since the last update. I occasionally get behind on this when I forget when the last update was. I owe gerry my thanks for occasionally kicking my backside and reminding me about the updates.

Respectfully submitted, Tricia Youngquist

Member donation	\$78.10
postage expense	76.30
end of year	1.80

Other Activities of the Church

The Rowan Tree News

I have been functioning as editor and publisher of The Rowan Tree News this past year. With this endeavor now part of our workload, we continue to fill the eight or nine pages of newsletter with Member letters and news of the Church. Although it is hoped that this project would be taken by someone else within the Church the logistical issues are considerable, given that most of the actual data

entry is now done by the Secretary who types up the letters he receives from Church Members. The Rowan Tree News is overseen by The Mystery School, which believes that the primary function of this periodical is to contain as much Church news as possible. For many of our Members, this is their primary contact with Lothloriën.

This past year we have been blessed with an abundance of Member letters, published thanks to the Secretary who sets aside time to type them up for the editor. Thanks to each of you are definitely in order!

Rev. Paul, temporary editor

Subscription Library Card File Project

I have been working since March of this year to complete a card catalogue for the subscription library. Before then, Alder had been working hard on this job. I hand write index cards (one for title, one for author) for each book in the library, and verify that the title, author's name, and quantity are correct for each book. The cards are then filed in the card catalogue drawers. I also create cards for books that are new to the library, and file new books on the appropriate shelf. In the coming year, I hope to make significant progress on the card catalogue, and perhaps finish it.

Charly Barker, assistant librarian

The Hermit's Grove

This educational subsidiary of The Rowan Tree Church has seen significant growth within the past year. The Master Herbalist program which leads to certification, is nearly complete. Although this also increases the demands placed upon Rev. Paul, it has been very good for the Grove. It has attracted some outstanding students and is operating at capacity. At present we have but one Church Member, Pam I. of California, who is pursuing this course of study.



The Grove's role is to help in providing for the future of the Church as well as assist the local Members with the maintenance of the land which the Beyerls have given to the Church. At present every dollar that Rev. Paul earns goes directly into the Grove. It is through his work as author, publisher and educator that the Grove maintains classes, the labor needed for the gardens, pays the property tax on the acre of land for the Church and pays many of the Church's bills. Rev. Paul and gerry will also be leaving their life insurance monies and the parcel of land which includes the house to the Church as well, in the hopes that there will be people who care enough about the Grove as an educational entity, about The Hermit's Grove as the reality of the gardens and herbs, and about all that the Grove

represents so that they will come forward to assist in the work needed to ensure that The Rowan Tree Church will have a permanent home for the library, some offices, storage of records and will be able to continue providing sacred space for Church Members. We urge all Church Members to participate in the Annual Retreat when it is held at The Hermit's Grove for this truly is a wonderful place.

The Grove replaced the old, rusting metal storage shed with a beautiful, large wooden structure. Although it takes up relatively the same square footage, it is a hip roof and far higher allowing for dramatically more storage. The funding for the first storage building, the grey tool shed built near the house, was from a grant received from George Edington of New Jersey. The funding for the second building, the 'garden barn,' is from money granted us from both George and from Tony Miranda.

The Galadhrim

The Galadhrim is a service organization within the Church open to all Members. It was founded back a dozen or so years ago by Cris Bear and is now managed by gerry Beyerl. Within the Galadhrim are the Lay Ministry and other volunteer projects

The Lay Ministry

This past year has been what might appear as a quiet year for the Lay-ministers of the Rowan Tree. They are Tricia Youngquist (IL), Jim Saigle (Ontario), Frank Cordeiro (CA), Cat McCabe (WA) and gerry Beyerl (WA). However, there has been much growth in the ministry this year. Tricia is starting a discussion group in her community which may eventually become a Community of the Church. Cat has purchased a home and is planning to have rituals and other events there, again with the possibility of creating a Church Community. Frank was in charge of those Members at the Grove that were not able to attend the Yellowstone retreat; he held a Sunday Circle and officiated at the Lamma Eve Ritual, allowing Grove Members to continue to use this space under ministerial guidance.

Anyone interested in finding out more about the Lay-minister program, please write to gerry Beyerl at the Church's Kirkland office for more information. The program takes work to complete, but those who have completed it have a great knowledge of the Rowan Tree's beliefs and functions.

Blessings, gerry Beyerl, Lay-Ministry Coordinator

Tricia Youngquist

My function as a Lay Minister within the Church has expanded to the establishment of a discussion group. It has been a bit slow coming together which is partly due to concurrent changes which have occurred in my life in rapid

succession. Nevertheless, I have met with several people over the last few months and hopefully will be setting a specific time to meet. It is my intention to start with a meeting once a month and build from there, probably to twice a month. The general topic for discussion as planned at this point is Wiccan Spirituality and how we each arrived at this point.

Cat McCabe

[No statement at this time. She has purchased a new home and is hoping to use it to establish a community and hold rituals.]

Frank Cordeiro

[No statement at this time. He has led the Grove community at this past years Annual Retreat rituals and functions.]

Jim Saigle

The Seasons have offered us a most wonderful Year on this trip around the Sun! My Ministry has centered around healing. I observe The Child of Light Ritual and the first quarter of the Moon. I help to remember those who seek healing and I remember the Earth.

I have been studying the process and the nature of Healing. I plan to present a paper on Healing in the coming year.

Blessings of Light and Dark, Jim

The Unicorns of the Galadhrim

felaróf

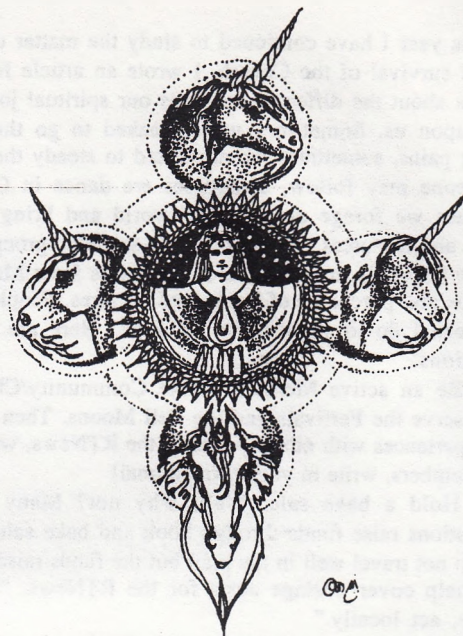
As the "Head-Horn" of the Galadhrim Society of Unicorns, it has been my honor and duty to communicate with the other Unicorns to let them know how we are all doing and to remind them of their commitment to communicate with and support each other. Currently, there are twelve Unicorns offering services of many types to the Church Members and each other. We also have a Unicorn that took a sabbatical who is considering rejoining the herd. Thirteen is a nice number, don't you think?

Last year, instead of this Unicorn doing all the talking, each Unicorn was asked to submitted a brief statement about their service for the past twelve months. The same request has been made this year, and here is the result.

The Child of Light healing rituals have been continued and are a major focus of our group working. Many thanks to each Member of the Church that has made a request for healing energies. Your requests help us to stay focused on the importance of this working.

i hope these responses from the Unicorns about what they have been doing in service to the Church during this past year is helpful to you in understanding how the Church Members are important.

In Service, *felaróf*



Amalthea

I am the "Town crier" for the Galadhrim, mostly for the COL when ritual time and RTNews time do not coordinate well. Hopefully, I will be able to create a wee fundraiser too!

Lindreau

I was unable to continue with my plans for the POP this past year. I was hopeful that it would undergo a successful revision. Unfortunately, I wasn't able to organize the new system. I was relieved when Rev. Paul decided to take over rather than see the program dismissed. I had very strong feelings about serving those men. I have been reluctant to pick up another project because I want to be sure that I can keep any new commitments I make.

I would like to see the communication within the herd deepen in the coming months. I have some ideas on how we can facilitate that process. I am looking forward to stepping into a more active role within the Galdhrim.

Ebon Moon

[No statement sent in. She did some work with The Littlest Unicorn.]

Gwathlo

Life has been difficult lately because of health. But I did manage to collect stones from the gardens at the Grove. They didn't take a good polish, but Goddess knows we tried. I thought if each Galadhrim Member had a Grove stone, they could feel more connected.

"Love brings bewitching grace into the heart." - Euripides

Keerdan

This year I have continued to study the matter of the physical survival of the Church. I wrote an article for the RTNews about the different demands our spiritual journey places upon us. Sometimes we are asked to go through growing pains, sometimes we are asked to steady the way so someone may follow, sometimes we dance in Circle, sometimes we forage out into the world and bring back supplies and resources. We are a widely scattered group.

The Church's main source of income is from Member donations and purchases of books and services. People ask, "What can I do to support the Church?" Here are some suggestions:

1. Be an active Member of the Community/Church. Yes, observe the Festivals and the Full Moons. Then share your experiences with others, write to the RTNews, write to other Members, write in your own Journal!
2. Hold a bake sale. Well, why not? Many local organizations raise funds through book and bake sales. No cakes do not travel well in the mail but the funds raised can surely help cover postage costs for the RTNews. "Think globally, act locally."
3. Be kind to yourself and to the people around you. Take time to think, to set priorities and still allow the spontaneous into your life. "Practice random acts of senseless kindness."
4. Send e-mail.

Unicorn Hugs from Keerdan

Maheen

This has been a year of change for me. I'll be finishing my BA fall quarter of this year, became a volunteer mediator for Victim and Offender Mediation Services in Seattle and I bought a house. Wow. The house mainly came about because as I was working at an intern program at the Hermits Grove, I realized how much I missed digging in the dirt. I've been living in a condo for the last eleven years so I'm very excited about my new living conditions. Also, this year I went on the Annual Retreat which was in Yellowstone. What a wonderful experience. I do hope we go back for another retreat in the near future.

As far as church functions, I continue to be a Lay Minister and as part of that role I correspond with individuals in the prisoners program. This has been a valuable experience for me. Because of my new living situation, I've been thinking of ways I could support my community. That may be by having ritual at my house or possibly hosting discussion groups. Because I am in my last quarter of school, I haven't totally formulated any plans yet but once I've graduated I'll be able to give this some serious thought. Finally, I continue the book binding of Rowan Tree publications. My goodness, I think I've been providing this function for over four years now. Many Blessings to you all.

Sordimon

During the year past, my service to our Church has

focused on setting up and maintaining an e-list to help Members of the Church communicate. I am also working on a web site for The Littlest Unicorn, and with the site now in place I really hope to get the information on the site before my mane turns grey! It is good to see the herd growing and new energy swirling through the ranks. By the way, did you know that we are "natural" tap dancers?

Uni-hugs to all

Valerian

As the resident Unicorn at Tricia's home, it seems to fall to me to write a report for the Galadhrim concerning the Tape Library. It is something that definitely keeps Tricia trotting (Unicorns don't hop well!)

Each month the process begins with the arrival of the first tape from Rev. Paul. This will be followed by a second tape. The time frame varies as the tapes are made for the Sunday Circles and New Moons, which are not always evenly spaced.

Tricia's work begins then with combining the two tapes into one. Copies are made to be sent to those who request them. Sometimes only a Sunday Circle tape is sent to a Member who is not in the Mystery School. I'm glad that is Tricia's job! Sometimes things get a bit hectic with trying to keep it all straight. There is a lot to remember - who gets what, who has sent blank tapes on reserve, and what is kept permanently for the Tape Library. Only recently, Tricia had to borrow back a tape to make a library copy. I was very glad that we were able to find one available. Tricia was getting stressed! It all worked out though, and the tape was returned to its own home.

Uni-hugs, Valerian

Odonata

Since some of you may not know me, I'll explain briefly what my services to the Church has been.

First, I've been volunteering in the Church's Subscription Library. I've been helping create a card catalogue for the Library, and have hand written index cards for hundreds of books! It's a big job, and I've got many, many sections left to complete. Part of setting up the card catalogue also involves verifying that the title, author(s) name(s), and number of copies are correct. Needless to say, I'm getting very well acquainted with several sections of the Library!

Another service I am donating to the Church is the sewing of robes for local Church Members. After receiving many compliments on my ritual robe, I have offered to sew robes for others in the Grove Community if they provide the fabric. If you are interested in a hooded, bell-sleeved robe, contact me and I will give you the fabric specifics. So far, in addition to three for myself, I have three robes either complete or in the works for Church Members. I just began my sewing journey at the beginning of the year, so robe-making has been a wonderful learning experience, and each robe tends to come together more smoothly and easily than the last.

Lothloriën's
Calendar & Wheel of the Year



for
The Rowan Tree Church
2000 - 2001 ce

November



1 November 2000 ce
The beginning of our religious year

10 November 2000 ce
Full Lovage Moon
actual: 1:15 p.m. PST: 19° Taurus 47'
Saturday the 11th
The Ritual of Lothloriën

25 November 2000 ce
New Sage Moon
actual: 3:11 pm PST: 4° Sagittarius 00'
The Ritual of Lothloriën

December

10 December 2000 ce
New Elfwort Moon
actual: 4:03 am EST: 19° Gemini 38'
Monday morning the 11th
The Ritual of Lothloriën

20 December 2000 ce
Yule Eve
This year's Sabbat ritual: "How the Little Unicorn
Saw the Birth of the Sun Child"
Sun enters Capricorn: 6:38 am MST
Thursday morning the 21st

25 December 2000 ce
New Comfrey Moon
actual: 11:22 am CST: 4° Capricorn 14'
The Ritual of Lothloriën

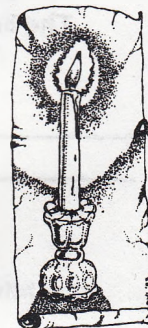
January

8 January 2001 ce
Full Hyssop Moon
actual at 1:24 pm MST - 19° Cancer 39'
Tuesday the 9th
The Ritual of Lothloriën

24 January 2001 ce
New Star Anise Moon
actual: 7:07 a.m. CST - 4° Aquarius 37'
The Ritual of Lothloriën

February

1 February 2001 ce
Candlemas Eve
"A Candlemas Journey"
with The Ritual of Lothloriën



7 February 2001 ce
Full Angelica Moon
actual: 11:12 pm PST - 19° Leo 35'
The Ritual of Lothloriën

18 February 2001 ce
New Willow Moon
actual: 1:21 am MST - 4° Pisces 47'
The Ritual of Lothloriën

March

8 March 2001 ce
Full Lavender Moon
actual: 9:23 am PST: 19° Virgo 12'
Friday morning the 9th
The Ritual of Lothloriën

19 March 2001 ce
Eostara Eve
Sun enters Aries: 8:31 am EST
Tuesday morning the 20th
Eostara Journey of Lothloriën

24 March 2001 ce
New Blessed Thistle Moon
actual: 5:21 pm PST: 4° Aries 28'
The Ritual of Lothloriën

April

1 April 2001 ce
Did you spring ahead?

7 April 2001 ce
Full Verbena Moon
actual: 10:22 p.m. CDT
The Ritual of Lothloriën

23 April 2001 ce
New Lovage Moon
actual: 9:26 am MDT: 3° Taurus 32'
The Ritual of Lothloriën

30 April 2001 ce
Beltane Eve
The Beltane Journey of
Lothloriën



May

6 May 2001 ce
Full Basil Moon
actual: 9:53 am EDT - 17° Taurus 04'
Monday morning the 7th
The Ritual of Lothloriën

7 May 2001 ce
The Tarot Ritual of Lothloriën
worked within The Mystery School
Begins promptly at 6:00 a.m. PDT

22 May 2001 ce
New Elfwort Moon
actual: 7:46 pm PDT - 2° Gemini 03'
The Ritual of Lothloriën

June

5 June 2001 ce
Full Sage Moon
actual: 8:39 pm CDT - 15° Sagittarius 26'
The Ritual of Lothloriën

20 June 2001 ce
Midsummer's Eve
"The Deva Ritual of Lothloriën"
or the Midsummer Journey of Lothloriën
Sun enters Cancer: 0:38 a.m. EDT
Thursday morning the 21st

21 June 2001 ce
New Hyssop Moon
actual: 7:58 am EDT - 00° Cancer 10'
The Ritual of Lothloriën

July

4 July 2001 ce
Full Comfrey Moon
actual: 9:04 am MDT - 13° Comfrey 39'
Thursday the 5th
The Ritual of Lothloriën

20 July 2001 ce
New Hyssop Moon
actual: 2:44 pm CDT - 28° Cancer 08'
The Ritual of Lothloriën

26 July 2001 ce
Opening of the 17th Annual Retreat
1:30 p.m. - Opening of the Retreat
7:00 p.m. - The Ritual of Lothloriën

27 July 2001 ce
17th Annual Retreat
The Child of Light - 8:00 a.m. PDT
Mingling of the Soil - 2:30 p.m. PDT
The Dream Quest of Lothloriën - 6:30 pm PDT

28 July 2001 ce
17th Annual Retreat
The Dream Quest concludes - early morning
The Child of Light - 8:00 a.m. PDT
The Lunar Rituals of Lothloriën - 1:30 p.m.
Retreat Potluck Feast - 4:30 p.m.

29 July 2001 ce
17th Annual Retreat
The Child of Light - 8:00 a.m. PDT
Sunday Circle 9:00 am PDT
Closing of the Retreat

31 July 2001
Lammas Eve
'The Lammas Journey of Lothloriën'
or 'The Lammas Ritual'



August

3 August 2001 ce
Full Star Anise Moon
actual: 10:56 pm PDT - 11° Aquarius 56'
The Ritual of Lothloriën
"Reading of the Names"

19 August 2001 ce
New Angelica Moon
actual: 10:55 pm EDT - 26° Leo 12'
Saturday evening the 18th
The Ritual of Lothloriën

September

2 September 2001 ce
Full Willow Moon
actual: 4:43 pm CDT: 10° Pisces 28'
The Ritual of Lothloriën

17 September 2001 ce
New Lavender Moon
actual: 4:27 am MDT - 24° Virgo 36'
The Ritual of Lothloriën

21 September 2001 ce
Autumn Eve
Sun enters Libra 4:05 p.m. PDT Saturday the 22nd
"The Autumn Journey"

23 September 2001 ce
Ritual for Fall
& Welcoming of the Board of Directors



October

1 October 2001 ce
Full Blessed Thistle Moon
actual: 8:49 am CDT - 9° Aries 26'
Tuesday the 2nd
The Ritual of Lothloriën

16 October 2001 ce
New Verbena Moon
actual: 3:23 pm EDT - 23° Libra 30'
The Ritual of Lothloriën

31 October 2001 ce
Hallows Eve
"The Hallows Ritual of Lothloriën" or
The Hallows Journey of Lothloriën

The Tradition of Lothloriën has a number of Sabbat Rituals published for your use. In addition, a collection of eight Sabbat Journeys suitable for working within a Circle cast with The Ritual of Lothloriën, is expected to be in print and available by the end of January, 1999 ce.



When we cannot work our New Moons at the same time as the actual astrological event, we generally work the first evening *following* the precise time so as to be working during waxing energy.

When we cannot work our Full Moons at the same time as the actual astrological event, we generally work the evening before the Full Moon so as to be working at the height of the Moon's waxing energy.

Ritual times may vary. Local Communities provide their own schedules. If you cannot work

at the Full Moon or on the observed evening, we recommend when possible working with the waxing energies.

New Moons are worked within The Mystery School. Your solitary work is encouraged.

Dates to Remember

Noël Knower	birthday	5 November
Randy Kellar	birthday	8 November
First Hermit's Grove	Sunday Circle	6 Nov. 1994
Ama Massey	birthday	18 November
Doug Taylor	birthday	5 December
Isaiah Dearborne	birthday	14 December
Carlos Castenada	birthday	25 Dec. 1931
J. R. R. Tolkien	birthday	3 Jan. 1892
Kahlil Gibran	birthday	5 January
Judith Karliss	birthday	11 January
Gloria Torell	birthday	11 January
Joan of Arc	birthday	15 Jan. 1412
<i>Painless Astrology</i> (2nd edition)	in print	17 Jan. 1997
final IRS ruling: RT is tax exempt		19 Jan. 1995
Lewis Carroll	birthday	27 Jan. 1832
Anahata Katkin	birthday	1 February
first Ritual of Dedication	conducted	2 February
Charly Barker	birthday	3 February
Legal Incorporation - Minnesota		4 Feb. 1980
Lilith's First Degree	Initiation	5 Feb. 1999
Ortolano's First Degree	Initiation	7 Feb. 1997
Jesse Ferguson		16 Feb. 1976
Sybil Leek	birthday	22 Feb. 1922
new garden barn erected at Grove		22 Feb. 2000
Rev. Paul's First Degree	Initiation	23 Feb. 1977
<i>A Compendium of Herbal Magick</i>	manuscript complete	18 March 1996
Rev. Paul began his Witchcraft	training	19 March 1976
Verger's First Degree	Initiation	13 March 1997
Edgar Cayce	birthday	18 March 1877
Rev. Paul's Ordination		20 March 1980
Joseph Campbell	birthday	26 March
Elinor Gum	birthday	26 March
First Unicorn Ensemble	concert	1 April 1979
<i>The Holy Books of the Devas</i> (4th edition)	in print	1 April 1998
Cris Bear	birthday	3 April
Michelle Sklar	birthday	9 April
Chris Hulka	birthday	10 April
Donna Lewin	birthday	14 April
Rev. Paul & gerry's Handfasting		17 April 1993
new Dancing Circle altar	installed	22 April 1998
Jennifer Smallbone	birthday	24 April
Rev. Ron Weroski	birthday	30 April
Salvador Dali	birthday	11 May 1904
Hermit's Grove incorporated		20 May 1994
houseblessing: House on Stevens		29 May 1980
Tony Miranda	birthday	5 June

Pam Bealer	birthday	7 June
Jennifer Kern	birthday	16 June
Derek Van Spoor	birthday	23 June
First Sunday Circle		24 June 1979
First filing for RT's 501(c)(3)		25 June 1990
Rowan Dearborne	birthday	24 June 2000
Jane Anderson	birthday	2 July
Denise Francis	birthday	6 July
Cat McCabe	birthday	10 July
Moved into the Blaisdell House		15 July 1984
<i>A Wiccan Bardo, Revisited</i>	in print	16 July 1999
Aldous Huxley	birthday	26 July 1894
Rev. Ron's Ordination		29 July 1995
Ladyhawk's First Degree	Initiation	2 Aug. 1996
The Rowan Tree given its name		15 Aug. 1979
Lizard Frank	birthday	25 August
Rev. Ron's First Degree	Initiation	29 Aug. 1992
gerald Beyerl	birthday	1 September
Rev. Paul Beyerl	birthday	2 September
Rev. Paul's 2nd Degree	Initiation	5 Sept. 1979
Jim Saigle	birthday	10 September
Dianne Lorden	birthday	19 September
Jack Reynolds	birthday	19 September
Moved to First Avenue Apartment		22 Sept. 1981
Stacey Furtado	birthday	27 September
gerry purchased acre of land (gardens and woods)		1 Oct. 1983
Tricia Youngquist	birthday	19 October
Pan Sculpture arrives at Grove		20 Oct. 1995
Allison Moore	birthday	22 October

We could only include those Members whose birth dates we have in our records. We do not wish to exclude any one. Included are important dates in Church history, the birth dates of historical figures, important volunteers in our Church and the Members we have on file. Remember these in your daily blessings as you turn the Wheel of the Year... If you are not listed, go ahead, send us your birth information!



Preserve Lifel

(All artwork in this calendar by Dianne Lorden, from *The Holy Books of the Devas*)