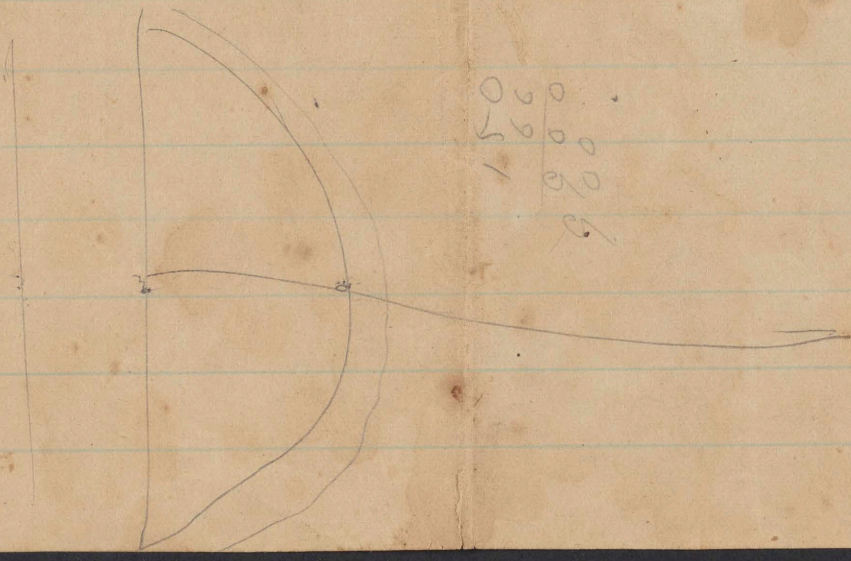


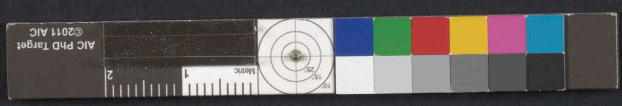


De A, S. Sauch Scale 40 ch to an inch

Marant 2nd day of January 1832
 Anceps 24th June 1833 for De A de Sa Roche
 a tract of land containing six hundred and ninety acres
 bounded by lands of G H Johnston said De Sa Roche + Marant
 certified by M. Cat
 Joseph Mansueti }
 Jno. May } C C. Scale 40 chains to an inch



0000
 0000
 0000
 0000
 0000



5-3 1/2
11
5-3
8-3 5-
518 8

9581 (09
119
88
43

4 | 1.75
4375
1015
4375
875

12/32
48
27
65
2.7
93

66) 1583 (2
918
918
10098

270
609
888
39

892
883
1881

571
091

18-
11
10
1
8-

