

*Pine Cone*

---

*nineteen 47*

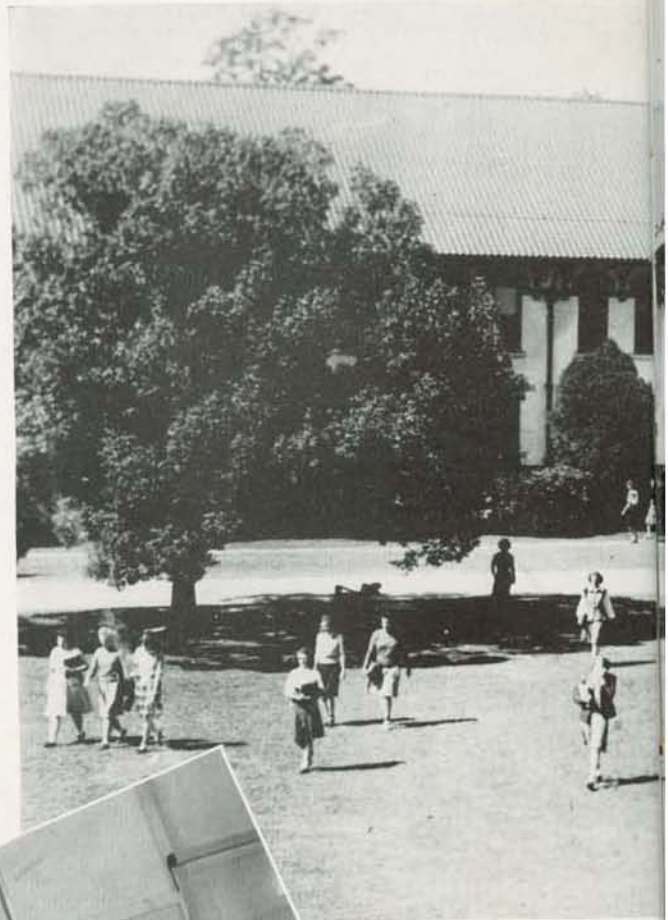




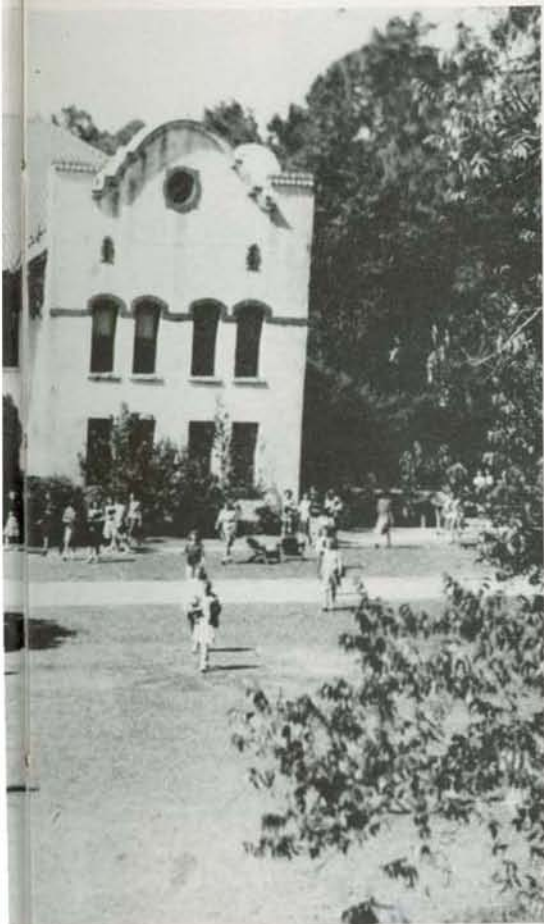
8/15/9

*Pine Cone*

~~21267~~







BIG DAY --- FROSH ARRIVE

SANTA COMES TO FINE ARTS BAZAAR

GLORIOUS TO OUR VIEW

ORANGES BETWEEN INNINGS

CALIFORNIA WAS NEVER LIKE THIS





Orange Slicing  
For Sports — Club Games



Corresponding or Studying?

Experiments!





# AMONG THE STATELY PINES...



Club Contests



Form on the Diving Board



Hikes

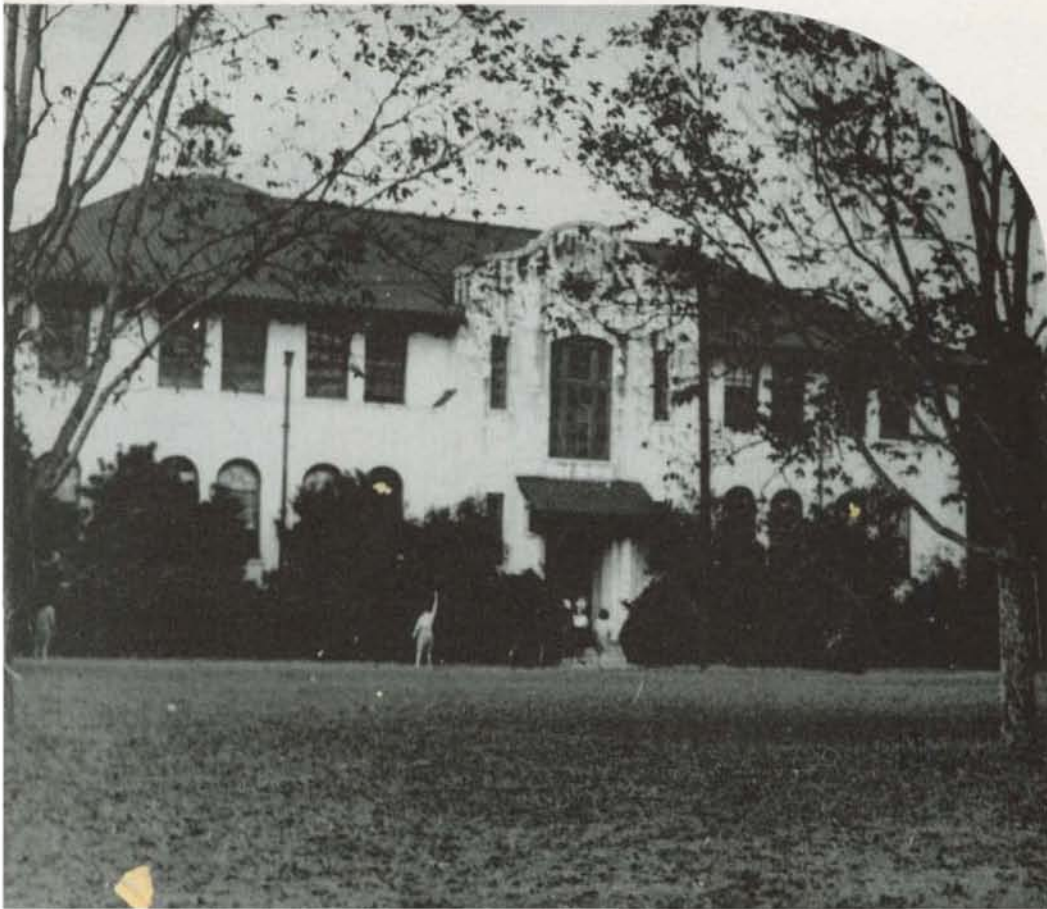




# REGISTRATION



FROM BETH



FROM  
AD BUILDING  
FOR CLASSES





TO "SUGIE"



TO "DR. D."



TO  
LIBRARY  
FOR RESEARCH







# GEORGIA STATE WOMANS COLLEGE YOUR 1947 PINE CONE

The combined activities of work, study and play in a setting of stately pines surrounding gleaming white buildings of Spanish architecture unite to build well-rounded students who every year leave to take their places in the ranks of leaders.





DEDICATED TO



DR. HAROLD STRONG GULLIVER

*"A Smile for Everyone"*



---AND DIVIDED INTO THESE  
**2** SECTIONS---

**1** People—the faculty and administrative staff directing the academic life on campus and a portrayal of the students who are G.S.W.C.'s contribution to a better world.

**2** Organizations which offer the opportunity for the development of the skills and abilities possessed by the students.



FRANK R. READE, *President*  
A.B., M.A., Ph.D.,  
University of Virginia



MARJORIE ESTELLE CARTER  
*Dean of Junior College*  
Associate Professor of Biology; B.S., William and  
Mary; M.A., University of Virginia



MRS. W. M. THOMAS, A.B.  
*Registrar*  
B.A., Georgia State Woman's College



# ADMINISTRATION and FACULTY



FRANCES LOUISE STUMP, *Assistant to Treasurer and Purchasing Agent*; B.A., Georgia State Womans College

J. R. DUSENBURY, *Treasurer and Purchasing Agent*

BETH WHITAKER, *Secretary to the President*; B.A., Georgia State Womans College

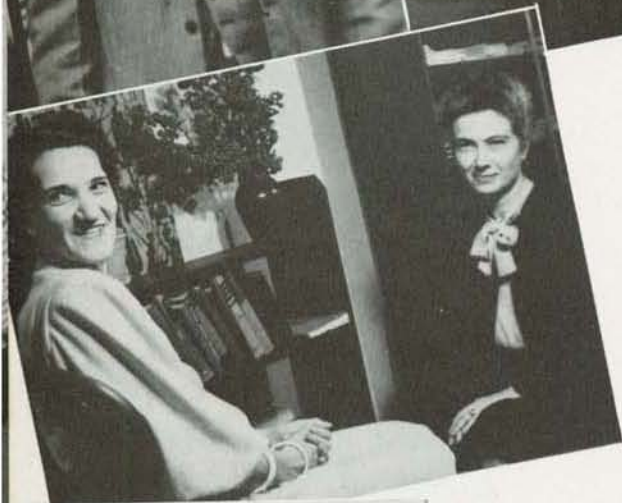
ELIZABETH FINK, *Director of Placement and Publicity*; B.A., East Tennessee State College

LILLIAN PATTERSON, *Librarian*; B.A., Georgia State Womans College; B.S. in L.S., University of North Carolina

THERA HAMBRICK, *Assistant Librarian*; B.A., Georgia State Womans College; B.S. in L.S., Louisiana State University

ALICE MEADORS, *Assistant Librarian*; B.A., Georgia State Womans College; B.S. in L.S., George Peabody College for Teachers





## DIVISION OF SOCIAL

JOSEPH AUSTIN DURRENBERGER, *Professor of Social Sciences*; B.A., Southwestern University; M.A., Columbia University; Ph.D., Ibid

WILLARD E. RUGGLES, *Associate Professor of Social Sciences*; B.A., M.S., Furman University

GERTRUDE GILMER ODUM, *Professor of English*; B.S., George Peabody College for Teachers; M.A., Ibid

HAROLD STRONG GULLIVER, *Professor of English*; B.A., Yale University; M.A., Columbia University; Ph.D., Ibid

MRS. N. E. FRY, *Professor of Sociology*; B.S., Georgia State College for Women; M.A., Tulane

MRS. CLAUDE KNIGHT, *Professor of Education*; B.S., M.A., George Peabody College for Teachers

MILDRED McCLELLAN PRICE, *Professor of History*; B.A., Georgia State Womans College; M.A., Columbia University

HONORIA SAPELO TREANOR, *Professor of French and Spanish*; B.A., University of Georgia; M.A., Ibid; Ph.D., University of North Carolina





## SCIENCES AND HUMANITIES

CLIFTON HUNTINGTON WHITE, *Associate Professor of Art and Music and Dean of Chapel*; B.A., Emory University; M.A., Ibid.

FRANCES RUTH CARPENTER, *Professor of Art*; Bachelor's Diploma and B.S., Teachers College, Columbia University; M.A., Ibid.

LOUISE ANNE SAWYER, *Professor of Speech*; Graduate, Columbia College of Expression; B.S., School of Speech, Northwestern University; M.A., Columbia University.

RAIMONDE AUBREY, *Associate Professor of Music*; F.T.C.L., Trinity College of Music, London.

MARTUA CARRINGTON AUBREY, *Accompanist, Music Department*.

GLADYS E. WARREN, *Professor of Music*; B.M., Lake Erie College; Graduate, New England Conservatory of Music; M.A., Iowa State University; Pupil of Carl Beecher, Northwestern University; of Ernest Hutcheson, New York City; of Lee Pattison, Chicago; of Tobias Matthay, Matthay School of Pianoforte, London, England; of Arthur Alexander, Royal College of Music, London, and of Ashley Pettis, Eastman School of Music, Rochester, N. Y.

FRANCES B. PARDEE, *Instructor in Violin*; Graduate, Cincinnati Conservatory of Music; Pupil of Sevcik in Vienna, and of Robert Perutz and Julian Pulkowski, Cincinnati Conservatory.

GLYNN HILL, *Assistant Professor of Voice*; B.A., Georgia State Womans College.







## FACULTY

# DIVISION OF PRACTICAL ARTS, NATURAL SCIENCES and MATHEMATICS



JEAN LOWRY, *Business Education Instructor*; B.A., East Tennessee State College; M.S., University of Kentucky

MRS. VENNIS A. KENDRICK, *Professor of Home Economics*; B.S., Auburn Polytechnic Institute

EARL W. PHELAN, *Professor of Chemistry*; B.Chem., Ph.D., Cornell University

LENA PHELPS HAWKS, *Professor of Mathematics*; B.A., Goucher College; M.A., Vanderbilt University; Ph.D., The Johns Hopkins University

ROLF EARL MOSELEY, *Associate Professor of Chemistry*; B.Ph., Emory University; B.S., Ibid.

BEATRICE NEVINS, *Professor of Biology*; B.Ph., M.Ph., D.Ph., University of Wisconsin

LEONORA IVEY, *Professor of Physical Education*; Graduate, Sargent School for Physical Education; B.S., Georgia State College for Women; M.A., George Peabody College for Teachers

## PHYSICAL





## DORMITORY STAFF



MRS. FLORINE W. MIERS, *Superintendent of Dormitories*

MRS. J. A. SCONYERS, *Director of Social Activities*

MRS. EVA A. SHRIVALLE, *Dietitian*

MRS. C. C. WHITTLE, *Assistant Dietitian*

MARIAN E. FARBAR, M.D., *Resident Physician*

MATILDA DASHER MATHIS, *Instructor in Physical Education; B.S., Louisiana State University*

FRANCES ALEX, *Instructor in Physical Education; Graduate nurse; B.S. in Physical Education and Health*

MRS. PHYLLIS VALENTE, *Dancing Instructor; B.A., Oklahoma A. & J. M.; M.S., Louisiana State University; attended Bennington School of Dance in Vermont*



## EDUCATION



# SENIOR OFFICERS

MARJORIE MASSEY, *Vice-President*



ELIZABETH PATE, *President*



ANNE WHITTLE, *Secretary-Treasurer*



SENIOR ACTIVITY

June 11, 1946

Dear Diary:

Tomorrow we march down the aisle in our caps and gowns and get the "container" and the "thing contained." Four years have gone by so swiftly, and I want to remember as much as I can that has happened, particularly in my Senior year.

It seemed funny at first to be "big wigs," top class on campus, and it took us a while to get used to the fact that people like the presidents of organizations and editors of publications were from our class—people we ran around with and whose sardines we shared at midnight.

Being "big wigs" has had its responsibilities, too, and we realized that more than once this year.

However, all work and no play makes Jill a dull gal, and we certainly have not been dull. Birthday



parties, square dances, and the fun we had with the Senior Carnival will live in our memories a long time, especially that "can-can" number in the side show.

We have brought out our white evening dresses twice; for the "Firelighting Service" and the "Hanging of the Greens," and we have worked together on the Christmas mailing list.

We have heard the call of "Last time" as we did the traditional things that we have grown to love so well, and when members of our class started leaving in December and March, then we realized that, in truth, we were graduating this year.

We have tried to do our best in whatever we have done, and we leave behind a record of which we need have no shame.

And now tomorrow we go out to face the cold civil world. Well, look out, World, here we come!





SARAH KATE ADCOCK—Fender, Ga.

*Humanities; Emphasis in English*

Sports Club 1, 2, 3, 4; Glee Club 1, 3; Home Economics Club 1, 2; Sociology Club 3; Y.W.C.A. 1, 2, 3, 4; Dance Club 3, 4; League of Women Voters 4; S.G.A., 1, 2, 3, 4.

HARRIET LOUISE ARRINGTON—Dixie, Ga.

*History, major; English and Biology, minors*

Y.W.C.A. 1, 2, 3, 4; "Y" Cabinet 2, 3, 4, Treasurer 2, 3, 4; S.G.A. 1, 2, 3, 4; Monitor 1, 2, 3, 4; I.R.C. 2, 3, 4, Vice-Pres. 2, Pres. 3, Vice-Pres. 4; Math Science 2, 3, 4; Senior Honor Society 3, 4, Pres. 4; League of Women Voters 3, 4, Pres. 3.

MILDRED SIMONE BASSETT—Fort Valley, Ga.

*French, major; English, minor*

S.G.A. 1, 2, 3, 4; Sports Club 1; Y.W.C.A. 1, 2, 3, 4; I.R.C. 2, 3, 4, Sec. 2; Romance Language Club 2, 3, 4, Pres. 3, Sec.-Treas. 4; Senior Honor Society 3, 4; Math Science Club 3; E.C.A. 3; Campus Canopy 2, 4.

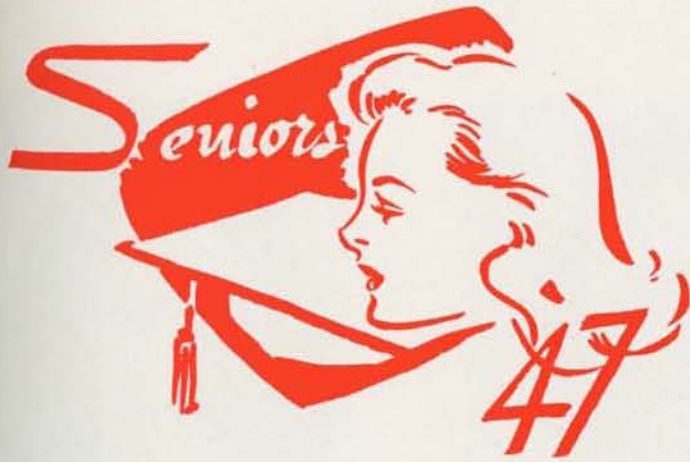


LISETTE CATHERINE BLACK—Savannah, Ga.

*English, major; History, minor*

Transfer from Armstrong Junior College, Savannah, Ga. English Club 4, Vice-Pres. 4; Romance Language Club 4; I.R.C. 4; House Council 4; Y.W.C.A. 3, 4; S.G.A. 3, 4.





EDITH RUTH COLLINS—Waycross, Ga.

*Sociology, Major*

Y.W.C.A. 1, 2, 3, 4, Vice-Pres. 3, Pres. 4; "Y" Cabinet 2, 3, 4, Organist 2; Chapel Choir 1, 2, 3; S.G.A., 1, 2, 3, 4; Executive Committee 4; House Council 3; Monitor 4; Sports Club 1, 2, 3, 4; *Campus Canopy* 1, 2, 3, 4, News Editor 1, Managing Editor 2, Columnist 3, 4; PINE CONE 3, 4, Assistant Activities Editor 3, Literary Co-Editor 4; Sociology Club 2, 3, 4; Math Science Club 2, 3; Philharmonic Club 1; Glee Club 1, 2; Fellowship of St. Martin 2, 3, 4, Pres. 2.

VIRGINIA ELIZABETH BOLEN—Mayo, Fla.

*Secretarial Science, major; History, minor*

Sports Club 1, 2, 3, 4, Lambda Team Captain 2, Pres. 3; Sports Council 1, 2, 3, 4; Awards 1, 2, 3, 4; Freshman Honor Society 2; Senior Honor Society 3, 4; Business Club 3, 4, Vice-Pres. 3, Pres. 4; Valdosta Club 1, 2, 3, Vice-Pres. 2; Math Science Club 2, 3; Sociology Club 3; S.G.A. 3, 4; Executive Committee 3; E.C.A. 4; League of Women Voters 3, 4; I.R.C. 4; PINE CONE Staff 4; Glee Club 1.



DATHINE ELEANOR BRUNSON—Reynolds, Ga.

*Secretarial Science, major; History, minor*

Sports Club 1, 2, 3, 4; Sports Club Council 3, 4; Awards 1, 2, 3, 4; Y.W.C.A. 1, 2, 3, 4; S.G.A. 1, 2, 3, 4; Sociology Club 3; Business Club 3, 4, Treas. 4; PINE CONE Photograph Editor 4; *Campus Canopy* Sports Editor 3, 4.

DOROTHY CLARE CARSON—Savannah, Ga.

*Social Work, major*

Y.W.C.A. 1, 2, 3, 4; S.G.A. 1, 2, 3, 4, Vice-Pres. 3; House Council 1; E.C.A. Chairman 3; Monitor 2, 3, 4; Sophomore Class Pres. 2; Sports Club 1, 2, 3, 4, Sec. 3; Sports Club Council 2, 3, 4; Awards 1, 2, 3; Math Science Club 3; Romance Language Club 2, 3, 4, vice-Pres. 3; *Campus Canopy* 1, 2, 3; League of Women Voters 3, 4.





MARY ELLEN COMPTON—Columbus, Ga.

*Humanities Division, Emphasis on Art*

Y.W.C.A. 1, 2, 3, 4; "Y" Cabinet 2; Chapel Choir 1; S.G.A. 1, 2, 3, 4; Monitor 2, 3, 4; Pres. of Freshman Class; Sports Club 1, 2, 3, 4; Sports Club Council 2, 3, 4; Fine Arts Club 1, 2, 3, 4; Sock and Buskin Club 1, 2, 3, 4; Math Science Club 2, 3, 4; Romance Language Club 3, 4; PINE CONE 3.

LAURA CLARKE CONVERSE—Valdosta, Ga.

*Secretarial Science, major; Political Science, minor*

Y.W.C.A. 1, 2, 3, 4; Sports Club 1, 2, 3, 4; S.G.A. 1, 2, 3, 4; E.C.A. 3; Executive Committee 4; Philharmonic Club 1, 2, 3; Glee Club 1, 2, 3, 4, Sec. 4; Business Club 3, 4, Pres. 3; Math Science Club 2, 3, 4; Senior Honor Society 3, 4; Dance Club 1, 2; Valdosta Club 1, 2, 3, 4; I.R.C. 4; Fellowship of St. Martin 2; League of Women Voters 3, 4, Sec. 3, 4; Activities Editor of Pine Cone 4; *Campus Canopy* 3, 4, Assistant Business Manager 3.

MARGUERITE DICKERSON—Ambrose, Ga.

*Biology, major; English, minor*

Math Science Club 2, 3, 4; Sociology Club 2, 3, 4; Sports Club 1, 2; Y.W.C.A. 1, 2, 3, 4; S.G.A. 1, 2, 3, 4; Log Cabin Committee 3, 4; Business Staff of *Canopy* 2, 3, 4; B.S.U. 1, 2, 3.

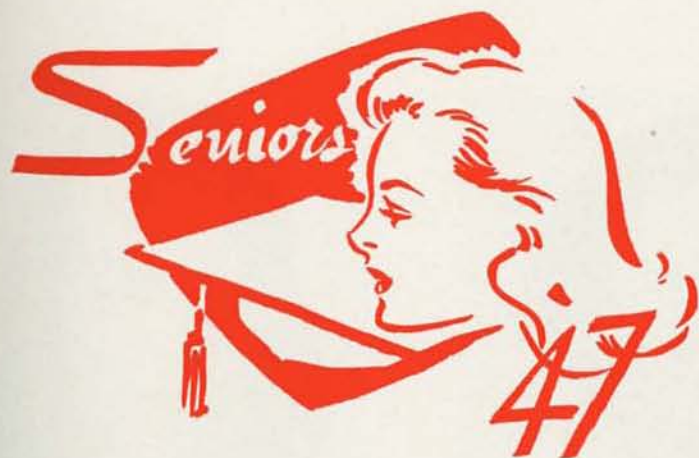


VIRGINIA CORINNE DELLINGER—Thomaston, Ga.

*Chemistry, major; Biology, minor*

S.G.A. 1, 2, 3, 4; Executive Committee 3; Y.W.C.A. 1, 2, 3, 4; Sports Club 1, 2, 3, 4, Historian 4; Sports Club Council 2, 3, 4; Awards 1, 2, 3, 4; Math Science Club 2, 3, 4, Chairman of Chemistry Div. 4; *Campus Canopy* 2, 3, 4, Sports Editor 2, Editor 3, Make-up Editor 4; Assistant Literary Editor of PINE CONE 3; League of Women Voters 3, 4, Member of Board 3, 4.





MARY JOSEPHINE EVERETT—Pavo, Ga.

*Humanities Division, Emphasis on English*

S.G.A. 1, 2, 3, 4; House Council 2, 4; Y.W.C.A. 1, 2, 3, 4; Sports Club 1, 2; Glee Club 1, 2, 3, 4; Serenaders 4; Methodist Choir 3; *Campus Canopy* Reporter 2; Business Club 3; English Club 3, 4, Sec.-Treas. 4; Romance Language Club 3, 4.

ILA DOWNIE—Uvalda, Ga.

*Home Economics, major; Sociology, minor*

Transfer from Brewton Parker. Y.W.C.A. 3, 4; S.G.A. 3, 4; Sports Club 3, 4; Home Economics Club 3, 4, Secretary 4; Sociology Club 3, 4; Monitor 4.

BERTHA DREXEL—Valdosta, Ga.

Fine Arts Club 3, 4, Reporter 4; Valdosta Club 1, 2, 3, 4; Sports Club 1, 2, 3, 4; S.G.A. 1, 2, 3, 4.

MARY MERRITT DYAL—Woodbine, Ga.

*Biology, major; Chemistry, minor*

S.G.A. 1, 2, 3, 4; House Council 4; Y.W.C.A. 1, 2, 3, 4; "Y" Cabinet 3, 4; Math Science Club 2, 3, 4, Chairman of Biology Div. 3, Pres. 4; Sophomore Council 2; Methodist Student Council 4; Sports Club 1, 2; League of Women Voters 3, 4; E.C.A. 4; Circulating Manager *Campus Canopy* 2, 3.





JULIA M. FLYNT—Decatur, Ga.  
*Mathematics, major; English, minor*

Transfer from University System Center, Atlanta, Ga. Sports Club 1, 4; Math Science Club 4; S.G.A. 1, 4; Y.W.C.A. 1, 4; Fellowship of St. Martin 4; League of Women Voters 4.

DOROTHY PEARL FUTCH—Elberton, Ga.  
*Sociology, major*

S.G.A. 1, 2, 3, 4; Y.W.C.A. 1, 2, 3, 4; Sports Club 1, 2, 3, 4; Math Science Club 3, 4; Sociology Club 3, 4; B.S.U. 1, 2, 3, 4.

PATRICIA GAINNEY—Thomasville, Ga.  
*Humanities Division, Emphasis on English*

Transfer from Central College, Fayette, Mo. Sports Club 3, 4; Sports Club Council 4; Executive Committee 3, 4; Log Cabin Chairman 4; English Club 4; Sock and Buskin Club 3, 4.

NORMA COLLEEN GEIGER—McRae, Ga.  
*Humanities Division, Emphasis on Art*

S.G.A. 1, 2, 3, 4; Y.W.C.A. 1, 2, 3, 4; Sports Club 2, 3, 4; Sports Club Council 3; Fine Arts Club 2, 3, 4, Sec.-Treas. 3, 4; Romance Language Club 3, 4; *Campus Canopy* 2, 3, 4; PINE CONE Art Editor 4; Log Cabin Committee 3; Student Handbook 3; Junior Class Sec.-Treas.







DORIS ANNE GIBBS—Waycross, Ga.

*Biology, major; English, minor.*

S.G.A. 1, 2, 3, 4; House Council 3; Y.W.C.A. 1, 2, 3, 4; "Y" Cabinet 2, 3, 4; Vesper Choir 3, 4; Sports Club 1, 2, 3, 4; Math Science Club 1, 2, 3, 4; *Campus Canopy* Ad Staff 2; B.S.U. 1, 2, 3, 4.

KATHLEEN GRANTHAM—Thomaston, Ga.

*Humanities Division, Emphasis on English*

Sociology Club 1; *Campus Canopy* 1, 2, 3, 4, Columnist 2, 3, Exchange Editor 4; PINE CONE Photography Editor 4; S.G.A. 1, 2, 3, 4, Executive Committee 4; Y.W.C.A. 1, 2, 3, 4; Sports Club 1, 2, 3, 4, Sec. 2, Vice-Pres. 3, Pres. 4; Sports Council 1, 2, 3, 4; Awards 1, 2, 3, 4; Sock and Buskin Club 3, 4; Romance Language Club 3, 4; English Club 3, 4, Sec.-Treas. 3; Fire Lt. 3.



JEAN CAROLYN HALL—Hahira, Ga.

*Divisional Major, Emphasis on History*

S.G.A. 1, 2, 3, 4; Y.W.C.A. 1, 2, 3, 4; Sports Club 1; I.R.C. 2, 3, 4, Treas. 4.

ANNETTE HERNDON—Sardis, Ga.

*Humanities Division, Emphasis on English*

S.G.A. 1, 2, 3, 4; Math Science Club 3, 4, Sec.-Treas. 4; Y.W.C.A. 1, 2, 3, 4; Sports Club 1, 2; *Campus Canopy* 3, 4, Business Manager 3, 4; PINE CONE 2; English Club 3, 4; Romance Language Club 3, 4; House Council 3.





DOROTHY KEATON HIGHTOWER—Damascus,  
Georgia

*Humanities Division, Emphasis on English*

S.G.A. 1, 2, 3, 4; Y.W.C.A. 1, 2, 3, 4; Sock and Buskin  
3, 4; English Club 4.

SANCIL EMILY HOLDER—Tifton, Ga.

*Humanities Division, Emphasis on English*

Y.W.C.A. 1, 2, 3, 4; S.G.A. 1, 2, 3, 4; Sports Club 1, 2, 3;  
Sophomore Council; Log Cabin Committee 3; English  
Club 3, 4; Math Science Club 3, 4; B.S.U. 1, 2, 3, 4,  
First Vice-Pres. 3, 4.

ELIZABETH (BETTY) HUTCHINSON—Valdosta,  
Georgia

*Humanities Division, Emphasis on English*

Valdosta Club 1, 2, 3, 4, Pres. 3; Glee Club 1; Sports  
Club 1; Y.W.C.A. 1, 2, 3, 4; S.G.A. 1, 2, 3, 4; Executive  
Committee 3; *Campus Canopy* 3, 4; PINE CONE 2, 3, Ad  
Manager 2, Business Manager 3; English Club 3, 4, Pres.  
3; Romance Language Club 3, 4; E.C.A. 3; League of  
Women Voters 3, 4, Pres. 4.







LOIS GIBSON JOHNSON—Milan, Ga.

*Biology, major; English, minor*

S.G.A. 1, 2, 3, 4; Y.W.C.A. 1, 2, 3, 4; Vesper Choir 2, 3; Math Science Club 3, 4; Sports Club 1, 2, 3, 4; Glee Club 4.

MARGARET JUNE JOYNER—Screven, Ga.

*Social Work, major; English, minor*

Sports Club. 1, 2; S.G.A. 1, 2, 3, 4; Y.W.C.A. 1, 2, 3, 4; Sociology Club 2, 3, 4; PINE CONE 2; *Campus Canopy* 1; Sophomore Council.

NEIL MILDRED KENNEY—Moultrie, Ga.

*Chemistry, major; Biology, minor*

S.G.A. 1, 2, 3, 4; Y.W.C.A. 1, 2, 3, 4; Sports Club 1, 2, 3, 4; Sports Council 1, 2, 3, 4; Awards 1, 2, 3, 4; Math Science Club 2, 3, 4; Senior Honor Society 4; League of Women Voters 3, 4.

JULIA FRANCES McINTYRE—Valdosta, Ga.

*Humanities Division, Emphasis on English*

S.G.A. 1, 2, 3, 4; Y.W.C.A. 1, 2, 3, 4; Valdosta Club 1, 2, 3, 4; Sports Club 1, 2, 3, 4.





JEAN MARTIN—Fitzgerald, Ga.

*History, major; English, minor*

Sports Club 1; S.G.A. 1, 2, 3, 4, Pres. 4; Executive Committee 1, 4; Pres. of Freshman Class; Y.W.C.A. 1, 2, 3, 4; Glee Club 1, 2, 3, 4; Librarian 2, 3; Serenaders 2, 3, 4; Chairman of Sophomore Council; I.R.C. 3, 4; Sock and Buskin Club 1, 2, 3, 4; Math Science Club 1, 2, 3; Freshman Honor Society 2; Senior Honor Society 3, Pres. 3; Romance Language Club 3, 4; League of Women Voters 3, 4; E.C.A. 1, 3, 4; Artist Series Committee 4; Philharmonic Club 1; *Campus Canopy* 2, 3.

SARAH MARGIE MASSEY—Valdosta, Ga.

*Home Economics, major; Art, minor*

Glee Club 1, 2, 3, 4; Sports Club 1, 2; Dance Club 4; Valdosta Club 1, 2, 3, 4; Y.W.C.A. 1, 2, 3, 4; E.C.A. 3, 4; S.G.A. 1, 2, 3, 4; Artist Series Committee 3, 4; League of Women Voters 3, 4; Sock and Buskin Club 3, 4; Fine Arts Club 2, 3, 4, Pres. 3, 4; Home Economics Club 2, 3, 4, Vice-Pres. 3; Vice-Pres. of Senior Class.

BETH MIDDLETON—Hortense, Ga.

*Biology, major; Chemistry, minor*

S.G.A. 1, 2, 3, 4; Sophomore Council; House Council 2; Math Science Club 2, 3, 4, Chairman of Biology Division 3; Sports Club 1, 4; Y.W.C.A. 1, 2, 3, 4; *Campus Canopy* 2.

BLANCHE HAYMAN MYERS—Valdosta, Ga.

*Humanities Division, Emphasis on English*

S.G.A. 1, 2, , 4; Y.W.C.A. 1, 2, 3, 4; Glee Club 1, 2, 3, 4; Valdosta Club 1, 2, 3, 4; Sports Club 1.







FRANCES MARION NEWSOM—Reynolds, Ga.

*Secretarial Science, major; Math, minor*

Sports Club 1, 2, 3, 4, Treas. 3, Lambda Team Captain 3, Vice-Pres. 4; Sports Club Council 2, 3, 4; Awards 1, 2, 3, 4; S.G.A. 1, 2, 3, 4, Vice-Pres. 3; Executive Committee 3, 4; Monitor 2, 3, 4; House Council 2; E.C.A. Chairman 4; I.R.C. 2, 3, 4, Treas. 2, Vice Pres. 3, Pres. 4; Freshman Honor Society 2; Senior Honor Society 3, 4; Math Science Club 2, 3, Sec.-Treas. 2; Y.W.C.A. 1, 2, 3, 4; Business Club 3, 4, Vice-Pres. 4; Literary Co-Editor of PINE CONE 4; League of Women Voters 3, 4, Member of Board 4.



VIVIAN LOUISE NEWTON—Camilla, Ga.

*Biology, major; Chemistry, minor.*

S.G.A. 1, 2, 3, 4; Freshman Representative; Sports Club 1, 2, 3, 4; Math Science Club 2, 3, 4; Y.W.C.A. 1, 2, 3, 4; Business Manager of PINE CONE 4.

KATHERINE PARHAM—Barnesville, Ga.

*Math, major; English, minor.*

Transfer from Gordon Military College, Barnesville, Ga. S.G.A. 3, 4; Y.W.C.A. 3, 4; Math Science Club 3, 4; Log Cabin Committee 3, 4; PINE CONE 3.

ELIZABETH PATE—Montezuma, Ga.

*Biology, major; Speech, minor*

Y.W.C.A. 1, 2, 3, 4; S.G.A. 1, 2, 3, 4; Monitor 2; Executive Committee 4; Senior Class President; Math Science Club 2, 3, 4; Freshman Honor Society 2; Senior Honor Society 3, 4, Vice-Pres. 3; Sock and Buskin Club 1, 2, 3, 4, Sec.-Treas. 3; Fine Arts Club 3, 4; I.R.C. 2; Dance Club 2, 3, 4; *Campus Canopy* Staff 2; Fire Lt. 2; Social Dance Committee 4; Sports Club 1, 2, 3, 4; Awards 1.





MARGARET ANNE RAIFORD—Norfolk, Va.

*Sociology, major*

S.G.A. 1, 2, 3, 4; Monitor 3, 4; House Council 1; Sophomore Council; Math Science Club 2; Dance Club 2, 3, 4; Sociology Club 3, 4; Sock and Buskin Club 3, 4; Ad Staff of *Canopy* 2; Ad Staff of *PINE CONE* 4; Sports Club 1, 2, 3, 4.

LEONA ROBERTS REDLES—Valdosta, Ga.

*Humanities Division, Emphasis on Art*

Transfer from Ward Belmont, Nashville, Tenn. Fine Arts Club 3, 4; Valdosta Club 3, 4.

LOUISE REES—Preston, Ga.

*Social Work, major*

S.G.A. 1, 2, 3, 4; Monitor 3, 4; Y.W.C.A. 1, 2, 3, 4; Sophomore Council; Sports Club 1, 2, 3, 4; Sock and Buskin Club 2, 3, 4, Vice-Pres. 3, Pres. 4; Math Science Club 3; Sociology Club 3, 4, Pres. 4; E.C.A. 4; Chairman of Artist Series Committee 4; *Campus Canopy* 1, 2, Ad Staff 1, 2, News Staff 1.



ELIZABETH HADEN RENTZ—Columbus, Ga.

*Humanities Division, Emphasis on English*

S.G.A. 1, 2, 3, 4; Monitor 3, 4; Sophomore Council; Y.W.C.A. 1, 2, 3, 4; "Y" Cabinet 3, 4; Chapel Choir 1, 2, 3, 4, Director 4; House Council 2; Glee Club 1, 2, 3, Vice-Pres. 3; Serenaders 1, 2, 3; Philharmonic Club 1, 2, 3, 4, Sec.-Treas. 3; Math Science Club 3, 4; English Club 4; B.S.U. 1, 2, 3, 4.





JUNE LILLIAN SEARS—Sasser, Ga.

*History, major; Biology, minor*

Glee Club 1, 2, 3; Dance Club 3; Romance Language Club 3, 4; *Campus Canopy* Ad Staff 1, 2; I.R.C. 2, 3, 4, Sec. 3; B.S.U. 2, 3, Vice-Pres. 2, Pres. 3; Sports Club 1, 2, 3, 4; Awards 3, 4; Y.W.C.A. 1, 2, 3, 4; PINE CONE 3, 4, Activities Editor 3, Co-Editor 4; Chapel Choir 2; S.G.A. 1, 2, 3, 4.



GERALDINE SHEFFIELD—Blakely, Ga.

*Humanities Division, Emphasis on English*

S.G.A. 1, 2, 3, 4; Sports Club 1, 2, 3; PINE CONE 2; Sociology Club 1, 2; Sock and Buskin Club 3, 4.

IRIS ANNE SHIPP—Talbotton, Ga.

*Humanities Division, Emphasis on English*

*Campus Canopy* 1, 2, 3, 4, Feature Editor 4; Y.W.C.A. 1, 2, 3, 4; "Y" Cabinet 1, 2, 3, 4, Sacristan 2, Deputation 3, Sec. 4; English Club 3, 4; Sock and Buskin Club 3, 4; Sports Club 1, 2, 3, 4; S.G.A. 1, 2, 3, 4; Social Committee 3.

MARGUERITE MORRISSY STORER—Savannah, Ga.

*French, major; English, minor*

Transfer from Armstrong Junior College, Savannah, Ga. *Campus Canopy* 3, 4, Managing Editor 3, Editor 4; Dance Club 3, 4, Pres. 3; Romance Language Club 3, 4, Sec. Treas. 3, Pres. 4; S.G.A. 3, 4; Executive Committee 4; Monitor 4; Y.W.C.A. 3, 4; "Y" Cabinet 3; Senior Honor Society 3, 4; PINE CONE 3, 4, Lay Out Editor 3; Sports Club 3, 4; League of Women Voters 3, 4; E.C.A. 3, 4; Artist Series Committee 3, 4.





BEVERLY JANE SWANSON—Salisbury, N. C.

*Math, major; Art, minor*

Transfer from Brenau College, Gainesville, Ga. Fine Arts Club 2, 3, 4. Vice-Pres. 2, Art Chairman 4; Fellowship of St. Martin 2, 3, 4, Pres. 4; Math Science Club 3, 4; PINE CONE Staff 4; Valdosta Club 2, 3; S.G.A. 4; Sports Club 1, 2, 3, 4; Y.W.C.A. 1, 2, 3, 4; League of Women Voters 4.

BOBBIE ELIZABETH TOWNSEND—Darien, Ga.

*Sociology, major*

S.G.A. 1, 2, 3, 4; Y.W.C.A. 1, 2, 3, 4; Sports Club 1, 2, 3, 4; Kappa Team Captain 4; Sports Club Council 3, 4; Sociology Club 2, 3, 4, Vice-Pres. 3, Sec.-Treas. 4; *Campus Canopy* 1, 2, 3, Ad Manager 2, 3; P.S.A. 1, 2.

EUGENIA RUTH TURNER—Barwick, Ga.

*Secretarial Science, major; English, minor*

S.G.A. 1, 2, 3, 4; Y.W.C.A. 1, 2, 3, 4; Sports Club 1, 2; *Campus Canopy* Staff 2; Math Science Club 3, 4; Business Club 3, 4.



HAZEL VERNELL WALKER—Valdosta, Ga.

*Secretarial Science, major; English, minor*

Valdosta Club 1, 2, 3, 4; Glee Club 1, 2; Dance Club 3, 4; Business Club 4; Sports Club 1; League of Women Voters 4.





LAURIE CARNES WHITE—Valdosta, Ga.

*Secretarial Science, major; History, minor*

S.G.A. 1, 2, 3, 4; Sports Club 1, 2, 3, 4; Y.W.C.A. 1, 2, 3, 4; Valdosta Club 1, 2, 3, 4; Glee Club 1, 2; Sociology Club 3, 4; Business Club 3, 4; Romance Language Club 3, 4; League of Women Voters 3, 4.

ANNE WOOLDRIDGE WHITTLE—Brunswick, Ga.

*Humanities Division, Emphasis on English*

Valdosta Club 1, 2; Fine Arts Club 2, 3, 4, Art Chairman 3, Vice-Pres. 4; English Club 3, 4, Vice-Pres. 3; Sock and Buskin Club 3, 4; Dance Club 3, 4; Sports Club 3, 4; S.G.A. 1, 2, 3, 4; Y.W.C.A. 1, 2, 3, 4; B.S.U. 1, 2, 3, Treas. 3; Co-Editor PINE CONE 4.



MARTHA MOOR WILCOX—Elberton, Ga.

*English, major; Spanish, Minor*

S.G.A. 1, 2, 3, 4; Executive Committee 3; Monitor 2, 3, 4; Y.W.C.A. 1, 2, 3, 4; "Y" Cabinet 2; Sports Club 1, 2, 3, 4; Freshman Honor Society 2, Pres. 2; Senior Honor Society 3, 4, Sec.-Treas. 3; English Club 3, 4, Pres. 4; Romance Language Club 2, 3, 4, Vice-Pres. 2; Math Science Club 2, 3, 4; Glee Club 1, 2, 3, 4; League of Women Voters 3, 4, Treas. 4; *Campus Canopy* 4; P.S.A. 1, 2, 3, 4, Pres. 2.

MARY NIX WILLIAMS—Gainesville, Ga.

*Humanities Division, Emphasis on Music.*

Glee Club 1, 2, 3, 4, Assistant Librarian 2, Pres. 3; Philharmonic Club 1, 2, 3, 4; Serenaders 1, 2, 3, 4; Dance Club 2, 3, 4, Pres. 4; League of Women Voters 3, 4; E.C.A. 3, 4; Artist Series Committee 3, 4; Sports Club 1, 2, 3, 4; Sock and Buskin Club 3, 4; Y.W.C.A. 1, 2, 3, 4; Chapel Choir 1.



# JUNIOR OFFICERS



MYDDLETON and WILKIN



LANE

- ANN WILKIN . . . . . *President*  
 ADAIR MYDDLETON . . . . . *Vice-President*  
 CLEMMIE LANE . . . . . *Secretary-Treasurer*

*Take a group of gay young lasses.  
 Add a lot of books and classes.  
 Move them o'er to Senior Hall  
 Where, at first, there's not a wall  
 In the wing where they shall stay,  
 Debris blocking all the way.  
 Give them patience to move in  
 Minus curtains, doors, and then  
 Crown their toil with victory—  
 'Lectric lights so they can see.  
 Watch them as they next assume  
 Home-like atmosphere in room  
 Where before was all confusion.  
 (Gee, I'd need a blood transfusion!)  
 Settle down to work once more,  
 Club work, lessons by the score,  
 Training to become the leaders,  
 Following their class precedents;  
 Map a program, make a plan  
 For a good "Homecoming" band.  
 Help the Seniors with their work  
 Not a girl there is to shirk.  
 Every one's a top-notch lass—  
 These members of the JUNIOR CLASS.*





ANNIE RUTH BLACK

Valdosta, Georgia

ALICE CAROLYN BOWEN

Register, Georgia

MRS. MARY BALLINTINE BROOKS

Valdosta, Georgia

MARY ANNE BROWN

Sasser, Georgia

LOUISE BRUMLOW

Lake Park, Georgia

MARION DELORIS BRYCE

Bryceville, Georgia

MARGARET CLAGHORN

Savannah, Georgia

JANNIE EVELYN CONNELL

Valdosta, Georgia







FAYE COOK

Valdosta, Georgia

VIRGINIA COOK

Valdosta, Georgia

HILDA JOHNNIE CRUM

Valdosta, Georgia

ALICE JANE DANCER

Colquitt, Georgia

JOAN KELLEY DAVIS

Donalsonville, Georgia

JEAN DICKSON

Nashville, Georgia

CHARLOTTE MARTIN GOODWIN

McRae, Georgia

HELEN MARIE GRAYDON

McRae, Georgia

*Juniors*

BETTY JO GUNTER

Statesboro, Georgia

MARY VIRGINIA HAGAN

Valdosta, Georgia

JOANNE HAMILTON

Arabi, Georgia

MARY HENDERSON

Ocilla, Georgia

LOLLA LEE HOLDER

Tifton, Georgia

FRANCES ERSULA HURN

St. Simons Island, Georgia

REBECCA WOOD JENNINGS

Dawson, Georgia

EDITH JONES

Homerville, Georgia







MARGARET JONES  
Valdosta, Georgia

PAULINE JORDAN  
Coolidge, Georgia

JEAN MONTEZ LAND  
Griffin, Georgia

ESTHER ELAINE LANDEY  
Valdosta, Georgia

CLEMMIE JOYCE LANE  
Ashburn, Georgia

ISABEL McLEOD  
Valdosta, Georgia

MARY JEAN MAYO  
Richland, Georgia

VENETTE CATHERINE MORGAN  
Vienna, Georgia

*Juniors*

FRANCES ADAIR MYDDELTON

Valdosta, Georgia

RAY JEAN NORMAN

Moultrie, Georgia

VALERA PARRISH

Adel, Georgia

CATHERINE MULLANEY PHILLIPS

Colquitt, Georgia

MIRIAM BUTLER POWELL

Atlanta, Georgia

RUTH ROLAND REYNOLDS

Blakely, Georgia

REBECCA HANSON ROGERS

Quitman, Georgia

BETTY JOY ROLAND

Donalsonville, Georgia







LOU SIMS  
Fitzgerald, Georgia

ELSIE WEST  
Moultrie, Georgia

JACQUELINE TALTON  
Valdosta, Georgia

SARA ANN WILKIN  
Colquitt, Georgia

GLADYS SUSAN THAMES  
Thomasville, Georgia

PEGGY JUNE WILLIAMS  
Vidalia, Georgia

BETTY JUNE THOMPSON  
Donalsonville, Georgia

VERA VIRGINIA WILSON  
Valdosta, Georgia

BETTY LYNN TOLER  
Americus, Georgia

No Pictures:

- VIRGINIA FREEMAN—Valdosta, Ga.
- BETTY KEENE—Columbus, Ga.
- SHERLA MELEESE MILLER—Jacksonville, Florida

- MRS. BARBARA K. PASSMORE—Valdosta, Georgia
- EDWINA ROBERTS—Valdosta, Ga.
- HELEN RUTH SMITH—Ocilla, Ga.

*Juniors*

# SOPHOMORE OFFICERS

CAROLYN MATHIS . . . . . *President*  
BETTY JANE ALDERMAN . . . . . *Vice-President*  
MARY JOHN RODGERS . . . . . *Secretary-Treasurer*



MATHIS

## COLONEL QUIZ, SPEAKING

And now, ladies and gentlemen, for our jackpot question I am going to give you a series of clues which will describe a group which you are to name. The first person to name the group correctly gets two free tickets to last week's production. Is everybody ready?

All right, here is the first clue. This group of girls is headed by a long, lean, lanky blond from Fitzgerald.

Next, this group is responsible for the successful Sweetheart Dance in February. Does anyone have the answer yet? No? Well, here is the third clue. Among the activities belonging exclusively to these girls are the decorating of the Christmas tree in the Rotunda in December, and the hooding of the graduates in June.

What's that? No, it's not Kilroy and his little helpers. However, that is a good guess. Keep on trying. Here is your next clue. This group of girls has learned to assume responsibility and leadership after a very brief period of indoctrination to their new surroundings.

A part of this group is able to rise upon the sounding of the five-minute bell and still make it to breakfast.



ALDERMAN



RODGERS



They can also get to meals without the ordeal of braving the elements. Both of these feats can be accomplished because these girls are housed in the same building with the dining room.

At last, light begins to dawn upon your bright and shining faces! Here is your final clue. This group comprises the second-year students of the college "Among the stately pines of Georgia."

That's right! You've got it! The SOPHOMORE CLASS of the Georgia State Womans College.





ANNE ELIZABETH ADAMS  
Dublin, Georgia

ZONA CLYDE BENNETT  
Nashville, Georgia

FRANCES ANN CASTLEBERRY  
Lumpkin, Georgia

GLORIA JEAN ADAMS  
Quitman, Georgia

CHARLENE ANN BOWEN  
Valdosta, Georgia

MARION ANITA COLLINS  
Cobbtown, Georgia

BETTY JANE ALDERMAN  
Valdosta, Georgia

VIRGINIA LEE BRAY  
Monroe, Georgia

MARY ELINORE POLLOCK CREA  
College Park, Georgia

VILMA RACHAEL ANSLEY  
Valdosta, Georgia

JOYCE WANDA BURCH  
Tifton, Georgia

BETTY LOUISE DAVIS  
Jesup, Georgia

FRANCES JOSEPHINE BALLIET  
Donalsonville, Georgia

ELLEN LATRELLE CARTER  
Valdosta, Georgia

JANE LUCILE DEKLE  
Cordele, Georgia

DORIS MERLE BATEMAN  
Sylvester, Georgia

MARY GAILE CARTER  
Lake Park, Georgia

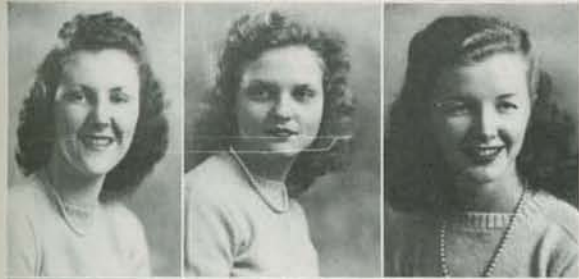
EVA ELIZABETH DELOACH  
Valdosta, Georgia

BETTY GRACE BELL  
Americus, Georgia

ROSELYN CARTER  
Callahan, Florida

BUNNIE AQUILLA DEMOTT  
Moultrie, Georgia





PATTY COOK DIXON  
Richland, Georgia

FLORENCE LUCILLE DOUGLAS  
Alma, Georgia

ANN ELIZABETH DUPRIEST  
Sylvester, Georgia



ALETHIA EDWARDS  
Claxton, Georgia

ELIZABETH MACRAE EFIRD  
Albany, Georgia

HARRIETTE ANN FOLSOM  
Hahira, Georgia



MARY NELL FOREHAND  
Sylvester, Georgia

ANN McNEILL FORTSON  
Washington, Georgia



ILEANA GILBERT  
Donalsonville, Georgia

RUTH ELIZABETH GILL  
Darien, Georgia

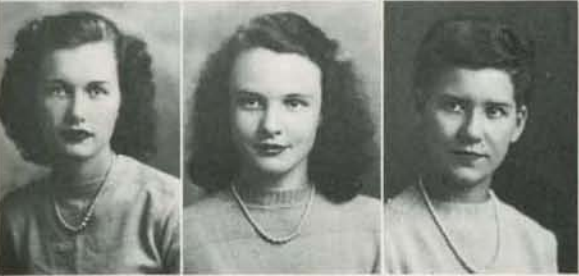
ELSIE MARIAN HARVEY  
Donalsonville, Georgia



MINNIE VIRGINIA HEISLER  
Thomasville, Georgia

ELEANOR JEAN HELTON  
Fitzgerald, Georgia

LUCILLE JACKSON  
Thomasville, Georgia



MARTHA CAROLYN JACKSON  
Macon, Georgia

JOELLA JOHNSON  
Nashville, Georgia

JANE CECELIA KENNEDY  
Ashburn, Georgia

CAROLYN BLANCHE KING  
Brunswick, Georgia



LENA ROZANE KING  
West Point, Georgia

ALA McBRIDE  
Alston, Georgia

MARTHA ANN MORGAN  
Pembroke, Georgia

ANNE DARLING KNEPTON  
Thomasville, Georgia

PATRICIA McCOLLOUGH  
Woodbine, Georgia

FRANCES LECYOLA MOXLEY  
Swainsboro, Georgia

RUBY ARDITH LACEY  
Hazlehurst, Georgia

ALICE DEVANE McGEACHY  
Valdosta, Georgia

BETTY ANNE NEWBERRY  
Arlington, Georgia

BARBARA ALICE LEE  
Alma, Georgia

JESSIE LOUISE MASSEY  
Valdosta, Georgia

JACQUELINE NORMAN  
Moultrie, Georgia

ELAINE MAE LEWIS  
Atlanta, Georgia

ANNA CAROLYN MATHIS  
Fitzgerald, Georgia

PATRICIA ANN PORTER  
Sylvester, Georgia

LILA ANNE LEWIS  
Waycross, Georgia

ANN ELIZABETH MIDDLEBROOKS  
Dublin, Georgia

MILDRED ANNETTE PRICE  
Vidalia, Georgia

GLORIA LOVE  
Columbus, Georgia

ROSE WALTON MILLS  
Hazlehurst, Georgia

MARY JOHN RODGERS  
Sycamore, Georgia





SALLY ALTHEA ROYAL  
Valdosta, Georgia

MARTHA ANN SANDERS  
Fitzgerald, Georgia

NAN SEAMAN  
Cordele, Georgia



BETTY JEAN SMITH  
College Park, Georgia

SUE NELL SMITH  
Statesboro, Georgia

WAYNE MORRIS SMITH  
Valdosta, Georgia



AMY WILHELMINA SPENCE  
Blakely, Georgia

HARIETTE BALDWIN STORY  
Nashville, Georgia

MARTHA JANE THOMPSON  
Ailey, Georgia



JEAN TIPPENS  
Waycross, Georgia

CORNELIA ANNE TUTEN  
Alma, Georgia

FAYE VICKERS  
Valdosta, Georgia



PHYLLIS WADE  
Valdosta, Georgia

ANNE CALLAWAY ZIPLIES  
Savannah, Georgia

No Pictures:

BARBARA COBB  
Quitman, Georgia

BARBARA BETH COLE  
Norman, Oklahoma

JULIA BRASHER JACKSON  
Valdosta, Georgia

MARGARET CLARE McINTYRE  
Valdosta, Georgia

VERA CHRISTEENE REGISTER  
Valdosta, Georgia

HENRIETTA LATRELLE SMITH  
Valdosta, Georgia

JOHNNIE VIOLA STOKES  
Valdosta, Georgia

# FRESHMAN OFFICERS

GLORIA McQUAIG . . . . . *President*  
 FRANCES PAINE . . . . . *Vice-President*  
 ROLINE THOMPSON . . . . . *Secretary-Treasurer*



McQUAIG

## GATHERED THOUGHTS OF A FRESHMAN, 1946-47

So this is Converse Hall! But who are those people coming to greet us? Golly, they are upper-classmen! Helping me, a FRESHMAN Gee, I thought all upper-classmen did was to frighten poor Freshmen. And this is my room, my place of abode for the next nine months. I wonder what my roommate's like? . . .

At last Freshman Week is over. I thought I'd never see the end of those tests and classes. Now I have passed my Student Government exam and can go out without a chaperon. Oh, happy day! I hope I can remember all the regulations. . .

Rat Day! I knew it was bound to come. It really hasn't been bad though, now that I can rest my weary bones and think back over it. How many pairs of shoes have I polished? . . .

Christmas time is a wonderful time here, with the "Hanging of the Greens," the carol services, and the Christmas Dinner. Those carols early Sunday morning were pretty, and I'm proud of my classmates who sang them. . .

Why didn't somebody tell me college was like this? Exams—and what exams! I wonder if I'll ever pass. Now let's see—the nervous system is composed of . . .

Heart Sisters—I wonder who drew my name. And how can I get mine her gifts without her finding out my name? I can hardly wait for the Sweetheart Dance. . .

The Campus is so beautiful now. I've never seen so many plants blooming at once, and so early, too. . .



PAINE



THOMPSON



That coke box comes in mighty handy these days. I need something to pick me up from this Spring fever attack. . .

Gee, it's June already. I didn't think I would ever stay nine months, and look, it has gone already. I've gotta pack so I can leave right after graduation tomorrow.

Jean! What's your address? . . .





GLORIA JEANNE ABRAHAMS  
Valdosta, Georgia

HELEN JOYCE ALFORD  
Columbus, Georgia

MARY ANNE ARNOLD  
Vienna, Georgia

LUCILLE AVERA  
Lakeland, Georgia

JEAN ELIZABETH BAILEY  
Waycross, Georgia

JULIA BAILEY  
Ashburn, Georgia

MARY ELIZABETH BAILEY  
Camilla, Georgia

LOIS MARIE BALDY  
Fitzgerald, Georgia

MAYEBELLE BEDELL  
Woodbine, Georgia

SUE BELLOFF  
Brookline, Massachusetts

VIRGINIA BLOUNT  
Vidalia, Georgia

SARA ANNOLENE BONE  
Leslie, Georgia

JULIA CLAY BRIGGS  
Valdosta, Georgia

SARA FRANCES BRIGGS  
Valdosta, Georgia

SARA EVELYN BROOKS  
Sylvester, Georgia

DELIA GRAY BROWN  
Brunswick, Georgia

DANISE BRYANT  
Moultrie, Georgia

JEAN ELIZABETH BRYANT  
Moultrie, Georgia

JOYCE HOPE BULLINGTON  
Valdosta, Georgia

MARJORIE HARRIS BUSH  
Decatur, Georgia

HELEN MARGARET CHESTER  
Whigham, Georgia

## *Freshmen*



MARY FRANCES CHESTER  
Whigham, Georgia

JOYCE CHARLOTTE CHILDS  
Thomaston, Georgia

MARY ELIZABETH CHISHOLM  
Moultrie, Georgia

BARBARA ELIZABETH CLARKE  
Moultrie, Georgia

CHRISTINE CLIFTON  
Albany, Georgia

ALCYONE COLLIER  
Bartow, Florida

SARA ELIZABETH CONNELL  
Augusta, Georgia

CONSTANCE MONROE  
Valdosta, Georgia

CONVERSE

LOMA JEAN COOK  
Boston, Georgia

VIVIAN COOPER  
Moultrie, Georgia

DOROTHY COPPAGE  
Hahira, Georgia

ANNE McLANE COX  
Fayetteville, Georgia

VELMA ELIZABETH CRUMMEY  
Brunswick, Georgia

NANCY COUPERY DANIEL  
Rome, Georgia

PEGGY JEANNE DAVIS  
Waycross, Georgia

FRANCES ANN DeVANE  
Miami, Florida

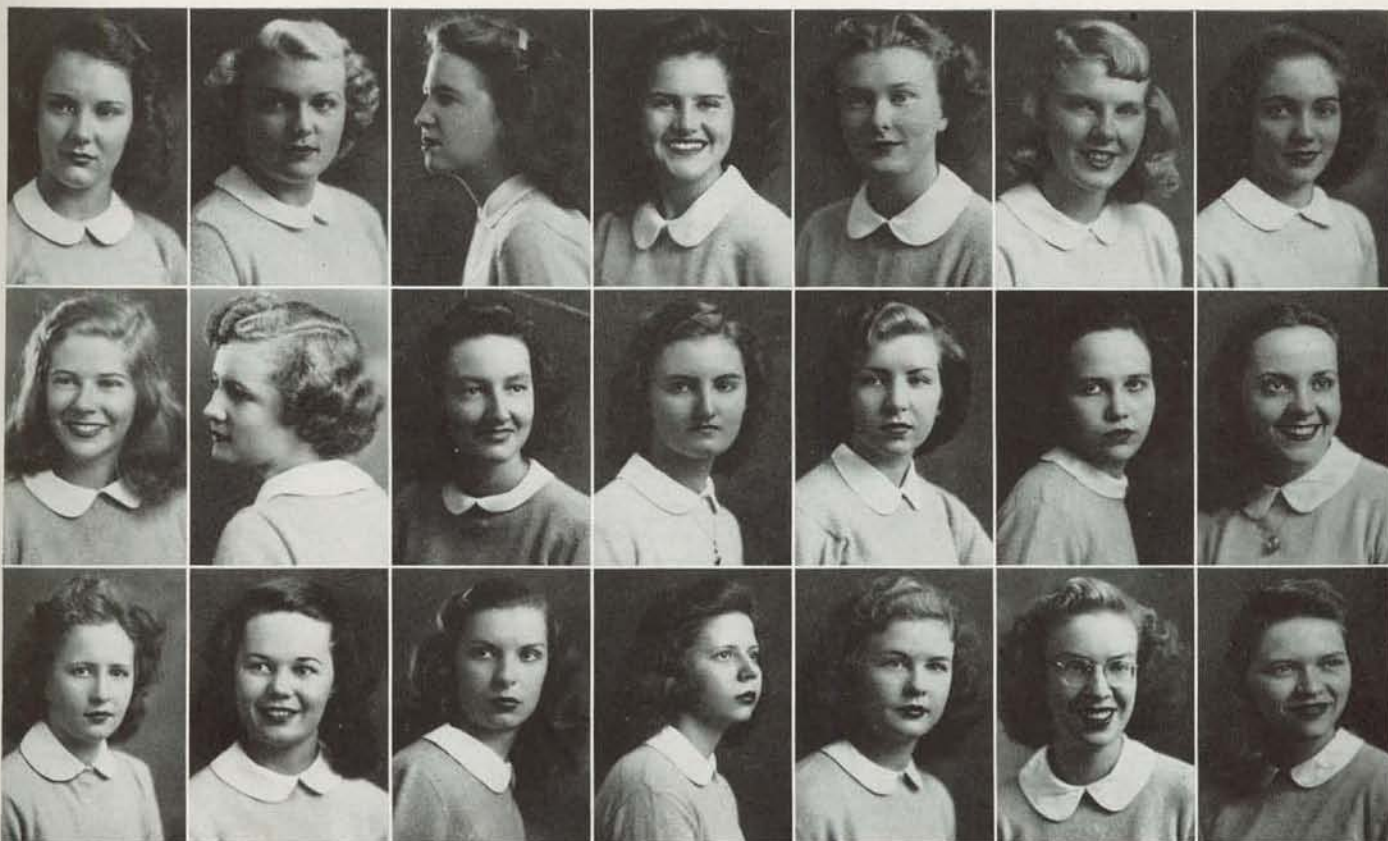
BETTIE CAROLYN DICKSON  
Tifton, Georgia

PATSY DILLARD  
Waycross, Georgia

MARY CLAIRE DUNCAN  
Leslie, Georgia

MARTHA SARILLA DUNLAP  
Madison, Georgia

MARTHA LUCILLE ELDER  
Monroe, Georgia





JEAN ELIJAH  
Vidalia, Georgia

BETTY SUE ETHERIDGE  
Dublin, Georgia

MRS. ANNE SLATER FAULKNER  
Thomasville, Georgia

NONA MARIE FERDON  
Homerville, Georgia

BILLIE DALE FINLEY  
Waycross, Georgia

JANE FLETCHER  
Valdosta, Georgia

MARTHA LEE GEORGE  
Valdosta, Georgia

ELIZABETH JANE GIBSON  
Donalsonville, Georgia

MADELINE ELAINE GILL  
Hinesville, Georgia

LOUISE GODBEE  
Vidalia, Georgia

JACQUELINE MAE GOODROE  
Waycross, Georgia

ANNA MARTHA GRISSETT  
Valdosta, Georgia

RAVONDA ANN HAMMOND  
Danielsville, Georgia

MERLE DeCARR HANCOCK  
Valdosta, Georgia

ELIZABETH JEANETTE  
HANDLEY  
Ocilla, Georgia

MARGARET EUNICE HARDY  
Pine Grove, Georgia

OUIDA NELL HARPER  
Ocilla, Georgia

INA GRACE HARRELL  
Whigham, Georgia

BENNIE WILLA HARRINGTON  
Homerville, Georgia

ALICE JOSEPHINE  
HENDERSON  
Hampton, Georgia

BEVERLY ANNE HENDERSON  
Waycross, Georgia

# *Freshmen*



ANNA JEAN HIGHTOWER  
Damascus, Georgia

VELMA GENE HILL  
Homerville, Georgia

BETTY KATHRYNE HOLLAND  
Cordele, Georgia

EMMA LOU HURSEY  
Douglas, Georgia

JULIANE JOHNSON  
Miami, Florida

HULDA ROBERTA JONES  
Albany, Georgia

LAVARA JONES  
Sycamore, Georgia

MARY HELEN JONES  
Cairo, Georgia

UNA REA KELLEY  
Clyattville, Georgia

ANNA RIVIERE KENNEDY  
Thomaston, Georgia

BARNADINE CLYDE KING  
Brunswick, Georgia

LEAH MARIE KING  
Leesburg, Georgia

DOLORES LAW  
Ashburn, Georgia

BARBARA HUNT LAWSON  
Savannah, Georgia

MARY VIRGINIA LAWSON  
Climax, Georgia

MARY RUTH LEAK  
Boston, Georgia

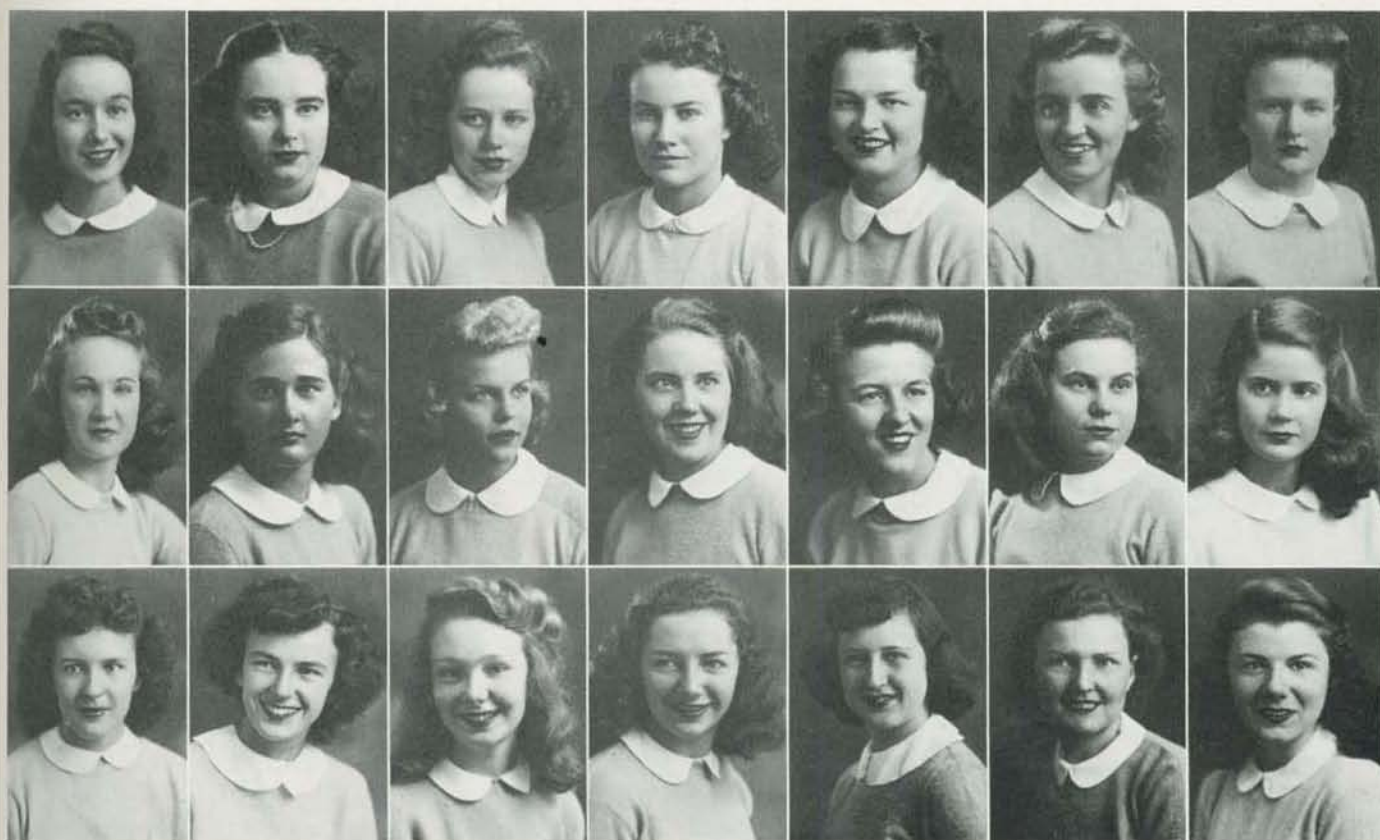
DOROTHY JANE LEGER  
Ocilla, Georgia

FREIDA LILLIAN LEVIN  
Nashville, Georgia

ELLIE LUNDY  
Boston, Georgia

MAURINE L. McCONNELL  
Hahira, Georgia

MARGARET McGREGOR  
Quitman, Georgia





MARY JOAN McINTOSH  
Valdosta, Georgia

ADA CAROLYN McLENDON  
Hazlehurst, Georgia

MARY ANN McLENDON  
Dawson, Georgia

GLORIA MYRISE McQUAIG  
Waycross, Georgia

MILDRED MANLEY  
Griffin, Georgia

HANNAH LOU MANSFIELD  
Moultrie, Georgia

MELBA MARTIN  
Mount Vernon, Georgia

PAULA JOCELYN MATTHIAS  
Marietta, Georgia

DORIS ELAINE MIMS  
Waycross, Georgia

DORIS CLAIRE MOBLEY  
Moultrie, Georgia

ANNIE LAUVIE MOORE  
Pine Grove, Georgia

JANE MOSES  
Uvalda, Georgia

EUGENIA ARMATHA MORGAN  
Hinesville, Georgia

DOROTHY JEAN MULLIS  
Valdosta, Georgia

JANE ANNE NEWTON  
Lake City, Florida

MARJORIE MITCHELL NOELL  
Valdosta, Georgia

MARY ALICE NORMAN  
St. George, Georgia

JACQUELINE NORTON  
Boston, Georgia

STEWART ELLEN ODOM  
Albany, Georgia

MARY WILLIAMS OWEN  
Hinesville, Georgia

FRANCES BRISCOE PAINE  
Valdosta, Georgia

## *Freshmen*



JESSIE NELL PERRY

Uvalda, Georgia

FRANCES CAROLYN PHILLIPS

Savannah, Georgia

FLORENCE AGNES PIRKLE

Alma, Georgia

BARBARA RAE PITTMAN

Blackshear, Georgia

JOHNNIE ALLENE PRINGLE

Bryceville, Florida

BETTY JUNE RACHALS

Albany, Georgia

MARY ELLEN REDMAN

McRae, Georgia

VERA ARISTEENE REGISTER

Valdosta, Georgia

NARENE LaRUE REGISTER

Valdosta, Georgia

SARAH LOUISE REGISTER

Valdosta, Georgia

GENEVA ROSS

Ashburn, Georgia

EDITH NELLREE RYALS

Homerville, Georgia

MARY FRANCES SANDERS

Fitzgerald, Georgia

MARY ANNE SAULS

Albany, Georgia

MAISIE SHARMAN

Albany, Georgia

PATTIE LEE SHEPHERD

Dawson, Georgia

CLARE LOUISE SINGLETARY

Meigs, Georgia

BETTY JEAN SMILEY

Hinesville, Georgia

EVELYN VIRGINIA SMITH

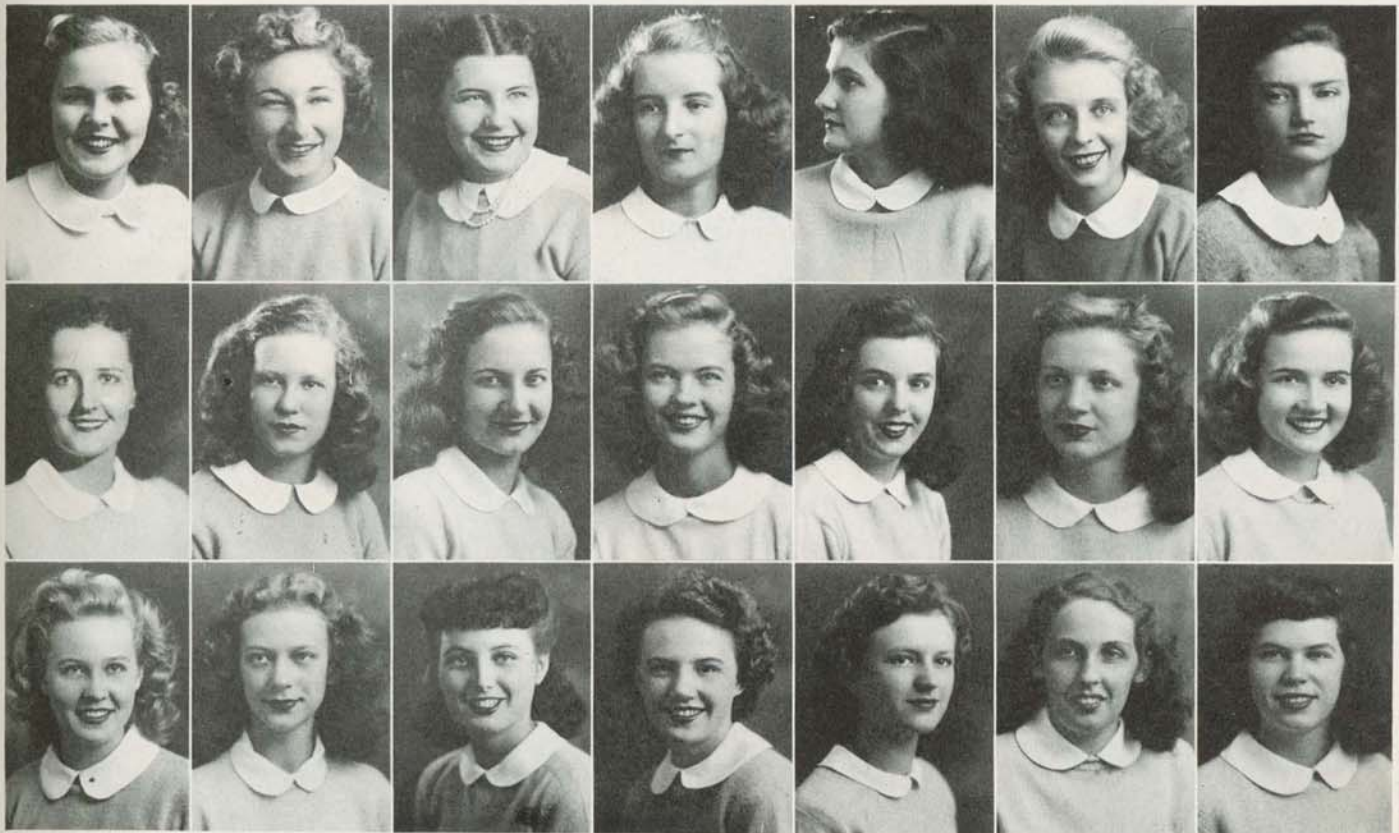
Broxton, Georgia

MARGARET ANN SMITH

Waycross, Georgia

SUSAN BELLE SMITH

Waycross, Georgia





WILLA LEE SMITH  
Folkston, Georgia

JO ANNE STORY  
Albany, Georgia

WILDA GLYNETTE STORY  
Ashburn, Georgia

GLENDA STRICKLAND  
Cairo, Georgia

SALLY PATRICIA  
SUTHERLAND  
Atlanta, Georgia

ROLINE ELIZABETH  
THOMPSON  
Thomaston, Georgia

MARGARET LOUISE  
TRAYNHAM  
Broxton, Georgia

MARY ELLEN WHITEHEAD  
Albany, Georgia

JEAN DELORIS USHER  
Savannah, Georgia

JOANNE VAN BRACKLE  
Adel, Georgia

JANICE LORRAINE WALKER  
Bryceville, Florida

MAXIE ANNETTE WARREN  
Donalsonville, Georgia

CAROLYN ELIZABETH  
WHELCHER  
Moultrie, Georgia

MARJORY ANN WHELCHER  
Cordele, Georgia

ANNETTE ANDREE TREYER  
Hollywood, Florida

JULIA ANN WILLIAMS  
Fitzgerald, Georgia

BETTY WILLIS  
Coolidge, Georgia

IRENE SELINA WILSON  
Waycross, Georgia

CAROLYN WINN  
Thomaston, Georgia

ALLIE JANIE WRIGHT  
Elberton, Georgia

DOROTHY ELOISE YANCEY  
Brunswick, Georgia

*Freshmen*











# ORGANIZATIONS





## EXECUTIVE COMMITTEE STUDENT GOVERNMENT ASSOCIATION

### EXECUTIVE COMMITTEE OFFICERS

JEAN MARTIN . . . . . *President*  
 JOAN DAVIS . . . . . *First Vice-President*  
 GLADYS THAMES . . . . . *Second Vice-President*  
 EDITH JONES . . . . . *Secretary-Treasurer*

The Executive Committee is the governing branch of the Student Government Association, in which all students on campus may become members upon passing examination. The Student Government officials are responsible for Freshman Week, and they are the ones who helped you feel more at home, helped you find your place in college life, and helped you to understand the principles upon which Student Government works.



### MEMBERS OF EXECUTIVE COMMITTEE

Pat Gainey	Edith Collins
Carolyn Mathis	Kathleen Grantham
Ann Wilkin	Virginia Heisler
Elizabeth Pate	Jean Land
Marion Newsom	Marguerite Storer
Laura Converse	



DAVIS and THAMES





## E. C. A.

### E. C. A.

#### MEMBERS

Marion Newsom, Chairman—International Relations Club  
 Harriet Arrington—Senior Honor Society  
 Charlene Bowen—Freshman Honor Society  
 Virginia Bolen—Business Club  
 Joan Davis—Home Economics Club  
 Merritt Dyal—Math Science Club  
 Charlotte Goodwin—Glee Club  
 Nickey Williams—Dance Club  
 Betty Hutchinson—G.S.W.C. League of Women Voters  
 Margie Massey—Fine Arts Club  
 Adair Myddelton—Valdosta Club  
 Louise Rees—Sock and Buskin Club  
 Louise Rees—Sociology Club  
 Marguerite Storer—Romance Language Club  
 Gladys Thames—Philharmonic Club  
 Martha Wilcox—English Club



NEWSOM, *Chairman*

#### EXTRA CURRICULAR ACTIVITIES

Formed to better co-ordinate the various activities of clubs on campus, the E. C. A. Committee is composed of the presidents of all campus organizations with the exception of the presidents of the Sports Club and the Y.W.C.A.

The meetings of this committee furnish a fine medium for the interchange of constructive and progressive ideas between the clubs and make for "smooth sailing" in campus activities.

The E. C. A. chairman represents the committee on the Student Government Executive Committee, and is a representative to the Faculty Judicial Board.



CABINET

## Y. W. C. A.

The "Y" sponsors all religious activities on campus, not only the annual traditional ones such as the Recognition Service, Firelighting Service, Thanksgiving, Hanging of the Greens, and Lenten Services, but daily and weekly Vespers, Morning Watch, and Compline.

This year the "Y" published the Book of Blessings, which took two years to compile. Also several deputation teams were sent out over South Georgia.

### OFFICERS

- EDITH COLLINS . . . . . *President*  
 BETTY GUNTER . . . . . *Vice-President*  
 VENETTE MORGAN . . . . . *Associate Vice-Pres.*  
 ANN SHIPP . . . . . *Secretary*  
 HARRIET ARRINGTON . . . . . *Treasurer*



COLLINS

### CABINET

- Carolyn Bowen—Publicity Co-chairman  
 Betty Jean Smith—Publicity Co-chairman  
 Merrit Dyal—Deputation Co-chairman  
 Charlotte Goodwin—Deputation Co-chairman  
 Doris Gibbs—Organist  
 Jean Land—Social Chairman  
 Gloria Love—Morning Watch Co-chairman  
 Betty Newberry—Morning Watch Co-chairman  
 Louise Massey—Town Girl Representative  
 Betty Rentz—Chapel Choir Director  
 Ruth Reynolds—Sacristan  
 Sue Nell Smith—Sacristan  
 Jane Kennedy—Head of Sophomore Council  
 Martha Ann Sanders—Organist  
 Rev. C. H. White—Adviser



MORGAN, ARRINGTON, SHIPP, GUNTER



# CHAPEL CHOIR

## MEMBERS:

BETTY RENTZ  
JEAN HELTON  
DORIS GIBBS  
LOIS JOHNSON  
FRANCES DeVANE  
BARBARA LAWSON  
JULIANNE JOHNSON  
FREIDA LEVIN  
SUE BELLOFF

Under the sponsorship of the "Y," the Chapel Choir furnishes the music for many of the services on campus. Reorganized last year, the choir, composed of selected Glee Club members, presents to the students the hymns, chants, and anthems appropriate to the services of the chapel.

FIRELIGHTING SERVICE



CHAPEL CHOIR



GRANTHAM

# SPORTS CLUB

The Sports Club is composed of all girls who are interested in sports and who participate in them on campus.

The members of Sports Council are the leaders of the Sports Club; team captains and managers, coaches, and various activity heads.

## SPORTS COUNCIL

### SPORTS COUNCIL:

Betty Jane Alderman  
Virginia Bolen  
Virginia Bray  
Dathine Brunson  
Clare Carson  
Mary Ellen Compton  
Corinne Dellinger  
Pat Gainey  
Kathleen Grantham  
Frances Hurn  
Martha Jackson  
Betty Keene  
Nell Kenny  
Ann Knepton  
Frances Moxley  
Marion Newsom  
Frances Phillips  
Joy Roland  
Morris Smith  
Roline Thompson  
Betty Toler  
Bobbie Townsend  
Ann Wilkin



NEWSOM, WILKIN, HUHN





OFFICERS

- KATHLEEN GRANTHAM . . . . . *President*  
 MARION NEWSOM . . . . . *Vice-President*  
 ANN WILKIN . . . . . *Secretary*  
 FRANCES HURN . . . . . *Treasurer*  
 CORINNE DELLINGER . . . . . *Historian*



# FINE ARTS CLUB



## OFFICERS

MARGIE MASSEY . . . *President*  
 ANNE WHITTLE . . . *Vice-President*  
 COLLEEN GEIGER  
                                   *Secretary-Treasurer*  
 BEVERLY SWANSON, HILDA CRUM  
                                   *Art Chairmen*  
 MARY B. BROOKS  
                                   *Rental Art Collection Chairman*  
 BERTHA DREXEL . . . . *Reporter*  
 MISS CARPENTER, MR. WHITE  
                                   *Faculty Advisers*

## MEMBERS

Doris Bateman, Mary B. Brooks, Mary Ellen Compton, Evelyn Connell, Mary Elinor Crea, Hilda Crum, Bertha Drexel, Harriette Folsom, Colleen Geiger, Virginia Hagan, Mary Kathryn Hillhouse, Margaret Jones, Clemmie Lane, Joan McIntosh, Isabel McLeod, Louise Massey, Margie Massey, Elizabeth Pate, Frances Phillips, Leona Reddles, Betty Jean Smith, Beverly Swanson, Betty June Thompson, and Anne Whittle.

The Fine Arts Club is composed of those girls who have artistic ability and have shown a sincere interest in art. This Club provides an opportunity for the study of both contemporary artists and art methods, gives an opportunity for a more intensive study of some chosen art or craft than is provided for in classroom activity, and arouses the interest of the entire student body in art by exhibits and bazaars.

This year the club operated the rental art collection on a non-profit basis, gave art exhibits and a dance, made posters, and gave the annual Christmas Bazaar and puppet show.

The program for 1946-47 emphasized the crafts and handiwork phases of art.



# HONOR SOCIETIES



SENIOR HONOR SOCIETY

## OFFICERS

- HARRIET ARRINGTON . . . . . *President*  
 BETTY KEENE . . . . . *Vice-President*  
 MRS. MARY B. BROOKS . . . . . *Secretary-Treasurer*  
 SIMONE BASSETT . . . . . *Historian-Reporter*

The purpose of this Society is to further and enrich the intellectual activities of the students.

The club selected pins this year which will become the permanent emblem of the club. A service project was also undertaken to make a definite contribution to campus life.

The members of this Society are selected to encourage high scholastic standing among the students, and to encourage the wholehearted allegiance to the ideals of G. S. W. C.

## MEMBERS

Harriet Arrington, Virginia Bolen, Laura Converse, Carolyn Bowen, Simone Bassett, Mary B. Brooks, Edith Collins, Evelyn Connel, Betty Gunter, Edith Jones, Betty Keene, Barbara Passmore, Nell Kenney, Marion Newsom, Elizabeth Pate, Marguerite Storer, Jackie Talton, Gladys Thames, Martha Wilcox.

## FRESHMAN HONOR SOCIETY OFFICERS

- CHARLENE BOWEN . . . . . *President*  
 ANNE ZIPLIES . . . . . *Vice-President*  
 GLORIA LOVE . . . . . *Secretary-Treasurer*  
 BETTY JEAN SMITH . . . . . *Historian*

This Society is for the purpose of stimulating higher scholastic activities among junior college students. Freshman students who, after two quarters' work, have an average of B or above, are eligible for membership.



FRESHMAN HONOR SOCIETY

## MEMBERS

- |                    |                  |
|--------------------|------------------|
| Zona Clyde Bennett | Gloria Love      |
| Charlene Bowen     | Carolyn Mathis   |
| Gaile Carter       | Betty Jean Smith |
| Latrell Carter     | Morris Smith     |
| Anne DuPriest      | Anne Ziplies     |



# THE 1947



SEARS and WHITTLE

At last. It's ready to be revealed to the eyes of the students and faculty. The staff of the 1947 PINE CONE hope that this annual will live up to that ideal of a yearbook that will be treasured throughout the years.

We have endeavored to give a complete picture of the working organizations on the G.S.W.C. campus.

This year we welcomed Dr. Phelan back to the staff as Campus Photographer, and we deeply appreciate his patience and cooperation. Our thanks also go to Blackburn Studio for their fine work.

## EDITORIAL STAFF

JUNE SEARS . . . . .	<i>Co-editor</i>
ANNE WHITTLE . . . . .	<i>Co-editor</i>
CAROLYN BOWEN . . . . .	<i>Layout Editor</i>
BETTY KEENE . . . . .	<i>Layout Editor</i>
MARION NEWSOME . . . . .	<i>Literary Editor</i>
EDITH COLLINS . . . . .	<i>Assistant Literary Editor</i>
LAURA CONVERSE . . . . .	<i>Activities Editor</i>
ADAIR MYDDLETON . . . . .	<i>Assistant Activities Editor</i>
COLLEEN GEIGER . . . . .	<i>Art Editor</i>
BEVERLY SWANSON . . . . .	<i>Assistant Art Editor</i>
DATHINE BRUNSON . . . . .	<i>Photograph Editor</i>
KATHLEEN GRANTHAM . . . . .	<i>Assistant Photograph Editor</i>
DR. PHELAN . . . . .	<i>Photographer</i>



KEENE and BOWEN

## EDITORIAL STAFF





# PINE CONE



NEWTON



BUSINESS STAFF

LOUISE NEWTON . . . . . *Business Manager*

Ad Staff:

- VIRGINIA BOLEN
- BOBBIE TOWNSEND
- ANN ADAMS
- ANN FORTSON
- ANNE ZIPLIES
- LOUISE MASSEY
- ALICE JANE DANCER



BOLEN and ADAMS



HERNDON and STORER

The *Campus Canopy*, a bi-weekly publication of the student body, attempts through its columns, editorials, features, and news stories to be representative of student opinion on the G.S.W.C. Campus.

The *Canopy* is a member of the Associated Collegiate Press and the Intercollegiate Press.





# CANOPY

## EDITORIAL STAFF

- MARGUERITE STORER . . . . . *Editor*
- BETTY JEAN SMITH . . . . . *Associate Editor*
- MARY ELINORE CREA . . . . . *News Editor*
- SIMONE BASSETT . . . . . *Columnist*
- MARTHA WILCOX . . . . . *Columnist*
- EDITH COLLINS . . . . . *Columnist*
- BETTY HUTCHINSON . . . . . *Columnist*
- JEAN LAND . . . . . *Columnist*
- CATHERINE PHILLIPS . . . . . *Columnist*
- CAROLYN MATHIS . . . . . *Sports Editor*
- KATHLEEN GRANTHAM . . . . . *Exchange Editor*
- MARGUERITE DICKERSON . . . . . *Circulation Manager*
- ANNETTE HERNDON . . . . . *Business Manager*
- ANN WILKIN . . . . . *Advertising Manager*



SMITH and CREA

## STAFF





TOWNSEND, GRAYDON, PHILLIPS, REES

# SOCIOLOGY CLUB

## OFFICERS

- LOUISE REES . . . . . *President*  
 HELEN GRAYDON . . . . . *Vice-President*  
 BOBBIE TOWNSEND . . . . . *Secretary-Treasurer*  
 CATHERINE PHILLIPS . . . . . *Reporter*



## MEMBERS:

Marguerite Dickerson, Margaret Joyner, Edith Collins, Louise Rees, Peggy Raiford, Ila Downie, Helen Graydon, Catherine Phillips, Hanson Rogers, Laurie White, Sara Adcock, Dorothy Futch, Jean Land, Sherla Miller, Clare Carson, Mary Brooks, Jean Dickson, Frances Hurn, Rebecca Jennings, Venette Morgan, Johnnie Stokes, Betty Toler, Peggy Williams, and Bobbie Townsend.

The Sociology Club is composed of all majors and minors in the field of Sociology. At each meeting of the group, an outside speaker who is a worker in some field of Sociology speaks on some pertinent subject, which helps acquaint the girls with the field they are interested in.

The club members have visited the Valdosta Boys' Club on several occasions, where they assisted in entertaining and directing the activities.



# HOME ECONOMICS CLUB

The Home Economics Club, whose forty-two members are all Home Economics majors and minors, is affiliated with the Georgia and American Home Economics Associations. The purpose of this club is to develop worthy self-expression, good leadership, and intelligent fellowship, and to provide social, business, and professional experience through the various aspects of the club.

## OFFICERS

JOAN DAVIS . . . . .	<i>President</i>	ELSIE HARVEY . . . . .	<i>Historian</i>
MIRIAM POWELL . . . . .	<i>Vice-President</i>	ISABEL MCLEOD . . . . .	<i>Parliamentarian</i>
ILA DOWNIE . . . . .	<i>Secretary</i>	BETTY JUNE THOMPSON . . . . .	<i>Reporter</i>
RAY JEAN NORMAN . . . . .	<i>Treasurer</i>	MRS. KENDRICKS . . . . .	<i>Faculty Adviser</i>





## BUSINESS CLUB

The Business Club is composed of students majoring or minoring in Secretarial Science. It has been the purpose of the club to promote interest in business training among the students and the providing of social, cultural, and business experience through club activities.

The most outstanding feature of the year is the organization of a Secretarial Bureau to be of service not only to the students but to the faculty also.

### OFFICERS

VIRGINIA BOLEN . . . . .	<i>President</i>
MARION NEWSOM . . . . .	<i>Vice-President</i>
JEAN LAND . . . . .	<i>Secretary</i>
DATHINE BRUNSON . . . . .	<i>Treasurer</i>

### MEMBERS

Vilma Ansley	Virginia Heisler	Barbara Passmore
Mary Ann Arnold	Frances Hurn	Catherine Phillips
Virginia Bolen	Rebecca Jennings	Annette Price
Carolyn Bowen	Jean Land	Mary Redman
Dathine Brunson	Mary Ruth Leak	Aristeen Register
Danise Bryant	Barbara Lee	Hanson Rogers
Barbara Clarke	Alice McGeachy	Glynette Story
Marion Collins	Clare Mobley	Jo Ann Story
Sarah Connell	Sherla Miller	Phyllis Wade
Laura Converse	Adair Myddelton	Laurie White
Helen Graydon	Jean Mullis	Hettie Wilkins
Merle Hancock	Jackie Norman	Betty Willis
	Jackie Norton	



BOLEN and NEWSOM



LAND and BRUNSON



# VALDOSTA CLUB

This organization, made up of all students who are either bona fide residents of Valdosta or graduates of the Valdosta High School, endeavors to unite the day students, to further and better the relations between the day and dormitory students, to interpret the college to the town, and to aid the civic organizations of Valdosta in any way possible.

During the year the members of this club enjoyed a wiener roast at the House in the Woods, and helped sponsor the Christmas dance.

## OFFICERS

ADAIR MYDDELTON . *President*  
 BETTY JANE ALDERMAN  
                                   *Vice-President*  
 CHARLENE BOWEN  
                                   *Secretary-Treasurer*  
 MRS. W. M. THOMAS  
                                   *Faculty Adviser*



BOWEN, ALDERMAN, MYDDELTON

## MEMBERS

Gloria Abrahams	Martha Lee George	Leona Reddes
Betty Jane Alderman	Virginia Hagan	Edwina Roberts
Vilma Ansley	Merle Hancock	Frances Paine
Ruth Black	Margaret Hardy	Betty Jane Phillips
Charlene Bowen	Martha Ellen Hatcher	Katheryn Phillips
Julia Clay Briggs	Faye Hemmingway	Narene Register
Sara Frances Briggs	Gaye Hemmingway	Louise Register
Joyce Bullington	Mary Catherine Hillhouse	Aristene Register
Barbara Cole	Judy Jackson	Sally Royal
Evelyn Connell	Margaret Jones	Anne Shelton
Sara Elizabeth Connell	Esther Landey	Henrietta Smith
Connie Converse	Alice McGeachy	Morris Smith
Laura Converse	Frances McIntyre	Johnnie V. Stokes
Faye Cook	Margaret McIntyre	Viva Ruth Southall
Virginia Cook	Joan McIntosh	Jackie Talton
Dorothy Coppage	Louise Massey	Ruth Templeton
Hilda Crum	Margie Massey	Nona Lee Touchton
Jean Davis	Sherla Miller	Faye Vickers
Elizabeth DeLoach	Vennette Morgan	Phyllis Wade
Bertha Drexel	Jean Mullis	Hazel Walker
Jane Fletcher	Adair Myddelton	Laurie White
Virginia Freeman	Blanche Myers	Vera Wilson
Anne French	Margie Noell	Betty Hutchinson

## OFFICERS

MERRITT DYAL . *President*

ANN WILKIN  
*Vice-President*

ANNETTE HERNDON  
*Secretary-Treasurer*

BETTY JEAN SMITH  
*Reporter*



## MATH SCIENCE CLUB

The Math-Science Club is composed of majors and minors in the fields of mathematics and science, and other interested students of high scholastic achievement in these fields.

The Club consists of three divisions: Biology, Chemistry, and Mathematics, each of which sponsors special projects. Among these are the making of "Little Willies" each year, which are good luck charms against the ever-present examinations.



HERNDON, WILKIN, BOWEN, DYAL

## MEMBERS

Harriet Arrington  
Corinne Dellinger  
Merritt Dyal  
Nell Kenny  
Beth Middleton  
Louise Newton  
Martha Wilcox  
Marguerite Dickerson  
Duris Gibbs  
Delores Bryce  
Edith Jones  
Barbara Passmore  
Clemmie Lane  
Betty Tolar  
Joan Davis

Evelyn Connell  
Betty Gunter  
Frances Hurn  
Betty Keene  
Simone Bassett  
Dorothy Futch  
Annette Herndon  
Sancil Holder  
Betty Rentz  
Ruth Turner  
Mary Ann Brown  
Beverly Swanson  
Joy Roland  
Lois Johnson  
Mary Ellen Compton

Ann DuPriest  
Jane Kennedy  
Carolyn Mathis  
Betty Jean Smith  
Ann Zipplies  
Katherine Parham  
Ann Wilkin  
Patty Dixon  
Jacquelyn Norman  
Lucille Jackson  
La'Trelle Carter  
Martha Ann Sanders  
Helen Graydon  
Edwina Roberts

Cornelia Tuten  
Zona Clyde Bennett  
Peggy Williams  
Margaret McGregor  
Margaret Claghorn  
Adair Myddelton  
Jean Tippins  
Frances Moxley  
Mary Gaile Carter  
Carolyn Bowen  
Judy Flynt  
Lolla Lee Holder  
Betty Bell  
Elia Meadors





## ENGLISH CLUB

The purpose of the English Club is to stimulate interest in literature and literary activities on the campus and among members of the group particularly.

This year the English Club brought an interesting outside speaker before the student body in chapel; another interesting activity was the giving of a prize in a contest among all students to encourage literary creation.

### OFFICERS

MARTHA WILCOX . . . . . *President*  
 LISETTE BLACK . . . . . *Vice-President*  
 JOSEPHINE EVERETTE . . . . . *Secretary and Treasurer*  
 MRS. ODUM . . . . . *Faculty Adviser*



EVERETT, WILCOX, BLACK

### MEMBERS

Louise Brunlow  
 Lisette Black  
 Evelyn Connell  
 Alice Jane Dancer  
 Josephine Everette

Virginia Freeman  
 Pat Gainey  
 Kathleen Grantham  
 Annette Herndon  
 Dot Hightower

Lolla Lee Holder  
 Sancil Holder  
 Betty Hutchinson  
 Margaret Jones  
 Edwina Roberts

Betty Rentz  
 Anne Shipp  
 Ann Whittle  
 Martha Wilcox

# ROMANCE LANGUAGE CLUB

This club, made up of advanced students in French and Spanish who have maintained an average of B in all such courses, was organized in order to afford to interested students a better understanding of French and Spanish and of those countries in which these languages are spoken.

As its yearly project the club again sent boxes of food and clothes to a French war orphan.

## OFFICERS

MARGUERITE STORER . . . . . *President*  
 GLADYS THAMES . . . . . *Vice-President*  
 SIMONE BASSETT . . . . . *Secretary-Treasurer*



THAMES, STORER, BASSETT

## MEMBERS

Simone Bassett	Lolla Lee Holder
Lisette Black	Betty Hutchinson
Mrs. Mary Brooks	Betty Keene
Clare Carson	Jean Martin
Mary Ellen Compton	June Sears
Evelyn Connell	Marguerite Storer
Josephine Everett	Gladys Thames
Colleen Geiger	Martha Wilcox
Kathleen Grantham	Laurie White
Annette Herndon	





# PHILHARMONIC CLUB

This year the Philharmonic Club has brought to the students through its program a well-balanced representation of classical and modern music.

Members of the group attended symphony concerts which were available in surrounding towns.

## OFFICERS

GLADYS THAMES . . . . . *President*  
BETTY GUNTER . . . . . *Vice-President*  
CHARLOTTE GOODWIN . . . . . *Secretary and Treasurer*

## MEMBERS

Annolene Bone	Betty Rentz
Carolyn Bowen	Ruth Reynolds
Joyce Childs	Margaret Smith
Jane Dekle	Susan Belle Smith
Charlotte Goodwin	Gladys Thames
Betty Gunter	Nickey Williams
Rebecca Jennings	Anne Zipplies



GUNTER, THAMES, GOODWIN





## DANCE CLUB

### OFFICERS

NICKEY WILLIAMS . . . . . *President*

ADAIR MYDDELTON . . . . . *Vice-President*

### MEMBERS

Sara Adcock, Doris Bateman, Carolyn Bowen, Louise Brumlow, Frances Castleberry, Sally Connell, Hilda Crum, Joan Davis, Betty Gunter, Margie Massey, Adair Myddelton, Barbara Lawson, Joselyn Matthias, Elizabeth Pate, Mary Frances Sanders, Anne Whittle, Marguerite Storer, Hazel Walker, and Nickey Williams.

The Dance Group has been very active this year under the able leadership of Mrs. Valente. Besides the regular performances at the Christmas Dinner and Spring Festival, the Dance Club presented its first dance recital in the Spring. All the members of the group participated, and several outstanding solo numbers were presented.



WILLIAMS and STORER





## SOCK and BUSKIN

Our campus Thespians may be found as members of the Sock and Buskin Club. These girls present two major productions each year. An outstanding production of this year was "Night Must Fall," produced under the able leadership of Miss Louise Sawyer, director of the club. Once this year the club journeyed to a neighboring city to see a current play. This trip proved to be entertaining and informative to all.

### OFFICERS

LOUISE REES . . . . . *President*  
 CORNELIA TUTEN . . . . . *Vice-President*  
 CATHERINE PHILLIPS . . . . . *Secretary-Treasurer*



REES and PHILLIPS



TUTEN and ROGERS

## Fellowship of St. Martin

The Fellowship of Saint Martin is composed of Episcopal students and their friends. A branch of the Fellowship group located at the Cathedral of St. Philip in Atlanta, the Fellowship strives to promote Christian ideals of service and to forward intellectual and cultural association thus following in the model of its patron St. Martin. Christian sharing is the summation of a member's duty.

BEVERLY SWANSON . . . . . *President*  
 PAT AUBREY . . . . . *Vice-President*  
 MARY ELINOR CREA . . . . . *Recorder*  
 BETTY JEAN SMITH . . . . . *Bursar*



FELLOWSHIP OF ST. MARTIN

# RELIGIOUS ORGANIZATIONS

## Baptist Student Union

The purpose of this organization is to serve as a link between the school and the church and to interest and enlist the college students in the church activities.

Members of the B.S.U. Council include all students on campus who belong to any local Baptist Church organization.

LOLLA LEE HOLDER . . . . . *President*  
 SANCIL HOLDER . . . . . *First Vice-President*  
 LOUISE MASSEY . . . . . *Second Vice-President*  
 BETTY KEENE . . . . . *Third Vice-President*  
 SUE NELL SMITH . . . . . *Secretary*  
 RUTH REYNOLDS . . . . . *Treasurer*  
 ISABEL MCLEOD . . . . . *Publicity*  
 CAROLYN BOWEN . . . . . *Sunday School Representative*  
 EDITH JONES . . . . . *B.T.U. Representative*  
 MRS. KENDRICKS . . . . . *Faculty Adviser*

## Methodist Student Movement

This is an organization for all Methodist girls on campus. The council serves to link them and the First Methodist Church. Its purpose is to encourage Sunday School, Church, and Fellowship attendance.

### COUNCIL

MERRITT DYAL, *Chairman*  
 CHARLOTTE GOODWIN  
 VIRGINIA HEISLER  
 HULDA JONES  
 CHARLENE BOWEN





BAPTIST STUDENT UNION



METHODIST STUDENT MOVEMENT COUNCIL





## GLEE CLUB

Under the able direction of Mr. Raimonde Aubrey this club has enlarged its enrollment and has become one of the most outstanding attractions to the college. Besides its annual spring concert in May, this organization has made several appearances in nearby cities.

### MEMBERS

Gloria Abrahams	Louise Godbey	Jean Mayo
Julia Bailey	Charlotte Goodwin	Adair Myddelton
Sue Belloff	Doris Gibbs	Mary Alice Norman
Zona Bennett	Bennie Harrington	Frances Paine
Annolene Bone	Grace Harrell	Valera Parrish
Charlene Bowen	Jean Helton	Elizabeth Pate
Danise Bryant	Rebecca Jennings	Miriam Powell
Frances Castleberry	Julianne Johnson	Ann Shelton
Frances Chester	Hulda Jones	Ruth Reynolds
Margaret Claghorn	Louis Johnson	Martha Sanders
Constance Converse	Barbara Lawson	Claire Singletary
Laura Converse	Freida Levin	Betty Jean Smith
Vivian Cooper	Mildred Manley	Henrietta Smith
Mary Elinor Crea	Carolyn Mann	Margaret Ann Smith
Hilda Crum	Jean Martin	Susan Bell Smith
Alice Jane Dancer	Louise Massey	Harriette Story
Jane Dekle	Margie Massey	Ruth Templeton
Frances DeVane	Alice McGeachy	Martha Jane Thompson
Patsy Dillard	Carolyn Mathis	Jean Tippins
Patty Dixon	Jocelyn Matthias	Cornelia Tuten
Lucille Douglas	Sherla Miller	Claire Walker
Mary Duncan	Armatha Morgan	Martha Wilcox
Alethia Edwards	Martha Morgan	Mary Nix Williams
Josephine Everett	Venette Morgan	Irene Wilson
Ann Fortson	Jane Moses	Anne Ziplies



GOODWIN



HELTON and CONVERSE



# SERENADERS

## MEMBERS

JANE DEKLE  
JOSEPHINE EVERETT  
CHARLOTTE GOODWIN  
GLYNN HILL  
JEAN MARTIN  
VENETTE MORGAN  
NICKEY WILLIAMS



The Serenaders, selected from the Glee Club for their unusual ability, have represented the College at many special events around town during the year, and have increased their already outstanding reputation.

# LEAGUE OF WOMEN VOTERS

The League was very active this year in bringing interesting programs and speakers to the members and to the student body. Many stimulating discussions concerning important events in our national, state and local governments were held.

Officers again attended the League meeting in Atlanta in the spring, and gained many new and interesting ideas.

## OFFICERS

BETTY HUTCHINSON . . . . *President*  
BARBARA KENNEDY PASSMORE  
*Vice-President*  
LAURA CONVERSE . . . . *Secretary*  
MARTHA WILCOX . . . . *Treasurer*

## BOARD

BETTY KEENE                    MARION NEWSOME  
CORRINE DELLINGER       ANN WILKIN  
LAURIE WHITE                EDITH JONES

## MEMBERS

Velma Ansley                Barbara Passmore  
Sara Adcock                Nell Kenney  
Harriet Arrington        Jean Land  
Virginia Bolen              Gloria Love  
Carolyn Bowen              Clemmie Lane  
Mrs. Mary B. Brooks     Margie Massey  
Clare Carson                Carolyn Mathis  
Miss Carter                Marion Newsome  
Laura Converse             Louise Newton  
Joan Davis                 Mrs. Odum  
Jane Dekle                 Ruth Reynolds  
Corrine Dellinger        Joy Roland  
Merrit Dyal                Marguerite Storer  
Virginia Freeman        Betty Jane Thompson  
Betty Gunter                Cornelia Tuten  
Mrs. Mary Hillhouse     Laurie White  
Frances Hurn               Beverly Swanson  
Betty Hutchinson        Hazel Walker  
Edith Jones                Martha Wilcox  
Betty Keene                Ann Wilkin  
Mrs. Kendricks            Nicky Williams



WILCOX, HUTCHINSON, CONVERSE







ICELANDIC SINGERS

## ARTIST SERIES



LA MERI



MICHAEL STRANGE



YVES TINAYRE



# INTERNATIONAL RELATIONS

The I.R.C. is under the sponsorship of the Carnegie Endowment for International Peace.

The club endeavors to deal with all topics of national and international importance in an impartial manner, always endeavoring to search out the truth of each situation under investigation.

This year the club participated in American Relief to Europe by sending boxes of necessities and gifts to a person of need in Belgium.

## OFFICERS

MARION NEWSOME . . . . . *President*  
 RUTH BLACK . . . . . *Vice-President*  
 CAROLYN MATHIS . . . . . *Secretary*  
 JEAN HALL . . . . . *Treasurer*  
 LISETTE BLACK . . . . . *Member-at-Large*

## MEMBERS

Simone Bassett                      Jean Martin  
 Virginia Bolen                      June Sears  
 Laura Converse                      Martha Ann Morgan  
 Harriet Arrington



NEWSOM, BLACK, HALL, MATHIS, BLACK







CLARE CARSON



VIRGINIA BOLEN



EDITH COLLINS

## OUTSTANDING



MARY ELLEN COMPTON



KATHLEEN GRANTHAM





BETTY HUTCHINSON



JEAN MARTIN

## SENIORS



MARION NEWSOM



MARGUERITE STORER



ELIZABETH PATE

*Congratulations to the*

**1947 SENIORS**

*of the*

**Georgia State Womans College**

*and . . .*

*Welcome to the*

**UPPERCLASSMEN and FRESHMEN**

**"THE CITY OF AZALEAS"**

*welcomes the opportunity of being your home during  
your college days and of sharing your culture.*

*May your associations and your memories of our  
city be such that you will return after college days.*



# CONGRATULATIONS

## G. S. W. C. Graduates

We are proud of the records that you have made at college in Valdosta and will always hold a warm spot in our hearts for you.

### Welcome Upperclassmen and Freshmen

We are proud to have you as a part of Valdosta, and extend to you our every facility to make your stay in Valdosta pleasant and long remembered.



*Luke Brothers*

**Georgia's Finest Store, South**

COMPLIMENTS

. . of . .

THE CITIZENS and SOUTHERN  
NATIONAL BANK



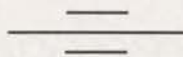
VALDOSTA

GEORGIA

Valdosta's Leading Restaurant

THE ROOSEVELT

FAMOUS FOR WESTERN STEAKS



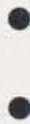
VALDOSTA -:- GEORGIA



BEST WISHES

--- from ---

The  
WHITE HOUSE RESTAURANT



VALDOSTA, GEORGIA

The other day, a man wrote that he considered me his ice man, cook and laundress, doing the washing and ironing in addition to bringing music and drama into his well-lighted home.

In short, he said that I was his "chief cook and bottle washer" . . . and that my wages would be cheap at *twice* the price. But by the same token, I'll bet he's glad that his electrical dollar is buying *three times* as much as it did fifteen years ago.

So when you build your new home or remodel your present kitchen . . . remember that electricity can do it best for less.

**Georgia Power**  
AND  
LIGHT COMPANY



*GOOD SERVICE*

*... at ...*

**BOB BELCHER'S  
DRUG STORE**

PATTERSON and CENTRAL

Phone 812-813



108 W. Central Ave.

Valdosta, Ga.

**BLACKBURN'S  
STUDIO**

*Portraits of Distinction*

FRAMES

--

FRAMING

Phone 201

Photographers of  
PINE CONE

**LANGDALE TIMBER  
COMPANY**

•  
NAVAL STORES  
PULPWOOD  
CROSSTIES

•  
106 WEST HILL AVENUE

Valdosta

Georgia

*Compliments of ...*

**BELK-HUDSON  
COMPANY**

*Valdosta's Largest and  
Leading Department Store*

•  
Newest Campus Styles



**SOUTHERN STATIONERY  
& PRINTING COMPANY**

Wholesale Paper Dealers

•  
COMMERCIAL STATIONERS  
PRINTERS  
OFFICE OUTFITTERS

•  
VALDOSTA, GEORGIA

*COMPLIMENTS*

*. . . of . . .*

**Lowndes County Board  
of County Commissioners**

D. E. COLEMAN, *Chairman*

T. M. DASHER

E. P. STATEN

*Congratulations and  
Best Wishes . . .*

**RITZ** **DOSTA**  
**PALACE**  
**MARTIN THEATRES**

•  
VALDOSTA, GEORGIA

**BROOKWOOD  
PHARMACY**

*Congratulations Seniors  
of '47 and Welcome  
All Students of G. S. W. C.*

•  
PHONE 336-337

*Compliments of . . .*

**C. C. VARNEDOE  
and COMPANY**

For the 68th Year  
Valdosta's Store Dependable

The Style Center  
of Valdosta

*Compliments of . . .*

**M. & F. FOOD STORES**

•  
VALDOSTA,  
GEORGIA

**MILAM FURNITURE  
COMPANY**

110 W. Hill Avenue  
Valdosta, Georgia

Phone 1170

*"It's Really 'Home Sweet Home'  
When We Furnish It"*

**TERRY'S DRUG STORE**

*The Rexall Store*

•  
Patterson at Hill

Valdosta, Ga.

Phone 115-116

**DUNCAN'S SHOE SHOP**

•  
Smart Footwear of Known  
Quality for College Girls

*Compliments of . . .*

**REGISTER CLOTHING  
COMPANY**

122 N. Patterson St.

Valdosta, Ga.

Home of Michael Stern Clothes



*Do Your Banking at . . .*



**THE FIRST  
NATIONAL BANK  
OF VALDOSTA**



*Best Wishes from . . .*

---

**PAXON-JONES, Inc.**

The Home of Good Shoes for 43 Years

April  
1903

April  
1947

---

*Compliments of . . .*

**SHIVER'S PINES  
RESTAURANT**

•  
1515 N. ASHLEY ST.  
•

VALDOSTA

GEORGIA



**TRAILWAYS**

*Safe and Courteous Service  
Modern Comfortable  
Clipper Coaches*

**GEORGIA STAGES, Inc.**

ALBANY, GEORGIA

## OLIVER BROTHERS

PHILCO RADIOS    AMOCO PRODUCTS  
PENNSYLVANIA TIRES

Phone 231

## NORWOOD'S, Inc.

LITHOGRAPHERS                  PRINTERS  
STATIONERS

*Read the Lowndes County  
News Each Week for Local News*

*Compliments of . . .*

## The VALDOSTA DAILY TIMES

A Good Afternoon Paper

*Congratulations to the Seniors  
of 1947*

## RHODES - COLLINS FURNITURE COMPANY

## BRIGG'S CLOTHING

*"THINGS MEN WEAR"*

VALDOSTA, GA.

114 N. Patterson St.

Phone 168

COMPLIMENTS

*. . . of . . .*

## COWART'S DRESS SHOP

Smart Styles for College Girls

*Compliments of . . .*

## VALDOSTA BOWLING CENTER

125 W. Central Ave.

Phone 22

## MUSIC

*For a Profession or for Pleasure*

## Mathis & Youmans Co.

112 N. Patterson St.

Pianos, Radios, Electric Organs,  
Records and Supplies



COMPLIMENTS

. . . of . . .

**HALL'S CHILDREN'S SHOP**

*"Tots Through Teens"*

COMPLIMENTS

. . . of . . .

**VALDOSTA DRUG CO.**

•

*For the best in flowers . . .*

**VALDOSTA  
GREENHOUSES**

908 Williams Street

*Compliments of . . .*

**TAYLOR'S BAKERY**

*We Appreciate Your Patronage*

VALDOSTA

GEORGIA

**VALDOSTA  
MUSIC SUPPLY**

Sheet Music, Majestic Radios,  
Records, Albums, Recording Studio  
127 W. Central Ave.  
Valdosta, Ga.  
Phone 2188

**VALDOSTA COACHES**

•

CITY BUS  
YELLOW CAB

Phone 1000

*Compliments of . . .*

**STAR LAUNDRY, Inc.**

Over Fifty Years of Faithful Service

*"Satisfaction a Habit"*

H. D. BEVILLE, *Mgr.*

Phone 54

*G.S.W.C. Girls . . .*

PAUSE and REFRESH

. . . DRINK . . .

**COCA-COLA**

IN BOTTLES

**Valdosta Coca-Cola Bottling  
Works, Inc.**

**LESLIE R. DAVIS**

Complete line of watches,  
jewelry, and greeting cards

132 N. Ashley St.

Phone 1826

**DUTCH'S GRILL**

NEXT TO BUS TERMINAL

Steaks — Chicken — Chops —  
Sandwiches

HOME OF 350 CAB CO.

*COMPLIMENTS*

*. . . of . . .*

**HOTEL DANIEL ASHLEY**

Valdosta

Georgia

**KELLER CLOTHING CO.,  
Inc.**

EVERYTHING FOR MEN and BOYS

Phone 307

106 N. Patterson

Enjoy

**Foremost Ice Cream**

*It's Delicious*

**FOREMOST FARMS, Inc.**

Valdosta

Georgia

*COMPLIMENTS*

*. . . of . . .*

**HOTEL VALDES**

Valdosta

Georgia

*COMPLIMENTS*

*. . . of . . .*

**PAINÉ HARDWARE CO.**

Everything in Hardware

PHONE 800

Valdosta

Georgia

*COMPLIMENTS*

*. . . of . . .*

**BRIGGS LADIES SHOP**

WHERE QUALITY COUNTS



COMPLIMENTS

. . . of . . .

**FRIEDLANDER'S**

The Finest in Fashions

Valdosta

Georgia

COMPLIMENTS

. . . of . . .

**SERVICE TIRE COMPANY**

709 N. Ashley St.

Valdosta

Georgia

*We, the Staff of the 1947 PINE CONE, take this opportunity to extend our sincere appreciation to those loyal friends of our institution who, by their generous support, have made possible the publication of this book.*

A black and white photograph of a cloudy sky. The clouds are large and billowy, filling most of the frame. In the foreground, there are dark silhouettes of trees and a couple standing together, holding hands. The couple is positioned in the lower center of the image. To the right, there is a silhouette of a building with a dome. The overall scene is romantic and evocative.

ANNUALS  
*of*  
DISTINCTION

BOWEN, LONG AND YOUNG  
Atlanta