

1937-1938

2025

2. Name

Address

3. Name

Address

1. Name

Address

Please fill out as soon as possible and return to  
George W. ...  
Please place the names of students willing to take part in the ...

- 1. For ...
- 2. For ...
- 3. For ...
- 4. For ...
- 5. For ...
- 6. For ...

Please ...  
The ...  
The ...

These ...  
The ...  
The ...

These ...  
The ...  
The ...

These ...  
The ...  
The ...

...

...

...

...

...	...
...	...
...	...
...	...
...	...

...	...
...	...
...	...
...	...
...	...

...	...
...	...
...	...
...	...
...	...

...

THE SEVENTH SOUTHEASTERN INTERNATIONAL RELATIONS CLUB CONFERENCE

Vanderbilt University

Nashville, Tennessee, March 4 and 5, 1938

The members of the International Relations Club of Vanderbilt University cordially invite you to Nashville for the Seventh Southeastern Conference. We are looking forward to renewing old acquaintances, and meeting your new members. We hope you will send a large delegation.

We are planning a program built around the topics noted below. Will you kindly check on this list three subjects which your club would prefer to have discussed in the round tables. Add any other topic which you may care to suggest.

1. Far Eastern Crisis
2. Europe and International Security
3. Economic Readjustments for World Peace
4. Isolation, Neutrality or Cooperation
5. The Western Hemisphere
6. \_\_\_\_\_

Kindly give the names of students willing to lead round tables, present papers, or take part in discussion.

1. Name \_\_\_\_\_ Subject \_\_\_\_\_

2. Name \_\_\_\_\_ Subject \_\_\_\_\_

3. Name \_\_\_\_\_ Subject \_\_\_\_\_

Address \_\_\_\_\_

Please fill out as soon as possible and return to

George W. Burroughs  
Box 131, Vanderbilt University  
Nashville, Tennessee

Various

2\* Name \_\_\_\_\_ Subject \_\_\_\_\_

3\* Name \_\_\_\_\_ Subject \_\_\_\_\_

1\* Name \_\_\_\_\_ Subject \_\_\_\_\_

Persons' names of those who are to be invited to the conference should be given in the names of students attending to the best of your knowledge.

- 2\* The National Association
- 4\* Association of Professors
- 2\* Economic Development of the Middle East
- 2\* Europe and International Relations
- 1\* The League of Nations

Persons' names of those who are to be invited to the conference should be given in the names of students attending to the best of your knowledge.

# Southeastern International Relations Clubs

## SEVENTH CONFERENCE

### Vanderbilt University

March 4-5, 1938

NASHVILLE, TENNESSEE

ROBERT T. FINNEY  
PRESIDENT  
VANDERBILT UNIVERSITY

EDGAR SHANNON  
FIRST VICE-PRESIDENT  
WASHINGTON AND LEE UNIVERSITY

JACK TALBERT  
SECOND VICE-PRESIDENT  
EMORY UNIVERSITY

AGNES STIGGINS  
RECORDING SECRETARY  
FLORIDA STATE COLLEGE FOR WOMEN

ANN WRIGHT  
TREASURER  
VANDERBILT UNIVERSITY

WILLIAM C. HALL  
CORRESPONDING SECRETARY  
VANDERBILT UNIVERSITY

January 21, 1938

Dear Faculty Advisor:

It may be that your reply to our recent letter is already in the mail. In any case we are eager to hear from you about the Conference.

We know that it is sometimes difficult to decide how large a delegation shall go to the Conference, and so we hope that you can begin to discuss the matter now.

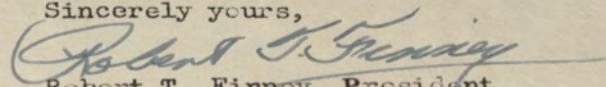
Surely there has never been a time when conference, discussion, and the exchange of ideas was more needed. With the Far East ablaze and the situation in Europe almost equally critical, the necessity for thinking our way through, if possible, would seem to be imperative. The time which we have left to think in may also be short.

We know that Miss Jones will bring with her the usual able corps of speakers to address the Conference. We are going to do our best to make it stimulating and enjoyable. George Peabody College for Teachers, which adjoins the campus of Vanderbilt University, will open its fine dormitories to the girls who come. We are making a special effort to take care of the girls. Since we are primarily a men's school the boys can be more easily accommodated.

We hope that even the more distant clubs can plan to send a small delegation, and that larger groups will come from the nearer states.

As usual, the Roundtables will be the heart of the Conference. Please indicate your choice of subjects on the enclosed sheet, and the names of some students who will take a part. Please tell us what you think your students can do best, and be sure to note the name and address of your school.

Further details about the Conference will be sent you soon.

Sincerely yours,  
  
 Robert T. Finney, President

Box 131

MEERMILL  
BOND  
MADE IN U.S.A.

THE SIXTEENTH SOUTHEASTERN INTERNATIONAL RELATIONS CLUBS CONFERENCE

- 1. THE NATURE OF THE CONFERENCE
- 2. THE PURPOSE OF THE CONFERENCE
- 3. THE PROGRAM OF THE CONFERENCE
- 4. THE VENUE OF THE CONFERENCE
- 5. THE COST OF THE CONFERENCE
- 6. THE DATE OF THE CONFERENCE
- 7. THE TIME OF THE CONFERENCE

Responses and inquiries about the Conference are now arriving in such volume that we believe it will be a great gathering.

THE SIXTEENTH SOUTHEASTERN INTERNATIONAL RELATIONS CLUBS CONFERENCE

Vanderbilt University  
Nashville, Tennessee

March 4-5, 1938

To ALL IRC Clubs:

Responses and inquiries about the Conference are now arriving in such volume that we believe it will be a great gathering.

Speakers: There is good news from New York also. Dr. Charles G. Fenwick, Professor of Government at Bryn Mawr College, will be one of the Carnegie speakers. Dr. Fenwick is one of the most dynamic speakers whom we could hope to hear. For several years Miss Jones has been trying to persuade him to address one of the Conferences, but his engagements would never permit. Recently, for example, he could not come because he was one of the President's delegates to the Buenos Aires Conference. This year he will be with us and no one who hears him will fail to get some ideas. Dr. Fenwick provokes discussion and stimulates thinking.

The other Carnegie speaker will be Dr. Ernest B. Price, head of the International House, University of Chicago. This also is an exceptionally fortunate development for us. Dr. Price has returned recently from a long study of present conditions in Manchuria, China and Japan. He was born in China and speaks the Eastern languages. Dr. Fleming heard Dr. Price speak at Philadelphia and reports that he has a remarkable fund of information. Thus we will have a rare opportunity to get the inside facts of the present situation in the Far East.

Conference Expenses: The Registration fee for delegates arriving Thursday evening will be \$3.50. This covers lodging Thursday and Friday nights and meals beginning with dinner Thursday evening (if arrival is before 6:00 P.M.) and including Saturday lunch. Admission to the banquet Friday evening is also included.

For delegates arriving Friday morning in time for breakfast, the fee will be \$3.25. Later arrivals will pay \$3.00. Sponsors will pay the same fees as delegates.

For those who may prefer to live with friends, or to go to a hotel, the fees will be as follows: registration, \$1.00; Banquet, 75¢. Hotel reservations must be made directly and should be made well in advance.

Number of Delegates: Send as many as you like, but warn us as soon as possible how many we must prepare for.

The Conference Banquet will be held on Friday evening in the Great Hall of Scarritt College for Christian Workers, a short distance from Vanderbilt Campus. The new Scarritt buildings are among the most beautiful structures in the United States--especially lovely at night. We feel therefore that the Conference banquet will be an occasion to remember.

series\* bl... ..  
KINDIA K... ..

- 2\* The ... ..
- 4\* ... ..
- 2\* ... ..
- 3\* ... ..
- 1\* ... ..

series\* ... ..  
... ..  
... ..

... ..  
... ..

... ..  
... ..

... ..  
... ..  
... ..

... ..  
... ..  
... ..

... ..

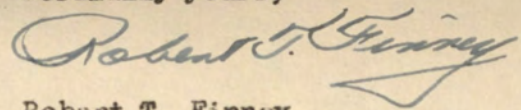
Page 2

While it will be the chief social event of the Conference, formal dress will not be necessary. Many will wear formal dress and many will not, so wear what you like and be sure you will be in order.

Roundtable Subjects: After reading the many suggestions which have come in from you, we have re-phrased the roundtable topics slightly, and they will be found, with sub-topics, on a separate sheet.

If we have not answered all of your questions by this time, write us at once. We hope that even the remote clubs may find it possible to send at least one delegate. See what you can do. We are expecting to have a great time and we want you in on it.

Cordially yours,



Robert T. Finney  
President of the Conference

Bookstore Box 151  
Vanderbilt University

The Fifteenth Conference

Southeastern International Relations Clubs

March 4-5, 1938

Vanderbilt University  
Nashville, Tennessee

Important Notice to all IRC Clubs:

There has been a slight but important change in the time of the Conference. Please note that the Conference will not open until 1:30 P.M. Friday, March 4, and will hold through all of Saturday.

We believe this change will help the attendance distinctly. Many delegates can leave home early Friday morning. Those from farthest away will have both Thursday and Friday to travel in. Most of us will miss less school.

Conference Expenses: The Registration for delegates arriving before lunch Friday noon will be \$3.50. For those arriving after lunch on Friday, but in time for dinner, the fee will be \$3.25. Those arriving after dinner Friday evening will pay \$3.00. Sponsors will pay the same fees as delegates.

We expect to care for delegates from a long distance who may arrive late Thursday evening.

For those who may prefer to live with friends, or to go to a hotel, the fees will be as follows: Registration, \$1.00; Banquet, 75¢. Hotel reservations must be made directly and should be made well in advance.

Social Events: The entire conference will be entertained at an informal reception on Friday at 4:00 P.M. by the Vanderbilt Student Union.

The Conference Banquet will be held at 6:30 P.M. on Saturday evening, instead of on Friday, as previously announced. Place: The Great Hall of Scarritt College.

After the close of the Conference on Saturday evening, the Vanderbilt Student Union will give a dance in honor of the delegates.

Notice of arrival: Please mail the enclosed notice of arrival on the earliest possible day. It is being sent even to those Clubs who had decided not to send delegates, in the hope that the change in our plans may enable them to send some one.

Registration: At the Alumni Building from 8:00 to 11:30 P.M., Thursday evening; 9:00 to 1:30 Friday

PROGRAM

Friday, March 4

9:00 - 1:30 Registration, Alumni Building.  
12:00 - 1:15 Luncheon, Kissam Hall Cafeteria.



AMY HEMINWAY JONES



DR. CHARLES G. FENWICK



DR. ERNEST B. PRICE

### IR C Will Send Delegates To Nashville Meet

Camille Rycroft, Anna Mathews, Ora Kate Wisenbaker, Frances McLain and Miss Mildred Price have been chosen delegates by the International Relations Club to the IRC conference to be held in Nashville, Tenn., at Vanderbilt University on March 4 and 5.

#### Round Table Discussions

The conference will feature both platform addresses and Round table discussions. Carnegie speakers will include Dr. Charles G. Fenwick, Professor of Government at Bryn Mawr College and Dr. Ernest B. Price, head of the International House, University of Chicago. Dr. Price has returned recently from a study of present conditions in Manchuria, China and Japan.

The conference will entertain delegates from clubs in the sixteen conferences, which include Georgia, Alabama and Tennessee.

### Prominent Speakers At IRC Meet In Nashville

Delegates from the GSWC International Relations Club to the Southeastern Conference of IRC in Nashville, Tennessee, held March 4, 5, include Frances McLain, Camille Rycroft, Anna Mathews, Ora Kate Wisenbaker and Miss Mildred Price, faculty advisor.

Round tables, conferences and speeches on international problems make up the program, given at Vanderbilt University.

#### Prominent Lecturers

Dr. Ernest B. Price, a Carnegie Endowment speaker, talked on the subject, "Forces In the Far East." Miss Amy Heminway Jones, Division Assistant of the Endowment, conducted the meetings called to discuss the club work. Dr. Charles G. Fenwick, also a Carnegie speaker, gave a lecture on "This Business of the Haves and Have-Nots."

The GSWC delegates left on Wednesday by motor and planned to visit points of interest in Tennessee and North Georgia. Colleges in Alabama, Florida, Georgia, Mississippi, Tennessee, Virginia, North Carolina and South Carolina are represented at the meet.

## Fifteenth Conference

### Southeastern International Relations Clubs

Vanderbilt University  
Nashville, Tennessee

March 4-5, 1938





1938 Southeastern Conference on International Relations Vanderbilt Univ



International  
Relations  
Clubs

SEE Ruby Falls  
in Lookout  
Mountain *Caves*

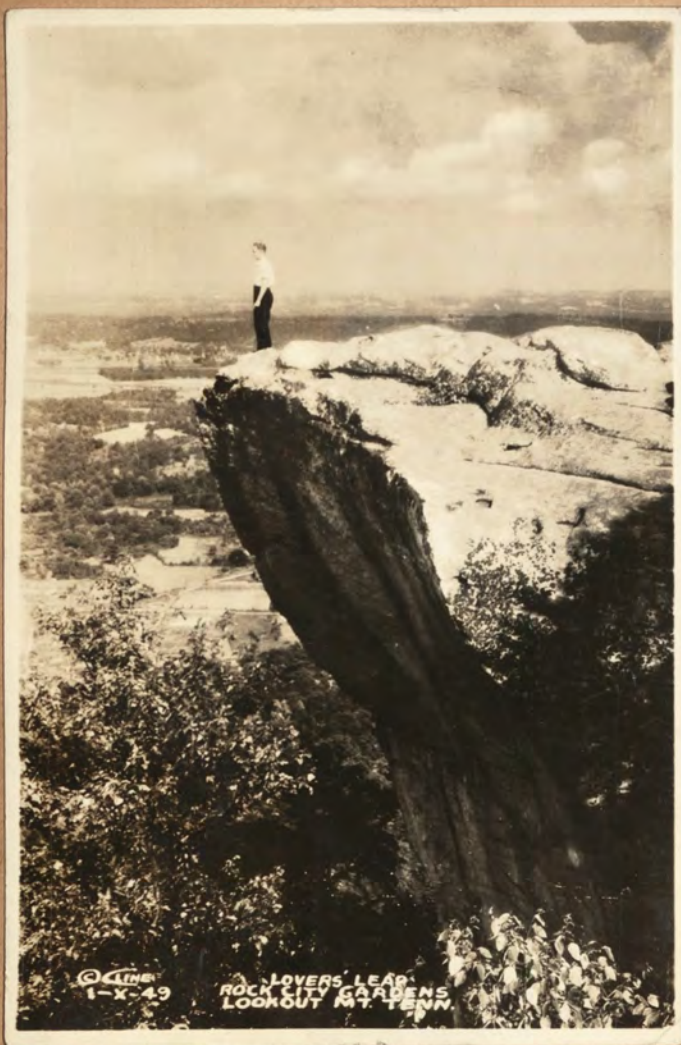
*Mar 1938*



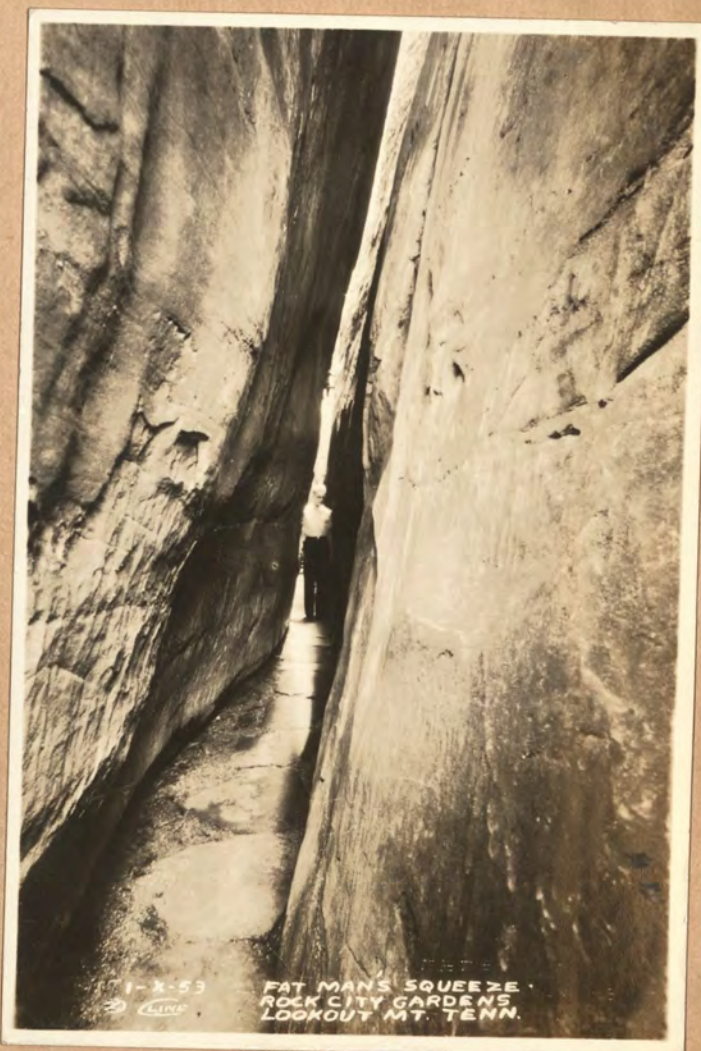
Ruby Falls  
•  
145 ft.  
High  
and  
1120 feet  
UNDER-  
GROUND



CHATTANOOGA, TENN.



© 1949  
LOVERS LEAP  
ROCK CITY GARDENS  
LOOKOUT MT. TENN.



1-8-53  
© 1953  
FAT MAN'S SQUEEZE  
ROCK CITY GARDENS  
LOOKOUT MT. TENN.



*Hall of Dreams  
Onyx Jungle*



*Elevator  
Arabian Draperies*



**Ruby Falls . . .**

Enroute to this "Majestic Peer" of cave wonders, is a 420 Ft. level . . . have been known and visited for centuries and draperies which the indirect lighting system brings to a natural entrance off the banks of the Tennessee River, cent splendor. Gigantic icicles of solid onyx, formed through the chambers and weird passages, were once used as a the Hall of Dreams, in contrast to the more rugged formations and later as a retreat and camping ground by the reported to the most delicate, lacy fabrics of nature's natural entrance was sealed up by the construction of hundreds of crystal like miniature stalactites and stalactites . . . millions of years old and still in the process of growth. Lookout Mountain.

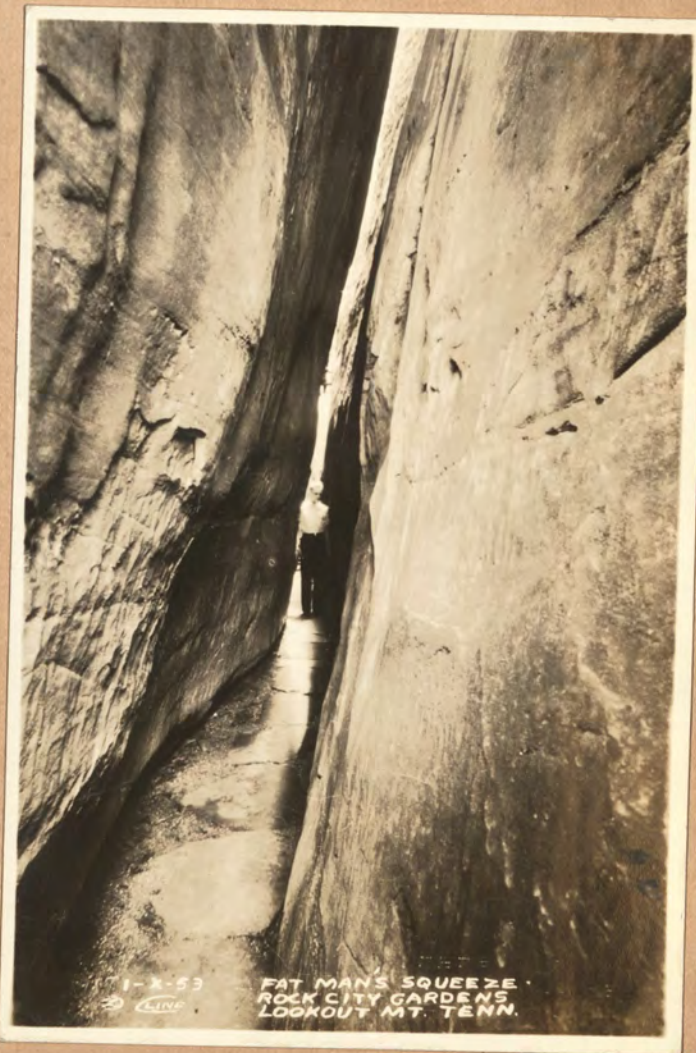
The fitting climax of a journey through this subterranean these caves again accessible to the public. It was by the view of unsurpassing beauty presented by Ruby Falls through solid stone . . . that the Ruby Falls route . . . 260 different from any other cavern in that the stream drops Ruby Falls is the amazing scene at the end of an ing the world's most spectacular underground scene. 7 houses this 145 Ft. waterfall is 1120 Ft. below the surface when there forever . . . it will endure forever . . . the memory ral design, and of color in this room, is worthy of the Metime.

**Lookout Mountain Caves**

**"THE MOST SPECTACULOUS MOUNTAIN CAVES."**



© 1949  
LOVERS LEAD  
ROCK CITY GARDENS  
LOOKOUT MT. TENN.



© 1953  
FAT MAN'S SQUEEZE  
ROCK CITY GARDENS  
LOOKOUT MT. TENN.

# Gorgeous Beauty -

Within the Earth . . .

1120 feet below  
the Surface



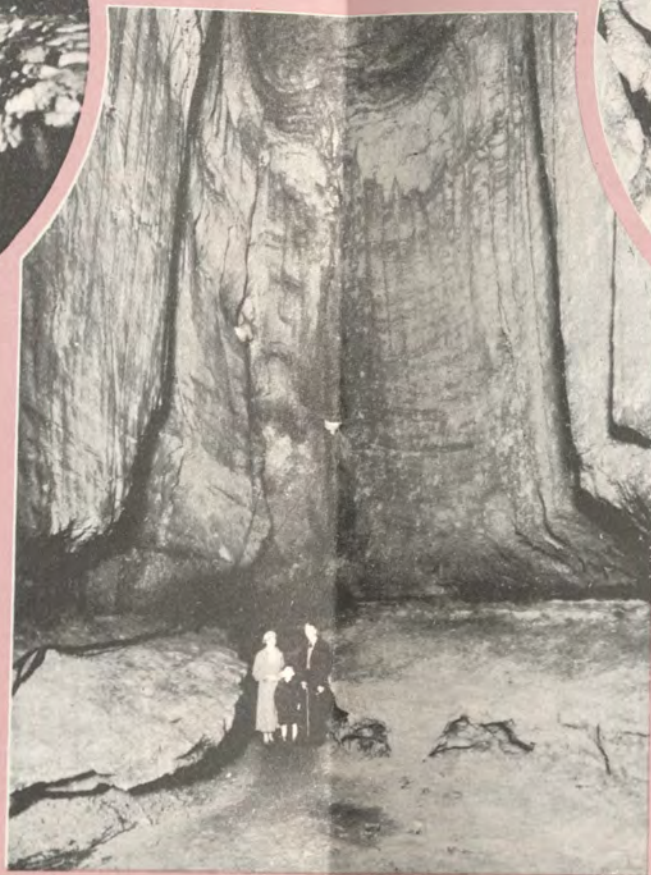
*Elevator  
Arabian Draperies*



## Lookout Mountain Caves

• The Historic Twin Caves . . . 420 Ft. level . . . have been known and visited for hundreds of years. Having a natural entrance off the banks of the Tennessee River, these caves with their huge chambers and weird passages, were once used as a rendezvous by the Indians and later as a retreat and camping ground by the Civil War Soldiers. But, this natural entrance was sealed up by the construction of the railroad tunnel through Lookout Mountain.

In 1923 the idea was conceived to drill an elevator shaft from a point on the side of the mountain to make these caves again accessible to the public. It was while drilling this shaft . . . through solid stone . . . that the Ruby Falls route . . . 260 Ft. level . . . was discovered. Ruby Falls is the amazing scene at the end of an outstanding tour. It has been there forever . . . it will endure forever . . . the memory of seeing it will endure a lifetime.



*Entrance to Ruby Falls*



*Hall of Dreams  
Onyx Jungle -*

## Ruby Falls . . .

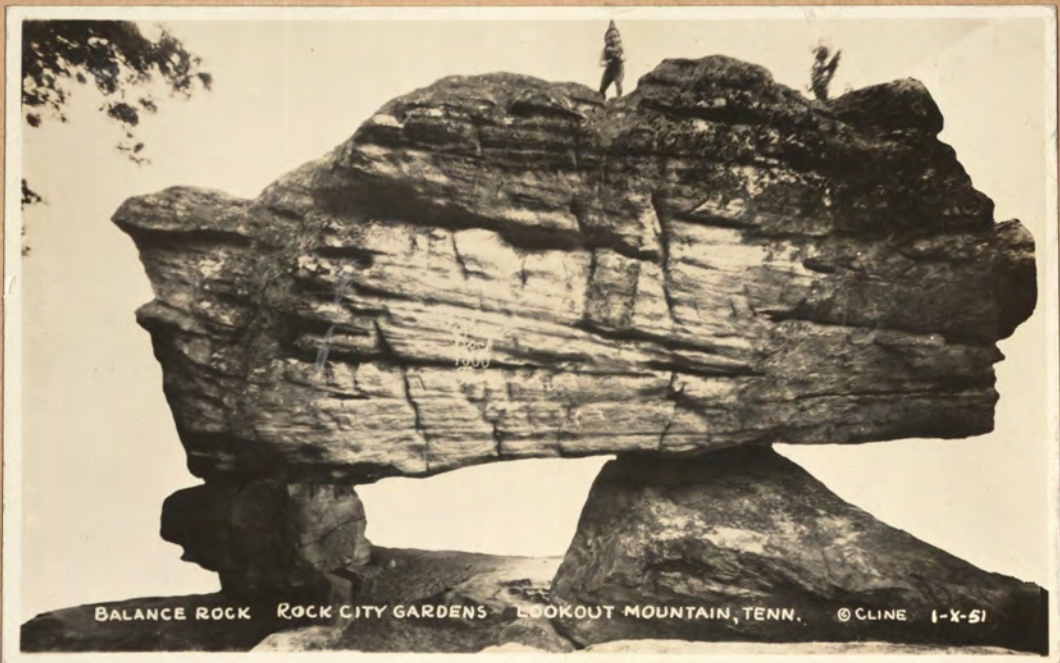
• Enroute to this "Majestic Peer" of cave wonders, is seen varied colored curtains and draperies which the indirect lighting system brings out in all their magnificent splendor. Gigantic icicles of solid onyx, formed through aeons of ages, shade from creamy white to arctic blue and hold the visitor in an ecstasy of wonder. In the Hall of Dreams, in contrast to the more rugged formations, one's fancy is transported to the most delicate, lacy fabrics of nature's handiwork. Hundreds and hundreds of crystal like miniature stalactites and stalagmites, "capulary tubes" and helectites . . . millions of years old and still in the process of formation. All below the famous battlefield where "The Battle above the Clouds" was fought.

The fitting climax of a journey through this subterranean Fairyland is reached by the view of unsurpassing beauty presented by Ruby Falls. It is unique and different from any other cavern in that the stream drops a sheer 145 Ft., presenting the world's most spectacular underground scene. The massive chamber which houses this 145 Ft. waterfall is 1120 Ft. below the surface of the earth. The architectural design, and of color in this room, is worthy of the Master's Hand alone.

"THE MOST SPECTACULAR OF THE WORLD'S WONDERS . . . RUBY FALLS, LOOKOUT MOUNTAIN CAVES."



A FEW OF THE MANY UNUSUAL FORMATIONS IN "ROCK CITY" -- "FAIRYLAND"

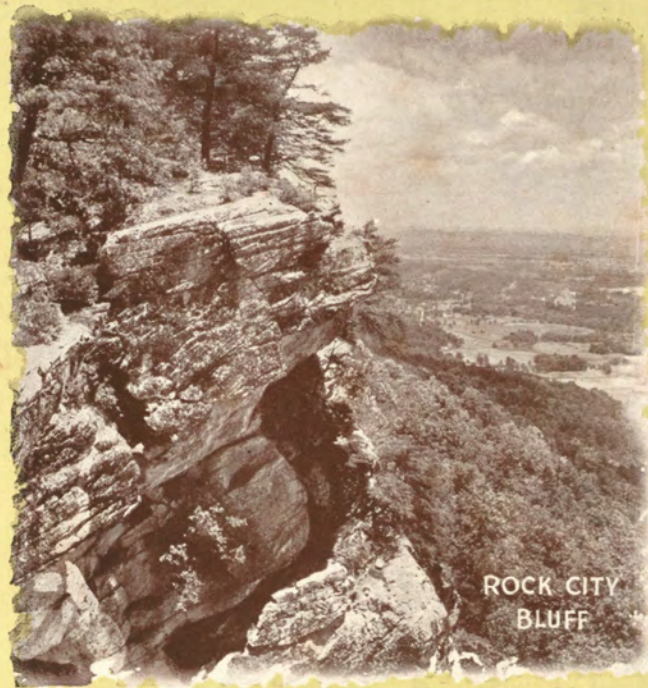




TENNIS AND RIDING AT "FAIRYLAND"



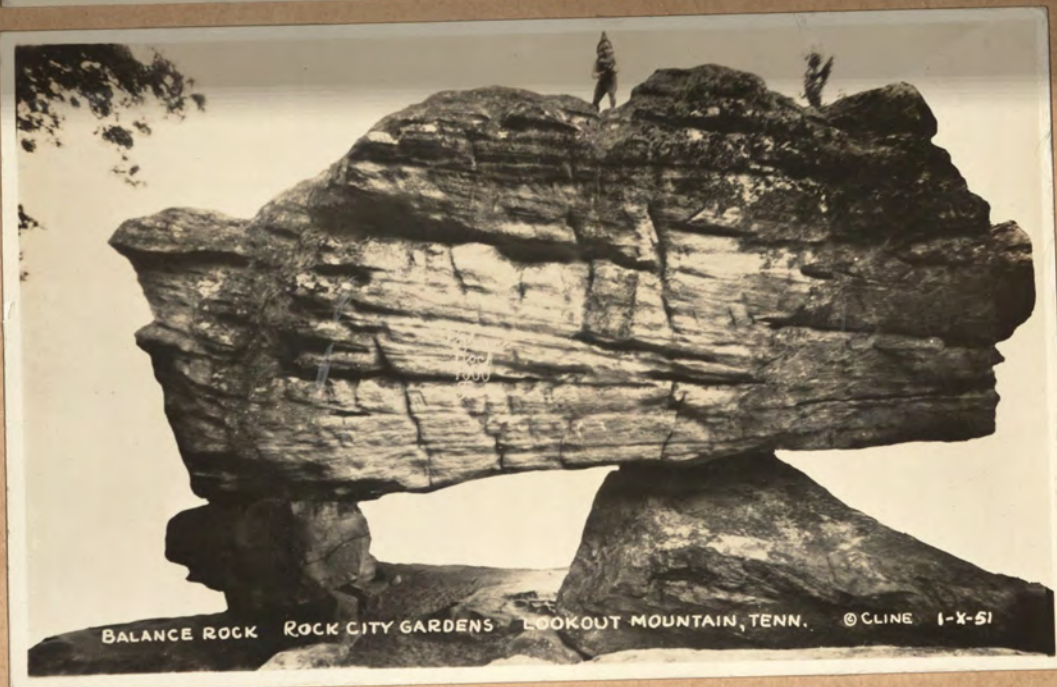
B GOLF COURSE



ROCK CITY  
BLUFF



"FAIRYLAND" GOLF COURSE



BALANCE ROCK ROCK CITY GARDENS LOOKOUT MOUNTAIN, TENN. © CLINE 1-X-51



CRATER LAKE  
ROCK CITY GARDENS  
LOOKOUT MT. TENN.

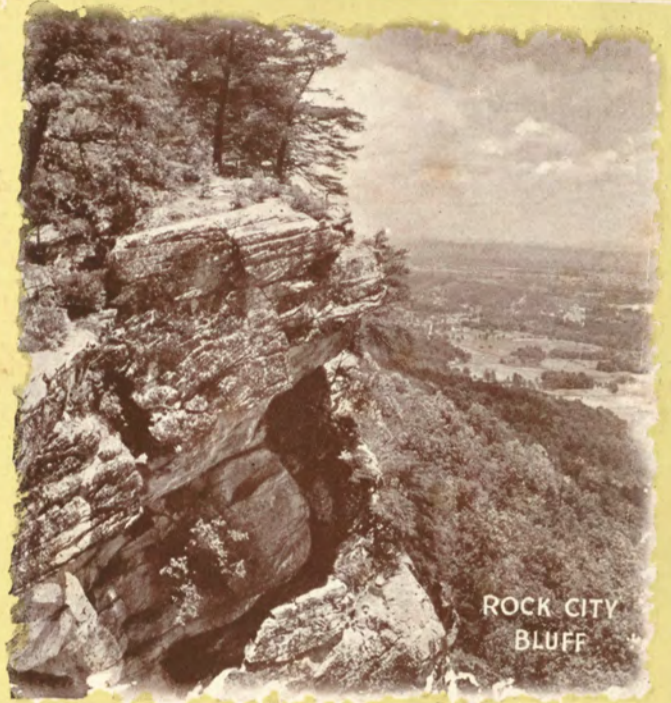
1-X-59 CLINE



TENNIS AND RIDING AT "FAIRYLAND"



B GOLF COURSE



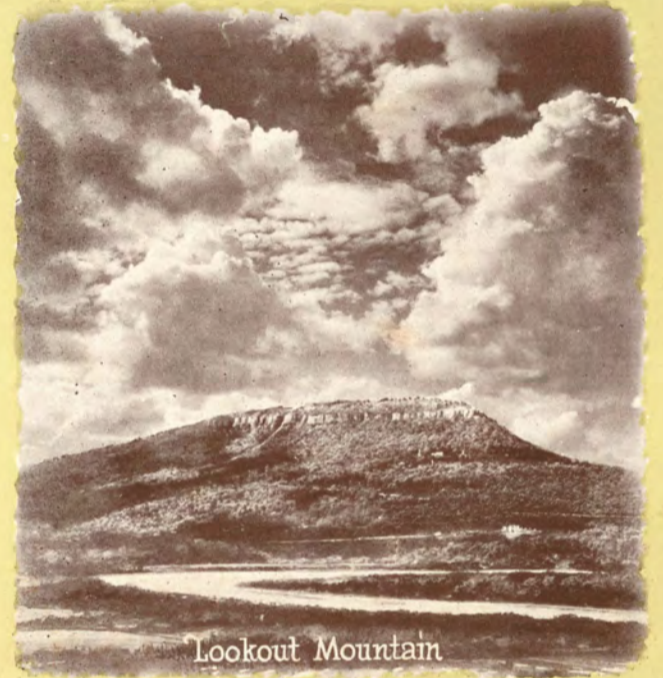
ROCK CITY BLUFF



The Road to "FAIRYLAND"



FAIRYLAND INN



Lookout Mountain



CHICKAMAUGA BLUFF



FAIRYLAND BLUFF



CRATER LAKE  
ROCK CITY BRIDGES  
LOOKOUT ST. TERN

1-X-39 CLINE



DINING AND BALL ROOM "FAIRYLAND" INN



THE ORIGINAL TOM THUMB GOLF COURSE, - THE FIRST IN THE WORLD



Entrance  
Mother Goose Village



LOUNGE ROOM "FAIRYLAND" INN



"FAIRYLAND"  
INN



Swimming



BARBECUE PIT



Hansel and Gretel's  
Gingerbread House

The "Tinder Box" Gift Shoppe



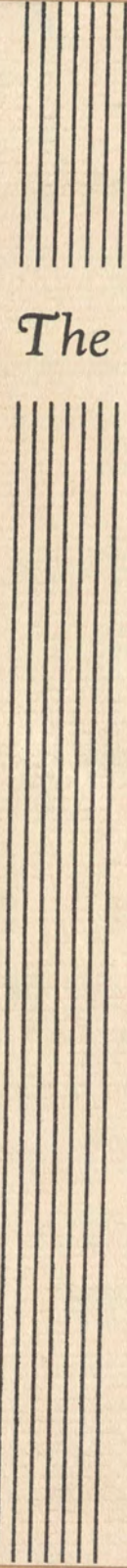
PEN WOMEN'S CLUB



CRATER LAKE  
ROCK ISLAND  
LOOKS AT 75%

1-X-29  
CLINE





*The* PARTHENON

C a t a l o g u e

*of*

*P a i n t i n g s*

JAS. M. COWAN COLLECTION  
DONATED 1927



- |  |  |   |   |
|--|--|---|---|
| 1. SEPTEMBER BY THE SEA<br>CULLEN YATES                | 17. PARTRIDGE WEATHER<br>Guy Wiggins, N. A.                      | 32. IN THE ROCKY MOUNTAINS<br>SANFORD R. GIFFORD, N. A.     | 48. ROBES OF FALL<br>BRUCE CRANE, N. A.                               |
| 2. THE COVERED BRIDGE<br>CHARLES MORRIS YOUNG          | 18. LANDSCAPE<br>GEORGE INNESS, JR., N. A.                       | 33. LANDSCAPE<br>BEN FOSTER, N. A.                          | 49. A TRANQUIL HOUR<br>GLENN NEWELL, A. N. A.                         |
| 3. CANAL IN HOLLAND<br>CHARLES P. GRUPPE               | 19. TAWNY SUNSET<br>CHARLES WARREN EATON, A. N. A.               | 34. STILL LIFE<br>EMIL CARLSEN, N. A.                       | 50. ARKVILLE VALLEY<br>ARTHUR PARTON, N. A.                           |
| 4. THE NEW DRESS<br>EDWIN H. BLASHFIELD, N. A.         | 20. HILLSIDE AND POOL—<br>OCTOBER<br>ALBERT P. RYDER, N. A.      | 35. LANDSCAPE<br>FELIX RUSMANN                              | 51. THE LAST LOAD<br>LEWIS PAUL DESSAR, N. A.                         |
| 5. MARINE—MOONLIGHT<br>BRUCE CRANE, N. A.              | 21. THE OLD MILL<br>EMIL CARLSEN, N. A.                          | 36. VALLEY IN WINTER<br>EDWARD W. REDFIELD                  | 52. APRIL MORNING<br>WILSON IRVINE                                    |
| 6. EVENING IN HOLLAND<br>GEO. ELMER BROWNE, N. A.      | 22. PEACEFUL HOUR<br>WILLIAM KEITH, N. A.                        | 37. NORTHEASTERLY GALE<br>PAUL DOUGHERTY, N. A.             | 53. RAB AND THE GIRLS<br>WINSLOW HOMER                                |
| 7. ACROSS THE HARBOR—<br>ST. IVE'S BAY<br>HAYLEY LEVER | 23. VENICE<br>LUCIAN W. POWELL                                   | 38. SPRING MORNING ON<br>COAST<br>W. ELMER SCHOFIELD, N. A. | 54. IN THE TROPICS<br>FREDERICK CHURCH, N. A.                         |
| 8. AUTUMN LANDSCAPE<br>EMIL CARLSEN, N. A.             | 24. THE SALUTE, EARLY MORN-<br>ING<br>J. CARROLL BECKWITH, N. A. | 39. BROOK OF ANANOSUC<br>CHAUNCEY F. RYDER, N. A.           | 55. ST. GABRIELS GROTTA, ISLE<br>OF JAMAICA<br>R. A. BLAKELOCK, N. A. |
| 9. HILL AND VALLEY<br>ERNEST LAWSON, N. A.             | 25. NUDE FIGURE IN THE<br>WOODS<br>LILLIAN GENTH, A. N. A.       | 40. THE COVE<br>JONAS LIE                                   | 56. MT. TAMALPAIS<br>ALBERT BIERSTADT                                 |
| 10. LEDA AND THE SWAN<br>ELLIOTT DAINGERFIELD, N. A.   | 26. THE MAY PARTY<br>JEROME MYERS                                | 41. GLOUCESTER HARBOR<br>HARRY A. VINCENT, N. A.            | 57. MUSICAL INSPIRATION<br>ELIHU VEDDER, N. A.                        |
| 11. TOWN POND—EASTHAMP-<br>TON<br>THOMAS MORAN, N. A.  | 27. STREET SCENE IN<br>BRITTANY<br>PAULINE PALMER                | 42. WIDENING SEA<br>FRED'K. J. WAUGH, N. A.                 | 58. INDIAN IN CORNFIELD<br>WALTER UFER                                |
| 12. STILL LIFE—FISH<br>WILLIAM M. CHASE, N. A.         | 28. SPRING LANDSCAPE<br>H. BOLTON JONES, N. A.                   | 43. EARLY AUTUMN<br>W. GRANVILLE SMITH, N. A.               | 59. THE HILLTOP<br>CHARLES C. CURRAN, N. A.                           |
| 13. SUNRISE—POTTERS DOCK<br>HARRY W. RANGER, N. A.     | 29. SUMMER DAYS<br>EDWARD DUFNER, A. N. A.                       | 44. NIGHT ON THE BANKS<br>GEO. ELMER BROWNE, A. N. A.       | 60. MOONLIGHT VENICE<br>GEORGE H. BOGERT                              |
| 14. GRAY DAY<br>LEONARD OCHTMAN                        | 30. GREENSWARD DURHAM<br>GEORGE INNESS, N. A.                    | 45. ROSE OF SHIRAZ<br>HOVSEP PUSHMAN                        | 61. INDIANS<br>ELLIOTT DAINGERFIELD                                   |
| 15. A BIT OF LAKE CHAMPLAIN<br>J. FRANCIS MURPHY       | 31. FROSTY MORNING<br>BRUCE CRANE, N. A.                         | 46. GIRL IN DOORWAY<br>F. C. FRIESEKE, N. A.                | 62. VENUS TEACHING CUPID<br>BENJAMIN WEST, P. R. A.                   |
| 16. THE YOUNG MUSICIAN<br>JOHN G. BROWN, N. A.         |  | 47. BIRCHES AND PINES<br>GARDNER SYMONS, N. A.              | 63. FROST BOUND STREAM<br>JOHN F. CARLSON, N. A.                      |