

---

## Community Archives – Thomas County Collection – City of Thomasville

CA/003-01-001

---

1928

# Insurance Maps of Thomasville, Georgia

Sanborn Map Company

---

For this and additional works see: <https://vtext.valdosta.edu/xmlui/handle/10428/6956>

UUID: 26E34D96-F05B-EA9A-4869-3FCDCAB2FCCE

### **Recommended Citation:**

Sanborn Map Company. (1928). Sanborn fire insurance map from Thomasville, Thomas County, Georgia. [Map]. Sanborn Map Company. Thomas County Collection: City of Thomasville. Valdosta State University Archives and Special Collections. Retrieved from <https://hdl.handle.net/10428/7073>

This item is part of the *Community Archives: Thomas County Collection* at Valdosta State University Archives and Special Collections. All rights reserved by the City of Thomasville. If you have any questions, contact [archives@valdosta.edu](mailto:archives@valdosta.edu)







Paste over Add'l Index of Sept., 1932, which is now void.

THOMASVILLE, GA.

## ADD'L INDEX, November, 1938

Note: Paste over Add'l Index of Nov., 1938, which is now void.

Thomasville, Ga.,

### ADDITIONAL INDEX, JUNE, 1947

STREETS	sheet	N	sheet	Commercial National Bank, . . . . .	sheet
<b>A</b>		North Blvd., . . . . .	40	<b>D</b>	
Archbold Ave., . . . . .	30			Dawson Street Baptist Church, . . . . .	40
<b>B</b>		Oak Alley, . . . . .	39	Douglas Grammer School (Col.), . . . . .	38
Balsom, . . . . .	37			High School (Col.), . . . . .	31
Bennett Alley, see Clark.				Drake Bros., Foundry, . . . . .	
Blackhear, . . . . .	37	Pavo Rd., . . . . .	27	<b>F</b>	
Bond, . . . . .	38	Pershing Ave., . . . . .	21	Farmers Curb Market, . . . . .	20
Bosser Ave., . . . . .	37	Pratt Alley, . . . . .	28	Products Co., Peanut Who., . . . . .	20
Broad, S., . . . . .	37			First Presbyterian Church, (Col.), . . . . .	26
<b>C</b>				Free Will Baptist Church, . . . . .	21
Cherry, . . . . .	40	Ridgecrest Drive, . . . . .	40	<b>G</b>	
Chestnut, . . . . .	40			Georgia Packing Co., . . . . .	40
Church, . . . . .	39			Crate & Basket Co., . . . . .	3
Clark, . . . . .	20 & 21	School, . . . . .	37	Gilbert Hotel, . . . . .	3
Clay, E., . . . . .	*40	Short Broad, . . . . .	22	Golden Bros. Co. Whol. Groceries, . . . . .	18
1000-1012	25	Short Madison, . . . . .	22	Gordon Avenue Apartments, . . . . .	29
1001-1011	40	Slexas, . . . . .	18	Gulf Oil Corp., . . . . .	19
1013-1310	40	100-135	28		
Clay, W., . . . . .	38	200-425	28	<b>H</b>	
Cloverdale Drive, . . . . .	22	500-725	29	Horne's Chapel (Col.), . . . . .	33
Coon, . . . . .	27	Small Alley, . . . . .	*23	<b>J</b>	
<b>D</b>		South, . . . . .	810-910	Johnson Lumber Co., . . . . .	
Dawson, N., . . . . .	1000-1415	Spear, N., see N. Spair.		Saw & Planning Mills, . . . . .	38
Dawson Drive, . . . . .	40	Spear, S., see S. Spair.		<b>K</b>	
Dellwood Place, . . . . .	40	Straw Road, . . . . .	34	Kirby-Evans Material Co., . . . . .	21
Dixon, . . . . .	22			<b>M</b>	
<b>E</b>				Masonic Temple, . . . . .	3
Edgewood Drive, . . . . .	25	Vine, . . . . .	40	Mitchell Canneries, Inc., . . . . .	18
Ell, . . . . .	38	Virginia, . . . . .	40	Municipal Bldg., . . . . .	3
<b>F</b>		<b>W</b>		<b>P</b>	
Florida Ave., . . . . .	100-139	Walnut, . . . . .	40	Piney Woods Cottages, . . . . .	20
<b>G</b>		Warren Ave., . . . . .	100-235	<b>S</b>	
Glenwood Drive, . . . . .	100-230	100-235	14	St. Augustine's Church (R.C.), . . . . .	3
Gribben, . . . . .	*40	Washington, E., . . . . .	300-529	Marks A.M. Church, . . . . .	36
	32	500-529	11	Scott Building, . . . . .	3
<b>H</b>		Westover Ave., . . . . .	900-1211	Construction Co., . . . . .	39
Hawkins, . . . . .	22		32	Second Primitive Baptist Church, . . . . .	16
Horrix, . . . . .	32	<b>Y</b>		Seventh Day Adventist Church, . . . . .	39
<b>J</b>		Young, . . . . .	800-1019	Southern Bell Telephone Co., Who., . . . . .	2
Jackson, E., N.S., Glenwood Dr. . . . .	*40	<b>SPECIALS</b>		State Highway Dept., Garage, . . . . .	25
to Myrtle Dr., . . . . .	36	<b>A</b>		Patrol Pos. No. 12, . . . . .	30
Junius, . . . . .		Alday & McBride, Cotton Gin & Feed Mill, . . . . .	17	<b>T</b>	
<b>L</b>		American Oil Co., . . . . .	39	Take-Along Travel Chair Co., . . . . .	15
Lester, . . . . .	100-120	<b>B</b>		Thomasville City Water & Light Dept., . . . . .	17
101-121	*28	Balfour Lumber Co., . . . . .	38	Jr. & Sr. High Schools, . . . . .	25
Little, . . . . .	29	B.P.O.E. Bldg., . . . . .	12	Times Enterprise, Prtg., . . . . .	2
Lucy, . . . . .	31	Bracey Lumber Co., General Wood Work, . . . . .	4	Youth Center, . . . . .	19
Luten Lane, . . . . .	100-131	<b>C</b>		<b>W</b>	
<b>M</b>		Church of God, . . . . .	32	WPAX Radio Broadcasting Station, . . . . .	3
Meadow, . . . . .	22	the Nazarens, . . . . .	3	West Side Baptist Church, . . . . .	16
Montrose Drive, . . . . .	40	City Offices, . . . . .	3		
Myrtle Drive, . . . . .	100-229	Shop & Street Dept., . . . . .	6		
	40	Clifford Temple C.M. Church, . . . . .	33		
		Colonial Hotel, . . . . .	5		

S-875-40

\* Indicates only one side of Street shown



All information contained in this map, covering properties (that might be related to National Defense activities), is to be treated as strictly confidential by our subscribers and not divulged to any outside interests. The U. S. Espionage Act makes it incumbent upon possessors of information relating to National Defense to take all possible precautions to prevent it from falling into the hands of interests inimical to the United States.

Notes: (State above New Report of Nov., 1928, which is now void.)

**THOMASVILLE**  
 THOMAS COUNTY, GEORGIA  
**NEW REPORT, AUGUST, 1923**  
 CITY IN GENERAL

**POPULATION:** 14,424 (1920 U. S. Census)

**METEOLOGY:** Prevailing winds S.W. Water temperatures mild.

**TOPOGRAPHY:** Surface comparatively level.

**STREETS:** Approximately 275 streets improved.

**FIRE FIGHTING FACILITIES**

**WATER SUPPLY:** Municipally owned. Gravity and direct pressure system from wells. Pumped flow 2,000,000 G. P. D. Total pumping capacity 2,000,000 G. P. D. Total storage capacity 1,500,000 gallons. Pressures range from 55 to 70 lbs., with an average of 55 lbs. Average daily consumption 2,000,000 gallons. Fully paid with 1 chief and 18 firemen. 1 station.

**FIRE DEPT.:** 3 combination pumper, hose and booster trucks, 1 pumper and hose and 1 booster and hose.

**FIRE ALARM:** Centralized system with headquarters at Fire Station, 100 S. Crawford Street.

**STRUCTURAL REGULATIONS**

**ROOFING:** New wood roofs prohibited.

**FIRE LIMITS:** Masonry or noncombustible construction required.

5-497-12



**KEY**

- FIRE WALL 1/2" A.B. ROOF
- FIRE WALL 1/2" A.B. ROOF
- WOOD CONCRETE
- FIRE WALL 1/2" A.B. ROOF
- FRAME CONSTRUCTION
- OPENING WITH IRON SHUTTERS
- STANDARD
- WOOD SHUTTERS
- WINDOWS & IRON SHUTTERS
- WINDOWS BY STORY
- WINDOWS & 3rd STORES
- 275-845-11
- STABLE (C) CONCRETE BLOCK
- BUILDINGS COLORED YELLOW ARE FRAME
- RED BRICK
- BROWN BRICK
- GRAY
- BROWN FIRE PROOF
- INDICATE
- RELATIVE HEIGHTS
- FIRE STATION AS SHOWN ON KEY MAP
- STREET NUMBERS ARE ACTUAL
- CONSECUTIVE STREET NOS. ARE ARBITRARY

**CORRECTION RECORD**

REV. NO.	DATE OF CORRECTION	ATTACHED BY	DATE ATTACHED
3	12-42	C.G.	1-14-26
4	6-21	TC	1-24-24
5	5-21-23	TC	5-5-23
6	9-23	TC	3-6-26



Scale 800 feet to an inch (Approx.)







W. JEFFERSON

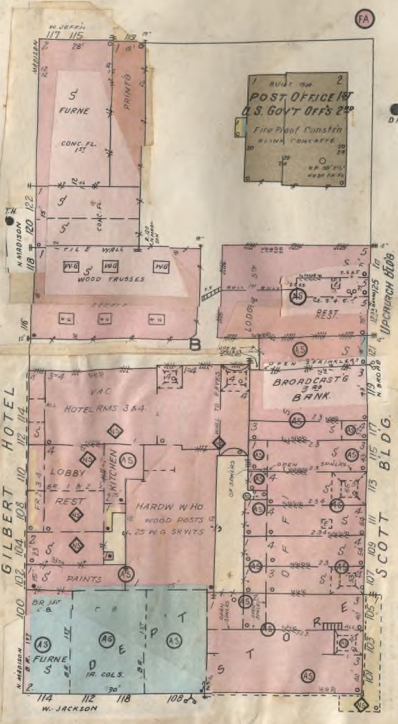
E. JEFFERSON

R. W. PIPE

N. MADISON

N. BROAD

N. CRAWFORD



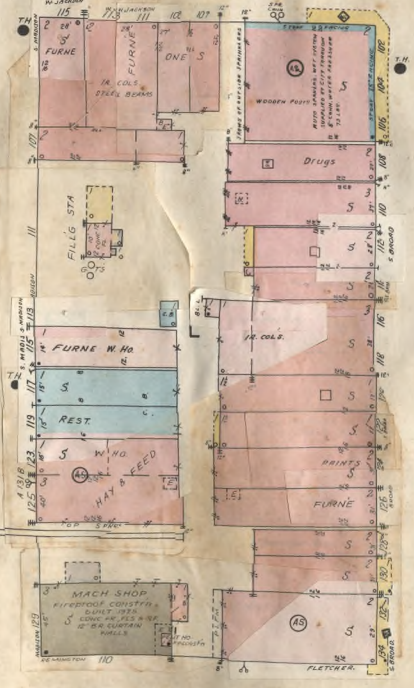
W. JACKSON

E. JACKSON

S. MADISON

S. BROAD

S. CRAWFORD

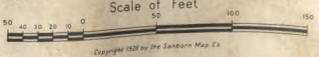


FLETCHER

REMINGTON AV.

AV.

REMINGTON PL.



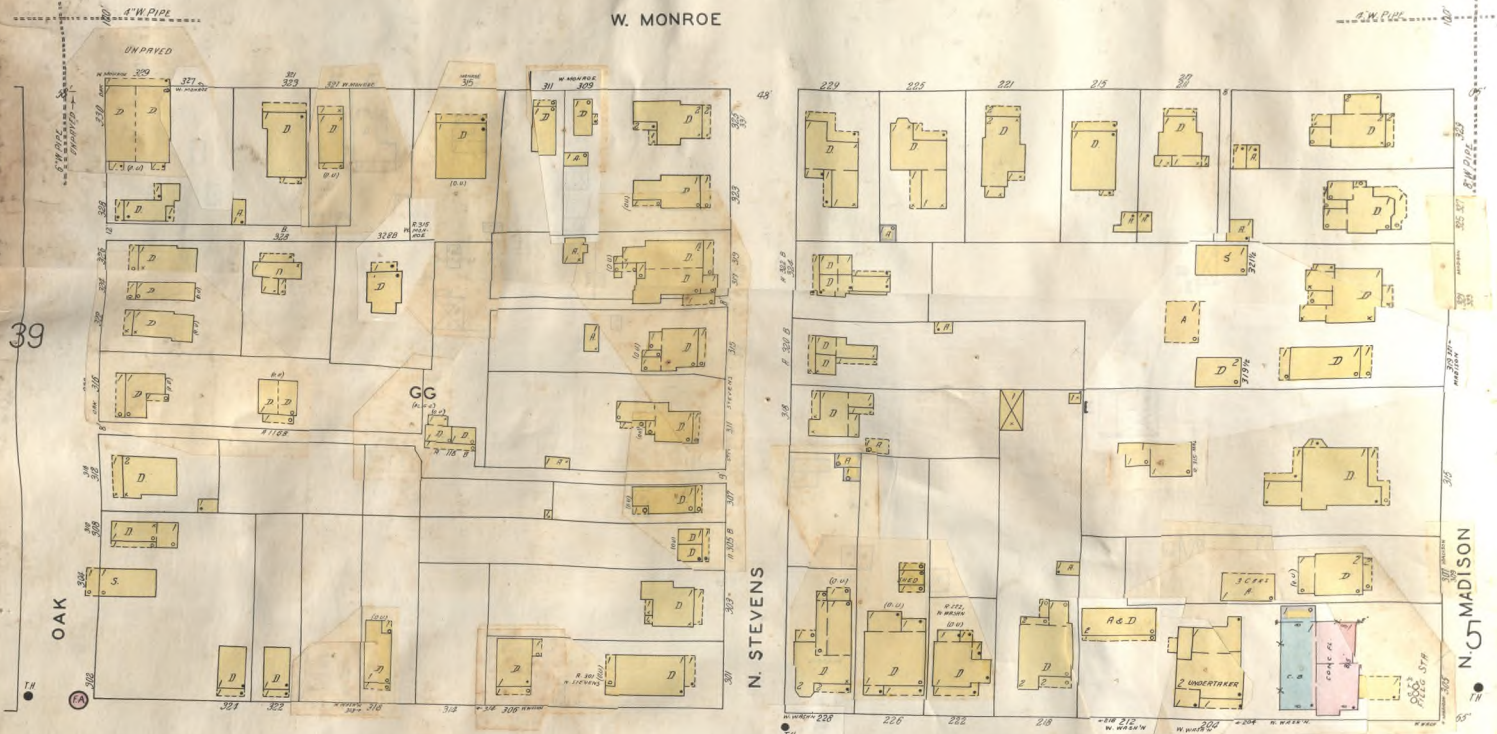


JULY 1928  
THOMASVILLE  
GA.



6

W. MONROE



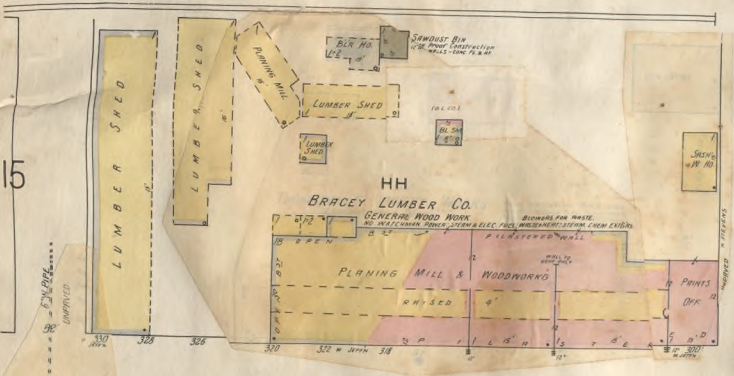
39

OAK

N. STEVENS

N. MADISON

W. WASHINGTON

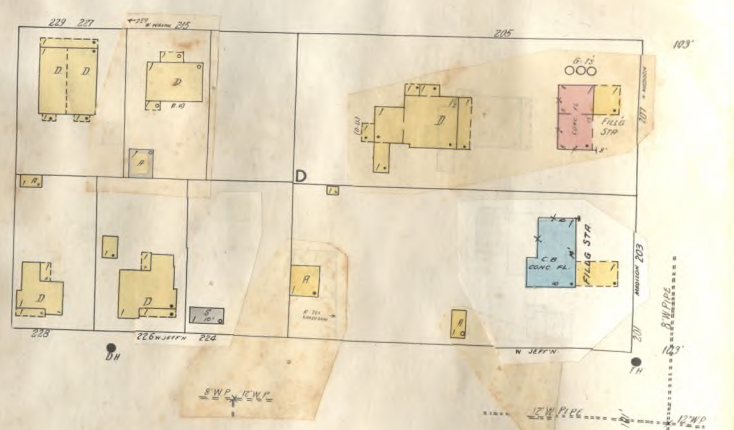


15

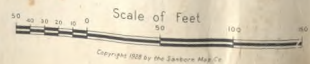
HH  
BRACEY LUMBER CO.  
GENERAL WOOD WORK

PLANNING MILL & WOODWORK

W. JEFFERSON



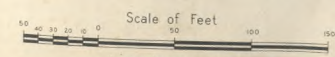
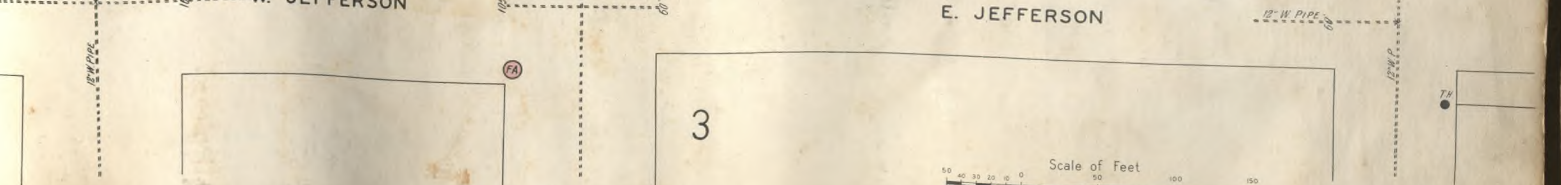
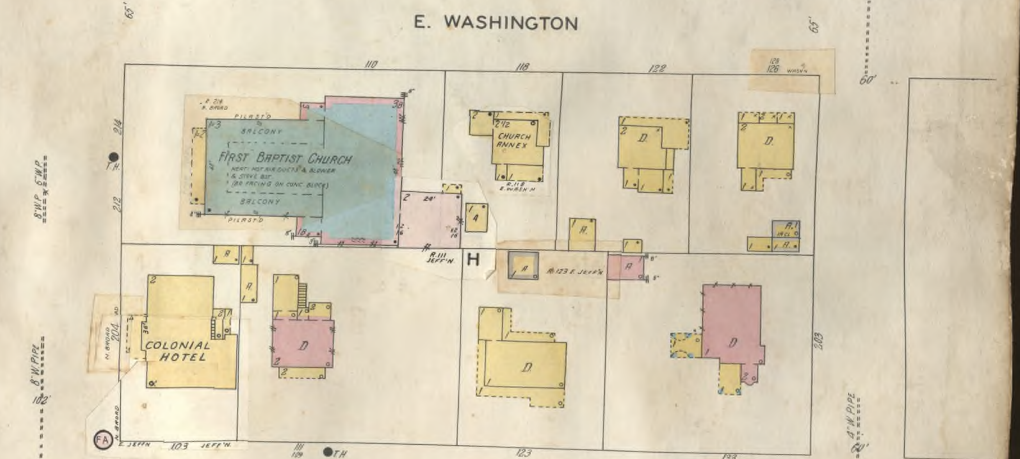
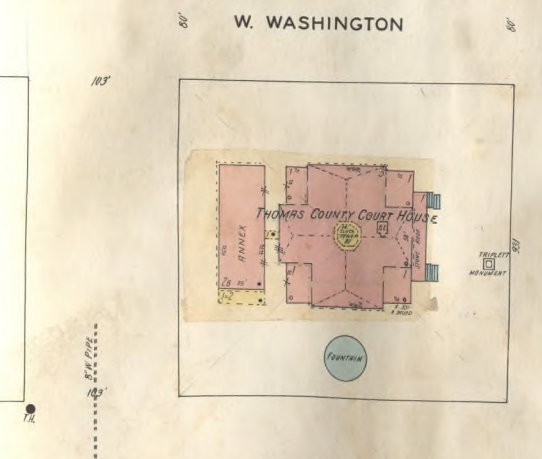
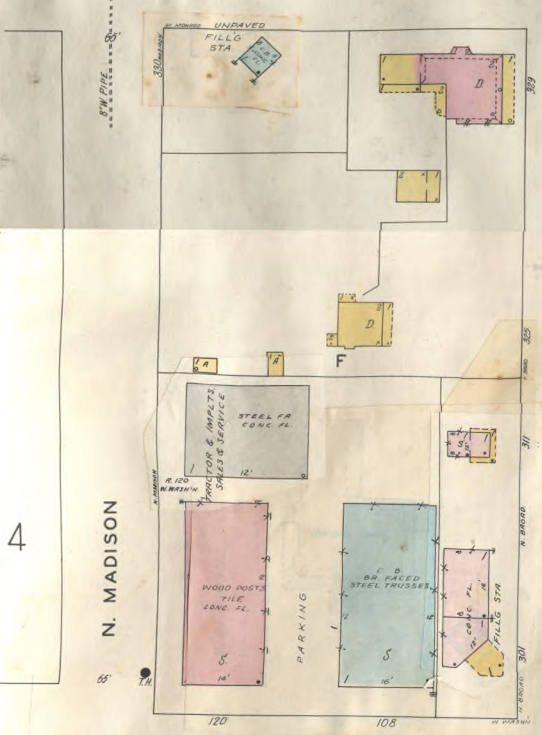
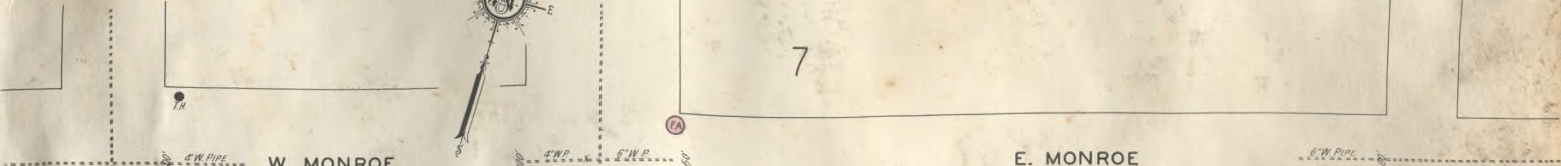
2



Scale of Feet

Copyright 1928 by the Sattone Map Co.

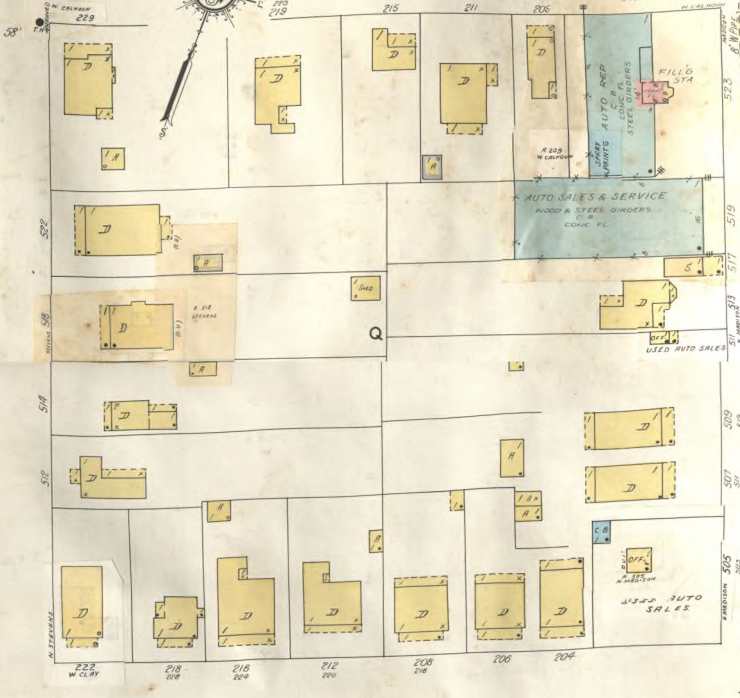




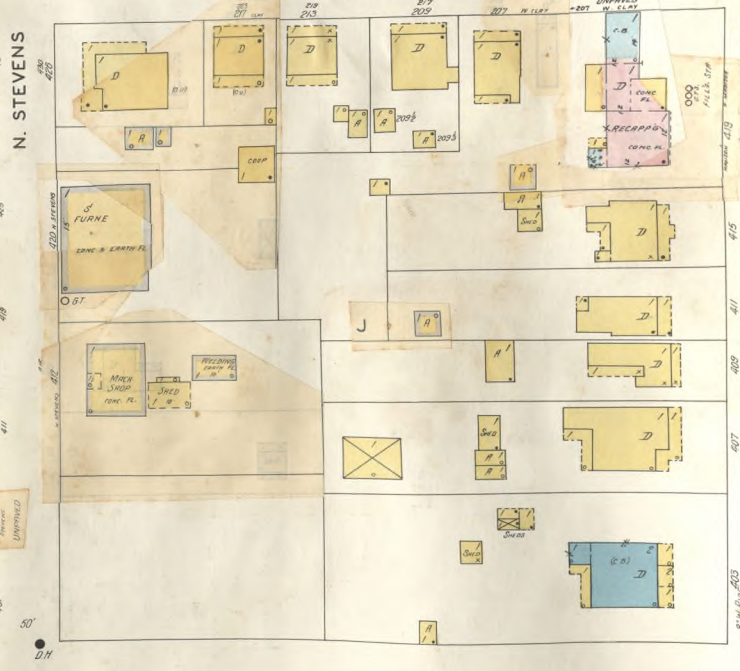
Copyright 1928 by the Sanborn Map Co



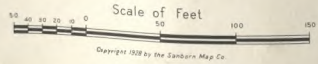
W. CALHOUN



W. CLAY



W. MONROE



Copyright 1928 by the Sanborn Map Co.

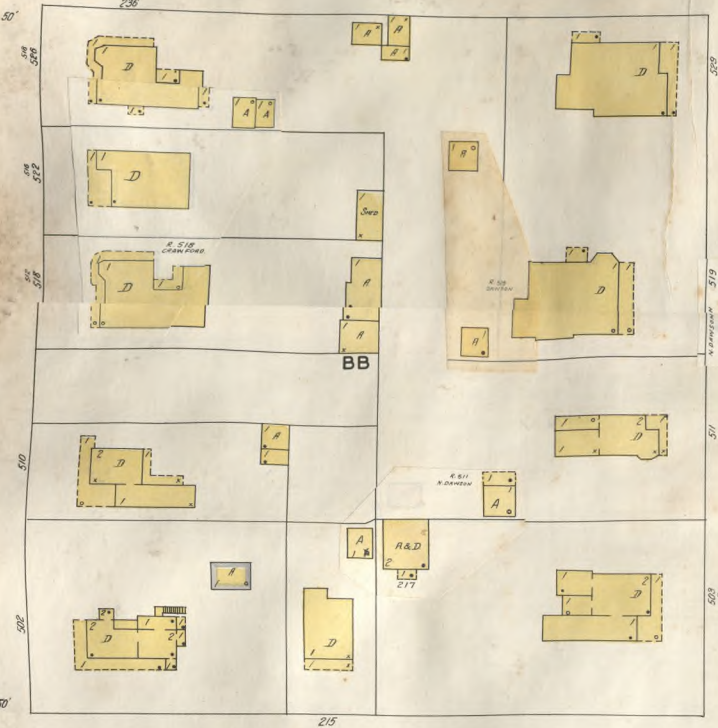




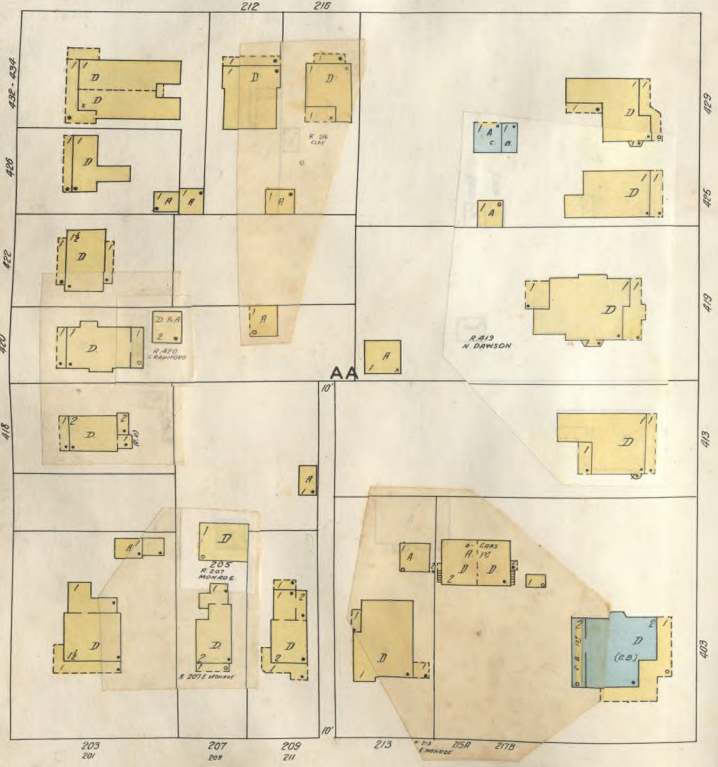


JULY 1928  
THOMASVILLE  
GA.

E. CALHOUN

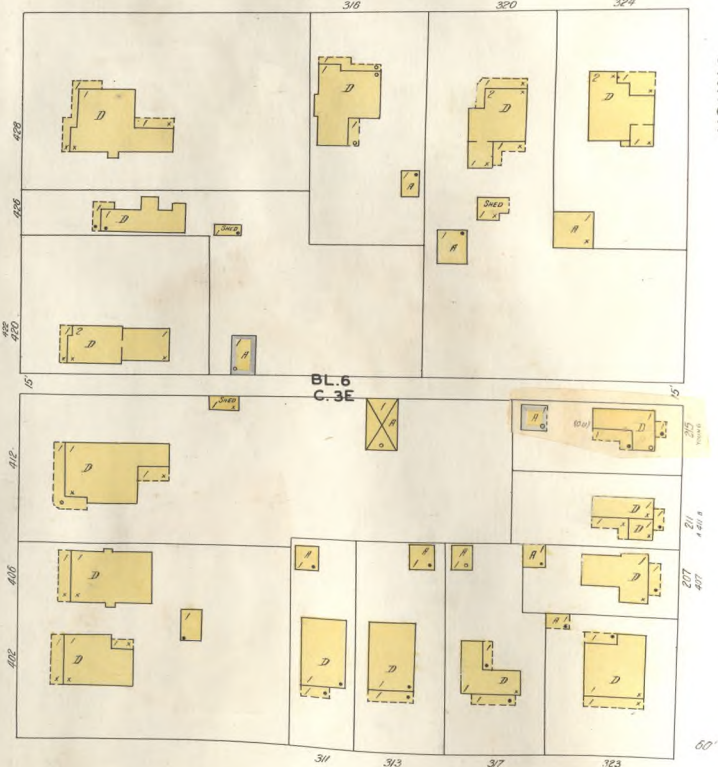


E. CLAY



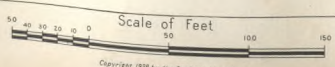
N. CRAWFORD

N. DAWSON

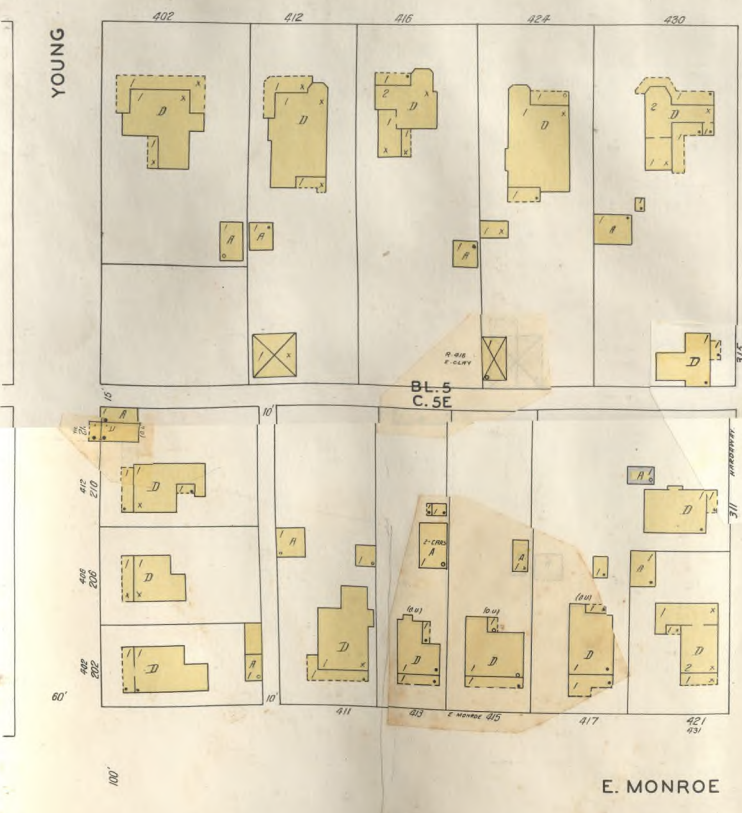
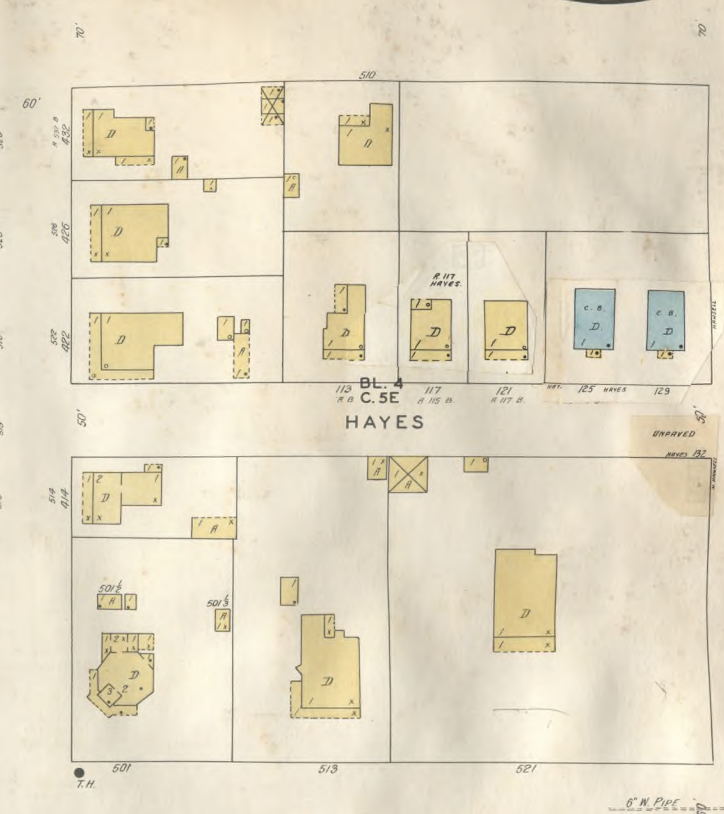
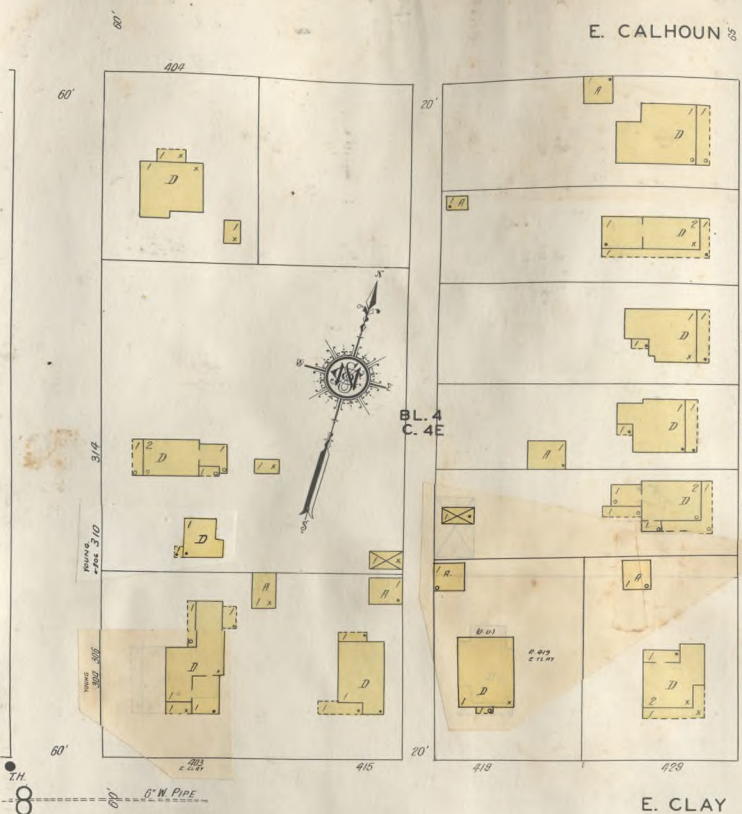


YOUNG

E. MONROE

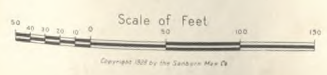
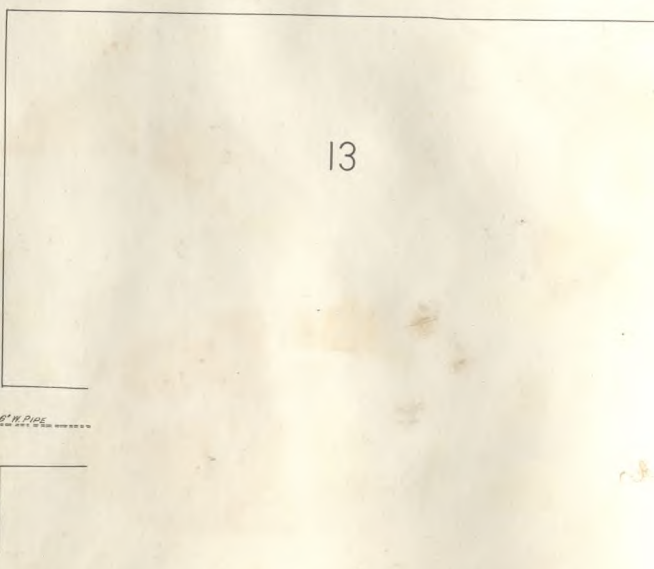
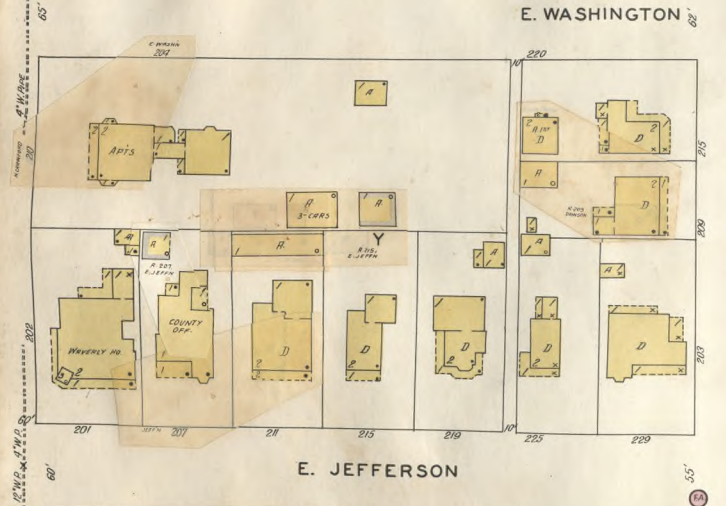
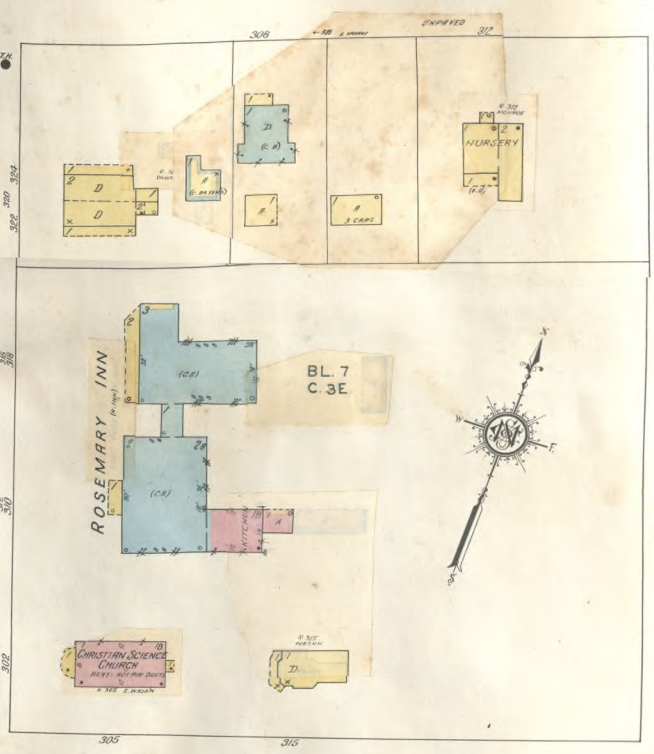
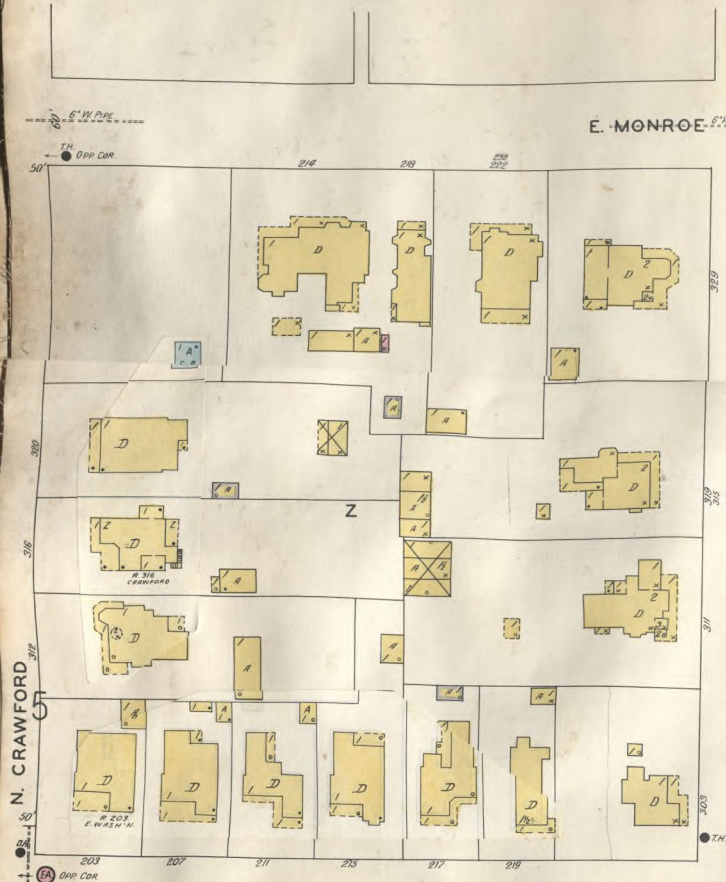




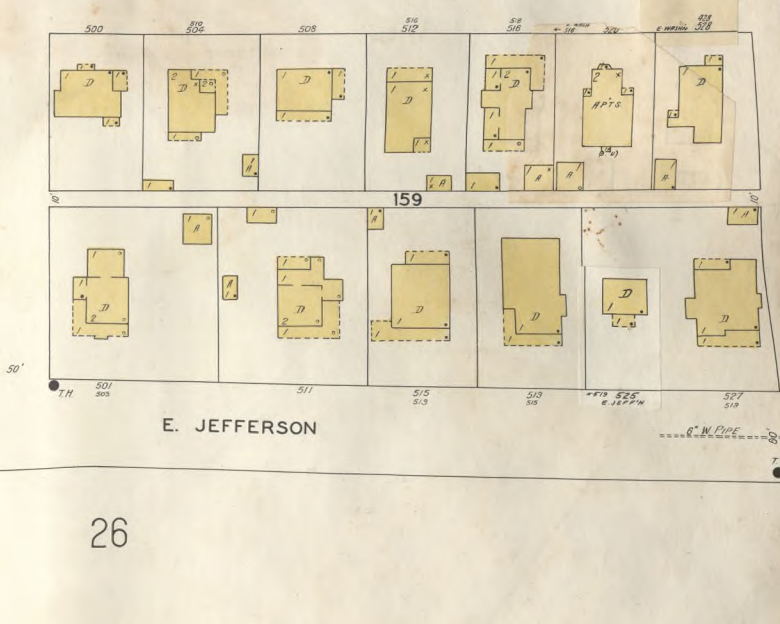
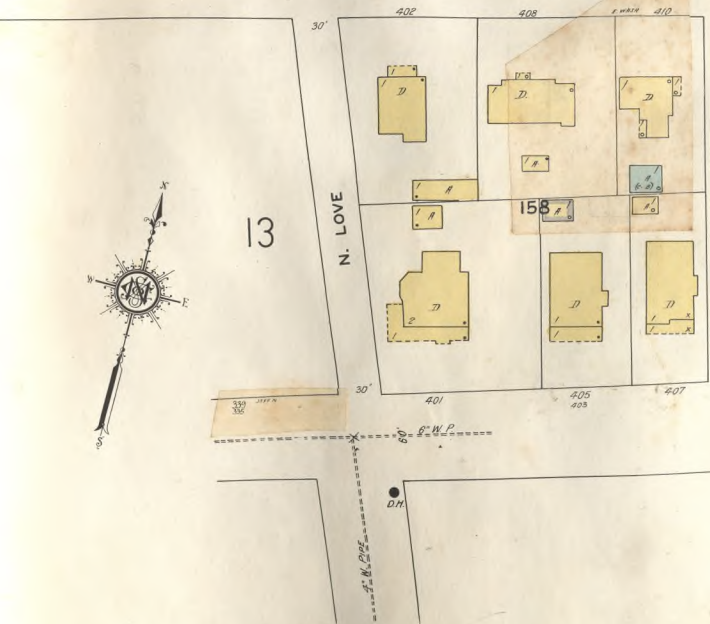




JULY 1928  
THOMASVILLE  
GA.









JULY 1928  
THOMASVILLE  
GA.

13

14

19

E. JEFFERSON

E. JACKSON

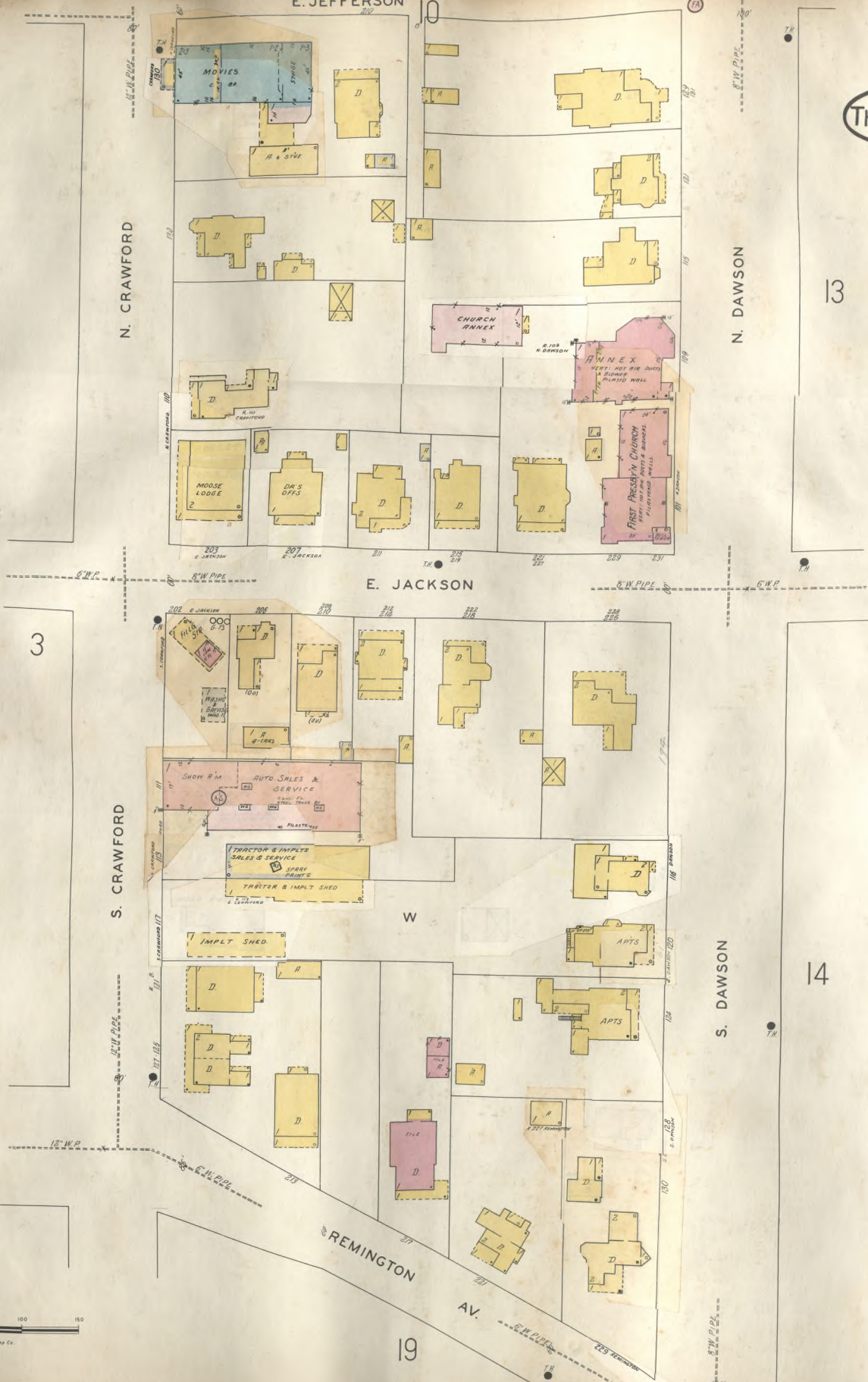
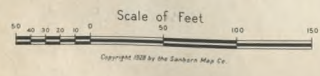
REMINGTON AV.

N. CRAWFORD

N. DAWSON

S. CRAWFORD

S. DAWSON





10

Young St.

E. WASHINGTON

6" W. PIPE

60'

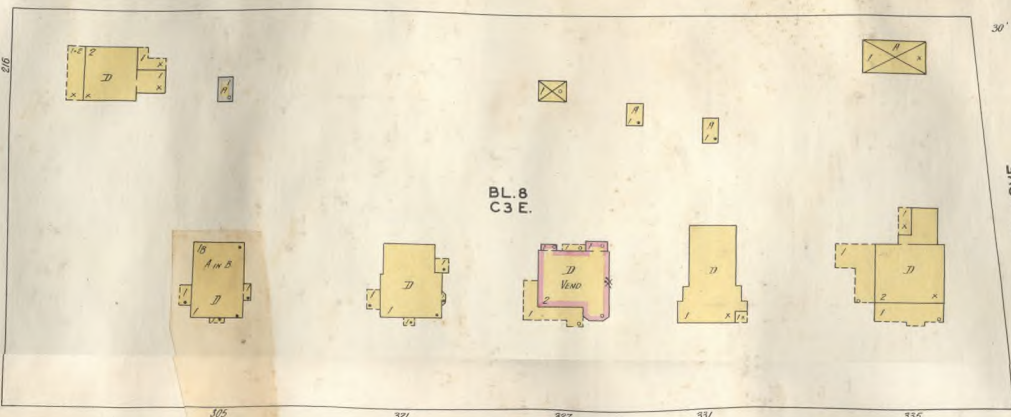
60'

N. LOVE

11

10

BL. 8  
C 3 E.



E. JEFFERSON

N. DAWSON

60'

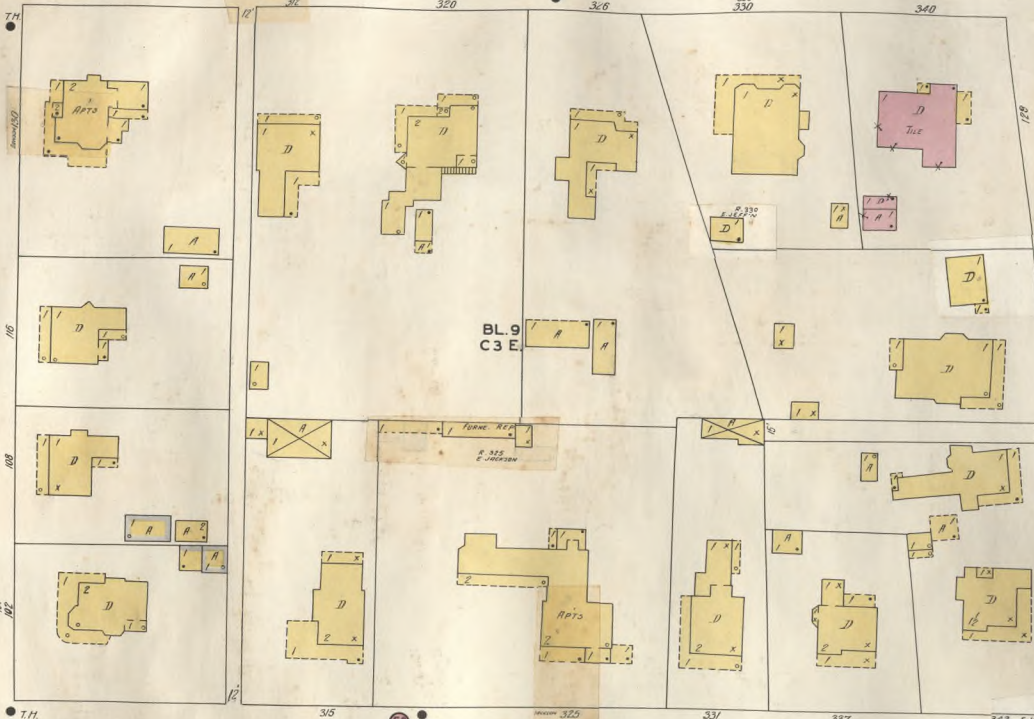
60'

N. LOVE

26

12

BL. 9  
C 3 E.



E. JACKSON

6" W. PIPE

60'

60'

6" W. PIPE

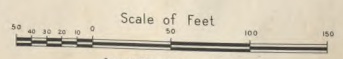
60'

60'

60'

SEWARD ST.

14



Copyright 1928 by the Sanborn Map Co.



JULY 1928  
THOMASVILLE  
GA.

E. JACKSON

S. DAWSON

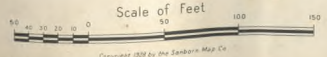
SEWARD

S. LOVE

WARREN AV.

REMINGTON AV.

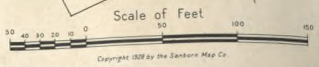
Shoebress Pl.



Copyright 1928 by the Sanborn Map Co.







Copyright 1928 by the Sanborn Map Co.











19

12

14

19

JULY 1928  
THOMASVILLE  
GA.

S. DAWSON ST.

WARREN ST.

REMINGTON AV.

AV.

THOMASVILLE YOUTH CENTER

PP

SNODGRASS ALLEY (MOORES AV)

MCLEAN AV.

S. DAWSON

S. CRAWFORD

SMITH AV.

18

ATLANTIC COAST LINE R.R.

29

6" W. PIPE  
T.M. ON COR.

ST. THOMAS EPISC. CHURCH  
RECTORY  
BUTRESSES IN S.W. COR.  
PARISH HO.  
WIND

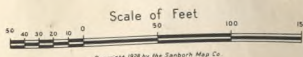
USED AUTO SHEDS

HOLLAND BONDED W. HO.  
WOOD POSTS

GULF OIL CORP.

MITCHELL CHAMBERSHIP CURB MARKET

MOSE W. HO.  
PEANUT & HONEY W. HO.



Copyright 1928 by the Sanborn Map Co.



20

14

26

20

JULY 1928  
THOMASVILLE  
GA.



METCALF AV.

29

METCALF AV.

E. LOOMIS

E. HILL

BLACKSHEAR

31

COLTON AV.

Scale 100 Ft. to One Inch.

Copyright 1928 by the Southern Map Co



JULY 1928  
THOMASVILLE  
GA.



31  
SCALE 100 FT TO ONE INCH  
Copyright 1928 by the Southern Railway

523

522 (204)

204

BLACKSHEAR

METCALF AV.

PARKER LA.

COLTON-EBEL AV.

SIMEON

524

525

526

527

528

529

530

531

532

533

534

535

536

537

538

539

540

541

542

543

544

545

546

547

548

549

550

551

552

553

554

555

556

557

558

559

560

561

562

563

564

565

566

567

568

569

570

571

572

573

574

575

576

577

578

579

580

581

582

583

584

585

586

587

588

589

590

591

592

593

594

595

596

597

598

599

600

601

602

603

604

605

606

607

608

609

610

611

612

613

614

615

616

617

618

619

620

621

622

623

624

625

626

627

628

629

630

631

632

633

634

635

636

637

638

639

640

641

642

643

644

645

646

647

648

649

650

651

652

653

654

655

656

657

658

659

660

661

662

663

664

665

666

667

668

669

670

671

672

673

674

675

676

677

678

679

680

681

682

683

684

685

686

687

688

689

690

691

692

693

694

695

696

697

698

699

700

701

702

703

704

705

706

707

708

709

710

711

712

713

714

715

716

717

718

719

720

721

722

723

724

725

726

727

728

729

730

731

732

733

734

735

736

737

738

739

740

741

742

743

744

745

746

747

748

749

750

751

752

753

754

755

756

757

758

759

760

761

762

763

764

765

766

767

768

769

770

771

772

773

774

775

776

777

778

779

780

781

782

783

784

785

786

787

788

789

790

791

792

793

794

795

796

797

798

799

800

801

802

803

804

805

806

807

808

809

810

811

812

813

814

815

816

817

818

819

820

821

822

823



JULY 1928  
THOMASVILLE  
GA.



A

B

B

38

23

40

24

N. CRAWFORD

Scale 100 Ft. to One Inch.

Copyright 1928 by the Sanborn Map Co





BOULEVARD

38

39

22

24

90



SUNNYSIDE HOMES  
APARTMENTS - 24 FAMILY UNITS  
CONC. WALKS TO ALL PAVED  
ALL WALKS TO ALL PAVED  
ALL WALKS TO ALL PAVED  
ALL WALKS TO ALL PAVED

BL. 2  
C. 3W

BL. 2  
C. 2W

BL. 1  
C. 1E

THOMAS COUNTY JAIL  
NON-CONF. BLDG. 1850  
CONFINED IN SPECIAL QUARTERS

DD  
WHITE WOMEN'S CLUB

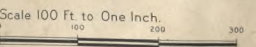
AUTO SALES & SERVICE

AMERICAN LEGION HALL

OLD CEMETERY

OLD CEMETERY  
COLORED

CITY CONST'N  
SUPPLY YARD



Scale 100 Ft. to One Inch.







25

BL. 2  
C. 6E

144

CHARL  
WEST  
ELEC

E. CALHOUN

BL. 3  
C. 6E  
HAYES

E. CLAY

E. MONROE

E. WASHINGTON

EAST SIDE GRAMMAR SCHOOL  
(1923-24)

E. JEFFERSON

26

PALMETTO AV.  
THOMASVILLE, GA.  
JULY 1928

25

PALMETTO (AV)

EDGEWOOD DR. (AV)

GLENWOOD DRIVE

40

THOMASVILLE JUNIOR HIGH SCHOOL  
(1924)

THOMASVILLE SENIOR HIGH SCHOOL  
(1924)

GYM  
STEEL FR  
C.B. OR FACED WALL  
10' IN ABOVE

SCALE 100 FT TO ONE INCH



24

9

N. HANSELL

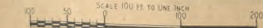
N. MITCHELL

E. W. PIPE

26

161

162





26

25

26

168

JULY 1928  
THOMASVILLE  
GA.

13

**E. JEFFERSON**

N. LOVE

N. HANSELL

166

**E. JACKSON**

167

173

175

174

172

178

179

176

**S. LOVE**

14

172

174

178

179

**S. HANSELL**

173

174

175

176

179

WARREN AV.

PILGRIM LANE

176

**S. LOVE**

14

178

179

176

179

**S. HANSELL**

173

174

175

176

179

WARREN AV.

PILGRIM LANE

176

**REMGTON AV.**

20

179

176

179

**S. HANSELL**

173

174

175

176

179

WARREN AV.

PILGRIM LANE

176



Scale 100 Ft. to One Inch.

0 100 200 300

Copyright 1928 by the Sanborn Mfg. Co.

LAUREL HILL CEMETERY

SCHENLEY

27

REMGTON AV.  
OR PAVO RD.







JULY 1928  
THOMASVILLE  
GA.



Scale 100 Ft. to One Inch.  
Copyright 1928 by the Sanson Map Co.



JULY 1928  
THOMASVILLE  
GA.

20

COLTON ST.

GRADY ST.

METCALF AV.

S. DAWSON

P A R R I S E P A R K

199



SOUTH

NEEL

S BROAD

GORDON

SIEXAS

7

S. HANSELL

31

PARK

AV. (ACHILLES)

13

E. LOOMIS

31

ROSEBANK AV.

30

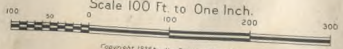
14

W. LOOMIS

30

WOODRWN APTS  
16-ROOMS  
100' x 100'  
YERD.

Scale 100 Ft. to One Inch.



Copyright 1928 by the Sanborn Map Co.





JULY 1928  
THOMASVILLE  
GA.



28

29

36

17

19

27

MIMOSA

W. HILL

31

S. BROAD

ARCHBOLD AV (ROSEDALE AV)

JOHN D. ARCHBOLD MEMORIAL HOSPITAL

416

37

34

Scale 100 Ft. to One Inch.

Copyright 1928 by the Sanborn Map Co.





Scale 100 Ft. to One Inch.  
 Copyright 1925 by the Sanborn Map Co.



JULY 1928  
THOMASVILLE  
GA.





33

JULY 1928  
THOMASVILLE  
GA.

28

33

16

CAMPBELL

BARTOW

THOMASVILLE GRAMMAR SCHOOL  
HEAT STEAM - LIGHTS ELEC

252

WESTSIDE  
BAPTIST  
CHURCH

268

28

32

S. COLLEGE

269

COLLEGE TERRACE HOMES - APARTMENTS  
40 FAMILY UNITS  
CONSTRUCTION NOTE: ALL BUILDINGS ARE TILE OR PAVED WITH  
TILE FINISH TO CEILING ONLY.

LESTER

248

N. COLLEGE

W. JACKSON

253

FLETCHER

FEARN

36

PATEN

254

BIBBS

256

HOPKINS (STANLAND)

271

34

NEEL ST.

RAILROAD AV.

255

DOWELL ALLEY

DOWELL

35

JONES (HOWARD)

JONES

WATER ST.

Scale 100 ft. to One Inch.

Copyright 1928 by the Sanborn Map Co.



JULY 1928  
THOMASVILLE  
GA.



26  
NOT OPENED

GRIFFEN 215

246

33

PARNELL

JUNIUS (FEARN)

GORDON AV

528

WATSON

MAC INTYRE

241

242

W. JACKSON

247

TEDDY ST

RAILROAD AV

HAMBLETON

ISOBEL ST

35

408

HOTEL THOMAS

409

502

LUMBER PILES

503

GEORGIA CRATE & BASKET CO

FORD

METCALF RD

410

504

35

Scale 100 Ft. to One Inch.

Copyright 1928 by the Sanborn Map Co





33

36

36

34

261

264

276

290

265

DIXON L.A.

FLETCHER

277

37

Scale 100 Ft to One Inch.

Copyright 1928 by the Sanborn Map Co



JULY 1928  
THOMASVILLE  
GA.

S. COLLEGE (AV.)

33

LESTER

281

282

304

305

30

27

SOUTH

MIMOSA DR.

306

283

FERN

307

DRYANT

284

HOPKINS

308

HOLLOWAY ST.

286

MAGNOLIA

309

JONES

287

400

ANDREWS

288

35

HOLLOWAY LANE

292

ELY (ELI)

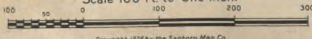
INMAN

157

37



Scale 100 Ft. to One Inch.



Copyright 1928 by the Sander's Map Co.





35

35

265

30

30

291

BOSSER AV.

AUGUSTA AV.

S BROAD

E. R. JERGER SCHOOL  
BUILT 1907

520

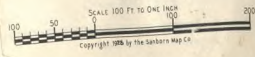
416

416A

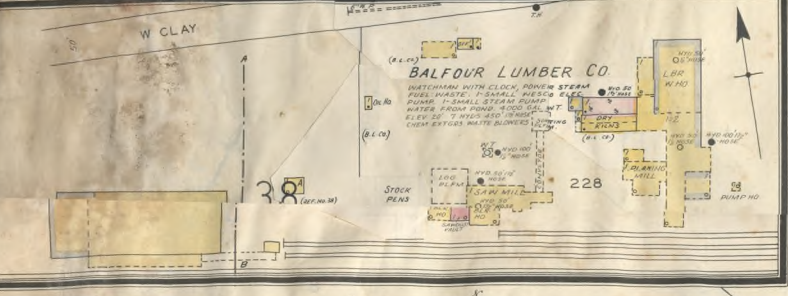
37

36

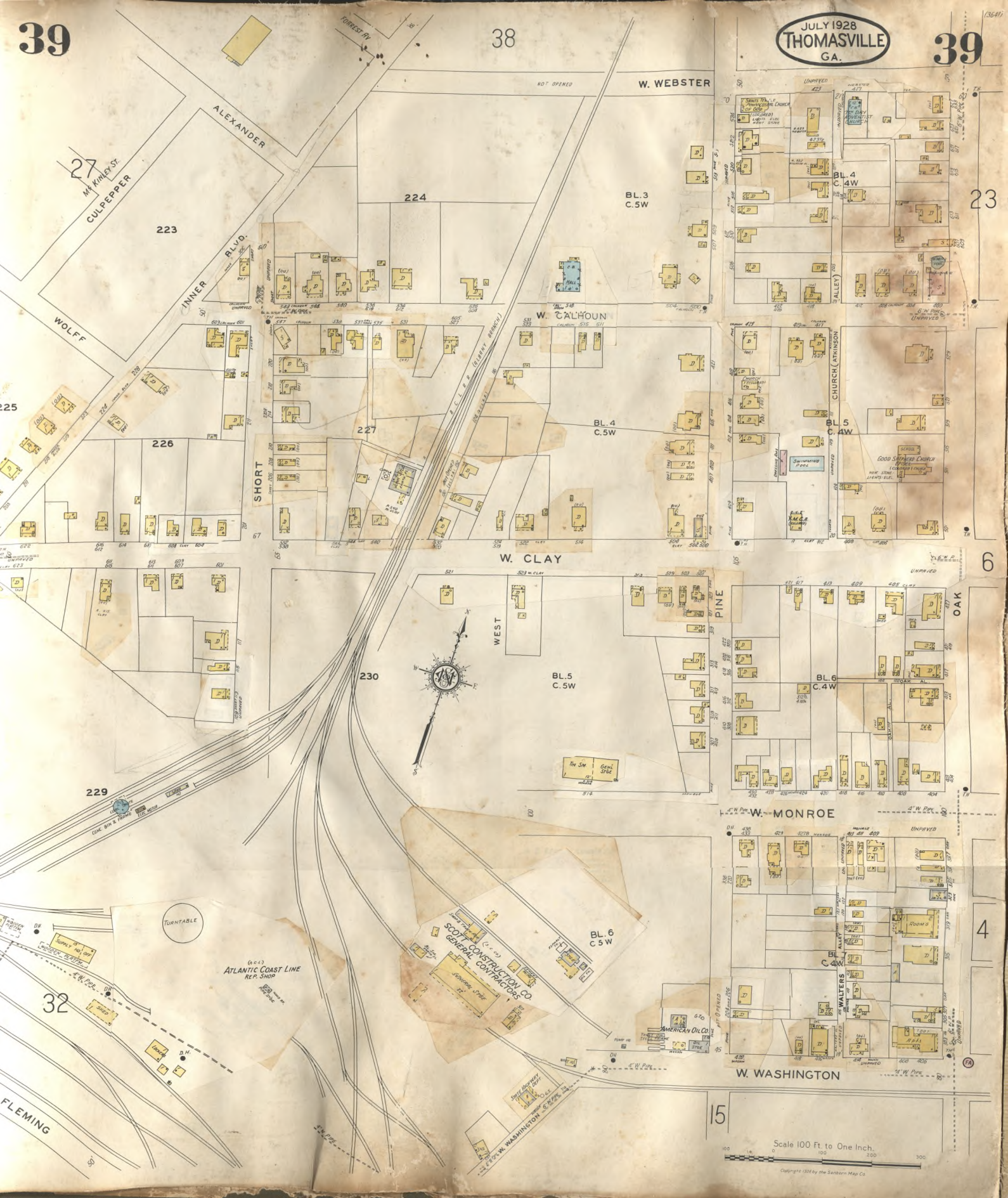
37











Scale 100 Ft to One Inch.  
Copyright 1928 by the Searson Map Co.





**GEORGIA PACKING CO.**  
 WATCHMAN WITH ELDON, HEAT STOVE  
 POWERED ELEC. PAUL WOOD, STOVE ELDON  
 WATER SUPPLY FROM CITY. (6-4-16)

